

# ***therascreen*<sup>®</sup> KRAS RGQ PCR Kit**

## **Instructions for Use (Handbook)**



Version 3

For in vitro diagnostic use

For use with Rotor-Gene<sup>®</sup> Q MDx instrument

**REF** 870021



QIAGEN Manchester Ltd, Skelton House,

Lloyd Street North, Manchester, M15 6SH, UK

**R1** **MAT** 1069600



Trademarks: QIAGEN®, QIAamp®, MinElute®, Rotor-Disc™, Rotor-Gene®, Scorpions®, *therascreen*® (QIAGEN Group); ARMS® (AstraZeneca Ltd.); ERBITUX® (ImClone LLC., a wholly-owned subsidiary of Eli Lilly and Company); Vectibix® (Amgen Inc.) FAM™, HEX™ (Life Technologies, Inc.).

THE PURCHASE OF THIS PRODUCT GRANTS THE PURCHASER RIGHTS UNDER CERTAIN ROCHE PATENTS TO USE IT SOLELY FOR PROVIDING HUMAN IN VITRO DIAGNOSTIC SERVICES. NO GENERAL PATENT OR OTHER LICENSE OF ANY KIND OTHER THAN THIS SPECIFIC RIGHT OF USE FROM PURCHASE IS GRANTED HEREBY.

#### **Limited License Agreement**

Use of this product signifies the agreement of any purchaser or user of the *therascreen* KRAS RGQ PCR KRAS Kit to the following terms:

1. The *therascreen* KRAS RGQ PCR Kit may be used solely in accordance with the *therascreen* KRAS RGQ PCR Kit Instructions for Use (Handbook) and for use with components contained in the *therascreen* KRAS RGQ PCR Kit only. QIAGEN grants no license under any of its intellectual property to use or incorporate the enclosed components of this Kit with any components not included within this *therascreen* KRAS RGQ PCR Kit except as described in the *therascreen* KRAS RGQ PCR Kit Instructions for Use (Handbook) and additional protocols available at [www.qiagen.com](http://www.qiagen.com).
2. Other than expressly stated licenses, QIAGEN makes no warranty that this *therascreen* KRAS RGQ PCR Kit and/or its use(s) do not infringe the rights of third-parties.
3. This *therascreen* KRAS RGQ PCR Kit and its components are licensed for one-time use and may not be reused, refurbished, or resold.
4. QIAGEN specifically disclaims any other licenses, expressed or implied other than those expressly stated.
5. The purchaser and user of the *therascreen* KRAS RGQ PCR Kit agree not to take or permit anyone else to take any steps that could lead to or facilitate any acts prohibited above. QIAGEN may enforce the prohibitions of this Limited License Agreement in any Court, and shall recover all its investigative and Court costs, including attorney fees, in any action to enforce this Limited License Agreement or any of its intellectual property rights relating to the *therascreen* KRAS RGQ PCR Kit and/or its components.

For updated license terms, see [www.qiagen.com](http://www.qiagen.com).

© 2014 QIAGEN, all rights reserved.

## **Contents**

<b>Intended Use</b>	<b>5</b>
<b>Summary and Explanation of the Test</b>	<b>5</b>
<b>Principle of the Procedure</b>	<b>6</b>
<b>Reagents</b>	<b>9</b>
<b>Warnings and Precautions</b>	<b>11</b>
<b>Safety information</b>	<b>11</b>
<b>General Precautions</b>	<b>11</b>
<b>Reagent Storage and Handling</b>	<b>12</b>
<b>Specimen Collection, Preparation for Analysis, and Storage</b>	<b>13</b>
<b>Materials Provided</b>	<b>15</b>
<b>Kit contents</b>	<b>15</b>
<b>Materials required but not provided</b>	<b>16</b>
<b>Procedure</b>	<b>17</b>
<b>DNA extraction</b>	<b>17</b>
<b>Protocol: DNA sample assessment</b>	<b>18</b>
<b>Protocol: Detection of KRAS mutations</b>	<b>30</b>
<b>Results</b>	<b>42</b>
<b>Limitations of the Procedure</b>	<b>43</b>
<b>Specific Performance Characteristics</b>	<b>43</b>
<b>Analytical performance</b>	<b>43</b>
<b>Sample handling variability</b>	<b>65</b>
<b>Lot interchangeability</b>	<b>67</b>
<b>Clinical performance</b>	<b>67</b>
<b>References</b>	<b>73</b>
<b>Names and Place of Business of Manufacture</b>	<b>74</b>
<b>Issue Date and Version</b>	<b>75</b>
<b>Troubleshooting Guide</b>	<b>76</b>
<b>Rotor-Gene Q therascreen KRAS Assay Package flags</b>	<b>77</b>
<b>Symbols</b>	<b>82</b>
<b>Contact Information</b>	<b>83</b>

<b>Appendix A: Installation of the Rotor-Gene Q thetascreen KRAS Assay Package</b>	<b>84</b>
<b>Ordering Information</b>	<b>88</b>

## Intended Use

The *therascreen* KRAS RGQ PCR Kit is a real-time qualitative PCR assay used on the Rotor-Gene Q MDx instrument for the detection of seven somatic mutations in the human KRAS oncogene, using DNA extracted from formalin-fixed paraffin-embedded (FFPE), colorectal cancer (CRC) tissue. The *therascreen* KRAS RGQ PCR Kit is intended to aid in the identification of CRC patients for treatment with Erbitux® (cetuximab) or with Vectibix® (panitumumab) based on a KRAS no mutation detected test result.

## Summary and Explanation of the Test

Mutations in the KRAS oncogene are frequently found in human cancers (1–3). The presence of these mutations correlates with a lack of response to certain EGFR inhibitor cancer therapies in patients with metastatic colorectal cancer (4, 5–13). Such mutations in the KRAS oncogene are present in around 40% of cases (14).

Using Scorpions® (15) and ARMS® (Allele Refractory Mutation System) technologies (16, 17), the *therascreen* KRAS RGQ PCR Kit enables the detection of seven mutations in codons 12 and 13 of the KRAS oncogene against a background of wild-type genomic DNA (see Table 1). Based on data in the COSMIC database (2012 v59), the seven mutations detected by the KRAS Kit account for >97% of all reported KRAS mutations in CRC patients (18).

**Table 1. List of mutations and COSMIC identities\***

Mutation	Base change	COSMIC ID
GLY12ALA (G12A)	GGT>GCT	522
GLY12ASP (G12D)	GGT>GAT	521
GLY12ARG (G12R)	GGT>CGT	518
GLY12CYS (G12C)	GGT>TGT	516
GLY12SER (G12S)	GGT>AGT	517
GLY12VAL (G12V)	GGT>GTT	520
GLY13ASP (G13D)	GGC>GAC	532

\* COSMIC IDs are taken from the Catalog of Somatic Mutations in Cancer ([www.sanger.ac.uk/genetics/CGP/cosmic](http://www.sanger.ac.uk/genetics/CGP/cosmic)).

## Principle of the Procedure

The *therascreen* KRAS RGQ PCR Kit provides eight separate PCR amplification reactions: seven mutation-specific reactions in codons 12 and 13 of exon 2 of the KRAS oncogene, and a wild type control in exon 4. The principle components of the kit are explained below.

### Mutation reaction mixes

Each mutation-specific reaction mix uses a mutation-specific ARMS primer to selectively amplify mutated DNA and then a Scorpions primer to detect the amplification product.

### ARMS

Allele-specific amplification is achieved by ARMS which exploits the ability of *Taq* DNA polymerase to distinguish between a matched and a mismatched base at the 3' end of a PCR primer. When the primer is fully matched, the amplification proceeds with full efficiency. When the 3' base is mismatched, only low-level background amplification may occur. Therefore, a mutated sequence is selectively amplified even in samples where the majority of the DNA does not carry the mutation.

### Scorpions

Detection of amplification is performed using Scorpions. Scorpions are bi-functional molecules containing a PCR primer covalently linked to a probe. The probe incorporates the fluorophore carboxyfluorescein (FAM™) and a quencher. The latter quenches the fluorescence of the fluorophore. When the probe binds to the ARMS amplicon during PCR, the fluorophore and quencher become separated, leading to a detectable increase in fluorescence.

### Control reaction

The Control Reaction Mix (tube CTRL) uses a Scorpions primer and an unlabeled primer to amplify a short sequence of exon 4 of the KRAS gene. The control reaction is used to determine if an appropriate level of amplifiable DNA is present in the sample and is a factor used in the analytical calculations that are used to determine mutation status.

### Internal control

Each of the eight reaction mixes contains an internal control designed to detect failure of the reaction (e.g., due to the presence of inhibitors). The internal control employs a non-KRAS related oligonucleotide target sequence, an unlabeled primer, and a Scorpions primer labeled with hexachlorofluorescein

(HEX<sup>™</sup>) in order to distinguish it from the FAM-labeled Scorpions in the control and mutation reactions.

### **Positive control**

The *therascreen* KRAS RGQ PCR Kit also contains the KRAS Positive Control (tube PC). The Positive Control is a mixture of synthetic oligonucleotides representing each of the mutations detected by the kit. Detection of the Positive Control confirms the proper functioning of each of the reaction mixes in the kit.

### **Negative control**

The *therascreen* KRAS RGQ PCR Kit contains nuclease-free water for No Template Control (tube NTC) to be used for the “no template control” (NTC) reaction. The NTC serves as a negative control and assesses potential contamination during assay setup.

### **Taq DNA polymerase**

Taq DNA polymerase is the enzyme for the polymerase chain reaction used by the *therascreen* KRAS RGQ PCR Kit.

### **Platform and software**

The *therascreen* KRAS RGQ PCR Kit is specifically designed to be used with the Rotor-Gene Q MDx instrument. The Rotor-Gene Q MDx instrument is programmed for different cycle parameters, or “runs”, by the *therascreen* KRAS Assay Package.

The *therascreen* KRAS Assay Package consists of two templates: the “*therascreen* KRAS QC Locked Template” (for DNA sample assessment) and the “*therascreen* KRAS Locked Template” (for detection of KRAS mutations). These templates contain the PCR run parameters and calculate the results. The same run parameters are used for both the DNA sample assessment with the Control Reaction Mix and for detection of KRAS mutations using the mutation reaction mixes:

1. Hold at 95°C for 15 minutes to activate the Taq DNA polymerase.
2. PCR for 40 cycles of 95°C for 30 seconds to denature, and 60°C for 1 minute to anneal and extend.

The PCR cycle at which the fluorescence from a particular reaction crosses the predefined threshold value given by *therascreen* KRAS Assay Package is defined as the C<sub>T</sub> value.

By using the control reaction to assess the DNA sample, it is possible based on the C<sub>T</sub> values obtained to determine if the samples contain DNA levels that are suitable for analysis, and which samples require dilution prior to analysis.

Assessing the sample using the different mutation reaction mixes to determine their respective  $C_T$  values allows the *therascreen* KRAS Assay Package software to perform a calculation to determine the  $\Delta C_T$  value of the sample using the equation:

$$\Delta C_T = [\text{mutation assay } C_T \text{ value}] - [\text{control assay } C_T \text{ value}]$$

Based on pre-determined analytical  $C_T$  and  $\Delta C_T$  values, the Rotor-Gene Q MDx software qualitatively determines the mutation status of the DNA samples and reports which samples contain which mutation.\*

\* Rarely, a tumor may contain more than one mutation. In such instances, the mutation yielding the lowest  $\Delta C_T$  value will be identified.



## Reagents

Reaction mixes are duplex, containing FAM-labeled reagents to detect targets and HEX-labeled internal control. The reaction mixes and positive control reagents contain Tris EDTA buffer, and the positive control contains the carrier Poly A RNA.

**Table 2. Reagents supplied in the *therascreen* KRAS RGQ PCR Kit**

Reagent	Ingredients	
Control Reaction Mix	Control Unlabeled Primer, Control Scorpions Primer, Internal Control Unlabeled Primer, Internal Control Scorpion Primer, Internal Control Template, Deoxynucleotide Triphosphates, Magnesium Chloride, Tris EDTA Buffer, PCR Buffer	2 tubes x 600 $\mu$ l
12ALA Reaction Mix	12ALA ARMS Primer, Scorpions Primer, Internal Control Unlabeled Primer, Internal Control Scorpion Primer, Internal Control Template, Deoxynucleotide Triphosphates, Magnesium Chloride, Tris EDTA Buffer, PCR Buffer	1 tube x 600 $\mu$ l
12ASP Reaction Mix	12ASP ARMS Primer, Scorpions Primer, Internal Control Unlabeled Primer, Internal Control Scorpion Primer, Internal Control Template, Deoxynucleotide Triphosphates, Magnesium Chloride, Tris EDTA Buffer, PCR Buffer	1 tube x 600 $\mu$ l
12ARG Reaction Mix	12ARG ARMS Primer, Scorpions Primer, Internal Control Unlabeled Primer, Internal Control Scorpion Primer, Internal Control Template, Deoxynucleotide Triphosphates, Magnesium Chloride, Tris EDTA Buffer, PCR Buffer	1 tube x 600 $\mu$ l

Table continued on next page.

**Table 2. Continued.**

Reagent	Ingredients	
12CYS Reaction Mix	12CYS ARMS Primer, Scorpions Primer, Internal Control Unlabeled Primer, Internal Control Scorpion Primer, Internal Control Template, Deoxynucleotide Triphosphates, Magnesium Chloride, Tris EDTA Buffer, PCR Buffer	1 tube x 600 $\mu$ l
12SER Reaction Mix	12SER ARMS Primer, Scorpions Primer, Internal Control Unlabeled Primer, Internal Control Scorpion Primer, Internal Control Template, Deoxynucleotide Triphosphates, Magnesium Chloride, Tris EDTA Buffer, PCR Buffer	1 tube x 600 $\mu$ l
12VAL Reaction Mix	12VAL ARMS Primer, Scorpions Primer, Internal Control Unlabeled Primer, Internal Control Scorpion Primer, Internal Control Template, Deoxynucleotide Triphosphates, Magnesium Chloride, Tris EDTA Buffer, PCR Buffer	1 tube x 600 $\mu$ l
13ASP Reaction Mix	13ASP ARMS Primer, Scorpions Primer, Internal Control Unlabeled Primer, Internal Control Scorpion Primer, Internal Control Template, Deoxynucleotide Triphosphates, Magnesium Chloride, Tris EDTA Buffer, PCR Buffer	1 tube x 600 $\mu$ l
KRAS Positive Control	Control Template, 12ALA Template, 12ASP Template, 12ARG Template, 12CYS Template, 12SER Template, 12VAL Template, 13ASP Template, Poly A RNA, Tris EDTA Buffer	1 tube x 250 $\mu$ l
Taq DNA Polymerase	Taq Polymerase: 50% glycerol/water	1 tube x 70 $\mu$ l
No template control	Nuclease-Free Water	1 tube x 1.9 ml
For template dilution	Nuclease-Free Water	1 tube x 1.9 ml

**Platform**

The *therascreen* KRAS RGQ PCR Kit is specifically designed for use with the Rotor-Gene Q MDx instrument installed with the *therascreen* KRAS Assay

Package version 1.0.12, available separately on CD (QIAGEN, cat. no. 9021168).

- Refer to the instrument user manual for information concerning the instrument.
- Refer to “Appendix A: Installation of the Rotor-Gene Q *therascreen* KRAS Assay Package”, page 84, for instructions on installing the Rotor-Gene Q MDx *therascreen* KRAS Assay Package.

The Rotor-Gene Q MDx instrument must be maintained according to the requirements in the instrument user manual.

## Warnings and Precautions

For in vitro diagnostic use.

For prescription use only.

## Safety information

When working with chemicals, always wear a suitable lab coat, disposable gloves, and protective goggles. For more information, please consult the appropriate material safety data sheets (MSDSs). These are available online in convenient and compact PDF format at [www.qiagen.com/support/MSDS.aspx](http://www.qiagen.com/support/MSDS.aspx), where you can find, view, and print the MSDS for each QIAGEN kit and kit component.

### 24-hour emergency information

Chemical emergency or accident assistance is available 24 hours a day from: CHEMTREC

USA & Canada ■ Tel: 1-800-424-9300

## General Precautions

- The Test is for use with formalin-fixed, paraffin-embedded tissue specimens.
- All chemicals and biological materials are potentially hazardous. Specimens and samples are potentially infectious and must be treated as biohazardous materials.
- Discard sample and assay waste according to your local safety procedures.
- Reagents for the *therascreen* KRAS RGQ PCR Kit are diluted optimally. Do not dilute reagents further as this may result in a loss of performance. Do not use reaction volumes (reaction mix plus sample) of less than 25  $\mu$ l.
- All reagents in the *therascreen* KRAS RGQ PCR Kit are formulated specifically for use with the tests provided in the *therascreen* KRAS RGQ PCR Kit.

- All reagents supplied in *therascreen* KRAS RGQ PCR Kit are intended to be used solely with the other reagents supplied in the same *therascreen* KRAS RGQ PCR Kit. Do not substitute the reagents in the *therascreen* KRAS RGQ PCR Kit or between *therascreen* KRAS RGQ PCR kits, as this may affect performance.
- Only use the *Taq* DNA polymerase (tube *Taq*) that is provided in the *therascreen* KRAS RGQ PCR Kit. Do not substitute with *Taq* DNA polymerase from other kits of the same or any other type, or with *Taq* DNA polymerase from another supplier.
- Refer to the Rotor-Gene Q MDx instrument user manual for additional warnings, precautions and procedures.
- Do not use expired or incorrectly stored components.

**Note:** Use extreme caution to prevent contamination of the control and reaction mix reagents with the synthetic materials that are contained in the positive control reagent.

**Note:** Use individual, dedicated pipets for setting up reaction mixes and adding positive control reagents.

**Note:** Perform preparation and dispensing of reaction mixes in an area separate from the one used for the addition of the positive control.

**Note:** Do not open the Rotor-Gene Q MDx instrument until the run has finished.

**Note:** Do not open Rotor-Gene Q tubes after the run has finished.

**Note:** Caution must be observed to ensure correct sample testing with emphasis to wrong sample entry, loading error, and pipetting error.

## Reagent Storage and Handling

The *therascreen* KRAS RGQ PCR Kit is shipped on dry ice. If any component of the *therascreen* KRAS RGQ PCR Kit is not frozen on arrival, the outer packaging has been opened during transit, or the shipment does not contain a packing note, Instructions for Use, or the reagents, please contact one of the QIAGEN Technical Service Departments or local distributors (see back cover or visit [www.qiagen.com](http://www.qiagen.com)).

The *therascreen* KRAS RGQ PCR Kit should be stored immediately upon receipt at  $-15$  to  $-25^{\circ}\text{C}$  in a constant-temperature freezer and protected from light. When stored under the specified storage conditions, the *therascreen* KRAS RGQ PCR Kit is stable until the stated expiration date.

Once opened, reagents can be stored in their original packaging at  $-15$  to  $-25^{\circ}\text{C}$  for 12 months or until the stated expiration date shown on the

packaging. Repeated thawing and freezing should be avoided. Do not exceed a maximum of 6 freeze–thaw cycles.

The reagents must be thawed at room temperature for a minimum of 1 hour and a maximum of 4.5 hours. Once the reagents are ready to use, the PCR reactions can be set up. The Rotor-Gene Q tubes, containing the master mixes and the DNA sample, can be loaded onto the Rotor-Gene Q immediately. The total time prior to run once the PCR reactions are set up should not exceed:

- 7 hours if stored at room temperature  
**Note:** This time includes both the PCR setup and storage.
- 18 hours if stored in the refrigerator (2–8°C)  
**Note:** This time includes both the PCR setup and storage.

**Note:** Scorpions (as with all fluorescently labeled molecules) in the reaction mix reagents are light sensitive. Protect control and reaction mix reagents from light to avoid photo bleaching.

Reagents in the *therascreen* KRAS RGQ PCR Kit are diluted optimally and no further purification or treatment is required prior to their use in analysis as directed by the *therascreen* KRAS RGQ PCR Kit Instructions for Use (Handbook).

Attention should be paid to expiration dates and storage conditions printed on the box and labels of all components. Do not use expired or incorrectly stored components.

## Specimen Collection, Preparation for Analysis, and Storage

The *therascreen* KRAS RGQ PCR Kit is for use on DNA samples extracted from formalin-fixed paraffin-embedded (FFPE) tumor tissue collected from colorectal cancer (CRC) patients. Tumors are heterogeneous in terms of both genotype and phenotype. Mutation-positive tumors can contain wild-type DNA and similarly histology can show regions of non-tumor tissue. All tissue samples should be treated as potentially hazardous.

To prepare tissue samples for DNA extraction:

- Using standard materials and methods, fix the tissue specimen in 10% neutral buffered formalin (NBF), and embed the tissue specimen in paraffin. Using a microtome, cut 5 µm serial sections from the paraffin block and mount them on glass slides.
- Use a trained individual (e.g., a pathologist) to assess a Hematoxylin & Eosin (H&E)-stained section for tumor content and area determination. Mark the stained slide to distinguish tumor from normal tissue. Use serial sections for DNA extraction.

- Use sections with  $>20\%$  tumor content by area for processing without macro-dissection (see below).
- For sections that are  $\leq 20\%$  tumor content by area, macrodissect one or more sections. Discard the non-tumor tissue.
- For sections that are  $< 4\text{mm}^2$  in area, process two or more sections to increase the total tumor area to at least  $4\text{mm}^2$  (applies to samples both with and without macro-dissection). Discard the non-tumor tissue.
- Scrape excess paraffin away from the tissue using a fresh, sterile scalpel.

**Note:** Use dry scalpels. Do not perform this step in a laminar flow or fume hood.

- Scrape the tumor tissue from the sections into labeled microcentrifuge tubes using a fresh scalpel for each sample.

Label, handle, and store tumor specimens, blocks, slides, samples, and microcentrifuge tubes ready for extraction in a controlled fashion according to local procedures.

Store FFPE blocks and slides at room temperature. Slides may be stored at ambient temperature for up to 4 weeks prior to DNA extraction.

Genomic DNA may be stored at  $2-8^{\circ}\text{C}$  for 1 week post extraction, then at  $-15$  to  $-25^{\circ}\text{C}$  up to 8 weeks before use.

# Materials Provided

## Kit contents

Table 3

<b><i>therascreen</i> KRAS RGQ PCR Kit</b>				<b>(24)</b>
<b>Catalog no.</b>				<b>870021</b>
<b>Number of preps</b>				<b>24</b>
<b>Color</b>	<b>Identity</b>	<b>Tube identification</b>		<b>Volume</b>
Red	Control Reaction Mix	1	CTRL	2 x 600 µl
Purple	12ALA Reaction Mix	2	12ALA	600 µl
Orange	12ASP Reaction Mix	3	12ASP	600 µl
Pink	12ARG Reaction Mix	4	12ARG	600 µl
Green	12CYS Reaction Mix	5	12CYS	600 µl
Yellow	12SER Reaction Mix	6	12SER	600 µl
Grey	12VAL Reaction Mix	7	12VAL	600 µl
Blue	13ASP Reaction Mix	8	13ASP	600 µl
Beige	KRAS Positive Control	9	PC	250 µl
Mint	<i>Taq</i> DNA Polymerase		<i>Taq</i>	70 µl
White	Nuclease-free water for No Template Control		NTC	1.9 ml
White	Nuclease-free water for Dilution		Dil.	1.9 ml
Instructions for Use (Handbook)				1

## Materials required but not provided

When working with chemicals, always wear a suitable lab coat, disposable gloves, and protective goggles. For more information, consult the appropriate material safety data sheets (MSDSs), available from the product supplier.

- 0.1 ml Strip Tubes and Caps, for use with 72-well rotor (QIAGEN, cat. no. 981103 or 981106)
- Sterile microcentrifuge tubes for preparing master mixes
- Sterile pipet tips with aerosol barriers
- Permanent marker
- Rotor-Gene Q MDx instrument with 72-well rotor\* (QIAGEN, cat. no. 9002035 and 9001580)
- Rotor-Gene Q software version 2.1.0

**Note:** The Rotor-Gene Q MDx *therascreen* KRAS Assay Package software will only work with the software version 2.1.0 (Build 9) or higher.

- Rotor-Gene Q MDx *therascreen* KRAS Assay Package CD version 1.0.12 (QIAGEN, cat. no. 9021168)
- Loading Block 72 x 0.1 ml Tubes, aluminum block for manual reaction setup (QIAGEN, cat. no. 9018901)
- Dedicated pipets\* (adjustable) for sample preparation
- Dedicated pipets\* (adjustable) for PCR master mix preparation
- Dedicated pipets\* (adjustable) for dispensing of template DNA
- Thermomixer,\* heated orbital incubator, heating block, or water bath capable of incubation at 56°C and 90°C\*
- Benchtop centrifuge\* with rotor for 1.5 ml tubes
- Benchtop vortexer\*
- QIAamp® DSP DNA FFPE Tissue Kit (QIAGEN, cat. no. 60404; see "DNA extraction", page 17)

\* Prior to use ensure that instruments have been checked and calibrated according to the manufacturer's recommendations.



# Procedure

## DNA extraction

Use the QIAamp DSP DNA FFPE Tissue Kit (QIAGEN, cat. no. 60404) with the modifications to protocol described below for purifying genomic DNA from samples prepared from FFPE CRC specimens.

**Note:** The *therascreen* KRAS RGQ PCR Kit has been validated using DNA extracted using the QIAamp DSP DNA FFPE Tissue Kit. Do not use any other DNA extraction product.

Carry out the DNA extraction according to instructions in the *QIAamp DSP DNA FFPE Tissue Kit Handbook* (Version 1) noting the following:

- See the *QIAamp DSP DNA FFPE Tissue Kit Handbook* for preparation of samples prior to DNA extraction.
- The QIAamp DSP DNA FFPE Tissue Kit must be used manually only. Do not use the automated protocol for the QIAcube described in the *QIAamp DSP DNA FFPE Tissue Kit Handbook*.
- Do not use the RNase step described in the *QIAamp DSP DNA FFPE Tissue Kit Handbook*.
- Do not use the QIAGEN deparaffinization solution provided in the QIAamp DSP DNA FFPE Tissue Kit. Use only the xylene/ethanol method for deparaffinization described in the *QIAamp DSP DNA FFPE Tissue Kit Handbook*.
- Proteinase K digestion (step 11 in the *QIAamp DSP DNA FFPE Tissue Kit Handbook*) must be performed for 1 hour.
- The samples must be eluted into 200 µl of elution buffer (ATE) from the QIAamp DSP DNA FFPE Tissue Kit.

Store genomic DNA at 2–8°C for 1 week post extraction, and then at –15 to –25°C for up to 8 weeks before use.

## Protocol: DNA sample assessment

This protocol is used to assess the total amplifiable DNA in samples.

### Important points before starting

- Up to 24 samples can be assessed using the Control Reaction Mix available.
- Use the Control Reaction Mix (tube CTRL) to assess the DNA prior to testing.

**Note:** It is important to use the Control Reaction Mix as described below for this assessment and not spectrophotometry or other alternative methods. Heavily degraded DNA may not amplify even though the primers generate short DNA fragments.

- For efficient use of the reagents in the *therascreen* KRAS RGQ PCR Kit, batch DNA samples as far as possible to create full runs. Testing samples individually or in smaller numbers uses up more reagents and reduces the overall number of samples that can be tested with a single *therascreen* KRAS RGQ PCR Kit.
- Do not vortex the *Taq* DNA polymerase (tube *Taq*) or any mix containing *Taq* DNA polymerase, as this may inactivate the enzyme.
- Pipet *Taq* DNA polymerase by carefully placing the pipet tip just under the liquid surface to avoid the tip being coated in excess enzyme.

### Things to do before starting

- Ensure that the Rotor-Gene Q *therascreen* KRAS Assay Package software is installed before first use of the Rotor-Gene Q MDx instrument (see “Appendix A: Installation of the Rotor-Gene Q *therascreen* KRAS Assay Package”, page 84).
- Before each use, all reagents need to be thawed completely for a minimum of 1 hour at room temperature (15–25°C), mixed by inverting 10 times, and centrifuged briefly to collect the contents at the bottom of the tube.
- Ensure that *Taq* DNA polymerase (tube *Taq*) is at room temperature (15–25°C) before each use. Centrifuge the tube briefly to collect the enzyme at the bottom of the tube.

## Procedure

1. Completely thaw the Control Reaction Mix (tube CTRL), nuclease-free water for No Template Control (tube NTC), and KRAS Positive Control (tube PC) at room temperature (15–25°C) for a minimum of 1 hour. The times for thawing reagents, PCR setup, and storage before starting the run are indicated in Table 4. When the reagents have thawed, mix them by inverting each tube 10 times to avoid localized concentrations of salts and then centrifuge briefly to collect the contents at the bottom of the tube.

Table 4. Thawing times, PCR setup times, and storage temperatures

Thaw time		Storage temperature after PCR setup	Maximum PCR setup and storage time
Minimum	Maximum		
1 hour	4.5 hours	Room temperature (15–25°C)	7 hours
1 hour	4.5 hours	2–8°C	18 hours

**Note:** PCR setup is to be performed at room temperature. The term “Storage” refers to the time between completion of PCR setup and start of the PCR run on the Rotor-Gene Q MDx instrument.

**Note:** Bring *Taq* DNA polymerase (tube *Taq*) to room temperature (15–25°C) at the same time as the other reagents (see “Reagent Storage and Handling”, page 12). Centrifuge the tube briefly to collect the enzyme at the bottom of the tube.

2. Prepare sufficient master mixes (Control Reaction Mix [tube CTRL] plus *Taq* DNA polymerase [tube *Taq*]) for the DNA samples, one KRAS Positive Control (tube PC) reaction, and one Nuclease-free water for No Template Control (tube NTC) reaction according to the volumes in Table 5. Include reagents for 2 extra samples to allow sufficient overage for the PCR setup.

The master mix contains all of the components needed for the PCR, except the sample.

Table 5. Preparation of Control assay master mix

Component	Volume
Control Reaction Mix (tube CTRL)	19.76 $\mu\text{l}$ x (n+2)*
Taq DNA polymerase (tube Taq)	0.24 $\mu\text{l}$ x (n+2)*
Total volume	20.0 $\mu\text{l}$ /reaction

\* n=number of reactions (samples plus controls). Prepare enough master mix for 2 extra samples (n+2) to allow for sufficient overage for the PCR setup. The value n should not exceed 24 (plus controls) as 24 is the maximum number of samples which can fit on a run.

**Note:** When preparing the master mix, the required volume of the Control Reaction Mix is added to the relevant tube first and the Taq DNA polymerase (tube Taq) is added last.

- Place the appropriate number of PCR 4-strip tubes (each strip has four tubes) in the loading block according to the layout in Table 6. Do not cap the tubes.**

**Note:** Leave the caps in the plastic container until required.

Table 6. Run layout for DNA sample assessment in the loading block\*

Assay									
Control	1 [PC]	9	17	25	–	–	–	–	–
Control	2 [NTC]	10	18	26	–	–	–	–	–
Control	3	11	19	–	–	–	–	–	–
Control	4	12	20	–	–	–	–	–	–
Control	5	13	21	–	–	–	–	–	–
Control	6	14	22	–	–	–	–	–	–
Control	7	15	23	–	–	–	–	–	–
Control	8	16	24	–	–	–	–	–	–

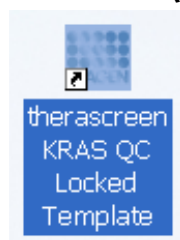
\* Each tube should contain a total reaction volume of 25  $\mu\text{l}$  (20  $\mu\text{l}$  of master mix prepared in Table 5, plus 5  $\mu\text{l}$  of NTC/sample/PC). Numbers denote positions in the loading block and indicate final rotor position.

- Set a pipet to a volume lower than the total reaction mix volume and thoroughly mix the master mix by fully aspirating up and down**

**10 times. Immediately add 20  $\mu$ l master mix to each PCR strip tube.**

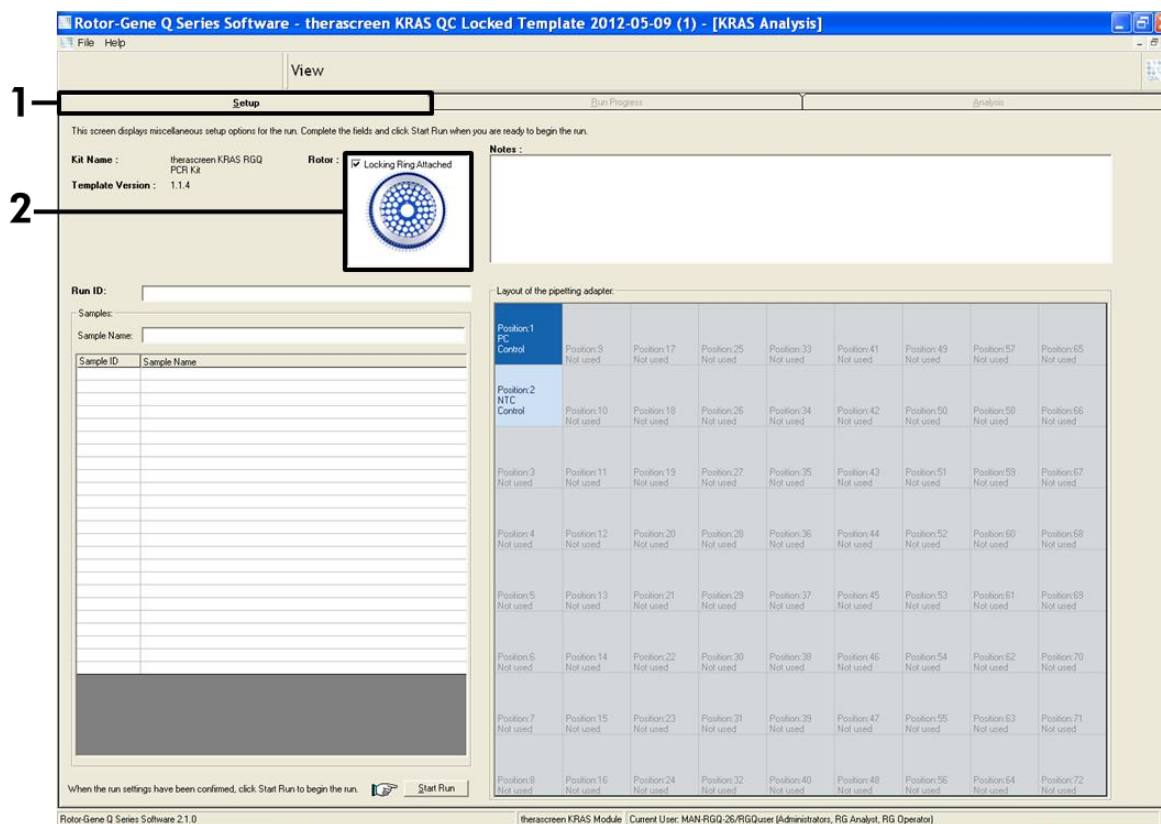
**Note:** Refer to Table 6 for the tube layout while setting up the reaction mixes. For DNA sample assessment, Control assay master mix should be added to one PC tube, one NTC tube, and one tube for each DNA sample.

- 5. Immediately add 5  $\mu$ l of nuclease-free water for No Template Control (tube NTC) to the NTC tube (tube position 2) and cap the tube.**
  - 6. Add 5  $\mu$ l of each DNA sample to the sample tubes (tube positions 3–26) and cap the tubes.**
  - 7. Add 5  $\mu$ l of KRAS Positive Control (tube PC) to the PC tube (tube position 1) and cap the tube.**
  - 8. Using a permanent marker, mark the lids of the first tubes in the lowest numerical position in each PCR 4-strip tube (e.g. positions 1, 5, and 9, etc.) to show the orientation to load the tubes into the 72-well rotor of the Rotor-Gene Q MDx instrument.**
  - 9. Invert capped tubes 4 times to mix the sample and reaction mix.**
  - 10. Place all PCR 4-strip tubes into the appropriate positions of the 72-well rotor according to the run layout (Table 6) using the marks for orientation.**
- Note:** If the rotor is not fully occupied, all unused positions on the rotor must be filled with a capped, empty tube. This ensures that the thermal efficiency of the Rotor Gene Q MDx instrument is maintained.
- 11. Place the 72-well rotor into the Rotor-Gene Q MDx instrument. Ensure the locking ring (supplied with the Rotor-Gene Q MDx instrument) is placed on top of the rotor to secure the tubes during the run.**
  - 12. Start the Rotor-Gene Q MDx software and open the template at the same time by double-clicking on the “*therascreen* KRAS QC Locked Template” icon on the desktop of the laptop connected to the Rotor-Gene Q MDx instrument (Figure 1).**



**Figure 1.** The “*therascreen* KRAS QC Locked Template” icon.

13. The “Setup” tab appears as the default (Figure 2). Ensure that the locking ring is properly attached and check the “Locking Ring Attached” box. Close the lid of the Rotor-Gene Q MDx instrument.



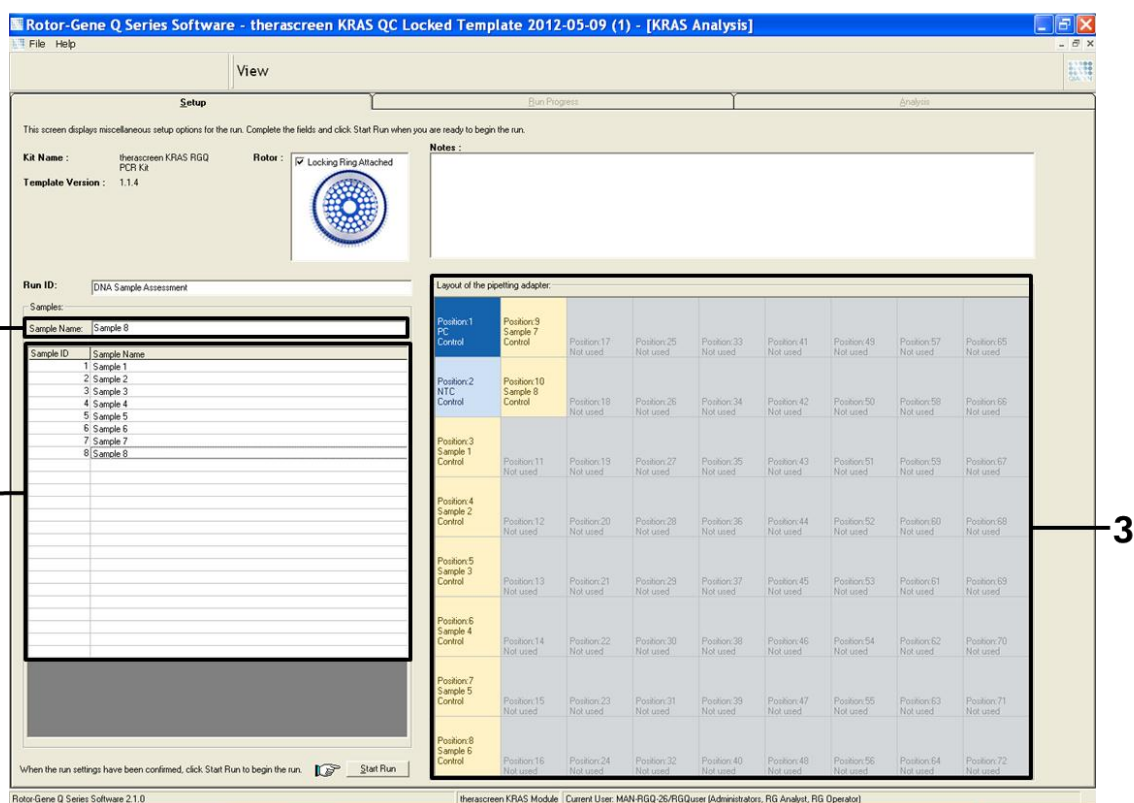
**Figure 2.** The “Setup” tab and “Locking Ring Attached” box. 1 = “Setup” tab, 2 = “Locking Ring Attached” box.

14. Enter the run ID in the “Run ID” dialog field according to your local naming convention. Enter the sample name in the “Sample Name” dialog field according to your local naming convention and press the return key. This will add the sample name to the sample list below and assign the sample a “Sample ID” (1, 2, 3, etc.). In addition, the “Layout of the pipetting adapter” panel on the right side will update to include the sample name (Figure 3).

**Note:** In the “Layout of the pipetting adapter” panel, check that addition of the sample name has been highlighted by a change in color and the sample name is in the sample position (Figure 3).

**Note:** Sample names with more than 8 characters may not be completely displayed in the “Layout of the pipetting adapter” panel.



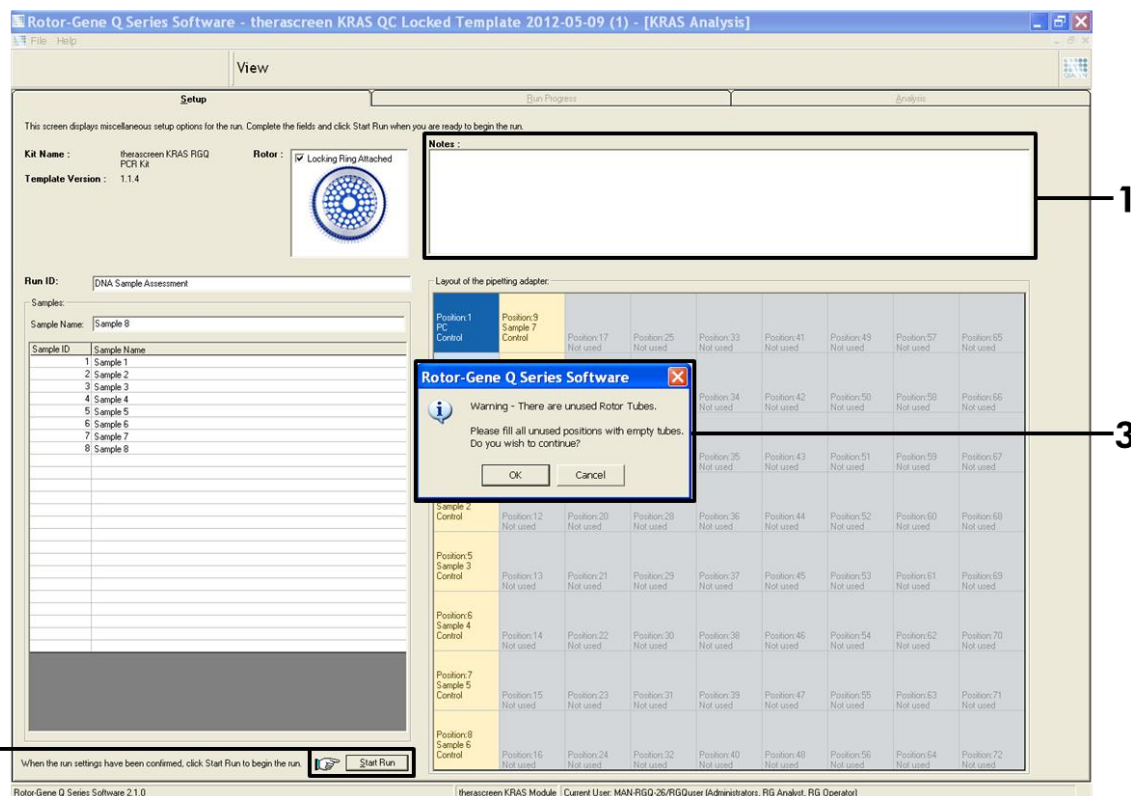


**Figure 4. Entering additional sample names in the “Sample Name” dialog field. 1 = “Sample Name” dialog field, 2 = Sample List, 3 = “Layout of the pipetting adapter” panel with additional sample names.**

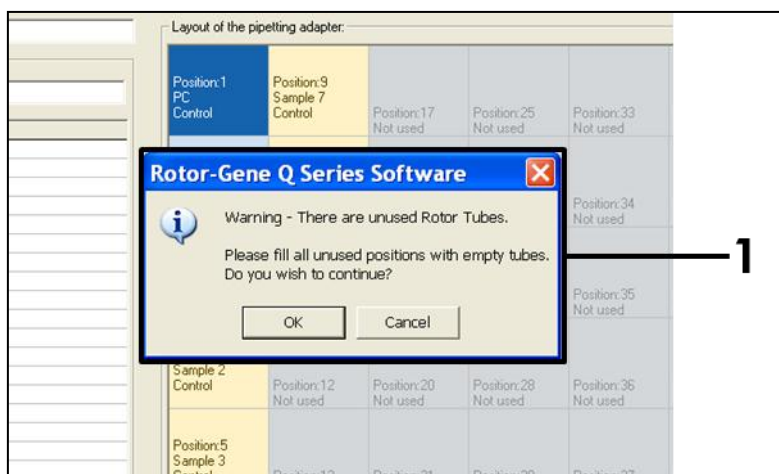
**16. When all sample names have been entered, verify they are correct. Add any additional information in the “Notes” dialog field if necessary and then click the “Start Run” button (Figure 5).**

**Note:** If any rotor position is unused, a “Warning” will appear (Figure 5 and Figure 6) to remind the user that all unused positions on the rotor must be filled with a capped, empty tube. Check that all unused rotor positions are filled with a capped, empty tube and click “OK” to proceed.



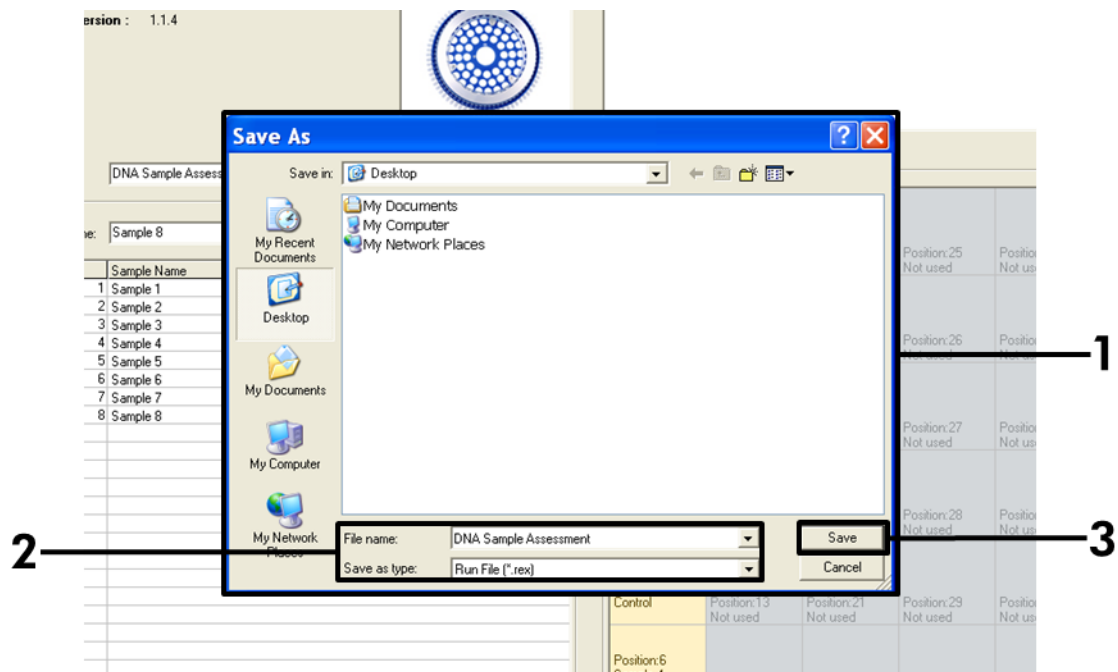


**Figure 5. “Notes” dialog field, the “Start Run” button and “Warning” of unused rotor positions.** 1 = “Notes” dialog field, 2 = “Start Run” button, 3 = “Warning” of unused rotor positions.



**Figure 6. “Warning” of unused rotor positions.** 1 = “Warning” of unused rotor positions.

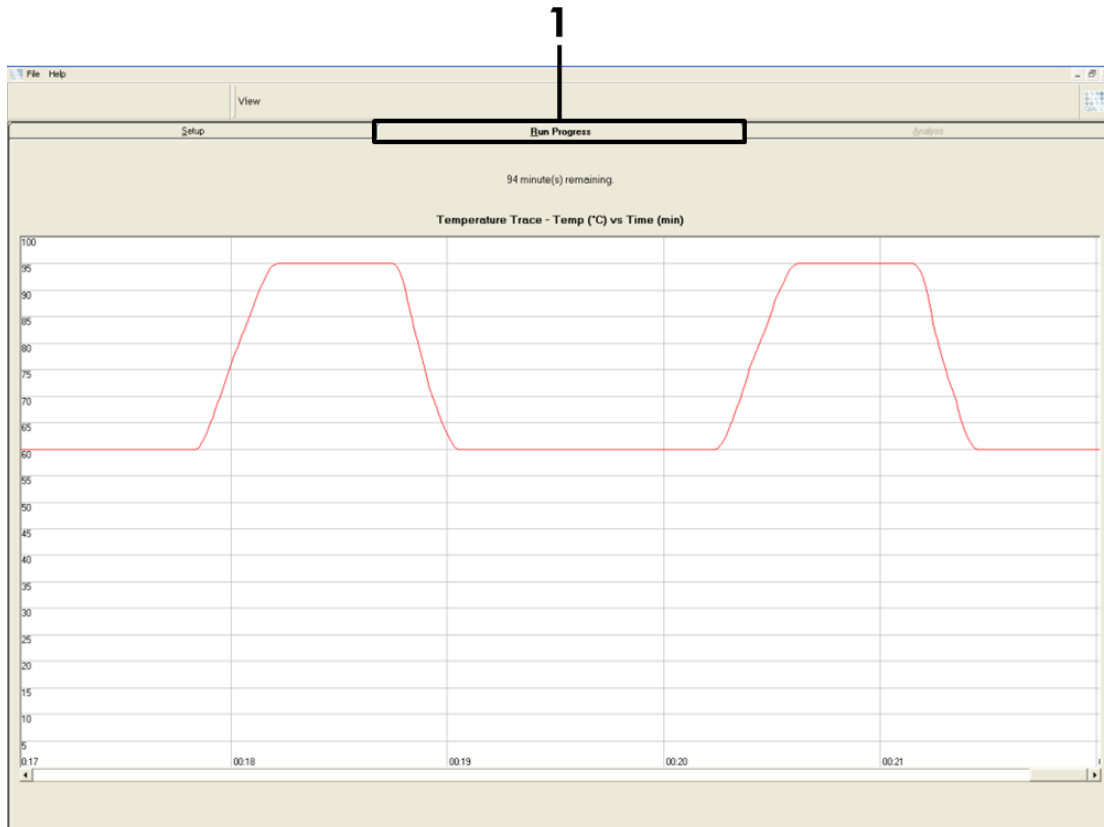
**17. A “Save As” window appears. Chose an appropriate file name and save the PCR run as a \*.rex run file to the selected location and click the “Save” button (Figure 7).**



**Figure 7. Saving the run file.** 1 = "Save As" window, 2 = File name and save as type \*.rex file, 3 = "Save" button.

## 18. The PCR run starts.

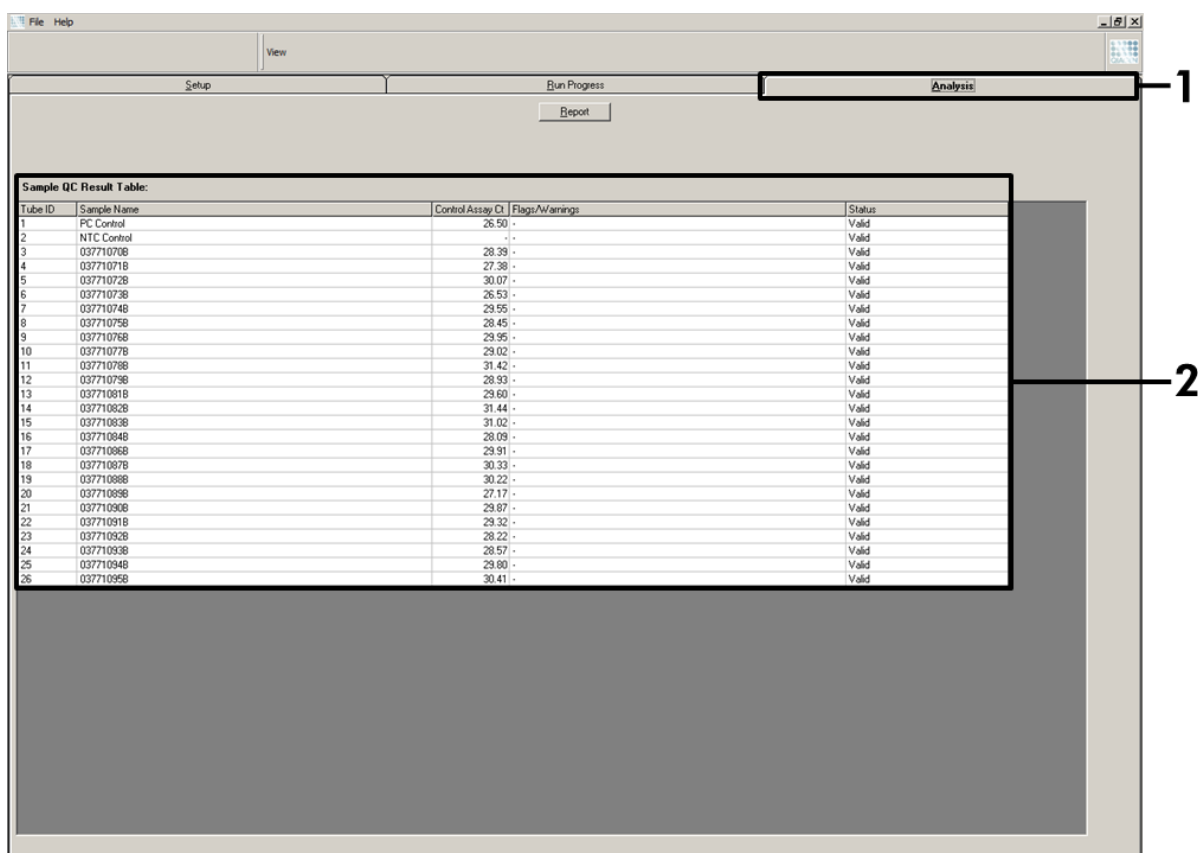
**Note:** When the run starts, the "Run Progress" tab will open automatically to show the temperature trace and remaining run time (Figure 8).



**Figure 8. The "Run Progress" tab.** 1 = "Run Progress" tab.

**19. After the run is finished, the “Analysis” tab will open automatically.**

**Note:** If the “Analysis” tab fails to open, click the “Analysis” tab (Figure 9).



**Figure 9. The “Analysis” tab and reporting of results.** 1 = “Analysis” tab, 2 = “Sample QC Result Table”.

**20. Control results will be reported as follows in the “Sample QC Result Table” (Figure 9):**

**Note:** If re-extraction or dilution is required, repeat the control reaction to confirm that the DNA concentration is suitable for use.

**Run controls (PC and NTC, tube positions 1 and 2 respectively).** If the results are within acceptable ranges, each will display “Valid”, otherwise an “Invalid” result will appear.

**Sample control reaction  $C_T > 32.00$ , will display “Invalid”.** Quantity of DNA is not sufficient for mutation analysis. Retest the sample. If the quantity of DNA is still insufficient, extract more tumor tissue if available (see “Troubleshooting Guide”, page 89).

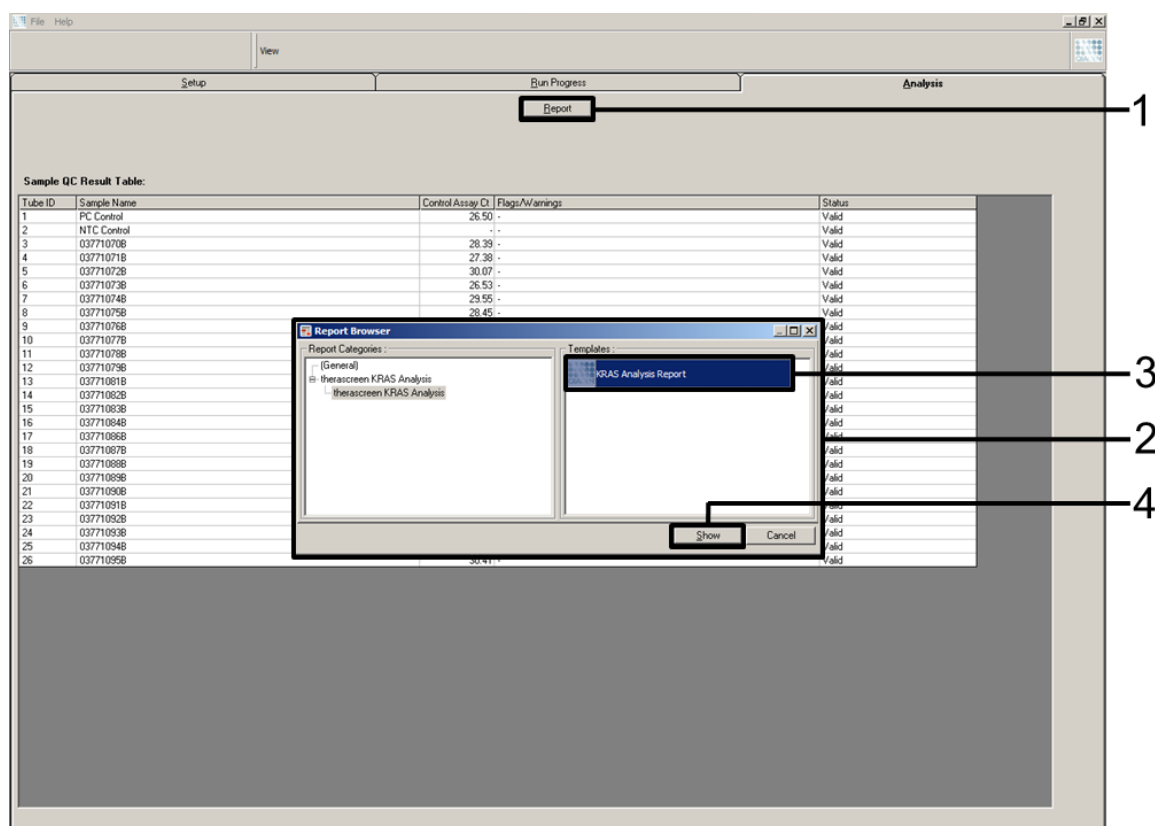
**Sample control reaction  $C_T < 21.92$ , will display “Invalid”.** DNA concentration is too high for mutation analysis. Dilute with Nuclease- Free Water for Dilution (tube Dil.) and retest. Dilute to a  $C_T$  of 21.92–32.00. A 1:1 dilution increases the  $C_T$  value by approximately 1.0.

**Sample control reaction  $C_T$  of 21.92–32.00, ( $21.92 \leq \text{Control } C_T \leq 32.00$ ) will display “Valid”.** DNA concentration is suitable for mutation analysis.

**Note:** If re-extraction or dilution is required, repeat the control reaction to confirm that the DNA concentration is suitable for use.

**21. Report files can be produced by clicking the “Report” button. The “Report Browser” window will appear. Select “KRAS Analysis Report” under “Templates” and then click the “Show” button (Figure 10).**

**Note:** Reports can be saved to an alternative location in Web Archives format by clicking the “Save As” button on the top left corner of each report.



**Figure 10. Selecting the "KRAS Analysis Report".** 1 = "Report" button, 2 = "Report Browser" window, 3 = "KRAS Analysis Report" selection, 4 = "Show" button.

## Protocol: Detection of KRAS mutations

This protocol is for the detection of KRAS mutations.

### Important points before starting

- A sample can be tested using the KRAS mutation assays once it has passed the sample assessment.
- For efficient use of the *therascreen* KRAS RGQ PCR Kit, samples must be grouped into batches of 7 (to fill the 72-well rotor). Smaller batch sizes will mean that fewer samples can be tested with the *therascreen* KRAS RGQ PCR Kit.
- Do not vortex the *Taq* DNA polymerase (tube *Taq*) or any mix containing *Taq* DNA polymerase, as this may inactivate the enzyme.
- Pipet *Taq* DNA polymerase by carefully placing the pipet tip just under the liquid surface to avoid the tip being coated in excess enzyme.

### Things to do before starting

- Before each use, all reagents need to be thawed completely for a minimum of 1 hour at room temperature (15–25°C), mixed by inverting 10 times, and centrifuged briefly to collect the contents at the bottom of the tube.
- Ensure that *Taq* DNA polymerase (tube *Taq*) is at room temperature (15–25°C) before each use. Centrifuge the tube briefly to collect the enzyme at the bottom of the tube.

### Protocol

- 1. Completely thaw all reaction mix tubes, nuclease-free water for No Template Control (tube NTC), and KRAS Positive Control (tube PC) at room temperature (15–25°C) for a minimum of 1 hour. The times for thawing reagents, PCR setup, and storage before starting the run are indicated in Table 7. When the reagents have thawed, mix them by inverting each tube 10 times to avoid localized concentrations of salts and then centrifuge briefly to collect the contents at the bottom of the tube.**

**Table 7. Thawing times, PCR setup times, and storage temperatures**

Thaw time		Storage temperature after PCR setup	Maximum PCR setup and storage time
Minimum	Maximum		
1 hour	4.5 hours	Room temperature (15–25°C)	7 hours
1 hour	4.5 hours	2–8°C	18 hours

**Note:** PCR setup is to be performed at room temperature. The term “Storage” refers to the time between completion of PCR setup and start of the PCR run on the Rotor-Gene Q MDx instrument.

**Note:** Bring the *Taq* DNA polymerase (tube *Taq*) to room temperature (15–25°C) at the same time as the other reagents (see “Reagent Storage and Handling”, page 12). Centrifuge the tube briefly to collect the enzyme at the bottom of the tube.

- 2. Label eight microcentrifuge tubes (not provided) according to each corresponding reaction mix shown in Table 8. Prepare sufficient master mixes (Control or Mutation Reaction Mix [tube CTRL, 12ALA, 12ASP, 12ARG, 12CYS, 12SER, 12VAL or 13ASP] plus *Taq* DNA polymerase [*Taq*]) for the DNA samples, one KRAS Positive Control (tube PC) reaction, and one nuclease-free water for No Template Control (tube NTC) reaction according to the volumes in Table 8. Include reagents for 2 extra samples to allow sufficient overage for the PCR setup.**

The master mixes contain all of the components needed for PCR except the sample.

**Table 8. Preparation of assay master mixes\***

<b>Assay</b>	<b>Reaction mix tube</b>	<b>Volume of reaction mix</b>	<b>Volume of Taq DNA polymerase (tube Taq)</b>
Control	CTRL	19.76 $\mu$ l x (n+2)	0.24 $\mu$ l x (n+2)
12ALA	12ALA	19.76 $\mu$ l x (n+2)	0.24 $\mu$ l x (n+2)
12ASP	12ASP	19.76 $\mu$ l x (n+2)	0.24 $\mu$ l x (n+2)
12ARG	12ARG	19.76 $\mu$ l x (n+2)	0.24 $\mu$ l x (n+2)
12CYS	12CYS	19.76 $\mu$ l x (n+2)	0.24 $\mu$ l x (n+2)
12SER	12SER	19.76 $\mu$ l x (n+2)	0.24 $\mu$ l x (n+2)
12VAL	12VAL	19.76 $\mu$ l x (n+2)	0.24 $\mu$ l x (n+2)
13ASP	13ASP	19.76 $\mu$ l x (n+2)	0.24 $\mu$ l x (n+2)

\* n=number of reactions (DNA samples plus controls). Prepare enough for 2 extra samples (n+2) to allow for sufficient overage for the PCR setup. The value n should not exceed 7 (plus controls), as 7 is the maximum number of samples which can fit on a run.

**Note:** When preparing the master mix, the required volume of the control or mutation reaction mix is added to the relevant tube first and the Taq DNA polymerase is added last.

- Place the appropriate number of PCR 4-strip tubes (each strip has four tubes) in the loading block according to the layout in Table 6. Do not cap the tubes.**

**Note:** Leave the caps in the plastic container until required.

- Set a pipet to a volume lower than the total reaction mix volume and thoroughly mix the master mixes by fully aspirating up and down 10 times. Immediately add 20  $\mu$ l master mix to each appropriate PCR strip tube.**

**Note:** Refer to Table 9 for the tube layout while setting up the reaction mixes. For detection of KRAS mutations, master mixes should be added to eight PC tubes, eight NTC tubes, and eight tubes for each DNA sample.



**Table 9. Run layout for detection of KRAS Mutations in the loading block\***

Assay	Controls		Sample number						
	PC	NTC	1	2	3	4	5	6	7
Control	1	9	17	25	33	41	49	57	65
12ALA	2	10	18	26	34	42	50	58	66
12ASP	3	11	19	27	35	43	51	59	67
12ARG	4	12	20	28	36	44	52	60	68
12CYS	5	13	21	29	37	45	53	61	69
12SER	6	14	22	30	38	46	54	62	70
12VAL	7	15	23	31	39	47	55	63	71
13ASP	8	16	24	32	40	48	56	64	72

\* Each tube should contain a total reaction volume of 25  $\mu$ l (20  $\mu$ l of master mix prepared in Table 5, plus 5  $\mu$ l of NTC/sample/PC). Numbers denote positions in the loading block and indicate final rotor position.

5. Immediately add 5  $\mu$ l of nuclease-free water for No Template Control (tube NTC) to the NTC tubes (tube positions 9–16) and cap the tubes.
6. Add 5  $\mu$ l of each DNA sample to the sample tubes (tube positions 17–72) and cap the tubes.
7. Add 5  $\mu$ l of KRAS Positive Control (tube PC) to the PC tubes (tube positions 1–8) and cap the tubes.
8. Using a permanent marker, mark the lids of the first tubes in the lowest numerical position in each PCR 4-strip tube (e.g. positions 1, 5, and 9, etc.) to show the orientation to load the tubes into the 72-well rotor of the Rotor-Gene Q MDx instrument.
9. Invert the capped tubes 4 times to mix the sample and reaction mix.
10. Place all PCR 4-strip tubes into the appropriate positions of the 72-well rotor according to the run layout (Table 6) using the marks for orientation.

**Note:** A maximum of 7 samples can be included in each PCR run. If the rotor is not fully occupied, all unused positions on the rotor must be filled with a capped, empty tube. This ensures that the thermal efficiency of the Rotor-Gene Q MDx instrument is maintained.

11. Place the 72-well rotor into the Rotor-Gene Q MDx instrument. Ensure the locking ring (supplied with the Rotor-Gene Q MDx instrument) is placed on top of the rotor to secure the tubes during the run.
12. Start the Rotor-Gene Q MDx software and open the template at the same time by double-clicking on the “*therascreen* KRAS Locked Template” icon on the desktop of the laptop connected to the Rotor-Gene Q instrument (Figure 11).

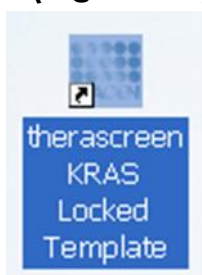


Figure 11. The “*therascreen* KRAS Locked Template” icon.

13. The “Setup” tab appears as the default (Figure 12). Ensure that the locking ring is properly attached and check the “Locking Ring Attached” box. Close the lid of the Rotor-Gene MDx Q instrument.

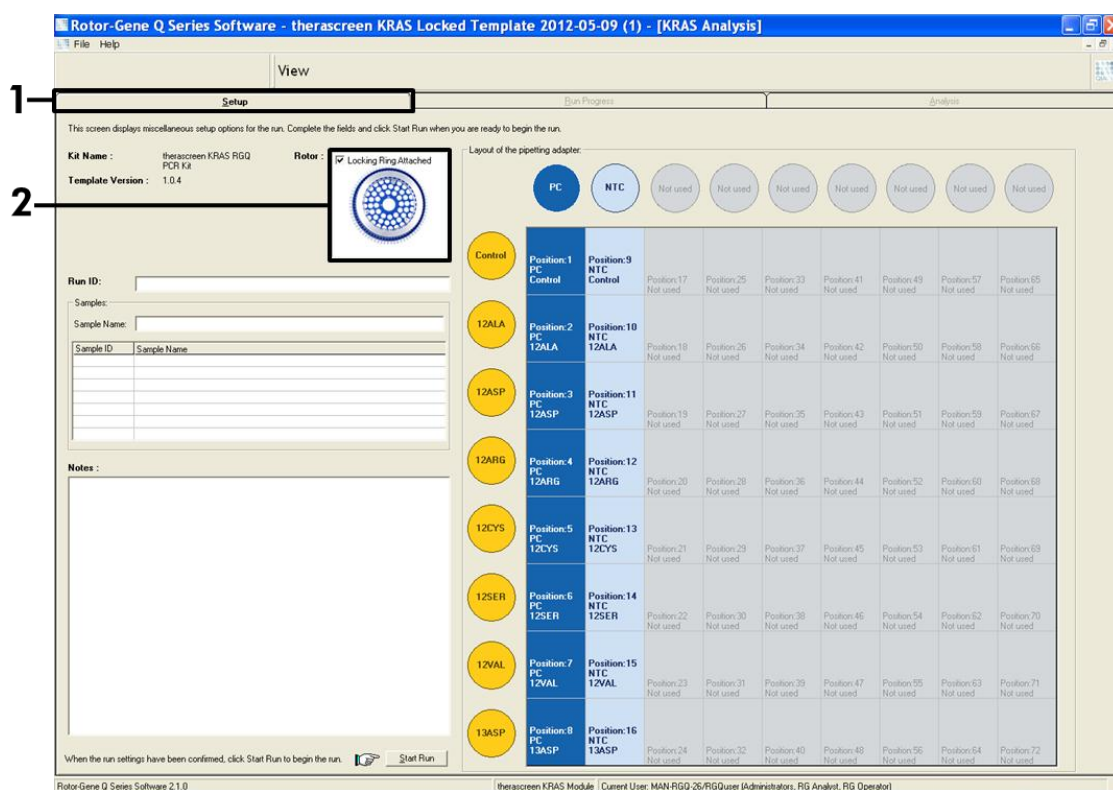


Figure 12. The “Setup” tab and “Locking Ring Attached” box. 1 = “Setup” tab, 2 = “Locking Ring Attached” box.

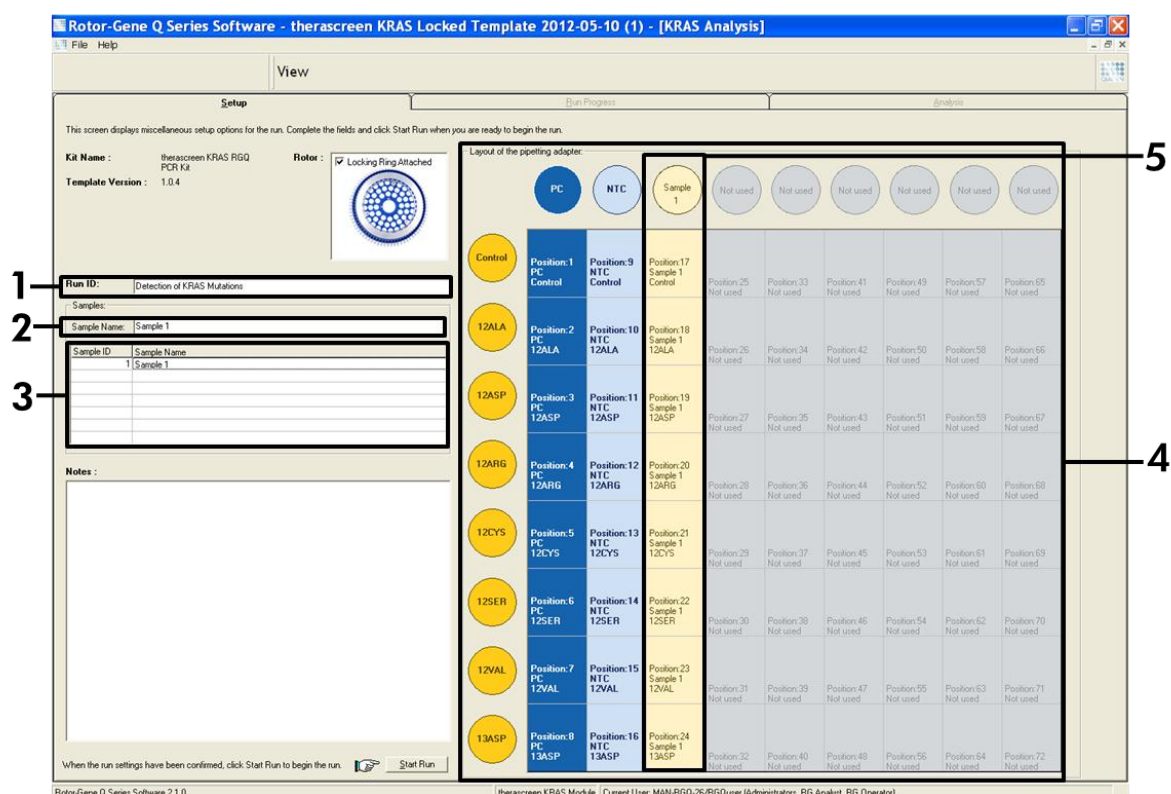
14. Enter the run ID in the “Run ID” dialog field according to your local naming convention. Enter the sample name in the “Sample Name” dialog field according to your local naming convention and

press the return key. This will add the sample name to the sample list below and assign the sample a “Sample ID” (1, 2, 3, etc.). In addition, the “Layout of the pipetting adapter” panel on the right side will update to include the sample name (Figure 13).

**Note:** In the “Layout of the pipetting adapter” panel, check that addition of the sample name has been highlighted by a change in color and that all eight assays in the column under the sample circle are highlighted (Figure 13).

**Note:** A maximum of 7 samples can be added. The sample IDs (in the sample circles) will automatically be assigned from 1 to 7.

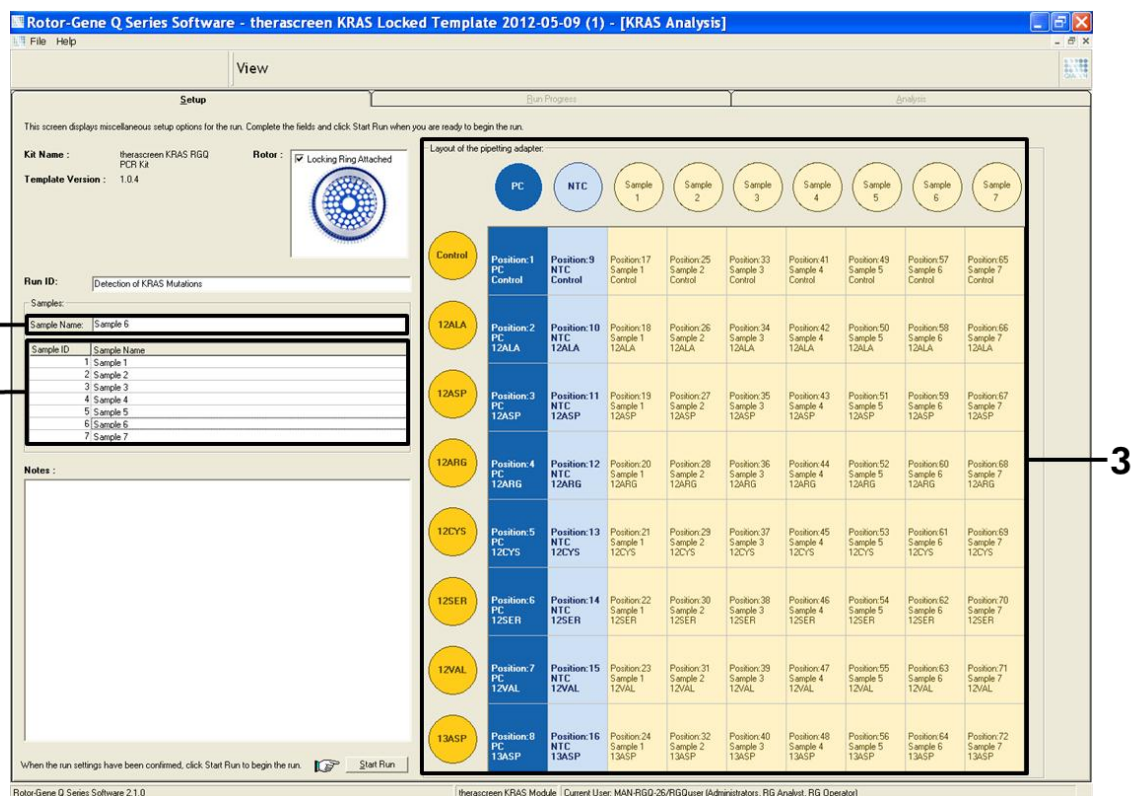
**Note:** Sample names with more than 8 characters may not be completely displayed in the “Layout of the pipetting adapter” panel.



**Figure 13. Entering the “Run ID” and “Sample Name”.** 1 = “Run ID” dialog field, 2 = “Sample Name” dialog field, 3 = Sample List, 4 = “Layout of the pipetting adapter” panel, 5 = Highlighted sample circle and column of eight assays underneath.

## 15. Repeat step 15 to enter the names of all additional samples (Figure 14).

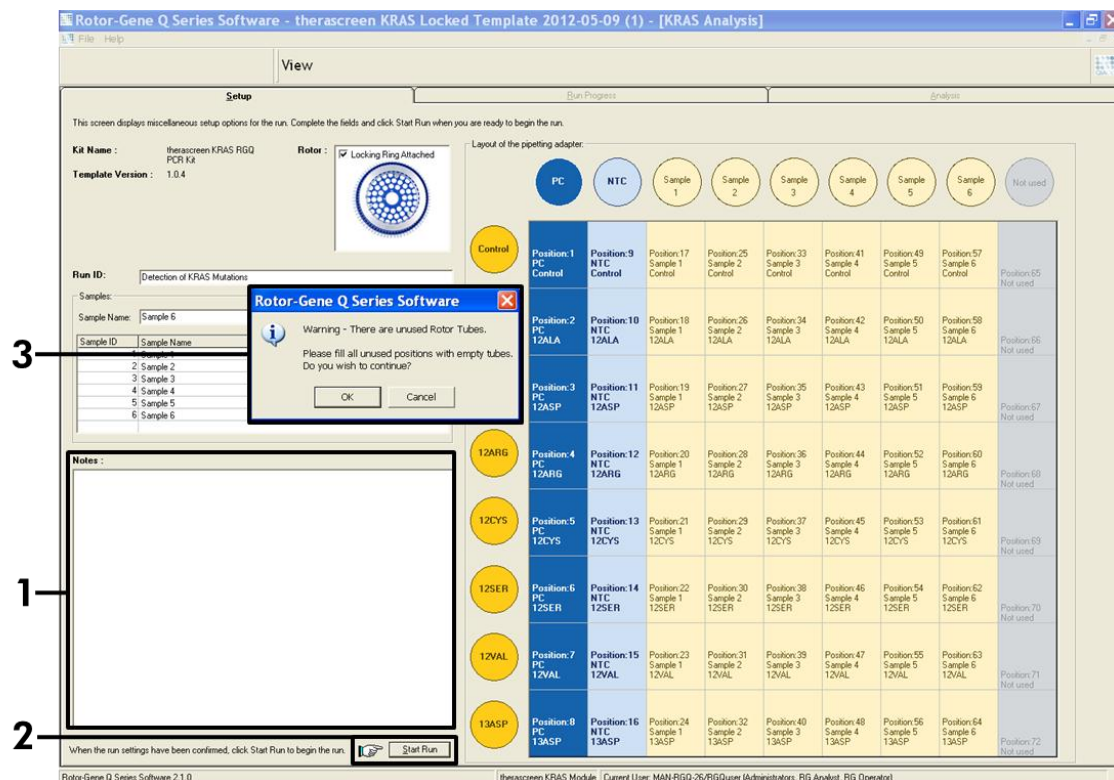
**Note:** To edit a sample name, click on the “Sample Name” in the sample list and the selected sample will appear in the “Sample Name” dialog field above. Edit the sample name according to your local naming convention and press the return key to update the name.



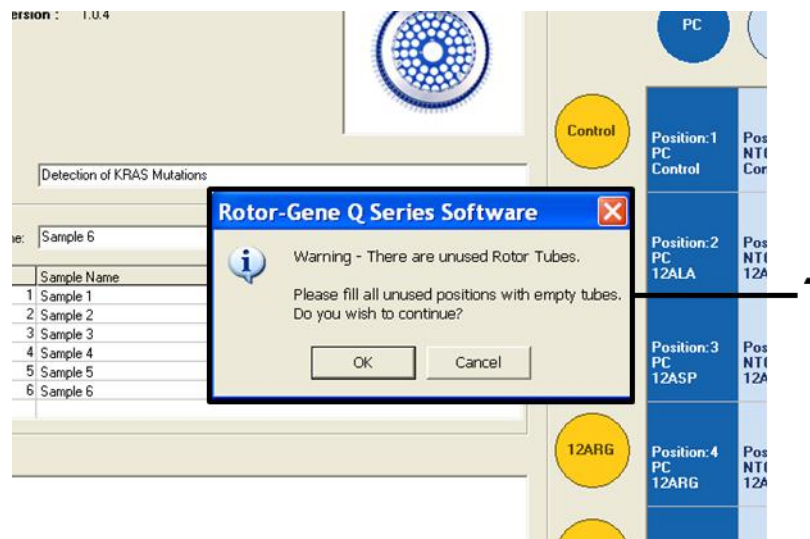
**Figure 14. Entering additional sample names in the “Sample Name” dialog field.**  
 1 = “Sample Name” dialog field, 2 = Sample List, 3 = “Layout of the pipetting adapter” panel with additional sample names.

**16. When all sample names have been entered, verify they are correct. Add any additional information in the “Notes” dialog field if necessary and then click the “Start Run” button (Figure 15).**

**Note:** If any rotor position is unused, a “Warning” will appear (Figure 15 and Figure 16) to remind the user that all unused positions on the rotor must be filled with a capped, empty tube. Check that all unused rotor positions are filled with a capped, empty tube and click “OK” to proceed.

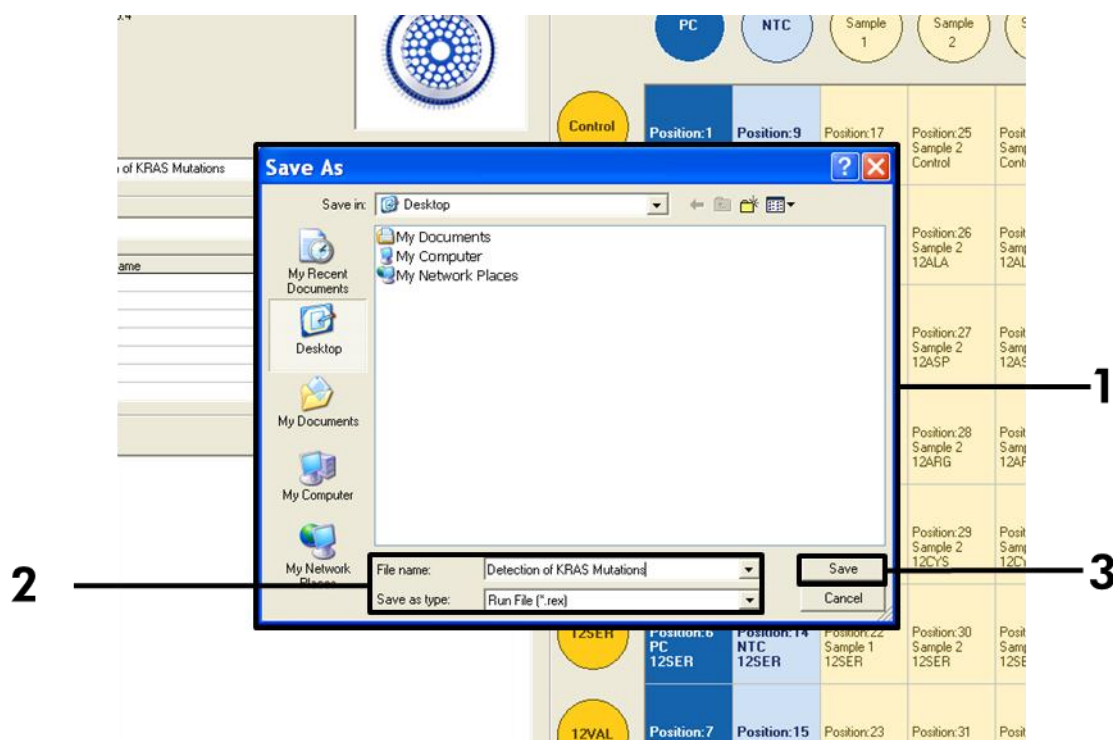


**Figure 15. “Notes” dialog field, the “Start Run” button and “Warning” of unused rotor positions.** 1 = “Notes” dialog field, 2 = “Start Run” button, 3 = “Warning” of unused rotor positions.



**Figure 16. “Warning” of unused rotor positions.** 1 = “Warning” of unused rotor positions.

**17. A “Save As” window appears. Chose an appropriate file name and save the PCR run as a \*.rex run file to the selected location (Figure 17).**

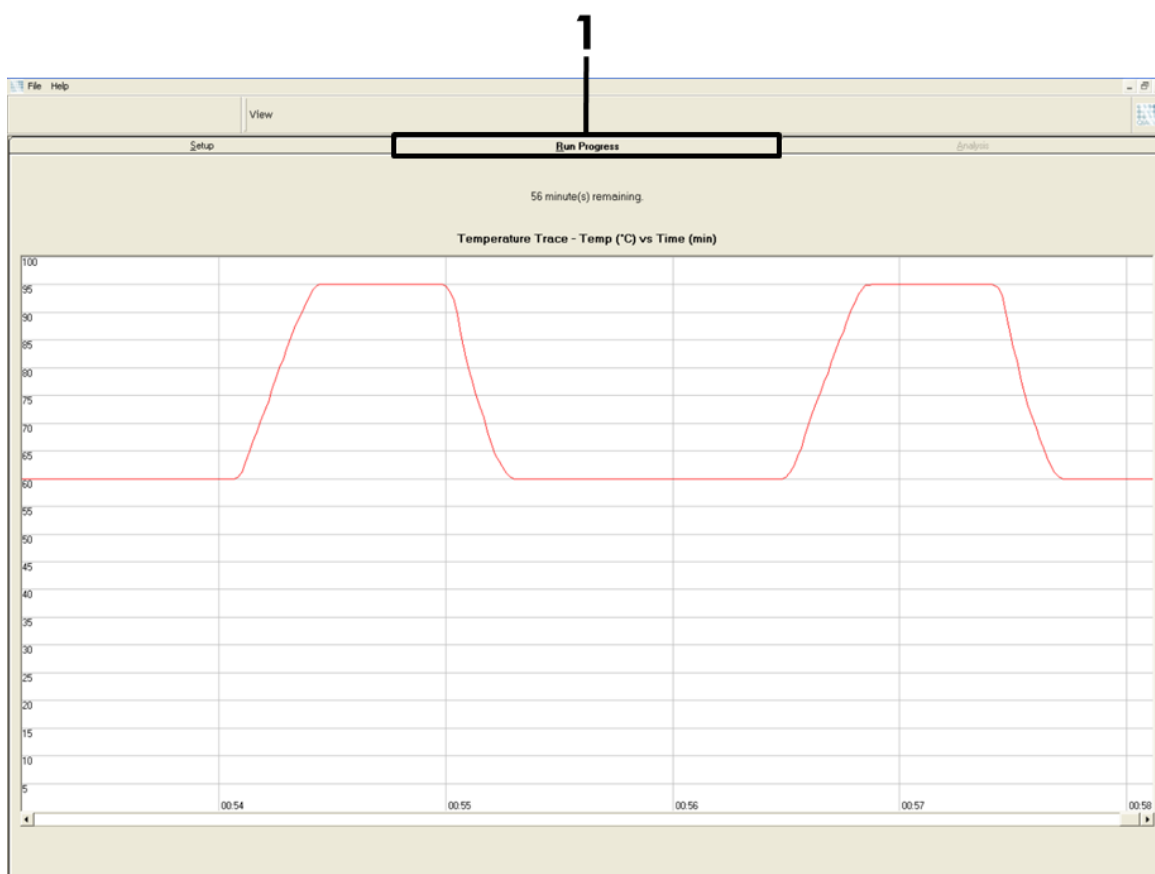


**Figure 17. Saving the run file.** 1 = "Save As" window, 2 = File name and save as type \*.rex file, 3 = "Save" button.

## 18. The PCR run starts.

**Note:** When the run starts, the "Run Progress" tab will open automatically to show the temperature trace and remaining run time (Figure 18).



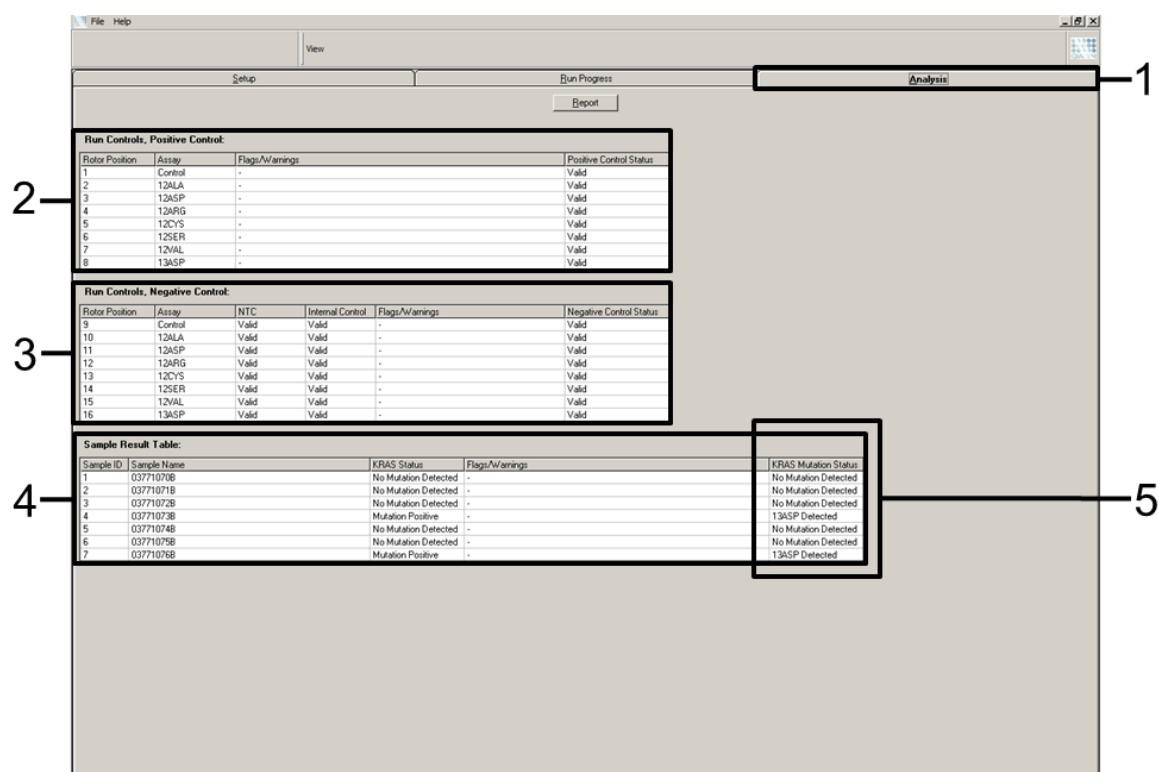


**Figure 18. 1 = Run Progress" tab.**

**19. After the run is finished, the "Analysis" tab will open automatically.**

**Note:** If the "Analysis" tab fails to open, click the "Analysis" tab (Figure 19).

**Note:** An explanation of the calculation method is presented in the "Results" section, page 42.



**Figure 19. The “Analysis” tab and reporting of results.** 1 = “Analysis” tab, 2 = “Run Controls, Positive Control” panel, 3 = “Run Controls, Negative Control” panel, 4 = “Sample Result Table”, 5 = “KRAS Mutation Status” column.

## 20. Assay results will be reported as follows (Figure 19):

**The “Run Controls, Positive Control” panel.** If the results are within acceptable range, the “Positive Control Status” will display “Valid”, otherwise an “Invalid” result will appear.

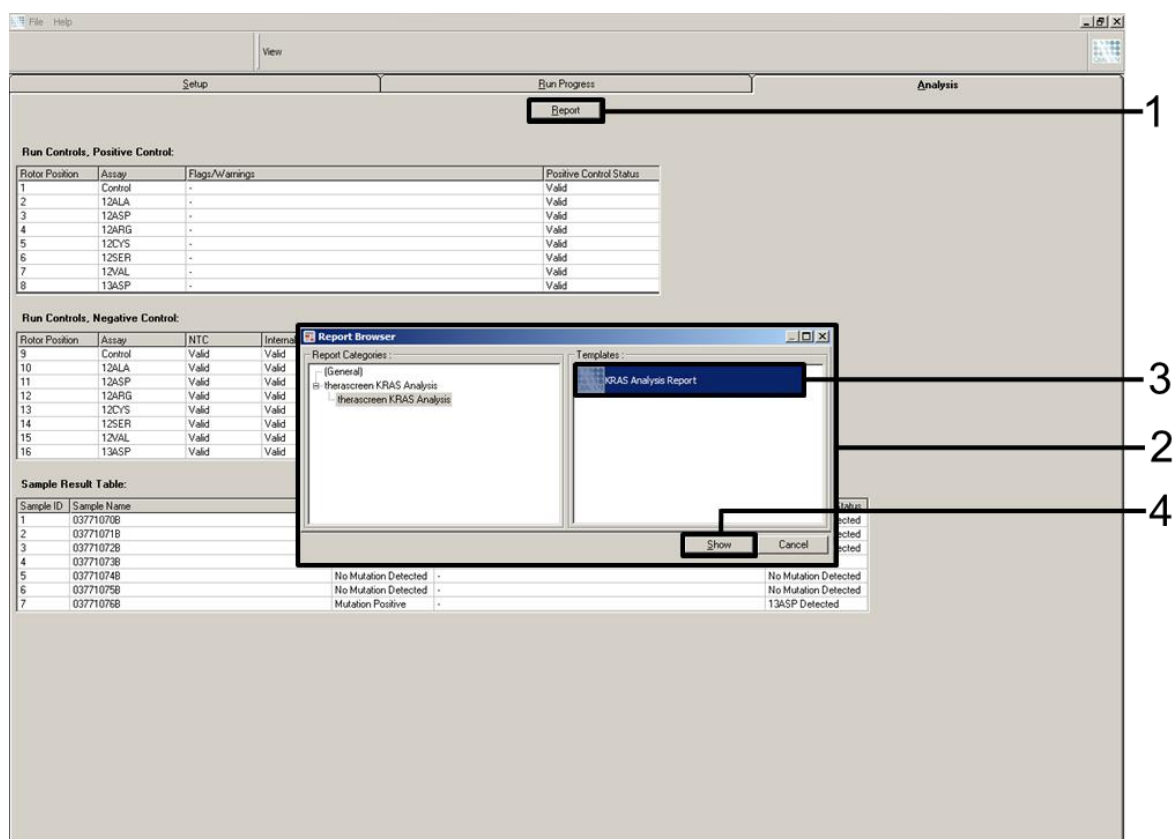
**The “Run Controls, Negative Control” panel.** If both the “NTC” and “Internal Control” results are within acceptable ranges, the “Negative Control Status” will display “Valid”, otherwise an “Invalid” result will appear.

**The “Sample Result Table” panel.** Specific mutations will be reported for the Mutation Positive samples under the “KRAS Mutation Status” column.

## 21. Report files can be produced by clicking the “Report” button. The “Report Browser” window will appear. Select “KRAS Analysis Report” under “Templates”, and then click the “Show” button (Figure 20).

**Note:** Reports can be saved to an alternative location in Web Archives format by clicking the “Save As” button on the top left corner of each report.





**Figure 20. Selecting the “KRAS Analysis Report”.** 1 = “Report” button, 2 = “Report Browser” window, 3 = “KRAS Analysis Report” selection, 4 = “Show” button.

## Results

The analysis and mutation calls are performed automatically by the Rotor-Gene Q *therascreen* KRAS Assay Package once a run is completed. The following information explains how Rotor-Gene Q *therascreen* KRAS Assay Package makes the analysis and mutation calls.

The PCR cycle at which the fluorescence from a particular reaction crosses a threshold value is defined as the  $C_T$  value.  $C_T$  values indicate the quantity of specific input DNA. Low  $C_T$  values indicate higher input DNA levels and high  $C_T$  values indicate lower input DNA levels. Reactions with a  $C_T$  value are classed as positive amplification.

The Rotor-Gene Q MDx software interpolates fluorescence signals between any two recorded values. The  $C_T$  values can therefore be any real number (not limited to integers) within the range of 0 to 40.

For the *therascreen* KRAS RGQ PCR Kit, the threshold value is set at 0.05 relative fluorescence units. This value is configured in the Rotor-Gene Q *therascreen* KRAS Assay Package for both the green and yellow channels. The threshold value was defined during development of the *therascreen* KRAS RGQ PCR Kit.

A calculation is performed to determine the  $\Delta CT$  value using the equation:

$$\Delta CT = [\text{mutation assay } C_T \text{ value}] - [\text{control assay } C_T \text{ value}]$$

The run controls (positive control, NTC, and internal controls) are assessed to ensure that acceptable CT values are met and the reactions are performing correctly.

Sample  $\Delta C_T$  values are calculated as the difference between the mutation assay  $C_T$  and control assay  $C_T$  from the same sample. Samples are classed as mutation positive if they give a  $\Delta C_T$  less than or equal to the cutoff  $\Delta C_T$  value for that assay. Above this value, the sample may either contain less than the percentage of mutation able to be detected by the *therascreen* KRAS RGQ PCR Kit (beyond the limit of the assays), or the sample is mutation negative which would be reported as "No Mutation Detected".

No amplification in mutation reactions will be scored as "No Mutation Detected".  $\Delta CT$  values calculated from background amplification are expected to be greater than the cutoff  $\Delta CT$  values and the sample will be classed as "No Mutation Detected".

The assay results will be displayed as "Mutation Positive", "No Mutation Detected", "Invalid" or, if a run control fails, "Run Control Failed". For the mutation-positive samples, specific mutations will be reported. Other possible results that may be displayed are discussed in the "Protocol: DNA sample assessment", and "Troubleshooting Guide" sections of this Instructions for Use.

Rarely, a tumor may contain more than one mutation. In such instances, the mutation yielding the lowest  $\Delta C_T$  value will be identified.

## Limitations of the Procedure

The test is designed to detect 7 mutation in codons 12 and 13 of the KRAS gene. Samples with results reported as “no mutation detected” may harbor KRAS mutations not detected by the assay (e.g., 13CYS).

Detection of mutations is dependent on sample integrity and the amount of amplifiable DNA present in the specimen. The procedure should be repeated in the event that the initial assessment of the DNA in the sample indicates that the quantity is either not sufficient or too high for mutation analysis.

The *therascreen* KRAS RGQ PCR Kit is used in a polymerase chain reaction (PCR) procedure. As with all PCR procedures, samples may be contaminated by external sources of DNA in the test environment and the DNA in the positive control. Use caution to avoid contamination of samples and reaction mix reagents.

The KRAS Kit is not to be used for diagnosis.

The *therascreen* KRAS RGQ PCR Kit is only intended to discriminate between wild-type and mutant. The test has been designed such that each mutant reaction is most sensitive for the specific mutation being measured. However, in samples where a mutation is detected, cross reactivity may occur with other mutation reactions. If more than one mutant reaction is positive, the result is the one with the lowest  $\Delta C_T$  result.

The *therascreen* KRAS RGQ PCR Kit is only validated for formalin-fixed, paraffin-embedded colorectal cancer tissue.

The *therascreen* KRAS RGQ PCR Kit is only validated for use with the QIAamp DSP DNA FFPE Tissue Kit. Only the Rotor-Gene Q MDx instrument has been validated for use with the *therascreen* KRAS RGQ PCR Kit.

## Specific Performance Characteristics

### Analytical performance

The specific performance characteristics of the *therascreen* KRAS RGQ PCR Kit were determined by studies involving formalin-fixed, paraffin-embedded (FFPE) tissue samples collected from colorectal cancer patients (CRC) and 8 formalin-fixed, paraffin-embedded human cell lines (FFPE cell lines) of which 7 harbor known KRAS mutations detected by the assay, and one KRAS wild-type (i.e., no mutations at codon 12 and 13). Mutation status of samples was confirmed by bi-directional Sanger sequencing.

## Cut-off

Two hundred twenty FFPE samples were tested using a method following guidance in NCCLS EP17-A (2004) to establish the cut-offs for the assay. The control reaction  $C_T$  range was established as 21.92 to 32.00. The cut-off values, which are based on the  $C_T$  of the control reaction subtracted from the  $C_T$  of the mutant reactions ( $\Delta C_T$ ) are shown in Table 10.

**Table 10. Established cut-off values for each mutation assay**

	Mutant assay ( $\Delta C_T$ )						
	12ALA	12ASP	12ARG	12CYS	12SER	12VAL	13ASP
Cut-off ( $\Delta C_T$ ) $\leq$	8.0	6.6	8.0	8.0	8.0	7.5	7.5

## Limit of blank

To assess performance of the *therascreen* KRAS RGQ PCR Kit in the absence of mutant positive template, and to ensure that a blank sample does not generate an analytical signal that may indicate a low concentration of mutation, samples with no template were evaluated. The results demonstrated no detectable control or mutant  $C_T$  values in any of the mutation or control reaction tubes (internal control  $C_T$  values were all valid).

## Comparison to analytical reference method

Two studies were conducted to demonstrate the concordance in mutation status of CRC samples tested with the *therascreen* KRAS RGQ PCR Kit relative to bi-directional sequencing. In the first study, 350 procured tumor samples from CRC patients were selected based on a set of baseline clinical, demographic, and tumor specimen characteristics. Using a statistical random sampling technique, 150 samples of unknown mutation status were chosen for evaluation. These (150) FFPE samples were tested and subsequently analyzed in this study using statistical measures of agreement/disagreement from the CLSI EP12-A2 Guidance (2008). A total of 137 of the FFPE samples returned valid results for both the *therascreen* KRAS RGQ PCR Kit and bi-directional sequencing. The results demonstrated that the KRAS Kit reported two samples as negative, one of which bi-directional sequencing indicated to be positive for 12ASP and the other indicated by bi-directional sequencing to be 13ASP. In contrast, three samples were reported as having a KRAS mutation by the KRAS Kit which was not reported as positive by bi-directional sequencing. In addition, one sample identified as 12ARG by the KRAS Kit was determined to be 12ASP by bi-directional sequencing. There were 5 samples determined to be mutation negative by bi-directional sequencing that were either indeterminate (3 samples) or invalid (2 samples) by the *therascreen* KRAS RGQ Kit (data not

shown). One sample that was indeterminate by Sanger bi-directional sequencing was determined to be 12SER by the KRAS Kit (data not shown).

Table 11 shows the analysis of agreement between *therascreen* KRAS RGQ PCR Kit and bi-directional sequencing.

Table 11 KRAS Kit vs Sanger bi-directional sequencing

KRAS Kit call	Mutation call by bi-directional sequencing										Total
	Neg	12ALA	12ARG	12ASP	12CYS	12SER	12VAL	13ASP			
Negative	80	–	–	1	–	–	–	1	82		
Positive 12ALA	–	3	–	–	–	–	–	–	3		
Positive 12ARG	–	–	–	1	–	–	–	–	1		
Positive 12ASP	–	–	–	20	–	–	–	–	20		
Positive 12CYS	–	–	–	–	3	–	–	–	3		
Positive 12SER	–	–	–	–	–	–	–	–	0		
Positive 12VAL	2	–	–	–	–	–	14	–	16		
Positive 13ASP	1	–	–	–	–	–	–	11	12		
Total	83	3	0	22	3	0	14	12	137		

The results demonstrate a positive percent agreement (PPA) of 96.3%, a negative percent agreement (NPA) of 96.3%, and an overall percent agreement (OPA) of 96.4%. The overall results, excluding 6 failed Sanger samples, are shown in Table 12 below

**Table 12. Analysis of agreement**

Measurement of agreement	Frequency (%)	95% CI
Overall percentage agreement	132/137 (96.35)	92.69–98.21
Percentage positive agreement	52/54 (96.30)	89.41–98.77
Percentage negative agreement	80/83 (96.39)	91.30–98.55

A second unique set of samples was evaluated to supplement the data from the first study. A set of 271 CRC FFPE samples were procured; 250 of unknown mutation status, and 21 samples of known mutation status to enrich for rare mutations were compared to Sanger bi-directional sequencing as described above. A total of 13 (~5%) samples required macrodissection for KRAS Kit evaluation. Out of the 271 samples with bi-directional sequencing results, 24 of the samples were indeterminate by the KRAS Kit (failed control  $C_T$  range; data not shown). Concordance analysis was carried out on 247 samples with both valid bi-directional and KRAS Kit results. There were 9 discordant samples. One sample from the 247 samples had a mutation positive result with bi-directional sequencing but a “no mutation detected” result with the KRAS Kit. Eight samples were shown to have a positive result with the KRAS Kit but a negative result with bi-directional sequencing. Overall, agreement was 96.4%. The data supports the accurate performance of the *therascreen* RGQ PCR KRAS Kit (see Table 13 and 14).

**Table 13 Analysis of agreement (second study)**

<b>Measurement of agreement</b>	<b>Frequency (%)</b>	<b>95% CI</b>
Overall percentage agreement	238/247 (96.36)	93.73–98.09
Percentage positive agreement	106/107 (99.07)	95.64–99.95
Percentage negative agreement	132/140 (94.29)	89.93–97.13



**Table 14 KRAS Kit vs Sanger bidirectional sequencing (second study)**

	Neg	Mutation call by bi-directional sequencing								Total
		12ALA	12ARG	12ASP	12CYS	12SER	12VAL	13ASP		
Negative	132	-	-	-	-	1	-	-	133	
Positive 12ALA	-	10	-	-	-	-	-	-	10	
Positive 12ARG	5	-	5	-	-	-	-	-	10	
Positive 12ASP	-	-	-	31	-	-	-	-	31	
Positive 12CYS	1	-	-	-	11	-	-	-	12	
Positive 12SER	-	-	-	-	-	13	-	-	13	
Positive 12VAL	2	-	-	-	-	-	25	-	27	
Positive 13ASP	-	-	-	-	-	-	-	11	11	
Total	140	10	5	31	11	14	25	11	247	

KRAS Kit Call

## Limit of detection (LoD)

The working range for the KRAS Kit is based on the amount of amplifiable DNA in the specimen as determined by the control reaction  $C_T$  value. The stated input range for the assay is defined by the control  $C_T$  prespecified range of 21.92 to 32.00. The LoD is the minimum percentage of mutant DNA that can be detected in a background of wild-type when the total amplifiable DNA is within the stated input range and still below the threshold cut-off  $\Delta C_T$  value. A study was conducted to determine the LoD of each of the seven mutation specific reactions incorporated in the *therascreen* KRAS RGQ PCR Kit. For the *therascreen* KRAS RGQ PCR Kit, the limit of detecting mutant DNA in a background of wild-type DNA is defined as the lowest dilution factor at which 95% of the test replicates for each mutation positive sample were determined to be positive. Eight FFPE cell lines; seven with known mutant DNA content and one wild-type were used for this evaluation. The proportion of mutant in total amplifiable DNA (percent mutant DNA) was determined previously using a bi-directional Sanger sequencing method from unfixed cells, followed by relative peak analysis. In the case of three cell lines, the mutant content was 100% (i.e., the cell line DNA was homozygous mutant). The other cell lines were of mixed zygosity. Multiple DNA extractions from each sample were pooled to generate DNA stocks. The DNA stocks were then normalized to achieve target control reaction  $C_T$  values. Normalized mutant DNA extracts were diluted with normalized wild-type DNA extract to create a dilution series of extracts containing the same level of total amplifiable DNA but different levels of mutant DNA. Serial dilutions were then generated from these samples and run in multiple replicates. The first dilution series was created for the mid-range control reaction  $C_T$  value (approximately 26). Nine replicates per dilution were tested. The percentage of correct calls as a function of the dilution for each mutant reaction is shown below. Highlighted boxes indicate the percentage in which greater than 95% of the replicates produced correct calls.

**Table 15 Percentage of correct calls**

% Mutation dilution	% Correct calls						
	12ALA	12ASP	12ARG	12CYS	12SER	12VAL	13ASP
<b>0.78</b>	100	0	33.3	55.6	22.2	66.7	0
<b>1.56</b>	100	33.3	100	100	88.9	100	0
<b>3.13</b>	100	77.8	100	100	100	100	66.7
<b>6.25</b>	100	100	100	100	100	100	100
<b>12.5</b>	100	100	100	100	100	100	100
<b>25.0</b>	100	100	100	100	100	100	100
<b>50.0</b>	100*	100	100	100	100	100	100

\* Mutation Dilution for this sample was 40.0%

The results of the first dilution series were used to generate dilutions for the confirmation of LoD values using narrower, reaction-specific, ranges of percent mutation dilutions at both low and high levels within the input range of the assay. Twelve replicates each were evaluated for the high dilution series. The percentage of correct calls as a function of dilution for the high dilution series (target values approximately  $C_T$  23–24) is shown in Table 16 below. Highlighted boxes indicate the percentage in which greater than 95% of the replicates produced correct calls.

**Table 16. Percentage of correct calls (high)**

% Mutation dilution (high)						
12ALA	0.13	0.27	0.54	<b>1.08</b>	2.15	4.30
% Correct calls	0	0	91.7	<b>100</b>	100	100
12ASP	0.56	1.13	2.25	4.50	<b>9.00</b>	18.00*
% Correct calls	0	8.3	33.3	83.3	<b>100</b>	100
12ARG	0.16	0.33	0.65	<b>1.30</b>	2.60	5.20
% Correct calls	0	0	8.3	<b>100</b>	100	100
12CYS	0.12	0.24	0.49	0.98	<b>1.95</b>	3.90
% Correct calls	0	0	8.3	83.3	<b>100</b>	100
12SER	0.31	0.63	1.25	2.50	<b>5.00</b>	10.00
% Correct calls	0	0	33.3	66.7	<b>100</b>	100
12VAL	0.17	0.34	0.69	<b>1.38</b>	2.75	5.50
% Correct calls	0	0	16.7	<b>100</b>	100	100
13ASP	0.63	1.25	2.50	<b>5.0</b>	10.0	20.0
% Correct calls	0	0	0	<b>100</b>	100	100

\* Eleven valid replicates.

Twenty-four replicates were used per dilution for the Low series except where indicated. The percentage of correct calls as a function of dilution for the low dilution series (target approximately CT value 31) is shown in Table 17 below.

**Table 17. Percentage of correct calls (low)**

% Mutation dilution (Low)								
12ALA	0.27	0.54	1.08	2.15	<b>4.30</b>	8.60	12.90	
% Correct calls	12.5	20.8	33.3	83.3	<b>100</b>	100	100	
12ASP	0.56	1.13	2.25	4.50	<b>9.0</b>	18.0	27.0	
% Correct calls	0	16.7	29.2	58.3	<b>100</b>	100	100	
12ARG*	0.33	0.65	1.30	2.60	<b>5.20</b>	10.4	15.6	
% Correct calls	8.3	4.2	29.2	52.2	<b>95.8</b>	100	100	
12CYS	0.24	0.49	0.98	1.95	3.90	<b>7.80</b>	11.7	
% Correct calls	8.3	4.2	20.9	54.2	83.3	<b>100</b>	100	
12SER	0.63	1.25	2.50	5.0	10.0	20.0	<b>30.0</b>	
% Correct calls	0	0	8.3	33.3	70.9	83.3	<b>100</b>	
12VAL <sup>†</sup>	0.34	0.69	1.38	2.75	<b>5.50</b>	11.00	16.50	
% Correct calls	4.3	16.7	46.7	75.0	<b>100</b>	100	100	
13ASP	0.63	1.25	2.5	5.0	10.0	<b>20.0</b>	30.0	
% Correct calls	0	4.2	8.3	33.3	70.8	<b>100</b>	100	

\* At 2.60 dilution, the number of valid replicates was 23 .

<sup>†</sup> The number of valid replicates in the series were 23, 24, 15, 16, 13, 12, and 19 for 12VAL.

Logistic regression models were applied to each assay individually for the low and high input DNA datasets. In these models, the response variable was the binary output of mutation detected (detect = 1) and mutation not detected (detect = 0), the continuous explanatory variable was log2 % mutation dilution. The LoDs were calculated as the percent mutation dilution which gave a predicted probability of detection of 0.95. The LoDs determined from the dilution series beginning with either the low or high C<sub>T</sub> values are shown in Table 18 below.

**Table 18. Logistics regression data for low and high C<sub>T</sub> dilutions series**

Assay	Low	High
12ALA	4.25	0.56
12ASP	10.23	6.43
12ARG	7.27	0.87
12CYS	6.90	1.21
12SER	25.75	4.20
12VAL	5.17	0.90
13ASP	18.83	4.16

The final LoD claims using FFPE cell lines when the input C<sub>T</sub> value is between approximately 22 and 27 C<sub>T</sub> are shown in Table 19 below. At the lower end of the C<sub>T</sub> input range, the sensitivity of the assay decreases, as the amount of input DNA may not contain sufficient copies to support the same percentage ratios of wild type to mutant DNA observed within the high and mid points of the working range.

**Table 19. LoD values for each mutation assay using FFPE cell lines**

Assay	LoD C <sub>95</sub> (percentage of mutant DNA in wild-type DNA)
12ALA	0.8
12ARG	2.6
12ASP	6.4
12CYS	1.5
12SER	5.6
12VAL	1.6
13ASP	6.4

### Effect of input DNA

When samples at different total DNA levels contain the same proportion of mutant DNA, it is expected that the measured  $\Delta C_T$  values will remain consistent. The objective of the study was to demonstrate that the performance of the KRAS

Kit is consistent over the total DNA input (control  $C_T$ ) range of the assay. DNA extracted from 8 FFPE cell lines was used to prepare pools of DNA with the lowest achievable control reaction  $C_T$ . Concentrated DNA stocks were subsequently diluted to generate DNA spanning the working range (a total of 5 dilutions including the initial concentrated stock). For each point within the working range, sufficient material was prepared to carry out 6 replicate tests. The dilution range for each mutation reaction, and the mean  $\Delta C_T$  value obtained from the results are shown in Table 20 below. For each of the mutations detected by the KRAS Kit, the  $\Delta C_T$  values measured at different total DNA input levels spanning the working range of the assay passed the pre-set acceptance criteria for the study. Although there is a slight increase in  $\Delta C_T$  as DNA input increases, overall, the  $\Delta C_T$  values were consistent across the working range of the KRAS Kit within the prespecified acceptance criteria.

**Table 20. Effect of DNA input on  $\Delta C_T$  values across the input control reaction  $C_T$  range — FFPE cell lines**

Mutation	Replicate numbers				
	Dilution 1	Dilution 2	Dilution 3	Dilution 4	Dilution 5
	~20–21 $C_T$	~23–24 $C_T$	~26–27 $C_T$	~29–30 $C_T$	~32–33 $C_T$
	$\Delta C_T$	$\Delta C_T$	$\Delta C_T$	$\Delta C_T$	$\Delta C_T$
12ALA	1.56	1.25	1.16	1.14	1.27
12ASP*	2.46	2.18	2.11	2.11	1.75
12ARG	1.18	0.63	1.08	0.94	1.06
12VAL	0.29	0.25	0.15	0.26	–0.1
DNA	~22–23 $C_T$	~24–25 $C_T$	~27–28 $C_T$	~29–30 $C_T$	~32–33 $C_T$
12SER	2.91	2.21	2.15	2.15	2.08
12CYS	0.98	0.71	0.58	0.81	0.67
13ASP	3.57	2.84	2.54	2.46	2.62

\* The total number of replicates for 12ASP was 27.

### Linearity/amplification efficiency as a function of DNA input

The linearity and amplification efficiency of PCR for each mutation reaction, relative to the control reaction, across the working range of the KRAS Kit was demonstrated. Amplification efficiency was calculated for each of the mutation reactions and the control reaction as  $[2(-1/\text{slope})] - 1$ . The amplification efficiency of the control compared to the mutant reaction indicates that the  $\Delta C_T$ ,

and thus mutation call, is consistent across the working range of the assay. The largest difference in the amplification efficiencies between the control reaction and a mutant reaction was observed for the 13ASP assay with a mean difference in efficiencies of approximately 14.5%. A summary of the data is shown in Table 21 below.



**Table 21 . Amplification efficiencies**

	Intercept			Calculated slope	Standard error (slope)	Lower two-sided 95% confidence limit (slope)	Upper two-sided 95% confidence limit (slope)	Amplification efficiency	Difference in amplification efficiencies
	Intercept	standard error							
12ALA	Control	21.060	0.060	-1.008	0.007	-1.023	-0.993	<b>0.989</b>	0.03
	C <sub>T</sub>								
	12ALA C <sub>T</sub>	22.476	0.103	-0.987	0.013	-1.013	-0.961	<b>1.019</b>	
12ASP	Control	20.825	0.083	-1.035	0.01	-1.056	-1.014	<b>0.954</b>	0.056
	C <sub>T</sub>								
	12ASP C <sub>T</sub>	23.237	0.083	-0.993	0.011	-1.016	-0.97	<b>1.01</b>	
12ARG	Control	20.385	0.13	-1.013	0.16	-1.046	-0.98	<b>0.982</b>	-0.003
	C <sub>T</sub>								
	12ARG C <sub>T</sub>	21.347	0.065	-1.015	0.008	-1.032	-0.999	<b>0.979</b>	
12CYS	Control	23.437	0.063	-0.981	0.01	-1.003	-0.96	<b>1.026</b>	0.032
	C <sub>T</sub>								
	12CYS C <sub>T</sub>	24.289	0.039	-0.961	0.006	-0.974	-0.947	<b>1.058</b>	
12SER	Control	22.568	0.050	-1.003	0.008	-1.02	-0.986	<b>0.996</b>	0.105
	C <sub>T</sub>								
	12SER C <sub>T</sub>	25.212	0.087	-0.934	0.014	-0.963	-0.904	<b>1.101</b>	
12VAL	Control	21.208	0.047	-0.995	0.006	-1.007	-0.983	<b>1.007</b>	0.033
	C <sub>T</sub>								
	12VAL C <sub>T</sub>	21.532	0.043	-0.972	0.005	-0.983	-0.961	<b>1.04</b>	
13ASP	Control	23.207	0.056	-1.001	0.009	-1.02	-0.982	<b>0.999</b>	0.145
	C <sub>T</sub>								
	13ASP C <sub>T</sub>	26.466	0.106	-0.909	0.017	-0.945	-0.873	<b>1.144</b>	

Sample

## Linearity/amplification efficiency as a function of percent mutation

The objective of this study was to evaluate the effect of serially diluted mutant positive sample on amplification efficiency, across the working range of the KRAS Kit, beginning with input levels of  $C_T$  at approximately 22–23 $C_T$ . DNA extracts from FFPE cell lines were initially assessed by OD readings prior to carrying out PCR with the KRAS Kit. DNA stocks were then prepared to a Control reaction  $C_T$  corresponding to ~23 $C_T$ . The stocks were diluted serially 2-fold each time using wild-type DNA, in order to maintain the total wild-type DNA constant while varying the percentage mutant DNA in the template. Thus, each of the templates generated had the same absolute quantity and concentration of DNA but differing ratios of wild-type to mutant DNA. Pools of DNA sufficient for 6 replicates per mutation were prepared.  $C_T$  and  $\Delta C_T$  data for each mutation at each dilution point were calculated. The mutation reaction  $C_T$  values were plotted and the efficiencies calculated; the control reaction  $C_T$  values were consistent over the dilution series of each mutation. For each sample where the control reaction  $C_T$  value fell within the specified range (21.92–32.00),  $\Delta C_T$  values were calculated. A linear regression model was fitted with mutation reaction  $C_T$  versus log2 DNA input dilution. The slope and 95% confidence intervals were reported. The study showed the dilution of mutations in a background of a constant concentration of wild-type DNA resulted in amplification efficiencies that did not vary significantly outside the values determined in the above linearity study with the amplification efficiencies differing by less than  $\pm 10\%$ .

**Table 22. Amplification efficiencies**

	Intercept	Intercept standard error	Calculated slope	Standard error slope	Lower two- sided 95% confidence limit (slope)	Upper two- sided confidence limit (slope)	Amplification efficiency
12ALA	23.540	0.025	-0.968	0.010	-0.989	-0.947	1.047
12ASP	24.804	0.054	-1.030	0.022	-1.075	-0.985	0.960
12ARG	24.226	0.028	-1.008	0.011	-1.031	-0.984	0.990
12CYS	24.354	0.027	-0.981	0.011	-1.003	-0.959	1.027
12SER	25.376	0.054	-0.892	0.022	-0.937	-0.847	1.174
12VAL	22.703	0.035	-1.021	0.014	-1.050	-0.992	0.972
13ASP	27.555	0.057	-0.810	0.023	-0.857	-0.763	1.353

## Interfering substances

The objective of this study was to evaluate the impact of potentially interfering substances on the performance of the *therascreen* KRAS RGQ PCR Kit. This was performed by analyzing the impact of each substance, by means of spiking experiments at two concentrations, on the  $\Delta C_T$  values and mutation status of test samples. The concentrations are shown in Table 23.

**Table 23. Amount of interfering substances tested in each assay (i.e., 1x)**

Interfering substance	Actual high amount [ $\mu$ l/200 $\mu$ l eluate]	Actual low amount [ $\mu$ l/200 $\mu$ l eluate]
Paraffin wax (in xylene)	$2.00 \times 10^{-4}$	$5.00 \times 10^{-5}$
Xylene	$2.00 \times 10^{-4}$	$5.00 \times 10^{-5}$
Ethanol	$1.35 \times 10^{-3}$	$3.38 \times 10^{-4}$
Buffer ATL	$5.40 \times 10^{-4}$	$1.35 \times 10^{-4}$
Proteinase K	$1.32 \times 10^{-5}$	$3.30 \times 10^{-6}$
Buffer AL	$1.33 \times 10^{-3}$	$3.33 \times 10^{-5}$
Wash Buffer AW1	0.50	$1.25 \times 10^{-1}$
Wash Buffer AW2	5.00	1.25

None of the potentially interfering substances evaluated at the concentrations expected to be encountered in normal use impacts the ability of the *therascreen* KRAS RGQ PCR Kit to distinguish between mutation-positive and mutation-negative samples.

In addition to the interfering substances study, the potential effect of necrosis in clinical samples was assessed to determine if high levels of necrotic tissue in tumor samples impact the ability to generate valid data. From a total of 421 samples assessed as part of the Comparison to Analytical Reference Method studies, 29 samples had necrosis at a level >50% as determined by pathology review. Of these 29 samples, 28 returned valid results that were concordant to bi-directional Sanger sequencing. A single result was invalid due to insufficient DNA.

## Cross-contamination

The objective of this study was to determine the extent of cross-contamination, potentially leading to false positive results, between DNA samples using the *therascreen* KRAS RGQ PCR Kit. Potential sources of cross-contamination include:

- Sample extraction (e.g., scraping of slides)
- Pipetting of samples
- Closure ("capping") of sample tubes
- Contamination of kit reagents during use
- Loading of assay tubes onto the Rotor-Gene Q MDx instrument

For this study, FFPE standards were used: the wild-type standard and the 12ALA standard (since the 12ALA reaction is the reaction with the lowest LoD in the kit).

The study consisted of 10 PCR runs designed to investigate the potential for contamination both within and between Rotor-Gene Q MDx instrument runs. In these test runs, tubes containing wild-type DNA were used to test for contamination from mutant DNA.

The results of this study indicated no detectable contamination in any of the wild-type DNA extracts intended to detect cross-contamination.

## Exclusivity/cross-reactivity

The *therascreen* KRAS RGQ PCR Kit is comprised of 8 separate reactions; one single control reaction that detects a non-polymorphic region of the KRAS gene and seven mutation-specific reactions. There is no reaction that specifically measures the wild-type KRAS sequence at codon 12 or 13. The KRAS "no mutation detected" result, (i.e., wild-type) is determined from the absence of any of the 7 mutations resulting in a positive mutation result. Therefore, it is necessary to demonstrate the amount of non-specific amplification, or cross-reactivity that occurs in each reaction with excess amounts of KRAS wild-type DNA to ensure no false positive results occur. Similarly, non-specific amplification of KRAS mutations for which the reaction is not intended to detect is evaluated to demonstrate that the amount of cross-reactivity between mutant reactions does not result in erroneous mutation calls in the presence of excess amounts of mutant DNA. Since the DNA input for this assay is based on the control  $C_T$  range (21.92 to 32.00), the highest concentration of DNA input is based on having a control  $C_T$  value of approximately 22. FFPE clinical samples were used for this evaluation, as well as FFPE cell line DNA.

## Non-specific amplification/cross-reactivity: Wild-type KRAS DNA

In order to address the amount of non-specific amplification of wild-type DNA by reaction mixes designed to amplify specific mutations, sixty (60) replicates of

wild-type FFPE cell line DNA or DNA extracted from CRC tumor tissue at the highest concentration of amplifiable DNA input level was evaluated using the KRAS Kit. For DNA extracted from FFPE cell line the control  $C_T$  values were approximately 22–23. Control  $C_T$  values for three wild-type CRC samples were between 24 and 25. The results demonstrated that the  $\Delta C_T$  values exceeded the established cut-offs. The mean and/or lowest  $\Delta C_T$  values observed for each reaction is shown below.

**Table 24. Lowest mean  $\Delta C_T$  observed for wild-type samples in mutant reactions**

Mutant reaction	Cut-off	Lowest $\Delta C_T$ observed	Sample 1 $\Delta C_T$ mean (lowest)	Sample 2 mean (lowest)	Sample 3 mean (lowest)
12ALA	8	12.76	18.00 (11.40)	18.62 (11.50)	20.03 (19.36)
12ASP	6.6	10.35	10.90 (9.62)	10.34 (8.84)	10.68 (9.01)
12ARG	8	14.26	20.33 (12.94)	20.02 (13.20)	20.03 (19.36)
12CYS	8	13.66	20.62 (17.38)	20.29 (19.62)	20.03 (19.36)
12SER	8	11.97	17.26 (11.14)	17.90 (11.42)	18.05 (10.44)
12VAL	7.5	11.81	14.87 (11.46)	16.27 (11.50)	18.68 (11.36)
13ASP	7.5	10.94	12.35 (9.08)	13.68 (10.69)	14.82 (9.97)

### **Non-specific amplification/cross-reactivity/exclusivity: Mutation-positive KRAS DNA**

Mutant samples that have a high concentration of input DNA were tested against all reaction mixes by preparing DNA samples from each of the FFPE cell lines so that the Control reaction  $C_T$  corresponded to approximately 23. Six replicates of each mutation sample were evaluated. The percentage of mutation in the sample was governed by the percentage of mutant in the cell line DNA. The mean  $\Delta C_T$  are presented in the table below and demonstrates that there is cross-reactivity between mutant reactions. The 12ALA mutation was amplified and generated  $\Delta C_T$  values below the  $\Delta C_T$  thresholds for the 12CYS, 12SER, and

12VAL reactions. The 12VAL mutation was amplified and generated a  $\Delta C_T$  value below the  $\Delta C_T$  threshold for the 12ALA reaction, however, in all cases, the results demonstrate that the correct mutation was called with the matched mutation reaction (i.e., the smallest  $\Delta C_T$  value was the correct mutation call). All other test cases were either not detected or outside the  $\Delta C_T$  threshold.

**Table 25  $\Delta C_T$  cross-reactivity between mutation reactions using FFPE cell line DNA at the high input range\***

		Cut-off	12ALA	12ASP	12ARG	12CYS	12SER	12VAL	13ASP
Mutant DNA	12ALA	8	<b>1.42</b>	12.66	–	5.81	2.78	6.31	13.21
	12ASP	6.6	12.56	<b>2.42</b>	–	–	13.44	11.21	13.55
	12ARG	8	13.12	11.56	<b>1.12</b>	11.42	–	13.43	12.66
	12CYS	8	14.2	12.48	9.23	<b>0.98</b>	–	7.96	12.88
	12SER	8	–	13.39	13.31	–	<b>3.02</b>	12.99	13.97
	12VAL	7.5	6.83	–	–	–	13.38	<b>0.28</b>	13.74
	13ASP	7.5	–	13.29	13.89	–	–	14.36	<b>4.5</b>

\*  $\Delta C_T$  values from matched reactions are shown in bold. Blank cells show no cross-reaction.  $\Delta C_T$  from cross-reactive reactions below the cut-off are highlighted.

## Repeatability and reproducibility

The precision of the *therascreen* KRAS RGQ PCR Kit was determined using a protocol incorporating aspects of CLSI EP12-A and EP5-A2. Clinical CRC samples were used for this evaluation. One wild-type and one sample for each mutation were tested with the *therascreen* KRAS RGQ PCR Kit, using two operators at each of 3 sites testing all samples and controls on three lots of *therascreen* KRAS RGQ PCR kits, each day for five days, with two runs per day and with two replicates of each sample on each run. The  $C_T$  and  $\Delta C_T$  values obtained for each reaction in each sample were also analyzed by variance component analysis. Reproducibility of the *therascreen* KRAS RGQ PCR Kit was demonstrated for low level mutant (3xLoD) and wild-type samples, with at least 39/40 correct mutation calls for all assays across multiple lots, platforms, and operators, for both within and between laboratory experiments. Estimates of variance demonstrated (one times standard deviation), using C50 and 3xLoD samples are listed in Table 26 and Table 27.

**Table 26. Assay variance estimates reproducibility precision estimates**

Assay	%CV for $\Delta C_T$		%CV for mutant $C_T$		%CV for control $C_T$		
	3xLoD	C50	3xLoD	C50	3xLoD	C50	WT
12ALA	13.14	8.32	1.87	2.02	0.97	1.12	1.12
12ARG	10.79	8.04	1.59	1.96	1.24	1.51	1.15
12ASP	12.86	5.87	1.11	1.00	0.90	0.90	1.04
12CYS	17.61	10.83	1.86	2.02	1.54	1.22	1.15
12SER	13.97	10.43	1.71	2.11	0.94	1.19	1.15
12VAL	9.66	15.47	1.52	1.65	1.11	3.74	1.26
13ASP	13.73	9.35	1.91	2.08	1.11	1.41	1.19



**Table 27 Repeatability precision estimates**

Assay	%CV for $\Delta C_T$		%CV for mutant $C_T$		%CV for control $C_T$		
	3xLoD	C50	3xLoD	C50	3xLoD	C50	WT
12ALA	10.71	7.51	1.69	1.76	0.77	0.90	0.79
12ARG	9.83	8.04	1.21	1.76	0.84	1.33	0.90
12ASP	10.16	4.08	0.93	0.89	0.80	0.76	0.76
12CYS	13.15	8.80	1.31	1.76	1.40	1.01	0.76
12SER	6.76	6.18	1.10	1.48	0.80	0.90	0.90
12VAL	9.21	15.32	1.40	1.42	0.91	3.49	0.94
13ASP	8.67	7.01	1.30	1.65	0.91	1.19	0.97

The estimated proportion of 3xLoD samples testing mutant and wild-type samples were reported overall and within each of the sites. For all assays and sample combinations, at least 79 out of 80 replicates gave the correct mutation call. The overall proportion of correct calls was 99.6% (1115/1120); 99.6% (558/560) for mutation positive (3xLoD) samples and 99.5% (557/560) for no-mutation detected (wild-type) samples.

**Table 28. Correct calls overall**

	Mutation						
	12ALA	12ARG	12ASP	12CYS	12SER	12VAL	13ASP
<b>3xLoD samples</b>							
Overall	79/80	80/80	80/80	79/80	80/80	80/80	80/80
<b>Wild-type samples (low)</b>							
Overall	80/80	79/80	80/80	80/80	79/80	79/80	80/80

\* SD=standard deviation.

## Sample handling variability

To assess sample handling variability as part of the KRAS Kit Test system process, 30 sequential 5  $\mu$ m sections were cut from each of 10 FFPE CRC

samples (3 wild-type and 1 per mutation). Sections were randomized to one of three testing sites so that each site received 10 sections per FFPE sample (100 sections total). Of the 300 DNA extractions tested, 298 samples were valid. There was 99.33% concordance with respect to the KRAS mutation calls between the three sites. The variance of  $\Delta C_T$  values for each assay was estimated, and the contribution of between and within laboratory sources was estimated using an ANOVA variance components model. Variance for within test sites was highest for 12ASP (0.30). Variance between test sites was highest for 12SER (0.05). A comparison by site of mean  $\Delta C_T$  values with corresponding standard deviation for mutant and wild-type samples showed very close agreement for the results. The results demonstrate the agreement of the DNA extraction procedure and sample processing in conjunction with the KRAS Kit.

**Table 29. Comparison by site of mean  $\Delta C_T$  (SD) values for mutant type samples**

	<b>12ALA</b>	<b>12ARG</b>	<b>12ASP</b>	<b>12CYS</b>	<b>12SER</b>	<b>12VAL</b>	<b>13ASP</b>
Site 1	2.44 (0.1)	2.62 (0.3)	3.03 (0.6)	2.24 (0.1)	2.34 (0.3)	2.51 (0.1)	3.93 (0.4)
Site 2	2.44 (0.2)	2.52 (0.4)	3.01 (0.7)	2.29 (0.2)	2.10 (0.4)	2.44 (0.5)	4.15 (0.7)
Site 3	2.67 (0.6)	2.52 (0.2)	3.07 (0.5)	2.29 (0.2)	2.74 (0.5)	2.56 (0.2)	3.95 (0.3)

**Table 30. Comparison by site of mean  $\Delta C_T$  (SD) values for wild-type samples**

	12ALA	12ARG	12ASP	12CYS	12SER	12VAL	13ASP
Site 1	12.46 (0.3)	–	10.37 (0.4)	–	11.84 (0.4)	12.36 (0.5)	11.11 (0.6)
Site 2	12.09 (0.6)	13.07 (0.2)	10.17 (0.5)	–	11.71 (0.7)	12.20 (0.6)	11.00 (0.9)
Site 3	12.07 (0.2)	–	10.61 (0.4)	–	11.94 (0.3)	12.28 (0.6)	11.82 (0.5)

Note: “–” denotes a missing value, due to no break-through being observed.

## Lot interchangeability

The potential for lot-to-lot variability to impact the mutation detection was assessed. In this study, three lots of QIAamp DSP DNA FFPE Tissue Kit (FFPE extraction kit) and *therascreen* KRAS RGQ PCR Kit with each lot of FFPE extraction kit were evaluated. DNA was extracted from formalin-fixed paraffin-embedded cell lines with 3 lots of FFPE extraction kit to yield DNA samples with target control  $C_T$  values of approximately 23, 26, and 31. These  $C_T$  values were selected to span the defined working range of total DNA input level for the KRAS Kit (control  $C_T$  within 21.92–32.00). Six replicate extractions at each of the target  $C_T$  values were tested by each of the 3 independent KRAS Kit lots. The  $\Delta C_T$  values and mutation calls were collected for all test samples. The pre-defined study objectives were met with the correct mutation call observed in 100% of valid tests, confirming that sample mutation calling is not affected by using different lots of FFPE extraction kits and/or KRAS Kits.

## Clinical performance

Note: The KRAS Kit is designed to specifically detect 7 KRAS mutations in codons 12 and 13 of the KRAS gene. It is not designed to specifically detect the wild-type sequence at these codons. The results of the test are reported out as “Mutation-positive” and “No-mutation detected”. In clinical studies presented below, KRAS mutation-positive results are those patients whose tumor issue was positive for one or more of the 7 mutations detected by the *therascreen* KRAS RGQ PCR Kit (G12A, G12D, G12R, G12C, G12S, G12V, G13D). KRAS mutation-negative (wild-type) refers to those patients whose tumor tissue was negative for the 7 mutations detected by the KRAS Kit (i.e., the sample may in fact harbor mutations in the KRAS gene not identified by the KRAS Kit such as G13D).

### Clinical Study Supporting Use with Cetuximab (Erbix)

A clinical performance study was conducted to generate data to support the clinical utility of the *therascreen* KRAS RGQ PCR Kit as a companion diagnostic test that enables selection of patients for treatment with cetuximab (Erbix). The safety and effectiveness of cetuximab (Erbix) has been demonstrated in the CA225025 study. CA225025 was a multicenter, open-label, randomized, clinical trial conducted in 572 patients with EGFR-expressing, previously treated, recurrent mCRC. Patients were randomized (1:1) to receive either Erbix plus best supportive care (BSC) or BSC alone. Erbix was administered as a 400 mg/m<sup>2</sup> initial dose, followed by 250 mg/m<sup>2</sup> weekly until disease progression or unacceptable toxicity.

Of the 572 randomized patients, the median age was 63 years, 64% were male, 89% were Caucasian, and 77% had baseline ECOG performance status of 0–1. Demographics and baseline characteristics were similar between study arms. All patients were to have received and progressed on prior therapy including an irinotecan-containing regimen and an oxaliplatin-containing regimen.

KRAS status was available for 453/572 (79%) of the patients: 245 (54%) patients had KRAS mutation-negative tumors, and 208 (46%) patients had KRAS mutation-positive tumors, when assessed by the *therascreen* KRAS RGQ PCR Kit.

The main outcome measure of the study was overall survival (OS). For the KRAS Mutation-negative (Wild-type) Population, median survival time (95% CI) was 8.6 (7.0, 10.3) months in the cetuximab+BSC group and 5.0 (4.3, 5.7) months in the BSC group. The OS hazard ratio of cetuximab+BSC over BSC was 0.63. The 95% confidence interval (CI) was (0.47, 0.84).

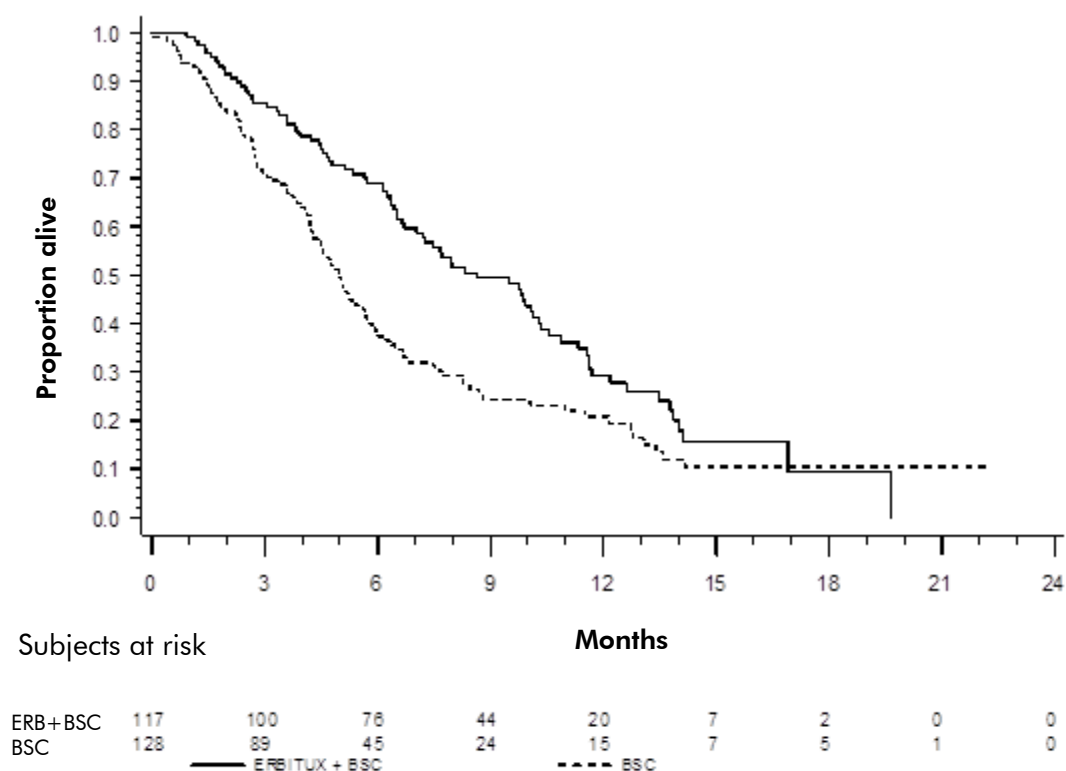
For the KRAS Mutation-Positive population, median survival time was 4.8 (3.9, 5.6) months in the cetuximab+BSC group and 4.6 (3.6, 4.9) months in the BSC group. The hazard ratio was 0.91 with 95% CI (0.67, 1.24). Results are presented in Table 31 and Figure 21.

**Table 31. Overall survival in previously treated EGFR-expressing metastatic colorectal cancer (all randomized and KRAS status)**

	All randomized		KRAS Mutation-negative (Wild-type)		KRAS Mutation-positive	
	Erbix plus BSC (N=287)	BSC (N=285)	Erbix plus BSC (N=117)	BSC (N=128)	Erbix plus BSC (N=108)	BSC (N=100)
Median (months) (95% CI)	6.1 (5.4, 6.7)	4.6 (4.2, 4.9)	8.6 (7.0, 10.3)	5.0 (4.3, 5.7)	4.8 (3.9, 5.6)	4.6 (3.6, 4.9)
Hazard Ratio (95% CI)	0.77 (0.64, 0.92)		0.63 (0.47, 0.84)		0.91 (0.67, 1.24)	
p-value*	0.0046		-		-	

\* Based on the stratified log-rank test.

Overall survival rates based on Kaplan-Meier estimates at months 6 and 12 were higher for the cetuximab+BSC group than the BSC group for the KRAS wild-type subset. This advantage was not observed in the KRAS mutant subset.



**Figure 21. Kaplan-Meier curve for overall survival in patients with KRAS mutation-negative (wild-type) metastatic colorectal cancer.**

#### Clinical Study Supporting Use with Panitumumab (Vectibix)

A clinical performance study was conducted to generate data to support the clinical utility of the therascreen KRAS RGQ PCR Kit (referred to as KRAS Kit) as a companion diagnostic test that aids in the identification of patients for treatment with panitumumab (Vectibix). The objective of the study was to assess whether KRAS status as determined by the therascreen KRAS RGQ PCR Kit can be used to select patients with metastatic colorectal cancer (mCRC) who will benefit from panitumumab (Vectibix) treatment. The clinical trial 20050203 was a multicenter, prospective, open-label, randomized phase 3 study to assess the efficacy of panitumumab in combination with oxaliplatin, 5-fluorouracil (5-FU), and leucovorin (FOLFOX) vs. FOLFOX alone in patients with previously untreated, recurrent metastatic colorectal cancer (mCRC).

Banked tumor samples from patients in study 20050203 were tested with the KRAS Kit to identify two subgroups: KRAS mutation-positive (mutant KRAS) and KRAS mutation-negative (wild-type KRAS), according to whether at least one or none of seven KRAS mutations in codons 12 and 13 of exon 2 in the KRAS oncogene was detected. In retrospective analyses, efficacy data from study 20050203 were stratified by KRAS subgroup. The primary objective of the KRAS analysis was to assess whether an overall improvement in PFS for

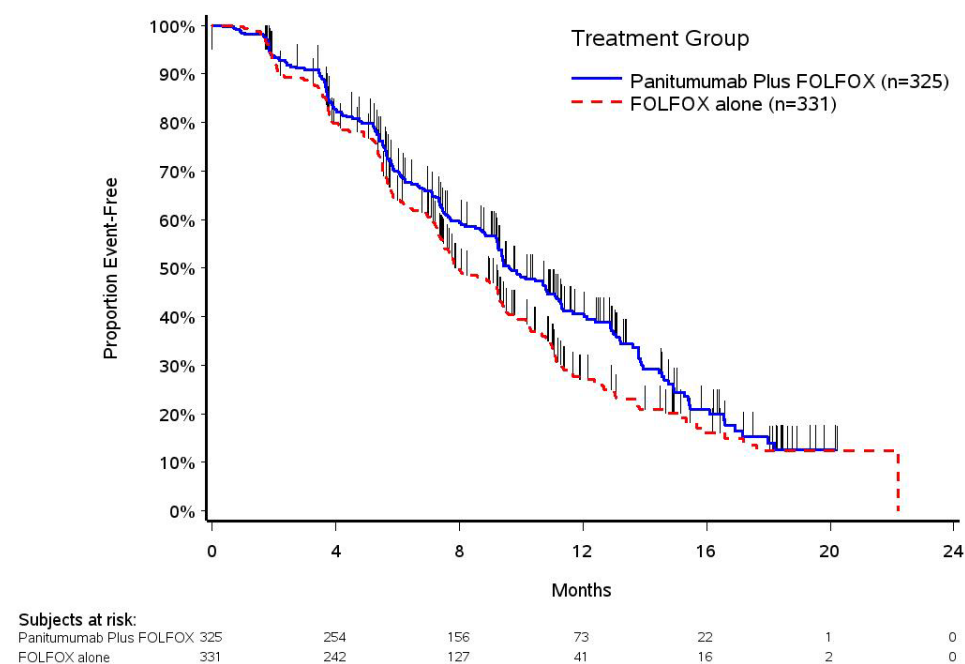
panitumumab plus FOLFOX relative to FOLFOX alone was significantly greater among subjects with KRAS wild-type tumors compared to subjects with KRAS mutant tumors.

The pre-specified primary efficacy endpoint was PFS in the group of patients (n = 656) with wild-type KRAS mCRC as assessed by a blinded independent central review of imaging. Other key efficacy endpoints included OS and ORR. The efficacy results in patients with wild-type KRAS mCRC are presented in the table below.

#### Results in Patients with Wild-type KRAS mCRC

	Primary Analysis	
	Panitumumab plus FOLFOX	FOLFOX Alone
Wild-type KRAS population	(n = 325)	(n = 331)
PFS		
Median (months) (95% CI)	9.6 (9.2, 11.1)	8.0 (7.5, 9.3)
Hazard ratio (95% CI)	0.80 (0.66, 0.97)	
p-value	p = 0.02	
ORR		
% (95% CI)	54% (48%, 59%)	47% (41%, 52%)

#### Kaplan-Meier Plot of Progression-Free Survival in Patients with Wild-type KRAS mCRC

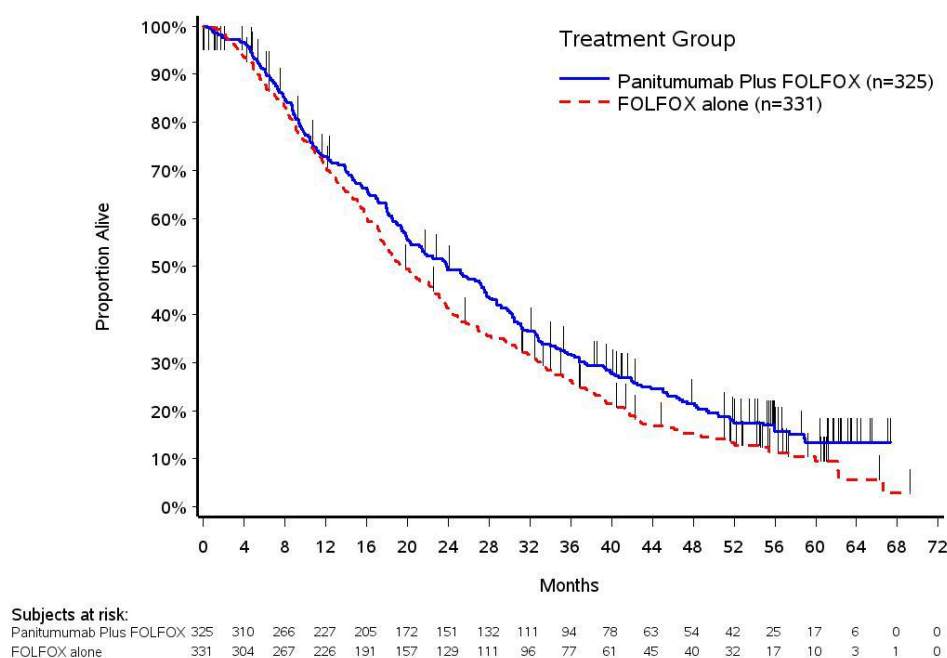


Among patients with KRAS mutant tumors, median PFS was 7.3 months (95% CI: 6.3, 8.0) in the 221 patients receiving panitumumab plus FOLFOX versus the median PFS of 8.8 months (95% CI: 7.7, 9.4) in the 219 patients who received FOLFOX alone (HR = 1.29, 95% CI: 1.04, 1.62). Median OS was 15.5 months (95% CI: 13.1, 17.6) in patients receiving panitumumab plus FOLFOX versus the median OS of 19.3 months (95% CI: 16.5, 21.8) in patients who received FOLFOX alone (HR = 1.24, 95% CI: 0.98, 1.57).

An exploratory analysis of OS with updated information based on events in 82% of patients with wild-type KRAS mCRC estimated the treatment effect of Vectibix plus FOLFOX compared with FOLFOX alone. Median OS among 325 patients with wild type KRAS mCRC who received Vectibix plus FOLFOX was 23.8 months (95% CI: 20.0, 27.7) versus 19.4 months (95% CI: 17.4, 22.6) among 331 patients who received FOLFOX-alone (HR = 0.83, 95% CI: 0.70, 0.98).

### Kaplan-Meier Plot of Overall Survival in Patients with Wild-type KRAS mCRC





For more information regarding Erbitux and Vectibix indications, please refer to the most recent respective drug label at [www.accessdata.fda.gov/scripts/cder/drugsatfda/index.cfm](http://www.accessdata.fda.gov/scripts/cder/drugsatfda/index.cfm)

## References

QIAGEN maintains a large, up-to-date online database of scientific publications utilizing QIAGEN products. Comprehensive search options allow you to find the articles you need, either by a simple keyword search or by specifying the application, research area, title, etc.

For a complete list of references, visit the QIAGEN Reference Database online at [www.qiagen.com/RefDB/search.asp](http://www.qiagen.com/RefDB/search.asp) or contact QIAGEN Technical Services or your local distributor.

## Cited references

1. Hilger, R.A., Scheulen, M.E., Strumberg, D. (2002) The Ras-Raf-MEK-ERK Pathway in the Treatment of Cancer. *Onkologie* **25**, 511.
2. Bachireddy, P., Bendapudi, P.K., Felsher, D.W., (2005) Getting at MYC through RAS. *Clin. Cancer Res.* **11(12)**, 4278.
3. Benvenuti, S. et al. (2007) Oncogenic activation of the RAS/RAF signaling pathway impairs the response of metastatic colorectal cancers to anti-epidermal growth factor receptor antibody therapies. *Cancer Res.* **67 (6)**, 2643.
4. Neumann, J., Zeindl-Eberhart, E., Kirchner, T., Jung, A. Epub 2009 Frequency and type of KRAS mutations in routine diagnostic analysis of metastatic colorectal cancer. *Pathol. Res. Pract.* **205(12)**, 858.

5. Di Fiore, F. et al. (2007). Clinical relevance of KRAS mutation detection in metastatic colorectal cancer treated by Cetuximab plus chemotherapy. *British Journal of Cancer* **96**, 1166.
6. Bokemeyer, C. et al., (2008) K-RAS status and efficacy of first-line treatment of patients with metastatic colorectal cancer (mCRC) with FOLFOX with or without cetuximab: The OPUS experience. *J Clin. Oncol.* **26** (May 20 suppl; abstr 4000).
7. Van Cutsem, E. et al. (2008) K-RAS status and efficacy in the first-line treatment of patients with metastatic colorectal cancer (mCRC) treated with FOLFIRI with or without cetuximab: The CRYSTAL experience. *J Clin. Oncol.* **26**, (May 20 suppl; abstr 2).
8. Tejpar, S. et al. (2008) Relationship of efficacy with K-RAS status (wild type versus mutant) in patients with irinotecan-refractory metastatic colorectal cancer (mCRC), treated with irinotecan (q2w) and escalating doses of cetuximab (q1w): The EVEREST experience (preliminary data). *J Clin. Oncol.* **26**, (May 20 suppl; abstr 4001).
9. Amado RG, Wolf M, Peeters M, et al. Wild-type KRAS is required for panitumumab efficacy in patients with metastatic colorectal cancer: Results from a phase III trial of panitumumab compared to best supportive care. *J Clin Oncol.* 2008;26:1626-1634.
10. Freeman DJ, Juan T, Reiner M, et al. Association of K-ras mutational status and clinical outcomes in patients with metastatic colorectal cancer receiving panitumumab alone. *Clin Colorectal Cancer.* 2008;7:184-190
11. Freeman D, Juan T, Meropol NJ, et al. Association of somatic KRAS gene mutations and clinical outcome in patients (pts) with metastatic colorectal cancer (mCRC) receiving panitumumab monotherapy. *Eur J Cancer.* 2007;Suppl 5(4):239
12. Douillard JY, Siena S, Cassidy J, et al. Randomized, phase III trial of panitumumab with infusional fluorouracil, leucovorin, and oxaliplatin (FOLFOX4) versus FOLFOX4 alone as first-line treatment in patients with previously untreated metastatic colorectal cancer: The PRIME study. *J Clin Oncol* 2010 28:4697-4705.
13. Peeters M, Price TJ, Cervantes A, et al. Randomized phase III study of panitumumab with fluorouracil, leucovorin, and irinotecan (FOLFIRI) compared with FOLFIRI alone as second-line treatment in patients with metastatic colorectal cancer. *J Clin Oncol* 2010 28(31):4706
14. De Roock, W. et al (2007). KRAS mutations preclude tumor shrinkage of colorectal cancers treated with cetuximab. *Journal of Clinical Oncology* **25 (18S)**, 4132.
15. Newton, C.R. et al. (1989) Analysis of any point mutation in DNA. The amplification refractory mutation system (ARMS). *Nucleic Acids Res.* **17 (7)**, 2503.
16. Whitcombe D. et al. (1999) Detection of PCR products using self-probing amplicons and fluorescence. *Nature Biotech* **17**, 804.
17. Thelwell N. et al. (2000) Mode of Action and Application of Scorpion Primers to Mutation Detection. *Nucleic Acids Research* **28(19)**, 3752.
18. Catalog of Somatic Mutations in Cancer ([www.sanger.ac.uk/genetics/CGP/cosmic](http://www.sanger.ac.uk/genetics/CGP/cosmic)).

## Names and Place of Business of Manufacture



QIAGEN Manchester Ltd,  
Skelton House,

Lloyd Street North,  
Manchester, M15 6SH,  
United Kingdom

## **Issue Date and Version**

Draft 4<sup>th</sup> July 2012, Version 1

# Troubleshooting Guide

This troubleshooting guide may be helpful in solving any problems that may arise. For more information, see also the Frequently Asked Questions page at our Technical Support Center: [www.qiagen.com/FAQ/FAQList.aspx](http://www.qiagen.com/FAQ/FAQList.aspx). The scientists in QIAGEN Technical Services are always happy to answer any questions you may have about either the information and protocols in this handbook or sample and assay technologies (for contact information, see back cover or visit [www.qiagen.com](http://www.qiagen.com)).

## Comments and suggestions

---

### Invalid results

- |  |  |
|--|--|
| a) The storage conditions for one or more components did not comply with the instructions given in "Reagent Storage and Handling", page 13 | Check the storage conditions and the expiration date (see the label) of the reagents and use a new kit, if necessary.                                      |
| b) The <i>therascreen</i> KRAS RGQ PCR Kit has expired   | Check the storage conditions and the expiration date (see the kit label) of the reagents and, if necessary, use a new <i>therascreen</i> KRAS RGQ PCR Kit. |

### NTC samples show positive results in the FAM channel

- |  |   |
|--|---|
| Contamination occurred during preparation of the PCR | Repeat the PCR with new reagents in replicates.<br>If possible, close the PCR tubes directly after addition of the sample to be tested.<br>Make sure that work space and instruments are decontaminated at regular intervals. |
|--|---|

## Rotor-Gene Q *therascreen* KRAS Assay Package flags

Table 33 lists the possible flags that may be generated by the Rotor-Gene Q *therascreen* KRAS Assay Package, their meaning, and actions to be taken.

**Table 33. Rotor-Gene Q *therascreen* KRAS Assay Package flags**

Flag	Meaning	Action to be taken
PC_CTRL_ASSAY_FAIL	PCR run invalid — FAM C <sub>T</sub> out of range for positive control in control reaction.	Repeat the entire PCR run.
PC_MUTATION_ASSAY_FAIL	PCR run invalid — FAM C <sub>T</sub> out of range for one or more mutation control reactions.	Repeat the entire PCR run.
PC_CTRL_INVALID_DATA	PCR run invalid — Fluorescence data in positive control (Control Reaction Mix) can't be interpreted.	Repeat the entire PCR run.
PC_MUTATION_INVALID_DATA	PCR run invalid — Fluorescence data in positive control (mutation reaction mix) can't be interpreted.	Repeat the entire PCR run.
NTC_INT_CTRL_FAIL	PCR run invalid — Internal control above range for negative control.	Repeat the entire PCR run.

Table continued on next page.

**Table 33. Continued.**

<b>Flag</b>	<b>Meaning</b>	<b>Action to be taken</b>
NTC_INT_CTRL _EARLY _CT	PCR run invalid — Internal control is below range for negative control.	Repeat the entire PCR run.
NTC_INVALID_CT	PCR run invalid — FAM invalid (smaller than limit) for negative control.	Repeat the entire PCR run.
NTC_INVALID_DATA	PCR run invalid — Fluorescence data in negative control can't be interpreted.	Repeat the entire PCR run.
SAMPLE_CTRL _INVALID _DATA	Sample invalid — Fluorescence data in sample control can't be interpreted.	Setup new PCR run to repeat the relevant sample(s).
SAMPLE_CTRL _HIGH _CONC	Sample Invalid — FAM C <sub>T</sub> too low in sample control.	Dilute sample to increase control C <sub>T</sub> value. This dilution should be calculated on the assumption that diluting 1:1 with the water supplied in the kit will increase the C <sub>T</sub> by 1.0; once sample is diluted, setup new PCR run to repeat sample.
SAMPLE_CTRL_LOW _CONC	Low concentration in sample control (warning, not error).	None.

Table continued on next page.

**Table 33. Continued.**

Flag	Meaning	Action to be taken
SAMPLE_CTRL _FAIL	Sample invalid — FAM C <sub>T</sub> too high in sample control reaction.	Setup new PCR run to repeat sample. If invalid on repeat PCR run, extract the sample from a fresh FFPE section(s). Setup a new PCR run to test fresh extraction. If invalid, repeat this second extraction. If the sample does not give a valid result after this run, the sample is given an indeterminate mutation status and no further testing should be carried out.
SAMPLE_INT_CTRL _FAIL	C <sub>T</sub> too high (or no C <sub>T</sub> ) for internal control (HEX), FAM channel mutation-negative.	If sample given valid status — No action.  If sample given invalid status, setup new PCR run to repeat sample. If invalid on repeat PCR run, extract the sample from a fresh FFPE section(s). Setup a new PCR run to test fresh extraction. If invalid, repeat this second extraction. If the sample does not give a valid result after this run, the sample is given an indeterminate mutation status and no further testing should be carried out.

Table continued on next page.

**Table 33. Continued.**

<b>Flag</b>	<b>Meaning</b>	<b>Action to be taken</b>
SAMPLE_INT_CTRL _EARLY_CT	Mutation tube invalid — C <sub>T</sub> HEX too low for sample (internal control)	If sample given valid status — No action.  If sample given invalid status, setup new PCR run to repeat sample. If invalid on repeat PCR run, extract the sample from a fresh FFPE section(s). Setup a new PCR run to test fresh extraction. If invalid, repeat this second extraction. If the sample does not give a valid result after this run, the sample is given an indeterminate mutation status and no further testing should be carried out.

Table continued on next page.



**Table 33. Continued.**

<b>Flag</b>	<b>Meaning</b>	<b>Action to be taken</b>
SAMPLE_INVALID_DATA	Mutation tube invalid — Fluorescence data in internal control can't be interpreted.	<p>If sample given valid status — No action.</p> <p>If sample given invalid status, setup new PCR run to repeat sample. If invalid on repeat PCR run, extract the sample from a fresh FFPE section(s). Setup a new PCR run to test fresh extraction. If invalid, repeat this second extraction. If the sample does not give a valid result after this run, the sample is given an indeterminate mutation status and no further testing should be carried out.</p>
MUTATION_EARLY_CT	Mutation tube invalid — C <sub>T</sub> FAM too low for sample.	<p>If sample given valid status — No action.</p> <p>If sample given invalid status, setup new PCR run to repeat sample. If invalid on repeat PCR run, extract the sample from a fresh FFPE section(s). Setup a new PCR run to test fresh extraction. If invalid, repeat this second extraction. If the sample does not give a valid result after this run, the sample is given an indeterminate mutation status and no further testing should be carried out.</p>










Table continued on next page.

**Table 33. Continued.**

Flag	Meaning	Action to be taken
SAMPLE_POSITIVE _AND_INVALID	This result is valid. One or more mutations for a sample are valid and positive, at the same time one or more mutations for the same sample are invalid (warning, not an error).	None. This result is valid.

## Symbols

The following symbols may appear on the packaging and labeling:

 <24>	Contains reagents sufficient for 24 reactions
	Use by
	Catalog number
	Lot number
	Material number (i.e. component, labeling)
	Components (i.e. a list of what is included)
	Contains (contents)
	Number (i.e. vials, bottles)
Rn	R is for revision of the Instructions for Use (Handbook) and n is the revision number
	Temperature limitation



Manufacturer



Consult instructions for use



Keep away from sunlight

## Contact Information

For technical assistance and more information, please see our Technical Support Center at [www.qiagen.com/Support](http://www.qiagen.com/Support) or call one of the QIAGEN Technical Service Departments or local distributors (see back cover or visit [www.qiagen.com](http://www.qiagen.com)).

## Appendix A: Installation of the Rotor-Gene Q *therascreen* KRAS Assay Package

The *therascreen* KRAS RGQ PCR Kit is designed for use with the Rotor Gene Q MDx instrument with a 72-well rotor. The Rotor-Gene Q *therascreen* KRAS Assay Package is available separately on CD (QIAGEN, cat. no. 9021168).

The package includes “*therascreen* KRAS QC Locked Template” and “*therascreen* KRAS Locked Template”. The CD also includes printable plate maps that can be used to record the experiments and run templates that define the PCR protocols for FFPE Sample Preparation using the QIAamp DSP DNA FFPE Tissue Kit, DNA Sample Assessment using the *therascreen* KRAS RGQ PCR Kit, and Detection of KRAS mutations using the *therascreen* KRAS RGQ PCR Kit.

**Note:** The Rotor-Gene Q *therascreen* KRAS Assay Package only works with Rotor-Gene Q Series Software version 2.1.0 or higher. Make sure the correct version of Rotor-Gene Q MDx software is installed before proceeding with the *therascreen* KRAS Assay Package installation.

### Procedure

1. Order the Rotor-Gene Q *therascreen* KRAS RGQ Assay Package CD (QIAGEN, cat. no. 9021168) available separately from QIAGEN.
2. Insert the CD into the CD drive of the laptop connected to the Rotor-Gene Q MDx instrument.
3. Start the installation by double-clicking the file *therascreen\_KRAS\_Assay\_Package\_1.0.12.exe*.
4. The setup wizard will appear. Click “Next” to continue (Figure 21).

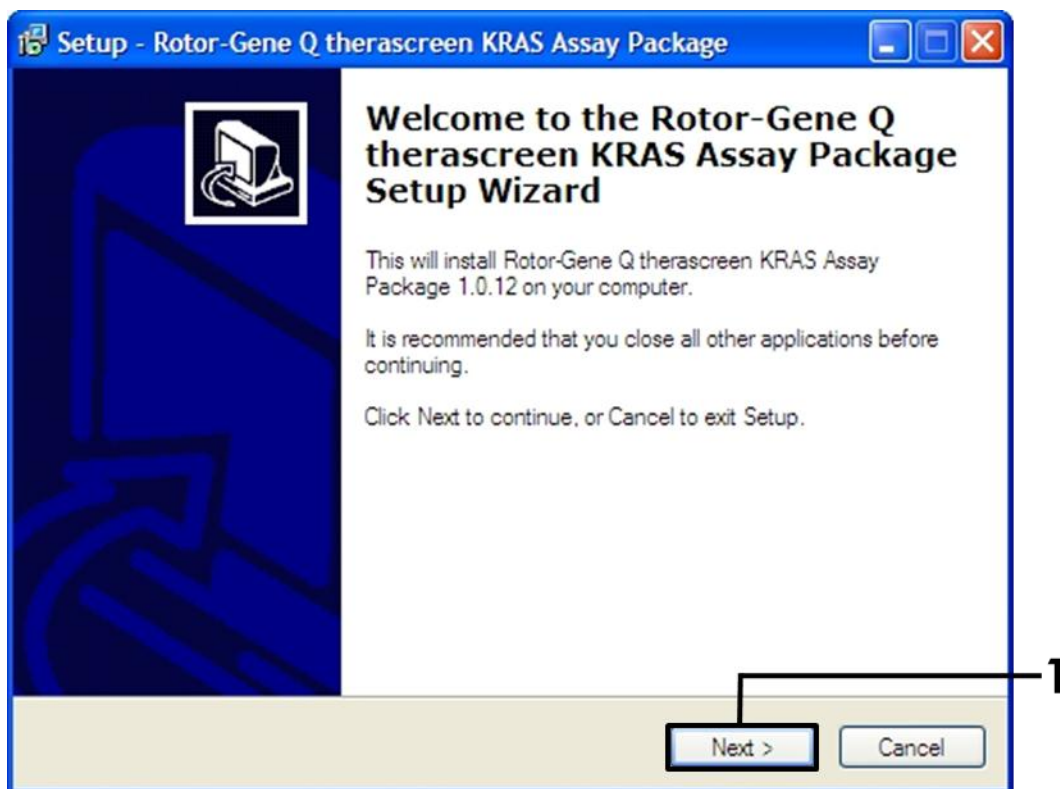
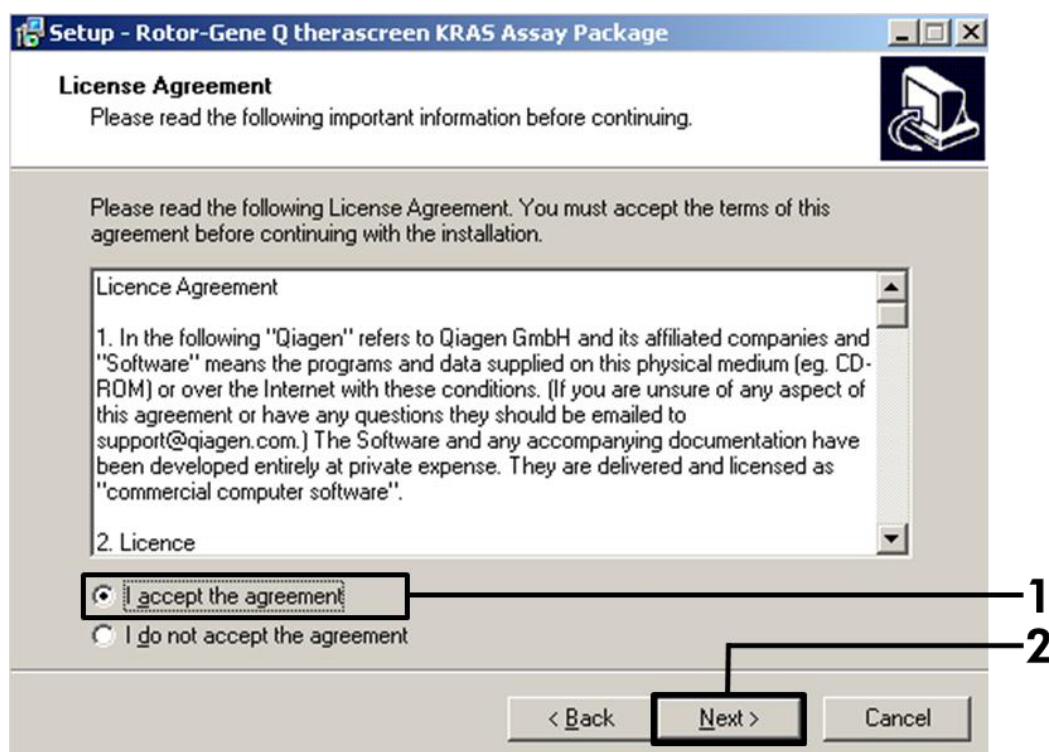


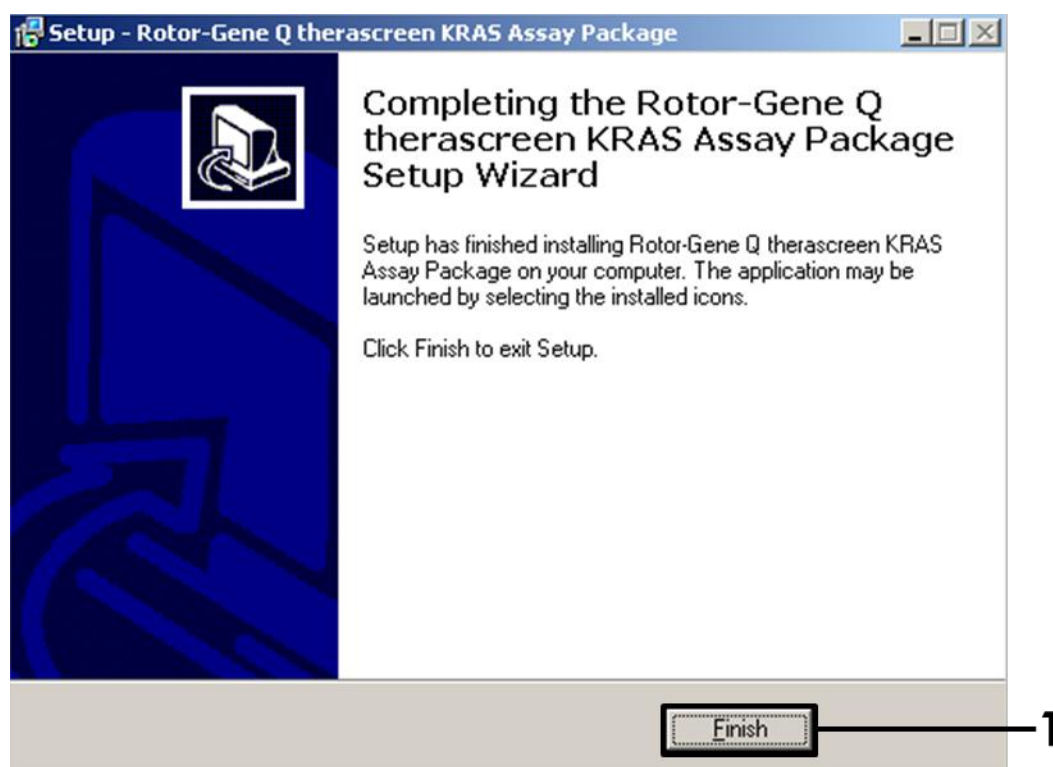
Figure 21. The "Setup" dialog box. 1 = "Next" button.

5. Read the License Agreement in the "License Agreement" dialog box and accept the agreement by checking the statement "I accept the agreement". Click "Next" to continue (Figure 22).



**Figure 22. The "License Agreement" dialog box.** 1 = "I accept the agreement" statement, 2 = "Next" button.

6. The template setup will start automatically and a final "Setup" dialog box will appear. Click "Finish" to exit the setup wizard (Figure 23).



**Figure 23. Completing the setup wizard.** 1 = "Finish" button.

7. Restart the computer. Shortcuts to both the “therascreen KRAS QC Locked Template” and “therascreen KRAS Locked Template” will be generated automatically and appear on the desktop.

## Ordering Information

Product	Contents	Cat. no.
<i>therascreen</i> KRAS RGQ PCR KRAS Kit (24)	For 24 reactions: 1 Control Assay, 7 Mutation Assays, Positive Control, Water, Taq DNA Polymerase	870021
Rotor-Gene Q <i>therascreen</i> KRAS Assay Package CD	Software protocol package for use with the <i>therascreen</i> KRAS RGQ PCR KRAS Kit and the QIAGEN Rotor-Gene Q MDx instrument	9021168
<b>Rotor-Gene Q MDx and accessories</b>		
Rotor-Gene Q MDx Platform (US)	Real-time PCR cycler, laptop computer, software, accessories, 1-year warranty on parts and labor	9002035
Rotor-Gene Q MDx System (US)	Real-time PCR cycler, laptop computer, software, accessories, 1-year warranty on parts and labor, installation and training	9002036
Loading Block 72 x 0.1 ml Tubes	Aluminum block for manual reaction setup with a single-channel pipet in 72 x 0.1 ml tubes	9018901
Strip Tubes and Caps, 0.1 ml (250)	250 strips of 4 tubes and caps for 1000 reactions	981103
Strip Tubes and Caps, 0.1 ml (2500)	10 x 250 strips of 4 tubes and caps for 10,000 reactions	981106
<b>Related products</b>		
QIAamp DSP DNA FFPE Tissue KRAS Kit (50)	For 50 DNA preps: QIAamp MinElute® Columns, Proteinase K, Buffers, and Collection Tubes (2 ml)	60404



This page is intentionally left blank

This page is intentionally left blank



---

[www.qiagen.com](http://www.qiagen.com)

USA ■ [techservice-us@qiagen.com](mailto:techservice-us@qiagen.com)

