

HIGHLIGHTS OF PRESCRIBING INFORMATION

These highlights do not include all the information needed to use FARESTON® safely and effectively. See full prescribing information for FARESTON®.

FARESTON® (toremifene citrate) 60 mg Tablets oral administration
Initial U.S. Approval: [1997]

WARNING: QT PROLONGATION

FARESTON has been shown to prolong the QTc interval in a dose- and concentration-related manner [see *Clinical Pharmacology* (12.2)]. Prolongation of the QT interval can result in a type of ventricular tachycardia called Torsade de pointes, which may result in syncope, seizure, and/or death. Toremifene should not be prescribed to patients with congenital/acquired QT prolongation, uncorrected hypokalemia or uncorrected hypomagnesemia. Drugs known to prolong the QT interval and strong CYP3A4 inhibitors should be avoided [see *Warnings and Precautions* (5.1)].

RECENT MAJOR CHANGES

Boxed Warning	03-2011
Contraindications, QT Prolongation, Hypokalemia, Hypomagnesemia (4.2)	03-2011
Warnings and Precautions, Prolongation of the QT Interval (5.2)	03-2011

INDICATIONS AND USAGE

FARESTON® is an estrogen agonist/antagonist indicated for the treatment of metastatic breast cancer in postmenopausal women with estrogen-receptor positive or unknown tumors.

DOSAGE AND ADMINISTRATION

- 60 mg once daily, orally

DOSAGE FORMS AND STRENGTHS

- 60 mg tablet is round, convex, unscored, uncoated, and white, or almost white, identified with TO 60 embossed on one side.

CONTRAINDICATIONS

- Hypersensitivity to the drug (4.1)
- QT Prolongation, Hypokalemia, Hypomagnesemia (4.2)

WARNINGS AND PRECAUTIONS

- Prolongation of the QT Interval (5.1)
- Hypercalcemia and Tumor Flare (5.2)
- Tumorigenicity (5.3)
- General (5.4)
- Laboratory Tests (5.5)
- Pregnancy: Fetal harm may occur when administered to a pregnant woman. Women should be advised not to become pregnant when taking FARESTON (5.6, 8.1)
- Women of Childbearing Potential: Use effective nonhormonal contraception during FARESTON therapy.(5.7)

ADVERSE REACTIONS

Most common adverse reactions are hot flashes, sweating, nausea and vaginal discharge. (6.1)

To report SUSPECTED ADVERSE REACTIONS, contact (GTx, Inc., at 888-507-8369 or FDA at 1-800-FDA-1088 or www.fda.gov/medwatch.

DRUG INTERACTIONS

- Drugs that decrease renal calcium excretion, e.g., thiazide diuretics, may increase the risk of hypercalcemia in patients receiving FARESTON. (7.1)
- Agents that prolong QT should be avoided (7.2)
- Coadministration with a strong CYP3A4 inducer may result in a relevant decrease in FARESTON exposure and should be avoided. (7.3)
- Coadministration with a strong CYP3A4 inhibitor can result in a relevant increase in FARESTON exposure and should be avoided. (7.4)
- CYP2C9 substrates with a narrow therapeutic index such as warfarin or phenytoin with FARESTON should be used with caution and require careful monitoring. (7.6)

USE IN SPECIFIC POPULATIONS

- Nursing Mothers: Discontinue drug or nursing taking into account the importance of the drug to the mother (8.2)

See 17 for PATIENT COUNSELING INFORMATION and FDA-approved patient labeling.

Revised [03/2011]

FULL PRESCRIBING INFORMATION: CONTENTS*

WARNING: QT PROLONGATION

- INDICATIONS AND USAGE
- DOSAGE AND ADMINISTRATION
- DOSAGE FORMS AND STRENGTHS
- CONTRAINDICATIONS
 - Hypersensitivity to the Drug
 - QT Prolongation, Hypokalemia, Hypomagnesemia
- WARNINGS AND PRECAUTIONS
 - Prolongation of the QT Interval
 - Hypercalcemia and Tumor Flare
 - Tumorigenicity
 - General
 - Laboratory Tests
 - Use in Pregnancy
 - Women of Childbearing Potential
- ADVERSE REACTIONS
 - Clinical Trials Experience
 - Post-marketing Experience

- 7 DRUG INTERACTIONS
 - 7.1 Drugs that Decrease Renal Calcium Excretion
 - 7.2 Agents that Prolong QT
 - 7.3 Effect of Strong CYP3A4 Inducers on Toremifene
 - 7.4 Effect of Strong CYP3A4 Inhibitors on Toremifene
 - 7.5 Effect of Toremifene on CYP3A4 Substrates
 - 7.6 Effect of Toremifene on CYP2C9 Substrates
- 8 USE IN SPECIFIC POPULATIONS
 - 8.1 Pregnancy
 - 8.2 Nursing Mothers
 - 8.3 Pediatric Use
 - 8.4 Geriatric Use
 - 8.5 Renal Impairment
 - 8.6 Hepatic Impairment
 - 8.7 Race
- 10 OVERDOSAGE
- 11 DESCRIPTION
- 12 CLINICAL PHARMACOLOGY
 - 12.1 Mechanism of Action
 - 12.2 Pharmacodynamics
 - 12.3 Pharmacokinetics:
- 13 NONCLINICAL TOXICOLOGY
 - 13.1 Carcinogenesis, Mutagenesis, and Impairment of Fertility
- 14 CLINICAL STUDIES
- 16 SUPPLIED/STORAGE AND HANDLING
- 17 PATIENT COUNSELING INFORMATION

*Sections or subsections omitted from the full prescribing information are not listed.

FULL PRESCRIBING INFORMATION

WARNING: QT PROLONGATION

FARESTON has been shown to prolong the QTc interval in a dose- and concentration-related manner [see *Clinical Pharmacology* (12.2)]. Prolongation of the QT interval can result in a type of ventricular tachycardia called Torsade de pointes, which may result in syncope, seizure, and/or death. Toremifene should not be prescribed to patients with congenital/acquired QT prolongation, uncorrected hypokalemia or uncorrected hypomagnesemia. Drugs known to prolong the QT interval and strong CYP3A4 inhibitors should be avoided [see *Warnings and Precautions* (5.1)].

1 INDICATIONS AND USAGE

FARESTON® is an estrogen agonist/antagonist indicated for the treatment of metastatic breast cancer in postmenopausal women with estrogen-receptor positive or unknown tumors.

2 DOSAGE AND ADMINISTRATION

The dosage of FARESTON is 60 mg, once daily, orally. Treatment is generally continued until disease progression is observed.

3 DOSAGE FORMS AND STRENGTHS

Tablet is 60 mg, round, convex, unscored, uncoated, and white, or almost white, identified with TO 60 embossed on one side.

4 CONTRAINDICATIONS

4.1 Hypersensitivity to the Drug

FARESTON is contraindicated in patients with known hypersensitivity to the drug.

4.2 QT Prolongation, Hypokalemia, Hypomagnesemia

Toremifene should not be prescribed to patients with congenital/acquired QT prolongation (long QT syndrome), uncorrected hypokalemia, or uncorrected hypomagnesemia.

5 WARNINGS AND PRECAUTIONS

5.1 Prolongation of the QT Interval

Toremifene has been shown to prolong the QTc interval in a dose- and concentration-related manner [see *Clinical Pharmacology* (12.2)]. Prolongation of the QT interval can result in a type of ventricular tachycardia called Torsade de pointes, which may result in syncope, seizure, and/or death.

Toremifene should be avoided in patients with long QT syndrome. Caution should be exercised in patients with congestive heart failure, hepatic impairment and electrolyte abnormalities. Hypokalemia or hypomagnesemia must be corrected prior to initiating toremifene and these electrolytes should be monitored periodically during therapy. Drugs that prolong the QT interval should be avoided. In patients at increased risk, electrocardiograms (ECGs) should be obtained at baseline and as clinically indicated [see *Drug Interactions* (7.2) and *Clinical Pharmacology* (12.2)].

5.2 Hypercalcemia and Tumor Flare

As with other antiestrogens, hypercalcemia and tumor flare have been reported in some breast cancer patients with bone metastases during the first weeks of treatment with FARESTON. Tumor flare is a syndrome of diffuse musculoskeletal pain and erythema with increased size of tumor lesions that later regress. It is often accompanied by hypercalcemia. Tumor flare does not imply failure of treatment or represent tumor progression. If hypercalcemia occurs, appropriate measures should be instituted and, if hypercalcemia is severe, FARESTON treatment should be discontinued.

5.3 Tumorigenicity

Since most toremifene trials have been conducted in patients with metastatic disease, adequate data on the potential endometrial tumorigenicity of long-term treatment with FARESTON are not available. Endometrial hyperplasia has been reported. Some patients treated with FARESTON have developed endometrial cancer, but circumstances (short duration of treatment or prior antiestrogen treatment or premalignant conditions) make it difficult to establish the role of FARESTON. Endometrial hyperplasia of the uterus was observed in animals treated with toremifene [see *Nonclinical Toxicology* (13.1)].

5.4 General

Patients with a history of thromboembolic diseases should generally not be treated with FARESTON. In general, patients with preexisting endometrial hyperplasia should not be given long-term FARESTON treatment. Patients with bone metastases should be monitored closely for hypercalcemia during the first weeks of treatment [see *Warnings and Precautions* (5.2)]. Leukopenia and thrombocytopenia have been reported rarely; leukocyte and platelet counts should be monitored when using FARESTON in patients with leukopenia and thrombocytopenia.

5.5 Laboratory Tests

Periodic complete blood counts, calcium levels, and liver function tests should be obtained.

5.6 Use in Pregnancy

Based on its mechanism of action in humans and findings of increased pregnancy loss and fetal malformation in animal studies, FARESTON can cause fetal harm when administered to a pregnant woman. Toremifene caused embryo-fetal toxicities at maternal doses that were lower than the 60 mg daily recommended human dose on a mg/m² basis. There are no adequate and well-controlled studies in pregnant women using FARESTON. If this drug is used during pregnancy, or if the patient becomes pregnant while taking this drug, the patient should be apprised of the potential hazard to the fetus [see *Use in Specific Populations* (8.1)].

5.7 Women of Childbearing Potential

FARESTON is indicated only in postmenopausal women. However, premenopausal women prescribed FARESTON should use effective non-hormonal contraception and should be apprised of the potential hazard to the fetus should pregnancy occur.

6 ADVERSE REACTIONS

Because clinical trials are conducted under widely varying conditions, adverse reaction rates observed in the clinical trials of a drug cannot be directly compared to rates in the clinical trials of another drug and may not reflect the rates observed in clinical practice.

6.1 Clinical Trials Experience

Adverse drug reactions are principally due to the antiestrogenic actions of FARESTON and typically occur at the beginning of treatment.

The incidences of the following eight clinical toxicities were prospectively assessed in the North American Study. The incidence reflects the toxicities that were considered by the investigator to be drug related or possibly drug related.

	North American Study	
	FAR60 n = 221	TAM20 n = 215
Hot Flashes	35%	30%
Sweating	20%	17%
Nausea	14%	15%
Vaginal Discharge	13%	16%
Dizziness	9%	7%
Edema	5%	5%
Vomiting	4%	2%
Vaginal Bleeding	2%	4%

Approximately 1% of patients receiving FARESTON (n = 592) in the three controlled studies discontinued treatment as a result of adverse reactions (nausea and vomiting, fatigue, thrombophlebitis, depression, lethargy, anorexia, ischemic attack, arthritis, pulmonary embolism, and myocardial infarction).

Serious adverse reactions occurring in at least 1% of patients receiving FARESTON in the three major trials are listed in the table below.

Three prospective, randomized, controlled clinical studies (North American, Eastern European, and Nordic) were conducted. The patients were randomized to parallel groups receiving FARESTON 60 mg (FAR60) or tamoxifen 20 mg (TAM20) in the North American Study or tamoxifen 40 mg (TAM40) in the Eastern European and Nordic studies. The North American and Eastern European studies also included high-dose toremifene arms of 200 and 240 mg daily, respectively [see *Clinical Studies* (14)].

Adverse Reactions	North American		Eastern European		Nordic	
	FAR60 n=221(%)	TAM20 n=215(%)	FAR60 n=157(%)	TAM40 n=149(%)	FAR60 n=214(%)	TAM40 n=201(%)
Cardiac						
Cardiac Failure	2 (1)	1 (<1)	-	1 (<1)	2 (1)	3 (1.5)
Myocardial Infarction	2 (1)	3 (1.5)	1 (<1)	2 (1)	-	1 (<1)
Arrhythmia	-	-	-	-	3 (1.5)	1 (<1)
Angina Pectoris	-	-	1 (<1)	-	1 (<1)	2 (1)
Ocular*						
Cataracts	22 (10)	16 (7.5)	-	-	-	5 (3)
Dry Eyes	20 (9)	16 (7.5)	-	-	-	-
Abnormal Visual Fields	8 (4)	10 (5)	-	-	-	1 (<1)
Corneal Keratopathy	4 (2)	2 (1)	-	-	-	-
Glaucoma	3 (1.5)	2 (1)	1 (<1)	-	-	1 (<1)
Abnormal Vision/Diplopia	-	-	-	-	3 (1.5)	-
Thromboembolic						
Pulmonary Embolism	4 (2)	2 (1)	1 (<1)	-	-	1 (<1)
Thrombophlebitis	-	2 (1)	1 (<1)	1 (<1)	4 (2)	3 (1.5)
Thrombosis	-	1 (<1)	1 (<1)	-	3 (1.5)	4 (2)
CVA/TIA	1 (<1)	-	-	1 (<1)	4 (2)	4 (2)
Elevated Liver Tests**						
AST	11 (5)	4 (2)	30 (19)	22 (15)	32 (15)	35 (17)
Alkaline Phosphatase	41 (19)	24 (11)	16 (10)	13 (9)	18 (8)	31 (15)
Bilirubin	3 (1.5)	4 (2)	2 (1)	1 (<1)	2 (1)	3 (1.5)
Hypercalcemia	6 (3)	6 (3)	1 (<1)	-	-	-

* Most of the ocular abnormalities were observed in the North American Study in which on-study and biannual ophthalmic examinations were performed. No cases of retinopathy were observed in any arm.

** Elevated defined as follows: North American Study: AST >100 IU/L; alkaline phosphatase >200 IU/L; bilirubin > 2 mg/dL. Eastern European and Nordic studies: AST, alkaline phosphatase, and bilirubin – WHO Grade 1 (1.25 times the upper limit of normal).

Other adverse reactions included leukopenia and thrombocytopenia, skin discoloration or dermatitis, constipation, dyspnea, paresis, tremor, vertigo, pruritus, anorexia, reversible corneal opacity (corneal verticulata), asthenia, alopecia, depression, jaundice, and rigors.

The incidence of AST elevations was greater in the 200 and 240 mg FARESTON dose arms than in the tamoxifen arms. Higher doses of FARESTON were also associated with an increase in nausea.

Approximately 4% of patients were withdrawn for toxicity from the high-dose FARESTON treatment arms. Reasons for withdrawal included hypercalcemia, abnormal liver function tests, and one case each of toxic hepatitis, depression, dizziness, incoordination, ataxia, blurry vision, diffuse dermatitis, and a constellation of symptoms consisting of nausea, sweating, and tremor.

6.2 Post-marketing Experience

The following adverse reactions were identified during post approval use of FARESTON. Because these reactions are reported voluntarily from a population of uncertain size, it is not always possible to reliably estimate their frequency or establish a causal relationship to drug exposure.

Adverse reactions reported during post approval use of FARESTON have been consistent with clinical trial experience. The most frequently reported adverse reactions related to FARESTON use since market introduction include hot flash, sweating, nausea, and vaginal discharge.

7 DRUG INTERACTIONS

7.1 Drugs that Decrease Renal Calcium Excretion

Drugs that decrease renal calcium excretion, e.g., thiazide diuretics, may increase the risk of hypercalcemia in patients receiving FARESTON.

7.2 Agents that Prolong QT

The administration of FARESTON with agents that have demonstrated QT prolongation as one of their pharmacodynamic effects should be avoided. Should treatment with any of these agents be required, it is recommended that therapy with FARESTON be interrupted. If interruption of treatment with FARESTON is not possible, patients who require treatment with a drug that prolongs QT should be closely monitored for prolongation of the QT interval. Agents generally accepted to prolong QT interval include Class 1A (e.g., quinidine, procainamide, disopyramide) and Class III (e.g., amiodarone, sotalol, ibutilide, dofetilide) antiarrhythmics; certain antipsychotics (e.g., thioridazine, haloperidol); certain antidepressants (e.g., venlafaxine, amitriptyline); certain antibiotics (e.g., erythromycin, clarithromycin, levofloxacin, ofloxacin); and certain anti-emetics (e.g., ondansetron, granisetron). In patients at increased risk, electrocardiograms (ECGs) should be obtained and patients monitored as clinically indicated [see *Boxed Warning and Warnings and Precautions (5.1)*].

7.3 Effect of Strong CYP3A4 Inducers on Toremifene

Strong CYP3A4 enzyme inducers, such as dexamethasone, phenytoin, carbamazepine, rifampin, rifabutin, phenobarbital, St. John's Wort, lower the steady-state concentration of toremifene in serum.

7.4 Effect of Strong CYP3A4 Inhibitors on Toremifene

In a study of 18 healthy subjects, 80 mg toremifene once daily coadministered with 200 mg of ketoconazole twice daily increased the toremifene C_{max} and AUC by 1.4- and 2.9-fold, respectively. N-demethyltoremifene C_{max} and AUC were reduced by 56% and 20%, respectively.

The administration of FARESTON with agents that are strong CYP3A4 inhibitors (e.g., ketoconazole, itraconazole, clarithromycin, atazanavir, indinavir, nefazodone, nelfinavir, ritonavir, saquinavir, telithromycin, and voriconazole) increase the steady-state concentration in serum and should be avoided. Grapefruit juice may also increase plasma concentrations of toremifene and should be avoided. Should treatment with any of these agents be required, it is recommended that therapy with FARESTON be interrupted. If interruption of treatment with FARESTON is not possible, patients who require treatment with a drug that strongly inhibits CYP3A4 should be closely monitored for prolongation of the QT interval [see *Boxed Warning and Warnings and Precautions (5.1)*].

7.5 Effect of Toremifene on CYP3A4 Substrates

In a study of 20 healthy subjects, 2 mg midazolam once daily (days 6 and 18) coadministered with toremifene as a 480 mg loading dose followed by 80 mg once daily for 16 days. Following coadministration on days 6 and 18 relevant increases in midazolam and α -hydroxymidazolam C_{max} and AUC were not observed. Following coadministration on day 18 midazolam and α -hydroxymidazolam C_{max} and AUC were reduced by less than 20%.

Clinically relevant exposure changes in sensitive substrates due to inhibition or induction of CYP3A4 by toremifene appear unlikely.

7.6 Effect of Toremifene on CYP2C9 Substrates

In a study of 20 healthy subjects, 500 mg tolbutamide once daily (days 7 and 19) coadministered with toremifene as a 480 mg loading dose followed by 80 mg once daily for 16 days. Following coadministration on days 7 and 19 plasma tolbutamide C_{max} and AUC were increased by less than 30%. A reduction of similar magnitude was observed for hydroxytolbutamide and carboxytolbutamide C_{max} and AUC.

Toremifene is a weak inhibitor of CYP2C9. Concomitant use of CYP2C9 substrates with a narrow therapeutic index such as warfarin or phenytoin with FARESTON should be done with caution and requires careful monitoring (e.g., substrate concentrations (if possible), appropriate laboratory markers, and signs and symptoms of increased exposure).

8 USE IN SPECIFIC POPULATIONS

8.1 Pregnancy

Pregnancy Category D [see *Warnings and Precautions (5.6)*].

Based on its mechanism of action in humans and findings of increased pregnancy loss and fetal malformation in animal studies, FARESTON can cause fetal harm when administered to a pregnant woman. Toremifene caused embryo-fetal toxicities at maternal doses that were lower than the 60 mg daily recommended human dose on a mg/m² basis. There are no adequate and well-controlled studies in pregnant women using FARESTON. If this drug is used during pregnancy, or if the patient becomes pregnant while taking this drug, the patient should be apprised of the potential hazard to the fetus.

In animal studies, toremifene crossed the placenta and accumulated in the rodent fetus. Administration of toremifene to pregnant rats during organogenesis at doses of approximately 6% the daily maximum recommended human dose of 60 mg (on a mg/m^2 basis) resulted in signs of maternal toxicity and increased preimplantation loss, increased resorptions, reduced fetal weight, and fetal anomalies. Fetal anomalies include malformation of limbs, incomplete ossification, misshapen bones, ribs/spine anomalies, hydronephrosis, testicular displacement, and subcutaneous edema. Maternal toxicity may have contributed to these adverse embryo-fetal effects. Similar embryo-fetal toxicities occurred in rabbits that received toremifene at doses approximately 40% the daily recommended human dose of 60 mg (on a mg/m^2 basis). Findings in rabbits included increased preimplantation loss, increased resorptions, and fetal anomalies, including incomplete ossification and anencephaly.

Animal doses resulting in embryo-fetal toxicities were ≥ 1.0 mg/kg/day in rats and ≥ 1.25 mg/kg/day in rabbits.

In rodent models of fetal reproductive tract development, toremifene produced inhibition of uterine development in female pups similar to effects seen with diethylstilbestrol (DES) and tamoxifen. The clinical relevance of these changes is not known. Neonatal rodent studies have not been conducted to assess the potential for toremifene to cause other DES-like effects in offspring (i.e., vaginal adenosis). Vaginal adenosis in animals occurred following treatment with other drugs of this class and has been observed in women exposed to diethylstilbestrol in utero.

8.2 Nursing Mothers

It is not known if toremifene is excreted in human milk. Toremifene is excreted in the milk of lactating rats. Because many drugs are excreted in human milk and because of the potential for serious adverse reactions in nursing infants from FARESTON, a decision should be made to either discontinue nursing or discontinue the drug, taking into account the importance of the drug to the mother.

8.3 Pediatric Use

There is no indication for use of FARESTON in pediatric patients.

8.4 Geriatric Use

The pharmacokinetics of toremifene were studied in 10 healthy young males and 10 elderly females following a single 120 mg dose under fasting conditions. Increases in the elimination half-life (4.2 versus 7.2 days) and the volume of distribution (457 versus 627 L) of toremifene were seen in the elderly females without any change in clearance or AUC.

The median ages in the three controlled studies ranged from 60 to 66 years. No significant age-related differences in FARESTON effectiveness or safety were noted.

8.5 Renal Impairment

The pharmacokinetics of toremifene and N-demethyltoremifene were similar in normals and in patients with impaired kidney function.

8.6 Hepatic Impairment

The mean elimination half-life of toremifene was increased by less than twofold in 10 patients with hepatic impairment (cirrhosis or fibrosis) compared to subjects with normal hepatic function. The pharmacokinetics of N-demethyltoremifene were unchanged in these patients. Ten patients on anticonvulsants (phenobarbital, clonazepam, phenytoin, and carbamazepine) showed a twofold increase in clearance and a decrease in the elimination half-life of toremifene.

8.7 Race

The pharmacokinetics of toremifene in patients of different races has not been studied.

Fourteen percent of patients in the North American Study were non-Caucasian. No significant race-related differences in FARESTON effectiveness or safety were noted.

10 OVERDOSAGE

Lethality was observed in rats following single oral doses that were ≥ 1000 mg/kg (about 150 times the recommended human dose on a mg/m^2 basis) and was associated with gastric atony/dilatation leading to interference with digestion and adrenal enlargement.

Vertigo, headache, and dizziness were observed in healthy volunteer studies at a daily dose of 680 mg for 5 days. The symptoms occurred in two of the five subjects during the third day of the treatment and disappeared within 2 days of discontinuation of the drug. No immediate concomitant changes in any measured clinical chemistry

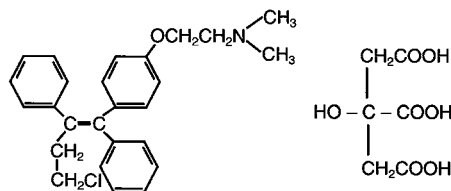
parameters were found. In a study in postmenopausal breast cancer patients, toremifene 400 mg/m²/day caused dose-limiting nausea, vomiting, and dizziness, as well as reversible hallucinations and ataxia in one patient.

Theoretically, overdose may be manifested as an increase of antiestrogenic effects, such as hot flashes; estrogenic effects, such as vaginal bleeding; or nervous system disorders, such as vertigo, dizziness, ataxia, and nausea. There is no specific antidote and the treatment is symptomatic.

11 DESCRIPTION

FARESTON (toremifene citrate) Tablets for oral administration each contain 88.5 mg of toremifene citrate, which is equivalent to 60 mg toremifene.

FARESTON is an estrogen agonist/antagonist. The chemical name of toremifene is: 2-[p-[(Z)-4-chloro-1,2-diphenyl-1-butenyl]phenoxy]-N,N-dimethylethylamine citrate (1:1). The structural formula is:



and the molecular formula is C₂₆H₂₈ClNO • C₆H₈O₇. The molecular weight of toremifene citrate is 598.10. The pK_a is 8.0. Water solubility at 37°C is 0.63 mg/mL and in 0.02N HCl at 37°C is 0.38 mg/mL.

FARESTON is available only as tablets for oral administration. Inactive ingredients: colloidal silicon dioxide, lactose, magnesium stearate, microcrystalline cellulose, povidone, sodium starch glycolate, and starch.

12 CLINICAL PHARMACOLOGY

12.1 Mechanism of Action

Toremifene is a nonsteroidal triphenylethylene derivative. Toremifene binds to estrogen receptors and may exert estrogenic, antiestrogenic, or both activities, depending upon the duration of treatment, animal species, gender, target organ, or endpoint selected. In general, however, nonsteroidal triphenylethylene derivatives are predominantly antiestrogenic in rats and humans and estrogenic in mice. In rats, toremifene causes regression of established dimethylbenzanthracene (DMBA)-induced mammary tumors. The antitumor effect of toremifene in breast cancer is believed to be mainly due to its antiestrogenic effects, i.e., its ability to compete with estrogen for binding sites in the cancer, blocking the growth-stimulating effects of estrogen in the tumor.

12.2 Pharmacodynamics

Toremifene causes a decrease in the estradiol-induced vaginal cornification index in some postmenopausal women, indicative of its antiestrogenic activity. Toremifene also has estrogenic activity as shown by decreases in serum gonadotropin concentrations (FSH and LH).

Effects on Cardiac Electrophysiology

The effect of 20 mg, 80 mg, and 300 mg of toremifene on QT interval was evaluated in a double-blind, randomized study in healthy male subjects aged 18 to 45 years. The QT interval was measured at steady state of toremifene (Day 5 of dosing), including the time of peak plasma concentration (T_{max}), at 13 time points (4 ECGs/time point) over 24 hours post dose in a time matched analysis. The 300 mg dose of toremifene (approximately five times the highest recommended dose 60 mg) was chosen because this dose produces exposure to toremifene that will cover the expected exposures that may result from potential drug interactions and hepatic impairment [see *Drug Interactions* (7.2)].

Dose and concentration-related increases in the QTc interval and T wave changes were observed (see Table 1). These effects are believed to be caused by toremifene and N-demethyltoremifene. Toremifene had no effects on heart rate, PR and QRS interval duration [see *Boxed Warning and Warnings and Precautions* (5.1)].

Table 1: QTc Prolongation in Healthy Male Volunteers

Treatment Arm	Mean (90% CI) ΔΔQTc, ms	ΔQTc > 60 ms (n, %)	QTc > 500 ms (n, %)
Toremifene 20 mg (N = 47)	7 (0.9, 13.6)	0	0
Toremifene 80 mg (N = 47)	26 (21.1, 31.2)	2 (4.3%)	0

Toremifene 300 mg (N = 48)	65 (60.1, 69.2)	43 (89.6%)	5 (10.4%)
----------------------------	-----------------	------------	-----------

12.3 Pharmacokinetics:

Absorption – Toremifene is well absorbed after oral administration and absorption is not influenced by food. Peak plasma concentrations are obtained within 3 hours. Toremifene displays linear pharmacokinetics after single oral doses of 10 to 680 mg. After multiple dosing, dose proportionality was observed for doses of 10 to 400 mg. Steady state concentrations were reached in about 4-6 weeks.

Distribution – Toremifene has an apparent volume of distribution of 580 L and binds extensively (>99.5%) to serum proteins, mainly albumin.

Metabolism – Toremifene is extensively metabolized, principally by CYP3A4 to N-demethyltoremifene which is also antiestrogenic but with weak *in vivo* antitumor potency. Serum concentrations of N-demethyltoremifene are 2 to 4 times higher than toremifene at steady state.

Following multiple dosing with toremifene in 20 healthy volunteers, plasma toremifene exposure was lower on Day 17 compared to Day 5 by approximately 14%. N-demethyltoremifene exposure was higher on Day 17 compared to Day 5 by approximately 80%. Based on these data and an *in vitro* induction study in human hepatocytes, auto-induction of CYP3A4 by toremifene is likely. The effect of auto-induction on efficacy was likely captured following prolonged dosing in the clinical studies.

Elimination – The plasma concentration time profile of toremifene declines biexponentially after absorption with a mean distribution half-life of about 4 hours and an elimination half-life of about 5 days. Elimination half-lives of major metabolites, N-demethyltoremifene and (Deaminohydroxy) toremifene, were 6 and 4 days, respectively. Mean total clearance of toremifene was approximately 5 L/h. Toremifene is eliminated as metabolites primarily in the feces, with about 10% excreted in the urine during a 1-week period. Elimination of toremifene is slow, in part because of enterohepatic circulation.

Renal insufficiency – The pharmacokinetics of toremifene and N-demethyltoremifene were similar in normals and patients with impaired kidney function.

Hepatic insufficiency – The mean elimination half-life of toremifene was increased by less than twofold in 10 patients with hepatic impairment (cirrhosis or fibrosis) compared to subjects with normal hepatic function. The pharmacokinetics of N-demethyltoremifene were unchanged in these patients. Ten patients on anticonvulsants (phenobarbital, clonazepam, phenytoin, and carbamazepine) showed a twofold increase in clearance and a decrease in the elimination half-life of toremifene.

Geriatric patients – The pharmacokinetics of toremifene were studied in 10 healthy young males and 10 elderly females following a single 120 mg dose under fasting conditions. Increases in the elimination half-life (4.2 versus 7.2 days) and the volume of distribution (457 versus 627 L) of toremifene were seen in the elderly females without any change in clearance or AUC. The median ages in the three controlled studies ranged from 60 to 66 years. No significant age-related differences in FARESTON effectiveness or safety were noted.

Food – The rate and extent of absorption of FARESTON are not influenced by food; thus FARESTON may be taken with or without food.

Race – The pharmacokinetics of toremifene in patients of different races has not been studied. Fourteen percent of patients in the North American Study were non-Caucasian. No significant race-related differences in FARESTON effectiveness or safety were noted.

13 NONCLINICAL TOXICOLOGY

13.1 Carcinogenesis, Mutagenesis, and Impairment of Fertility

Conventional carcinogenesis studies in rats at doses of 0.12 to 12 mg/kg/day (approximately 1/50 to 2 times the daily maximum recommended human dose of 60 mg, on a mg/m² basis) for up to 2 years did not show evidence of carcinogenicity. Studies in mice at doses of 1.0 to 30.0 mg/kg/day (approximately 1/15 to 2 times the daily maximum recommended human dose of 60 mg, on a mg/m² basis) for up to 2 years revealed increased incidence of ovarian and testicular tumors and increased incidence of osteoma and osteosarcoma. The significance of the mouse findings is uncertain because of the different role of estrogens in mice and the estrogenic effect of toremifene in mice. An increased incidence of ovarian and testicular tumors in mice has also been observed with other human estrogen agonists/antagonists that have primarily estrogenic activity in mice. Endometrial hyperplasia of the uterus was observed in monkeys following 52 weeks of treatment at ≥1 mg/kg and in dogs following 16 weeks of treatment

at ≥ 3 mg/kg with toremifene (approximately 1/3 and 1.4 times, respectively, the daily maximum recommended human dose of 60 mg, on a mg/m^2 basis).

Toremifene has not been shown to be mutagenic in *in vitro* tests (Ames and E. coli bacterial tests). Toremifene is clastogenic *in vitro* (chromosomal aberrations and micronuclei formation in human lymphoblastoid MCL-5 cells) and *in vivo* (chromosomal aberrations in rat hepatocytes).

Toremifene produced impairment of fertility and conception in male and female rats at doses ≥ 25.0 and 0.14 mg/kg/day, respectively (approximately 4 times and 1/50 the daily maximum recommended human dose of 60 mg, on a mg/m^2 basis). At these doses, sperm counts, fertility index, and conception rate were reduced in males with atrophy of seminal vesicles and prostate. In females, fertility and reproductive indices were markedly reduced with increased pre- and post-implantation loss. In addition, offspring of treated rats exhibited depressed reproductive indices. Toremifene produced ovarian atrophy in dogs administered doses ≥ 3 mg/kg/day (approximately 1.5 times the daily maximum recommended human dose of 60 mg, on a mg/m^2 basis) for 16 weeks. Cystic ovaries and reduction in endometrial stromal cellularity were observed in monkeys at doses ≥ 1 mg/kg/day (about 1/3 the daily maximum recommended human dose of 60 mg, on a mg/m^2 basis) for 52 weeks.

14 CLINICAL STUDIES

Three prospective, randomized, controlled clinical studies (North American, Eastern European, and Nordic) were conducted to evaluate the efficacy of FARESTON for the treatment of breast cancer in postmenopausal women. The patients were randomized to parallel groups receiving FARESTON 60 mg (FAR60) or tamoxifen 20 mg (TAM20) in the North American Study or tamoxifen 40 mg (TAM40) in the Eastern European and Nordic studies. The North American and Eastern European studies also included high-dose toremifene arms of 200 and 240 mg daily, respectively. The studies included postmenopausal patients with estrogen-receptor (ER) positive or estrogen-receptor (ER) unknown metastatic breast cancer. The patients had at least one measurable or evaluable lesion. The primary efficacy variables were response rate (RR) and time to progression (TTP). Survival (S) was also determined. Ninety-five percent confidence intervals (95% CI) were calculated for the difference in RR between FAR60 and TAM groups and the hazard ratio (relative risk for an unfavorable event, such as disease progression or death) between TAM and FAR60 for TTP and S.

Two of the 3 studies showed similar results for all effectiveness endpoints. However, the Nordic Study showed a longer time to progression for tamoxifen (see table).

Clinical Studies						
Study	North American		Eastern European		Nordic	
Treatment Group	FAR60	TAM20	FAR60	TAM40	FAR60	TAM40
No. Patients	221	215	157	149	214	201
Responses						
CR ¹ + PR ²	14 + 33	11 + 30	7 + 25	3 + 28	19 + 48	19 + 56
RR ³ (CR + PR)%	21.3	19.1	20.4	20.8	31.3	37.3
Difference in RR	2.2		-0.4		-6.0	
95% CI ⁴ for Difference in RR	-5.8 to 10.2		-9.5 to 8.6		-15.1 to 3.1	
Time to Progression (TTP)						
Median TTP (mo.)	5.6	5.8	4.9	5.0	7.3	10.2
Hazard Ratio (TAM/FAR)	1.01		1.02		0.80	
95% CI ⁴ for Hazard Ratio (%)	0.81 to 1.26		0.79 to 1.31		0.64 to 1.00	
Survival (S)						
Median S (mo.)	33.6	34.0	25.4	23.4	33.0	38.7
Hazard Ratio (TAM/FAR)	0.94		0.96		0.94	
95% CI ⁴ for Hazard Ratio (%)	0.74 to 1.24		0.72 to 1.28		0.73 to 1.22	

¹CR = complete response; ²PR = partial response; ³RR = response rate; ⁴CI = confidence interval

The high-dose groups, toremifene 200 mg daily in the North American Study and 240 mg daily in the Eastern European Study, were not superior to the lower toremifene dose groups, with response rates of 22.6% and 28.7%, median times to progression of 5.6 and 6.1 months, and median survivals of 30.1 and 23.8 months, respectively. The median treatment duration in the three pivotal studies was 5 months (range 4.2-6.3 months).

16 SUPPLIED/STORAGE AND HANDLING

FARESTON Tablets, containing toremifene citrate in an amount equivalent to 60 mg of toremifene, are round, convex, unscored, uncoated, and white, or almost white.

FARESTON Tablets are identified with TO 60 embossed on one side.

FARESTON Tablets are available as:

NDC 11399-005-30 bottles of 30
NDC 11399-005-01 bottles of 100
NDC 11399-005-07 samples of 7

Store at 25°C (77°F).

Excursions permitted to 15-30°C (59-86°F)

[See USP Controlled Room Temperature.]

Protect from heat and light.

17 PATIENT COUNSELING INFORMATION

Vaginal bleeding has been reported in patients using FARESTON. Patients should be informed about this and instructed to contact their physician if such bleeding occurs.

FARESTON may harm the fetus and increase the risk for pregnancy loss [*see Warnings and Precautions (5.6) and Use in Specific Populations (8.1)*].

Premenopausal women using FARESTON should use nonhormonal contraception during treatment and should be apprised of the potential hazard to the fetus should pregnancy occur [*see Warnings and Precautions (5.7)*].

Patients with bone metastases should be informed about the typical signs and symptoms of hypercalcemia and instructed to contact their physician for further assessment if such signs or symptoms occur.

Patients who must take medications known to prolong the QT interval, or potent CYP3A4 inhibitors, should be informed of the effect of toremifene on QT interval. Toremifene has been shown to prolong the QTc interval in a dose-related manner [*see Boxed Warning, Warnings and Precautions (5.1), and Clinical Pharmacology (12.2)*].

Specific interactions with foods that inhibit CYP3A4, including grapefruit juice, have not been studied but may increase toremifene concentrations. Patients should avoid grapefruit products and other foods that are known to inhibit CYP3A4 during FARESTON treatment.

Certain other medicines, including over-the-counter medications or herbal supplements (such as St. John's Wort) and toremifene, can reduce concentrations of coadministered drugs [*see Drug Interactions (7.3)*].

Distributed by **GTx, Inc.**

Memphis, TN 38103, USA

Product covered by Orion Product Patents and related patent numbers.

© 2011 GTx, Inc.

All rights reserved.

2E Rev. 03/2011