

BASE LABEL,  
PAGE 9,  
GLUE APPLIED  
HERE

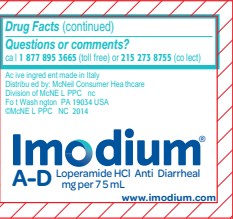


PAGE 8  
GLUED TO BASE  
LABEL

COVER,  
PAGE 1



PAGE 2



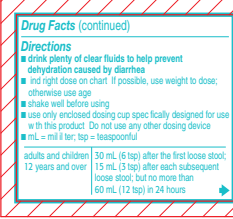
PAGE 7



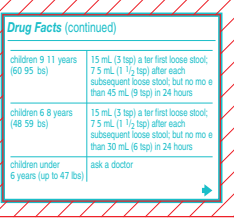
PAGE 6



PAGE 3



PAGE 4



PAGE 5

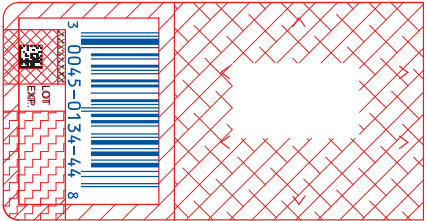
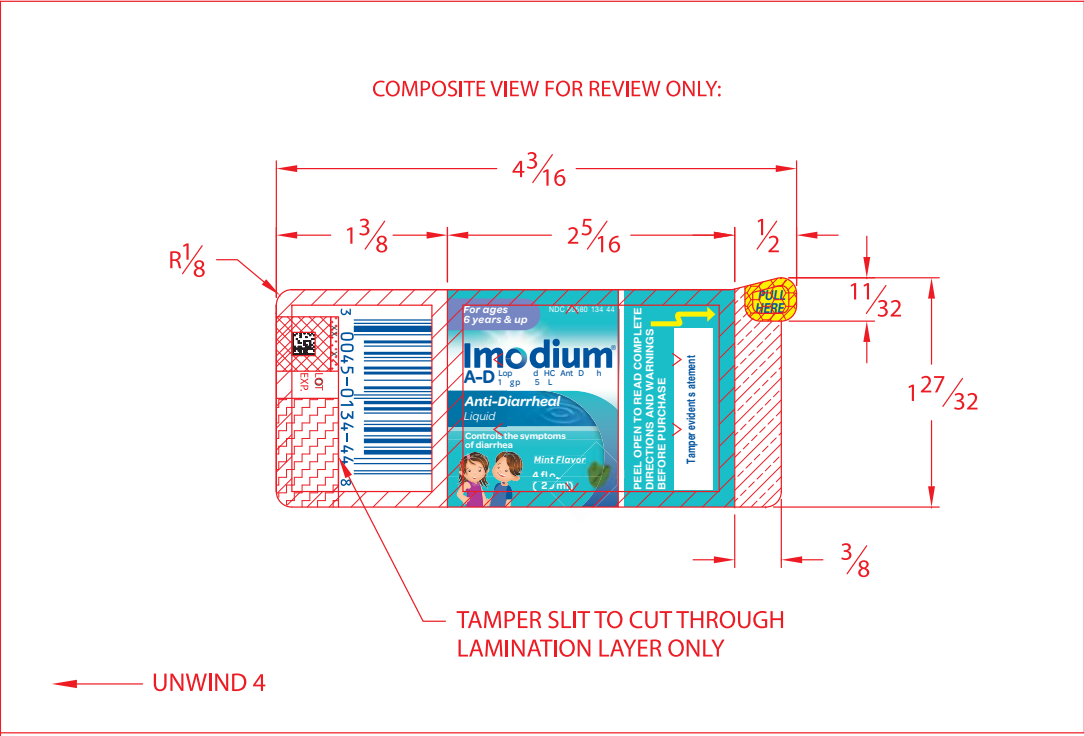


.0625"

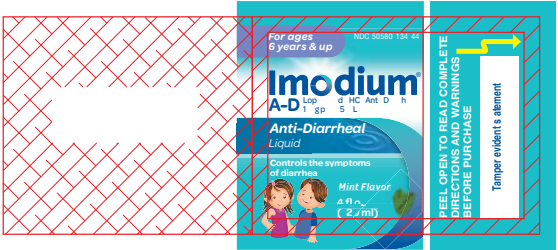
PDP = 2.41 square inches



Fraction - Decimal Conversion Chart	
	Inches
$\frac{1}{16}$	.0625
$\frac{1}{8}$	.125
$\frac{3}{16}$	.1875

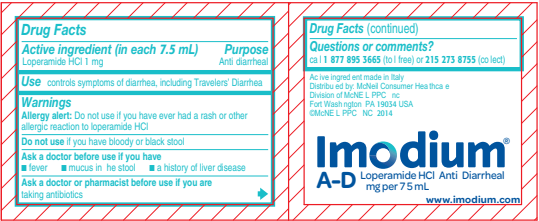


BASE LABEL,  
PAGE 9,  
GLUE APPLIED  
HERE

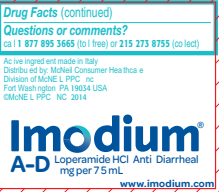


PAGE 8  
GLUED TO BASE  
LABEL

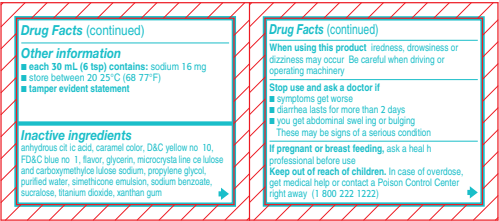
COVER,  
PAGE 1



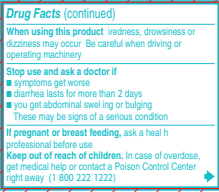
PAGE 2



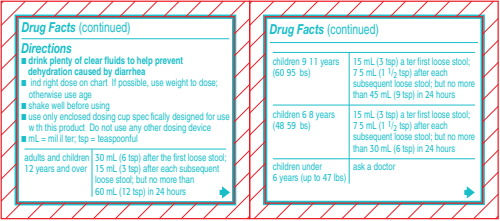
PAGE 7



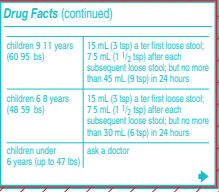
PAGE 6



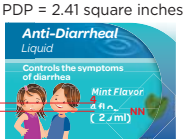
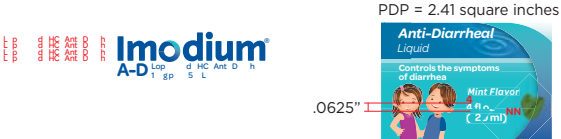
PAGE 3



PAGE 4

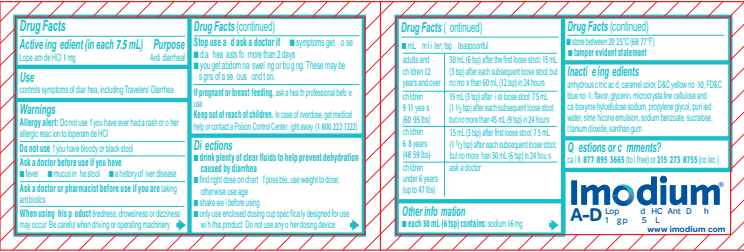
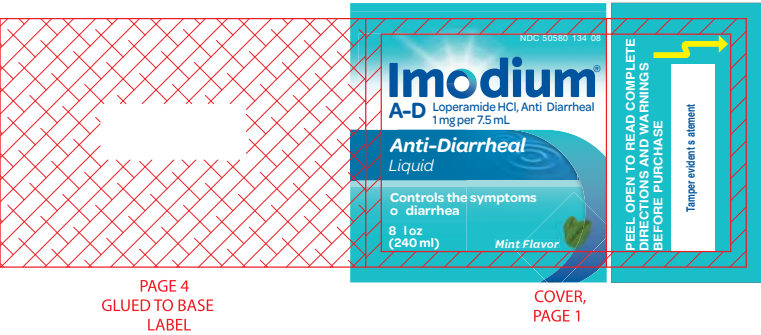
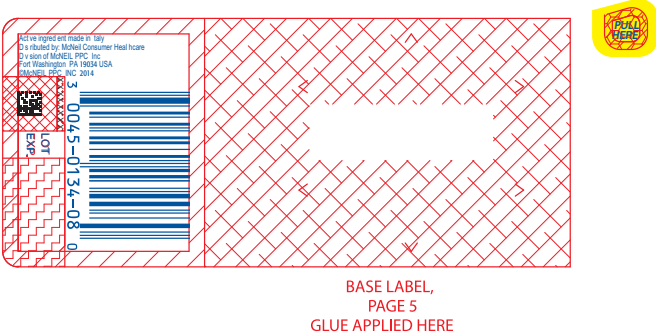
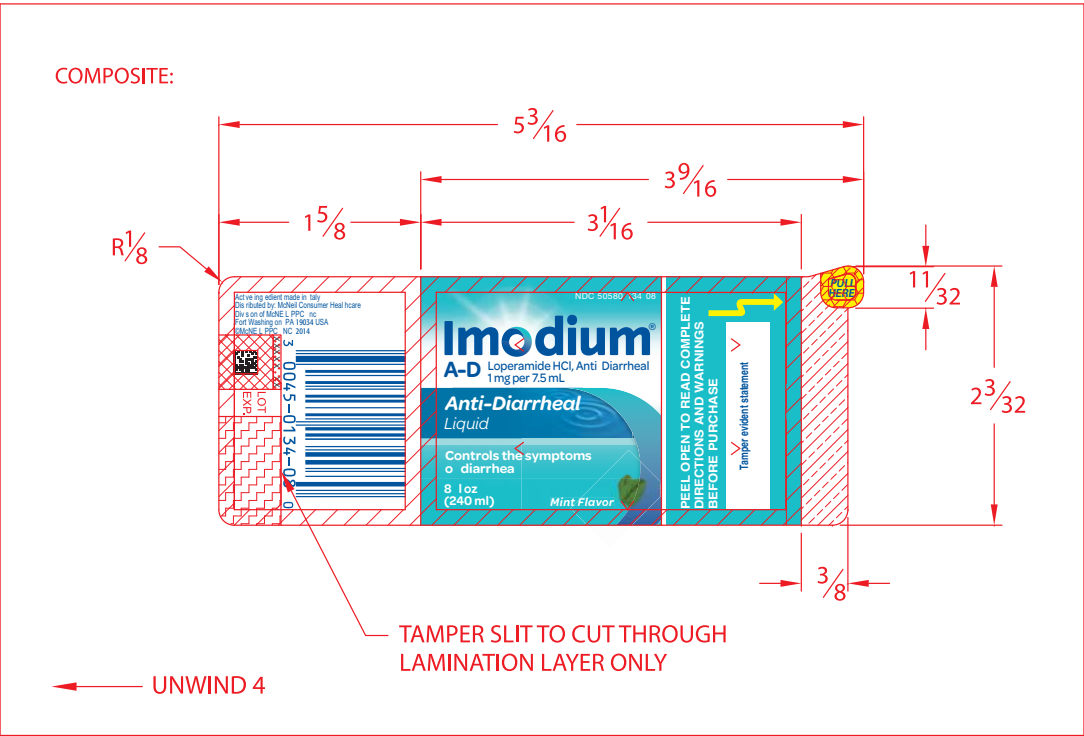


PAGE 5



.0625"

Fraction - Decimal Conversion Chart	
Inches	
1/16	.0625
1/8	.125
3/16	.1875



PDP = 3.88 square inches

Loperamide hydrochloride oral solution  
Loperamide hydrochloride oral solution  
Loperamide hydrochloride oral solution

**Imodium®**  
A-D

Controls the symptoms of diarrhea  
8.1 oz (240 mL) Mint Flavor

Fraction - Decimal Conversion Chart

Fraction	Decimal	Inches
$\frac{1}{16}$	.0625	
$\frac{1}{8}$	.125	
$\frac{3}{16}$	.1875	

Reference ID: 3708537

Reference ID: 3718169

(b) (4)