

HIGHLIGHTS OF PRESCRIBING INFORMATION

These highlights do not include all the information needed to use TYGACIL safely and effectively. See full prescribing information for TYGACIL.

TYGACIL® (tigecycline) for injection, for intravenous use

Initial U.S. Approval: 2005

WARNING: ALL-CAUSE MORTALITY

See full prescribing information for complete boxed warning.

All-cause mortality was higher in patients treated with TYGACIL than comparators in a meta-analysis of clinical trials. The cause of this mortality risk difference of 0.6% (95% CI 0.1, 1.2) has not been established. TYGACIL should be reserved for use in situations when alternative treatments are not suitable (1.4, 5.1, 5.2, 6.1).

INDICATIONS AND USAGE

TYGACIL is a tetracycline class antibacterial indicated in patients 18 years of age and older for:

- Complicated skin and skin structure infections (1.1)
- Complicated intra-abdominal infections (1.2)
- Community-acquired bacterial pneumonia (1.3)

Limitations of Use: TYGACIL is not indicated for treatment of diabetic foot infection or hospital-acquired pneumonia, including ventilator-associated pneumonia (1.4).

To reduce the development of drug-resistant bacteria and maintain the effectiveness of TYGACIL and other antibacterial drugs, TYGACIL should be used only to treat infections that are proven or strongly suspected to be caused by bacteria.

DOSAGE AND ADMINISTRATION

- Initial dose of 100 mg, followed by 50 mg every 12 hours administered intravenously over approximately 30 to 60 minutes. (2.1)
- Severe hepatic impairment (Child Pugh C): Initial dose of 100 mg followed by 25 mg every 12 hours. (2.2)

DOSAGE FORMS AND STRENGTHS

For Injection: 50 mg, lyophilized powder for reconstitution in a single-dose 5 mL vial or 10 mL vial. (3)

CONTRAINDICATIONS

- Known hypersensitivity to tigecycline. (4)

WARNINGS AND PRECAUTIONS

- **All-Cause Mortality:** A meta-analysis of Phase 3 and 4 clinical trials demonstrated an increase in all-cause mortality in TYGACIL-treated patients compared to controls with a risk difference of 0.6% (95% CI 0.1, 1.2). The cause of this increase has not been established. An increase was also seen in a meta-analysis limited to the approved indications [0.6% (95% CI 0.0, 1.2)]. The greatest difference in mortality was seen in TYGACIL-treated patients with ventilator-associated pneumonia (5.1, 5.2).
- **Anaphylactic Reactions:** have been reported with TYGACIL, and may be life-threatening. Avoid use in patients with known hypersensitivity to tetracyclines. (5.3)
- **Hepatic Adverse Effects:** have been reported with TYGACIL. Patients who develop abnormal liver function tests during TYGACIL therapy should be monitored for evidence of worsening hepatic function and evaluated for risk/benefit of continuing tigecycline therapy. (5.4)
- **Pancreatitis,** including fatalities, has been reported with TYGACIL. If pancreatitis is suspected, then consider stopping TYGACIL. (5.5)
- **Fetal Harm:** TYGACIL may cause fetal harm when administered to a pregnant woman. (5.6)
- **Tooth Discoloration:** The use of TYGACIL during tooth development may cause permanent discoloration of the teeth. (5.7)
- ***Clostridium difficile* associated Diarrhea (CDAD):** evaluate if diarrhea occurs. (5.8)

ADVERSE REACTIONS

The most common adverse reactions (incidence >5%) are nausea, vomiting, diarrhea, abdominal pain, headache, and increased SGPT. (6.1)

To report SUSPECTED ADVERSE REACTIONS, contact Pfizer Inc. at 1-800-438-1985 or FDA at 1-800-FDA-1088 or www.fda.gov/medwatch.

DRUG INTERACTIONS

- Suitable anticoagulation test should be monitored if TYGACIL is administered to patients receiving warfarin. (7.1)

USE IN SPECIFIC POPULATIONS

- **Pediatrics:** Use in patients under 18 years of age is not recommended. Pediatric trials were not conducted because of the higher risk of mortality seen in adult trials (8.4)

See 17 for PATIENT COUNSELING INFORMATION

Revised: 4/2018

FULL PRESCRIBING INFORMATION: CONTENTS ***WARNING: ALL-CAUSE MORTALITY****1 INDICATIONS AND USAGE**

- 1.1 Complicated Skin and Skin Structure Infections
- 1.2 Complicated Intra-abdominal Infections
- 1.3 Community-Acquired Bacterial Pneumonia
- 1.4 Limitations of Use
- 1.5 Usage

2 DOSAGE AND ADMINISTRATION

- 2.1 Recommended Adult Dosage
- 2.2 Dosage in Patients With Hepatic Impairment
- 2.3 Dosage in Pediatric Patients
- 2.4 Preparation and Administration
- 2.5 Drug Compatibilities
- 2.6 Drug Incompatibilities

3 DOSAGE FORMS AND STRENGTHS**4 CONTRAINDICATIONS****5 WARNINGS AND PRECAUTIONS**

- 5.1 All-Cause Mortality
- 5.2 Mortality Imbalance and Lower Cure Rates in Hospital-Acquired Pneumonia
- 5.3 Anaphylactic Reactions
- 5.4 Hepatic Adverse Effects
- 5.5 Pancreatitis
- 5.6 Fetal Harm
- 5.7 Tooth Discoloration
- 5.8 *Clostridium difficile* Associated Diarrhea
- 5.9 Sepsis/Septic Shock in Patients With Intestinal Perforation
- 5.10 Tetracycline-Class Adverse Effects
- 5.11 Development of Drug-Resistant Bacteria

6 ADVERSE REACTIONS

- 6.1 Clinical Trials Experience
- 6.2 Post-Marketing Experience

7 DRUG INTERACTIONS

- 7.1 Warfarin
- 7.2 Oral Contraceptives

8 USE IN SPECIFIC POPULATIONS

- 8.1 Pregnancy
- 8.3 Nursing Mothers
- 8.4 Pediatric Use
- 8.5 Geriatric Use
- 8.6 Hepatic Impairment

10 OVERDOSAGE**11 DESCRIPTION****12 CLINICAL PHARMACOLOGY**

- 12.1 Mechanism of Action
- 12.2 Pharmacodynamics
- 12.3 Pharmacokinetics
- 12.4 Microbiology

13 NONCLINICAL TOXICOLOGY

- 13.1 Carcinogenesis, Mutagenesis, Impairment of Fertility
- 13.2 Animal Toxicology and/or Pharmacology

14 CLINICAL STUDIES

- 14.1 Complicated Skin and Skin Structure Infections
- 14.2 Complicated Intra-abdominal Infections
- 14.3 Community-Acquired Bacterial Pneumonia

16 HOW SUPPLIED/STORAGE AND HANDLING**17 PATIENT COUNSELING INFORMATION**

* Sections or subsections omitted from the full prescribing information are not listed

FULL PRESCRIBING INFORMATION

WARNING: ALL-CAUSE MORTALITY

An increase in all-cause mortality has been observed in a meta-analysis of Phase 3 and 4 clinical trials in TYGACIL-treated patients versus comparator. The cause of this mortality risk difference of 0.6% (95% CI 0.1, 1.2) has not been established. TYGACIL should be reserved for use in situations when alternative treatments are not suitable [see *Indications and Usage (1.4)*, *Warnings and Precautions (5.1, 5.2)* and *Adverse Reactions (6.1)*].

1 INDICATIONS AND USAGE

1.1 Complicated Skin and Skin Structure Infections

Tigecycline for injection is indicated in patients 18 years of age and older for the treatment of complicated skin and skin structure infections caused by susceptible isolates of *Escherichia coli*, *Enterococcus faecalis* (vancomycin-susceptible isolates), *Staphylococcus aureus* (methicillin-susceptible and -resistant isolates), *Streptococcus agalactiae*, *Streptococcus anginosus* grp. (includes *S. anginosus*, *S. intermedius*, and *S. constellatus*), *Streptococcus pyogenes*, *Enterobacter cloacae*, *Klebsiella pneumoniae*, and *Bacteroides fragilis*.

1.2 Complicated Intra-abdominal Infections

Tigecycline for injection is indicated in patients 18 years of age and older for the treatment of complicated intra-abdominal infections caused by susceptible isolates of *Citrobacter freundii*, *Enterobacter cloacae*, *Escherichia coli*, *Klebsiella oxytoca*, *Klebsiella pneumoniae*, *Enterococcus faecalis* (vancomycin-susceptible isolates), *Staphylococcus aureus* (methicillin-susceptible and -resistant isolates), *Streptococcus anginosus* grp. (includes *S. anginosus*, *S. intermedius*, and *S. constellatus*), *Bacteroides fragilis*, *Bacteroides thetaiotaomicron*, *Bacteroides uniformis*, *Bacteroides vulgatus*, *Clostridium perfringens*, and *Peptostreptococcus micros*.

1.3 Community-Acquired Bacterial Pneumonia

Tigecycline for injection is indicated in patients 18 years of age and older for the treatment of community-acquired bacterial pneumonia caused by susceptible isolates of *Streptococcus pneumoniae* (penicillin-susceptible isolates), including cases with concurrent bacteremia, *Haemophilus influenzae*, and *Legionella pneumophila*.

1.4 Limitations of Use

TYGACIL is not indicated for the treatment of diabetic foot infections. A clinical trial failed to demonstrate non-inferiority of TYGACIL for treatment of diabetic foot infections.

TYGACIL is not indicated for the treatment of hospital-acquired or ventilator-associated pneumonia. In a comparative clinical trial, greater mortality and decreased efficacy were reported in TYGACIL-treated patients [*see Warnings and Precautions (5.2)*].

1.5 Usage

To reduce the development of drug-resistant bacteria and maintain the effectiveness of TYGACIL and other antibacterial drugs, TYGACIL should be used only to treat infections that are proven or strongly suspected to be caused by susceptible bacteria. When culture and susceptibility information are available, they should be considered in selecting or modifying antibacterial therapy. In the absence of such data, local epidemiology and susceptibility patterns may contribute to the empiric selection of therapy.

Appropriate specimens for bacteriological examination should be obtained in order to isolate and identify the causative organisms and to determine their susceptibility to tigecycline. TYGACIL may be initiated as empiric monotherapy before results of these tests are known.

2 DOSAGE AND ADMINISTRATION

2.1 Recommended Adult Dosage

The recommended dosage regimen for TYGACIL is an initial dose of 100 mg, followed by 50 mg every 12 hours. Intravenous infusions of TYGACIL should be administered over approximately 30 to 60 minutes every 12 hours.

The recommended duration of treatment with TYGACIL for complicated skin and skin structure infections or for complicated intra-abdominal infections is 5 to 14 days. The recommended duration of treatment with TYGACIL for community-acquired bacterial pneumonia is 7 to 14 days. The duration of therapy should be guided by the severity and site of the infection and the patient's clinical and bacteriological progress.

2.2 Dosage in Patients With Hepatic Impairment

No dosage adjustment is warranted in patients with mild to moderate hepatic impairment (Child Pugh A and Child Pugh B). In patients with severe hepatic impairment (Child Pugh C), the initial dose of TYGACIL should be 100 mg followed by a reduced maintenance dose of 25 mg every 12 hours. Patients with severe hepatic impairment (Child Pugh C) should be treated with caution and monitored for treatment response [*see Clinical Pharmacology (12.3) and Use in Specific Populations (8.6)*].

2.3 Dosage in Pediatric Patients

The safety and efficacy of the proposed pediatric dosing regimens have not been evaluated due to the observed increase in mortality associated with TYGACIL in adult patients. Avoid use of TYGACIL in pediatric patients unless no alternative antibacterial drugs are available. Under these circumstances, the following doses are suggested:

- Pediatric patients aged 8 to 11 years should receive 1.2 mg/kg of TYGACIL every 12 hours intravenously to a maximum dose of 50 mg of TYGACIL every 12 hours.
- Pediatric patients aged 12 to 17 years should receive 50 mg of TYGACIL every 12 hours.

The proposed pediatric doses of TYGACIL were chosen based on exposures observed in pharmacokinetic trials, which included small numbers of pediatric patients [*see Use in Specific Populations (8.4) and Clinical Pharmacology (12.3)*].

There are no data to provide dosing recommendations in pediatric patients with hepatic impairment.

2.4 Preparation and Administration

Each vial of TYGACIL should be reconstituted with 5.3 mL of 0.9% Sodium Chloride Injection, USP, 5% Dextrose Injection, USP, or Lactated Ringer's Injection, USP to achieve a concentration of 10 mg/mL of tigecycline. (Note: Each vial contains a 6% overage. Thus, 5 mL of reconstituted solution is equivalent to 50 mg of the drug.) The vial should be gently swirled until the drug dissolves. Reconstituted solution must be transferred and further diluted for intravenous infusion. Withdraw 5 mL of the reconstituted solution from the vial and add to a 100 mL intravenous bag for infusion (for a 100 mg dose, reconstitute two vials; for a 50 mg dose, reconstitute one vial). The maximum concentration in the intravenous bag should be 1 mg/mL. The reconstituted solution should be yellow to orange in color; if not, the solution should be discarded. Parenteral drug products should be inspected visually for particulate matter and discoloration (e.g., green or black) prior to administration. Once reconstituted, TYGACIL may be stored at room temperature (not to exceed 25°C/77°F) for up to 24 hours (up to 6 hours in the vial and the remaining time in the intravenous bag). If the storage conditions exceed 25°C (77°F) after reconstitution, tigecycline should be used immediately. Alternatively, TYGACIL mixed with 0.9% Sodium Chloride Injection, USP or 5% Dextrose Injection, USP may be stored refrigerated at 2° to 8°C (36° to 46°F) for up to 48 hours following immediate transfer of the reconstituted solution into the intravenous bag.

TYGACIL may be administered intravenously through a dedicated line or through a Y-site. If the same intravenous line is used for sequential infusion of several drugs, the line should be flushed before and after infusion of TYGACIL with 0.9% Sodium Chloride Injection, USP, 5% Dextrose Injection, USP or Lactated Ringer's Injection, USP. Injection should be made with an infusion solution compatible with tigecycline and with any other drug(s) administered via this common line.

2.5 Drug Compatibilities

Compatible intravenous solutions include 0.9% Sodium Chloride Injection, USP, 5% Dextrose Injection, USP, and Lactated Ringer's Injection, USP. When administered through a Y-site, TYGACIL is compatible with the following drugs or diluents when used with either 0.9% Sodium Chloride Injection, USP or 5% Dextrose Injection, USP: amikacin, dobutamine, dopamine HCl, gentamicin, haloperidol, Lactated Ringer's, lidocaine HCl, metoclopramide, morphine, norepinephrine, piperacillin/tazobactam (EDTA formulation), potassium chloride, propofol, ranitidine HCl, theophylline, and tobramycin.

2.6 Drug Incompatibilities

The following drugs should not be administered simultaneously through the same Y-site as TYGACIL: amphotericin B, amphotericin B lipid complex, diazepam, esomeprazole and omeprazole.

3 DOSAGE FORMS AND STRENGTHS

For Injection: Each single-dose 5 mL glass vial and 10 mL glass vial contain 50 mg of tigecycline as an orange lyophilized powder for reconstitution.

4 CONTRAINDICATIONS

TYGACIL is contraindicated for use in patients who have known hypersensitivity to tigecycline. Reactions have included anaphylactic reactions [*see Warnings and Precautions (5.3) and Adverse Reactions (6.2)*].

5 WARNINGS AND PRECAUTIONS

5.1 All-Cause Mortality

An increase in all-cause mortality has been observed in a meta-analysis of Phase 3 and 4 clinical trials in TYGACIL-treated patients versus comparator-treated patients. In all 13 Phase 3 and 4 trials that included a comparator, death occurred in 4.0% (150/3788) of patients receiving TYGACIL and 3.0% (110/3646) of patients receiving comparator drugs. In a pooled analysis of these trials, based on a random effects model by trial weight, the adjusted risk difference of all-cause mortality was 0.6% (95% CI 0.1, 1.2) between TYGACIL and comparator-treated patients. An analysis of mortality in all trials conducted for approved indications (cSSSI, cIAI, and CABP), including post-market trials showed an adjusted mortality rate of 2.5% (66/2640) for tigecycline and 1.8% (48/2628) for comparator, respectively. The adjusted risk difference for mortality stratified by trial weight was 0.6% (95% CI 0.0, 1.2).

The cause of this mortality difference has not been established. Generally, deaths were the result of worsening infection, complications of infection or underlying co-morbidities. TYGACIL should be reserved for use in situations when alternative treatments are not suitable [*see Boxed Warning, Indications and Usage (1.4), Warnings and Precautions (5.2) and Adverse Reactions (6.1)*].

5.2 Mortality Imbalance and Lower Cure Rates in Hospital-Acquired Pneumonia

A trial of patients with hospital acquired, including ventilator-associated, pneumonia failed to demonstrate the efficacy of TYGACIL. In this trial, patients were randomized to receive TYGACIL (100 mg initially, then 50 mg every 12 hours) or a comparator. In addition, patients were allowed to receive specified adjunctive therapies. The sub-group of patients with ventilator-associated pneumonia who received TYGACIL had lower cure rates (47.9% versus 70.1% for the clinically evaluable population).

In this trial, greater mortality was seen in patients with ventilator-associated pneumonia who received TYGACIL (25/131 [19.1%] versus 15/122 [12.3%] in comparator-treated patients) [see *Adverse Reactions* (6.1)]. Particularly high mortality was seen among TYGACIL-treated patients with ventilator-associated pneumonia and bacteremia at baseline (9/18 [50.0%] versus 1/13 [7.7%] in comparator-treated patients).

5.3 Anaphylactic Reactions

Anaphylactic reactions have been reported with nearly all antibacterial agents, including TYGACIL, and may be life-threatening. TYGACIL is structurally similar to tetracycline-class antibiotics and should be avoided in patients with known hypersensitivity to tetracycline-class antibiotics.

5.4 Hepatic Adverse Effects

Increases in total bilirubin concentration, prothrombin time and transaminases have been seen in patients treated with tigecycline. Isolated cases of significant hepatic dysfunction and hepatic failure have been reported in patients being treated with tigecycline. Some of these patients were receiving multiple concomitant medications. Patients who develop abnormal liver function tests during tigecycline therapy should be monitored for evidence of worsening hepatic function and evaluated for risk/benefit of continuing tigecycline therapy. Hepatic dysfunction may occur after the drug has been discontinued.

5.5 Pancreatitis

Acute pancreatitis, including fatal cases, has occurred in association with tigecycline treatment. The diagnosis of acute pancreatitis should be considered in patients taking tigecycline who develop clinical symptoms, signs, or laboratory abnormalities suggestive of acute pancreatitis. Cases have been reported in patients without known risk factors for pancreatitis. Patients usually improve after tigecycline discontinuation. Consideration should be given to the cessation of the treatment with tigecycline in cases suspected of having developed pancreatitis [see *Adverse Reactions* (6.2)].

5.6 Fetal Harm

TYGACIL may cause fetal harm when administered to a pregnant woman. If the patient becomes pregnant while taking tigecycline, the patient should be apprised of the potential hazard to the fetus. Results of animal studies indicate that tigecycline crosses the placenta and is found in fetal tissues. Decreased fetal weights in rats and rabbits (with associated delays in ossification) and fetal loss in rabbits have been observed with tigecycline [see *Use in Specific Populations* (8.1)].

5.7 Tooth Discoloration

The use of TYGACIL during tooth development (last half of pregnancy, infancy, and childhood to the age of 8 years) may cause permanent discoloration of the teeth (yellow-gray-brown). Results of studies in rats with TYGACIL have shown bone discoloration. TYGACIL should not be used during tooth development unless other drugs are not likely to be effective or are contraindicated.

5.8 *Clostridium difficile* Associated Diarrhea

Clostridium difficile associated diarrhea (CDAD) has been reported with use of nearly all antibacterial agents, including TYGACIL, and may range in severity from mild diarrhea to fatal colitis. Treatment with antibacterial agents alters the normal flora of the colon leading to overgrowth of *C. difficile*.

C. difficile produces toxins A and B which contribute to the development of CDAD. Hypertoxin producing strains of *C. difficile* cause increased morbidity and mortality, as these infections can be refractory to antimicrobial therapy and may require colectomy. CDAD must be considered in all patients who present with diarrhea following antibiotic use. Careful medical history is necessary since CDAD has been reported to occur over two months after the administration of antibacterial agents.

If CDAD is suspected or confirmed, ongoing antibiotic use not directed against *C. difficile* may need to be discontinued. Appropriate fluid and electrolyte management, protein supplementation, antibiotic treatment of *C. difficile*, and surgical evaluation should be instituted as clinically indicated.

5.9 Sepsis/Septic Shock in Patients With Intestinal Perforation

Monotherapy with tigecycline should be avoided in patients with complicated intra-abdominal infections (cIAI) secondary to clinically apparent intestinal perforation. In cIAI studies (n=1642), 6 patients treated with TYGACIL and 2 patients treated with imipenem/cilastatin presented with intestinal perforations and developed sepsis/septic shock. The 6 patients treated with TYGACIL had higher APACHE II scores (median = 13) versus the 2 patients treated with imipenem/cilastatin (APACHE II scores = 4 and 6). Due to differences in baseline APACHE II scores between treatment groups and small overall numbers, the relationship of this outcome to treatment cannot be established.

5.10 Tetracycline-Class Adverse Effects

TYGACIL is structurally similar to tetracycline-class antibacterial drugs and may have similar adverse effects. Such effects may include: photosensitivity, pseudotumor cerebri, and anti-anabolic action (which has led to increased BUN, azotemia, acidosis, and hyperphosphatemia).

5.11 Development of Drug-Resistant Bacteria

Prescribing TYGACIL in the absence of a proven or strongly suspected bacterial infection is unlikely to provide benefit to the patient and increases the risk of the development of drug-resistant bacteria.

6 ADVERSE REACTIONS

The following serious adverse reactions are described elsewhere in the labeling:

- All-Cause Mortality [*see Boxed Warning and Warnings and Precautions (5.1)*]
- Mortality Imbalance and Lower Cure Rates in Hospital-Acquired Pneumonia [*see Warnings and Precautions (5.2)*]
- Anaphylaxis [*Warning and Precautions (5.3)*]
- Hepatic Adverse Effects [*Warnings and Precautions (5.4)*]
- Pancreatitis [*Warnings and Precautions (5.5)*]

6.1 Clinical Trials Experience

Because clinical trials are conducted under widely varying conditions, adverse reaction rates observed in the clinical trials of a drug cannot be directly compared to rates in the clinical trials of another drug and may not reflect the rates observed in practice.

In clinical trials, 2514 patients were treated with TYGACIL. TYGACIL was discontinued due to adverse reactions in 7% of patients compared to 6% for all comparators. Table 1 shows the incidence of adverse reactions through test of cure reported in $\geq 2\%$ of patients in these trials.

Table 1. Incidence (%) of Adverse Reactions Through Test of Cure Reported in $\geq 2\%$ of Patients Treated in Clinical Studies

Body System Adverse Reactions	TYGACIL (N=2514)	Comparators ^a (N=2307)
Body as a Whole		
Abdominal pain	6	4
Abscess	2	2
Asthenia	3	2
Headache	6	7
Infection	7	5
Cardiovascular System		
Phlebitis	3	4
Digestive System		
Diarrhea	12	11
Dyspepsia	2	2
Nausea	26	13
Vomiting	18	9

Table 1. Incidence (%) of Adverse Reactions Through Test of Cure Reported in $\geq 2\%$ of Patients Treated in Clinical Studies

Body System	TYGACIL	Comparators^a
Adverse Reactions	(N=2514)	(N=2307)
Hemic and Lymphatic System		
Anemia	5	6
Metabolic and Nutritional		
Alkaline Phosphatase Increased	3	3
Amylase Increased	3	2
Bilirubinemia	2	1
BUN Increased	3	1
Healing Abnormal	3	2
Hyponatremia	2	1
Hypoproteinemia	5	3
SGOT Increased ^b	4	5
SGPT Increased ^b	5	5
Respiratory System		
Pneumonia	2	2
Nervous System		
Dizziness	3	3
Skin and Appendages		
Rash	3	4

^a Vancomycin/Aztreonam, Imipenem/Cilastatin, Levofloxacin, Linezolid.

^b LFT abnormalities in TYGACIL-treated patients were reported more frequently in the post therapy period than those in comparator-treated patients, which occurred more often on therapy.

In all 13 Phase 3 and 4 trials that included a comparator, death occurred in 4.0% (150/3788) of patients receiving TYGACIL and 3.0% (110/3646) of patients receiving comparator drugs. In a pooled analysis of these trials, based on a random effects model by trial weight, an adjusted risk difference of all-cause mortality was 0.6% (95% CI 0.1, 1.2) between TYGACIL and comparator-treated patients (see Table 2). The cause of the imbalance has not been established. Generally, deaths were the result of worsening infection, complications of infection or underlying co-morbidities.

Table 2. Patients with Outcome of Death by Infection Type

Infection Type	TYGACIL		Comparator		Risk Difference*
	n/N	%	n/N	%	
cSSSI	12/834	1.4	6/813	0.7	0.7 (-0.3, 1.7)
cIAI	42/1382	3.0	31/1393	2.2	0.8 (-0.4, 2.0)
CAP	12/424	2.8	11/422	2.6	0.2 (-2.0, 2.4)
HAP	66/467	14.1	57/467	12.2	1.9 (-2.4, 6.3)
Non-VAP ^a	41/336	12.2	42/345	12.2	0.0 (-4.9, 4.9)
VAP ^a	25/131	19.1	15/122	12.3	6.8 (-2.1, 15.7)
RP	11/128	8.6	2/43	4.7	3.9 (-4.0, 11.9)
DFI	7/553	1.3	3/508	0.6	0.7 (-0.5, 1.8)
Overall Adjusted	150/3788	4.0	110/3646	3.0	0.6 (0.1, 1.2)**

CAP = Community-acquired pneumonia; cIAI = Complicated intra-abdominal infections; cSSSI = Complicated skin and skin structure infections; HAP = Hospital-acquired pneumonia; VAP = Ventilator-associated pneumonia; RP = Resistant pathogens; DFI = Diabetic foot infections.

* The difference between the percentage of patients who died in TYGACIL and comparator treatment groups. The 95% CI for each infection type was calculated using the normal approximation method without continuity correction.

** Overall adjusted (random effects model by trial weight) risk difference estimate and 95% CI.

^a These are subgroups of the HAP population.

Note: The studies include 300, 305, 900 (cSSSI), 301, 306, 315, 316, 400 (cIAI), 308 and 313 (CAP), 311 (HAP), 307 [Resistant gram-positive pathogen study in patients with MRSA or Vancomycin-Resistant Enterococcus (VRE)], and 319 (DFI with and without osteomyelitis).

An analysis of mortality in all trials conducted for approved indications - cSSSI, cIAI, and CAP, including post-market trials (one in cSSSI and two in cIAI) - showed an adjusted mortality rate of 2.5% (66/2640) for tigecycline and 1.8% (48/2628) for comparator, respectively. The adjusted risk difference for mortality stratified by trial weight was 0.6% (95% CI 0.0, 1.2).

In comparative clinical studies, infection-related serious adverse reactions were more frequently reported for subjects treated with TYGACIL (7%) versus comparators (6%). Serious adverse reactions of sepsis/septic shock were more frequently reported for subjects treated with TYGACIL (2%) versus comparators (1%). Due to baseline differences between treatment groups in this subset of patients, the relationship of this outcome to treatment cannot be established [*see Warnings and Precautions (5.9)*].

The most common adverse reactions were nausea and vomiting which generally occurred during the first 1 – 2 days of therapy. The majority of cases of nausea and vomiting associated with TYGACIL and comparators were either mild or moderate in severity. In patients treated with TYGACIL, nausea incidence was 26% (17% mild, 8% moderate, 1% severe) and vomiting incidence was 18% (11% mild, 6% moderate, 1% severe).

In patients treated for complicated skin and skin structure infections (cSSSI), nausea incidence was 35% for TYGACIL and 9% for vancomycin/aztreonam; vomiting incidence was 20% for TYGACIL and 4% for vancomycin/aztreonam. In patients treated for complicated intra-abdominal infections (cIAI), nausea incidence was 25% for TYGACIL and 21% for imipenem/cilastatin; vomiting incidence was 20% for TYGACIL and 15% for imipenem/cilastatin. In patients treated for community-acquired bacterial pneumonia (CABP), nausea incidence was 24% for TYGACIL and 8% for levofloxacin; vomiting incidence was 16% for TYGACIL and 6% for levofloxacin.

Discontinuation from TYGACIL was most frequently associated with nausea (1%) and vomiting (1%). For comparators, discontinuation was most frequently associated with nausea (<1%).

The following adverse reactions were reported (<2%) in patients receiving TYGACIL in clinical studies:

Body as a Whole: injection site inflammation, injection site pain, injection site reaction, septic shock, allergic reaction, chills, injection site edema, injection site phlebitis

Cardiovascular System: thrombophlebitis

Digestive System: anorexia, jaundice, abnormal stools

Metabolic/Nutritional System: increased creatinine, hypocalcemia, hypoglycemia

Special Senses: taste perversion

Hemic and Lymphatic System: prolonged activated partial thromboplastin time (aPTT), prolonged prothrombin time (PT), eosinophilia, increased international normalized ratio (INR), thrombocytopenia

Skin and Appendages: pruritus

Urogenital System: vaginal moniliasis, vaginitis, leukorrhea

6.2 Post-Marketing Experience

The following adverse reactions have been identified during post-approval use of TYGACIL. Because these reactions are reported voluntarily from a population of uncertain size, it is not always possible to reliably estimate their frequency or establish causal relationship to drug exposure.

- anaphylactic reactions
- acute pancreatitis
- hepatic cholestasis, and jaundice
- severe skin reactions, including Stevens-Johnson Syndrome
- symptomatic hypoglycemia in patients with and without diabetes mellitus

7 DRUG INTERACTIONS

7.1 Warfarin

Prothrombin time or other suitable anticoagulation test should be monitored if TYGACIL is administered with warfarin [*see Clinical Pharmacology (12.3)*].

7.2 Oral Contraceptives

Concurrent use of antibacterial drugs with oral contraceptives may render oral contraceptives less effective.

8 USE IN SPECIFIC POPULATIONS

8.1 Pregnancy

Teratogenic Effects—Pregnancy Category D [*see Warnings and Precautions (5.6)*]

Tigecycline was not teratogenic in the rat or rabbit. In preclinical safety studies, ¹⁴C-labeled tigecycline crossed the placenta and was found in fetal tissues, including fetal bony structures. The administration of tigecycline was associated with reductions in fetal weights and an increased incidence of skeletal anomalies (delays in bone ossification) at exposures of 5 times and 1 times the human daily dose based on AUC in rats and rabbits, respectively (28 mcg·hr/mL and 6 mcg·hr/mL at 12 and 4 mg/kg/day). An increased incidence of fetal loss was observed at maternotoxic doses in the rabbits with exposure equivalent to human dose.

There are no adequate and well-controlled studies of tigecycline in pregnant women. TYGACIL should be used during pregnancy only if the potential benefit justifies the potential risk to the fetus.

8.3 Nursing Mothers

Results from animal studies using ¹⁴C-labeled tigecycline indicate that tigecycline is excreted readily via the milk of lactating rats. Consistent with the limited oral bioavailability of tigecycline, there is little or no systemic exposure to tigecycline in nursing pups as a result of exposure via maternal milk.

It is not known whether this drug is excreted in human milk. Because many drugs are excreted in human milk, caution should be exercised when TYGACIL is administered to a nursing woman [*see Warnings and Precautions (5.7)*].

8.4 Pediatric Use

Use in patients under 18 years of age is not recommended. Safety and effectiveness in pediatric patients below the age of 18 years have not been established. Because of the increased mortality observed in TYGACIL-treated adult patients in clinical trials, pediatric trials of TYGACIL to evaluate the safety and efficacy of TYGACIL were not conducted.

In situations where there are no other alternative antibacterial drugs, dosing has been proposed for pediatric patients 8 to 17 years of age based on data from pediatric pharmacokinetic studies [see *Dosage and Administration* (2.3) and *Clinical Pharmacology* (12.3)].

Because of effects on tooth development, use in patients under 8 years of age is not recommended [see *Warnings and Precautions* (5.7)].

8.5 Geriatric Use

Of the total number of subjects who received TYGACIL in Phase 3 clinical studies (n=2514), 664 were 65 and over, while 288 were 75 and over. No overall differences in safety or effectiveness were observed between these subjects and younger subjects, but greater sensitivity to adverse events of some older individuals cannot be ruled out.

No significant difference in tigecycline exposure was observed between healthy elderly subjects and younger subjects following a single 100 mg dose of tigecycline [see *Clinical Pharmacology* (12.3)].

8.6 Hepatic Impairment

No dosage adjustment is warranted in patients with mild to moderate hepatic impairment (Child Pugh A and Child Pugh B). In patients with severe hepatic impairment (Child Pugh C), the initial dose of tigecycline should be 100 mg followed by a reduced maintenance dose of 25 mg every 12 hours. Patients with severe hepatic impairment (Child Pugh C) should be treated with caution and monitored for treatment response [see *Clinical Pharmacology* (12.3) and *Dosage and Administration* (2.2)].

10 OVERDOSAGE

No specific information is available on the treatment of overdosage with tigecycline. Intravenous administration of TYGACIL at a single dose of 300 mg over 60 minutes in healthy volunteers resulted in an increased incidence of nausea and vomiting. Tigecycline is not removed in significant quantities by hemodialysis.

11 DESCRIPTION

TYGACIL (tigecycline) is a tetracycline class antibacterial for intravenous infusion. The chemical name of tigecycline is (4*S*,4*aS*,5*aR*,12*aS*)-9-[2-(*tert*-butylamino)acetamido]-4,7-bis(dimethylamino)-1,4,4*a*,5,5*a*,6,11,12*a*-octahydro-3,10,12,12*a*-tetrahydroxy-1,11-dioxo-2-naphthacenecarboxamide. The empirical formula is C₂₉H₃₉N₅O₈ and the molecular weight is 585.65.

The following represents the chemical structure of tigecycline:

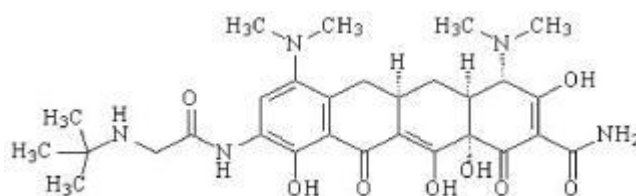


Figure 1: Structure of Tigecycline

TYGACIL is an orange lyophilized powder or cake. Each TYGACIL single-dose 5 mL or 10 mL vial contains 50 mg tigecycline lyophilized powder for reconstitution for intravenous infusion and 100 mg of lactose monohydrate. The pH is adjusted with hydrochloric acid, and if necessary sodium hydroxide. The product does not contain preservatives.

12 CLINICAL PHARMACOLOGY

12.1 Mechanism of Action

Tigecycline is a tetracycline class antibacterial [see Microbiology (12.4)].

12.2 Pharmacodynamics

Cardiac Electrophysiology

No significant effect of a single intravenous dose of TYGACIL 50 mg or 200 mg on QTc interval was detected in a randomized, placebo- and active-controlled four-arm crossover thorough QTc study of 46 healthy subjects.

12.3 Pharmacokinetics

The mean pharmacokinetic parameters of tigecycline after single and multiple intravenous doses based on pooled data from clinical pharmacology studies are summarized in Table 3. Intravenous infusions of tigecycline were administered over approximately 30 to 60 minutes.

Table 3. Mean (CV%) Pharmacokinetic Parameters of Tigecycline

	Single Dose 100 mg (N=224)	Multiple Dose ^a 50 mg every 12h (N=103)
C _{max} (mcg/mL) ^b	1.45 (22%)	0.87 (27%)
C _{max} (mcg/mL) ^c	0.90 (30%)	0.63 (15%)
AUC (mcg·h/mL)	5.19 (36%)	- -
AUC _{0-24h} (mcg·h/mL)	- -	4.70 (36%)
C _{min} (mcg/mL)	- -	0.13 (59%)
t _{1/2} (h)	27.1 (53%)	42.4 (83%)

Table 3. Mean (CV%) Pharmacokinetic Parameters of Tigecycline

	Single Dose 100 mg (N=224)	Multiple Dose ^a 50 mg every 12h (N=103)
CL (L/h)	21.8 (40%)	23.8 (33%)
CL _r (mL/min)	38.0 (82%)	51.0 (58%)
V _{ss} (L)	568 (43%)	639 (48%)

^a 100 mg initially, followed by 50 mg every 12 hours

^b 30-minute infusion

^c 60-minute infusion

Distribution

The *in vitro* plasma protein binding of tigecycline ranges from approximately 71% to 89% at concentrations observed in clinical studies (0.1 to 1.0 mcg/mL). The steady-state volume of distribution of tigecycline averaged 500 to 700 L (7 to 9 L/kg), indicating tigecycline is extensively distributed beyond the plasma volume and into the tissues.

Following the administration of tigecycline 100 mg followed by 50 mg every 12 hours to 33 healthy volunteers, the tigecycline AUC_{0-12h} (134 mcg·h/mL) in alveolar cells was approximately 78-fold higher than the AUC_{0-12h} in the serum, and the AUC_{0-12h} (2.28 mcg·h/mL) in epithelial lining fluid was approximately 32% higher than the AUC_{0-12h} in serum. The AUC_{0-12h} (1.61 mcg·h/mL) of tigecycline in skin blister fluid was approximately 26% lower than the AUC_{0-12h} in the serum of 10 healthy subjects.

In a single-dose study, tigecycline 100 mg was administered to subjects prior to undergoing elective surgery or medical procedure for tissue extraction. Concentrations at 4 hours after tigecycline administration were higher in gallbladder (38-fold, n=6), lung (3.7-fold, n=5), and colon (2.3-fold, n=6), and lower in synovial fluid (0.58-fold, n=5), and bone (0.35-fold, n=6) relative to serum. The concentration of tigecycline in these tissues after multiple doses has not been studied.

Elimination

Metabolism

Tigecycline is not extensively metabolized. *In vitro* studies with tigecycline using human liver microsomes, liver slices, and hepatocytes led to the formation of only trace amounts of metabolites. In healthy male volunteers receiving ¹⁴C-tigecycline, tigecycline was the primary ¹⁴C-labeled material recovered in urine and feces, but a glucuronide, an N-acetyl metabolite, and a tigecycline epimer (each at no more than 10% of the administered dose) were also present.

Tigecycline is a substrate of P-glycoprotein (P-gp) based on an *in vitro* study using a cell line overexpressing P-gp. The potential contribution of P-gp-mediated transport to the *in vivo* disposition of tigecycline is not known.

Excretion

The recovery of total radioactivity in feces and urine following administration of ^{14}C -tigecycline indicates that 59% of the dose is eliminated by biliary/fecal excretion, and 33% is excreted in urine. Approximately 22% of the total dose is excreted as unchanged tigecycline in urine. Overall, the primary route of elimination for tigecycline is biliary excretion of unchanged tigecycline and its metabolites. Glucuronidation and renal excretion of unchanged tigecycline are secondary routes.

Specific Populations

Hepatic Impairment

In a study comparing 10 patients with mild hepatic impairment (Child Pugh A), 10 patients with moderate hepatic impairment (Child Pugh B), and 5 patients with severe hepatic impairment (Child Pugh C) to 23 age and weight matched healthy control subjects, the single-dose pharmacokinetic disposition of tigecycline was not altered in patients with mild hepatic impairment. However, systemic clearance of tigecycline was reduced by 25% and the half-life of tigecycline was prolonged by 23% in patients with moderate hepatic impairment (Child Pugh B). Systemic clearance of tigecycline was reduced by 55%, and the half-life of tigecycline was prolonged by 43% in patients with severe hepatic impairment (Child Pugh C). Dosage adjustment is necessary in patients with severe hepatic impairment (Child Pugh C) [see *Use in Specific Populations* (8.6) and *Dosage and Administration* (2.2)].

Renal Impairment

A single dose study compared 6 subjects with severe renal impairment (creatinine clearance <30 mL/min), 4 end stage renal disease (ESRD) patients receiving tigecycline 2 hours before hemodialysis, 4 ESRD patients receiving tigecycline 1 hour after hemodialysis, and 6 healthy control subjects. The pharmacokinetic profile of tigecycline was not significantly altered in any of the renally impaired patient groups, nor was tigecycline removed by hemodialysis. No dosage adjustment of TYGACIL is necessary in patients with renal impairment or in patients undergoing hemodialysis.

Geriatric Patients

No significant differences in pharmacokinetics were observed between healthy elderly subjects (n=15, age 65-75; n=13, age >75) and younger subjects (n=18) receiving a single 100-mg dose of TYGACIL. Therefore, no dosage adjustment is necessary based on age [see *Use in Specific Populations* (8.5)].

Pediatric Patients

A single-dose safety, tolerability, and pharmacokinetic study of tigecycline in pediatric patients aged 8-16 years who recently recovered from infections was conducted. The doses administered were 0.5, 1, or 2 mg/kg. The study showed that for children aged 12-16 years (n = 16) a dosage of 50 mg twice daily would likely result in exposures comparable to those observed in adults

with the approved dosing regimen. Large variability observed in children aged 8 to 11 years of age (n = 8) required additional study to determine the appropriate dosage.

A subsequent tigecycline dose-finding study was conducted in 8-11 year old patients with cIAI, cSSSI, or CABP. The doses of tigecycline studied were 0.75 mg/kg (n = 17), 1 mg/kg (n = 21), and 1.25 mg/kg (n=20). This study showed that for children aged 8-11 years, a 1.2 mg/kg dose would likely result in exposures comparable to those observed in adults resulting with the approved dosing regimen [see *Dosage and Administration* (2.3)].

Gender

In a pooled analysis of 38 women and 298 men participating in clinical pharmacology studies, there was no significant difference in the mean (\pm SD) tigecycline clearance between women (20.7 \pm 6.5 L/h) and men (22.8 \pm 8.7 L/h). Therefore, no dosage adjustment is necessary based on gender.

Race

In a pooled analysis of 73 Asian subjects, 53 Black subjects, 15 Hispanic subjects, 190 White subjects, and 3 subjects classified as “other” participating in clinical pharmacology studies, there was no significant difference in the mean (\pm SD) tigecycline clearance among the Asian subjects (28.8 \pm 8.8 L/h), Black subjects (23.0 \pm 7.8 L/h), Hispanic subjects (24.3 \pm 6.5 L/h), White subjects (22.1 \pm 8.9 L/h), and “other” subjects (25.0 \pm 4.8 L/h). Therefore, no dosage adjustment is necessary based on race.

Drug Interaction Studies

Digoxin

TYGACIL (100 mg followed by 50 mg every 12 hours) and digoxin (0.5 mg followed by 0.25 mg, orally, every 24 hours) were co-administered to healthy subjects in a drug interaction study. Tigecycline slightly decreased the C_{\max} of digoxin by 13%, but did not affect the AUC or clearance of digoxin. This small change in C_{\max} did not affect the steady-state pharmacodynamic effects of digoxin as measured by changes in ECG intervals. In addition, digoxin did not affect the pharmacokinetic profile of tigecycline. Therefore, no dosage adjustment of either drug is necessary when TYGACIL is administered with digoxin.

Warfarin

Concomitant administration of TYGACIL (100 mg followed by 50 mg every 12 hours) and warfarin (25 mg single-dose) to healthy subjects resulted in a decrease in clearance of R-warfarin and S-warfarin by 40% and 23%, an increase in C_{\max} by 38% and 43% and an increase in AUC by 68% and 29%, respectively. Tigecycline did not significantly alter the effects of warfarin on INR. In addition, warfarin did not affect the pharmacokinetic profile of tigecycline. However, prothrombin time or other suitable anticoagulation test should be monitored if tigecycline is administered with warfarin.

In vitro studies in human liver microsomes indicate that tigecycline does not inhibit metabolism mediated by any of the following 6 cytochrome P450 (CYP) isoforms: 1A2, 2C8, 2C9, 2C19, 2D6, and 3A4. Therefore, TYGACIL is not expected to alter the metabolism of drugs metabolized by these enzymes. In addition, because tigecycline is not extensively metabolized, clearance of tigecycline is not expected to be affected by drugs that inhibit or induce the activity of these CYP450 isoforms.

In vitro studies using Caco-2 cells indicate that tigecycline does not inhibit digoxin flux, suggesting that tigecycline is not a P-glycoprotein (P-gp) inhibitor. This *in vitro* information is consistent with the lack of effect of tigecycline on digoxin clearance noted in the *in vivo* drug interaction study described above.

Tigecycline is a substrate of P-gp based on an *in vitro* study using a cell line overexpressing P-gp. The potential contribution of P-gp-mediated transport to the *in vivo* disposition of tigecycline is not known. Coadministration of P-gp inhibitors (e.g., ketoconazole or cyclosporine) or P-gp inducers (e.g., rifampicin) could affect the pharmacokinetics of tigecycline.

12.4 Microbiology

Mechanism of Action

Tigecycline inhibits protein translation in bacteria by binding to the 30S ribosomal subunit and blocking entry of amino-acyl tRNA molecules into the A site of the ribosome. This prevents incorporation of amino acid residues into elongating peptide chains. In general, tigecycline is considered bacteriostatic; however, TYGACIL has demonstrated bactericidal activity against isolates of *S. pneumoniae* and *L. pneumophila*.

Resistance

To date there has been no cross-resistance observed between tigecycline and other antibacterials. Tigecycline is less affected by the two major tetracycline-resistance mechanisms, ribosomal protection and efflux. Additionally, tigecycline is not affected by resistance mechanisms such as beta-lactamases (including extended spectrum beta-lactamases), target-site modifications, macrolide efflux pumps or enzyme target changes (e.g. gyrase/topoisomerases). However, some ESBL-producing isolates may confer resistance to tigecycline via other resistance mechanisms. Tigecycline resistance in some bacteria (e.g. *Acinetobacter calcoaceticus*-*Acinetobacter baumannii* complex) is associated with multi-drug resistant (MDR) efflux pumps.

Interaction with Other Antimicrobials

In vitro studies have not demonstrated antagonism between tigecycline and other commonly used antibacterials.

Antimicrobial Activity

Tigecycline has been shown to be active against most of the following microorganisms, both *in vitro* and in clinical infections [see *Indications and Usage (1)*].

Gram-positive bacteria

Enterococcus faecalis (vancomycin-susceptible isolates)
Staphylococcus aureus (methicillin-susceptible and -resistant isolates)
Streptococcus agalactiae
Streptococcus anginosus group (includes *S. anginosus*, *S. intermedius*, and *S. constellatus*)
Streptococcus pneumoniae (penicillin-susceptible isolates)
Streptococcus pyogenes

Gram-negative bacteria

Citrobacter freundii
Enterobacter cloacae
Escherichia coli
Haemophilus influenzae
Klebsiella oxytoca
Klebsiella pneumoniae
Legionella pneumophila

Anaerobic bacteria

Bacteroides fragilis
Bacteroides thetaiotaomicron
Bacteroides uniformis
Bacteroides vulgatus
Clostridium perfringens
Peptostreptococcus micros

The following *in vitro* data are available, but their clinical significance is unknown. At least 90 percent of the following bacteria exhibit an *in vitro* minimum inhibitory concentration (MIC) less than or equal to the susceptible breakpoint for tigecycline against isolates of similar genus or organism group. However, the efficacy of tigecycline in treating clinical infections caused by these bacteria has not been established in adequate and well-controlled clinical trials.

Gram-positive bacteria

Enterococcus avium
Enterococcus casseliflavus
Enterococcus faecalis (vancomycin-resistant isolates)
Enterococcus faecium (vancomycin-susceptible and -resistant isolates)
Enterococcus gallinarum
Listeria monocytogenes
Staphylococcus epidermidis (methicillin-susceptible and -resistant isolates)
Staphylococcus haemolyticus

Gram-negative bacteria

*Acinetobacter baumannii**
Aeromonas hydrophila
Citrobacter koseri
Enterobacter aerogenes
Haemophilus influenzae (ampicillin-resistant)
Haemophilus parainfluenzae
Pasteurella multocida
Serratia marcescens
Stenotrophomonas maltophilia

Anaerobic bacteria

Bacteroides distasonis
Bacteroides ovatus
Peptostreptococcus spp.
Porphyromonas spp.
Prevotella spp.

Other bacteria

Mycobacterium abscessus
Mycobacterium fortuitum

*There have been reports of the development of tigecycline resistance in *Acinetobacter* infections seen during the course of standard treatment. Such resistance appears to be attributable to an MDR efflux pump mechanism. While monitoring for relapse of infection is important for all infected patients, more frequent monitoring in this case is suggested. If relapse is suspected, blood and other specimens should be obtained and cultured for the presence of bacteria. All bacterial isolates should be identified and tested for susceptibility to tigecycline and other appropriate antimicrobials.

Susceptibility Testing

For specific information regarding susceptibility test interpretive criteria, and associated test methods and quality control standards recognized by FDA for this drug, please see <https://www.fda.gov/STIC>.

13 NONCLINICAL TOXICOLOGY

13.1 Carcinogenesis, Mutagenesis, Impairment of Fertility

Lifetime studies in animals have not been performed to evaluate the carcinogenic potential of tigecycline. No mutagenic or clastogenic potential was found in a battery of tests, including *in vitro* chromosome aberration assay in Chinese hamster ovary (CHO) cells, *in vitro* forward mutation assay in CHO cells (HGRPT locus), *in vitro* forward mutation assays in mouse lymphoma cells, and *in vivo* mouse micronucleus assay. Tigecycline did not affect mating or

fertility in rats at exposures up to 5 times the human daily dose based on AUC (28 mcg·hr/mL at 12 mg/kg/day). In female rats, there were no compound-related effects on ovaries or estrous cycles at exposures up to 5 times the human daily dose based on AUC.

13.2 Animal Toxicology and/or Pharmacology

In two week studies, decreased erythrocytes, reticulocytes, leukocytes, and platelets, in association with bone marrow hypocellularity, have been seen with tigecycline at exposures of 8 times and 10 times the human daily dose based on AUC in rats and dogs, (AUC of approximately 50 and 60 mcg·hr/mL at doses of 30 and 12 mg/kg/day) respectively. These alterations were shown to be reversible after two weeks of dosing.

14 CLINICAL STUDIES

14.1 Complicated Skin and Skin Structure Infections

TYGACIL was evaluated in adults for the treatment of complicated skin and skin structure infections (cSSSI) in two randomized, double-blind, active-controlled, multinational, multicenter studies (Studies 1 and 2). These studies compared TYGACIL (100 mg intravenous initial dose followed by 50 mg every 12 hours) with vancomycin (1 g intravenous every 12 hours)/aztreonam (2 g intravenous every 12 hours) for 5 to 14 days. Patients with complicated deep soft tissue infections including wound infections and cellulitis (≥ 10 cm, requiring surgery/drainage or with complicated underlying disease), major abscesses, infected ulcers, and burns were enrolled in the studies. The primary efficacy endpoint was the clinical response at the test of cure (TOC) visit in the co-primary populations of the clinically evaluable (CE) and clinical modified intent-to-treat (c-mITT) patients. See Table 4. Clinical cure rates at TOC by pathogen in the microbiologically evaluable patients are presented in Table 5.

Table 4. Clinical Cure Rates from Two Studies in Complicated Skin and Skin Structure Infections after 5 to 14 Days of Therapy

	TYGACIL ^a n/N (%)	Vancomycin/Aztreonam ^b n/N (%)
Study 1		
CE	165/199 (82.9)	163/198 (82.3)
c-mITT	209/277 (75.5)	200/260 (76.9)
Study 2		
CE	200/223 (89.7)	201/213 (94.4)
c-mITT	220/261 (84.3)	225/259 (86.9)

^a 100 mg initially, followed by 50 mg every 12 hours

^b Vancomycin (1 g every 12 hours)/Aztreonam (2 g every 12 hours)

Table 5. Clinical Cure Rates By Infecting Pathogen in Microbiologically Evaluable Patients with Complicated Skin and Skin Structure Infections^a

Pathogen	TYGACIL n/N (%)	Vancomycin/Aztreonam n/N (%)
<i>Escherichia coli</i>	29/36 (80.6)	26/30 (86.7)
<i>Enterobacter cloacae</i>	10/12 (83.3)	15/15 (100)
<i>Enterococcus faecalis</i> (vancomycin-susceptible only)	15/21 (71.4)	19/24 (79.2)
<i>Klebsiella pneumoniae</i>	12/14 (85.7)	15/16 (93.8)
Methicillin-susceptible <i>Staphylococcus aureus</i> (MSSA)	124/137 (90.5)	113/120 (94.2)
Methicillin-resistant <i>Staphylococcus aureus</i> (MRSA)	79/95 (83.2)	46/57 (80.7)
<i>Streptococcus agalactiae</i>	8/8 (100)	11/14 (78.6)
<i>Streptococcus anginosus</i> grp. ^b	17/21 (81.0)	9/10 (90.0)
<i>Streptococcus pyogenes</i>	31/32 (96.9)	24/27 (88.9)
<i>Bacteroides fragilis</i>	7/9 (77.8)	4/5 (80.0)

^a Two cSSSI pivotal studies and two Resistant Pathogen studies

^b Includes *Streptococcus anginosus*, *Streptococcus intermedius*, and *Streptococcus constellatus*

14.2 Complicated Intra-abdominal Infections

TYGACIL was evaluated in adults for the treatment of complicated intra-abdominal infections (cIAI) in two randomized, double-blind, active-controlled, multinational, multicenter studies (Studies 1 and 2). These studies compared TYGACIL (100 mg intravenous initial dose followed by 50 mg every 12 hours) with imipenem/cilastatin (500 mg intravenous every 6 hours) for 5 to 14 days. Patients with complicated diagnoses including appendicitis, cholecystitis, diverticulitis, gastric/duodenal perforation, intra-abdominal abscess, perforation of intestine, and peritonitis were enrolled in the studies. The primary efficacy endpoint was the clinical response at the TOC visit for the co-primary populations of the microbiologically evaluable (ME) and the microbiologic modified intent-to-treat (m-mITT) patients. See Table 6. Clinical cure rates at TOC by pathogen in the microbiologically evaluable patients are presented in Table 7.

Table 6. Clinical Cure Rates from Two Studies in Complicated Intra-abdominal Infections after 5 to 14 Days of Therapy

	TYGACIL ^a n/N (%)	Imipenem/Cilastatin ^b n/N (%)
Study 1		
ME	199/247 (80.6)	210/255 (82.4)
m-mITT	227/309 (73.5)	244/312 (78.2)
Study 2		
ME	242/265 (91.3)	232/258 (89.9)
m-mITT	279/322 (86.6)	270/319 (84.6)

^a 100 mg initially, followed by 50 mg every 12 hours

^b Imipenem/Cilastatin (500 mg every 6 hours)

Table 7. Clinical Cure Rates By Infecting Pathogen in Microbiologically Evaluable Patients with Complicated Intra-abdominal Infections^a

Pathogen	TYGACIL n/N (%)	Imipenem/Cilastatin n/N (%)
<i>Citrobacter freundii</i>	12/16 (75.0)	3/4 (75.0)
<i>Enterobacter cloacae</i>	15/17 (88.2)	16/17 (94.1)
<i>Escherichia coli</i>	284/336 (84.5)	297/342 (86.8)
<i>Klebsiella oxytoca</i>	19/20 (95.0)	17/19 (89.5)
<i>Klebsiella pneumoniae</i>	42/47 (89.4)	46/53 (86.8)
<i>Enterococcus faecalis</i>	29/38 (76.3)	35/47 (74.5)
Methicillin-susceptible <i>Staphylococcus aureus</i> (MSSA)	26/28 (92.9)	22/24 (91.7)
Methicillin-resistant <i>Staphylococcus aureus</i> (MRSA)	16/18 (88.9)	1/3 (33.3)
<i>Streptococcus anginosus</i> grp. ^b	101/119 (84.9)	60/79 (75.9)
<i>Bacteroides fragilis</i>	68/88 (77.3)	59/73 (80.8)
<i>Bacteroides thetaiotaomicron</i>	36/41 (87.8)	31/36 (86.1)
<i>Bacteroides uniformis</i>	12/17 (70.6)	14/16 (87.5)
<i>Bacteroides vulgatus</i>	14/16 (87.5)	4/6 (66.7)
<i>Clostridium perfringens</i>	18/19 (94.7)	20/22 (90.9)
<i>Peptostreptococcus micros</i>	13/17 (76.5)	8/11 (72.7)

^a Two cIAI pivotal studies and two Resistant Pathogen studies

^b Includes *Streptococcus anginosus*, *Streptococcus intermedius*, and *Streptococcus constellatus*

14.3 Community-Acquired Bacterial Pneumonia

TYGACIL was evaluated in adults for the treatment of community-acquired bacterial pneumonia (CABP) in two randomized, double-blind, active-controlled, multinational, multicenter studies (Studies 1 and 2). These studies compared TYGACIL (100 mg intravenous initial dose followed by 50 mg every 12 hours) with levofloxacin (500 mg intravenous every 12 or 24 hours). In

Study 1, after at least 3 days of intravenous therapy, a switch to oral levofloxacin (500 mg daily) was permitted for both treatment arms. Total therapy was 7 to 14 days. Patients with community-acquired bacterial pneumonia who required hospitalization and intravenous therapy were enrolled in the studies. The primary efficacy endpoint was the clinical response at the test of cure (TOC) visit in the co-primary populations of the clinically evaluable (CE) and clinical modified intent-to-treat (c-mITT) patients. See Table 8. Clinical cure rates at TOC by pathogen in the microbiologically evaluable patients are presented in Table 9.

Table 8. Clinical Cure Rates from Two Studies in Community-Acquired Bacterial Pneumonia after 7 to 14 Days of Total Therapy

	TYGACIL ^a n/N (%)	Levofloxacin ^b n/N (%)	95% CI ^c
Study 1 ^d			
CE	125/138 (90.6)	136/156 (87.2)	(-4.4, 11.2)
c-mITT	149/191 (78)	158/203 (77.8)	(-8.5, 8.9)
Study 2			
CE	128/144 (88.9)	116/136 (85.3)	(-5.0, 12.2)
c-mITT	170/203 (83.7)	163/200 (81.5)	(-5.6, 10.1)

^a 100 mg initially, followed by 50 mg every 12 hours

^b Levofloxacin (500 mg intravenous every 12 or 24 hours)

^c 95% confidence interval for the treatment difference

^d After at least 3 days of intravenous therapy, a switch to oral levofloxacin (500 mg daily) was permitted for both treatment arms in Study 1.

Table 9. Clinical Cure Rates By Infecting Pathogen in Microbiologically Evaluable Patients with Community-Acquired Bacterial Pneumonia^a

Pathogen	TYGACIL n/N (%)	Levofloxacin n/N (%)
<i>Haemophilus influenzae</i>	14/17 (82.4)	13/16 (81.3)
<i>Legionella pneumophila</i>	10/10 (100.0)	6/6 (100.0)
<i>Streptococcus pneumoniae</i> (penicillin-susceptible only) ^b	44/46 (95.7)	39/44 (88.6)

^a Two CABP studies

^b Includes cases of concurrent bacteremia [cure rates of 20/22 (90.9%) versus 13/18 (72.2%) for TYGACIL and levofloxacin respectively]

To further evaluate the treatment effect of tigecycline, a post-hoc analysis was conducted in CABP patients with a higher risk of mortality, for whom the treatment effect of antibiotics is supported by historical evidence. The higher-risk group included CABP patients from the two studies with any of the following factors:

- Age ≥ 50 years
- PSI score ≥ 3
- *Streptococcus pneumoniae* bacteremia

The results of this analysis are shown in Table 10. Age ≥ 50 was the most common risk factor in the higher-risk group.

Table 10. Post-hoc Analysis of Clinical Cure Rates in Patients with Community-Acquired Bacterial Pneumonia Based on Risk of Mortality^a

	TYGACIL n/N (%)	Levofloxacin n/N (%)	95% CI ^b
Study 1 ^c			
CE			
Higher risk			
Yes	93/103 (90.3)	84/102 (82.4)	(-2.3, 18.2)
No	32/35 (91.4)	52/54 (96.3)	(-20.8, 7.1)
c-mITT			
Higher risk			
Yes	111/142 (78.2)	100/134 (74.6)	(-6.9, 14)
No	38/49 (77.6)	58/69 (84.1)	(-22.8, 8.7)
Study 2			
CE			
Higher risk			
Yes	95/107 (88.8)	68/85 (80)	(-2.2, 20.3)
No	33/37 (89.2)	48/51 (94.1)	(-21.1, 8.6)
c-mITT			
Higher risk			
Yes	112/134 (83.6)	93/120 (77.5)	(-4.2, 16.4)
No	58/69 (84.1)	70/80 (87.5)	(-16.2, 8.8)

^a Patients at higher risk of death include patients with any one of the following: ≥ 50 year of age; PSI score ≥ 3 ; or bacteremia due to *Streptococcus pneumoniae*

^b 95% confidence interval for the treatment difference

^c After at least 3 days of intravenous therapy, a switch to oral levofloxacin (500 mg daily) was permitted for both treatment arms in Study 1.

16 HOW SUPPLIED/STORAGE AND HANDLING

TYGACIL (tigecycline) for injection is supplied in a single-dose 5 mL glass vial or 10 mL glass vial, each containing 50 mg tigecycline lyophilized powder for reconstitution.

Supplied:

5 mL - 10 vials/box. NDC 0008-4990-02

10 mL - 10 vials/box. NDC 0008-4990-20

Prior to reconstitution, TYGACIL should be stored at 20° to 25°C (68° to 77°F); excursions permitted to 15° to 30°C (59° to 86°F). [See USP Controlled Room Temperature.] The reconstituted solution of TYGACIL may be stored at room temperature (not to exceed 25°C/77°F) for up to 24 hours (up to 6 hours in the vial and the remaining time in the intravenous bag) [see *Dosage and Administration* (2.1)].

17 PATIENT COUNSELING INFORMATION

- Advise patients, their families, or caregivers that diarrhea is a common problem caused by antibacterial drugs. Sometimes, frequent watery or bloody diarrhea may occur and may be a sign of a more serious intestinal infection. If severe watery or bloody diarrhea develops, tell them to contact his or her healthcare provider [see *Warnings and Precautions* (5.8)].
- Patients should be counseled that antibacterial drugs including TYGACIL should only be used to treat bacterial infections. They do not treat viral infections (e.g., the common cold). When TYGACIL is prescribed to treat a bacterial infection, patients should be told that although it is common to feel better early in the course of therapy, the medication should be taken exactly as directed. Skipping doses or not completing the full course of therapy may (1) decrease the effectiveness of the immediate treatment and (2) increase the likelihood that bacteria will develop resistance and will not be treatable by TYGACIL or other antibacterial drugs in the future.

This product's label may have been updated. For current full prescribing information, please visit www.pfizer.com.



Distributed by
Wyeth Pharmaceuticals LLC
A subsidiary of Pfizer Inc
Philadelphia, PA 19101

LAB-0458-9.2