

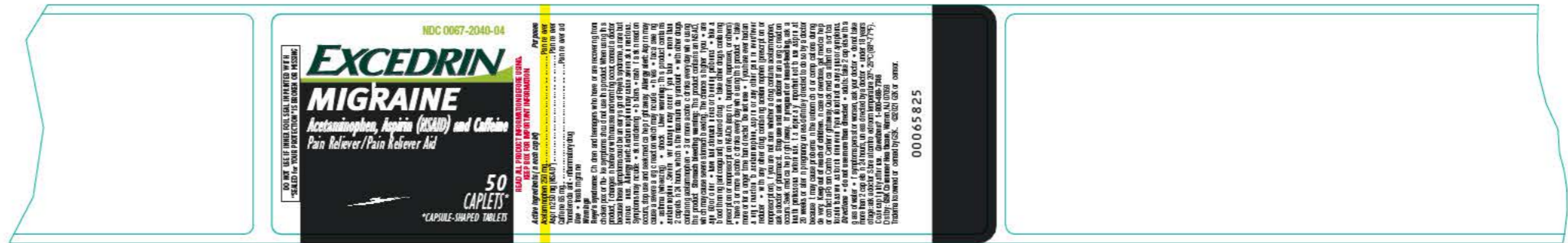




GSK Regulatory Spec Box		Verified Date: 05.20.21
<b>Drug Facts Info</b>		
Drug Facts	N/A	N/A
Drug Facts (continued)	N/A	N/A
Headings	Helvetica Bold Condensed Italic	4.75 pt.
Subheadings	Helvetica Bold Condensed	4.75 pt.
Body text	Helvetica Condensed / Bold Condensed	4.75 pt.
Bullets	Helvetica Condensed	4 pt.
Bullets on same lines: end of statement separated from bulleted statement by two ems		No
Spacing of the hair lines from edge of box -i.e. Minimum of 2 spaces either side of Drug Fact Box		N/A
Tracking:	-3	Horizontal Scale: 83%
Leading:	4.85 pt.	Maximum Characters/Inch: > 39
Barlines:	N/A	Hairlines: N/A
<b>Primary Display Panel Info</b>		
Size of Net Wt/Contents (Smallest character height in inches)*		> 0.062 in.
PDP dimensions (in square inches)		< 5 sq. in.
Ratio of Statement of Identity to Logo/Largest Copy on PDP		
Statement of Identity (pt.) (Divided by) Largest Logo Copy (pt.)	Vertical PDP: N/A	Horizontal PDP: 36%



GSK Regulatory Spec Box Verified Date: 05.20.21		
<b>Drug Facts Info</b>		
Drug Facts	N/A	N/A
Drug Facts (continued)	N/A	N/A
Headings	Helvetica Bold Condensed Italic	4.75 pt
Subheadings	Helvetica Bold Condensed	4.75 pt
Body text	Helvetica Condensed / Bold Condensed	4.75 pt
Bullets	Helvetica Condensed	4 pt.
Bullets on same lines; end of statement separated from bulleted statement by two ems		No
Spacing of the hair lines from edge of box -i.e. Minimum of 2 spaces either side of Drug Fact Box		N/A
Tracking:	-3	Horizontal Scale: 83%
Leading:	4.85 pt.	Maximum Characters/Inch: > 39
Barlines:	N/A	Hairlines: N/A
<b>Primary Display Panel Info</b>		
Size of Net Wt/Contents (Smallest character height in inches)*	> 0.062 in.	
PDP dimensions (in square inches)	< 5 sq. in.	
Ratio of Statement of Identity to Logo/Largest Copy on PDP		
Statement of Identity (pt.) (Divided by) Largest Logo Copy (pt.)		
Vertical PDP:	N/A	Horizontal PDP: 36%



GSK Regulatory Spec Box		Verified Date: 05.21.21	
<b>Drug Facts Info</b>			
Drug Facts	N/A		N/A
Drug Facts (continued)	N/A		N/A
Headings	Helvetica Bold Condensed Italic		4 pt
Subheadings	Helvetica Bold Condensed		4 pt
Body text	Helvetica Condensed / Bold Condensed		4 pt
Bullets	Helvetica Condensed		3.5 pt.
Bullets on same lines; end of statement separated from bulleted statement by two ems			No
Spacing of the hair lines from edge of box -i.e. Minimum of 2 spaces either side of Drug Fact Box			N/A
Tracking:	0	Horizontal Scale:	83%
Leading:	4.1 pt.	Maximum Characters/Inch:	> 39
Barlines:	N/A	Hairlines:	N/A
<b>Primary Display Panel Info</b>			
Size of Net Wt/Contents (Smallest character height in inches)*			> 0.062 in.
PDP dimensions (in square inches)			< 5 sq. in.
Ratio of Statement of Identity to Logo/Largest Copy on PDP			
Statement of Identity (pt.) (Divided by) Largest Logo Copy (pt.)			
Vertical PDP: N/A		Horizontal PDP: 40%	



DO NOT USE IF INNER FOIL SEAL IMPRINTED WITH "SEALED FOR YOUR PROTECTION" IS BROKEN OR MISSING

# EXCEDRIN MIGRAINE

Acetaminophen, Aspirin (ASA) and Caffeine  
Pain Reliever/Pain Reliever Aid

125  
100  
CAPLETS\*  
\*CAPSULE-SHAPED TABLETS

NDC 0067-2040-06

READ ALL PRODUCT INFORMATION BEFORE USING. KEEP BOX FOR IMPORTANT INFORMATION.

Indications: Migraine, Pain relief  
 Active ingredients: Acetaminophen, Aspirin, Caffeine  
 Each caplet contains: Acetaminophen 325 mg, Aspirin 100 mg, Caffeine 65 mg  
 Contains 125 caplets in a child-resistant container.

**Use:** \* Treat migraine  
 \* Take with food or a glass of water.  
 \* Do not use more than 3 caplets in 24 hours.  
 \* Do not use for more than 3 days unless directed by a doctor.  
 \* Do not use if you are allergic to aspirin, salicylates, or caffeine.  
 \* Do not use if you are taking other medications containing aspirin, acetaminophen, or caffeine.  
 \* Do not use if you are pregnant or breastfeeding.  
 \* Do not use if you have a history of stomach ulcers, bleeding, or liver disease.  
 \* Do not use if you have a history of kidney disease.  
 \* Do not use if you have a history of heart disease.  
 \* Do not use if you have a history of high blood pressure.  
 \* Do not use if you have a history of diabetes.  
 \* Do not use if you have a history of asthma.  
 \* Do not use if you have a history of epilepsy.  
 \* Do not use if you have a history of alcoholism.  
 \* Do not use if you have a history of drug abuse.  
 \* Do not use if you have a history of mental illness.  
 \* Do not use if you have a history of surgery.  
 \* Do not use if you have a history of dental work.  
 \* Do not use if you have a history of blood thinning.  
 \* Do not use if you have a history of bleeding.  
 \* Do not use if you have a history of liver damage.  
 \* Do not use if you have a history of kidney damage.  
 \* Do not use if you have a history of heart failure.  
 \* Do not use if you have a history of high cholesterol.  
 \* Do not use if you have a history of diabetes.  
 \* Do not use if you have a history of asthma.  
 \* Do not use if you have a history of epilepsy.  
 \* Do not use if you have a history of alcoholism.  
 \* Do not use if you have a history of drug abuse.  
 \* Do not use if you have a history of mental illness.  
 \* Do not use if you have a history of surgery.  
 \* Do not use if you have a history of dental work.  
 \* Do not use if you have a history of blood thinning.  
 \* Do not use if you have a history of bleeding.  
 \* Do not use if you have a history of liver damage.  
 \* Do not use if you have a history of kidney damage.  
 \* Do not use if you have a history of heart failure.  
 \* Do not use if you have a history of high cholesterol.

00065821

GSK Regulatory Spec Box		Verified Date: 05.21.21
<b>Drug Facts Info</b>		
Drug Facts	N/A	N/A
Drug Facts (continued)	N/A	N/A
Headings	Helvetica Bold Condensed Italic	4.75 pt.
Subheadings	Helvetica Bold Condensed	4.75 pt.
Body text	Helvetica Condensed / Bold Condensed	4.75 pt.
Bullets	Helvetica Condensed	4 pt.
Bullets on same lines: end of statement separated from bulleted statement by two ems		No
Spacing of the hair lines from edge of box - i.e. Minimum of 2 spaces either side of Drug Fact Box		N/A
Tracking:	0	Horizontal Scale: 82%
Leading:	5.0 pt.	Maximum Characters/Inch: > 39
Barlines:	N/A	Hairlines: N/A
<b>Primary Display Panel Info</b>		
Size of Net Wt/Contents (Smallest character height in inches)*		> 0.125 in.
PDP dimensions (in square inches)		< 5 sq. in.
Ratio of Statement of Identity to Logo/Largest Copy on PDP Statement of Identity (pt.) (Divided by) Largest Logo Copy (pt.)		
	Vertical PDP: N/A	Horizontal PDP: 40%









GSK Regulatory Spec Box		Verified Date: 05.20.21
<b>Drug Facts Info</b>		
Drug Facts	N/A	N/A
Drug Facts (continued)	N/A	N/A
Headings	Helvetica Bold Condensed Italic	4.75 pt.
Subheadings	Helvetica Bold Condensed	4.75 pt.
Body text	Helvetica Condensed / Bold Condensed	4.75 pt.
Bullets	Helvetica Condensed	4 pt.
Bullets on same lines; end of statement separated from bulleted statement by two ems		No
Spacing of the hair lines from edge of box -i.e. Minimum of 2 spaces either side of Drug Fact Box		N/A
Tracking:	0	Horizontal Scale: 82%
Leading:	5.0 pt.	Maximum Characters/Inch: > 39
Barlines:	N/A	Hairlines: N/A
<b>Primary Display Panel Info</b>		
Size of Net Wt/Contents (Smallest character height in inches)*		> 0.125 in.
PDP dimensions (in square inches)		< 5 sq. in.
Ratio of Statement of Identity to Logo/Largest Copy on PDP		
Statement of Identity (pt.) (Divided by) Largest Logo Copy (pt.)		
Vertical PDP:	N/A	Horizontal PDP: 36%





GSK Regulatory Spec Box Verified Date: 05.21.21

**Drug Facts Info**

<b>Drug Facts</b>	Helvetica Bold Condensed Italic	9 pt.
<b>Drug Facts (continued)</b>	Helvetica Bold Condensed Italic / Condensed	8 pt.
<b>Headings</b>	Helvetica Bold Condensed Italic	8 pt.
<b>Subheadings</b>	Helvetica Bold Condensed	6 pt.
<b>Body text</b>	Helvetica Condensed / Bold Condensed	6 pt.
<b>Bullets</b>	Helvetica Condensed	5 pt.
Bullets on same lines: end of statement separated from bulleted statement by two ems		Yes
Spacing of the hair lines from edge of box -i.e. Minimum of 2 spaces either side of Drug Fact Box		No
<b>Tracking:</b>	-7	Horizontal Scale: 81%
<b>Leading:</b>	6.5 pt.	Maximum Characters/Inch: < 39
<b>Barlines:</b>	1.5 pt.	Hairlines: 0.5 pt.

**Primary Display Panel Info**

Size of Net Wt/Contents (Smallest character height in inches)*	> 0.125 in.
PDP dimensions (in square inches)	5-25 sq. in.
Ratio of Statement of Identity to Logo/Largest Copy on PDP Statement of Identity (pt.) (Divided by) Largest Logo Copy (pt.)	Vertical PDP: N/A Horizontal PDP: 41%



GSK Regulatory Spec Box		Verified Date: 05.19.21
<b>Drug Facts Info</b>		
Drug Facts	Helvetica Bold Condensed Italic	9 pt.
Drug Facts (continued)	Helvetica Bold Condensed Italic / Condensed	8 pt.
Headings	Helvetica Bold Condensed Italic	8 pt.
Subheadings	Helvetica Bold Condensed	6 pt.
Body text	Helvetica Condensed / Bold Condensed	6 pt.
Bullets	Helvetica Condensed	5 pt.
Bullets on same lines: end of statement separated from bulleted statement by two ems		Yes
Spacing of the hair lines from edge of box -i.e. Minimum of 2 spaces either side of Drug Fact Box		No
Tracking:	-9	Horizontal Scale: 83%
Leading:	6.5 pt.	Maximum Characters/Inch: < 39
Barlines:	1.5 pt.	Hairlines: 0.5 pt.
<b>Primary Display Panel Info</b>		
Size of Net Wt/Contents (Smallest character height in inches)*	< 0.125 in.	
PDP dimensions (in square inches)	5-25 sq. in.	
Ratio of Statement of Identity to Logo/Largest Copy on PDP Statement of Identity (pt.) (Divided by) Largest Logo Copy (pt.)	Vertical PDP: N/A      Horizontal PDP: 29%	



GSK Regulatory Spec Box		Verified Date: 05.13.21
<b>Drug Facts Info</b>		
<b>Drug Facts</b>	Helvetica Bold Condensed Italic	9 pt.
<b>Drug Facts (continued)</b>	Helvetica Bold Condensed Italic / Condensed	8 pt.
Headings	Helvetica Bold Condensed Italic	8 pt.
Subheadings	Helvetica Bold Condensed	6 pt.
Body text	Helvetica Condensed / Bold Condensed	6 pt.
Bullets	Helvetica Condensed	5 pt.
Bullets on same lines: end of statement separated from bulleted statement by two ems		Yes
Spacing of the hair lines from edge of box-i.e. Minimum of 2 spaces either side of Drug Fact Box		No
Tracking:	0	Horizontal Scale: 81%
Leading:	6.5 pt.	Maximum Characters/Inch: < 39
Barlines:	1.5 pt.	Hairlines: 0.5 pt.
<b>Primary Display Panel Info</b>		
Size of Net Wt/Contents (Smallest character height in inches)*		> 0.125 in.
PDP dimensions (in square inches)		5-25 sq. in.
Ratio of Statement of Identity to Logo/Largest Copy on PDP		
Statement of Identity (pt.) (Divided by) Largest Logo Copy (pt.)		
Vertical PDP: N/A		Horizontal PDP: 31%



GSK Regulatory Spec Box		Verified Date: 05.19.21
<b>Drug Facts Info</b>		
Drug Facts	Helvetica Bold Condensed Italic	9 pt.
Drug Facts (continued)	Helvetica Bold Condensed Italic / Condensed	8 pt.
Headings	Helvetica Bold Condensed Italic	8 pt.
Subheadings	Helvetica Bold Condensed	6 pt.
Body text	Helvetica Condensed / Bold Condensed	6 pt.
Bullets	Helvetica Condensed	5 pt.
Bullets on same lines; end of statement separated from bulleted statement by two ams		Yes
Spacing of the hair lines from edge of box -i.e. Minimum of 2 spaces either side of Drug Fact Box		No
Tracking:	0 Horizontal Scale:	81%
Leading:	6.5 pt. Maximum Characters/Inch:	≤ 39
Barlines:	1.5 pt. Hairlines:	0.5 pt.
<b>Primary Display Panel Info</b>		
Size of Net Wt./Contents (Smallest character height in inches)*		> 0.125 in.
PDP dimensions (in square inches)		5-25 sq. in.
Ratio of Statement of Identity to Logo/Largest Copy on PDP		
Statement of Identity (p.i.) (Divided by) Largest Logo Copy (pt.)		
Vertical PDP: N/A	Horizontal PDP:	34%



**Drug Facts**

**Active ingredients (in each caplet)**

Acetaminophen 250 mg. Pain reliever

Aspirin 81 mg. Pain reliever

Caffeine 65 mg. Pain reliever and vasoconstrictor drug

**Use**

• treats migraine

**Warnings**

May be especially harmful to children and teenagers who have or are recovering from chicken pox or flu-like symptoms. Do not use this product when using this product if changes in behavior with nausea and vomiting occur, consult a doctor because these symptoms could be an early sign of Reye's syndrome, a rare but serious illness.

Always alert. Acetaminophen may cause severe skin reactions. Symptoms may include: • skin rash/itching • blisters • sores • a skin reaction occurs, stop use and seek medical help right away

Always alert. Aspirin may cause a severe allergic reaction which may include: • hives • facial swelling • wheezing (breathing) • shock

**Other warnings:** This product contains acetaminophen. Severe liver damage may occur if you take: • more than 7 capsules in 24 hours, which is the maximum daily amount • with other drugs containing acetaminophen

• 1 or more alcoholic drinks every day while using this product

**Stomach bleeding warning:** This product contains an NSAID, which may cause severe stomach bleeding. The chance is higher if you: • are age 65 or older • have had stomach ulcers or bleeding problems • take a blood thinning (anticoagulant) or steroid drug • take other drugs containing aspirin or naproxen (NSAID) (aspirin, ibuprofen, naproxen, or others) • have 2 or more alcoholic drinks every day while using this product • take more or for a longer time than directed

**Medication overdose headache warning:** Headaches may worsen if this product is used for 10 or more days per month.

**Caffeine warning:** The recommended dose of this product contains about as much caffeine as a cup of coffee. Limit the use of caffeine-containing medications, foods, or beverages while taking this product because too much caffeine may cause nervousness, irritability, sleeplessness, and, occasionally, rapid heart beat.

**Do not use**

- if you have ever had an allergic reaction to acetaminophen, aspirin or any other pain reliever/fever reducer
- with any other drug containing acetaminophen (prescription or

**Drug Facts (continued)**

nonprescription). If you are not sure whether a drug contains acetaminophen, ask a doctor or pharmacist.

**Ask a doctor before use if**

- you have never had migraine diagnosed by a health professional
- you have a headache that is different from your usual migraine
- you have the worst headache of your life
- you have ever had stiff neck
- you have headaches beginning after or caused by head injury, surgery, coughing or sneezing
- you experienced your first headache after the age of 50
- you have daily medication
- you have a migraine so severe as to require bed rest
- you have liver disease • stomach bleeding warning applies to you
- you have a history of stomach problems, such as heartburn
- you have high blood pressure, heart disease, liver, circulatory, or kidney disease • you are taking a diuretic • you have asthma
- you have problems or serious side effects from taking pain relievers, or fever reducers • you have vomiting with your migraine headache

**Ask a doctor or pharmacist before use if you are**

- taking a prescription drug for • diabetes • gout • asthma
- under a doctor's care for any serious condition
- taking any other drug
- taking any other product that contains aspirin, acetaminophen, or any other pain reliever/fever reducer

**Stop use and ask a doctor if**

- an allergic reaction occurs. Seek medical help right away.
- you experience any of the following signs of stomach bleeding: • bad taste • vomit blood • vomit bloody or black stools
- have stomach pain that does not get better
- your migraine is not relieved or worsens after that dose
- new or unexpected symptoms occur
- tingles in the ear or loss of hearing occurs

**If pregnant or breast-feeding, ask a health professional before use.** It is especially important not to use aspirin at 20 weeks or later in pregnancy unless explicitly directed to do so by a doctor because it may cause problems in the unborn child or complications during delivery. Keep out of reach of children.

**In case of overdose, get medical help or contact a Poison Control Center right away. Basic medical attention is critical for adults as well as for children, even if you do not notice any signs or symptoms.**

**Directions** • Do not use more than directed • Adults: Take 2 caplets with a glass of water

**Drug Facts (continued)**

**Other information**

• Do not crush, chew, or break caplets. Swallow whole.

• Do not use if the seal is broken.

• Do not use if the caplets are discolored or if the caplets are broken.

**Other information**

• Do not use if the seal is broken.

• Do not use if the caplets are discolored or if the caplets are broken.

**Other information**

• Do not use if the seal is broken.

• Do not use if the caplets are discolored or if the caplets are broken.

**EXCEDRIN**

**MIGRAINE**

**Acetaminophen, Aspirin (NSAID) and Caffeine**

**Pain Reliever/Pain Reliever Aid**

**125/81/65**

**25% MORE FREE**

**EXCEDRIN**

**MIGRAINE**

**Acetaminophen, Aspirin (NSAID) and Caffeine**

**Pain Reliever/Pain Reliever Aid**

**125/81/65**

**25% MORE FREE**



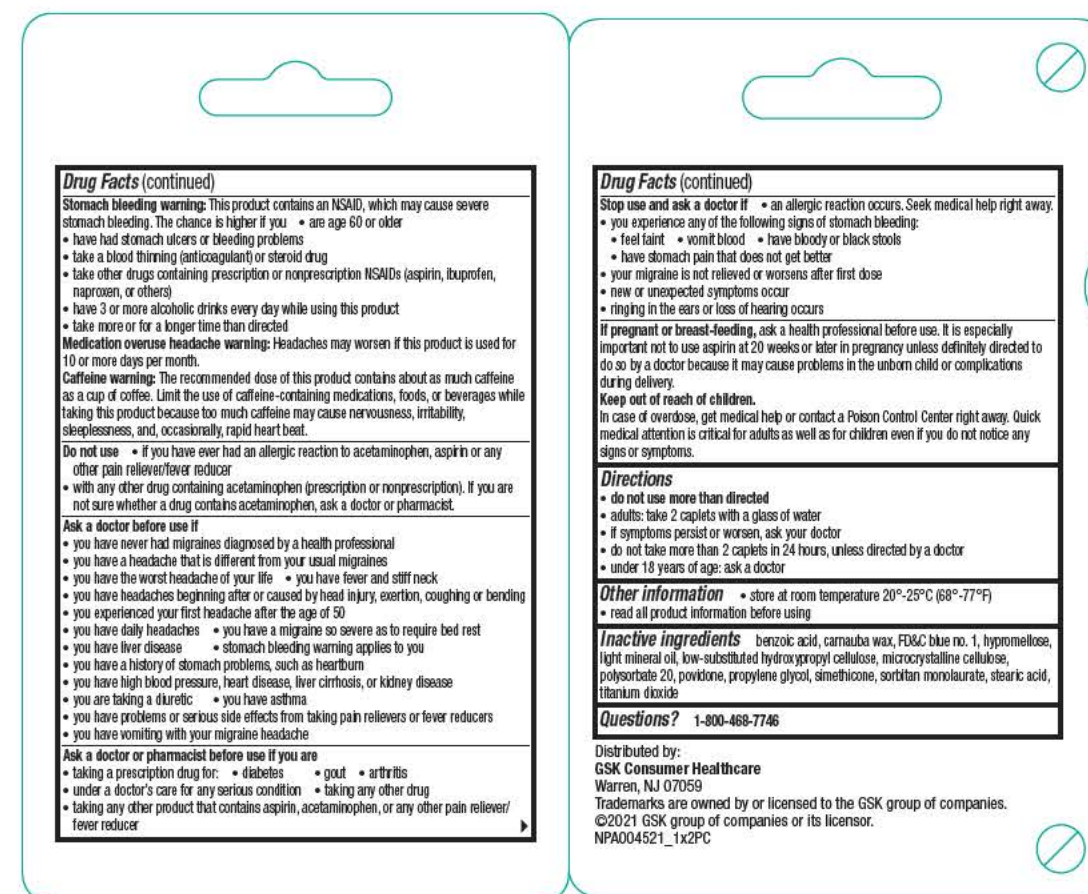
GSK Regulatory Spec Box		Verified Date: 05.21.21
<b>Drug Facts Info</b>		
Drug Facts	Helvetica Bold Condensed Italic	9 pt.
Drug Facts (continued)	Helvetica Bold Condensed Italic / Condensed	8 pt.
Headings	Helvetica Bold Condensed Italic	8 pt.
Subheadings	Helvetica Bold Condensed	6 pt.
Body text	Helvetica Condensed / Bold Condensed	6 pt.
Bullets	Helvetica Condensed	5 pt.
Bullets on same line; end of statement separated from bulleted statement by two ems		Yes
Spacing of the hair lines from edge of box - i.e. Minimum of 2 spaces either side of Drug Fact Box		No
Tracking:	0	Horizontal Scale: 81%
Leading:	6.5 pt.	Maximum Characters/Inch: < 39
Barlines:	1.5 pt.	Hairlines: 0.5 pt.
<b>Primary Display Panel Info</b>		
Size of Net Wt./Contents (Smallest character height in inches)		> 0.125 in.
PDP dimensions (in square inches)		5-25 sq. in.
Ratio of Statement of Identity to Logo/Largest Copy on PDP		
Statement of Identity (pt.) (Divided by Largest Logo Copy (pt.))		
Vertical PDP: N/A		Horizontal PDP: 36%



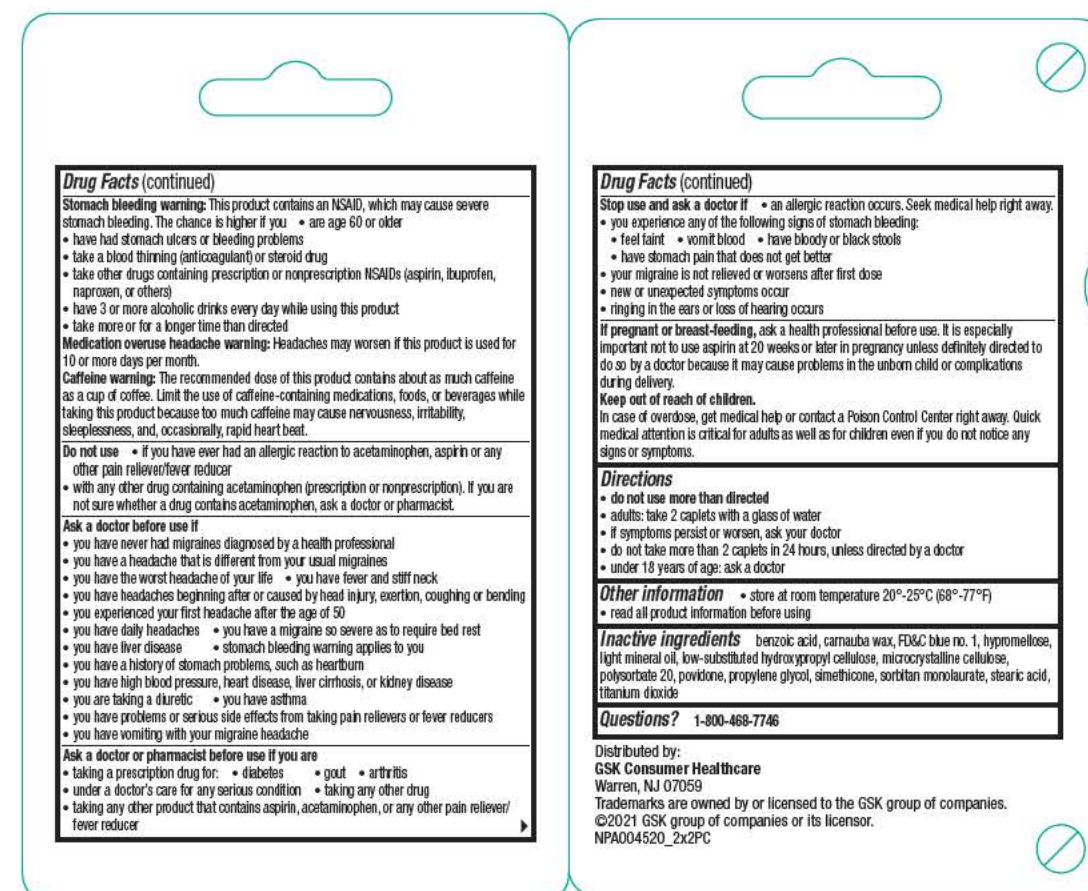
GSK Regulatory Spec Box		Verified Date: 05.21.21
<b>Drug Facts Info</b>		
Drug Facts	Helvetica Bold Condensed Italic	9 pt.
Drug Facts (continued)	Helvetica Bold Condensed Italic / Condensed	8 pt.
Headings	Helvetica Bold Condensed Italic	8 pt.
Subheadings	Helvetica Bold Condensed	6 pt.
Body text	Helvetica Condensed / Bold Condensed	6 pt.
Bullets	Helvetica Condensed	5 pt.
Bullets on same line; end of statement separated from bulleted statement by two ems		Yes
Spacing of the hair line from edge of box - i.e. Minimum of 2 spaces either side of Drug Fact Box		No
Tracking:	0	Horizontal Scale: 81%
Leading:	6.5 pt.	Maximum Characters/Inch: > 59
Baseline:	1.5 pt.	Hairlines: 0.5 pt.
<b>Primary Display Panel Info</b>		
Size of Net Wt./Contents (Smallest character height in inches)		> 0.125 in.
PDP dimensions (in square inches)		5-25 sq. in.
Ratio of Statement of Identity to Logo/Largest Copy on PDP		
Statement of Identity pt. (Divided by Largest Logo Copy pt.)		
Vertical PDP:	41%	Horizontal PDP: 37%



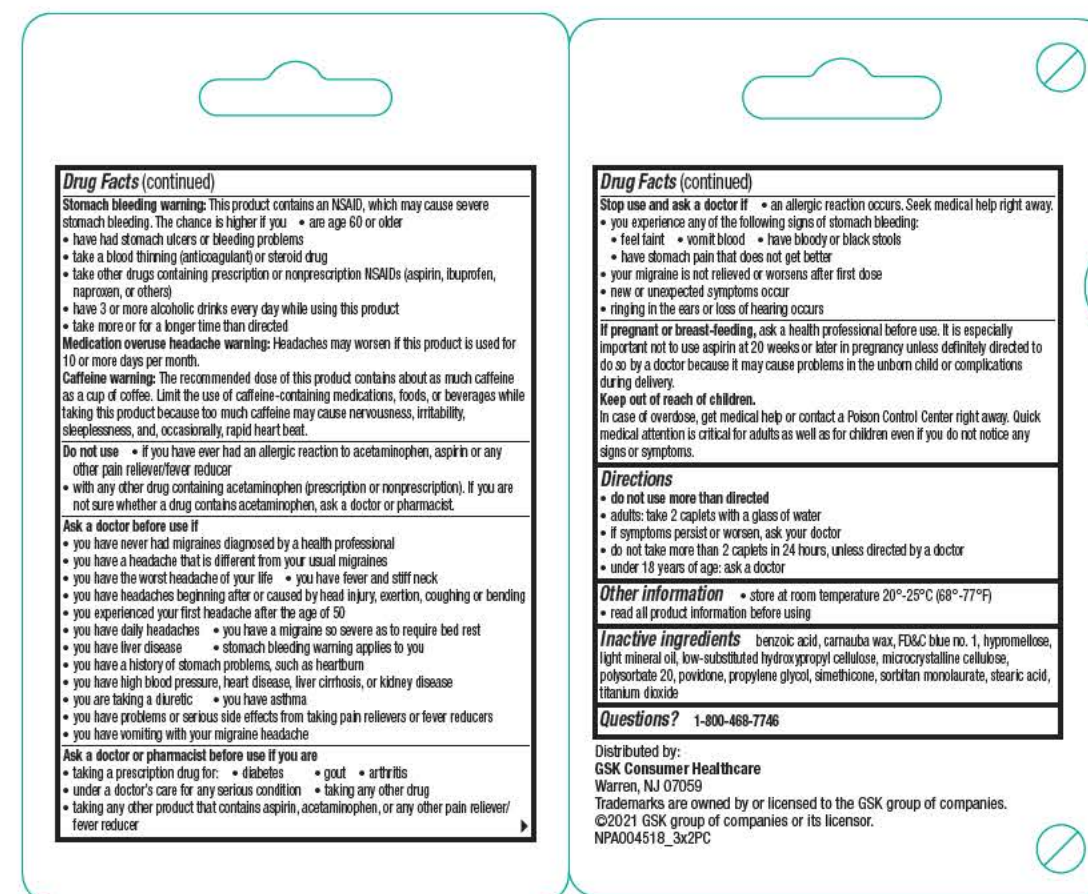




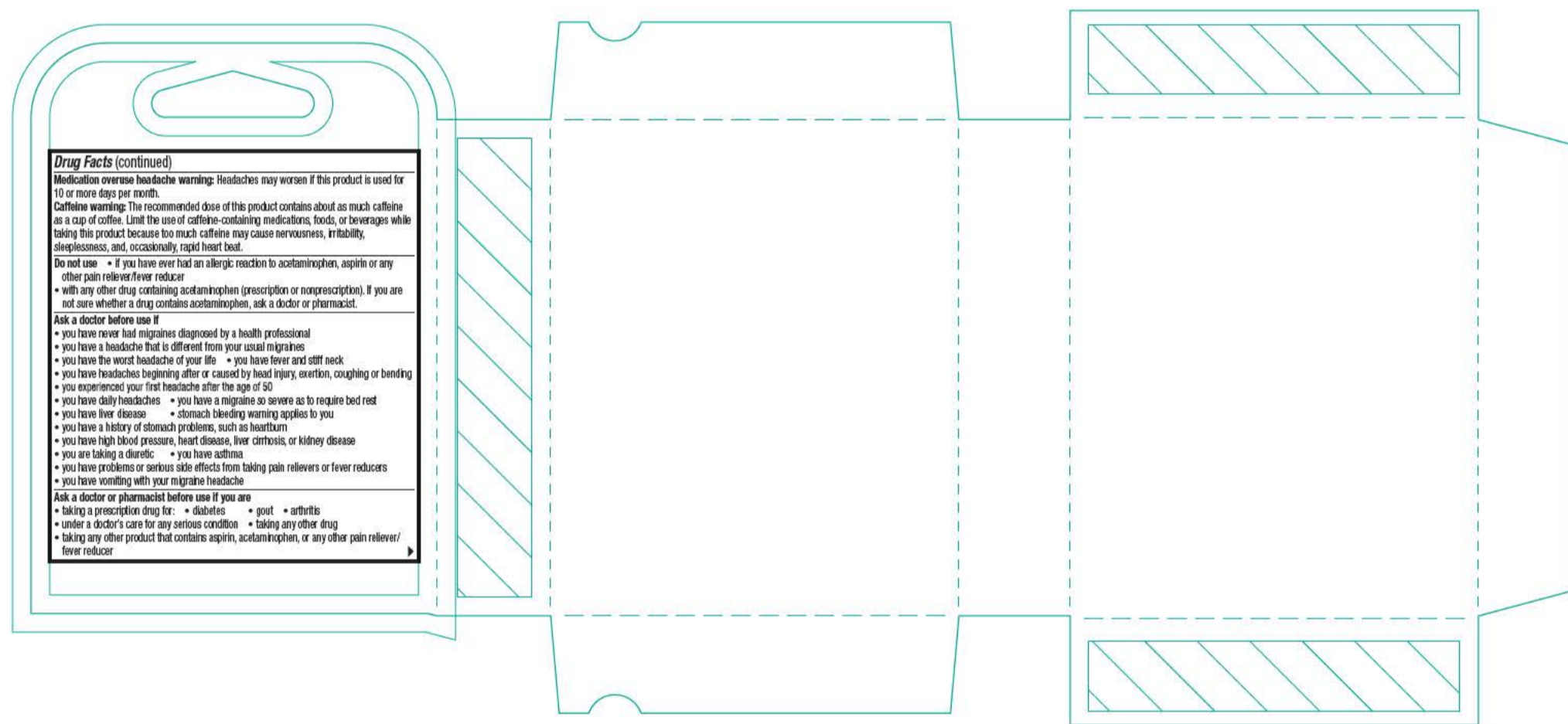
GSK Regulatory Spec Box		Verified Date: 06.29.21
<b>Drug Facts Info</b>		
Drug Facts	Helvetica LT Std Neue Bold Cond Oblique	9 pt.
Drug Facts (continued)	Helvetica LT Std Neue Bold Cond Oblique / Med.	8 pt.
Headings	Helvetica LT Std Neue Bold Cond Oblique	8 pt.
Subheadings	Helvetica LT Std Neue Bold Cond	6 pt.
Body text	Helvetica LT Std Neue Bold Cond / Med. Cond	6 pt.
Bullets	Helvetica LT Std Neue Roman	5 pt.
Bullets on same lines: end of statement separated from bulleted statement by two ems		Yes
Spacing of the hair lines from edge of box-La, Minimum of 2 spaces either side of Drug Fact Box		Yes
Tracking:	-10 to 0	Horizontal Scale: 83% - 100%
Leading:	6.5 pt.	Maximum Characters/Inch: < 39
Baselines:	1.5 pt.	Hairlines: 0.5 pt.
<b>Primary Display Panel Info</b>		
Size of Net Wt/Contents (Smallest character height in inches)*		> 0.125 in.
PDP dimensions (in square inches)		5-25 sq. in.
Ratio of Statement of Identity to Logo/Largest Copy on PDP		
Statement of Identity (pt.) (Divided by) Largest Logo Copy (pt.)	Vertical PDP: 37%	Horizontal PDP: N/A



GSK Regulatory Spec Box		Verified Date: 06.29.21
<b>Drug Facts Info</b>		
Drug Facts	Helvetica LT Std Neue Bold Cond Oblique	9 pt.
Drug Facts (continued)	Helvetica LT Std Neue Bold Cond Oblique / Med.	8 pt.
Headings	Helvetica LT Std Neue Bold Cond Oblique	8 pt.
Subheadings	Helvetica LT Std Neue Bold Cond	6 pt.
Body text	Helvetica LT Std Neue Bold Cond / Med. Cond	6 pt.
Bullets	Helvetica LT Std Neue Roman	5 pt.
Bullets on same lines: end of statement separated from bulleted statement by two ems		Yes
Spacing of the hair lines from edge of box-La, Minimum of 2 spaces either side of Drug Fact Box		Yes
Tracking:	-10 to 0	Horizontal Scale: 83% - 100%
Leading:	6.5 pt.	Maximum Characters/Inch: < 39
Baselines:	1.5 pt.	Hairlines: 0.5 pt.
<b>Primary Display Panel Info</b>		
Size of Net Wt/Contents (Smallest character height in inches)*		> 0.125 in.
PDP dimensions (in square inches)		5-25 sq. in.
Ratio of Statement of Identity to Logo/Largest Copy on PDP		
Statement of Identity (pt.) (Divided by) Largest Logo Copy (pt.)	Vertical PDP: 37%	Horizontal PDP: N/A



GSK Regulatory Spec Box		Verified Date: 06.30.21
<b>Drug Facts Info</b>		
Drug Facts	Helvetica LT Std Neue Bold Cond Oblique	9 pt.
Drug Facts (continued)	Helvetica LT Std Neue Bold Cond Oblique / Med.	8 pt.
Headings	Helvetica LT Std Neue Bold Cond Oblique	8 pt.
Subheadings	Helvetica LT Std Neue Bold Cond	6 pt.
Body text	Helvetica LT Std Neue Bold Cond / Med. Cond	6 pt.
Bullets	Helvetica LT Std Neue Roman	5 pt.
Bullets on same lines: end of statement separated from bulleted statement by two ems		Yes
Spacing of the hair lines from edge of box-La, Minimum of 2 spaces either side of Drug Fact Box		Yes
Tracking:	-10 to 0	Horizontal Scale: 83% - 100%
Leading:	6.5 pt.	Maximum Characters/Inch: < 39
Baselines:	1.5 pt.	Hairlines: 0.5 pt.
<b>Primary Display Panel Info</b>		
Size of Net Wt/Contents (Smallest character height in inches)*		> 0.125 in.
PDP dimensions (in square inches)		5-25 sq. in.
Ratio of Statement of Identity to Logo/Largest Copy on PDP		
Statement of Identity (pt.) (Divided by) Largest Logo Copy (pt.)	Vertical PDP: 37%	Horizontal PDP: N/A



GSK Regulatory Spec Box		Verified Date: 06.30.21
<b>Drug Facts Info</b>		
<b>Drug Facts</b>	Helvetica Bold Condensed Italic	9 pt.
<b>Drug Facts (continued)</b>	Helvetica Bold Condensed Italic / Condensed	8 pt.
Headings	Helvetica Bold Condensed Italic	8 pt.
Subheadings	Helvetica Bold Condensed	6 pt.
Body text	Helvetica Condensed / Bold Condensed	6 pt.
Bullets	Helvetica Condensed	5 pt.
Bullets on same lines: end of statement separated from bulleted statement by two ems		
Spacing of the hair lines from edge of box - i.e., Minimum of 2 spaces either side of Drug Fact Box		
Tracking:	0	Horizontal Scale: 83%
Leading:	6.5 pt.	Maximum Characters/Inch: < 39
Barlines:	1.5 pt.	Hairlines: 0.5 pt.
<b>Primary Display Panel Info</b>		
Size of Net Wt/Contents (Smallest character height in inches)*		
		> 0.125 in.
PDP dimensions (in square inches)		
		5-25 sq. in.
Ratio of Statement of Identity to Logo/Largest Copy on PDP		
Statement of Identity (pt.) (Divided by) Largest Logo Copy (pt.)		
Vertical PDP: N/A		Horizontal PDP: 34%

(30) 2ct PACKETS  
60 CAPLETS TOTAL  
\*Capsule-Shaped Tablets

**Aspirin (NSAID) and Caffeine  
Pain Reliever/Pain Reliever Aid**

**EXCEDRIN**

TAMPER EVIDENT PACKET. DO NOT USE IF SEAL IS BROKEN.

Drug Facts	Purposes
Acetaminophen 250 mg	Pain reliever
Aspirin 250 mg (NSAID)	Pain reliever
Caffeine 65 mg	Pain reliever aid
Nonsteroidal anti-inflammatory drug	

**Use**

- treats migraine

**Warnings**

Reye's syndrome: Children and teenagers who have or are recovering from chicken pox or flu-like symptoms should not use this product. When using this product, if changes in behavior with nausea and vomiting occur, consult a doctor because these symptoms could be an early sign of Reye's syndrome, a rare but serious illness.

**Allergy alert:** Acetaminophen may cause severe skin reactions. Symptoms may include:

- skin redness
- hives
- rash

If a skin reaction occurs, stop use and seek medical help right away.

**Allergy alert:** Aspirin may cause a severe allergic reaction which may include:

- hives
- facial swelling
- asthma (wheezing)
- shock

**Liver warning:** This product contains acetaminophen. Severe liver damage may occur if you take:

- more than 2 caplets in 24 hours, which is the maximum daily amount
- with other drugs containing acetaminophen

**Stomach bleeding warning:** This product contains an NSAID, which may cause severe stomach bleeding. The chance is higher if you:

- are age 60 or older
- have had stomach ulcers or bleeding problems
- take a blood thinning (anticoagulant) or steroid drug
- take other drugs containing prescription or nonprescription NSAIDs (aspirin, ibuprofen, naproxen, or others)
- have 2 or more alcoholic drinks every day while using this product
- take more or for a longer time than directed

**Medication overdose headache warning:** Headaches may worsen if this product is used for 10 or more days per month.

**Caffeine warning:** The recommended dose of this product contains about as much caffeine as a cup of coffee. Limit the use of caffeine-containing medications, foods, or beverages while taking this product because too much caffeine may cause nervousness, irritability, sleeplessness, and, occasionally, rapid heart beat.

**Do not use**

- if you have ever had an allergic reaction to acetaminophen, aspirin or any other pain reliever/fever reducer
- with any other drug containing acetaminophen (prescription or nonprescription), if you are not sure whether a drug contains acetaminophen, ask a doctor or pharmacist.

**Ask a doctor before use if**

- you have never had migraines diagnosed by a health professional
- you have a headache that is different from your usual migraines
- you have the worst headache of your life
- you have fever and stiff neck
- you have headaches beginning after or caused by head injury, exertion, coughing or heaving

Distributed by:  
GSK Consumer Healthcare  
Warren, NJ 07059  
©2021 GSK group of companies or its licensors.  
Trademarks are owned by or licensed  
to the GSK group of companies. NPA004517

LOT/EXP  
Date Stamp Area  
No Varnish

**Drug Facts (continued)**

- you experienced your first headache after the age of 50
- you have daily headaches
- you have a migraine so severe as to require bed rest
- you have liver disease
- stomach bleeding warning applies to you
- you have a history of stomach problems, such as heartburn
- you have high blood pressure, heart disease, liver cirrhosis, or kidney disease
- you are taking a diuretic
- you have asthma
- you have problems or serious side effects from taking pain relievers or fever reducers
- you have vomiting with your migraine headache

**Ask a doctor or pharmacist before use if you are**

- taking a prescription drug for: • diabetes • gout • arthritis
- under a doctor's care for any serious condition
- taking any other drug
- taking any other product that contains aspirin, acetaminophen, or any other pain reliever/fever reducer

**Stop use and ask a doctor if**

- an allergic reaction occurs. Seek medical help right away.
- you experience any of the following signs of stomach bleeding:
  - feel faint
  - vomit blood
  - have bloody or black stools
  - have stomach pain that does not get better
- your migraine is not relieved or worsens after first dose
- new or unexpected symptoms occur
- ringing in the ears or loss of hearing occurs

**If pregnant or breast-feeding, ask a health professional before use. It is especially important not to use aspirin at 20 weeks or later in pregnancy unless definitely directed to do so by a doctor because it may cause problems in the unborn child or complications during delivery.**

**Keep out of reach of children.**

In case of overdose, get medical help or contact a Poison Control Center right away. Quick medical attention is critical for adults as well as for children even if you do not notice any signs or symptoms.

**Directions**

- do not use more than directed
- adults: take 2 caplets with a glass of water
- if symptoms persist or worsen, ask your doctor
- do not take more than 2 caplets in 24 hours, unless directed by a doctor
- under 15 years of age: ask a doctor

**Other information**

- store at room temperature 20°-25°C (68°-77°F)
- read all product information before using

**Inactive ingredients:** benzoic acid, carnauba wax, FD&C Blue No. 1, hypromellose, light yellow 6, low-substituted hydroxypropyl cellulose, microcrystalline cellulose, polyvinylpyrrolidone, polyethylene glycol, simethicone, sorbitan monolaurate, stearic acid, titanium dioxide

**Questions?** 1-800-488-7746

0000.00.00      SERV-0000-00-00

**EXCEDRIN**

**MIGRAINE**

**Acetaminophen,  
Aspirin (NSAID) and Caffeine  
Pain Reliever/Pain Reliever Aid**

60 CAPLETS\* TOTAL  
\*Capsule-Shaped Tablets  
(30) 2ct PACKETS

0 94187 08030 6

**EXCEDRIN**

**MIGRAINE**

**Acetaminophen,  
Aspirin (NSAID) and Caffeine  
Pain Reliever/Pain Reliever Aid**

60 CAPLETS\* TOTAL  
\*Capsule-Shaped Tablets  
(30) 2ct PACKETS

0 94187 08030 6

GSK Regulatory Spec Box		Verified Date: 07.02.21
<b>Drug Facts Info</b>		
Drug Facts	Helvetica Bold Condensed Italic	11 pt.
Drug Facts (continued)	Helvetica Bold Condensed Italic / Condensed	8 pt.
Headings	Helvetica Bold Condensed Italic	8 pt.
Subheadings	Helvetica Bold Condensed	6 pt.
Body text	Helvetica Condensed / Bold Condensed	6 pt.
Bullets	Helvetica Condensed	5 pt.
Bullets on same line: end of statement separated from bulleted statement by two ems		Yes
Spacing of the hair lines from edge of box-us. Minimum of 2 spaces either side of Drug Fact Box		Yes
Tracking:	0	Horizontal Scale: 100%
Leading:	6.5 pt.	Maximum Characters/Inch: < 39
Barlines:	1.5 pt.	Halflines: 0.5 pt.
<b>Primary Display Panel Info</b>		
Size of Net Wt/Contents (Smallest character height in inches)†		> 0.125 in.
PDP dimensions (in square inches)		5-25 sq. in.
Ratio of Statement of Identity to Logo/Largest Copy on PDP		
Statement of Identity (pt.) (Divided by) Largest Logo Copy (pt.)		Vertical PDP: 43%
		Horizontal PDP: 43%



**TAMPER EVIDENT PACKET. DO NOT USE IF SEAL IS BROKEN.**

Drug Facts	Purposes
Acetaminophen 250 mg	Pain reliever
Aspirin 250 mg (NSAID)	Pain reliever
Caffeine 65 mg	Pain reliever aid
Nonsteroidal anti-inflammatory drug	

**Use**  
• treats migraine

**Warnings**  
Reye's syndrome: Children and teenagers who have or are recovering from chicken pox or flu-like symptoms should not use this product. When using this product, if changes in behavior with nausea and vomiting occur, consult a doctor because these symptoms could be an early sign of Reye's syndrome, a rare but serious illness.  
Allergy alert: Acetaminophen may cause severe skin reactions. Symptoms may include:  
• skin redness • hives • rash  
If a skin reaction occurs, stop use and seek medical help right away.  
Allergy alert: Aspirin may cause a severe allergic reaction which may include:  
• hives • facial swelling • asthma (wheezing) • shock  
Liver warning: This product contains acetaminophen. Severe liver damage may occur if you take:  
• more than 2 caplets in 24 hours, which is the maximum daily amount  
• with other drugs containing acetaminophen  
• 2 or more alcoholic drinks every day while using this product  
Stomach bleeding warning: This product contains an NSAID, which may cause severe stomach bleeding. The chance is higher if you:  
• are age 60 or older  
• have had stomach ulcers or bleeding problems  
• take a blood thinning (anticoagulant) or steroid drug  
• take other drugs containing prescription or nonprescription NSAIDs (aspirin, ibuprofen, naproxen, or others)  
• have 2 or more alcoholic drinks every day while using this product  
• take more or for a longer time than directed  
Medication overdose headache warning: Headaches may worsen if this product is used for 10 or more days per month.  
Caffeine warning: The recommended dose of this product contains about as much caffeine as a cup of coffee. Limit the use of caffeine-containing medications, foods, or beverages while taking this product because too much caffeine may cause nervousness, irritability, sleeplessness, and, occasionally, rapid heart beat.

**Do not use**  
• if you have ever had an allergic reaction to acetaminophen, aspirin or any other pain reliever/fever reducer  
• with any other drug containing acetaminophen (prescription or nonprescription). If you are not sure whether a drug contains acetaminophen, ask a doctor or pharmacist.  
**Ask a doctor before use if**  
• you have never had migraines diagnosed by a health professional  
• you have a headache that is different from your usual migraines  
• you have the worst headache of your life  
• you have fever and stiff neck  
• you have headaches beginning after or caused by head injury, exertion, coughing or heaving

Distributed by:  
GSK Consumer Healthcare  
Warren, NJ 07059  
©2021 GSK group of companies or its licensors.  
Trademarks are owned by or licensed  
to the GSK group of companies. NPA004516

LOT/EXP  
Date Stamp Area  
No Varnish

**Drug Facts (continued)**

- you experienced your first headache after the age of 50
- you have daily headaches
- you have a migraine so severe as to require bed rest
- you have liver disease
- stomach bleeding warning applies to you
- you have a history of stomach problems, such as heartburn
- you have high blood pressure, heart disease, liver cirrhosis, or kidney disease
- you are taking a diuretic
- you have asthma
- you have problems or serious side effects from taking pain relievers or fever reducers
- you have vomiting with your migraine headache

Ask a doctor or pharmacist before use if you are:  
• taking a prescription drug for • diabetes • gout • arthritis  
• under a doctor's care for any serious condition  
• taking any other drug  
• taking any other product that contains aspirin, acetaminophen, or any other pain reliever/fever reducer

**Stop use and ask a doctor if**  
• an allergic reaction occurs. Seek medical help right away.  
• you experience any of the following signs of stomach bleeding:  
• feel faint • vomit blood • have bloody or black stools  
• have stomach pain that does not get better  
• your migraine is not relieved or worsens after first dose  
• new or unexpected symptoms occur  
• ringing in the ears or loss of hearing occurs

If pregnant or breast-feeding, ask a health professional before use. It is especially important not to use aspirin at 20 weeks or later in pregnancy unless definitely directed to do so by a doctor because it may cause problems in the unborn child or complications during delivery.  
Keep out of reach of children.  
In case of overdose, get medical help or contact a Poison Control Center right away. Quick medical attention is critical for adults as well as for children even if you do not notice any signs or symptoms.

**Directions**  
• do not use more than directed  
• adults: take 2 caplets with a glass of water  
• if symptoms persist or worsen, ask your doctor  
• do not take more than 2 caplets in 24 hours, unless directed by a doctor  
• under 15 years of age, ask a doctor

**Other information**  
• store at room temperature 20°-25°C (68°-77°F)  
• read all product information before using

**Inactive ingredients** benzoic acid, carnauba wax, FD&C blue no. 1, hypromellose, light yellow 6, low-substituted hydroxypropyl cellulose, microcrystalline cellulose, poly sorbate 20, polyethylene glycol, simethicone, sorbitan monolaurate, stearic acid, titanium dioxide

**Questions?** 1-800-488-7746

0000.00.00 SERV-0000-00-00

**EXCEDRIN**

**MIGRAINE**  
Acetaminophen,  
Aspirin (NSAID) and Caffeine  
Pain Reliever/Pain Reliever Aid

80 CAPLETS\* TOTAL  
\*Capsule-Shaped Tablets  
(40) 2ct. PACKETS

0 94187 08030 6

**EXCEDRIN**

**MIGRAINE**  
Acetaminophen,  
Aspirin (NSAID) and Caffeine  
Pain Reliever/Pain Reliever Aid

80 CAPLETS\* TOTAL  
\*Capsule-Shaped Tablets  
(40) 2ct. PACKETS

0 94187 08030 6

GSK Regulatory Spec Box		Verified Date: 07.02.21
<b>Drug Facts Info</b>		
Drug Facts	Helvetica Bold Condensed Italic	11 pt.
Drug Facts (continued)	Helvetica Bold Condensed Italic / Condensed	8 pt.
Headings	Helvetica Bold Condensed Italic	8 pt.
Subheadings	Helvetica Bold Condensed	6 pt.
Body text	Helvetica Condensed / Bold Condensed	6 pt.
Bullets	Helvetica Condensed	5 pt.
Bullets on same line: end of statement separated from bulleted statement by two ems		Yes
Spacing of the hair lines from edge of box-us. Minimum of 2 spaces either side of Drug Fact Box		Yes
Tracking:	0	Horizontal Scale: 100%
Leading:	6.5 pt.	Maximum Characters/Inch: < 39
Barlines:	1.5 pt.	Halflines: 0.5 pt.
<b>Primary Display Panel Info</b>		
Size of Net Wt/Contents (Smallest character height in inches)†		> 0.125 in.
PDP dimensions (in square inches)		5-25 sq. in.
Ratio of Statement of Identity to Logo/Largest Copy on PDP		
Statement of Identity (pt.) (Divided by) Largest Logo Copy (pt.)		Vertical PDP: 43%
		Horizontal PDP: 43%

(50) 2ct PACKETS  
100 CAPLETS TOTAL  
Caplet-Shaped Tablets  
Pain Reliever/Pain Reliever Aid  
Aspirin (NSAID) and Caffeine  
Acetaminophen,  
**MIGRAINE**  
**EXCEDRIN**

TAMPER EVIDENT PACKET. DO NOT USE IF SEAL IS BROKEN.

**Drug Facts**

Active ingredients (in each caplet)	Purposes
Acetaminophen 250 mg	Pain reliever
Aspirin 250 mg (NSAID)	Pain reliever
Caffeine 65 mg	Pain reliever aid
Hydrocodone bitartrate	Non-steroidal anti-inflammatory drug

**Use**

- treat migraine

**Warnings**

Reye's syndrome: Children and teenagers who have or are recovering from chicken pox or flu-like symptoms should not use this product. When using this product, if changes in behavior with nausea and vomiting occur, consult a doctor because these symptoms could be an early sign of Reye's syndrome, a rare but serious illness.

**Allergy alert:** Acetaminophen may cause severe skin reactions. Symptoms may include:

- skin redness
- hives
- rash

If a skin reaction occurs, stop use and seek medical help right away.

**Allergy alert:** Aspirin may cause a severe allergic reaction which may include:

- hives
- facial swelling
- asthma (wheezing)
- shock

**Liver warning:** This product contains acetaminophen. Severe liver damage may occur if you take:

- more than 2 caplets in 24 hours, which is the maximum daily amount
- with other drugs containing acetaminophen

**2 or more alcoholic drinks every day while using this product.**

**Stomach bleeding warning:** This product contains an NSAID, which may cause severe stomach bleeding. The chance is higher if you:

- are age 60 or older
- have had stomach ulcers or bleeding problems
- take a blood thinning (anticoagulant) or steroid drug
- take other drugs containing prescription or nonprescription NSAIDs (aspirin, ibuprofen, naproxen, or others)
- have 2 or more alcoholic drinks every day while using this product
- take more or for a longer time than directed

**Medication overdose headache warning:** Headaches may worsen if this product is used for 10 or more days per month.

**Caffeine warning:** The recommended dose of this product contains about as much caffeine as a cup of coffee. Limit the use of caffeine-containing medications, foods, or beverages while taking this product because too much caffeine may cause nervousness, irritability, sleeplessness, and, occasionally, rapid heart beat.

**Do not use**

- if you have ever had an allergic reaction to acetaminophen, aspirin or any other pain reliever/fever reducer
- with any other drug containing acetaminophen (prescription or nonprescription), if you are not sure whether a drug contains acetaminophen, ask a doctor or pharmacist.

**Ask a doctor before use if**

- you have never had migraines diagnosed by a health professional
- you have a headache that is different from your usual migraines
- you have the worst headache of your life
- you have fever and stiff neck
- you have headaches beginning after or caused by head injury, exertion, coughing or bending

Distributed by:  
GSK Consumer Healthcare  
Warren, NJ 07059  
©2021 GSK group of companies or its licensors.  
Trademarks are owned by or licensed  
to the GSK group of companies. NPA004515

LOT/EXP \_\_\_\_\_  
Date Stamp Area  
No Varnish

**Drug Facts (continued)**

- you experienced your first headache after the age of 50
- you have daily headaches
- you have a migraine so severe as to require bed rest
- you have liver disease
- stomach bleeding warning applies to you
- you have a history of stomach problems, such as heartburn
- you have high blood pressure, heart disease, liver cirrhosis, or kidney disease
- you are taking a diuretic
- you have asthma
- you have problems or serious side effects from taking pain relievers or fever reducers
- you have vomiting with your migraine headache

**Ask a doctor or pharmacist before use if you are:**

- taking a prescription drug for: • diabetes • gout • arthritis
- under a doctor's care for any serious condition
- taking any other drug
- taking any other product that contains aspirin, acetaminophen, or any other pain reliever/fever reducer

**Stop use and ask a doctor if**

- an allergic reaction occurs. Seek medical help right away.
- you experience any of the following signs of stomach bleeding:
  - feel faint
  - vomit blood
  - have bloody or black stools
  - have stomach pain that does not get better
- your migraine is not relieved or worsens after first dose
- new or unexpected symptoms occur
- ringing in the ears or loss of hearing occurs

**If pregnant or breast-feeding, ask a health professional before use. It is especially important not to use aspirin at 20 weeks or later in pregnancy unless definitely directed to do so by a doctor because it may cause problems in the unborn child or complications during delivery.**

**Keep out of reach of children.**

**In case of overdose, get medical help or contact a Poison Control Center right away. Quick medical attention is critical for adults as well as for children even if you do not notice any signs or symptoms.**

**Directions**

- do not use more than directed
- adults: take 2 caplets with a glass of water
- if symptoms persist or worsen, ask your doctor
- do not take more than 2 caplets in 24 hours, unless directed by a doctor
- under 15 years of age: ask a doctor

**Other information**

- store at room temperature 20°-25°C (68°-77°F)
- read all product information before using

**Inactive ingredients:** benzoic acid, carnauba wax, FD&C blue no. 1, hypromellose, light mineral oil, low-substituted hydroxypropyl cellulose, microcrystalline cellulose, polyvinylpyrrolidone, polyethylene glycol, simethicone, sorbitan monolaurate, stearic acid, titanium dioxide

**Questions?** 1-800-488-7748

0000.00.00      SERV-0000-00-00

NDC 0000-0000-00

**EXCEDRIN**

**MIGRAINE**  
Acetaminophen,  
Aspirin (NSAID) and Caffeine  
Pain Reliever/Pain Reliever Aid

100 CAPLETS TOTAL  
Caplet-Shaped Tablets  
(50) 2ct PACKETS

0 94187 08030 6

**EXCEDRIN**

**MIGRAINE**  
Acetaminophen,  
Aspirin (NSAID) and Caffeine  
Pain Reliever/Pain Reliever Aid

100 CAPLETS TOTAL  
Caplet-Shaped Tablets  
(50) 2ct PACKETS

0 94187 08030 6

GSK Regulatory Spec Box		Verified Date: 06.30.21
<b>Drug Facts Info</b>		
Drug Facts	Helvetica Bold Condensed Italic	11 pt.
Drug Facts (continued)	Helvetica Bold Condensed Italic / Condensed	8 pt.
Headings	Helvetica Bold Condensed Italic	8 pt.
Subheadings	Helvetica Bold Condensed	6 pt.
Body text	Helvetica Condensed / Bold Condensed	6 pt.
Bullets	Helvetica Condensed	5 pt.
Bullets on same line: end of statement separated from bulleted statement by two ems		Yes
Spacing of the hair lines from edge of box-us. Minimum of 2 spaces either side of Drug Fact Box		Yes
Tracking:	0	Horizontal Scale: 100%
Leading:	6.5 pt.	Maximum Characters/Inch: < 39
Barlines:	1.5 pt.	Halflines: 0.5 pt.
<b>Primary Display Panel Info</b>		
Size of Net Wt/Contents (Smallest character height in inches)†		> 0.125 in.
PDP dimensions (in square inches)		5-25 sq. in.
Ratio of Statement of Identity to Logo/Largest Copy on PDP		
Statement of Identity (pt.) (Divided by) Largest Logo Copy (pt.)		Vertical PDP: 43%
		Horizontal PDP: 43%



NPAA04079

DO NOT USE IF INNER FOIL SEAL IMPRINTED WITH "SEALED FOR YOUR PROTECTION" IS BROKEN OR MISSING

**EXCEDRIN**  
**MIGRAINE**  
*(Acetaminophen, Aspirin (ASA) and Caffeine)*  
**20**  
**CGT/60**  
15 TABLETS PER BOTTLE

**READ ALL PRODUCT INFORMATION BEFORE USING. KEEP BOX IMPORTANT INFORMATION ON.**

**Active Ingredients Purpose (in each tablet)**

Acetaminophen 250 mg ..... Pain reliever  
Aspirin 250 mg (ASA) ..... Pain reliever  
Caffeine 65 mg ..... Pain reliever  
\*nonsteroidal anti-inflammatory drug  
Use • treats migraine

**Warnings**  
Reye's syndrome: Children and teenagers who have or are recovering from chicken pox or flu-like symptoms should not use this product. When using this product, if changes in behavior with nausea and vomiting occur, consult a doctor because these symptoms could be an early sign of Reye's syndrome, a rare but serious illness. Allergy alert: Acetaminophen may cause severe skin reactions. Symptoms may include: • skin redness • blisters • rash. If a skin reaction occurs, stop use and seek medical help right away. Allergy alert: Aspirin may cause a severe allergic

**PEEL FOR ADDITIONAL LABELING**

ask a doctor if an allergic reaction occurs. Seek medical help right away. If pregnant or breast-feeding, ask a health professional before use. It is especially important not to use aspirin at 20 weeks or later in pregnancy unless definitely directed to do so by a doctor because it may cause problems in the unborn child or complications during delivery. Keep out of reach of children. In case of overdose, get medical help or contact a Poison Control Center right away. Quick medical attention is critical for adults as well as for children even if you do not notice any signs or symptoms.

**Directions** • do not use more than directed • adults take 2 tablets with a glass of water • if symptoms persist or worsen, ask your doctor • do not take more than 2 tablets in 24 hours, unless directed by a doctor • under 18 years of age, ask a doctor. *Other information* • store at controlled room temperature 20°-25°C (68°-77°F). Once the bottle is opened, discard after 9 months. Do not use beyond expiry date. Protect from moisture. • close cap tightly after use. *Questions?* 1-800-468-7746. *Dist. by:* GSK Consumer Healthcare, Warren, NJ 07059. *Trademarks owned or licensed by GSK.* C021 GSK or licensor. NPA04079

reaction which may include: • hives • facial swelling • asthma (wheezing) • shock. **Liver warning:** This product contains acetaminophen. Severe liver damage may occur if you take • more than 2 tablets in 24 hours, which is the maximum daily amount • with other drugs containing acetaminophen • 3 or more alcoholic drinks every day while using this product. **Stomach bleeding warning:** This product contains an NSAID, which may cause severe stomach bleeding. The chance is higher if you • are age 60 or older • have had stomach ulcers or bleeding problems • take a blood thinning (anticoagulant) or steroid drug • take other drugs containing prescription or nonprescription NSAIDs (aspirin, ibuprofen, naproxen, or others) • have 3 or more alcoholic drinks every day while using this product • take more or for a longer time than directed. **Do not use** • if you have ever had an allergic reaction to acetaminophen, aspirin or any other pain reliever/fever reducer • with any other drug containing acetaminophen (prescription or nonprescription). If you are not sure whether a drug contains acetaminophen, ask a doctor or pharmacist. Stop use and

DRUG FACT FORMATTING-ABBREVIATED	
LABELING TEXT	TYPE STYLE
HEADINGS	5.5 pt Helvetica Cond Bold Ob
SUBHEADS	5.5 pt Helvetica Cond Bold
BODY TEXT	5.5 pt Helvetica Cond
TRACKING	0
CONDENSATION	63%
LEADING	6 pt
BULLETS	5.5 pt



GSK Regulatory Spec Box		Verified Date: 04.27.21
<b>Drug Facts Info</b>		
<b>Drug Facts</b>	Helvetica Bold Condensed Italic	9 pt.
<b>Drug Facts (continued)</b>	Helvetica Bold Condensed Italic / Condensed	8 pt.
Headings	Helvetica Bold Condensed Italic	8 pt.
Subheadings	Helvetica Bold Condensed	6 pt.
Body text	Helvetica Condensed / Bold Condensed	6 pt.
Bullets	Helvetica Condensed	5 pt.
Bullets on same lines: end of statement separated from bulleted statement by two ems		Yes
Spacing of the hair lines from edge of box-i.e. Minimum of 2 spaces either side of Drug Fact Box		No
Tracking:	-7	Horizontal Scale: 83%
Leading:	6.3 pt.	Maximum Characters/Inch: > 39
Barlines:	1.5 pt.	Hairlines: 0.5 pt.
<b>Primary Display Panel Info</b>		
Size of Net Wt/Contents (Smallest character height in inches)*		> 0.125 in.
PDP dimensions (in square inches)		5-25 sq. in.
Ratio of Statement of Identity to Logo/Largest Copy on PDP		
Statement of Identity (pt.) (Divided by) Largest Logo Copy (pt.)		
Vertical PDP: N/A		Horizontal PDP: 31%



GSK Regulatory Spec Box		Verified Date: 05.13.21	
<b>Drug Facts Info</b>			
<b>Drug Facts</b>	Helvetica Bold Condensed Italic		N/A
<b>Drug Facts (continued)</b>	Helvetica Bold Condensed Italic / Condensed		N/A
Headings	Helvetica Bold Condensed Italic		4.75 pt.
Subheadings	Helvetica Bold Condensed		4.75 pt.
Body text	Helvetica Condensed / Bold Condensed		4.75 pt.
Bullets	Helvetica Condensed		4 pt.
Bullets on same lines: end of statement separated from bulleted statement by two ems			Yes
Spacing of the hair lines from edge of box--i.e. Minimum of 2 spaces either side of Drug Fact Box			N/A
Tracking:	0	Horizontal Scale:	85%
Leading:	4.9 pt.	Maximum Characters/Inch:	< 39
Barlines:	N/A	Hairlines:	N/A
<b>Primary Display Panel Info</b>			
Size of Net Wt/Contents (Smallest character height in inches)*			> 0.125 in.
PDP dimensions (in square inches)			< 5 sq. in.
Ratio of Statement of Identity to Logo/Largest Copy on PDP Statement of Identity (pt.) (Divided by) Largest Logo Copy (pt.)			
	Vertical PDP: 42%		Horizontal PDP: N/A



GSK Regulatory Spec Box		Verified Date: 05.12.21
<b>Drug Facts Info</b>		
<b>Drug Facts</b>	Helvetica Bold Condensed Italic	9 pt.
<b>Drug Facts (continued)</b>	Helvetica Bold Condensed Italic / Condensed	8 pt.
<b>Headings</b>	Helvetica Bold Condensed Italic	8 pt.
<b>Subheadings</b>	Helvetica Bold Condensed	6 pt.
<b>Body text</b>	Helvetica Condensed / Bold Condensed	6 pt.
<b>Bullets</b>	Helvetica Condensed	5 pt.
<b>Bullets on same lines: end of statement separated from bulleted statement by two ems</b>		Yes
<b>Spacing of the hair lines from edge of box -La, Minimum of 2 spaces either side of Drug Fact Box</b>		Yes
<b>Tracking:</b>	0	Horizontal Scale: 83%
<b>Leading:</b>	6.5 pt.	Maximum Characters/Inch: < 39
<b>Barlines:</b>	1.5 pt.	Hairlines: 0.5 pt.
<b>Primary Display Panel Info</b>		
<b>Size of Net Wt/Contents (Smallest character height in inches)*</b>		> 0.125 in.
<b>PDP dimensions (in square inches)</b>		5-25 sq. in.
<b>Ratio of Statement of Identity to Logo/Largest Copy on PDP</b>		
<b>Statement of Identity (pt.) (Divided by) Largest Logo Copy (pt.)</b>		
	Vertical PDP: N/A	Horizontal PDP: 35%

-----  
**This is a representation of an electronic record that was signed electronically. Following this are manifestations of any and all electronic signatures for this electronic record.**  
-----

/s/  
-----

VALERIE S PRATT  
11/03/2021 04:42:05 PM