

## HIGHLIGHTS OF PRESCRIBING INFORMATION

These highlights do not include all the information needed to use BORTEZOMIB safely and effectively. See full prescribing information for BORTEZOMIB.

### BORTEZOMIB for injection, for intravenous use

Initial U.S. Approval: 2003

#### INDICATIONS AND USAGE

Bortezomib for injection is a proteasome inhibitor indicated for:

- treatment of adult patients with multiple myeloma (1.1)
- treatment of adult patients with mantle cell lymphoma who have received at least 1 prior therapy (1.2)

#### DOSAGE AND ADMINISTRATION

- For intravenous use only (2.1)
- The recommended starting dose of bortezomib is 1.3 mg/m<sup>2</sup> administered as a 3 to 5 second bolus intravenous injection (2.2, 2.4)
- Retreatment for Multiple Myeloma: May retreat starting at the last tolerated dose. (2.4)
- Hepatic Impairment: Use a lower starting dose for patients with moderate or severe hepatic impairment. (2.6)
- Dose must be individualized to prevent overdose (2.8)

#### DOSAGE FORMS AND STRENGTHS

For injection: Single-dose vial contains 3.5 mg of bortezomib as lyophilized powder for reconstitution and withdrawal of the appropriate individual patient dose. (3)

#### CONTRAINDICATIONS

- Patients with hypersensitivity (not including local reactions) to bortezomib or boron including anaphylactic reactions. (4)
- Contraindicated for intrathecal administration. (4)

#### WARNINGS AND PRECAUTIONS

- Peripheral Neuropathy: Manage with dose modification or discontinuation. (2.5) Patients with pre-existing severe neuropathy should be treated with Bortezomib for injection only after careful risk-benefit assessment. (2.5, 5.1)
- Hypotension: Use caution when treating patients taking antihypertensives, with a history of syncope, or with dehydration. (5.2)

- Cardiac Toxicity: Worsening of and development of cardiac failure has occurred. Closely monitor patients with existing heart disease or risk factors for heart disease. (5.3)
- Pulmonary Toxicity: Acute respiratory syndromes have occurred. Monitor closely for new or worsening symptoms and consider interrupting Bortezomib for injection. (5.4)
- Posterior Reversible Encephalopathy Syndrome: Consider MRI imaging for onset of visual or neurological symptoms; discontinue Bortezomib for injection if suspected. (5.5)
- Gastrointestinal Toxicity: Nausea, diarrhea, constipation, and vomiting may require use of antiemetic and antidiarrheal medications or fluid replacement. (5.6)
- Thrombocytopenia and Neutropenia: Monitor complete blood counts regularly throughout treatment. (5.7)
- Tumor Lysis Syndrome: Closely monitor patients with high tumor burden. (5.8)
- Hepatic Toxicity: Monitor hepatic enzymes during treatment. Interrupt Bortezomib for injection therapy to assess reversibility. (5.9)
- Thrombotic Microangiopathy: Monitor for signs and symptoms. Discontinue Bortezomib for injection if suspected. (5.10)
- Embryo-Fetal Toxicity: Bortezomib can cause fetal harm. Advise females of reproductive potential and males with female partners of reproductive potential of the potential risk to a fetus and to use effective contraception. (5.11)

#### ADVERSE REACTIONS

Most commonly reported adverse reactions (incidence  $\geq$  20%) in clinical studies include nausea, diarrhea, thrombocytopenia, neutropenia, peripheral neuropathy, fatigue, neuralgia, anemia, leukopenia, constipation, vomiting, lymphopenia, rash, pyrexia, and anorexia. (6.1)

To report SUSPECTED ADVERSE REACTIONS, contact Dr. Reddy's Laboratories Inc., at 1-888-375-3784 or FDA at 1-800-FDA-1088 or [www.fda.gov/medwatch](http://www.fda.gov/medwatch)

#### DRUG INTERACTIONS

- Strong CYP3A4 Inhibitors: Closely monitor patients with concomitant use. (7.1)
- Strong CYP3A4 Inducers: Avoid concomitant use. (7.3)

#### USE IN SPECIFIC POPULATIONS

- Patients with diabetes may require close monitoring of blood glucose and adjustment of antidiabetic medication. (8.8)

### See 17 for PATIENT COUNSELING INFORMATION

Revised: 2/2022

## FULL PRESCRIBING INFORMATION: CONTENTS\*

### 1 INDICATIONS AND USAGE

- 1.1 Multiple Myeloma
- 1.2 Mantle Cell Lymphoma

### 2 DOSAGE AND ADMINISTRATION

- 2.1 Important Dosing Guidelines
- 2.2 Dosage in Previously Untreated Multiple Myeloma
- 2.3 Dose Modification Guidelines for Bortezomib When Given in Combination with Melphalan and Prednisone
- 2.4 Dosage and Dose Modifications for Relapsed Multiple Myeloma and Relapsed Mantle Cell Lymphoma
- 2.5 Dose Modifications for Peripheral Neuropathy
- 2.6 Dosage in Patients with Hepatic Impairment
- 2.7 Administration Precautions
- 2.8 Reconstitution/Preparation for Intravenous Administration

### 3 DOSAGE FORMS AND STRENGTHS

### 4 CONTRAINDICATIONS

### 5 WARNINGS AND PRECAUTIONS

- 5.1 Peripheral Neuropathy
- 5.2 Hypotension
- 5.3 Cardiac Toxicity
- 5.4 Pulmonary Toxicity
- 5.5 Posterior Reversible Encephalopathy Syndrome (PRES)
- 5.6 Gastrointestinal Toxicity
- 5.7 Thrombocytopenia/Neutropenia
- 5.8 Tumor Lysis Syndrome
- 5.9 Hepatic Toxicity
- 5.10 Thrombotic Microangiopathy
- 5.11 Embryo-Fetal Toxicity

### 6 ADVERSE REACTIONS

- 6.1 Clinical Trials Experience
- 6.2 Postmarketing Experience

### 7 DRUG INTERACTIONS

- 7.1 Effect of Other Drugs on Bortezomib
- 7.2 Drugs Without Clinically Significant Interactions with Bortezomib

### 8 USE IN SPECIFIC POPULATIONS

- 8.1 Pregnancy
- 8.2 Lactation
- 8.3 Females and Males of Reproductive Potential
- 8.4 Pediatric Use
- 8.5 Geriatric Use
- 8.6 Renal Impairment
- 8.7 Hepatic Impairment
- 8.8 Patients with Diabetes

### 10 OVERDOSAGE

### 11 DESCRIPTION

### 12 CLINICAL PHARMACOLOGY

- 12.1 Mechanism of Action
- 12.2 Pharmacodynamics
- 12.3 Pharmacokinetics

### 13 NONCLINICAL TOXICOLOGY

- 13.1 Carcinogenesis, Mutagenesis, Impairment of Fertility
- 13.2 Animal Toxicology and/or Pharmacology

### 14 CLINICAL STUDIES

- 14.1 Multiple Myeloma
- 14.2 Mantle Cell Lymphoma

### 15 REFERENCES

### 16 HOW SUPPLIED/STORAGE AND HANDLING

### 17 PATIENT COUNSELING INFORMATION

\*Sections or subsections omitted from the full prescribing information are not listed.

## FULL PRESCRIBING INFORMATION

### 1 INDICATIONS AND USAGE

#### 1.1 Multiple Myeloma

Bortezomib for injection is indicated for the treatment of adult patients with multiple myeloma.

#### 1.2 Mantle Cell Lymphoma

Bortezomib for injection is indicated for the treatment of adult patients with mantle cell lymphoma who have received at least 1 prior therapy.

### 2 DOSAGE AND ADMINISTRATION

#### 2.1 Important Dosing Guidelines

Bortezomib for injection is for intravenous use only. Do not administer Bortezomib for injection by any other route.

The recommended starting dose of Bortezomib for injection is 1.3 mg/m<sup>2</sup>. Bortezomib for injection is administered intravenously at a concentration of 1 mg/mL [see *Dosage and Administration* (2.8)].

Bortezomib for injection retreatment may be considered for patients with multiple myeloma who had previously responded to treatment with bortezomib and who have relapsed at least six months after completing prior bortezomib treatment. Treatment may be started at the last tolerated dose [see *Dosage and Administration* (2.4)].

Administer Bortezomib for injection as a 3 to 5 second bolus intravenous injection.

#### 2.2 Dosage in Previously Untreated Multiple Myeloma

Bortezomib for injection is administered in combination with oral melphalan and oral prednisone for 9, six-week treatment cycles as shown in Table 1. In Cycles 1 to 4, Bortezomib for injection is administered twice weekly (Days 1, 4, 8, 11, 22, 25, 29 and 32). In Cycles 5 to 9, Bortezomib for injection is administered once weekly (Days 1, 8, 22 and 29). At least 72 hours should elapse between consecutive doses of Bortezomib for injection.

**Table 1: Dosage Regimen for Patients with Previously Untreated Multiple Myeloma**

	Twice Weekly Bortezomib for injection (Cycles 1 to 4)											
Week	1				2		3	4		5		6
Bortezomib for injection (1.3 mg/m <sup>2</sup> )	Day 1	--	--	Day 4	Day 8	Day 11	rest period	Day 22	Day 25	Day 29	Day 32	rest period
Melphalan (9 mg/m <sup>2</sup> ) Prednisone (60 mg/m <sup>2</sup> )	Day 1	Day 2	Day 3	Day 4	--	--	rest period	--	--	--	--	rest period

**Once Weekly Bortezomib for injection (Cycles 5 to 9 when used in combination with Melphalan and Prednisone)**

Week	1				2		3	4		5		6
Bortezomib for injection (1.3 mg/m <sup>2</sup> )	Day 1	--	--		Day 8		rest period	Day 22		Day 29		rest period
Melphalan (9 mg/m <sup>2</sup> ) Prednisone (60 mg/m <sup>2</sup> )	Day 1	Day 2	Day 3	Day 4	--	--	rest period	--	--	--	--	rest period

**2.3 Dose Modification Guidelines for Bortezomib for injection When Given in Combination with Melphalan and Prednisone**

Prior to initiating any cycle of therapy with Bortezomib for injection in combination with melphalan and prednisone:

- Platelet count should be at least 70 x 10<sup>9</sup>/L and the absolute neutrophil count (ANC) should be at least 1 x 10<sup>9</sup>/L
- Nonhematological toxicities should have resolved to Grade 1 or baseline

**Table 2: Dose Modifications During Cycles of Combination Bortezomib for injection, Melphalan and Prednisone Therapy**

Toxicity	Dose Modification or Delay
Hematological toxicity during a cycle: If prolonged Grade 4 neutropenia or thrombocytopenia, or thrombocytopenia with bleeding is observed in the previous cycle	Consider reduction of the melphalan dose by 25% in the next cycle.
If platelet count is not above 30 × 10 <sup>9</sup> /L or ANC is not above 0.75 x 10 <sup>9</sup> /L on a Bortezomib for injection dosing day (other than Day 1)	Withhold Bortezomib for injection dose
If several Bortezomib for injection doses in consecutive cycles are withheld due to toxicity	Reduce Bortezomib for injection dose by 1 dose level (from 1.3 mg/m <sup>2</sup> to 1 mg/m <sup>2</sup> , or from 1 mg/m <sup>2</sup> to 0.7 mg/m <sup>2</sup> )
Grade 3 or higher nonhematological toxicities	Withhold Bortezomib for injection therapy until symptoms of toxicity have resolved to Grade 1 or baseline. Then, Bortezomib for injection may be reinitiated with one dose level reduction (from 1.3 mg/m <sup>2</sup> to 1 mg/m <sup>2</sup> , or from 1 mg/m <sup>2</sup> to 0.7 mg/m <sup>2</sup> ). For Bortezomib for injection-related neuropathic pain and/or peripheral neuropathy, hold or modify Bortezomib for injection as outlined in Table 5.

For information concerning melphalan and prednisone, see manufacturer's prescribing information.

Dose modifications guidelines for peripheral neuropathy are provided [see *Dosage and Administration (2.5)*].

## 2.4 Dosage and Dose Modifications for Relapsed Multiple Myeloma and Relapsed Mantle Cell Lymphoma

Bortezomib for injection (1.3 mg/m<sup>2</sup>/dose) is administered twice weekly for two weeks (Days 1, 4, 8, and 11) followed by a ten day rest period (Days 12 to 21). For extended therapy of more than eight cycles, Bortezomib for injection may be administered on the standard schedule or for relapsed multiple myeloma, on a maintenance schedule of once weekly for four weeks (Days 1, 8, 15, and 22) followed by a 13-day rest period (Days 23 to 35) [see *Clinical Studies (14.1)*]. At least 72 hours should elapse between consecutive doses of bortezomib.

Patients with multiple myeloma who have previously responded to treatment with bortezomib (either alone or in combination) and who have relapsed at least six months after their prior bortezomib therapy may be started on bortezomib at the last tolerated dose. Retreated patients are administered Bortezomib for injection twice weekly (Days 1, 4, 8, and 11) every three weeks for a maximum of eight cycles. At least 72 hours should elapse between consecutive doses of bortezomib. Bortezomib for injection may be administered either as a single agent or in combination with dexamethasone [see *Clinical Studies (14.1)*].

Bortezomib for injection therapy should be withheld at the onset of any Grade 3 nonhematological or Grade 4 hematological toxicities excluding neuropathy as discussed below [see *Warnings and Precautions (5)*]. Once the symptoms of the toxicity have resolved, Bortezomib for injection therapy may be reinitiated at a 25% reduced dose (1.3 mg/m<sup>2</sup>/dose reduced to 1 mg/m<sup>2</sup>/dose; 1 mg/m<sup>2</sup>/dose reduced to 0.7 mg/m<sup>2</sup>/dose).

For dose modifications guidelines for peripheral neuropathy see section 2.5.

## 2.5 Dose Modifications for Peripheral Neuropathy

Patients with preexisting severe neuropathy should be treated with Bortezomib for injection only after careful risk-benefit assessment.

Patients experiencing new or worsening peripheral neuropathy during Bortezomib for injection therapy may require a decrease in the dose and/or a less dose-intense schedule.

For dose or schedule modification guidelines for patients who experience Bortezomib for injection-related neuropathic pain and/or peripheral neuropathy see Table 3.

**Table 3 Recommended Dose Modification for Bortezomib related Neuropathic Pain and/or Peripheral Sensory or Motor Neuropathy**

Severity of Peripheral Neuropathy Signs and Symptoms*	Modification of Dose and Regimen
Grade 1 (asymptomatic; loss of deep tendon reflexes or paresthesia) without pain or loss of function	No action
Grade 1 with pain or Grade 2 (moderate symptoms; limiting instrumental Activities of Daily Living (ADL)**)	Reduce Bortezomib for injection to 1 mg/m <sup>2</sup>
Grade 2 with pain or Grade 3 (severe symptoms; limiting self care ADL ***)	Withhold Bortezomib for injection therapy until toxicity resolves. When toxicity resolves reinitiate

	with a reduced dose of Bortezomib for injection at 0.7 mg/m <sup>2</sup> once per week.
Grade 4 (life-threatening consequences; urgent intervention indicated)	Discontinue Bortezomib for injection

\*Grading based on NCI Common Terminology Criteria CTCAE v4

\*\*Instrumental ADL: refers to preparing meals, shopping for groceries or clothes, using telephone, managing money etc;

\*\*\*Self care ADL: refers to bathing, dressing and undressing, feeding self, using the toilet, taking medications, and not bedridden

## 2.6 Dosage in Patients with Hepatic Impairment

Do not adjust the starting dose for patients with mild hepatic impairment.

Start patients with moderate or severe hepatic impairment at a reduced dose of 0.7 mg/m<sup>2</sup> per injection during the first cycle, and consider subsequent dose escalation to 1 mg/m<sup>2</sup> or further dose reduction to 0.5 mg/m<sup>2</sup> based on patient tolerance (*see Table 4*) [*see Use in Specific Populations (8.7), Clinical Pharmacology (12.3)*].

**Table 4: Recommended Starting Dose Modification for Bortezomib for injection in Patients with Hepatic Impairment**

	Bilirubin Level	SGOT (AST) Levels	Modification of Starting Dose
Mild	Less than or equal to 1x ULN	More than ULN	None
	More than 1x–1.5x ULN	Any	None
Moderate	More than 1.5x–3x ULN	Any	Reduce Bortezomib for injection to 0.7 mg/m <sup>2</sup> in the first cycle. Consider dose escalation to 1 mg/m <sup>2</sup> or further dose reduction to 0.5 mg/m <sup>2</sup> in subsequent cycles based on patient tolerability.
Severe	More than 3x ULN	Any	

Abbreviations: SGOT = serum glutamic oxaloacetic transaminase; AST = aspartate aminotransferase; ULN = upper limit of the normal range.

## 2.7 Administration Precautions

The drug quantity contained in one vial (3.5 mg) may exceed the usual dose required. Caution should be used in calculating the dose to prevent overdose [*see Dosage and Administration (2.8)*].

Bortezomib for injection is a cytotoxic drug. Follow applicable special handling and disposal procedures.<sup>1</sup>

## 2.8 Reconstitution/Preparation for Intravenous Administration

Use proper aseptic technique. Reconstitute **only with 0.9% Sodium Chloride Injection, USP**. The reconstituted product should be a clear and colorless solution.

For each 3.5 mg single-dose vial of Bortezomib for injection reconstitute with the following volume of 0.9% Sodium Chloride Injection, USP (Table: 5)

**Table 5: Reconstitution Volumes and Final Concentration for Intravenous Administration**

<b>Route of Administration</b>	<b>Bortezomib (mg/vial)</b>	<b>Diluent (0.9% Sodium Chloride Injection, USP)</b>	<b>Final Bortezomib Concentration (mg/mL)</b>
Intravenous	3.5 mg	3.5 mL	1 mg/mL

Dose must be individualized to prevent overdosage. After determining patient body surface area (BSA) in square meters, use the following equations to calculate the total volume (mL) of reconstituted Bortezomib for injection to be administered:

- **Intravenous Administration [1 mg/mL concentration]**

$$\frac{\text{Bortezomib for injection dose (mg/m}^2\text{)} \times \text{patient BSA(m}^2\text{)}}{1 \text{ mg/mL}} = \text{Total Bortezomib for injection (mL) to be administered}$$

A sticker that indicates the route of administration is provided with each Bortezomib for injection vial. Place this sticker directly on the syringe of Bortezomib for injection once it is prepared to help alert practitioners of the correct route of administration for Bortezomib for injection.

Parenteral drug products should be inspected visually for particulate matter and discoloration prior to administration whenever solution and container permit. If any discoloration or particulate matter is observed, the reconstituted product should not be used.

#### Stability

Unopened vials of Bortezomib for injection are stable until the date indicated on the package when stored in the original package protected from light.

Bortezomib for injection contains no antimicrobial preservative. Administer reconstituted Bortezomib for injection within 8 hours of preparation. When reconstituted as directed, Bortezomib for injection may be stored at 20°-25°C (68°-77°F). The reconstituted material should be stored in the original vial and/or the syringe prior to administration. The product may be stored for up to eight hours in a syringe; however, total storage time for the reconstituted material must not exceed eight hours when exposed to normal indoor lighting.

### **3 DOSAGE FORMS AND STRENGTHS**

For Injection: Each single-dose vial of Bortezomib for injection contains 3.5 mg of bortezomib as a sterile lyophilized white to off-white powder for reconstitution and withdrawal of the appropriate individual patient dose [see *Dosage and Administration (2.8)*].

### **4 CONTRAINDICATIONS**

Bortezomib for injection is contraindicated in patients with hypersensitivity (not including local reactions) to bortezomib or boron. Reactions have included anaphylactic reactions [see *Adverse Reactions (6.1)*].

Bortezomib for injection is contraindicated for intrathecal administration. Fatal events have occurred with intrathecal administration of bortezomib products.

## **5 WARNINGS AND PRECAUTIONS**

### **5.1 Peripheral Neuropathy**

Bortezomib treatment causes a peripheral neuropathy that is predominantly sensory; however, cases of severe sensory and motor peripheral neuropathy have been reported. Patients with pre-existing symptoms (numbness, pain or a burning feeling in the feet or hands) and/or signs of peripheral neuropathy may experience worsening peripheral neuropathy (including  $\geq$  Grade 3) during treatment with Bortezomib for injection. Patients should be monitored for symptoms of neuropathy, such as a burning sensation, hyperesthesia, hypoesthesia, paresthesia, discomfort, neuropathic pain or weakness. In the Phase 3 relapsed multiple myeloma trial the incidence of Grade  $\geq$  2 peripheral neuropathy was 39% for the intravenous treatment group. Grade  $\geq$  3 peripheral neuropathy occurred in 15% in the intravenous treatment group [*see Adverse Reactions (6.1)*].

Patients experiencing new or worsening peripheral neuropathy during Bortezomib for injection therapy may require a decrease in the dose and/or a less dose-intense schedule [*see Dosage and Administration (2.5)*]. In the bortezomib versus dexamethasone Phase 3 relapsed multiple myeloma study, improvement in or resolution of peripheral neuropathy was reported in 48% of patients with  $\geq$  Grade 2 peripheral neuropathy following dose adjustment or interruption. Improvement in or resolution of peripheral neuropathy was reported in 73% of patients who discontinued due to Grade 2 neuropathy or who had  $\geq$  Grade 3 peripheral neuropathy in the phase 2 multiple myeloma studies. The long-term outcome of peripheral neuropathy has not been studied in mantle cell lymphoma.

### **5.2 Hypotension**

The incidence of hypotension (postural, orthostatic, and hypotension NOS) was 8% [*see Adverse Reactions (6.1)*]. These events are observed throughout therapy. Patients with a history of syncope, patients receiving medications known to be associated with hypotension, and patients who are dehydrated may be at increased risk of hypotension. Management of orthostatic/postural hypotension may include adjustment of antihypertensive medications, hydration, and administration of mineralocorticoids and/or sympathomimetics.

### **5.3 Cardiac Toxicity**

Acute development or exacerbation of congestive heart failure and new onset of decreased left ventricular ejection fraction have occurred during bortezomib therapy, including reports in patients with no risk factors for decreased left ventricular ejection fraction [*see Adverse Reactions (6.1)*]. Patients with risk factors for, or existing heart disease should be frequently monitored. In the relapsed multiple myeloma study of bortezomib versus dexamethasone, the incidence of any treatment-related cardiac disorder was 8% and 5% in the bortezomib and dexamethasone groups, respectively. The incidence of adverse reactions suggestive of heart failure (acute pulmonary edema, pulmonary edema, cardiac failure, congestive cardiac failure, cardiogenic shock) was  $\leq$ 1% for each individual reaction in the bortezomib group. In the dexamethasone group the incidence was  $\leq$  1% for cardiac failure and congestive cardiac failure; there were no reported reactions of acute pulmonary edema, pulmonary edema, or cardiogenic shock. There have been isolated cases of QT-interval prolongation in clinical studies; causality has not been established.

### **5.4 Pulmonary Toxicity**

Acute Respiratory Distress Syndrome (ARDS) and acute diffuse infiltrative pulmonary disease of unknown etiology such as pneumonitis, interstitial pneumonia, lung infiltration have occurred in patients receiving bortezomib. Some of these events have been fatal.

In a clinical trial, the first two patients given high-dose cytarabine ( $2\text{g}/\text{m}^2$  per day) by continuous infusion with daunorubicin and bortezomib for relapsed acute myelogenous leukemia died of ARDS early in the course of therapy.

There have been reports of pulmonary hypertension associated with bortezomib administration in the absence of left heart failure or significant pulmonary disease.

In the event of new or worsening cardiopulmonary symptoms, consider interrupting Bortezomib for injection until a prompt and comprehensive diagnostic evaluation is conducted.

### **5.5 Posterior Reversible Encephalopathy Syndrome (PRES)**

Posterior Reversible Encephalopathy Syndrome (PRES; formerly termed Reversible Posterior Leukoencephalopathy Syndrome (RPLS)) has occurred in patients receiving bortezomib. PRES is a rare, reversible, neurological disorder which can present with seizure, hypertension, headache, lethargy, confusion, blindness, and other visual and neurological disturbances. Brain imaging, preferably MRI (Magnetic Resonance Imaging), is used to confirm the diagnosis. In patients developing PRES, discontinue bortezomib. The safety of reinitiating Bortezomib for injection therapy in patients previously experiencing PRES is not known.

### **5.6 Gastrointestinal Toxicity**

Bortezomib treatment can cause nausea, diarrhea, constipation, and vomiting [*see Adverse Reactions (6.1)*] sometimes requiring use of antiemetic and antidiarrheal medications. Ileus can occur. Fluid and electrolyte replacement should be administered to prevent dehydration. Interrupt Bortezomib for injection for severe symptoms.

### **5.7 Thrombocytopenia/Neutropenia**

Bortezomib is associated with thrombocytopenia and neutropenia that follow a cyclical pattern with nadirs occurring following the last dose of each cycle and typically recovering prior to initiation of the subsequent cycle. The cyclical pattern of platelet and neutrophil decreases and recovery remain consistent in the studies of multiple myeloma and mantle cell lymphoma, with no evidence of cumulative thrombocytopenia or neutropenia in the treatment regimens studied.

Monitor complete blood counts (CBC) frequently during treatment with Bortezomib for injection. Measure platelet counts prior to each dose of Bortezomib for injection. Adjust dose/schedule for thrombocytopenia [*see Dosage and Administration (2.4)*]. Gastrointestinal and intracerebral hemorrhage has occurred during thrombocytopenia in association with bortezomib. Support with transfusions and supportive care, according to published guidelines.

In the single-agent, relapsed multiple myeloma study of bortezomib versus dexamethasone, the mean platelet count nadir measured was approximately 40% of baseline. The severity of thrombocytopenia related to pretreatment platelet count is shown in Table 6. The incidence of bleeding ( $\geq$  Grade 3) was 2% on the bortezomib arm and was  $<$  1% in the dexamethasone arm.



**Table 6: Severity of Thrombocytopenia Related to Pretreatment Platelet Count in the Relapsed Multiple Myeloma Study of Bortezomib versus Dexamethasone**

<b>Pretreatment Platelet Count*</b>	<b>Number of Patients (N=331)**</b>	<b>Number (%) of Patients with Platelet Count &lt;10,000/<math>\mu</math>L</b>	<b>Number (%) of Patients with Platelet Count 10,000-25,000/<math>\mu</math>L</b>
$\geq 75,000/\mu\text{L}$	309	8 (3%)	36 (12%)
$\geq 50,000/\mu\text{L}$ to <75,000/ $\mu\text{L}$	14	2 (14%)	11 (79%)
$\geq 10,000/\mu\text{L}$ to <50,000/ $\mu\text{L}$	7	1(14%)	5 (71%)

\* A baseline platelet count of 50,000/ $\mu\text{L}$  was required for study eligibility

\*\* Data were missing at baseline for one patient

### 5.8 Tumor Lysis Syndrome

Tumor lysis syndrome has been reported with bortezomib therapy. Patients at risk of tumor lysis syndrome are those with high tumor burden prior to treatment. Monitor patients closely and take appropriate precautions.

### 5.9 Hepatic Toxicity

Cases of acute liver failure have been reported in patients receiving multiple concomitant medications and with serious underlying medical conditions. Other reported hepatic reactions include hepatitis, increases in liver enzymes, and hyperbilirubinemia. Interrupt Bortezomib for injection therapy to assess reversibility. There is limited rechallenge information in these patients.

### 5.10 Thrombotic Microangiopathy

Cases, sometimes fatal, of thrombotic microangiopathy, including thrombotic thrombocytopenic purpura/hemolytic uremic syndrome (TTP/HUS), have been reported in the postmarketing setting in patients who received bortezomib. Monitor for signs and symptoms of TTP/HUS. If the diagnosis is suspected, stop Bortezomib for injection and evaluate. If the diagnosis of TTP/HUS is excluded, consider restarting Bortezomib for injection. The safety of reinitiating Bortezomib for injection therapy in patients previously experiencing TTP/HUS is not known.

### 5.11 Embryo-Fetal Toxicity

Based on the mechanism of action and findings in animals, bortezomib can cause fetal harm when administered to a pregnant woman. Bortezomib administered to rabbits during organogenesis at a dose approximately 0.5 times the clinical dose of 1.3 mg/m<sup>2</sup> based on body surface area caused postimplantation loss and a decreased number of live fetuses [see *Use in Specific Populations* (8.1)].

Advise females of reproductive potential to use effective contraception during treatment with Bortezomib for injection and for seven months following treatment. Advise males with female partners of reproductive potential to use effective contraception during treatment with Bortezomib for injection and for four months following treatment. If Bortezomib for injection is used during pregnancy or if the patient becomes pregnant during Bortezomib for injection treatment, the patient

should be apprised of the potential risk to the fetus [see *Use in Specific Populations* (8.1, 8.3), *Nonclinical Toxicology* (13.1)].

## 6 ADVERSE REACTIONS

The following clinically significant adverse reactions are also discussed in other sections of the labeling:

- Peripheral Neuropathy [see *Warnings and Precautions* (5.1)]
- Hypotension [see *Warnings and Precautions* (5.2)]
- Cardiac Toxicity [see *Warnings and Precautions* (5.3)]
- Pulmonary Toxicity [see *Warnings and Precautions* (5.4)]
- Posterior Reversible Encephalopathy Syndrome (PRES) [see *Warnings and Precautions* (5.5)]
- Gastrointestinal Toxicity [see *Warnings and Precautions* (5.6)]
- Thrombocytopenia/Neutropenia [see *Warnings and Precautions* (5.7)]
- Tumor Lysis Syndrome [see *Warnings and Precautions* (5.8)]
- Hepatic Toxicity [see *Warnings and Precautions* (5.9)]
- Thrombotic Microangiopathy [see *Warnings and Precautions* (5.10)]

### 6.1 Clinical Trials Experience

Because clinical trials are conducted under widely varying conditions, adverse reaction rates observed in the clinical trials of a drug cannot be directly compared to rates in the clinical trials of another drug and may not reflect the rates observed in clinical practice.

#### Summary of Clinical Trial in Patients with Previously Untreated Multiple Myeloma

Table 7 describes safety data from 340 patients with previously untreated multiple myeloma who received bortezomib (1.3 mg/m<sup>2</sup>) administered intravenously in combination with melphalan (9 mg/m<sup>2</sup>) and prednisone (60 mg/m<sup>2</sup>) in a prospective randomized study.

The safety profile of bortezomib for injection in combination with melphalan/prednisone is consistent with the known safety profiles of both bortezomib and melphalan/prednisone.

**Table 7: Most Commonly Reported Adverse Reactions (≥ 10% in the Bortezomib, Melphalan and Prednisone Arm) with Grades 3 and ≥ 4 Intensity in the Previously Untreated Multiple Myeloma Study**

Body System	Bortezomib, Melphalan and Prednisone (n=340)			Melphalan and Prednisone (n=337)		
	Total n (%)	Toxicity Grade, n (%)		Total n(%)	Toxicity Grade, n (%)	
Adverse Reaction		3	≥ 4		3	≥ 4
<b>Blood and Lymphatic System Disorders</b>						
Thrombocytopenia	164 (48)	60 (18)	57 (17)	140 (42)	48 (14)	39 (12)
Neutropenia	160 (47)	101(30)	33 (10)	143 (42)	77 (23)	42 (12)
Anemia	109 (32)	41 (12)	4 (1)	156 (46)	61 (18)	18 (5)
Leukopenia	108 (32)	64 (19)	8 (2)	93 (28)	53 (16)	11 (3)

Lymphopenia	78 (23)	46 (14)	17 (5)	51 (15)	26 (8)	7 (2)
<b>Gastrointestinal Disorders</b>						
Nausea	134 (39)	10 (3)	0	70 (21)	1 (< 1)	0
Diarrhea	119 (35)	19 (6)	2 (1)	20 (6)	1 (< 1)	0
Vomiting	87 (26)	13 (4)	0	41 (12)	2 (1)	0
Constipation	77 (23)	2 (1)	0	14 (4)	0	0
Abdominal pain upper	34 (10)	1 (< 1)	0	20 (6)	0	0
<b>Nervous System Disorders</b>						
Peripheral neuropathy <sup>a</sup>	156 (46)	42 (12)	2 (1)	4 (1)	0	0
Neuralgia	117 (34)	27 (8)	2 (1)	1 (< 1)	0	0
Paresthesia	42 (12)	6 (2)	0	4 (1)	0	0
<b>General Disorders and Administration Site Conditions</b>						
Fatigue	85 (25)	19 (6)	2 (1)	48 (14)	4 (1)	0
Asthenia	54 (16)	18 (5)	0	23 (7)	3 (1)	0
Pyrexia	53 (16)	4 (1)	0	19 (6)	1 (< 1)	1 (< 1)
<b>Infections and Infestations</b>						
Herpes Zoster	39 (11)	11 (3)	0	9 (3)	4 (1)	0
<b>Metabolism and Nutrition Disorders</b>						
Anorexia	64 (19)	6 (2)	0	19 (6)	0	0
<b>Skin and Subcutaneous Tissue Disorders</b>						
Rash	38 (11)	2 (1)	0	7 (2)	0	0
<b>Psychiatric Disorders</b>						
Insomnia	35 (10)	1 (< 1)	0	21 (6)	0	0

<sup>a</sup> Represents High Level Term Peripheral Neuropathies NEC

### **Relapsed Multiple Myeloma Randomized Study of Bortezomib vs Dexamethasone**

The safety data described below and in Table 8 reflect exposure to either bortezomib (n=331) or dexamethasone (n=332) in a study of patients with relapsed multiple myeloma. Bortezomib was administered intravenously at doses of 1.3 mg/m<sup>2</sup> twice weekly for two out of three weeks (21-day cycle). After eight 21-day cycles patients continued therapy for three 35-day cycles on a weekly schedule. Duration of treatment was up to 11 cycles (nine months) with a median duration of six cycles (4.1 months). For inclusion in the trial, patients must have had measurable disease and one to three prior therapies. There was no upper age limit for entry. Creatinine clearance could be as low as 20 mL/min and bilirubin levels as high as 1.5 times the upper limit of normal. The overall frequency of adverse reactions was similar in men and women, and in patients <65 and ≥65 years of age. Most patients were Caucasian [see *Clinical Studies (14.1)*].

Among the 331 bortezomib-treated patients, the most commonly reported (> 20%) adverse reactions overall were nausea (52%), diarrhea (52%), fatigue (39%), peripheral neuropathies (35%), thrombocytopenia (33%), constipation (30%), vomiting (29%), and anorexia (21%). The most commonly reported (> 20%) adverse reaction reported among the 332 patients in the dexamethasone group was fatigue (25%). Eight percent (8%) of patients in the bortezomib-treated arm experienced a Grade 4 adverse reaction; the most common reactions were thrombocytopenia (4%) and neutropenia (2%). Nine percent (9%) of dexamethasone-treated patients experienced a

Grade 4 adverse reaction. All individual dexamethasone-related Grade 4 adverse reactions were less than 1%.

***Serious Adverse Reactions and Adverse Reactions Leading to Treatment Discontinuation in the Relapsed Multiple Myeloma Study of Bortezomib vs Dexamethasone***

Serious adverse reactions are defined as any reaction that results in death, is life-threatening, requires hospitalization or prolongs a current hospitalization, results in a significant disability, or is deemed to be an important medical event. A total of 80 (24%) patients from the bortezomib treatment arm experienced a serious adverse reaction during the study, as did 83 (25%) dexamethasone-treated patients. The most commonly reported serious adverse reactions in the bortezomib treatment arm were diarrhea (3%), dehydration, herpes zoster, pyrexia, nausea, vomiting, dyspnea, and thrombocytopenia (2% each). In the dexamethasone treatment group, the most commonly reported serious adverse reactions were pneumonia (4%), hyperglycemia (3%), pyrexia, and psychotic disorder (2% each).

A total of 145 patients, including 84 (25%) of 331 patients in the bortezomib treatment group and 61(18%) of 332 patients in the dexamethasone treatment group were discontinued from treatment due to adverse reactions. Among the 331 bortezomib treated patients, the most commonly reported adverse reaction leading to discontinuation was peripheral neuropathy (8%). Among the 332 patients in the dexamethasone group, the most commonly reported adverse reactions leading to treatment discontinuation were psychotic disorder and hyperglycemia (2% each).

Four deaths were considered to be bortezomib related in this relapsed multiple myeloma study: one case each of cardiogenic shock, respiratory insufficiency, congestive heart failure and cardiac arrest. Four deaths were considered dexamethasone-related: two cases of sepsis, one case of bacterial meningitis, and one case of sudden death at home.

***Most Commonly Reported Adverse Reactions in the Relapsed Multiple Myeloma Study of Bortezomib vs Dexamethasone***

The most common adverse reactions from the relapsed multiple myeloma study are shown in Table 8. All adverse reactions with incidence  $\geq 10\%$  in the bortezomib arm are included.

**Table 8: Most Commonly Reported Adverse Reactions ( $\geq 10\%$  in Bortezomib Arm), with Grades 3 and 4 Intensity in the Relapsed Multiple Myeloma Study of Bortezomib vs Dexamethasone (N=663)**

Adverse Reactions	All	Bortezomib N=331		Dexamethasone N=332		
		Grade 3	Grade 4	All	Grade 3	Grade 4
Any Adverse Reactions	324 (98)	193 (58)	28 (8)	297 (89)	110 (33)	29 (9)
Nausea	172 (52)	8 (2)	0	31 (9)	0	0
Diarrhea NOS	171 (52)	22 (7)	0	36 (11)	2 (< 1)	0
Fatigue	130 (39)	15 (5)	0	82 (25)	8 (2)	0
Peripheral neuropathies <sup>a</sup>	115 (35)	23 (7)	2 (< 1)	14 (4)	0	1 (< 1)
Thrombocytopenia	109 (33)	80 (24)	12 (4)	11 (3)	5 (2)	1 (< 1)
Constipation	99 (30)	6 (2)	0	27 (8)	1 (< 1)	0
Vomiting NOS	96 (29)	8 (2)	0	10 (3)	1 (< 1)	0

Anorexia	68 (21)	8 (2)	0	8 (2)	1 (< 1)	0
Pyrexia	66 (20)	2 (< 1)	0	21 (6)	3 (< 1)	1 (< 1)
Paresthesia	64 (19)	5 (2)	0	24 (7)	0	0
Anemia NOS	63 (19)	20 (6)	1 (< 1)	21 (6)	8 (2)	0
Headache NOS	62 (19)	3 (< 1)	0	23 (7)	1 (< 1)	0
Neutropenia	58 (18)	37 (11)	8 (2)	1 (< 1)	1 (< 1)	0
Rash NOS	43 (13)	3 (< 1)	0	7 (2)	0	0
Appetite decreased NOS	36 (11)	0	0	12 (4)	0	0
Dyspnea NOS	35 (11)	11 (3)	1 (< 1)	37 (11)	7 (2)	1 (< 1)
Abdominal pain NOS	35 (11)	5 (2)	0	7 (2)	0	0
Weakness	34 (10)	10 (3)	0	28 (8)	8 (2)	0

<sup>a</sup>Represents High Level Term Peripheral Neuropathies NEC

### ***Safety Experience from the Phase 2 Open-Label Extension Study in Relapsed Multiple Myeloma***

In the Phase 2 extension study of 63 patients, no new cumulative or new long-term toxicities were observed with prolonged bortezomib treatment. These patients were treated for a total of 5.3 to 23 months, including time on bortezomib in the prior bortezomib study [see *Clinical Studies (14.1)*].

### **Integrated Summary of Safety (Relapsed Multiple Myeloma and Relapsed Mantle Cell Lymphoma)**

Safety data from Phase 2 and 3 studies of single agent bortezomib 1.3 mg/m<sup>2</sup>/dose twice weekly for two weeks followed by a ten-day rest period in 1163 patients with previously-treated multiple myeloma (N=1008) and previously-treated mantle cell lymphoma (N=155) were integrated and tabulated. In the integrated studies, the safety profile of bortezomib was similar in patients with multiple myeloma and mantle cell lymphoma.

In the integrated analysis, the most commonly reported (> 20%) adverse reactions were nausea (49%), diarrhea (46%), asthenic conditions including fatigue (41%) and weakness (11%), peripheral neuropathies (38%), thrombocytopenia (32%), vomiting (28%), constipation (25%), and pyrexia (21%). Eleven percent (11%) of patients experienced at least one episode of ≥ Grade 4 toxicity, most commonly thrombocytopenia (4%) and neutropenia (2%).

In the Phase 2 relapsed multiple myeloma clinical trials of bortezomib administered intravenously, local skin irritation was reported in 5% of patients, but extravasation of bortezomib was not associated with tissue damage.

### ***Serious Adverse Reactions and Adverse Reactions Leading to Treatment Discontinuation in the Integrated Summary of Safety***

A total of 26% of patients experienced a serious adverse reaction during the studies. The most commonly reported serious adverse reactions included diarrhea, vomiting and pyrexia (3% each), nausea, dehydration, and thrombocytopenia (2% each) and pneumonia, dyspnea, peripheral neuropathies, and herpes zoster (1% each).

Adverse reactions leading to discontinuation occurred in 22% of patients. The reasons for discontinuation included peripheral neuropathy (8%), and fatigue, thrombocytopenia, and diarrhea (2% each).

In total, 2% of the patients died and the cause of death was considered by the investigator to be possibly related to study drug: including reports of cardiac arrest, congestive heart failure, respiratory failure, renal failure, pneumonia and sepsis.

***Most Commonly Reported Adverse Reactions in the Integrated Summary of Safety***

The most common adverse reactions are shown in Table 9. All adverse reactions occurring at  $\geq 10\%$  are included. In the absence of a randomized comparator arm, it is often not possible to distinguish between adverse events that are drug-caused and those that reflect the patient’s underlying disease. Please see the discussion of specific adverse reactions that follows.

**Table 9: Most Commonly Reported ( $\geq 10\%$  Overall) Adverse Reactions in Integrated Analyses of Relapsed Multiple Myeloma and Relapsed Mantle Cell Lymphoma Studies Using the 1.3 mg/m<sup>2</sup> Dose (N=1163)**

Adverse Reactions	All Patients N=1163		Multiple Myeloma N=1008		Mantle Cell Lymphoma N=155	
	All	$\geq$ Grade 3	All	$\geq$ Grade 3	All	$\geq$ Grade 3
Nausea	567 (49)	36 (3)	511 (51)	32 (3)	56 (36)	4 (3)
Diarrhea NOS	530 (46)	83 (7)	470 (47)	72 (7)	60 (39)	11 (7)
Fatigue	477 (41)	86 (7)	396 (39)	71 (7)	81 (52)	15 (10)
Peripheral neuropathies <sup>a</sup>	443 (38)	129 (11)	359 (36)	110 (11)	84 (54)	19 (12)
Thrombocytopenia	369 (32)	295 (25)	344 (34)	283 (28)	25 (16)	12 (8)
Vomiting NOS	321 (28)	44 (4)	286 (28)	40 (4)	35 (23)	4 (3)
Constipation	296 (25)	17 (1)	244 (24)	14 (1)	52 (34)	3 (2)
Pyrexia	249 (21)	16 (1)	233 (23)	15 (1)	16 (10)	1 (< 1)
Anorexia	227 (20)	19 (2)	205 (20)	16 (2)	22 (14)	3 (2)
Anemia NOS	209 (18)	65 (6)	190 (19)	63 (6)	19 (12)	2 (1)
Headache NOS	175 (15)	8 (< 1)	160 (16)	8 (< 1)	15 (10)	0
Neutropenia	172 (15)	121 (10)	164 (16)	117 (12)	8 (5)	4 (3)
Rash NOS	156 (13)	8 (< 1)	120 (12)	4 (< 1)	36 (23)	4 (3)
Paresthesia	147 (13)	9 (< 1)	136 (13)	8 (< 1)	11 (7)	1 (< 1)
Dizziness (excl vertigo)	129 (11)	13 (1)	101 (10)	9 (< 1)	28 (18)	4 (3)
Weakness	124 (11)	31 (3)	106 (11)	28 (3)	18 (12)	3 (2)

<sup>a</sup>Represents High Level Term Peripheral Neuropathies NEC

**Description of Selected Adverse Reactions from the Integrated Phase 2 and 3 Relapsed Multiple Myeloma and Phase 2 Relapsed Mantle Cell Lymphoma Studies**

***Gastrointestinal Toxicity***

A total of 75% of patients experienced at least one gastrointestinal disorder. The most common gastrointestinal disorders included nausea, diarrhea, constipation, vomiting, and appetite decreased. Other gastrointestinal disorders included dyspepsia and dysgeusia. Grade 3 adverse reactions occurred in 14% of patients;  $\geq$  Grade 4 adverse reactions were  $\leq 1\%$ . Gastrointestinal adverse reactions were considered serious in 7% of patients. Four percent (4%) of patients

discontinued due to a gastrointestinal adverse reaction. Nausea was reported more often in patients with multiple myeloma (51%) compared to patients with mantle cell lymphoma (36%).

### ***Thrombocytopenia***

Across the studies, bortezomib-associated thrombocytopenia was characterized by a decrease in platelet count during the dosing period (Days 1 to 11) and a return toward baseline during the ten-day rest period during each treatment cycle. Overall, thrombocytopenia was reported in 32% of patients. Thrombocytopenia was Grade 3 in 22%,  $\geq$  Grade 4 in 4%, and serious in 2% of patients, and the reaction resulted in bortezomib discontinuation in 2% of patients [see *Warnings and Precautions* (5.7)]. Thrombocytopenia was reported more often in patients with multiple myeloma (34%) compared to patients with mantle cell lymphoma (16%). The incidence of  $\geq$ Grade 3 thrombocytopenia also was higher in patients with multiple myeloma (28%) compared to patients with mantle cell lymphoma (8%).

### ***Peripheral Neuropathy***

Overall, peripheral neuropathies occurred in 38% of patients. Peripheral neuropathy was Grade 3 for 11% of patients and  $\geq$ Grade 4 for <1% of patients. Eight percent (8%) of patients discontinued bortezomib due to peripheral neuropathy. The incidence of peripheral neuropathy was higher among patients with mantle cell lymphoma (54%) compared to patients with multiple myeloma (36%).

In the bortezomib vs dexamethasone Phase 3 relapsed multiple myeloma study, among the 62 bortezomib-treated patients who experienced  $\geq$  Grade 2 peripheral neuropathy and had dose adjustments, 48% had improved or resolved with a median of 3.8 months from first onset.

In the Phase 2 relapsed multiple myeloma studies, among the 30 patients who experienced Grade 2 peripheral neuropathy resulting in discontinuation or who experienced  $\geq$  Grade 3 peripheral neuropathy, 73% reported improvement or resolution with a median time of 47 days to improvement of one grade or more from the last dose of bortezomib.

### ***Hypotension***

The incidence of hypotension (postural, orthostatic and hypotension NOS) was 8% in patients treated with bortezomib. Hypotension was Grade 1 or 2 in the majority of patients and Grade 3 in 2% and  $\geq$  Grade 4 in < 1%. Two percent (2%) of patients had hypotension reported as a serious adverse reaction, and 1% discontinued due to hypotension. The incidence of hypotension was similar in patients with multiple myeloma (8%) and those with mantle cell lymphoma (9%). In addition, < 1% of patients experienced hypotension associated with a syncopal reaction.

### ***Neutropenia***

Neutrophil counts decreased during the bortezomib dosing period (Days 1 to 11) and returned toward baseline during the ten day rest period during each treatment cycle. Overall, neutropenia occurred in 15% of patients and was Grade 3 in 8% of patients and  $\geq$  Grade 4 in 2%. Neutropenia was reported as a serious adverse reaction in <1% of patients and <1% of patients discontinued due to neutropenia. The incidence of neutropenia was higher in patients with multiple myeloma (16%) compared to patients with mantle cell lymphoma (5%). The incidence of  $\geq$ Grade 3 neutropenia also was higher in patients with multiple myeloma (12%) compared to patients with

mantle cell lymphoma (3%).

### ***Asthenic Conditions (Fatigue, Malaise, Weakness, Asthenia)***

Asthenic conditions were reported in 54% of patients. Fatigue was reported as Grade 3 in 7% and  $\geq$  Grade 4 in  $< 1\%$  of patients. Asthenia was reported as Grade 3 in 2% and  $\geq$  Grade 4 in  $< 1\%$  of patients. Two percent (2%) of patients discontinued treatment due to fatigue and  $< 1\%$  due to weakness and asthenia. Asthenic conditions were reported in 53% of patients with multiple myeloma and 59% of patients with mantle cell lymphoma.

### ***Pyrexia***

Pyrexia ( $>38^{\circ}\text{C}$ ) was reported as an adverse reaction for 21% of patients. The reaction was Grade 3 in 1% and  $\geq$  Grade 4 in  $< 1\%$ . Pyrexia was reported as a serious adverse reaction in 3% of patients and led to bortezomib discontinuation in  $< 1\%$  of patients. The incidence of pyrexia was higher among patients with multiple myeloma (23%) compared to patients with mantle cell lymphoma (10%). The incidence of  $\geq$  Grade 3 pyrexia was 1% in patients with multiple myeloma.

### ***Herpes Virus Infection***

Consider using antiviral prophylaxis in subjects being treated with bortezomib. In the randomized studies in previously untreated and relapsed multiple myeloma, herpes zoster reactivation was more common in subjects treated with bortezomib (ranging between 6 to 11%) than in the control groups (3 to 4%). Herpes simplex was seen in 1 to 3% in subjects treated with bortezomib and 1 to 3% in the control groups. In the previously untreated multiple myeloma study, herpes zoster virus reactivation in the bortezomib, melphalan and prednisone arm was less common in subjects receiving prophylactic antiviral therapy (3%) than in subjects who did not receive prophylactic antiviral therapy (17%).

### **Retreatment in Relapsed Multiple Myeloma**

A single-arm trial was conducted in 130 patients with relapsed multiple myeloma to determine the efficacy and safety of retreatment with intravenous bortezomib. The safety profile of patients in this trial is consistent with the known safety profile of bortezomib-treated patients with relapsed multiple myeloma as demonstrated in Tables 8 and 9; no cumulative toxicities were observed upon retreatment. The most common adverse drug reaction was thrombocytopenia which occurred in 52% of the patients. The incidence of  $\geq$ Grade 3 thrombocytopenia was 24%. Peripheral neuropathy occurred in 28% of patients, with the incidence of  $\geq$ Grade 3 peripheral neuropathy reported at 6%. The incidence of serious adverse reactions was 12.3%. The most commonly reported serious adverse reactions were thrombocytopenia (3.8%), diarrhea (2.3%), and herpes zoster and pneumonia (1.5% each).

Adverse reactions leading to discontinuation occurred in 13% of patients. The reasons for discontinuation included peripheral neuropathy (5%) and diarrhea (3%).

Two deaths considered to be bortezomib-related occurred within 30 days of the last bortezomib dose; one in a patient with cerebrovascular accident and one in a patient with sepsis.

### **Additional Adverse Reactions from Clinical Studies**

The following clinically important serious adverse reactions that are not described above have been reported in clinical trials in patients treated with bortezomib administered as monotherapy or in



combination with other chemotherapeutics. These studies were conducted in patients with hematological malignancies and in solid tumors.

**Blood and Lymphatic System Disorders:** Anemia, disseminated intravascular coagulation, febrile neutropenia, lymphopenia, leukopenia

**Cardiac Disorders:** Angina pectoris, atrial fibrillation aggravated, atrial flutter, bradycardia, sinus arrest, cardiac amyloidosis, complete atrioventricular block, myocardial ischemia, myocardial infarction, pericarditis, pericardial effusion, *Torsades de pointes*, ventricular tachycardia

**Ear and Labyrinth Disorders:** Hearing impaired, vertigo

**Eye Disorders:** Diplopia and blurred vision, conjunctival infection, irritation

**Gastrointestinal Disorders:** Abdominal pain, ascites, dysphagia, fecal impaction, gastroenteritis, gastritis hemorrhagic, hematemesis, hemorrhagic duodenitis, ileus paralytic, large intestinal obstruction, paralytic intestinal obstruction, peritonitis, small intestinal obstruction, large intestinal perforation, stomatitis, melena, pancreatitis acute, oral mucosal petechiae, gastroesophageal reflux

**General Disorders and Administration Site Conditions:** Chills, edema, edema peripheral, injection site erythema, neuralgia, injection site pain, irritation, malaise, phlebitis

**Hepatobiliary Disorders:** Cholestasis, hepatic hemorrhage, hyperbilirubinemia, portal vein thrombosis, hepatitis, liver failure

**Immune System Disorders:** Anaphylactic reaction, drug hypersensitivity, immune complex mediated hypersensitivity, angioedema, laryngeal edema

**Infections and Infestations:** Aspergillosis, bacteremia, bronchitis, urinary tract infection, herpes viral infection, listeriosis, nasopharyngitis, pneumonia, respiratory tract infection, septic shock, toxoplasmosis, oral candidiasis, sinusitis, catheter related infection

**Injury, Poisoning and Procedural Complications:** Catheter related complication, skeletal fracture, subdural hematoma

**Investigations:** Weight decreased

**Metabolism and Nutrition Disorders:** Dehydration, hypocalcemia, hyperuricemia, hypokalemia, hyperkalemia, hyponatremia, hypernatremia

**Musculoskeletal and Connective Tissue Disorders:** Arthralgia, back pain, bone pain, myalgia, pain in extremity

**Nervous System Disorders:** Ataxia, coma, dizziness, dysarthria, dysesthesia, dysautonomia, encephalopathy, cranial palsy, grand mal convulsion, headache, hemorrhagic stroke, motor dysfunction, neuralgia, spinal cord compression, paralysis, postherpetic neuralgia, transient ischemic attack

**Psychiatric Disorders:** Agitation, anxiety, confusion, insomnia, mental status change, psychotic disorder, suicidal ideation

**Renal and Urinary Disorders:** Calculus renal, bilateral hydronephrosis, bladder spasm, hematuria, hemorrhagic cystitis, urinary incontinence, urinary retention, renal failure (acute and chronic), glomerular nephritis proliferative

**Respiratory, Thoracic and Mediastinal Disorders:** Acute respiratory distress syndrome, aspiration pneumonia, atelectasis, chronic obstructive airways disease exacerbated, cough, dysphagia, dyspnea, dyspnea exertional, epistaxis, hemoptysis, hypoxia, lung infiltration, pleural effusion, pneumonitis, respiratory distress, pulmonary hypertension

**Skin and Subcutaneous Tissue Disorders:** Urticaria, face edema, rash (which may be pruritic), leukocytoclastic vasculitis, pruritus.

**Vascular Disorders:** Cerebrovascular accident, cerebral hemorrhage, deep venous thrombosis, hypertension, peripheral embolism, pulmonary embolism, pulmonary hypertension

## 6.2 Postmarketing Experience

The following adverse reactions have been identified from the worldwide postmarketing experience with bortezomib. Because these reactions are reported voluntarily from a population of uncertain size, it is not always possible to reliably estimate their frequency or establish a causal relationship to drug exposure:

**Cardiac Disorders:** Cardiac tamponade

**Ear and Labyrinth Disorders:** Deafness bilateral

**Eye Disorders:** Optic neuropathy, blindness, chalazion/blepharitis

**Gastrointestinal Disorders:** Ischemic colitis

**Infections and Infestations:** Progressive multifocal leukoencephalopathy (PML), ophthalmic herpes, herpes meningoencephalitis

**Nervous System Disorders:** Posterior reversible encephalopathy syndrome (PRES, formerly RPLS), Guillain-Barré syndrome, demyelinating polyneuropathy

**Respiratory, Thoracic and Mediastinal Disorders:** Acute diffuse infiltrative pulmonary disease

**Skin and Subcutaneous Tissue Disorders:** Stevens-Johnson syndrome/toxic epidermal necrolysis (SJS/TEN), acute febrile neutrophilic dermatosis (Sweet's syndrome)

## 7 DRUG INTERACTIONS

### 7.1 Effects of Other Drugs on Bortezomib

#### Strong CYP3A4 Inducers

Coadministration with a strong CYP3A4 inducer decreases the exposure of bortezomib [*see Clinical Pharmacology (12.3)*] which may decrease Bortezomib for injection efficacy. Avoid coadministration with strong CYP3A4 inducers.

#### Strong CYP3A4 Inhibitors

Coadministration with a strong CYP3A4 inhibitor increases the exposure of bortezomib [*see Clinical Pharmacology (12.3)*] which may increase the risk of bortezomib toxicities. Monitor patients for signs of bortezomib toxicity and consider a Bortezomib for injection dose reduction if Bortezomib for injection must be given in combination with strong CYP3A4 inhibitors.

### 7.2 Drugs Without Clinically Significant Interactions with Bortezomib

No clinically significant drug interactions have been observed when bortezomib was coadministered with dexamethasone, omeprazole, or melphalan in combination with prednisone [*see Clinical Pharmacology (12.3)*].

## 8 USE IN SPECIFIC POPULATIONS

### 8.1 Pregnancy

#### *Risk Summary*

Based on its mechanism of action [*see Clinical Pharmacology (12.1)*] and findings in animals, bortezomib can cause fetal harm when administered to a pregnant woman. There are no studies with the use of bortezomib in pregnant women to inform drug-associated risks. Bortezomib caused embryo-fetal lethality in rabbits at doses lower than the clinical dose (*see Data*). Advise pregnant women of the potential risk to the fetus.

Adverse outcomes in pregnancy occur regardless of the health of the mother or the use of medications. The estimated background risk of major birth defects and miscarriage for the indicated population is unknown. In the U.S. general population, the estimated background risk of major birth defects and miscarriage in clinically recognized pregnancies is 2 to 4% and 15 to 20%, respectively.

#### *Data*

##### *Animal Data*

Bortezomib was not teratogenic in nonclinical developmental toxicity studies in rats and rabbits at the highest dose tested (0.075 mg/kg; 0.5 mg/m<sup>2</sup> in the rat and 0.05 mg/kg; 0.6 mg/m<sup>2</sup> in the rabbit) when administered during organogenesis. These dosages are approximately 0.5 times the clinical dose of 1.3 mg/m<sup>2</sup> based on body surface area.

Bortezomib caused embryo-fetal lethality in rabbits at doses lower than the clinical dose (approximately 0.5 times the clinical dose of 1.3 mg/m<sup>2</sup> based on body surface area). Pregnant rabbits given bortezomib during organogenesis at a dose of 0.05 mg/kg (0.6 mg/m<sup>2</sup>) experienced significant postimplantation loss and decreased number of live fetuses. Live fetuses from these litters also showed significant decreases in fetal weight.

## **8.2 Lactation**

### *Risk Summary*

There are no data on the presence of bortezomib or its metabolites in human milk, the effects of the drug on the breastfed child, or the effects of the drug on milk production. Because many drugs are excreted in human milk and because the potential for serious adverse reactions in breastfed child from bortezomib is unknown, advise nursing women not to breastfeed during treatment with Bortezomib for injection and for two months after treatment.

## **8.3 Females and Males of Reproductive Potential**

Based on its mechanism of action and findings in animals, bortezomib can cause fetal harm when administered to a pregnant woman [*see Use in Specific Populations (8.1)*].

### *Pregnancy Testing*

Conduct pregnancy testing in females of reproductive potential prior to initiating Bortezomib for injection treatment.

### *Contraception*

#### *Females*

Advise females of reproductive potential to use effective contraception during treatment with Bortezomib for injection and for seven months after the last dose.

### *Males*

Males with female partners of reproductive potential should use effective contraception during treatment with Bortezomib for injection and for four months after the last dose.

### *Infertility*

Based on the mechanism of action and findings in animals, Bortezomib for injection may have an effect on either male or female fertility [*see Nonclinical Toxicology (13.1)*].

## **8.4 Pediatric Use**

Additional information describing a clinical study in which efficacy was not demonstrated in pediatric patients is in the approved label for Millennium Pharmaceuticals, Inc.'s VELCADE (bortezomib) Injection. However, due to Millennium Pharmaceuticals, Inc.'s marketing exclusivity rights, this drug product is not labeled with that pediatric information.

## **8.5 Geriatric Use**

Of the 669 patients enrolled in the relapsed multiple myeloma study, 245 (37%) were 65 years of age or older: 125 (38%) on the bortezomib arm and 120 (36%) on the dexamethasone arm. Median time to progression and median duration of response for patients  $\geq 65$  were longer on bortezomib compared to dexamethasone [5.5 mo vs 4.3 mo, and 8 mo vs 4.9 mo, respectively]. On the bortezomib arm, 40% (n=46) of evaluable patients aged  $\geq 65$  experienced response (CR+PR) vs 18% (n=21) on the dexamethasone arm. The incidence of Grade 3 and 4 events was 64%, 78% and 75% for bortezomib patients  $\leq 50$ , 51 to 64 and  $\geq 65$  years old, respectively [*see Adverse Reactions (6.1), Clinical Studies (14.1)*].

No overall differences in safety or effectiveness were observed between patients  $\geq$  age 65 and younger patients receiving bortezomib; but greater sensitivity of some older individuals cannot be ruled out.

## **8.6 Renal Impairment**

No starting dosage adjustment of Bortezomib for injection is recommended for patients with renal impairment. In patients requiring dialysis, Bortezomib for injection should be administered after the dialysis procedure [*see Clinical Pharmacology (12.3)*].

## **8.7 Hepatic Impairment**

No starting dosage adjustment of Bortezomib for injection is recommended for patients with mild hepatic impairment (total bilirubin  $\leq 1$ x ULN and AST  $>$  ULN, or total bilirubin  $>1$  to  $1.5$ x ULN and any AST). The exposure of bortezomib is increased in patients with moderate (total bilirubin  $\geq 1.5$  to  $3$ x ULN and any AST) and severe (total bilirubin  $>3$ x ULN and any AST) hepatic impairment. Reduce the starting dose in patients with moderate or severe hepatic impairment [*see Dosage and Administration (2.6), Clinical Pharmacology (12.3)*].

## **8.8 Patients with Diabetes**

During clinical trials, hypoglycemia and hyperglycemia were reported in diabetic patients receiving oral hypoglycemics. Patients on oral antidiabetic agents receiving Bortezomib for injection treatment may require close monitoring of their blood glucose levels and adjustment of the dose of their antidiabetic medication.

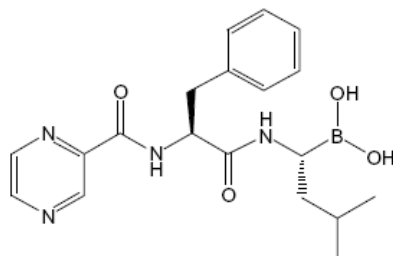
## 10 OVERDOSAGE

There is no known specific antidote for Bortezomib for injection overdose. In humans, fatal outcomes following the administration of more than twice the recommended therapeutic dose have been reported, which were associated with the acute onset of symptomatic hypotension (5.2) and thrombocytopenia (5.7). In the event of an overdose, the patient's vital signs should be monitored and appropriate supportive care given.

Studies in monkeys and dogs showed that intravenous bortezomib doses as low as two times the recommended clinical dose on a  $\text{mg}/\text{m}^2$  basis were associated with increases in heart rate, decreases in contractility, hypotension, and death. In dog studies, a slight increase in the corrected QT interval was observed at doses resulting in death. In monkeys, doses of  $3 \text{ mg}/\text{m}^2$  and greater (approximately twice the recommended clinical dose) resulted in hypotension starting at one hour postadministration, with progression to death in 12 to 14 hours following drug administration.

## 11 DESCRIPTION

Bortezomib for injection, a proteasome inhibitor, contains bortezomib which is an antineoplastic agent. Bortezomib is a modified dipeptidyl boronic acid. The chemical name is [(1R)-3-methyl-1-[[[(2S)-1-oxo-3-phenyl-2-[(pyrazinylcarbonyl)amino]propyl]amino]butyl] boronic acid. The molecular formula is  $\text{C}_{19}\text{H}_{25}\text{BN}_4\text{O}_4$ . The molecular weight is 384.24. Bortezomib has the following molecular structure:



The solubility of bortezomib, as the monomeric boronic acid, in water is 0.8 to 0.9  $\text{mg}/\text{mL}$  in a pH range of 2 to 6.5.

Bortezomib for injection is available for intravenous injection use. Each single-dose vial contains 3.5 mg of bortezomib as a sterile lyophilized cake or powder. The inactive ingredients are citric acid, USP 10 mg and tromethamine, USP 8.4 mg. The product is provided as a citric acid boronic ester which, in reconstituted form, consists of the citric acid ester in equilibrium with its hydrolysis product, the monomeric boronic acid. The drug substance exists in its cyclic anhydride form as a trimeric boroxine.

## 12 CLINICAL PHARMACOLOGY

### 12.1 Mechanism of Action

Bortezomib is a reversible inhibitor of the chymotrypsin-like activity of the 26S proteasome in mammalian cells. The 26S proteasome is a large protein complex that degrades ubiquitinated proteins. The ubiquitin-proteasome pathway plays an essential role in regulating the intracellular concentration of specific proteins, thereby maintaining homeostasis within cells. Inhibition of the 26S proteasome prevents this targeted proteolysis, which can affect multiple signaling cascades within the cell. This disruption of normal homeostatic mechanisms can lead to cell death.

Experiments have demonstrated that bortezomib is cytotoxic to a variety of cancer cell types *in vitro*. Bortezomib causes a delay in tumor growth *in vivo* in nonclinical tumor models, including multiple myeloma.

## **12.2 Pharmacodynamics**

Following twice weekly administration of 1 mg/m<sup>2</sup> and 1.3 mg/m<sup>2</sup> bortezomib doses (n=12 per each dose level), the maximum inhibition of 20S proteasome activity (relative to baseline) in whole blood was observed five minutes after drug administration. Comparable maximum inhibition of 20S proteasome activity was observed between 1 and 1.3 mg/m<sup>2</sup> doses. Maximal inhibition ranged from 70% to 84% and from 73% to 83% for the 1 mg/m<sup>2</sup> and 1.3 mg/m<sup>2</sup> dose regimens, respectively.

## **12.3 Pharmacokinetics**

Following intravenous administration of 1 mg/m<sup>2</sup> and 1.3 mg/m<sup>2</sup> doses, the mean maximum plasma concentrations of bortezomib (C<sub>max</sub>) after the first dose (Day 1) were 57 and 112 ng/mL, respectively. When administered twice weekly, the mean maximum observed plasma concentrations ranged from 67 to 106 ng/mL for the 1 mg/m<sup>2</sup> dose and 89 to 120 ng/mL for the 1.3 mg/m<sup>2</sup> dose.

### Distribution

The mean distribution volume of bortezomib ranged from approximately 498 to 1884 L/m<sup>2</sup> following single- or repeat-dose administration of 1 mg/m<sup>2</sup> or 1.3 mg/m<sup>2</sup> to patients with multiple myeloma. The binding of bortezomib to human plasma proteins averaged 83% over the concentration range of 100 to 1000 ng/mL.

### Elimination

The mean elimination half-life of bortezomib upon multiple dosing ranged from 40 to 193 hours after the 1 mg/m<sup>2</sup> dose and 76 to 108 hours after the 1.3 mg/m<sup>2</sup> dose. The mean total body clearances were 102 and 112 L/h following the first dose for doses of 1 mg/m<sup>2</sup> and 1.3 mg/m<sup>2</sup>, respectively, and ranged from 15 to 32 L/h following subsequent doses for doses of 1 and 1.3 mg/m<sup>2</sup>, respectively.

### *Metabolism*

Bortezomib is primarily oxidatively metabolized to several inactive metabolites *in vitro* via cytochrome P450 (CYP) enzymes 3A4, CYP2C19, and CYP1A2, and to a lesser extent by CYP2D6 and CYP2C9.

### Excretion

The pathways of elimination of bortezomib have not been characterized in humans.

### Specific Populations

No clinically significant differences in the pharmacokinetics of bortezomib were observed based on age, sex, or renal impairment (including patients administered bortezomib after dialysis). The effect of race on bortezomib pharmacokinetics is unknown.

### Patients with Hepatic Impairment

Following administration of bortezomib doses ranging from 0.5 to 1.3 mg/m<sup>2</sup>, mild (total bilirubin ≤1x ULN and AST > ULN, or total bilirubin >1 to 1.5x ULN and any AST) hepatic impairment did not alter dose-normalized bortezomib AUC when compared to patients with normal hepatic function. Dose normalized mean bortezomib AUC increased by approximately 60% in patients with moderate (total bilirubin >1.5 to 3x ULN and any AST) or severe (total bilirubin >3x ULN and any AST) hepatic impairment. A lower starting dose is recommended in patients with moderate or severe hepatic impairment.

### Drug Interaction Studies

#### *Clinical Studies*

No clinically significant differences in bortezomib pharmacokinetics were observed when coadministered with dexamethasone (weak CYP3A4 inducer), omeprazole (strong CYP2C19 inhibitor), or melphalan in combination with prednisone.

#### Strong CYP3A4 Inhibitor

Coadministration with ketoconazole (strong CYP3A4 inhibitor) increased bortezomib exposure by 35%.

#### Strong CYP3A4 Inducer

Coadministration with rifampin (strong CYP3A4 inducer) decreased bortezomib exposure by approximately 45%.

#### *In Vitro Studies*

Bortezomib may inhibit CYP2C19 activity and increase exposure to drugs that are substrates for this enzyme.

## **13. NONCLINICAL TOXICOLOGY**

### **13.1 Carcinogenesis, Mutagenesis, Impairment of Fertility**

Carcinogenicity studies have not been conducted with bortezomib.

Bortezomib showed clastogenic activity (structural chromosomal aberrations) in the *in vitro* chromosomal aberration assay using Chinese hamster ovary cells. Bortezomib was not genotoxic when tested in the *in vitro* mutagenicity assay (Ames test) and *in vivo* micronucleus assay in mice.

Fertility studies with bortezomib were not performed but evaluation of reproductive tissues has been performed in the general toxicity studies. In the six-month rat toxicity study, degenerative effects in the ovary were observed at doses ≥0.3 mg/m<sup>2</sup> (one-fourth of the recommended clinical dose), and degenerative changes in the testes occurred at 1.2 mg/m<sup>2</sup>.

### **13.2 Animal Toxicology and/or Pharmacology**

#### Cardiovascular Toxicity:

Studies in monkeys showed that administration of dosages approximately twice the recommended clinical dose resulted in heart rate elevations, followed by profound progressive hypotension, bradycardia, and death 12 to 14 hours postdose. Doses ≥1.2 mg/m<sup>2</sup> induced dose-proportional

changes in cardiac parameters. Bortezomib has been shown to distribute to most tissues in the body, including the myocardium. In a repeated dosing toxicity study in the monkey, myocardial hemorrhage, inflammation, and necrosis were also observed.

#### Chronic Administration:

In animal studies at a dose and schedule similar to that recommended for patients (twice weekly dosing for two weeks followed by one-week rest), toxicities observed included severe anemia and thrombocytopenia, and gastrointestinal, neurological and lymphoid system toxicities. Neurotoxic effects of bortezomib in animal studies included axonal swelling and degeneration in peripheral nerves, dorsal spinal roots, and tracts of the spinal cord. Additionally, multifocal hemorrhage and necrosis in the brain, eye, and heart were observed.

## **14 CLINICAL STUDIES**

### **14.1 Multiple Myeloma**

#### **Randomized, Open-Label Clinical Study in Patients with Previously Untreated Multiple Myeloma:**

A prospective, international, randomized (1:1), open-label clinical study (NCT00111319) of 682 patients was conducted to determine whether bortezomib administered intravenously (1.3 mg/m<sup>2</sup>) in combination with melphalan (9 mg/m<sup>2</sup>) and prednisone (60 mg/m<sup>2</sup>) resulted in improvement in time to progression (TTP) when compared to melphalan (9 mg/m<sup>2</sup>) and prednisone (60 mg/m<sup>2</sup>) in patients with previously untreated multiple myeloma. Treatment was administered for a maximum of nine cycles (approximately 54 weeks) and was discontinued early for disease progression or unacceptable toxicity. Antiviral prophylaxis was recommended for patients on the bortezomib study arm.

The median age of the patients in the study was 71 years (48;91), 50% were male, 88% were Caucasian and the median Karnofsky performance status score for the patients was 80 (60;100). Patients had IgG/IgA/Light chain myeloma in 63%/25%/8% instances, a median hemoglobin of 105 g/L (64;165), and a median platelet count of 221,500/microliter (33,000;587,000).

Efficacy results for the trial are presented in Table 10. At a prespecified interim analysis (with median follow-up of 16.3 months), the combination of bortezomib, melphalan and prednisone therapy resulted in significantly superior results for time to progression, progression free survival, overall survival and response rate. Further enrollment was halted, and patients receiving melphalan and prednisone were offered bortezomib in addition. A later, prespecified analysis of overall survival (with median follow-up of 36.7 months with a hazard ratio of 0.65, 95% CI: 0.51, 0.84) resulted in a statistically significant survival benefit for the bortezomib, melphalan and prednisone treatment arm despite subsequent therapies including bortezomib based regimens. In an updated analysis of overall survival based on 387 deaths (median follow-up 60.1 months), the median overall survival for the bortezomib, melphalan and prednisone treatment arm was 56.4 months and for the melphalan and prednisone treatment arm was 43.1 months, with a hazard ratio of 0.695 (95% CI: 0.57, 0.85).



**Table 10: Summary of Efficacy Analyses in the Previously Untreated Multiple Myeloma Study**

<b>Efficacy Endpoint</b>	<b>Bortezomib, Melphalan and Prednisone n=344</b>	<b>Melphalan and Prednisone n=338</b>
<b>Time to Progression</b>		
Events n (%)	101 (29)	152 (45)
Median <sup>a</sup> (months)	20.7	15
(95% CI)	(17.6, 24.7)	(14.1, 17.9)
Hazard ratio <sup>b</sup>		0.54
(95% CI)		(0.42, 0.70)
p-value <sup>c</sup>		0.000002
<b>Progression-Free Survival</b>		
Events n (%)	135 (39)	190 (56)
Median <sup>a</sup> (months)	18.3	14
(95% CI)	(16.6, 21.7)	(11.1, 15)
Hazard ratio <sup>b</sup>		0.61
(95% CI)		(0.49, 0.76)
p-value <sup>c</sup>		0.00001
<b>Response Rate</b>		
CR <sup>d</sup> n (%)	102 (30)	12 (4)
PR <sup>d</sup> n (%)	136 (40)	103 (30)
nCR n (%)	5 (1)	0
CR + PR <sup>d</sup> n (%)	238 (69)	115 (34)
p-value <sup>e</sup>		<10 <sup>-10</sup>
<b>Overall Survival at Median Follow Up of 36.7 Months</b>		
Events (deaths) n (%)	109 (32)	148 (44)
Median <sup>a</sup> (months)	Not Reached	43.1
(95% CI)	(46.2, NR)	(34.8, NR)
Hazard ratio <sup>b</sup>		0.65
(95% CI)		(0.51, 0.84)
p-value <sup>c</sup>		0.00084

Note: All results are based on the analysis performed at a median follow-up duration of 16.3 months except for the overall survival analysis.

<sup>a</sup> Kaplan-Meier estimate

<sup>b</sup> Hazard ratio estimate is based on a Cox proportional-hazard model adjusted for stratification factors: beta2-microglobulin, albumin, and region. A hazard ratio less than one indicates an advantage for bortezomib, melphalan and prednisone

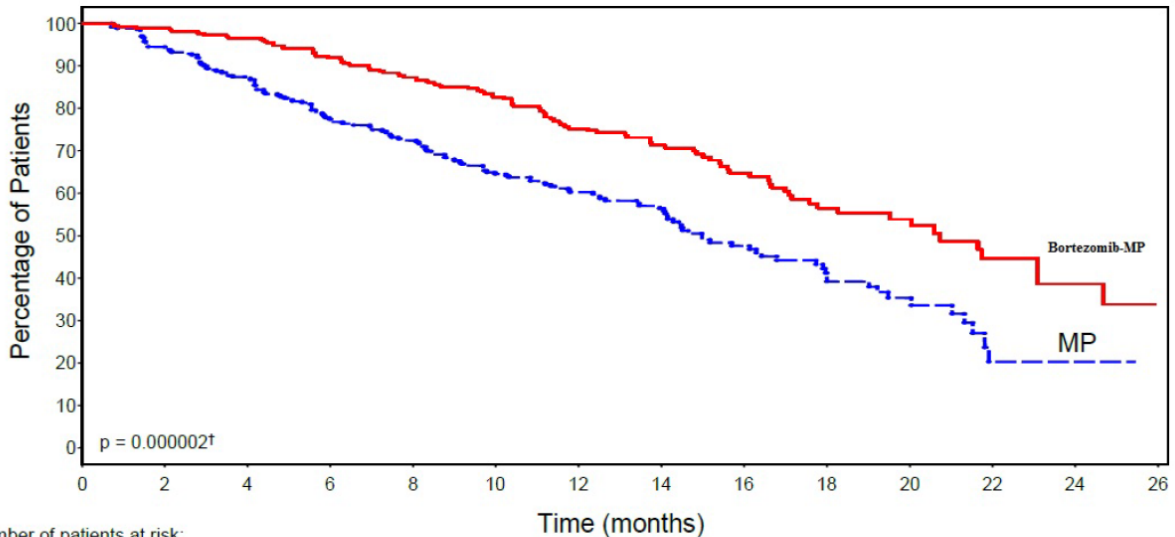
<sup>c</sup> p-value based on the stratified log-rank test adjusted for stratification factors: beta 2-microglobulin, albumin, and region

<sup>d</sup> EBMT criteria

<sup>e</sup> p-value for Response Rate (CR + PR) from the Cochran-Mantel-Haenszel chi-square test adjusted for the stratification factors

TTP was statistically significantly longer on the bortezomib, melphalan and prednisone arm (see Figure 1). (median follow-up 16.3 months)

**Figure 1: Time to Progression**  
**Bortezomib, Melphalan and Prednisone vs Melphalan and Prednisone**

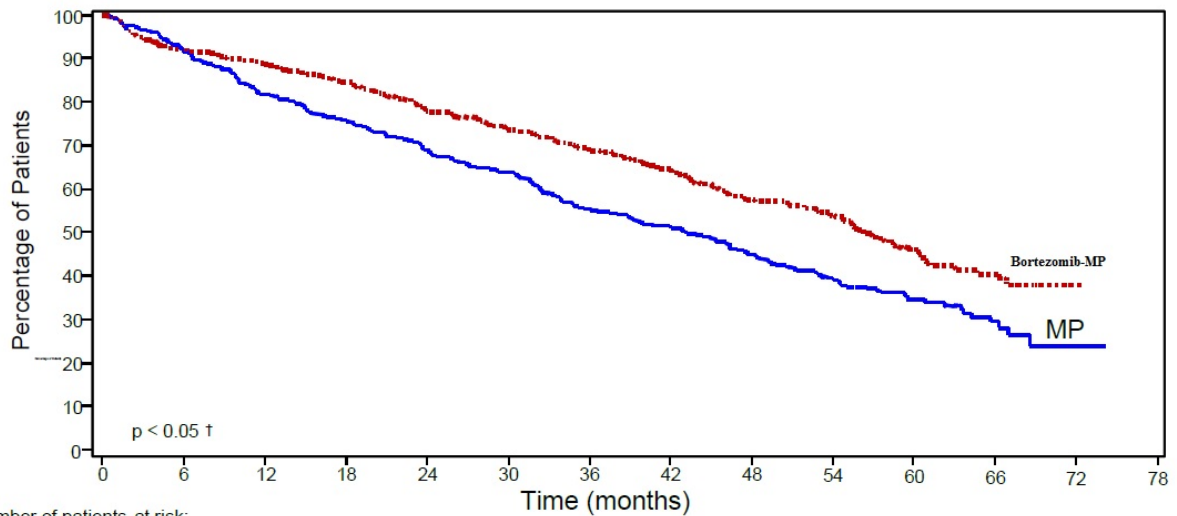


Number of patients at risk:		Time (months)													
		0	2	4	6	8	10	12	14	16	18	20	22	24	26
Bortezomib-MP (n*)	344	309	280	258	240	200	159	114	81	53	35	20	13		
MP (n*)	338	298	264	218	200	160	128	90	61	41	20	6	3		

\* Patients remaining after the indicated timepoint  
 † p-value from log-rank test

Overall survival was statistically significantly longer on the bortezomib, melphalan and prednisone arm (see Figure 2). (median follow-up 60.1 months)

**Figure 2: Overall Survival**  
**Bortezomib, Melphalan and Prednisone vs Melphalan and Prednisone**



Number of patients at risk:		Time (months)														
		0	6	12	18	24	30	36	42	48	54	60	66	72	78	
Bortezomib-MP (n*)	344	300	288	270	246	232	216	199	176	158	78	34	1	0		
MP (n*)	338	301	262	240	216	196	168	153	133	112	61	24	3	0		

\* Patients remaining after the indicated timepoint  
 † p-value from log-rank test

**Randomized, Clinical Study in Relapsed Multiple Myeloma of Bortezomib vs Dexamethasone**

A prospective Phase 3, international, randomized (1:1), stratified, open-label clinical study (NCT00048230) enrolling 669 patients was designed to determine whether bortezomib resulted in improvement in time to progression (TTP) compared to high-dose dexamethasone in patients with progressive multiple myeloma following 1 to 3 prior therapies. Patients considered to be refractory to prior high-dose dexamethasone were excluded as were those with baseline Grade  $\geq 2$  peripheral neuropathy or platelet counts  $< 50,000/\mu\text{L}$ . A total of 627 patients were evaluable for response.

Stratification factors were based on the number of lines of prior therapy the patient had previously received (one previous line vs more than one line of therapy), time of progression relative to prior treatment (progression during or within six months of stopping their most recent therapy vs relapse  $> 6$  months after receiving their most recent therapy), and screening beta<sub>2</sub>-microglobulin levels ( $\leq 2.5$  mg/L vs  $> 2.5$  mg/L).

Baseline patient and disease characteristics are summarized in **Table 11**.

**Table 11: Summary of Baseline Patient and Disease Characteristics in the Relapsed Multiple Myeloma Study**

	<b>Bortezomib N=333</b>	<b>Dexamethasone N=336</b>
<b>Patient Characteristics</b>		
Median age in years (range)	62 (33, 84)	61 (27, 86)
Gender: Male/female	56% / 44%	60% / 40%
Race: Caucasian/black/other	90% / 6% / 4%	88% / 7% / 5%
Karnofsky performance status score $\leq 70$	13%	17%
Hemoglobin $< 100$ g/L	32%	28%
Platelet count $< 75 \times 10^9/\text{L}$	6%	4%
<b>Disease Characteristics</b>		
Type of myeloma (%): IgG/IgA/Light chain	60% / 23% / 12%	59% / 24% / 13%
Median beta <sub>2</sub> -microglobulin (mg/L)	3.7	3.6
Median albumin (g/L)	39	39
Creatinine clearance $\leq 30$ mL/min [n (%)]	17 (5%)	11 (3%)
<b>Median Duration of Multiple Myeloma Since Diagnosis (Years)</b>	3.5	3.1
<b>Number of Prior Therapeutic Lines of Treatment</b>		
Median	2	2
1 prior line	40%	35%
$> 1$ prior line	60%	65%
<b>Previous Therapy</b>		
Any prior steroids, e.g., dexamethasone, VAD	98%	99%
Any prior anthracyclines, e.g., VAD, mitoxantrone	77%	76%
Any prior alkylating agents, e.g., MP, VBMCP	91%	92%
Any prior thalidomide therapy	48%	50%
Vinca alkaloids	74%	72%
Prior stem cell transplant/other high-dose therapy	67%	68%

Patients in the bortezomib treatment group were to receive 8 three-week treatment cycles followed by 3 five week treatment cycles of bortezomib. Patients achieving a CR were treated for four cycles beyond first evidence of CR. Within each three-week treatment cycle, bortezomib 1.3 mg/m<sup>2</sup>/dose alone was administered by intravenous bolus twice weekly for two weeks on Days 1, 4, 8, and 11 followed by a ten-day rest period (Days 12 to 21). Within each five-week treatment cycle, bortezomib 1.3 mg/m<sup>2</sup>/dose alone was administered by intravenous bolus once weekly for four weeks on Days 1, 8, 15, and 22 followed by a 13day rest period (Days 23 to 35) [see *Dosage and Administration (2.2)*].

Patients in the dexamethasone treatment group were to receive 4 five-week treatment cycles followed by 5 four week treatment cycles. Within each five-week treatment cycle, dexamethasone 40 mg/day PO was administered once daily on Days 1 to 4, 9 to 12, and 17 to 20 followed by a 15 day rest period (Days 21 to 35). Within each four week treatment cycle, dexamethasone 40 mg/day PO was administered once daily on Days 1 to 4 followed by a 24 day rest period (Days 5 to 28). Patients with documented progressive disease on dexamethasone were offered bortezomib at a standard dose and schedule on a companion study. Following a preplanned interim analysis of time to progression, the dexamethasone arm was halted and all patients randomized to dexamethasone were offered bortezomib, regardless of disease status.

In the bortezomib arm, 34% of patients received at least one bortezomib dose in all eight of the three week cycles of therapy, and 13% received at least one dose in all 11 cycles. The average number of bortezomib doses during the study was 22, with a range of 1 to 44. In the dexamethasone arm, 40% of patients received at least one dose in all four of the five week treatment cycles of therapy, and 6% received at least one dose in all nine cycles.

The time to event analyses and response rates from the relapsed multiple myeloma study are presented in Table 12. Response and progression were assessed using the European Group for Blood and Marrow Transplantation (EBMT) criteria. Complete response (CR) required <5% plasma cells in the marrow, 100% reduction in M-protein, and a negative immunofixation test (IF<sup>-</sup>). Partial response (PR) requires ≥50% reduction in serum myeloma protein and ≥90% reduction of urine myeloma protein on at least two occasions for a minimum of at least six weeks along with stable bone disease and normal calcium. Near complete response (nCR) was defined as meeting all the criteria for complete response including 100% reduction in M-protein by protein electrophoresis, however M-protein was still detectable by immunofixation (IF<sup>+</sup>).

**Table 12: Summary of Efficacy Analyses in the Relapsed Multiple Myeloma Study**

Efficacy Endpoint	All Patients		1 Prior Line of Therapy		> 1 Prior Line of Therapy	
	Bortezomib	Dex	Bortezomib	Dex	Bortezomib	Dex
	n=333	n=336	n=132	n=119	n=200	n=217
Time to Progression Events n (%)	147 (44)	196 (58)	55 (42)	64 (54)	92 (46)	132 (61)

Median <sup>a</sup> (95% CI)	6.2 mo (4.9, 6.9)	3.5 mo (2.9, 4.2)	7 mo (6.2, 8.8)	5.6 mo (3.4, 6.3)	4.9 mo (4.2, 6.3)	2.9 mo (2.8, 3.5)
Hazard ratio <sup>b</sup> (95% CI)	0.55 (0.44, 0.69)		0.55 (0.38, 0.81)		0.54 (0.41, 0.72)	
p-value <sup>c</sup>	<0.0001		0.0019		<0.0001	
<b>Overall Survival</b> Events (deaths) n (%)	51 (15)	84 (25)	12 (9)	24 (20)	39 (20)	60 (28)
Hazard ratio <sup>b</sup> (95% CI)	0.57 (0.40, 0.81)		0.39 (0.19, 0.81)		0.65 (0.43, 0.97)	
p-value <sup>c,d</sup>	<0.05		<0.05		<0.05	
<b>Response Rate</b> Population <sup>e</sup> n = 627	n=315	n=312	n=128	n=110	n=187	n=202
CR <sup>f</sup> n (%)	20 (6)	2 (<1)	8 (6)	2 (2)	12 (6)	0 (0)
PR <sup>f</sup> n (%)	101 (32)	54 (17)	49 (38)	27 (25)	52 (28)	27 (13)
nCR <sup>f,g</sup> n (%)	21 (7)	3 (<1)	8 (6)	2 (2)	13 (7)	1 (<1)
CR + PR <sup>f</sup> n (%)	121 (38)	56 (18)	57 (45)	29 (26)	64 (34)	27 (13)
p-value <sup>h</sup>	<0.0001		0.0035		<0.0001	

<sup>a</sup> Kaplan-Meier estimate

<sup>b</sup> Hazard ratio is based on Cox proportional-hazard model with the treatment as single independent variable. A hazard ratio less than one indicates an advantage for bortezomib

<sup>c</sup> p-value based on the stratified log-rank test including randomization stratification factors

<sup>d</sup> Precise p-value cannot be rendered

<sup>e</sup> Response population includes patients who had measurable disease at baseline and received at least one dose of study drug

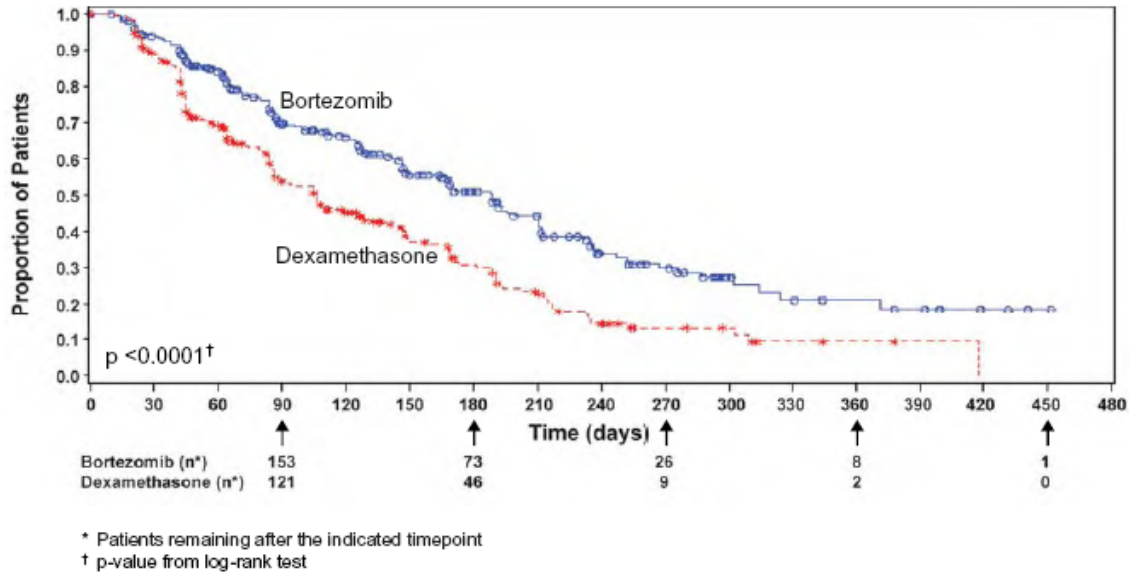
<sup>f</sup> EBMT criteria; nCR meets all EBMT criteria for CR but has positive IF. Under EBMT criteria nCR is in the PR category

<sup>g</sup> In two patients, the IF was unknown

<sup>h</sup> p-value for Response Rate (CR + PR) from the Cochran-Mantel-Haenszel chi-square test adjusted for the stratification factors

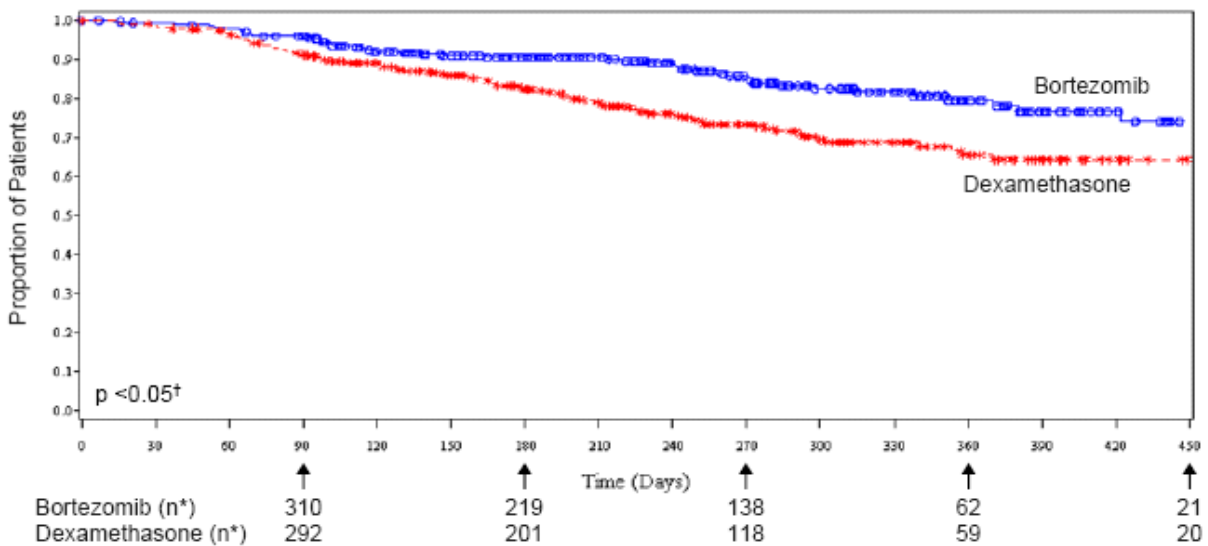
TTP was statistically significantly longer on the bortezomib arm (see Figure 3).

### **Figure 3: Time to Progression Bortezomib vs Dexamethasone (Relapsed Multiple Myeloma Study)**



As shown in Figure 4 bortezomib had a significant survival advantage relative to dexamethasone ( $p < 0.05$ ). The median follow-up was 8.3 months.

**Figure 4: Overall Survival Bortezomib vs Dexamethasone (Relapsed Multiple Myeloma Study)**



\* Patients remaining after the indicated timepoint  
† p-value from log-rank test

For the 121 patients achieving a response (CR or PR) on the bortezomib arm, the median duration was 8 months (95% CI: 6.9, 11.5 months) compared to 5.6 months (95% CI: 4.8, 9.2 months) for the 56 responders on the dexamethasone arm. The response rate was significantly higher on the bortezomib arm regardless of  $\beta_2$ -microglobulin levels at baseline.

### ***A Randomized Phase 2 Dose-Response Study in Relapsed Multiple Myeloma***

An open-label, multicenter study randomized 54 patients with multiple myeloma who had progressed or relapsed on or after front-line therapy to receive bortezomib 1 mg/m<sup>2</sup> or 1.3 mg/m<sup>2</sup> intravenous bolus twice weekly for two weeks on Days 1, 4, 8, and 11 followed by a ten day rest period (Days 12 to 21). The median duration of time between diagnosis of multiple myeloma and first dose of bortezomib on this trial was two years, and patients had received a median of one prior line of treatment (median of three prior therapies). A single complete response was seen at each dose. The overall response rates (CR + PR) were 30% (8/27) at 1 mg/m<sup>2</sup> and 38% (10/26) at 1.3 mg/m<sup>2</sup>.

### **A Phase 2 Open-Label Extension Study in Relapsed Multiple Myeloma**

Patients from the two Phase 2 studies, who in the investigators' opinion would experience additional clinical benefit continued to receive bortezomib beyond 8 cycles on an extension study. Sixty-three (63) patients from the Phase 2 multiple myeloma studies were enrolled and received a median of seven additional cycles of bortezomib therapy for a total median of 14 cycles (range 7 to 32). The overall median dosing intensity was the same in both the parent protocol and extension study. Sixty-seven percent (67%) of patients initiated the extension study at the same or higher dose intensity at which they completed the parent protocol, and 89% of patients maintained the standard three week dosing schedule during the extension study. No new cumulative or new long-term toxicities were observed with prolonged bortezomib treatment. [see Adverse Reactions (6.1)].

### **A Single-Arm Trial of Retreatment in Relapsed Multiple Myeloma**

A single arm, open-label trial (NCT00431769) was conducted to determine the efficacy and safety of retreatment with bortezomib. One hundred and thirty patients (≥18 years of age) with multiple myeloma who previously had at least partial response on a bortezomib-containing regimen (median of two prior lines of therapy [range 1 to 7]) were retreated upon progression with bortezomib administered intravenously. Patients were excluded from trial participation if they had peripheral neuropathy or neuropathic pain of Grade ≥2. At least six months after prior bortezomib therapy, bortezomib was restarted at the last tolerated dose of 1.3 mg/m<sup>2</sup> (n=93) or ≤1 mg/m<sup>2</sup> (n=37) and given on Days 1, 4, 8 and 11 every three weeks for maximum of eight cycles either as single agent or in combination with dexamethasone in accordance with the standard of care. Dexamethasone was administered in combination with bortezomib to 83 patients in Cycle 1 with an additional 11 patients receiving dexamethasone during the course of bortezomib retreatment cycles.

The primary endpoint was best confirmed response to retreatment as assessed by European Group for Blood and Marrow Transplantation (EBMT) criteria. Fifty of the 130 patients achieved a best confirmed response of Partial Response or better for an overall response rate of 38.5% (95% CI: 30.1, 47.4). One patient achieved a Complete Response and 49 achieved Partial Response. In the 50 responding patients, the median duration of response was 6.5 months and the range was 0.6 to 19.3 months.

## **14.2 Mantle Cell Lymphoma**

### ***A Phase 2 Single-Arm Clinical Study in Relapsed Mantle Cell Lymphoma after Prior Therapy***

The safety and efficacy of bortezomib in relapsed or refractory mantle cell lymphoma were evaluated in an open-label, single-arm, multicenter study (NCT00063713) of 155 patients with

progressive disease who had received at least one prior therapy. The median age of the patients was 65 years (42, 89), 81% were male, and 92% were Caucasian. Of the total, 75% had one or more extra-nodal sites of disease, and 77% were Stage 4. In 91% of the patients, prior therapy included all of the following: an anthracycline or mitoxantrone, cyclophosphamide, and rituximab. A total of thirty seven percent (37%) of patients were refractory to their last prior therapy. An intravenous bolus injection of bortezomib 1.3 mg/m<sup>2</sup>/dose was administered twice weekly for two weeks on Days 1, 4, 8, and 11 followed by a ten day rest period (Days 12 to 21) for a maximum of 17 treatment cycles. Patients achieving a CR or CRu were treated for four cycles beyond first evidence of CR or CRu. The study employed dose modifications for toxicity [see *Dosage and Administration* (2.4, 2.5)].

Responses to bortezomib are shown in Table 13. Response rates to bortezomib were determined according to the International Workshop Response Criteria (IWRC) based on independent radiologic review of CT scans. The median number of cycles administered across all patients was four; in responding patients the median number of cycles was eight. The median time to response was 40 days (range 31 to 204 days). The median duration of follow-up was more than 13 months.

**Table 13: Response Outcomes in a Phase 2 Relapsed Mantle Cell Lymphoma Study**

<b>Response Analyses (N = 155)</b>	<b>N (%)</b>	<b>95% CI</b>
Overall Response Rate (IWRC) (CR + CRu + PR)	48 (31)	(24, 39)
Complete Response (CR + CRu)	12 (8)	(4, 13)
CR	10 (6)	(3, 12)
CRu	2 (1)	(0, 5)
Partial Response (PR)	36 (23)	(17, 31)
<b>Duration of Response</b>	<b>Median</b>	<b>95% CI</b>
CR + CRu + PR (N = 48)	9.3 months	(5.4, 13.8)
CR + CRu (N = 12)	15.4 months	(13.4, 15.4)
PR (N=36)	6.1 months	(4.2, 9.3)

## 15 REFERENCES

1. “OSHA Hazardous Drugs” (refer to antineoplastic weblinks including OSHA Technical Manual). *OSHA*. <http://www.osha.gov/SLTC/hazardousdrugs/index.html>.

## 16 HOW SUPPLIED/STORAGE AND HANDLING

Bortezomib for injection is supplied as individually cartoned 10 mL vials containing 3.5 mg of bortezomib as a white to off-white cake or powder.

3.5 mg single-dose vial NDC 43598-865-60

Store at 20°-25°C (68°-77°F). Retain in original package to protect from light.

Follow guidelines for handling and disposal for hazardous drugs, including the use of gloves and other protective clothing to prevent skin contact<sup>1</sup>.

## 17 PATIENT COUNSELING INFORMATION

Discuss the following with patients prior to treatment with Bortezomib for injection:



### Peripheral Neuropathy

Advise patients to report the development or worsening of sensory and motor peripheral neuropathy to their healthcare provider [*see Warnings and Precautions (5.1)*].

### Hypotension

Advise patients to drink adequate fluids to avoid dehydration and to report symptoms of hypotension to their healthcare provider [*see Warnings and Precautions (5.2)*].

Instruct patients to seek medical advice if they experience symptoms of dizziness, light headedness or fainting spells, or muscle cramps.

### Cardiac Toxicity

Advise patients to report signs or symptoms of heart failure to their healthcare provider [*see Warnings and Precautions (5.3)*].

### Pulmonary Toxicity

Advise patients to report symptoms of ARDS, pulmonary hypertension, pneumonitis, and pneumonia immediately to their healthcare provider [*see Warnings and Precautions (5.4)*].

### Posterior Reversible Encephalopathy Syndrome (PRES)

Advise patients to seek immediate medical attention for signs or symptoms of PRES [*see Warnings and Precautions (5.5)*].

### Gastrointestinal Toxicity

Advise patients to report symptoms of gastrointestinal toxicity to their healthcare provider and to drink adequate fluids to avoid dehydration. Instruct patients to seek medical advice if they experience symptoms of dizziness, light headedness or fainting spells, or muscle cramps [*see Warnings and Precautions (5.6)*].

### Thrombocytopenia/Neutropenia

Advise patients to report signs or symptoms of bleeding or infection immediately to their healthcare provider [*see Warnings and Precautions (5.7)*].

### Tumor Lysis Syndrome

Advise patients of the risk of tumor lysis syndrome and to drink adequate fluids to avoid dehydration [*see Warnings and Precautions (5.8)*].

### Hepatic Toxicity

Advise patients to report signs or symptoms of hepatic toxicity to their healthcare provider [*see Warnings and Precautions (5.9)*].

### Thrombotic Microangiopathy

Advise patients to seek immediate medical attention if any signs or symptoms of thrombotic microangiopathy occur [*see Warnings and Precautions (5.10)*].

### Ability to Drive or Operate Machinery or Impairment of Mental Ability

Bortezomib may cause fatigue, dizziness, syncope, orthostatic/postural hypotension. Advise

patients not to drive or operate machinery if they experience any of these symptoms [*see Warnings and Precautions (5.2, 5.5)*].

Embryo-Fetal Toxicity:

Advise females of the potential risk to the fetus and use effective contraception during treatment with Bortezomib for injection and for seven months following the last dose. Advise male patients with female partners of reproductive potential to use effective contraception during treatment with Bortezomib for injection and for four months following the last dose. Instruct patients to report pregnancy to their physicians immediately if they or their female partner becomes pregnant during treatment or within seven months following last dose [*see Warnings and Precautions (5.11)*].

Lactation:

Advise women not to breastfeed while receiving Bortezomib for injection and for two months after last dose [*see Use in Specific Populations (8.2)*].

Concomitant Medications:

Advise patients to speak with their physicians about any other medication they are currently taking.

Diabetic Patients:

Advise patients to check their blood sugar frequently if using an oral antidiabetic medication and to notify their physicians of any changes in blood sugar level.

Dermal:

Advise patients to contact their physicians if they experience rash, severe injection site reactions [*see Dosage and Administration (2.7)*], or skin pain. Discuss with patients the option for antiviral prophylaxis for herpes virus infection [*see Adverse Reactions (6.1)*].

Other:

Instruct patients to contact their physicians if they develop an increase in blood pressure, bleeding, fever, constipation, or decreased appetite.

Manufactured by:

**Dr. Reddy's Laboratories Limited**

Visakhapatnam 530 046- INDIA

