

HIGHLIGHTS OF PRESCRIBING INFORMATION

These highlights do not include all the information needed to use ZYPITAMAG® safely and effectively. See full prescribing information for ZYPITAMAG.

ZYPITAMAG (pitavastatin) tablets, for oral use

Initial U.S. Approval: 2009

RECENT MAJOR CHANGES

| | |
|--|-----------------|
| Contraindications, Pregnancy and Lactation (4) | Removed 01/2024 |
| Warnings and Precautions, Immune-Mediated Necrotizing Myopathy (5.2) | 01/2024 |

INDICATIONS AND USAGE

ZYPITAMAG is a HMG-CoA reductase inhibitor (statin) indicated as an adjunct to diet to reduce low-density lipoprotein cholesterol (LDL-C) in adults with primary hyperlipidemia (1).

DOSAGE AND ADMINISTRATION

- Take orally once daily with or without food at the same time each day. (2.1).
- For patients requiring a high-intensity statin or are unable to achieve their LDL-C goal receiving ZYPITAMAG 4 mg daily, prescribe alternative LDL-C-lowering treatment. (2.1)
- Assess LDL-C when clinically appropriate, as early as 4 weeks after initiation of ZYPITAMAG, and adjust the dosage if necessary. (2.1)
- Recommended dosage is 2 mg to 4 mg once daily. Maximum recommended dosage is 4 mg once daily. (2.2)
- Recommended starting dosage for patients with moderate and severe renal impairment and end-stage renal disease on hemodialysis is 1 mg once daily. ZYPITAMAG is not available in a 1 mg dose; use an alternative formulation of pitavastatin. Maximum recommended dosage is 2 mg once daily. (2.3)
- See full prescribing information for ZYPITAMAG dosage modifications due to drug interactions. (2.4)

DOSAGE FORMS AND STRENGTHS

- Tablets: 2 mg and 4 mg (3)

CONTRAINDICATIONS

- Cyclosporine (4, 7)
- Active liver failure or decompensated cirrhosis (4, 5.3)
- Hypersensitivity to pitavastatin or any excipients in ZYPITAMAG (4)

WARNINGS AND PRECAUTIONS

- Myopathy and Rhabdomyolysis:** Risk factors include age 65 or greater, uncontrolled hypothyroidism, renal impairment, concomitant use with certain other drugs, and higher ZYPITAMAG dosage. Discontinue ZYPITAMAG if markedly elevated CK levels occur or myopathy is diagnosed or suspected. Temporarily discontinue ZYPITAMAG in patients experiencing an acute or serious condition at high risk of developing renal failure secondary to rhabdomyolysis. Inform patients of the risk of myopathy and rhabdomyolysis when starting or increasing the ZYPITAMAG dosage. Instruct patients to promptly report unexplained muscle pain, tenderness or weakness particularly if accompanied by malaise or fever (5.1, 7, 8.5, 8.6).
- Immune-Mediated Necrotizing Myopathy (IMNM):** Rare reports of IMNM, an autoimmune myopathy, have been reported. Discontinue ZYPITAMAG if IMNM is suspected. (5.2).
- Hepatic Dysfunction:** Increases in serum transaminases have occurred, some persistent. Rare reports of fatal and non-fatal hepatic failure have occurred. Consider testing liver enzyme before initiating therapy and as clinically indicated thereafter. If serious hepatic injury with clinical symptoms and/or hyperbilirubinemia or jaundice occurs, promptly discontinue ZYPITAMAG. (5.3)

ADVERSE REACTIONS

The most frequent adverse reactions (rate $\geq 2\%$) were myalgia, constipation, diarrhea, back pain, and pain in extremity. (6)

To report SUSPECTED ADVERSE REACTIONS, contact Medicare at 1-800-509-0544 or FDA at 1-800-FDA-1088 or www.fda.gov/medwatch.

DRUG INTERACTIONS

See full prescribing information for details regarding concomitant use of ZYPITAMAG with other drugs that increase the risk of myopathy and rhabdomyolysis. (2.4, 7).

USE IN SPECIFIC POPULATIONS

- Pregnancy:** May cause fetal harm (8.1)
- Lactation:** Breastfeeding not recommended during treatment with ZYPITAMAG (8.2)

See 17 for PATIENT COUNSELING INFORMATION

Pediatric use information is approved for Kowa Co Ltd LIVALO (pitavastatin) tablets. However, due to Kowa Co Ltd marketing exclusivity rights, this drug product is not labeled with that information.

Revised: 01/2024

FULL PRESCRIBING INFORMATION: CONTENTS*

| | |
|----------|--|
| 1 | INDICATIONS AND USAGE |
| 2 | DOSAGE AND ADMINISTRATION |
| 2.1 | Important Dosage and Administration Information |
| 2.2 | Recommended Dosage for Adults |
| 2.3 | Recommended Dosage in Patients with Renal Impairment |
| 2.4 | Dosage Adjustments Due to Drug Interactions |
| 3 | DOSAGE FORMS AND STRENGTHS |
| 4 | CONTRAINDICATIONS |
| 5 | WARNINGS AND PRECAUTIONS |
| 5.1 | Myopathy and Rhabdomyolysis |
| 5.2 | Immune-Mediated Necrotizing Myopathy |
| 5.3 | Hepatic Dysfunction |
| 5.4 | Increases in HbA1c and Fasting Serum Glucose Levels |
| 6 | ADVERSE REACTIONS |
| 6.1 | Clinical Studies Experience |
| 6.2 | Postmarketing Experience |
| 7 | DRUG INTERACTIONS |

8 USE IN SPECIFIC POPULATIONS

| | |
|-----|--------------------|
| 8.1 | Pregnancy |
| 8.2 | Lactation |
| 8.4 | Pediatric Use |
| 8.5 | Geriatric Use |
| 8.6 | Renal Impairment |
| 8.7 | Hepatic Impairment |

10 OVERDOSAGE

11 DESCRIPTION

12 CLINICAL PHARMACOLOGY

| | |
|------|---------------------|
| 12.1 | Mechanism of Action |
| 12.2 | Pharmacodynamics |
| 12.3 | Pharmacokinetics |

13 NONCLINICAL TOXICOLOGY

| | |
|------|--|
| 13.1 | Carcinogenesis, Mutagenesis, Impairment of Fertility |
|------|--|

14 CLINICAL STUDIES

16 HOW SUPPLIED/STORAGE AND HANDLING

17 PATIENT COUNSELING INFORMATION

* Sections or subsections omitted from the full prescribing information are not listed.

FULL PRESCRIBING INFORMATION

1 INDICATIONS AND USAGE

ZYPITAMAG is indicated as an adjunct to diet to reduce low-density lipoprotein cholesterol (LDL-C) in adults with primary hyperlipidemia.

Pediatric use information is approved for Kowa Co Ltd LIVALO (pitavastatin) tablets. However, due to Kowa Co Ltd marketing exclusivity rights, this drug product is not labeled with that information.

2 DOSAGE AND ADMINISTRATION

2.1 Important Dosage and Administration Information

- Take ZYPITAMAG orally once daily with or without food at the same time each day.
- For patients that require a high-intensity statin or are unable to achieve their LDL-C goal receiving ZYPITAMAG 4 mg daily, prescribe alternative LDL-C-lowering treatment.
- Assess LDL-C when clinically appropriate, as early as 4 weeks after initiating ZYPITAMAG, and adjust the dosage if necessary.

2.2 Recommended Dosage for Adults

- The recommended dosage range of ZYPITAMAG is 2 mg to 4 mg daily.
- The maximum recommended dosage is ZYPITAMAG 4 mg once daily.

2.3 Recommended Dosage in Patients with Renal Impairment

- The recommended starting dosage for patients with moderate and severe renal impairment (estimated glomerular filtration rate 30 – 59 mL/minute/1.73 m² and 15 – 29 mL/minute/1.73 m², respectively) and patients with end-stage renal disease receiving hemodialysis is pitavastatin 1 mg once daily. ZYPITAMAG is not available in a 1 mg dose; use an alternative formulation of pitavastatin for the 1 mg dose. The maximum recommended dose for these patients is ZYPITAMAG 2 mg once daily [*see Use in Specific Populations (8.6)*].
- There are no dosage adjustment recommendations for patients with mild renal impairment.

2.4 Dosage Adjustments Due to Drug Interactions

- In patients taking erythromycin, do not exceed pitavastatin 1 mg once daily [*see Drug Interactions (7)*]. ZYPITAMAG is not available in a 1 mg dose; use an alternative formulation of pitavastatin for the 1 mg dose.
- In patients taking rifampin, do not exceed ZYPITAMAG 2 mg once daily [*see Drug Interactions (7)*].

Pediatric use information is approved for Kowa Co Ltd LIVALO (pitavastatin) tablets. However, due to Kowa Co Ltd marketing exclusivity rights, this drug product is not labeled with that information

3 DOSAGE FORMS AND STRENGTHS

Tablets:

- 2 mg: White to off-white, beveled-edge, round-shaped tablets debossed with “877” on one side and plain on the other side.
- 4 mg: White to off-white, beveled-edge, round-shaped tablets debossed with “878” on one side and plain on the other side.

4 CONTRAINDICATIONS

ZYPITAMAG is contraindicated in the following conditions:

- Concomitant use of cyclosporine [*see Drug Interactions (7)*].
- Acute liver failure or decompensated cirrhosis [*see Warnings and Precautions (5.3)*]
- Hypersensitivity to pitavastatin or any excipients in ZYPITAMAG. Hypersensitivity reactions including angioedema, rash, pruritus, and urticaria have been reported with pitavastatin [*see Adverse Reactions (6)*].

5 WARNINGS AND PRECAUTIONS

5.1 Myopathy and Rhabdomyolysis

ZYPITAMAG may cause myopathy (muscle pain, tenderness, or weakness associated with elevated creatine kinase [CK]) and rhabdomyolysis. Acute kidney injury secondary to myoglobinuria and rare fatalities have occurred as a result of rhabdomyolysis in patients treated with statins, including pitavastatin.

Risk Factors for Myopathy

Risk factors for myopathy include age 65 years or greater, uncontrolled hypothyroidism, renal impairment, concomitant use of certain drugs (including other lipid-lowering therapies), and higher ZYPITAMAG dosage [*see Dosage and Administration (2.2), Drug Interactions (7), and Use in Specific Populations (8.5, 8.6)*]. Dosages of pitavastatin greater than 4 mg once daily were associated with an increased risk for severe myopathy in premarketing clinical studies. The maximum recommended dose of ZYPITAMAG is 4 mg once daily.

Steps to Prevent or Reduce the Risk of Myopathy and Rhabdomyolysis

ZYPITAMAG is contraindicated in patients taking cyclosporine and not recommended in patients taking gemfibrozil [*see Contraindications (4) and Drug Interactions (7)*]. There are pitavastatin dosage restrictions for patients taking erythromycin or rifampin [*see Dosage and Administration (2.4)*]. The following drugs when used concomitantly with ZYPITAMAG may also increase the risk of myopathy and rhabdomyolysis: lipid-modifying dosages of niacin (>1 grams/day), fibrates, and colchicine [*see Drug Interactions (7)*].

Discontinue ZYPITAMAG if markedly elevated CK levels occur or if myopathy is either diagnosed or suspected. Muscle symptoms and CK elevations may resolve if ZYPITAMAG is discontinued. Temporarily discontinue ZYPITAMAG in patients experiencing an acute or serious condition at high risk of developing renal failure secondary to rhabdomyolysis (e.g., sepsis; shock; severe hypovolemia; major surgery; trauma; severe metabolic, endocrine, or electrolyte disorders; or uncontrolled epilepsy).

Inform patients of the risk of myopathy and rhabdomyolysis when starting or increasing the ZYPITAMAG dosage. Instruct patients to promptly report any unexplained muscle pain, tenderness or weakness, particularly if accompanied by malaise or fever.

5.2 Immune-Mediated Necrotizing Myopathy

There have been rare reports of immune-mediated necrotizing myopathy (IMNM), an autoimmune myopathy, associated with statin use, including reports of recurrence when the same or a different statin was administered. IMNM is characterized by proximal muscle weakness and elevated serum creatine kinase that persist despite discontinuation of statin treatment; positive anti-HMG CoA reductase antibody; muscle biopsy showing necrotizing myopathy; and improvement with immunosuppressive agents. Additional neuromuscular and serologic testing may be necessary. Treatment with immunosuppressive agents may be required. Discontinue ZYPITAMAG if IMNM is suspected.

5.3 Hepatic Dysfunction

Increases in serum transaminases have been reported with ZYPITAMAG [see *Adverse Reactions (6)*]. In most cases, these changes appeared soon after initiation, were transient, were not accompanied by symptoms, and resolved or improved on continued therapy or after a brief interruption in therapy. There have been rare postmarketing reports of fatal and non-fatal hepatic failure in patients taking statins, including pitavastatin.

Patients who consume substantial quantities of alcohol and/or have a history of liver disease may be at increased risk for hepatic injury.

Consider liver enzyme testing before the initiation of ZYPITAMAG and when clinically indicated thereafter. ZYPITAMAG is contraindicated in patients with acute liver failure or decompensated cirrhosis [see *Contraindications (4)*]. If serious hepatic injury with clinical symptoms and/or hyperbilirubinemia or jaundice occurs, promptly discontinue ZYPITAMAG.

5.4 Increases in HbA1c and Fasting Serum Glucose Levels

Increases in HbA1c and fasting serum glucose levels have been reported with statins, including pitavastatin. Optimize lifestyle measures, including regular exercise, maintaining a healthy body weight, and making healthy food choices.

6 ADVERSE REACTIONS

The following serious adverse reactions are discussed in other sections of the labeling:

- Myopathy and Rhabdomyolysis [see *Warnings and Precautions (5.1)*]
- Immune-Mediated Necrotizing Myopathy [see *Warnings and Precautions (5.2)*]
- Hepatic Dysfunction [see *Warnings and Precautions (5.3)*]
- Increases in HbA1c and Fasting Serum Glucose Levels [see *Warnings and Precautions (5.4)*].

6.1 Clinical Studies Experience

Because clinical studies are conducted under widely varying conditions, adverse reaction rates observed in the clinical studies of one drug cannot be directly compared to rates in the clinical studies of another drug and may not reflect the rates observed in practice.

Adverse Reactions in Adults with Primary Hyperlipidemia

In 10 controlled clinical studies and 4 subsequent open-label extension studies, 3,291 adult patients with primary hyperlipidemia were administered pitavastatin 1 mg to 4 mg daily. The mean continuous exposure of pitavastatin (1 mg to 4 mg) was 36.7 weeks (median 51.1 weeks). The mean age of the patients was 60.9 years (range; 18 years – 89 years) and 52% females. Approximately 93% of the patients were White 7% were Asian/Indian, 0.2% were African American and 0.3% were Hispanic and other.

In controlled clinical studies and their open-label extensions, 3.9% (1 mg), 3.3% (2 mg), and 3.7% (4 mg) of pitavastatin-treated patients were discontinued due to adverse reactions. The most common adverse reactions that led to treatment discontinuation were: elevated creatine phosphokinase (0.6% on 4 mg) and myalgia (0.5% on 4 mg).

Adverse reactions reported in $\geq 2\%$ of patients in controlled clinical studies and at a rate greater than or equal to placebo are shown in [Table 1](#). These studies had treatment duration of up to 12 weeks.

Table 1. Adverse Reactions ($\geq 2\%$ and \geq placebo) in Adult Patients with Primary Hyperlipidemia in Studies up to 12 Weeks

| Adverse Reactions | Placebo (N=208) % | Pitavastatin 1 mg (N=309) % | Pitavastatin 2 mg (N=951) % | Pitavastatin 4 mg (N=1540) % |
|-------------------|-------------------------|-----------------------------------|-----------------------------------|------------------------------------|
| Myalgia | 1.4 | 1.9 | 2.8 | 3.1 |
| Constipation | 1.9 | 3.6 | 1.5 | 2.2 |
| Diarrhea | 1.9 | 2.6 | 1.5 | 1.9 |
| Back pain | 2.9 | 3.9 | 1.8 | 1.4 |
| Pain in Extremity | 1.9 | 2.3 | 0.6 | 0.9 |

Other adverse reactions reported from clinical studies were arthralgia, headache, influenza, and nasopharyngitis.

Hypersensitivity reactions including rash, pruritus, and urticaria have been reported with pitavastatin.

The following laboratory abnormalities have been reported: elevated creatine phosphokinase, transaminases, alkaline phosphatase, bilirubin, and glucose.

Adverse Reactions in Adult HIV-Infected Patients with Dyslipidemia

In a double-blind, randomized, controlled, 52-week trial, 252 HIV-infected patients with dyslipidemia were treated with either pitavastatin 4 mg once daily (n=126) or another statin (n=126). All patients were taking antiretroviral therapy (excluding darunavir) and had HIV-1 RNA less than 200 copies/mL and CD4 count greater than 200 cell/ μ L for at least 3 months prior to randomization. The safety profile of pitavastatin was generally consistent with that observed in the clinical trials described above. One patient (0.8%) treated with pitavastatin had a peak creatine phosphokinase value exceeding 10 times the upper limit of normal (ULN), which resolved spontaneously. Four patients (3%) treated with pitavastatin had at least one ALT value exceeding 3 times but less than 5 times the ULN, none of which led to drug discontinuation. Virologic failure was reported for four patients (3%) treated with pitavastatin, defined as a confirmed measurement of HIV-1 RNA exceeding 200 copies/mL that was also more than a 2-fold increase from baseline.

Pediatric use information is approved for Kowa Co Ltd LIVALO (pitavastatin) tablets. However, due to Kowa Co Ltd marketing exclusivity rights, this drug product is not labeled with that information.

6.2 Postmarketing Experience

The following adverse reactions have been identified during post-approval use of pitavastatin. Because these reactions are reported voluntarily from a population of uncertain size, it is not always possible to reliably estimate their frequency or establish a causal relationship to drug exposure.

Gastrointestinal disorders: abdominal discomfort, abdominal pain, dyspepsia, nausea

General disorders: asthenia, fatigue, malaise, dizziness

Hepatobiliary disorders: hepatitis, jaundice, fatal and non-fatal hepatic failure

Immune system disorders: angioedema, immune-mediated necrotizing myopathy associated with statin use

Metabolism and nutrition disorders: increases in HbA1c, fasting serum glucose levels

Musculoskeletal and connective tissue disorders: muscle spasms, myopathy, rhabdomyolysis

Nervous system disorders: hypoesthesia, peripheral neuropathy, rare reports of cognitive impairment (e.g., memory loss, forgetfulness, amnesia, memory impairment, confusion) associated with statin use. Cognitive impairment was generally nonserious, and reversible upon statin discontinuation, with variable times to symptom onset (1 day to years) and symptom resolution (median of 3 weeks). There have been rare reports of new-onset or exacerbation of myasthenia gravis, including ocular myasthenia, and reports of recurrence when the same or a different statin was administered.

Psychiatric disorders: insomnia, depression.

Reproductive system and breast disorders: erectile dysfunction

Respiratory, thoracic and mediastinal disorders: interstitial lung disease

Skin and subcutaneous tissue disorders: lichen planus

7 DRUG INTERACTIONS

Table 2 includes a list of drugs that increase the risk of myopathy and rhabdomyolysis when administered concomitantly with ZYPITAMAG and instructions for preventing or managing drug interactions [see *Warnings and Precautions (5.1)*, *Clinical Pharmacology (12.3)*].

Table 2. Drug Interactions that Increase the Risk of Myopathy and Rhabdomyolysis with ZYPITAMAG

| Cyclosporine | |
|-------------------------|---|
| <i>Clinical Impact:</i> | Cyclosporine significantly increases pitavastatin exposure and increases the risk of myopathy and rhabdomyolysis. |
| <i>Intervention:</i> | Concomitant use of cyclosporine with ZYPITAMAG is contraindicated [see <i>Contraindications (4)</i>]. |
| Gemfibrozil | |
| <i>Clinical Impact:</i> | Gemfibrozil may cause myopathy when given alone. The risk of myopathy and rhabdomyolysis is increased with concomitant use of gemfibrozil with statins, including pitavastatin. |
| <i>Intervention:</i> | Avoid concomitant use of gemfibrozil with ZYPITAMAG. |
| Erythromycin | |
| <i>Clinical Impact:</i> | Erythromycin significantly increases pitavastatin exposure and increases the risk of myopathy and rhabdomyolysis. |
| <i>Intervention:</i> | In patients taking erythromycin, do not exceed pitavastatin 1 mg once daily. ZYPITAMAG is not available in a 1 mg dose; use an alternative formulation of pitavastatin for the 1 mg dose [see <i>Dosage and Administration (2.4)</i>]. |
| Rifampin | |
| <i>Clinical Impact:</i> | Rifampin significantly increases peak pitavastatin exposure and increases the risk of myopathy and rhabdomyolysis. |
| <i>Intervention:</i> | In patients taking rifampin, do not exceed ZYPITAMAG 2 mg once daily [see <i>Dosage and Administration (2.4)</i>]. |
| Fibrates | |
| <i>Clinical Impact:</i> | Fibrates may cause myopathy when given alone. The risk of myopathy and rhabdomyolysis is increased with concomitant use of fibrates with statins, including pitavastatin. |
| <i>Intervention:</i> | Consider if the benefit of using fibrates concomitantly with ZYPITAMAG outweighs the increased risk of myopathy and rhabdomyolysis. |
| Niacin | |
| <i>Clinical Impact:</i> | The risk of myopathy and rhabdomyolysis may be increased with concomitant use of lipid-modifying doses (≥ 1 g/day) of niacin with pitavastatin. |
| <i>Intervention:</i> | Consider if the benefit of using lipid-modifying doses (>1 g/day) of niacin concomitantly with ZYPITAMAG outweighs the increased risk of myopathy and rhabdomyolysis. |
| Colchicine | |
| <i>Clinical Impact:</i> | Cases of myopathy and rhabdomyolysis have been reported with concomitant use of colchicine with statins, including pitavastatin. |
| <i>Intervention:</i> | Consider the risk/benefit of concomitant use of colchicine with ZYPITAMAG. |

8 USE IN SPECIFIC POPULATIONS

8.1 Pregnancy

Risk Summary

Discontinue ZYPITAMAG when pregnancy is recognized. Alternatively, consider the ongoing therapeutic needs of the individual patient.

ZYPITAMAG decreases synthesis of cholesterol and possibly other biologically active substances derived from cholesterol; therefore, ZYPITAMAG may cause fetal harm when administered to pregnant patients based on the mechanism of action [see *Clinical Pharmacology (12.1)*]. In addition, treatment of hyperlipidemia is not generally necessary during pregnancy. Atherosclerosis is a chronic process and the discontinuation of lipid-lowering drugs during pregnancy should have little impact on the outcome of long-term therapy of primary hyperlipidemia for most patients.

Available data from case series and prospective and retrospective observational cohort studies over decades of use with statins in pregnant women have not identified a drug-associated risk of major congenital malformations. Published data from prospective and retrospective observational cohort studies with statin use in pregnant women are insufficient to determine if there is a drug-associated risk of miscarriage (see [Data](#)).

In animal reproduction studies, no embryo-fetal toxicity or congenital malformations were observed in pregnant rats or rabbits orally administered pitavastatin during the period of organogenesis at doses that resulted in 22 and 4 times, respectively, the human exposure at the maximum recommended human dose (MRHD) of 4 mg, based on AUC (see [Data](#)).

The estimated background risk of major birth defects and miscarriage for the indicated population is unknown. In the U.S. general population, the estimated background risk of major birth defects and miscarriage in clinically recognized pregnancies is 2% to 4% and 15% to 20%, respectively.

Data

Human Data

A Medicaid cohort linkage study of 1152 statin-exposed pregnant women compared to 886,996 controls did not find a significant teratogenic effect from maternal use of statins in the first trimester of pregnancy, after adjusting for potential confounders – including maternal age, diabetes mellitus, hypertension, obesity, and alcohol and tobacco use -using propensity score-based methods. The relative risk of congenital malformations between the group with statin use and the group with no statin use in the first trimester was 1.07 (95% confidence interval 0.85 to 1.37) after controlling for confounders, particularly pre-existing diabetes mellitus. There were also no statistically significant increases in any of the organ-specific malformations assessed after accounting for confounders. In the majority of pregnancies, statin treatment was initiated prior to pregnancy and was discontinued at some point in the first trimester when pregnancy was identified. Study limitations include reliance on physician coding to define the presence of a malformation, lack of control for certain confounders such as body mass index, use of prescription dispensing as verification for use of a statin, and a lack of information on non-live births.

Animal Data

Embryo-fetal developmental studies were conducted in pregnant rats administered 3 mg/kg/day, 10 mg/kg/day, 30 mg/kg/day pitavastatin by oral gavage during organogenesis (gestation day 7-17). No adverse effects were observed at 3 mg/kg/day, systemic exposures 22 times human systemic exposure at 4 mg/day based on AUC.

Embryo-fetal developmental studies were conducted in pregnant rabbits administered 0.1 mg/kg/day, 0.3 mg/kg/day, 1 mg/kg/day pitavastatin by oral gavage during the period of fetal organogenesis (gestation day 6-18). Maternal toxicity consisting of reduced body weight and abortion was observed at all doses tested (4 times human systemic exposure at 4 mg/day based on AUC).

In perinatal/postnatal studies in pregnant rats given oral gavage doses of pitavastatin at 0.1 mg/kg/day, 0.3 mg/kg/day, 1 mg/kg/day, 3 mg/kg/day, 10 mg/kg/day, 30 mg/kg/day from organogenesis through weaning (gestation day 17 to lactation day 21), maternal toxicity consisting of mortality at ≥ 0.3 mg/kg/day and impaired lactation at all doses contributed to the decreased survival of neonates in all dose groups (0.1 mg/kg/day represents approximately 1 time human systemic exposure at 4 mg/day dose based on AUC).

Reproductive toxicity studies have shown that pitavastatin crosses the placenta in rats and is found in fetal tissues at $\leq 36\%$ of maternal plasma concentrations following a single dose of 1 mg/kg/day during gestation (at the end of organogenesis).

8.2 Lactation

Risk Summary

There is no available information about the presence of pitavastatin in human or animal milk, the effects of the drug on the breastfed infant, or the effects of the drug on milk production. However, it has been shown that another drug in this class passes into human milk. Statins, including pitavastatin, decrease cholesterol synthesis and possibly the synthesis of other biologically active substances derived from cholesterol and may cause harm to the breastfed infant.

Because of the potential for serious adverse reactions in a breastfed infant, based upon the mechanism of action, advise patients that breastfeeding is not recommended during treatment with ZYPITAMAG [see *Use in Specific Populations (8.1)*, *Clinical Pharmacology (12.1)*].

8.4 Pediatric Use

The safety and effectiveness of ZYPITAMAG in pediatric patients have not been established.

Pediatric use information is approved for Kowa Co Ltd LIVALO (pitavastatin) tablets. However, due to Kowa Co Ltd marketing exclusivity rights, this drug product is not labeled with that information.

8.5 Geriatric Use

In controlled clinical studies, 1,209 (43%) patients were 65 years and older. No overall differences in safety or effectiveness were observed between these patients and younger patients.

Advanced age (≥ 65 years) is a risk factor for pitavastatin-associated myopathy and rhabdomyolysis. Dose selection for a geriatric patient should be cautious, recognizing the greater frequency of decreased hepatic, renal, or cardiac function, and of concomitant disease or other drug therapy and the higher risk of myopathy. Monitor geriatric patients receiving ZYPITAG for the increased risk of myopathy [see *Warnings and Precautions (5.1)*].

8.6 Renal Impairment

Renal impairment is a risk factor for myopathy and rhabdomyolysis. Monitor all patients with renal impairment for development of myopathy. Due to the risk of myopathy, a dosage modification of ZYPITAMAG is recommended for patients with moderate and severe renal impairment (estimated glomerular filtration rate 30 – 59 mL/min/1.73 m² and 15 – 29 mL/min/1.73 m², respectively) as well as end-stage renal disease receiving hemodialysis [see *Dosage and Administration (2.3)*, *Warnings and Precautions (5.1)*, *Clinical Pharmacology (12.3)*].

8.7 Hepatic Impairment

ZYPITAMAG is contraindicated in patients with active liver failure or decompensated cirrhosis [see *Contraindications (4), Warnings and Precautions (5.3)*].

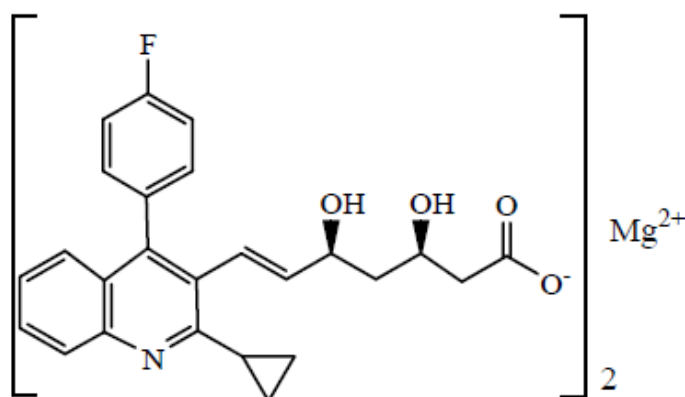
10 OVERDOSAGE

No specific treatment for pitavastatin overdose is known. Contact Poison Control (1-800-222-1222) for latest recommendations. Hemodialysis is unlikely to be of benefit due to high protein binding ratio of pitavastatin.

11 DESCRIPTION

ZYPITAMAG (pitavastatin) tablets for oral use is an HMG-CoA reductase inhibitor.

The chemical name for pitavastatin is (3R,5S)-7-[2-Cyclopropyl-4-(4-fluorophenyl)quinoline-3-yl]3,5-dihydroxy-6(E)-heptanoic acid hemi magnesium. The structural formula is:



The molecular formula for pitavastatin is $C_{50}H_{46}MgF_2N_2O_8$ and the molecular weight is 865.21. Pitavastatin is a white to off-white powder. It is freely soluble in acetone, ethyl acetate; soluble in dimethylsulfoxide and insoluble in dichloromethane and isopropyl alcohol. Pitavastatin is hygroscopic and slightly unstable in light.

Each film-coated tablet of ZYPITAMAG contains 2.053 mg or 4.106 mg of pitavastatin magnesium, which is equivalent to 2 mg or 4 mg, respectively of free base and the following inactive ingredients: calcium carbonate, crospovidone, hypromellose, lactose monohydrate, magnesium stearate and sodium carbonate anhydrous and film-coating containing the following inactive ingredients: hypromellose, polyethylene glycol, talc and titanium dioxide.

12 CLINICAL PHARMACOLOGY

12.1 Mechanism of Action

Pitavastatin is an inhibitor of 3-hydroxy-3-methylglutaryl-coenzyme A (HMG-CoA) reductase, the enzyme that catalyzes the conversion of HMG-CoA to mevalonate, a rate-limiting step in the biosynthetic pathway for cholesterol. As a result, the expression of LDL-receptors followed by the uptake of LDL from blood to liver is accelerated and then the plasma TC decreases. Sustained inhibition of cholesterol synthesis in the liver also decreases levels of very low density lipoproteins.

12.2 Pharmacodynamics

Cardiac Electrophysiology

In a randomized, double-blind, placebo-controlled, 4-way parallel, active-comparator study with moxifloxacin in 174 healthy participants, pitavastatin was not associated with clinically meaningful prolongation of the QTc interval or heart rate at daily doses up to 16 mg (4 times the recommended maximum dose of 4 mg daily).

12.3 Pharmacokinetics

Absorption

Pitavastatin peak plasma concentrations are achieved about 1 hour after oral administration. Both C_{max} and AUC_{0-inf} increased in an approximately dose-proportional manner for single pitavastatin doses from 1 mg to 24 mg once daily. The absolute bioavailability of pitavastatin oral solution is 51%. The C_{max} and AUC of pitavastatin did not differ following evening or morning drug administration. In healthy volunteers receiving 4 mg pitavastatin, the percent change from baseline for LDL-C following evening dosing was slightly greater than that following morning dosing. Pitavastatin was absorbed in the small intestine but very little in the colon.

Effect of Food

Administration of pitavastatin with a high fat meal (50% fat content) decreases pitavastatin C_{max} by 43% but does not significantly reduce pitavastatin AUC.

Distribution

Pitavastatin is more than 99% protein bound in human plasma, mainly to albumin and alpha 1-acid glycoprotein, and the mean volume of distribution is approximately 148 L.

Elimination

Metabolism

The principal route of pitavastatin metabolism is glucuronidation via liver uridine 5'-diphosphate glucuronosyltransferase (UGT) with subsequent formation of pitavastatin lactone. There is only minimal metabolism by the cytochrome P450 system. Pitavastatin is marginally metabolized by CYP2C9 and to a lesser extent by CYP2C8. The major metabolite in human plasma is the lactone, which is formed via an ester-type pitavastatin glucuronide conjugate by UGTs (UGT1A3 and UGT2B7).

Excretion

A mean of 15% of radioactivity of orally administered, single 32 mg ^{14}C -labeled pitavastatin dose was excreted in urine, whereas a mean of 79% of the dose was excreted in feces within 7 days. The mean plasma elimination half-life is approximately 12 hours.

Specific Populations

Geriatric Patients

In a pharmacokinetic study which compared healthy young and geriatric (≥ 65 years) volunteers, pitavastatin C_{max} and AUC were 10 and 30% higher, respectively, in the geriatric patients [see *Use in Specific Populations (8.5)*].

Pediatric Patients

Pediatric use information is approved for Kowa Co Ltd LIVALO (pitavastatin) tablets. However, due to Kowa Co Ltd marketing exclusivity rights, this drug product is not labeled with that information.

Male and Female Patients

In a pharmacokinetic study, which compared healthy male and female volunteers, pitavastatin C_{\max} and AUC were 60 and 54% higher, respectively in females.

Racial or Ethnic Groups

In pharmacokinetic studies pitavastatin C_{\max} and AUC were 21 and 5% lower, respectively in Black or African American healthy volunteers compared with those of White healthy volunteers. In pharmacokinetic comparison between Whitevolunteers and Japanese volunteers, there were no significant differences in C_{\max} and AUC.

Patients with Renal Impairment

In adult patients with moderate renal impairment (estimated glomerular filtration rate of 30 mL/min/1.73 m² to 59 mL/min/1.73 m²) and end stage renal disease receiving hemodialysis, pitavastatin AUC_{0-inf} is 102% and 86% higher than those of healthy volunteers, respectively, while pitavastatin C_{\max} is 60% and 40% higher than those of healthy volunteers, respectively. Patients received hemodialysis immediately before pitavastatin dosing and did not undergo hemodialysis during the pharmacokinetic study. Hemodialysis patients have 33% and 36% increases in the mean unbound fraction of pitavastatin as compared to healthy volunteers and patients with moderate renal impairment, respectively [see *Use in Specific Populations (8.6)*].

In another pharmacokinetic study, adult patients with severe renal impairment (estimated glomerular filtration rate 15 mL/min/1.73 m² to 29 mL/min/1.73 m²) not receiving hemodialysis were administered a single dose of pitavastatin 4 mg. The AUC_{0-inf} and the C_{\max} were 36% and 18% higher, respectively, compared with those of healthy volunteers. For both patients with severe renal impairment and healthy volunteers, the mean percentage of protein-unbound pitavastatin was approximately 0.6% [see *Use in Specific Populations (8.6)*].

The effect of mild renal impairment on pitavastatin exposure has not been studied.

Patients with Hepatic Impairment

The disposition of pitavastatin was compared in healthy volunteers and patients with various degrees of hepatic impairment. Pitavastatin C_{\max} and AUC_{inf} in patients with moderate hepatic impairment (Child-Pugh B disease) was 2.7-fold and 3.8-fold higher, respectively as compared to healthy volunteers. In patients with mild hepatic impairment (Child-Pugh A disease), pitavastatin C_{\max} and AUC_{inf} were 30% and 60% higher as compared to healthy volunteers. Mean pitavastatin half-life for moderate hepatic impairment, mild hepatic impairment, and healthy volunteers were 15, 10, and 8 hours, respectively [see *Contraindications (4), Warnings and Precautions (5.3)*].

Drug Interaction Studies

Warfarin

The steady-state pharmacodynamics (international normalized ratio [INR] and prothrombin time [PT]) and pharmacokinetics of warfarin in healthy volunteers were unaffected by the coadministration of pitavastatin 4 mg daily.

Table 3 presents the effect of coadministered drugs on pitavastatin systemic exposure:

Table 3. Effect of Coadministered Drugs on Pitavastatin Systemic Exposure

| Coadministered Drug | Dosage Regimen | Change in AUC* | Change in C _{max} * |
|---------------------|--|----------------|------------------------------|
| Cyclosporine | Pitavastatin 2 mg QD for 6 days + cyclosporine 2 mg/kg on Day 6 | ↑ 4.6 fold † | ↑ 6.6 fold † |
| Erythromycin | Pitavastatin 4 mg single dose on Day 4 + erythromycin 500 mg 4 times daily for 6 days | ↑ 2.8 fold † | ↑ 3.6 fold † |
| Rifampin | Pitavastatin 4 mg QD + rifampin 600 mg QD for 5 days | ↑ 29% | ↑ 2 fold † |
| Atazanavir | Pitavastatin 4 mg QD + atazanavir 300 mg daily for 5 days | ↑ 31% | ↑ 60% |
| Darunavir/Ritonavir | Pitavastatin 4 mg QD on Days 1 to 5 and 12 to 16 + darunavir/ritonavir 800 mg/100 mg QD on Days 6 to 16 | ↓ 26% | ↓ 4% |
| Lopinavir/Ritonavir | Pitavastatin 4 mg QD on Days 1 to 5 and 20 to 24 + lopinavir/ritonavir 400 mg/100 mg BID on Days 9 to 24 | ↓ 20% | ↓ 4% |
| Gemfibrozil | Pitavastatin 4 mg QD + gemfibrozil 600 mg BID for 7 days | ↑ 45% | ↑ 31% |
| Fenofibrate | Pitavastatin 4 mg QD + fenofibrate 160 mg QD for 7 days | ↑ 18% | ↑ 11% |
| Ezetimibe | Pitavastatin 2 mg QD + ezetimibe 10 mg for 7 days | ↓ 2% | ↓ 0.2% |
| Enalapril | Pitavastatin 4 mg QD + enalapril 20 mg daily for 5 days | ↑ 6% | ↓ 7% |
| Digoxin | Pitavastatin 4 mg QD + digoxin 0.25 mg for 7 days | ↑ 4% | ↓ 9% |
| Diltiazem LA | Pitavastatin 4 mg QD on Days 1 to 5 and 11 to 15 and diltiazem LA 240 mg on Days 6 to 15 | ↑ 10% | ↑ 15% |
| Grapefruit Juice | Pitavastatin 2 mg single dose on Day 3 + grapefruit juice for 4 days | ↑ 15% | ↓ 12% |
| Itraconazole | Pitavastatin 4 mg single dose on Day 4 + itraconazole 200 mg daily for 5 days | ↓ 23% | ↓ 22% |

* Data presented as x-fold change represent the ratio between coadministration and pitavastatin alone (i.e., 1-fold = no change). Data presented as % change represent % difference relative to pitavastatin alone (i.e., 0% = no change).

† Considered clinically significant [see Dosage and Administration (2.4), Drug Interactions (7)]

BID = twice daily; QD = once daily; LA = Long Acting.

Table 4 presents the effect of pitavastatin coadministration on systemic exposure of other drugs:

Table 4. Effect of Pitavastatin Coadministration on Systemic Exposure to Other Drugs

| Coadministered Drug | Dose Regimen | Change in AUC* | Change in C _{max} * |
|---------------------|--|----------------|------------------------------|
| Atazanavir | Pitavastatin 4 mg QD + atazanavir 300 mg daily for 5 days | ↑ 6% | ↑ 13% |
| Darunavir | Pitavastatin 4 mg QD on Days 1 to 5 and 12 to 16 + darunavir/ritonavir 800 mg/100 mg QD on Days 6 to 16 | ↑ 3% | ↑ 6% |
| Lopinavir | Pitavastatin 4 mg QD on Days 1 to 5 and 20 to 24 + lopinavir/ritonavir 400 mg/100 mg BID on Days 9 to 24 | ↓ 9% | ↓ 7% |
| Ritonavir | Pitavastatin 4 mg QD on Days 1 to 5 and 20 to 24 + lopinavir/ritonavir 400 mg/100 mg BID on Days 9 to 24 | ↓ 11% | ↓ 11% |
| Ritonavir | Pitavastatin 4 mg QD on Days 1 to 5 and 12 to 16 + darunavir/ritonavir 800 mg/100 mg QD on Days 6 to 16 | ↑ 8% | ↑ 2% |
| Enalapril | Pitavastatin 4 mg QD + enalapril 20 mg daily for 5 days | Enalapril | ↑ 12% |
| | | Enalaprilat | ↓ 1% |
| Warfarin | Individualized maintenance dose of warfarin (2 to 7 mg) for 8 days + pitavastatin 4 mg QD for 9 days | R-warfarin | ↑ 7% |
| | | S-warfarin | ↑ 6% |
| Ezetimibe | Pitavastatin 2 mg QD + ezetimibe 10 mg for 7 days | ↑ 9% | ↑ 2% |

| Coadministered Drug | Dose Regimen | Change in AUC* | Change in C _{max} * |
|---------------------|--|----------------|------------------------------|
| Digoxin | Pitavastatin 4 mg QD + digoxin 0.25 mg for 7 days | ↓ 3% | ↓ 4% |
| Diltiazem LA | Pitavastatin 4 mg QD on Days 1 to 5 and 11 to 15 and diltiazem LA 240 mg on Days 6 to 15 | ↓ 2% | ↓ 7% |
| Rifampin | Pitavastatin 4 mg QD + rifampin 600 mg QD for 5 days | ↓ 15% | ↓ 18% |

* Data presented as % change represent % difference relative to the investigated drug alone (i.e., 0% = no change).

BID = twice daily; QD = once daily; LA = Long Acting.

13 NONCLINICAL TOXICOLOGY

13.1 Carcinogenesis, Mutagenesis, Impairment of Fertility

In a 92-week carcinogenicity study in mice given pitavastatin, at the maximum tolerated dose of 75 mg/kg/day with systemic maximum exposures (AUC) 26 times the clinical maximum exposure at 4 mg daily, there was an absence of drug-related tumors.

In a 92-week carcinogenicity study in rats given pitavastatin at 1 mg/kg/day, 5 mg/kg/day, 25 mg/kg/day by oral gavage there was a significant increase in the incidence of thyroid follicular cell tumors at 25 mg/kg/day, which represents 295 times human systemic exposures based on AUC at the 4 mg daily maximum human dose.

In a 26-week transgenic mouse (Tg rasH2) carcinogenicity study where animals were given pitavastatin at 30 mg/kg/day, 75 mg/kg/day, and 150 mg/kg/day by oral gavage, no clinically significant tumors were observed.

Pitavastatin was not mutagenic in the Ames test with *Salmonella typhimurium* and *Escherichia coli* with and without metabolic activation, the micronucleus test following a single administration in mice and multiple administrations in rats, the unscheduled DNA synthesis test in rats, and a Comet assay in mice. In the chromosomal aberration test, clastogenicity was observed at the highest doses tested, which also elicited high levels of cytotoxicity.

Pitavastatin had no adverse effects on male and female rat fertility at oral doses of 10 mg/kg/day and 30 mg/kg/day, respectively, at systemic exposures 56- and 354- times clinical exposure at 4 mg daily based on AUC.

Pitavastatin treatment in rabbits resulted in mortality in males and females given 1 mg/kg/day (30 times clinical systemic exposure at 4 mg daily based on AUC) and higher during a fertility study. Although the cause of death was not determined, rabbits had gross signs of renal toxicity (kidneys whitened) indicative of possible ischemia. Lower doses (15-times human systemic exposure) did not show significant toxicity in adult males and females. However, decreased implantations, increased resorptions, and decreased viability of fetuses were observed.

14 CLINICAL STUDIES

Primary Hyperlipidemia in Adults

Study with Atorvastatin (Study 301)

Pitavastatin was compared with atorvastatin calcium tablets (referred to as atorvastatin) in a randomized, multicenter, double-blind, double-dummy, active-controlled, non-inferiority study of 817 adult patients with primary hyperlipidemia or mixed dyslipidemia. Patients entered a 6- to 8-week wash-out/dietary lead-in period and then were randomized to a 12-week treatment with either pitavastatin or atorvastatin (Table 5).

Non-inferiority of pitavastatin to a given dose of atorvastatin was considered to be demonstrated if the lower bound of the 95% CI for the mean treatment difference was greater than -6% for the mean percent change in LDL-C.

Lipid results are shown in [Table 5](#). For the percent change from baseline to endpoint in LDL-C, pitavastatin was non-inferior to atorvastatin for the two pairwise comparisons: pitavastatin 2 mg vs. atorvastatin 10 mg and pitavastatin 4 mg vs. atorvastatin 20 mg. Mean treatment differences (95% CI) were 0% (-3%, 3%) and 1% (-2%, 4%), respectively.

Table 5. Lipid Response by Dose of Pitavastatin and Atorvastatin in Adult Patients with Primary Hyperlipidemia or Mixed Dyslipidemia in Study 301 (Mean % Change from Baseline at Week 12)

| Treatment | N | LDL-C | Apo-B | TC | TG | HDL-C | non-HDL-C |
|--------------------------|-----|-------|-------|-----|-----|-------|-----------|
| Pitavastatin 2 mg daily | 315 | -38 | -30 | -28 | -14 | 4 | -35 |
| Pitavastatin 4 mg daily | 298 | -45 | -35 | -32 | -19 | 5 | -41 |
| Atorvastatin 10 mg daily | 102 | -38 | -29 | -28 | -18 | 3 | -35 |
| Atorvastatin 20 mg daily | 102 | -44 | -36 | -33 | -22 | 2 | -41 |

Study with Simvastatin (Study 302)

Pitavastatin was compared with simvastatin tablets (referred to as simvastatin) in a randomized, multicenter, double-blind, double-dummy, active-controlled, non-inferiority study of 843 adult patients with primary hyperlipidemia or mixed dyslipidemia. Patients entered a 6- to 8-week wash-out/dietary lead-in period and then were randomized to a 12-week treatment with either pitavastatin or simvastatin ([Table 6](#)). Non-inferiority of pitavastatin to a given dose of simvastatin was considered to be demonstrated if the lower bound of the 95% CI for the mean treatment difference was greater than -6% for the mean percent change in LDL-C.

Lipid results are shown in [Table 6](#). For the percent change from baseline to endpoint in LDL-C, pitavastatin was non-inferior to simvastatin for the two pairwise comparisons: pitavastatin 2 mg vs. simvastatin 20 mg and pitavastatin 4 mg vs. simvastatin 40 mg. Mean treatment differences (95% CI) were 4% (1%, 7%) and 1% (-2%, 4%), respectively.

Table 6. Lipid Response by Dose of Pitavastatin and Simvastatin in Adult Patients with Primary Hyperlipidemia or Mixed Dyslipidemia in Study 302 (Mean % Change from Baseline at Week 12)

| Treatment | N | LDL-C | Apo-B | TC | TG | HDL-C | non-HDL-C |
|-------------------------|-----|-------|-------|-----|-----|-------|-----------|
| Pitavastatin 2 mg daily | 307 | -39 | -30 | -28 | -16 | 6 | -36 |
| Pitavastatin 4 mg daily | 319 | -44 | -35 | -32 | -17 | 6 | -41 |
| Simvastatin 20 mg daily | 107 | -35 | -27 | -25 | -16 | 6 | -32 |
| Simvastatin 40 mg daily | 110 | -43 | -34 | -31 | -16 | 7 | -39 |

Study with Pravastatin in Geriatric Patients (Study 306)

Pitavastatin was compared with pravastatin sodium tablets (referred to as pravastatin) in a randomized, multicenter, double-blind, double-dummy, parallel group, active-controlled non-inferiority study of 942 geriatric patients (≥ 65 years) with primary hyperlipidemia or mixed dyslipidemia. Patients entered a 6- to

8-week wash-out/dietary lead-in period, and then were randomized to a once daily dose of pitavastatin or pravastatin for 12 weeks (Table 7). Non-inferiority of pitavastatin to a given dose of pravastatin was assumed if the lower bound of the 95% CI for the treatment difference was greater than -6% for the mean percent change in LDL-C.

Lipid results are shown in Table 7. Pitavastatin significantly reduced LDL-C compared to pravastatin as demonstrated by the following pairwise dose comparisons: pitavastatin 1 mg vs. pravastatin 10 mg, pitavastatin 2 mg vs. pravastatin 20 mg and pitavastatin 4 mg vs. pravastatin 40 mg. Mean treatment differences (95% CI) were 9% (6%, 12%), 10% (7%, 13%) and 10% (7%, 13%), respectively.

Table 7. Lipid Response by Dose of Pitavastatin and Pravastatin in Geriatric Patients with Primary Hyperlipidemia or Mixed Dyslipidemia in Study 306 (Mean % Change from Baseline at Week 12)

| Treatment | N | LDL-C | Apo-B | TC | TG | HDL-C | non-HDL-C |
|-------------------------|-----|-------|-------|-----|-----|-------|-----------|
| Pitavastatin 1 mg daily | 207 | -31 | -25 | -22 | -13 | 1 | -29 |
| Pitavastatin 2 mg daily | 224 | -39 | -31 | -27 | -15 | 2 | -36 |
| Pitavastatin 4 mg daily | 210 | -44 | -37 | -31 | -22 | 4 | -41 |
| Pravastatin 10 mg daily | 103 | -22 | -17 | -15 | -5 | 0 | -20 |
| Pravastatin 20 mg daily | 96 | -29 | -22 | -21 | -11 | -1 | -27 |
| Pravastatin 40 mg daily | 102 | -34 | -28 | -24 | -15 | 1 | -32 |

Study with Simvastatin in Patients with ≥ 2 Risk Factors for Coronary Heart Disease (Study 304)

Pitavastatin was compared with simvastatin tablets (referred to as simvastatin) in a randomized, multicenter, double-blind, double-dummy, active-controlled, non-inferiority study of 351 adult patients with primary hyperlipidemia or mixed dyslipidemia with ≥ 2 risk factors for coronary heart disease. After a 6- to 8-week wash-out/dietary lead-in period, patients were randomized to a 12-week treatment with either pitavastatin or simvastatin (Table 8). Non-inferiority of pitavastatin to simvastatin was considered to be demonstrated if the lower bound of the 95% CI for the mean treatment difference was greater than -6% for the mean percent change in LDL-C.

Lipid results are shown in Table 8. Pitavastatin 4 mg was non-inferior to simvastatin 40 mg for percent change from baseline to endpoint in LDL-C. The mean treatment difference (95% CI) was 0% (-2%, 3%).

Table 8. Lipid Response by Dose of Pitavastatin and Simvastatin in Adult Patients with Primary Hyperlipidemia or Mixed Dyslipidemia with ≥ 2 Risk Factors for Coronary Heart Disease in Study 304 (Mean % Change from Baseline at Week 12)

| Treatment | N | LDL-C | Apo-B | TC | TG | HDL-C | non-HDL-C |
|-------------------------|-----|-------|-------|-----|-----|-------|-----------|
| Pitavastatin 4 mg daily | 233 | -44 | -34 | -31 | -20 | 7 | -40 |
| Simvastatin 40 mg daily | 118 | -44 | -34 | -31 | -15 | 5 | -39 |

Study with Atorvastatin in Patients with Type 2 Diabetes Mellitus (Study 305)

Pitavastatin was compared with atorvastatin calcium tablets (referred to as atorvastatin) in a randomized, multicenter, double-blind, double-dummy, parallel group, active-controlled, non-inferiority study of 410 adult patients with type 2 diabetes mellitus and mixed dyslipidemia. Patients entered a 6- to 8-week wash-out/dietary lead-in period and were randomized to a once daily dose of pitavastatin or atorvastatin for 12 weeks. Non-inferiority of pitavastatin was considered to be demonstrated if the lower bound of the 95% CI for the mean treatment difference was greater than -6% for the mean percent change in LDL-C.

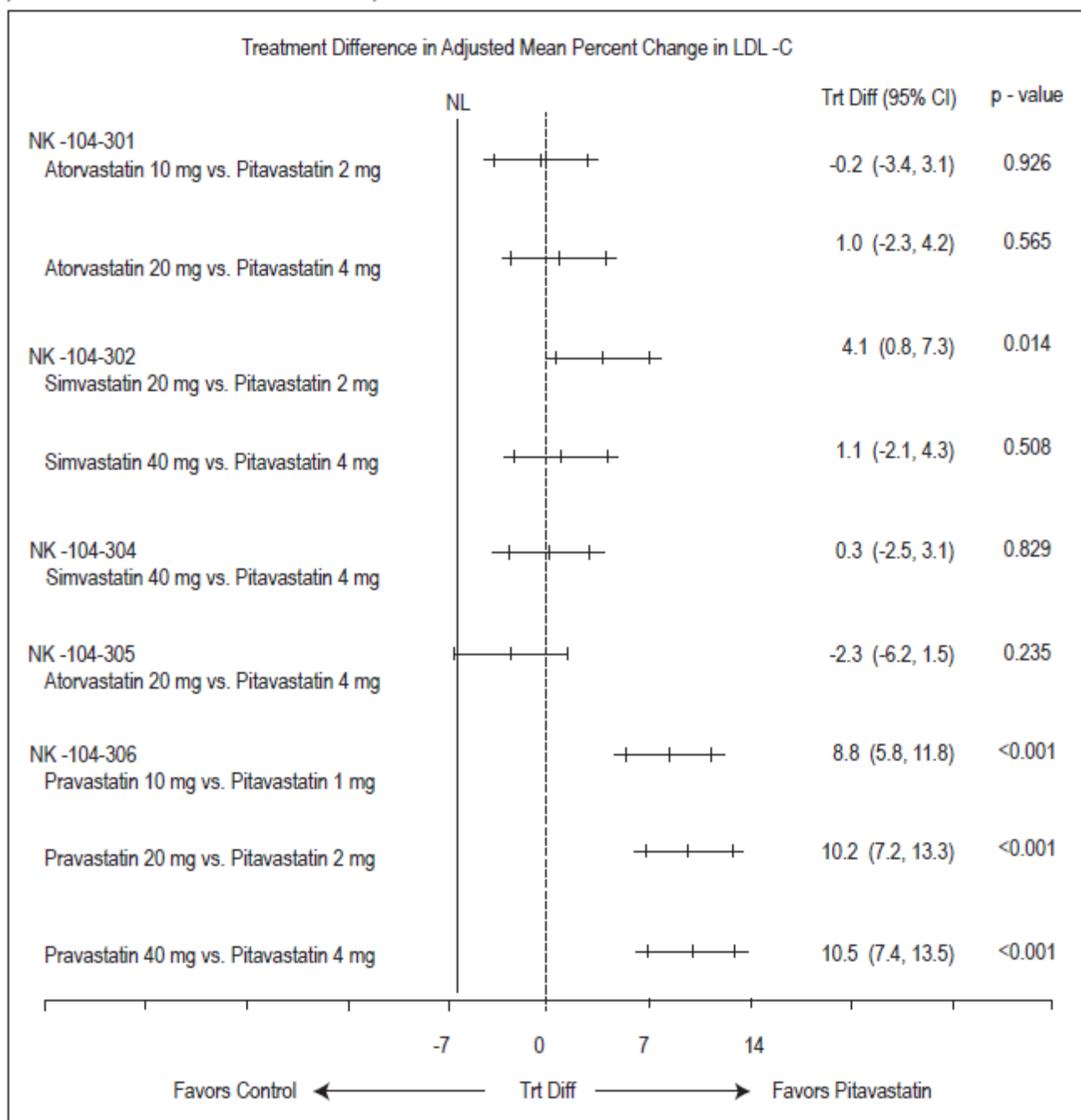
Lipid results are shown in [Table 9](#). The treatment difference (95% CI) for LDL-C percent change from baseline was -2% (-6.2%, 1.5%). The two treatment groups were not statistically different on LDL-C. However, the lower limit of the CI was -6.2%, slightly exceeding the -6% non-inferiority limit. The study failed to demonstrate that pitavastatin was not significantly different than atorvastatin in lowering LDL-C in patients with type 2 diabetes mellitus and mixed dyslipidemia.

Table 9. Lipid Response by Dose of Pitavastatin and Atorvastatin in Patients with Type 2 Diabetes Mellitus and Mixed Dyslipidemia in Study 305 (Mean % Change from Baseline at Week 12)

| Treatment | N | LDL-C | Apo-B | TC | TG | HDL-C | non-HDL-C |
|-----------------------------|----------|--------------|--------------|-----------|-----------|--------------|------------------|
| Pitavastatin 4 mg daily | 274 | -41 | -32 | -28 | -20 | 7 | -36 |
| Atorvastatin 20 mg daily | 136 | -43 | -34 | -32 | -27 | 8 | -40 |

The treatment differences in efficacy in LDL-C change from baseline between pitavastatin and active controls (i.e., atorvastatin, simvastatin, or pravastatin) in the active-controlled studies described above are summarized in [Figure 1](#).

Figure 1. Treatment Difference in Adjusted Mean Percent Change in LDL-C between Pitavastatin and the Comparator (Atorvastatin, Simvastatin, or Pravastatin)



NL = non-inferiority limit.

Pediatric use information is approved for Kowa Co Ltd LIVALO (pitavastatin) tablets. However, due to Kowa Co Ltd marketing exclusivity rights, this drug product is not labeled with that information.

16 HOW SUPPLIED/STORAGE AND HANDLING

ZYPITAMAG (pitavastatin) Tablets, 2 mg are white to off-white, beveled-edge, round-shaped tablets debossed with “877” on one side and plain on the other side and are supplied as follows:

NDC 25208-201-13 in bottle of 30 tablets with child-resistant closure

NDC 25208-201-09 in bottle of 90 tablets with child-resistant closure

NDC 25208-201-14 in bottle of 100 tablets

NDC 25208-201-15 in bottle of 500 tablets
NDC 25208-201-11 in bottle of 1000 tablets
NDC 25208-201-12 in unit-dose blister cartons of 100 (10 x 10) unit-dose tablets

ZYPITAMAG (pitavastatin) Tablets, 4 mg are white to off-white, beveled-edge, round-shaped tablets debossed with “878” on one side and plain on the other side and are supplied as follows:

NDC 25208-202-13 in bottle of 30 tablets with child-resistant closure
NDC 25208-202-09 in bottle of 90 tablets with child-resistant closure
NDC 25208-202-14 in bottle of 100 tablets
NDC 25208-202-15 in bottle of 500 tablets
NDC 25208-202-11 in bottle of 1000 tablets
NDC 25208-202-12 in unit-dose blister cartons of 100 (10 x 10) unit-dose tablets

Storage

Store at 20°C to 25°C (68°F to 77°F) [See USP Controlled Room Temperature].
Protect from moisture and light.

17 PATIENT COUNSELING INFORMATION

Myopathy and Rhabdomyolysis

Advise patients that ZYPITAMAG may cause myopathy and rhabdomyolysis. Inform patients that the risk is increased when taking certain types of medication and they should discuss all medication, both prescription and over the counter, with their healthcare provider. Instruct patients to promptly report any unexplained muscle pain, tenderness or weakness particularly if accompanied by malaise or fever [see *Warnings and Precautions (5.1)*].

Hepatic Dysfunction

Inform patients that ZYPITAMAG may cause liver enzyme elevations and possibly liver failure. Advise patients to promptly report fatigue, anorexia, right upper abdominal discomfort, dark urine or jaundice [see *Warnings and Precautions (5.3)*].

Increases in HbA1c and Fasting Serum Glucose Levels

Inform patients that increases in HbA1c and fasting serum glucose levels may occur with ZYPITAMAG. Encourage patients to optimize lifestyle measures, including regular exercise, maintaining a healthy body weight, and making healthy food choices [see *Warnings and Precautions (5.4)*].

Pregnancy

Advise pregnant patients and patients who can become pregnant of the potential risk to a fetus. Advise patients to inform their healthcare provider of a known or suspected pregnancy to discuss if ZYPITAMAG should be discontinued [see *Use in Specific Populations (8.1)*].

Lactation

Advise patients that breastfeeding is not recommended during treatment with ZYPITAMAG [see *Use in Specific Populations (8.2)*].

Please address medical inquiries to (medical.information@medicure.com) Tel.: 1-800-509-0544.

This product's label may have been updated. For current full prescribing information, please visit www.medicure.com

Patent: www.medicure.com/zypitamag/patents

Manufactured by:

Zydus Lifesciences Ltd.
Ahmedabad, India

Distributed by:

Medicure

Princeton, NJ 08540 USA
PIM-ZYP-07