

CENTER FOR DRUG EVALUATION AND RESEARCH

Approval Package for:

APPLICATION NUMBER:

NDA 20-768/S-010 & 21-231/S-003

Trade Name: Zomig tablets &
Zomig-ZMT orally disintegrating tablets

Generic Name: zolmitripan

Sponsor: AstraZeneca Pharmaceuticals

Approval Date: 10/09/02

CENTER FOR DRUG EVALUATION AND RESEARCH

APPLICATION NUMBER:

NDA 20-768/S-010 & 21-231/S-003

CONTENTS

Reviews / Information Included in this NDA Review.

Approval Letter	X
Approvable Letter	
Labeling	X
Medical Review(s)	X
Chemistry Review(s)	
Pharmacology Review(s)	
Statistical Review(s)	
Microbiology Review(s)	
Clinical Pharmacology/ Biopharmaceutics Review(s)	
Administrative and Correspondence Document(s)	X

**CENTER FOR DRUG EVALUATION AND
RESEARCH**

APPLICATION NUMBER:

NDA 20-768/S-010 & 21-231/S-003

APPROVAL LETTER



NDA 20-768/SLR-010
NDA 21-231/SLR-003

AstraZeneca Pharmaceuticals LP
US Regulatory Affairs
Attention: Judy W. Firor
1800 Concord Pike
PO Box 15437
Wilmington, DE 19803-5437

Dear Ms. Firor:

Please refer to your supplemental new drug applications dated July 1, 2002 submitted under section 505(b) of the Federal Food, Drug, and Cosmetic Act for Zomig (zolmitriptan) tablets and Zomig-ZMT (zolmitriptan) orally disintegrating tablets.

These supplemental applications provide for adding the terms *anaphylaxis* or *anaphylactoid reaction* in the *Adverse Reactions, Post-Marketing Experience* section, under subheading *General*. These supplements were submitted in response to FDA letter dated January 24, 2002.

We have completed the review of these supplemental applications, as amended, and have concluded that adequate information has been presented to demonstrate that the drug products are safe and effective for use as recommended in the submitted final printed labeling (package insert, patient package insert submitted July 1, 2002 Label Code SIC 64192-02), which incorporates all of the revisions listed. Accordingly, these supplemental applications are approved effective on the date of this letter.

Labeling changes of the kind which you have proposed under the above supplemental applications are permitted by section 314.70(c) of the regulations to be instituted prior to approval of these supplements. It is understood that the changes, described in the above NDA supplements, have been made.

If a letter communicating important information about these drug products (i.e., a "Dear Health Care Practitioner" letter) is issued to physicians and others responsible for patient care, we request that you submit a copy of the letter to these NDAs and a copy to the following address:

MEDWATCH, HF-2
FDA
5600 Fishers Lane
Rockville, MD 20857

We remind you that you must comply with the requirements for an approved NDA set forth under 21 CFR 314.80 and 314.81.

NDA 20-768/SLR-010
NDA 21-231/SLR-003
Page 2

If you have any questions, call Ms. Lana Chen, R.Ph., Regulatory Project Manager, at (301) 594-5529.

Sincerely,

{See appended electronic signature page}

Russell Katz, M.D.
Director
Division of Neuropharmacological Drug Products
Office of Drug Evaluation I
Center for Drug Evaluation and Research

**This is a representation of an electronic record that was signed electronically and
this page is the manifestation of the electronic signature.**

/s/

Russell Katz
10/9/02 04:55:29 PM

**CENTER FOR DRUG EVALUATION AND
RESEARCH**

APPLICATION NUMBER:

NDA 20-768/S-010 & 21-231/S-003

LABELING

1

Zomig[®]
ZOLMITRIPTAN



64192-02



Rev 03/02

Zomig®

ZOLMITRIPTAN

TABLETS

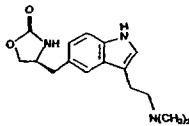
Zomig-ZMT™

ZOLMITRIPTAN

ORALLY DISINTEGRATING TABLETS

DESCRIPTION

ZOMIG® (zolmitriptan) Tablets contain zolmitriptan, which is a selective 5-hydroxytryptamine_{1B/1D} (5-HT_{1B/1D}) receptor agonist. Zolmitriptan is chemically designated as (S)-4-[[3-[(2-dimethylamino)ethyl]-1H-indol-5-yl]methyl]-2-oxazolidinone and has the following chemical structure:



The empirical formula is C₁₉H₂₁N₃O₂, representing a molecular weight of 287.36. Zolmitriptan is a white to almost white powder that is readily soluble in water. ZOMIG Tablets are available as 2.5 mg (yellow) and 5 mg (pink) film coated tablets for oral administration. The film coated tablets contain anhydrous lactose NF, microcrystalline cellulose NF, sodium starch glycolate NF, magnesium stearate NF, hydroxypropyl methylcellulose USP, titanium dioxide USP, polyethylene glycol 400 NF, yellow iron oxide NF (2.5 mg tablet), red iron oxide NF (5 mg tablet), and polyethylene glycol 8000 NF.

ZOMIG-ZMT™ Orally Disintegrating Tablets are available as 2.5 mg and 5.0 mg white uncoated tablets for oral administration. The orally disintegrating tablets contain mannitol USP, microcrystalline cellulose NF, croscopolone NF, aspartame NF, sodium bicarbonate USP, citric acid anhydrous USP, colloid silicon dioxide NF, magnesium stearate NF and orange flavor SN 027512.

CLINICAL PHARMACOLOGY

Mechanism of Action: Zolmitriptan binds with high affinity to human recombinant 5-HT_{1D} and 5-HT_{1B} receptors. Zolmitriptan exhibits modest affinity for 5-HT_{1A} receptors, but has no significant affinity (as measured by radioligand binding assays) or pharmacological activity at 5-HT_{1A}, 5-HT₂, 5-HT_{2A}, alpha₁, alpha₂, beta₁, beta₂, adrenergic; H₁, H₂, histaminic; muscarinic; dopamine₁, or dopamine₂ receptors. The N-desmethyl metabolite also has high affinity for 5-HT_{1B/1D} and modest affinity for 5-HT_{1A} receptors.

Current theories proposed to explain the etiology of migraine headache suggest that symptoms are due to local cranial vasodilatation and/or to the release of sensory neuropeptides (vasoactive intestinal peptide, substance P and calcitonin gene-related peptide) through nerve endings in the trigeminal system. The therapeutic activity of zolmitriptan for the treatment of migraine headache can most likely be attributed to the agonist effects at the 5-HT_{1B/1D} receptors on intracranial blood vessels (including the arterio-venous anastomoses) and sensory nerves of the trigeminal system which result in cranial vessel constriction and inhibition of pro-inflammatory neuropeptide release.

Clinical Pharmacokinetics and Availability

Absorption: Zolmitriptan is well absorbed after oral administration for both the conventional tablets and the orally disintegrating tablets. Zolmitriptan displays linear kinetics over the dose range of 2.5 to 50 mg.

The AUC and C_{max} of zolmitriptan are similar following administration of ZOMIG Tablets and ZOMIG-ZMT Orally Disintegrating Tablets, but the T_{max} is somewhat later with ZOMIG-ZMT, with a median T_{max} of 3 hours for the orally disintegrating tablet compared with 1.5 hours for the conventional tablet. The AUC, C_{max}, and T_{max} for the active N-desmethyl metabolite are similar for the two formulations.

During a moderate to severe migraine attack, mean AUC₀₋₄ and C_{max} for zolmitriptan, dosed as a conventional tablet, were decreased by 40% and 25%, respectively, and mean T_{max} was delayed by one-half hour compared to the same patients during a migraine free period.

Food has no significant effect on the bioavailability of zolmitriptan. No accumulation occurred on multiple dosing.

Distribution: Mean absolute bioavailability is approximately 40%. The mean apparent volume of distribution is 7.0 L/kg. Plasma protein binding of zolmitriptan is 25% over the concentration range of 10-1000 ng/mL.

Metabolism: Zolmitriptan is converted to an active N-desmethyl metabolite such that the metabolite concentrations are about two thirds that of zolmitriptan. Because the 5-HT_{1B/1D} potency of the metabolite is 2 to 6 times that of the parent, the metabolite may contribute a substantial portion of the overall effect after zolmitriptan administration.

Elimination: Total radioactivity recovered in urine and feces was 65% and 30% of the administered dose, respectively. About 8% of the dose was recovered in the urine as unchanged zolmitriptan. Indole acetic acid metabolite accounted for 31% of the dose, followed by N-oxide (7%) and N-desmethyl (4%) metabolites. The indole acetic acid and N-oxide metabolites are inactive.

Mean total plasma clearance is 31.5 mL/min/kg, of which one-third is renal clearance. The renal clearance is greater than the glomerular filtration rate suggesting renal tubular secretion.

Special Populations

Age: Zolmitriptan pharmacokinetics in healthy elderly non-migraineur volunteers (age 65 - 76 yrs) were similar to those in younger non-migraineur volunteers (age 18 - 39 yrs).

Sex: Mean plasma concentrations of zolmitriptan were up to 1.5-fold higher in females than males.

Renal Impairment: Clearance of zolmitriptan was reduced by 25% in patients with severe renal impairment (Cl_{cr} ≤ 25 mL/min) compared to the normal group (Cl_{cr} > 70 mL/min); no significant change in clearance was observed in the moderately renally impaired group (Cl_{cr} ≥ 26 to 50 mL/min).

Hepatic Impairment: In severely hepatically impaired patients, the mean C_{max}, T_{max}, and AUC₀₋₄ of zolmitriptan were increased 1.5, 2 (p < 4 hr), and 3-fold, respectively, compared to normals. Seven out of 27 patients experienced 20 to 80 mm Hg elevations in systolic and/or diastolic blood pressure after a 10 mg dose. Zolmitriptan should be administered with caution in subjects with liver disease, generally using doses less than 2.5 mg (see WARNINGS and PRECAUTIONS).

Sensitive Patients: No differences in the pharmacokinetics of zolmitriptan or its effects on blood pressure were seen in mild to moderate hypertensives compared to normotensive controls.

Retrospective analysis of pharmacokinetic data between Japanese and Caucasians revealed no significant differences.

Drug Interactions: All drug interaction studies were performed in healthy volunteers using a single 10 mg dose of zolmitriptan and a single dose of the other drug except where otherwise noted.

Food: The pharmacokinetics of zolmitriptan, as well as its effect on blood pressure, were unaffected by 4 weeks of pretreatment with oral fluoxetine (20 mg/day).

MAO Inhibitors: Following one week of administration of 150 mg bid moclobemide, a specific MAO-A inhibitor, there was an increase of about 25% in both C_{max} and AUC for zolmitriptan and a 3-fold increase in the C_{max} and AUC of the active N-desmethyl metabolite (see CONTRAINDICATIONS and PRECAUTIONS).

Seleniline, a selective MAO-B inhibitor, at a dose of 10 mg/day for 1 week, had no effect on the pharmacokinetics of zolmitriptan and its metabolite.

Propranolol: C_{max} and AUC of zolmitriptan increased 1.5-fold after one week of dosing with propranolol (160 mg/day). C_{max} and AUC of the N-desmethyl metabolite were reduced by 30% and 15%, respectively. There were no interactive effects on blood pressure or pulse rate following administration of propranolol with zolmitriptan.

Acetaminophen: A single 1 g dose of acetaminophen does not alter the pharmacokinetics of zolmitriptan and its N-desmethyl metabolite. However, zolmitriptan delayed the T_{max} of acetaminophen by one hour.

Metoclopramide: A single 10 mg dose of metoclopramide had no effect on the pharmacokinetics of zolmitriptan or its metabolites.

Oral Contraceptives: Retrospective analysis of pharmacokinetic data across studies indicated that mean plasma concentrations of zolmitriptan were generally higher in females taking oral contraceptives compared to those not taking oral contraceptives. Mean C_{max} and AUC of zolmitriptan were found to be higher by 30% and 50%, respectively, and T_{max} was delayed by one-half hour in females taking oral contraceptives. The effect of zolmitriptan on the pharmacokinetics of oral contraceptives has not been studied.

Genetics: Following the administration of cimetidine, the half-life and AUC of a 5 mg dose of zolmitriptan and its active metabolite were approximately doubled (see PRECAUTIONS).

Clinical Studies: The efficacy of ZOMIG Tablets in the acute treatment of migraine headaches was demonstrated in five randomized, double-blind, placebo controlled studies, of which 2 utilized the 1 mg dose, 2 utilized the 2.5 mg dose and 4 utilized the 5 mg dose; all studies used the marketed formulation. In study 1, patients treated their headaches in a clinic setting. In the other studies, patients treated their headaches as outpatients. In study 4, patients who had previously used sumatriptan were excluded, whereas in the other studies no such exclusion was applied. Patients enrolled in these 5 studies were predominantly female (82%) and Caucasian (97%) with a mean age of 40 years (range 12-65). Patients were instructed to treat a moderate to severe headache. Headache response, defined as a reduction in headache severity from moderate or severe pain to mild or no pain, was assessed at 1, 2, and, in most studies, 4 hours after dosing. Associated symptoms such as nausea, photophobia and phonophobia were also assessed. Maintenance of response was assessed for up to 24 hours postdose. A second dose of ZOMIG Tablets or other medication was allowed 2 to 24 hours after the initial treatment for persistent and recurrent headache. The frequency and time to use of these additional treatments were also recorded. In all studies, the effect of zolmitriptan was compared to placebo in the treatment of a single migraine attack.

In all five studies, the percentage of patients achieving headache response 2 hours after treatment was significantly greater among patients receiving ZOMIG Tablets at all doses (except for the 1 mg dose in the smallest study) compared to those who received placebo. In the two studies that evaluated the 1 mg dose, there was a statistically significant greater percentage of patients with headache response at 2 hours in the higher dose groups (2.5 and/or 5 mg) compared to the 1 mg dose group. There were no statistically significant differences between the 2.5 and 5 mg dose groups (or of doses up to 20 mg) for the primary end point of headache response at 2 hours in any study. The results of these controlled clinical studies are summarized in Table 1.

Comparisons of drug performance based upon results obtained in different clinical trials are never reliable. Because studies are conducted at different times, with different samples of patients, by different investigators, employing different criteria and/or different interpretations of the same criteria, under different conditions (dose, dosing regimen, etc.), quantitative estimates of treatment response and the timing of response may be expected to vary considerably from study to study.

Table 1: Percentage of Patients with Headache Response (Mild or no Headache) 2 Hours Following Treatment (n=number of patients randomized).

	Placebo	ZOMIG 1.0 mg	ZOMIG 2.5 mg	ZOMIG 5 mg
Study 1 ^a	16% (n=19)	27% (n=22)	NA	60%* (n=20)
Study 2	19% (n=88)	NA	NA	66%* (n=179)
Study 3	34% (n=121)	50%* (n=140)	65%* (n=260)	67%* (n=245)
Study 4 ^b	44% (n=55)	NA	NA	59%* (n=491)
Study 5	36% (n=92)	NA	62%* (n=178)	NA

*p<0.05 in comparison with placebo.

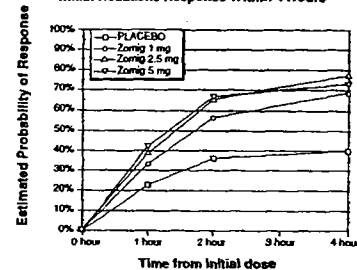
#p<0.05 in comparison with 1 mg.

^a This was the only study in which patients treated the headache in a clinic setting.

^b This was the only study where patients were excluded who had previously used sumatriptan.
NA - not applicable

The estimated probability of achieving an initial headache response by 4 hours following treatment is depicted in Figure 1.

Figure 1: Estimated Probability of Achieving Initial Headache Response Within 4 Hours*

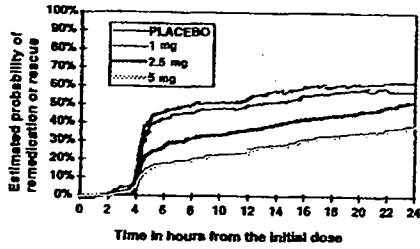


*Figure 1 shows the Kaplan-Meier plot of the probability over time of obtaining headache response (no or mild pain) following treatment with zolmitriptan. The averages displayed are based on pooled data from 3 placebo controlled, outpatient trials providing evidence of efficacy (Trials 2, 3 and 5). Patients not achieving headache response or taking additional treatment prior to 4 hours were censored at 4 hours.

For patients with migraine associated photophobia, phonophobia, and nausea at baseline, there was a decreased incidence of these symptoms following administration of ZOMIG as compared to placebo.

Two to 24 hours following the initial dose of study treatment, patients were allowed to take additional treatment for pain relief in the form of a second dose of study treatment or other medication. The estimated probability of patients taking a second dose or other medication for migraine over the 24 hours following the initial dose of study treatment is summarized in Figure 2.

Figure 2: The Estimated Probability Of Patients Taking A Second Dose Or Other Medication For Migraines Over The 24 Hours Following The Initial Dose Of Study Treatment *



*This Kaplan-Meier plot is based on data obtained in 3 placebo controlled clinical trials (Study 2, 3 and 5). Patients not using additional treatments were censored at 24 hours. The plot includes both patients who had headache response at 2 hours and those who had no response to the initial dose. It should be noted that the protocols did not allow remediation within 2 hours post-dose.

The efficacy of ZOMIG was unaffected by presence of aura; duration of headache prior to treatment; relationship to menses; gender; age or weight of the patient; pretreatment nausea or concomitant use of common migraine prophylactic drugs.

ZOMIG-ZMT Orally Disintegrating Tablets

The efficacy of ZOMIG-ZMT 2.5 mg was demonstrated in a randomized, placebo-controlled trial that was similar in design to the trials of ZOMIG Tablets. Patients were instructed to treat a moderate to severe headache. Of the 471 patients treated in the study, 87% were female and 97% were Caucasian, with a mean age of 41 years (range 18-62). At 2 hours post-dosing response rates in patients treated with ZOMIG-ZMT 2.5 mg were 63% compared to 22% in the placebo group. The difference was statistically significant. The estimated probability of achieving an initial headache response by 2 hours following treatment with ZOMIG-ZMT Tablets is depicted in Figure 3.

Figure 3: Estimated Probability Of Achieving Initial Headache Response By 2 Hours

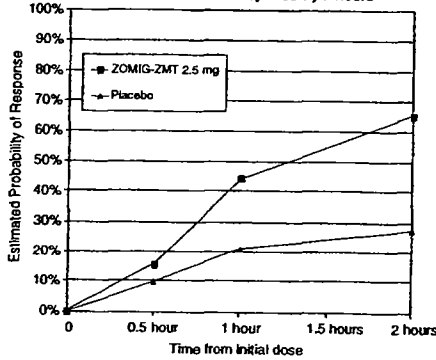
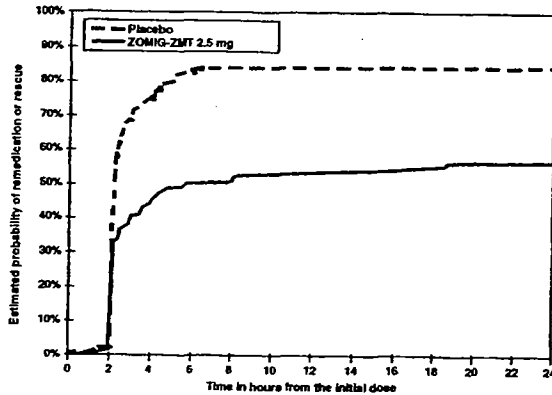


Figure 3 shows the Kaplan-Meier plot of the probability over time of obtaining headache response (no or mild pain) following treatment with ZOMIG-ZMT Tablets or placebo. Patients taking additional treatment or not achieving headache response prior to 2 hours were censored at 2 hours.

For patients with migraine-associated photophobia, phonophobia and nausea at baseline, there was a decreased incidence of these symptoms following administration of ZOMIG-ZMT 2.5 mg as compared to placebo.

Two to 24 hours following the initial dose of study treatment, patients were allowed to use additional treatment in the form of a second dose of study treatment or other medication. The estimated probability of patients taking a second dose or other medication for migraines over the 24 hours following the initial dose of study treatment is summarized in Figure 4.

Figure 4: The Estimated Probability Of Patients Taking A Second Dose Or Other Medication For Migraines Over The 24 Hours Following The Initial Dose Of Study Treatment



In this Kaplan-Meier plot, patients not using additional treatments were censored at 24 hours. The plot includes both patients who had headache response at 2 hours and those who had no response to the initial dose. Remediation was allowed 2 hours post-dose, and unlike the conventional tablet, remediation prior to 4 hours was not discouraged.

INDICATIONS AND USAGE: ZOMIG is indicated for the acute treatment of migraine with or without aura in adults. ZOMIG is not intended for the prophylactic therapy of migraine or for use in the management of hemiplegic or basilar migraine (see **CONTRAINDICATIONS**). Safety and effectiveness of ZOMIG have not been established for cluster headache, which is present in an older, predominantly male population.

CONTRAINDICATIONS

ZOMIG should not be given to patients with ischemic heart disease (angina pectoris, history of myocardial infarction, or documented silent ischemia) or to patients who have symptoms or findings consistent with ischemic heart disease, coronary artery vasospasm, including Prinzmetal's variant angina, or other significant underlying cardiovascular disease (see **WARNINGS**).

Because ZOMIG may increase blood pressure, it should not be given to patients with uncontrolled hypertension (see **WARNINGS**).

ZOMIG should not be used within 24 hours of treatment with another 5-HT₁ agonist or an ergotamine-containing or ergot-type medication (like dihydroergotamine or methysergide).

ZOMIG should not be administered to patients with hemiplegic or basilar migraine.

Concurrent administration of MAO-A inhibitors or use of zolmitriptan within 2 weeks of discontinuation of MAO-A inhibitor therapy is contraindicated (see **CLINICAL PHARMACOLOGY: Drug Interactions and PRECAUTIONS: Drug Interactions**).

ZOMIG is contraindicated in patients who are hypersensitive to zolmitriptan or any of its inactive ingredients.

WARNINGS: ZOMIG should only be used where a clear diagnosis of migraine has been established.

Risk of Myocardial Ischemia and/or Infarction and Other Adverse Cardiac Events: ZOMIG should not be given to patients with documented ischemic or vasospastic coronary artery disease (see **CONTRAINDICATIONS**). It is strongly recommended that zolmitriptan not be given to patients in whom unrecognized coronary artery disease (CAD) is predicted by the presence of risk factors (e.g., hypertension, hypercholesterolemia, smoker, obesity, diabetes, strong family history of CAD, angina with surgical or physiological cause, or male over 40 years of age) unless a cardiovascular evaluation provides satisfactory clinical evidence that the patient is reasonably free of coronary artery and ischemic myocardial disease or other significant underlying cardiovascular disease. The sensitivity of cardiac diagnostic procedures to detect cardiovascular disease or predisposition to coronary artery vasospasm is modest, at best. If, during the cardiovascular evaluation, the patient's medical history, electrocardiographic, or other investigations reveal findings indicative of, or consistent with, coronary artery vasospasm or myocardial ischemia, zolmitriptan should not be administered (see **CONTRAINDICATIONS**). For patients with risk factors predictive of CAD, who are determined to have a satisfactory cardiovascular evaluation, it is strongly recommended that administration of the first dose of zolmitriptan take place in the setting of a physician's office or similar medically staffed and equipped facility unless the patient has previously received zolmitriptan. Because cardiac ischemia can occur in the absence of clinical symptoms, consideration should be given to obtaining on the first occasion of use an electrocardiogram (ECG) during the interval immediately following ZOMIG, in these patients with risk factors.

It is recommended that patients who are intermittent long-term users of ZOMIG and who have or acquire risk factors predictive of CAD, as described above, undergo periodic interval cardiovascular evaluation as they continue to use ZOMIG.

The systematic approach described above is intended to reduce the likelihood that patients with unrecognized cardiovascular disease will be inadvertently exposed to zolmitriptan.

Cardiac Events and Fatalities: Serious adverse cardiac events, including acute myocardial infarction, have been reported within a few hours following administration of zolmitriptan. Life-threatening disturbances of cardiac rhythm, and death have been reported within a few hours following the administration of other 5-HT₁ agonists. Considering the extent of use of 5-HT₁ agonists in patients with migraine, the incidence of these events is extremely low. ZOMIG can cause coronary vasospasm; at least one of these events occurred in a patient with no cardiac disease history and with documented absence of coronary artery disease. Because of the dose proximity of the events to ZOMIG use, a causal relationship cannot be excluded. In the cases where there has been known underlying coronary artery disease, the relationship is uncertain.

Patients with symptomatic Wolff-Parkinson-White syndrome or arrhythmias associated with other cardiac accessory conduction pathway disorders should not receive ZOMIG.

Premarketing experience with zolmitriptan: Among the more than 2,500 patients with migraine who participated in premarketing controlled clinical trials of ZOMIG Tablets, no deaths or serious cardiac events were reported.

Postmarketing experience with zolmitriptan: Serious cardiovascular events have been reported in association with the use of ZOMIG. The uncontrolled nature of postmarketing surveillance, however, makes it impossible to determine definitively the proportion of the reported cases that were actually caused by zolmitriptan or to reliably assess causation in individual cases.

Cerebrovascular Events and Fatalities with 5-HT₁ agonists: Cerebral hemorrhage, subarachnoid hemorrhage, stroke, and other cerebrovascular events have been reported in patients treated with 5-HT₁ agonists; and some have resulted in fatalities. In a number of cases, it appears possible that the cerebrovascular events were primary, the agonist having been administered in the incorrect belief that the symptoms experienced were a consequence of migraine, when they were not. It should be noted that patients with migraine may be at increased risk of certain cerebrovascular events (e.g., stroke, hemorrhage, transient ischemic attack).

Other Vasospasm-Related Events: 5-HT₁ agonists may cause vasospastic reactions other than coronary artery vasospasm. Both peripheral vascular ischemia and colonic ischemia with abdominal pain and bloody diarrhea have been reported with 5-HT₁ agonists.

Increase in Blood Pressure: Significant elevations in systemic blood pressure have been reported on rare occasions in patients with and without a history of hypertension treated with 5-HT₁ agonists. Zolmitriptan is contraindicated in patients with uncontrolled hypertension. In volunteers, an increase of 1 and 5 mm Hg in the systolic and diastolic blood pressure, respectively, was seen at 5 mg. In the headache trials, vital signs were measured only in the small inpatient study and no effect on blood pressure was seen. In a study of patients with moderate to severe liver disease, 7 of 27 experienced 70 to 80 mm Hg elevations in systolic and/or diastolic blood pressure after a dose of 10 mg of zolmitriptan (see **CONTRAINDICATIONS**).

An 18% increase in mean pulmonary artery pressure was seen following dosing with another 5-HT₁ agonist in a study evaluating subjects undergoing cardiac catheterization.

PRECAUTIONS

General: As with other 5-HT₁ agonists, sensations of lightheadness, pain, pressure, and heaviness have been reported after treatment with ZOMIG Tablets in the forehead, throat, neck and jaw. Because zolmitriptan may cause coronary artery vasospasm, patients who experience signs or symptoms suggestive of angina following dosing should be evaluated for the presence of CAD or a predisposition to Prinzmetal's variant angina before receiving additional doses of medication, and should be monitored electrocardiographically if dosing is resumed and similar symptoms recur. Similarly, patients who experience other symptoms or signs suggestive of decreased arterial flow, such as ischemic bowel syndrome or Raynaud's syndrome following the use of any 5-HT₁ agonist are candidates for further evaluation (see **WARNINGS**).

Zolmitriptan should also be administered with caution to patients with diseases that may alter the absorption, metabolism, or excretion of drugs, such as impaired hepatic function (see **CLINICAL PHARMACOLOGY**).

For a given attack, if a patient does not respond to the first dose of zolmitriptan, the diagnosis of migraine headache should be reconsidered before administration of a second dose.

Binding to Melanin-Concentrating Tissue: When pigmented rats were given a single oral dose of 10 mg/kg of radiolabeled zolmitriptan, the radioactivity in the eye after 7 days, the latest time point examined, was still 75% of the value measured after 4 hours. This suggests that zolmitriptan and/or its metabolites may bind to the melanin of the eye. Because there could be accumulation in melanin rich tissues over time, this raises the possibility that zolmitriptan could cause toxicity in these tissues after extended use. However, no effects on the retina related to treatment with zolmitriptan were noted in any of the toxicity studies. Although no systematic monitoring of ophthalmologic function was undertaken in clinical trials, and no specific recommendations for ophthalmologic monitoring are offered, prescribers should be aware of the possibility of long-term ophthalmologic effects.

Phenylethylamine: Phenylethylamine patients should be informed that ZOMIG-ZMT contains phenylethylamine (a component of aspartame). Each 2.5 mg orally disintegrating tablet contains 2.81 mg phenylethylamine. Each 5 mg orally disintegrating tablet contains 5.62 mg phenylethylamine.

Information for Patients: See **PATIENT INFORMATION** at the end of this labeling for the text of the separate leaflet provided for patients.

ZOMIG-ZMT Orally Disintegrating Tablets

The orally disintegrating tablet is packaged in a blister. Patients should be instructed not to remove the tablet from the blister until just prior to dosing. The blister pack should then be peeled open, and the orally disintegrating tablet placed on the tongue, where it will dissolve and be swallowed with the saliva. Laboratory Tests: No monitoring of specific laboratory tests is recommended.

Drug Interactions: Ergot-containing drugs have been reported to cause prolonged vasospastic reactions. Because there is a theoretical basis that these effects may be additive, use of ergotamine-containing or ergot-type medications (like dihydroergotamine or methysergide) and zolmitriptan within 24 hours of each other should be avoided (see **CONTRAINDICATIONS**).

MAO-A inhibitors increase the systemic exposure of zolmitriptan. Therefore, the use of zolmitriptan in patients receiving MAO-A inhibitors is contraindicated (see **CLINICAL PHARMACOLOGY and CONTRAINDICATIONS**).

Concomitant use of other 5-HT₁ agonists within 24 hours of ZOMIG treatment is not recommended (see **CONTRAINDICATIONS**). Following administration of cimetidine, the half-life and AUC of zolmitriptan and its active metabolites were approximately doubled (see **CLINICAL PHARMACOLOGY**).

Selective serotonin reuptake inhibitors (SSRIs) (eg, fluoxetine, fluvoxamine, paroxetine, sertraline) have been reported, rarely, to cause weakness, hyperreflexia, and incoordination when coadministered with 5-HT₁ agonists. If concomitant treatment with zolmitriptan and an SSRI is clinically warranted, appropriate observation of the patient is advised.

Drug/Laboratory Test Interactions: Zolmitriptan is not known to interfere with commonly employed clinical laboratory tests.

Contraception, Mutagenesis, Impairment of Fertility

Contraception: Carcinogenicity studies by oral gavage were carried out in mice and rats at doses up to 400 mg/kg/day. Mice were dosed for 65 weeks (males) and 92 weeks (females). The exposure (plasma AUC of parent drug) at the highest dose level was approximately 800 times that seen in humans after a single 10 mg dose (the maximum recommended total daily dose). There was no effect of zolmitriptan on tumor incidence. Control, low dose and middle dose rats were dosed for 104-105 weeks; the high dose group was sacrificed after 101 weeks (males) and 85 weeks (females) due to excess mortality. Aside from an increase in the incidence of thyroid follicular cell hyperplasia and thyroid follicular cell adenomas seen in male rats receiving 400 mg/kg/day, an exposure approximately 3000 times that seen in humans after dosing with 10 mg, no tumors were noted.

Mutagenesis: Zolmitriptan was mutagenic in an Ames test, in 2 of 5 strains of *S. typhimurium* tested, in the presence of, but not in the absence of, metabolic activation. It was not mutagenic in an *in vitro* mammalian gene cell mutation (CHM/GPRT) assay. Zolmitriptan was clastogenic in an *in vitro*

CONTINUED ON REVERSE



4

ZOMIG® (zolmitriptan) Tablets
ZOMIG-ZMT™ (zolmitriptan) Orally Disintegrating Tablets

human lymphocyte assay both in the absence of and the presence of metabolic activation; It was not clastogenic in an *in vivo* mouse micronucleus assay. It was also not genotoxic in an unscheduled DNA synthesis study.

Impairment of Fertility: Studies of male and female rats administered zolmitriptan prior to and during mating and up to implantation have shown no impairment of fertility at doses up to 400 mg/kg/day. Exposure at this dose was approximately 3000 times exposure at the maximum recommended human dose of 10 mg/day.

Pregnancy: Pregnancy Category C: There are no adequate and well controlled studies in pregnant women; therefore, zolmitriptan should be used during pregnancy only if the potential benefit justifies the potential risk to the fetus.

In reproductive toxicity studies in rats and rabbits, oral administration of zolmitriptan to pregnant animals was associated with embryolethality and fetal abnormalities. When pregnant rats were administered oral zolmitriptan during the period of organogenesis at doses of 100, 400 and 1200 mg/kg/day, there was a dose-related increase in embryolethality which became statistically significant at the high dose. The maternal plasma exposures at these doses were approximately 280, 1100 and 5000 times the exposure in humans receiving the maximum recommended total daily dose of 10 mg. The high dose was maternally toxic, as evidenced by a decreased maternal body weight gain during gestation. In a similar study in rabbits, embryolethality was increased at the maternally toxic doses of 10 and 30 mg/kg/day (maternal plasma exposures equivalent to 11 and 42 times exposure in humans receiving the maximum recommended total daily dose of 10 mg), and increased incidences of fetal malformations (fused sternbrae, rib anomalies) and variations (major blood vessel variations, irregular ossification pattern of ribs) were observed at 30 mg/kg/day. Three mg/kg/day was a no effect dose (equivalent to human exposure at a dose of 10 mg). When female rats were given zolmitriptan during gestation, parturition, and lactation, an increased incidence of hydronephrosis was found in the offspring at the maternally toxic dose of 400 mg/kg/day (1100 times human exposure).

Nursing Mothers: It is not known whether zolmitriptan is excreted in human milk. Because many drugs are excreted in human milk, caution should be exercised when zolmitriptan is administered to a nursing woman. Lactating rats dosed with zolmitriptan had milk levels equivalent to maternal plasma levels at 1 hour and 4 times higher than plasma levels at 4 hours.

Pediatric Use: Safety and effectiveness of ZOMIG in pediatric patients have not been established therefore, ZOMIG is not recommended for use in patients under 18 years of age.

Postmarketing experience with other triptans includes a limited number of reports that describe pediatric patients who have experienced clinically serious adverse events that are similar in nature to those reported rarely in adults.

Use in the Elderly: Although the pharmacokinetic disposition of the drug in the elderly is similar to that seen in younger adults, there is no information about the safety and effectiveness of zolmitriptan in this population because patients over age 65 were excluded from the controlled clinical trials. (see CLINICAL PHARMACOLOGY: Special Populations)

ADVERSE REACTIONS: Serious cardiac events, including myocardial infarction, have occurred following the use of ZOMIG Tablets. These events are extremely rare and most have been reported in patients with risk factors predictive of CAD. Events reported, in association with drugs of this class, have included coronary artery vasospasm, transient myocardial ischemia, myocardial infarction, ventricular tachycardia, and ventricular fibrillation (see CONTRAINDICATIONS, WARNINGS, and PRECAUTIONS).

Incidence in Controlled Clinical Trials: Among 2,633 patients treated with ZOMIG Tablets in the active and placebo controlled trials, no patients withdrew for reasons related to adverse events, but as patients treated a single headache in these trials, the opportunity for discontinuation was limited. In a long-term, open label study where patients were allowed to treat multiple migraine attacks for up to 1 year, 8% (167 out of 2,058) withdrew from the trial because of adverse experience. The most common events were paresthesia, asthenia, nausea, dizziness, pain, chest or neck tightness or heaviness, somnolence and warm sensation.

Table 2 lists the adverse events that occurred in $\geq 2\%$ of the 2,074 patients in any one of the ZOMIG 1 mg, ZOMIG 2.5 mg or ZOMIG 5 mg Tablets dose groups of the controlled clinical trials. Only events that were more frequent in a ZOMIG Tablets group compared to the placebo groups are included. The events cited reflect experience gained under closely monitored conditions of clinical trials in a highly selected patient population. In actual clinical practice or in other clinical trials, these frequency estimates may not apply, as the conditions of use, reporting behavior, and the kinds of patients treated may differ.

Several of the adverse events appear dose related, notably paresthesia, sensation of heaviness or tightness in chest, neck, jaw, and throat, dizziness, somnolence, and possibly asthenia and nausea.

Table 2: Adverse Experience Incidence in Five Placebo-Controlled Migraine Clinical Trials: Events Reported By $\geq 2\%$ Patients Treated With ZOMIG Tablets

Adverse Event Type	Placebo (n=401)	ZOMIG 1 mg (n=163)	ZOMIG 2.5 mg (n=498)	ZOMIG 5 mg (n=1012)
ATYPICAL SENSATIONS	6%	12%	12%	18%
Hypesthesia	1%	1%	1%	2%
Paresthesia (all types)	2%	5%	7%	9%
Sensation warm/cold	4%	6%	5%	7%
PAIN AND PRESSURE SENSATIONS	7%	13%	14%	22%
Chest-pain/tightness/pressure and/or heaviness	1%	2%	3%	4%
Neck/throat/jaw-pain/tightness/pressure	3%	4%	7%	10%
Heaviness other than chest or neck	1%	1%	2%	5%
Pain-location specified	1%	2%	2%	3%
Other-Pressure/tightness/heaviness	0%	2%	2%	2%
DIGESTIVE	8%	11%	16%	14%
Dry mouth	2%	5%	3%	3%
Dyspepsia	1%	3%	2%	1%
Dysphagia	0%	0%	0%	2%
Nausea	4%	4%	9%	6%
NEUROLOGICAL	10%	11%	17%	21%
Dizziness	4%	6%	8%	10%
Somnolence	3%	5%	6%	8%
Vertigo	0%	0%	0%	2%
OTHER				
Asthenia	3%	5%	3%	9%
Palpitations	1%	0%	<1%	2%
Myalgia	<1%	1%	1%	2%
Myasthenia	<1%	0%	1%	2%
Sweating	1%	0%	2%	3%

ZOMIG is generally well tolerated. Across all doses, most adverse reactions were mild and transient and did not lead to long-lasting effects. The incidence of adverse events in controlled clinical trials was not affected by gender, weight, or age of the patients; use of prophylactic medications; or presence of aura. There were insufficient data to assess the impact of race on the incidence of adverse events.

Other Events: In the paragraphs that follow, the frequencies of less commonly reported adverse clinical events are presented. Because the reports include events observed in open and uncontrolled studies, the role of ZOMIG in their causation cannot be reliably determined. Furthermore, variability associated with adverse event reporting, the terminology used to describe adverse events, etc., limit the value of the quantitative frequency estimates provided. Event frequencies are calculated as the number of patients who used ZOMIG Tablets (n=4,027) and reported an event divided by the total number of patients exposed to ZOMIG Tablets. All reported events are included except those already listed in the previous table, those too general to be informative, and those not reasonably associated with the use of the drug. Events are further classified within body system categories and enumerated in order of decreasing frequency using the following definitions: Infrequent adverse events are those occurring in 1/100 to 1/1,000 patients and rare adverse events are those occurring in fewer than 1/1,000 patients.

Atypical sensations: Infrequent was hyperesthesia.

General: Infrequent were allergy reaction, chills, facial edema, fever, malaise and photosensitivity.

Cardiovascular: Infrequent were arrhythmias, hypertension and syncope. Rare were bradycardia, extrasystoles, postural hypotension, QT prolongation, tachycardia and thrombophlebitis.

Digestive: Infrequent were increased appetite, tongue edema, esophagitis, gastroenteritis, liver function abnormality and thirst. Rare were anorexia, constipation, gastritis, hematemesis, pancreatitis, melena, and ulcer.

Hemic: Infrequent was ecchymosis. Rare were cyanosis, thrombocytopenia, eosinophilia and leukopenia.

Metabolic: Infrequent was edema. Rare were hyperglycemia and alkaline phosphatase increased.

Musculoskeletal: Infrequent were back pain, leg cramps and tenosynovitis. Rare were arthritis, asthenia, tetany and twitching.

Neurological: Infrequent were agitation, anxiety, depression, emotional lability and insomnia. Rare were akathisia, amnesia, apathy, ataxia, dystonia, euphoria, hallucinations, cerebral ischemia, hyperkinesia, hypotonia, hypertonia and irritability.

Respiratory: Infrequent were bronchitis, bronchospasm, epistaxis, hiccup, laryngitis, and yawn. Rare were apnea and voice alteration.

Skin: Infrequent were pruritus, rash and urticaria.

Special Senses: Infrequent were dry eye, eye pain, hyperacusis, ear pain, parosmia, and tinnitus. Rare were diplopia and lacrimation.

Urogenital: Infrequent were hematuria, cystitis, polyuria, urinary frequency, urinary urgency. Rare were miscarriage and dysmenorrhea.

... adverse experiences profile seen with ZOMIG-ZMT Tablets was similar to that seen with ZOMIG Tablets.

Postmarketing Experience: The following section enumerates potentially important adverse events that have occurred in clinical practice and which have been reported spontaneously to various surveillance systems. The events enumerated represent reports arising from both domestic and non-domestic use of zolmitriptan. The events enumerated include all except those already listed in the ADVERSE REACTIONS section above or those too general to be informative. Because the reports cite events reported spontaneously from worldwide postmarketing experience, frequency of events and the role of zolmitriptan in their causation cannot be reliably determined.

Cardiovascular: Coronary artery vasospasm, transient myocardial ischemia, angina pectoris, and myocardial infarction.

General: As with other 5-HT_{1B/1D} agonists, there have been very rare reports of anaphylaxis or anaphylactoid reactions in patients receiving ZOMIG. **ORUG ABUSE AND DEPENDENCE:** The abuse potential of ZOMIG has not been assessed in clinical trials.

OVERDOSAGE: There is no experience with clinical overdose. Volunteers receiving single 50 mg oral doses of zolmitriptan commonly experienced sedation.

The elimination half-life of ZOMIG is 3 hours (see CLINICAL PHARMACOLOGY), and therefore monitoring of patients after overdose with ZOMIG should continue for at least 15 hours or while symptoms or signs persist.

There is no specific antidote to zolmitriptan. In cases of severe intoxication, intensive care procedures are recommended, including establishing and maintaining a patent airway, ensuring adequate oxygenation and ventilation, and monitoring and support of the cardiovascular system.

It is unknown what effect hemodialysis or peritoneal dialysis has on the plasma concentrations of zolmitriptan.

DOSEAGE AND ADMINISTRATION:

ZOMIG Tablets

In controlled clinical trials, single doses of 1, 2.5 and 5 mg of ZOMIG Tablets were effective for the acute treatment of migraines in adults. A greater proportion of patients had headache response following a 2.5 or 5 mg dose than following a 1 mg dose (see Table 1). In the only direct comparison of 2.5 and 5 mg, there was little added benefit from the larger dose but side effects are generally increased at 5 mg (see Table 2). Patients should, therefore, be started on 2.5 mg or lower. A dose lower than 2.5 mg can be achieved by manually breaking the scored 2.5 mg tablet in half.

If the headache returns, the dose may be repeated after 2 hours, not to exceed 10 mg within a 24-hour period. Controlled trials have not adequately established the effectiveness of a second dose if the initial dose is ineffective.

The safety of treating an average of more than three headaches in a 30-day period has not been established.

ZOMIG-ZMT Orally Disintegrating Tablets

In a controlled clinical trial, a single dose of 2.5 mg of ZOMIG-ZMT Tablets was effective for the acute treatment of migraines in adults. If the headache returns, the dose may be repeated after 2 hours, not to exceed 10 mg within a 24-hour period. Controlled trials have not adequately established the effectiveness of a second dose if the initial dose is ineffective.

The safety of treating an average of more than three headaches in a 30-day period has not been established.

Administration with liquid is not necessary. The orally disintegrating tablet is packaged in a blister. Patients should be instructed not to remove the tablet from the blister until just prior to dosing. The blister pack should then be peeled open, and the orally disintegrating tablet placed on the tongue, where it will dissolve and be swallowed with the saliva. It is not recommended to break the orally disintegrating tablet.

Hepatic Impairment: Patients with moderate to severe hepatic impairment have decreased clearance of zolmitriptan and significant elevation in blood pressure was observed in some patients. Use of a low dose with blood pressure monitoring is recommended (see CLINICAL PHARMACOLOGY AND WARNINGS).

HOW SUPPLIED: 2.5 mg Tablets - Yellow, biconvex, round, film-coated, scored tablets containing 2.5 mg of zolmitriptan identified with "ZOMIG" and "2.5" debossed on one side are supplied in cartons containing a blister pack of 6 tablets (NDC 0310-0210-20).

2.5 mg Orally Disintegrating Tablets - White, flat faced, uncoated, bevelled tablet containing 2.5 mg of zolmitriptan identified with a debossed "Z" on one side are supplied in cartons containing a blister pack of 6 tablets (NDC 0310-0209-20).

5 mg Tablets - Pink, biconvex, film-coated tablets containing 5 mg of zolmitriptan identified with "ZOMIG" and "5" debossed on one side are supplied in cartons containing a blister pack of 3 tablets (NDC 0310-0211-25).

5 mg Orally Disintegrating Tablets - White, flat faced, round, uncoated, bevelled tablet containing 5.0 mg of zolmitriptan identified with a debossed "Z" and "5" on one side and plain on the other are supplied in cartons containing a blister pack of 3 tablets (NDC 0310-0213-21).

Store both ZOMIG Tablets and ZOMIG-ZMT Tablets at controlled room temperature, 20-25°C (68-77°F) [see USP]. Protect from light and moisture.

PATIENT INFORMATION

The following wording is contained in a separate leaflet provided for patients.

ZOMIG® (zolmitriptan) Tablets
ZOMIG-ZMT™ (zolmitriptan) Orally Disintegrating Tablets

Paternal Information about ZOMIG (Zo-mig) for Migraines
 Generic Name: zolmitriptan (zol-mi-trip-tan)

Information for the Consumer on ZOMIG (zolmitriptan) Tablets: Please read this leaflet carefully before you administer ZOMIG Tablets. This provides a summary of the information available on your medicine. Please do not throw away this leaflet until you have finished your medicine. You may need to read this leaflet again. This leaflet does not contain all the information on ZOMIG Tablets. For further information or advice, ask your doctor or pharmacist.

Information About Your Medicine: The name of your medicine is ZOMIG Tablets. It can be obtained only by prescription from your doctor. The decision to use ZOMIG Tablets is one that you and your doctor should make jointly, taking into account your individual preferences and medical circumstances. If you have risk factors for heart disease (such as high blood pressure, high cholesterol, obesity, diabetes, smoking, strong family history of heart disease, or you are postmenopausal or a male over the age of 40), you should tell your doctor, who should evaluate you for heart disease in order to determine if ZOMIG Tablets are appropriate for you.

- The Purpose of Your Medicine:** ZOMIG Tablets are intended to relieve your migraine, but not to prevent or reduce the number of attacks you experience. Use ZOMIG Tablets only to treat an actual migraine attack.
- Important Questions to Consider Before Using ZOMIG Tablets:** If the answer to any of the following questions is YES or if you do not know the answer, then you must discuss it with your doctor before you use ZOMIG Tablets.
 - Do you have any chest pain, heart disease, shortness of breath, or irregular heartbeats? Have you had a heart attack?
 - Do you have risk factors for heart disease (such as high blood pressure, high cholesterol, obesity, diabetes, smoking, strong family history of heart disease, or you are postmenopausal or a male over the age of 40)?
 - Do you have high blood pressure?
 - Are you pregnant? Do you think you might be pregnant? Are you trying to become pregnant? Are you not using adequate contraception? Are you breast feeding an infant?
 - If you are taking ZOMIG-ZMT™, are you sensitive to phenylalanine (a component of the artificial sweetener aspartame)?
 - Have you ever had to stop taking this or any other medication because of an allergy or other problems?
 - Are you taking any other migraine medications, including 5-HT₁ agonist or migraine medications containing ergotamine, dihydroergotamine, or methysergide?
 - Are you taking any medication for depression (monoamine oxidase inhibitors or selective serotonin reuptake inhibitors [SSRIs])?
 - Have you had, or do you have, any disease of the liver or kidney?
 - Have you had, or do you have, epilepsy or seizures?
 - Is this headache different from your usual migraine attacks?

Remember, if you answered YES to any of the above questions, then you must discuss it with your doctor.

- The Use of ZOMIG Tablets During Pregnancy:** Do not use ZOMIG Tablets if you are pregnant, think you might be pregnant, are trying to become pregnant, or are not using adequate contraception, unless you have discussed this with your doctor.
- How to Use ZOMIG Tablets:** Adults should be started on a 2.5 mg dose or lower administered by mouth. A dose lower than 2.5 mg can be achieved by manually breaking the conventional film-coated, scored 2.5 mg tablet in half. It is not recommended to break the ZOMIG-ZMT Tablet. If your headache comes back after your initial dose, a second dose may be administered anytime after 2 hours of administering the dose. For any attack where you have no response to the first dose, do not take a second dose without first consulting with your doctor. Do not administer more than a total of 10 mg of ZOMIG Tablets in any 24-hour period. Discard any unused tablets or its portion that have been removed from the blister packaging.

ZOMIG-ZMT Orally Disintegrating Tablets

The blister pack should be peeled open and the orally disintegrating tablet placed on the tongue, where it will dissolve and be swallowed with the saliva.

Side Effects to Watch For:

- Some patients experience pain or tightness in the chest or throat when using ZOMIG Tablets. If this happens to you, then discuss it with your doctor before using any more ZOMIG Tablets. If the chest pain is severe or does not go away, call your doctor immediately.

- Shortness of breath, wheeziness; heart throbbing; swelling of eyelids, face, or lips; or a skin rash, skin bumps, or hives happens rarely. If it happens to you, then tell your doctor immediately. Do not take any more ZOMIG Tablets unless your doctor tells you to do so.
- Some people may have feelings of tingling, heat, heaviness or pressure after treatment with ZOMIG Tablets. A few people may feel drowsy, dizzy, tired, or sick. Tell your doctor immediately if you have symptoms that you do not understand.
- What To Do If An Overdose Is Taken:** If you have taken more medication than you have been told, contact either your doctor, hospital emergency department, or nearest poison control center immediately. This medicine was prescribed for your particular condition and should not be used by others or for any other condition.
- Storing Your Medicine:** Keep your medicine in a safe place where children cannot reach it. It may be harmful to children. Store your medication away from light and moisture, and at a controlled room temperature. If your medication has expired (the expiration date is printed on the treatment pack), throw it away as instructed. If your doctor decides to stop your treatment, do not keep any leftover medicine unless your doctor tells you to. Throw away your medicine as instructed. Be sure that discarded tablets are out of the reach of children.

All trademarks are the property of the AstraZeneca group
 © AstraZeneca 2002

ZOMIG® (zolmitriptan) Tablets
 Manufactured for:
 AstraZeneca Pharmaceuticals LP
 Wilmington, DE 19850
 By: IPR Pharmaceuticals, Inc.
 Carolina, PR 00984

ZOMIG-ZMT™ (zolmitriptan) Orally Disintegrating Tablets
 Manufactured for:
 AstraZeneca Pharmaceuticals LP
 Wilmington, DE 19850
 By: CIMA Labs, Inc.
 Eden Prairie, MN 55344

64192-02
 Rev 03/02



**CENTER FOR DRUG EVALUATION AND
RESEARCH**

APPLICATION NUMBER:

NDA 20-768/S-010 & 21-231/S-003

MEDICAL REVIEW

Review and Evaluation of Clinical Data

IND (Serial Number)	20768(010) and 21231(003)
Sponsor:	AstraZeneca
Drug:	Zomig Tablet and Zomig-ZMT
Proposed Indication:	Migraine
Material Submitted:	CBE (submitted electronically) EDR \\Cdsesub1\n20768\S_010\2002-07-01
Correspondence Date:	7/1/02
Date Received / Agency:	7/2/02
Date Review Completed	8/22/02
Reviewer:	Kevin Prohaska, D.O.

1. Introduction

The sponsor submits a Changes Being Effected (CBE) supplement to add information regarding possible anaphylactic reaction to the Zomig label.

This change is in response to a letter, dated January 24, 2002, sent to the sponsor from the Agency requesting the change. In the Agency letter we stated the following:

"In the Adverse Reactions, Post-Marketing Experience section, Zomig labeling should add the terms 'anaphylaxis or anaphylactoid reaction.' Although the present label arguably provides a partial description with the existing terms 'allergy reaction', 'bronchospasm', and 'pruritis, rash, and urticaria', the terms 'anaphylaxis or anaphylactoid reaction' more accurately convey the risk of a severe, systemic, and potentially life-threatening adverse event like those experienced by at least some of the patients reviewed."

This requested change resulted from the review of eight possible cases of anaphylaxis associated with the use of Zomig. The change was requested for Zomig Tablet (NDA 20768) and Zomig-ZMT (NDA 21231).

2. Comments

The present label for Zomig was approved in October 2001. Both Zomig Tablets and Zomig-ZMT use the same package insert. In the "Current Annotated.pdf" file the sponsor supplies an annotated version of the package insert. In section "Adverse Reactions", subsection "General" the sponsor adds the following statement:

"As with other 5-HT_{1B/1D} agonists, there have been very rare reports of anaphylaxis or anaphylactoid reactions in patients receiving Zomig."

No other additions or deletions are proposed for the label.

The changes to the label are consistent with what was requested by the Agency. Likewise they are consistent with the language used in the Imitrex Tablets label.

3. Recommendations

The change to the label proposed by the sponsor is acceptable.

Kevin Prohaska, D.O.
Medical Reviewer

A. Oliva, M.D. _____

cc:
HFD-120
IND 20768(010) and 21231

**This is a representation of an electronic record that was signed electronically and
this page is the manifestation of the electronic signature.**

/s/

Kevin Prohaska
8/22/02 11:14:18 AM
MEDICAL OFFICER

Armando Oliva
8/23/02 04:24:05 PM
MEDICAL OFFICER

**CENTER FOR DRUG EVALUATION AND
RESEARCH**

APPLICATION NUMBER:

NDA 20-768/S-010 & 21-231/S-003

**ADMINISTRATIVE and CORRESPONDENCE
DOCUMENTS**

**REGULATORY PROJECT MANAGER
LABELING REVIEW**

NDA's : 20-768 Zomig (zolmitriptan) tablets
 21-231 Zomig-ZMT (zolmitriptan) orally disintegrating tablets
Sponsor: AstraZeneca
Indication: Migraine
Supplements: NDA 20-768/SLR-010 (dated 7/1/02)
 NDA 21-231/SLR-003 (dated 7/1/02)

Notes of interest:

The labeling provides for information regarding both zolmitriptan tablet and orally disintegrating tablet formulations. The last approved labeling supplement revisions were N 21-231/SLR-001 (package insert code SIC 64192-00) dated 5/21/01, and approved in an Agency letter dated 9/17/01.

REVIEW

20-768/SLR-010 & 21-231/SLR-003

Dated: 7/1/02

CBE: Yes

Label Code: SIC 64192-02

Reviewed by Medical Officer: Yes, acceptable.

These supplemental applications provide for "Changes Being Effected" supplements, adding the terms *anaphylaxis* or *anaphylactoid reaction* in the *Adverse Reactions, Post-Marketing Experience* section, under subheading *General*. These supplements were submitted in response to FDA letter dated January 24, 2002.

CONCLUSIONS

1. These supplements provide for the labeling revisions listed above.
2. The medical officer has agreed to the above changes.
3. I recommend issuing an approval letter for supplements 20-768/SLR-010 and 21-231/SLR-003.

Lana Y. Chen, RPh
Regulatory Project Manager

Robbin Nighswander, MS, RPh
Supervisory Consumer Safety Officer

LABELING REVIEW

**This is a representation of an electronic record that was signed electronically and
this page is the manifestation of the electronic signature.**

/s/

Lana Chen
9/25/02 03:07:45 PM
CSO

Robbin Nighswander
9/25/02 03:14:59 PM
CSO