

**CENTER FOR DRUG EVALUATION AND
RESEARCH**

APPLICATION NUMBER:

022574Orig1s000

LABELING

HIGHLIGHTS OF PRESCRIBING INFORMATION

These highlights do not include all the information needed to use SAFYRAL safely and effectively. See full prescribing information for SAFYRAL.

SAFYRAL (drospirenone/ethinyl estradiol/levomefolate calcium tablets and levomefolate calcium tablets)

Initial U.S. Approval: 2010

WARNING: CIGARETTE SMOKING AND SERIOUS CARDIOVASCULAR EVENTS

See full prescribing information for complete boxed warning

- Women over 35 years old who smoke should not use Safyral. (4)
- Cigarette smoking increases the risk of serious cardiovascular events from combination oral contraceptive (COC) use. (4)

INDICATIONS AND USAGE

Safyral is an estrogen/progestin COC containing a folate, indicated for use by women to:

- prevent pregnancy. (1.1)
- raise folate levels in women who choose to use an oral contraceptive for contraception. (1.2)

DOSAGE AND ADMINISTRATION

- Take one tablet daily by mouth at the same time every day. (2.1)
- Tablets must be taken in the order directed on the blister pack. (2.1)

DOSAGE FORMS AND STRENGTHS

Safyral consists of 28 film-coated, biconvex tablets in the following order (3):

- 21 orange tablets, each containing 3 mg drospirenone (DRSP), 0.03 mg ethinyl estradiol (EE) as betadex clathrate and 0.451 mg levomefolate calcium,
- 7 light orange tablets, each containing 0.451 mg levomefolate calcium

CONTRAINDICATIONS

- Renal impairment or adrenal insufficiency (4)
- A high risk of arterial or venous thrombotic diseases (4)
- Undiagnosed abnormal uterine bleeding (4)
- Breast cancer or other estrogen- or progestin-sensitive cancer (4)
- Liver tumors or liver disease (4)
- Pregnancy (4)

WARNINGS AND PRECAUTIONS

- Vascular risks: Stop Safyral if a thrombotic event occurs. Stop at least 4 weeks before and through 2 weeks after major surgery. Start no earlier than 4 weeks after delivery, in women who are not breastfeeding. (5.1)
- Hyperkalemia: DRSP has antimineralocorticoid activity. Do not use in patients predisposed to hyperkalemia. Check serum potassium level during the first treatment cycle in women on long-term treatment with medications that may increase serum potassium. (5.2, 7.3)
- Liver disease: Discontinue Safyral if jaundice occurs. (5.4)
- High blood pressure: Do not prescribe Safyral for women with uncontrolled hypertension or hypertension with vascular disease. (5.5)
- Carbohydrate and lipid metabolic effects: Monitor prediabetic and diabetic women taking Safyral. Consider an alternate contraceptive method for women with uncontrolled dyslipidemia. (5.7)
- Headache: Evaluate significant change in headaches and discontinue Safyral if indicated. (5.8)
- Uterine bleeding: Evaluate irregular bleeding or amenorrhea. (5.9)

ADVERSE REACTIONS

The most frequent (> 2 %) adverse reactions in contraception and folate clinical trials are as follows: premenstrual syndrome (12.4%), headache /migraine (10.3%), breast pain/tenderness/discomfort (8.1%), nausea/vomiting (4.4%), abdominal pain/tenderness/discomfort (2.2%). (6.1)

To report SUSPECTED ADVERSE REACTIONS, contact Bayer HealthCare Pharmaceuticals Inc. at 1-888-842-2937 or FDA at 1-800-FDA-1088 or www.fda.gov/medwatch

DRUG INTERACTIONS

Drugs or herbal products that induce certain enzymes (e.g., CYP3A4) may decrease the effectiveness of COCs or increase breakthrough bleeding. Counsel patients to use a back-up or alternative method of contraception when enzyme inducers are used with COCs. (7.1)

USE IN SPECIFIC POPULATIONS

- Nursing mothers: Not recommended; can decrease milk production. (8.3)

See 17 for PATIENT COUNSELING INFORMATION and FDA-approved patient labeling.

Revised: 12/2010

FULL PRESCRIBING INFORMATION: CONTENTS*

WARNING: CIGARETTE SMOKING AND SERIOUS CARDIOVASCULAR EVENTS

1 INDICATIONS AND USAGE

- 1.1 Oral Contraceptive
- 1.2 Folate Supplementation

2 DOSAGE AND ADMINISTRATION

- 2.1 How to Take Safyral
- 2.2 How to Start Safyral
- 2.3 Advice in Case of Gastrointestinal Disturbances
- 2.4 Folate Supplementation

3 DOSAGE FORMS AND STRENGTHS

4 CONTRAINDICATIONS

5 WARNINGS AND PRECAUTIONS

- 5.1 Thromboembolic Disorders and Other Vascular Problems
- 5.2 Hyperkalemia
- 5.3 Carcinoma of the Breasts and Reproductive Organs
- 5.4 Liver Disease
- 5.5 High Blood Pressure
- 5.6 Gallbladder Disease
- 5.7 Carbohydrate and Lipid Metabolic Effects
- 5.8 Headache
- 5.9 Bleeding Irregularities
- 5.10 COC Use Before or During Early Pregnancy
- 5.11 Depression
- 5.12 Interference with Laboratory Tests
- 5.13 Monitoring
- 5.14 Other Conditions

6 ADVERSE REACTIONS

- 6.1 Clinical Trials Experience
- 6.2 Postmarketing Experience

7 DRUG INTERACTIONS

- 7.1 Effects of Other Drugs on Combined Hormonal Contraceptives
- 7.2 Effects of Combined Oral Contraceptives on Other Drugs
- 7.3 Interactions that Have the Potential to Increase Serum Potassium
- 7.4 Effects of Folates on Other Drugs
- 7.5 Effects of Other Drugs on Folates

8 USE IN SPECIFIC POPULATIONS

- 8.1 Pregnancy
- 8.3 Nursing Mothers
- 8.4 Pediatric Use
- 8.5 Geriatric Use
- 8.6 Patients with Renal Impairment
- 8.7 Patients with Hepatic Impairment

10 OVERDOSAGE

11 DESCRIPTION

12 CLINICAL PHARMACOLOGY

- 12.1 Mechanism of Action
- 12.2 Pharmacodynamics
- 12.3 Pharmacokinetics

13 NONCLINICAL TOXICOLOGY

- 13.1 Carcinogenesis, Mutagenesis, Impairment of Fertility

14 CLINICAL STUDIES

- 14.1 Oral Contraceptive Clinical Trial
- 14.2 Folate Supplementation Clinical Trials

15 REFERENCES

16 HOW SUPPLIED/STORAGE AND HANDLING

- 16.1 How Supplied
- 16.2 Storage Conditions

17 PATIENT COUNSELING INFORMATION

*Sections or subsections omitted from the full prescribing information are not listed

FULL PRESCRIBING INFORMATION

WARNING: CIGARETTE SMOKING AND SERIOUS CARDIOVASCULAR EVENTS

Cigarette smoking increases the risk of serious cardiovascular events from combination oral contraceptives (COC) use. This risk increases with age, particularly in women over 35 years of age, and with the number of cigarettes smoked. For this reason, COCs should not be used by women who are over 35 years of age and smoke. [See Contraindications (4)].

1 INDICATIONS AND USAGE

1.1 Oral Contraceptive

Safyral is indicated for use by women to prevent pregnancy.

1.2 Folate Supplementation

Safyral is indicated in women who choose to use an oral contraceptive as their method of contraception, to raise folate levels for the purpose of reducing the risk of a neural tube defect in a pregnancy conceived while taking the product or shortly after discontinuing the product.

2 DOSAGE AND ADMINISTRATION

2.1 How to Take Safyral

Take one tablet by mouth at the same time every day. The failure rate may increase when pills are missed or taken incorrectly.

To achieve maximum contraceptive effectiveness, Safyral must be taken as directed. Single missed pills should be taken as soon as remembered.

2.2 How to Start Safyral

Instruct the patient to begin taking Safyral either on the first day of her menstrual period (Day 1 Start) or on the first Sunday after the onset of her menstrual period (Sunday Start).

Day 1 Start

During the first cycle of Safyral use, instruct the patient to take one orange Safyral daily, beginning on Day one (1) of her menstrual cycle. (The first day of menstruation is Day one.) She should take one orange Safyral daily for 21 consecutive days, followed by one light orange tablet, containing levomefolate alone, daily on days 22 through 28. Safyral should be taken in the order directed on the package at the same time each day, preferably after the evening meal or at bedtime with some liquid, as needed. Safyral can be taken without regard to meals. If Safyral is first taken later than the first day of the menstrual cycle, Safyral should not be considered effective as a contraceptive until after the first 7 consecutive days of product administration. Instruct the patient to use a non-hormonal contraceptive as back-up during the first 7 days. The possibility of ovulation and conception prior to initiation of medication should be considered.

Sunday Start

During the first cycle of Safyral use, instruct the patient to take one orange Safyral daily, beginning on the first Sunday after the onset of her menstrual period. She should take one orange Safyral daily for 21 consecutive days, followed by one light orange tablet, containing levomefolate alone, daily on days 22 through 28. Safyral should be taken in the order directed on the package at the same time each day, preferably after the evening meal or at bedtime with some liquid, as needed. Safyral can be taken without regard to meals. Safyral should not be considered effective as a contraceptive until after the first 7 consecutive days of product administration. Instruct the patient to use a non-hormonal contraceptive as back-up during the first 7 days. The possibility of ovulation and conception prior to initiation of medication should be considered.

The patient should begin her next and all subsequent 28-day regimens of Safyral on the same day of the week that she began her first regimen, following the same schedule. She should begin taking her orange tablets on the next day after ingestion of the last light orange folate tablet, regardless of whether or not a menstrual period has occurred or is still in progress. Anytime a subsequent cycle of Safyral is started later than the day following administration of the last light

orange tablet, the patient should use another method of contraception until she has taken an orange Safyral daily for seven consecutive days.

When switching from a different birth control pill

When switching from another birth control pill, Safyral should be started on the same day that a new pack of the previous oral contraceptive would have been started.

When switching from a method other than a birth control pill

When switching from a transdermal patch or vaginal ring, Safyral should be started when the next application would have been due. When switching from an injection, Safyral should be started when the next dose would have been due. When switching from an intrauterine contraceptive or an implant, Safyral should be started on the day of removal.

Withdrawal bleeding usually occurs within 3 days following the last orange tablet. If spotting or breakthrough bleeding occurs while taking Safyral, the patient should be instructed to continue taking her Safyral by the regimen described above. Counsel her that this type of bleeding is usually transient and without significance; however, advise her that if the bleeding is persistent or prolonged, she should consult her healthcare provider.

Although the occurrence of pregnancy is low if Safyral is taken according to directions, if withdrawal bleeding does not occur, consider the possibility of pregnancy. If the patient has not adhered to the prescribed dosing schedule (missed one or more active tablets or started taking them on a day later than she should have), consider the possibility of pregnancy at the time of the first missed period and take appropriate diagnostic measures. If the patient has adhered to the prescribed regimen and misses two consecutive periods, rule out pregnancy. Discontinue Safyral if pregnancy is confirmed.

The risk of pregnancy increases with each active orange tablet missed. For additional patient instructions regarding missed pills, see the **“WHAT TO DO IF YOU MISS PILLS”** section in the **FDA-Approved Patient Labeling** which follows. If breakthrough bleeding occurs following missed tablets, it will usually be transient and of no consequence. If the patient misses one or more light orange tablets, she should still be protected against pregnancy provided she begins taking a new cycle of orange tablets on the proper day.

For postpartum women who do not breastfeed or after a second trimester abortion, start Safyral no earlier than 4 weeks postpartum due to the increased risk of thromboembolism. If the patient starts Safyral postpartum and has not yet had a period, evaluate for possible pregnancy, and instruct her to use an additional method of contraception until she has taken Safyral for 7 consecutive days.

2.3 Advice in case of Gastrointestinal Disturbances

In case of severe vomiting or diarrhea, absorption may not be complete and additional contraceptive measures should be taken. If vomiting occurs within 3-4 hours after tablet-taking, this can be regarded as a missed tablet.

2.4 Folate Supplementation

The U.S. Preventive Services Task Force recommends that women of childbearing age consume supplemental folic acid in a dose of at least 0.4 mg (400 mcg) daily.¹ Consider other folate supplementation that a woman may be taking before prescribing Safyral. Ensure that folate supplementation is maintained if a woman discontinues Safyral due to pregnancy.

3 DOSAGE FORMS AND STRENGTHS

Safyral (drospirenone/ethinyl estradiol/levomefolate calcium tablets and levomefolate calcium tablets) is available in blister packs.

Each blister pack contains 28 film-coated, round, bi-convex tablets in the following order:

- 21 orange tablets each containing 3 mg drospirenone (DRSP), 0.03 mg ethinyl estradiol (EE) as betadex clathrate and 0.451 mg levomefolate calcium embossed with a “Y+” in a regular hexagon on one side.
- 7 light orange tablets each containing 0.451 mg levomefolate calcium embossed with a “M+” in a regular hexagon on one side

4 CONTRAINDICATIONS

Do not prescribe Safyral to women who are known to have the following:

- Renal impairment
- Adrenal insufficiency
- A high risk of arterial or venous thrombotic diseases. Examples include women who are known to:
 - Smoke, if over age 35 [*see Boxed Warning and Warnings and Precautions (5.1)*]
 - Have deep vein thrombosis or pulmonary embolism, now or in the past [*see Warnings and Precautions (5.1)*]
 - Have cerebrovascular disease [*see Warnings and Precautions (5.1)*]
 - Have coronary artery disease [*see Warnings and Precautions (5.1)*]
 - Have thrombogenic valvular or thrombogenic rhythm diseases of the heart (for example, subacute bacterial endocarditis with valvular disease, or atrial fibrillation) [*see Warnings and Precautions (5.1)*]
 - Have inherited or acquired hypercoagulopathies [*see Warnings and Precautions (5.1)*]
 - Have uncontrolled hypertension [*see Warnings and Precautions (5.5)*]
 - Have diabetes mellitus with vascular disease [*see Warnings and Precautions (5.7)*]
 - Have headaches with focal neurological symptoms or have migraine headaches with or without aura if over age 35 [*see Warnings and Precautions (5.8)*]
- Undiagnosed abnormal uterine bleeding [*see Warnings and Precautions (5.9)*]
- Breast cancer or other estrogen- or progestin-sensitive cancer, now or in the past [*see Warnings and Precautions (5.3)*]
- Liver tumor (benign or malignant) or liver disease [*see Warnings and Precautions (5.4) and Use in Specific Populations (8.7)*]
- Pregnancy, because there is no reason to use COCs during pregnancy [*see Warnings and Precautions (5.10) and Use in Specific Populations (8.1)*]

5 WARNINGS AND PRECAUTIONS

5.1 Thromboembolic Disorders and Other Vascular Problems

Stop Safyral if an arterial or deep venous thrombotic (VTE) event occurs. Although the use of COCs increases the risk of venous thromboembolism, pregnancy increases the risk of venous thromboembolism as much or more than the use of COCs. The risk of venous thromboembolism in women using COCs is 3 to 9 per 10,000 woman-years. The risk is highest during the first year of use of a COC. Use of COCs also increases the risk of arterial thromboses such as strokes and myocardial infarctions, especially in women with other risk factors for these events. The risk of thromboembolic disease due to oral contraceptives gradually disappears after COC use is discontinued.

If feasible, stop Safyral at least 4 weeks before and through 2 weeks after major surgery or other surgeries known to have an elevated risk of thromboembolism.

Start Safyral no earlier than 4 weeks after delivery, in women who are not breastfeeding. The risk of postpartum thromboembolism decreases after the third postpartum week, whereas the risk of ovulation increases after the third postpartum week.

COCs have been shown to increase both the relative and attributable risks of cerebrovascular events (thrombotic and hemorrhagic strokes), although, in general, the risk is greatest among older (>35 years of age), hypertensive women who also smoke. COCs also increase the risk for stroke in women with other underlying risk factors.

Oral contraceptives must be used with caution in women with cardiovascular disease risk factors.

Stop Safyral if there is unexplained loss of vision, proptosis, diplopia, papilledema, or retinal vascular lesions. Evaluate for retinal vein thrombosis immediately.

Epidemiologic studies including a DRSP-containing COC

Several studies have investigated the relative risks of thromboembolism in women using a different DRSP-containing COC (Yasmin, which contains 0.03 mg of EE and 3 mg of DRSP) compared to those in women using COCs containing other progestins. Two prospective cohort studies, both evaluating the risk of venous and arterial thromboembolism and death, were initiated at the time of Yasmin approval.^{2,3} The first (EURAS) showed the risk of thromboembolism (particularly venous thromboembolism) and death in Yasmin users to be comparable to that of other oral contraceptive

preparations, including those containing levonorgestrel (a so-called second generation COC). The second prospective cohort study (Ingenix) also showed a comparable risk of thromboembolism in Yasmin users compared to users of other COCs, including those containing levonorgestrel. In the second study, COC comparator groups were selected based on their having similar characteristics to those being prescribed Yasmin.

Two additional epidemiological studies, one case-control study (van Hylckama Vlieg et al. ⁴) and one retrospective cohort study (Lidegaard et al. ⁵) suggested that the risk of venous thromboembolism occurring in Yasmin users was higher than that for users of levonorgestrel-containing COCs and lower than that for users of desogestrel/gestodene-containing COCs (so-called third generation COCs). In the case-control study, however, the number of Yasmin cases was very small (1.2% of all cases) making the risk estimates unreliable. The relative risk for Yasmin users in the retrospective cohort study was greater than that for users of other COC products when considering women who used the products for less than one year. However, these one-year estimates may not be reliable because the analysis may include women of varying risk levels. Among women who used the product for 1 to 4 years, the relative risk was similar for users of Yasmin to that for users of other COC products.

5.2 Hyperkalemia

Safyral contains 3 mg of the progestin DRSP, which has antimineralocorticoid activity, including the potential for hyperkalemia in high-risk patients, comparable to a 25 mg dose of spironolactone. Safyral should not be used in patients with conditions that predispose to hyperkalemia (i.e., renal impairment, hepatic dysfunction and adrenal insufficiency). Women receiving daily, long-term treatment for chronic conditions or diseases with medications that may increase serum potassium should have their serum potassium level checked during the first treatment cycle. Medications that may increase serum potassium include ACE inhibitors, angiotensin-II receptor antagonists, potassium-sparing diuretics, potassium supplementation, heparin, aldosterone antagonists, and NSAIDs.

5.3 Carcinoma of the Breasts and Reproductive Organs

Women who currently have or have had breast cancer should not use Safyral because breast cancer is a hormonally-sensitive tumor.

There is substantial evidence that COCs do not increase the incidence of breast cancer. Although some past studies have suggested that COCs might increase the incidence of breast cancer, more recent studies have not confirmed such findings.

Some studies suggest that COCs are associated with an increase in the risk of cervical cancer or intraepithelial neoplasia. However, there is controversy about the extent to which these findings may be due to differences in sexual behavior and other factors.

5.4 Liver Disease

Discontinue Safyral if jaundice develops. Steroid hormones may be poorly metabolized in patients with impaired liver function. Acute or chronic disturbances of liver function may necessitate the discontinuation of COC use until markers of liver function return to normal and COC causation has been excluded.

Hepatic adenomas are associated with COC use. An estimate of the attributable risk is 3.3 cases/100,000 COC users. Rupture of hepatic adenomas may cause death through intra-abdominal hemorrhage.

Studies have shown an increased risk of developing hepatocellular carcinoma in long-term (> 8 years) COC users. However, the attributable risk of liver cancers in COC users is less than one case per million users.

Oral contraceptive-related cholestasis may occur in women with a history of pregnancy-related cholestasis. Women with a history of COC-related cholestasis may have the condition recur with subsequent COC use.

5.5 High Blood Pressure

For women with well-controlled hypertension, monitor blood pressure and stop Safyral if blood pressure rises significantly. Women with uncontrolled hypertension or hypertension with vascular disease should not use COCs.

An increase in blood pressure has been reported in women taking COCs, and this increase is more likely in older women and with extended duration of use. The incidence of hypertension increases with increasing concentration of progestin.

5.6 Gallbladder Disease

Studies suggest a small increased relative risk of developing gallbladder disease among COC users.

5.7 Carbohydrate and Lipid Metabolic Effects

Carefully monitor prediabetic and diabetic women who are taking Safyral. COCs may decrease glucose tolerance in a dose-related fashion.

Consider alternative contraception for women with uncontrolled dyslipidemia. A small proportion of women will have adverse lipid changes while on COCs.

Women with hypertriglyceridemia, or a family history thereof, may be at an increased risk of pancreatitis when using COCs.

5.8 Headache

If a woman taking Safyral develops new headaches that are recurrent, persistent, or severe, evaluate the cause and discontinue Safyral if indicated.

An increase in frequency or severity of migraine during COC use (which may be prodromal of a cerebrovascular event) may be a reason for immediate discontinuation of the COC.

5.9 Bleeding Irregularities

Unscheduled (breakthrough or intracyclic) bleeding and spotting sometimes occur in patients on COCs, especially during the first three months of use. If bleeding persists or occurs after previously regular cycles, check for causes such as pregnancy or malignancy. If pathology and pregnancy are excluded, bleeding irregularities may resolve over time or with a change to a different COC.

Data from ten Yasmin contraceptive efficacy clinical trials (N=2,467) show that the percent of women who took Yasmin and experienced unscheduled bleeding decreased over time from 12% at cycle 2 to 6% (cycle 13). A total of 25 subjects out of 3,009 in the Yasmin and Safyral trials (<1%) discontinued due to bleeding complaints. These are described as metrorrhagia, vaginal hemorrhage, menorrhagia, abnormal withdrawal bleeding, and menometrorrhagia.

The average duration of scheduled bleeding episodes in the majority of subjects (86%-88%) was 4-7 days. Women who use Safyral may experience absence of withdrawal bleeding, even if they are not pregnant. Based on subject diaries from Yasmin contraceptive efficacy trials, during cycles 2 –13, 1 - 11% of women per cycle experienced no withdrawal bleeding. Some women may encounter post-pill amenorrhea or oligomenorrhea, especially when such a condition was pre-existent.

If withdrawal bleeding does not occur, consider the possibility of pregnancy. If the patient has not adhered to the prescribed dosing schedule (missed one or more active tablets or started taking them on a day later than she should have), consider the possibility of pregnancy at the time of the first missed period and take appropriate diagnostic measures. If the patient has adhered to the prescribed regimen and misses two consecutive periods, rule out pregnancy.

5.10 COC Use Before or During Early Pregnancy

Extensive epidemiological studies have revealed no increased risk of birth defects in women who have used oral contraceptives prior to pregnancy. Studies also do not suggest a teratogenic effect when COCs are taken inadvertently during early pregnancy, particularly in so far as cardiac anomalies and limb-reduction defects are concerned. Discontinue Safyral if pregnancy is confirmed and initiate a prenatal vitamin containing folate supplementation.

The administration of oral contraceptives to induce withdrawal bleeding should not be used as a test for pregnancy [*see Use in Specific Populations (8.1)*].

5.11 Depression

Women with a history of depression should be carefully observed and Safyral discontinued if depression recurs to a serious degree.

5.12 Interference with Laboratory Tests

The use of COCs may change the results of some laboratory tests, such as coagulation factors, lipids, glucose tolerance, and binding proteins. Women on thyroid hormone replacement therapy may need increased doses of thyroid hormone because serum concentrations of thyroid-binding globulin increase with use of COCs. DRSP causes an increase in plasma renin activity and plasma aldosterone induced by its mild antimineralocorticoid activity.

Folates may mask vitamin B12 deficiency.

5.13 Monitoring

A woman who is taking COCs should have a yearly visit with her healthcare provider for a blood pressure check and for other indicated healthcare.

5.14 Other Conditions

In women with hereditary angioedema, exogenous estrogens may induce or exacerbate symptoms of angioedema. Chloasma may occasionally occur, especially in women with a history of chloasma gravidarum. Women with a tendency to chloasma should avoid exposure to the sun or ultraviolet radiation while taking COCs.

6 ADVERSE REACTIONS

The following serious adverse reactions with the use of COCs are discussed elsewhere in the labeling:

- Serious cardiovascular events and smoking [*see Boxed Warning and Warnings and Precautions (5.1)*]
- Vascular events [*see Warnings and Precautions (5.1)*]
- Liver disease [*see Warnings and Precautions (5.4)*]

Adverse reactions commonly reported by COC users are:

- Irregular uterine bleeding
- Nausea
- Breast tenderness
- Headache

6.1 Clinical Trials Experience

Because clinical trials are conducted under widely varying conditions, the adverse reaction rates observed cannot be directly compared to rates in other clinical trials and may not reflect the rates observed in clinical practice.

Contraception and Folate Supplementation Clinical Trials

The data provided reflect the experience with the use of Yasmin (3 mg DRSP/0.03 mg EE) in the adequate and well-controlled studies for contraception (N=2,837) and folate supplementation (N=172). For contraception, the US pivotal clinical study (N=326) for the oral contraception indication for Yasmin was a multicenter, open-label trial in healthy women aged 18 -35 who were treated with Yasmin for up to 13 cycles. The second contraceptive pivotal study was a multicenter, randomized, open-label comparative European study of Yasmin vs. 0.150 mg desogestrel/0.03 mg EE conducted in healthy women aged 17-40 who were treated for up to 26 cycles. The primary efficacy study using Safyral for folate supplementation was a randomized, single-center European trial in 172 healthy, female subjects aged 18 -40 years comparing the pharmacodynamic effects of Yasmin + 0.451 mg levomefolate calcium to Yasmin co-administered with folic acid during 24 weeks of treatment followed by 20 weeks of open-label Yasmin.

The adverse reactions seen across the 2 indications overlapped and are reported using the frequencies from the pooled dataset. The most common treatment-emergent adverse reactions ($\geq 2\%$ of users) were: premenstrual syndrome (12.4%), headache/migraine (10.3%), breast pain/tenderness/discomfort (8.1%), nausea/vomiting (4.4%) and abdominal pain/discomfort/tenderness (2.2%).

Adverse Reactions ($\geq 1\%$) Leading to Study Discontinuation:

Contraception Clinical Trials

Of 2,837 women, 6.7% discontinued from the clinical trials due to an adverse reaction; the most frequent adverse reaction leading to discontinuation was headache/migraine (1.5%).

Folate Clinical Trial

There were no subjects who discontinued due to an adverse reaction.

Serious Adverse Reactions (Definitely, Probably, or Possibly Related to Study Drug):

Contraception Clinical Trials: depression, pulmonary embolism, toxic skin eruption, and uterine leiomyoma.

Folate Supplementation Clinical Trial: none reported in the clinical trial

6.2 Postmarketing Experience

The following adverse reactions have been identified during post-approval use of Yasmin. Because these reactions are reported voluntarily from a population of uncertain size, it is not always possible to reliably estimate their frequency or establish a causal relationship to drug exposure.

Adverse reactions, including fatalities, are grouped into System Organ Classes and ordered by frequency.

Vascular disorders: Venous and arterial thromboembolic events (including pulmonary emboli, deep vein thrombosis, intracardiac thrombosis, intracranial venous sinus thrombosis, sagittal sinus thrombosis, retinal vein occlusion, myocardial infarction and stroke), hypertension

Hepatobiliary disorders: Gallbladder disease

Immune system disorders: Hypersensitivity

Metabolism and nutrition disorders: Hyperkalemia

Skin and subcutaneous tissue disorders: Chloasma

7 DRUG INTERACTIONS

Consult the labeling of all concurrently-used drugs to obtain further information about interactions with hormonal contraceptives or the potential for enzyme alterations.

7.1 Effects of Other Drugs on Combined Hormonal Contraceptives

Substances diminishing the efficacy of COCs: Drugs or herbal products that induce certain enzymes, including CYP3A4, may decrease the effectiveness of COCs or increase breakthrough bleeding. Some drugs or herbal products that may decrease the effectiveness of hormonal contraceptives include phenytoin, barbiturates, carbamazepine, bosentan, felbamate, griseofulvin, oxcarbazepine, rifampicin, topiramate and products containing St. John's wort. Interactions between oral contraceptives and other drugs may lead to breakthrough bleeding and/or contraceptive failure. Counsel women to use an alternative method of contraception or a back-up method when enzyme inducers are used with COCs, and to continue back-up contraception for 28 days after discontinuing the enzyme inducer to ensure contraceptive reliability.

Substances increasing the plasma levels of COCs: Co-administration of atorvastatin with certain COCs containing EE increase AUC values for EE by approximately 20%. Ascorbic acid and acetaminophen may increase plasma EE levels, possibly by inhibition of conjugation. CYP3A4 inhibitors such as itraconazole or ketoconazole may increase plasma hormone levels.

HIV protease inhibitors and non-nucleoside reverse transcriptase inhibitors: Significant changes (increase or decrease) in the plasma levels of estrogen and progestin have been noted in some cases of co-administration with HIV protease inhibitors or with non-nucleoside reverse transcriptase inhibitors.

Antibiotics: There have been reports of pregnancy while taking hormonal contraceptives and antibiotics, but clinical pharmacokinetic studies have not shown consistent effects of antibiotics on plasma concentrations of synthetic steroids.

Effect on DRSP: The main metabolites of DRSP in human plasma are generated without involvement of the cytochrome P450 system. Inhibitors of this enzyme system are therefore unlikely to influence the metabolism of DRSP.

7.2 Effects of Combined Oral Contraceptives on Other Drugs

COCs containing EE may inhibit the metabolism of other compounds. COCs have been shown to significantly decrease plasma concentrations of lamotrigine, likely due to induction of lamotrigine glucuronidation. This may reduce seizure control; therefore, dosage adjustments of lamotrigine may be necessary. Consult the labeling of the concurrently-used drug to obtain further information about interactions with COCs or the potential for enzyme alterations.

In vitro and clinical studies did not indicate an inhibitory potential of DRSP towards human CYP450 enzymes at clinically relevant concentrations [see *Clinical Pharmacology* (12.3)].

7.3 Interactions that Have the Potential to Increase Serum Potassium

There is a potential for an increase in serum potassium in women taking Safyral with other drugs that may increase serum potassium [see *Warnings and Precautions* (5.2) and *Clinical Pharmacology* (12.3)].

7.4 Effects of Folates on Other Drugs

Folates may modify the pharmacokinetics or pharmacodynamics of certain antifolate drugs, e.g., antiepileptics (such as phenytoin), methotrexate or pyrimethamine, and may result in a decreased pharmacological effect of the antifolate drug.

7.5 Effects of Other Drugs on Folates

Several drugs have been reported to reduce folate levels by inhibition of the dihydrofolate reductase enzyme (e.g., methotrexate and sulfasalazine) or by reducing folate absorption (e.g., cholestyramine), or via unknown mechanisms (e.g., antiepileptics such as carbamazepine, phenytoin, phenobarbital, primidone and valproic acid).

8 USE IN SPECIFIC POPULATIONS

8.1 Pregnancy

There is little or no increased risk of birth defects in women who inadvertently use COCs during early pregnancy. Epidemiologic studies and meta-analyses have not found an increased risk of genital or non-genital birth defects (including cardiac anomalies and limb-reduction defects) following exposure to low dose COCs prior to conception or during early pregnancy.

The administration of COCs to induce withdrawal bleeding should not be used as a test for pregnancy. COCs should not be used during pregnancy to treat threatened or habitual abortion.

Women who do not breastfeed may start COCs no earlier than four weeks postpartum.

8.3 Nursing Mothers

When possible, advise the nursing mother to use other forms of contraception until she has weaned her child. Estrogen-containing OCs can reduce milk production in breastfeeding mothers. This is less likely to occur once breastfeeding is well-established; however, it can occur at any time in some women. Small amounts of oral contraceptive steroids and/or metabolites are present in breast milk.

After oral administration of 3 mg DRSP/0.03 mg EE tablets (Yasmin), about 0.02% of the DRSP dose was excreted into the breast milk of postpartum women within 24 hours. This results in a maximal daily dose of about 0.003 mg DRSP in an infant.

Studies to date indicate there is no adverse effect of folate on nursing infants.

8.4 Pediatric Use

Safety and efficacy of Safyral has been established in women of reproductive age. Safety and efficacy are expected to be the same for postpubertal adolescents under the age of 18 and for users 18 years and older. Use of this product before menarche is not indicated.

8.5 Geriatric Use

Safyral has not been studied in postmenopausal women and is not indicated in this population.

8.6 Patients with Renal Impairment

Safyral is contraindicated in patients with renal impairment [see *Contraindications* (4) and *Warnings and Precautions* (5.2)].

Following administration of DRSP 3 mg daily for 14 days, the serum DRSP levels in subjects with mild renal impairment (creatinine clearance CL_{Cr}, 50-80 mL/min) were comparable to those in subjects with normal renal function (CL_{Cr}, >80 mL/min). The serum DRSP levels were on average 37% higher in the group with moderate renal impairment (CL_{Cr}, 30-50 mL/min) compared to those in the group with normal renal function. DRSP treatment did not show any clinically significant effect on serum potassium concentration. Although hyperkalemia was not observed in the study, in five of the seven subjects who continued use of potassium sparing drugs during the study, mean serum potassium levels increased by up to 0.33 mEq/L. Therefore, potential exists for hyperkalemia to occur in subjects with renal impairment

whose serum potassium is in the upper reference range, and who are concomitantly using potassium sparing drugs [see Clinical Pharmacology (12.3)].

8.7 Patients with Hepatic Impairment

Safyral is contraindicated in patients with hepatic disease [see *Contraindications (4) and Warnings and Precautions (5.4)*]. The mean exposure to DRSP in women with moderate liver impairment is approximately three times higher than the exposure in women with normal liver function. Safyral has not been studied in women with severe hepatic impairment.

10 OVERDOSAGE

There have been no reports of serious ill effects from overdose, including ingestion by children. Overdosage may cause withdrawal bleeding in females and nausea.

DRSP however, is a spironolactone analogue which has antimineralocorticoid properties. Serum concentration of potassium and sodium, and evidence of metabolic acidosis, should be monitored in cases of overdose.

Levomefolate calcium doses of 17 mg/day (37-fold higher than the levomefolate calcium dose of Safyral) were well tolerated after long-term treatment up to 12 weeks.

11 DESCRIPTION

Safyral (drospirenone/ethinyl estradiol/levomefolate calcium tablets and levomefolate calcium tablets) provides an oral contraceptive regimen consisting of 28 film-coated tablets that contain the active ingredients specified for each tablet below:

- 21 orange tablets each containing 3 mg DRSP, 0.03 mg EE as betadex clathrate, and 0.451 mg levomefolate calcium
- 7 light orange tablets each containing 0.451 mg levomefolate calcium

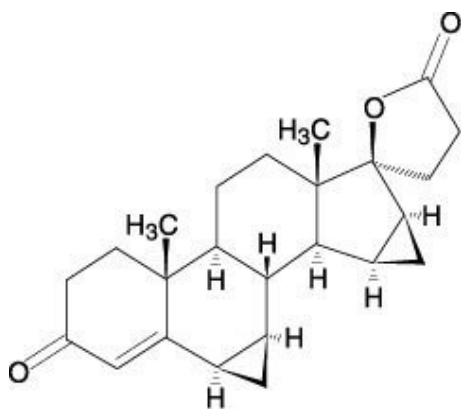
The inactive ingredients in the orange tablets are lactose monohydrate NF, microcrystalline cellulose NF, croscarmellose sodium NF, hydroxypropyl cellulose USP, magnesium stearate NF, hypromellose USP, titanium dioxide USP, talc USP, polyethylene glycol NF, ferric oxide pigment, yellow NF, and ferric oxide pigment, red NF. The light orange film-coated tablets contain 0.451 mg of levomefolate calcium. The inactive ingredients in the light orange tablets are lactose monohydrate NF, microcrystalline cellulose NF, croscarmellose sodium NF, hydroxypropyl cellulose NF, magnesium stearate NF, hypromellose USP, titanium dioxide USP, talc USP, polyethylene glycol NF and ferric oxide pigment, yellow NF, and ferric oxide pigment, red NF.

Drospirenone (6R,7R,8R,9S,10R,13S,14S,15S,16S,17S)-1,3',4',6,6a,7,8,9,10,11,12,13, 14,15,15a,16-hexadecahydro-10,13-dimethylspiro-[17H-dicyclopropa-6,7:15,16] cyclo-penta[a]phenanthrene-17,2'(5H)-furan]-3,5'(2H)-dione) is a synthetic progestational compound and has a molecular weight of 366.5 and a molecular formula of $C_{24}H_{30}O_3$.

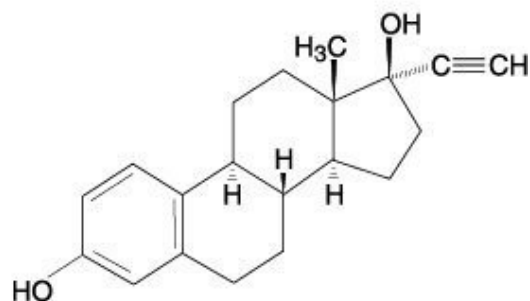
Ethinyl estradiol (19-nor-17 α -pregna 1,3,5(10)-triene-20-yne-3,17-diol) is a synthetic estrogenic compound and has a molecular weight of 296.4 and a molecular formula of $C_{20}H_{24}O_2$.

Levomefolate calcium (N-[4-[[[2-amino-1,4,5,6,7,8-hexahydro-5-methyl-4-oxo-(6S)-pteridinyl)methyl]amino]benzoyl]-L-glutamic acid, calcium salt) is a synthetic calcium salt of L-5-methyltetrahydrofolate (L-5-methyl-THF), which is a metabolite of vitamin B₉ and has a molecular weight of 497.5 and a molecular formula of $C_{20}H_{23}CaN_7O_6$.

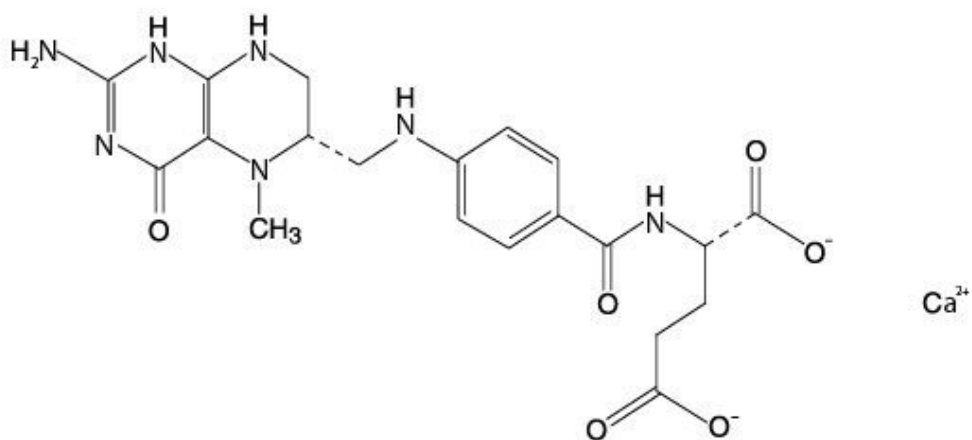
The structural formulas are as follows:



Drospirenone



Ethinyl estradiol



Levomefolate Calcium

12 CLINICAL PHARMACOLOGY

12.1 Mechanism of Action

COCs lower the risk of becoming pregnant primarily by suppressing ovulation. Other possible mechanisms may include cervical mucus changes that inhibit sperm penetration and endometrial changes that reduce the likelihood of implantation.

12.2 Pharmacodynamics

Drospirenone is a spironolactone analogue with antimineralocorticoid activity. The estrogen in Safyral is ethinyl estradiol (EE).

Contraception

No specific pharmacodynamic studies were conducted with Safyral.

Folate Supplementation

Two studies evaluated the impact of Safyral on plasma folate and red blood cell (RBC) folate levels. A randomized, double-blind, active-controlled, parallel group study compared plasma folate and RBC folate levels during a 24-week treatment with 3 mg DRSP/0.02 mg EE (YAZ) + 0.451 mg levomefolate calcium as compared to YAZ alone in a U.S. population. The pharmacodynamic effect on plasma folate, RBC folate, and the profile of circulating folate metabolites was assessed during 24 weeks of treatment with 0.451 mg levomefolate calcium or with 0.4 mg folic acid (equimolar dose to 0.451 mg levomefolate calcium), both in combination with 3 mg DRSP/0.03 mg EE (Yasmin) followed by 20 weeks of open-label treatment with Yasmin only (elimination phase). [See *Clinical Studies*, 14.4.]

12.3 Pharmacokinetics

Absorption

Safyral and Yasmin are bioequivalent with respect to DRSP and EE.

The absolute bioavailability of DRSP from a single entity tablet is about 76%. The absolute bioavailability of EE is approximately 40% as a result of presystemic conjugation and first-pass metabolism. The absolute bioavailability of Safyral, which is a combination tablet of DRSP and EE stabilized by betadex as a clathrate (molecular inclusion complex), has not been evaluated. The bioavailability of EE is similar when dosed via a betadex clathrate formulation compared to when it is dosed as a free steroid. Serum concentrations of DRSP and EE reached peak levels within 1-2 hours after administration of Safyral.

The pharmacokinetics of DRSP are dose proportional following single doses ranging from 1-10 mg. Following daily dosing of Yasmin, steady state DRSP concentrations were observed after 8 days. There was about 2 to 3 fold accumulation in serum C_{max} and AUC (0-24h) values of DRSP following multiple dose administration of Yasmin (see Table 1).

For EE, steady-state conditions are reported during the second half of a treatment cycle. Following daily administration of Yasmin serum C_{max} and AUC (0-24h) values of EE accumulate by a factor of about 1.5 to 2 (see Table I).

Levomefolate calcium is structurally identical to L-5-methyltetrahydrofolate (L-5-methyl-THF), a metabolite of vitamin B₉. Mean baseline concentrations of about 15 nmol/L are reached in populations without folate food fortification under normal nutritional conditions. Orally administered levomefolate calcium is absorbed and is incorporated into the body folate pool. Peak plasma concentrations of about 50 nmol/L above baseline are reached within 0.5 – 1.5 hours after single oral administration of 0.451 mg levomefolate calcium.

Steady state conditions for total folate in plasma after intake of 0.451 mg levomefolate calcium are reached after about 8-16 weeks depending on the baseline levels. In red blood cells achievement of steady state is delayed due to the long life-span of red blood cells of about 120 days.

TABLE 1: MEAN PHARMACOKINETIC PARAMETERS OF YASMIN
(DRSP 3 mg and EE 0.03 mg)

DRSP Mean (%CV) Values					
Cycle / Day	No. of Subjects	C_{max} (ng/mL)	T_{max} (h)	AUC(0-24h) (ng•h/mL)	t_{1/2} (h)
1/1	12	36.9 (13)	1.7 (47)	288 (25)	NA
1/21	12	87.5 (59)	1.7 (20)	827 (23)	30.9 (44)
6/21	12	84.2 (19)	1.8 (19)	930 (19)	32.5 (38)
9/21	12	81.3 (19)	1.6 (38)	957 (23)	31.4 (39)
13/21	12	78.7 (18)	1.6 (26)	968 (24)	31.1 (36)
EE Mean (%CV) Values					
Cycle / Day	No. of Subjects	C_{max} (ng/mL)	T_{max} (h)	AUC(0-24h) (ng•h/mL)	t_{1/2} (h)
1/1	11	53.5 (43)	1.9 (45)	280 (87)	NA
1/21	11	92.1 (35)	1.5 (40)	461 (94)	NA
6/21	11	99.1 (45)	1.5 (47)	346 (74)	NA
9/21	11	87 (43)	1.5 (42)	485 (92)	NA
13/21	10	90.5 (45)	1.6 (38)	469 (83)	NA

NA – Not available

Food Effect

The rate of absorption of DRSP and EE following single administration of a formulation similar to Safyral was slower under fed (high fat meal) conditions with the serum C_{max} being reduced about 40% for both components. The extent of absorption of DRSP, however, remained unchanged. In contrast, the extent of absorption of EE was reduced by about 20% under fed conditions.

The effect of food on absorption of levomefolate calcium following administration of Safyral has not been evaluated.

Distribution

DRSP and EE serum levels decline in two phases. The apparent volume of distribution of DRSP is approximately 4 L/kg and that of EE is reported to be approximately 4–5 L/kg.

DRSP does not bind to sex hormone binding globulin (SHBG) or corticosteroid binding globulin (CBG) but binds about 97% to other serum proteins. Multiple dosing over 3 cycles resulted in no change in the free fraction (as measured at trough levels). EE is reported to be highly but non-specifically bound to serum albumin (approximately 98.5 %) and induces an increase in the serum concentrations of both SHBG and CBG. EE induced effects on SHBG and CBG were not affected by variation of the DRSP dosage in the range of 2 to 3 mg.

Biphasic kinetics is reported for folates with a fast- and a slow-turnover pool. The fast-turnover pool, probably reflecting newly absorbed folate, is consistent with the terminal half-life of approximately 4-5 hours after single oral administration

of 0.451 mg levomefolate calcium. The slow-turnover pool reflecting turnover of folate polyglutamate has a mean residence time of greater than or equal to 100 days.

Metabolism

The two main metabolites of DRSP found in human plasma were identified to be the acid form of DRSP generated by opening of the lactone ring and the 4,5-dihydrodrospirenone-3-sulfate. These metabolites were shown not to be pharmacologically active. In *in vitro* studies with human liver microsomes, DRSP was metabolized only to a minor extent mainly by Cytochrome P450 3A4 (CYP3A4).

EE has been reported to be subject to presystemic conjugation in both small bowel mucosa and the liver. Metabolism occurs primarily by aromatic hydroxylation but a wide variety of hydroxylated and methylated metabolites are formed. These are present as free metabolites and as conjugates with glucuronide and sulfate. CYP3A4 in the liver is responsible for the 2-hydroxylation which is the major oxidative reaction. The 2-hydroxy metabolite is further transformed by methylation and glucuronidation prior to urinary and fecal excretion.

L-5-methyl-THF is the predominant folate transport form in blood under physiological conditions and during folic acid and levomefolate calcium administration.

Excretion

DRSP serum levels are characterized by a terminal disposition phase half-life of approximately 30 hours after both single and multiple dose regimens. Excretion of DRSP was nearly complete after ten days and amounts excreted were slightly higher in feces compared to urine. DRSP was extensively metabolized and only trace amounts of unchanged DRSP were excreted in urine and feces. At least 20 different metabolites were observed in urine and feces. About 38-47% of the metabolites in urine were glucuronide and sulfate conjugates. In feces, about 17-20% of the metabolites were excreted as glucuronides and sulfates.

For EE the terminal disposition phase half-life has been reported to be approximately 24 hours. EE is not excreted unchanged. EE is excreted in the urine and feces as glucuronide and sulfate conjugates and undergoes enterohepatic circulation.

L-5-methyl-THF is eliminated from the body by urinary excretion of intact folates and catabolic products as well as fecal excretion through a biphasic kinetics process.

Specific Populations

Pediatric Use: Safety and efficacy of Safyral has been established in women of reproductive age. Safety and efficacy is expected to be the same for postpubertal adolescents under the age of 18 and for users 18 years and older. Use of this product before menarche is not indicated. [See *Use in Specific Populations* (8.4).]

Geriatric Use: Safyral has not been studied in postmenopausal women and is not indicated in this population. [See *Use in Specific Populations* (8.5).]

Race: No clinically significant difference was observed between the pharmacokinetics of DRSP or EE in Japanese versus Caucasian women (age 25-35) when 3 mg DRSP/0.02 mg EE was administered daily for 21 days. Other ethnic groups have not been specifically studied.

Renal Impairment: Safyral is contraindicated in patients with renal impairment.

The effect of renal impairment on the pharmacokinetics of DRSP (3 mg daily for 14 days) and the effect of DRSP on serum potassium levels were investigated in female subjects (n=28, age 30-65) with normal renal function and mild and moderate renal impairment. All subjects were on a low potassium diet. During the study 7 subjects continued the use of potassium sparing drugs for the treatment of the underlying illness. On the 14th day (steady-state) of DRSP treatment, the serum DRSP levels in the group with mild renal impairment (creatinine clearance CL_{Cr}, 50-80 mL/min) were comparable to those in the group with normal renal function (CL_{Cr}, >80 mL/min). The serum DRSP levels were on average 37% higher in the group with moderate renal impairment (CL_{Cr}, 30-50 mL/min) compared to those in the group with normal renal function. DRSP treatment did not show any clinically significant effect on serum potassium concentration. Although hyperkalemia was not observed in the study, in five of the seven subjects who continued use of potassium sparing drugs during the study, mean serum potassium levels increased by up to 0.33 mEq/L. [see *Contraindications* (4), *Warnings and Precautions* (5.2) and *Use in Specific Populations* (8.6)]

Hepatic Impairment: Safyral is contraindicated in patients with hepatic disease.

The mean exposure to DRSP in women with moderate liver impairment is approximately three times higher than the exposure in women with normal liver function. Safyral has not been studied in women with severe hepatic impairment [see *Contraindications* (4), *Warnings and Precautions* (5.2) and *Use in Specific Populations* (8.7)].

Drug Interactions

Effects of Other Drugs on Combined Hormonal Contraceptives:

Substances diminishing the efficacy of COCs: Drugs or herbal products that induce certain enzymes, including CYP3A4, may decrease the effectiveness of COCs or increase breakthrough bleeding. [See *Drug Interactions* (7.1).]

Substances increasing the plasma levels of COCs: Co-administration of atorvastatin with certain COCs containing ethinyl estradiol increase AUC values for ethinyl estradiol by approximately 20%. Ascorbic acid and acetaminophen may increase plasma ethinyl estradiol levels, possibly by inhibition of conjugation. CYP3A4 inhibitors such as itraconazole or ketoconazole may increase plasma hormone levels. [See *Drug Interactions* (7.1).]

HIV Protease Inhibitors and non-nucleoside reverse transcriptase inhibitors: Significant changes (increase or decrease) in the plasma levels of estrogen and progestin have been noted in some cases of co-administration with HIV protease inhibitors or with non-nucleoside reverse transcriptase inhibitors. [See *Drug Interactions* (7.1).]

Antibiotics: There have been reports of pregnancy while taking hormonal contraceptives and antibiotics, but clinical pharmacokinetic studies have not shown consistent effects of antibiotics on plasma concentrations of synthetic steroids. [See *Drug Interactions* (7.1).]

Effects of Combined Oral Contraceptives on Other Drugs:

COCs containing ethinyl estradiol may inhibit the metabolism of other compounds. COCs have been shown to significantly decrease plasma concentrations of lamotrigine, likely due to induction of lamotrigine glucuronidation. This may reduce seizure control; therefore, dosage adjustments of lamotrigine may be necessary. Consult the labeling of the concurrently-used drug to obtain further information about interactions with COCs or the potential for enzyme alterations. [See *Drug Interactions* (7.2).]

Metabolism of DRSP and potential effects of DRSP on hepatic cytochrome P450 (CYP) enzymes have been investigated in *in vitro* and *in vivo* studies. In *in vitro* studies DRSP did not affect turnover of model substrates of CYP1A2 and CYP2D6, but had an inhibitory influence on the turnover of model substrates of CYP1A1, CYP2C9, CYP2C19 and CYP3A4 with CYP2C19 being the most sensitive enzyme. The potential effect of DRSP on CYP2C19 activity was investigated in a clinical pharmacokinetic study using omeprazole as a marker substrate. In the study with 24 postmenopausal women [including 12 women with homozygous (wild type) CYP2C19 genotype and 12 women with heterozygous CYP2C19 genotype] the daily oral administration of 3 mg DRSP for 14 days did not affect the oral clearance of omeprazole (40 mg, single oral dose) and the CYP2C19 product 5-hydroxy omeprazole. Furthermore, no significant effect of DRSP on the systemic clearance of the CYP3A4 product omeprazole sulfone was found. These results demonstrate that DRSP did not inhibit CYP2C19 and CYP3A4 *in vivo*. [See *Drug Interactions* (7.2).]

Two additional clinical drug-drug interaction studies using simvastatin and midazolam as marker substrates for CYP3A4 were each performed in 24 healthy postmenopausal women. The results of these studies demonstrated that pharmacokinetics of the CYP3A4 substrates were not influenced by steady state DRSP concentrations achieved after administration of 3 mg DRSP/day. [See *Drug Interactions* (7.2).]

Interactions With Drugs That Have the Potential to Increase Serum Potassium:

There is a potential for an increase in serum potassium in women taking Safyral with other drugs that may increase serum potassium [see *Warnings and Precautions* (5.2)].

A drug-drug interaction study of DRSP 3 mg/estradiol (E2) 1 mg versus placebo was performed in 24 mildly hypertensive postmenopausal women taking enalapril maleate 10 mg twice daily. Potassium levels were obtained every other day for a total of 2 weeks in all subjects. Mean serum potassium levels in the DRSP/E2 treatment group relative to baseline were 0.22 mEq/L higher than those in the placebo group. Serum potassium concentrations also were measured at multiple time points over 24 hours at baseline and on Day 14. On Day 14, the ratios for serum potassium C_{max} and AUC in the DRSP/E2 group to those in the placebo group were 0.955 (90% CI: 0.914, 0.999) and 1.010 (90% CI: 0.944, 1.08), respectively. No patient in either treatment group developed hyperkalemia (serum potassium concentrations >5.5 mEq/L).

Effects of Folates on Other Drugs:

There is a potential that folates such as folic acid and levomefolate calcium may modify the pharmacokinetics or pharmacodynamics of certain antifolate drugs (e.g., antiepileptics, methotrexate). [See *Drug Interactions* (7.4).]

Effects of other Drugs on Folate:

Several drugs (e.g., methotrexate, sulfasalazine, cholestyramine, antiepileptics) have been reported to reduce folate levels. [See *Drug Interactions* (7.5).]

13 NONCLINICAL TOXICOLOGY

13.1 Carcinogenesis, Mutagenesis, Impairment of Fertility

In a 24 month oral carcinogenicity study in mice dosed with 10 mg/kg/day DRSP alone or 1 + 0.01, 3 + 0.03 and 10 + 0.1 mg/kg/day of DRSP and EE, 0.1 to 2 times the exposure (AUC of DRSP) of women taking a contraceptive dose, there was an increase in carcinomas of the harderian gland in the group that received the high dose of DRSP alone. In a similar study in rats given 10 mg/kg/day DRSP alone or 0.3 + 0.003, 3 + 0.03 and 10 + 0.1 mg/kg/day DRSP and EE, 0.8 to 10 times the exposure of women taking a contraceptive dose, there was an increased incidence of benign and total (benign and malignant) adrenal gland pheochromocytomas in the group receiving the high dose of DRSP. Mutagenesis studies for DRSP were conducted *in vivo* and *in vitro* and no evidence of mutagenic activity was observed.

Long-term animal studies have not been conducted to evaluate the carcinogenic potential of levomefolate. Mutagenesis studies for levomefolate were conducted *in vitro* and *in vivo* and no evidence of mutagenic activity was observed.

14 CLINICAL STUDIES

14.1 Oral Contraceptive Clinical Trial

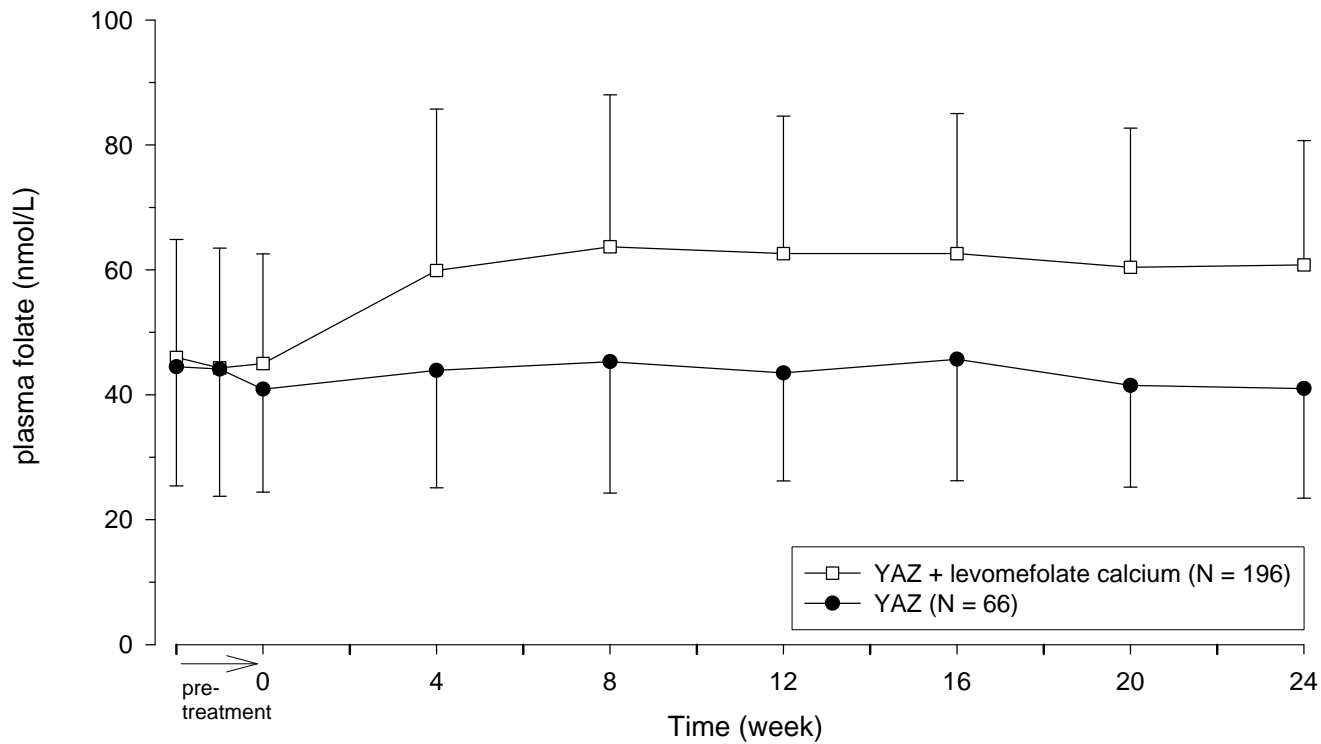
In clinical efficacy studies of YASMIN (3 mg DRSP/0.03 mg EE) of up to 2 years duration, 2,629 subjects completed 33,160 cycles of use without any other contraception. The mean age of the subjects was 25.5 ± 4.7 years. The age range was 16 to 37 years. The racial demographic was: 83% Caucasian, 1% Hispanic, 1% Black, <1% Asian, <1% other, <1% missing data, 14% not inquired and <1% unspecified. Pregnancy rates in the clinical trials were less than one per 100 woman-years of use.

14.2 Folate Supplementation Clinical Trials

The development program for Safyral (Yasmin + levomefolate calcium) consisted of two clinical trials.

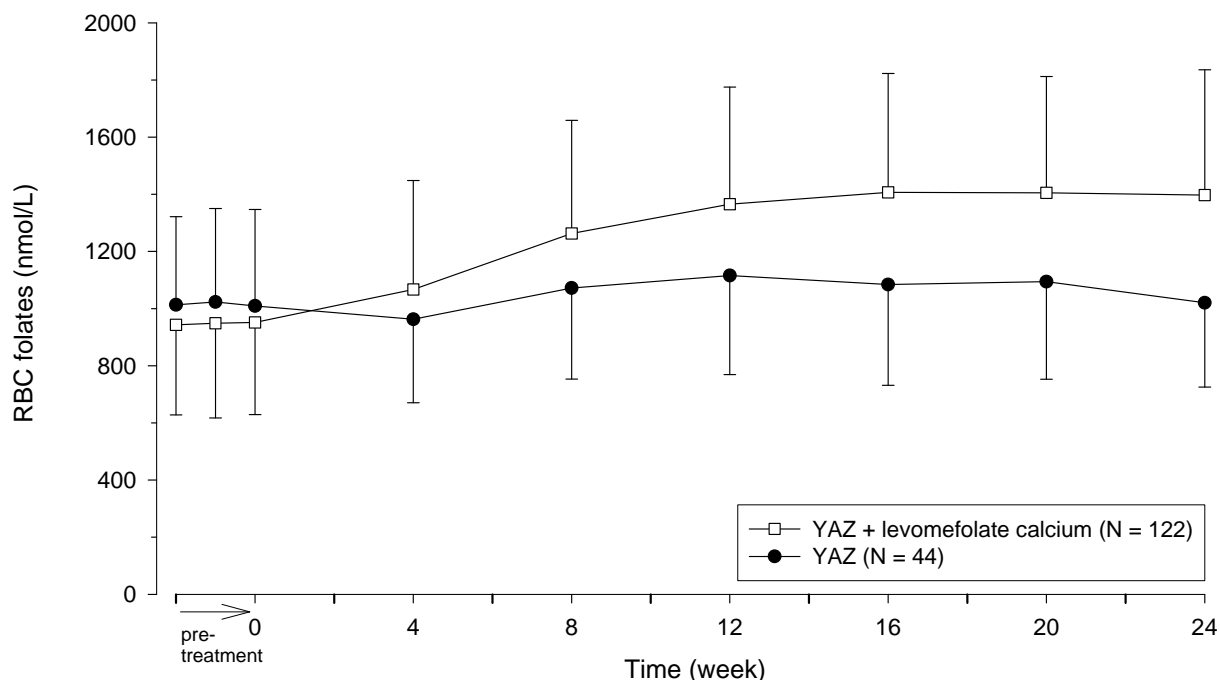
One study was a multicenter, randomized, double-blind, active-controlled, parallel group US study. Plasma folate and red blood cell folate levels were investigated during a 24-week treatment with 3 mg DRSP/0.02 mg EE (YAZ) + 0.451 mg levomefolate calcium as compared to YAZ alone in a U.S. population that consumed folate fortified food. A total of 379 healthy women between 18 and 40 years of age with no restrictions on folate supplementation received YAZ + levomefolate calcium (N= 285) or YAZ (N=94). The plasma and RBC folate concentrations at Week 24 were the co-primary endpoints. Figures 1 and 2 display the results for plasma and RBC folate concentrations, respectively, among evaluable subjects in each arm of the study.

Figure 1: US Study: Mean trough concentration-time curves (and SD) of plasma folates after daily oral administration of YAZ + levomefolate calcium and YAZ



Arithmetic mean values based on 4-weekly measurements are displayed with arithmetic standard deviations which are shown in only one direction to improve readability. Data are based on the per protocol analysis populations. The SD bars shown represent one SD.

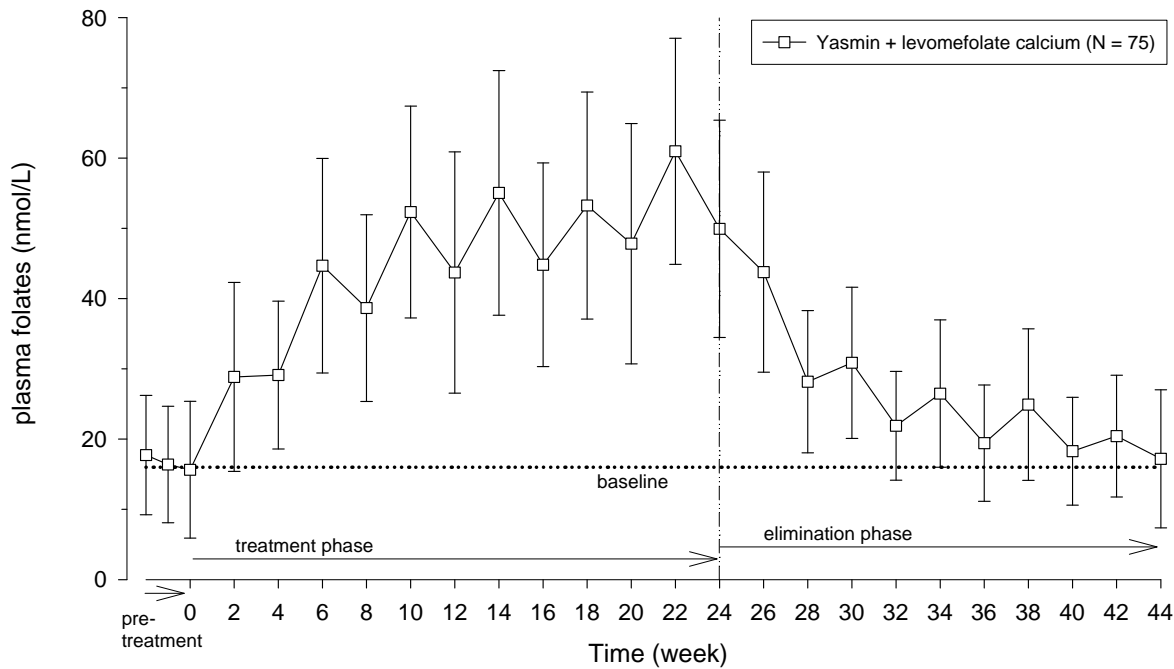
Figure 2: US Study: Mean concentration-time curves (and SD) of RBC folates after daily oral administration of YAZ + levomefolate calcium and YAZ



Arithmetic mean values based on 4-weekly measurements are displayed with arithmetic standard deviations which are shown in only one direction to improve readability. Data are based on the per protocol analysis populations. The SD bars shown represent one SD.

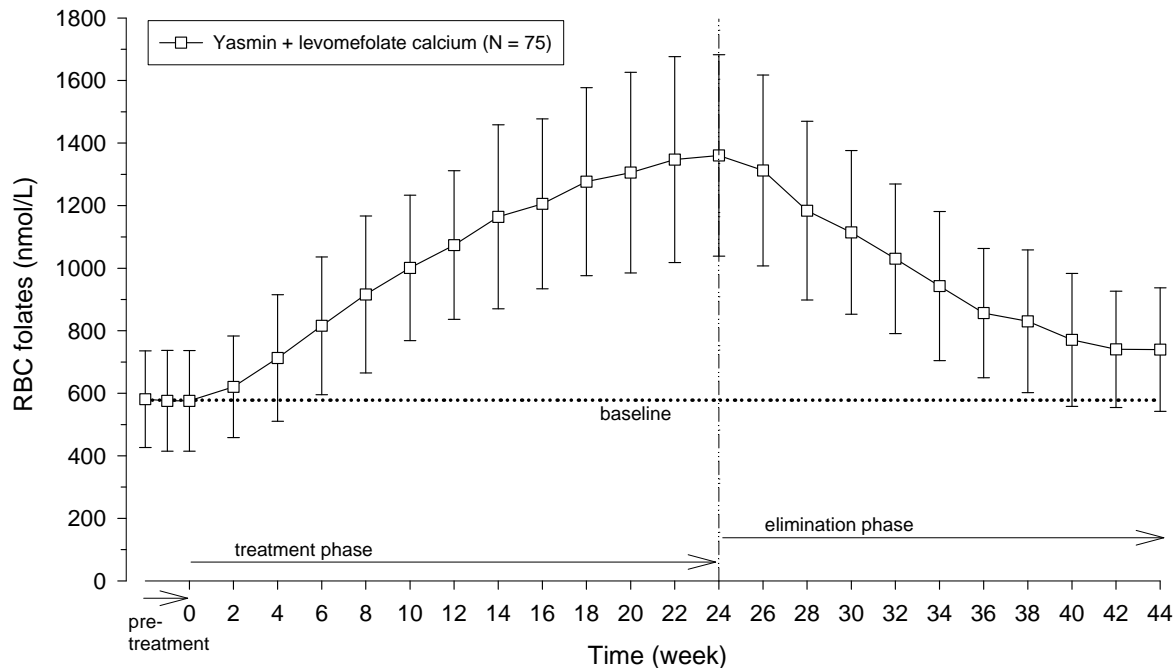
In the second study, the pharmacodynamic effect on plasma folate, RBC folate, and the profile of circulating folate metabolites was assessed during 24 weeks of treatment with 0.451 mg levomefolate calcium or with 0.4 mg folic acid (equimolar dose to 0.451 mg levomefolate calcium), both in combination with 3 mg DRSP/0.03 mg EE (Yasmin) followed by 20 weeks of open-label treatment with Yasmin only (elimination phase). One-hundred and seventy-two healthy women between 18 to 40 years of age from a German population that consumed food without folate fortification and without concomitant intake of folate supplements were randomized to one of the two treatments. Figures 3 and 4 display the results for plasma and RBC folate concentrations, respectively, among evaluable subjects in the levomefolate arm of the study.

Figure 3: German Study: Mean trough concentration-time curve (and SD) of plasma folates after daily oral administration of Yasmin + levomefolate calcium



Arithmetic mean values based on biweekly measurements are displayed with arithmetic standard deviations. In the treatment phase, women received Yasmin + levomefolate calcium; in the elimination phase, all women received Yasmin only. Data are based on the per protocol analysis population. The SD bars shown represent one SD.

Figure 4: German Study: Mean concentration-time curves (and SD) of RBC folates after daily oral administration of Yasmin + levomefolate calcium



Arithmetic mean values based on biweekly measurements are displayed with arithmetic standard deviations. In the treatment phase, women received Yasmin + levomefolate calcium; in the elimination phase, all women received Yasmin only. Data are based on the per protocol analysis population. The SD bars shown represent one SD.

The potential to reduce the incidence of neural tube defects (NTDs) with folate supplementation is well established based on a body of evidence derived from randomized, controlled trials, nonrandomized intervention trials, and observational studies using folic acid. Therefore, the Centers for Disease Control and Prevention (CDC) and the U.S. Preventive Services Task Force recommend that women of childbearing age consume supplemental folic acid in a dose of at least 0.4 mg (400 mcg) daily^{1,6}.

15 REFERENCES

1. US Preventive Services Task Force. Folic Acid for the Prevention of Neural Tube Defects: US Preventive Services Task Force Recommendation Statement. *Ann Intern Med* 2009;150:626-631.
2. Dinger JC, Heinemann LAJ, et al: The safety of a drospirenone-containing oral contraceptive: final results from the European active surveillance study on oral contraceptives based on 142,475 women-years of observation. *Contraception* 2007;75:344-354.
3. Seeger JD, Loughlin J, Eng PM, et al: Risk of thromboembolism in women taking ethinylestradiol/drospirenone and other oral contraceptives. *Obstetrics & Gynecology* 2007;110(3):587-593.
4. van Hylckama Vlieg A, Helmerhorst FM, Vandenbroucke JP, et al: The venous thrombotic risk of oral contraceptives, effects of oestrogen dose and progestogen type: results of the MEGA case-control study. *BMJ* 2009;339:b2921.
5. Lidegaard O, Lokkegaard E, Svendsen AL, et al: Hormonal contraception and risk of venous thromboembolism: national follow-up study. *BMJ* 2009; 339:b2890.
6. Centers for Disease Control. Recommendations for the use of folic acid to reduce the number of cases of spina bifida and other neural tube defects. *MMWR* 1992;41(No. RR-14):(inclusive page numbers).

16 HOW SUPPLIED/STORAGE AND HANDLING

16.1 How Supplied

Safyral (drospirenone/ethinyl estradiol/levomefolate calcium tablets and levomefolate calcium tablets) is available in packages of three blister packs (50419-403-03).

The film-coated tablets are rounded with biconvex faces, one side is embossed with a regular hexagon shape with Y+ or M+.

Each blister pack contains 28 film-coated tablets in the following order:

21 round, biconvex, orange, film-coated tablets with embossed “Y+” in a regular hexagon on one side each containing 3 mg drospirenone, 0.03 mg ethinyl estradiol, and 0.451 mg levomefolate calcium

7 round, biconvex, light orange, film-coated tablets with embossed “M+” in a regular hexagon on one side each containing 0.451 mg levomefolate calcium

16.2 Storage Conditions

Store at 25°C (77°F); excursions permitted to 15-30°C (59-86°F) [see USP Controlled Room Temperature].

17 PATIENT COUNSELING INFORMATION

[See FDA-approved Patient Labeling]

- Counsel patients that cigarette smoking increases the risk of serious cardiovascular events from COC use, and that women who are over 35 years old and smoke should not use COCs.
- Counsel patients that Safyral does not protect against HIV-infection (AIDS) and other sexually transmitted diseases.
- Counsel patients on Warnings and Precautions associated with COCs.
- Counsel patients that Safyral contains DRSP. Drospirenone may increase potassium. Patients should be advised to inform their healthcare provider if they have kidney, liver or adrenal disease because the use of Safyral in the presence of these conditions could cause serious heart and health problems. They should also inform their healthcare provider if they are currently on daily, long-term treatment (NSAIDs, potassium-sparing diuretics, potassium supplementation, ACE inhibitors, angiotensin-II receptor antagonists, Heparin or aldosterone antagonists) for a chronic condition.
- Safyral is not indicated during pregnancy. If pregnancy is planned or occurs during treatment with Safyral, further intake must be stopped. However, women should be advised on the continued need of sufficient folate intake.
- Counsel patients to take one tablet daily by mouth at the same time every day. Instruct patients what to do in the event pills are missed. *See “What to Do if You Miss Pills” section in FDA-Approved Patient Labeling.*
- Counsel patients to use a back-up or alternative method of contraception when enzyme inducers are used with COCs.
- Counsel patients who are breastfeeding or who desire to breastfeed that COCs may reduce breast milk production. This is less likely to occur if breastfeeding is well established.
- Counsel any patient who starts COCs postpartum, and who have not yet had a period, to use an additional method of contraception until she has taken an orange tablet for 7 consecutive days.
- Counsel patients that amenorrhea may occur. Rule out pregnancy in the event of amenorrhea in two or more consecutive cycles.
- Counsel patients to report whether they are taking folate supplements. Safyral contains the equivalent of 0.4 mg (400 mcg) of folic acid.
- Counsel patients to maintain folate supplementation if they discontinue Safyral due to pregnancy.

Manufactured for Bayer HealthCare Pharmaceuticals Inc.

Wayne, NJ 07470

Manufactured in Germany

WARNING TO WOMEN WHO SMOKE

Do not use Safyral if you smoke cigarettes and are over 35 years old. Smoking increases your risk of serious cardiovascular side effects (heart and blood vessel problems) from birth control pills, including death from heart attack, blood clots or stroke. This risk increases with age and the number of cigarettes you smoke.

Birth control pills help to lower the chances of becoming pregnant when taken as directed. They do not protect against HIV infection (AIDS) and other sexually transmitted diseases.

What Is Safyral?

Safyral is a birth control pill. It contains two female hormones, a synthetic estrogen called ethinyl estradiol and a progestin called drospirenone. Safyral also contains levomefolate calcium, which is a B vitamin.

The progestin drospirenone may increase potassium. Therefore, you should not take Safyral if you have kidney, liver or adrenal disease because this could cause serious heart and health problems. Other drugs may also increase potassium. If you are currently on daily, long-term treatment for a chronic condition with any of the medications below, you should consult your healthcare provider about whether Safyral is right for you, and during the first month that you take Safyral, you should have a blood test to check your potassium level.

- NSAIDs (ibuprofen [Motrin, Advil], naproxen [Aleve and others] when taken long-term and daily for treatment of arthritis or other problems)
- Potassium-sparing diuretics (spironolactone and others)
- Potassium supplementation
- ACE inhibitors (Capoten, Vasotec, Zestril and others)
- Angiotensin-II receptor antagonists (Cozaar, Diovan, Avapro and others)
- Heparin
- Aldosterone antagonists

Safyral may also be taken by women who elect to use an oral contraceptive, to provide folate supplementation. It is recommended that women of reproductive age supplement their diet with 0.4 mg (400 mcg) of folic acid daily to lower their risk of having a pregnancy with a rare type of birth defect (known as a neural tube defect). The amount of folate contained in Safyral supplements folate in the diet to lower this risk should you become pregnant while taking the drug or shortly after stopping it.

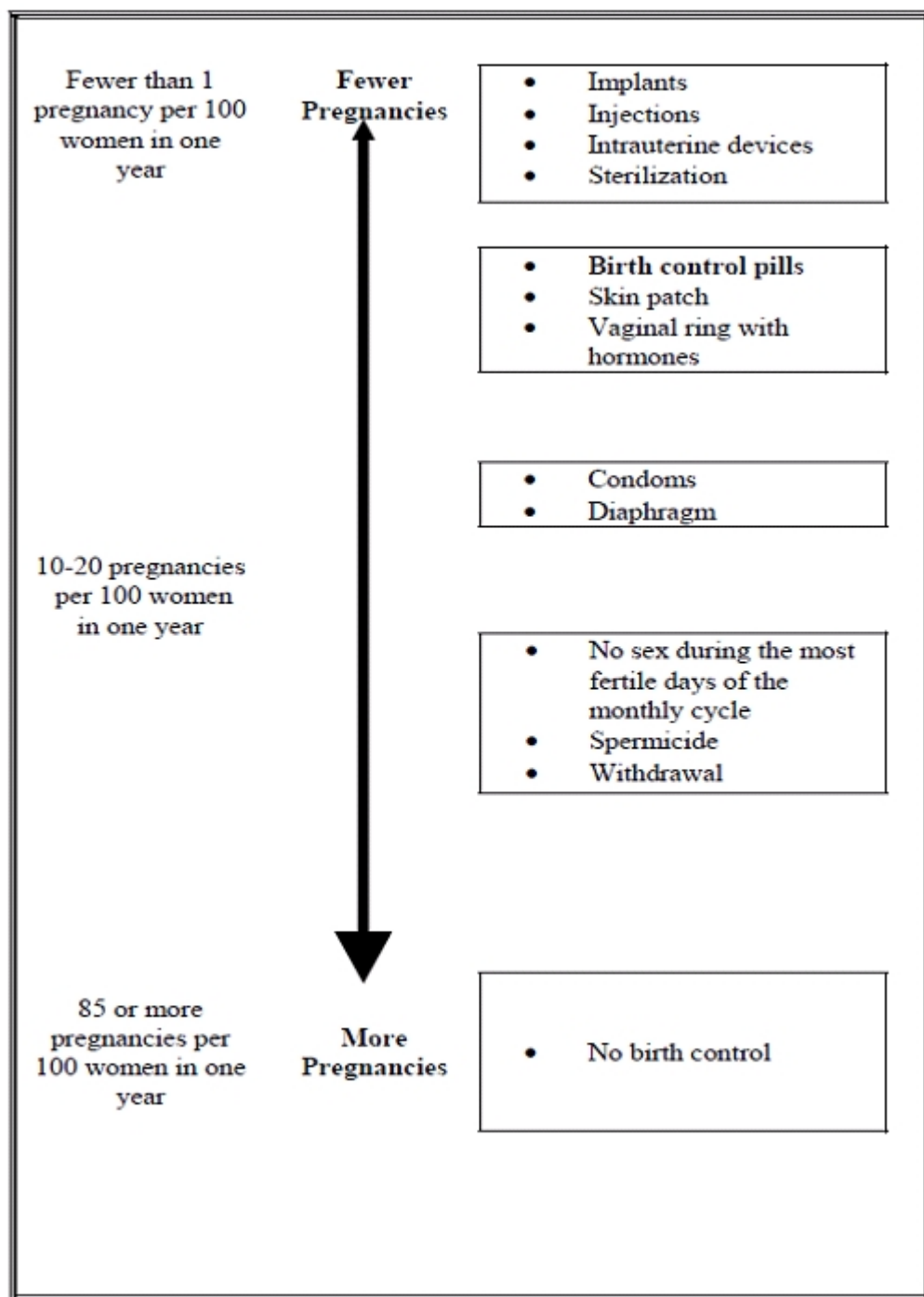
How Well Does Safyral Work?

Your chance of getting pregnant depends on how well you follow the directions for taking your birth control pills. The better you follow the directions, the less chance you have of getting pregnant.

Based on the results of one clinical study, 1 to 2 women out of 100 women, may get pregnant during the first year they use Safyral.

The following chart shows the chance of getting pregnant for women who use different methods of birth control. Each box on the chart contains a list of birth control methods that are similar in

effectiveness. The most effective methods are at the top of the chart. The box on the bottom of the chart shows the chance of getting pregnant for women who do not use birth control and are trying to get pregnant.



How Do I Take Safyral?

1. **Be sure to read these directions** before you start taking your pills or anytime you are not sure what to do.
2. The right way to take the pill is to take one pill every day at the same time in the order directed on the package. Preferably, take the pill after the evening meal or at bedtime, with some liquid, as needed. Safyral can be taken without regard to meals.

If you miss pills you could get pregnant. This includes starting the pack late. The more pills you miss, the more likely you are to get pregnant. See "WHAT TO DO IF YOU MISS PILLS" below.

3. Many women have spotting or light bleeding at unexpected times, or may feel sick to their stomach during the first 1-3 packs of pills.

If you do have spotting or light bleeding or feel sick to your stomach, do not stop taking the pill. The problem will usually go away. If it does not go away, check with your healthcare provider.

4. Missing pills can also cause spotting or light bleeding, even when you make up these missed pills.

On the days you take two pills, to make up for missed pills, you could also feel a little sick to your stomach.

5. If you have vomiting (within 3 to 4 hours after you take your pill), you should follow the instructions for "WHAT TO DO IF YOU MISS PILLS." If you have diarrhea or if you take certain medicines, including some antibiotics and some herbal products such as St. John's Wort, your pills may not work as well.

Use a back-up method (such as condoms and spermicides) until you check with your healthcare provider.

6. If you have trouble remembering to take the pill, talk to your healthcare provider about how to make pill-taking easier or about using another method of birth control.

7. If you have any questions or are unsure about the information in this leaflet, call your healthcare provider.

Before You Start Taking Your Pills

1. Decide What Time of Day You Want to Take Your Pill

It is important to take Safyral in the order directed on the package at the same time every day, preferably after the evening meal or at bedtime, with some liquid, as needed. Safyral can be taken without regard to meals.

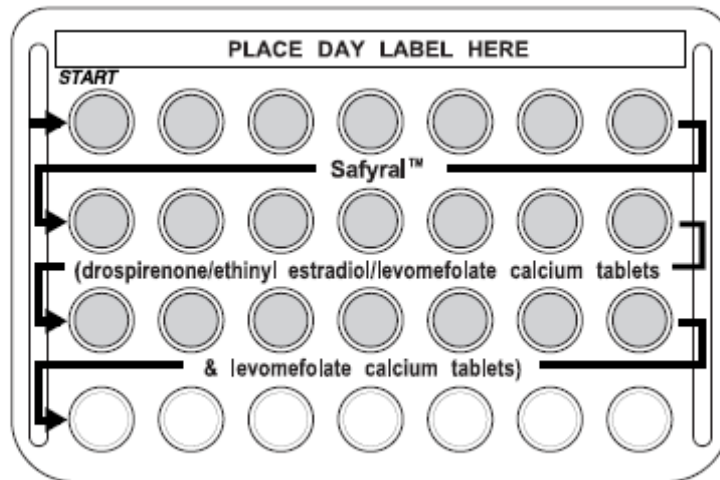
2. Look at Your Pill Pack – It has 28 Pills

The Safyral pill pack has 21 orange pills (with hormones and folate) to be taken for three weeks, followed by 7 light orange pills (without hormones, containing folate) to be taken for one week. **It is important to take the light orange pills because they contain folate.**

3. Also look for:

a) Where on the pack to start taking pills,

b) In what order to take the pills (follow the arrows)



4. Be sure you have ready at all times (a) another kind of birth control (such as condoms or spermicides) to use as a back-up in case you miss pills, and (b) an extra, full pill pack.

When To Start the First Pack of Pills

You have a choice for which day to start taking your first pack of pills. Decide with your healthcare provider which is the best day for you. Pick a time of day which will be easy to remember.

Day 1 Start:

1. Take the first orange pill of the pack during the first 24 hours of your period.
2. You will not need to use a back-up method of birth control, because you are starting the Pill at the beginning of your period. However, if you start Safyral later than the first day of your period, you should use another method of birth control (such as a condom and spermicide) as a back-up method until you have taken 7 orange pills.

Sunday Start:

1. Take the first orange pill of the pack on the Sunday after your period starts, even if you are still bleeding. If your period begins on Sunday, start the pack that same day.
2. Use another method of birth control (such as a condom and spermicide) as a back-up method if you have sex anytime from the Sunday you start your first pack until the next Sunday (7 days). This also applies if you start Safyral after having been pregnant and you have not had a period since your pregnancy.

When You Switch From a Different Birth Control Pill

When switching from another birth control pill, Safyral should be started on the same day that a new pack of the previous birth control pill would have been started.

When You Switch From Another Type of Birth Control Method

When switching from a transdermal patch or vaginal ring, Safyral should be started when the next application would have been due. When switching from an injection, Safyral should be started when the next dose would have been due. When switching from an intrauterine contraceptive or an implant, Safyral should be started on the day of removal.

What to Do During the Month

1. Take one pill at the same time every day until the pack is empty.

Do not skip pills even if you are spotting or bleeding between monthly periods or feel sick to your stomach (nausea).

Do not skip pills even if you do not have sex very often.

2. When you finish a pack of pills, start the next pack on the day after your last light orange pill. **It is important to take the light orange pills because they contain folate.** Do not wait any days between packs.

What to Do if You Miss Pills

If you miss 1 orange pill in Week 1 of your pack:

1. Take it as soon as you remember. Take the next pill at your regular time. This means you may take two pills in one day.
2. You do not need to use a back-up birth control method if you have sex.

If you miss 2 orange pills in a row in week 1 OR week 2 of your pack:

1. Take two pills on the day you remember and two pills the next day.
2. Then take one pill a day until you finish the pack.
3. **You could become pregnant** if you have sex in the 7 days after you restart your pills. You must use another birth control method (such as a condom and spermicide) as a back-up for those 7 days.

If you miss 2 orange pills in a row in week 3 or week 4 of your pack:

1. If you are a Day 1 Starter:

Throw out the rest of the pill pack and start a new pack that same day.

2. If you are a Sunday Starter:

Keep taking one pill every day until Sunday. On Sunday, throw out the rest of the pack and start a new pack of pills that same day.

3. You could become pregnant if you have sex in the 7 days after you restart your pills. You must use another birth control method (such as a condom and spermicide) as a back-up for those 7 days.

4. You may not have your period this month but this is expected. However, if you miss your period two months in a row, call your healthcare provider because you might be pregnant.

If you miss 3 or more orange pills in a row during any week:

1. If you are a Day 1 Starter:

Throw out the rest of the pill pack and start a new pack that same day.

2. If you are a Sunday Starter:

Keep taking 1 pill every day until Sunday. On Sunday, throw out the rest of the pack and start a new pack of pills that same day.

3. You could become pregnant if you have sex in the 7 days after you restart your pills. You must use another birth control method (such as condoms or spermicides) as a back-up for those 7 days.

4. You may not have your period this month but this is expected. However, if you miss your period two months in a row, call your healthcare provider because you might be pregnant.

If you miss any of the 7 light orange pills in Week 4:

Throw away the pills you missed.

Keep taking one pill each day until the pack is empty.

You do not need a back-up method.

Finally, if you are still not sure what to do about the pills you have missed:

Use a back-up method (such as condoms and spermicides) anytime you have sex.

Contact your healthcare provider and continue taking one active orange pill each day until otherwise directed.

WHO SHOULD NOT TAKE Safyral?

Your healthcare provider should not give you Safyral if you:

- Ever had blood clots in your legs (deep vein thrombosis), lungs (pulmonary embolism), or eyes (retinal thrombosis)
- Ever had a stroke
- Ever had a heart attack
- Have certain heart valve problems or heart rhythm abnormalities that can cause blood clots to form in the heart
- Have an inherited problem with your blood that makes it clot more than normal
- Have high blood pressure that medicine can't control
- Have diabetes with kidney, eye, nerve, or blood vessel damage
- Ever had certain kinds of severe migraine headaches with aura, numbness, weakness or changes in vision
- Ever had breast cancer or any cancer that is sensitive to female hormones
- Have liver disease, including liver tumors
- Have kidney disease
- Have adrenal disease

Also, do not take birth control pills if you:

- Smoke and are over 35 years old
- Are pregnant or suspect you are pregnant

Birth control pills may not be a good choice for you if you have ever had jaundice (yellowing of the skin or eyes) caused by pregnancy (also called cholestasis of pregnancy).

Tell your healthcare provider if you have ever had any of the above conditions (your healthcare provider can recommend another method of birth control).

Tell your healthcare provider if you are already taking daily folate supplements.

What Else Should I Know about Taking Safyral?

Birth control pills do not protect you against any sexually transmitted disease, including HIV, the virus that causes AIDS.

Do not skip any pills, even if you do not have sex often.

If you miss a period, you could be pregnant. However, some women miss periods or have light periods on birth control pills, even when they are not pregnant. Contact your healthcare provider for advice if you:

- Think you are pregnant
- Miss one period and have not taken your birth control pills on time every day
- Miss two periods in a row

Birth control pills should not be taken during pregnancy. However, birth control pills taken by accident during pregnancy are not known to cause birth defects.

Due to an increased risk of blood clots, you should stop Safyral at least four weeks before you have major surgery and not restart it until at least two weeks after the surgery .

If you are breastfeeding, consider another birth control method until you are ready to stop breastfeeding. Birth control pills that contain estrogen, like Safyral, may decrease the amount of milk you make. A small amount of the pill's hormones pass into breast milk.

If you are currently on daily, long-term treatment for a chronic condition with any of the following medications, you should consult your healthcare provider before taking Safyral:

- NSAIDs (ibuprofen, naproxen and others)
- Potassium-sparing diuretics (spironolactone and others)
- Potassium supplementation
- ACE inhibitors (captopril, enalapril, lisinopril and others)
- Angiotensin-II receptor antagonists (Cozaar, Diovan, Avapro and others)
- Heparin
- Aldosterone antagonists

Tell your healthcare provider about all medicines and herbal products that you take. Some other medicines and herbal products may make birth control pills less effective, including:

- Barbiturates
- Bosentan
- Carbamazepine
- Felbamate
- Griseofulvin
- Oxcarbazepine
- Phenytoin
- Rifampin
- St. John's wort
- Topiramate

Consider using another birth control method when you take medicines (such as the ones listed above) that may make birth control pills less effective.

Birth control pills may interact with lamotrigine, an anticonvulsant used for epilepsy. This may increase the risk of seizures, so your healthcare provider may need to adjust the dose of lamotrigine.

Folates may make certain drugs, including some used for epilepsy, less effective, so talk to your healthcare provider about any medicines you take.

If you have vomiting or diarrhea, your birth control pills may not work as well. Take another pill if you vomit within 3-4 hours after taking your pill, or use another birth control method, like condoms and a spermicide, until you check with your healthcare provider.

If you are scheduled for any laboratory tests, tell your doctor you are taking birth-control pills. Certain blood tests may be affected by birth-control pills.

What are the Most Serious Risks of Taking Birth Control Pills?

Like pregnancy, birth control pills increase the risk of serious blood clots, especially in women who have other risk factors, such as smoking, obesity, or age greater than 35. It is possible to die from a problem caused by a blood clot, such as a heart attack or a stroke. Some examples of serious blood clots are in the:

- Legs (thrombophlebitis)
- Lungs (pulmonary embolus)
- Eyes (loss of eyesight)
- Heart (heart attack)
- Brain (stroke)

A few women who take birth control pills may get:

- High blood pressure
- Gallbladder problems
- Rare cancerous or noncancerous liver tumors

All of these events are uncommon in healthy women.

Call your healthcare provider right away if you have:

- Persistent leg pain
- Sudden shortness of breath
- Sudden blindness, partial or complete
- Severe pain in your chest
- Sudden, severe headache unlike your usual headaches
- Weakness or numbness in an arm or leg, or trouble speaking
- Yellowing of the skin or eyeballs

What are the Common Side Effects of Birth Control Pills?

The most common side effects of birth control pills are:

- Spotting or bleeding between menstrual periods
- Nausea
- Breast tenderness
- Headache

These side effects are usually mild and usually disappear with time.

Less common side effects are:

- Acne
- Less sexual desire
- Bloating or fluid retention

- Blotchy darkening of the skin, especially on the face
- High blood sugar, especially in women who already have diabetes
- High fat (cholesterol; triglyceride) levels in the blood
- Depression, especially if you have had depression in the past. Call your healthcare provider immediately if you have any thoughts of harming yourself.
- Problems tolerating contact lenses
- Weight changes

This is not a complete list of possible side effects. Talk to your healthcare provider if you develop any side effects that concern you. You may report side effects to the FDA at 1-800-FDA-1088.

No serious problems have been reported from a birth control pill overdose, even when accidentally taken by children.

Do Birth Control Pills Cause Cancer?

Birth control pills do not seem to cause breast cancer. However, if you have breast cancer now, or have had it in the past, do not use birth control pills because some breast cancers are sensitive to hormones.

Women who use birth control pills may have a slightly higher chance of getting cervical cancer. However, this may be due to other reasons such as having more sexual partners.

What Should I Know about My Period when Taking Safyral?

Irregular vaginal bleeding or spotting may occur while you are taking Safyral. Irregular bleeding may vary from slight staining between menstrual periods to breakthrough bleeding, which is a flow much like a regular period. Irregular bleeding occurs most often during the first few months of oral contraceptive use, but may also occur after you have been taking the pill for some time. Such bleeding may be temporary and usually does not indicate any serious problems. It is important to continue taking your pills on schedule. If the bleeding occurs in more than one cycle, is unusually heavy, or lasts for more than a few days, call your healthcare provider.

Some women may not have a menstrual period but this should not be cause for alarm as long as you have taken the pills regularly on time.

What if I Miss My Scheduled Period when Taking Safyral?

It is not uncommon to miss your period. However, if you miss two periods in a row or miss one period when you have not taken your birth control pills regularly on time, call your healthcare provider. Also notify your healthcare provider if you have symptoms of pregnancy such as morning sickness or unusual breast tenderness. It is important that your healthcare provider checks you to find out if you are pregnant. Stop taking Safyral if you are pregnant.

What If I Want to Become Pregnant?

You may stop taking the pill whenever you wish. Consider a visit with your healthcare provider for a pre-pregnancy checkup before you stop taking the pill. See your healthcare provider about appropriate folate supplementation if you stop taking Safyral, are pregnant, or plan on becoming pregnant.

General Advice about Safyral

Your healthcare provider prescribed Safyral for you. Please do not share Safyral with anyone else. Keep Safyral out of the reach of children.

If you have concerns or questions, ask your healthcare provider. You may also ask your healthcare provider for a more detailed label written for medical professionals.

Bayer HealthCare Pharmaceuticals Inc.

This is a representation of an electronic record that was signed electronically and this page is the manifestation of the electronic signature.

/s/

SCOTT E MONROE
12/16/2010