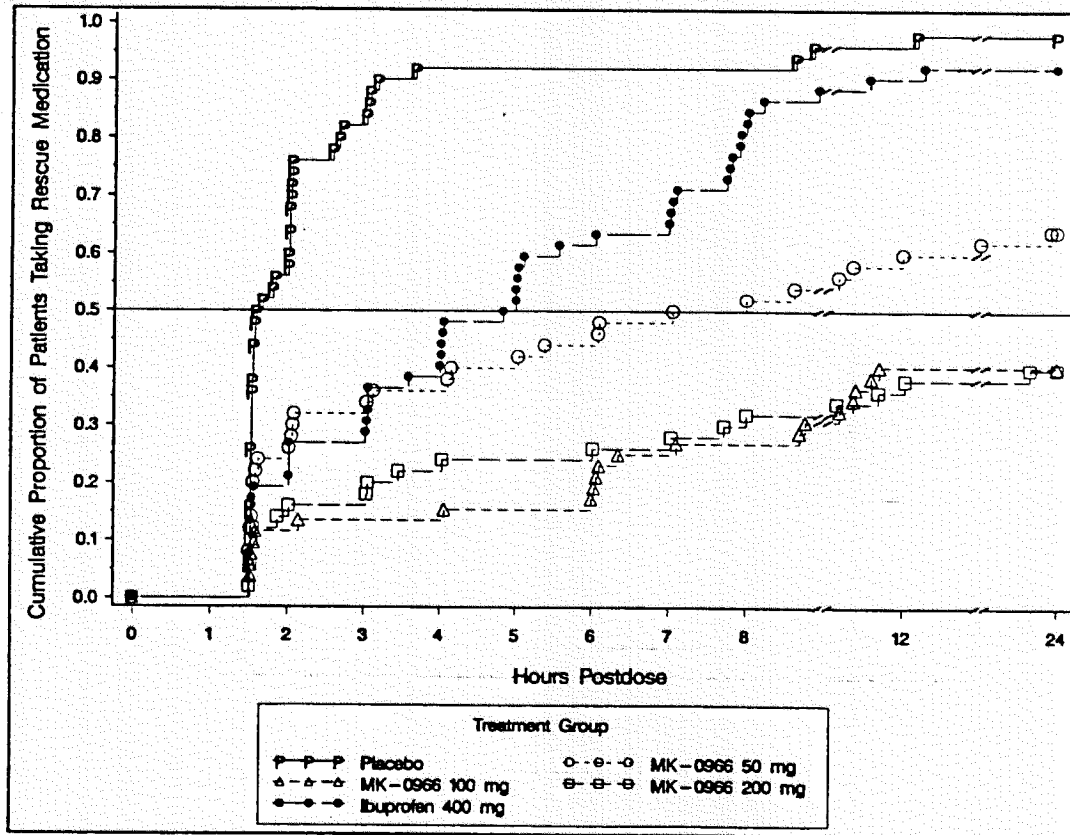


MK-0966 Prot. No. 071
Phase III Trial for Postoperative Dental Pain

APPENDIX 4.1

4.1.30: Five-Page Summary (Cont.)

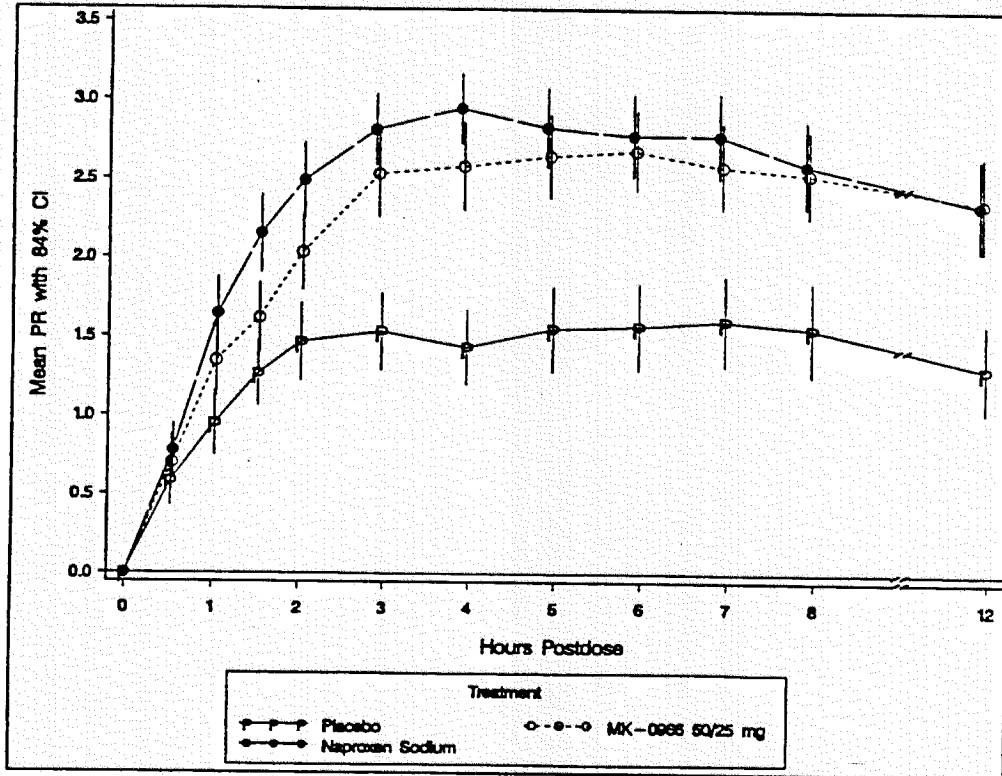
Analysis of Time to Taking Rescue Medication Within 24 Hours
(Intention-to-Treat Approach)



Treatment	N	Number(% [@]) of Patients Rescue Medication	Time (Hour) to Rescue Medication by Percentile		
			25th	50th (95% CI)	75th
Placebo	50	49 (98.0)	1.5	1.6 (1.5, 2.0) D	2.1
MK-0966 50 mg	50	32 (64.0)	2.0	7.5 (4.1,23.6) B	NE
MK-0966 100 mg	52	21 (40.4)	6.7	NE A	NE
MK-0966 200 mg	50	20 (40.0)	6.0	NE A	NE
Ibuprofen 400 mg	52	48 (92.3)	2.0	4.9 (3.6, 6.1) C	7.8
Effect					p-Value
Treatment					<0.001
Stratum (Baseline PI)					0.727
@: Kaplan-Meier estimate of incidence rate (This may be different from the crude rate). NE: Not estimable. Percentile NE due to low percentage (5x% for the x'th percentile). A,B,C,D — Letter A indicates the most effective dose(s), B the next most effective dose(s), and so forth. Treatments sharing the same letter were not significantly different from each other at the 5% significance level. All p-values from the pairwise comparisons are provided in Table 26 of the CSR.					

MK-0966 Prot. No. 055
Phase III Dysmenorrhea

Appendix 4.1.29 Five-Page Summary
1. Analysis of Pain Relief Over Time (Intention-to-Treat)

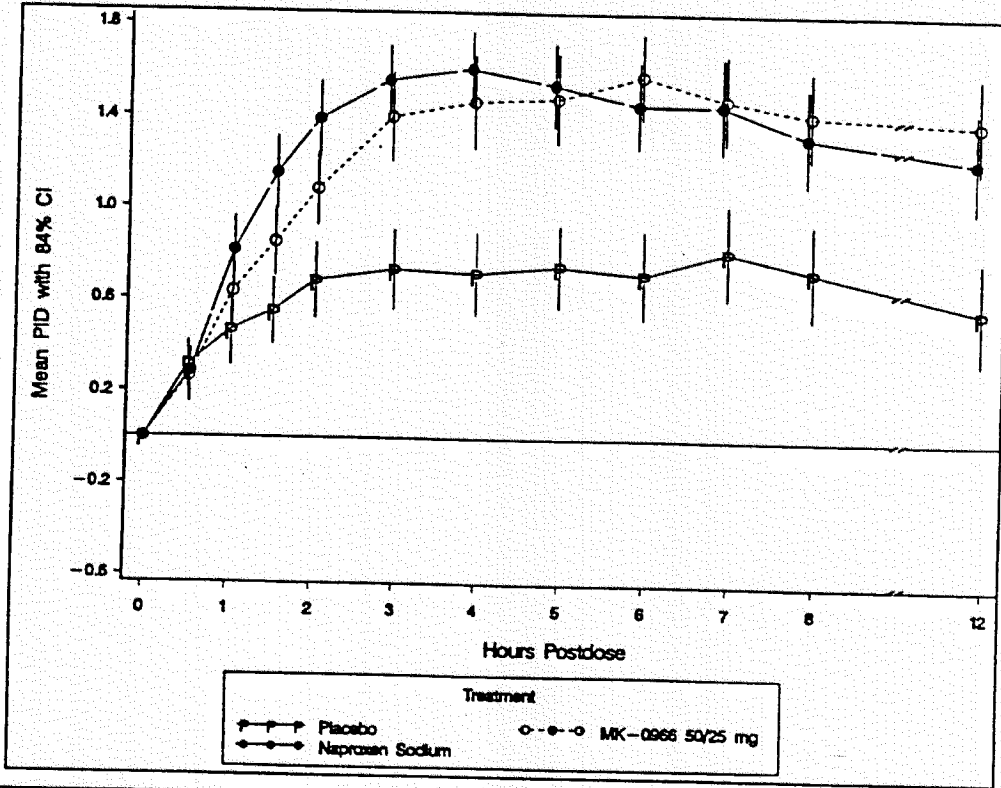


Treatment		Analysis of Pain Relief by Timepoint (Hours Postdose, Last Value Carried Forward)										
		0.5	1	1.5	2	3	4	5	6	7	8	12
Placebo	N †	60	60	59	58	30	47	46	41	38	38	31
	MEAN	0.6 A	1.0 B	1.3 B	1.5 C	1.5 B	1.4 B	1.6 B	1.6 B	1.6 B	1.6 B	1.3 B
	STD	0.9	1.1	1.1	1.3	1.3	1.3	1.5	1.5	1.6	1.6	1.5
MK-0966 50/25 mg	N †	60	60	59	57	57	55	52	51	49	48	45
	MEAN	0.7 A	1.4 A	1.6 B	2.0 B	2.5 A	2.6 A	2.7 A	2.7 A	2.6 A	2.5 A	2.4 A
	STD	1.0	1.2	1.2	1.3	1.5	1.5	1.5	1.4	1.5	1.5	1.7
Naproxen Sodium	N †	59	58	58	57	55	55	54	49	48	47	43
	MEAN	0.8 A	1.4 A	2.2 A	2.5 A	2.8 A	2.9 A	2.8 A	2.8 A	2.8 A	2.6 A	2.3 A
	STD	0.9	1.3	1.4	1.3	1.2	1.2	1.4	1.4	1.5	1.5	1.6
Within Patient Pooled SD		0.8	1.1	1.2	1.2	1.3	1.3	1.3	1.3	1.4	1.4	1.3
Effect		p-Values by Timepoint (Hours Postdose)										
Treatment ††		0.405	0.003	<0.001	<0.001	<0.001	<0.001	<0.001	<0.001	<0.001	<0.001	<0.001
Stratum (Baseline PI)		0.739	0.869	0.253	0.352	0.968	0.707	0.921	0.904	0.885	0.754	0.476
Rx-by-Stratum Interaction †††		0.998	0.370	0.353	0.524	0.416	0.444	0.132	0.169	0.163	0.414	0.091

†: Observed sample size
 ††: Model included sequence, patient (sequence), period, treatment, baseline Pain Intensity (PI) as factors.
 †††: Model included sequence, patient (sequence), period, treatment, baseline PI and treatment-by-baseline PI interaction as factors.
 A, B, C — Based on Model †† LSMeans. Letter A indicates the most effective dose(s), B indicates the next most effective, and so forth. Treatments sharing at least one letter were not significantly different from each other at the 5% significance level.
 All p-values from the pairwise comparisons are provided in Appendix [4.1.1] of the CSR

MK-0966 Prot. No. 055
Phase III Dysmenorrhea

Appendix 4.1.29 Five-Page Summary (cont.)
2. Analysis of PID over Time (Intention-to-Treat)



Treatment		Analysis of PID by Timepoint (Hours Postdose, Last Value Carried Forward)										
		0.5	1	1.5	2	3	4	5	6	7	8	12
Placebo	N†	60	60	59	58	50	47	46	41	38	38	31
	MEAN	0.3 A	0.5 B	0.6 C	0.7 C	0.7 B	0.7 B	0.8 B	0.7 B	0.8 B	0.7 B	0.6 B
	STD	0.6	0.9	0.8	0.9	1.0	1.0	1.0	1.1	1.1	1.1	1.2
MK-0966 50/25 mg	N†	60	60	59	57	57	55	52	51	49	48	46
	MEAN	0.3 A	0.6 A B	0.9 B	1.1 B	1.4 A	1.5 A	1.5 A	1.6 A	1.5 A	1.4 A	1.4 A
	STD	0.6	0.8	0.8	0.9	1.1	1.1	1.1	1.0	1.1	1.1	1.2
Naproxen Sodium	N†	59	58	58	57	55	55	54	50	48	47	43
	MEAN	0.3 A	0.8 A	1.2 A	1.4 A	1.6 A	1.6 A	1.5 A	1.5 A	1.5 A	1.3 A	1.2 A
	STD	0.5	0.8	0.9	0.9	0.8	0.9	1.0	1.0	1.1	1.2	1.2
Within Patient Pooled SD		0.5	0.7	0.7	0.8	0.9	0.9	0.9	0.9	0.9	1.0	0.9
Effect		p-Values by Timepoint (Hours Postdose)										
Treatment ††		0.849	0.013	<0.001	<0.001	<0.001	<0.001	<0.001	<0.001	<0.001	<0.001	<0.001
Stratum (Baseline PI)		0.005	0.027	0.050	0.047	0.005	<0.001	<0.001	0.001	<0.001	0.001	<0.001
Rx-by-Stratum Interaction †††		0.738	0.426	0.354	0.098	0.335	0.041	0.044	0.151	0.094	0.217	0.244

†: Observed sample size

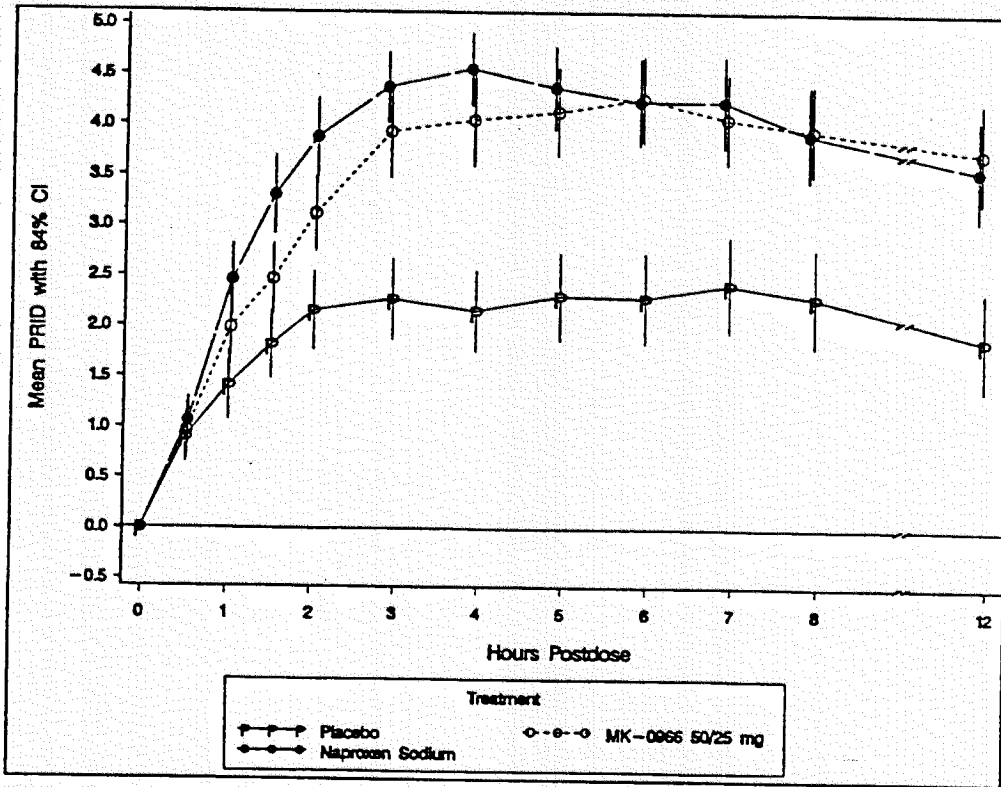
††: Model included sequence, patient (sequence), period, treatment, baseline Pain Intensity (PI) as factors.

†††: Model included sequence, patient (sequence), period, treatment, baseline PI and treatment-by-baseline PI interaction as factors.

A, B, C — Based on Model †† LSMeans. Letter A indicates the most effective dose(s), B indicates the next most effective, and so forth. Treatments sharing at least one letter were not significantly different from each other at the 5% significance level. All p-values from the pairwise comparisons are provided in Appendix [4.1.2] of the CSR.

MK-0966 Prot. No. 055
Phase III Dysmenorrhea

Appendix 4.1.29 Five-Page Summary (cont.)
3. Analysis of PRID over Time (Intention-to-Treat)



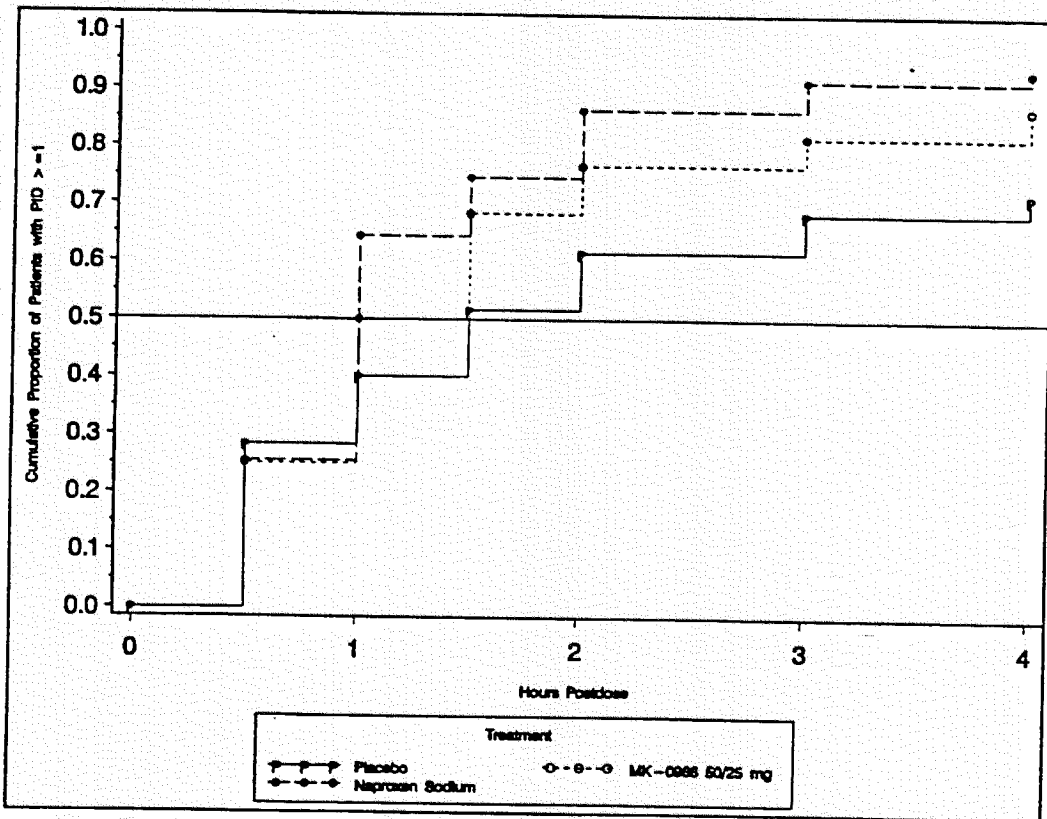
Treatment		Analysis of PRID by Timepoint (Hours Postdose, Last Value Carried Forward)										
		0.5	1	1.5	2	3	4	5	6	7	8	12
Placebo	N †	60	60	59	58	50	47	46	41	38	38	31
	MEAN	0.9 A	1.4 B	1.8 B	2.2 C	2.3 B	2.2 B	2.3 B	2.4 B	2.4 B	2.3 B	1.9 B
	STD	1.4	1.9	1.8	2.2	2.2	2.2	2.4	2.5	2.6	2.7	2.6
MK-0966 50/25 mg	N †	60	60	59	57	57	55	52	51	49	48	45
	MEAN	1.0 A	2.0 AB	2.5 B	3.1 B	3.9 A	4.1 A	4.1 A	4.3 A	4.1 A	4.0 A	3.7 A
	STD	1.5	2.0	1.9	2.1	2.5	2.5	2.4	2.3	2.4	2.5	2.7
Naproxen Sodium	N †	59	58	58	57	55	55	54	49	48	47	43
	MEAN	1.1 A	2.5 A	3.3 A	3.9 A	4.4 A	4.6 A	4.4 A	4.2 A	4.2 A	3.9 A	3.6 A
	STD	1.3	2.0	2.1	2.1	1.9	2.0	2.2	2.3	2.5	2.6	2.7
Within Patient Pooled SD		1.1	1.8	1.8	2.0	2.1	2.1	2.1	2.1	2.2	2.3	2.2
Effect		p-Values by Timepoint (Hours Postdose)										
Treatment ††		0.742	0.003	<0.001	<0.001	<0.001	<0.001	<0.001	<0.001	<0.001	<0.001	<0.001
Stratum (Baseline PI)		0.321	0.437	0.954	0.816	0.840	0.076	0.131	0.201	0.082	0.243	0.280
Rx-by-Stratum Interaction†††		0.938	0.359	0.340	0.292	0.362	0.194	0.092	0.157	0.137	0.326	0.129

†: Observed sample size
 ††: Model included sequence, patient (sequence), period, treatment, baseline Pain Intensity (PI) as factors.
 †††: Model included sequence, patient (sequence), period, treatment, baseline PI and treatment-by-baseline PI interaction as factors.
 A, B, C — Based on Model †† LSMeans. Letter A indicates the most effective dose(s), B indicates the next most effective, and so forth. Treatments sharing at least one letter were not significantly different from each other at the 5% significance level.
 All p-values from the pairwise comparisons are provided in Appendix [4.1.3] of the CSR

MK-0966 Prot. No. 055
Phase III Dysmenorrhea

Appendix 4.1.29 Five-Page Summary (cont.)

4. Analysis of Time to Onset of Analgesia (Time to PID ≥ 1)

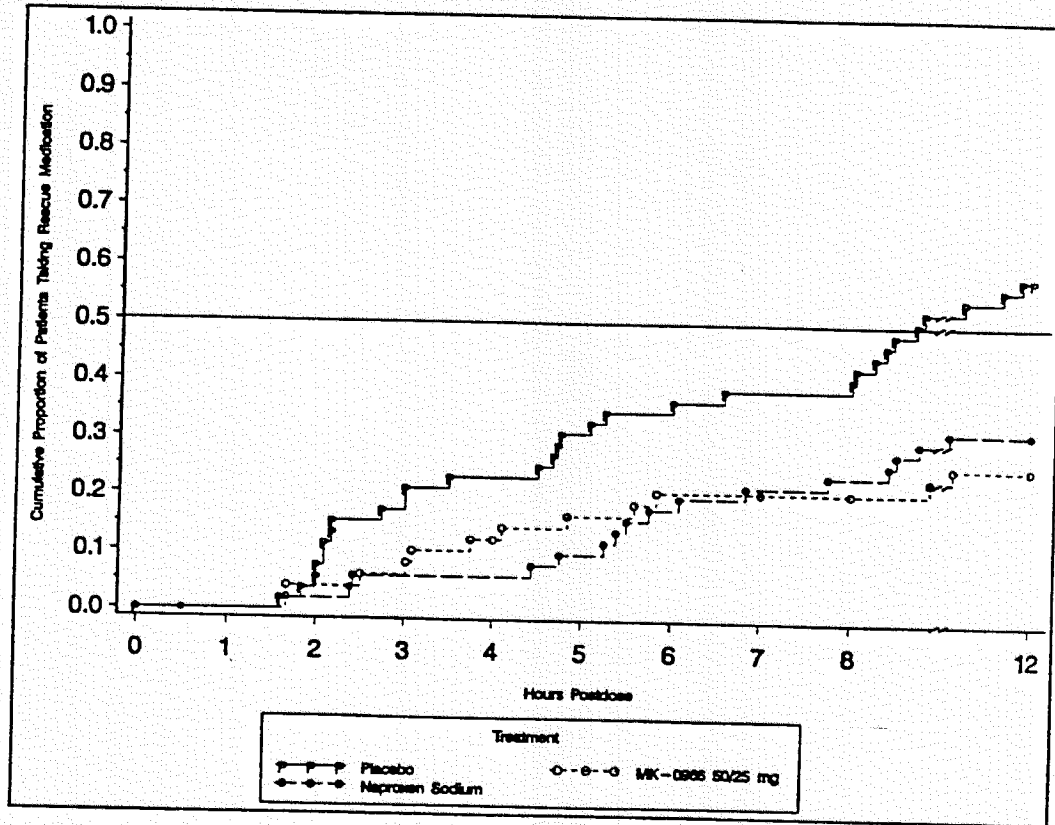


Treatment	N	Number(% ^a) of Patients PID ≥ 1	Time (Hour) to PID ≥ 1 by Percentile		
			25th	50th (95% CI)	75th
Placebo	60	43 (71.7)	0.5	1.5 (1.0, 3.0) B	NE
MK-0966 50/25 mg	60	52 (86.7)	0.8	1.3 (1.0, 1.5) A B	2.0
Naproxen Sodium	59	55 (93.2)	0.5	1.0 (NE, NE) A	2.0
Effect					p-Value
Treatment					0.008
Stratum (Baseline PI)					0.093
<p>^a: Kaplan-Meier estimate of incidence rate (This may be different from the crude rate). A, B, C — Letter A indicates the most effective dose(s), B indicates the next most effective, and so forth. Treatments sharing at least one letter were not significantly different from each other at the 5% significance level. NE: Not estimable. Percentile NE due to low percentage (<= x% for the x'th percentile). All p-values from the pairwise comparisons are provided in Table 27 of the CSR.</p>					

MK-0966 Prot. No. 055
Phase III Dysmenorrhea

Appendix 4.1.29 Five-Page Summary (cont.)

5. Analysis of Time to Rescue Medication Use



Treatment	N	Number(% [@]) of Patients Rescue Medication	Time (Hour) to Rescue Medication by Percentile		
			25th	50th (95% CI)	75th
Placebo	60	30 (51.3)	4.7	11.8 (8.5, NE) B	NE
MK-0966 50/25 mg	60	12 (20.4)	NE	NE A	NE
Naproxen Sodium	59	16 (27.6)	9.5	NE A	NE
Effect					p-Value
Treatment					<0.001
Stratum (Baseline PI)					0.427

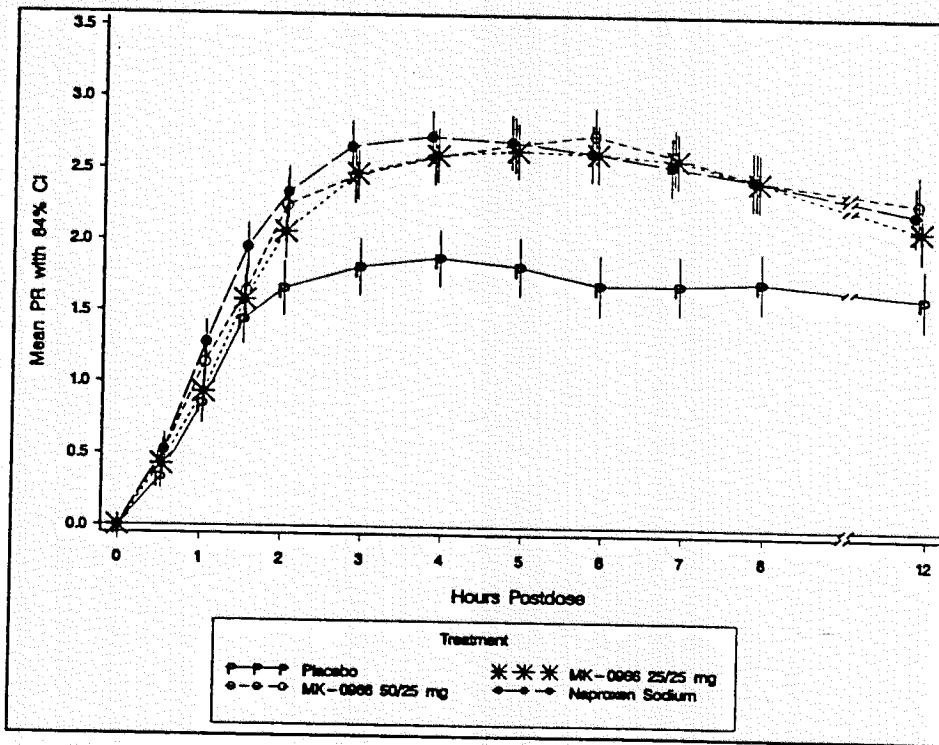
[@]: Kaplan-Meier estimate of incidence rate (This may be different from the crude rate).
A, B, C — Letter A indicates the most effective dose(s), B indicates the next most effective, and so forth. Treatments sharing at least one letter were not significantly different from each other at the 5% significance level.
NE: Not estimable. Percentile NE due to low percentage ($\leq x\%$ for the x'th percentile).
All p-values from the pairwise comparisons are provided in Table 31 of the CSR.

MK-0966 Prot. No. 056
Phase III Dysmenorrhea

APPENDIX 4.1

4.1.27: Five-Page Summary of Efficacy Results

Analysis of Pain Relief Over Time (Intention-to-Treat)



Treatment		Analysis of Pain Relief by Timepoint (Hours Postdose, Last Value Carried Forward)										
		0.5	1	1.5	2	3	4	5	6	7	8	12
Placebo	N †	118	118	118	117	99	89	83	78	72	67	64
	MEAN	0.3 A	0.8 C	1.4 B	1.7 B	1.8 B	1.9 B	1.8 B	1.7 B	1.7 B	1.7 B	1.6 B
	STD	0.6	1.1	1.4	1.5	1.6	1.6	1.6	1.7	1.7	1.7	1.7
MK-0966 25/25 mg	N †	115	115	113	113	107	99	97	94	90	89	84
	MEAN	0.4 A	0.9 BC	1.6 B	2.1 A	2.5 A	2.6 A	2.6 A	2.6 A	2.6 A	2.4 A	2.1 A
	STD	0.8	1.1	1.3	1.5	1.6	1.5	1.5	1.6	1.5	1.6	1.7
MK-0966 50/25 mg	N †	117	118	118	118	112	103	96	93	92	91	87
	MEAN	0.5 A	1.1 AB	1.8 B	2.2 A	2.4 A	2.6 A	2.7 A	2.7 A	2.6 A	2.4 A	2.3 A
	STD	0.8	1.2	1.3	1.5	1.5	1.5	1.5	1.5	1.6	1.6	1.6
Naproxen Sodium	N †	122	122	121	121	113	111	106	103	96	92	87
	MEAN	0.5 A	1.3 A	2.0 A	2.3 A	2.7 A	2.7 A	2.7 A	2.6 A	2.5 A	2.4 A	2.2 A
	STD	0.9	1.2	1.4	1.4	1.4	1.5	1.5	1.6	1.7	1.7	1.7
Within Patient Pooled SD		0.7	1.0	1.1	1.3	1.3	1.3	1.3	1.4	1.3	1.3	1.3
Effect		p-Values by Timepoint (Hours Postdose)										
Treatment ††		0.274	0.004	0.007	<0.001	<0.001	<0.001	<0.001	<0.001	<0.001	<0.001	<0.001
Stratum (Baseline PI)		0.528	0.263	0.043	0.108	0.099	0.163	0.274	0.409	0.640	0.299	0.993
Rx-by-Stratum Interaction †††		0.786	0.811	0.785	0.964	0.766	0.280	0.305	0.283	0.101	0.207	0.751

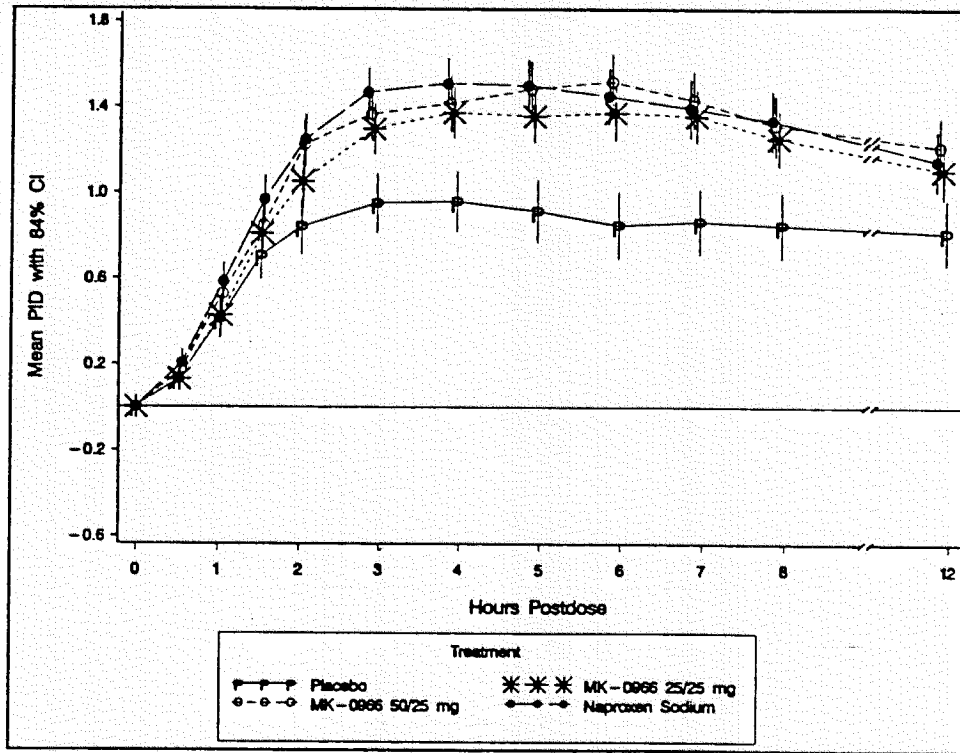
†: Observed sample size
 ††: Model included sequence, patient (sequence), period, treatment, baseline Pain Intensity (PI) as factors.
 †††: Model included sequence, patient (sequence), period, treatment, baseline PI and treatment-by-baseline PI interaction as factors.
 A, B, C — Based on Model †† LSMeans. Letter A indicates the most effective dose(s), B indicates the next most effective, and so forth. Treatments sharing at least one letter were not significantly different from each other at the 5% significance level.
 All p-values from the pairwise comparisons are provided in Appendix [4.1.1] of the CSR

MK-0966 Prot. No. 056
Phase III Dysmenorrhea

APPENDIX 4.1

4.1.27: Five-Page Summary of Efficacy Results (Cont.)

Analysis of PID Over Time (Intention-to-Treat)



Treatment		Analysis of PID by Timepoint (Hours Postdose, Last Value Carried Forward)										
		0.5	1	1.5	2	3	4	5	6	7	8	12
Placebo	N †	118	118	118	117	99	89	83	78	72	67	64
	MEAN	0.1 A	0.4 B	0.7 B	0.8 B	0.9 B	1.0 B	0.9 B	0.8 B	0.9 B	0.8 B	0.8 B
	STD	0.4	0.7	0.9	1.0	1.1	1.1	1.1	1.2	1.2	1.2	1.2
MK-0966 25/25 mg	N †	115	115	113	113	107	99	97	94	90	89	84
	MEAN	0.1 A	0.4 A B	0.8 A B	1.1 A	1.3 A	1.4 A	1.4 A	1.4 A	1.4 A	1.3 A	1.1 A
	STD	0.4	0.7	0.8	0.9	0.9	1.0	1.0	1.0	1.0	1.0	1.0
MK-0966 50/25 mg	N †	117	118	118	118	112	103	96	93	92	91	87
	MEAN	0.2 A	0.5 A B	0.8 A B	1.2 A	1.4 A	1.4 A	1.5 A	1.5 A	1.4 A	1.3 A	1.2 A
	STD	0.4	0.7	0.8	0.9	1.0	1.0	1.0	1.0	1.1	1.1	1.1
Naproxen Sodium	N †	122	122	121	121	113	111	106	103	96	92	87
	MEAN	0.3 A	0.6 A	1.0 A	1.2 A	1.5 A	1.5 A	1.5 A	1.5 A	1.4 A	1.3 A	1.1 A
	STD	0.5	0.7	0.9	1.0	0.9	1.0	1.0	1.0	1.1	1.1	1.1
Within Patient Pooled SD		0.4	0.6	0.7	0.8	0.8	0.8	0.9	0.9	0.9	0.9	0.9
Effect		p-Values by Timepoint (Hours Postdose)										
Treatment ††		0.373	0.087	0.025	<0.001	<0.001	<0.001	<0.001	<0.001	<0.001	<0.001	<0.001
Stratum (Baseline PI)		0.003	0.006	0.002	<0.001	<0.001	<0.001	<0.001	<0.001	<0.001	<0.001	<0.001
Rx-by-Stratum Interaction †††		0.568	0.504	0.876	0.858	0.921	0.510	0.188	0.188	0.098	0.099	0.464

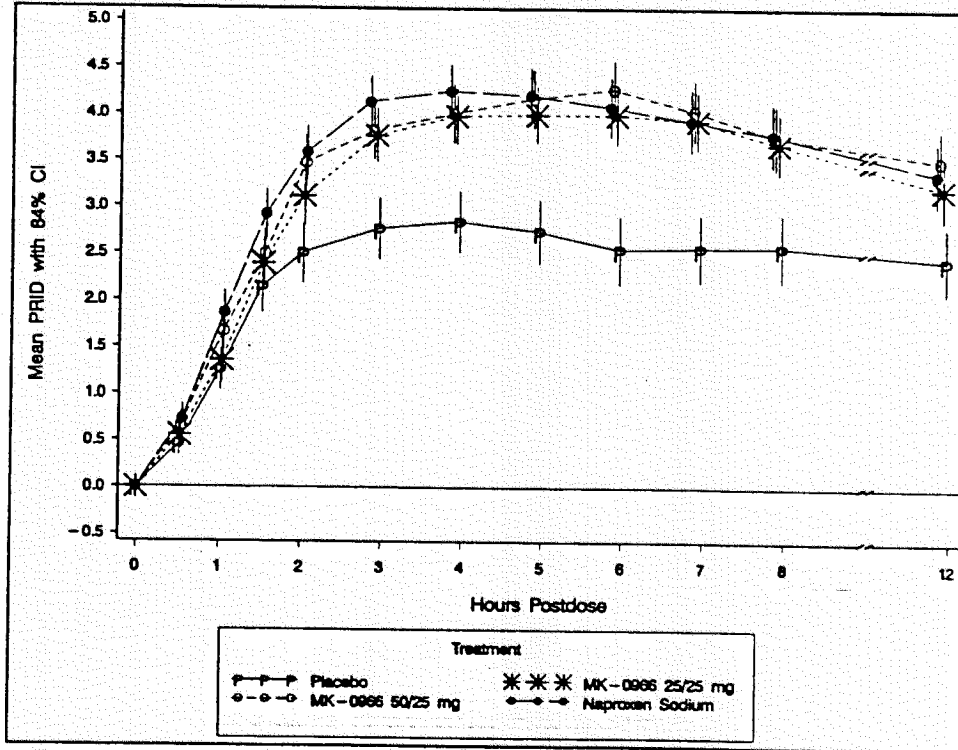
†: Observed sample size
 ††: Model included sequence, patient (sequence), period, treatment, baseline Pain Intensity (PI) as factors.
 †††: Model included sequence, patient (sequence), period, treatment, baseline PI and treatment-by-baseline PI interaction as factors.
 A, B, C — Based on Model †† LSMeans. Letter A indicates the most effective dose(s), B indicates the next most effective, and so forth. Treatments sharing at least one letter were not significantly different from each other at the 5% significance level.
 All p-values from the pairwise comparisons are provided in Appendix [4.1.2] of the CSR.

MK-0966 Prot. No. 056
Phase III Dysmenorrhea

APPENDIX 4.1

4.1.27: Five-Page Summary of Efficacy Results (Cont.)

Analysis of PRID Over Time (Intention-to-Treat)



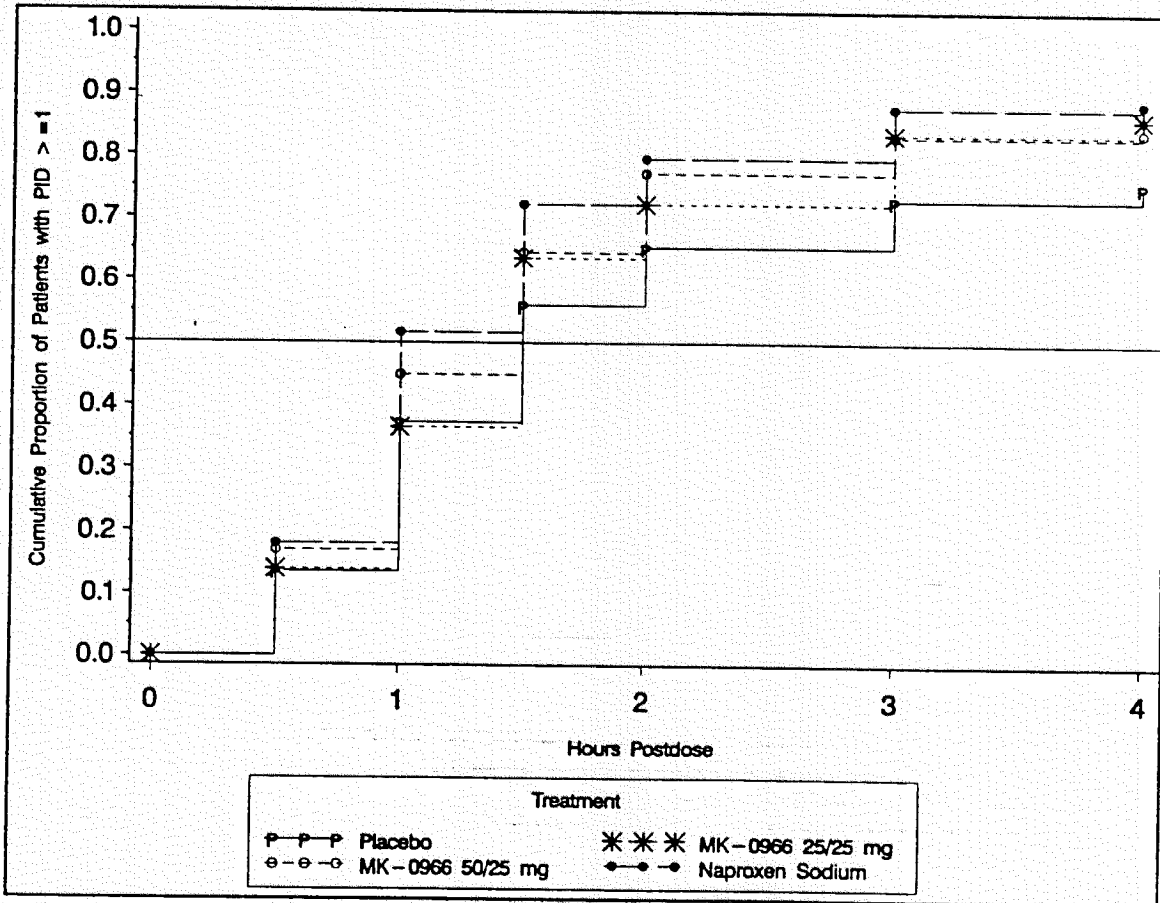
Treatment		Analysis of PRID by Timepoint (Hours Postdose, Last Value Carried Forward)										
		0.5	1	1.5	2	3	4	5	6	7	8	12
Placebo	N †	118	118	118	117	99	89	83	78	72	67	64
	MEAN	0.5 A	1.3 C	2.1 B	2.5 B	2.8 B	2.8 B	2.7 B	2.5 B	2.6 B	2.6 B	2.4 B
	STD	1.0	1.7	2.2	2.5	2.6	2.6	2.7	2.9	2.8	2.8	2.8
MK-0966 25/25 mg	N †	115	115	113	113	107	99	97	94	90	89	84
	MEAN	0.6 A	1.4 BC	2.4 B	3.1 A	3.8 A	4.0 A	4.0 A	4.0 A	3.9 A	3.7 A	3.2 A
	STD	1.2	1.8	2.1	2.3	2.3	2.3	2.4	2.5	2.4	2.5	2.6
MK-0966 50/25 mg	N †	117	118	118	118	112	103	96	93	92	91	87
	MEAN	0.7 A	1.7 AB	2.5 A B	3.5 A	3.8 A	4.0 A	4.2 A	4.3 A	4.0 A	3.8 A	3.5 A
	STD	1.2	1.8	2.1	2.4	2.4	2.5	2.5	2.5	2.6	2.7	2.6
Naproxen Sodium	N †	122	122	121	121	113	111	106	103	96	92	87
	MEAN	0.7 A	1.9 A	2.9 A	3.6 A	4.1 A	4.2 A	4.2 A	4.1 A	3.9 A	3.8 A	3.4 A
	STD	1.3	1.9	2.2	2.3	2.3	2.3	2.4	2.5	2.7	2.7	2.7
Within Patient Pooled SD		1.1	1.6	1.8	2.1	2.0	2.1	2.1	2.2	2.2	2.2	2.1
Effect		p-Values by Timepoint (Hours Postdose)										
Treatment ††		0.266	0.010	0.008	<0.001	<0.001	<0.001	<0.001	<0.001	<0.001	<0.001	<0.001
Stratum (Baseline PI)		0.469	0.678	0.955	0.571	0.448	0.292	0.164	0.119	0.046	0.146	0.027
Rx-by-Stratum Interaction †††		0.833	0.693	0.963	0.974	0.860	0.378	0.253	0.248	0.094	0.158	0.625
†: Observed sample size												
††: Model included sequence, patient (sequence), period, treatment, baseline Pain Intensity (PI) as factors.												
†††: Model included sequence, patient (sequence), period, treatment, baseline PI and treatment-by-baseline PI interaction as factors.												
A, B, C — Based on Model †† LSMeans. Letter A indicates the most effective dose(s), B indicates the next most effective, and so forth. Treatments sharing at least one letter were not significantly different from each other at the 5% significance level.												
All p-values from the pairwise comparisons are provided in Appendix [4.1.3] of the CSR.												

MK-0966 Prot. No. 056
Phase III Dysmenorrhea

APPENDIX 4.1

4.1.27: Five-Page Summary of Efficacy Results (Cont.)

Analysis of Time to Onset of Analgesia (Time to PID ≥ 1)



Treatment	N	Number(%) ^a of Patients PID ≥ 1	Time (Hour) to PID ≥ 1 by Percentile		
			25th	50th (95% CI)	75th
Placebo	118	89 (75.4)	1.0	1.5 (1.5, 2.0) B	4.0
MK-0966 25/25 mg	115	99 (86.1)	1.0	1.5 (NE , NE) A B	3.0
MK-0966 50/25 mg	118	99 (83.9)	1.0	1.5 (1.0, 1.5) A B	2.0
Naproxen Sodium	122	108 (88.5)	1.0	1.0 (1.0, 1.5) A	2.0
Effect					p-Value
Treatment					0.025
Stratum (Baseline PI)					0.299

^a: Kaplan-Meier estimate of incidence rate (This may be different from the crude rate).

A, B, C — Letter A indicates the most effective dose(s), B indicates the next most effective, and so forth. Treatments sharing at least one letter were not significantly different from each other at the 5% significance level.

NE: Not estimable.

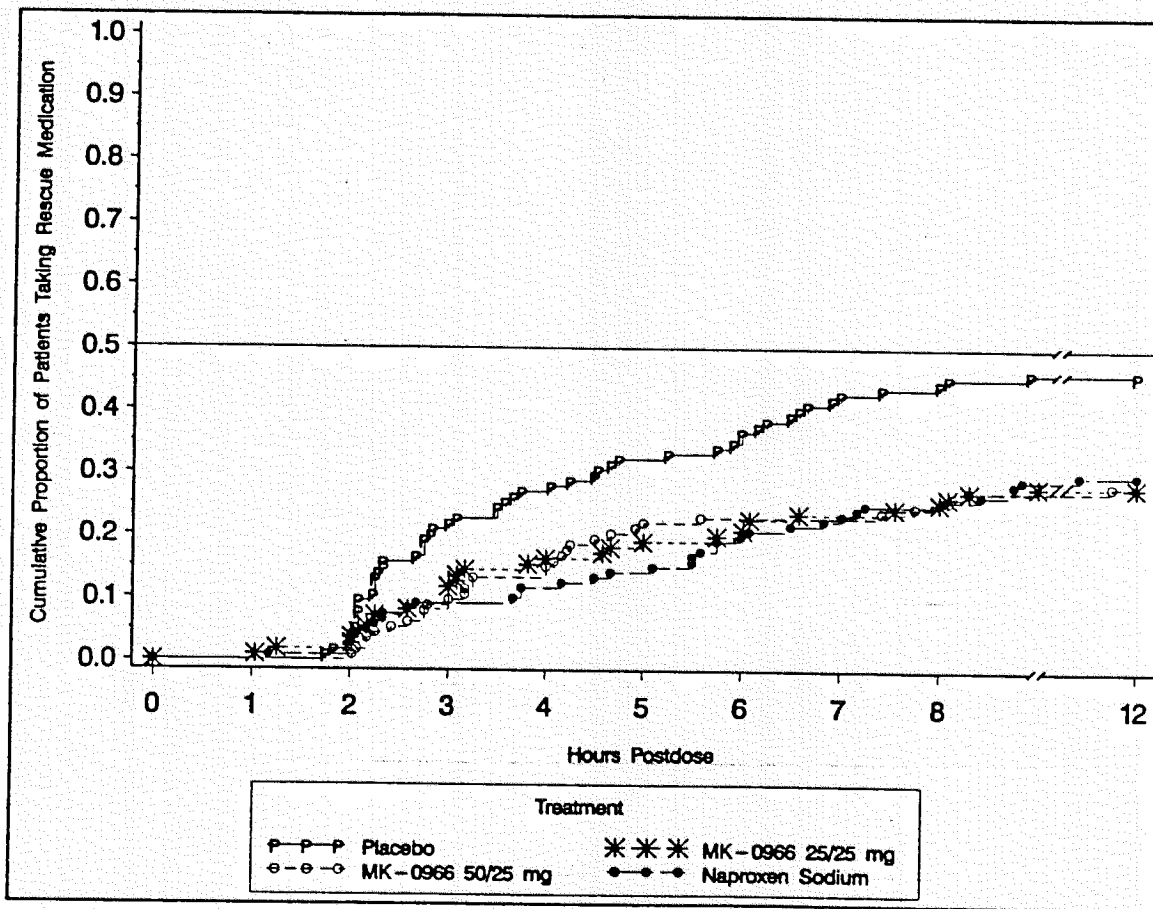
All p-values from the pairwise comparisons are provided in Table 27 of the CSR.

MK-0966 Prot. No. 056
Phase III Dysmenorrhea

APPENDIX 4.1

4.1.27: Five-Page Summary of Efficacy Results (Cont.)

Analysis of Time to Rescue Medication Use

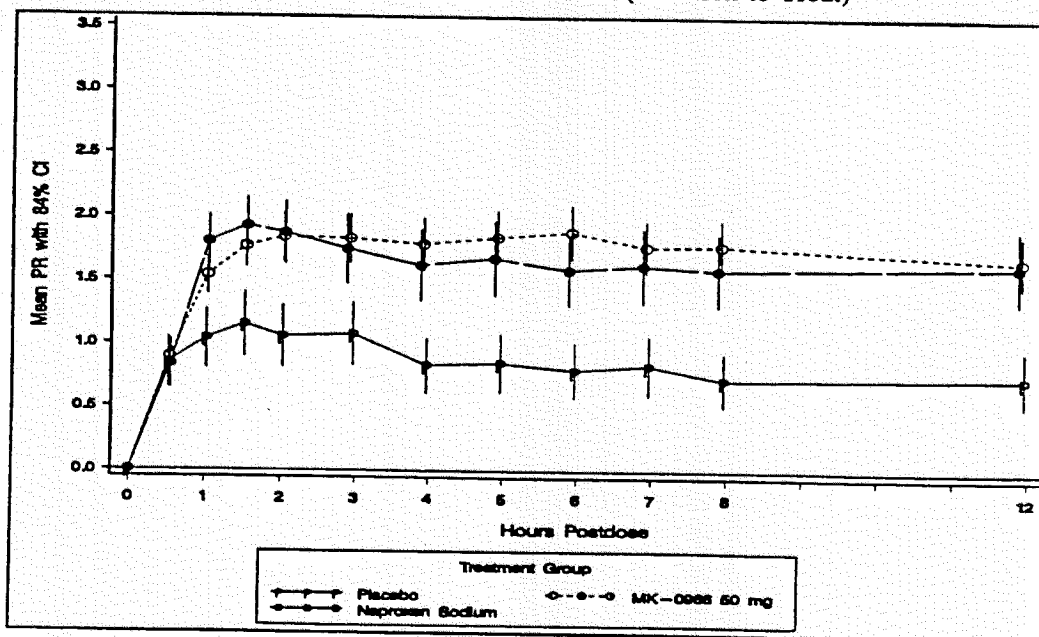


Treatment	N	Number (%) [@] of Patients Rescue Medication	Time (Hour) to Rescue Medication by Percentile		
			25th	50th (95% CI)	75th
Placebo	118	53 (45.3)	3.7	NE B	NE
MK-0966 25/25 mg	115	31 (27.0)	8.2	NE A	NE
MK-0966 50/25 mg	118	32 (27.1)	8.3	NE A	NE
Naproxen Sodium	122	36 (29.5)	8.1	NE A	NE
Effect					p-Value
Treatment					0.002
Stratum (Baseline PI)					0.028
<p>[@]: Kaplan-Meier estimate of incidence rate (This may be different from the crude rate). A, B, C — Letter A indicates the most effective dose(s), B indicates the next most effective, and so forth. Treatments sharing at least one letter were not significantly different from each other at the 5% significance level. NE: Not estimable because less than 50% of patients took rescue medication. All p-values from the pairwise comparisons are provided in Table 31 of the CSR.</p>					

MK-0966 Prot. No. 072
Phase III Postorthopedic Surgical Pain

APPENDIX 4.1

**Appendix 4.1.37: Five-Page Summary of Efficacy
Analysis of Pain Relief over Time (Intention-to-Treat)**



Treatment		Summary Statistics by Timepoint (Hours Postdose, Last Value Carried Forward)											
		0.5	1	1.5	2	3	4	5	6	7	8	12	
Placebo	N†	53	53	45	33	27	21	16	8	8	7	2	
	MEAN	0.8 A	1.0 B	1.2 B	1.1 B	1.1 B	0.8 B	0.8 B	0.8 B	0.8 B	0.7 B	0.7 B	
	STD	1.0	1.2	1.3	1.3	1.3	1.1	1.2	1.1	1.2	1.1	1.1	
MK-0966 50 mg	N†	110	110	97	86	80	68	58	53	46	46	40	
	MEAN	0.9 A	1.5 A	1.8 A	1.8 A	1.8 A	1.8 A	1.8 A	1.9 A	1.8 A	1.8 A	1.7 A	
	STD	1.0	1.1	1.2	1.4	1.5	1.6	1.6	1.6	1.5	1.6	1.5	
Naproxen Sodium	N†	55	55	52	49	44	32	28	27	21	19	14	
	MEAN	0.8 A	1.8 A	1.9 A	1.9 A	1.7 A	1.6 A	1.7 A	1.6 A	1.6 A	1.6 A	1.6 A	
	STD	1.0	1.1	1.2	1.3	1.4	1.5	1.5	1.5	1.5	1.5	1.5	
Pooled SD		1.0	1.1	1.2	1.3	1.4	1.4	1.5	1.4	1.4	1.4	1.4	
Effect		p-Values by Timepoint (Hours Postdose)											
Treatment ††		0.932	0.002	0.003	0.001	0.008	<0.001	<0.001	<0.001	<0.001	<0.001	<0.001	
Baseline Pain Intensity (PI) ††		0.232	0.371	0.042	0.018	0.065	0.116	0.110	0.042	0.011	0.055	0.045	
Center (Study Site) ††		<0.001	0.150	0.299	0.243	0.078	0.009	0.036	0.032	0.031	0.036	0.008	
Surgical Procedure (Surgery) ††		0.419	0.437	0.301	0.930	0.200	0.078	0.094	0.114	0.216	0.147	0.336	
Rx-by-Baseline PI Interaction†††		0.969	0.645	0.636	0.897	0.438	0.788	0.848	0.989	0.991	0.995	0.985	
Rx-by-Center Interaction†††		0.131	0.808	0.346	0.865	0.339	0.385	0.288	0.792	0.839	0.790	0.931	
Rx-by-Surgery Interaction†††		0.166	0.932	0.637	0.093	0.048	0.321	0.425	0.460	0.278	0.694	0.831	

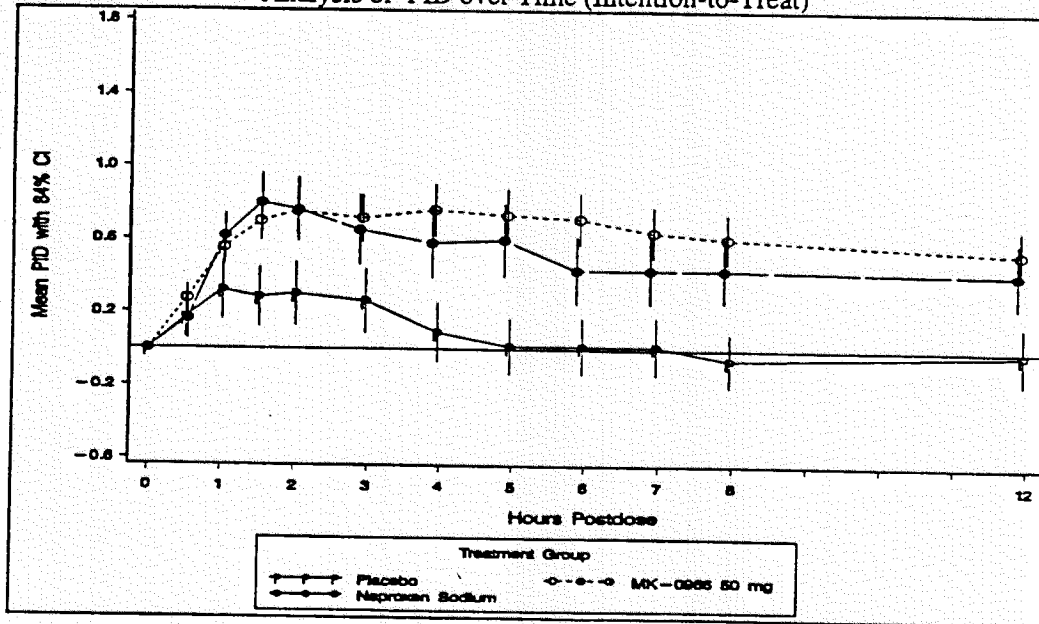
†: Observed sample size
 ††: Model included baseline Pain Intensity (PI), center, surgical procedure, and treatment as factors.
 †††: Model included baseline PI, center, surgical procedure, treatment, and the three factor-by-treatment interactions.
 A, B, C — Based on Model †† LSMeans. Letter A indicates the most effective dose(s), B indicates the next most effective, and so forth. Treatments sharing at least one letter were not significantly different from each other at the 5% significance level.
 All p-values from the pairwise comparisons are provided in Appendix [4.1.1] of the CSR.

MK-0966 Prot. No. 072
Phase III Postorthopedic Surgical Pain

APPENDIX 4.1

Appendix 4.1.37: Five-Page Summary of Efficacy (Cont.)

Analysis of PID over Time (Intention-to-Treat)



Treatment		Summary Statistics by Timepoint (Hours Postdose, Last Value Carried Forward)											
		0.5	1	1.5	2	3	4	5	6	7	8	12	
Placebo	N †	53	53	45	33	27	21	16	8	8	7	2	
	MEAN	0.2 A	0.3 B	0.3 B	0.3 B	0.2 B	0.1 B	0.0 B	0.0 B	0.0 B	-0.1 B	-0.0 B	
	STD	0.6	0.8	0.9	0.9	0.9	0.9	0.8	0.8	0.8	0.8	0.8	
MK-0966 50 mg	N †	110	110	97	86	80	68	59	52	46	46	40	
	MEAN	0.3 A	0.6 A	0.7 A	0.8 A	0.7 A	0.8 A	0.7 A	0.7 A	0.6 A	0.6 A	0.5 A	
	STD	0.6	0.7	0.8	1.0	1.0	1.1	1.1	1.1	1.1	1.0	1.0	
Naproxen Sodium	N †	55	55	52	49	44	32	28	27	21	19	14	
	MEAN	0.2 A	0.6 A	0.8 A	0.8 A	0.7 A	0.6 A	0.6 A	0.4 A	0.4 A	0.4 A	0.4 A	
	STD	0.6	0.7	0.8	0.9	1.0	1.0	1.0	1.0	1.0	0.9	0.9	
Pooled SD		0.5	0.7	0.8	0.9	0.9	1.0	1.0	1.0	1.0	0.9	0.9	
Effect		p-Values by Timepoint (Hours Postdose)											
Treatment ††		0.454	0.042	0.001	0.006	0.014	<0.001	<0.001	<0.001	<0.001	<0.001	0.002	
Baseline Pain Intensity (PI) ††		0.035	0.013	0.007	0.044	0.005	0.003	0.012	0.022	0.012	0.026	0.016	
Center (Study Site) ††		<0.001	0.053	0.378	0.186	0.017	0.008	0.048	0.296	0.212	0.231	0.161	
Surgical Procedure (Surgery) ††		0.064	0.618	0.042	0.527	0.080	0.014	0.053	0.059	0.041	0.031	0.079	
Rx-by-Baseline PI Interaction †††		0.545	0.764	0.185	0.506	0.125	0.824	0.696	0.951	0.999	0.867	0.983	
Rx-by-Center Interaction †††		0.625	0.315	0.005	0.678	0.366	0.563	0.287	0.621	0.700	0.503	0.565	
Rx-by-Surgery Interaction †††		0.363	0.973	0.282	0.484	0.215	0.175	0.195	0.242	0.165	0.460	0.405	

†: Observed sample size
 ††: Model included baseline Pain Intensity (PI), center, surgical procedure, and treatment as factors.
 †††: Model included baseline PI, center, surgical procedure, treatment, and the three factor-by-treatment interactions.
 A, B, C — Based on Model †† LSMeans. Letter A indicates the most effective dose(s), B indicates the next most effective, and so forth. Treatments sharing at least one letter were not significantly different from each other at the 5% significance level.
 All p-values from the pairwise comparisons are provided in Appendix [4.1.2] of the CSR.