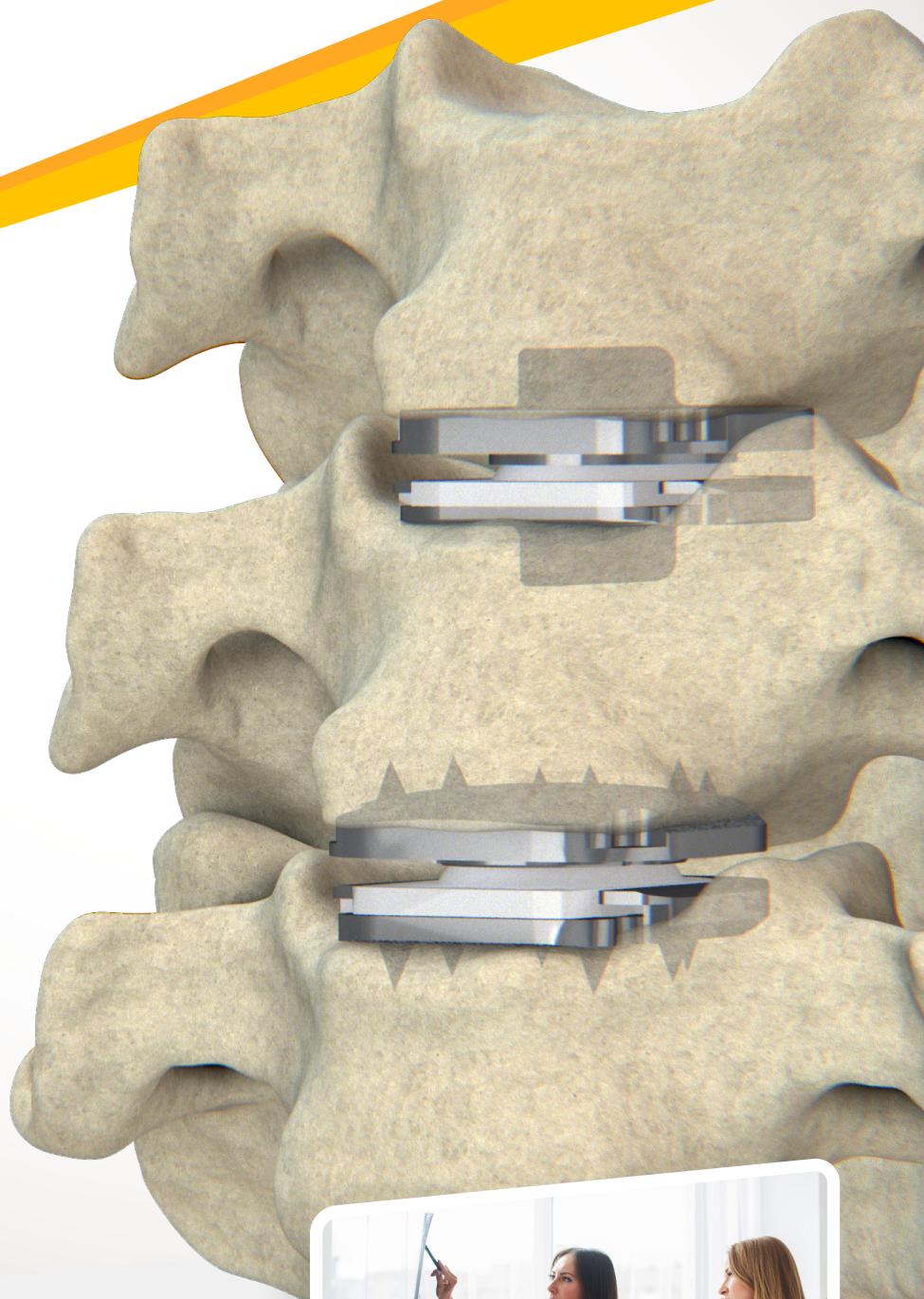


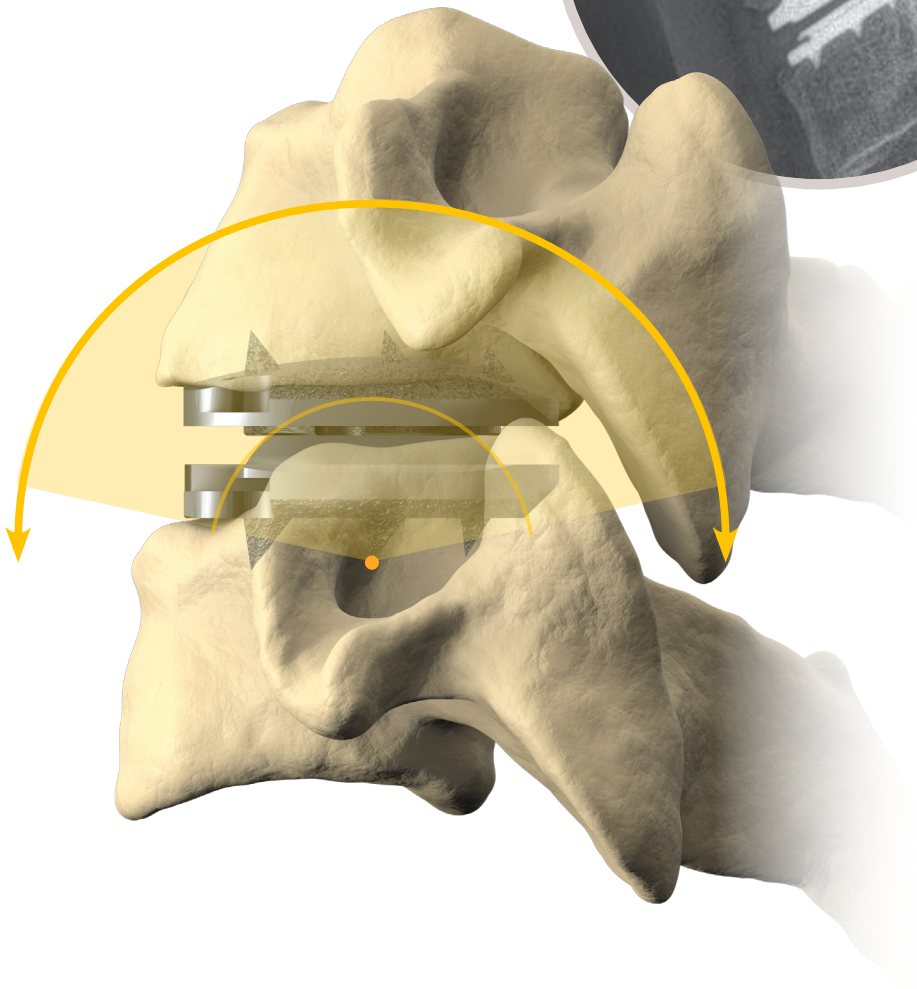
# CENTINEL SPINE®

## Patient Information Guide



**prodisc®**  
For Cervical Total Disc Replacement





# prodisc®

## For Cervical Total Disc Replacement

### TABLE OF CONTENTS

<b>Glossary</b>	<b>4 - 5</b>	<b>What are the Potential Risks for the prodisc Cervical Total Disc Replacement Device?</b>	<b>12</b>
<b>Introduction</b>	<b>6</b>	<b>About the Surgery</b>	<b>14</b>
Why Have I Been Given This Information Guide?	6	What Can I Expect Before the Surgery?	14
What is Important For Me to Understand About My Spine?	6	What Can I Expect During the Surgery?	14
Why Might I Need Surgery?	7	What Can I Expect After the Surgery?	14
<b>About prodisc for Cervical Total Disc Replacement</b>	<b>8</b>	After You Go Home	14
What Is the prodisc Cervical Total Disc Replacement Device?	8 - 9	Your Doctor May Recommend...	14
How is Surgery with prodisc for Cervical Total Disc Replacement Different from Other Surgical Choices?	10	When to Contact Your Doctor...	14
Who Should Receive prodisc for Cervical Total Disc Replacement and What is it Designed To Do?	10	What are the Expected Outcomes of the Surgery?	16
Who Should Not Receive prodisc for Cervical Total Disc Replacement?	11	Making the Choice for Surgery	16
What Warnings and Precautions Should I Pay Attention To?	11	Conclusion	16
		Cautions & Warnings	16 - 17
		When Can I Travel After prodisc Cervical Total Disc Replacement Surgery?	18
		Where Can I Find Out More Information?	18
		<b>Patient Information</b>	<b>19</b>

## GLOSSARY

<b>Alleviate:</b>	To make something less severe or more bearable, especially pain.
<b>Anterior:</b>	Front of the body.
<b>Anterior Cervical Disectomy and Fusion (ACDF):</b>	A surgical procedure in which a damaged disc is removed and replaced with material to encourage a fusion between the two vertebrae.
<b>Artificial Disc Replacement Device:</b>	A medical implant designed to replace a worn out disc.
<b>Bone Graft:</b>	A transplant of bone taken from one area to another area.
<b>Cobalt chromium molybdenum alloy (CoCrMo):</b>	A metallic material used in implants.
<b>Computerized Tomography (CT):</b>	An x-ray procedure that combines many x-ray images to create cross-sectional images (like slices) of the body.
<b>Degenerated:</b>	To fall or deteriorate below a normal or desirable state functionally, to decline in quality.
<b>Disc:</b>	The soft tissue found between the bones of the spinal column that helps cushion the spine.
<b>Discectomy:</b>	A surgical procedure in which the soft tissue (central) portion of a disc is removed.
<b>Extension (In the neck):</b>	Bending the head backward.
<b>Facet Joint:</b>	Joints that connect the vertebrae together in the back of the spine and slide against one another during motion.
<b>Flexion (In the neck):</b>	Bending the head forward.
<b>Fusion:</b>	Joining two bones together so that they no longer move.
<b>Herniated Disc:</b>	A disc that, due to use, injury or disease, bulges outside its normal area, potentially causing pain and limiting function.
<b>Incision:</b>	During surgery, a cut into a body tissue or organ with a sharp instrument.
<b>Intervertebral:</b>	Located between the spinal vertebrae.
<b>Investigational Device Exemption (IDE):</b>	Allows an investigational device to be used in a clinical study to collect safety and effectiveness data.
<b>Lateral Bending (In the neck):</b>	Bending the head from side to side.

<b>Lordosis:</b>	The natural curve of the spine in both the neck (cervical) and lower back (lumbar) regions. The spine's natural curves position the head over the pelvis and work as shock absorbers during movement. An excessive curve of the spine can be painful, sometimes affecting movement.
<b>Magnetic Resonance Imaging (MRI):</b>	A radiographic (like an X-ray) procedure that uses magnets to create cross-sectional images (like slices) of the body.
<b>Medical Device:</b>	An instrument, apparatus, or implant designed to diagnose, prevent, or treat a disease or other condition. A medical implant is a medical device placed inside the body by means of surgery.
<b>Non-inferior:</b>	A new treatment is not unacceptably worse than the comparator treatment.
<b>Osteopenia:</b>	Mild loss of bone mineral density (BMD), usually seen as a precursor to osteoporosis.
<b>Osteoporosis:</b>	A disease in which the bones deteriorate and become weakened, fragile, and easily broken. Bone mineral density (BMD) is reduced as minerals, such as calcium, leach out. Any bone can be affected by osteoporosis, but spinal or vertebral fractures can cause severe back pain and lead to loss of height and spinal deformity.
<b>Pars Defect:</b>	The pars is a short section of bone within a vertebra. A pars defect is a fracture (break) of the pars.
<b>Ultra-High Molecular Weight Polyethylene (UHMWPE):</b>	Hard plastic used between the metal endplates.
<b>Rehabilitation:</b>	To restore to good health or good condition through therapy and education.
<b>Symptomatic Cervical Disc Disease (SCDD):</b>	SCDD is a condition that can occur when the cervical discs no longer function normally because of aging, wear, or from being injured.
<b>Spinal Arthroplasty:</b>	The reconstruction of a damaged or diseased disc. also known as Total Disc Replacement.
<b>Spinal Stenosis:</b>	A condition that occurs when the space that holds the spinal cord and nerve roots becomes narrowed or restricted. Stenosis can squeeze nerves and the spinal cord, leading to pain in the lower back and legs, or in the neck, arms, and hands, depending on where the narrowing is occurring in the spine.
<b>Spondylolisthesis:</b>	A vertebrae that has slipped on the vertebrae below. This usually occurs when a vertebra has a bony defect (spondylolysis) on both sides of the bony ring.
<b>Spondylosis:</b>	A degenerative condition in which the vertebral joints of the spine may stiffen or fuse.
<b>Systemic:</b>	Pertaining to or affecting a particular body system.
<b>Vertebrae:</b>	The bones of the spine that make up the spinal column, with a hole for the spinal cord to pass through.
<b>X-ray:</b>	An image produced by the use of radiation waves, showing bone and other tissues in the body.

## INTRODUCTION

### Why Have I Been Given This Information Guide?

After reviewing your medical history and x-rays, and taking into account the results of other diagnostic studies, your doctor has decided that you may benefit from spine surgery. This patient information guide is provided to assist you in making a decision about the treatment of your arm and/or neck pain with one of the prodisc Cervical Total Disc Replacement devices (**prodisc C**, **prodisc C Vivo**, **prodisc C SK**, or **prodisc C Nova**) manufactured by Centinel Spine.

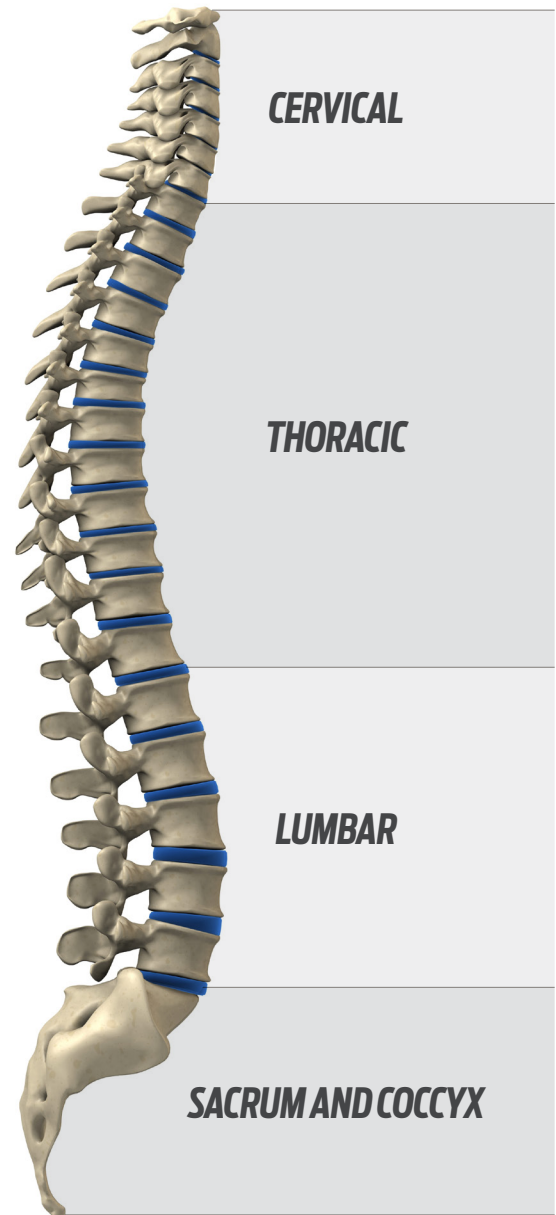
### What is Important For Me to Understand About My Spine?

Your spine (**Figure 1**) is the structure that supports and stabilizes your body and allows motion. It gives you the ability to perform activities such as walking, bending and sitting. It also provides protection for your spinal cord and nerve roots.

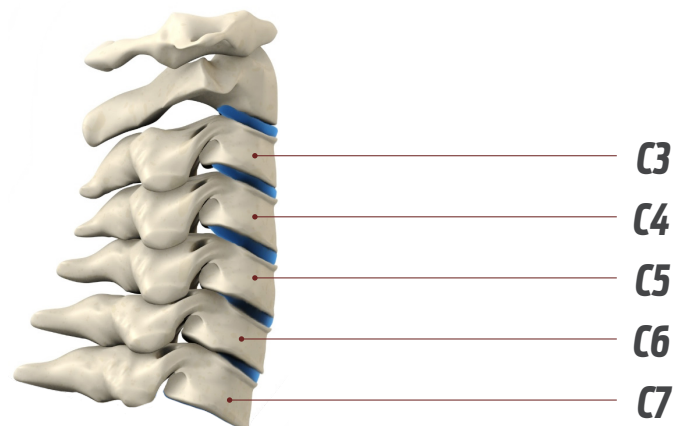
Your spine is made up of bones called vertebrae that are stacked on top of each other to form a column. Each vertebra has a hole in the center through which the spinal cord passes. The spinal cord contains nerves that carry signals from your brain to the rest of the body. The vertebrae are separated by soft, cushioning intervertebral discs which maintain an appropriate space to support motion and allow nerves to pass through your spine to many different parts of your body.

The spine is divided into four regions. The cervical region (commonly called the neck) contains the seven uppermost vertebrae in your neck. The thoracic region (commonly known as the rib section) contains the twelve vertebrae in your mid-back. The lumbar region (commonly known as the lower back) contains the five vertebrae in your lower back. The sacrum and coccyx region (commonly called the tail bone) contains the bones in the base of the spine.

prodisc Cervical Total Disc Replacement devices are used to treat the lower cervical spine. Your doctor may refer to the involved cervical areas as C3, C4, C5, C6, or C7 (**Figure 2**).



**Figure 1:** The Spinal Column



**Figure 2:** Levels of the Cervical Spine

## Why Might I Need Surgery?

Your doctor has diagnosed you with **symptomatic cervical disc disease (SCDD)**.

prodisc **C Vivo** and prodisc **C SK** are indicated for reconstruction of the disc from C3-C7 following discectomy at two contiguous levels for intractable radiculopathy (arm pain and/or a neurological deficit) with or without neck pain, or myelopathy due to abnormality localized to the level of the disc space and at least one of the following conditions confirmed by radiographic imaging (CT, MRI, X-rays):

- herniated nucleus pulposus
- spondylosis (defined by the presence of osteophytes)
- and/or visible loss of disc height compared to adjacent levels

The prodisc **C Vivo** and prodisc **C SK** are implanted using an anterior approach. Subjects should have failed at least 6 weeks of conservative treatment or demonstrated progressive signs or symptoms despite nonoperative treatment prior to implantation of the prodisc **C Vivo** and prodisc **C SK**.

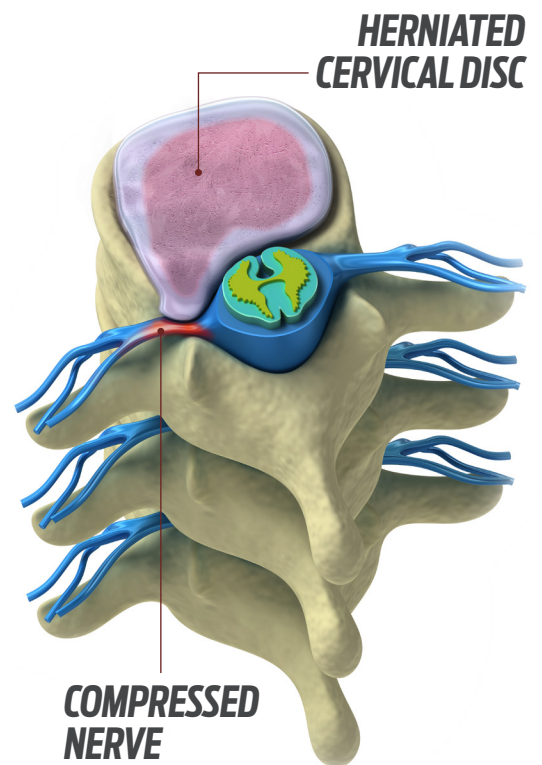
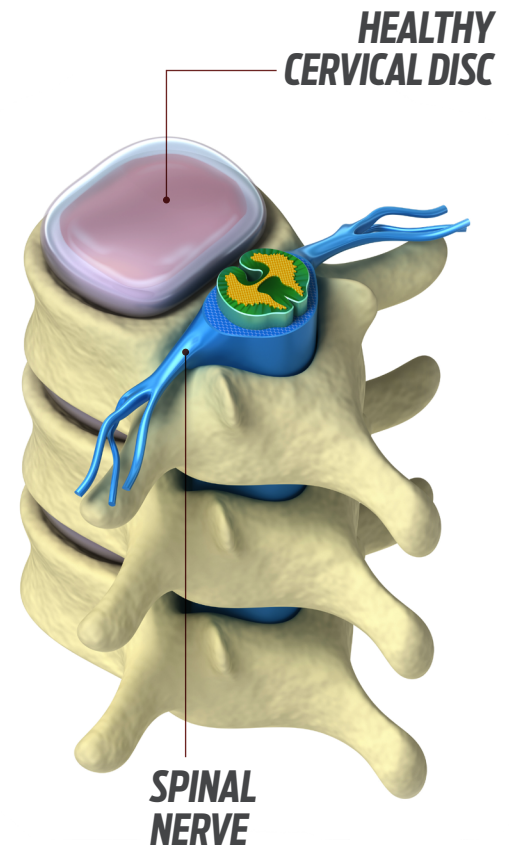
prodisc **C** and prodisc **C Nova** are indicated for symptomatic cervical disc disease (SCDD) at a single level, which is defined as neck or arm (radicular) pain and/or a functional / neurological deficit with at least one of the following conditions confirmed by imaging (CT, MRI, or x-rays):

- herniated nucleus pulposus
- spondylosis (defined by the presence of osteophytes)
- loss of disc height

Your doctor may call your condition a **herniated disc**, **spondylosis**, or **radiculopathy**. Normally, the intervertebral disc between each pair of vertebrae provides the cushioning space that keeps the bones separated. Symptomatic cervical disc disease (SCDD) can occur when the discs no longer work normally because of wear or from being injured. This can cause the vertebral bodies to compress or lose height, and they may press on the nerves or the spinal cord. This can cause pain and/or numbness in the arms and neck and limit your ability to perform daily activities.

If you have been diagnosed with SCDD and your pain has failed to improve after at least six weeks of conservative (nonsurgical) treatment such as physical therapy or medication, you may get relief by having surgery. One type of surgery is total disc replacement surgery. A computed tomography (CT) scan, magnetic resonance imaging (MRI) and/or x-rays may be required to confirm the source of your pain and to help your doctor determine if you are a suitable candidate for surgery, including total disc replacement.

**Warning:** In the USA, each individual prodisc Cervical product has labeling limitations. See package insert for complete information.



**Figure 3: Healthy Disc vs. Damaged Disc**

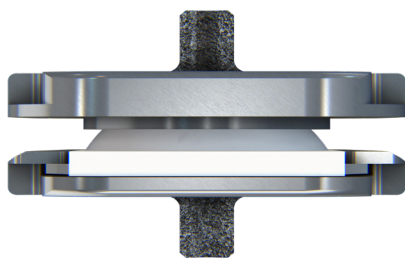
# ABOUT **prodisc**® FOR CERVICAL TOTAL DISC REPLACEMENT SYSTEM

## What Is the **prodisc** Cervical Total Disc Replacement Device?

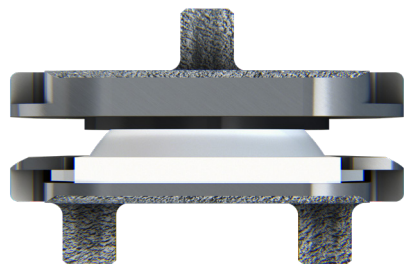
There are several **prodisc** devices in the Cervical Total Disc Replacement system, including **prodisc C**, **prodisc C Vivo**, **prodisc C SK**, and **prodisc C Nova**. All **prodisc** Cervical Total Disc Replacement devices are composed of top and bottom metal cobalt chromium (CO-28Cr-6Mo) endplates, with a plastic inlay (ultra-high molecular weight polyethylene) (**Figures 4 - 7**).

All **prodisc** Cervical Total Disc Replacement devices provide the possibility for motion by allowing the top endplate to move over the plastic ball attached to the bottom endplate (**Figure 8**).

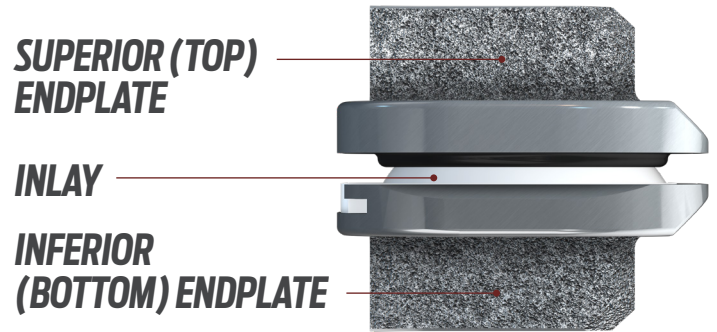
The materials used in the **prodisc** Cervical Total Disc Replacement devices have been used in spinal disc replacement for over 35 years and are the most commonly used materials in knee and hip replacements worldwide.



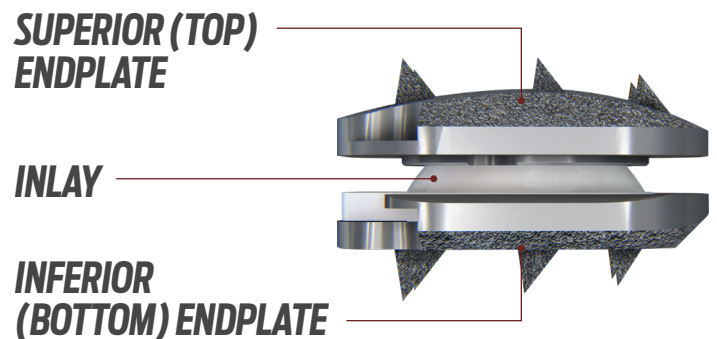
**Figure 6a:** The **prodisc C SK** Implant in A/P View



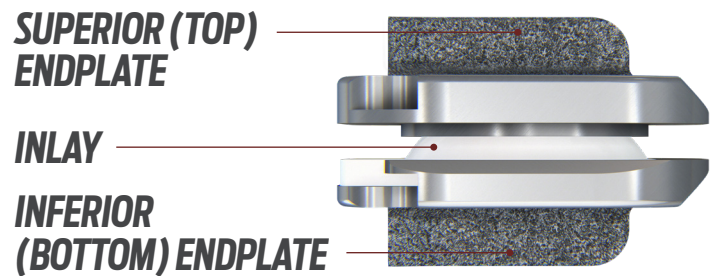
**Figure 7a:** The **prodisc C Nova** Implant in A/P View



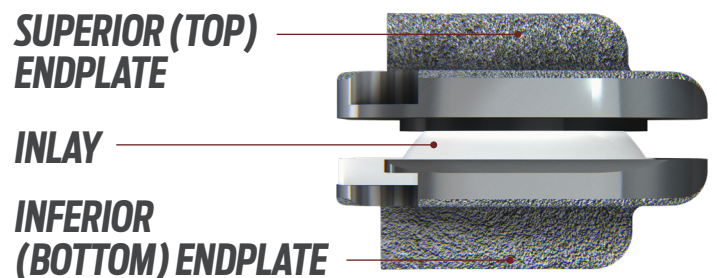
**Figure 4:** The **prodisc C\*** Implant in Lateral View



**Figure 5:** The **prodisc C Vivo\*\*** Implant in Lateral View



**Figure 6b:** The **prodisc C SK\*\*** Implant in Lateral View



**Figure 7b:** The **prodisc C Nova\*** Implant in Lateral View

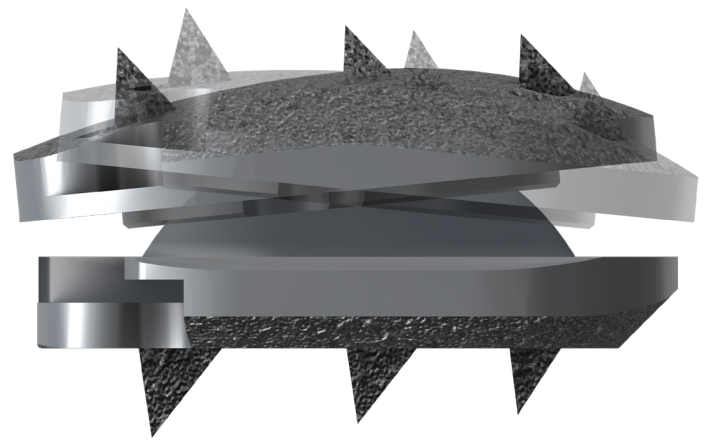
\***prodisc C** & **prodisc C Nova** are approved for 1-level usage only. \*\***prodisc C Vivo** & **prodisc C SK** are approved for both 1- and 2-level usage.

Each **prodisc** Cervical Total Disc Replacement device has features that help fixate it in the vertebral bone. The **prodisc C**, **prodisc C SK**, and **prodisc C Nova** devices have superior and inferior keels, and **prodisc C Vivo** has spikes on both endplates. The metal surfaces that are in contact with the bone are also coated with a highly porous titanium layer (a metal). This coating is designed to help the bone attach to the metal endplates and fixate the device in place.

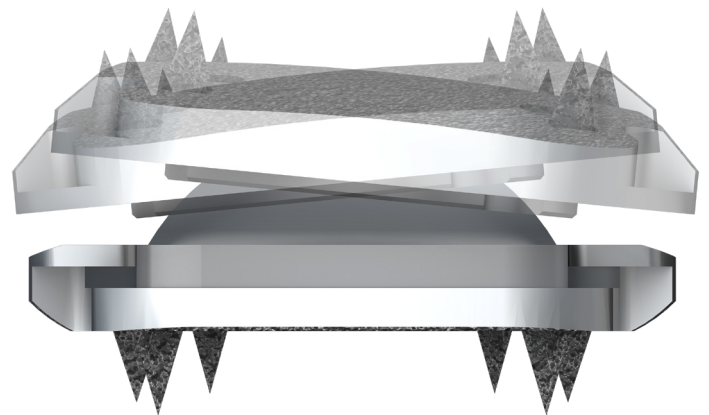
All **prodisc** Cervical Total Disc Replacement devices are designed to allow motion in axial rotation (turning the head left and right) and flexion and extension (bending forward and backward, **Figure 9**) as well as lateral bending (bending side to side, **Figure 10**); however, not all patients will achieve motion after treatment with the **prodisc** Cervical Total Disc Replacement devices.



**Figure 8:** Ball and Socket



**Figure 9:** Illustrated Flexion/Extension Motion of **prodisc C Vivo** Total Disc Replacement



**Figure 10:** Illustrated Lateral Bending Motion of **prodisc C Vivo** Total Disc Replacement

## How is Surgery with **prodisc** for Cervical Total Disc Replacement Different from Other Surgical Choices?

**prodisc** Cervical Total Disc Replacement surgery is an alternative to anterior cervical discectomy and fusion (ACDF), which is the surgery that is most commonly done for your condition.

In both the ACDF and **prodisc** Cervical Total Disc Replacement procedures, the symptomatic disc is removed and the height at that level of your spine is restored to relieve pressure on the nerves and/or spinal cord. In an ACDF procedure, after the symptomatic disc is removed, the bones are fixed in position with implants and bone graft.

In some ACDF procedures, the bone graft may come from your hip in a separate incision. After surgery, the two bones are supposed to grow together, creating one solid piece of bone and eliminating motion at that level of your spine. In the **prodisc** Cervical Total Disc Replacement procedure, the device is inserted into the disc space to restore the height at that level of your spine, while potentially allowing some motion. The **prodisc** Cervical Total Disc Replacement procedure does not require a bone graft.

## Who Should Receive **prodisc** for Cervical Total Disc Replacement and What is it Designed To Do?

The **prodisc** Cervical Total Disc Replacement device is used to replace a single symptomatic (diseased and/or degenerated) disc of the cervical spine after the symptomatic disc is removed.

In addition, **prodisc C Vivo** and **prodisc C SK** are also used to reconstruct two contiguous levels in the spine from C3-C7, and may be used for patients with myelopathy (compression of the spinal cord).

The **prodisc** Cervical Total Disc Replacement is designed to reduce pain by removing the symptomatic disc while potentially allowing your neck to move after surgery.

The **prodisc** Cervical Total Disc Replacement system should only be used in patients who are skeletally mature, have a symptomatic disc, and have had neck or arm pain for at least six (6) weeks that did not respond to nonoperative care (physical therapy, medication, etc.).



## Who Should Not Receive prodisc for Cervical Total Disc Replacement?

Consult with your surgeon to determine the best prodisc for your situation.

The specific contraindications for each prodisc system vary, and are in the Instructions for Use document which you can access at [guides.centinelspine.com](http://guides.centinelspine.com), or by scanning the QR code.



## What Warnings and Precautions Should I Pay Attention To?

It is important to select a surgeon who has been trained by the company who makes the prodisc Cervical Total Disc Replacement devices (Centinel Spine).

This device is placed close to nerves and blood vessels in the cervical spine. There is a risk of nerve damage or serious and potentially fatal bleeding if damage to these structures occurs during or after surgery.

It is very important that you let your doctor know about any allergies you have, any medications you take on a regular basis, if you are pregnant, or have any other treated or untreated illnesses, such as rheumatoid arthritis, cancer, cardiac disease, diabetes, hepatitis, osteoporosis, previous surgeries or injuries you may have that may impact whether this device is right for you.



## What are the Potential Risks for the **prodisc** Cervical Total Disc Replacement Device?

As with any surgery, there are possible problems that can occur. There is a risk that the surgery may not make you feel better or may cause you to feel worse. If this happens, you may need another surgery to help you feel better.

Specific possible problems that may occur with any surgery include:

- Infection/abscess/cyst, localized or systemic
- Pain at surgical site
- Blood clots, including pulmonary emboli
- Medication and anesthesia reactions
- Phlebitis
- Pneumonia
- Atelectasis
- Soft tissue damage
- Septicemia
- Hemorrhage possibly requiring a blood transfusion, with possible transfusion reaction
- Myocardial infarction
- Paralysis
- Poor tissue healing
- Cerebrovascular accident (CVA)
- Death

In a U.S. clinical study of 103 patients who received the **prodisc C** Total Disc Replacement device, there were six (6) patients who did not get any relief of their symptoms and a number of other patients whose improvement was likely not significant enough for them to notice a difference. There were two (2) patients who needed additional surgery on their necks.<sup>1</sup>

Throughout the course of the clinical study, patients reported health-related problems to their physicians. Some of the most common problems were pain, headaches, and muscle aches.

In another U.S. clinical study of two-level symptoms, 291 patients received either **prodisc C Vivo** and/or **prodisc C SK**, 87.1% of the patients were considered a clinical success. Seven of the 291 patients received a removal secondary surgery, and two patients received a reoperation.<sup>2</sup>

A more complete list of risks is provided in the instructions for use, which is available on our website. Visit [guides.centinelspine.com](http://guides.centinelspine.com) or scan the QR Code to download the instructions for use.





## ABOUT THE SURGERY

### What Can I Expect Before the Surgery?

Your doctor will review your condition with you and explain your possible choices, including medications, physical therapy, and other surgeries such as removal of the diseased disc, fusion, etc.

### What Can I Expect During the Surgery?

During the total disc replacement surgery, you will be under general anesthesia. The surgeon will make a small incision in the front of your neck to get access to your symptomatic disc. Then the surgeon will remove the symptomatic disc. The surgeon will insert the **prodisc** Cervical Total Disc Replacement implant into the disc space. Finally, the surgeon will close the incision.

### What Can I Expect After the Surgery?

Surgery with the **prodisc** Cervical Total Disc Replacement device is considered a major surgery. As with any major surgery, you should expect discomfort, as well as a period of rehabilitation. Your doctor may prescribe medicines to help you manage any pain or nausea you may experience. While many patients will have the surgery conducted without an overnight stay, some patients may have conditions that lead them to be monitored in a facility for a day or two.

### After You Go Home

You and your doctor should talk about a plan to steadily bring you back to normal activity while the healing process occurs. It is very important that you follow your doctor's instructions. You can begin moving soon after surgery, but try not to do too much, too soon.

### Your Doctor May Recommend the Following Instructions:

- A hard or soft collar may be used if your doctor thinks it is necessary
- Avoid prolonged or strenuous activity
- Avoid heavy physical activity until your doctor tells you it is okay
- You will be taught how to clean and care for your wound

After surgery, your doctor may refer you to a physical therapist who will teach you exercises to improve your strength and mobility while protecting your spine.

### Contact Your Doctor Immediately If You:

- Have fever or chills
- Notice fluid draining from your wound
- Have trouble swallowing or breathing
- Have new or increased neck pain, arm pain, numbness, or weakness



## What are the Expected Outcomes of the Surgery?

Clinical studies with **prodisc** Total Disc Replacement cervical devices have demonstrated relief of pain and return to functional activity.<sup>3</sup> Speak with your surgeon for more details about clinical study results and expected outcomes from **prodisc** surgery.

## Making the Choice for Surgery

You should discuss both surgical and nonsurgical treatment options with your doctor. If surgery is selected, your occupation, activity level, weight, and the condition of the spine will be considered when determining if you are an appropriate candidate. Only your doctor can decide if you are an appropriate surgical candidate.

**CAUTION:** Please be sure to tell any doctors you later see that you had surgery with the **prodisc** Cervical Total Disc Replacement device before you have a magnetic resonance imaging (MRI) taken. The metal in the **prodisc** Cervical Total Disc Replacement can affect the quality of images taken.



Each of the **prodisc** Cervical Total Disc Replacement devices is labeled MR Conditional, meaning the implant can be scanned only under certain conditions. For instructions for conducting an MRI, package inserts, or other documents, please scan the QR code or visit: <https://guides.centinelspine.com>



## Conclusion

You have been diagnosed with symptomatic cervical disc disease (SCDD) and your doctor believes that surgery is the best treatment option. After considering the alternatives, your doctor may recommend the **prodisc** Cervical Total Disc Replacement device as a treatment alternative.

If you would like additional information, or have more questions about total disc replacement surgery, please call or see your doctor.

This patient information guide is not a replacement for professional medical advice. Only your doctor is qualified to diagnose and treat your neck and/or arm pain.

**CAUTION:** Inform your doctor if you have an active infection or allergy to cobalt, chromium, molybdenum, polyethylene or titanium. Also inform your doctor if you have been diagnosed with osteoporosis, osteopenia, or if you have any other health issues.



**WARNING:** This product has labeling limitations. Please visit [guides.centinelspine.com](https://guides.centinelspine.com) or scan the QR code to see the package insert for complete information.



**CAUTION:** International law restricts this device to sale by or on the order of a physician who has appropriate training and experience.

## When Can I Travel After **prodisc** Cervical Total Disc Replacement Surgery?

Ask your doctor when you can start driving after surgery. The amount of time needed to recover from surgery differs from patient to patient.

Contact your local airport if you will be traveling following implantation of your device. Due to increased security, airport personnel will be able to provide appropriate guidance on passing through security with a metallic device in your spine.



## Where Can I Find Out More Information?

**CENTINEL SPINE** has provided this guide in an effort to inform you about your treatment options. If you would like additional information or have more questions about artificial disc surgery, please contact your doctor.

**VISIT OUR WEBSITE:**

**rediscover**<sup>®</sup>

[www.rediscovermylife.org](http://www.rediscovermylife.org)

**PLEASE NOTE:** This patient information guide is not a replacement for professional medical advice. Only your surgeon is qualified to diagnose and treat your spine-related pain.

If you experience any serious incident in relation to the **prodisc** Cervical Total Disc Replacement device, please report to the manufacturer, Centinel Spine ([complaints@centinelspine.com](mailto:complaints@centinelspine.com)).

## PATIENT INFORMATION

**You may wish to record important information regarding your prodisc Cervical Total Disc Replacement device.**

**Please ask your surgeon for this information.**

---

Lot #

---

Part#

**Warning:** This product has labeling limitations. See package insert for complete information.

**Caution:** U.S. law restricts this device to sale by or on the order of a physician who has appropriate training experience.



**Magnetic Resonance Imaging:** The prodisc Cervical Total Disc Replacement is labeled MR conditional, where it has been demonstrated to pose no known hazards in a specified MR environment with specified conditions of use. For more information, please refer to the Instructions for Use. Visit [guides.centinelspine.com](https://guides.centinelspine.com) or scan the QR Code (right) to download the Instructions for Use.



**Implant Identification & Information Card:** Download, print, and fold this wallet-sized information card to identify the device, manufacturer, and implant material composition—as well as provide MRI safety information, surgery details, and metal-detection notification to the appropriate authorities or when traveling. Visit [rediscovermylife.org/resources.php](https://rediscovermylife.org/resources.php) or scan the QR code (right).



## References:

<sup>1</sup> [https://www.accessdata.fda.gov/cdrh\\_docs/pdf7/P070001b.pdf](https://www.accessdata.fda.gov/cdrh_docs/pdf7/P070001b.pdf)

<sup>2</sup> For detailed information regarding the IDE study, refer to the Summary of Safety and Effectiveness Data at [2level.centinelspine.com](http://2level.centinelspine.com).

<sup>3</sup> Janssen ME, et al, ProDisc-C Total Disc Replacement Versus ACDF for Single-Level Symptomatic Cervical Disc Disease, JBJS, 2015, 97:1738-47.



US Headquarters: 900 Airport Rd, Ste. 3B, West Chester, PA 19380 USA  
Email (US): [info@centinelspine.com](mailto:info@centinelspine.com)  
Web: [www.centinelspine.com](http://www.centinelspine.com)

Centinel Spine® and prodisc® are registered trademarks of Centinel Spine®, LLC. All rights reserved.



LBL641 Rev 2 (10/2025)