



DEPARTMENT OF HEALTH & HUMAN SERVICES

Public Health Service

Food and Drug Administration
Rockville, MD 20857

NDA 19-508/S-033

Reliant Pharmaceuticals, Inc.
Attention: Fernando Marcella
110 Allen Road
Liberty Corner, NJ 07938

Dear Mr. Marcella:

Please refer to your supplemental new drug application dated June 28, 2005, received June 29, 2005, submitted under section 505(b) of the Federal Food, Drug, and Cosmetic Act for Axid (nizatidine) capsules, USP.

We acknowledge receipt on July 28, 2005, of your submission dated July 27, 2005.

This "Changes Being Effectuated in 30 Days" supplemental new drug application provides for an alternate facility for manufacturing, packaging, analytical testing, and release of the 150 mg capsules. This supplement also provides for the following changes to the labeling:

- 1) Revising the distributor statement on the immediate container label (1514M400) to "Manufactured for Reliant Pharmaceuticals, Inc., Liberty Corner, NJ 07938 by Patheon Pharmaceuticals, Inc., Cincinnati, OH 45237".
- 2) Revising the distributor statement on the package insert for the 60-count HDPE bottle (214F400 and 214R400, March 2005) to "Distributed by Reliant Pharmaceuticals, Inc., Liberty Corner, New Jersey 07938, USA"; "Address Medical Inquiries to: Reliant Pharmaceuticals, Inc. Medical Affairs 110 Allen Road, Liberty Corner, NJ 07938, USA."
- 3) Deleting the reference to the 500-count bottle and the blister pack presentation for the 150 mg capsules in the How Supplied section of the package insert.

We completed our review of this supplemental new drug application. This supplement is approved.

We remind you that you must comply with the reporting requirements for an approved NDA (21 CFR 314.80 and 314.81).

If you have any questions, call Valerie Jimenez, Regulatory Project Manager, at (301) 796-1233.

Sincerely,

{See appended electronic signature page}

Eric Duffy, Ph.D.
Director
Division of Post-Marketing Evaluation
Office of New Drug Quality Assessment
Center for Drug Evaluation and Research

Attachments:

Immediate Container: 1514M400
Package Inserts: 214F400 (March 2005) and 214R400 (March 2005)

■ Black

■ PMS 1245

□ Non-varnish area inside

Label Size: 1 3/4" x 3 3/4"

Usual Adult Dose:
See accompanying literature for dosage.

Keep tightly closed.

Store at controlled room temperature 20° to 25°C (68° to 77°F) [see USP].


Manufactured for:
Reliant Pharmaceuticals, Inc.
Liberty Corner, NJ 07938
by:
Patheon Pharmaceuticals Inc.
Cincinnati, OH 45237

NDC 65726-144-15

AXID[®]
(nizatidine)
Capsules, USP


150 mg

Rx only
60 PULVULES[®]

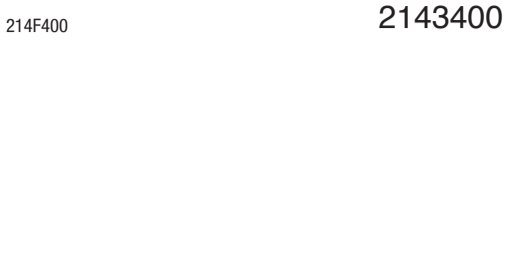
 **Reliant**
PHARMACEUTICALS, INC.

LOT:
EXP:

1514M400



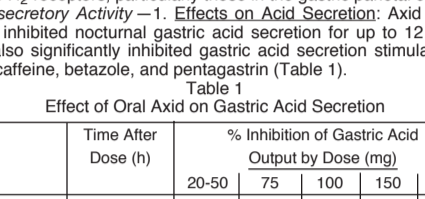
3 65726 144 15 6



214F400

DESCRIPTION

Axid® (Nizatidine, USP) is a histamine H₂-receptor antagonist. Chemically, it is N-[2-[[[2-[(dimethylamino)methyl]-4-thiazolyl]methyl]thio]ethyl]-N'-methyl-2-nitro-1,1-ethenediamine. The structural formula is as follows:



Nizatidine

Nizatidine has the empirical formula C₁₂H₁₆N₄O₂S₂ representing a molecular weight of 331.47. It is an off-white to buff crystalline solid that is soluble in water. Nizatidine has a bitter taste and mild sulfur-like odor. Each Pulvule® (capsule) contains for oral administration gelatin, pregelatinized starch, dimethicone, starch, titanium dioxide, yellow iron oxide, 150 mg (0.45 mmol) or 300 mg (0.91 mmol) of nizatidine, and other inactive ingredients. The 150-mg Pulvule also contains magnesium stearate, and the 300-mg Pulvule also contains croscarmellose sodium, povidone, red iron oxide, and talc.

CLINICAL PHARMACOLOGY

Axid is a competitive, reversible inhibitor of histamine at the histamine H₂-receptors, particularly those in the gastric parietal cells. **Antisecretory Activity** — 1. **Effects on Acid Secretion:** Axid significantly inhibited nocturnal gastric acid secretion for up to 12 hours. Axid also significantly inhibited gastric acid secretion stimulated by food, caffeine, betazole, and pentagastrin (Table 1).

Table 1
Effect of Oral Axid on Gastric Acid Secretion

	Time After Dose (h)	% Inhibition of Gastric Acid Output by Dose (mg)			
		20-50	75	100	150
Nocturnal	Up to 10	57	73	73	90
Betazole	Up to 3		93	100	99
Pentagastrin	Up to 6		25	64	67
Meal	Up to 4	41	64	98	97
Caffeine	Up to 3		73	85	96

2. **Effects on Other Gastrointestinal Secretions — Pepsin:** Oral administration of 75 to 300 mg of Axid did not affect pepsin activity in gastric secretions. Total pepsin output was reduced in proportion to the reduced volume of gastric secretions. **Intrinsic Factor:** Oral administration of 75 to 300 mg of Axid increased betazole-stimulated secretion of intrinsic factor.

Serum Gastrin: Axid had no effect on basal serum gastrin. No rebound of gastrin secretion was observed when food was ingested 12 hours after administration of Axid.

3. **Other Pharmacologic Actions** — a. **Hormones:** Axid was not shown to affect the serum concentrations of gonadotropins, prolactin, growth hormone, antiuretic hormone, cortisol, triiodothyronine, thyroxine, testosterone, 5 α -dihydrotestosterone, androstenedione, or estradiol.

b. Axid had no demonstrable antiandrogenic action.

4. **Pharmacokinetics** — The absolute oral bioavailability of nizatidine exceeds 70%. Peak plasma concentrations (700 to 1,800 μ g/L for a 150-mg dose and 1,400 to 3,600 μ g/L for a 300-mg dose) occur from 0.5 to 3 hours following the dose. A concentration of 1,000 μ g/L is equivalent to 3 μ mol/L; a dose of 300 mg is equivalent to 905 μ moles. Plasma concentrations 12 hours after administration are less than 10 μ g/L. The elimination half-life is 1 to 2 hours, plasma clearance is 40 to 60 L/h, and the volume of distribution is 0.8 to 1.5 L/kg. Because of the short half-life and rapid clearance of nizatidine, accumulation of the drug would not be expected in individuals with normal renal function who take either 300 mg once daily at bedtime or 150 mg twice daily. Axid exhibits dose proportionality over the recommended dose range.

The oral bioavailability of nizatidine is unaffected by concomitant ingestion of propantheline. Antacids consisting of aluminum and magnesium hydroxides with simethicone decrease the absorption of nizatidine by about 10%. With food, the AUC and C_{max} increase by approximately 10%.

In humans, less than 7% of an oral dose is metabolized as N2-monodes-methylnizatidine, an H₂-receptor antagonist, which is the principal metabolite excreted in the urine. Other likely metabolites are the N2-oxide (less than 5% of the dose) and the S-oxide (less than 6% of the dose).

More than 90% of an oral dose of nizatidine is excreted in the urine within 12 hours. About 60% of an oral dose is excreted as unchanged drug. Renal clearance is about 500 mL/min, which indicates excretion by active tubular secretion. Less than 6% of an administered dose is eliminated in the feces.

Moderate to severe renal impairment significantly prolongs the half-life and decreases the clearance of nizatidine. In individuals who are functionally anephric, the half-life is 3.5 to 11 hours, and the plasma clearance is 7 to 14 L/h. To avoid accumulation of the drug in individuals with clinically significant renal impairment, the amount and/or frequency of doses of Axid should be reduced in proportion to the severity of dysfunction (see Dosage and Administration).

Approximately 35% of nizatidine is bound to plasma protein, mainly to α -acid glycoprotein. Warfarin, diazepam, acetaminophen, propantheline, phenobarbital, and propranolol did not affect plasma protein binding of nizatidine in vitro.

Clinical Trials — 1. **Active Duodenal Ulcer:** In multicenter, double-blind, placebo-controlled studies in the United States, endoscopically diagnosed duodenal ulcers healed more rapidly following administration of Axid, 300 mg h.s. or 150 mg b.i.d., than with placebo (Table 2). Lower doses, such as 100 mg h.s., had slightly lower effectiveness.

Table 2
Healing Response of Ulcers to Axid

STUDY	AXID					
	300 mg h.s.		150 mg b.i.d.		Placebo	
	Number Entered	Healed/Evaluable	Number Entered	Healed/Evaluable	Number Entered	Healed/Evaluable
Week 1						
Week 2			276	93/265 (35%)*	279	55/260 (21%)
Week 4				198/259 (76%)*		95/243 (39%)
STUDY 2						
Week 2	108	24/103 (23%)*	106	27/101 (27%)*	101	9/93 (10%)
Week 4		65/97 (67%)*		66/97 (68%)*		24/84 (29%)
STUDY 3						
Week 2	92	22/90 (24%)*†			98	13/92 (14%)
Week 4		52/85 (61%)*				28/88 (33%)
Week 8		68/83 (82%)*				39/79 (49%)

*P <0.01 as compared with placebo.
†P <0.05 as compared with placebo.

2. **Maintenance of Healed Duodenal Ulcer:** Treatment with a reduced dose of Axid has been shown to be effective as maintenance therapy following healing of active duodenal ulcers. In multicenter, double-blind, placebo-controlled studies conducted in the United States, 150 mg of Axid taken at bedtime resulted in a significantly lower incidence of duodenal ulcer recurrence in patients treated for up to 1 year (Table 3).

Table 3
Percentage of Ulcers Recurring by 3, 6, and 12 Months in Double-Blind Studies Conducted in the United States

Month	Axid, 150 mg h.s.	Placebo
3	13% (28/208)*	40% (82/204)
6	24% (45/188)*	57% (106/187)
12	34% (57/166)*	64% (112/175)

*P <0.001 as compared with placebo.

3. **Gastroesophageal Reflux Disease (GERD):** In 2 multicenter, double-blind, placebo-controlled clinical trials performed in the United States and Canada, Axid was more effective than placebo in improving endoscopically diagnosed esophagitis and in healing erosive and ulcerative esophagitis.

In patients with erosive or ulcerative esophagitis, 150 mg b.i.d. of Axid given to 88 patients compared with placebo in 98 patients in Study 1 yielded a higher healing rate at 3 weeks (16% vs 7%) and at 6 weeks (32% vs 16%, P<0.05). Of 99 patients on Axid and 94 patients on placebo, Study 2 at the same dosage yielded similar results at 6 weeks (21% vs 11%, P< 0.05) and at 12 weeks (29% vs 13%, P<0.01).

In addition, relief of associated heartburn was greater in patients treated with Axid. Patients treated with Axid consumed fewer antacids than did patients treated with placebo.

4. **Active Benign Gastric Ulcer:** In a multicenter, double-blind, placebo-controlled study conducted in the United States and Canada, endoscopically diagnosed benign gastric ulcers healed significantly more rapidly following administration of nizatidine than of placebo (Table 4).

Table 4

Week	Treatment	Healing Rate	vs. Placebo p-value*
4	Niz 300 mg h.s.	52/153 (34%)	0.342
	Niz 150 mg b.i.d.	65/151 (43%)	0.022
	Placebo	48/151 (32%)	
8	Niz 300 mg h.s.	99/153 (65%)	0.011
	Niz 150 mg b.i.d.	105/151 (70%)	<0.001
	Placebo	78/151 (52%)	

*P-values are one-sided, obtained by Chi-square test, and not adjusted for multiple comparisons.

In a multicenter, double-blind, comparator-controlled study in Europe, healing rates for patients receiving nizatidine (300 mg h.s. or 150 mg b.i.d.) were equivalent to rates for patients receiving a comparator drug, and statistically superior to historical placebo control rates.

INDICATIONS AND USAGE

Axid is indicated for up to 8 weeks for the treatment of active duodenal ulcer. In most patients, the ulcer will heal within 4 weeks. Axid is indicated for maintenance therapy for duodenal ulcer patients, at a reduced dosage of 150 mg h.s. after healing of an active duodenal ulcer. The consequences of continuous therapy with Axid for longer than 1 year are not known.

Axid is indicated for up to 12 weeks for the treatment of endoscopically diagnosed esophagitis, including erosive and ulcerative esophagitis, and associated heartburn due to GERD.

Axid is indicated for up to 8 weeks for the treatment of active benign gastric ulcer. Before initiating therapy, care should be taken to exclude the possibility of malignant gastric ulceration.

CONTRAINDICATION

Axid is contraindicated in patients with known hypersensitivity to the drug. Because cross sensitivity in this class of compounds has been observed, H₂-receptor antagonists, including Axid, should not be administered to patients with a history of hypersensitivity to other H₂-receptor antagonists.

PRECAUTIONS

General — 1. Symptomatic response to nizatidine therapy does not preclude the presence of gastric malignancy. 2. Because nizatidine is excreted primarily by the kidney, dosage should be reduced in patients with moderate to severe renal insufficiency (see Dosage and Administration).

3. Pharmacokinetic studies in patients with hepatorenal syndrome have not been done. Part of the dose of nizatidine is metabolized in the liver. In patients with normal renal function and uncomplicated hepatic dysfunction, the disposition of nizatidine is similar to that in normal subjects.

Laboratory Tests — False-positive tests for urobilinogen with Multistix® may occur during therapy with nizatidine. **Drug Interactions** — No interactions have been observed between Axid and theophylline, chloridiazepoxide, lorazepam, lidocaine, phenytoin, and warfarin. Axid does not inhibit the cytochrome P-450-linked drug-metabolizing enzyme system; therefore, drug interactions mediated by inhibition of hepatic metabolism are not expected to occur. In patients given very high doses (3,900 mg) of aspirin daily, increases in serum salicylate levels were seen when nizatidine, 150 mg b.i.d., was administered concurrently.

Carcinogenesis, Mutagenesis, Impairment of Fertility — A 2-year oral carcinogenicity study in rats with doses as high as 500 mg/kg/day (about 80 times the recommended daily therapeutic dose) showed no evidence of a carcinogenic effect. There was a dose-related increase in the density of enterochromaffin-like (ECL) cells in the gastric oxyntic mucosa. In a 2-year study in mice, there was no evidence of a carcinogenic effect in male mice; although hyperplastic nodules of the liver were increased in the high-dose males as compared with placebo. Female mice given the high-dose of Axid (2,000 mg/kg/day, about 330 times the human dose) showed marginally statistically significant increases in hepatic carcinoma and hepatic nodular hyperplasia with no numerical increase seen in any of the other dose groups. The rate of hepatic carcinoma in the high-dose animals was within the historical control limits seen for the strain of mice used. The female mice were given a dose larger than the maximum tolerated dose, as indicated by excessive (30%) weight decrement as compared with concurrent controls and evidence of mild liver injury (transaminase elevations). The occurrence of a marginal finding at high dose only in animals given an excessive and somewhat hepatotoxic dose, with no evidence of a carcinogenic effect in rats, male mice, and female mice (given up to 360 mg/kg/day, about 60 times the human dose), and a negative mutagenicity battery are not considered evidence of a carcinogenic potential for Axid.

Axid was not mutagenic in a battery of tests performed to evaluate its potential genetic toxicity, including bacterial mutation tests, unscheduled DNA synthesis, sister chromatid exchange, mouse lymphoma assay, chromosome aberration tests, and a micronucleus test.

In a 2-generation, perinatal and postnatal fertility study in rats, doses of nizatidine up to 650 mg/kg/day produced no adverse effects on the reproductive performance of parental animals or their progeny.

Pregnancy — Teratogenic Effects — Pregnancy Category B — Oral reproduction studies in pregnant rats at doses up to 1500 mg/kg/day (9000 mg/m²/day, 40.5 times the recommended human dose based on body surface area) and in pregnant rabbits at doses up to 275 mg/kg/day (3245 mg/m²/day, 14.6 times the recommended human dose based on body surface area) have revealed no evidence of impaired fertility or harm to the fetus due to nizatidine. There are, however, no adequate and well-controlled studies in pregnant women. Because animal reproduction studies are not always predictive of human response, this drug should be used during pregnancy only if clearly needed.

Nursing Mothers — Studies conducted in lactating women have shown that 0.1% of the administered oral dose of nizatidine is secreted in human milk in proportion to plasma concentrations. Because of the growth depression in pups reared by lactating rats treated with nizatidine, a decision should be made whether to discontinue nursing or discontinue the drug, taking into account the importance of the drug to the mother.

Pediatric Use — Safety and effectiveness in pediatric patients have not been established.

AXID®
(nizatidine) Capsules, USP

Geriatric Use — Of the 955 patients in clinical studies who were treated with nizatidine, 337 (35.3%) were 65 and older. No overall differences in safety or effectiveness were observed between these and younger subjects. Other reported clinical experience has not identified differences in responses between the elderly and younger patients, but greater sensitivity of some older individuals cannot be ruled out.

This drug is known to be substantially excreted by the kidney, and the risk of toxic reactions to this drug may be greater in patients with impaired renal function. Because elderly patients are more likely to have decreased renal function, care should be taken in dose selection, and it may be useful to monitor renal function (see Dosage and Administration).

ADVERSE REACTIONS

Worldwide, controlled clinical trials of nizatidine included over 6,000 patients given nizatidine in studies of varying durations. Placebo-controlled trials in the United States and Canada included over 2,600 patients given nizatidine and over 1,700 given placebo. Among the adverse events in these placebo-controlled trials, anemia (0.2% vs 0%) and urticaria (0.5% vs 0.1%) were significantly more common in the nizatidine group.

Incidence in Placebo-Controlled Clinical Trials in the United States and Canada — Table 5 lists adverse events that occurred at a frequency of 1% or more among nizatidine-treated patients who participated in placebo-controlled trials. The cited figures provide some basis for estimating the relative contribution of drug and nondrug factors to the side effect incidence rate in the population studied.

Table 5
INCIDENCE OF TREATMENT-EMERGENT
ADVERSE EVENTS IN PLACEBO-CONTROLLED
CLINICAL TRIALS
IN THE UNITED STATES AND CANADA

Body System/Adverse Event*	Percentage of Patients Reporting Event	
	Nizatidine(N=2,694)	Placebo(N=1,729)
Body as a Whole		
Headache	16.6	15.6
Abdominal pain	7.5	12.5
Pain	4.2	3.8
Asthenia	3.1	2.9
Back pain	2.4	2.6
Chest pain	2.3	2.1
Infection	1.7	1.1
Fever	1.6	2.3
Surgical procedure	1.4	1.5
Injury, accident	1.2	0.9
Digestive		
Diarrhea	7.2	6.9
Nausea	5.4	7.4
Flatulence	4.9	5.4
Vomiting	3.6	5.6
Dyspepsia	3.6	4.4
Constipation	2.5	3.8
Dry mouth	1.4	1.3
Nausea and vomiting	1.2	1.9
Anorexia	1.2	1.6
Gastrointestinal disorder	1.1	1.2
Tooth disorder	1.0	0.8
Musculoskeletal		
Myalgia	1.7	1.5
Nervous		
Dizziness	4.6	3.8
Insomnia	2.7	3.4
Abnormal dreams	1.9	1.9
Somnolence	1.9	1.6
Anxiety	1.6	1.4
Nervousness	1.1	0.8
Respiratory		
Rhinitis	9.8	9.6
Pharyngitis	3.3	3.1
Sinusitis	2.4	2.1
Cough, increased	2.0	2.0
Skin and Appendages		
Rash	1.9	2.1
Pruritus	1.7	1.3
Special Senses		
Amblyopia	1.0	0.9

*Events reported by at least 1% of nizatidine-treated patients are included.

A variety of less common events were also reported; it was not possible to determine whether these were caused by nizatidine.

Hepatic — Hepatocellular injury, evidenced by elevated liver enzyme tests (SGOT [AST], SGPT [ALT], or alkaline phosphatase), occurred in some patients and was possibly or probably related to nizatidine. In some cases there was marked elevation of SGOT, SGPT enzymes (greater than 500 IU/L) and, in a single instance, SGPT was greater than 2,000 IU/L. The overall rate of occurrences of elevated liver enzymes and elevations to 3 times the upper limit of normal, however, did not significantly differ from the rate of liver enzyme abnormalities in placebo-treated patients. All abnormalities were reversible after discontinuation of Axid. Since market introduction, hepatitis and jaundice have been reported. Rare cases of cholestatic or mixed hepatocellular and cholestatic injury with jaundice have been reported with reversal of the abnormalities after discontinuation of Axid.

Cardiovascular — In clinical pharmacology studies, short episodes of asymptomatic ventricular tachycardia occurred in 2 individuals administered Axid and in 3 untreated subjects.

CNS — Rare cases of reversible mental confusion have been reported.

Endocrine — Clinical pharmacology studies and controlled clinical trials showed no evidence of antiandrogenic activity due to Axid. Impotence and decreased libido were reported with similar frequency by patients who received Axid and by those given placebo. Rare reports of gynecomastia occurred.

Hematologic — Anemia was reported significantly more frequently in nizatidine- than in placebo-treated patients. Fatal thrombocytopenia was reported in a patient who was treated with Axid and another H₂-receptor antagonist. On previous occasions, this patient had experienced thrombocytopenia while taking other drugs. Rare cases of thrombocytopenic purpura have been reported.

Integumental — Sweating and urticaria were reported significantly more frequently in nizatidine- than in placebo-treated patients. Rash and exfoliative dermatitis were also reported. Vasculitis has been reported rarely.

Hypersensitivity — As with other H₂-receptor antagonists, rare cases of anaphylaxis following administration of nizatidine have been reported. Rare episodes of hypersensitivity reactions (eg, bronchospasm, laryngeal edema, rash, and eosinophilia) have been reported.

Body as a Whole — Serum sickness-like reactions have occurred rarely in conjunction with nizatidine use.

Genitourinary — Reports of impotence have occurred.

Other — Hyperuricemia unassociated with gout or nephrolithiasis was reported. Eosinophilia, fever, and nausea related to nizatidine administration have been reported.

OVERDOSAGE

Overdoses of Axid have been reported rarely. The following is provided to serve as a guide should such an overdose be encountered.

Signs and Symptoms — There is little clinical experience with overdose of Axid in humans. Test animals that received large doses of nizatidine have exhibited cholinergic-type effects, including lacrimation, salivation, emesis, miosis, and diarrhea. Single oral doses of 800 mg/kg in dogs and of 1,200 mg/kg in monkeys were not lethal. Intravenous median lethal doses in the rat and mouse were 301 mg/kg and 232 mg/kg respectively.

Treatment — To obtain up-to-date information about the treatment of overdose, a good resource is your certified Regional Poison Control Center. Telephone numbers of certified poison control centers are listed in the *Physicians' Desk Reference (PDR)*. In managing overdose, consider the possibility of multiple drug overdoses, interaction among drugs, and unusual drug kinetics in your patient.

If overdose occurs, use of activated charcoal, emesis, or lavage should be considered along with clinical monitoring and supportive therapy. The ability of hemodialysis to remove nizatidine from the body has not been conclusively demonstrated; however, due to its large volume of distribution, nizatidine is not expected to be efficiently removed from the body by this method.

DOSAGE AND ADMINISTRATION

Active Duodenal Ulcer — The recommended oral dosage for adults is 300 mg once daily at bedtime. An alternative dosage regimen is 150 mg twice daily.

Maintenance of Healed Duodenal Ulcer — The recommended oral dosage for adults is 150 mg once daily at bedtime.

Gastroesophageal Reflux Disease — The recommended oral dosage in adults for the treatment of erosions, ulcerations, and associated heartburn is 150 mg twice daily.

Active Benign Gastric Ulcer — The recommended oral dosage is 300 mg given either as 150 mg twice daily or 300 mg once daily at bedtime. Prior to treatment, care should be taken to exclude the possibility of malignant gastric ulceration.

Dosage Adjustment for Patients With Moderate to Severe Renal Insufficiency — The dose for patients with renal dysfunction should be reduced as follows:

Active Duodenal Ulcer, GERD and Benign Gastric Ulcer	
C_{Cr}	Dose
20-50 mL/min	150 mg every day
<20 mL/min	150 mg every other day

Maintenance Therapy	
C_{Cr}	Dose
20-50 mL/min	150 mg every other day
<20 mL/min	150 mg every 3 days

Some elderly patients may have creatinine clearances of less than 50 mL/min, and, based on pharmacokinetic data in patients with renal impairment, the dose for such patients should be reduced accordingly. The clinical effects of this dosage reduction in patients with renal failure have not been evaluated.

HOW SUPPLIED

Axid® Pulvules® are available in:
The 150-mg Pulvules are imprinted with "150" on the opaque dark yellow cap and "AXID" and "Reliant" on the opaque pale yellow body, using black ink. They are available as follows:

Bottles of 60 NDC 65726-144-15

The 300-mg Pulvules are imprinted with "300" on the opaque brown cap and "AXID" and "Reliant" on the opaque pale yellow body, using black ink. They are available as follows:

Bottles of 30 NDC 65726-145-10

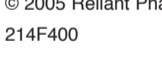
*Pulvules® (filled gelatin capsules, Lilly)

Store at controlled room temperature 20° to 25°C (68° to 77°F) in a tightly closed container [see USP].

The USP defines controlled room temperature as: A temperature maintained thermostatically that encompasses the usual and customary working environment of 20° to 25°C (68° to 77°F); that results in a mean kinetic temperature calculated to be not more than 25°C; and that allows for excursions between 15° and 30°C (59° and 86°F) that are experienced in pharmacies, hospitals, and warehouses.

Rx Only

March 2005



Distributed by:
Reliant Pharmaceuticals, Inc.
Liberty Corner, NJ 07938, USA

Address Medical Inquiries to:
Reliant Pharmaceuticals, Inc.
Medical Affairs
110 Allen Road
Liberty Corner, NJ 07938, USA

© 2005 Reliant Pharmaceuticals, Inc.

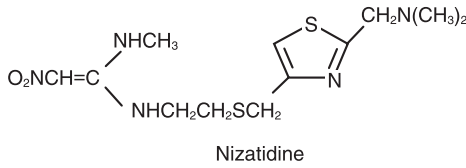
214F400

PRINTED IN U.S.A.

AXID®
(nizatidine) Capsules, USP

Description: Axid® (Nizatidine, USP) is a histamine H₂-receptor antagonist. Chemically, it is N-[2-[[[2-[(dimethylamino)methyl]-4-thiazolyl]methyl]thio]ethyl]-N-methyl-2-nitro-1,1-ethenediamine.

The structural formula is as follows:



Nizatidine has the empirical formula C₁₂H₁₇N₅O₂S₂ representing a molecular weight of 331.47. It is an off-white to buff crystalline solid that is soluble in water. Nizatidine has a bitter taste and mild sulfur-like odor. Each Pulvule® (capsule) contains for oral administration gelatin, pregelatinized starch, dimethicone, starch, titanium dioxide, yellow iron oxide, 150 mg (0.45 mmol) or 300 mg (0.91 mmol) of nizatidine, and other inactive ingredients. The 150-mg Pulvule also contains magnesium stearate, and the 300-mg Pulvule also contains croscarmellose sodium, povidone, red iron oxide, and talc.

Clinical Pharmacology: Axid is a competitive, reversible inhibitor of histamine at the histamine H₂-receptors, particularly those in the gastric parietal cells.

Antisecretory Activity—1. Effects on Acid Secretion: Axid significantly inhibited nocturnal gastric acid secretion for up to 12 hours. Axid also significantly inhibited gastric acid secretion stimulated by food, caffeine, betazole, and pentagastrin (Table 1).

Table 1.—Effect of Oral Axid on Gastric Acid Secretion

	Time After Dose (h)	% Inhibition of Gastric Acid Output by Dose (mg)				
		20-50	75	100	150	300
Nocturnal	Up to 10	57		73		90
Betazole	Up to 3		93		100	99
Pentagastrin	Up to 6		25		64	67
Meal	Up to 4	41	64		98	97
Caffeine	Up to 3		73		85	96

2. Effects on Other Gastrointestinal Secretions—Pepsin: Oral administration of 75 to 300 mg of Axid did not affect pepsin activity in gastric secretions. Total pepsin output was reduced in proportion to the reduced volume of gastric secretions.

Intrinsic Factor: Oral administration of 75 to 300 mg of Axid increased betazole-stimulated secretion of intrinsic factor.

Serum Gastrin: Axid had no effect on basal serum gastrin. No rebound of gastrin secretion was observed when food was ingested 12 hours after administration of Axid.

3. Other Pharmacologic Actions—

a. **Hormones:** Axid was not shown to affect the serum concentrations of gonadotropins, prolactin, growth hormone, antidiuretic hormone, cortisol, triiodothyronine, thyroxine, testosterone, 5 α -dihydrotestosterone, androstenedione, or estradiol.

b. Axid had no demonstrable antiandrogenic action.

4. **Pharmacokinetics—**The absolute oral bioavailability of nizatidine exceeds 70%. Peak plasma concentrations (700 to 1,800 μ g/L for a 150-mg dose and 1,400 to 3,600 μ g/L for a 300-mg dose) occur from 0.5 to 3 hours following the dose. A concentration of 1,000 μ g/L is equivalent to 3 μ mol/L; a dose of 300 mg is equivalent to 905 μ moles. Plasma concentrations 12 hours after administration are less than 10 μ g/L. The elimination half-life is 1 to 2 hours, plasma clearance is 40 to 60 L/h, and the volume of distribution is 0.8 to 1.5 L/kg. Because of the short half-life and rapid clearance of nizatidine, accumulation of the drug would not be expected in individuals with normal renal function who take either 300 mg once daily at bedtime or 150 mg twice daily. Axid exhibits dose proportionality over the recommended dose range.

The oral bioavailability of nizatidine is unaffected by concomitant ingestion of propantheline. Antacids consisting of aluminum and magnesium hydroxides with simethicone decrease the absorption of nizatidine by about 10%. With food, the AUC and C_{max} increase by approximately 10%.

In humans, less than 7% of an oral dose is metabolized as N2-monodesmethylnizatidine, an H₂-receptor antagonist, which is the principal metabolite excreted in the urine. Other likely metabolites are the N2-oxide (less than 5% of the dose) and the S-oxide (less than 6% of the dose).

AXID®
(nizatidine) Capsules, USP

More than 90% of an oral dose of nizatidine is excreted in the urine within 12 hours. About 60% of an oral dose is excreted as unchanged drug. Renal clearance is about 500 mL/min, which indicates excretion by active tubular secretion. Less than 6% of an administered dose is eliminated in the feces.

Moderate to severe renal impairment significantly prolongs the half-life and decreases the clearance of nizatidine. In individuals who are functionally anephric, the half-life is 3.5 to 11 hours, and the plasma clearance is 7 to 14 L/h. To avoid accumulation of the drug in individuals with clinically significant renal impairment, the amount and/or frequency of doses of Axid should be reduced in proportion to the severity of dysfunction (see Dosage and Administration).

Approximately 35% of nizatidine is bound to plasma protein, mainly to α -acid glycoprotein. Warfarin, diazepam, acetaminophen, propantheline, phenobarbital, and propranolol did not affect plasma protein binding of nizatidine in vitro.

Clinical Trials—1. Active Duodenal Ulcer: In multicenter, double-blind, placebo-controlled studies in the United States, endoscopically diagnosed duodenal ulcers healed more rapidly following administration of Axid, 300 mg h.s. or 150 mg b.i.d., than with placebo (Table 2). Lower doses, such as 100 mg h.s., had slightly lower effectiveness.

Table 2.—Healing Response of Ulcers to Axid

	Axid		Placebo	
	300 mg h.s.	150 mg b.i.d.	Number Entered	Healed/Evaluable
STUDY 1				
Week 2		276	279	55/260 (21%)
Week 4		93/265 (35%)*		95/243 (39%)
Week 6		198/259 (76%)*		
STUDY 2				
Week 2	108	24/103 (23%)*	101	9/93 (10%)
Week 4		27/101 (27%)*		24/84 (29%)
Week 6		65/97 (67%)*		
STUDY 3				
Week 2	92	22/90 (24%)†	98	13/92 (14%)
Week 4		52/85 (61%)*		29/88 (33%)
Week 6		68/83 (82%)*		39/79 (49%)

*P<0.01 as compared with placebo.

†P<0.05 as compared with placebo.

2. Maintenance of Healed Duodenal Ulcer: Treatment with a reduced dose of Axid has been shown to be effective as maintenance therapy following healing of active duodenal ulcers. In multicenter, double-blind, placebo-controlled studies conducted in the United States, 150 mg of Axid taken at bedtime resulted in a significantly lower incidence of duodenal ulcer recurrence in patients treated for up to 1 year (Table 3).

Table 3. Percentage of Ulcers Recurring by 3, 6, and 12 Months in Double-Blind Studies Conducted in the United States

Month	Axid, 150 mg h.s.	Placebo
3	13% (28/208)*	40% (82/204)
6	24% (45/188)*	57% (106/187)
12	34% (57/166)*	64% (112/175)

*P<0.001 as compared with placebo.

3. Gastroesophageal Reflux Disease (GERD): In 2 multicenter, double-blind, placebo-controlled clinical trials performed in the United States and Canada, Axid was more effective than placebo in improving endoscopically diagnosed esophagitis and in healing erosive and ulcerative esophagitis.

In patients with erosive or ulcerative esophagitis, 150 mg b.i.d. of Axid given to 88 patients compared with placebo in 98 patients in Study 1 yielded a higher healing rate at 3 weeks (16% vs 7%) and at 6 weeks (32% vs 16%, P<0.05). Of 99 patients on Axid and 94 patients on placebo, Study 2 at the same dosage yielded similar results at 6 weeks (21% vs 11%, P<0.05) and at 12 weeks (29% vs 13%, P<0.01).

In addition, relief of associated heartburn was greater in patients treated with Axid. Patients treated with Axid consumed fewer antacids than did patients treated with placebo.

4. Active Benign Gastric Ulcer: In a multicenter, double-blind, placebo-controlled study conducted in the United States and Canada, endoscopically diagnosed benign gastric ulcers healed significantly more rapidly following administration of nizatidine than of placebo (Table 4).

Table 4.

Week	Treatment	Healing Rate	vs. Placebo p-value*
4	Niz 300 mg h.s.	52/153 (34%)	0.342
	Niz 150 mg b.i.d.	65/151 (43%)	0.022
	Placebo	48/151 (32%)	
8	Niz 300 mg h.s.	99/153 (65%)	0.011
	Niz 150 mg b.i.d.	105/151 (70%)	<0.001
	Placebo	78/151 (52%)	

*P-values are one-sided, obtained by Chi-square test, and not adjusted for multiple comparisons.

AXID®
(nizatidine) Capsules, USP

In a multicenter, double-blind, comparator-controlled study in Europe, healing rates for patients receiving nizatidine (300 mg h.s. or 150 mg b.i.d.) were equivalent to rates for patients receiving a comparator drug, and statistically superior to historical placebo control rates.

Indications and Usage: Axid is indicated for up to 8 weeks for the treatment of active duodenal ulcer. In most patients, the ulcer will heal within 4 weeks.

Axid is indicated for maintenance therapy for duodenal ulcer patients at a reduced dosage of 150 mg h.s. after healing of an active duodenal ulcer. The consequences of continuous therapy with Axid for longer than 1 year are not known.

Axid is indicated for up to 12 weeks for the treatment of endoscopically diagnosed esophagitis, including erosive and ulcerative esophagitis, and associated heartburn due to GERD.

Axid is indicated for up to 8 weeks for the treatment of active benign gastric ulcer. Before initiating therapy, care should be taken to exclude the possibility of malignant gastric ulceration.

Contraindication: Axid is contraindicated in patients with known hypersensitivity to the drug. Because cross sensitivity in this class of compounds has been observed, H₂-receptor antagonists, including Axid, should not be administered to patients with a history of hypersensitivity to other H₂-receptor antagonists.

Precautions: General—1. Symptomatic response to nizatidine therapy does not preclude the presence of gastric malignancy.

2. Because nizatidine is excreted primarily by the kidney, dosage should be reduced in patients with moderate to severe renal insufficiency (see Dosage and Administration).

3. Pharmacokinetic studies in patients with hepatorenal syndrome have not been done. Part of the dose of nizatidine is metabolized in the liver. In patients with normal renal function and uncomplicated hepatic dysfunction, the disposition of nizatidine is similar to that in normal subjects.

Laboratory Tests—False-positive tests for urobilinogen with Multistix® may occur during therapy with nizatidine.

Drug Interactions—No interactions have been observed between Axid and theophylline, chlorthalidone, lorazepam, lidocaine, phenytoin, and warfarin. Axid does not inhibit the cytochrome P-450-linked drug-metabolizing enzyme system; therefore, drug interactions mediated by inhibition of hepatic metabolism are not expected to occur. In patients given very high doses (3,900 mg) of aspirin daily, increases in serum salicylate levels were seen when nizatidine, 150 mg b.i.d., was administered concurrently.

Carcinogenesis, Mutagenesis, Impairment of Fertility—A 2-year oral carcinogenicity study in rats with doses as high as 500 mg/kg/day (about 80 times the recommended daily therapeutic dose) showed no evidence of a carcinogenic effect. There was a dose-related increase in the density of enterochromaffin-like (ECL) cells in the gastric oxyntic mucosa. In a 2-year study in mice, there was no evidence of a carcinogenic effect in male mice; although hyperplastic nodules of the liver were increased in the high-dose males as compared with placebo. Female mice given the high dose of Axid (2,000 mg/kg/day, about 330 times the human dose) showed marginally statistically significant increases in hepatic carcinoma and hepatic nodular hyperplasia with no numerical increase seen in any of the other dose groups. The rate of hepatic carcinoma in the high-dose animals was within the historical control limits seen for the strain of mice used. The female mice were given a dose larger than the maximum tolerated dose, as indicated by excessive (30%) weight decrement as compared with concurrent controls and evidence of mild liver injury (transaminase elevations). The occurrence of a marginal finding at high dose only in animals given an excessive and somewhat hepatotoxic dose, with no evidence of a carcinogenic effect in rats, male mice, and female mice (given up to 360 mg/kg/day, about 60 times the human dose), and a negative mutagenicity battery are not considered evidence of a carcinogenic potential for Axid.

Axid was not mutagenic in a battery of tests performed to evaluate its potential genetic toxicity, including bacterial mutation tests, unscheduled DNA synthesis, sister chromatid exchange, mouse lymphoma assay, chromosome aberration tests, and a micronucleus test.

In a 2-generation, perinatal and postnatal fertility study in rats, doses of nizatidine up to 650 mg/kg/day produced no adverse effects on the reproductive performance of parental animals or their progeny.

Pregnancy—Teratogenic Effects—Pregnancy Category B—Oral reproduction studies in pregnant rats at doses up

AXID®
(nizatidine) Capsules, USP

AXID®
(nizatidine) Capsules, USP

AXID®
(nizatidine) Capsules, USP

to 1500 mg/kg/day (9000 mg/m²/day, 40.5 times the recommended human dose based on body surface area) and in pregnant rabbits at doses up to 275 mg/kg/day (3245 mg/m²/day, 14.6 times the recommended human dose based on body surface area) have revealed no evidence of impaired fertility or harm to the fetus due to nizatidine. There are, however, no adequate and well-controlled studies in pregnant women. Because animal reproduction studies are not always predictive of human response, this drug should be used during pregnancy only if clearly needed.

Nursing Mothers—Studies conducted in lactating women have shown that 0.1% of the administered oral dose of nizatidine is secreted in human milk in proportion to plasma concentrations. Because of the growth depression in pups reared by lactating rats treated with nizatidine, a decision should be made whether to discontinue nursing or discontinue the drug, taking into account the importance of the drug to the mother.

Pediatric Use—Safety and effectiveness in pediatric patients have not been established.

Geriatric Use—Of the 955 patients in clinical studies who were treated with nizatidine, 337 (35.3%) were 65 and older. No overall differences in safety or effectiveness were observed between these and younger subjects. Other reported clinical experience has not identified differences in responses between the elderly and younger patients, but greater sensitivity of some older individuals cannot be ruled out.

This drug is known to be substantially excreted by the kidney, and the risk of toxic reactions to this drug may be greater in patients with impaired renal function. Because elderly patients are more likely to have decreased renal function, care should be taken in dose selection, and it may be useful to monitor renal function (see Dosage and Administration).

Adverse Reactions: Worldwide, controlled clinical trials of nizatidine included over 6,000 patients given nizatidine in studies of varying durations. Placebo-controlled trials in the United States and Canada included over 2,600 patients given nizatidine and over 1,700 given placebo. Among the adverse events in these placebo-controlled trials, anemia (0.2% vs 0%) and urticaria (0.5% vs 0.1%) were significantly more common in the nizatidine group.

Incidence in Placebo-Controlled Clinical Trials in the United States and Canada—Table 5 lists adverse events that occurred at a frequency of 1% or more among nizatidine-treated patients who participated in placebo-controlled trials. The cited figures provide some basis for estimating the relative contribution of drug and nondrug factors to the side-effect incidence rate in the population studied.

Table 5.
Incidence of Treatment-Emergent Adverse Events in Placebo-Controlled Clinical Trials in the United States and Canada

Body System/ Adverse Event*	Percentage of Patients Reporting Event		Body System/ Adverse Event*	Percentage of Patients Reporting Event	
	Nizatidine (N=2,694)	Placebo (N=1,729)		Nizatidine (N=2,694)	Placebo (N=1,729)
Body as a Whole					
Headache	16.6	15.6	Musculoskeletal		
Abdominal pain	7.5	12.5	Myalgia	1.7	1.5
Pain	4.2	3.8	Nervous		
Asthenia	3.1	2.9	Dizziness	4.6	3.8
Back pain	2.4	2.6	Insomnia	2.7	3.4
Chest pain	2.3	2.1	Abnormal dreams	1.9	1.9
Infection	1.7	1.1	Somnolence	1.9	1.6
Fever	1.6	2.3	Anxiety	1.6	1.4
Surgical procedure	1.4	1.5	Nervousness	1.1	0.8
Injury, accident	1.2	0.9	Respiratory		
Digestive					
Diarrhea	7.2	6.9	Rhinitis	9.8	9.6
Nausea	5.4	7.4	Pharyngitis	3.3	3.1
Flatulence	4.9	5.4	Sinusitis	2.4	2.1
Vomiting	3.6	5.6	Cough, increased	2.0	2.0
Dyspepsia	3.6	4.4	Skin and Appendages		
Constipation	2.5	3.8	Rash	1.9	2.1
Dry mouth	1.4	1.3	Pruritus	1.7	1.3
Nausea and vomiting	1.2	1.9	Special Senses		
Anorexia	1.2	1.6	Amblyopia	1.0	0.9
Gastrointestinal disorder	1.1	1.2			
Tooth disorder	1.0	0.8			

*Events reported by at least 1% of nizatidine-treated patients are included.

A variety of less common events were also reported; it was not possible to determine whether these were caused by nizatidine.

Hepatic—Hepatocellular injury, evidenced by elevated liver enzyme tests (SGOT [AST], SGPT [ALT], or alkaline phosphatase), occurred in some patients and was possibly or probably related to nizatidine. In some cases, there was marked elevation of SGOT, SGPT enzymes (greater than 500 IU/L) and, in a single instance, SGPT was greater than 2,000 IU/L. The overall rate of occurrences of elevated liver enzymes and elevations to 3 times the upper limit of normal, however, did not significantly differ from the rate of liver enzyme abnormalities in placebo-treated patients. All abnormalities were reversible after discontinuation of Axid. Since market introduction, hepatitis and jaundice have been reported. Rare cases of cholestatic or mixed hepatocellular and cholestatic injury with jaundice have been reported with reversal of the abnormalities after discontinuation of Axid.

Cardiovascular—In clinical pharmacology studies, short episodes of asymptomatic ventricular tachycardia occurred in 2 individuals administered Axid and in 3 untreated subjects.

CNS—Rare cases of reversible mental confusion have been reported.

Endocrine—Clinical pharmacology studies and controlled clinical trials showed no evidence of antiandrogenic activity due to Axid. Impotence and decreased libido were reported with similar frequency by patients who received Axid and by those given placebo. Rare reports of gynecomastia occurred.

Hematologic—Anemia was reported significantly more frequently in nizatidine- than in placebo-treated patients. Fatal thrombocytopenia was reported in a patient who was treated with Axid and another H₂-receptor antagonist. On previous occasions, this patient had experienced thrombocytopenia while taking other drugs. Rare cases of thrombocytopenic purpura have been reported.

Integumentary—Sweating and urticaria were reported significantly more frequently in nizatidine- than in placebo-treated patients. Rash and exfoliative dermatitis were also reported. Vasculitis has been reported rarely.

Hypersensitivity—As with other H₂-receptor antagonists, rare cases of anaphylaxis following administration of nizatidine have been reported. Rare episodes of hypersensitivity reactions (eg, bronchospasm, laryngeal edema, rash, and eosinophilia) have been reported.

Body as a Whole—Serum sickness-like reactions have occurred rarely in conjunction with nizatidine use.

Genitourinary—Reports of impotence have occurred.

Other—Hyperuricemia unassociated with gout or nephrolithiasis was reported. Eosinophilia, fever, and nausea related to nizatidine administration have been reported.

Overdosage: Overdoses of Axid have been reported rarely. The following is provided to serve as a guide should such an overdose be encountered.

Signs and Symptoms—There is little clinical experience with overdosage of Axid in humans. Test animals that received large doses of nizatidine have exhibited cholinergic-type effects, including lacrimation, salivation, emesis, miosis, and diarrhea. Single oral doses of 800 mg/kg in dogs and of 1,200 mg/kg in monkeys were not lethal. Intravenous median lethal doses in the rat and mouse were 301 mg/kg and 232 mg/kg respectively.

Treatment—To obtain up-to-date information about the treatment of overdose, a good resource is your certified Regional Poison Control Center. Telephone numbers of certified poison control centers are listed in the *Physicians' Desk Reference (PDR)*. In managing overdosage, consider the possibility of multiple drug overdoses, interaction among drugs, and unusual drug kinetics in your patient.

If overdosage occurs, use of activated charcoal, emesis, or lavage should be considered along with clinical monitoring and supportive therapy. The ability of hemodialysis to remove nizatidine from the body has not been conclusively demonstrated; however, due to its large volume of distribution, nizatidine is not expected to be efficiently removed from the body by this method.

Dosage and Administration:
Active Duodenal Ulcer—The recommended oral dosage for adults is 300 mg once daily at bedtime. An alternative dosage regimen is 150 mg twice daily.

Maintenance of Healed Duodenal Ulcer—The recommended oral dosage for adults is 150 mg once daily at bedtime.

Gastroesophageal Reflux Disease—The recommended oral dosage in adults for the treatment of erosions, ulcerations, and associated heartburn is 150 mg twice daily.

Active Benign Gastric Ulcer—The recommended oral dosage is 300 mg given either as 150 mg twice daily or 300 mg once daily at bedtime. Prior to treatment, care should be taken to exclude the possibility of malignant gastric ulceration.

Dosage Adjustment for Patients With Moderate to Severe Renal Insufficiency—The dose for patients with renal dysfunction should be reduced as follows:

Active Duodenal Ulcer, GERD, and Benign Gastric Ulcer	
C _{cr}	Dose
20-50 mL/min	150 mg daily
<20 mL/min	150 mg every other day
Maintenance Therapy	
C _{cr}	Dose
20-50 mL/min	150 mg every other day
<20 mL/min	150 mg every 3 days

Some elderly patients may have creatinine clearances of less than 50 mL/min, and, based on pharmacokinetic data in patients with renal impairment, the dose for such patients should be reduced accordingly. The clinical effects of this dosage reduction in patients with renal failure have not been evaluated.

How Supplied:

Axid® Pulvules® are available in:
The 150-mg Pulvules are imprinted with "150" on the opaque dark yellow cap and "AXID" and "Reliant" on the opaque pale yellow body, using black ink. They are available as follows:

Bottles of 60 NDC 65726-144-15

The 300-mg Pulvules are imprinted with "300" on the opaque brown cap and "AXID" and "Reliant" on the opaque pale yellow body, using black ink. They are available as follows:

Bottles of 30 NDC 65726-145-10

*Pulvules® (filled gelatin capsules, Lilly)

Store at controlled room temperature 20° to 25°C (68° to 77°F) in a tightly closed container [see USP].

The USP defines controlled room temperature as: A temperature maintained thermostatically that encompasses the usual and customary working environment of 20° to 25°C (68° to 77°F); that results in a mean kinetic temperature calculated to be not more than 25°C; and that allows for excursions between 15° and 30°C (59° and 86°F) that are experienced in pharmacies, hospitals, and warehouses.

Rx Only

March 2005



Distributed by:
Reliant Pharmaceuticals, Inc.
Liberty Corner, NJ 07938, USA

Address Medical Inquiries to:
Reliant Pharmaceuticals, Inc.

Medical Affairs
110 Allen Road
Liberty Corner, NJ 07938, USA

© 2005 Reliant Pharmaceuticals, Inc.

214R400

PRINTED IN U.S.A.

**This is a representation of an electronic record that was signed electronically and
this page is the manifestation of the electronic signature.**

/s/

Eric Duffy
12/23/2005 10:45:44 AM