

HIGHLIGHTS OF PRESCRIBING INFORMATION

These highlights do not include all of the information needed to use OMNITROPE® safely and effectively. See full prescribing information for OMNITROPE®.

OMNITROPE® [somatropin (rDNA origin) injection], for subcutaneous use.
Initial U.S. Approval: 1987

INDICATIONS AND USAGE

OMNITROPE® is a recombinant human growth hormone indicated for:

- **Pediatric:** Treatment of children with growth failure due to growth hormone deficiency GHD (1.1)
- **Adult:** Treatment of adults with either adult onset or childhood onset GHD (1.2)

DOSAGE AND ADMINISTRATION

OMNITROPE® should be administered subcutaneously (2).

- **Pediatric GHD:** 0.16 to 0.24 mg/kg/week, divided into 6 - 7 daily injections, (2.1)
- **Adult GHD:** not more than 0.04 mg/kg/week (divided into daily injections) to be increased as tolerated to not more than 0.08 mg/kg/week; to be increased gradually every 1 - 2 months (2.2)
- OMNITROPE® Cartridges 5 mg/1.5 mL and 10 mg/1.5 mL must be used with the corresponding OMNITROPE® Pen 5 and Pen 10 delivery system, respectively (2.3)
- Injection sites should always be rotated to avoid lipoatrophy (2.3)

DOSAGE FORMS AND STRENGTHS

- OMNITROPE® Cartridge 5 mg/1.5 mL (15 IU) is a prefilled sterile solution in a glass cartridge ready to be administered with the Omnitrope® Pen 5. (3.1)
- OMNITROPE® Cartridge 10 mg/1.5 mL (30 IU) is a prefilled sterile solution in a glass cartridge ready to be administered with the Omnitrope® Pen 10. (3.1)
- OMNITROPE® for injection 1.5 mg/vial is supplied with two vials, one containing somatropin as a powder and the other vial containing the diluent (3.2).
- OMNITROPE® for injection 5.8 mg/vial is supplied with two vials, one containing somatropin as a powder and the other vial containing diluent (3.3).

CONTRAINDICATIONS

- Acute Critical Illness (4.1, 5.1)
- Children with Prader-Willi syndrome who are severely obese or have severe respiratory impairment - reports of sudden death (4.2)
- Active Malignancy (4.3)
- Active Proliferative or Severe Non-Proliferative Diabetic Retinopathy (4.4)
- Children with closed epiphyses (4.5)
- Known hypersensitivity to somatropin or excipients (4.6)
- Formulations containing benzyl alcohol (5 mg/1.5 mL Omnitrope Cartridges and the Bacteriostatic Water for Injection diluent for the 5.8 mg/vial Omnitrope) should not be used in premature babies or neonates (4.7)

WARNINGS AND PRECAUTIONS

- Acute Critical Illness: Potential benefit of treatment continuation should be weighed against the potential risk (5.1)
- Neoplasm: Monitor patients with preexisting tumors for progression or recurrence. Increased risk of a second neoplasm in childhood cancer survivors treated with somatropin - in particular meningiomas in patients treated with radiation to the head for their first neoplasm (5.2).
- Impaired Glucose Tolerance and Diabetes Mellitus: May be unmasked. Periodically monitor glucose levels in all patients. Doses of concurrent antihyperglycemic drugs in diabetics may require adjustment (5.3).
- Intracranial Hypertension: Exclude preexisting papilledema. May develop and is usually reversible after discontinuation or dose reduction (5.4).
- Fluid Retention (i.e., edema, arthralgia, carpal tunnel syndrome - especially in adults): May occur frequently. Reduce dose as necessary (5.5).
- Hypothyroidism: May first become evident or worsen (5.6)
- Slipped Capital Femoral Epiphysis: May develop. Evaluate children with the onset of a limp or hip/knee pain (5.7)
- Progression of Preexisting Scoliosis: May develop (5.8)

ADVERSE REACTIONS

Other common somatropin-related adverse reactions include injection site reactions/rashes and lipoatrophy (6.1) and headaches (6.3).

- **To report SUSPECTED ADVERSE REACTIONS, contact Sandoz Inc. at 800-525-2492 or FDA at 1-800-FDA-1088 or www.fda.gov/medwatch**

DRUG INTERACTIONS

- Inhibition of 11β-Hydroxysteroid Dehydrogenase Type 1: May require the initiation of glucocorticoid replacement therapy. Patients treated with glucocorticoid replacement for previously diagnosed hypoadrenalism may require an increase in their maintenance doses (7.1).
- Glucocorticoid Replacement: Should be carefully adjusted (7.2)
- Cytochrome P450-Metabolized Drugs: Monitor carefully if used with somatropin (7.3)
- Oral Estrogen: Larger doses of somatropin may be required in women (7.4)
- Insulin and/or Oral Hypoglycemic Agents: May require adjustment (7.5)

USE IN SPECIFIC POPULATIONS

See 17 for PATIENT COUNSELING INFORMATION and FDA Approved Product Labeling

Approved:

FULL PRESCRIBING INFORMATION: CONTENTS*

1 INDICATIONS AND USAGE

- 1.1 Pediatric Patients - Pediatric Growth Hormone Deficiency
- 1.2 Adult Patients - Adult Growth Hormone Deficiency

2 DOSAGE AND ADMINISTRATION

- 2.1 Dosing of Pediatric Patients - General Pediatric Dosing Information, Pediatric Growth Hormone Deficiency
- 2.2 Dosing of Adult Patients - Adult Growth Hormone Deficiency
- 2.3 Preparation and Administration

3 DOSAGE FORMS AND STRENGTHS

4 CONTRAINDICATIONS

- 4.1 Acute Critical Illness
- 4.2 Prader-Willi Syndrome in Children
- 4.3 Active Malignancy
- 4.4 Diabetic Retinopathy
- 4.5 Closed Epiphyses
- 4.6 Hypersensitivity
- 4.7 Benzyl Alcohol Sensitivity

5 WARNINGS AND PRECAUTIONS

- 5.1 Acute Critical Illness
- 5.2 Neoplasms
- 5.3 Glucose Intolerance
- 5.4 Intracranial Hypertension (IH)
- 5.5 Fluid Retention
- 5.6 Hypothyroidism
- 5.7 Slipped Capital Femoral Epiphysis in Pediatric Patients
- 5.8 Progression of Preexisting Scoliosis in Pediatric Patients
- 5.9 Confirmation of Childhood Onset Adult GHD
- 5.10 Local and Systemic Reactions
- 5.11 Laboratory Tests

6 ADVERSE REACTIONS

- 6.1 Most Serious and/or Most Frequently Observed Adverse Reactions
- 6.2 Clinical Trials Experience
- 6.3 Post-Marketing Surveillance

7 DRUG INTERACTIONS

- 7.1 Inhibition of 11 β -Hydroxysteroid Dehydrogenase Type 1 (11BHS-D-1)
- 7.2 Glucocorticoid Replacement
- 7.3 Cytochrome P450-Metabolized Drugs
- 7.4 Oral Estrogen
- 7.5 Insulin and/or Oral Hypoglycemic Agents

8 USE IN SPECIFIC POPULATIONS

- 8.1 Pregnancy
- 8.3 Nursing Mothers
- 8.5 Geriatric Use

10 OVERDOSAGE

11 DESCRIPTION

12 CLINICAL PHARMACOLOGY

- 12.1 Mechanism of Action
- 12.2 Pharmacodynamics
- 12.3 Pharmacokinetics

13 NONCLINICAL TOXICOLOGY

- 13.1 Carcinogenesis, Mutagenesis, Impairment of Fertility

14 CLINICAL STUDIES

- 14.1 Pediatric Growth Hormone Deficiency
- 14.2 Adult Growth Hormone Deficiency (GHD)

16 HOW SUPPLIED/STORAGE AND HANDLING

17 PATIENT COUNSELING INFORMATION

*Sections or subsections omitted from the Full Prescribing Information are not listed

FULL PRESCRIBING INFORMATION

Omnitrope (somatropin [rDNA origin]) Cartridges and for Injection

1 INDICATIONS AND USAGE

1.1 Pediatric Patients

Omnitrope[®] [somatropin (rDNA origin) injection] is indicated for the treatment of children with growth failure due to inadequate secretion of endogenous growth hormone (GH).

1.2 Adult Patients

Omnitrope[®] [somatropin (rDNA origin) injection] is indicated for the replacement of endogenous GH in adults with growth hormone deficiency (GHD) who meet either of the following two criteria:

- Adult Onset (AO): Patients who have GHD, either alone or associated with multiple hormone deficiencies (hypopituitarism), as a result of pituitary disease, hypothalamic disease, surgery, radiation therapy, or trauma; or
- Childhood Onset (CO): Patients who were GH deficient during childhood as a result of congenital, genetic, acquired, or idiopathic causes.

In general, confirmation of the diagnosis of adult GHD in both groups usually requires an appropriate GH stimulation test. However, confirmatory GH stimulation testing may not be required in patients with congenital/genetic GHD or multiple pituitary hormone deficiencies due to organic disease.

2 DOSAGE AND ADMINISTRATION

For subcutaneous injection.

Therapy with Omnitrope[®] should be supervised by a physician who is experienced in the diagnosis and management of pediatric patients with short stature associated with GHD and adult patients with either childhood onset or adult onset GHD.

2.1 Dosing of Pediatric Patients

General Pediatric Dosing Information

The Omnitrope[®] dosage and administration schedule should be individualized based on the growth response of each patient. Serum insulin-like growth factor I (IGF-I) levels may be useful during dose titration.

Response to somatropin therapy in pediatric patients tends to decrease with time. However, in pediatric patients, the failure to increase growth rate, particularly during the first year of therapy, indicates the need for close assessment of compliance and evaluation for other causes of growth failure, such as hypothyroidism, undernutrition, advanced bone age and antibodies to recombinant human GH (rhGH).

Treatment with Omnitrope[®] for short stature should be discontinued when the epiphyses are fused.

Pediatric Growth Hormone Deficiency (GHD)

Generally, a dosage of 0.16 - 0.24 mg/kg body weight /week, divided into 6 - 7 daily doses, is recommended.

2.2 Dosing of Adult Patients

Adult Growth Hormone Deficiency (GHD)

Based on the weight-based dosing utilized in clinical studies with another somatropin product, the recommended dosage at the start of therapy is not more than 0.04 mg/kg/week given as a daily subcutaneous injection. The dose may be increased at 4- to 8-week intervals according to individual patient requirements to not more than 0.08 mg/kg/week. Clinical response, side effects, and determination of age- and gender-adjusted serum IGF-I levels may be used as guidance in dose titration.

Alternatively, taking into account recent literature, a starting dose of approximately 0.2 mg/day (range, 0.15-0.30 mg/day) may be used without consideration of body weight. This dose can be increased

gradually every 1-2 months by increments of approximately 0.1-0.2 mg/day, according to individual patient requirements based on the clinical response and serum IGF-I concentrations. During therapy, the dose should be decreased if required by the occurrence of adverse events and/or serum IGF-I levels above the age- and gender-specific normal range. Maintenance dosages vary considerably from person to person.

A lower starting dose and smaller dose increments should be considered for older patients, who are more prone to the adverse effects of somatropin than younger individuals. In addition, obese individuals are more likely to manifest adverse effects when treated with a weight-based regimen. In order to reach the defined treatment goal, estrogen-replete women may need higher doses than men. Oral estrogen administration may increase the dose requirements in women.

2.3 Preparation and Administration

Omnitrope[®] Cartridge 5 mg/1.5 mL and Cartridge 10 mg/1.5 mL

Each cartridge of Omnitrope[®] must be inserted into its corresponding Omnitrope[®] Pen 5 or Omnitrope[®] Pen 10 delivery system. Instructions for delivering the dosage are provided in the Omnitrope[®] INSTRUCTIONS FOR USE booklet enclosed with the Omnitrope[®] drug and the Omnitrope[®] Pens.

OMNITROPE[®] for injection 1.5 mg/vial and 5.8 mg/vial

Instructions for delivering the dosage are provided in the INSTRUCTIONS FOR USE leaflets enclosed with the Omnitrope[®] drug.

Once the diluent is added to the lyophilized powder, swirl gently; **do not shake**. Shaking may cause denaturation of the active ingredient.

Parenteral drug products should always be inspected visually for particulate matter and discoloration prior to administration, whenever solution and container permit. Omnitrope[®] **MUST NOT BE INJECTED** if the solution is cloudy or contains particulate matter. Use it only if it is clear and colorless. Omnitrope must be refrigerated at 2° to 8°C (36° to 46°F).

Patients and caregivers who will administer OMNITROPE[®] in medically unsupervised situations should receive appropriate training and instruction on the proper use of OMNITROPE[®] from the physician or other suitably qualified health professional.

The dosage of OMNITROPE[®] must be adjusted for the individual patient. The dose should be given daily by **subcutaneous** injections (administered preferably in the evening). OMNITROPE[®] may be given in the thigh, buttocks, or abdomen.

Injection sites should always be rotated to avoid lipoatrophy.

3 DOSAGE FORMS AND STRENGTHS

Omnitrope[®] Cartridges and vials (for injection) are available:

- 5 mg/1.5 mL Cartridge is a prefilled sterile somatropin solution containing benzyl alcohol in a glass cartridge ready to be administered with the Omnitrope[®] Pen 5.
- 10 mg/1.5 mL Cartridge is a prefilled sterile somatropin solution in a glass cartridge ready to be administered with the Omnitrope[®] Pen 10.
- 1.5 mg/vial is supplied with two vials, one containing somatropin as a powder and the other vial containing the diluent (Sterile Water for Injection).
- 5.8 mg/vial is supplied with two vials, one containing somatropin as a powder and the other vial containing diluent (Bacteriostatic Water for Injection containing benzyl alcohol as a preservative).

4 CONTRAINDICATIONS

4.1 Acute Critical Illness

Treatment with pharmacologic amounts of somatropin is contraindicated in patients with acute critical illness due to complications following open heart surgery, abdominal surgery or multiple accidental trauma, or those with acute respiratory failure. Two placebo-controlled clinical trials in non-growth hormone deficient adult patients (n=522) with these conditions in intensive care units revealed a

significant increase in mortality (41.9% vs. 19.3%) among somatropin-treated patients (doses 5.3-8 mg/day) compared to those receiving placebo [see *Warnings and Precautions (5.1)*].

4.2 Prader-Willi Syndrome in Children

Somatropin is contraindicated in patients with Prader-Willi syndrome who are severely obese, have a history of upper airway obstruction or sleep apnea, or have severe respiratory impairment. There have been reports of sudden death when somatropin was used in such patients. Omnitrope[®] is not indicated for the treatment of pediatric patients who have growth failure due to genetically confirmed Prader-Willi syndrome.

4.3 Active Malignancy

In general, somatropin is contraindicated in the presence of active malignancy. Any preexisting malignancy should be inactive and its treatment complete prior to instituting therapy with somatropin. Somatropin should be discontinued if there is evidence of recurrent activity. Since GHD may be an early sign of the presence of a pituitary tumor (or, rarely, other brain tumors), the presence of such tumors should be ruled out prior to initiation of treatment. Somatropin should not be used in patients with any evidence of progression or recurrence of an underlying intracranial tumor.

4.4 Diabetic Retinopathy

Somatropin is contraindicated in patients with active proliferative or severe non-proliferative diabetic retinopathy.

4.5 Closed Epiphyses

Somatropin should not be used for growth promotion in pediatric patients with closed epiphyses.

4.6 Hypersensitivity

Omnitrope[®] is contraindicated in patients with a known hypersensitivity to somatropin or any of its excipients. Localized reactions are the most common hypersensitivity reactions.

4.7 Benzyl Alcohol Sensitivity

Benzyl alcohol, a preservative in Omnitrope Cartridge 5 mg/1.5 mL and in Bacteriostatic Water for Injection, has been associated with toxicity in newborns.

Omnitrope Cartridge 5 mg/1.5 mL and Omnitrope for Injection 5.8 mg/vial must not be given to premature babies or neonates.

5 WARNINGS AND PRECAUTIONS

5.1 Acute Critical Illness

Increased mortality in patients with acute critical illness due to complications following open heart surgery, abdominal surgery or multiple accidental trauma, or those with acute respiratory failure has been reported after treatment with pharmacologic amounts of somatropin [see *Contraindications (4.1)*]. The safety of continuing somatropin treatment in patients receiving replacement doses for approved indications who concurrently develop these illnesses has not been established. Therefore, the potential benefit of treatment continuation with somatropin in patients experiencing acute critical illnesses should be weighed against the potential risk.

5.2 Neoplasms

Patients with preexisting tumors or GHD secondary to an intracranial lesion should be monitored routinely for progression or recurrence of the underlying disease process. In pediatric patients, clinical literature has revealed no relationship between somatropin replacement therapy and central nervous system (CNS) tumor recurrence or new extracranial tumors. However, in childhood cancer survivors, an increased risk of a second neoplasm has been reported in patients treated with somatropin after their first neoplasm. Intracranial tumors, in particular meningiomas, in patients treated with radiation to the head for their first neoplasm, were the most common of these second neoplasms. In adults, it is unknown whether there is any relationship between somatropin replacement therapy and CNS tumor recurrence.

Patients should be monitored carefully for potential malignant transformation of skin lesions, i.e. increased growth of preexisting nevi.

5.3 Glucose Intolerance

Treatment with somatropin may decrease insulin sensitivity, particularly at higher doses in susceptible patients. As a result, previously undiagnosed impaired glucose tolerance and overt diabetes mellitus may be unmasked during somatropin treatment. Therefore, glucose levels should be monitored periodically in all patients treated with somatropin, especially in those with risk factors for diabetes mellitus, such as obesity or a family history of diabetes mellitus. Patients with preexisting type 1 or type 2 diabetes mellitus or impaired glucose tolerance should be monitored closely during somatropin therapy. The doses of antihyperglycemic drugs (i.e., insulin or oral agents) may require adjustment when somatropin therapy is instituted in these patients.

5.4 Intracranial Hypertension (IH)

Intracranial hypertension (IH) with papilledema, visual changes, headache, nausea, and/or vomiting has been reported in a small number of patients treated with somatropin products. Symptoms usually occurred within the first eight (8) weeks after the initiation of somatropin therapy. In all reported cases, IH-associated signs and symptoms rapidly resolved after cessation of therapy or a reduction of the somatropin dose.

Funduscopy examination should be performed routinely before initiating treatment with somatropin to exclude preexisting papilledema, and periodically during the course of somatropin therapy. If papilledema is observed by funduscopy during somatropin treatment, treatment should be stopped. If somatropin-induced IH is diagnosed, treatment with somatropin can be restarted at a lower dose after IH-associated signs and symptoms have resolved.

5.5 Fluid Retention

Fluid retention during somatropin replacement therapy in adults may frequently occur. Clinical manifestations of fluid retention are usually transient and dose dependent.

5.6 Hypothyroidism

Undiagnosed/untreated hypothyroidism may prevent an optimal response to somatropin, in particular, the growth response in children. Patients with an inherently increased risk of developing autoimmune thyroid disease and primary hypothyroidism should have their thyroid function checked prior to initiation of somatropin therapy. In patients with GHD, central (secondary) hypothyroidism may first become evident or worsen during somatropin treatment. Therefore, patients treated with somatropin should have periodic thyroid function tests and thyroid hormone replacement therapy should be initiated or appropriately adjusted when indicated.

In patients with hypopituitarism (multiple hormone deficiencies), standard hormonal replacement therapy should be monitored closely when somatropin therapy is administered.

5.7 Slipped Capital Femoral Epiphysis in Pediatric Patients

Slipped capital femoral epiphysis may occur more frequently in patients undergoing rapid growth. Any pediatric patient with the onset of a limp or complaints of hip or knee pain during somatropin therapy should be carefully evaluated.

5.8 Progression of Preexisting Scoliosis in Pediatric Patients

Progression of scoliosis can occur in patients who experience rapid growth. Because somatropin increases growth rate, patients with a history of scoliosis who are treated with somatropin should be monitored for progression of scoliosis. However, somatropin has not been shown to increase the occurrence of scoliosis.

5.9 Confirmation of Childhood Onset Adult GHD

Patients with epiphyseal closure who were treated with somatropin replacement therapy in childhood should be reevaluated according to the criteria in *Indications and Usage (1.2)* before continuation of somatropin therapy at the reduced dose level recommended for GH deficient adults.

5.10 Local and Systemic Reactions

When somatropin is administered subcutaneously at the same site over a long period of time, tissue atrophy may result. This can be avoided by rotating the injection site [see *Dosage and Administration (2.3)*].

As with any protein, local or systemic allergic reactions may occur. Parents/Patients should be informed that such reactions are possible and that prompt medical attention should be sought if allergic reactions occur.

5.11 Laboratory Tests

Serum levels of inorganic phosphorus, alkaline phosphatase, parathyroid hormone (PTH) and IGF-I may increase after somatropin therapy.

6 ADVERSE REACTIONS

6.1 Most Serious and/or Most Frequently Observed Adverse Reactions

This list presents the most serious^b and/or most frequently observed^a adverse reactions during treatment with somatropin:

- ^bSudden death in pediatric patients with Prader-Willi syndrome with risk factors including severe obesity, history of upper airway obstruction or sleep apnea and unidentified respiratory infection [see *Contraindications (4.2)*]
- ^bIntracranial tumors, in particular meningiomas, in teenagers/young adults treated with radiation to the head as children for a first neoplasm and somatropin [see *Contraindications (4.3)* and *Warnings and Precautions (5.3)*]
- ^{a,b}Glucose intolerance including impaired glucose tolerance/impaired fasting glucose as well as overt diabetes mellitus [see *Warnings and Precautions (5.4)*]
- ^bIntracranial hypertension [see *Warnings and Precautions (5.5)*]
- ^bSignificant diabetic-retinopathy [see *Contraindications (4.4)*]
- ^bSlipped capital femoral epiphysis in pediatric patients [see *Warnings and Precautions (5.8)*]
- ^bProgression of preexisting scoliosis in pediatric patients [see *Warnings and Precautions (5.9)*]
- ^aFluid retention manifested by edema, arthralgia, myalgia, nerve compression syndromes including carpal tunnel syndrome/paraesthesias [see *Warnings and Precautions (5.6)*]
- ^aUnmasking of latent central hypothyroidism [see *Warnings and Precautions (5.7)*]
- ^aInjection site reactions/rashes and lipoatrophy (as well as rare generalized hypersensitivity reactions) [see *Warnings and Precautions (5.11)*]

6.2 Clinical Trials Experience

Because clinical trials are conducted under varying conditions, adverse reaction rates observed during the clinical trials performed with one somatropin formulation cannot always be directly compared to the rates observed during the clinical trials performed with a second somatropin formulation, and may not reflect the adverse reaction rates observed in practice.

Clinical Trials in Pediatric GHD Patients

As with all protein drugs, a small percentage of patients may develop antibodies to the protein. GH antibodies with binding capacities lower than 2 mg/L have not been associated with growth attenuation. In a very small number of patients, when binding capacity was greater than 2 mg/L, interference with the growth response was observed.

The following events were observed during clinical studies with OMNITROPE[®] Cartridge conducted in children with GHD:

Table 1: Incidence of adverse reactions occurring in $\geq 5\%$ pediatric patients with GHD during treatment with OMNITROPE[®] Cartridge (n=86)

Adverse Event	Number (%)
Elevated HbA1c	14
Eosinophilia	12

Hematoma 9

The following events were observed during clinical studies with OMNITROPE[®] for injection conducted in children with GHD:

Table 2: Incidence of adverse reactions occurring in $\geq 5\%$ pediatric patients with GHD during treatment with OMNITROPE[®] for injection (n=44)

Adverse Event	Number (%)
Hypothyroidism	16%
Elevated HbA1c	14%
Eosinophilia	11%
Hematoma	9%
Headache	7%
Hypertriglyceridemia	5%
Leg Pain	5%

Clinical Trials in Adult GHD Patients

In clinical trials with somatropin in GHD adults, the majority of the adverse events consisted of mild to moderate symptoms of fluid retention, including peripheral swelling, arthralgia, pain and stiffness of the extremities, peripheral edema, myalgia, paresthesia, and hypoesthesia. These events were reported early during therapy, and tended to be transient and/or responsive to dosage reduction.

6.3 Post-Marketing Surveillance

Because these adverse events are reported voluntarily from a population of uncertain size, it is not always possible to reliably estimate their frequency or establish a causal relationship to drug exposure. The adverse events reported during post-marketing surveillance do not differ from those listed/discussed above in Sections 6.1 and 6.2 in children and adults.

Leukemia has been reported in a small number of GH deficient children treated with somatropin, somatrem (methionylated rhGH) and GH of pituitary origin. It is uncertain whether these cases of leukemia are related to GH therapy, the pathology of GHD itself, or other associated treatments such as radiation therapy. On the basis of current evidence, experts have not been able to conclude that GH therapy *per se* was responsible for these cases of leukemia. The risk for children with GHD, if any, remains to be established [see *Contraindications (4.3) and Warnings and Precautions (5.2)*].

The following additional adverse reactions have been observed during the use of somatropin: headaches (children and adults), gynecomastia (children), and pancreatitis (children).

7 DRUG INTERACTIONS

7.1 Inhibition of 11 β -Hydroxysteroid Dehydrogenase Type 1 (11 β HSD-1)

Somatropin inhibits 11 β -hydroxysteroid dehydrogenase type 1 (11 β HSD-1) in adipose/hepatic tissue and may significantly impact the metabolism of cortisol and cortisone. As a consequence, in patients treated with somatropin, previously undiagnosed central (secondary) hypoadrenalism may be unmasked requiring glucocorticoid replacement therapy. In addition, patients treated with glucocorticoid replacement therapy for previously diagnosed hypoadrenalism may require an increase in their maintenance or stress doses; this may be especially true for patients treated with cortisone acetate and prednisone since conversion of these drugs to their biologically active metabolites is dependent on the activity of the 11 β HSD-1 enzyme.

7.2 Glucocorticoid Replacement

Excessive glucocorticoid therapy may attenuate the growth promoting effects of somatropin in children. Therefore, glucocorticoid replacement therapy should be carefully adjusted in children with concomitant GH and glucocorticoid deficiency to avoid both hypoadrenalism and an inhibitory effect on growth.

7.3 Cytochrome P450-Metabolized Drugs

Limited published data indicate that somatropin treatment increases cytochrome P450 (CYP450)-mediated antipyrine clearance in man. These data suggest that somatropin administration may alter the clearance of compounds known to be metabolized by CYP450 liver enzymes (e.g., corticosteroids, sex steroids, anticonvulsants, cyclosporine). Careful monitoring is advisable when somatropin is administered in combination with other drugs known to be metabolized by CYP450 liver enzymes. However, formal drug interaction studies have not been conducted.

7.4 Oral Estrogen

In adult women on oral estrogen replacement, a larger dose of somatropin may be required to achieve the defined treatment goal [see *Dosage and Administration (2.2)*].

7.5 Insulin and/or Oral Hypoglycemic Agents

In patients with diabetes mellitus requiring drug therapy, the dose of insulin and/or oral agent may require adjustment when somatropin therapy is initiated [see *Warnings and Precautions (5.4)*].

8 USE IN SPECIFIC POPULATIONS

8.1 Pregnancy

Pregnancy Category B. Animal reproduction studies have not been conducted with Omnitrope[®]. It is not known whether Omnitrope[®] can cause fetal harm when administered to a pregnant woman or can affect reproductive capacity.-

Reproduction studies carried out with another approved somatropin product at doses of 0.3, 1, and 3.3 mg/kg/day administered subcutaneously in the rat and 0.08, 0.3, and 1.3 mg/kg/day administered intramuscularly in the rabbit (highest doses approximately 24 times and 19 times the recommended human therapeutic levels, respectively, based on body surface area) resulted in decreased maternal body weight gains but were not teratogenic. In rats receiving subcutaneous doses during gametogenesis and up to 7 days of pregnancy, 3.3 mg/kg/day (approximately 24 times human dose) produced anestrus or extended estrus cycles in females and fewer and less motile sperm in males. When given to pregnant female rats (days 1 to 7 of gestation) at 3.3 mg/kg/day a very slight increase in fetal deaths was observed. At 1 mg/kg/day (approximately seven times human dose) rats showed slightly extended estrus cycles, whereas at 0.3 mg/kg/day no effects were noted.

In perinatal and postnatal studies in rats, somatropin doses of 0.3, 1, and 3.3 mg/kg/day of another approved somatropin product produced growth-promoting effects in the dams but not in the fetuses. Young rats at the highest dose showed increased weight gain during suckling but the effect was not apparent by 10 weeks of age. No adverse effects were observed on gestation, morphogenesis, parturition, lactation, postnatal development, or reproductive capacity of the offsprings due to another approved somatropin product. There are, however, no adequate and well-controlled studies in pregnant women. Because animal reproduction studies are not always predictive of human response, this drug should be used during pregnancy only if clearly needed.

8.3 Nursing Mothers

It is not known whether Omnitrope[®] is excreted in human milk. Because many drugs are excreted in human milk, caution should be exercised when Omnitrope[®] is administered to a nursing woman.

8.5 Geriatric Use

The safety and effectiveness of Omnitrope[®] in patients aged 65 and over have not been evaluated in clinical studies. Elderly patients may be more sensitive to the action of somatropin, and therefore may be more prone to develop adverse reactions. A lower starting dose and smaller dose increments should be considered for older patients [see *Dosage and Administration (2.2)*].

10 OVERDOSAGE

Short-Term

Short-term overdosage could lead initially to hypoglycemia and subsequently to hyperglycemia. Furthermore, overdose with somatropin is likely to cause fluid retention.

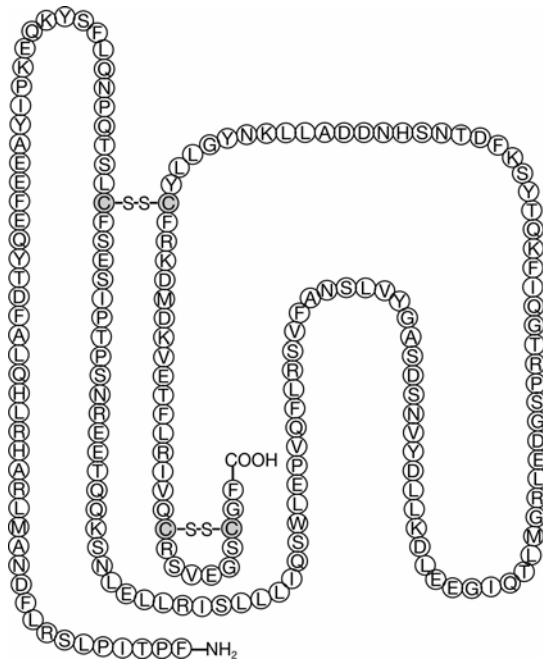
Long-Term

Long-term overdosage could result in signs and symptoms of gigantism and/or acromegaly consistent with the known effects of excess growth hormone [see *Dosage and Administration (2)*].

11 DESCRIPTION

OMNITROPE® (somatropin [rDNA] origin) is a polypeptide hormone of recombinant DNA origin. It has 191 amino acid residues and a molecular weight of 22,125 daltons. The amino acid sequence of the product is identical to that of human growth hormone of pituitary origin (somatropin). OMNITROPE® is synthesized in a strain of *Escherichia coli* that has been modified by the addition of the gene for human growth hormone. OMNITROPE® Cartridge is a clear, colorless, sterile solution for subcutaneous injection. OMNITROPE® for Injection is a lyophilized powder that is reconstituted for subcutaneous injection.

Figure 1: Schematic amino acid sequence of human growth hormone including the disulfide bonds



Omnitrope[®] Pen 10

Instructions for Use

For use with Omnitrope[®] (Somatropin
[rDNA origin] Injection) 10 mg/1.5 mL
cartridges

TABLE OF CONTENTS

Important Safety Information	3
DOs and DON'Ts	4
Pen Parts	6
Auto-positioning Feature	6
Pen Components	7
How to Use Your Omnitrope[®] Pen 10	8
Loading the Cartridge into the Pen	8
Attaching the Pen Needle	9
Priming	10
Dose Dialing	11
Making the Injection	12
Removing the Pen Needle	13
Trouble Shooting	14
Care and Storage	16
Guarantee	17
Important Personal Notes	18
Service Materials	19

READ FIRST: Important Safety Information

1. Read the following instructions before using the Omnitrope[®] Pen 10. Ask your healthcare professional if there is something you do not understand.
2. The Omnitrope[®] Pen 10 is a pen injector. It is for use with Omnitrope[®] cartridges 10 mg/1.5 mL (30 IU) and BD[®] pen needles (29G x 12.7 mm or 31G x 8 mm or 31G x 5 mm).
3. People with very poor vision should not use the Omnitrope[®] Pen 10 unless someone with good eyesight is able to help.

DOS AND DON'TS

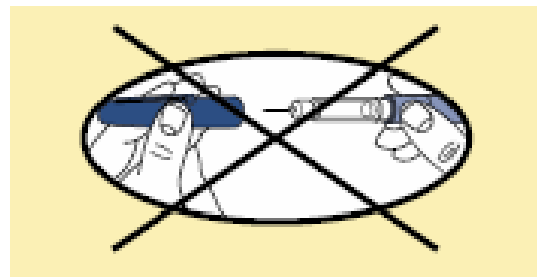
DOs

1. Always keep Omnitrope[®] cartridges refrigerated.
2. After taking a cartridge out of the refrigerator, allow it to reach room temperature (about 30 minutes) before injecting the medicine.
3. When starting a new cartridge, always ready (prime) the pen.
4. When making an injection, insert the pen needle into the skin in the way that your healthcare professional teaches you. After pen needle insertion, push the injection button in as far as it will go and continue to press firmly for at least five seconds, before you remove the pen needle from the skin. If medicine continues to drip from the pen needle after injection, hold the pen needle in the skin longer the next time you inject.
5. This device **must not be shared with other patients**. However, if you are giving an injection to another person, be careful when removing the pen needle. Accidental pen needle sticks can transmit infections.
6. **For safety and injection comfort, use a new, sterile pen needle with each injection.**

DON'Ts

1. Do not share the Omnitrope[®] Pen 10. It is made for only one person to use.
2. The pen needle unit is sterile. To avoid contaminating the pen needle after opening, **do not place it on a surface or touch exposed parts.**
3. Never dial your dose or attempt to correct a dialing error with the pen needle in your skin. This may result in a wrong dose.
4. **Never store or carry your Omnitrope[®] Pen 10 with a pen needle attached.**

Never recap pen with pen needle on.



Storing or carrying your Omnitrope[®] Pen 10 with a pen needle attached may lead to needle pricks and leaves an open passage for:

- Air to enter the cartridge
- medicine to leak out

Both of these conditions can affect the dose of the injection.

5. Do not use your Omnitrope[®] Pen 10 if the cap or other parts are missing.

PEN PARTS

AUTO-POSITIONING FEATURE

The Omnitrope® Pen 10 has a black rod with an auto-positioning feature. This auto-positioning feature makes priming easier (fewer steps), especially when a new cartridge is used.

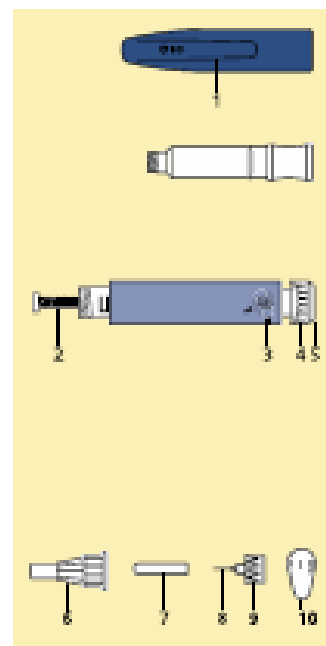
How it works

(Pictures are included only to demonstrate the auto-positioning feature. These steps are not necessary to operate pen).



Notice that the black rod moves into the pen easily and returns to the fully extended position automatically. This automatic extension of the black rod positions it correctly against the cartridge plunger.

PEN PARTS



PEN CAP

- 1. Clip

CARTRIDGE HOLDER

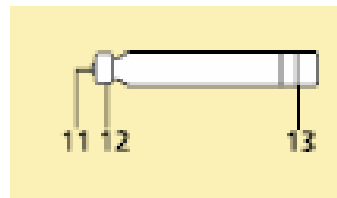
PEN BODY

- 2. Black rod
- 3. Dose window with arrow indicator
- 4. White dose knob
- 5. Red injection button

PEN NEEDLE UNIT

- 6. Outer pen needle shield
- 7. Inner pen needle shield
- 8. Pen needle
- 9. Hub
- 10. Paper tab

Note - Pen Needle Unit is supplied assembled and sterile. Do not disassemble at this point.



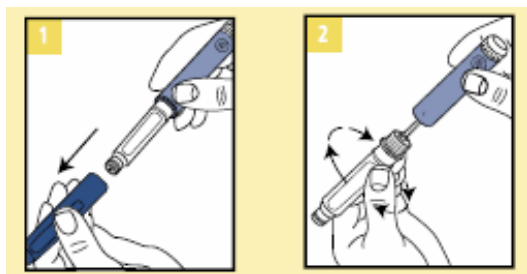
CARTRIDGE

- 11. Rubber septum
- 12. Metal Cap
- 13. Cartridge plunger

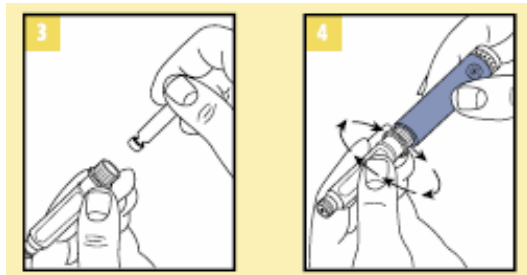
8

HOW TO USE YOUR OMNITROPE® PEN 10

LOADING THE CARTRIDGE INTO THE PEN



1. Remove the pen cap by pulling it off the pen.
2. Unscrew the cartridge holder from the pen body

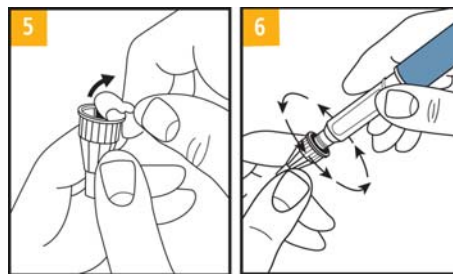


3. Insert the cartridge, metal cap first, into the cartridge holder
4. Lower the pen body onto the cartridge holder so that the black rod presses against the cartridge plunger. Screw the cartridge holder onto the pen body until no gap remains. One of the blue arrows must line-up with the yellow line mark on the pen body.

Note - Do not overtighten.

9

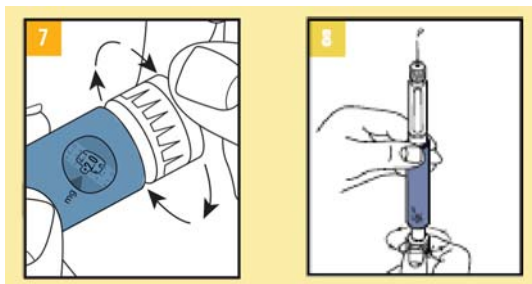
ATTACHING THE PEN NEEDLE



5. Remove the paper tab from the back of a new pen needle.
- 6a. Holding the cartridge holder, push the pen needle unit onto the pen. Then screw the threaded hub of the pen needle onto the cartridge holder as shown.
- 6b. With a gentle pull, remove the outer pen needle shield. Save the outer shield. You will use it to remove the pen needle from the pen after your injection is finished.
- 6c. Do not remove the inner pen needle shield at this time.
- 6d. Check that the cartridge holder is attached to the pen body, with the blue arrow lined-up with the yellow mark on the pen body before each injection.

10

PRIMING



Important - Before using a new cartridge, you must prime the Omnitrope[®] Pen 10.

For a New Cartridge Only

7. Hold the pen with the needle pointing upwards. Gently tap the cartridge holder with your finger to help air bubbles rise to the top of the cartridge. Set the dose to 0.1 mg (one click) by turning the dose knob.

8. Remove the inner pen needle shield. With the pen needle pointing up, firmly turn the dose knob back to the "0" position and hold for at least 5 seconds. At least 2 drops of medicine must flow out of the pen needle for the pen to be properly primed.

If at least 2 drops do not flow out, set the dose to 0.1 mg and repeat the steps until at least 2 drops of medicine appear at the tip of the pen needle.

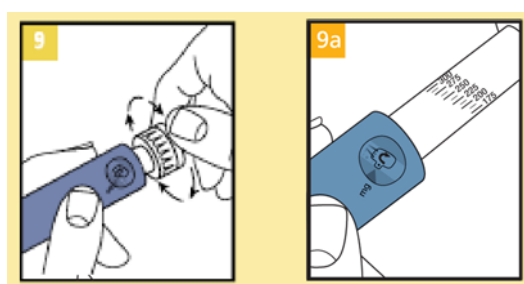
When medicine appears, the Omnitrope[®] Pen 10 is properly primed for injection and ready to use.

For a previously used Cartridge

No priming is needed. Remove the inner pen needle shield and continue with dose dialing.

11

DOSE DIALING



9. To set your dose, turn the dose knob until you see the number of mg for your dose in the middle of the dose window lined-up with the arrow. You will hear a click for each dose increment you dial. However, do not rely on counting these clicks to measure the right dose.

Important - Dose Correction

If you turn the dose knob past your dose, **do not dial backwards.**

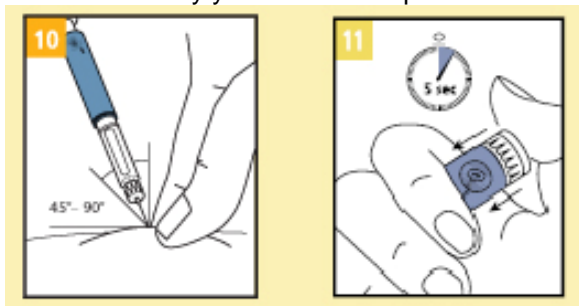
Hold the pen body and turn the dose knob until it is fully extended as shown in picture 9a. You will see a bent arrow (↪) in the dose dialing window. The injection button can now be fully pressed, resetting the dial to "0" without giving medicine. The right dose can now be redialed as described in step 9.

Note - Check that the cartridge holder is still attached to the pen body, with the blue arrow lined-up with the yellow mark on the pen body.

12

MAKING THE INJECTION

10. Insert the pen needle into the skin as instructed by your healthcare professional.



11. After inserting the pen needle, push the injection button in as far in as it will go and press firmly. A clicking sound will be heard while your dose is injecting. Continue to press firmly for at least 5 seconds, before you remove the pen needle from the skin.

If medicine continues to drip from the pen needle after injection, hold the pen needle in your skin for a longer time the next time you inject.

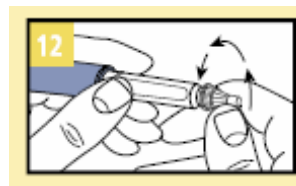
If you cannot push the Injection button in as far in as it goes and the dose window does not read "0", the cartridge is empty and the full dose of medicine has not been injected. The dose indicator window will show the amount of medicine still needed. Remove the pen needle from the skin and note the number. Reset the dose knob to "0" by holding the pen and turning the dose knob until it is fully extended as shown in picture 9a. The dose injection button can now be fully pressed

13

to "0". Remove the pen needle from the pen (see step 12 below) and remove the empty cartridge by unscrewing the cartridge holder. Insert a new cartridge and prime the pen as described in steps 7 and 8. Set the dose, which you noted, and inject. This completes your dose.

Important - Before replacing a cartridge, be sure that the pen needle unit is **NOT** attached to the Omnitrope[®] Pen 10.

REMOVING THE PEN NEEDLE



12. Carefully replace the outer pen needle shield. Hold the pen by the cartridge holder and unscrew the pen needle from the cartridge holder. Recap the pen.
13. Store your Omnitrope[®] Pen 10 with attached Omnitrope cartridge in its pouch or refrigerator storage box. Store in a refrigerator between 36 and 46°F (2 and 8°C).
14. Dispose of used pen needles in a special container called a "sharps" container. Your healthcare professional can give you a sharps container or tell you how to make one. Do not dispose of used pen needles in the trash.

TROUBLESHOOTING

PROBLEM	POSSIBLE CAUSE	HOW TO FIX
Dial unit does not turn easily.	Dust or dirt	Turn the dial beyond the highest setting on the scale. Wipe all exposed surfaces with a clean, damp cloth. Please also refer to the chapter "Care and Storage".
You have dialed a higher dose than needed.		Correct dose as described in step 9, "Dose correction".
The injection button cannot be pushed or stops during injection. (Dose knob does not return to "0").	Cartridge is empty and full dose has not been dispensed.	Remove the pen needle as per step 12 and replace the empty cartridge with a new cartridge. Refer to step 11, "If the injection button stops".
	Clogged pen needle.	Remove the pen needle as per step 12 and replace it with a new needle as described in step 5.
No clicking is heard during the injection (Dose knob moves freely).	Pen is in dose correction mode.	Remove pen needle from skin. Press injection button all the way in so the dial returns to zero and repeat from step 9 to make the injection.
Medicine continues to drip from the pen needle after injection.	Pen needle was removed from the skin too early.	Hold the pen needle in your skin longer next time you inject.
	Cartridge holder is not properly attached to the pen body.	Line-up blue arrow on cartridge holder with yellow mark on pen body.

16

CARE AND STORAGE

Once your Omnitrope[®] Pen 10 contains a somatotropin cartridge, it has to be stored in the refrigerator between 36 and 46°F (2 and 8°C).

Protect your Omnitrope[®] Pen 10 and cartridge from light by storing in its pouch or refrigerator storage box.

The Omnitrope cartridge must be discarded 28 days after the first injection. The Omnitrope[®] Pen 10 can be reloaded with a new cartridge and be used multiple times.

Your Omnitrope[®] Pen 10 must be properly cared for.

- Only a clean, damp cloth should be used for routine cleaning. Never wash the pen in water or with strong surgical disinfectants.
- Avoid exposure to dust, moisture and temperature extremes. Do not expose to heat or freeze.

If your Omnitrope[®] Pen 10 is damaged or you cannot get it to work contact your local Omnitrope[®] Pen 10 provider (phone 800-525-2492). For questions or additional information please call 1800 525 8747. Do not attempt to repair the pen yourself.

17

GUARANTEE

Your Omnitrope[®] Pen 10 is covered by a 2 year guarantee. Contact your local pen provider after you have used the pen for 2 years to have it replaced by a new one.

If your Omnitrope[®] Pen 10 is defective in materials or workmanship within the period of the guarantee, the local pen provider will replace the Omnitrope[®] Pen 10 and/or rectify the fault at its own cost.

In case of complaints, please contact your local pen provider to report a complaint.

This guarantee is invalid if your Omnitrope[®] Pen 10 has not been used in accordance with the manufacturer's instruction leaflet or if the defect has been caused by neglect, misuse or accident.

ACCURACY - Omnitrope[®] Pen 10 complies with the accuracy requirements of the International Standard EN ISO11608-1/2000 Pen Injectors for medical use - Requirements and test methods.

18
IMPORTANT PERSONAL NOTES

Date I first used the Omnitrope[®] Pen 10:
_____ (dd/mm/yy)

Pen log no:

Additional Comments:

19
SERVICE MATERIALS*



POUCH to store and protect your pen and other components, such as needles



REFRIGATOR STORAGE BOX to protect the drug from odors and accidental spills



COOLBAG to help maintain Omnitrope[®] at refrigerator temperature when traveling

* Optional; please check availability with your local Sandoz representative

Produced for:
Sandoz GmbH
Biochemiestr. 10
A-6250 Kundl
Austria

Authorized representative
Becton Dickinson France S.A.S.
38801 Le Pont de Claix Cedex
France

BD medical-Pharmaceutical Systems
1 Becton Drive
Franklin Lanes, NJ 07417
USA

Omnitrope is a trademark of Novartis.
BD and BD Logo are trademarks of Becton, Dickinson and
Company.

OP5.ifU.06.1