

# ZERIT<sup>®</sup> (stavudine)

## ZERIT<sup>®</sup> (stavudine) Capsules ZERIT<sup>®</sup> (stavudine) for Oral Solution

(Patient Information Leaflet Included)

### WARNING

LACTIC ACIDOSIS AND SEVERE HEPATOMEGALY WITH STEATOSIS, INCLUDING FATAL CASES, HAVE BEEN REPORTED WITH THE USE OF NUCLEOSIDE ANALOGUES ALONE OR IN COMBINATION, INCLUDING STAVUDINE AND OTHER ANTIRETROVIRALS. FATAL LACTIC ACIDOSIS HAS BEEN REPORTED IN PREGNANT WOMEN WHO RECEIVED THE COMBINATION OF STAVUDINE AND DIDANOSINE WITH OTHER ANTIRETROVIRAL AGENTS. THE COMBINATION OF STAVUDINE AND DIDANOSINE SHOULD BE USED WITH CAUTION DURING PREGNANCY AND IS RECOMMENDED ONLY IF THE POTENTIAL BENEFIT CLEARLY OUTWEIGHS THE POTENTIAL RISK (SEE **WARNINGS AND PRECAUTIONS: PREGNANCY**).

FATAL AND NONFATAL PANCREATITIS HAVE OCCURRED DURING THERAPY WHEN ZERIT WAS PART OF A COMBINATION REGIMEN THAT INCLUDED DIDANOSINE IN BOTH TREATMENT-NAIVE AND TREATMENT-EXPERIENCED PATIENTS, REGARDLESS OF DEGREE OF IMMUNOSUPPRESSION (SEE **WARNINGS**).

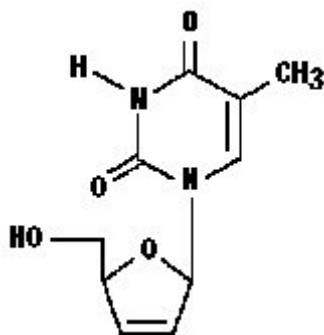
### DESCRIPTION

ZERIT<sup>®</sup> is the brand name for stavudine (d4T), a synthetic thymidine nucleoside analogue, active against the human immunodeficiency virus (HIV).

ZERIT (stavudine) Capsules are supplied for oral administration in strengths of 15, 20, 30, and 40 mg of stavudine. Each capsule also contains inactive ingredients microcrystalline cellulose, sodium starch glycolate, lactose, and magnesium stearate. The hard gelatin shell consists of gelatin, titanium dioxide, and iron oxides. The capsules are printed with edible inks.

ZERIT (stavudine) for Oral Solution is supplied as a dye-free, fruit-flavored powder in bottles with child-resistant closures providing 200 mL of a 1 mg/mL stavudine solution upon constitution with water per label instructions. The powder for oral solution contains the following inactive ingredients: methylparaben, propylparaben, sodium carboxymethylcellulose, sucrose, and antifoaming and flavoring agents.

The chemical name for stavudine is 2',3'-didehydro-3'-deoxythymidine. Stavudine has the following structural formula:



Stavudine is a white to off-white crystalline solid with the molecular formula  $C_{10}H_{12}N_2O_4$  and a molecular weight of 224.2. The solubility of stavudine at 23° C is approximately 83 mg/mL in water and 30 mg/mL in propylene glycol. The n-octanol/water partition coefficient of stavudine at 23° C is 0.144.

## MICROBIOLOGY

### Mechanism of Action

Stavudine, a nucleoside analogue of thymidine, is phosphorylated by cellular kinases to the active metabolite stavudine triphosphate. Stavudine triphosphate inhibits the activity of HIV-1 reverse transcriptase (RT) by competing with the natural substrate thymidine triphosphate ( $K_i=0.0083$  to  $0.032 \mu\text{M}$ ) and by causing DNA chain termination following its incorporation into viral DNA. Stavudine triphosphate inhibits cellular DNA polymerases  $\beta$  and  $\gamma$  and markedly reduces the synthesis of mitochondrial DNA.

### Antiviral Activity

The cell culture antiviral activity of stavudine was measured in peripheral blood mononuclear cells, monocytic cells, and lymphoblastoid cell lines. The concentration of drug necessary to inhibit HIV-1 replication by 50% ( $EC_{50}$ ) ranged from 0.009 to  $4 \mu\text{M}$  against laboratory and

clinical isolates of HIV-1. In cell culture, stavudine exhibited additive to antagonistic activity in combination with zidovudine. Stavudine in combination with either abacavir, didanosine, tenofovir, or zalcitabine exhibited additive to synergistic anti-HIV-1 activity. Ribavirin, at the 9-45  $\mu\text{M}$  concentrations tested, reduced the anti-HIV-1 activity of stavudine by 2.5- to 5-fold. The relationship between cell culture susceptibility of HIV-1 to stavudine and the inhibition of HIV-1 replication in humans has not been established.

## **Drug Resistance**

HIV-1 isolates with reduced susceptibility to stavudine have been selected in cell culture (strain-specific) and were also obtained from patients treated with stavudine. Phenotypic analysis of HIV-1 isolates from 61 patients receiving prolonged (6-29 months) stavudine monotherapy showed that post-therapy isolates from four patients exhibited  $\text{EC}_{50}$  values more than 4-fold (range 7- to 16-fold) higher than the average pretreatment susceptibility of baseline isolates. Of these, HIV-1 isolates from one patient contained the zidovudine-resistance-associated mutations T215Y and K219E, and isolates from another patient contained the multiple-nucleoside-resistance-associated mutation Q151M. Mutations in the RT gene of HIV-1 isolates from the other two patients were not detected. The genetic basis for stavudine susceptibility changes has not been identified.

## **Cross-resistance**

Cross-resistance among HIV-1 reverse transcriptase inhibitors has been observed. Several studies have demonstrated that prolonged stavudine treatment can select and/or maintain mutations associated with zidovudine resistance. HIV-1 isolates with one or more zidovudine-resistance-associated mutations (M41L, D67N, K70R, L210W, T215Y/F, K219Q/E) exhibited reduced susceptibility to stavudine in cell culture.

## **CLINICAL PHARMACOLOGY**

### **Pharmacokinetics**

The pharmacokinetics of stavudine have been evaluated in HIV-infected adult and pediatric patients (Tables 1-3). Peak plasma concentrations ( $C_{\text{max}}$ ) and area under the plasma concentration-time curve (AUC) increased in proportion to dose after both single and multiple doses ranging from 0.03 to 4 mg/kg. There was no significant accumulation of stavudine with repeated administration every 6, 8, or 12 hours.

## Absorption

Following oral administration, stavudine is rapidly absorbed, with peak plasma concentrations occurring within 1 hour after dosing. The systemic exposure to stavudine is the same following administration as capsules or solution. Steady-state pharmacokinetic parameters of ZERIT (stavudine) in HIV-infected adults are shown in Table 1.

**Table 1: Steady-State Pharmacokinetic Parameters of ZERIT in HIV-Infected Adults**

Parameter	ZERIT 40 mg BID Mean $\pm$ SD (n=8)
AUC (ng•h/mL) <sup>a</sup>	2568 $\pm$ 454
C <sub>max</sub> (ng/mL)	536 $\pm$ 146
C <sub>min</sub> (ng/mL)	8 $\pm$ 9

<sup>a</sup> from 0 to 24 hours.

AUC = area under the curve over 24 hours.

C<sub>max</sub> = maximum plasma concentration.

C<sub>min</sub> = trough or minimum plasma concentration.

## Distribution

Binding of stavudine to serum proteins was negligible over the concentration range of 0.01 to 11.4  $\mu$ g/mL. Stavudine distributes equally between red blood cells and plasma. Volume of distribution is shown in Table 2.

## Metabolism

Metabolism plays a limited role in the clearance of stavudine. Unchanged stavudine was the major drug-related component circulating in plasma after an 80-mg dose of <sup>14</sup>C-stavudine, while metabolites constituted minor components of the circulating radioactivity. Minor metabolites include oxidized stavudine, glucuronide conjugates of stavudine and its oxidized metabolite, and an *N*-acetylcysteine conjugate of the ribose after glycosidic cleavage, suggesting that thymine is also a metabolite of stavudine.

## Elimination

Following an 80-mg dose of <sup>14</sup>C-stavudine to healthy subjects, approximately 95% and 3% of the total radioactivity was recovered in urine and feces, respectively. Radioactivity due to parent drug in urine and feces was 73.7% and 62.0%, respectively. The mean terminal elimination half-life is approximately 2.3 hours following single oral doses. Mean renal clearance of the parent compound is approximately 272 mL/min, accounting for approximately 67% of the apparent oral clearance.

In HIV-infected patients, renal elimination of unchanged drug accounts for about 40% of the overall clearance regardless of the route of administration (Table 2). The mean renal clearance was about twice the average endogenous creatinine clearance, indicating active tubular secretion in addition to glomerular filtration.

**Table 2: Pharmacokinetic Parameters of Stavudine in HIV-Infected Adults: Bioavailability, Distribution, and Clearance**

Parameter	Mean ± SD	n
Oral bioavailability (%)	86.4 ± 18.2	25
Volume of distribution (L) <sup>a</sup>	46 ± 21	44
Total body clearance (mL/min) <sup>a</sup>	594 ± 164	44
Apparent oral clearance (mL/min) <sup>b</sup>	560 ± 182 <sup>c</sup>	113
Renal clearance (mL/min) <sup>a</sup>	237 ± 98	39
Elimination half-life, IV dose (h) <sup>a</sup>	1.15 ± 0.35	44
Elimination half-life, oral dose (h) <sup>b</sup>	1.6 ± 0.23	8
Urinary recovery of stavudine (% of dose) <sup>a,d</sup>	42 ± 14	39

<sup>a</sup> following 1-hour IV infusion.

<sup>b</sup> following single oral dose.

<sup>c</sup> assuming a body weight of 70 kg.

<sup>d</sup> over 12-24 hours.

## Special Populations

### *Pediatric*

For pharmacokinetic properties of stavudine in pediatric patients see [Table 3](#).

**Table 3: Pharmacokinetic Parameters (Mean ± SD) of Stavudine in HIV-Exposed or -Infected Pediatric Patients**

Parameter	Ages 5 weeks to 15 years		Ages 14 to 28 days		Day of Birth	
		n		n		n
Oral bioavailability (%)	76.9 ± 31.7	20	ND		ND	
Volume of distribution (L/kg) <sup>a</sup>	0.73 ± 0.32	21	ND		ND	
Ratio of CSF: plasma concentrations (as %) <sup>b</sup>	59 ± 35	8	ND		ND	
Total body clearance (mL/min/kg) <sup>a</sup>	9.75 ± 3.76	21	ND		ND	

**Table 3: Pharmacokinetic Parameters (Mean ± SD) of Stavudine in HIV-Exposed or -Infected Pediatric Patients**

Parameter	Ages 5 weeks to 15 years		Ages 14 to 28 days		Day of Birth	
		n		n		n
Apparent oral clearance (mL/min/kg) <sup>c</sup>	13.75 ± 4.29	20	11.52 ± 5.93	30	5.08 ± 2.80	17
Elimination half-life, IV dose (h) <sup>a</sup>	1.11 ± 0.28	21	ND		ND	
Elimination half-life, oral dose (h) <sup>c</sup>	0.96 ± 0.26	20	1.59 ± 0.29	30	5.27 ± 2.01	17
Urinary recovery of stavudine (% of dose) <sup>c,d</sup>	34 ± 16	19	ND		ND	

<sup>a</sup> following 1-hour IV infusion.

<sup>b</sup> at median time of 2.5 hours (range 2-3 hours) following multiple oral doses.

<sup>c</sup> following single oral dose.

<sup>d</sup> over 8 hours.

ND = not determined.

### Renal Impairment

Data from two studies in adults indicated that the apparent oral clearance of stavudine decreased and the terminal elimination half-life increased as creatinine clearance decreased (see [Table 4](#)).  $C_{max}$  and  $T_{max}$  were not significantly altered by renal impairment. The mean ± SD hemodialysis clearance value of stavudine was 120 ± 18 mL/min (n=12); the mean ± SD percentage of the stavudine dose recovered in the dialysate, timed to occur between 2-6 hours post-dose, was 31 ± 5%. Based on these observations, it is recommended that ZERIT (stavudine) dosage be modified in patients with reduced creatinine clearance and in patients receiving maintenance hemodialysis (see [DOSAGE AND ADMINISTRATION](#)).

**Table 4: Mean ± SD Pharmacokinetic Parameter Values of ZERIT<sup>a</sup> in Adults with Varying Degrees of Renal Function**

	Creatinine Clearance			Hemodialysis Patients <sup>b</sup> (n=11)
	>50 mL/min (n=10)	26-50 mL/min (n=5)	9-25 mL/min (n=5)	
Creatinine clearance (mL/min)	104 ± 28	41 ± 5	17 ± 3	NA
Apparent oral clearance (mL/min)	335 ± 57	191 ± 39	116 ± 25	105 ± 17
Renal clearance (mL/min)	167 ± 65	73 ± 18	17 ± 3	NA
$T_{1/2}$ (h)	1.7 ± 0.4	3.5 ± 2.5	4.6 ± 0.9	5.4 ± 1.4

**Table 4: Mean ± SD Pharmacokinetic Parameter Values of ZERIT<sup>a</sup> in Adults with Varying Degrees of Renal Function**

	Creatinine Clearance			Hemodialysis Patients <sup>b</sup> (n=11)
	>50 mL/min (n=10)	26-50 mL/min (n=5)	9-25 mL/min (n=5)	

<sup>a</sup> Single 40-mg oral dose.

<sup>b</sup> Determined while patients were off dialysis.

T<sub>1/2</sub> = terminal elimination half-life.

NA = not applicable.

### *Hepatic Impairment*

Stavudine pharmacokinetics were not altered in five non-HIV-infected patients with hepatic impairment secondary to cirrhosis (Child-Pugh classification B or C) following the administration of a single 40-mg dose.

### *Geriatric*

Stavudine pharmacokinetics have not been studied in patients >65 years of age. (See **PRECAUTIONS: Geriatric Use.**)

### *Gender*

A population pharmacokinetic analysis of data collected during a controlled clinical study in HIV-infected patients showed no clinically important differences between males (n=291) and females (n=27).

### *Race*

A population pharmacokinetic analysis of data collected during a controlled clinical study in HIV-infected patients showed no clinically important differences between races (n=233 Caucasian, 39 African-American, 41 Hispanic, 1 Asian, and 4 other).

### *Drug Interactions (see PRECAUTIONS: Drug Interactions)*

*Zidovudine:* Zidovudine competitively inhibits the intracellular phosphorylation of stavudine. Therefore, use of zidovudine in combination with ZERIT (stavudine) should be avoided.

*Doxorubicin:* *In vitro* data indicate that the phosphorylation of stavudine is inhibited at relevant concentrations by doxorubicin.

*Ribavirin:* *In vitro* data indicate ribavirin reduces phosphorylation of lamivudine, stavudine, and zidovudine. However, no pharmacokinetic (eg, plasma concentrations or intracellular triphosphorylated active metabolite concentrations) or pharmacodynamic (eg, loss of HIV/HCV virologic suppression) interaction was observed when ribavirin and lamivudine (n=18), stavudine (n=10), or zidovudine (n=6) were coadministered as part of a multi-drug regimen to HIV/HCV co-infected patients (see **WARNINGS**).

Stavudine does not inhibit the major cytochrome P450 isoforms CYP1A2, CYP2C9, CYP2C19, CYP2D6, and CYP3A4; therefore, it is unlikely that clinically significant drug interactions will occur with drugs metabolized through these pathways.

Because stavudine is not protein-bound, it is not expected to affect the pharmacokinetics of protein-bound drugs.

Tables 5 and 6 summarize the effects on AUC and C<sub>max</sub>, with a 95% confidence interval (CI) when available, following coadministration of ZERIT with didanosine, lamivudine, and nelfinavir. No clinically significant pharmacokinetic interactions were observed.

**Table 5: Results of Drug Interaction Studies with ZERIT: Effects of Coadministered Drug on Stavudine Plasma AUC and C<sub>max</sub> Values**

Drug	Stavudine Dosage	n <sup>a</sup>	AUC of Stavudine (95% CI)	C <sub>max</sub> of Stavudine (95% CI)
Didanosine, 100 mg q12h for 4 days	40 mg q12h for 4 days	10	↔	↑ 17%
Lamivudine, 150 mg single dose	40 mg single dose	18	↔ (92.7-100.6%)	↑ 12% (100.3-126.1%)
Nelfinavir, 750 mg q8h for 56 days	30-40 mg q12h for 56 days	8	↔	↔

↑ indicates increase.

↔ indicates no change, or mean increase or decrease of <10%.

<sup>a</sup> HIV-infected patients.

**Table 6: Results of Drug Interaction Studies with ZERIT: Effects of Stavudine on Coadministered Drug Plasma AUC and C<sub>max</sub> Values**

Drug	Stavudine Dosage	n <sup>a</sup>	AUC of Coadministered Drug (95% CI)	C <sub>max</sub> of Coadministered Drug (95% CI)
Didanosine, 100 mg q12h for 4 days	40 mg q12h for 4 days	10	↔	↔



**Table 6: Results of Drug Interaction Studies with ZERIT: Effects of Stavudine on Coadministered Drug Plasma AUC and C<sub>max</sub> Values**

Drug	Stavudine Dosage	n <sup>a</sup>	AUC of Coadministered Drug (95% CI)	C <sub>max</sub> of Coadministered Drug (95% CI)
Lamivudine, 150 mg single dose	40 mg single dose	18	↔ (90.5-107.6%)	↔ (87.1-110.6%)
Nelfinavir, 750 mg q8h for 56 days	30-40 mg q12h for 56 days	8	↔	↔

↔ indicates no change, or mean increase or decrease of <10%.

<sup>a</sup> HIV-infected patients.

## INDICATIONS AND USAGE

**ZERIT (stavudine), in combination with other antiretroviral agents, is indicated for the treatment of HIV-1 infection (see [Clinical Studies](#)).**

### Clinical Studies

#### ***Combination Therapy***

The combination use of ZERIT is based on the results of clinical studies in HIV-infected patients in double- and triple-combination regimens with other antiretroviral agents.

One of these studies (START 1) was a multicenter, randomized, open-label study comparing ZERIT (40 mg twice daily) plus lamivudine plus indinavir to zidovudine plus lamivudine plus indinavir in 202 treatment-naive patients. Both regimens resulted in a similar magnitude of inhibition of HIV RNA levels and increases in CD4 cell counts through 48 weeks.

#### ***Monotherapy***

The efficacy of ZERIT was demonstrated in a randomized, double-blind study (AI455-019, conducted 1992-1994) comparing ZERIT with zidovudine in 822 patients with a spectrum of HIV-related symptoms. The outcome in terms of progression of HIV disease and death was similar for both drugs.

## CONTRAINDICATIONS

ZERIT is contraindicated in patients with clinically significant hypersensitivity to stavudine or to any of the components contained in the formulation.

## WARNINGS

### 1. Lactic Acidosis/Severe Hepatomegaly with Steatosis:

**Lactic acidosis and severe hepatomegaly with steatosis, including fatal cases, have been reported with the use of nucleoside analogues alone or in combination, including stavudine and other antiretrovirals.** Although relative rates of lactic acidosis have not been assessed in prospective well-controlled trials, longitudinal cohort and retrospective studies suggest that this infrequent event may be more often associated with antiretroviral combinations containing stavudine. Female gender, obesity, and prolonged nucleoside exposure may be risk factors. Fatal lactic acidosis has been reported in pregnant women who received the combination of stavudine and didanosine with other antiretroviral agents. The combination of stavudine and didanosine should be used with caution during pregnancy and is recommended only if the potential benefit clearly outweighs the potential risk (see **PRECAUTIONS: Pregnancy**).

Particular caution should be exercised when administering ZERIT to any patient with known risk factors for liver disease; however, cases of lactic acidosis have also been reported in patients with no known risk factors. Generalized fatigue, digestive symptoms (nausea, vomiting, abdominal pain, and unexplained weight loss); respiratory symptoms (tachypnea and dyspnea); or neurologic symptoms (including motor weakness, see **3. Neurologic Symptoms**) might be indicative of the development of symptomatic hyperlactatemia or lactic acidosis syndrome.

Treatment with ZERIT (stavudine) should be suspended in any patient who develops clinical or laboratory findings suggestive of symptomatic hyperlactatemia, lactic acidosis, or pronounced hepatotoxicity (which may include hepatomegaly and steatosis even in the absence of marked transaminase elevations).

### 2. Hepatic Impairment and Toxicity:

The safety and efficacy of ZERIT have not been established in HIV-infected patients with significant underlying liver disease. During combination antiretroviral therapy, patients with preexisting liver dysfunction, including chronic active hepatitis, have an increased frequency of liver function abnormalities, including severe and potentially fatal hepatic adverse events, and should be monitored according to standard practice. If there is evidence of worsening liver disease in such patients, interruption or discontinuation of treatment must be considered.

An increased risk of hepatotoxicity may occur in patients treated with ZERIT in combination with didanosine and hydroxyurea compared to when ZERIT is used alone. Deaths attributed to

hepatotoxicity have occurred in patients receiving this combination. This combination should be avoided.

### *Use with Interferon and Ribavirin-Based Regimens*

*In vitro* studies have shown ribavirin can reduce the phosphorylation of pyrimidine nucleoside analogues such as stavudine. Although no evidence of a pharmacokinetic or pharmacodynamic (eg, loss of HIV/HCV virologic suppression) interaction was seen when ribavirin was coadministered with stavudine in HIV/HCV co-infected patients (see **CLINICAL PHARMACOLOGY: Drug Interactions**), **hepatic decompensation (some fatal) has occurred in HIV/HCV co-infected patients receiving combination antiretroviral therapy for HIV and interferon and ribavirin.** Patients receiving interferon with or without ribavirin and stavudine should be closely monitored for treatment-associated toxicities, especially hepatic decompensation. Discontinuation of stavudine should be considered as medically appropriate. Dose reduction or discontinuation of interferon, ribavirin, or both should also be considered if worsening clinical toxicities are observed, including hepatic decompensation (eg, Child-Pugh >6) (see **the complete prescribing information for interferon and ribavirin**).

### **3. Neurologic Symptoms:**

Motor weakness has been reported rarely in patients receiving combination antiretroviral therapy including ZERIT. Most of these cases occurred in the setting of lactic acidosis. The evolution of motor weakness may mimic the clinical presentation of Guillain-Barré syndrome (including respiratory failure). Symptoms may continue or worsen following discontinuation of therapy.

Peripheral neuropathy, manifested by numbness, tingling, or pain in the hands or feet, has been reported in patients receiving ZERIT therapy. Peripheral neuropathy has occurred more frequently in patients with advanced HIV disease, with a history of neuropathy, or in patients receiving other drugs that have been associated with neuropathy, including didanosine (see **ADVERSE REACTIONS**).

### **4. Pancreatitis:**

Fatal and nonfatal pancreatitis have occurred during therapy when ZERIT was part of a combination regimen that included didanosine in both treatment-naïve and treatment-experienced patients, regardless of degree of immunosuppression. The combination of ZERIT and didanosine and any other agents that are toxic to the pancreas should be suspended in patients with suspected pancreatitis. Reinstitution of ZERIT after a confirmed diagnosis of

pancreatitis should be undertaken with particular caution and close patient monitoring. The new regimen should not contain didanosine.

## **PRECAUTIONS**

### **Fat Redistribution**

Redistribution/accumulation of body fat including central obesity, dorsocervical fat enlargement (buffalo hump), peripheral wasting, facial wasting, breast enlargement, and “cushingoid appearance” have been observed in patients receiving antiretroviral therapy. The mechanism and long-term consequences of these events are currently unknown. A causal relationship has not been established.

### **Immune Reconstitution Syndrome**

Immune reconstitution syndrome has been reported in patients treated with combination antiretroviral therapy, including ZERIT. During the initial phase of combination antiretroviral treatment, patients whose immune system responds may develop an inflammatory response to indolent or residual opportunistic infections (such as *Mycobacterium avium* infection, cytomegalovirus, *Pneumocystis jiroveci* pneumonia (PCP), or tuberculosis), which may necessitate further evaluation and treatment.

### **Information for Patients (See Patient Information Leaflet.)**

Patients should be informed of the importance of early recognition of symptoms of symptomatic hyperlactatemia or lactic acidosis syndrome, which include unexplained weight loss, abdominal discomfort, nausea, vomiting, fatigue, dyspnea, and motor weakness. Patients in whom these symptoms develop should seek medical attention immediately. Discontinuation of ZERIT therapy may be required.

Patients should be informed that an important toxicity of ZERIT (stavudine) is peripheral neuropathy. Patients should be aware that peripheral neuropathy is manifested by numbness, tingling, or pain in hands or feet, and that these symptoms should be reported to their physicians. Patients should be counseled that peripheral neuropathy occurs with greatest frequency in patients who have advanced HIV disease or a history of peripheral neuropathy, and that dose modification and/or discontinuation of ZERIT may be required if toxicity develops.

Caregivers of young children receiving ZERIT therapy should be instructed regarding detection and reporting of peripheral neuropathy.

Patients should be informed that when ZERIT is used in combination with other agents with similar toxicities, the incidence of adverse events may be higher than when ZERIT is used alone. An increased risk of pancreatitis, which may be fatal, may occur in patients treated with the combination of ZERIT and didanosine. Patients treated with this combination should be closely monitored for symptoms of pancreatitis. An increased risk of hepatotoxicity, which may be fatal, may occur in patients treated with ZERIT in combination with didanosine and hydroxyurea. This combination should be avoided.

Patients should be informed that ZERIT (stavudine) is not a cure for HIV infection, and that they may continue to acquire illnesses associated with HIV infection, including opportunistic infections. Patients should be advised to remain under the care of a physician when using ZERIT. They should be advised that ZERIT therapy has not been shown to reduce the risk of transmission of HIV to others through sexual contact or blood contamination. Patients should be informed that the long-term effects of ZERIT are unknown at this time.

Patients should be informed that the Centers for Disease Control and Prevention (CDC) recommend that HIV-infected mothers not nurse newborn infants to reduce the risk of postnatal transmission of HIV infection.

Patients should be informed that redistribution or accumulation of body fat may occur in individuals receiving antiretroviral therapy and that the cause and long-term health effects of these conditions are not known at this time.

Patients should be advised of the importance of adherence to any antiretroviral regimen, including those that contain ZERIT.

## **Drug Interactions (see also CLINICAL PHARMACOLOGY)**

Zidovudine competitively inhibits the intracellular phosphorylation of stavudine. Therefore, use of zidovudine in combination with ZERIT should be avoided.

*In vitro* data indicate that the phosphorylation of stavudine is also inhibited at relevant concentrations by doxorubicin and ribavirin. The clinical significance of these *in vitro* interactions is unknown; therefore, concomitant use of stavudine with either of these drugs should be undertaken with caution. (See **WARNINGS**.)

## **Carcinogenesis, Mutagenesis, Impairment of Fertility**

In 2-year carcinogenicity studies in mice and rats, stavudine was noncarcinogenic at doses which produced exposures (AUC) 39 and 168 times, respectively, human exposure at the

recommended clinical dose. Benign and malignant liver tumors in mice and rats and malignant urinary bladder tumors in male rats occurred at levels of exposure 250 (mice) and 732 (rats) times human exposure at the recommended clinical dose.

Stavudine was not mutagenic in the Ames, *E. coli* reverse mutation, or the CHO/HGPRT mammalian cell forward gene mutation assays, with and without metabolic activation. Stavudine produced positive results in the *in vitro* human lymphocyte clastogenesis and mouse fibroblast assays, and in the *in vivo* mouse micronucleus test. In the *in vitro* assays, stavudine elevated the frequency of chromosome aberrations in human lymphocytes (concentrations of 25 to 250 µg/mL, without metabolic activation) and increased the frequency of transformed foci in mouse fibroblast cells (concentrations of 25 to 2500 µg/mL, with and without metabolic activation). In the *in vivo* micronucleus assay, stavudine was clastogenic in bone marrow cells following oral stavudine administration to mice at dosages of 600 to 2000 mg/kg/day for 3 days.

No evidence of impaired fertility was seen in rats with exposures (based on  $C_{max}$ ) up to 216 times that observed following a clinical dosage of 1 mg/kg/day.

## **Pregnancy**

### *Pregnancy Category C*

Reproduction studies have been performed in rats and rabbits with exposures (based on  $C_{max}$ ) up to 399 and 183 times, respectively, of that seen at a clinical dosage of 1 mg/kg/day and have revealed no evidence of teratogenicity. The incidence in fetuses of a common skeletal variation, unossified or incomplete ossification of sternebra, was increased in rats at 399 times human exposure, while no effect was observed at 216 times human exposure. A slight post-implantation loss was noted at 216 times the human exposure with no effect noted at approximately 135 times the human exposure. An increase in early rat neonatal mortality (birth to 4 days of age) occurred at 399 times the human exposure, while survival of neonates was unaffected at approximately 135 times the human exposure. A study in rats showed that stavudine is transferred to the fetus through the placenta. The concentration in fetal tissue was approximately one-half the concentration in maternal plasma. Animal reproduction studies are not always predictive of human response.

There are no adequate and well-controlled studies of stavudine in pregnant women. Stavudine should be used during pregnancy only if the potential benefit justifies the potential risk.

Fatal lactic acidosis has been reported in pregnant women who received the combination of stavudine and didanosine with other antiretroviral agents. It is unclear if pregnancy augments the risk of lactic acidosis/hepatic steatosis syndrome reported in nonpregnant individuals receiving nucleoside analogues (see **WARNINGS: Lactic Acidosis/Severe Hepatomegaly with Steatosis**). **The combination of stavudine and didanosine should be used with caution during pregnancy and is recommended only if the potential benefit clearly outweighs the potential risk.** Healthcare providers caring for HIV-infected pregnant women receiving stavudine should be alert for early diagnosis of lactic acidosis/hepatic steatosis syndrome.

**Antiretroviral Pregnancy Registry:** To monitor maternal-fetal outcomes of pregnant women exposed to stavudine and other antiretroviral agents, an Antiretroviral Pregnancy Registry has been established. Physicians are encouraged to register patients by calling 1-800-258-4263.

## **Nursing Mothers**

**The Centers for Disease Control and Prevention recommend that HIV-infected mothers not breast-feed their infants to avoid risking postnatal transmission of HIV.** Studies in lactating rats demonstrated that stavudine is excreted in milk. Although it is not known whether stavudine is excreted in human milk, there exists the potential for adverse effects from stavudine in nursing infants. Because of both the potential for HIV transmission and the potential for serious adverse reactions in nursing infants, **mothers should be instructed not to breast-feed if they are receiving ZERIT.**

## **Pediatric Use**

Use of stavudine in pediatric patients from birth through adolescence is supported by evidence from adequate and well-controlled studies of stavudine in adults with additional pharmacokinetic and safety data in pediatric patients.

Adverse events and laboratory abnormalities reported to occur in pediatric patients in clinical studies were generally consistent with the safety profile of stavudine in adults. These studies include ACTG 240, where 105 pediatric patients ages 3 months to 6 years received ZERIT 2 mg/kg/day for a median of 6.4 months; a controlled clinical trial where 185 newborns received ZERIT 2 mg/kg/day either alone or in combination with didanosine from birth through 6 weeks of age; and a clinical trial where 8 newborns received ZERIT 2 mg/kg/day in combination with didanosine and nelfinavir from birth through 4 weeks of age.

Stavudine pharmacokinetics have been evaluated in 25 HIV-infected pediatric patients ranging in age from 5 weeks to 15 years and in weight from 2 to 43 kg after IV or oral administration of single doses and twice-daily regimens and in 30 HIV-exposed or -infected newborns ranging in

age from birth to 4 weeks after oral administration of twice-daily regimens (see **CLINICAL PHARMACOLOGY**, Table 3).

## **Geriatric Use**

Clinical studies of ZERIT (stavudine) did not include sufficient numbers of patients aged 65 years and over to determine whether they respond differently than younger patients. Greater sensitivity of some older individuals to the effects of ZERIT cannot be ruled out.

In a monotherapy Expanded Access Program for patients with advanced HIV infection, peripheral neuropathy or peripheral neuropathic symptoms were observed in 15 of 40 (38%) elderly patients receiving 40 mg twice daily and 8 of 51 (16%) elderly patients receiving 20 mg twice daily. Of the approximately 12,000 patients enrolled in the Expanded Access Program, peripheral neuropathy or peripheral neuropathic symptoms developed in 30% of patients receiving 40 mg twice daily and 25% of patients receiving 20 mg twice daily. Elderly patients should be closely monitored for signs and symptoms of peripheral neuropathy.

ZERIT is known to be substantially excreted by the kidney, and the risk of toxic reactions to this drug may be greater in patients with impaired renal function. Because elderly patients are more likely to have decreased renal function, it may be useful to monitor renal function. Dose adjustment is recommended for patients with renal impairment (see **DOSAGE AND ADMINISTRATION: Dosage Adjustment**).

## **ADVERSE REACTIONS**

### **Adults**

Fatal lactic acidosis has occurred in patients treated with ZERIT in combination with other antiretroviral agents. Patients with suspected lactic acidosis should immediately suspend therapy with ZERIT. Permanent discontinuation of ZERIT should be considered for patients with confirmed lactic acidosis.

ZERIT therapy has rarely been associated with motor weakness, occurring predominantly in the setting of lactic acidosis. If motor weakness develops, ZERIT should be discontinued.

ZERIT therapy has also been associated with peripheral sensory neuropathy, which can be severe, is dose related, and occurs more frequently in patients being treated with other drugs that have been associated with neuropathy (including didanosine), in patients with advanced HIV infection, or in patients who have previously experienced peripheral neuropathy.



Patients should be monitored for the development of neuropathy, which is usually manifested by numbness, tingling, or pain in the feet or hands. Stavudine-related peripheral neuropathy may resolve if therapy is withdrawn promptly. In some cases, symptoms may worsen temporarily following discontinuation of therapy. If symptoms resolve completely, patients may tolerate resumption of treatment at one-half the dose (see **DOSAGE AND ADMINISTRATION**). If neuropathy recurs after resumption, permanent discontinuation of ZERIT should be considered.

Selected clinical adverse events that occurred in adult patients receiving ZERIT (stavudine) in a controlled monotherapy study (Study AI455-019) are provided in Table 7.

**Table 7: Selected Clinical Adverse Events in Study AI455-019<sup>a</sup> (Monotherapy)**

Adverse Events	Percent (%)	
	ZERIT <sup>b</sup> (40 mg twice daily) (n=412)	zidovudine (200 mg 3 times daily) (n=402)
Headache	54	49
Diarrhea	50	44
Peripheral Neurologic Symptoms/Neuropathy	52	39
Rash	40	35
Nausea and Vomiting	39	44

<sup>a</sup> Any severity, regardless of relationship to study drug.

<sup>b</sup> Median duration of stavudine therapy = 79 weeks; median duration of zidovudine therapy = 53 weeks.

Pancreatitis was observed in 3 of the 412 adult patients who received ZERIT in a controlled monotherapy study.

Selected clinical adverse events that occurred in antiretroviral-naïve adult patients receiving ZERIT from two controlled combination studies are provided in Table 8.

**Table 8: Selected Clinical Adverse Events<sup>a</sup> in START 1 and START 2<sup>b</sup> Studies (Combination Therapy)**

Adverse Events	Percent (%)			
	START 1		START 2 <sup>b</sup>	
	ZERIT + lamivudine + indinavir (n=100 <sup>c</sup> )	zidovudine + lamivudine + indinavir (n=102)	ZERIT + didanosine + indinavir (n=102 <sup>c</sup> )	zidovudine + lamivudine + indinavir (n=103)
Nausea	43	63	53	67
Diarrhea	34	16	45	39

**Table 8: Selected Clinical Adverse Events<sup>a</sup> in START 1 and START 2<sup>b</sup> Studies (Combination Therapy)**

Adverse Events	Percent (%)			
	START 1		START 2 <sup>b</sup>	
	ZERIT + lamivudine + indinavir (n=100 <sup>c</sup> )	zidovudine + lamivudine + indinavir (n=102)	ZERIT + didanosine + indinavir (n=102 <sup>c</sup> )	zidovudine + lamivudine + indinavir (n=103)
Headache	25	26	46	37
Rash	18	13	30	18
Vomiting	18	33	30	35
Peripheral Neurologic Symptoms/ Neuropathy	8	7	21	10

<sup>a</sup> Any severity, regardless of relationship to study regimen.

<sup>b</sup> START 2 compared two triple-combination regimens in 205 treatment-naive patients. Patients received either ZERIT (40 mg twice daily) plus didanosine plus indinavir or zidovudine plus lamivudine plus indinavir.

<sup>c</sup> Duration of stavudine therapy = 48 weeks.

Pancreatitis resulting in death was observed in patients treated with ZERIT plus didanosine in controlled clinical studies and in postmarketing reports.

Selected laboratory abnormalities reported in a controlled monotherapy study (Study AI455-019) are provided in Table 9.

**Table 9: Selected Adult Laboratory Abnormalities in Study AI455-019<sup>a,b</sup>**

Parameter	Percent (%)	
	ZERIT (40 mg twice daily) (n=412)	zidovudine (200 mg 3 times daily) (n=402)
AST (SGOT) (>5.0 x ULN)	11	10
ALT (SGPT) (>5.0 x ULN)	13	11
Amylase (≥1.4 x ULN)	14	13

<sup>a</sup> Data presented for patients for whom laboratory evaluations were performed.

<sup>b</sup> Median duration of stavudine therapy = 79 weeks; median duration of zidovudine therapy = 53 weeks.

ULN = upper limit of normal.

Selected laboratory abnormalities reported in two controlled combination studies are provided in Tables 10 and 11.

**Table 10: Selected Laboratory Abnormalities in START 1 and START 2 Studies (Grades 3–4)**

Parameter	Percent (%)			
	START 1		START 2	
	ZERIT + lamivudine + indinavir (n=100)	zidovudine + lamivudine + indinavir (n=102)	ZERIT + didanosine + indinavir (n=102)	zidovudine + lamivudine + indinavir (n=103)
Bilirubin (>2.6 x ULN)	7	6	16	8
AST (SGOT) (>5 x ULN)	5	2	7	7
ALT (SGPT) (>5 x ULN)	6	2	8	5
GGT (>5 x ULN)	2	2	5	2
Lipase (>2 x ULN)	6	3	5	5
Amylase (>2 x ULN)	4	<1	8	2

ULN = upper limit of normal.

**Table 11: Selected Laboratory Abnormalities in START 1 and START 2 Studies (All Grades)**

Parameter	Percent (%)			
	START 1		START 2	
	ZERIT + lamivudine + indinavir (n=100)	zidovudine + lamivudine + indinavir (n=102)	ZERIT + didanosine + indinavir (n=102)	zidovudine + lamivudine + indinavir (n=103)
Total Bilirubin	65	60	68	55
AST (SGOT)	42	20	53	20
ALT (SGPT)	40	20	50	18
GGT	15	8	28	12
Lipase	27	12	26	19
Amylase	21	19	31	17

### Observed During Clinical Practice

The following events have been identified during post-approval use of ZERIT (stavudine). Because they are reported voluntarily from a population of unknown size, estimates of frequency cannot be made. These events have been chosen for inclusion due to their seriousness, frequency of reporting, causal connection to ZERIT, or a combination of these factors.

*Body as a Whole*—abdominal pain, allergic reaction, chills/fever, and redistribution/accumulation of body fat (see **PRECAUTIONS: Fat Redistribution**).

*Digestive Disorders*—anorexia.

*Exocrine Gland Disorders*—pancreatitis [including fatal cases (see **WARNINGS**)].

*Hematologic Disorders*—anemia, leukopenia, thrombocytopenia, and macrocytosis.

*Liver*—symptomatic hyperlactatemia/lactic acidosis and hepatic steatosis (see **WARNINGS**), hepatitis and liver failure.

*Metabolic Disorders*—diabetes mellitus and hyperglycemia.

*Musculoskeletal*—myalgia.

*Nervous System*—insomnia, severe motor weakness (most often reported in the setting of lactic acidosis, see **WARNINGS**).

### **Use with Didanosine- and Hydroxyurea-Based Regimens**

When stavudine is used in combination with other agents with similar toxicities, the incidence of these toxicities may be higher than when stavudine is used alone. Thus, patients treated with ZERIT in combination with didanosine, with or without hydroxyurea, may be at increased risk for pancreatitis and hepatotoxicity, which may be fatal, and severe peripheral neuropathy. The combination of ZERIT and hydroxyurea, with or without didanosine, should be avoided (see **WARNINGS** and **PRECAUTIONS**).

### **Pediatric Patients**

Adverse reactions and serious laboratory abnormalities in pediatric patients from birth through adolescence were similar in type and frequency to those seen in adult patients (see **PRECAUTIONS: Pediatric Use**).

### **OVERDOSAGE**

Experience with adults treated with 12 to 24 times the recommended daily dosage revealed no acute toxicity. Complications of chronic overdosage include peripheral neuropathy and hepatic toxicity. Stavudine can be removed by hemodialysis; the mean  $\pm$  SD hemodialysis clearance of stavudine is  $120 \pm 18$  mL/min. Whether stavudine is eliminated by peritoneal dialysis has not been studied.

## DOSAGE AND ADMINISTRATION

The interval between doses of ZERIT (stavudine) should be 12 hours. ZERIT may be taken with or without food.

**Adults:** The recommended dose based on body weight is as follows:

40 mg twice daily for patients  $\geq 60$  kg.

30 mg twice daily for patients  $< 60$  kg.

**Pediatrics:** The recommended dose for newborns from birth to 13 days old is 0.5 mg/kg/dose given every 12 hours (see **CLINICAL PHARMACOLOGY**). The recommended dose for pediatric patients at least 14 days old and weighing less than 30 kg is 1 mg/kg/dose, given every 12 hours. Pediatric patients weighing 30 kg or greater should receive the recommended adult dosage.

### Dosage Adjustment

Patients should be monitored for the development of peripheral neuropathy, which is usually manifested by numbness, tingling, or pain in the feet or hands. These symptoms may be difficult to detect in young children (see **WARNINGS**). If these symptoms develop during treatment, stavudine therapy should be interrupted. Symptoms may resolve if therapy is withdrawn promptly. In some cases, symptoms may worsen temporarily following discontinuation of therapy. If symptoms resolve completely, patients may tolerate resumption of treatment at one-half the recommended dose:

20 mg twice daily for patients  $\geq 60$  kg.

15 mg twice daily for patients  $< 60$  kg.

If peripheral neuropathy recurs after resumption of ZERIT, permanent discontinuation should be considered.

### *Renal Impairment*

ZERIT may be administered to adult patients with impaired renal function with adjustment in dose as shown in Table 12.

**Table 12: Recommended Dosage Adjustment for Renal Impairment**

Creatinine Clearance (mL/min)	Recommended ZERIT Dose by Patient Weight	
	≥60 kg	<60 kg
>50	40 mg every 12 hours	30 mg every 12 hours
26–50	20 mg every 12 hours	15 mg every 12 hours
10–25	20 mg every 24 hours	15 mg every 24 hours

Since urinary excretion is also a major route of elimination of stavudine in pediatric patients, the clearance of stavudine may be altered in children with renal impairment. Although there are insufficient data to recommend a specific dose adjustment of ZERIT in this patient population, a reduction in the dose and/or an increase in the interval between doses should be considered.

#### *Hemodialysis Patients*

The recommended dose is 20 mg every 24 hours (≥60 kg) or 15 mg every 24 hours (<60 kg), administered after the completion of hemodialysis and at the same time of day on non-dialysis days.

## **Method of Preparation**

### **ZERIT (stavudine) for Oral Solution**

Prior to dispensing, the pharmacist must constitute the dry powder with purified water to a concentration of 1 mg stavudine per mL of solution, as follows:

1. Add 202 mL of purified water to the container.
2. Shake container vigorously until the powder dissolves completely. Constitution in this way produces 200 mL (deliverable volume) of 1 mg/mL stavudine solution. The solution may appear slightly hazy.
3. Dispense solution in original container with measuring cup provided. Instruct patient to shake the container vigorously prior to measuring each dose and to store the tightly closed container in a refrigerator, 2° C to 8° C (36° F to 46° F). Discard any unused portion after 30 days.

## HOW SUPPLIED

ZERIT<sup>®</sup> (stavudine) Capsules are available in the following strengths and configurations of plastic bottles with child-resistant closures:

**Table 13: Capsule Strength/Configuration**

Product Strength	Capsule Shell Color	Markings on Capsule (in Black Ink)	Capsules per Bottle	NDC No.
15 mg	Light yellow & dark red	BMS 1964	60	0003-1964-01
20 mg	Light brown	BMS 1965	60	0003-1965-01
30 mg	Light orange & dark orange	BMS 1966	60	0003-1966-01
40 mg	Dark orange	BMS 1967	60	0003-1967-01

ZERIT<sup>®</sup> (stavudine) for Oral Solution is a dye-free, fruit-flavored powder that provides 1 mg of stavudine per mL of solution upon constitution with water. Directions for solution preparation are included on the product label and in the **DOSAGE AND ADMINISTRATION** section of this insert. ZERIT for Oral Solution (NDC No. 0003-1968-01) is available in child-resistant containers that provide 200 mL of solution after constitution with water.

US Patent No.: 4,978,655

## Storage

ZERIT Capsules should be stored in tightly closed containers at 25° C (77° F). Excursions between 15° C and 30° C (59° F and 86° F) are permitted (see USP Controlled Room Temperature).

ZERIT for Oral Solution should be protected from excessive moisture and stored in tightly closed containers at 25° C (77° F). Excursions between 15° C and 30° C (59° F and 86° F) are permitted (see USP Controlled Room Temperature). After constitution, store tightly closed containers of ZERIT for Oral Solution in a refrigerator, 2° C to 8° C (36° F to 46° F). Discard any unused portion after 30 days.

Bristol-Myers Squibb Company  
Princeton, NJ 08543 USA

XXXXXXXXXX  
Rev July 2009

## PATIENT INFORMATION

### ZERIT<sup>®</sup>

(generic name = **stavudine**, also known as **d4T**)

ZERIT<sup>®</sup> (stavudine) Capsules

ZERIT<sup>®</sup> (stavudine) for Oral Solution

### What is ZERIT?

ZERIT (pronounced *ZAIR it*) is a prescription medicine used in combination with other drugs to treat adults and children who are infected with HIV (the human immunodeficiency virus), the virus that causes AIDS. ZERIT belongs to a class of drugs called nucleoside reverse transcriptase inhibitors (NRTIs). By reducing the growth of HIV, ZERIT helps your body maintain its supply of CD4 cells, which are important for fighting HIV and other infections.

ZERIT (stavudine) will not cure your HIV infection. At present there is no cure for HIV infection. Even while taking ZERIT, you may continue to have HIV-related illnesses, including infections caused by other disease-producing organisms. Continue to see your doctor regularly and report any medical problems that occur.

ZERIT does not prevent a person infected with HIV from passing the virus to other people. To protect others, you must continue to practice safe sex and take precautions to prevent others from coming in contact with your blood and other body fluids.

There is limited information on the long-term use of ZERIT.

### Who should not take ZERIT?

Do not take ZERIT if you are allergic to any of its ingredients, including its active ingredient, stavudine, and the inactive ingredients. (See **Inactive Ingredients** at the end of this leaflet.) Tell your doctor if you think you have had an allergic reaction to any of these ingredients.

### How should I take ZERIT? How should I store it?

Your doctor will determine your dose (the amount in each capsule or spoonful) based on your body weight, kidney and liver function, and any side effects that you may have had with other medicines. Take ZERIT exactly as instructed. Try not to miss a dose, but if you do, take it as soon as possible. If it is almost time for the next dose, skip the missed dose and continue your regular dosing schedule. ZERIT may be taken with food or on an empty stomach.



- **Capsules:** ZERIT capsules are usually taken twice a day (every 12 hours). Store ZERIT capsules in a tightly closed container at room temperature away from heat and out of the reach of children and pets. Do NOT store this medicine in a damp place such as a bathroom medicine cabinet or near the kitchen sink.
- **Oral solution (for children):** ZERIT for Oral Solution is taken twice a day (every 12 hours). If your child will be taking ZERIT, the doctor should give you written instructions on how to give this medicine. Before measuring each dose, shake the bottle well. Store ZERIT for Oral Solution in a tightly closed container in a refrigerator and throw away any unused portion after 30 days.

***If you have a kidney problem:***

If your kidneys are not working properly, your doctor may monitor your kidney function while you take ZERIT. Also, your dosage of ZERIT may be adjusted.

**What should I do if someone takes an overdose of ZERIT?**

If you suspect that you or someone else has taken an overdose of ZERIT, get medical help right away. Contact a doctor or a poison control center.

**What important information should I know about taking ZERIT with other medicines?**

- Do not take zidovudine (AZT) while taking ZERIT, because AZT may interfere with the actions of ZERIT. Products containing AZT include Combivir<sup>®</sup>, Retrovir<sup>®</sup>, and Trizivir<sup>®</sup>.
- If you are taking ribavirin or interferon, your doctor may need to monitor your therapy more closely or may consider a change in your therapy.

Tell your doctor or pharmacist about any other medicine, vitamin, supplement, or herbal preparation you are taking.

**What about pregnancy and nursing (breast-feeding)?**

- It is not known if ZERIT can harm a human fetus. Pregnant women have experienced serious side effects when taking stavudine (the active ingredient in ZERIT) in combination with didanosine and other HIV medicines. ZERIT should be used during pregnancy only after discussion with your doctor. **Tell your doctor if you become pregnant or plan to become pregnant while taking ZERIT.**
- Because studies have shown ZERIT is in the breast milk of animals receiving the drug, it may be present in human breast milk. The Centers for Disease Control and Prevention

(CDC) recommends that HIV-infected mothers **not** breast-feed to reduce the risk of passing HIV infection to their babies and the potential for serious adverse reactions in nursing infants. Therefore, do not nurse a baby while taking ZERIT.

### **What are the possible side effects of ZERIT?**

- **Lactic acidosis**, severe increase of lactic acid in the blood, **severe liver enlargement**, including inflammation (pain and swelling) of the liver, and **liver failure**, which can cause death, have been reported among patients taking ZERIT. *Symptoms of lactic acidosis may include:*
  - *nausea, vomiting, or unusual or unexpected stomach discomfort;*
  - *feeling very weak and tired;*
  - *shortness of breath;*
  - *weakness in arms and legs.*

*If you notice these symptoms or if your medical condition has suddenly changed, stop taking ZERIT and call your doctor right away.* Lactic acidosis is a medical emergency that must be treated in a hospital. Women (including pregnant women), overweight patients, and those who have had lengthy treatment with nucleoside medicines are more likely to develop lactic acidosis. Your doctor should closely monitor your liver function if you are taking ZERIT and have a history of heavy alcohol use or a liver condition.

- **Peripheral neuropathy** is a nerve disorder of the hands and feet. If not recognized promptly, this disorder may worsen. *Tell your doctor right away if you or a child taking ZERIT has continuing numbness, tingling, burning, or pain in the feet and/or hands.* A child may not recognize these symptoms or know to tell you that his or her feet or hands are numb, burning, tingling, or painful. Ask your child's doctor for instructions on how to find out if your child develops peripheral neuropathy.

Let your doctor know if you or a child taking ZERIT has ever had peripheral neuropathy, because this condition occurs more often in patients who have had it previously. Peripheral neuropathy is also more likely to occur in patients taking drugs that affect the nerves and in patients with advanced HIV disease, but it can occur at any disease stage. If you develop peripheral neuropathy, your doctor may tell you to stop taking ZERIT. In some cases the symptoms worsen for a short time before getting better. Once symptoms of peripheral neuropathy go away completely, ZERIT may be started again at a lower dose.

- **Pancreatitis** is a dangerous inflammation of the pancreas. It may cause death. ***Tell your doctor right away if you develop stomach pain, nausea, or vomiting. These can be signs of pancreatitis.*** Let your doctor know if you have ever had pancreatitis, regularly drink alcoholic beverages, or have gallstones. Pancreatitis occurs more often in patients with these conditions. It is also more likely in people with advanced HIV disease, but can occur at any disease stage. The combination of ZERIT and didanosine may increase your risk for pancreatitis.

People who take ZERIT along with other medicines that may cause similar side effects may have a higher chance of developing these side effects than if they took ZERIT (stavudine) alone.

**Other side effects.** In addition to peripheral neuropathy, the most frequent side effects observed in studies of adults taking the recommended dose of ZERIT were headache, diarrhea, rash, nausea, and vomiting. Other side effects may include abdominal pain, muscle pain, insomnia, loss of appetite, chills or fever, allergic reactions, blood disorders, and high blood sugar (hyperglycemia or diabetes).

Changes in body fat have been seen in some patients taking antiretroviral therapy. These changes may include increased amount of fat in the upper back and neck (“buffalo hump”), breast, and around the trunk. Loss of fat from the legs, arms, and face may also happen. The cause and long-term health effects of these conditions are not known at this time.

### **What else should I know about ZERIT?**

***If you have diabetes mellitus:*** ZERIT for Oral Solution contains 50 mg of sucrose (sugar) per mL.

### **Inactive Ingredients:**

**ZERIT Capsules:** microcrystalline cellulose, sodium starch glycolate, lactose (milk sugar), and magnesium stearate in a hard gelatin shell.

**ZERIT for Oral Solution:** methylparaben, propylparaben, sodium carboxymethylcellulose, sucrose (table sugar), and flavoring agents.

---

This medicine was prescribed for your particular condition. Do not use ZERIT for another condition or give it to others. Keep ZERIT and all other medicines out of the reach of children and pets at all times. Do not keep medicine that is out of date or that you no longer need. Dispose

of unused ZERIT through community take-back disposal programs when available or by placing it in an unrecognizable closed container in the household trash.

This summary does not include everything there is to know about ZERIT. Medicines are sometimes prescribed for purposes other than those listed in a Patient Information Leaflet. If you have questions or concerns, or want more information about ZERIT, your physician and pharmacist have the complete prescribing information upon which this leaflet was based. You may want to read it and discuss it with your doctor or other healthcare professional. Remember, no written summary can replace careful discussion with your doctor.

Combivir<sup>®</sup>, Retrovir<sup>®</sup>, and Trizivir<sup>®</sup> are registered trademarks of the GlaxoSmithKline group of companies.

Bristol-Myers Squibb Company  
Princeton, NJ 08543 USA

This Patient Information Leaflet has been approved by the U.S. Food and Drug Administration.

XXXXXXXXXX  
Rev July 2009