



MOBAN[®]
(Molindone Hydrochloride Tablets, USP)

R_x only

WARNING

Increased Mortality in Elderly Patients with Dementia-Related Psychosis — Elderly patients with dementia-related psychosis treated with antipsychotic drugs are at an increased risk of death. Analyses of seventeen placebo-controlled trials (modal duration of 10 weeks), largely in patients taking atypical antipsychotic drugs, revealed a risk of death in drug-treated patients of between 1.6 to 1.7 times the risk of death in placebo-treated patients. Over the course of a typical 10-week controlled trial, the rate of death in drug-treated patients was about 4.5%, compared to a rate of about 2.6% in the placebo group. Although the causes of death were varied, most of the deaths appeared to be either cardiovascular (e.g., heart failure, sudden death) or infectious (e.g., pneumonia) in nature. Observational studies suggest that, similar to atypical antipsychotic drugs, treatment with conventional antipsychotic drugs may increase mortality. The extent to which the findings of increased mortality in observational studies may be attributed to the antipsychotic drug as opposed to some characteristic(s) of the patients is not clear. MOBAN is not approved for the treatment of patients with dementia-related psychosis (see WARNINGS).

DESCRIPTION

MOBAN (molindone hydrochloride) is a dihydroindolone compound which is not structurally related to the phenothiazines, the butyrophenones or the thioxanthenes.

MOBAN is 3-ethyl-6, 7-dihydro-2-methyl-5-(morpholinomethyl) indol-4 (5*H*)-one hydrochloride. It is a white to off-white crystalline powder, freely soluble in water and alcohol.

MOBAN Tablets contain the following inactive ingredients:

Calcium sulfate, lactose, magnesium stearate, microcrystalline cellulose and povidone.

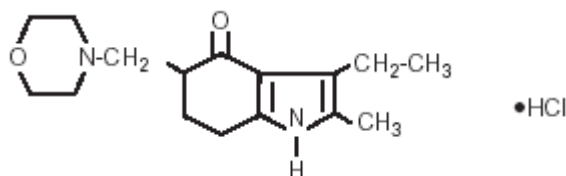
The 5 mg strength also contains alginic acid, colloidal silicon dioxide and FD&C Yellow 6.

The 10 mg strength also contains alginic acid, colloidal silicon dioxide, FD&C Blue 2 and FD&C Red 40.

The 25 mg strength also contains alginic acid, colloidal silicon dioxide, D&C Yellow 10, FD&C Blue 2, and FD&C Yellow 6.

The 50 mg strength also contains FD&C Blue 2 and sodium starch glycolate.

Molindone Hydrochloride is represented by the following structural formula:



The empirical formula is $C_{16}H_{24}N_2O_2 \cdot HCl$ representing a molecular weight of 312.83.

CLINICAL PHARMACOLOGY

MOBAN has a pharmacological profile in laboratory animals which predominantly resembles that of other antipsychotic agents causing reduction of spontaneous locomotion and aggressiveness, suppression of a conditioned response and antagonism of the bizarre stereotyped behavior and hyperactivity induced by amphetamines. In addition, MOBAN antagonizes the depression caused by the tranquilizing agent tetrabenazine.

In human clinical studies an antipsychotic effect is achieved in the absence of muscle relaxing or incoordinating effects. Based on EEG studies, MOBAN exerts its effect on the ascending reticular activating system.

Human metabolic studies show MOBAN to be rapidly absorbed and metabolized when given orally. Unmetabolized drug reached a peak blood level at 1.5 hours. Pharmacological effect from a single oral dose persists for 24-36 hours. There are 36 recognized metabolites with less than 2-3% unmetabolized MOBAN being excreted in urine and feces.

INDICATIONS AND USAGE

MOBAN is indicated for the management of schizophrenia. The efficacy of MOBAN in schizophrenia was established in clinical studies which enrolled newly hospitalized and chronically hospitalized, acutely ill, schizophrenic patients as subjects.

CONTRAINDICATIONS

MOBAN is contraindicated in severe central nervous system depression (alcohol, barbiturates, narcotics, etc.) or comatose states, and in patients with known hypersensitivity to the drug.

WARNINGS

Increased Mortality in Elderly Patients with Dementia-Related Psychosis — Elderly patients with dementia-related psychosis treated with antipsychotic drugs are at an increased risk of death. MOBAN is not approved for the treatment of patients with dementia-related psychosis (see BOXED WARNING).

Tardive Dyskinesia

Tardive dyskinesia, a syndrome consisting of potentially irreversible, involuntary, dyskinetic movements may develop in patients treated with antipsychotic drugs. Although the prevalence of the syndrome appears to be highest among the elderly, especially elderly women, it is impossible to rely upon prevalence estimates to predict, at the inception of antipsychotic treatment, which patients are likely to develop the syndrome. Whether antipsychotic drug products differ in their potential to cause tardive dyskinesia is unknown.

Both the risk of developing the syndrome and the likelihood that it will become irreversible are believed to increase as the duration of treatment and the total cumulative dose of antipsychotic drugs administered to the patient increase. However, the syndrome can develop, although much less commonly, after relatively brief treatment periods at low doses.

There is no known treatment for established cases of tardive dyskinesia, although the syndrome may remit, partially or completely, if antipsychotic treatment is withdrawn. Antipsychotic treatment, itself, however, may suppress (or partially suppress) the signs and symptoms of the syndrome and thereby may possibly mask the underlying disease process. The effect that symptomatic suppression has upon the long-term course of the syndrome is unknown.

Given these considerations, antipsychotics should be prescribed in a manner that is most likely to minimize the occurrence of tardive dyskinesia. Chronic antipsychotic treatment should generally be reserved for patients who suffer from a chronic illness that, 1) is known to respond to antipsychotic drugs, and 2) for whom alternative, equally effective, but potentially less harmful treatments are not available or appropriate. In patients who do require chronic treatment, the smallest dose and the shortest duration of treatment producing a satisfactory clinical response should be sought. The need for continued treatment should be reassessed periodically.

If signs and symptoms of tardive dyskinesia appear in a patient on antipsychotics, drug discontinuation should be considered. However, some patients may require treatment despite the presence of the syndrome.

(For further information about the description of tardive dyskinesia and its clinical detection, please refer to the section on Adverse Reactions.)

Neuroleptic Malignant Syndrome (NMS)

A potentially fatal symptom complex sometimes referred to as Neuroleptic Malignant Syndrome (NMS) has been reported in association with antipsychotic drugs. Clinical manifestations of NMS are hyperpyrexia, muscle rigidity, altered mental status and evidence of autonomic instability (irregular pulse or blood pressure, tachycardia, diaphoresis, and cardiac dysrhythmias).

The diagnostic evaluation of patients with this syndrome is complicated. In arriving at a diagnosis, it is important to identify cases where the clinical presentation includes both serious medical illness (e.g., pneumonia, systemic infection, etc.) and untreated or inadequately treated extrapyramidal signs and symptoms (EPS). Other important considerations in the differential diagnosis include central anticholinergic toxicity, heat stroke, drug fever and primary central nervous system (CNS) pathology.

The management of NMS should include, 1) immediate discontinuation of antipsychotic drugs and other drugs not essential to concurrent therapy, 2) intensive symptomatic treatment and medical monitoring, and 3) treatment of any concomitant serious medical problems for which specific treatments are available. There is no general agreement about specific pharmacological treatment regimens for uncomplicated NMS.

If a patient requires antipsychotic drug treatment after recovery from NMS, the potential reintroduction of drug therapy should be carefully considered. The patient should be carefully monitored, since recurrences of NMS have been reported.

PRECAUTIONS

General

Some patients receiving MOBAN (molindone hydrochloride) may note drowsiness initially and they should be advised against activities requiring mental alertness until their response to the drug has been established.

Increased activity has been noted in patients receiving MOBAN. Caution should be exercised where increased activity may be harmful.

MOBAN does not lower the seizure threshold in experimental animals to the degree noted with more sedating antipsychotic drugs. However, in humans convulsive seizures have been reported in a few instances.

The physician should be aware that this tablet preparation contains calcium sulfate as an excipient and that calcium ions may interfere with the absorption of preparations containing phenytoin sodium and tetracyclines.

MOBAN has an antiemetic effect in animals. A similar effect may occur in humans and may obscure signs of intestinal obstruction or brain tumor.

Antipsychotic drugs elevate prolactin levels; the elevation persists during chronic administration. Tissue culture experiments indicate that approximately one-third of human breast cancers are prolactin dependent *in vitro*, a factor of potential importance if the prescription of these drugs is contemplated in a patient with a previously detected breast cancer. Although disturbances such as galactorrhea, amenorrhea, gynecomastia, and impotence have been reported, the clinical significance of elevated serum prolactin levels is unknown for most patients. An increase in mammary neoplasms has been found in rodents after chronic administration of antipsychotic drugs. Neither clinical studies nor epidemiologic studies conducted to date, however, have shown an association between chronic administration of these drugs and mammary tumorigenesis; the available evidence is considered too limited to be conclusive at this time.

MOBAN has not been shown effective in the management of behavioral complications in patients with mental retardation

Leukopenia, Neutropenia and Agranulocytosis

Class Effect: In clinical trial and/or postmarketing experience, events of leukopenia/neutropenia and agranulocytosis have been reported temporally related to antipsychotic agents.

Possible risk factors for leukopenia/neutropenia include preexisting low white blood cell count (WBC) and history of drug induced leukopenia/neutropenia. Patients with a history of a clinically significant low WBC or drug induced leukopenia/neutropenia should have their complete blood count (CBC) monitored frequently during the first few months of therapy and

discontinuation of MOBAN should be considered at the first sign of a clinically significant decline in WBC in the absence of other causative factors.

Patients with clinically significant neutropenia should be carefully monitored for fever or other symptoms or signs of infection and treated promptly if such symptoms or signs occur. Patients with severe neutropenia (absolute neutrophil count $<1000/\text{mm}^3$) should discontinue MOBAN and have their WBC followed until recovery.

Drug Interactions

Potential of drugs administered concurrently with MOBAN has not been reported. Additionally, animal studies have not shown increased toxicity when MOBAN is given concurrently with representative members of three classes of drugs (i.e., barbiturates, chloral hydrate and antiparkinson drugs).

Pregnancy

Studies in pregnant patients have not been carried out. Reproduction studies have been performed in the following animals:

Pregnant Rats oral dose—

no adverse effect	20 mg/kg/day - 10 days
no adverse effect	40 mg/kg/day - 10 days

Pregnant Mice oral dose—

slight increase resorptions	20 mg/kg/day - 10 days
slight increase resorptions	40 mg/kg/day - 10 days

Pregnant Rabbits oral dose—

no adverse effect	5 mg/kg/day - 12 days
no adverse effect	10 mg/kg/day - 12 days
no adverse effect	20 mg/kg/day - 12 days

Animal reproductive studies have not demonstrated a teratogenic potential. The anticipated benefits must be weighed against the unknown risks to the fetus if used in pregnant patients.

Non-teratogenic Effects

Neonates exposed to antipsychotic drugs, during the third trimester of pregnancy are at risk for extrapyramidal and/or withdrawal symptoms following delivery. There have been reports of agitation, hypertonia, hypotonia, tremor, somnolence, respiratory distress and feeding disorder in these neonates. These complications have varied in severity; while in some cases symptoms have been self-limited, in other cases neonates have required intensive care unit support and prolonged hospitalization.

Moban should be used during pregnancy only if the potential benefit justifies the potential risk to the fetus.

Nursing Mothers

Data are not available on the content of MOBAN (molindone hydrochloride) in the milk of nursing mothers.

Pediatric Use

Use of MOBAN in pediatric patients below the age of twelve years is not recommended because safe and effective conditions for its usage have not been established.

ADVERSE REACTIONS

CNS Effects

The most frequently occurring effect is initial drowsiness that generally subsides with continued usage of the drug or lowering of the dose.

Noted less frequently were depression, hyperactivity and euphoria.

Neurological

Extrapyramidal Symptoms

Extrapyramidal symptoms noted below may occur in susceptible individuals and are usually reversible with appropriate management.

Akathisia

Motor restlessness may occur early.

Parkinson Syndrome

Akinesia, characterized by rigidity, immobility and reduction of voluntary movements and tremor, have been observed. Occurrence is less frequent than akathisia.

Dystonia

Class effect: Symptoms of dystonia, prolonged abnormal contractions of muscle groups, may occur in susceptible individuals during the first few days of treatment. Dystonic symptoms include: spasm of the neck muscles, sometimes progressing to tightness of the throat, swallowing difficulty, difficulty breathing, and/or protrusion of the tongue. While these symptoms can occur at low doses, they occur more frequently and with greater severity with high potency and at higher doses of first generation antipsychotic drugs. An elevated risk of acute dystonia is observed in males and younger age groups.

Tardive Dyskinesia

Antipsychotic drugs are known to cause a syndrome of dyskinetic movements commonly referred to as tardive dyskinesia. The movements may appear during treatment or upon withdrawal of treatment and may be either reversible or irreversible (i.e., persistent) upon cessation of further antipsychotic administration.

The syndrome is known to have a variable latency for development and the duration of the latency cannot be determined reliably. It is thus wise to assume that any antipsychotic agent has the capacity to induce the syndrome and act accordingly until sufficient data has been collected

to settle the issue definitively for a specific drug product. In the case of antipsychotics known to produce the irreversible syndrome, the following has been observed.

Tardive dyskinesia has appeared in some patients on long-term therapy and has also appeared after drug therapy has been discontinued. The risk appears to be greater in elderly patients on high-dose therapy, especially females. The symptoms are persistent and in some patients appear to be irreversible. The syndrome is characterized by rhythmical involuntary movements of the tongue, face, mouth or jaw (e.g., protrusion of tongue, puffing of cheeks, puckering of mouth, chewing movements). There may be involuntary movements of extremities.

There is no known effective treatment of tardive dyskinesia; antiparkinsonism agents usually do not alleviate the symptoms of this syndrome. It is suggested that all antipsychotic agents be discontinued if these symptoms appear. Should it be necessary to reinstitute treatment, or increase the dosage of the agent, or switch to a different antipsychotic agent, the syndrome may be masked. It has been reported that fine vermicular movements of the tongue may be an early sign of the syndrome and if the medication is stopped at that time the syndrome may not develop (See WARNINGS).

Autonomic Nervous System

Occasionally blurring of vision, tachycardia, nausea, dry mouth and salivation have been reported. Urinary retention and constipation may occur particularly if anticholinergic drugs are used to treat extrapyramidal symptoms. One patient being treated with MOBAN experienced priapism which required surgical intervention, apparently resulting in residual impairment of erectile function.

Laboratory Tests

There have been rare reports of leucopenia and leucocytosis. If such reactions occur, treatment with MOBAN may continue if clinical symptoms are absent. Alterations of blood glucose, B.U.N., and red blood cells have not been considered clinically significant.

Metabolic and Endocrine Effects

Alteration of thyroid function has not been significant. Amenorrhea has been reported infrequently. Resumption of menses in previously amenorrheic women has been reported. Initially heavy menses may occur. Galactorrhea and gynecomastia have been reported infrequently. Increase in libido has been noted in some patients. Impotence has not been reported. Although both weight gain and weight loss have been in the direction of normal or ideal weight, excessive weight gain has not occurred with MOBAN.

Hepatic Effects

There have been rare reports of clinically significant alterations in liver function in association with MOBAN use.

Cardiovascular

Rare, transient, non-specific T wave changes have been reported on E.K.G. Association with a clinical syndrome has not been established. Rarely has significant hypotension been reported.

Ophthalmological

Lens opacities and pigmentary retinopathy have not been reported where patients have received MOBAN. In some patients, phenothiazine induced lenticular opacities have resolved following discontinuation of the phenothiazine while continuing therapy with MOBAN.

Skin

Early, non-specific skin rash, probably of allergic origin, has occasionally been reported. Skin pigmentation has not been seen with MOBAN usage alone.

MOBAN has certain pharmacological similarities to other antipsychotic agents. Because adverse reactions are often extensions of the pharmacological activity of a drug, all of the known pharmacological effects associated with other antipsychotic drugs should be kept in mind when MOBAN is used. Upon abrupt withdrawal after prolonged high dosage an abstinence syndrome has not been noted.

OVERDOSAGE

Symptomatic, supportive therapy should be the rule.

Gastric lavage is indicated for the reduction of absorption of MOBAN which is freely soluble in water.

Since the adsorption of MOBAN by activated charcoal has not been determined, the use of this antidote must be considered of theoretical value.

Emesis in a comatose patient is contraindicated. Additionally, while the emetic effect of apomorphine is blocked by MOBAN in animals, this blocking effect has not been determined in humans.

A significant increase in the rate of removal of unmetabolized MOBAN from the body by forced diuresis, peritoneal or renal dialysis would not be expected. (Only 2% of a single ingested dose of MOBAN is excreted unmetabolized in the urine). However, poor response of the patient may justify use of these procedures.

While the use of laxatives or enemas might be based on general principles, the amount of unmetabolized MOBAN in feces is less than 1%. Extrapyramidal symptoms have responded to the use of Diphenhydramine (Benadryl[®])*, Amantadine HCl (Symmetrel[®])[†] and the synthetic anticholinergic antiparkinson agents, (i.e., Artane[®][‡], Cogentin[®][§], Akineton[®][¶]).

DOSAGE AND ADMINISTRATION

Initial and maintenance doses of MOBAN should be individualized.

Initial Dosage Schedule

The usual starting dosage is 50-75 mg/day.

—Increase to 100 mg/day in 3 or 4 days.

—Based on severity of symptomatology, dosage may be titrated up or down depending on individual patient response.

—An increase to 225 mg/day may be required in patients with severe symptomatology.

Elderly and debilitated patients should be started on lower dosage.

Maintenance Dosage Schedule

1. Mild-5 mg-15 mg three or four times a day.
2. Moderate-10 mg-25 mg three or four times a day.
3. Severe-225 mg/day may be required.

HOW SUPPLIED

MOBAN (molindone hydrochloride) tablets are supplied in bottles of 100 tablets as follows:

5 mg	Orange, round, biconvex tablet, one face debossed with “Moban 5”, and the other face plain.	NDC 63481-072-70
10 mg	Lavender, round, biconvex tablet, one face debossed with “Moban 10”, and the other face plain.	NDC 63481-073-70
25 mg	Green, round, biconvex tablet, one face debossed with “Moban 25”, and the other face plain with partial bisect.	NDC 63481-074-70
50 mg	Blue, round, biconvex tablet, one face with partial bisect and debossed with “Moban 50”, and the other face plain.	NDC 63481-076-70

Store at 25°C (77°F); excursions permitted to 15°-30°C (59°-86°F).

Dispense in a tight, light-resistant container as defined in the USP, with a child-resistant closure (as required).

KEEP TIGHTLY CLOSED

* Benadryl is a registered trademark of Warner-Lambert.

† Symmetrel is a registered trademark of Endo Pharmaceuticals Inc.

‡ Artane is a registered trademark of Lederle Laboratories.

§ Cogentin is a registered trademark of Merck & Co., Inc.

¶ Akineton is a registered trademark of Knoll Laboratories.

MOBAN is a registered trademark of Endo Pharmaceuticals Inc.

Manufactured for:

Endo Pharmaceuticals Inc.

Chadds Ford, Pennsylvania 19317



© 2009 Endo Pharmaceuticals

Printed in U.S.A.

2005295/December, 2010