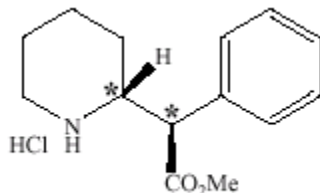


Focalin[®]**dexmethylphenidate
hydrochloride tablets****Rx only****Prescribing Information****DESCRIPTION**

Focalin[®] (dexmethylphenidate hydrochloride) is the *d-threo*-enantiomer of racemic methylphenidate hydrochloride, which is a 50/50 mixture of the *d-threo* and *l-threo*-enantiomers. Focalin is a central nervous system (CNS) stimulant, available in three tablet strengths. Each tablet contains dexmethylphenidate hydrochloride 2.5, 5, or 10 mg for oral administration. Dexmethylphenidate hydrochloride is methyl α -phenyl-2-piperidineacetate hydrochloride, (R,R')-(+)-. Its empirical formula is C₁₄H₁₉NO₂•HCl. Its molecular weight is 269.77 and its structural formula is



Note: * = asymmetric carbon centers

Dexmethylphenidate hydrochloride is a white to off white powder. Its solutions are acid to litmus. It is freely soluble in water and in methanol, soluble in alcohol, and slightly soluble in chloroform and in acetone.

Focalin also contains the following inert ingredients: pregelatinized starch, lactose monohydrate, sodium starch glycolate, microcrystalline cellulose, magnesium stearate, and FD&C Blue No.1 #5516 aluminum lake (2.5 mg tablets), D&C Yellow Lake #10 (5 mg tablets); the 10 mg tablet contains no dye.

CLINICAL PHARMACOLOGY**Pharmacodynamics**

Dexmethylphenidate hydrochloride is a central nervous system stimulant. Focalin, the more pharmacologically active enantiomer of the *d*- and *l*-enantiomers, is thought to block the reuptake of norepinephrine and dopamine into the presynaptic neuron and increase the release of these monoamines into the extraneuronal space. The mode of therapeutic action in Attention Deficit Hyperactivity Disorder (ADHD) is not known.

Pharmacokinetics

Absorption

Dexmethylphenidate hydrochloride is readily absorbed following oral administration of Focalin. In patients with ADHD, plasma dexmethylphenidate concentrations increase rapidly, reaching a maximum in the fasted state at about 1 to 1½ hours post-dose. No differences in the pharmacokinetics of Focalin were noted following single and repeated twice daily dosing, thus indicating no significant drug accumulation in children with ADHD.

When given to children as capsules in single doses of 2.5 mg, 5 mg, and 10 mg, C_{max} and AUC_{0-inf} of dexmethylphenidate were proportional to dose. In the same study, plasma dexmethylphenidate levels were comparable to those achieved following single *dl-threo*-methylphenidate HCl doses given as capsules in twice the total mg amount (equimolar with respect to Focalin).

Food Effects

In a single dose study conducted in adults, coadministration of 2 x 10 mg Focalin with a high fat breakfast resulted in a dexmethylphenidate t_{max} of 2.9 hours post-dose as compared to 1.5 hours post-dose when given in a fasting state. C_{max} and AUC_{0-inf} were comparable in both the fasted and non-fasted states.

Distribution

Plasma dexmethylphenidate concentrations in children decline exponentially following oral administration of Focalin.

Metabolism and Excretion

In humans, dexmethylphenidate is metabolized primarily to *d*- α -phenyl-piperidine acetic acid (also known as *d*-ritalinic acid) by de-esterification. This metabolite has little or no pharmacological activity. There is little or no *in vivo* interconversion to the *l-threo*-enantiomer, based on a finding of minute levels of *l-threo*-methylphenidate being detectable in a few samples in only 2 of 58 children and adults. After oral dosing of radiolabeled racemic methylphenidate in humans, about 90% of the radioactivity was recovered in urine. The main urinary metabolite was ritalinic acid, accountable for approximately 80% of the dose.

In vitro studies showed that dexmethylphenidate did not inhibit cytochrome P450 isoenzymes.

The mean plasma elimination half-life of dexmethylphenidate is approximately 2.2 hours.

Special Populations

Gender

Pharmacokinetic parameters were similar for boys and girls (mean age 10 years).

In a single dose study conducted in adults, the mean dexmethylphenidate AUC_{0-inf} values (adjusted for body weight) following single 2 x 10 mg doses of Focalin were 25%-35% higher in adult female volunteers (n=6) compared to male volunteers (n=9). Both t_{max} and $t_{1/2}$ were comparable for males and females.

Race

There is insufficient experience with the use of Focalin to detect ethnic variations in pharmacokinetics.

Age

The pharmacokinetics of dexamethylphenidate after Focalin administration have not been studied in children less than 6 years of age. When single doses of Focalin were given to children between the ages of 6 to 12 years and healthy adult volunteers, C_{\max} of dexamethylphenidate was similar, however, children showed somewhat lower AUCs compared to the adults.

Renal Insufficiency

There is no experience with the use of Focalin in patients with renal insufficiency. After oral administration of radiolabeled racemic methylphenidate in humans, methylphenidate was extensively metabolized and approximately 80% of the radioactivity was excreted in the urine in the form of ritalinic acid. Since very little unchanged drug is excreted in the urine, renal insufficiency is expected to have little effect on the pharmacokinetics of Focalin.

Hepatic Insufficiency

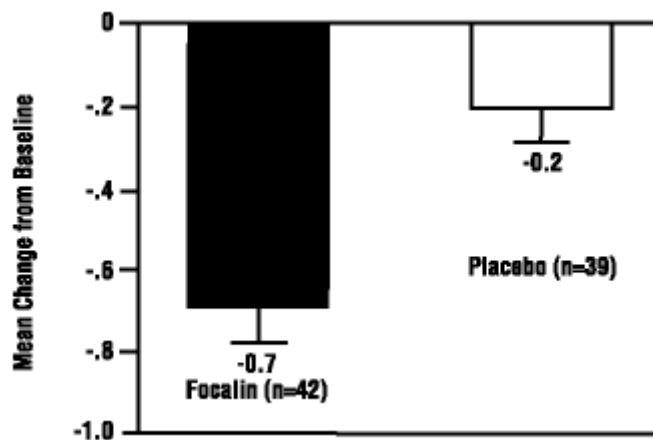
There is no experience with the use of Focalin in patients with hepatic insufficiency. (For Drug Interactions, see PRECAUTIONS.)

Clinical Studies

Focalin was evaluated in two double-blind, parallel-group, placebo-controlled trials in untreated or previously treated patients aged 6 to 17 years old with a DSM-IV diagnosis of Attention Deficit Hyperactivity Disorder (ADHD). Both studies included all three subtypes of ADHD, *i.e.*, Combined Type, Predominantly Inattentive Type, or Predominantly Hyperactive-Impulsive Type. While both children and adolescents were included, the sample was predominantly children, thus, the findings are most pertinent to this age group. In both studies, the primary comparison of interest was Focalin *versus* placebo.

Focalin (5, 10, or 20 mg/day total dose), *dl-threo*-methylphenidate HCl (10, 20, or 40 mg/day total dose), and placebo were compared in a multicenter, 4-week, parallel group study in n=132 patients. Patients took the study medication twice daily, 3.5 to 5.5 hours between doses. Treatment was initiated with the lowest dose, and doses could be doubled at weekly intervals, depending on clinical response and tolerability, up to the maximum dose. The change from baseline to week 4 of the averaged score (an average of two ratings during the week) of the teacher's version of the SNAP-ADHD Rating Scale, a scale for assessing ADHD symptoms, was the primary outcome. Patients treated with Focalin showed a statistically significant improvement in symptom scores from baseline over patients who received placebo.

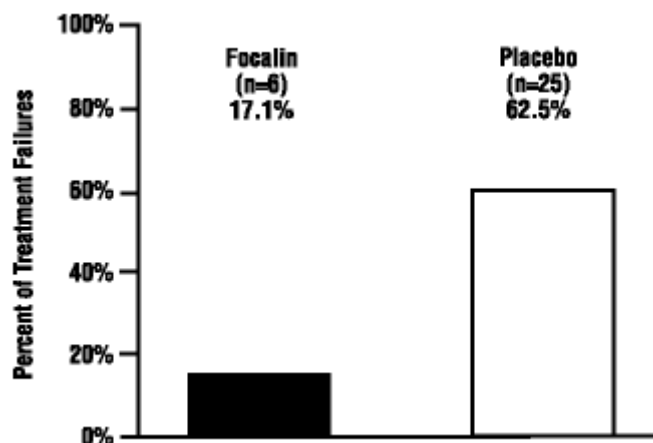
Figure 1 Mean Change from Baseline in Teacher SNAP-ADHD Scores in a 4-week Double-Blind Placebo-Controlled Study of Focalin^{®*}



*Figure 1: Error bars represent the standard error of the mean.

The other study, involving n=75 patients, was a multicenter, placebo-controlled, double-blind, 2-week treatment withdrawal study in children who were responders during a 6-week, open label initial treatment period. Children took study medication twice a day separated by a 3.5 to 5.5 hour interval. The primary outcome was proportion of treatment failures at the end of the 2-week withdrawal phase, where treatment failure was defined as a rating of 6 (much worse) or 7 (very much worse) on the Investigator Clinical Global Impression - Improvement (CGI-I). Patients continued on Focalin showed a statistically significant lower rate of failure over patients who received placebo.

Figure 2 Percent of Treatment Failures following a 2-week Double-Blind Placebo-Controlled Withdrawal of Focalin®



INDICATION AND USAGE

Focalin is indicated for the treatment of Attention Deficit Hyperactivity Disorder (ADHD).

The efficacy of Focalin in the treatment of ADHD was established in two controlled trials of patients aged 6 to 17 years of age who met DSM-IV criteria for ADHD (see Clinical Studies).

A diagnosis of ADHD (DSM-IV) implies the presence of hyperactive-impulsive or inattentive symptoms that cause impairment and were present before age 7 years. The symptoms must cause clinically significant impairment, *e.g.*, in social, academic, or occupational functioning; and be present in two or more settings, *e.g.*, school (or work) and at home. The symptoms must not be better accounted for by another mental disorder. For the inattentive type, at least six of the following symptoms must have persisted for at least 6 months: lack of attention to details/careless mistakes; lack of sustained attention;

poor listener; failure to follow through on tasks; poor organization; avoids tasks requiring sustained mental effort; loses things; easily distracted; forgetful. For the Hyperactive-Impulsive Type, at least six of the following symptoms must have persisted for at least 6 months: fidgeting/squirming; leaving seat; inappropriate running/climbing; difficulty with quiet activities; “on the go,” excessive talking; blurting answers; can’t wait turn; intrusive. The Combined Type requires both inattentive and hyperactive-impulsive criteria to be met.

Special Diagnostic Considerations

Specific etiology of this syndrome is unknown, and there is no single diagnostic test. Adequate diagnosis requires the use not only of medical but of special psychological, educational, and social resources. Learning may or may not be impaired. The diagnosis must be based upon a complete history and evaluation of the child and not solely on the presence of the required number of DSM-IV characteristics.

Need for Comprehensive Treatment Program

Focalin is indicated as an integral part of a total treatment program for ADHD that may include other measures (psychological, educational, social) for patients with this syndrome. Drug treatment may not be indicated for all patients with this syndrome. Stimulants are not intended for use in the patient who exhibits symptoms secondary to environmental factors and/or other primary psychiatric disorders, including psychosis. Appropriate educational placement is essential and psychosocial intervention is often helpful. When remedial measures alone are insufficient, the decision to prescribe stimulant medication will depend upon the physician’s assessment of the chronicity and severity of the patient’s symptoms.

Long-term Use

The effectiveness of Focalin for long-term use, *i.e.*, for more than 6 weeks, has not been systematically evaluated in controlled trials. Therefore, the physician who elects to use Focalin for extended periods should periodically re-evaluate the long-term usefulness of the drug for the individual patient (see DOSAGE AND ADMINISTRATION).

CONTRAINDICATIONS

Agitation

Focalin is contraindicated in patients with marked anxiety, tension, and agitation, since the drug may aggravate these symptoms.

Hypersensitivity to Methylphenidate

Focalin is contraindicated in patients known to be hypersensitive to methylphenidate or other components of the product.

Glaucoma

Focalin is contraindicated in patients with glaucoma.

Tics

Focalin is contraindicated in patients with motor tics or with a family history or diagnosis of Tourette’s syndrome (see ADVERSE REACTIONS).

Monoamine Oxidase Inhibitors

Focalin is contraindicated during treatment with monoamine oxidase inhibitors, and also within a minimum of 14 days following discontinuation of a monoamine oxidase inhibitor (hypertensive crises may result).

WARNINGS

Serious Cardiovascular Events

Sudden Death and Pre-Existing Structural Cardiac Abnormalities or Other Serious Heart Problems

Children and Adolescents

Sudden death has been reported in association with CNS stimulant treatment at usual doses in children and adolescents with structural cardiac abnormalities or other serious heart problems. Although some serious heart problems alone carry an increased risk of sudden death, stimulant products generally should not be used in children or adolescents with known serious structural cardiac abnormalities, cardiomyopathy, serious heart rhythm abnormalities, or other serious cardiac problems that may place them at increased vulnerability to the sympathomimetic effects of a stimulant drug.

Adults

Sudden death, stroke, and myocardial infarction have been reported in adults taking stimulant drugs at usual doses for ADHD. Although the role of stimulants in these adult cases is also unknown, adults have a greater likelihood than children of having serious structural cardiac abnormalities, cardiomyopathy, serious heart rhythm abnormalities, coronary artery disease, or other serious cardiac problems. Adults with such abnormalities should also generally not be treated with stimulant drugs.

Hypertension and Other Cardiovascular Conditions

Stimulant medications cause a modest increase in average blood pressure (about 2-4 mmHg) and average heart rate (about 3-6 bpm), and individuals may have larger increases. While the mean changes alone would not be expected to have short-term consequences, all patients should be monitored for larger changes in heart rate and blood pressure. Caution is indicated in treating patients whose underlying medical conditions might be compromised by increases in blood pressure or heart rate, e.g., those with pre-existing hypertension, heart failure, recent myocardial infarction, or ventricular arrhythmia.

Assessing Cardiovascular Status in Patients being Treated with Stimulant Medications

Children, adolescents, or adults who are being considered for treatment with stimulant medications should have a careful history (including assessment for a family history of sudden death or ventricular arrhythmia) and physical exam to assess for the presence of cardiac disease, and should receive further cardiac evaluation if findings suggest such disease (e.g., electrocardiogram and echocardiogram). Patients who develop symptoms such as exertional chest pain, unexplained syncope, or other symptoms suggestive of cardiac disease during stimulant treatment should undergo a prompt cardiac evaluation.

Psychiatric Adverse Events

Pre-Existing Psychosis

Administration of stimulants may exacerbate symptoms of behavior disturbance and thought disorder in patients with a pre-existing psychotic disorder.

Bipolar Illness

Particular care should be taken in using stimulants to treat ADHD in patients with comorbid bipolar disorder because of concern for possible induction of a mixed/manic episode in such patients. Prior to initiating treatment with a stimulant, patients with comorbid depressive symptoms should be adequately screened to determine if they are at risk for bipolar disorder; such screening should include a detailed psychiatric history, including a family history of suicide, bipolar disorder, and depression.

Emergence of New Psychotic or Manic Symptoms

Treatment emergent psychotic or manic symptoms, e.g., hallucinations, delusional thinking, or mania in children and adolescents without a prior history of psychotic illness or mania can be caused by stimulants at usual doses. If such symptoms occur, consideration should be given to a possible causal role of the stimulant, and discontinuation of treatment may be appropriate. In a pooled analysis of multiple short-term, placebo-controlled studies, such symptoms occurred in about 0.1% (4 patients with events out of 3,482 exposed to methylphenidate or amphetamine for several weeks at usual doses) of stimulant-treated patients compared to 0 in placebo-treated patients.

Aggression

Aggressive behavior or hostility is often observed in children and adolescents with ADHD, and has been reported in clinical trials and the postmarketing experience of some medications indicated for the treatment of ADHD. Although there is no systematic evidence that stimulants cause aggressive behavior or hostility, patients beginning treatment for ADHD should be monitored for the appearance of or worsening of aggressive behavior or hostility.

Long-Term Suppression of Growth

Careful follow-up of weight and height in children ages 7 to 10 years who were randomized to either methylphenidate or non-medication treatment groups over 14 months, as well as in naturalistic subgroups of newly methylphenidate-treated and non-medication treated children over 36 months (to the ages of 10 to 13 years), suggests that consistently medicated children (i.e., treatment for 7 days per week throughout the year) have a temporary slowing in growth rate (on average, a total of about 2 cm less growth in height and 2.7 kg less growth in weight over 3 years), without evidence of growth rebound during this period of development. Published data are inadequate to determine whether chronic use of amphetamines may cause a similar suppression of growth, however, it is anticipated that they likely have this effect as well. Therefore, growth should be monitored during treatment with stimulants, and patients who are not growing or gaining height or weight as expected may need to have their treatment interrupted.

Seizures

There is some clinical evidence that stimulants may lower the convulsive threshold in patients with prior history of seizures, in patients with prior EEG abnormalities in absence of seizures, and, very rarely, in patients without a history of seizures and no prior EEG evidence of seizures. In the presence of seizures, the drug should be discontinued.

Visual Disturbance

Difficulties with accommodation and blurring of vision have been reported with stimulant treatment.

Use in Children Under 6 Years of Age

Focalin should not be used in children under 6 years, since safety and efficacy in this age group have not been established.

DRUG DEPENDENCE:

Focalin should be given cautiously to patients with a history of drug dependence or alcoholism. Chronic, abusive use can lead to marked tolerance and psychological dependence with varying degrees of abnormal behavior. Frank psychotic episodes can occur, especially with parenteral abuse. Careful supervision is required during drug withdrawal from abusive use since severe depression may occur. Withdrawal following chronic therapeutic use may unmask symptoms of the underlying disorder that may require follow-up.

PRECAUTIONS

Hematologic Monitoring

Periodic CBC, differential, and platelet counts are advised during prolonged therapy.

Information for Patients

Prescribers or other health professionals should inform patients, their families, and their caregivers about the benefits and risks associated with treatment with dexamethylphenidate and should counsel them in its appropriate use. A patient Medication Guide is available for Focalin. The prescriber or health professional should instruct patients, their families, and their caregivers to read the Medication Guide and should assist them in understanding its contents. Patients should be given the opportunity to discuss the contents of the Medication Guide and to obtain answers to any questions they may have. The complete text of the Medication Guide is reprinted at the end of this document.

Drug Interactions

Methylphenidate may decrease the effectiveness of drugs used to treat hypertension. Because of possible effects on blood pressure, Focalin should be used cautiously with pressor agents.

Human pharmacologic studies have shown that racemic methylphenidate may inhibit the metabolism of coumarin anticoagulants, anticonvulsants (*e.g.*, phenobarbital, phenytoin, primidone), and some antidepressants (tricyclics and selective serotonin reuptake inhibitors). Downward dose adjustments of these drugs may be required when given concomitantly with methylphenidate. It may be necessary to adjust the dosage and monitor plasma drug concentration (or, in the case of coumarin, coagulation times), when initiating or discontinuing concomitant methylphenidate.

Carcinogenesis, Mutagenesis, and Impairment of Fertility

Lifetime carcinogenicity studies have not been carried out with dexamethylphenidate. In a lifetime carcinogenicity study carried out in B6C3F1 mice, racemic methylphenidate caused an increase in hepatocellular adenomas, and in males only, an increase in hepatoblastomas at a daily dose of approximately 60 mg/kg/day. Hepatoblastoma is a relatively rare rodent malignant tumor type. There was no increase in total malignant hepatic tumors. The mouse strain used is sensitive to the development of hepatic tumors, and the significance of these results to humans is unknown.

Racemic methylphenidate did not cause any increase in tumors in a lifetime carcinogenicity study carried out in F344 rats; the highest dose used was approximately 45 mg/kg/day.

In a 24-week study of racemic methylphenidate in the transgenic mouse strain p53+/-, which is sensitive to genotoxic carcinogens, there was no evidence of carcinogenicity. Mice were fed diets containing the same concentrations as in the lifetime carcinogenicity study; the high-dose group was exposed to 60-74 mg/kg/day of racemic methylphenidate.

Dexmethylphenidate was not mutagenic in the *in vitro* Ames reverse mutation assay, the *in vitro* mouse lymphoma cell forward mutation assay, or the *in vivo* mouse bone marrow micronucleus test.

Racemic methylphenidate was not mutagenic in the *in vitro* Ames reverse mutation assay or the *in vitro* mouse lymphoma cell forward mutation assay, and was negative *in vivo* in the mouse bone marrow micronucleus assay. However, sister chromatid exchanges and chromosome aberrations were increased, indicative of a weak clastogenic response, in an *in vitro* assay of racemic methylphenidate in cultured Chinese Hamster Ovary (CHO) cells.

Racemic methylphenidate did not impair fertility in male or female mice that were fed diets containing the drug in an 18-week Continuous Breeding study. The study was conducted at doses of up to 160 mg/kg/day.

Pregnancy

Pregnancy Category C

In studies conducted in rats and rabbits, dexmethylphenidate was administered orally at doses of up to 20 and 100 mg/kg/day, respectively, during the period of organogenesis. No evidence of teratogenic activity was found in either the rat or rabbit study; however, delayed fetal skeletal ossification was observed at the highest dose level in rats. When dexmethylphenidate was administered to rats throughout pregnancy and lactation at doses of up to 20 mg/kg/day, postweaning body weight gain was decreased in male offspring at the highest dose, but no other effects on postnatal development were observed. At the highest doses tested, plasma levels (AUCs) of dexmethylphenidate in pregnant rats and rabbits were approximately 5 and 1 times, respectively, those in adults dosed with the maximum recommended human dose of 20 mg/day.

Racemic methylphenidate has been shown to have teratogenic effects in rabbits when given in doses of 200 mg/kg/day throughout organogenesis.

Adequate and well-controlled studies in pregnant women have not been conducted. Focalin should be used during pregnancy only if the potential benefit justifies the potential risk to the fetus.

Nursing Mothers

It is not known whether dexmethylphenidate is excreted in human milk. Because many drugs are excreted in human milk, caution should be exercised if Focalin is administered to a nursing woman.

Pediatric Use

The safety and efficacy of Focalin in children under 6 years old have not been established. Long-term effects of Focalin in children have not been well established (see WARNINGS).

In a study conducted in young rats, racemic methylphenidate was administered orally at doses of up to 100 mg/kg/day for 9 weeks, starting early in the postnatal period (Postnatal Day 7) and continuing through sexual maturity (Postnatal Week 10). When these animals were tested as adults (Postnatal Weeks 13-14), decreased spontaneous locomotor activity was observed in males and females previously treated with 50 mg/kg/day (approximately 6 times the maximum recommended human dose [MRHD] of racemic methylphenidate on a mg/m² basis) or greater, and a deficit in the acquisition of a specific learning task was seen in females exposed to the highest dose (12 times the racemic MRHD on a mg/m² basis). The no effect level for juvenile neurobehavioral development in rats was 5 mg/kg/day (half the racemic MRHD on a mg/m² basis). The clinical significance of the long-term behavioral effects observed in rats is unknown.

ADVERSE REACTIONS

The pre-marketing development program for Focalin included exposures in a total of 696 participants in clinical trials (684 patients, 12 healthy adult subjects). These participants received Focalin 5, 10, or 20 mg/day. The 684 ADHD patients (ages 6 to 17 years) were evaluated in two controlled clinical studies, two clinical pharmacology studies, and two uncontrolled long-term safety studies. Safety data on all patients are included in the discussion that follows. Adverse reactions were assessed by collecting adverse events, and results of physical examinations, vital sign and body weight measurements, and laboratory analyses.

Adverse events during exposure were primarily obtained by general inquiry and recorded by clinical investigators using terminology of their own choosing. Consequently, it is not possible to provide a meaningful estimate of the proportion of individuals experiencing adverse events without first grouping similar types of events into a smaller number of standardized event categories. In the tables and tabulations that follow, standard COSTART dictionary terminology has been used to classify reported adverse events.

The stated frequencies of adverse events represent the proportion of individuals who experienced, at least once, a treatment-emergent adverse event of the type listed. An event was considered treatment emergent if it occurred for the first time or worsened while receiving therapy following baseline evaluation.

Adverse Findings in Clinical Trials with Focalin

Adverse Events Associated with Discontinuation of Treatment

No Focalin-treated patients discontinued due to adverse events in two placebo-controlled trials. Overall, 50 of 684 children treated with Focalin (7.3%) experienced an adverse event that resulted in discontinuation. The most common reasons for discontinuation were twitching (described as motor or vocal tics), anorexia, insomnia, and tachycardia (approximately 1% each).

Adverse Events Occurring at an Incidence of 5% or More Among Focalin-Treated Patients

Table 1 enumerates treatment-emergent adverse events for two, placebo-controlled, parallel group trials in children with ADHD at Focalin doses of 5, 10, and 20 mg/day. The table includes only those events that occurred in 5% or more of patients treated with Focalin where the incidence in patients treated with Focalin was at least twice the incidence in placebo-treated patients. The prescriber should be aware that these figures cannot be used to predict the incidence of adverse events in the course of usual medical practice where patient characteristics and other factors differ from those which prevailed in the clinical trials. Similarly, the cited frequencies cannot be compared with figures obtained from other clinical investigations involving different treatments, uses, and investigators. The cited figures, however, do provide the prescribing physician with some basis for estimating the relative contribution of drug and non-drug factors to the adverse event incidence rate in the population studied.

Table 1 Treatment-Emergent Adverse Events¹ Occurring During Double-Blind Treatment in Clinical Trials of Focalin[®]

Body System	Preferred Term	Focalin (n=79)	Placebo (n=82)
Body as a Whole	Abdominal Pain	15%	6%
	Fever	5%	1%
Digestive System	Anorexia	6%	1%
	Nausea	9%	1%

¹ Events, regardless of causality, for which the incidence for patients treated with Focalin was at least 5% and twice the incidence among placebo-treated patients. Incidence has been rounded to the nearest whole number.

Adverse Events with Other Methylphenidate HCl Products

Nervousness and insomnia are the most common adverse reactions reported with other methylphenidate products. In children, loss of appetite, abdominal pain, weight loss during prolonged therapy, insomnia, and tachycardia may occur more frequently; however, any of the other adverse reactions listed below may also occur.

Other reactions include:

Cardiac: angina, arrhythmia, palpitations, pulse increased or decreased, tachycardia

Gastrointestinal: nausea

Immune: hypersensitivity reactions including skin rash, urticaria, fever, arthralgia, exfoliative dermatitis, erythema multiforme with histopathological findings of necrotizing vasculitis, and thrombocytopenic purpura

Nervous System: dizziness, drowsiness, dyskinesia, headache, rare reports of Tourette's syndrome, toxic psychosis

Vascular: blood pressure increased or decreased, cerebral arteritis and/or occlusion

Although a definite causal relationship has not been established, the following have been reported in patients taking methylphenidate:

Blood/lymphatic: leukopenia and/or anemia

Hepatobiliary: abnormal liver function, ranging from transaminase elevation to hepatic coma

Psychiatric: transient depressed mood, aggressive behavior

Skin/subcutaneous: scalp hair loss

Very rare reports of neuroleptic malignant syndrome (NMS) have been received, and, in most of these, patients were concurrently receiving therapies associated with NMS. In a single report, a ten year old boy who had been taking methylphenidate for approximately 18 months experienced an NMS-like event within 45 minutes of ingesting his first dose of venlafaxine. It is uncertain whether this case represented a drug-drug interaction, a response to either drug alone, or some other cause.

In children, loss of appetite, abdominal pain, weight loss during prolonged therapy, insomnia, and tachycardia may occur more frequently; however, any of the other adverse reactions listed above may also occur.

DRUG ABUSE AND DEPENDENCE

Controlled Substance Class

Focalin, like other methylphenidate products, is classified as a Schedule II controlled substance by Federal regulation.

Abuse, Dependence, and Tolerance

See WARNINGS for boxed warning containing drug abuse and dependence information.

OVERDOSAGE

Signs and Symptoms

Signs and symptoms of acute methylphenidate overdose, resulting principally from overstimulation of the CNS and from excessive sympathomimetic effects, may include the following: vomiting, agitation, tremors, hyperreflexia, muscle twitching, convulsions (may be followed by coma), euphoria, confusion, hallucinations, delirium, sweating, flushing, headache, hyperpyrexia, tachycardia, palpitations, cardiac arrhythmias, hypertension, mydriasis, and dryness of mucous membranes.

Recommended Treatment

Treatment consists of appropriate supportive measures. The patient must be protected against self-injury and against external stimuli that would aggravate overstimulation already present. Gastric contents may be evacuated by gastric lavage as indicated. Before performing gastric lavage, control agitation and seizures if present and protect the airway. Other measures to detoxify the gut include administration of activated charcoal and a cathartic. Intensive care must be provided to maintain adequate circulation and respiratory exchange; external cooling procedures may be required for hyperpyrexia.

Efficacy of peritoneal dialysis for Focalin overdose has not been established.

Poison Control Center

As with the management of all overdose, the possibility of multiple drug ingestion should be considered. The physician may wish to consider contacting a poison control center for up-to-date information on the management of overdose with methylphenidate.

DOSAGE AND ADMINISTRATION

Focalin is administered twice daily, at least 4 hours apart. Focalin may be administered with or without food.

Dosage should be individualized according to the needs and responses of the patient.

Patients New to Methylphenidate

The recommended starting dose of Focalin for patients who are not currently taking racemic methylphenidate, or for patients who are on stimulants other than methylphenidate, is 5 mg/day (2.5 mg twice daily).

Dosage may be adjusted in 2.5 to 5 mg increments to a maximum of 20 mg/day (10 mg twice daily). In general, dosage adjustments may proceed at approximately weekly intervals.

Patients Currently Using Methylphenidate

For patients currently using methylphenidate, the recommended starting dose of Focalin is half the dose of racemic methylphenidate. The maximum recommended dose is 20 mg/day (10 mg twice daily).

Maintenance/Extended Treatment

There is no body of evidence available from controlled trials to indicate how long the patient with ADHD should be treated with Focalin. It is generally agreed, however, that pharmacological treatment of ADHD may be needed for extended periods. Nevertheless, the physician who elects to use Focalin for extended periods in patients with ADHD should periodically re-evaluate the long-term usefulness of the drug for the individual patient with periods off medication to assess the patient's functioning without

pharmacotherapy. Improvement may be sustained when the drug is either temporarily or permanently discontinued.

Dose Reduction and Discontinuation

If paradoxical aggravation of symptoms or other adverse events occur, the dosage should be reduced, or, if necessary, the drug should be discontinued.

If improvement is not observed after appropriate dosage adjustment over a 1-month period, the drug should be discontinued.

HOW SUPPLIED

Tablets, D-shaped, embossed “D” on upper convex face and dosage strength on lower convex face

2.5 mg Tablets - blue

Bottles of 100.....NDC 0078-0380-05

5 mg Tablets - yellow

Bottles of 100.....NDC 0078-0381-05

10 mg Tablets - white

Bottles of 100.....NDC 0078-0382-05

Store at 25°C (77°F); excursions permitted 15°C-30°C (59°F-86°F).

[see USP Controlled Room Temperature]

Protect from light and moisture.

REFERENCE

American Psychiatric Association. Diagnosis and Statistical Manual of Mental Disorders. 4th ed. Washington DC: American Psychiatric Association 1994.

MEDICATION GUIDE

FOCALIN[®]

(dexamethylphenidate hydrochloride tablets) CII

Read the Medication Guide that comes with FOCALIN[®] before you or your child starts taking it and each time you get a refill. There may be new information. This Medication Guide does not take the place of talking to your doctor about your or your child’s treatment with FOCALIN[®].

What is the most important information I should know about FOCALIN[®]?

The following have been reported with use of dexamethylphenidate hydrochloride and other stimulant medicines.

1. Heart-related problems:

- **sudden death in patients who have heart problems or heart defects**
- **stroke and heart attack in adults**

- **increased blood pressure and heart rate**

Tell your doctor if you or your child have any heart problems, heart defects, high blood pressure, or a family history of these problems.

Your doctor should check you or your child carefully for heart problems before starting FOCALIN®.

Your doctor should check your or your child's blood pressure and heart rate regularly during treatment with FOCALIN®.

Call your doctor right away if you or your child has any signs of heart problems such as chest pain, shortness of breath, or fainting while taking FOCALIN®.

2. Mental (Psychiatric) problems:

All Patients

- **new or worse behavior and thought problems**
- **new or worse bipolar illness**
- **new or worse aggressive behavior or hostility**

Children and Teenagers

- **new psychotic symptoms (such as hearing voices, believing things that are not true, are suspicious) or new manic symptoms**

Tell your doctor about any mental problems you or your child have, or about a family history of suicide, bipolar illness, or depression.

Call your doctor right away if you or your child have any new or worsening mental symptoms or problems while taking FOCALIN®, especially seeing or hearing things that are not real, believing things that are not real, or are suspicious.

What Is FOCALIN®?

FOCALIN® is a central nervous system stimulant prescription medicine. **It is used for the treatment of attention deficit and hyperactivity disorder (ADHD).** FOCALIN® may help increase attention and decrease impulsiveness and hyperactivity in patients with ADHD.

FOCALIN® should be used as a part of a total treatment program for ADHD that may include counseling or other therapies.

FOCALIN® is a federally controlled substance (CII) because it can be abused or lead to dependence. Keep FOCALIN® in a safe place to prevent misuse and abuse. Selling or giving away FOCALIN® may harm others, and is against the law.

Tell your doctor if you or your child have (or have a family history of) ever abused or been dependent on alcohol, prescription medicines or street drugs.

Who should not take FOCALIN®?

FOCALIN® should not be taken if you or your child:

- are very anxious, tense, or agitated
- have an eye problem called glaucoma
- have tics or Tourette's syndrome, or a family history of Tourette's syndrome. Tics are hard to control repeated movements or sounds.

- are taking or have taken within the past 14 days an anti-depression medicine called a monoamine oxidase inhibitor or MAOI.
- are allergic to anything in FOCALIN[®]. See the end of this Medication Guide for a complete list of ingredients.

FOCALIN[®] should not be used in children less than 6 years old because it has not been studied in this age group.

FOCALIN[®] may not be right for you or your child. Before starting FOCALIN[®] tell your or your child's doctor about all health conditions (or a family history of) including:

- heart problems, heart defects, high blood pressure
- mental problems including psychosis, mania, bipolar illness, or depression
- tics or Tourette's syndrome
- seizures or have had an abnormal brain wave test (EEG)

Tell your doctor if you or your child is pregnant, planning to become pregnant, or breast-feeding.

Can FOCALIN[®] be taken with other medicines?

Tell your doctor about all of the medicines that you or your child take including prescription and nonprescription medicines, vitamins, and herbal supplements. FOCALIN[®] and some medicines may interact with each other and cause serious side effects. Sometimes the doses of other medicines will need to be adjusted while taking FOCALIN[®].

Your doctor will decide whether FOCALIN[®] can be taken with other medicines.

Especially tell your doctor if you or your child takes:

- anti-depression medicines including MAOIs
- seizure medicines
- blood thinner medicines
- blood pressure medicines
- cold or allergy medicines that contain decongestants

Know the medicines that you or your child takes. Keep a list of your medicines with you to show your doctor and pharmacist.

Do not start any new medicine while taking FOCALIN[®] without talking to your doctor first.

How should FOCALIN[®] be taken?

- **Take FOCALIN exactly as prescribed.** Your doctor may adjust the dose until it is right for you or your child.
- Take FOCALIN[®] twice a day, at least 4 hours apart.
- FOCALIN[®] can be taken with or without food.
- From time to time, your doctor may stop FOCALIN[®] treatment for a while to check ADHD symptoms.
- Your doctor may do regular checks of the blood, heart, and blood pressure while taking FOCALIN[®]. Children should have their height and weight checked often while taking FOCALIN[®]. FOCALIN[®] treatment may be stopped if a problem is found during these check-ups.
- **If you or your child takes too much FOCALIN[®] or overdoses, call your doctor or poison control center right away, or get emergency treatment.**

What are possible side effects of FOCALIN[®]?

See “**What is the most important information I should know about FOCALIN[®]?**” for information on reported heart and mental problems.

Other serious side effects include:

- slowing of growth (height and weight) in children
- seizures, mainly in patients with a history of seizures
- eyesight changes or blurred vision

Common side effects include:

- stomach ache
- decreased appetite
- nausea
- fever

Talk to your doctor if you or your child has side effects that are bothersome or do not go away.

This is not a complete list of possible side effects. Ask your doctor or pharmacist for more information.

How should I store FOCALIN®?

- Store FOCALIN® in a safe place at room temperature, 59 to 86° F (15 to 30° C).
- **Keep FOCALIN® and all medicines out of the reach of children.**

General information about FOCALIN®

Medicines are sometimes prescribed for purposes other than those listed in a Medication Guide. Do not use FOCALIN® for a condition for which it was not prescribed. Do not give FOCALIN® to other people, even if they have the same condition. It may harm them and it is against the law.

This Medication Guide summarizes the most important information about FOCALIN®. If you would like more information, talk with your doctor. You can ask your doctor or pharmacist for information about FOCALIN® that was written for healthcare professionals. For more information about FOCALIN® call 1-888-669-6682.

What are the ingredients in FOCALIN®?

Active Ingredient: dexmethylphenidate hydrochloride

Inactive Ingredients: pregelatinized starch, lactose monohydrate, sodium starch glycolate, microcrystalline cellulose, magnesium stearate, and FD&C Blue No.1 #5516 aluminum lake (2.5 mg tablets), D&C Yellow Lake #10 (5 mg tablets); the 10 mg tablet contains no dye.

Call your doctor for medical advice about side effects. You may report side effects to FDA at 1-800-FDA-1088.

This Medication Guide has been approved by the U.S. Food and Drug Administration.

REV: Month Year
XX/T2009-26

T20XX-

Manufactured for:

Novartis Pharmaceuticals Corporation

East Hanover, NJ 07936

By:

Mikart, Inc.

Atlanta, GA 30318

© Novartis