

ZITHROMAX[®]

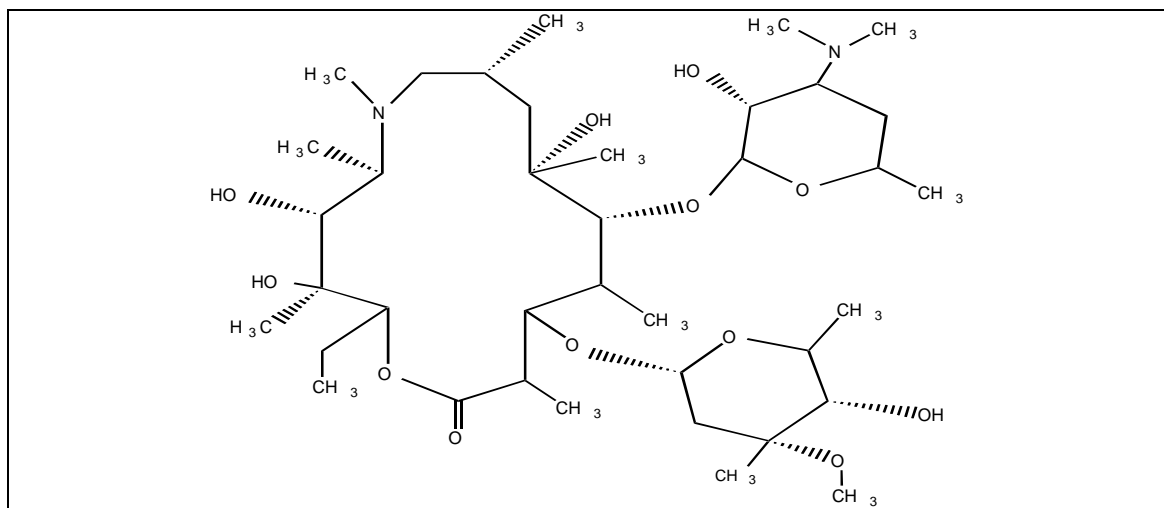
(azithromycin for injection)

For IV infusion only

To reduce the development of drug-resistant bacteria and maintain the effectiveness of ZITHROMAX[®] (azithromycin) and other antibacterial drugs, ZITHROMAX (azithromycin) should be used only to treat or prevent infections that are proven or strongly suspected to be caused by bacteria.

DESCRIPTION

ZITHROMAX (azithromycin for injection) contains the active ingredient azithromycin, an azalide, a subclass of macrolide antibiotics, for intravenous injection. Azithromycin has the chemical name (2*R*,3*S*,4*R*,5*R*,8*R*,10*R*,11*R*,12*S*,13*S*,14*R*)-13-[(2,6-dideoxy-3-*C*-methyl-3-*O*-methyl- α -*L*-ribo-hexopyranosyl)oxy]-2-ethyl-3,4,10-trihydroxy-3,5,6,8,10,12,14-heptamethyl-11-[[[3,4,6-trideoxy-3-(dimethylamino)- β -*D*-xylo-hexopyranosyl]oxy]-1-oxa-6-azacyclopentadecan-15-one. Azithromycin is derived from erythromycin; however, it differs chemically from erythromycin in that a methyl-substituted nitrogen atom is incorporated into the lactone ring. Its molecular formula is C₃₈H₇₂N₂O₁₂, and its molecular weight is 749.00. Azithromycin has the following structural formula:



Azithromycin, as the dihydrate, is a white crystalline powder with a molecular formula of C₃₈H₇₂N₂O₁₂ · 2H₂O and a molecular weight of 785.0.

ZITHROMAX (azithromycin for injection) consists of azithromycin dihydrate and the following inactive ingredients: citric acid and sodium hydroxide. ZITHROMAX (azithromycin for injection) is supplied in lyophilized form in a 10-mL vial equivalent to 500 mg of azithromycin for intravenous administration. Reconstitution, according to label directions, results in approximately 5 mL of ZITHROMAX for intravenous injection with each mL containing azithromycin dihydrate equivalent to 100 mg of azithromycin.

CLINICAL PHARMACOLOGY

Pharmacokinetics

In patients hospitalized with community-acquired pneumonia receiving single daily one-hour intravenous infusions for 2 to 5 days of 500-mg azithromycin at a concentration of 2 mg/mL, the mean $C_{max} \pm S.D.$ achieved was $3.63 \pm 1.60 \mu\text{g/mL}$, while the 24-hour trough level was $0.20 \pm 0.15 \mu\text{g/mL}$, and the AUC_{24} was $9.60 \pm 4.80 \mu\text{g}\cdot\text{h/mL}$.

The mean C_{max} , 24-hour trough and AUC_{24} values were $1.14 \pm 0.14 \mu\text{g/mL}$, $0.18 \pm 0.02 \mu\text{g/mL}$, and $8.03 \pm 0.86 \mu\text{g}\cdot\text{h/mL}$, respectively, in normal volunteers receiving a 3-hour intravenous infusion of 500 mg azithromycin at a concentration of 1 mg/mL. Similar pharmacokinetic values were obtained in patients hospitalized with community-acquired pneumonia who received the same 3-hour dosage regimen for 2-5 days.

Plasma concentrations ($\mu\text{g/mL} \pm S.D.$) after the last daily intravenous infusion of 500 mg azithromycin

<u>Infusion Concentration, Duration</u>	<u>Time after starting the infusion (hr)</u>								
	0.5	1	2	3	4	6	8	12	24
2 mg/mL, 1 hr ^a	2.98 ± 1.12	3.63 ± 1.73	0.60 ± 0.31	0.40 ± 0.23	0.33 ± 0.16	0.26 ± 0.14	0.27 ± 0.15	0.20 ± 0.12	0.20 ± 0.15
1 mg/mL, 3 hr ^b	0.91 ± 0.13	1.02 ± 0.11	1.14 ± 0.13	1.13 ± 0.16	0.32 ± 0.05	0.28 ± 0.04	0.27 ± 0.03	0.22 ± 0.02	0.18 ± 0.02

a = 500 mg (2 mg/mL) for 2-5 days in community-acquired pneumonia patients.

b = 500 mg (1 mg/mL) for 5 days in healthy subjects.

The average CL_t and V_d values were 10.18 mL/min/kg and 33.3 L/kg, respectively, in 18 normal volunteers receiving 1000 to 4000-mg doses given as 1 mg/mL over 2 hours.

Comparison of the plasma pharmacokinetic parameters following the 1st and 5th daily doses of 500 mg intravenous azithromycin showed only an 8% increase in C_{max} but a 61% increase in AUC_{24} reflecting a threefold rise in C_{24} trough levels.

Following single oral doses of 500-mg azithromycin (two 250-mg capsules) to 12 healthy volunteers, C_{max} , trough level, and AUC_{24} were reported to be 0.41 $\mu\text{g/mL}$, 0.05 $\mu\text{g/mL}$, and 2.6 $\mu\text{g}\cdot\text{h/mL}$, respectively. These oral values are approximately 38%, 83%, and 52% of the values observed following a single 500-mg I.V. 3-hour infusion (C_{max} : 1.08 $\mu\text{g/mL}$, trough: 0.06 $\mu\text{g/mL}$, and AUC_{24} : 5.0 $\mu\text{g}\cdot\text{h/mL}$). Thus, plasma concentrations are higher following the intravenous regimen throughout the 24-hour interval. The pharmacokinetic parameters on day 5 of azithromycin 250-mg capsules following a 500-mg oral loading dose to healthy young adults (age 18-40 years old) were as follows: C_{max} : 0.24 $\mu\text{g/mL}$, AUC_{24} : 2.1 $\mu\text{g}\cdot\text{h/mL}$. Azithromycin 250-mg capsules are no longer commercially available. Azithromycin 250-mg tablets are bioequivalent to 250-mg capsules in the fasting state.

Median azithromycin exposure (AUC_{0-288}) in mononuclear (MN) and polymorphonuclear (PMN) leukocytes following 1,500 mg of oral azithromycin, administered in single daily doses over either 5 days (two 250-mg tablets on day 1, followed by one 250-mg tablet on days 2-5) or 3 days (500 mg per day for days 1-3) to 12 healthy volunteers, was more than a 1000-fold and 800-fold greater than in serum, respectively.

Distribution

The serum protein binding of azithromycin is variable in the concentration range approximating human exposure, decreasing from 51% at 0.02 $\mu\text{g/mL}$ to 7% at 2 $\mu\text{g/mL}$.

Tissue concentrations have not been obtained following intravenous infusions of azithromycin. Selected tissue (or fluid) concentration and tissue (or fluid) to plasma/serum concentration ratios following oral administration of azithromycin are shown in the following table:

**AZITHROMYCIN CONCENTRATIONS FOLLOWING
A 500-mg DOSE (TWO-250 mg CAPSULES) IN ADULTS**

TISSUE OR FLUID	TIME AFTER DOSE (h)	TISSUE OR FLUID CONCENTRATION ($\mu\text{g/g}$ or $\mu\text{g/mL}$) ¹	CORRESPONDING PLASMA OR SERUM LEVEL ($\mu\text{g/mL}$)	<u>TISSUE (FLUID) PLASMA (SERUM) RATIO</u> ¹
SKIN	72-96	0.4	0.012	35
LUNG	72-96	4.0	0.012	>100
SPUTUM*	2-4	1.0	0.64	2
SPUTUM**	10-12	2.9	0.1	30
TONSIL***	9-18	4.5	0.03	>100
TONSIL***	180	0.9	0.006	>100
CERVIX****	19	2.8	0.04	70

¹High tissue concentrations should not be interpreted to be quantitatively related to clinical efficacy. The antimicrobial activity of azithromycin is pH related and appears to be reduced

with decreasing pH. However, the extensive distribution of drug to tissues may be relevant to clinical activity.

- * Sample was obtained 2-4 hours after the first dose.
- ** Sample was obtained 10-12 hours after the first dose.
- *** Dosing regimen of 2 doses of 250 mg each, separated by 12 hours.
- **** Sample was obtained 19 hours after a single 500-mg dose.

Tissue levels were determined following a single oral dose of 500-mg azithromycin in 7 gynecological patients. Approximately 17 hours after dosing, azithromycin concentrations were 2.7 µg/g in ovarian tissue, 3.5 µg/g in uterine tissue, and 3.3 µg/g in salpinx. Following a regimen of 500 mg on the first day followed by 250 mg daily for 4 days, concentrations in the cerebrospinal fluid were less than 0.01 µg/mL in the presence of non-inflamed meninges.

Metabolism

In vitro and *in vivo* studies to assess the metabolism of azithromycin have not been performed.

Elimination

Plasma concentrations of azithromycin following single 500-mg oral and i.v. doses declined in a polyphasic pattern with a mean apparent plasma clearance of 630 mL/min and terminal elimination half-life of 68 hours. The prolonged terminal half-life is thought to be due to extensive uptake and subsequent release of drug from tissues.

In a multiple-dose study in 12 normal volunteers utilizing a 500-mg (1 mg/mL) one-hour intravenous-dosage regimen for five days, the amount of administered azithromycin dose excreted in urine in 24 hours was about 11% after the 1st dose and 14% after the 5th dose. These values are greater than the reported 6% excreted unchanged in urine after oral administration of azithromycin. Biliary excretion is a major route of elimination for unchanged drug, following oral administration.

Special Populations

Renal Insufficiency

Azithromycin pharmacokinetics were investigated in 42 adults (21 to 85 years of age) with varying degrees of renal impairment. Following the oral administration of a single 1,000-mg dose of azithromycin, mean C_{max} and AUC_{0-120} increased by 5.1% and 4.2%, respectively in subjects with mild to moderate renal impairment (GFR 10 to 80 mL/min) compared to subjects with normal renal function (GFR >80 mL/min). The mean C_{max} and AUC_{0-120} increased 61% and 35%, respectively in subjects with severe renal impairment (GFR <10 mL/min) compared to subjects with normal renal function (GFR >80 mL/min). (See **DOSAGE AND ADMINISTRATION.**)

Hepatic Insufficiency

The pharmacokinetics of azithromycin in subjects with hepatic impairment has not been established.

Gender

There are no significant differences in the disposition of azithromycin between male and female subjects. No dosage adjustment is recommended based on gender.

Geriatric Patients

Pharmacokinetic studies with intravenous azithromycin have not been performed in older volunteers. Pharmacokinetics of azithromycin following oral administration in older volunteers (65-85 years old) were similar to those in younger volunteers (18-40 years old) for the 5-day therapeutic regimen.

Pediatric Patients

Pharmacokinetic studies with intravenous azithromycin have not been performed in children.

Drug-Drug Interactions

Drug interaction studies were performed with oral azithromycin and other drugs likely to be co-administered. The effects of co-administration of azithromycin on the pharmacokinetics of other drugs are shown in Table 1 and the effects of other drugs on the pharmacokinetics of azithromycin are shown in Table 2.

Co-administration of azithromycin at therapeutic doses had a modest effect on the pharmacokinetics of the drugs listed in Table 1. No dosage adjustment of drugs listed in Table 1 is recommended when co-administered with azithromycin.

Co-administration of azithromycin with efavirenz or fluconazole had a modest effect on the pharmacokinetics of azithromycin. Nelfinavir significantly increased the C_{max} and AUC of azithromycin. No dosage adjustment of azithromycin is recommended when administered with drugs listed in Table 2. (See **PRECAUTIONS - Drug Interactions.**)

Table 1. Drug Interactions: Pharmacokinetic Parameters for Co-administered Drugs in the Presence of Azithromycin

Co-administered Drug	Dose of Co-administered Drug	Dose of Azithromycin	n	Ratio (with/without azithromycin) of Co-administered Drug Pharmacokinetic Parameters (90% CI); No Effect = 1.00	
				Mean C _{max}	Mean AUC
Atorvastatin	10 mg/day × 8 days	500 mg/day PO on days 6-8	12	0.83 (0.63 to 1.08)	1.01 (0.81 to 1.25)
Carbamazepine	200 mg/day × 2 days, then 200 mg BID × 18 days	500 mg/day PO for days 16-18	7	0.97 (0.88 to 1.06)	0.96 (0.88 to 1.06)
Cetirizine	20 mg/day × 11 days	500 mg PO on day 7, then 250 mg/day on days 8-11	14	1.03 (0.93 to 1.14)	1.02 (0.92 to 1.13)
Didanosine	200 mg PO BID × 21 days	1,200 mg/day PO on days 8-21	6	1.44 (0.85 to 2.43)	1.14 (0.83 to 1.57)
Efavirenz	400 mg/day × 7 days	600 mg PO on day 7	14	1.04*	0.95*
Fluconazole	200 mg PO single dose	1,200 mg PO single dose	18	1.04 (0.98 to 1.11)	1.01 (0.97 to 1.05)
Indinavir	800 mg TID × 5 days	1,200 mg PO on day 5	18	0.96 (0.86 to 1.08)	0.90 (0.81 to 1.00)
Midazolam	15 mg PO on day 3	500 mg/day PO × 3 days	12	1.27 (0.89 to 1.81)	1.26 (1.01 to 1.56)
Nelfinavir	750 mg TID × 11 days	1,200 mg PO on day 9	14	0.90 (0.81 to 1.01)	0.85 (0.78 to 0.93)
Rifabutin	300 mg/day × 10 days	500 mg PO on day 1, then 250 mg/day on days 2-10	6	See footnote below	NA
Sildenafil	100 mg on days 1 and 4	500 mg/day PO × 3 days	12	1.16 (0.86 to 1.57)	0.92 (0.75 to 1.12)
Theophylline	4 mg/kg IV on days 1, 11, 25	500 mg PO on day 7, 250 mg/day on days 8-11	10	1.19 (1.02 to 1.40)	1.02 (0.86 to 1.22)
Theophylline	300 mg PO BID × 15 days	500 mg PO on day 6, then 250 mg/day on days 7-10	8	1.09 (0.92 to 1.29)	1.08 (0.89 to 1.31)
Triazolam	0.125 mg on day 2	500 mg PO on day 1, then 250 mg/day on day 2	12	1.06*	1.02*
Trimethoprim/ Sulfamethoxazole	160 mg/800 mg/day PO × 7 days	1,200 mg PO on day 7	12	0.85 (0.75 to 0.97)/ 0.90 (0.78 to 1.03)	0.87 (0.80 to 0.95)/ 0.96 (0.88 to 1.03)
Zidovudine	500 mg/day PO × 21 days	600 mg/day PO × 14 days	5	1.12 (0.42 to 3.02)	0.94 (0.52 to 1.70)
Zidovudine	500 mg/day PO × 21 days	1,200 mg/day PO × 14 days	4	1.31 (0.43 to 3.97)	1.30 (0.69 to 2.43)

NA - Not Available

* - 90% Confidence interval not reported

Mean rifabutin concentrations one-half day after the last dose of rifabutin were 60 ng/mL when co-administered with azithromycin and 71 ng/mL when co-administered with placebo.

Table 2. Drug Interactions: Pharmacokinetic Parameters for Azithromycin in the Presence of Co-administered Drugs (See PRECAUTIONS - Drug Interactions.)

Co-administered Drug	Dose of Co-administered Drug	Dose of Azithromycin	n	Ratio (with/without co-administered drug) of Azithromycin Pharmacokinetic Parameters (90% CI); No Effect = 1.00	
				Mean C _{max}	Mean AUC
Efavirenz	400 mg/day × 7 days	600 mg PO on day 7	14	1.22 (1.04 to 1.42)	0.92*
Fluconazole	200 mg PO single dose	1,200 mg PO single dose	18	0.82 (0.66 to 1.02)	1.07 (0.94 to 1.22)
Nelfinavir	750 mg TID × 11 days	1,200 mg PO on day 9	14	2.36 (1.77 to 3.15)	2.12 (1.80 to 2.50)
Rifabutin	300 mg/day × 10 days	500 mg PO on day 1, then 250 mg/day on days 2-10	6	See footnote below	NA

NA – Not available

* - 90% Confidence interval not reported

Mean azithromycin concentrations one day after the last dose were 53 ng/mL when co-administered with 300 mg daily rifabutin and 49 ng/mL when co-administered with placebo.

Pharmacodynamics

Cardiac Electrophysiology

QTc interval prolongation was studied in a randomized, placebo-controlled parallel trial in 116 healthy subjects who received either chloroquine (1000 mg) alone or in combination with azithromycin (500 mg, 1000 mg, and 1500 mg once daily). Co-administration of azithromycin increased the QTc interval in a dose- and concentration-dependent manner. In comparison to chloroquine alone, the maximum mean (95% upper confidence bound) increases in QTcF were 5 (10) ms, 7 (12) ms and 9 (14) ms with the co-administration of 500 mg, 1000 mg and 1500 mg azithromycin, respectively.

Microbiology: Azithromycin acts by binding to the 50S ribosomal subunit of susceptible microorganisms and, thus, interfering with microbial protein synthesis. Nucleic acid synthesis is not affected.

Azithromycin concentrates in phagocytes and fibroblasts as demonstrated by *in vitro* incubation techniques. Using such methodology, the ratio of intracellular to extra-cellular concentration was >30 after one hour incubation. *In vivo* studies suggest that concentration in phagocytes may contribute to drug distribution to inflamed tissues.

Azithromycin has been shown to be active against most isolates of the following microorganisms, both *in vitro* and in clinical infections as described in the **INDICATIONS AND USAGE** section of the package insert for ZITHROMAX (azithromycin for injection).

Aerobic and facultative gram-positive microorganisms

Staphylococcus aureus

Streptococcus pneumoniae

NOTE: Azithromycin demonstrates cross-resistance with erythromycin-resistant gram-positive strains. Most strains of *Enterococcus faecalis* and methicillin-resistant staphylococci are resistant to azithromycin.

Aerobic and facultative gram-negative microorganisms

Haemophilus influenzae

Moraxella catarrhalis

Neisseria gonorrhoeae

“Other” microorganisms

Chlamydia pneumoniae

Chlamydia trachomatis

Legionella pneumophila

Mycoplasma hominis

Mycoplasma pneumoniae

Beta-lactamase production should have no effect on azithromycin activity.

Azithromycin has been shown to be active against most strains of the following microorganisms, both *in vitro* and in clinical infections as described in the **INDICATIONS AND USAGE** section of the package insert for ZITHROMAX (azithromycin tablets) and ZITHROMAX (azithromycin for oral suspension).

Aerobic and facultative gram-positive microorganisms

Staphylococcus aureus

Streptococcus agalactiae

Streptococcus pneumoniae

Streptococcus pyogenes

Aerobic and facultative gram-negative microorganisms

Haemophilus ducreyi

Haemophilus influenzae

Moraxella catarrhalis

Neisseria gonorrhoeae

“Other” microorganisms

Chlamydia pneumoniae

Chlamydia trachomatis

Mycoplasma pneumoniae

Beta-lactamase production should have no effect on azithromycin activity.

The following *in vitro* data are available, **but their clinical significance is unknown.**

At least 90% of the following microorganisms exhibit an *in vitro* minimum inhibitory concentration (MIC) less than or equal to the susceptible breakpoints for azithromycin. However, the safety and effectiveness of azithromycin in treating clinical infections due to these microorganisms have not been established in adequate and well-controlled clinical trials.

Aerobic and facultative gram-positive microorganisms

Streptococci (Groups C, F, G)
Viridans group streptococci

Aerobic and facultative gram-negative microorganisms

Bordetella pertussis

Anaerobic microorganisms

Peptostreptococcus species
Prevotella bivia

“Other” microorganisms

Ureaplasma urealyticum

Beta-lactamase production should have no effect on azithromycin activity.

Susceptibility Testing Methods

When available, the results of *in vitro* susceptibility test results for antimicrobial drugs used in resident hospitals should be provided to the physician as periodic reports which describe the susceptibility profile of nosocomial and community-acquired pathogens. These reports may differ from susceptibility data obtained from outpatient use, but could aid the physician in selecting the most effective antimicrobial.

Dilution techniques

Quantitative methods are used to determine antimicrobial minimum inhibitory concentrations (MICs). These MICs provide estimates of the susceptibility of bacteria to antimicrobial compounds. The MICs should be determined using a standardized procedure. Standardized procedures are based on a dilution method^{1,3} (broth or agar) or equivalent with standardized inoculum concentrations and standardized concentrations of azithromycin powder. The MIC values should be interpreted according to criteria provided in Table 3.

Diffusion techniques:

Quantitative methods that require measurement of zone diameters also provide reproducible estimates of the susceptibility of bacteria to antimicrobial compounds. One such standardized procedure^{2,3} requires the use of standardized inoculum concentrations. This procedure uses paper disks impregnated with 15-µg azithromycin to test the susceptibility of microorganisms to azithromycin. The disk diffusion interpretive criteria are provided in Table 3.

**Table 3. Susceptibility Interpretive Criteria for Azithromycin
Susceptibility Test Result Interpretive Criteria**

Pathogen	Minimum Inhibitory Concentrations (µg/mL)			Disk Diffusion (zone diameters in mm)		
	S	I	R ^a	S	I	R ^a
<i>Haemophilus influenzae</i>	≤ 4	--	--	≥ 12	--	--
<i>Staphylococcus aureus</i>	≤ 2	4	≥ 8	≥ 18	14-17	≤ 13
<i>Streptococcus pneumoniae</i> ^b	≤ 0.5	1	≥ 2	≥ 18	14-17	≤ 13

^aThe current absence of data on resistant strains precludes defining any category other than “susceptible”. If strains yield MIC results other than susceptible, they should be submitted to a reference laboratory for further testing.

^bSusceptibility of streptococci including, *S. pneumoniae* to azithromycin and other macrolides can be predicted by testing erythromycin.

No interpretive criteria have been established for testing *Neisseria gonorrhoeae*. This species is not usually tested.

A report of “susceptible” indicates that the pathogen is likely to be inhibited if the antimicrobial compound reaches the concentrations usually achievable. A report of “intermediate” indicates that the result should be considered equivocal, and, if the microorganism is not fully susceptible to alternative, clinically feasible drugs, the test should be repeated. This category implies possible clinical applicability in body sites where the drug is physiologically concentrated or in situations where high dosage of drug can be used. This category also provides a buffer zone which prevents small uncontrolled technical factors from causing major discrepancies in interpretation. A report of “resistant” indicates that the pathogen is not likely to be inhibited if the antimicrobial compound reaches the concentrations usually achievable; other therapy should be selected.

Quality Control

Standardized susceptibility test procedures require the use of quality control microorganisms to control the technical aspects of the test procedures. Standard azithromycin powder should provide the following range of values noted in Table 4. Quality control microorganisms are specific strains of organisms with intrinsic biological properties. QC strains are very stable

strains which will give a standard and repeatable susceptibility pattern. The specific strains used for microbiological quality control are not clinically significant.

Table 4. Acceptable Quality Control Ranges for Azithromycin

QC Strain	Minimum Inhibitory Concentrations (µg/mL)	Disk Diffusion (zone diameters in mm)
<i>Haemophilus influenzae</i>		
ATCC 49247	1.0-4.0	13-21
<i>Staphylococcus aureus</i>		
ATCC 29213	0.5-2.0	
<i>Staphylococcus aureus</i>		
ATCC 25923		21-26
<i>Streptococcus pneumoniae</i>		
ATCC 49619	0.06-0.25	19-25

INDICATIONS AND USAGE

ZITHROMAX (azithromycin for injection) is indicated for the treatment of patients with infections caused by susceptible strains of the designated microorganisms in the conditions listed below. As recommended dosages, durations of therapy, and applicable patient populations vary among these infections, please see **DOSAGE AND ADMINISTRATION** for dosing recommendations.

Community-acquired pneumonia due to *Chlamydia pneumoniae*, *Haemophilus influenzae*, *Legionella pneumophila*, *Moraxella catarrhalis*, *Mycoplasma pneumoniae*, *Staphylococcus aureus*, or *Streptococcus pneumoniae* in patients who require initial intravenous therapy.

Pelvic inflammatory disease due to *Chlamydia trachomatis*, *Neisseria gonorrhoeae*, or *Mycoplasma hominis* in patients who require initial intravenous therapy. If anaerobic microorganisms are suspected of contributing to the infection, an antimicrobial agent with anaerobic activity should be administered in combination with ZITHROMAX.

ZITHROMAX (azithromycin for injection) should be followed by ZITHROMAX by the oral route as required. (See **DOSAGE AND ADMINISTRATION**.)

Appropriate culture and susceptibility tests should be performed before treatment to determine the causative microorganism and its susceptibility to azithromycin. Therapy with ZITHROMAX may be initiated before results of these tests are known; once the results become available, antimicrobial therapy should be adjusted accordingly.

To reduce the development of drug-resistant bacteria and maintain the effectiveness of ZITHROMAX (azithromycin) and other antibacterial drugs, ZITHROMAX (azithromycin) should be used only to treat or prevent infections that are proven or strongly suspected to be caused by susceptible bacteria. When culture and susceptibility information are available, they should be considered in selecting or modifying antibacterial therapy. In the absence of such data, local epidemiology and susceptibility patterns may contribute to the empiric selection of therapy.

CONTRAINDICATIONS

ZITHROMAX is contraindicated in patients with known hypersensitivity to azithromycin, erythromycin, any macrolide or ketolide antibiotic. Zithromax is contraindicated in patients with a history of cholestatic jaundice/hepatic dysfunction associated with prior use of azithromycin.

WARNINGS

Hypersensitivity

Serious allergic reactions, including angioedema, anaphylaxis, and dermatologic reactions, including Stevens-Johnson Syndrome and toxic epidermal necrolysis, have been reported rarely in patients on azithromycin therapy. Although rare, fatalities have been reported. (See **CONTRAINDICATIONS**.) Despite initially successful symptomatic treatment of the allergic symptoms, when symptomatic therapy was discontinued, the allergic symptoms **recurred soon thereafter in some patients without further azithromycin exposure**. These patients required prolonged periods of observation and symptomatic treatment. The relationship of these episodes to the long tissue half-life of azithromycin and subsequent prolonged exposure to antigen is unknown at present.

If an allergic reaction occurs, the drug should be discontinued and appropriate therapy should be instituted. Physicians should be aware that reappearance of the allergic symptoms may occur when symptomatic therapy is discontinued.

Hepatotoxicity

Abnormal liver function, hepatitis, cholestatic jaundice, hepatic necrosis, and hepatic failure have been reported, some of which have resulted in death. Discontinue azithromycin immediately if signs and symptoms of hepatitis occur.

Clostridium Difficile-associated diarrhea

Clostridium difficile associated diarrhea (CDAD) has been reported with use of nearly all antibacterial agents, including ZITHROMAX (azithromycin for injection), and may range in severity from mild diarrhea to fatal colitis. Treatment with antibacterial agents alters the normal flora of the colon leading to overgrowth of *C. difficile*.

C. difficile produces toxins A and B which contribute to the development of CDAD. Hypertoxin producing strains of *C. difficile* cause increased morbidity and mortality, as these infections can be refractory to antimicrobial therapy and may require colectomy. CDAD must be considered in all patients who present with diarrhea following antibiotic use. Careful medical history is

necessary since CDAD has been reported to occur over two months after the administration of antibacterial agents.

If CDAD is suspected or confirmed, ongoing antibiotic use not directed against *C. difficile* may need to be discontinued. Appropriate fluid and electrolyte management, protein supplementation, antibiotic treatment of *C. difficile*, and surgical evaluation should be instituted as clinically indicated.

QT Prolongation

Prolonged cardiac repolarization and QT interval, imparting a risk of developing cardiac arrhythmia and torsades de pointes, have been seen in treatment with macrolides, including azithromycin. Cases of torsades de pointes have been spontaneously reported during postmarketing surveillance in patients receiving azithromycin. Providers should consider the risk of QT prolongation which can be fatal when weighing the risks and benefits of azithromycin for at-risk groups including:

- patients with known prolongation of the QT interval, a history of torsades de pointes, congenital long QT syndrome, bradyarrhythmias or uncompensated heart failure
- patients on drugs known to prolong the QT interval
- patients with ongoing proarrhythmic conditions such as uncorrected hypokalemia or hypomagnesemia, clinically significant bradycardia, and in patients receiving Class IA (quinidine, procainamide) or Class III (dofetilide, aminodarone, sotalol) antiarrhythmic agents.

Elderly patients may be more susceptible to drug-associated effects on the QT interval.

PRECAUTIONS

General: Because azithromycin is principally eliminated via the liver, caution should be exercised when azithromycin is administered to patients with impaired hepatic function. Due to the limited data in subjects with GFR <10 mL/min, caution should be exercised when prescribing azithromycin in these patients. (See **CLINICAL PHARMACOLOGY - Special Populations - Renal Insufficiency.**)

ZITHROMAX (azithromycin for injection) should be reconstituted and diluted as directed and administered as an intravenous infusion over not less than 60 minutes. (See **DOSAGE AND ADMINISTRATION.**)

Local I.V. site reactions have been reported with the intravenous administration of azithromycin. The incidence and severity of these reactions were the same when 500 mg azithromycin was given over 1 hour (2 mg/mL as 250 mL infusion) or over 3 hours (1 mg/mL as 500 mL infusion). (See **ADVERSE REACTIONS.**) All volunteers who received infusate concentrations above 2.0 mg/mL experienced local I.V. site reactions and, therefore, higher concentrations should be avoided.

Exacerbation of symptoms of myasthenia gravis and new onset of myasthenic syndrome have been reported in patients receiving azithromycin therapy.

Prescribing ZITHROMAX (azithromycin) in the absence of a proven or strongly suspected bacterial infection or a prophylactic indication is unlikely to provide benefit to the patient and increases the risk of the development of drug-resistant bacteria.

Information for Patients:

Patients should be directed to discontinue azithromycin and contact a physician if any signs of an allergic reaction occur.

Patients should be counseled that antibacterial drugs including, ZITHROMAX (azithromycin) should only be used to treat bacterial infections. They do not treat viral infections (e.g., the common cold). When ZITHROMAX (azithromycin) is prescribed to treat a bacterial infection, patients should be told that although it is common to feel better early in the course of the therapy, the medication should be taken exactly as directed. Skipping doses or not completing the full course of therapy may (1) decrease the effectiveness of the immediate treatment and (2) increase the likelihood that bacteria will develop resistance and will not be treatable by ZITHROMAX (azithromycin) or other antibacterial drugs in the future.

Diarrhea is a common problem caused by antibiotics, which usually ends when the antibiotic is discontinued. Sometimes after starting treatment with antibiotics, patients can develop watery and bloody stools (with or without stomach cramps and fever) even as late as two or more months after having taken the last dose of the antibiotic. If this occurs, patients should contact their physician as soon as possible.

Drug Interactions: Co-administration of nelfinavir at steady-state with a single oral dose of azithromycin resulted in increased azithromycin serum concentrations. Although a dose adjustment of azithromycin is not recommended when administered in combination with nelfinavir, close monitoring for known side effects of azithromycin, such as liver enzyme abnormalities and hearing impairment, is warranted. (See **ADVERSE REACTIONS.**)

Although, in a study of 22 healthy men, a 5-day course of azithromycin did not affect the prothrombin time from a subsequently administered dose of warfarin, spontaneous post-marketing reports suggest that concomitant administration of azithromycin may potentiate the effects of oral anticoagulants. Prothrombin times should be carefully monitored while patients are receiving azithromycin and oral anticoagulants concomitantly.

Drug interaction studies were performed with azithromycin and other drugs likely to be co-administered. (See **CLINICAL PHARMACOLOGY-Drug-Drug Interactions.**) When used in therapeutic doses, azithromycin had a modest effect on the pharmacokinetics of atorvastatin, carbamazepine, cetirizine, didanosine, efavirenz, fluconazole, indinavir, midazolam, rifabutin, sildenafil, theophylline (intravenous and oral), triazolam, trimethoprim/sulfamethoxazole or zidovudine. Co-administration with efavirenz or fluconazole had a modest effect on the

pharmacokinetics of azithromycin. No dosage adjustment of either drug is recommended when azithromycin is co-administered with any of these agents.

Interactions with the drugs listed below have not been reported in clinical trials with azithromycin; however, no specific drug interaction studies have been performed to evaluate potential drug-drug interaction. Nonetheless, they have been observed with macrolide products. Until further data are developed regarding drug interactions when azithromycin and these drugs are used concomitantly, careful monitoring of patients is advised:

Digoxin - elevated digoxin concentrations.

Ergotamine or dihydroergotamine - acute ergot toxicity characterized by severe peripheral vasospasm and dysesthesia.

Terfenadine, cyclosporine, hexobarbital and phenytoin - elevated concentrations.

Laboratory Test Interactions: There are no reported laboratory test interactions.

Carcinogenesis, Mutagenesis, Impairment of Fertility: Long-term studies in animals have not been performed to evaluate carcinogenic potential. Azithromycin has shown no mutagenic potential in standard laboratory tests: mouse lymphoma assay, human lymphocyte clastogenic assay, and mouse bone marrow clastogenic assay. No evidence of impaired fertility due to azithromycin was found.

Pregnancy: Teratogenic Effects. Pregnancy Category B: Reproduction studies have been performed in rats and mice at doses up to moderately maternally toxic dose concentrations (i.e., 200 mg/kg/day by the oral route). These doses, based on a mg/m² basis, are estimated to be 4 and 2 times, respectively, the human daily dose of 500 mg by the oral route. In the animal studies, no evidence of harm to the fetus due to azithromycin was found. There are, however, no adequate and well-controlled studies in pregnant women. Because animal reproduction studies are not always predictive of human response, azithromycin should be used during pregnancy only if clearly needed.

Nursing Mothers: It is not known whether azithromycin is excreted in human milk. Because many drugs are excreted in human milk, caution should be exercised when azithromycin is administered to a nursing woman.

Pediatric Use: Safety and effectiveness of azithromycin for injection in children or adolescents under 16 years have not been established. In controlled clinical studies, azithromycin has been administered to pediatric patients (age 6 months to 16 years) by the oral route. For information regarding the use of ZITHROMAX (azithromycin for oral suspension) in the treatment of pediatric patients, refer to the **INDICATIONS AND USAGE** and **DOSAGE AND ADMINISTRATION** sections of the prescribing information for ZITHROMAX (azithromycin for oral suspension) 100 mg/5 mL and 200 mg/5 mL bottles.

Geriatric Use: Pharmacokinetic studies with intravenous azithromycin have not been performed in older volunteers. Pharmacokinetics of azithromycin following oral administration in older

volunteers (65-85 years old) were similar to those in younger volunteers (18-40 years old) for the 5-day therapeutic regimen.

In multiple-dose clinical trials of intravenous azithromycin in the treatment of community-acquired pneumonia, 45% of patients (188/414) were at least 65 years of age and 22% of patients (91/414) were at least 75 years of age. No overall differences in safety were observed between these subjects and younger subjects in terms of adverse events, laboratory abnormalities, and discontinuations. Similar decreases in clinical response were noted in azithromycin- and comparator-treated patients with increasing age.

Elderly patients may be more susceptible to development of torsades de pointes arrhythmia than younger patients (See **WARNINGS**).

ZITHROMAX (azithromycin for injection) contains 114 mg (4.96 mEq) of sodium per vial. At the usual recommended doses, patients would receive 114 mg (4.96 mEq) of sodium. The geriatric population may respond with a blunted natriuresis to salt loading. The total sodium content from dietary and non-dietary sources may be clinically important with regard to such diseases as congestive heart failure.

ADVERSE REACTIONS

In clinical trials of intravenous azithromycin for community-acquired pneumonia, in which 2-5 I.V. doses were given, most of the reported side effects were mild to moderate in severity and were reversible upon discontinuation of the drug. The majority of patients in these trials had one or more co-morbid diseases and were receiving concomitant medications. Approximately 1.2% of the patients discontinued intravenous ZITHROMAX therapy, and a total of 2.4% discontinued azithromycin therapy by either the intravenous or oral route because of clinical or laboratory side effects.

In clinical trials conducted in patients with pelvic inflammatory disease, in which 1-2 I.V. doses were given, 2% of women who received monotherapy with azithromycin and 4% who received azithromycin plus metronidazole discontinued therapy due to clinical side effects.

Clinical side effects leading to discontinuations from these studies were most commonly gastrointestinal (abdominal pain, nausea, vomiting, diarrhea), and rashes; laboratory side effects leading to discontinuation were increases in transaminase levels and/or alkaline phosphatase levels.

Clinical

Overall, the most common side effects associated with treatment in adult patients who received I.V./P.O. ZITHROMAX in studies of community-acquired pneumonia were related to the gastrointestinal system with diarrhea/loose stools (4.3%), nausea (3.9%), abdominal pain (2.7%), and vomiting (1.4%) being the most frequently reported. Approximately 12% of patients experienced a side effect related to the intravenous infusion; most common were pain at the injection site (6.5%) and local inflammation (3.1%).

The most common side effects associated with treatment in adult women who received I.V./P.O. ZITHROMAX in studies of pelvic inflammatory disease were related to the gastrointestinal system. Diarrhea (8.5%) and nausea (6.6%) were most commonly reported, followed by vaginitis (2.8%), abdominal pain (1.9%), anorexia (1.9%), rash and pruritus (1.9%). When azithromycin was co-administered with metronidazole in these studies, a higher proportion of women experienced side effects of nausea (10.3%), abdominal pain (3.7%), vomiting (2.8%), application site reaction, stomatitis, dizziness, or dyspnea (all at 1.9%).

No other side effects occurred in patients on the multiple dose I.V./P.O. regimen of ZITHROMAX in these studies with a frequency greater than 1%.

Side effects that occurred with a frequency of 1% or less included the following:

Gastrointestinal: dyspepsia, flatulence, mucositis, oral moniliasis, and gastritis.

Nervous System: headache, somnolence.

Allergic: bronchospasm.

Special Senses: taste perversion.

Post-Marketing Experience:

Adverse events reported with azithromycin during the post-marketing period in adult and/or pediatric patients for which a causal relationship may not be established include:

Allergic: Arthralgia, edema, urticaria and angioedema.

Cardiovascular: Arrhythmias including ventricular tachycardia and hypotension. There have been rare reports of QT prolongation and *torsades de pointes*.

Gastrointestinal: Anorexia, constipation, dyspepsia, flatulence, vomiting/diarrhea rarely resulting in dehydration, pseudomembranous colitis, pancreatitis, oral candidiasis, pyloric stenosis, and rare reports of tongue discoloration.

General: Asthenia, paresthesia, fatigue, malaise and anaphylaxis (rarely fatal).

Genitourinary: Interstitial nephritis and acute renal failure and vaginitis.

Hematopoietic: Thrombocytopenia.

Liver/Biliary: Adverse reactions related to hepatic dysfunction have been reported in postmarketing experience with azithromycin. (See **WARNINGS, Hepatotoxicity**.)

Nervous System: Convulsions, dizziness/vertigo, headache, somnolence, hyperactivity, nervousness, agitation and syncope.

Psychiatric: Aggressive reaction and anxiety.

Skin/Appendages: Pruritus, rarely serious skin reactions including, erythema multiforme, Stevens-Johnson syndrome and toxic epidermal necrolysis.

Special Senses: Hearing disturbances including hearing loss, deafness and/or tinnitus and reports of taste/smell perversion and/or loss.

Laboratory Abnormalities

Significant abnormalities (irrespective of drug relationship) occurring during the clinical trials were reported as follows:

with an incidence of 4-6%, elevated ALT (SGPT), AST (SGOT), creatinine
with an incidence of 1-3%, elevated LDH, bilirubin
with an incidence of less than 1%, leukopenia, neutropenia, decreased platelet count, and
elevated serum alkaline phosphatase

When follow-up was provided, changes in laboratory tests appeared to be reversible.

In multiple-dose clinical trials involving more than 750 patients treated with ZITHROMAX (I.V./P.O.), less than 2% of patients discontinued azithromycin therapy because of treatment-related liver enzyme abnormalities.

DOSAGE AND ADMINISTRATION (See **INDICATIONS AND USAGE** and **CLINICAL PHARMACOLOGY**.)

The recommended dose of ZITHROMAX (azithromycin for injection) for the treatment of adult patients with community-acquired pneumonia due to the indicated organisms is: 500 mg as a single daily dose by the intravenous route for at least two days. Intravenous therapy should be followed by azithromycin by the oral route at a single, daily dose of 500 mg, administered as two 250-mg tablets to complete a 7- to 10-day course of therapy. The timing of the switch to oral therapy should be done at the discretion of the physician and in accordance with clinical response.

The recommended dose of ZITHROMAX (azithromycin for injection) for the treatment of adult patients with pelvic inflammatory disease due to the indicated organisms is: 500 mg as a single daily dose by the intravenous route for one or two days. Intravenous therapy should be followed by azithromycin by the oral route at a single, daily dose of 250 mg to complete a 7-day course of therapy. The timing of the switch to oral therapy should be done at the discretion of the physician and in accordance with clinical response. If anaerobic microorganisms are suspected of contributing to the infection, an antimicrobial agent with anaerobic activity should be administered in combination with ZITHROMAX.

Renal Insufficiency

No dosage adjustment is recommended for subjects with renal impairment (GFR \leq 80 mL/min). The mean AUC₀₋₁₂₀ was similar in subjects with GFR 10-80 mL/min compared to subjects with normal renal function, whereas it increased 35% in subjects with GFR <10 mL/min compared to subjects with normal renal function. Caution should be exercised when azithromycin is administered to subjects with severe renal impairment. (See **CLINICAL PHARMACOLOGY, Special Populations, Renal Insufficiency**.)

Hepatic Insufficiency

The pharmacokinetics of azithromycin in subjects with hepatic impairment have not been established. No dose adjustment recommendations can be made in patients with impaired hepatic function (See **CLINICAL PHARMACOLOGY, Special Populations, Hepatic Insufficiency**.)

No dosage adjustment is recommended based on age or gender. (See **CLINICAL PHARMACOLOGY, Special Populations.**)

The infusate concentration and rate of infusion for ZITHROMAX (azithromycin for injection) should be either 1 mg/mL over 3 hours or 2 mg/mL over 1 hour. ZITHROMAX (azithromycin for injection) should not be given as a bolus or as an intramuscular injection.

**Preparation of the solution for intravenous administration is as follows:
Reconstitution**

Prepare the initial solution of ZITHROMAX (azithromycin for injection) by adding 4.8 mL of Sterile Water For Injection to the 500 mg vial and shaking the vial until all of the drug is dissolved. Since ZITHROMAX (azithromycin for injection) is supplied under vacuum, it is recommended that a standard 5 mL (non-automated) syringe be used to ensure that the exact amount of 4.8 mL of Sterile Water is dispensed. Each mL of reconstituted solution contains 100 mg azithromycin. Reconstituted solution is stable for 24 hours when stored below 30°C (86°F).

Parenteral drug products should be inspected visually for particulate matter prior to administration. If particulate matter is evident in reconstituted fluids, the drug solution should be discarded.

Dilute this solution further prior to administration as instructed below.

Dilution

To provide azithromycin over a concentration range of 1.0-2.0 mg/mL, transfer 5 mL of the 100 mg/mL azithromycin solution into the appropriate amount of any of the diluents listed below:

- Normal Saline (0.9% sodium chloride)
- 1/2 Normal Saline (0.45% sodium chloride)
- 5% Dextrose in Water
- Lactated Ringer's Solution
- 5% Dextrose in 1/2 Normal Saline (0.45% sodium chloride) with 20 mEq KCl
- 5% Dextrose in Lactated Ringer's Solution
- 5% Dextrose in 1/3 Normal Saline (0.3% sodium chloride)
- 5% Dextrose in 1/2 Normal Saline (0.45% sodium chloride)
- Normosol[®]-M in 5% Dextrose
- Normosol[®]-R in 5% Dextrose

When used with the Vial-Mate[®] drug reconstitution device, please reference the Vial-Mate[®] instructions for assembly and reconstitution.

<u>Final Infusion Solution Concentration (mg/mL)</u>	<u>Amount of Diluent (mL)</u>
1.0 mg/mL	500 mL
2.0 mg/mL	250 mL

It is recommended that a 500-mg dose of ZITHROMAX (azithromycin for injection), diluted as above, be infused over a period of not less than 60 minutes.

ZITHROMAX (azithromycin for injection) should not be given as a bolus or as an intramuscular injection.

Other intravenous substances, additives, or medications should not be added to ZITHROMAX (azithromycin for injection), or infused simultaneously through the same intravenous line.

Storage

When diluted according to the instructions (1.0 mg/mL to 2.0 mg/mL), ZITHROMAX (azithromycin for injection) is stable for 24 hours at or below room temperature 30°C (86°F), or for 7 days if stored under refrigeration 5°C (41°F).

HOW SUPPLIED

ZITHROMAX (azithromycin for injection) is supplied in lyophilized form under a vacuum in a 10-mL vial equivalent to 500 mg of azithromycin for intravenous administration. Each vial also contains sodium hydroxide and 413.6 mg citric acid.

These are packaged as follows:

10 vials of 500 mg	NDC 0069-3150-83
10 vials of 500 mg with 1 Vial-Mate® Adaptor each	NDC 0069-3150-14

CLINICAL STUDIES

Community-Acquired Pneumonia

In a controlled study of community-acquired pneumonia performed in the U.S., azithromycin (500 mg as a single daily dose by the intravenous route for 2-5 days, followed by 500 mg/day by the oral route to complete 7-10 days therapy) was compared to cefuroxime (2250 mg/day in three divided doses by the intravenous route for 2-5 days followed by 1000 mg/day in two divided doses by the oral route to complete 7-10 days therapy), with or without erythromycin. For the 291 patients who were evaluable for clinical efficacy, the clinical outcome rates, i.e., cure, improved, and success (cure + improved) among the 277 patients seen at 10-14 days post-therapy were as follows:

Clinical Outcome	Azithromycin	Comparator
Cure	46%	44%
Improved	32%	30%
Success (Cure + Improved)	78%	74%

In a separate, uncontrolled clinical and microbiological trial performed in the U.S., 94 patients with community-acquired pneumonia who received azithromycin in the same regimen were evaluable for clinical efficacy. The clinical outcome rates, i.e., cure, improved, and success (cure + improved) among the 84 patients seen at 10-14 days post-therapy were as follows:

Clinical Outcome	Azithromycin
Cure	60%
Improved	29%
Success (Cure + Improved)	89%

Microbiological determinations in both trials were made at the pre-treatment visit and, where applicable, were reassessed at later visits. Serological testing was done on baseline and final visit specimens. The following combined presumptive bacteriological eradication rates were obtained from the evaluable groups:

Combined Bacteriological Eradication Rates for Azithromycin:

(at last completed visit)	Azithromycin
<i>S. pneumoniae</i>	64/67 (96%) ^a
<i>H. influenzae</i>	41/43 (95%)
<i>M. catarrhalis</i>	9/10
<i>S. aureus</i>	9/10

^a Nineteen of twenty-four patients (79%) with positive blood cultures for *S. pneumoniae* were cured (intent-to-treat analysis) with eradication of the pathogen.

The presumed bacteriological outcomes at 10-14 days post-therapy for patients treated with azithromycin with evidence (serology and/or culture) of atypical pathogens for both trials were as follows:

Evidence of Infection	Total	Cure	Improved	Cure + Improved
<i>Mycoplasma pneumoniae</i>	18	11 (61%)	5 (28%)	16 (89%)
<i>Chlamydia pneumoniae</i>	34	15 (44%)	13 (38%)	28 (82%)
<i>Legionella pneumophila</i>	16	5 (31%)	8 (50%)	13 (81%)

ANIMAL TOXICOLOGY

Phospholipidosis (intracellular phospholipid accumulation) has been observed in some tissues of mice, rats, and dogs given multiple doses of azithromycin. It has been demonstrated in numerous organ systems (e.g., eye, dorsal root ganglia, liver, gallbladder, kidney, spleen, and pancreas) in dogs treated with azithromycin at doses which, expressed on the basis of mg/m², are approximately equal to the recommended adult human dose, and in rats treated at doses approximately one-sixth of the recommended adult human dose. This effect has been shown to be reversible after cessation of azithromycin treatment. Phospholipidosis has been observed to a similar extent in the tissues of neonatal rats and dogs given daily doses of azithromycin ranging

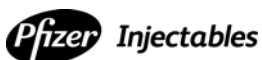
from 10 days to 30 days. Based on the pharmacokinetic data, phospholipidosis has been seen in the rat (30 mg/kg dose) at observed C_{max} value of 1.3 $\mu\text{g/mL}$ (six times greater than the observed C_{max} of 0.216 $\mu\text{g/mL}$ at the pediatric dose of 10 mg/kg). Similarly, it has been shown in the dog (10 mg/kg dose) at observed C_{max} value of 1.5 $\mu\text{g/mL}$ (seven times greater than the observed same C_{max} and drug dose in the studied pediatric population). On a mg/m^2 basis, 30 mg/kg dose in the neonatal rat (135 mg/m^2) and 10 mg/kg dose in the neonatal dog (79 mg/m^2) are approximately 0.45 and 0.3 times, respectively, the recommended dose in the pediatric patients with an average body weight of 25 kg. Phospholipidosis, similar to that seen in the adult animals, is reversible after cessation of azithromycin treatment. The significance of these findings for animals and for humans is unknown.

REFERENCES:

1. Clinical and Laboratory Standards Institute. *Performance Standards for Antimicrobial Susceptibility Testing; 21st Informational Supplement*. CLSI document M100-S21. (ISBN 1-56238-742-1). CLSI, 940 West Valley Road, Suite 1400, Wayne, PA, 19087-1898 USA. 2011
2. Clinical and Laboratory Standards Institute. *Methods for Dilution Antimicrobial Susceptibility Tests for Bacteria that Grow Aerobically; Approved Standard - 8th ed.* CLSI document M07-A8. (ISBN 1-56238-689-1). CLSI, 940 West Valley Road, Suite 1400, Wayne, PA, 19087-1898 USA. 2009.
3. Clinical and Laboratory Standards Institute. *Performance Standards for Antimicrobial Disk Susceptibility Tests; Approved Standard - 10th ed.* CLSI document M02-A10. (ISBN 1-56238-688-3). CLSI, 940 West Valley Road, Suite 1400, Wayne, PA, 19087-1898 USA. 2009

Licensed from Pliva

Vial-Mate is a registered trademark of Baxter International Inc., Reg. U.S. Pat and TM Off.



Distributed by
Pfizer Labs
Division of Pfizer Inc
New York, NY 10017

LAB-0024-11.1

Revised January 2013