

- **Serious Allergic Reactions.** Serious allergic reactions, including death, can happen with ACTEMRA. These reactions can happen with any infusion or injection of ACTEMRA, even if they did not occur with an earlier infusion or injection. Tell your healthcare provider before your next dose if you had hives, rash or flushing after your injection. Seek medical attention right away if you have any of the following signs of a serious allergic reaction:
 - shortness of breath or trouble breathing
 - swelling of the lips, tongue, or face
 - chest pain
 - feeling dizzy or faint
 - moderate or severe abdominal pain or vomiting
- **Nervous system problems.** While rare, Multiple Sclerosis has been diagnosed in people who take ACTEMRA. It is not known what effect ACTEMRA may have on some nervous system disorders.

Common side effects of ACTEMRA include:

- upper respiratory tract infections (common cold, sinus infections)
- headache
- increased blood pressure (hypertension)
- injection site reactions

Tell your healthcare provider if you have any side effect that bothers you or that does not go away. These are not all of the possible side effects of ACTEMRA. For more information, ask your healthcare provider or pharmacist.

Call your doctor for medical advice about side effects. You may report side effects to FDA at 1-800-FDA-1088.

You may also report side effects to Genentech at 1-888-835-2555.

General information about ACTEMRA.

Medicines are sometimes prescribed for purposes other than those listed in a Medication Guide. This Medication Guide summarizes the most important information about ACTEMRA.

If you would like more information, talk to your healthcare provider. You can ask your pharmacist or healthcare provider for information about ACTEMRA that is written for health professionals.

For more information, go to www.ACTEMRA.com or call 1-800-ACTEMRA.

What are the ingredients in ACTEMRA?

Active ingredient: tocilizumab

Inactive ingredients of Intravenous ACTEMRA: sucrose, polysorbate 80, disodium phosphate dodecahydrate, sodium dihydrogen phosphate dihydrate.

Inactive ingredients of Subcutaneous ACTEMRA: L-arginine, L-arginine hydrochloride, L-methionine, L-histidine, L-histidine hydrochloride monohydrate.

This Medication Guide has been approved by the U.S. Food and Drug Administration.

MG Revised: October 2013

ACTEMRA is a registered trademark of Chugai Seiyaku Kabushiki Kaisha Corp., a member of the Roche Group.

Genentech, Inc.

A Member of the Roche Group

1 DNA Way

South San Francisco, CA 94080-4990

US License No.1048

© 2013 Genentech, Inc. All rights reserved.

Instructions for Use
ACTEMRA® (AC-TEM-RA)
(tocilizumab)
Prefilled Syringe

Read and follow the Instructions for Use that come with your ACTEMRA prefilled syringe before you start using it and each time you get a prescription refill. Before you use ACTEMRA prefilled syringe for the first time, make sure your healthcare provider shows you the right way to use it.

- **Do not remove the needle cap until you are ready to inject ACTEMRA.**
- **Do not try to take apart the syringe at any time.**
- **Do not reuse the same syringe.**

Parts of your ACTEMRA Prefilled Syringe (See Figure A).

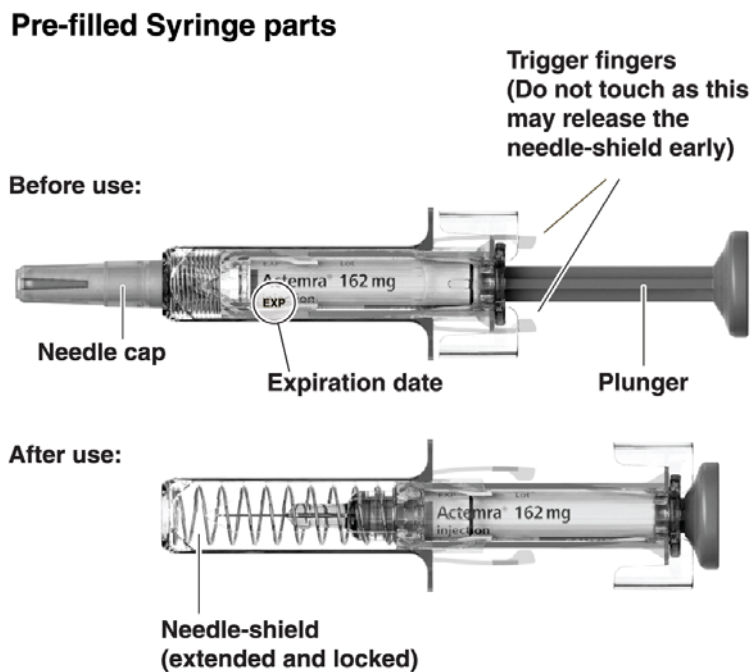


Figure A

Supplies needed for your ACTEMRA Prefilled Syringe Injection (See Figure B):

- ACTEMRA prefilled syringe
- alcohol pad
- sterile cotton ball or gauze
- puncture-resistant container or sharps container for safe disposal of needle cap and used syringe (see **Step 4 “Dispose of the syringe”**)

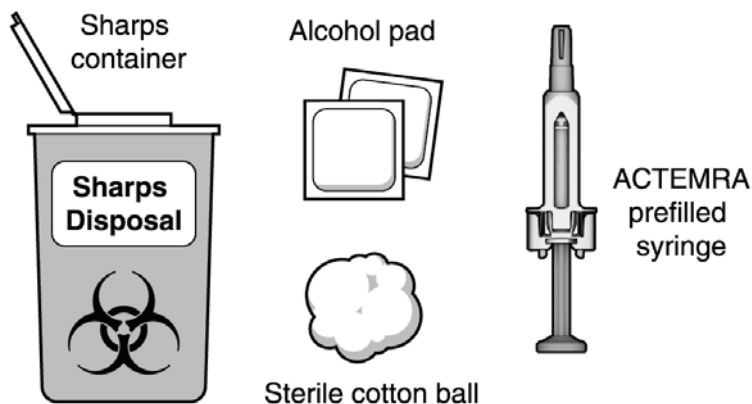


Figure B

Step 1. Preparing for an ACTEMRA Injection

Find a comfortable space with a clean, flat, working surface.

- Take the box containing the syringe out of the refrigerator and open the box. **Do not** touch the trigger fingers on the syringe as this may damage the syringe.
- Remove 1 single-use ACTEMRA prefilled syringe from the box and let it warm up for 30 minutes to allow it to reach room temperature. If the syringe does not reach room temperature, this could cause your injection to feel uncomfortable and make it difficult to push the plunger in.
- **Do not** speed up the warming process in any way, such as using the microwave or placing the syringe in warm water.
- Check the expiration date on the ACTEMRA prefilled syringe (**See Figure A**). **Do not** use it if the expiration date has passed because it may not be safe to use. If the expiration date has passed safely dispose of the syringe in a sharps container and get a new one.

Do not remove the needle cap while allowing your ACTEMRA prefilled syringe to reach room temperature.

- Keep your unused syringes in the original carton and keep in the refrigerator at 36° F to 46° F (2° C to 8° C). **Do not** freeze.
- Hold your ACTEMRA prefilled syringe with the covered needle pointing down (**see Figure C**).

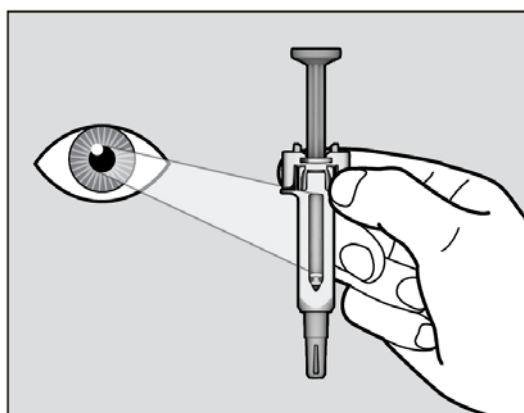


Figure C

- Check the liquid in the ACTEMRA prefilled syringe. It should be clear and colorless to pale yellow. Do not inject ACTEMRA if the liquid is cloudy, discolored, or has lumps or particles in it because it may not be safe to use. Safely dispose of the syringe in a sharps container and get a new one.
- Wash your hands well with soap and water.

Step 2. Choose and Prepare an Injection Site

Choose an Injection Site

- The front of your thigh and your abdomen except for the 2-inch area around your navel are the recommended injection sites (**See Figure D**).
- The outer area of the upper arms may also be used only if the injection is being given by a caregiver. Do not attempt to use the upper arm area by yourself (**See Figure D**).

Rotate Injection Site

- Choose a different injection site for each new injection at least 1 inch from the last area you injected.
- Do not inject into moles, scars, bruises, or areas where the skin is tender, red, hard or not intact.

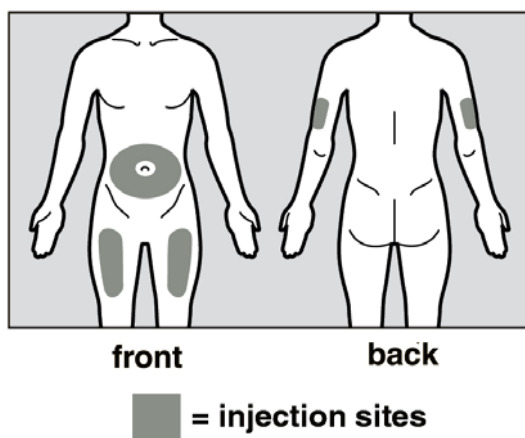


Figure D

Prepare the Injection Site

- Wipe the injection site with an alcohol pad in a circular motion and let it air dry to reduce the chance of getting an infection. **Do not** touch the injection site again before giving the injection.
- **Do not** fan or blow on the clean area.

Step 3. Inject ACTEMRA

- Hold the ACTEMRA prefilled syringe with 1 hand and pull the needle cap straight off with your other hand (**See Figure E**). **Do not** hold the plunger while you remove the needle cap. If you cannot remove the needle cap you should ask a caregiver for help or contact your healthcare provider.

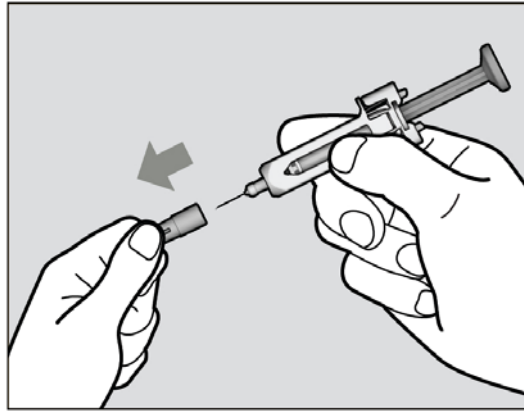


Figure E

- Throw away the needle cap in a sharps container.
- There may be a small air bubble in the ACTEMRA prefilled syringe. You do not need to remove it.
- You may see a drop of liquid at the end of the needle. This is normal and will not affect your dose.
- **Do not** touch the needle or let it touch any surfaces.
- **Do not** use the prefilled syringe if it is dropped.
- If it is not used within 5 minutes of needle cap removal, the syringe should be disposed of in the puncture resistant container or sharps container and a new syringe should be used.
- Never reattach the needle cap after removal.
- Hold the ACTEMRA prefilled syringe in 1 hand between the thumb and index finger (**See Figure F**).

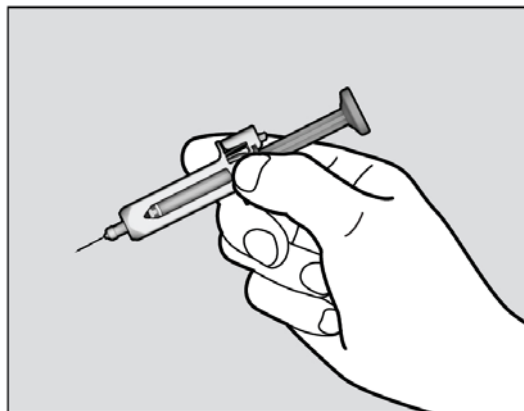


Figure F

- **Do not** pull back on the plunger of the syringe.
- Use your other hand and gently pinch the area of skin you cleaned. Hold the pinched skin firmly. Pinching the skin is important to make sure that you inject under the skin (into fatty tissue) but not any deeper (into muscle). Injection into muscle could cause the injection to feel uncomfortable.
- **Do not** hold or push on the plunger while inserting the needle into the skin.
- Use a quick, dart-like motion to insert the needle all the way into the pinched skin at an angle between 45° to 90° (**See Figure G**). It is important to use the correct angle to make sure the medicine is delivered under the skin (into fatty tissue), or the injection could be painful and the medicine may not work.

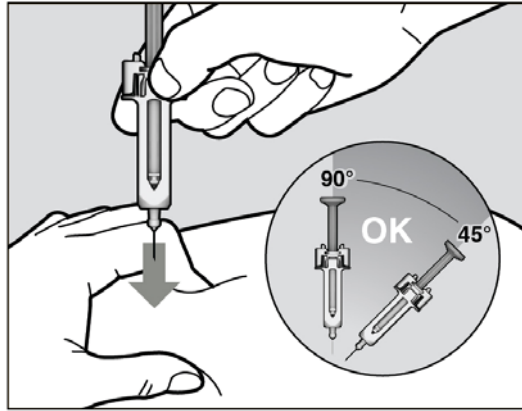


Figure G

- Keep the syringe in position and let go of the pinch of skin.
- Slowly inject all of the medicine by gently pushing the plunger all the way down (**See Figure H**). You must press the plunger all the way down to get the full dose of medicine and to ensure the trigger fingers are completely pushed to the side. If the plunger is not fully depressed the needle shield will not extend to cover the needle when it is removed. If the needle is not covered, carefully place the syringe into the puncture resistant container to avoid injury with the needle.

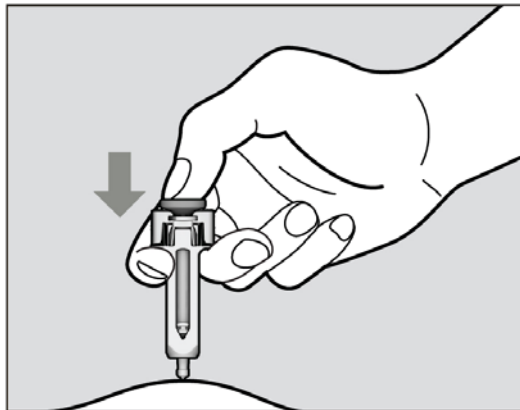


Figure H

- After the plunger is pushed all the way down, keep pressing down on the plunger to be sure all of the medicine is injected before taking the needle out of the skin.
- Keep pressing down on the plunger while you take the needle out of the skin at the same angle as inserted (**See Figure I**).

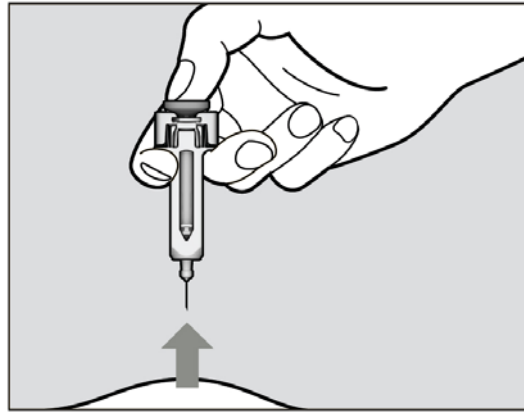


Figure I

- After the needle is removed completely from the skin, release the plunger, allowing the needle-shield to protect the needle (**See Figure J**).

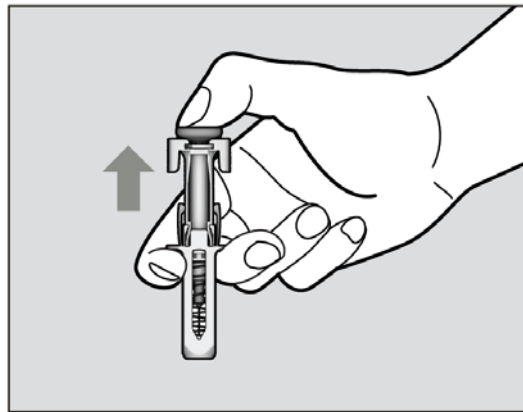


Figure J

After the Injection

- There may be a little bleeding at the injection site. You can press a cotton ball or gauze over the injection site.
- **Do not** rub the injection site.
- If needed, you may cover the injection site with a small bandage.

Step 4. Dispose of the syringe

- The ACTEMRA prefilled syringe should not be reused.
- Put the used syringe into your puncture resistant container (see “**How do I throw away used syringes?**”)
- **Do not** put the needle cap back on the needle.
- **If your injection is given by another person, this person must also be careful when removing the syringe and disposing of the syringe to prevent accidental needle stick injury and passing infection.**

How do I throw away used syringes?

- Put your used needles and syringes including ACTEMRA in a FDA-cleared sharps disposal container right away after use (**See Figure K**). **Do not throw away (dispose of) loose needles and syringes in your household trash.**



Figure K

- If you do not have a FDA-cleared sharps disposal container, you may use a household container that is:
 - made of a heavy-duty plastic
 - can be closed with a tight-fitting, puncture-resistant lid, without sharps being able to come out
 - upright stable during use
 - leak-resistant
 - properly labeled to warn of hazardous waste inside the container
 - When your sharps disposal container is almost full, you will need to follow your community guidelines for the right way to dispose of your sharps disposal container. There may be state or local laws about how you should throw away used needles and syringes. For more information about the safe sharps disposal, and for specific information about sharps disposal in the state that you live in, go to the FDA's website at: <http://www.fda.gov/safesharpsdisposal>.
 - Do not dispose of your used sharps disposal container in your household trash unless your community guidelines permit this. Do not recycle your used sharps disposal container.
- **Keep ACTEMRA prefilled syringes and the disposal container out of the reach of children.**

Record your Injection

- Write the date, time, and specific part of your body where you injected yourself. It may also be helpful to write any questions or concerns about the injection so you can ask your healthcare provider.

If you have questions or concerns about your ACTEMRA prefilled syringe, please contact your healthcare provider familiar with ACTEMRA or call 1-800-ACTEMRA.

This Medication Guide and Instructions for Use has been approved by the U.S. Food and Drug Administration.

MG Revised: October 2013

ACTEMRA is a registered trademark of Chugai Seiyaku Kabushiki Kaisha Corp., a member of the Roche Group.

Genentech, Inc.

A Member of the Roche Group

1 DNA Way

South San Francisco, CA 94080-4990

US License No.1048

© 2013 Genentech, Inc. All rights reserved.