

HIGHLIGHTS OF PRESCRIBING INFORMATION

These highlights do not include all the information needed to use FEMARA safely and effectively. See full prescribing information for FEMARA.

Femara (letrozole) tablets

Initial U.S. Approval: 1997

INDICATIONS AND USAGE

Femara is an aromatase inhibitor indicated for:

- Adjuvant treatment of postmenopausal women with hormone receptor positive early breast cancer (1.1)
- Extended adjuvant treatment of postmenopausal women with early breast cancer who have received prior standard adjuvant tamoxifen therapy (1.2)
- First and second-line treatment of postmenopausal women with hormone receptor positive or unknown advanced breast cancer (1.3)

DOSAGE AND ADMINISTRATION

Femara tablets are taken orally without regard to meals (2):

- Recommended dose: 2.5 mg once daily (2.1)
- Patients with cirrhosis or severe hepatic impairment: 2.5 mg every other day (2.5, 5.3)

DOSAGE FORMS AND STRENGTHS

2.5 milligram tablets (3)

CONTRAINDICATIONS

Women of premenopausal endocrine status, including pregnant women (4)

WARNINGS AND PRECAUTIONS

- Decreases in bone mineral density may occur. Consider bone mineral density monitoring (5.1)
- Increases in total cholesterol may occur. Consider cholesterol monitoring. (5.2)
- Fatigue, dizziness and somnolence may occur. Exercise caution when operating machinery (5.4)

ADVERSE REACTIONS

The most common adverse reactions (>20%) were hot flashes, arthralgia (6.1); flushing, asthenia, edema, arthralgia, headache, dizziness, hypercholesterolemia, sweating increased, bone pain (6.2, 6.3); and musculoskeletal (6.4).

To report SUSPECTED ADVERSE REACTIONS, contact Novartis Pharmaceuticals Corporation at 1-888-669-6682 or FDA at 1-800-FDA-1088 or www.fda.gov/medwatch.

See 17 for PATIENT COUNSELING INFORMATION

Revised: 1/2014

FULL PRESCRIBING INFORMATION: CONTENTS*

1 INDICATIONS AND USAGE

- 1.1 Adjuvant Treatment of Early Breast Cancer
- 1.2 Extended Adjuvant Treatment of Early Breast Cancer
- 1.3 First and Second-Line Treatment of Advanced Breast Cancer

2 DOSAGE AND ADMINISTRATION

- 2.1 Recommended Dose
- 2.2 Use in Adjuvant Treatment of Early Breast Cancer
- 2.3 Use in Extended Adjuvant Treatment of Early Breast Cancer
- 2.4 Use in First and Second-Line Treatment of Advanced Breast Cancer
- 2.5 Use in Hepatic Impairment
- 2.6 Use in Renal Impairment

3 DOSAGE FORMS AND STRENGTHS

4 CONTRAINDICATIONS

5 WARNINGS AND PRECAUTIONS

- 5.1 Bone Effects
- 5.2 Cholesterol
- 5.3 Hepatic Impairment
- 5.4 Fatigue and Dizziness
- 5.5 Laboratory Test Abnormalities

6 ADVERSE REACTIONS

- 6.1 Adjuvant Treatment of Early Breast Cancer
- 6.2 Extended Adjuvant Treatment of Early Breast Cancer, Median Treatment Duration of 24 Months
- 6.3 Updated Analysis, Extended Adjuvant Treatment of Early Breast Cancer, Median Treatment Duration of 60 Months
- 6.4 First-Line Treatment of Advanced Breast Cancer
- 6.5 Second-Line Treatment of Advanced Breast Cancer
- 6.6 First and Second-Line Treatment of Advanced Breast Cancer

6.7 Postmarketing Experience

7 DRUG INTERACTIONS

8 USE IN SPECIFIC POPULATIONS

- 8.1 Pregnancy
- 8.3 Nursing Mothers
- 8.4 Pediatric Use
- 8.5 Geriatric Use

10 OVERDOSAGE

11 DESCRIPTION

12 CLINICAL PHARMACOLOGY

- 12.1 Mechanism of Action
- 12.2 Pharmacodynamics
- 12.3 Pharmacokinetics

13 NONCLINICAL TOXICOLOGY

- 13.1 Carcinogenesis, Mutagenesis, Impairment of Fertility
- 13.2 Animal Toxicology and/or Pharmacology

14 CLINICAL STUDIES

- 14.1 Updated Adjuvant Treatment of Early Breast Cancer
- 14.2 Extended Adjuvant Treatment of Early Breast Cancer, Median Treatment Duration of 24 Months
- 14.3 Updated Analyses of Extended Adjuvant Treatment of Early Breast Cancer, Median Treatment Duration of 60 Months
- 14.4 First-Line Treatment of Advanced Breast Cancer
- 14.5 Second-Line Treatment of Advanced Breast Cancer

16 HOW SUPPLIED/STORAGE AND HANDLING

17 PATIENT COUNSELING INFORMATION

* Sections or subsections omitted from the full prescribing information are not listed

FULL PRESCRIBING INFORMATION

1 INDICATIONS AND USAGE

1.1 Adjuvant Treatment of Early Breast Cancer

Femara (letrozole) is indicated for the adjuvant treatment of postmenopausal women with hormone receptor positive early breast cancer.

1.2 Extended Adjuvant Treatment of Early Breast Cancer

Femara is indicated for the extended adjuvant treatment of early breast cancer in postmenopausal women, who have received 5 years of adjuvant tamoxifen therapy. The effectiveness of Femara in extended adjuvant treatment of early breast cancer is based on an analysis of disease-free survival in patients treated with Femara for a median of 60 months [see *Clinical Studies (14.2, 14.3)*].

1.3 First and Second-Line Treatment of Advanced Breast Cancer

Femara is indicated for first-line treatment of postmenopausal women with hormone receptor positive or unknown, locally advanced or metastatic breast cancer. Femara is also indicated for the treatment of advanced breast cancer in postmenopausal women with disease progression following antiestrogen therapy [see *Clinical Studies (14.4, 14.5)*].

2 DOSAGE AND ADMINISTRATION

2.1 Recommended Dose

The recommended dose of Femara is one 2.5 mg tablet administered once a day, without regard to meals.

2.2 Use in Adjuvant Treatment of Early Breast Cancer

In the adjuvant setting, the optimal duration of treatment with letrozole is unknown. The planned duration of treatment in the study was 5 years with 73% of the patients having completed adjuvant therapy. Treatment should be discontinued at relapse [see *Clinical Studies (14.1)*].

2.3 Use in Extended Adjuvant Treatment of Early Breast Cancer

In the extended adjuvant setting, the optimal treatment duration with Femara is not known. The planned duration of treatment in the study was 5 years. In the final updated analysis, conducted at a median follow-up of 62 months, the median treatment duration was 60 months. Seventy-one percent of patients were treated for at least 3 years and 58% of patients completed least 4.5 years of extended adjuvant treatment. The treatment should be discontinued at tumor relapse [see *Clinical Studies (14.2)*].

2.4 Use in First and Second-Line Treatment of Advanced Breast Cancer

In patients with advanced disease, treatment with Femara should continue until tumor progression is evident. [see *Clinical Studies (14.4, 14.5)*]

2.5 Use in Hepatic Impairment

No dosage adjustment is recommended for patients with mild to moderate hepatic impairment, although Femara blood concentrations were modestly increased in subjects with moderate hepatic impairment due to cirrhosis. The dose of Femara in patients with cirrhosis and severe hepatic dysfunction should be reduced by 50% [see *Warnings and Precautions (5.3)*]. The recommended dose of Femara for such patients is 2.5 mg administered every other day. The effect of hepatic impairment on Femara exposure in noncirrhotic cancer patients with elevated bilirubin levels has not been determined.

2.6 Use in Renal Impairment

No dosage adjustment is required for patients with renal impairment if creatinine clearance is ≥ 10 mL/min. [see *Clinical Pharmacology (12.3)*].

3 DOSAGE FORMS AND STRENGTHS

2.5 mg tablets: dark yellow, film-coated, round, slightly biconvex, with beveled edges (imprinted with the letters FV on one side and CG on the other side).

4 CONTRAINDICATIONS

Femara may cause fetal harm when administered to a pregnant woman and the clinical benefit to premenopausal women with breast cancer has not been demonstrated. Femara is contraindicated in women who are or may become pregnant. If Femara is used during pregnancy, or if the patient becomes pregnant while taking this drug, the patient should be apprised of the potential hazard to a fetus. [*see Use in Specific Populations (8.1)*]

5 WARNINGS AND PRECAUTIONS

5.1 Bone Effects

Use of Femara may cause decreases in bone mineral density (BMD). Consideration should be given to monitoring BMD. Results of a substudy to evaluate safety in the adjuvant setting comparing the effect on lumbar spine (L2-L4) bone mineral density (BMD) of adjuvant treatment with letrozole to that with tamoxifen showed at 24 months a median decrease in lumbar spine BMD of 4.1% in the letrozole arm compared to a median increase of 0.3% in the tamoxifen arm (difference = 4.4%) ($P < 0.0001$) [*see Adverse reactions (6.1)*]. Updated results from the BMD substudy in the extended adjuvant setting demonstrated that at 2 years patients receiving letrozole had a median decrease from baseline of 3.8% in hip BMD compared to a median decrease of 2.0% in the placebo group. The changes from baseline in lumbar spine BMD in letrozole and placebo treated groups were not significantly different [*see Adverse Reactions (6.2)*].

In the adjuvant trial the incidence of bone fractures at any time after randomization was 13.8% for letrozole and 10.5% for tamoxifen. The incidence of osteoporosis was 5.1% for letrozole and 2.7% for tamoxifen [*see Adverse Reactions (6.1)*]. In the extended adjuvant trial the incidence of bone fractures at any time after randomization was 13.3% for letrozole and 7.8% for placebo. The incidence of new osteoporosis was 14.5% for letrozole and 7.8% for placebo [*see Adverse Reactions (6.3)*].

5.2 Cholesterol

Consideration should be given to monitoring serum cholesterol. In the adjuvant trial hypercholesterolemia was reported in 52.3% of letrozole patients and 28.6% of tamoxifen patients. CTC grade 3-4 hypercholesterolemia was reported in 0.4% of letrozole patients and 0.1% of tamoxifen patients. Also in the adjuvant setting, an increase of ≥ 1.5 X ULN in total cholesterol (generally non-fasting) was observed in patients on monotherapy who had baseline total serum cholesterol within the normal range (i.e., ≤ 1.5 X ULN) in 151/1843 (8.2%) on letrozole vs 57/1840 (3.2%). Lipid lowering medications were required for 25% of patients on letrozole and 16% on tamoxifen [*see Adverse Reactions (6.1)*].

5.3 Hepatic Impairment

Subjects with cirrhosis and severe hepatic impairment who were dosed with 2.5 mg of Femara experienced approximately twice the exposure to Femara as healthy volunteers with normal liver function. Therefore, a dose reduction is recommended for this patient population. The effect of hepatic impairment on Femara exposure in cancer patients with elevated bilirubin levels has not been determined. [*see Dosage and Administration (2.5)*]

5.4 Fatigue and Dizziness

Because fatigue, dizziness, and somnolence have been reported with the use of Femara, caution is advised when driving or using machinery until it is known how the patient reacts to Femara use.

5.5 Laboratory Test Abnormalities

No dose-related effect of Femara on any hematologic or clinical chemistry parameter was evident. Moderate decreases in lymphocyte counts, of uncertain clinical significance, were observed in some patients receiving Femara 2.5 mg. This depression was transient in about half of those affected. Two patients on Femara developed thrombocytopenia; relationship to the study drug was unclear. Patient withdrawal due to laboratory abnormalities, whether related to study treatment or not, was infrequent.

6 ADVERSE REACTIONS

The most serious adverse reactions from the use of Femara are:

- Bone effects [see Warnings and Precautions (5.1)]
- Increases in cholesterol [see Warnings and Precautions (5.2)]

Because clinical trials are conducted under widely varying conditions, adverse reactions rates observed in the clinical trials of a drug cannot be directly compared to rates in the clinical trials of another drug and may not reflect the rates observed in practice.

6.1 Adjuvant Treatment of Early Breast Cancer

The median treatment duration of adjuvant treatment was 60 months and the median duration of follow-up for safety was 73 months for patients receiving Femara and tamoxifen.

Certain adverse reactions were prospectively specified for analysis, based on the known pharmacologic properties and side effect profiles of the two drugs.

Adverse reactions were analyzed irrespective of whether a symptom was present or absent at baseline. Most adverse reactions reported (approximately 75% of patients reporting 1 or more AE) were Grade 1 or Grade 2 applying the Common Toxicity Criteria Version 2.0/ Common Terminology Criteria for Adverse Events, version 3.0. Table 1 describes adverse reactions (Grades 1-4) irrespective of relationship to study treatment in the adjuvant trial for the monotherapy arms analysis (safety population).

Table 1: Patients with Adverse Reactions (CTC Grades 1-4, Irrespective of Relationship to Study Drug) in the Adjuvant Study – Monotherapy Arms Analysis (Median Follow-up 73 Months; Median Treatment 60 Months)

Adverse Reaction	Grades 1-4		Grades 3-4	
	Femara N=2448 n (%)	tamoxifen N=2447 n (%)	Femara N=2448 n (%)	tamoxifen N=2447 n (%)
Pts with any adverse event	2310 (94.4)	2214 (90.5)	635 (25.9)	604 (24.7)
Hypercholesterolemia	1280 (52.3)	700 (28.6)	11 (0.4)	6 (0.2)
Hot Flashes/Flushes	821 (33.5)	929 (38.0)	0	0
Arthralgia/Arthritis	618 (25.2)	501 (20.4)	85 (3.5)	50 (2.0)
Night Sweats	357 (14.6)	426 (17.4)	0	0
Bone Fractures ²	338 (13.8)	257 (10.5)	-	-
Weight Increase	317 (12.9)	378 (15.4)	27 (1.1)	39 (1.6)
Nausea	283 (11.6)	277 (11.3)	6 (0.2)	9 (0.4)
Bone Fractures ¹	247 (10.1)	174 (7.1)	-	-
Fatigue (Lethargy, Malaise, Asthenia)	235 (9.6)	250 (10.2)	6 (0.2)	7 (0.3)
Myalgia	217 (8.9)	212 (8.7)	18 (0.7)	14 (0.6)
Edema	164 (6.7)	160 (6.5)	3 (0.1)	1 (<0.1)
Weight Decrease	140 (5.7)	129 (5.3)	8 (0.3)	5 (0.2)
Vaginal Bleeding	128 (5.2)	320 (13.1)	1 (<0.1)	8 (0.3)
Back Pain	125 (5.1)	136 (5.6)	7 (0.3)	11 (0.4)
Osteoporosis NOS	124 (5.1)	66 (2.7)	10 (0.4)	5 (0.2)
Bone pain	123 (5.0)	109 (4.5)	6 (0.2)	4 (0.2)
Depression	119 (4.9)	114 (4.7)	16 (0.7)	14 (0.6)
Vaginal Irritation	111 (4.5)	77 (3.1)	2 (<0.1)	2 (<0.1)
Headache	105 (4.3)	94 (3.8)	9 (0.4)	5 (0.2)
Pain in extremity	103 (4.2)	79 (3.2)	6 (0.2)	4 (0.2)
Osteopenia	87 (3.6)	74 (3.0)	0	2 (<0.1)
Dizziness/Light-Headedness	84 (3.4)	84 (3.4)	1 (<0.1)	6 (0.2)
Alopecia	83 (3.4)	84 (3.4)	0	0
Vomiting	80 (3.3)	80 (3.3)	3 (0.1)	5 (0.2)

Cataract	49	(2.0)	54	(2.2)	16	(0.7)	17	(0.7)
Constipation	49	(2.0)	71	(2.9)	3	(0.1)	1	(<0.1)
Breast pain	37	(1.5)	43	(1.8)	1	(<0.1)	0	-
Anorexia	20	(0.8)	20	(0.8)	1	(<0.1)	1	(<0.1)
Endometrial Hyperplasia/ Cancer ^{2,3}	11/1909	(0.6)	70/1943	(3.6)	-	-	-	-
Endometrial Proliferation Disorders	10	(0.3)	71	(1.8)	0	-	14	(0.6)
Endometrial Hyperplasia/ Cancer ^{1,3}	6/1909	(0.3)	57/1943	(2.9)	-	-	-	-
Other Endometrial Disorders	2	(<0.1)	3	(0.1)	0	-	0	-
Myocardial Infarction ¹	24	(1.0)	12	(0.5)	-	-	-	-
Myocardial Infarction ²	37	(1.5)	25	(1.0)	-	-	-	-
Myocardial Ischemia	6	(0.2)	9	(0.4)	-	-	-	-
Cerebrovascular Accident ¹	52	(2.1)	46	(1.9)	-	-	-	-
Cerebrovascular Accident ²	70	(2.9)	63	(2.6)	-	-	-	-
Angina ¹	26	(1.1)	24	(1.0)	-	-	-	-
Angina ²	32	(1.3)	31	(1.3)	-	-	-	-
Thromboembolic Event ¹	51	(2.1)	89	(3.6)	-	-	-	-
Thromboembolic Event ²	71	(2.9)	111	(4.5)	-	-	-	-
Other Cardiovascular ¹	260	(10.6)	256	(10.5)	-	-	-	-
Other Cardiovascular ²	312	(12.7)	337	(13.8)	-	-	-	-
Second Malignancies ¹	53	(2.2)	78	(3.2)	-	-	-	-
Second Malignancies ²	102	(4.2)	119	(4.9)	-	-	-	-

¹ During study treatment, based on Safety Monotherapy population

² Any time after randomization, including post treatment follow-up

³ Excluding women who had undergone hysterectomy before study entry

Note: Cardiovascular (including cerebrovascular and thromboembolic), skeletal and urogenital/endometrial events and second malignancies were collected life-long. All of these events were assumed to be of CTC Grade 3 to 5 and were not individually graded.

When considering all grades during study treatment, a higher incidence of events was seen for Femara regarding fractures (10.1% vs 7.1%), myocardial infarctions (1.0% vs 0.5%), and arthralgia (25.2% vs 20.4%) (Femara vs tamoxifen respectively). A higher incidence was seen for tamoxifen regarding thromboembolic events (2.1% vs 3.6%), endometrial hyperplasia/cancer (0.3% vs 2.9%), and endometrial proliferation disorders (0.3% vs 1.8%) (Femara vs tamoxifen respectively).

At a median follow up of 73 months, a higher incidence of events was seen for Femara (13.8%) than for tamoxifen (10.5%) regarding fractures. A higher incidence was seen for tamoxifen compared to Femara regarding thromboembolic events (4.5% vs 2.9%), and endometrial hyperplasia or cancer (2.9% vs 0.4%) (tamoxifen vs Femara, respectively).

Bone Study: Results of a phase 3 safety trial in 262 postmenopausal women with resected receptor positive early breast cancer in the adjuvant setting comparing the effect on lumbar spine (L2-L4) bone mineral density (BMD) of adjuvant treatment with letrozole to that with tamoxifen showed at 24 months a median decrease in lumbar spine BMD of 4.1% in the letrozole arm compared to a median increase of 0.3% in the tamoxifen arm (difference = 4.4%) ($P < 0.0001$). No patients with a normal BMD at baseline became osteoporotic over the 2 years and only 1 patient with osteopenia at baseline (T score of -1.9) developed osteoporosis during the treatment period (assessment by central review). The results for total hip BMD were similar, although the differences between the two treatments were less pronounced. During the 2 year period, fractures were reported by 4 of 103 patients (4%) in the letrozole arm, and 6 of 97 patients (6%) in the tamoxifen arm.

Lipid Study: In a phase 3 safety trial in 262 postmenopausal women with resected receptor positive early breast cancer at 24 months comparing the effects on lipid profiles of adjuvant letrozole to tamoxifen, 12% of patients on letrozole had at least one total cholesterol value of a higher CTCAE grade than at baseline compared with 4% of patients on tamoxifen.

6.2 Extended Adjuvant Treatment of Early Breast Cancer, Median Treatment Duration of 24 Months

The median duration of extended adjuvant treatment was 24 months and the median duration of follow-up for safety was 28 months for patients receiving Femara and placebo.

Table 2 describes the adverse reactions occurring at a frequency of at least 5% in any treatment group during treatment. Most adverse reactions reported were Grade 1 and Grade 2 based on the Common Toxicity Criteria Version 2.0. In the extended adjuvant setting, the reported drug-related adverse reactions that were significantly different from placebo were hot flashes, arthralgia/arthritis, and myalgia.

Table 2: Percentage of Patients with Adverse Reactions

	Number (%) of Patients with Grade 1-4 Adverse Reaction		Number (%) of Patients with Grade 3-4 Adverse Reaction	
	Femara N=2563	Placebo N=2573	Femara N=2563	Placebo N=2573
Any Adverse Reaction	2232 (87.1)	2174 (84.5)	419 (16.3)	389 (15.1)
Vascular Disorders	1375 (53.6)	1230 (47.8)	59 (2.3)	74 (2.9)
Flushing	1273 (49.7)	1114 (43.3)	3 (0.1)	0
General Disorders	1154 (45)	1090 (42.4)	30 (1.2)	28 (1.1)
Asthenia	862 (33.6)	826 (32.1)	16 (0.6)	7 (0.3)
Edema NOS	471 (18.4)	416 (16.2)	4 (0.2)	3 (0.1)
Musculoskeletal Disorders	978 (38.2)	836 (32.5)	71 (2.8)	50 (1.9)
Arthralgia	565 (22)	465 (18.1)	25 (1)	20 (0.8)
Arthritis NOS	173 (6.7)	124 (4.8)	10 (0.4)	5 (0.2)
Myalgia	171 (6.7)	122 (4.7)	8 (0.3)	6 (0.2)
Back Pain	129 (5)	112 (4.4)	8 (0.3)	7 (0.3)
Nervous System Disorders	863 (33.7)	819 (31.8)	65 (2.5)	58 (2.3)
Headache	516 (20.1)	508 (19.7)	18 (0.7)	17 (0.7)
Dizziness	363 (14.2)	342 (13.3)	9 (0.4)	6 (0.2)
Skin Disorders	830 (32.4)	787 (30.6)	17 (0.7)	16 (0.6)
Sweating Increased	619 (24.2)	577 (22.4)	1 (<0.1)	0
Gastrointestinal Disorders	725 (28.3)	731 (28.4)	43 (1.7)	42 (1.6)
Constipation	290 (11.3)	304 (11.8)	6 (0.2)	2 (<0.1)
Nausea	221 (8.6)	212 (8.2)	3 (0.1)	10 (0.4)
Diarrhea NOS	128 (5)	143 (5.6)	12 (0.5)	8 (0.3)
Metabolic Disorders	551 (21.5)	537 (20.9)	24 (0.9)	32 (1.2)
Hypercholesterolemia	401 (15.6)	398 (15.5)	2 (<0.1)	5 (0.2)
Reproductive Disorders	303 (11.8)	357 (13.9)	9 (0.4)	8 (0.3)
Vaginal Hemorrhage	123 (4.8)	171 (6.6)	2 (<0.1)	5 (0.2)
Vulvovaginal Dryness	137 (5.3)	127 (4.9)	0	0
Psychiatric Disorders	320 (12.5)	276 (10.7)	21 (0.8)	16 (0.6)
Insomnia	149 (5.8)	120 (4.7)	2 (<0.1)	2 (<0.1)
Respiratory Disorders	279 (10.9)	260 (10.1)	30 (1.2)	28 (1.1)
Dyspnea	140 (5.5)	137 (5.3)	21 (0.8)	18 (0.7)
Investigations	184 (7.2)	147 (5.7)	13 (0.5)	13 (0.5)
Infections and Infestations	166 (6.5)	163 (6.3)	40 (1.6)	33 (1.3)
Renal Disorders	130 (5.1)	100 (3.9)	12 (0.5)	6 (0.2)

Based on a median follow-up of patients for 28 months, the incidence of clinical fractures from the core randomized study in patients who received Femara was 5.9% (152) and placebo was 5.5% (142). The incidence of self-reported osteoporosis was higher in patients who received Femara 6.9% (176) than in patients who received placebo 5.5% (141). Bisphosphonates were administered to 21.1% of the patients who received Femara and 18.7% of the patients who received placebo.

The incidence of cardiovascular ischemic events from the core randomized study was comparable between patients who received Femara 6.8% (175) and placebo 6.5% (167).

A patient-reported measure that captures treatment impact on important symptoms associated with estrogen deficiency demonstrated a difference in favor of placebo for vasomotor and sexual symptom domains.

Bone Sub-study: [see Warnings and Precautions (5.1)].

Lipid Sub-study: In the extended adjuvant setting, based on a median duration of follow-up of 62 months, there was no significant difference between Femara and placebo in total cholesterol or in any lipid fraction at any time over 5 years. Use of lipid lowering drugs or dietary management of elevated lipids was allowed. [see Warnings and Precautions (5.2)].

6.3 Updated Analysis, Extended Adjuvant Treatment of Early Breast Cancer, Median Treatment Duration of 60 Months

The extended adjuvant treatment trial was unblinded early [see Adverse Reactions (6.2)]. At the updated (final analysis), overall the side effects seen were consistent to those seen at a median treatment duration of 24 months.

During treatment or within 30 days of stopping treatment (median duration of treatment 60 months) a higher rate of fractures was observed for Femara (10.4%) compared to placebo (5.8%), as also a higher rate of osteoporosis (Femara 12.2% vs placebo 6.4%).

Based on 62 months median duration of follow-up in the randomized letrozole arm in the Safety population the incidence of new fractures at any time after randomization was 13.3% for letrozole and 7.8% for placebo. The incidence of new osteoporosis was 14.5% for letrozole and 7.8% for placebo.

During treatment or within 30 days of stopping treatment (median duration of treatment 60 months) the incidence of cardiovascular events was 9.8% for Femara and 7.0% for placebo.

Based on 62 months median duration of follow-up in the randomized letrozole arm in the Safety population the incidence of cardiovascular disease at any time after randomization was 14.4% for letrozole and 9.8% for placebo.

Lipid sub-study: In the extended adjuvant setting, based on a median duration of follow-up of 62 months, there was no significant difference between Femara and placebo in total cholesterol or in any lipid fraction over 5 years. Use of lipid lowering drugs or dietary management of elevated lipids was allowed. [see Warnings and Precautions(5.2)]

6.4 First-Line Treatment of Advanced Breast Cancer

A total of 455 patients were treated for a median time of exposure of 11 months. The incidence of adverse reactions was similar for Femara and tamoxifen. The most frequently reported adverse reactions were bone pain, hot flushes, back pain, nausea, arthralgia and dyspnea. Discontinuations for adverse reactions other than progression of tumor occurred in 10/455 (2%) of patients on Femara and in 15/455 (3%) of patients on tamoxifen.

Adverse reactions, regardless of relationship to study drug, that were reported in at least 5% of the patients treated with Femara 2.5 mg or tamoxifen 20 mg in the first-line treatment study are shown in Table 3.

Table 3: Percentage (%) of Patients with Adverse Reactions

Adverse Reaction	Femara 2.5 mg (N=455) %	tamoxifen 20 mg (N=455) %
General Disorders Fatigue	13	13

Chest Pain	8	9
Edema Peripheral	5	6
Pain NOS	5	7
Weakness	6	4
Investigations		
Weight Decreased	7	5
Vascular Disorders		
Hot Flushes	19	16
Hypertension	8	4
Gastrointestinal Disorders		
Nausea	17	17
Constipation	10	11
Diarrhea	8	4
Vomiting	7	8
Infections/Infestations		
Influenza	6	4
Urinary Tract Infection NOS	6	3
Injury, Poisoning and Procedural Complications		
Post-Mastectomy Lymphedema	7	7
Metabolism and Nutrition Disorders		
Anorexia	4	6
Musculoskeletal and Connective Tissue Disorders		
Bone Pain	22	21
Back Pain	18	19
Arthralgia	16	15
Pain in Limb	10	8
Nervous System Disorders		
Headache NOS	8	7
Psychiatric Disorders		
Insomnia	7	4
Reproductive System and Breast Disorders		
Breast Pain	7	7
Respiratory, Thoracic and Mediastinal Disorders		
Dyspnea	18	17
Cough	13	13
Chest Wall Pain	6	6

Other less frequent ($\leq 2\%$) adverse reactions considered consequential for both treatment groups, included peripheral thromboembolic events, cardiovascular events, and cerebrovascular events. Peripheral thromboembolic events included venous thrombosis, thrombophlebitis, portal vein thrombosis and pulmonary embolism. Cardiovascular events included angina, myocardial infarction, myocardial ischemia, and coronary heart disease. Cerebrovascular events included transient ischemic attacks, thrombotic or hemorrhagic strokes and development of hemiparesis.

6.5 Second-Line Treatment of Advanced Breast Cancer

Study discontinuations in the megestrol acetate comparison study for adverse reactions other than progression of tumor were 5/188 (2.7%) on Femara 0.5 mg, in 4/174 (2.3%) on Femara 2.5 mg, and in 15/190 (7.9%) on megestrol acetate. There were fewer thromboembolic events at both Femara doses than on the megestrol acetate arm (0.6% vs 4.7%). There was also less vaginal bleeding (0.3% vs 3.2%) on Femara than on megestrol acetate. In the aminoglutethimide comparison study, discontinuations for reasons other than progression occurred in 6/193 (3.1%) on 0.5 mg Femara, 7/185 (3.8%) on 2.5 mg Femara, and 7/178 (3.9%) of patients on aminoglutethimide.

Comparisons of the incidence of adverse reactions revealed no significant differences between the high and low dose Femara groups in either study. Most of the adverse reactions observed in all treatment groups were mild to moderate in severity and it was generally not possible to distinguish adverse reactions due to treatment from the consequences of the patient's metastatic breast cancer, the effects of estrogen deprivation, or intercurrent illness.

Adverse reactions, regardless of relationship to study drug, that were reported in at least 5% of the patients treated with Femara 0.5 mg, Femara 2.5 mg, megestrol acetate, or aminoglutethimide in the two controlled trials are shown in Table 4.

Table 4: Percentage (%) of Patients with Adverse Reactions

Adverse Reaction	Pooled Femara 2.5 mg (N=359) %	Pooled Femara 0.5 mg (N=380) %	megestrol acetate 160 mg (N=189) %	aminoglutethimide 500 mg (N=178) %
Body as a Whole				
Fatigue	8	6	11	3
Chest Pain	6	3	7	3
Peripheral Edema ¹	5	5	8	3
Asthenia	4	5	4	5
Weight Increase	2	2	9	3
Cardiovascular				
Hypertension	5	7	5	6
Digestive System				
Nausea	13	15	9	14
Vomiting	7	7	5	9
Constipation	6	7	9	7
Diarrhea	6	5	3	4
Pain-Abdominal	6	5	9	8
Anorexia	5	3	5	5
Dyspepsia	3	4	6	5
Infections/Infestations				
Viral Infection	6	5	6	3
Lab Abnormality				
Hypercholesterolemia	3	3	0	6
Musculoskeletal System				
Musculoskeletal ²	21	22	30	14
Arthralgia	8	8	8	3
Nervous System				
Headache	9	12	9	7
Somnolence	3	2	2	9
Dizziness	3	5	7	3
Respiratory System				
Dyspnea	7	9	16	5
Coughing	6	5	7	5
Skin and Appendages				
Hot Flashes	6	5	4	3
Rash ³	5	4	3	12
Pruritus	1	2	5	3

¹ Includes peripheral edema, leg edema, dependent edema, edema

² Includes musculoskeletal pain, skeletal pain, back pain, arm pain, leg pain

³ Includes rash, erythematous rash, maculopapular rash, psoriasiform rash, vesicular rash

Other less frequent (<5%) adverse reactions considered consequential and reported in at least 3 patients treated with Femara, included hypercalcemia, fracture, depression, anxiety, pleural effusion, alopecia, increased sweating and vertigo.

6.6 First and Second-Line Treatment of Advanced Breast Cancer

In the combined analysis of the first- and second-line metastatic trials and post-marketing experiences other adverse reactions that were reported were cataract, eye irritation, palpitations, cardiac failure, tachycardia, dysesthesia (including hypesthesia/paresthesia), arterial thrombosis, memory impairment, irritability, nervousness, urticaria, increased urinary frequency, leukopenia, stomatitis cancer pain, pyrexia, vaginal discharge, appetite increase, dryness of skin and mucosa (including dry mouth), and disturbances of taste and thirst.

6.7 Postmarketing Experience

Cases of blurred vision, increased hepatic enzymes, angioedema, anaphylactic reactions, toxic epidermal necrolysis, erythema multiforme, and hepatitis have been reported. Cases of carpal tunnel syndrome and trigger finger have been identified during post approval use of Femara.

7 DRUG INTERACTIONS

Tamoxifen

Coadministration of Femara and tamoxifen 20 mg daily resulted in a reduction of letrozole plasma levels of 38% on average. Clinical experience in the second-line breast cancer trials indicates that the therapeutic effect of Femara therapy is not impaired if Femara is administered immediately after tamoxifen.

Cimetidine

A pharmacokinetic interaction study with cimetidine showed no clinically significant effect on letrozole pharmacokinetics.

Warfarin

An interaction study with warfarin showed no clinically significant effect of letrozole on warfarin pharmacokinetics.

Other anticancer agents

There is no clinical experience to date on the use of Femara in combination with other anticancer agents.

8 USE IN SPECIFIC POPULATIONS

8.1 Pregnancy

Pregnancy Category X [*see Contraindications (4)*]. Femara may cause fetal harm when administered to a pregnant woman and the clinical benefit to premenopausal women with breast cancer has not been demonstrated. Femara is contraindicated in women who are or may become pregnant. If this drug is used during pregnancy, or if the patient becomes pregnant while taking this drug, the patient should be apprised of the potential hazard to a fetus.

Femara caused adverse pregnancy outcomes, including congenital malformations, in rats and rabbits at doses much smaller than the daily maximum recommended human dose (MRHD) on a mg/m² basis. Effects included increased post-implantation pregnancy loss and resorptions, fewer live fetuses, and fetal malformations affecting the renal and skeletal systems. Animal data and letrozole's mechanism of action raise concerns that letrozole could be a human teratogen as well.

Reproduction studies in rats showed embryo and fetal toxicity at letrozole doses during organogenesis equal to or greater than 1/100 the daily maximum recommended human dose (MHRD) (mg/m² basis). Adverse effects included: intrauterine mortality; increased resorptions and postimplantation loss; decreased numbers of live fetuses; and fetal anomalies including absence and shortening of renal papilla, dilation of ureter, edema and incomplete ossification of frontal skull and metatarsals. Letrozole doses 1/10 the daily MHRD (mg/m² basis) caused fetal domed head and cervical/centrum vertebral fusion. In rabbits, letrozole caused embryo and fetal toxicity at doses about 1/100,000 and 1/10,000 the daily MHRD respectively (mg/m² basis). Fetal anomalies included incomplete ossification of the skull, sternbrae, and fore- and hind legs. [*see Nonclinical Toxicology (13.2)*].

Physicians should discuss the need for adequate contraception with women who are recently menopausal. Contraception should be used until postmenopausal status is clinically well established.

8.3 Nursing Mothers

It is not known if letrozole is excreted in human milk. Because many drugs are excreted in human milk and because of the potential for serious adverse reactions in nursing infants from letrozole, a decision

should be made whether to discontinue nursing or to discontinue the drug, taking into account the importance of the drug to the mother.

8.4 Pediatric Use

The safety and effectiveness in pediatric patients have not been established.

8.5 Geriatric Use

The median age of patients in all studies of first-line and second-line treatment of metastatic breast cancer was 64-65 years. About 1/3 of the patients were ≥ 70 years old. In the first-line study, patients ≥ 70 years of age experienced longer time to tumor progression and higher response rates than patients < 70 .

For the extended adjuvant setting, more than 5,100 postmenopausal women were enrolled in the clinical study. In total, 41% of patients were aged 65 years or older at enrollment, while 12% were 75 or older. In the extended adjuvant setting, no overall differences in safety or efficacy were observed between these older patients and younger patients, and other reported clinical experience has not identified differences in responses between the elderly and younger patients, but greater sensitivity of some older individuals cannot be ruled out.

In the adjuvant setting, more than 8,000 postmenopausal women were enrolled in the clinical study. In total, 36 % of patients were aged 65 years or older at enrollment, while 12% were 75 or older. More adverse reactions were generally reported in elderly patients irrespective of study treatment allocation. However, in comparison to tamoxifen, no overall differences with regards to the safety and efficacy profiles were observed between elderly patients and younger patients.

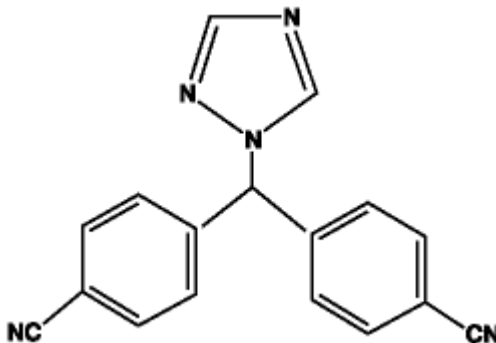
10 OVERDOSAGE

Isolated cases of Femara overdose have been reported. In these instances, the highest single dose ingested was 62.5 mg or 25 tablets. While no serious adverse reactions were reported in these cases, because of the limited data available, no firm recommendations for treatment can be made. However, emesis could be induced if the patient is alert. In general, supportive care and frequent monitoring of vital signs are also appropriate. In single-dose studies, the highest dose used was 30 mg, which was well tolerated; in multiple-dose trials, the largest dose of 10 mg was well tolerated.

Lethality was observed in mice and rats following single oral doses that were equal to or greater than 2,000 mg/kg (about 4,000 to 8,000 times the daily maximum recommended human dose on a mg/m^2 basis); death was associated with reduced motor activity, ataxia and dyspnea. Lethality was observed in cats following single IV doses that were equal to or greater than 10 mg/kg (about 50 times the daily maximum recommended human dose on a mg/m^2 basis); death was preceded by depressed blood pressure and arrhythmias.

11 DESCRIPTION

Femara tablets for oral administration contains 2.5 mg of letrozole, a nonsteroidal aromatase inhibitor (inhibitor of estrogen synthesis). It is chemically described as 4,4'-(1H-1,2,4-Triazol-1-ylmethylene)dibenzonitrile, and its structural formula is



Letrozole is a white to yellowish crystalline powder, practically odorless, freely soluble in dichloromethane, slightly soluble in ethanol, and practically insoluble in water. It has a molecular weight of 285.31, empirical formula C₁₇H₁₁N₅, and a melting range of 184°C to 185°C.

Femara is available as 2.5 mg tablets for oral administration.

Inactive Ingredients: Colloidal silicon dioxide, ferric oxide, hydroxypropyl methylcellulose, lactose monohydrate, magnesium stearate, maize starch, microcrystalline cellulose, polyethylene glycol, sodium starch glycolate, talc, and titanium dioxide.

12 CLINICAL PHARMACOLOGY

12.1 Mechanism of Action

The growth of some cancers of the breast is stimulated or maintained by estrogens. Treatment of breast cancer thought to be hormonally responsive (i.e., estrogen and/or progesterone receptor positive or receptor unknown) has included a variety of efforts to decrease estrogen levels (ovariectomy, adrenalectomy, hypophysectomy) or inhibit estrogen effects (antiestrogens and progestational agents). These interventions lead to decreased tumor mass or delayed progression of tumor growth in some women.

In postmenopausal women, estrogens are mainly derived from the action of the aromatase enzyme, which converts adrenal androgens (primarily androstenedione and testosterone) to estrone and estradiol. The suppression of estrogen biosynthesis in peripheral tissues and in the cancer tissue itself can therefore be achieved by specifically inhibiting the aromatase enzyme.

Letrozole is a nonsteroidal competitive inhibitor of the aromatase enzyme system; it inhibits the conversion of androgens to estrogens. In adult nontumor- and tumor-bearing female animals, letrozole is as effective as ovariectomy in reducing uterine weight, elevating serum LH, and causing the regression of estrogen-dependent tumors. In contrast to ovariectomy, treatment with letrozole does not lead to an increase in serum FSH. Letrozole selectively inhibits gonadal steroidogenesis but has no significant effect on adrenal mineralocorticoid or glucocorticoid synthesis.

Letrozole inhibits the aromatase enzyme by competitively binding to the heme of the cytochrome P450 subunit of the enzyme, resulting in a reduction of estrogen biosynthesis in all tissues. Treatment of women with letrozole significantly lowers serum estrone, estradiol and estrone sulfate and has not been shown to significantly affect adrenal corticosteroid synthesis, aldosterone synthesis, or synthesis of thyroid hormones.

12.2 Pharmacodynamics

In postmenopausal patients with advanced breast cancer, daily doses of 0.1 mg to 5 mg Femara (letrozole) suppress plasma concentrations of estradiol, estrone, and estrone sulfate by 75% to 95% from baseline with maximal suppression achieved within two-three days. Suppression is dose-related, with doses of 0.5 mg and higher giving many values of estrone and estrone sulfate that were below the limit of detection in the assays. Estrogen suppression was maintained throughout treatment in all patients treated at 0.5 mg or higher.

Letrozole is highly specific in inhibiting aromatase activity. There is no impairment of adrenal steroidogenesis. No clinically-relevant changes were found in the plasma concentrations of cortisol, aldosterone, 11-deoxycortisol, 17-hydroxy-progesterone, ACTH or in plasma renin activity among postmenopausal patients treated with a daily dose of Femara 0.1 mg to 5 mg. The ACTH stimulation test performed after 6 and 12 weeks of treatment with daily doses of 0.1, 0.25, 0.5, 1, 2.5, and 5 mg did not indicate any attenuation of aldosterone or cortisol production. Glucocorticoid or mineralocorticoid supplementation is, therefore, not necessary.

No changes were noted in plasma concentrations of androgens (androstenedione and testosterone) among healthy postmenopausal women after 0.1, 0.5, and 2.5 mg single doses of Femara or in plasma concentrations of androstenedione among postmenopausal patients treated with daily doses of 0.1 mg to 5

mg. This indicates that the blockade of estrogen biosynthesis does not lead to accumulation of androgenic precursors. Plasma levels of LH and FSH were not affected by letrozole in patients, nor was thyroid function as evaluated by TSH levels, T3 uptake, and T4 levels.

12.3 Pharmacokinetics

Absorption and Distribution: Letrozole is rapidly and completely absorbed from the gastrointestinal tract and absorption is not affected by food. It is metabolized slowly to an inactive metabolite whose glucuronide conjugate is excreted renally, representing the major clearance pathway. About 90% of radiolabeled letrozole is recovered in urine. Letrozole's terminal elimination half-life is about 2 days and steady-state plasma concentration after daily 2.5 mg dosing is reached in 2-6 weeks. Plasma concentrations at steady state are 1.5 to 2 times higher than predicted from the concentrations measured after a single dose, indicating a slight non-linearity in the pharmacokinetics of letrozole upon daily administration of 2.5 mg. These steady-state levels are maintained over extended periods, however, and continuous accumulation of letrozole does not occur. Letrozole is weakly protein bound and has a large volume of distribution (approximately 1.9 L/kg).

Metabolism and Excretion: Metabolism to a pharmacologically-inactive carbinol metabolite (4,4'-methanol-bisbenzotrile) and renal excretion of the glucuronide conjugate of this metabolite is the major pathway of letrozole clearance. Of the radiolabel recovered in urine, at least 75% was the glucuronide of the carbinol metabolite, about 9% was two unidentified metabolites, and 6% was unchanged letrozole.

In human microsomes with specific CYP isozyme activity, CYP3A4 metabolized letrozole to the carbinol metabolite while CYP2A6 formed both this metabolite and its ketone analog. In human liver microsomes, letrozole strongly inhibited CYP2A6 and moderately inhibited CYP2C19.

Pediatric, Geriatric and Race: In the study populations (adults ranging in age from 35 to >80 years), no change in pharmacokinetic parameters was observed with increasing age. Differences in letrozole pharmacokinetics between adult and pediatric populations have not been studied. Differences in letrozole pharmacokinetics due to race have not been studied.

Renal Impairment: In a study of volunteers with varying renal function (24-hour creatinine clearance: 9 to 116 mL/min), no effect of renal function on the pharmacokinetics of single doses of 2.5 mg of Femara was found. In addition, in a study of 347 patients with advanced breast cancer, about half of whom received 2.5 mg Femara and half 0.5 mg Femara, renal impairment (calculated creatinine clearance: 20 to 50 mL/min) did not affect steady-state plasma letrozole concentrations.

Hepatic Impairment: In a study of subjects with mild to moderate non-metastatic hepatic dysfunction (e.g., cirrhosis, Child-Pugh classification A and B), the mean AUC values of the volunteers with moderate hepatic impairment were 37% higher than in normal subjects, but still within the range seen in subjects without impaired function.

In a pharmacokinetic study, subjects with liver cirrhosis and severe hepatic impairment (Child-Pugh classification C, which included bilirubins about 2-11 times ULN with minimal to severe ascites) had two-fold increase in exposure (AUC) and 47% reduction in systemic clearance. Breast cancer patients with severe hepatic impairment are thus expected to be exposed to higher levels of letrozole than patients with normal liver function receiving similar doses of this drug. [*see Dosage and Administration (2.5)*]

13 NONCLINICAL TOXICOLOGY

13.1 Carcinogenesis, Mutagenesis, Impairment of Fertility

A conventional carcinogenesis study in mice at doses of 0.6 to 60 mg/kg/day (about 1 to 100 times the daily maximum recommended human dose on a mg/m² basis) administered by oral gavage for up to 2 years revealed a dose-related increase in the incidence of benign ovarian stromal tumors. The incidence of combined hepatocellular adenoma and carcinoma showed a significant trend in females when the high dose group was excluded due to low survival. In a separate study, plasma AUC_{0-12hr} levels in mice at 60 mg/kg/day were 55 times higher than the AUC_{0-24hr} level in breast cancer patients at the recommended

dose. The carcinogenicity study in rats at oral doses of 0.1 to 10 mg/kg/day (about 0.4 to 40 times the daily maximum recommended human dose on a mg/m² basis) for up to 2 years also produced an increase in the incidence of benign ovarian stromal tumors at 10 mg/kg/day. Ovarian hyperplasia was observed in females at doses equal to or greater than 0.1 mg/kg/day. At 10 mg/kg/day, plasma AUC_{0-24hr} levels in rats were 80 times higher than the level in breast cancer patients at the recommended dose. The benign ovarian stromal tumors observed in mice and rats were considered to be related to the pharmacological inhibition of estrogen synthesis and may be due to increased luteinizing hormone resulting from the decrease in circulating estrogen.

Femara (letrozole) was not mutagenic in *in vitro* tests (Ames and E.coli bacterial tests) but was observed to be a potential clastogen in *in vitro* assays (CHO K1 and CCL 61 Chinese hamster ovary cells). Letrozole was not clastogenic *in vivo* (micronucleus test in rats).

Studies to investigate the effect of letrozole on fertility have not been conducted; however, repeated dosing caused sexual inactivity in females and atrophy of the reproductive tract in males and females at doses of 0.6, 0.1 and 0.03 mg/kg in mice, rats and dogs, respectively (about one, 0.4 and 0.4 the daily maximum recommended human dose on a mg/m² basis, respectively). Oral administration of letrozole to female rats starting 2 weeks before mating until pregnancy day 6 resulted in decreases in the incidence of successful mating and pregnancy at equal to or greater than 0.03 mg/kg/day (approximately 0.1 times the recommended human dose on a mg/m² basis). An increase in pre-implantation loss was observed at doses equal to or greater than 0.003 mg/kg/day (approximately 0.01 times the recommended human dose on a mg/m² basis).

Letrozole administered to young (postnatal day 7) rats for 12 weeks duration at 0.003, 0.03, 0.3 mg/kg/day by oral gavage, resulted in adverse skeletal/growth effects (bone maturation, bone mineral density) and neuroendocrine and reproductive developmental perturbations of the hypothalamic-pituitary axis at exposures less than exposure anticipated at the clinical dose of 2.5 mg/day. Decreased fertility was accompanied by hypertrophy of the hypophysis and testicular changes that included degeneration of the seminiferous tubular epithelium and atrophy of the female reproductive tract. Young rats in this study were allowed to recover following discontinuation of letrozole treatment for 42 days. Histopathological changes were not reversible at clinically relevant exposures.

13.2 Animal Toxicology and/or Pharmacology

Reproductive Toxicology: Reproduction studies in rats at letrozole doses equal to or greater than 0.003 mg/kg (about 1/100 the daily maximum recommended human dose on a mg/m² basis) administered during the period of organogenesis, have shown that letrozole is embryotoxic and fetotoxic, as indicated by intrauterine mortality, increased resorption, increased postimplantation loss, decreased numbers of live fetuses and fetal anomalies including absence and shortening of renal papilla, dilation of ureter, edema and incomplete ossification of frontal skull and metatarsals. Letrozole was teratogenic in rats. A 0.03 mg/kg dose (about 1/10 the daily maximum recommended human dose on a mg/m² basis) caused fetal domed head and cervical/centrum vertebral fusion.

Letrozole is embryotoxic at doses equal to or greater than 0.002 mg/kg and fetotoxic when administered to rabbits at 0.02 mg/kg (about 1/100,000 and 1/10,000 the daily maximum recommended human dose on a mg/m² basis, respectively). Fetal anomalies included incomplete ossification of the skull, sternebrae, and fore- and hind legs.

14 CLINICAL STUDIES

14.1 Updated Adjuvant Treatment of Early Breast Cancer

In a multicenter study enrolling over 8,000 postmenopausal women with resected, receptor-positive early breast cancer, one of the following treatments was randomized in a double-blind manner:

Option 1:

- A. tamoxifen for 5 years
- B. Femara for 5 years

C. tamoxifen for 2 years followed by Femara for 3 years

D. Femara for 2 years followed by tamoxifen for 3 years

Option 2:

A. tamoxifen for 5 years

B. Femara for 5 years

The study in the adjuvant setting, BIG 1-98 was designed to answer two primary questions: whether Femara for 5 years was superior to tamoxifen for 5 years (Primary Core Analysis) and whether switching endocrine treatments at 2 years was superior to continuing the same agent for a total of 5 years (Sequential Treatments Analysis). Selected baseline characteristics for the study population are shown in Table 5.

The primary endpoint of this trial was disease-free survival (DFS) (i.e., interval between randomization and earliest occurrence of a local, regional, or distant recurrence, or invasive contralateral breast cancer, or death from any cause). The secondary endpoints were overall survival (OS), systemic disease-free survival (SDFS), invasive contralateral breast cancer, time to breast cancer recurrence (TBR) and time to distant metastasis (TDM).

The Primary Core Analysis (PCA) included all patients and all follow-up in the monotherapy arms in both randomization options, but follow-up in the two sequential treatments arms was truncated 30 days after switching treatments. The PCA was conducted at a median treatment duration of 24 months and a median follow-up of 26 months. Femara was superior to tamoxifen in all endpoints except overall survival and contralateral breast cancer [e.g., DFS: hazard ratio, HR 0.79; 95% CI (0.68, 0.92); $P=0.002$; SDFS: HR 0.83; 95% CI (0.70, 0.97); TDM: HR 0.73; 95% CI (0.60, 0.88); OS: HR 0.86; 95% CI (0.70, 1.06)].

In 2005, based on recommendations by the independent Data Monitoring Committee, the tamoxifen arms were unblinded and patients were allowed to complete initial adjuvant therapy with Femara (if they had received tamoxifen for at least 2 years) or to start extended adjuvant treatment with Femara (if they had received tamoxifen for at least 4.5 years) if they remained alive and disease-free. In total, 632 patients crossed to Femara or another aromatase inhibitor. Approximately 70% (448) of these 632 patients crossed to Femara to complete initial adjuvant therapy and most of these crossed in years 3 to 4. All of these patients were in Option 1. A total of 184 patients started extended adjuvant therapy with Femara (172 patients) or with another aromatase inhibitor (12 patients). To explore the impact of this selective crossover, results from analyses censoring follow-up at the date of the selective crossover (in the tamoxifen arm) are presented for the Monotherapy Arms Analysis (MAA).

The PCA allowed the results of Femara for 5 years compared with tamoxifen for 5 years to be reported in 2005 after a median follow-up of only 26 months. The design of the PCA is not optimal to evaluate the effect of Femara after a longer time (because follow-up was truncated in two arms at around 25 months). The Monotherapy Arms Analysis (ignoring the two sequential treatment arms) provided follow-up equally as long in each treatment and did not over-emphasize early recurrences as the PCA did. The MAA thus provides the clinically appropriate updated efficacy results in answer to the first primary question, despite the confounding of the tamoxifen reference arm by the selective crossover to Femara. The updated results for the MAA are summarized in Table 6. Median follow-up for this analysis is 73 months.

The Sequential Treatments Analysis (STA) addresses the second primary question of the study. The primary analysis for the Sequential Treatments Analysis (STA) was from switch (or equivalent time-point in monotherapy arms) + 30 days (STA-S) with a two-sided test applied to each pair-wise comparison at the 2.5% level. Additional analyses were conducted from randomization (STA-R) but these comparisons (added in light of changing medical practice) were under-powered for efficacy.

Table 5: Adjuvant Study - Patient and Disease Characteristics (ITT Population)

Characteristic	Primary Core Analysis (PCA)		Monotherapy Arms Analysis (MAA)	
	Femara N=4003 n (%)	tamoxifen N=4007 n (%)	Femara N=2463 n (%)	tamoxifen N=2459 n (%)
Age (median, years)	61	61	61	61
Age range (years)	38-89	39-90	38-88	39-90

Hormone receptor status (%)				
ER+ and/or PgR+	99.7	99.7	99.7	99.7
Both unknown	0.3	0.3	0.3	0.3
Nodal status (%)				
Node negative	52	52	50	52
Node positive	41	41	43	41
Nodal status unknown	7	7	7	7
Prior adjuvant chemotherapy (%)				
	24	24	24	24

Table 6: Updated Adjuvant Study Results - Monotherapy Arms Analysis (Median Follow-up 73 Months)

		Femara N=2463		tamoxifen N=2459		Hazard ratio (95% CI)	P
		Events (%)	5-year rate	Events (%)	5-year rate		
Disease-free survival ¹	ITT	445 (18.1)	87.4	500 (20.3)	84.7	0.87 (0.76, 0.99)	0.03
	Censor	445	87.4	483	84.2	0.84 (0.73, 0.95)	
0 positive nodes	ITT	165	92.2	189	90.3	0.88 (0.72, 1.09)	
1-3 positive nodes	ITT	151	85.6	163	83.0	0.85 (0.68, 1.06)	
>=4 positive nodes	ITT	123	71.2	142	62.6	0.81 (0.64, 1.03)	
Adjuvant chemotherapy	ITT	119	86.4	150	80.6	0.77 (0.60, 0.98)	
No chemotherapy	ITT	326	87.8	350	86.1	0.91 (0.78, 1.06)	
Systemic DFS ²	ITT	401	88.5	446	86.6	0.88 (0.77, 1.01)	
Time to distant metastasis ³	ITT	257	92.4	298	90.1	0.85 (0.72, 1.00)	
Adjuvant chemotherapy	ITT	84	-	109	-	0.75 (0.56-1.00)	
No chemotherapy	ITT	173	-	189	-	0.90 (0.73, 1.11)	
Distant DFS ⁴	ITT	385	89.0	432	87.1	0.87 (0.76, 1.00)	
Contralateral breast cancer	ITT	34	99.2	44	98.6	0.76 (0.49, 1.19)	
Overall survival	ITT	303	91.8	343	90.9	0.87 (0.75, 1.02)	
	Censor	303	91.8	338	90.1	0.82 (0.70, 0.96)	
0 positive nodes	ITT	107	95.2	121	94.8	0.90 (0.69, 1.16)	
1-3 positive nodes	ITT	99	90.8	114	90.6	0.81 (0.62, 1.06)	
>=4 positive nodes	ITT	92	80.2	104	73.6	0.86 (0.65, 1.14)	
Adjuvant chemotherapy	ITT	76	91.5	96	88.4	0.79 (0.58, 1.06)	
No chemotherapy	ITT	227	91.9	247	91.8	0.91 (0.76, 1.08)	

Definition of:

¹ Disease-free survival: Interval from randomization to earliest event of invasive loco-regional recurrence, distant metastasis, invasive contralateral breast cancer, or death without a prior event

² Systemic disease-free survival: Interval from randomization to invasive regional recurrence, distant metastasis, or death without a prior cancer event

³ Time to distant metastasis: Interval from randomization to distant metastasis

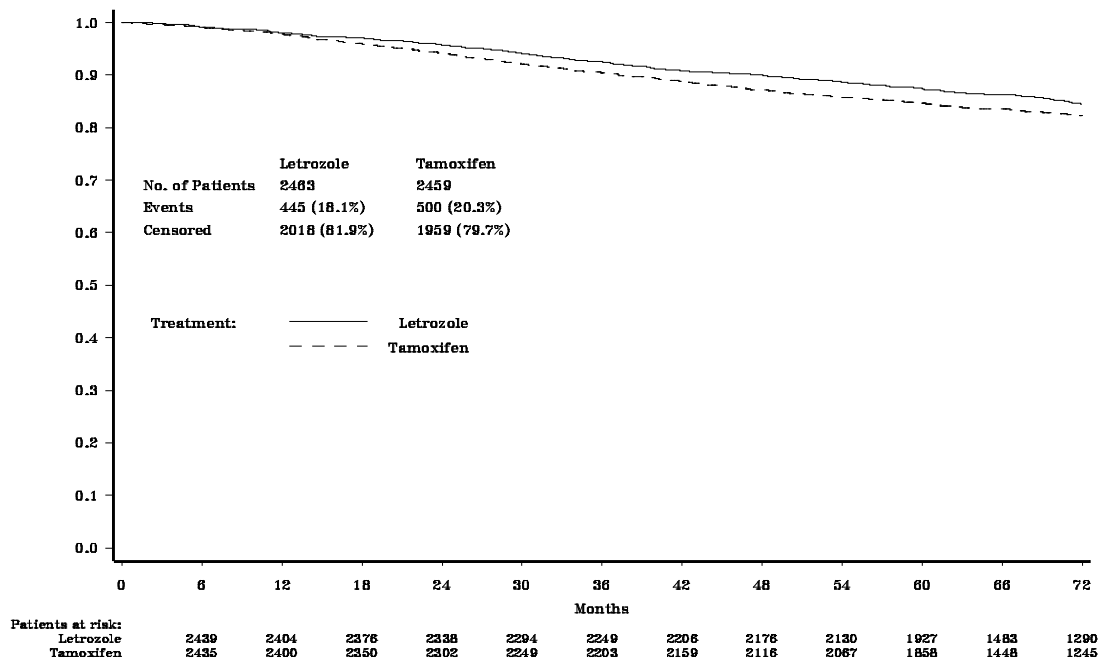
⁴ Distant disease-free survival: Interval from randomization to earlier event of relapse in a distant site or death from any cause

ITT analysis ignores selective crossover in tamoxifen arms

Censored analysis censors follow-up at the date of selective crossover in 632 patients who crossed to Femara or another aromatase inhibitor after the tamoxifen arms were unblinded in 2005

Figure 1 shows the Kaplan-Meier curves for Disease-Free Survival Monotherapy Analysis

Figure 1 Disease-Free Survival (Median follow-up 73 months, ITT Approach)



DFS events defined as loco-regional recurrence, distant metastasis, invasive contralateral breast cancer, or death from any cause (i.e., definition excludes second non-breast primary cancers).

The medians of overall survival for both arms were not reached for the Monotherapy Arms Analysis (MAA). There was no statistically significant difference in overall survival. The hazard ratio for survival in the Femara arm compared to the tamoxifen arm was 0.87, with 95% CI (0.75, 1.02) (see Table 6).

There were no significant differences in DFS, OS, SDFS, and Distant DFS from switch in the Sequential Treatments Analysis with respect to either monotherapy (e.g., [Tamoxifen 2 years followed by] Femara 3 years versus tamoxifen beyond 2 years, DFS HR 0.89; 97.5% CI 0.68, 1.15 and [Femara 2 years followed by] tamoxifen 3 years versus Femara beyond 2 years, DFS HR 0.93; 97.5% CI 0.71, 1.22).

There were no significant differences in DFS, OS, SDFS, and Distant DFS from randomization in the Sequential Treatments Analyses.

14.2 Extended Adjuvant Treatment of Early Breast Cancer, Median Treatment Duration of 24 Months

A double-blind, randomized, placebo-controlled trial of Femara was performed in over 5,100 postmenopausal women with receptor-positive or unknown primary breast cancer who were disease free after 5 years of adjuvant treatment with tamoxifen.

The planned duration of treatment for patients in the study was 5 years, but the trial was terminated early because of an interim analysis showing a favorable Femara effect on time without recurrence or contralateral breast cancer. At the time of unblinding, women had been followed for a median of 28 months, 30% of patients had completed 3 or more years of follow-up and less than 1% of patients had completed 5 years of follow-up.

Selected baseline characteristics for the study population are shown in Table 7.

Table 7: Selected Study Population Demographics (Modified ITT Population)

Baseline Status	Femara N=2582	Placebo N=2586
Hormone Receptor Status (%)		
ER+ and/or PgR+	98	98
Both Unknown	2	2

Nodal Status (%)		
Node Negative	50	50
Node Positive	46	46
Nodal Status Unknown	4	4
Chemotherapy	46	46

Table 8 shows the study results. Disease-free survival was measured as the time from randomization to the earliest event of loco-regional or distant recurrence of the primary disease or development of contralateral breast cancer or death. DFS by hormone receptor status, nodal status and adjuvant chemotherapy were similar to the overall results. Data were premature for an analysis of survival.

Table 8: Extended Adjuvant Study Results

	Femara N = 2582	Placebo N = 2586	Hazard Ratio (95% CI)	P-Value
Disease Free Survival (DFS)¹ Events	122 (4.7%)	193 (7.5%)	0.62 (0.49, 0.78) ²	0.00003
Local Breast Recurrence	9	22		
Local Chest Wall Recurrence	2	8		
Regional Recurrence	7	4		
Distant Recurrence	55	92	0.61 (0.44 - 0.84)	0.003
Contralateral Breast Cancer	19	29		
Deaths Without Recurrence or Contralateral Breast Cancer	30	38		

CI = confidence interval for hazard ratio. Hazard ratio of less than 1.0 indicates difference in favor of Femara (lesser risk of recurrence); hazard ratio greater than 1.0 indicates difference in favor of placebo (higher risk of recurrence with Femara).

¹ First event of loco-regional recurrence, distant relapse, contralateral breast cancer or death from any cause

² Analysis stratified by receptor status, nodal status and prior adjuvant chemotherapy (stratification factors as at randomization). P-value based on stratified logrank test.

14.3 Updated Analyses of Extended Adjuvant Treatment of Early Breast Cancer, Median Treatment Duration of 60 Months

Table 9: Update of Extended Adjuvant Study Results

	Femara N = 2582 (%)	Placebo N = 2586 (%)	Hazard Ratio¹ (95% CI)	P-Value²
Disease Free Survival (DFS) events³	344 (13.3)	402 (15.5)	0.89 (0.77, 1.03)	0.12
Breast cancer recurrence (Protocol definition of DFS events⁴)	209	286	0.75 (0.63, 0.89)	0.001
Local Breast Recurrence	15	44		
Local Chest Wall Recurrence	6	14		
Regional Recurrence	10	8		
Distant Recurrence	140	167		
Distant Recurrence (first or subsequent events) Contralateral Breast Cancer	142	169	0.88 (0.70,1.10)	0.246
Deaths Without Recurrence or Contralateral Breast Cancer	37 135	53 116		

¹ Adjusted by receptor status, nodal status and prior chemotherapy

² Stratified logrank test, stratified by receptor status, nodal status and prior chemotherapy

³ DFS events defined as earliest of loco-regional recurrence, distant metastasis, contralateral breast cancer or death from any cause, and ignoring switches to Femara in 60% of the placebo arm.

⁴ Protocol definition does not include deaths from any cause

Updated analyses were conducted at a median follow-up of 62 months. In the Femara arm, 71% of the patients were treated for a least 3 years and 58% of patients completed at least 4.5 years of extended adjuvant treatment. After the unblinding of the study at a median follow-up of 28 months, approximately 60% of the selected patients in the placebo arm opted to switch to Femara.

In this updated analysis shown in Table 9, Femara significantly reduced the risk of breast cancer recurrence or contralateral breast cancer compared with placebo (HR 0.75; 95% CI 0.63, 0.89; $P=0.001$). However, in the updated DFS analysis (interval between randomization and earliest event of loco-regional recurrence, distant metastasis, contralateral breast cancer, or death from any cause) the treatment difference was heavily diluted by 60% of the patients in the placebo arm switching to Femara and accounting for 64% of the total placebo patient-years of follow-up. Ignoring these switches, the risk of DFS event was reduced by a non-significant 11% (HR 0.89; 95% CI 0.77, 1.03). There was no significant difference in distant disease-free survival or overall survival.

14.4 First-Line Treatment of Advanced Breast Cancer

A randomized, double-blind, multinational trial compared Femara 2.5 mg with tamoxifen 20 mg in 916 postmenopausal patients with locally advanced (Stage IIIB or loco-regional recurrence not amenable to treatment with surgery or radiation) or metastatic breast cancer. Time to progression (TTP) was the primary endpoint of the trial. Selected baseline characteristics for this study are shown in Table 10.

Table 10: Selected Study Population Demographics

Baseline Status	Femara N=458	tamoxifen N=458
Stage of Disease		
IIIB	6%	7%
IV	93%	92%
Receptor Status		
ER and PgR Positive	38%	41%
ER or PgR Positive	26%	26%
Both Unknown	34%	33%
ER ⁻ or PgR ⁻ /Other Unknown	<1%	0
Previous Antiestrogen Therapy		
Adjuvant	19%	18%
None	81%	82%
Dominant Site of Disease		
Soft Tissue	25%	25%
Bone	32%	29%
Viscera	43%	46%

Femara was superior to tamoxifen in TTP and rate of objective tumor response (see Table 11).

Table 11 summarizes the results of the trial, with a total median follow-up of approximately 32 months. (All analyses are unadjusted and use 2-sided P -values.)

Table 11: Results of First-Line Treatment of Advanced Breast Cancer

Femara 2.5 mg N=453	tamoxifen 20 mg N=454	Hazard or Odds Ratio (95% CI) P -Value (2-Sided)
---------------------------	-----------------------------	--

Median Time to Progression	9.4 months	6.0 months	0.72 (0.62, 0.83) ¹ <i>P</i> <0.0001
Objective Response Rate (CR + PR)	145 (32%)	95 (21%)	1.77 (1.31, 2.39) ² <i>P</i> =0.0002
(CR)	42 (9%)	15 (3%)	2.99 (1.63, 5.47) ² <i>P</i> =0.0004
Duration of Objective Response Median	18 months (N=145)	16 months (N=95)	
Overall Survival	35 months (N=458)	32 months (N=458)	<i>P</i> =0.5136 ³

¹ Hazard ratio

² Odds ratio

³ Overall logrank test

Figure 2 shows the Kaplan-Meier curves for TTP.

Figure 2 Kaplan-Meier Estimates of Time to Progression (Tamoxifen Study)

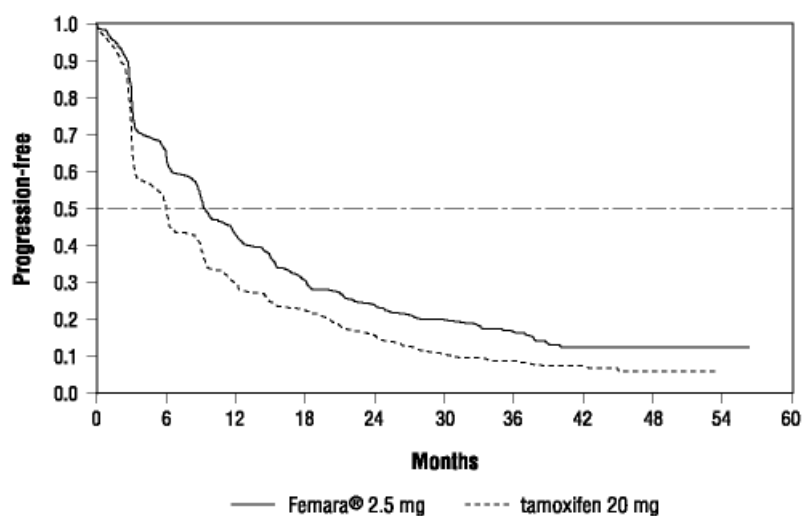


Table 12 shows results in the subgroup of women who had received prior antiestrogen adjuvant therapy, Table 13, results by disease site and Table 14, the results by receptor status.

Table 12: Efficacy in Patients Who Received Prior Antiestrogen Therapy

Variable	Femara 2.5 mg N=84	tamoxifen 20 mg N=83
Median Time to Progression (95% CI)	8.9 months (6.2, 12.5)	5.9 months (3.2, 6.2)
Hazard Ratio for TTP (95% CI)		0.60 (0.43, 0.84)
Objective Response Rate (CR + PR)	22 (26%)	7 (8%)
Odds Ratio for Response (95% CI)		3.85 (1.50, 9.60)

Hazard ratio less than 1 or odds ratio greater than 1 favors Femara; hazard ratio greater than 1 or odds ratio less than 1 favors tamoxifen.

Table 13: Efficacy by Disease Site

	Femara 2.5 mg	tamoxifen 20 mg
Dominant Disease Site		
Soft Tissue:	N=113	N=115
Median TTP	12.1 months	6.4 months
Objective Response Rate	50%	34%
Bone:	N=145	N=131
Median TTP	9.5 months	6.3 months
Objective Response Rate	23%	15%
Viscera:	N=195	N=208
Median TTP	8.3 months	4.6 months
Objective Response Rate	28%	17%

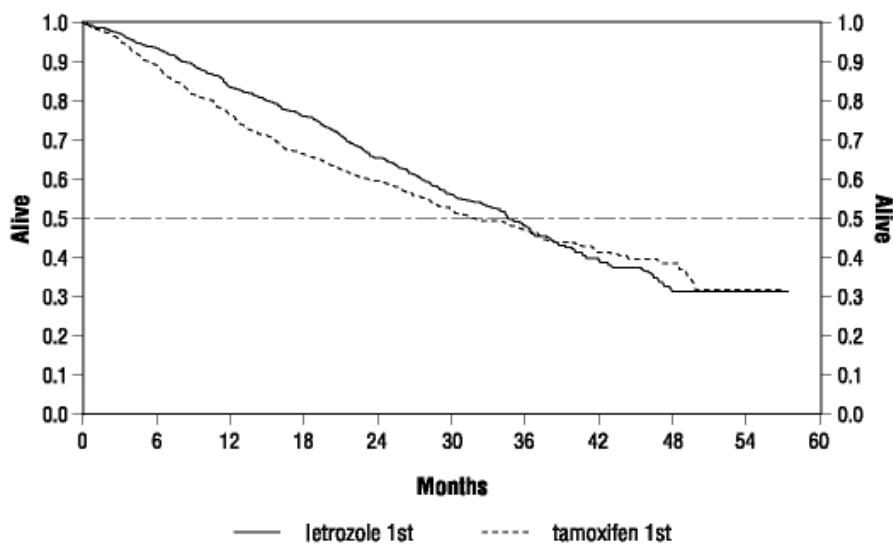
Table 14: Efficacy by Receptor Status

Variable	Femara 2.5 mg	tamoxifen 20 mg
Receptor Positive	N=294	N=305
Median Time to Progression (95% CI)	9.4 months (8.9, 11.8)	6.0 months (5.1, 8.5)
Hazard Ratio for TTP (95% CI)	0.69 (0.58, 0.83)	
Objective Response Rate (CR+PR)	97 (33%)	66 (22%)
Odds Ratio for Response 95% CI	1.78 (1.20, 2.60)	
Receptor Unknown	N=159	N=149
Median Time to Progression (95% CI)	9.2 months (6.1, 12.3)	6.0 months (4.1, 6.4)
Hazard Ratio for TTP (95% CI)	0.77 (0.60, 0.99)	
Objective Response Rate (CR+PR)	48 (30%)	29 (20%)
Odds Ratio for Response (95% CI)	1.79 (1.10, 3.00)	

Hazard ratio less than 1 or odds ratio greater than 1 favors Femara; hazard ratio greater than 1 or odds ratio less than 1 favors tamoxifen.

Figure 3 shows the Kaplan-Meier curves for survival.

Figure 3 Survival by Randomized Treatment Arm



Legend: Randomized Femara: n=458, events 57%, median overall survival 35 months (95% CI 32 to 38 months)

Randomized tamoxifen: n=458, events 57%, median overall survival 32 months (95% CI 28 to 37 months)

Overall logrank $P=0.5136$ (i.e., there was no significant difference between treatment arms in overall survival).

The median overall survival was 35 months for the Femara group and 32 months for the tamoxifen group, with a *P*-value 0.5136. Study design allowed patients to cross over upon progression to the other therapy. Approximately 50% of patients crossed over to the opposite treatment arm and almost all patients who crossed over had done so by 36 months. The median time to crossover was 17 months (Femara to tamoxifen) and 13 months (tamoxifen to Femara). In patients who did not cross over to the opposite treatment arm, median survival was 35 months with Femara (n=219, 95% CI 29 to 43 months) vs 20 months with tamoxifen (n=229, 95% CI 16 to 26 months).

14.5 Second-Line Treatment of Advanced Breast Cancer

Femara was initially studied at doses of 0.1 mg to 5.0 mg daily in six non-comparative Phase I/II trials in 181 postmenopausal estrogen/progesterone receptor positive or unknown advanced breast cancer patients previously treated with at least antiestrogen therapy. Patients had received other hormonal therapies and also may have received cytotoxic therapy. Eight (20%) of forty patients treated with Femara 2.5 mg daily in Phase I/II trials achieved an objective tumor response (complete or partial response).

Two large randomized, controlled, multinational (predominantly European) trials were conducted in patients with advanced breast cancer who had progressed despite antiestrogen therapy. Patients were randomized to Femara 0.5 mg daily, Femara 2.5 mg daily, or a comparator (megestrol acetate 160 mg daily in one study; and aminoglutethimide 250 mg b.i.d. with corticosteroid supplementation in the other study). In each study over 60% of the patients had received therapeutic antiestrogens, and about one-fifth of these patients had an objective response. The megestrol acetate controlled study was double-blind; the other study was open label. Selected baseline characteristics for each study are shown in Table 15.

Table 15: Selected Study Population Demographics

Parameter	megestrol acetate study	aminoglutethimide study
No. of Participants	552	557
Receptor Status		
ER/PR Positive	57%	56%
ER/PR Unknown	43%	44%
Previous Therapy		
Adjuvant Only	33%	38%
Therapeutic +/- Adj.	66%	62%
Sites of Disease		
Soft Tissue	56%	50%
Bone	50%	55%
Viscera	40%	44%

Confirmed objective tumor response (complete response plus partial response) was the primary endpoint of the trials. Responses were measured according to the Union Internationale Contre le Cancer (UICC) criteria and verified by independent, blinded review. All responses were confirmed by a second evaluation 4 to 12 weeks after the documentation of the initial response.

Table 16 shows the results for the first trial, with a minimum follow-up of 15 months, that compared Femara 0.5 mg, Femara 2.5 mg, and megestrol acetate 160 mg daily. (All analyses are unadjusted.)

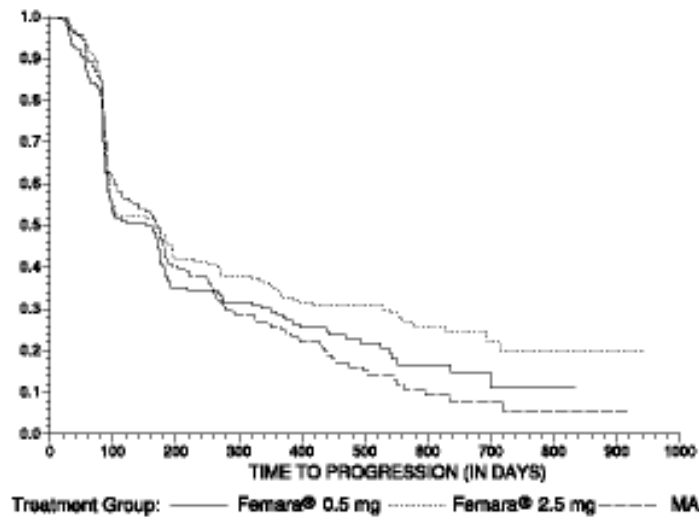
Table 16: Megestrol Acetate Study Results

	Femara 0.5 mg N=188	Femara 2.5 mg N=174	megestrol acetate N=190
Objective Response (CR + PR)	22 (11.7%)	41 (23.6%)	31 (16.3%)
Median Duration of Response	552 days	(Not reached)	561 days
Median Time to Progression	154 days	170 days	168 days
Median Survival	633 days	730 days	659 days
Odds Ratio for Response	Femara 2.5: Femara 0.5=2.33 (95% CI: 1.32, 4.17); <i>P</i> =0.004*		Femara 2.5: megestrol=1.58 (95% CI: 0.94, 2.66); <i>P</i> =0.08*
Relative Risk of Progression	Femara 2.5: Femara 0.5=0.81		Femara 2.5: megestrol=0.77

* two-sided P -value

The Kaplan-Meier curves for progression for the megestrol acetate study are shown in Figure 4.

Figure 4 Kaplan-Meier Estimates of Time to Progression (Megestrol Acetate Study)



The results for the study comparing Femara to aminoglutethimide, with a minimum follow-up of 9 months, are shown in Table 17. (Unadjusted analyses are used.)

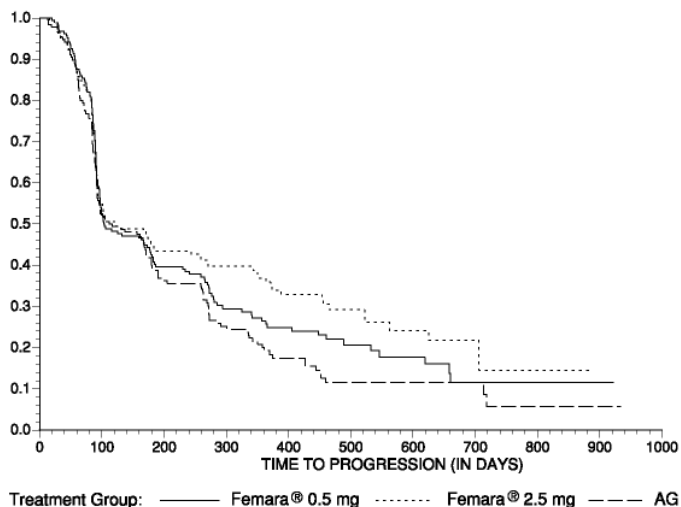
Table 17: Aminoglutethimide Study Results

	Femara 0.5 mg N=193	Femara 2.5 mg N=185	aminoglutethimide N=179
Objective Response (CR + PR)	34 (17.6%)	34 (18.4%)	22 (12.3%)
Median Duration of Response	619 days	706 days	450 days
Median Time to Progression	103 days	123 days	112 days
Median Survival	636 days	792 days	592 days
Odds Ratio for Response	Femara 2.5: Femara 0.5=1.05 (95% CI: 0.62, 1.79); $P=0.85^*$		Femara 2.5: aminoglutethimide=1.61 (95% CI: 0.90, 2.87); $P=0.11^*$
Relative Risk of Progression	Femara 2.5: Femara 0.5=0.86 (95% CI: 0.68, 1.11); $P=0.25^*$		Femara 2.5: aminoglutethimide=0.74 (95% CI: 0.57, 0.94); $P=0.02^*$

*2-sided P -value

The Kaplan-Meier curves for progression for the aminoglutethimide study is shown in Figure 5.

Figure 5 Kaplan-Meier Estimates of Time to Progression (Aminoglutethimide Study)



16 HOW SUPPLIED/STORAGE AND HANDLING

Packaged in HDPE bottles with a safety screw cap.

2.5 milligram tablets

Bottles of 30 tablets.....NDC 0078-0249-15

Store at 25°C (77°F); excursions permitted to 15 to 30°C (59 to 86°F) [see USP Controlled Room Temperature].

17 PATIENT COUNSELING INFORMATION

Information for Patients

Pregnancy: Femara is contraindicated in women of premenopausal endocrine status. The physician needs to discuss the necessity of adequate contraception with women who have the potential to become pregnant including women who are perimenopausal or who recently became postmenopausal, until their postmenopausal status is fully established.

Fatigue and Dizziness: Since fatigue and dizziness have been observed with the use of Femara and somnolence was uncommonly reported, caution is advised when driving or using machinery.

Bone Effects: Consideration should be given to monitoring bone mineral density.

Novartis Pharmaceuticals Corporation
East Hanover, New Jersey, 07936

© Novartis

T2014-01
Month Year