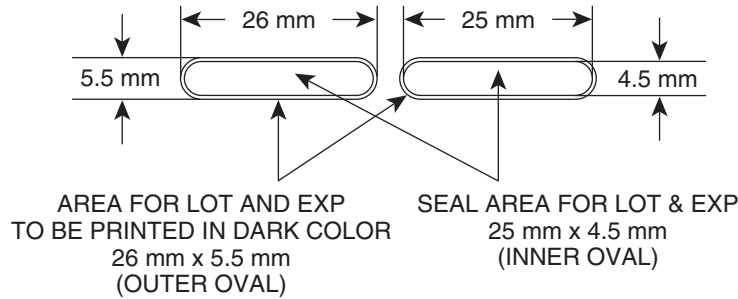
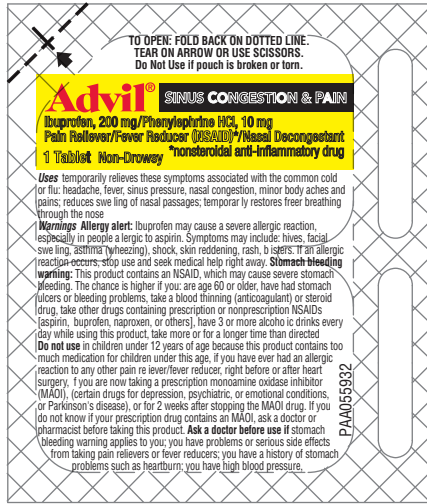


SEAL AREA FOR LOT & EXP
25 mm x 4.5 mm

BACK

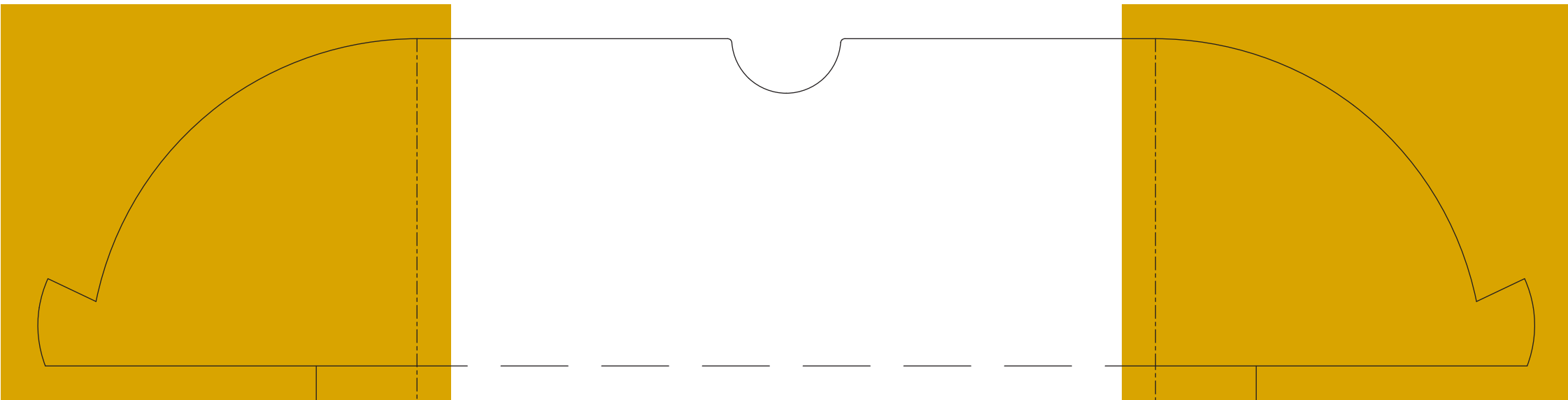
FOR BACK ONLY





FRONT

(b) (4)



For most recent product information, visit www.advil.com.
© 2011 Pfizer Inc. Madison, NJ 07940 USA

Do Not Use if pouch is broken or torn

Drug Facts Active ingredients (in each tablet) Ibuprofen (NSAID) Phenylephrine HCl (nasal decongestant)	Purposes Relieves these symptoms associated with the common cold or flu: ● fever ● sore throat ● sinus pressure ● nasal congestion ● stuffy nose ● sinus pain ● relief of nasal passages ● relief of the nasal passages	Warnings ● Allergic reactions may occur. A severe allergic reaction, especially in people taking aspirin, symptoms may include: ● hives ● itching (redness) ● swelling ● trouble breathing (asthma) or chest pain ● trouble swallowing (dysphagia) or stomach pain ● trouble breathing (asthma) or chest pain ● trouble swallowing (dysphagia) or stomach pain ● trouble breathing (asthma) or chest pain ● trouble swallowing (dysphagia) or stomach pain ● trouble breathing (asthma) or chest pain ● trouble swallowing (dysphagia) or stomach pain	Directions ● Adults and children 17 years of age and over: ● Take 1 tablet every 4 hours while symptoms persist. ● Do not take more than 6 tablets in a 24-hour period unless directed by a doctor. ● Children under 17 years of age: do not use because this product contains too much decongestant for their age.	Other information ● Store at 20-25°C (68-77°F); excursions permitted to 15-30°C (59-86°F). ● Keep all warnings and directions before use.	Contains Ibuprofen & Phenylephrine
--	---	---	--	--	--

CONTAINS: Ibuprofen & Phenylephrine

Advil

SINUS CONGESTION & PAIN

Ibuprofen 200 mg Pain Reliever/Fever Reducer (NSAID)
Phenylephrine HCl 10 mg Nasal Decongestant

1 PILL DOSAGE **NON-DROWSY relief of: Sinus Pressure, Nasal Swelling & Congestion, and Headache**

50 PACKETS OF 1 COATED TABLET

PACKET 606

CONTAINS: Ibuprofen & Phenylephrine

Advil

SINUS CONGESTION & PAIN

Ibuprofen 200 mg Pain Reliever/Fever Reducer (NSAID)
Phenylephrine HCl 10 mg Nasal Decongestant

1 PILL DOSAGE **NON-DROWSY relief of: Sinus Pressure, Nasal Swelling & Congestion, and Headache**

50 PACKETS OF 1 COATED TABLET

CONTAINS: Ibuprofen & Phenylephrine

Advil

SINUS CONGESTION & PAIN

Ibuprofen 200 mg Pain Reliever/Fever Reducer (NSAID)
Phenylephrine HCl 10 mg Nasal Decongestant

1 PILL DOSAGE **NON-DROWSY relief of: Sinus Pressure, Nasal Swelling & Congestion, and Headache**

50 PACKETS OF 1 COATED TABLET

CONTAINS: Ibuprofen & Phenylephrine

Advil

SINUS CONGESTION & PAIN

Ibuprofen 200 mg Pain Reliever/Fever Reducer (NSAID)
Phenylephrine HCl 10 mg Nasal Decongestant

1 PILL DOSAGE **NON-DROWSY relief of: Sinus Pressure, Nasal Swelling & Congestion, and Headache**

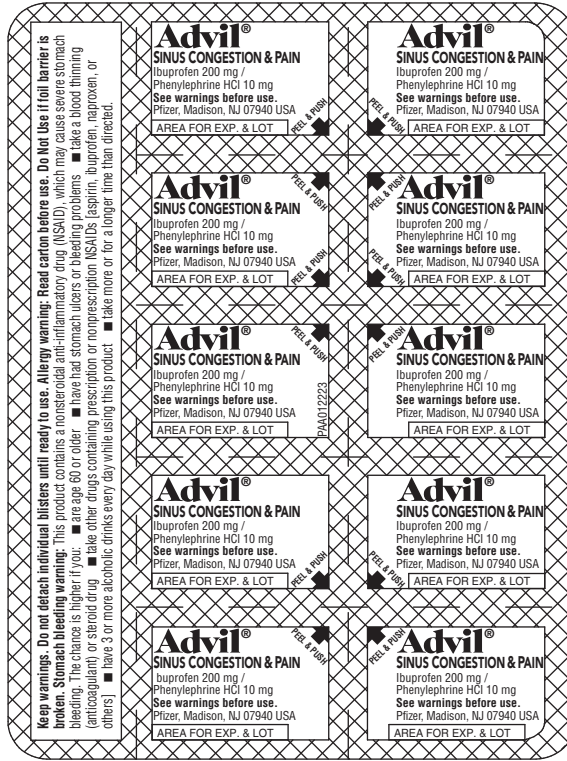
50 PACKETS OF 1 COATED TABLET



BACK

FRONT

ACTUAL SIZE



3/16" x 3/16" DATA MATRIX CODE (ECC200) **012221**,
 PRINTED IN BLACK OR DARK BLUE ON
 UNPRINTED WHITE BACKGROUND

LIFT HERE
For More Drug Facts

READ AND KEEP CARTON FOR COMPLETE WARNINGS AND INFORMATION

Drug Facts		Drug Facts (continued)	
Active ingredients (in each tablet) Ibuprofen 200 mg (NSAID)* .Pain reliever/fever reducer Phenylephrine HCl 10 mgNasal decongestant *nonsteroidal anti-inflammatory drug	Purposes	Warnings Allergy alert: Ibuprofen may cause a severe allergic reaction, especially in people allergic to aspirin. Symptoms may include: <ul style="list-style-type: none"> ■ hives ■ facial swelling ■ asthma (wheezing) ■ shock ■ skin reddening ■ rash ■ blisters If an allergic reaction occurs, stop use and seek medical help right away. Stomach bleeding warning: This product contains an NSAID, which may cause severe stomach bleeding. The chance is higher if you: <ul style="list-style-type: none"> ■ are age 60 or older 	
Uses <ul style="list-style-type: none"> ■ temporarily relieves these symptoms associated with the common cold or flu: <ul style="list-style-type: none"> ■ headache ■ fever ■ sinus pressure ■ nasal congestion ■ minor body aches and pains ■ reduces swelling of the nasal passages ■ temporarily restores freer breathing through the nose 			

PAA012221

PANEL 1

Drug Facts (continued) <ul style="list-style-type: none"> ■ have had stomach ulcers or bleeding problems ■ take a blood thinning (anticoagulant) or steroid drug ■ take other drugs containing prescription or nonprescription NSAIDs [aspirin, ibuprofen, naproxen, or others] ■ have 3 or more alcoholic drinks every day while using this product ■ take more or for a longer time than directed Do not use <ul style="list-style-type: none"> ■ in children under 12 years of age because this product contains too much medication for children under this age ■ if you have ever had an allergic reaction to any other pain reliever/fever reducer ■ right before or after heart surgery ■ if you are now taking a prescription monoamine oxidase inhibitor (MAOI) (certain drugs for depression, psychiatric, or emotional conditions, or Parkinson's disease), or for 2 weeks after stopping the MAOI drug. If you do not know if your prescription drug contains an MAOI, ask a doctor or pharmacist before taking this product Ask a doctor before use if <ul style="list-style-type: none"> ■ stomach bleeding warning applies to you 	Drug Facts (continued) <ul style="list-style-type: none"> ■ you have problems or serious side effects from taking pain relievers or fever reducers ■ you have a history of stomach problems, such as heartburn ■ you have high blood pressure, heart disease, liver cirrhosis, kidney disease, asthma, thyroid disease, diabetes or have trouble urinating due to an enlarged prostate gland ■ you are taking a diuretic Ask a doctor or pharmacist before use if you are <ul style="list-style-type: none"> ■ under a doctor's care for any serious condition ■ taking any other product that contains phenylephrine or any other nasal decongestant ■ taking aspirin for heart attack or stroke, because ibuprofen may decrease this benefit of aspirin ■ taking any other drug When using this product <ul style="list-style-type: none"> ■ take with food or milk if stomach upset occurs ■ the risk of heart attack or stroke may increase if you use more than directed or for longer than directed Stop use and ask a doctor if <ul style="list-style-type: none"> ■ you experience any of the following signs of stomach bleeding: <ul style="list-style-type: none"> ■ feel faint
--	---

PANEL 2

Drug Facts (continued) <ul style="list-style-type: none"> ■ vomit blood ■ have bloody or black stools ■ have stomach pain that does not get better ■ pain gets worse or lasts more than 7 days ■ fever gets worse or lasts more than 3 days ■ nasal congestion lasts for more than 7 days ■ symptoms continue or get worse ■ redness or swelling is present in the painful area ■ you get nervous, dizzy, or sleepless ■ any new symptoms appear If pregnant or breast-feeding , ask a health professional before use. It is especially important not to use ibuprofen during the last 3 months of pregnancy unless definitely directed to do so by a doctor because it may cause problems in the unborn child or complications during delivery. Keep out of reach of children. In case of overdose, get medical help or contact a Poison Control Center right away.	Drug Facts (continued) <ul style="list-style-type: none"> ■ children under 12 years of age: do not use because this product contains too much medication for children under this age Other information <ul style="list-style-type: none"> ■ store at 20-25°C (68-77°F). Avoid excessive heat above 40°C (104°F). ■ read all warnings and directions before use. Keep carton. Inactive ingredients acesulfame potassium, artificial flavor, carnauba wax, colloidal silicon dioxide, corn starch, croscarmellose sodium, glycerin, hypromellose, lactic acid, lecithin, maltodextrin, medium-chain triglycerides, microcrystalline cellulose, pharmaceutical ink, polydextrose, polyvinyl alcohol, pregelatinized starch, propyl gallate, sodium lauryl sulfate, stearic acid, sucralose, synthetic iron oxide, talc, titanium dioxide, triacetin, xanthan gum
Directions <ul style="list-style-type: none"> ■ do not take more than directed ■ adults and children 12 years of age and over: <ul style="list-style-type: none"> ■ take 1 tablet every 4 hours while symptoms persist. ■ do not use more than 6 tablets in any 24-hour period unless directed by a doctor 	Questions or comments? Call weekdays from 9 AM to 5 PM EST toll free at 1-800-88-ADVIL

BASE PANEL



RELEASED

Name _____ Date _____

DEPARTMENT	REVIEWED BY		DATE	✓ with Changes
	PRINT NAME	SIGNATURE		
Graphic Artist				<input type="checkbox"/>
Labeling Compliance				<input type="checkbox"/>
Medical				<input type="checkbox"/>
Regulatory Affairs				<input type="checkbox"/>
Marketing				<input type="checkbox"/>
Legal				<input type="checkbox"/>
Trademark				<input type="checkbox"/>
Display Services				<input type="checkbox"/>
Promotions				<input type="checkbox"/>
Graphic Artist Closed				<input type="checkbox"/>