

HIGHLIGHTS OF PRESCRIBING INFORMATION

These highlights do not include all the information needed to use ERIVEDGE safely and effectively. See full prescribing information for ERIVEDGE.

ERIVEDGE® (vismodegib) capsule for oral use
Initial U.S. Approval: 2012

WARNING: EMBRYO-FETAL TOXICITY

See full prescribing information for complete boxed warning.

ERIVEDGE can cause embryo-fetal death or severe birth defects when administered to a pregnant woman. ERIVEDGE is embryotoxic, fetotoxic, and teratogenic in animals. Teratogenic effects included severe midline defects, missing digits, and other irreversible malformations.

Verify the pregnancy status of females of reproductive potential within 7 days prior to initiating ERIVEDGE therapy. Advise females of reproductive potential to use effective contraception during and after ERIVEDGE therapy. Advise males of the potential risk of ERIVEDGE exposure through semen and to use condoms with a pregnant partner or a female partner of reproductive potential. Advise pregnant women of the potential risks to a fetus. (5.1, 5.3, 8.1, 8.3)

INDICATIONS AND USAGE

ERIVEDGE® (vismodegib) capsule is a hedgehog pathway inhibitor indicated for the treatment of adults with metastatic basal cell carcinoma, or with locally advanced basal cell carcinoma that has recurred following surgery or who are not candidates for surgery, and who are not candidates for radiation. (1)

DOSAGE AND ADMINISTRATION

The recommended dose is 150 mg orally once daily. (2)

DOSAGE FORMS AND STRENGTHS

150 mg capsules. (3)

CONTRAINDICATIONS

None.

WARNINGS AND PRECAUTIONS

- Blood donation: Advise patients not to donate blood or blood products while receiving ERIVEDGE and for **at least 7** months after the final dose of ERIVEDGE. (5.2)
- Semen donation: Advise males not to donate semen during and for 3 months after therapy (5.3, 8.3)

ADVERSE REACTIONS

- The most common adverse reactions (incidence of $\geq 10\%$) are muscle spasms, alopecia, dysgeusia, weight loss, fatigue, nausea, diarrhea, decreased appetite, constipation, arthralgias, vomiting, and ageusia-

To report SUSPECTED ADVERSE REACTIONS, contact Genentech, Inc. at 1-888-835-2555 or FDA at 1-800-FDA-1088 or www.fda.gov/medwatch.

USE IN SPECIFIC POPULATIONS

- Lactation: Breastfeeding not recommended. (8.2)
- Females and Males of Reproductive Potential: May cause amenorrhea in females. (8.3)

See Section 17 for PATIENT COUNSELING INFORMATION and FDA-approved patient labeling (Medication Guide).

Revised: 05/2015

FULL PRESCRIBING INFORMATION: CONTENTS*

WARNING: EMBRYO-FETAL TOXICITY

- 1 INDICATIONS AND USAGE**
- 2 DOSAGE AND ADMINISTRATION**
- 3 DOSAGE FORMS AND STRENGTHS**
- 4 CONTRAINDICATIONS**
- 5 WARNINGS AND PRECAUTIONS**
 - 5.1 Embryo-Fetal Toxicity
 - 5.2 Blood Donation
 - 5.3 Semen Donation
- 6 ADVERSE REACTIONS**
 - 6.1 Clinical Trials Experience
- 7 DRUG INTERACTIONS**
- 8 USE IN SPECIFIC POPULATIONS**
 - 8.1 Pregnancy
 - 8.2 Lactation
 - 8.3 Females and Males of Reproductive Potential
 - 8.4 Pediatric Use
 - 8.5 Geriatric Use
 - 8.6 Hepatic Impairment
 - 8.7 Renal Impairment
- 10 OVERDOSAGE**

11 DESCRIPTION

12 CLINICAL PHARMACOLOGY

- 12.1 Mechanism of Action
- 12.2 Pharmacodynamics
- 12.3 Pharmacokinetics

13 NONCLINICAL TOXICOLOGY

- 13.1 Carcinogenesis, Mutagenesis, Impairment of Fertility
- 13.2 Animal Toxicology

14 CLINICAL STUDIES

16 HOW SUPPLIED/STORAGE AND HANDLING

17 PATIENT COUNSELING INFORMATION

*Sections or subsections omitted from the Full Prescribing Information are not listed.

FULL PRESCRIBING INFORMATION

WARNING: EMBRYO-FETAL TOXICITY

ERIVEDGE can cause embryo-fetal death or severe birth defects when administered to a pregnant woman. ERIVEDGE is embryotoxic, fetotoxic, and teratogenic in animals. Teratogenic effects included severe midline defects, missing digits, and other irreversible malformations.

Verify the pregnancy status of females of reproductive potential within 7 days prior to initiating ERIVEDGE therapy. Advise females of reproductive potential to use effective contraception during and after ERIVEDGE therapy. Advise males of the potential risk of ERIVEDGE exposure through semen and to use condoms with a pregnant partner or a female partner of reproductive potential. Advise pregnant women of the potential risks to a fetus. [See *Warnings and Precautions* (5.1, 5.3), *Use in Specific Populations* (8.1, 8.3)].

1 INDICATIONS AND USAGE

ERIVEDGE capsule is indicated for the treatment of adults with metastatic basal cell carcinoma, or with locally advanced basal cell carcinoma that has recurred following surgery or who are not candidates for surgery, and who are not candidates for radiation.

2 DOSAGE AND ADMINISTRATION

The recommended dose of ERIVEDGE is 150 mg taken orally once daily until disease progression or until unacceptable toxicity [see *Clinical Studies* (14)].

ERIVEDGE may be taken with or without food. Swallow capsules whole. **Do not open or crush capsules.**

If a dose of ERIVEDGE is missed, do not make up that dose; resume dosing with the next scheduled dose.

3 DOSAGE FORMS AND STRENGTHS

ERIVEDGE (vismodegib) capsules, 150 mg. The capsule has a pink opaque body and a grey opaque cap, with “150 mg” printed on the capsule body and “VISMO” printed on the capsule cap in black ink.

4 CONTRAINDICATIONS

None.

5 WARNINGS AND PRECAUTIONS

5.1 Embryo-Fetal Toxicity

Based on its mechanism of action, ERIVEDGE can cause embryo-fetal death or severe birth defects when administered to a pregnant woman. In animal reproduction studies, vismodegib was embryotoxic, fetotoxic, and teratogenic at maternal exposures lower than the human exposures at the recommended dose of 150 mg/day.

Verify the pregnancy status of females of reproductive potential within 7 days prior to initiating ERIVEDGE therapy. Advise females of reproductive potential to use effective contraception during therapy with ERIVEDGE and for 7 months after the final dose. Advise male patients to use condoms, even after a vasectomy, to avoid potential drug exposure in pregnant partners and female

partners of reproductive potential during therapy and for 3 months after the final dose of ERIVEDGE. Advise pregnant women of the potential risk to a fetus [see *Use in Specific Populations* (8.1, 8.3) and *Clinical Pharmacology* (12.1)].

5.2 Blood Donation

Advise patients not to donate blood or blood products while receiving ERIVEDGE and for 7 months after the final dose of ERIVEDGE.

5.3 Semen Donation

Vismodegib is present in semen. It is not known if the amount of vismodegib in semen can cause embryo-fetal harm. Advise male patients not to donate semen during and for 3 months after the final dose of ERIVEDGE [see *Use in Specific Populations* (8.1, 8.3)].

6 ADVERSE REACTIONS

6.1 Clinical Trials Experience

Because clinical trials are conducted under widely varying conditions, adverse reaction rates observed in the clinical trials of a drug cannot be directly compared to rates in the clinical trials of another drug and may not reflect the rates observed in clinical practice.

ERIVEDGE capsule was administered as monotherapy at doses ≥ 150 mg orally daily in four open-label, uncontrolled, dose-ranging or fixed single dose clinical trials enrolling a total of 138 patients with advanced basal cell carcinoma (BCC). The median age of these patients was 61 years (range 21 to 101), 100% were White (including Hispanics), and 64% were male. The median duration of treatment was approximately 10 months (305 days; range 0.7 to 36 months); 111 patients received ERIVEDGE for 6 months or longer.

The most common adverse reactions ($\geq 10\%$) were muscle spasms, alopecia, dysgeusia, weight loss, fatigue, nausea, diarrhea, decreased appetite, constipation, arthralgias, vomiting, and ageusia (Table 1).

Table 1: Adverse Reactions Occurring in ≥ 10% of Advanced BCC Patients

MedDRA Preferred Term ²	All aBCC ¹ Patients (N = 138)		
	All Grades ³ (%)	Grade 3 (%)	Grade 4 (%)
Gastrointestinal disorders			
Nausea	42 (30.4%)	1 (0.7%)	-
Diarrhea	40 (29.0%)	1 (0.7%)	-
Constipation	29 (21.0%)	-	-
Vomiting	19 (13.8%)	-	-
General disorders and administration site conditions			
Fatigue	55 (39.9%)	7 (5.1%)	1 (0.7%)
Investigations			
Weight loss	62 (44.9%)	10 (7.2%)	-
Metabolism and nutrition disorders			
Decreased appetite	35 (25.4%)	3 (2.2%)	-
Musculoskeletal and connective tissue disorders			
Muscle spasms	99 (71.7%)	5 (3.6%)	-
Arthralgias	22 (15.9%)	1 (0.7%)	-
Nervous system disorders			
Dysgeusia	76 (55.1%)	-	-
Ageusia	15 (10.9%)	-	-
Skin and subcutaneous tissue disorders			
Alopecia	88 (63.8%)	-	-

¹aBCC = Advanced Basal Cell Carcinoma.

²MedDRA = Medical Dictionary for Regulatory Activities.

³Grading according to NCI-CTCAE v3.0.

Amenorrhea:

In clinical trials, a total of 3 of 10 pre-menopausal women developed amenorrhea while receiving ERIVEDGE [see *Non-Clinical Toxicology (13.1)*].

Laboratory Abnormalities:

Treatment-emergent Grade 3 laboratory abnormalities observed in clinical trials were hyponatremia in 6 patients (4%), hypokalemia in 2 patients (1%), and azotemia in 3 patients (2%).

7 DRUG INTERACTIONS

Clinically relevant pharmacokinetic interactions are not expected between vismodegib and a substrate, inducer or inhibitor of cytochrome 450 enzymes or an inhibitor of P-glycoprotein (P-gp) or between vismodegib and gastric pH elevating agents [see *Clinical Pharmacology (12.3)*].

8 USE IN SPECIFIC POPULATIONS

8.1 Pregnancy

Risk Summary

Based on its mechanism of action and animal reproduction studies, ERIVEDGE can cause fetal harm when administered to a pregnant woman [*see Clinical Pharmacology (12.1)*]. In animal reproduction studies, oral administration of vismodegib during organogenesis at doses below the recommended human dose resulted in embryotoxicity, fetotoxicity, and teratogenicity in rats [*see Data*]. There are no human data on the use of ERIVEDGE in pregnant women. Advise pregnant women of the potential risk to a fetus. Report pregnancies to Genentech at 1-888-835-2555.

The background risk of major birth defects and miscarriage for the indicated population is unknown. In the U.S. general population, the estimated background risk of major birth defects and miscarriage in clinically recognized pregnancies is 2-4% and 15-20%, respectively.

Data

Animal Data

In an embryo-fetal developmental toxicity study, pregnant rats were administered vismodegib orally at doses of 10, 60, or 300 mg/kg/day during the period of organogenesis. Pre- and post-implantation loss were increased at doses of ≥ 60 mg/kg/day (approximately ≥ 2 times the systemic exposure (AUC) in patients at the recommended human dose), which included early resorption of 100% of the fetuses. A dose of 10 mg/kg/day (approximately 0.2 times the AUC in patients at the recommended dose) resulted in malformations (including missing and/or fused digits, open perineum and craniofacial anomalies) and retardations or variations (including dilated renal pelvis, dilated ureter, and incompletely or unossified sternal elements, centra of vertebrae, or proximal phalanges and claws).

8.2 Lactation

No data are available regarding the presence of vismodegib in human milk, the effects of the drug on the breastfed infant, or the effects of the drug on milk production. Because of the potential for serious adverse reactions in breastfed infants from ERIVEDGE, advise a nursing woman that breastfeeding is not recommended during therapy with ERIVEDGE and for 7 months after the final dose.

8.3 Females and Males of Reproductive Potential

Pregnancy Testing

Verify the pregnancy status of females of reproductive potential within 7 days prior to initiating ERIVEDGE therapy.

Contraception

Females

Based on its mechanism of action and animal data, ERIVEDGE can cause fetal harm when administered to a pregnant woman [*see Use in Specific Populations (8.1)*]. Advise females of reproductive potential to use effective contraception during therapy and for 7 months after the final dose of ERIVEDGE.

Males

Vismodegib is present in semen [*see Clinical Pharmacology (12.3)*]. It is not known if the amount of vismodegib in semen can cause embryo-fetal harm. Advise male patients to use condoms, even after a vasectomy, to avoid drug exposure to pregnant partners and female partners of reproductive potential during therapy with and for 3 months after the final dose of ERIVEDGE. Advise males of the potential risk to an embryo or fetus if a female partner of reproductive potential is exposed to

ERIVEDGE. Advise males not to donate semen during therapy with and for 3 months after the final dose of ERIVEDGE.

Infertility

Females

Amenorrhea can occur in females of reproductive potential. Reversibility of amenorrhea is unknown [see *Adverse Reactions (6)*].

8.4 Pediatric Use

The safety and effectiveness of ERIVEDGE capsule have not been established in pediatric patients.

In repeat-dose toxicology studies in rats, administration of oral vismodegib resulted in toxicities in bone and teeth. Effects on bone consisted of closure of the epiphyseal growth plate when oral vismodegib was administered for 26 weeks at ≥ 50 mg/kg/day (approximately ≥ 0.4 times the systemic exposure (AUC) in patients at the recommended human dose). Abnormalities in growing incisor teeth (including degeneration/necrosis of odontoblasts, formation of fluid-filled cysts in the dental pulp, ossification of the root canal, and hemorrhage resulting in breakage or loss of teeth) were observed after administration of oral vismodegib at ≥ 15 mg/kg/day (approximately ≥ 0.2 times the AUC in patients at the recommended human dose).

8.5 Geriatric Use

Clinical studies of ERIVEDGE capsule did not include sufficient numbers of patients aged 65 and over to determine whether they respond differently from younger patients.

8.6 Hepatic Impairment

No dose adjustment is required in patients with hepatic impairment [see *Clinical Pharmacology (12.3)*].

8.7 Renal Impairment

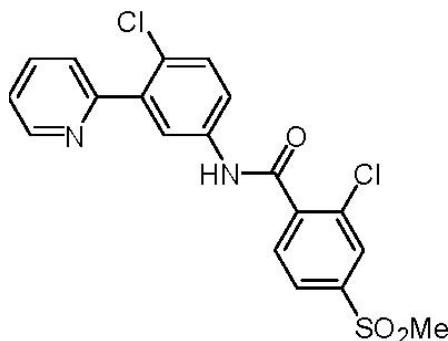
No dose adjustment is required in patients with renal impairment [see *Clinical Pharmacology (12.3)*].

10 OVERDOSAGE

There is no information on overdosage in humans. In clinical trials, ERIVEDGE capsule was administered at 540 mg orally once daily; exposure did not increase between 150 mg and 540 mg daily.

11 DESCRIPTION

Vismodegib is an inhibitor of the hedgehog (Hh) signaling pathway, which is described chemically as 2-Chloro-*N*-(4-chloro-3-(pyridin-2-yl)phenyl)-4-(methylsulfonyl)benzamide. The molecular formula is $C_{19}H_{14}Cl_2N_2O_3S$. The molecular weight is 421.30 g/mol and the structural formula is:



Vismodegib is a crystalline free base with a pKa (pyridinium cation) of 3.8, appearing as a white to tan powder. The solubility of vismodegib is pH dependent with 0.1 µg/mL at pH 7 and 0.99 mg/mL at pH 1. The partition coefficient (log P) is 2.7.

Each ERIVEDGE (vismodegib) capsule for oral administration contains 150 mg vismodegib and the following inactive ingredients: microcrystalline cellulose, lactose monohydrate, sodium lauryl sulfate, povidone, sodium starch glycolate, talc, and magnesium stearate (non-bovine). The capsule shell contains gelatin, titanium dioxide, red iron oxide, and black iron oxide. The black printing ink contains shellac and black iron oxide.

12 CLINICAL PHARMACOLOGY

12.1 Mechanism of Action

Vismodegib is an inhibitor of the Hedgehog pathway. Vismodegib binds to and inhibits Smoothened, a transmembrane protein involved in Hedgehog signal transduction.

12.2 Pharmacodynamics

Cardiac Electrophysiology

The QTc interval was not affected by therapeutic doses of ERIVEDGE in a thorough QTc trial.

12.3 Pharmacokinetics

Absorption

The single dose absolute bioavailability of vismodegib is 31.8%. Absorption is saturable as evidenced by the lack of dose proportional increase in exposure after a single dose of 270 mg or 540 mg vismodegib. ERIVEDGE capsule may be taken without regard to meals because the systemic exposure of vismodegib at steady state is not affected by food.

Distribution

The volume of distribution of vismodegib ranges from 16.4 to 26.6 L. Vismodegib plasma protein binding in patients is greater than 99%. Vismodegib binds to both human serum albumin and alpha-1-acid glycoprotein (AAG) and binding to AAG is saturable.

In a pharmacokinetic study, male patients (n=3) had an average concentration of vismodegib in semen on day 8 that was 6.5% of the average steady state concentration (C_{ss}) observed in plasma.

Metabolism

Greater than 98% of the total circulating drug-related components are the parent drug. Metabolic pathways of vismodegib in humans include oxidation, glucuronidation, and pyridine ring cleavage. The two most abundant oxidative metabolites recovered in feces are produced *in vitro* by recombinant CYP2C9 and CYP3A4/5.

Elimination

Vismodegib and its metabolites are eliminated primarily by the hepatic route with 82% of the administered dose recovered in the feces and 4.4% recovered in urine. The estimated elimination half-life ($t_{1/2}$) of vismodegib is 4 days after continuous once-daily dosing and 12 days after a single dose.

Specific Populations

Hepatic Impairment: In a dedicated clinical study, the mean systemic exposure (AUC_{0-24hr}) of vismodegib was increased by 24% in patients with mild (n=8), 31% in patients with moderate (n=6) and decreased 14% in patients with severe (n=3) hepatic impairment when compared to patients with normal hepatic function (n=9) after 8 days of daily ERIVEDGE administration. The NCI Organ Dysfunction Working Group criteria for hepatic impairment were used in the study. Mild hepatic impairment was defined as normal total bilirubin and aspartate transaminase (AST) > upper limit of

normal (ULN) or total bilirubin > 1.0 to 1.5 times ULN, moderate hepatic impairment as total bilirubin > 1.5 to 3.0 times ULN, and severe hepatic impairment as total bilirubin > 3.0 to 10.0 times ULN.

Renal Impairment: Renal excretion of vismodegib after oral administration of ERIVEDGE is low (<5%). The population pharmacokinetic analysis suggested no clinically relevant effect of renal impairment on the systemic exposure of vismodegib, based on pharmacokinetic data from patients with mild (CLCr 50 to 79 mL/min, n=58), and moderate (CLCr 30 to 49 mL/min, n=16) renal impairment.

Weight, Age, and Sex: The results of a population pharmacokinetic analysis suggested no clinically relevant effect of weight (range: 41-140 kg), age (range: 26-89 years), and sex on the systemic exposure of vismodegib.

Drug Interaction Studies

Effect of Drugs on Vismodegib: Coadministration of ERIVEDGE with fluconazole (a moderate CYP2C9 inhibitor and moderate CYP3A4 inhibitor) increased mean AUC_{0-24hr} and steady-state concentrations of vismodegib by 1.3-fold in healthy subjects. A strong inhibitor of CYP3A4 and P-gp (itraconazole) or a proton pump inhibitor (rabeprazole) had no effect on the steady-state systemic exposure of vismodegib when coadministered with ERIVEDGE in healthy subjects.

Effects of Vismodegib on Other Drugs: Results of a drug interaction study conducted in cancer patients demonstrated that the systemic exposure of rosiglitazone (a CYP2C8 substrate) or oral contraceptives (ethinyl estradiol and norethindrone) is not altered when either drug is coadministered with vismodegib.

In vitro studies suggest that vismodegib is an inhibitor of CYP2C8, CYP2C9, CYP2C19 and the transporter BCRP and that vismodegib is not an inducer of CYP1A2, CYP2B6, or CYP3A.

13 NONCLINICAL TOXICOLOGY

13.1 Carcinogenesis, Mutagenesis, Impairment of Fertility

Carcinogenicity studies with vismodegib have not been conducted. Pilomatricoma (a benign cutaneous neoplasm) was observed in rats administered oral vismodegib for 26 weeks at 100 mg/kg/day (approximately 0.8 times the systemic exposure (AUC) in patients at the recommended human dose).

Vismodegib was not mutagenic in the *in vitro* bacterial reverse mutation (Ames) assay and was not clastogenic in the *in vitro* human chromosomal aberration assay in human peripheral blood lymphocytes or in the *in vivo* rat bone marrow micronucleus assay.

Studies to assess the potential of vismodegib to affect fertility have not been conducted; however, data from repeat-dose toxicology studies in rats and dogs indicate that male and female reproductive function and fertility may be impaired in patients receiving ERIVEDGE capsule. In a 26-week toxicology study in rats, a relative decrease in percent motile sperm was observed at ≥ 15 mg/kg/day (approximately ≥ 0.3 times the AUC in patients at the recommended human dose). In dogs, increased numbers of degenerating germ cells and hypospermia were observed in young animals administered oral vismodegib for 4 weeks at ≥ 50 mg/kg/day (approximately ≥ 2 times the AUC in patients at the recommended human dose). No corresponding findings were observed in sexually mature dogs at similar doses in 13-week and 26-week toxicology studies. A decrease in the number of corpora lutea was observed in female rats administered oral vismodegib for 26 weeks at 100 mg/kg/day (approximately 0.8 times the AUC in patients at the recommended human dose).

13.2 Animal Toxicology

Neurologic effects characterized as limb or body tremors or twitching were observed in rats administered oral vismodegib for 4 weeks or longer at ≥ 50 mg/kg/day (approximately ≥ 0.4 times

the AUC in patients at the recommended human dose). These observations resolved upon discontinuation of dosing and were not associated with microscopic findings.

14 CLINICAL STUDIES

A single, international, single-arm, multi-center, open-label, 2-cohort trial was conducted in 104 patients with either metastatic basal cell carcinoma (mBCC) (n = 33) or locally advanced BCC (laBCC) (n = 71). Patients with laBCC were required to have lesions that had recurred after radiotherapy, unless radiotherapy was contraindicated or inappropriate (e.g. Gorlin syndrome; limitations because of location of tumor or cumulative prior radiotherapy dose), and where the lesions were either unresectable or surgical resection would result in substantial deformity. Patients were to receive 150 mg vismodegib per day orally until disease progression or unacceptable toxicity.

The major efficacy outcome measure of the trial was objective response rate (ORR) as assessed by an independent review facility (IRF). In the mBCC cohort, tumor response was assessed according to the Response Evaluation Criteria in Solid Tumors (RECIST) version 1.0. In the laBCC cohort, tumor response evaluation included measurement of externally assessable tumor (including scar) and assessment for ulceration in photographs, radiographic assessment of target lesions (if appropriate), and tumor biopsy. An objective response in laBCC required at least one of the following criteria and absence of any criterion for disease progression: (1) $\geq 30\%$ reduction in lesion size [sum of the longest diameter (SLD)] from baseline in target lesions by radiographic assessment; (2) $\geq 30\%$ reduction in SLD from baseline in externally visible dimension of target lesions; (3) complete resolution of ulceration in all target lesions. Complete response was defined as objective response (as defined above) with no residual BCC on sampling tumor biopsy. Disease progression was defined as any of the following: (1) $\geq 20\%$ increase in the SLD from nadir in target lesions (either by radiography or by externally visible dimension); (2) new ulceration of target lesions persisting without evidence of healing for at least 2 weeks; (3) new lesions by radiographic assessment or physical examination; (4) progression of non-target lesions by RECIST.

Of the 104 patients enrolled, 96 patients were evaluable for ORR. Twenty-one percent of patients carried a diagnosis of Gorlin syndrome. The median age of the efficacy evaluable population was 62 years (46% were at least 65 years old), 61% male and 100% White. For the mBCC cohort (n = 33), 97% of patients had prior therapy including surgery (97%), radiotherapy (58%), and systemic therapies (30%). For the laBCC cohort (n = 63), 94% of patients had prior therapies including surgery (89%), radiotherapy (27%), and systemic/topical therapies (11%). The median duration of treatment was 10.2 months (range 0.7 to 18.7 months).

The key outcome measures are presented in Table 2, below.

Table 2: Objective Response Rate: Efficacy-Evaluable Patients¹

	mBCC (n = 33)	laBCC (n = 63)
IRF²-Confirmed ORR, n (%) (95% CI)	10 (30.3) (15.6, 48.2)	27 (42.9) (30.5, 56.0)
Complete response³	0 (0.0)	13 (20.6)
Partial response	10 (30.3)	14 (22.2)
Median Response Duration (months) (95% CI⁵)	7.6 (5.6, NE ⁴)	7.6 (5.7, 9.7)

¹Patients who received at least one dose of ERIVEDGE with independent pathologist-confirmed diagnosis of BCC

²IRF = Independent Review Facility

³For laBCC, complete response was defined as objective response with no residual BCC on sampling tumor biopsy.

⁴NE = Not estimable

⁵CI = Confidence Interval

16 HOW SUPPLIED/STORAGE AND HANDLING

Each ERIVEDGE (vismodegib) capsule has a pink opaque body and a grey opaque cap with “150 mg” printed on the capsule body and “VISMO” printed on the capsule cap in black ink. ERIVEDGE capsules are available in bottles of 28 capsules (NDC 50242-140-01).

Store at room temperature 20°C to 25°C (68°F to 77°F); excursions permitted between 15°C to 30°C (59°F to 86°F) [see USP Controlled Room Temperature].

17 PATIENT COUNSELING INFORMATION

See *FDA-approved patient labeling (Medication Guide)*.

Administration Instructions

- Advise patients to swallow ERIVEDGE capsules whole and not to crush or open the capsules.

Embryo-Fetal Toxicity

- Advise pregnant women of the potential risk to a fetus [see *Warnings and Precautions (5.1) and Use in Specific Populations (8.1)*].
- Advise females of reproductive potential to use effective contraception during therapy with and for 7 months after the final dose of ERIVEDGE [see *Warnings and Precautions (5.1) and Use in Specific Populations (8.1, 8.3)*].
- Advise males, even those with prior vasectomy, to use condoms to avoid potential drug exposure in both pregnant partners and female partners of reproductive potential during therapy with and for 3 months after the final dose of ERIVEDGE [see *Warnings and Precautions (5.1) and Use in Specific Populations (8.1, 8.3)*].

- Advise female patients and female partners of male patients to contact their healthcare provider with a known or suspected pregnancy. Report pregnancies to Genentech at 1-888-835-2555 [*see Warnings and Precautions (5.1) and Use in Specific Populations (8.1, 8.3)*].

Semen Donation

- Advise males not to donate semen during therapy with and for 3 months after the final dose of ERIVEDGE.

Lactation

- Advise women that breastfeeding is not recommended during therapy with ERIVEDGE and for 7 months after the final dose [*see Use in Specific Populations (8.2)*].

Blood Donation

- Advise patients not to donate blood or blood products while taking ERIVEDGE and for 7 months after the final dose of ERIVEDGE.

ERIVEDGE® [vismodegib] capsule

Manufactured by:

Patheon, Inc.

Mississauga, Canada

ERIVEDGE is a registered trademark of Genentech, Inc.

Distributed by:

©2015 Genentech, Inc.

Genentech USA, Inc.

A Member of the Roche Group

1 DNA Way

South San Francisco, CA 94080-4990

MEDICATION GUIDE
ERIVEDGE® (EH-rih-vej)
(vismodegib)
capsule

What is the most important information I should know about ERIVEDGE?

ERIVEDGE can cause your baby to die before it is born (be stillborn) or cause your baby to have severe birth defects.

For females who can become pregnant:

- You should talk with your healthcare provider about the risks of ERIVEDGE to your unborn child.
- Your healthcare provider will do a pregnancy test before you start taking ERIVEDGE.
- In order to avoid pregnancy, you should use birth control during treatment, and for 7 months after your final dose of ERIVEDGE. Talk with your healthcare provider about what birth control method is right for you during this time.
- Talk to your healthcare provider right away if you have unprotected sex or if you think that your birth control has failed.
- Tell your healthcare provider right away if you become pregnant or think that you may be pregnant.

For males:

- ERIVEDGE is present in semen. Do not donate semen while you are taking ERIVEDGE and for 3 months after your final dose.
- You should always use a condom, even if you have had a vasectomy, during sex with female partners who are pregnant or who are able to become pregnant, during treatment with ERIVEDGE and for 3 months after your final dose to protect your female partner from being exposed to ERIVEDGE.
- Tell your healthcare provider right away if your partner becomes pregnant or thinks she is pregnant while you are taking ERIVEDGE.

Exposure to ERIVEDGE during pregnancy:

If you think that you or your female partner may have been exposed to ERIVEDGE during pregnancy, talk to your healthcare provider right away. If you become pregnant during treatment with ERIVEDGE, you or your healthcare provide should report your pregnancy to Genentech at 1-888-835-2555.

What is ERIVEDGE?

ERIVEDGE is a prescription medicine used to treat adults with a type of skin cancer, called basal cell carcinoma, that has spread to other parts of the body, or that has come back after surgery or that your health care provider decides cannot be treated with surgery or radiation.

It is not known if ERIVEDGE is safe and effective in children.

What should I tell my healthcare provider before taking ERIVEDGE?

Before taking ERIVEDGE, tell your healthcare provider if you:

- **are pregnant or plan to become pregnant.** See “What is the most important information I should know about ERIVEDGE?”
- **are breastfeeding or plan to breastfeed.** It is not known if ERIVEDGE passes into your breast milk. You should not breastfeed during treatment and for 7 months after your final dose of ERIVEDGE. Talk to your healthcare provider about the best way to feed your baby during this time.

Tell your health care provider about all the medicines you take, including prescription and over-the-counter medicines, vitamins, and herbal supplements.

How should I take ERIVEDGE?

- Take ERIVEDGE exactly as your healthcare provider tells you.
- You can take ERIVEDGE with or without food.
- Swallow ERIVEDGE capsules whole. **Do not open or crush the capsules.**
- Take ERIVEDGE one time each day.
- If you miss a dose, skip the missed dose. Just take your next scheduled dose.

What should I avoid while taking ERIVEDGE?

- Do not donate blood or blood products while you are taking ERIVEDGE and for 7 months after your final dose.
- Do not donate semen while you are taking ERIVEDGE and for 3 months after your final dose.

What are the possible side effects of ERIVEDGE?**ERIVEDGE can cause serious side effects, including:**

- See “**What is the most important information I should know about ERIVEDGE?**”

The most common side effects of ERIVEDGE are:

- muscle spasms
- hair loss
- change in how things taste or loss of taste
- weight loss
- tiredness
- nausea
- diarrhea
- decreased appetite
- constipation
- joint pain
- vomiting

ERIVEDGE can cause absence of menstrual periods (amenorrhea) in females who are able to become pregnant. It is not known if amenorrhea is permanent. Talk to your healthcare provider if you have concerns about fertility.

These are not all the possible side effects of ERIVEDGE. Call your doctor for medical advice about side effects. You may report side effects to FDA at 1-800-FDA-1088.

You may also report side effects to Genentech, Inc. at 1-888-835-2555.

How should I store ERIVEDGE?

- Store ERIVEDGE at room temperature between 68°F to 77°F (20°C to 25°C).

Keep ERIVEDGE and all medicines out of the reach of children.

General information about the safe and effective use of ERIVEDGE

Medicines are sometimes prescribed for purposes other than those listed in a Medication Guide. Do not use ERIVEDGE for a condition for which it was not prescribed. Do not give ERIVEDGE to other people, even if they have the same symptoms that you have. It may harm them. You can ask your pharmacist or healthcare provider for information about ERIVEDGE that is written for health professionals.

What are the ingredients in ERIVEDGE?

Active ingredient: vismodegib

Inactive ingredients: microcrystalline cellulose, lactose monohydrate, sodium lauryl sulfate, povidone, sodium starch glycolate, talc, magnesium stearate (non-bovine). The capsule shell contains gelatin, titanium dioxide, red iron oxide, and black iron oxide. The black printing ink contains shellac and black iron oxide.

Manufactured by: Patheon, Inc. Mississauga, Canada

Distributed by: **Genentech USA, Inc.** A Member of the Roche Group 1 DNA Way South San Francisco, CA 940804990

For more information, call 1-855-737-4833 or go to www.erivedge.com

ERIVEDGE is a registered trademark of Genentech, Inc.

©201XGenentech, Inc.

This Medication Guide has been approved by the U.S. Food and Drug Administration.

Revised: Month Year