

HIGHLIGHTS OF PRESCRIBING INFORMATION

These highlights do not include all the information needed to use EPIVIR safely and effectively. See full prescribing information for EPIVIR.

EPIVIR (lamivudine) tablets for oral use
EPIVIR (lamivudine) oral solution
Initial U.S. Approval: 1995

WARNING: LACTIC ACIDOSIS AND SEVERE HEPATOMEGALY, EXACERBATIONS OF HEPATITIS B, and DIFFERENT FORMULATIONS OF EPIVIR
See full prescribing information for complete boxed warning.

- Lactic acidosis and severe hepatomegaly with steatosis, including fatal cases, have been reported with the use of nucleoside analogues. (5.1)
- Severe acute exacerbations of hepatitis B have been reported in patients who are co-infected with hepatitis B virus (HBV) and human immunodeficiency virus (HIV-1) and have discontinued EPIVIR. Monitor hepatic function closely in these patients and, if appropriate, initiate anti-hepatitis B treatment. (5.2)
- Patients with HIV-1 infection should receive only dosage forms of EPIVIR appropriate for treatment of HIV-1. (5.2)

RECENT MAJOR CHANGES

Dosage and Administration (2.2)	07/2016
Warnings and Precautions, Patients with Hepatitis B Virus Co-infection (5.2)	09/2015
Warnings and Precautions, Related Products that are Not Recommended (5.3)	Removed- 07/2016
Warnings and Precautions, Lower Virologic Suppression Rates and Increased Risk of Viral Resistance with Oral Solution (5.6)	07/2016

INDICATIONS AND USAGE

EPIVIR is a nucleoside analogue reverse transcriptase inhibitor indicated in combination with other antiretroviral agents for the treatment of HIV-1 infection.

Limitations of Use: The dosage of this product is for HIV-1 and not for HBV. (1)

DOSAGE AND ADMINISTRATION

- Adults: 300 mg daily, administered as either 150 mg twice daily or 300 mg once daily. (2.1)
- Pediatric Patients Aged 3 Months and Older: Administered either once or twice daily. Dose should be calculated on body weight (kg) and should not exceed 300 mg daily. (2.2)
- Patients with Renal Impairment: Doses of EPIVIR must be adjusted in accordance with renal function. (2.3)

DOSAGE FORMS AND STRENGTHS

- Tablets: 150 mg, scored (3)
- Tablets: 300 mg (3)
- Oral Solution: 10 mg per mL (3)

CONTRAINDICATIONS

EPIVIR is contraindicated in patients with previous hypersensitivity reaction to lamivudine. (4)

WARNINGS AND PRECAUTIONS

- Co-infected HIV-1/HBV Patients: Emergence of lamivudine-resistant HBV variants associated with lamivudine-containing antiretroviral regimens has been reported. (5.2)
- Hepatic decompensation, some fatal, has occurred in HIV-1/HCV co-infected patients receiving interferon and ribavirin-based regimens. Monitor for treatment-associated toxicities. Discontinue EPIVIR as medically appropriate and consider dose reduction or discontinuation of interferon alfa, ribavirin, or both. (5.3)
- Pancreatitis: Use with caution in pediatric patients with a history of pancreatitis or other significant risk factors for pancreatitis. Discontinue treatment as clinically appropriate. (5.4)
- Immune reconstitution syndrome and redistribution/accumulation of body fat have been reported in patients treated with combination antiretroviral therapy. (5.5, 5.7)
- Lower virologic suppression rates and increased risk of viral resistance were observed in pediatric subjects who received EPIVIR oral solution concomitantly with other antiretroviral oral solutions compared with those who received tablets. (5.6)

ADVERSE REACTIONS

- The most common reported adverse reactions (incidence greater than or equal to 15%) in adults were headache, nausea, malaise and fatigue, nasal signs and symptoms, diarrhea, and cough. (6.1)
- The most common reported adverse reactions (incidence greater than or equal to 15%) in pediatric subjects were fever and cough. (6.1)

To report SUSPECTED ADVERSE REACTIONS, contact ViiV Healthcare at 1-877-844-8872 or FDA at 1-800-FDA-1088 or www.fda.gov/medwatch.

USE IN SPECIFIC POPULATIONS

- Lactation: Breastfeeding not recommended. (8.2)

See 17 for PATIENT COUNSELING INFORMATION and FDA-approved patient labeling.

Revised: 07/2016

FULL PRESCRIBING INFORMATION: CONTENTS*

FULL PRESCRIBING INFORMATION

WARNING: LACTIC ACIDOSIS AND SEVERE HEPATOMEGALY, EXACERBATIONS OF HEPATITIS B, AND DIFFERENT FORMULATIONS OF EPIVIR®.

- 1 INDICATIONS AND USAGE**
- 2 DOSAGE AND ADMINISTRATION**
 - 2.1 Recommended Dosage for Adult Patients
 - 2.2 Recommended Dosage for Pediatric Patients
 - 2.3 Patients with Renal Impairment
- 3 DOSAGE FORMS AND STRENGTHS**
- 4 CONTRAINDICATIONS**
- 5 WARNINGS AND PRECAUTIONS**
 - 5.1 Lactic Acidosis and Severe Hepatomegaly with Steatosis
 - 5.2 Patients with Hepatitis B Virus Co-infection
 - 5.3 Use with Interferon- and Ribavirin-Based Regimens
 - 5.4 Pancreatitis
 - 5.5 Immune Reconstitution Syndrome
 - 5.6 Lower Virologic Suppression Rates and Increased Risk of Viral Resistance with Oral Solution
 - 5.7 Fat Redistribution
- 6 ADVERSE REACTIONS**
 - 6.1 Clinical Trials Experience

- 6.2 Postmarketing Experience
- 7 DRUG INTERACTIONS**
- 8 USE IN SPECIFIC POPULATIONS**
 - 8.1 Pregnancy
 - 8.2 Lactation
 - 8.4 Pediatric Use
 - 8.5 Geriatric Use
 - 8.6 Patients with Impaired Renal Function
- 10 OVERDOSAGE**
- 11 DESCRIPTION**
- 12 CLINICAL PHARMACOLOGY**
 - 12.1 Mechanism of Action
 - 12.3 Pharmacokinetics
 - 12.4 Microbiology
- 13 NONCLINICAL TOXICOLOGY**
 - 13.1 Carcinogenesis, Mutagenesis, Impairment of Fertility
- 14 CLINICAL STUDIES**
 - 14.1 Adult Subjects
 - 14.2 Pediatric Subjects
- 16 HOW SUPPLIED/STORAGE AND HANDLING**
- 17 PATIENT COUNSELING INFORMATION**

*Sections or subsections omitted from the full prescribing information are not listed.

FULL PRESCRIBING INFORMATION

WARNING: LACTIC ACIDOSIS AND SEVERE HEPATOMEGALY, EXACERBATIONS OF HEPATITIS B, and DIFFERENT FORMULATIONS OF EPIVIR®.

Lactic Acidosis and Severe Hepatomegaly with Steatosis

Lactic acidosis and severe hepatomegaly with steatosis, including fatal cases, have been reported with the use of nucleoside analogues and other antiretrovirals. Discontinue EPIVIR if clinical or laboratory findings suggestive of lactic acidosis or pronounced hepatotoxicity occur [see *Warnings and Precautions (5.1)*].

Exacerbations of Hepatitis B

Severe acute exacerbations of hepatitis B have been reported in patients who are co-infected with hepatitis B virus (HBV) and human immunodeficiency virus (HIV-1) and have discontinued EPIVIR. Hepatic function should be monitored closely with both clinical and laboratory follow-up for at least several months in patients who discontinue EPIVIR and are co-infected with HIV-1 and HBV. If appropriate, initiation of anti-hepatitis B therapy may be warranted [see *Warnings and Precautions (5.2)*].

Important Differences among Lamivudine-Containing Products

EPIVIR tablets and oral solution (used to treat HIV-1 infection) contain a higher dose of the active ingredient (lamivudine) than EPIVIR-HBV® tablets and oral solution (used to treat chronic HBV infection). Patients with HIV-1 infection should receive only dosage forms appropriate for treatment of HIV-1 [see *Warnings and Precautions (5.2)*].

1 INDICATIONS AND USAGE

EPIVIR is a nucleoside analogue indicated in combination with other antiretroviral agents for the treatment of human immunodeficiency virus type 1 (HIV-1) infection.

Limitations of Use:

- The dosage of this product is for HIV-1 and not for HBV.

2 DOSAGE AND ADMINISTRATION

2.1 Recommended Dosage for Adult Patients

The recommended dosage of EPIVIR in HIV-1-infected adults is 300 mg daily, administered as either 150 mg taken orally twice daily or 300 mg taken orally once daily with or without food. If lamivudine is administered to a patient infected with HIV-1 and HBV, the dosage indicated for

HIV-1 therapy should be used as part of an appropriate combination regimen [see *Warnings and Precautions (5.2)*].

2.2 Recommended Dosage for Pediatric Patients

The recommended dosage of EPIVIR oral solution in HIV-1-infected pediatric patients aged 3 months and older is 4 mg per kg taken orally twice daily or 8 mg per kg taken orally once daily (up to a maximum of 300 mg daily), administered in combination with other antiretroviral agents. Consider HIV-1 viral load and CD4+ cell count/percentage when selecting the dosing interval for patients initiating treatment with oral solution [see *Warnings and Precautions (5.6)*, *Clinical Pharmacology (12.3)*].

EPIVIR scored tablet is the preferred formulation for HIV-1-infected pediatric patients who weigh at least 14 kg and for whom a solid dosage form is appropriate. Before prescribing EPIVIR scored tablets, pediatric patients should be assessed for the ability to swallow tablets. For patients unable to safely and reliably swallow EPIVIR tablets, the oral solution formulation should be prescribed [see *Warnings and Precautions (5.6)*]. The recommended oral dosage of EPIVIR tablets for HIV-1-infected pediatric patients is presented in Table 1.

Table 1. Dosing Recommendations for EPIVIR Scored (150-mg) Tablets in Pediatric Patients

Weight (kg)	Once-Daily Dosing Regimen ^a	Twice-Daily Dosing Regimen Using Scored 150-mg Tablet		
		AM Dose	PM Dose	Total Daily Dose
14 to <20	1 tablet (150 mg)	½ tablet (75 mg)	½ tablet (75 mg)	150 mg
≥20 to <25	1½ tablets (225 mg)	½ tablet (75 mg)	1 tablet (150 mg)	225 mg
≥25	2 tablets (300 mg) ^b	1 tablet (150 mg)	1 tablet (150 mg)	300 mg

^a Data regarding the efficacy of once-daily dosing is limited to subjects who transitioned from twice-daily dosing to once-daily dosing after 36 weeks of treatment [see *Clinical Studies (14.2)*].

^b Patients may alternatively take one 300-mg tablet, which is not scored.

2.3 Patients with Renal Impairment

Dosing of EPIVIR is adjusted in accordance with renal function. Dosage adjustments are listed in Table 2 [see *Clinical Pharmacology (12.3)*].

Table 2. Adjustment of Dosage of EPIVIR in Adults and Adolescents (Greater than or Equal to 25 kg) in Accordance with Creatinine Clearance

Creatinine Clearance (mL/min)	Recommended Dosage of EPIVIR
≥50	150 mg twice daily or 300 mg once daily
30-49	150 mg once daily
15-29	150 mg first dose, then 100 mg once daily
5-14	150 mg first dose, then 50 mg once daily
<5	50 mg first dose, then 25 mg once daily

No additional dosing of EPIVIR is required after routine (4-hour) hemodialysis or peritoneal dialysis.

Although there are insufficient data to recommend a specific dose adjustment of EPIVIR in pediatric patients with renal impairment, a reduction in the dose and/or an increase in the dosing interval should be considered.

3 DOSAGE FORMS AND STRENGTHS

- **EPIVIR Scored Tablets**

EPIVIR scored tablets contain 150 mg of lamivudine. The tablets are white, diamond-shaped, scored, film-coated tablets debossed with “GX CJ7” on both sides.

- **EPIVIR Tablets**

EPIVIR tablets contain 300 mg of lamivudine. The tablets are gray, modified diamond-shaped, film-coated, and engraved with “GX EJ7” on one side and plain on the reverse side.

- **EPIVIR Oral Solution**

EPIVIR oral solution contains 10 mg of lamivudine per 1 mL. The solution is a clear, colorless to pale yellow, strawberry-banana flavored liquid.

4 CONTRAINDICATIONS

EPIVIR is contraindicated in patients with a previous hypersensitivity reaction to lamivudine.

5 WARNINGS AND PRECAUTIONS

5.1 Lactic Acidosis and Severe Hepatomegaly with Steatosis

Lactic acidosis and severe hepatomegaly with steatosis, including fatal cases, have been reported with the use of nucleoside analogues and other antiretrovirals. A majority of these cases have been in women. Obesity and prolonged nucleoside exposure may be risk factors. Caution should be exercised when administering EPIVIR to any patient with known risk factors for liver disease; however, cases also have been reported in patients with no known risk factors. Treatment with

EPIVIR should be suspended in any patient who develops clinical or laboratory findings suggestive of lactic acidosis or pronounced hepatotoxicity (which may include hepatomegaly and steatosis even in the absence of marked transaminase elevations).

5.2 Patients with Hepatitis B Virus Co-infection

Posttreatment Exacerbations of Hepatitis

Clinical and laboratory evidence of exacerbations of hepatitis have occurred after discontinuation of lamivudine. These exacerbations have been detected primarily by serum ALT elevations in addition to re-emergence of HBV DNA. Although most events appear to have been self-limited, fatalities have been reported in some cases. Similar events have been reported from postmarketing experience after changes from lamivudine-containing HIV-1 treatment regimens to non-lamivudine-containing regimens in patients infected with both HIV-1 and HBV. The causal relationship to discontinuation of lamivudine treatment is unknown. Patients should be closely monitored with both clinical and laboratory follow-up for at least several months after stopping treatment.

Important Differences among Lamivudine-Containing Products

EPIVIR tablets and oral solution contain a higher dose of the same active ingredient (lamivudine) than EPIVIR-HBV tablets and EPIVIR-HBV oral solution. EPIVIR-HBV was developed for patients with chronic hepatitis B. The formulation and dosage of lamivudine in EPIVIR-HBV are not appropriate for patients co-infected with HIV-1 and HBV. Safety and efficacy of lamivudine have not been established for treatment of chronic hepatitis B in patients co-infected with HIV-1 and HBV. If treatment with EPIVIR-HBV is prescribed for chronic hepatitis B for a patient with unrecognized or untreated HIV-1 infection, rapid emergence of HIV-1 resistance is likely to result because of the subtherapeutic dose and the inappropriateness of monotherapy HIV-1 treatment. If a decision is made to administer lamivudine to patients co-infected with HIV-1 and HBV, EPIVIR tablets, EPIVIR oral solution, or another product containing the higher dose of lamivudine should be used as part of an appropriate combination regimen.

Emergence of Lamivudine-Resistant HBV

Safety and efficacy of lamivudine have not been established for treatment of chronic hepatitis B in subjects dually infected with HIV-1 and HBV (see full prescribing information for EPIVIR-HBV). Emergence of hepatitis B virus variants associated with resistance to lamivudine has also been reported in HIV-1-infected subjects who have received lamivudine-containing antiretroviral regimens in the presence of concurrent infection with hepatitis B virus.

5.3 Use with Interferon- and Ribavirin-Based Regimens

In vitro studies have shown ribavirin can reduce the phosphorylation of pyrimidine nucleoside analogues such as lamivudine. Although no evidence of a pharmacokinetic or pharmacodynamic interaction (e.g., loss of HIV-1/HCV virologic suppression) was seen when ribavirin was

coadministered with lamivudine in HIV-1/HCV co-infected patients [see *Clinical Pharmacology (12.3)*], hepatic decompensation (some fatal) has occurred in HIV-1/HCV co-infected patients receiving combination antiretroviral therapy for HIV-1 and interferon alfa with or without ribavirin. Patients receiving interferon alfa with or without ribavirin and EPIVIR should be closely monitored for treatment-associated toxicities, especially hepatic decompensation. Discontinuation of EPIVIR should be considered as medically appropriate. Dose reduction or discontinuation of interferon alfa, ribavirin, or both should also be considered if worsening clinical toxicities are observed, including hepatic decompensation (e.g., Child-Pugh greater than 6). See the full prescribing information for interferon and ribavirin.

5.4 Pancreatitis

In pediatric patients with a history of prior antiretroviral nucleoside exposure, a history of pancreatitis, or other significant risk factors for the development of pancreatitis, EPIVIR should be used with caution. Treatment with EPIVIR should be stopped immediately if clinical signs, symptoms, or laboratory abnormalities suggestive of pancreatitis occur [see *Adverse Reactions (6.1)*].

5.5 Immune Reconstitution Syndrome

Immune reconstitution syndrome has been reported in patients treated with combination antiretroviral therapy, including EPIVIR. During the initial phase of combination antiretroviral treatment, patients whose immune systems respond may develop an inflammatory response to indolent or residual opportunistic infections (such as *Mycobacterium avium* infection, cytomegalovirus, *Pneumocystis jirovecii* pneumonia [PCP], or tuberculosis), which may necessitate further evaluation and treatment.

Autoimmune disorders (such as Graves' disease, polymyositis, and Guillain-Barré syndrome) have also been reported to occur in the setting of immune reconstitution, however, the time to onset is more variable, and can occur many months after initiation of treatment.

5.6 Lower Virologic Suppression Rates and Increased Risk of Viral Resistance with Oral Solution

Pediatric subjects who received EPIVIR oral solution concomitantly with other antiretroviral oral solutions at any time in the ARROW trial had lower rates of virologic suppression, lower plasma lamivudine exposure, and developed viral resistance more frequently than those receiving EPIVIR tablets [see *Clinical Pharmacology (12.3)*, *Microbiology (12.4)*, *Clinical Studies (14.2)*].

EPIVIR scored tablet is the preferred formulation for HIV-1-infected pediatric patients who weigh at least 14 kg and for whom a solid dosage form is appropriate. Consider more frequent monitoring of HIV-1 viral load when treating with EPIVIR oral solution.

5.7 Fat Redistribution

Redistribution/accumulation of body fat including central obesity, dorsocervical fat enlargement (buffalo hump), peripheral wasting, facial wasting, breast enlargement, and “cushingoid appearance” have been observed in patients receiving antiretroviral therapy. The mechanism and long-term consequences of these events are currently unknown. A causal relationship has not been established.

6 ADVERSE REACTIONS

The following adverse reactions are discussed in other sections of the labeling:

- Lactic acidosis and severe hepatomegaly with steatosis [*see Boxed Warning, Warnings and Precautions (5.1)*].
- Exacerbations of hepatitis B [*see Boxed Warning, Warnings and Precautions (5.2)*].
- Hepatic decompensation in patients co-infected with HIV-1 and hepatitis C [*see Warnings and Precautions (5.3)*].
- Pancreatitis [*see Warnings and Precautions (5.4)*].
- Immune reconstitution syndrome [*see Warnings and Precautions (5.5)*].
- Fat redistribution [*see Warnings and Precautions (5.7)*].

6.1 Clinical Trials Experience

Clinical Trials Experience in Adult Subjects

Because clinical trials are conducted under widely varying conditions, adverse reaction rates observed in the clinical trials of a drug cannot be directly compared with rates in the clinical trials of another drug and may not reflect the rates observed in clinical practice.

The safety profile of EPIVIR in adults is primarily based on 3,568 HIV-1-infected subjects in 7 clinical trials.

The most common adverse reactions are headache, nausea, malaise, fatigue, nasal signs and symptoms, diarrhea, and cough.

Selected clinical adverse reactions in greater than or equal to 5% of subjects during therapy with EPIVIR 150 mg twice daily plus RETROVIR[®] 200 mg 3 times daily for up to 24 weeks are listed in Table 3.

Table 3. Selected Clinical Adverse Reactions (Greater than or Equal to 5% Frequency) in Four Controlled Clinical Trials (NUCA3001, NUCA3002, NUCB3001, NUCB3002)

Adverse Reaction	EPIVIR 150 mg Twice Daily plus RETROVIR (n = 251)	RETROVIR^a (n = 230)
Body as a Whole		
Headache	35%	27%
Malaise & fatigue	27%	23%
Fever or chills	10%	12%
Digestive		
Nausea	33%	29%
Diarrhea	18%	22%
Nausea & vomiting	13%	12%
Anorexia and/or decreased appetite	10%	7%
Abdominal pain	9%	11%
Abdominal cramps	6%	3%
Dyspepsia	5%	5%
Nervous System		
Neuropathy	12%	10%
Insomnia & other sleep disorders	11%	7%
Dizziness	10%	4%
Depressive disorders	9%	4%
Respiratory		
Nasal signs & symptoms	20%	11%
Cough	18%	13%
Skin		
Skin rashes	9%	6%
Musculoskeletal		
Musculoskeletal pain	12%	10%
Myalgia	8%	6%
Arthralgia	5%	5%

^a Either zidovudine monotherapy or zidovudine in combination with zalcitabine.

Pancreatitis: Pancreatitis was observed in 9 out of 2,613 adult subjects (0.3%) who received EPIVIR in controlled clinical trials EPV20001, NUCA3001, NUCB3001, NUCA3002, NUCB3002, and NUCB3007 [see *Warnings and Precautions (5.4)*].

EPIVIR 300 mg Once Daily: The types and frequencies of clinical adverse reactions reported in subjects receiving EPIVIR 300 mg once daily or EPIVIR 150 mg twice daily (in 3-drug combination regimens in EPV20001 and EPV40001) for 48 weeks were similar.

Selected laboratory abnormalities observed during therapy are summarized in Table 4.

Table 4. Frequencies of Selected Grade 3-4 Laboratory Abnormalities in Adults in Four 24-Week Surrogate Endpoint Trials (NUCA3001, NUCA3002, NUCB3001, NUCB3002) and a Clinical Endpoint Trial (NUCB3007)

Test (Threshold Level)	24-Week Surrogate Endpoint Trials ^a		Clinical Endpoint Trial ^a	
	EPIVIR plus RETROVIR	RETROVIR ^b	EPIVIR plus Current Therapy ^c	Placebo plus Current Therapy ^c
Absolute neutrophil count (<750/mm ³)	7.2%	5.4%	15%	13%
Hemoglobin (<8.0 g/dL)	2.9%	1.8%	2.2%	3.4%
Platelets (<50,000/mm ³)	0.4%	1.3%	2.8%	3.8%
ALT (>5.0 x ULN)	3.7%	3.6%	3.8%	1.9%
AST (>5.0 x ULN)	1.7%	1.8%	4.0%	2.1%
Bilirubin (>2.5 x ULN)	0.8%	0.4%	ND	ND
Amylase (>2.0 x ULN)	4.2%	1.5%	2.2%	1.1%

^a The median duration on study was 12 months.

^b Either zidovudine monotherapy or zidovudine in combination with zalcitabine.

^c Current therapy was either zidovudine, zidovudine plus didanosine, or zidovudine plus zalcitabine.

ULN = Upper limit of normal.

ND = Not done.

The frequencies of selected laboratory abnormalities reported in subjects receiving EPIVIR 300 mg once daily or EPIVIR 150 mg twice daily (in 3-drug combination regimens in EPV20001 and EPV40001) were similar.

Clinical Trials Experience in Pediatric Subjects

EPIVIR oral solution has been studied in 638 pediatric subjects aged 3 months to 18 years in 3 clinical trials.

Selected clinical adverse reactions and physical findings with a greater than or equal to 5% frequency during therapy with EPIVIR 4 mg per kg twice daily plus RETROVIR 160 mg per m² 3 times daily in therapy-naïve (less than or equal to 56 days of antiretroviral therapy) pediatric subjects are listed in Table 5.

Table 5. Selected Clinical Adverse Reactions and Physical Findings (Greater than or Equal to 5% Frequency) in Pediatric Subjects in Trial ACTG300

Adverse Reaction	EPIVIR plus RETROVIR (n = 236)	Didanosine (n = 235)
Body as a Whole		
Fever	25%	32%
Digestive		
Hepatomegaly	11%	11%
Nausea & vomiting	8%	7%
Diarrhea	8%	6%
Stomatitis	6%	12%
Splenomegaly	5%	8%
Respiratory		
Cough	15%	18%
Abnormal breath sounds/wheezing	7%	9%
Ear, Nose, and Throat		
Signs or symptoms of ears ^a	7%	6%
Nasal discharge or congestion	8%	11%
Other		
Skin rashes	12%	14%
Lymphadenopathy	9%	11%

^a Includes pain, discharge, erythema, or swelling of an ear.

Pancreatitis

Pancreatitis, which has been fatal in some cases, has been observed in antiretroviral nucleoside-experienced pediatric subjects receiving EPIVIR alone or in combination with other antiretroviral agents. In an open-label dose-escalation trial (NUCA2002), 14 subjects (14%) developed pancreatitis while receiving monotherapy with EPIVIR. Three of these subjects died of complications of pancreatitis. In a second open-label trial (NUCA2005), 12 subjects (18%) developed pancreatitis. In Trial ACTG300, pancreatitis was not observed in 236 subjects randomized to EPIVIR plus RETROVIR. Pancreatitis was observed in 1 subject in this trial who received open-label EPIVIR in combination with RETROVIR and ritonavir following discontinuation of didanosine monotherapy [see *Warnings and Precautions (5.4)*].

Paresthesias and Peripheral Neuropathies

Paresthesias and peripheral neuropathies were reported in 15 subjects (15%) in Trial NUCA2002, 6 subjects (9%) in Trial NUCA2005, and 2 subjects (less than 1%) in Trial ACTG300.

Selected laboratory abnormalities experienced by therapy-naive (less than or equal to 56 days of antiretroviral therapy) pediatric subjects are listed in Table 6.

Table 6. Frequencies of Selected Grade 3-4 Laboratory Abnormalities in Pediatric Subjects in Trial ACTG300

Test (Threshold Level)	EPIVIR plus RETROVIR	Didanosine
Absolute neutrophil count (<400/mm ³)	8%	3%
Hemoglobin (<7.0 g/dL)	4%	2%
Platelets (<50,000/mm ³)	1%	3%
ALT (>10 x ULN)	1%	3%
AST (>10 x ULN)	2%	4%
Lipase (>2.5 x ULN)	3%	3%
Total Amylase (>2.5 x ULN)	3%	3%

ULN = Upper limit of normal.

Pediatric Subjects Once-Daily versus Twice-Daily Dosing (COL105677)

The safety of once-daily compared with twice-daily dosing of EPIVIR was assessed in the ARROW trial. Primary safety assessment in the ARROW trial was based on Grade 3 and Grade 4 adverse events. The frequency of Grade 3 and 4 adverse events was similar among subjects randomized to once-daily dosing compared with subjects randomized to twice-daily dosing. One event of Grade 4 hepatitis in the once-daily cohort was considered as uncertain causality by the investigator and all other Grade 3 or 4 adverse events were considered not related by the investigator.

Neonates

Limited short-term safety information is available from 2 small, uncontrolled trials in South Africa in neonates receiving lamivudine with or without zidovudine for the first week of life following maternal treatment starting at Week 38 or 36 of gestation [see *Clinical Pharmacology (12.3)*]. Selected adverse reactions reported in these neonates included increased liver function tests, anemia, diarrhea, electrolyte disturbances, hypoglycemia, jaundice and hepatomegaly, rash, respiratory infections, and sepsis; 3 neonates died (1 from gastroenteritis with acidosis and convulsions, 1 from traumatic injury, and 1 from unknown causes). Two other nonfatal gastroenteritis or diarrhea cases were reported, including 1 with convulsions; 1 infant had transient renal insufficiency associated with dehydration. The absence of control groups limits assessments of causality, but it should be assumed that perinatally exposed infants may be at risk for adverse reactions comparable to those reported in pediatric and adult HIV-1-infected patients treated with lamivudine-containing combination regimens. Long-term effects of in utero and infant lamivudine exposure are not known.

6.2 Postmarketing Experience

The following adverse reactions have been identified during post-approval use of EPIVIR. Because these reactions are reported voluntarily from a population of unknown size, it is not always possible to reliably estimate their frequency or establish a causal relationship to drug exposure. These reactions have been chosen for inclusion due to a combination of their seriousness, frequency of reporting, or potential causal connection to lamivudine.

Body as a Whole

Redistribution/accumulation of body fat [*see Warnings and Precautions (5.7)*].

Endocrine and Metabolic

Hyperglycemia.

General

Weakness.

Hemic and Lymphatic

Anemia (including pure red cell aplasia and severe anemias progressing on therapy).

Hepatic and Pancreatic

Lactic acidosis and hepatic steatosis [*see Warnings and Precautions (5.1)*], posttreatment exacerbations of hepatitis B [*see Warnings and Precautions (5.2)*].

Hypersensitivity

Anaphylaxis, urticaria.

Musculoskeletal

Muscle weakness, CPK elevation, rhabdomyolysis.

Skin

Alopecia, pruritus.

7 DRUG INTERACTIONS

Lamivudine is predominantly eliminated in the urine by active organic cationic secretion. The possibility of interactions with other drugs administered concurrently should be considered, particularly when their main route of elimination is active renal secretion via the organic cationic transport system (e.g., trimethoprim) [*see Clinical Pharmacology (12.3)*]. No data are available regarding interactions with other drugs that have renal clearance mechanisms similar to that of lamivudine.

8 USE IN SPECIFIC POPULATIONS

8.1 Pregnancy

Pregnancy Exposure Registry

There is a pregnancy exposure registry that monitors pregnancy outcomes in women exposed to EPIVIR during pregnancy. Physicians are encouraged to register patients by calling the Antiretroviral Pregnancy Registry at 1-800-258-4263.

Risk Summary

Available data from the Antiretroviral Pregnancy Registry show no difference in the risk of overall major birth defects for lamivudine compared with the background rate for major birth defects of 2.7% in the US reference population of the Metropolitan Atlanta Congenital Defects Program (MACDP). Lamivudine produced embryonic toxicity in rabbits at a dose that produced similar human exposures as the recommended clinical dose. The relevance of animal findings to human pregnancy registry data is not known.

Data

Human Data: Based on prospective reports from the Antiretroviral Pregnancy Registry of over 11,000 exposures to lamivudine during pregnancy resulting in live births (including over 4,300 exposed in the first trimester), there was no difference between lamivudine and overall birth defects compared with the background birth defect rate of 2.7% in the US reference population of the MACDP. The prevalence of defects in the first trimester was 3.1% (95% CI: 2.6% to 3.7%).

Lamivudine pharmacokinetics were studied in pregnant women during 2 clinical trials conducted in South Africa. The trials assessed pharmacokinetics in 16 women at 36 weeks gestation using 150 mg lamivudine twice daily with zidovudine, 10 women at 38 weeks gestation using 150 mg lamivudine twice daily with zidovudine, and 10 women at 38 weeks gestation using lamivudine 300 mg twice daily without other antiretrovirals. These trials were not designed or powered to provide efficacy information. Lamivudine pharmacokinetics in pregnant women were similar to those seen in non-pregnant adults and in postpartum women. Lamivudine concentrations were generally similar in maternal, neonatal, and umbilical cord serum samples. In a subset of subjects, amniotic fluid specimens were collected following natural rupture of membranes and confirmed that lamivudine crosses the placenta in humans. Amniotic fluid concentrations of lamivudine were typically 2 times greater than maternal serum levels and ranged from 1.2 to 2.5 mcg per mL (150 mg twice daily) and 2.1 to 5.2 mcg per mL (300 mg twice daily).

Animal Data: Studies in pregnant rats showed that lamivudine is transferred to the fetus through the placenta. Reproduction studies with orally administered lamivudine have been performed in rats and rabbits at doses producing plasma levels up to approximately 35 times that for the recommended adult HIV dose. No evidence of teratogenicity due to lamivudine was observed. Evidence of early embryolethality was seen in the rabbit at exposure levels similar to those

observed in humans, but there was no indication of this effect in the rat at exposure levels up to 35 times those in humans.

8.2 Lactation

Risk Summary

The Centers for Disease Control and Prevention recommend that HIV-1-infected mothers in the United States not breastfeed their infants to avoid risking postnatal transmission of HIV-1 infection. Because of the potential for HIV-1 transmission mothers should be instructed not to breastfeed.

8.4 Pediatric Use

The safety and effectiveness of EPIVIR in combination with other antiretroviral agents have been established in pediatric patients aged 3 months and older. EPIVIR scored tablet is the preferred formulation for HIV-1-infected pediatric patients who weigh at least 14 kg and for whom a solid dosage form is appropriate because pediatric subjects who received EPIVIR oral solution had lower rates of virologic suppression, lower plasma lamivudine exposure, and developed viral resistance more frequently than those receiving EPIVIR tablets in the ARROW trial [*see Dosage and Administration (2.2), Warnings and Precautions (5.6), Adverse Reactions (6.1), Clinical Pharmacology (12.3), Clinical Studies (14.2)*].

8.5 Geriatric Use

Clinical trials of EPIVIR did not include sufficient numbers of subjects aged 65 and over to determine whether they respond differently from younger subjects. In general, caution should be exercised in the administration of EPIVIR in elderly patients reflecting the greater frequency of decreased hepatic, renal, or cardiac function, and of concomitant disease or other drug therapy [*see Dosage and Administration (2.3), Clinical Pharmacology (12.3)*].

8.6 Patients with Impaired Renal Function

Reduction of the dosage of EPIVIR is recommended for patients with impaired renal function [*see Dosage and Administration (2.3), Clinical Pharmacology (12.3)*].

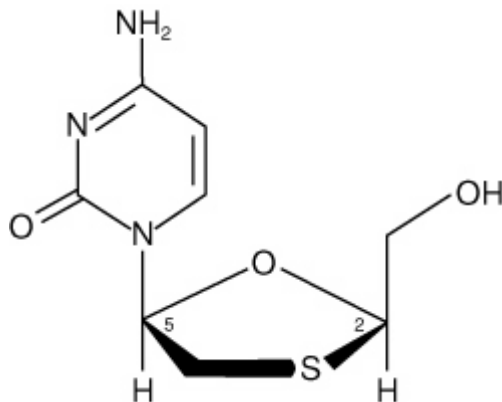
10 OVERDOSAGE

There is no known specific treatment for overdose with EPIVIR. If overdose occurs, the patient should be monitored and standard supportive treatment applied as required. Because a negligible amount of lamivudine was removed via (4-hour) hemodialysis, continuous ambulatory peritoneal dialysis, and automated peritoneal dialysis, it is not known if continuous hemodialysis would provide clinical benefit in a lamivudine overdose event.

11 DESCRIPTION

EPIVIR (also known as 3TC) is a brand name for lamivudine, a synthetic nucleoside analogue with activity against HIV-1 and HBV. The chemical name of lamivudine is (2R,cis)-4-amino-1-

(2-hydroxymethyl-1,3-oxathiolan-5-yl)-(1H)-pyrimidin-2-one. Lamivudine is the (-)enantiomer of a dideoxy analogue of cytidine. Lamivudine has also been referred to as (-)2',3'-dideoxy, 3'-thiacytidine. It has a molecular formula of $C_8H_{11}N_3O_3S$ and a molecular weight of 229.3 g per mol. It has the following structural formula:



Lamivudine is a white to off-white crystalline solid with a solubility of approximately 70 mg per mL in water at 20°C.

EPIVIR tablets are for oral administration. Each scored 150-mg film-coated tablet contains 150 mg of lamivudine and the inactive ingredients hypromellose, magnesium stearate, microcrystalline cellulose, polyethylene glycol, polysorbate 80, sodium starch glycolate, and titanium dioxide.

Each 300-mg film-coated tablet contains 300 mg of lamivudine and the inactive ingredients black iron oxide, hypromellose, magnesium stearate, microcrystalline cellulose, polyethylene glycol, polysorbate 80, sodium starch glycolate, and titanium dioxide.

EPIVIR oral solution is for oral administration. One milliliter (1 mL) of EPIVIR oral solution contains 10 mg of lamivudine (10 mg per mL) in an aqueous solution and the inactive ingredients artificial strawberry and banana flavors, citric acid (anhydrous), methylparaben, propylene glycol, propylparaben, sodium citrate (dihydrate), and sucrose (200 mg).

12 CLINICAL PHARMACOLOGY

12.1 Mechanism of Action

Lamivudine is an antiretroviral agent [*see Microbiology (12.4)*].

12.3 Pharmacokinetics

Pharmacokinetics in Adults

The pharmacokinetic properties of lamivudine have been studied in asymptomatic, HIV-1-infected adult subjects after administration of single intravenous (IV) doses ranging from 0.25 to 8 mg per kg, as well as single and multiple (twice-daily regimen) oral doses ranging from 0.25 to 10 mg per kg.

The pharmacokinetic properties of lamivudine have also been studied as single and multiple oral doses ranging from 5 mg to 600 mg per day administered to HBV-infected subjects.

The steady-state pharmacokinetic properties of the EPIVIR 300-mg tablet once daily for 7 days compared with the EPIVIR 150-mg tablet twice daily for 7 days were assessed in a crossover trial in 60 healthy subjects. EPIVIR 300 mg once daily resulted in lamivudine exposures that were similar to EPIVIR 150 mg twice daily with respect to plasma $AUC_{24,ss}$; however, $C_{max,ss}$ was 66% higher and the trough value was 53% lower compared with the 150-mg twice-daily regimen. Intracellular lamivudine triphosphate exposures in peripheral blood mononuclear cells were also similar with respect to $AUC_{24,ss}$ and $C_{max24,ss}$; however, trough values were lower compared with the 150-mg twice-daily regimen. Inter-subject variability was greater for intracellular lamivudine triphosphate concentrations versus lamivudine plasma trough concentrations.

The pharmacokinetics of lamivudine was evaluated in 12 adult HIV-1-infected subjects dosed with lamivudine 150 mg twice daily in combination with other antiretroviral agents. The geometric mean (95% CI) for $AUC_{(0-12)}$ was 5.53 (4.58, 6.67) mcg.h per mL and for C_{max} was 1.40 (1.17, 1.69) mcg per mL.

Absorption and Bioavailability: Following oral administration, lamivudine is rapidly absorbed and extensively distributed. Absolute bioavailability in 12 adult subjects was $86\% \pm 16\%$ (mean \pm SD) for the 150-mg tablet and $87\% \pm 13\%$ for the oral solution. After oral administration of 2 mg per kg twice a day to 9 adults with HIV-1, the peak serum lamivudine concentration (C_{max}) was 1.5 ± 0.5 mcg per mL (mean \pm SD). The area under the plasma concentration versus time curve (AUC) and C_{max} increased in proportion to oral dose over the range from 0.25 to 10 mg per kg.

The accumulation ratio of lamivudine in HIV-1-positive asymptomatic adults with normal renal function was 1.50 following 15 days of oral administration of 2 mg per kg twice daily.

Effects of Food on Oral Absorption: EPIVIR tablets and oral solution may be administered with or without food. An investigational 25-mg dosage form of lamivudine was administered orally to 12 asymptomatic, HIV-1-infected subjects on 2 occasions, once in the fasted state and once with food (1,099 kcal; 75 grams fat, 34 grams protein, 72 grams carbohydrate). Absorption of lamivudine was slower in the fed state (T_{max} : 3.2 ± 1.3 hours) compared with the fasted state (T_{max} : 0.9 ± 0.3 hours); C_{max} in the fed state was $40\% \pm 23\%$ (mean \pm SD) lower than in the fasted state. There was no significant difference in systemic exposure (AUC_{∞}) in the fed and fasted states.

Distribution: The apparent volume of distribution after IV administration of lamivudine to 20 subjects was 1.3 ± 0.4 L per kg, suggesting that lamivudine distributes into extravascular spaces. Volume of distribution was independent of dose and did not correlate with body weight.

Binding of lamivudine to human plasma proteins is low (less than 36%). In vitro studies showed that over the concentration range of 0.1 to 100 mcg per mL, the amount of lamivudine associated with erythrocytes ranged from 53% to 57% and was independent of concentration.

Metabolism: Metabolism of lamivudine is a minor route of elimination. In humans, the only known metabolite of lamivudine is the trans-sulfoxide metabolite (approximately 5% of an oral dose after 12 hours). Serum concentrations of this metabolite have not been determined. Lamivudine is not significantly metabolized by cytochrome P450 enzymes.

Elimination: The majority of lamivudine is eliminated unchanged in urine by active organic cationic secretion. In 9 healthy subjects given a single 300-mg oral dose of lamivudine, renal clearance was 199.7 ± 56.9 mL per min (mean \pm SD). In 20 HIV-1-infected subjects given a single IV dose, renal clearance was 280.4 ± 75.2 mL per min (mean \pm SD), representing $71\% \pm 16\%$ (mean \pm SD) of total clearance of lamivudine.

In most single-dose trials in HIV-1-infected subjects, HBV-infected subjects, or healthy subjects with serum sampling for 24 hours after dosing, the observed mean elimination half-life ($t_{1/2}$) ranged from 5 to 7 hours. In HIV-1-infected subjects, total clearance was 398.5 ± 69.1 mL per min (mean \pm SD). Oral clearance and elimination half-life were independent of dose and body weight over an oral dosing range of 0.25 to 10 mg per kg.

Special Populations

Renal Impairment: The pharmacokinetic properties of lamivudine have been determined in a small group of HIV-1-infected adults with impaired renal function (Table 7).

Table 7. Pharmacokinetic Parameters (Mean \pm SD) after a Single 300-mg Oral Dose of Lamivudine in 3 Groups of Adults with Varying Degrees of Renal Function

Parameter	Creatinine Clearance Criterion (Number of Subjects)		
	>60 mL/min (n = 6)	10-30 mL/min (n = 4)	<10 mL/min (n = 6)
Creatinine clearance (mL/min)	111 \pm 14	28 \pm 8	6 \pm 2
C _{max} (mcg/mL)	2.6 \pm 0.5	3.6 \pm 0.8	5.8 \pm 1.2
AUC _∞ (mcg·h/mL)	11.0 \pm 1.7	48.0 \pm 19	157 \pm 74
Cl/F (mL/min)	464 \pm 76	114 \pm 34	36 \pm 11

T_{max} was not significantly affected by renal function. Based on these observations, it is recommended that the dosage of lamivudine be modified in patients with renal impairment [see *Dosage and Administration (2.3)*].

Based on a trial in otherwise healthy subjects with impaired renal function, hemodialysis increased lamivudine clearance from a mean of 64 to 88 mL per min; however, the length of time of hemodialysis (4 hours) was insufficient to significantly alter mean lamivudine exposure after a

single-dose administration. Continuous ambulatory peritoneal dialysis and automated peritoneal dialysis have negligible effects on lamivudine clearance. Therefore, it is recommended, following correction of dose for creatinine clearance, that no additional dose modification be made after routine hemodialysis or peritoneal dialysis.

The effects of renal impairment on lamivudine pharmacokinetics in pediatric patients are not known.

Hepatic Impairment: The pharmacokinetic properties of lamivudine have been determined in adults with impaired hepatic function. Pharmacokinetic parameters were not altered by diminishing hepatic function. Safety and efficacy of lamivudine have not been established in the presence of decompensated liver disease.

Pregnancy: Lamivudine pharmacokinetics were studied in 36 pregnant women during 2 clinical trials conducted in South Africa. Lamivudine pharmacokinetics in pregnant women were similar to those seen in non-pregnant adults and in postpartum women. Lamivudine concentrations were generally similar in maternal, neonatal, and umbilical cord serum samples.

Pediatric Patients: The pharmacokinetics of lamivudine have been studied after either single or repeat doses of EPIVIR in 210 pediatric subjects. Pediatric subjects receiving lamivudine oral solution according to the recommended dosage regimen achieved approximately 25% lower plasma concentrations of lamivudine compared with HIV-1-infected adults. Pediatric subjects receiving lamivudine oral tablets achieved plasma concentrations comparable to or slightly higher than those observed in adults. The absolute bioavailability of both EPIVIR tablets and oral solution are lower in children than adults. The relative bioavailability of EPIVIR oral solution is approximately 40% lower than tablets containing lamivudine in pediatric subjects despite no difference in adults. The mechanisms for the diminished absolute bioavailability of lamivudine and relative bioavailability of lamivudine solution are unknown.

The pharmacokinetics of lamivudine dosed once daily in HIV-1-infected pediatric subjects aged 3 months through 12 years was evaluated in 3 trials (PENTA-15 [n = 17], PENTA 13 [n = 19], and ARROW PK [n = 35]). All 3 trials were 2-period, crossover, open-label pharmacokinetic trials of twice- versus once-daily dosing of abacavir and lamivudine. These 3 trials demonstrated that once-daily dosing provides similar AUC_{0-24} to twice-daily dosing of lamivudine at the same total daily dose when comparing the dosing regimens within the same formulation (i.e., either the oral solution or the tablet formulation). The mean C_{max} was approximately 80% to 90% higher with lamivudine once-daily dosing compared with twice-daily dosing.

Table 8. Pharmacokinetic Parameters (Geometric Mean [95% CI]) after Repeat Dosing of Lamivudine in 3 Pediatric Trials

	Trial (Number of Subjects)					
	ARROW PK (n = 35)		PENTA-13 (n = 19)		PENTA-15 (n = 17) ^a	
Age Range	3-12 years		2-12 years		3-36 months	
Formulation	Tablet		Solution and Tablet ^b		Solution	
Parameter	Once Daily	Twice Daily	Once Daily	Twice Daily	Once Daily	Twice Daily
C _{max} (mcg/mL)	3.17 (2.76, 3.64)	1.80 (1.59, 2.04)	2.09 (1.80, 2.42)	1.11 (0.96, 1.29)	1.87 (1.65, 2.13)	1.05 (0.88, 1.26)
AUC ₍₀₋₂₄₎ (mcg•h/mL)	13.0 (11.4, 14.9)	12.0 (10.7, 13.4)	9.80 (8.64, 11.1)	8.88 (7.67, 10.3)	8.66 (7.46, 10.1)	9.48 (7.89, 11.4)

^a n = 16 for PENTA-15 C_{max}.

^b Five subjects in PENTA-13 received lamivudine tablets.

Distribution of lamivudine into cerebrospinal fluid (CSF) was assessed in 38 pediatric subjects after multiple oral dosing with lamivudine. CSF samples were collected between 2 and 4 hours postdose. At the dose of 8 mg per kg per day, CSF lamivudine concentrations in 8 subjects ranged from 5.6% to 30.9% (mean ± SD of 14.2% ± 7.9%) of the concentration in a simultaneous serum sample, with CSF lamivudine concentrations ranging from 0.04 to 0.3 mcg per mL.

Limited, uncontrolled pharmacokinetic and safety data are available from administration of lamivudine (and zidovudine) to 36 infants aged up to 1 week in 2 trials in South Africa. In these trials, lamivudine clearance was substantially reduced in 1-week-old neonates relative to pediatric subjects (aged over 3 months) studied previously. There is insufficient information to establish the time course of changes in clearance between the immediate neonatal period and the age-ranges over 3 months old [see *Adverse Reactions (6.1)*].

Geriatric Patients: The pharmacokinetics of lamivudine after administration of EPIVIR to subjects over 65 years have not been studied [see *Use in Specific Populations (8.5)*].

Gender: There are no significant or clinically relevant gender differences in lamivudine pharmacokinetics.

Race: There are no significant or clinically relevant racial differences in lamivudine pharmacokinetics.

Drug Interactions

Interferon Alfa: There was no significant pharmacokinetic interaction between lamivudine and interferon alfa in a trial of 19 healthy male subjects [see *Warnings and Precautions (5.3)*].

Ribavirin: In vitro data indicate ribavirin reduces phosphorylation of lamivudine, stavudine, and zidovudine. However, no pharmacokinetic (e.g., plasma concentrations or intracellular triphosphorylated active metabolite concentrations) or pharmacodynamic (e.g., loss of HIV-1/HCV virologic suppression) interaction was observed when ribavirin and lamivudine (n = 18), stavudine (n = 10), or zidovudine (n = 6) were coadministered as part of a multi-drug regimen to HIV-1/HCV co-infected subjects [see *Warnings and Precautions (5.3)*].

Trimethoprim/Sulfamethoxazole: Lamivudine and TMP/SMX were coadministered to 14 HIV-1-positive subjects in a single-center, open-label, randomized, crossover trial. Each subject received treatment with a single 300-mg dose of lamivudine and TMP 160 mg/SMX 800 mg once a day for 5 days with concomitant administration of lamivudine 300 mg with the fifth dose in a crossover design. Coadministration of TMP/SMX with lamivudine resulted in an increase of $43\% \pm 23\%$ (mean \pm SD) in lamivudine AUC_{∞} , a decrease of $29\% \pm 13\%$ in lamivudine oral clearance, and a decrease of $30\% \pm 36\%$ in lamivudine renal clearance. The pharmacokinetic properties of TMP and SMX were not altered by coadministration with lamivudine. There is no information regarding the effect on lamivudine pharmacokinetics of higher doses of TMP/SMX such as those used in treat PCP.

Zidovudine: No clinically significant alterations in lamivudine or zidovudine pharmacokinetics were observed in 12 asymptomatic HIV-1-infected adult subjects given a single dose of zidovudine (200 mg) in combination with multiple doses of lamivudine (300 mg every 12 hours).

12.4 Microbiology

Mechanism of Action

Lamivudine is a synthetic nucleoside analogue. Intracellularly, lamivudine is phosphorylated to its active 5'-triphosphate metabolite, lamivudine triphosphate (3TC-TP). The principal mode of action of 3TC-TP is inhibition of HIV-1 reverse transcriptase (RT) via DNA chain termination after incorporation of the nucleotide analogue.

Antiviral Activity

The antiviral activity of lamivudine against HIV-1 was assessed in a number of cell lines including monocytes and fresh human peripheral blood lymphocytes (PBMCs) using standard susceptibility assays. EC_{50} values were in the range of 0.003 to 15 microM (1 microM = 0.23 mcg per mL). The median EC_{50} values of lamivudine were 60 nM (range: 20 to 70 nM), 35 nM (range: 30 to 40 nM), 30 nM (range: 20 to 90 nM), 20 nM (range: 3 to 40 nM), 30 nM (range: 1 to 60 nM), 30 nM (range: 20 to 70 nM), 30 nM (range: 3 to 70 nM), and 30 nM (range: 20 to 90 nM) against HIV-1 clades A-G and group O viruses (n = 3 except n = 2 for clade B) respectively. The EC_{50} values against HIV-2 isolates (n = 4) ranged from 0.003 to 0.120 microM in PBMCs. Lamivudine was not antagonistic to all tested anti-HIV agents.

Ribavirin (50 microM) used in the treatment of chronic HCV infection decreased the anti-HIV-1 activity of lamivudine by 3.5-fold in MT-4 cells.

Resistance

Lamivudine-resistant variants of HIV-1 have been selected in cell culture. Genotypic analysis showed that the resistance was due to a specific amino acid substitution in the HIV-1 reverse transcriptase at codon 184 changing the methionine to either valine or isoleucine (M184V/I).

HIV-1 strains resistant to both lamivudine and zidovudine have been isolated from subjects. Susceptibility of clinical isolates to lamivudine and zidovudine was monitored in controlled clinical trials. In subjects receiving lamivudine monotherapy or combination therapy with lamivudine plus zidovudine, HIV-1 isolates from most subjects became phenotypically and genotypically resistant to lamivudine within 12 weeks.

Genotypic and Phenotypic Analysis of On-Therapy HIV-1 Isolates from Subjects with Virologic Failure

Trial EPV20001: Fifty-three of 554 (10%) subjects enrolled in EPV20001 were identified as virological failures (plasma HIV-1 RNA level greater than or equal to 400 copies per mL) by Week 48. Twenty-eight subjects were randomized to the lamivudine once-daily treatment group and 25 to the lamivudine twice-daily treatment group. The median baseline plasma HIV-1 RNA levels of subjects in the lamivudine once-daily group and lamivudine twice-daily group were 4.9 log₁₀ copies per mL and 4.6 log₁₀ copies per mL, respectively.

Genotypic analysis of on-therapy isolates from 22 subjects identified as virologic failures in the lamivudine once-daily group showed that isolates from 8 of 22 subjects contained a treatment-emergent lamivudine resistance-associated substitution (M184V or M184I), isolates from 0 of 22 subjects contained treatment-emergent amino acid substitutions associated with zidovudine resistance (M41L, D67N, K70R, L210W, T215Y/F, or K219Q/E), and isolates from 10 of 22 subjects contained treatment-emergent amino acid substitutions associated with efavirenz resistance (L100I, K101E, K103N, V108I, or Y181C).

Genotypic analysis of on-therapy isolates from subjects (n = 22) in the lamivudine twice-daily treatment group showed that isolates from 5 of 22 subjects contained treatment-emergent lamivudine resistance substitutions, isolates from 1 of 22 subjects contained treatment-emergent zidovudine resistance substitutions, and isolates from 7 of 22 subjects contained treatment-emergent efavirenz resistance substitutions.

Phenotypic analysis of baseline-matched on-therapy HIV-1 isolates from subjects (n = 13) receiving lamivudine once daily showed that isolates from 7 of 13 subjects showed an 85- to 299-fold decrease in susceptibility to lamivudine, isolates from 12 of 13 subjects were susceptible to zidovudine, and isolates from 8 of 13 subjects exhibited a 25- to 295-fold decrease in susceptibility to efavirenz.

Phenotypic analysis of baseline-matched on-therapy HIV-1 isolates from subjects (n = 13) receiving lamivudine twice daily showed that isolates from 4 of 13 subjects exhibited a 29- to 159-fold decrease in susceptibility to lamivudine, isolates from all 13 subjects were susceptible to zidovudine, and isolates from 3 of 13 subjects exhibited a 21- to 342-fold decrease in susceptibility to efavirenz.

Trial EPV40001: Fifty subjects received lamivudine 300 mg once daily plus zidovudine 300 mg twice daily plus abacavir 300 mg twice daily and 50 subjects received lamivudine 150 mg plus zidovudine 300 mg plus abacavir 300 mg all twice-daily. The median baseline plasma HIV-1 RNA levels for subjects in the 2 groups were 4.79 log₁₀ copies per mL and 4.83 log₁₀ copies per mL, respectively. Fourteen of 50 subjects in the lamivudine once-daily treatment group and 9 of 50 subjects in the lamivudine twice-daily group were identified as virologic failures.

Genotypic analysis of on-therapy HIV-1 isolates from subjects (n = 9) in the lamivudine once-daily treatment group showed that isolates from 6 subjects had an abacavir and/or lamivudine resistance-associated substitution M184V alone. On-therapy isolates from subjects (n = 6) receiving lamivudine twice daily showed that isolates from 2 subjects had M184V alone, and isolates from 2 subjects harbored the M184V substitution in combination with zidovudine resistance-associated amino acid substitutions.

Phenotypic analysis of on-therapy isolates from subjects (n = 6) receiving lamivudine once daily showed that HIV-1 isolates from 4 subjects exhibited a 32- to 53-fold decrease in susceptibility to lamivudine. HIV-1 isolates from these 6 subjects were susceptible to zidovudine.

Phenotypic analysis of on-therapy isolates from subjects (n = 4) receiving lamivudine twice daily showed that HIV-1 isolates from 1 subject exhibited a 45-fold decrease in susceptibility to lamivudine and a 4.5-fold decrease in susceptibility to zidovudine.

Pediatrics: Pediatric subjects receiving lamivudine oral solution concomitantly with other antiretroviral oral solutions (abacavir, nevirapine/efavirenz, or zidovudine) in ARROW developed viral resistance more frequently than those receiving tablets. At randomization to once-daily or twice-daily dosing of EPIVIR plus abacavir, 13% of subjects who started on tablets and 32% of subjects who started on solution had resistance substitutions. The resistance profile observed in pediatrics is similar to that observed in adults in terms of the genotypic substitutions detected and relative frequency, with the most commonly detected substitutions at M184 (V or I) [*see Clinical Studies (14.2)*].

Cross-Resistance

Cross-resistance has been observed among nucleoside reverse transcriptase inhibitors (NRTIs). Lamivudine-resistant HIV-1 mutants were cross-resistant in cell culture to didanosine (ddI). Cross-resistance is also expected with abacavir and emtricitabine as these select M184V substitutions.

13 NONCLINICAL TOXICOLOGY

13.1 Carcinogenesis, Mutagenesis, Impairment of Fertility

Carcinogenesis

Long-term carcinogenicity studies with lamivudine in mice and rats showed no evidence of carcinogenic potential at exposures up to 10 times (mice) and 58 times (rats) the human exposures at the recommended dose of 300 mg.

Mutagenesis

Lamivudine was mutagenic in an L5178Y mouse lymphoma assay and clastogenic in a cytogenetic assay using cultured human lymphocytes. Lamivudine was not mutagenic in a microbial mutagenicity assay, in an in vitro cell transformation assay, in a rat micronucleus test, in a rat bone marrow cytogenetic assay, and in an assay for unscheduled DNA synthesis in rat liver. Lamivudine showed no evidence of in vivo genotoxic activity in the rat at oral doses of up to 2,000 mg per kg, producing plasma levels of 35 to 45 times those in humans at the recommended dose for HIV-1 infection.

Impairment of Fertility

In a study of reproductive performance, lamivudine administered to rats at doses up to 4,000 mg per kg per day, producing plasma levels 47 to 70 times those in humans, revealed no evidence of impaired fertility and no effect on the survival, growth, and development to weaning of the offspring.

14 CLINICAL STUDIES

The use of EPIVIR is based on the results of clinical trials in HIV-1-infected subjects in combination regimens with other antiretroviral agents. Information from trials with clinical endpoints or a combination of CD4+ cell counts and HIV-1 RNA measurements is included below as documentation of the contribution of lamivudine to a combination regimen in controlled trials.

14.1 Adult Subjects

Clinical Endpoint Trial

NUCB3007 (CAESAR) was a multicenter, double-blind, placebo-controlled trial comparing continued current therapy (zidovudine alone [62% of subjects] or zidovudine with didanosine or zalcitabine [38% of subjects]) to the addition of EPIVIR or EPIVIR plus an investigational non-nucleoside reverse transcriptase inhibitor (NNRTI), randomized 1:2:1. A total of 1,816 HIV-1-infected adults with 25 to 250 CD4+ cells per mm³ (median = 122 cells per mm³) at baseline were enrolled: median age was 36 years, 87% were male, 84% were nucleoside-experienced, and 16% were therapy-naive. The median duration on trial was 12 months. Results are summarized in Table 9.

Table 9. Number of Subjects (%) with at Least One HIV-1 Disease Progression Event or Death

Endpoint	Current Therapy (n = 460)	EPIVIR plus Current Therapy (n = 896)	EPIVIR plus an NNRTI^a plus Current Therapy (n = 460)
HIV-1 progression or death	90 (19.6%)	86 (9.6%)	41 (8.9%)
Death	27 (5.9%)	23 (2.6%)	14 (3.0%)

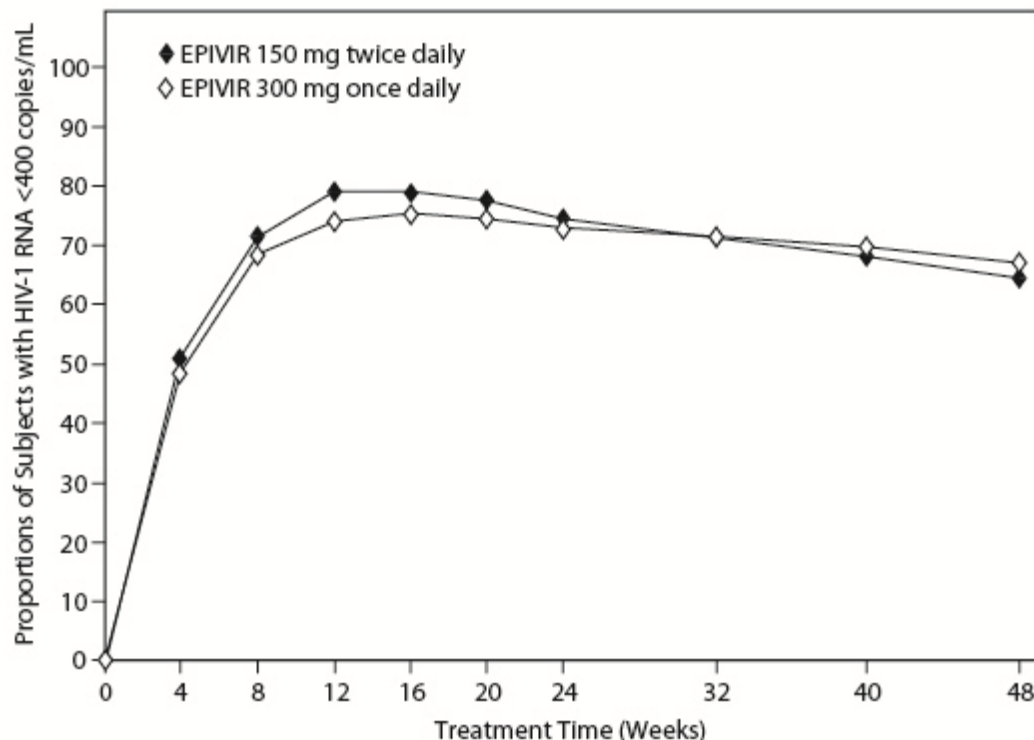
^a An investigational non-nucleoside reverse transcriptase inhibitor not approved in the United States.

Surrogate Endpoint Trials

Dual Nucleoside Analogue Trials: Principal clinical trials in the initial development of lamivudine compared lamivudine/zidovudine combinations with zidovudine monotherapy or with zidovudine plus zalcitabine. These trials demonstrated the antiviral effect of lamivudine in a 2-drug combination. More recent uses of lamivudine in treatment of HIV-1 infection incorporate it into multiple-drug regimens containing at least 3 antiretroviral drugs for enhanced viral suppression.

Dose Regimen Comparison Surrogate Endpoint Trials in Therapy-Naive Adults: EPV20001 was a multicenter, double-blind, controlled trial in which subjects were randomized 1:1 to receive EPIVIR 300 mg once daily or EPIVIR 150 mg twice daily, in combination with zidovudine 300 mg twice daily and efavirenz 600 mg once daily. A total of 554 antiretroviral treatment-naive HIV-1-infected adults enrolled: male (79%), white (50%), median age of 35 years, baseline CD4+ cell counts of 69 to 1,089 cells per mm³ (median = 362 cells per mm³), and median baseline plasma HIV-1 RNA of 4.66 log₁₀ copies per mL. Outcomes of treatment through 48 weeks are summarized in Figure 1 and Table 10.

Figure 1. Virologic Response through Week 48, EPV20001^{a,b} (Intent-to-Treat)



^a Roche AMPLICOR HIV-1 MONITOR.

^b Responders at each visit are subjects who had achieved and maintained HIV-1 RNA less than 400 copies per mL without discontinuation by that visit.

Table 10. Outcomes of Randomized Treatment through 48 Weeks (Intent-to-Treat)

Outcome	EPIVIR 300 mg Once Daily plus RETROVIR plus Efavirenz (n = 278)	EPIVIR 150 mg Twice Daily plus RETROVIR plus Efavirenz (n = 276)
Responder ^a	67%	65%
Virologic failure ^b	8%	8%
Discontinued due to clinical progression	<1%	0%
Discontinued due to adverse events	6%	12%
Discontinued due to other reasons ^c	18%	14%

^a Achieved confirmed plasma HIV-1 RNA less than 400 copies per mL and maintained through 48 weeks.

^b Achieved suppression but rebounded by Week 48, discontinued due to virologic failure, insufficient viral response according to the investigator, or never suppressed through Week 48.

^c Includes consent withdrawn, lost to follow-up, protocol violation, data outside the trial-defined schedule, and randomized but never initiated treatment.

The proportions of subjects with HIV-1 RNA less than 50 copies per mL (via Roche Ultrasensitive assay) through Week 48 were 61% for subjects receiving EPIVIR 300 mg once daily and 63% for subjects receiving EPIVIR 150 mg twice daily. Median increases in CD4+ cell counts were 144 cells per mm³ at Week 48 in subjects receiving EPIVIR 300 mg once daily and 146 cells per mm³ for subjects receiving EPIVIR 150 mg twice daily.

A small, randomized, open-label pilot trial, EPV40001, was conducted in Thailand. A total of 159 treatment-naïve adult subjects (male 32%, Asian 100%, median age 30 years, baseline median CD4+ cell count 380 cells per mm³, median plasma HIV-1 RNA 4.8 log₁₀ copies per mL) were enrolled. Two of the treatment arms in this trial provided a comparison between lamivudine 300 mg once daily (n = 54) and lamivudine 150 mg twice daily (n = 52), each in combination with zidovudine 300 mg twice daily and abacavir 300 mg twice daily. In intent-to-treat analyses of 48-week data, the proportions of subjects with HIV-1 RNA below 400 copies per mL were 61% (33 of 54) in the group randomized to once-daily lamivudine and 75% (39 of 52) in the group randomized to receive all 3 drugs twice daily; the proportions with HIV-1 RNA below 50 copies per mL were 54% (29 of 54) in the once-daily lamivudine group and 67% (35 of 52) in the all-twice-daily group; and the median increases in CD4+ cell counts were 166 cells per mm³ in the once-daily lamivudine group and 216 cells per mm³ in the all-twice-daily group.

14.2 Pediatric Subjects

Clinical Endpoint Trial

ACTG300 was a multicenter, randomized, double-blind trial that provided for comparison of EPIVIR plus RETROVIR (zidovudine) with didanosine monotherapy. A total of 471 symptomatic, HIV-1-infected therapy-naïve (less than or equal to 56 days of antiretroviral therapy) pediatric subjects were enrolled in these 2 treatment arms. The median age was 2.7 years (range: 6 weeks to 14 years), 58% were female, and 86% were non-white. The mean baseline CD4+ cell count was 868 cells per mm³ (mean: 1,060 cells per mm³ and range: 0 to 4,650 cells per mm³ for subjects aged less than or equal to 5 years; mean: 419 cells per mm³ and range: 0 to 1,555 cells per mm³ for subjects aged over 5 years) and the mean baseline plasma HIV-1 RNA was 5.0 log₁₀ copies per mL. The median duration on trial was 10.1 months for the subjects receiving EPIVIR plus RETROVIR and 9.2 months for subjects receiving didanosine monotherapy. Results are summarized in Table 11.

Table 11. Number of Subjects (%) Reaching a Primary Clinical Endpoint (Disease Progression or Death)

Endpoint	EPIVIR plus RETROVIR (n = 236)	Didanosine (n = 235)
HIV-1 disease progression or death (total)	15 (6.4%)	37 (15.7%)
Physical growth failure	7 (3.0%)	6 (2.6%)
Central nervous system deterioration	4 (1.7%)	12 (5.1%)
CDC Clinical Category C	2 (0.8%)	8 (3.4%)
Death	2 (0.8%)	11 (4.7%)

Once-Daily Dosing

ARROW (COL105677) was a 5-year randomized, multicenter trial which evaluated multiple aspects of clinical management of HIV-1 infection in pediatric subjects. HIV-1-infected, treatment-naïve subjects aged 3 months to 17 years were enrolled and treated with a first-line regimen containing EPIVIR and abacavir, dosed twice daily according to World Health Organization recommendations. After a minimum of 36 weeks on treatment, subjects were given the option to participate in Randomization 3 of the ARROW trial, comparing the safety and efficacy of once-daily dosing with twice-daily dosing of EPIVIR and abacavir, in combination with a third antiretroviral drug, for an additional 96 weeks. Of the 1,206 original ARROW subjects, 669 participated in Randomization 3. Virologic suppression was not a requirement for participation: at baseline for Randomization 3 (following a minimum of 36 weeks of twice-daily treatment), 75% of subjects in the twice-daily cohort were virologically suppressed, compared with 71% of subjects in the once-daily cohort.

The proportion of subjects with HIV-1 RNA of less than 80 copies per mL through 96 weeks is shown in Table 12. The differences between virologic responses in the two treatment arms were comparable across baseline characteristics for gender and age.

Table 12. Virologic Outcome of Randomized Treatment at Week 96^a (ARROW Randomization 3)

Outcome	EPIVIR plus Abacavir Twice-Daily Dosing (n = 333)	EPIVIR plus Abacavir Once-Daily Dosing (n = 336)
HIV-1 RNA <80 copies/mL^b	70%	67%
HIV-1 RNA ≥80 copies/mL^c	28%	31%
No virologic data		
Discontinued due to adverse event or death	1%	<1%
Discontinued study for other reasons ^d	0%	<1%
Missing data during window but on study	1%	1%

^a Analyses were based on the last observed viral load data within the Week 96 window.

^b Predicted difference (95% CI) of response rate is -4.5% (-11% to 2%) at Week 96.

^c Includes subjects who discontinued due to lack or loss of efficacy or for reasons other than an adverse event or death, and had a viral load value of greater than or equal to 80 copies per mL, or subjects who had a switch in background regimen that was not permitted by the protocol.

^d Other includes reasons such as withdrew consent, loss to follow-up, etc. and the last available HIV-1 RNA less than 80 copies per mL (or missing).

Analyses by formulation demonstrated the proportion of subjects with HIV-1 RNA of less than 80 copies per mL at randomization and Week 96 was higher in subjects who had received tablet formulations (75% [458/610] and 72% [434/601]) than in those who had received any solution formulations at any time (52% [29/56] and 54% [30/56]), respectively. These differences were observed in each different age group evaluated.

16 HOW SUPPLIED/STORAGE AND HANDLING

EPIVIR scored tablets contain 150 mg of lamivudine, are white, diamond-shaped, film-coated, and debossed with “GX CJ7” on both sides. Packaged as follows:

Bottle of 60 tablets (NDC 49702-203-18) with child-resistant closure.

EPIVIR tablets contain 300 mg of lamivudine, are gray, modified diamond-shaped, film-coated, and engraved with “GX EJ7” on one side and plain on the reverse side. Packaged as follows:

Bottle of 30 tablets (NDC 49702-204-13) with child-resistant closure.

Recommended Storage:

Store EPIVIR tablets at 25°C (77°F); excursions permitted to 15° to 30°C (59° to 86°F) [see USP Controlled Room Temperature].

EPIVIR oral solution is a clear, colorless to pale yellow, strawberry-banana-flavored liquid. Each mL of the solution contains 10 mg of lamivudine. Packaged as follows:

Plastic bottle of 240 mL (NDC 49702-205-48) with child-resistant closure. This product does not require reconstitution.

Store in tightly closed bottles at 25°C (77°F) [see USP Controlled Room Temperature].

17 PATIENT COUNSELING INFORMATION

Advise the patient to read the FDA-approved patient labeling (Patient Information).

Lactic Acidosis/Hepatomegaly

Advise patients that lactic acidosis and severe hepatomegaly with steatosis have been reported with use of nucleoside analogues and other antiretrovirals. Advise patients to stop taking EPIVIR if they develop clinical symptoms suggestive of lactic acidosis or pronounced hepatotoxicity [*see Warnings and Precautions (5.1)*].

Patients with Hepatitis B or C Co-infection

Inform patients co-infected with HIV-1 and HBV that deterioration of liver disease has occurred in some cases when treatment with lamivudine was discontinued. Advise patients to discuss any changes in regimen with their healthcare provider [*see Warnings and Precautions (5.2)*].

Inform patients with HIV-1/HCV co-infection that hepatic decompensation (some fatal) has occurred in HIV-1/HCV co-infected patients receiving combination antiretroviral therapy for HIV-1 and interferon alfa with or without ribavirin [*see Warnings and Precautions (5.3)*].

Differences in Formulations of EPIVIR

Advise patients that EPIVIR tablets and oral solution contain a higher dose of the same active ingredient (lamivudine) as EPIVIR-HBV tablets and oral solution. If a decision is made to include lamivudine in the HIV-1 treatment regimen of a patient co-infected with HIV-1 and HBV, the formulation and dosage of lamivudine in EPIVIR (not EPIVIR-HBV) should be used [*see Warnings and Precautions (5.2)*].

Risk of Pancreatitis

Advise parents or guardians to monitor pediatric patients for signs and symptoms of pancreatitis [*see Warnings and Precautions (5.4)*].

Immune Reconstitution Syndrome

Advise patients to inform their healthcare provider immediately of any signs and symptoms of infection as inflammation from previous infection may occur soon after combination antiretroviral therapy, including when EPIVIR is started [*see Warnings and Precautions (5.5)*].

Redistribution/Accumulation of Body Fat

Inform patients that redistribution or accumulation of body fat may occur in patients receiving antiretroviral therapy and that the cause and long-term health effects of these conditions are not known at this time [*see Warnings and Precautions (5.7)*].

Sucrose Content of EPIVIR Oral Solution

Advise diabetic patients that each 15-mL dose of EPIVIR oral solution contains 3 grams of sucrose (1 mL = 200 mg of sucrose) [*see Description (11)*].

Pregnancy Registry

Advise patients that there is a pregnancy exposure registry that monitors pregnancy outcomes in women exposed to EPIVIR during pregnancy [*see Use in Specific Populations (8.1)*].

Lactation

Instruct women with HIV-1 infection not to breastfeed because HIV-1 can be passed to the baby in the breast milk [*see Use in Specific Populations (8.2)*].

Missed Dosage

Instruct patients that if they miss a dose of EPIVIR, to take it as soon as they remember. Advise patients not to double their next dose or take more than the prescribed dose [*see Dosage and Administration (2)*].

EPIVIR and RETROVIR are registered trademarks of the ViiV Healthcare group of companies.

EPIVIR-HBV is a trademark licensed to the GSK group of companies.

Manufactured for:



ViiV Healthcare
Research Triangle Park, NC 27709

by:



GlaxoSmithKline
Research Triangle Park, NC 27709

Manufactured under agreement from
Shire Pharmaceuticals Group plc
Basingstoke, UK

©2016 the ViiV Healthcare group of companies. All rights reserved.

EPV:xPI

PHARMACIST-DETACH HERE AND GIVE INSTRUCTIONS TO PATIENT

PATIENT INFORMATION	
EPIVIR[®] (EP-i-veer) (lamivudine) tablets	EPIVIR[®] (EP-i-veer) (lamivudine) oral solution
<p>What is the most important information I should know about EPIVIR?</p> <p>EPIVIR can cause serious side effects, including:</p> <ul style="list-style-type: none">• Build-up of an acid in your blood (lactic acidosis). Lactic acidosis can happen in some people who take EPIVIR. Lactic acidosis is a serious medical emergency that can cause death. Call your healthcare provider right away if you get any of the following symptoms that could be signs of lactic acidosis:<ul style="list-style-type: none">• feel very weak or tired• unusual (not normal) muscle pain• trouble breathing• stomach pain with nausea and vomiting• feel cold, especially in your arms and legs• feel dizzy or light-headed• have a fast or irregular heartbeat• Serious liver problems can happen in people who take EPIVIR. In some cases these serious liver problems can lead to death. Your liver may become large (hepatomegaly) and you may develop fat in your liver (steatosis). Call your healthcare provider right away if you get any of the following signs or symptoms of liver problems:<ul style="list-style-type: none">• your skin or the white part of your eyes turns yellow (jaundice)• dark or “tea-colored” urine• light-colored stools (bowel movements)• loss of appetite for several days or longer• nausea• pain, aching, or tenderness on the right side of your stomach area <p>You may be more likely to get lactic acidosis or serious liver problems if you are female, very overweight (obese), or have been taking nucleoside analog medicines for a long time.</p> <ul style="list-style-type: none">• Worsening of hepatitis B virus in people who have HIV-1 infection. If you have HIV-1 (Human Immunodeficiency Virus type 1) and hepatitis B virus (HBV) infection, your HBV may get worse (flare-up) if you stop taking EPIVIR. A “flare-up” is when your HBV infection suddenly returns in a worse way than before. Worsening liver disease can be serious and may lead to death.<ul style="list-style-type: none">• Do not run out of EPIVIR. Refill your prescription or talk to your healthcare provider before your EPIVIR is all gone.• Do not stop EPIVIR without first talking to your healthcare provider.• If you stop taking EPIVIR, your healthcare provider will need to check your health often and do	

blood tests regularly for several months to check your liver.

- **Resistant Hepatitis B Virus (HBV).** If you have HIV-1 and hepatitis B, the hepatitis B virus can change (mutate) during your treatment with EPIVIR and become harder to treat (resistant).
- **Use with interferon and ribavirin-based regimens.** Worsening of liver disease that has caused death has happened in people infected with both HIV-1 and hepatitis C virus who are taking antiretroviral medicines and are also being treated for hepatitis C with interferon with or without ribavirin. If you are taking EPIVIR and interferon with or without ribavirin, tell your healthcare provider if you have any new symptoms.

What is EPIVIR?

EPIVIR is a prescription medicine used together with other antiretroviral medicines to treat Human Immunodeficiency Virus (HIV-1) infection.

HIV-1 is the virus that causes Acquired Immune Deficiency Syndrome (AIDS).

EPIVIR tablets and oral solution (used to treat HIV-1 infection) contain a higher dose of the same active ingredient (lamivudine) than is in the medicine EPIVIR-HBV tablets and oral solution (used to treat HBV). If you have both HIV-1 and HBV, you should not use EPIVIR-HBV to treat your infections.

The safety and effectiveness of EPIVIR have not been established in children under 3 months of age.

Who should not take EPIVIR?

Do not take EPIVIR if you are allergic to lamivudine or any of the ingredients in EPIVIR. See the end of this Patient Information leaflet for a complete list of ingredients in EPIVIR.

What should I tell my healthcare provider before taking EPIVIR?

Before you take EPIVIR, tell your healthcare provider if you:

- have or have had liver problems, including hepatitis B or C virus infection.
- have kidney problems.
- have diabetes. Each 15-mL dose (150 mg) of EPIVIR oral solution contains 3 grams of sucrose.
- are pregnant or plan to become pregnant. Taking EPIVIR during pregnancy has not been associated with an increased risk of birth defects. Talk to your healthcare provider if you are pregnant or plan to become pregnant.

Pregnancy Registry. There is a pregnancy registry for women who take antiretroviral medicines during pregnancy. The purpose of this registry is to collect information about the health of you and your baby. Talk to your healthcare provider about how you can take part in this registry.

- are breastfeeding or plan to breastfeed. **Do not breastfeed if you take EPIVIR.**
 - You should not breastfeed if you have HIV-1 because of the risk of passing HIV-1 to your baby. Talk with your healthcare provider about the best way to feed your baby.

Tell your healthcare provider about all the medicines you take, including prescription and over-the-counter medicines, vitamins, and herbal supplements.

Some medications interact with EPIVIR. Keep a list of your medicines and show it to your healthcare provider and pharmacist when you get a new medicine. You can ask your healthcare provider or pharmacist for a list of medicines that interact with EPIVIR.

Do not start taking a new medicine without telling your healthcare provider. Your healthcare provider can tell you if it is safe to take EPIVIR with other medicines.

How should I take EPIVIR?

- **Take EPIVIR exactly as your healthcare provider tells you to take it.**
- If you miss a dose of EPIVIR, take it as soon as you remember. Do not take 2 doses at the same time or take more than what your healthcare provider tells you to take.
- Stay under the care of a healthcare provider during treatment with EPIVIR.
- EPIVIR may be taken with or without food.
- For children 3 months and older, your healthcare provider will prescribe a dose of EPIVIR based on your child's body weight.
- Tell your healthcare provider if you or your child has trouble swallowing tablets. EPIVIR also comes as a liquid (oral solution).
- Do not run out of EPIVIR. The virus in your blood may increase and the virus may become harder to treat. When your supply starts to run low, get more from your healthcare provider or pharmacy.
- If you take too much EPIVIR, call your healthcare provider or go to the nearest hospital emergency room right away.

What are the possible side effects of EPIVIR?

- **EPIVIR can cause serious side effects including:**
- **See “What is the most important information I should know about EPIVIR?”**
- **Risk of inflammation of the pancreas (pancreatitis).** Children may be at risk for developing pancreatitis during treatment with EPIVIR if they:
 - have taken nucleoside analogue medicines in the past
 - have a history of pancreatitis
 - have other risk factors for pancreatitis

Call your healthcare provider right away if your child develops signs and symptoms of pancreatitis including severe upper stomach-area pain, with or without nausea and vomiting. Your healthcare provider may tell you to stop giving EPIVIR to your child if their symptoms and blood test results show that your child may have pancreatitis.

- **Changes in your immune system (Immune Reconstitution Syndrome)** can happen when you start taking HIV-1 medicines. Your immune system may get stronger and begin to fight infections that have been hidden in your body for a long time. Tell your healthcare provider right away if you start having new symptoms after you start taking EPIVIR.
- **Changes in body fat** can happen in people who take HIV-1 medicines. These changes may include

an increased amount of fat in the upper back and neck (“buffalo hump”), breast, and around the middle of your body (trunk). Loss of fat from the legs, arms, and face may also happen. The exact cause and long-term health effects of these conditions are not known.

The most common side effects of EPIVIR in adults include:

- headache
- nausea
- generally not feeling well
- tiredness
- nasal signs and symptoms
- diarrhea
- cough

The most common side effects of EPIVIR in children include fever and cough.

Tell your healthcare provider if you have any side effect that bothers you or that does not go away.

These are not all the possible side effects of EPIVIR. Call your healthcare provider for medical advice about side effects. You may report side effects to FDA at 1-800-FDA-1088.

How should I store EPIVIR?

- Store EPIVIR tablets and oral solution at room temperature between 68°F to 77°F (20°C to 25°C).
- Keep bottles of EPIVIR oral solution tightly closed.

Keep EPIVIR and all medicines out of the reach of children.

General information about the safe and effective use of EPIVIR.

Medicines are sometimes prescribed for purposes other than those listed in a Patient Information leaflet. Do not use EPIVIR for a condition for which it was not prescribed. Do not give EPIVIR to other people, even if they have the same symptoms that you have. It may harm them.

You can ask your healthcare provider or pharmacist for information about EPIVIR that is written for health professionals.

For more information, go to www.viivhealthcare.com or call 1-877-844-8872.

What are the ingredients in EPIVIR?

Active ingredient: lamivudine

Inactive ingredients:

EPIVIR scored 150-mg film-coated tablets: hypromellose, magnesium stearate, microcrystalline cellulose, polyethylene glycol, polysorbate 80, sodium starch glycolate, and titanium dioxide.

EPIVIR 300-mg film-coated tablets: black iron oxide, hypromellose, magnesium stearate, microcrystalline cellulose, polyethylene glycol, polysorbate 80, sodium starch glycolate, and titanium dioxide.

EPIVIR oral solution: artificial strawberry and banana flavors, citric acid (anhydrous), methylparaben, propylene glycol, propylparaben, sodium citrate (dihydrate), and sucrose (200 mg per mL).

Manufactured for:

by:



ViiV Healthcare
Research Triangle Park, NC 27709



GlaxoSmithKline
Research Triangle Park, NC 27709

Manufactured under agreement from Shire Pharmaceuticals Group plc, Basingstoke, UK

EPIVIR is a registered trademark of the ViiV Healthcare group of companies. EPIVIR-HBV is a trademark licensed to the GSK group of companies.

©2016 the ViiV Healthcare group of companies. All rights reserved.

EPV:xPIL

This Patient Information has been approved by the U.S. Food and Drug Administration.

Revised: 07/2016