

## HIGHLIGHTS OF PRESCRIBING INFORMATION

These highlights do not include all the information needed to use SUSTIVA safely and effectively. See full prescribing information for SUSTIVA.

SUSTIVA® (efavirenz) capsules for oral use

SUSTIVA® (efavirenz) tablets for oral use

Initial U.S. Approval: 1998

### -----RECENT MAJOR CHANGES-----

Warning and Precautions, QTc Prolongation (5.2) 08/2016

### -----INDICATIONS AND USAGE-----

SUSTIVA is a non-nucleoside reverse transcriptase inhibitor indicated in combination with other antiretroviral agents for the treatment of human immunodeficiency virus type 1 infection in adults and in pediatric patients at least 3 months old and weighing at least 3.5 kg. (1)

### -----DOSAGE AND ADMINISTRATION-----

- SUSTIVA should be taken orally once daily on an empty stomach, preferably at bedtime. (2)
- Recommended adult dose: 600 mg. (2.1)
- With voriconazole, increase voriconazole maintenance dose to 400 mg every 12 hours and decrease SUSTIVA dose to 300 mg once daily using the capsule formulation. (2.1)
- With rifampin, increase SUSTIVA dose to 800 mg once daily for patients weighing 50 kg or more. (2.1)
- Pediatric dosing is based on weight. (2.2)

### -----DOSAGE FORMS AND STRENGTHS-----

- Capsules: 200 mg and 50 mg (3)
- Tablets: 600 mg (3)

### -----CONTRAINDICATIONS-----

SUSTIVA is contraindicated in patients with previously demonstrated hypersensitivity (eg, Stevens-Johnson syndrome, erythema multiforme, or toxic skin eruptions) to any of the components of this product. (4.1)

### -----WARNINGS AND PRECAUTIONS-----

- QTc prolongation*: Consider alternatives to SUSTIVA in patients taking other medications with a known risk of Torsade de Pointes or in patients at higher risk of Torsade de Pointes. (5.2)
- Do not use as a single agent* or add on as a sole agent to a failing regimen. Consider potential for cross-resistance when choosing other agents. (5.3)
- Not recommended with ATRIPLA, which contains efavirenz, emtricitabine, and tenofovir disoproxil fumarate, unless needed for dose adjustment when coadministered with rifampin. (5.4)
- Serious psychiatric symptoms*: Immediate medical evaluation is recommended for serious psychiatric symptoms such as severe depression or suicidal ideation. (5.5, 17)

- Nervous system symptoms (NSS)*: NSS are frequent and usually begin 1-2 days after initiating therapy and resolve in 2-4 weeks. Dosing at bedtime may improve tolerability. NSS are not predictive of onset of psychiatric symptoms. (5.6, 6.1, 17)
- Embryo-Fetal Toxicity*: Avoid administration in the first trimester of pregnancy as fetal harm may occur. (5.7, 8.1)
- Hepatotoxicity*: Monitor liver function tests before and during treatment in patients with underlying hepatic disease, including hepatitis B or C coinfection, marked transaminase elevations, or who are taking medications associated with liver toxicity. Among reported cases of hepatic failure, a few occurred in patients with no pre-existing hepatic disease. (5.9, 6.1, 8.6)
- Rash*: Rash usually begins within 1-2 weeks after initiating therapy and resolves within 4 weeks. Discontinue if severe rash develops. (5.8, 6.1, 17)
- Convulsions*: Use caution in patients with a history of seizures. (5.10)
- Lipids*: Total cholesterol and triglyceride elevations. Monitor before therapy and periodically thereafter. (5.11)
- Immune reconstitution syndrome*: May necessitate further evaluation and treatment. (5.12)
- Redistribution/accumulation of body fat*: Observed in patients receiving antiretroviral therapy. (5.13, 17)

### -----ADVERSE REACTIONS-----

Most common adverse reactions (>5%, moderate-severe) are impaired concentration, abnormal dreams, rash, dizziness, nausea, headache, fatigue, insomnia, and vomiting. (5.6, 6)

To report SUSPECTED ADVERSE REACTIONS, contact Bristol-Myers Squibb at 1-800-721-5072 or FDA at 1-800-FDA-1088 or [www.fda.gov/medwatch](http://www.fda.gov/medwatch).

### -----DRUG INTERACTIONS-----

Coadministration of efavirenz can alter the concentrations of other drugs and other drugs may alter the concentrations of efavirenz. The potential for drug-drug interactions should be considered before and during therapy. (7.1, 12.3)

### -----USE IN SPECIFIC POPULATIONS-----

- Lactation*: Breastfeeding not recommended. (8.2)
- Females and Males of Reproductive Potential*: Pregnancy testing and contraception are recommended. (8.3)
- Hepatic impairment*: SUSTIVA is not recommended for patients with moderate or severe hepatic impairment. Use caution in patients with mild hepatic impairment. (8.6)
- Pediatric patients*: The incidence of rash was higher than in adults. (5.8, 6.2, 8.4)

See 17 for PATIENT COUNSELING INFORMATION and FDA-approved patient labeling.

Revised: 10/2016

## FULL PRESCRIBING INFORMATION: CONTENTS\*

1	INDICATIONS AND USAGE	7.2	Potential for Other Drugs to Affect SUSTIVA
2	DOSAGE AND ADMINISTRATION	7.3	QT Prolonging Drugs
2.1	Adults	7.4	Established and Other Potentially Significant Drug Interactions
2.2	Pediatric Patients		
2.3	Capsule Sprinkle Method of Administration	7.5	Drugs Without Clinically Significant Interactions with SUSTIV
3	DOSAGE FORMS AND STRENGTHS	7.6	Cannabinoid Test Interaction
4	CONTRAINDICATIONS	8	USE IN SPECIFIC POPULATIONS
4.1	Hypersensitivity	8.1	Pregnancy
5	WARNINGS AND PRECAUTIONS	8.2	Lactation
5.1	Drug Interactions	8.3	Females and Males of Reproductive Potential
5.2	QTc Prolongation	8.4	Pediatric Use
5.3	Resistance	8.5	Geriatric Use
5.4	Coadministration with Related Products	8.6	Hepatic Impairment
5.5	Psychiatric Symptoms	10	OVERDOSAGE
5.6	Nervous System Symptoms	11	DESCRIPTION
5.7	Embryo-Fetal Toxicity	12	CLINICAL PHARMACOLOGY
5.8	Rash	12.1	Mechanism of Action
5.9	Hepatotoxicity	12.2	Pharmacodynamics
5.10	Convulsions	12.3	Pharmacokinetics
5.11	Lipid Elevations	12.4	Microbiology
5.12	Immune Reconstitution Syndrome	13	NONCLINICAL TOXICOLOGY
5.13	Fat Redistribution	13.1	Carcinogenesis, Mutagenesis, Impairment of Fertility
6	ADVERSE REACTIONS	13.2	Animal Toxicology
6.1	Clinical Trials Experience	14	CLINICAL STUDIES
6.2	Postmarketing Experience	14.1	Adults
7	DRUG INTERACTIONS	14.2	Pediatric Patients
7.1	Potential for SUSTIVA to Affect other Drugs		

**16 HOW SUPPLIED/STORAGE AND HANDLING**

16.1 Capsules

16.2 Tablets

16.3 Storage

\*Sections or subsections omitted from the full prescribing information are not listed.

**17 PATIENT COUNSELING INFORMATION**

---

## FULL PRESCRIBING INFORMATION

### 1 INDICATIONS AND USAGE

SUSTIVA<sup>®</sup> (efavirenz) in combination with other antiretroviral agents is indicated for the treatment of human immunodeficiency virus type 1 (HIV-1) infection in adults and in pediatric patients at least 3 months old and weighing at least 3.5 kg.

### 2 DOSAGE AND ADMINISTRATION

#### 2.1 Adults

The recommended dosage of SUSTIVA (efavirenz) is 600 mg orally, once daily, in combination with a protease inhibitor and/or nucleoside analogue reverse transcriptase inhibitors (NRTIs). It is recommended that SUSTIVA be taken on an empty stomach, preferably at bedtime. The increased efavirenz concentrations observed following administration of SUSTIVA with food may lead to an increase in frequency of adverse reactions [*see Clinical Pharmacology (12.3)*]. Dosing at bedtime may improve the tolerability of nervous system symptoms [*see Warnings and Precautions (5.6), Adverse Reactions (6.1), and Patient Counseling Information (17)*]. SUSTIVA capsules or tablets should be swallowed intact with liquid. For patients who cannot swallow capsules or tablets, the capsule sprinkle method of administration is recommended [*see Dosage and Administration (2.3)*].

#### Concomitant Antiretroviral Therapy

SUSTIVA must be given in combination with other antiretroviral medications [*see Indications and Usage (1), Warnings and Precautions (5.3), Drug Interactions (7.1), and Clinical Pharmacology (12.3)*].

#### Dosage Adjustment

If SUSTIVA is coadministered with voriconazole, the voriconazole maintenance dose should be increased to 400 mg every 12 hours and the SUSTIVA dose should be decreased to 300 mg once daily using the capsule formulation (one 200 mg and two 50 mg capsules or six 50 mg capsules). SUSTIVA tablets must not be broken. [*See Drug Interactions (7.1, Table 5) and Clinical Pharmacology (12.3, Tables 7 and 8)*.]

If SUSTIVA is coadministered with rifampin to patients weighing 50 kg or more, an increase in the dose of SUSTIVA to 800 mg once daily is recommended [*see Drug Interactions (7.1, Table 5) and Clinical Pharmacology (12.3, Table 8)*].

#### 2.2 Pediatric Patients

It is recommended that SUSTIVA be taken on an empty stomach, preferably at bedtime. Table 1 describes the recommended dose of SUSTIVA for pediatric patients 3 months of age or older and weighing between 3.5 kg and 40 kg [*see Clinical Pharmacology (12.3)*]. The recommended dosage of SUSTIVA for pediatric patients weighing 40 kg or greater is 600 mg once daily. For pediatric patients who cannot swallow capsules, the capsule contents can be administered with a small amount of food or infant formula using the capsule sprinkle method of administration [*see Dosage and Administration (2.3)*].

**Table 1: SUSTIVA Dosing in Pediatric Patients**

Patient Body Weight	SUSTIVA Daily Dose	Number of Capsules <sup>a</sup> or Tablets <sup>b</sup> and Strength to Administer
3.5 kg to less than 5 kg	100 mg	two 50 mg capsules
5 kg to less than 7.5 kg	150 mg	three 50 mg capsules
7.5 kg to less than 15 kg	200 mg	one 200 mg capsule
15 kg to less than 20 kg	250 mg	one 200 mg + one 50 mg capsule
20 kg to less than 25 kg	300 mg	one 200 mg + two 50 mg capsules
25 kg to less than 32.5 kg	350 mg	one 200 mg + three 50 mg capsules
32.5 kg to less than 40 kg	400 mg	two 200 mg capsules
at least 40 kg	600 mg	one 600 mg tablet OR three 200 mg capsules

<sup>a</sup> Capsules can be administered intact or as sprinkles [see *Dosage and Administration* (2.3)].

<sup>b</sup> Tablets must not be crushed.

### 2.3 Capsule Sprinkle Method of Administration

For pediatric patients at least 3 months old and weighing at least 3.5 kg and adults who cannot swallow capsules or tablets, the capsule contents may be administered with a small amount (1 to 2 teaspoons) of food. Use of infant formula for mixing should only be considered for those young infants who cannot reliably consume solid foods. Patients and caregivers should be instructed to open the capsule carefully to avoid spillage or dispersion of the capsule contents into the air. The capsule should be held horizontally over a small container and carefully twisted to open. For patients able to tolerate solid foods, the entire capsule contents should be gently mixed with an age-appropriate soft food, such as applesauce, grape jelly, or yogurt, in the small container. For young infants receiving the capsule sprinkle-infant formula mixture, the entire capsule contents should be gently mixed into 2 teaspoons of reconstituted room temperature infant formula in a small container by carefully stirring with a small spoon, and then drawing up the mixture into a 10 mL oral dosing syringe for administration. After administration of the SUSTIVA-food or -formula mixture, an additional small amount (approximately 2 teaspoons) of food or formula must be added to the empty mixing container, stirred to disperse any remaining SUSTIVA residue, and administered to the patient. The SUSTIVA-food or -formula mixture should be administered within 30 minutes of mixing. No additional food should be consumed for 2 hours after administration of SUSTIVA.

Further patient instructions on the capsule sprinkle method of administration are provided in the FDA-approved patient labeling (see Patient Information and Instructions for Use).

## 3 DOSAGE FORMS AND STRENGTHS

- *Capsules*

200 mg capsules are gold color, reverse printed with “SUSTIVA” on the body and imprinted “200 mg” on the cap.

50 mg capsules are gold color and white, printed with “SUSTIVA” on the gold color cap and reverse printed “50 mg” on the white body.

- *Tablets*

600 mg tablets are yellow, capsular-shaped, film-coated tablets, with “SUSTIVA” printed on both sides.

## **4 CONTRAINDICATIONS**

### **4.1 Hypersensitivity**

SUSTIVA is contraindicated in patients with previously demonstrated clinically significant hypersensitivity (eg, Stevens-Johnson syndrome, erythema multiforme, or toxic skin eruptions) to any of the components of this product.

## **5 WARNINGS AND PRECAUTIONS**

### **5.1 Drug Interactions**

Efavirenz plasma concentrations may be altered by substrates, inhibitors, or inducers of CYP3A. Likewise, efavirenz may alter plasma concentrations of drugs metabolized by CYP3A or CYP2B6. The most prominent effect of efavirenz at steady-state is induction of CYP3A and CYP2B6 [see *Dosage and Administration (2.1)* and *Drug Interactions (7.1)*].

### **5.2 QTc Prolongation**

QTc prolongation has been observed with the use of efavirenz [see *Drug Interactions (7.3, 7.4)* and *Clinical Pharmacology (12.2)*]. Consider alternatives to SUSTIVA when coadministered with a drug with a known risk of Torsade de Pointes or when administered to patients at higher risk of Torsade de Pointes.

### **5.3 Resistance**

SUSTIVA must not be used as a single agent to treat HIV-1 infection or added on as a sole agent to a failing regimen. Resistant virus emerges rapidly when efavirenz is administered as monotherapy. The choice of new antiretroviral agents to be used in combination with efavirenz should take into consideration the potential for viral cross-resistance.

### **5.4 Coadministration with Related Products**

Coadministration of SUSTIVA with ATRIPLA (efavirenz 600 mg/emtricitabine 200 mg/tenofovir disoproxil fumarate 300 mg) is not recommended unless needed for dose adjustment (eg, with rifampin), since efavirenz is one of its active ingredients.

### **5.5 Psychiatric Symptoms**

Serious psychiatric adverse experiences have been reported in patients treated with SUSTIVA. In controlled trials of 1008 patients treated with regimens containing SUSTIVA for a mean of 2.1 years and 635 patients treated with control regimens for a mean of 1.5 years, the frequency (regardless of causality) of specific serious psychiatric events among patients who received SUSTIVA or control regimens, respectively, were severe depression (2.4%, 0.9%), suicidal ideation (0.7%, 0.3%), nonfatal suicide attempts (0.5%, 0), aggressive behavior (0.4%, 0.5%), paranoid reactions (0.4%, 0.3%), and manic reactions (0.2%, 0.3%). When psychiatric symptoms

similar to those noted above were combined and evaluated as a group in a multifactorial analysis of data from Study 006, treatment with efavirenz was associated with an increase in the occurrence of these selected psychiatric symptoms. Other factors associated with an increase in the occurrence of these psychiatric symptoms were history of injection drug use, psychiatric history, and receipt of psychiatric medication at study entry; similar associations were observed in both the SUSTIVA and control treatment groups. In Study 006, onset of new serious psychiatric symptoms occurred throughout the study for both SUSTIVA-treated and control-treated patients. One percent of SUSTIVA-treated patients discontinued or interrupted treatment because of one or more of these selected psychiatric symptoms. There have also been occasional postmarketing reports of death by suicide, delusions, and psychosis-like behavior, although a causal relationship to the use of SUSTIVA cannot be determined from these reports. Patients with serious psychiatric adverse experiences should seek immediate medical evaluation to assess the possibility that the symptoms may be related to the use of SUSTIVA, and if so, to determine whether the risks of continued therapy outweigh the benefits. [*See Adverse Reactions (6.1).*]

## **5.6 Nervous System Symptoms**

Fifty-three percent (531/1008) of patients receiving SUSTIVA in controlled trials reported central nervous system symptoms (any grade, regardless of causality) compared to 25% (156/635) of patients receiving control regimens [*see Adverse Reactions (6.1, Table 3)*]. These symptoms included, but were not limited to, dizziness (28.1% of the 1008 patients), insomnia (16.3%), impaired concentration (8.3%), somnolence (7.0%), abnormal dreams (6.2%), and hallucinations (1.2%). These symptoms were severe in 2.0% of patients; and 2.1% of patients discontinued therapy as a result. These symptoms usually begin during the first or second day of therapy and generally resolve after the first 2-4 weeks of therapy. After 4 weeks of therapy, the prevalence of nervous system symptoms of at least moderate severity ranged from 5% to 9% in patients treated with regimens containing SUSTIVA and from 3% to 5% in patients treated with a control regimen. Patients should be informed that these common symptoms were likely to improve with continued therapy and were not predictive of subsequent onset of the less frequent psychiatric symptoms [*see Warnings and Precautions (5.5)*]. Dosing at bedtime may improve the tolerability of these nervous system symptoms [*see Dosage and Administration (2)*].

Analysis of long-term data from Study 006 (median follow-up 180 weeks, 102 weeks, and 76 weeks for patients treated with SUSTIVA + zidovudine + lamivudine, SUSTIVA + indinavir, and indinavir + zidovudine + lamivudine, respectively) showed that, beyond 24 weeks of therapy, the incidences of new-onset nervous system symptoms among SUSTIVA-treated patients were generally similar to those in the indinavir-containing control arm.

Patients receiving SUSTIVA should be alerted to the potential for additive central nervous system effects when SUSTIVA is used concomitantly with alcohol or psychoactive drugs.

Patients who experience central nervous system symptoms such as dizziness, impaired concentration, and/or drowsiness should avoid potentially hazardous tasks such as driving or operating machinery.

## 5.7 Embryo-Fetal Toxicity

Efavirenz may cause fetal harm when administered during the first trimester to a pregnant woman. Advise females of reproductive potential who are receiving SUSTIVA to avoid pregnancy. [*See Use in Specific Populations (8.1 and 8.3).*]

## 5.8 Rash

In controlled clinical trials, 26% (266/1008) of adult patients treated with 600 mg SUSTIVA experienced new-onset skin rash compared with 17% (111/635) of those treated in control groups [*see Adverse Reactions (6.1)*]. Rash associated with blistering, moist desquamation, or ulceration occurred in 0.9% (9/1008) of patients treated with SUSTIVA. The incidence of Grade 4 rash (eg, erythema multiforme, Stevens-Johnson syndrome) in adult patients treated with SUSTIVA in all studies and expanded access was 0.1%. Rashes are usually mild-to-moderate maculopapular skin eruptions that occur within the first 2 weeks of initiating therapy with efavirenz (median time to onset of rash in adults was 11 days) and, in most patients continuing therapy with efavirenz, rash resolves within 1 month (median duration, 16 days). The discontinuation rate for rash in adult clinical trials was 1.7% (17/1008).

Rash was reported in 59 of 182 pediatric patients (32%) treated with SUSTIVA [*see Adverse Reactions (6.2)*]. Two pediatric patients experienced Grade 3 rash (confluent rash with fever, generalized rash), and four patients had Grade 4 rash (erythema multiforme). The median time to onset of rash in pediatric patients was 28 days (range 3-1642 days). Prophylaxis with appropriate antihistamines before initiating therapy with SUSTIVA in pediatric patients should be considered.

SUSTIVA can generally be reinitiated in patients interrupting therapy because of rash. SUSTIVA should be discontinued in patients developing severe rash associated with blistering, desquamation, mucosal involvement, or fever. Appropriate antihistamines and/or corticosteroids may improve the tolerability and hasten the resolution of rash. For patients who have had a life-threatening cutaneous reaction (eg, Stevens-Johnson syndrome), alternative therapy should be considered [*see Contraindications (4.1)*].

## 5.9 Hepatotoxicity

Monitoring of liver enzymes before and during treatment is recommended for patients with underlying hepatic disease, including hepatitis B or C infection; patients with marked transaminase elevations; and patients treated with other medications associated with liver toxicity [*see Adverse Reactions (6.1)* and *Use in Specific Populations (8.6)*]. A few of the postmarketing reports of hepatic failure occurred in patients with no pre-existing hepatic disease or other identifiable risk factors [*see Adverse Reactions (6.2)*]. Liver enzyme monitoring should also be considered for patients without pre-existing hepatic dysfunction or other risk factors. In patients with persistent elevations of serum transaminases to greater than five times the upper limit of the normal range, the benefit of continued therapy with SUSTIVA needs to be weighed against the unknown risks of significant liver toxicity.

## 5.10 Convulsions

Convulsions have been observed in adult and pediatric patients receiving efavirenz, generally in the presence of known medical history of seizures [see *Nonclinical Toxicology (13.2)*]. Caution should be taken in any patient with a history of seizures. Patients who are receiving concomitant anticonvulsant medications primarily metabolized by the liver, such as phenytoin and phenobarbital, may require periodic monitoring of plasma levels [see *Drug Interactions (7.1)*].

## 5.11 Lipid Elevations

Treatment with SUSTIVA has resulted in increases in the concentration of total cholesterol and triglycerides [see *Adverse Reactions (6.1)*]. Cholesterol and triglyceride testing should be performed before initiating SUSTIVA therapy and at periodic intervals during therapy.

## 5.12 Immune Reconstitution Syndrome

Immune reconstitution syndrome has been reported in patients treated with combination antiretroviral therapy, including SUSTIVA. During the initial phase of combination antiretroviral treatment, patients whose immune system responds may develop an inflammatory response to indolent or residual opportunistic infections (such as *Mycobacterium avium* infection, cytomegalovirus, *Pneumocystis jiroveci* pneumonia [PCP], or tuberculosis), which may necessitate further evaluation and treatment.

Autoimmune disorders (such as Graves' disease, polymyositis, and Guillain-Barré syndrome) have also been reported to occur in the setting of immune reconstitution; however, the time to onset is more variable, and can occur many months after initiation of treatment.

## 5.13 Fat Redistribution

Redistribution/accumulation of body fat including central obesity, dorsocervical fat enlargement (buffalo hump), peripheral wasting, facial wasting, breast enlargement, and “cushingoid appearance” have been observed in patients receiving antiretroviral therapy. The mechanism and long-term consequences of these events are currently unknown. A causal relationship has not been established.

## 6 ADVERSE REACTIONS

The most significant adverse reactions observed in patients treated with SUSTIVA are:

- psychiatric symptoms [see *Warnings and Precautions (5.5)*],
- nervous system symptoms [see *Warnings and Precautions (5.6)*],
- rash [see *Warnings and Precautions (5.8)*].

### 6.1 Clinical Trials Experience

Because clinical studies are conducted under widely varying conditions, the adverse reaction rates reported cannot be directly compared to rates in other clinical studies and may not reflect the rates observed in clinical practice.



## Adverse Reactions in Adults

The most common (>5% in either efavirenz treatment group) adverse reactions of at least moderate severity among patients in Study 006 treated with SUSTIVA in combination with zidovudine/lamivudine or indinavir were rash, dizziness, nausea, headache, fatigue, insomnia, and vomiting.

Selected clinical adverse reactions of moderate or severe intensity observed in  $\geq 2\%$  of SUSTIVA-treated patients in two controlled clinical trials are presented in Table 2.

**Table 2: Selected Treatment-Emergent<sup>a</sup> Adverse Reactions of Moderate or Severe Intensity Reported in  $\geq 2\%$  of SUSTIVA-Treated Patients in Studies 006 and ACTG 364**

Adverse Reactions	Study 006 LAM-, NNRTI-, and Protease Inhibitor-Naive Patients			Study ACTG 364 NRTI-experienced, NNRTI-, and Protease Inhibitor-Naive Patients		
	SUSTIVA <sup>b</sup> + ZDV/LAM (n=412)	SUSTIVA <sup>b</sup> + Indinavir (n=415)	Indinavir + ZDV/LAM (n=401)	SUSTIVA <sup>b</sup> + Nelfinavir + NRTIs (n=64)	SUSTIVA <sup>b</sup> + NRTIs (n=65)	Nelfinavir + NRTIs (n=66)
	180 weeks <sup>c</sup>	102 weeks <sup>c</sup>	76 weeks <sup>c</sup>	71.1 weeks <sup>c</sup>	70.9 weeks <sup>c</sup>	62.7 weeks <sup>c</sup>
<b>Body as a Whole</b>						
Fatigue	8%	5%	9%	0	2%	3%
Pain	1%	2%	8%	13%	6%	17%
<b>Central and Peripheral Nervous System</b>						
Dizziness	9%	9%	2%	2%	6%	6%
Headache	8%	5%	3%	5%	2%	3%
Insomnia	7%	7%	2%	0	0	2%
Concentration impaired	5%	3%	<1%	0	0	0
Abnormal dreams	3%	1%	0	—	—	—
Somnolence	2%	2%	<1%	0	0	0
Anorexia	1%	<1%	<1%	0	2%	2%
<b>Gastrointestinal</b>						
Nausea	10%	6%	24%	3%	2%	2%
Vomiting	6%	3%	14%	—	—	—
Diarrhea	3%	5%	6%	14%	3%	9%
Dyspepsia	4%	4%	6%	0	0	2%
Abdominal pain	2%	2%	5%	3%	3%	3%
<b>Psychiatric</b>						
Anxiety	2%	4%	<1%	—	—	—
Depression	5%	4%	<1%	3%	0	5%
Nervousness	2%	2%	0	2%	0	2%
<b>Skin &amp; Appendages</b>						
Rash <sup>d</sup>	11%	16%	5%	9%	5%	9%
Pruritus	<1%	1%	1%	9%	5%	9%

<sup>a</sup> Includes adverse events at least possibly related to study drug or of unknown relationship for Study 006.

**Table 2: Selected Treatment-Emergent<sup>a</sup> Adverse Reactions of Moderate or Severe Intensity Reported in ≥2% of SUSTIVA-Treated Patients in Studies 006 and ACTG 364**

	Study 006			Study ACTG 364		
	LAM-, NNRTI-, and Protease Inhibitor-Naive Patients			NRTI-experienced, NNRTI-, and Protease Inhibitor-Naive Patients		
	SUSTIVA <sup>b</sup> + ZDV/LAM (n=412)	SUSTIVA <sup>b</sup> + Indinavir (n=415)	Indinavir + ZDV/LAM (n=401)	SUSTIVA <sup>b</sup> + Nelfinavir + NRTIs (n=64)	SUSTIVA <sup>b</sup> + NRTIs (n=65)	Nelfinavir + NRTIs (n=66)
<b>Adverse Reactions</b>	180 weeks <sup>c</sup>	102 weeks <sup>c</sup>	76 weeks <sup>c</sup>	71.1 weeks <sup>c</sup>	70.9 weeks <sup>c</sup>	62.7 weeks <sup>c</sup>

Includes all adverse events regardless of relationship to study drug for Study ACTG 364.

<sup>b</sup> SUSTIVA provided as 600 mg once daily.

<sup>c</sup> Median duration of treatment.

<sup>d</sup> Includes erythema multiforme, rash, rash erythematous, rash follicular, rash maculopapular, rash petechial, rash pustular, and urticaria for Study 006 and macules, papules, rash, erythema, redness, inflammation, allergic rash, urticaria, welts, hives, itchy, and pruritus for ACTG 364.

— = Not Specified.

ZDV = zidovudine, LAM = lamivudine.

Pancreatitis has been reported, although a causal relationship with efavirenz has not been established. Asymptomatic increases in serum amylase levels were observed in a significantly higher number of patients treated with efavirenz 600 mg than in control patients (see *Laboratory Abnormalities*).

### Nervous System Symptoms

For 1008 patients treated with regimens containing SUSTIVA and 635 patients treated with a control regimen in controlled trials, Table 3 lists the frequency of symptoms of different degrees of severity and gives the discontinuation rates for one or more of the following nervous system symptoms: dizziness, insomnia, impaired concentration, somnolence, abnormal dreaming, euphoria, confusion, agitation, amnesia, hallucinations, stupor, abnormal thinking, and depersonalization [see *Warnings and Precautions (5.6)*]. The frequencies of specific central and peripheral nervous system symptoms are provided in Table 2.

**Table 3: Percent of Patients with One or More Selected Nervous System Symptoms<sup>a,b</sup>**

Percent of Patients with:	SUSTIVA 600 mg Once Daily (n=1008) %	Control Groups (n=635) %
Symptoms of any severity	52.7	24.6
Mild symptoms <sup>c</sup>	33.3	15.6
Moderate symptoms <sup>d</sup>	17.4	7.7
Severe symptoms <sup>e</sup>	2.0	1.3
Treatment discontinuation as a result of symptoms	2.1	1.1

<sup>a</sup> Includes events reported regardless of causality.

<sup>b</sup> Data from Study 006 and three Phase 2/3 studies.

<sup>c</sup> “Mild” = Symptoms which do not interfere with patient’s daily activities.

<sup>d</sup> “Moderate” = Symptoms which may interfere with daily activities.

<sup>e</sup> “Severe” = Events which interrupt patient’s usual daily activities.

### Psychiatric Symptoms

Serious psychiatric adverse experiences have been reported in patients treated with SUSTIVA. In controlled trials, psychiatric symptoms observed at a frequency greater than 2% among patients treated with SUSTIVA or control regimens, respectively, were depression (19%, 16%), anxiety (13%, 9%), and nervousness (7%, 2%).

### Rash

In controlled clinical trials, the frequency of rash (all grades, regardless of causality) was 26% for 1008 adults treated with regimens containing SUSTIVA and 17% for 635 adults treated with a control regimen. Most reports of rash were mild or moderate in severity. The frequency of Grade 3 rash was 0.8% for SUSTIVA-treated patients and 0.3% for control groups, and the frequency of Grade 4 rash was 0.1% for SUSTIVA and 0 for control groups. The discontinuation rates as a result of rash were 1.7% for SUSTIVA-treated patients and 0.3% for control groups [see *Warnings and Precautions* (5.8)].

Experience with SUSTIVA in patients who discontinued other antiretroviral agents of the NNRTI class is limited. Nineteen patients who discontinued nevirapine because of rash have been treated with SUSTIVA. Nine of these patients developed mild-to-moderate rash while receiving therapy with SUSTIVA, and two of these patients discontinued because of rash.

### Laboratory Abnormalities

Selected Grade 3-4 laboratory abnormalities reported in  $\geq 2\%$  of SUSTIVA-treated patients in two clinical trials are presented in Table 4.

**Table 4: Selected Grade 3-4 Laboratory Abnormalities Reported in ≥2% of SUSTIVA-Treated Patients in Studies 006 and ACTG 364**

Variable	Limit	Study 006 LAM-, NNRTI-, and Protease Inhibitor-Naive Patients			Study ACTG 364 NRTI-experienced, NNRTI-, and Protease Inhibitor-Naive Patients		
		SUSTIVA <sup>a</sup> + ZDV/LAM (n=412) 180 weeks <sup>b</sup>	SUSTIVA <sup>a</sup> + Indinavir (n=415) 102 weeks <sup>b</sup>	Indinavir + ZDV/LAM (n=401) 76 weeks <sup>b</sup>	SUSTIVA <sup>a</sup> + Nelfinavir + NRTIs (n=64) 71.1 weeks <sup>b</sup>	SUSTIVA <sup>a</sup> + NRTIs (n=65) 70.9 weeks <sup>b</sup>	Nelfinavir + NRTIs (n=66) 62.7 weeks <sup>b</sup>
<b>Chemistry</b>							
ALT	>5 × ULN	5%	8%	5%	2%	6%	3%
AST	>5 × ULN	5%	6%	5%	6%	8%	8%
GGT <sup>c</sup>	>5 × ULN	8%	7%	3%	5%	0	5%
Amylase	>2 × ULN	4%	4%	1%	0	6%	2%
Glucose	>250 mg/dL	3%	3%	3%	5%	2%	3%
Triglycerides <sup>d</sup>	≥751 mg/dL	9%	6%	6%	11%	8%	17%
<b>Hematology</b>							
Neutrophils	<750/mm <sup>3</sup>	10%	3%	5%	2%	3%	2%

<sup>a</sup> SUSTIVA provided as 600 mg once daily.

<sup>b</sup> Median duration of treatment.

<sup>c</sup> Isolated elevations of GGT in patients receiving SUSTIVA may reflect enzyme induction not associated with liver toxicity.

<sup>d</sup> Nonfasting.

ZDV = zidovudine, LAM = lamivudine, ULN = upper limit of normal, ALT = alanine aminotransferase, AST = aspartate aminotransferase, GGT = gamma-glutamyltransferase.

### *Patients Coinfected with Hepatitis B or C*

Liver function tests should be monitored in patients with a history of hepatitis B and/or C. In the long-term data set from Study 006, 137 patients treated with SUSTIVA-containing regimens (median duration of therapy, 68 weeks) and 84 treated with a control regimen (median duration, 56 weeks) were seropositive at screening for hepatitis B (surface antigen positive) and/or C (hepatitis C antibody positive). Among these coinfecting patients, elevations in AST to greater than five times ULN developed in 13% of patients in the SUSTIVA arms and 7% of those in the control arm, and elevations in ALT to greater than five times ULN developed in 20% of patients in the SUSTIVA arms and 7% of patients in the control arm. Among coinfecting patients, 3% of those treated with SUSTIVA-containing regimens and 2% in the control arm discontinued from the study because of liver or biliary system disorders [*see Warnings and Precautions (5.9)*].

### *Lipids*

Increases from baseline in total cholesterol of 10-20% have been observed in some uninfected volunteers receiving SUSTIVA. In patients treated with SUSTIVA + zidovudine + lamivudine,

increases from baseline in nonfasting total cholesterol and HDL of approximately 20% and 25%, respectively, were observed. In patients treated with SUSTIVA + indinavir, increases from baseline in nonfasting cholesterol and HDL of approximately 40% and 35%, respectively, were observed. Nonfasting total cholesterol levels  $\geq 240$  mg/dL and  $\geq 300$  mg/dL were reported in 34% and 9%, respectively, of patients treated with SUSTIVA + zidovudine + lamivudine; 54% and 20%, respectively, of patients treated with SUSTIVA + indinavir; and 28% and 4%, respectively, of patients treated with indinavir + zidovudine + lamivudine. The effects of SUSTIVA on triglycerides and LDL in this study were not well characterized since samples were taken from nonfasting patients. The clinical significance of these findings is unknown [see *Warnings and Precautions* (5.11)].

### Adverse Reactions in Pediatric Patients

Because clinical studies are conducted under widely varying conditions, the adverse reaction rates reported cannot be directly compared to rates in other clinical studies and may not reflect the rates observed in clinical practice.

Assessment of adverse reactions is based on three clinical trials in 182 HIV-1 infected pediatric patients (3 months to 21 years of age) who received SUSTIVA in combination with other antiretroviral agents for a median of 123 weeks. The adverse reactions observed in the three trials were similar to those observed in clinical trials in adults except that rash was more common in pediatric patients (32% for all grades regardless of causality) and more often of higher grade (ie, more severe). Two (1.1%) pediatric patients experienced Grade 3 rash (confluent rash with fever, generalized rash), and four (2.2%) pediatric patients had Grade 4 rash (all erythema multiforme). Five pediatric patients (2.7%) discontinued from the study because of rash [see *Warnings and Precautions* (5.8)].

## 6.2 Postmarketing Experience

The following adverse reactions have been identified during postapproval use of SUSTIVA. Because these reactions are reported voluntarily from a population of unknown size, it is not always possible to reliably estimate their frequency or establish a causal relationship to drug exposure.

*Body as a Whole:* allergic reactions, asthenia, redistribution/accumulation of body fat [see *Warnings and Precautions* (5.13)]

*Central and Peripheral Nervous System:* abnormal coordination, ataxia, cerebellar coordination and balance disturbances, convulsions, hyposesthesia, paresthesia, neuropathy, tremor, vertigo

*Endocrine:* gynecomastia

*Gastrointestinal:* constipation, malabsorption

*Cardiovascular:* flushing, palpitations

*Liver and Biliary System:* hepatic enzyme increase, hepatic failure, hepatitis. A few of the postmarketing reports of hepatic failure, including cases in patients with no pre-existing hepatic

disease or other identifiable risk factors, were characterized by a fulminant course, progressing in some cases to transplantation or death.

*Metabolic and Nutritional:* hypercholesterolemia, hypertriglyceridemia

*Musculoskeletal:* arthralgia, myalgia, myopathy

*Psychiatric:* aggressive reactions, agitation, delusions, emotional lability, mania, neurosis, paranoia, psychosis, suicide

*Respiratory:* dyspnea

*Skin and Appendages:* erythema multiforme, photoallergic dermatitis, Stevens-Johnson syndrome

*Special Senses:* abnormal vision, tinnitus

## **7 DRUG INTERACTIONS**

### **7.1 Potential for SUSTIVA to Affect other Drugs**

Efavirenz has been shown *in vivo* to induce CYP3A and CYP2B6. Other compounds that are substrates of CYP3A or CYP2B6 may have decreased plasma concentrations when coadministered with SUSTIVA.

### **7.2 Potential for Other Drugs to Affect SUSTIVA**

Drugs that induce CYP3A activity (eg, phenobarbital, rifampin, rifabutin) would be expected to increase the clearance of efavirenz resulting in lowered plasma concentrations [*see Dosage and Administration (2.1)*].

### **7.3 QT Prolonging Drugs**

There is limited information available on the potential for a pharmacodynamic interaction between SUSTIVA and drugs that prolong the QTc interval. QTc prolongation has been observed with the use of efavirenz [*see Clinical Pharmacology (12.2)*]. Consider alternatives to SUSTIVA when coadministered with a drug with a known risk of Torsade de Pointes

## 7.4 Established and Other Potentially Significant Drug Interactions

Drug interactions with SUSTIVA are summarized in Table 5. For pharmacokinetics data, [see *Clinical Pharmacology (12.3)*] Tables 7 and 8. This table includes potentially significant interactions, but is not all inclusive.

**Table 5: Established and Other Potentially Significant Drug Interactions: Alteration in Dose or Regimen May Be Recommended Based on Drug Interaction Studies or Predicted Interaction**

Concomitant Drug Class: Drug Name	Effect	Clinical Comment
<i>HIV antiviral agents</i>		
Protease inhibitor: Fosamprenavir Calcium	↓ amprenavir	Fosamprenavir (unboosted): Appropriate doses of the combinations with respect to safety and efficacy have not been established. Fosamprenavir/ritonavir: An additional 100 mg/day (300 mg total) of ritonavir is recommended when SUSTIVA is administered with fosamprenavir/ritonavir once daily. No change in the ritonavir dose is required when SUSTIVA is administered with fosamprenavir plus ritonavir twice daily.
Protease inhibitor: Atazanavir	↓ atazanavir*	<i>Treatment-naïve patients:</i> When coadministered with SUSTIVA, the recommended dose of atazanavir is 400 mg with ritonavir 100 mg (together once daily with food) and SUSTIVA 600 mg (once daily on an empty stomach, preferably at bedtime). <i>Treatment-experienced patients:</i> Coadministration of SUSTIVA and atazanavir is not recommended.
Protease inhibitor: Indinavir	↓ indinavir*	The optimal dose of indinavir, when given in combination with SUSTIVA, is not known. Increasing the indinavir dose to 1000 mg every 8 hours does not compensate for the increased indinavir metabolism due to SUSTIVA.
Protease inhibitor: Lopinavir/ritonavir	↓ lopinavir*	Lopinavir/ritonavir once daily dosing is not recommended when coadministered with SUSTIVA. The dose of lopinavir/ritonavir must be increased when coadministered with SUSTIVA. See the lopinavir/ritonavir prescribing information for dose adjustments of lopinavir/ritonavir when coadministered with efavirenz in adult and pediatric patients.
Protease inhibitor: Ritonavir	↑ ritonavir* ↑ efavirenz*	Monitor for elevation of liver enzymes and for adverse clinical experiences (e.g., dizziness, nausea, paresthesia) when SUSTIVA is coadministered with ritonavir.
Protease inhibitor: Saquinavir	↓ saquinavir*	Appropriate doses of the combination of SUSTIVA and saquinavir/ritonavir with respect to safety and efficacy have not been established.
NNRTI: Other NNRTIs	↑ or ↓ efavirenz and/or NNRTI	Combining two NNRTIs has not been shown to be beneficial. SUSTIVA should not be coadministered with other NNRTIs.
CCR5 co-receptor antagonist: Maraviroc	↓ maraviroc*	Refer to the full prescribing information for maraviroc for guidance on coadministration with efavirenz.

**Table 5: Established and Other Potentially Significant Drug Interactions: Alteration in Dose or Regimen May Be Recommended Based on Drug Interaction Studies or Predicted Interaction**

Concomitant Drug Class: Drug Name	Effect	Clinical Comment
<i>Hepatitis C antiviral agents</i>		
Protease inhibitor: Boceprevir	↓ boceprevir*	Concomitant administration of boceprevir with SUSTIVA is not recommended because it may result in loss of therapeutic effect of boceprevir.
Protease inhibitor: Simeprevir	↓ simeprevir* ↔ efavirenz*	Concomitant administration of simeprevir with SUSTIVA is not recommended because it may result in loss of therapeutic effect of simeprevir.
<i>Other agents</i>		
Anticoagulant: Warfarin	↑ or ↓ warfarin	Monitor INR and adjust warfarin dosage if necessary.
Anticonvulsants: Carbamazepine	↓ carbamazepine* ↓ efavirenz*	There are insufficient data to make a dose recommendation for efavirenz. Alternative anticonvulsant treatment should be used.
Phenytoin Phenobarbital	↓ anticonvulsant ↓ efavirenz	Potential for reduction in anticonvulsant and/or efavirenz plasma levels; periodic monitoring of anticonvulsant plasma levels should be conducted.
Antidepressants: Bupropion	↓ bupropion*	Increases in bupropion dosage should be guided by clinical response. Bupropion dose should not exceed the maximum recommended dose.
Sertraline	↓ sertraline*	Increases in sertraline dosage should be guided by clinical response.
Antifungals: Voriconazole	↓ voriconazole* ↑ efavirenz*	SUSTIVA and voriconazole should not be coadministered at standard doses. When voriconazole is coadministered with SUSTIVA, voriconazole maintenance dose should be increased to 400 mg every 12 hours and SUSTIVA dose should be decreased to 300 mg once daily using the capsule formulation. SUSTIVA tablets must not be broken. [ <i>See Dosage and Administration (2.1) and Clinical Pharmacology (12.3, Tables 7 and 8).</i> ]
Itraconazole	↓ itraconazole* ↓ hydroxyitraconazole*	Consider alternative antifungal treatment because no dose recommendation for itraconazole can be made.
Ketoconazole	↓ ketoconazole	Consider alternative antifungal treatment because no dose recommendation for ketoconazole can be made.
Posaconazole	↓ posaconazole*	Avoid concomitant use unless the benefit outweighs the risks.
Anti-infective: Clarithromycin	↓ clarithromycin* ↑ 14-OH metabolite*	Consider alternatives to macrolide antibiotics because of the risk of QT interval prolongation.



**Table 5: Established and Other Potentially Significant Drug Interactions: Alteration in Dose or Regimen May Be Recommended Based on Drug Interaction Studies or Predicted Interaction**

Concomitant Drug Class: Drug Name	Effect	Clinical Comment
Antimycobacterials: Rifabutin	↓ rifabutin*	Increase daily dose of rifabutin by 50%. Consider doubling the rifabutin dose in regimens where rifabutin is given 2 or 3 times a week.
Rifampin	↓ efavirenz*	Increase SUSTIVA to 800 mg once daily when coadministered with rifampin to patients weighing 50 kg or more.
Antimalarials: Artemether/ lumefantrine	↓ artemether* ↓ dihydroartemisinin* ↓ lumefantrine*	Consider alternatives to artemether/lumefantrine because of the risk of QT interval prolongation.
Atovaquone/ proguanil	↓ atovaquone ↓ proguanil	Concomitant administration is not recommended.
Calcium channel blockers: Diltiazem	↓ diltiazem* ↓ desacetyl diltiazem* ↓ N-monodesmethyl diltiazem*	Diltiazem dose adjustments should be guided by clinical response (refer to the full prescribing information for diltiazem). No dose adjustment of efavirenz is necessary when administered with diltiazem.
Others (eg, felodipine, nicardipine, nifedipine, verapamil)	↓ calcium channel blocker	When coadministered with SUSTIVA, dosage adjustment of calcium channels blocker may be needed and should be guided by clinical response (refer to the full prescribing information for the calcium channel blocker).
HMG-CoA reductase inhibitors: Atorvastatin Pravastatin Simvastatin	↓ atorvastatin* ↓ pravastatin* ↓ simvastatin*	Plasma concentrations of atorvastatin, pravastatin, and simvastatin decreased. Consult the full prescribing information for the HMG-CoA reductase inhibitor for guidance on individualizing the dose.
Hormonal contraceptives: Oral Ethinyl estradiol/ Norgestimate	↓ active metabolites of norgestimate*	A reliable method of barrier contraception should be used in addition to hormonal contraceptives.
Implant Etonogestrel	↓ etonogestrel	A reliable method of barrier contraception should be used in addition to hormonal contraceptives. The interaction between etonogestrel and efavirenz has not been studied. Decreased exposure of etonogestrel may be expected. There have been postmarketing reports of contraceptive failure with etonogestrel in efavirenz-exposed patients.

**Table 5: Established and Other Potentially Significant Drug Interactions: Alteration in Dose or Regimen May Be Recommended Based on Drug Interaction Studies or Predicted Interaction**

<b>Concomitant Drug Class: Drug Name</b>	<b>Effect</b>	<b>Clinical Comment</b>
Immunosuppressants: Cyclosporine, tacrolimus, sirolimus, and others metabolized by CYP3A	↓ immunosuppressant	Dose adjustments of the immunosuppressant may be required. Close monitoring of immunosuppressant concentrations for at least 2 weeks (until stable concentrations are reached) is recommended when starting or stopping treatment with efavirenz.
Narcotic analgesic: Methadone	↓ methadone*	Monitor for signs of methadone withdrawal and increase methadone dose if required to alleviate withdrawal symptoms.

\* The interaction between SUSTIVA and the drug was evaluated in a clinical study. All other drug interactions shown are predicted.

This table is not all-inclusive.

### **7.5 Drugs Without Clinically Significant Interactions with SUSTIVA**

No dosage adjustment is recommended when SUSTIVA is given with the following: aluminum/magnesium hydroxide antacids, azithromycin, cetirizine, famotidine, fluconazole, lorazepam, nelfinavir, nucleoside reverse transcriptase inhibitors (abacavir, emtricitabine, lamivudine, stavudine, tenofovir disoproxil fumarate, zidovudine), paroxetine, and raltegravir.

### **7.6 Cannabinoid Test Interaction**

Efavirenz does not bind to cannabinoid receptors. False-positive urine cannabinoid test results have been reported with some screening assays in uninfected and HIV-infected subjects receiving efavirenz. Confirmation of positive screening tests for cannabinoids by a more specific method is recommended.

## **8 USE IN SPECIFIC POPULATIONS**

### **8.1 Pregnancy**

#### Pregnancy Exposure Registry

There is a pregnancy exposure registry that monitors pregnancy outcomes in women exposed to SUSTIVA during pregnancy. Physicians are encouraged to register patients by calling the Antiretroviral Pregnancy Registry at 1-800-258-4263.

#### Risk Summary

There are retrospective case reports of neural tube defects in infants whose mothers were exposed to efavirenz-containing regimens in the first trimester of pregnancy. Prospective pregnancy data from the Antiretroviral Pregnancy Registry are not sufficient to adequately assess this risk. Available data from the Antiretroviral Pregnancy Registry show no difference in the risk of overall major birth defects compared to the background rate for major birth defects of 2.7% in the U.S. reference population of the Metropolitan Atlanta Congenital Defects Program (MACDP). Although a causal relationship has not been established between exposure to efavirenz in the first trimester and neural tube defects, similar malformations have been observed in studies conducted in monkeys at doses similar to the human dose. In addition, fetal and embryonic toxicities occurred in rats, at a dose ten times less than the human exposure at recommended clinical dose. Because of the potential risk of neural tube defects, efavirenz should not be used in the first trimester of pregnancy. Advise pregnant women of the potential risk to a fetus.

#### Data

##### *Human Data*

There are retrospective postmarketing reports of findings consistent with neural tube defects, including meningomyelocele, all in infants of mothers exposed to efavirenz-containing regimens in the first trimester.

Based on prospective reports from the Antiretroviral Pregnancy Registry (APR) of approximately 1000 live births following exposure to efavirenz-containing regimens (including over 800 live births exposed in the first trimester), there was no difference between efavirenz and overall birth defects compared with the background birth defect rate of 2.7% in the U.S. reference population of the Metropolitan Atlanta Congenital Defects Program. As of the interim APR report issued December 2014, the prevalence of birth defects following first-trimester exposure was 2.3% (95% CI: 1.4%-3.6%). One of these prospectively reported defects with first-trimester exposure was a neural tube defect. A single case of anophthalmia with first-trimester exposure to efavirenz has also been prospectively reported. This case also included severe oblique facial clefts and amniotic banding, which have a known association with anophthalmia.

##### *Animal Data*

Effects of efavirenz on embryo-fetal development have been studied in three nonclinical species (cynomolgus monkeys, rats, and rabbits). In monkeys, efavirenz 60 mg/kg/day was administered to pregnant females throughout pregnancy (gestation days 20 through 150). The maternal

systemic drug exposures (AUC) were 1.3 times the exposure in humans at the recommended clinical dose (600 mg/day), with fetal umbilical venous drug concentrations approximately 0.7 times the maternal values. Three of 20 fetuses/infants had one or more malformations; there were no malformed fetuses or infants from placebo-treated mothers. The malformations that occurred in these three monkey fetuses included anencephaly and unilateral anophthalmia in one fetus, microphthalmia in a second, and cleft palate in the third. There was no NOAEL (no observable adverse effect level) established for this study because only one dosage was evaluated. In rats, efavirenz was administered either during organogenesis (gestation days 7 to 18) or from gestation day 7 through lactation day 21 at 50, 100, or 200 mg/kg/day. Administration of 200 mg/kg/day in rats was associated with increase in the incidence of early resorptions; and doses 100 mg/kg/day and greater were associated with early neonatal mortality. The AUC at the NOAEL (50 mg/kg/day) in this rat study was 0.1 times that in humans at the recommended clinical dose. Drug concentrations in the milk on lactation day 10 were approximately 8 times higher than those in maternal plasma. In pregnant rabbits, efavirenz was neither embryo lethal nor teratogenic when administered at doses of 25, 50, and 75 mg/kg/day over the period of organogenesis (gestation days 6 through 18). The AUC at the NOAEL (75 mg/kg/day) in rabbits was 0.4 times that in humans at the recommended clinical dose.

## **8.2 Lactation**

### Risk Summary

The Centers for Disease Control and Prevention recommend that HIV-infected mothers not breastfeed their infants to avoid risking postnatal transmission of HIV. Because of the potential for HIV transmission in breastfed infants, advise women not to breastfeed.

## **8.3 Females and Males of Reproductive Potential**

Because of potential teratogenic effects, pregnancy should be avoided in women receiving SUSTIVA. [*See Use in Specific Populations (8.1).*]

### Pregnancy Testing

Females of reproductive potential should undergo pregnancy testing before initiation of SUSTIVA.

### Contraception

Females of reproductive potential should use effective contraception during treatment with SUSTIVA and for 12 weeks after discontinuing SUSTIVA due to the long half-life of efavirenz. Barrier contraception should always be used in combination with other methods of contraception. Hormonal methods that contain progesterone may have decreased effectiveness [*see Drug Interactions (7.1)*].

## **8.4 Pediatric Use**

The safety, pharmacokinetic profile, and virologic and immunologic responses of SUSTIVA were evaluated in antiretroviral-naïve and -experienced HIV-1 infected pediatric patients 3 months to 21 years of age in three open-label clinical trials [*see Adverse Reactions (6.2)*],

*Clinical Pharmacology (12.3)*, and *Clinical Studies (14.2)*]. The type and frequency of adverse reactions in these trials were generally similar to those of adult patients with the exception of a higher frequency of rash, including a higher frequency of Grade 3 or 4 rash, in pediatric patients compared to adults [*see Warnings and Precautions (5.8)* and *Adverse Reactions (6.2)*].

Use of SUSTIVA in patients younger than 3 months of age OR less than 3.5 kg body weight is not recommended because the safety, pharmacokinetics, and antiviral activity of SUSTIVA have not been evaluated in this age group and there is a risk of developing HIV resistance if SUSTIVA is underdosed. See *Dosage and Administration (2.2)* for dosing recommendations for pediatric patients.

### **8.5 Geriatric Use**

Clinical studies of SUSTIVA did not include sufficient numbers of subjects aged 65 years and over to determine whether they respond differently from younger subjects. In general, dose selection for an elderly patient should be cautious, reflecting the greater frequency of decreased hepatic, renal, or cardiac function and of concomitant disease or other therapy.

### **8.6 Hepatic Impairment**

SUSTIVA is not recommended for patients with moderate or severe hepatic impairment because there are insufficient data to determine whether dose adjustment is necessary. Patients with mild hepatic impairment may be treated with efavirenz without any adjustment in dose. Because of the extensive cytochrome P450-mediated metabolism of efavirenz and limited clinical experience in patients with hepatic impairment, caution should be exercised in administering SUSTIVA to these patients [*see Warnings and Precautions (5.9)* and *Clinical Pharmacology (12.3)*].

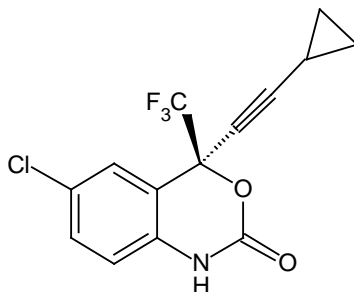
## **10 OVERDOSAGE**

Some patients accidentally taking 600 mg twice daily have reported increased nervous system symptoms. One patient experienced involuntary muscle contractions.

Treatment of overdose with SUSTIVA should consist of general supportive measures, including monitoring of vital signs and observation of the patient's clinical status. Administration of activated charcoal may be used to aid removal of unabsorbed drug. There is no specific antidote for overdose with SUSTIVA. Since efavirenz is highly protein bound, dialysis is unlikely to significantly remove the drug from blood.

## **11 DESCRIPTION**

SUSTIVA<sup>®</sup> (efavirenz) is an HIV-1 specific, non-nucleoside, reverse transcriptase inhibitor (NNRTI). Efavirenz is chemically described as (S)-6-chloro-4-(cyclopropylethynyl)-1,4-dihydro-4-(trifluoromethyl)-2H-3,1-benzoxazin-2-one. Its empirical formula is C<sub>14</sub>H<sub>9</sub>ClF<sub>3</sub>NO<sub>2</sub> and its structural formula is:



Efavirenz is a white to slightly pink crystalline powder with a molecular mass of 315.68. It is practically insoluble in water (<10 microgram/mL).

**Capsules:** SUSTIVA is available as capsules for oral administration containing either 50 mg or 200 mg of efavirenz and the following inactive ingredients: lactose monohydrate, magnesium stearate, sodium lauryl sulfate, and sodium starch glycolate. The capsule shell contains the following inactive ingredients and dyes: gelatin, sodium lauryl sulfate, titanium dioxide, and/or yellow iron oxide. The capsule shells may also contain silicon dioxide. The capsules are printed with ink containing carmine 40 blue, FD&C Blue No. 2, and titanium dioxide.

**Tablets:** SUSTIVA is available as film-coated tablets for oral administration containing 600 mg of efavirenz and the following inactive ingredients: croscarmellose sodium, hydroxypropyl cellulose, lactose monohydrate, magnesium stearate, microcrystalline cellulose, and sodium lauryl sulfate. The film coating contains Opadry Yellow and Opadry Clear. The tablets are polished with carnauba wax and printed with purple ink, Opacode WB.

## 12 CLINICAL PHARMACOLOGY

### 12.1 Mechanism of Action

Efavirenz is an antiviral drug [see *Microbiology* (12.4)].

### 12.2 Pharmacodynamics

#### Cardiac Electrophysiology

The effect of SUSTIVA on the QTc interval was evaluated in an open-label, positive and placebo controlled, fixed single sequence 3-period, 3-treatment crossover QT study in 58 healthy subjects enriched for CYP2B6 polymorphisms. The mean C<sub>max</sub> of efavirenz in subjects with CYP2B6 \*6/\*6 genotype following the administration of 600 mg daily dose for 14 days was 2.25-fold the mean C<sub>max</sub> observed in subjects with CYP2B6 \*1/\*1 genotype. A positive relationship between efavirenz concentration and QTc prolongation was observed. Based on the concentration-QTc relationship, the mean QTc prolongation and its upper bound 90% confidence interval are 8.7 ms and 11.3 ms in subjects with CYP2B6\*6/\*6 genotype following the administration of 600 mg daily dose for 14 days [see *Warnings and Precautions* (5.2)].

## 12.3 Pharmacokinetics

### Absorption

Peak efavirenz plasma concentrations of 1.6-9.1  $\mu\text{M}$  were attained by 5 hours following single oral doses of 100 mg to 1600 mg administered to uninfected volunteers. Dose-related increases in  $C_{\text{max}}$  and AUC were seen for doses up to 1600 mg; the increases were less than proportional suggesting diminished absorption at higher doses.

In HIV-1-infected patients at steady state, mean  $C_{\text{max}}$ , mean  $C_{\text{min}}$ , and mean AUC were dose proportional following 200 mg, 400 mg, and 600 mg daily doses. Time-to-peak plasma concentrations were approximately 3-5 hours and steady-state plasma concentrations were reached in 6-10 days. In 35 patients receiving SUSTIVA 600 mg once daily, steady-state  $C_{\text{max}}$  was  $12.9 \pm 3.7 \mu\text{M}$  (mean  $\pm$  SD), steady-state  $C_{\text{min}}$  was  $5.6 \pm 3.2 \mu\text{M}$ , and AUC was  $184 \pm 73 \mu\text{M}\cdot\text{h}$ .

#### *Effect of Food on Oral Absorption:*

*Capsules:* Administration of a single 600 mg dose of efavirenz capsules with a high-fat/high-caloric meal (894 kcal, 54 g fat, 54% calories from fat) or a reduced-fat/normal-caloric meal (440 kcal, 2 g fat, 4% calories from fat) was associated with a mean increase of 22% and 17% in efavirenz  $\text{AUC}_{\infty}$  and a mean increase of 39% and 51% in efavirenz  $C_{\text{max}}$ , respectively, relative to the exposures achieved when given under fasted conditions. [See *Dosage and Administration* (2) and *Patient Counseling Information* (17).]

*Tablets:* Administration of a single 600 mg efavirenz tablet with a high-fat/high-caloric meal (approximately 1000 kcal, 500-600 kcal from fat) was associated with a 28% increase in mean  $\text{AUC}_{\infty}$  of efavirenz and a 79% increase in mean  $C_{\text{max}}$  of efavirenz relative to the exposures achieved under fasted conditions. [See *Dosage and Administration* (2) and *Patient Counseling Information* (17).]

*Bioavailability of capsule contents mixed with food vehicles:* In healthy adult subjects, the efavirenz AUC when administered as the contents of three 200 mg capsules mixed with 2 teaspoons of certain food vehicles (applesauce, grape jelly or yogurt, or infant formula) met bioequivalency criteria for the AUC of the intact capsule formulation administered under fasted conditions.

### Distribution

Efavirenz is highly bound (approximately 99.5-99.75%) to human plasma proteins, predominantly albumin. In HIV-1 infected patients (n=9) who received SUSTIVA 200 to 600 mg once daily for at least one month, cerebrospinal fluid concentrations ranged from 0.26 to 1.19% (mean 0.69%) of the corresponding plasma concentration. This proportion is approximately 3-fold higher than the non-protein-bound (free) fraction of efavirenz in plasma.

## Metabolism

Studies in humans and *in vitro* studies using human liver microsomes have demonstrated that efavirenz is principally metabolized by the cytochrome P450 system to hydroxylated metabolites with subsequent glucuronidation of these hydroxylated metabolites. These metabolites are essentially inactive against HIV-1. The *in vitro* studies suggest that CYP3A and CYP2B6 are the major isozymes responsible for efavirenz metabolism.

Efavirenz has been shown to induce CYP enzymes, resulting in the induction of its own metabolism. Multiple doses of 200-400 mg per day for 10 days resulted in a lower than predicted extent of accumulation (22-42% lower) and a shorter terminal half-life of 40-55 hours (single dose half-life 52-76 hours).

## Elimination

Efavirenz has a terminal half-life of 52-76 hours after single doses and 40-55 hours after multiple doses. A one-month mass balance/excretion study was conducted using 400 mg per day with a <sup>14</sup>C-labeled dose administered on Day 8. Approximately 14-34% of the radiolabel was recovered in the urine and 16-61% was recovered in the feces. Nearly all of the urinary excretion of the radiolabeled drug was in the form of metabolites. Efavirenz accounted for the majority of the total radioactivity measured in feces.

## Special Populations

*Pediatric:* The pharmacokinetic parameters for efavirenz at steady state in pediatric patients were predicted by a population pharmacokinetic model and are summarized in Table 6 by weight ranges that correspond to the recommended doses.

**Table 6: Predicted Steady-State Pharmacokinetics of Recommended Doses of Efavirenz (Capsules/Capsule Sprinkles) in HIV-Infected Pediatric Patients**

Body Weight	Dose	Mean AUC <sub>(0-24)</sub> µM·h	Mean C <sub>max</sub> µg/mL	Mean C <sub>min</sub> µg/mL
3.5-5 kg	100 mg	220.52	5.81	2.43
5-7.5 kg	150 mg	262.62	7.07	2.71
7.5-10 kg	200 mg	284.28	7.75	2.87
10-15 kg	200 mg	238.14	6.54	2.32
15-20 kg	250 mg	233.98	6.47	2.3
20-25 kg	300 mg	257.56	7.04	2.55
25-32.5 kg	350 mg	262.37	7.12	2.68
32.5-40 kg	400 mg	259.79	6.96	2.69
>40 kg	600 mg	254.78	6.57	2.82

*Gender and race:* The pharmacokinetics of efavirenz in patients appear to be similar between men and women and among the racial groups studied.



**Renal impairment:** The pharmacokinetics of efavirenz have not been studied in patients with renal insufficiency; however, less than 1% of efavirenz is excreted unchanged in the urine, so the impact of renal impairment on efavirenz elimination should be minimal.

**Hepatic impairment:** A multiple-dose study showed no significant effect on efavirenz pharmacokinetics in patients with mild hepatic impairment (Child-Pugh Class A) compared with controls. There were insufficient data to determine whether moderate or severe hepatic impairment (Child-Pugh Class B or C) affects efavirenz pharmacokinetics.

### Drug Interaction Studies

Efavirenz has been shown *in vivo* to cause hepatic enzyme induction, thus increasing the biotransformation of some drugs metabolized by CYP3A and CYP2B6. *In vitro* studies have shown that efavirenz inhibited CYP isozymes 2C9 and 2C19 with  $K_i$  values (8.5-17  $\mu\text{M}$ ) in the range of observed efavirenz plasma concentrations. In *in vitro* studies, efavirenz did not inhibit CYP2E1 and inhibited CYP2D6 and CYP1A2 ( $K_i$  values 82-160  $\mu\text{M}$ ) only at concentrations well above those achieved clinically. Coadministration of efavirenz with drugs primarily metabolized by CYP2C9, CYP2C19, CYP3A, or CYP2B6 isozymes may result in altered plasma concentrations of the coadministered drug. Drugs which induce CYP3A and CYP2B6 activity would be expected to increase the clearance of efavirenz resulting in lowered plasma concentrations.

Drug interaction studies were performed with efavirenz and other drugs likely to be coadministered or drugs commonly used as probes for pharmacokinetic interaction. The effects of coadministration of efavirenz on the  $C_{\text{max}}$ , AUC, and  $C_{\text{min}}$  are summarized in Table 7 (effect of efavirenz on other drugs) and Table 8 (effect of other drugs on efavirenz). For information regarding clinical recommendations see *Drug Interactions (7.1)*.

**Table 7: Effect of Efavirenz on Coadministered Drug Plasma  $C_{\text{max}}$ , AUC, and  $C_{\text{min}}$**

Coadministered Drug	Dose	Efavirenz Dose	Number of Subjects	Coadministered Drug (mean % change)		
				$C_{\text{max}}$ (90% CI)	AUC (90% CI)	$C_{\text{min}}$ (90% CI)
Atazanavir	400 mg qd with a light meal d 1-20	600 mg qd with a light meal d 7-20	27	↓ 59% (49-67%)	↓ 74% (68-78%)	↓ 93% (90-95%)
	400 mg qd d 1-6, then 300 mg qd d 7-20 with ritonavir 100 mg qd and a light meal	600 mg qd 2 h after atazanavir and ritonavir d 7-20	13	↑ 14% <sup>a</sup> (↓ 17-↑ 58%)	↑ 39% <sup>a</sup> (2-88%)	↑ 48% <sup>a</sup> (24-76%)
	300 mg qd/ritonavir 100 mg qd d 1-10 (pm), then 400 mg qd/ritonavir 100 mg qd d 11-24 (pm) (simultaneous with efavirenz)	600 mg qd with a light snack d 11-24 (pm)	14	↑ 17% (8-27%)	↔	↓ 42% (31-51%)
Indinavir	1000 mg q8h × 10 days	600 mg qd × 10 days	20			

**Table 7: Effect of Efavirenz on Coadministered Drug Plasma C<sub>max</sub>, AUC, and C<sub>min</sub>**

Coadministered Drug	Dose	Efavirenz Dose	Number of Subjects	Coadministered Drug (mean % change)		
				C <sub>max</sub> (90% CI)	AUC (90% CI)	C <sub>min</sub> (90% CI)
	After morning dose			↔ <sup>b</sup>	↓ 33% <sup>b</sup> (26-39%)	↓ 39% <sup>b</sup> (24-51%)
	After afternoon dose			↔ <sup>b</sup>	↓ 37% <sup>b</sup> (26-46%)	↓ 52% <sup>b</sup> (47-57%)
	After evening dose			↓ 29% <sup>b</sup> (11-43%)	↓ 46% <sup>b</sup> (37-54%)	↓ 57% <sup>b</sup> (50-63%)
Lopinavir/ ritonavir	400/100 mg capsule q12h × 9 days	600 mg qd × 9 days	11,7 <sup>c</sup>	↔ <sup>d</sup>	↓ 19% <sup>d</sup> (↓ 36-↑ 3%)	↓ 39% <sup>d</sup> (3-62%)
	500/125 mg tablet q12h × 10 days with efavirenz compared to 400/100 mg q12h alone	600 mg qd × 9 days	19	↑ 12% <sup>d</sup> (2-23%)	↔ <sup>d</sup>	↓ 10% <sup>d</sup> (↓ 22-↑ 4%)
	600/150 mg tablet q12h × 10 days with efavirenz compared to 400/100 mg q12h alone	600 mg qd × 9 days	23	↑ 36% <sup>d</sup> (28-44%)	↑ 36% <sup>d</sup> (28-44%)	↑ 32% <sup>d</sup> (21-44%)
Nelfinavir	750 mg q8h × 7 days	600 mg qd × 7 days	10	↑ 21% (10-33%)	↑ 20% (8-34%)	↔
Metabolite AG-1402				↓ 40% (30-48%)	↓ 37% (25-48%)	↓ 43% (21-59%)
Ritonavir	500 mg q12h × 8 days	600 mg qd × 10 days	11			
	After AM dose			↑ 24% (12-38%)	↑ 18% (6-33%)	↑ 42% (9-86%) <sup>e</sup>
	After PM dose			↔	↔	↑ 24% (3-50%) <sup>e</sup>
Saquinavir SGC <sup>f</sup>	1200 mg q8h × 10 days	600 mg qd × 10 days	12	↓ 50% (28-66%)	↓ 62% (45-74%)	↓ 56% (16-77%) <sup>e</sup>
Lamivudine	150 mg q12h × 14 days	600 mg qd × 14 days	9	↔	↔	↑ 265% (37-873%)
Tenofovir <sup>g</sup>	300 mg qd	600 mg qd × 14 days	29	↔	↔	↔
Zidovudine	300 mg q12h × 14 days	600 mg qd × 14 days	9	↔	↔	↑ 225% (43-640%)
Maraviroc	100 mg bid	600 mg qd	12	↓ 51% (37-62%)	↓ 45% (38-51%)	↓ 45% (28-57%)
Raltegravir	400 mg single dose	600 mg qd	9	↓ 36% (2-59%)	↓ 36% (20-48%)	↓ 21% (↓ 51-↑ 28%)
Boceprevir	800 mg tid × 6 days	600 mg qd × 16 days	NA	↓ 8% (↓ 22-↑ 8%)	↓ 19% (11-25%)	↓ 44% (26-58%)
Simeprevir	150 mg qd × 14 days	600 mg qd × 14 days	23	↓ 51% (↓ 46-↓ 56%)	↓ 71% (↓ 67-↓ 74%)	↓ 91% (↓ 88-↓ 92%)
Azithromycin	600 mg single dose	400 mg qd × 7 days	14	↑ 22% (4-42%)	↔	NA
Clarithromycin	500 mg q12h ×	400 mg qd × 7 days	11	↓ 26%	↓ 39%	↓ 53%

**Table 7: Effect of Efavirenz on Coadministered Drug Plasma C<sub>max</sub>, AUC, and C<sub>min</sub>**

Coadministered Drug	Dose	Efavirenz Dose	Number of Subjects	Coadministered Drug (mean % change)		
				C <sub>max</sub> (90% CI)	AUC (90% CI)	C <sub>min</sub> (90% CI)
14-OH metabolite	7 days			(15-35%)	(30-46%)	(42-63%)
				↑ 49% (32-69%)	↑ 34% (18-53%)	↑ 26% (9-45%)
Fluconazole	200 mg × 7 days	400 mg qd × 7 days	10	↔	↔	↔
Itraconazole	200 mg q12h × 28 days	600 mg qd × 14 days	18	↓ 37% (20-51%)	↓ 39% (21-53%)	↓ 44% (27-58%)
				↓ 35% (12-52%)	↓ 37% (14-55%)	↓ 43% (18-60%)
Hydroxy-itraconazole						
Posaconazole	400 mg (oral suspension) bid × 10 and 20 days	400 mg qd × 10 and 20 days	11	↓ 45% (34-53%)	↓ 50% (40-57%)	NA
Rifabutin	300 mg qd × 14 days	600 mg qd × 14 days	9	↓ 32% (15-46%)	↓ 38% (28-47%)	↓ 45% (31-56%)
Voriconazole	400 mg po q12h × 1 day, then 200 mg po q12h × 8 days	400 mg qd × 9 days	NA	↓ 61% <sup>h</sup>	↓ 77% <sup>h</sup>	NA
	300 mg po q12h days 2-7	300 mg qd × 7 days	NA	↓ 36% <sup>i</sup> (21-49%)	↓ 55% <sup>i</sup> (45-62%)	NA
	400 mg po q12h days 2-7	300 mg qd × 7 days	NA	↑ 23% <sup>i</sup> (↓ 1-↑ 53%)	↓ 7% <sup>i</sup> (↓ 23-↑ 13%)	NA
Artemether/lumefantrine	Artemether 20 mg/ lumefantrine 120 mg tablets (6 4-tablet doses over 3 days)	600 mg qd × 26 days	12			
Artemether				↓ 21%	↓ 51%	NA
dihydroartemisinin				↓ 38%	↓ 46%	NA
Lumefantrine				↔	↓ 21%	NA
Atorvastatin	10 mg qd × 4 days	600 mg qd × 15 days	14	↓ 14% (1-26%)	↓ 43% (34-50%)	↓ 69% (49-81%)
Total active (including metabolites)				↓ 15% (2-26%)	↓ 32% (21-41%)	↓ 48% (23-64%)
Pravastatin	40 mg qd × 4 days	600 mg qd × 15 days	13	↓ 32% (↓ 59-↑ 12%)	↓ 44% (26-57%)	↓ 19% (0-35%)
Simvastatin	40 mg qd × 4 days	600 mg qd × 15 days	14	↓ 72% (63-79%)	↓ 68% (62-73%)	↓ 45% (20-62%)
Total active (including metabolites)				↓ 68% (55-78%)	↓ 60% (52-68%)	NA <sup>j</sup>

**Table 7: Effect of Efavirenz on Coadministered Drug Plasma C<sub>max</sub>, AUC, and C<sub>min</sub>**

Coadministered Drug	Dose	Efavirenz Dose	Number of Subjects	Coadministered Drug (mean % change)		
				C <sub>max</sub> (90% CI)	AUC (90% CI)	C <sub>min</sub> (90% CI)
Carbamazepine	200 mg qd × 3 days, 200 mg bid × 3 days, then 400 mg qd × 29 days	600 mg qd × 14 days	12	↓ 20% (15-24%)	↓ 27% (20-33%)	↓ 35% (24-44%)
Epoxide metabolite				↔	↔	↓ 13% (↓ 30-↑ 7%)
Cetirizine	10 mg single dose	600 mg qd × 10 days	11	↓ 24% (18-30%)	↔	NA
Diltiazem	240 mg × 21 days	600 mg qd × 14 days	13	↓ 60% (50-68%)	↓ 69% (55-79%)	↓ 63% (44-75%)
Desacetyl diltiazem				↓ 64% (57-69%)	↓ 75% (59-84%)	↓ 62% (44-75%)
N-monodesmethyl diltiazem				↓ 28% (7-44%)	↓ 37% (17-52%)	↓ 37% (17-52%)
Ethinyl estradiol/ Norgestimate	0.035 mg/0.25 mg × 14 days	600 mg qd × 14 days				
Ethinyl estradiol			21	↔	↔	↔
Norelgestromin			21	↓ 46% (39-52%)	↓ 64% (62-67%)	↓ 82% (79-85%)
Levonorgestrel			6	↓ 80% (77-83%)	↓ 83% (79-87%)	↓ 86% (80-90%)
Lorazepam	2 mg single dose	600 mg qd × 10 days	12	↑ 16% (2-32%)	↔	NA
Methadone	Stable maintenance 35-100 mg daily	600 mg qd × 14-21 days	11	↓ 45% (25-59%)	↓ 52% (33-66%)	NA
Bupropion	150 mg single dose (sustained-release)	600 mg qd × 14 days	13	↓ 34% (21-47%)	↓ 55% (48-62%)	NA
Hydroxybupropion				↑ 50% (20-80%)	↔	NA
Paroxetine	20 mg qd × 14 days	600 mg qd × 14 days	16	↔	↔	↔
Sertraline	50 mg qd × 14 days	600 mg qd × 14 days	13	↓ 29% (15-40%)	↓ 39% (27-50%)	↓ 46% (31-58%)

↑ Indicates increase ↓ Indicates decrease ↔ Indicates no change or a mean increase or decrease of <10%.

<sup>a</sup> Compared with atazanavir 400 mg qd alone.

<sup>b</sup> Comparator dose of indinavir was 800 mg q8h × 10 days.

<sup>c</sup> Parallel-group design; n for efavirenz + lopinavir/ritonavir, n for lopinavir/ritonavir alone.

<sup>d</sup> Values are for lopinavir; the pharmacokinetics of ritonavir in this study were unaffected by concurrent efavirenz.

<sup>e</sup> 95% CI.

<sup>f</sup> Soft Gelatin Capsule.

<sup>g</sup> Tenofovir disoproxil fumarate.

<sup>h</sup> 90% CI not available.

<sup>i</sup> Relative to steady-state administration of voriconazole (400 mg for 1 day, then 200 mg po q12h for 2 days).

<sup>j</sup> Not available because of insufficient data.

NA = not available.

**Table 8: Effect of Coadministered Drug on Efavirenz Plasma C<sub>max</sub>, AUC, and C<sub>min</sub>**

Coadministered Drug	Dose	Efavirenz Dose	Number of Subjects	Efavirenz (mean % change)		
				C <sub>max</sub> (90% CI)	AUC (90% CI)	C <sub>min</sub> (90% CI)
Indinavir	800 mg q8h × 14 days	200 mg qd × 14 days	11	↔	↔	↔
Lopinavir/ritonavir	400/100 mg q12h × 9 days	600 mg qd × 9 days	11,12 <sup>a</sup>	↔	↓ 16% (↓ 38-↑ 15%)	↓ 16% (↓ 42-↑ 20%)
Nelfinavir	750 mg q8h × 7 days	600 mg qd × 7 days	10	↓ 12% (↓ 32-↑ 13%) <sup>b</sup>	↓ 12% (↓ 35-↑ 18%) <sup>b</sup>	↓ 21% (↓ 53-↑ 33%)
Ritonavir	500 mg q12h × 8 days	600 mg qd × 10 days	9	↑ 14% (4-26%)	↑ 21% (10-34%)	↑ 25% (7-46%) <sup>b</sup>
Saquinavir SGC <sup>c</sup>	1200 mg q8h × 10 days	600 mg qd × 10 days	13	↓ 13% (5-20%)	↓ 12% (4-19%)	↓ 14% (2-24%) <sup>b</sup>
Tenofovir <sup>d</sup>	300 mg qd	600 mg qd × 14 days	30	↔	↔	↔
Boceprevir	800 mg tid × 6 days	600 mg qd × 16 days	NA	↑ 11% (2-20%)	↑ 20% (15-26%)	NA
Simeprevir	150 mg qd × 14 days	600 mg qd × 14 days	23	↔	↓ 10% (5-15%)	↓ 13% (7-19%)
Azithromycin	600 mg single dose	400 mg qd × 7 days	14	↔	↔	↔
Clarithromycin	500 mg q12h × 7 days	400 mg qd × 7 days	12	↑ 11% (3-19%)	↔	↔
Fluconazole	200 mg × 7 days	400 mg qd × 7 days	10	↔	↑ 16% (6-26%)	↑ 22% (5-41%)
Itraconazole	200 mg q12h × 14 days	600 mg qd × 28 days	16	↔	↔	↔
Rifabutin	300 mg qd × 14 days	600 mg qd × 14 days	11	↔	↔	↓ 12% (↓ 24-↑ 1%)
Rifampin	600 mg × 7 days	600 mg qd × 7 days	12	↓ 20% (11-28%)	↓ 26% (15-36%)	↓ 32% (15-46%)
Voriconazole	400 mg po q12h × 1 day, then 200 mg po q12h × 8 days	400 mg qd × 9 days	NA	↑ 38% <sup>e</sup>	↑ 44% <sup>e</sup>	NA
	300 mg po q12h days 2-7	300 mg qd × 7 days	NA	↓ 14% <sup>f</sup> (7-21%)	↔ <sup>f</sup>	NA
	400 mg po q12h days 2-7	300 mg qd × 7 days	NA	↔ <sup>f</sup>	↑ 17% <sup>f</sup> (6-29%)	NA
Artemether/ Lumefantrine	Artemether 20 mg/ lumefantrine 120 mg tablets (6 4-tablet doses over 3 days)	600 mg qd × 26 days	12	↔	↓ 17%	NA
Atorvastatin	10 mg qd × 4 days	600 mg qd × 15 days	14	↔	↔	↔
Pravastatin	40 mg qd × 4 days	600 mg qd × 15 days	11	↔	↔	↔
Simvastatin	40 mg qd × 4 days	600 mg qd × 15 days	14	↓ 12% (↓ 28-↑ 8%)	↔	↓ 12% (↓ 25-↑ 3%)
Aluminum hydroxide 400 mg, magnesium hydroxide 400 mg, plus simethicone 40 mg	30 mL single dose	400 mg single dose	17	↔	↔	NA











**Table 10: Outcomes of Randomized Treatment Through 48 Weeks, Study ACTG 364\***

Outcome	SUSTIVA + NFV		
	+ NRTIs (n=65)	SUSTIVA + NRTIs (n=65)	NFV + NRTIs (n=66)
HIV-1 RNA <500 copies/mL <sup>a</sup>	71%	63%	41%
HIV-1 RNA ≥500 copies/mL <sup>b</sup>	17%	34%	54%
CDC Category C Event	2%	0%	0%
Discontinuations for adverse events <sup>c</sup>	3%	3%	5%
Discontinuations for other reasons <sup>d</sup>	8%	0%	0%

\* For some patients, Week 56 data were used to confirm the status at Week 48.

<sup>a</sup> Subjects achieved virologic response (two consecutive viral loads <500 copies/mL) and maintained it through Week 48.

<sup>b</sup> Includes viral rebound and failure to achieve confirmed <500 copies/mL by Week 48.

<sup>c</sup> See *Adverse Reactions (6.1)* for a safety profile of these regimens.

<sup>d</sup> Includes loss to follow-up, consent withdrawn, noncompliance.

A Kaplan-Meier analysis of time to treatment failure through 72 weeks demonstrates a longer duration of virologic suppression (HIV RNA <500 copies/mL) in the SUSTIVA-containing treatment arms.

## 14.2 Pediatric Patients

Study AI266922 is an open-label study to evaluate the pharmacokinetics, safety, tolerability, and antiviral activity of SUSTIVA in combination with didanosine and emtricitabine in antiretroviral-naïve and -experienced pediatric patients. Thirty-seven patients 3 months to 6 years of age (median 0.7 years) were treated with SUSTIVA. At baseline, median plasma HIV-1 RNA was 5.88 log<sub>10</sub> copies/mL, median CD4+ cell count was 1144 cells/mm<sup>3</sup>, and median CD4+ percentage was 25%. The median time on study therapy was 60 weeks; 27% of patients discontinued before Week 48. Using an ITT analysis, the overall proportions of patients with HIV RNA <400 copies/mL and <50 copies/mL at Week 48 were 57% (21/37) and 46% (17/37), respectively. The median increase from baseline in CD4+ count at 48 weeks was 196 cells/mm<sup>3</sup> and the median increase in CD4+ percentage was 6%.

Study PACTG 1021 was an open-label study to evaluate the pharmacokinetics, safety, tolerability, and antiviral activity of SUSTIVA in combination with didanosine and emtricitabine in pediatric patients who were antiretroviral therapy naïve. Forty-three patients 3 months to 21 years of age (median 9.6 years) were dosed with SUSTIVA. At baseline, median plasma HIV-1 RNA was 4.8 log<sub>10</sub> copies/mL, median CD4+ cell count was 367 cells/mm<sup>3</sup>, and median CD4+ percentage was 18%. The median time on study therapy was 181 weeks; 16% of patients discontinued before Week 48. Using an ITT analysis, the overall proportions of patients with HIV RNA <400 copies/mL and <50 copies/mL at Week 48 were 77% (33/43) and 70% (30/43),















**SUSTIVA may affect the way other medicines work, and other medicines may affect how SUSTIVA works**, and may cause serious side effects. If you take certain medicines with SUSTIVA, the amount of SUSTIVA in your body may be too low and it may not work to help control your HIV infection. The HIV virus in your body may become resistant to SUSTIVA or other HIV medicines that are like it.

**You should not take SUSTIVA if you take ATRIPLA** (efavirenz, emtricitabine, tenofovir disoproxil fumarate) unless your doctor tells you to.

**Tell your doctor and pharmacist about all the medicines you take**, including prescription and over-the-counter medicines, vitamins, and herbal supplements. Some medicines interact with SUSTIVA.

Keep a list of your medicines to show your doctor and pharmacist.

- You can ask your doctor or pharmacist for a list of medicines that interact with SUSTIVA.
- **Do not start taking a new medicine without telling your doctor.** Your doctor can tell you if it is safe to take SUSTIVA with other medicines.

#### **How should I take SUSTIVA?**

- Take SUSTIVA exactly as your doctor tells you to.
- Do not change your dose or stop taking SUSTIVA unless your doctor tells you to.
- Stay under the care of your doctor during treatment with SUSTIVA.
- SUSTIVA must be used with other antiretroviral medicines.
- Take SUSTIVA 1 time each day.
- SUSTIVA comes as tablets or capsules.
- SUSTIVA tablets must not be broken.
- Swallow SUSTIVA tablets or capsules whole with liquid.

#### **How and when to take SUSTIVA.**

- You should take SUSTIVA on an empty stomach at bedtime. Taking SUSTIVA with food increases the amount of medicine in your body. Some side effects may bother you less if you take SUSTIVA on an empty stomach and at bedtime.
- Your child's doctor will prescribe the right dose of SUSTIVA based on your child's weight.
- If you have difficulty swallowing tablets or capsules, tell your doctor. Your doctor may recommend opening the SUSTIVA capsule and mixing the contents with food or infant formula. **See the detailed "Instructions for Use" at the end**

**of this Patient Information to learn the right way to take SUSTIVA using the capsule sprinkle method.**

- Adults and children who take SUSTIVA using the capsule sprinkle method should not eat for 2 hours after taking a dose of SUSTIVA.
- Babies should not be given infant formula for 2 hours after taking a dose of SUSTIVA using the capsule sprinkle method.
- Do not miss a dose of SUSTIVA. If you forget to take SUSTIVA, take the missed dose right away, unless it is almost time for your next dose. Do not take 2 doses at one time. Just take your next dose at your regularly scheduled time. If you need help in planning the best times to take your medicine, ask your doctor or pharmacist.
- If you take too much SUSTIVA, call your doctor or go to the nearest hospital emergency room right away.
- When your SUSTIVA supply starts to run low, get more from your doctor or pharmacy. It is important not to run out of SUSTIVA. The amount of HIV-1 in your blood may increase if the medicine is stopped for even a short time. The virus may become resistant to SUSTIVA and harder to treat.

**What are the possible side effects of SUSTIVA?**

**SUSTIVA may cause serious side effects, including:**

- **Serious mental health problems** can happen in people who take SUSTIVA. Tell your doctor right away if you have any of the following symptoms:
  - feel sad or hopeless
  - feel anxious or restless
  - have thoughts of hurting yourself (suicide) or have tried to hurt yourself or others
  - are not able to tell the difference between what is true or real and what is false or unreal
  - do not trust other people
  - hear or see things that are not real
- **Nervous system symptoms** are common in people who take SUSTIVA and can be severe. These symptoms usually begin during the first or second day of treatment with SUSTIVA and usually go away after 2 to 4 weeks of treatment. These symptoms may become worse if you drink alcohol, take a medicine for mental health problems, or use certain street drugs during treatment with SUSTIVA. Symptoms may include:
  - dizziness
  - trouble sleeping
  - trouble concentrating
  - drowsiness
  - unusual dreams

If you have dizziness, trouble concentrating or drowsiness, do not drive a car, use machinery, or do anything that needs you to be alert.

- **Skin rash** is common with SUSTIVA but can sometimes be severe. Skin rash usually goes away without any change in treatment. If you develop a rash with any of the following symptoms, tell your doctor right away:
  - skin rash, with or without itching
  - fever
  - swelling of your face
  - blisters or skin lesions
  - peeling skin
  - mouth sores
  - red or inflamed eyes, like “pink eye” (conjunctivitis)
- **Liver problems, including liver failure and death.** If you have liver problems, including hepatitis B or C infection or take another medicine that can cause liver problems, your doctor may do blood tests to check your liver before you start SUSTIVA and during treatment. Liver problems can also happen in people without a history of liver problems. Tell your doctor right away if you get any of the following symptoms:
  - your skin or the white part of your eyes turns yellow (jaundice)
  - your urine turns dark
  - your bowel movements (stools) turn light in color
  - you don’t feel like eating food for several days or longer
  - you feel sick to your stomach (nausea)
  - you have lower stomach area (abdominal) pain
- **Seizures** can happen in people who take SUSTIVA. Seizures are more likely to happen if you have had seizures in the past. Tell your doctor if you have had a seizure or if you take a medicine to help prevent seizures.
- **Changes in your immune system (Immune Reconstitution Syndrome)** can happen when you start taking HIV-1 medicines. Your immune system may get stronger and begin to fight infections that have been hidden in your body for a long time. Tell your doctor if you start having new symptoms after starting your HIV-1 medicine.
- **Changes in body fat** can happen in people who take HIV-1 medicine. These changes may include increased amount of fat in the upper back and neck (“buffalo hump”), breast, and around the main part of your body (trunk). Loss of fat from the legs, arms, and face may also happen. The cause and long-term health effects of these conditions are not known.

**The most common side effects of SUSTIVA include:**

- rash
- dizziness
- nausea
- headache
- difficulty concentrating
- abnormal dreams
- tiredness
- trouble sleeping
- vomiting

Some patients taking SUSTIVA have experienced increased levels of lipids (cholesterol and triglycerides) in the blood. Tell your doctor if you have any side effect that bothers you or that does not go away.

These are not all the possible side effects of SUSTIVA. For more information, ask your doctor or pharmacist.

Call your doctor for medical advice about side effects. You may report side effects to FDA at 1-800-FDA-1088.

**How should I store SUSTIVA?**

- Store SUSTIVA capsules and tablets at room temperature between 68°F to 77°F (20°C to 25°C).

**Keep SUSTIVA and all medicines out of the reach of children.**

**General information about SUSTIVA**

Medicines are sometimes prescribed for purposes other than those listed in a Patient Information leaflet. Do not use SUSTIVA for a condition for which it was not prescribed. Do not give SUSTIVA to other people, even if they have the same symptoms that you have. It may harm them.

If you would like more information, talk with your doctor. You can ask your pharmacist or doctor for information about SUSTIVA that is written for health professionals. For more information, go to [www.sustiva.com](http://www.sustiva.com) or call 1-800-321-1335.

**What are the ingredients in SUSTIVA?**

**Active ingredient:** efavirenz

**Inactive ingredients:**

**SUSTIVA capsules:** lactose monohydrate, magnesium stearate, sodium lauryl sulfate, and sodium starch glycolate. The capsule shell contains gelatin, sodium lauryl sulfate, titanium dioxide, and/or yellow iron oxide. The capsule shell may also contain silicon dioxide. The capsules are printed with ink containing carmine 40 blue, FD&C Blue No. 2, and titanium dioxide.

**SUSTIVA tablets:** croscarmellose sodium, hydroxypropyl cellulose, lactose monohydrate, magnesium stearate, microcrystalline cellulose, and sodium lauryl sulfate. The tablet film coating contains Opadry Yellow and Opadry Clear. The tablets are polished with carnauba wax and printed with purple ink, Opacode WB.

This Patient Information has been approved by the U.S. Food and Drug Administration.

Distributed by:  
Bristol-Myers Squibb Company  
Princeton, NJ 08543 USA

© Bristol-Myers Squibb Company 2016

[print code]

Revised: October 2016

SUSTIVA is a registered trademark of Bristol-Myers Squibb Pharma Company.  
ATRIPLA is a registered trademark of Bristol-Myers Squibb & Gilead Sciences, LLC.

**Instructions for Use**  
**SUSTIVA®** (sus-TEE-vah)  
**(efavirenz)**  
**capsules**

**Preparing a dose of SUSTIVA using the capsule sprinkle method**

Read this Instructions for Use before you prepare your first dose of SUSTIVA mixed with food or infant formula using the capsule sprinkle method, each time you get a refill, and as needed. There may be new information. This information does not take the place of talking to your doctor about your medical condition or treatment. Ask your doctor or pharmacist if you have any questions about how to mix or give a dose of SUSTIVA using the capsule sprinkle method.

**Important Information:**

- For more information about SUSTIVA capsules, see the Patient Information leaflet.
- The capsule sprinkle method for mixing the contents of SUSTIVA capsules with soft food or infant formula may be used for adults or children who cannot swallow capsules or tablets.
- You should take SUSTIVA on an empty stomach at bedtime.
- You should not eat for 2 hours after taking SUSTIVA mixed with food.
- Babies who are old enough to swallow food should be given SUSTIVA using the capsule sprinkle method mixed with food instead of with infant formula.
- Talk with your doctor to help decide the best schedule for giving your baby SUSTIVA mixed with infant formula using the capsule sprinkle method.

**Preparing a dose of SUSTIVA mixed with food using the capsule sprinkle method.**

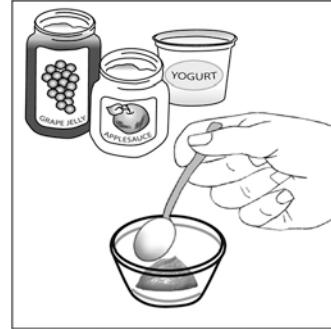
Before you prepare a dose of SUSTIVA mixed with food using the capsule sprinkle method, gather the following supplies:

- paper towels
- teaspoon for measuring
- small spoon for stirring and feeding
- **small** clean container (such as a **small** cup or bowl)
- soft food such as applesauce, grape jelly, or yogurt

**Step 1.** Choose a clean, flat work surface. Place a clean paper towel on the work surface. Then place the other supplies on the paper towel.

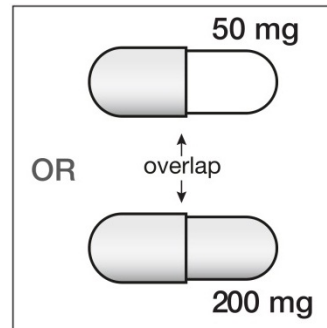
**Step 2.** Wash and dry your hands well.

**Step 3.** Place 1 to 2 teaspoons of soft food such as applesauce, grape jelly, or yogurt in the small container (see Figure A). The color and thickness of the food may change when mixed with the medicine.



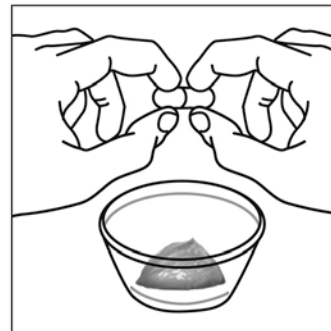
**Figure A**

**Step 4.** There are 2 parts of the SUSTIVA capsule. Look at the SUSTIVA capsule to see which part of the capsule overlaps the other part (see Figure B).



**Figure B**

**Step 5.** Hold the SUSTIVA capsule in a sideways (horizontal) position directly over the container of food. Hold each end of the SUSTIVA capsule between your thumbs and index (pointer) fingers (see Figure C).



**Figure C**

**Step 6.** Use your thumb and index finger to pinch near the end of the overlapping part of the SUSTIVA capsule (see Figure D).



**Figure D**

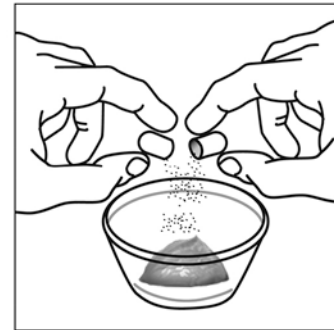
Then, carefully twist both ends of the SUSTIVA capsule in opposite directions to open it (see Figure E). Be careful not to spill the capsule contents or spread it in the air.



**Figure E**

**Step 7.** Sprinkle the contents of the SUSTIVA capsule onto the food (see Figure F).

- Check the capsule shells to make sure they are empty.
- Throw away the empty capsule shells.



**Figure F**

**If the total prescribed dose is more than 1 capsule, follow Steps 4 through 7 for each capsule. Do not add more food.**

Steps 8 through 11 should be completed **within 30 minutes** of mixing the medicine (see Figure G).



**Figure G**

**Step 8.** Use the small spoon to gently mix the capsule contents and food together (see Figure H). Sprinkles will not dissolve. Mixture will look grainy but should not be lumpy.



**Figure H**



**Step 9.** Use the small spoon to give or take the food and capsule contents mixture. Make sure that all of the mixture is swallowed.

**Step 10.** Add about 2 teaspoons more of the food to the empty container and gently stir with the small spoon to mix with any capsule contents that may still be in the container.

**Step 11.** Use the small spoon to give or take the food and capsule contents mixture. Make sure all of the mixture is swallowed.

**Step 12.** Wash the container and spoons. Throw away the paper towel and clean the work surface. Wash your hands.

## Preparing a dose of SUSTIVA mixed with infant formula using the capsule sprinkle method

To make sure that your baby gets all of the medicine, do not give SUSTIVA capsule contents to your baby in a bottle.

Before you prepare a dose of SUSTIVA mixed with infant formula using the capsule sprinkle method, gather the following supplies:

- paper towels
- teaspoon for stirring and measuring
- **small** clean container (such as a **small** cup or bowl) (see Figure I).
- 10 mL oral dosing syringe (ask your pharmacist for this) (see Figure I).
- infant formula at room temperature.

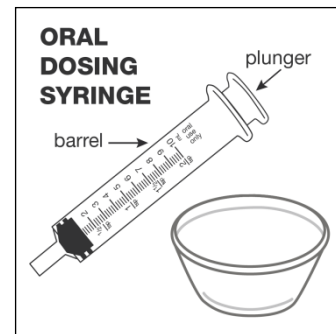


Figure I

**Step 1.** Prepare the infant formula according to the directions on the infant formula package. You will use about 1 ounce of the formula to give the medicine. Any remaining formula should not be given to the child for 2 hours.

**Step 2.** Choose a clean, flat work surface. Place a clean paper towel on the work surface. Place the supplies you will need on the paper towel.

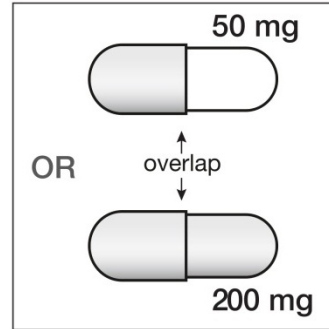
**Step 3.** Wash and dry your hands well.

**Step 4.** Pour 2 teaspoons of room temperature infant formula into the container (see Figure J).



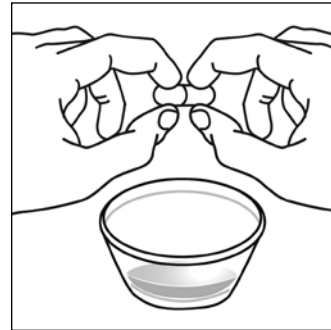
Figure J

**Step 5.** There are 2 parts of the SUSTIVA capsule. Look at the SUSTIVA capsule to see which part of the capsule overlaps the other part (see Figure K).



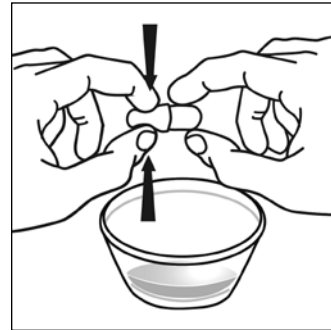
**Figure K**

**Step 6.** Hold the SUSTIVA capsule in a sideways (horizontal) position directly over the container with the infant formula. Hold each end of the SUSTIVA capsule between your thumbs and index (pointer) fingers (see Figure L).



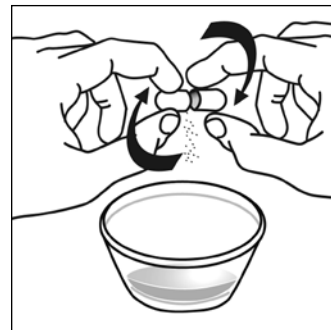
**Figure L**

**Step 7.** Use your thumb and index finger to pinch near the end of the overlapping part of the SUSTIVA capsule (see Figure M).



**Figure M**

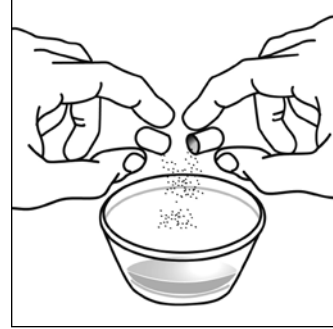
Then, carefully twist both ends of the SUSTIVA capsule in opposite directions to open it (see Figure N). Be careful not to spill the capsule contents or spread it in the air.



**Figure N**

**Step 8.** Sprinkle the contents of the SUSTIVA capsule onto the infant formula (see Figure O).

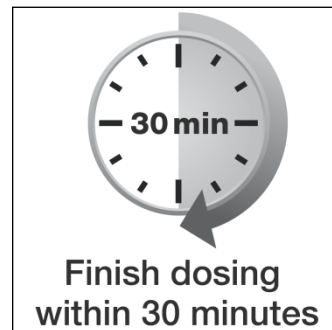
- Check the capsule shells to make sure they are empty.
- Throw away the empty capsule shells.



**Figure O**

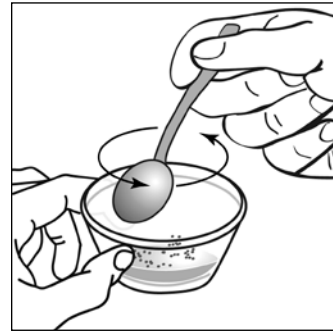
**If the total prescribed dose is more than 1 capsule, follow Steps 5 through 8 for each capsule. Do not add more infant formula.**

Steps 9 through 12 should be completed **within 30 minutes** of mixing the medicine (see Figure P).



**Figure P**

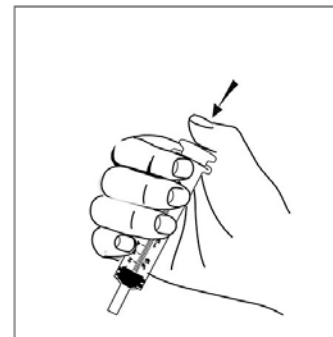
**Step 9.** Hold the container with one hand. With your other hand, use the teaspoon to gently mix the capsule contents and the infant formula (see Figure Q). Sprinkles will not dissolve. Mixture will look grainy but should not be lumpy.



**Figure Q**

**Step 10.** To draw up all of the mixture into the oral dosing syringe:

- Check that the plunger is completely pushed into barrel of the syringe (see Figure R).



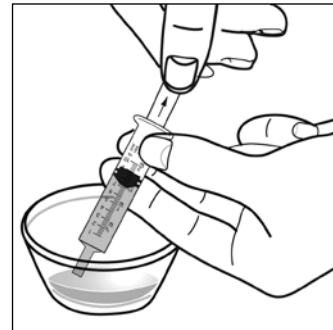
**Figure R**

- Place the tip of the syringe into the mixture in the container (see Figure S).



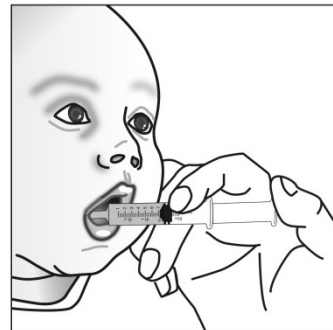
**Figure S**

- Slowly pull back on the plunger and draw up all of the mixture (see Figure T).



**Figure T**

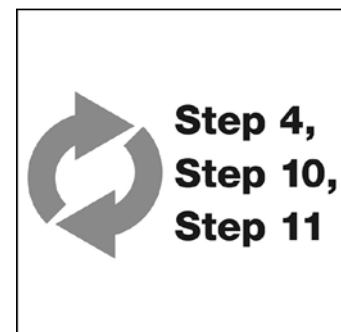
**Step 11.** Place the tip of the syringe in your baby's mouth along the inner cheek (see Figure U). Slowly push on the plunger to give your baby all of the mixture.



**Figure U**

**Step 12. To make sure all of the medicine is given to your baby:**

- Repeat **Step 4** above.
- Stir with a teaspoon.
- Then, repeat **Steps 10 and 11** above (see Figure V).



**Figure V**

**Step 13.** Remove the plunger from the oral dosing syringe. Wash the container, teaspoon, and oral dosing syringe. Allow the plunger and the syringe barrel to dry before putting them back together.

**Step 14.** Throw away the paper towel and clean the work surface. Wash your hands.

**How should I store SUSTIVA capsules?**

- Store SUSTIVA capsules at room temperature between 68°F to 77°F (20°C to 25°C).

**Keep SUSTIVA capsules and all medicines out of the reach of children.**

This Instructions for Use has been approved by the U.S. Food and Drug Administration.

Distributed by:  
Bristol-Myers Squibb Company  
Princeton, NJ 08543 USA

[print code]

Revised: October 2016