

## HIGHLIGHTS OF PRESCRIBING INFORMATION

These highlights do not include all the information needed to use KAPVAY safely and effectively. See full prescribing information for KAPVAY.

**KAPVAY (clonidine hydrochloride) extended-release tablets, for oral use**  
Initial U.S. Approval: 1974

### INDICATIONS AND USAGE

- KAPVAY® is a centrally acting alpha<sub>2</sub>-adrenergic agonist indicated for the treatment of attention deficit hyperactivity disorder (ADHD) as monotherapy or as adjunctive therapy to stimulant medications. (1)

### DOSAGE AND ADMINISTRATION

- Start with one 0.1 mg tablet at bedtime for one week. Increase daily dosage in increments of 0.1 mg/day at weekly intervals until the desired response is achieved. Take twice a day, with either an equal or higher split dosage being given at bedtime, as depicted below (2.2)

Total Daily Dose	Morning Dose	Bedtime Dose
0.1 mg/day		0.1 mg
0.2 mg/day	0.1 mg	0.1 mg
0.3 mg/day	0.1 mg	0.2 mg
0.4 mg/day	0.2 mg	0.2 mg

- Do not crush, chew or break tablet before swallowing. (2.1)
- Do not substitute for other clonidine products on a mg-per-mg basis, because of differing pharmacokinetic profiles. (2.1)
- When discontinuing, taper the dose in decrements of no more than 0.1 mg every 3 to 7 days to avoid rebound hypertension. (2.3)

### DOSAGE FORMS AND STRENGTHS

Extended-release tablets: 0.1 mg and 0.2 mg, not scored. (3)

### CONTRAINDICATIONS

History of a hypersensitivity reaction to clonidine. Reactions have included generalized rash, urticaria, angioedema. (4)

### WARNINGS AND PRECAUTIONS

- Hypotension/bradycardia/syncope: Titrate slowly and monitor vital signs frequently in patients at risk for hypotension, heart block, bradycardia, syncope, cardiovascular disease, vascular disease, cerebrovascular disease or chronic renal failure. Measure heart rate and

blood pressure prior to initiation of therapy, following dose increases, and periodically while on therapy. Avoid concomitant use of drugs with additive effects unless clinically indicated. Advise patients to avoid becoming dehydrated or overheated. (5.1)

- Somnolence/Sedation: Has been observed with KAPVAY. Consider the potential for additive sedative effects with CNS depressant drugs. Caution patients against operating heavy equipment or driving until they know how they respond to KAPVAY. (5.2)
- Cardiac Conduction Abnormalities: May worsen sinus node dysfunction and atrioventricular (AV) block, especially in patients taking other sympatholytic drugs. Titrate slowly and monitor vital signs frequently. (5.5)

### ADVERSE REACTIONS

Most common adverse reactions (incidence at least 5% and twice the rate of placebo) as monotherapy in ADHD: somnolence, fatigue, irritability, nightmare, insomnia, constipation, dry mouth. (6.1)

Most common adverse reactions (incidence at least 5% and twice the rate of placebo) as adjunct therapy to psychostimulant in ADHD: somnolence, fatigue, decreased appetite, dizziness. (6.1)

To report SUSPECTED ADVERSE REACTIONS, contact Concordia Pharmaceuticals Inc. at 1-877-370-1142 or FDA at 1-800-FDA-1088 or [www.fda.gov/medwatch](http://www.fda.gov/medwatch).

### DRUG INTERACTIONS

- Sedating Drugs: Clonidine may potentiate the CNS-depressive effects of alcohol, barbiturates or other sedating drugs. (7)
- Tricyclic Antidepressants: May reduce the hypotensive effect of clonidine. (7)
- Drugs Known to Affect Sinus Node Function or AV Nodal Conduction: Caution is warranted in patients receiving clonidine concomitantly with agents known to affect sinus node function or AV nodal conduction (e.g., digitalis, calcium channel blockers and beta-blockers) due to a potential for additive effects such as bradycardia and AV block. (7)
- Antihypertensive drugs: Use caution when coadministered with KAPVAY. (7)

### USE IN SPECIFIC POPULATIONS

- Based on animal data, KAPVAY may cause fetal harm. (8.1)
- Renal Impairment: The dosage of KAPVAY must be adjusted according to the degree of impairment, and patients should be carefully monitored. (8.6, 12.3)

See 17 for Patient Counseling Information and FDA-approved patient labeling.

Revised: 8/2016

## FULL PRESCRIBING INFORMATION: CONTENTS\*

<b>1 INDICATIONS AND USAGE</b>
<b>2 DOSAGE AND ADMINISTRATION</b>
2.1 General Dosing Information
2.2 Dose Selection
2.3 Discontinuation
2.4 Missed Doses
<b>3 DOSAGE FORMS AND STRENGTHS</b>
<b>4 CONTRAINDICATIONS</b>
<b>5 WARNINGS AND PRECAUTIONS</b>
5.1 Hypotension/Bradycardia
5.2 Sedation and Somnolence
5.3 Rebound Hypertension
5.4 Allergic Reactions
5.5 Cardiac Conduction Abnormalities
<b>6 ADVERSE REACTIONS</b>
6.1 Clinical Trial Experience
6.2 Postmarketing Experience
<b>7 DRUG INTERACTIONS</b>
<b>8 USE IN SPECIFIC POPULATIONS</b>
8.1 Pregnancy
8.3 Nursing Mothers
8.4 Pediatric Use
8.6 Renal Impairment
<b>9 DRUG ABUSE AND DEPENDENCE</b>
9.1 Controlled Substance
<b>10 OVERDOSAGE</b>
<b>11 DESCRIPTION</b>

## 12 CLINICAL PHARMACOLOGY

- 12.1 Mechanism of Action
- 12.2 Pharmacodynamics
- 12.3 Pharmacokinetics

## 13 NONCLINICAL TOXICOLOGY

- 13.1 Carcinogenesis, Mutagenesis and Impairment of Fertility

## 14 CLINICAL STUDIES

- 16 HOW SUPPLIED/STORAGE AND HANDLING**
- 17 PATIENT COUNSELING INFORMATION**

\* Sections or subsections omitted from the full prescribing information are not listed.

## FULL PRESCRIBING INFORMATION

### 1 INDICATIONS AND USAGE

KAPVAY® (clonidine hydrochloride) extended-release is indicated for the treatment of attention deficit hyperactivity disorder (ADHD) as monotherapy and as adjunctive therapy to stimulant medications [see *Clinical Studies (14)*].

### 2 DOSAGE AND ADMINISTRATION

#### 2.1 General Dosing Information

KAPVAY is an extended-release tablet to be taken orally with or without food. Swallow tablets whole. Do not crush, chew, or break tablets because this will increase the rate of clonidine release.

Due to the lack of controlled clinical trial data and differing pharmacokinetic profiles, substitution of KAPVAY for other clonidine products on a mg-per-mg basis is not recommended [see *Clinical Pharmacology (12.3)*].

#### 2.2 Dose Selection

The dose of KAPVAY, administered either as monotherapy or as adjunctive therapy to a psychostimulant, should be individualized according to the therapeutic needs and response of the patient. Dosing should be initiated with one 0.1 mg tablet at bedtime, and the daily dosage should be adjusted in increments of 0.1 mg/day at weekly intervals until the desired response is achieved. Doses should be taken twice a day, with either an equal or higher split dosage being given at bedtime (see Table 1).

**Table 1 KAPVAY Dosing Guidance**

Total Daily Dose	Morning Dose	Bedtime Dose
0.1 mg/day		0.1 mg
0.2 mg/day	0.1 mg	0.1 mg
0.3 mg/day	0.1 mg	0.2 mg
0.4 mg/day	0.2 mg	0.2 mg

Doses of KAPVAY higher than 0.4 mg/day (0.2 mg twice daily) were not evaluated in clinical trials for ADHD and are not recommended.

When KAPVAY is being added-on to a psychostimulant, the dose of the psychostimulant can be adjusted depending on the patient's response to KAPVAY.

#### 2.3 Discontinuation

When discontinuing KAPVAY, the total daily dose should be tapered in decrements of no more than 0.1 mg every 3 to 7 days to avoid rebound hypertension [see *Warnings and Precautions (5.3)*].

#### 2.4 Missed Doses

If patients miss a dose of KAPVAY, they should skip that dose and take the next dose as scheduled. Do not take more than the prescribed total daily amount of KAPVAY in any 24-hour period.

### 3 DOSAGE FORMS AND STRENGTHS

KAPVAY tablets are available in two strengths, 0.1 mg and 0.2 mg as an extended-release formulation. Both the 0.1 mg and 0.2 mg tablets are white, non-scored, standard convex with debossing on one side. The 0.1 mg tablets are round and the 0.2 mg tablets are oval. KAPVAY tablets must be swallowed whole and never crushed, cut or chewed.

### 4 CONTRAINDICATIONS

KAPVAY is contraindicated in patients with a history of a hypersensitivity reaction to clonidine. Reactions have included generalized rash, urticaria, and angioedema [see *Adverse Reactions (6)*].

### 5 WARNINGS AND PRECAUTIONS

#### 5.1 Hypotension/Bradycardia

Treatment with KAPVAY can cause dose-related decreases in blood pressure and heart rate [see *Adverse Reactions (6.1)*]. Measure heart rate and blood pressure prior to initiation of therapy, following dose increases, and periodically while on therapy. Titrate KAPVAY slowly in patients with a history of hypotension, and those with underlying conditions that may be worsened by hypotension and bradycardia; e.g., heart block, bradycardia, cardiovascular disease, vascular disease, cerebrovascular disease, or chronic renal failure. In patients who have a history of syncope or may have a condition that predisposes them to syncope, such as hypotension, orthostatic hypotension, bradycardia, or dehydration, advise patients to avoid becoming dehydrated or overheated. Monitor blood pressure and heart rate, and adjust dosages accordingly in patients treated concomitantly with antihypertensives or other drugs that can reduce blood pressure or heart rate or increase the risk of syncope.

## 5.2 Sedation and Somnolence

Somnolence and sedation were commonly reported adverse reactions in clinical studies. In patients that completed 5 weeks of therapy in a controlled, fixed dose pediatric monotherapy study, 31% of patients treated with 0.4 mg/day and 38% treated with 0.2 mg/day versus 4% of placebo treated patients reported somnolence as an adverse event. In patients that completed 5 weeks of therapy in a controlled flexible dose pediatric adjunctive to stimulants study, 19% of patients treated with KAPVAY+stimulant versus 7% treated with placebo+stimulant reported somnolence. Before using KAPVAY with other centrally active depressants (such as phenothiazines, barbiturates, or benzodiazepines), consider the potential for additive sedative effects. Caution patients against operating heavy equipment or driving until they know how they respond to treatment with KAPVAY. Advise patients to avoid use with alcohol.

## 5.3 Rebound Hypertension

Abrupt discontinuation of KAPVAY can cause rebound hypertension. In adults with hypertension, sudden cessation of clonidine hydrochloride extended-release formulation treatment in the 0.2 to 0.6 mg/day range resulted in reports of headache, tachycardia, nausea, flushing, warm feeling, brief lightheadedness, tightness in chest, and anxiety. In adults with hypertension, sudden cessation of treatment with immediate-release clonidine has, in some cases, resulted in symptoms such as nervousness, agitation, headache, and tremor accompanied or followed by a rapid rise in blood pressure and elevated catecholamine concentrations in the plasma.

No studies evaluating abrupt discontinuation of KAPVAY in children with ADHD have been conducted; however, to minimize the risk of rebound hypertension, gradually reduce the dose of KAPVAY in decrements of no more than 0.1 mg every 3 to 7 days. Patients should be instructed not to discontinue KAPVAY therapy without consulting their physician due to the potential risk of withdrawal effects.

## 5.4 Allergic Reactions

In patients who have developed localized contact sensitization to clonidine transdermal system, continuation of clonidine transdermal system or substitution of oral KAPVAY therapy may be associated with the development of a generalized skin rash.

In patients who develop an allergic reaction from clonidine transdermal system, substitution of oral KAPVAY may also elicit an allergic reaction (including generalized rash, urticaria, or angioedema).

## 5.5 Cardiac Conduction Abnormalities

The sympatholytic action of clonidine may worsen sinus node dysfunction and atrioventricular (AV) block, especially in patients taking other sympatholytic drugs. There have been post-marketing reports of patients with conduction abnormalities and/or taking other sympatholytic drugs who developed severe bradycardia requiring IV atropine, IV isoproterenol, and temporary cardiac pacing while taking clonidine. Titrate KAPVAY slowly and monitor vital signs frequently in patients with cardiac conduction abnormalities or patients concomitantly treated with other sympatholytic drugs.

## 6 ADVERSE REACTIONS

The following serious adverse reactions are described in greater detail elsewhere in labeling:

- Hypotension/bradycardia [see *Warnings and Precautions* (5.1)]
- Sedation and somnolence [see *Warnings and Precautions* (5.2)]
- Rebound hypertension [see *Warnings and Precautions* (5.3)]
- Allergic reactions [see *Warnings and Precautions* (5.4)]
- Cardiac Conduction Abnormalities [see *Warnings and Precautions* (5.5)]

### 6.1 Clinical Trial Experience

Because clinical trials are conducted under widely varying conditions, adverse reaction rates observed in the clinical trials of a drug cannot be directly compared to rates in the clinical trials of another drug and may not reflect the rates observed in practice.

Two KAPVAY ADHD clinical studies (Study 1, CLON-301 and Study 2, CLON-302) evaluated 256 patients in two 8-week placebo-controlled studies.

A third KAPVAY ADHD clinical study (Study 3, SHN-KAP-401) evaluated 135 children and adolescents in a 40-week placebo-controlled randomized-withdrawal study.

#### **Study 1: Fixed-dose KAPVAY Monotherapy**

Study 1 (CLON-301) was a short-term, multi-center, randomized, double-blind, placebo-controlled study of two fixed doses (0.2 mg/day or 0.4 mg/day) of KAPVAY in children and adolescents (6 to 17 years of age) who met DSM-IV criteria for ADHD hyperactive or combined inattentive/hyperactive subtypes.

*Most Common Adverse Reactions* (incidence of  $\geq 5\%$  and at least twice the rate of placebo): somnolence, fatigue, irritability, insomnia, nightmare, constipation, dry mouth.

*Adverse Events Leading to Discontinuation of KAPVAY*—Five patients (7%) in the low dose group (0.2 mg), 15 patients (20%) in the high dose group (0.4 mg), and 1 patient in the placebo group (1%) reported adverse reactions that led to discontinuation. The most common adverse reactions that led to discontinuation were somnolence and fatigue.

Commonly observed adverse reactions (incidence of  $\geq 2\%$  in either active treatment group and greater than the rate on placebo) during the treatment period are listed in Table 2.

**Table 2 Common Adverse Reactions in the Fixed-Dose Monotherapy Trial - Treatment Period (Study 1)**

Preferred Term	Percentage of Patients Reporting Event		
	KAPVAY 0.2 mg/day N=76	KAPVAY 0.4 mg/day N=78	Placebo (N=76)
<b>PSYCHIATRIC DISORDERS</b>			
Somnolence*	38%	31%	4%
Nightmare	4%	9%	0%
Emotional Disorder	4%	4%	1%
Aggression	3%	1%	0%
Tearfulness	1%	3%	0%
Enuresis	0%	4%	0%
Sleep Terror	3%	0%	0%
Poor Quality Sleep	0%	3%	1%
<b>NERVOUS SYSTEM DISORDERS</b>			
Headache	20%	13%	16%
Insomnia	5%	6%	1%
Tremor	1%	4%	0%
Abnormal Sleep-Related Event	3%	1%	0%
<b>GASTROINTESTINAL DISORDERS</b>			
Upper Abdominal Pain	15%	10%	12%
Nausea	4%	5%	3%
Constipation	1%	6%	0%
Dry Mouth	0%	5%	1%
<b>GENERAL DISORDERS</b>			
Fatigue†	16%	13%	1%
Irritability	9%	5%	4%
<b>CARDIAC DISORDERS</b>			
Dizziness	7%	3%	5%
Bradycardia	0%	4%	0%
<b>INVESTIGATIONS</b>			
Increased Heart Rate	0%	3%	0%
<b>METABOLISM AND NUTRITION DISORDERS</b>			
Decreased Appetite	3%	4%	4%

\* Somnolence includes the terms "somnolence" and "sedation".

† Fatigue includes the terms "fatigue" and "lethargy".

Commonly observed adverse reactions (incidence of  $\geq 2\%$  in either active treatment group and greater than the rate on placebo) during the taper period are listed in Table 3.

**Table 3 Common Adverse Reactions in the Fixed-Dose Monotherapy Trial - Taper Period\* (Study 1)**

Preferred Term	Percentage of Patients Reporting Event		
	KAPVAY 0.2 mg/day N=76	KAPVAY 0.4 mg/day N=78	Placebo (N=76)
Abdominal Pain Upper	0%	6%	3%
Headache	5%	2%	3%
Gastrointestinal Viral	0%	5%	0%
Somnolence	2%	3%	0%
Heart Rate Increased	0%	3%	0%

Otitis Media Acute	3%	0%	0%
--------------------	----	----	----

\* Taper Period: 0.2 mg dose, week 8; 0.4 mg dose, weeks 6-8; Placebo dose, weeks 6-8

### **Study 2: Flexible-dose KAPVAY as Adjunctive Therapy to Psychostimulants**

Study 2 (CLON-302) was a short-term, randomized, double-blind, placebo-controlled study of a flexible dose of KAPVAY as adjunctive therapy to a psychostimulant in children and adolescents (6 to 17 years) who met DSM-IV criteria for ADHD hyperactive or combined inattentive/hyperactive subtypes. during which KAPVAY was initiated at 0.1 mg/day and titrated up to 0.4 mg/day over a 3-week period. Most KAPVAY treated patients (75.5%) were escalated to the maximum dose of 0.4 mg/day.

*Most Common Adverse Reactions* (incidence of  $\geq 5\%$  and at least twice the rate of placebo): somnolence, fatigue, decreased appetite, dizziness.

*Adverse Events Leading to Discontinuation* – There was one patient in the CLON+STM group (1%) who discontinued because of an adverse event (severe bradypnea, with severe fatigue).

Commonly observed adverse reactions (incidence of  $\geq 2\%$  in the treatment group and greater than the rate on placebo) during the treatment period are listed in Table 4.

**Table 4 Common Adverse Reactions in the Flexible-Dose Adjunctive to Stimulant Therapy Trial - Treatment Period (Study 2)**

Preferred Term	Percentage of Patients Reporting Event	
	KAPVAY+STM (N=102)	PBO+STM (N=96)
PSYCHIATRIC DISORDERS		
Somnolence*	19%	7%
Aggression	2%	1%
Affect Lability	2%	1%
Emotional Disorder	2%	0%
GENERAL DISORDERS		
Fatigue†	14%	4%
Irritability	2%	7%
NERVOUS SYSTEM DISORDERS		
Headache	7%	12%
Insomnia	4%	3%
GASTROINTESTINAL DISORDERS		
Upper Abdominal Pain	7%	4%
RESPIRATORY DISORDERS		
Nasal Congestion	2%	2%
METABOLISM AND NUTRITION DISORDERS		
Decreased Appetite	6%	3%
CARDIAC DISORDERS		
Dizziness	5%	1%

\* Somnolence includes the terms: "somnolence" and "sedation".

† Fatigue includes the terms "fatigue" and "lethargy".

Commonly observed adverse reactions (incidence of  $\geq 2\%$  in the treatment group and greater than the rate on placebo) during the taper period are listed in Table 5.

**Table 5 Common Adverse Reactions in the Flexible-Dose Adjunctive to Stimulant Therapy Trial - Taper Period\* (Study 2)**

Preferred Term	Percentage of Patients Reporting Event	
	KAPVAY+STM (N=102)	PBO+STM (N=96)
Nasal Congestion	4%	2%
Headache	3%	1%
Irritability	3%	2%
Throat Pain	3%	1%
Gastroenteritis Viral	2%	0%
Rash	2%	0%

\* Taper Period: weeks 6-8

## **Adverse Reactions Leading to Discontinuation**

Thirteen percent (13%) of patients receiving KAPVAY discontinued from the pediatric monotherapy study due to adverse events, compared to 1% in the placebo group. The most common adverse reactions leading to discontinuation of KAPVAY monotherapy treated patients were from somnolence/sedation (5%) and fatigue (4%).

### **Effect on Blood Pressure and Heart Rate**

In patients that completed 5 weeks of treatment in a controlled, fixed-dose monotherapy study in pediatric patients, during the treatment period the maximum placebo-subtracted mean change in systolic blood pressure was -4.0 mmHg on KAPVAY 0.2 mg/day and -8.8 mmHg on KAPVAY 0.4 mg/day. The maximum placebo-subtracted mean change in diastolic blood pressure was -4.0 mmHg on KAPVAY 0.2 mg/day and -7.3 mmHg on KAPVAY 0.4 mg/day. The maximum placebo-subtracted mean change in heart rate was -4.0 beats per minute on KAPVAY 0.2 mg/day and -7.7 beats per minute on KAPVAY 0.4 mg/day.

During the taper period of the fixed-dose monotherapy study the maximum placebo-subtracted mean change in systolic blood pressure was +3.4 mmHg on KAPVAY 0.2 mg/day and -5.6 mmHg on KAPVAY 0.4 mg/day. The maximum placebo-subtracted mean change in diastolic blood pressure was +3.3 mmHg on KAPVAY 0.2 mg/day and -5.4 mmHg on KAPVAY 0.4 mg/day. The maximum placebo-subtracted mean change in heart rate was -0.6 beats per minute on KAPVAY 0.2 mg/day and -3.0 beats per minute on KAPVAY 0.4 mg/day.

## **6.2 Postmarketing Experience**

The following adverse reactions have been identified during post-approval use of KAPVAY. Because these reactions are reported voluntarily from a population of uncertain size, it is not always possible to reliably estimate their frequency or establish a causal relationship to drug exposure. These events exclude those already mentioned in 6.1:

**Psychiatric:** hallucinations

**Cardiovascular:** Q-T prolongation

## **7 DRUG INTERACTIONS**

The following have been reported with other oral immediate release formulations of clonidine:

**Table 6 Clinically Important Drug Interactions**

<b>Concomitant Drug Name or Drug Class</b>	<b>Clinical Rationale</b>	<b>Clinical Recommendation</b>
Tricyclic antidepressants	Increase blood pressure and may counteract clonidine's hypotensive effects	Monitor blood pressure and adjust as needed
Antihypertensive drugs	Potentiate clonidine's hypotensive effects	Monitor blood pressure and adjust as needed
CNS depressants	Potentiate sedating effects	Avoid use
Drugs that affect sinus node function or AV node conduction (e.g., digitalis, calcium channel blockers, beta blockers)	Potentiate bradycardia and risk of AV block	Avoid use

## **8 USE IN SPECIFIC POPULATIONS**

### **8.1 Pregnancy**

#### **Pregnancy Category C:**

##### *Risk Summary*

There are no adequate or well-controlled studies with KAPVAY in pregnant women. In animal embryofetal studies, increased resorptions were seen in rats and mice administered oral clonidine hydrochloride from implantation through organogenesis at 10 and 5 times, respectively, the maximum recommended human dose (MRHD). No embryotoxic or teratogenic effects were seen in rabbits administered oral clonidine hydrochloride during organogenesis at doses up to 3 times the MRHD. KAPVAY should be used during pregnancy only if the potential benefit justifies the potential risk to the fetus.

##### *Animal Data*

Oral administration of clonidine hydrochloride to pregnant rabbits during the period of embryo/fetal organogenesis at doses of up to 80 mcg/kg/day (approximately 3 times the oral maximum recommended daily dose [MRHD] of 0.4 mg/day on a mg/m<sup>2</sup> basis) produced no evidence of teratogenic or embryotoxic potential. In pregnant rats, however, doses as low as 15 mcg/kg/day (1/3 the MRHD on a mg/m<sup>2</sup> basis) were associated with increased resorptions in a study in which dams were treated continuously from 2 months prior to mating and throughout gestation. Increased resorptions were not associated with treatment at the same or at higher dose levels (up to 3 times the MRHD) when treatment of the dams was restricted to gestation days 6-15. Increases in resorptions were observed in both rats and mice at 500 mcg/kg/day (10 and 5 times the MRHD in rats and mice, respectively) or higher when the animals were treated on gestation days 1-14; 500 mcg/kg/day was the lowest dose employed in this study.

### **8.3 Nursing Mothers**

Clonidine hydrochloride is present in human milk. The developmental and health benefits of breastfeeding should be considered along with the mother's clinical need for KAPVAY and any potential adverse effects on the breastfed child from KAPVAY or from the underlying maternal condition. Exercise caution when KAPVAY is administered to a nursing woman.

## 8.4 Pediatric Use

The safety and efficacy of KAPVAY in the treatment of ADHD have been established in pediatric patients 6 to 17 years of age. Use of KAPVAY in pediatric patients 6 to 17 years of age is supported by three adequate and well-controlled studies; a short-term, placebo-controlled monotherapy trial, a short-term adjunctive therapy trial and a longer-term randomized monotherapy trial [see *Clinical Studies (14)*]. Safety and efficacy in pediatric patients below the age of 6 years has not been established.

### Juvenile Animal Data

In studies in juvenile rats, clonidine hydrochloride alone or in combination with methylphenidate had an effect on bone growth at clinically relevant doses and produced a slight delay in sexual maturation in males at 3 times the maximum recommended human dose (MRHD) for clonidine and methylphenidate.

In a study where juvenile rats were treated orally with clonidine hydrochloride from day 21 of age to adulthood, a slight delay in onset of preputial separation (delayed sexual maturation) was seen in males treated with 300 mcg/kg/day, which is approximately 3 times the MRHD of 0.4 mg/day on a mg/m<sup>2</sup> basis. The no-effect dose was 100 mcg/kg/day, which is approximately equal to the MRHD. There was no drug effects on fertility or on other measures of sexual or neurobehavioral development.

In a study where juvenile rats were treated with clonidine alone (300 mcg/kg/day) or in combination with methylphenidate (10 mg/kg/day in females and 50/30 mg/kg/day in males; the dose was lowered from 50 to 30 mg/kg/day in males due to self-injurious behavior during the first week of treatment) from day 21 of age to adulthood, decreases in bone mineral density and mineral content were observed in males treated with 300 mcg/kg/day clonidine alone and in combination with 50/30 mg/kg/day methylphenidate and a decrease in femur length was observed in males treated with the combination at the end of the treatment period. These doses are approximately 3 times the MRHD of 0.4 mg/day clonidine and 54 mg/day methylphenidate on a mg/m<sup>2</sup> basis. All these effects in males were not reversed at the end of a 4-week recovery period. In addition, similar findings were seen in males treated with a lower dose of clonidine (30 mcg/kg/day) in combination with 50 mg/kg/day of methylphenidate and a decrease in femur length was observed in females treated with clonidine alone at the end of the recovery period. These effects were accompanied by a decrease in body weight gain in treated animals during the treatment period but the effect was reversed at the end of the recovery period. A delay in preputial separation (sexual maturation) was observed in males treated with the combination treatment of 300 mcg/kg/day clonidine and 50/30 mg/kg/day methylphenidate. There was no effect on reproduction or sperm analysis in these males.

## 8.6 Renal Impairment

The impact of renal impairment on the pharmacokinetics of clonidine in children has not been assessed. The initial dosage of KAPVAY should be based on degree of impairment. Monitor patients carefully for hypotension and bradycardia, and titrate to higher doses cautiously. Since only a minimal amount of clonidine is removed during routine hemodialysis, there is no need to give supplemental KAPVAY following dialysis.

## 9 DRUG ABUSE AND DEPENDENCE

### 9.1 Controlled Substance

KAPVAY is not a controlled substance and has no known potential for abuse or dependence.

## 10 OVERDOSAGE

### Symptoms

**Clonidine overdose:** hypertension may develop early and may be followed by hypotension, bradycardia, respiratory depression, hypothermia, drowsiness, decreased or absent reflexes, weakness, irritability and miosis. The frequency of CNS depression may be higher in children than adults. Large overdoses may result in reversible cardiac conduction defects or dysrhythmias, apnea, coma and seizures. Signs and symptoms of overdose generally occur within 30 minutes to two hours after exposure.

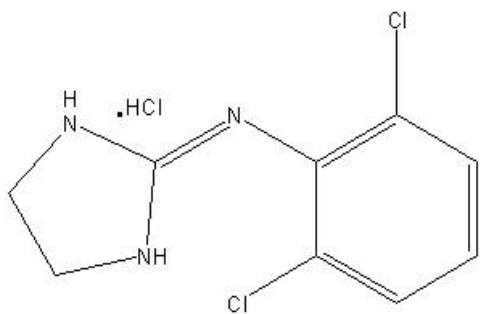
### Treatment

Consult with a Certified Poison Control Center (1-800-222-1222) for up-to-date guidance and advice.

## 11 DESCRIPTION

KAPVAY (clonidine hydrochloride) extended-release is a centrally acting alpha<sub>2</sub>-adrenergic agonist available as 0.1 mg or 0.2 mg extended-release tablets for oral administration. Each 0.1 mg and 0.2 mg tablet is equivalent to 0.087 mg and 0.174 mg, respectively, of the free base.

The inactive ingredients are sodium lauryl sulfate, lactose monohydrate, hypromellose type 2208, partially pregelatinized starch, colloidal silicon dioxide, and magnesium stearate. The formulation is designed to delay the absorption of active drug in order to decrease peak to trough plasma concentration differences. Clonidine hydrochloride is an imidazoline derivative and exists as a mesomeric compound. The chemical name is 2-(2,6-dichlorophenylamino)-2-imidazoline hydrochloride. The following is the structural formula:



C<sub>9</sub>H<sub>9</sub>Cl<sub>2</sub>N<sub>3</sub>·HCl

Mol. Wt. 266.56

Clonidine hydrochloride is an odorless, bitter, white, crystalline substance soluble in water and alcohol.

## 12 CLINICAL PHARMACOLOGY

### 12.1 Mechanism of Action

Clonidine stimulates alpha<sub>2</sub>-adrenergic receptors in the brain. Clonidine is not a central nervous system stimulant. The mechanism of action of clonidine in ADHD is not known.

### 12.2 Pharmacodynamics

Clonidine is a known antihypertensive agent. By stimulating alpha<sub>2</sub>-adrenergic receptors in the brain stem, clonidine reduces sympathetic outflow from the central nervous system and decreases peripheral resistance, renal vascular resistance, heart rate, and blood pressure.

### 12.3 Pharmacokinetics

#### Single-dose Pharmacokinetics in Adults

Immediate-release clonidine hydrochloride and KAPVAY have different pharmacokinetic characteristics; dose substitution on a milligram for milligram basis will result in differences in exposure. A comparison across studies suggests that the C<sub>max</sub> is 50% lower for KAPVAY compared to immediate-release clonidine hydrochloride.

Following oral administration of an immediate release formulation, plasma clonidine concentration peaks in approximately 3 to 5 hours and the plasma half-life ranges from 12 to 16 hours. The half-life increases up to 41 hours in patients with severe impairment of renal function. Following oral administration about 40-60% of the absorbed dose is recovered in the urine as unchanged drug in 24 hours.

About 50% of the absorbed dose is metabolized in the liver. Although studies of the effect of renal impairment and studies of clonidine excretion have not been performed with KAPVAY, results are likely to be similar to those of the immediate release formulation.

The pharmacokinetic profile of KAPVAY administration was evaluated in an open-label, three-period, randomized, crossover study of 15 healthy adult subjects who received three single-dose regimens of clonidine: 0.1 mg of KAPVAY under fasted conditions, 0.1 mg of KAPVAY following a high fat meal, and 0.1 mg of clonidine immediate-release (Catapres<sup>®</sup>) under fasted conditions. Treatments were separated by one-week washout periods.

Mean concentration-time data from the 3 treatments are shown in Table 7 and Figure 1. After administration of KAPVAY, maximum clonidine concentrations were approximately 50% of the Catapres maximum concentrations and occurred approximately 5 hours later relative to Catapres. Similar elimination half-lives were observed and total systemic bioavailability following KAPVAY was approximately 89% of that following Catapres.

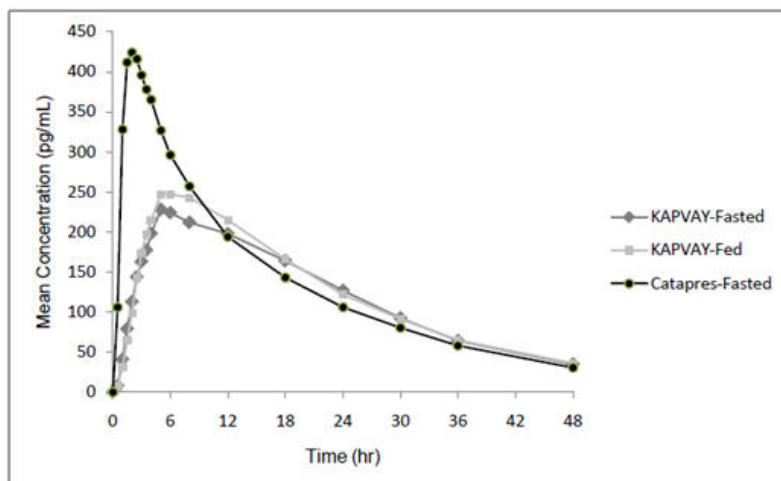
Food had no effect on plasma concentrations, bioavailability, or elimination half-life.

**Table 7 Pharmacokinetic Parameters of Clonidine in Healthy Adult Volunteers**

Parameter	CATAPRES-Fasted n=15		KAPVAY-Fed n=15		KAPVAY-Fasted n=14	
	Mean	SD	Mean	SD	MEAN	SD
C <sub>max</sub> (pg/mL)	443	59.6	235	34.7	258	33.3
AUC <sub>inf</sub> (hr*pg/mL)	7313	1812	6505	1728	6729	1650
hT <sub>max</sub> (hr)	2.07	0.5	6.80	3.61	6.50	1.23
T <sub>1/2</sub> (hr)	12.57	3.11	12.67	3.76	12.65	3.56



**Figure 1 Mean Clonidine Concentration -Time Profiles after Single Dose Administration**



### **Multiple-dose Pharmacokinetics in Children and Adolescents**

Plasma clonidine concentrations in children and adolescents (0.1 mg bid and 0.2 mg bid) with ADHD are greater than those of adults with hypertension with children and adolescents receiving higher doses on a mg/kg basis. Body weight normalized clearance (CL/F) in children and adolescents was higher than CL/F observed in adults with hypertension. Clonidine concentrations in plasma increased with increases in dose over the dose range of 0.2 to 0.4 mg/day. Clonidine CL/F was independent of dose administered over the 0.2 to 0.4 mg/day dose range. Clonidine CL/F appeared to decrease slightly with increases in age over the range of 6 to 17 years, and females had a 23% lower CL/F than males. The incidence of "sedation-like" AEs (somnia and fatigue) appeared to be independent of clonidine dose or concentration within the studied dose range in the titration study. Results from the add-on study showed that clonidine CL/F was 11% higher in patients who were receiving methylphenidate and 44% lower in those receiving amphetamine compared to subjects not on adjunctive therapy.

## **13 NONCLINICAL TOXICOLOGY**

### **13.1 Carcinogenesis, Mutagenesis and Impairment of Fertility**

Clonidine HCl was not carcinogenic when administered in the diet of rats (for up to 132 weeks) or mice (for up to 78 weeks) at doses of up to 1620 (male rats), 2040 (female rats), or 2500 (mice) mcg/kg/day. These doses are approximately 20, 25, and 15 times, respectively, the maximum recommended human dose (MRHD) of 0.4 mg/day on a mg/m<sup>2</sup> basis.

There was no evidence of genotoxicity in the Ames test for mutagenicity or mouse micronucleus test for clastogenicity.

Fertility of male or female rats was unaffected by clonidine HCl doses as high as 150 mcg/kg/day (approximately 3 times the MRHD on a mg/m<sup>2</sup> basis). In a separate experiment, fertility of female rats appeared to be adversely affected at dose levels of 500 and 2000 mcg/kg/day (10 and 40 times the MRHD on a mg/m<sup>2</sup> basis).

## **14 CLINICAL STUDIES**

Efficacy of KAPVAY in the treatment of ADHD was established in children and adolescents (6 to 17 years) in:

- One short-term, placebo-controlled monotherapy trial (Study 1)
- One short-term adjunctive therapy to psychostimulants trial (Study 2)
- One randomized withdrawal trial as monotherapy (Study 3)

### Short-term Monotherapy and Adjunctive Therapy to Psychostimulant Studies for ADHD

The efficacy of KAPVAY in the treatment of ADHD was established in 2 (one monotherapy and one adjunctive therapy) placebo-controlled trials in pediatric patients aged 6 to 17, who met DSM-IV criteria of ADHD hyperactive or combined hyperactive/inattentive subtypes. Signs and symptoms of ADHD were evaluated using the investigator administered and scored ADHD Rating Scale-IV-Parent Version (ADHDRS-IV) total score including hyperactive/impulsivity and inattentive subscales.

Study 1 (CLON-301), was an 8-week randomized, double-blind, placebo-controlled, fixed dose study of children and adolescents aged 6 to 17 (N=236) with a 5-week primary efficacy endpoint. Patients were randomly assigned to one of the following three treatment groups: KAPVAY (CLON) 0.2 mg/day (N=78), KAPVAY 0.4 mg/day (N=80), or placebo (N=78). Dosing for the KAPVAY groups started at 0.1 mg/day and was titrated in increments of 0.1 mg/week to their respective dose (as divided doses). Patients were maintained at their dose for a minimum of 2 weeks before being gradually tapered down to 0.1 mg/day at the last week of treatment. At both doses, improvements in ADHD symptoms were statistically significantly superior in KAPVAY-treated patients compared with placebo-treated patients at the end of 5 weeks as measured by the ADHDRS-IV total score (Table 8).

Study 2 (CLON-302) was an 8-week randomized, double-blind, placebo-controlled, flexible dose study in children and adolescents aged 6 to 17 (N=198) with a 5-week primary efficacy end point. Patients had been treated with a psychostimulant (methylphenidate or amphetamine) for four weeks with inadequate response. Patients were randomly assigned to one of two treatment groups: KAPVAY adjunct to a psychostimulant (N=102) or psychostimulant alone (N=96). The KAPVAY dose was initiated at 0.1 mg/day and doses were titrated in increments of 0.1 mg/week up to 0.4 mg/day, as divided doses, over a 3-week period based on tolerability and clinical response. The dose was maintained for a minimum of 2 weeks before being gradually tapered to 0.1 mg/day at the last week of treatment. ADHD symptoms were statistically significantly improved in KAPVAY plus stimulant group compared with the stimulant alone group at the end of 5 weeks as measured by the ADHDRS-IV total score (Table 8).

**Table 8 Short-Term Trials**

Study Number	Treatment Group	Primary Efficacy Measure: ADHDRS-IV Total Score		
		Mean Baseline Score (SD)	LS Mean Change from Baseline (SE)	Placebo-subtracted Difference <sup>a</sup> (95% CI)
Study 1	KAPVAY (0.2 mg/day)	43.8 (7.47)	-15.0 (1.38)	-8.5 (-12.2, - 4.8)
	KAPVAY (0.4 mg/day)	44.6 (7.73)	-15.6 (1.33)	-9.1 (-12.8, - 5.5)
	Placebo	45.0 (8.53)	-6.5 (1.35)	--
Study 2	KAPVAY (0.4 mg/day) + Psychostimulant	38.9 (6.95)	-15.8 (1.18)	-4.5 (-7.8, -1.1)
	Psychostimulant alone	39.0 (7.68)	-11.3 (1.24)	--

SD: standard deviation; SE: standard error; LS Mean: least-squares mean; CI: unadjusted confidence interval.

<sup>a</sup> Difference (drug minus placebo) in least-squares mean change from baseline.

### Maintenance Monotherapy for ADHD

Study 3 (SHN-KAP-401), was a double-blind, placebo-controlled, randomized-withdrawal study in children and adolescents aged 6 to 17 years (n=253) with DSM-IV-TR diagnosis of ADHD. The study consisted of a 10-week, open-label phase (4 weeks of dose optimization and 6 weeks of dose maintenance), a 26-week double-blind phase, and a 4-week taper-down and follow-up phase. All patients were initiated at 0.1 mg/day and increased at weekly intervals in increments of 0.1 mg/day until reaching personalized optimal dose (0.1, 0.2, 0.3 or 0.4 mg/day, as divided doses). Eligible patients had to demonstrate treatment response as defined by  $\geq 30\%$  reduction in ADHD-RS-IV total score and a Clinical Global Impression-Improvement score of 1 or 2 during the open label phase. Patients who sustained treatment response (n=135) until the end of the open label phase were randomly assigned to one of the two treatment groups, KAPVAY (N=68) and Placebo (N=67), to evaluate the long-term efficacy of maintenance dose of KAPVAY in the double-blind phase. The primary efficacy endpoint was the percentage of patients with treatment failure defined as a  $\geq 30\%$  increase (worsening) in ADHD-RS-IV total score and  $\geq 2$  points increase (worsening) in Clinical Global Impression – Severity Scale in 2 consecutive visits or early termination for any reason. A total of 73 patients experienced treatment failure in the double-blind phase: 31 patients (45.6%) in the KAPVAY group and 42 patients (62.7%) in the placebo group, with a statistically significant difference in the primary endpoint favoring KAPVAY (Table 9). The cumulative proportion of patients with treatment failure over time during the double-blind phase is displayed in Figure 2.

**Table 9 Treatment Failure: Double-Blind Full Analysis Set (Study 3)**

Study 3	Double-Blind Full Analysis Set	
	Kapvay <sup>®</sup>	Placebo
Number of subjects	68	67
Number of treatment failures	31 (45.6%)	42 (62.7%)
Basis of Treatment Failure		
Clinical criteria <sup>a,b</sup>	11 (16.2%)	9 (13.4%)
Lack of efficacy <sup>c</sup>	1 (1.5%)	3 (4.5%)
Withdrawal of informed assent/consent	4 (5.9%)	20 (29.9%)
Other early terminations	15 (22.1%)	10 (14.9%)

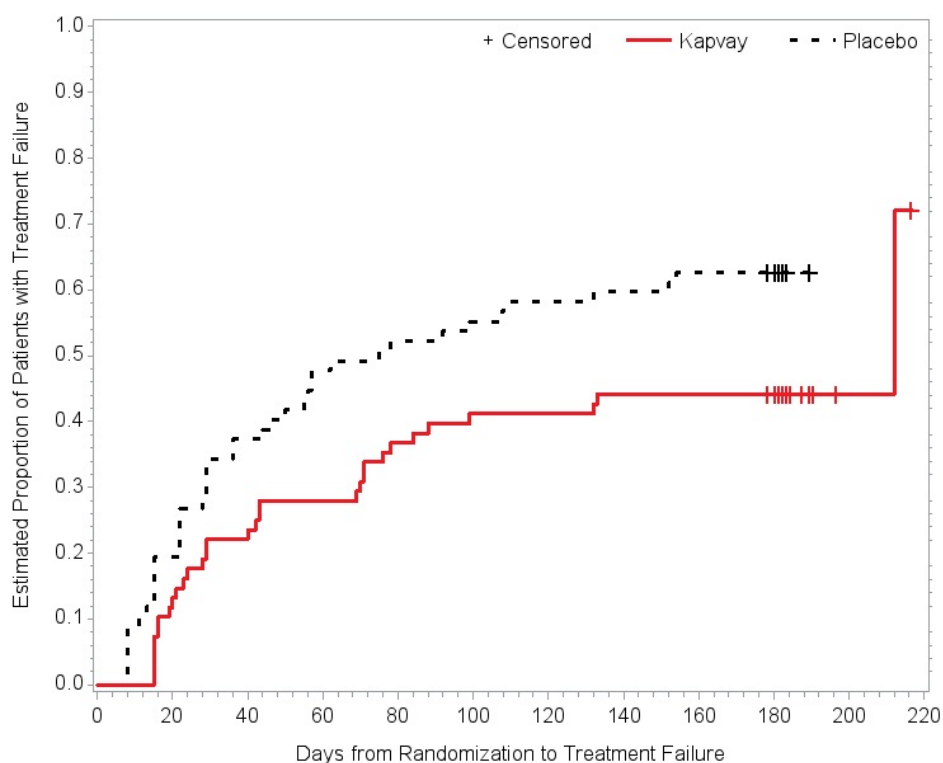
ADHD-RS-IV = Attention Deficit Hyperactivity Disorder-Rating Scale-4<sup>th</sup> edition; CGI-S = Clinical Global Impression-Severity

<sup>a</sup>At the same 2 consecutive visits a (1) 30% or greater reduction in ADHD-RS-IV, and (2) 2-point or more increase in CGI-S.

<sup>b</sup>Two subjects (1 placebo and 1 KAPVAY) withdrew consent, but met the clinical criteria for treatment failure.

<sup>c</sup>Three subjects (all placebo) discontinued the study due to treatment failure, but met only the criterion for ADHD-RS-IV.

**Figure 2: Kaplan-Meier Estimation of Cumulative Proportion of Patients with Treatment Failure (Study 3)**



## 16 HOW SUPPLIED/STORAGE AND HANDLING

KAPVAY extended-release tablets are white, non-scored, standard convex with debossing ("651" for 0.1 mg and "652" for 0.2 mg) on one side.

NDC 59212-658-60 – 0.1 mg round tablets supplied in bottles containing 60 tablets.

NDC 59212-659-60 – 0.2 mg oval tablets supplied in bottles containing 60 tablets.

Store at 20°-25°C (68°-77°F) [see USP Controlled Room Temperature].

Dispense in a tight container.

## 17 PATIENT COUNSELING INFORMATION

Advise the patient to read the FDA-approved Patient Labeling (Patient Information)

### Dosage and Administration

Advise patients that KAPVAY must be swallowed whole, never crushed, cut, or chewed, and may be taken with or without food. When initiating treatment, provide dosage escalation instructions [see *Dosage and Administration (2.1)*].

#### **Missed Dose**

If patients miss a dose of KAPVAY, advise them to skip the dose and take the next dose as scheduled and not to take more than the prescribed total daily amount of KAPVAY in any 24-hour period [see *Dosage and Administration (2.4)*].

#### **Hypotension/Bradycardia**

Advise patients who have a history of syncope or may have a condition that predisposes them to syncope, such as hypotension, orthostatic hypotension, bradycardia, or dehydration, to avoid becoming dehydrated or overheated [see *Warnings and Precautions (5.1)*].

#### **Sedation and Somnolence**

Instruct patients to use caution when driving a car or operating hazardous machinery until they know how they will respond to treatment with KAPVAY. Also advise patients to avoid the use of KAPVAY with other centrally active depressants and with alcohol [see *Warnings and Precautions (5.2)*].

#### **Rebound Hypertension**

Advise patients not to discontinue KAPVAY abruptly [see *Warnings and Precautions (5.3)*].

#### **Allergic Reactions**

Advise patients to discontinue KAPVAY and seek immediate medical attention if any signs or symptoms of a hypersensitivity reaction occur, such as generalized rash, urticaria, or angioedema [see *Warnings and Precautions (5.4)*].

## **Patient Information**

### **KAPVAY® (KAP-vay)**

#### **(clonidine hydrochloride) Extended-Release Tablets**

Read the Patient Information that comes with KAPVAY before you start taking it and each time you get a refill. There may be new information. This Patient Information leaflet does not take the place of talking to your doctor about your medical condition or treatment.

#### **What is KAPVAY?**

KAPVAY is a prescription medicine used for the treatment of Attention-Deficit Hyperactivity Disorder (ADHD). Your doctor may prescribe KAPVAY alone or together with certain other ADHD medicines.

- KAPVAY is not a central nervous system (CNS) stimulant.
- KAPVAY should be used as part of a total treatment program for ADHD that may include counseling or other therapies.

#### **Who should not take KAPVAY?**

- Do not take KAPVAY if you are allergic to clonidine in KAPVAY. See the end of this leaflet for a complete list of ingredients in KAPVAY.

#### **What should I tell my doctor before taking KAPVAY?**

Before you take KAPVAY, tell your doctor if you:

- have kidney problems
- have low or high blood pressure
- have a history of passing out (syncope)
- have heart problems, including history of heart attack
- have had a stroke or have stroke symptoms
- had a skin reaction (such as a rash) after taking clonidine in a transdermal form (skin patch)
- have any other medical conditions
- are pregnant or plan to become pregnant. It is not known if KAPVAY will harm your unborn baby. Talk to your doctor if you are pregnant or plan to become pregnant.
- are breastfeeding or plan to breastfeed. KAPVAY can pass into your breast milk. Talk to your doctor about the best way to feed your baby if you take KAPVAY.

Tell your doctor about all of the medicines that you take, including prescription and non-prescription medicines, vitamins, and herbal supplements.

KAPVAY and certain other medicines may affect each other causing serious side effects. Sometimes the doses of other medicines may need to be changed while taking KAPVAY.

#### **Especially tell your doctor if you take:**

- anti-depression medicines
- heart or blood pressure medicine
- other medicines that contain clonidine
- a medicine that makes you sleepy (sedation)

Ask your doctor or pharmacist for a list of these medicines, if you are not sure if your medicine is listed above.

Know the medicines that you take. Keep a list of your medicines with you to show your doctor and pharmacist when you get a new medicine.

#### **How should I take KAPVAY?**

- Take KAPVAY exactly as your doctor tells you to take it.
- Your doctor will tell you how many KAPVAY tablets to take and when to take them. Your doctor may change your dose of KAPVAY. Do not change your dose of KAPVAY without talking to your doctor.
- Do not stop taking KAPVAY without talking to your doctor.
- KAPVAY can be taken with or without food.

- KAPVAY should be taken 2 times a day (in the morning and at bedtime).
- If you miss a dose of KAPVAY, skip the missed dose. Just take the next dose at your regular time. Do not take two doses at the same time.
- Take KAPVAY tablets whole. Do not chew, crush or break KAPVAY tablets. Tell your doctor if you cannot swallow KAPVAY tablets whole. You may need a different medicine.
- If you take too much KAPVAY, call your Poison Control Center or go to the nearest hospital emergency room right away.

#### **What should I avoid while taking KAPVAY?**

- Do not drink alcohol or take other medicines that make you sleepy or dizzy while taking KAPVAY until you talk with your doctor. KAPVAY taken with alcohol or medicines that cause sleepiness or dizziness may make your sleepiness or dizziness worse.
- Do not drive, operate heavy machinery or do other dangerous activities until you know how KAPVAY will affect you.
- Avoid becoming dehydrated or overheated.

#### **What are possible side effects of KAPVAY?**

##### **KAPVAY may cause serious side effects, including:**

- **Low blood pressure and low heart rate.** Your doctor should check your heart rate and blood pressure before starting treatment and regularly during treatment with KAPVAY.
- Sleepiness.
- Withdrawal symptoms. Suddenly stopping KAPVAY may cause withdrawal symptoms including: increased blood pressure, headache, increased heart rate, lightheadedness, tightness in your chest and nervousness.

The most common side effects of KAPVAY include:

- sleepiness
- tiredness
- irritability
- trouble sleeping (insomnia)
- nightmare
- constipation
- dry mouth
- decreased appetite
- dizziness

Tell your doctor if you have any side effects that bother you or that does not go away.

These are not all of the possible side effects of KAPVAY. For more information, ask your doctor or pharmacist.

Call your doctor for medical advice about side effects. You may report side effects to FDA at 1-800-FDA-1088.

#### **How should I store KAPVAY?**

- Store KAPVAY between 68°-77°F (20°-25°C).
- Keep KAPVAY in a tightly closed container.

#### **Keep KAPVAY and all medicines out of the reach of children.**

#### **General information about the safe and effective use of KAPVAY**

Medicines are sometimes prescribed for purposes other than those listed in a Patient Information leaflet. Do not use KAPVAY for a condition for which it was not prescribed.

Do not give KAPVAY to other people, even if they have the same symptoms that you have. It may harm them.

This Patient Information leaflet summarizes the most important information about KAPVAY. If you would like more information, talk with your doctor. You can also ask your doctor or pharmacist for information about KAPVAY that is written for healthcare professionals.

For more information about KAPVAY, go to [www.KAPVAY.com](http://www.KAPVAY.com) or call 1-877-370-1142.

#### **What are the ingredients in KAPVAY?**

- Active Ingredient: clonidine hydrochloride

- Inactive Ingredients: sodium lauryl sulfate, lactose monohydrate, hypromellose type 2208, partially pregelatinized starch, colloidal silicon dioxide, and magnesium stearate

Revised: 8/2016

Manufactured for:  
Concordia Pharmaceuticals Inc.  
St. Michael, Barbados BB11005

Kapvay® is a registered trademark of Concordia Pharmaceuticals Inc.