

HIGHLIGHTS OF PRESCRIBING INFORMATION

These highlights do not include all the information needed to use KADCYLA safely and effectively. See full prescribing information for KADCYLA.

KADCYLA® (ado-trastuzumab emtansine) for injection, for intravenous use
Initial U.S. Approval: 2013

WARNING: HEPATOTOXICITY, CARDIAC TOXICITY, EMBRYO-FETAL TOXICITY

See full prescribing information for complete boxed warning

- Do not substitute KADCYLA for or with trastuzumab. (2.1)
- Hepatotoxicity, liver failure and death have occurred in KADCYLA-treated patients. Monitor hepatic function prior to initiation and prior to each dose. Institute dose modifications or permanently discontinue as appropriate. (2.2, 5.1)
- KADCYLA may lead to reductions in left ventricular ejection fraction (LVEF). Assess LVEF prior to initiation. Monitor and withhold dosing or discontinue as appropriate. (2.2, 5.2)
- Embryo-Fetal Toxicity: Exposure to KADCYLA during pregnancy can result in embryo-fetal harm. Advise patients of these risks and the need for effective contraception. (5.3, 8.1, 8.3)

RECENT MAJOR CHANGES

Boxed Warning	04/2016
Dosage and Administration (2.3)	05/2015
Warnings and Precautions (5.3)	05/2015

INDICATIONS AND USAGE

KADCYLA is a HER2-targeted antibody and microtubule inhibitor conjugate indicated, as a single agent, for the treatment of patients with HER2-positive, metastatic breast cancer who previously received trastuzumab and a taxane, separately or in combination. Patients should have either:

- Received prior therapy for metastatic disease, or
- Developed disease recurrence during or within six months of completing adjuvant therapy. (1)

DOSAGE AND ADMINISTRATION

- *For intravenous infusion only.* Do not administer as an intravenous push or bolus. Do not use Dextrose (5%) solution. (2.3)
- The recommended dose of KADCYLA is 3.6 mg/kg given as an intravenous infusion every 3 weeks (21-day cycle) until disease progression or unacceptable toxicity. *Do not administer KADCYLA at doses greater than 3.6 mg/kg. Do not substitute KADCYLA for or with trastuzumab.* (2.1)
- Management of adverse events (infusion-related reactions, hepatotoxicity, left ventricular cardiac dysfunction, thrombocytopenia, pulmonary toxicity or peripheral neuropathy) may require temporary

interruption, dose reduction, or treatment discontinuation of KADCYLA. (2.2)

DOSAGE FORMS AND STRENGTHS

Lyophilized powder in single-use vials containing 100 mg per vial or 160 mg per vial. (3)

CONTRAINDICATIONS

None. (4)

WARNINGS AND PRECAUTIONS

- Pulmonary Toxicity: Permanently discontinue KADCYLA in patients diagnosed with interstitial lung disease or pneumonitis. (2.2, 5.4)
- Infusion-Related Reactions, Hypersensitivity Reactions: Monitor for signs and symptoms during and after infusion. If significant infusion-related reactions or hypersensitivity reactions occur, slow or interrupt the infusion and administer appropriate medical therapies. Permanently discontinue KADCYLA for life threatening infusion-related reaction. (2.1, 2.2, 5.5)
- Hemorrhage: Fatal cases of hemorrhage occurred in clinical trials among patients with no known identified risk factors, as well as among patients with thrombocytopenia and those receiving anti-coagulation and antiplatelet therapy. Use caution with these agents and consider additional monitoring when concomitant use is medically necessary. (5.6)
- Thrombocytopenia: Monitor platelet counts prior to each KADCYLA dose. Institute dose modifications as appropriate. (2.2, 5.7)
- Neurotoxicity: Monitor for signs or symptoms. Withhold dosing temporarily for patients experiencing Grade 3 or 4 peripheral neuropathy. (2.2, 5.8, 13.2)
- HER2 Testing: Perform using FDA-approved tests by laboratories with demonstrated proficiency. (5.9)

ADVERSE REACTIONS

The most common adverse drug reactions (frequency > 25%) with KADCYLA (n=884 treated patients) were fatigue, nausea, musculoskeletal pain, hemorrhage, thrombocytopenia, headache, increased transaminases, constipation and epistaxis. (6.1)

To report SUSPECTED ADVERSE REACTIONS, contact Genentech at 1-888-835-2555 or FDA at 1-800-FDA-1088 or www.fda.gov/medwatch.

USE IN SPECIFIC POPULATIONS

- Lactation: Advise not to breastfeed. (8.2)
- Females and Males of Reproductive Potential: Verify pregnancy status of females prior to initiation of KADCYLA. (8.3)

See 17 for PATIENT COUNSELING INFORMATION.

Revised: 04/2016

FULL PRESCRIBING INFORMATION: CONTENTS*

1 INDICATIONS AND USAGE

2 DOSAGE AND ADMINISTRATION

2.1 Recommended Doses and Schedules

2.2 Dose Modifications

2.3 Preparation for Administration

3 DOSAGE FORMS AND STRENGTHS

4 CONTRAINDICATIONS

5 WARNINGS AND PRECAUTIONS

5.1 Hepatotoxicity

5.2 Left Ventricular Dysfunction

5.3 Embryo-Fetal Toxicity

5.4 Pulmonary Toxicity

5.5 Infusion Related Reactions, Hypersensitivity Reactions

5.6 Hemorrhage

5.7 Thrombocytopenia

5.8 Neurotoxicity

5.9 HER2 Testing

5.10 Extravasation

6 ADVERSE REACTIONS

6.1 Clinical Trials Experience

6.2 Immunogenicity

7 DRUG INTERACTIONS

* Sections or subsections omitted from the Full Prescribing Information are not listed.

8 USE IN SPECIFIC POPULATIONS

8.1 Pregnancy

8.2 Lactation

8.3 Females and Males of Reproductive Potential

8.4 Pediatric Use

8.5 Geriatric Use

8.6 Renal Impairment

8.7 Hepatic Impairment

10 OVERDOSAGE

11 DESCRIPTION

12 CLINICAL PHARMACOLOGY

12.1 Mechanism of Action

12.3 Pharmacokinetics

12.6 Cardiac Electrophysiology

13 NONCLINICAL TOXICOLOGY

13.1 Carcinogenesis, Mutagenesis, Impairment of Fertility

13.2 Animal Toxicology and/or Pharmacology

14 CLINICAL STUDIES

14.1 Metastatic Breast Cancer

15 REFERENCES

16 HOW SUPPLIED/STORAGE AND HANDLING

16.1 How Supplied/Storage

16.2 Special Handling

17 PATIENT COUNSELING INFORMATION

FULL PRESCRIBING INFORMATION

WARNING: HEPATOTOXICITY, CARDIAC TOXICITY, EMBRYO-FETAL TOXICITY

- **Do Not Substitute KADCYLA for or with trastuzumab. (2.1)**
- **Hepatotoxicity: Serious hepatotoxicity has been reported, including liver failure and death in patients treated with KADCYLA. Monitor serum transaminases and bilirubin prior to initiation of KADCYLA treatment and prior to each KADCYLA dose. Reduce dose or discontinue KADCYLA as appropriate in cases of increased serum transaminases or total bilirubin. (2.2, 5.1)**
- **Cardiac Toxicity: KADCYLA administration may lead to reductions in left ventricular ejection fraction (LVEF). Evaluate left ventricular function in all patients prior to and during treatment with KADCYLA. Withhold treatment for clinically significant decrease in left ventricular function. (2.2, 5.2)**
- **Embryo-Fetal Toxicity: Exposure to KADCYLA during pregnancy can result in embryo-fetal harm. Advise patients of these risks and the need for effective contraception (5.3, 8.1, 8.3).**

1 INDICATIONS AND USAGE

KADCYLA[®], as a single agent, is indicated for the treatment of patients with HER2-positive, metastatic breast cancer who previously received trastuzumab and a taxane, separately or in combination. Patients should have either:

- Received prior therapy for metastatic disease, or
- Developed disease recurrence during or within six months of completing adjuvant therapy.

2 DOSAGE AND ADMINISTRATION

2.1 Recommended Doses and Schedules

The recommended dose of KADCYLA is 3.6 mg/kg given as an intravenous infusion every 3 weeks (21-day cycle) until disease progression or unacceptable toxicity. Do not administer KADCYLA at doses greater than 3.6 mg/kg. Do not substitute KADCYLA for or with trastuzumab.

Closely monitor the infusion site for possible subcutaneous infiltration during drug administration [see Warnings and Precautions (5.10)].

First infusion: Administer infusion over 90 minutes. Patients should be observed during the infusion and for at least 90 minutes following the initial dose for fever, chills, or other infusion-related reactions [see Warnings and Precautions (5.5)].

Subsequent infusions: Administer over 30 minutes if prior infusions were well tolerated. Patients should be observed during the infusion and for at least 30 minutes after infusion.

2.2 Dose Modifications

Do not re-escalate the KADCYLA dose after a dose reduction is made.

If a planned dose is delayed or missed, administer as soon as possible; do not wait until the next planned cycle. Adjust the schedule of administration to maintain a 3-week interval between doses. Administer the infusion at the dose and rate the patient tolerated in the most recent infusion.

Slow or interrupt the infusion rate of KADCYLA if the patient develops an infusion-related reaction. Permanently discontinue KADCYLA for life-threatening infusion-related reactions [see *Warnings and Precautions (5.5)*].

Management of increased serum transaminases, hyperbilirubinemia, left ventricular dysfunction, thrombocytopenia, pulmonary toxicity or peripheral neuropathy may require temporary interruption, dose reduction or treatment discontinuation of KADCYLA as per guidelines provided in Tables 1 to 5.

Table 1 Recommended Dose Reduction Schedule for Adverse Events

Dose Reduction Schedule	Dose Level
Starting dose	3.6 mg/kg
First dose reduction	3 mg/kg
Second dose reduction	2.4 mg/kg
Requirement for further dose reduction	Discontinue treatment

Hepatotoxicity [see *Warnings and Precautions (5.1)*]

Reduce the dose of KADCYLA in the case of hepatotoxicity exhibited as increases in serum transaminases and/or hyperbilirubinemia (see Tables 2 and 3).

Table 2 Dose Modification Guidelines for Increased Serum Transaminases (AST/ALT)

Grade 2 (> 2.5 to $\leq 5 \times$ ULN)	Grade 3 (> 5 to $\leq 20 \times$ ULN)	Grade 4 ($> 20 \times$ ULN)
Treat at same dose level.	Do not administer KADCYLA until AST/ALT recovers to Grade ≤ 2 , and then reduce one dose level.	Permanently discontinue KADCYLA.

ALT = alanine transaminase; AST = aspartate transaminase; ULN = upper limit of normal.

Table 3 Dose Modification Guidelines for Hyperbilirubinemia

Grade 2 (> 1.5 to $\leq 3 \times$ ULN)	Grade 3 (> 3 to $\leq 10 \times$ ULN)	Grade 4 ($> 10 \times$ ULN)
Do not administer KADCYLA until total bilirubin recovers to Grade ≤ 1 , and then treat at same dose level.	Do not administer KADCYLA until total bilirubin recovers to Grade ≤ 1 , and then reduce one dose level.	Permanently discontinue KADCYLA.

Permanently discontinue KADCYLA treatment in patients with serum transaminases $> 3 \times$ ULN and concomitant total bilirubin $> 2 \times$ ULN.

Permanently discontinue KADCYLA in patients diagnosed with nodular regenerative hyperplasia (NRH).

Left Ventricular Dysfunction [see Warnings and Precautions (5.2)]

Table 4 Dose Modifications for Left Ventricular Dysfunction

Symptomatic CHF	LVEF < 40%	LVEF 40% to ≤ 45% and decrease is ≥ 10% points from baseline	LVEF 40% to ≤ 45% and decrease is < 10% points from baseline	LVEF > 45%
Discontinue KADCYLA	Do not administer KADCYLA. Repeat LVEF assessment within 3 weeks. If LVEF < 40% is confirmed, discontinue KADCYLA.	Do not administer KADCYLA. Repeat LVEF assessment within 3 weeks. If the LVEF has not recovered to within 10% points from baseline, discontinue KADCYLA.	Continue treatment with KADCYLA. Repeat LVEF assessment within 3 weeks.	Continue treatment with KADCYLA.

CHF = Congestive Heart Failure; LVEF = Left Ventricular Ejection Fraction

Thrombocytopenia [see Warnings and Precautions (5.7)]

Reduce the dose in the case of Grade 4 thrombocytopenia (platelets < 25,000/mm³) (see Table 5).

Table 5 Dose Modification Guidelines for Thrombocytopenia

Grade 3	Grade 4
PLT 25,000/mm ³ to < 50,000/mm ³	PLT < 25,000/mm ³
Do not administer KADCYLA until platelet count recovers to ≤ Grade 1 (≥ 75,000/mm ³), and then treat at same dose level.	Do not administer KADCYLA until platelet count recovers to ≤ Grade 1 (≥ 75,000/mm ³), and then reduce one dose level.

PLT = Platelets

Pulmonary Toxicity [see Warnings and Precautions (5.4)]

Permanently discontinue KADCYLA in patients diagnosed with interstitial lung disease (ILD) or pneumonitis.

Peripheral Neuropathy [see Warnings and Precautions (5.8)]

Temporarily discontinue KADCYLA in patients experiencing Grade 3 or 4 peripheral neuropathy until resolution to ≤ Grade 2.

2.3 Preparation for Administration

In order to prevent medication errors it is important to check the vial labels to ensure that the drug being prepared and administered is KADCYLA (ado-trastuzumab emtansine) and not trastuzumab.

Administration:

- Administer KADCYLA as an intravenous infusion only with a 0.2 or 0.22 micron in-line polyethersulfone (PES) filter. Do not administer as an intravenous push or bolus.
- Do not mix KADCYLA, or administer as an infusion, with other medicinal products.
- In order to improve traceability of biological medicinal products, the tradename and the batch number of the administered product should be clearly recorded (or stated) in the patient file.

Reconstitution:

- Use aseptic technique for reconstitution and preparation of dosing solution. Appropriate procedures for the preparation of chemotherapeutic drugs should be used.
- Using a sterile syringe, slowly inject 5 mL of Sterile Water for Injection into the 100 mg KADCYLA vial, or 8 mL of Sterile Water for Injection into the 160 mg KADCYLA vial to yield a solution containing 20 mg/mL. Swirl the vial gently until completely dissolved. Do not shake. Inspect the reconstituted solution for particulates and discoloration.
- The reconstituted solution should be clear to slightly opalescent and free of visible particulates. The color of the reconstituted solution should be colorless to pale brown. Do not use if the reconstituted solution contains visible particulates or is cloudy or discolored.
- The reconstituted lyophilized vials should be used immediately following reconstitution with Sterile Water for Injection. If not used immediately, the reconstituted KADCYLA vials can be stored for up to 24 hours in a refrigerator at 2°C to 8°C (36°F to 46°F); discard unused KADCYLA after 24 hours. Do not freeze.
- The reconstituted product contains no preservative and is intended for single-use only.

Dilution:

Determine the correct dose (mg) of KADCYLA [*see Dosage and Administration (2.1)*].

- Calculate the volume of the 20 mg/mL reconstituted KADCYLA solution needed.
- Withdraw this amount from the vial and add it to an infusion bag containing 250 mL of 0.9% Sodium Chloride Injection. Do not use Dextrose (5%) solution.
- Gently invert the bag to mix the solution in order to avoid foaming.
- The diluted KADCYLA infusion solution should be used immediately. If not used immediately, the solution may be stored in a refrigerator at 2°C to 8°C (36°F to 46°F) for up to 24 hours prior to use. This storage time is additional to the time allowed for the reconstituted vials. Do not freeze or shake.

3 DOSAGE FORMS AND STRENGTHS

Lyophilized powder in single-use vials: 100 mg per vial or 160 mg per vial of ado-trastuzumab emtansine.

4 CONTRAINDICATIONS

None.

5 WARNINGS AND PRECAUTIONS

5.1 Hepatotoxicity

Hepatotoxicity, predominantly in the form of asymptomatic, transient increases in the concentrations of serum transaminases, has been observed in clinical trials with KADCYLA [*see*

Adverse Reactions (6.1)]. Serious hepatobiliary disorders, including at least two fatal cases of severe drug-induced liver injury and associated hepatic encephalopathy, have been reported in clinical trials with KADCYLA. Some of the observed cases may have been confounded by comorbidities and/or concomitant medications with known hepatotoxic potential.

Monitor serum transaminases and bilirubin prior to initiation of KADCYLA treatment and prior to each KADCYLA dose. Patients with known active hepatitis B virus or hepatitis C virus were excluded from Study 1 [*see Clinical Studies (14.1)*]. Reduce the dose or discontinue KADCYLA as appropriate in cases of increased serum transaminases and/or total bilirubin [*see Dosage and Administration (2.2)*]. Permanently discontinue KADCYLA treatment in patients with serum transaminases > 3 x ULN and concomitant total bilirubin > 2 x ULN. KADCYLA has not been studied in patients with serum transaminases > 2.5 x ULN or bilirubin > 1.5 x ULN prior to the initiation of treatment.

In clinical trials of KADCYLA, cases of nodular regenerative hyperplasia (NRH) of the liver have been identified from liver biopsies (3 cases out of 884 treated patients, one of which was fatal). Two of these three cases of NRH were observed in the randomized trial (Study 1) [*see Adverse Reactions (6.1)*]. NRH is a rare liver condition characterized by widespread benign transformation of hepatic parenchyma into small regenerative nodules; NRH may lead to non-cirrhotic portal hypertension. The diagnosis of NRH can be confirmed only by histopathology. NRH should be considered in all patients with clinical symptoms of portal hypertension and/or cirrhosis-like pattern seen on the computed tomography (CT) scan of the liver but with normal transaminases and no other manifestations of cirrhosis. Upon diagnosis of NRH, KADCYLA treatment must be permanently discontinued.

5.2 Left Ventricular Dysfunction

Patients treated with KADCYLA are at increased risk of developing left ventricular dysfunction. A decrease of LVEF to < 40% has been observed in patients treated with KADCYLA. In the randomized trial (Study 1), left ventricular dysfunction occurred in 1.8% of patients in the KADCYLA-treated group and 3.3% of patients in the lapatinib plus capecitabine-treated group [*see Adverse Reactions (6.1)*].

Assess LVEF prior to initiation of KADCYLA and at regular intervals (e.g. every three months) during treatment to ensure the LVEF is within the institution's normal limits. Treatment with KADCYLA has not been studied in patients with LVEF < 50% prior to initiation of treatment. If, at routine monitoring, LVEF is < 40%, or is 40% to 45% with a 10% or greater absolute decrease below the pretreatment value, withhold KADCYLA and repeat LVEF assessment within approximately 3 weeks. Permanently discontinue KADCYLA if the LVEF has not improved or has declined further [*see Dosage and Administration (2.2)*]. Patients with a history of symptomatic congestive heart failure (CHF), serious cardiac arrhythmia, or history of myocardial infarction or unstable angina within 6 months were excluded from Study 1 [*see Clinical Studies (14.1)*].

5.3 Embryo-Fetal Toxicity

KADCYLA can cause fetal harm when administered to a pregnant woman. Cases of oligohydramnios, and oligohydramnios sequence manifesting as pulmonary hypoplasia, skeletal abnormalities and neonatal death were observed in the postmarketing setting in patients treated with trastuzumab, the antibody component of KADCYLA. DM1, the cytotoxic component of KADCYLA, can cause embryo-fetal toxicity based on its mechanism of action.

Verify the pregnancy status of females of reproductive potential prior to the initiation of KADCYLA. Advise pregnant women and females of reproductive potential that exposure to KADCYLA during pregnancy or within 7 months prior to conception can result in fetal harm.

Advise females of reproductive potential to use effective contraception during treatment and for 7 months following the last dose of KADCYLA [see *Use in Specific Populations (8.1, 8.3)*].

5.4 Pulmonary Toxicity

Cases of interstitial lung disease (ILD), including pneumonitis, some leading to acute respiratory distress syndrome or fatal outcome have been reported in clinical trials with KADCYLA. Pneumonitis at an incidence of 0.8% (7 out of 884 treated patients) has been reported, with one case of grade 3 pneumonitis. Signs and symptoms include dyspnea, cough, fatigue, and pulmonary infiltrates. These events may or may not occur as sequelae of infusion reactions. In the randomized trial (Study 1), the overall frequency of pneumonitis was 1.2% [see *Adverse Reactions (6.1)*].

Permanently discontinue treatment with KADCYLA in patients diagnosed with ILD or pneumonitis.

Patients with dyspnea at rest due to complications of advanced malignancy and co-morbidities may be at increased risk of pulmonary toxicity.

5.5 Infusion-Related Reactions, Hypersensitivity Reactions

Treatment with KADCYLA has not been studied in patients who had trastuzumab permanently discontinued due to infusion-related reactions (IRR) and/or hypersensitivity; treatment with KADCYLA is not recommended for these patients.

Infusion-related reactions, characterized by one or more of the following symptoms – flushing, chills, pyrexia, dyspnea, hypotension, wheezing, bronchospasm, and tachycardia have been reported in clinical trials of KADCYLA. In the randomized trial (Study 1), the overall frequency of IRRs in patients treated with KADCYLA was 1.4% [see *Adverse Reactions (6.1)*]. In most patients, these reactions resolved over the course of several hours to a day after the infusion was terminated. KADCYLA treatment should be interrupted in patients with severe IRR. KADCYLA treatment should be permanently discontinued in the event of a life-threatening IRR [see *Dosage and Administration (2.2)*]. Patients should be observed closely for IRR reactions, especially during the first infusion.

One case of a serious, allergic/anaphylactic-like reaction has been observed in clinical trials of single-agent KADCYLA. Medications to treat such reactions, as well as emergency equipment, should be available for immediate use.

5.6 Hemorrhage

Cases of hemorrhagic events, including central nervous system, respiratory, and gastrointestinal hemorrhage, have been reported in clinical trials with Kadcyla. Some of these bleeding events resulted in fatal outcomes. In the randomized trial (Study 1), the overall frequency of hemorrhage was 32.2% in the KADCYLA-treated group and 16.4% in the lapatinib plus capecitabine-treated group. The incidence of \geq Grade 3 hemorrhage was 1.8% in the KADCYLA-treated group and 0.8% in the lapatinib plus capecitabine-treated group [see *Adverse Reactions (6.1)*]. Although, in some of the observed cases the patients were also receiving anti-coagulation therapy, antiplatelet therapy, or had thrombocytopenia, in others there were no known additional risk factors. Use caution with these agents and consider additional monitoring when concomitant use is medically necessary.

5.7 Thrombocytopenia

Thrombocytopenia, or decreased platelet count, was reported in clinical trials of KADCYLA (103 of 884 treated patients with \geq Grade 3; 283 of 884 treated patients with any Grade). The majority of these patients had Grade 1 or 2 events ($<$ LLN to \geq 50,000/mm³) with the nadir

occurring by day 8 and generally improving to Grade 0 or 1 ($\geq 75,000 /\text{mm}^3$) by the next scheduled dose. In clinical trials of KADCYLA, the incidence and severity of thrombocytopenia were higher in Asian patients.

In the randomized trial (Study 1), the overall frequency of thrombocytopenia was 31.2% in the KADCYLA-treated group and 3.3% in the lapatinib plus capecitabine-treated group [see *Adverse Reactions (6.1)*]. The incidence of \geq Grade 3 thrombocytopenia was 14.5% in the KADCYLA-treated group and 0.4% in the lapatinib plus capecitabine-treated group. In Asian patients, the incidence of \geq Grade 3 thrombocytopenia was 45.1% in the KADCYLA-treated group and 1.3% in the lapatinib plus capecitabine-treated group.

Monitor platelet counts prior to initiation of KADCYLA and prior to each KADCYLA dose [see *Dosage and Administration (2.2)*]. KADCYLA has not been studied in patients with platelet counts $<100,000/\text{mm}^3$ prior to initiation of treatment. In the event of decreased platelet count to Grade 3 or greater ($< 50,000/\text{mm}^3$) do not administer KADCYLA until platelet counts recover to Grade 1 ($\geq 75,000/\text{mm}^3$) [see *Dosage and Administration (2.2)*]. Patients with thrombocytopenia ($< 100,000/\text{mm}^3$) and patients on anti-coagulant treatment should be closely monitored during treatment with KADCYLA.

5.8 Neurotoxicity

Peripheral neuropathy, mainly as Grade 1 and predominantly sensory, was reported in clinical trials of KADCYLA (14 of 884 treated patients with \geq Grade 3; 196 of 884 treated patients with any Grade). In the randomized trial (Study 1), the overall frequency of peripheral neuropathy was 21.2% in the KADCYLA-treated group and 13.5% in the lapatinib plus capecitabine-treated group [see *Adverse Reactions (6.1)*]. The incidence of \geq Grade 3 peripheral neuropathy was 2.2% in the KADCYLA-treated group and 0.2% in the lapatinib plus capecitabine-treated group.

KADCYLA should be temporarily discontinued in patients experiencing Grade 3 or 4 peripheral neuropathy until resolution to \leq Grade 2. Patients should be clinically monitored on an ongoing basis for signs or symptoms of neurotoxicity [see *Nonclinical Toxicology (13.2)*].

5.9 HER2 Testing

Detection of HER2 protein overexpression or gene amplification is necessary for selection of patients appropriate for KADCYLA therapy because these are the only patients studied for whom benefit has been shown [see *Indications and Usage (1), Clinical Studies (14.1)*]. In the randomized study (Study 1), patients with breast cancer were required to have evidence of HER2 overexpression defined as 3+ IHC by Dako Herceptest™ or evidence of overexpression defined as FISH amplification ratio ≥ 2.0 by Dako HER2 FISH PharmDx™ test kit. Only limited data were available for patients whose breast cancer was positive by FISH and 0 or 1+ by IHC.

Assessment of HER2 status should be performed by laboratories with demonstrated proficiency in the specific technology being utilized. Improper assay performance, including use of sub-optimally fixed tissue, failure to utilize specified reagents, deviation from specific assay instructions, and failure to include appropriate controls for assay validation, can lead to unreliable results.

5.10 Extravasation

In KADCYLA clinical studies, reactions secondary to extravasation have been observed. These reactions, observed more frequently within 24 hours of infusion, were usually mild and comprised erythema, tenderness, skin irritation, pain, or swelling at the infusion site. Specific treatment for KADCYLA extravasation is unknown. The infusion site should be closely monitored for possible subcutaneous infiltration during drug administration.

6 ADVERSE REACTIONS

The following adverse reactions are discussed in greater detail in other sections of the label:

- Hepatotoxicity [*See Warnings and Precautions (5.1)*]
- Left Ventricular Dysfunction [*See Warnings and Precautions (5.2)*]
- Embryo-Fetal Toxicity [*See Warnings and Precautions (5.3)*]
- Pulmonary Toxicity [*See Warnings and Precautions (5.4)*]
- Infusion-Related Reactions, Hypersensitivity Reactions [*See Warnings and Precautions (5.5)*]
- Hemorrhage [*See Warnings and Precautions (5.6)*]
- Thrombocytopenia [*See Warnings and Precautions (5.7)*]
- Neurotoxicity [*See Warnings and Precautions (5.8)*]

6.1 Clinical Trials Experience

Because clinical trials are conducted under widely varying conditions, adverse reaction rates observed in the clinical trials of a drug cannot be directly compared to rates in the clinical trials of another drug and may not reflect the rates observed in practice.

In clinical trials, KADCYLA has been evaluated as single-agent in 884 patients with HER2-positive metastatic breast cancer. The most common (frequency $\geq 25\%$) adverse drug reactions (ADRs) seen in 884 patients treated with KADCYLA were fatigue, nausea, musculoskeletal pain, hemorrhage, thrombocytopenia, headache, increased transaminases, constipation and epistaxis.

The ADRs described in Table 6 were identified in patients with HER2-positive metastatic breast cancer treated in a randomized trial (Study 1) [*see Clinical Studies (14.1)*]. Patients were randomized to receive KADCYLA or lapatinib plus capecitabine. The median duration of study treatment was 7.6 months for patients in the KADCYLA-treated group and 5.5 months and 5.3 months for patients treated with lapatinib and capecitabine, respectively. Two hundred and eleven (43.1%) patients experienced \geq Grade 3 adverse events in the KADCYLA-treated group compared with 289 (59.2%) patients in the lapatinib plus capecitabine-treated group. Dose adjustments for KADCYLA were permitted [*see Dosage and Administration (2.2)*]. Thirty-two patients (6.5%) discontinued KADCYLA due to an adverse event, compared with 41 patients (8.4%) who discontinued lapatinib, and 51 patients (10.5%) who discontinued capecitabine due to an adverse event. The most common adverse events leading to KADCYLA withdrawal were thrombocytopenia and increased transaminases. Eighty patients (16.3%) treated with KADCYLA had adverse events leading to dose reductions. The most frequent adverse events leading to dose reduction of KADCYLA (in $\geq 1\%$ of patients) included thrombocytopenia, increased transaminases, and peripheral neuropathy. Adverse events that led to dose delays occurred in 116 (23.7%) of KADCYLA treated patients. The most frequent adverse events leading to a dose delay of KADCYLA (in $\geq 1\%$ of patients) were neutropenia, thrombocytopenia, leukopenia, fatigue, increased transaminases and pyrexia.

Table 6 reports the ADRs that occurred in patients in the KADCYLA-treated group (n=490) of the randomized trial (Study 1). Selected laboratory abnormalities are shown in Table 7. The most common ADRs seen with KADCYLA in the randomized trial (frequency $> 25\%$) were nausea, fatigue, musculoskeletal pain, hemorrhage, thrombocytopenia, increased transaminases, headache, and constipation. The most common NCI-CTCAE (version 3) \geq Grade 3 ADRs (frequency $>2\%$) were thrombocytopenia, increased transaminases, anemia, hypokalemia, peripheral neuropathy and fatigue.

Table 6 Summary of Adverse Drug Reactions Occurring in Patients on the KADCYLA Treatment Arm in the Randomized Trial (Study 1)

Adverse Drug Reactions (MedDRA) System Organ Class	KADCYLA (3.6 mg/kg) n=490 Frequency rate %		Lapatinib (1250 mg) + Capecitabine (2000 mg/m ²) n=488 Frequency rate %	
	All grades (%)	Grade 3 – 4 (%)	All grades (%)	Grade 3 – 4 (%)
Blood and Lymphatic System Disorders				
Neutropenia	6.7	2.0	9.0	4.3
Anemia	14.3	4.1	10.5	2.5
Thrombocytopenia	31.2	14.5	3.3	0.4
Cardiac Disorders				
Left ventricular dysfunction	1.8	0.2	3.3	0.4
Eye Disorders				
Lacrimation increased	3.3	0	2.5	0
Dry eye	3.9	0	3.1	0
Vision blurred	4.5	0	0.8	0
Conjunctivitis	3.9	0	2.3	0
Gastrointestinal Disorders				
Dyspepsia	9.2	0	11.5	0.4
Stomatitis	14.1	0.2	32.6	2.5
Dry Mouth	16.7	0	4.9	0.2
Abdominal pain	18.6	0.8	17.6	1.6
Vomiting	19.2	0.8	29.9	4.5
Diarrhea	24.1	1.6	79.7	20.7
Constipation	26.5	0.4	11.1	0
Nausea	39.8	0.8	45.1	2.5
General Disorders and Administration				
Peripheral edema	7.1	0	8.2	0.2
Chills	7.6	0	3.1	0
Pyrexia	18.6	0.2	8.4	0.4
Asthenia	17.8	0.4	17.6	1.6
Fatigue	36.3	2.5	28.3	3.5
Hepatobiliary Disorders*				
Nodular regenerative hyperplasia*	0.4	ND	0	0
Portal hypertension*	0.4	0.2	0	0
Immune System Disorders				
Drug hypersensitivity	2.2	0	0.8	0
Injury, Poisoning, and Procedural				
Infusion-related reaction	1.4	0	0.2	0
Infections and Infestations				
Urinary tract infection	9.4	0.6	3.9	0
Investigations				

Adverse Drug Reactions (MedDRA) System Organ Class	KADCYLA (3.6 mg/kg) n=490 Frequency rate %		Lapatinib (1250 mg) + Capecitabine (2000 mg/m ²) n=488 Frequency rate %	
	All grades (%)	Grade 3 – 4 (%)	All grades (%)	Grade 3 – 4 (%)
Blood alkaline phosphatase increased	4.7	0.4	3.7	0.4
Increased transaminases	28.8	8.0	14.3	2.5
Metabolism and Nutrition Disorders				
Hypokalemia	10.2	2.7	9.4	4.7
Musculoskeletal and Connective Tissue Disorders				
Myalgia	14.1	0.6	3.7	0
Arthralgia	19.2	0.6	8.4	0
Musculoskeletal pain	36.1	1.8	30.5	1.4
Nervous System Disorders				
Dysgeusia	8.0	0	4.1	0.2
Dizziness	10.2	0.4	10.7	0.2
Peripheral neuropathy	21.2	2.2	13.5	0.2
Headache	28.2	0.8	14.5	0.8
Psychiatric Disorders				
Insomnia	12.0	0.4	8.6	0.2
Respiratory, Thoracic, and Mediastinal Disorders				
Pneumonitis	1.2	0	0	0
Dyspnea	12.0	0.8	8.0	0.4
Cough	18.2	0.2	13.1	0.2
Epistaxis	22.5	0.2	8.4	0
Skin and Subcutaneous Tissue Disorders				
Pruritus	5.5	0.2	9.2	0
Rash	11.6	0	27.5	1.8
Vascular Disorders				
Hemorrhage	32.2	1.8	16.4	0.8
Hypertension	5.1	1.2	2.3	0.4

* Nodular Regenerative Hyperplasia and Portal Hypertension occurred in the same patient.

ND = Not determined

Table 7 Selected Laboratory Abnormalities

Parameter	KADCYLA (3.6 mg/kg)			Lapatinib (1250 mg) + Capecitabine (2000 mg/m ²)		
	All Grade %	Grade 3 %	Grade 4 %	All Grade %	Grade 3 %	Grade 4 %
Increased bilirubin	17	<1	0	57	2	0
Increased AST	98	7	<1	65	3	0
Increased ALT	82	5	<1	54	3	0
Decreased platelet count	83	14	3	21	<1	<1
Decreased hemoglobin	60	4	1	64	3	<1
Decreased neutrophils	39	3	<1	38	6	2
Decreased potassium	33	3	0	31	6	<1

Hepatic failure has been observed in two patients (0.2%) with HER2-positive metastatic breast cancer in clinical trials (n=884) with KADCYLA as single-agent.

6.2 Immunogenicity

As with all therapeutic proteins, there is the potential for an immune response to KADCYLA. A total of 836 patients from six clinical studies were tested at multiple time points for anti-therapeutic antibody (ATA) responses to KADCYLA. Following KADCYLA dosing, 5.3% (44/836) of patients tested positive for anti-KADCYLA antibodies at one or more post-dose time points. The presence of KADCYLA in patient serum at the time of ATA sampling may interfere with the ability of this assay to detect anti-KADCYLA antibodies. As a result, data may not accurately reflect the true incidence of anti-KADCYLA antibody development. In addition, neutralizing activity of anti-KADCYLA antibodies has not been assessed.

Immunogenicity data are highly dependent on the sensitivity and specificity of the test methods used. Additionally, the observed incidence of a positive result in a test method may be influenced by several factors, including sample handling, timing of sample collection, drug interference, concomitant medication and the underlying disease. Therefore, comparison of the incidence of antibodies to KADCYLA with the incidence of antibodies to other products may be misleading. Clinical significance of anti-KADCYLA antibodies is not yet known.

7 DRUG INTERACTIONS

No formal drug-drug interaction studies with KADCYLA have been conducted. *In vitro* studies indicate that DM1, the cytotoxic component of KADCYLA, is metabolized mainly by CYP3A4 and to a lesser extent by CYP3A5. Concomitant use of strong CYP3A4 inhibitors (e.g., ketoconazole, itraconazole, clarithromycin, atazanavir, indinavir, nefazodone, nelfinavir, ritonavir, saquinavir, telithromycin, and voriconazole) with KADCYLA should be avoided due to the potential for an increase in DM1 exposure and toxicity. Consider an alternate medication with no or minimal potential to inhibit CYP3A4. If concomitant use of strong CYP3A4 inhibitors is unavoidable, consider delaying KADCYLA treatment until the strong CYP3A4 inhibitors have cleared from the circulation (approximately 3 elimination half-lives of the inhibitors) when possible. If a strong CYP3A4 inhibitor is coadministered and KADCYLA treatment cannot be delayed, patients should be closely monitored for adverse reactions.

8 USE IN SPECIFIC POPULATIONS

8.1 Pregnancy

Pregnancy Exposure Registry and Pregnancy Pharmacovigilance Program

There is a pregnancy exposure registry that monitors pregnancy outcomes in women exposed to KADCYLA during pregnancy. Encourage women who receive KADCYLA during pregnancy or within 7 months prior to conception, to enroll in the MoTHER Pregnancy Registry by contacting 1-800-690-6720 or visiting <http://www.motherpregnancyregistry.com/>.

In addition, there is a pregnancy pharmacovigilance program for KADCYLA. If KADCYLA is administered during pregnancy, or if a patient becomes pregnant while receiving KADCYLA or within 7 months following the last dose of KADCYLA, health care providers and patients should immediately report KADCYLA exposure to Genentech at 1-888-835-2555.

Risk Summary

KADCYLA can cause fetal harm when administered to a pregnant woman. There are no available data on the use of KADCYLA in pregnant women. Cases of oligohydramnios and oligohydramnios sequence manifesting as pulmonary hypoplasia, skeletal abnormalities, and neonatal death were observed in the postmarketing setting in patients treated with trastuzumab, the antibody component of KADCYLA [see Data]. Based on its mechanism of action, the DM1 component of KADCYLA can also cause embryo-fetal harm when administered to a pregnant woman [see Data]. Apprise the patient of the potential risks to a fetus. There are clinical considerations if KADCYLA is used in a pregnant woman, or if a patient becomes pregnant within 7 months following the last dose of KADCYLA [see Clinical Considerations].

The estimated background risk of major birth defects and miscarriage for the indicated population is unknown. In the U.S. general population, the estimated background risk of major birth defects and miscarriage in clinically recognized pregnancies is 2-4% and 15-20%, respectively.

Clinical Considerations

Fetal/Neonatal Adverse Reactions

Monitor women who received KADCYLA during pregnancy or within 7 months prior to conception for oligohydramnios. If oligohydramnios occurs, perform fetal testing that is appropriate for gestational age and consistent with community standards of care.

Data

Human Data

There are no available data on the use of KADCYLA in pregnant women. In the post-marketing setting, cases of oligohydramnios, and of oligohydramnios sequence, manifesting in the fetus as pulmonary hypoplasia, skeletal abnormalities and neonatal death were observed after treatment with trastuzumab during pregnancy. These case reports described oligohydramnios in pregnant women who received trastuzumab either alone or in combination with chemotherapy. In some case reports, amniotic fluid index increased after trastuzumab was stopped. In one case, trastuzumab therapy resumed after amniotic index improved, and oligohydramnios recurred.

Animal Data

There were no reproductive and developmental toxicology studies conducted with ado-trastuzumab emtansine. DM1, the cytotoxic component of KADCYLA, disrupts microtubule function. DM1 is toxic to rapidly dividing cells in animals and is genotoxic, suggesting it has the potential to cause embryotoxicity and teratogenicity. In studies where trastuzumab was administered to pregnant cynomolgus monkeys during the period of organogenesis at doses up to 25 mg/kg given twice weekly (about 7 times the clinical dose), trastuzumab crossed the placental barrier during the early (Gestation Days 20 to 50) and late (Gestation Days 120 to 150) phases of gestation. The resulting concentrations of trastuzumab in fetal serum and amniotic fluid were

approximately 33% and 25%, respectively, of those present in the maternal serum but were not associated with adverse developmental effects.

8.2 Lactation

Risk Summary

There is no information regarding the presence of ado-trastuzumab emtansine in human milk, the effects on the breastfed infant, or the effects on milk production. DM1, the cytotoxic component of KADCYLA, may cause serious adverse reactions in breastfed infants based on its mechanism of action [see Data]. Advise women not to breastfeed during treatment and for 7 months following the last dose of KADCYLA.

Data

There were no animal lactation studies conducted with ado-trastuzumab emtansine or the cytotoxic component of KADCYLA (DM1). In lactating cynomolgus monkeys, trastuzumab was present in breast milk at about 0.3% of maternal serum concentrations after pre- (beginning Gestation Day 120) and post-partum (through Post-partum Day 28) doses of 25 mg/kg administered twice weekly (about 7 times the clinical dose of KADCYLA). Infant monkeys with detectable serum levels of trastuzumab did not exhibit any adverse effects on growth or development from birth to 1 month of age.

8.3 Females and Males of Reproductive Potential

Pregnancy Testing

Verify the pregnancy status of females of reproductive potential prior to the initiation of KADCYLA.

Contraception

Females

KADCYLA can cause embryo-fetal harm when administered during pregnancy. Advise females of reproductive potential to use effective contraception during treatment and for 7 months following the last dose of KADCYLA [see Use in Specific Populations (8.1)].

Males

Because of the potential for genotoxicity, advise male patients with female partners of reproductive potential to use effective contraception during treatment with KADCYLA and for 4 months following the last dose.

Infertility

Based on results from animal toxicity studies, KADCYLA may impair fertility in females and males of reproductive potential. It is not known if the effects are reversible [see Nonclinical Toxicology (13.1)].

8.4 Pediatric Use

Safety and effectiveness of KADCYLA have not been established in pediatric patients.

8.5 Geriatric Use

Of 495 patients who were randomized to KADCYLA in the randomized trial (Study 1) [see Clinical Studies (14.1)], 65 patients (13%) were \geq 65 years of age and 11 patients (2%) were \geq 75 years of age. In patients \geq 65 years old (n=138 across both treatment arms) the hazard ratios for progression-free survival (PFS) and Overall Survival (OS) were 1.06 (95% CI: 0.68, 1.66) and 1.05 (95% CI: 0.58, 1.91), respectively.

Population pharmacokinetic analysis indicates that age does not have a clinically meaningful effect on the pharmacokinetics of ado-trastuzumab emtansine [see Clinical Pharmacology (12.3)].

8.6 Renal Impairment

No dedicated renal impairment trial for KADCYLA has been conducted. Based on the population pharmacokinetics, as well as analysis of Grade 3 or greater adverse drug reactions and dose modifications, dose adjustments of KADCYLA are not needed in patients with mild (creatinine clearance [CLcr] 60 to 89 mL/min) or moderate (CLcr 30 to 59 mL/min) renal impairment. No dose adjustment can be recommended for patients with severe renal impairment (CLcr less than 30 mL/min) because of the limited data available [see *Clinical Pharmacology (12.3)*].

8.7 Hepatic Impairment

In vitro studies in human liver microsomes indicates that DM1 is metabolized by CYP3A4/5. The influence of hepatic impairment on the pharmacokinetics of ado-trastuzumab emtansine conjugate has not been determined.

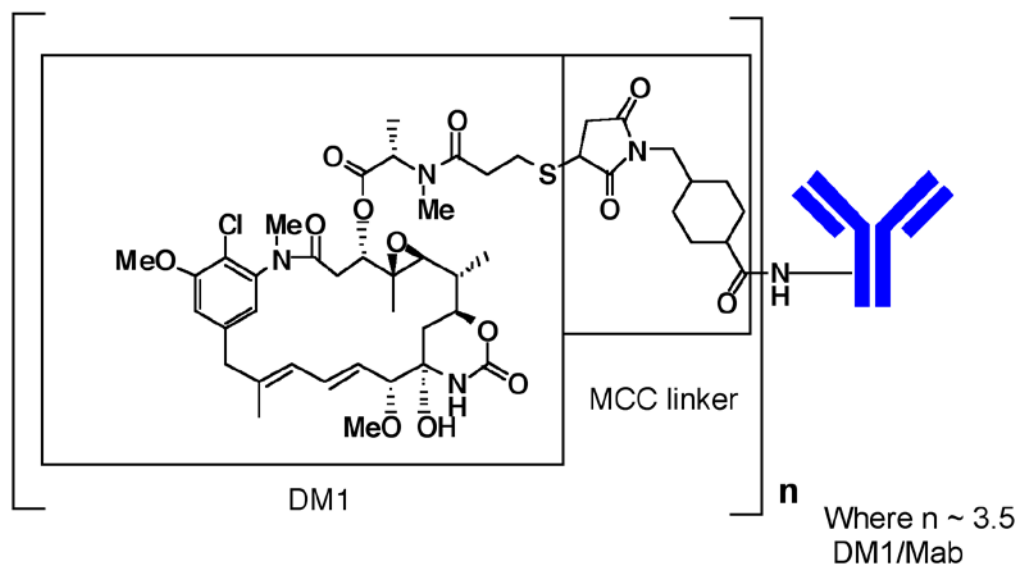
10 OVERDOSAGE

There is no known antidote for overdose of KADCYLA. In clinical trials, overdose of KADCYLA has been reported at approximately two times the recommended dose which resulted in Grade 2 thrombocytopenia (resolved 4 days later) and one death. In the fatal case, the patient incorrectly received KADCYLA at 6 mg/kg and died approximately 3 weeks following the overdose; a cause of death and a causal relationship to KADCYLA were not established.

11 DESCRIPTION

KADCYLA (ado-trastuzumab emtansine) is a HER2-targeted antibody-drug conjugate (ADC) which contains the humanized anti-HER2 IgG1, trastuzumab, covalently linked to the microtubule inhibitory drug DM1 (a maytansine derivative) via the stable thioether linker MCC (4-[N-maleimidomethyl] cyclohexane-1-carboxylate). Emtansine refers to the MCC-DM1 complex.

The antibody trastuzumab, is a well characterized recombinant monoclonal antibody product produced by mammalian (Chinese hamster ovary) cells, and the small molecule components (DM1 and MCC) are produced by chemical synthesis. Ado-trastuzumab emtansine contains an average of 3.5 DM1 molecules per antibody. Ado-trastuzumab emtansine has the following chemical structure:



Note: The bracketed structure is DM1 plus MCC which represents the emtansine component. The n is, on average, 3.5 DM1 molecules per trastuzumab (Mab) molecule.

KADCYLA (ado-trastuzumab emtansine) is a sterile, white to off-white preservative free lyophilized powder in single-use vials. Each vial contains 100 mg or 160 mg ado-trastuzumab emtansine. Following reconstitution, each single-use vial contains ado-trastuzumab emtansine (20 mg/mL), polysorbate 20 [0.02% (w/v)], sodium succinate (10 mM), and sucrose [6% (w/v)] with a pH of 5.0 and density of 1.026 g/mL. The resulting solution containing 20 mg/mL ado-trastuzumab emtansine is administered by intravenous infusion following dilution.

12 CLINICAL PHARMACOLOGY

12.1 Mechanism of Action

Ado-trastuzumab emtansine is a HER2-targeted antibody-drug conjugate. The antibody is the humanized anti-HER2 IgG1, trastuzumab. The small molecule cytotoxin, DM1, is a microtubule inhibitor. Upon binding to sub-domain IV of the HER2 receptor, ado-trastuzumab emtansine undergoes receptor-mediated internalization and subsequent lysosomal degradation, resulting in intracellular release of DM1-containing cytotoxic catabolites. Binding of DM1 to tubulin disrupts microtubule networks in the cell, which results in cell cycle arrest and apoptotic cell death. In addition, *in vitro* studies have shown that similar to trastuzumab, ado-trastuzumab emtansine inhibits HER2 receptor signaling, mediates antibody-dependent cell-mediated cytotoxicity and inhibits shedding of the HER2 extracellular domain in human breast cancer cells that overexpress HER2.

12.3 Pharmacokinetics

The pharmacokinetics of KADCYLA was evaluated in a phase 1 study and in a population pharmacokinetic analysis for the ado-trastuzumab emtansine conjugate (ADC) using pooled data from 5 trials in patients with breast cancer. A linear two-compartment model with first-order elimination from the central compartment adequately describes the ADC concentration-time profile. In addition to ADC, the pharmacokinetics of total antibody (conjugated and unconjugated trastuzumab), DM1 were also determined. The pharmacokinetics of KADCYLA are summarized below.

Distribution

Maximum concentrations (C_{max}) of ADC and DM1 were observed close to the end of infusion. In Study 1, mean (SD) ADC and DM1 Cycle 1 C_{max} following KADCYLA administration was 83.4 (16.5) $\mu\text{g/mL}$ and 4.61 (1.61) ng/mL , respectively.

In vitro, the mean binding of DM1 to human plasma proteins was 93%. *In vitro*, DM1 was a substrate of P-glycoprotein (P-gp).

Based on population pharmacokinetic analysis, the central volume of distribution of ADC was 3.13 L.

Metabolism

In vitro studies indicate that DM1, the small molecule component of KADCYLA, undergoes metabolism by CYP3A4/5. DM1 did not inhibit or induce major CYP450 enzymes *in vitro*. In human plasma, ado-trastuzumab emtansine catabolites MCC-DM1, Lys-MCC-DM1, and DM1 were detected at low levels.

Elimination

Based on population pharmacokinetic analysis, following intravenous infusion of KADCYLA, the clearance of the ADC was 0.68 L/day and the elimination half-life ($t_{1/2}$) was approximately 4 days. No accumulation of KADCYLA was observed after repeated dosing of intravenous infusion every 3 weeks.

Based on population pharmacokinetic analysis (n=671), body weight, sum of longest diameter of target lesions by RECIST, HER2 extracellular domain (ECD) concentrations, AST, albumin, and baseline trastuzumab concentrations were identified as statistically significant covariates for ado-trastuzumab emtansine clearance. However, the magnitude of effect of these covariates on ado-trastuzumab emtansine exposure suggests that, with the exception of body weight, these covariates are unlikely to have a clinically meaningful effect on KADCYLA exposure. Therefore, the body weight based dose of 3.6 mg/kg every 3 weeks without correction for other covariates is considered appropriate.

Effect of Renal Impairment

Based on population pharmacokinetic analysis in 668 patients, including moderate (CL_{cr} 30 - 59 mL/min, n=53) and mild (CL_{cr} 60 - 89 mL/min, n=254) renal impairment, indicate that pharmacokinetics of the ADC is not affected by mild to moderate renal impairment as compared to normal renal function ($CL_{cr} \geq 90$ mL/min, n=361). Data from only one patient with severe renal impairment ($CL_{cr} < 30$ mL/min) is available [see *Use in Specific Populations* (8.7)].

Effects of Age and Race

Based on population pharmacokinetic analysis, age (< 65 (n=577); 65 - 75 (n=78); > 75 (n=16)) and race (Asian (n=73); non-Asian (n=598)) do not have a clinically meaningful effect on the pharmacokinetics of ado-trastuzumab emtansine.

12.6 Cardiac Electrophysiology

The effect of multiple doses of KADCYLA (3.6 mg/kg every 3 weeks) on the QTc interval was evaluated in an open label, single arm study in 51 patients with HER2-positive metastatic breast cancer. No large changes in the mean QT interval (i.e., > 20 ms) were detected in the study.

13 NONCLINICAL TOXICOLOGY

13.1 Carcinogenesis, Mutagenesis, Impairment of Fertility

Carcinogenicity studies have not been conducted with ado-trastuzumab emtansine.

DM1 was aneugenic or clastogenic in an *in vivo* single-dose rat bone marrow micronucleus assay at exposures that were comparable to mean maximum concentrations of DM1 measured in humans administered KADCYLA. DM1 was not mutagenic in an *in vitro* bacterial reverse mutation (Ames) assay.

Based on results from animal toxicity studies, KADCYLA may impair fertility in humans. In a single-dose toxicity study of ado-trastuzumab emtansine in rats, degeneration of seminiferous tubules with hemorrhage in the testes associated with increased weights of testes and epididymides at a severely toxic dose level (60 mg/kg; about 4 times the clinical exposure based on AUC) were observed. The same dose in female rats resulted in signs of hemorrhage and necrosis of the corpus luteum in ovaries. In monkeys dosed with ado-trastuzumab emtansine once every three weeks for 12 weeks (four doses), at up to 30 mg/kg (about 7 times the clinical exposure based on AUC), there were decreases in the weights of epididymides, prostate, testes, seminal vesicles and uterus, although the interpretation of these effects is unclear due to the varied sexual maturity of enrolled animals.

13.2 Animal Toxicology and/or Pharmacology

In monkeys, treatment with doses of ado-trastuzumab emtansine up to 30 mg/kg (about 7 times the clinical exposure based on AUC) caused dose dependent axonal degeneration in the sciatic nerve with hypertrophy or hyperplasia of the Schwann cells, and axonal degeneration of the dorsal funiculus in the spinal cord. Based on the mechanism of action of the cytotoxic component DM1, there is clinical potential for neurotoxicity [see *Warnings and Precautions* (5.8)].

14 CLINICAL STUDIES

14.1 Metastatic Breast Cancer

The efficacy of KADCYLA was evaluated in a randomized, multicenter, open-label trial of 991 patients with HER2-positive, unresectable locally advanced or metastatic breast cancer. Prior taxane and trastuzumab-based therapy was required before trial enrollment. Patients with only prior adjuvant therapy were required to have disease recurrence during or within six months of completing adjuvant therapy. Breast tumor samples were required to show HER2 overexpression defined as 3+ IHC or FISH amplification ratio ≥ 2.0 determined at a central laboratory. Patients were randomly allocated (1:1) to receive lapatinib plus capecitabine or KADCYLA. Randomization was stratified by world region (United States, Western Europe, other), number of prior chemotherapy regimens for unresectable locally advanced or metastatic disease (0–1, >1) and visceral versus non-visceral disease as determined by the investigators.

KADCYLA was given intravenously at 3.6 mg/kg on Day 1 of a 21-day cycle. Lapatinib was administered at 1250 mg/day orally once per day of a 21-day cycle and capecitabine was administered at 1000 mg/m² orally twice daily on Days 1–14 of a 21-day cycle. Patients were treated with KADCYLA or lapatinib plus capecitabine until progression of disease, withdrawal of consent, or unacceptable toxicity. At the time of the primary analysis, median time on study drug was 5.7 months (range: 0–28.4) for KADCYLA, 4.9 months (range: 0–30.8) for lapatinib, and 4.8 months (range: 0–30.4) for capecitabine.

The co-primary efficacy endpoints of the study were progression-free survival (PFS) based on tumor response assessments by an independent review committee (IRC), and overall survival (OS). PFS was defined as the time from the date of randomization to the date of disease progression or death from any cause (whichever occurred earlier). Overall survival was defined as the time from the date of randomization to the date of death from any cause. Additional endpoints included PFS (based on investigator tumor response assessments), objective response rate (ORR), duration of response and time to symptom progression.

Patient demographics and baseline tumor characteristics were balanced between treatment arms. All patients had metastatic disease at study entry. The median age was approximately 53 years (range 24–84 years), 74% were White, 18% were Asian and 5% were Black. All but 5 patients were women. Twenty-seven percent of patients were enrolled in United States, 32% in Europe and 16% in Asia. Tumor prognostic characteristics including hormone receptor status (positive:

55%, negative: 43%), presence of visceral disease (68%) and non-visceral disease only (33%) and the number of metastatic sites (< 3: 61%, ≥ 3: 37%) were similar in the study arms.

The majority of patients (88%) had received prior systemic treatment in the metastatic setting. Twelve percent of patients had prior treatment only in the neoadjuvant or adjuvant setting and had disease relapse within 6 months of treatment. All but one patient received trastuzumab prior to study entry; approximately 85% of patients received prior trastuzumab in the metastatic setting. Over 99% percent of patients had received a taxane, and 61% of patients had received an anthracycline prior to study entry. Overall, patients received a median of 3 systemic agents in the metastatic setting. Among patients with hormone receptor-positive tumors, 44.4% received prior adjuvant hormonal therapy and 44.8% received hormonal therapy for locally advanced/metastatic disease.

The randomized trial demonstrated a statistically significant improvement in IRC-assessed PFS in the KADCYLA-treated group compared with the lapatinib plus capecitabine-treated group [hazard ratio (HR) = 0.65, 95% CI: 0.55, 0.77, $p < 0.0001$], and an increase in median PFS of 3.2 months (median PFS of 9.6 months in the KADCYLA-treated group vs. 6.4 months in the lapatinib plus capecitabine group). See Table 8 and Figure 1. The results for investigator-assessed PFS were similar to those observed for IRC-assessed PFS.

At the time of PFS analysis, 223 patients had died. More deaths occurred in the lapatinib plus capecitabine arm (26%) compared with the KADCYLA arm (19%), however the results of this interim OS analysis did not meet the pre-specified stopping boundary for statistical significance. At the time of the second interim OS analysis, 331 events had occurred. The co-primary endpoint of OS was met; OS was significantly improved in patients receiving KADCYLA (HR = 0.68, 95% CI: 0.55, 0.85, $p = 0.0006$). This result crossed the pre-specified efficacy stopping boundary (HR = 0.73 or $p = 0.0037$). The median duration of survival was 30.9 months in the KADCYLA arm vs. 25.1 months in the lapatinib plus capecitabine arm. See Table 8 and Figure 2.

A treatment benefit with KADCYLA in terms of PFS and OS was observed in patient subgroups based on stratification factors, key baseline demographic and disease characteristics, and prior treatments. In the subgroup of patients with hormone receptor-negative disease (n=426), the hazard ratios for PFS and OS were 0.56 (95% CI: 0.44, 0.72) and 0.75 (95% CI: 0.54, 1.03), respectively. In the subgroup of patients with hormone receptor-positive disease (n=545), the hazard ratios for PFS and OS were 0.72 (95% CI: 0.58, 0.91) and 0.62 (95% CI: 0.46, 0.85), respectively. In the subgroup of patients with non-measurable disease (n=205), based on IRC assessments, the hazard ratios for PFS and OS were 0.91 (95% CI: 0.59, 1.42) and 0.96 (95% CI: 0.54, 1.68), respectively; in patients with measurable disease the hazard ratios were 0.62 (95% CI: 0.52, 0.75) and 0.65 (95% CI: 0.51, 0.82), respectively. The PFS and OS hazard ratios in patients who were younger than 65 years old (n=853) were 0.62 (95% CI: 0.52, 0.74) and 0.66 (95% CI: 0.52, 0.83), respectively. In patients ≥ 65 years old (n=138), the hazard ratios for PFS and OS were 1.06 (95% CI: 0.68, 1.66) and 1.05 (95% CI: 0.58, 1.91), respectively.

Table 8 Summary of Efficacy from Study 1

	KADCYLA N= 495	Lapatinib +Capecitabine N= 496
Progression-Free Survival (independent review)		
Number (%) of patients with event	265 (53.5%)	304 (61.3%)
Median duration of PFS (months)	9.6	6.4
Hazard Ratio (stratified*)		0.650

	KADCYLA N= 495	Lapatinib +Capecitabine N= 496
95% CI for Hazard Ratio p-value (Log-Rank test, stratified*)		(0.549, 0.771) <0.0001
Overall Survival **		
Number (%) of patients who died	149 (30.1%)	182 (36.7%)
Median duration of survival (months)	30.9	25.1
Hazard Ratio (stratified*)		0.682
95% CI for Hazard Ratio		(0.548, 0.849)
p-value (Log-Rank test*)		0.0006
Objective Response Rate (independent review)		
Patients with measurable disease	397	389
Number of patients with OR (%)	173 (43.6%)	120 (30.8%)
Difference (95% CI)		12.7% (6.0, 19.4)
Duration of Objective Response (months)		
Number of patients with OR	173	120
Median duration (95% CI)	12.6 (8.4, 20.8)	6.5 (5.5, 7.2)

PFS: progression-free survival; OR: objective response

* Stratified by world region (United States, Western Europe, other), number of prior chemotherapeutic regimens for locally advanced or metastatic disease (0-1 vs. >1), and visceral vs. non-visceral disease.

** The second interim analysis for OS was conducted when 331 events were observed and the results are presented in this table.

Figure 1 Kaplan-Meier Curve of IRC-Assessed Progression-Free Survival for Study 1

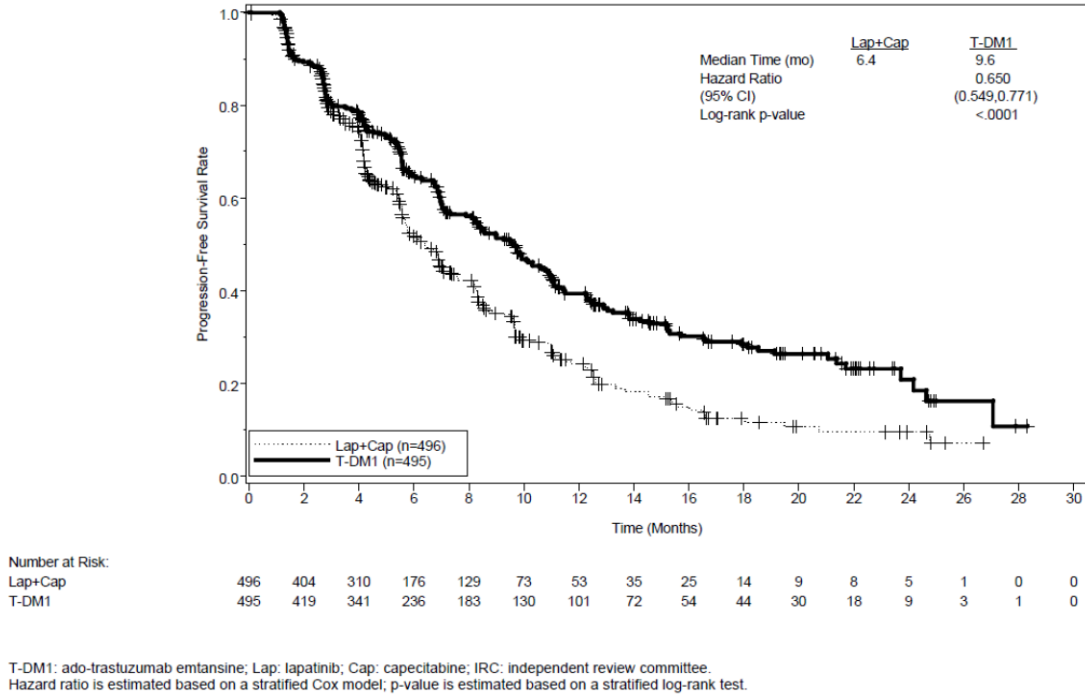
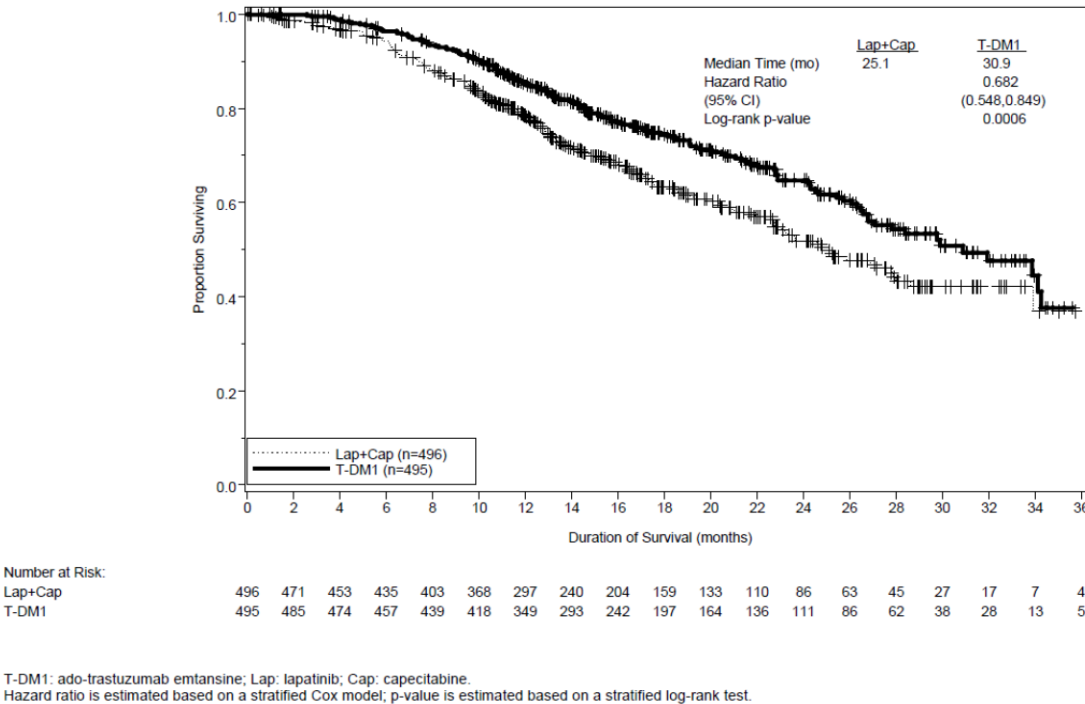


Figure 2 Kaplan-Meier Curve of Overall Survival for Study 1



15 REFERENCES

1. OSHA Hazardous Drugs. *OSHA*. <http://www.osha.gov/SLTC/hazardousdrugs/index.html>

16 HOW SUPPLIED/STORAGE AND HANDLING

16.1 How Supplied/Storage

KADCYLA (ado-trastuzumab emtansine) is supplied as:

Carton Contents	NDC
One 100 mg vial, single use vial	NDC 50242-088-01
One 160 mg vial, single use vial	NDC 50242-087-01

Store vials in a refrigerator at 2°C to 8°C (36°F to 46°F) until time of reconstitution. *Do not freeze or shake.*

16.2 Special Handling

Follow procedures for proper handling and disposal of anticancer drugs¹.

17 PATIENT COUNSELING INFORMATION

- Inform patients of the possibility of severe liver injury and advise patients to immediately seek medical attention if they experience symptoms of acute hepatitis such as nausea, vomiting, abdominal pain (especially RUQ abdominal pain), jaundice, dark urine, generalized pruritus, anorexia, etc. [*see Warnings and Precautions (5.1)*].
- Advise patients to contact a health care professional immediately for any of the following: new onset or worsening shortness of breath, cough, swelling of the ankles/legs, palpitations, weight gain of more than 5 pounds in 24 hours, dizziness or loss of consciousness [*see Warnings and Precautions (5.2)*].

Embryo-Fetal Toxicity

- Advise pregnant women and females of reproductive potential that KADCYLA exposure during pregnancy or within 7 months prior to conception can result in fetal harm. Advise female patients to contact their healthcare provider with a known or suspected pregnancy [*see Use in Specific Populations (8.1, 8.3)*].
- Advise women who are exposed to KADCYLA during pregnancy or who become pregnant within 7 months following the last dose of KADCYLA that there is a pregnancy exposure registry and a pregnancy pharmacovigilance program that monitors pregnancy outcomes. Encourage these patients to enroll in the MoTHER Pregnancy Registry and report their pregnancy to Genentech [*see Use in Specific Populations (8.1)*].
- Advise females of reproductive potential to use effective contraception during treatment and for 7 months following the last dose of KADCYLA [*see Use in Specific Populations (8.1, 8.3)*].
- Advise male patients with female partners of reproductive potential to use effective contraception during treatment and for 4 months following the last dose of KADCYLA [*see Use in Specific Populations (8.3)*].

Lactation

- Advise women not to breastfeed during treatment and for 7 months after the last dose of KADCYLA [*see Use in Specific Populations (8.2)*].

Manufactured by:

Genentech, Inc.

A Member of the Roche Group

1 DNA Way

South San Francisco, CA 94080-4990

U.S. License No: 1048

Initial U.S. Approval: February 2013

KADCYLA is a trademark of Genentech, Inc.

©2016 Genentech, Inc.