

HIGHLIGHTS OF PRESCRIBING INFORMATION

These highlights do not include all the information needed to use STIOLTO RESPIMAT safely and effectively. See full prescribing information for STIOLTO RESPIMAT

STIOLTO™ RESPIMAT® (tiotropium bromide and olodaterol) inhalation spray, for oral inhalation use
Initial U.S. Approval: 2015

WARNING: ASTHMA-RELATED DEATH

See full prescribing information for complete boxed warning.

- Long-acting beta₂-adrenergic agonists (LABA) such as olodaterol, one of the active ingredients in STIOLTO RESPIMAT, increase the risk of asthma-related death. (5.1)
- A placebo-controlled study with another long-acting beta₂-adrenergic agonist (salmeterol) showed an increase in asthma-related deaths in patients receiving salmeterol. (5.1)
- This finding of an increased risk of asthma-related death with salmeterol is considered a class effect of LABA, including olodaterol, one of the active ingredients in STIOLTO RESPIMAT. The safety and efficacy of STIOLTO RESPIMAT in patients with asthma have not been established. STIOLTO RESPIMAT is not indicated for the treatment of asthma. (4, 5.1)

INDICATIONS AND USAGE

STIOLTO RESPIMAT is a combination of tiotropium, an anticholinergic and olodaterol, a long-acting beta₂-adrenergic agonist (LABA) indicated for: The long-term, once-daily maintenance treatment of airflow obstruction in patients with chronic obstructive pulmonary disease (COPD) (1.1)

Important limitations:

- STIOLTO RESPIMAT is NOT indicated to treat acute deterioration of COPD. (1.2)
- STIOLTO RESPIMAT is NOT indicated to treat asthma. (1.2)

DOSAGE AND ADMINISTRATION

- For oral inhalation only.
- Two inhalations of STIOLTO RESPIMAT once-daily at the same time of day. (2)

DOSAGE FORMS AND STRENGTHS

Inhalation spray: Each actuation from the mouthpiece contains 3.124 mcg tiotropium bromide monohydrate, equivalent to 2.5 mcg tiotropium, and 2.736 mcg olodaterol hydrochloride, equivalent to 2.5 mcg olodaterol.

Two actuations equal one dose. (3)

CONTRAINDICATIONS

- All LABAs are contraindicated in patients with asthma without use of a long-term asthma control medication. (4) STIOLTO RESPIMAT is not indicated for the treatment of asthma. (1.2)
- Hypersensitivity to tiotropium, ipratropium, olodaterol, or any component of this product. (4)

WARNINGS AND PRECAUTIONS

- LABA increase the risk of asthma related death. (5.1)
- Do not initiate STIOLTO RESPIMAT in acutely deteriorating COPD patients. (5.2)
- Do not use for relief of acute symptoms. Concomitant short-acting beta₂-agonists can be used as needed for acute relief. (5.2)
- Do not exceed the recommended dose. Excessive use of STIOLTO RESPIMAT, or use in conjunction with other medications containing LABA can result in clinically significant cardiovascular effects and may be fatal. (5.3)
- Immediate hypersensitivity reactions: Discontinue STIOLTO RESPIMAT at once and consider alternatives if immediate hypersensitivity reactions, including angioedema, bronchospasm, or anaphylaxis, occur. (5.4)
- Life-threatening paradoxical bronchospasm can occur. Discontinue STIOLTO RESPIMAT immediately. (5.5)
- Use with caution in patients with cardiovascular or convulsive disorders, thyrotoxicosis, or sensitivity to sympathomimetic drugs. (5.6, 5.7)
- Worsening of narrow-angle glaucoma may occur. Use with caution in patients with narrow-angle glaucoma and instruct patients to consult a physician immediately if this occurs. (5.8)
- Worsening of urinary retention may occur. Use with caution in patients with prostatic hyperplasia or bladder-neck obstruction and instruct patients to consult a physician immediately if this occurs. (5.9)
- Be alert to hypokalemia and hyperglycemia. (5.11)

ADVERSE REACTIONS

The most common adverse reactions (>3% incidence and more than an active control) were nasopharyngitis, cough, and back pain

To report SUSPECTED ADVERSE REACTIONS, contact Boehringer Ingelheim Pharmaceuticals, Inc. at (800) 542-6257 or (800) 459-9906 TTY, or FDA at 1-800-FDA-1088 or www.fda.gov/medwatch.

DRUG INTERACTIONS

- Other adrenergic drugs may potentiate effect. Use with caution. (5.3, 7.1)
- Xanthine derivatives, steroids, diuretics, or non-potassium sparing diuretics may potentiate hypokalemia or ECG changes. Use with caution. (7.2, 7.3)
- MAO inhibitors, tricyclic antidepressants, and drugs that prolong QTc interval may potentiate effect on cardiovascular system. Use with extreme caution. (7.4)
- Beta-blockers may decrease effectiveness. Use with caution and only when medically necessary. (7.5)
- Anticholinergics: May interact additively with concomitantly used anticholinergic medications. Avoid administration of STIOLTO RESPIMAT with other anticholinergic-containing drugs. (7.6)

USE IN SPECIFIC POPULATIONS

Patients with moderate to severe renal impairment should be monitored closely for potential anticholinergic side effects. (2, 8.7)

See 17 for PATIENT COUNSELING INFORMATION, Medication Guide, and Instructions for Use.

Revised: 3/2016

FULL PRESCRIBING INFORMATION: CONTENTS*

WARNING: ASTHMA-RELATED DEATH

1 INDICATIONS AND USAGE

- 1.1 Maintenance Treatment of COPD

2 DOSAGE AND ADMINISTRATION

- 2.1 Recommended Dosage
- 2.2 Administration Information

3 DOSAGE FORMS AND STRENGTHS

4 CONTRAINDICATIONS

5 WARNINGS AND PRECAUTIONS

- 5.1 Asthma-Related Death [See Boxed Warning]
- 5.2 Deterioration of Disease and Acute Episodes
- 5.3 Excessive Use of STIOLTO RESPIMAT and Use With Other Long-Acting Beta₂-Agonists

- 5.4 Immediate Hypersensitivity Reactions

- 5.5 Paradoxical Bronchospasm

- 5.6 Cardiovascular Effects

- 5.7 Coexisting Conditions

- 5.8 Worsening of Narrow-Angle Glaucoma

- 5.9 Worsening of Urinary Retention

- 5.10 Renal Impairment

- 5.11 Hypokalemia and Hyperglycemia

6 ADVERSE REACTIONS

- 6.1 Clinical Trials Experience in Chronic Obstructive Pulmonary Disease

7 DRUG INTERACTIONS

- 7.1 Adrenergic Drugs

- 7.2 Sympathomimetics, Xanthine Derivatives, Steroids, or Diuretics

- 7.3 Non-Potassium Sparing Diuretics
 - 7.4 Monoamine Oxidase Inhibitors, Tricyclic Antidepressants, QTc Prolonging Drugs
 - 7.5 Beta-Blockers
 - 7.6 Anticholinergics
 - 7.7 Inhibitors of Cytochrome P450 and P-gp Efflux Transporters
- 8 USE IN SPECIFIC POPULATIONS**
- 8.1 Pregnancy
 - 8.2 Labor and Delivery
 - 8.3 Nursing Mothers
 - 8.4 Pediatric Use
 - 8.5 Geriatric Use
 - 8.6 Hepatic Impairment
 - 8.7 Renal Impairment

- 10 OVERDOSAGE**
- 11 DESCRIPTION**
- 12 CLINICAL PHARMACOLOGY**
- 12.1 Mechanism of Action
 - 12.2 Pharmacodynamics
 - 12.3 Pharmacokinetics
- 13 NONCLINICAL TOXICOLOGY**
- 13.1 Carcinogenesis, Mutagenesis, Impairment of Fertility
- 14 CLINICAL STUDIES**
- 16 HOW SUPPLIED/STORAGE AND HANDLING**
- 17 PATIENT COUNSELING INFORMATION**

*Sections or subsections omitted from the full prescribing information are not listed.

FULL PRESCRIBING INFORMATION

WARNING: ASTHMA-RELATED DEATH

Long-acting beta₂-adrenergic agonists (LABA) such as olodaterol, one of the active ingredients in STIOLTO RESPIMAT, increase the risk of asthma-related death. Data from a large, placebo-controlled US study that compared the safety of another long-acting beta₂-adrenergic agonist (salmeterol) with placebo added to usual asthma therapy showed an increase in asthma-related deaths in patients receiving salmeterol. This finding with salmeterol is considered a class effect of all LABA, including olodaterol, one of the active ingredients in STIOLTO RESPIMAT. The safety and efficacy of STIOLTO RESPIMAT in patients with asthma have not been established. STIOLTO RESPIMAT is not indicated for the treatment of asthma [see *Contraindications (4)*, *Warnings and Precautions (5.1)*].

1 INDICATIONS AND USAGE

1.1 Maintenance Treatment of COPD

STIOLTO RESPIMAT is a combination of tiotropium and olodaterol indicated for long-term, once-daily maintenance treatment of airflow obstruction in patients with chronic obstructive pulmonary disease (COPD), including chronic bronchitis and/or emphysema.

Important Limitations of Use

- STIOLTO RESPIMAT is not indicated to treat acute deteriorations of COPD. [See *Warnings and Precautions (5.2)*]
- STIOLTO RESPIMAT is not indicated to treat asthma. The safety and effectiveness of STIOLTO RESPIMAT in asthma have not been established.

2 DOSAGE AND ADMINISTRATION

2.1 Recommended Dosage

The recommended dose of STIOLTO RESPIMAT is two inhalations once-daily at the same time of the day. Do not use STIOLTO RESPIMAT more than two inhalations every 24 hours.

2.2 Administration Information

For oral inhalation only.

Prior to first use, the STIOLTO RESPIMAT cartridge is inserted into the STIOLTO RESPIMAT inhaler and the unit is primed. When using the unit for the first time, patients are to actuate the inhaler toward the ground until an aerosol cloud is visible and then repeat the process three more times. The unit is then considered primed and ready for use. If not used for more than 3 days, patients are to actuate the inhaler once to prepare the inhaler for use. If not used for more than 21 days, patients are to actuate the inhaler until an aerosol cloud is visible and then repeat the process three more times to prepare the inhaler for use [see *Patient Counseling Information (17)*].

No dosage adjustment is required for geriatric, hepatically-impaired, or renally-impaired patients. However, patients with moderate to severe renal impairment given STIOLTO RESPIMAT should be monitored closely for anticholinergic effects [see *Warnings and Precautions (5.9)*, *Use in Specific Populations (8.5, 8.6, 8.7)*, and *Clinical Pharmacology (12.3)*].

3 DOSAGE FORMS AND STRENGTHS

Inhalation Spray: STIOLTO RESPIMAT consists of a STIOLTO RESPIMAT inhaler and an aluminum cylinder (STIOLTO RESPIMAT cartridge) containing a combination of tiotropium bromide (as the monohydrate) and olodaterol (as the hydrochloride). The STIOLTO RESPIMAT cartridge is intended only for use with the STIOLTO RESPIMAT inhaler.

Each actuation from the STIOLTO RESPIMAT inhaler delivers 3.124 mcg tiotropium bromide monohydrate (equivalent to 2.5 mcg tiotropium) and 2.736 mcg olodaterol hydrochloride (equivalent to 2.5 mcg olodaterol) from the mouthpiece.

Two actuations equal one dose.

4 CONTRAINDICATIONS

All LABAs are contraindicated in patients with asthma without use of a long-term asthma control medication [see *Warnings and Precautions (5.1)*]. STIOLTO RESPIMAT is not indicated for the treatment of asthma.

STIOLTO RESPIMAT is contraindicated in patients with a hypersensitivity to tiotropium, ipratropium, olodaterol, or any component of this product [see *Warnings and Precautions (5.4)*].

In clinical trials and postmarketing experience with tiotropium, immediate hypersensitivity reactions, including angioedema (including swelling of the lips, tongue, or throat), itching, or rash have been reported. Hypersensitivity reactions were also reported in clinical trials with STIOLTO RESPIMAT.

5 WARNINGS AND PRECAUTIONS

5.1 Asthma-Related Death [See *Boxed Warning*]

- Data from a large placebo-controlled study in asthma patients showed that long-acting beta₂-adrenergic agonists may increase the risk of asthma-related death. Data are not available to determine whether the rate of death in patients with COPD is increased by long-acting beta₂-adrenergic agonists.
- A 28-week, placebo-controlled US study comparing the safety of another long-acting beta₂-adrenergic agonist (salmeterol) with placebo, each added to usual asthma therapy, showed an increase in asthma-related deaths in patients receiving salmeterol (13/13,176 in patients treated with salmeterol vs. 3/13,179 in patients treated with placebo; RR 4.37, 95% CI 1.25, 15.34). The increased risk of asthma-related death is considered a class effect of long-acting beta₂-adrenergic agonists, including olodaterol, one of the active ingredients in STIOLTO RESPIMAT. No study adequate to determine whether the rate of asthma-related death is increased in patients treated with STIOLTO RESPIMAT has been conducted. The safety and efficacy of STIOLTO RESPIMAT in patients with asthma have not been established. STIOLTO RESPIMAT is not indicated for the treatment of asthma. [See *Contraindications (4)*]

5.2 Deterioration of Disease and Acute Episodes

STIOLTO RESPIMAT should not be initiated in patients with acutely deteriorating COPD, which may be a life-threatening condition. STIOLTO RESPIMAT has not been studied in patients with acutely deteriorating COPD. The use of STIOLTO RESPIMAT in this setting is inappropriate.

STIOLTO RESPIMAT should not be used for the relief of acute symptoms, i.e., as rescue therapy for the treatment of acute episodes of bronchospasm. STIOLTO RESPIMAT has not been studied in the relief of acute symptoms and extra doses should not be used for that purpose. Acute symptoms should be treated with an inhaled short-acting beta₂-agonist.

When beginning STIOLTO RESPIMAT, patients who have been taking inhaled, short-acting beta₂-agonists on a regular basis (e.g., four times a day) should be instructed to discontinue the regular use of these drugs and use them only for symptomatic relief of acute respiratory symptoms. When prescribing STIOLTO RESPIMAT, the healthcare provider should also prescribe an inhaled, short-acting beta₂-agonist and instruct the patient on how it should be used. Increasing inhaled beta₂-agonist use is a signal of deteriorating disease for which prompt medical attention is indicated.

COPD may deteriorate acutely over a period of hours or chronically over several days or longer. If STIOLTO RESPIMAT no longer controls symptoms of bronchoconstriction, or the patient's inhaled, short-acting beta₂-agonist becomes less effective or the patient needs more inhalation of short-acting beta₂-agonist than usual, these may be markers of deterioration of disease. In this setting, a re-evaluation of the patient and the COPD treatment regimen should be undertaken at once. Increasing the daily dosage of STIOLTO RESPIMAT beyond the recommended dose is not appropriate in this situation.

5.3 Excessive Use of STIOLTO RESPIMAT and Use With Other Long-Acting Beta₂-Agonists

As with other inhaled drugs containing beta₂-adrenergic agents, STIOLTO RESPIMAT should not be used more often than recommended, at higher doses than recommended, or in conjunction with other medications containing long-acting beta₂-agonists, as an overdose may result. Clinically significant cardiovascular effects and fatalities have been reported in association with excessive use of inhaled sympathomimetic drugs.

5.4 Immediate Hypersensitivity Reactions

Immediate hypersensitivity reactions, including urticaria, angioedema (including swelling of the lips, tongue or throat), rash, bronchospasm, anaphylaxis, or itching may occur after administration of STIOLTO RESPIMAT. If such a reaction occurs, therapy with STIOLTO RESPIMAT should be stopped at once and alternative treatments should be considered. Given the similar structural formula of atropine to tiotropium, patients with a history of hypersensitivity reactions to atropine or its derivatives should be closely monitored for similar hypersensitivity reactions to STIOLTO RESPIMAT.

5.5 Paradoxical Bronchospasm

As with other inhaled medicines, STIOLTO RESPIMAT may cause paradoxical bronchospasm that may be life-threatening. If paradoxical bronchospasm occurs, STIOLTO RESPIMAT should be stopped immediately and alternative therapy instituted.

5.6 Cardiovascular Effects

Olodaterol, like other beta₂-agonists, can produce a clinically significant cardiovascular effect in some patients as measured by increases in pulse rate, systolic or diastolic blood pressure, and/or symptoms. If such effects occur, STIOLTO RESPIMAT may need to be discontinued. In addition, beta-agonists have been reported to produce ECG changes, such as flattening of the T wave, prolongation of the QTc interval, and ST segment depression. The clinical significance of these findings is unknown. Long acting beta₂-adrenergic agonists should be administered with caution in patients with cardiovascular disorders, especially coronary insufficiency, cardiac arrhythmias, hypertrophic obstructive cardiomyopathy, and hypertension.

5.7 Coexisting Conditions

Olodaterol, like other sympathomimetic amines, should be used with caution in patients with convulsive disorders or thyrotoxicosis, in patients with known or suspected prolongation of the QT interval, and in patients who are unusually responsive to sympathomimetic amines. Doses of the related beta₂-agonist albuterol, when administered intravenously, have been reported to aggravate pre-existing diabetes mellitus and ketoacidosis.

5.8 Worsening of Narrow-Angle Glaucoma

STIOLTO RESPIMAT should be used with caution in patients with narrow-angle glaucoma. Prescribers and patients should be alert for signs and symptoms of acute narrow-angle glaucoma (e.g., eye pain or discomfort, blurred vision, visual halos or colored images in association with red eyes from conjunctival congestion and corneal edema). Instruct patients to consult a physician immediately should any of these signs or symptoms develop.

5.9 Worsening of Urinary Retention

STIOLTO RESPIMAT should be used with caution in patients with urinary retention. Prescribers and patients should be alert for signs and symptoms of prostatic hyperplasia or bladder-neck obstruction (e.g., difficulty passing urine, painful urination), especially in patients with prostatic hyperplasia or bladder neck obstruction. Instruct patients to consult a physician immediately should any of these signs or symptoms develop.

5.10 Renal Impairment

Because tiotropium is a predominantly renally excreted drug, patients with moderate to severe renal impairment (creatinine clearance of ≤ 60 mL/min) treated with STIOLTO RESPIMAT should be monitored closely for anticholinergic side effects [see *Use in Specific Populations* (8.7) and *Clinical Pharmacology* (12.3)].

5.11 Hypokalemia and Hyperglycemia

Beta-adrenergic agonists may produce significant hypokalemia in some patients, which has the potential to produce adverse cardiovascular effects [see *Clinical Pharmacology* (12.2)]. The decrease in serum potassium is usually transient, not requiring supplementation. Inhalation of high doses of beta₂-adrenergic agonists may produce increases in plasma glucose.

In patients with severe COPD, hypokalemia may be potentiated by hypoxia and concomitant treatment [see *Drug Interactions* (7.2)], which may increase the susceptibility for cardiac arrhythmias.

Clinically notable decreases in serum potassium or changes in blood glucose were infrequent during clinical studies with long-term administration of olodaterol with the rates similar to those for placebo controls. Olodaterol has not been investigated in patients whose diabetes mellitus is not well controlled.

6 ADVERSE REACTIONS

LABA, such as olodaterol, one of the active components in STIOLTO RESPIMAT, increase the risk of asthma-related death. STIOLTO RESPIMAT is not indicated for the treatment of asthma [see *Boxed Warning and Warning and Precautions* 5.1].

The following adverse reactions are described, or described in greater detail, in other sections:

- Immediate hypersensitivity reactions [see Warnings and Precautions (5.4)]
- Paradoxical bronchospasm [see Warnings and Precautions (5.5)]
- Worsening of narrow-angle glaucoma [see Warnings and Precautions (5.7)]
- Worsening of urinary retention [see Warnings and Precautions (5.8)]

6.1 Clinical Trials Experience in Chronic Obstructive Pulmonary Disease

Because clinical trials are conducted under widely varying conditions, the incidence of adverse reactions observed in the clinical trials of a drug cannot be directly compared to the incidences in the clinical trials of another drug and may not reflect the incidences observed in practice.

The clinical program for STIOLTO RESPIMAT included 7151 subjects with COPD in two 52-week active-controlled trials, one 12-week placebo-controlled trial, three 6-week placebo-controlled cross-over trials, and four additional trials of shorter duration. A total of 1988 subjects received at least 1 dose of STIOLTO RESPIMAT. Adverse reactions observed in the ≤ 12 -week trials were consistent with those observed in the 52-week trials, which formed the primary safety database.

The primary safety database consisted of pooled data from the two 52-week double-blind, active-controlled, parallel group confirmatory clinical trials. These trials included 5162 adult COPD patients (72.9% males and 27.1% females) 40 years of age and older. Of these patients, 1029 were treated with STIOLTO RESPIMAT once daily. The STIOLTO RESPIMAT group was composed of mostly Caucasians (71.1%) with a mean age of 63.8 years and a mean percent predicted FEV₁ at baseline of 43.2%. In these two trials, tiotropium 5 mcg and olodaterol 5 mcg were included as active control arms and no placebo was used.

In these two clinical trials, 74% of patients exposed to STIOLTO RESPIMAT reported an adverse reaction compared to 76.6% and 73.3% in the olodaterol 5 mcg and tiotropium 5 mcg groups, respectively. The proportion of patients who discontinued due to an adverse reaction was 7.4% for STIOLTO RESPIMAT treated patients compared to 9.9% and 9.0% for olodaterol 5 mcg and tiotropium 5 mcg treated patients. The adverse reaction most commonly leading to discontinuation was worsening COPD.

The most common serious adverse reactions were COPD exacerbation and pneumonia.

Table 1 shows all adverse drug reactions that occurred with an incidence of $>3\%$ in the STIOLTO RESPIMAT treatment group and a higher incidence rate than the active comparator groups listed.

Table 1: Number and frequency of adverse drug reactions greater than 3% (and higher than any of the comparators tiotropium and/or olodaterol) in COPD patients exposed to STIOLTO RESPIMAT: Pooled data from the two 52-week, double-blind, active-controlled clinical trials in COPD patients 40 years of age and older

Treatment	STIOLTO RESPIMAT (once daily)	Tiotropium (5 mcg once daily)	Olodaterol (5 mcg once daily)
Body system (adverse drug reaction)	n=1029 n (%)	n=1033 n (%)	n=1038 n (%)
Infections and infestations			
Nasopharyngitis	128 (12.4)	121 (11.7)	131 (12.6)
Respiratory, thoracic, and mediastinal disorders			
Cough	40 (3.9)	45 (4.4)	31 (3.0)
Musculoskeletal and connective tissue disorders			
Back Pain	37 (3.6)	19 (1.8)	35 (3.4)

Other adverse drug reactions in patients receiving STIOLTO RESPIMAT that occurred in $\leq 3\%$ of patients in clinical studies are listed below:

Metabolism and nutrition disorders: dehydration

Nervous system disorders: dizziness, insomnia

Eye disorders: glaucoma, intraocular pressure increased, vision blurred

Cardiac/vascular disorders: atrial fibrillation, palpitations, supraventricular tachycardia, tachycardia, hypertension

Respiratory, thoracic, and mediastinal disorders: epistaxis, pharyngitis, dysphonia, bronchospasm, laryngitis, sinusitis

Gastrointestinal disorders: dry mouth, constipation, oropharyngeal candidiasis, dysphagia, gastroesophageal reflux disease, gingivitis, glossitis, stomatitis, intestinal obstruction including ileus paralytic

Skin and subcutaneous disorders: rash, pruritus, angioneurotic edema, urticaria, skin infection, and skin ulcer, dry skin, hypersensitivity (including immediate reactions)

Musculoskeletal and connective tissue disorders: arthralgia, joint swelling

Renal and urinary disorders: urinary retention, dysuria, and urinary tract infection.

7 DRUG INTERACTIONS

7.1 Adrenergic Drugs

If additional adrenergic drugs are to be administered by any route, they should be used with caution because the sympathetic effects of olodaterol, one component of STIOLTO RESPIMAT may be potentiated [see Warnings and Precautions (5.3, 5.6, 5.10, 5.11)].

7.2 Sympathomimetics, Xanthine Derivatives, Steroids, or Diuretics

Tiotropium has been used concomitantly with short-acting and long-acting sympathomimetic (beta-agonists) bronchodilators, methylxanthines, and oral and inhaled steroids, without increases in adverse reactions. Concomitant treatment with xanthine derivatives, steroids, or diuretics may potentiate any hypokalemic effect of olodaterol [see Warnings and Precautions (5.11)].

7.3 Non-Potassium Sparing Diuretics

The ECG changes and/or hypokalemia that may result from the administration of non-potassium sparing diuretics (such as loop or thiazide diuretics) can be acutely worsened by beta-agonists, especially when the recommended dose of the beta-agonist is exceeded. Although the clinical significance of these effects is not known, caution is advised in the co-administration of STIOLTO RESPIMAT with non-potassium sparing diuretics.

7.4 Monoamine Oxidase Inhibitors, Tricyclic Antidepressants, QTc Prolonging Drugs

STIOLTO RESPIMAT, as with other drugs containing beta₂-agonists, should be administered with extreme caution to patients being treated with monoamine oxidase inhibitors or tricyclic antidepressants or other drugs known to prolong the QTc interval because the action of adrenergic agonists on the cardiovascular system may be potentiated by these agents. Drugs that are known to prolong the QTc interval may be associated with an increased risk of ventricular arrhythmias.

7.5 Beta-Blockers

Beta-adrenergic receptor antagonists (beta-blockers) and the olodaterol component of STIOLTO RESPIMAT may interfere with the effect of each other when administered concurrently. Beta-blockers not only block the therapeutic effects of beta-agonists, but may produce severe bronchospasm in COPD patients. Therefore, patients with COPD should not normally be treated with beta-blockers. However, under certain circumstances, e.g. as prophylaxis after myocardial infarction, there may be no acceptable alternatives to the use of beta-blockers in patients with COPD. In this setting, cardioselective beta-blockers could be considered, although they should be administered with caution.

7.6 Anticholinergics

There is potential for an additive interaction with concomitantly used anticholinergic medications. Therefore, avoid co-administration of STIOLTO RESPIMAT with other anticholinergic-containing drugs as this may lead to an increase in anticholinergic adverse effects [see *Warnings and Precautions* (5.7, 5.8) and *Adverse Reactions* (6)].

7.7 Inhibitors of Cytochrome P450 and P-gp Efflux Transporter

In a drug interaction study using the strong dual CYP and P-gp inhibitor ketoconazole, a 1.7-fold increase of olodaterol maximum plasma concentrations and AUC was observed [see *Pharmacokinetics* (12.3)]. Olodaterol was evaluated in clinical trials for up to one year at doses up to twice the recommended therapeutic dose. No dose adjustment of STIOLTO RESPIMAT is necessary.

8 USE IN SPECIFIC POPULATIONS

8.1 Pregnancy

Teratogenic Effects: Pregnancy Category C.

There are no adequate and well-controlled studies with STIOLTO RESPIMAT or its individual components, tiotropium bromide and olodaterol, in pregnant women. Animal reproduction studies were conducted with the individual components of STIOLTO RESPIMAT, tiotropium bromide and olodaterol. STIOLTO RESPIMAT should be used during pregnancy only if the potential benefit justifies the potential risk to the fetus.

Tiotropium

No evidence of structural alterations was observed in rats and rabbits at approximately 790 and 8 times the recommended human daily inhalation dose (RHDID; on a mcg/m² basis at maternal inhalation doses of 1471 and 7 mcg/kg/day in rats and rabbits, respectively). However, in rats, tiotropium caused fetal resorption, litter loss, decreases in the number of live pups at birth and the mean pup weights, and a delay in pup sexual maturation at approximately 40 times the RHDID (on a mcg/m² basis at a maternal inhalation dose of 78 mcg/kg/day). In rabbits, tiotropium caused an increase in post-implantation loss at approximately 430 times the RHDID (on a mcg/m² basis at a maternal inhalation dose of 400 mcg/kg/day). Such effects were not observed at approximately 5 and 95 times the RHDID (on a mcg/m² basis at maternal inhalation doses of 9 and 88 mcg/kg/day in rats and rabbits, respectively).

Olodaterol

Olodaterol was not teratogenic in rats at approximately 2731 times the RHDID (on an AUC basis at a maternal inhalation dose of 1054 mcg/kg/day). Placental transfer of olodaterol was observed in pregnant rats.

Olodaterol has been shown to be teratogenic in New Zealand rabbits at approximately 7130 times the RHDID in adults (on an AUC basis at a maternal inhalation dose of 2489 mcg/kg/day). Olodaterol exhibited the following fetal toxicities: enlarged or small heart atria or ventricles, eye abnormalities, and split or distorted sternum. No significant effects occurred at approximately 1353 times the RHDID in adults (on an AUC basis at a maternal inhalation dose of 974 mcg/kg/day).

8.2 Labor and Delivery

There are no adequate and well-controlled human studies that have investigated the effects of STIOLTO RESPIMAT on preterm labor or labor at term. Because of the potential for beta-agonist interference with uterine contractility, use of STIOLTO RESPIMAT during labor should be restricted to those patients in whom the benefits clearly outweigh the risks.

8.3 Nursing Mothers

Clinical data from nursing women or infants exposed to STIOLTO RESPIMAT or its individual active components are not available. Tiotropium, olodaterol, and metabolites of olodaterol are excreted into the milk of lactating rats. It is not known whether these compounds are excreted in human milk, but because many drugs are excreted in human milk and given these findings in rats, caution should be exercised if STIOLTO RESPIMAT is administered to a nursing woman.

8.4 Pediatric Use

COPD does not normally occur in children. The safety and effectiveness of STIOLTO RESPIMAT in the pediatric population has not been established.

8.5 Geriatric Use

Based on available data, no adjustment of STIOLTO RESPIMAT dosage in geriatric patients is warranted [see *Clinical Pharmacology* (12.3)].

Of the 1029 patients who received STIOLTO RESPIMAT at the recommended dose once daily in the clinical studies from the pooled 1-year database, 525 (51.0%) were <65 years of age, 407 (39.6%) were 65 to <75, 96 (9.3%) were 75 to <85, and 1 (0.1%) was ≥85.

No overall differences in effectiveness were observed, and in the 1-year pooled data, the adverse drug reaction profiles were similar in the older population compared to the patient population overall.

8.6 Hepatic Impairment

No dose adjustment is needed in patients with mild and moderate hepatic impairment. A study in subjects with severe hepatic impairment was not performed [see *Clinical Pharmacology* (12.3)].

8.7 Renal Impairment

No dose adjustment is required for patients with renal impairment. However, patients with moderate to severe renal impairment (creatinine clearance of ≤60 mL/min) treated with STIOLTO RESPIMAT should be monitored closely for anticholinergic side effects [see *Dosage and Administration* (2), *Warnings and Precautions* (5.9), and *Clinical Pharmacology* (12.3)].

10 OVERDOSAGE

STIOLTO RESPIMAT contains both tiotropium bromide and olodaterol; therefore, the risks associated with overdosage for the individual components described below apply to STIOLTO RESPIMAT.

Tiotropium

High doses of tiotropium may lead to anticholinergic signs and symptoms. However, there were no systemic anticholinergic adverse effects following a single inhaled dose of up to 282 mcg tiotropium in 6 healthy volunteers. In a study of 12 healthy volunteers, bilateral conjunctivitis and dry mouth were seen following repeated once-daily inhalation of 141 mcg of tiotropium. Dry mouth/throat and dry nasal mucosa occurred in a dose-dependent [10-40 mcg daily] manner, were observed following 14-day dosing of up to 40 mcg tiotropium bromide inhalation solution in healthy subjects.

Olodaterol

The expected signs and symptoms with overdosage of olodaterol are those of excessive beta-adrenergic stimulation and occurrence or exaggeration of any of the signs and symptoms, e.g., myocardial ischemia, angina pectoris, hypertension or hypotension, tachycardia, arrhythmias, palpitations, dizziness, nervousness, insomnia, anxiety, headache, tremor, dry mouth, muscle spasms, nausea, fatigue, malaise, hypokalemia, hyperglycemia, and metabolic acidosis. As with all inhaled sympathomimetic medications, cardiac arrest and even death may be associated with an overdose of olodaterol.

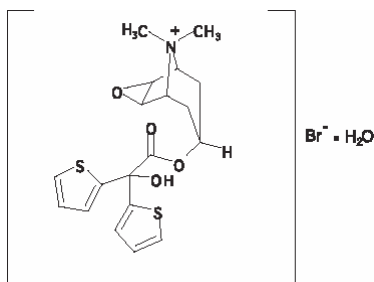
Treatment of overdosage consists of discontinuation of STIOLTO RESPIMAT together with institution of appropriate symptomatic and supportive therapy. The judicious use of a cardioselective beta-receptor blocker may be considered, bearing in mind that such medication can produce bronchospasm. There is insufficient evidence to determine if dialysis is beneficial for overdosage of STIOLTO RESPIMAT. Cardiac monitoring is recommended in cases of overdosage.

11 DESCRIPTION

STIOLTO RESPIMAT is a combination of tiotropium, an anticholinergic, and olodaterol, a long-acting beta₂-adrenergic agonist (LABA).

The drug substance tiotropium bromide monohydrate is chemically described as (1*α*, 2*B*, 4*B*, 5*α*, 7*B*)-7-[(Hydroxydi-2-thienylacetyl)oxy]-9,9-dimethyl-3-oxa-9-azoniatricyclo[3.3.1.0^{2,4}] nonane bromide monohydrate. It is a synthetic, non-chiral, quaternary ammonium compound. Tiotropium bromide is a white or yellowish white powder. It is sparingly soluble in water and soluble in methanol.

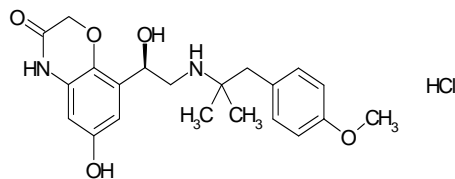
The structural formula is:



Tiotropium bromide (monohydrate) has a molecular mass of 490.4 and a molecular formula of C₁₉H₂₂NO₄S₂Br • H₂O.

The drug substance olodaterol hydrochloride is chemically described as 2H-1,4-Benzoxazin-3H(4H)-one, 6-hydroxy-8-[(1*R*)-1-hydroxy-2-[[2-(4-methoxyphenyl)-1,1-dimethylethyl]-amino]ethyl]-, monohydrochloride. Olodaterol hydrochloride is a white to off-white powder that is sparingly-slightly soluble in water and slightly soluble in ethanol. The molecular weight is 422.9 g/mole (salt); 386.5 g/mole (base), and the molecular formula is C₂₁H₂₆N₂O₅ x HCl as a hydrochloride. The conversion factor from salt to free base is 1.094.

The structural formula is:



The drug product, STIOLTO RESPIMAT, is composed of a sterile aqueous solution of tiotropium bromide and olodaterol hydrochloride filled into a 4.5 mL plastic container crimped into an aluminum cylinder (STIOLTO RESPIMAT cartridge) for use with the STIOLTO RESPIMAT inhaler.

Excipients include water for injection, benzalkonium chloride, edetate disodium, and hydrochloric acid.

The STIOLTO RESPIMAT cartridge is only intended for use with the STIOLTO RESPIMAT inhaler. The STIOLTO RESPIMAT inhaler is a hand held, pocket sized oral inhalation device that uses mechanical energy to generate a slow-moving aerosol cloud of medication from a metered volume of the drug solution. The STIOLTO RESPIMAT inhaler has a light green-colored cap.

When used with the STIOLTO RESPIMAT inhaler each cartridge, containing 4 grams of sterile aqueous solution, delivers 60 (or 28) metered actuations after preparation for use, the equivalent of 30 days' (or 14 days') medication when used as two actuations once a day. Each dose (one dose equals two actuations) from the STIOLTO RESPIMAT inhaler delivers 5 mcg tiotropium and 5 mcg olodaterol in 22.1 mL from the mouthpiece. As with all inhaled drugs, the actual amount of drug delivered to the lung may depend on patient factors, such as the coordination between the actuation of the inhaler and inspiration through the delivery system. The duration of inspiration should be at least as long as the spray duration (1.5 seconds).

12 CLINICAL PHARMACOLOGY

12.1 Mechanism of Action

STIOLTO RESPIMAT

STIOLTO RESPIMAT contains both tiotropium and olodaterol. The properties described below for the individual components apply to STIOLTO RESPIMAT. These drugs represent 2 different classes of medication (an anticholinergic and a beta-agonist) that have different effects on clinical and physiological indices.

Tiotropium

Tiotropium is a long-acting, muscarinic antagonist which is often referred to as an anticholinergic. It has similar affinity to the subtypes of muscarinic receptors, M₁ to M₅. In the airways, it exhibits pharmacological effects through inhibition of M₃-receptors at the smooth muscle leading to bronchodilation. The competitive and reversible nature of antagonism was shown with human and animal origin receptors and isolated organ preparations. In preclinical *in vitro* as well as *in vivo* studies, prevention of methacholine-induced bronchoconstriction effects was dose-dependent and lasted longer than 24 hours. The bronchodilation following inhalation of tiotropium is predominantly a site-specific effect.

Olodaterol

Olodaterol is a long-acting beta₂-adrenergic agonist (LABA). The compound exerts its pharmacological effects by binding and activation of beta₂-adrenoceptors after topical administration by inhalation. Activation of these receptors in the airways results in a stimulation of intracellular adenylyl cyclase, an enzyme that mediates the synthesis of cyclic-3', 5' adenosine monophosphate (cAMP). Elevated levels of cAMP induce bronchodilation by relaxation of airway smooth muscle cells. *In vitro* studies have shown that olodaterol has 241-fold greater agonist activity at beta₂-adrenoceptors compared to beta₁-adrenoceptors and 2299-fold greater agonist activity compared to beta₃-adrenoceptors. The clinical significance of these findings is unknown.

Beta-adrenoceptors are divided into three subtypes: beta₁-adrenoceptors predominantly expressed on cardiac muscle, beta₂-adrenoceptors predominantly expressed on airway smooth muscle, and beta₃-adrenoceptors predominantly expressed on adipose tissue. Beta₂-agonists cause bronchodilation. Although the beta₂-adrenoceptor is the predominant adrenergic receptor in the airway smooth muscle, it is also present on the surface of a variety of other cells, including lung epithelial and endothelial cells and in the heart. The precise function of beta₂-receptors in the heart is not known, but their presence raises the possibility that even highly selective beta₂-agonists may have cardiac effects.

12.2 Pharmacodynamics

Cardiac Electrophysiology

STIOLTO RESPIMAT

In two 52-week randomized, double-blind trials using STIOLTO RESPIMAT that enrolled 5162 patients with COPD, ECG assessments were performed post-dose on days 1, 85, 169, and 365. In a pooled analysis the number of subjects with changes from baseline-corrected QT interval of >30 msec using both the Bazett (QTcB) and Fredericia (QTcF), corrections of QT for heart rate were not different for the STIOLTO RESPIMAT group compared to olodaterol 5 mcg and tiotropium 5 mcg across the assessments conducted.

Tiotropium

The effect of tiotropium dry powder for inhalation on QT interval was also evaluated in a randomized, placebo- and positive-controlled crossover study in 53 healthy volunteers. Subjects received tiotropium inhalation powder 18 mcg, 54 mcg (3 times the recommended dose), or placebo for 12 days. ECG assessments were performed at baseline and throughout the dosing interval following the first and last dose of study medication. Relative to placebo, the maximum mean change from baseline in study-specific QTc interval was 3.2 msec and 0.8 msec for tiotropium inhalation powder 18 mcg and 54 mcg, respectively. No subject showed a new onset of QTc >500 msec or QTc changes from baseline of ≥60 msec.

In a multicenter, randomized, double-blind trial using tiotropium dry powder for inhalation that enrolled 198 patients with COPD, the number of subjects with changes from baseline-corrected QT interval of 30–60 msec was higher in the tiotropium group as compared with placebo. This difference was apparent using both the Bazett (QTcB) [20 (20%) patients vs. 12 (12%) patients] and Fredericia (QTcF) [16 (16%) patients vs. 1 (1%) patient] corrections of QT for heart rate. No patients in either group had either QTcB or QTcF of >500 msec. Other clinical trials with tiotropium did not detect an effect of the drug on QTc intervals.

Olodaterol

The effect of olodaterol on the QT/QTc interval of the ECG was investigated in 24 healthy male and female volunteers in a double-blind, randomized, placebo- and active (moxifloxacin)- controlled study at single doses of 10, 20, 30, and 50 mcg. Dose-dependent QTcI (individual subject corrected QT interval) prolongation was observed. The maximum mean (one-sided 95% upper confidence bound) difference in QTcI from placebo after baseline correction was 2.5 (5.6) ms, 6.1 (9.2) ms, 7.5 (10.7) ms, and 8.5 (11.6) ms following doses of 10, 20, 30, and 50 mcg, respectively.

The effect of 5 mcg and 10 mcg olodaterol on heart rate and rhythm was assessed using continuous 24-hour ECG recording (Holter monitoring) in a subset of 772 patients in the 48-week, placebo-controlled phase 3 trials. There were no dose- or time-related trends or patterns observed for the magnitudes of mean changes in heart rate or premature beats. Shifts from baseline to the end of treatment in premature beats did not indicate meaningful differences between olodaterol 5 mcg, 10 mcg, and placebo.

12.3 Pharmacokinetics

STIOLTO RESPIMAT

When STIOLTO RESPIMAT was administered by the inhalation route, the pharmacokinetic parameters for tiotropium and for olodaterol were similar to those observed when each active substance was administered separately.

Tiotropium

Tiotropium is administered as an inhalation spray. Some of the pharmacokinetic data described below were obtained with higher doses than recommended for therapy.

Olodaterol

Olodaterol showed linear pharmacokinetics. On repeated once-daily inhalation, steady-state of olodaterol plasma concentrations was achieved after 8 days, and the extent of exposure was increased up to 1.8-fold as compared to a single dose.

Absorption

Tiotropium

Following inhalation of the solution by young healthy volunteers, urinary excretion data suggests that approximately 33% of the inhaled dose reaches the systemic circulation. Oral solutions of tiotropium have an absolute bioavailability of 2% to 3%. Food is not expected to influence the absorption of tiotropium for the same reason. Maximum tiotropium plasma concentrations were observed 5 to 7 minutes after inhalation.

Olodaterol

Olodaterol reaches maximum plasma concentrations generally within 10 to 20 minutes following drug inhalation. In healthy volunteers the absolute bioavailability of olodaterol following inhalation was estimated to be approximately 30%, whereas the absolute bioavailability was below 1% when given as an oral solution. Thus, the systemic availability of olodaterol after inhalation is mainly determined by lung absorption, while any swallowed portion of the dose only negligibly contributes to systemic exposure.

Distribution

Tiotropium

The drug has a plasma protein binding of 72% and shows a volume of distribution of 32 L/kg. Local concentrations in the lung are not known, but the mode of administration suggests substantially higher concentrations in the lung. Studies in rats have shown that tiotropium does not penetrate the blood-brain barrier.

Olodaterol

Olodaterol exhibits multi-compartmental disposition kinetics after inhalation as well as after intravenous administration. The volume of distribution is high (1110 L), suggesting extensive distribution into tissue. *In vitro* binding of [¹⁴C] olodaterol to human plasma proteins is independent of concentration and is approximately 60%.

Elimination

Metabolism

Tiotropium

The extent of metabolism is small. This is evident from a urinary excretion of 74% of unchanged substance after an intravenous dose to young healthy volunteers. Tiotropium, an ester, is nonenzymatically cleaved to the alcohol N-methylscopine and dithienylglycolic acid, both not binding to muscarinic receptors.

In vitro experiments with human liver microsomes and human hepatocytes suggest that a fraction of the administered dose (74% of an intravenous dose is excreted unchanged in the urine, leaving 25% for metabolism) is metabolized by cytochrome P450-dependent oxidation and subsequent glutathione conjugation to a variety of Phase 2 metabolites. This enzymatic pathway can be inhibited by CYP450 2D6 and 3A4 inhibitors, such as quinidine, ketoconazole, and gestodene. Thus, CYP450 2D6 and 3A4 are involved in the metabolic pathway that is responsible for the elimination of a small part of the administered dose. *In vitro* studies using human liver microsomes showed that tiotropium in supra-therapeutic concentrations does not inhibit CYP450 1A1, 1A2, 2B6, 2C9, 2C19, 2D6, 2E1, or 3A4.

Olodaterol

Olodaterol is substantially metabolized by direct glucuronidation and by O-demethylation at the methoxy moiety followed by conjugation. Of the six metabolites identified, only the unconjugated demethylation product binds to beta₂-receptors. This metabolite, however, is not detectable in plasma after chronic inhalation of the recommended therapeutic dose.

Cytochrome P450 isozymes CYP2C9 and CYP2C8, with negligible contribution of CYP3A4, are involved in the O-demethylation of olodaterol, while uridine diphosphate glycosyl transferase isoforms UGT2B7, UGT1A1, 1A7, and 1A9 were shown to be involved in the formation of olodaterol glucuronides.

Excretion

Tiotropium

The terminal half-life of tiotropium in COPD patients following once daily inhalation of 5 mcg tiotropium was approximately 25 hours. Total clearance was 880 mL/min after an intravenous dose in young healthy volunteers. Intravenously administered tiotropium bromide is mainly excreted unchanged in urine (74%). After inhalation of the solution by patients with COPD, urinary excretion is 18.6% (0.932 mcg) of the dose, the remainder being mainly non-absorbed drug in the gut that is eliminated via the feces. The renal clearance of tiotropium exceeds the creatinine clearance, indicating secretion into the urine. After chronic once-daily inhalation by COPD patients, pharmacokinetic steady state was reached by day 7 with no accumulation thereafter.

Olodaterol

Total clearance of olodaterol in healthy volunteers is 872 mL/min, and renal clearance is 173 mL/min. The terminal half-life following intravenous administration is 22 hours. The terminal half-life following inhalation in contrast is about 45 hours, indicating that the latter is determined by absorption rather than by elimination processes. However, the effective half-life at daily dose of 5 mcg calculated from C_{max} from COPD patients is 7.5 hours.

Following intravenous administration of [¹⁴C]-labeled olodaterol, 38% of the radioactive dose was recovered in the urine and 53% was recovered in feces. The amount of unchanged olodaterol recovered in the urine after intravenous administration was 19%. Following oral administration, only 9% of olodaterol and/or its metabolites was recovered in urine, while the major portion was recovered in feces (84%). More than 90% of the dose was excreted within 6 and 5 days following intravenous and oral administration, respectively. Following inhalation, excretion of unchanged olodaterol in urine within the dosing interval in healthy volunteers at steady state accounted for 5% to 7% of the dose.

Drug Interactions

STIOLTO RESPIMAT

Pharmacokinetic drug interaction studies with STIOLTO RESPIMAT have not been performed; however such studies have been conducted with individual components tiotropium and olodaterol.

When tiotropium and olodaterol were administered in combination by the inhaled route, the pharmacokinetic parameters for each component were similar to those observed when each active substance was administered separately.

Tiotropium

An interaction study with tiotropium (14.4 mcg intravenous infusion over 15 minutes) and cimetidine 400 mg three times daily or ranitidine 300 mg once-daily was conducted. Concomitant administration of cimetidine with tiotropium resulted in a 20% increase in the AUC_{0-4h}, a 28% decrease in the renal clearance of tiotropium and no significant change in the C_{max} and amount excreted in urine over 96 hours. Co-administration of tiotropium with ranitidine did not affect the pharmacokinetics of tiotropium.

Common concomitant medications (long-acting beta₂-adrenergic agonists (LABA), inhaled corticosteroids (ICS)) used by patients with COPD were not found to alter the exposure to tiotropium.

Olodaterol

Drug-drug interaction studies were carried out using fluconazole as a model inhibitor of CYP 2C9 and ketoconazole as a potent P-gp (and CYP3A4, 2C8, 2C9) inhibitor.

Fluconazole: Co-administration of 400 mg fluconazole once a day for 14 days had no relevant effect on systemic exposure to olodaterol.

Ketoconazole: Co-administration of 400 mg ketoconazole once a day for 14 days increased olodaterol C_{max} by 66% and AUC_{0-1} by 68%.

Tiotropium: Co-administration of tiotropium bromide, delivered as a fixed-dose combination with olodaterol, for 21 days had no relevant effect on systemic exposure to olodaterol, and vice versa.

Specific Populations

Olodaterol

A pharmacokinetic meta-analysis showed that no dose adjustment is necessary based on the effect of age, gender, and weight on systemic exposure in COPD patients after inhalation of olodaterol.

Geriatric Patients

Tiotropium

As expected for all predominantly renally excreted drugs, advancing age was associated with a decrease of tiotropium renal clearance (347 mL/min in COPD patients <65 years to 275 mL/min in COPD patients ≥ 65 years). This did not result in a corresponding increase in $AUC_{0-6,ss}$ and $C_{max,ss}$ values.

Renal Impairment

Tiotropium

Following inhaled administration of therapeutic doses of tiotropium to steady-state to patients with COPD, mild renal impairment (creatinine clearance 60-90 mL/min) resulted in 23% higher $AUC_{0-6,ss}$ and 17% higher $C_{max,ss}$ values. Moderate renal impairment (creatinine clearance 30-60 mL/min) resulted in 57% higher $AUC_{0-6,ss}$ and 31% higher $C_{max,ss}$ values compared to COPD patients with normal renal function (creatinine clearance >90 mL/min). In COPD patients with severe renal impairment (CLCR <30 mL/min), a single intravenous administration of tiotropium bromide resulted in 94% higher AUC_{0-4} and 52% higher C_{max} compared to COPD patients with normal renal function.

Olodaterol

Olodaterol levels were increased by approximately 40% in subjects with severe renal impairment. A study in subjects with mild and moderate renal impairment was not performed.

Hepatic Impairment

Tiotropium

The effects of hepatic impairment on the pharmacokinetics of tiotropium were not studied.

Olodaterol

Subjects with mild and moderate hepatic impairment showed no changes in C_{max} or AUC, nor did protein binding differ between mild and moderate hepatically impaired subjects and their healthy controls. A study in subjects with severe hepatic impairment was not performed.

13 NONCLINICAL TOXICOLOGY

13.1 Carcinogenesis, Mutagenesis, Impairment of Fertility

STIOLTO RESPIMAT

No studies of the carcinogenicity, *in vitro* mutagenicity, or impairment of fertility were conducted with STIOLTO RESPIMAT, however, studies are available for the individual components, tiotropium and olodaterol.

Tiotropium

No evidence of tumorigenicity was observed in a 104-week inhalation study in rats at tiotropium doses up to 59 mcg/kg/day, in an 83-week inhalation study in female mice at doses up to 145 mcg/kg/day, and in a 101-week inhalation study in male mice at doses up to 2 mcg/kg/day. These doses correspond to approximately 30, 40, and 0.5 times the recommended human daily inhalation dose (RHDID) on a mcg/m² basis, respectively.

Tiotropium bromide demonstrated no evidence of mutagenicity or clastogenicity in the following assays: the bacterial gene mutation assay, the V79 Chinese hamster cell mutagenesis assay, the chromosomal aberration assay in human lymphocytes *in vitro*, the mouse micronucleus assay *in vivo*, and the unscheduled DNA synthesis assay in primary rat hepatocytes *in vitro*.

In rats, decreases in the number of corpora lutea and the percentage of implants were noted at inhalation tiotropium doses of 78 mcg/kg/day or greater (approximately 35 times the RHDID on a mcg/m² basis). No such effects were observed at 9 mcg/kg/day (approximately 4 times than the RHDID on a mcg/m² basis). The fertility index; however, was not affected at inhalation doses up to 1689 mg/kg/day (approximately 760 times the RHDID on a mcg/m² basis).

Olodaterol

Two-year inhalation studies were conducted in rats and mice to assess the carcinogenic potential of olodaterol. Lifetime treatment of female rats induced leiomyomas of the mesovarium at doses of 25.8 and 270 mcg/kg/day (approximately 18- and 198-fold, respectively, the RHDID on an AUC basis). No tumor findings were observed in male rats at doses up to 270 mcg/kg/day (approximately 230-fold the RHDID on an AUC basis). Lifetime treatment of female mice induced leiomyomas and leiomyosarcomas of the uterus at doses ≥ 76.9 mcg/kg/day (approximately 106-fold the RHDID on an AUC basis). No tumor findings were observed in male mice at doses up to 255 mcg/kg/day (approximately 455-fold the RHDID on an AUC basis). Increases in leiomyomas and leiomyosarcomas of the female rodent reproductive tract have been similarly demonstrated with other β_2 -adrenergic agonist drugs. The relevance of these findings to human use is unknown.

Olodaterol was not mutagenic in the *in vitro* Ames test or in the *in vitro* mouse lymphoma assay. Olodaterol produced increased frequency of micronuclei in rats after intravenous doses. The increased frequency of micronuclei was likely related to drug enhanced (compensatory) erythropoiesis. The mechanism for induction of micronuclei formation is likely not relevant at clinical exposures.

Olodaterol did not impair male or female fertility in rats at inhalation doses up to 3068 mcg/kg/day (approximately 2322 times the RHDID on an AUC basis).

14 CLINICAL STUDIES

The safety and efficacy of STIOLTO RESPIMAT were evaluated in a clinical development program that included three dose ranging trials, two active-controlled trials, three active- and placebo-controlled trials, and one placebo-controlled trial. The efficacy of STIOLTO RESPIMAT is based primarily on two 4-week dose-ranging trials in 592 COPD patients and two confirmatory active-controlled 52-week trials (Trials 1 and 2) in 5162 COPD patients.

Dose-Ranging Trials

Dose selection for STIOLTO RESPIMAT was primarily based on trials for the individual components, tiotropium bromide and olodaterol.

Dose selection was also supported by two randomized, double-blind, active-controlled, 4-week trials. In one trial in 232 patients with COPD, three tiotropium doses (1.25, 2.5, and 5 mcg) were given in combination with olodaterol 5 or 10 mcg and were evaluated compared to olodaterol monotherapy. Results demonstrated improvement in trough FEV₁ for the combination when compared to olodaterol alone. The difference in trough FEV₁ for the tiotropium bromide/olodaterol doses of 1.25/5, 2.5/5, and 5/5 mcg once daily from olodaterol 5 mcg were 0.054 L (95% CI 0.016, 0.092), 0.065 L (0.027, 0.103), and 0.084 L (0.046, 0.122), respectively. In the second trial in 360 patients with COPD, three olodaterol doses (2, 5, and 10 mcg) were given in combination with tiotropium 5 mcg and were evaluated compared to tiotropium monotherapy. The difference in trough FEV₁ for the tiotropium/olodaterol doses of 5/2, 5/5, and 5/10 mcg once daily from tiotropium 5 mcg were 0.024 L (95% CI -0.029, 0.076), 0.033 L (-0.019, 0.085), and 0.057 L (0.004, 0.110), respectively. Results of these trials supported the evaluation of once-daily doses of tiotropium bromide/olodaterol 2.5/5 mcg and 5/5 mcg in the confirmatory trials.

Confirmatory Trials

A total of 5162 COPD patients (1029 receiving STIOLTO RESPIMAT, 1038 receiving olodaterol 5 mcg, and 1033 receiving tiotropium bromide 5 mcg) were studied in two confirmatory trials of STIOLTO RESPIMAT. Trials 1 and 2 were 52-week, replicate, randomized, double-blind, active controlled, parallel group trials that compared STIOLTO RESPIMAT to tiotropium 5 mcg and olodaterol 5 mcg. In these trials, all products were administered via the RESPIMAT inhaler.

The trials enrolled patients 40 years of age or older with a clinical diagnosis of COPD, a smoking history of more than 10 pack-years, and moderate to very severe pulmonary impairment (post-bronchodilator FEV₁ less than 80% predicted normal [GOLD Stage 2-4]; post-bronchodilator FEV₁ to FVC ratio of less than 70%). All treatments were administered once daily in the morning. The primary endpoints were change from baseline in FEV₁ AUC_{0-3hr} and trough FEV₁ after 24-weeks of treatment.

The majority of the 5162 patients were male (73%), white (71%) or Asian (25%), with a mean age of 64.0 years. Mean post-bronchodilator FEV₁ was 1.37 L (GOLD 2 [50%], GOLD 3 [39%], GOLD 4 [11%]). Mean beta₂-agonist responsiveness was 16.6% of baseline (0.171 L). Pulmonary medications allowed as concomitant therapy included inhaled steroids [47%] and xanthines [10%].

In both Trials 1 and 2, STIOLTO RESPIMAT demonstrated significant improvements in FEV₁ AUC_{0-3hr} and trough FEV₁ after 24 weeks compared to tiotropium 5 mcg and olodaterol 5 mcg (Table 2). The increased bronchodilator effects of STIOLTO RESPIMAT compared to tiotropium 5 mcg and olodaterol 5 mcg were maintained throughout the 52-week treatment period. STIOLTO RESPIMAT displayed a mean increase in FEV₁ from baseline of 0.137 L (range: 0.133-0.140 L) within 5 minutes after the first dose. Patients treated with STIOLTO RESPIMAT used less rescue medication compared to patients treated with tiotropium 5 mcg and olodaterol 5 mcg.

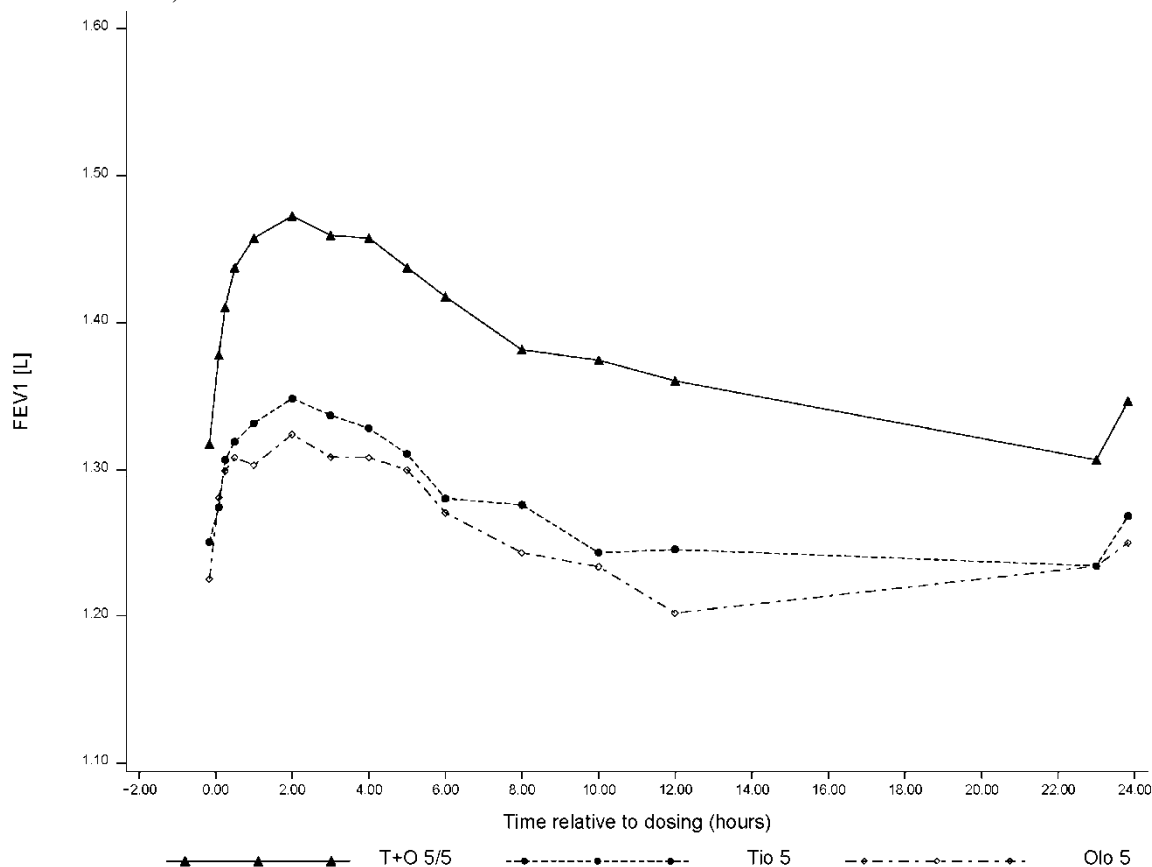
Table 2 FEV₁ AUC_{0-3hr} and Trough FEV₁ response for STIOLTO RESPIMAT compared to tiotropium 5 mcg and olodaterol 5 mcg after 24 weeks (primary endpoints; Trials 1 and 2)

	Trial 1			Trial 2		
	n	Mean (L)	Difference (L) (95% CI)	n	Mean (L)	Difference (L) (95% CI)
FEV₁ AUC_{0-3hr} response						
STIOLTO RESPIMAT	522	0.256	-	502	0.268	-
Tiotropium 5 mcg	526	0.139	0.117 (0.094, 0.140)	500	0.165	0.103 (0.078, 0.127)
Olodaterol 5 mcg	525	0.133	0.123 (0.100, 0.146)	507	0.136	0.132 (0.108, 0.157)
Trough FEV₁ response						
STIOLTO RESPIMAT	521	0.136	-	497	0.145	-
Tiotropium 5 mcg	520	0.065	0.071 (0.047, 0.094)	498	0.096	0.050 (0.024, 0.075)
Olodaterol 5 mcg	519	0.054	0.082 (0.059, 0.106)	503	0.057	0.088 (0.063, 0.113)

Pre-treatment baseline FEV₁: Trial 1=1.16 L; Trial 2=1.15 L
p<0.0001 for all comparisons between STIOLTO RESPIMAT and the monotherapies.

For the subset of patients (n=521) who completed extended lung function measurements up to 12 hours post-dose, STIOLTO RESPIMAT showed a significantly greater FEV₁ response compared to tiotropium 5 mcg and olodaterol 5 mcg over the full 24-hour dosing interval. Results from Trial 2 are shown in Figure 1.

Figure 1 FEV₁ profile for STIOLTO RESPIMAT, tiotropium 5 mcg and olodaterol 5 mcg over a 24-hour dosing interval after 24 weeks (12 hr PFT subset from Trial 2)



The St. George's Respiratory Questionnaire (SGRQ) was assessed in Trials 1 and 2 and in two additional 12-week placebo-controlled trials.

In the first 12-week trial, SGRQ responder rates at week 12 (defined as an improvement in score of 4 or more as a threshold) were 53%, 42%, and 31% for STIOLTO RESPIMAT, tiotropium 5mcg, and placebo, respectively, with odds ratios of 1.6 (95% CI 1.1, 2.4) and 2.5 (95% CI 1.6, 3.8) for STIOLTO RESPIMAT vs. tiotropium 5mcg and STIOLTO RESPIMAT vs. placebo, respectively. In the second 12-week trial, results were similar with odds ratios of 1.5 (95% CI 1.0, 2.3) and 2.2 (95% CI 1.5, 3.4) for STIOLTO RESPIMAT vs. tiotropium 5mcg and STIOLTO RESPIMAT vs. placebo, respectively. For the 52-week trials similar responder rates were seen. In Trial 1, the odds ratios for STIOLTO vs. tiotropium 5mcg and STIOLTO vs. olodaterol 5mcg at week 24 were 1.6 (95% CI 1.2, 2.0) and 1.9 (95% CI 1.5, 2.4), respectively. The results were similar in the 52-week Trial 2, with odds ratios for STIOLTO vs. tiotropium 5mcg and STIOLTO vs. olodaterol 5mcg of 1.3 (95% CI 1.0, 1.7) and 1.5 (95% CI 1.1, 1.9), respectively.

16 HOW SUPPLIED/STORAGE AND HANDLING

STIOLTO RESPIMAT Inhalation Spray is supplied in a labeled carton containing one STIOLTO RESPIMAT cartridge and one STIOLTO RESPIMAT inhaler.

The STIOLTO RESPIMAT cartridge is provided as an aluminum cylinder with a tamper protection seal on the cap. The STIOLTO RESPIMAT cartridge is only intended for use with the STIOLTO RESPIMAT inhaler and should not be interchanged with any other RESPIMAT device delivered product.

The STIOLTO RESPIMAT inhaler is a cylindrical shaped plastic inhalation device with a gray colored body and a clear base. The clear base is removed to insert the cartridge. The inhaler contains a dose indicator. The light green-colored cap and the written information on the label of the gray inhaler body indicate that it is labeled for use with the STIOLTO RESPIMAT cartridge.

STIOLTO RESPIMAT Inhalation Spray is available as:

- STIOLTO RESPIMAT Inhalation Spray: 60 metered actuations (NDC 0597-0155-61)
- STIOLTO RESPIMAT Inhalation Spray: 28 metered actuations (NDC 0597-0155-31) (institutional pack)

The STIOLTO RESPIMAT cartridge has a net fill weight of at least 4 grams and when used with the STIOLTO RESPIMAT inhaler, is designed to deliver the labeled number of metered actuations (60 or 28) after preparation for use; which is respectively, the equivalent of 30 or 14 days of medication when used according to the Instructions for Use (one dose equals two actuations).

When the labeled number of actuations (60 or 28) has been dispensed from the inhaler, the RESPIMAT locking mechanism will be engaged and no more actuations can be dispensed.

After assembly, the STIOLTO RESPIMAT inhaler should be discarded at the latest 3 months after first use or when the locking mechanism is engaged, whichever comes first.

Keep out of reach of children. Do not spray into eyes.

Storage

Store at 25°C (77°F); excursions permitted to 15°C to 30°C (59°F to 86°F) [see USP Controlled Room Temperature]. Avoid freezing.

17 PATIENT COUNSELING INFORMATION

Advise the patient to read the FDA-approved patient labeling (Medication Guide and Instructions for Use).

Asthma-Related Death

Inform patients that LABA, such as STIOLTO RESPIMAT, increase the risk of asthma-related death. STIOLTO RESPIMAT is not indicated for the treatment of asthma.

Not for Acute Symptoms

STIOLTO RESPIMAT is not meant to relieve acute asthma symptoms or exacerbations of COPD and extra doses should not be used for that purpose. Acute symptoms should be treated with an inhaled, short-acting beta₂-agonist such as albuterol. (The healthcare provider should provide the patient with such medication and instruct the patient in how it should be used.)

Instruct patients to notify their physician immediately if they experience any of the following:

- Worsening of symptoms
- Decreasing effectiveness of inhaled, short-acting beta₂-agonists
- Need for more inhalations than usual of inhaled, short-acting beta₂-agonists
- Significant decrease in lung function as outlined by the physician

Instruct patients not to stop therapy with STIOLTO RESPIMAT without physician/provider guidance since symptoms may recur after discontinuation.

Do Not Use Additional Long-Acting Beta₂-Agonists

Patients who have been taking inhaled, short-acting beta₂-agonists on a regular basis should be instructed to discontinue the regular use of these products and use them only for the symptomatic relief of acute symptoms.

When patients are prescribed STIOLTO RESPIMAT, other inhaled medications containing long-acting beta₂-agonists should not be used. Patients should not use more than the recommended once-daily dose of STIOLTO RESPIMAT. Excessive use of sympathomimetics may cause significant cardiovascular effects, and may be fatal.

Risks Associated with Beta₂-Agonist Therapy

Inform patients of adverse effects associated with beta₂-agonists, such as palpitations, chest pain, rapid heart rate, tremor, or nervousness.

Paradoxical Bronchospasm

Inform patients that STIOLTO RESPIMAT can produce paradoxical bronchospasm. Advise patients that if paradoxical bronchospasm occurs, patients should discontinue STIOLTO RESPIMAT.

Urinary Retention

Difficulty passing urine and dysuria may be symptoms of new or worsening prostatic hyperplasia or bladder outlet obstruction. Patients should be instructed to consult a physician immediately should any of these signs or symptoms develop.

Visual Effects

Eye pain or discomfort, blurred vision, visual halos or colored images in association with red eyes from conjunctival congestion and corneal edema may be signs of acute narrow-angle glaucoma. Inform patients to consult a physician immediately should any of these signs and symptoms develop. Advise patients that miotic eye drops alone are not considered to be effective treatment.

Inform patients that care must be taken not to allow the aerosol cloud to enter into the eyes as this may cause blurring of vision and pupil dilation.

Since dizziness and blurred vision may occur with the use of STIOLTO RESPIMAT, caution patients about engaging in activities such as driving a vehicle or operating appliances or machinery.

Instructions for Administering STIOLTO RESPIMAT

It is important for patients to understand how to correctly administer STIOLTO RESPIMAT inhalation spray using the STIOLTO RESPIMAT inhaler. Instruct patients that STIOLTO RESPIMAT inhalation spray should only be administered via the STIOLTO RESPIMAT inhaler and the STIOLTO RESPIMAT inhaler should not be used for administering other medications.

Instruct patients that priming STIOLTO RESPIMAT is essential to ensure appropriate content of the medication in each actuation.

When using the unit for the first time, the STIOLTO RESPIMAT cartridge is inserted into the STIOLTO RESPIMAT inhaler and the unit is primed. STIOLTO RESPIMAT patients are to actuate the inhaler toward the ground until an aerosol cloud is visible and then to repeat the process three more times. The unit is then considered primed and ready for use. If not used for more than 3 days, patients are to actuate the inhaler once to prepare the inhaler for use. If not used for more than 21 days, patients are to actuate the inhaler until an aerosol cloud is visible and then repeat the process three more times to prepare the inhaler for use.

Distributed by:

Boehringer Ingelheim Pharmaceuticals, Inc.
Ridgefield, CT 06877 USA

SPIRIVA®, HandiHaler®, STRIVERDI®, STIOLTO™ and RESPIMAT® are registered trademarks and are used under license from Boehringer Ingelheim International GmbH

Copyright © 201x Boehringer Ingelheim International GmbH,

ALL RIGHTS RESERVED

IT6053BK102015
305630-xx

Medication Guide
STIOLTO™ RESPIMAT® (sti-OL-to- RES peh mat)
(tiotropium bromide and olodaterol) Inhalation Spray

Read the Medication Guide that comes with STIOLTO RESPIMAT before you start using it and each time you get a refill. There may be new information. This Medication Guide does not take the place of talking to your healthcare provider about your medical condition or treatment.

What is the most important information I should know about STIOLTO RESPIMAT?

STIOLTO RESPIMAT has been approved for chronic obstructive pulmonary disease (COPD) only. STIOLTO RESPIMAT is not to be used in asthma.

STIOLTO RESPIMAT can cause serious side effects, including:

- **People with asthma who take long-acting beta₂-adrenergic agonist (LABA) medicines, such as olodaterol (one of the medicines in STIOLTO RESPIMAT), have an increased risk of death from asthma problems.**
- **It is not known if LABA medicines, such as olodaterol (one of the medicines in STIOLTO RESPIMAT), increase the risk of death in people with COPD.**
- **Get emergency medical care if:**
 - breathing problems worsen quickly
 - you use your rescue inhaler medicine, but it does not relieve your breathing problems

What is STIOLTO RESPIMAT?

STIOLTO RESPIMAT contains the anticholinergic tiotropium, and the long-acting beta₂-adrenergic agonist (LABA), olodaterol.

STIOLTO RESPIMAT is used long term, 2 puffs once each day, in controlling symptoms of COPD in adults with COPD.

Anticholinergic and LABA medicines help the muscles around the airways in your lungs stay relaxed to prevent symptoms, such as wheezing, cough, chest tightness, and shortness of breath.

STIOLTO RESPIMAT is not for use to treat sudden symptoms of COPD. Always have a rescue medicine with you to treat sudden symptoms. If you do not have a rescue inhaler, contact your healthcare provider to have one prescribed for you.

It is not known if STIOLTO RESPIMAT is safe and effective in people with asthma.

STIOLTO RESPIMAT should not be used in children. It is not known if STIOLTO RESPIMAT is safe and effective in children.

Who should not use STIOLTO RESPIMAT?

Do not use STIOLTO RESPIMAT if:

- you have asthma.
- you are allergic to tiotropium, ipratropium, olodaterol, or any of the ingredients in STIOLTO RESPIMAT. See the end of this Medication Guide for a complete list of ingredients in STIOLTO RESPIMAT.

What should I tell my healthcare provider before using STIOLTO RESPIMAT?

Tell your healthcare provider about all of your health conditions, including if you:

- have heart problems

- have high blood pressure
- have seizures
- have thyroid problems
- have diabetes
- have eye problems, such as glaucoma. STIOLTO RESPIMAT can make your glaucoma worse.
- have prostate or bladder problems, or problems passing urine. STIOLTO RESPIMAT can make these problems worse.
- have any other medical conditions
- are pregnant or planning to become pregnant. It is not known if STIOLTO RESPIMAT can harm your unborn baby.
- are breastfeeding. It is not known if STIOLTO RESPIMAT passes into your breast milk and if it can harm your baby.
- are allergic to STIOLTO RESPIMAT or any of its ingredients, any other medicines, or food products.

Tell your healthcare provider about all the medicines you take, including prescription and over-the-counter medicines, eye drops, vitamins, and herbal supplements. STIOLTO RESPIMAT and certain other medicines may interact with each other. This may cause serious side effects.

Especially tell your healthcare provider if you take:

- anticholinergics (including ipratropium, acclidinium, umeclidinium or another tiotropium-containing product such as SPIRIVA RESPIMAT or SPIRIVA HandiHaler)
- atropine

Know the medicines you take. Keep a list of your medicines with you to show your healthcare provider and pharmacist each time you get a new medicine.

How should I use STIOLTO RESPIMAT?

- Read the step-by-step instructions for using STIOLTO RESPIMAT at the end of this Medication Guide.
- STIOLTO RESPIMAT inhaler has a slow-moving mist that helps you inhale the medicine.
- Use STIOLTO RESPIMAT exactly as your healthcare provider tells you to use it.
- **Use 1 dose (2 puffs) of STIOLTO RESPIMAT, 1 time each day, at the same time of the day.**
- If you miss a dose of STIOLTO RESPIMAT, take it as soon as you remember. Do not take more than 1 dose (2 puffs) in 24 hours.
- **Do not spray STIOLTO RESPIMAT in your eyes.**
- Always use the new STIOLTO RESPIMAT inhaler that is provided with each new prescription.

- **STIOLTO RESPIMAT does not relieve sudden symptoms of COPD.** Always have a rescue inhaler medicine with you to treat sudden symptoms. If you do not have a rescue inhaler medicine, call your healthcare provider to have one prescribed for you.
- Do not stop using STIOLTO RESPIMAT or other medicines to control or treat your COPD unless told to do so by your healthcare provider because your symptoms might get worse. Your healthcare provider will change your medicines as needed.
- **Do not use STIOLTO RESPIMAT:**
 - more often than prescribed for you, or
 - with other medicines that contain LABA or an anticholinergic for any reason. Ask your healthcare provider or pharmacist if any of your other medicines are LABA or anticholinergic medicines.
- **Call your healthcare provider or get emergency medical care right away if:**
 - your breathing problems worsen with STIOLTO RESPIMAT
 - you need to use your rescue medicine more often than usual
 - your rescue inhaler medicine does not work as well for you at relieving your symptoms

What are the possible side effects with STIOLTO RESPIMAT?

STIOLTO RESPIMAT can cause serious side effects, including:

- **See “What is the most important information I should know about STIOLTO RESPIMAT?”**
- If your COPD symptoms worsen over time do not increase your dose of STIOLTO RESPIMAT, instead call your healthcare provider.
- sudden shortness of breath that may be life-threatening
- serious allergic reactions including rash, hives, swelling of the face, mouth, and tongue, and breathing problems. Call your healthcare provider or get emergency medical care if you get any symptoms of a serious allergic reaction.
- heart problems including fast or irregular heartbeat, palpitations, chest pain, increased blood pressure
- new or worsening eye problems including acute narrow-angle glaucoma. Symptoms of acute narrow-angle glaucoma include eye pain or discomfort, blurred vision, seeing halos or colored images around lights, and red eyes. Call your healthcare provider right away if you have any of these symptoms. Use caution as some of these eye problems can affect your ability to drive and operate appliances and machinery.
- new or worsening urinary retention. Symptoms of urinary retention may include difficulty urinating, painful urination, urinating frequently, or urinating in a weak stream or drips. Call your healthcare provider right away if you have any of these symptoms.
- low blood potassium (which may cause symptoms of muscle spasm, muscle weakness or abnormal heart rhythm)
- high blood sugar

Common side effects of STIOLTO RESPIMAT include runny nose, cough, and back pain.

Tell your healthcare provider about any side effect that bothers you or that does not go away.

These are not all the side effects with STIOLTO RESPIMAT. Ask your healthcare provider or pharmacist for more information.

Call your doctor for medical advice about side effects. You may report side effects to FDA at 1-800-FDA-1088.

How should I store STIOLTO RESPIMAT?

- Store STIOLTO RESPIMAT at room temperature between 68°F to 77°F (20°C to 25°C).
- Do not freeze your STIOLTO cartridge or RESPIMAT inhaler.
- **Keep your STIOLTO RESPIMAT and all medicines out of the reach of children.**

General Information about the safe and effective use of STIOLTO RESPIMAT

Medicines are sometimes prescribed for purposes other than those listed in a Medication Guide. Do not use STIOLTO RESPIMAT for a condition for which it was not prescribed. Do not give STIOLTO RESPIMAT to other people, even if they have the same condition. It may harm them.

This Medication Guide summarizes the most important information about STIOLTO RESPIMAT. If you would like more information, talk with your healthcare provider. You can ask your healthcare provider or pharmacist for information about STIOLTO RESPIMAT that was written for healthcare professionals.

For more information about STIOLTO RESPIMAT or a video demonstration on how to use STIOLTO RESPIMAT, go to www.STIOLTO.com, or scan the code below. You may also call 1-800-542-6257 or (TTY) 1-800-459-9906 for further information about STIOLTO RESPIMAT.



What are the ingredients in STIOLTO RESPIMAT?

Active ingredients: Tiotropium bromide and olodaterol

Inactive ingredients: water for injection, benzalkonium chloride, edetate disodium, and hydrochloric acid

Instructions for Use
STIOLTO™ RESPIMAT® (sti-OL-to- RES peh mat)
(tiotropium bromide and olodaterol)
Inhalation Spray

For Oral Inhalation Only
Do not spray STIOLTO RESPIMAT into your eyes

Read these Instructions for Use before you start using STIOLTO RESPIMAT and each time you get a refill. There may be new information. This information does not take the place of talking to your doctor about your medical condition or your treatment.

Your STIOLTO RESPIMAT cartridge contains either 60 puffs (equal to 30 doses of medicine) or 28 puffs (equal to 14 doses of medicine) after you prepare your inhaler for the first use. There is enough medicine for 30 days or 14 days when it is used as 2 puffs 1 time each day at the same time of the day.

Before your STIOLTO RESPIMAT inhaler is used for the first time, the STIOLTO RESPIMAT cartridge must be inserted into the STIOLTO RESPIMAT inhaler and then primed. The instructions below show you how to prepare and prime the inhaler for first time use and how to use the inhaler for daily dosing.

Do not turn the clear base before inserting the cartridge.

The STIOLTO RESPIMAT inhaler



Prepare For First Time Use

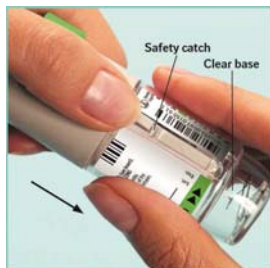


Figure 1

Step 1. With the light green cap closed, press the safety catch while pulling off the clear base. See Figure 1.

Be careful not to touch the piercing element located inside the bottom of the clear base.

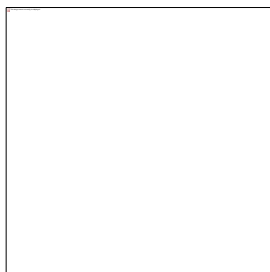


Figure 2

Step 2. Write the **discard by** date on the label of the STIOLTO RESPIMAT inhaler. The **discard by** date is 3 months from the date the cartridge is inserted into the inhaler. See Figure 2.

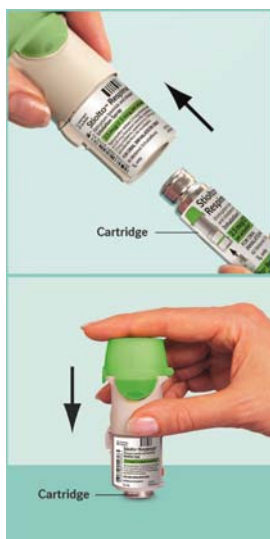


Figure 3

Step 3. Take the STIOLTO RESPIMAT cartridge out of the box. Push the **narrow** end of the cartridge into the inhaler. The base of the cartridge will not sit flush with the inhaler. **About 1/8 of an inch will remain visible** when the cartridge is correctly inserted. See Figure 3.

The cartridge can be pushed against a firm surface to ensure that it is correctly inserted. See Figure 3.

Do not remove the cartridge once it has been inserted into the inhaler.

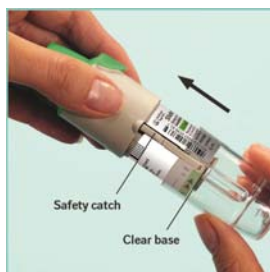


Figure 4

Step 4. Put the clear base back into place. See Figure 4.

Do not remove the clear base again.

Your STIOLTO RESPIMAT inhaler should not be taken apart after you have inserted the cartridge and put the clear base back.

Prime For First Time Use

The following steps are needed to fill the dosing system the first time you use it and will not affect the number of doses available. After preparation and initial priming, your STIOLTO RESPIMAT inhaler will be able to deliver the labeled number of doses (30 or 14).

Proper priming of the inhaler is important to make sure the correct amount of medicine is delivered.



Figure 5

Step 5. Hold the STIOLTO RESPIMAT inhaler upright, with the light green cap closed, to avoid accidental release of the dose. Turn the clear base in the direction of the black arrows on the label until it clicks (half a turn). See Figure 5.



Figure 6

Step 6. Flip the light green cap until it snaps fully open. See Figure 6.



Figure 7

Step 7. Point the STIOLTO RESPIMAT inhaler toward the ground (away from your face).

Press the dose release button. See Figure 7. Close the light green cap.

Repeat Steps 5, 6, and 7 until a spray is visible.

Once the spray is visible, you must repeat Steps 5, 6, and 7 three more times to make sure the inhaler is prepared for use.

Your STIOLTO RESPIMAT inhaler is now ready to use.

These steps will not affect the number of doses available. After preparation and initial priming, your STIOLTO RESPIMAT inhaler will be able to deliver the labeled number of doses (30 or 14).

Daily Dosing



Figure A

Step A. Hold the STIOLTO RESPIMAT inhaler upright, with the light green cap closed, so you do not accidentally release a dose of medicine.

Turn the clear base in the direction of the black arrows on the label until it clicks (half a turn). See Figure A.

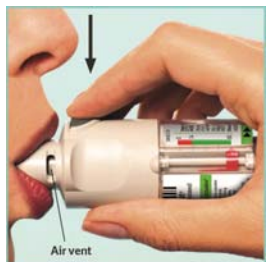


Figure B

Step B. Flip the light green cap until it snaps fully open.

Breathe out slowly and fully, and then close your lips around the end of the mouthpiece without covering the air vents. See Figure B.

Point your STIOLTO RESPIMAT inhaler to the back of your throat.

While taking in a slow, deep breath through your mouth, press the dose release button and continue to breathe in slowly for as long as you can.

Hold your breath for 10 seconds or for as long as comfortable.

Step C. **Repeat Steps A and B so that you get the full dose.**

Close the light green cap until you use your STIOLTO RESPIMAT inhaler again.

Helpful Hints for Daily Dosing:

Using the STIOLTO RESPIMAT inhaler requires 3 simple steps. A helpful way to remember the steps for Daily Dosing is to remember **TOP**:

Turn the clear base

Open the cap and close your lips around the mouthpiece

Press the dose-release button and inhale

These steps should be performed **2 times** to receive the proper dose of medicine.

If your STIOLTO RESPIMAT inhaler has not been used for more than 3 days, spray 1 puff toward the ground to prepare the inhaler for use.

If your STIOLTO RESPIMAT inhaler has not been used for more than 21 days, repeat Steps 5, 6, and 7 until a spray is visible. Then repeat Steps 5, 6, and 7 three more times to prepare the inhaler for use.

The STIOLTO RESPIMAT inhaler should be discarded no later than 3 months from the date the cartridge is inserted into the inhaler.

For more information about STIOLTO RESPIMAT or a video demonstration on how to use

STIOLTO RESPIMAT, go to www.STIOLTO.com, or scan the code below. You may also call 1-800-542-6257 or (TTY) 1-800-459-9906 for further information about STIOLTO RESPIMAT.



When should I get a new STIOLTO RESPIMAT inhaler?



30 dose product



14 dose product

STIOLTO RESPIMAT is available with 30 or 14 doses of medicine (equal to 60 or 28 puffs). 2 puffs from STIOLTO RESPIMAT equal 1 dose of medicine. The dose indicator shows approximately how many puffs of medication are left. When the pointer enters the red area of the scale, there is enough medicine for 7 days (30 dose product) or 3 days (14 dose product). This is when you need to refill your prescription or ask your doctor if you need another prescription for STIOLTO RESPIMAT Inhalation Spray.

Once the dose indicator has reached the end of the scale, all puffs have been used and the RESPIMAT inhaler locks automatically. At this point, the base cannot be turned any further.

Throw away the STIOLTO RESPIMAT inhaler 3 months after insertion of cartridge into inhaler, even if all the medicine has not been used, or when the inhaler is locked, whichever comes first.

Questions and Answers about your STIOLTO RESPIMAT inhaler

What if...	Reason	What to do
I can not turn the base easily?	The STIOLTO RESPIMAT inhaler is already prepared and ready to use.	The STIOLTO RESPIMAT inhaler can be used as it is.
	The STIOLTO RESPIMAT inhaler is locked and all the medicine has been used.	Prepare and use a new STIOLTO RESPIMAT inhaler.
I can not press the dose release button?	The clear base has not been turned.	Turn the clear base until it clicks (half a turn).

The clear base springs back after I have turned it and a small amount of moisture is released?	The clear base was not turned far enough.	Prepare the STIOLTO RESPIMAT inhaler for use by turning the clear base until it clicks (half a turn).
--	---	---

I can turn the clear base past the point where it clicks?	Either the dose release button has been pressed, or the clear base has been turned too far.	With the light green cap closed, turn the clear base until it clicks (half a turn).
---	---	---

How should I care for my STIOLTO RESPIMAT inhaler?

Clean the mouthpiece, including the metal part inside the mouthpiece, with a damp cloth or tissue only, at least 1 time a week. Any minor discoloration in the mouthpiece does not affect your STIOLTO RESPIMAT inhaler.

If the outside of your STIOLTO RESPIMAT inhaler gets dirty, wipe it with a damp cloth.

How should I store my STIOLTO RESPIMAT inhaler?

- Store STIOLTO RESPIMAT at Room Temperature between 68°F to 77°F (20°C to 25°C).
- Do not freeze your STIOLTO RESPIMAT cartridge and inhaler.

Keep your STIOLTO RESPIMAT cartridge and inhaler out of the reach of children.

This Medication Guide and Instructions for Use has been approved by the U.S. Food and Drug Administration.

Distributed by: Boehringer Ingelheim Pharmaceuticals, Inc., Ridgefield, CT 06877 USA

SPIRIVA[®], HandiHaler[®], STRIVERDI[®], STIOLTO[™] and RESPIMAT[®] are registered trademarks and are used under license from Boehringer Ingelheim International GmbH

Copyright © 201x Boehringer Ingelheim International GmbH.

ALL RIGHTS RESERVED

Revised: May 2015

IT6053BK102015

305630-xx