

SORIATANE
(acitretin)
Capsules



CONTRAINDICATIONS AND WARNINGS: Pregnancy

SORIATANE must not be used by females who are pregnant, or who intend to become pregnant during therapy or at any time for at least 3 years following discontinuation of therapy. SORIATANE also must not be used by females who may not use reliable contraception while undergoing treatment and for at least 3 years following discontinuation of treatment. Acitretin is a metabolite of etretinate (TEGISON), and major human fetal abnormalities have been reported with the administration of acitretin and etretinate. Potentially, any fetus exposed can be affected.

Clinical evidence has shown that concurrent ingestion of acitretin and ethanol has been associated with the formation of etretinate, which has a significantly longer elimination half-life than acitretin. Because the longer elimination half-life of etretinate would increase the duration of teratogenic potential for female patients, ethanol must not be ingested by female patients of childbearing potential either during treatment with SORIATANE or for 2 months after cessation of therapy. This allows for elimination of acitretin, thus removing the substrate for transesterification to etretinate. The mechanism of the metabolic process for conversion of acitretin to etretinate has not been fully defined. It is not known whether substances other than ethanol are associated with transesterification.

Acitretin has been shown to be embryotoxic and/or teratogenic in rabbits, mice, and rats at oral doses of 0.6, 3, and 15 mg per kg, respectively. These doses are approximately 0.2, 0.3, and 3 times the maximum recommended therapeutic dose, respectively, based on a mg-per-m² comparison.

Major human fetal abnormalities associated with acitretin and/or etretinate administration have been reported including meningomyelocele; meningoencephalocele; multiple synostoses; facial dysmorphia; syndactyly; absence of terminal phalanges; malformations of hip, ankle, and forearm; low-set ears; high palate; decreased cranial volume; cardiovascular malformation; and alterations of the skull and cervical vertebrae.

SORIATANE should be prescribed only by those who have special competence in the diagnosis and treatment of severe psoriasis, are experienced in the use of systemic retinoids, and understand the risk of teratogenicity.

Because of the teratogenicity of SORIATANE, a program called the *Do Your P.A.R.T.* program, Pregnancy Prevention Actively Required During and After Treatment, has been developed to educate women of childbearing potential and their healthcare providers about the serious risks associated with acitretin and to help prevent pregnancies from occurring with the use of this drug and for 3 years after its discontinuation. The *Do Your P.A.R.T.* program requirements are described below and program materials are available at www.soriatane.com or may be requested by calling 1-888-784-3335 (1-888-STIEFEL) (see also PRECAUTIONS section).

Important Information for Women of Childbearing Potential:

SORIATANE should be considered only for women with severe psoriasis unresponsive to other therapies or whose clinical condition contraindicates the use of other treatments.

Females of reproductive potential must not be given a prescription for SORIATANE until pregnancy is excluded. SORIATANE is contraindicated in females of reproductive potential unless the patient meets ALL of the following conditions:

- Must have had 2 negative urine or serum pregnancy tests with a sensitivity of at least 25 mIU per mL before receiving the initial prescription for SORIATANE. The first test (a screening test) is obtained by the prescriber when the decision is made to pursue therapy with SORIATANE. The second pregnancy test (a confirmation test) should be done during the first 5 days of the menstrual period immediately preceding the beginning of therapy with SORIATANE. For patients with amenorrhea, the second test should be done at least 11 days after the last act of unprotected sexual intercourse (without using 2 effective forms of contraception [birth control] simultaneously). If the second pregnancy test is negative, initiation of treatment with SORIATANE should begin within 7 days of the specimen collection. SORIATANE should be limited to a monthly supply.**
- Must have a pregnancy test with a sensitivity of at least 25 mIU per mL repeated every month during treatment with SORIATANE. The patient must have a negative result from a urine or serum pregnancy test before receiving a prescription for SORIATANE. To encourage compliance with this recommendation, a monthly supply of the drug should be prescribed. For at least 3 years after discontinuing therapy with SORIATANE, a pregnancy test must be repeated every 3 months.**
- Must have selected and have committed to use 2 effective forms of contraception (birth control) simultaneously, at least 1 of which must be a primary form, unless absolute abstinence is the chosen method, or the patient has undergone a hysterectomy or is clearly postmenopausal.**

- **Patients must use 2 effective forms of contraception (birth control) simultaneously for at least 1 month prior to initiation of therapy with SORIATANE, during therapy with SORIATANE, and for at least 3 years after discontinuing therapy with SORIATANE. A Contraception Counseling Referral Form is available so that patients can receive an initial free contraception counseling session and pregnancy testing. Counseling about contraception and behaviors associated with an increased risk of pregnancy must be repeated on a monthly basis by the prescriber during therapy with SORIATANE and every 3 months for at least 3 years following discontinuation of SORIATANE.**

Effective forms of contraception include both primary and secondary forms of contraception. Primary forms of contraception include: tubal ligation, partner's vasectomy, intrauterine devices, birth control pills, and injectable/implantable/insertable/topical hormonal birth control products.

Secondary forms of contraception include condoms (with or without spermicide), diaphragms and cervical caps (which must be used with a spermicide), and vaginal sponges (contains spermicide).

Any birth control method can fail. Therefore, it is critically important that women of childbearing potential use 2 effective forms of contraception (birth control) simultaneously. It has not been established if there is a pharmacokinetic interaction between acitretin and combined oral contraceptives. However, it has been established that acitretin interferes with the contraceptive effect of microdosed progestin preparations.¹ Microdosed "minipill" progestin preparations are not recommended for use with SORIATANE. *It is not known whether other progestin-only contraceptives, such as implants and injectables, are adequate methods of contraception during acitretin therapy.* Prescribers are advised to consult the package insert of any medication administered concomitantly with hormonal contraceptives, since some medications may decrease the effectiveness of these birth control products. Patients should be prospectively cautioned not to self-medicate with the herbal supplement St. John's wort because a possible interaction has been suggested with hormonal contraceptives based on reports of breakthrough bleeding on oral contraceptives shortly after starting St. John's wort. Pregnancies have been reported by users of combined hormonal contraceptives who also used some form of St. John's wort (see PRECAUTIONS).

- **Must have signed a Patient Agreement/Informed Consent for Female Patients that contains warnings about the risk of potential birth defects if the fetus is exposed to SORIATANE, about contraceptive failure, about the fact that they must not ingest beverages or products containing ethanol while taking SORIATANE and for 2 months after treatment with SORIATANE has been discontinued, and about preventing pregnancy while taking SORIATANE and for at least 3 years after discontinuing SORIATANE.**

If pregnancy does occur during therapy with SORIATANE or at any time for at least 3 years following discontinuation of SORIATANE, the prescriber and patient should discuss the possible effects on the pregnancy. The available information is as follows:

Acitretin, the active metabolite of etretinate, is teratogenic and is contraindicated during pregnancy. The risk of severe fetal malformations is well established when systemic retinoids are taken during pregnancy. Pregnancy must also be prevented after stopping acitretin therapy, while the drug is being eliminated to below a threshold blood concentration that would be associated with an increased incidence of birth defects. Because this threshold has not been established for acitretin in humans and because elimination rates vary among patients, the duration of posttherapy contraception to achieve adequate elimination cannot be calculated precisely. It is strongly recommended that contraception be continued for at least 3 years after stopping treatment with acitretin, based on the following considerations:

- In the absence of transesterification to form etretinate, greater than 98% of the acitretin would be eliminated within 2 months, assuming a mean elimination half-life of 49 hours.
- In cases where etretinate is formed, as has been demonstrated with concomitant administration of acitretin and ethanol,

- ◆ greater than 98% of the etretinate formed would be eliminated in 2 years, assuming a mean elimination half-life of 120 days.
- ◆ greater than 98% of the etretinate formed would be eliminated in 3 years, based on the longest demonstrated elimination half-life of 168 days.
However, etretinate was found in plasma and subcutaneous fat in one patient reported to have had sporadic alcohol intake, 52 months after she stopped acitretin therapy.²

- Severe birth defects have been reported where conception occurred during the time interval when the patient was being treated with acitretin and/or etretinate. In addition, severe birth defects have also been reported when conception occurred after the mother completed therapy. These cases have been reported both prospectively (before the outcome was known) and retrospectively (after the outcome was known). The events below are listed without distinction as to whether the reported birth defects are consistent with retinoid-induced embryopathy or not.

- ◆ There have been 318 prospectively reported cases involving pregnancies and the use of etretinate, acitretin, or both. In 238 of these cases, the conception occurred after the last dose of etretinate (103 cases), acitretin (126), or both (9). Fetal outcome remained unknown in approximately one-half of these cases, of which 62 were terminated and 14 were spontaneous abortions. Fetal outcome is known for the other 118 cases and 15 of the outcomes were abnormal (including cases of absent hand/wrist, clubfoot, GI malformation, hypocalcemia, hypotonia, limb malformation, neonatal apnea/anemia, neonatal ichthyosis, placental disorder/death, undescended testicle, and 5 cases of premature birth). In the 126 prospectively reported cases where conception occurred after the last dose of acitretin only, 43 cases involved conception at least 1 year but less than 2 years after the last dose. There were 3 reports of abnormal outcomes out of these 43 cases (involving limb malformation, GI tract malformations, and premature birth). There were only 4 cases where conception occurred at least 2 years after the last dose but there were no reports of birth defects in these cases.
- ◆ There is also a total of 35 retrospectively reported cases where conception occurred at least 1 year after the last dose of etretinate, acitretin, or both. From these cases there are 3 reports of birth defects when the conception occurred at least 1 year but less than 2 years after the last dose of acitretin (including heart malformations, Turner's Syndrome, and unspecified congenital malformations) and 4 reports of birth defects when conception occurred 2 or more years after the last dose of acitretin (including foot malformation, cardiac malformations [2 cases], and unspecified neonatal and infancy disorder). There were 3 additional abnormal outcomes in cases where conception occurred 2 or more years after the last dose of etretinate (including chromosome disorder, forearm aplasia, and stillbirth).
- ◆ Females who have taken TEGISON (etretinate) must continue to follow the contraceptive recommendations for TEGISON. TEGISON is no longer marketed in the US; for information, call Stiefel at 1-888-784-3335 (1-888-STIEFEL).
- ◆ Patients should not donate blood during and for at least 3 years following the completion of therapy with SORIATANE because women of childbearing potential must not receive blood from patients being treated with SORIATANE.

Important Information for Males Taking SORIATANE:

Patients should not donate blood during and for at least 3 years following therapy with SORIATANE because women of childbearing potential must not receive blood from patients being treated with SORIATANE.

- **Samples of seminal fluid from 3 male patients treated with acitretin and 6 male patients treated with etretinate have been assayed for the presence of acitretin. The maximum concentration of acitretin observed in the seminal fluid of these men was 12.5 ng per mL. Assuming an ejaculate volume of 10 mL, the amount of drug transferred in semen would be 125 ng, which is 1/200,000 of a single 25-mg capsule. Thus, although it appears that residual acitretin in seminal fluid poses little, if any, risk to a fetus while a male patient is taking the drug or after it is discontinued, the no-effect limit for teratogenicity is unknown and there is no registry for birth defects associated with acitretin. The available data are as follows:**

There have been 25 cases of reported conception when the male partner was taking acitretin. The pregnancy outcome is known in 13 of these 25 cases. Of these, 9 reports were retrospective and 4 were prospective (meaning the pregnancy was reported prior to knowledge of the outcome)³.

| Timing of Paternal Acitretin Treatment Relative to Conception | Delivery of Healthy Neonate | Spontaneous Abortion | Induced Abortion | Total |
|--|------------------------------------|-----------------------------|-------------------------|--------------|
| At time of conception | 5 ^a | 5 | 1 | 11 |
| Discontinued ~4 weeks prior | 0 | 0 | 1 ^b | 1 |
| Discontinued ~6 to 8 months prior | 0 | 1 | 0 | 1 |

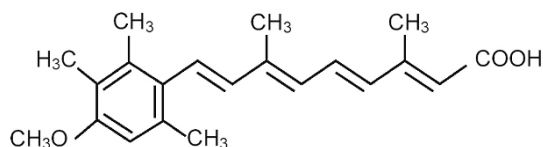
^a Four of 5 cases were prospective.

^b With malformation pattern not typical of retinoid embryopathy (bilateral cystic hygromas of neck, hypoplasia of lungs bilateral, pulmonary atresia, VSD with overriding truncus arteriosus).

For All Patients: A SORIATANE MEDICATION GUIDE MUST BE GIVEN TO THE PATIENT EACH TIME SORIATANE IS DISPENSED, AS REQUIRED BY LAW.

DESCRIPTION

SORIATANE (acitretin), a retinoid, is available in 10-mg, 17.5-mg, and 25-mg gelatin capsules for oral administration. Chemically, acitretin is all-trans-9-(4-methoxy-2,3,6-trimethylphenyl)-3,7-dimethyl-2,4,6,8-nonatetraenoic acid. It is a metabolite of etretinate and is related to both retinoic acid and retinol (vitamin A). It is a yellow to greenish-yellow powder with a molecular weight of 326.44. The structural formula is:



Each capsule contains acitretin, black monogramming ink, gelatin, maltodextrin (a mixture of polysaccharides), microcrystalline cellulose, and sodium ascorbate.

Gelatin capsule shells contain gelatin, iron oxide (yellow, black, and red), and titanium dioxide. They may also contain benzyl alcohol, carboxymethylcellulose sodium, edetate calcium disodium.

CLINICAL PHARMACOLOGY

The mechanism of action of SORIATANE is unknown.

Pharmacokinetics: Absorption: Oral absorption of acitretin is optimal when given with food. For this reason, acitretin was given with food in all of the following trials. After administration of a single 50-mg oral dose of acitretin to 18 healthy subjects, maximum plasma concentrations ranged from 196 to 728 ng per mL (mean: 416 ng per mL) and were achieved in 2 to 5 hours (mean: 2.7 hours). The oral absorption of acitretin is linear and proportional with increasing doses from 25 to 100 mg. Approximately 72% (range: 47% to 109%) of the administered dose was absorbed after a single 50-mg dose of acitretin was given to 12 healthy subjects.

Distribution: Acitretin is more than 99.9% bound to plasma proteins, primarily albumin.

Metabolism: (See Pharmacokinetic Drug Interactions: Ethanol.) Following oral absorption, acitretin undergoes extensive metabolism and interconversion by simple isomerization to its 13-cis form (cis-acitretin). The formation of cis-acitretin relative to parent compound is not altered by dose or fed/fast conditions of oral administration of acitretin. Both parent compound and isomer are further metabolized into chain-shortened breakdown products and conjugates, which are excreted. Following multiple-dose administration of acitretin, steady-state concentrations of acitretin and cis-acitretin in plasma are achieved within approximately 3 weeks.

Elimination: The chain-shortened metabolites and conjugates of acitretin and cis-acitretin are ultimately excreted in the feces (34% to 54%) and urine (16% to 53%). The terminal elimination half-life of acitretin following multiple-dose administration is 49 hours (range: 33 to 96 hours), and that of cis-acitretin under the same conditions is 63 hours (range: 28 to 157 hours). The accumulation ratio of the parent compound is 1.2; that of cis-acitretin is 6.6.

Special Populations: Psoriasis: In an 8-week trial of acitretin pharmacokinetics in subjects with psoriasis, mean steady-state trough concentrations of acitretin increased in a dose-proportional manner with dosages ranging from 10 to 50 mg daily. Acitretin plasma concentrations were nonmeasurable (<4 ng per mL) in all subjects 3 weeks after cessation of therapy.

Elderly: In a multiple-dose trial in healthy young (n = 6) and elderly (n = 8) subjects, a 2-fold increase in acitretin plasma concentrations were seen in elderly subjects, although the elimination half-life did not change.

Renal Failure: Plasma concentrations of acitretin were significantly (59.3%) lower in subjects with end-stage renal failure (n = 6) when compared with age-matched controls, following single 50-mg oral doses. Acitretin was not removed by hemodialysis in these subjects.

Pharmacokinetic Drug Interactions (see also boxed CONTRAINDICATIONS AND WARNINGS and PRECAUTIONS: Drug Interactions): In studies of in vivo pharmacokinetic drug interactions, no interaction was seen between acitretin and cimetidine, digoxin, phenprocoumon, or glyburide.

Ethanol: Clinical evidence has shown that etretinate (a retinoid with a much longer half-life, see below) can be formed with concurrent ingestion of acitretin and ethanol. In a 2-way crossover trial, all 10 subjects formed etretinate with concurrent ingestion of a single 100-mg oral dose of acitretin during a 3-hour period of ethanol ingestion (total ethanol, approximately 1.4 g per kg body weight). A mean peak etretinate concentration of 59 ng per mL (range: 22 to 105 ng per mL) was observed, and extrapolation of AUC values indicated that the formation of etretinate in this trial was comparable to a single 5-mg oral dose of etretinate. There was no detectable formation of etretinate when a single 100-mg oral dose of acitretin was administered without concurrent ethanol ingestion, although the formation of etretinate without concurrent ethanol ingestion cannot be excluded (see boxed CONTRAINDICATIONS AND WARNINGS). Of 93 evaluable psoriatic subjects on acitretin therapy in several foreign trials (10 to 80 mg per day), 16% had measurable etretinate levels (>5 ng per mL).

Etretinate has a much longer elimination half-life compared with that of acitretin. In one trial the apparent mean terminal half-life after 6 months of therapy was approximately 120 days (range: 84 to 168 days). In another trial of 47 subjects treated chronically with etretinate, 5 had detectable serum drug levels (in the range of 0.5 to 12 ng per mL) 2.1 to 2.9 years after therapy was discontinued. The long half-life appears to be due to storage of etretinate in adipose tissue.

Progestin-only Contraceptives: It has not been established if there is a pharmacokinetic interaction between acitretin and combined oral contraceptives. However, it has been established that acitretin interferes with the contraceptive effect of microdosed progestin preparations.¹ Microdosed “minipill” progestin preparations are *not* recommended for use with SORIATANE. *It is not known whether other progestin-only contraceptives, such as implants and injectables, are adequate methods of contraception during acitretin therapy.*

CLINICAL STUDIES

In 2 double-blind, placebo-controlled trials, SORIATANE was administered once daily to subjects with severe psoriasis (e.g., covering at least 10% to 20% of the body surface area). At 8 weeks (see Table 1) subjects treated in Trial A with 50 mg of SORIATANE per day showed significant improvements ($P \leq 0.05$) relative to baseline and to placebo in the physician’s global evaluation and in the mean ratings of severity of psoriasis (scaling, thickness, and erythema). In Trial B, differences from baseline and from placebo were statistically significant ($P \leq 0.05$) for all variables at both the 25-mg and 50-mg doses; it should be noted for Trial B that no statistical adjustment for multiplicity was carried out.

Table 1. Summary of the Efficacy Results of the 8-Week Double-Blind Phase of Trials A and B of SORIATANE

| Efficacy Variables | Trial A | | Trial B | | |
|--------------------------------------|---------------------|--------------------|---------------------|--------------------|--------------------|
| | Total Daily Dose | | Total Daily Dose | | |
| | Placebo (N = 29) | 50 mg (N = 29) | Placebo (N = 72) | 25 mg (N = 74) | 50 mg (N = 71) |
| Physician's Global Evaluation | | | | | |
| Baseline | 4.62 | 4.55 | 4.43 | 4.37 | 4.49 |
| Mean Change After 8 Weeks | -0.29 | -2.00 ^a | -0.06 | -1.06 ^a | -1.57 ^a |
| Scaling | | | | | |
| Baseline | 4.10 | 3.76 | 3.97 | 4.11 | 4.10 |
| Mean Change After 8 Weeks | -0.22 | -1.62 ^a | -0.21 | -1.50 ^a | -1.78 ^a |
| Thickness | | | | | |
| Baseline | 4.10 | 4.10 | 4.03 | 4.11 | 4.20 |
| Mean Change After 8 Weeks | -0.39 | -2.10 ^a | -0.18 | -1.43 ^a | -2.11 ^a |
| Erythema | | | | | |
| Baseline | 4.21 | 4.59 | 4.42 | 4.24 | 4.45 |
| Mean Change After 8 Weeks | -0.33 | -2.10 ^a | -0.37 | -1.12 ^a | -1.65 ^a |

^a Values were statistically significantly different from placebo and from baseline ($P \leq 0.05$). No adjustment for multiplicity was done for Trial B.

The efficacy variables consisted of: the mean severity rating of scale, lesion thickness, erythema, and the physician's global evaluation of the current status of the disease. Ratings of scaling, erythema, and lesion thickness, and the ratings of the global assessments were made using a 7-point scale (0 = none, 1 = trace, 2 = mild, 3 = mild-moderate, 4 = moderate, 5 = moderate-severe, 6 = severe).

A subset of 141 subjects from both pivotal Trials A and B continued to receive SORIATANE in an open fashion for up to 24 weeks. At the end of the treatment period, all efficacy variables, as indicated in Table 2, were significantly improved ($P \leq 0.01$) from baseline, including extent of psoriasis, mean ratings of psoriasis severity, and physician's global evaluation.

Table 2. Summary of the First Course of Therapy with SORIATANE (24 Weeks)

| Variables | Trial A | Trial B |
|--|--------------------|--------------------|
| Mean Total Daily Dose of SORIATANE (mg) | 42.8 | 43.1 |
| Mean Duration of Therapy (Weeks) | 21.1 | 22.6 |
| Physician's Global Evaluation | N = 39 | N = 98 |
| Baseline | 4.51 | 4.43 |
| Mean Change from Baseline | -2.26 ^a | -2.60 ^a |
| Scaling | N = 59 | N = 132 |
| Baseline | 3.97 | 4.07 |
| Mean Change from Baseline | -2.15 ^a | -2.42 ^a |
| Thickness | N = 59 | N = 132 |
| Baseline | 4.00 | 4.12 |
| Mean Change from Baseline | -2.44 ^a | -2.66 ^a |
| Erythema | N = 59 | N = 132 |
| Baseline | 4.35 | 4.33 |
| Mean Change from Baseline | -2.31 ^a | -2.29 ^a |

^a Indicates that the difference from baseline was statistically significant ($P \leq 0.01$).

The efficacy variables consisted of: the mean severity rating of scale, lesion thickness, erythema, and the physician's global evaluation of the current status of the disease. Ratings of scaling, erythema, and lesion thickness, and the ratings of the global assessments were made using a 7-point scale (0 = none, 1 = trace, 2 = mild, 3 = mild-moderate, 4 = moderate, 5 = moderate-severe, 6 = severe).

All efficacy variables improved significantly in a subset of 55 subjects from Trial A treated for a second, 6-month maintenance course of therapy (for a total of 12 months of treatment); a small subset of subjects (n = 4) from Trial A continued to improve after a third 6-month course of therapy (for a total of 18 months of treatment).

INDICATIONS AND USAGE

SORIATANE is indicated for the treatment of severe psoriasis in adults. Because of significant adverse effects associated with its use, SORIATANE should be prescribed only by those knowledgeable in the systemic use of retinoids. In females of reproductive potential, SORIATANE should be reserved for non-pregnant patients who are unresponsive to other therapies or whose clinical condition contraindicates the use of other treatments (see boxed CONTRAINDICATIONS AND WARNINGS — SORIATANE can cause severe birth defects).

Most patients experience relapse of psoriasis after discontinuing therapy. Subsequent courses, when clinically indicated, have produced efficacy results similar to the initial course of therapy.

CONTRAINDICATIONS

Pregnancy Category X: (See boxed CONTRAINDICATIONS AND WARNINGS.)

SORIATANE is contraindicated in patients with severely impaired liver or kidney function and in patients with chronic abnormally elevated blood lipid values (see boxed WARNINGS: Hepatotoxicity, WARNINGS: Lipids and Possible Cardiovascular Effects, and PRECAUTIONS).

An increased risk of hepatitis has been reported to result from combined use of methotrexate and etretinate. Consequently, the combination of methotrexate with SORIATANE is also contraindicated (see PRECAUTIONS: Drug Interactions).

Since both SORIATANE and tetracyclines can cause increased intracranial pressure, their combined use is contraindicated (see WARNINGS: Pseudotumor Cerebri).

SORIATANE is contraindicated in cases of hypersensitivity (e.g., angioedema, urticaria) to the preparation (acitretin or excipients) or to other retinoids.

WARNINGS

(See also boxed CONTRAINDICATIONS AND WARNINGS.)

Hepatotoxicity: Of the 525 subjects treated in US clinical trials, 2 had clinical jaundice with elevated serum bilirubin and transaminases considered related to treatment with SORIATANE. Liver function test results in these subjects returned to normal after SORIATANE was discontinued. Two of the 1,289 subjects treated in European clinical trials developed biopsy-confirmed toxic hepatitis. A second biopsy in one of these subjects revealed nodule formation suggestive of cirrhosis. One subject in a Canadian clinical trial of 63 subjects developed a 3-fold increase of transaminases. A liver biopsy of this subject showed mild lobular disarray, multifocal hepatocyte loss, and mild triaditis of the portal tracts compatible with acute reversible hepatic injury. The subject's transaminase levels returned to normal 2 months after SORIATANE was discontinued.

The potential of therapy with SORIATANE to induce hepatotoxicity was prospectively evaluated using liver biopsies in an open-label trial of 128 subjects. Pretreatment and posttreatment biopsies were available for 87 subjects. A comparison of liver biopsy findings before and after therapy revealed 49 (58%) subjects showed no change, 21 (25%) improved, and 14 (17%) subjects had a worsening of their liver biopsy status. For 6 subjects, the classification changed from class 0 (no pathology) to class I (normal fatty infiltration; nuclear variability and portal inflammation; both mild); for 7 subjects, the change was from class I to class II (fatty infiltration, nuclear variability, portal inflammation, and focal necrosis; all moderate to severe); and for 1 subject, the change was from class II to class IIIb (fibrosis, moderate to severe). No correlation could be found between liver function test result abnormalities and the change in liver biopsy status, and no cumulative dose relationship was found.

Elevations of AST (SGOT), ALT (SGPT), GGT (GGTP), or LDH have occurred in approximately 1 in 3 subjects treated with SORIATANE. Of the 525 subjects treated in clinical trials in the US, treatment was discontinued in 20 (3.8%) due to elevated liver function test results. If hepatotoxicity is suspected during treatment with SORIATANE, the drug should be discontinued and the etiology further investigated.

Ten of 652 subjects treated in US clinical trials of etretinate, of which acitretin is the active metabolite, had clinical or histologic hepatitis considered to be possibly or probably related to etretinate treatment.

There have been reports of hepatitis-related deaths worldwide; a few of these subjects had received etretinate for a month or less before presenting with hepatic symptoms or signs.

Skeletal Abnormalities: In adults receiving long-term treatment with SORIATANE, appropriate examinations should be periodically performed in view of possible ossification abnormalities (see ADVERSE REACTIONS). Because the frequency and severity of iatrogenic bony abnormality in adults is low, periodic radiography is only warranted in the presence of symptoms or long-term use of SORIATANE. If such disorders arise, the continuation of therapy should be discussed with the patient on the basis of a careful risk/benefit analysis. In clinical trials with SORIATANE, subjects were prospectively evaluated for evidence of development or change in bony abnormalities of the vertebral column, knees, and ankles.

Of 380 subjects treated with SORIATANE, 15% had preexisting abnormalities of the spine which showed new changes or progression of preexisting findings. Changes included degenerative spurs, anterior bridging of spinal vertebrae, diffuse idiopathic skeletal hyperostosis, ligament calcification, and narrowing and destruction of a cervical disc space. De novo changes (formation of small spurs) were seen in 3 subjects after 1½ to 2½ years.

Six of 128 subjects treated with SORIATANE showed abnormalities in the knees and ankles before treatment that progressed during treatment. In 5, these changes involved the formation of additional spurs or enlargement of existing spurs. The sixth subject had degenerative joint disease which worsened. No subjects developed spurs de novo. Clinical complaints did not predict radiographic changes.

Lipids and Possible Cardiovascular Effects: Blood lipid determinations should be performed before SORIATANE is administered and again at intervals of 1 to 2 weeks until the lipid response to the drug is established, usually within 4 to 8 weeks. In subjects receiving SORIATANE during clinical trials, 66% and 33% experienced elevation in triglycerides and cholesterol, respectively. Decreased high density lipoproteins (HDL) occurred in 40% of subjects. These effects of SORIATANE were generally reversible upon cessation of therapy.

Subjects with an increased tendency to develop hypertriglyceridemia included those with disturbances of lipid metabolism, diabetes mellitus, obesity, increased alcohol intake, or a

familial history of these conditions. Because of the risk of hypertriglyceridemia, serum lipids must be more closely monitored in high-risk patients and during long-term treatment.

Hypertriglyceridemia and lowered HDL may increase a patient's cardiovascular risk status. Although no causal relationship has been established, there have been postmarketing reports of acute myocardial infarction or thromboembolic events in patients on therapy with SORIATANE. In addition, elevation of serum triglycerides to greater than 800 mg per dL has been associated with fatal fulminant pancreatitis. Therefore, dietary modifications, reduction in dose of SORIATANE, or drug therapy should be employed to control significant elevations of triglycerides. If, despite these measures, hypertriglyceridemia and low HDL levels persist, the discontinuation of SORIATANE should be considered.

Ophthalmologic Effects: The eyes and vision of 329 subjects treated with SORIATANE were examined by ophthalmologists. The findings included dry eyes (23%), irritation of eyes (9%), and brow and lash loss (5%). The following were reported in less than 5% of subjects: Bell's palsy, blepharitis and/or crusting of lids, blurred vision, conjunctivitis, corneal epithelial abnormality, cortical cataract, decreased night vision, diplopia, itchy eyes or eyelids, nuclear cataract, pannus, papilledema, photophobia, posterior subcapsular cataract, recurrent sties, and subepithelial corneal lesions.

Any patient treated with SORIATANE who is experiencing visual difficulties should discontinue the drug and undergo ophthalmologic evaluation.

Pancreatitis: Lipid elevations occur in 25% to 50% of subjects treated with SORIATANE. Triglyceride increases sufficient to be associated with pancreatitis are much less common, although fatal fulminant pancreatitis has been reported. There have been rare reports of pancreatitis during therapy with SORIATANE in the absence of hypertriglyceridemia.

Pseudotumor Cerebri: SORIATANE and other retinoids administered orally have been associated with cases of pseudotumor cerebri (benign intracranial hypertension). Some of these events involved concomitant use of isotretinoin and tetracyclines. However, the event seen in a single patient receiving SORIATANE was not associated with tetracycline use. Early signs and symptoms include papilledema, headache, nausea and vomiting, and visual disturbances. Patients with these signs and symptoms should be examined for papilledema and, if present, should discontinue SORIATANE immediately and be referred for neurological evaluation and care. Since both SORIATANE and tetracyclines can cause increased intracranial pressure, their combined use is contraindicated (see CONTRAINDICATIONS).

Capillary Leak Syndrome: Capillary leak syndrome, a potential manifestation of retinoic acid syndrome, has been reported in patients receiving SORIATANE. Features of this syndrome may include localized or generalized edema with secondary weight gain, fever, and hypotension. Rhabdomyolysis and myalgias have been reported in association with capillary leak syndrome, and laboratory tests may reveal neutrophilia, hypoalbuminemia, and an elevated hematocrit. Discontinue SORIATANE if capillary leak syndrome develops during therapy.

Exfoliative Dermatitis/Erythroderma: Exfoliative dermatitis/erythroderma has been reported in patients receiving SORIATANE. Discontinue SORIATANE if exfoliative dermatitis/erythroderma occurs during therapy.

PRECAUTIONS

A description of the *Do Your P.A.R.T.* materials is provided below. The main goals of the materials are to explain the program requirements, to reinforce the educational messages, and to assess program effectiveness.

The *Do Your P.A.R.T.* booklet includes:

- The *Do Your P.A.R.T.* Patient Brochure: information on the program requirements, risks of acitretin, and the types of contraceptive methods
- The Contraception Counseling Referral Form for female patients who want to receive free contraception counseling reimbursed by the manufacturer
- The Patient Agreement/Informed Consent for Female Patients form
- Medication Guide

The *Do Your P.A.R.T.* program also includes a voluntary patient survey for women of childbearing potential to assess the effectiveness of the SORIATANE Pregnancy Prevention Program *Do Your P.A.R.T.* *Do Your P.A.R.T.* Program materials are available at www.soriatane.com or may be requested by calling 1-888-784-3335 (1-888-STIEFEL).

Information for Patients:

(See Medication Guide for all patients and Patient Agreement/Informed Consent for Female Patients at end of professional labeling).

Patients should be instructed to read the Medication Guide supplied as required by law when SORIATANE is dispensed.

Females of Reproductive Potential: SORIATANE can cause severe birth defects. Female patients must not be pregnant when therapy with SORIATANE is initiated, they must not become pregnant while taking SORIATANE and for at least 3 years after stopping SORIATANE, so that the drug can be eliminated to below a blood concentration that would be associated with an increased incidence of birth defects. Because this threshold has not been established for acitretin in humans and because elimination rates vary among patients, the duration of posttherapy contraception to achieve adequate elimination cannot be calculated precisely (see boxed CONTRAINDICATIONS AND WARNINGS).

Females of reproductive potential should also be advised that they must not ingest beverages or products containing ethanol while taking SORIATANE and for 2 months after SORIATANE has been discontinued. This allows for elimination of the acitretin which can be converted to etretinate in the presence of alcohol.

Female patients should be advised that any method of birth control can fail, including tubal ligation, and that microdosed progestin “minipill” preparations are *not* recommended for use with SORIATANE (see CLINICAL PHARMACOLOGY: Pharmacokinetic Drug Interactions). Data from one patient who received a very low-dosed progestin contraceptive (levonorgestrel 0.03 mg) had a significant increase of the progesterone level after 3 menstrual cycles during acitretin treatment.²

Female patients should be advised to contact their physician, women’s health centers, pharmacies, or hospital emergency rooms for information about how to obtain Emergency Contraception if sexual intercourse occurs without using 2 effective forms of contraception simultaneously. A 24-hour, toll-free number (1-800-739-6700) is also available for patients to receive automated birth control and emergency contraception information.

Female patients should sign a consent form prior to beginning therapy with SORIATANE (see boxed CONTRAINDICATIONS AND WARNINGS).

Nursing Mothers: Studies on lactating rats have shown that etretinate is excreted in the milk. There is one prospective case report where acitretin is reported to be excreted in human milk. Therefore, nursing mothers should not receive SORIATANE prior to or during nursing because of the potential for serious adverse reactions in nursing infants.

All Patients: Depression and/or other psychiatric symptoms such as aggressive feelings or thoughts of self-harm have been reported. These events, including self-injurious behavior, have been reported in patients taking other systemically administered retinoids, as well as in patients taking SORIATANE. Since other factors may have contributed to these events, it is not known if they are related to SORIATANE. Patients should be counseled to stop taking SORIATANE and notify their prescriber immediately if they experience psychiatric symptoms.

Patients should be advised that a transient worsening of psoriasis is sometimes seen during the initial treatment period. Patients should be advised that they may have to wait 2 to 3 months before they get the full benefit of SORIATANE, although some patients may achieve significant improvements within the first 8 weeks of treatment as demonstrated in clinical trials.

Decreased night vision has been reported during therapy with SORIATANE. Patients should be advised of this potential problem and warned to be cautious when driving or operating any vehicle at night. Visual problems should be carefully monitored (see WARNINGS and ADVERSE REACTIONS). Patients should be advised that they may experience decreased tolerance to contact lenses during the treatment period and sometimes after treatment has stopped.

Patients should not donate blood during and for at least 3 years following therapy because SORIATANE can cause birth defects and women of childbearing potential must not receive blood from patients being treated with SORIATANE.

Because of the relationship of SORIATANE to vitamin A, patients should be advised against taking vitamin A supplements in excess of minimum recommended daily allowances to avoid possible additive toxic effects.

Patients should avoid the use of sun lamps and excessive exposure to sunlight (non-medical UV exposure) because the effects of UV light are enhanced by retinoids.

Patients should be advised that they must not give their SORIATANE to any other person.

For Prescribers: SORIATANE has not been studied in and is not indicated for treatment of acne.

Phototherapy: Significantly lower doses of phototherapy are required when SORIATANE is used because effects on the stratum corneum induced by SORIATANE can increase the risk of erythema (burning) (see DOSAGE AND ADMINISTRATION).

Drug Interactions: Ethanol: Clinical evidence has shown that etretinate can be formed with concurrent ingestion of acitretin and ethanol (see boxed CONTRAINDICATIONS AND WARNINGS and CLINICAL PHARMACOLOGY: Pharmacokinetics).

Glyburide: In a trial of 7 healthy male volunteers, acitretin treatment potentiated the blood glucose-lowering effect of glyburide (a sulfonylurea similar to chlorpropamide) in 3 of the 7 subjects. Repeating the trial with 6 healthy male volunteers in the absence of glyburide did not detect an effect of acitretin on glucose tolerance. Careful supervision of diabetic patients under treatment with SORIATANE is recommended (see CLINICAL PHARMACOLOGY: Pharmacokinetics and DOSAGE AND ADMINISTRATION).

Hormonal Contraceptives: It has not been established if there is a pharmacokinetic interaction between acitretin and combined oral contraceptives. However, it has been established that acitretin interferes with the contraceptive effect of microdosed progestin “minipill” preparations. Microdosed “minipill” progestin preparations are not recommended for use with SORIATANE (see CLINICAL PHARMACOLOGY: Pharmacokinetic Drug Interactions). *It is not known whether other progestin-only contraceptives, such as implants and injectables, are adequate methods of contraception during acitretin therapy.*

Methotrexate: An increased risk of hepatitis has been reported to result from combined use of methotrexate and etretinate. Consequently, the combination of methotrexate with acitretin is also contraindicated (see CONTRAINDICATIONS).

Phenytoin: If acitretin is given concurrently with phenytoin, the protein binding of phenytoin may be reduced.

Tetracyclines: Since both acitretin and tetracyclines can cause increased intracranial pressure, their combined use is contraindicated (see CONTRAINDICATIONS and WARNINGS: Pseudotumor Cerebri).

Vitamin A and Oral Retinoids: Concomitant administration of vitamin A and/or other oral retinoids with acitretin must be avoided because of the risk of hypervitaminosis A.

Other: There appears to be no pharmacokinetic interaction between acitretin and cimetidine, digoxin, or glyburide. Investigations into the effect of acitretin on the protein binding of anticoagulants of the coumarin type (warfarin) revealed no interaction.

Laboratory Tests: If significant abnormal laboratory results are obtained, either dosage reduction with careful monitoring or treatment discontinuation is recommended, depending on clinical judgment.

Blood Sugar: Some patients receiving retinoids have experienced problems with blood sugar control. In addition, new cases of diabetes have been diagnosed during retinoid therapy, including diabetic ketoacidosis. In diabetics, blood-sugar levels should be monitored very carefully.

Lipids: In clinical trials, the incidence of hypertriglyceridemia was 66%, hypercholesterolemia was 33%, and that of decreased HDL was 40%. Pretreatment and follow-up measurements should be obtained under fasting conditions. It is recommended that these tests be performed weekly or every other week until the lipid response to SORIATANE has stabilized (see WARNINGS).

Liver Function Tests: Elevations of AST (SGOT), ALT (SGPT), or LDH were experienced by approximately 1 in 3 patients treated with SORIATANE. It is recommended that these tests be performed prior to initiation of therapy with SORIATANE, at 1- to 2-week intervals until stable, and thereafter at intervals as clinically indicated (see CONTRAINDICATIONS and boxed WARNINGS).

Carcinogenesis, Mutagenesis, Impairment of Fertility: Carcinogenesis: A carcinogenesis study of acitretin in Wistar rats, at doses up to 2 mg per kg per day administered 7 days per week for 104 weeks, has been completed. There were no neoplastic lesions observed that were considered to have been related to treatment with acitretin. An 80-week carcinogenesis study in mice has been completed with etretinate, the ethyl ester of acitretin. Blood level data obtained during this study demonstrated that etretinate was metabolized to acitretin and that blood levels of acitretin exceeded those of etretinate at all times studied. In the etretinate study, an increased incidence of blood vessel tumors (hemangiomas and hemangiosarcomas at several different sites) was noted in male, but not female, mice at doses approximately one-half the maximum recommended human therapeutic dose based on a mg-per-m² comparison.

Mutagenesis: Acitretin was evaluated for mutagenic potential in the Ames test, in the Chinese hamster (V79/HGPRT) assay, in unscheduled DNA synthesis assays using rat hepatocytes and human fibroblasts, and in an in vivo mouse micronucleus assay. No evidence of mutagenicity of acitretin was demonstrated in any of these assays.

Impairment of Fertility: In a fertility study in rats, the fertility of treated animals was not impaired at the highest dosage of acitretin tested, 3 mg per kg per day (approximately one-half the maximum recommended therapeutic dose based on a mg-per-m² comparison). Chronic toxicity studies in dogs revealed testicular changes (reversible mild to moderate spermatogenic

arrest and appearance of multinucleated giant cells) in the highest dosage group (50 then 30 mg per kg per day).

No decreases in sperm count or concentration and no changes in sperm motility or morphology were noted in 31 men (17 psoriatic subjects, 8 subjects with disorders of keratinization, and 6 healthy volunteers) given 30 to 50 mg per day of acitretin for at least 12 weeks. In these trials, no deleterious effects were seen on either testosterone production, LH, or FSH in any of the 31 men.^{4,6} No deleterious effects were seen on the hypothalamic-pituitary axis in any of the 18 men where it was measured.^{4,5}

Pregnancy: *Teratogenic Effects:* Pregnancy Category X (see boxed CONTRAINDICATIONS AND WARNINGS).

In a study in which acitretin was administered to male rats only at a dosage of 5 mg per kg per day for 10 weeks (approximate duration of one spermatogenic cycle) prior to and during mating with untreated female rats, no teratogenic effects were observed in the progeny (see boxed CONTRAINDICATIONS AND WARNINGS for information about male use of SORIATANE).

Nonteratogenic Effects: In rats dosed at 3 mg per kg per day (approximately one-half the maximum recommended therapeutic dose based on a mg-per-m² comparison), slightly decreased pup survival and delayed incisor eruption were noted. At the next lowest dose tested, 1 mg per kg per day, no treatment-related adverse effects were observed.

Pediatric Use: Safety and effectiveness in pediatric patients have not been established. No clinical trials have been conducted in pediatric subjects. Ossification of interosseous ligaments and tendons of the extremities, skeletal hyperostoses, decreases in bone mineral density, and premature epiphyseal closure have been reported in children taking other systemic retinoids, including etretinate, a metabolite of SORIATANE. A causal relationship between these effects and SORIATANE has not been established. While it is not known that these occurrences are more severe or more frequent in children, there is special concern in pediatric patients because of the implications for growth potential (see WARNINGS: Hyperostosis).

Geriatric Use: Clinical trials of SORIATANE did not include sufficient numbers of subjects aged 65 and over to determine whether they respond differently than younger subjects. Other reported clinical experience has not identified differences in responses between the elderly and younger subjects. In general, dose selection for an elderly patient should be cautious, usually starting at the low end of the dosing range, reflecting the greater frequency of decreased hepatic, renal, or cardiac function, and of concomitant disease or other drug therapy. A 2-fold increase in acitretin plasma concentrations was seen in healthy elderly subjects compared with young subjects, although the elimination half-life did not change (see CLINICAL PHARMACOLOGY: Special Populations).

ADVERSE REACTIONS

Hypervitaminosis A produces a wide spectrum of signs and symptoms primarily of the mucocutaneous, musculoskeletal, hepatic, neuropsychiatric, and central nervous systems. Many of the clinical adverse reactions reported to date with administration of SORIATANE resemble those of the hypervitaminosis A syndrome.

Adverse Events/Postmarketing Reports: In addition to the events listed in the tables for the clinical trials, the following adverse events have been identified during postapproval use of SORIATANE. Because these events are reported voluntarily from a population of uncertain size, it is not always possible to reliably estimate their frequency or establish a causal relationship to drug exposure.

Cardiovascular: Acute myocardial infarction, thromboembolism (see WARNINGS), stroke.

Immune System Disorders: Hypersensitivity, including angioedema and urticaria (see CONTRAINDICATIONS).

Nervous System: Myopathy with peripheral neuropathy has been reported during therapy with SORIATANE. Both conditions improved with discontinuation of the drug.

Psychiatric: Aggressive feelings and/or suicidal thoughts have been reported. These events, including self-injurious behavior, have been reported in patients taking other systemically administered retinoids, as well as in patients taking SORIATANE. Since other factors may have contributed to these events, it is not known if they are related to SORIATANE (see PRECAUTIONS).

Reproductive: Vulvo-vaginitis due to *Candida albicans*.

Skin and Appendages: Thinning of the skin, skin fragility, and scaling may occur all over the body, particularly on the palms and soles; nail fragility is frequently observed. Madarosis and exfoliative dermatitis/erythroderma have been reported (see WARNINGS).

Vascular Disorders: Capillary leak syndrome (see WARNINGS).

Clinical Trials: During clinical trials with SORIATANE, 513 of 525 (98%) subjects reported a total of 3,545 adverse events. One-hundred sixteen subjects (22%) left trials prematurely, primarily because of adverse experiences involving the mucous membranes and skin. Three subjects died. Two of the deaths were not drug-related (pancreatic adenocarcinoma and lung cancer); the other subject died of an acute myocardial infarction, considered remotely related to drug therapy. In clinical trials, SORIATANE was associated with elevations in liver function test results or triglyceride levels and hepatitis.

The tables below list by body system and frequency the adverse events reported during clinical trials of 525 subjects with psoriasis.

**Table 3. Adverse Events Frequently Reported during Clinical Trials
Percent of Subjects Reporting (N = 525)**

| Body System | >75% | 50% to 75% | 25% to 50% | 10% to 25% |
|---------------------|-----------|--------------------------|---------------------------------------|--|
| CNS | | | | Rigors |
| Eye Disorders | | | | Xerophthalmia |
| Mucous Membranes | Cheilitis | | Rhinitis | Dry mouth Epistaxis |
| Musculoskeletal | | | | Arthralgia Spinal hyperostosis (progression of existing lesions) |
| Skin and Appendages | | Alopecia Skin peeling | Dry skin Nail disorder Pruritus | Erythematous rash Hyperesthesia Paresthesia Paronychia Skin atrophy Sticky skin |

**Table 4. Adverse Events Less Frequently Reported during Clinical Trials (Some of Which
May Bear No Relationship to Therapy)
Percent of Subjects Reporting (N = 525)**

| Body System | 1% to 10% | <1% | |
|-------------------------------|---|--|---|
| Body as a Whole | Anorexia Edema Fatigue Hot flashes Increased appetite | Alcohol intolerance Dizziness Fever Influenza-like symptoms | Malaise Moniliasis Muscle weakness Weight increase |
| Cardiovascular | Flushing | Chest pain Cyanosis Increased bleeding time | Intermittent claudication Peripheral ischemia |
| CNS (also see Psychiatric) | Headache Pain | Abnormal gait Migraine Neuritis | Pseudotumor cerebri (intracranial hypertension) |

| | | | | |
|-------------------|--|--|---|---|
| Eye Disorders | Abnormal/ blurred vision Blepharitis Conjunctivitis/ irritation Corneal epithelial abnormality | Decreased night vision/night blindness Eye abnormality Eye pain Photophobia | Abnormal lacrimation Chalazion Conjunctival hemorrhage Corneal ulceration Diplopia Ectropion | Itchy eyes and lids Papilledema Recurrent sties Subepithelial corneal lesions |
| Gastrointestinal | Abdominal pain Diarrhea Nausea Tongue disorder | | Constipation Dyspepsia Esophagitis Gastritis Gastroenteritis | Glossitis Hemorrhoids Melena Tenesmus Tongue ulceration |
| Liver and Biliary | | | Hepatic function abnormal Hepatitis Jaundice | |
| Mucous Membranes | Gingival bleeding Gingivitis Increased saliva | Stomatitis Thirst Ulcerative stomatitis | Altered saliva Anal disorder Gum hyperplasia | Hemorrhage Pharyngitis |
| Musculoskeletal | Arthritis Arthrosis Back pain Hypertonia Myalgia | Osteodynia Peripheral joint hyperostosis (progression of existing lesions) | Bone disorder Olecranon bursitis Spinal hyperostosis (new lesions) Tendonitis | |
| Psychiatric | Depression Insomnia Somnolence | | Anxiety Dysphonia Libido decreased Nervousness | |
| Reproductive | | | Atrophic vaginitis Leukorrhea | |
| Respiratory | Sinusitis | | Coughing Increased sputum Laryngitis | |

| | | | | |
|--------------------------|--|--|---|--|
| Skin and Appendages | Abnormal skin odor Abnormal hair texture Bullous eruption Cold/clammy skin Dermatitis Increased sweating Infection | Psoriasiform rash Purpura Pyogenic granuloma Rash Seborrhea Skin fissures Skin ulceration Sunburn | Acne Breast pain Cyst Eczema Fungal infection Furunculosis Hair discoloration Herpes simplex Hyperkeratosis Hypertrichosis Hypoesthesia Impaired healing Otitis media | Otitis externa Photosensitivity reaction Psoriasis aggravated Scleroderma Skin nodule Skin hypertrophy Skin disorder Skin irritation Sweat gland disorder Urticaria Verrucae |
| Special Senses/ Other | Earache Taste perversion Tinnitus | | Ceruminosis Deafness Taste loss | |
| Urinary | | | Abnormal urine Dysuria Penis disorder | |

Laboratory: Therapy with SORIATANE induces changes in liver function tests in a significant number of patients. Elevations of AST (SGOT), ALT (SGPT) or LDH were experienced by approximately 1 in 3 subjects treated with SORIATANE. In most subjects, elevations were slight to moderate and returned to normal either during continuation of therapy or after cessation of treatment. In subjects receiving SORIATANE during clinical trials, 66% and 33% experienced elevation in triglycerides and cholesterol, respectively. Decreased high density lipoproteins (HDL) occurred in 40% (see WARNINGS). Transient, usually reversible elevations of alkaline phosphatase have been observed.

Table 5 lists the laboratory abnormalities reported during clinical trials.

Table 5. Abnormal Laboratory Test Results Reported during Clinical Trials

Percent of Subjects Reporting

| Body System | 50% to 75% | 25% to 50% | 10% to 25% | 1% to 10% |
|--------------------|------------------------------|--|--|---|
| Electrolytes | | | Increased: –Phosphorus –Potassium –Sodium Increased and decreased: –Magnesium | Decreased: –Phosphorus –Potassium –Sodium Increased and decreased: –Calcium –Chloride |
| Hematologic | | Increased: –Reticulocytes | Decreased: –Hematocrit –Hemoglobin –WBC Increased: –Haptoglobin –Neutrophils –WBC | Increased: –Bands –Basophils –Eosinophils –Hematocrit –Hemoglobin –Lymphocytes –Monocytes Decreased: –Haptoglobin –Lymphocytes –Neutrophils –Reticulocytes Increased or decreased: –Platelets –RBC |
| Hepatic | | Increased: –Cholesterol –LDH –SGOT –SGPT Decreased: –HDL cholesterol | Increased: –Alkaline phosphatase –Direct bilirubin –GGTP | Increased: –Globulin –Total bilirubin –Total protein Increased and decreased: –Serum albumin |
| Miscellaneous | Increased: –Triglycerides | Increased: –CPK –Fasting blood sugar | Decreased: –Fasting blood sugar –High occult blood | Increased and decreased: –Iron |

| | | | | |
|---------|--|--------------|---|-----------------------------------|
| Renal | | | Increased: –Uric acid | Increased: –BUN –Creatinine |
| Urinary | | WBC in urine | Acetonuria Hematuria RBC in urine | Glycosuria Proteinuria |

OVERDOSAGE

In the event of acute overdosage, SORIATANE must be withdrawn at once. Symptoms of overdose are identical to acute hypervitaminosis A (e.g., headache and vertigo). The acute oral toxicity (LD₅₀) of acitretin in both mice and rats was greater than 4,000 mg per kg.

In one reported case of overdose, a 32-year-old male with Darier’s disease took 21 x 25-mg capsules (525-mg single dose). He vomited several hours later but experienced no other ill effects.

All female patients of childbearing potential who have taken an overdose of SORIATANE must:

1) Have a pregnancy test at the time of overdose; 2) Be counseled as per the boxed CONTRAINDICATIONS AND WARNINGS and PRECAUTIONS sections regarding birth defects and contraceptive use for at least 3 years’ duration after the overdose.

DOSAGE AND ADMINISTRATION

There is intersubject variation in the pharmacokinetics, clinical efficacy, and incidence of side effects with SORIATANE. A number of the more common side effects are dose-related. Individualization of dosage is required to achieve sufficient therapeutic response while minimizing side effects. Therapy with SORIATANE should be initiated at 25 to 50 mg per day, given as a single dose with the main meal. Maintenance doses of 25 to 50 mg per day may be given dependent upon an individual patient’s response to initial treatment. Relapses may be treated as outlined for initial therapy.

When SORIATANE is used with phototherapy, the prescriber should decrease the phototherapy dose, dependent on the patient’s individual response (see PRECAUTIONS: General).

Females who have taken TEGISON (etretinate) must continue to follow the contraceptive recommendations for TEGISON. TEGISON is no longer marketed in the US; for information, call Stiefel at 1-888-784-3335 (1-888-STIEFEL).

Information for Pharmacists: SORIATANE must only be dispensed in no more than a monthly supply. A SORIATANE Medication Guide must be given to the patient each time SORIATANE is dispensed, as required by law.

HOW SUPPLIED:

Brown and white capsules, 10 mg, imprinted “A-10 mg”; bottles of 30 (NDC 0145-0090-25).

Rich yellow capsules, 17.5 mg, imprinted “A-17.5 mg”; bottles of 30 (NDC 0145-3817-03).

Brown and yellow capsules, 25 mg, imprinted “A-25 mg”; bottles of 30 (NDC 0145-0091-25).

Store between 15° and 25°C (59° and 77°F). Protect from light. Avoid exposure to high temperatures and humidity after the bottle is opened.

REFERENCES:

1. Berbis Ph, et al.: *Arch Dermatol Res* (1988) 280:388-389.
2. Maier H, Honigsmann H: Concentration of etretinate in plasma and subcutaneous fat after long-term acitretin. *Lancet* 348:1107, 1996.
3. Geiger JM, Walker M: Is there a reproductive safety risk in male patients treated with acitretin (Neotigason/ Soriatane)? *Dermatology* 205:105-107, 2002.
4. Sigg C, et al.: Andrological investigations in patients treated with etretin. *Dermatologica* 175:48-49, 1987.
5. Parsch EM, et al.: Andrological investigation in men treated with acitretin (Ro 10-1670). *Andrologia* 22:479-482, 1990.
6. Kadar L, et al.: Spermatological investigations in psoriatic patients treated with acitretin. In: *Pharmacology of Retinoids in the Skin*; Reichert U. et al., ed, KARGER, Basel, vol. 3, pp 253-254, 1988.

PATIENT AGREEMENT/INFORMED CONSENT FOR FEMALE PATIENTS

To be completed by the patient* and signed by her prescriber



*Must also be initialed by the parent or guardian of a minor patient (under age 18)

Read each item below and initial in the space provided to show that you understand each item.
Do not sign this consent and do not take SORIATANE (acitretin) if there is anything that you do not understand.

(Patient's name)

1. I understand that there is a very high risk that my unborn baby could have severe birth defects if I am pregnant or become pregnant while taking SORIATANE in any amount even for short periods of time. Birth defects have also happened in babies of women who became pregnant after stopping treatment with SORIATANE.

INITIAL: _____

2. I understand that I must not become pregnant while taking SORIATANE and for at least 3 years after the end of my treatment with SORIATANE.

INITIAL: _____

3. I know that I must avoid all alcohol, including drinks, food, medicines, and over-the-counter products that contain alcohol. I understand that the risk of birth defects may last longer than 3 years if I swallow any form of alcohol during therapy with SORIATANE, and for 2 months after I stop taking SORIATANE.

INITIAL: _____

4. I understand that I must not have sexual intercourse, or I must use 2 separate, effective forms of birth control **at the same time**. The only exceptions are if I have had surgery to remove the womb (a hysterectomy) or my prescriber has told me I have gone completely through menopause.

INITIAL: _____

5. I understand that I have to use 2 effective forms of birth control (contraception) at the same time for at least 1 month before starting SORIATANE, for the entire time of therapy with SORIATANE, and for at least 3 years after stopping SORIATANE.

INITIAL: _____

6. I understand that any form of birth control can fail. Therefore, I must use 2 different methods at the same time, every time I have sexual intercourse.

INITIAL: _____

7. I understand that the following are considered effective forms of birth control: Primary: Tubal ligation (having my tubes tied), partner's vasectomy, birth control pills (not progestin-only "minipills"), injectable/implantable/insertable/topical (patch) hormonal birth control products, and IUDs (intrauterine devices). Secondary: Condoms (with or without spermicide, which is a special cream or jelly that kills sperm), diaphragms and cervical caps (which must be used with a spermicide), and vaginal sponges (contains

spermicide). I understand that at least 1 of my 2 methods of birth control must be a primary method.

INITIAL: _____

8. I will talk with my prescriber about any medicines or dietary supplements I plan to take while taking SORIATANE because certain birth control methods may not work if I am taking certain medicines or herbal products (for example, St. John's wort).

INITIAL: _____

9. Unless I have had a hysterectomy or my prescriber says I have gone completely through menopause, I understand that I must have 2 negative pregnancy test results before I can get a prescription to start SORIATANE. I understand that if the second pregnancy test is negative, I must start taking my SORIATANE within 7 days of the specimen collection. I will then have pregnancy tests on a monthly basis during therapy with SORIATANE as instructed by my prescriber. In addition, for at least 3 years after I stop taking SORIATANE, I will have a pregnancy test every 3 months.

INITIAL: _____

10. I understand that I should not start taking SORIATANE until I am *sure* that I am not pregnant and have negative results from 2 pregnancy tests.

INITIAL: _____

11. I have received information on emergency contraception (birth control), including information on its availability over-the-counter.

INITIAL: _____

12. I understand that my prescriber can give me a referral for a free contraception (birth control) counseling session and pregnancy testing.

INITIAL: _____

13. I understand that on a monthly basis during therapy with SORIATANE and every 3 months for at least 3 years after stopping SORIATANE that I should receive counseling from my prescriber about contraception (birth control) and behaviors associated with an increased risk of pregnancy.

INITIAL: _____

14. I understand that I must stop taking SORIATANE right away and call my prescriber if I get pregnant, miss my menstrual period, stop using birth control, or have sexual intercourse without using my 2 birth control methods during and at least 3 years after stopping SORIATANE.

INITIAL: _____

15. If I do become pregnant while on SORIATANE or at any time within 3 years of stopping SORIATANE, I understand that I should report my pregnancy to Stiefel at 1-888-784-3335 (1-

888-STIEFEL) or to the Food and Drug Administration (FDA) MedWatch program at 1-800-FDA-1088. The information I share will be kept confidential (private) unless disclosure is legally required. This will help the company and the FDA evaluate the pregnancy prevention program to prevent birth defects.

INITIAL: _____

I have received a copy of the Do Your P.A.R.T. brochure. My prescriber has answered all my questions about SORIATANE. I understand that it is my responsibility to follow my doctor's instructions, and not to get pregnant during treatment with SORIATANE or for at least 3 years after I stop taking SORIATANE.

I now authorize my prescriber,
_____, to begin my treatment with
SORIATANE.

Patient signature: _____

Date: _____

Parent/guardian signature (if under age 18): _____

Date: _____

Please print: Patient name and address:

Telephone: _____

I have fully explained to the patient,
_____, the nature and purpose of the
treatment described above and the risks to females of childbearing potential. I have asked the
patient if she has any questions regarding her treatment with SORIATANE and have answered
those questions to the best of my ability.

Prescriber signature: _____

Date: _____

Revised 09/2017
SRN:6PI

MEDICATION GUIDE
SORIATANE (sor-RYE-uh-tane)
(acitretin)
Capsules

Read this Medication Guide carefully before you start taking SORIATANE and read it each time you get more SORIATANE. There may be new information.

The first information in this Medication Guide is about birth defects and how to avoid pregnancy. **After this section there is important safety information about possible effects for any patient taking SORIATANE. All patients** should read this entire Medication Guide carefully. This information does not take the place of talking with your prescriber about your medical condition or treatment.

What is the most important information I should know about SORIATANE?

SORIATANE can cause serious side effects, including:

- **Severe birth defects.** If you are a female who can get pregnant, you should use SORIATANE only if you are not pregnant now, can avoid becoming pregnant for at least 3 years, and other medicines do not work for your severe psoriasis or you cannot use other psoriasis medicines. Information about effects on unborn babies and about how to avoid pregnancy is found in the next section: **“What are the important warnings and instructions for females taking SORIATANE?”**

CAUSES BIRTH
DEFECTS



DO NOT GET
PREGNANT

- **Liver problems**, including abnormal liver function tests and inflammation of your liver (hepatitis). Your prescriber should do blood tests to check how your liver is working before you start taking and during treatment with SORIATANE. Stop taking SORIATANE and call your prescriber right away if you have any of the following signs or symptoms of a serious liver problem:
 - yellowing of your skin or the whites of your eyes
 - nausea and vomiting
 - loss of appetite
 - dark urine

What are the important warnings and instructions for females taking SORIATANE?

- **Before you receive your first prescription for SORIATANE, you should have discussed and signed a Patient Agreement/Informed Consent for Female Patients form with your prescriber. This is to help make sure you understand the risk of birth defects and how to avoid getting pregnant. If you did not talk to your prescriber about this and sign the form, contact your prescriber.**

Important: If you are a female who can become pregnant:

- **You must not take SORIATANE if you are pregnant or might become pregnant during treatment or at any time for at least 3 years after you stop treatment because SORIATANE can cause severe birth defects.**
- **During treatment with SORIATANE and for 2 months after you stop treatment with SORIATANE, you must avoid drinks, foods, and all medicines that contain alcohol. This includes over-the-counter products that contain alcohol. Avoiding alcohol is very important,**

because alcohol changes SORIATANE into a drug that may take longer than 3 years to leave your body. The chance of birth defects may last longer than 3 years if you swallow any form of alcohol during treatment with SORIATANE and for 2 months after you stop taking SORIATANE.

- **You and your prescriber must be sure you are not pregnant before you start therapy with SORIATANE. You must have negative results from 2 pregnancy tests before you start treatment with SORIATANE.** A negative result shows you are not pregnant. Because it takes a few days after pregnancy begins for a test to show that you are pregnant, the first negative test may not ensure you are not pregnant. Do not start SORIATANE until you have negative results from 2 pregnancy tests.
 - The **first pregnancy test** (urine or blood) will be done at the time you and your prescriber decide if SORIATANE might be right for you.
 - The **second pregnancy test** will usually be done during the first 5 days of your menstrual period. You must start taking SORIATANE within 7 days of when the urine or blood for the second pregnancy test is collected.
- After you start taking SORIATANE, you must have a pregnancy test repeated each month that you are taking SORIATANE. This is to be sure that you are not pregnant during treatment because SORIATANE can cause birth defects. In addition, your prescription of SORIATANE will be limited to a monthly supply.
- For at least 3 years after stopping treatment with SORIATANE, you must have a pregnancy test repeated every 3 months to make sure that you are not pregnant.
- **Discuss effective birth control (contraception) with your prescriber. You must use 2 effective forms of birth control (contraception) at the same time during all of the following:**
 - for at least 1 month before beginning treatment with SORIATANE
 - during treatment with SORIATANE
 - for at least 3 years after stopping treatment with SORIATANE
- **If you are sexually active, you must use 2 effective forms of birth control (contraception) at the same time even if you think you cannot become pregnant, unless 1 of the following is true for you:**
 - You had your womb (uterus) removed during an operation (a hysterectomy).
 - Your prescriber said you have gone completely through menopause (the “change of life”).
- **You can get a free birth control counseling session and pregnancy testing from a prescriber or family planning expert. Your prescriber can give you a Contraception Counseling Referral Form for this free session.**

The following are considered effective forms of birth control:

Primary Forms:

- having your tubes tied (tubal ligation)
- partner’s vasectomy
- IUD (Intrauterine device)
- birth control pills that contain both estrogen and progestin (combination oral contraceptives); not progestin-only “minipills”
- hormonal birth control products that are injected, implanted, or inserted in your body
- birth control patch

Secondary Forms (use with a Primary Form):

- diaphragms with spermicide

- condoms (with or without spermicide)
- cervical caps with spermicide
- vaginal sponge (contains spermicide)

At least 1 of your 2 methods of birth control must be a primary form.

- **If you have sex at any time without using 2 effective forms of birth control (contraception) at the same time, or if you get pregnant or miss your period, stop using SORIATANE and call your prescriber right away.**
- **Consider “Emergency Contraception” (EC) if you have sex with a male without correctly using 2 effective forms of birth control (contraception) at the same time.** EC is also called “emergency birth control” which includes the “morning after” pill. Contact your prescriber **as soon as possible** if you have sex without using 2 effective forms of birth control (contraception) at the same time, because EC works best if it is used within 1 or 2 days after sex. EC is not a replacement for your usual 2 effective forms of birth control (contraception) because it is not as effective as regular birth control methods.
Contact your prescriber, women’s health centers, pharmacies, or hospital emergency rooms for information on how to get emergency contraception. A 24-hour, toll-free number (1-800-739-6700) is also available for patients to receive automated birth control and emergency contraception information.
- **Stop taking SORIATANE right away and contact your prescriber if you get pregnant while taking SORIATANE or at any time for at least 3 years after treatment has stopped. You need to discuss the possible effects on the unborn baby with your prescriber.**
- **If you do become pregnant while taking SORIATANE or at any time for at least 3 years after stopping SORIATANE, you should report your pregnancy to Stiefel Laboratories, Inc. at 1-888-784-3335 (1-888-STIEFEL) or directly to the Food and Drug Administration (FDA) MedWatch program at 1-800-FDA-1088.** Your name will be kept in private (confidential). The information you share will help the FDA and the manufacturer evaluate the Pregnancy Prevention Program for SORIATANE.
- **Do not take SORIATANE if you are breastfeeding.** SORIATANE can pass into your milk and may harm your baby. You will need to choose either to breast feed or take SORIATANE, but not both.

What should males know before taking SORIATANE?

Small amounts of SORIATANE are found in the semen of males taking SORIATANE. Based upon available information, it appears that these small amounts of SORIATANE in semen pose little, if any, risk to an unborn child while a male patient is taking the drug or after it is discontinued. Discuss any concerns you have about this with your prescriber.

All patients should read the rest of this Medication Guide.

What is SORIATANE?

SORIATANE is a medicine used to treat severe forms of psoriasis in adults. Psoriasis is a skin disease that causes cells in the outer layer of the skin to grow faster than normal and pile up on the skin’s surface. In the most common type of psoriasis, the skin becomes inflamed and produces red, thickened areas, often with silvery scales.

Because SORIATANE can have serious side effects, you should talk with your prescriber about whether possible benefits of SORIATANE outweigh its possible risks.

SORIATANE may not work right away. You may have to wait 2 to 3 months before you get the full benefit of SORIATANE. Psoriasis gets worse for some patients when they first start treatment with SORIATANE.

SORIATANE has not been studied in children.

Who should not take SORIATANE?

- **Do NOT take SORIATANE if you can get pregnant.** Do not take SORIATANE if you are pregnant or might get pregnant during treatment with SORIATANE or at any time for **at least 3 years** after you stop treatment with SORIATANE (see “**What are the important warnings and instructions for females taking SORIATANE?**”).
- **Do NOT take SORIATANE if you are breastfeeding.** SORIATANE can pass into your milk and may harm your baby. You will need to choose either to breast feed or take SORIATANE, but not both.
- **Do NOT take SORIATANE if you have severe liver or kidney disease.**
- **Do NOT take SORIATANE if you have repeated high blood lipids** (fat in the blood).
- **Do NOT take SORIATANE if you take these medicines:**
 - methotrexate
 - tetracyclines

The use of these medicines with SORIATANE may cause serious side effects.

- **Do NOT take SORIATANE if you are allergic to acitretin**, the active ingredient in SORIATANE, to any of the other ingredients in SORIATANE (see the end of this Medication Guide for a list of all the ingredients in SORIATANE), or to any medicines that are like SORIATANE. Ask your prescriber or pharmacist if any medicines you are allergic to are like SORIATANE.

Before taking SORIATANE, tell your prescriber about all your medical conditions, including if you have or have had:

- diabetes or high blood sugar
- liver problems
- kidney problems
- high cholesterol or high triglycerides (fat in the blood)
- heart disease
- depression
- alcoholism
- an allergic reaction to a medication

Your prescriber needs this information to decide if SORIATANE is right for you and to know what dose is best for you.

Tell your prescriber about all the medicines you take, including prescription and over-the-counter medicines, vitamins, and herbal supplements.

Some medicines can cause serious side effects if taken while you also take SORIATANE. Some medicines may affect how SORIATANE works, or SORIATANE may affect how other medicines work.

Be especially sure to tell your prescriber if you are taking the following medicines:

- methotrexate tetracyclines
- glyburide
- phenytoin
- vitamin A supplements
- progestin-only oral contraceptives (“minipills”)
- TEGISON or TIGASON (etretinate). Tell your prescriber if you have ever taken this medicine in the

past.

- St. John's wort herbal supplement

Tell your prescriber if you are getting phototherapy treatment. Your doses of phototherapy may need to be changed to prevent a burn.

How should I take SORIATANE?

- Take SORIATANE with food.
- Be sure to take your medicine as prescribed by your prescriber. The dose of SORIATANE varies from patient to patient. The number of capsules you must take is chosen specially for you by your prescriber. This dose may change during treatment.
- If you miss a dose, do not double the next dose. Skip the missed dose and resume your normal schedule.
- If you take too much SORIATANE (overdose), call your local poison control center or emergency room.

You should have blood tests for liver function, cholesterol, and triglycerides before starting treatment and during treatment to check your body's response to SORIATANE. Your prescriber may also do other tests.

Once you stop taking SORIATANE, your psoriasis may return. Do not treat this new psoriasis with leftover SORIATANE. It is important to see your prescriber again for treatment recommendations because your situation may have changed.

What should I avoid while taking SORIATANE?

- **Avoid pregnancy.** See "What is the most important information I should know about SORIATANE?", and "What are the important warnings and instructions for females taking SORIATANE?"
Avoid breastfeeding. See "What are the important warnings and instructions for females taking SORIATANE?"
- **Avoid alcohol.** Females who are able to become pregnant must avoid drinks, foods, medicines, and over-the-counter products that contain alcohol. The risk of birth defects may continue for longer than 3 years if you swallow any form of alcohol during treatment with SORIATANE and for 2 months after stopping SORIATANE (see "What are the important warnings and instructions for females taking SORIATANE?").
- **Avoid giving blood. Do not donate blood** while you are taking SORIATANE and **for at least 3 years after stopping** treatment with SORIATANE. SORIATANE in your blood can harm an unborn baby if your blood is given to a pregnant woman. SORIATANE does not affect your ability to receive a blood transfusion.
- **Avoid progestin-only birth control pills ("minipills").** This type of birth control pill may not work while you take SORIATANE. Ask your prescriber if you are not sure what type of pills you are using.
- **Avoid night driving if you develop any sudden vision problems.** Stop taking SORIATANE and call your prescriber if this occurs (see "What are the possible side effects of SORIATANE?").
- **Avoid non-medical ultraviolet (UV) light.** SORIATANE can make your skin more sensitive to UV light. Do not use sunlamps, and avoid sunlight as much as possible. If you are taking light treatment (phototherapy), your prescriber may need to change your light dosages to avoid burns.
- **Avoid dietary supplements containing vitamin A.** SORIATANE is related to vitamin A. Therefore, do not take supplements containing vitamin A, because they may add to the unwanted effects of SORIATANE. Check with your prescriber or pharmacist if you have any questions about vitamin supplements.

- **Do not share SORIATANE with anyone else, even if they have the same symptoms.** Your medicine may harm them or their unborn child.

What are the possible side effects of SORIATANE?

SORIATANE can cause serious side effects, including:

- See “**What is the most important information I should know about SORIATANE?**” and “**What are the important warnings and instructions for females taking SORIATANE?**”

Stop taking SORIATANE and call your prescriber right away if you get the following signs or symptoms of possible serious side effects:

- **Bad headaches, nausea, vomiting, blurred vision.** These symptoms can be signs of increased brain pressure that can lead to blindness or even death.
- **Vision problems. Decreased vision in the dark (night blindness).** Since this can start suddenly, you should be very careful when driving at night. This problem usually goes away when treatment with SORIATANE stops. Stop taking SORIATANE and call your prescriber if you develop any vision problems or eye pain.
- **Depression.** There have been some reports of patients developing mental problems including a depressed mood, aggressive feelings, or thoughts of ending their own life (suicide). These events, including suicidal behavior, have been reported in patients taking other drugs similar to SORIATANE as well as patients taking SORIATANE. Since other things may have contributed to these problems, it is not known if they are related to SORIATANE.
- **Aches or pains in your bones, joints, muscles, or back, trouble moving, or loss of feeling in your hands or feet.** These can be signs of abnormal changes to your bones or muscles.
- **Frequent urination, great thirst or hunger.** SORIATANE can affect blood sugar control, even if you do not already have diabetes. These are some of the signs of high blood sugar.
- **Shortness of breath, dizziness, nausea, chest pain, weakness, trouble speaking, or swelling of a leg. These may be signs of a heart attack, blood clots, or stroke.** SORIATANE can cause serious changes in blood fats (lipids). It is possible for these changes to cause blood vessel blockages that lead to heart attacks, strokes, or blood clots.
- **Blood vessel problems.** SORIATANE can cause fluid to leak out of your blood vessels into your body tissues. **Call your prescriber right away if you have any of the following symptoms:** sudden swelling in one part of your body or all over your body, weight gain, fever, lightheadedness or feeling faint, or muscle aches. If this happens, your prescriber will tell you to stop taking SORIATANE.
- **Serious allergic reactions.** See “Who should not take SORIATANE?” Serious allergic reactions can happen during treatment with SORIATANE. **Call your prescriber right away if you get any of the following symptoms of an allergic reaction:** hives, itching, swelling of your face, mouth, or tongue, or problems breathing. **If this happens, stop taking SORIATANE and do not take it again.**
- **Serious skin problems.** SORIATANE can cause skin problems that can begin in a small area and then spread over large areas of your body. **Call your prescriber right away if your skin becomes red and swollen (inflamed), you have peeling of your skin, or your skin becomes itchy and painful.** You should stop SORIATANE if this happens.

Common side effects

If you develop any of these side effects or any unusual reaction, check with your prescriber to find out if you need to change the amount of SORIATANE you take. These side effects usually get better if the dose of SORIATANE is reduced or SORIATANE is stopped.

- **Chapped lips, peeling fingertips, palms, and soles, itching, scaly skin all over, weak nails, sticky or fragile (weak) skin, runny or dry nose, or nosebleeds.** Your prescriber or pharmacist

can recommend a lotion or cream to help treat drying or chapping.

- **Dry mouth**
- **Joint pain**
- **Tight muscles**
- **Hair loss.** Most patients have some hair loss, but this condition varies among patients. No one can tell if you will lose hair, how much hair you may lose or if and when it may grow back. You may also lose your eyelashes.
- **Dry eyes.** SORIATANE may dry your eyes. Wearing **contact lenses** may be uncomfortable during and after treatment with SORIATANE because of the dry feeling in your eyes. If this happens, remove your contact lenses and call your prescriber. Also read the section about vision problems under “Serious side effects”.
- **Rise in blood fats (lipids).** SORIATANE can cause your blood fats (lipids) to rise. Most of the time this is not serious. But sometimes the increase can become a serious problem (see information under “Serious side effects”). You should have blood tests as directed by your prescriber.

Psoriasis gets worse for some patients when they first start treatment with SORIATANE. Some patients have more redness or itching. If this happens, tell your prescriber. These symptoms usually get better as treatment continues, but your prescriber may need to change the amount of your medicine.

These are not all the possible side effects of SORIATANE. For more information, ask your prescriber or pharmacist.

Call your doctor for medical advice about side effects. You may report side effects to FDA at 1-800-FDA-1088.

How should I store SORIATANE?

- Store SORIATANE between 59°F to 77°F (15°C to 25°C).
- Keep SORIATANE away from sunlight, high temperature, and humidity.

Keep SORIATANE and all medicines out of the reach of children.

General information about the safe and effective use of SORIATANE

Medicines are sometimes prescribed for purposes other than those listed in a Medication Guide. Do not use SORIATANE for a condition for which it was not prescribed. Do not give SORIATANE to other people, even if they have the same symptoms that you have. It may harm them. You can ask your pharmacist or healthcare provider for information about SORIATANE that is written for health professionals.

What are the ingredients in SORIATANE?

Active ingredient: acitretin

Inactive ingredients: black monogramming ink, gelatin, maltodextrin (a mixture of polysaccharides), microcrystalline cellulose, and sodium ascorbate. Gelatin capsule shells contain gelatin, iron oxide (yellow, black, and red), and titanium dioxide. They may also contain benzyl alcohol, carboxymethylcellulose sodium, edetate calcium disodium.

Manufactured for: Stiefel Laboratories, Inc., Research Triangle Park, NC 27709

SORIATANE and Do Your P.A.R.T are trademarks owned by or licensed to the GSK group of companies

The other brands listed are trademarks owned by or licensed to their owners and are not owned by or licensed to the GSK group of companies. The makers of these brands are not affiliated with and do not endorse the GSK group of companies or its products.

©2017 GSK group of companies or its licensor.

SRN:6MG

For more information about SORIATANE go www.soriatane.com or call 1-888-784-3335.



This Medication Guide has been approved by the U.S. Food and Drug Administration

Revised: 09/2017

AUTHORIZATION FOR USE OR DISCLOSURE OF HEALTH INFORMATION

I authorize the use or disclosure of health information about me as described below.

1. I agree to permit my doctor and Stiefel Laboratories, Inc., its affiliates, and those working with Stiefel Laboratories or its affiliates (Stiefel) to use and disclose health information about me.
2. I agree to permit Stiefel to receive the following health information about me: All health information related to reimbursement of certain costs related to lab work and physician counseling, and health information in my medical records that is relevant to my treatment with SORIATANE® (acitretin).
3. Stiefel is authorized to use the information to determine if I qualify for reimbursement under the Do Your P.A.R.T.™ program and, if it is determined that I qualify, in providing my doctor reimbursement for certain approved costs.
4. I understand that Stiefel is not a health care provider or health plan covered by federal privacy regulations, and when the information described above is disclosed to Stiefel it will no longer be protected by these regulations.
5. I understand that I may refuse to sign this authorization. If I do not sign, however, I understand that I will not be able to apply for or receive reimbursement of certain costs under the Do Your P.A.R.T.™ program.
6. I understand that I may revoke this authorization at any time by sending a written request to SORIATANE® Do Your P.A.R.T.™, 5150 McCrimmon Parkway, Morrisville, NC 27560 , except to the extent that action has been taken in reliance on this authorization.
7. This authorization expires 1 year after my participation in the Do Your P.A.R.T.™ program ends.

Signature of patient or representative

Date

Patient name

Name of personal representative (if applicable)
(A copy of this signed form will be provided to the patient.)

Relationship to patient

Patient Copy



©2017 Stiefel Laboratories, Inc. All rights reserved. Printed in USA. SRN:XX##
Rev 09/2017

AUTHORIZATION FOR USE OR DISCLOSURE OF HEALTH INFORMATION

I authorize the use or disclosure of health information about me as described below.

1. I agree to permit my doctor and Stiefel Laboratories, Inc., its affiliates, and those working with Stiefel Laboratories or its affiliates (Stiefel) to use and disclose health information about me.
2. I agree to permit Stiefel to receive the following health information about me: All health information related to reimbursement of certain costs related to lab work and physician counseling, and health information in my medical records that is relevant to my treatment with SORIATANE® (acitretin).
3. Stiefel is authorized to use the information to determine if I qualify for reimbursement under the Do Your P.A.R.T.™ program and, if it is determined that I qualify, in providing my doctor reimbursement for certain approved costs.
4. I understand that Stiefel is not a health care provider or health plan covered by federal privacy regulations, and when the information described above is disclosed to Stiefel it will no longer be protected by these regulations.
5. I understand that I may refuse to sign this authorization. If I do not sign, however, I understand that I will not be able to apply for or receive reimbursement of certain costs under the Do Your P.A.R.T.™ program.
6. I understand that I may revoke this authorization at any time by sending a written request to SORIATANE® Do Your P.A.R.T.™, 5150 McCrimmon Parkway, Morrisville, NC 27560, except to the extent that action has been taken in reliance on this authorization.
7. This authorization expires 1 year after my participation in the Do Your P.A.R.T.™ program ends.

Signature of patient or representative

Date

Patient name

Name of personal representative (if applicable)
(A copy of this signed form will be provided to the patient.)

Relationship to patient

Stiefel Copy



©2017 Stiefel Laboratories, Inc. All rights reserved. Printed in USA. SRN:XX##
Rev 09/2017

CONTRACEPTION COUNSELING REFERRAL FORM (SORIATANE®)

CAUSES BIRTH
DEFECTS



DO NOT GET
PREGNANT

Notes to Contraception Counselor

This patient, _____, is being considered for treatment with SORIATANE® (acitretin). She has been referred to you for contraception counseling before she receives a prescription for SORIATANE.

SORIATANE is a potent teratogen; therefore, it is essential to rule out pregnancy before her treatment begins and for you to fully inform the patient about effective contraception. The typical course of therapy with SORIATANE may last several months, depending upon the patient's response to the medication. The patient must choose **2 effective forms of contraception** to be used simultaneously for at least 1 month prior to initiation of therapy with SORIATANE, during therapy with SORIATANE, and for at least 3 years after discontinuing therapy with SORIATANE. According to the package insert for SORIATANE, the following are considered effective forms of contraception:

Primary: Tubal ligation, partner's vasectomy, intrauterine devices, injectable/implantable/insertable hormonal birth control products, and birth control patch. Birth control pills that contain both estrogen and progestin (combination oral contraceptives) are considered an effective form of birth control; however, progestin-only ("minipills") birth control pills should be avoided.

Secondary: Condoms (with or without spermicide), diaphragms and cervical caps-(which must be used with a spermicide), and vaginal sponges (contain spermicide).

The patient must choose at least 1 primary form of contraception.

Please explain the patient's options for contraception, the risk of possible contraceptive failure, and the requirements for achieving maximal effectiveness with her chosen methods. Please inform me if the patient does not choose 2 effective forms of contraception. The patient should also be counseled about emergency contraception.

Therapy cannot begin until pregnancy has been ruled out by negative results from 2 pregnancy tests with a sensitivity of at least 25 mIU per mL. The first test should be done at the time the patient decides to pursue therapy. The second test should be done during the first 5 days of the menstrual period immediately preceding the beginning of therapy with SORIATANE; or, if the patient has amenorrhea, the pregnancy test should be done at least 11 days after the last act of unprotected sexual intercourse (without using 2

effective forms of contraception simultaneously). If the second pregnancy test is negative, initiation of treatment with SORIATANE should begin within 7 days of the specimen collection. SORIATANE should be limited to a monthly supply.

Prescriber's name: _____
(Please affix label, or type or print clearly.)

Address: _____

Telephone: _____

Prescriber's signature: _____ Date: _____

Information to Be Returned to Prescriber

I have provided the following for your patient _____
(Name)

Comprehensive contraception counseling

Information about emergency contraception

The patient had a negative pregnancy test on _____
(Date)

The patient has chosen 2 methods of contraception.

Yes No

Primary method: _____

Secondary method: _____

Name: _____
(Please affix label, or type or print clearly.)

Address: _____

Telephone: _____

Contraception counselor's signature: _____ Date: _____

Contraception Counselor Copy



©2017 Stiefel Laboratories, Inc. All rights reserved. Printed in USA. SRN:XX##
Rev 09/2017

Reimbursement

NOTE: Reimbursement is offered only for contraception counseling and pregnancy testing, if performed. Other services that may be provided during this visit are not eligible for reimbursement.

The prescriber who actually prescribes SORIATANE® (acitretin) is not eligible for reimbursement by Stiefel®.

REIMBURSEMENT INSTRUCTIONS

To receive reimbursement, you must call a toll-free number for reimbursement. After you have provided all the requested information, a check will be sent to you by first-class mail.

Steps: Dial 1-888-784-3335 (1-888-STIEFEL).

- You will be asked to provide the following information:
 - Your name and address
 - Your office phone number
 - Name of graduate school from which you graduated
 - Year of graduation
 - The name and address of the referring prescriber
 - The patient's name
 - Whether you have provided contraception counseling and information on emergency contraception
 - Your normal and customary charge for providing these services
- A check will then be processed and mailed to you within 10 days.
- To check on the status of a previous request, you will need to provide only your name, address, and phone number. A representative will contact you to update your request status.

REIMBURSEMENT FOR PREGNANCY TEST

If you have performed pregnancy testing in the office or sent the patient directly to the laboratory, please instruct the laboratory to send the bill to the following address:

SORIATANE® Do Your P.A.R.T.™
5150 McCrimmon Parkway
Morrisville, NC 27560

Important: Your name and address must be included on the invoice from the laboratory.

The laboratory will be reimbursed directly.

Reimbursement

NOTE: Reimbursement is offered only for contraception counseling and pregnancy testing, if performed. Other services that may be provided during this visit are not eligible for reimbursement.

The prescriber who actually prescribes SORIATANE® (acitretin) is not eligible for reimbursement by Stiefel®.

REIMBURSEMENT INSTRUCTIONS

To receive reimbursement, you must call a toll-free number for reimbursement. After you have provided all the requested information, a check will be sent to you by first-class mail.

Steps: Dial 1-888-784-3335 (1-888-STIEFEL).

- You will be asked to provide the following information:
 - Your name and address
 - Your office phone number
 - Name of graduate school from which you graduated
 - Year of graduation
 - The name and address of the referring prescriber
 - The patient's name
 - Whether you have provided contraception counseling and information on emergency contraception
 - Your normal and customary charge for providing these services
- A check will then be processed and mailed to you within 10 days.
- To check on the status of a previous request, you will need to provide only your name, address, and phone number. A representative will contact you to update your request status.

REIMBURSEMENT FOR PREGNANCY TEST

If you have performed pregnancy testing in the office or sent the patient directly to the laboratory, please instruct the laboratory to send the bill to the following address:

SORIATANE® Do Your P.A.R.T.™
5150 McCrimmon Parkway
Morrisville, NC 27560

Important: Your name and address must be included on the invoice from the laboratory.

The laboratory will be reimbursed directly.

NOTE TO CONSULTANTS: BY PARTICIPATING IN THIS PROGRAM, YOU AGREE TO PROVIDE STIEFEL WITH ACCESS TO ADDITIONAL INFORMATION SHOULD IT BECOME NECESSARY TO CONFIRM THE APPROPRIATENESS OF THIS REQUEST FOR REIMBURSEMENT. STIEFEL RESERVES THE RIGHT TO PLACE LIMITATIONS ON REIMBURSEMENTS OR DENY REIMBURSEMENTS IN CERTAIN SITUATIONS.



©2017 Stiefel Laboratories, Inc. All rights reserved. Printed in USA. SRN:XX##
Rev 09/2017

CONTRACEPTION COUNSELING REFERRAL FORM (SORIATANE®)

CAUSES BIRTH
DEFECTS



DO NOT GET
PREGNANT

Notes to Contraception Counselor

This patient, _____, is being considered for treatment with SORIATANE® (acitretin). She has been referred to you for contraception counseling before she receives a prescription for SORIATANE.

SORIATANE is a potent teratogen; therefore, it is essential to rule out pregnancy before her treatment begins and for you to fully inform the patient about effective contraception. The typical course of therapy with SORIATANE may last several months, depending upon the patient's response to the medication. The patient must choose **2 effective forms of contraception** to be used simultaneously for at least 1 month prior to initiation of therapy with SORIATANE, during therapy with SORIATANE, and for at least 3 years after discontinuing therapy with SORIATANE. According to the package insert for SORIATANE, the following are considered effective forms of contraception:

Primary: Tubal ligation, partner's vasectomy, intrauterine devices, injectable/implantable/insertable hormonal birth control products, and birth control patch. Birth control pills that contain both estrogen and progestin (combination oral contraceptives) are considered an effective form of birth control; however, progestin-only ("minipills") birth control pills should be avoided.

Secondary: Condoms (with or without spermicide), diaphragms and cervical caps-(which must be used with a spermicide), and vaginal sponges (contain spermicide).

The patient must choose at least 1 primary form of contraception.

Please explain the patient's options for contraception, the risk of possible contraceptive failure, and the requirements for achieving maximal effectiveness with her chosen methods. Please inform me if the patient does not choose 2 effective forms of contraception. The patient should also be counseled about emergency contraception.

Therapy cannot begin until pregnancy has been ruled out by negative results from 2 pregnancy tests with a sensitivity of at least 25 mIU per mL. The first test should be done at the time the patient decides to pursue therapy. The second test should be done during the first 5 days of the menstrual period immediately preceding the beginning of therapy with SORIATANE; or, if the patient has amenorrhea, the pregnancy test should be done at least 11 days after the last act of unprotected sexual intercourse (without using 2

effective forms of contraception simultaneously). If the second pregnancy test is negative, initiation of treatment with SORIATANE should begin within 7 days of the specimen collection. SORIATANE should be limited to a monthly supply.

Prescriber's name: _____
(Please affix label, or type or print clearly.)

Address: _____

Telephone: _____

Prescriber's signature: _____ Date: _____

Information to Be Returned to Prescriber

I have provided the following for your patient _____
(Name)

Comprehensive contraception counseling

Information about emergency contraception

The patient had a negative pregnancy test on _____
(Date)

The patient has chosen 2 methods of contraception.

Yes No

Primary method: _____

Secondary method: _____

Name: _____
(Please affix label, or type or print clearly.)

Address: _____

Telephone: _____

Contraception counselor's signature: _____ Date: _____

Return This Copy to Prescriber



©2017 Stiefel Laboratories, Inc. All rights reserved. Printed in USA. SRN:XX##
Rev 09/2017

Reimbursement

NOTE: Reimbursement is offered only for contraception counseling and pregnancy testing, if performed. Other services that may be provided during this visit are not eligible for reimbursement.

The prescriber who actually prescribes SORIATANE® (acitretin) is not eligible for reimbursement by Stiefel®.

REIMBURSEMENT INSTRUCTIONS

To receive reimbursement, you must call a toll-free number for reimbursement. After you have provided all the requested information, a check will be sent to you by first-class mail.

Steps: Dial 1-888-784-3335 (1-888-STIEFEL).

- You will be asked to provide the following information:
 - Your name and address
 - Your office phone number
 - Name of graduate school from which you graduated
 - Year of graduation
 - The name and address of the referring prescriber
 - The patient's name
 - Whether you have provided contraception counseling and information on emergency contraception
 - Your normal and customary charge for providing these services
- A check will then be processed and mailed to you within 10 days.
- To check on the status of a previous request, you will need to provide only your name, address, and phone number. A representative will contact you to update your request status.

REIMBURSEMENT FOR PREGNANCY TEST

If you have performed pregnancy testing in the office or sent the patient directly to the laboratory, please instruct the laboratory to send the bill to the following address:

SORIATANE® Do Your P.A.R.T.™
5150 McCrimmon Parkway
Morrisville, NC 27560

Important: Your name and address must be included on the invoice from the laboratory.

The laboratory will be reimbursed directly.

NOTE TO CONSULTANTS: BY PARTICIPATING IN THIS PROGRAM, YOU AGREE TO PROVIDE STIEFEL WITH ACCESS TO ADDITIONAL INFORMATION SHOULD IT BECOME NECESSARY TO CONFIRM THE APPROPRIATENESS OF THIS REQUEST FOR REIMBURSEMENT. STIEFEL RESERVES THE RIGHT TO PLACE LIMITATIONS ON REIMBURSEMENTS OR DENY REIMBURSEMENTS IN CERTAIN SITUATIONS.



©2017 Stiefel Laboratories, Inc. All rights reserved. Printed in USA. SRN:XX##
Rev 09/2017

CONTRACEPTION COUNSELING REFERRAL PROGRAM

Expert Counseling With No Added Expenses



Before you can start taking SORIATANE® (acitretin), you have to be sure that you are not pregnant and that you understand how to avoid pregnancy. That's why Stiefel Laboratories, Inc. will pay for you to go to a contraception counselor. This specialist will provide you with expert counseling about birth control (contraception and avoiding pregnancy). This counseling is very important, even if you already feel you know about birth control, and even if you are not having sex or do not plan to have sex.

6 Simple Instructions

1

Make an appointment to see a contraception counselor and give him/her the attached forms. The counselor should call your prescriber if there are any questions about why you are there or about how the program works.

2

Notify your prescriber after you have had contraception counseling.

3

Ask the contraception counselor to mail a copy of the form to your prescriber. **You will not get your first prescription for SORIATANE until your prescriber has received this signed form, and you must have negative results from 2 pregnancy tests.** Your first test will be done at the time you and your prescriber decide if SORIATANE might be right for you. The second pregnancy test will usually be done during the first 5 days of your menstrual period right before you plan to start SORIATANE. If the second pregnancy test is negative, initiation of treatment with SORIATANE should begin within 7 days of the specimen collection. SORIATANE should be limited to a monthly supply.

4

You must use **2 effective forms of birth control** (contraception) at the same time for at least 1 month before beginning treatment with SORIATANE, during treatment with SORIATANE, and for at least 3 years after you stop taking SORIATANE.

5

You are not required to pay any charges for the counseling by the contraception counselor. If you are asked to pay, have your contraception counselor send your signed Authorization for Use or Disclosure of Health Information form to the address below. The counselor should follow the instructions on the attached forms. The fee will be paid by Stiefel Laboratories, Inc.

6

Finally, if your contraception counselor performs a pregnancy test, the laboratory bill should be sent to the following address:

SORIATANE® Do Your P.A.R.T.™
5150 McCrimmon Parkway
Morrisville, NC 27560

Patient Copy



©2017 Stiefel Laboratories, Inc. All rights reserved. Printed in USA. SRN:XX##
Rev 09/2017

COVER
HEAD:
SERIOUS TREATMENT
SERIOUS DECISIONS

COPY:
DO YOUR P.A.R.T.™
Pregnancy Prevention **A**ctively **R**equired During & After **T**reatment

SIG:
CAUSES BIRTH
DEFECTS



DO NOT GET
PREGNANT
new SORIATANE logo

FIRST INSIDE SPREAD/LEFT

HEAD:

TABLE OF CONTENTS

PAGES

COPY:

| | |
|---|-------------|
| Introduction | 1 |
| General Information | 2-3 |
| Avoiding Pregnancy | 4-5 |
| Additional Considerations | 6 |
| Birth Control Methods | 7-12 |
| Patient Self-Evaluation | 13-14 |
| Your Personal Record | 15 |
| Notes/Personal Contact Information | 16 |
| Patient Agreement/Informed Consent for Female Patients Form | Back Pocket |
| Contraception Counseling Referral Program Form | Back Pocket |
| <i>Medication Guide for Patients</i> | Back Pocket |
| Patient Privacy Form (HIPAA Authorization Form) | Back Pocket |

BOXED WARNING:

CAUSES BIRTH
DEFECTS



DO NOT GET
PREGNANT

CONTRAINDICATIONS AND WARNINGS: SORIATANE® (acitretin) must not be used by females who are pregnant or who may become pregnant during therapy or at any time for at least 3 years after discontinuation of treatment. SORIATANE also must not be used by females of reproductive potential who may not use 2 effective forms of contraception (birth control) simultaneously for at least 1 month before, during, and for at least 3 years after treatment. Two effective forms of contraception (birth control) are to be used simultaneously, even when 1 form is a hormonal contraceptive. Patients should not self-medicate with St. John's wort because of a possible interaction with hormonal contraceptives. Prescribers must obtain negative results for 2 pregnancy tests before initiating treatment with SORIATANE. The first test is a screening test; the second is a confirmation test done during the first 5 days of the menstrual period immediately preceding therapy with SORIATANE. For patients with amenorrhea, the second test should be done at least 11 days after the last act of unprotected sexual intercourse. If the second pregnancy test is negative, initiation of treatment with SORIATANE should begin within 7 days of the specimen collection. SORIATANE should be limited to a monthly supply. Pregnancy testing throughout the treatment course should be monthly. Females must sign a Patient Agreement/Informed Consent for Female Patients form about the risks of birth defects. Acitretin is a metabolite of etretinate and major fetal abnormalities have been reported with both drugs. Acitretin can interact with ethanol to form etretinate. Therefore, females of reproductive potential must not ingest ethanol during treatment and for 2 months after cessation of treatment. Before prescribing, please see complete pregnancy warning in the accompanying complete prescribing information. Females who have undergone treatment with TEGISON® (etretinate) must continue to follow the contraception requirements for TEGISON.

FAIR BALANCE:

Less frequent, but potentially serious, adverse events include hepatotoxicity, pancreatitis, and pseudotumor cerebri (please see WARNINGS in complete prescribing information), as well as hyperostosis, alterations in lipids, possible cardiovascular effects, ophthalmologic effects, capillary leak syndrome, and exfoliative dermatitis/erythroderma.

HEAD:

INTRODUCTION

COPY:

ABOUT SORIATANE

SORIATANE® (acitretin) is a medicine used to treat severe forms of psoriasis in adults. Psoriasis is a skin disease that causes cells in the outer layer of the skin to grow faster than normal and pile up on the skin's surface. In the most common type of psoriasis, the skin becomes inflamed and produces red, thickened areas, often with silvery scales. **Because SORIATANE can have serious side effects**, you should talk with your prescriber about whether the possible benefits of SORIATANE outweigh its possible risks.

In women of childbearing potential, SORIATANE should be reserved for non-pregnant patients who are unresponsive to other therapies or whose clinical condition contraindicates the use of other treatments (see boxed CONTRAINDICATIONS AND WARNINGS — SORIATANE can cause severe birth defects).

Most patients experience relapse of psoriasis after stopping therapy. Subsequent courses, when clinically indicated, have produced efficacy results similar to the initial course of therapy.

ABOUT THE DO YOUR P.A.R.T.™ PROGRAM

This program applies to you because your doctor has prescribed SORIATANE for you. This program is for women of childbearing potential.

SORIATANE can cause severe birth defects during treatment and for up to 3 years after a patient stops SORIATANE. The **Do Your P.A.R.T.™** program is intended to help you avoid getting pregnant during this time.

The SORIATANE **Do Your P.A.R.T.™** Program contains several important components:

- This booklet
- Patient Agreement/Informed Consent for Female Patients form
- Contraception Counseling Referral Program form (optional)
- *A Medication Guide for Patients*
- Authorization for Use or Disclosure of Health Information
- Voluntary Patient Survey
- Patient Survey Brochure
- Patient Survey Registration Form

Read and complete all of these materials before taking SORIATANE, and be sure to ask your doctor about any questions you have.

YOUR SEXUAL PARTNER

It is strongly recommended that your sexual partner read this booklet in order to understand all of the facts about the risks of birth defects for women taking SORIATANE. It is critical that you and your sexual partner know that you must not become pregnant during or within 3 years after you stop using SORIATANE.

HEAD:

GENERAL INFORMATION

COPY:

WHAT IS SORIATANE?

SORIATANE is a medicine used to treat severe forms of psoriasis in adults. Psoriasis is a skin disease that causes cells in the outer layer of the skin to grow faster than normal, creating a “traffic jam” of skin cells on the surface. The skin becomes red, irritated, inflamed, thicker, and sometimes has a silvery appearance.

Because SORIATANE can have serious side effects, you should talk with your doctor to see if it is right for you.

SORIATANE might not work right away. It might take 2 or 3 months before your skin may begin to improve.

Psoriasis gets worse for some patients when they first start taking SORIATANE.

SORIATANE has not been studied in children.

Please see the enclosed *Medication Guide for Patients* for additional information about SORIATANE.

You may also ask your doctor to provide you with the complete prescribing information (package insert) for SORIATANE® (acitretin).

WHAT SHOULD I AVOID WHILE TAKING SORIATANE?

- Do not get pregnant during therapy and for 3 years after treatment discontinuation (SORIATANE can cause birth defects).
- Do not breastfeed.
- Do not consume alcohol (women of reproductive potential only).
- Do not donate blood during therapy and for 3 years after treatment discontinuation. Other women who could get pregnant must not receive blood from patients being treated with SORIATANE.
- Do not share SORIATANE with anyone, even if they have the same symptoms.
- Avoid night driving if you develop any sudden vision problems.
- Avoid nonmedical ultraviolet (UV) light.
- Avoid dietary supplements containing vitamin A.
- Avoid progestin-only birth control pills (“minipills”).

WHAT ARE THE POSSIBLE SIDE EFFECTS OF SORIATANE?

SORIATANE can cause birth defects. Refer to the enclosed *Medication Guide for Patients* and see “What is the most important information I should know about SORIATANE?” and “What are the important warnings and instructions for females taking SORIATANE?”

Psoriasis gets worse for some patients when they first start treatment with SORIATANE. Some patients have more redness or itching. If this happens, tell your prescriber. These symptoms usually get better as treatment continues, but your prescriber may need to change the amount of your medicine.

Serious side effects. These do not happen often, but they can lead to permanent harm, or rarely, to death. Stop taking SORIATANE and call your prescriber right away if you get the following signs or symptoms:

- **Yellowing of your skin or the whites of your eyes, nausea and vomiting, loss of appetite, or dark urine.** These can be signs of serious liver damage.
- **Bad headaches, nausea, vomiting, blurred vision.** These symptoms can be signs of increased brain pressure that can lead to blindness or even death.
- **Vision Problems. Decreased vision in the dark (night blindness).** Since this can start suddenly, you should be very careful when driving at night. This problem usually goes away when treatment with SORIATANE stops. Stop taking SORIATANE and call your prescriber if you develop any vision problems or eye pain.
- **Depression.** There have been some reports of patients developing mental problems including a depressed mood, aggressive feelings, or thoughts of ending their own life (suicide). These events, including suicidal behavior, have been reported in patients taking other drugs similar to SORIATANE as well as patients taking SORIATANE. Since other things may have contributed to these problems, it is not known if they are related to SORIATANE.
- **Aches or pains in your bones, joints, muscles, or back, trouble moving, or loss of feeling in your hands or feet.** These can be signs of abnormal changes to your bones or muscles.
- **Frequent urination, great thirst or hunger.** SORIATANE can affect blood sugar control, even if you do not already have diabetes. These are some of the signs of high blood sugar.
- **Shortness of breath, dizziness, nausea, chest pain, weakness, trouble speaking, or swelling of a leg. These may be signs of a heart attack, blood clots, or stroke.** SORIATANE can cause serious changes in blood fats (lipids). It is possible for these changes to cause blood vessel blockages that lead to heart attacks, strokes, or blood clots.
- **Blood vessel problems.** SORIATANE can cause fluid to leak out of your blood vessels into your body tissues. **Call your prescriber right away if you have any of the following symptoms:** sudden swelling in one part of your body or

all over your body, weight gain, fever, lightheadedness or feeling faint, or muscle aches. If this happens your prescriber will tell you to stop taking SORIATANE.

- **Serious allergic reactions.** See “Who should not take SORIATANE?” in the Medication Guide. Serious allergic reactions can happen during treatment with SORIATANE. **Call your prescriber right away if you get any of the following symptoms of an allergic reaction:** hives, itching, swelling of your face, mouth, or tongue, or problems breathing. **If this happens, stop taking SORIATANE and do not take it again.**
- **Serious skin problems.** SORIATANE can cause skin problems that can begin in a small area and then spread over large areas of your body. **Call your prescriber right away if your skin becomes red and swollen (inflamed), you have peeling of your skin, or your skin becomes itchy, and painful.** You should stop SORIATANE if this happens.

Common side effects. If you develop any of these side effects or any unusual reaction, check with your prescriber to find out if you need to change the amount of SORIATANE you take. These side effects usually get better if the dose of SORIATANE is reduced or SORIATANE is stopped.

- **Chapped lips, peeling fingertips, palms, and soles, itching, scaly skin all over, weak nails, sticky or fragile (weak) skin, runny or dry nose, or nosebleeds.** Your prescriber or pharmacist can recommend a lotion or cream to help treat drying or chapping.
- **Dry mouth**
- **Joint pain**
- **Tight muscles**
- **Hair loss.** Most patients have some hair loss, but this condition varies among patients. No one can tell if you will lose hair, how much hair you may lose, or if and when it may grow back. You may also lose your eyelashes.
- **Dry eyes.** SORIATANE may dry your eyes. Wearing **contact lenses** may be uncomfortable during and after treatment with SORIATANE because of the dry feeling in your eyes. If this happens, remove your contact lenses and call your prescriber. Also read the section about vision problems under “Serious side effects”.
- **Rise in blood fats (lipids).** SORIATANE can cause your blood fats (lipids) to rise. Most of the time, this is not serious. But sometimes the increase can become a serious problem (see information under “Serious side effects”). You should have blood tests as directed by your prescriber.

These are not all the possible side effects of SORIATANE. For more information, ask your prescriber or pharmacist.

COPY:

SORIATANE CAN CAUSE SEVERE BIRTH DEFECTS.

If you are a woman who could possibly become pregnant, and you and your doctor think that SORIATANE is right for you, there are very important things to understand before starting SORIATANE.

1. You MUST NOT get pregnant while taking SORIATANE.

You MUST have 2 negative pregnancy tests before starting SORIATANE. You MUST start treatment with SORIATANE within 7 days of the specimen collection. You MUST have a pregnancy test each month before receiving the next month's prescription and every 3 months for 3 years after discontinuation. You MUST use 2 forms of birth control starting 1 month before treatment, the whole time you are treated with SORIATANE, and for 3 years after you stop taking SORIATANE.

2. If you stop taking SORIATANE, you MUST NOT get pregnant for at least 3 years. Keeping track of this time interval is extremely important.

3. You MUST NOT consume alcohol of any kind while taking SORIATANE, or for 2 months after you've stopped SORIATANE.

4. You MUST NOT donate blood during therapy and for 3 years after treatment discontinuation.

5. You MUST sign the Patient Agreement/Informed Consent for Female Patients Form.

IF YOU CANNOT AGREE TO THESE REQUIREMENTS, SORIATANE IS NOT FOR YOU.

HEAD:

AVOIDING PREGNANCY

CAUSES BIRTH
DEFECTS



DO NOT GET
PREGNANT

COPY:

IMPORTANT INFORMATION FOR FEMALE PATIENTS

SORIATANE is a very powerful drug, and women must be very careful not to become pregnant. If it is possible for you to become pregnant, and you and your doctor agree on using SORIATANE, you must:

- Before starting SORIATANE, take 2 pregnancy tests proving that you're not pregnant. The first negative test will start the process, and the second negative test will confirm the results. (Your doctor will tell you when and how to take the tests.) Initiation of treatment with SORIATANE should begin within 7 days of the specimen collection and should be limited to a monthly supply.
- Use 2 forms of birth control at the same time, for at least 1 month before and during your treatment with SORIATANE and for at least 3 years after you stop treatment with SORIATANE. You and your doctor should choose 2 forms of birth control. At least one of the methods must be a primary method.

PRIMARY: (you must choose at least 1 from this list)

- Birth control pills (but not progestin-only "minipills")
- Birth control patch
- Intrauterine device (IUD)
- Injected, implanted, or inserted hormonal birth control products
- Having your tubes tied
- Partner's vasectomy

SECONDARY: (you may choose 1 from this list to use with primary method)

- Diaphragm with spermicide
- Cervical cap with spermicide
- Condom with or without spermicide
- Vaginal sponge (contains spermicide)

Before you receive your first prescription for SORIATANE, you should have discussed and signed a Patient Agreement/Informed Consent for Female Patients form with your prescriber. This is to help make sure you understand the risk of birth defects

and how to avoid getting pregnant. If you did not talk to your prescriber about this and sign the form, contact your prescriber.

CALL-OUT:

WHOM CAN I CONTACT FOR BIRTH CONTROL INFORMATION?

TOLL-FREE NUMBER: 1-800-739-6700

A 24-hour, toll-free, automated birth control counseling line has been set up for you to use.

Remember, calling this number is completely confidential—you will never have to give your name, and you cannot be identified.

A 24-hour, toll-free, automated line is available to all patients on SORIATANE. You can also share this information and phone number with members of your family and your partner.

If you need more information about birth control options, the following sites are available on the Internet:

- Association of Reproductive Health Professionals: **www.arhp.org**
- Planned Parenthood: **www.plannedparenthood.org**

If you need more information about drugs and birth defects, the following sites are available on the Internet:

- Organization of Teratology Information Services: **www.mothersbaby.org**
- Centers for Disease Control and Prevention: **www.cdc.gov**

If you feel you need to talk to an expert on contraception, a Contraception Counselor can be provided for you free of charge. Please see the Contraception Counseling Referral Form at the back of this booklet for more information.

THIRD INSIDE SPREAD/RIGHT [PAGE 5]

COPY:

COMMONLY ASKED QUESTIONS

How long do I need to use birth control?

- You need to start using 2 forms of birth control at least 1 month before you begin taking SORIATANE.
- You need to use 2 forms of birth control during your entire treatment with SORIATANE.
- You need to continue to use 2 forms of birth control for 3 years after you stop taking SORIATANE.

If you think you have had unprotected sex or you feel that your contraception has failed while taking SORIATANE:

- Contact your prescriber, women's health centers, pharmacies, or hospital emergency rooms for information on how to get emergency contraception. A 24-hour, toll-free number (1-800-739-6700) is also available for patients to receive automated birth control and emergency contraception information.

What is "emergency contraception"?

Emergency contraception is an option that can be used if you have had unprotected sex or your birth control method failed while taking SORIATANE (or within 3 years after you stop). "Unprotected" means using fewer than 2 types of birth control, or 1 of the forms you were using failed. Emergency contraception, which includes the "morning-after pill", needs to be used as directed after having unprotected sex.

If you think you've become pregnant while taking SORIATANE or within 3 years of stopping:

- Stop taking SORIATANE.
- Call your doctor to tell him/her you might be pregnant.
- Call Stiefel at **1-888-784-3335 (1-888-STIEFEL)**.
- Or call FDA MedWatch at **1-800-328-1088 (1-800-FDA-1088)**.

CALL-OUT:

IMPORTANT INFORMATION FOR MALE PATIENTS

Very small amounts of SORIATANE are found in the semen of males taking the medication (1/200,000 of a single 25 mg capsule). Based upon available information, it appears that these small amounts of SORIATANE in semen pose little, if any, risk to an unborn child. Discuss any concerns you may have about this with your doctor.

FOURTH INSIDE SPREAD/LEFT [PAGE 6]

ADDITIONAL CONSIDERATIONS

What about alcohol?

Alcohol can increase the length of time SORIATANE is stored in a woman's body, causing the risk of birth defects to last longer than 3 years. It is essential that women of reproductive potential do not drink alcohol during treatment with SORIATANE, or for 2 months after they stop treatment.

Alcohol is in more places than you think. Even small amounts found in cold medicine, or alcohol used in cooking, can make the possibility of birth defects last MUCH longer. Be very careful not to allow any kind of alcohol into your body.

If you have any questions about alcohol and SORIATANE, ask your doctor.

What about breastfeeding?

Do not take SORIATANE if you're breastfeeding. SORIATANE can pass into your milk and may harm your baby.

What about donating blood?

No person (male or female) should donate blood while taking SORIATANE, or for at least 3 years after stopping therapy. The SORIATANE in your blood, if given to a pregnant woman, could harm her baby. SORIATANE does not affect your ability to receive a blood transfusion.

FOURTH INSIDE SPREADS/RIGHT [PAGE 7]

HEAD:

BIRTH CONTROL METHODS

COPY:

The following descriptions have been supplied to give you an overview of how each birth control method works in your body. For more information, please ask your doctor, refer to the information included with the individual product, or use the resources listed in the "**WHOM CAN I CONTACT FOR BIRTH CONTROL INFORMATION?**" section on page 4.

CALL-OUT:

What about MINIPILLS?

Do not use "minipills," which may not work while you take SORIATANE.

Ask your prescriber if you are not sure what type of pills you are using.

PRIMARY METHODS

You must choose at least 1 from the following methods.

BIRTH CONTROL PILLS¹

"The Pill" contains hormones that prevent you from becoming pregnant. These hormones prevent your ovaries from releasing eggs and may also keep sperm from joining with an egg. The Pill is safe and effective for most women, and is taken once daily. The Pill needs to be prescribed by a doctor.

Two kinds are available for most women: one has a combination of hormones, and the other has only one hormone ("minipills").

Do not use "minipills," which may not work while you take SORIATANE. Ask your prescriber if you are not sure what type of pills you are using.

Effectiveness: Fewer than 1 in 100 women will become pregnant each year with perfect use. With typical use, 9 in 100 women will become pregnant each year.

FIFTH INSIDE SPREAD/LEFT [PAGE 8]

COPY:

BIRTH CONTROL PATCH¹

The patch, available by prescription, sends hormones into your body through your skin. These hormones help prevent your ovaries from releasing eggs and may also keep sperm from joining with an egg. A new patch is placed on the skin once a week for three weeks in a row, followed by a patch-free week.

Effectiveness: Fewer than 1 in 100 women will become pregnant each year with perfect use. With typical use, 9 in 100 women will become pregnant each year.

INTRAUTERINE DEVICE¹

The intrauterine device (IUD) is placed inside your uterus by a doctor and usually either contains copper or releases hormones. Both kinds of IUDs prevent fertilization by affecting movement of sperm so they can't join with an egg.

Effectiveness: Fewer than 1 in 100 women will become pregnant each year if an IUD is used.

FIFTH INSIDE SPREAD/RIGHT [PAGE 9]

COPY:

INJECTED, IMPLANTED, OR INSERTED HORMONAL BIRTH CONTROL¹

There are several different kinds of hormonal birth control that can prevent pregnancy.

Injected or implanted hormones: This form is given to you by your healthcare provider at specific time intervals. These hormone shots or implants prevent your ovaries from releasing eggs and may also keep sperm from joining with an egg.

Injected hormone effectiveness: Fewer than 1 in 100 women will get pregnant each year with perfect use. With typical use, 6 in 100 women will get pregnant each year.

Implanted hormone effectiveness: Fewer than 1 in 100 women will get pregnant each year. It lasts up to 3 years.

Inserted hormones: This form is usually called the "vaginal ring," and you insert it into your vagina. It must be prescribed by your doctor. After being properly inserted, it releases a continuous low dose of hormones into your body. These hormones prevent your ovaries from releasing eggs and may also keep sperm from joining with an egg. The ring remains in the vagina for 3 weeks, and then is removed for 1 week.

Effectiveness: Fewer than 1 in 100 women will become pregnant each year with perfect use. With typical use, 9 in 100 women will become pregnant each year.

COPY:

TUBAL LIGATION¹ (“HAVING YOUR TUBES TIED”) OR YOUR PARTNER’S VASECTOMY¹

Sterilization of women and men requires operations and are meant to be permanent.

“Having your tubes tied” (or tubal ligation) is intended to block a woman’s fallopian tubes, where sperm would join with an egg. There are different types of sterilization incision methods and a non-incision method (Essure). The non-incision method, Essure, takes about 3 months before it is effective. An x-ray should be performed by your doctor to confirm if the fallopian tubes are fully blocked.

A vasectomy is an operation that permanently disconnects a man’s semen duct, which carries sperm. Vasectomies do not work immediately, and it often takes up to 3 months before all the live sperm are gone. A semen analysis should be performed to confirm if there are no more live sperm.

Tubal ligation effectiveness: Approximately 5 in 1,000 women will become pregnant after having a tubal ligation performed with traditional incision methods. Fewer than 3 in 1,000 women will become pregnant after having tubal ligation performed with Essure.

Vasectomy effectiveness: 1 in 1,000 men will become fertile again after a vasectomy has been performed.

CONTINUOUS ABSTINENCE¹

Continuous abstinence is not having sex play with a partner at all.

Effectiveness: When used continuously, abstinence is 100% effective in preventing pregnancy.

MEDICALLY CONFIRMED MENOPAUSE²

Menopause is the time at "midlife" when a woman has her last period. It happens when the ovaries stop releasing eggs — usually a gradual process. Sometimes it happens all at once. It is confirmed when a woman has missed her period for 12 consecutive months (which can not be attributed to other causes). Menopause also results in lower levels of estrogen and other hormones.

Induced menopause occurs if the ovaries are removed or damaged during surgery, chemotherapy, or radiation therapy. In this case, menopause begins immediately.

Women reach menopause at different times. The timing is not related to age at last pregnancy, age of menarche (first period), the birth control pill, breastfeeding, class, fertility patterns, height, having been pregnant, or race.

The average age for menopause is 51. If menopause is reached naturally or surgically before the age of 40, it is called early or premature menopause.

Estrogen levels drop very abruptly after induced menopause — when *both* ovaries are removed surgically or damaged by radiation or chemotherapy.

Women in **perimenopause** (the period of gradual changes that lead into menopause) have reduced fertility but they are not infertile. Although menstruation may be sporadic, pregnancy *can* happen. That's why women need to consider birth control during perimenopause.

Only your doctor can confirm that you have reached menopause and do not need to pursue contraceptive options.

HYSTERECTOMY³

Hysterectomy is the removal of the uterus. It is major surgery and is not usually used for sterilization. It is used to correct significant medical conditions. Hysterectomy ends menstruation as well as the possibility of pregnancy.

SECONDARY METHODS

You may choose 1 from these options to use with a primary method. Spermicide must be used with the diaphragm and cervical cap. Spermicide is available in a variety of forms and contains a chemical that prevents sperm from joining with an egg. Spermicide may cause irritation. Changing forms or brands may help. Spermicide is not required with condoms or vaginal sponge.

DIAPHRAGM¹

The diaphragm is a shallow latex cup that you insert into your vagina. You must have a custom fitting from a healthcare professional to obtain a diaphragm.

The diaphragm must be used with spermicide, and must stay in place for 6 hours after sex. If you have sex again or if you have sex more than 6 hours after you put in the diaphragm, more spermicide needs to be inserted deep into your vagina.

The diaphragm should not be left in place longer than 24 hours.

Effectiveness: 6 in 100 women will become pregnant each year with perfect use. With typical use, 12 in 100 women will become pregnant each year.

COPY:

CERVICAL CAP¹

The cervical cap is very similar to the diaphragm, except that it is smaller and covers only the cervix. You must have a custom fitting from a healthcare professional to obtain a cervical cap.

The cervical cap must be used with spermicide. With each sexual act, check that the cervical cap is still covering the cervix and insert more spermicide deep into your vagina. The cervical cap must stay in place for 6 hours after sex and should not be left in longer than 48 hours.

Effectiveness for women who have never been pregnant or given birth vaginally: 14 in 100 women who use the cervical cap will become pregnant each year.

Effectiveness for women who have given birth vaginally: 29 in 100 women who use the cervical cap will become pregnant each year.

CONDOM¹

Male condoms are made of latex or plastic and are worn on the penis during intercourse. Condoms prevent pregnancy by preventing sperm from entering the vagina. Condoms are non-prescription and available at drugstores, health centers, or grocery stores.

Effectiveness: 2 in 100 women whose partners use condoms will become pregnant each year with perfect use. With typical use, 18 in 100 women whose partners use condoms will become pregnant each year.

VAGINAL SPONGE¹

The vaginal sponge is made of plastic foam and contains spermicide. The vaginal sponge should be inserted before intercourse deep into the vagina so that it covers the cervix. The vaginal sponge continuously releases a spermicide and blocks sperm from entering the uterus. The vaginal sponge can be inserted up to 24 hours before intercourse and must stay in place for 6 hours after sex. It should not be left in place longer than 30 hours.

Effectiveness for women who have never given birth: 9 in 100 women will become pregnant each year with perfect use. With typical use, 12 in 100 women will become pregnant each year.

Effectiveness for women who have previously given birth: 20 in 100 will become pregnant each year with perfect use. With typical use, 24 in 100 will become pregnant each year.

HEAD:

PATIENT SELF-EVALUATION

COPY:

Now that you have read the **Do Your P.A.R.T.**[™] brochure and talked with your doctor about SORIATANE and its risks, please use this self-evaluation exercise to test your understanding of some of the most important points.

Please choose the best answer for each of the following 7 questions.

1. Treatment with SORIATANE requires prevention of pregnancy because:
 - a. Severe psoriasis may get worse after pregnancy
 - b. SORIATANE can cause birth defects
 - c. Psoriasis is more likely in children of psoriasis patients
 - d. None of the above

2. Before starting treatment with SORIATANE, it is important to be certain I am not pregnant. To be certain, I must:
 - a. Test my urine at home with 2 pregnancy test kits
 - b. Have my doctor order 2 pregnancy tests, 2 weeks apart
 - c. Have my doctor do a screening test for pregnancy when we decide to treat me with SORIATANE, and then test for pregnancy again during the first 5 days of my period (or at least 11 days after the last time I had sex without birth control) to confirm I am not pregnant
 - d. Not have sex for one month

3. I must start using 2 effective forms of birth control:
 - a. At least 1 month before starting SORIATANE
 - b. At the time I take the first dose of SORIATANE
 - c. After my period ends
 - d. Now

4. I must continue using 2 effective forms of birth control:
 - a. As long as I continue to take SORIATANE
 - b. For 1 year after I stop taking SORIATANE
 - c. For 3 years after I stop taking SORIATANE
 - d. Until menopause

5. True or False? (circle one) T F
It is important to avoid alcohol while taking SORIATANE and for 2 months after stopping SORIATANE because alcohol can change SORIATANE into another substance that may also cause birth defects, and that lasts in the body for even longer than SORIATANE.

6. True or False? (circle one) T F
A female patient with severe psoriasis has used birth control pills for 7 years after her last child was born and they have worked just fine. She still needs to add a second method of birth control before starting treatment with SORIATANE.

7. True or False? (circle one) T F

Avoiding pregnancy during and after treatment with SORIATANE is equally the responsibility of my doctor, my partner, and me.

HEAD:

ANSWERS

COPY:

1. b

While a and c are both true, the reason pregnancy prevention is required is because SORIATANE can cause birth defects which can be severe. SORIATANE stays in the body for a long time, so you should not get pregnant for at least 3 years after stopping treatment. If you think you may want to become pregnant in the near future, you should NOT take SORIATANE.

2. c

When we talk about "2 negative pregnancy tests," we mean a screening test and then a confirmation test during your period. Both tests must be negative BEFORE starting SORIATANE. It is important to be sure you are not pregnant because SORIATANE could harm your developing baby.

3. a

It is important to be sure you have made the right choice of birth control for you and are comfortable using the 2 forms of birth control. If cooperation from your partner is involved, as with condoms, you need to be certain you both understand and accept the requirement to use condoms every time you have sex. Starting 1 month before SORIATANE also helps ensure you are not pregnant. If you and your doctor have decided SORIATANE is right for you, now is a good time to start using 2 forms of birth control, but you must use them for at least 1 month before starting SORIATANE.

4. c

Because SORIATANE remains in your body for a long time after you stop taking the drug, the risk of birth defects continues and you must not get pregnant for at least 3 years after stopping SORIATANE.

5. TRUE

Even a small amount of alcohol can affect how the body handles SORIATANE.

6. TRUE

Every method of birth control can fail, including birth control pills. Because the risk of birth defects with exposure to SORIATANE is so serious, 2 reliable methods are recommended.

7. FALSE

Only you can truly prevent pregnancy. While your doctor will give you information, refer you to counseling, and encourage you to make the right decision, and your partner's cooperation and support with birth control methods is essential, the success of pregnancy prevention during and after treatment is your responsibility.

SCORING:

7 correct? Well done!

If you got any question wrong, please review the brochure again and make sure you understand. Thank you!

Please be sure to discuss any questions or concerns you may have with your doctor before starting treatment with SORIATANE. Other treatment options should be used if you are not willing or able to take seriously the responsibility for pregnancy prevention and actively follow all recommendations.

EIGHTH INSIDE SPREAD/RIGHT [PAGE 15]

YOUR PERSONAL RECORD

NAME: _____

You **MUST** have 2 negative pregnancy tests performed by your doctor that show you are **NOT** pregnant before starting therapy with SORIATANE.

The first test will be at the time that you and your doctor decide that SORIATANE might be right for you.

1 TEST DATE _____ TEST RESULT _____

The second test will usually be done during the first 5 days of your menstrual period . If the second pregnancy test is negative, initiation of treatment with SORIATANE should begin within 7 days of the specimen collection. SORIATANE should be limited to a monthly supply.

2 START OF MENSTRUAL PERIOD _____

TEST DATE _____ TEST RESULT _____

DATE THERAPY WITH SORIATANE BEGAN _____

FOLLOW-UP APPOINTMENTS

DATE _____ TIME _____

DATE _____ TIME _____

DATE _____ TIME _____

DATE _____ TIME _____

DATE _____ TIME _____

DATE _____ TIME _____

DATE _____ TIME _____

DATE _____ TIME _____

DATE _____ TIME _____

DATE _____ TIME _____

DATE _____ TIME _____

DATE _____ TIME _____

DATE THERAPY WITH SORLATANE STOPPED _____

FOLLOW-UP APPOINTMENTS

DATE _____ TIME _____

DATE _____ TIME _____

DATE _____ TIME _____

DATE _____ TIME _____

DATE _____ TIME _____

DATE _____ TIME _____

DATE _____ TIME _____

DATE _____ TIME _____

DATE _____ TIME _____

DATE _____ TIME _____

DATE _____ TIME _____

DATE _____ TIME _____

NINTH INSIDE SPREAD/LEFT [PAGE 16]

NOTES/PERSONAL CONTACT INFORMATION

PHYSICIAN NAME:

PHYSICIAN PHONE:

PHARMACY NAME:

2. The North American Menopause Society: Menopause 101. Available at: <http://www.menopause.org/for-women>. Accessed February 15, 2017.
3. MedlinePlus: Hysterectomy. Available at: <http://www.nlm.nih.gov/medlineplus/hysterectomy.html>. Accessed February 15, 2017.

- Yes
- No, but someone else from my doctor's office did
- No, no one answered my questions
- I don't know / I don't remember

5. Did you complete and sign the Patient Agreement/Informed Consent for Female Patients form in the doctor's office? (Choose only one)

- Yes
- No
- I don't know / I don't remember

6. Did you receive and read the contraception counseling referral form? (Choose only one)

- Yes, I received and read it
- Yes, I received but have not yet read it
- No
- I don't know / I don't remember

7. Are you currently taking SORIATANE®? (Choose only one)

- No [SKIP TO Question # 9]
- Yes [GO TO Next Question]

8. When did you start your current therapy with SORIATANE? (Enter approximate month and year)

/ [SKIP TO Question # 12]
(Month) (Year)

9. Read the responses below and choose the best answer: (Choose only one)

- I have not yet started therapy with SORIATANE [GO TO Question # 10]
- I have stopped taking SORIATANE [SKIP TO Question # 11]

10. When do you plan to BEGIN taking SORIATANE? (Enter the approximate month and year)

/ [SKIP TO Question # 13]
(Month) (Year)

11. What date did you STOP taking SORIATANE? (Enter the approximate month and year)

/ [GO TO Next Question]
(Month) (Year)

12. Were you pregnant when you BEGAN taking SORIATANE? (Choose only one)

- No
- Yes
- Don't know

13. Did you have two negative pregnancy tests before receiving your first prescription for SORIATANE? (Choose only one)

- No [GO TO Next Question]
- Yes [GO TO Next Question]
- I don't know [GO TO Next Question]
- I have not received my first prescription yet [SKIP TO Question # 20]

14. Where do you obtain your SORIATANE? (Check all that apply)

- Pharmacy
- Internet
- Other (specify): _____

15. Removing the womb (uterus) is sometimes medically necessary, and is called a hysterectomy. Since you have been on SORIATANE have you had a hysterectomy? (Choose only one.)

- No
- I don't know
- Yes (If Yes, enter the approximate month and year below)

/
(Month) (Year)

16. Since you have been on SORIATANE have you had both ovaries surgically removed? (Choose only one.)

- No
- I don't know
- Yes (If Yes, enter the approximate month and year below)

/
(Month) (Year)

17. Since you have been on SORIATANE has your doctor told you that your ovaries stopped working and that you are in menopause? (Choose only one.)

- No
- I don't know
- Yes (If Yes, enter the approximate month and year below)

/
(Month) (Year)

18. Have you become pregnant since obtaining/taking your SORIATANE? (Choose only one)

- No
- I don't know
- Yes (If Yes, enter the approximate month and year of the most recent pregnancy below)

/
(Month) (Year)

19. Since beginning treatment with SORIATANE, how often would you say that you used two effective and different forms of birth control (as described in the *Do Your P.A.R.T.*™ program) for each episode of sexual intercourse?

- Never
- Not very often
- Sometimes
- Often
- Always

20. Are you currently using 2 effective and different forms of birth control at each episode of sexual intercourse?

- Yes

- No
- I Don't Know

If Yes, please identify forms of birth control currently used (check all that apply):

- | | |
|---|--|
| <input type="checkbox"/> Birth control patch | <input type="checkbox"/> Tubal ligation |
| <input type="checkbox"/> Birth control pills (contains estrogen and progesterone) | <input type="checkbox"/> Vasectomy |
| <input type="checkbox"/> Birth control progestin-only mini-pill | <input type="checkbox"/> Condoms |
| <input type="checkbox"/> Injected hormonal birth control | <input type="checkbox"/> Diaphragm |
| <input type="checkbox"/> Inserted hormonal birth control | <input type="checkbox"/> Cervical Cap |
| <input type="checkbox"/> Implanted hormonal birth control | <input type="checkbox"/> Spermicide |
| <input type="checkbox"/> Intrauterine Device (IUD) | <input type="checkbox"/> Sponge |
| <input type="checkbox"/> Abstinence | <input type="checkbox"/> Natural family planning |
| <input type="checkbox"/> Withdrawal | |
| <input type="checkbox"/> None | method |
| <input type="checkbox"/> Other | <input type="checkbox"/> Emergency contraception |
- (specify): _____

21. How often are you given a pregnancy test? (Choose only one)

- Once a month
- Every other month
- Once every three months
- Once every six months
- Once a year
- Never
- Don't know

22. To the best of your knowledge, enter the approximate month and year of your last pregnancy test that was performed.

/

(Month) (Year)

- Check here if you can't remember

23. Are you pregnant now? (Choose only one)

- No
- Yes
- Don't know

INSTRUCTIONS: In this section, there are four statements that could be either True or False. Test your knowledge by reading each statement and determine if it is true or false. Choose only one answer for each statement.

24. Because of the risk of birth defects from SORIATANE, you need to start using two forms of birth control at least 1 month before you begin taking SORIATANE, for your entire treatment with SORIATANE, and for 3 years after you stop taking SORIATANE.

- False
- True

25. Alcohol (even small amounts contained in medicines or used in cooking) can increase the length of time SORIATANE is stored in a woman's body, causing the risk of birth defects as long as 3 years after stopping SORIATANE.

- False
- True

26. Because of the risk of birth defects, it is important that women of reproductive potential do not drink alcohol during treatment with SORIATANE, and for two months after they stop treatment.

- False
- True

27. No person (male or female) should donate blood while taking SORIATANE and for at least 3 years after stopping therapy.

- False
- True

28. How would you like to complete future surveys? (Choose only one)

- Paper form (mailed)
- Internet (web-based)

END OF SURVEY – THANK YOU!

Please return the survey to:

SORIATANE® Do Your P.A.R.T.™ Survey

5150 McCrimmon Parkway

Morrisville, NC 27560



©2017 Stiefel Laboratories, Inc. All rights reserved. Printed in USA. SRN:XX##

Rev 09/2017

PATIENT AGREEMENT/INFORMED CONSENT FOR FEMALE PATIENTS

To be completed by the patient* and signed by her prescriber

CAUSES BIRTH
DEFECTS



DO NOT GET
PREGNANT

*Must also be initialed by the parent or guardian of a minor patient (under age 18)
Read each item below and initial in the space provided to show that you understand each item. **Do not sign this consent and do not take SORIATANE® (acitretin) if there is anything that you do not understand.**

(Patient's name)

1. I understand that there is a very high risk that my unborn baby could have severe birth defects if I am pregnant or become pregnant while taking SORIATANE in any amount even for short periods of time. Birth defects have also happened in babies of women who became pregnant after stopping treatment with SORIATANE.

INITIAL: _____

2. I understand that I must not become pregnant while taking SORIATANE and for at least 3 years after the end of my treatment with SORIATANE.

INITIAL: _____

3. I know that I must avoid all alcohol, including drinks, food, medicines, and over-the-counter products that contain alcohol. I understand that the risk of birth defects may last longer than 3 years if I swallow any form of alcohol during therapy with SORIATANE, and for 2 months after I stop taking SORIATANE.

INITIAL: _____

4. I understand that I must not have sexual intercourse, or I must use 2 separate, effective forms of birth control **at the same time**. The only exceptions are if I have had surgery to remove the womb (a hysterectomy) or my prescriber has told me I have gone completely through menopause.

INITIAL: _____

5. I understand that I have to use 2 effective forms of birth control (contraception) at the same time for at least 1 month before starting SORIATANE, for the entire time of therapy with SORIATANE, and for at least 3 years after stopping SORIATANE.

INITIAL: _____

6. I understand that any form of birth control can fail. Therefore, I must use 2 different methods at the same time, every time I have sexual intercourse.

INITIAL: _____

7. I understand that the following are considered effective forms of birth control: Primary: Tubal ligation (having my tubes tied), partner's vasectomy, birth control pills (not progestin-only "minipills"), injectable/implantable/insertable/topical (patch) hormonal birth control products, and IUDs (intrauterine devices). Secondary: Condoms (with or without spermicide, which is a special cream or jelly that kills sperm), diaphragms and cervical caps (which must be used with a spermicide), and vaginal sponges (contain spermicide). I understand that at least 1 of my 2 methods of birth control must be a primary method.

INITIAL: _____

8. I will talk with my prescriber about any medicines or dietary supplements I plan to take while taking SORIATANE because certain birth control methods may not work if I am taking certain medicines or herbal products (for example, St. John's wort).
INITIAL: _____

9. Unless I have had a hysterectomy or my prescriber says I have gone completely through menopause, I understand that I must have 2 negative pregnancy test results before I can get a prescription to start SORIATANE. I understand that if the second pregnancy test is negative, I must start taking my SORIATANE within 7 days of specimen collection. I will then have pregnancy tests on a monthly basis during therapy with SORIATANE as instructed by my prescriber. In addition, for at least 3 years after I stop taking SORIATANE, I will have a pregnancy test every 3 months.
INITIAL: _____

10. I understand that I should not start taking SORIATANE until I am *sure* that I am not pregnant and have negative results from 2 pregnancy tests.
INITIAL: _____

11. I have received information on emergency contraception (birth control), including information on its availability over-the-counter.
INITIAL: _____

12. I understand that my prescriber can give me a referral for a free contraception (birth control) counseling session and pregnancy testing.
INITIAL: _____

13. I understand that on a monthly basis during therapy with SORIATANE and every 3 months for at least 3 years after stopping SORIATANE that I should receive counseling from my prescriber about contraception (birth control) and behaviors associated with an increased risk of pregnancy.
INITIAL: _____

14. I understand that I must stop taking SORIATANE right away and call my prescriber if I get pregnant, miss my menstrual period, stop using birth control, or have sexual intercourse without using my 2 birth control methods during and at least 3 years after stopping SORIATANE.
INITIAL: _____

15. If I do become pregnant while on SORIATANE or at any time within 3 years of stopping SORIATANE, I understand that I should report my pregnancy to Stiefel at 1-888-784-3335 (1-888-STIEFEL) or to the Food and Drug Administration (FDA) MedWatch program at 1-800-FDA-1088. The information I share will be kept confidential (private) unless disclosure is legally required. This will help the company and the FDA evaluate the pregnancy prevention program to prevent birth defects.
INITIAL: _____

I have received a copy of the Do Your P.A.R.T.™ brochure. My prescriber has answered all my questions about SORIATANE. I understand that it is my responsibility to follow my doctor's instructions, and not to get pregnant during treatment with SORIATANE or for at least 3 years after I stop taking SORIATANE.

I now authorize my prescriber, _____, to begin my treatment with SORIATANE.

Patient signature: _____ Date: _____

Parent/guardian signature (if under age 18): _____ Date: _____

Please print: Patient name and address:

Telephone: _____

I have fully explained to the patient, _____, the nature and purpose of the treatment described above and the risks to females of childbearing potential. I have asked the patient if she has any questions regarding her treatment with SORIATANE and have answered those questions to the best of my ability.

Prescriber signature: _____ Date: _____

[Patient Copy]



©2017 Stiefel Laboratories, Inc. All rights reserved. Printed in USA. SRN:XX## Rev 09/2017

PATIENT AGREEMENT/INFORMED CONSENT FOR FEMALE PATIENTS

To be completed by the patient* and signed by her prescriber

CAUSES BIRTH
DEFECTS



DO NOT GET
PREGNANT

*Must also be initialed by the parent or guardian of a minor patient (under age 18)
Read each item below and initial in the space provided to show that you understand each item. **Do not sign this consent and do not take SORIATANE® (acitretin) if there is anything that you do not understand.**

(Patient's name)

1. I understand that there is a very high risk that my unborn baby could have severe birth defects if I am pregnant or become pregnant while taking SORIATANE in any amount even for short periods of time. Birth defects have also happened in babies of women who became pregnant after stopping treatment with SORIATANE.

INITIAL: _____

2. I understand that I must not become pregnant while taking SORIATANE and for at least 3 years after the end of my treatment with SORIATANE.

INITIAL: _____

3. I know that I must avoid all alcohol, including drinks, food, medicines, and over-the-counter products that contain alcohol. I understand that the risk of birth defects may last longer than 3 years if I swallow any form of alcohol during therapy with SORIATANE, and for 2 months after I stop taking SORIATANE.

INITIAL: _____

4. I understand that I must not have sexual intercourse, or I must use 2 separate, effective forms of birth control **at the same time**. The only exceptions are if I have had surgery to remove the womb (a hysterectomy) or my prescriber has told me I have gone completely through menopause.

INITIAL: _____

5. I understand that I have to use 2 effective forms of birth control (contraception) at the same time for at least 1 month before starting SORIATANE, for the entire time of therapy with SORIATANE, and for at least 3 years after stopping SORIATANE.

INITIAL: _____

6. I understand that any form of birth control can fail. Therefore, I must use 2 different methods at the same time, every time I have sexual intercourse.

INITIAL: _____

7. I understand that the following are considered effective forms of birth control: Primary: Tubal ligation (having my tubes tied), partner's vasectomy, birth control pills (not progestin-only "minipills"), injectable/implantable/insertable/topical (patch) hormonal birth control products, and IUDs (intrauterine devices). Secondary: Condoms (with or without spermicide, which is a special cream or jelly that kills sperm), diaphragms and cervical caps (which must be used with a spermicide), and vaginal sponges (contain spermicide). I understand that at least 1 of my 2 methods of birth control must be a primary method.

INITIAL: _____

8. I will talk with my prescriber about any medicines or dietary supplements I plan to take while taking SORIATANE because certain birth control methods may not work if I am taking certain medicines or herbal products (for example, St. John's wort).

INITIAL: _____

9. Unless I have had a hysterectomy or my prescriber says I have gone completely through menopause, I understand that I must have 2 negative pregnancy test results before I can get a prescription to start SORIATANE. I understand that if the second pregnancy test is negative, I must start taking my SORIATANE within 7 days of the specimen collection. I will then have pregnancy tests on a monthly basis during therapy with SORIATANE as instructed by my prescriber. In addition, for at least 3 years after I stop taking SORIATANE, I will have a pregnancy test every 3 months.

INITIAL: _____

10. I understand that I should not start taking SORIATANE until I am *sure* that I am not pregnant and have negative results from 2 pregnancy tests.

INITIAL: _____

11. I have received information on emergency contraception (birth control), including information on its availability over-the-counter.

INITIAL: _____

12. I understand that my prescriber can give me a referral for a free contraception (birth control) counseling session and pregnancy testing.

INITIAL: _____

13. I understand that on a monthly basis during therapy with SORIATANE and every 3 months for at least 3 years after stopping SORIATANE that I should receive counseling from my prescriber about contraception (birth control) and behaviors associated with an increased risk of pregnancy.

INITIAL: _____

14. I understand that I must stop taking SORIATANE right away and call my prescriber if I get pregnant, miss my menstrual period, stop using birth control, or have sexual intercourse without using my 2 birth control methods during and at least 3 years after stopping SORIATANE.

INITIAL: _____

15. If I do become pregnant while on SORIATANE or at any time within 3 years of stopping SORIATANE, I understand that I should report my pregnancy to Stiefel at 1-888-784-3335 (1-888-STIEFEL) or to the Food and Drug Administration (FDA) MedWatch program at 1-800-FDA-1088. The information I share will be kept confidential (private) unless disclosure is legally required. This will help the company and the FDA evaluate the pregnancy prevention program to prevent birth defects.

INITIAL: _____

I have received a copy of the Do Your P.A.R.T.™ brochure. My prescriber has answered all my questions about SORIATANE. I understand that it is my responsibility to follow my doctor's instructions, and not to get pregnant during treatment with SORIATANE or for at least 3 years after I stop taking SORIATANE.

I now authorize my prescriber, _____, to begin my treatment with SORIATANE.

Patient signature: _____ Date: _____

Parent/guardian signature (if under age 18): _____

Date: _____

Please print: Patient name and address:

Telephone: _____

I have fully explained to the patient, _____, the nature and purpose of the treatment described above and the risks to females of childbearing potential. I have asked the patient if she has any questions regarding her treatment with SORIATANE and have answered those questions to the best of my ability.

Prescriber signature: _____ Date: _____

[Prescriber Copy]



©2017 Stiefel Laboratories, Inc. All rights reserved. Printed in USA. SRN:XX## Rev 09/2017

The SORIATANE Do Your P.A.R.T.™ Survey: Patient Brochure Copy

Tri-Fold Brochure Panel Reference:

Printed Side: Front

| | | |
|-----------------------------------|----------------------------|-----------------------------|
| Panel 1: Inside Fold Panel | Panel 2: Back Panel | Panel 3: Front Panel |
|-----------------------------------|----------------------------|-----------------------------|

Printed Side: Back

| | | |
|-----------------------------------|-------------------------------------|------------------------------------|
| Panel 4: Inside Left Panel | Panel 5: Inside Center Panel | Panel 6: Inside Right Panel |
|-----------------------------------|-------------------------------------|------------------------------------|

Panel 1: Inside Fold Panel

[GRAPHIC: Woman of child bearing potential]

What is the SORIATANE® (acitretin) Do Your P.A.R.T.™ Patient Survey?

The SORIATANE Survey is a short, easy-to-answer questionnaire about your use of SORIATANE, pregnancy prevention and your understanding of the risks associated with using SORIATANE. The questions are very similar to the topics that you have already discussed with your doctor or nurse.

The survey is voluntary, but all women who have the potential to become pregnant while taking SORIATANE and for three years after they stop taking SORIATANE are being asked to participate.

Panel 2: Back Panel

For more information, visit the SORIATANE® (*acitretin*) **Do Your P.A.R.T.**™ website at www.soriatane.com.

HELPFUL PHONE NUMBERS:

BIRTH CONTROL COUNSELING: 1-800-739-6700

IF YOU BECOME PREGNANT OR HAVE A SIDE EFFECT FROM TAKING SORIATANE: 1-888-784-3335 (1-888-STIEFEL) OR 1-800-332-1088 (1-800-FDA-1088)

[Soriatane Logo]



CAUSES BIRTH DEFECTS



DO NOT GET PREGNANT

©201x Stiefel Laboratories, Inc. All rights reserved. Printed in USA. SRN:XX## Rev Date

Panel 3: Front Panel

[GRAPHIC: Photograph of woman of child bearing potential]

The SORIATANE® (*acitretin*) **Do Your P.A.R.T.**™ Survey: A Patient's Guide to Participation
Pregnancy Prevention **Actively Required** During & After Treatment

[GRAPHIC: Soriatane logo]

Panel 4: Inside Left Panel[Graphic: Woman of Child-bearing potential]

Why Should You Participate?

Your doctor has asked you to participate in the SORIATANE® (*acitretin*) Survey because you are able to become pregnant and were prescribed SORIATANE.

Your participation will be simple: you will periodically complete a short survey questionnaire while you are taking SORIATANE and for three years after you stop.

Panel 5: Inside Center Panel

[Graphic Woman of Child-Bearing Potential]
Your Participation in the Survey

We will contact you each time the survey is to be completed – you won't have to remember! You will have the option of completing the survey on paper or via the internet at the SORIATANE® (*acitretin*) Survey website. Completing the survey will only take a few minutes.

While you are taking SORIATANE, you will be asked to complete a brief survey once every three months.

After you stop taking SORIATANE, you will be asked to complete the survey two times a year for three years.

You will be paid for your time after you complete each survey.

[GRAPHIC: Participation timeline]

Panel 6: Inside Right Panel

[Graphic: Woman of Child-Bearing Potential]

Your Privacy

We understand the importance of your privacy. Your participation in the SORIATANE® (*acitretin*) Survey is completely confidential. Only the researchers and those working with the researchers managing the survey will know your identity. Your name and contact information will not be shared with others, and the answers you provide will never be identified with you in any presentation of the survey results.

How to Contact Us

If you have questions about the SORIATANE **Do Your P.A.R.T.**™ survey, please call 1-877-351-5495.

Please see the back of this brochure for phone numbers to report a side effect or pregnancy, or for information about birth control or contraception.

Thank You

Thank you for participating in the SORIATANE Survey. The information you provide will help ensure the safe use of SORIATANE now and in the future.

[GRAPHIC: Soriatane logo]