

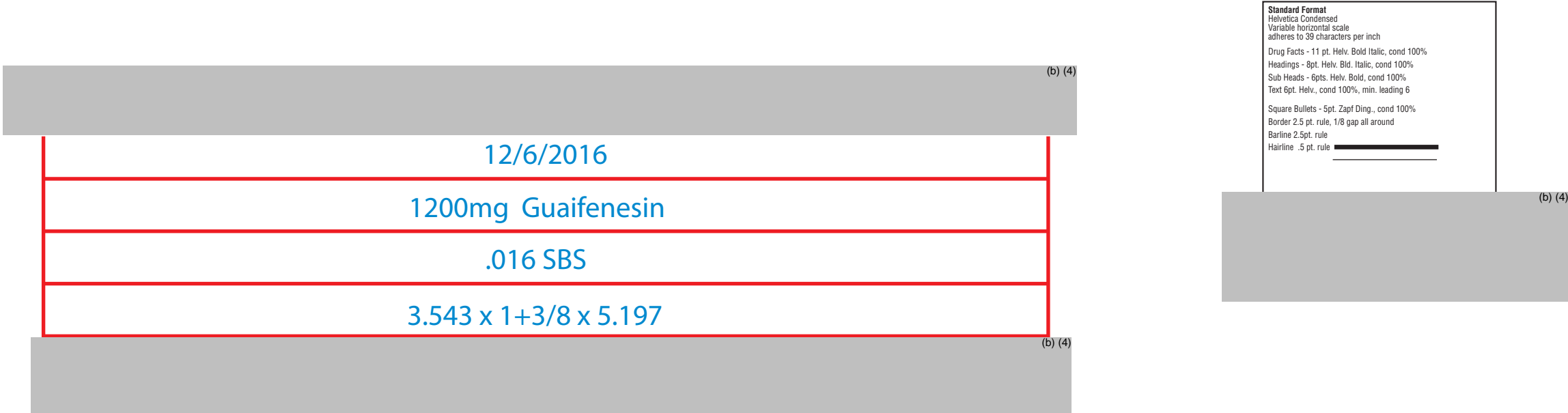
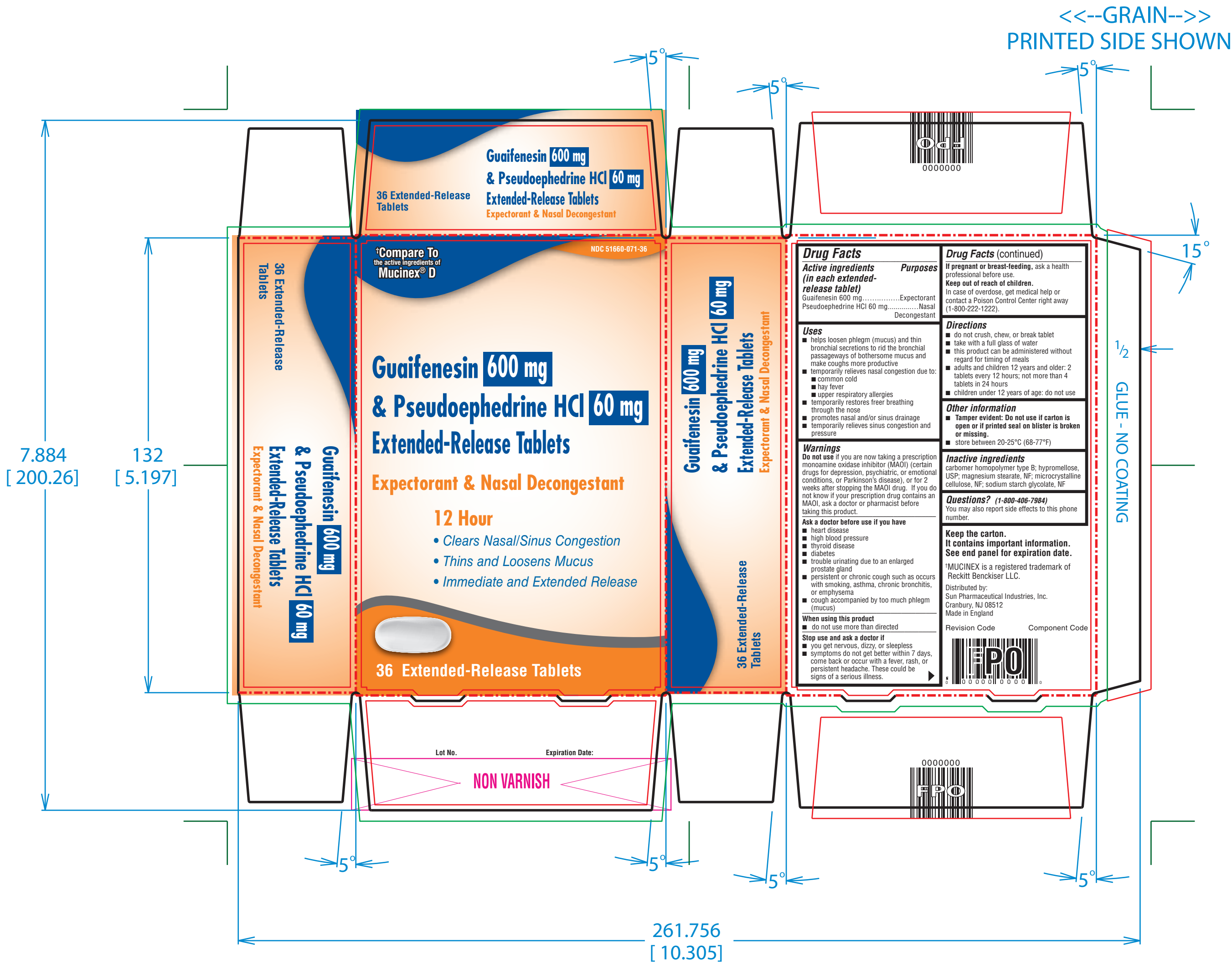
(b) (4)	
11/29/2016	
600 MG GUAIFENESIN	
.016 SBS	
3.543 x 0.748 x 5.197	
(b) (4)	

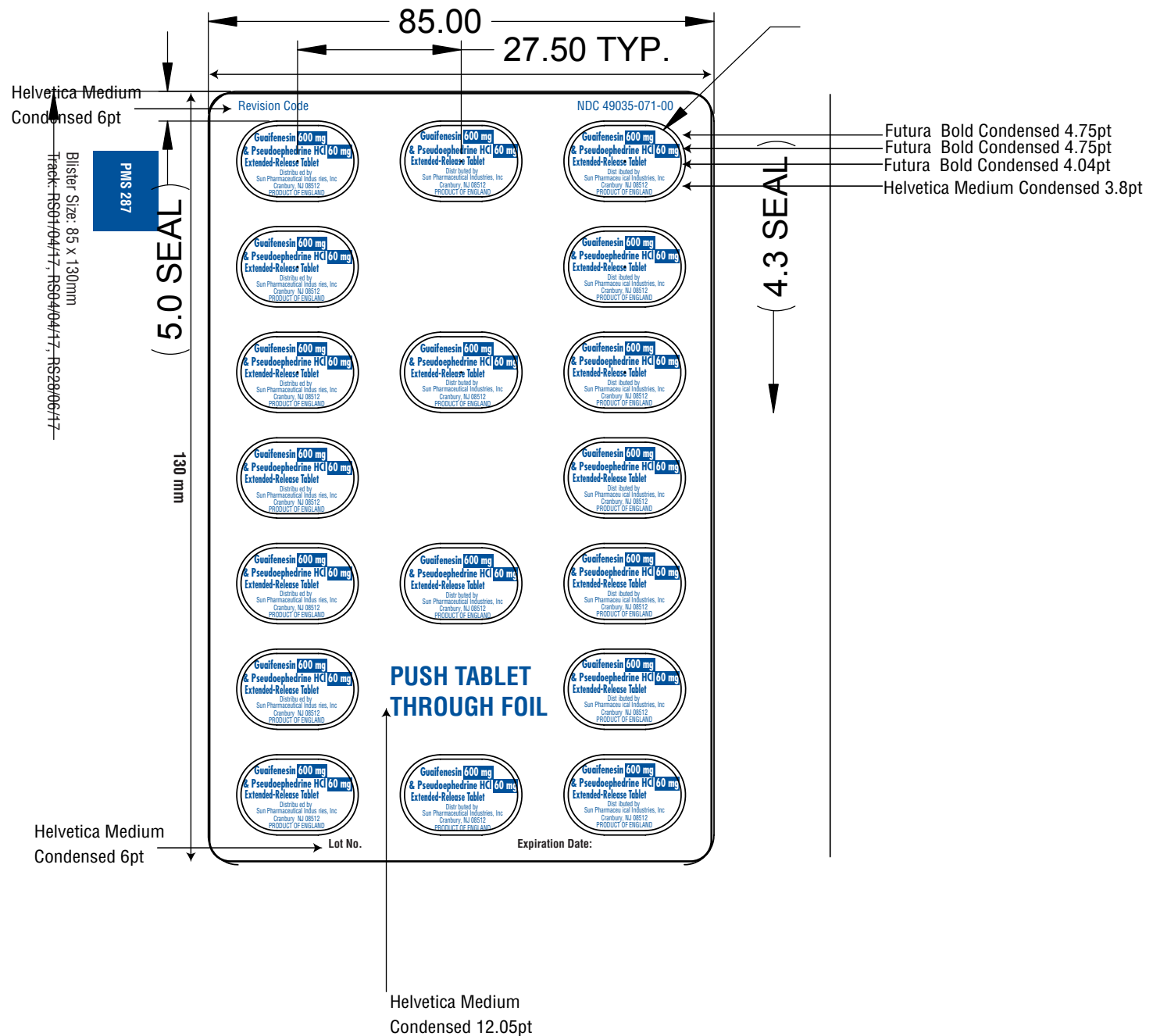
Standard Format
Helvetica Condensed
Variable horizontal scale
adheres to 39 characters per inch

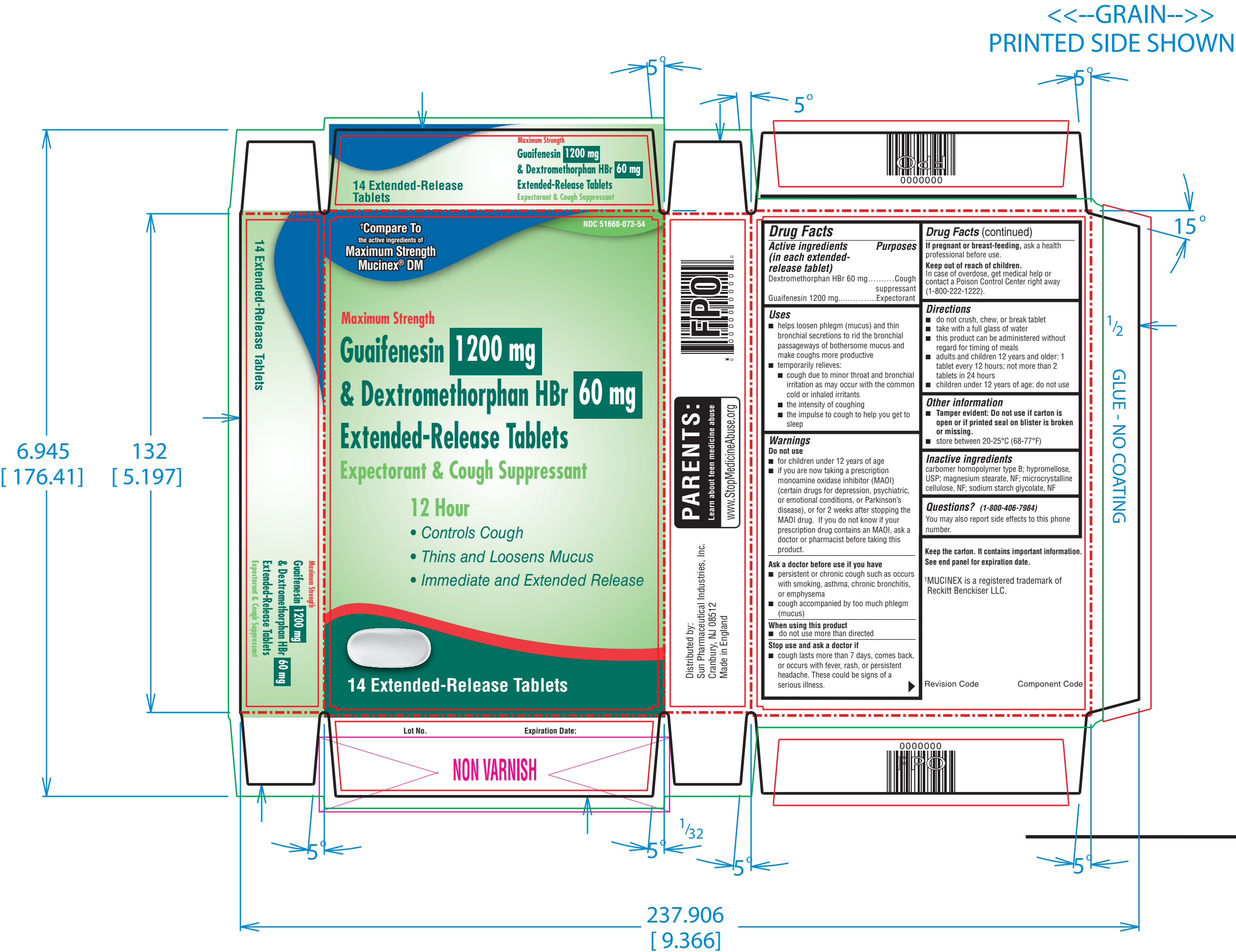
Drug Facts - 11 pt. Helv. Bold Italic, cond 100%
Headings - 8pt. Helv. Bid. Italic, cond 100%
Sub Heads - 6pts. Helv. Bold, cond 100%
Text 6pt. Helv., cond 100%, min. leading 6

Square Bullets - 5pt. Zapf Ding., cond 100%
Border 2.5 pt. rule, 1/8 gap all around
Barline 2.5pt. rule
Hairline .5 pt. rule

(b) (4)







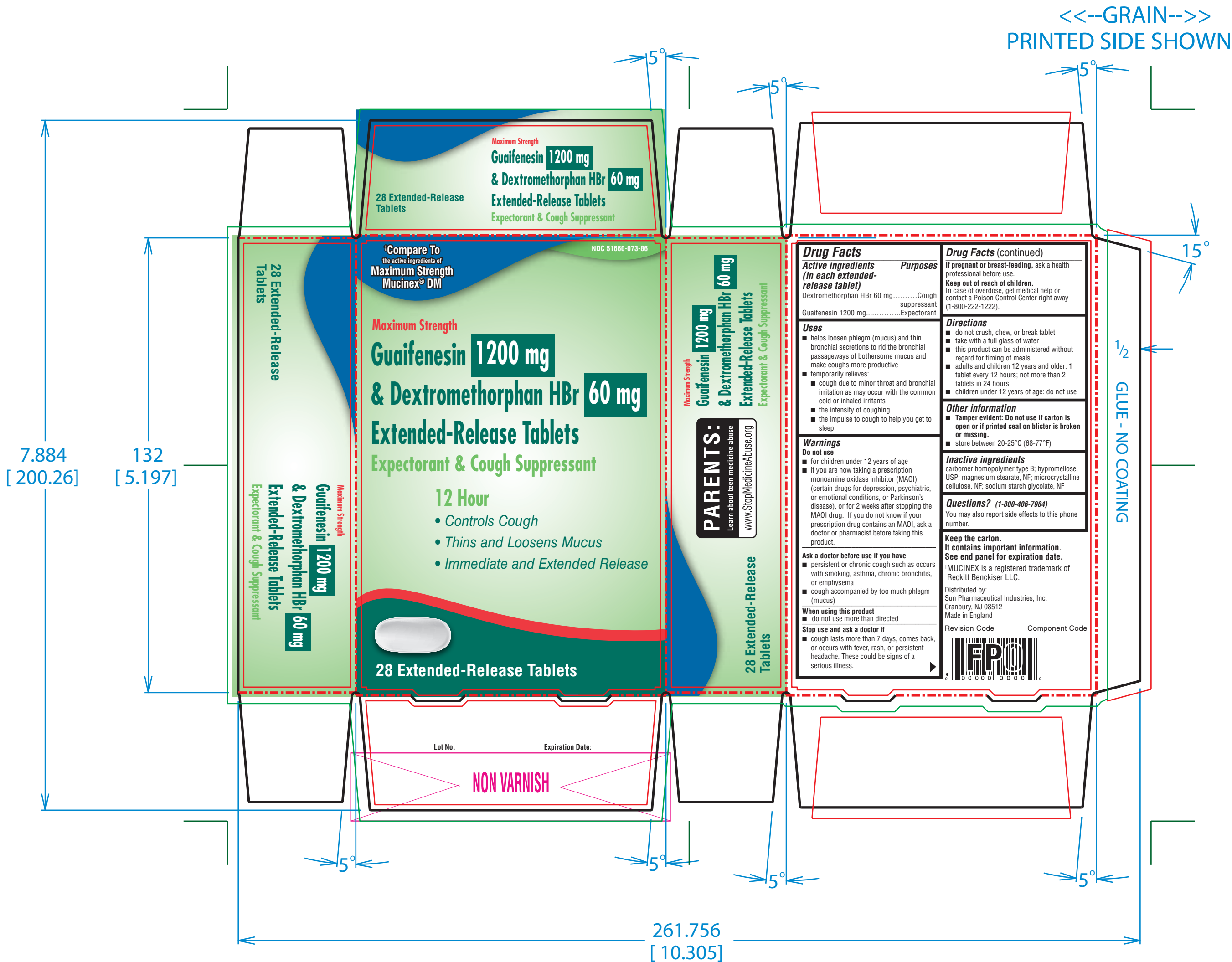
(b) (4)	
11/29/2016	
1200 MG GUAIFENESIN	
.016 SBS	
3.543 x 0.906 x 5.197	
(b) (4)	

Standard Format
Helvetica Condensed
Variable horizontal scale
adheres to 38 characters per inch

Drug Facts - 11 pt. Helv. Bold Italic, cond 100%
Headings - 8pt. Helv. Bld. Italic, cond 100%
Sub Heads - 6pts. Helv. Bold, cond 100%
Text 6pt. Helv., cond 100%, min. leading 6

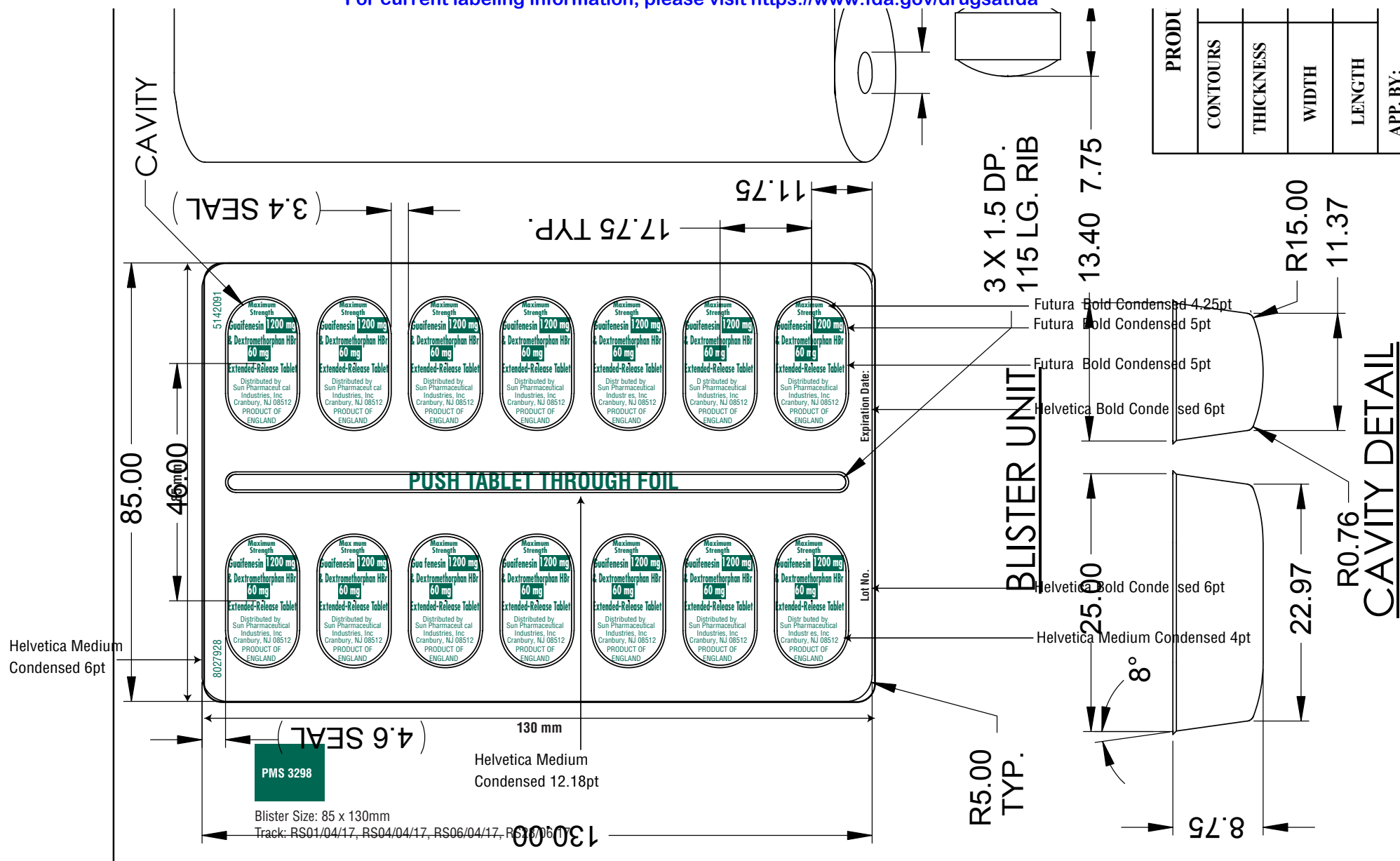
Square Bullets - 5pt. Zapf Ding., cond 100%
Border 2.5 pt. rule, 1/8 gap all around
Barline 2.5pt. rule
Hairline .5 pt. rule

(b) (4)



(b) (4)	
12/6/2016	
1200mg Guaifenesin	
.016 SBS	
3.543 x 1+3/8 x 5.197	
J61600A	

(b) (4)	
Standard Format Helvetica Condensed Variable horizontal scale adheres to 39 characters per inch Drug Facts - 11 pt. Helv. Bold Italic, cond 100% Headings - 8pt. Helv. Bld. Italic, cond 100% Sub-Heads - 6pts. Helv. Bold, cond 100% Text 6pt. Helv., cond 100%, min. leading 6 Square Bullets - 5pt. Zapf Ding., cond 100% Border 2.5 pt. rule, 1/8 gap all around Barline 2.5pt. rule Hairline .5 pt. rule	
(b) (4)	



This is a representation of an electronic record that was signed electronically and this page is the manifestation of the electronic signature.

/s/

THERESA M MICHELE
07/13/2017