

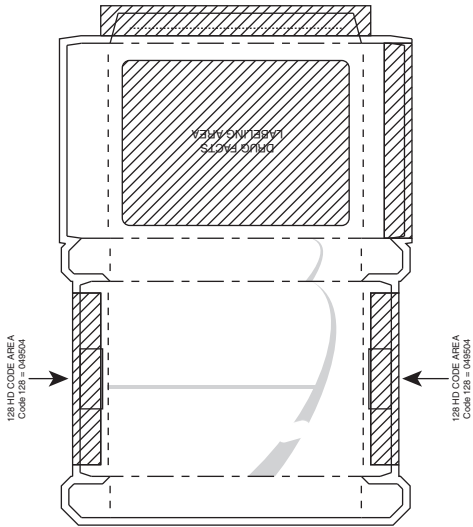


PRODUCTION

(NOT COLOR ACCURATE)

(b) (4)

Silver Foil Stamp



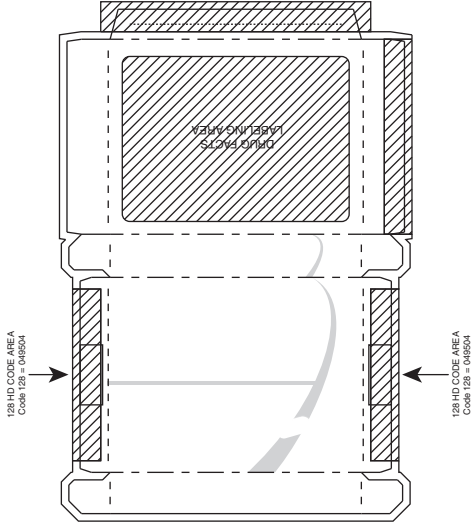


PRODUCTION

(NOT COLOR ACCURATE)

(b) (4)

Silver Foil Stamp



090177e18bb9f45d\Final\Final On: 15-Apr-2017 20:27 (GMT)

PANEL 1

3/16" x 3/16" DATA MATRIX CODE (ECC200),
PRINTED IN BLACK OR DARK BLUE ON
UNPRINTED WHITE BACKGROUND
DATA MATRIX CODE = 085890

PAA085890.FDA02

READ AND KEEP CARTON FOR COMPLETE WARNINGS AND INFORMATION

Drug Facts

Active ingredients (in each tablet) Purposes
Chlorpheniramine maleate 4 mg Antihistamine
Ibuprofen 200 mg (NSAID)* Pain reliever/Fever reducer
Phenylephrine HCl 10 mg..... Nasal decongestant
*nonsteroidal anti-inflammatory drug

Uses

■ temporarily relieves these symptoms associated with the common cold or flu:
■ headache ■ fever
■ minor body aches and pains
■ nasal congestion ■ runny nose
■ sinus pressure ■ sneezing
■ reduces swelling of the nasal passages
■ temporarily restores freer breathing through the nose

Warnings

Allergy alert: Ibuprofen may cause a severe allergic reaction, especially in people allergic to aspirin. Symptoms may include:
■ hives ■ facial swelling ■ asthma (wheezing)
■ shock ■ skin reddening ■ rash ■ blisters
If an allergic reaction occurs, stop use and seek medical help right away.

Drug Facts (continued)

Stomach bleeding warning: This product contains an NSAID, which may cause severe stomach bleeding. The chance is higher if you:
■ are age 60 or older
■ have had stomach ulcers or bleeding problems
■ take a blood thinning (anticoagulant) or steroid drug
■ take other drugs containing prescription or nonprescription NSAIDs [aspirin, ibuprofen, naproxen, or others]
■ have 3 or more alcoholic drinks every day while using this product
■ take more or for a longer time than directed
Heart attack and stroke warning: NSAIDs, except aspirin, increase the risk of heart attack, heart failure, and stroke. These can be fatal. The risk is higher if you use more than directed or for longer than directed.

NOTE: BLACK RULE MUST PRINT.

PANEL 2

Drug Facts (continued)

Do not use
■ in children under 12 years of age
■ if you have ever had an allergic reaction to any other pain reliever/fever reducer
■ right before or after heart surgery
■ if you are now taking a prescription monoamine oxidase inhibitor (MAOI) (certain drugs for depression, psychiatric, or emotional conditions, or Parkinson's disease), or for 2 weeks after stopping the MAOI drug. If you do not know if your prescription drug contains an MAOI, ask a doctor or pharmacist before taking this product.
Ask a doctor before use if
■ you have a breathing problem such as emphysema or chronic bronchitis
■ stomach bleeding warning applies to you
■ you have problems or serious side effects from taking pain relievers or fever reducers
■ you have a history of stomach problems, such as heartburn
■ you have high blood pressure, heart disease, liver cirrhosis, kidney disease, asthma, thyroid disease, diabetes, glaucoma, have trouble urinating due to an enlarged prostate gland, or had a stroke
■ you are taking a diuretic

Drug Facts (continued)

Ask a doctor or pharmacist before use if you are
■ under a doctor's care for any serious condition
■ taking sedatives or tranquilizers
■ taking any other product that contains phenylephrine, chlorpheniramine or any other nasal decongestant or antihistamine
■ taking aspirin for heart attack or stroke, because ibuprofen may decrease this benefit of aspirin
■ taking any other drug
When using this product
■ take with food or milk if stomach upset occurs
■ avoid alcoholic drinks
■ be careful when driving a motor vehicle or operating machinery
■ drowsiness may occur
■ alcohol, sedatives, and tranquilizers may increase drowsiness
■ may cause excitability especially in children
Stop use and ask a doctor if
■ you experience any of the following signs of stomach bleeding:
■ feel faint
■ vomit blood
■ have bloody or black stools
■ have stomach pain that does not get better

HINGE AREA

BASE PANEL

Drug Facts (continued)

■ you have symptoms of heart problems or stroke:
■ chest pain
■ trouble breathing
■ weakness in one part or side of body
■ slurred speech
■ leg swelling
■ pain gets worse or lasts more than 7 days
■ fever gets worse or lasts more than 3 days
■ nasal congestion lasts for more than 7 days
■ redness or swelling is present in the painful area
■ you get nervous, dizzy, or sleepless
■ symptoms continue or get worse
■ any new symptoms appear
If pregnant or breast-feeding, ask a health professional before use. It is especially important not to use ibuprofen during the last 3 months of pregnancy unless definitely directed to do so by a doctor because it may cause problems in the unborn child or complications during delivery.
Keep out of reach of children. In case of overdose, get medical help or contact a Poison Control Center right away.

Drug Facts (continued)

Directions
■ **do not take more than directed**
■ adults and children 12 years of age and over:
■ take 1 tablet every 4 hours while symptoms persist
■ do not take more than 6 tablets in any 24-hour period, unless directed by a doctor
■ children under 12 years of age: do not use
Other information
■ read all warnings and directions before use. Keep carton.
■ store at 20-25°C (68-77°F)
■ avoid excessive heat above 40°C (104°F)
Inactive ingredients acesulfame potassium, artificial flavors, carnauba wax, colloidal silicon dioxide, corn starch, croscarmellose sodium, glycerin, glyceryl behenate, hypromellose, lactic acid, lecithin, maltodextrin, medium-chain triglycerides, microcrystalline cellulose, pharmaceutical ink, polydextrose, polyvinyl alcohol, pregelatinized starch, propyl gallate, silicon dioxide, sucralose, synthetic iron oxide, talc, titanium dioxide, triacetin, xanthan gum
Questions or comments? Call weekdays from 9 AM to 5 PM EST toll free at 1-800-88-ADVL

HINGE AREA

PRODUCTION (NOT COLOR ACCURATE)



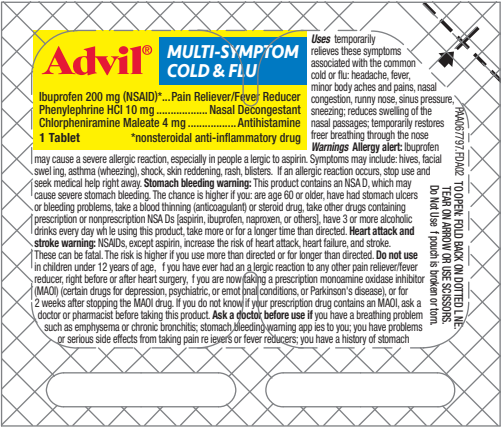
DRUG FACTS TEXT DEFINED	TYPE SIZE
• DRUG FACTS TITLE	9 pt
• DRUG FACTS CONTINUED	8 pt
• HEADINGS	8 pt
• SUBHEADINGS/BODY TEXT	6 pt
• LEADING	6.5 pt
• # OF CHARACTERS PER INCH	<39
• BULLETS	5 pt
• SPACE BEFORE BULLET	2 ems
• BARLINES, HAIRLINES	1.5 pt, .5 pt
• SPACE BETWEEN HAIRLINES AND BOX END	2 spaces



PRODUCTION (NOT COLOR ACCURATE)

DRUG FACTS TEXT DEFINED	TYPE SIZE
• DRUG FACTS TITLE	9 pt
• DRUG FACTS CONTINUED	8 pt
• HEADINGS	8 pt
• SUBHEADINGS/BODY TEXT	6 pt
• LEADING	6.5 pt
• # OF CHARACTERS PER INCH	<39
• BULLETS	5 pt
• SPACE BEFORE BULLET	2 ems
• BARLINES, HAIRLINES	1.5 pt, .5 pt
• SPACE BETWEEN HAIRLINES AND BOX END	2 spaces

090177e18b65394f\Final\Final On: 27-Feb-2017 02:59 (GMT)



FRONT

PRODUCTION (NOT COLOR ACCURATE)

(b) (4)

DRUG FACTS TEXT DEFINED	TYPE SIZE
• HEADINGS	4.5 pt
• SUBHEADINGS/BODY TEXT	4.5 pt
• LEADING	4.5 pt
• BULLETS	N/A
• SPACE BEFORE BULLET	N/A
• WARNING BOX LINE, HAIRLINES	N/A

problems, such as heartburn, you have it on going pressure, heart disease, liver cirrhosis, kidney disease, asthma, thyroid disease, diabetes, glaucoma, have trouble swallowing due to an enlarged prostate gland, or have a stroke; you are taking a diuretic. **Ack a doctor or pharmacist before use** if you are under a doctor's care for any seizure condition, taking sedatives or tranquilizers, taking any other product that contains phenylephrine, chlorpheniramine or any other nasal decongestant or antihistamine, taking aspirin for heart attack or stroke, because butylglycid may decrease the benefit of aspirin and taking any other drug. When using this product take with food or milk. A stomach upset occurs, avoid alcohol or drink, be careful when driving a motor vehicle or operating machinery, drowsiness may occur, alcohol, sedatives, and tranquilizers may increase drowsiness, may cause excitation especially in children. **Stop use** and **ask a doctor** if you experience any of the following signs of allergic bleeding: feel faintly or lightheaded, have bloody or black stools, have skin that does not get better; you have symptoms of heart problems or stroke: chest pain, trouble breathing, weakness in one part or side of body, slurred speech, or leg swelling, pain gets worse or lasts more than 7 days; fever gets worse or lasts more than 3 days; nasal congestion lasts more than 7 days; redness or swelling is present in the painful area; you feel nervous, dizzy or shivers; symptoms continue or get worse; any new symptoms appear. If pregnant or breast-feeding, ask a health professional before use. It is especially important not to use buprenorphine during the last 8 months of pregnancy unless definitely directed to do so by a doctor because it may cause problems in the unborn child or complications during delivery. **Keep out of reach of children.** In case of overdose, call your poison control or Poison Control Center right away. **Directions:** **Do not take more than directed.** Adults and children 12 years of age and over: take 1 tablet every 4 hours while symptoms persist. Do not take more than 6 tablets in any 24-hour period unless directed by a doctor. Children under 12 years of age: do not use. **Other information:** Read all warnings and directions before use. Store at 20°-25°C (68°F - 77°F). Avoid exposure below 40°F (4°C). **Inactive ingredients** include ferrous fumarate, croscarmellose sodium, croscarmellose sodium, starch, croscarmellose sodium, glycerin, polyethylene glycol, hypromellose, lactac acid, lecithin, maltodextrin, medium-chain triglycerides, microcrystalline cellulose, pharmaceutical ink, polydextrose, polyvinyl alcohol, phthalized starch, propyl gallate, silicon dioxide, sucralose, sym hecic thin oxide, talc, titanium dioxide, triacetin, xanthan gum ☞ U.S. Pat. # 5,900,884-AUW.

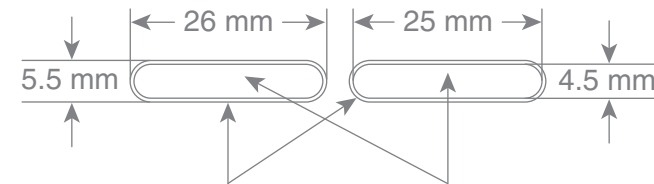
Pfizer, Madison, NJ 07940 USA

PAA0677E FDA043

SEAL AREA FOR LOT & EXP
25 mm x 4.5 mm

(NOT COLOR ACCURATE)

(b) (4)



AREA FOR LOT AND EXP
TO BE PRINTED IN DARK COLOR
26 mm x 5.5 mm
(OUTER OVAL)

SEAL AREA FOR LOT & EXP
25 mm x 4.5 mm
(INNER OVAL)

DRUG FACTS TEXT DEFINED	TYPE SIZE
• HEADINGS	4.5 pt
• SUBHEADINGS/BODY TEXT	4.5 pt
• LEADING	4.5 pt
• BULLETS	N/A
• SPACE BEFORE BULLET	N/A
• WARNING BOX LINE, HAIRLINES	N/A

090177e18b653951\Final\Final On: 27-Feb-2017 02:58 (GMT)



PRODUCTION

(NOT COLOR ACCURATE)

(b) (4)

DRUG FACTS TEXT DEFINED	TYPE SIZE
• HEADINGS	N/A
• SUBHEADINGS/BODY TEXT	5.5 pt
• LEADING	6 pt
• BULLETS	4.5 pt
• SPACE BEFORE BULLET	2 ems
• WARNING BOX LINE, HAIRLINES	N/A

This is a representation of an electronic record that was signed electronically and this page is the manifestation of the electronic signature.

/s/

THERESA M MICHELE
04/28/2017