

HIGHLIGHTS OF PRESCRIBING INFORMATION

These highlights do not include all the information needed to use CAMBIA safely and effectively. See full prescribing information for CAMBIA.

CAMBIA® (diclofenac potassium), for oral solution

Initial U.S. Approval: 1988

WARNING: RISK OF SERIOUS CARDIOVASCULAR AND GASTROINTESTINAL EVENTS

See full prescribing information for complete boxed warning

- **Non-steroidal anti-inflammatory drugs (NSAIDs) cause an increased risk of serious cardiovascular thrombotic events, including myocardial infarction and stroke, which can be fatal. This risk may occur early in treatment and may increase with duration of use (5.1)**
- **CAMBIA is contraindicated in the setting of coronary artery bypass graft (CABG) surgery (4, 5.1)**
- **NSAIDs cause an increased risk of serious gastrointestinal (GI) adverse events including bleeding, ulceration, and perforation of the stomach or intestines, which can be fatal. These events can occur at any time during use and without warning symptoms. Elderly patients and patients with a prior history of peptic ulcer disease and/or GI bleeding are at greater risk for serious GI events (5.2)**

RECENT MAJOR CHANGES

Boxed Warning	05/2016
Contraindications (4)	05/2016
Warnings and Precautions (5.1, 5.2, 5.5, 5.6, 5.12, 5.14)	05/2016
Warnings and Precautions (5.10)	03/2017

INDICATIONS AND USAGE

CAMBIA is a non-steroidal anti-inflammatory drug (NSAID) indicated for the acute treatment of migraine attacks with or without aura in adults 18 years of age or older (1)

Limitations of Use (1):

- CAMBIA is not indicated for the prophylactic therapy of migraine
- Safety and effectiveness of CAMBIA not established for cluster headache, which is present in an older, predominantly male population

DOSAGE AND ADMINISTRATION

Single 50 mg dose; mix single packet contents with 1 to 2 ounces or 2 to 4 tablespoons (30 to 60 mL) of water prior to administration

- Use the lowest effective dose for shortest duration consistent with individual patient treatment goals (2.1)

DOSAGE FORMS AND STRENGTHS

Packets: Each containing buffered diclofenac potassium 50 mg in a soluble powder (3)

CONTRAINDICATIONS

- Known hypersensitivity to diclofenac or NSAIDs or any components of the drug product (4)
- History of asthma, urticaria, or other allergic-type reactions after taking aspirin or other NSAIDs (4)
- In the setting of (CABG) surgery (4)

WARNINGS AND PRECAUTIONS

- **Hepatotoxicity:** Inform patients of warning signs and symptoms of hepatotoxicity. Discontinue if abnormal liver tests persist or worsen or if clinical signs and symptoms of liver disease develop (5.3, 8.6, 12.3)
- **Hypertension:** Patients taking some antihypertensive medications may have impaired response to these therapies when taking NSAIDs. Monitor blood pressure (5.4, 7)
- **Heart Failure and Edema:** Avoid use of CAMBIA in patients with severe heart failure unless benefits are expected to outweigh risk of worsening heart failure (5.5)
- **Renal Toxicity:** Monitor renal function in patients with renal or hepatic impairment, heart failure, dehydration, or hypovolemia. Avoid use of CAMBIA in patients with advanced renal disease unless benefits are expected to outweigh risk of worsening renal function (5.6)
- **Anaphylactic Reactions:** Seek emergency help if an anaphylactic reaction occurs (5.7)
- **Exacerbation of Asthma Related to Aspirin Sensitivity:** CAMBIA is contraindicated in patients with aspirin-sensitive asthma. Monitor patients with preexisting asthma (without aspirin sensitivity) (5.8)
- **Serious Skin Reactions:** Discontinue CAMBIA at first appearance of skin rash or other signs of hypersensitivity (5.9)
- **Medication Overuse Headache:** Detoxification may be necessary. (5.10)
- **Hematologic Toxicity:** Monitor hemoglobin or hematocrit in patients with any signs or symptoms of anemia (5.12, 7)

ADVERSE REACTIONS

Most common adverse reactions ($\geq 1\%$ and $>$ placebo) were nausea and dizziness (6.1)

To report SUSPECTED ADVERSE REACTIONS, contact Depomed, Inc. at 866-458-6389 or FDA at 1-800-FDA-1088 or www.fda.gov/medwatch.

DRUG INTERACTIONS

- **Drugs that Interfere with Hemostasis (e.g. warfarin, aspirin, SSRIs/SNRIs):** Monitor patients for bleeding who are concomitantly taking CAMBIA with drugs that interfere with hemostasis. Concomitant use of CAMBIA and analgesic doses of aspirin is not generally recommended (7)
- **ACE Inhibitors and ARBs:** Concomitant use with CAMBIA in elderly, volume depleted, or those with renal impairment may result in deterioration of renal function. In such high risk patients, monitor for signs of worsening renal function (7)
- **Diuretics:** NSAIDs can reduce natriuretic effect of loop and thiazide diuretics. Monitor patients to assure diuretic efficacy including antihypertensive effects (7)
- **Digoxin:** Concomitant use with CAMBIA can increase serum concentration and prolong half-life of digoxin. Monitor serum digoxin levels (7)

USE IN SPECIFIC POPULATIONS

- **Pregnancy:** Based on animal data, may cause fetal harm. Based on human data, starting at 30 weeks gestation, CAMBIA should be avoided as premature closure of the ductus arteriosus in the fetus may occur (5.11, 8.1)
- **Nursing Mothers:** Use with caution, as it is not known if diclofenac is excreted in human milk (8.3)

See 17 for PATIENT COUNSELING INFORMATION and Medication Guide

Revised: 03/2017

FULL PRESCRIBING INFORMATION: CONTENTS*

WARNING: RISK OF SERIOUS CARDIOVASCULAR AND GASTROINTESTINAL EVENTS

1 INDICATIONS AND USAGE

2 DOSAGE AND ADMINISTRATION

- 2.1 Acute Treatment of Migraine
- 2.2 Non-Interchangeability with Other Formulations of Diclofenac

3 DOSAGE FORMS AND STRENGTHS

4 CONTRAINDICATIONS

5 WARNINGS AND PRECAUTIONS

- 5.1 Cardiovascular Thrombotic Events
- 5.2 Gastrointestinal Bleeding, Ulceration, and Perforation
- 5.3 Hepatotoxicity
- 5.4 Hypertension
- 5.5 Heart Failure and Edema
- 5.6 Renal Toxicity and Hyperkalemia
- 5.7 Anaphylactic Reactions
- 5.8 Exacerbation of Asthma Related to Aspirin Sensitivity
- 5.9 Serious Skin Reactions
- 5.10 Medication Overuse Headache
- 5.11 Premature Closure of Fetal Ductus Arteriosus
- 5.12 Hematologic Toxicity
- 5.13 Masking of Inflammation and Fever
- 5.14 Laboratory Monitoring

6 ADVERSE REACTIONS

- 6.1 Clinical Trial Experience
- 6.2 Postmarketing Experience

7 DRUG INTERACTIONS

8 USE IN SPECIFIC POPULATIONS

- 8.1 Pregnancy
- 8.2 Labor and Delivery
- 8.3 Nursing Mothers
- 8.4 Pediatric Use
- 8.5 Geriatric Use
- 8.6 Hepatic Impairment
- 8.7 Renal Impairment

10 OVERDOSAGE

11 DESCRIPTION

12 CLINICAL PHARMACOLOGY

- 12.1 Mechanism of Action
- 12.3 Pharmacokinetics

13 NON-CLINICAL TOXICOLOGY

- 13.1 Carcinogenesis, Mutagenesis, Impairment of Fertility

14 CLINICAL STUDIES

16 HOW SUPPLIED/STORAGE AND HANDLING

17 PATIENT COUNSELING INFORMATION

***Sections or subsections omitted from the full prescribing information are not listed.**

FULL PRESCRIBING INFORMATION

WARNING: RISK OF SERIOUS CARDIOVASCULAR AND GASTROINTESTINAL EVENTS

Cardiovascular Thrombotic Events

- Nonsteroidal anti-inflammatory drugs (NSAIDs) cause an increased risk of serious cardiovascular thrombotic events, including myocardial infarction and stroke, which can be fatal. This risk may occur early in treatment and may increase with duration of use [*see Warnings and Precautions (5.1)*].
- CAMBIA is contraindicated in the setting of coronary artery bypass graft (CABG) surgery [*see Contraindications (4) and Warnings and Precautions (5.1)*].

Gastrointestinal Bleeding, Ulceration, and Perforation

- NSAIDs cause an increased risk of serious gastrointestinal (GI) adverse events including bleeding, ulceration, and perforation of the stomach or intestines, which can be fatal. These events can occur at any time during use and without warning symptoms. Elderly patients and patients with a prior history of peptic ulcer disease and/or GI bleeding are at greater risk for serious GI events [*see Warnings and Precautions (5.2)*].

1 INDICATIONS AND USAGE

CAMBIA is indicated for the acute treatment of migraine attacks with or without aura in adults (18 years of age or older).

Limitations of Use:

- CAMBIA is not indicated for the prophylactic therapy of migraine.
- The safety and effectiveness of CAMBIA have not been established for cluster headache, which is present in an older, predominantly male population.

2 DOSAGE AND ADMINISTRATION

2.1 Acute Treatment of Migraine

Administer one packet (50 mg) of CAMBIA for the acute treatment of migraine. Empty the contents of one packet into a cup containing 1 to 2 ounces or 2 to 4 tablespoons (30 to 60 mL) of water, mix well and drink immediately.

Do not use liquids other than water.

Taking CAMBIA with food may cause a reduction in effectiveness compared to taking CAMBIA on an empty stomach [*see Clinical Pharmacology (12.3)*].

Use the lowest effective dose for the shortest duration consistent with individual patient treatment goals. The safety and effectiveness of a second dose have not been established.

2.2 Non-Interchangeability with Other Formulations of Diclofenac

Different formulations of oral diclofenac (e.g., CAMBIA, diclofenac sodium enteric-coated tablets, diclofenac sodium extended-release tablets, or diclofenac potassium immediate-release tablets) may not be bioequivalent even if the milligram strength is the same. Therefore, it is not possible to convert dosing from any other formulation of diclofenac to CAMBIA.

3 DOSAGE FORMS AND STRENGTHS

CAMBIA is available in individual packets each designed to deliver a 50 mg dose when mixed in water.

4 CONTRAINDICATIONS

CAMBIA is contraindicated in the following patients:

- Known hypersensitivity (e.g., anaphylactic reactions and serious skin reactions) to diclofenac or any components of the drug product [*see Warnings and Precautions (5.7, 5.9)*]
- History of asthma, urticaria, or other allergic-type reactions after taking aspirin or other NSAIDs. Severe, sometimes fatal, anaphylactic reactions to NSAIDs have been reported in such patients [*see Warnings and Precautions (5.7, 5.8)*]
- In the setting of coronary artery bypass graft (CABG) surgery [*see Warnings and Precautions (5.1)*]

5 WARNINGS AND PRECAUTIONS

5.1 Cardiovascular Thrombotic Events

Clinical trials of several COX-2 selective and nonselective NSAIDs of up to three years duration have shown an increased risk of serious cardiovascular (CV) thrombotic events, including myocardial infarction (MI) and stroke, which can be fatal. Based on available data, it is unclear that the risk for CV thrombotic events is similar for all NSAIDs. The relative increase in serious CV thrombotic events over baseline conferred by NSAID use appears to be similar in those with and without known CV disease or risk factors for CV disease. However, patients with known CV disease or risk factors had a higher absolute incidence of excess serious CV thrombotic events, due to their increased baseline rate. Some observational studies found that this increased risk of serious CV thrombotic events began as early as the first weeks of treatment. The increase in CV thrombotic risk has been observed most consistently at higher doses.

To minimize the potential risk for an adverse CV event in NSAID-treated patients, use the lowest effective dose for the shortest duration possible. Physicians and patients should remain alert for the development of such events, throughout the entire treatment course, even in the absence of previous CV symptoms. Patients should be informed about the symptoms of serious CV events and the steps to take if they occur.

There is no consistent evidence that concurrent use of aspirin mitigates the increased risk of serious CV thrombotic events associated with NSAID use. The concurrent use of aspirin and an NSAID, such as diclofenac, increases the risk of serious gastrointestinal (GI) events [*see Warnings and Precautions (5.2)*].

Status Post Coronary Artery Bypass Graft (CABG) Surgery

Two large, controlled clinical trials of a COX-2 selective NSAID for the treatment of pain in the first 10-14 days following CABG surgery found an increased incidence of myocardial infarction and stroke. NSAIDs are contraindicated in the setting of CABG [*see Contraindications (4)*].

Post-MI Patients

Observational studies conducted in the Danish National Registry have demonstrated that patients treated with NSAIDs in the post-MI period were at increased risk of reinfarction, CV-related death, and all-cause mortality beginning in the first week of treatment. In this same cohort, the incidence of death in the first year post-MI was 20 per 100 person years in NSAID-treated patients compared to 12 per 100 person years in non-NSAID exposed patients. Although the absolute rate of death declined somewhat after the first year post-MI, the increased relative risk of death in NSAID users persisted over at least the next four years of follow-up.

Avoid the use of CAMBIA in patients with a recent MI unless the benefits are expected to outweigh the risk of recurrent CV thrombotic events. If CAMBIA is used in patients with a recent MI, monitor patients for signs of

cardiac ischemia.

5.2 Gastrointestinal Bleeding, Ulceration, and Perforation

NSAIDs, including diclofenac, cause serious gastrointestinal (GI) adverse events including inflammation, bleeding, ulceration, and perforation of the esophagus, stomach, small intestine, or large intestine, which can be fatal. These serious adverse events can occur at any time, with or without warning symptoms, in patients treated with NSAIDs. Only one in five patients who develop a serious upper GI adverse event on NSAID therapy is symptomatic. Upper GI ulcers, gross bleeding, or perforation caused by NSAIDs occurred in approximately 1% of patients treated for 3-6 months, and in about 2%-4% of patients treated for one year. However, even short-term NSAID therapy is not without risk.

Risk Factors for GI Bleeding, Ulceration, and Perforation

Patients with a prior history of peptic ulcer disease and/or GI bleeding who used NSAIDs had a greater than 10-fold increased risk for developing a GI bleed compared to patients without these risk factors. Other factors that increase the risk for GI bleeding in patients treated with NSAIDs include longer duration of NSAID therapy; concomitant use of oral corticosteroids, aspirin, anticoagulants, or selective serotonin reuptake inhibitors (SSRI); smoking; use of alcohol; older age; and poor general health status. Most postmarketing reports of fatal GI events occurred in elderly or debilitated patients. Additionally, patients with advanced liver disease and/or coagulopathy are at increased risk for GI bleeding.

Strategies to Minimize the GI Risk in NSAID-treated patients:

- Use the lowest effective dosage for the shortest possible duration.
- Avoid administration of more than one NSAID at a time.
- Avoid use in patients at higher risk unless benefits are expected to outweigh the increased risk of bleeding. For high risk patients, as well as those with active GI bleeding, consider alternate therapies other than NSAIDs.
- Remain alert for signs and symptoms of GI ulceration and bleeding during NSAID therapy.
- If a serious GI adverse event is suspected, promptly initiate evaluation and treatment, and discontinue CAMBIA until a serious GI adverse event is ruled out.
- In the setting of concomitant use of low-dose aspirin for cardiac prophylaxis, monitor patients more closely for evidence of GI bleeding [*see Drug Interactions (7)*].

5.3 Hepatotoxicity

Elevations of one or more liver tests may occur during therapy with CAMBIA. These laboratory abnormalities may progress, may persist, or may only be transient with continued therapy. Borderline elevations (less than 3 times the upper limit of the normal [ULN] range) or greater elevations of transaminases occurred in about 15% of diclofenac-treated patients. Of the markers of hepatic function, ALT (SGPT) is recommended for the monitoring of liver injury.

In clinical trials, meaningful elevations (i.e., more than 3 times the ULN) of AST (SGOT) occurred in about 2% of approximately 5,700 patients at some time during treatment (ALT was not measured in all studies). In an open-label, controlled trial of 3,700 patients treated for 2–6 months, patients were monitored at 8 weeks and 1,200 patients were monitored again at 24 weeks. Meaningful elevations of ALT and/or AST occurred in about 4% of the 3,700 patients and included marked elevations (>8 times the ULN) in about 1% of the 3,700 patients. In this open-label study, a higher incidence of borderline (less than 3 times the ULN), moderate (3–8 times the ULN), and marked (>8 times the ULN) elevations of ALT or AST was observed in patients receiving diclofenac when compared to other NSAIDs. Almost all meaningful elevations in transaminases were detected before patients became symptomatic [*see Warnings and Precautions (5.14)*].

Abnormal tests occurred during the first 2 months of therapy with diclofenac in 42 of the 51 patients in all trials who developed marked transaminase elevations. In postmarketing reports, cases of drug-induced hepatotoxicity have been reported in the first month, and in some cases, the first 2 months of NSAID therapy, but can occur at any time during treatment with diclofenac.

Postmarketing surveillance has reported cases of severe hepatic reactions, including liver necrosis, jaundice, fulminant hepatitis with and without jaundice, and liver failure. Some of these reported cases resulted in fatalities or liver transplantation.

Inform patients of the warning signs and symptoms of hepatotoxicity (e.g., nausea, fatigue, lethargy, diarrhea, pruritus, jaundice, right upper quadrant tenderness, and "flu-like" symptoms). If clinical signs and symptoms consistent with liver disease develop, or if systemic manifestations occur (e.g., eosinophilia, rash, etc.), discontinue CAMBIA immediately, and perform a clinical evaluation of the patient.

To minimize the potential risk for an adverse liver-related event in patients treated with CAMBIA, use the lowest effective dose for the shortest duration possible. Exercise caution when prescribing CAMBIA with concomitant drugs that are known to be potentially hepatotoxic (e.g., acetaminophen, certain antibiotics, antiepileptics). Caution patients to avoid taking nonprescription acetaminophen-containing products while using CAMBIA.

5.4 Hypertension

NSAIDs, including CAMBIA, can lead to new onset of hypertension or worsening of pre-existing hypertension, either of which may contribute to the increased incidence of CV events. Use NSAIDs, including CAMBIA, with caution in patients with hypertension. Monitor blood pressure closely during the initiation of NSAID treatment and throughout the course of therapy.

Patients taking angiotensin converting enzyme (ACE) inhibitors, thiazides, or loop diuretics may have impaired response to these therapies when taking NSAIDs [*see Drug Interactions (7)*].

5.5 Heart Failure and Edema

The Coxib and traditional NSAID Trialists' Collaboration meta-analysis of randomized controlled trials demonstrated an approximately two-fold increase in hospitalizations for heart failure in COX-2 selective-treated patients and nonselective NSAID-treated patients compared to placebo-treated patients. In a Danish National Registry study of patients with heart failure, NSAID use increased the risk of MI, hospitalization for heart failure, and death.

Additionally, fluid retention and edema have been observed in some patients treated with NSAIDs. Use of diclofenac may blunt the CV effects of several therapeutic agents used to treat these medical conditions (e.g., diuretics, ACE inhibitors, or angiotensin receptor blockers [ARBs]) [*see Drug Interactions (7)*].

Avoid the use of CAMBIA in patients with severe heart failure unless the benefits are expected to outweigh the risk of worsening heart failure. If CAMBIA is used in patients with severe heart failure, monitor patients for signs of worsening heart failure.

5.6 Renal Toxicity and Hyperkalemia

Renal Toxicity

Long-term administration of NSAIDs has resulted in renal papillary necrosis and other renal injury. Renal toxicity has also been seen in patients in whom renal prostaglandins have a compensatory role in the maintenance of renal perfusion. In these patients, administration of an NSAID may cause a dose-dependent reduction in prostaglandin formation and, secondarily, in renal blood flow, which may precipitate overt renal

decompensation. Patients at greatest risk of this reaction are those with impaired renal function, dehydration, hypovolemia, heart failure, liver dysfunction, those taking diuretics and ACE inhibitors or ARBs, and the elderly. Discontinuation of NSAID therapy is usually followed by recovery to the pretreatment state.

No information is available from controlled clinical studies regarding the use of CAMBIA in patients with advanced renal disease. The renal effects of CAMBIA may hasten the progression of renal dysfunction in patients with pre-existing renal disease.

Correct volume status in dehydrated or hypovolemic patients prior to initiating CAMBIA. Monitor renal function in patients with renal or hepatic impairment, heart failure, dehydration, or hypovolemia during use of CAMBIA [see *Drug Interactions* (7)]. Avoid the use of CAMBIA in patients with advanced renal disease unless the benefits are expected to outweigh the risk of worsening renal function. If CAMBIA is used in patients with advanced renal disease, monitor patients for signs of worsening renal function.

Hyperkalemia

Increases in serum potassium concentration, including hyperkalemia, have been reported with use of NSAIDs, even in some patients without renal impairment. In patients with normal renal function, these effects have been attributed to a hyporeninemic-hypoaldosteronism state.

5.7 Anaphylactic Reactions

Diclofenac has been associated with anaphylactic reactions in patients with and without known hypersensitivity to diclofenac and in patients with aspirin-sensitive asthma [see *Contraindications* (4) and *Warnings and Precautions* (5.8)].

Seek emergency help if an anaphylactic reaction occurs.

5.8 Exacerbation of Asthma Related to Aspirin Sensitivity

A subpopulation of patients with asthma may have aspirin-sensitive asthma which may include chronic rhinosinusitis complicated by nasal polyps; severe, potentially fatal bronchospasm; and/or intolerance to aspirin and other NSAIDs. Because cross-reactivity between aspirin and other NSAIDs has been reported in such aspirin-sensitive patients, CAMBIA is contraindicated in patients with this form of aspirin sensitivity [see *Contraindications* (4)]. When CAMBIA is used in patients with preexisting asthma (without known aspirin sensitivity), monitor patients for changes in the signs and symptoms of asthma.

5.9 Serious Skin Reactions

NSAIDs, including diclofenac, can cause serious skin adverse reactions such as exfoliative dermatitis, Stevens-Johnson Syndrome (SJS), and toxic epidermal necrolysis (TEN), which can be fatal. These serious events may occur without warning. Inform patients about the signs and symptoms of serious skin reactions, and to discontinue the use of CAMBIA at the first appearance of skin rash or any other sign of hypersensitivity.

CAMBIA is contraindicated in patients with previous serious skin reactions to NSAIDs [see *Contraindications* (4)].

5.10 Medication Overuse Headache

Overuse of acute migraine drugs (e.g., ergotamine, triptans, opioids, nonsteroidal anti-inflammatory drugs or combination of these drugs for 10 or more days per month) may lead to exacerbation of headache (medication overuse headache). Medication overuse headache may present as migraine-like daily headaches or as a marked increase in frequency of migraine attacks. Detoxification of patients, including withdrawal of the overused drugs and treatment of withdrawal symptoms (which often includes a transient worsening of headache) may be necessary.

5.11 Premature Closure of Fetal Ductus Arteriosus

CAMBIA can cause fetal harm when administered to a pregnant woman. Starting at 30 weeks gestation, CAMBIA and other NSAIDs should be avoided by pregnant women as premature closure of the ductus arteriosus in the fetus may occur. If this drug is used during this time period in pregnancy, the patient should be apprised of the potential hazard to a fetus [see *Use in Special Populations (8.1)*].

5.12 Hematologic Toxicity

Anemia has occurred in NSAID-treated patients. This may be due to occult or gross blood loss, fluid retention, or an incompletely described effect upon erythropoiesis. If a patient treated with CAMBIA has any signs or symptoms of anemia, monitor hemoglobin or hematocrit.

NSAIDs, including CAMBIA, may increase the risk of bleeding events. Concomitant use of warfarin and other anticoagulants, antiplatelet agents (e.g., aspirin), and serotonin reuptake inhibitors (SSRIs) and serotonin norepinephrine reuptake inhibitors (SNRIs) may increase this risk. Monitor these patients and any patient who may be adversely affected by alterations in platelet function for signs of bleeding [see *Drug Interactions (7)*].

5.13 Masking of Inflammation and Fever

The pharmacological activity of CAMBIA in reducing inflammation, and possibly fever, may diminish the utility of diagnostic signs in detecting infections.

5.14 Laboratory Monitoring

Because serious GI bleeding, hepatotoxicity, and renal injury can occur without warning symptoms or signs, consider monitoring patients on long-term NSAID treatment with a CBC and a chemistry profile periodically [see *Warnings and Precautions (5.2, 5.3, 5.6)*].

Discontinue CAMBIA if abnormal liver tests or renal tests persist or worsen.

6 ADVERSE REACTIONS

The following serious adverse reactions are discussed in greater detail in other sections of the labeling:

- Cardiovascular Thrombotic Events [see *Warnings and Precautions (5.1)*]
- GI Bleeding, Ulceration and Perforation [see *Warnings and Precautions (5.2)*]
- Hepatotoxicity [see *Warnings and Precautions (5.3)*]
- Hypertension [see *Warnings and Precautions (5.4)*]
- Heart Failure and Edema [see *Warnings and Precautions (5.5)*]
- Renal Toxicity and Hyperkalemia [see *Warnings and Precautions (5.6)*]
- Anaphylactic Reactions [see *Warnings and Precautions (5.7)*]
- Serious Skin Reactions [see *Warnings and Precautions (5.9)*]
- Hematologic Toxicity [see *Warnings and Precautions (5.12)*]

6.1 Clinical Trials Experience

Because clinical trials are conducted under widely varying conditions, adverse reaction rates observed in the clinical trials of a drug cannot be directly compared with rates in the clinical trials of another drug and may not reflect the rates observed in practice.

The safety of a single dose of CAMBIA was evaluated in 2 placebo-controlled trials with a total of 634 migraine patients treated with CAMBIA for a single migraine headache. Following treatment with diclofenac potassium (either CAMBIA or diclofenac potassium immediate-release tablets [as a control]), 5 subjects

(0.8%) withdrew from the studies; following placebo exposure, 1 subject (0.2%) withdrew.

The most common adverse reactions (i.e., that occurred in 1% or more of CAMBIA-treated patients) and more frequent with CAMBIA than with placebo were nausea and dizziness (see Table 1).

Table 1: Adverse Reactions With Incidence >1% and Greater Than Placebo in Studies 1 and 2 Combined

Adverse Reactions	CAMBIA	Placebo
	N=634	N=646
Gastrointestinal		
Nausea	3%	2%
Nervous System		
Dizziness	1%	0.5%

The most common adverse events resulting in discontinuation of patients following CAMBIA dosing in controlled clinical trials were urticaria (0.2%) and flushing (0.2%). No withdrawals were due to a serious reaction.

6.2 Postmarketing Experience

The following adverse reactions have been identified during post approval use of diclofenac or other NSAIDs. Because these reactions are reported voluntarily from a population of uncertain size, it is not always possible to reliably estimate their frequency or establish a causal relationship to drug exposure.

Adverse Reactions Reported With Diclofenac and Other NSAIDs

In patients taking diclofenac or other NSAIDs, the most frequently reported adverse reactions occurring in approximately 1%-10% of patients are: GI reactions (including abdominal pain, constipation, diarrhea, dyspepsia, flatulence, gross bleeding/perforation, heartburn, nausea, GI ulcers [gastric/duodenal], and vomiting), abnormal renal function, anemia, dizziness, edema, elevated liver enzymes, headaches, increased bleeding time, pruritus, rashes, and tinnitus.

Additional adverse reactions reported in patients taking NSAIDs include occasionally:

Body as a Whole: Fever, infection, sepsis

Cardiovascular System: Congestive heart failure, hypertension, tachycardia, syncope

Digestive System: Dry mouth, esophagitis, gastric/peptic ulcers, gastritis, gastrointestinal bleeding, glossitis, hematemesis, hepatitis, jaundice

Hemic and Lymphatic System: Ecchymosis, eosinophilia, leukopenia, melena, purpura, rectal bleeding, stomatitis, thrombocytopenia

Metabolic and Nutritional: Weight changes

Nervous System: Anxiety, asthenia, confusion, depression, dream abnormalities, drowsiness, insomnia, malaise, nervousness, paresthesia, somnolence, tremors, vertigo

Respiratory System: Asthma, dyspnea

Skin and Appendages: Alopecia, photosensitivity, sweating

increased Special Senses: Blurred vision

Urogenital System: Cystitis, dysuria, hematuria, interstitial nephritis, oliguria/polyuria, proteinuria, renal failure

Other adverse reactions in patients taking NSAIDs, which occur rarely,

are: Body as a Whole: Anaphylactic reactions, appetite changes, death

Cardiovascular System: Arrhythmia, hypotension, myocardial infarction, palpitations, vasculitis

Digestive System: Colitis, eructation, liver failure, pancreatitis

Hemic and Lymphatic System: Agranulocytosis, hemolytic anemia, aplastic anemia, lymphadenopathy, pancytopenia

Metabolic and Nutritional: Hyperglycemia

Nervous System: Convulsions, coma, hallucinations,

meningitis Respiratory System: Respiratory depression, pneumonia

Skin and Appendages: Angioedema, toxic epidermal necrolysis, erythema multiforme, exfoliative dermatitis, Stevens-Johnson syndrome, urticaria

Special Senses: Conjunctivitis, hearing impairment

7 DRUG INTERACTIONS

See Table 2 for clinically significant drug interactions with diclofenac.

Table 2: Clinically Significant Drug Interactions with diclofenac

Drugs That Interfere with Hemostasis	
<i>Clinical Impact:</i>	<ul style="list-style-type: none">• Diclofenac and anticoagulants such as warfarin have a synergistic effect on bleeding. The concomitant use of diclofenac and anticoagulants have an increased risk of serious bleeding compared to the use of either drug alone.• Serotonin release by platelets plays an important role in hemostasis. Case-control and cohort epidemiological studies showed that concomitant use of drugs that interfere with serotonin reuptake and an NSAID may potentiate the risk of bleeding more than an NSAID alone.
<i>Intervention:</i>	Monitor patients with concomitant use of CAMBIA with anticoagulants (e.g., warfarin), antiplatelet agents (e.g., aspirin), selective serotonin reuptake inhibitors (SSRIs), and serotonin norepinephrine reuptake inhibitors (SNRIs) for signs of bleeding [<i>see Warnings and Precautions (5.12)</i>]
Aspirin	
<i>Clinical Impact:</i>	Controlled clinical studies showed that the concomitant use of NSAIDs and analgesic doses of aspirin does not produce any greater therapeutic effect than the use of NSAIDs alone. In a clinical study, the concomitant use of an NSAID and aspirin was associated with a significantly increased incidence of GI adverse reactions as compared to use of the NSAID alone [<i>see Warnings and Precautions (5.2) and Clinical Pharmacology (12.3)</i>].
<i>Intervention:</i>	Concomitant use of CAMBIA and analgesic doses of aspirin is not generally recommended because of the increased risk of bleeding [<i>see Warnings and Precautions (5.12)</i>].
ACE Inhibitors, Angiotensin Receptor Blockers, and Beta-blockers	
<i>Clinical Impact:</i>	<ul style="list-style-type: none">• NSAIDs may diminish the antihypertensive effect of angiotensin converting enzyme (ACE) inhibitors, angiotensin receptor blockers (ARBs), or beta-blockers (including propranolol).• In patients who are elderly, volume-depleted (including those on diuretic therapy), or have renal impairment, co-administration of an NSAID with ACE inhibitors or ARBs may result in deterioration of renal function, including possible acute renal failure. These effects are usually reversible.
<i>Intervention:</i>	<ul style="list-style-type: none">• During concomitant use of CAMBIA and ACE-inhibitors, ARBs, or beta-

	<p>blockers, monitor blood pressure to ensure that the desired blood pressure is obtained.</p> <ul style="list-style-type: none"> • During concomitant use of CAMBIA and ACE-inhibitors or ARBs in patients who are elderly, volume-depleted, or have impaired renal function, monitor for signs of worsening renal function [<i>see Warnings and Precautions (5.6)</i>].
Diuretics	
<i>Clinical Impact:</i>	Clinical studies, as well as post-marketing observations, showed that NSAIDs reduced the natriuretic effect of loop diuretics (e.g., furosemide) and thiazide diuretics in some patients. This effect has been attributed to the NSAID inhibition of renal prostaglandin synthesis.
<i>Intervention:</i>	During concomitant use of CAMBIA with diuretics, observe patients for signs of worsening renal function, in addition to assuring diuretic efficacy including antihypertensive effects [<i>see Warnings and Precautions (5.6)</i>].
Digoxin	
<i>Clinical Impact:</i>	The concomitant use of diclofenac with digoxin has been reported to increase the serum concentration and prolong the half-life of digoxin.
<i>Intervention:</i>	During concomitant use of CAMBIA and digoxin, monitor serum digoxin levels.
Lithium	
<i>Clinical Impact:</i>	NSAIDs have produced elevations in plasma lithium levels and reductions in renal lithium clearance. The mean minimum lithium concentration increased 15%, and the renal clearance decreased by approximately 20%. This effect has been attributed to NSAID inhibition of renal prostaglandin synthesis.
<i>Intervention:</i>	During concomitant use of CAMBIA and lithium, monitor patients for signs of lithium toxicity.
Methotrexate	
<i>Clinical Impact:</i>	Concomitant use of NSAIDs and methotrexate may increase the risk for methotrexate toxicity (e.g., neutropenia, thrombocytopenia, renal dysfunction).
<i>Intervention:</i>	During concomitant use of CAMBIA and methotrexate, monitor patients for methotrexate toxicity.
Cyclosporine	
<i>Clinical Impact:</i>	Concomitant use of CAMBIA and cyclosporine may increase cyclosporine's nephrotoxicity.
<i>Intervention:</i>	During concomitant use of CAMBIA and cyclosporine, monitor patients for signs of worsening renal function.
NSAIDs and Salicylates	
<i>Clinical Impact:</i>	Concomitant use of diclofenac with other NSAIDs or salicylates (e.g., diflunisal, salsalate) increases the risk of GI toxicity, with little or no increase in efficacy [<i>see Warnings and Precautions (5.2)</i>].
<i>Intervention:</i>	The concomitant use of diclofenac with other NSAIDs or salicylates is not recommended.
Pemetrexed	
<i>Clinical Impact:</i>	Concomitant use of CAMBIA and pemetrexed may increase the risk of pemetrexed-associated myelosuppression, renal, and GI toxicity (see the pemetrexed prescribing information).
<i>Intervention:</i>	<p>During concomitant use of NSAIDs and pemetrexed, in patients with renal impairment whose creatinine clearance ranges from 45 to 79 mL/min, monitor for myelosuppression, renal and GI toxicity.</p> <p>NSAIDs with short elimination half-lives (e.g., diclofenac, indomethacin) should be avoided for a period of two days before, the day of, and two days following</p>

	administration of pemetrexed. In the absence of data regarding potential interaction between pemetrexed and NSAIDs with longer half-lives (e.g., meloxicam, nabumetone), patients taking these NSAIDs should interrupt dosing for at least five days before, the day of, and two days following pemetrexed administration.
Inhibitors of Cytochrome P450 2C9	
<i>Clinical Impact:</i>	Diclofenac is metabolized predominantly by Cytochrome P-450 CYP2C9. Co-administration of medications that inhibit CYP2C9 may affect the pharmacokinetics of diclofenac [<i>see Clinical Pharmacology (12.3)</i>]
<i>Intervention:</i>	During concomitant use of CAMBIA and drugs that inhibit CYP2C9, an increase in the duration between CAMBIA doses for subsequent migraine attacks may be necessary.

8 USE IN SPECIFIC POPULATIONS

8.1 Pregnancy

Pregnancy Category C prior to 30 weeks gestation; Category D starting at 30 weeks gestation.

Starting at 30 weeks gestation, CAMBIA, and other NSAIDs, should be avoided by pregnant women as premature closure of the ductus arteriosus in the fetus may occur [*see Warnings and Precautions (5.9)*]. There are no adequate and well controlled studies in pregnant women.

Prior to 30 weeks gestation, CAMBIA should be used during pregnancy only if the potential benefit justifies the potential risk to the fetus.

Reproductive studies have been performed in mice given diclofenac sodium (up to 20 mg/kg/day, 2 times the recommended human dose [RHD] of 50 mg/day on a body surface area [mg/m² basis), and in rats and rabbits given diclofenac sodium (up to 10 mg/kg/day; 2 [rats] and 4 [rabbits] times the RHD on a mg/m² basis) and have revealed no evidence of teratogenicity despite the induction of maternal toxicity and fetal toxicity. In rats, maternally toxic doses were associated with dystocia, prolonged gestation, reduced fetal weights and growth, and reduced fetal survival.

8.2 Labor and Delivery

The effects of CAMBIA on labor and delivery in pregnant women are unknown. In rat studies, maternal exposure to NSAIDs, as with other drugs known to inhibit prostaglandin synthesis, increased the incidence of dystocia, delayed parturition, and decreased pup survival.

8.3 Nursing Mothers

It is not known whether this drug is excreted in human milk. Because many drugs are excreted in human milk and because of the potential for serious adverse reactions in nursing infants from CAMBIA, a decision should be made whether to discontinue nursing or to discontinue the drug, taking into account the importance of the drug to the mother.

8.4 Pediatric Use

Safety and effectiveness in pediatric patients have not been established.

8.5 Geriatric Use

Elderly patients, compared to younger patients, are at greater risk for NSAID-associated serious cardiovascular, gastrointestinal, and/or renal adverse reactions. If the anticipated benefit for the elderly patient outweighs these potential risks, monitor patients for adverse effects [*see Warnings and Precautions (5.1, 5.2, 5.3, 5.6, 5.14)*].

Clinical studies of CAMBIA did not include sufficient numbers of subjects aged 65 and over to determine whether they respond differently from younger subjects.

8.6 Hepatic Impairment

Because hepatic metabolism accounts for almost 100% of diclofenac elimination, patients with hepatic impairment should be considered for treatment with CAMBIA only if the benefits outweigh the risks. There is insufficient information available to support dosing recommendations for CAMBIA in patients with hepatic insufficiency [*see Clinical Pharmacology (12.3)*].

8.7 Renal Impairment

No information is available from controlled clinical studies regarding the use of CAMBIA in patients with advanced renal disease. Therefore, treatment with CAMBIA is not recommended in patients with advanced renal disease. If CAMBIA therapy must be initiated, close monitoring of the patient's renal function is advisable.

10 OVERDOSAGE

Symptoms following acute NSAID overdoses have been typically limited to lethargy, drowsiness, nausea, vomiting, and epigastric pain, which have been generally reversible with supportive care. Gastrointestinal bleeding has occurred. Hypertension, acute renal failure, respiratory depression and, coma have occurred, but were rare [*see Warnings and Precautions (5.1, 5.2, 5.4, 5.6)*].

Manage patients with symptomatic and supportive care following an NSAID overdose. There are no specific antidotes. Consider emesis and/or activated charcoal (60 to 100 grams in adults, 1 to 2 grams per kg of body weight in pediatric patients) and/or osmotic cathartic in symptomatic patients seen within four hours of ingestion or in patients with a large overdose (5 to 10 times the recommended dosage). Forced diuresis, alkalization of urine, hemodialysis, or hemoperfusion may not be useful due to high protein binding.

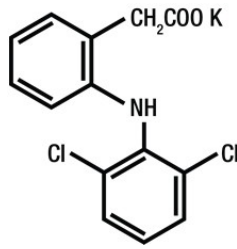
For additional information about overdose treatment contact a poison control center (1-800-222-1222).

Anaphylactic reactions have been reported with therapeutic ingestion of NSAIDs, and may occur following an overdose.

11 DESCRIPTION

CAMBIA (diclofenac potassium) for oral solution is a nonsteroidal anti-inflammatory drug, available as a buffered soluble powder, designed to be mixed with water prior to oral administration. CAMBIA is a white to off-white, buffered, flavored powder for oral solution packaged in individual unit dose packets.

The chemical name is 2-[(2,6-dichlorophenyl)amino] benzeneacetic acid monopotassium salt. The molecular weight is 337.12. Its molecular formula is $C_{14}H_{10}Cl_2NKO_2$, and it has the following structure.



The inactive ingredients in CAMBIA include: flavoring agents (anise and mint), glycerol behenate, mannitol, potassium bicarbonate, and sucralose.

12 CLINICAL PHARMACOLOGY

12.1 Mechanism of Action

CAMBIA has analgesic, anti-inflammatory, and antipyretic properties.

The mechanism of action of CAMBIA, like that of other NSAIDs, is not completely understood but involves inhibition of cyclooxygenase (COX-1 and COX-2).

Diclofenac is a potent inhibitor of prostaglandin synthesis *in vitro*. Diclofenac concentrations reached during therapy have produced *in vivo* effects. Prostaglandins sensitize afferent nerves and potentiate the action of bradykinin in inducing pain in animal models. Prostaglandins are mediators of inflammation. Because diclofenac is an inhibitor of prostaglandin synthesis, its mode of action may be due to a decrease of prostaglandins in peripheral tissues.

12.3 Pharmacokinetics

Absorption

Diclofenac is 100% absorbed after oral administration compared to intravenous administration as measured by urine recovery. However, due to first-pass metabolism, only about 50% of the absorbed dose is systemically available. In fasting volunteers, measurable plasma levels were observed within 5 minutes of dosing with CAMBIA. Peak plasma levels were achieved at approximately 0.25 hour in fasting normal volunteers, with a range of 0.17 to 0.67 hours. High fat food had no significant effect on the extent of diclofenac absorption, but there was a reduction in peak plasma levels of approximately 70% after a high fat meal. Decreased C_{max} may be associated to decreased effectiveness.

Distribution

The apparent volume of distribution (V/F) of diclofenac potassium is 1.3 L/kg.

Diclofenac is more than 99% bound to human serum proteins, primarily to albumin. Serum protein binding is constant over the concentration range (0.15-105 $\mu\text{g/mL}$) achieved with recommended doses.

Elimination

Metabolism

Five diclofenac metabolites have been identified in human plasma and urine. The metabolites include 4'-hydroxy-, 5-hydroxy-, 3'-hydroxy-, 4',5-dihydroxy- and 3'-hydroxy-4'-methoxy diclofenac. The major diclofenac metabolite, 4'-hydroxydiclofenac, has very weak pharmacologic activity. The formation of 4'-hydroxy diclofenac is primarily mediated by CPY2C9. Both diclofenac and its oxidative metabolites undergo glucuronidation or sulfation followed by biliary excretion. Acylglucuronidation mediated by UGT2B7 and oxidation mediated by CPY2C8 may also play a role in diclofenac metabolism. CYP3A4 is responsible for the formation of minor metabolites, 5-hydroxy and 3'-hydroxy- diclofenac. In patients with renal impairment, peak concentrations of metabolites 4'-hydroxy- and 5-hydroxydiclofenac were approximately 50% and 4% of the parent compound after single oral

dosing compared to 27% and 1% in normal healthy subjects.

Excretion

Diclofenac is eliminated through metabolism and subsequent urinary and biliary excretion of the glucuronide and the sulfate conjugates of the metabolites. Little or no free unchanged diclofenac is excreted in the urine. Approximately 65% of the dose is excreted in the urine and approximately 35% in the bile as conjugates of unchanged diclofenac plus metabolites. Because renal elimination is not a significant pathway of elimination for unchanged diclofenac, dosing adjustment in patients with mild to moderate renal dysfunction is not necessary. The terminal half-life of unchanged diclofenac is approximately 2 hours.

Specific Populations

Race: There are no pharmacokinetic differences due to race.

Hepatic Impairment: The liver metabolizes almost 100% of diclofenac; there is insufficient information available to support dosing recommendations for CAMBIA in patients with hepatic insufficiency [see *Warnings and Precautions (5.3) and Use in Specific Populations (8.6)*].

Renal Impairment: In patients with renal impairment (inulin clearance 60-90, 30-60, and <30 mL/min; N=6 in each group), AUC values and elimination rate were comparable to those in healthy subjects [see *Warnings and Precautions (5.6) and Use in Specific Populations (8.7)*].

Drug Interaction Studies

Aspirin: When NSAIDs were administered with aspirin, the protein binding of NSAIDs were reduced, although the clearance of free NSAID was not altered. The clinical significance of this interaction is not known. See Table 2 for clinically significant drug interactions of NSAIDs with aspirin [see *Drug Interactions (7)*].

13 NONCLINICAL TOXICOLOGY

13.1 Carcinogenesis, Mutagenesis, and Impairment of Fertility

Carcinogenesis

Long term carcinogenicity studies in rats given diclofenac sodium up to 2 mg/kg/day (less than the recommended human dose [RHD] of 50 mg/day on a body surface area [mg/m^2] basis) have revealed no significant increases in tumor incidence. There was a slight increase in benign mammary fibroadenomas in mid-dose treated (0.5 mg/kg/day or $3 \text{ mg}/\text{m}^2/\text{day}$) female rats (high-dose females had excessive mortality), but the increase was not significant for this common rat tumor. A 2-year carcinogenicity study conducted in mice employing diclofenac sodium at doses up to 0.3 mg/kg/day (less than the RHD on a mg/m^2 basis) in males and 1 mg/kg/day (less than the RHD on a mg/m^2 basis) in females did not reveal any oncogenic potential.

Mutagenesis

Diclofenac sodium was not genotoxic in *in vitro* (reverse mutation in bacteria [Ames], mouse lymphoma tk) or in *in vivo* (including dominant lethal and male germinal epithelial chromosomal aberration in Chinese hamster) assays.

Impairment of Fertility

Diclofenac sodium administered to male and female rats at 4 mg/kg/day (less than the RHD on a mg/m^2 basis) did not affect fertility.

14 CLINICAL STUDIES

The efficacy of CAMBIA in the acute treatment of migraine headache was demonstrated in two randomized, double-blind, placebo-controlled trials.

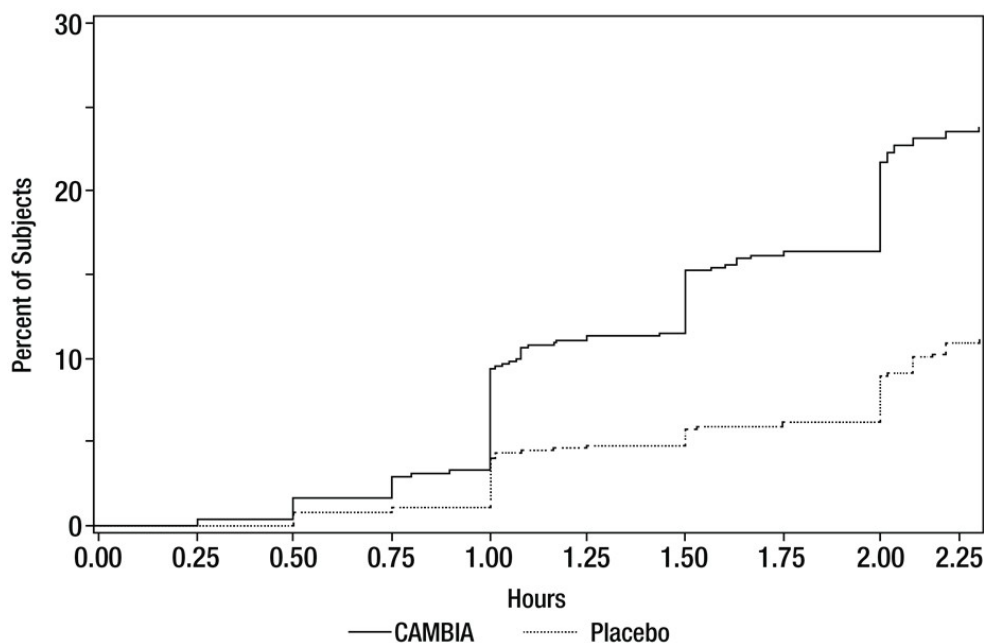
Patients enrolled in these two trials were predominantly female (85%) and white (86%), with a mean age of 40 years (range: 18 to 65). Patients were instructed to treat a migraine of moderate to severe pain with 1 dose of study medication. Patients evaluated their headache pain 2 hours later. Associated symptoms of nausea, photophobia, and phonophobia were also evaluated. In addition, the proportion of patients who were “sustained pain free”, defined as a reduction in headache severity from moderate or severe pain to no pain at 2 hours post- dose without a return of mild, moderate, or severe pain and no use of rescue medication for 24 hours post-dose, was also evaluated. In these studies, the percentage of patients achieving pain freedom 2 hours after treatment and sustained pain freedom from 2 to 24 hours post-dose was significantly greater in patients who received CAMBIA compared with those who received placebo (see Table 3). The percentage of patients achieving pain relief 2 hours after treatment (defined as a reduction in headache severity from moderate or severe pain to mild or no pain) was also significantly greater in patients who received CAMBIA compared with those who received placebo (see Table 3).

Table 3: Percentage of Patients with 2-Hour Pain Freedom, Sustained Pain Freedom 2-24 Hours, and 2-Hour Pain Relief Following Treatment

Study 1	CAMBIA (n=265)	Placebo (n=257)
2-Hour Pain Free	24%	13%
2-24h Sustained Pain Free	22%	10%
2-Hour Pain Relief	48%	27%
Study 2	CAMBIA (n=343)	Placebo (n=347)
2-Hour Pain Free	25%	10%
2-24h Sustained Pain Free	19%	7%
2-Hour Pain Relief	65%	41%

The estimated probability of achieving migraine headache pain freedom within 2 hours following treatment with CAMBIA is shown in Figure 1.

Figure 1. Percentage of Patients with Initial Headache Pain Freedom within 2 Hours



There was a decreased incidence of nausea, photophobia and phonophobia following administration of CAMBIA, compared to placebo. The efficacy and safety of CAMBIA was unaffected by age or gender of the patient.

16 HOW SUPPLIED/STORAGE AND HANDLING

CAMBIA (diclofenac potassium) 50 mg, is a white to off-white, buffered, flavored powder for oral solution, supplied as one or more sets of three perforated co-joined individual dose packets. Each individual packet is designed to deliver a dose of 50 mg diclofenac potassium when mixed in water.

NDC 13913-012-01	Individual CAMBIA Packets
NDC 13913-012-03	Boxes of nine (9) CAMBIA Packets

Storage

Store at 25°C (77°F). Excursions permitted from 15°C-30°C (59°F-86°F). [See USP Controlled Room Temperature]

17 PATIENT COUNSELING INFORMATION

Advise the patient to read the FDA-approved patient labeling (Medication Guide) that accompanies each prescription dispensed. Inform patients, families, or their caregivers of the following information before initiating therapy with CAMBIA and periodically during the course of ongoing therapy.

Cardiovascular Thrombotic Events

Advise patients to be alert for the symptoms of cardiovascular thrombotic events, including chest pain, shortness of breath, weakness, or slurring of speech, and to report any of these symptoms to their health care provider immediately [see *Warnings and Precautions* (5.1)].

Gastrointestinal Bleeding, Ulceration, and Perforation

ICAMBIA, like other NSAIDs, can cause GI discomfort and more serious GI adverse events such as ulcers and bleeding, which may result in hospitalization and even death. Inform patients of the increased risk, and advise patients to report symptoms of ulcerations and bleeding, including epigastric pain, dyspepsia, melena, and hematemesis to their health care provider. Inform patients of the importance of follow-up in the setting of concomitant use of low-dose aspirin for cardiac prophylaxis [see *Warnings and Precautions* (5.2)].

Medication Overuse Headache

Inform patients that use of acute migraine drugs for 10 or more days per month may lead to an exacerbation of headache and encourage patients to record headache frequency and drug use (e.g., by keeping a headache diary) [see *Warnings and Precautions* (5.10)].

Hepatotoxicity

Inform patients of the warning signs and symptoms of hepatotoxicity (e.g., nausea, fatigue, lethargy, pruritus, diarrhea, jaundice, right upper quadrant tenderness, and “flu-like” symptoms). If these occur, instruct patients to stop CAMBIA and seek immediate medical therapy [see *Warnings and Precautions* (5.3)].

Heart Failure and Edema

Advise patients to be alert for the symptoms of congestive heart failure including shortness of breath, unexplained weight gain, or edema and to contact their healthcare provider if such symptoms occur [see *Warnings and Precautions* (5.5)].

Anaphylactic Reactions

Inform patients of the signs of an anaphylactic reaction (e.g., difficulty breathing, swelling of the face or throat). Instruct patients to seek immediate emergency help if these occur [see *Contraindications* (4) and *Warnings and Precautions* (5.7)].

Serious Skin Reactions

Advise patients to stop CAMBIA immediately if they develop any type of rash, blisters, fever or other signs of hypersensitivity such as itching and to contact their healthcare provider as soon as possible [*see Warnings and Precautions (5.9)*]. CAMBIA, like other NSAIDs, can cause serious skin reactions such as exfoliative dermatitis, Stevens-Johnson syndrome (SJS), and toxic epidermal necrosis (TEN), which may result in hospitalizations and even death. (5.9]

Effects During Pregnancy

Inform patients that starting at 30 weeks gestation, CAMBIA and other NSAIDs should be avoided by pregnant women as premature closure of the ductus arteriosus in the fetus may occur [*see Warnings and Precautions (5.11) and Use in Specific Populations (8.1)*].

Avoid Concomitant Use of NSAIDs

Inform patients that the concomitant use of CAMBIA with other NSAIDs or salicylates (e.g., diflunisal, salsalate) is not recommended due to the increased risk of gastrointestinal toxicity, and little or no increase in efficacy [*see Warnings and Precautions (5.2) and Drug Interactions (7)*]. Alert patients that NSAIDs may be present in “over the counter” medications for treatment of colds, fever, or insomnia.

Use of NSAIDs and Low-Dose Aspirin

Inform patients not to use low-dose aspirin concomitantly with CAMBIA until they talk to their healthcare provider [*see Drug Interactions (7)*].

Manufactured by:
MIPHARM S.p.A.
Via Bernardo Quaranta, 12
20141 Milan, Italy

Manufactured for:
Depomed, Inc.
Newark, CA 94560
United States of America

Manufactured and Distributed Under License from APR Applied Pharma Research SA, Balerna, Switzerland

U.S. Patents: 6,974,595; 7,482,377; 7,759,394; 8,097,651

CAM-003-C.1 Month 2017

©2017 Depomed, Inc.

Medication Guide
CAMBIA (Cam-bē-ə or Cam-bē-a)
(diclofenac potassium)
for oral solution

What is the most important information I should know about Cambia?

CAMBIA contains diclofenac (a non-steroidal anti-inflammatory drug or NSAID).

NSAIDs, including CAMBIA, can cause serious side effects, including:

- **Increased risk of a heart attack or stroke that can lead to death.** This risk may happen early in treatment and may increase:
 - with increasing doses of NSAIDs
 - with longer use of NSAIDs

Do not take NSAIDs, including CAMBIA, right before or after a heart surgery called a “coronary artery bypass graft (CABG).”

Avoid taking NSAIDs, including CAMBIA, after a recent heart attack, unless your healthcare provider tells you to. You may have an increased risk of another heart attack if you take NSAIDs after a recent heart attack.

- **Increased risk of bleeding, ulcers, and tears (perforation) of the esophagus (tube leading from the mouth to the stomach), stomach and intestines:**
 - anytime during use
 - without warning symptoms
 - that may cause death

The risk of getting an ulcer or bleeding increases with:

- past history of stomach ulcers, or stomach or intestinal bleeding with use of NSAIDs
- taking medicines called “corticosteroids”, “anticoagulants”, “SSRIs”, or “SNRIs”
- increasing doses of NSAIDs
- longer use of NSAIDs
- smoking
- drinking alcohol
- older age
- poor health
- advanced liver disease
- bleeding problems

CAMBIA should only be used:

- exactly as prescribed
- at the lowest dose possible for your treatment
- for the shortest time needed

What is CAMBIA?

CAMBIA is a prescription medicine used to treat migraine attacks in adults. It does not prevent or lessen the number of migraines you have, and it is not for other types of headaches. CAMBIA contains diclofenac potassium (a non-steroidal anti-inflammatory drug or NSAID).

How should I take CAMBIA?

Take CAMBIA exactly as your healthcare provider tells you to take it.

Take 1 dose of CAMBIA to treat your migraine headache:

- remove one single dose packet from a set of three packets
- open packet only when you are ready to use it
- empty contents of packet into 1 to 2 ounces or 2 to 4 tablespoons (30 to 60 mL) of water
- mix well and drink the water and powder mixture
- throw away empty packet in a safe place and out of the reach of children.
- taking CAMBIA with food may cause a reduction in effectiveness compared to taking CAMBIA on an empty stomach
- do not take more CAMBIA than directed by your healthcare provider. In case of overdose, get medical help or contact a Poison Control Center right away

Who should not take CAMBIA?

Do not take CAMBIA:

- if you have had an asthma attack, hives, or other allergic reaction with aspirin, diclofenac, or any other NSAIDs.
- right before or after heart bypass surgery.

Before taking CAMBIA, tell your healthcare provider about all of your medical conditions, including if you:

- have liver or kidney problems
- have a history of stomach ulcer or bleeding in your stomach or intestines
- have any allergies to any medicines
- have chest pain, shortness of breath, irregular heartbeats have high blood pressure
- have asthma
- are pregnant, think you might be pregnant, or are trying to become pregnant. CAMBIA should not be used by pregnant women, especially after 29 weeks of pregnancy unless directed by your healthcare provider to do so. CAMBIA may cause problems in your unborn child or complications during your delivery
- are breastfeeding or plan to breastfeed. It is not known if CAMBIA passes into your breast milk. You and your doctor should decide if you will take CAMBIA or breastfeed. You should not do both
- have a headache that is different from your usual migraine

Tell your healthcare provider about all of the medicines you take, including prescription or over-the-counter medicines, vitamins or herbal supplements. NSAIDs, like CAMBIA, and some other medicines can interact with each other and cause serious side effects. **Do not start taking any new medicine without talking to your healthcare provider first.**

Especially tell your doctor if you take:

- aspirin
- any anticoagulant medicines (warfarin, Coumadin, Jantoven)

Know the medicines you take. Keep a list of your medicines and show it to your doctor and pharmacist when you get a new medicine.

What are the possible side effects of CAMBIA?

CAMBIA can cause serious side effects, including:

See “What is the most important information I should know about CAMBIA?”

- new or worse high blood pressure
- heart failure
- liver problems including liver failure
- kidney problems including kidney failure
- bleeding and ulcers in the stomach and intestine
- low red blood cells (anemia)
- life-threatening skin reactions
- life-threatening allergic reactions
- asthma attacks in people who have asthma
- medication overuse headaches. Some people who use too much CAMBIA may have worse headaches (medication overuse headache). If your headaches get worse, your healthcare provider may decide to stop your treatment with CAMBIA.

- **Other side effects of NSAIDs include:** stomach pain, constipation, diarrhea, gas, heartburn, nausea, vomiting, and dizziness.

Get emergency help right away if you get any of the following symptoms:

- shortness of breath or trouble breathing
- chest pain
- weakness in one part or side of your body
- slurred speech
- swelling of the face or throat

Stop taking CAMBIA and call your healthcare provider right away if you get any of the following symptoms:

- nausea that seems out of proportion to your migraine
- sudden or severe pain in your belly more tired or weaker than usual
- diarrhea
- vomit blood
- there is blood in your bowel movement or it is black and sticky like tar
- unusual weight gain
- more tired or weaker than usual

- flu-like symptoms

If you take too much of your NSAID, call your healthcare provider or get medical help right away.

These are not all the possible side effects of NSAIDs. For more information, ask your healthcare provider or pharmacist about NSAIDs.

Call your doctor for medical advice about side effects. You may report side effects to FDA at 1-800-FDA-1088.

Other information about NSAIDs

- Aspirin is an NSAID but it does not increase the chance of a heart attack. Aspirin can cause bleeding in the brain, stomach, and intestines. Aspirin can also cause ulcers in the stomach and intestines.
- Some NSAIDs are sold in lower doses without a prescription (over-the-counter). Talk to your healthcare provider before using over-the-counter NSAIDs for more than 10 days.

General information about the safe and effective use of NSAIDs

Medicines are sometimes prescribed for purposes other than those listed in a Medication Guide. Do not use NSAIDs for a condition for which it was not prescribed. Do not give NSAIDs to other people, even if they have the same symptoms that you have. It may harm them.

If you would like more information about NSAIDs, talk with your healthcare provider. You can ask your pharmacist or healthcare provider for information about NSAIDs that is written for health professionals.

Distributed by: Depomed, Inc. Newark, CA 94560

For more information, go to www.CambiaRx.com or call 1-866-458-6389

This Medication Guide has been approved by the U.S. Food and Drug Administration.

Revised 03/2017 CAM-004-C.2