

## HIGHLIGHTS OF PRESCRIBING INFORMATION

These highlights do not include all the information needed to use REVATIO safely and effectively. See full prescribing information for REVATIO.

REVATIO (sildenafil) tablets, for oral use  
REVATIO (sildenafil) for oral suspension  
REVATIO (sildenafil) injection, for intravenous use  
Initial U.S. Approval: 1998

### RECENT MAJOR CHANGES

Warnings and Precautions, Visual Loss (5.5) 07/2017

### INDICATIONS AND USAGE

REVATIO is a phosphodiesterase-5 (PDE-5) inhibitor indicated for the treatment of pulmonary arterial hypertension (PAH) (WHO Group I) in adults to improve exercise ability and delay clinical worsening. Studies establishing effectiveness were short-term (12 to 16 weeks), and included predominately patients with NYHA Functional Class II-III symptoms. Etiologies were idiopathic (71%) or associated with connective tissue disease (25%). (1)

**Limitation of Use:** Adding sildenafil to bosentan therapy does not result in any beneficial effect on exercise capacity. (1, 14)

### DOSAGE AND ADMINISTRATION

- Tablet and oral suspension: 5 mg or 20 mg three times a day, 4-6 hours apart (2.1)
- Injection: 2.5 mg or 10 mg three times a day administered as an intravenous bolus injection (2.2)

### DOSAGE FORMS AND STRENGTHS

- *Tablets:* 20 mg (3)
- *Injection:* 10 mg /12.5 mL in a single use vial (3)
- *For Oral Suspension:* 10 mg/mL (when reconstituted) (3)

### CONTRAINDICATIONS

- Use with organic nitrates or riociguat (4)

## FULL PRESCRIBING INFORMATION: CONTENTS\*

- 1 INDICATIONS AND USAGE
- 2 DOSAGE AND ADMINISTRATION
  - 2.1 REVATIO Tablets and Oral Suspension
  - 2.2 REVATIO Injection
  - 2.3 Reconstitution of the Powder for Oral Suspension
- 3 DOSAGE FORMS AND STRENGTHS
- 4 CONTRAINDICATIONS
- 5 WARNINGS AND PRECAUTIONS
  - 5.1 Mortality with Pediatric Use
  - 5.2 Hypotension
  - 5.3 Worsening Pulmonary Vascular Occlusive Disease
  - 5.4 Epistaxis
  - 5.5 Visual Loss
  - 5.6 Hearing Loss
  - 5.7 Combination with other PDE-5 Inhibitors
  - 5.8 Priapism
  - 5.9 Vaso-occlusive Crisis in Patients with Pulmonary Hypertension Secondary to Sickle Cell Anemia
- 6 ADVERSE REACTIONS
  - 6.1 Clinical Trials Experience
  - 6.2 Postmarketing Experience

- History of hypersensitivity reaction to sildenafil or any component of the tablet, injection, or oral suspension (4)

### WARNINGS AND PRECAUTIONS

- Increased mortality with increasing doses in pediatric patients. Not recommended for use in pediatric patients. (5.1)
- Vasodilation effects may be more common in patients with hypotension or on antihypertensive therapy. (5.2)
- Use in pulmonary veno-occlusive disease may cause pulmonary edema and is not recommended. (5.3)
- Hearing or visual impairment: Seek medical attention if sudden decrease or loss of vision or hearing occurs. (5.5, 5.6)
- Pulmonary hypertension secondary to sickle cell disease: REVATIO may cause serious vaso-occlusive crises. (5.9)

### ADVERSE REACTIONS

Most common adverse reactions greater than or equal to 3% and more frequent than placebo were epistaxis, headache, dyspepsia, flushing, insomnia, erythema, dyspnea, and rhinitis. (6.1, 6.2)

To report SUSPECTED ADVERSE REACTIONS, contact Pfizer at 1-800-438-1985 or FDA at 1-800-FDA-1088 or [www.fda.gov/medwatch](http://www.fda.gov/medwatch).

### DRUG INTERACTIONS

- Concomitant alpha-blockers or amlodipine: Note additive blood pressure lowering effects. (7)
- Use with ritonavir and other potent CYP3A inhibitors: Not recommended. (7, 12.3)
- Concomitant PDE-5 inhibitors: Avoid use with Viagra or other PDE-5 inhibitors. (5.7)

See 17 for PATIENT COUNSELING INFORMATION AND FDA-approved patient labeling

Revised: 07/2017

- 7 DRUG INTERACTIONS
- 8 USE IN SPECIFIC POPULATIONS
  - 8.1 Pregnancy
  - 8.2 Labor and Delivery
  - 8.3 Nursing Mothers
  - 8.4 Pediatric Use
  - 8.5 Geriatric Use
  - 8.6 Patients with Hepatic Impairment
  - 8.7 Patients with Renal Impairment
- 10 OVERDOSAGE
- 11 DESCRIPTION
- 12 CLINICAL PHARMACOLOGY
  - 12.1 Mechanism of Action
  - 12.2 Pharmacodynamics
  - 12.3 Pharmacokinetics
- 13 NONCLINICAL TOXICOLOGY
  - 13.1 Carcinogenesis, Mutagenesis, Impairment of Fertility
- 14 CLINICAL STUDIES
- 16 HOW SUPPLIED/STORAGE AND HANDLING
- 17 PATIENT COUNSELING INFORMATION

\*Sections or subsections omitted from the Full Prescribing Information are not listed.

## FULL PRESCRIBING INFORMATION

### 1 INDICATIONS AND USAGE

REVATIO is indicated for the treatment of pulmonary arterial hypertension (WHO Group I) in adults to improve exercise ability and delay clinical worsening. The delay in clinical worsening was demonstrated when REVATIO was added to background epoprostenol therapy [see *Clinical Studies (14)*].

Studies establishing effectiveness were short-term (12 to 16 weeks), and included predominately patients with New York Heart Association (NYHA) Functional Class II-III symptoms and idiopathic etiology (71%) or associated with connective tissue disease (CTD) (25%).

**Limitation of Use:** Adding sildenafil to bosentan therapy does not result in any beneficial effect on exercise capacity [see *Clinical Studies (14)*].

### 2 DOSAGE AND ADMINISTRATION

#### 2.1 REVATIO Tablets and Oral Suspension

The recommended dose of REVATIO is 5 mg or 20 mg three times a day. Administer REVATIO doses 4-6 hours apart.

In the clinical trial no greater efficacy was achieved with the use of higher doses. Treatment with doses higher than 20 mg three times a day is not recommended.

#### 2.2 REVATIO Injection

REVATIO injection is for the continued treatment of patients with PAH who are currently prescribed oral REVATIO and who are temporarily unable to take oral medication.

The recommended dose is 2.5 mg or 10 mg administered as an intravenous bolus injection three times a day. The dose of REVATIO injection does not need to be adjusted for body weight.

A 10 mg dose of REVATIO injection is predicted to provide pharmacological effect of sildenafil and its N-desmethyl metabolite equivalent to that of a 20 mg oral dose.

#### 2.3 Reconstitution of the Powder for Oral Suspension

1. Tap the bottle to release the powder.
2. Remove the cap.
3. Accurately measure out 60 mL of water and pour the water into the bottle. (Figure 1)

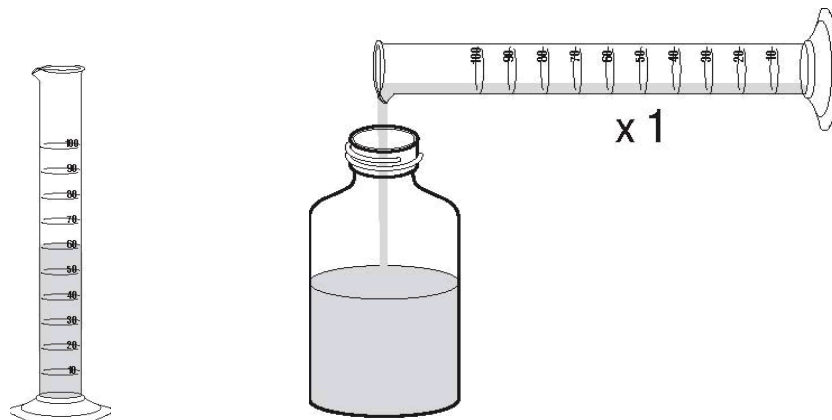


Figure 1

4. Replace the cap and shake the bottle vigorously for a minimum of 30 seconds. (Figure 2)

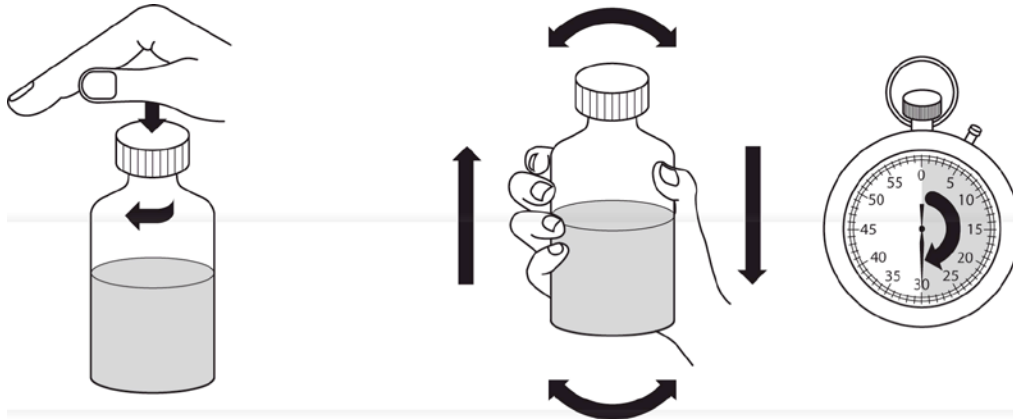


Figure 2

5. Remove the cap.  
6. Accurately measure out another 30 mL of water and add this to the bottle. You should always add a total of 90 mL of water irrespective of the dose prescribed. (Figure 3)

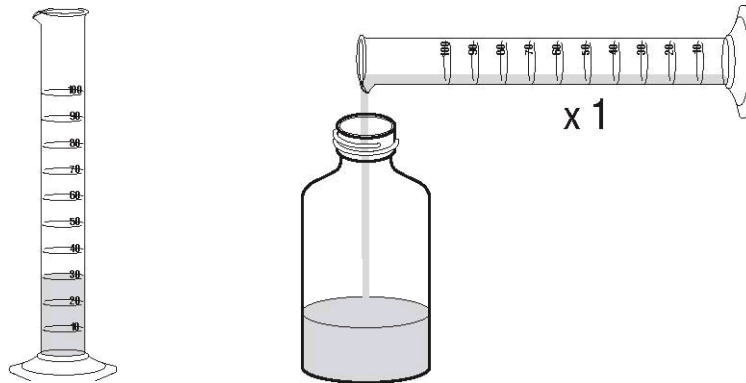


Figure 3

7. Replace the cap and shake the bottle vigorously for a minimum of 30 seconds. (Figure 4)

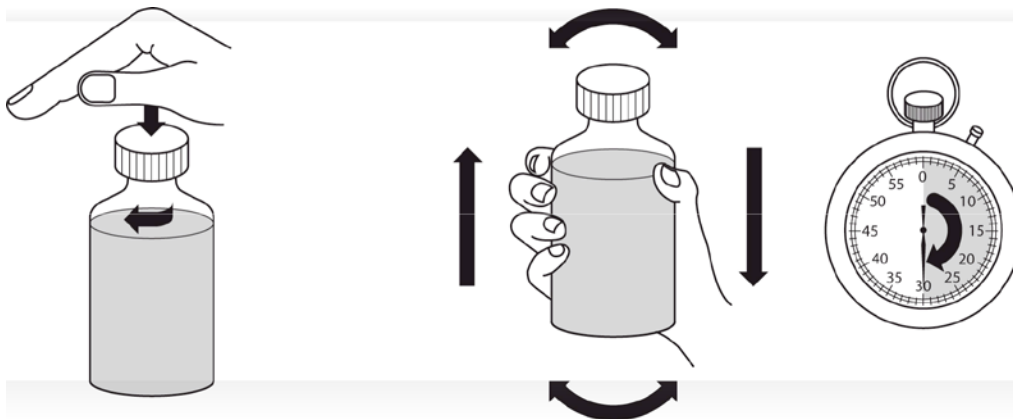


Figure 4

8. Remove the cap.

9. Press the bottle adaptor into the neck of the bottle (as shown on Figure 5, below). The adaptor is provided so that you can fill the oral syringe with medicine from the bottle. Replace the cap on the bottle.

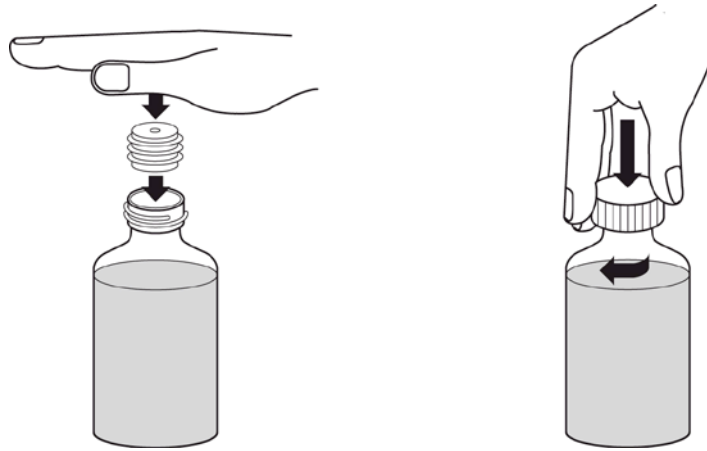


Figure 5

10. Write the expiration date of the constituted oral suspension on the bottle label (the expiration date of the constituted oral suspension is 60 days from the date of constitution).

#### **Incompatibilities**

Do not mix with any other medication or additional flavoring agent.

### **3 DOSAGE FORMS AND STRENGTHS**

#### **REVATIO Tablets**

White, film-coated, round tablets engraved with “RVT20” containing sildenafil citrate equivalent to 20 mg of sildenafil.

#### **REVATIO Injection**

Single use vial containing 10 mg/12.5 mL of sildenafil.

#### **REVATIO for Oral Suspension**

White to off-white powders containing 1.57 g of sildenafil citrate (equivalent to 1.12 g of sildenafil) in a bottle intended for constitution. Following constitution with 90 mL of water, the volume of the oral suspension is 112 mL and the oral suspension contains 10 mg/mL sildenafil. A 2 mL oral syringe (with 0.5 mL and 2 mL dose markings) and a press-in bottle adaptor are also provided.

### **4 CONTRAINDICATIONS**

REVATIO is contraindicated in patients with:

- Concomitant use of organic nitrates in any form, either regularly or intermittently, because of the greater risk of hypotension [see *Warnings and Precautions (5.2)*].
- Concomitant use of riociguat, a guanylate cyclase stimulator. PDE-5 inhibitors, including sildenafil, may potentiate the hypotensive effects of riociguat.
- Known hypersensitivity to sildenafil or any component of the tablet, injection, or oral suspension. Hypersensitivity, including anaphylactic reaction, anaphylactic shock and anaphylactoid reaction, has been reported in association with the use of sildenafil.

## 5 WARNINGS AND PRECAUTIONS

### 5.1 Mortality with Pediatric Use

In a long-term trial in pediatric patients with PAH, an increase in mortality with increasing REVATIO dose was observed. Deaths were first observed after about 1 year and causes of death were typical of patients with PAH. Use of REVATIO, particularly chronic use, is not recommended in children [see *Use in Specific Populations (8.4)*].

### 5.2 Hypotension

REVATIO has vasodilatory properties, resulting in mild and transient decreases in blood pressure. Before prescribing REVATIO, carefully consider whether patients with certain underlying conditions could be adversely affected by such vasodilatory effects (e.g., patients on antihypertensive therapy or with resting hypotension [BP less than 90/50], fluid depletion, severe left ventricular outflow obstruction, or autonomic dysfunction). Monitor blood pressure when co-administering blood pressure lowering drugs with REVATIO.

### 5.3 Worsening Pulmonary Vascular Occlusive Disease

Pulmonary vasodilators may significantly worsen the cardiovascular status of patients with pulmonary veno-occlusive disease (PVOD). Since there are no clinical data on administration of REVATIO to patients with veno-occlusive disease, administration of REVATIO to such patients is not recommended. Should signs of pulmonary edema occur when REVATIO is administered, consider the possibility of associated PVOD.

### 5.4 Epistaxis

The incidence of epistaxis was 13% in patients taking REVATIO with PAH secondary to CTD. This effect was not seen in idiopathic PAH (REVATIO 3%, placebo 2%) patients. The incidence of epistaxis was also higher in REVATIO-treated patients with a concomitant oral vitamin K antagonist (9% versus 2% in those not treated with concomitant vitamin K antagonist).

The safety of REVATIO is unknown in patients with bleeding disorders or active peptic ulceration.

### 5.5 Visual Loss

When used to treat erectile dysfunction, non-arteritic anterior ischemic optic neuropathy (NAION), a cause of decreased vision including permanent loss of vision, has been reported postmarketing in temporal association with the use of phosphodiesterase type 5 (PDE-5) inhibitors, including sildenafil. Most, but not all, of these patients had underlying anatomic or vascular risk factors for developing NAION, including but not necessarily limited to: low cup to disc ratio (“crowded disc”), age over 50, diabetes, hypertension, coronary artery disease, hyperlipidemia and smoking. Based on published literature, the annual incidence of NAION is 2.5-11.8 cases per 100,000 males aged  $\geq$  50 per year in the general population.

An observational case-crossover study evaluated the risk of NAION when PDE-5 inhibitor use, as a class, occurred immediately before NAION onset (within 5 half-lives), compared to PDE-5 inhibitor use in a prior time period. The results suggest an approximate 2-fold increase in the risk of NAION, with a risk estimate of 2.15 (95% CI 1.06, 4.34). A similar study reported a consistent result, with a risk estimate of 2.27 (95% CI 0.99, 5.20). Other risk factors for NAION, such as the presence of “crowded” optic disc, may have contributed to the occurrence of NAION in these studies.

Neither the rare postmarketing reports, nor the association of PDE-5 inhibitor use and NAION in the observational studies, substantiate a causal relationship between PDE-5 inhibitor use and NAION [see *Adverse Reactions (6.2)*].

Advise patients to seek immediate medical attention in the event of a sudden loss of vision in one or both eyes while taking PDE-5 inhibitors, including REVATIO. Physicians should also discuss the increased risk of NAION with patients who have already experienced NAION in one eye, including whether such individuals could be adversely affected by use of vasodilators, such as PDE-5 inhibitors.

There are no controlled clinical data on the safety or efficacy of REVATIO in patients with retinitis pigmentosa, a minority whom have genetic disorders of retinal phosphodiesterases. Prescribe REVATIO with caution in these patients.

## 5.6 Hearing Loss

Cases of sudden decrease or loss of hearing, which may be accompanied by tinnitus and dizziness, have been reported in temporal association with the use of PDE-5 inhibitors, including REVATIO. In some of the cases, medical conditions and other factors were reported that may have played a role. In many cases, medical follow-up information was limited. It is not possible to determine whether these reported events are related directly to the use of REVATIO, to the patient's underlying risk factors for hearing loss, a combination of these factors, or to other factors.

Advise patients to seek prompt medical attention in the event of sudden decrease or loss of hearing while taking PDE-5 inhibitors, including REVATIO.

## 5.7 Combination with other PDE-5 inhibitors

Sildenafil is also marketed as VIAGRA®. The safety and efficacy of combinations of REVATIO with VIAGRA or other PDE-5 inhibitors have not been studied. Inform patients taking REVATIO not to take VIAGRA or other PDE-5 inhibitors.

## 5.8 Priapism

Use REVATIO with caution in patients with anatomical deformation of the penis (e.g., angulation, cavernosal fibrosis, or Peyronie's disease) or in patients who have conditions, which may predispose them to priapism (e.g., sickle cell anemia, multiple myeloma, or leukemia). In the event of an erection that persists longer than 4 hours, the patient should seek immediate medical assistance. If priapism (painful erection greater than 6 hours in duration) is not treated immediately, penile tissue damage and permanent loss of potency could result.

## 5.9 Vaso-occlusive Crisis in Patients with Pulmonary Hypertension Secondary to Sickle Cell Anemia

In a small, prematurely terminated study of patients with pulmonary hypertension (PH) secondary to sickle cell disease, vaso-occlusive crises requiring hospitalization were more commonly reported by patients who received REVATIO than by those randomized to placebo. The effectiveness and safety of REVATIO in the treatment of PAH secondary to sickle cell anemia has not been established.

# 6 ADVERSE REACTIONS

The following serious adverse events are discussed elsewhere in the labeling:

- Mortality with pediatric use [*see Warnings and Precautions (5.1) and Use in Specific Populations (8.4)*]
- Hypotension [*see Warnings and Precautions (5.2)*]
- Vision loss [*see Warnings and Precautions (5.5)*]
- Hearing loss [*see Warnings and Precautions (5.6)*]
- Priapism [*see Warnings and Precautions (5.8)*]
- Vaso-occlusive crisis [*see Warnings and Precautions (5.9)*]

## 6.1 Clinical Trials Experience

Because clinical trials are conducted under widely varying conditions, adverse reaction rates observed in the clinical trials of a drug cannot be directly compared to rates in the clinical trials of another drug and may not reflect the rates observed in practice.

Safety data of REVATIO in adults were obtained from the 12-week, placebo-controlled clinical study (Study 1) and an open-label extension study in 277 REVATIO-treated patients with PAH, WHO Group I [*see Clinical Studies (14)*].

The overall frequency of discontinuation in REVATIO-treated patients on 20 mg three times a day was 3% and was the same for the placebo group.

In Study 1, the adverse reactions that were reported by at least 3% of REVATIO-treated patients (20 mg three times a day) and were more frequent in REVATIO-treated patients than in placebo-treated patients are shown in Table 1. Adverse reactions were generally transient and mild to moderate in nature.

**Table 1. Most Common Adverse Reactions in Patients with PAH in Study 1 (More Frequent in REVATIO-Treated Patients than Placebo-Treated Patients and Incidence ≥3% in REVATIO-Treated Patients)**

	Placebo, % (n = 70)	REVATIO 20 mg three times a day, % (n = 69)	Placebo-Subtracted, %
Epistaxis	1	9	8
Headache	39	46	7
Dyspepsia	7	13	6
Flushing	4	10	6
Insomnia	1	7	6
Erythema	1	6	5
Dyspnea exacerbated	3	7	4
Rhinitis	0	4	4
Diarrhea	6	9	3
Myalgia	4	7	3
Pyrexia	3	6	3
Gastritis	0	3	3
Sinusitis	0	3	3
Paresthesia	0	3	3

At doses higher than the recommended 20 mg three times a day, there was a greater incidence of some adverse reactions including flushing, diarrhea, myalgia and visual disturbances. Visual disturbances were identified as mild and transient, and were predominately color-tinge to vision, but also increased sensitivity to light or blurred vision.

The incidence of retinal hemorrhage with REVATIO 20 mg three times a day was 1.4% versus 0% placebo and for all REVATIO doses studied was 1.9% versus 0% placebo. The incidence of eye hemorrhage at both 20 mg three times a day and at all doses studied was 1.4% for REVATIO versus 1.4% for placebo. The patients experiencing these reactions had risk factors for hemorrhage including concurrent anticoagulant therapy.

In a placebo-controlled fixed dose titration study (Study 2) of REVATIO (starting with recommended dose of 20 mg and increased to 40 mg and then 80 mg all three times a day) as an adjunct to intravenous epoprostenol in patients with PAH, the adverse reactions that were more frequent in the REVATIO + epoprostenol group than in the epoprostenol group (greater than 6% difference) are shown in Table 2 [see *Clinical Studies (14)*].

**Table 2. Adverse Reactions (%) in patients with PAH in Study 2 (incidence in REVATIO + Epoprostenol group at least 6% greater than Epoprostenol group)**

	REVATIO + Epoprostenol (n = 134)	Epoprostenol (n = 131)	(REVATIO + Epoprostenol) minus Epoprostenol
Headache	57	34	23
Edema <sup>^</sup>	25	13	14
Dyspepsia	16	2	14
Pain in extremity	17	6	11
Diarrhea	25	18	7
Nausea	25	18	7
Nasal congestion	9	2	7

<sup>^</sup>includes peripheral edema

#### REVATIO Injection

REVATIO injection was studied in a 66-patient, placebo-controlled study in patients with PAH at doses targeting plasma concentrations between 10 and 500 ng/mL (up to 8 times the exposure of the recommended dose). Adverse events with REVATIO injection were similar to those seen with oral tablets.

## 6.2 Postmarketing Experience

The following adverse reactions have been identified during post approval use of sildenafil (marketed for both PAH and erectile dysfunction). Because these reactions are reported voluntarily from a population of uncertain size, it is not always possible to reliably estimate their frequency or establish a causal relationship to drug exposure.

## **Cardiovascular Events**

In postmarketing experience with sildenafil at doses indicated for erectile dysfunction, serious cardiovascular, cerebrovascular, and vascular events, including myocardial infarction, sudden cardiac death, ventricular arrhythmia, cerebrovascular hemorrhage, transient ischemic attack, hypertension, pulmonary hemorrhage, and subarachnoid and intracerebral hemorrhages have been reported in temporal association with the use of the drug. Most, but not all, of these patients had preexisting cardiovascular risk factors. Many of these events were reported to occur during or shortly after sexual activity, and a few were reported to occur shortly after the use of sildenafil without sexual activity. Others were reported to have occurred hours to days after use concurrent with sexual activity. It is not possible to determine whether these events are related directly to sildenafil, to sexual activity, to the patient's underlying cardiovascular disease, or to a combination of these or other factors.

## **Nervous system**

Seizure, seizure recurrence

## **Ophthalmologic**

NAION [*see Warnings and Precautions (5.5) and Patient Counseling Information (17)*].

## **7 DRUG INTERACTIONS**

### **Nitrates**

Concomitant use of REVATIO with nitrates in any form is contraindicated [*see Contraindications (4)*].

### **Ritonavir and other Potent CYP3A Inhibitors**

Concomitant use of REVATIO with ritonavir and other potent CYP3A inhibitors is not recommended [*see Clinical Pharmacology (12.3)*].

### **Other drugs that reduce blood pressure**

*Alpha blockers.* In drug-drug interaction studies, sildenafil (25 mg, 50 mg, or 100 mg) and the alpha-blocker doxazosin (4 mg or 8 mg) were administered simultaneously to patients with benign prostatic hyperplasia (BPH) stabilized on doxazosin therapy. In these study populations, mean additional reductions of supine systolic and diastolic blood pressure of 7/7 mmHg, 9/5 mmHg, and 8/4 mmHg, respectively, were observed. Mean additional reductions of standing blood pressure of 6/6 mmHg, 11/4 mmHg, and 4/5 mmHg, respectively, were also observed. There were infrequent reports of patients who experienced symptomatic postural hypotension. These reports included dizziness and light-headedness, but not syncope.

*Amlodipine.* When sildenafil 100 mg oral was co-administered with amlodipine, 5 mg or 10 mg oral, to hypertensive patients, the mean additional reduction on supine blood pressure was 8 mmHg systolic and 7 mmHg diastolic.

Monitor blood pressure when co-administering blood pressure lowering drugs with REVATIO [*see Warnings and Precautions (5.2)*].

## **8 USE IN SPECIFIC POPULATIONS**

### **8.1 Pregnancy**

#### **Pregnancy Category B**

There are no adequate and well-controlled studies of sildenafil in pregnant women. No evidence of teratogenicity, embryotoxicity, or fetotoxicity was observed in pregnant rats or rabbits dosed with sildenafil 200 mg/kg/day during organogenesis, a level that is, on a mg/m<sup>2</sup> basis, 32- and 68-times, respectively, the recommended human dose (RHD) of 20 mg three times a day. In a rat pre- and postnatal development study, the no-observed-adverse-effect dose was 30 mg/kg/day (equivalent to 5-times the RHD on a mg/m<sup>2</sup> basis).

### **8.2 Labor and Delivery**

The safety and efficacy of REVATIO during labor and delivery have not been studied.

### **8.3 Nursing Mothers**

It is not known if sildenafil or its metabolites are excreted in human breast milk. Because many drugs are excreted in human milk, caution should be exercised when REVATIO is administered to a nursing woman.



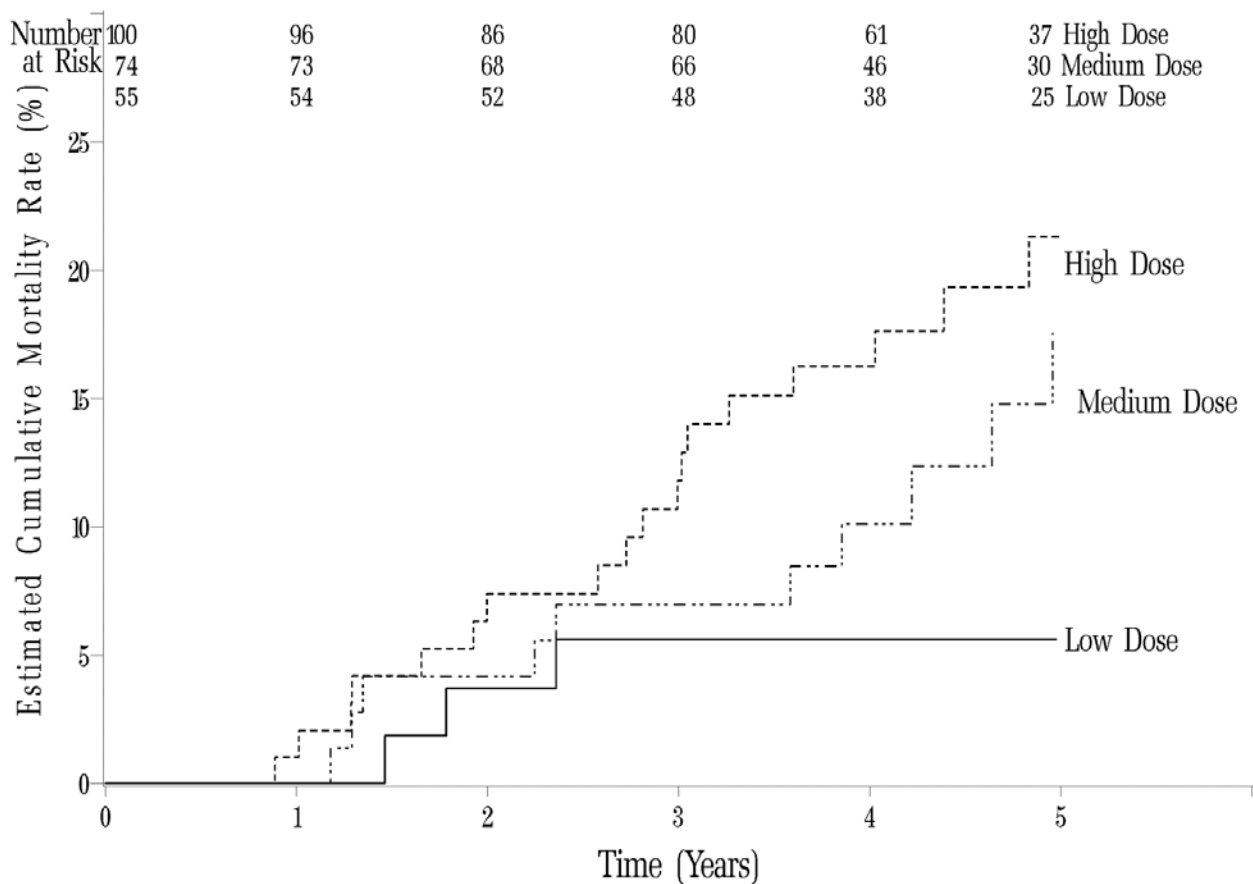
## 8.4 Pediatric Use

In a randomized, double-blind, multi-center, placebo-controlled, parallel-group, dose-ranging study, 234 patients with PAH, aged 1 to 17 years, body weight greater than or equal to 8 kg, were randomized, on the basis of body weight, to three dose levels of REVATIO, or placebo, for 16 weeks of treatment. Most patients had mild to moderate symptoms at baseline: WHO Functional Class I (32%), II (51%), III (15%), or IV (0.4%). One-third of patients had primary PAH; two-thirds had secondary PAH (systemic-to-pulmonary shunt in 37%; surgical repair in 30%). Sixty-two percent of patients were female. Drug or placebo was administered three times a day.

The primary objective of the study was to assess the effect of REVATIO on exercise capacity as measured by cardiopulmonary exercise testing in pediatric patients developmentally able to perform the test (n = 115). Administration of REVATIO did not result in a statistically significant improvement in exercise capacity in those patients. No patients died during the 16-week controlled study.

After completing the 16-week controlled study, a patient originally randomized to REVATIO remained on his/her dose of REVATIO or, if originally randomized to placebo, was randomized to low-, medium-, or high-dose REVATIO. After all patients completed 16 weeks of follow-up in the controlled study, the blind was broken and doses were adjusted as clinically indicated. Patients treated with sildenafil were followed for a median of 4.6 years (range 2 days to 8.6 years). Mortality during the long-term study, by originally assigned dose, is shown in Figure 6:

**Figure 6: Kaplan-Meier Plot of Mortality by REVATIO Dose**



During the study, there were 42 reported deaths, with 37 of these deaths reported prior to a decision to titrate subjects to a lower dosage because of a finding of increased mortality with increasing REVATIO doses. For the survival analysis which included 37 deaths, the hazard ratio for high dose compared to low dose was 3.9,  $p=0.007$ . Causes of death were typical of patients with PAH. Use of REVATIO, particularly chronic use, is not recommended in children.

## 8.5 Geriatric Use

Clinical studies of REVATIO did not include sufficient numbers of subjects aged 65 and over to determine whether they respond differently from younger subjects. Other reported clinical experience has not identified differences in

responses between the elderly and younger patients. In general, dose selection for an elderly patient should be cautious, reflecting the greater frequency of decreased hepatic, renal, or cardiac function, and of concomitant disease or other drug therapy [see *Clinical Pharmacology* (12.3)].

### 8.6 Patients with Hepatic Impairment

No dose adjustment for mild to moderate impairment is required. Severe impairment has not been studied [see *Clinical Pharmacology* (12.3)].

### 8.7 Patients with Renal Impairment

No dose adjustment is required (including severe impairment  $CL_{Cr} < 30$  mL/min) [see *Clinical Pharmacology* (12.3)].

## 10 OVERDOSAGE

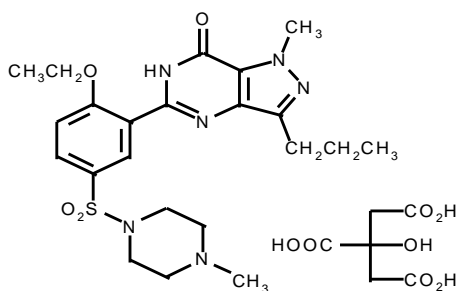
In studies with healthy volunteers of single doses up to 800 mg, adverse events were similar to those seen at lower doses but rates and severities were increased.

In cases of overdose, standard supportive measures should be adopted as required. Renal dialysis is not expected to accelerate clearance as sildenafil is highly bound to plasma proteins and it is not eliminated in the urine.

## 11 DESCRIPTION

REVATIO, phosphodiesterase-5 (PDE-5) inhibitor, is the citrate salt of sildenafil, a selective inhibitor of cyclic guanosine monophosphate (cGMP)-specific phosphodiesterase type-5 (PDE-5). Sildenafil is also marketed as VIAGRA<sup>®</sup> for erectile dysfunction.

Sildenafil citrate is designated chemically as 1-[[3-(6,7-dihydro-1-methyl-7-oxo-3-propyl-1H-pyrazolo [4,3-d] pyrimidin-5-yl)-4-ethoxyphenyl] sulfonyl]-4-methylpiperazine citrate and has the following structural formula:



Sildenafil citrate is a white to off-white crystalline powder with a solubility of 3.5 mg/mL in water and a molecular weight of 666.7.

REVATIO (sildenafil) Tablets: REVATIO is formulated as white, film-coated round tablets for oral administration. Each tablet contains sildenafil citrate equivalent to 20 mg of sildenafil. In addition to the active ingredient, sildenafil citrate, each tablet contains the following inactive ingredients: microcrystalline cellulose, anhydrous dibasic calcium phosphate, croscarmellose sodium, magnesium stearate, hypromellose, titanium dioxide, lactose monohydrate, and triacetin.

REVATIO (sildenafil) Injection: REVATIO is supplied as a clear, colorless, sterile, ready to use solution in a single-use vial containing 10 mg/12.5 mL of sildenafil. Each mL of solution contains 1.124 mg sildenafil citrate (equivalent to 0.8 mg sildenafil), 50.5 mg dextrose and water for injection.

REVATIO (sildenafil) for Oral Suspension: REVATIO is supplied as white to off-white powders containing 1.57 g of sildenafil citrate (equivalent to 1.12 g sildenafil) in an amber glass bottle intended for constitution. Following constitution with 90 mL water, the volume of the oral suspension is 112 mL and the oral suspension contains 10 mg/mL sildenafil. The inactive ingredients include sorbitol, citric acid anhydrous, sucralose, sodium citrate dihydrate, xanthan gum, titanium dioxide, sodium benzoate, colloidal silicon dioxide anhydrous and grape flavor. In addition to the bottle, a press-in bottle adapter and an oral dosing syringe (with 0.5 mL and 2 mL dose markings) are provided.

## 12 CLINICAL PHARMACOLOGY

### 12.1 Mechanism of Action

Sildenafil is an inhibitor of cGMP specific phosphodiesterase type-5 (PDE-5) in the smooth muscle of the pulmonary vasculature, where PDE-5 is responsible for degradation of cGMP. Sildenafil, therefore, increases cGMP within pulmonary vascular smooth muscle cells resulting in relaxation. In patients with PAH, this can lead to vasodilation of the pulmonary vascular bed and, to a lesser degree, vasodilation in the systemic circulation.

Studies in vitro have shown that sildenafil is selective for PDE-5. Its effect is more potent on PDE-5 than on other known phosphodiesterases (10-fold for PDE6, greater than 80-fold for PDE1, greater than 700-fold for PDE2, PDE3, PDE4, PDE7, PDE8, PDE9, PDE10, and PDE11). The approximately 4,000-fold selectivity for PDE-5 versus PDE3 is important because PDE3 is involved in control of cardiac contractility. Sildenafil is only about 10-fold as potent for PDE-5 compared to PDE6, an enzyme found in the retina and involved in the phototransduction pathway of the retina. This lower selectivity is thought to be the basis for abnormalities related to color vision observed with higher doses or plasma levels [see *Clinical Pharmacology (12.2)*].

In addition to pulmonary vascular smooth muscle and the corpus cavernosum, PDE-5 is also found in other tissues including vascular and visceral smooth muscle and in platelets. The inhibition of PDE-5 in these tissues by sildenafil may be the basis for the enhanced platelet anti-aggregatory activity of nitric oxide observed in vitro, and the mild peripheral arterial-venous dilatation in vivo.

### 12.2 Pharmacodynamics

#### Effects of REVATIO on Hemodynamic Measures

Patients on all REVATIO doses achieved a statistically significant reduction in mean pulmonary arterial pressure (mPAP) compared to those on placebo in a study with no background vasodilators [Study 1 in *Clinical Studies (14)*]. Data on other hemodynamic measures for the REVATIO 20 mg three times a day and placebo dosing regimens is displayed in Table 3. The relationship between these effects and improvements in 6-minute walk distance is unknown.

**Table 3. Changes from Baseline in Hemodynamic Parameters at Week 12 [mean (95% CI)] for the REVATIO 20 mg Three Times a Day and Placebo Group**

	Placebo (n = 65)*	REVATIO 20 mg three times a day (n = 65)*
mPAP (mmHg)	0.6 (-0.8, 2.0)	-2.1 (-4.3, 0.0)
PVR (dyn·s/cm <sup>5</sup> )	49 (-54, 153)	-122 (-217, -27)
SVR (dyn·s/cm <sup>5</sup> )	-78 (-197, 41)	-167 (-307, -26)
RAP (mmHg)	0.3 (-0.9, 1.5)	-0.8 (-1.9, 0.3)
CO (L/min)	-0.1 (-0.4, 0.2)	0.4 (0.1, 0.7)
HR (beats/min)	-1.3 (-4.1, 1.4)	-3.7 (-5.9, -1.4)

mPAP = mean pulmonary arterial pressure; PVR = pulmonary vascular resistance; SVR = systemic vascular resistance; RAP = right atrial pressure; CO = cardiac output; HR = heart rate

\*The number of patients per treatment group varied slightly for each parameter due to missing assessments.

In another study evaluating lower doses of sildenafil 1 mg, 5 mg and 20 mg [Study 3 in *Clinical Studies (14)*], there were no significant differences in the effects on hemodynamic variables between doses.

#### Effects of REVATIO on Blood Pressure

Single oral doses of sildenafil 100 mg administered to healthy volunteers produced decreases in supine blood pressure (mean maximum decrease in systolic/diastolic blood pressure of 8/5 mmHg). The decrease in blood pressure was most notable approximately 1-2 hours after dosing, and was not different from placebo at 8 hours. Similar effects on blood pressure were noted with 25 mg, 50 mg and 100 mg doses of sildenafil, therefore the effects are not related to dose or plasma levels within this dosage range. Larger effects were recorded among patients receiving concomitant nitrates [see *Contraindications (4)*].

Single oral doses of sildenafil up to 100 mg in healthy volunteers produced no clinically relevant effects on ECG. After chronic dosing of 80 mg three times a day to patients with PAH, no clinically relevant effects on ECG were reported.

After chronic dosing of 80 mg three times a day sildenafil to healthy volunteers, the largest mean change from baseline in supine systolic and supine diastolic blood pressures was a decrease of 9.0 mmHg and 8.4 mmHg, respectively.

After chronic dosing of 80 mg three times a day sildenafil to patients with systemic hypertension, the mean change from baseline in systolic and diastolic blood pressures was a decrease of 9.4 mmHg and 9.1 mmHg, respectively.

After chronic dosing of 80 mg three times a day sildenafil to patients with PAH, lesser reductions than above in systolic and diastolic blood pressures were observed (a decrease in both of 2 mmHg).

### **Effects of REVATIO on Vision**

At single oral doses of 100 mg and 200 mg, transient dose-related impairment of color discrimination (blue/green) was detected using the Farnsworth-Munsell 100-hue test, with peak effects near the time of peak plasma levels. This finding is consistent with the inhibition of PDE6, which is involved in phototransduction in the retina. An evaluation of visual function at doses up to 200 mg revealed no effects of REVATIO on visual acuity, intraocular pressure, or pupillometry.

## **12.3 Pharmacokinetics**

### **Absorption and Distribution**

REVATIO is rapidly absorbed after oral administration, with a mean absolute bioavailability of 41% (25-63%). Maximum observed plasma concentrations are reached within 30 to 120 minutes (median 60 minutes) of oral dosing in the fasted state. When REVATIO is taken with a high-fat meal, the rate of absorption is reduced, with a mean delay in  $T_{max}$  of 60 minutes and a mean reduction in  $C_{max}$  of 29%. The mean steady state volume of distribution ( $V_{ss}$ ) for sildenafil is 105 L, indicating distribution into the tissues. Sildenafil and its major circulating N-desmethyl metabolite are both approximately 96% bound to plasma proteins. Protein binding is independent of total drug concentrations.

Bioequivalence was established between the 20 mg tablet and the 10 mg/mL oral suspension when administered as a 20 mg single oral dose of sildenafil (as citrate).

### **Metabolism and Excretion**

Sildenafil is cleared predominantly by the CYP3A (major route) and cytochrome P450 2C9 (CYP2C9, minor route) hepatic microsomal isoenzymes. The major circulating metabolite results from N-desmethylation of sildenafil, and is, itself, further metabolized. This metabolite has a phosphodiesterase selectivity profile similar to sildenafil and an in vitro potency for PDE-5 approximately 50% of the parent drug. In healthy volunteers, plasma concentrations of this metabolite are approximately 40% of those seen for sildenafil, so that the metabolite accounts for about 20% of sildenafil's pharmacologic effects. In patients with PAH, however, the ratio of the metabolite to sildenafil is higher. Both sildenafil and the active metabolite have terminal half-lives of about 4 hours.

After either oral or intravenous administration, sildenafil is excreted as metabolites predominantly in the feces (approximately 80% of the administered oral dose) and to a lesser extent in the urine (approximately 13% of the administered oral dose).

REVATIO Injection: The pharmacokinetic profile of REVATIO has been characterized following intravenous administration. A 10 mg dose of REVATIO Injection is predicted to provide a pharmacological effect of sildenafil and its N-desmethyl metabolite equivalent to that of a 20 mg oral dose.

### **Population Pharmacokinetics**

Age, gender, race, and renal and hepatic function were included as factors assessed in the population pharmacokinetic model to evaluate sildenafil pharmacokinetics in patients with PAH. The dataset available for the population pharmacokinetic evaluation contained a wide range of demographic data and laboratory parameters associated with hepatic and renal function. None of these factors had a significant impact on sildenafil pharmacokinetics in patients with PAH.

In patients with PAH, the average steady-state concentrations were 20-50% higher when compared to those of healthy volunteers. There was also a doubling of  $C_{min}$  levels compared to healthy volunteers. Both findings suggest a lower clearance and/or a higher oral bioavailability of sildenafil in patients with PAH compared to healthy volunteers.

### Geriatric Patients

Healthy elderly volunteers (65 years or over) had a reduced clearance of sildenafil, resulting in approximately 84% and 107% higher plasma concentrations of sildenafil and its active N-desmethyl metabolite, respectively, compared to those seen in healthy younger volunteers (18-45 years). Due to age-differences in plasma protein binding, the corresponding increase in the AUC of free (unbound) sildenafil and its active N-desmethyl metabolite were 45% and 57%, respectively.

### Renal Impairment

In volunteers with mild (CL<sub>cr</sub> = 50-80 mL/min) and moderate (CL<sub>cr</sub> = 30-49 mL/min) renal impairment, the pharmacokinetics of a single oral dose of sildenafil (50 mg) was not altered. In volunteers with severe (CL<sub>cr</sub> less than 30 mL/min) renal impairment, sildenafil clearance was reduced, resulting in approximately doubling of AUC and C<sub>max</sub> compared to age-matched volunteers with no renal impairment. In addition, N-desmethyl metabolite AUC and C<sub>max</sub> values were significantly increased 200 % and 79 %, respectively, in subjects with severe renal impairment compared to subjects with normal renal function.

### Hepatic Impairment

In volunteers with mild to moderate hepatic cirrhosis (Child-Pugh class A and B), sildenafil clearance was reduced, resulting in increases in AUC (84%) and C<sub>max</sub> (47%) compared to age-matched volunteers with no hepatic impairment. Patients with severe hepatic impairment (Child-Pugh class C) have not been studied.

## **Drug Interaction Studies**

### ***In vitro* studies**

Sildenafil metabolism is principally mediated by the CYP3A (major route) and CYP2C9 (minor route) cytochrome P450 isoforms. Therefore, inhibitors of these isoenzymes may reduce sildenafil clearance and inducers of these isoenzymes may increase sildenafil clearance.

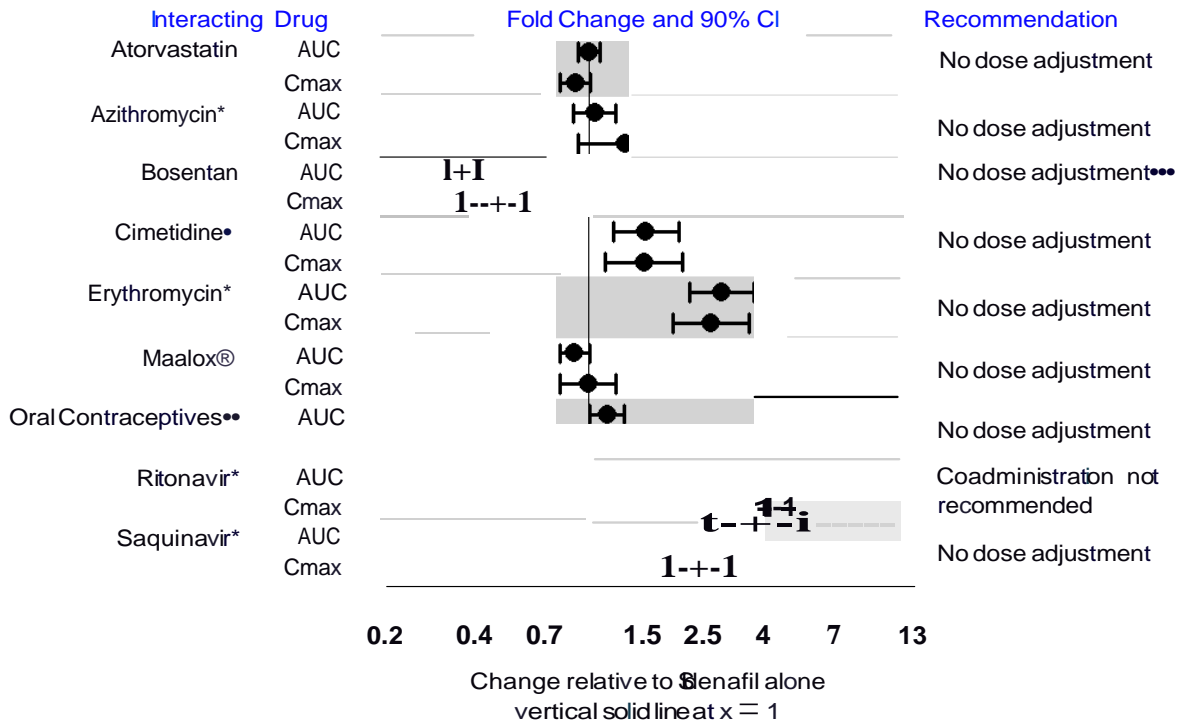
Sildenafil is a weak inhibitor of the cytochrome P450 isoforms 1A2, 2C9, 2C19, 2D6, 2E1 and 3A (IC<sub>50</sub> greater than 150 μM).

Sildenafil is not expected to affect the pharmacokinetics of compounds which are substrates of these CYP enzymes at clinically relevant concentrations.

### ***In vivo* studies**

The effects of other drugs on sildenafil pharmacokinetics and the effects of sildenafil on the exposure to other drugs are shown in Figure 7 and Figure 8, respectively.

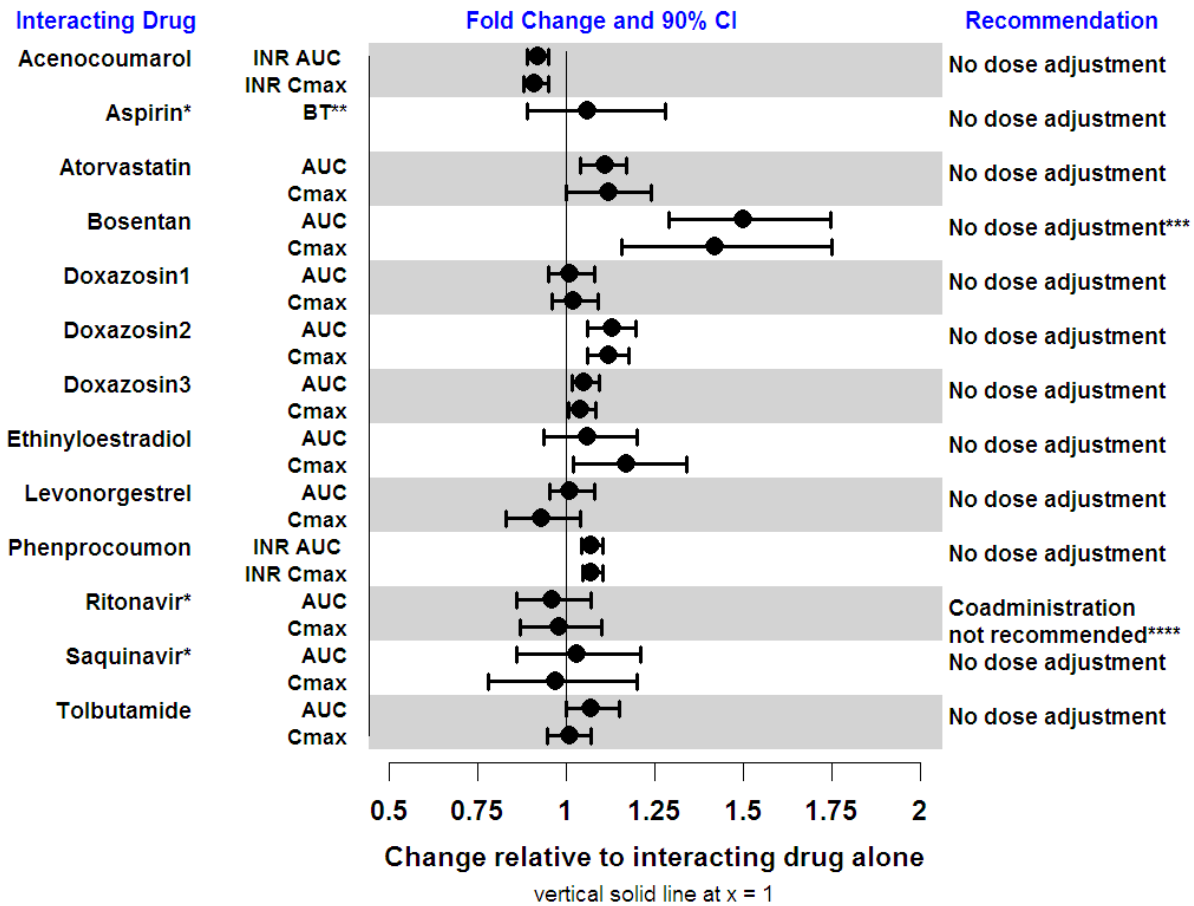
Figure 7. Effects of Other Drugs on Sildenafil Pharmacokinetics



• 95% CI; •• AUC accumulation ratio from Day 1 to Day 7 relative to sildenafil alone

\*\*\* No benefit on exercise capacity when sildenafil added to bosentan therapy [see Clinical Studies (14)]

**Figure 8 Effects of Sildenafil on Other Drugs**



Doxazosin1, 25 mg; 2, 50 mg; and 3, 100 mg sildenafil; \* 95% CI; \*\* BT = bleeding time

\*\*\* No benefit on exercise capacity when sildenafil added to bosentan therapy [see *Clinical Studies (14)*]

\*\*\*\*based on the effect of ritonavir on sildenafil PK

### CYP3A Inhibitors and Beta Blockers

Population pharmacokinetic analysis of data from patients in clinical trials indicated an approximately 30% reduction in sildenafil clearance when it was co-administered with mild/moderate CYP3A inhibitors and an approximately 34% reductions in sildenafil clearance when co-administered with beta-blockers. Sildenafil exposure at a dose of 80 mg three times a day without concomitant medication is shown to be 5-fold the exposure at a dose of 20 mg three times a day. This concentration range covers the same increased sildenafil exposure observed in specifically-designed drug interaction studies with CYP3A inhibitors (except for potent inhibitors such as ketoconazole, itraconazole, and ritonavir).

REVATIO Injection: Predictions based on a pharmacokinetic model suggest that drug-drug interactions with CYP3A inhibitors will be less than those observed after oral sildenafil administration.

### CYP3A4 inducers including bosentan

Concomitant administration of potent CYP3A inducers is expected to cause substantial decreases in plasma levels of sildenafil.

Population pharmacokinetic analysis of data from patients in clinical trials indicated approximately 3-fold the sildenafil clearance when it was co-administered with mild CYP3A inducers.

### Epoprostenol

The mean reduction of sildenafil (80 mg three times a day) bioavailability when co-administered with epoprostenol was 28%, resulting in about 22% lower mean average steady state concentrations. Therefore, the slight decrease of sildenafil exposure in the presence of epoprostenol is not considered clinically relevant. The effect of sildenafil on epoprostenol pharmacokinetics is not known.

No significant interactions were shown with tolbutamide (250 mg) or warfarin (40 mg), both of which are metabolized by CYP2C9.

### Alcohol

Sildenafil (50 mg) did not potentiate the hypotensive effect of alcohol in healthy volunteers with mean maximum blood alcohol levels of 0.08%.

## **13 NONCLINICAL TOXICOLOGY**

### **13.1 Carcinogenesis, Mutagenesis, Impairment of Fertility**

Sildenafil was not carcinogenic when administered to rats for up to 24 months at 60 mg/kg/day, a dose resulting in total systemic exposure (AUC) to unbound sildenafil and its major metabolite 33 and 37 times, for male and female rats respectively, the human exposure at the RHD of 20 mg three times a day. Sildenafil was not carcinogenic when administered to male and female mice for up to 21 and 18 months, respectively, at doses up to a maximally tolerated level of 10 mg/kg/day, a dose equivalent to the RHD on a mg/m<sup>2</sup> basis.

Sildenafil was negative in *in vitro* bacterial and Chinese hamster ovary cell assays to detect mutagenicity, and *in vitro* human lymphocytes and *in vivo* mouse micronucleus assays to detect clastogenicity.

There was no impairment of fertility in male or female rats given up to 60 mg sildenafil/kg/day, a dose producing a total systemic exposure (AUC) to unbound sildenafil and its major metabolite of 19 and 38 times for males and females, respectively, the human exposure at the RHD of 20 mg three times a day.

## **14 CLINICAL STUDIES**

### **Studies of Adults with Pulmonary Arterial Hypertension**

#### **Study 1 (REVATIO monotherapy (20 mg, 40 mg, and 80 mg three times a day))**

A randomized, double-blind, placebo-controlled study of REVATIO (Study 1) was conducted in 277 patients with PAH (defined as a mean pulmonary artery pressure of greater than or equal to 25 mmHg at rest with a pulmonary capillary wedge pressure less than 15 mmHg). Patients were predominantly World Health Organization (WHO) functional classes II-III. Allowed background therapy included a combination of anticoagulants, digoxin, calcium channel blockers, diuretics, and oxygen. The use of prostacyclin analogues, endothelin receptor antagonists, and arginine supplementation were not permitted. Subjects who had failed to respond to bosentan were also excluded. Patients with left ventricular ejection fraction less than 45% or left ventricular shortening fraction less than 0.2 also were not studied.

Patients were randomized to receive placebo (n=70) or REVATIO 20 mg (n = 69), 40 mg (n = 67) or 80 mg (n = 71) three times a day for a period of 12 weeks. They had either primary pulmonary hypertension (PPH) (63%), PAH associated with CTD (30%), or PAH following surgical repair of left-to-right congenital heart lesions (7%). The study population consisted of 25% men and 75% women with a mean age of 49 years (range: 18-81 years) and baseline 6-minute walk distance between 100 and 450 meters (mean 343).

The primary efficacy endpoint was the change from baseline at week 12 (at least 4 hours after the last dose) in the 6-minute walk distance. Placebo-corrected mean increases in walk distance of 45-50 meters were observed with all doses of REVATIO. These increases were significantly different from placebo, but the REVATIO dose groups were not different from each other (see Figure 9), indicating no additional clinical benefit from doses higher than 20 mg three times a day. The improvement in walk distance was apparent after 4 weeks of treatment and was maintained at week 8 and week 12.



**Figure 9. Change from Baseline in 6-Minute Walk Distance (meters) at Weeks 4, 8, and 12 in Study 1: Mean (95% Confidence Interval)**

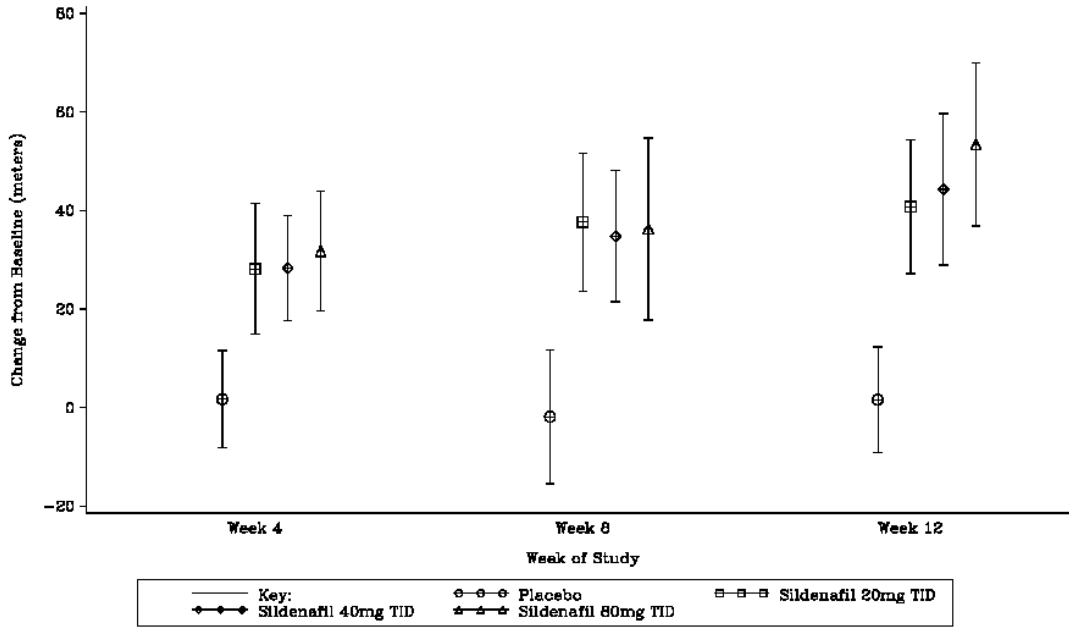
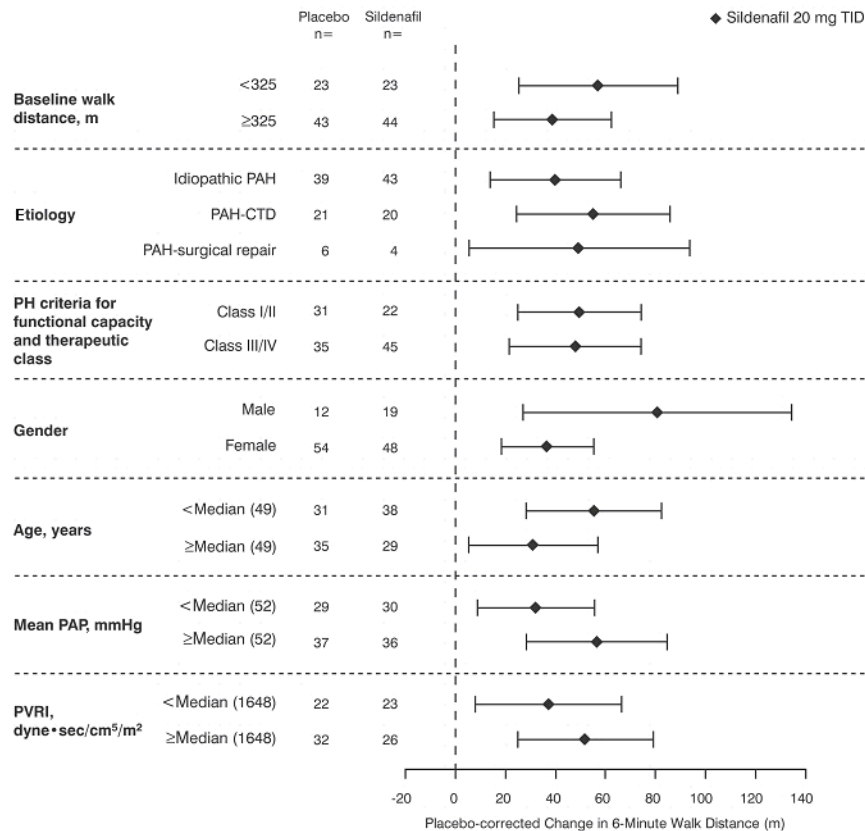


Figure 10 displays subgroup efficacy analyses in Study 1 for the change from baseline in 6-Minute Walk Distance at Week 12 including baseline walk distance, disease etiology, functional class, gender, age, and hemodynamic parameters.

**Figure 10. Placebo-Corrected Change From Baseline in 6-Minute Walk Distance (meters) at Week 12 by study subpopulation in Study 1: Mean (95% Confidence Interval)**



**Key:** PAH = pulmonary arterial hypertension; CTD = connective tissue disease; PH = pulmonary hypertension; PAP = pulmonary arterial pressure; PVRI = pulmonary vascular resistance index; TID = three times daily.

Of the 277 treated patients, 259 entered a long-term, uncontrolled extension study. At the end of 1 year, 94% of these patients were still alive. Additionally, walk distance and functional class status appeared to be stable in patients taking REVATIO. Without a control group, these data must be interpreted cautiously.

### Study 2 (REVATIO co-administered with epoprostenol)

A randomized, double-blind, placebo controlled study (Study 2) was conducted in 267 patients with PAH who were taking stable doses of intravenous epoprostenol. Patients had to have a mean pulmonary artery pressure (mPAP) greater than or equal to 25 mmHg and a pulmonary capillary wedge pressure (PCWP) less than or equal to 15 mmHg at rest via right heart catheterization within 21 days before randomization, and a baseline 6-minute walk test distance greater than or equal to 100 meters and less than or equal to 450 meters (mean 349 meters). Patients were randomized to placebo or REVATIO (in a fixed titration starting from 20 mg, to 40 mg and then 80 mg, three times a day) and all patients continued intravenous epoprostenol therapy.

At baseline patients had PPH (80%) or PAH secondary to CTD (20%); WHO functional class I (1%), II (26%), III (67%), or IV (6%); and the mean age was 48 years, 80% were female, and 79% were Caucasian.

There was a statistically significant greater increase from baseline in 6-minute walk distance at Week 16 (primary endpoint) for the REVATIO group compared with the placebo group. The mean change from baseline at Week 16 (last observation carried forward) was 30 meters for the REVATIO group compared with 4 meters for the placebo group giving an adjusted treatment difference of 26 meters (95% CI: 10.8, 41.2) ( $p = 0.0009$ ).

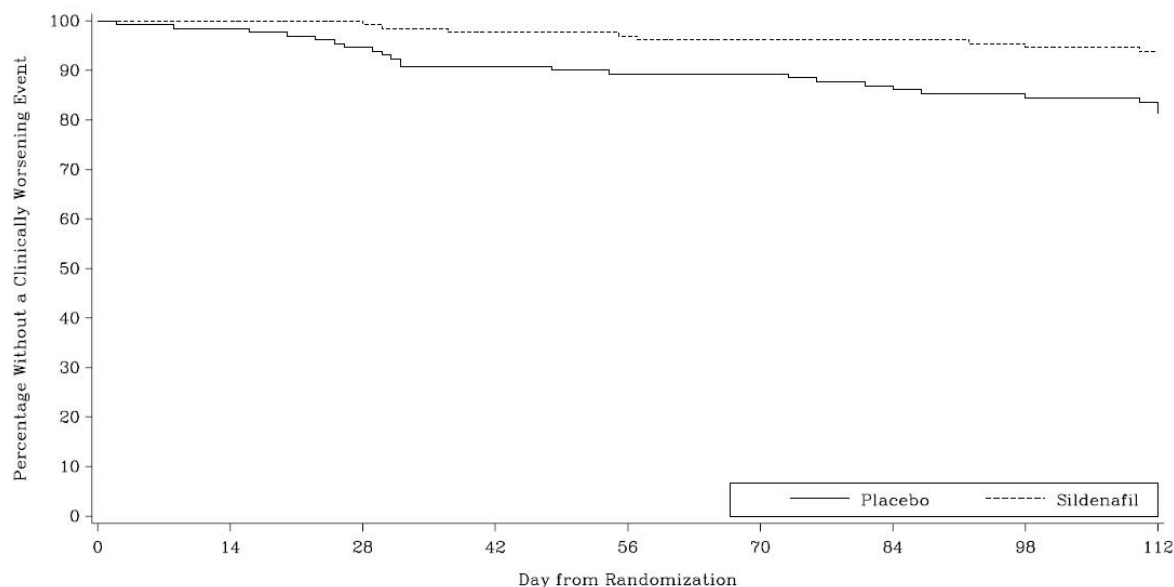
Patients on REVATIO achieved a statistically significant reduction in mPAP compared to those on placebo. A mean placebo-corrected treatment effect of -3.9 mmHg was observed in favor of REVATIO (95% CI: -5.7, -2.1) ( $p = 0.0003$ ).

Time to clinical worsening of PAH was defined as the time from randomization to the first occurrence of a clinical worsening event (death, lung transplantation, initiation of bosentan therapy, or clinical deterioration requiring a change in epoprostenol therapy). Table 4 displays the number of patients with clinical worsening events in Study 2. Kaplan-Meier estimates and a stratified log-rank test demonstrated that placebo-treated patients were 3 times more likely to experience a clinical worsening event than REVATIO-treated patients and that REVATIO-treated patients experienced a significant delay in time to clinical worsening versus placebo-treated patients ( $p = 0.0074$ ). Kaplan-Meier plot of time to clinical worsening is presented in Figure 11.

**Table 4. Clinical Worsening Events in Study 2**

	Placebo (N = 131)		REVATIO (N = 134)	
	First Event	All Events	First Event	All Events
Number of subjects with clinical worsening first event	23		8	
Death, n	3	4	0	0
Lung Transplantation, n	1	1	0	0
Hospitalization due to PAH, n	9	11	8	8
Clinical deterioration resulting in:				
Change of Epoprostenol Dose, n	9	16	0	2
Initiation of Bosentan, n	1	1	0	0
Proportion Worsened 95% Confidence Interval	0.187 (0.12 - 0.26)		0.062 (0.02 - 0.10)	

**Figure 11. Kaplan-Meier Plot of Time (in Days) to Clinical Worsening of PAH in Study 2**



Improvements in WHO functional class for PAH were also demonstrated in subjects on REVATIO compared to placebo. More than twice as many REVATIO-treated patients (36%) as placebo-treated patients (14%) showed an improvement in at least one functional New York Heart Association (NYHA) class for PAH.

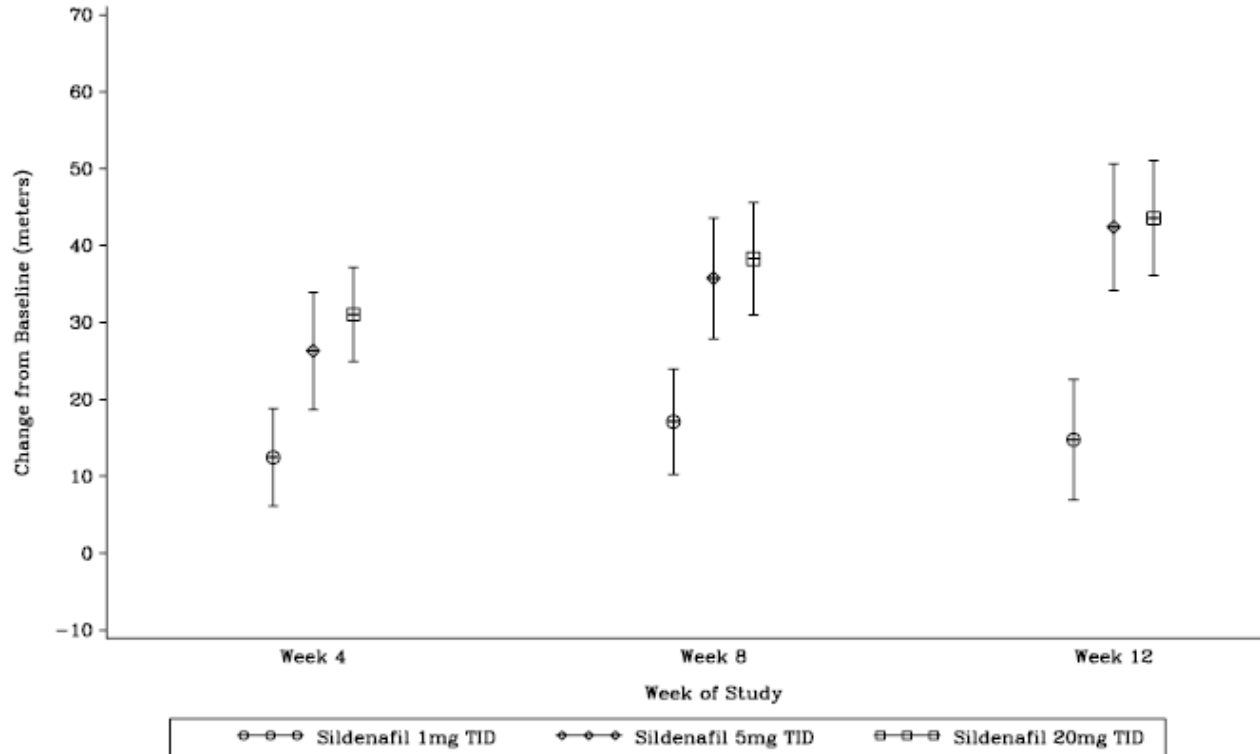
### **Study 3 (REVATIO monotherapy (1 mg, 5 mg, and 20 mg three times a day))**

A randomized, double-blind, parallel dose study (Study 3) was planned in 219 patients with PAH. This study was prematurely terminated with 129 subjects enrolled. Patients were required to have a mPAP greater than or equal to 25 mmHg and a PCWP less than or equal to 15 mmHg at rest via right heart catheterization within 12 weeks before randomization, and a baseline 6-minute walk test distance greater than or equal to 100 meters and less than or equal to 450 meters (mean 345 meters). Patients were randomized to 1 of 3 doses of REVATIO: 1 mg, 5 mg, and 20 mg, three times a day.

At baseline patients had PPH (74%) or secondary PAH (26%); WHO functional class II (57%), III (41%), or IV (2%); the mean age was 44 years; and 67% were female. The majority of subjects were Asian (67%), and 28% were Caucasian.

The primary efficacy endpoint was the change from baseline at Week 12 (at least 4 hours after the last dose) in the 6-minute walk distance. Similar increases in walk distance (mean increase of 38-41 meters) were observed in the 5 and 20 mg dose groups. These increases were significantly better than those observed in the 1 mg dose group (Figure 12).

**Figure 12. Mean Change from Baseline in Six Minute Walk (meters) by Visit to Week 12 – ITT Population Sildenafil Protocol A1481244**



The plot represents the mean change from baseline +/- the Standard Error for each treatment at each visit up to week 12.

**Study 4 (REVATIO added to bosentan therapy – lack of effect on exercise capacity)**

A randomized, double-blind, placebo controlled study was conducted in 103 patients with PAH who were on bosentan therapy for a minimum of three months. The PAH patients included those with primary PAH, and PAH associated with CTD. Patients were randomized to placebo or sildenafil (20 mg three times a day) in combination with bosentan (62.5-125 mg twice a day). The primary efficacy endpoint was the change from baseline at Week 12 in 6MWD. The results indicate that there is no significant difference in mean change from baseline on 6MWD observed between sildenafil 20 mg plus bosentan and bosentan alone.

**16 HOW SUPPLIED/STORAGE AND HANDLING**

REVATIO tablets are supplied as white, film-coated, round tablets containing sildenafil citrate equivalent to the nominally indicated amount of sildenafil as follows:

REVATIO Tablets			
Package Configuration	Strength	NDC	Engraving on Tablet
Bottle of 90 Tablets	20 mg	0069-4190-68	RVT20

Recommended Storage for REVATIO Tablets: Store at controlled room temperature 20°C - 25°C (68°F - 77°F) ; excursions permitted to 15°C - 30°C (59°F -86°F) [see USP Controlled Room Temperature].

REVATIO injection is supplied as a clear, colorless, sterile, ready to use solution containing 10 mg sildenafil/12.5 mL presented in a single-use glass vial.

REVATIO Injection		
Package Configuration	Strength	NDC
Vial individually packaged in a carton	10 mg /12.5 mL	0069-0338-01

Recommended Storage for REVATIO Injection: Store at controlled room temperature 20°C - 25°C (68°F - 77°F); excursions permitted to 15°C - 30°C (59°F - 86°F) [see USP Controlled Room Temperature].

REVATIO powder for oral suspension is supplied in amber glass bottles. Each bottle contains white to off-white powders containing 1.57 g of sildenafil citrate (equivalent to 1.12 g sildenafil). Following constitution, the volume of the oral suspension is 112 mL (10 mg sildenafil/mL). A 2 mL oral dosing syringe (with 0.5 mL and 2 mL dose markings) and a press-in bottle adaptor are also provided.

REVATIO Powder for Oral Suspension		
Package Configuration	Strength	NDC
Powder for oral suspension - bottle	10 mg/mL (when reconstituted)	0069-0336-21

Recommended storage for REVATIO for oral suspension: Store below 30°C (86°F) in the original package in order to protect from moisture.

#### Constituted Oral Suspension

Store below 30°C (86°F) or in refrigerator at 2°C to 8°C (36° F - 46°F). Do not freeze. The shelf-life of the constituted oral suspension is 60 days. Any remaining oral suspension should be discarded 60 days after constitution.

## 17 PATIENT COUNSELING INFORMATION

See FDA-approved patient labeling (Patient Information).

- Inform patients of contraindication of REVATIO with regular and/or intermittent use of organic nitrates.
- Inform patients that sildenafil is also marketed as VIAGRA for erectile dysfunction. Advise patients taking REVATIO not to take VIAGRA or other PDE-5 inhibitors.
- Advise patients to seek immediate medical attention for a sudden loss of vision in one or both eyes while taking REVATIO. Such an event may be a sign of NAION.
- Advise patients to seek prompt medical attention in the event of sudden decrease or loss of hearing while taking REVATIO. These events may be accompanied by tinnitus and dizziness.

This product's label may have been updated. For current full prescribing information, please visit [www.pfizer.com](http://www.pfizer.com)



LAB-0313-16.1

## PATIENT INFORMATION

**REVATIO®** (re-VAH-tee-oh)  
(sildenafil) tablets

**REVATIO®** (re-VAH-tee-oh)  
(sildenafil)  
oral suspension

Read this Patient Information before you start taking REVATIO and each time you get a refill. There may be new information. This information does not take the place of talking with your doctor about your medical condition or treatment. If you have any questions about REVATIO, ask your doctor or pharmacist.

### **What is the most important information I should know about REVATIO?**

**Never take REVATIO with any nitrate or guanylate cyclase stimulator medicines. Your blood pressure could drop quickly to an unsafe level.**

#### **Nitrate medicines include:**

- **Medicines that treat chest pain (angina)**
- **Nitroglycerin in any form including tablets, patches, sprays, and ointments**
- **Isosorbide mononitrate or dinitrate**
- **Street drugs called “poppers” (amyl nitrate or nitrite)**

#### **Guanylate cyclase stimulators include:**

- **Riociguat (Adempas)**

Ask your doctor or pharmacist if you are not sure if you are taking a nitrate or a guanylate cyclase stimulator medicine.

### **What is REVATIO?**

REVATIO is a prescription medicine used in adults to treat pulmonary arterial hypertension (PAH). With PAH, the blood pressure in your lungs is too high. Your heart has to work hard to pump blood into your lungs.

REVATIO improves the ability to exercise and can slow down worsening changes in your physical condition.

- REVATIO is not for use in children
- Adding REVATIO to another medication used to treat PAH, bosentan (Tracleer®), does not result in improvement in your ability to exercise.

REVATIO contains the same medicine as VIAGRA® (sildenafil), which is used to treat erectile dysfunction (impotence). Do not take REVATIO with VIAGRA or other PDE-5 inhibitors.

### **Who should not take REVATIO?**

Do not take REVATIO if you:

- take nitrate medicines. See **“What is the most important information I should know about REVATIO?”**

- take guanylate cyclase stimulator medicines. See “**What is the most important information I should know about REVATIO?**”
- are allergic to sildenafil or any other ingredient in REVATIO. See “**What are the ingredients in REVATIO?**” at the end of this leaflet.

### **What should I tell my doctor before taking REVATIO?**

Tell your doctor about all of your medical conditions, including if you

- have heart problems such as angina (chest pain), heart failure, irregular heartbeats, or have had a heart attack
- have a disease called pulmonary veno-occlusive disease (PVOD)
- have high or low blood pressure or blood circulation problems
- have an eye problem called retinitis pigmentosa
- have or had loss of sight in one or both eyes
- have any problem with the shape of your penis or Peyronie’s disease
- have any blood cell problems such sickle cell anemia
- have a stomach ulcer or any bleeding problems
- are pregnant or planning to become pregnant. It is not known if REVATIO could harm your unborn baby.
- are breastfeeding. It is not known if REVATIO passes into your breast milk or if it could harm your baby.

**Tell your doctor about all of the medicines you take, including prescription and non-prescription medicines, vitamins, and herbal products.** REVATIO and certain other medicines can cause side effects if you take them together. The doses of some of your medicines may need to be adjusted while you take REVATIO.

### **Especially tell your doctor if you take**

- Nitrate medicines. See “**What is the most important information I should know about REVATIO?**”
- Riociguat (Adempas). See “**What is the most important information I should know about REVATIO?**”
- Ritonavir (Norvir®) or other medicines used to treat HIV infection
- Ketoconazole (Nizoral®)
- Itraconazole (Sporanox)
- High blood pressure medicine

Know the medicines you take. Keep a list of your medicines and show it to your doctor and pharmacist when you get a new medicine.

### **How should I take REVATIO?**

- Take REVATIO exactly as your doctor tells you.
- REVATIO may be prescribed to you as
- REVATIO tablets or REVATIO oral suspension
  - Take REVATIO tablet or oral suspension 3 times a day about 4 to 6 hours apart
  - Take REVATIO tablets or oral suspension at the same times every day.
  - REVATIO oral suspension will be mixed for you by your pharmacist. Do not mix REVATIO oral suspension with other medicine or flavoring. Shake well for at least 10 seconds before each dose.
  - If you miss a dose, take it as soon as you remember. If it is close to your next dose, skip the missed dose, and take your next dose at the regular time.
  - Do not take more than one dose of REVATIO at a time.

- Do not change your dose or stop taking REVATIO on your own. Talk to your doctor first.
- **If you take too much REVATIO, call your doctor or go to the nearest hospital emergency room.**

### **What are the possible side effects of REVATIO?**

- **low blood pressure.** Low blood pressure may cause you to feel faint or dizzy. Lie down if you feel faint or dizzy.
- **more shortness of breath than usual.** Tell your doctor if you get more short of breath after you start REVATIO. More shortness of breath than usual may be due to your underlying medical condition.
- **decreased eyesight or loss of sight in one or both eyes (NAION).** If you notice a sudden decrease or loss of eyesight, talk to your doctor right away.
- **sudden decrease or loss of hearing.** If you notice a sudden decrease or loss of hearing, talk to your doctor right away. It is not possible to determine whether these events are related directly to this class of oral medicines, including REVATIO, or to other diseases or medicines, to other factors, or to a combination of factors.
- **heart attack, stroke, irregular heartbeats, and death.** Most of these happened in men who already had heart problems.
- **erections that last several hours.** If you have an erection that lasts more than 4 hours, get medical help right away. If it is not treated right away, priapism can permanently damage your penis.

### **The most common side effects with REVATIO include:**

Nosebleed, headache, upset stomach, getting red or hot in the face (flushing), trouble sleeping, as well as fever, erection increased, respiratory infection, nausea, vomiting, bronchitis, pharyngitis, runny nose, and pneumonia in children.

***Tell your doctor if you have any side effect that bothers you or doesn't go away.***

***These are not all the possible side effects of REVATIO. For more information, ask your doctor or pharmacist.***

Call your doctor for medical advice about side effects. You may report side effects to FDA at 1-800-FDA-1088.

### **How should I store REVATIO?**

- Store REVATIO tablets at controlled room temperature, between 20°C -25°C (68°F to 77°F).
- Store REVATIO constituted oral suspension below 30°C (86°F) or in a refrigerator between 2°C to 8°C (36°F to 46°F).
- Do not freeze REVATIO oral suspension.
- Throw away REVATIO oral suspension after 60 days.
- **Keep REVATIO and all medicines away from children.**

### **General information about REVATIO**

Medicines are sometimes prescribed for purposes that are not in the patient leaflet. Do not use REVATIO for a condition for which it was not prescribed. Do not give REVATIO to other people, even if they have the same symptoms you have. It could harm them.

This patient leaflet summarizes the most important information about REVATIO. If you would like more information about REVATIO talk with your doctor. You can ask your doctor or pharmacist for information about REVATIO that is written for health professionals. For more information go to [www.REVATIO.com](http://www.REVATIO.com) or call 1-800-879-3477.



## What are the ingredients in REVATIO?

REVATIO tablets

**Active ingredients:** sildenafil citrate

**Inactive ingredients:** microcrystalline cellulose, anhydrous dibasic calcium phosphate, croscarmellose sodium, magnesium stearate, hypromellose, titanium dioxide, lactose monohydrate, and triacetin

REVATIO for oral suspension

**Active ingredients:** sildenafil citrate

**Inactive ingredients:** sorbitol, citric acid anhydrous, sucralose, sodium citrate dihydrate, xanthan gum, titanium dioxide, sodium benzoate, colloidal silicon dioxide anhydrous, and grape flavor

This product's label may have been updated. For current full prescribing information, please visit [www.pfizer.com](http://www.pfizer.com)

This Patient Information has been approved by the U.S. Food and Drug Administration



LAB-0335-10.0

April 2015

## Instructions for Use

### REVATIO® (re-VAH-tee-oh) (sildenafil) oral suspension

Read this Instructions for Use for REVATIO oral suspension before you start taking and each time you get a refill. There may be new information. This information does not take the place of talking to your doctor about your medical condition or your treatment.

#### Important information:

- Your pharmacist should tell you how to measure REVATIO oral suspension by using the oral syringe provided in the pack.
- REVATIO oral suspension should only be given using the oral syringe supplied with each pack.
- REVATIO for oral suspension should not be mixed with any other medicine or flavoring.

#### Supplies you will need to take REVATIO oral suspension:

- Bottle of REVATIO oral suspension with syringe adaptor fitted in neck of bottle
- Oral syringe (as supplied by pharmacist). (See Figure A)

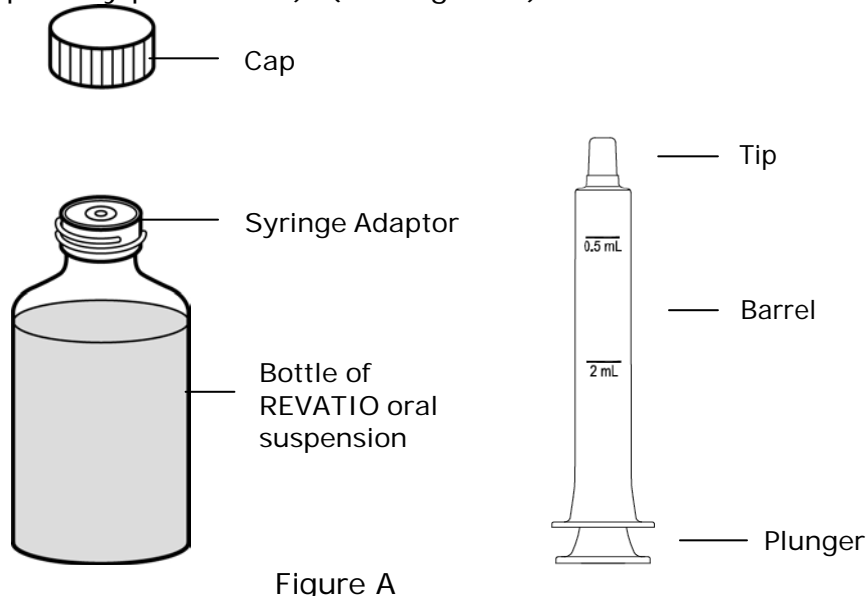


Figure A

1. Shake the bottle of REVATIO oral suspension for 10 seconds before each use. (See Figure B)
2. Remove the cap. Open the bottle by pushing downward on the cap and twisting it in the direction of the arrow (counter-clockwise). (See Figure B)

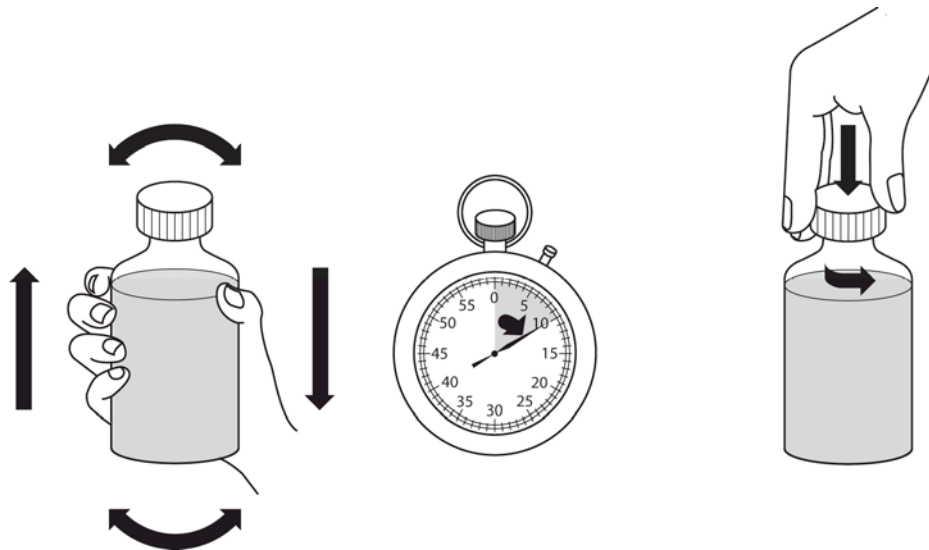


Figure B

3. Insert the tip of the oral syringe into the adaptor while the bottle is upright, on a flat surface. Fully push down (depress) the plunger of the syringe. (See Figure C)

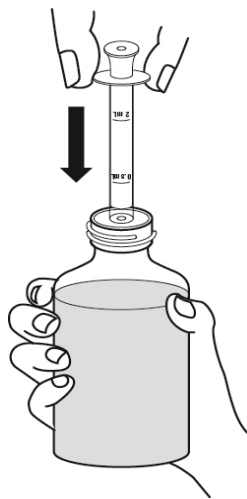


Figure C

4. Turn the bottle upside down while holding the oral syringe in place. Slowly pull back the plunger of the oral syringe until the bottom of the plunger is even with the graduation markings on the syringe for the prescribed dose for you. Take your dose of REVATIO oral suspension exactly as prescribed by your doctor. If air bubbles can be seen, slowly push the oral suspension in the syringe back into the bottle. Repeat steps 3 and 4. (See Figure D)

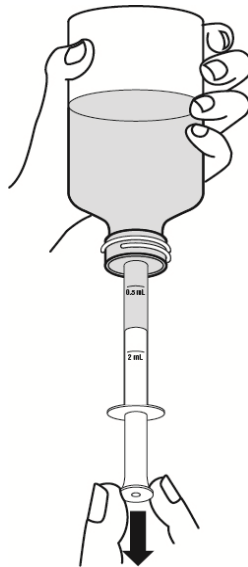


Figure D

5. Turn the bottle back upright with the oral syringe still in place. Remove the oral syringe from the bottle by pulling straight up on the barrel of the oral dosing syringe. (See Figure E)

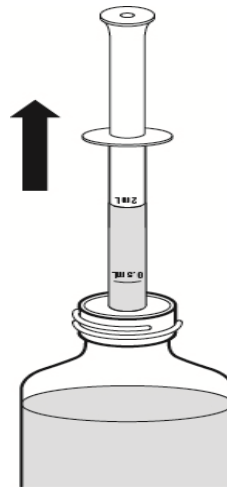


Figure E

6. Put the tip of the oral syringe into your mouth. Point the tip of the oral syringe towards the inside of the cheek. Slowly push down the plunger of the oral syringe. (See Figure F)

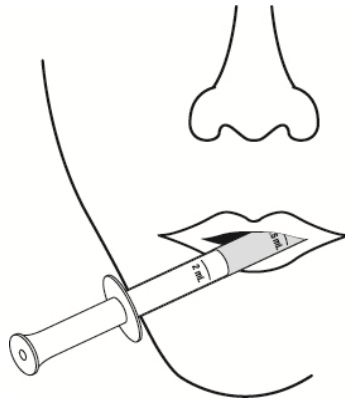


Figure F

7. Replace the cap on the bottle, leaving the bottle adaptor in place. Wash the oral syringe as instructed below.
8. The syringe should be washed after each dose. Pull the plunger out of the barrel and rinse both parts with water. (See Figure G)

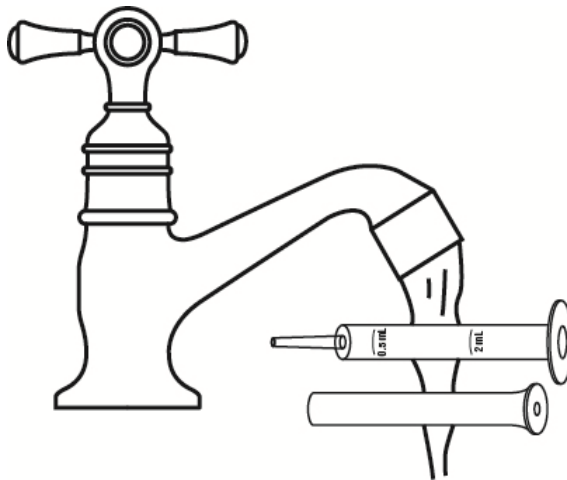


Figure G

9. Dry all parts with a clean paper towel. Push the plunger back into the barrel. Store the syringe with REVATIO oral suspension in a clean safe place.

Administer REVATIO oral suspension using the oral syringe supplied with each pack. Refer to the patient instructions for use for more detailed instructions for use. Discard any unused suspension after the expiration date written on the bottle.

### **How should I store REVATIO?**

- Store REVATIO constituted oral suspension below 30°C (86°F) or in a refrigerator between 2°C to 8°C (36°F to 46°F).
- Do not freeze REVATIO oral suspension
- Throw away (discard) REVATIO oral suspension after 60 days.

- **Keep REVATIO and all medicines away from children.**

This Instruction for Use has been approved by the U.S. Food and Drug Administration.

This product's label may have been updated. For current full prescribing information, please visit [www.pfizer.com](http://www.pfizer.com)



LAB-0575-3.0

January 2014

Issued Jan/2014