

## HIGHLIGHTS OF PRESCRIBING INFORMATION

These highlights do not include all the information needed to use CIPRO XR® safely and effectively. See full prescribing information for CIPRO XR.

CIPRO XR (ciprofloxacin) extended-release tablets, for oral use  
Initial U.S. Approval: 1987

### WARNING: SERIOUS ADVERSE REACTIONS INCLUDING TENDINITIS, TENDON RUPTURE, PERIPHERAL NEUROPATHY, CENTRAL NERVOUS SYSTEM EFFECTS AND EXACERBATION OF MYASTHENIA GRAVIS

See full prescribing information for complete boxed warning.

- Fluoroquinolones, including CIPRO XR, have been associated with disabling and potentially irreversible serious adverse reactions that have occurred together (5.1), including:
  - Tendinitis and tendon rupture (5.2)
  - Peripheral neuropathy (5.3)
  - Central nervous system effects (5.4)

Discontinue CIPRO XR immediately and avoid the use of fluoroquinolones, including CIPRO XR, in patients who experience any of these serious adverse reactions (5.1)

- Fluoroquinolones, including CIPRO XR, may exacerbate muscle weakness in patients with myasthenia gravis. Avoid CIPRO XR in patients with known history of myasthenia gravis. (5.5)
- Because fluoroquinolones, including CIPRO, have been associated with serious adverse reactions (5.1-5.16), reserve CIPRO XR for use in patients who have no alternative treatment options for uncomplicated urinary tract infections (1.1)

## RECENT MAJOR CHANGES

Dosage and Administration (2.2)

5/2020

## INDICATIONS AND USAGE

CIPRO XR is a fluoroquinolone antibacterial indicated in adults (18 years of age and older) with infections caused by designated, susceptible bacteria:

- Uncomplicated Urinary tract infections (1.1)
- Complicated Urinary tract infections, and acute uncomplicated pyelonephritis (1.2)

### Usage

To reduce the development of drug-resistant bacteria and maintain the effectiveness of CIPRO XR and other antibacterial drugs, CIPRO XR should be used only to treat or prevent infections that are proven or strongly suspected to be caused by bacteria. (1.4)

## DOSAGE AND ADMINISTRATION

- Uncomplicated urinary tract infection: 500 mg orally every 24 hours for 3 days (2.1)
- Complicated urinary tract infection and acute uncomplicated pyelonephritis: 1000 mg orally every 24 hours for 7–14 days (2.1)
- Take whole. Do not split, crush, or chew tablets (2.2)
- Renally impaired patients with complicated urinary tract infections or acute uncomplicated pyelonephritis with creatinine clearance of  $\leq 30$  mL/min, dosage should not exceed 500 mg daily (2.3)

## DOSAGE FORMS AND STRENGTHS

- Extended release tablets: 500 mg, 1000 mg (3)

## CONTRAINDICATIONS

- Known hypersensitivity to CIPRO or other quinolones (4.1, 5.7)
- Concomitant administration with tizanidine (4.2, 7)

## WARNINGS AND PRECAUTIONS

- Hypersensitivity and other serious adverse reactions: Serious and sometimes fatal reactions (for example, anaphylactic reactions) may occur after first or subsequent doses of CIPRO XR. Discontinue CIPRO XR at first sign of skin rash, jaundice or any other sign of hypersensitivity. (4.1, 5.6, 5.7)
- Hepatotoxicity: Discontinue immediately if signs and symptoms of hepatitis occur. (5.8)
- *Clostridioides difficile*-associated diarrhea: Evaluate if colitis occurs. (5.11)
- QT Prolongation: Prolongation of the QT interval and isolated cases of torsade de pointes have been reported. Avoid use in patients with known prolongation, those with hypokalemia, and with other drugs that prolong the QT interval. (5.12, 7, 8.5)

## ADVERSE REACTIONS

The most common adverse reactions  $\geq 2\%$  were nausea, headache, dizziness, diarrhea, vomiting, and vaginal moniliasis. (6.1)

To report SUSPECTED ADVERSE REACTIONS, contact Bayer HealthCare Pharmaceuticals Inc. at 1-888-842-2937 or FDA at 1-800-FDA-1088 or www.fda.gov/medwatch.

## DRUG INTERACTIONS

Interacting Drug	Interaction
Theophylline	Serious and fatal reactions. Avoid concomitant use. Monitor serum level. (5.10, 7)
Warfarin	Anticoagulant effect enhanced. Monitor prothrombin time, INR, and bleeding. (7)
Antidiabetic agents	Hypoglycemia including fatal outcomes have been reported. Monitor blood glucose. (7)
Phenytoin	Monitor phenytoin level (7)
Methotrexate	Monitor for methotrexate toxicity (7)
Cyclosporine	May increase serum creatinine. Monitor serum creatinine. (7)
Multivalent cation-containing products including antacids, metal cations or didanosine	Decreased CIPRO absorption. Take 2 hours before or 6 hours after CIPRO (2.2, 7)

## USE IN SPECIFIC POPULATIONS

- Lactation: Breastfeeding is not recommended during treatment, but a lactating woman may pump and discard breastmilk during treatment and an additional 2 days after the last dose. (8.2)
- Pediatric: Increased risk of musculoskeletal disorders. Shown to cause arthropathy in juvenile animals. (8.4)
- Geriatric: Increased risk for severe tendon disorders further increased by concomitant corticosteroid therapy; also increased risk of prolongation of the QT interval (8.5)

See 17 for PATIENT COUNSELING INFORMATION and Medication Guide

Revised: 5/2020

---

**FULL PRESCRIBING INFORMATION: CONTENTS\*****WARNING: SERIOUS ADVERSE REACTIONS INCLUDING TENDINITIS, TENDON RUPTURE, PERIPHERAL NEUROPATHY, CENTRAL NERVOUS SYSTEM EFFECTS AND EXACERBATION OF MYASTHENIA GRAVIS****1 INDICATIONS AND USAGE**

- 1.1 Uncomplicated Urinary Tract Infections (Acute Cystitis)
- 1.2 Complicated Urinary Tract Infections and Acute Uncomplicated Pyelonephritis
- 1.3 Limitations of Use
- 1.4 Usage

**2 DOSAGE AND ADMINISTRATION**

- 2.1 Dosage
- 2.2 Administration
- 2.3 Impaired Renal Function

**3 DOSAGE FORMS AND STRENGTHS****4 CONTRAINDICATIONS**

- 4.1 Hypersensitivity
- 4.2 Tizanidine

**5 WARNINGS AND PRECAUTIONS**

- 5.1 Disabling and Potentially Irreversible Serious Adverse Reactions Including Tendinitis and Tendon Rupture, Peripheral Neuropathy, and Central Nervous System Effects
- 5.2 Tendinitis and Tendon Rupture
- 5.3 Peripheral Neuropathy
- 5.4 Central Nervous System Effects
- 5.5 Exacerbation of Myasthenia Gravis
- 5.6 Other Serious and Sometimes Fatal Reactions
- 5.7 Hypersensitivity Reactions
- 5.8 Hepatotoxicity
- 5.9 Risk of Aortic Aneurysm and Dissection
- 5.10 Serious Adverse Reactions with Concomitant Theophylline
- 5.11 *Clostridioides difficile*-Associated Diarrhea
- 5.12 Prolongation of the QT Interval
- 5.13 Musculoskeletal Disorders in Pediatric Patients and Arthropathic Effects in Animals

- 5.14 Photosensitivity/Phototoxicity
- 5.15 Development of Drug Resistant Bacteria
- 5.16 Potential Risks with Concomitant Use of Drugs Metabolized by Cytochrome P450 1A2 Enzymes
- 5.17 Interference with Timely Diagnosis of Syphilis
- 5.18 Crystalluria
- 5.19 Blood Glucose Disturbances

**6 ADVERSE REACTIONS**

- 6.1 Clinical Trials Experience
- 6.2 Postmarketing Experience
- 6.3 Adverse Laboratory Changes

**7 DRUG INTERACTIONS****8 USE IN SPECIFIC POPULATIONS**

- 8.1 Pregnancy
- 8.2 Lactation
- 8.4 Pediatric Use
- 8.5 Geriatric Use
- 8.6 Renal Impairment
- 8.7 Hepatic Impairment

**10 OVERDOSAGE****11 DESCRIPTION****12 CLINICAL PHARMACOLOGY**

- 12.1 Mechanism of Action
- 12.3 Pharmacokinetics
- 12.4 Microbiology

**13 NONCLINICAL TOXICOLOGY**

- 13.1 Carcinogenesis, Mutagenesis, Impairment of Fertility
- 13.2 Animal Toxicology and/or Pharmacology

**14 CLINICAL STUDIES**

- 14.1 Complicated Urinary Tract Infections (Acute Cystitis)
- 14.2 Complicated Urinary Tract Infections and Acute Uncomplicated Pyelonephritis

**15 REFERENCES****16 HOW SUPPLIED/STORAGE AND HANDLING****17 PATIENT COUNSELING INFORMATION**

---

\*Sections or subsections omitted from the full prescribing information are not listed.

## FULL PRESCRIBING INFORMATION

### **WARNING: SERIOUS ADVERSE REACTIONS INCLUDING TENDINITIS, TENDON RUPTURE, PERIPHERAL NEUROPATHY, CENTRAL NERVOUS SYSTEM EFFECTS AND EXACERBATION OF MYASTHENIA GRAVIS**

- Fluoroquinolones, including CIPRO XR, have been associated with disabling and potentially irreversible serious adverse reactions that have occurred together [see *Warnings and Precautions* (5.1)], including:
  - Tendinitis and tendon rupture [see *Warnings and Precautions* (5.2)]
  - Peripheral neuropathy [see *Warnings and Precautions* (5.3)]
  - Central nervous system effects [see *Warnings and Precautions* (5.4)]

Discontinue CIPRO XR immediately and avoid the use of fluoroquinolones, including CIPRO XR, in patients who experience any of these serious adverse reactions [see *Warnings and Precautions* (5.1)]

- Fluoroquinolones, including CIPRO XR, may exacerbate muscle weakness in patients with myasthenia gravis. Avoid CIPRO XR in patients with known history of myasthenia gravis. [see *Warnings and Precautions* (5.5)]
- Because fluoroquinolones, including CIPRO, have been associated with serious adverse reactions [see *Warnings and Precautions* (5.1–5.16)], reserve CIPRO for use in patients who have no alternative treatment options for uncomplicated urinary tract infections [see *Indications and Usage* (1.1)]

## 1 INDICATIONS AND USAGE

### 1.1 Uncomplicated Urinary Tract Infections (Acute Cystitis)

CIPRO XR is indicated for the treatment of uncomplicated urinary tract infections (UTIs) caused by *Escherichia coli*, *Proteus mirabilis*, *Enterococcus faecalis*, or *Staphylococcus saprophyticus*.

Because fluoroquinolones, including CIPRO XR, have been associated with serious adverse reactions [see *Warnings and Precautions* (5.1–5.16)] and for some patients uncomplicated UTI (acute cystitis) is self-limiting, reserve CIPRO XR for treatment of uncomplicated UTIs (acute cystitis) in patients who have no alternative treatment options.

### 1.2 Complicated Urinary Tract Infections, and Acute Uncomplicated Pyelonephritis

CIPRO XR is indicated for the treatment of complicated urinary tract infections (cUTI) caused by *Escherichia coli*, *Klebsiella pneumoniae*, *Enterococcus faecalis*, *Proteus mirabilis*, or *Pseudomonas aeruginosa* and acute uncomplicated pyelonephritis (AUP) caused by *Escherichia coli*.

### 1.3 Limitations of Use

- The safety and efficacy of CIPRO XR in treating infections other than urinary tract infections has not been demonstrated.
- CIPRO XR is not indicated for pediatric patients.

### 1.4 Usage

To reduce the development of drug-resistant bacteria and maintain the effectiveness of CIPRO XR and other antibacterial drugs, CIPRO XR should be used only to treat or prevent infections that are proven or strongly suspected to be caused by susceptible bacteria. When culture and susceptibility information are available, they should be considered in selecting or modifying antibacterial therapy. In the absence of such data, local epidemiology and susceptibility patterns may contribute to the empiric selection of therapy.

Appropriate culture and susceptibility tests should be performed before treatment in order to isolate and identify organisms causing infection and to determine their susceptibility to ciprofloxacin. Therapy with CIPRO XR may be initiated before results of these tests are known; once results become available appropriate therapy should be continued.

As with other drugs, some isolates of *Pseudomonas aeruginosa* may develop resistance fairly rapidly during treatment with ciprofloxacin. Culture and susceptibility testing performed periodically during therapy will provide information not only on the therapeutic effect of the antimicrobial agent but also on the possible emergence of bacterial resistance.

## 2 DOSAGE AND ADMINISTRATION

### 2.1 Dosage

CIPRO XR and ciprofloxacin immediate-release tablets are not interchangeable. Cipro XR should be administered orally once daily (Table 1).

**Table 1: Dosage Guidelines**

Indication	Dose	Frequency	Usual Duration
Uncomplicated Urinary Tract Infection (Acute Cystitis)	500 mg	every 24 hours	3 Days
Complicated Urinary Tract Infection and Acute Uncomplicated Pyelonephritis	1000 mg	every 24 hours	7–14 Days

Patients whose therapy is started with CIPRO IV for UTIs may be switched to CIPRO XR when clinically indicated at the discretion of the physician.

### 2.2 Administration

- CIPRO XR tablets should be taken whole and not split, crushed, or chewed.
- CIPRO XR should be administered at least 2 hours before or 6 hours after antacids containing magnesium or aluminum, polymeric phosphate binders (for example, sevelamer, lanthanum carbonate), as well as sucralfate, VIDEX® (didanosine) chewable/buffered tablets or pediatric powder, other highly buffered drugs, metal cations such as iron, and multivitamin preparations with zinc [see *Drug Interactions* (7)].
- Concomitant administration of Cipro XR with dairy products (like milk or yogurt) or with calcium-fortified products alone should be avoided since decreased absorption is possible. A 2-hour window between substantial calcium intake (greater than 800 mg) and dosing with CIPRO XR is recommended [see *Patient Counseling Information* (17)].
- Adequate hydration of patients receiving CIPRO XR should be maintained to prevent the formation of highly concentrated urine. Crystalluria has been reported with quinolones [see *Warnings and Precautions* (5.18), *Adverse Reactions* (6.1) and *Patient Counseling Information* (17)].
- If a dose is missed, it should be taken anytime but not later than 8 hours prior to the next scheduled dose. If less than 8 hours remain before the next dose, the missed dose should not be taken and treatment should be continued as prescribed with the next scheduled dose. Double doses should not be taken to compensate for a missed dose.

### 2.3 Impaired Renal Function

- In patients with cUTI and acute uncomplicated pyelonephritis with a creatinine clearance of  $\leq 30$  mL/min, the dose of CIPRO XR should be reduced from 1000 mg to 500 mg daily. The use of Ciprofloxacin 1000 mg XR tablets is not recommended in this patient population.

- For patients on hemodialysis or peritoneal dialysis, administer CIPRO XR after the dialysis procedure is completed (maximum dose should be Ciprofloxacin 500 mg XR every 24 hours). The use of Ciprofloxacin 1000 mg XR is not recommended in this patient population [*see Use in Specific Populations (8.6) and Clinical Pharmacology (12.3)*].
- For patients on continuous ambulatory peritoneal dialysis (CAPD), the maximum dose should be 500 mg every 24 hours.

### 3 DOSAGE FORMS AND STRENGTHS

- 500 mg white to slightly yellowish, film-coated, oblong-shaped tablets imprinted with the word “BAYER” on one side and “C500 QD” on the other
- 1000 mg white to slightly yellowish, film-coated, oblong-shaped tablets imprinted the word “BAYER” on one side and “C1000 QD” on the other

### 4 CONTRAINDICATIONS

#### 4.1 Hypersensitivity

CIPRO XR is contraindicated in persons with a history of hypersensitivity to ciprofloxacin, any member of the quinolone class of antibacterials, or any of the product components [*see Warnings and Precautions (5.7)*].

#### 4.2 Tizanidine

Concomitant administration with tizanidine is contraindicated [*see Drug Interactions (7)*].

### 5 WARNINGS AND PRECAUTIONS

#### 5.1 Disabling and Potentially Irreversible Serious Adverse Reactions Including Tendinitis and Tendon Rupture, Peripheral Neuropathy, and Central Nervous System Effects

Fluoroquinolones, including CIPRO XR, have been associated with disabling and potentially irreversible serious adverse reactions from different body systems that can occur together in the same patient. Commonly seen adverse reactions include tendinitis, tendon rupture, arthralgia, myalgia, peripheral neuropathy, and central nervous system effects (hallucinations, anxiety, depression, insomnia, severe headaches, and confusion). These reactions can occur within hours to weeks after starting CIPRO XR. Patients of any age or without pre-existing risk factors have experienced these adverse reactions [*see Warnings and Precautions (5.2, 5.3, 5.4)*].

Discontinue CIPRO XR immediately at the first signs or symptoms of any serious adverse reaction. In addition, avoid the use of fluoroquinolones, including CIPRO XR, in patients who have experienced any of these serious adverse reactions associated with fluoroquinolones.

#### 5.2 Tendinitis and Tendon Rupture

Fluoroquinolones, including CIPRO XR, have been associated with an increased risk of tendinitis and tendon rupture in all ages [*see Warnings and Precautions (5.1) and Adverse Reactions (6.2)*]. This adverse reaction most frequently involves the Achilles tendon, and also been reported in the rotator cuff (the shoulder), the hand, the biceps, the thumb, and other tendons. Tendinitis and tendon rupture can occur within hours or days of starting CIPRO XR, or as long as several months after completion of fluoroquinolone therapy. Tendinitis and tendon rupture can occur bilaterally.

The risk of developing fluoroquinolone-associated tendinitis and tendon rupture is further increased in patients over 60 years of age, in patients taking corticosteroid drugs, and in patients with kidney, heart or lung transplants. Other factors that may independently increase the risk of tendon rupture include strenuous physical activity, renal failure, and previous

tendon disorders such as rheumatoid arthritis. Tendinitis and tendon rupture have also occurred in patients taking fluoroquinolones who do not have the above risk factors.

Discontinue CIPRO XR immediately if the patient experiences pain, swelling, inflammation or rupture of a tendon. Avoid fluoroquinolones, including CIPRO XR, in patients who have a history of tendon disorders or have experienced tendinitis or tendon rupture [see *Adverse Reactions* (6.2)].

### 5.3 Peripheral Neuropathy

Fluoroquinolones, including CIPRO XR, have been associated with an increased risk of peripheral neuropathy. Cases of sensory or sensorimotor axonal polyneuropathy affecting small and/or large axons resulting in paresthesias, hypoesthesias, dysesthesias and weakness have been reported in patients receiving fluoroquinolones, including CIPRO XR. Symptoms may occur soon after initiation of CIPRO XR and may be irreversible in some patients [see *Warnings and Precautions* (5.1) and *Adverse Reactions* (6.1, 6.2)].

Discontinue CIPRO XR immediately if the patient experiences symptoms of peripheral neuropathy including pain, burning, tingling, numbness, and/or weakness, or other alterations in sensations including light touch, pain, temperature, position sense and vibratory sensation and/or motor strength in order to minimize the development of an irreversible condition. Avoid fluoroquinolones, including CIPRO, in patients who have previously experienced peripheral neuropathy [see *Adverse Reactions* (6.1, 6.2).]

### 5.4 Central Nervous System Effects

#### *Psychiatric Adverse Reactions*

Fluoroquinolones, including CIPRO, have been associated with an increased risk of psychiatric adverse reactions, including: toxic psychosis, psychotic reactions progressing to suicidal ideations/thoughts, hallucinations, or paranoia; depression, or self-injurious behavior such as attempted or completed suicide; anxiety, agitation, or nervousness; confusion, delirium, disorientation, or disturbances in attention; insomnia or nightmares; memory impairment. These reactions may occur following the first dose. Advise patients receiving CIPRO to inform their healthcare provider immediately if these reactions occur, discontinue the drug, and institute appropriate care.

#### *Central Nervous System Adverse Reactions*

Fluoroquinolones, including CIPRO, have been associated with an increased risk of seizures (convulsions), increased intracranial pressure (psudotumor cerebri), dizziness, and tremors. CIPRO, like other fluoroquinolones, is known to trigger seizures or lower the seizure threshold. Cases of status epilepticus have been reported. As with all fluoroquinolones, use CIPRO with caution in epileptic patients and patients with known or suspected CNS disorders that may predispose to seizures or lower the seizure threshold (for example, severe cerebral arteriosclerosis, previous history of convulsion, reduced cerebral blood flow, altered brain structure, or stroke), or in the presence of other risk factors that may predispose to seizures or lower the seizure threshold (for example, certain drug therapy, renal dysfunction). If seizures occur, discontinue CIPRO and institute appropriate care [see *Adverse Reactions* (6.1) and *Drug Interactions* (7)].

### 5.5 Exacerbation of Myasthenia Gravis

Fluoroquinolones, including CIPRO XR, have neuromuscular blocking activity and may exacerbate muscle weakness in patients with myasthenia gravis. Postmarketing serious adverse reactions, including deaths and requirement for ventilatory support, have been associated with fluoroquinolone use in patients with myasthenia gravis. Avoid CIPRO XR in patients with known history of myasthenia gravis [see *Adverse Reactions* (6.3) and *Patient Counseling Information* (17)].

### 5.6 Other Serious and Sometimes Fatal Adverse Reactions

Other serious and sometimes fatal adverse reactions, some due to hypersensitivity, and some due to uncertain etiology, have been reported in patients receiving therapy with quinolones, including ciprofloxacin. These events may be severe and

generally occur following the administration of multiple doses. Clinical manifestations may include one or more of the following:

- Fever, rash, or severe dermatologic reactions (for example, toxic epidermal necrolysis, Stevens-Johnson syndrome);
- Vasculitis; arthralgia; myalgia; serum sickness;
- Allergic pneumonitis;
- Interstitial nephritis; acute renal insufficiency or failure;
- Hepatitis; jaundice; acute hepatic necrosis or failure;
- Anemia, including hemolytic and aplastic; thrombocytopenia, including thrombotic thrombocytopenic purpura; leukopenia; agranulocytosis; pancytopenia; and/or other hematologic abnormalities.

Discontinue CIPRO XR immediately at the first appearance of a skin rash, jaundice, or any other sign of hypersensitivity and supportive measures instituted [*see Adverse Reactions (6.1, 6.2)*].

### **5.7 Hypersensitivity Reactions**

Serious and occasionally fatal hypersensitivity (anaphylactic) reactions, some following the first dose, have been reported in patients receiving quinolone therapy, including CIPRO XR. Some reactions were accompanied by cardiovascular collapse, loss of consciousness, tingling, pharyngeal or facial edema, dyspnea, urticaria, and itching. Only a few patients had a history of hypersensitivity reactions. Serious anaphylactic reactions require immediate emergency treatment with epinephrine and other resuscitation measures, including oxygen, intravenous fluids, intravenous antihistamines, corticosteroids, pressor amines, and airway management, including intubation, as indicated [*see Contraindications (4.1), Adverse Reactions (6.1) and Patient Counseling Information (17)*].

### **5.8 Hepatotoxicity**

Cases of severe hepatotoxicity, including hepatic necrosis, life-threatening hepatic failure, and fatal events, have been reported with CIPRO XR. Acute liver injury is rapid in onset (range 1–39 days), and is often associated with hypersensitivity. The pattern of injury can be hepatocellular, cholestatic or mixed. Most patients with fatal outcomes were older than 55 years old. In the event of any signs and symptoms of hepatitis (such as anorexia, jaundice, dark urine, pruritus, or tender abdomen), discontinue treatment immediately.

There can be a temporary increase in transaminases, alkaline phosphatase, or cholestatic jaundice, especially in patients with previous liver damage, who are treated with CIPRO XR [*see Adverse Reactions (6.1, 6.2, 6.3)*].

### **5.9 Risk of Aortic Aneurysm and Dissection**

Epidemiologic studies report an increased rate of aortic aneurysm and dissection within two months following use of fluoroquinolones, particularly in elderly patients. The cause for the increased risk has not been identified. In patients with a known aortic aneurysm or patients who are at greater risk for aortic aneurysms, reserve CIPRO XR for use only when there are no alternative antibacterial treatments available.

### **5.10 Serious Adverse Reactions with Concomitant Theophylline Use**

Serious and fatal reactions have been reported in patients receiving concurrent administration of CIPRO XR and theophylline. These reactions have included cardiac arrest, seizure, status epilepticus, and respiratory failure. Instances of nausea, vomiting, tremor, irritability, or palpitation have also occurred.

Although similar serious adverse reactions have been reported in patients receiving theophylline alone, the possibility that these reactions may be potentiated by CIPRO XR cannot be eliminated. If concomitant use cannot be avoided, monitor serum levels of theophylline and adjust dosage as appropriate [*see Drug Interactions (7)*].

### **5.11 *Clostridioides difficile*-Associated Diarrhea**

*Clostridioides difficile* (*C. difficile*)-associated diarrhea (CDAD) has been reported with use of nearly all antibacterial agents, including CIPRO XR, and may range in severity from mild diarrhea to fatal colitis. Treatment with antibacterial agents alters the normal flora of the colon leading to overgrowth of *C. difficile*.

*C. difficile* produces toxins A and B which contribute to the development of CDAD. Hypertoxin producing isolates of *C. difficile* cause increased morbidity and mortality, as these infections can be refractory to antimicrobial therapy and may require colectomy. CDAD must be considered in all patients who present with diarrhea following antibacterial use. Careful medical history is necessary since CDAD has been reported to occur over two months after the administration of antibacterial agents.

If CDAD is suspected or confirmed, ongoing antibacterial use not directed against *C. difficile* may need to be discontinued. Appropriate fluid and electrolyte management, protein supplementation, antibacterial treatment of *C. difficile*, and institute surgical evaluation as clinically indicated [see *Adverse Reactions* (6.2)].

### **5.12 Prolongation of the QT Interval**

Some fluoroquinolones, including CIPRO XR have been associated with prolongation of the QT interval on the electrocardiogram and cases of arrhythmia. Cases of torsade de pointes have been reported during postmarketing surveillance in patients receiving fluoroquinolones, including CIPRO XR.

Avoid CIPRO XR in patients with known prolongation of the QT interval, risk factors for QT prolongation or torsade de pointes (for example, congenital long QT syndrome, uncorrected electrolyte imbalance, such as hypokalemia or hypomagnesemia and cardiac disease, such as heart failure, myocardial infarction, or bradycardia), and patients receiving Class IA antiarrhythmic agents (quinidine, procainamide), or Class III antiarrhythmic agents (amiodarone, sotalol), tricyclic antidepressants, macrolides, and antipsychotics. Elderly patients may also be more susceptible to drug-associated effects on the QT interval [see *Adverse Reactions* (6.2) and *Use in Specific Populations* (8.5)].

### **5.13 Musculoskeletal Disorders in Pediatric Patients and Arthropathic Effects in Animals**

An increased incidence of adverse reactions compared to controls, including reactions related to joints and/or surrounding tissues, has been observed [see *Adverse Reactions* (6.2)].

In pre-clinical studies, oral administration of CIPRO XR caused lameness in immature dogs. Histopathological examination of the weight-bearing joints of these dogs revealed permanent lesions of the cartilage. Related quinolone-class drugs also produce erosions of cartilage of weight-bearing joints and other signs of arthropathy in immature animals of various species [see *Use in Specific Populations* (8.4) and *Nonclinical Toxicology* (13.2)].

### **5.14 Photosensitivity/Phototoxicity**

Moderate to severe photosensitivity/phototoxicity reactions, the latter of which may manifest as exaggerated sunburn reactions (for example, burning, erythema, exudation, vesicles, blistering, edema) involving areas exposed to light (typically the face, “V” area of the neck, extensor surfaces of the forearms, dorsa of the hands), can be associated with the use of quinolones including CIPRO XR after sun or UV light exposure. Therefore, avoid excessive exposure to these sources of light. Discontinue CIPRO XR if phototoxicity occurs [see *Adverse Reactions* (6.1)].

### **5.15 Development of Drug Resistant Bacteria**

Prescribing CIPRO XR Tablets in the absence of a proven or strongly suspected bacterial infection or a prophylactic indication is unlikely to provide benefit to the patient and increases the risk of the development of drug-resistant bacteria.

### **5.16 Potential Risks with Concomitant Use of Drugs Metabolized by Cytochrome P450 1A2 Enzymes**

Ciprofloxacin is an inhibitor of the hepatic CYP1A2 enzyme pathway. Co-administration of ciprofloxacin and other drugs primarily metabolized by CYP1A2 (for example, theophylline, methylxanthines, caffeine, tizanidine, ropinirole, clozapine, olanzapine and zolpidem) results in increased plasma concentrations of the co-administered drug and could



lead to clinically significant pharmacodynamic adverse reactions of the co-administered drug [see *Drug Interactions* (7) and *Clinical Pharmacology* (12.3)].

### 5.17 Interference with Timely Diagnosis of Syphilis

Ciprofloxacin has not been shown to be effective in the treatment of syphilis. Antimicrobial agents used in high dose for short periods of time to treat gonorrhea may mask or delay the symptoms of incubating syphilis. Perform a serologic test for syphilis in all patients with gonorrhea at the time of diagnosis. Perform follow-up serologic test for syphilis three months after CIPRO XR treatment.

### 5.18 Crystalluria

Crystals of ciprofloxacin have been observed rarely in the urine of human subjects but more frequently in the urine of laboratory animals, which is usually alkaline [see *Nonclinical Toxicology* (13.2)]. Crystalluria related to ciprofloxacin has been reported only rarely in humans because human urine is usually acidic. Avoid alkalinity of the urine in patients receiving CIPRO XR. Hydrate patients well to prevent the formation of highly concentrated urine [see *Dosage and Administration* (2.2)].

### 5.19 Blood Glucose Disturbances

Fluoroquinolones, including CIPROXR, have been associated with disturbances of blood glucose, including symptomatic hyperglycemia and hypoglycemia, usually in diabetic patients receiving concomitant treatment with an oral hypoglycemic agent (for example, glyburide) or with insulin. In these patients, careful monitoring of blood glucose is recommended. Severe cases of hypoglycemia resulting in coma or death have been reported. If a hypoglycemic reaction occurs in a patient being treated with CIPRO XR, discontinue CIPRO XR and initiate appropriate therapy immediately [see *Adverse Reactions* (6.1), *Drug Interactions* (7)].

## 6 ADVERSE REACTIONS

The following serious and otherwise important adverse drug reactions are discussed in greater detail in other sections of labeling:

- Disabling and Potentially Irreversible Serious Adverse Reactions [see *Warnings and Precautions* (5.1)]
- Tendinitis and Tendon Rupture [see *Warnings and Precautions* (5.2)]
- Peripheral Neuropathy [see *Warnings and Precautions* (5.3)]
- Central Nervous System Effects [see *Warnings and Precautions* (5.4)]
- Exacerbation of Myasthenia Gravis [see *Warnings and Precautions* (5.5)]
- Other Serious and Sometimes Fatal Adverse Reactions [see *Warnings and Precautions* (5.6)]
- Hypersensitivity Reactions [see *Warnings and Precautions* (5.7)]
- Hepatotoxicity [see *Warnings and Precautions* (5.8)]
- Risk of Aortic Aneurysm and Dissection [see *Warnings and Precautions* (5.9)]
- Serious Adverse Reactions with Concomitant Theophylline [see *Warnings and Precautions* (5.10)]
- *Clostridioides difficile*-Associated Diarrhea [see *Warnings and Precautions* (5.11)]
- Prolongation of the QT Interval [see *Warnings and Precautions* (5.12)]
- Musculoskeletal Disorders in Pediatric Patients [see *Warnings and Precautions* (5.13)]
- Photosensitivity/Phototoxicity [see *Warnings and Precautions* (5.14)]
- Development of Drug Resistant Bacteria [see *Warnings and Precautions* (5.15)]

## 6.1 Clinical Trials Experience

Because clinical trials are conducted under widely varying conditions, adverse reaction rates observed in the clinical trials of a drug cannot be directly compared to rates in the clinical trials of another drug and may not reflect the rates observed in practice.

Clinical trials in patients with urinary tract infections enrolled 961 patients treated with 500 mg or 1000 mg CIPRO XR. The overall incidence, type and distribution of adverse reactions were similar in patients receiving both 500 mg and 1000 mg of CIPRO XR. The adverse reaction information from clinical studies does, however, provide a basis for identifying the adverse events that appear to be related to drug use and for approximating rates.

In the clinical trial of uncomplicated UTIs, CIPRO XR (500 mg once daily) in 444 patients was compared to ciprofloxacin immediate-release tablets (250 mg twice daily) in 447 patients for 3 days. Discontinuations due to adverse reactions thought to be drug-related occurred in 0.2% (1/444) of patients in the CIPRO XR arm and in 0% (0/447) of patients in the control arm.

In the clinical trial of cUTI and acute uncomplicated pyelonephritis (AUP) defined as infections occurring in premenopausal, non-pregnant women with no known urological abnormalities or comorbidities, CIPRO XR (1000 mg once daily) in 517 patients was compared to ciprofloxacin immediate-release tablets (500 mg twice daily) in 518 patients for 7 to 14 days. Discontinuations due to adverse reactions thought to be drug-related occurred in 3.1% (16/517) of patients in the CIPRO XR arm and in 2.3% (12/518) of patients in the control arm. The most common reasons for discontinuation in the CIPRO XR arm were nausea/vomiting (4 patients) and dizziness (3 patients). In the control arm the most common reason for discontinuation was nausea/vomiting (3 patients).

In these clinical trials, the following events occurred in  $\geq 2\%$  of all CIPRO XR patients: nausea (4%), headache (3%), dizziness (2%), diarrhea (2%), vomiting (2%) and vaginal moniliasis (2%).

Adverse reactions, judged by investigators to be at least possibly drug-related, occurring in greater than or equal to 1% of all CIPRO XR treated patients were: nausea (3%), diarrhea (2%), headache (1%), dyspepsia (1%), dizziness (1%), and vaginal moniliasis (1%). Vomiting (1%) occurred in the 1000 mg group.

**Table 2: Medically Important Adverse Reactions That Occurred In <1% of CIPRO XR Patients**

<b>System Organ Class</b>	<b>Adverse Reactions</b>
<b>Body as a Whole</b>	Abdominal pain Asthenia Malaise
<b>Cardiovascular</b>	Bradycardia Migraine Syncope
<b>Central Nervous System</b>	Abnormal dreams Convulsive seizures (including status epilepticus) Depersonalization Depression (potentially culminating in self-injurious behavior, such as suicidal ideations/thoughts and attempted or completed suicide) Hypertonia Incoordination Insomnia Somnolence Tremor Vertigo
<b>Gastrointestinal</b>	Constipation Dry mouth Flatulence Thirst
<b>Hepatobiliary Disorders</b>	Liver function tests abnormal
<b>Investigations</b>	Prothrombin decrease
<b>Metabolic</b>	Hyperglycemia Hypoglycemia
<b>Psychiatric Disorders</b>	Anorexia
<b>Skin/Hypersensitivity</b>	Dry skin Maculopapular rash Photosensitivity/phototoxicity reactions Pruritus Rash Skin disorder Urticarial Vesiculobullous rash
<b>Special Senses</b>	Diplopia Taste perversion
<b>Urogenital</b>	Dysmenorrhea Hematuria Kidney function abnormal Vaginitis

## 6.2 Postmarketing Experience

The following adverse reactions have been reported from worldwide marketing experience with fluoroquinolones, including CIPRO XR. Because these reactions are reported voluntarily from a population of uncertain size, it is not always possible to reliably estimate their frequency or establish a causal relationship to drug exposure (Table 3).

**Table 3: Postmarketing Reports of Adverse Drug Reactions**

<b>System Organ Class</b>	<b>Adverse Reactions</b>
<b>Cardiovascular</b>	QT prolongation Torsade de Pointes Vasculitis and ventricular arrhythmia
<b>Central Nervous System</b>	Hypertonia Myasthenia Exacerbation of myasthenia gravis Peripheral neuropathy Polyneuropathy Twitching
<b>Eye Disorders</b>	Nystagmus
<b>Gastrointestinal</b>	Pseudomembranous colitis
<b>Hemic/Lymphatic</b>	Pancytopenia (life threatening or fatal outcome) Methemoglobinemia
<b>Hepatobiliary</b>	Hepatic failure (including fatal cases)
<b>Infections and Infestations</b>	Candidiasis (oral, gastrointestinal, vaginal)
<b>Investigations</b>	Prothrombin time prolongation or decrease Cholesterol elevation (serum) Potassium elevation (serum)
<b>Musculoskeletal</b>	Myalgia Myoclonus Tendinitis Tendon rupture
<b>Psychiatric Disorders</b>	Agitation Confusion Delirium Psychosis (toxic)
<b>Skin/Hypersensitivity</b>	Acute generalized exanthematous pustulosis (AGEP) Fixed eruption Serum sickness-like reaction
<b>Special Senses</b>	Anosmia Hyperesthesia Hypesthesia Taste loss

## 6.3 Adverse Laboratory Changes

Changes in laboratory parameters while on CIPRO are listed below:

Hepatic—Elevations of ALT (SGPT), AST (SGOT), alkaline phosphatase, LDH, serum bilirubin.

Hematologic—Eosinophilia, leukopenia, decreased blood platelets, elevated blood platelets, pancytopenia.

Renal—Elevations of serum creatinine, BUN, crystalluria, cylindruria, and hematuria have been reported.

Other changes occurring were: elevation of serum gamma-glutamyl transferase, elevation of serum amylase, reduction in blood glucose, elevated uric acid, decrease in hemoglobin, anemia, bleeding diathesis, increase in blood monocytes, and leukocytosis.

## 7 DRUG INTERACTIONS

Ciprofloxacin is an inhibitor of human cytochrome P450 1A2 (CYP1A2) mediated metabolism. Co-administration of CIPRO XR with other drugs primarily metabolized by CYP1A2 results in increased plasma concentrations of these drugs and could lead to clinically significant adverse events of the co-administered drug.

**Table 4: Drugs That are Affected by and Affecting CIPRO**

<b>Drugs That are Affected by CIPRO</b>		
<b>Drug(s)</b>	<b>Recommendation</b>	<b>Comments</b>
Tizanidine	Contraindicated	Concomitant administration of tizanidine and CIPRO XR is contraindicated due to the potentiation of hypotensive and sedative effects of tizanidine [ <i>see Contraindications (4.2)</i> ].
Theophylline	Avoid Use (Plasma Exposure Likely to be Increased and Prolonged)	Concurrent administration of CIPRO XR with theophylline may result in increased risk of a patient developing central nervous system (CNS) or other adverse reactions. If concomitant use cannot be avoided, monitor serum levels of theophylline and adjust dosage as appropriate [ <i>see Warnings and Precautions (5.10)</i> ].
Drugs Known to Prolong QT Interval	Avoid Use	Cipro XR may further prolong the QT interval in patients receiving drugs known to prolong the QT interval (for example, class IA or III antiarrhythmics, tricyclic antidepressants, macrolides, antipsychotics) [ <i>see Warnings and Precautions (5.12) and Use in Specific Populations (8.5)</i> ].
Oral antidiabetic drugs	Use with caution Glucose-lowering effect potentiated	Hypoglycemia sometimes severe has been reported when CIPRO XR and oral antidiabetic agents, mainly sulfonylureas (for example, glyburide, glimepiride), were co-administered, presumably by intensifying the action of the oral antidiabetic agent. Fatalities have been reported. Monitor blood glucose when CIPRO XR is co-administered with oral antidiabetic drugs [ <i>see Adverse Reactions (6.1)</i> ].
Phenytoin	Use with caution Altered serum levels of phenytoin (increased and decreased)	To avoid the loss of seizure control associated with decreased phenytoin levels and to prevent phenytoin overdose-related adverse reactions upon CIPRO XR discontinuation in patients receiving both agents, monitor phenytoin therapy, including phenytoin serum concentration during and shortly after co-administration of CIPRO XR with phenytoin.
Cyclosporine	Use with caution (transient elevations in serum creatinine)	Monitor renal function (in particular serum creatinine) when CIPRO XR is co-administered with cyclosporine.
Anti-coagulant drugs	Use with caution (Increase in anticoagulant effect)	The risk may vary with the underlying infection, age and general status of the patient so that the contribution of CIPRO XR to the increase in INR (international

		normalized ratio) is difficult to assess. Monitor prothrombin time and INR frequently during and shortly after co-administration of CIPRO XR with an oral anti-coagulant (for example, warfarin).
Methotrexate	Use with caution Inhibition of methotrexate renal tubular transport potentially leading to increased methotrexate plasma levels	Potential increase in the risk of methotrexate associated toxic reactions. Therefore, carefully monitor patients under methotrexate therapy when concomitant CIPRO XR therapy is indicated.
Ropinirole	Use with caution	Monitoring for ropinirole-related adverse reactions and appropriate dose adjustment of ropinirole is recommended during and shortly after co-administration with CIPRO XR [see Warnings and Precautions (5.16)].
Clozapine	Use with caution	Careful monitoring of clozapine associated adverse reactions and appropriate adjustment of clozapine dosage during and shortly after co-administration with CIPRO XR are advised.
NSAIDs	Use with caution	Non-steroidal anti-inflammatory drugs (but not acetyl salicylic acid) in combination of very high doses of quinolones have been shown to provoke convulsions in pre-clinical studies and in postmarketing.
Sildenafil	Use with caution Two-fold increase in exposure	Monitor for sildenafil toxicity [see Clinical Pharmacology (12.3)].
Duloxetine	Avoid Use Five-fold increase in duloxetine exposure	If unavoidable monitor, for duloxetine toxicity
Caffeine/Xanthine Derivatives	Use with caution Reduced clearance resulting in elevated levels and prolongation of serum half-life	CIPRO XR inhibits the formation of paraxanthine after caffeine administration (or pentoxifylline containing products). Monitor for xanthine toxicity and adjust dose as necessary.
Zolpidem	Avoid Use	Co-administration with ciprofloxacin may increase blood levels of zolpidem, concurrent use is not recommended
<b>Drug(s) Affecting Pharmacokinetics of CIPRO XR</b>		
Antacids, Sucralfate, Multivitamins and Other Products Containing Multivalent Cations (magnesium/aluminum antacids; polymeric phosphate binders (for example, sevelamer, lanthanum carbonate); sucralfate; Videx® (didanosine) chewable/buffered tablets or pediatric powder; other highly buffered drugs; or	CIPRO XR should be taken at least two hours before or six hours after Multivalent cation-containing products administration [see Dosage and Administration ( 2)].	Decrease CIPRO XR absorption, resulting in lower serum and urine levels considerably lower than desired for concurrent administration of these agents with CIPRO XR

products containing calcium, iron, or zinc and dairy products)		
Probenecid	Use with caution (interferes with renal tubular secretion of CIPRO XR and increases CIPRO XR serum levels)	Potential of CIPRO XR toxicity may occur.

## 8 USE IN SPECIFIC POPULATIONS

### 8.1 Pregnancy

#### *Risk Summary*

Prolonged experience with ciprofloxacin in pregnant women over several decades, based on available published information from case reports, case control studies and observational studies on ciprofloxacin administered during pregnancy, have not identified any drug-associated risk of major birth defects, miscarriage or adverse maternal or fetal outcomes (*see Data*). Oral administration of ciprofloxacin during organogenesis at doses up to 100 mg/kg to pregnant mice and rats, and up to 30 mg/kg to pregnant rabbits did not cause fetal malformations (*see Data*). These doses were up to 0.3, 0.6, and 0.4 times the maximum recommended clinical oral dose in mice, rats, and rabbits, respectively, based on body surface area.

The estimated background risk of major birth defects and miscarriage for the indicated population is unknown. All pregnancies have a background risk of birth defect, loss, or other adverse outcomes. In the U.S. general population, the estimated background risks of major birth defects and miscarriage in clinically recognized pregnancies is 2 to 4% and 15 to 20%, respectively.

#### *Data*

##### Human Data

While available studies cannot definitively establish the absence of risk, published data from prospective observational studies over several decades have not established an association with ciprofloxacin use during pregnancy and major birth defects, miscarriage, or adverse maternal or fetal outcomes. Available studies have methodological limitations including small sample size and some of them are not specific for ciprofloxacin. A controlled prospective observational study followed 200 women exposed to fluoroquinolones (52.5% exposed to ciprofloxacin and 68% first trimester exposures) during gestation. In utero exposure to fluoroquinolones during embryogenesis was not associated with increased risk of major malformations. The reported rates of major congenital malformations were 2.2% for the fluoroquinolone group and 2.6% for the control group (background incidence of major malformations is 1–5%). Rates of spontaneous abortions, prematurity and low birth weight did not differ between the groups and there were no clinically significant musculoskeletal dysfunctions up to one year of age in the ciprofloxacin exposed children.

Another prospective follow-up study reported on 549 pregnancies with fluoroquinolone exposure (93% first trimester exposures). There were 70 ciprofloxacin exposures, all within the first trimester. The malformation rates among live-born babies exposed to ciprofloxacin and to fluoroquinolones overall were both within background incidence ranges. No specific patterns of congenital abnormalities were found. The study did not reveal any clear adverse reactions due to in utero exposure to ciprofloxacin.

No differences in the rates of prematurity, spontaneous abortions, or birth weight were seen in women exposed to ciprofloxacin during pregnancy. However, these small postmarketing epidemiology studies, of which most experience is

from short term, first trimester exposure, are insufficient to evaluate the risk for less common defects or to permit reliable and definitive conclusions regarding the safety of ciprofloxacin in pregnant women and their developing fetuses.

### Animal Data

Developmental toxicology studies have been performed with ciprofloxacin in rats, mice, and rabbits. In rats and mice, oral doses up to 100 mg/kg administered during organogenesis (Gestation Days, GD, 6-17) were not associated with adverse developmental outcomes, including embryofetal toxicity or malformations. In rats and mice, a 100 mg/kg dose is approximately 0.6 and 0.3 times the maximum daily human oral dose (1500 mg/day) based upon body surface area, respectively. In a series of rabbit developmental toxicology studies, does received oral or intravenous ciprofloxacin for one of the following 5 day periods: GD 6 to 10, GD 10 to 14, or GD 14 to 18, intended to cover the period of organogenesis. This was an attempt to mitigate the gastrointestinal intolerance observed in rabbits that receive antibacterials manifested by reduced maternal food consumption and weight loss, that can lead to embryofetal resorption or spontaneous abortion. An oral ciprofloxacin dose of 100 mg/kg (approximately 1.3 times the highest recommended clinical oral dose based on body surface area) caused excessive maternal toxicity confounding evaluation of the fetuses. A 30 mg/kg oral dose (approximately 0.4 times the highest recommended clinical oral dose) was associated with suppression of maternal and fetal body weight gain, but fetal malformations were not observed. Intravenous administration of doses up to 20 mg/kg (approximately 0.3 times the highest recommended clinical oral dose based upon body surface area) to pregnant rabbits was not maternally toxic and neither embryofetal toxicity nor fetal malformations were observed.

In peri- and post-natal studies, rats received ciprofloxacin doses up to 200 mg/kg/day (oral) or up to 30 mg/kg/day (subcutaneous) from GD 16 to 22 days postpartum. The 200 mg/kg dose is approximately 1.3-times the maximum recommended clinical oral dose based on body surface area. Neither maternal toxicity nor adverse effects on growth and development of the pups were observed, including no sign of arthropathy on the rear leg joints of the pups. Ciprofloxacin and other quinolones have been shown to cause arthropathy in immature animals of most species tested when administered directly [*see Warnings and Precautions (5.13) and Nonclinical Toxicology 13.2*].

## **8.2 Lactation**

### Risk Summary

Published literature reports that ciprofloxacin is present in human milk following intravenous and oral administration. There is no information regarding effects of CIPRO on milk production or the breastfed infant. Because of the potential risk of serious adverse reactions in breastfed infants, including arthropathy shown in juvenile animal studies [*see Use in Specific Populations (8.4), (Clinical Considerations)*], for most indications a lactating woman may consider pumping and discarding breast milk during treatment with CIPRO and an additional two days (five half-lives) after the last dose. Alternatively, advise a woman that breastfeeding is not recommended during treatment with CIPRO and for an additional two days (five half-lives) after the last dose.

## **8.4 Pediatric Use**

Safety and effectiveness of CIPRO XR in pediatric patients and adolescents less than 18 years of age have not been established. Ciprofloxacin causes arthropathy (arthralgia, arthritis) in juvenile animals [*see Nonclinical Toxicology (13.2)*]. CIPRO XR is not indicated for pediatric patients [*see Indications and Usage (1.3)*].

## **8.5 Geriatric Use**

Geriatric patients are at increased risk for developing severe tendon disorders including tendon rupture when being treated with a fluoroquinolone such as CIPRO XR. This risk is further increased in patients receiving concomitant corticosteroid therapy. Tendinitis or tendon rupture can involve the Achilles, hand, shoulder, or other tendon sites and can occur during or after completion of therapy; cases occurring up to several months after fluoroquinolone treatment have been reported. Caution should be used when prescribing CIPRO XR to elderly patients especially those on corticosteroids. Patients should be informed of this potential side effect and advised to discontinue CIPRO XR and contact their healthcare



provider if any symptoms of tendinitis or tendon rupture occur [see [Boxed Warning](#), [Warnings and Precautions \(5.2\)](#), and [Adverse Reactions \(6.2\)](#)].

Epidemiologic studies report an increased rate of aortic aneurysm and dissection within two months following use of fluoroquinolones, particularly in elderly patients [see [Warnings and Precautions \(5.9\)](#)].

In a large, prospective, randomized CIPRO XR clinical trial in cUTI, 49% (509/1035) of the patients were 65 and over, while 30% (308/1035) were 75 and over. No overall differences in safety or effectiveness were observed between these subjects and younger subjects, and other reported clinical experience has not identified differences in responses between the elderly and younger patients, but greater sensitivity of some older individuals on any drug therapy cannot be ruled out. Ciprofloxacin is known to be substantially excreted by the kidney, and the risk of adverse reactions may be greater in patients with impaired renal function. No alteration of dosage is necessary for patients greater than 65 years of age with normal renal function. However, since some older individuals experience reduced renal function by virtue of their advanced age, care should be taken in dose selection for elderly patients, and renal function monitoring may be useful in these patients [see [Dosage and Administration \(2.3\)](#) and [Clinical Pharmacology \(12.3\)](#)].

In general, elderly patients may be more susceptible to drug-associated effects on the QT interval. Therefore, precaution should be taken when using CIPRO XR with concomitant drugs that can result in prolongation of the QT interval (for example, class IA or class III antiarrhythmics) or in patients with risk factors for torsade de pointes (for example, known QT prolongation, uncorrected hypokalemia) [see [Warnings and Precautions \(5.12\)](#)].

## 8.6 Renal Impairment

Ciprofloxacin is eliminated primarily by renal excretion; however, the drug is also metabolized and partially cleared through the biliary system of the liver and through the intestine. These alternate pathways of drug elimination appear to compensate for the reduced renal excretion in patients with renal impairment. No dosage adjustment is required for patients with uncomplicated UTIs receiving 500 mg CIPRO XR. Dosing in children (less than 18 years of age) with impaired renal function has not been studied [see [Clinical Pharmacology \(12.3\)](#)].

## 8.7 Hepatic Impairment

In preliminary studies in patients with stable chronic liver cirrhosis, no significant changes in ciprofloxacin pharmacokinetics have been observed. The pharmacokinetics of ciprofloxacin in patients with acute hepatic insufficiency, have not been studied.

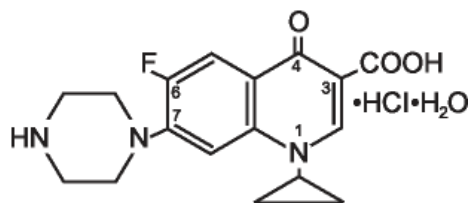
## 10 OVERDOSAGE

In the event of acute overdosage, reversible renal toxicity has been reported in some cases. Empty the stomach by inducing vomiting or by gastric lavage. Observe the patient carefully and give supportive treatment, including monitoring of renal function, urinary pH and acidify, if required, to prevent crystalluria and administration of magnesium, aluminum or calcium containing antacids, which can reduce the absorption of ciprofloxacin. Adequate hydration must be maintained. Only a small amount of ciprofloxacin (less than 10%) is removed from the body after hemodialysis or peritoneal dialysis.

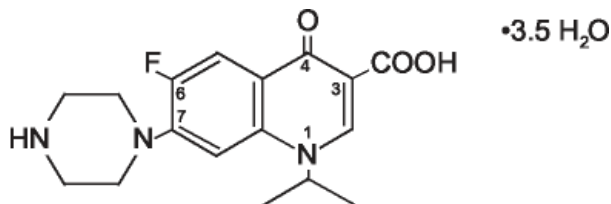
## 11 DESCRIPTION

CIPRO XR (ciprofloxacin\*) extended-release tablets contain ciprofloxacin, a synthetic antimicrobial agent for oral administration. CIPRO XR tablets are coated, bilayer tablets consisting of an immediate-release layer and an erosion-matrix type controlled-release layer. The tablets contain a combination of two types of ciprofloxacin drug substance, ciprofloxacin hydrochloride and ciprofloxacin betaine (base). Ciprofloxacin hydrochloride is 1-cyclopropyl-6-fluoro-1,4-dihydro-4-oxo-7-(1-piperazinyl)-3-quinolinecarboxylic acid hydrochloride. It is provided as a mixture of the monohydrate and the sesquihydrate. The empirical formula of the monohydrate is  $C_{17}H_{18}FN_3O_3 \cdot HCl \cdot H_2O$  and its molecular weight is 385.8. The empirical formula of the sesquihydrate is  $C_{17}H_{18}FN_3O_3 \cdot HCl \cdot 1.5 H_2O$  and its molecular

weight is 394.8. The drug substance is a faintly yellowish to light yellow crystalline substance. The chemical structure of the monohydrate is as follows:



Ciprofloxacin betaine is 1-cyclopropyl-6-fluoro-1, 4-dihydro-4-oxo-7-(1-piperaziny)-3-quinolinecarboxylic acid. As a hydrate, its empirical formula is  $C_{17}H_{18}FN_3O_3 \cdot 3.5 H_2O$  and its molecular weight is 394.3. It is a pale yellowish to light yellow crystalline substance and its chemical structure is as follows:



CIPRO XR is available in 500 mg and 1000 mg (ciprofloxacin equivalent) tablet strengths. CIPRO XR tablets are nearly white to slightly yellowish, film-coated, oblong-shaped tablets. Each CIPRO XR 500 mg tablet contains 500 mg of ciprofloxacin as ciprofloxacin HCl (287.5 mg, calculated as ciprofloxacin on the dried basis) and ciprofloxacin<sup>†</sup> (212.6 mg, calculated on the dried basis). Each CIPRO XR 1000 mg tablet contains 1000 mg of ciprofloxacin as ciprofloxacin HCl (574.9 mg, calculated as ciprofloxacin on the dried basis) and ciprofloxacin<sup>†</sup> (425.2 mg, calculated on the dried basis). The inactive ingredients are crospovidone, hypromellose, magnesium stearate, polyethylene glycol, silica colloidal anhydrous, succinic acid, and titanium dioxide.

\* as ciprofloxacin<sup>†</sup> and ciprofloxacin hydrochloride

<sup>†</sup> does not comply with the loss on drying test and residue on ignition test of the USP monograph.

## 12 CLINICAL PHARMACOLOGY

### 12.1 Mechanism of Action

Ciprofloxacin is a member of the fluoroquinolone class of antibacterial agents [see *Microbiology* (12.4)].

### 12.3 Pharmacokinetics

#### *Absorption*

CIPRO XR tablets are formulated to release drug at a slower rate compared to immediate-release tablets. Approximately 35% of the dose is contained within an immediate-release component, while the remaining 65% is contained in a slow-release matrix.

Maximum plasma ciprofloxacin concentrations are attained between 1 and 4 hours after dosing with CIPRO XR. In comparison to the 250 mg and 500 mg ciprofloxacin immediate-release twice a day (BID) treatment, the  $C_{max}$  of CIPRO XR 500 mg and 1000 mg once daily are higher than the corresponding BID doses, while the AUCs over 24 hours are equivalent.

The following table compares the pharmacokinetic parameters obtained at steady state for these four treatment regimens (500 mg once a day (QD) CIPRO XR versus 250 mg BID ciprofloxacin immediate-release tablets and 1000 mg QD CIPRO XR versus 500 mg BID ciprofloxacin immediate-release).

**Table 5: Ciprofloxacin Pharmacokinetics (Mean ± SD) Following CIPRO and CIPRO XR Administration**

	C <sub>max</sub> (mg/L)	AUC <sub>0–24h</sub> (mg•h/L)	T <sub>1/2</sub> (hr)	T <sub>max</sub> (hr) <sup>1</sup>
CIPRO XR 500 mg QD	1.59 ± 0.43	7.97 ± 1.87	6.6 ± 1.4	1.5 (1 – 2.5)
CIPRO 250 mg BID	1.14 ± 0.23	8.25 ± 2.15	4.8 ± 0.6	1 (0.5 – 2.5)
CIPRO XR 1000 mg QD	3.11 ± 1.08	16.83 ± 5.65	6.31 ± 0.72	2 (1 – 4)
CIPRO 500 mg BID	2.06 ± 0.41	17.04 ± 4.79	5.66 ± 0.89	2 (0.5 – 3.5)

<sup>1</sup> median (range)

Results of the pharmacokinetic studies demonstrate that CIPRO XR may be administered with or without food (for example, high-fat and low-fat meals or under fasted conditions).

### *Distribution*

The volume of distribution calculated for intravenous ciprofloxacin is approximately 2.1–2.7 L/kg. Studies with the oral and intravenous forms of ciprofloxacin have demonstrated penetration of ciprofloxacin into a variety of tissues. The binding of ciprofloxacin to serum proteins is 20% to 40%, which is not likely to be high enough to cause significant protein binding interactions with other drugs. Following administration of a single dose of CIPRO XR, ciprofloxacin concentrations in urine collected up to 4 hours after dosing averaged over 300 mg/L for both the 500 mg and 1000 mg tablets; in urine excreted from 12 to 24 hours after dosing, ciprofloxacin concentration averaged 27 mg/L for the 500 mg tablet, and 58 mg/L for the 1000 mg tablet.

### *Metabolism*

Four metabolites of ciprofloxacin were identified in human urine. The metabolites have antimicrobial activity, but are less active than unchanged ciprofloxacin. The primary metabolites are oxociprofloxacin (M3) and sulfociprofloxacin (M2), each accounting for roughly 3% to 8% of the total dose. Other minor metabolites are desethylene ciprofloxacin (M1), and formylciprofloxacin (M4). The relative proportion of drug and metabolite in serum corresponds to the composition found in urine. Excretion of these metabolites was essentially complete by 24 hours after dosing. Ciprofloxacin is an inhibitor of CYP1A2 mediated metabolism. Co-administration of ciprofloxacin with other drugs primarily metabolized by CYP1A2 results in increased plasma concentrations of these drugs and could lead to clinically significant adverse events of the co-administered drug [see *Contraindications* (4.2), *Warnings and Precautions* (5.10, 5.16) and *Drug Interactions* (7)].

### *Elimination*

The elimination kinetics of ciprofloxacin are similar for the immediate-release and the CIPRO XR tablet. In studies comparing the CIPRO XR and immediate-release ciprofloxacin, approximately 35% of an orally administered dose was excreted in the urine as unchanged drug for both formulations. The urinary excretion of ciprofloxacin is virtually complete within 24 hours after dosing. The renal clearance of ciprofloxacin, which is approximately 300 mL/minute, exceeds the normal glomerular filtration rate of 120 mL/minute. Thus, active tubular secretion would seem to play a significant role in its elimination. Co-administration of probenecid with immediate-release ciprofloxacin results in about a 50% reduction in the ciprofloxacin renal clearance and a 50% increase in its concentration in the systemic circulation. Although bile concentrations of ciprofloxacin are several fold higher than serum concentrations after oral dosing with the immediate-release tablet, only a small amount of the dose administered is recovered from the bile as unchanged drug. An additional 1 to 2% of the dose is recovered from the bile in the form of metabolites. Approximately 20 to 35% of an oral dose of immediate-release ciprofloxacin is recovered from the feces within 5 days after dosing. This may arise from either biliary clearance or transintestinal elimination.

### *Specific Populations*

#### Elderly

Pharmacokinetic studies of the immediate-release oral tablet (single dose) and intravenous (single and multiple dose) forms of ciprofloxacin indicate that plasma concentrations of ciprofloxacin are higher in elderly subjects (> 65 years) as compared to young

adults.  $C_{max}$  is increased 16 to 40%, and mean AUC is increased approximately 30%, which can be at least partially attributed to decreased renal clearance in the elderly. Elimination half-life is only slightly (~20%) prolonged in the elderly. These differences are not considered clinically significant [see *Use in Specific Populations* (8.5)].

### Renal Impairment

In patients with reduced renal function, the half-life of ciprofloxacin is slightly prolonged. No dose adjustment is required for patients with uncomplicated UTIs receiving 500 mg CIPRO XR. For cUTI and AUP, where 1000 mg is the appropriate dose, the dosage of CIPRO XR should be reduced to CIPRO XR 500 mg q24h in patients with creatinine clearance equal to or below 30 mL/min [see *Dosage and Administration* (2.3)].

### Hepatic Impairment

In preliminary studies in patients with stable chronic cirrhosis, no significant changes in ciprofloxacin pharmacokinetics have been observed. The kinetics of ciprofloxacin in patients with acute hepatic insufficiency, however, have not been fully elucidated [see *Use in Specific Populations* (8.7)].

### *Drug-Drug Interactions*

#### Antacids

Concurrent administration of antacids containing magnesium hydroxide or aluminum hydroxide may reduce the bioavailability of CIPRO by as much as 90% [see *Dosage and Administration* (2.2) and *Drug Interactions* (7)].

#### Histamine H<sub>2</sub>-receptor antagonists

Histamine H<sub>2</sub>-receptor antagonists appear to have no significant effect on the bioavailability of CIPRO.

#### Metronidazole

The serum concentrations of CIPRO and metronidazole were not altered when these two drugs were given concomitantly.

#### Tizanidine

In a pharmacokinetic study, systemic exposure of tizanidine (4 mg single dose) was significantly increased ( $C_{max}$  7-fold, AUC 10-fold) when the drug was given concomitantly with CIPRO (500 mg twice a day for 3 days). Concomitant administration of tizanidine and CIPRO XR is contraindicated due to the potentiation of hypotensive and sedative effects of tizanidine [see *Contraindications* (4.2)].

#### Ropinirole

In a study conducted in 12 patients with Parkinson's disease who were administered 6 mg ropinirole once daily with 500 mg CIPRO twice-daily, the mean  $C_{max}$  and mean AUC of ropinirole were increased by 60% and 84%, respectively. Monitoring for ropinirole-related adverse reactions and appropriate dose adjustment of ropinirole is recommended during and shortly after co-administration with CIPRO XR [see *Warnings and Precautions* (5.16)].

#### Clozapine

Following concomitant administration of 250 mg CIPRO with 304 mg clozapine for 7 days, serum concentrations of clozapine and N-desmethylclozapine were increased by 29% and 31%, respectively. Careful monitoring of clozapine associated adverse reactions and appropriate adjustment of clozapine dosage during and shortly after co-administration with CIPRO XR are advised.

#### Sildenafil

Following concomitant administration of a single oral dose of 50 mg sildenafil with 500 mg CIPRO to healthy subjects, the mean  $C_{max}$  and mean AUC of sildenafil were both increased approximately two-fold. Use sildenafil with caution when co-administered with CIPRO XR due to the expected two-fold increase in the exposure of sildenafil upon co-administration of CIPRO [see *Drug Interactions* (7)].

## Duloxetine

In clinical studies it was demonstrated that concomitant use of duloxetine with strong inhibitors of the CYP450 1A2 isozyme such as fluvoxamine, may result in a 5-fold increase in mean AUC and a 2.5-fold increase in mean  $C_{\max}$  of duloxetine.

## Lidocaine

In a study conducted in 9 healthy volunteers, concomitant use of 1.5 mg/kg IV lidocaine with 500 mg ciprofloxacin twice daily resulted in an increase of lidocaine  $C_{\max}$  and AUC by 12% and 26%, respectively. Although lidocaine treatment was well tolerated at this elevated exposure, a possible interaction with CIPRO XR and an increase in adverse reactions related to lidocaine may occur upon concomitant administration.

## Metoclopramide

Metoclopramide significantly accelerates the absorption of oral ciprofloxacin resulting in a shorter time to reach maximum plasma concentrations. No significant effect was observed on the bioavailability of ciprofloxacin.

## Omeprazole

When CIPRO XR was administered as a single 1000 mg dose concomitantly with omeprazole (40 mg once daily for three days) to 18 healthy volunteers, the mean AUC and  $C_{\max}$  of ciprofloxacin were reduced by 20% and 23%, respectively. The clinical significance of this interaction has not been determined.

## **12.4 Microbiology**

### *Mechanism of Action*

The bactericidal action of ciprofloxacin results from inhibition of the enzymes topoisomerase II (DNA gyrase) and topoisomerase IV (both Type II topoisomerases), which are required for bacterial DNA replication, transcription, repair, and recombination.

### *Mechanism of Resistance*

The mechanism of action of fluoroquinolones, including ciprofloxacin, is different from that of other antimicrobial agents such as beta-lactams, macrolides, tetracyclines, or aminoglycosides; therefore, microorganisms resistant to these classes of drugs may be susceptible to ciprofloxacin. Resistance to fluoroquinolones occurs primarily by either mutations in the DNA gyrases, decreased outer membrane permeability, or drug efflux. *In vitro* resistance to ciprofloxacin develops slowly by multiple step mutations. Resistance to ciprofloxacin due to spontaneous mutations occurs at a general frequency of between  $< 10^{-9}$  to  $1 \times 10^{-6}$ .

### *Cross Resistance*

There is no known cross-resistance between ciprofloxacin and other classes of antimicrobials.

Ciprofloxacin has been shown to be active against most isolates of the following bacteria, both *in vitro* and in clinical infections ciprofloxacin [see *Indications and Usage* ([1](#))].

### **Gram-positive bacteria**

*Enterococcus faecalis*

*Staphylococcus saprophyticus*

### **Gram-negative bacteria**

*Escherichia coli*

*Klebsiella pneumoniae*

*Proteus mirabilis*

### *Pseudomonas aeruginosa*

The following *in vitro* data are available, but their clinical significance is unknown. At least 90 percent of the following bacteria exhibit an *in vitro* minimum inhibitory concentration (MIC) less than or equal to the susceptible breakpoint for ciprofloxacin against isolates of similar genus or organism group. However, the efficacy of ciprofloxacin in treating clinical infections caused by these bacteria has not been established in adequate and well-controlled clinical trials.

#### **Gram-negative bacteria**

*Citrobacter koseri*

*Citrobacter freundii*

*Edwardsiella tarda*

*Enterobacter aerogenes*

*Enterobacter cloacae*

*Klebsiella oxytoca*

*Morganella morganii*

*Proteus vulgaris*

*Providencia rettgeri*

*Providencia stuartii*

*Serratia marcescens*

#### **Susceptibility Test Methods**

For specific information regarding susceptibility test interpretive criteria and associated test methods and quality control standards recognized by FDA for this drug, please see: <https://www.fda.gov/STIC>.

## **13 NONCLINICAL TOXICOLOGY**

### **13.1 Carcinogenesis, Mutagenesis, Impairment of Fertility**

Eight *in vitro* mutagenicity tests have been conducted with ciprofloxacin, and the test results are listed below:

- Salmonella/Microsome Test (Negative)
- *E. coli* DNA Repair Assay (Negative)
- Mouse Lymphoma Cell Forward Mutation Assay (Positive)
- Chinese Hamster V<sub>79</sub> Cell HGPRT Test (Negative)
- Syrian Hamster Embryo Cell Transformation Assay (Negative)
- *Saccharomyces cerevisiae* Point Mutation Assay (Negative)
- *Saccharomyces cerevisiae* Mitotic Crossover and Gene Conversion Assay (Negative)
- Rat Hepatocyte DNA Repair Assay (Positive)

Thus, 2 of the 8 tests were positive, but results of the following 3 *in vivo* test systems gave negative results:

- Rat Hepatocyte DNA Repair Assay
- Micronucleus Test (Mice)

- Dominant Lethal Test (Mice)

Ciprofloxacin was not carcinogenic or tumorigenic in 2-year carcinogenicity studies with rats and mice at daily oral dose levels of 250 mg/kg and 750 mg/kg, respectively (approximately 2 and 3 -fold greater than the 1000 mg daily human dose based upon body surface area).

Results from photo co-carcinogenicity testing indicate that ciprofloxacin does not reduce the time to appearance of UV-induced skin tumors as compared to vehicle control. Hairless (Skh-1) mice were exposed to UVA light for 3.5 hours five times every two weeks for up to 78 weeks while concurrently being administered ciprofloxacin. The time to development of the first skin tumors was 50 weeks in mice treated concomitantly with UVA and ciprofloxacin (mouse dose approximately equal to the maximum recommended daily human dose of 1000 mg based upon body surface area), as opposed to 34 weeks when animals were treated with both UVA and vehicle. The times to development of skin tumors ranged from 16–32 weeks in mice treated concomitantly with UVA and other quinolones.

In this model, mice treated with ciprofloxacin alone did not develop skin or systemic tumors. There are no data from similar models using pigmented mice and/or fully haired mice. The clinical significance of these findings to humans is unknown.

Fertility studies performed in male and female rats at oral doses of ciprofloxacin up to 100 mg/kg (approximately equal to a daily human oral dose of 1000 mg based upon body surface area) revealed no evidence of impairment. Male rats received oral ciprofloxacin for 10 weeks prior to mating and females were dosed for 3 weeks prior to mating through Gestation Day 7.

### **13.2 Animal Toxicology and/or Pharmacology**

Ciprofloxacin and other quinolones have been shown to cause arthropathy in immature animals of most species tested [*see Warnings and Precautions (5.13)*]. Damage of weight bearing joints was observed in juvenile dogs and rats. In young beagles, 100 mg/kg ciprofloxacin, given daily for 4 weeks, caused degenerative articular changes of the knee joint. At 30 mg/kg, the effect on the joint was minimal. In a subsequent study in young beagle dogs, oral ciprofloxacin doses of 30 mg/kg and 90 mg/kg given daily for 2 weeks caused articular changes which were still observed by histopathology after a treatment-free period of 5 months. At 10 mg/kg no effects on joints were observed. This dose was also not associated with arthrotoxicity after an additional treatment-free period of 5 months. In another study, removal of weight bearing from the joint reduced the lesions but did not totally prevent them.

Crystalluria, sometimes associated with secondary nephropathy, occurs in laboratory animals dosed with ciprofloxacin. This is primarily related to the reduced solubility of ciprofloxacin under alkaline conditions, which predominate in the urine of test animals; in man, crystalluria is rare since human urine is typically acidic. In rhesus monkeys, crystalluria without nephropathy has been noted after single oral doses as low as 5 mg/kg (approximately 0.1-times the highest recommended therapeutic dose based upon body surface area). After 6 months of intravenous dosing at 10 mg/kg/day, no nephropathological changes were noted; however, nephropathy was observed after dosing at 20 mg/kg/day for the same duration (approximately 0.4 times the highest recommended therapeutic dose based upon body surface area).

In dogs, ciprofloxacin administered at 3 and 10 mg/kg by rapid infusion injection (15 sec.) produces hypotensive effects. These effects are considered to be related to histamine release because they are partially antagonized by pyrilamine, an antihistamine. In rhesus monkeys, rapid infusion injection also produces hypotension. but the effect in this species is inconsistent and less pronounced.

In mice, concomitant administration of nonsteroidal anti-inflammatory drugs such as phenylbutazone and indomethacin with quinolones has been reported to enhance the CNS stimulatory effect of quinolones.

Ocular toxicity seen with some related drugs has not been observed in ciprofloxacin-treated animals.

## 14 CLINICAL STUDIES

### 14.1 Uncomplicated Urinary Tract Infections (acute cystitis)

CIPRO XR was evaluated for the treatment of uncomplicated UTIs (acute cystitis) in a randomized, double-blind, controlled clinical trial conducted in the US. This study compared CIPRO XR (500 mg once daily for three days) with ciprofloxacin immediate-release tablets (CIPRO® 250 mg two times a day (BID) for three days). Of the 905 patients enrolled, 452 were randomly assigned to the CIPRO XR treatment group and 453 were randomly assigned to the control group. The primary efficacy variable was bacteriologic eradication of the baseline organism(s) with no new infection or superinfection at test-of-cure (Day 4–11 Post-therapy).

The bacteriologic eradication and clinical success rates were similar between CIPRO XR and the control group. The eradication and clinical success rates and their corresponding 95% confidence intervals for the differences between rates (CIPRO XR minus control group) are given in Table 6:

**Table 6: Bacteriological Eradication and Clinical Cure Rates at the Test-of-Cure (TOC) Visit**

	<b>CIPRO XR 500 mg QD x 3 Days</b>	<b>CIPRO 250 mg BID x 3 Days</b>
Randomized Patients	452	453
Per Protocol Patients <sup>4</sup>	199	223
Bacteriologic Eradication at TOC (n/N) <sup>1</sup>	188/199 (94.5%)	209/223 (93.7%)
CI [-3.5%, 5.1%]		
Bacteriologic Eradication (by organism) at TOC (n/N) <sup>2</sup>		
<i>E. coli</i>	156/160 (97.5%)	176/181 (97.2%)
<i>E. faecalis</i>	10/11 (90.9%)	17/21 (81%)
<i>P. mirabilis</i>	11/12 (91.7%)	7/7 (100%)
<i>S. saprophyticus</i>	6/7 (85.7%)	9/9 (100%)
Clinical Response at TOC (n/N) <sup>3</sup>	189/199 (95%)	204/223 (91.5%)
CI [-1.1%, 8.1%]		

<sup>1</sup> n/N = patients with baseline organism(s) eradicated and no new infections or superinfections/ total number of patients

<sup>2</sup> n/N = patients with specified baseline organism eradicated/patients with specified baseline organism

<sup>3</sup> n/N = patients with clinical success /total number of patients

<sup>4</sup> The presence of a pathogen at a level of  $\geq 10^5$  CFU/mL was required for microbiological evaluability criteria, except for *S. saprophyticus* ( $\geq 10^4$  CFU/mL).

### 14.2 Complicated Urinary Tract Infections and Acute Uncomplicated Pyelonephritis

CIPRO XR was evaluated for the treatment of cUTI and acute uncomplicated pyelonephritis (AUP) in a randomized, double-blind, controlled clinical trial conducted in the US and Canada. The study enrolled 1,042 patients (521 patients per treatment arm) and compared CIPRO XR (1000 mg once daily for 7 to 14 days) with immediate-release ciprofloxacin (500 mg BID for 7 to 14 days). The primary efficacy endpoint for this trial was bacteriologic eradication of the baseline organism(s) with no new infection or superinfection at 5 to 11 days post-therapy (test-of-cure or TOC) for the Per Protocol and Modified Intent-To-Treat (MITT) populations.

The Per Protocol population was defined as patients with a diagnosis of cUTI or AUP, a causative organism(s) at baseline present at  $\geq 10^5$  CFU/mL, no inclusion criteria violation, a valid test-of-cure urine culture within the TOC window, an organism susceptible to study drug, no premature discontinuation or loss to follow-up, and compliance with the dosage regimen (among other criteria). More patients in the CIPRO XR arm than in the control arm were excluded from the Per Protocol population and this should be considered in the interpretation of the study results. Reasons for exclusion with the greatest



discrepancy between the two arms were no valid test-of-cure urine culture, an organism resistant to the study drug, and premature discontinuation due to adverse events.

An analysis of all patients with a causative organism(s) isolated at baseline and who received study medication, defined as the MITT population, included 342 patients in the CIPRO XR arm and 324 patients in the control arm. Patients with missing responses were counted as failures in this analysis. In the MITT analysis of cUTI patients, bacteriologic eradication was 160/271 (59%) versus 156/248 (62.9%) in CIPRO XR and control arm, respectively [97.5% CI\* (-13.5%, 5.7%)]. Clinical cure was 184/271 (67.9%) for CIPRO XR and 182/248 (73.4%) for control arm, respectively [97.5% CI\* (-14.4%, 3.5%)]. Bacterial eradication in the MITT analysis of patients with AUP at TOC was 47/71 (66.2%) and 58/76 (76.3%) for CIPRO XR and control arm, respectively [97.5% CI\* (-26.8%, 6.5%)]. Clinical cure at TOC was 50/71 (70.4%) for CIPRO XR and 58/76 (76.3%) for the control arm [97.5% CI\* (-22.0%, 10.4%)].

\* confidence interval of the difference in rates (CIPRO XR minus control).

In the Per Protocol population, the differences between CIPRO XR and the control arm in bacteriologic eradication rates at the TOC visit were not consistent between AUP and cUTI patients. The bacteriologic eradication rate for cUTI patients was higher in the CIPRO XR arm than in the control arm. For AUP patients, the bacteriologic eradication rate was lower in the CIPRO XR arm than in the control arm. This inconsistency was not observed between the two treatment groups for clinical cure rates. Clinical cure rates were 96.1% (198/206) and 92.1% (211/229) for CIPRO XR and the control arm, respectively [difference: 4.0% with a two-sided 97.5% CI (-1.3%, 9.4%)].

The bacterial eradication and clinical cure rates by infection type for CIPRO XR and the control arm at the TOC visit and their corresponding 97.5% confidence intervals for the differences between rates (CIPRO XR minus control arm) are given in Table 7 for the Per Protocol population analysis.

**Table 7: Bacteriological Eradication and Clinical Cure Rates at the Test-of-Cure (TOC) Visit**

	<b>CIPRO XR 1000 mg QD</b>	<b>CIPRO 500 mg BID</b>
Randomized Patients	521	521
Per Protocol Patients <sup>1</sup>	206	229
<b>cUTI Patients</b>		
Bacteriologic Eradication at TOC (n/N) <sup>2</sup>	148/166 (89.2%)	144/177 (81.4%)
CI [-0.7%, 16.3%]		
Bacteriologic Eradication (by organism) at TOC (n/N) <sup>3</sup>		
<i>E. coli</i>	91/94 (96.8%)	90/92 (97.8%)
<i>K. pneumoniae</i>	20/21 (95.2%)	19/23 (82.6%)
<i>E. faecalis</i>	17/17 (100%)	14/21 (66.7%)
<i>P. mirabilis</i>	11/12 (91.6%)	10/10 (100%)
<i>P. aeruginosa</i>	3/3 (100%)	3/3 (100%)
Clinical Cure at TOC (n/N) <sup>4</sup>	159/166 (95.8%)	161/177 (91.0%)
CI [-1.1%, 10.8%]		
<b>AUP Patients</b>		
Bacteriologic Eradication at TOC (n/N) <sup>2</sup>	35/40 (87.5%)	51/52 (98.1%)
CI [-34.8%, 6.2%]		
Bacteriologic Eradication of <i>E. coli</i>	35/36 (97.2%)	41/41 (100%)
Clinical Cure at TOC (n/N) <sup>4</sup>	39/40 (97.5%)	50/52 (96.2%)
CI [-15.3%, 21.1%]		

<sup>1</sup> Patients excluded from the Per Protocol population were primarily those with no causative organism(s) at baseline or no organism present at  $\geq 10^5$  CFU/mL at baseline, inclusion criteria violation, no valid test-of-cure urine culture within the TOC window, an organism resistant to study drug, premature discontinuation due to an adverse event, lost to follow-up, or non-compliance with dosage regimen (among other criteria).

<sup>2</sup> n/N = patients with baseline organism(s) eradicated and no new infections or superinfections/total number of patients

<sup>3</sup> n/N = patients with specified baseline organism eradicated/patients with specified baseline organism

<sup>4</sup> n/N = patients with clinical success /total number of patients

Of the 166 cUTI patients treated with CIPRO XR, 148 (89%) had the causative organism(s) eradicated, 8 (5%) had persistence, 5 (3%) patients developed superinfections and 5 (3%) developed new infections. Of the 177 cUTI patients treated in the control arm, 144 (81%) had the causative organism(s) eradicated, 16 (9%) patients had persistence, 3 (2%) developed superinfections and 14 (8%) developed new infections. Of the 40 patients with AUP treated with CIPRO XR, 35 (87.5%) had the causative organism(s) eradicated, 2 (5%) patients had persistence and 3 (7.5%) developed new infections. Of the 5 CIPRO XR AUP patients without eradication at TOC, 4 were considered clinical cures and did not receive alternative antibiotic therapy. Of the 52 patients with AUP treated in the control arm, 51 (98%) had the causative organism(s) eradicated. One patient (2%) had persistence.

## 16 HOW SUPPLIED/STORAGE AND HANDLING

CIPRO XR is available as nearly white to slightly yellowish, film-coated, oblong-shaped tablets containing 500 mg or 1000 mg ciprofloxacin. The 500 mg tablet is coded with the word “BAYER” on one side and “C500 QD” on the reverse side. The 1000 mg tablet is coded with the word “BAYER” on one side and “C1000 QD” on the reverse side.

	Strength	NDC Code
Bottles of 50	500 mg	50419-788-01
Bottles of 50	1000 mg	50419-789-01

Store at 25°C (77°F); excursions permitted to 15°C to 30°C (59°F to 86°F) [see USP Controlled Room Temperature].

## 17 PATIENT COUNSELING INFORMATION

Advise the patient to read the FDA-approved patient labeling (*Medication Guide*).

### Serious Adverse Reactions

Advise patients to stop taking CIPRO XR if they experience an adverse reaction and to call their healthcare provider for advice on completing the full course of treatment with another antibacterial drug.

Inform patients of the following serious adverse reactions that have been associated with CIPRO XR or other fluoroquinolone use:

- **Disabling and potentially irreversible serious adverse reactions that may occur together:** Inform patients that disabling and potentially irreversible serious adverse reactions, including tendinitis and tendon rupture, peripheral neuropathies, and central nervous system effects, have been associated with use of CIPRO XR and may occur together in the same patient. Inform patients to stop taking CIPRO XR immediately if they experience an adverse reaction and to call their healthcare provider.
- **Tendinitis and Tendon Rupture:** Instruct patients to contact their healthcare provider if they experience pain, swelling, or inflammation of a tendon, or weakness or inability to use one of their joints; rest and refrain from exercise; and discontinue CIPRO XR treatment. Symptoms may be irreversible. The risk of severe tendon disorder with fluoroquinolones is higher in older patients usually over 60 years of age, in patients taking corticosteroid drugs, and in patients with kidney, heart or lung transplants.
- **Peripheral Neuropathies:** Inform patients that peripheral neuropathies have been associated with ciprofloxacin use, symptoms may occur soon after initiation of therapy and may be irreversible. If symptoms of peripheral neuropathy including pain, burning, tingling, numbness and/or weakness develop, immediately discontinue CIPRO XR and tell them to contact their physician.
- **Central Nervous System Effects** (for example, convulsions, dizziness, lightheadedness, increased intracranial pressure): Inform patients that convulsions have been reported in patients receiving fluoroquinolones, including ciprofloxacin. Instruct patients to notify their physician before taking this drug if they have a history of convulsions. Inform patients that they should know how they react to CIPRO XR before they operate an automobile or machinery or engage in other activities requiring mental alertness and coordination. Instruct patients to notify their physician if persistent headache with or without blurred vision occurs.
- **Exacerbation of Myasthenia Gravis:** Instruct patients to inform their physician of any history of myasthenia gravis. Instruct patients to notify their physician if they experience any symptoms of muscle weakness, including respiratory difficulties.
- **Hypersensitivity Reactions:** Inform patients that ciprofloxacin can cause hypersensitivity reactions, even following a single dose, and to discontinue the drug at the first sign of a skin rash, hives or other skin reactions, a rapid heartbeat, difficulty in swallowing or breathing, any swelling suggesting angioedema (for example, swelling of the lips, tongue, face, tightness of the throat, hoarseness), or other symptoms of an allergic reaction.
- **Hepatotoxicity:** Inform patients that severe hepatotoxicity (including acute hepatitis and fatal events) has been reported in patients taking CIPRO XR. Instruct patients to inform their physician if they experience any signs or symptoms of liver injury including: loss of appetite, nausea, vomiting, fever, weakness, tiredness, right upper quadrant tenderness, itching, yellowing of the skin and eyes, light colored bowel movements or dark colored urine.
- **Aortic aneurysm and dissection:** Inform patients to seek emergency medical care if they experience sudden chest, stomach, or back pain.
- **Diarrhea:** Diarrhea is a common problem caused by antibiotics which usually ends when the antibiotic is discontinued. Sometimes after starting treatment with antibiotics, patients can develop watery and bloody stools (with

or without stomach cramps and fever) even as late as two or more months after having taken the last dose of the antibiotic. If this occurs, instruct patients to contact their physician as soon as possible.

- **Prolongation of the QT Interval:** Instruct patients to inform their physician of any personal or family history of QT prolongation or proarrhythmic conditions such as hypokalemia, bradycardia, or recent myocardial ischemia; if they are taking any Class IA (quinidine, procainamide), or Class III (amiodarone, sotalol) antiarrhythmic agents. Instruct patients to notify their physician if they have any symptoms of prolongation of the QT interval, including prolonged heart palpitations or a loss of consciousness.
- **Musculoskeletal Disorders in Pediatric Patients:** Instruct parents to inform their child's physician if the child has a history of joint-related problems before taking this drug. Inform parents of pediatric patients to notify their child's physician of any joint-related problems that occur during or following ciprofloxacin therapy [*see Warnings and Precautions (5.13) and Use in Specific Populations (8.4)*].
- **Tizanidine:** Instruct patients not to use ciprofloxacin if they are already taking tizanidine. CIPRO XR increases the effects of tizanidine (Zanaflex®).
- **Theophylline:** Inform patients that ciprofloxacin CIPRO XR may increase the effects of theophylline. Life-threatening CNS effects and arrhythmias can occur. Advise the patients to immediately seek medical help if they experience seizures, palpitations, or difficulty breathing.
- **Caffeine:** Inform patients that CIPRO XR may increase the effects of caffeine. There is a possibility of caffeine accumulation when products containing caffeine are consumed while taking quinolones.
- **Photosensitivity/Phototoxicity:** Inform patients that photosensitivity/phototoxicity has been reported in patients receiving fluoroquinolones. Inform patients to minimize or avoid exposure to natural or artificial sunlight (tanning beds or UVA/B treatment) while taking quinolones. If patients need to be outdoors while using quinolones, instruct them to wear loose-fitting clothes that protect skin from sun exposure and discuss other sun protection measures with their physician. If a sunburn-like reaction or skin eruption occurs, instruct patients to contact their physician.
- **Blood Glucose Disturbances:** Inform the patients that if they are diabetic and are being treated with insulin or an oral hypoglycemic agent and a hypoglycemic reaction occurs, they should discontinue CIPRO XR and consult a physician.
- **Lactation:** Advise a woman that breastfeeding is not recommended during treatment with Cipro and for an additional 2 days after the last dose. Alternatively, a woman may pump and discard during treatment and for additional 2 days after the last dose [*see Use in Specific Populations (8.2)*].

### **Antibacterial Resistance**

Inform patients that antibacterial drugs including CIPRO XR, CIPRO Tablets, and CIPRO Oral Suspension should only be used to treat bacterial infections. They do not treat viral infections (for example, the common cold). When CIPRO XR, CIPRO Tablets, and CIPRO Oral Suspension are prescribed to treat a bacterial infection, patients should be told that although it is common to feel better early in the course of therapy, the medication should be taken exactly as directed. Skipping doses or not completing the full course of therapy may (1) decrease the effectiveness of the immediate treatment and (2) increase the likelihood that bacteria will develop resistance and will not be treatable by CIPRO XR, CIPRO Tablets, and CIPRO Oral Suspension or other antibacterial drugs in the future.

### **Administration Instructions**

Inform patients that CIPRO XR may be taken with or without food.

Inform patients to drink fluids liberally while taking CIPRO XR to avoid formation of a highly concentrated urine and crystal formation in the urine.

Inform patients that antacids containing magnesium, or aluminum, as well as sucralfate, metal cations such as iron, and multivitamin preparations with zinc or didanosine should be taken at least two hours before or six hours after CIPRO XR administration. CIPRO XR should not be taken with dairy products (like milk or yogurt) or calcium-fortified juices alone since absorption of ciprofloxacin may be significantly reduced; however, CIPRO XR may be taken with a meal that contains these products

Advise patients that if a dose is missed, it should be taken anytime but not later than 8 hours prior to the next scheduled dose. If less than 8 hours remain before the next dose, the missed dose should not be taken and treatment should be continued as prescribed with the next scheduled dose. Double doses should not be taken to compensate for a missed dose.

**Drug Interactions Oral Antidiabetic Agents**

Inform patients that hypoglycemia has been reported when ciprofloxacin and oral antidiabetic agents were co-administered; if low blood sugar occurs with CIPRO XR, instruct them to consult their physician and that their antibacterial medicine may need to be changed.

**Medication Guide**  
**CIPRO® (Sip-row)**  
(ciprofloxacin hydrochloride)  
tablets, for oral use

**CIPRO® (Sip-row)**  
(ciprofloxacin)  
for oral suspension

**CIPRO® XR (Sip-row)**  
(ciprofloxacin)  
extended-release tablets, for oral use

**CIPRO® IV (Sip-row)**  
(ciprofloxacin)  
injection, for intravenous infusion

Read this Medication Guide before you start taking CIPRO and each time you get a refill. There may be new information. This information does not take the place of talking to your healthcare provider about your medical condition or your treatment.

### **What is the most important information I should know about CIPRO?**

**CIPRO, a fluoroquinolone antibacterial medicine, can cause serious side effects. Some of these serious side effects can happen at the same time and could result in death.**

If you get any of the following serious side effects while you take CIPRO, you should stop taking CIPRO immediately and get medical help right away.

#### **1. Tendon rupture or swelling of the tendon (tendinitis).**

- **Tendon problems can happen in people of all ages who take CIPRO.** Tendons are tough cords of tissue that connect muscles to bones. **Symptoms of tendon problems may include:**
  - pain
  - swelling
  - tears and swelling of the tendons including the back of the ankle (Achilles), shoulder, hand, thumb, or other tendon sites.
- **The risk of getting tendon problems while you take CIPRO is higher if you:**
  - are over 60 years of age
  - are taking steroids (corticosteroids)
  - have had a kidney, heart or lung transplant.
- **Tendon problems can happen in people who do not have the above risk factors when they take CIPRO.**
- **Other reasons that can increase your risk of tendon problems can include:**
  - physical activity or exercise
  - kidney failure
  - tendon problems in the past, such as in people with rheumatoid arthritis (RA).
- **Stop taking CIPRO immediately and get medical help right away at the first sign of tendon pain, swelling or inflammation.** The most common area of pain and swelling is the Achilles tendon at the back of your ankle. This can also happen with other tendons.
- **Tendon rupture can happen while you are taking or after you have finished taking CIPRO.** Tendon ruptures can happen within hours or days of taking CIPRO and have happened up to several months after people have finished taking their fluoroquinolone.
- **Stop taking CIPRO immediately and get medical help right away if you get any of the following signs or symptoms of a tendon rupture:**
  - hear or feel a snap or pop in a tendon area
  - bruising right after an injury in a tendon area
  - unable to move the affected area or bear weight

The tendon problems may be permanent.

**2. Changes in sensation and possible nerve damage (Peripheral Neuropathy).** Damage to the nerves in arms, hands, legs, or feet can happen in people who take fluoroquinolones, including CIPRO. Stop taking CIPRO immediately and talk to your healthcare provider right away if you get any of the following symptoms of peripheral neuropathy in your arms, hands, legs, or feet:

- pain
- burning
- tingling
- numbness
- weakness

CIPRO may need to be stopped to prevent permanent nerve damage.

**3. Central Nervous System (CNS) effects.** Mental health problems and seizures have been reported in people who take fluoroquinolone antibacterial medicines, including CIPRO. Tell your healthcare provider if you have a history of seizures before you start taking CIPRO. CNS side effects may happen as soon as after taking the first dose of CIPRO. Stop taking CIPRO immediately and talk to your healthcare provider right away if you get any of these side effects, or other changes in mood or behavior:

- seizures
- hear voices, see things, or sense things that are not there (hallucinations)
- feel restless or agitated
- tremors
- feel anxious or nervous
- confusion
- depression
- reduced awareness of surroundings
- trouble sleeping
- nightmares
- feel lightheaded or dizzy
- feel more suspicious (paranoia)
- suicidal thoughts or acts
- headaches that will not go away, with or without blurred vision
- memory problems
- false or strange thoughts or beliefs (delusions)

The CNS changes may be permanent.

**4. Worsening of myasthenia gravis (a problem that causes muscle weakness).** Fluoroquinolones like CIPRO may cause worsening of myasthenia gravis symptoms, including muscle weakness and breathing problems. Tell your healthcare provider if you have a history of myasthenia gravis before you start taking CIPRO. Call your healthcare provider right away if you have any worsening muscle weakness or breathing problems.

#### What is CIPRO?

CIPRO is a fluoroquinolone antibacterial medicine used in adults age 18 years and older to treat certain infections caused by certain germs called bacteria. These bacterial infections include:

- urinary tract infection
- chronic prostate infection
- lower respiratory tract infection
- sinus infection
- skin infection
- bone and joint infection
- nosocomial pneumonia
- intra-abdominal infection, complicated
- infectious diarrhea
- typhoid (enteric) fever
- cervical and urethral gonorrhea, uncomplicated
- people with a low white blood cell count and a fever
- inhalational anthrax
- plague

- Studies of CIPRO for use in the treatment of plague and anthrax were done in animals only, because plague and anthrax could not be studied in people.
- CIPRO should not be used in patients with acute exacerbation of chronic bronchitis, acute uncomplicated cystitis, and sinus infections, if there are other treatment options available.
- CIPRO should not be used as the first choice of antibacterial medicine to treat lower respiratory tract infections caused by a certain type of bacterial called *Streptococcus pneumoniae*.
- **CIPRO is also used in children younger than 18 years of age** to treat complicated urinary tract and kidney infections or who may have breathed in anthrax germs, have plague or have been exposed to plague germs.
- Children younger than 18 years of age have a higher chance of getting bone, joint, or tendon (musculoskeletal) problems such as pain or swelling while taking CIPRO. CIPRO should not be used as the first choice of antibacterial medicine in children under 18 years of age.
- **CIPRO XR is only used** in adults 18 years of age and older to treat urinary tract infections (complicated and uncomplicated), including kidney infections (pyelonephritis).

- It is not known if CIPRO XR is safe and effective in children under 18 years of age.

### **Who should not take CIPRO?**

#### **Do not take CIPRO if you:**

- have ever had a severe allergic reaction to an antibacterial medicine known as a fluoroquinolone, or are allergic to ciprofloxacin hydrochloride or any of the ingredients in CIPRO. See the end of this Medication Guide for a complete list of ingredients in CIPRO.
- also take a medicine called tizanidine (Zanaflex®).

Ask your healthcare provider if you are not sure.

### **What should I tell my healthcare provider before taking CIPRO?**

#### **Before you take CIPRO, tell your healthcare provider about all your medical conditions, including if you:**

- have tendon problems; CIPRO should not be used in patients who have a history of tendon problems.
- have a disease that causes muscle weakness (myasthenia gravis); CIPRO should not be used in patients who have a known history of myasthenia gravis
- have liver problems
- have central nervous system problems (such as epilepsy).
- have nerve problems. CIPRO should not be used in patients who have a history of a nerve problem called peripheral neuropathy or anyone in your family has an irregular heartbeat, or heart attack, especially a condition called "QT prolongation".
- have low blood potassium (hypokalemia) or low magnesium (hypomagnesemia).
- have or have had seizures.
- have kidney problems. You may need a lower dose of CIPRO if your kidneys do not work well.
- have diabetes or problems with low blood sugar (hypoglycemia).
- have joint problems including rheumatoid arthritis (RA)
- have trouble swallowing pills.
- are pregnant or plan to become pregnant. It is not known if CIPRO will harm your unborn baby.
- are breastfeeding or plan to breastfeed. CIPRO passes into your breast milk.
  - You should not breastfeed during treatment with CIPRO and for 2 days after taking your last dose of CIPRO. You may pump your breast milk and throw it away during treatment with CIPRO and for 2 days after taking your last dose of CIPRO.
  - If you are taking CIPRO for inhalation anthrax, you and your healthcare provider should decide whether you can continue breastfeeding while taking CIPRO.

**Tell your healthcare provider about all the medicines you take**, including prescription and over-the-counter medicines, vitamins, and herbal supplements.

- CIPRO and other medicines can affect each other causing side effects.
- Especially tell your healthcare provider if you take:
  - a steroid medicine.
  - an anti-psychotic medicine.
  - a tricyclic antidepressant.
  - a water pill (diuretic).
  - theophylline (such as Theo-24®, Elixophyllin®, Theochron®, Uniphyll®, Theolair®).
  - a medicine to control your heart rate or rhythm (antiarrhythmics)
  - an oral anti-diabetes medicine.
  - phenytoin (Fosphenytoin Sodium®, Cerebyx®, Dilantin-125®, Dilantin®, Extended Phenytoin Sodium®, Prompt Phenytoin Sodium®, Phenytek®).
  - cyclosporine (Gengraf®, Neoral®, Sandimmune®, Sangcya®).
  - a blood thinner (such as warfarin, Coumadin®, Jantoven®).
  - methotrexate (Trexall®).
  - ropinirole (Requip®).
  - clozapine (Clozaril®, Fazaclo® ODT®).
  - a Non-Steroidal Anti-Inflammatory Drug (NSAID). Many common medicines for pain relief are NSAIDs. Taking an NSAID while you take CIPRO or other fluoroquinolones may increase your risk of central nervous system effects and seizures.
  - sildenafil (Viagra®, Revatio®).



- duloxetine.
- products that contain caffeine.
- probenecid (Probalan<sup>®</sup>, Col-probenecid<sup>®</sup>).
- Certain medicines may keep CIPRO Tablets, CIPRO Oral Suspension from working correctly. Take CIPRO Tablets and Oral Suspension either 2 hours before or 6 hours after taking these medicines, vitamins, or supplements:
  - an antacid, multivitamin, or other medicine or supplements that has magnesium, calcium, aluminum, iron, or zinc.
  - sucralfate (Carafate<sup>®</sup>).
  - didanosine (Videx<sup>®</sup>, Videx EC<sup>®</sup>).

Ask your healthcare provider for a list of these medicines if you are not sure.

Know the medicines you take. Keep a list of them to show your healthcare provider and pharmacist when you get a new medicine.

### How should I take CIPRO?

- Take CIPRO exactly as your healthcare provider tells you to take it.
- Your healthcare provider will tell you how much CIPRO to take and when to take it.
- Take CIPRO Tablets in the morning and evening at about the same time each day. Swallow the tablet whole. Do not split, crush or chew the tablet. Tell your healthcare provider if you cannot swallow the tablet whole.
- Take CIPRO Oral Suspension in the morning and evening at about the same time each day. Shake the CIPRO Oral Suspension bottle well each time before use for about 15 seconds to make sure the suspension is mixed well. Close the bottle completely after use.
- Take CIPRO XR one time each day at about the same time each day. Swallow the tablet whole. Do not split, crush or chew the tablet. Tell your healthcare provider if you cannot swallow the tablet whole.
- CIPRO IV is given to you by intravenous (IV) infusion into your vein, slowly, over 60 minutes, as prescribed by your healthcare provider.
- CIPRO can be taken with or without food.
- If you miss a dose of **CIPRO Tablets or CIPRO Oral Suspension** and it is:
  - **6 hours or more** until your next scheduled dose, take your missed dose right away. Then take the next dose at your regular time.
  - **less than 6 hours** until your next scheduled dose, **do not** take the missed dose. Take the next dose at your regular time.
- If you miss a dose of **CIPRO XR Tablets** and it is:
  - **8 hours or more** until your next scheduled dose, take your missed dose right away. Then take the next dose at your regular time.
  - **less than 8 hours** until your next scheduled dose, **do not** take the missed dose. Take the next dose at your regular time.
- Do not take 2 doses of CIPRO Tablets, CIPRO Oral Suspension or CIPRO XR at one time to make up for a missed dose. If you are not sure about when to take CIPRO Tablets or CIPRO Oral Suspension after a missed dose, ask your doctor or pharmacist.
- CIPRO should not be taken with dairy products (like milk or yogurt) or calcium-fortified juices alone, but may be taken with a meal that contains these products.
- Drink plenty of fluids while taking CIPRO.
- Do not skip any doses of CIPRO, or stop taking it, even if you begin to feel better, until you finish your prescribed treatment unless:
  - you have tendon problems. See **“What is the most important information I should know about CIPRO?”**
  - you have nerve problems. See **“What is the most important information I should know about CIPRO?”**
  - you have central nervous system problems. See **“What is the most important information I should know about CIPRO?”**
  - you have a serious allergic reaction. See **“What are the possible side effects of CIPRO?”**
  - your healthcare provider tells you to stop taking CIPRO.

Taking all of your CIPRO doses will help make sure that all of the bacteria are killed. Taking all of your CIPRO doses will help lower the chance that the bacteria will become resistant to CIPRO. If you become resistant to CIPRO, CIPRO and other antibacterial medicines may not work for you in the future.

- If you take too much CIPRO, call your healthcare provider or get medical help right away.

### What should I avoid while taking CIPRO?

- CIPRO can make you feel dizzy and lightheaded. **Do not** drive, operate machinery, or do other activities that require mental alertness or coordination until you know how CIPRO affects you.
- Avoid sunlamps, tanning beds, and try to limit your time in the sun. CIPRO can make your skin sensitive to the sun (photosensitivity) and the light from sunlamps and tanning beds. You could get a severe sunburn, blisters or swelling of your skin. If you get any of these symptoms while you take CIPRO, call your healthcare provider right away. You should use a sunscreen and wear a hat and clothes that cover your skin if you have to be in sunlight.

### What are the possible side effects of CIPRO?

#### CIPRO may cause serious side effects, including:

- See “What is the most important information I should know about CIPRO?”

- **Serious allergic reactions.** Serious allergic reactions, including death, can happen in people taking fluoroquinolones, including CIPRO, even after only 1 dose. Stop taking CIPRO and get emergency medical help right away if you get any of the following symptoms of a severe allergic reaction:

- hives
- trouble breathing or swallowing
- swelling of the lips, tongue, face
- throat tightness, hoarseness
- rapid heartbeat
- faint
- skin rash

Skin rash may happen in people taking CIPRO even after only 1 dose. Stop taking CIPRO at the first sign of a skin rash and call your healthcare provider. Skin rash may be a sign of a more serious reaction to CIPRO.

- **Liver damage (hepatotoxicity).** Hepatotoxicity can happen in people who take CIPRO. Call your healthcare provider right away if you have unexplained symptoms such as:

- nausea or vomiting
- stomach pain
- fever
- weakness
- abdominal pain or tenderness
- itching
- unusual tiredness
- loss of appetite
- light colored bowel movements
- dark colored urine
- yellowing of the skin and whites of your eyes

Stop taking CIPRO and tell your healthcare provider right away if you have yellowing of your skin or white part of your eyes, or if you have dark urine. These can be signs of a serious reaction to CIPRO (a liver problem).

- **Aortic aneurysm and dissection.** Tell your healthcare provider if you have ever been told that you have an aortic aneurysm, a swelling of the large artery that carries blood from the heart to the body. Get emergency medical help right away if you have sudden chest, stomach, or back pain.
- **Intestine infection (Clostridiodes difficile – associated diarrhea).** Clostridiodes difficile-associated diarrhea (CDAD) can happen with many antibacterial medicines, including CIPRO. Call your healthcare provider right away if you get watery diarrhea, diarrhea that does not go away, or bloody stools. You may have stomach cramps and a fever. CDAD can happen 2 or more months after you have finished your antibacterial medicine.
- **Serious heart rhythm changes (QT prolongation and torsade de pointes).** Tell your healthcare provider right away if you have a change in your heart beat (a fast or irregular heartbeat), or if you faint. CIPRO may cause a rare heart problem known as prolongation of the QT interval. This condition can cause an abnormal heartbeat and can be very dangerous. The chances of this event are higher in people:
  - who are elderly.
  - with a family history of prolonged QT interval.
  - with low blood potassium (hypokalemia) or low magnesium (hypomagnesemia).
  - who take certain medicines to control heart rhythm (antiarrhythmics).
- **Joint Problems.** Increased chance of problems with joints and tissues around joints in children under 18 years old can happen. Tell your child's healthcare provider if your child has any joint problems during or after treatment with CIPRO.
- **Sensitivity to sunlight (photosensitivity).** See “What should I avoid while taking CIPRO?”
- **Changes in blood sugar.** People who take CIPRO and other fluoroquinolone medicines with oral anti-diabetes medicines or with insulin can get low blood sugar (hypoglycemia) and high blood sugar (hyperglycemia). Follow your healthcare provider's instructions for how often to check your blood sugar. If you have diabetes and you get low blood sugar while taking CIPRO, stop taking CIPRO and call your healthcare provider right away. Your antibiotic medicine may need to be changed.

#### The most common side effects of CIPRO include:

- nausea
- diarrhea
- changes in liver function tests
- vomiting
- rash

Tell your healthcare provider about any side effect that bothers you, or that does not go away.

These are not all the possible side effects of CIPRO. For more information, ask your healthcare provider or pharmacist.

Call your doctor for medical advice about side effects. You may report side effects to FDA at 1-800-FDA-1088.

### How should I store CIPRO?

#### CIPRO Tablets

- Store at room temperature between 68°F to 77°F (20°C to 25°C).

#### CIPRO Oral Suspension

- Store microcapsules and diluent at room temperature up to 77°F (25°C).
- Do not freeze.
- After your CIPRO treatment is finished, safely throw away any unused oral suspension.

#### CIPRO XR

- Store CIPRO XR at room temperature up between 68°F to 77°F (20°C to 25°C).

**Keep CIPRO and all medicines out of the reach of children.**

### General Information about the safe and effective use of CIPRO.

Medicines are sometimes prescribed for purposes other than those listed in a Medication Guide. Do not use CIPRO for a condition for which it is not prescribed. Do not give CIPRO to other people, even if they have the same symptoms that you have. It may harm them.

This Medication Guide summarizes the most important information about CIPRO. If you would like more information about CIPRO, talk with your healthcare provider. You can ask your healthcare provider or pharmacist for information about CIPRO that is written for healthcare professionals.

### What are the ingredients in CIPRO?

#### CIPRO Tablets:

- **Active ingredient:** ciprofloxacin hydrochloride
- **Inactive ingredients:** cornstarch, crospovidone, hypromellose, magnesium stearate, microcrystalline cellulose, polyethylene glycol, silicon dioxide, and titanium dioxide.

#### CIPRO Oral Suspension:

- **Active ingredient:** ciprofloxacin
- **Inactive ingredients:**
  - **Microcapsules contains:** hypromellose, magnesium stearate, methacrylic acid copolymer, and Polysorbate 20 and povidone.
  - **Diluent contains:** medium-chain triglycerides, sucrose, soy-lecithin, water, and strawberry flavor.

#### CIPRO XR:

- **Active ingredients:** ciprofloxacin and ciprofloxacin hydrochloride
- **Inactive ingredients:** crospovidone, hypromellose, magnesium stearate, polyethylene glycol, silica colloidal anhydrous, succinic acid, and titanium dioxide.

#### CIPRO IV:

- **Active ingredient:** ciprofloxacin
- **Inactive ingredients:** hydrochloric acid for pH adjustment, lactic acid as a solubilizing agent.

Manufactured for:  
Bayer HealthCare Pharmaceuticals Inc.  
Whippany, NJ 07981

CIPRO is a registered trademark of Bayer Aktiengesellschaft.

Rx Only

©1987 Bayer HealthCare Pharmaceuticals Inc.

For more information, call 1-1-888-842-2937.

This Medication Guide has been approved by the U.S. Food and Drug Administration

Revised:5/2020