

HIGHLIGHTS OF PRESCRIBING INFORMATION

These highlights do not include all the information needed to use SIVEXTRO® safely and effectively. See full prescribing information for SIVEXTRO.

SIVEXTRO (tedizolid phosphate) for injection, for intravenous use

SIVEXTRO (tedizolid phosphate) tablet, for oral use

Initial U.S. Approval: 2014

RECENT MAJOR CHANGES

Indications and Usage, Acute Bacterial Skin and Skin Structure Infections (1.1) 6/2020

Dosage and Administration, Recommended Dosage (2.1) 6/2020

Dosage and Administration, Preparation and Administration of Intravenous Solution (2.2) 6/2020

INDICATIONS AND USAGE

SIVEXTRO is an oxazolidinone-class antibacterial drug indicated in adult and pediatric patients 12 years of age and older for the treatment of acute bacterial skin and skin structure infections (ABSSSI) caused by designated susceptible bacteria. (1.1)

To reduce the development of drug-resistant bacteria and maintain the effectiveness of SIVEXTRO and other antibacterial drugs, SIVEXTRO should be used only to treat or prevent infections that are proven or strongly suspected to be caused by susceptible bacteria.

DOSAGE AND ADMINISTRATION

200 mg administered once daily orally or as an intravenous (IV) infusion over 1 hour for six (6) days in adult and pediatric patients 12 years of age and older. (2.1)

DOSAGE FORMS AND STRENGTHS

- For injection: 200 mg, sterile, lyophilized powder in single-dose vial for reconstitution for intravenous infusion;
- Tablet: 200 mg (3)

CONTRAINDICATIONS

None (4)

WARNINGS AND PRECAUTIONS

- Patients with neutropenia: The safety and efficacy of SIVEXTRO in patients with neutropenia (neutrophil counts <1000 cells/mm³) have not been adequately evaluated. In an animal model of infection, the antibacterial activity of SIVEXTRO was reduced in the absence of granulocytes. Consider alternative therapies in neutropenic patients. (5.1)
- Clostridioides difficile*-associated diarrhea: Evaluate if diarrhea occurs. (5.2)

ADVERSE REACTIONS

The most common adverse reactions ($\geq 2\%$) in adults are nausea, headache, diarrhea, infusion- or injection-related adverse reactions, vomiting, and dizziness. The most common adverse reactions ($\geq 2\%$) in pediatric patients are phlebitis, and increased hepatic transaminases. (6)

To report SUSPECTED ADVERSE REACTIONS, contact Merck Sharp & Dohme Corp., a subsidiary of Merck & Co., Inc., at 1-877-888-4231 or FDA at 1-800-FDA-1088 or www.fda.gov/medwatch.

DRUG INTERACTIONS

SIVEXTRO (when administered orally) can increase the plasma concentrations of orally administered Breast Cancer Resistance Protein (BCRP) substrates. Monitor for adverse reactions related to the concomitant BCRP substrates if coadministration cannot be avoided. (7, 12.3)

USE IN SPECIFIC POPULATIONS

Pregnancy: Based on animal data, SIVEXTRO may cause fetal harm. Advise pregnant women of the potential risks to a fetus. (8.1)

See 17 for PATIENT COUNSELING INFORMATION and FDA-approved patient labeling.

Revised: 6/2020

FULL PRESCRIBING INFORMATION: CONTENTS*

1 INDICATIONS AND USAGE

- Acute Bacterial Skin and Skin Structure Infections
- Usage

2 DOSAGE AND ADMINISTRATION

- Recommended Dosage
- Preparation and Administration of Intravenous Solution
- Compatible Intravenous Solutions
- Incompatibilities

3 DOSAGE FORMS AND STRENGTHS

4 CONTRAINDICATIONS

5 WARNINGS AND PRECAUTIONS

- Patients with Neutropenia
- Clostridioides difficile*-Associated Diarrhea
- Development of Drug-Resistant Bacteria

6 ADVERSE REACTIONS

- Clinical Trials Experience

7 DRUG INTERACTIONS

8 USE IN SPECIFIC POPULATIONS

- Pregnancy
- Lactation

8.4 Pediatric Use

8.5 Geriatric Use

10 OVERDOSAGE

11 DESCRIPTION

12 CLINICAL PHARMACOLOGY

- Mechanism of Action
- Pharmacodynamics
- Pharmacokinetics
- Microbiology

13 NONCLINICAL TOXICOLOGY

- Carcinogenesis, Mutagenesis, Impairment of Fertility
- Animal Toxicology and/or Pharmacology

14 CLINICAL STUDIES

- Acute Bacterial Skin and Skin Structure Infections

16 HOW SUPPLIED/STORAGE AND HANDLING

- Tablets
- For Injection
- Storage and Handling

17 PATIENT COUNSELING INFORMATION

*Sections or subsections omitted from the full prescribing information are not listed.

FULL PRESCRIBING INFORMATION

1 INDICATIONS AND USAGE

1.1 Acute Bacterial Skin and Skin Structure Infections

SIVEXTRO® is an oxazolidinone-class antibacterial indicated in adult and pediatric patients 12 years of age and older for the treatment of acute bacterial skin and skin structure infections (ABSSSI) caused by susceptible isolates of the following Gram-positive microorganisms: *Staphylococcus aureus* (including methicillin-resistant [MRSA] and methicillin-susceptible [MSSA] isolates), *Streptococcus pyogenes*, *Streptococcus agalactiae*, *Streptococcus anginosus* Group (including *Streptococcus anginosus*, *Streptococcus intermedius*, and *Streptococcus constellatus*), and *Enterococcus faecalis*.

1.2 Usage

To reduce the development of drug-resistant bacteria and maintain the effectiveness of SIVEXTRO and other antibacterial drugs, SIVEXTRO should be used only to treat ABSSSI that are proven or strongly suspected to be caused by susceptible bacteria. When culture and susceptibility information are available, they should be considered in selecting or modifying antibacterial therapy. In the absence of such data, local epidemiology and susceptibility patterns may contribute to the empiric selection of therapy.

2 DOSAGE AND ADMINISTRATION

2.1 Recommended Dosage

The recommended dosage of SIVEXTRO is 200 mg administered once daily for six (6) days either orally (with or without food) or as an intravenous (IV) infusion in patients 12 years of age or older.

The recommended dosage and administration of SIVEXTRO are described in Table 1.

Table 1: Dosage of SIVEXTRO

Infection	Route	Dosage	Frequency	Infusion Time	Duration of Treatment
Acute Bacterial Skin and Skin Structure Infections (ABSSSI)	Intravenous	200 mg	Once daily	1 hour	6 days
	Oral	200 mg	Once daily	Not Applicable	

No dose adjustment is necessary when changing from intravenous to oral SIVEXTRO.

If patients miss a dose, they should take it as soon as possible anytime up to 8 hours prior to their next scheduled dose. If less than 8 hours remain before the next dose, wait until their next scheduled dose.

2.2 Preparation and Administration of Intravenous Solution

SIVEXTRO is supplied as a sterile, lyophilized powder for injection in single-dose vials of 200 mg. Each 200 mg vial must be reconstituted with Sterile Water for Injection and subsequently diluted only with 0.9% Sodium Chloride Injection, USP.

SIVEXTRO vials contain no antimicrobial preservatives and are intended for single dose only. Discard any unused portion.

Preparation

The contents of the vial should be reconstituted using aseptic technique as follows:

Note: To minimize foaming, AVOID vigorous agitation or shaking of the vial during or after reconstitution.

1. Reconstitute the SIVEXTRO vial with 4 mL of Sterile Water for Injection.
2. Gently swirl the contents and let the vial stand until the cake has completely dissolved and any foam disperses.

3. Inspect the vial to ensure the solution contains no particulate matter and no cake or powder remains attached to the sides of the vial. If necessary, invert the vial to dissolve any remaining powder and swirl gently to prevent foaming. The reconstituted solution is clear and colorless to pale-yellow in color; the total storage time should not exceed 24 hours at either room temperature or under refrigeration at 2°C to 8°C (36°F to 46°F).
4. Tilt the upright vial and insert a syringe with appropriately sized needle into the bottom corner of the vial and remove 4 mL of the reconstituted solution. Do not invert the vial during extraction.
5. The reconstituted solution must be further diluted in 250 mL of 0.9% Sodium Chloride Injection, USP. Slowly inject the 4 mL of reconstituted solution into a 250 mL bag of 0.9% Sodium Chloride Injection, USP. Invert the bag gently to mix. Do NOT shake the bag as this may cause foaming.

Administration

Administer as an intravenous infusion only.

Do not administer as an intravenous push or bolus. Do not mix SIVEXTRO with other drugs when administering. It is not intended for intra-arterial, intramuscular, intrathecal, intraperitoneal, or subcutaneous administration.

The intravenous bag containing the reconstituted and diluted intravenous solution should be inspected visually for particulate matter prior to administration. Discard if visible particles are observed. The resulting solution is clear and colorless to pale-yellow in color.

After reconstitution and dilution, SIVEXTRO is to be administered via intravenous infusion using a total time of 1 hour.

The total time from reconstitution to administration should not exceed 24 hours at room temperature or under refrigeration at 2°C to 8°C (36°F to 46°F).

Discard unused portion.

2.3 Compatible Intravenous Solutions

SIVEXTRO is compatible with 0.9% Sodium Chloride Injection, USP.

2.4 Incompatibilities

SIVEXTRO for injection is incompatible with any solution containing divalent cations (e.g., Ca^{2+} , Mg^{2+}), including Lactated Ringer's Injection and Hartmann's Solution.

Limited data are available on the compatibility of SIVEXTRO for injection with other intravenous substances, additives or other medications and they should not be added to SIVEXTRO single-dose vials or infused simultaneously. If the same intravenous line is used for sequential infusion of several different drugs, the line should be flushed before and after infusion of SIVEXTRO with 0.9% Sodium Chloride Injection, USP.

3 DOSAGE FORMS AND STRENGTHS

SIVEXTRO 200 mg tablet is a yellow film-coated oval tablet; each tablet is debossed with "TZD" on one side and "200" on the other side.

SIVEXTRO for injection is a sterile, white to off-white lyophilized powder for injection in single-dose vials of 200 mg. Each 200 mg vial must be reconstituted with Sterile Water for Injection and subsequently diluted only with 0.9% Sodium Chloride Injection, USP.

4 CONTRAINDICATIONS

None

5 WARNINGS AND PRECAUTIONS

5.1 Patients with Neutropenia

The safety and efficacy of SIVEXTRO in patients with neutropenia (neutrophil counts <1000 cells/mm³) have not been adequately evaluated. In an animal model of infection, the antibacterial activity of SIVEXTRO was reduced in the absence of granulocytes [see *Clinical Pharmacology* (12.2)]. Alternative therapies should be considered when treating patients with neutropenia and ABSSSI.

5.2 *Clostridioides difficile*-Associated Diarrhea

Clostridioides difficile-associated diarrhea (CDAD) has been reported for nearly all systemic antibacterial agents including SIVEXTRO, with severity ranging from mild diarrhea to fatal colitis. Treatment with antibacterial agents can alter the normal flora of the colon and may permit overgrowth of *C. difficile*.

C. difficile produces toxins A and B which contribute to the development of CDAD. Hypertoxin producing strains of *C. difficile* cause increased morbidity and mortality, as these infections can be refractory to antibacterial therapy and may require colectomy. CDAD must be considered in all patients who present with diarrhea following antibacterial drug use. Careful medical history is necessary because CDAD has been reported to occur more than two months after the administration of antibacterial agents.

If CDAD is suspected or confirmed, antibacterial use not directed against *C. difficile* should be discontinued, if possible. Appropriate measures such as fluid and electrolyte management, protein supplementation, antibacterial treatment of *C. difficile*, and surgical evaluation should be instituted as clinically indicated.

5.3 Development of Drug-Resistant Bacteria

Prescribing SIVEXTRO in the absence of a proven or strongly suspected bacterial infection or prophylactic indication is unlikely to provide benefit to the patient and increases the risk of the development of drug-resistant bacteria.

6 ADVERSE REACTIONS

6.1 Clinical Trials Experience

Because clinical trials are conducted under widely varying conditions, adverse reaction rates observed in clinical trials of a drug cannot be compared directly to rates from clinical trials of another drug and may not reflect rates observed in practice.

Adult Patients

Adverse reactions were evaluated for 1425 adult patients treated with SIVEXTRO in two Phase 2 and four Phase 3 clinical trials (three Phase 3 trials for 6 days of therapy and one Phase 3 trial for 7-21 days of therapy). The median age of adult patients treated with SIVEXTRO in the Phase 2 and Phase 3 trials was 44 years, ranging between 17 and 94 years old. The majority of adult patients treated with SIVEXTRO were male (66%) and White (67%).

Serious Adverse Reactions and Adverse Reactions Leading to Discontinuation in Adults

Serious adverse reactions occurred in 37/1425 (2.6%) of adult patients treated with SIVEXTRO and in 25/1000 (2.5%) of adult patients treated with the comparator. SIVEXTRO was discontinued due to an adverse reaction in 14/1425 (1%) of adult patients and the comparator was discontinued due to an adverse reaction in 13/1000 (1.3%) of adult patients.

Most Common Adverse Reactions in Adults

The most common adverse reactions in adult patients treated with SIVEXTRO were nausea (7.1%), headache (4.5%), diarrhea (3.6%), vomiting (2.7%), and dizziness (1.6%). The median time of onset of adverse reactions was 5 days for both SIVEXTRO and linezolid with 12% occurring on the second day of treatment in both treatment groups.

Table 2 lists selected adverse reactions occurring in at least 2% of adult patients treated with SIVEXTRO in clinical trials.

Table 2: Selected Adverse Reactions Occurring in $\geq 2\%$ of Adult Patients Receiving SIVEXTRO in the Pooled Phase 3 ABSSSI Clinical Trials

Adverse Reactions	Pooled Phase 3 ABSSSI Clinical Trials	
	SIVEXTRO (200 mg oral/intravenous once daily for 6 days) (N=1037)	Linezolid (600 mg oral/intravenous twice daily for 10 days) (N=1000)
Gastrointestinal Disorders		
Nausea	7%	10%
Diarrhea	4%	5%
Vomiting	3%	5%
Nervous System Disorder		
Headache	5%	5%
Dizziness	2%	2%
Infusion- or Injection-Related Adverse Reactions*		
	4%	2%

*Includes adverse reactions in the following body system or organ classes: General disorders and administration site conditions, infections and infestations, injury, poisoning and procedural complications, and vascular disorders, including but not limited to, phlebitis, injection- or infusion-site pain, injection- or infusion-site swelling, injection-site reaction, injection-site erythema, injection-site induration, and infusion-related reaction.

The following selected adverse reactions were reported in SIVEXTRO-treated adult patients at a rate of less than 2% in these clinical trials:

Blood and Lymphatic System Disorders: anemia

Cardiovascular: palpitations, tachycardia

Eye Disorders: asthenopia, vision blurred, visual impairment, vitreous floaters

Immune System Disorders: drug hypersensitivity

Infections and Infestations: *Clostridioides difficile* colitis, oral candidiasis, vulvovaginal mycotic infection

Investigations: hepatic transaminases increased (ALT increased, AST increased), gamma-glutamyltransferase (GGT) increased, white blood cell count decreased

Nervous System Disorders: hypoesthesia, paresthesia, VIIth nerve paralysis

Psychiatric Disorders: insomnia

Skin and Subcutaneous Tissue Disorders: pruritus, urticaria, dermatitis

Vascular Disorders: flushing, hypertension

Laboratory Parameters

Hematology laboratory abnormalities that were determined to be potentially clinically significant in the pooled Phase 3 ABSSSI clinical trials are provided in Table 3.

Table 3: Potentially Clinically Significant Lowest Laboratory Values in the Pooled Phase 3 ABSSSI Clinical Trials in Adults

Laboratory Assay	Potentially Clinically Significant Values ^{*,†}	
	SIVEXTRO (200 mg oral/intravenous once daily for 6 days) (N) [‡]	Linezolid (600 mg oral/intravenous twice daily for 10 days) (N) [‡]
Hemoglobin (<10.1 g/dL [M]) (<9 g/dL [F])	(994) 3.4%	(957) 3.4%
Platelet count (<112 × 10 ³ /mm ³)	(989) 2.1%	(950) 3.8%
Absolute neutrophil count (<0.8 × 10 ³ /mm ³)	(980) 0.4%	(941) 0.6%

M = male; F = female

* <75% (<50% for absolute neutrophil count) of lower limit of normal (LLN) for post-baseline measurements

† Represents laboratory values within two days after the last dose of active drug

‡ Number of subjects with at least one post-baseline test result that are within two days after the last dose of active drug

Myelosuppression

Phase 1 studies conducted in healthy adults exposed to SIVEXTRO for 21 days showed a possible dose and duration effect on hematologic parameters beyond 6 days of treatment. In the Phase 3 trials, clinically significant changes in these parameters were generally similar for both treatment arms (see Table 3).

Peripheral and Optic Neuropathy

Peripheral and optic neuropathy have been described in patients treated with another member of the oxazolidinone class for longer than 28 days. In Phase 3 trials in adults, reported adverse reactions for peripheral neuropathy and optic nerve disorders were similar between both treatment arms (peripheral neuropathy 1.2% vs. 0.7% for tedizolid phosphate and linezolid, respectively; optic nerve disorders 0.3% vs. 0.1%, respectively).

Pediatric Patients

Adverse reactions were evaluated in 91 pediatric patients with ABSSSI ranging from 12 to <18 years of age treated with IV and/or oral SIVEXTRO 200 mg for 6 days and 29 patients treated with comparator agents for 10 days. The majority of pediatric patients treated with SIVEXTRO were male (64%) and white (88%).

Serious adverse reactions occurred in 1/91 (1%) of pediatric patients treated with SIVEXTRO and in none of the 29 patients treated with the comparator. Adverse reactions leading to discontinuation occurred in 1 (1%) pediatric patient in the SIVEXTRO arm and in none in the comparator arm.

The most common adverse reactions occurring in pediatric patients receiving SIVEXTRO in the ABSSSI clinical trial were phlebitis (3%), increased hepatic transaminases (alanine aminotransferase, aspartate aminotransferase), (3%), anemia, and vomiting (1%).

Safety has not been evaluated in pediatric patients under 12 years of age.

Laboratory Parameters

Table 4: Potentially Clinically Significant Lowest Laboratory Values in the ABSSSI Clinical Trial in Pediatric Patients (12- <18 years)

Laboratory Assay	Potentially Clinically Significant Values ^{*,†}	
	SIVEXTRO (200 mg oral/intravenous once daily for 6 days) (N) [‡]	Comparators [§] (for 10 days) (N) [‡]
Hemoglobin (<10.1 g/dL [M]) (<9 g/dL [F])	(85) 2.4%	(26) 0.0%
Platelet count (<112 × 10 ³ /mm ³)	(82) 1.2%	(26) 0.0%
Absolute neutrophil count (<0.8 × 10 ³ /mm ³)	(85) 0.0%	(26) 0.0%

M = male; F = female

* <75% (<50% for absolute neutrophil count) of lower limit of normal (LLN) for post-baseline measurements

† Represents laboratory values within two days after the last dose of active drug

‡ Number of subjects with at least one post-baseline test result that are within two days after the last dose of active drug

§ 5 IV and 4 oral comparators selected per local standard of care

7 DRUG INTERACTIONS

Orally administered SIVEXTRO inhibits Breast Cancer Resistance Protein (BCRP) in the intestine, which can increase the plasma concentrations of orally administered BCRP substrates, and the potential for adverse reactions. If possible, an interruption in the treatment of the co-administered BCRP substrate medicinal product should be considered during treatment with SIVEXTRO, especially for BCRP substrates with a narrow therapeutic index (e.g., methotrexate or topotecan). If coadministration cannot be avoided, monitor for adverse reactions related to the concomitantly administered BCRP substrates, including rosuvastatin. [See *Clinical Pharmacology* (12.3).]

8 USE IN SPECIFIC POPULATIONS

8.1 Pregnancy

Risk Summary

Based on animal reproduction studies, SIVEXTRO may cause fetal harm when administered to pregnant women. The available data on the use of SIVEXTRO in pregnant women are insufficient to evaluate for a drug-associated risk of major birth defects, miscarriage, or adverse maternal or fetal outcomes. Advise pregnant women of the potential risks to a fetus. Fetal developmental toxicities were observed in mice and rats treated with SIVEXTRO. In embryo-fetal studies in mice and rats, tedizolid phosphate was shown to produce fetal developmental toxicities in mice and maternal toxicity and fetal developmental toxicities in rats. Tedizolid phosphate administered orally during organogenesis to pregnant animals was associated with reduced fetal weights and an increased incidence of costal cartilage anomalies in the absence of maternal toxicity in mice; and maternal toxicity, decreased fetal weights, and increased skeletal variations in rats at plasma exposures approximately 4- and 6-times respectively, the human plasma exposure at the maximum recommended human dose (MRHD) of 200 mg/day. In female rats administered tedizolid phosphate during organogenesis through lactation, there was no evidence of fetal toxicity, developmental delays, or impaired reproduction in the offspring at plasma exposures approximately equivalent to the human plasma exposure at the MRHD. (see *Data*)

The estimated background risk of major birth defects and miscarriage for the indicated population is unknown. All pregnancies have a background risk of birth defect, loss, or other adverse outcomes. In the U.S. general population, the estimated background risk of major birth defects and miscarriage in clinically recognized pregnancies is 2-4% and 15-20%, respectively.

Data

Animal Data

In an embryo-fetal development study, tedizolid phosphate administered orally to pregnant mice at doses of 1, 5, and 25 mg/kg/day during organogenesis (Gestational Day [GD] 6 to GD15) was associated with fetal developmental effects occurring in the absence of maternal toxicity, including reduced fetal weights and an increased incidence of costal cartilage anomalies at the high dose (approximately 4-times the human plasma exposure at the MRHD based on plasma AUC comparison). Tedizolid phosphate administered orally at doses of 2.5, 5, and 15 mg/kg/day to pregnant rats during organogenesis (GD6 through GD17) was associated with maternal toxicity (reduced maternal body weights), decreased fetal weights, and increased skeletal variations including reduced ossification of the sternebrae, vertebrae, and skull at the high dose of 15 mg/kg/day (approximately 6-times the human plasma exposure at the MRHD based on plasma AUC comparison). The doses not associated with fetal toxicity in mice and maternal and fetal toxicity in rats were 5 and 2.5 mg/kg/day respectively (for both species approximately equivalent to the human plasma exposure at the MRHD based on plasma AUC comparison).

In a pre-postnatal study, oral tedizolid phosphate administered to female rats at doses of 1.25, 2.5, and 3.75 mg/kg/day during gestation and lactation (GD6 through Lactational Day 20) was not associated with maternal toxicity, fetal toxicity, developmental delays, or impaired reproduction at doses up to the high dose of 3.75 mg/kg/day (approximately equivalent to the human plasma exposure at the MRHD based on plasma AUC comparison).

8.2 Lactation

Risk Summary

There is no information on the presence of tedizolid in human milk. Tedizolid is present in rat milk. When a drug is present in animal milk, it is likely that the drug will be present in human milk. There are no data on the effects of SIVEXTRO on the breastfed child or on milk production.

The developmental and health benefits of breastfeeding should be considered along with the mother's clinical need for SIVEXTRO and any potential adverse effects on the breastfed child from SIVEXTRO or from the underlying maternal condition.

8.4 Pediatric Use

The safety and effectiveness of SIVEXTRO for the treatment of ABSSSI have been established in pediatric patients aged 12 years and older. Use of SIVEXTRO for the treatment of ABSSSI is supported by evidence from adequate and well-controlled studies in adults with additional pharmacokinetic and safety data in pediatric patients aged 12 years and older [see *Adverse Reactions* (6.1), *Clinical Pharmacology* (12.3), and *Clinical Studies* (14.1)].

Safety and effectiveness of SIVEXTRO in pediatric patients below the age of 12 years have not been established.

8.5 Geriatric Use

Clinical studies of SIVEXTRO did not include sufficient numbers of subjects aged 65 and over to determine whether they respond differently from younger subjects. No overall differences in pharmacokinetics were observed between elderly subjects and younger subjects.

10 OVERDOSAGE

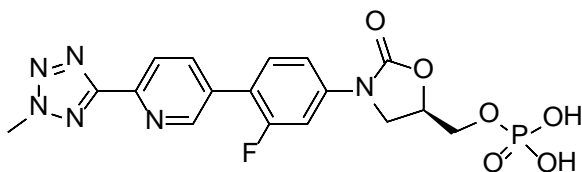
In the event of overdosage, SIVEXTRO should be discontinued and general supportive treatment given. Hemodialysis does not result in meaningful removal of tedizolid from systemic circulation.

11 DESCRIPTION

SIVEXTRO (tedizolid phosphate), a phosphate prodrug, is converted to tedizolid in the presence of phosphatases.

Tedizolid phosphate has the chemical name [(5*R*)-(3-{3-Fluoro-4-[6-(2-methyl-2*H*-tetrazol-5-yl) pyridin-3-yl]phenyl}-2-oxooxazolidin-5-yl)methyl hydrogen phosphate.

Its empirical formula is $C_{17}H_{16}FN_6O_6P$ and its molecular weight is 450.32. Its structural formula is:



Tedizolid phosphate is a white to yellow solid and is administered orally or by intravenous infusion.

The pharmacologically active moiety, tedizolid, is an antibacterial agent of the oxazolidinone class.

SIVEXTRO tablets contain 200 mg of tedizolid phosphate, and the following inactive ingredients: crospovidone, magnesium stearate, mannitol, microcrystalline cellulose, and povidone. In addition, the film coating contains the following inactive ingredients: polyethylene glycol/macrogol, polyvinyl alcohol, talc, titanium dioxide, and yellow iron oxide.

SIVEXTRO for injection is a sterile, white to off-white sterile lyophilized powder supplied in a clear glass single-dose vial. Each vial contains 200 mg of tedizolid phosphate and the inactive ingredient, mannitol (105 mg). Sodium hydroxide and hydrochloric acid are used as needed for pH adjustment. When reconstituted as directed with 4 mL of Sterile Water for Injection, each mL contains 50 mg of tedizolid phosphate. The pH of the reconstituted solution is 7.4 to 8.1.

12 CLINICAL PHARMACOLOGY

12.1 Mechanism of Action

Tedizolid is an antibacterial drug [see *Microbiology* (12.4)].

12.2 Pharmacodynamics

The AUC/minimum inhibitory concentration (MIC) was shown to best correlate with tedizolid activity in animal infection models.

In the mouse thigh infection model of *S. aureus*, antistaphylococcal killing activity was impacted by the presence of granulocytes. In granulocytopenic mice (neutrophil count <100 cells/mL), bacterial stasis was achieved at a human-equivalent dose of approximately 2000 mg/day; whereas, in non-granulocytopenic animals, stasis was achieved at a human-equivalent dose of approximately 100 mg/day. The safety and efficacy of SIVEXTRO for the treatment of neutropenic patients (neutrophil counts <1000 cells/mm³) have not been evaluated.

Cardiac Electrophysiology

In a randomized, positive- and placebo-controlled crossover thorough QTc study, 48 enrolled subjects were administered a single oral dose of SIVEXTRO at a therapeutic dose of 200 mg, SIVEXTRO at a supratherapeutic dose of 1200 mg, placebo, and a positive control; no significant effects of SIVEXTRO on heart rate, electrocardiogram morphology, PR, QRS, or QT interval were detected. Therefore, SIVEXTRO does not affect cardiac repolarization.

12.3 Pharmacokinetics

Tedizolid phosphate is a prodrug that is converted by phosphatases to tedizolid, the microbiologically active moiety, following oral and intravenous administration. Only the pharmacokinetic profile of tedizolid is discussed further due to negligible systemic exposure of tedizolid phosphate following oral and intravenous administration. Following multiple once-daily oral or intravenous administration, steady-state concentrations are achieved within approximately three days with tedizolid accumulation of approximately 30% (tedizolid half-life of approximately 12 hours). Pharmacokinetic (PK) parameters of tedizolid following oral and intravenous administration of 200 mg once daily tedizolid phosphate are shown in Table 5.

Table 5: Mean (Standard Deviation) Tedizolid Pharmacokinetic Parameters Following Single and Multiple Oral and Intravenous Administration of 200 mg Once-Daily Tedizolid Phosphate

Pharmacokinetic Parameters of Tedizolid*	Oral		Intravenous	
	Single Dose	Steady State	Single Dose	Steady State
C _{max} (mcg/mL)	2.0 (0.7)	2.2 (0.6)	2.3 (0.6)	3.0 (0.7)
T _{max} (hr) [†]	2.5 (1.0 - 8.0)	3.5 (1.0 - 6.0)	1.1 (0.9 - 1.5)	1.2 (0.9 - 1.5)
AUC (mcg·hr/mL) [‡]	23.8 (6.8)	25.6 (8.5)	26.6 (5.2)	29.2 (6.2)
CL or CL/F (L/hr)	7.5 (2.3)	6.9 (1.7)	6.4 (1.2)	5.9 (1.4)

* C_{max}, maximum concentration; T_{max}, time to reach C_{max}; AUC, area under the concentration-time curve; CL, systemic clearance; CL/F, apparent oral clearance

[†] Median (range)

[‡] AUC is AUC_{0-∞} (AUC from time 0 to infinity) for single-dose administration and AUC₀₋₂₄ (AUC from time 0 to 24 hours) for multiple-dose administration

Absorption

Peak plasma tedizolid concentrations are achieved within approximately 3 hours following oral administration under fasting conditions or at the end of the 1 hour intravenous infusion of tedizolid phosphate. The absolute bioavailability is approximately 91% and no dosage adjustment is necessary between intravenous and oral administration.

Tedizolid phosphate (oral) may be administered with or without food as total systemic exposure (AUC_{0-∞}) is unchanged between fasted and fed (high-fat, high-calorie) conditions.

Distribution

Protein binding of tedizolid to human plasma proteins is approximately 70 to 90%. The mean steady state volume of distribution of tedizolid in healthy adults following a single intravenous dose of tedizolid phosphate 200 mg ranged from 67 to 80 L (approximately twice total body water). Tedizolid penetrates into the interstitial space fluid of adipose and skeletal muscle tissue with exposure similar to free drug exposure in plasma.

Elimination

Metabolism

Other than tedizolid, which accounts for approximately 95% of the total radiocarbon AUC in plasma, there are no other significant circulating metabolites in humans.

There was no degradation of tedizolid in human liver microsomes indicating tedizolid is unlikely to be a substrate for hepatic CYP450 enzymes.

In vitro studies showed that conjugation of tedizolid is mediated via multiple sulfotransferase (SULT) isoforms (SULT1A1, SULT1A2, and SULT2A1).

Excretion

Following single oral administration of ¹⁴C-labeled tedizolid phosphate under fasted conditions, the majority of elimination occurred via the liver, with 82% of the radioactive dose recovered in feces and 18% in urine, primarily as a non-circulating and microbiologically inactive sulfate conjugate. Most of the elimination of tedizolid (>85%) occurs within 96 hours. Less than 3% of the tedizolid phosphate-administered dose is excreted in feces and urine as unchanged tedizolid.

Specific Populations

Based on the population pharmacokinetic analysis, there are no clinically relevant demographic or clinical patient factors (including age, gender, race, ethnicity, weight, body mass index, and measures of renal or liver function) that impact the pharmacokinetics of tedizolid.

Patients with Hepatic Impairment

Following administration of a single 200 mg oral dose of SIVEXTRO, no clinically meaningful changes in mean tedizolid C_{\max} and $AUC_{0-\infty}$ were observed in adult patients with moderate (n=8) or severe (n=8) hepatic impairment (Child-Pugh Class B and C) compared to 8 matched healthy control subjects. No dose adjustment is necessary for patients with hepatic impairment.

Patients with Renal Impairment

Following administration of a single 200 mg intravenous dose of SIVEXTRO to 8 adult subjects with severe renal impairment defined as $eGFR < 30 \text{ mL/min/1.73 m}^2$, the C_{\max} was essentially unchanged and $AUC_{0-\infty}$ was decreased by less than 10% compared to 8 matched healthy control adult subjects. Hemodialysis does not result in meaningful removal of tedizolid from systemic circulation, as assessed in subjects with end-stage renal disease ($eGFR < 15 \text{ mL/min/1.73 m}^2$). No dosage adjustment is necessary in patients with renal impairment or patients on hemodialysis.

Geriatric Patients

The pharmacokinetics of tedizolid were evaluated in a Phase 1 study conducted in elderly healthy volunteers (age 65 years and older, with at least 5 subjects at least 75 years old; n=14) compared to younger control subjects (25 to 45 years old; n=14) following administration of a single oral dose of SIVEXTRO 200 mg. There were no clinically meaningful differences in tedizolid C_{\max} and $AUC_{0-\infty}$ between elderly subjects and younger control subjects. No dosage adjustment of SIVEXTRO is necessary in elderly patients.

Male and Female Patients

The impact of gender on the pharmacokinetics of SIVEXTRO was evaluated in clinical trials of adult healthy males and females and in a population pharmacokinetics analysis. The pharmacokinetics of tedizolid were similar in males and females. No dosage adjustment of SIVEXTRO is necessary based on gender.

Pediatric Patients

Compared to adult patients, tedizolid exposures are higher in pediatric patients 12 to <18 years of age following multiple dose administration of IV or oral SIVEXTRO (geometric mean C_{\max} 3.13 vs. 2.00 mcg/mL, AUC_{24h} 28.6 vs. 21.0 mcg*h/mL); however, this increase in exposure is not considered clinically significant.

Drug Interaction Studies

Drug Metabolizing Enzymes

Transformation via Phase 1 hepatic oxidative metabolism is not a significant pathway for elimination of SIVEXTRO.

Neither SIVEXTRO nor tedizolid detectably inhibited or induced the metabolism of selected CYP enzyme substrates, suggesting that drug-drug interactions based on oxidative metabolism are unlikely.

Membrane Transporters

The potential for tedizolid or tedizolid phosphate to inhibit transport of probe substrates of important drug uptake (OAT1, OAT3, OATP1B1, OATP1B3, OCT1, and OCT2) and efflux transporters (P-gp and BCRP) was tested *in vitro*. No clinically relevant interactions are expected to occur with these transporters except BCRP.

Coadministration of multiple oral doses of SIVEXTRO (200 mg once daily) increased the C_{\max} and AUC of rosuvastatin (10 mg single oral dose), a known BCRP substrate, by approximately 55% and 70%, respectively, in healthy adult subjects [see *Drug Interactions* (7)].

Monoamine Oxidase Inhibition

Tedizolid is a reversible inhibitor of monoamine oxidase (MAO) *in vitro*. The interaction with MAO inhibitors could not be evaluated in Phase 2 and 3 trials, as subjects taking such medications were excluded from the trials.

Adrenergic Agents

Two placebo-controlled crossover studies were conducted to assess the potential of 200 mg oral SIVEXTRO at steady state to enhance pressor responses to pseudoephedrine and tyramine in healthy adults. No meaningful changes in blood pressure or heart rate were seen with pseudoephedrine. The median tyramine dose required to cause an increase in systolic blood pressure of $\geq 30 \text{ mmHg}$ from pre-dose

baseline was 325 mg with SIVEXTRO compared to 425 mg with placebo. Palpitations were reported in 21/29 (72.4%) adult subjects exposed to SIVEXTRO compared to 13/28 (46.4%) exposed to placebo in the tyramine challenge study.

Serotonergic Agents

Serotonergic effects at doses of tedizolid phosphate up to 30-fold above the human equivalent dose did not differ from vehicle control in a mouse model that predicts serotonergic activity. In Phase 3 trials, subjects taking serotonergic agents including antidepressants such as selective serotonin reuptake inhibitors (SSRIs), tricyclic antidepressants, and serotonin 5-hydroxytryptamine (5-HT₁) receptor agonists (triptans), meperidine, or buspirone were excluded.

12.4 Microbiology

Mechanism of Action

The antibacterial activity of tedizolid is mediated by binding to the 50S subunit of the bacterial ribosome resulting in inhibition of protein synthesis. Tedizolid inhibits bacterial protein synthesis through a mechanism of action different from that of other non-oxazolidinone class antibacterial drugs; therefore, cross-resistance between tedizolid and other classes of antibacterial drugs is unlikely. The results of *in vitro* time-kill studies show that tedizolid is bacteriostatic against enterococci, staphylococci, and streptococci.

Resistance

Organisms resistant to oxazolidinones via mutations in chromosomal genes encoding 23S rRNA or ribosomal proteins (L3 and L4) are generally cross-resistant to tedizolid. In the limited number of *Staphylococcus aureus* strains tested, the presence of the chloramphenicol-florfenicol resistance (*cfr*) gene did not result in resistance to tedizolid in the absence of chromosomal mutations.

Spontaneous mutations conferring reduced susceptibility to tedizolid occur *in vitro* at a frequency rate of approximately 10⁻¹⁰.

Interaction with Other Antimicrobial Drugs

In vitro drug combination studies with tedizolid and aztreonam, ceftriaxone, ceftazidime, imipenem, rifampin, trimethoprim/sulfamethoxazole, minocycline, clindamycin, ciprofloxacin, daptomycin, vancomycin, gentamicin, amphotericin B, ketoconazole, and terbinafine demonstrate neither synergy nor antagonism.

Antimicrobial Activity

Tedizolid has been shown to be active against most isolates of the following bacteria, both *in vitro* and in clinical infections, as described in *Indications and Usage (1)*.

Aerobic bacteria

Gram-positive bacteria

Staphylococcus aureus (including methicillin-resistant [MRSA] and methicillin-susceptible [MSSA] isolates)

Streptococcus pyogenes

Streptococcus agalactiae

Streptococcus anginosus Group (including *S. anginosus*, *S. intermedius*, and *S. constellatus*)

Enterococcus faecalis

The following *in vitro* data are available, but their clinical significance is unknown. At least 90% of the following bacteria exhibit an *in vitro* minimum inhibitory concentration (MIC) less than or equal to the susceptible breakpoint for tedizolid against isolates of similar genus or organism group. However, the efficacy of SIVEXTRO in treating clinical infections caused by these bacteria has not been established in adequate and well-controlled clinical trials.

Aerobic bacteria

Gram-positive bacteria

Staphylococcus epidermidis (including methicillin-susceptible and methicillin-resistant isolates)

Staphylococcus haemolyticus

Staphylococcus lugdunensis

Enterococcus faecium

Susceptibility Testing

For specific information regarding susceptibility test interpretive criteria and associated test methods and quality control standards recognized by FDA for this drug, please see:

<https://www.fda.gov/STIC>

13 NONCLINICAL TOXICOLOGY

13.1 Carcinogenesis, Mutagenesis, Impairment of Fertility

Carcinogenicity

Long-term carcinogenicity studies have not been conducted with tedizolid phosphate.

Mutagenesis

Tedizolid phosphate was negative for genotoxicity in all *in vitro* assays (bacterial reverse mutation (Ames), Chinese hamster lung (CHL) cell chromosomal aberration) and in all *in vivo* tests (mouse bone marrow micronucleus, rat liver unscheduled DNA synthesis). Tedizolid, generated from tedizolid phosphate after metabolic activation (*in vitro* and *in vivo*), was also tested for genotoxicity. Tedizolid was positive in an *in vitro* CHL cell chromosomal aberration assay, but negative for genotoxicity in other *in vitro* assays (Ames, mouse lymphoma mutagenicity) and *in vivo* in a mouse bone marrow micronucleus assay.

Impairment of Fertility

In a fertility study, oral tedizolid phosphate administered in doses of 5, 15, and 50 mg/kg/day for 28 days before mating and during mating to male rats had no adverse effects on the fertility or reproductive performance, including spermatogenesis, at the maximum tested dose (50 mg/kg/day) with a plasma tedizolid AUC approximately 5-fold greater than the plasma AUC value in humans at the maximum recommended human dose (MRHD). Tedizolid phosphate administered in doses of 2.5, 5, and 15 mg/kg/day for 14 days before mating, during mating, and until Gestation Day (GD)7 to female rats also had no adverse effects on the fertility or reproductive performance at doses up to the maximum tested dose of 15 mg/kg/day (approximately 4-fold higher than exposures in humans at the MRHD based on plasma AUC comparison).

13.2 Animal Toxicology and/or Pharmacology

Repeated-oral and intravenous dosing of tedizolid phosphate in rats in 1-month and 3-month toxicology studies produced dose- and time-dependent bone marrow hypocellularity (myeloid, erythroid, and megakaryocyte), with associated reduction in circulating RBCs, WBCs, and platelets. These effects showed evidence of reversibility and occurred at plasma tedizolid exposure levels (AUC) ≥ 6 -fold greater than the plasma exposure associated with the human therapeutic dose. In a 1-month immunotoxicology study in rats, repeated oral dosing of tedizolid phosphate was shown to significantly reduce splenic B cells and T cells and reduce plasma IgG titers. These effects occurred at plasma tedizolid exposure levels (AUC) ≥ 3 -fold greater than the expected human plasma exposure associated with the therapeutic dose.

14.1 Acute Bacterial Skin and Skin Structure Infections**Adults**

A total of 1333 adults with acute bacterial skin and skin structure infections (ABSSSI) were randomized in two multicenter, multinational, double-blind, non-inferiority trials. Both trials compared SIVEXTRO 200 mg once daily for 6 days versus linezolid 600 mg every 12 hours for 10 days. In Trial 1, patients were treated with oral therapy, while in Trial 2, patients could receive oral therapy after a minimum of one day of intravenous therapy. Patients with cellulitis/erysipelas, major cutaneous abscess, or wound infection were enrolled in the trials. Patients with wound infections could have received aztreonam and/or metronidazole as adjunctive therapy for gram-negative bacterial coverage, if needed. The intent-to-treat (ITT) patient population included all randomized patients.

In Trial 1, 332 patients with ABSSSI were randomized to SIVEXTRO and 335 patients were randomized to linezolid. The majority (91%) of patients treated with SIVEXTRO in Trial 1 were less than 65 years old with a median age of 43 years (range: 18 to 86 years). Patients treated with SIVEXTRO were predominantly male (61%) and White (84%); 13% had BMI ≥ 35 kg/m², 8% had diabetes mellitus, 35% were current or recent intravenous drug users, and 2% had moderate to severe renal impairment. The overall median surface area of infection was 188 cm². The types of ABSSSI included were cellulitis/erysipelas (41%), wound infection (29%), and major cutaneous abscess (30%). In addition to local signs and symptoms of infection, patients were also required to have at least one regional or systemic sign of infection at baseline, defined as lymphadenopathy (87% of patients), temperature 38°C or higher (16% of patients), white blood cell count greater than 10,000 cells/mm³ or less than 4000 cells/mm³ (42%), or 10% or more band forms on white blood cell differential (4%).

The primary endpoint in Trial 1 was early clinical response defined as no increase from baseline lesion area at 48-72 hours after the first dose and oral temperature of $\leq 37.6^\circ\text{C}$, confirmed by a second temperature measurement within 24 hours in the ITT population.

In Trial 2, 332 patients with ABSSSI were randomized to SIVEXTRO and 334 patients were randomized to linezolid. The majority (87%) of patients treated with SIVEXTRO in Trial 2 were less than 65 years old with a median age of 46 years (range: 17 to 86 years). Patients treated with SIVEXTRO were predominantly male (68%) and White (86%); 16% had BMI ≥ 35 kg/m², 10% had diabetes mellitus, 20% were current or recent intravenous drug users, and 4% had moderate to severe renal impairment. The overall median surface area of infection was 231 cm². The types of ABSSSI included were cellulitis/erysipelas (50%), wound infection (30%), and major cutaneous abscess (20%). In addition to local signs and symptoms of infection, patients were also required to have at least one regional or systemic sign of infection at baseline, defined as lymphadenopathy (71% of patients), temperature 38°C or higher (31% of patients), white blood cell count greater than 10,000 cells/mm³ or less than 4000 cells/mm³ (53%), or 10% or more band forms on white blood cell differential (16%).

The primary endpoint in Trial 2 was early clinical response defined as at least a 20% decrease from baseline lesion area at 48-72 hours after the first dose in the ITT population (Table 6).

Table 6: Early Clinical Response in the ITT Adult Patient Population

	SIVEXTRO (200 mg)	Linezolid (1200 mg)	Treatment Difference (2-sided 95% CI)
No increase in lesion surface area from baseline and oral temperature of $\leq 37.6^{\circ}\text{C}$, confirmed by a second temperature measurement within 24 hours at 48-72 hours*			
Trial 1, N	332	335	
Responder, n (%)	264 (79.5)	266 (79.4)	0.1 (-6.1, 6.2)
Trial 2, N	332	334	
Responder, n (%)	286 (86.1)	281 (84.1)	2.0 (-3.5, 7.3)
At least a 20% decrease from baseline in lesion area at 48-72 hours†			
Trial 1, N	332	335	
Responder, n (%)	259 (78.0)	255 (76.1)	1.9 (-4.5, 8.3)
Trial 2, N	332	334	
Responder, n (%)	283 (85.2)	276 (82.6)	2.6 (-3.0, 8.2)

CI=confidence interval

* Primary endpoint for Trial 1; sensitivity analysis for Trial 2

† Primary endpoint for Trial 2; sensitivity analysis for Trial 1

An investigator assessment of clinical response was made at the post-therapy evaluation (PTE) (7 - 14 days after the end of therapy) in the ITT and CE (Clinically Evaluable) populations. Clinical success was defined as resolution or near resolution of most disease-specific signs and symptoms, absence or near resolution of systemic signs of infection if present at baseline (lymphadenopathy, fever, >10% immature neutrophils, abnormal WBC count), and no new signs, symptoms, or complications attributable to the ABSSSI requiring further treatment of the primary lesion (Table 7).

Table 7: Investigator-Assessed Clinical Response at Post-therapy Evaluation in ITT and CE Adult Patient Populations from Two Phase 3 ABSSSI Trials

	SIVEXTRO (200 mg) n/N (%)	Linezolid (1200 mg) n/N (%)	Treatment Difference (2-sided 95% CI)
Trial 1			
ITT	284/332 (85.5)	288/335 (86.0)	-0.5 (-5.8, 4.9)
CE	264/279 (94.6)	267/280 (95.4)	-0.8 (-4.6, 3.0)
Trial 2			
ITT	292/332 (88.0)	293/334 (87.7)	0.3 (-4.8, 5.3)
CE	268/290 (92.4)	269/280 (96.1)	-3.7 (-7.7, 0.2)

CI=confidence interval; ITT=intent-to-treat; CE=clinically evaluable

Clinical success by baseline pathogens from the primary infection site or blood cultures for the microbiological intent-to-treat (MITT) patient population for two integrated Phase 3 ABSSSI studies are presented in Table 8 and Table 9.

Table 8: Early Clinical Response by Baseline Pathogen from Two Phase 3 ABSSSI Adult Trials (MITT Population)

Pathogen	No increase in lesion surface area from baseline and oral temperature of $\leq 37.6^{\circ}\text{C}^*$		At least a 20% decrease from baseline in lesion area [†]	
	SIVEXTRO (200 mg) n/N (%)	Linezolid (1200 mg) n/N (%)	SIVEXTRO (200 mg) n/N (%)	Linezolid (1200 mg) n/N (%)
<i>Staphylococcus aureus</i>	276/329 (83.9)	278/342 (81.3)	280/329 (85.1)	276/342 (80.7)
Methicillin-resistant <i>S. aureus</i>	112/141 (79.4)	113/146 (77.4)	114/141 (80.9)	111/146 (76.0)
Methicillin-susceptible <i>S. aureus</i>	164/188 (87.2)	167/198 (84.3)	166/188 (88.3)	167/198 (84.3)
<i>Streptococcus pyogenes</i>	27/33 (81.8)	18/20 (90.0)	25/33 (75.8)	16/20 (80.0)
<i>Streptococcus anginosus</i> Group	22/30 (73.3)	26/28 (92.9)	22/30 (73.3)	25/28 (89.3)
<i>Streptococcus agalactiae</i>	6/9 (66.7)	8/10 (80.0)	6/9 (66.7)	7/10 (70.0)
<i>Enterococcus faecalis</i>	7/10 (70.0)	3/4 (75.0)	6/10 (60.0)	1/4 (25.0)

Pooled analysis; n=number of patients in the specific category; N=Number of patients with the specific pathogen isolated from the ABSSSI

* Primary endpoint of Trial 1

[†] Primary endpoint of Trial 2

Baseline bacteremia in the tedizolid arm with relevant pathogens included two subjects with MRSA, four subjects with MSSA, two subjects with *S. pyogenes*, one subject with *S. agalactiae*, and one subject with *S. constellatus*. All of these subjects were Responders at the 48-72 hour evaluation. At the Post-therapy Evaluation (PTE), 8 of 10 subjects were considered clinical successes.

Table 9: Clinical Response at PTE by Baseline Pathogen from Two Phase 3 ABSSSI Adult Trials (MITT Population)

Pathogen	Clinical Response at PTE	
	SIVEXTRO (200 mg) n/N (%)	Linezolid (1200 mg) n/N (%)
<i>Staphylococcus aureus</i>	291/329 (88.5)	303/342 (88.6)
Methicillin-resistant <i>S. aureus</i>	118/141 (83.7)	119/146 (81.5)
Methicillin-susceptible <i>S. aureus</i>	173/188 (92.0)	186/198 (93.9)
<i>Streptococcus pyogenes</i>	30/33 (90.9)	19/20 (95.0)
<i>Streptococcus anginosus</i> Group	21/30 (70.0)	25/28 (89.3)
<i>Streptococcus agalactiae</i>	8/9 (88.9)	8/10 (80.0)
<i>Enterococcus faecalis</i>	7/10 (70.0)	4/4 (100.0)

Pooled analysis; n=number of patients in the specific category; N=Number of patients with the specific pathogen isolated from the ABSSSI

Baseline bacteremia in the tedizolid arm with relevant pathogens included two subjects with MRSA, four subjects with MSSA, two subjects with *S. pyogenes*, one subject with *S. agalactiae*, and one subject with *S. constellatus*. All of these subjects were Responders at the 48-72 hour evaluation. At the Post-therapy Evaluation (PTE) 8 of 10 subjects were considered clinical successes.

Pediatric Patients

The safety and efficacy of SIVEXTRO in pediatric patients 12 to < 18 years of age were investigated in a randomized, single blind, active-controlled trial of 120 patients with clinically documented ABSSSI (91 receiving tedizolid, 29 receiving comparator). Patients were randomized in a 3:1 ratio with stratification by geographic region to receive SIVEXTRO IV and/or oral therapy, dosed 200 mg once daily for 6 days, or comparator IV and/or oral therapy, dosed over 10 days. Comparator therapy was selected by the investigator from a list of 5 IV and 4 oral comparators per local standard of care. The most frequently used comparators were cefazolin (11 patients) and vancomycin (8 patients).

The primary objective was to evaluate the safety and tolerability of SIVEXTRO. The trial was not powered for comparative inferential efficacy analysis. Clinical response at the test of cure visit (Day 18-25) was assessed by a blinded investigator in the ITT population (all randomized patients). Clinical successes were required to have resolution or near resolution of all related signs and symptoms such that no further antibacterial therapy was needed. Early clinical response, defined as at least a 20% reduction in lesion size at 48-72 hours after start of treatment, was also assessed in the ITT population.

Clinical success at test of cure was 96.7% (88/91) in the tedizolid group and 93.1% (27/29) in the comparator group (difference 3.6%, 95% CI: -6.3, 13.5). Early clinical response at 48-72 hours was 92.3% (84/91) in the tedizolid group and 96.6% (28/29) in the comparator group (difference -4.2%, 95% CI: -12.9, 4.4).

16 HOW SUPPLIED/STORAGE AND HANDLING

16.1 Tablets

SIVEXTRO tablets are yellow film-coated oval tablets containing 200 mg of tedizolid phosphate; each tablet is debossed with “TZD” on one side and “200” on the other side.

They are supplied as follows:

HDPE bottles of 30 tablets with child-resistant closure (NDC 67919-041-01)

Unit dose blister packs of 6 tablets (NDC 67919-041-02)

16.2 For Injection

SIVEXTRO is supplied as a sterile, lyophilized powder for injection in single-dose vials of 200 mg. Each 200 mg vial must be reconstituted with Sterile Water for Injection and subsequently diluted only with 0.9% Sodium Chloride Injection, USP.

They are supplied as follows:

Package of ten 200 mg single-dose vials (NDC 67919-040-01)

16.3 Storage and Handling

SIVEXTRO tablets and SIVEXTRO for injection should be stored at 20°C to 25°C (68°F to 77°F); excursions permitted to 15°C to 30°C (59°F to 86°F) [see USP Controlled Room Temperature]. Discard any unused portion of the single-dose vials.

17 PATIENT COUNSELING INFORMATION

Advise the patient to read the FDA-approved patient labeling (Patient Information).

Administration with Food

Patients should be informed that SIVEXTRO tablets may be taken with or without food and without any dietary restrictions [see *Dosage and Administration (2.1) and Clinical Pharmacology (12.3)*].

Usage Safeguards

Patients should be advised that antibacterial drugs including SIVEXTRO should only be used to treat bacterial infections. SIVEXTRO does not treat viral infections (e.g., the common cold). When SIVEXTRO is prescribed to treat a bacterial infection, patients should be told that although it is common to feel better early in the course of therapy, the medication should be taken exactly as directed. Skipping doses or not completing the full course of therapy may (1) decrease the effectiveness of the immediate treatment and (2) increase the likelihood that bacteria will develop resistance and will not be treatable by SIVEXTRO or other antibacterial drugs in the future [see *Indications and Usage (1.2)*].

Patients should be informed that if they miss a dose, they should take the dose as soon as possible anytime up to 8 hours prior to their next scheduled dose. If less than 8 hours remains before the next dose, then they should wait until their next scheduled dose. Patients should take the prescribed number of doses [see *Dosage and Administration (2.1)*].

Keep SIVEXTRO and all medications out of reach of children.

Potentially Serious Adverse Reactions

Patients should be advised that diarrhea is a common problem caused by antibacterial drugs including SIVEXTRO and usually resolves when the drug is discontinued. Sometimes after starting treatment with antibacterial drugs, patients can develop frequent watery and bloody stools (with or without stomach cramps and fever) even as late as two or more months after having taken the last dose of the antibacterial drug and may be a sign of a more serious intestinal infection [*see Warnings and Precautions (5.2) and Adverse Reactions (6.1)*]. If this occurs, patients should contact their healthcare provider as soon as possible.

Embryo-Fetal Toxicity

Based on animal data, advise pregnant women and females of reproductive potential of the potential risk to a fetus. Advise females to inform their healthcare provider of a known or suspected pregnancy [*see Use in Specific Populations (8.1)*].

Manuf. for: Merck Sharp & Dohme Corp., a subsidiary of
 **MERCK & CO., INC.**, Whitehouse Station, NJ 08889, USA

Sivextro tablets
Manufactured by: Patheon Inc.
Whitby, Ontario, L1N 5Z5 Canada

Sivextro for injection
Manufactured by: Patheon Italia S.p.A.
03013, Ferentino, FR Italy

For patent information: www.merck.com/product/patent/home.html

Copyright © 2015-2020 Merck Sharp & Dohme Corp., a subsidiary of **Merck & Co., Inc.**
All rights reserved.

uspi-mk1986-mf-2006r005

Patient Information
SIVEXTRO®(sih-vex-tro)
(tedizolid phosphate)
tablets

What you need to know about SIVEXTRO

- Before you take this medicine, be sure you understand what it is for and how to take it safely.
- Keep this information.
- If you have questions about this medicine, ask your doctor or pharmacist.
- Every time you get a refill, look at the Patient Information sheet that comes with it. There may be new information.
- Remember that your doctor has prescribed this medicine only for you. Never give it to anyone else.

What is SIVEXTRO?

SIVEXTRO is a tablet for people 12 years of age and older who have a skin infection or an infection in the tissue below the skin. SIVEXTRO is an antibiotic that works by stopping the growth of certain bacteria.

Children

SIVEXTRO should not be used for people under 12 years old. It is not known if SIVEXTRO works or is safe for people under age 12.

What should I tell my doctor before taking SIVEXTRO?

Medical Conditions

Tell your doctor if you:

- have diarrhea, or have ever had diarrhea while taking antibiotics. Tell your doctor, even if you had diarrhea that occurred up to 2 months after you took the antibiotic.
- are allergic to tedizolid phosphate or any of the ingredients in SIVEXTRO. See the end of this Patient Information for a complete list of ingredients in SIVEXTRO.
- are pregnant or plan to get pregnant, tell your doctor if you become pregnant while taking SIVEXTRO. It is not known if SIVEXTRO will harm your baby while you are pregnant. You and your doctor should decide together if you will take SIVEXTRO.
- are breastfeeding or plan to breastfeed, tell your doctor before you take SIVEXTRO. It is not known if SIVEXTRO passes into your breast milk. You and

your doctor should decide together if you will take SIVEXTRO or breastfeed.

Are you taking other medicines?

- SIVEXTRO can affect the way other medicines work, and other medicines can affect how SIVEXTRO works. Some medicines cannot be taken with SIVEXTRO at all. Your doctor will tell you if it is safe to take SIVEXTRO with other medicines.
- It is especially important to tell your doctor if you take any of the following medicines:
 - Methotrexate (for cancer or rheumatoid arthritis)
 - Topotecan (for cancer)
 - Rosuvastatin (for cholesterol)
- **Tell your doctor about all of the medicines you take**, including prescription and over-the-counter medicines, vitamins and herbal and dietary supplements.
- Know the medicines you take. Keep a list of them and show the list to your doctor and pharmacist when you get a new medicine.

How do I take SIVEXTRO?

- Take SIVEXTRO exactly how your doctor tells you to take it.
- **Take 1 SIVEXTRO tablet 1 time each day.**
- **Take SIVEXTRO for 6 days, at the same time every day.**
- Take SIVEXTRO by mouth, with or without food.

What if I forget to take SIVEXTRO?

- If you miss a dose, take the missed dose as soon as you remember. If it is less than 8 hours until your next dose, skip the missed dose and take the next tablet at the time you usually take it.
- Do not take 2 doses of SIVEXTRO at the same time to make up for a missed dose.
- If you are not sure how to take SIVEXTRO, call your doctor or pharmacist.
- Take all 6 tablets to finish your SIVEXTRO, even if you have missed a dose.

If you do not finish your medicine, SIVEXTRO may not work. You may get sick again and the remaining bacteria may be harder to treat.

What are the possible side effects of SIVEXTRO?

SIVEXTRO may cause serious side effects, including diarrhea from **C-diff (Clostridioides difficile) infection**. Call your healthcare provider right away if you get

stomach cramps, fever, watery diarrhea, diarrhea that does not go away, or bloody stools. C-diff infection can happen 2 or more months after you have finished your antibacterial medicine.

C-diff is an infection of your intestines (bowels) that can happen with many antibiotics like SIVEXTRO and may cause mild diarrhea to life-threatening swelling of your intestines (colitis).

Common side effects of SIVEXTRO include:

- nausea
- headache
- dizziness
- vomiting
- diarrhea
- increased liver enzymes

Some less common side effects are:

Problems with your skin

- itching, red or itchy rash, hives, acne
- hot flushes or feeling like you are blushing or your face, neck or chest is red
- not able to feel something as well
- a tingling or prickling sensation

Problems with your sleep

- hard time sleeping

Problems with your body

- numbness

Problems with infections

- vagina that is infected, inflamed or itchy
- fungal infections of skin, mouth

Problems with your eyes

- eye strain
- blurred or impaired vision
- seeing dots or spots in your eyes

Problems with your heart

- Your heartbeat does not feel normal. It could feel like your heart is beating too fast or pumping harder than usual.

Problems with your vascular system

- high blood pressure

Problems with your blood work

Your doctor may tell you that you have the following while taking Sivextro:

- a low white blood cell count
- anemia (low red blood cells)
- bleeding or bruising easily

If you have any side effect that bothers you or does not go away, tell your doctor.

These are not all the possible side effects of SIVEXTRO. For information, ask your doctor or pharmacist. Call your doctor for medical advice about side effects. You may report side effects to FDA at 1-800-FDA-1088.

How should I store SIVEXTRO?

- Store SIVEXTRO at room temperature between 68°F to 77°F (20°C to 25°C).
- Keep SIVEXTRO and all medicines out of the reach of children.

General information about SIVEXTRO.

- Medicines are sometimes prescribed for purposes that are not mentioned here.
- Do not use SIVEXTRO for a condition for which it was not prescribed.

What if I have questions?

- Call your doctor.
- Call Merck, the company that makes SIVEXTRO, at 1-800-444-2080.
- Go to the website – www.SIVEXTRO.com.
- You can ask your doctor or pharmacist for information about SIVEXTRO that is written for health professionals.

What are the ingredients in SIVEXTRO?

- The active ingredient: tedizolid phosphate.
 - The inactive ingredients: crospovidone, magnesium stearate, mannitol, microcrystalline cellulose, and povidone. Film coating: polyethylene glycol/macrogol, polyvinyl alcohol, talc, titanium dioxide, and yellow iron oxide.
-

Manuf. for: Merck Sharp & Dohme Corp., a subsidiary of
 **MERCK & CO., INC.**, Whitehouse Station, NJ 08889, USA

Sivextro tablets Manufactured by: Patheon Inc., Whitby, Ontario, L1N 5Z5 Canada
Sivextro for injection Manufactured by: Patheon Italia S.p.A., 03013, Ferentino, FR Italy

For patent information: www.merck.com/product/patent/home.html. The trademarks depicted herein are owned by their respective companies.

Copyright © 2017-2020 Merck Sharp & Dohme Corp., a subsidiary of **Merck & Co., Inc.** All rights reserved.

usppi-mk1986-mf-2006r002

This Patient Information has been approved by the U.S. Food and Drug Administration

Revised: 6/2020