

4 mg daily dose

LENVIMA<sup>®</sup>  
(lenvatinib) capsules

203976

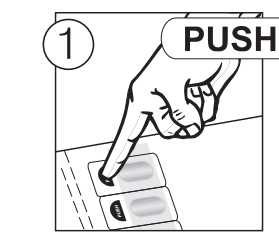
LENVIMA<sup>®</sup>  
(lenvatinib) capsules

NDC 62856-704-30  
Rx only

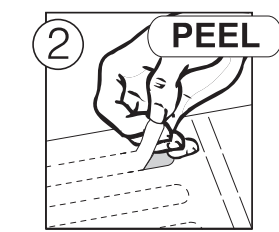
4 mg daily dose

**Dosing Instructions:**

Take one daily dose: one 4 mg capsule at the same time once daily, with or without food. Continue to take every day until instructed otherwise by your doctor.



1. Push through black half circle.



2. Turn card over and peel tab to expose foil.



3. Turn card over and push on END of plastic blister to dispense.

Each daily dose consists of 1 capsule: one 4 mg capsule (total dose 4 mg). Each capsule contains 4 mg of lenvatinib equivalent to 4.90 mg of lenvatinib mesylate.

See package insert for dosage information.

Store at 25°C (77°F); excursions permitted to 15-30°C (59-86°F) [see USP Controlled Room Temperature].

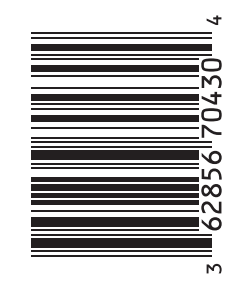
UNVARNISHED LOT/EXP AREA



4 mg daily dose

30 Day Supply

LENVIMA<sup>®</sup>  
(lenvatinib) capsules



123247

Rx only

NDC 62856-704-30

LENVIMA<sup>®</sup>  
(lenvatinib) capsules

4 mg daily dose

Take one 4 mg capsule once daily

30 Day Supply

4 mg daily-dose carton containing 6 cards  
(five 4 mg capsules per card)



Distributed by:  
Eisai Inc., Woodcliff Lake, NJ 07677  
Made in Japan

Take one “Daily Dose”  
of 4 mg each day

INSIDE TOP FLAP PRINTING

(b) (4)

8 mg daily dose

LENVIMA<sup>®</sup>  
(lenvatinib) capsules

203972

LENVIMA<sup>®</sup>  
(lenvatinib) capsules

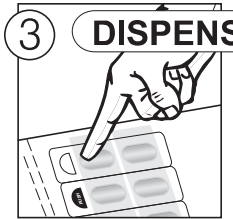
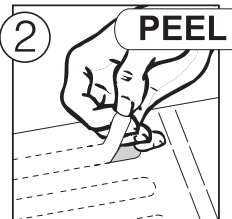
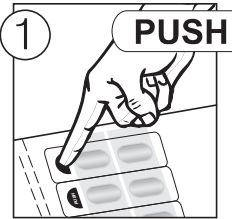
NDC 62856-708-30

Rx only

8 mg daily dose

**Dosing Instructions:**

Take one daily dose: two 4 mg capsules at the same time once daily, with or without food. Continue to take every day until instructed otherwise by your doctor.



Each daily dose consists of 2 capsules: two 4 mg capsules (total dose 8 mg).  
Each capsule contains 4 mg of lenvatinib equivalent to 4.90 mg of lenvatinib mesylate.  
See package insert for dosage information.

Store at 25°C (77°F); excursions permitted to 15 - 30°C (59 - 86°F) [see USP Controlled Room Temperature].

UNVARNISHED LOT/EXP AREA



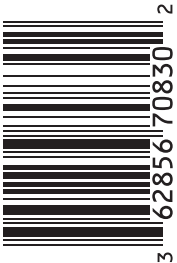
1 2 3 2 4 3

123243

8 mg daily dose

30 Day Supply

LENVIMA<sup>®</sup>  
(lenvatinib) capsules



3 62856 70830 2

Rx only

NDC 62856-708-30

LENVIMA<sup>®</sup>  
(lenvatinib) capsules

8 mg daily dose

Take two 4 mg capsules once daily

30 Day Supply

8 mg daily-dose carton containing 6 cards  
(ten 4 mg capsules per card)



Distributed by:  
Eisai Inc., Woodcliff Lake, NJ 07677  
Made in Japan

Take one “Daily Dose”  
of 8 mg each day

INSIDE TOP FLAP PRINTING

(b) (4)

10 mg daily dose

LENVIMA<sup>®</sup>  
(lenvatinib) capsules

203974

LENVIMA<sup>®</sup>  
(lenvatinib) capsules

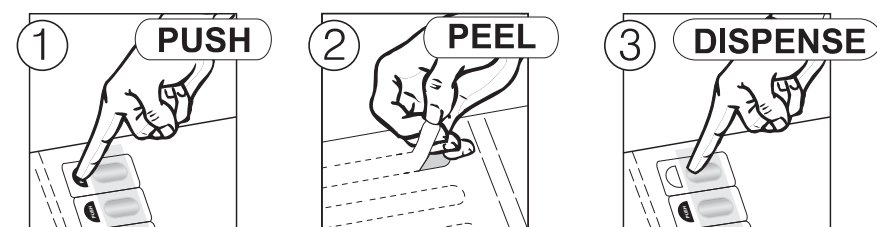
NDC 62856-710-30

Rx only

10 mg daily dose

**Dosing Instructions:**

Take one daily dose: one 10 mg capsule at the same time once daily, with or without food. Continue to take every day until instructed otherwise by your doctor.



1. Push through black half circle.

2. Turn card over and peel tab to expose foil.

3. Turn card over and push on END of plastic blister to dispense.

Each daily dose consists of 1 capsule: one 10 mg capsule (total dose 10 mg). Each capsule contains 10 mg of lenvatinib equivalent to 12.25 mg of lenvatinib mesylate.

See package insert for dosage information.

Store at 25°C (77°F); excursions permitted to 15-30°C (59-86°F) [see USP Controlled Room Temperature].

UNVARNISHED LOT/EXP AREA

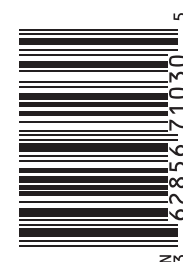


1 2 3 2 3 7

10 mg daily dose

30 Day Supply

LENVIMA<sup>®</sup>  
(lenvatinib) capsules



123237

Rx only

NDC 62856-710-30

LENVIMA<sup>®</sup>  
(lenvatinib) capsules

10 mg daily dose

Take one 10 mg capsule once daily

30 Day Supply

10 mg daily-dose carton containing 6 cards  
(five 10 mg capsules per card)

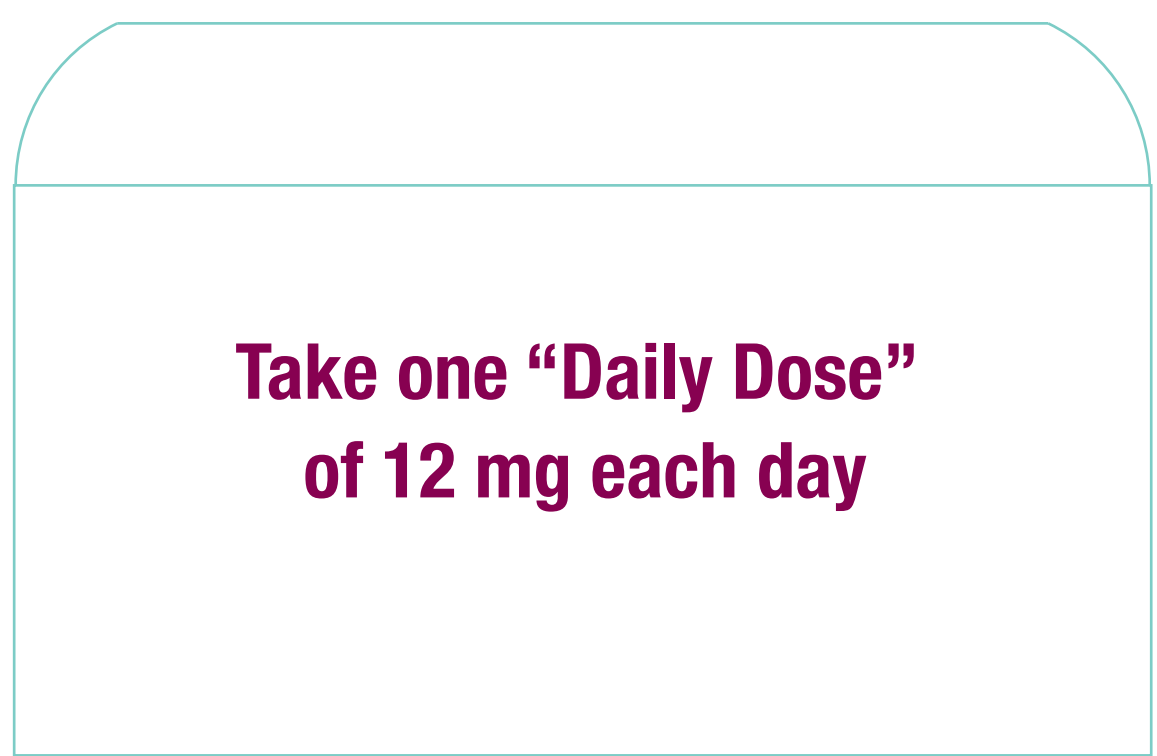


Distributed by:  
Eisai Inc., Woodcliff Lake, NJ 07677  
Made in Japan

Take one “Daily Dose”  
of 10 mg each day

INSIDE TOP FLAP PRINTING

(b) (4)



INSIDE TOP FLAP PRINTING



(b) (4)

14 mg daily dose

LENVIMA<sup>®</sup>  
(lenvatinib) capsules

203966

LENVIMA<sup>®</sup>  
(lenvatinib) capsules

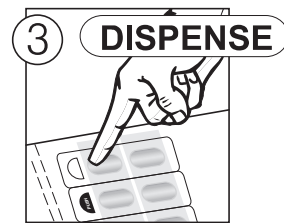
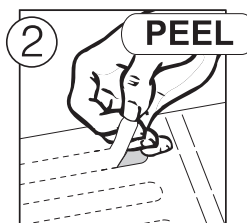
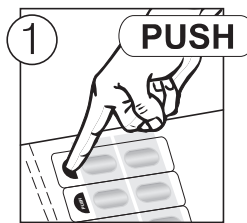
NDC 62856-714-30

Rx only

14 mg daily dose

**Dosing Instructions:**

Take one daily dose: one 10 mg capsule and one 4 mg capsule at the same time once daily, with or without food. Continue to take every day until instructed otherwise by your doctor.



1. Push through black half circle.

2. Turn card over and peel tab to expose foil.

3. Turn card over and push on END of plastic blister to dispense.

Each daily dose consists of 2 capsules: one 10 mg capsule and one 4 mg capsule (total dose 14 mg). Each 10 mg capsule contains 10 mg of lenvatinib equivalent to 12.25 mg of lenvatinib mesylate. Each 4 mg capsule contains 4 mg of lenvatinib equivalent to 4.90 mg of lenvatinib mesylate.

See package insert for dosage information.

Store at 25°C (77°F); excursions permitted to 15-30°C (59-86°F) [see USP Controlled Room Temperature].

UNVARNISHED LOT/EXP AREA

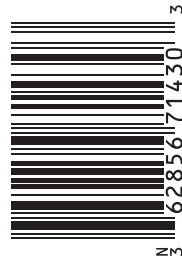


123239

14 mg daily dose

30 Day Supply

LENVIMA<sup>®</sup>  
(lenvatinib) capsules



NDC 62856-714-30

Rx only

NDC 62856-714-30

LENVIMA<sup>®</sup>  
(lenvatinib) capsules

14 mg daily dose

Take one 10 mg capsule and one 4 mg capsule together once daily

30 Day Supply

14 mg daily-dose carton containing 6 cards  
(five 10 mg capsules and five 4 mg capsules per card)



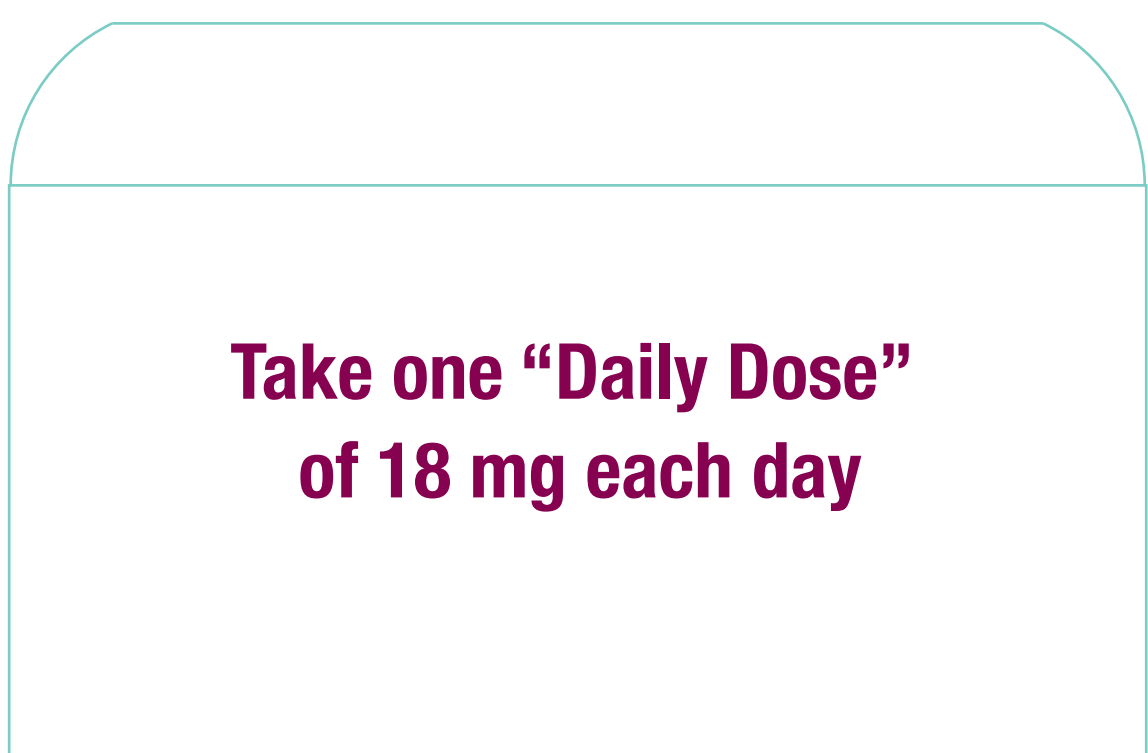
Distributed by:  
Eisai Inc., Woodcliff Lake, NJ 07677  
Made in Japan

Take one “Daily Dose”  
of 14 mg each day

INSIDE TOP FLAP PRINTING

(b) (4)





INSIDE TOP FLAP PRINTING



(b) (4)

203964

LENVIMA<sup>®</sup>  
(lenvatinib) capsules

20 mg daily dose

LENVIMA<sup>®</sup>  
(lenvatinib) capsules

20 mg daily dose

Dosing Instructions:

Take one daily dose: two 10 mg capsules at the same time once daily, with or without food. Continue to take every day until instructed otherwise by your doctor.

1

PUSH



2

PEEL



3

DISPENSE



1. Push through black half circle.

2. Turn card over and peel tab to expose foil.

3. Turn card over and push on END of plastic blister to dispense.

Each daily dose consists of 2 capsules: two 10 mg capsules (total dose 20 mg). Each capsule contains 10 mg of lenvatinib equivalent to 12.25 mg of lenvatinib mesylate.

See package insert for dosage information.

Store at 25°C (77°F); excursions permitted to 15-30°C (59-86°F) [see USP Controlled Room Temperature].

UNVARNISHED LOT/EXP AREA

123241

20 mg daily dose

30 Day Supply

Rx only

NDC 62856-720-30

LENVIMA<sup>®</sup>  
(lenvatinib) capsules

20 mg daily dose

Take two 10 mg capsules once daily

30 Day Supply

20 mg daily-dose carton containing 6 cards  
(ten 10 mg capsules per card)

Eisai

Distributed by:  
Eisai Inc., Woodcliff Lake, NJ 07677  
Made in Japan

Take one “Daily Dose”  
of 20 mg each day

INSIDE TOP FLAP PRINTING

**LENVIMA®** (lenvatinib) capsules

**LENVIMA®**  
(lenvatinib) capsules

**Rx only**


**Dosing Instructions:**

**3. Turn card over and push on END of plastic blister to dispense.**

See package insert for dosage information.

UNVARNISHED LOT/EXP AREA

**LENVIMA®**  
(lenvatinib) capsules



9 780762 758229

**Rx only**

NDC 62856-724-30

**LENVIMA<sup>®</sup>**  
(lenvatinib) capsules

## 24 mg daily dose

**Take two 10 mg capsules and one 4 mg capsule together once daily**

## 30 Day Supply

**24 mg daily-dose carton containing 6 cards  
(ten 10 mg capsules and five 4 mg capsules per card)**



Distributed by:  
Eisai Inc., Woodcliff Lake, NJ 07677  
Made in Japan

**Take one “Daily Dose”  
of 24 mg each day**

## INSIDE TOP FLAP PRINTING

(b) (4)





123242

Take both capsules at the same time daily

Take both capsules at the same time daily

Take both capsules at the same time daily

Take both capsules at the same time daily

Take both capsules at the same time daily

4 mg

4 mg

Record Start Date

4 mg

4 mg

Daily Dose

Daily Dose

Daily Dose

Daily Dose

Daily Dose

NDC 62856-708-05

LENVIMA® (lenvatinib) capsules

Each 5 Day Card contains ten 4 mg capsules

Take two 4 mg capsules once daily

8 mg daily dose

LENVIMA®  
(lenvatinib) capsules

Rx only  
NDC 62856-708-05

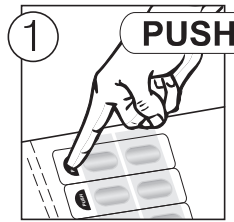
LENVIMA®  
(lenvatinib) capsules

NDC 62856-708-05  
Rx only

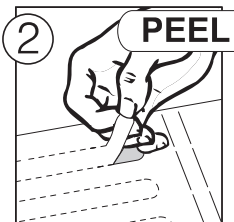
8 mg daily dose

Dosing Instructions:

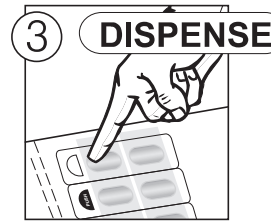
Take one daily dose: two 4 mg capsules at the same time once daily, with or without food. Continue to take every day until instructed otherwise by your doctor.



1. Push through black half circle.



2. Turn card over and peel tab to expose foil.



3. Turn card over and push on END of plastic blister to dispense.

Each daily dose consists of 2 capsules: two 4 mg capsules (total dose 8 mg). Each capsule contains 4 mg of lenvatinib equivalent to 4.90 mg of lenvatinib mesylate.

See package insert for dosage information.

Store at 25°C (77°F); excursions permitted to 15 - 30°C (59 - 86°F) [see USP Controlled Room Temperature].

203977



123246

Take one capsule at the same time daily

Take one capsule at the same time daily

Take one capsule at the same time daily

Take one capsule at the same time daily

Take one capsule at the same time daily

4 mg

4 mg

Record Start Date

Daily Dose

Daily Dose

Daily Dose

Daily Dose

Daily Dose

Each 5 Day Card contains five 4 mg capsules



Distributed by:  
Eisai Inc., Woodcliff Lake, NJ 07677  
Made in Japan

Take one 4 mg capsule once daily

4 mg daily dose

LENVIMA<sup>®</sup>  
(lenvatinib) capsules

NDC 62856-704-05  
Rx only

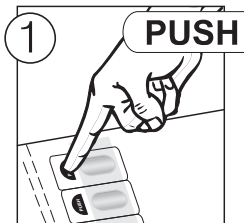
LENVIMA<sup>®</sup>  
(lenvatinib) capsules

NDC 62856-704-05  
Rx only

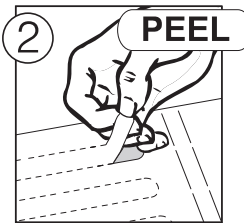
4 mg daily dose

Dosing Instructions:

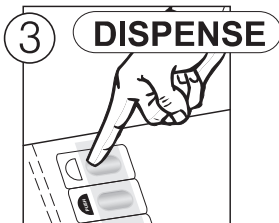
Take one daily dose: one 4 mg capsule at the same time once daily, with or without food. Continue to take every day until instructed otherwise by your doctor.



1. Push through black half circle.



2. Turn card over and peel tab to expose foil.



3. Turn card over and push on END of plastic blister to dispense.

Each daily dose consists of 1 capsule: one 4 mg capsule (total dose 4 mg). Each capsule contains 4 mg of lenvatinib equivalent to 4.90 mg of lenvatinib mesylate.

See package insert for dosage information.

Store at 25°C (77°F); excursions permitted to 15-30°C (59-86°F) [see USP Controlled Room Temperature].

203975

Distributed by:  
Eisai Inc., Woodcliff Lake, NJ 07677  
Made in Japan



Each 5 Day Card contains  
five 10 mg capsules

Take one 10 mg capsule once daily

10 mg daily dose

LENVIMA<sup>®</sup>  
(lenvatinib) capsules

Rx only  
NDC 62856-710-05

LENVIMA<sup>®</sup> (lenvatinib) capsules

NDC 62856-710-05



123236

Take one capsule at the same time daily

Take one capsule at the same time daily

Take one capsule at the same time daily

Take one capsule at the same time daily

Take one capsule at the same time daily

10 mg

10 mg

Record Start  
Date

Daily  
Dose

Daily  
Dose

Daily  
Dose

Daily  
Dose

Daily  
Dose

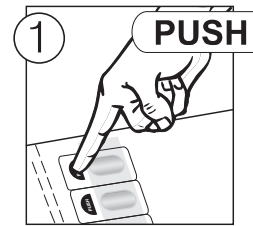
LENVIMA<sup>®</sup>  
(lenvatinib) capsules

NDC 62856-710-05  
Rx only

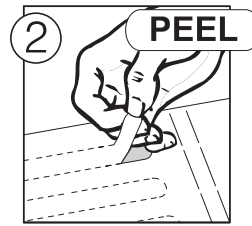
10 mg daily dose

#### Dosing Instructions:

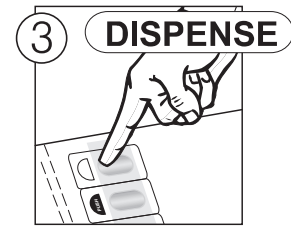
Take one daily dose: one 10 mg capsule at the same time once daily, with or without food. Continue to take every day until instructed otherwise by your doctor.



1. Push through black half circle.



2. Turn card over and peel tab to expose foil.



3. Turn card over and push on END of plastic blister to dispense.

Each daily dose consists of 1 capsule: one 10 mg capsule (total dose 10 mg). Each capsule contains 10 mg of lenvatinib equivalent to 12.25 mg of lenvatinib mesylate.

See package insert for dosage information.

Store at 25°C (77°F); excursions permitted to 15-30°C (59-86°F) [see USP Controlled Room Temperature].

203973

(b) (4)

**Each 5 Day Card contains fifteen 4 mg capsules**

**Take three 4 mg capsules once daily**

# 12 mg daily dose

**LENVIMA®** (lenvatinib) capsules

**Rx only**  
NDC 62856-712-05

**LENVIMA®** (lenvatinib) capsules

NDC 62856-712-05



123248

**Take all three capsules at the same time daily**

**Take all three capsules at the same time daily**

**Take all three capsules at the same time daily**

**Take all three capsules at the same time daily**

**Take all three capsules at the same time daily**

4 m

4 m

4 m

**4 mg**

**4 mg**

**4 mg**

Record Start  
Date

Daily Dose

**Daily Dose**

**Daily Dose**

**Daily Dose**

**Daily Dose**

**LENVIMA®**  
(lenvatinib) capsules

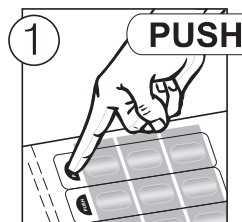
NDC 62856-712-05

**Rx only**

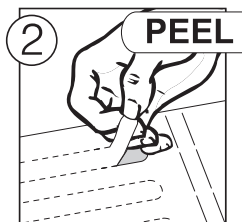
## 12 mg daily dose

### Dosing Instructions:

Take one daily dose: three 4 mg capsules at the same time once daily, with or without food. Continue to take every day until instructed otherwise by your doctor.



**1. Push through black half circle.**



**2. Turn card over and peel tab to expose foil.**



**3. Turn card over and push on END of plastic blister to dispense.**

Each daily dose consists of 3 capsules: three 4 mg capsules (total dose 12 mg). Each 4 mg capsule contains 4 mg of lenvatinib equivalent to 4.90 mg of lenvatinib mesylate.

See package insert for dosage information.

Store at 25°C (77°F); excursions permitted to 15-30°C (59-86°F) [see USP Controlled Room Temperature].

203969

(4)

**Each 5 Day Card contains  
five 10 mg capsules  
and five 4 mg capsules**

**Take one 10 mg capsule and one 4 mg capsule together once daily**

# 14 mg daily dose

**LENVIMA®** (lenvatinib) capsules

Rx only

NDC 62856-714-05

NDC 62856-714-05

**LENVIMA®** (lenvatinib) capsules



123244

**Take both capsules at the same time daily**

**Take both capsules at the same time daily**

**Take both capsules at the same time daily**

**Take both capsules at the same time daily**

**Take both capsules at the same time daily**

10 mg

4 mg

Record Start  
Date

**10 mg**

**4 mg**

**Daily Dose**

Daily Dose

**Daily Dose**

Daily Dose

**Daily Dose**

**LENVIMA®**  
(lenvatinib) capsules

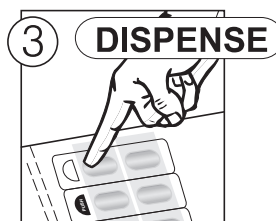
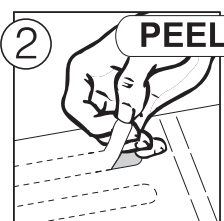
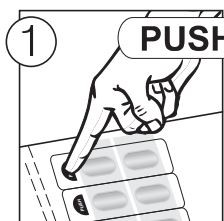
NDC 62856-714-05

**Rx only**

## 14 mg daily dose

### Dosing Instructions:

Take one daily dose: one 10 mg capsule and one 4 mg capsule at the same time once daily, with or without food. Continue to take every day until instructed otherwise by your doctor.



**1. Push through black half circle.**

**2. Turn card over and peel tab to expose foil.**

**3. Turn card over and push on END of plastic blister to dispense.**

Each daily dose consists of 2 capsules: one 10 mg capsule and one 4 mg capsule (total dose 14 mg). Each 10 mg capsule contains 10 mg of lenvatinib equivalent to 12.25 mg of lenvatinib mesylate. Each 4 mg capsule contains 4 mg of lenvatinib equivalent to 4.90 mg of lenvatinib mesylate.

See package insert for dosage information.

Store at 25°C (77°F); excursions permitted to 15-30°C (59-86°F) [see USP Controlled Room Temperature].

203971

(b) (4)



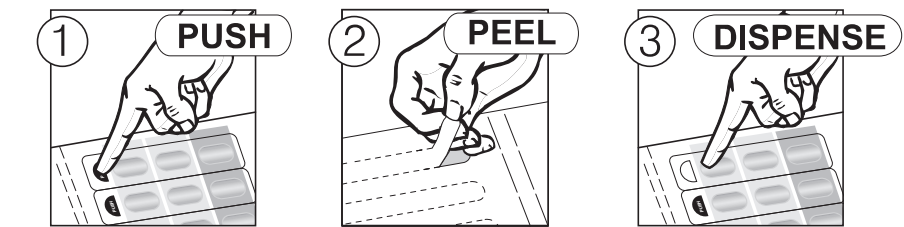
LENVIMA<sup>®</sup> (lenvatinib) capsules  
NDC 62856-718-05  
Rx only

LENVIMA<sup>®</sup>  
(lenvatinib) capsules

18 mg daily dose

**Dosing Instructions:**

Take one daily dose: one 10 mg capsule and two 4 mg capsules at the same time once daily, with or without food. Continue to take every day until instructed otherwise by your doctor.



1. Push through black half circle.
2. Turn card over and peel tab to expose foil.
3. Turn card over and push on END of plastic blister to dispense.

Each daily dose consists of 3 capsules: one 10 mg capsule and two 4 mg capsules (total dose 18 mg). Each 10 mg capsule contains 10 mg of lenvatinib equivalent to 12.25 mg of lenvatinib mesylate. Each 4 mg capsule contains 4 mg of lenvatinib equivalent to 4.90 mg of lenvatinib mesylate.

See package insert for dosage information.

Store at 25°C (77°F); excursions permitted to 15 - 30°C (59 - 86°F) [see USP Controlled Room Temperature].

Each 5 Day Card contains  
five 10 mg capsules  
and ten 4 mg capsules

Take one 10 mg capsule and two  
4 mg capsules together once daily

18 mg daily dose

LENVIMA<sup>®</sup>  
(lenvatinib) capsules

NDC 62856-718-05  
Rx only

NDC 62856-718-05

Rx only

LENVIMA<sup>®</sup> (lenvatinib) capsules

NDC 62856-718-05

Record Start  
Date

Daily  
Dose

Daily  
Dose

Daily  
Dose

Daily  
Dose

Daily  
Dose

10 mg

4 mg

4 mg

10 mg

4 mg

4 mg

Take all three capsules at the same time daily

Take all three capsules at the same time daily

Take all three capsules at the same time daily

Take all three capsules at the same time daily

Take all three capsules at the same time daily

123244



LENVIMA®  
(lenvatinib) capsules

Rx only  
NDC 62856-720-05

20 mg daily dose

Take two 10 mg capsules once daily

Each 5 Day Card contains  
ten 10 mg capsules



Distributed by:  
Eisai Inc., Woodcliff Lake, NJ 07677  
Made in Japan

LENVIMA® (lenvatinib) capsules

NDC 62856-720-05



123240

Take both capsules at the same time daily

Take both capsules at the same time daily

Take both capsules at the same time daily

Take both capsules at the same time daily

Take both capsules at the same time daily

10 mg

10 mg

Record Start  
Date

10 mg

10 mg

Daily  
Dose

Daily  
Dose

Daily  
Dose

Daily  
Dose

Daily  
Dose

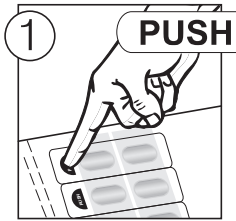
LENVIMA®  
(lenvatinib) capsules

NDC 62856-720-05  
Rx only

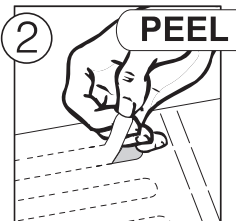
20 mg daily dose

#### Dosing Instructions:

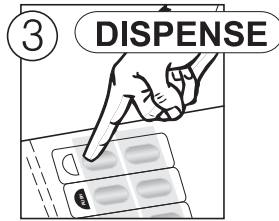
Take one daily dose: two 10 mg capsules at the same time once daily, with or without food. Continue to take every day until instructed otherwise by your doctor.



1. Push through black half circle.



2. Turn card over and peel tab to expose foil.



3. Turn card over and push on END of plastic blister to dispense.

Each daily dose consists of 2 capsules: two 10 mg capsules (total dose 20 mg). Each capsule contains 10 mg of lenvatinib equivalent to 12.25 mg of lenvatinib mesylate.

See package insert for dosage information.

Store at 25°C (77°F); excursions permitted to 15-30°C (59-86°F) [see USP Controlled Room Temperature].

203963

LENVIMA<sup>®</sup>  
(lenvatinib) capsules

NDC 62856-724-05  
Rx only

24 mg daily dose

Take two 10 mg capsules and one  
4 mg capsule together once daily

Each 5 Day Card contains  
ten 10 mg capsules  
and five 4 mg capsules



Distributed by:  
Eisai Inc., Woodcliff Lake, NJ 07677  
Made in Japan

LENVIMA<sup>®</sup> (lenvatinib) capsules

NDC 62856-724-05



123250

Take all three capsules at the same time daily

Take all three capsules at the same time daily

Take all three capsules at the same time daily

Take all three capsules at the same time daily

Take all three capsules at the same time daily

10 mg

10 mg

4 mg

Record Start  
Date

10 mg

10 mg

4 mg

Daily  
Dose

Daily  
Dose

Daily  
Dose

Daily  
Dose

Daily  
Dose

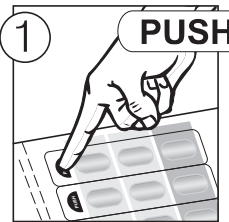

LENVIMA<sup>®</sup>  
(lenvatinib) capsules

NDC 62856-724-05  
Rx only

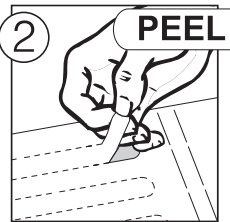
24 mg daily dose

Dosing Instructions:

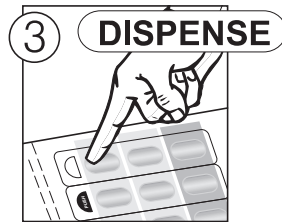
Take one daily dose: two 10 mg capsules and one 4 mg capsule at the same time once daily, with or without food. Continue to take every day until instructed otherwise by your doctor.



1. Push through black half circle.



2. Turn card over and peel tab to expose foil.



3. Turn card over and push on END of plastic blister to dispense.

Each daily dose consists of 3 capsules: two 10 mg capsules and one 4 mg capsule (total dose 24 mg). Each 10 mg capsule contains 10 mg of lenvatinib equivalent to 12.25 mg of lenvatinib mesylate. Each 4 mg capsule contains 4 mg of lenvatinib equivalent to 4.90 mg of lenvatinib mesylate.

See package insert for dosage information.

Store at 25°C (77°F); excursions permitted to 15-30°C (59-86°F) [see USP Controlled Room Temperature].

203965

(b) (4)



Ramesh  
Raghavachari

Digitally signed by Ramesh Raghavachari  
Date: 4/23/2020 02:05:02PM  
GUID: 502d0913000029f375128b0de8c50020