

Adverse Reaction	Severity of Adverse Reaction¹	Dosage Modifications
	AST or ALT more than 8 times the upper limit of normal or total bilirubin more than 3 times the upper limit of normal	Permanently discontinue
Colitis or diarrhea [<i>see Warnings and Precautions (5.3)</i>]	Grade 2 or 3	Withhold dose until Grade 1 or resolved and corticosteroid dose is less than or equal to prednisone 10 mg per day (or equivalent)
	Grade 4	Permanently discontinue
Endocrinopathies (including but not limited to hypophysitis, adrenal insufficiency, hyperthyroidism, and type 1 diabetes mellitus) [<i>see Warnings and Precautions (5.4)</i>]	Grade 2, 3, or 4	Withhold dose until Grade 1 or resolved and clinically stable on hormone replacement therapy.
Other immune-mediated adverse reactions involving a major organ [<i>see Warnings and Precautions (5.5)</i>]	Grade 3	Withhold dose until Grade 1 or resolved and corticosteroid dose is less than or equal to prednisone 10 mg per day (or equivalent)
	Grade 4	Permanently discontinue
Infections [<i>see Warnings and Precautions (5.6)</i>]	Grade 3 or 4	Withhold dose until Grade 1 or resolved
Infusion-Related Reactions [<i>see Warnings and Precautions (5.7)</i>]	Grade 1 or 2	Interrupt or slow the rate of infusion
	Grade 3 or 4	Permanently discontinue
Persistent Grade 2 or 3 adverse reaction (excluding endocrinopathies)	Grade 2 or 3 adverse reaction that does not recover to Grade 0 or 1 within 12 weeks after last TECENTRIQ dose	Permanently discontinue
Inability to taper corticosteroid	Inability to reduce to less than or equal to prednisone 10 mg per day (or equivalent) within 12 weeks after last TECENTRIQ dose	Permanently discontinue
Recurrent Grade 3 or 4 adverse reaction	Recurrent Grade 3 or 4 (severe or life-threatening) adverse reaction	Permanently discontinue

¹ National Cancer Institute Common Terminology Criteria for Adverse Events (NCI CTCAE) version 4.0

Dermatologic: bullous dermatitis, pemphigoid, erythema multiforme, Stevens Johnson Syndrome (SJS)/toxic epidermal necrolysis (TEN).

Gastrointestinal: pancreatitis, including increases in serum amylase or lipase levels

General: systemic inflammatory response syndrome, histiocytic necrotizing lymphadenitis

Hematological: autoimmune hemolytic anemia, immune thrombocytopenic purpura.

Musculoskeletal: myositis, rhabdomyolysis.

Neurological: Guillain-Barre syndrome, myasthenia syndrome/myasthenia gravis, demyelination, immune-related meningoencephalitis, aseptic meningitis, encephalitis, facial and abducens nerve paresis, polymyalgia rheumatica, autoimmune neuropathy, and Vogt-Koyanagi-Harada syndrome.

Ophthalmological: uveitis, iritis.

Renal: nephrotic syndrome, nephritis.

Vascular: vasculitis

5.6 Infections

TECENTRIQ can cause severe infections including fatal cases. Monitor patients for signs and symptoms of infection. For Grade 3 or higher infections, withhold TECENTRIQ and resume once clinically stable [see *Dosage and Administration (2.6)* and *Adverse Reactions (6.1)*].

In clinical studies enrolling 2616 patients with various cancers who received TECENTRIQ as a single-agent [see *Adverse Reactions (6.1)*], infections occurred in 42% of patients, including Grade 3 (8.7%), Grade 4 (1.5%), and Grade 5 (1%). In patients with urothelial carcinoma, the most common Grade 3 or higher infection was urinary tract infections, occurring in 6.5% of patients. In patients with NSCLC, the most common Grade 3 or higher infection was pneumonia, occurring in 3.8% of patients. The frequency and severity of infections were similar whether TECENTRIQ was given as a single-agent in patients with various cancers or in combination with other antineoplastic drugs in NSCLC and SCLC.

5.7 Infusion-Related Reactions

TECENTRIQ can cause severe or life-threatening infusion-related reactions. Monitor for signs and symptoms of infusion-related reactions. Interrupt, slow the rate of, or permanently discontinue TECENTRIQ based on the severity [see *Dosage and Administration (2.6)*]. For Grade 1 or 2 infusion-related reactions, consider using pre-medications with subsequent doses.

In clinical studies enrolling 2616 patients with various cancers who received TECENTRIQ as a single-agent [see *Adverse Reactions (6.1)*], infusion-related reactions occurred in 1.3% of patients, including Grade 3 (0.2%). The frequency and severity of infusion-related reactions were similar whether TECENTRIQ was given as a single-agent in patients with various cancers, in combination with other antineoplastic drugs in NSCLC and SCLC, and across the recommended dose range (840 mg Q2W to 1680 mg Q4W).

5.8 Embryo-Fetal Toxicity

Based on its mechanism of action, TECENTRIQ can cause fetal harm when administered to a pregnant woman. There are no available data on the use of TECENTRIQ in pregnant women. Animal studies have demonstrated that inhibition of the PD-L1/PD-1 pathway can lead to increased risk of immune-related rejection of the developing fetus resulting in fetal death.

Verify pregnancy status of females of reproductive potential prior to initiating TECENTRIQ. Advise females of reproductive potential of the potential risk to a fetus. Advise females of

reproductive potential to use effective contraception during treatment with TECENTRIQ and for at least 5 months after the last dose [see *Use in Specific Populations (8.1, 8.3)*].

6 ADVERSE REACTIONS

The following clinically significant adverse reactions are described elsewhere in the labeling:

- Immune-Mediated Pneumonitis [see *Warnings and Precautions (5.1)*]
- Immune-Mediated Hepatitis [see *Warnings and Precautions (5.2)*]
- Immune-Mediated Colitis [see *Warnings and Precautions (5.3)*]
- Immune-Mediated Endocrinopathies [see *Warnings and Precautions (5.4)*]
- Other Immune-Mediated Adverse Reactions [see *Warnings and Precautions (5.5)*]
- Infections [see *Warnings and Precautions (5.6)*]
- Infusion-Related Reactions [see *Warnings and Precautions (5.7)*]

6.1 Clinical Trials Experience

Because clinical trials are conducted under widely varying conditions, adverse reaction rates observed in the clinical trials of a drug cannot be directly compared to rates in the clinical trials of another drug and may not reflect the rates observed in practice.

The data described in WARNINGS AND PRECAUTIONS reflect exposure to TECENTRIQ as a single-agent in 2616 patients in two randomized, active-controlled studies (POPLAR, OAK) and four open-label, single arm studies (PCD4989g, IMvigor210, BIRCH, FIR) which enrolled 524 patients with metastatic urothelial carcinoma, 1636 patients with metastatic NSCLC, and 456 patients with other tumor types. TECENTRIQ was administered at a dose of 1200 mg intravenously every 3 weeks in all studies except PCD4989g. Among the 2616 patients who received a single-agent TECENTRIQ, 36% were exposed for longer than 6 months and 20% were exposed for longer than 12 months. Using the dataset described for patients who received TECENTRIQ as a single-agent, the most common adverse reactions in $\geq 20\%$ of patients were fatigue/asthenia (48%), decreased appetite (25%), nausea (24%), cough (22%), and dyspnea (22%).

In addition, the data reflect exposure to TECENTRIQ in combination with other antineoplastic drugs in 2421 patients with NSCLC (N = 2223) or SCLC (N = 198) enrolled in five randomized, active-controlled trials, including IMpower150, IMpower130 and IMpower133. Among the 2421 patients, 53% were exposed to TECENTRIQ for longer than 6 months and 29% were exposed to TECENTRIQ for longer than 12 months. Among the 2421 patients with NSCLC and SCLC who received TECENTRIQ in combination with other antineoplastic drugs, the most common adverse reactions in $\geq 20\%$ of patients were fatigue/asthenia (49%), nausea (38%), alopecia (35%), constipation (29%), diarrhea (28%) and decreased appetite (27%).

Urothelial Carcinoma

Cisplatin-Ineligible Patients with Locally Advanced or Metastatic Urothelial Carcinoma

The safety of TECENTRIQ was evaluated in IMvigor 210 (Cohort 1), a multicenter, open-label, single-arm trial that included 119 patients with locally advanced or metastatic urothelial carcinoma who were ineligible for cisplatin-containing chemotherapy and were either previously untreated or had disease progression at least 12 months after neoadjuvant or adjuvant chemotherapy [see *Clinical Studies (14.1)*]. Patients received TECENTRIQ 1200 mg intravenously every 3 weeks until either unacceptable toxicity or disease progression. The median duration of exposure was 15 weeks (0 to 87 weeks).

Five patients (4.2%) who were treated with TECENTRIQ experienced one of the following events which led to death: sepsis, cardiac arrest, myocardial infarction, respiratory failure, or respiratory distress. One additional patient (0.8%) was experiencing herpetic meningoencephalitis and disease progression at the time of death.

Serious adverse reactions occurred in 37% of patients. The most frequent serious adverse reactions ($\geq 2\%$) were diarrhea, intestinal obstruction, sepsis, acute kidney injury, and renal failure.

TECENTRIQ was discontinued for adverse reactions in 4.2% of patients. The adverse reactions leading to discontinuation were diarrhea/colitis (1.7%), fatigue (0.8%), hypersensitivity (0.8%), and dyspnea (0.8%).

Adverse reactions leading to interruption occurred in 35% of patients; the most common ($\geq 1\%$) were intestinal obstruction, fatigue, diarrhea, urinary tract infection, infusion-related reaction, cough, abdominal pain, peripheral edema, pyrexia, respiratory tract infection, upper respiratory tract infection, creatinine increase, decreased appetite, hyponatremia, back pain, pruritus, and venous thromboembolism.

Tables 2 and 3 summarize the adverse reactions and Grades 3–4 selected laboratory abnormalities, respectively, in patients who received TECENTRIQ in IMvigor210 (Cohort 1).

Table 2: Adverse Reactions in $\geq 10\%$ of Patients with Urothelial Carcinoma in IMvigor210 (Cohort 1)

Adverse Reaction	TECENTRIQ N = 119	
	All Grades (%)	Grades 3–4 (%)
General		
Fatigue ¹	52	8
Peripheral edema ²	17	2
Pyrexia	14	0.8
Gastrointestinal		
Diarrhea ³	24	5
Nausea	22	2
Vomiting	16	0.8
Constipation	15	2
Abdominal pain ⁴	15	0.8
Metabolism and Nutrition		
Decreased appetite ⁵	24	3
Musculoskeletal and Connective Tissue		
Back/Neck pain	18	3
Arthralgia	13	0
Skin and Subcutaneous Tissue		
Pruritus	18	0.8

Adverse Reaction	TECENTRIQ N = 119	
	All Grades (%)	Grades 3–4 (%)
Rash ⁶	17	0.8
Infections		
Urinary tract infection ⁷	17	5
Respiratory, Thoracic, and Mediastinal		
Cough ⁸	14	0
Dyspnea ⁹	12	0

¹ Includes fatigue, asthenia, lethargy, and malaise

² Includes edema peripheral, scrotal edema, lymphedema, and edema

³ Includes diarrhea, colitis, frequent bowel movements, autoimmune colitis

⁴ Includes abdominal pain, upper abdominal pain, lower abdominal pain, and flank pain

⁵ Includes decreased appetite and early satiety

⁶ Includes rash, dermatitis, dermatitis acneiform, rash maculo-papular, rash erythematous, rash pruritic, rash macular, and rash papular

⁷ Includes urinary tract infection, urinary tract infection bacterial, cystitis, and urosepsis

⁸ Includes cough and productive cough

⁹ Includes dyspnea and exertional dyspnea

Table 3: Grades 3–4 Laboratory Abnormalities in ≥ 1% of Patients with Urothelial Carcinoma in IMvigor210 (Cohort 1)

Laboratory Abnormality	Grades 3–4 (%)
Chemistry	
Hyponatremia	15
Hyperglycemia	10
Increased Alkaline Phosphatase	7
Increased Creatinine	5
Hypophosphatemia	4
Increased ALT	4
Increased AST	4
Hyperkalemia	3
Hypermagnesemia	3
Hyperbilirubinemia	3
Hematology	
Lymphopenia	9
Anemia	7

Graded per NCI CTCAE v4.0.

Previously Treated Locally Advanced or Metastatic Urothelial Carcinoma

The safety of TECENTRIQ was evaluated in IMvigor210 (Cohort 2), a multicenter, open-label, single-arm trial that included 310 patients with locally advanced or metastatic urothelial carcinoma who had disease progression during or following at least one platinum-containing chemotherapy regimen or who had disease progression within 12 months of treatment with a platinum-containing neoadjuvant or adjuvant chemotherapy regimen [see *Clinical Studies (14.1)*]. Patients received TECENTRIQ 1200 mg intravenously every 3 weeks until unacceptable toxicity or either radiographic or clinical progression. The median duration of exposure was 12.3 weeks (0.1 to 46 weeks).

Three patients (1%) who were treated with TECENTRIQ experienced one of the following events which led to death: sepsis, pneumonitis, or intestinal obstruction.

TECENTRIQ was discontinued for adverse reactions in 3.2% of patients. Sepsis led to discontinuation in 0.6% of patients.

Serious adverse reactions occurred in 45% of patients. The most frequent serious adverse reactions (> 2%) were urinary tract infection, hematuria, acute kidney injury, intestinal obstruction, pyrexia, venous thromboembolism, urinary obstruction, pneumonia, dyspnea, abdominal pain, sepsis, and confusional state.

Adverse reactions leading to interruption occurred in 27% of patients; the most common (> 1%) were liver enzyme increase, urinary tract infection, diarrhea, fatigue, confusional state, urinary obstruction, pyrexia, dyspnea, venous thromboembolism, and pneumonitis.

Tables 4 and 5 summarize the adverse reactions and Grades 3–4 selected laboratory abnormalities, respectively, in patients who received TECENTRIQ in IMvigor210 (Cohort 2).

Table 4: Adverse Reactions in ≥ 10% of Patients with Urothelial Carcinoma in IMvigor210 (Cohort 2)

Adverse Reaction	TECENTRIQ N = 310	
	All Grades (%)	Grades 3–4 (%)
General		
Fatigue	52	6
Pyrexia	21	1
Peripheral edema	18	1
Metabolism and Nutrition		
Decreased appetite	26	1
Gastrointestinal		
Nausea	25	2
Constipation	21	0.3
Diarrhea	18	1
Abdominal pain	17	4
Vomiting	17	1
Infections		
Urinary tract infection	22	9

Adverse Reaction	TECENTRIQ N = 310	
	All Grades (%)	Grades 3–4 (%)
Respiratory, Thoracic, and Mediastinal		
Dyspnea	16	4
Cough	14	0.3
Musculoskeletal and Connective Tissue		
Back/Neck pain	15	2
Arthralgia	14	1
Skin and Subcutaneous Tissue		
Rash	15	0.3
Pruritus	13	0.3
Renal and Urinary		
Hematuria	14	3

Table 5: Grades 3–4 Laboratory Abnormalities in $\geq 1\%$ of Patients with Urothelial Carcinoma in IMvigor210 (Cohort 2)

Laboratory Abnormality	Grades 3–4 (%)
Chemistry	
Hyponatremia	10
Hyperglycemia	5
Increased Alkaline Phosphatase	4
Increased Creatinine	3
Increased ALT	2
Increased AST	2
Hypoalbuminemia	1
Hematology	
Lymphopenia	10
Anemia	8

Graded per NCI CTCAE v4.0.

Non-small Cell Lung Cancer (NSCLC)

IMpower110

The safety of TECENTRIQ was evaluated in IMpower110, a multicenter, international, randomized, open-label study in 549 chemotherapy-naïve patients with stage IV NSCLC, including those with EGFR or ALK genomic tumor aberrations. Patients received TECENTRIQ 1200 mg every 3 weeks (n=286) or platinum-based chemotherapy consisting of carboplatin or cisplatin with either pemetrexed or gemcitabine (n=263) until disease progression or unacceptable toxicity [see *Clinical Studies (14.2)*]. IMpower110 enrolled patients whose tumors

express PD-L1 (PD-L1 stained $\geq 1\%$ of tumor cells [TC] or PD-L1 stained tumor-infiltrating immune cells [IC] covering $\geq 1\%$ of the tumor area). The median duration of exposure to TECENTRIQ was 5.3 months (0 to 33 months).

Fatal adverse reactions occurred in 3.8% of patients receiving TECENTRIQ; these included death (reported as unexplained death and death of unknown cause), aspiration, chronic obstructive pulmonary disease, pulmonary embolism, acute myocardial infarction, cardiac arrest, mechanical ileus, sepsis, cerebral infarction, and device occlusion (1 patient each).

Serious adverse reactions occurred in 28% of patients receiving TECENTRIQ. The most frequent serious adverse reactions ($>2\%$) were pneumonia (2.8%), chronic obstructive pulmonary disease (2.1%) and pneumonitis (2.1%)

TECENTRIQ was discontinued due to adverse reactions in 6% of patients; the most common adverse reactions (≥ 2 patients) leading to TECENTRIQ discontinuation were peripheral neuropathy and pneumonitis.

Adverse reactions leading to interruption of TECENTRIQ occurred in 26% of patients; the most common ($>1\%$) were ALT increased (2.1%), AST increased (2.1%), pneumonitis (2.1%), pyrexia (1.4%), pneumonia (1.4%) and upper respiratory tract infection (1.4%).

Tables 6 and 7 summarize adverse reactions and selected laboratory abnormalities in patients receiving TECENTRIQ in IMpower110.

Table 6: Adverse Reactions Occurring in $\geq 10\%$ of Patients with NSCLC Receiving TECENTRIQ in IMpower110

Adverse Reaction	TECENTRIQ N = 286		Platinum-Based Chemotherapy N = 263	
	All Grades (%)	Grades 3–4*	All Grades*	Grades 3–4 (%)
Gastrointestinal				
Nausea	14	0.3	34	1.9
Constipation	12	1.0	22	0.8
Diarrhea	11	0	12	0.8
General				
Fatigue/asthenia	25	1.4	34	4.2
Pyrexia	14	0	9	0.4
Metabolism and Nutrition				
Decreased appetite	15	0.7	19	0
Respiratory, Thoracic and Mediastinal				
Dyspnea	14	0.7	10	0
Cough	12	0.3	10	0

Graded per NCI CTCAE v4.0

Table 7: Laboratory Abnormalities Worsening from Baseline Occurring in $\geq 20\%$ of Patients Receiving TECENTRIQ in IMpower110

Laboratory Abnormality	TECENTRIQ		Platinum Based Chemotherapy	
	All Grades (%)	Grades 3–4 (%)	All Grades (%)	Grades 3–4 (%)
Hematology				
Anemia	69	1.8	94	20
Lymphopenia	47	9	59	17
Chemistry				
Hypoalbuminemia	48	0.4	39	2
Increased alkaline phosphatase	46	2.5	42	1.2
Hyponatremia	44	9	36	7
Increased ALT	38	3.2	32	0.8
Increased AST	36	3.2	32	0.8
Hyperkalemia	29	3.9	36	2.7
Hypocalcemia	24	1.4	24	2.7
Increased blood creatinine	24	0.7	33	1.5
Hypophosphatemia	23	3.6	21	2

Each test incidence is based on the number of patients who had at least one on-study laboratory measurement available: TECENTRIQ (range: 278-281); platinum-based chemotherapy (range:256-260). Graded per NCI CTCAE v4.0. Increased blood creatinine only includes patients with test results above the normal range.

IMpower150

The safety of TECENTRIQ with bevacizumab, paclitaxel and carboplatin was evaluated in IMpower150, a multicenter, international, randomized, open-label trial in which 393 chemotherapy-naïve patients with metastatic non-squamous NSCLC received TECENTRIQ 1200 mg with bevacizumab 15 mg/kg, paclitaxel 175 mg/m² or 200 mg/m², and carboplatin AUC 6 mg/mL/min intravenously every 3 weeks for a maximum of 4 or 6 cycles, followed by TECENTRIQ 1200 mg with bevacizumab 15 mg/kg intravenously every 3 weeks until disease progression or unacceptable toxicity [see *Clinical Studies (14.2)*]. The median duration of exposure to TECENTRIQ was 8.3 months in patients receiving TECENTRIQ with bevacizumab, paclitaxel, and carboplatin.

Fatal adverse reactions occurred in 6% of patients receiving TECENTRIQ; these included hemoptysis, febrile neutropenia, pulmonary embolism, pulmonary hemorrhage, death, cardiac arrest, cerebrovascular accident, pneumonia, aspiration pneumonia, chronic obstructive pulmonary disease, intracranial hemorrhage, intestinal angina, intestinal ischemia, intestinal obstruction and aortic dissection.

Serious adverse reactions occurred in 44%. The most frequent serious adverse reactions (>2%) were febrile neutropenia, pneumonia, diarrhea, and hemoptysis.

TECENTRIQ was discontinued due to adverse reactions in 15% of patients; the most common adverse reaction leading to discontinuation was pneumonitis (1.8%).

Adverse reactions leading to interruption of TECENTRIQ occurred in 48%; the most common (>1%) were neutropenia, thrombocytopenia, fatigue/asthenia, diarrhea, hypothyroidism, anemia, pneumonia, pyrexia, hyperthyroidism, febrile neutropenia, increased ALT, dyspnea, dehydration and proteinuria.

Tables 8 and 9 summarize adverse reactions and laboratory abnormalities in patients receiving TECENTRIQ with bevacizumab, paclitaxel, and carboplatin in IMpower150.

Table 8: Adverse Reactions Occurring in ≥15% of Patients with NSCLC Receiving TECENTRIQ in IMpower150

Adverse Reaction	TECENTRIQ with Bevacizumab, Paclitaxel, and Carboplatin N = 393		Bevacizumab, Paclitaxel and Carboplatin N = 394	
	All Grades (%)	Grades 3–4 (%)	All Grades (%)	Grades 3–4 (%)
Nervous System				
Neuropathy ¹	56	3	47	3
Headache	16	0.8	13	0
General				
Fatigue/Asthenia	50	6	46	6
Pyrexia	19	0.3	9	0.5
Skin and Subcutaneous Tissue				
Alopecia	48	0	46	0
Rash ²	23	2	10	0.3
Musculoskeletal and Connective Tissue				
Myalgia/Pain ³	42	3	34	2
Arthralgia	26	1	22	1
Gastrointestinal				
Nausea	39	4	32	2
Diarrhea ⁴	33	6	25	0.5
Constipation	30	0.3	23	0.3
Vomiting	19	2	18	1
Metabolism and Nutrition				
Decreased appetite	29	4	21	0.8
Vascular				
Hypertension	25	9	22	8
Respiratory				
Cough	20	0.8	19	0.3
Epistaxis	17	1	22	0.3
Renal				
Proteinuria ⁵	16	3	15	3

Graded per NCI CTCAE v4.0

¹ Includes neuropathy peripheral, peripheral sensory neuropathy, hypoesthesia, paraesthesia, dysesthesia, polyneuropathy.

² Includes rash, rash maculo-papular, drug eruption, eczema, eczema asteatotic, dermatitis, contact dermatitis, rash erythematous, rash macular, pruritic rash, seborrheic dermatitis, dermatitis psoriasiform.

³ Includes pain in extremity, musculoskeletal chest pain, musculoskeletal discomfort, neck pain, backpain, myalgia, and bone pain.

⁴ Includes diarrhea, gastroenteritis, colitis, enterocolitis.

⁵ Data based on Preferred Terms since laboratory data for proteinuria were not systematically collected.

Table 9: Laboratory Abnormalities Worsening from Baseline Occurring in $\geq 20\%$ of Patients with NSCLC Receiving TECENTRIQ in IMpower150

Laboratory Abnormality	TECENTRIQ with Bevacizumab, Paclitaxel, and Carboplatin		Bevacizumab, Paclitaxel and Carboplatin	
	All Grades (%)	Grades 3–4 (%)	All Grades (%)	Grades 3–4 (%)
Hematology				
Anemia	83	10	83	9
Neutropenia	52	31	45	26
Lymphopenia	48	17	38	13
Chemistry				
Hyperglycemia	61	0	60	0
Increased BUN	52	NA ¹	44	NA ¹
Hypomagnesemia	42	2	36	1
Hypoalbuminemia	40	3	31	2
Increased AST	40	4	28	0.8
Hyponatremia	38	10	36	9
Increased Alkaline Phosphatase	37	2	32	1
Increased ALT	37	6	28	0.5
Increased TSH	30	NA ¹	20	NA ¹
Hyperkalemia	28	3	25	2
Increased Creatinine	28	1	19	2
Hypocalcemia	26	3	21	3
Hypophosphatemia	25	4	18	4
Hypokalemia	23	7	14	4
Hyperphosphatemia	25	NA ¹	19	NA ¹

Each test incidence is based on the number of patients who had both baseline and at least one on-study laboratory measurement available: TECENTRIQ with bevacizumab, paclitaxel, and carboplatin range: 337-380); bevacizumab, paclitaxel, and carboplatin (range: 337-382). Graded per NCI CTCAE v4.0

¹NA = Not applicable. NCI CTCAE does not provide a Grades 3-4 definition for these laboratory abnormalities

IMpower130

The safety of TECENTRIQ with paclitaxel protein-bound and carboplatin was evaluated in IMpower130, a multicenter, international, randomized, open-label trial in which 473 chemotherapy-naïve patients with metastatic non-squamous NSCLC received TECENTRIQ 1200 mg and carboplatin AUC 6 mg/mL/min intravenously on Day 1 and paclitaxel protein-bound 100 mg/m² intravenously on Day 1, 8, and 15 of each 21-day cycle for a maximum of 4 or 6 cycles, followed by TECENTRIQ 1200 mg intravenously every 3 weeks until disease progression or unacceptability toxicity [see *Clinical Studies (14.2)*]. Among patients receiving TECENTRIQ, 55% were exposed for 6 months or longer and 3.5% were exposed for greater than one year.

Fatal adverse reactions occurred in 5.3% of patients receiving TECENTRIQ; these included including pneumonia (1.1%), pulmonary embolism (0.8%), myocardial infarction (0.6%), cardiac arrest (0.4%) and pneumonitis (0.4%) and sepsis, septic shock, staphylococcal sepsis,

aspiration, respiratory distress, cardiorespiratory arrest, ventricular tachycardia, death (not otherwise specified), and hepatic cirrhosis (0.2% each).

Serious adverse reactions occurred in 51% of patients receiving TECENTRIQ. The most frequent serious adverse reactions ($\geq 2\%$) were pneumonia (6%), diarrhea (3%), lung infection (3.0%), pulmonary embolism (3%), chronic obstructive pulmonary disease exacerbation (2.5%), dyspnea (2.3%), and febrile neutropenia (1.9%).

TECENTRIQ was discontinued due to adverse reactions in 13% of patients; the most common adverse reactions leading to discontinuation were pneumonia (0.8%), pulmonary embolism (0.8%), fatigue (0.6%), dyspnea (0.6%), pneumonitis (0.6%), neutropenia (0.4%), nausea (0.4%), renal failure (0.4%), cardiac arrest (0.4%), and septic shock (0.4%).

Adverse reactions leading to interruption of TECENTRIQ occurred in 62% of patients; the most common ($>1\%$) were neutropenia, thrombocytopenia, anemia, diarrhea, fatigue/asthenia, pneumonia, dyspnea, pneumonitis, pyrexia, nausea, acute kidney injury, vomiting, pulmonary embolism, arthralgia, infusion-related reaction, abdominal pain, chronic obstructive pulmonary disease exacerbation, dehydration, and hypokalemia.

Tables 10 and 11 summarize adverse reactions and laboratory abnormalities in patients receiving TECENTRIQ with paclitaxel protein-bound and carboplatin in IMpower130.

Table 10: Adverse Reactions Occurring in $\geq 20\%$ of Patients with NSCLC Receiving TECENTRIQ in IMpower130

Adverse Reaction	TECENTRIQ with Paclitaxel Protein-Bound and Carboplatin N = 473		Paclitaxel Protein-Bound and Carboplatin N = 232	
	All Grades (%)	Grades 3–4 (%)	All Grades (%)	Grades 3–4 (%)
General				
Fatigue/Asthenia	61	11	60	8
Gastrointestinal				
Nausea	50	3.4	46	2.2
Diarrhea ¹	43	6	32	6
Constipation	36	1.1	31	0
Vomiting	27	2.7	19	2.2
Musculoskeletal and Connective Tissue				
Myalgia/Pain ²	38	3	22	0.4
Nervous System				
Neuropathy ³	33	2.5	28	2.2
Respiratory, Thoracic and Mediastinal				
Dyspnea ⁴	32	4.9	25	1.3
Cough	27	0.6	17	0
Skin and Subcutaneous Tissue				
Alopecia	32	0	27	0
Rash ⁵	20	0.6	11	0.9
Metabolism and Nutrition				
Decreased appetite	30	2.1	26	2.2

Graded per NCI CTCAE v4.0

¹ Includes diarrhea, colitis, and gastroenteritis

² Includes back pain, pain in extremity, myalgia, musculoskeletal chest pain, bone pain, neck pain and musculoskeletal discomfort

³ Includes neuropathy peripheral, peripheral sensory neuropathy, hypoesthesia, paresthesia, dysesthesia, polyneuropathy

⁴ Includes dyspnea, dyspnea exertional and wheezing

⁵ Includes rash, rash maculo-papular, eczema, rash pruritic, rash erythematous, dermatitis, dermatitis contact, drug eruption, seborrheic dermatitis and rash macular.

Table 11: Laboratory Abnormalities Worsening from Baseline Occurring in ≥20% of Patients Receiving TECENTRIQ in IMpower130

Laboratory Abnormality	TECENTRIQ with Paclitaxel Protein-Bound and Carboplatin N = 473		Paclitaxel Protein-Bound and Carboplatin N = 232	
	All Grades (%)	Grades 3–4 (%)	All Grades (%)	Grades 3–4 (%)
Hematology				
Anemia	92	33	87	25
Neutropenia	75	50	67	39

Thrombocytopenia	73	19	59	13
Lymphopenia	71	23	61	16
Chemistry				
Hyperglycemia	75	8	66	8
Hypomagnesemia	50	3.4	42	3.2
Hyponatremia	37	9	28	7
Hypoalbuminemia	35	1.3	31	0
Increased ALT	31	2.8	24	3.9
Hypocalcemia	31	2.6	27	1.8
Hypophosphatemia	29	6	20	3.2
Increased AST	28	2.2	24	1.8
Increased TSH	26	NA ¹	5	NA ¹
Hypokalemia	26	6	24	4.4
Increased Alkaline Phosphatase	25	2.6	22	1.3
Increased Blood Creatinine	23	2.8	16	0.4
Hyperphosphatemia	21	NA ¹	13	NA ¹

Each test incidence is based on the number of patients who had both baseline and at least one on-study laboratory measurement available: TECENTRIQ with paclitaxel protein bound and carboplatin (range: 423 - 467); paclitaxel protein bound and carboplatin (range: 218- 229). Graded per NCI CTCAE v4.0.

¹ NA = Not applicable. NCI CTCAE does not provide a Grades 3-4 definition for these laboratory abnormalities

Previously Treated Metastatic NSCLC

The safety of TECENTRIQ was evaluated in OAK, a multicenter, international, randomized, open-label trial in patients with metastatic NSCLC who progressed during or following a platinum-containing regimen, regardless of PD-L1 expression [see *Clinical Studies (14.2)*]. A total of 609 patients received TECENTRIQ 1200 mg intravenously every 3 weeks until unacceptable toxicity, radiographic progression, or clinical progression or docetaxel (n=578) 75 mg/m² intravenously every 3 weeks until unacceptable toxicity or disease progression. The study excluded patients with active or prior autoimmune disease or with medical conditions that required systemic corticosteroids. The median duration of exposure was 3.4 months (0 to 26 months) in TECENTRIQ-treated patients and 2.1 months (0 to 23 months) in docetaxel-treated patients.

The study population characteristics were: median age of 63 years (25 to 85 years), 46% age 65 years or older, 62% male, 71% White, 20% Asian, 68% former smoker, 16% current smoker, and 63% had ECOG performance status of 1.

Fatal adverse reactions occurred in 1.6% of patients; these included pneumonia, sepsis, septic shock, dyspnea, pulmonary hemorrhage, sudden death, myocardial ischemia or renal failure.

Serious adverse reactions occurred in 33.5% of patients. The most frequent serious adverse reactions (>1%) were pneumonia, sepsis, dyspnea, pleural effusion, pulmonary embolism, pyrexia and respiratory tract infection.

TECENTRIQ was discontinued due to adverse reactions in 8% of patients. The most common adverse reactions leading to TECENTRIQ discontinuation were fatigue, infections and dyspnea. Adverse reactions leading to interruption of TECENTRIQ occurred in 25% of patients; the most common (>1%) were pneumonia, liver function test abnormality, dyspnea, fatigue, pyrexia, and back pain.

Tables 12 and 13 summarize adverse reactions and laboratory abnormalities, respectively, in OAK.

Table 12: Adverse Reactions Occurring in $\geq 10\%$ of Patients with NSCLC Receiving TECENTRIQ in OAK

Adverse Reaction	TECENTRIQ N = 609		Docetaxel N = 578	
	All Grades (%)	Grades 3-4 (%)	All Grades (%)	Grades 3-4 (%)
General				
Fatigue/Asthenia ¹	44	4	53	6
Pyrexia	18	<1	13	<1
Respiratory				
Cough ²	26	<1	21	<1
Dyspnea	22	2.8	21	2.6
Metabolism and Nutrition				
Decreased appetite	23	<1	24	1.6
Musculoskeletal				
Myalgia/Pain ³	20	1.3	20	<1
Arthralgia	12	0.5	10	0.2
Gastrointestinal				
Nausea	18	<1	23	<1
Constipation	18	<1	14	<1
Diarrhea	16	<1	24	2
Skin				
Rash ⁴	12	<1	10	0

Graded per NCI CTCAE v4.0

¹ Includes fatigue and asthenia

² Includes cough and exertional cough

³ Includes musculoskeletal pain, musculoskeletal stiffness, musculoskeletal chest pain, myalgia

⁴ Includes rash, erythematous rash, generalized rash, maculopapular rash, papular rash, pruritic rash, pustular rash, pemphigoid

Table 13: Laboratory Abnormalities Worsening From Baseline Occurring in $\geq 20\%$ of Patients with NSCLC Receiving TECENTRIQ in OAK

Laboratory Abnormality	TECENTRIQ		Docetaxel	
	All Grades (%)	Grades 3-4 (%)	All Grades (%)	Grades 3-4 (%)
Hematology				
Anemia	67	3	82	7
Lymphocytopenia	49	14	60	21
Chemistry				
Hypoalbuminemia	48	4	50	3
Hyponatremia	42	7	31	6
Increased Alkaline Phosphatase	39	2	25	1
Increased AST	31	3	16	0.5
Increased ALT	27	3	14	0.5

Laboratory Abnormality	TECENTRIQ		Docetaxel	
	All Grades (%)	Grades 3-4 (%)	All Grades (%)	Grades 3-4 (%)
Hypophosphatemia	27	5	23	4
Hypomagnesemia	26	1	21	1
Increased Creatinine	23	2	16	1

Each test incidence is based on the number of patients who had both baseline and at least one on-study laboratory measurement available: TECENTRIQ (range: 546–585) and docetaxel (range: 532–560). Graded according to NCI CTCAE version 4.0

Metastatic Triple Negative Breast Cancer (TNBC)

The safety of TECENTRIQ in combination with paclitaxel protein-bound was evaluated in IMpassion130, a multicenter, international, randomized, double-blinded placebo-controlled trial in patients with locally advanced or metastatic TNBC who have not received prior chemotherapy for metastatic disease [see *Clinical Studies (14.3)*]. Patients received TECENTRIQ 840 mg (n=452) or placebo (n=438) intravenously followed by paclitaxel protein-bound (100 mg/m²) intravenously. For each 28 day cycle, TECENTRIQ was administered on days 1 and 15 and paclitaxel protein-bound was administered on days 1, 8, and 15 until disease progression or unacceptable toxicity. In the safety-evaluable population, the median duration of exposure to TECENTRIQ was 5.5 months (range: 0-32 months) and paclitaxel protein-bound was 5.1 months (range: 0-31.5 months) in the TECENTRIQ and paclitaxel protein-bound arm. The median duration of exposure to placebo was 5.1 months (range: 0-25.1 months) and paclitaxel protein-bound was 5.0 months (range: 0-23.7 months) in the placebo and paclitaxel protein-bound arm.

Fatal adverse reactions occurred in 1.3% of patients in the TECENTRIQ and paclitaxel protein-bound arm; these included septic shock, mucosal inflammation, auto-immune hepatitis, aspiration, pneumonia, pulmonary embolism.

Serious adverse reactions occurred in 23% of patients. The most frequent serious adverse reactions were pneumonia (2%), urinary tract infection (1%), dyspnea (1%), and pyrexia (1%).

Adverse reactions leading to discontinuation of TECENTRIQ occurred in 6% (29/452) of patients in the TECENTRIQ and paclitaxel protein-bound arm. The most common adverse reaction leading to TECENTRIQ discontinuation was peripheral neuropathy (<1%).

Adverse reactions leading to interruption of TECENTRIQ occurred in 31% of patients; the most common ($\geq 2\%$) were neutropenia, neutrophil count decreased, hyperthyroidism, and pyrexia.

Immune-related adverse reactions requiring systemic corticosteroid therapy occurred in 13% (59/452) of patients in the TECENTRIQ and paclitaxel protein-bound arm.

Tables 14 and 15 summarize adverse reactions and selected laboratory abnormalities worsening from baseline in the TECENTRIQ treated patients.

Table 14: Adverse Reactions Occurring in $\geq 10\%$ of Patients with TNBC in IMpassion130

Adverse Reaction	TECENTRIQ with Paclitaxel Protein-Bound N = 452		Placebo with Paclitaxel Protein-Bound N = 438	
	All Grades (%)	Grades 3-4 (%)	All Grades (%)	Grades 3-4 (%)
Skin and Subcutaneous Tissue				
Alopecia	56	<1	58	<1
Rash	17	<1	16	<1

Adverse Reaction	TECENTRIQ with Paclitaxel Protein-Bound N = 452		Placebo with Paclitaxel Protein-Bound N = 438	
	All Grades (%)	Grades 3–4 (%)	All Grades (%)	Grades 3–4 (%)
Pruritus	14	0	10	0
Nervous System				
Peripheral neuropathies ¹	47	9	44	5
Headache	23	<1	22	<1
Dysgeusia	14	0	14	0
Dizziness	14	0	11	0
General				
Fatigue	47	4	45	3.4
Pyrexia	19	<1	11	0
Peripheral Edema	15	<1	16	1.4
Asthenia	12	<1	11	<1
Gastrointestinal				
Nausea	46	1.1	38	1.8
Diarrhea	33	1.3	34	2.1
Constipation	25	<1	25	<1
Vomiting	20	<1	17	1.1
Abdominal pain	10	<1	12	<1
Respiratory, Thoracic, and Mediastinal				
Cough	25	0	19	0
Dyspnea	16	<1	15	<1
Metabolism and Nutrition				
Decreased Appetite	20	<1	18	<1
Musculoskeletal and Connective Tissue				
Arthralgia	18	<1	16	<1
Back pain	15	1.3	13	<1
Myalgia	14	<1	15	<1
Pain in extremity	11	<1	10	<1
Endocrine				
Hypothyroidism	14	0	3.4	0
Infections				
Urinary tract infection	12	<1	11	<1
Upper respiratory tract infection	11	1.1	9	0
Nasopharyngitis	11	0	8	0

Graded per NCI CTCAE v4.0

¹ Includes peripheral neuropathy, peripheral sensory neuropathy, paresthesia, and polyneuropathy

Table 15: Laboratory Abnormalities Worsening from Baseline Occurring in ≥20% of Patients with TNBC in IMpassion130

Laboratory Abnormality	TECENTRIQ with Paclitaxel Protein-Bound		Placebo in combination with Paclitaxel Protein-Bound	
	All Grades (%)	Grades 3–4 (%)	All Grades (%)	Grades 3–4 (%)
Hematology				
Decreased Hemoglobin	79	3.8	73	3
Decreased Leukocytes	76	14	71	9
Decreased Neutrophils	58	13	54	13
Decreased Lymphocytes	54	13	47	8
Increased Prothrombin INR	25	<1	25	<1
Chemistry				
Increased ALT	43	6	34	2.7
Increased AST	42	4.9	34	3.4
Decreased Calcium	28	1.1	26	<1
Decreased Sodium	27	4.2	25	2.7
Decreased Albumin	27	<1	25	<1
Increased Alkaline Phosphatase	25	3.3	22	2.7
Decreased Phosphate	22	3.6	19	3.7
Increased Creatinine	21	<1	16	<1

Each test incidence is based on the number of patients who had at least one on-study laboratory measurement available: TECENTRIQ with paclitaxel protein-bound (range: 316-452); placebo with paclitaxel protein-bound (range: 299-438). Graded per NCI CTCAE v4.0, except for increased creatinine which only includes patients with creatinine increase based on upper limit of normal definition for grade 1 events (NCI CTCAE v5.0).

Small Cell Lung Cancer (SCLC)

The safety of TECENTRIQ with carboplatin and etoposide was evaluated in IMpower133, a randomized, multicenter, double-blind, placebo-controlled trial in which 198 patients with ES-SCLC received TECENTRIQ 1200 mg and carboplatin AUC 5 mg/mL/min on Day 1 and etoposide 100 mg/m² intravenously on Days 1, 2 and 3 of each 21-day cycle for a maximum of 4 cycles, followed by TECENTRIQ 1200 mg every 3 weeks until disease progression or unacceptable toxicity [see *Clinical Studies (14.4)*]. Among 198 patients receiving TECENTRIQ, 32% were exposed for 6 months or longer and 12% were exposed for 12 months or longer.

Fatal adverse reactions occurred in 2% of patients receiving TECENTRIQ. These included pneumonia, respiratory failure, neutropenia, and death (1 patient each).

Serious adverse reactions occurred in 37% of patients receiving TECENTRIQ. Serious adverse reactions in >2% were pneumonia (4.5%), neutropenia (3.5%), febrile neutropenia (2.5%), and thrombocytopenia (2.5%).

TECENTRIQ was discontinued due to adverse reactions in 11% of patients. The most frequent adverse reaction requiring permanent discontinuation in >2% of patients was infusion-related reactions (2.5%).

Adverse reactions leading to interruption of TECENTRIQ occurred in 59% of patients; the most common (>1%) were neutropenia (22%), anemia (9%), leukopenia (7%), thrombocytopenia (5%), fatigue (4.0%), infusion-related reaction (3.5%), pneumonia (2.0%), febrile neutropenia (1.5%), increased ALT (1.5%), and nausea (1.5%).

Tables 16 and 17 summarize adverse reactions and laboratory abnormalities, respectively, in patients who received TECENTRIQ with carboplatin and etoposide in IMpower133.

Table 16: Adverse Reactions Occurring in ≥20% of Patients with SCLC Receiving TECENTRIQ in IMpower133

Adverse Reaction	TECENTRIQ with Carboplatin and Etoposide N = 198		Placebo with Carboplatin and Etoposide N = 196	
	All Grades (%)	Grades 3–4 (%)	All Grades (%)	Grades 3–4 (%)
General				
Fatigue/asthenia	39	5	33	3
Gastrointestinal				
Nausea	38	1	33	1
Constipation	26	1	30	1
Vomiting	20	2	17	3
Skin and Subcutaneous Tissue				
Alopecia	37	0	35	0
Metabolism and Nutrition				
Decreased appetite	27	1	18	0

Graded per NCI CTCAE v4.0

Table 17: Laboratory Abnormalities Worsening from Baseline Occurring in ≥20% of Patients with SCLC Receiving TECENTRIQ in IMpower133

Laboratory Abnormality	TECENTRIQ with Carboplatin and Etoposide		Placebo with Carboplatin and Etoposide	
	All Grades (%)	Grades 3–4 (%)	All Grades (%)	Grades 3–4 (%)
Hematology				
Anemia	94	17	93	19
Neutropenia	73	45	76	48
Thrombocytopenia	58	20	53	17
Lymphopenia	46	14	38	11
Chemistry				
Hyperglycemia	67	10	65	8
Increased Alkaline Phosphatase	38	1	35	2
Hyponatremia	34	15	33	11
Hypoalbuminemia	32	1	30	0
Decreased TSH ²	28	NA ¹	15	NA ¹
Hypomagnesemia	31	5	35	6
Hypocalcemia	26	3	28	5
Increased ALT	26	3	31	1
Increased AST	22	1	21	2
Increased Blood Creatinine	22	4	15	1
Hyperphosphatemia	21	NA ¹	23	NA ¹
Increased TSH ²	21	NA ¹	7	NA ¹

Each test incidence is based on the number of patients who had both baseline and at least one on-study laboratory measurement available: TECENTRIQ (range: 181-193); Placebo (range: 181-196). Graded per NCI CTCAE v4.0

¹ NA= Not applicable. ² TSH = thyroid-stimulating hormone. NCI CTCAE v4.0 does not include these laboratories.

6.2 Immunogenicity

As with all therapeutic proteins, there is a potential for immunogenicity. The detection of antibody formation is highly dependent on the sensitivity and specificity of the assay. Additionally, the observed incidence of antibody (including neutralizing antibody) positivity in an assay may be influenced by several factors including assay methodology, sample handling, timing of sample collection, concomitant medications, and underlying disease. For these reasons, comparison of the incidence of antibodies to atezolizumab in the studies described above with the incidence of antibodies in other studies or to other products may be misleading.

Among 565 patients with NSCLC in OAK, 30% tested positive for treatment-emergent anti-drug antibodies (ADA) at one or more post-dose time points. The median onset time to ADA formation was 3 weeks. The ability of these binding ADA to neutralize atezolizumab is unknown. Patients who tested positive for treatment-emergent ADA also had decreased systemic atezolizumab exposure [see *Clinical Pharmacology (12.3)*]. Exploratory analyses showed that the subset of patients who were ADA positive by week 4 (21%; 118/560) appeared to have less efficacy (effect on overall survival) as compared to patients who tested negative for treatment-emergent ADA by week 4 [see *Clinical Studies (14.2)*]. The presence of ADA did not have a clinically significant effect on the incidence or severity of adverse reactions.

Among 275 patients with urothelial carcinoma in IMvigor210 (Cohort 2), 42% tested positive for treatment-emergent ADA at one or more post-dose time points. Among 111 patients in IMvigor210 (Cohort 1), 48% tested positive for treatment-emergent ADA at one or more post-dose time points. Patients who tested positive for treatment-emergent ADA also had decreased systemic atezolizumab exposures. The presence of ADA did not have a clinically significant effect on the incidence or severity of adverse reactions.

Among 364 ADA-evaluable patients with NSCLC who received TECENTRIQ with bevacizumab, paclitaxel and carboplatin in IMpower150, 36% (n=132) tested positive for treatment-emergent ADA at one or more post-dose time points and 83% of these 132 patients tested ADA positive prior to receiving the second dose of atezolizumab. The ability of these binding ADA to neutralize atezolizumab is unknown. Patients who tested positive for treatment-emergent ADA had lower systemic atezolizumab exposure as compared to patients who were ADA negative [see *Clinical Pharmacology (12.3)*]. The presence of ADA did not increase the incidence or severity of adverse reactions [see *Clinical Studies (14.2)*].

Among 434 patients with TNBC in IMpassion130, 13% tested positive for treatment-emergent ADA at one or more post-dose time points. Among 178 patients in PD-L1 positive subgroup with TNBC in IMpassion130, 12% tested positive for treatment-emergent ADA at one or more post-dose time points. Patients who tested positive for treatment-emergent ADA had decreased systemic atezolizumab exposure [see *Clinical Pharmacology (12.3)*]. There are insufficient numbers of patients in the PD-L1 positive subgroup with ADA to determine whether ADA alters the efficacy of atezolizumab. The presence of ADA did not have a clinically significant effect on the incidence or severity of adverse reactions.

8 USE IN SPECIFIC POPULATIONS

8.1 Pregnancy

Risk Summary

Based on its mechanism of action [see *Clinical Pharmacology (12.1)*], TECENTRIQ can cause fetal harm when administered to a pregnant woman. There are no available data on the use of TECENTRIQ in pregnant women.

Animal studies have demonstrated that inhibition of the PD-L1/PD-1 pathway can lead to increased risk of immune-related rejection of the developing fetus resulting in fetal death (*see Data*). Advise females of reproductive potential of the potential risk to a fetus.

In the U.S. general population, the estimated background risk of major birth defects and miscarriage in clinically recognized pregnancies is 2% to 4% and 15% to 20%, respectively.

Data

Animal Data

Animal reproduction studies have not been conducted with TECENTRIQ to evaluate its effect on reproduction and fetal development. A literature-based assessment of the effects on reproduction demonstrated that a central function of the PD-L1/PD-1 pathway is to preserve pregnancy by maintaining maternal immune tolerance to a fetus. Blockage of PD-L1 signaling has been shown in murine models of pregnancy to disrupt tolerance to a fetus and to result in an increase in fetal loss; therefore, potential risks of administering TECENTRIQ during pregnancy include increased rates of abortion or stillbirth. As reported in the literature, there were no malformations related to the blockade of PD-L1/PD-1 signaling in the offspring of these animals; however, immune-mediated disorders occurred in PD-1 and PD-L1 knockout mice. Based on its mechanism of action, fetal exposure to atezolizumab may increase the risk of developing immune-mediated disorders or altering the normal immune response.

8.2 Lactation

Risk Summary

There is no information regarding the presence of atezolizumab in human milk, the effects on the breastfed infant, or the effects on milk production. As human IgG is excreted in human milk, the potential for absorption and harm to the infant is unknown. Because of the potential for serious adverse reactions in breastfed infants from TECENTRIQ, advise women not to breastfeed during treatment and for at least 5 months after the last dose.

8.3 Females and Males of Reproductive Potential

Pregnancy Testing

Verify pregnancy status in females of reproductive potential prior to initiating TECENTRIQ [*see Use in Specific Populations (8.1)*].

Contraception

Females

Based on its mechanism of action, TECENTRIQ can cause fetal harm when administered to a pregnant woman [*see Use in Specific Populations (8.1)*]. Advise females of reproductive potential to use effective contraception during treatment with TECENTRIQ and for at least 5 months following the last dose.

Infertility

Females

Based on animal studies, TECENTRIQ may impair fertility in females of reproductive potential while receiving treatment [*see Nonclinical Toxicology (13.1)*].

8.4 Pediatric Use

The safety and effectiveness of TECENTRIQ have not been established in pediatric patients.

8.5 Geriatric Use

Of 2481 patients with urothelial carcinoma, lung cancer, and triple-negative breast cancer who were treated with TECENTRIQ in clinical studies, 45% were 65 years and over and 11% were 75 years and over. No overall differences in safety or effectiveness were observed between patients aged 65 years or older and younger patients.

11 DESCRIPTION

Atezolizumab is a programmed cell death ligand 1 (PD-L1) blocking antibody. Atezolizumab is an Fc-engineered, humanized, non-glycosylated IgG1 kappa immunoglobulin that has a calculated molecular mass of 145 kDa.

TECENTRIQ (atezolizumab) injection for intravenous use is a sterile, preservative-free, colorless to slightly yellow solution in single-dose vials. Each 20 mL vial contains 1200 mg of atezolizumab and is formulated in glacial acetic acid (16.5 mg), L-histidine (62 mg), polysorbate 20 (8 mg), and sucrose (821.6 mg), with a pH of 5.8. Each 14 mL vial contains 840 mg of atezolizumab and is formulated in glacial acetic acid (11.5 mg), L-histidine (43.4 mg), polysorbate 20 (5.6 mg), and sucrose (575.1 mg) with a pH of 5.8.

12 CLINICAL PHARMACOLOGY

12.1 Mechanism of Action

PD-L1 may be expressed on tumor cells and/or tumor infiltrating immune cells and can contribute to the inhibition of the anti-tumor immune response in the tumor microenvironment. Binding of PD-L1 to the PD-1 and B7.1 receptors found on T cells and antigen presenting cells suppresses cytotoxic T-cell activity, T-cell proliferation and cytokine production.

Atezolizumab is a monoclonal antibody that binds to PD-L1 and blocks its interactions with both PD-1 and B7.1 receptors. This releases the PD-L1/PD-1 mediated inhibition of the immune response, including activation of the anti-tumor immune response without inducing antibody-dependent cellular cytotoxicity. In syngeneic mouse tumor models, blocking PD-L1 activity resulted in decreased tumor growth.

12.3 Pharmacokinetics

Patients' exposure to atezolizumab increased dose proportionally over the dose range of 1 mg/kg to 20 mg/kg, including a dose of 1200 mg administered every 3 weeks. The clearance (CV%) was 0.20 L/day (29%), the volume of distribution at steady state was 6.9 L, and the terminal half-life was 27 days. Steady state was achieved after 6 to 9 weeks following multiple doses. The systemic accumulation ratio for every 2 weeks administration and every 3 weeks administration was 3.3- and 1.9- fold, respectively. Atezolizumab clearance was found to decrease over time, with a mean maximal reduction (CV%) from baseline value of approximately 17% (41%); however, the decrease in clearance was not considered clinically relevant.

Specific Populations

Age (21 to 89 years), body weight, sex, albumin levels, tumor burden, region or race, mild or moderate renal impairment [estimated glomerular filtration rate (eGFR) 30 to 89 mL/min/1.73 m²], mild hepatic impairment (bilirubin ≤ ULN and AST > ULN or bilirubin > 1 to 1.5 × ULN and any AST), level of PD-L1 expression, or performance status had no clinically significant effect on the systemic exposure of atezolizumab. In OAK, IMpower150 (TECENTRIQ, bevacizumab, paclitaxel, carboplatin arm only), and IMpassion130 (TECENTRIQ and paclitaxel protein-bound) atezolizumab clearance in patients who tested positive for treatment-emergent anti-drug antibodies (ADA) was 25%, 18%, and 22% higher, respectively, as compared to clearance in patients who tested negative for treatment-emergent ADA.

The effect of severe renal impairment or moderate or severe hepatic impairment on the pharmacokinetics of atezolizumab is unknown.

Drug Interaction Studies

The drug interaction potential of atezolizumab is unknown.

13 NONCLINICAL TOXICOLOGY

13.1 Carcinogenesis, Mutagenesis, Impairment of Fertility

No studies have been performed to test the potential of atezolizumab for carcinogenicity or genotoxicity.

Animal fertility studies have not been conducted with atezolizumab; however, an assessment of the male and female reproductive organs was included in a 26-week, repeat-dose toxicity study in cynomolgus monkeys. Weekly administration of atezolizumab to female monkeys at the highest dose tested caused an irregular menstrual cycle pattern and a lack of newly formed corpora lutea in the ovaries. This effect occurred at an estimated AUC approximately 6 times the AUC in patients receiving the recommended dose and was reversible. There was no effect on the male monkey reproductive organs.

13.2 Animal Toxicology and/or Pharmacology

In animal models, inhibition of PD-L1/PD-1 signaling increased the severity of some infections and enhanced inflammatory responses. M. tuberculosis-infected PD-1 knockout mice exhibit markedly decreased survival compared with wild-type controls, which correlated with increased bacterial proliferation and inflammatory responses in these animals. PD-L1 and PD-1 knockout mice and mice receiving PD-L1 blocking antibody have also shown decreased survival following infection with lymphocytic choriomeningitis virus.

14 CLINICAL STUDIES

14.1 Urothelial Carcinoma

Cisplatin-Ineligible Patients with Locally Advanced or Metastatic Urothelial Carcinoma

The efficacy of TECENTRIQ was investigated in IMvigor210 (Cohort 1) (NCT02951767), a multicenter, open-label, single-arm trial that included 119 patients with locally advanced or metastatic urothelial carcinoma who were ineligible for cisplatin-containing chemotherapy and were either previously untreated or had disease progression at least 12 months after neoadjuvant or adjuvant chemotherapy. Patients were considered cisplatin-ineligible if they met any one of the following criteria at study entry: impaired renal function [creatinine clearance (CL_{cr}) of 30 to 59 mL/min], Eastern Cooperative Oncology Group (ECOG) performance status (PS) of 2, hearing loss of ≥ 25 decibels (dB) at two contiguous frequencies, or Grades 2-4 peripheral neuropathy. This study excluded patients who had: a history of autoimmune disease; active or corticosteroid-dependent brain metastases; administration of a live, attenuated vaccine within 28 days prior to enrollment; or administration of systemic immunostimulatory agents within 6 weeks or systemic immunosuppressive medications within 2 weeks prior to enrollment. Patients received TECENTRIQ 1200 mg as an intravenous infusion every 3 weeks until unacceptable toxicity or disease progression. Tumor response assessments were conducted every 9 weeks for the first 54 weeks and every 12 weeks thereafter. Major efficacy outcome measures included confirmed overall response rate (ORR) as assessed by independent review facility (IRF) using Response Evaluation Criteria in Solid Tumors (RECIST v1.1), duration of response (DoR) and overall survival (OS).

In this study, the median age was 73 years, 81% were male, and 91% were White. Thirty-five percent of patients had non-bladder urothelial carcinoma and 66% had visceral metastases.

Eighty percent of patients had an ECOG PS of 0 or 1. Reasons for ineligibility for cisplatin-containing chemotherapy were: 70% had impaired renal function, 20% had an ECOG PS of 2, 14% had a hearing loss of ≥ 25 dB, and 6% had Grades 2-4 peripheral neuropathy at baseline. Twenty percent of patients had disease progression following prior platinum-containing neoadjuvant or adjuvant chemotherapy.

Tumor specimens were evaluated prospectively using the VENTANA PD-L1 (SP142) Assay at a central laboratory, and the results were used to define subgroups for pre-specified analyses. Of the 119 patients, 27% were classified as having PD-L1 expression of $\geq 5\%$ (defined as PD-L1 stained tumor-infiltrating immune cells [IC] covering $\geq 5\%$ of the tumor area). The remaining 73% of patients were classified as having PD-L1 expression of $< 5\%$ (PD-L1 stained tumor-infiltrating IC covering $< 5\%$ of the tumor area).

Among the 32 patients with PD-L1 expression of $\geq 5\%$, median age was 67 years, 81% were male, 19% female, and 88% were White. Twenty-eight percent of patients had non-bladder urothelial carcinoma and 56% had visceral metastases. Seventy-two percent of patients had an ECOG PS of 0 or 1. Reasons for ineligibility for cisplatin-containing chemotherapy were: 66% had impaired renal function, 28% had an ECOG PS of 2, 16% had a hearing loss ≥ 25 dB, and 9% had Grades 2-4 peripheral neuropathy at baseline. Thirty-one percent of patients had disease progression following prior platinum-containing neoadjuvant or adjuvant chemotherapy.

Confirmed ORR in all patients and the two PD-L1 subgroups are summarized in Table 18. The median follow-up time for this study was 14.4 months. In 24 patients with disease progression following neoadjuvant or adjuvant therapy, the ORR was 33% (95% CI: 16%, 55%).

Table 18: Efficacy Results in IMvigor210 (Cohort 1)

	All Patients	PD-L1 Expression Subgroups	
	N = 119	PD-L1 Expression of $< 5\%$ in ICs ¹ N = 87	PD-L1 Expression of $\geq 5\%$ in ICs ¹ N = 32
Number of IRF-assessed Confirmed Responders	28	19	9
ORR % (95% CI)	23.5% (16.2, 32.2)	21.8% (13.7, 32)	28.1% (13.8, 46.8)
Complete Response	6.7%	6.9%	6.3%
Partial Response	16.8%	14.9%	21.9%
Median DoR, months (range)	NR (3.7, 16.6+)	NR (3.7, 16.6+)	NR (8.1, 15.6+)
NR = Not reached + Denotes a censored value ¹ PD-L1 expression in tumor-infiltrating immune cells (ICs)			

IMvigor130 (NCT02807636) is an ongoing multicenter, randomized study in previously untreated patients with metastatic urothelial carcinoma who are eligible for platinum-containing chemotherapy. The study contains three arms: TECENTRIQ monotherapy, TECENTRIQ with platinum-based chemotherapy (i.e., cisplatin or carboplatin with gemcitabine), and platinum-based chemotherapy alone (comparator). Both cisplatin-eligible and cisplatin-ineligible patients are included in the study. Tumor specimens were evaluated prospectively using the VENTANA PD-L1 (SP142) Assay at a central laboratory. The independent Data Monitoring Committee

(iDMC) for the study conducted a review of early data and found that patients classified as having PD-L1 expression of <5% when treated with TECENTRIQ monotherapy had decreased survival compared to those who received platinum-based chemotherapy. The iDMC recommended closure of the monotherapy arm to further accrual of patients with low PD-L1 expression, however, no other changes were recommended for the study, including any change of therapy for patients who had already been randomized to and were receiving treatment in the monotherapy arm.

Previously Treated Locally Advanced or Metastatic Urothelial Carcinoma

The efficacy of TECENTRIQ was investigated in IMvigor210 (Cohort 2) (NCT02108652), a multicenter, open-label, single-arm trial that included 310 patients with locally advanced or metastatic urothelial carcinoma who had disease progression during or following a platinum-containing chemotherapy regimen or who had disease progression within 12 months of treatment with a platinum-containing neoadjuvant or adjuvant chemotherapy regimen. This study excluded patients who had: a history of autoimmune disease, active or corticosteroid-dependent brain metastases, administration of a live, attenuated vaccine within 28 days prior to enrollment, or administration of systemic immunostimulatory agents within 6 weeks or systemic immunosuppressive medications within 2 weeks prior to enrollment. Patients received TECENTRIQ 1200 mg intravenously every 3 weeks until unacceptable toxicity or either radiographic or clinical progression. Tumor response assessments were conducted every 9 weeks for the first 54 weeks and every 12 weeks thereafter. Major efficacy outcome measures included confirmed ORR as assessed by IRF using RECIST v1.1 and DoR.

In this study, the median age was 66 years, 78% were male, 91% of patients were White. Twenty-six percent had non-bladder urothelial carcinoma and 78% of patients had visceral metastases. Sixty-two percent of patients had an ECOG PS of 1 and 35% of patients had a baseline CLcr < 60 mL/min. Nineteen percent of patients had disease progression following prior platinum-containing neoadjuvant or adjuvant chemotherapy. Forty-one percent of patients had received 2 or more prior systemic regimens in the metastatic setting. Seventy-three percent of patients received prior cisplatin, 26% had prior carboplatin, and 1% were treated with other platinum-based regimens.

Tumor specimens were evaluated prospectively using the VENTANA PD-L1 (SP142) Assay at a central laboratory and the results were used to define subgroups for pre-specified analyses. Of the 310 patients, 32% were classified as having PD-L1 expression of $\geq 5\%$. The remaining 68% of patients were classified as having PD-L1 expression of < 5%.

Confirmed ORR and median DOR in all patients and the two PD-L1 subgroups are summarized in Table 19. The median follow-up time for this study was 32.9 months. In 59 patients with disease progression following neoadjuvant or adjuvant therapy, the ORR was 22.0% (95% CI: 12.3%, 34.7%).

Table 19: Efficacy Results in IMvigor210 (Cohort 2)

	All Patients	PD-L1 Expression Subgroups	
	N = 310	PD-L1 Expression of < 5% in IC ¹ N = 210	PD-L1 Expression of $\geq 5\%$ in IC ¹ N = 100
Number of IRF-assessed Confirmed Responders	46	20	26
ORR % (95% CI)	14.8% (11.2, 19.3)	9.5% (5.9, 14.3)	26% (17.7, 35.7)

	All Patients	PD-L1 Expression Subgroups	
	N = 310	PD-L1 Expression of < 5% in IC ¹ N = 210	PD-L1 Expression of ≥ 5% in IC ¹ N = 100
Complete Response	5.5%	2.4%	12.0%
Partial Response	9.4%	7.1%	14.0%
Median DOR, months (range)	27.7 (2.1+, 33.4+)	20.9 (2.1+, 33.4+)	29.7 (4.2, 31.2+)
+ Denotes a censored value			
¹ PD-L1 expression in tumor-infiltrating immune cells (IC)			

14.2 Non-Small Cell Lung Cancer

Metastatic Chemotherapy-Naïve NSCLC with High PD-L1 Expression

The efficacy of TECENTRIQ was evaluated in IMpower110 (NCT02409342), a multicenter, international, randomized, open-label trial in patients with stage IV NSCLC whose tumors express PD-L1 (PD-L1 stained ≥ 1% of tumor cells [TC ≥ 1%] or PD-L1 stained tumor-infiltrating immune cells [IC] covering ≥ 1% of the tumor area [IC ≥ 1%]), who had received no prior chemotherapy for metastatic disease. PD-L1 tumor status was determined based on immunohistochemistry (IHC) testing using the VENTANA PD-L1 (SP142) Assay. The evaluation of efficacy is based on the subgroup of patients with high PD-L1 expression (TC ≥ 50% or IC ≥ 10%), excluding those with EGFR or ALK genomic tumor aberrations. The trial excluded patients with a history of autoimmune disease, administration of a live attenuated vaccine within 28 days prior to randomization, active or untreated CNS metastases, administration of systemic immunostimulatory agents within 4 weeks or systemic immunosuppressive medications within 2 weeks prior to randomization.

Randomization was stratified by sex, ECOG performance status, histology (non-squamous vs. squamous) and PD-L1 expression (TC ≥ 1% and any IC vs. TC < 1% and IC ≥ 1%). Patients were randomized (1:1) to receive one of the following treatment arms:

- Arm A: TECENTRIQ 1200 mg every 3 weeks until disease progression or unacceptable toxicity
- Arm B: Platinum-based chemotherapy

Arm B platinum-based chemotherapy regimens for non-squamous NSCLC consisted of cisplatin (75 mg/m²) and pemetrexed (500 mg/m²) OR carboplatin (AUC 6 mg/mL/min) and pemetrexed (500 mg/m²) on Day 1 of each 21-day cycle for a maximum of 4 or 6 cycles followed by pemetrexed 500 mg/m² until disease progression or unacceptable toxicity.

Arm B platinum-based chemotherapy regimens for squamous NSCLC consisted of cisplatin (75 mg/m²) on Day 1 with gemcitabine (1250 mg/m²) on Days 1 and 8 of each 21-day cycle OR carboplatin (AUC 5 mg/mL/min) on Day 1 with gemcitabine (1000 mg/m²) on Days 1 and 8 of each 21-day cycle for a maximum of 4 or 6 cycles followed by best supportive care until disease progression or unacceptable toxicity.

Administration of TECENTRIQ was permitted beyond RECIST-defined disease progression. Tumor assessments were conducted every 6 weeks for the first 48 weeks following Cycle 1, Day 1 and then every 9 weeks thereafter. Tumor specimens were evaluated prospectively using the

VENTANA PD-L1 (SP142) Assay at a central laboratory and the results were used to define subgroups for pre-specified analyses.

The major efficacy outcome measure was overall survival (OS) sequentially tested in the following subgroups of patients, excluding those with EGFR or ALK genomic tumor aberrations: TC \geq 50% or IC \geq 10%; TC \geq 5% or IC \geq 5%; and TC \geq 1% or IC \geq 1%.

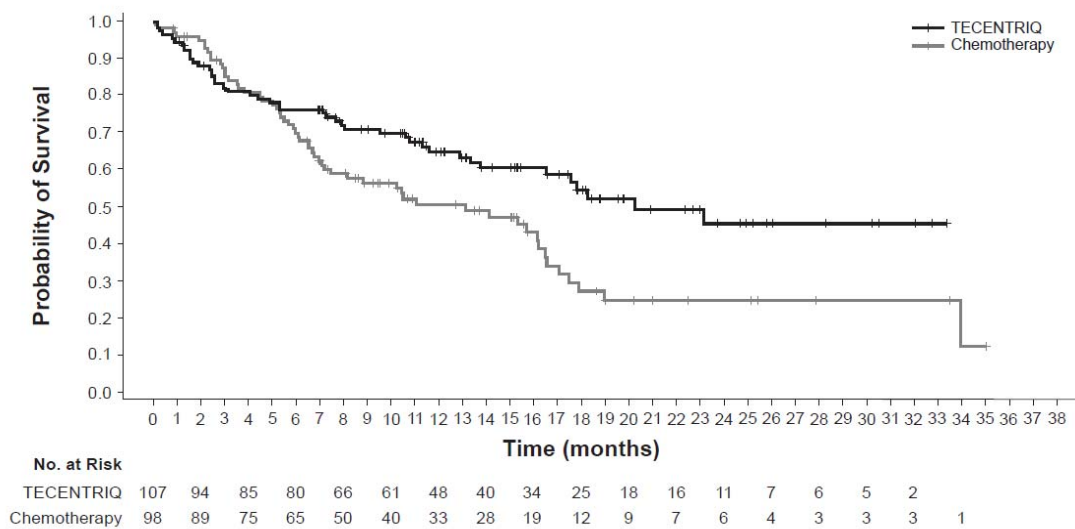
Among the 205 chemotherapy-naïve patients with stage IV NSCLC with high PD-L1 expression (TC \geq 50% or IC \geq 10%) excluding those with EGFR or ALK genomic tumor aberrations, the median age was 65.0 years (range: 33 to 87), and 70% of patients were male. The majority of patients were White (82%) and Asian (17%). Baseline ECOG performance status was 0 (36%) or 1 (64%); 88% were current or previous smokers; and 76% of patients had non-squamous disease while 24% of patients had squamous disease.

The trial demonstrated a statistically significant improvement in OS for patients with high PD-L1 expression (TC \geq 50% or IC \geq 10%) at the time of the OS interim analysis. There was no statistically significant difference in OS for the other two PD-L1 subgroups (TC \geq 5% or IC \geq 5%; and TC \geq 1% or IC \geq 1%) at the interim or final analyses. Efficacy results for patients with NSCLC with high PD-L1 expression are presented in Table 20 and Figure 1.

Table 20: Efficacy Results from IMpower110 in Patients with NSCLC with High PD-L1 Expression (TC \geq 50% or IC \geq 10%) and without EGFR or ALK Genomic Tumor Aberrations

	Arm A: TECENTRIQ N = 107	Arm B: Platinum-Based Chemotherapy N = 98
Overall Survival¹		
Deaths (%)	44 (41%)	57 (58%)
Median, months	20.2	13.1
(95% CI)	(16.5, NE)	(7.4, 16.5)
Hazard ratio ² (95% CI)	0.59 (0.40, 0.89)	
p-value ³	0.0106 ⁴	
¹ Based on OS interim analysis. The median survival follow-up time in patients was 15.7 months. ² Stratified by sex and ECOG performance status ³ Based on the stratified log-rank test compared to Arm A ⁴ Compared to the allocated alpha of 0.0413 (two-sided) for this interim analysis. CI=confidence interval; NE=not estimable		

Figure 1: Kaplan-Meier Plot of Overall Survival in IMpower110 in Patients with NSCLC with High PD-L1 Expression (TC \geq 50% or IC \geq 10%) and Without EGFR or ALK Genomic Tumor Aberrations



Investigator-assessed PFS showed a HR of 0.63 (95% CI: 0.45, 0.88), with median PFS of 8.1 months (95% CI: 6.8, 11.0) in the TECENTRIQ arm and 5 months (95% CI: 4.2, 5.7) in the platinum-based chemotherapy arm. The investigator-assessed confirmed ORR was 38% (95% CI: 29%, 48%) in the TECENTRIQ arm and 29% (95% CI: 20%, 39%) in the platinum-based chemotherapy arm.

Metastatic Chemotherapy-Naive Non-Squamous NSCLC

IMpower150

The efficacy of TECENTRIQ with bevacizumab, paclitaxel, and carboplatin was evaluated in IMpower150 (NCT02366143), a multicenter, international, randomized (1:1:1), open-label trial in patients with metastatic non-squamous NSCLC. Patients with stage IV non-squamous NSCLC who had received no prior chemotherapy for metastatic disease but could have received prior EGFR or ALK kinase inhibitor if appropriate, regardless of PD-L1 or T-effector gene (tGE) status and ECOG performance status 0 or 1 were eligible. The trial excluded patients with a history of autoimmune disease, administration of a live attenuated vaccine within 28 days prior to randomization, active or untreated CNS metastases, administration of systemic immunostimulatory agents within 4 weeks or systemic immunosuppressive medications within 2 weeks prior to randomization, or clear tumor infiltration into the thoracic great vessels or clear cavitation of pulmonary lesions as seen on imaging. Randomization was stratified by sex, presence of liver metastases, and PD-L1 expression status on tumor cells (TC) and tumor-infiltrating immune cells (IC) as follows: TC3 and any IC vs. TC0/1/2 and IC2/3 vs. TC0/1/2 and IC0/1. Patients were randomized to one of the following three treatment arms.

- Arm A: TECENTRIQ 1200 mg, paclitaxel 175 mg/m² or 200 mg/m² and carboplatin AUC 6 mg/mL/min on Day 1 of each 21-day cycle for a maximum of 4 or 6 cycles
- Arm B: TECENTRIQ 1200 mg, bevacizumab 15 mg/kg, paclitaxel 175 mg/m² or 200 mg/m², and carboplatin AUC 6 mg/mL/min on Day 1 of each 21-day cycle for a maximum of 4 or 6 cycles
- Arm C: bevacizumab 15 mg/kg, paclitaxel 175 mg/m² or 200 mg/m², and carboplatin AUC 6 mg/mL/min on Day 1 of each 21-day cycle for a maximum of 4 or 6 cycles

Patients who had not experienced disease progression following the completion or cessation of platinum-based chemotherapy, received:

- Arm A: TECENTRIQ 1200 mg intravenously on Day 1 of each 21-day cycle until disease progression or unacceptable toxicity
- Arm B: TECENTRIQ 1200 mg and bevacizumab 15 mg/kg intravenously on Day 1 of each 21-day cycle until disease progression or unacceptable toxicity
- Arm C: bevacizumab 15 mg/kg intravenously on Day 1 of each 21-day cycle until disease progression or unacceptable toxicity

Tumor assessments were conducted every 6 weeks for the first 48 weeks following Cycle 1, Day 1 and then every 9 weeks thereafter. Tumor specimens were evaluated prior to randomization for PD-L1 tumor expression using the VENTANA PD-L1 (SP142) assay at a central laboratory. Tumor tissue was collected at baseline for expression of tGE signature and evaluation was performed using a clinical trial assay in a central laboratory prior to the analysis of efficacy outcome measures.

Major efficacy outcome measures for comparison of Arms B and C were progression free survival (PFS) by RECIST v1.1 in the tGE-WT (patients with high expression of T-effector gene signature [tGE], excluding those with EGFR- and ALK-positive NSCLC [WT]) and in the ITT-WT subpopulations and overall survival (OS) in the ITT-WT subpopulation. Additional efficacy outcome measures for comparison of Arms B and C or Arms A and C were PFS and OS in the ITT population, OS in the tGE-WT subpopulation, and ORR/DoR in the tGE-WT and ITT-WT subpopulations.

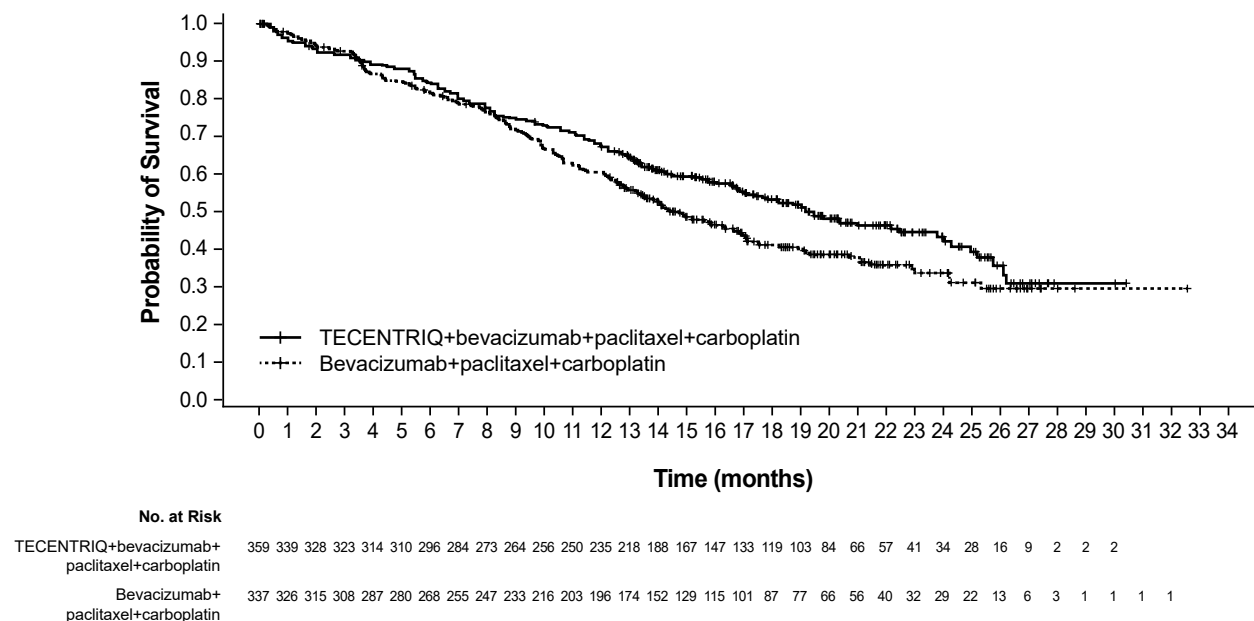
A total of 1202 patients were enrolled across the three arms of whom 1045 were in the ITT-WT subpopulation and 447 were in the tGE-WT subpopulation. The demographic information is limited to the 800 patients enrolled in Arms B and C where efficacy has been demonstrated. The median age was 63 years (range: 31 to 90), and 60% of patients were male. The majority of patients were White (82%), 13% of patients were Asian, 10% were Hispanic, and 2% of patients were Black. Clinical sites in Asia (enrolling 13% of the study population) received paclitaxel at a dose of 175 mg/m² while the remaining 87% received paclitaxel at a dose of 200 mg/m². Approximately 14% of patients had liver metastases at baseline, and most patients were current or previous smokers (80%). Baseline ECOG performance status was 0 (43%) or 1 (57%). PD-L1 was TC3 and any IC in 12%, TC0/1/2 and IC2/3 in 13%, and TC0/1/2 and IC0/1 in 75%. The demographics for the 696 patients in the ITT-WT subpopulation were similar to the ITT population except for the absence of patients with EGFR- or ALK-positive NSCLC.

The trial demonstrated a statistically significant improvement in PFS between Arms B and C in both the tGE-WT and ITT-WT subpopulations, but did not demonstrate a significant difference for either subpopulation between Arms A and C based on the final PFS analyses. In the interim analysis of OS, a statistically significant improvement was observed for Arm B compared to Arm C, but not for Arm A compared to Arm C. Efficacy results for the ITT-WT subpopulation are presented in Table 21 and Figure 2.

Table 21: Efficacy Results in ITT-WT Population in IMpower150

	Arm C: Bevacizumab, Paclitaxel and Carboplatin N = 337	Arm B: TECENTRIQ with Bevacizumab, Paclitaxel, and Carboplatin N = 359	Arm A: TECENTRIQ with Paclitaxel, and Carboplatin N = 349
Overall Survival¹			
Deaths (%)	197 (59%)	179 (50%)	179 (51%)
Median, months	14.7	19.2	19.4
(95% CI)	(13.3, 16.9)	(17.0, 23.8)	(15.7, 21.3)
Hazard ratio ² (95% CI)	---	0.78 (0.64, 0.96)	0.84 (0.72, 1.08)
p-value ³	---	0.016 ⁴	0.204 ⁵
Progression-Free Survival⁶			
Number of events (%)	247 (73%)	247 (69%)	245 (70%)
Median, months	7.0	8.5	6.7
(95% CI)	(6.3, 7.9)	(7.3, 9.7)	(5.6, 6.9)
Hazard ratio ² (95% CI)	---	0.71 (0.59, 0.85)	0.94 (0.79, 1.13)
p-value ³	---	0.0002 ⁷	0.5219
Objective Response Rate⁶			
Number of responders (%)	142 (42%)	196 (55%)	150 (43%)
(95% CI)	(37, 48)	(49, 60)	(38, 48)
Complete Response	3 (1%)	14 (4%)	9 (3%)
Partial Response	139 (41%)	182 (51%)	141 (40%)
Duration of Response⁶	n = 142	n = 196	n = 150
Median, months	6.5	10.8	9.5
(95% CI)	(5.6, 7.6)	(8.4, 13.9)	(7.0, 13.0)
¹ Based on OS interim analysis . ² Stratified by sex, presence of liver metastases, and PD-L1 expression status on TC and IC ³ Based on the stratified log-rank test compared to Arm C ⁴ Compared to the allocated $\alpha=0.0174$ (two sided) for this interim analysis. ⁵ Compared to the allocated $\alpha=0.0128$ (two sided) for this interim analysis. ⁶ As determined by independent review facility (IRF) per RECIST v1.1 (Response Evaluation Criteria in Solid Tumors v1.1) ⁷ Compared to the allocated $\alpha=0.006$ (two sided) for the final PFS analysis. CI=confidence interval			

Figure 2: Kaplan-Meier Curves for Overall Survival in ITT-WT Population in IMpower150



Exploratory analyses showed that the subset of patients in the four drug regimen arm who were ADA positive by week 4 (30%) appeared to have similar efficacy (effect on overall survival) as compared to patients who tested negative for treatment-emergent ADA by week 4 (70%) [see *Adverse Reactions (6.2), Clinical Pharmacology (12.3)*]. In an exploratory analysis, propensity score matching was conducted to compare ADA positive patients in the TECENTRIQ, bevacizumab, paclitaxel, and carboplatin arm with a matched population in the bevacizumab, paclitaxel, and carboplatin arm. Similarly ADA negative patients in the TECENTRIQ, bevacizumab, paclitaxel, and carboplatin arm were compared with a matched population in the bevacizumab, paclitaxel, and carboplatin arm. Propensity score matching factors were: baseline sum of longest tumor size (BSLD), baseline ECOG, baseline albumin, baseline LDH, sex, tobacco history, metastatic site, TC level, and IC level. The hazard ratio comparing the ADA-positive subgroup with its matched control was 0.69 (95% CI: 0.44, 1.07). The hazard ratio comparing the ADA-negative subgroup with its matched control was 0.64 (95% CI: 0.46, 0.90).

IMpower130

The efficacy of TECENTRIQ with paclitaxel protein-bound and carboplatin was evaluated in IMpower130 (NCT02367781), a multicenter, randomized (2:1), open-label trial in patients with stage IV non-squamous NSCLC. Patients with Stage IV non-squamous NSCLC who had received no prior chemotherapy for metastatic disease, but could have received prior EGFR or ALK kinase inhibitor, if appropriate, were eligible. The trial excluded patients with history of autoimmune disease, administration of live attenuated vaccine within 28 days prior to randomization, administration of immunostimulatory agents within 4 weeks or systemic immunosuppressive medications within 2 weeks prior to randomization, and active or untreated CNS metastases. Randomization was stratified by sex, presence of liver metastases, and PD-L1 tumor expression according to the VENTANA PD-L1 (SP142) assay as follows: TC3 and any IC vs. TC0/1/2 and IC2/3 vs. TC0/1/2 and IC0/1. Patients were randomized to one of the following treatment regimens:

- TECENTRIQ 1200 mg on Day 1, paclitaxel protein-bound 100 mg/m² on Days 1, 8, and 15, and carboplatin AUC 6 mg/mL/min on Day 1 of each 21-day cycle for a maximum of 4 or 6

cycles followed by TECENTRIQ 1200 mg once every 3 weeks until disease progression or unacceptable toxicity, or

- Paclitaxel protein-bound 100 mg/m² on Days 1, 8 and 15 and carboplatin AUC 6 mg/mL/min on Day 1 of each 21-day cycle for a maximum of 4 or 6 cycles followed by best supportive care or pemetrexed.

Tumor assessments were conducted every 6 weeks for the first 48 weeks, then every 9 weeks thereafter. Major efficacy outcome measures were PFS by RECIST v1.1 and OS in the subpopulation of patients evaluated for and documented to have no EGFR or ALK genomic tumor aberrations (ITT-WT).

A total of 724 patients were enrolled; of these, 681 (94%) were in the ITT-WT population. The median age was 64 years (range: 18 to 86) and 59% were male. The majority of patients were white (90%), 2% of patients were Asian, 5% were Hispanic, and 4% were Black. Baseline ECOG performance status was 0 (41%) or 1 (58%). Most patients were current or previous smokers (90%). PD-L1 tumor expression was TC0/1/2 and IC0/1 in 73%; TC3 and any IC in 14%; and TC0/1/2 and IC2/3 in 13%.

Efficacy results for the ITT-WT population are presented in Table 22 and Figure 3.

Table 22: Efficacy Results from IMpower130

	TECENTRIQ with Paclitaxel Protein-Bound and Carboplatin	Paclitaxel Protein-Bound and Carboplatin
Overall Survival¹	n=453	n=228
Deaths (%)	228 (50%)	131 (57%)
Median, months	18.6	13.9
(95% CI)	(15.7, 21.1)	(12.0, 18.7)
Hazard ratio ² (95% CI)	0.80 (0.64, 0.99)	
p-value ³	0.0384 ⁴	
Progression-Free Survival⁶	n=453	n=228
Number of events (%)	330 (73%)	177 (78%)
Median, months	7.2	6.5
(95% CI)	(6.7, 8.3)	(5.6, 7.4)
Hazard ratio ² (95% CI)	0.75 (0.63, 0.91)	
p-value ³	0.0024 ⁵	
Overall Response Rate^{6,7}	n=453	n=228
Number of responders (%)	207 (46%)	74 (32%)
(95% CI)	(41, 50)	(26, 39)
Complete Response	22 (5%)	2 (1%)
Partial Response	185 (41%)	72 (32%)
Duration of Response^{6,7}	n=207	n=74
Median, months	10.8	7.8
(95% CI)	(9.0, 14.4)	(6.8, 10.9)
¹ Based on OS interim analysis		
² Stratified by sex and PD-L1 tumor expression on tumor cells (TC) and tumor infiltrating cells (IC)		
³ Based on the stratified log-rank test		
⁴ Compared to the allocated $\alpha=0.0428$ (two sided) for this interim analysis		

**TECENTRIQ with
Paclitaxel Protein-Bound
and Carboplatin**

**Paclitaxel Protein-Bound
and Carboplatin**

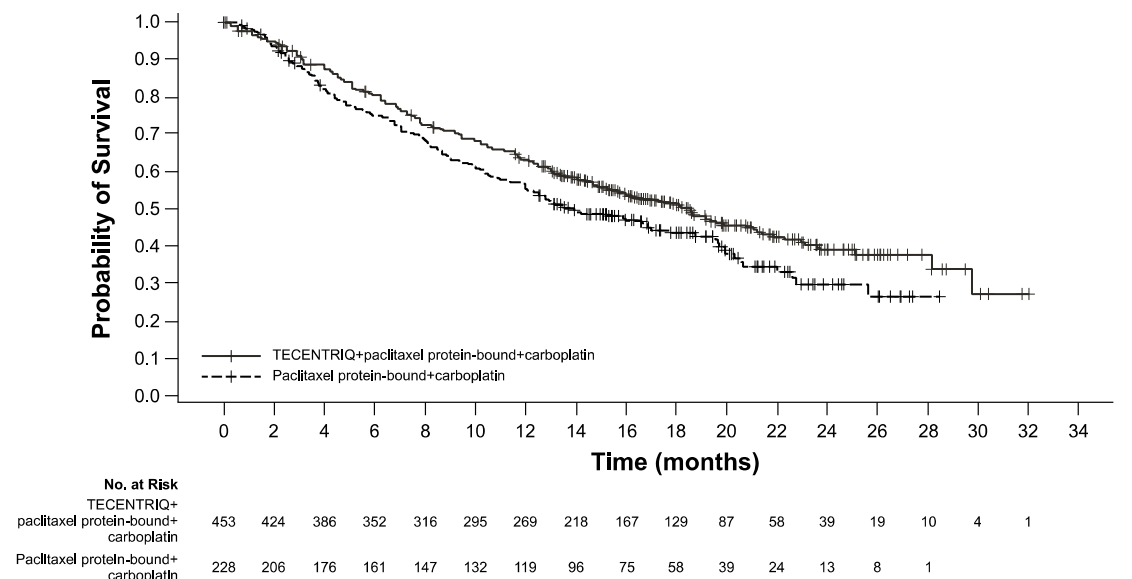
⁵Compared to the allocated $\alpha=0.006$ (two sided) for the final PFS analysis

⁶As determined by independent review facility (IRF) per RECIST v1.1 (Response Evaluation Criteria in Solid Tumors v1.1)

⁷Confirmed response

CI=confidence interval

Figure 3: Kaplan-Meier Curves for Overall Survival in IMpower130



Previously Treated Metastatic NSCLC

The efficacy of TECENTRIQ was evaluated in a multicenter, international, randomized (1:1), open-label study (OAK; NCT02008227) conducted in patients with locally advanced or metastatic NSCLC whose disease progressed during or following a platinum-containing regimen. Patients with a history of autoimmune disease, symptomatic or corticosteroid-dependent brain metastases, or requiring systemic immunosuppression within 2 weeks prior to enrollment were ineligible. Randomization was stratified by PD-L1 expression tumor-infiltrating immune cells (IC), the number of prior chemotherapy regimens (1 vs. 2), and histology (squamous vs. non-squamous).

Patients were randomized to receive TECENTRIQ 1200 mg intravenously every 3 weeks until unacceptable toxicity, radiographic progression, or clinical progression or docetaxel 75 mg/m² intravenously every 3 weeks until unacceptable toxicity or disease progression. Tumor assessments were conducted every 6 weeks for the first 36 weeks and every 9 weeks thereafter. Major efficacy outcome measure was overall survival (OS) in the first 850 randomized patients and OS in the subgroup of patients with PD-L1-expressing tumors (defined as $\geq 1\%$ PD-L1 expression on tumor cells [TC] or immune cells [IC]). Additional efficacy outcome measures were OS in all randomized patients (n = 1225), OS in subgroups based on PD-L1 expression, overall response rate (ORR), and progression free survival as assessed by the investigator per RECIST v.1.1.

Among the first 850 randomized patients, the median age was 64 years (33 to 85 years) and 47% were ≥ 65 years old; 61% were male; 70% were White and 21% were Asian; 15% were current smokers and 67% were former smokers; and 37% had baseline ECOG PS of 0 and 63% had a

baseline ECOG PS of 1. Nearly all (94%) had metastatic disease, 74% had non-squamous histology, 75% had received only one prior platinum-based chemotherapy regimen, and 55% of patients had PD-L1-expressing tumors.

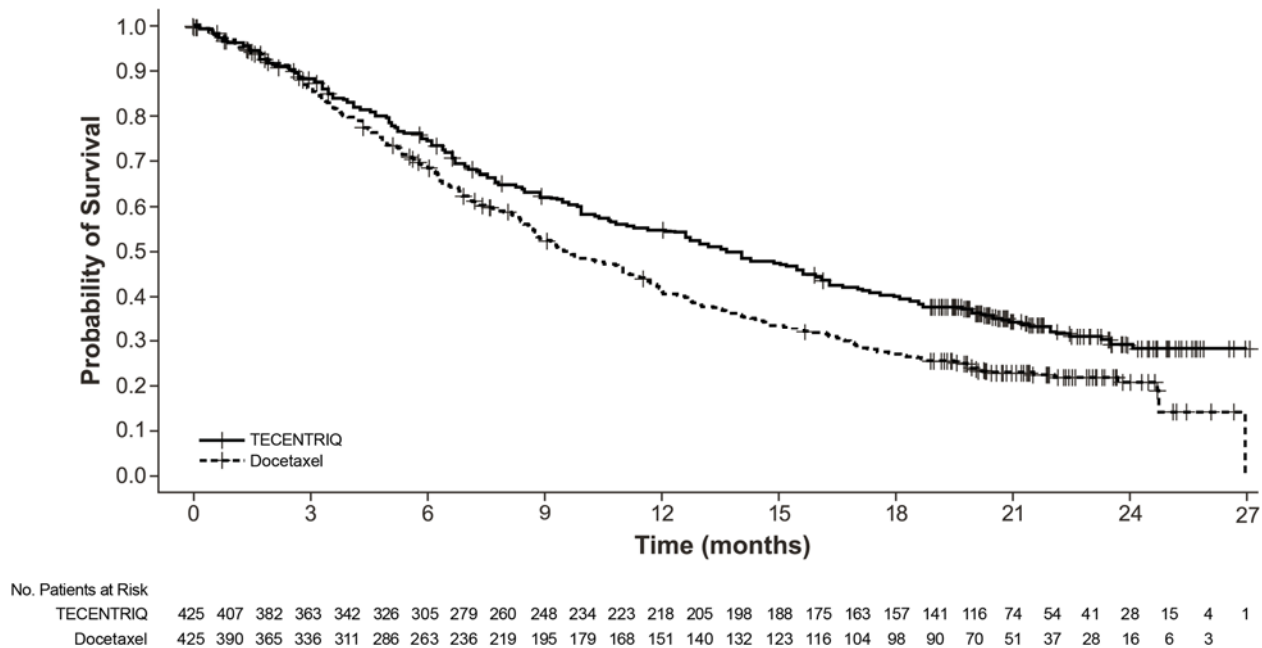
Efficacy results are presented in Table 23 and Figure 4.

Table 23: Efficacy Results in OAK

	TECENTRIQ	Docetaxel
Overall Survival in first 850 patients		
Number of patients	N=425	N=425
Deaths (%)	271 (64%)	298 (70%)
Median, months	13.8	9.6
(95% CI)	(11.8, 15.7)	(8.6, 11.2)
Hazard ratio ¹ (95% CI)	0.74 (0.63, 0.87)	
p-value ²	0.0004 ³	
Progression-Free Survival		
Number of Patients	N=425	N=425
Events (%)	380 (89%)	375 (88%)
Progression (%)	332 (78%)	290 (68%)
Deaths (%)	48 (11%)	85 (20%)
Median, months	2.8	4.0
(95% CI)	(2.6, 3.0)	(3.3, 4.2)
Hazard ratio ¹ (95% CI)	0.95 (0.82, 1.10)	
Overall Response Rate ⁴		
Number of Patients	N=425	N=425
ORR, n (%)	58 (14%)	57 (13%)
(95% CI)	(11%, 17%)	(10%, 17%)
Complete Response	6 (1%)	1 (0.2%)
Partial Response	52 (12%)	56 (13%)
Duration of Response³		
	N=58	N=57
Median, months	16.3	6.2
(95% CI)	(10.0, NE)	(4.9, 7.6)
Overall Survival in all 1225 patients		
Number of patients	N=613	N=612
Deaths (%)	384 (63%)	409 (67%)
Median, months	13.3	9.8
(95% CI)	(11.3, 14.9)	(8.9, 11.3)
Hazard ratio ¹ (95% CI)	0.79 (0.69, 0.91)	
p-value ²	0.0013 ⁵	
¹ Stratified by PD-L1 expression in tumor infiltrating immune cells, the number of prior chemotherapy regimens, and histology ² Based on the stratified log-rank test ³ Compared to the pre-specified allocated α of 0.03 for this analysis ⁴ Per RECIST v1.1 (Response Evaluation Criteria in Solid Tumors v1.1)		

	TECENTRIQ	Docetaxel
⁵ Compared to the allocated α of 0.0177 for this interim analysis based on 86% information using O'Brien-Fleming boundary		
CI=confidence interval; NE=not estimable		

Figure 4: Kaplan-Meier Curves of Overall Survival in the First 850 Patients Randomized in OAK



Tumor specimens were evaluated prospectively using the VENTANA PD-L1 (SP142) Assay at a central laboratory and the results were used to define the PD-L1 expression subgroups for pre-specified analyses. Of the 850 patients, 16% were classified as having high PD-L1 expression, defined as having PD-L1 expression on $\geq 50\%$ of TC or $\geq 10\%$ of IC. In an exploratory efficacy subgroup analysis of OS based on PD-L1 expression, the hazard ratio was 0.41 (95% CI: 0.27, 0.64) in the high PD-L1 expression subgroup and 0.82 (95% CI: 0.68, 0.98) in patients who did not have high PD-L1 expression.

Exploratory analyses showed that the subset of patients who were ADA positive by week 4 (21%) appeared to have less efficacy (effect on overall survival) as compared to patients who tested negative for treatment-emergent ADA by week 4 (79%) [see *Adverse Reactions* (6.2), *Clinical Pharmacology* (12.3)]. ADA positive patients by week 4 appeared to have similar OS compared to docetaxel-treated patients. In an exploratory analysis, propensity score matching was conducted to compare ADA positive patients in the atezolizumab arm with a matched population in the docetaxel arm and ADA negative patients in the atezolizumab arm with a matched population in the docetaxel arm. Propensity score matching factors were: baseline sum of longest tumor size (BSLD), baseline ECOG, histology (squamous vs. non-squamous), baseline albumin, baseline LDH, gender, tobacco history, metastases status (advanced or local), metastatic site, TC level, and IC level. The hazard ratio comparing the ADA positive subgroup with its matched control was 0.89 (95% CI: 0.61, 1.3). The hazard ratio comparing the ADA negative subgroup with its matched control was 0.68 (95% CI: 0.55, 0.83).

14.3 Locally Advanced or Metastatic Triple-Negative Breast Cancer

The efficacy of TECENTRIQ in combination with paclitaxel protein-bound was investigated in IMpassion130 (NCT02425891), a multicenter, international, double-blinded, placebo-controlled, randomized (1:1) trial that included 902 unresectable locally advanced or metastatic triple-negative breast cancer patients that had not received prior chemotherapy for metastatic disease.

The trial excluded patients with a history of autoimmune disease, administration of a live attenuated vaccine within 4 weeks prior to randomization, administration of systemic immunostimulatory agents within 4 weeks or systemic immunosuppressive medications within 2 weeks prior to randomization; or untreated or corticosteroid-dependent brain metastases. Randomization was stratified by presence of liver metastases, prior taxane treatment, and by PD-L1 expression status in tumor infiltrating immune cells (IC) (PD-L1 stained tumor-infiltrating immune cells [IC] <1% of tumor area vs. \geq 1% of the tumor area) by the VENTANA PD-L1 (SP142) Assay. Of the 902 patients in the intent to treat population (ITT), 41% (369 patients) were classified as PD-L1 expression \geq 1%. Patients were randomized to receive TECENTRIQ 840 mg or placebo intravenously on Days 1 and 15 of every 28-day cycle with paclitaxel protein-bound 100 mg/m² intravenously on Days 1, 8 and 15 of every 28-day cycle. Patients received treatment until radiographic disease progression per RECIST v1.1, or unacceptable toxicity. Tumor assessments were performed every 8 weeks (\pm 1 week) for the first 12 months after Cycle 1, day 1 and every 12 weeks (\pm 1 week) thereafter. Major efficacy outcomes were investigator-assessed progression free survival (PFS) in the ITT and PD-L1 expressing patient population per RECIST v1.1 and overall survival (OS) in the ITT population.

In IMpassion130, the median age was 55 years (range: 20-86). Overall, most patients were women (99.6%) and the majority of patients were white (68%), Asian (18%), Black or African American (7%), and American Indian or Alaskan Native (4.4%). The demographic and baseline disease characteristics of the study population were well balanced between the treatment arms. Baseline ECOG performance status was 0 (58%) or 1 (41%). Overall, 41% of enrolled patients had PD-L1 expression \geq 1%, 27% had liver metastases and 7% brain metastases at baseline. Approximately half the patients had received a taxane (51%) or anthracycline (54%) in the (neo)adjuvant setting. Patient demographics and baseline tumor disease in the PD-L1 expressing population were generally representative of the broader study population.

Tumor specimens (archival or fresh) were evaluated prospectively using the VENTANA PD-L1 (SP142) Assay at a central laboratory and the results were used as a stratification factor for randomization and to define the PD-L1 expression subgroups for pre-specified analyses.

Overall survival data were immature with 43% deaths in the ITT population. The efficacy results of IMpassion130 for the patient population with PD-L1 expression \geq 1% are presented in Table 24 and Figure 5.

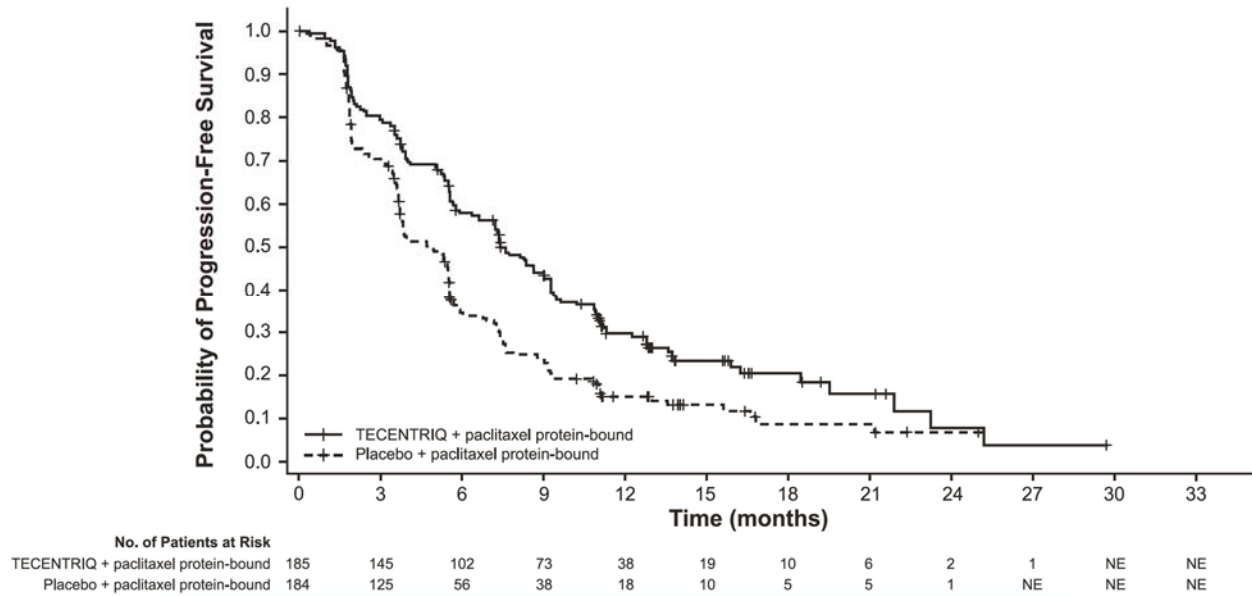
Table 24: Efficacy Results from IMpassion130 in Patients with PD-L1 Expression \geq 1%

	PD-L1 Expression \geq 1% ¹	
	TECENTRIQ in combination with paclitaxel protein-bound	Placebo in combination with paclitaxel protein-bound
Progression-Free Survival ^{2,3}	(n=185)	(n=184)
Events (%)	136 (74)	151 (82)
Median, months	7.4 (6.6, 9.2)	4.8 (3.8, 5.5)
Stratified Hazard ratio (95% CI) ⁴	0.60 (0.48, 0.77)	
p-value	<0.0001	
Objective Response Rate ^{2,3,5,6}	n=185	n=183
Number of responders (%)	98 (53)	60 (33)
(95% CI)	(45.5, 60.3)	(26.0, 40.1)
Complete Response (%)	17 (9)	1 (<1)
Partial Response (%)	81 (44)	59 (32)
Duration of Response ^{2,3,6}	n=98	n=60

Median, months (95% CI)	9.2 (7.5, 11.9)	6.2 (5.5, 8.8)
----------------------------	--------------------	-------------------

¹ PD-L1 expression in tumor-infiltrating immune cells (IC)
² As determined by investigator assessment
³ per RECIST v1.1 (Response Evaluation Criteria in Solid Tumors v1.1)
⁴ Stratified by presence of liver metastases, and by prior taxane treatment
⁵ Patients with measurable disease at baseline
⁶ Confirmed responses
PFS=Progression-Free Survival; CI=Confidence Interval; ORR=Objective Response Rate; DOR=Duration of Response; NE=Not Estimable

Figure 5: Kaplan-Meier Plot of Progression-Free-Survival in IMpassion130 in Patients with PD-L1 Expression $\geq 1\%$



14.4 Small Cell Lung Cancer

The efficacy of TECENTRIQ with carboplatin and etoposide was investigated in IMpower133 (NCT02763579), a randomized (1:1), multicenter, double-blind, placebo-controlled trial in 403 patients with ES-SCLC. IMpower133 enrolled patients with ES-SCLC who had received no prior chemotherapy for extensive stage disease and ECOG performance status 0 or 1. The trial excluded patients with active or untreated CNS metastases, history of autoimmune disease, administration of a live, attenuated vaccine within 4 weeks prior to randomization, or administration of systemic immunosuppressive medications within 1 week prior to randomization. Randomization was stratified by sex, ECOG performance status, and presence of brain metastases. Patients were randomized to receive one of the following two treatment arms:

- TECENTRIQ 1200 mg and carboplatin AUC 5 mg/mL/min on Day 1 and etoposide 100 mg/m² intravenously on Days 1, 2 and 3 of each 21-day cycle for a maximum of 4 cycles followed by TECENTRIQ 1200 mg once every 3 weeks until disease progression or unacceptable toxicity, or
- placebo and carboplatin AUC 5 mg/mL/min on Day 1 and etoposide 100 mg/m² intravenously on Days 1, 2, and 3 of each 21-day cycle for a maximum of 4 cycles followed by placebo once every 3 weeks until disease progression or unacceptable toxicity.

Administration of TECENTRIQ was permitted beyond RECIST-defined disease progression. Tumor assessments were conducted every 6 weeks for the first 48 weeks following Cycle 1, Day

1 and then every 9 weeks thereafter. Patients treated beyond disease progression had tumor assessment conducted every 6 weeks until treatment discontinuation.

Major efficacy outcome measures were OS and PFS as assessed by investigator per RECIST v1.1 in the intent-to-treat population. Additional efficacy outcome measures included ORR and DoR as assessed by investigator per RECIST v1.1.

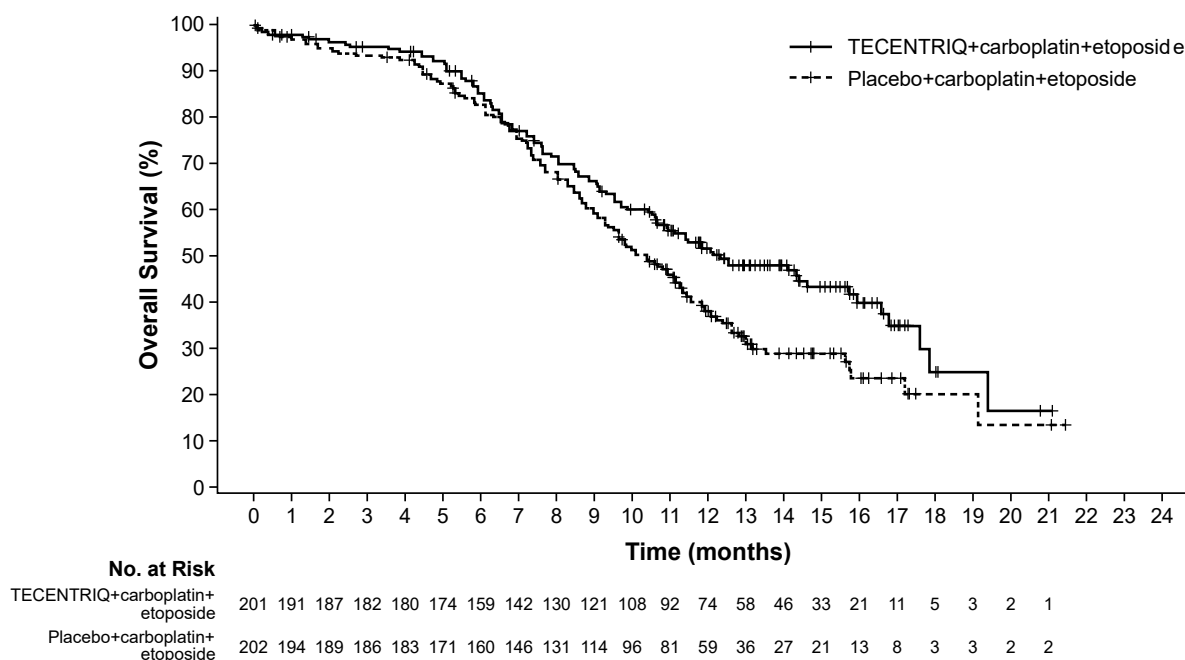
A total of 403 patients were randomized, including 201 to the TECENTRIQ arm and 202 to the chemotherapy alone arm. The median age was 64 years (range 26 to 90) and 65% were male. The majority of patients were White (80%); 17% were Asian, 4% were Hispanic and 1% were Black. Baseline ECOG performance status was 0 (35%) or 1 (65%); 9% of patients had a history of brain metastases, and 97% were current or previous smokers.

Efficacy results are presented in Table 25 and Figure 6.

Table 25: Efficacy Results from IMpower133

	TECENTRIQ with Carboplatin and Etoposide	Placebo with Carboplatin and Etoposide
Overall Survival	N=201	N=202
Deaths (%)	104 (52%)	134 (66%)
Median, months	12.3	10.3
(95% CI)	(10.8, 15.9)	(9.3, 11.3)
Hazard ratio ³ (95% CI)	0.70 (0.54, 0.91)	
p-value ^{4,5}	0.0069	
Progression-Free Survival^{1,2}	N=201	N=202
Number of events (%)	171 (85%)	189 (94%)
Median, months	5.2	4.3
(95% CI)	(4.4, 5.6)	(4.2, 4.5)
Hazard ratio ³ (95% CI)	0.77 (0.62, 0.96)	
p-value ^{4,6}	0.0170	
Objective Response Rate^{1,2,7}	N=201	N=202
Number of responders (%)	121 (60%)	130 (64%)
(95% CI)	(53, 67)	(57, 71)
Complete Response (%)	5 (2%)	2 (1%)
Partial Response (%)	116 (58%)	128 (63%)
Duration of Response^{1,2,7}	N=121	N=130
Median, months	4.2	3.9
(95% CI)	(4.1, 4.5)	(3.1, 4.2)
¹ As determined by investigator assessment ² per RECIST v1.1 (Response Evaluation Criteria in Solid Tumors v1.1) ³ Stratified by sex and ECOG performance status ⁴ Based on the stratified log-rank test ⁵ Compared to the allocated α of 0.0193 for this interim analysis based on 78% information using O'Brien-Fleming boundary ⁶ Compared to the allocated α of 0.05 for this analysis. ⁷ Confirmed response CI=confidence interval		

Figure 6: Kaplan-Meier Plot of Overall Survival in IMpower133



16 HOW SUPPLIED/STORAGE AND HANDLING

TECENTRIQ injection is a sterile, preservative-free, and colorless to slightly yellow solution for intravenous infusion supplied as a carton containing one 840 mg/14 mL single-dose vial (NDC 50242-918-01) or 1200 mg/20 mL single-dose vial (NDC 50242-917-01).

Store vials under refrigeration at 2°C to 8°C (36°F to 46°F) in original carton to protect from light. Do not freeze. Do not shake.

17 PATIENT COUNSELING INFORMATION

Advise the patient to read the FDA-approved patient labeling (Medication Guide).

Immune-Mediated Adverse Reactions

Inform patients of the risk of immune-mediated adverse reactions that may require corticosteroid treatment and interruption or discontinuation of TECENTRIQ, including:

- **Pneumonitis:** Advise patients to contact their healthcare provider immediately for any new or worsening cough, chest pain, or shortness of breath [*see Warnings and Precautions (5.1)*].
- **Hepatitis:** Advise patients to contact their healthcare provider immediately for jaundice, severe nausea or vomiting, pain on the right side of abdomen, lethargy, or easy bruising or bleeding [*see Warnings and Precautions (5.2)*].
- **Colitis:** Advise patients to contact their healthcare provider immediately for diarrhea, blood or mucus in stools, or severe abdominal pain [*see Warnings and Precautions (5.3)*].

- Endocrinopathies: Advise patients to contact their healthcare provider immediately for signs or symptoms of hypophysitis, hyperthyroidism, hypothyroidism, adrenal insufficiency, or type 1 diabetes mellitus, including diabetic ketoacidosis [*see Warnings and Precautions (5.4)*].
- Other Immune-Mediated Adverse Reactions: Advise patients to contact their healthcare provider immediately for signs or symptoms of other potential immune-mediated adverse reactions [*see Warnings and Precautions (5.5)*].

Infections

Advise patients to contact their healthcare provider immediately for signs or symptoms of infection [*see Warnings and Precautions (5.6)*].

Infusion-Related Reactions

Advise patients to contact their healthcare provider immediately for signs or symptoms of infusion-related reactions [*see Warnings and Precautions (5.7)*].

Embryo-Fetal Toxicity

Advise females of reproductive potential that TECENTRIQ can cause harm to a fetus and to inform their healthcare provider of a known or suspected pregnancy [*see Warnings and Precautions (5.8), Use in Specific Populations (8.1, 8.3)*].

Advise females of reproductive potential to use effective contraception during treatment and for at least 5 months after the last dose of TECENTRIQ [*see Use in Specific Populations (8.3)*].

Lactation

Advise female patients not to breastfeed while taking TECENTRIQ and for at least 5 months after the last dose [*see Use in Specific Populations (8.2)*].

Manufactured by:

Genentech, Inc.

A Member of the Roche Group

1 DNA Way

South San Francisco, CA 94080-4990

U.S. License No. 1048

TECENTRIQ is a registered trademark of Genentech, Inc.

©2020 Genentech, Inc.

MEDICATION GUIDE
TECENTRIQ® (te-SEN-trik)
(atezolizumab)
injection

What is the most important information I should know about TECENTRIQ?

TECENTRIQ is a medicine that may treat certain cancers by working with your immune system. TECENTRIQ can cause your immune system to attack normal organs and tissues and can affect the way they work. These problems can sometimes become serious or life-threatening and can lead to death.

Call or see your healthcare provider right away if you get any symptoms of the following problems or these symptoms get worse:

Lung problems (pneumonitis). Signs and symptoms of pneumonitis may include:

- new or worsening cough
- shortness of breath
- chest pain

Liver problems (hepatitis). Signs and symptoms of hepatitis may include:

- yellowing of your skin or the whites of your eyes
- dark urine (tea colored)
- severe nausea or vomiting
- bleeding or bruising more easily than normal
- pain on the right side of your stomach area (abdomen)
- feeling less hungry than usual
- drowsiness

Intestinal problems (colitis). Signs and symptoms of colitis may include:

- diarrhea (loose stools) or more bowel movements than usual
- blood or mucus in your stools or dark, tarry, sticky stools
- severe stomach area (abdomen) pain or tenderness

Hormone gland problems (especially the thyroid, adrenal glands, pancreas, and pituitary). Signs and symptoms that your hormone glands are not working properly may include:

- headaches that will not go away or unusual headaches
- feeling cold
- extreme tiredness
- constipation
- weight gain or weight loss
- your voice gets deeper
- dizziness or fainting
- urinating more often than usual
- feeling more hungry or thirsty than usual
- nausea or vomiting
- hair loss
- stomach area (abdomen) pain
- changes in mood or behavior, such as decreased sex drive, irritability, or forgetfulness

Problems in other organs. Signs and symptoms may include:

- severe muscle weakness
- neck stiffness
- numbness or tingling in hands or feet
- eye pain or redness
- confusion
- skin blisters or peeling
- blurry vision, double vision, or other vision problems
- chest pain, irregular heartbeat, shortness of breath or swelling of the ankles
- changes in mood or behavior
- extreme sensitivity to light

Severe infections. Signs and symptoms of infection may include:

- fever
- flu-like symptoms
- cough
- pain when urinating, frequent urination or back pain

Severe infusion reactions. Signs and symptoms of infusion reactions may include:

- chills or shaking
- dizziness
- itching or rash
- fever
- flushing
- feeling like passing out
- shortness of breath or wheezing
- back or neck pain
- swelling of your face or lips

Getting medical treatment right away may help keep these problems from becoming more serious.

Your healthcare provider will check you for these problems during your treatment with TECENTRIQ. Your healthcare provider may treat you with corticosteroid or hormone replacement medicines. Your healthcare provider may delay or completely stop treatment with TECENTRIQ if you have severe side effects.

What is TECENTRIQ?

TECENTRIQ is a prescription medicine used to treat adults with:

- **a type of bladder and urinary tract cancer called urothelial carcinoma.** TECENTRIQ may be used when your bladder cancer has spread or cannot be removed by surgery, **and if you have any one of the following conditions:**
 - you are not able to take chemotherapy that contains a medicine called cisplatin, and your cancer tests positive for “PD-L1”, **or**
 - you are not able to take chemotherapy that contains any platinum regardless of “PD-L1” status, **or**
 - you have tried chemotherapy that contains platinum, and it did not work or is no longer working.
- **a type of lung cancer called non-small cell lung cancer (NSCLC).**
 - **TECENTRIQ may be used alone as your first treatment when your lung cancer:**
 - has spread or grown, **and**
 - your cancer tests positive for “high PD-L1”, **and**
 - your tumor does not have an abnormal “EGFR” or “ALK” gene.
 - **TECENTRIQ may be used with the medicines bevacizumab, paclitaxel, and carboplatin as your first treatment when your lung cancer:**
 - has spread or grown, **and**
 - is a type called “non-squamous NSCLC”, **and**
 - your tumor does not have an abnormal “EGFR” or “ALK” gene.
 - **TECENTRIQ may be used with the medicines paclitaxel protein-bound and carboplatin as your first treatment when your lung cancer:**
 - has spread or grown, **and**
 - is a type called “non-squamous NSCLC”, **and**
 - your tumor does not have an abnormal “EGFR” or “ALK” gene.
 - **TECENTRIQ may also be used alone when your lung cancer:**
 - has spread or grown, **and**
 - you have tried chemotherapy that contains platinum, and it did not work or is no longer working.
 - if your tumor has an abnormal “EGFR” or “ALK” gene, you should have also tried an FDA-approved therapy for tumors with these abnormal genes, and it did not work or is no longer working.
- **a type of breast cancer called triple-negative breast cancer (TNBC).** TECENTRIQ may be used with the medicine paclitaxel protein-bound when your breast cancer:
 - has spread or cannot be removed by surgery, **and**
 - your cancer tests positive for “PD-L1”.
- **a type of lung cancer called small cell lung cancer (SCLC).** TECENTRIQ may be used with the chemotherapy medicines carboplatin and etoposide as your first treatment when your lung cancer
 - is a type called “extensive-stage SCLC,” which means that it has spread or grown.

It is not known if TECENTRIQ is safe and effective in children.

Before you receive TECENTRIQ, tell your healthcare provider about all of your medical conditions, including if you:

- have immune system problems such as Crohn’s disease, ulcerative colitis, or lupus
- have had an organ transplant
- have lung or breathing problems
- have liver problems
- have a condition that affects your nervous system, such as myasthenia gravis or Guillain-Barré syndrome
- are being treated for an infection
- are pregnant or plan to become pregnant. TECENTRIQ can harm your unborn baby. Tell your healthcare provider right away if you become pregnant or think you may be pregnant during treatment with TECENTRIQ.

Females who are able to become pregnant:

- Your healthcare provider should do a pregnancy test before you start treatment with TECENTRIQ.
- You should use an effective method of birth control during your treatment and for at least 5 months after the last dose of TECENTRIQ.
- are breastfeeding or plan to breastfeed. It is not known if TECENTRIQ passes into your breast milk. Do not breastfeed during treatment and for at least 5 months after the last dose of TECENTRIQ.

Tell your healthcare provider about all the medicines you take, including prescription and over-the-counter medicines, vitamins, and herbal supplements.

How will I receive TECENTRIQ?

- Your healthcare provider will give you TECENTRIQ into your vein through an intravenous (IV) line over 30 to 60 minutes.
- TECENTRIQ is usually given every 2, 3, or 4 weeks.

- Your healthcare provider will decide how many treatments you need.
- Your healthcare provider will test your blood to check you for certain side effects.
- If you miss any appointments, call your healthcare provider as soon as possible to reschedule your appointment.

What are the possible side effects of TECENTRIQ?

TECENTRIQ can cause serious side effects, including:

- See “What is the most important information I should know about TECENTRIQ?”

The most common side effects of TECENTRIQ when used alone include:

- | | |
|-------------------------|-----------------------|
| • feeling tired or weak | • cough |
| • nausea | • shortness of breath |
| | • decreased appetite |

The most common side effects of TECENTRIQ when used in lung cancer with other anti-cancer medicines include:

- | | |
|-------------------------|----------------------|
| • feeling tired or weak | • diarrhea |
| • nausea | • decreased appetite |
| • hair loss | |
| • constipation | |

The most common side effects of TECENTRIQ when used in triple-negative breast cancer with paclitaxel protein-bound include:

- | | |
|---|-------------------------|
| • hair loss | • constipation |
| • tingling or numbness in hands or feet | • cough |
| • feeling tired | • headache |
| • nausea | • low white blood cells |
| • diarrhea | • vomiting |
| • low red blood cells (anemia) | • decreased appetite |

TECENTRIQ may cause fertility problems in females, which may affect the ability to have children. Talk to your healthcare provider if you have concerns about fertility.

These are not all the possible side effects of TECENTRIQ. Ask your healthcare provider or pharmacist for more information. Call your doctor for medical advice about side effects. You may report side effects to FDA at 1-800-FDA-1088.

General information about the safe and effective use of TECENTRIQ.

Medicines are sometimes prescribed for purposes other than those listed in a Medication Guide. If you would like more information about TECENTRIQ, talk with your healthcare provider. You can ask your healthcare provider for information about TECENTRIQ that is written for health professionals.

What are the ingredients in TECENTRIQ?

Active ingredient: atezolizumab

Inactive ingredients: glacial acetic acid, L-histidine, polysorbate 20 and sucrose

Manufactured by: **Genentech, Inc.**, A Member of the Roche Group, 1 DNA Way, South San Francisco, CA 94080-4990 USA

U.S. License No. 1048 TECENTRIQ is a registered trademark of Genentech, Inc.

For more information, call 1-844-832-3687 or go to www.TECENTRIQ.com.

This Medication Guide has been approved by the U.S. Food and Drug Administration.

Revised: 05/2020

This is a representation of an electronic record that was signed electronically. Following this are manifestations of any and all electronic signatures for this electronic record.

/s/

B HARPREET SINGH
05/18/2020 01:40:17 PM