

Labeling Format Information:		
Fonts : Helvetica Condensed Black Oblique Helvetica Condensed Bold Helvetica Narrow		
Drug Facts :	9.5pt	Leading : 6.15pt
Header :	8pt	Bullets : 6pt
Subheader :	6pt	Barlines : 2.5pt
Body Text :	6pt	Hairlines : 0.5pt
Drug Facts (Continued) NA		
Horizontal Scale: 80%-100% Average Kerning: 0		



NDC#48581-670-99

for temporary relief of mild to moderate pain

- Sore Muscle
- Sprains
- Backache
- Joint Pain

HOW TO APPLY



Salonpas®

Pain Relief Patch

**Menthol 3%
Methyl Salicylate 10%
Topical Analgesic**

APPLY FOR
8-12
HOURS

1 PATCH
2 3/4" x 3 15/16" (7cm x 10cm)

FDA APPROVED NON-PRESCRIPTION PAIN RELIEVING PATCH
EFFECTIVENESS CONFIRMED IN CLINICAL TRIAL

Manufactured by
Hisamitsu Pharmaceutical Co., Inc.
JAPAN SAGA TOSU
MADE IN JAPAN

Distributed by
Hisamitsu America, Inc.
Florham Park, NJ 07932

**FREE SAMPLE
NOT FOR RE-SALE**

Package not child resistant.
Keep out of reach of children.

✂ CUT OPEN HERE ----- CUT OPEN HERE ✂

Drug Facts

Active ingredients (in each patch)	Purpose
Menthol 3%.....	Topical analgesic
Methyl salicylate 10% (NSAID: nonsteroidal anti-inflammatory drug).....	Topical analgesic

Uses Temporarily relieves mild to moderate aches & pains of muscles & joints associated with:
 ■ strains ■ sprains ■ simple backache ■ arthritis ■ bruises

Warnings
For external use only
Stomach bleeding warning: This product contains an NSAID, which may cause stomach bleeding. The chance is small but higher if you:
 ■ have had stomach ulcers or bleeding problems ■ are age 60 or older
 ■ take other drugs containing an NSAID (aspirin, ibuprofen, naproxen, or others) ■ take a blood thinning (anticoagulant) or steroid drug
 ■ have 3 or more alcoholic drinks every day while using this product
 ■ take more or for a longer time than directed

Do not use
 ■ on the face or rashes ■ on wounds or damaged skin ■ if allergic to aspirin or other NSAIDs
 ■ with a heating pad ■ when sweating (such as from exercise or heat)
 ■ any patch from a pouch that has been open for 14 or more days ■ right before or after heart surgery

Ask a doctor before use if ■ you are allergic to topical products ■ the stomach bleeding warning applies to you
 ■ you are taking a diuretic ■ you have high blood pressure, heart disease, or kidney disease

When using this product ■ wash hands after applying or removing patch. Avoid contact with eyes. If eye contact occurs, rinse thoroughly with water.
 ■ the risk of heart attack or stroke may increase if you use more than directed or for longer than directed

Stop use and ask a doctor if ■ stomach pain or upset gets worse or lasts
 ■ you feel faint, vomit blood, or have bloody or black stools. These are signs of stomach bleeding.
 ■ rash, itching or skin irritation develops ■ condition worsens ■ symptoms last for more than 3 days
 ■ symptoms clear up and occur again within a few days

If pregnant or breast-feeding, ask a health professional before use. It is especially important not to use methyl salicylate at 20 weeks or later in pregnancy unless definitely directed to do so by a doctor because it may cause problems in the unborn child or complications during delivery.
Keep out of reach of children. If put in mouth, get medical help or contact a Poison Control Center right away. Package not child resistant. Dispose of the used patches after folding sticky ends together.

Directions
Adults 18 years and older: ■ only use one patch at a time
 ■ clean and dry affected area ■ remove patch from backing film and apply to skin (see illustration)
 ■ apply one patch to the affected area and leave in place for up to 8 to 12 hours
 ■ if pain lasts after using the first patch, a second patch may be applied for up to another 8 to 12 hours
 ■ do not use more than 2 patches per day ■ do not use for more than 3 days in a row
 ■ the used patch should be removed from the skin when a new one is applied
Children under 18 years of age: do not use; this product has not been shown to work in children

Other information ■ Store at 20-25°C (68-77°F) ■ Avoid storing product in direct sunlight
 ■ Protect product from excessive moisture
 ■ Some individuals may not experience pain relief until several hours after applying the patch

Inactive ingredients
 alicyclic saturated hydrocarbon resin, backing cloth, film, mineral oil, polyisobutylene, polyisobutylene 1,200,000, styrene-isoprene-styrene block copolymer, synthetic aluminum silicate

Questions or comments?
 Toll free 1-87-SALONPAS www.salonpas.us

LOT

EXP.

®:Registered Trade Mark XXXXXX-X

Labeling Format Information:		
Fonts : Helvetica Condensed Black Oblique Helvetica Condensed Bold Helvetica Narrow		
Drug Facts :	9.5pt	Leading : 6.15pt
Header :	8pt	Bullets : 6pt
Subheader :	6pt	Barlines : 2.5pt
Body Text :	6pt	Hairlines : 0.5pt
Drug Facts (Continued) NA		
Horizontal Scale: 80%-100% Average Kerning: 0		



NDC#46581-670-01

for temporary relief of mild to moderate pain

- Sore Muscle
- Sprains
- Backache
- Joint Pain

HOW TO APPLY



Salonpas®

Pain Relief Patch

Menthol 3%
Methyl Salicylate 10%
Topical Analgesic

APPLY FOR
8-12
HOURS

1 PATCH
2 3/4" x 3 15/16" (7cm x 10cm)

Package not child resistant.
Keep out of reach of children.

FDA APPROVED NON-PRESCRIPTION PAIN RELIEVING PATCH
EFFECTIVENESS CONFIRMED IN CLINICAL TRIAL

⚠ DO NOT USE MORE THAN ONE SALONPAS PATCH AT A TIME. SEE DIRECTIONS.

Manufactured by
Hisamitsu Pharmaceutical Co., Inc.
JAPAN SAGA TOSU
MADE IN JAPAN

Distributed by
Hisamitsu America, Inc.
Florham Park, NJ 07932



3 46581 67001 1

✂ CUT OPEN HERE ----- CUT OPEN HERE ✂

minty scent

Drug Facts

Active ingredients (in each patch)	Purpose
Menthol 3%.....	Topical analgesic
Methyl salicylate 10% (NSAID: nonsteroidal anti-inflammatory drug).....	Topical analgesic

Uses Temporarily relieves mild to moderate aches & pains of muscles & joints associated with:
 ■ strains ■ sprains ■ simple backache ■ arthritis ■ bruises

Warnings
For external use only
Stomach bleeding warning: This product contains an NSAID, which may cause stomach bleeding. The chance is small but higher if you:
 ■ are age 60 or older
 ■ have had stomach ulcers or bleeding problems ■ take a blood thinning (anticoagulant) or steroid drug
 ■ take other drugs containing an NSAID (aspirin, ibuprofen, naproxen, or others)
 ■ have 3 or more alcoholic drinks every day while using this product
 ■ take more or for a longer time than directed

Do not use
 ■ on the face or rashes ■ on wounds or damaged skin ■ if allergic to aspirin or other NSAIDs
 ■ with a heating pad ■ when sweating (such as from exercise or heat)
 ■ any patch from a pouch that has been open for 14 or more days ■ right before or after heart surgery

Ask a doctor before use if ■ you are allergic to topical products ■ the stomach bleeding warning applies to you
 ■ you are taking a diuretic ■ you have high blood pressure, heart disease, or kidney disease

When using this product ■ wash hands after applying or removing patch. Avoid contact with eyes. If eye contact occurs, rinse thoroughly with water.
 ■ the risk of heart attack or stroke may increase if you use more than directed or for longer than directed

Stop use and ask a doctor if ■ stomach pain or upset gets worse or lasts
 ■ you feel faint, vomit blood, or have bloody or black stools. These are signs of stomach bleeding.
 ■ rash, itching or skin irritation develops ■ condition worsens ■ symptoms last for more than 3 days
 ■ symptoms clear up and occur again within a few days

If pregnant or breast-feeding, ask a health professional before use. It is especially important not to use methyl salicylate at 20 weeks or later in pregnancy unless definitely directed to do so by a doctor because it may cause problems in the unborn child or complications during delivery.
Keep out of reach of children. If put in mouth, get medical help or contact a Poison Control Center right away. Package not child resistant. Dispose of the used patches after folding sticky ends together.

Directions
Adults 18 years and older: ■ only use one patch at a time
 ■ clean and dry affected area ■ remove patch from backing film and apply to skin (see illustration)
 ■ apply one patch to the affected area and leave in place for up to 8 to 12 hours
 ■ if pain lasts after using the first patch, a second patch may be applied for up to another 8 to 12 hours
 ■ do not use more than 2 patches per day ■ do not use for more than 3 days in a row
 ■ the used patch should be removed from the skin when a new one is applied
Children under 18 years of age: do not use; this product has not been shown to work in children

Other information ■ Store at 20-25°C (68-77°F) ■ Avoid storing product in direct sunlight
 ■ Protect product from excessive moisture
 ■ Some individuals may not experience pain relief until several hours after applying the patch

Inactive ingredients
 alicyclic saturated hydrocarbon resin, backing cloth, film, mineral oil, polyisobutylene, polyisobutylene 1,200,000, styrene-isoprene-styrene block copolymer, synthetic aluminum silicate

Questions or comments?
 Toll free 1-87-SALONPAS www.salonpas.us

LOT

EXP.

®:Registered Trade Mark XXXXXX-X

Labeling Format Information:	
Fonts : Helvetica Condensed Black Oblique Helvetica Condensed Bold Helvetica Narrow	
Drug Facts : 9.5pt	Leading : 6.15pt
Header : 8pt	Bullets : 6pt
Subheader : 6pt	Barlines : 2.5pt
Body Text : 6pt	Hairlines : 0.5pt
Drug Facts (Continued) NA	
Horizontal Scale: 80%-100% Average Kerning: 0	

✂ CUT OPEN HERE ----- CUT OPEN HERE ✂

FOLD TWICE AFTER OPENING
Discard unused patches 14 days after opening
FOLD TWICE AFTER OPENING

NDC#46581-670-03 **Hisamitsu**

for temporary relief of mild to moderate pain

- Sore Muscle
- Sprains
- Backache
- Joint Pain

HOW TO APPLY

- Peel the center film.
- Place on affected area.
- Slide the film backward.
- Slide the other film forward.

Salonpas
Pain Relief Patch

Menthol 3%
Methyl Salicylate 10%
Topical Analgesic

APPLY FOR 8-12 HOURS

3 PATCHES
2 3/4" x 3 15/16" (7cm x 10cm)

Package not child resistant. Keep out of reach of children.

DO NOT USE MORE THAN ONE SALONPAS PATCH AT A TIME. SEE DIRECTIONS.

Manufactured by Hisamitsu Pharmaceutical Co., Inc. JAPAN SAGA TOSU MADE IN JAPAN
Distributed by Hisamitsu America, Inc. Florham Park, NJ 07932

3 46581 67003 5

✂ CUT OPEN HERE ----- CUT OPEN HERE ✂

Drug Facts minty scent

Active ingredients (in each patch)	Purpose
Menthol 3%	Topical analgesic
Methyl salicylate 10% (NSAID: nonsteroidal anti-inflammatory drug)	Topical analgesic

Uses Temporarily relieves mild to moderate aches & pains of muscles & joints associated with:
 ■ strains ■ sprains ■ simple backache ■ arthritis ■ bruises

Warnings
For external use only
Stomach bleeding warning: This product contains an NSAID, which may cause stomach bleeding. The chance is small but higher if you:
 ■ are age 60 or older
 ■ have had stomach ulcers or bleeding problems ■ take a blood thinning (anticoagulant) or steroid drug
 ■ take other drugs containing an NSAID (aspirin, ibuprofen, naproxen, or others)
 ■ have 3 or more alcoholic drinks every day while using this product
 ■ take more or for a longer time than directed

Do not use
 ■ on the face or rashes ■ on wounds or damaged skin ■ if allergic to aspirin or other NSAIDs
 ■ with a heating pad ■ when sweating (such as from exercise or heat)
 ■ any patch from a pouch that has been open for 14 or more days ■ right before or after heart surgery

Ask a doctor before use if ■ you are allergic to topical products ■ the stomach bleeding warning applies to you
 ■ you are taking a diuretic ■ you have high blood pressure, heart disease, or kidney disease

When using this product ■ wash hands after applying or removing patch. Avoid contact with eyes. If eye contact occurs, rinse thoroughly with water.
 ■ the risk of heart attack or stroke may increase if you use more than directed or for longer than directed

Stop use and ask a doctor if ■ stomach pain or upset gets worse or lasts
 ■ you feel faint, vomit blood, or have bloody or black stools. These are signs of stomach bleeding.
 ■ rash, itching or skin irritation develops ■ condition worsens ■ symptoms last for more than 3 days
 ■ symptoms clear up and occur again within a few days

If pregnant or breast-feeding, ask a health professional before use. It is especially important not to use methyl salicylate at 20 weeks or later in pregnancy unless definitely directed to do so by a doctor because it may cause problems in the unborn child or complications during delivery.
Keep out of reach of children. If put in mouth, get medical help or contact a Poison Control Center right away. Package not child resistant. Dispose of the used patches after folding sticky ends together.

Directions
Adults 18 years and older: ■ only use one patch at a time
 ■ clean and dry affected area ■ remove patch from backing film and apply to skin (see illustration)
 ■ apply one patch to the affected area and leave in place for up to 8 to 12 hours
 ■ if pain lasts after using the first patch, a second patch may be applied for up to another 8 to 12 hours
 ■ do not use more than 2 patches per day ■ do not use for more than 3 days in a row
 ■ the used patch should be removed from the skin when a new one is applied
Children under 18 years of age: do not use; this product has not been shown to work in children

Other information ■ Store at 20-25°C (68-77°F) ■ Avoid storing product in direct sunlight
 ■ Protect product from excessive moisture
 ■ Some individuals may not experience pain relief until several hours after applying the patch

Inactive ingredients
 alicyclic saturated hydrocarbon resin, backing cloth, film, mineral oil, polyisobutylene, polyisobutylene 1,200,000, styrene-isoprene-styrene block copolymer, synthetic aluminum silicate

Questions or comments?
 Toll free 1-87-SALONPAS www.salonpas.us

LOT: _____
 EXP: _____

®:Registered Trade Mark XXXXXX-X

Labeling Format Information:		
Fonts : Helvetica Condensed Black Oblique Helvetica Condensed Bold Helvetica Narrow		
Drug Facts :	9.5pt	Leading : 6.15pt
Header :	8pt	Bullets : 6pt
Subheader :	6pt	Barlines : 2.5pt
Body Text :	6pt	Hairlines : 0.5pt
Drug Facts (Continued) NA		
Horizontal Scale: 80%-100% Average Kerning: 0		

✂ CUT OPEN HERE ----- CUT OPEN HERE ✂

FOLD TWICE AFTER OPENING

Discard unused patches 14 days after opening

FOLD TWICE AFTER OPENING

HOW TO APPLY



1
Peel the center film.



2
Place on affected area.



3
Slide the film backward.



4
Slide the other film forward.

Salonpas®

Pain Relief Patch

**Menthol 3%
Methyl Salicylate 10%
Topical Analgesic**

3 PATCHES
2 3/4" x 3 15/16" (7cm x 10cm)

✂ DO NOT USE MORE THAN ONE SALONPAS PATCH AT A TIME. SEE DIRECTIONS.

Package not child resistant.
Keep out of reach of children.

Hisamitsu®
Manufactured by
Hisamitsu Pharmaceutical Co., Inc.
JAPAN SAGA TOSU
Distributed by
Hisamitsu America, Inc.
Florham Park, NJ 07932
MADE IN JAPAN

LOT _____
EXP. _____

✂ CUT OPEN HERE ----- CUT OPEN HERE ✂

Salonpas® Pain Relief Patch Menthol 3%, Methyl Salicylate 10% minty scent

Drug Facts	Purpose
Active ingredients (in each patch) Menthol 3%..... Topical analgesic Methyl salicylate 10% (NSAID: nonsteroidal anti-inflammatory drug)..... Topical analgesic	
Uses Temporarily relieves mild to moderate aches & pains of muscles & joints associated with: ■ strains ■ sprains ■ simple backache ■ arthritis ■ bruises	
Warnings For external use only Stomach bleeding warning: This product contains an NSAID, which may cause stomach bleeding. The chance is small but higher if you: ■ are age 60 or older ■ have had stomach ulcers or bleeding problems ■ take a blood thinning (anticoagulant) or steroid drug ■ take other drugs containing an NSAID (aspirin, ibuprofen, naproxen, or others) ■ have 3 or more alcoholic drinks every day while using this product ■ take more or for a longer time than directed	
Do not use ■ on the face or rashes ■ on wounds or damaged skin ■ if allergic to aspirin or other NSAIDs ■ with a heating pad ■ when sweating (such as from exercise or heat) ■ any patch from a pouch that has been open for 14 or more days ■ right before or after heart surgery	
Ask a doctor before use if ■ you are allergic to topical products ■ the stomach bleeding warning applies to you ■ you are taking a diuretic ■ you have high blood pressure, heart disease, or kidney disease	
When using this product ■ wash hands after applying or removing patch. Avoid contact with eyes. If eye contact occurs, rinse thoroughly with water. ■ the risk of heart attack or stroke may increase if you use more than directed or for longer than directed	
Stop use and ask a doctor if ■ stomach pain or upset gets worse or lasts ■ you feel faint, vomit blood, or have bloody or black stools. These are signs of stomach bleeding. ■ rash, itching or skin irritation develops ■ condition worsens ■ symptoms last for more than 3 days ■ symptoms clear up and occur again within a few days	
If pregnant or breast-feeding , ask a health professional before use. It is especially important not to use methyl salicylate at 20 weeks or later in pregnancy unless definitely directed to do so by a doctor because it may cause problems in the unborn child or complications during delivery. Keep out of reach of children. If put in mouth, get medical help or contact a Poison Control Center right away. Package not child resistant. Dispose of the used patches after folding sticky ends together.	
Directions Adults 18 years and older: ■ only use one patch at a time ■ clean and dry affected area ■ remove patch from backing film and apply to skin (see illustration) ■ apply one patch to the affected area and leave in place for up to 8 to 12 hours ■ if pain lasts after using the first patch, a second patch may be applied for up to another 8 to 12 hours ■ do not use more than 2 patches per day ■ do not use for more than 3 days in a row ■ the used patch should be removed from the skin when a new one is applied Children under 18 years of age: do not use; this product has not been shown to work in children	
Other information ■ Store at 20-25°C (68-77°F) ■ Avoid storing product in direct sunlight ■ Protect product from excessive moisture ■ Some individuals may not experience pain relief until several hours after applying the patch	
Inactive ingredients alicyclic saturated hydrocarbon resin, backing cloth, film, mineral oil, polyisobutylene, polyisobutylene 1,200,000, styrene-isoprene-styrene block copolymer, synthetic aluminum silicate	
Questions or comments? Toll free 1-87-SALONPAS www.salonpas.us ®:Registered Trade Mark XXXXXX-X	

03.FS67_sachet_5s 210513

Labeling Format Information:		
Fonts : Helvetica Condensed Black Oblique Helvetica Condensed Bold Helvetica Narrow		
Drug Facts :	9.5pt	Leading : 6.15pt
Header :	8pt	Bullets : 6pt
Subheader :	6pt	Barlines : 2.5pt
Body Text :	6pt	Hairlines : 0.4pt
Drug Facts (Continued)	NA	
Horizontal Scale: 80%-100% Average Kerning: 0		

✂ CUT OPEN HERE ----- CUT OPEN HERE ✂

FOLD TWICE AFTER OPENING

Discard unused patches 14 days after opening

FOLD TWICE AFTER OPENING

HOW TO APPLY



1 Peel the center film.



2 Place on affected area.



3 Slide the film backward.



4 Slide the other film forward.



Salonpas
Pain Relief Patch

Menthol 3%
Methyl Salicylate 10%
Topical Analgesic

5 PATCHES
2 3/4" x 3 15/16" (7cm x 10cm)

✂ DO NOT USE MORE THAN ONE SALONPAS PATCH AT A TIME. SEE DIRECTIONS.

*Package not child resistant.
Keep out of reach of children.*

Hisamitsu[®]
Manufactured by
Hisamitsu Pharmaceutical Co., Inc.
408, Tashirodaikan-machi, Tosu, Saga, Japan

Distributed by
Hisamitsu America, Inc.
Florham Park, NJ 07932

MADE IN JAPAN

LOT

EXP.

✂ CUT OPEN HERE ----- CUT OPEN HERE ✂

Salonpas[®] Pain Relief Patch Menthol 3%, Methyl Salicylate 10% minty scent

Drug Facts	Purpose
Active ingredients (in each patch)	
Menthol 3%.....	Topical analgesic
Methyl salicylate 10% (NSAID: nonsteroidal anti-inflammatory drug).....	Topical analgesic
Uses	Temporarily relieves mild to moderate aches & pains of muscles & joints associated with: ■ strains ■ sprains ■ simple backache ■ arthritis ■ bruises
Warnings	
For external use only	
Stomach bleeding warning: This product contains an NSAID, which may cause stomach bleeding. The chance is small but higher if you: ■ are age 60 or older ■ have had stomach ulcers or bleeding problems ■ take a blood thinning (anticoagulant) or steroid drug ■ take other drugs containing an NSAID (aspirin, ibuprofen, naproxen, or others) ■ have 3 or more alcoholic drinks every day while using this product ■ take more or for a longer time than directed	
Do not use ■ on the face or rashes ■ on wounds or damaged skin ■ if allergic to aspirin or other NSAIDs ■ with a heating pad ■ when sweating (such as from exercise or heat) ■ any patch from a pouch that has been open for 14 or more days ■ right before or after heart surgery	
Ask a doctor before use if ■ you are allergic to topical products ■ the stomach bleeding warning applies to you ■ you are taking a diuretic ■ you have high blood pressure, heart disease, or kidney disease	
When using this product ■ wash hands after applying or removing patch. Avoid contact with eyes. If eye contact occurs, rinse thoroughly with water. ■ the risk of heart attack or stroke may increase if you use more than directed or for longer than directed	
Stop use and ask a doctor if ■ stomach pain or upset gets worse or lasts ■ you feel faint, vomit blood, or have bloody or black stools. These are signs of stomach bleeding. ■ rash, itching or skin irritation develops ■ condition worsens ■ symptoms last for more than 3 days ■ symptoms clear up and occur again within a few days	
If pregnant or breast-feeding , ask a health professional before use. It is especially important not to use methyl salicylate at 20 weeks or later in pregnancy unless definitely directed to do so by a doctor because it may cause problems in the unborn child or complications during delivery. Keep out of reach of children. If put in mouth, get medical help or contact a Poison Control Center right away. Package not child resistant. Dispose of the used patches after folding sticky ends together.	
Directions	
Adults 18 years and older: ■ only use one patch at a time ■ clean and dry affected area ■ remove patch from backing film and apply to skin (see illustration) ■ apply one patch to the affected area and leave in place for up to 8 to 12 hours ■ if pain lasts after using the first patch, a second patch may be applied for up to another 8 to 12 hours ■ do not use more than 2 patches per day ■ do not use for more than 3 days in a row ■ the used patch should be removed from the skin when a new one is applied	
Children under 18 years of age: do not use; this product has not been shown to work in children	
Other information ■ Store at 20-25°C (68-77°F) ■ Avoid storing product in direct sunlight ■ Protect product from excessive moisture ■ Some individuals may not experience pain relief until several hours after applying the patch	
Inactive ingredients alicyclic saturated hydrocarbon resin, backing cloth, film, mineral oil, polyisobutylene, polyisobutylene 1,200,000, styrene-isoprene-styrene block copolymer, synthetic aluminum silicate	
Questions or comments?	
Toll free 1-87-SALONPAS	www.salonpas.us
	®Registered Trade Mark
	3P116T-0

Labeling Format Information:			
Fonts :	Helvetica Roman , Bold , Bold Oblique		
Drug Facts :	9.5pt	Leading :	6.5pt
Header :	8pt	Bullets :	5pt
Subheader :	6pt	Barlines :	2.5pt
Body Text :	6pt	Hairlines :	0.5pt
Horizontal Scale: 80%-100%		Average Kerning: 0	

5 Patches
Salonpas®
Pain Relief Patch
Menthol 3%, Methyl Salicylate 10%
 Manufactured by
 Hisamitsu Pharmaceutical Co., Inc.
 JAPAN SAGA TOSU
 MADE IN JAPAN
 Distributed by
 Hisamitsu America, Inc.
 Florham Park, NJ 07932
 ®Registered Trade Mark

Salonpas® Pain Relief Patch 5

Menthol 3%, Methyl Salicylate 10% PATCHES



for temporary relief of mild to moderate pain

- Sore Muscle
- Sprains
- Backache
- Joint Pain

Salonpas® Pain Relief Patch

Menthol 3%
Methyl Salicylate 10%
Topical Analgesic

APPLY FOR 8-12 HOURS

5 PATCHES
2 3/4" x 3 1/8" (7cm x 10cm)

DO NOT USE MORE THAN ONE SALONPAS PATCH AT A TIME. SEE DIRECTIONS.

LOT _____
EXP. _____

Salonpas® Pain Relief Patch
Menthol 3%, Methyl Salicylate 10% **5 PATCHES**

Salonpas®
Pain Relief Patch
Menthol 3%, Methyl Salicylate 10%

5 Patches

Salonpas® Pain Relief Patch
Menthol 3%, Methyl Salicylate 10%

5 Patches

HOW TO APPLY

1. Peel the center film.
2. Place on affected area.
3. Slide the film backward.
4. Slide the other film forward.

Salonpas®
Pain Relief Patch
Menthol 3%, Methyl Salicylate 10%

5 Patches

Salonpas® Pain Relief Patch
Menthol 3%, Methyl Salicylate 10%

5 Patches

minty scent

Drug Facts

Active ingredients (in each patch)

Menthol 3%	Topical analgesic
Methyl salicylate 10% (NSAID: nonsteroidal anti-inflammatory drug)	Topical analgesic

Uses
Temporarily relieves mild to moderate aches & pains of muscles & joints associated with:
 ■ strains ■ sprains ■ simple backache ■ arthritis ■ bruises

Warnings
For external use only
Stomach bleeding warning: This product contains an NSAID, which may cause stomach bleeding. The chance is small but higher if you:
 ■ are age 60 or older ■ have had stomach ulcers or bleeding problems
 ■ take a blood thinning (anticoagulant) or steroid drug
 ■ take other drugs containing an NSAID [aspirin, ibuprofen, naproxen, or others]
 ■ have 3 or more alcoholic drinks every day while using this product
 ■ take more or for a longer time than directed

Do not use
 ■ on the face or rashes ■ on wounds or damaged skin ■ if allergic to aspirin or other NSAIDs
 ■ with a heating pad ■ when sweating (such as from exercise or heat)
 ■ any patch from a pouch that has been open for 14 or more days ■ right before or after heart surgery

Ask a doctor before use if
 ■ you are allergic to topical products ■ the stomach bleeding warning applies to you
 ■ you are taking a diuretic ■ you have high blood pressure, heart disease, or kidney disease

When using this product
 ■ wash hands after applying or removing patch. Avoid contact with eyes. If eye contact occurs, rinse thoroughly with water.
 ■ the risk of heart attack or stroke may increase if you use more than directed or for longer than directed

Stop use and ask a doctor if
 ■ stomach pain or upset gets worse or lasts
 ■ you feel faint, vomit blood, or have bloody or black stools. These are signs of stomach bleeding.
 ■ rash, itching or skin irritation develops ■ condition worsens ■ symptoms last for more than 3 days
 ■ symptoms clear up and occur again within a few days

If pregnant or breast-feeding, ask a health professional before use. It is especially important not to use methyl salicylate at 20 weeks or later in pregnancy unless definitely directed to do so by a doctor because it may cause problems in the unborn child or complications during delivery.

Keep out of reach of children. If put in mouth, get medical help or contact a Poison Control Center right away. Package not child resistant. Dispose of the used patches after folding sticky ends together.

Directions
Adults 18 years and older:
 ■ only use one patch at a time
 ■ clean and dry affected area ■ remove patch from backing film and apply to skin (see illustration)
 ■ apply one patch to the affected area and leave in place for up to 8 to 12 hours
 ■ if pain lasts after using the first patch, a second patch may be applied for up to another 8 to 12 hours
 ■ do not use more than 2 patches per day ■ do not use for more than 3 days in a row
 ■ the used patch should be removed from the skin when a new one is applied

Children under 18 years of age: do not use; this product has not been shown to work in children

Other information
 ■ Store at 20-25°C (68-77°F) ■ Avoid storing product in direct sunlight
 ■ Protect product from excessive moisture
 ■ Some individuals may not experience pain relief until several hours after applying the patch

Inactive ingredients
 alicyclic saturated hydrocarbon resin, backing cloth, film, mineral oil, polyisobutylene, polyisobutylene 1,200,000, styrene-isoprene-styrene block copolymer, synthetic aluminum silicate

Questions or comments?
 Toll free 1-87-SALONPAS www.salonpas.us

Labeling Format Information:			
Fonts :	Helvetica Roman , Bold , Bold Oblique		
Drug Facts :	9.5pt	Leading :	6.5pt
Header :	8pt	Bullets :	5pt
Subheader :	6pt	Barlines :	2.5pt
Body Text :	6pt	Hairlines :	0.5pt
Horizontal Scale: 80%-100%		Average Kerning: 0	

6/5 Salonpas® Pain Relief Patch
 Menthol 3%, Methyl Salicylate 10%
 PATCHES
 Manufactured by
 Hisamitsu Pharmaceutical Co., Inc.
 JAPAN SAGA TOSU
 MADE IN JAPAN
 Distributed by
 Hisamitsu America, Inc.
 Florham Park, NJ 07932
 ®Registered Trade Mark

Salonpas® Pain Relief Patch **6/5**

Menthol 3%, Methyl Salicylate 10% PATCHES



for temporary relief of mild to moderate pain

- Sore Muscle
- Sprains
- Backache
- Joint Pain

BONUS PACK! ONE FREE PATCH

Salonpas® Pain Relief Patch

Menthol 3% Methyl Salicylate 10% Topical Analgesic

APPLY FOR 8-12 HOURS

FDA APPROVED NON-PRESCRIPTION PAIN RELIEVING PATCH
EFFECTIVENESS CONFIRMED IN CLINICAL TRIAL

6/5 PATCHES
 2 3/4" x 3 15/16" (7cm x 10cm)

DO NOT USE MORE THAN ONE SALONPAS PATCH AT A TIME. SEE DIRECTIONS.

Package not child resistant.
 Keep out of reach of children.

LOT _____
 EXP. _____

Salonpas® Pain Relief Patch
 Menthol 3%, Methyl Salicylate 10% PATCHES

6/5 Salonpas® Pain Relief Patch
 Menthol 3%, Methyl Salicylate 10% PATCHES

HOW TO APPLY

1. Peel the center film.
2. Place on affected area.
3. Slide the film backward.
4. Slide the other film forward.

Salonpas® Pain Relief Patch
 Menthol 3%, Methyl Salicylate 10%

PRESS OPEN minty scent

Drug Facts

Active ingredients (in each patch)	Purpose
Menthol 3%.....	Topical analgesic
Methyl salicylate 10% (NSAID: nonsteroidal anti-inflammatory drug).....	Topical analgesic

Uses
 Temporarily relieves mild to moderate aches & pains of muscles & joints associated with:
 ■ strains ■ sprains ■ simple backache ■ arthritis ■ bruises

Warnings
For external use only
Stomach bleeding warning: This product contains an NSAID, which may cause stomach bleeding. The chance is small but higher if you:
 ■ are age 60 or older ■ have had stomach ulcers or bleeding problems
 ■ take a blood thinning (anticoagulant) or steroid drug
 ■ take other drugs containing an NSAID [aspirin, ibuprofen, naproxen, or others]
 ■ have 3 or more alcoholic drinks every day while using this product
 ■ take more or for a longer time than directed

Do not use
 ■ on the face or rashes ■ on wounds or damaged skin ■ if allergic to aspirin or other NSAIDs
 ■ with a heating pad ■ when sweating (such as from exercise or heat)
 ■ any patch from a pouch that has been open for 14 or more days ■ right before or after heart surgery

Ask a doctor before use if
 ■ you are allergic to topical products ■ the stomach bleeding warning applies to you
 ■ you are taking a diuretic ■ you have high blood pressure, heart disease, or kidney disease

When using this product
 ■ wash hands after applying or removing patch. Avoid contact with eyes. If eye contact occurs, rinse thoroughly with water.
 ■ the risk of heart attack or stroke may increase if you use more than directed or for longer than directed

Stop use and ask a doctor if
 ■ stomach pain or upset gets worse or lasts
 ■ you feel faint, vomit blood, or have bloody or black stools. These are signs of stomach bleeding.
 ■ rash, itching or skin irritation develops ■ condition worsens ■ symptoms last for more than 3 days
 ■ symptoms clear up and occur again within a few days

If pregnant or breast-feeding, ask a health professional before use. It is especially important not to use methyl salicylate at 20 weeks or later in pregnancy unless definitely directed to do so by a doctor because it may cause problems in the unborn child or complications during delivery.

Keep out of reach of children. If put in mouth, get medical help or contact a Poison Control Center right away. Package not child resistant. Dispose of the used patches after folding sticky ends together.

Directions
Adults 18 years and older:
 ■ clean and dry affected area ■ only use one patch at a time
 ■ apply one patch to the affected area and leave in place for up to 8 to 12 hours ■ remove patch from backing film and apply to skin (see illustration)
 ■ if pain lasts after using the first patch, a second patch may be applied for up to another 8 to 12 hours
 ■ do not use more than 2 patches per day ■ do not use for more than 3 days in a row
 ■ the used patch should be removed from the skin when a new one is applied

Children under 18 years of age: do not use; this product has not been shown to work in children

Other information
 ■ Store at 20-25°C (68-77°F) ■ Avoid storing product in direct sunlight
 ■ Protect product from excessive moisture
 ■ Some individuals may not experience pain relief until several hours after applying the patch

Inactive ingredients
 alicyclic saturated hydrocarbon resin, backing cloth, film, mineral oil, polyisobutylene, polyisobutylene 1,200,000, styrene-isoprene-styrene block copolymer, synthetic aluminum silicate

Questions or comments?
 Toll free 1-87-SALONPAS www.salonpas.us

Labeling Format Information:			
Fonts :	Helvetica Roman , Bold , Bold Oblique		
Drug Facts :	9.5pt	Leading :	6.5pt
Header :	8pt	Bullets :	5pt
Subheader :	6pt	Barlines :	2.5pt
Body Text :	6pt	Hairlines :	0.5pt
Horizontal Scale: 80%-100%		Average Kerning: 0	

15
PATCHES

Salonpas®
Pain Relief Patch
Menthol 3%, Methyl Salicylate 10%

Manufactured by
Hisamitsu Pharmaceutical Co., Inc.
JAPAN SAGA TOSU
MADE IN JAPAN

Distributed by
Hisamitsu America, Inc.
Florham Park, NJ 07932

®Registered Trade Mark



3 46581 67015 8

Salonpas®
Pain Relief Patch
Menthol 3%, Methyl Salicylate 10%

15
PATCHES

Hisamitsu®
NDC#46581-670-15

for temporary relief of mild to moderate pain

- Sore Muscle
- Sprains
- Backache
- Joint Pain

Salonpas®
Pain Relief Patch
Menthol 3%, Methyl Salicylate 10%

Menthol 3%
Methyl Salicylate 10%
Topical Analgesic

APPLY FOR 8-12 HOURS

15 PATCHES
2 3/4" x 3 15/16" (7cm x 10cm)

FDA APPROVED NON-PRESCRIPTION PAIN RELIEVING PATCH
EFFECTIVENESS CONFIRMED IN CLINICAL TRIAL

Package not child resistant.
Keep out of reach of children.

DO NOT USE MORE THAN ONE SALONPAS PATCH AT A TIME. SEE DIRECTIONS.

Salonpas® Pain Relief Patch
Menthol 3%, Methyl Salicylate 10% **15** PATCHES

LOT

EXP.

15
PATCHES

Salonpas®
Pain Relief Patch
Menthol 3%, Methyl Salicylate 10%

Drug Facts
Active ingredients (in each patch)

Menthol 3%	Topical analgesic
Methyl salicylate 10% (NSAID: nonsteroidal anti-inflammatory drug)	Topical analgesic

Uses
Temporarily relieves mild to moderate aches & pains of muscles & joints associated with:
• strains • sprains • simple backache • arthritis • bruises

Warnings
For external use only
Stomach bleeding warning: This product contains an NSAID, which may cause stomach bleeding. The chance is small but higher if you:
• are age 60 or older • have had stomach ulcers or bleeding problems
• take a blood thinning (anticoagulant) or steroid drug
• take other drugs containing an NSAID [aspirin, ibuprofen, naproxen, or others]
• have 3 or more alcoholic drinks every day while using this product
• take more or for a longer time than directed

Do not use
• on the face or rashes • on wounds or damaged skin • if allergic to aspirin or other NSAIDs
• with a heating pad • when sweating (such as from exercise or heat)
• any patch from a pouch that has been open for 14 or more days • right before or after heart surgery

Ask a doctor before use if
• you are allergic to topical products • the stomach bleeding warning applies to you
• you are taking a diuretic • you have high blood pressure, heart disease, or kidney disease

When using this product
• wash hands after applying or removing patch. Avoid contact with eyes. If eye contact occurs, rinse thoroughly with water.
• the risk of heart attack or stroke may increase if you use more than directed or for longer than directed

Stop use and ask a doctor if
• stomach pain or upset gets worse or lasts
• you feel faint, vomit blood, or have bloody or black stools. These are signs of stomach bleeding.
• rash, itching or skin irritation develops • condition worsens • symptoms last for more than 3 days
• symptoms clear up and occur again within a few days

If pregnant or breast-feeding, ask a health professional before use. It is especially important not to use methyl salicylate at 20 weeks or later in pregnancy unless definitely directed to do so by a doctor because it may cause problems in the unborn child or complications during delivery.

Keep out of reach of children. If put in mouth, get medical help or contact a Poison Control Center right away. Package not child resistant. Dispose of the used patches after folding sticky ends together.

Directions
Adults 18 years and older:
• only use one patch at a time
• clean and dry affected area • remove patch from backing film and apply to skin (see illustration)
• apply one patch to the affected area and leave in place for up to 8 to 12 hours
• if pain lasts after using the first patch, a second patch may be applied for up to another 8 to 12 hours
• do not use more than 2 patches per day • do not use for more than 3 days in a row
• the used patch should be removed from the skin when a new one is applied

Children under 18 years of age: do not use; this product has not been shown to work in children

Other information
• Store at 20-25°C (68-77°F) • Avoid storing product in direct sunlight
• Protect product from excessive moisture
• Some individuals may not experience pain relief until several hours after applying the patch

Inactive ingredients
alicyclic saturated hydrocarbon resin, backing cloth, film, mineral oil, polyisobutylene, polyisobutylene 1,200,000, styrene-isoprene-styrene block copolymer, synthetic aluminum silicate

Questions or comments?
Toll free 1-87-SALONPAS www.salonpas.us

xxxxxx-x

Labeling Format Information:			
Fonts : Helvetica Roman , Bold , Bold Oblique			
Drug Facts :	9.5pt	Leading :	6.5pt
Header :	8pt	Bullets :	5pt
Subheader :	6pt	Barlines :	2.5pt
Body Text :	6pt	Hairlines :	0.5pt
Horizontal Scale: 80%-100%		Average Kerning: 0	

180723H

20 Salonpas® Pain Relief Patch
 Menthol 3%, Methyl Salicylate 10%
 Patches
 Manufactured by
 Hisamitsu Pharmaceutical Co., Inc.
 408, Tashirodai-1-machi
 Tosu, Saga, Japan
 MADE IN JAPAN
 Distributed by
 Hisamitsu America, Inc.
 Florham Park, NJ 07932
 ®Registered Trade Mark

Salonpas® Pain Relief Patch 20

Menthol 3%, Methyl Salicylate 10% PATCHES



for temporary relief of mild to moderate pain

- Sore Muscle
- Sprains
- Backache
- Joint Pain

Salonpas® Pain Relief Patch

Menthol 3%
Methyl Salicylate 10%
Topical Analgesic

APPLY FOR 8-12 HOURS

20 PATCHES
2 3/4" x 3 15/16" (7cm x 10cm)

DO NOT USE MORE THAN ONE SALONPAS PATCH AT A TIME. SEE DIRECTIONS.

LOT: _____
EXP: _____

Salonpas® Pain Relief Patch
Menthol 3%, Methyl Salicylate 10%
20 PATCHES

Salonpas® Pain Relief Patch
Menthol 3%, Methyl Salicylate 10%

20 Salonpas® Pain Relief Patch
Menthol 3%, Methyl Salicylate 10%

HOW TO APPLY

1. Peel the center film.
2. Place on affected area.
3. Slide the film backward.
4. Slide the other film forward.

2M438T-0

Salonpas® Pain Relief Patch
Menthol 3%, Methyl Salicylate 10%

PRESS OPEN *minty scent*

Drug Facts	
Active ingredients (in each patch)	Purpose
Menthol 3%.....	Topical analgesic
Methyl salicylate 10% (NSAID: nonsteroidal anti-inflammatory drug).....	Topical analgesic
Uses	
Temporarily relieves mild to moderate aches & pains of muscles & joints associated with:	
<ul style="list-style-type: none"> ■ strains ■ sprains ■ simple backache ■ arthritis ■ bruises 	
Warnings	
For external use only	
Stomach bleeding warning: This product contains an NSAID, which may cause stomach bleeding. The chance is small but higher if you:	
<ul style="list-style-type: none"> ■ are age 60 or older ■ have had stomach ulcers or bleeding problems ■ take a blood thinning (anticoagulant) or steroid drug ■ take other drugs containing an NSAID [aspirin, ibuprofen, naproxen, or others] ■ have 3 or more alcoholic drinks every day while using this product ■ take more or for a longer time than directed 	
Do not use	
<ul style="list-style-type: none"> ■ on the face or rashes ■ on wounds or damaged skin ■ if allergic to aspirin or other NSAIDs ■ with a heating pad ■ when sweating (such as from exercise or heat) ■ any patch from a pouch that has been open for 14 or more days ■ right before or after heart surgery 	
Ask a doctor before use if	
<ul style="list-style-type: none"> ■ you are allergic to topical products ■ the stomach bleeding warning applies to you ■ you are taking a diuretic ■ you have high blood pressure, heart disease, or kidney disease 	
When using this product	
<ul style="list-style-type: none"> ■ wash hands after applying or removing patch. Avoid contact with eyes. If eye contact occurs, rinse thoroughly with water. ■ the risk of heart attack or stroke may increase if you use more than directed or for longer than directed 	
Stop use and ask a doctor if	
<ul style="list-style-type: none"> ■ stomach pain or upset gets worse or lasts ■ you feel faint, vomit blood, or have bloody or black stools. These are signs of stomach bleeding. ■ rash, itching or skin irritation develops ■ condition worsens ■ symptoms last for more than 3 days ■ symptoms clear up and occur again within a few days 	
If pregnant or breast-feeding , ask a health professional before use. It is especially important not to use methyl salicylate at 20 weeks or later in pregnancy unless definitely directed to do so by a doctor because it may cause problems in the unborn child or complications during delivery.	
Keep out of reach of children. If put in mouth, get medical help or contact a Poison Control Center right away. Package not child resistant. Dispose of the used patches after folding sticky ends together.	
Directions	
Adults 18 years and older:	
<ul style="list-style-type: none"> ■ clean and dry affected area ■ only use one patch at a time ■ apply one patch to the affected area and leave in place for up to 8 to 12 hours ■ if pain lasts after using the first patch, a second patch may be applied for up to another 8 to 12 hours ■ do not use more than 2 patches per day ■ do not use for more than 3 days in a row ■ the used patch should be removed from the skin when a new one is applied 	
Children under 18 years of age: do not use; this product has not been shown to work in children	
Other information	
<ul style="list-style-type: none"> ■ Store at 20-25°C (68-77°F) ■ Avoid storing product in direct sunlight ■ Protect product from excessive moisture ■ Some individuals may not experience pain relief until several hours after applying the patch 	
Inactive ingredients	
alicyclic saturated hydrocarbon resin, backing cloth, film, mineral oil, polyisobutylene, polyisobutylene 1,200,000, styrene-isoprene-styrene block copolymer, synthetic aluminum silicate	
Questions or comments?	
Toll free 1-87-SALONPAS www.salonpas.us	

Labeling Format Information:		
Fonts : Helvetica Condensed Black Oblique Helvetica Condensed Bold Helvetica Narrow		
Drug Facts :	9.5pt	Leading : 6.15pt
Header :	8pt	Bullets : 6pt
Subheader :	6pt	Barlines : 2.5pt
Body Text :	6pt	Hairlines : 0.5pt
Drug Facts (Continued) NA		
Horizontal Scale: 80%-100% Average Kerning: 0		

180904H

LARGE



NDC#46581-675-99

3¹⁵/₁₆" X 5¹/₂"



for temporary relief of mild to moderate pain

- Backache
- Sore Muscle
- Strains
- Bruises

HOW TO APPLY



Salonpas[®]

Pain Relief Patch

**Menthol 3%
Methyl Salicylate 10%
Topical Analgesic**

APPLY FOR

8-12

HOURS

FDA APPROVED NON-PRESCRIPTION PAIN RELIEVING PATCH
EFFECTIVENESS CONFIRMED IN CLINICAL TRIAL

1 LARGE PATCH
3¹⁵/₁₆" X 5¹/₂" (10cm X 14cm)

⚠ DO NOT USE MORE THAN ONE SALONPAS PATCH AT A TIME. SEE DIRECTIONS.

Package not child resistant.
Keep out of reach of children.

Manufactured by
Hisamitsu Pharmaceutical Co., Inc.
JAPAN SAGA TOSU
MADE IN JAPAN

Distributed by
Hisamitsu America, Inc.
Florham Park, NJ 07932

FREE SAMPLE
NOT FOR RE-SALE

✂ CUT OPEN HERE ----- CUT OPEN HERE ✂

Drug Facts

Active ingredients (in each patch)

Menthol 3%..... Topical analgesic
Methyl salicylate 10% (NSAID: nonsteroidal anti-inflammatory drug)..... Topical analgesic

Uses Temporarily relieves mild to moderate aches & pains of muscles & joints associated with:
 ■ strains ■ sprains ■ simple backache ■ arthritis ■ bruises

Warnings
For external use only
Stomach bleeding warning: This product contains an NSAID, which may cause stomach bleeding. The chance is small but higher if you:
 ■ have had stomach ulcers or bleeding problems ■ are age 60 or older
 ■ take other drugs containing an NSAID (aspirin, ibuprofen, naproxen, or others) ■ take a blood thinning (anticoagulant) or steroid drug
 ■ have 3 or more alcoholic drinks every day while using this product ■ right before or after heart surgery
 ■ take more or for a longer time than directed

Do not use
 ■ on the face or rashes ■ on wounds or damaged skin ■ if allergic to aspirin or other NSAIDs
 ■ with a heating pad ■ when sweating (such as from exercise or heat)
 ■ any patch from a pouch that has been open for 14 or more days

Ask a doctor before use if ■ you are allergic to topical products ■ the stomach bleeding warning applies to you
 ■ you are taking a diuretic ■ you have high blood pressure, heart disease, or kidney disease

When using this product ■ wash hands after applying or removing patch. Avoid contact with eyes. If eye contact occurs, rinse thoroughly with water.
 ■ the risk of heart attack or stroke may increase if you use more than directed or for longer than directed

Stop use and ask a doctor if ■ stomach pain or upset gets worse or lasts
 ■ you feel faint, vomit blood, or have bloody or black stools. These are signs of stomach bleeding.
 ■ rash, itching or skin irritation develops ■ condition worsens ■ symptoms last for more than 3 days
 ■ symptoms clear up and occur again within a few days

If pregnant or breast-feeding, ask a health professional before use. It is especially important not to use methyl salicylate at 20 weeks or later in pregnancy unless definitely directed to do so by a doctor because it may cause problems in the unborn child or complications during delivery.

Keep out of reach of children. If put in mouth, get medical help or contact a Poison Control Center right away. Package not child resistant. Dispose of the used patches after folding sticky ends together.

minty scent

Purpose

Directions
Adults 18 years and older: ■ only use one patch at a time
 ■ clean and dry affected area ■ remove patch from backing film and apply to skin (see illustration)
 ■ apply one patch to the affected area and leave in place for up to 8 to 12 hours
 ■ if pain lasts after using the first patch, a second patch may be applied for up to another 8 to 12 hours
 ■ do not use more than 2 patches per day ■ do not use for more than 3 days in a row
 ■ the used patch should be removed from the skin when a new one is applied

Children under 18 years of age: do not use; this product has not been shown to work in children

Other information ■ Store at 20-25°C (68-77°F) ■ Avoid storing product in direct sunlight
 ■ Protect product from excessive moisture
 ■ Some individuals may not experience pain relief until several hours after applying the patch

Inactive ingredients
 alicyclic saturated hydrocarbon resin, backing cloth, film, mineral oil, polyisobutylene, polyisobutylene 1,200,000, styrene-isoprene-styrene block copolymer, synthetic aluminum silicate

Questions or comments?
 Toll free 1-87-SALONPAS www.salonpas.us

LOT

EXP.

®:Registered Trade Mark 2P138T-0

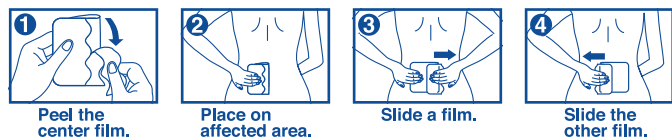
Labeling Format Information:
 Fonts : Helvetica Condensed Black Oblique
 Helvetica Condensed Bold
 Helvetica Narrow
 Drug Facts : 9.5pt Leading : 6.15pt
 Header : 8pt Bullets : 6pt
 Subheader : 6pt Barlines : 2.5pt
 Body Text : 6pt Hairlines : 0.5pt
 Drug Facts (Continued) NA
 Horizontal Scale: 80%-100% Average Kerning: 0

PANTONE
293C

✂ CUT OPEN HERE ----- CUT OPEN HERE ✂

HOW TO APPLY

NDC#46581-675-01



Salonpas[®]

Pain Relief Patch

**Menthol 3%
Methyl Salicylate 10%
Topical Analgesic**



**FDA APPROVED NON-PRESCRIPTION PAIN RELIEVING PATCH
EFFECTIVENESS CONFIRMED IN CLINICAL TRIAL**

1 LARGE PATCH
3 15/16" X 5 1/2" (10cm X 14cm)

✂ **DO NOT USE MORE THAN ONE SALONPAS PATCH AT A TIME. SEE DIRECTIONS.**

Hisamitsu[®]
 Manufactured by
Hisamitsu Pharmaceutical Co., Inc.
 408, Tashirodaikan-machi, Tosu, Saga, Japan
 Distributed by
Hisamitsu America, Inc.
 Florham Park, NJ 07932

MADE IN JAPAN

*Package not child resistant.
Keep out of reach of children.*



✂ CUT OPEN HERE ----- CUT OPEN HERE ✂

Drug Facts

Active ingredients (in each patch)
 Menthol 3%..... Topical analgesic
 Methyl salicylate 10% (NSAID: nonsteroidal anti-inflammatory drug)..... Topical analgesic

Uses Temporarily relieves mild to moderate aches & pains of muscles & joints associated with:
 ■ strains ■ sprains ■ simple backache ■ arthritis ■ bruises

Warnings

For external use only
Stomach bleeding warning: This product contains an NSAID, which may cause stomach bleeding. The chance is small but higher if you:
 ■ are age 60 or older
 ■ have had stomach ulcers or bleeding problems ■ take a blood thinning (anticoagulant) or steroid drug
 ■ take other drugs containing an NSAID (aspirin, ibuprofen, naproxen, or others)
 ■ have 3 or more alcoholic drinks every day while using this product
 ■ take more or for a longer time than directed

Do not use
 ■ on the face or rashes ■ on wounds or damaged skin ■ if allergic to aspirin or other NSAIDs
 ■ with a heating pad ■ when sweating (such as from exercise or heat)
 ■ any patch from a pouch that has been open for 14 or more days ■ right before or after heart surgery

Ask a doctor before use if
 ■ you are allergic to topical products ■ the stomach bleeding warning applies to you
 ■ you are taking a diuretic ■ you have high blood pressure, heart disease, or kidney disease

When using this product ■ wash hands after applying or removing patch. Avoid contact with eyes. If eye contact occurs, rinse thoroughly with water.
 ■ the risk of heart attack or stroke may increase if you use more than directed or for longer than directed

Stop use and ask a doctor if
 ■ stomach pain or upset gets worse or lasts
 ■ you feel faint, vomit blood, or have bloody or black stools. These are signs of stomach bleeding.
 ■ rash, itching or skin irritation develops ■ condition worsens ■ symptoms last for more than 3 days
 ■ symptoms clear up and occur again within a few days

If pregnant or breast-feeding, ask a health professional before use. It is especially important not to use methyl salicylate at 20 weeks or later in pregnancy unless definitely directed to do so by a doctor because it may cause problems in the unborn child or complications during delivery.
Keep out of reach of children. If put in mouth, get medical help or contact a Poison Control Center right away. Package not child resistant. Dispose of the used patches after folding sticky ends together.

Directions

Adults 18 years and older:
 ■ only use one patch at a time
 ■ clean and dry affected area ■ remove patch from backing film and apply to skin (see illustration)
 ■ apply one patch to the affected area and leave in place for up to 8 to 12 hours
 ■ if pain lasts after using the first patch, a second patch may be applied for up to another 8 to 12 hours
 ■ do not use more than 2 patches per day ■ do not use for more than 3 days in a row
 ■ the used patch should be removed from the skin when a new one is applied
Children under 18 years of age: do not use; this product has not been shown to work in children

Other information ■ Store at 20-25°C (68-77°F) ■ Avoid storing product in direct sunlight
 ■ Protect product from excessive moisture
 ■ Some individuals may not experience pain relief until several hours after applying the patch

Inactive ingredients
 alicyclic saturated hydrocarbon resin, backing cloth, film, mineral oil, polyisobutylene, polyisobutylene 1,200,000, styrene-isoprene-styrene block copolymer, synthetic aluminum silicate

Questions or comments?
 Toll free 1-87-SALONPAS www.salonpas.us

LOT

EXP.

®:Registered Trade Mark 2P181T-0

Labeling Format Information:		
Fonts : Helvetica Condensed Black Oblique Helvetica Condensed Bold Helvetica Narrow		
Drug Facts :	9.5pt	Leading : 6.15pt
Header :	8pt	Bullets : 6pt
Subheader :	6pt	Barlines : 2.5pt
Body Text :	6pt	Hairlines : 0.5pt
Drug Facts (Continued) NA		
Horizontal Scale: 80%-100% Average Kerning: 0		

✂ CUT OPEN HERE ----- CUT OPEN HERE ✂

FOLD TWICE AFTER OPENING

Discard unused patches 14 days after opening

FOLD TWICE AFTER OPENING

HOW TO APPLY



1 Peel the center film.



2 Place on affected area.



3 Slide a film.



4 Slide the other film.



Salonpas®
Pain Relief Patch

Menthol 3%
Methyl Salicylate 10%
Topical Analgesic

2 LARGE PATCHES
3 15/16" x 5 1/2" (10cm x 14cm)

✂ DO NOT USE MORE THAN ONE SALONPAS PATCH AT A TIME. SEE DIRECTIONS.

*Package not child resistant.
Keep out of reach of children.*

Hisamitsu® LOT
Manufactured by
Hisamitsu Pharmaceutical Co., Inc.
JAPAN SAGA TOSU
Distributed by
Hisamitsu America, Inc. EXP.
Florham Park, NJ 07932
MADE IN JAPAN

✂ CUT OPEN HERE ----- CUT OPEN HERE ✂

Salonpas® Pain Relief Patch LARGE Menthol 3%, Methyl Salicylate 10% minty scent

Drug Facts	Purpose
Active ingredients (in each patch)	
Menthol 3%.....	Topical analgesic
Methyl salicylate 10% (NSAID: nonsteroidal anti-inflammatory drug).....	Topical analgesic
Uses	Temporarily relieves mild to moderate aches & pains of muscles & joints associated with: ■ strains ■ sprains ■ simple backache ■ arthritis ■ bruises
Warnings	
For external use only	
Stomach bleeding warning: This product contains an NSAID, which may cause stomach bleeding. The chance is small but higher if you: ■ are age 60 or older ■ have had stomach ulcers or bleeding problems ■ take a blood thinning (anticoagulant) or steroid drug ■ take other drugs containing an NSAID (aspirin, ibuprofen, naproxen, or others) ■ have 3 or more alcoholic drinks every day while using this product ■ take more or for a longer time than directed	
Do not use ■ on the face or rashes ■ on wounds or damaged skin ■ if allergic to aspirin or other NSAIDs ■ with a heating pad ■ when sweating (such as from exercise or heat) ■ any patch from a pouch that has been open for 14 or more days ■ right before or after heart surgery	
Ask a doctor before use if ■ you are allergic to topical products ■ the stomach bleeding warning applies to you ■ you are taking a diuretic ■ you have high blood pressure, heart disease, or kidney disease	
When using this product ■ wash hands after applying or removing patch. Avoid contact with eyes. If eye contact occurs, rinse thoroughly with water. ■ the risk of heart attack or stroke may increase if you use more than directed or for longer than directed	
Stop use and ask a doctor if ■ stomach pain or upset gets worse or lasts ■ you feel faint, vomit blood, or have bloody or black stools. These are signs of stomach bleeding. ■ rash, itching or skin irritation develops ■ condition worsens ■ symptoms last for more than 3 days ■ symptoms clear up and occur again within a few days	
If pregnant or breast-feeding , ask a health professional before use. It is especially important not to use methyl salicylate at 20 weeks or later in pregnancy unless definitely directed to do so by a doctor because it may cause problems in the unborn child or complications during delivery. Keep out of reach of children. If put in mouth, get medical help or contact a Poison Control Center right away. Package not child resistant. Dispose of the used patches after folding sticky ends together.	
Directions	
Adults 18 years and older: ■ clean and dry affected area ■ only use one patch at a time ■ apply one patch to the affected area and leave in place for up to 8 to 12 hours ■ remove patch from backing film and apply to skin (see illustration) ■ if pain lasts after using the first patch, a second patch may be applied for up to another 8 to 12 hours ■ do not use more than 2 patches per day ■ do not use for more than 3 days in a row ■ the used patch should be removed from the skin when a new one is applied	
Children under 18 years of age: do not use; this product has not been shown to work in children	
Other information ■ Store at 20-25°C (68-77°F) ■ Avoid storing product in direct sunlight ■ Protect product from excessive moisture ■ Some individuals may not experience pain relief until several hours after applying the patch	
Inactive ingredients alicyclic saturated hydrocarbon resin, backing cloth, film, mineral oil, polyisobutylene, polyisobutylene 1,200,000, styrene-isoprene-styrene block copolymer, synthetic aluminum silicate	
Questions or comments? Toll free 1-87-SALONPAS www.salonpas.us ®:Registered Trade Mark XXXXXX-X	

Labeling Format Information:			
Fonts : Helvetica Roman , Bold , Bold Oblique			
Drug Facts : 9.5pt	Leading : 6.5pt		
Header : 8pt	Bullets : 5pt		
Subheader : 6pt	Barlines : 2.5pt		
Body Text : 6pt	Hairlines : 0.5pt		
Horizontal Scale: 80%-100%		Average Kerning: 0	

2 PATCHES

Manufactured by
Hisamitsu Pharmaceutical Co., Inc.
JAPAN SAGA TOSU
MADE IN JAPAN

Distributed by
Hisamitsu America, Inc.
Florham Park, NJ 07932
®Registered Trade Mark

3 46581 67502 3

Salonpas® Pain Relief Patch LARGE

Menthol 3%, Methyl Salicylate 10% 2 PATCHES



LARGE

Hisamitsu® NDC#46581-675-02

for temporary relief of mild to moderate pain

- Backache
- Sore Muscle
- Sprains
- Bruises

Salonpas® Pain Relief Patch

Menthol 3% Methyl Salicylate 10% Topical Analgesic

APPLY FOR 8-12 HOURS

2 LARGE PATCHES 3 15/16" x 5 1/2" (10cm x 14cm)

FDA APPROVED NON-PRESCRIPTION PAIN RELIEVING PATCH EFFECTIVENESS CONFIRMED IN CLINICAL TRIAL

Package not child resistant. Keep out of reach of children.

XXXXXX-X

LOT

EXP.

2 PATCHES

Salonpas® Pain Relief Patch LARGE Menthol 3%, Methyl Salicylate 10%

2 PATCHES

minty scent

Drug Facts

Active ingredients (in each patch)

Menthol 3%..... Topical analgesic

Methyl salicylate 10% (NSAID: nonsteroidal anti-inflammatory drug)..... Topical analgesic

Uses

Temporarily relieves mild to moderate aches & pains of muscles & joints associated with:

- strains
- sprains
- simple backache
- arthritis
- bruises

Warnings

For external use only

Stomach bleeding warning: This product contains an NSAID, which may cause stomach bleeding. The chance is small but higher if you:

- are age 60 or older
- have had stomach ulcers or bleeding problems
- take a blood thinning (anticoagulant) or steroid drug
- take other drugs containing an NSAID [aspirin, ibuprofen, naproxen, or others]
- have 3 or more alcoholic drinks every day while using this product
- take more or for a longer time than directed

Do not use

- on the face or rashes
- on wounds or damaged skin
- if allergic to aspirin or other NSAIDs
- with a heating pad
- when sweating (such as from exercise or heat)
- any patch from a pouch that has been open for 14 or more days
- right before or after heart surgery

Ask a doctor before use if

- you are allergic to topical products
- the stomach bleeding warning applies to you
- you are taking a diuretic
- you have high blood pressure, heart disease, or kidney disease

When using this product

- wash hands after applying or removing patch. Avoid contact with eyes. If eye contact occurs, rinse thoroughly with water.
- the risk of heart attack or stroke may increase if you use more than directed or for longer than directed

Stop use and ask a doctor if

- stomach pain or upset gets worse or lasts
- you feel faint, vomit blood, or have bloody or black stools. These are signs of stomach bleeding.
- rash, itching or skin irritation develops
- condition worsens
- symptoms last for more than 3 days
- symptoms clear up and occur again within a few days

If pregnant or breast-feeding, ask a health professional before use. It is especially important not to use methyl salicylate at 20 weeks or later in pregnancy unless definitely directed to do so by a doctor because it may cause problems in the unborn child or complications during delivery.

Keep out of reach of children. If put in mouth, get medical help or contact a Poison Control Center right away. Package not child resistant. Dispose of the used patches after folding sticky ends together.

Directions

Adults 18 years and older:

- only use one patch at a time
- clean and dry affected area
- remove patch from backing film and apply to skin (see illustration)
- apply one patch to the affected area and leave in place for up to 8 to 12 hours
- if pain lasts after using the first patch, a second patch may be applied for up to another 8 to 12 hours
- do not use more than 2 patches per day
- do not use for more than 3 days in a row
- the used patch should be removed from the skin when a new one is applied

Children under 18 years of age: do not use; this product has not been shown to work in children

Other information

- Store at 20-25°C (68-77°F)
- Avoid storing product in direct sunlight
- Protect product from excessive moisture
- Some individuals may not experience pain relief until several hours after applying the patch

Inactive ingredients

alicyclic saturated hydrocarbon resin, backing cloth, film, mineral oil, polyisobutylene, polyisobutylene 1,200,000, styrene-isoprene-styrene block copolymer, synthetic aluminum silicate

Questions or comments?

Toll free 1-87-SALONPAS www.salonpas.us

14.SPRP large 3ct inner pouch 210513

Labeling Format Information:		
Fonts : Helvetica Condensed Black Oblique Helvetica Condensed Bold Helvetica Narrow		
Drug Facts :	9.5pt	Leading : 6.15pt
Header :	8pt	Bullets : 6pt
Subheader :	6pt	Barlines : 2.5pt
Body Text :	6pt	Hairlines : 0.5pt
Drug Facts (Continued) NA		
Horizontal Scale: 80%-100% Average Kerning: 0		

✂ CUT OPEN HERE ----- CUT OPEN HERE ✂

FOLD TWICE AFTER OPENING

Discard unused patches 14 days after opening

FOLD TWICE AFTER OPENING

HOW TO APPLY



1 Peel the center film.



2 Place on affected area.



3 Slide a film.



4 Slide the other film.



Salonpas®

Pain Relief Patch

Menthol 3%

Methyl Salicylate 10%

Topical Analgesic

3 LARGE PATCHES

3 15/16" x 5 1/2" (10cm x 14cm)

✂ **DO NOT USE MORE THAN ONE SALONPAS PATCH AT A TIME. SEE DIRECTIONS.**

Package not child resistant.
Keep out of reach of children.

Hisamitsu®

Manufactured by
Hisamitsu Pharmaceutical Co., Inc.
JAPAN SAGA TOSU

Distributed by
Hisamitsu America, Inc.
Florham Park, NJ 07932

MADE IN JAPAN

LOT

EXP.

✂ CUT OPEN HERE ----- CUT OPEN HERE ✂

Salonpas® Pain Relief Patch LARGE Menthol 3%, Methyl Salicylate 10% minty scent

Drug Facts	Purpose
Active ingredients (in each patch)	
Menthol 3%.....	Topical analgesic
Methyl salicylate 10% (NSAID: nonsteroidal anti-inflammatory drug).....	Topical analgesic
Uses Temporarily relieves mild to moderate aches & pains of muscles & joints associated with: <ul style="list-style-type: none"> ■ strains ■ sprains ■ simple backache ■ arthritis ■ bruises 	
Warnings	
For external use only	
Stomach bleeding warning: This product contains an NSAID, which may cause stomach bleeding. The chance is small but higher if you: <ul style="list-style-type: none"> ■ are age 60 or older ■ have had stomach ulcers or bleeding problems ■ take a blood thinning (anticoagulant) or steroid drug ■ take other drugs containing an NSAID (aspirin, ibuprofen, naproxen, or others) ■ have 3 or more alcoholic drinks every day while using this product ■ take more or for a longer time than directed 	
Do not use <ul style="list-style-type: none"> ■ on the face or rashes ■ on wounds or damaged skin ■ if allergic to aspirin or other NSAIDs ■ with a heating pad ■ when sweating (such as from exercise or heat) ■ any patch from a pouch that has been open for 14 or more days ■ right before or after heart surgery 	
Ask a doctor before use if <ul style="list-style-type: none"> ■ you are allergic to topical products ■ the stomach bleeding warning applies to you ■ you are taking a diuretic ■ you have high blood pressure, heart disease, or kidney disease 	
When using this product ■ wash hands after applying or removing patch. Avoid contact with eyes. If eye contact occurs, rinse thoroughly with water. <ul style="list-style-type: none"> ■ the risk of heart attack or stroke may increase if you use more than directed or for longer than directed 	
Stop use and ask a doctor if <ul style="list-style-type: none"> ■ stomach pain or upset gets worse or lasts ■ you feel faint, vomit blood, or have bloody or black stools. These are signs of stomach bleeding. ■ rash, itching or skin irritation develops ■ condition worsens ■ symptoms last for more than 3 days ■ symptoms clear up and occur again within a few days 	
If pregnant or breast-feeding , ask a health professional before use. It is especially important not to use methyl salicylate at 20 weeks or later in pregnancy unless definitely directed to do so by a doctor because it may cause problems in the unborn child or complications during delivery. Keep out of reach of children. If put in mouth, get medical help or contact a Poison Control Center right away. Package not child resistant. Dispose of the used patches after folding sticky ends together.	
Directions	
Adults 18 years and older: <ul style="list-style-type: none"> ■ only use one patch at a time ■ clean and dry affected area ■ remove patch from backing film and apply to skin (see illustration) ■ apply one patch to the affected area and leave in place for up to 8 to 12 hours ■ if pain lasts after using the first patch, a second patch may be applied for up to another 8 to 12 hours ■ do not use more than 2 patches per day ■ do not use for more than 3 days in a row ■ the used patch should be removed from the skin when a new one is applied 	
Children under 18 years of age: do not use; this product has not been shown to work in children	
Other information <ul style="list-style-type: none"> ■ Store at 20-25°C (68-77°F) ■ Avoid storing product in direct sunlight ■ Protect product from excessive moisture ■ Some individuals may not experience pain relief until several hours after applying the patch 	
Inactive ingredients alicyclic saturated hydrocarbon resin, backing cloth, film, mineral oil, polyisobutylene, polyisobutylene 1,200,000, styrene-isoprene-styrene block copolymer, synthetic aluminum silicate	
Questions or comments? Toll free 1-87-SALONPAS www.salonpas.us ®:Registered Trade Mark 2L772T-0	

Labeling Format Information:			
Fonts : Helvetica Roman , Bold , Bold Oblique			
Drug Facts : 9.5pt	Leading : 6.5pt		
Header : 8pt	Bullets : 5pt		
Subheader : 6pt	Barlines : 2.5pt		
Body Text : 6pt	Hairlines : 0.5pt		
Horizontal Scale: 80%-100%		Average Kerning: 0	

3
PATCHES

Manufactured by
Hisamitsu Pharmaceutical Co., Inc.
JAPAN SAGA TOSU
MADE IN JAPAN

Distributed by
Hisamitsu America, Inc.
Florham Park, NJ 07932
®Registered Trade Mark

Salonpas® Pain Relief Patch **LARGE** 3 PATCHES

Menthol 3%, Methyl Salicylate 10%



LARGE

Hisamitsu® NDC#46581-675-03

for temporary relief of mild to moderate pain

- Backache
- Sore Muscle
- Sprains
- Bruises

Salonpas® Pain Relief Patch

Menthol 3% Methyl Salicylate 10% Topical Analgesic

APPLY FOR 8-12 HOURS

3 LARGE PATCHES
3 15/16" x 5 1/2" (10cm x 14cm)

FDA APPROVED NON-PRESCRIPTION PAIN RELIEVING PATCH
EFFECTIVENESS CONFIRMED IN CLINICAL TRIAL

Package not child resistant.
Keep out of reach of children.

⚠ DO NOT USE MORE THAN ONE SALONPAS PATCH AT A TIME. SEE DIRECTIONS.

3
PATCHES

Salonpas® Pain Relief Patch **LARGE**
Menthol 3%, Methyl Salicylate 10%

HOW TO APPLY

- 1  Peel the center film.
- 2  Place on affected area.
- 3  Slide a film.
- 4  Slide the other film.

LOT

EXP.

Salonpas® Pain Relief Patch **LARGE** 3 PATCHES

Menthol 3%, Methyl Salicylate 10%

XXXXXX-X

3
PATCHES

Salonpas® Pain Relief Patch **LARGE**
Menthol 3%, Methyl Salicylate 10%

PRESS OPEN

minty scent

Drug Facts

Active ingredients (in each patch)

Menthol 3%.....	Topical analgesic
Methyl salicylate 10% (NSAID: nonsteroidal anti-inflammatory drug).....	Topical analgesic

Uses

Temporarily relieves mild to moderate aches & pains of muscles & joints associated with:

- strains ▪ sprains ▪ simple backache ▪ arthritis ▪ bruises

Warnings

For external use only

Stomach bleeding warning: This product contains an NSAID, which may cause stomach bleeding. The chance is small but higher if you:

- are age 60 or older ▪ have had stomach ulcers or bleeding problems
- take a blood thinning (anticoagulant) or steroid drug
- take other drugs containing an NSAID [aspirin, ibuprofen, naproxen, or others]
- have 3 or more alcoholic drinks every day while using this product
- take more or for a longer time than directed

Do not use

- on the face or rashes ▪ on wounds or damaged skin ▪ if allergic to aspirin or other NSAIDs
- with a heating pad ▪ when sweating (such as from exercise or heat)
- any patch from a pouch that has been open for 14 or more days ▪ right before or after heart surgery

Ask a doctor before use if

- you are allergic to topical products ▪ the stomach bleeding warning applies to you
- you are taking a diuretic ▪ you have high blood pressure, heart disease, or kidney disease

When using this product

- wash hands after applying or removing patch. Avoid contact with eyes. If eye contact occurs, rinse thoroughly with water.
- the risk of heart attack or stroke may increase if you use more than directed or for longer than directed

Stop use and ask a doctor if

- stomach pain or upset gets worse or lasts
- you feel faint, vomit blood, or have bloody or black stools. These are signs of stomach bleeding.
- rash, itching or skin irritation develops ▪ condition worsens ▪ symptoms last for more than 3 days
- symptoms clear up and occur again within a few days

If pregnant or breast-feeding, ask a health professional before use. It is especially important not to use methyl salicylate at 20 weeks or later in pregnancy unless definitely directed to do so by a doctor because it may cause problems in the unborn child or complications during delivery.

Keep out of reach of children. If put in mouth, get medical help or contact a Poison Control Center right away. Package not child resistant. Dispose of the used patches after folding sticky ends together.

Directions

Adults 18 years and older:

- clean and dry affected area ▪ only use one patch at a time
- apply one patch to the affected area and leave in place for up to 8 to 12 hours
- if pain lasts after using the first patch, a second patch may be applied for up to another 8 to 12 hours
- do not use more than 2 patches per day ▪ do not use for more than 3 days in a row
- the used patch should be removed from the skin when a new one is applied

Children under 18 years of age: do not use; this product has not been shown to work in children

Other information

- Store at 20-25°C (68-77°F) ▪ Avoid storing product in direct sunlight
- Protect product from excessive moisture
- Some individuals may not experience pain relief until several hours after applying the patch

Inactive ingredients

alicyclic saturated hydrocarbon resin, backing cloth, film, mineral oil, polyisobutylene, polyisobutylene 1,200,000, styrene-isoprene-styrene block copolymer, synthetic aluminum silicate

Questions or comments?

Toll free 1-87-SALONPAS www.salonpas.us

Labeling Format Information:			
Fonts : Helvetica Roman , Bold , Bold Oblique			
Drug Facts :	9.5pt	Leading :	6.5pt
Header :	8pt	Bullets :	5pt
Subheader :	6pt	Barlines :	2.5pt
Body Text :	6pt	Hairlines :	0.5pt
Horizontal Scale: 80%-100%		Average Kerning: 0	

PANTONE
293c

PANTONE
354c

M

Y

6 PATCHES

Manufactured by
Hisamitsu Pharmaceutical Co., Inc.
JAPAN SAGA TOSU
MADE IN JAPAN

Distributed by
Hisamitsu America, Inc.
Florham Park, NJ 07932
®Registered Trade Mark

Salonpas® Pain Relief Patch **LARGE** 9 PATCHES

Menthol 3%, Methyl Salicylate 10%

LARGE
3 15/16" X 5 1/2"

Hisamitsu®
NDC#46581-675-09

for temporary relief of mild to moderate pain

- Backache
- Sore Muscle
- Sprains
- Bruises

Salonpas® Pain Relief Patch

Menthol 3%
Methyl Salicylate 10%
Topical Analgesic

APPLY FOR
8-12
HOURS

FDA APPROVED NON-PRESCRIPTION PAIN RELIEVING PATCH
EFFECTIVENESS CONFIRMED IN CLINICAL TRIAL

9 LARGE PATCHES
3 15/16" X 5 1/2" (10cm X 14cm)

Package not child resistant.
Keep out of reach of children.

3 46581 67509 2

LOT

EXP.

Salonpas® Pain Relief Patch **LARGE** 9 PATCHES
Menthol 3%, Methyl Salicylate 10%

9 PATCHES

Salonpas® Pain Relief Patch **LARGE** 9 PATCHES
Menthol 3%, Methyl Salicylate 10%

HOW TO APPLY

- 1 Peel the center film.
- 2 Place on affected area.
- 3 Slide a film.
- 4 Slide the other film.

Salonpas® Pain Relief Patch **LARGE 9 PATCHES**

Menthol 3%, Methyl Salicylate 10%

PRESS OPEN

minty scent

Drug Facts

Active ingredients (in each patch)

Menthol 3%	Topical analgesic
Methyl salicylate 10% (NSAID: nonsteroidal anti-inflammatory drug)	Topical analgesic

Uses
Temporarily relieves mild to moderate aches & pains of muscles & joints associated with:

- strains
- sprains
- simple backache
- arthritis
- bruises

Warnings
For external use only

Stomach bleeding warning: This product contains an NSAID, which may cause stomach bleeding. The chance is small but higher if you:

- are age 60 or older
- have had stomach ulcers or bleeding problems
- take a blood thinning (anticoagulant) or steroid drug
- take other drugs containing an NSAID [aspirin, ibuprofen, naproxen, or others]
- have 3 or more alcoholic drinks every day while using this product
- take more or for a longer time than directed

Do not use

- on the face or rashes
- on wounds or damaged skin
- if allergic to aspirin or other NSAIDs
- with a heating pad
- when sweating (such as from exercise or heat)
- any patch from a pouch that has been open for 14 or more days
- right before or after heart surgery

Ask a doctor before use if

- you are allergic to topical products
- the stomach bleeding warning applies to you
- you are taking a diuretic
- you have high blood pressure, heart disease, or kidney disease

When using this product

- wash hands after applying or removing patch. Avoid contact with eyes. If eye contact occurs, rinse thoroughly with water.
- the risk of heart attack or stroke may increase if you use more than directed or for longer than directed

Stop use and ask a doctor if

- stomach pain or upset gets worse or lasts
- you feel faint, vomit blood, or have bloody or black stools. These are signs of stomach bleeding.
- rash, itching or skin irritation develops
- condition worsens
- symptoms last for more than 3 days
- symptoms clear up and occur again within a few days

If pregnant or breast-feeding, ask a health professional before use. It is especially important not to use methyl salicylate at 20 weeks or later in pregnancy unless definitely directed to do so by a doctor because it may cause problems in the unborn child or complications during delivery.

Keep out of reach of children. If put in mouth, get medical help or contact a Poison Control Center right away. Package not child resistant. Dispose of the used patches after folding sticky ends together.

Directions
Adults 18 years and older:

- clean and dry affected area
- only use one patch at a time
- remove patch from backing film and apply to skin (see illustration)
- apply one patch to the affected area and leave in place for up to 8 to 12 hours
- if pain lasts after using the first patch, a second patch may be applied for up to another 8 to 12 hours
- do not use more than 2 patches per day
- do not use for more than 3 days in a row
- the used patch should be removed from the skin when a new one is applied

Children under 18 years of age: do not use; this product has not been shown to work in children

Other information

- Store at 20-25°C (68-77°F)
- Avoid storing product in direct sunlight
- Protect product from excessive moisture
- Some individuals may not experience pain relief until several hours after applying the patch

Inactive ingredients
alicyclic saturated hydrocarbon resin, backing cloth, film, mineral oil, polyisobutylene, polyisobutylene 1,200,000, styrene-isoprene-styrene block copolymer, synthetic aluminum silicate

Questions or comments?
Toll free 1-87-SALONPAS | www.salonpas.us

3M398T-0

Labeling Format Information:		
Fonts : Helvetica Condensed Black Oblique Helvetica Condensed Bold Helvetica Narrow		
Drug Facts :	9.5pt	Leading : 6.15pt
Header :	8pt	Bullets : 6pt
Subheader :	6pt	Barlines : 2.5pt
Body Text :	6pt	Hairlines : 0.5pt
Drug Facts (Continued) NA		
Horizontal Scale: 80%-100% Average Kerning: 0		



NDC#46581-680-99

for temporary relief of mild to moderate pain

- Arthritis
- Joint Pain
- Sprains
- Strains

HOW TO APPLY



Salonpas®

Arthritis Pain Patch

**Menthol 3%
Methyl Salicylate 10%
Topical Analgesic**

APPLY FOR
8-12
HOURS

FDA APPROVED NON-PRESCRIPTION PAIN RELIEVING PATCH

EFFECTIVENESS CONFIRMED IN CLINICAL TRIAL

1 PATCH
2 3/4" x 3 15/16" (7cm x 10cm)

Package not child resistant.
Keep out of reach of children.

※DO NOT USE MORE THAN ONE SALONPAS PATCH AT A TIME. SEE DIRECTIONS.

Manufactured by
Hisamitsu Pharmaceutical Co., Inc.
JAPAN SAGA TOSU
MADE IN JAPAN

Distributed by
Hisamitsu America, Inc.
Florham Park, NJ 07932

**FREE SAMPLE
NOT FOR RE-SALE**

✂ CUT OPEN HERE ----- CUT OPEN HERE ✂

minty scent

Drug Facts

Active ingredients (in each patch)	Purpose
Menthol 3%.....	Topical analgesic
Methyl salicylate 10% (NSAID: nonsteroidal anti-inflammatory drug).....	Topical analgesic

Uses Temporarily relieves mild to moderate aches & pains of muscles & joints associated with:
 ■ arthritis ■ sprains ■ strains ■ bruises ■ simple backache

Warnings
For external use only
Stomach bleeding warning: This product contains an NSAID, which may cause stomach bleeding. The chance is small but higher if you:
 ■ are age 60 or older
 ■ have had stomach ulcers or bleeding problems ■ take a blood thinning (anticoagulant) or steroid drug
 ■ take other drugs containing an NSAID (aspirin, ibuprofen, naproxen, or others)
 ■ have 3 or more alcoholic drinks every day while using this product
 ■ take more or for a longer time than directed

Do not use
 ■ on the face or rashes ■ on wounds or damaged skin ■ if allergic to aspirin or other NSAIDs
 ■ with a heating pad ■ when sweating (such as from exercise or heat)
 ■ any patch from a pouch that has been open for 14 or more days ■ right before or after heart surgery

Ask a doctor before use if ■ you are allergic to topical products ■ the stomach bleeding warning applies to you
 ■ you are taking a diuretic ■ you have high blood pressure, heart disease, or kidney disease

When using this product ■ wash hands after applying or removing patch. Avoid contact with eyes. If eye contact occurs, rinse thoroughly with water.
 ■ the risk of heart attack or stroke may increase if you use more than directed or for longer than directed

Stop use and ask a doctor if ■ stomach pain or upset gets worse or lasts
 ■ you feel faint, vomit blood, or have bloody or black stools. These are signs of stomach bleeding.
 ■ rash, itching or skin irritation develops ■ condition worsens ■ symptoms last for more than 3 days
 ■ symptoms clear up and occur again within a few days

If pregnant or breast-feeding, ask a health professional before use. It is especially important not to use methyl salicylate at 20 weeks or later in pregnancy unless definitely directed to do so by a doctor because it may cause problems in the unborn child or complications during delivery.
Keep out of reach of children. If put in mouth, get medical help or contact a Poison Control Center right away. Package not child resistant. Dispose of the used patches after folding sticky ends together.

Directions
Adults 18 years and older: ■ only use one patch at a time
 ■ clean and dry affected area ■ remove patch from backing film and apply to skin (see illustration)
 ■ apply one patch to the affected area and leave in place for up to 8 to 12 hours
 ■ if pain lasts after using the first patch, a second patch may be applied for up to another 8 to 12 hours
 ■ do not use more than 2 patches per day ■ do not use for more than 3 days in a row
 ■ the used patch should be removed from the skin when a new one is applied
Children under 18 years of age: do not use; this product has not been shown to work in children

Other information ■ Store at 20-25°C (68-77°F) ■ Avoid storing product in direct sunlight
 ■ Protect product from excessive moisture
 ■ Some individuals may not experience pain relief until several hours after applying the patch

Inactive ingredients
 alicyclic saturated hydrocarbon resin, backing cloth, film, mineral oil, polyisobutylene, polyisobutylene 1,200,000, styrene-isoprene-styrene block copolymer, synthetic aluminum silicate

Questions or comments?
 Toll free 1-87-SALONPAS www.salonpas.us

LOT

EXP.

®:Registered Trade Mark XXXXXX-X

Labeling Format Information:		
Fonts : Helvetica Condensed Black Oblique Helvetica Condensed Bold Helvetica Narrow		
Drug Facts :	9.5pt	Leading : 6.15pt
Header :	8pt	Bullets : 6pt
Subheader :	6pt	Barlines : 2.5pt
Body Text :	6pt	Hairlines : 0.5pt
Drug Facts (Continued) NA		
Horizontal Scale: 80%-100% Average Kerning: 0		



Hisamitsu®
NDC#46581-680-01

for temporary relief of mild to moderate pain

Arthritis
Joint Pain
Sprains
Strains

HOW TO APPLY

- Peel the center film.
- Place on affected area.
- Slide the film upward.
- Slide the other film downward.

Salonpas®
Arthritis Pain Patch

Menthol 3%
Methyl Salicylate 10%
Topical Analgesic

APPLY FOR 8-12 HOURS

1 PATCH
2 3/4" x 3 15/16" (7cm x 10cm)

FDA APPROVED NON-PRESCRIPTION PAIN RELIEVING PATCH
EFFECTIVENESS CONFIRMED IN CLINICAL TRIAL

Package not child resistant.
Keep out of reach of children.

DO NOT USE MORE THAN ONE SALONPAS PATCH AT A TIME. SEE DIRECTIONS.

Manufactured by Hisamitsu Pharmaceutical Co., Inc. JAPAN SAGA TOSU MADE IN JAPAN
Distributed by Hisamitsu America, Inc. Florham Park, NJ 07932

3 46581 68001 0

CUT OPEN HERE ----- CUT OPEN HERE

minty scent

Drug Facts

Active ingredients (in each patch)	Purpose
Menthol 3%	Topical analgesic
Methyl salicylate 10% (NSAID: nonsteroidal anti-inflammatory drug)	Topical analgesic

Uses Temporarily relieves mild to moderate aches & pains of muscles & joints associated with:
 ■ arthritis ■ sprains ■ strains ■ bruises ■ simple backache

Warnings
For external use only
Stomach bleeding warning: This product contains an NSAID, which may cause stomach bleeding. The chance is small but higher if you:
 ■ are age 60 or older
 ■ have had stomach ulcers or bleeding problems ■ take a blood thinning (anticoagulant) or steroid drug
 ■ take other drugs containing an NSAID (aspirin, ibuprofen, naproxen, or others)
 ■ have 3 or more alcoholic drinks every day while using this product
 ■ take more or for a longer time than directed

Do not use
 ■ on the face or rashes ■ on wounds or damaged skin ■ if allergic to aspirin or other NSAIDs
 ■ with a heating pad ■ when sweating (such as from exercise or heat)
 ■ any patch from a pouch that has been open for 14 or more days ■ right before or after heart surgery

Ask a doctor before use if
 ■ you are allergic to topical products ■ the stomach bleeding warning applies to you
 ■ you are taking a diuretic ■ you have high blood pressure, heart disease, or kidney disease

When using this product ■ wash hands after applying or removing patch. Avoid contact with eyes. If eye contact occurs, rinse thoroughly with water.
 ■ the risk of heart attack or stroke may increase if you use more than directed or for longer than directed

Stop use and ask a doctor if
 ■ stomach pain or upset gets worse or lasts
 ■ you feel faint, vomit blood, or have bloody or black stools. These are signs of stomach bleeding.
 ■ rash, itching or skin irritation develops ■ condition worsens ■ symptoms last for more than 3 days
 ■ symptoms clear up and occur again within a few days

If pregnant or breast-feeding, ask a health professional before use. It is especially important not to use methyl salicylate at 20 weeks or later in pregnancy unless definitely directed to do so by a doctor because it may cause problems in the unborn child or complications during delivery.
Keep out of reach of children. If put in mouth, get medical help or contact a Poison Control Center right away. Package not child resistant. Dispose of the used patches after folding sticky ends together.

Directions
Adults 18 years and older:
 ■ only use one patch at a time
 ■ clean and dry affected area ■ remove patch from backing film and apply to skin (see illustration)
 ■ apply one patch to the affected area and leave in place for up to 8 to 12 hours
 ■ if pain lasts after using the first patch, a second patch may be applied for up to another 8 to 12 hours
 ■ do not use more than 2 patches per day ■ do not use for more than 3 days in a row
 ■ the used patch should be removed from the skin when a new one is applied
Children under 18 years of age: do not use; this product has not been shown to work in children

Other information ■ Store at 20-25°C (68-77°F) ■ Avoid storing product in direct sunlight
 ■ Protect product from excessive moisture
 ■ Some individuals may not experience pain relief until several hours after applying the patch

Inactive ingredients
 alicyclic saturated hydrocarbon resin, backing cloth, film, mineral oil, polyisobutylene, polyisobutylene 1,200,000, styrene-isoprene-styrene block copolymer, synthetic aluminum silicate

Questions or comments?
 Toll free 1-87-SALONPAS www.salonpas.us

LOT
EXP.

®:Registered Trade Mark XXXXXX-X

Labeling Format Information:		
Fonts : Helvetica Condensed Black Oblique Helvetica Condensed Bold Helvetica Narrow		
Drug Facts :	9.5pt	Leading : 6.15pt
Header :	8pt	Bullets : 6pt
Subheader :	6pt	Barlines : 2.5pt
Body Text :	6pt	Hairlines : 0.5pt
Drug Facts (Continued) NA		
Horizontal Scale: 80%-100% Average Kerning: 0		

✂ CUT OPEN HERE ----- CUT OPEN HERE ✂

FOLD TWICE AFTER OPENING
Discard unused patches 14 days after opening
FOLD TWICE AFTER OPENING

NDC#46581-680-03 **Hisamitsu®**

HOW TO APPLY



for temporary relief of mild to moderate pain

- Arthritis
- Joint Pain
- Sprains
- Strains

1 Peel the center film. 2 Place on affected area.
3 Slide the film upward. 4 Slide the other film downward.

Salonpas®

Arthritis Pain Patch

**Menthol 3%
Methyl Salicylate 10%
Topical Analgesic**

APPLY FOR 8-12 HOURS

**FDA APPROVED NON-PRESCRIPTION PAIN RELIEVING PATCH
EFFECTIVENESS CONFIRMED IN CLINICAL TRIAL**

3 PATCHES
2 3/4" x 3 15/16" (7cm x 10cm)

DO NOT USE MORE THAN ONE SALONPAS PATCH AT A TIME. SEE DIRECTIONS.

Package not child resistant. Keep out of reach of children.

Manufactured by Hisamitsu Pharmaceutical Co., Inc. JAPAN SAGA TOSU MADE IN JAPAN
Distributed by Hisamitsu America, Inc. Florham Park, NJ 07932



3 46581 68003 4

✂ CUT OPEN HERE ----- CUT OPEN HERE ✂

minty scent

Drug Facts

Active ingredients (in each patch)	Purpose
Menthol 3%	Topical analgesic
Methyl salicylate 10% (NSAID: nonsteroidal anti-inflammatory drug)	Topical analgesic

Uses Temporarily relieves mild to moderate aches & pains of muscles & joints associated with:
 ■ arthritis ■ sprains ■ strains ■ bruises ■ simple backache

Warnings
For external use only
Stomach bleeding warning: This product contains an NSAID, which may cause stomach bleeding. The chance is small but higher if you:
 ■ are age 60 or older
 ■ have had stomach ulcers or bleeding problems ■ take a blood thinning (anticoagulant) or steroid drug
 ■ take other drugs containing an NSAID (aspirin, ibuprofen, naproxen, or others)
 ■ have 3 or more alcoholic drinks every day while using this product
 ■ take more or for a longer time than directed

Do not use
 ■ on the face or rashes ■ on wounds or damaged skin ■ if allergic to aspirin or other NSAIDs
 ■ with a heating pad ■ when sweating (such as from exercise or heat)
 ■ any patch from a pouch that has been open for 14 or more days ■ right before or after heart surgery

Ask a doctor before use if ■ you are allergic to topical products ■ the stomach bleeding warning applies to you
 ■ you are taking a diuretic ■ you have high blood pressure, heart disease, or kidney disease

When using this product ■ wash hands after applying or removing patch. Avoid contact with eyes. If eye contact occurs, rinse thoroughly with water.
 ■ the risk of heart attack or stroke may increase if you use more than directed or for longer than directed

Stop use and ask a doctor if ■ stomach pain or upset gets worse or lasts
 ■ you feel faint, vomit blood, or have bloody or black stools. These are signs of stomach bleeding.
 ■ rash, itching or skin irritation develops ■ condition worsens ■ symptoms last for more than 3 days
 ■ symptoms clear up and occur again within a few days

If pregnant or breast-feeding, ask a health professional before use. It is especially important not to use methyl salicylate at 20 weeks or later in pregnancy unless definitely directed to do so by a doctor because it may cause problems in the unborn child or complications during delivery.
Keep out of reach of children. If put in mouth, get medical help or contact a Poison Control Center right away. Package not child resistant. Dispose of the used patches after folding sticky ends together.

Directions
Adults 18 years and older: ■ only use one patch at a time
 ■ clean and dry affected area ■ remove patch from backing film and apply to skin (see illustration)
 ■ apply one patch to the affected area and leave in place for up to 8 to 12 hours
 ■ if pain lasts after using the first patch, a second patch may be applied for up to another 8 to 12 hours
 ■ do not use more than 2 patches per day ■ do not use for more than 3 days in a row
 ■ the used patch should be removed from the skin when a new one is applied
Children under 18 years of age: do not use; this product has not been shown to work in children

Other information ■ Store at 20-25°C (68-77°F) ■ Avoid storing product in direct sunlight
 ■ Protect product from excessive moisture
 ■ Some individuals may not experience pain relief until several hours after applying the patch

Inactive ingredients
 alicyclic saturated hydrocarbon resin, backing cloth, film, mineral oil, polyisobutylene, polyisobutylene 1,200,000, styrene-isoprene-styrene block copolymer, synthetic aluminum silicate

Questions or comments?
 Toll free 1-87-SALONPAS www.salonpas.us

LOT: _____
 EXP: _____

®:Registered Trade Mark XXXXXX-X

Labeling Format Information:		
Fonts : Helvetica Condensed Black Oblique Helvetica Condensed Bold Helvetica Narrow		
Drug Facts :	9.5pt	Leading : 6.15pt
Header :	8pt	Bullets : 6pt
Subheader :	6pt	Barlines : 2.5pt
Body Text :	6pt	Hairlines : 0.5pt
Drug Facts (Continued) NA		
Horizontal Scale: 80%-100% Average Kerning: 0		

✂ CUT OPEN HERE ----- CUT OPEN HERE ✂

FOLD TWICE AFTER OPENING

Discard unused patches 14 days after opening

FOLD TWICE AFTER OPENING

HOW TO APPLY



1
Peel the center film.



2
Place on affected area.



3
Slide the film upward.



4
Slide the other film downward.



Menthol 3%
Methyl Salicylate 10%
Topical Analgesic

5 PATCHES

2 3/4" x 3 15/16" (7cm x 10cm)

✂ DO NOT USE MORE THAN ONE SALONPAS PATCH AT A TIME. SEE DIRECTIONS.

Package not child resistant.
Keep out of reach of children.

Hisamitsu®
Manufactured by
Hisamitsu Pharmaceutical Co., Inc.
JAPAN SAGA TOSU
Distributed by
Hisamitsu America, Inc.
Florham Park, NJ 07932
MADE IN JAPAN

LOT _____

EXP. _____

✂ CUT OPEN HERE ----- CUT OPEN HERE ✂

Salonpas® Arthritis Pain Patch Menthol 3%, Methyl Salicylate 10%
minty scent

Drug Facts	Purpose
Active ingredients (in each patch)	
Menthol 3%.....	Topical analgesic
Methyl salicylate 10% (NSAID: nonsteroidal anti-inflammatory drug).....	Topical analgesic
Uses Temporarily relieves mild to moderate aches & pains of muscles & joints associated with: ■ arthritis ■ sprains ■ strains ■ bruises ■ simple backache	
Warnings	
For external use only	
Stomach bleeding warning: This product contains an NSAID, which may cause stomach bleeding. The chance is small but higher if you: ■ are age 60 or older ■ have had stomach ulcers or bleeding problems ■ take a blood thinning (anticoagulant) or steroid drug ■ take other drugs containing an NSAID (aspirin, ibuprofen, naproxen, or others) ■ have 3 or more alcoholic drinks every day while using this product ■ take more or for a longer time than directed	
Do not use ■ on the face or rashes ■ on wounds or damaged skin ■ if allergic to aspirin or other NSAIDs ■ with a heating pad ■ when sweating (such as from exercise or heat) ■ any patch from a pouch that has been open for 14 or more days ■ right before or after heart surgery	
Ask a doctor before use if ■ you are allergic to topical products ■ the stomach bleeding warning applies to you ■ you are taking a diuretic ■ you have high blood pressure, heart disease, or kidney disease	
When using this product ■ wash hands after applying or removing patch. Avoid contact with eyes. If eye contact occurs, rinse thoroughly with water. ■ the risk of heart attack or stroke may increase if you use more than directed or for longer than directed	
Stop use and ask a doctor if ■ stomach pain or upset gets worse or lasts ■ you feel faint, vomit blood, or have bloody or black stools. These are signs of stomach bleeding. ■ rash, itching or skin irritation develops ■ condition worsens ■ symptoms last for more than 3 days ■ symptoms clear up and occur again within a few days	
If pregnant or breast-feeding , ask a health professional before use. It is especially important not to use methyl salicylate at 20 weeks or later in pregnancy unless definitely directed to do so by a doctor because it may cause problems in the unborn child or complications during delivery. Keep out of reach of children. If put in mouth, get medical help or contact a Poison Control Center right away. Package not child resistant. Dispose of the used patches after folding sticky ends together.	
Directions	
Adults 18 years and older: ■ clean and dry affected area ■ only use one patch at a time ■ apply one patch to the affected area and leave in place for up to 8 to 12 hours ■ remove patch from backing film and apply to skin (see illustration) ■ if pain lasts after using the first patch, a second patch may be applied for up to another 8 to 12 hours ■ do not use more than 2 patches per day ■ do not use for more than 3 days in a row ■ the used patch should be removed from the skin when a new one is applied	
Children under 18 years of age: do not use; this product has not been shown to work in children	
Other information ■ Store at 20-25°C (68-77°F) ■ Avoid storing product in direct sunlight ■ Protect product from excessive moisture ■ Some individuals may not experience pain relief until several hours after applying the patch	
Inactive ingredients alicyclic saturated hydrocarbon resin, backing cloth, film, mineral oil, polyisobutylene, polyisobutylene 1,200,000, styrene-isoprene-styrene block copolymer, synthetic aluminum silicate	
Questions or comments? Toll free 1-87-SALONPAS www.salonpas.us ®:Registered Trade Mark XXXXXX-X	

Labeling Format Information:			
Fonts :	Helvetica Roman , Bold , Bold Oblique		
Drug Facts :	9.5pt	Leading :	6.5pt
Header :	8pt	Bullets :	5pt
Subheader :	6pt	Barlines :	2.5pt
Body Text :	6pt	Hairlines :	0.5pt
Horizontal Scale: 80%-100%		Average Kerning: 0	

5 Patches

Salonpas®
Arthritis Pain Patch
Menthol 3%, Methyl Salicylate 10%

Manufactured by
Hisamitsu Pharmaceutical Co., Inc.
JAPAN SAGA TOSU
MADE IN JAPAN

Distributed by
Hisamitsu America, Inc.
Florham Park, NJ 07932
®Registered Trade Mark



3 46581 680051 8

Salonpas® Arthritis Pain Patch 5

Menthol 3%, Methyl Salicylate 10% PATCHES



NDC#46581-680-05

for temporary relief of mild to moderate pain

- Arthritis
- Joint Pain
- Sprains
- Strains

Salonpas® Arthritis Pain Patch

Menthol 3% Methyl Salicylate 10%

Salonpas® Arthritis Pain Patch 5

Menthol 3% Methyl Salicylate 10%

APPLY FOR 8-12 HOURS

Menthol 3% Methyl Salicylate 10% Topical Analgesic

FDA APPROVED NON-PRESCRIPTION PAIN RELIEVING PATCH
EFFECTIVENESS CONFIRMED IN CLINICAL TRIAL

5 PATCHES
2 3/4" x 3 1/4" (7cm x 10cm)

DO NOT USE MORE THAN ONE SALONPAS PATCH AT A TIME. SEE DIRECTIONS.

Package not child resistant.
Keep out of reach of children.

LOT _____

EXP. _____

Salonpas®
Arthritis Pain Patch
Menthol 3%, Methyl Salicylate 10%

5 PATCHES

Salonpas®
Arthritis Pain Patch
Menthol 3%, Methyl Salicylate 10%

PRESS OPEN

minty scent

Drug Facts

Active ingredients (in each patch)

Menthol 3%	Topical analgesic
Methyl salicylate 10% (NSAID: nonsteroidal anti-inflammatory drug)	Topical analgesic

Purpose

Temporarily relieves mild to moderate aches & pains of muscles & joints associated with:

- arthritis
- sprains
- strains
- bruises
- simple backache

Uses

Temporarily relieves mild to moderate aches & pains of muscles & joints associated with:

- arthritis
- sprains
- strains
- bruises
- simple backache

Warnings

For external use only

Stomach bleeding warning: This product contains an NSAID, which may cause stomach bleeding. The chance is small but higher if you:

- are age 60 or older
- have had stomach ulcers or bleeding problems
- take a blood thinning (anticoagulant) or steroid drug
- take other drugs containing an NSAID [aspirin, ibuprofen, naproxen, or others]
- have 3 or more alcoholic drinks every day while using this product
- take more or for a longer time than directed

Do not use

- on the face or rashes
- on wounds or damaged skin
- if allergic to aspirin or other NSAIDs
- with a heating pad
- when sweating (such as from exercise or heat)
- any patch from a pouch that has been open for 14 or more days
- right before or after heart surgery

Ask a doctor before use if

- you are allergic to topical products
- the stomach bleeding warning applies to you
- you are taking a diuretic
- you have high blood pressure, heart disease, or kidney disease

When using this product

- wash hands after applying or removing patch. Avoid contact with eyes. If eye contact occurs, rinse thoroughly with water.
- the risk of heart attack or stroke may increase if you use more than directed or for longer than directed

Stop use and ask a doctor if

- stomach pain or upset gets worse or lasts
- you feel faint, vomit blood, or have bloody or black stools. These are signs of stomach bleeding.
- rash, itching or skin irritation develops
- condition worsens
- symptoms last for more than 3 days
- symptoms clear up and occur again within a few days

If pregnant or breast-feeding, ask a health professional before use. It is especially important not to use methyl salicylate at 20 weeks or later in pregnancy unless definitely directed to do so by a doctor because it may cause problems in the unborn child or complications during delivery.

Keep out of reach of children. If put in mouth, get medical help or contact a Poison Control Center right away. Package not child resistant. Dispose of the used patches after folding sticky ends together.

Directions

Adults 18 years and older:

- only use one patch at a time
- clean and dry affected area
- remove patch from backing film and apply to skin (see illustration)
- apply one patch to the affected area and leave in place for up to 8 to 12 hours
- if pain lasts after using the first patch, a second patch may be applied for up to another 8 to 12 hours
- do not use more than 2 patches per day
- do not use for more than 3 days in a row
- the used patch should be removed from the skin when a new one is applied

Children under 18 years of age: do not use; this product has not been shown to work in children

Other information

- Store at 20-25°C (68-77°F)
- Avoid storing product in direct sunlight
- Protect product from excessive moisture
- Some individuals may not experience pain relief until several hours after applying the patch

Inactive ingredients

alicyclic saturated hydrocarbon resin, backing cloth, film, mineral oil, polyisobutylene, polyisobutylene 1,200,000, styrene-isoprene-styrene block copolymer, synthetic aluminum silicate

Questions or comments?

Toll free 1-87-SALONPAS www.salonpas.us

HOW TO APPLY

- 1  Peel the center film.
- 2  Place on affected area.
- 3  Slide the film upward.
- 4  Slide the other film downward.

XXXXXX-X

Labeling Format Information:			
Fonts : Helvetica Roman , Bold , Bold Oblique			
Drug Facts :	9.5pt	Leading :	6.5pt
Header :	8pt	Bullets :	5pt
Subheader :	6pt	Barlines :	2.5pt
Body Text :	6pt	Hairlines :	0.5pt
Horizontal Scale: 80%-100%		Average Kerning: 0	

15
PATCHES

Salonpas®
Arthritis Pain Patch
Menthol 3%, Methyl Salicylate 10%

Manufactured by
Hisamitsu Pharmaceutical Co., Inc.
JAPAN SAGA TOSU
MADE IN JAPAN

Distributed by
Hisamitsu America, Inc.
Florham Park, NJ 07932

®Registered Trade Mark



3 46581 68015 7

Salonpas®
Arthritis Pain Patch
Menthol 3%, Methyl Salicylate 10%



Salonpas®
Arthritis Pain Patch
Menthol 3%, Methyl Salicylate 10%

Salonpas®
Arthritis Pain Patch
Menthol 3%, Methyl Salicylate 10%

Salonpas®
Arthritis Pain Patch
Menthol 3%, Methyl Salicylate 10%

15
PATCHES

Salonpas®
Arthritis Pain Patch
Menthol 3%, Methyl Salicylate 10%

15
PATCHES

Salonpas®
Arthritis Pain Patch
Menthol 3%, Methyl Salicylate 10%

15
PATCHES

Salonpas®
Arthritis Pain Patch
Menthol 3%, Methyl Salicylate 10%

15
PATCHES

Salonpas®
Arthritis Pain Patch
Menthol 3%, Methyl Salicylate 10%

15
PATCHES

Salonpas®
Arthritis Pain Patch
Menthol 3%, Methyl Salicylate 10%

APPLY FOR 8-12 HOURS

15 PATCHES
2 3/4" X 3 1/4" (7cm X 10cm)

DO NOT USE MORE THAN ONE SALONPAS PATCH AT A TIME. SEE DIRECTIONS.

LOT

EXP.

HOW TO APPLY

for Knee



1 Peel the center film.



2 Place on affected area.



3 Slide the film upward.



4 Slide the other film downward.

for Elbow



1 Peel the center film.



2 Place on affected area.



3 Slide a film.



4 Slide the other film.

Drug Facts

Active ingredients (in each patch)

Menthol 3%	Topical analgesic
Methyl salicylate 10% (NSAID: nonsteroidal anti-inflammatory drug)	Topical analgesic

Uses
Temporarily relieves mild to moderate aches & pains of muscles & joints associated with:
 ■ arthritis ■ sprains ■ strains ■ bruises ■ simple backache

Warnings
For external use only
Stomach bleeding warning: This product contains an NSAID, which may cause stomach bleeding. The chance is small but higher if you:
 ■ are age 60 or older ■ have had stomach ulcers or bleeding problems
 ■ take a blood thinning (anticoagulant) or steroid drug
 ■ take other drugs containing an NSAID [aspirin, ibuprofen, naproxen, or others]
 ■ have 3 or more alcoholic drinks every day while using this product
 ■ take more or for a longer time than directed

Do not use
 ■ on the face or rashes ■ on wounds or damaged skin ■ if allergic to aspirin or other NSAIDs
 ■ with a heating pad ■ when sweating (such as from exercise or heat)
 ■ any patch from a pouch that has been open for 14 or more days ■ right before or after heart surgery

Ask a doctor before use if
 ■ you are allergic to topical products ■ the stomach bleeding warning applies to you
 ■ you are taking a diuretic ■ you have high blood pressure, heart disease, or kidney disease

When using this product
 ■ wash hands after applying or removing patch. Avoid contact with eyes. If eye contact occurs, rinse thoroughly with water.
 ■ the risk of heart attack or stroke may increase if you use more than directed or for longer than directed

Stop use and ask a doctor if
 ■ stomach pain or upset gets worse or lasts
 ■ you feel faint, vomit blood, or have bloody or black stools. These are signs of stomach bleeding.
 ■ rash, itching or skin irritation develops ■ condition worsens ■ symptoms last for more than 3 days
 ■ symptoms clear up and occur again within a few days

If pregnant or breast-feeding, ask a health professional before use. It is especially important not to use methyl salicylate at 20 weeks or later in pregnancy unless definitely directed to do so by a doctor because it may cause problems in the unborn child or complications during delivery.

Keep out of reach of children. If put in mouth, get medical help or contact a Poison Control Center right away. Package not child resistant. Dispose of the used patches after folding sticky ends together.

Directions
Adults 18 years and older:
 ■ only use one patch at a time
 ■ clean and dry affected area ■ remove patch from backing film and apply to skin (see illustration)
 ■ apply one patch to the affected area and leave in place for up to 8 to 12 hours
 ■ if pain lasts after using the first patch, a second patch may be applied for up to another 8 to 12 hours
 ■ do not use more than 2 patches per day ■ do not use for more than 3 days in a row
 ■ the used patch should be removed from the skin when a new one is applied
Children under 18 years of age: do not use; this product has not been shown to work in children

Other information
 ■ Store at 20-25°C (68-77°F) ■ Avoid storing product in direct sunlight
 ■ Protect product from excessive moisture
 ■ Some individuals may not experience pain relief until several hours after applying the patch

Inactive ingredients
 alicyclic saturated hydrocarbon resin, backing cloth, film, mineral oil, polyisobutylene, polyisobutylene 1,200,000, styrene-isoprene-styrene block copolymer, synthetic aluminum silicate

Questions or comments?
 Toll free 1-87-SALONPAS www.salonpas.us

Labeling Format Information:		
Fonts : Helvetica Condensed Black Oblique Helvetica Condensed Bold Helvetica Narrow		
Drug Facts :	9.5pt	Leading : 6.15pt
Header :	8pt	Bullets : 6pt
Subheader :	6pt	Barlines : 2.5pt
Body Text :	6pt	Hairlines : 0.5pt
Drug Facts (Continued) NA		
Horizontal Scale: 80%-100% Average Kerning: 0		

LARGE

for temporary relief of mild to moderate pain

Arthritis
Joint Pain
Sprains
Strains

HOW TO APPLY

Salonpas®

Arthritis Pain Patch

Menthol 3%
Methyl Salicylate 10%
Topical Analgesic

APPLY FOR

8-12

HOURS

1 LARGE PATCH

3 15/16" X 5 1/2" (10cm X 14cm)

FDA APPROVED NON-PRESCRIPTION PAIN RELIEVING PATCH
EFFECTIVENESS CONFIRMED IN CLINICAL TRIAL

Package not child resistant.
Keep out of reach of children.

Manufactured by
Hisamitsu Pharmaceutical Co., Inc.
JAPAN SAGA TOSU
MADE IN JAPAN

Distributed by
Hisamitsu America, Inc.
Florham Park, NJ 07932

✂ CUT OPEN HERE ----- CUT OPEN HERE ✂

Drug Facts

Active ingredients (in each patch)

Menthol 3%.....	Topical analgesic
Methyl salicylate 10% (NSAID: nonsteroidal anti-inflammatory drug).....	Topical analgesic

Purpose

minty scent

Uses Temporarily relieves mild to moderate aches & pains of muscles & joints associated with:

- arthritis ■ sprains ■ strains ■ bruises ■ simple backache

Warnings

For external use only

Stomach bleeding warning: This product contains an NSAID, which may cause stomach bleeding. The chance is small but higher if you:

- are age 60 or older
- have had stomach ulcers or bleeding problems
- take a blood thinning (anticoagulant) or steroid drug
- take other drugs containing an NSAID (aspirin, ibuprofen, naproxen, or others)
- have 3 or more alcoholic drinks every day while using this product
- take more or for a longer time than directed

Do not use

- on the face or rashes
- on wounds or damaged skin
- if allergic to aspirin or other NSAIDs
- with a heating pad
- when sweating (such as from exercise or heat)
- any patch from a pouch that has been open for 14 or more days
- right before or after heart surgery

Ask a doctor before use if

- you are allergic to topical products
- the stomach bleeding warning applies to you
- you are taking a diuretic
- you have high blood pressure, heart disease, or kidney disease

When using this product

- wash hands after applying or removing patch. Avoid contact with eyes.
- If eye contact occurs, rinse thoroughly with water.
- the risk of heart attack or stroke may increase if you use more than directed or for longer than directed

Stop use and ask a doctor if

- stomach pain or upset gets worse or lasts
- you feel faint, vomit blood, or have bloody or black stools. These are signs of stomach bleeding.
- rash, itching or skin irritation develops
- condition worsens
- symptoms last for more than 3 days
- symptoms clear up and occur again within a few days

If pregnant or breast-feeding, ask a health professional before use. It is especially important not to use methyl salicylate at 20 weeks or later in pregnancy unless definitely directed to do so by a doctor because it may cause problems in the unborn child or complications during delivery.

Keep out of reach of children. If put in mouth, get medical help or contact a Poison Control Center right away. Package not child resistant. Dispose of the used patches after folding sticky ends together.

Directions

Adults 18 years and older:

- only use one patch at a time
- clean and dry affected area
- remove patch from backing film and apply to skin (see illustration)
- apply one patch to the affected area and leave in place for up to 8 to 12 hours
- if pain lasts after using the first patch, a second patch may be applied for up to another 8 to 12 hours
- do not use more than 2 patches per day
- do not use for more than 3 days in a row
- the used patch should be removed from the skin when a new one is applied

Children under 18 years of age: do not use; this product has not been shown to work in children

Other information

- Store at 20-25°C (68-77°F)
- Avoid storing product in direct sunlight
- Protect product from excessive moisture
- Some individuals may not experience pain relief until several hours after applying the patch

Inactive ingredients

alicyclic saturated hydrocarbon resin, backing cloth, film, mineral oil, polyisobutylene, polyisobutylene 1,200,000, styrene-isoprene-styrene block copolymer, synthetic aluminum silicate

Toll free 1-87-SALONPAS www.salonpas.us

LOT

EXP.

®:Registered Trade Mark XXXXXX-X

Labeling Format Information:		
Fonts : Helvetica Condensed Black Oblique Helvetica Condensed Bold Helvetica Narrow		
Drug Facts :	9.5pt	Leading : 6.15pt
Header :	8pt	Bullets : 6pt
Subheader :	6pt	Barlines : 2.5pt
Body Text :	6pt	Hairlines : 0.5pt
Drug Facts (Continued) NA		
Horizontal Scale: 80%-100% Average Kerning: 0		

LARGE

NDC#46581-685-99

for temporary relief of mild to moderate pain

- Arthritis
- Joint Pain
- Sprains
- Strains

HOW TO APPLY

Salonpas®

Arthritis Pain Patch

Menthol 3%
Methyl Salicylate 10%
Topical Analgesic

APPLY FOR
8-12
HOURS

FDA APPROVED NON-PRESCRIPTION PAIN RELIEVING PATCH
EFFECTIVENESS CONFIRMED IN CLINICAL TRIAL

1 LARGE PATCH
3 1/8" X 5 1/2" (10cm X 14cm)

⚠ DO NOT USE MORE THAN ONE SALONPAS PATCH AT A TIME. SEE DIRECTIONS.

Package not child resistant.
Keep out of reach of children.

Manufactured by
Hisamitsu Pharmaceutical Co., Inc.
JAPAN SAGA TOSU
MADE IN JAPAN

Distributed by
Hisamitsu America, Inc.
Florham Park, NJ 07932

FREE SAMPLE
NOT FOR RE-SALE

✂ CUT OPEN HERE ----- CUT OPEN HERE ✂

Drug Facts

Active ingredients (in each patch)

Menthol 3%..... Topical analgesic
Methyl salicylate 10% (NSAID: nonsteroidal anti-inflammatory drug)..... Topical analgesic

Uses Temporarily relieves mild to moderate aches & pains of muscles & joints associated with:
 ■ arthritis ■ sprains ■ strains ■ bruises ■ simple backache

Warnings
For external use only
Stomach bleeding warning: This product contains an NSAID, which may cause stomach bleeding. The chance is small but higher if you:
 ■ have had stomach ulcers or bleeding problems ■ are age 60 or older
 ■ take other drugs containing an NSAID (aspirin, ibuprofen, naproxen, or others) ■ take a blood thinning (anticoagulant) or steroid drug
 ■ have 3 or more alcoholic drinks every day while using this product
 ■ take more or for a longer time than directed

Do not use
 ■ on the face or rashes ■ on wounds or damaged skin ■ if allergic to aspirin or other NSAIDs
 ■ with a heating pad ■ when sweating (such as from exercise or heat)
 ■ any patch from a pouch that has been open for 14 or more days ■ right before or after heart surgery

Ask a doctor before use if ■ you are allergic to topical products ■ the stomach bleeding warning applies to you
 ■ you are taking a diuretic ■ you have high blood pressure, heart disease, or kidney disease

When using this product ■ wash hands after applying or removing patch. Avoid contact with eyes. If eye contact occurs, rinse thoroughly with water.
 ■ the risk of heart attack or stroke may increase if you use more than directed or for longer than directed

Stop use and ask a doctor if ■ stomach pain or upset gets worse or lasts
 ■ you feel faint, vomit blood, or have bloody or black stools. These are signs of stomach bleeding.
 ■ rash, itching or skin irritation develops ■ condition worsens ■ symptoms last for more than 3 days
 ■ symptoms clear up and occur again within a few days

If pregnant or breast-feeding, ask a health professional before use. It is especially important not to use methyl salicylate at 20 weeks or later in pregnancy unless definitely directed to do so by a doctor because it may cause problems in the unborn child or complications during delivery.
Keep out of reach of children. If put in mouth, get medical help or contact a Poison Control Center right away. Package not child resistant. Dispose of the used patches after folding sticky ends together.

Directions
Adults 18 years and older: ■ only use one patch at a time
 ■ clean and dry affected area ■ remove patch from backing film and apply to skin (see illustration)
 ■ apply one patch to the affected area and leave in place for up to 8 to 12 hours
 ■ if pain lasts after using the first patch, a second patch may be applied for up to another 8 to 12 hours
 ■ do not use more than 2 patches per day ■ do not use for more than 3 days in a row
 ■ the used patch should be removed from the skin when a new one is applied
Children under 18 years of age: do not use; this product has not been shown to work in children

Other information ■ Store at 20-25°C (68-77°F) ■ Avoid storing product in direct sunlight
 ■ Protect product from excessive moisture
 ■ Some individuals may not experience pain relief until several hours after applying the patch

Inactive ingredients
 alicyclic saturated hydrocarbon resin, backing cloth, film, mineral oil, polyisobutylene, polyisobutylene 1,200,000, styrene-isoprene-styrene block copolymer, synthetic aluminum silicate

Questions or comments?
 Toll free 1-87-SALONPAS www.salonpas.us

Purpose

Topical analgesic

Topical analgesic

minty scent

LOT _____

EXP. _____

®:Registered Trade Mark XXXXXX-X

Reference ID: 4883946

Labeling Format Information:		
Fonts : Helvetica Condensed Black Oblique Helvetica Condensed Bold Helvetica Narrow		
Drug Facts :	9.5pt	Leading : 6.15pt
Header :	8pt	Bullets : 6pt
Subheader :	6pt	Barlines : 2.5pt
Body Text :	6pt	Hairlines : 0.5pt
Drug Facts (Continued) NA		
Horizontal Scale: 80%-100% Average Kerning: 0		

✂ CUT OPEN HERE ----- CUT OPEN HERE ✂

FOLD TWICE AFTER OPENING

Discard unused patches 14 days after opening

FOLD TWICE AFTER OPENING

HOW TO APPLY



1 Peel the center film.



2 Place on affected area.



3 Slide the film upward.



4 Slide the other film downward.



Salonpas®
Arthritis Pain Patch

Menthol 3%
Methyl Salicylate 10%
Topical Analgesic

2 LARGE PATCHES
3 15/16" x 5 1/2" (10cm x 14cm)

✂ DO NOT USE MORE THAN ONE SALONPAS PATCH AT A TIME. SEE DIRECTIONS.

Package not child resistant.
Keep out of reach of children.

Hisamitsu®
Manufactured by
Hisamitsu Pharmaceutical Co., Inc.
JAPAN SAGA TOSU
Distributed by
Hisamitsu America, Inc.
Florham Park, NJ 07932
MADE IN JAPAN

LOT

EXP.

✂ CUT OPEN HERE ----- CUT OPEN HERE ✂

Salonpas® Arthritis Pain Patch LARGE Menthol 3%, Methyl Salicylate 10% minty scent

Drug Facts	Purpose
Active ingredients (in each patch)	
Menthol 3%.....	Topical analgesic
Methyl salicylate 10% (NSAID: nonsteroidal anti-inflammatory drug).....	Topical analgesic
Uses Temporarily relieves mild to moderate aches & pains of muscles & joints associated with: <ul style="list-style-type: none"> ■ arthritis ■ sprains ■ strains ■ bruises ■ simple backache 	
Warnings	
For external use only	
Stomach bleeding warning: This product contains an NSAID, which may cause stomach bleeding. The chance is small but higher if you: <ul style="list-style-type: none"> ■ are age 60 or older ■ have had stomach ulcers or bleeding problems ■ take a blood thinning (anticoagulant) or steroid drug ■ take other drugs containing an NSAID (aspirin, ibuprofen, naproxen, or others) ■ have 3 or more alcoholic drinks every day while using this product ■ take more or for a longer time than directed 	
Do not use <ul style="list-style-type: none"> ■ on the face or rashes ■ on wounds or damaged skin ■ if allergic to aspirin or other NSAIDs ■ with a heating pad ■ when sweating (such as from exercise or heat) ■ any patch from a pouch that has been open for 14 or more days ■ right before or after heart surgery 	
Ask a doctor before use if <ul style="list-style-type: none"> ■ you are allergic to topical products ■ the stomach bleeding warning applies to you ■ you are taking a diuretic ■ you have high blood pressure, heart disease, or kidney disease 	
When using this product ■ wash hands after applying or removing patch. Avoid contact with eyes. If eye contact occurs, rinse thoroughly with water. <ul style="list-style-type: none"> ■ the risk of heart attack or stroke may increase if you use more than directed or for longer than directed 	
Stop use and ask a doctor if <ul style="list-style-type: none"> ■ stomach pain or upset gets worse or lasts ■ you feel faint, vomit blood, or have bloody or black stools. These are signs of stomach bleeding. ■ rash, itching or skin irritation develops ■ condition worsens ■ symptoms last for more than 3 days ■ symptoms clear up and occur again within a few days 	
If pregnant or breast-feeding , ask a health professional before use. It is especially important not to use methyl salicylate at 20 weeks or later in pregnancy unless definitely directed to do so by a doctor because it may cause problems in the unborn child or complications during delivery. Keep out of reach of children. If put in mouth, get medical help or contact a Poison Control Center right away. Package not child resistant. Dispose of the used patches after folding sticky ends together.	
Directions	
Adults 18 years and older: <ul style="list-style-type: none"> ■ only use one patch at a time ■ clean and dry affected area ■ remove patch from backing film and apply to skin (see illustration) ■ apply one patch to the affected area and leave in place for up to 8 to 12 hours ■ if pain lasts after using the first patch, a second patch may be applied for up to another 8 to 12 hours ■ do not use more than 2 patches per day ■ do not use for more than 3 days in a row ■ the used patch should be removed from the skin when a new one is applied 	
Children under 18 years of age: do not use; this product has not been shown to work in children	
Other information <ul style="list-style-type: none"> ■ Store at 20-25°C (68-77°F) ■ Avoid storing product in direct sunlight ■ Protect product from excessive moisture ■ Some individuals may not experience pain relief until several hours after applying the patch 	
Inactive ingredients alicyclic saturated hydrocarbon resin, backing cloth, film, mineral oil, polyisobutylene, polyisobutylene 1,200,000, styrene-isoprene-styrene block copolymer, synthetic aluminum silicate	
Questions or comments? Toll free 1-87-SALONPAS www.salonpas.us ®:Registered Trade Mark XXXXXX-X	

Labeling Format Information:			
Fonts : Helvetica Roman , Bold , Bold Oblique			
Drug Facts :	9.5pt	Leading :	6.5pt
Header :	8pt	Bullets :	5pt
Subheader :	6pt	Barlines :	2.5pt
Body Text :	6pt	Hairlines :	0.5pt
Horizontal Scale: 80%-100%		Average Kerning: 0	

2 PATCHES

Manufactured by
Hisamitsu Pharmaceutical Co., Inc.
JAPAN SAGA TOSU
MADE IN JAPAN

Distributed by
Hisamitsu America, Inc.
Florham Park, NJ 07932
®Registered Trade Mark

3 46581 68502 2

Salonpas® Arthritis Pain Patch LARGE 2 PATCHES

Menthol 3%, Methyl Salicylate 10%

LARGE



NDC#46581-685-02

for temporary relief of mild to moderate pain

- Arthritis
- Joint Pain
- Sprains
- Strains

Salonpas® Arthritis Pain Patch

Menthol 3%
Methyl Salicylate 10%
Topical Analgesic

APPLY FOR 8-12 HOURS

FDA APPROVED NON-PRESCRIPTION PAIN RELIEVING PATCH
EFFECTIVENESS CONFIRMED IN CLINICAL TRIAL

2 LARGE PATCHES
3 1/4" x 5 1/2" (10cm x 14cm)

Package not child resistant.
Keep out of reach of children.

DO NOT USE MORE THAN ONE SALONPAS PATCH AT A TIME. SEE DIRECTIONS.

LOT _____

EXP. _____

Salonpas® Arthritis Pain Patch LARGE 2 PATCHES
Menthol 3%, Methyl Salicylate 10%

2 PATCHES

Salonpas® Arthritis Pain Patch LARGE 2 PATCHES
Menthol 3%, Methyl Salicylate 10%

2 PATCHES

Salonpas® Arthritis Pain Patch LARGE
Menthol 3%, Methyl Salicylate 10%

2 PATCHES

Salonpas®
Arthritis Pain Patch LARGE
Menthol 3%, Methyl Salicylate 10%

PRESS OPEN

minty scent

HOW TO APPLY

- 1 Peel the center film.
- 2 Place on affected area.
- 3 Slide the film upward.
- 4 Slide the other film downward.

Drug Facts

Active ingredients (in each patch)	Purpose
Menthol 3%	Topical analgesic
Methyl salicylate 10% (NSAID: nonsteroidal anti-inflammatory drug)	Topical analgesic

Uses
Temporarily relieves mild to moderate aches & pains of muscles & joints associated with:
 • arthritis • sprains • strains • bruises • simple backache

Warnings
For external use only
Stomach bleeding warning: This product contains an NSAID, which may cause stomach bleeding. The chance is small but higher if you:
 • are age 60 or older • have had stomach ulcers or bleeding problems
 • take a blood thinning (anticoagulant) or steroid drug
 • take other drugs containing an NSAID [aspirin, ibuprofen, naproxen, or others]
 • have 3 or more alcoholic drinks every day while using this product
 • take more or for a longer time than directed

Do not use
 • on the face or rashes • on wounds or damaged skin • if allergic to aspirin or other NSAIDs
 • with a heating pad • when sweating (such as from exercise or heat)
 • any patch from a pouch that has been open for 14 or more days • right before or after heart surgery

Ask a doctor before use if
 • you are allergic to topical products • the stomach bleeding warning applies to you
 • you are taking a diuretic • you have high blood pressure, heart disease, or kidney disease

When using this product
 • wash hands after applying or removing patch. Avoid contact with eyes. If eye contact occurs, rinse thoroughly with water.
 • the risk of heart attack or stroke may increase if you use more than directed or for longer than directed

Stop use and ask a doctor if
 • stomach pain or upset gets worse or lasts
 • you feel faint, vomit blood, or have bloody or black stools. These are signs of stomach bleeding.
 • rash, itching or skin irritation develops • condition worsens • symptoms last for more than 3 days
 • symptoms clear up and occur again within a few days

If pregnant or breast-feeding, ask a health professional before use. It is especially important not to use methyl salicylate at 20 weeks or later in pregnancy unless definitely directed to do so by a doctor because it may cause problems in the unborn child or complications during delivery.
Keep out of reach of children. If put in mouth, get medical help or contact a Poison Control Center right away. Package not child resistant. Dispose of the used patches after folding sticky ends together.

Directions
Adults 18 years and older:
 • only use one patch at a time • remove patch from backing film and apply to skin (see illustration)
 • clean and dry affected area
 • apply one patch to the affected area and leave in place for up to 8 to 12 hours
 • if pain lasts after using the first patch, a second patch may be applied for up to another 8 to 12 hours
 • do not use more than 2 patches per day • do not use for more than 3 days in a row
 • the used patch should be removed from the skin when a new one is applied
Children under 18 years of age: do not use; this product has not been shown to work in children

Other information
 • Store at 20-25°C (68-77°F) • Avoid storing product in direct sunlight
 • Protect product from excessive moisture
 • Some individuals may not experience pain relief until several hours after applying the patch

Inactive ingredients
 alicyclic saturated hydrocarbon resin, backing cloth, film, mineral oil, polyisobutylene, polyisobutylene 1,200,000, styrene-isoprene-styrene block copolymer, synthetic aluminum silicate

Questions or comments?
 Toll free 1-87-SALONPAS www.salonpas.us

Labeling Format Information:		
Fonts : Helvetica Condensed Black Oblique Helvetica Condensed Bold Helvetica Narrow		
Drug Facts :	9.5pt	Leading : 6.15pt
Header :	8pt	Bullets : 6pt
Subheader :	6pt	Barlines : 2.5pt
Body Text :	6pt	Hairlines : 0.5pt
Drug Facts (Continued) NA		
Horizontal Scale: 80%-100% Average Kerning: 0		

✂ CUT OPEN HERE ----- CUT OPEN HERE ✂

FOLD TWICE AFTER OPENING

Discard unused patches 14 days after opening

FOLD TWICE AFTER OPENING

HOW TO APPLY



1 Peel the center film.



2 Place on affected area.



3 Slide the film upward.



4 Slide the other film downward.



Salonpas®
Arthritis Pain Patch

Menthol 3%
Methyl Salicylate 10%
Topical Analgesic

3 LARGE PATCHES
3 15/16" x 5 1/2" (10cm x 14cm)

✂ DO NOT USE MORE THAN ONE SALONPAS PATCH AT A TIME. SEE DIRECTIONS.

Package not child resistant.
Keep out of reach of children.

Hisamitsu®
Manufactured by
Hisamitsu Pharmaceutical Co., Inc.
JAPAN SAGA TOSU
Distributed by
Hisamitsu America, Inc.
Florham Park, NJ 07932
MADE IN JAPAN

LOT

EXP.

✂ CUT OPEN HERE ----- CUT OPEN HERE ✂

Salonpas® Arthritis Pain Patch LARGE Menthol 3%, Methyl Salicylate 10% minty scent

Drug Facts	Purpose
Active ingredients (in each patch)	Menthol 3%..... Topical analgesic
Methyl salicylate 10% (NSAID: nonsteroidal anti-inflammatory drug).....	Topical analgesic
Uses	Temporarily relieves mild to moderate aches & pains of muscles & joints associated with: ■ arthritis ■ sprains ■ strains ■ bruises ■ simple backache
Warnings	
For external use only	
Stomach bleeding warning: This product contains an NSAID, which may cause stomach bleeding. The chance is small but higher if you: ■ are age 60 or older ■ have had stomach ulcers or bleeding problems ■ take a blood thinning (anticoagulant) or steroid drug ■ take other drugs containing an NSAID (aspirin, ibuprofen, naproxen, or others) ■ have 3 or more alcoholic drinks every day while using this product ■ take more or for a longer time than directed	
Do not use ■ on the face or rashes ■ on wounds or damaged skin ■ if allergic to aspirin or other NSAIDs ■ with a heating pad ■ when sweating (such as from exercise or heat) ■ any patch from a pouch that has been open for 14 or more days ■ right before or after heart surgery	
Ask a doctor before use if ■ you are allergic to topical products ■ the stomach bleeding warning applies to you ■ you are taking a diuretic ■ you have high blood pressure, heart disease, or kidney disease	
When using this product ■ wash hands after applying or removing patch. Avoid contact with eyes. If eye contact occurs, rinse thoroughly with water. ■ the risk of heart attack or stroke may increase if you use more than directed or for longer than directed	
Stop use and ask a doctor if ■ stomach pain or upset gets worse or lasts ■ you feel faint, vomit blood, or have bloody or black stools. These are signs of stomach bleeding. ■ rash, itching or skin irritation develops ■ condition worsens ■ symptoms last for more than 3 days ■ symptoms clear up and occur again within a few days	
If pregnant or breast-feeding , ask a health professional before use. It is especially important not to use methyl salicylate at 20 weeks or later in pregnancy unless definitely directed to do so by a doctor because it may cause problems in the unborn child or complications during delivery. Keep out of reach of children. If put in mouth, get medical help or contact a Poison Control Center right away. Package not child resistant. Dispose of the used patches after folding sticky ends together.	
Directions	
Adults 18 years and older: ■ clean and dry affected area ■ only use one patch at a time ■ apply one patch to the affected area and leave in place for up to 8 to 12 hours ■ remove patch from backing film and apply to skin (see illustration) ■ if pain lasts after using the first patch, a second patch may be applied for up to another 8 to 12 hours ■ do not use more than 2 patches per day ■ do not use for more than 3 days in a row ■ the used patch should be removed from the skin when a new one is applied	
Children under 18 years of age: do not use; this product has not been shown to work in children	
Other information ■ Store at 20-25°C (68-77°F) ■ Avoid storing product in direct sunlight ■ Protect product from excessive moisture ■ Some individuals may not experience pain relief until several hours after applying the patch	
Inactive ingredients alicyclic saturated hydrocarbon resin, backing cloth, film, mineral oil, polyisobutylene, polyisobutylene 1,200,000, styrene-isoprene-styrene block copolymer, synthetic aluminum silicate	
Questions or comments? Toll free 1-87-SALONPAS www.salonpas.us ®:Registered Trade Mark XXXXXX-X	

Labeling Format Information:			
Fonts : Helvetica Roman , Bold , Bold Oblique			
Drug Facts :	9.5pt	Leading :	6.5pt
Header :	8pt	Bullets :	5pt
Subheader :	6pt	Barlines :	2.5pt
Body Text :	6pt	Hairlines :	0.5pt
Horizontal Scale: 80%-100%		Average Kerning: 0	

3 PATCHES

Manufactured by
Hisamitsu Pharmaceutical Co., Inc.
JAPAN SAGA TOSU
MADE IN JAPAN

Distributed by
Hisamitsu America, Inc.
Florham Park, NJ 07932
®Registered Trade Mark

3 46581 68503 9

Salonpas® Arthritis Pain Patch LARGE 3 PATCHES

Menthol 3%, Methyl Salicylate 10%

LARGE

NDC#46581-685-03

for temporary relief of mild to moderate pain

- Arthritis
- Joint Pain
- Sprains
- Strains

Salonpas® Arthritis Pain Patch

Menthol 3% Methyl Salicylate 10% Topical Analgesic

APPLY FOR 8-12 HOURS

FDA APPROVED NON-PRESCRIPTION PAIN RELIEVING PATCH
EFFECTIVENESS CONFIRMED IN CLINICAL TRIAL

3 LARGE PATCHES 3 1/4" x 5 1/2" (10cm x 14cm)

Package not child resistant. Keep out of reach of children.

DO NOT USE MORE THAN ONE SALONPAS PATCH AT A TIME. SEE DIRECTIONS.

LOT _____

EXP. _____

Salonpas® Arthritis Pain Patch LARGE 3 PATCHES
Menthol 3%, Methyl Salicylate 10%

3 PATCHES

Salonpas® Arthritis Pain Patch LARGE 3 PATCHES
Menthol 3%, Methyl Salicylate 10%

PRESS OPEN

minty scent

Drug Facts

Active ingredients (in each patch)

Menthol 3%	Topical analgesic
Methyl salicylate 10% (NSAID: nonsteroidal anti-inflammatory drug)	Topical analgesic

Uses

Temporarily relieves mild to moderate aches & pains of muscles & joints associated with:

- arthritis
- sprains
- strains
- bruises
- simple backache

Warnings

For external use only

Stomach bleeding warning: This product contains an NSAID, which may cause stomach bleeding. The chance is small but higher if you:

- are age 60 or older
- have had stomach ulcers or bleeding problems
- take a blood thinning (anticoagulant) or steroid drug
- take other drugs containing an NSAID [aspirin, ibuprofen, naproxen, or others]
- have 3 or more alcoholic drinks every day while using this product
- take more or for a longer time than directed

Do not use

- on the face or rashes
- on wounds or damaged skin
- if allergic to aspirin or other NSAIDs
- with a heating pad
- when sweating (such as from exercise or heat)
- any patch from a pouch that has been open for 14 or more days
- right before or after heart surgery

Ask a doctor before use if

- you are allergic to topical products
- the stomach bleeding warning applies to you
- you are taking a diuretic
- you have high blood pressure, heart disease, or kidney disease

When using this product

- wash hands after applying or removing patch. Avoid contact with eyes. If eye contact occurs, rinse thoroughly with water.
- the risk of heart attack or stroke may increase if you use more than directed or for longer than directed

Stop use and ask a doctor if

- stomach pain or upset gets worse or lasts
- you feel faint, vomit blood, or have bloody or black stools. These are signs of stomach bleeding.
- rash, itching or skin irritation develops
- condition worsens
- symptoms last for more than 3 days
- symptoms clear up and occur again within a few days

If pregnant or breast-feeding, ask a health professional before use. It is especially important not to use methyl salicylate at 20 weeks or later in pregnancy unless definitely directed to do so by a doctor because it may cause problems in the unborn child or complications during delivery.

Keep out of reach of children. If put in mouth, get medical help or contact a Poison Control Center right away. Package not child resistant. Dispose of the used patches after folding sticky ends together.

Directions

Adults 18 years and older:

- only use one patch at a time
- clean and dry affected area
- remove patch from backing film and apply to skin (see illustration)
- apply one patch to the affected area and leave in place for up to 8 to 12 hours
- if pain lasts after using the first patch, a second patch may be applied for up to another 8 to 12 hours
- do not use more than 2 patches per day
- do not use for more than 3 days in a row
- the used patch should be removed from the skin when a new one is applied

Children under 18 years of age: do not use; this product has not been shown to work in children

Other information

- Store at 20-25°C (68-77°F)
- Avoid storing product in direct sunlight
- Protect product from excessive moisture
- Some individuals may not experience pain relief until several hours after applying the patch

Inactive ingredients

alicyclic saturated hydrocarbon resin, backing cloth, film, mineral oil, polyisobutylene, polyisobutylene 1,200,000, styrene-isoprene-styrene block copolymer, synthetic aluminum silicate

Questions or comments?

Toll free 1-87-SALONPAS www.salonpas.us

HOW TO APPLY

- Peel the center film.
- Place on affected area.
- Slide the film upward.
- Slide the other film downward.

XXXXXX-X

Reference ID: 4883946

This is a representation of an electronic record that was signed electronically. Following this are manifestations of any and all electronic signatures for this electronic record.

/s/

VALERIE S PRATT
11/04/2021 02:22:21 PM