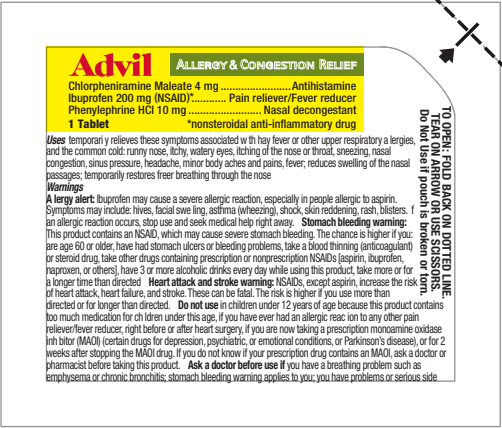


BACK

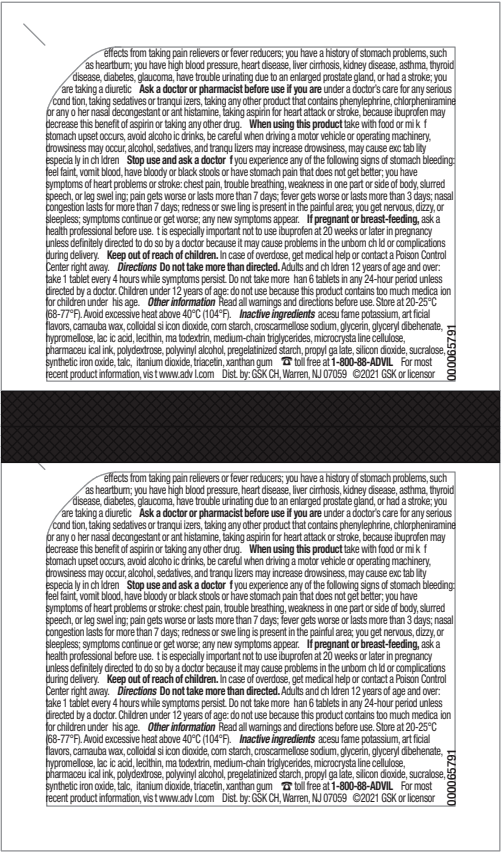
AREA FOR LOT AND EXP
TO BE PRINTED IN DARK COLOR
26 mm x 5.5 mm

taking pain relievers or fever reducers; you have a history of stomach problems, such as heartburn; you have high blood pressure, heart disease, liver cirrhosis, kidney disease, asthma, thyroid disease, diabetes, glaucoma, have trouble urinating due to an enlarged prostate gland, or had a stroke; you are taking a diuretic. **Ask a doctor or pharmacist before use if you are** under a doctor's care for any serious condition, taking sedatives or tranquilizers, taking any other product that contains phenylephrine, chlorpheniramine or any other nasal decongestant or an histamine, taking aspirin for heart attack or stroke, because ibuprofen may decrease the benefit of aspirin or taking any other drug. **When using this product** take with food or milk. If stomach upset occurs, avoid alcoholic drinks, be careful when driving a motor vehicle or operating machinery, drowsiness may occur, alcohol, sedatives, and tranquilizers may increase drowsiness, may cause excitability especially in children. **Stop use and ask a doctor if** you experience any of the following signs of stomach bleeding: feel faint, vomit blood, have bloody or black stools or have stomach pain that does not get better; you have symptoms of heart problems or stroke: chest pain, trouble breathing, weakness in one part or side of body, slurred speech, or leg swelling; pain gets worse or lasts more than 7 days; fever gets worse or lasts more than 3 days; nasal congestion lasts for more than 7 days; redness or swelling is present in the painful area; you get nervous, dizzy, or sleepless; symptoms continue or get worse; any new symptoms appear. **If pregnant or breast-feeding, ask a health professional before use.** It is especially important not to use ibuprofen at 20 weeks or later in pregnancy unless definitely directed to do so by a doctor because it may cause problems in the unborn child or complications during delivery. **Keep out of reach of children.** In case of overdose, get medical help or contact a Poison Control Center right away. **Directions: Do not take more than directed.** Adults and children 12 years of age and over: take 1 tablet every 4 hours while symptoms persist. Do not take more than 6 tablets in any 24-hour period unless directed by a doctor. Children under 12 years of age: do not use because this product contains too much medication for children under this age. **Other information:** Read all warnings and directions before use. Store at 20-25°C (68-77°F). Avoid excessive heat above 40°C (104°F). **Inactive ingredients:** sucrose, farnesol, potassium, artificial flavors, carnauba wax, croscarmellose sodium, glycerin, glyceryl dibehenate, hypromellose, lactic acid, lecithin, maltodextrin, medium-chain triglycerides, microcrystalline cellulose, pharmaceutical ink, polydextrose, polyvinyl alcohol, pregelatinized starch, propyl gallate, silicon dioxide, sucralose, synthetic iron oxide, talc, titanium dioxide, triacetin, xanthan gum. **Call free at 1-800-86-ADVIL.** For most recent product information, visit www.adhl.com. GSK CH, Warren, NJ 07059 ©2021 GSK or its affiliates.

000065788



FRONT



BACK

LASER ENCODING AREA FOR LOT AND EXPIRATION INFORMATION. PRINTED IN ONE SOLID COLOR, BLACK OR DARK BLUE.

BACK

000065791

PANEL
1

READ AND KEEP CARTON FOR COMPLETE WARNINGS AND INFORMATION

LIFT HERE
For More Drug Facts

Drug Facts Active ingredients (in each tablet) Chlorpheniramine maleate 4 mgAntihistamine Ibuprofen 200 mg (NSAID)* Pain reliever/Fever reducer Phenylephrine HCl 10 mgNasal decongestant *nonsteroidal anti-inflammatory drug	Purposes temporarily relieves these symptoms associated with hay fever or other upper respiratory allergies, and the common cold: ■ runny nose ■ itchy, watery eyes ■ itching of the nose or throat ■ sneezing ■ nasal congestion ■ sinus pressure ■ headache ■ minor body aches and pains ■ fever ■ reduces swelling of the nasal passages ■ temporarily restores freer breathing through the nose
Drug Facts (continued) Warnings Allergy alert: Ibuprofen may cause a severe allergic reaction, especially in people allergic to aspirin. Symptoms may include: ■ hives ■ asthma (wheezing) ■ skin reddening ■ blisters ■ facial swelling ■ shock ■ rash If an allergic reaction occurs, stop use and seek medical help right away. Stomach bleeding warning: This product contains an NSAID, which may cause severe stomach bleeding. The chance is higher if you: ■ are age 60 or older ■ have had stomach ulcers or bleeding problems ■ take a blood thinning (anticoagulant) or steroid drug ■ take other drugs containing prescription or nonprescription NSAIDs [aspirin, ibuprofen, naproxen, or others] ■ have 3 or more alcoholic drinks every day while using this product ■ take more or for a longer time than directed	

000065956

PANEL
2

Drug Facts (continued) Heart attack and stroke warning: NSAIDs, except aspirin, increase the risk of heart attack, heart failure, and stroke. These can be fatal. The risk is higher if you use more than directed or for longer than directed. Do not use ■ in children under 12 years of age because this product contains too much medication for children under this age ■ if you have ever had an allergic reaction to any other pain reliever/fever reducer ■ right before or after heart surgery ■ if you are now taking a prescription monoamine oxidase inhibitor (MAOI) (certain drugs for depression, psychiatric, or emotional conditions, or Parkinson's disease), or for 2 weeks after stopping the MAOI drug. If you do not know if your prescription drug contains an MAOI, ask a doctor or pharmacist before taking this product. Ask a doctor before use if ■ you have a breathing problem such as emphysema or chronic bronchitis ■ stomach bleeding warning applies to you ■ you have problems or serious side effects from taking pain relievers or fever reducers	Drug Facts (continued) ■ you have a history of stomach problems, such as heartburn ■ you have high blood pressure, heart disease, liver cirrhosis, kidney disease, asthma, thyroid disease, diabetes, glaucoma, have trouble urinating due to an enlarged prostate gland, or had a stroke ■ you are taking a diuretic Ask a doctor or pharmacist before use if you are ■ under a doctor's care for any serious condition ■ taking sedatives or tranquilizers ■ taking any other product that contains phenylephrine, chlorpheniramine or any other nasal decongestant or antihistamine ■ taking aspirin for heart attack or stroke, because ibuprofen may decrease this benefit of aspirin ■ taking any other drug When using this product ■ take with food or milk if stomach upset occurs ■ avoid alcoholic drinks ■ be careful when driving a motor vehicle or operating machinery ■ drowsiness may occur ■ alcohol, sedatives, and tranquilizers may increase drowsiness ■ may cause excitability especially in children
---	---

BASE
PANEL

Drug Facts (continued) Stop use and ask a doctor if ■ you experience any of the following signs of stomach bleeding: ■ feel faint ■ vomit blood ■ have bloody or black stools ■ have stomach pain that does not get better ■ you have symptoms of heart problems or stroke: ■ chest pain ■ trouble breathing ■ weakness in one part or side of body ■ slurred speech ■ leg swelling ■ pain gets worse or lasts more than 7 days ■ fever gets worse or lasts more than 3 days ■ nasal congestion lasts for more than 7 days ■ redness or swelling is present in the painful area ■ you get nervous, dizzy, or sleepless ■ symptoms continue or get worse ■ any new symptoms appear If pregnant or breast-feeding , ask a health professional before use. It is especially important not to use ibuprofen at 20 weeks or later in pregnancy unless definitely directed to do so by a doctor because it may cause problems in the unborn child or complications during delivery. Keep out of reach of children. In case of overdose, get medical help or contact a Poison Control Center right away.	Drug Facts (continued) Directions ■ do not take more than directed ■ adults and children 12 years of age and over: ■ take 1 tablet every 4 hours while symptoms persist ■ do not take more than 6 tablets in any 24-hour period, unless directed by a doctor ■ children under 12 years of age: do not use because this product contains too much medication for children under this age Other information ■ read all warnings and directions before use. Keep carton. ■ store at 20-25°C (68-77°F) ■ avoid excessive heat above 40°C (104°F) Inactive ingredients acesulfame potassium, artificial flavors, carnauba wax, colloidal silicon dioxide, corn starch, croscarmellose sodium, glycerin, glyceryl dibehenate, hypromellose, lactic acid, lecithin, maltodextrin, medium-chain triglycerides, microcrystalline cellulose, pharmaceutical ink, polydextrose, polyvinyl alcohol, pregelatinized starch, propyl gallate, silicon dioxide, sucralose, synthetic iron oxide, talc, titanium dioxide, triacetin, xanthan gum Questions or comments? Call weekdays from 9 AM to 5 PM EST toll free at 1-800-88-ADVIL
--	---

000065956

UNPRINTED AREA FOR
LOT & EXP CODING
(UNVARNISHED)

Product inside sealed in plastic blister with foil backing.
Do Not Use if plastic blister or foil barrier is broken.

READ AND KEEP CARTON FOR COMPLETE WARNINGS AND INFORMATION

Distributed by: GSK Consumer Healthcare, Warren, NJ 07059
For most recent product information, visit www.advil.com
Trademarks owned or licensed by GSK. ©2021 GSK or licensor

000066065

81% For Position Only

3 0573 2161 03 7

Drug Facts Active ingredients (in each tablet) Chlorpheniramine maleate 4 mg.....Antihistamine Ibuprofen 200 mg (NSAID)*.....Pain reliever/Fever reducer Phenylephrine HCl 10 mg.....Nasal decongestant <small>*nonsteroidal anti-inflammatory drug</small>	Purposes ■ temporarily relieves these symptoms associated with hay fever or other upper respiratory allergies, and the common cold: ■ runny nose ■ itchy, watery eyes ■ itching of the nose or throat ■ sneezing ■ nasal congestion ■ sinus pressure
Uses ■ temporarily relieves these symptoms associated with hay fever or other upper respiratory allergies, and the common cold: ■ runny nose ■ itchy, watery eyes ■ itching of the nose or throat ■ sneezing ■ nasal congestion ■ sinus pressure	
Warnings Allergy alert: Ibuprofen may cause a severe allergic reaction, especially in people allergic to aspirin. Symptoms may include: ■ hives ■ facial swelling ■ asthma (wheezing) ■ shock ■ skin reddening ■ rash ■ blisters If an allergic reaction occurs, stop use and seek medical help right away.	

Drug Facts (continued) Stomach bleeding warning: This product contains an NSAID, which may cause severe stomach bleeding. The chance is higher if you: ■ are age 60 or older ■ have had stomach ulcers or bleeding problems ■ take a blood thinning (anticoagulant) or steroid drug ■ take other drugs containing prescription or nonprescription NSAIDs (aspirin, ibuprofen, naproxen, or others) ■ have 3 or more alcoholic drinks every day while using this product ■ take more or for a longer time than directed Heart attack and stroke warning: NSAIDs, except aspirin, increase the risk of heart attack, heart failure, and stroke. These can be fatal. The risk is higher if you use more than directed or for longer than directed. Do not use ■ in children under 12 years of age because this product contains too much medication for children under this age ■ if you have ever had an allergic reaction to any other pain reliever/fever reducer ■ right before or after heart surgery ■ if you are now taking a prescription monoamine oxidase inhibitor (MAOI) (certain drugs for depression, psychiatric, or emotional conditions, or Parkinson's disease), or for 2 weeks after stopping the MAOI drug. If you do not know if your prescription drug contains an MAOI, ask a doctor or pharmacist before taking this product. Ask a doctor before use if ■ you have a breathing problem such as emphysema or chronic bronchitis ■ stomach bleeding warning applies to you ■ you have problems or serious side effects from taking pain relievers or fever reducers ■ you have a history of stomach problems, such as heartburn	Drug Facts (continued) ■ you have high blood pressure, heart disease, liver cirrhosis, kidney disease, asthma, thyroid disease, diabetes, glaucoma, have trouble urinating due to an enlarged prostate gland, or had a stroke ■ you are taking a diuretic Ask a doctor or pharmacist before use if you are ■ under a doctor's care for any serious condition ■ taking sedatives or tranquilizers ■ taking any other product that contains phenylephrine, chlorpheniramine or any other nasal decongestant or antihistamine ■ taking aspirin for heart attack or stroke, because ibuprofen may decrease this benefit of aspirin ■ taking any other drug When using this product ■ take with food or milk if stomach upset occurs ■ avoid alcoholic drinks ■ be careful when driving a motor vehicle or operating machinery ■ drowsiness may occur ■ alcohol, sedatives, and tranquilizers may increase drowsiness ■ may cause excitability especially in children Stop use and ask a doctor if ■ you experience any of the following signs of stomach bleeding: ■ feel faint ■ vomit blood ■ have bloody or black stools ■ have stomach pain that does not get better ■ you have symptoms of heart problems or stroke: ■ chest pain ■ trouble breathing ■ weakness in one part or side of body ■ slurred speech ■ leg swelling ■ pain gets worse or lasts more than 7 days ■ fever gets worse or lasts more than 3 days
--	--

Drug Facts (continued)
■ store at 20-25°C (68-77°F)
■ avoid excessive heat above 40°C (104°F)

Inactive ingredients acacia, artificial flavors, carnauba wax, colloidal silicon dioxide, corn starch, croscarmellose sodium, glycerin, glyceryl dibehenate, hypromellose, lactic acid, lactin, maltodextrin, medium-chain triglycerides, microcrystalline cellulose, pharmaceutical ink, polyacrylate, polyvinyl alcohol, pregelatinized starch, propyl gallate, silicon dioxide, sucralose, synthetic iron oxide, tac, titanium dioxide, triacetin, xanthan gum

Questions or comments? Call weekdays from 9 AM to 5 PM EST toll free at 1-800-88-ADVIL

Drug Facts (continued) ■ nasal congestion lasts for more than 7 days ■ redness or swelling is present in the painful area ■ you get nervous, dizzy, or sleepless ■ symptoms continue or get worse ■ any new symptoms appear If pregnant or breast-feeding, ask a health professional before use. It is especially important not to use ibuprofen at 20 weeks or later in pregnancy unless definitely directed to do so by a doctor because it may cause problems in the unborn child or complications during delivery. Keep out of reach of children. In case of overdose, get medical help or contact a Poison Control Center right away.	Drug Facts (continued) Directions ■ do not take more than directed ■ adults and children 12 years of age and over: ■ take 1 tablet every 4 hours while symptoms persist ■ do not take more than 6 tablets in any 24-hour period, unless directed by a doctor ■ children under 12 years of age: do not use because this product contains too much medication for children under this age Other information ■ read all warnings and directions before use. Keep carton.
--	--

Advil

ALLERGY & CONGESTION RELIEF

Chlorpheniramine Maleate 4 mg Antihistamine
Ibuprofen 200 mg Pain Reliever/Fever Reducer (NSAID)
Phenylephrine HCl 10 mg Nasal Decongestant

✓ Sneezing

✓ Nasal Congestion

✓ Sinus Pressure

✓ Nasal Swelling

✓ Runny Nose

✓ Headache

✓ Fever

✓ Body Aches

Advil

A&C

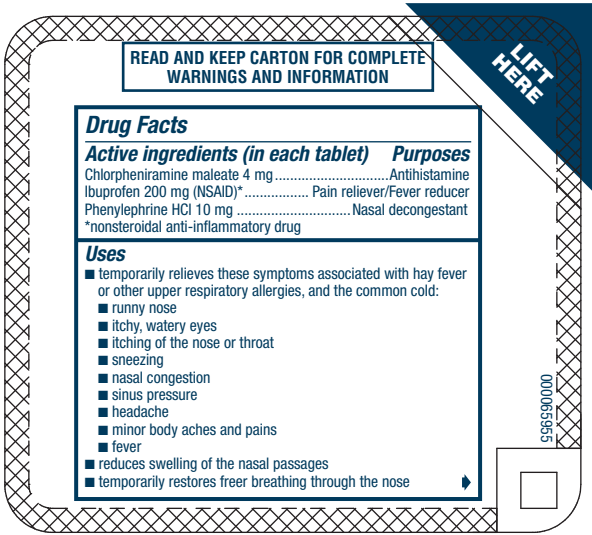
30/20 Coated Tablets

50% MORE

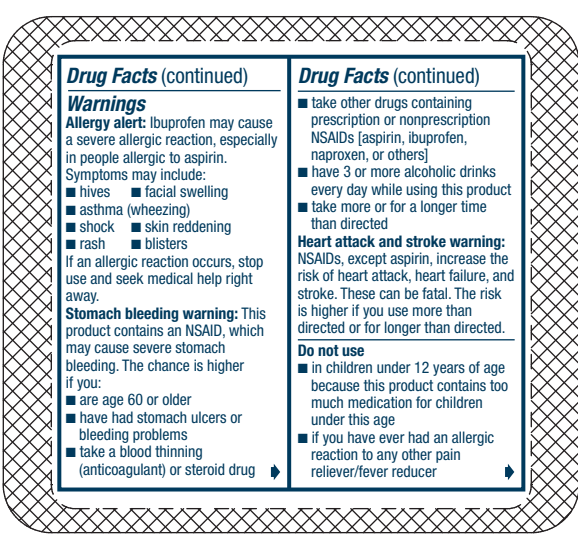
10 FREE Tablets

ONE TABLET DOSE!

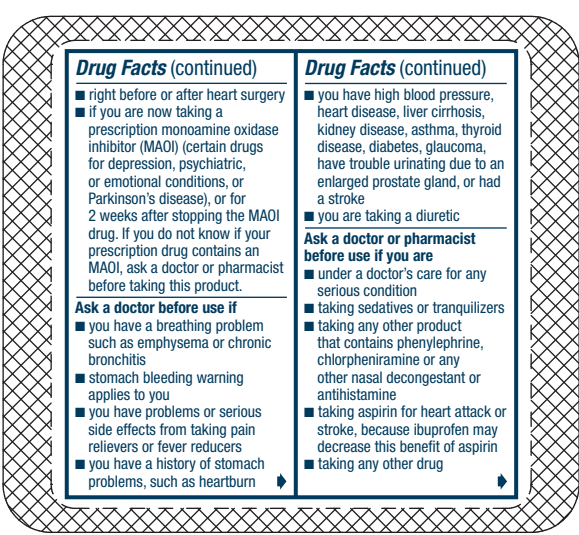
000066065



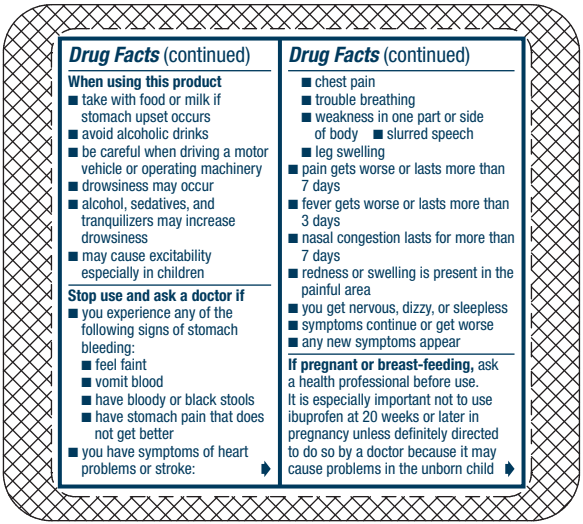
PANEL 1



PANEL 2



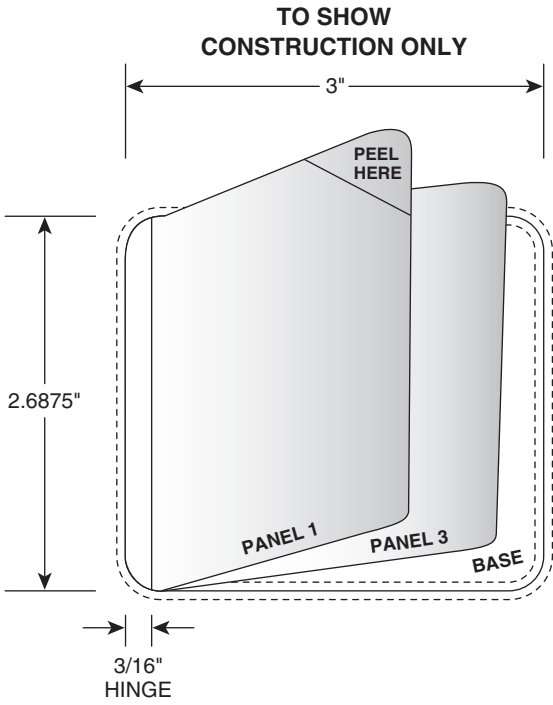
PANEL 3



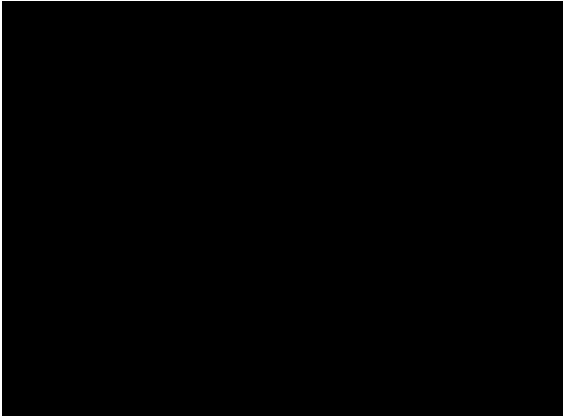
PANEL 4



BASE PANEL



000065955



BACK

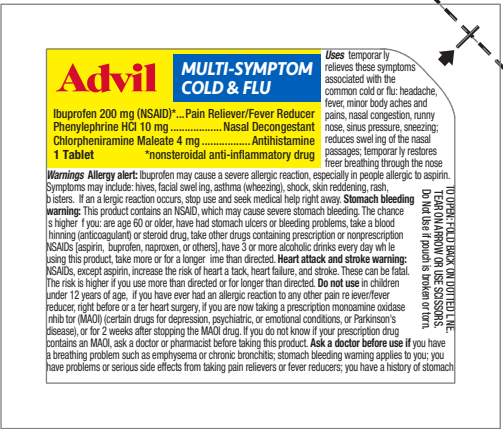
problems, such as heartburn; you have high blood pressure, heart disease, liver cirrhosis,
kidney disease, asthma, thyroid problems, diabetes, glaucoma, have trouble urinating due to an
enlarged prostate gland, or had a stroke; you are taking a diuretic. Ask a doctor or pharmacist before
use if you under a doctor's care for any serious condition, other sedatives or tranquilizers, taking
any other product that contains phenylephrine, chlorpheniramine or any nasal decongestant or antihistamine,
taking aspirin for heart attack or stroke, because bupropion may decrease the benefit of aspirin or taking any other
drug. When using this product taken with food or milk if stomach upset occurs, avoid alcohol it better, be careful
when driving a motor vehicle or operating machinery, drowsiness may occur, alcohol, sedatives, and tranquilizers may
increase drowsiness, may cause excitability especially in children. Stop use and ask a doctor if you experience any of
the following signs of stomach bleeding: fecal, vomit blood, blue stools or black stools or have stomach pain, has
does not get better, you notice symptoms of allergy: chest pain, trouble breathing, wheezing, cough, hives,
one part or side of body, slurred speech, or leg swelling; pain gets worse or lasts more than 7 days; fever gets worse or lasts
more than 3 days; nasal congestion lasts longer than 7 days; redness or sore living is present in the painful area; you
get nervous, dizzy, or sleepless; symptoms continue after you stop it; or especially, any new symptoms appear. If pregnant
breast-feeding, ask a health professional before use. It is especially important not to use bupropion at 20 weeks or later
in pregnancy unless definitely directed to do so by a doctor because it may cause problems in the unborn child or
complications during delivery. Keep out of reach of children. In case of overdose, get medical help or contact a Poison
Control Center right away. Biotens does not take effect immediately. Adults and children 12 years of age and over:
take 1 tablet every 4 hours while symptomatic period. Do not take more than 6 tablets in any 24-hour period unless
directed by a doctor. Children under 12 years of age do not use. ***Other information:*** Read all warnings and directions
before use. Store at 20°-25°C (68°-77°F). Avoid excessive heat above 40°C (104°F). **Inactive ingredients:** acetaminophen,
acetanilide, croscarmellose sodium, croscarmellose sodium cross-linked polyvinylpyrrolidone, croscarmellose sodium,
glyceryl dibehenate, hypromellose, lactic acid, lecithin, methylcellulose, medium-chain triglycerides, microcrystalline
cellulose, pharmaceutical ink, polyethylene glycol, polyvinyl alcohol, pregelatinized starch, pronylgallate, si icon dioxide,
sucralose, synthetic iron oxide, talc, titanium dioxide, triethyl citrate, vanillin gum.

US & CANADIAN PRODUCT INFORMATION
® **©** 1998-**BB ADV** / LSKC/WL Warner, NJ 07059

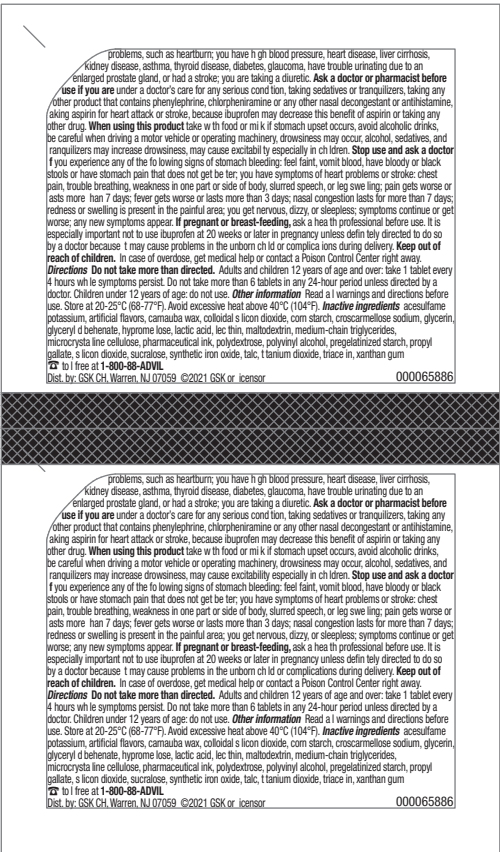
000065877

AREA FOR LOT AND EXP
TO BE PRINTED IN DARK COLOR
26 mm x 5.5 mm

000065877



FRONT



BACK

LASER ENCODING AREA FOR LOT AND EXPIRATION INFORMATION. PRINTED IN ONE SOLID COLOR, BLACK OR DARK BLUE.

BACK

000065886



LASER ETCHING AREA FOR LOT & EXP.
PRINT A SOLID DARK COLOR.

000065889

PANEL
1

000065785

READ AND KEEP CARTON FOR COMPLETE WARNINGS AND INFORMATION

LIFT HERE
for More Drug Facts

Drug Facts

Active ingredients (in each tablet) Purposes

Chlorpheniramine maleate 4 mg Antihistamine
Ibuprofen 200 mg (NSAID)* Pain reliever/Fever reducer
Phenylephrine HCl 10 mg Nasal decongestant
*nonsteroidal anti-inflammatory drug

Uses

■ temporarily relieves these symptoms associated with the common cold or flu:
■ headache ■ fever
■ minor body aches and pains
■ nasal congestion ■ runny nose
■ sinus pressure ■ sneezing
■ reduces swelling of the nasal passages
■ temporarily restores freer breathing through the nose

Warnings

Allergy alert: Ibuprofen may cause a severe allergic reaction, especially in people allergic to aspirin. Symptoms may include:
■ hives ■ facial swelling ■ asthma (wheezing)
■ shock ■ skin reddening ■ rash ■ blisters
If an allergic reaction occurs, stop use and seek medical help right away.

Drug Facts (continued)

Stomach bleeding warning: This product contains an NSAID, which may cause severe stomach bleeding. The chance is higher if you:
■ are age 60 or older
■ have had stomach ulcers or bleeding problems
■ take a blood thinning (anticoagulant) or steroid drug
■ take other drugs containing prescription or nonprescription NSAIDs [aspirin, ibuprofen, naproxen, or others]
■ have 3 or more alcoholic drinks every day while using this product
■ take more or for a longer time than directed
Heart attack and stroke warning: NSAIDs, except aspirin, increase the risk of heart attack, heart failure, and stroke. These can be fatal. The risk is higher if you use more than directed or for longer than directed.

PANEL
2

Drug Facts (continued)

Do not use
■ in children under 12 years of age
■ if you have ever had an allergic reaction to any other pain reliever/fever reducer
■ right before or after heart surgery
■ if you are now taking a prescription monoamine oxidase inhibitor (MAOI) (certain drugs for depression, psychiatric, or emotional conditions, or Parkinson's disease), or for 2 weeks after stopping the MAOI drug. If you do not know if your prescription drug contains an MAOI, ask a doctor or pharmacist before taking this product.

Ask a doctor before use if
■ you have a breathing problem such as emphysema or chronic bronchitis
■ stomach bleeding warning applies to you
■ you have problems or serious side effects from taking pain relievers or fever reducers
■ you have a history of stomach problems, such as heartburn
■ you have high blood pressure, heart disease, liver cirrhosis, kidney disease, asthma, thyroid disease, diabetes, glaucoma, have trouble urinating due to an enlarged prostate gland, or had a stroke
■ you are taking a diuretic

Drug Facts (continued)

Ask a doctor or pharmacist before use if you are
■ under a doctor's care for any serious condition
■ taking sedatives or tranquilizers
■ taking any other product that contains phenylephrine, chlorpheniramine or any other nasal decongestant or antihistamine
■ taking aspirin for heart attack or stroke, because ibuprofen may decrease this benefit of aspirin
■ taking any other drug
When using this product
■ take with food or milk if stomach upset occurs
■ avoid alcoholic drinks
■ be careful when driving a motor vehicle or operating machinery
■ drowsiness may occur
■ alcohol, sedatives, and tranquilizers may increase drowsiness
■ may cause excitability especially in children
Stop use and ask a doctor if
■ you experience any of the following signs of stomach bleeding:
■ feel faint
■ vomit blood
■ have bloody or black stools
■ have stomach pain that does not get better

BASE
PANEL

Drug Facts (continued)

■ you have symptoms of heart problems or stroke:
■ chest pain
■ trouble breathing
■ weakness in one part or side of body
■ slurred speech
■ leg swelling
■ pain gets worse or lasts more than 7 days
■ fever gets worse or lasts more than 3 days
■ nasal congestion lasts for more than 7 days
■ redness or swelling is present in the painful area
■ you get nervous, dizzy, or sleepless
■ symptoms continue or get worse
■ any new symptoms appear

If pregnant or breast-feeding, ask a health professional before use. It is especially important not to use ibuprofen at 20 weeks or later in pregnancy unless definitely directed to do so by a doctor because it may cause problems in the unborn child or complications during delivery.
Keep out of reach of children. In case of overdose, get medical help or contact a Poison Control Center right away.

Drug Facts (continued)

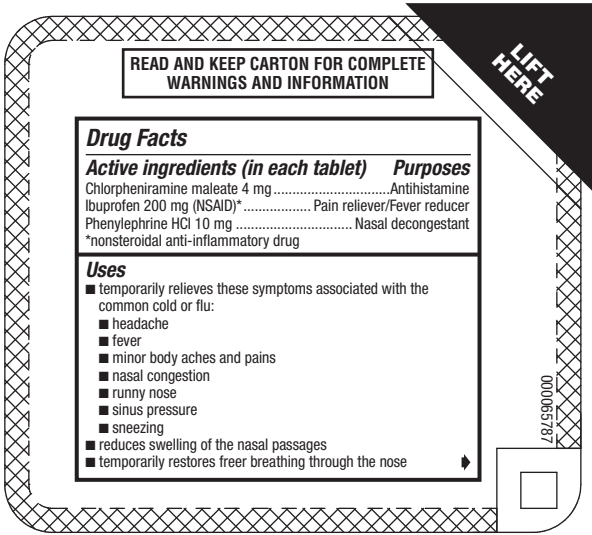
Directions
■ **do not take more than directed**
■ adults and children 12 years of age and over:
■ take 1 tablet every 4 hours while symptoms persist
■ do not take more than 6 tablets in any 24-hour period, unless directed by a doctor
■ children under 12 years of age: do not use
Other information
■ read all warnings and directions before use. Keep carton.
■ store at 20-25°C (68-77°F)
■ avoid excessive heat above 40°C (104°F)
Inactive ingredients acesulfame potassium, artificial flavors, carnauba wax, colloidal silicon dioxide, corn starch, croscarmellose sodium, glycerin, glyceryl dibehenate, hypromellose, lactic acid, lecithin, maltodextrin, medium-chain triglycerides, microcrystalline cellulose, pharmaceutical ink, polydextrose, polyvinyl alcohol, pregelatinized starch, propyl gallate, silicon dioxide, sucralose, synthetic iron oxide, talc, titanium dioxide, triacetin, xanthan gum
Questions or comments? Call weekdays from 9 AM to 5 PM EST toll free at 1-800-88-ADVIL

000065785

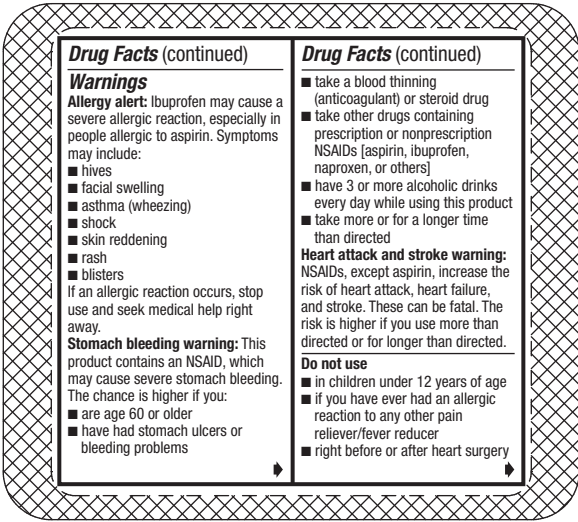
Reference ID: 4893683



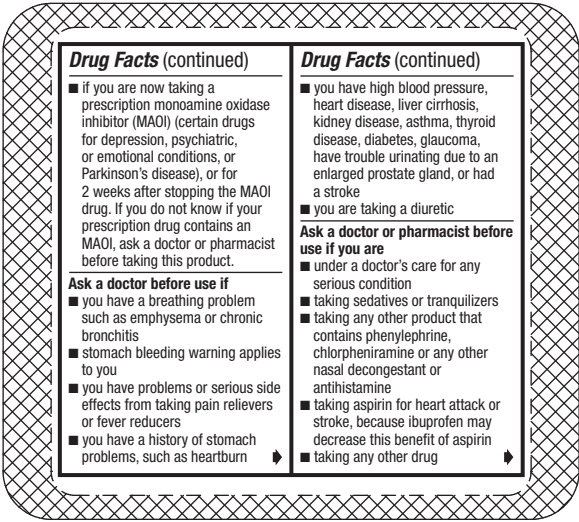
100



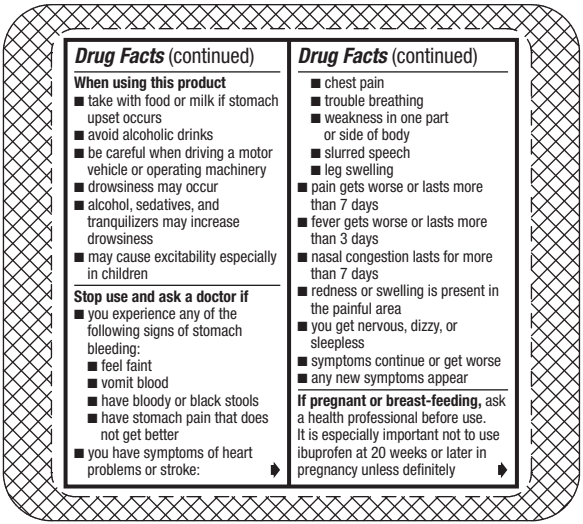
PANEL 1



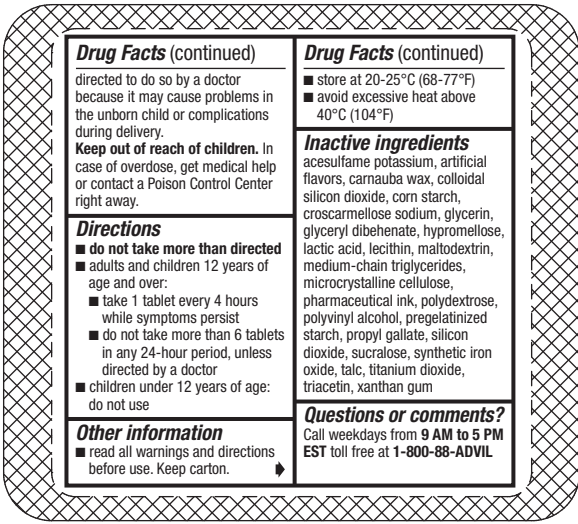
PANEL 2



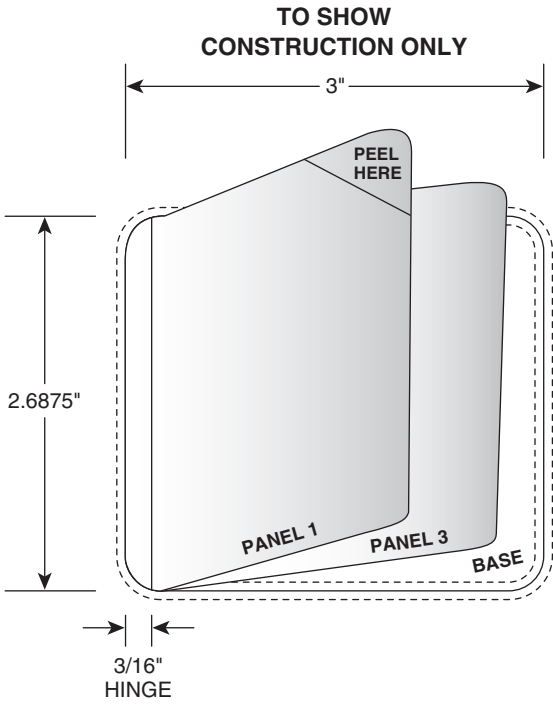
PANEL 3



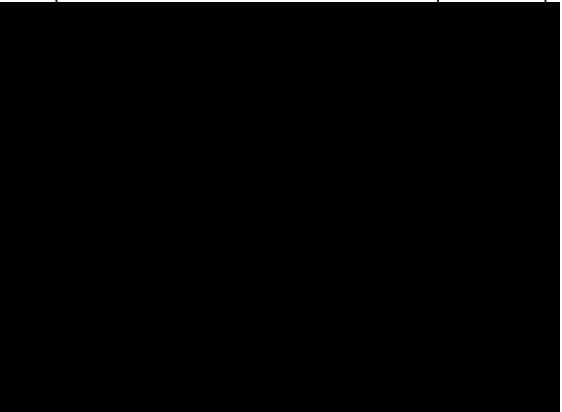
PANEL 4



BASE PANEL



000065787



[illegible]

100

This is a representation of an electronic record that was signed electronically. Following this are manifestations of any and all electronic signatures for this electronic record.

/s/

VALERIE S PRATT
11/23/2021 01:42:29 PM