

When used with Lynparza, the recommended dose of bevacizumab is 15 mg/kg every three weeks. Bevacizumab should be given for a total of 15 months including the period given with chemotherapy and given as maintenance. Refer to the Prescribing Information for bevacizumab when used in combination with Lynparza for more information.

Recurrent Ovarian Cancer, Germline *BRCA* Advanced Ovarian Cancer, HER2-negative Metastatic Breast Cancer, Metastatic Pancreatic Adenocarcinoma, and HRR Gene-mutated Metastatic Castration-Resistant Prostate Cancer

Continue treatment until disease progression or unacceptable toxicity for:

- Maintenance treatment of recurrent ovarian cancer
- Advanced germline *BRCA*-mutated ovarian cancer
- Germline *BRCA*-mutated HER-2 negative metastatic breast cancer
- First-line maintenance treatment of germline *BRCA*-mutated metastatic pancreatic adenocarcinoma.
- HRR gene-mutated metastatic castration-resistant prostate cancer

Patients receiving Lynparza for mCRPC should also receive a gonadotropin-releasing hormone (GnRH) analog concurrently or should have had bilateral orchiectomy.

2.3 Dosage Modifications for Adverse Reactions

To manage adverse reactions, consider interruption of treatment or dose reduction. The recommended dose reduction is 250 mg taken twice daily.

If a further dose reduction is required, then reduce to 200 mg taken twice daily.

2.4 Dosage Modifications for Concomitant Use with Strong or Moderate CYP3A Inhibitors

Avoid concomitant use of strong or moderate CYP3A inhibitors with Lynparza.

If concomitant use cannot be avoided, reduce Lynparza dosage to:

- 100 mg twice daily when used concomitantly with a strong CYP3A inhibitor.
- 150 mg twice daily when used concomitantly with a moderate CYP3A inhibitor.

After the inhibitor has been discontinued for 3 to 5 elimination half-lives, resume the Lynparza dose taken prior to initiating the CYP3A inhibitor [see [Drug Interactions \(7.2\)](#) and [Clinical Pharmacology \(12.3\)](#)].

2.5 Dosage Modifications for Renal Impairment

Moderate Renal Impairment

In patients with moderate renal impairment (CL_{cr} 31-50 mL/min), reduce the Lynparza dosage to 200 mg orally twice daily [see [Use in Specific Populations \(8.6\)](#) and [Clinical Pharmacology \(12.3\)](#)].

of the potential hazard to a fetus and the potential risk for loss of the pregnancy. Advise females of reproductive potential to use effective contraception during treatment and for 6 months following the last dose of Lynparza. Based on findings from genetic toxicity and animal reproduction studies, advise male patients with female partners of reproductive potential or who are pregnant to use effective contraception during treatment and for 3 months following the last dose of Lynparza [see [Use in Specific Populations \(8.1, 8.3\)](#)].

5.4 Venous Thromboembolic Events

Venous thromboembolic events, including pulmonary embolism, occurred in 7% of patients with metastatic castration resistant prostate cancer who received Lynparza plus androgen deprivation therapy (ADT) compared to 3.1% of patients receiving enzalutamide or abiraterone plus ADT in the PROfound study. Patients receiving Lynparza and ADT had a 6% incidence of pulmonary embolism compared to 0.8% of patients treated with ADT plus either enzalutamide or abiraterone. Monitor patients for signs and symptoms of venous thrombosis and pulmonary embolism and treat as medically appropriate, which may include long-term anticoagulation as clinically indicated.

6 ADVERSE REACTIONS

The following adverse reactions are discussed elsewhere in the labeling:

- Myelodysplastic Syndrome/Acute Myeloid Leukemia [see [Warnings and Precautions \(5.1\)](#)]
- Pneumonitis [see [Warnings and Precautions \(5.2\)](#)]
- Venous Thromboembolic Events [see [Warnings and Precautions \(5.4\)](#)]

6.1 Clinical Trial Experience

Because clinical trials are conducted under widely varying conditions, adverse reaction rates observed in the clinical trials of a drug cannot be directly compared to rates in the clinical trials of another drug and may not reflect the rates observed in practice.

The data described in the WARNINGS AND PRECAUTIONS reflect exposure to Lynparza as a single agent in 2901 patients; 2135 patients with exposure to 300 mg twice daily tablet dose including five controlled, randomized, trials (SOLO-1, SOLO-2, OlympiAD, POLO, and PROfound) and to 400 mg twice daily capsule dose in 766 patients in other trials that were pooled to conduct safety analyses. In these trials, 56% of patients were exposed for 6 months or longer and 28% were exposed for greater than one year in the Lynparza group.

In this pooled safety population, the most common adverse reactions in $\geq 10\%$ of patients were nausea (60%), fatigue (55%), anemia (36%), vomiting (32%), diarrhea (24%), decreased appetite (22%), headache (16%), dysgeusia (15%), cough (15%), neutropenia (14%), dyspnea (14%), dizziness (12%), dyspepsia (12%), leukopenia (11%), and thrombocytopenia (10%).

First-Line Maintenance Treatment of BRCA-mutated Advanced Ovarian Cancer

In addition, the adverse reactions observed in POLO that occurred in <10% of patients receiving Lynparza were cough (9%), abdominal pain upper (7%), blood creatinine increased (7%), dizziness (7%), headache (7%), dyspepsia (5%), leukopenia (5%), hypersensitivity (2%), and lymphopenia (2%).

Table 15 Laboratory Abnormalities Reported in ≥25% of Patients in POLO

Laboratory Parameter*	Lynparza tablets n [†] =91		Placebo n [†] =60	
	Grades 1-4 (%)	Grades 3-4 (%)	Grades 1-4 (%)	Grades 3-4 (%)
Increase in serum creatinine	99	2	85	0
Decrease in hemoglobin	86	11	65	0
Increase in mean corpuscular volume [‡]	71	-	30	-
Decrease in lymphocytes	61	9	27	0
Decrease in platelets	56	2	39	0
Decrease in leukocytes	50	3	23	0
Decrease in absolute neutrophil count	25	3	10	0

* Patients were allowed to enter POLO with hemoglobin ≥9 g/dL (CTCAE Grade 2) and other laboratory values of CTCAE Grade 1.

[†] This number represents the safety population. The derived values in the table are based on the total number of evaluable patients for each laboratory parameter.

[‡] Represents the proportion of subjects whose mean corpuscular volume was > ULN.

HRR Gene-mutated Metastatic Castration-Resistant Prostate Cancer

PROfound

The safety of Lynparza as monotherapy was evaluated in patients with mCRPC and HRR gene mutations who have progressed following prior treatment with enzalutamide or abiraterone in PROfound [see [Clinical Studies \(14.7\)](#)]. This study was a randomized, open-label, multi-center study in which 386 patients received either Lynparza tablets 300 mg orally twice daily (n=256) or investigator's choice of enzalutamide or abiraterone acetate (n=130) until disease progression or unacceptable toxicity. Among patients receiving Lynparza, 62% were exposed for 6 months or longer and 20% were exposed for greater than one year.

Fatal adverse reactions occurred in 4% of patients treated with Lynparza. These included pneumonia (1.2%), cardiopulmonary failure (0.4%), aspiration pneumonia (0.4%), intestinal diverticulum (0.4%), septic shock (0.4%), Budd-Chiari Syndrome (0.4%), sudden death (0.4%), and acute cardiac failure (0.4%).

Serious adverse reactions occurred in 36% of patients receiving Lynparza. The most frequent serious adverse reactions (≥2%) were anemia (9%), pneumonia (4%), pulmonary embolism (2%), fatigue/asthenia (2%), and urinary tract infection (2%).

Dose interruptions due to an adverse reaction of any grade occurred in 45% of patients receiving Lynparza; dose reductions due to an adverse reaction occurred in 22% of Lynparza patients. The most frequent adverse reactions leading to dose interruption of Lynparza were anemia (25%) and thrombocytopenia (6%) and the most frequent adverse reaction leading to reduction of Lynparza was anemia (16%). Discontinuation due to adverse reactions occurred in 18% of Lynparza. The adverse reaction that most frequently led to discontinuation of Lynparza was anemia (7%).

Tables 16 and 17 summarize the adverse reactions and laboratory abnormalities, respectively, in patients in PROfound.

Table 16 Adverse Reactions* Reported in ≥10% of Patients in PROfound

Adverse Reactions	Lynparza tablets n=256		Enzalutamide or abiraterone n=130	
	Grades 1-4 (%)	Grades 3-4 (%)	Grades 1-4 (%)	Grades 3-4 (%)
Blood and lymphatic disorders				
Anemia [†]	46	21	15	5
Thrombocytopenia [‡]	12	4	3	0
Gastrointestinal disorders				
Nausea	41	1	19	0
Diarrhea	21	1	7	0
Vomiting	18	2	12	1
General disorders and administration site conditions				
Fatigue (including asthenia)	41	3	32	5
Metabolism and nutrition disorders				
Decreased appetite	30	1	18	1
Respiratory, thoracic, and mediastinal disorders				
Cough	11	0	2	0
Dyspnea	10	2	3	0

* Graded according to the National Cancer Institute Common Terminology Criteria for Adverse Events (NCI CTCAE), version 4.03

[†] Includes anemia and hemoglobin decreased

[‡] Includes platelet count decreased and thrombocytopenia

In addition, adverse reactions of clinical relevance in PROfound that occurred in <10% of patients receiving Lynparza were neutropenia (9%), venous thromboembolic events (7%), dizziness (7%), dysgeusia (7%), dyspepsia (7%), headache (6%), pneumonia (5%), stomatitis (5%), rash (4%), blood creatinine increase (4%), pneumonitis (2%), upper abdominal pain (2%), and hypersensitivity (1%).

Table 17 Laboratory Abnormalities Reported in ≥25% of Patients in PROfound

Laboratory Parameter*	Lynparza tablets n [†] = 256		Enzalutamide or abiraterone n [†] =130	
	Grades 1-4 n= 247 (%)	Grades 3-4 n=247 (%)	Grades 1-4 n=124 (%)	Grades 3-4 n=124 (%)
Decrease in hemoglobin	242 (98)	33 (13)	91 (73)	5 (4)
Decrease in lymphocytes	154 (62)	57 (23)	42 (34)	16 (13)
Decrease in leukocytes	130 (53)	9 (4)	26 (21)	0
Decrease in absolute neutrophil count	83 (34)	8 (3)	11 (9)	0

* Patients were allowed to enter clinical studies with laboratory values of CTCAE Grade 1.

† This number represents the safety population. The derived values in the table are based on the total number of evaluable patients for each laboratory parameter.

6.2 Postmarketing Experience

The following adverse reactions have been identified during post approval use of Lynparza. Because these reactions are reported voluntarily from a population of uncertain size, it is not always possible to reliably estimate their frequency or establish a causal relationship to drug exposure.

Immune System Disorders: Hypersensitivity including angioedema.

Skin and subcutaneous tissue disorders: Erythema nodosum, rash, dermatitis.

7 DRUG INTERACTIONS

7.1 Use with Anticancer Agents

Clinical studies of Lynparza with other myelosuppressive anticancer agents, including DNA damaging agents, indicate a potentiation and prolongation of myelosuppressive toxicity.

7.2 Effect of Other Drugs on Lynparza

Strong and Moderate CYP3A Inhibitors

Coadministration of CYP3A inhibitors can increase olaparib concentrations, which may increase the risk for adverse reactions [see [Clinical Pharmacology \(12.3\)](#)]. Avoid coadministration of strong or moderate CYP3A inhibitors. If the strong or moderate inhibitor must be coadministered, reduce the dose of Lynparza [see [Dosage and Administration \(2.4\)](#)].

Strong and Moderate CYP3A Inducers

Concomitant use with a strong or moderate CYP3A inducer decreased olaparib exposure, which may reduce Lynparza efficacy [see [Clinical Pharmacology \(12.3\)](#)]. Avoid coadministration of strong or moderate CYP3A inducers.

8 USE IN SPECIFIC POPULATIONS

8.1 Pregnancy

Risk Summary

Based on findings in animals and its mechanism of action [see [Clinical Pharmacology \(12.1\)](#)], Lynparza can cause fetal harm when administered to a pregnant woman. There are no available data on Lynparza use in pregnant women to inform the drug-associated risk. In an animal reproduction study, the administration of olaparib to pregnant rats during the period of organogenesis caused teratogenicity and embryo-fetal toxicity at exposures below those in patients receiving the recommended human dose of 300 mg twice daily (see [Data](#)). Apprise pregnant women of the potential hazard to the fetus and the potential risk for loss of the pregnancy.

The estimated background risk of major birth defects and miscarriage for the indicated population is unknown. The estimated background risk in the U.S. general population of major birth defects is 2-4%; and the risk for spontaneous abortion is approximately 15-20% in clinically recognized pregnancies.

Data

Animal Data

In a fertility and early embryonic development study in female rats, olaparib was administered orally for 14 days before mating through to Day 6 of pregnancy, which resulted in increased post-implantation loss at a dose level of 15 mg/kg/day (with maternal systemic exposures approximately 7% of the human exposure (AUC_{0-24h}) at the recommended dose).

In an embryo-fetal development study, pregnant rats received oral doses of 0.05 and 0.5 mg/kg/day olaparib during the period of organogenesis. A dose of 0.5 mg/kg/day (with maternal systemic exposures approximately 0.18% of human exposure (AUC_{0-24h}) at the recommended dose) caused embryo-fetal toxicities including increased post-implantation loss and major malformations of the eyes (anophthalmia, microphthalmia), vertebrae/ribs (extra rib or ossification center; fused or absent neural arches, ribs, and sternbrae), skull (fused exoccipital), and diaphragm (hernia). Additional abnormalities or variants included incomplete or absent ossification (vertebrae/sternbrae, ribs, limbs) and other findings in the vertebrae/sternbrae, pelvic girdle, lung, thymus, liver, ureter, and umbilical artery. Some findings noted above in the eyes, ribs, and ureter were observed at a dose of 0.05 mg/kg/day olaparib at lower incidence.

8.2 Lactation

Risk Summary

No data are available regarding the presence of olaparib in human milk, or on its effects on the breastfed infant or on milk production. Because of the potential for serious adverse reactions in the breastfed infants from Lynparza, advise a lactating woman not to breastfeed during treatment with Lynparza and for one month after receiving the last dose.

8.3 Females and Males of Reproductive Potential

Pregnancy Testing

Recommend pregnancy testing for females of reproductive potential prior to initiating treatment with Lynparza.

Contraception

Females

Lynparza can cause fetal harm when administered to a pregnant woman [see [Use in Specific Populations \(8.1\)](#)]. Advise females of reproductive potential to use effective contraception during treatment with Lynparza and for at least 6 months following the last dose.

Males

Based on findings in genetic toxicity and animal reproduction studies, advise male patients with female partners of reproductive potential or who are pregnant to use effective contraception during treatment and for 3 months following the last dose of Lynparza. Advise male patients not to donate sperm during therapy and for 3 months following the last dose of Lynparza [see [Use in Specific Populations \(8.1\)](#) and [Nonclinical Toxicology \(13.1\)](#)].

8.4 Pediatric Use

Safety and effectiveness of Lynparza have not been established in pediatric patients.

8.5 Geriatric Use

Of the 2351 patients with advanced solid tumors who received Lynparza tablets 300 mg orally twice daily as monotherapy, 596 (25%) patients were aged ≥ 65 years, and this included 137 (6%) patients who were aged ≥ 75 years. Seven (0.3%) patients were aged ≥ 85 years.

Of the 535 patients with advanced solid tumors who received Lynparza tablets 300 mg orally twice daily in combination with bevacizumab, 204 (38%) patients were aged ≥ 65 years, and this included 31 (6%) patients who were aged ≥ 75 years.

No overall differences in the safety or effectiveness of Lynparza were observed between these patients and younger patients.

8.6 Renal Impairment

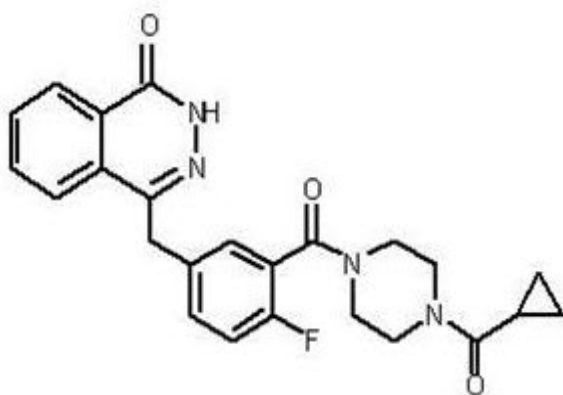
No dosage modification is recommended in patients with mild renal impairment (CLcr 51 to 80 mL/min estimated by Cockcroft-Gault). Reduce Lynparza dosage to 200 mg twice daily in patients with moderate renal impairment (CLcr 31 to 50 mL/min) [see [Dosage and Administration \(2.5\)](#)]. There are no data in patients with severe renal impairment or end-stage disease (CLcr ≤ 30 mL/min) [see [Clinical Pharmacology \(12.3\)](#)].

8.7 Hepatic Impairment

No adjustment to the starting dose is required in patients with mild or moderate hepatic impairment (Child-Pugh classification A and B). There are no data in patients with severe hepatic impairment (Child-Pugh classification C) [see [Clinical Pharmacology \(12.3\)](#)].

11 DESCRIPTION

Olaparib is a poly (ADP-ribose) polymerase (PARP) inhibitor. The chemical name is 4-[(3-[[4-(cyclopropylcarbonyl)piperazin-1-yl]carbonyl]-4-fluorophenyl)methyl]phthalazin-1(2H)-one. The empirical molecular formula for Lynparza is C₂₄H₂₃FN₄O₃ and the relative molecular mass is 434.46. It has the following chemical structure:



Olaparib is a crystalline solid, is non-chiral and shows pH-independent low solubility across the physiological pH range.

Lynparza (olaparib) tablets for oral use contain 100 mg or 150 mg of olaparib. Inactive ingredients in the tablet core are copovidone, mannitol, colloidal silicon dioxide, and sodium stearyl fumarate. The tablet coating consists of hypromellose, polyethylene glycol 400, titanium dioxide, ferric oxide yellow, and ferrousferrous oxide (150 mg tablet only).

12 CLINICAL PHARMACOLOGY

12.1 Mechanism of Action

Olaparib is an inhibitor of poly (ADP-ribose) polymerase (PARP) enzymes, including PARP1, PARP2, and PARP3. PARP enzymes are involved in normal cellular functions, such as DNA transcription and DNA repair. Olaparib has been shown to inhibit growth of select tumor cell lines in vitro and decrease tumor growth in mouse xenograft models of human cancer, both as monotherapy or following platinum-based chemotherapy. Increased cytotoxicity and anti-tumor activity following treatment with olaparib were noted in cell lines and mouse tumor models with deficiencies in *BRCA1/2*, *ATM*, or other genes involved in the homologous recombination repair (HRR) of DNA damage and correlated with platinum response. In vitro studies have shown that olaparib-induced cytotoxicity may involve inhibition of PARP enzymatic activity and increased formation of PARP-DNA complexes, resulting in DNA damage and cancer cell death.

12.2 Pharmacodynamics

Cardiac Electrophysiology

The effect of olaparib on cardiac repolarization was assessed in 119 patients following a single dose of 300 mg and in 109 patients following multiple dosing of 300 mg twice daily. No clinically relevant effect of olaparib on QT interval was observed.

12.3 Pharmacokinetics

The area under the curve (AUC) of olaparib increases approximately proportionally following administration of single doses of 25 mg to 450 mg (0.08 to 1.5 times the recommended dose) and maximal concentrations (C_{max}) increased slightly less than proportionally for the same dose range. Olaparib showed time-dependent pharmacokinetics and an AUC mean accumulation ratio of 1.8 is observed at steady state following a dose of 300 mg twice daily.

The mean (CV%) olaparib C_{max} is 5.4 $\mu\text{g}/\text{mL}$ (32%) and AUC is 39.2 $\mu\text{g}\cdot\text{h}/\text{mL}$ (44%) following a single 300 mg dose. The mean steady state olaparib C_{max} and AUC is 7.6 $\mu\text{g}/\text{mL}$ (35%) and 49.2 $\mu\text{g}\cdot\text{h}/\text{mL}$ (44%), following a dose of 300 mg twice daily.

Absorption

Following oral administration of olaparib, the median time to peak plasma concentration is 1.5 hours.

Effect of Food

Co-administration of a high fat and high calorie meal (800-1000 kcal, 50% of the calorie content made up from fat) with olaparib slowed the rate (t_{max} delayed by 2.5 hours) of absorption, but did not significantly alter the extent of olaparib absorption (mean AUC increased by approximately 8%).

Distribution

The mean (\pm standard deviation) apparent volume of distribution of olaparib is 158 ± 136 L following a single 300 mg dose of Lynparza. The protein binding of olaparib is approximately 82% in vitro.

Elimination

The mean (\pm standard deviation) terminal plasma half-life of olaparib is 14.9 ± 8.2 hours and the apparent plasma clearance is 7.4 ± 3.9 L/h following a single 300 mg dose of Lynparza.

Metabolism

Olaparib is metabolized by cytochrome P450 (CYP) 3A in vitro.

Following an oral dose of radiolabeled olaparib to female patients, unchanged olaparib accounted for 70% of the circulating radioactivity in plasma. It was extensively metabolized with unchanged drug accounting for 15% and 6% of radioactivity in urine and feces, respectively. The majority of the metabolism is attributable to oxidation reactions with a number of the components produced undergoing subsequent glucuronide or sulfate conjugation.

Excretion

Following a single dose of radiolabeled olaparib, 86% of the dosed radioactivity was recovered within a 7-day collection period, 44% via the urine and 42% via the feces. The majority of the material was excreted as metabolites.

Specific Populations

Patients with Renal Impairment

In a renal impairment trial, the mean AUC increased by 24% and C_{max} by 15%, when olaparib was dosed in patients with mild renal impairment ($CL_{cr}=51-80$ mL/min defined by the Cockcroft-Gault equation; $n=13$) and by 44% and 26%, respectively, when olaparib was dosed in patients with moderate renal impairment ($CL_{cr}=31-50$ mL/min; $n=13$), compared to those with normal renal function ($CL_{cr} \geq 81$ mL/min; $n=12$). There was no evidence of a relationship between the extent of plasma protein binding of olaparib and creatinine clearance. There are no data in patients with severe renal impairment or end-stage renal disease ($CL_{cr} \leq 30$ mL/min).

Patients with Hepatic Impairment

In a hepatic impairment trial, the mean AUC increased by 15% and the mean C_{max} increased by 13% when olaparib was dosed in patients with mild hepatic impairment (Child-Pugh classification A; $n=10$) and the mean AUC increased by 8% and the mean C_{max} decreased by 13% when olaparib was dosed in patients with moderate hepatic impairment (Child-Pugh classification B; $n=8$), compared to patients with normal hepatic function ($n=13$). Hepatic impairment has no effect on the protein binding of olaparib and, therefore, total plasma exposure was representative of free drug. There are no data in patients with severe hepatic impairment (Child-Pugh classification C).

Drug Interaction Studies

Clinical Studies

CYP3A Inhibitors: Concomitant use of itraconazole (strong CYP3A inhibitor) increased olaparib C_{max} by 42% and AUC by 170%. Concomitant use of fluconazole (moderate CYP3A inhibitor) is predicted to increase olaparib C_{max} by 14% and AUC by 121%.

CYP3A Inducers: Concomitant use of rifampicin (strong CYP3A inducer) decreased olaparib C_{max} by 71% and AUC by 87%. Concomitant use of efavirenz (moderate CYP3A inducer) is predicted to decrease olaparib C_{max} by 31% and AUC by 60%.

In vitro Studies

CYP Enzymes: Olaparib is both an inhibitor and inducer of CYP3A and an inducer of CYP2B6. Olaparib is predicted to be a weak CYP3A inhibitor in humans.

UGT Enzymes: Olaparib is an inhibitor of UGT1A1.

Transporters: Olaparib is an inhibitor of BCRP, OATP1B1, OCT1, OCT2, OAT3, MATE1, and MATE2K. Olaparib is a substrate and inhibitor of the efflux transporter P-gp. The potential for olaparib to induce P-gp has not been evaluated.

13 NONCLINICAL TOXICOLOGY

13.1 Carcinogenesis, Mutagenesis, Impairment of Fertility

Carcinogenicity studies have not been conducted with olaparib.

Olaparib was clastogenic in an in vitro chromosomal aberration assay in mammalian Chinese hamster ovary (CHO) cells and in an in vivo rat bone marrow micronucleus assay. This clastogenicity is consistent with genomic instability resulting from the primary pharmacology of olaparib and indicates potential for genotoxicity in humans. Olaparib was not mutagenic in a bacterial reverse mutation (Ames) test.

In a fertility study, female rats received oral olaparib at doses of 0.05, 0.5, and 15 mg/kg/day for at least 14 days before mating through the first week of pregnancy. There were no adverse effects on mating and fertility rates at doses up to 15 mg/kg/day (maternal systemic exposures approximately 7% of the human exposure (AUC_{0-24h}) at the recommended dose).

In a male fertility study, olaparib had no effect on mating and fertility in rats at oral doses up to 40 mg/kg/day following at least 70 days of olaparib treatment (with systemic exposures of approximately 5% of the human exposure (AUC_{0-24h}) at the recommended dose).

14 CLINICAL STUDIES

14.1 First-Line Maintenance Treatment of *BRCA*-mutated Advanced Ovarian Cancer

The efficacy of Lynparza was evaluated in SOLO-1 (NCT01844986), a randomized (2:1), double-blind, placebo-controlled, multi-center trial in patients with *BRCA*-mutated advanced ovarian, fallopian tube, or primary peritoneal cancer following first-line platinum-based chemotherapy. Patients were randomized to receive Lynparza tablets 300 mg orally twice daily or placebo. Treatment was continued for up to 2 years or until disease progression or unacceptable toxicity; however, patients with evidence of disease at 2 years, who in the opinion of the treating healthcare provider could derive further benefit from continuous treatment, could be treated beyond 2 years. Randomization was stratified by response to first-line platinum-based chemotherapy (complete or partial response). The major efficacy outcome was investigator-assessed progression-free survival (PFS) evaluated according to Response Evaluation Criteria in Solid Tumors (RECIST), version 1.1.

A total of 391 patients were randomized, 260 to Lynparza and 131 to placebo. The median age of patients treated with Lynparza was 53 years (range: 29 to 82) and 53 years (range: 31 to 84) among patients on placebo. The ECOG performance status (PS) was 0 in 77% of patients receiving Lynparza and 80% of patients receiving placebo. Of all patients, 82% were White, 36% were enrolled in the U.S. or Canada, and 82% were in complete response to their most recent platinum-based regimen. The majority of patients (n=389) had germline *BRCA* mutation (g*BRCAM*), and 2 patients had somatic *BRCAM* (s*BRCAM*).

Of the 391 patients randomized in SOLO-1, 386 were retrospectively or prospectively tested with a Myriad BRACAnalysis test and 383 patients were confirmed to have deleterious or suspected deleterious

gBRCAm status; 253 were randomized to the Lynparza arm and 130 to the placebo arm. Two out of 391 patients randomized in SOLO-1 were confirmed to have sBRCAm based on an investigational Foundation Medicine tissue test.

SOLO-1 demonstrated a statistically significant improvement in investigator-assessed PFS for Lynparza compared to placebo. Results from a blinded independent review were consistent. At the time of the analysis of PFS, overall survival (OS) data were not mature (21% of patients had died). Efficacy results are presented in Table 18 and Figure 1.

Table 18 Efficacy Results – SOLO-1 (Investigator Assessment)

	Lynparza tablets (n=260)	Placebo (n=131)
Progression-Free Survival*		
Number of events (%)	102 (39%)	96 (73%)
Median, months	NR	13.8
Hazard ratio [†] (95% CI)	0.30 (0.23, 0.41)	
p-value [‡]	<0.0001	

* Median follow up of 41 months in both treatment arms.

† A value <1 favors olaparib. Hazard ratio from a Cox proportional hazards model including response to previous platinum chemotherapy (complete response versus partial response) as a covariate.

‡ The p-value is derived from a stratified log-rank test.

NR not reached; CI Confidence Interval.

syndrome' (MDS) or 'acute myeloid leukemia' (AML) which have been reported in patients treated with Lynparza [see [Warnings and Precautions \(5.1\)](#)].

Pneumonitis

Advise patients to contact their healthcare provider if they experience any new or worsening respiratory symptoms including shortness of breath, fever, cough, or wheezing [see [Warnings and Precautions \(5.2\)](#)].

Embryo-Fetal Toxicity

Inform pregnant women of the risk to a fetus and potential loss of the pregnancy. Advise females to inform their healthcare provider of known or suspected pregnancy [see [Use in Specific Populations \(8.1\)](#)].

Advise females of reproductive potential to use effective contraception during treatment with Lynparza and for 6 months after the last dose [see [Use in Specific Populations \(8.3\)](#)].

Advise male patients with female partners of reproductive potential or who are pregnant to use effective contraception during treatment and for 3 months after receiving the last dose of Lynparza. Advise male patients not to donate sperm during therapy and for 3 months following the last dose of Lynparza [see [Warnings and Precautions \(5.3\)](#) and [Use in Specific Populations \(8.3\)](#)].

Venous Thromboembolic Events

Advise patients with metastatic castration-resistant prostate cancer to immediately report any signs or symptoms of thromboembolism such as pain or swelling in an extremity, shortness of breath, chest pain, tachypnea, and tachycardia [see [Warnings and Precautions \(5.4\)](#)].

Lactation

Advise patients not to breastfeed while taking Lynparza and for one month after receiving the last dose [see [Use in Specific Populations \(8.2\)](#)].

Drug Interactions

Advise patients and caregivers to inform their healthcare provider of all concomitant medications, including prescription medicines, over-the-counter drugs, vitamins, and herbal products. Inform patients to avoid grapefruit, grapefruit juice, Seville oranges, and Seville orange juice while taking Lynparza [see [Drug Interactions \(7.2\)](#)].

Nausea/Vomiting

Advise patients that mild or moderate nausea and/or vomiting is very common in patients receiving Lynparza and that they should contact their healthcare provider who will advise on available antiemetic treatment options [see [Adverse Reactions \(6.1\)](#)].

Distributed by:
AstraZeneca Pharmaceuticals LP
Wilmington, DE 19850

What are the ingredients in Lynparza?

Active ingredient: olaparib

Inactive ingredients:

Tablet contains: copovidone, mannitol, colloidal silicon dioxide and sodium stearyl fumarate

Tablet coating contains: hypromellose, polyethylene glycol 400, titanium dioxide, ferric oxide yellow and ferrousferrous oxide (150 mg tablet only)

Lynparza is a registered trademark of the AstraZeneca group of companies.

© AstraZeneca 2021

Distributed by:

AstraZeneca Pharmaceuticals LP

Wilmington, DE 19850

For more information, call 1-800-236-9933 or go to www.Lynparza.com.

This Medication Guide has been approved by the U.S. Food and Drug Administration.

Revised: 3/2021