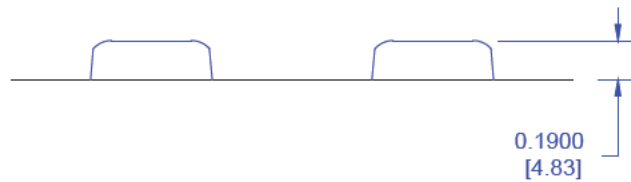
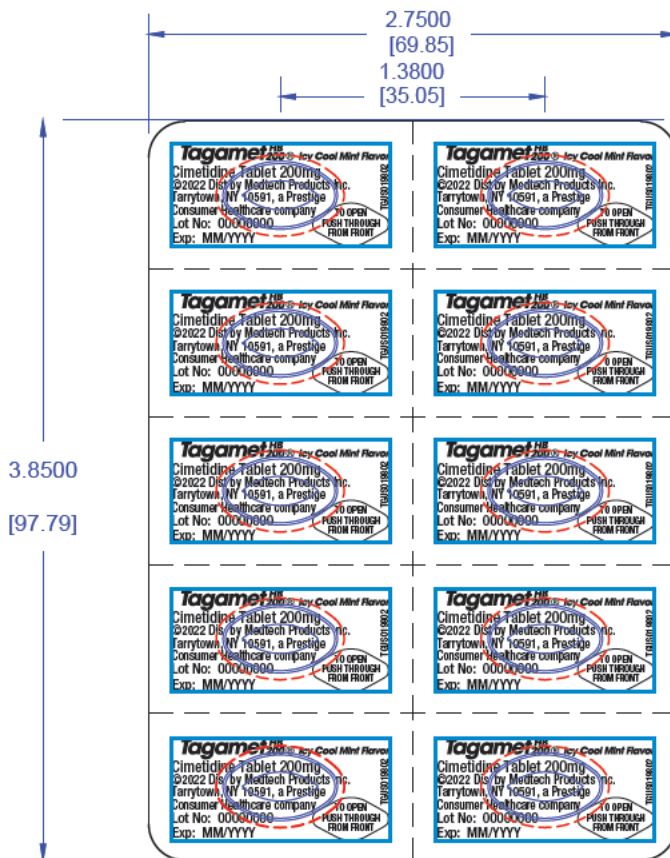
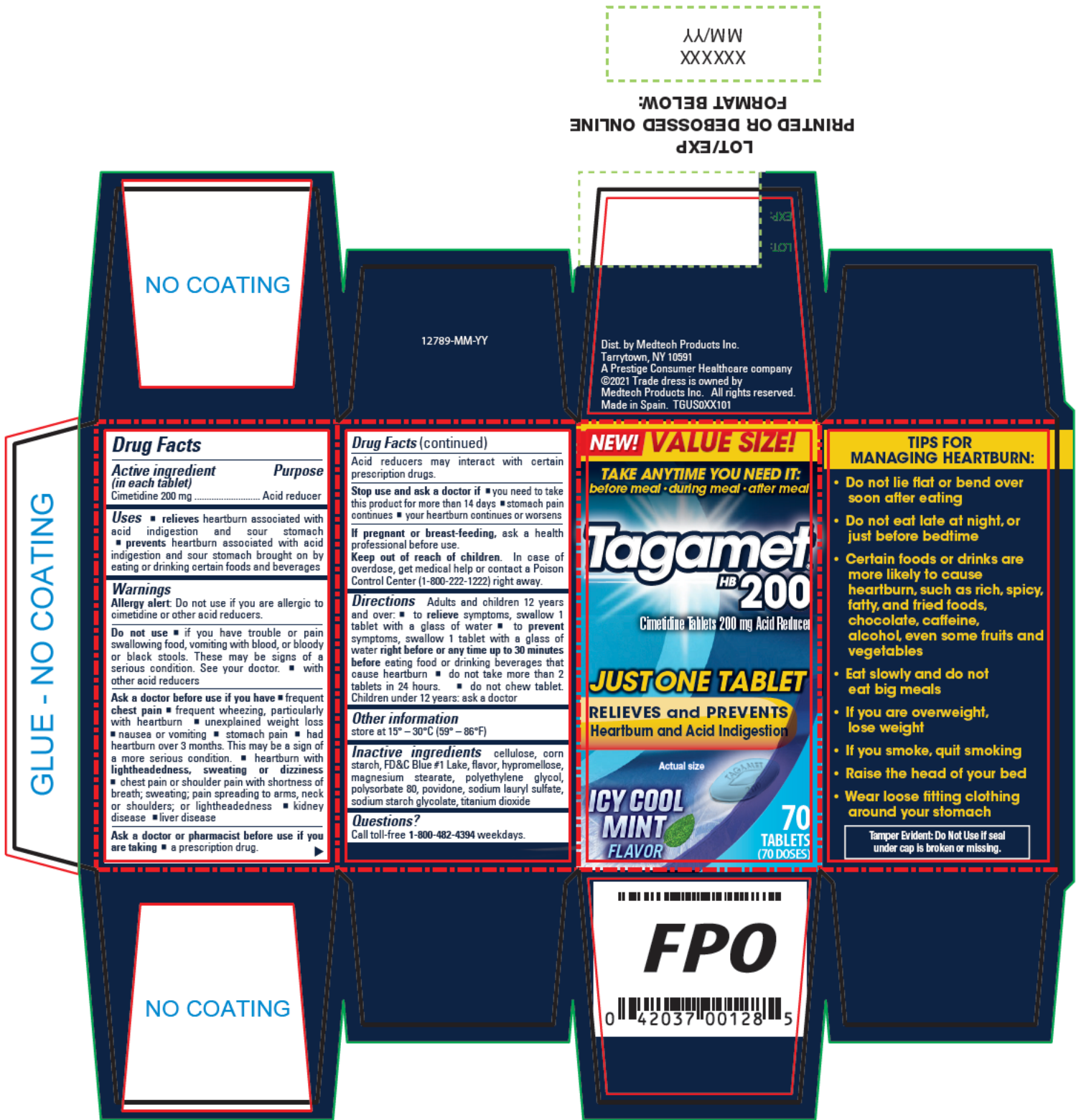




VARIABLE DATA  
NO INK / NO COAT  
1.5" X 0.50"





0.40" X 1.5"  
VARIABLE DATA AREA  
NO INK/NO COAT

FRONT

NEW! TAKE ANYTIME YOU NEED IT:  
before meal • during meal • after meal

**Tagamet**  
HB  
**200**  
Cimetidine Tablets 200 mg  
Acid Reducer

JUST ONE TABLET  
RELIEVES and PREVENTS  
Heartburn and Acid Indigestion

ICY COOL  
MINT  
FLAVOR

70  
TABLETS  
(70 DOSES)

**Drug Facts**  
**Active ingredient (in each tablet)**  
Cimetidine 200 mg ..... Acid reducer

**Purpose**  
**Uses**  
■ relieves heartburn associated with acid indigestion and sour stomach  
■ prevents heartburn associated with acid indigestion and sour stomach brought on by eating or drinking certain foods and beverages

**Drug Facts (continued)**  
**Warnings**  
**Allergy alert:** Do not use if you are allergic to cimetidine or other acid reducers.  
**Do not use**  
■ if you have trouble or pain swallowing food, vomiting with blood, or bloody or black stools. These may be signs of a serious condition. See your doctor.  
■ with other acid reducers

©2021 Dist. by Medtach Products Inc., Tarrytown, NY 10591. Made in Spain. T8US013201

**Tamper Evident: Do Not Use if seal under cap is broken or missing.**

PEEL HERE

BACK

**Drug Facts (continued)**  
**Ask a doctor before use if you have**  
■ frequent chest pain  
■ frequent wheezing, particularly with heartburn  
■ unexplained weight loss  
■ nausea or vomiting  
■ stomach pain  
■ had heartburn over 3 months. This may be a sign of a more serious condition.  
■ heartburn with lightheadedness, sweating or dizziness  
■ chest pain or shoulder pain with shortness of breath; sweating; pain spreading to arms, neck or shoulders; or lightheadedness

**Drug Facts (continued)**  
■ kidney disease    ■ liver disease  
**Ask a doctor or pharmacist before use if you are taking** ■ a prescription drug. Acid reducers may interact with certain prescription drugs.  
**Stop use and ask a doctor if** ■ you need to take this product for more than 14 days ■ stomach pain continues ■ your heartburn continues or worsens  
**If pregnant or breast-feeding**, ask a health professional before use.  
**Keep out of reach of children.** In case of overdose, get medical help or contact a Poison Control Center (1-800-222-1222) right away.

0.5" hinge  
non printing area

BASE

0.5" hinge  
non printing area

**Drug Facts (continued)**  
**Directions**  
**Adults and children 12 years and over:**  
■ to relieve symptoms, swallow 1 tablet with a glass of water  
■ to prevent symptoms, swallow 1 tablet with a glass of water right before or any time up to 30 minutes before eating food or drinking beverages that cause heartburn    ■ do not take more than 2 tablets in 24 hours    ■ do not chew tablet.  
**Children under 12 years:** ask a doctor

**Drug Facts (continued)**  
**Other information**  
store at 15° – 30°C (59° – 86°F)  
**Inactive ingredients** cellulose, corn starch, FD&C Blue #1 Lake, flavor, hypromellose, magnesium stearate, polyethylene glycol, polysorbate 80, povidone, sodium lauryl sulfate, sodium starch glycolate, titanium dioxide  
**Questions?** Call toll-free 1-800-482-4394 weekdays.

Reference ID: 4989115

-----  
**This is a representation of an electronic record that was signed electronically. Following this are manifestations of any and all electronic signatures for this electronic record.**  
-----

/s/  
-----

NUSHIN F TODD  
05/24/2022 08:04:34 PM