

NDC 0078-0241-15
30 SOFT GELATIN CAPSULES

PUSH HERE
TO OPEN

100 mg

100 mg

30 SOFT GELATIN
CAPSULES

SANDIMMUNE®
(cyclosporine)
Store at 20°C - 25°C
(68°F-77°F), excursions
permitted between 15°C
and 30°C (59°F and 86°F)
[see USP Controlled Room
Temperature].

SANDIMMUNE® Soft Gelatin Capsules (cyclosporine capsules, USP)



Each 100 mg capsule contains:
cyclosporine, USP100 mg
alcohol, USP dehydratedmax 12.7% by volume
Inactive Ingredients: corn oil, gelatin, iron oxide red,
linoleoyl macroglycerides, sorbitol, and titanium
dioxide. May also contain glycerol or iron oxide yellow.

WARNING: Sandimmune® (cyclosporine capsules, USP) is
NOT BIOEQUIVALENT to Neoral® (cyclosporine capsules,
USP) MODIFIED. Do NOT use interchangeably without a
physician's supervision.

Product of Ireland.

Manufactured by:
Catalent Pharma Solutions, LLC
St. Petersburg, Florida 33716

Distributed by:
Novartis Pharmaceuticals Corporation
East Hanover, New Jersey 07936

Dosage:
See package insert for dosage information.

Rx only

NOVARTIS

©Novartis PCR700-14250 US



GTIN: 00300780241151
EXP/LOT



Serialization Variable data printing

MM YY
XXXXX
SN NNNNNNNNNNN



U

Use scissors to cut along the dashed line with scissors.
USE CAUTION TO AVOID CUTTING CAPSULES.



To Remove Soft Gelatin Capsule:
(Note: Do not remove capsule from foil until just prior to use)

WARNING: Sandimmune® (cyclosporine capsules, USP) is NOT BIOEQUIVALENT to Neoral® (cyclosporine capsules, USP) MODIFIED. Do NOT use interchangeably without a physician's supervision.



SANDIMMUNE® Soft Gelatin Capsules (cyclosporine capsules, USP)

100 mg

100 mg

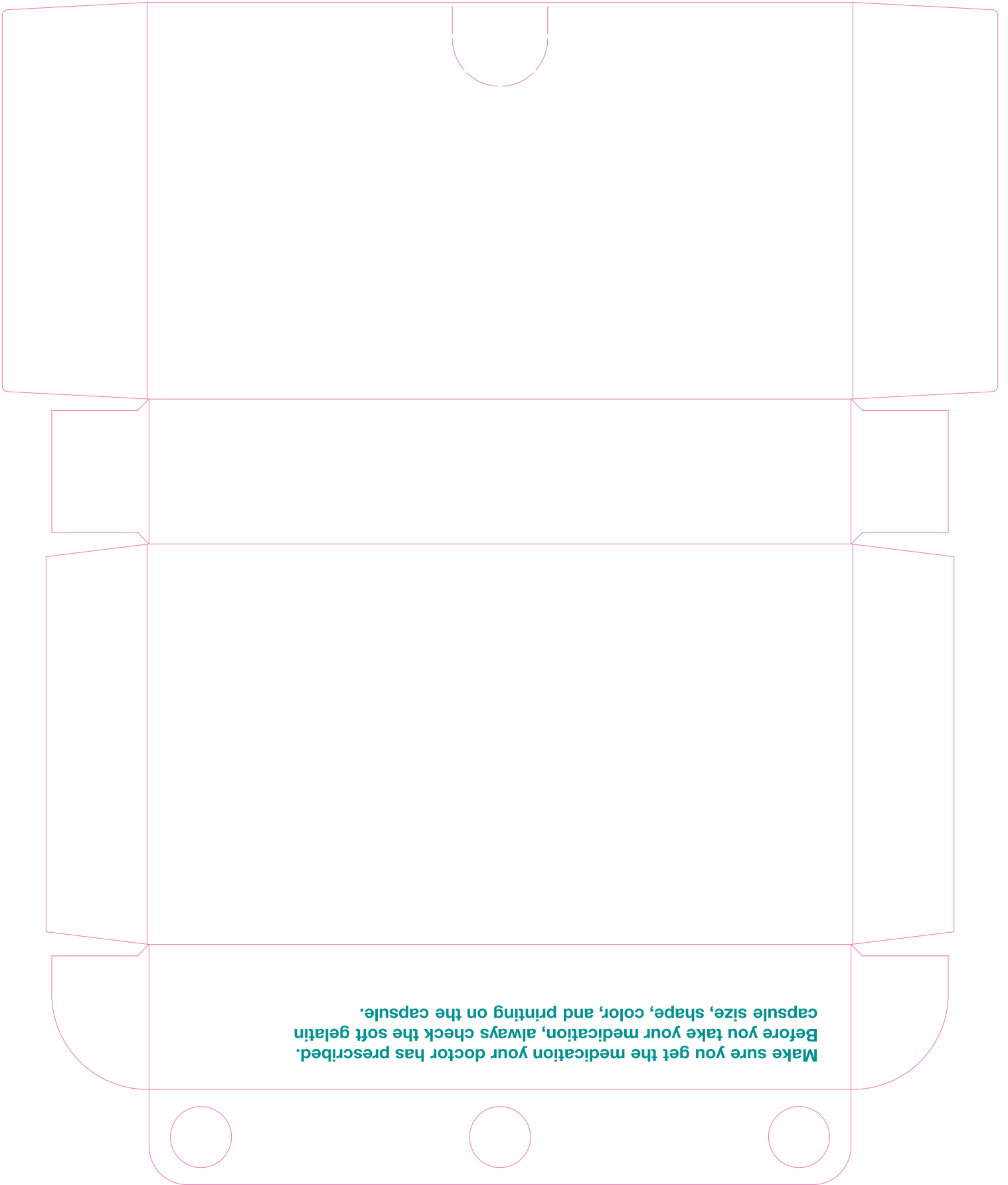
NDC 0078-0241-15
30 SOFT GELATIN CAPSULES

SANDIMMUNE® Soft Gelatin Capsules (cyclosporine capsules, USP)



Read Direction
(70014250)

**Make sure you get the medication your doctor has prescribed.
Before you take your medication, always check the soft gelatin
capsule size, shape, color, and printing on the capsule.**



NDC 0078-0241-61

SANDIMMUNE®
Soft Gelatin Capsule
(cyclosporine capsule, USP)
100mg

alcohol, USP dehydrated...max. 12.7% by vol.
Dist. by: Novartis East Hanover, NJ 07936
©Novartis PCR-150-14251 US

NDC 0078-0241-61

SANDIMMUNE®
Soft Gelatin Capsule
(cyclosporine capsule, USP)
100mg

alcohol, USP dehydrated...max. 12.7% by vol.
Dist. by: Novartis East Hanover, NJ 07936
©Novartis PCR-150-14251 US

NDC 0078-0241-61

SANDIMMUNE®
Soft Gelatin Capsule
(cyclosporine capsule, USP)
100mg

alcohol, USP dehydrated...max. 12.7% by vol.
Dist. by: Novartis East Hanover, NJ 07936
©Novartis PCR-150-14251 US

NDC 0078-0241-61

SANDIMMUNE®
Soft Gelatin Capsule
(cyclosporine capsule, USP)
100mg

alcohol, USP dehydrated...max. 12.7% by vol.
Dist. by: Novartis East Hanover, NJ 07936
©Novartis PCR-150-14251 US

NDC 0078-0241-61

SANDIMMUNE®
Soft Gelatin Capsule
(cyclosporine capsule, USP)
100mg

alcohol, USP dehydrated...max. 12.7% by vol.
Dist. by: Novartis East Hanover, NJ 07936
©Novartis PCR-150-14251 US

NDC 0078-0241-61

SANDIMMUNE®
Soft Gelatin Capsule
(cyclosporine capsule, USP)
100mg

alcohol, USP dehydrated...max. 12.7% by vol.
Dist. by: Novartis East Hanover, NJ 07936
©Novartis PCR-150-14251 US

NDC 0078-0241-61

SANDIMMUNE®
Soft Gelatin Capsule
(cyclosporine capsule, USP)
100mg

alcohol, USP dehydrated...max. 12.7% by vol.
Dist. by: Novartis East Hanover, NJ 07936
©Novartis PCR-150-14251 US

NDC 0078-0241-61

SANDIMMUNE®
Soft Gelatin Capsule
(cyclosporine capsule, USP)
100mg

alcohol, USP dehydrated...max. 12.7% by vol.
Dist. by: Novartis East Hanover, NJ 07936
©Novartis PCR-150-14251 US

NDC 0078-0241-61

SANDIMMUNE®
Soft Gelatin Capsule
(cyclosporine capsule, USP)
100mg

alcohol, USP dehydrated...max. 12.7% by vol.
Dist. by: Novartis East Hanover, NJ 07936
©Novartis PCR-150-14251 US

NDC 0078-0241-61

SANDIMMUNE®
Soft Gelatin Capsule
(cyclosporine capsule, USP)
100mg

alcohol, USP dehydrated...max. 12.7% by vol.
Dist. by: Novartis East Hanover, NJ 07936
©Novartis PCR-150-14251 US

Variable data printing
EXP: MMYY
LOT: XXXXXX



Gurpreet
Gill Sangha

Digitally signed by Gurpreet Gill Sangha
Date: 3/16/2022 11:57:40AM
GUID: 5135f2ad000117842392c50c36c7f28a