

HIGHLIGHTS OF PRESCRIBING INFORMATION

These highlights do not include all the information needed to use DAXXIFY safely and effectively. See full prescribing information for DAXXIFY.

DAXXIFY™ (daxibotulinumtoxinA-lanm) for injection, for intramuscular use

Initial U.S. Approval: 2022

WARNING: DISTANT SPREAD OF TOXIN EFFECT

See full prescribing information for complete boxed warning.

The effects of DAXXIFY and all botulinum toxin products may spread from the area of injection to produce symptoms consistent with botulinum toxin effects. These symptoms have been reported hours to weeks after injection. Swallowing and breathing difficulties can be life threatening and there have been reports of death. DAXXIFY is not approved for the treatment of spasticity or any conditions other than glabellar lines. (5.1)

INDICATIONS AND USAGE

DAXXIFY is an acetylcholine release inhibitor and neuromuscular blocking agent indicated for the temporary improvement in the appearance of moderate to severe glabellar lines associated with corrugator and/or procerus muscle activity in adult patients. (1)

DOSAGE AND ADMINISTRATION

Glabellar Lines: 0.1 mL (8 Units) by intramuscular injection into each of five sites, for a total dose of 40 Units. (2)

DOSAGE FORMS AND STRENGTHS

For injection: 50 Units or 100 Units sterile lyophilized powder in a single-dose vial. (3)

CONTRAINDICATIONS

- Known hypersensitivity to any botulinum toxin preparation, DAXXIFY or any of the components in the DAXXIFY formulation (4.1)
- Infection at the injection sites (4.2)

WARNING AND PRECAUTIONS

- The potency Units of DAXXIFY are not interchangeable with other preparations of other botulinum toxin products. (5.2, 11)
- Spread of toxin effects, swallowing and breathing difficulties can lead to death. Seek immediate medical attention if respiratory, speech or swallowing difficulties occur. (5.1)
- Adverse event reports have been received involving the cardiovascular system with botulinum toxin products, some with fatal outcomes. Use caution when administering to patients with pre-existing cardiovascular disease. (5.5)
- Concomitant neuromuscular disorder may exacerbate clinical effects of treatment. (5.6)
- Use with caution in patients with compromised respiratory function or dysphagia. (5.7)
- Potential serious adverse reactions after administration of DAXXIFY for unapproved use. (5.3)

ADVERSE REACTIONS

The most commonly observed adverse reactions ($\geq 1\%$) are headache (6%), eyelid ptosis (2%) and facial paresis (1%). (6.1)

To report SUSPECTED ADVERSE REACTIONS, contact Revance Therapeutics, Inc. at 1-877-373-8669 or FDA at 1-800-FDA-1088 or www.fda.gov/medwatch.

DRUG INTERACTIONS

Aminoglycoside antibiotics, anticholinergic agents or any other agents that interfere with neuromuscular transmission may potentiate the effect of DAXXIFY; co-administer only with caution and close observation. (7)

See 17 for PATIENT COUNSELING INFORMATION and Medication Guide

Revised: 9/2022

FULL PRESCRIBING INFORMATION: CONTENTS*

WARNING: DISTANT SPREAD OF TOXIN EFFECT

- 1 INDICATIONS AND USAGE**
- 2 DOSAGE AND ADMINISTRATION**
 - 2.1 Important Administration Instructions
 - 2.2 Recommended Dosage
 - 2.3 Preparation and Dilution Technique
 - 2.4 Administration
- 3 DOSAGE FORMS AND STRENGTHS**
- 4 CONTRAINDICATIONS**
 - 4.1 Hypersensitivity
 - 4.2 Infection at Injection Site
- 5 WARNINGS AND PRECAUTIONS**
 - 5.1 Spread of Toxin Effect
 - 5.2 Lack of Interchangeability between Botulinum Toxin Products
 - 5.3 Serious Adverse Reactions with Unapproved Use
 - 5.4 Hypersensitivity Reactions
 - 5.5 Cardiovascular System
 - 5.6 Pre-Existing Neuromuscular Disorders
 - 5.7 Dysphagia and Breathing Difficulties
 - 5.8 Pre-existing Conditions at the Injection Site
 - 5.9 Ophthalmic Adverse Reactions

- 6 ADVERSE REACTIONS**
 - 6.1 Clinical Trial Experience
 - 6.2 Immunogenicity
- 7 DRUG INTERACTIONS**
- 8 USE IN SPECIFIC POPULATIONS**
 - 8.1 Pregnancy
 - 8.2 Lactation
 - 8.4 Pediatric use
 - 8.5 Geriatric use
- 10 OVERDOSAGE**
- 11 DESCRIPTION**
- 12 CLINICAL PHARMACOLOGY**
 - 12.1 Mechanism of Action
 - 12.2 Pharmacodynamics
 - 12.3 Pharmacokinetics
- 13 NONCLINICAL TOXICOLOGY**
 - 13.1 Carcinogenesis, Mutagenesis, Impairment of Fertility
- 14 CLINICAL STUDIES**
 - 14.1 Glabellar Lines
- 16 HOW SUPPLIED/STORAGE AND HANDLING**
- 17 PATIENT COUNSELING INFORMATION**

* Sections or subsections omitted from the full prescribing information are not listed.

FULL PRESCRIBING INFORMATION

WARNING: DISTANT SPREAD OF TOXIN EFFECT

The effects of all botulinum toxin products, including DAXXIFY, may spread from the area of injection to produce symptoms consistent with botulinum toxin effects. These symptoms have been reported hours to weeks after injection. Swallowing and breathing difficulties can be life threatening and there have been reports of death. DAXXIFY is not approved for any condition other than glabellar lines. [see *Warnings and Precautions (5.1)*]

1 INDICATIONS AND USAGE

DAXXIFY (daxibotulinumtoxinA-lanm) is indicated for the temporary improvement in the appearance of moderate to severe glabellar lines associated with corrugator and/or procerus muscle activity in adult patients.

2 DOSAGE AND ADMINISTRATION

2.1 Important Administration Instructions

The potency units of DAXXIFY for injection are specific to the preparation and test method utilized. They are not interchangeable with other preparations of botulinum toxin products and, therefore, units of biological activity of DAXXIFY cannot be compared to or converted into units of any other botulinum toxin products assessed with any other specific test method. [see *Warnings and Precautions (5.12)*, *Description (11)*]

The safe and effective use of DAXXIFY depends upon proper storage of the product, selection of the correct dose, and proper reconstitution and administration techniques. Glabellar lines arise from the contraction of the corrugator and procerus muscles. These can be identified by palpation of the glabellar muscle mass while having the patient frown maximally. Contraction of the corrugator muscles compresses the skin, creating a vertical line or lines surrounded by ridges of tensed muscle. Because the exact location, size, and activity of the muscles can vary markedly among individuals, physicians administering DAXXIFY must understand the relevant anatomy of the area involved and any alterations to the anatomy due to prior surgical procedures and diseases [see *Warnings and Precautions (5.8)*]. After assessment, the location of the corrugator muscle injection sites may need to be adjusted based on individual facial anatomy and the pattern of muscle contraction.

DAXXIFY should be administered no more frequently than every three months. Consideration of the cumulative dose is necessary when treating adult patients with DAXXIFY. Physicians should be aware of whether patients are receiving treatment with other botulinum toxin products for other indications.

Reconstituted DAXXIFY is intended for intramuscular injection only.

Reconstitution instructions are provided specifically for the 50 Unit and the 100 Unit vials ([Table 1](#); [Table 2](#)).

2.2 Recommended Dosage

The total recommended dose is 40 Units per treatment session divided into five equal intramuscular injections of 8 Units each (two injections in each corrugator muscle and one injection in the procerus muscle).

2.3 Preparation and Dilution Technique

DAXXIFY is supplied in single-dose 50 Unit and 100 Unit vials. Prior to intramuscular injection, reconstitute each vial of DAXXIFY with the required amount of sterile, preservative-free 0.9% Sodium Chloride Injection, USP to obtain a reconstituted solution at a concentration of 8 Units/0.1 mL (see [Tables 1 and 2](#)).

Table 1: DAXXIFY 50 Unit Vials

Dilution Volume for Reconstitution

| Diluent* Added to 50 Unit Vial | Resulting dose in Units per 0.1 mL |
|--------------------------------|------------------------------------|
| 0.6 mL | 8 Units |

*Preservative-free 0.9% Sodium Chloride Injection, USP

Table 2: DAXXIFY 100 Unit Vials

Dilution Volume for Reconstitution

| Diluent * Added to 100 Unit Vials | Resulting dose in Units per 0.1 mL |
|-----------------------------------|------------------------------------|
| 1.2 mL | 8 Units |

*Preservative-free 0.9% Sodium Chloride Injection, USP

Slowly inject the diluent into the vial. Discard the vial if a vacuum does not pull the diluent into the vial. Dispose of any unused diluent. Gently mix DAXXIFY with 0.9% Sodium Chloride Injection, USP by rotating the vial.

Reconstituted DAXXIFY solution is clear to slightly opalescent and colorless and free of particulate matter. Inspect visually the reconstituted DAXXIFY for particulate matter and discoloration prior to administration. Do not use if the solution is cloudy or discolored or contains flakes or particles.

Administer DAXXIFY within 72 hours after reconstitution. During this time period, store unused reconstituted DAXXIFY in a refrigerator between 2°C to 8°C (36°F to 46°F) and protected from light. Do not freeze reconstituted DAXXIFY. Dispose of any unused DAXXIFY.

2.4 Administration

After reconstitution, only use each DAXXIFY vial for only one injection session and for only one patient. Discard any remaining solution in vial immediately after administration.

The upper eyelid margin position should be carefully examined for separation or weakness of the levator palpebrae superioris muscle. Evaluate the range of upper eyelid excursion while manually immobilizing the frontalis to assess degree of levator function and frontalis compensation.

In order to reduce the complication of ptosis, the following steps should be taken:

- Avoid injection near the levator palpebrae superioris, particularly in patients with larger brow depressor complexes.
- Ensure the injected volume/dose is accurate and administer in a steady, controlled manner.
- Do not inject DAXXIFY less than 1 centimeter above the superior orbital rim.

To inject DAXXIFY, clean the exposed portion of the stopper with an alcohol swab and aseptically withdraw at least 0.5 mL of the reconstituted solution from the vial into a sterile syringe. Replace the needle used to withdraw the product with a 30 to 33 gauge sterile needle for injection. Expel any air bubbles prior to administration.

Advance the needle through the skin into the underlying muscle while applying finger pressure on the superior medial orbital rim.

- Inject a dose of 8 Units (0.1 mL) into each of the 5 injection sites: 2 injections into medial corrugator and lateral corrugator muscles respectively, and 1 injection in the procerus muscle ([Figure 1](#)).

would predispose them to these symptoms. In unapproved uses, including upper limb spasticity in children and approved indications, symptoms consistent with spread of toxin effect have been reported at doses comparable to or lower than the maximum recommended total dose. DAXXIFY is not approved for treatment of spasticity or any conditions other than glabellar lines. Patients or caregivers should be advised to seek immediate medical care if swallowing, speech or respiratory difficulties occur.

Although no serious adverse reactions of distant spread of toxin effect associated with DAXXIFY have been reported in clinical studies of 40 Units for glabellar lines, these reactions are possible.

5.2 Lack of Interchangeability between Botulinum Toxin Products

The potency Units of DAXXIFY are specific to the preparation and assay method utilized. They are not interchangeable with other preparation of botulinum toxin products therefore, Units of biological activity of DAXXIFY cannot be compared to or converted to Units of any other botulinum toxin products assessed with any other specific assay method [*see Description (11)*].

5.3 Serious Adverse Reactions with Unapproved Use

Serious adverse reactions, including excessive weakness, dysphagia, and aspiration pneumonia, with some adverse reactions associated with fatal outcomes, have been reported in patients who received botulinum toxin injections for unapproved uses. In these cases, the adverse reactions may have resulted from the administration of botulinum toxin products to the site of injection and/or adjacent structures. In some cases, patients had pre-existing dysphagia or other significant disabilities. There is insufficient information to identify factors associated with an increased risk for adverse reactions associated with the unapproved uses of botulinum toxin products.

5.4 Hypersensitivity Reactions

Serious and/or immediate hypersensitivity reactions have been reported for botulinum toxin products. These reactions include anaphylaxis, serum sickness, urticaria, soft tissue edema, and dyspnea. If such a reaction occurs, discontinue further injection of DAXXIFY and immediately institute appropriate medical therapy. The use of DAXXIFY in patients with a known hypersensitivity to any botulinum toxin preparation, DAXXIFY or any of its formulation components could lead to a life threatening allergic reaction. [*see Contraindications (4.1)*]

5.5 Cardiovascular System

There have been reports following administration of botulinum toxins of adverse events involving the cardiovascular system, including arrhythmia and myocardial infarction, some with fatal outcomes. Some of these patients had risk factors including pre-existing cardiovascular disease. Use caution when administering to patients with pre-existing cardiovascular disease.

5.6 Pre-Existing Neuromuscular Disorders

Monitor patients with peripheral motor neuropathic diseases, amyotrophic lateral sclerosis, or neuromuscular junctional disorders (e.g., myasthenia gravis or Lambert-Eaton syndrome) for increased neuromuscular compromise following botulinum toxin treatment. Patients with neuromuscular disorders may be at increased risk of clinically significant effects including generalized muscle weakness, diplopia, ptosis, dysphonia, dysarthria, severe dysphagia and respiratory compromise from typical doses of DAXXIFY.

5.7 Dysphagia and Breathing Difficulties

Treatment with botulinum toxin products, including DAXXIFY, can result in swallowing or breathing difficulties. These reactions can occur within hours to weeks after injection with botulinum toxin. Patients with pre-existing swallowing or breathing difficulties may be more susceptible to these complications. In most cases, this is a consequence of weakening of muscles in the area of injection that are involved in breathing or

swallowing. When distant effects occur, additional respiratory mechanisms may be involved. [see *Warnings and Precautions (5.3)*]

Deaths as a complication of severe dysphagia have been reported after treatment with botulinum toxin products. Dysphagia may persist for several months. Aspiration may result from severe dysphagia and is a particular risk when treating patients in whom swallowing or respiratory function is already compromised. Treatment with botulinum toxins, including DAXXIFY, may weaken neck muscles that serve as accessory muscles of ventilation. This may result in a critical loss of breathing capacity in patients with respiratory disorders who may have become dependent upon these accessory muscles. There have been postmarketing reports from other botulinum toxin products of serious breathing difficulties, including respiratory failure.

Patients treated with botulinum toxin may require immediate medical attention should they develop problems with swallowing, speech or respiratory disorders.

5.8 Pre-existing Conditions at the Injection Site

Use caution when administering DAXXIFY to patients with surgical alterations to the facial anatomy, marked facial asymmetry, excessive dermatochalasis, deep dermal scarring, thick sebaceous skin, inflammation at the injection site(s), pre-existing eyelid or eyebrow ptosis, when excessive weakness or atrophy is present in the target muscles, or the inability to substantially lessen glabellar lines even by physically spreading them apart.

5.9 Ophthalmic Adverse Reactions

Dry eye has been reported with the use of botulinum toxin products in the treatment of glabellar lines. Reduced tear production, reduced blinking, and corneal disorders may occur with use of botulinum toxins, including DAXXIFY. If symptoms of dry eye (e.g., eye irritation, photophobia, or visual changes) persist, consider referring patient to an ophthalmologist.

6 ADVERSE REACTIONS

The following adverse reactions are discussed in greater detail in other sections of the labeling:

- Spread of Effects from Toxin [see *Warnings and Precautions (5)*]
- Hypersensitivity Reactions [see *Warnings and Precautions (5.6)*]
- Dysphagia and Breathing Difficulties [see *Warnings and Precautions (5.6)*]

6.1 Clinical Trial Experience

Because clinical trials are conducted under widely varying conditions, adverse reaction rates observed in the clinical trials of a drug cannot be directly compared to rates in the clinical trials of another drug and may not reflect the rates observed in practice. The most common side effects from treatment with DAXXIFY usually occur within one to two weeks after injection and while generally transient, may have a duration of several weeks or months.

Glabellar Lines

In the two randomized, placebo-controlled, Phase 3 clinical trials that assess the use of DAXXIFY for the temporary improvement in the appearance of moderate to severe glabellar lines, GL-1 and GL-2, 406 subjects received a single dose treatment of 40 Units DAXXIFY and 203 subjects received placebo.

The most frequent adverse reactions are presented in [Table 3](#).

TABLE 3: Most Common Adverse Reactions $\geq 1\%$ and More Frequent than Placebo in Pooled Double-Blind, Placebo-Controlled Trials for Glabellar Lines

| Adverse Reaction | DAXXIFY N=406 n (%) | Placebo N=203 n (%) |
|-------------------------|--|--|
| Headache | 26 (6%) | 4 (2%) |
| Eyelid ptosis | 9 (2%) | 0 (0%) |
| Facial paresis* | 5 (1%) | 0 (0%) |

* Facial paresis, including facial asymmetry.

Injection site reactions were reported in 6% of subjects treated with DAXXIFY and in 6% of subjects treated with placebo (these reactions included injection site pain, injection site erythema, injection site oedema, injection site bruising, injection site hematoma, injection site papule, injection site pruritus).

In an 84-week open label repeat-dose safety study in glabellar lines, 2691 subjects were treated with 40 U of DAXXIFY. Of these, 2380 subjects received one treatment with DAXXIFY, 882 received two treatments with DAXXIFY and 568 subjects received three treatments with DAXXIFY. Adverse reactions were reported in 535 of the 2691 subjects (20%). The adverse reaction profile was similar to that reported in single dose trials.

Injection site reactions were the most common adverse reactions, reported in 9% of subjects [including injection site pain (4%), injection site erythema (3%), injection site oedema (3%), injection site bruising (1%), injection site papule (<1%), injection site pruritus (<1%)], followed by headache (5%), edema (2%), erythema (2%) and eyelid ptosis in 1% of subjects. The incidence of these adverse reactions did not increase with multiple re-treatments.

6.2 Immunogenicity

As with all therapeutic proteins, there is a potential for immunogenicity.

The detection of antibody formation is highly dependent on the sensitivity and specificity of the assay. Additionally, the observed incidence of antibody (including neutralizing antibody) positivity in an assay may be influenced by several factors including assay methodology, sample handling, timing of sample collection, concomitant medications, and underlying disease. For these reasons, comparison of the incidence of antibodies in the studies described below with the incidence of antibodies in other studies or to other products can be misleading.

Treatment with botulinum toxins may result in the formation of antibodies that may reduce the effectiveness of subsequent treatments by inactivating biological activity of the toxin.

Among 2786 subjects receiving up to 3 treatments with DAXXIFY in the phase 3 studies, 12 Subjects (0.4%) had preexisting binding antibodies to daxibotulinumtoxinA-lanm and 75 (3%) had preexisting binding antibodies to the 35 amino acid peptide excipient RTP004. A total of 20 (0.8%) subjects developed treatment-emergent binding antibodies to daxibotulinumtoxinA-lanm and 33 (1.2%) subjects developed treatment-emergent binding antibodies to RTP004. No subjects developed neutralizing antibodies to DAXXIFY.

7 DRUG INTERACTIONS

No formal drug interaction studies have been conducted with DAXXIFY.

However, the potential for certain drugs to potentiate the effects of DAXXIFY warrant consideration given the potential risks involved and should be used with caution.

- Aminoglycosides or other agents interfering with neuromuscular transmission
- Anticholinergic drugs
- Botulinum neurotoxin products
- Muscle relaxants

8 USE IN SPECIFIC POPULATION

8.1 Pregnancy

Risk Summary

There are no available data on DAXXIFY use in pregnant women to evaluate for a drug-associated risk of major birth defects, miscarriage, or adverse maternal or fetal outcomes. In animal reproduction studies, intramuscular administration of DAXXIFY during pregnancy resulted in adverse effects on fetal growth (decreased fetal body weight and skeletal ossification) at maternally toxic doses approximately equivalent to 40 times the maximum recommended human dose (MRHD) (*see Data*).

The background risk of major birth defects and miscarriage for the indicated population is unknown. In the U.S. general population, the estimated background risk of major birth defects and miscarriages in clinically recognized pregnancies is 2-4% and 15-20%, respectively.

Data

Animal Data

Embryofetal development studies were conducted in rats and rabbits with DAXXIFY. For comparison of animal to human doses based on a body weight comparison, the MRHD is set at 40 Units/subject (0.67 Units/kg for an average 60 kg subject).

Intramuscular administration of DAXXIFY (3, 10 or 30 Units/kg) to pregnant rats four times during the period of organogenesis (on gestation days 7, 10, 13, and 16) caused decreased fetal body weight and decreased fetal skeletal ossification at the highest dose, which was associated with maternal toxicity. No embryofetal developmental toxicity was noted at doses up to 10 Units/kg which is 15 times the MRHD.

Intramuscular administration of DAXXIFY (0.02, 0.1, 0.48 or 2.4 Units/kg/day) to pregnant rabbits during the period of organogenesis (total of 13 doses) resulted in maternal lethality at 2.4 Units/kg/day and significant decreased maternal body weight at 0.48 Units/kg/day. No embryofetal developmental toxicity was noted at doses up to 0.48 Units/kg/day which is approximately equivalent to the MRHD.

8.2 Lactation

Risk Summary

There are no data on the presence of DAXXIFY in human or animal milk, the effects on the breastfed infant, or the effects on milk production. The developmental and health benefits of breastfeeding should be considered along with the mother's clinical need for DAXXIFY and any potential adverse effects on the breastfed infant from DAXXIFY or from the underlying maternal condition.

8.4 Pediatric Use

Safety and effectiveness of DAXXIFY in patients less than 18 years of age have not been established.

8.5 Geriatric Use

Among the 406 subjects treated with DAXXIFY in the placebo-controlled clinical trials, 36 subjects were 65 years or older. There was no increase in the incidence of treatment-related adverse events in patients over 65 years treated with DAXXIFY. Clinical studies of DAXXIFY did not include sufficient numbers of subjects

aged 65 and older to determine whether they responded differently from younger subjects. [see *Clinical Studies (14)*]

10 OVERDOSAGE

Excessive doses of DAXXIFY may be expected to produce neuromuscular weakness with a variety of symptoms. Respiratory support may be required where excessive doses cause paralysis of the respiratory muscles. In the event of overdose, the patient should be medically monitored for symptoms or excessive muscle weakness or muscle paralysis. [see *Warnings and Precautions (5.6), (5.7)*] Symptomatic treatment may be necessary.

Symptoms of overdose are not likely to be present immediately following injection. Should accidental injection or oral ingestion occur, the person should be medically supervised for several weeks for signs and symptoms of excessive muscle weakness or paralysis.

In the event of overdose, antitoxin raised against botulinum toxin is available from the Centers for Disease Control and Prevention (CDC) in Atlanta, GA. However, the antitoxin will not reverse any botulinum toxin-induced effects already apparent by the time of antitoxin administration. In the event of suspected or actual cases of botulinum toxin poisoning, please contact your local or state Health Department to process a request for antitoxin through the CDC. If you do not receive a response within 30 minutes, please contact the CDC directly at 1-770-488-7100.

11 DESCRIPTION

DaxibotulinumtoxinA-lanm is an acetylcholine release inhibitor and neuromuscular blocking agent. DaxibotulinumtoxinA-lanm is a 150 kDa botulinum toxin without accessory proteins purified from the bacterium *Clostridium botulinum* type A.

DAXXIFY (daxibotulinumtoxinA-lanm) for injection is supplied as a sterile, preservative-free, white to off-white lyophilized powder in a single-dose vial for intramuscular use after reconstitution. DAXXIFY is formulated with a 35 amino acid peptide excipient (RTP004) that prevents surface adsorption and promotes thermal stability of DAXXIFY. Each vial contains 50 Units or 100 Units of daxibotulinumtoxinA-lanm, L-histidine (0.14 mg), L-histidine-HCl monohydrate (0.65 mg), polysorbate 20 (0.1 mg), RTP004 peptide (11.7 mcg), and trehalose dihydrate (36 mg).

12 CLINICAL PHARMACOLOGY

12.1 Mechanism of Action

DAXXIFY blocks cholinergic transmission at the neuromuscular junction by inhibiting the release of acetylcholine. When injected into skeletal muscle, DAXXIFY is internalized into the nerve terminal, translocates into the neuronal cytosol where it cleaves SNAP25, a protein necessary for synaptic vesicle membrane docking and subsequent release of acetylcholine which produces a dose dependent decrease of muscle function. Recovery of activity is gradual and results from the degradation of neurotoxin light chain in the neurons with a contribution from the formation of axonal sprouts. Muscle reinnervation occurs, leading to a slow reversal of the pharmacological effects of DAXXIFY.

12.2 Pharmacodynamics

No formal pharmacodynamics studies have been conducted with DAXXIFY.

12.3 Pharmacokinetics

Using currently available analytical technology, it is not possible to detect DAXXIFY in the peripheral blood following intramuscular injection at the recommended dose.

13 NONCLINICAL TOXICOLOGY

13.1 Carcinogenesis, Mutagenesis, Impairment of Fertility

Long-term studies in animals have not been performed to evaluate the carcinogenic potential of DAXXIFY.

Genotoxicity studies have not been conducted for DAXXIFY.

In fertility and early embryonic development studies in rats, intramuscular administration of (3, 10 or 20 Units/kg in males and 3, 10 or 30 Units/kg in females) to either male or female rats prior to mating and during mating (7 doses, 1 week apart for males; and 4 doses, 1 week apart for females) to untreated animals, caused reduced fertility at doses associated with paternal or maternal toxicity as indicated by reductions in body weight gain and food intake. No effects on fertility were noted at 3 Units/kg in males or 10 Units/kg in females, which are approximately 4 and 15 times, respectively, the MRHD.

14 CLINICAL STUDIES

14.1 Glabellar Lines

Two randomized, double-blind, multi-center, placebo-controlled clinical trials, Studies GL-1 and GL-2, were conducted to evaluate DAXXIFY for use in the temporary improvement of moderate-to-severe glabellar lines in adults. The 2 trials enrolled a total of 609 subjects (≥ 18 years old) with glabellar lines of at least moderate severity at maximum frown. A total of 405 subjects were randomized and 406 were treated with 40 Units of DAXXIFY and 204 subjects were randomized and 203 were treated with an equal volume of placebo. Subjects were excluded if they had eyelid ptosis, deep dermal scarring, excessive dermatochalasis or an inability to lessen glabellar lines by physically spreading them apart. Enrolled subjects were 21 to 75 years old, with a mean age of 50 years, were predominantly female (87%) and Caucasian (86%). The total dose was delivered in 5 equally divided intramuscular injections of 8 Units each to specific sites in the glabellar ([Figure 1](#)). Subjects were followed for at least 24 weeks after treatment.

Efficacy was determined through the assessment by investigators and subjects of frown wrinkle severity at maximum frown using a 4-point scale (0 = none, 1 = mild, 2 = moderate, 3 = severe). The primary efficacy endpoint (treatment success) was defined as achieving a score of 0 or 1 (none or mild) and an improvement of at least 2 points from baseline for both the investigator's and subject's assessments at Week 4. The percentages of subjects with treatment success at Week 4 are presented in [Table 4](#).

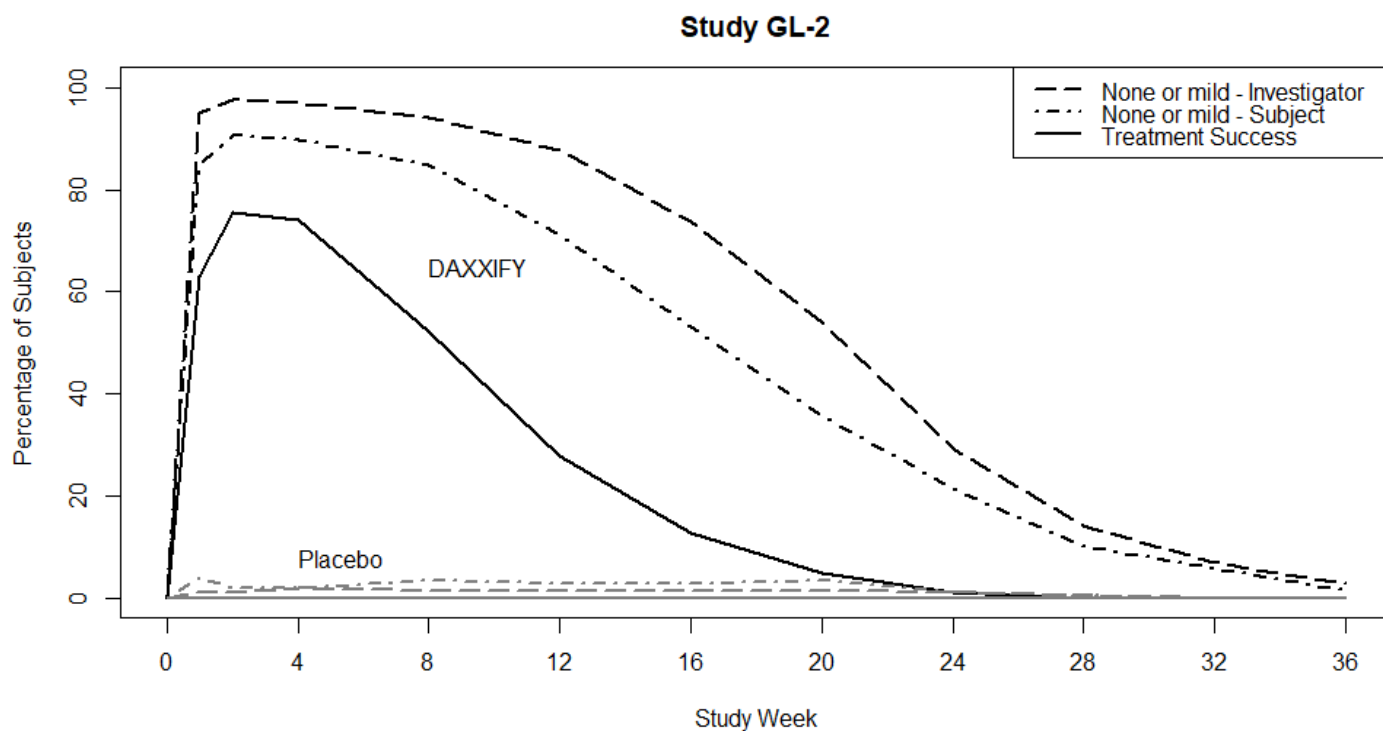
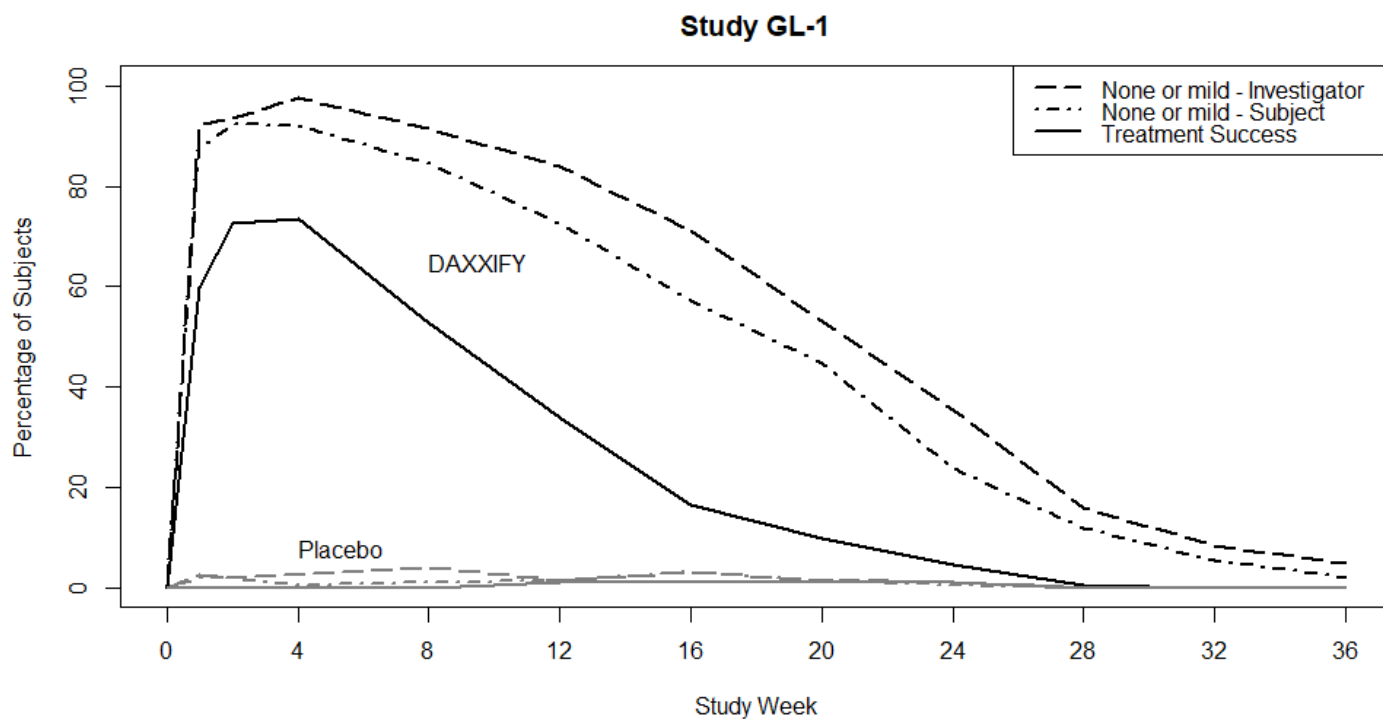
TABLE 4: Percentage of Subjects Achieving a Score of None or Mild and ≥ 2 -Grade Improvement from Baseline on the Investigator and Subject Assessment of Glabellar Line Severity at Maximum Frown at Week 4

| | STUDY GL-1 | | | STUDY GL-2 | | |
|-----------------------------------|-----------------------------|-----------------------------|---|-----------------------------|-----------------------------|---|
| | DAXXIFY (N=201) n (%) | Placebo (N=102) n (%) | Treatment Difference and 95% Confidence Interval | DAXXIFY (N=205) n (%) | Placebo (N=101) n (%) | Treatment Difference and 95% Confidence Interval |
| Treatment Success ^a | 148 (74%) | 0 (0%) | 74% (68%, 80%) | 152 (74%) | 0 (0%) | 74% (68%, 80%) |
| Individual Components | | | | | | |
| Investigator Assessment | 172 (86%) | 1 (1%) | --- | 187 (92%) | 2 (2%) | --- |
| Subject Assessment | 152 (76%) | 0 | --- | 156 (77%) | 0 | --- |

^a A score of 0 or 1 (none or mild) and ≥ 2 -Grade Improvement from Baseline on both the Investigator and Subject Assessment

Figure 2 shows the proportion of subjects, over 36 weeks, rated as 0 or 1 (none or mild) by the investigator, 0 or 1 by the subject, and 0 or 1 with at least a 2-point improvement from their baseline based on both the investigator and subject ratings. Subjects were followed through at least Week 24 and then were discontinued from the study when both the investigator and subject scores returned to baseline. Subjects who returned to baseline levels prior to Week 36 were counted as non-responders following study discontinuation.

FIGURE 2: Proportion of subjects rated as 0 or 1 (none or mild) by investigator, 0 or 1 by the subject, and 0 or 1 with at least 2-point improvement from their baseline (based on both the investigator and subject ratings) in Study GL-1 and Study GL-2.



Treatment Success is defined as a score of 0 or 1 (none or mild) and ≥ 2 -grade improvement from baseline on both the investigator and subject assessment.

16 HOW SUPPLIED/STORAGE AND HANDLING

How Supplied

DAXXIFY (daxibotulinumtoxinA-lanm) for injection is a sterile lyophilized powder supplied in a single-dose vial in the following sizes:

Carton containing one 50 Units/Vial NDC 72960-111-01

Carton containing one 100 Units/Vial NDC 72960-112-01

Storage and Handling

Unopened DAXXIFY vials should be stored at room temperature 20°C to 25°C (68°F to 77°F) or refrigerated at 2°C to 8°C (36°F to 46°F) in the original carton to protect from light.

17 PATIENT COUNSELING INFORMATION

Advise the patient to read the FDA-approved patient labeling (Medication Guide).

Swallowing, Speaking or Breathing Difficulties, or other Unusual Symptoms

Advise patients or caregivers to seek immediate medical care if swallowing, speech or respiratory disorders arise or existing symptoms worsen. *[see Warnings and Precautions (5.7)]*

Ability to Operate Machinery or Vehicles

Advise patients if they develop any unusual symptoms such as loss of strength, muscle weakness, blurred vision, or drooping eyelids occur, they should avoid driving a car or engaging in other potentially hazardous activities. *[see Warnings and Precautions (5)]*

Ophthalmic Adverse Reaction

Inform patients that DAXXIFY injection may cause eye dryness. Advise patients to report symptoms of eye dryness (e.g., eye pain, eye irritation, photosensitivity, or changes in vision) to their doctor. *[see Warnings and Precautions (5.9)]*

Manufactured by:

Revanche Therapeutics, Inc.

Newark, CA 94560

U.S. License Number 2101

© 2022 Revanche Therapeutics, Inc.

DAXXIFY is a trademark of Revanche Therapeutics, Inc.

PI761127-0.8

MEDICATION GUIDE

DAXXIFY™ (dax'-i-fye)

daxibotulinumtoxinA-lanm

for injection, for intramuscular use

What is the most important information I should know about DAXXIFY?

DAXXIFY may cause serious side effects that can be life threatening. Call your healthcare provider or get medical help right away if you have any of these problems after treatment with DAXXIFY:

- **Problems swallowing, speaking, or breathing. These problems can happen hours, days, or weeks after an injection of DAXXIFY** if the muscles that you use to breathe and swallow become weak after the injection. Death can happen as a complication if you have severe problems with swallowing or breathing after treatment with DAXXIFY.
 - People with certain breathing problems may need to use muscles in their neck to help them breathe. These people may be at greater risk for serious breathing problems with DAXXIFY.
 - Swallowing problems may last for several months. People who cannot swallow well may need a feeding tube to receive food and water. If swallowing problems are severe, food or liquids may go into your lungs. People who already have swallowing or breathing problems before receiving DAXXIFY have the highest risk of getting these problems.
- **Spread of toxin effects.** In some cases, the effect of botulinum toxin may affect areas of the body away from the injection site and cause symptoms of a serious condition called botulism. The symptoms of botulism include:
 - loss of strength and muscle weakness all over the body
 - blurred vision and drooping eyelids
 - trouble saying words clearly
 - trouble breathing
 - double vision
 - hoarseness or change or loss of voice
 - loss of bladder control
 - trouble swallowing

These symptoms can happen hours, days, or weeks after you receive an injection of DAXXIFY.

These problems could make it unsafe for you to drive a car or do other dangerous activities. See "**What should I avoid while receiving DAXXIFY?**"

Although no serious adverse reactions of distant spread of toxin effect associated with DAXXIFY have been reported in clinical studies of 40 Units for glabellar lines, these reactions are possible.

What is DAXXIFY?

DAXXIFY is a prescription medicine for adults that is injected into muscles to temporarily improve the look of moderate to severe frown lines between the eyebrows (glabellar lines).

It is not known if DAXXIFY is safe and effective in children less than 18 years of age.

Do not receive DAXXIFY if you:

- are allergic to DAXXIFY or any of the ingredients in DAXXIFY. See the end of this Medication Guide for a list of ingredients in DAXXIFY.
- had an allergic reaction to any other botulinum toxin product such as rimabotulinumtoxinB (MYOBLOC), onabotulinumtoxinA (BOTOX, BOTOX COSMETIC), abobotulinumtoxinA (DYSPOUR), incobotulinumtoxinA (XEOMIN) or prabotulinumtoxinA-xvfs (JEUVEAU).
- have a skin infection at the planned injection site.

Before receiving DAXXIFY, tell your healthcare provider about all of your medical conditions, including if you:

- have a disease that affects your muscles and nerves (such as amyotrophic lateral sclerosis [ALS or Lou Gehrig's disease], myasthenia gravis or Lambert-Eaton syndrome). See "**What is the most important information I should know about DAXXIFY?**"
- have had any side effect from any other botulinum toxin in the past
- have or have had a breathing problem, such as asthma or emphysema
- have or have had swallowing problems
- have or have had heart problems
- have or have had bleeding problems
- have weakness of your forehead muscles, such as trouble raising your eyebrows
- have drooping eyelids
- plan to have surgery

- have had surgery on your face
- have had dry eye problems with the use of botulinum toxin products in the past
- are pregnant or plan to become pregnant. It is not known if DAXXIFY can harm your unborn baby.
- are breastfeeding or plan to breastfeed. It is not known if DAXXIFY passes into your breast milk. Talk to your healthcare provider about the best way to feed your baby during treatment with DAXXIFY.

Tell your healthcare provider about all the medicines you take, including prescription and over-the-counter medicines, vitamins and herbal supplements.

Using DAXXIFY with certain other medicines may cause serious side effects. **Do not start any new medicines until you have told your healthcare provider that you have received DAXXIFY in the past.**

Especially tell your healthcare provider if you:

- have received any other botulinum toxin product in the last 4 months.
- have received injections of botulinum toxin such as rimabotulinumtoxinB (MYOBLOC), onabotulinumtoxinA (BOTOX, BOTOX COSMETIC), abobotulinumtoxinA (DYSPORT), prabotulinumtoxinA (JEUVEAU) and incobotulinumtoxinA, (XEOMIN) in the past. Be sure your healthcare provider knows exactly which product you received.

Know the medicines you take. Keep a list of your medicines with you to show your healthcare provider and pharmacist each time you get a new medicine.

How will I receive DAXXIFY?

- DAXXIFY is an injection that your healthcare provider will give you.
- DAXXIFY is injected into your affected muscles.
Your healthcare provider may change your dose of DAXXIFY, until you and your healthcare provider find the best dose for you.
- DAXXIFY should not be received more than 1 time every 3 months.
- Your healthcare provider will tell you how often you will receive your dose of DAXXIFY injections.

What should I avoid while receiving DAXXIFY?

DAXXIFY may cause loss of strength or general muscle weakness, blurred vision, or drooping eyelids within hours to weeks of receiving DAXXIFY. **If this happens, do not drive a car, operate machinery, or do other dangerous activities.** See "**What is the most important information I should know about DAXXIFY?**"

What are the possible side effects of DAXXIFY?

DAXXIFY may cause serious side effects, including:

- See "**What is the most important information I should know about DAXXIFY?**"
- **Heart problems.** Irregular heartbeat and heart attack that have resulted in death, have happened in some people who received botulinum toxin products.
- **Eye problems.** Dry eye, reduced blinking, and corneal problems have happened in some people who receive DAXXIFY to treat glabellar lines. Tell your healthcare provider if you develop eye pain or irritation, sensitivity to light, or changes in your vision.
- **Allergic reactions.** Symptoms of an allergic reaction to DAXXIFY may include: itching, rash, redness, swelling, wheezing, trouble breathing, or dizziness or feeling faint. Tell your healthcare provider or get medical help right away if you have wheezing or trouble breathing, or if you feel dizzy or faint.

The most common side effects of DAXXIFY include:

- headache
- loss of the ability to move the muscles in your face
- eyelid drooping

These are not all the possible side effects of DAXXIFY.

Call your doctor for medical advice about side effects. You may report side effects to FDA at 1-800-FDA-1088.

You may also report side effect to Revance Therapeutics, Inc. at 1-877-373-8669.

General information about DAXXIFY.

Medicines are sometimes prescribed for purposes other than those listed in a Medication Guide. You can ask your pharmacist or healthcare provider for information about DAXXIFY that is written for healthcare professionals.

What are the ingredients in DAXXIFY?

Active ingredient: daxibotulinumtoxinA-lanm

This label may not be the latest approved by FDA.
For current labeling information, please visit <https://www.fda.gov/drugsatfda>

Inactive ingredients: L-histidine, L-histidine-HCl monohydrate, polysorbate 20, RTP004 peptide, trehalose dihydrate

Manufactured by: Revance Therapeutics, Inc.

Newark, CA 94560

U.S. License Number 2101

© 2022 Revance Therapeutics, Inc.

All trademarks are the property of their respective owners.

MG761127-0.6

This Medication Guide has been approved by the U.S. Food and Drug Administration

Issued: 9/2022