

HIGHLIGHTS OF PRESCRIBING INFORMATION

These highlights do not include all the information needed to use PRILOSEC safely and effectively. See full prescribing information for PRILOSEC.

PRILOSEC® (omeprazole magnesium) for delayed-release oral suspension
Initial U.S. Approval: 1989

INDICATIONS AND USAGE

PRILOSEC is a proton pump inhibitor (PPI) indicated for the:

- Treatment of active duodenal ulcer in adults (1.1)
- Eradication of *Helicobacter pylori* to reduce the risk of duodenal ulcer recurrence in adults (1.2)
- Treatment of active benign gastric ulcer in adults (1.3)
- Treatment of symptomatic gastroesophageal reflux disease (GERD) in patients 1 year of age and older (1.4)
- Treatment of erosive esophagitis (EE) due to acid-mediated GERD in patients 1 month of age and older (1.5)
- Maintenance of healing of EE due to acid-mediated GERD in patients 1 year of age and older (1.6)
- Pathologic hypersecretory conditions in adults (1.7)

DOSAGE AND ADMINISTRATION

Indication	Recommended Adult (2.1) and Pediatric Dosage (2.2)
Treatment of Active Duodenal Ulcer	20 mg once daily for 4 weeks; some patients may require an additional 4 weeks (2.1)
<i>H. pylori</i> Eradication to Reduce the Risk of Duodenal Ulcer Recurrence	
<i>Triple Therapy:</i>	
PRILOSEC	20 mg
Amoxicillin	1000 mg
Clarithromycin	500 mg
<i>Dual Therapy:</i>	
PRILOSEC	40 mg once daily for 14 days**
Clarithromycin	500 mg three times daily for 14 days (2.1)
Active Benign Gastric Ulcer	40 mg once daily for 4 to 8 weeks (2.1)
Symptomatic GERD	20 mg once daily for up to 4 weeks (2.1) See full prescribing information for weight based dosing in pediatric patients 1 year of age and older (2.2)
EE due to Acid-Mediated GERD	20 mg once daily for 4 to 8 weeks (2.1)*** See full prescribing information for weight based dosing in pediatric patients 1 month of age and older (2.2)
Maintenance of Healing of EE due to Acid-Mediated GERD	20 mg once daily (2.1)**** See full prescribing information for weight based dosing in pediatric patients 1 year of age and older (2.2)
Pathological Hypersecretory Conditions	Starting dose is 60 mg once daily (varies with individual patient, see full prescribing information) as long as clinically indicated (2.1)

* if ulcer present, continue PRILOSEC 20 mg once daily for an additional 18 days.

** if ulcer present, continue PRILOSEC 20 mg once daily for an additional 14 days.

*** an additional 4 weeks of treatment may be given if no response; if recurrence additional 4 to 8 week courses may be considered.

**** studied for 12 months. Reduce the dosage to 10 mg once daily for patients with hepatic impairment (Child-Pugh Class A, B, or C) and Asian patients (8.6, 8.7)

DOSAGE FORMS AND STRENGTHS

PRILOSEC for delayed-release oral suspension: 2.5 mg and 10 mg omeprazole in unit dose packets (3)

CONTRAINDICATIONS

- Patients with known hypersensitivity to substituted benzimidazoles or any component of the formulation. (4)
- Patients receiving rilpivirine-containing products. (4, 7)
- Refer to the Contraindications section of the prescribing information for clarithromycin and amoxicillin, when administered in combination with PRILOSEC. (4)

WARNINGS AND PRECAUTIONS

- **Gastric Malignancy:** In adults, symptomatic response does not preclude the presence of gastric malignancy. Consider additional follow-up and diagnostic testing. (5.1)
- **Acute Tubulointerstitial Nephritis:** Discontinue treatment and evaluate patients (5.2)
- **Clostridium difficile-Associated Diarrhea:** PPI therapy may be associated with increased risk. (5.3)
- **Bone Fracture:** Long-term and multiple daily dose PPI therapy may be associated with an increased risk for osteoporosis-related fractures of the hip, wrist or spine. (5.4)
- **Severe Cutaneous Adverse Reactions:** Discontinue at the first signs or symptoms of severe cutaneous adverse reactions or other signs of hypersensitivity and consider further evaluation. (5.5)
- **Cutaneous and Systemic Lupus Erythematosus:** Mostly cutaneous; new onset or exacerbation of existing disease; discontinue PRILOSEC and refer to specialist for evaluation. (5.6)
- **Interaction with Clopidogrel:** Avoid concomitant use of PRILOSEC. (5.7, 7)
- **Cyanocobalamin (Vitamin B-12) Deficiency:** Daily long-term use (e.g., longer than 3 years) may lead to malabsorption or a deficiency of cyanocobalamin. (5.8)
- **Hypomagnesemia and Mineral Metabolism:** Reported rarely with prolonged treatment with PPIs. (5.9)
- **Interaction with St. John's Wort or Rifampin:** Avoid concomitant use of PRILOSEC. (5.10, 7)
- **Interactions with Diagnostic Investigations for Neuroendocrine Tumors:** Increased Chromogranin A (CgA) levels may interfere with diagnostic investigations for neuroendocrine tumors; temporarily stop PRILOSEC at least 14 days before assessing CgA levels. (5.11, 7)
- **Interaction with Methotrexate:** Concomitant use with PPIs may elevate and/or prolong serum concentrations of methotrexate and/or its metabolite, possibly leading to toxicity. With high dose methotrexate administration, consider a temporary withdrawal of PRILOSEC. (5.12, 7)
- **Fundic Gland Polyps:** Risk increases with long-term use, especially beyond one year. Use the shortest duration of therapy. (5.13)

ADVERSE REACTIONS

Adults: Most common adverse reactions in adults (incidence $\geq 2\%$) are

- Headache, abdominal pain, nausea, diarrhea, vomiting, and flatulence. (6)

Pediatric patients (1 to 16 years of age):

- Safety profile similar to that in adults, except that respiratory system events and fever were the most frequently reported reactions in pediatric studies. (8.4)

To report SUSPECTED ADVERSE REACTIONS, contact Covis Pharma at 1-866-488-4423 or FDA at 1-800-FDA-1088 or www.fda.gov/medwatch.

DRUG INTERACTIONS

See full prescribing information for a list of clinically important drug interactions. (7)

See 17 for PATIENT COUNSELING INFORMATION and Medication Guide.

Revised: 07/2023

- 1 INDICATIONS AND USAGE**
 - 1.1 Treatment of Active Duodenal Ulcer
 - 1.2 *Helicobacter pylori* Eradication to Reduce the Risk of Duodenal Ulcer Recurrence
 - 1.3 Treatment of Active Benign Gastric Ulcer
 - 1.4 Treatment of Symptomatic Gastroesophageal Reflux Disease (GERD)
 - 1.5 Treatment of Erosive Esophagitis (EE) Due to Acid-Mediated GERD
 - 1.6 Maintenance of Healing of EE Due to Acid-Mediated GERD
 - 1.7 Pathological Hypersecretory Conditions
 - 2 DOSAGE AND ADMINISTRATION**
 - 2.1 Recommended Adult Dosage Regimen by Indication
 - 2.2 Recommended Pediatric Dosage Regimen by Indication
 - 2.3 Administration Instructions
 - 3 DOSAGE FORMS AND STRENGTHS**
 - 4 CONTRAINDICATIONS**
 - 5 WARNINGS AND PRECAUTIONS**
 - 5.1 Presence of Gastric Malignancy
 - 5.2 Acute Tubulointerstitial Nephritis
 - 5.3 *Clostridium difficile*-Associated Diarrhea
 - 5.4 Bone Fracture
 - 5.5 Severe Cutaneous Adverse Reactions
 - 5.6 Cutaneous and Systemic Lupus Erythematosus
 - 5.7 Interaction with Clopidogrel
 - 5.8 Cyanocobalamin (Vitamin B-12) Deficiency
 - 5.9 Hypomagnesemia and Mineral Metabolism
 - 5.10 Interaction with St. John's Wort or Rifampin
 - 5.11 Interactions with Diagnostic Investigations for Neuroendocrine Tumors
 - 5.12 Interaction with Methotrexate
 - 5.13 Fundic Gland Polyps
 - 6 ADVERSE REACTIONS**
 - 6.1 Clinical Trials Experience with PRILOSEC
 - 6.2 Clinical Trials Experience with PRILOSEC in Combination Therapy for *H. pylori* Eradication
 - 6.3 Postmarketing Experience
 - 7 DRUG INTERACTIONS**
 - 8 USE IN SPECIFIC POPULATIONS**
 - 8.1 Pregnancy
 - 8.2 Lactation
 - 8.4 Pediatric Use
 - 8.5 Geriatric Use
 - 8.6 Hepatic Impairment
 - 8.7 Asian Population
 - 10 OVERDOSAGE**
 - 11 DESCRIPTION**
 - 12 CLINICAL PHARMACOLOGY**
 - 12.1 Mechanism of Action
 - 12.2 Pharmacodynamics
 - 12.3 Pharmacokinetics
 - 12.4 Microbiology
 - 12.5 Pharmacogenomics
 - 13 NONCLINICAL TOXICOLOGY**
 - 13.1 Carcinogenesis, Mutagenesis, Impairment of Fertility
 - 14 CLINICAL STUDIES**
 - 14.1 Active Duodenal Ulcer
 - 14.2 *H. pylori* Eradication in Patients with Duodenal Ulcer Disease
 - 14.3 Active Benign Gastric Ulcer
 - 14.4 Symptomatic GERD
 - 14.5 EE due to Acid-Mediated GERD
 - 14.6 Maintenance of Healing of EE due to Acid-Mediated GERD
 - 14.7 Pathological Hypersecretory Conditions
 - 14.8 Pediatric Studies for the Treatment of Symptomatic GERD, Treatment of EE due to Acid-Mediated GERD, and Maintenance of Healing of EE due to Acid-Mediated GERD
 - 15 REFERENCES**
 - 16 HOW SUPPLIED/STORAGE AND HANDLING**
 - 17 PATIENT COUNSELING INFORMATION**
- *Sections or subsections omitted from the full prescribing information are not listed.

FULL PRESCRIBING INFORMATION

1 INDICATIONS AND USAGE

1.1 Treatment of Active Duodenal Ulcer

PRILOSEC is indicated for short-term treatment of active duodenal ulcer in adults. Most patients heal within four weeks. Some patients may require an additional four weeks of therapy.

1.2 *Helicobacter pylori* Eradication to Reduce the Risk of Duodenal Ulcer Recurrence

Eradication of *H. pylori* has been shown to reduce the risk of duodenal ulcer recurrence.

Triple Therapy

PRILOSEC in combination with clarithromycin and amoxicillin, is indicated for treatment of patients with *H. pylori* infection and duodenal ulcer disease (active or up to 1-year history) to eradicate *H. pylori* in adults.

Dual Therapy

PRILOSEC in combination with clarithromycin is indicated for treatment of patients with *H. pylori* infection and duodenal ulcer disease to eradicate *H. pylori* in adults.

Among patients who fail therapy, PRILOSEC with clarithromycin is more likely to be associated with the development of clarithromycin resistance as compared with triple therapy. In patients who fail therapy, susceptibility testing should be done. If resistance to clarithromycin is demonstrated or susceptibility testing is not possible, alternative antimicrobial therapy should be instituted [see *Clinical Pharmacology (12.4)* and the clarithromycin prescribing information, Microbiology section/].

1.3 Treatment of Active Benign Gastric Ulcer

PRILOSEC is indicated for short-term treatment (4 to 8 weeks) of active benign gastric ulcer in adults.

1.4 Treatment of Symptomatic Gastroesophageal Reflux Disease (GERD)

PRILOSEC is indicated for the treatment of heartburn and other symptoms associated with GERD for up to 4 weeks in patients 1 year of age and older.

1.5 Treatment of Erosive Esophagitis (EE) Due to Acid-Mediated GERD

Pediatric Patients 1 Year of Age to Adults

PRILOSEC is indicated for the short-term treatment (4 to 8 weeks) of EE due to acid-mediated GERD that has been diagnosed by endoscopy in patients 1 year of age and older.

The efficacy of PRILOSEC used for longer than 8 weeks in patients with EE has not been established. If a patient does not respond to 8 weeks of treatment, an additional 4 weeks of treatment may be given. If there is recurrence of EE or GERD symptoms (e.g., heartburn), additional 4 to 8 week courses of PRILOSEC may be considered.

Pediatric Patients 1 Month to Less than 1 Year of Age

PRILOSEC is indicated for the short-term treatment (up to 6 weeks) of EE due to acid-mediated GERD in pediatric patients 1 month to less than 1 year of age.

1.6 Maintenance of Healing of EE Due to Acid-Mediated GERD

PRILOSEC is indicated for the maintenance healing of EE due to acid-mediated GERD in patients 1 year of age and older.

Controlled studies do not extend beyond 12 months.

1.7 Pathological Hypersecretory Conditions

PRILOSEC is indicated for the long-term treatment of pathological hypersecretory conditions (e.g., Zollinger-Ellison syndrome, multiple endocrine adenomas and systemic mastocytosis) in adults.

2. DOSAGE AND ADMINISTRATION

2.1 Recommended Adult Dosage Regimen by Indication

Table 1 shows the recommended dosage of PRILOSEC in adult patients by indication.

Table 1: Recommended Dosage Regimen of PRILOSEC in Adults by Indication

Indication	Dosage of PRILOSEC	Treatment Duration
Treatment of Active Duodenal Ulcer	20 mg once daily	4 weeks ¹
<i>Helicobacter pylori</i> Eradication to Reduce the Risk of Duodenal Ulcer Recurrence	<i>Triple Therapy</i> PRILOSEC 20 mg Amoxicillin 1000 mg Clarithromycin 500 mg Take all three drugs twice daily	10 days In patients with an ulcer present at the time of initiation of therapy, continue PRILOSEC 20 mg once daily for an additional 18 days for ulcer healing and symptom relief.
	<i>Dual Therapy</i> PRILOSEC 40 mg once daily Clarithromycin 500 mg three times daily	14 days In patients with an ulcer present at the time of initiation of therapy, an additional 14 days of PRILOSEC 20 mg once daily is recommended for ulcer healing and symptom relief.
Active Benign Gastric Ulcer	40 mg once daily	4 to 8 weeks
Treatment of Symptomatic GERD	20 mg once daily	Up to 4 weeks
Treatment of EE due to Acid-Mediated GERD	20 mg once daily	4 to 8 weeks ²
Maintenance of Healing of EE due to Acid-Mediated GERD	20 mg once daily ³	Controlled studies do not extend beyond 12 months.
Pathological Hypersecretory Conditions	Starting dose is 60 mg once daily; adjust to patient needs Daily dosages of greater than 80 mg should be administered in divided doses. Dosages up to 120 mg three times daily have been administered.	As long as clinically indicated. Some patients with Zollinger-Ellison syndrome have been treated continuously for more than 5 years.

1. Most patients heal within 4 weeks; some patients may require an additional 4 weeks of therapy to achieve healing

- The efficacy of PRILOSEC used for longer than 8 weeks in patients with EE has not been established. If a patient does not respond to 8 weeks of treatment, an additional 4 weeks of treatment may be given. If there is recurrence of EE or GERD symptoms (e.g., heartburn), additional 4 to 8 week courses of PRILOSEC may be considered.
- Dosage reduction to 10 mg once daily is recommended for patients with hepatic impairment (Child-Pugh Class A, B or C) and Asian patients when used for the maintenance of healing of EE [see *Use in Specific Populations (8.6, 8.7) and Clinical Pharmacology (12.3, 12.5)*].

2.2 Recommended Pediatric Dosage Regimen by Indication

Table 2 shows the recommended dosage of PRILOSEC in pediatric patients by indication.

Table 2: Recommended Dosage Regimen of PRILOSEC in Pediatric Patients by Indication

Indication	PRILOSEC Dosage Regimen and Duration		
	Patient Age	Weight-Based Dose (mg)	Regimen and Duration
Treatment of Symptomatic GERD	1 to 16 years	5 to less than 10 kg: 5 mg	Once daily for up to 4 weeks
		10 to less than 20 kg: 10 mg	
		20 kg and greater: 20 mg	
Treatment of EE due to Acid-Mediated GERD	1 to 16 years	5 to less than 10 kg: 5 mg	Once daily for 4 to 8 weeks ¹
		10 to less than 20 kg: 10 mg	
		20 kg and greater: 20 mg	
	1 month to less than 1 year	3 to less than 5 kg: 2.5 mg	Once daily up to 6 weeks
		5 to less than 10 kg: 5 mg	
		10 kg and greater: 10 mg	
Maintenance of Healing of EE due to Acid-Mediated GERD	1 to 16 years	5 to less than 10 kg: 5 mg	Once daily. Controlled studies do not extend beyond 12 months
		10 to less than 20 kg: 10 mg	
		20 kg and greater: 20 mg	

- The efficacy of PRILOSEC used for longer than 8 weeks in patients with EE has not been established. If a patient does not respond to 8 weeks of treatment, an additional 4 weeks of treatment may be given. If there is recurrence of EE or GERD symptoms (e.g., heartburn), additional 4 to 8 week courses of PRILOSEC may be considered.

2.3 Administration Instructions

- PRILOSEC is intended to be prepared in water and administered orally or via a nasogastric (NG) or gastric tube.
- Take PRILOSEC before meals.
- Antacids may be used concomitantly with PRILOSEC.
- Missed doses: If a dose is missed, administer as soon as possible. However, if the next scheduled dose is due, do not take the missed dose, and take the next dose on time. Do not take two doses at one time to make up for a missed dose.

Oral Administration in Water

- Empty the contents of a 2.5 mg packet into a container containing 5 mL of water.
- Empty the contents of a 10 mg packet into a container containing 15 mL of water.
- Stir.
- Leave 2 to 3 minutes to thicken.
- Stir and drink within 30 minutes.
- If any material remains after drinking, add more water, stir and drink immediately.

Administration with Water via a NG or Gastric Tube (Size 6 or Larger)

1. Add 5 mL of water to a catheter tipped syringe and then add the contents of a 2.5 mg packet (or 15 mL of water for the 10 mg packet). It is important to only use a catheter tipped syringe when administering through a nasogastric tube or gastric tube.
2. Immediately shake the syringe and leave 2 to 3 minutes to thicken.
3. Shake the syringe and inject through the nasogastric or gastric tube into the stomach within 30 minutes.
4. Refill the syringe with an equal amount of water.
5. Shake and flush any remaining contents from the nasogastric or gastric tube into the stomach.

3. DOSAGE FORMS AND STRENGTHS

PRILOSEC For Delayed-Release Oral Suspension: 2.5 mg and 10 mg omeprazole in unit dose packets containing a fine yellow powder, consisting of white to brownish omeprazole magnesium granules and pale yellow inactive granules.

4. CONTRAINDICATIONS

- PRILOSEC is contraindicated in patients with known hypersensitivity to substituted benzimidazoles or to any component of the formulation. Hypersensitivity reactions may include anaphylaxis, anaphylactic shock, angioedema, bronchospasm, acute tubulointerstitial nephritis, and urticaria [*see Warnings and Precautions (5.2), Adverse Reactions (6)*].
- Proton pump inhibitors (PPIs), including PRILOSEC, are contraindicated in patients receiving rilpivirine-containing products [*see Drug Interactions (7)*].
- For information about contraindications of antibacterial agents (clarithromycin and amoxicillin) indicated in combination with PRILOSEC, refer to the CONTRAINDICATIONS section of their package inserts.

5. WARNINGS AND PRECAUTIONS

5.1 Presence of Gastric Malignancy

In adults, symptomatic response to therapy with PRILOSEC does not preclude the presence of gastric malignancy. Consider additional follow-up and diagnostic testing in adult patients who have a suboptimal response or an early symptomatic relapse after completing treatment with a PPI. In older patients, also consider an endoscopy.

5.2 Acute Tubulointerstitial Nephritis

Acute tubulointerstitial nephritis (TIN) has been observed in patients taking PPIs and may occur at any point during PPI therapy. Patients may present with varying signs and symptoms from symptomatic hypersensitivity reactions to non-specific symptoms of decreased renal function (e.g., malaise, nausea, anorexia). In reported case series, some patients were diagnosed on biopsy and in the absence of extra-renal manifestations (e.g., fever, rash or arthralgia). Discontinue PRILOSEC and evaluate patients with suspected acute TIN [*see Contraindications (4)*].

5.3 *Clostridium difficile*-Associated Diarrhea

Published observational studies suggest that PPI therapy like PRILOSEC may be associated with an increased risk of *Clostridium difficile*-associated diarrhea, especially in hospitalized patients. This diagnosis should be considered for diarrhea that does not improve [*see Adverse Reactions (6.2)*].

Patients should use the lowest dose and shortest duration of PPI therapy appropriate to the condition being treated.

Omeprazole

Reproductive studies conducted with omeprazole in rats at oral doses up to 138 mg/kg/day (about 34 times an oral human dose of 40 mg on a body surface area basis) and in rabbits at doses up to 69.1 mg/kg/day (about 34 times an oral human dose of 40 mg on a body surface area basis) during organogenesis did not disclose any evidence for a teratogenic potential of omeprazole. In rabbits, omeprazole in a dose range of 6.9 to 69.1 mg/kg/day (about 3.4 to 34 times an oral human dose of 40 mg on a body surface area basis) administered during organogenesis produced dose-related increases in embryo-lethality, fetal resorptions, and pregnancy disruptions. In rats, dose-related embryo/fetal toxicity and postnatal developmental toxicity were observed in offspring resulting from parents treated with omeprazole at 13.8 to 138.0 mg/kg/day (about 3.4 to 34 times an oral human doses of 40 mg on a body surface area basis), administered prior to mating through the lactation period.

Esomeprazole

The data described below was generated from studies using esomeprazole, an enantiomer of omeprazole. The animal to human dose multiples are based on the assumption of equal systemic exposure to esomeprazole in humans following oral administration of either 40 mg esomeprazole or 40 mg omeprazole.

No effects on embryo-fetal development were observed in reproduction studies with esomeprazole magnesium in rats at oral doses up to 280 mg/kg/day (about 68 times an oral human dose of 40 mg on a body surface area basis) or in rabbits at oral doses up to 86 mg/kg/day (about 42 times an oral human dose of 40 mg esomeprazole or 40 mg omeprazole on a body surface area basis) administered during organogenesis.

A pre- and postnatal developmental toxicity study in rats with additional endpoints to evaluate bone development was performed with esomeprazole magnesium at oral doses of 14 to 280 mg/kg/day (about 3.4 to 68 times an oral human dose of 40 mg esomeprazole or 40 mg omeprazole on a body surface area basis). Neonatal/early postnatal (birth to weaning) survival was decreased at doses equal to or greater than 138 mg/kg/day (about 34 times an oral human dose of 40 mg esomeprazole or 40 mg omeprazole on a body surface area basis). Body weight and body weight gain were reduced and neurobehavioral or general developmental delays in the immediate post-weaning timeframe were evident at doses equal to or greater than 69 mg/kg/day (about 17 times an oral human dose of 40 mg esomeprazole or 40 mg omeprazole on a body surface area basis). In addition, decreased femur length, width and thickness of cortical bone, decreased thickness of the tibial growth plate and minimal to mild bone marrow hypocellularity were noted at doses equal to or greater than 14 mg/kg/day (about 3.4 times an oral human dose of 40 mg esomeprazole or 40 mg omeprazole on a body surface area basis). Physeal dysplasia in the femur was observed in offspring of rats treated with oral doses of esomeprazole magnesium at doses equal to or greater than 138 mg/kg/day (about 34 times an oral human dose of 40 mg esomeprazole or 40 mg omeprazole on a body surface area basis).

Effects on maternal bone were observed in pregnant and lactating rats in the pre- and postnatal toxicity study when esomeprazole magnesium was administered at oral doses of 14 to 280 mg/kg/day (about 3.4 to 68 times an oral human dose of 40 mg esomeprazole or 40 mg omeprazole on a body surface area basis). When rats were dosed from gestational day 7 through weaning on postnatal day 21, a statistically significant decrease in maternal femur weight of up to 14% (as compared to placebo treatment) was observed at doses equal to or greater than 138 mg/kg/day (about 34 times an oral human dose of 40 mg esomeprazole or 40 mg omeprazole on a body surface area basis).

A pre- and postnatal development study in rats with esomeprazole strontium (using equimolar doses compared to esomeprazole magnesium study) produced similar results in dams and pups as described above.

A follow up developmental toxicity study in rats with further time points to evaluate pup bone development from postnatal day 2 to adulthood was performed with esomeprazole magnesium at oral doses of 280 mg/kg/day (about 68 times an oral human dose of 40 mg on a body surface area basis) where esomeprazole administration was from either gestational day 7 or gestational day 16 until parturition. When maternal administration was confined to gestation only, there were no effects on bone physeal morphology in the offspring at any age.

8.2 Lactation

Risk Summary

Limited data suggest omeprazole may be present in human milk. There are no clinical data on the effects of omeprazole on the breastfed infant or on milk production. The developmental and health benefits of breastfeeding should be considered along with the mother's clinical need for PRILOSEC and any potential adverse effects on the breastfed infant from PRILOSEC or from the underlying maternal condition.

8.4 Pediatric Use

The safety and effectiveness of PRILOSEC have been established in pediatric patients 1 to 16 years for the treatment of symptomatic GERD, treatment of EE due to acid-mediated GERD, and maintenance of healing of EE due to acid-mediated GERD. Use of PRILOSEC in this age group is supported by adequate and well-controlled studies in adults and uncontrolled safety, efficacy and pharmacokinetic studies performed in pediatric and adolescent patients [see *Clinical Pharmacology (12.3)*, *Clinical Studies (14.8)*].

The safety and effectiveness of PRILOSEC have been established in pediatric patients 1 month to less than 1 year of age for the treatment of EE due to acid-mediated GERD and is supported by adequate and well-controlled studies in adults and safety, pharmacokinetic, and pharmacodynamic studies performed in pediatric patients [see *Clinical Pharmacology (12.3)*].

In the pediatric population, adverse reactions of the respiratory system were frequently reported in the entire (1 month to 16 year) age group. Otitis media was frequently reported in the 1 month to <1 year age group, fever was frequently reported in the 1 to <2 year age group, and accidental injuries were frequently reported in the 2 to 16 year age group [see *Adverse Reactions (6.1)*].

The safety and effectiveness of PRILOSEC have not been established in:

- patients less than 1 year of age for:
 - Treatment of symptomatic GERD
 - Maintenance of healing of EE due to acid-mediated GERD
- pediatric patients for:
 - Treatment of active duodenal ulcer
 - *H. pylori* eradication to reduce the risk of duodenal ulcer recurrence
 - Treatment of active benign gastric ulcer
 - Pathological hypersecretory conditions
- patients less than 1 month of age for any indication.

Juvenile Animal Data

Esomeprazole, an enantiomer of omeprazole, was shown to decrease body weight, body weight gain, femur weight, femur length, and overall growth at oral doses about 34 to 68 times a daily human dose of 40 mg esomeprazole or 40 mg omeprazole based on body surface area in a juvenile rat toxicity study. The animal to human dose multiples are based on the assumption of equal systemic exposure to esomeprazole in humans following oral administration of either 40 mg esomeprazole or 40 mg omeprazole.

A 28-day toxicity study with a 14-day recovery phase was conducted in juvenile rats with esomeprazole magnesium at doses of 70 to 280 mg/kg/day (about 17 to 68 times a daily oral human dose of 40 mg esomeprazole or 40 mg omeprazole on a body surface area basis). An increase in the number of deaths at the high dose of 280 mg/kg/day was observed when juvenile rats were administered esomeprazole magnesium from postnatal day 7 through postnatal day 35. In addition, doses equal to or greater than 140 mg/kg/day (about 34 times a daily oral human dose of 40 mg esomeprazole or 40 mg omeprazole on a body surface area basis), produced treatment-related decreases in body weight (approximately 14%) and body weight gain, decreases in femur weight and femur length, and affected overall growth. Comparable findings described above have also been observed in this study with another esomeprazole salt, esomeprazole strontium, at equimolar doses of esomeprazole.

8.5 Geriatric Use

Omeprazole was administered to over 2000 elderly individuals (≥ 65 years of age) in clinical trials in the U.S. and Europe. There were no differences in safety and effectiveness between the elderly and younger subjects. Other reported clinical experience has not identified differences in response between the elderly and younger subjects, but greater sensitivity of some older individuals cannot be ruled out.

Pharmacokinetic studies have shown the elimination rate was somewhat decreased in the elderly and bioavailability was increased. The plasma clearance of omeprazole was 250 mL/min (about half that of young volunteers) and its plasma half-life averaged one hour, about twice that of young healthy volunteers. However, no dosage adjustment is necessary in the elderly [see *Clinical Pharmacology (12.3)*].

8.6 Hepatic Impairment

In patients with hepatic impairment (Child-Pugh Class A, B, or C) exposure to omeprazole substantially increased compared to healthy subjects. Dosage reduction of PRILOSEC to 10 mg once daily is recommended for patients with hepatic impairment for maintenance of healing of EE [see *Dosage and Administration (2.1), Clinical Pharmacology (12.3)*].

8.7 Asian Population

In studies of healthy subjects, Asians had approximately a four-fold higher exposure than Caucasians. Dosage reduction of PRILOSEC to 10 mg once daily is recommended for Asian patients for maintenance of healing of EE [see *Dosage and Administration (2.1), Clinical Pharmacology (12.5)*].

10 OVERDOSAGE

Reports have been received of overdosage with omeprazole in humans. Doses ranged up to 2400 mg (120 times the usual recommended clinical dose). Manifestations were variable, but included confusion, drowsiness, blurred vision, tachycardia, nausea, vomiting, diaphoresis, flushing, headache, dry mouth, and other adverse reactions similar to those seen in normal clinical experience [see *Adverse Reactions (6)*]. Symptoms were transient, and no serious clinical outcome has been reported when PRILOSEC was taken alone. No specific antidote for omeprazole overdosage is known.

Omeprazole is extensively protein bound and is, therefore, not readily dialyzable. In the event of overdosage, treatment should be symptomatic and supportive.

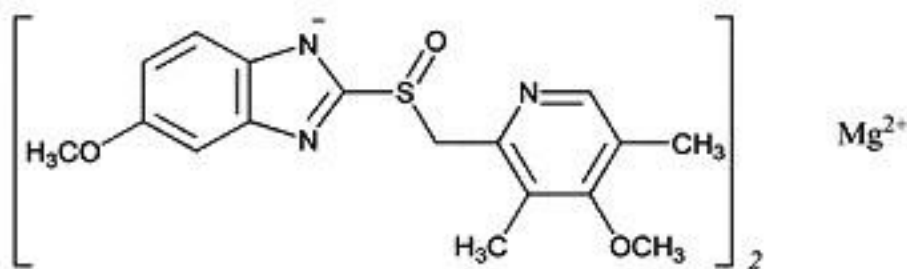
If over-exposure occurs, call your Poison Control Center at 1-800-222-1222 for current information on the management of poisoning or overdosage.

11 DESCRIPTION

The active ingredient in PRILOSEC (omeprazole magnesium) for delayed-release oral suspension, is 5-Methoxy-2-[[[4-methoxy-3,5-dimethyl-2-pyridinyl)methyl]sulfinyl]-1*H*-benzimidazole, magnesium salt (2:1).

Omeprazole magnesium is a white to off white powder with a melting point with degradation at 200°C. The salt is slightly soluble (0.25 mg/mL) in water at 25°C, and it is soluble in methanol. The half-life is highly pH dependent.

The empirical formula for omeprazole magnesium is $(C_{17}H_{18}N_3O_3S)_2 Mg$, the molecular weight is 713.12 and the structural formula is:



Each packet of PRILOSEC for delayed-release oral suspension contains either 2.5 mg or 10 mg of omeprazole (equivalent to 2.8 mg or 11.2 mg of omeprazole magnesium trihydrate), in the form of enteric-coated granules with the following inactive ingredients: glyceryl monostearate, hydroxypropyl cellulose, hypromellose, magnesium stearate, methacrylic acid copolymer C, polysorbate, sugar spheres, talc, and triethyl citrate, and also inactive granules. The inactive granules are composed of the following ingredients: citric acid, crospovidone, dextrose, hydroxypropyl cellulose, iron oxide and xanthan gum. The omeprazole granules and inactive granules are constituted with water to form a suspension and are given by oral, nasogastric or direct gastric administration.

12 CLINICAL PHARMACOLOGY

12.1 Mechanism of Action

Omeprazole belongs to a class of antisecretory compounds, the substituted benzimidazoles, that suppress gastric acid secretion by specific inhibition of the H^+/K^+ ATPase enzyme system at the secretory surface of the gastric parietal cell. Because this enzyme system is regarded as the acid (proton) pump within the gastric mucosa, omeprazole has been characterized as a gastric acid-pump inhibitor, in that it blocks the final step of acid production. This effect is dose-related and leads to inhibition of both basal and stimulated acid secretion irrespective of the stimulus.

12.2 Pharmacodynamics

Antisecretory Activity

After oral administration, the onset of the antisecretory effect of omeprazole occurs within one hour, with the maximum effect occurring within two hours. Inhibition of secretion is about 50% of maximum at 24 hours and the duration of inhibition lasts up to 72 hours. The antisecretory effect thus lasts far longer than would be expected from the very short (less than one hour) plasma half-life, apparently due to prolonged binding to the parietal H^+/K^+ ATPase enzyme. When the drug is discontinued, secretory activity returns gradually, over 3 to 5 days. The inhibitory effect of omeprazole on acid secretion increases with repeated once-daily dosing, reaching a plateau after four days.

Results from numerous studies of the antisecretory effect of multiple doses of 20 mg and 40 mg of omeprazole in healthy subjects and patients are shown below. The “max” value represents determinations at a time of maximum effect (2 to 6 hours after dosing), while “min” values are those 24 hours after the last dose of omeprazole.

Table 5: Range of Mean Values from Multiple Studies of the Mean Antisecretory Effects of Omeprazole After Multiple Daily Dosing

Parameter	Omeprazole 20 mg		Omeprazole 40 mg	
	Max	Min	Max	Min
% Decrease in Basal Acid Output	78 ¹	58-80	94 ¹	80-93
% Decrease in Peak Acid Output	79 ¹	50-59	88 ¹	62-68
% Decrease in 24-hr. Intra-gastric Acidity		80-97		92-94

1. Single Studies

Single daily oral doses of omeprazole ranging from a dose of 10 mg to 40 mg have produced 100% inhibition of 24-hour intra-gastric acidity in some patients.

Serum Gastrin Effects

In studies involving more than 200 patients, serum gastrin levels increased during the first 1 to 2 weeks of once-daily administration of therapeutic doses of omeprazole in parallel with inhibition of acid secretion. No further increase in serum gastrin occurred with continued treatment. In comparison with histamine H₂-receptor antagonists, the median increases produced by 20 mg doses of omeprazole were higher (1.3 to 3.6 fold vs. 1.1 to 1.8 fold increase). Gastrin values returned to pretreatment levels, usually within 1 to 2 weeks after discontinuation of therapy.

Increased gastrin causes enterochromaffin-like cell hyperplasia and increased serum Chromogranin A (CgA) levels. The increased CgA levels may cause false positive results in diagnostic investigations for neuroendocrine tumors [*see Warnings and Precautions (5.10)*].

Enterochromaffin-like (ECL) Cell Effects

Human gastric biopsy specimens have been obtained from more than 3000 patients (both children and adults) treated with omeprazole in long-term clinical trials. The incidence of ECL cell hyperplasia in these studies increased with time; however, no case of ECL cell carcinoids, dysplasia, or neoplasia has been found in these patients. However, these studies are of insufficient duration and size to rule out the possible influence of long-term administration of omeprazole on the development of any premalignant or malignant conditions.

Other Effects

Systemic effects of omeprazole in the CNS, cardiovascular and respiratory systems have not been found to date. Omeprazole, given in oral doses of 30 or 40 mg for 2 to 4 weeks, had no effect on thyroid function, carbohydrate metabolism, or circulating levels of parathyroid hormone, cortisol, estradiol, testosterone, prolactin, cholecystokinin or secretin.

No effect on gastric emptying of the solid and liquid components of a test meal was demonstrated after a single dose of omeprazole 90 mg. In healthy subjects, a single intravenous dose of omeprazole (0.35 mg/kg) had no effect on intrinsic factor secretion. No systematic dose-dependent effect has been observed on basal or stimulated pepsin output in humans.

However, when intragastric pH is maintained at 4.0 or above, basal pepsin output is low, and pepsin activity is decreased.

As do other agents that elevate intragastric pH, omeprazole administered for 14 days in healthy subjects produced a significant increase in the intragastric concentrations of viable bacteria. The pattern of the bacterial species was unchanged from that commonly found in saliva. All changes resolved within three days of stopping treatment.

The course of Barrett's esophagus in 106 patients was evaluated in a U.S. double-blind controlled study of PRILOSEC 40 mg twice daily for 12 months followed by 20 mg twice daily for 12 months or ranitidine 300 mg twice daily for 24 months. No clinically significant impact on Barrett's mucosa by antisecretory therapy was observed. Although neosquamous epithelium developed during antisecretory therapy, complete elimination of Barrett's mucosa was not achieved. No significant difference was observed between treatment groups in development of dysplasia in Barrett's mucosa and no patient developed esophageal carcinoma during treatment. No significant differences between treatment groups were observed in development of ECL cell hyperplasia, corpus atrophic gastritis, corpus intestinal metaplasia, or colon polyps exceeding 3 mm in diameter.

12.3 Pharmacokinetics

Absorption

PRILOSEC for delayed-release oral suspension contains omeprazole magnesium granules and inactive granules to be administered in water. Absorption of omeprazole begins only after the gastro-resistant granules leave the stomach. The pharmacokinetics of omeprazole are time dependent, with higher plasma concentrations at steady state compared to after a single dose. The systemic exposure (AUC and C_{max}) to omeprazole following once daily dosing of 20 mg delayed-release oral suspension for 5 days is 51% and 58% higher, respectively, than after the first dose. Peak plasma concentrations of

omeprazole after repeated doses of delayed-release oral suspension occur within 1.5 to 2 hours. In healthy subjects, the plasma half-life is 0.5 to 1 hour.

Distribution

Protein binding is approximately 95%.

Elimination

Metabolism

Omeprazole is extensively metabolized by the cytochrome P450 (CYP) enzyme system. The major part of its metabolism is dependent on the polymorphically expressed CYP2C19, responsible for the formation of hydroxyomeprazole, the major metabolite in plasma. The remaining part is dependent on another specific isoform, CYP3A4, responsible for the formation of omeprazole sulphone.

Excretion

Following single dose oral administration of a buffered solution of omeprazole, little if any unchanged drug was excreted in urine. The majority of the dose (about 77%) was eliminated in urine as at least six metabolites. Two were identified as hydroxyomeprazole and the corresponding carboxylic acid. The remainder of the dose was recoverable in feces. This implies a significant biliary excretion of the metabolites of omeprazole. Three metabolites have been identified in plasma the sulfide and sulfone derivatives of omeprazole, and hydroxyomeprazole. These metabolites have very little or no antisecretory activity.

Combination Therapy with Antimicrobials

Omeprazole 40 mg daily was given in combination with clarithromycin 500 mg every 8 hours to healthy adult male subjects. The steady state plasma concentrations of omeprazole were increased (C_{max} , AUC_{0-24} , and $T_{1/2}$ increases of 30%, 89% and 34% respectively) by the concomitant administration of clarithromycin. The observed increases in omeprazole plasma concentration were associated with the following pharmacological effects. The mean 24-hour gastric pH value was when omeprazole was administered alone and 5.7 when co-administered with clarithromycin.

The plasma concentrations of clarithromycin and 14-hydroxy-clarithromycin were increased by the concomitant administration of omeprazole. For clarithromycin, the mean C_{max} was 10% greater, the mean C_{min} was 27% greater, and the mean AUC_{0-8} was 15% greater when clarithromycin was administered with omeprazole than when clarithromycin was administered alone. Similar results were seen for 14-hydroxy-clarithromycin, the mean C_{max} was 45% greater, the mean C_{min} was 57% greater, and the mean AUC_{0-8} was 45% greater. Clarithromycin concentrations in the gastric tissue and mucus were also increased by concomitant administration of omeprazole.

Table 6: Clarithromycin Tissue Concentrations 2 hours after Dose¹

Tissue	Clarithromycin	Clarithromycin + Omeprazole
Antrum	10.48 ± 2.01 (n = 5)	19.96 ± 4.71 (n = 5)
Fundus	20.81 ± 7.64 (n = 5)	24.25 ± 6.37 (n = 5)
Mucus	4.15 ± 7.74 (n = 4)	39.29 ± 32.79 (n = 4)

1. Mean ± SD (µg/g)

Specific Populations

Geriatric Patients

The elimination rate of omeprazole was somewhat decreased in the elderly, and bioavailability was increased. Omeprazole was 76% bioavailable when a single 40 mg oral dose of omeprazole (buffered solution) was administered to healthy elderly volunteers, versus 58% in young volunteers given the same dose. Nearly 70% of the dose was recovered in

urine as metabolites of omeprazole and no unchanged drug was detected. The plasma clearance of omeprazole was 250 mL/min (about half that of young volunteers) and its plasma half-life averaged one hour, about twice that of young healthy volunteers.

Pediatric Patients

2 to 16 Years of Age

The pharmacokinetics of omeprazole have been investigated in pediatric patients 2 to 16 years of age:

Table 7: Pharmacokinetic Parameters of Omeprazole Following Single and Repeated Oral Administration in Pediatric Populations Compared with Adults

Single or Repeated Oral Dosing/Parameter	Children ¹ ≤ 20 kg 2-5 years 10 mg	Children ¹ > 20 kg 6-16 years 20 mg	Adults ² (mean 76 kg) 23-29 years (n=12)
Single Dosing			
C _{max} ³ (ng/mL)	288 (n=10)	495 (n=49)	668
AUC ³ (ng h/mL)	511 (n=7)	1140 (n=32)	1220
Repeated Dosing			
C _{max} ³ (ng/mL)	539 (n=4)	851 (n=32)	1458
AUC ³ (ng h/mL)	1179 (n=2)	2276 (n=23)	3352

1. Data from single and repeated dose studies. Doses of 10, 20 and 40 mg omeprazole administered as suspension prepared from omeprazole magnesium delayed-release capsules.
2. Data from a single and repeated dose study. Doses of 10, 20 and 40 mg omeprazole administered as delayed-release capsules.
3. Plasma concentration adjusted to an oral dose of 1 mg/kg.

Following comparable mg/kg doses of omeprazole, younger children (2 to 5 years of age) have lower AUCs than children 6 to 16 years of age or adults; AUCs of the latter two groups did not differ [see *Dosage and Administration (2)*].

1 to 11 Months of Age

A population pharmacokinetics model was used to determine appropriate doses of PRILOSEC in pediatric patients

1 month to less than 1 year of age for treatment (up to 6 weeks) of erosive esophagitis due to acid-mediated GERD. The model was based on data from 64 children 0.5 month to 16 year of age. Only limited data were available in children younger than the age of 1 year. Omeprazole was administered to the pediatric patients in these studies as an oral suspension prepared from the delayed-release capsules. Pediatric doses were simulated in the age group of 1 to 11 month, to achieve comparable omeprazole exposures with adults following treatment with 20 mg once daily [see *Dosage and Administration (2.2)*].

Racial or Ethnic Groups

[See *Clinical Pharmacology (12.5)*].

Patients with Renal Impairment

In patients with chronic renal impairment (creatinine clearance between 10 and 62 mL/min/1.73 m²), the disposition of omeprazole was very similar to that in healthy subjects, although there was a slight increase in bioavailability. Because urinary excretion is a primary route of excretion of omeprazole metabolites, their elimination slowed in proportion to the decreased creatinine clearance. This increase in bioavailability is not considered to be clinically meaningful.

Patients with Hepatic Impairment

In patients with chronic hepatic disease classified as Child-Pugh Class A (n=3), B (n=4) and C (n=1), the bioavailability increased to approximately 100% compared to healthy subjects, reflecting decreased first-pass effect, and the plasma half-life of the drug increased to nearly 3 hours compared with the half-life in healthy subjects of 0.5 to 1 hour. Plasma clearance averaged 70 mL/min, compared with a value of 500 to 600 mL/min in healthy subjects [see *Dosage and Administration* (2.1), *Use in Specific Populations* (8.6)].

Drug Interaction Studies

Effect of Omeprazole on Other Drugs

Omeprazole is a time-dependent inhibitor of CYP2C19 and can increase the systemic exposure of co-administered drugs that are CYP2C19 substrates. In addition, administration of omeprazole increases intragastric pH and can alter the systemic exposure of certain drugs that exhibit pH-dependent solubility.

Antiretrovirals

For some antiretroviral drugs, such as rilpivirine, atazanavir and nelfinavir, decreased serum concentrations have been reported when given together with omeprazole [see *Drug Interactions* (7)].

Rilpivirine: Following multiple doses of rilpivirine (150 mg, daily) and omeprazole (20 mg, daily), AUC was decreased by 40%, C_{max} by 40%, and C_{min} by 33% for rilpivirine.

Nelfinavir: Following multiple doses of nelfinavir (1250 mg, twice daily) and omeprazole (40 mg daily), AUC was decreased by 36% and 92%, C_{max} by 37% and 89% and C_{min} by 39% and 75% respectively for nelfinavir and M8.

Atazanavir: Following multiple doses of atazanavir (400 mg, daily) and omeprazole (40 mg, daily, 2 hours before atazanavir), AUC was decreased by 94%, C_{max} by 96%, and C_{min} by 95%.

Saquinavir: Following multiple dosing of saquinavir/ritonavir (1000/100 mg) twice daily for 15 days with omeprazole 40 mg daily co-administered days 11 to 15.

AUC was increased by 82%, C_{max} by 75%, and C_{min} by 106%. The mechanism behind this interaction is not fully elucidated.

Clopidogrel

In a crossover clinical study, 72 healthy subjects were administered clopidogrel (300 mg loading dose followed by 75 mg per day) alone and with omeprazole (80 mg at the same time as clopidogrel) for 5 days. The exposure to the active metabolite of clopidogrel was decreased by 46% (Day 1) and 42% (Day 5) when clopidogrel and omeprazole were administered together.

Results from another crossover study in healthy subjects showed a similar pharmacokinetic interaction between clopidogrel (300 mg loading dose/75 mg daily maintenance dose) and omeprazole 80 mg daily when co-administered for 30 days. Exposure to the active metabolite of clopidogrel was reduced by 41% to 46% over this time period.

In another study, 72 healthy subjects were given the same doses of clopidogrel and 80 mg omeprazole but the drugs were administered 12 hours apart; the results were similar, indicating that administering clopidogrel and omeprazole at different times does not prevent their interaction [see *Warnings and Precautions* (5.6), *Drug Interactions* (7)].

Mycophenolate Mofetil

Administration of omeprazole 20 mg twice daily for 4 days and a single 1000 mg dose of MMF approximately one hour after the last dose of omeprazole to 12 healthy subjects in a cross-over study resulted in a 52% reduction in the C_{max} and 23% reduction in the AUC of MPA [see *Drug Interactions* (7)].

Cilostazol

Omeprazole acts as an inhibitor of CYP2C19. Omeprazole, given in doses of 40 mg daily for one week to 20 healthy subjects in cross-over study, increased C_{max} and AUC of cilostazol by 18% and 26% respectively. The C_{max} and AUC of one of the active metabolites, 3,4- dihydro-cilostazol, which has 4-7 times the activity of cilostazol, were increased by 29% and 69%, respectively. Co-administration of cilostazol with omeprazole is expected to increase concentrations of cilostazol and the above mentioned active metabolite [see *Drug Interactions (7)*].

Diazepam

Concomitant administration of omeprazole 20 mg once daily and diazepam 0.1 mg/kg given intravenously resulted in 27% decrease in clearance and 36% increase in diazepam half-life [see *Drug Interactions (7)*].

Digoxin

Concomitant administration of omeprazole 20 mg once daily and digoxin in healthy subjects increased the bioavailability of digoxin by 10% (30% in two subjects) [see *Drug Interactions (7)*].

Effect of Other Drugs on Omeprazole

Voriconazole

Concomitant administration of omeprazole and voriconazole (a combined inhibitor of CYP2C19 and CYP3A4) resulted in more than doubling of the omeprazole exposure. When voriconazole (400 mg every 12 hours for one day, followed by 200 mg once daily for 6 days) was given with omeprazole (40 mg once daily for 7 days) to healthy subjects, the steady-state C_{max} and AUC₀₋₂₄ of omeprazole significantly increased: an average of 2 times (90% CI: 1.8, 2.6) and 4 times (90% CI: 3.3, 4.4), respectively, as compared to when omeprazole was given without voriconazole [see *Drug Interactions (7)*].

12.4 Microbiology

Omeprazole and clarithromycin dual therapy and omeprazole, clarithromycin and amoxicillin triple therapy have been shown to be active against most strains of *Helicobacter pylori* *in vitro* and in clinical infections [see *Indications and Usage (1.2)*, *Clinical Studies (14.2)*].

Helicobacter pylori

Susceptibility testing of *H. pylori* isolates was performed for amoxicillin and clarithromycin using agar dilution methodology¹, and minimum inhibitory concentrations (MICs) were determined.

Standardized susceptibility test procedures require the use of laboratory control microorganisms to control the technical aspects of the laboratory procedures.

Pretreatment Resistance

Clarithromycin pretreatment resistance rates were 3.5% (4/113) in the omeprazole/clarithromycin dual therapy studies (4 and 5) and 9.3% (41/439) in omeprazole/clarithromycin/amoxicillin triple therapy studies (1, 2 and 3).

Amoxicillin pretreatment susceptible isolates (≤ 0.25 $\mu\text{g/mL}$) were found in 99.3% (436/439) of the patients in the omeprazole/clarithromycin/amoxicillin triple therapy studies (1, 2, and 3). Amoxicillin pretreatment minimum inhibitory concentrations (MICs) > 0.25 $\mu\text{g/mL}$ occurred in 0.7% (3/439) of the patients, all of whom were in the clarithromycin and amoxicillin study arm. One patient had an unconfirmed pretreatment amoxicillin minimum inhibitory concentration (MIC) of > 256 $\mu\text{g/mL}$ by Ettest[®].

Table 8: Clarithromycin Susceptibility Test Results and Clinical/Bacteriological Outcomes

Clarithromycin Susceptibility Test Results and Clinical/Bacteriological Outcomes ¹						
Clarithromycin Pretreatment Results		Clarithromycin Post-treatment Results				
		<i>H. pylori</i> negative – eradicated	<i>H. pylori</i> positive – not eradicated Post-treatment susceptibility results			
			S ²	I ²	R ²	No MIC
Dual Therapy – (omeprazole 40 mg once daily/clarithromycin 500 three times daily for 14 days followed by omeprazole 20 mg once daily for another 14 days) (Studies 4, 5)						
Susceptible ²	108	72	1		26	9
Intermediate ²	1				1	
Resistant ²	4				4	
Triple Therapy – (omeprazole 20 mg twice daily/clarithromycin 500 mg twice daily/amoxicillin 1 g twice daily for 10 days – Studies 1, 2, 3; followed by omeprazole 20 mg once daily for another 18 days – Studies 1, 2)						
Susceptible ²	171	153	7		3	8
Intermediate ²						
Resistant ²	14	4	1		6	3

1. Includes only patients with pretreatment clarithromycin susceptibility test results.

2. Susceptible (S) MIC ≤ 0.25 µg/mL, Intermediate (I) MIC 0.5-1.0 µg/mL, Resistant (R) MIC ≥ 2 µg/mL.

Patients not eradicated of *H. pylori* following omeprazole/clarithromycin/amoxicillin triple therapy or omeprazole/clarithromycin dual therapy will likely have clarithromycin resistant *H. pylori* isolates. Therefore, clarithromycin susceptibility testing should be done, if possible. Patients with clarithromycin resistant *H. pylori* should not be treated with any of the following: omeprazole/clarithromycin dual therapy, omeprazole/clarithromycin/amoxicillin triple therapy, or other regimens which include clarithromycin as the sole antimicrobial agent.

Amoxicillin Susceptibility Test Results and Clinical/Bacteriological Outcomes

In the triple therapy clinical trials, 84.9% (157/185) of the patients in the omeprazole/clarithromycin/amoxicillin treatment group who had pretreatment amoxicillin susceptible MICs (≤ 0.25 µg/mL) were eradicated of *H. pylori* and 15.1% (28/185) failed therapy. Of the 28 patients who failed triple therapy, 11 had no post-treatment susceptibility test results and 17 had post-treatment *H. pylori* isolates with amoxicillin susceptible MICs. Eleven of the patients who failed triple therapy also had post-treatment *H. pylori* isolates with clarithromycin resistant MICs.

Susceptibility Test for Helicobacter pylori

For susceptibility testing information about *Helicobacter pylori*, see Microbiology section in prescribing information for clarithromycin and amoxicillin.

Effects on Gastrointestinal Microbial Ecology

Decreased gastric acidity due to any means including proton pump inhibitors, increases gastric counts of bacteria normally present in the gastrointestinal tract. Treatment with proton pump inhibitors may lead to slightly increased risk of gastrointestinal infections such as *Salmonella* and *Campylobacter* and, in hospitalized patients, possibly also *Clostridium difficile*.

12.5 Pharmacogenomics

CYP2C19, a polymorphic enzyme, is involved in the metabolism of omeprazole. The CYP2C19*1 allele is fully functional while the CYP2C19*2 and *3 alleles are nonfunctional. There are other alleles associated with no or reduced enzymatic function. Patients carrying two fully functional alleles are extensive metabolizers and those carrying two loss-of-function alleles are poor metabolizers. In extensive metabolizers, omeprazole is primarily metabolized by CYP2C19. The systemic exposure to omeprazole varies with a patient's metabolism status: poor metabolizers > intermediate

metabolizers > extensive metabolizers. Approximately 3% of Caucasians and 15 to 20% of Asians are CYP2C19 poor metabolizers.

In a pharmacokinetic study of single 20 mg omeprazole dose, the AUC of omeprazole in Asian subjects was approximately four-fold of that in Caucasians [see *Dosage and Administration (2.1), Use in Specific Populations (8.7)*].

13 NONCLINICAL TOXICOLOGY

13.1 Carcinogenesis, Mutagenesis, Impairment of Fertility

In two 24-month carcinogenicity studies in rats, omeprazole at daily doses of 1.7, 3.4, 13.8, 44.0 and 140.8 mg/kg/day (about 0.4 to 34 times a human dose of 40 mg/day, as expressed on a body surface area basis) produced gastric ECL cell carcinoids in a dose-related manner in both male and female rats; the incidence of this effect was markedly higher in female rats, which had higher blood levels of omeprazole. Gastric carcinoids seldom occur in the untreated rat. In addition, ECL cell hyperplasia was present in all treated groups of both sexes. In one of these studies, female rats were treated with 13.8 mg omeprazole/kg/day (about 3.4 times a human dose of 40 mg/day, based on body surface area) for one year, and then followed for an additional year without the drug. No carcinoids were seen in these rats. An increased incidence of treatment-related ECL cell hyperplasia was observed at the end of one year (94% treated vs. 10% controls). By the second year the difference between treated and control rats was much smaller (46% vs. 26%) but still showed more hyperplasia in the treated group. Gastric adenocarcinoma was seen in one rat (2%). No similar tumor was seen in male or female rats treated for two years. For this strain of rat no similar tumor has been noted historically, but a finding involving only one tumor is difficult to interpret. In a 52-week toxicity study in Sprague-Dawley rats, brain astrocytomas were found in a small number of males that received omeprazole at dose levels of 0.4, 2, and 16 mg/kg/day (about 0.1 to 3.9 times the human dose of 40 mg/day, based on a body surface area basis). No astrocytomas were observed in female rats in this study. In a 2-year carcinogenicity study in Sprague-Dawley rats, no astrocytomas were found in males or females at the high dose of 140.8 mg/kg/day (about 34 times the human dose of 40 mg/day on a body surface area basis). A 78-week mouse carcinogenicity study of omeprazole did not show increased tumor occurrence, but the study was not conclusive. A 26-week p53 (+/-) transgenic mouse carcinogenicity study was not positive.

Omeprazole was positive for clastogenic effects in an *in vitro* human lymphocyte chromosomal aberration assay, in one of two *in vivo* mouse micronucleus tests, and in an *in vivo* bone marrow cell chromosomal aberration assay. Omeprazole was negative in the *in vitro* Ames test, an *in vitro* mouse lymphoma cell forward mutation assay, and an *in vivo* rat liver DNA damage assay.

Omeprazole at oral doses up to 138 mg/kg/day in rats (about 34 times an oral human dose of 40 mg on a body surface area basis) was found to have no effect on fertility and reproductive performance.

In 24-month carcinogenicity studies in rats, a dose-related significant increase in gastric carcinoid tumors and ECL cell hyperplasia was observed in both male and female animals [see *Warnings and Precautions (5)*]. Carcinoid tumors have also been observed in rats subjected to fundectomy or long-term treatment with other proton pump inhibitors or high doses of H₂-receptor antagonists.

14 CLINICAL STUDIES

14.1 Active Duodenal Ulcer

In a multicenter, double-blind, placebo-controlled study of 147 patients with endoscopically documented duodenal ulcer, the percentage of patients healed (per protocol) at 2 and 4 weeks was significantly higher with omeprazole magnesium delayed-release capsules 20 mg once daily than with placebo ($p \leq 0.01$).

Treatment of Active Duodenal Ulcer % of Patients Healed

	omeprazole magnesium delayed-release capsules 20 mg a.m. (n=99)	Placebo a.m. (n=48)
Week 2	41 ¹	13
Week 4	75 ¹	27

1. ($p \leq 0.01$)

Complete daytime and nighttime pain relief occurred significantly faster ($p \leq 0.01$) in patients treated with omeprazole magnesium delayed-release capsules 20 mg than in patients treated with placebo. At the end of the study, significantly more patients who had received omeprazole magnesium delayed-release capsules had complete relief of daytime pain ($p \leq 0.05$) and nighttime pain ($p \leq 0.01$).

In a multicenter, double-blind study of 293 patients with endoscopically documented duodenal ulcer, the percentage of patients healed (per protocol) at 4 weeks was significantly higher with omeprazole magnesium delayed-release capsules 20 mg once daily than with ranitidine 150 mg b.i.d. ($p < 0.01$).

Treatment of Active Duodenal Ulcer % of Patients Healed

	omeprazole magnesium delayed-release capsules 20 mg a.m. (n = 145)	Ranitidine 150 mg twice daily (n = 148)
Week 2	42	34
Week 4	82 ¹	63

1. ($p < 0.01$)

Healing occurred significantly faster in patients treated with omeprazole magnesium delayed-release capsules than in those treated with ranitidine 150 mg b.i.d. ($p < 0.01$).

In a foreign multinational randomized, double-blind study of 105 patients with endoscopically documented duodenal ulcer, 20 mg and 40 mg of omeprazole magnesium delayed-release capsules were compared with 150 mg b.i.d. of ranitidine at 2, 4 and 8 weeks. At 2 and 4 weeks both doses of PRILOSEC were statistically superior (per protocol) to ranitidine, but 40 mg was not superior to 20 mg of omeprazole magnesium delayed-release capsules, and at 8 weeks there was no significant difference between any of the active drugs.

Treatment of Active Duodenal Ulcer % of Patients Healed

	omeprazole magnesium delayed-release capsules 20 mg (n = 34)	40 mg (n = 36)	Ranitidine 150 mg twice daily (n = 35)
Week 2	83 ¹	83 ¹	53
Week 4	97 ¹	100 ¹	82
Week 8	100	100	94

1. ($p \leq 0.01$)

14.2 *H. pylori* Eradication in Patients with Duodenal Ulcer Disease

Triple Therapy (omeprazole magnesium delayed-release capsules/clarithromycin/amoxicillin)

Three US, randomized, double-blind clinical studies in patients with *H. pylori* infection and duodenal ulcer disease (n = 558) compared omeprazole magnesium delayed-release capsules plus clarithromycin plus amoxicillin with clarithromycin plus amoxicillin. Two studies (1 and 2) were conducted in patients with an active duodenal ulcer, and the other study (3) was conducted in patients with a history of a duodenal ulcer in the past 5 years but without an ulcer present at the time of

enrollment. The dose regimen in the studies was omeprazole magnesium delayed-release capsules 20 mg twice daily plus clarithromycin 500 mg twice daily plus amoxicillin 1 g twice daily for 10 days; or clarithromycin 500 mg twice daily plus amoxicillin 1 g twice daily for 10 days. In studies 1 and 2, patients who took the omeprazole regimen also received an additional 18 days of omeprazole magnesium delayed-release capsules 20 mg once daily. Endpoints studied were eradication of *H. pylori* and duodenal ulcer healing (studies 1 and 2 only). *H. pylori* status was determined by CLOtest®, histology and culture in all three studies. For a given patient, *H. pylori* was considered eradicated if at least two of these tests were negative, and none was positive.

The combination of omeprazole plus clarithromycin plus amoxicillin was effective in eradicating *H. pylori*.

Table 9: Per- Protocol and Intent-to-Treat *H. pylori* Eradication Rates % of Patients Cured [95% Confidence Interval]

	Omeprazole magnesium delayed-release capsules+clarithromycin +amoxicillin		Clarithromycin +amoxicillin	
	Per-Protocol ¹	Intent-to-Treat ²	Per-Protocol ¹	Intent-to-Treat ²
Study 1	77 ³ [64, 86] (n = 64)	69 ³ [57, 79] (n = 80)	43 [31, 56] (n = 67)	37 [27, 48] (n = 84)
Study 2	78 ³ [67, 88] (n = 65)	73 ³ [61, 82] (n = 77)	41 [29, 54] (n = 68)	36 [26, 47] (n = 83)
Study 3	90 ³ [80, 96] (n = 69)	83 ³ [74, 91] (n = 84)	33 [24, 44] (n = 93)	32 [23, 42] (n = 99)

1. Patients were included in the analysis if they had confirmed duodenal ulcer disease (active ulcer, studies 1 and 2; history of ulcer within 5 years, study 3) and *H. pylori* infection at baseline defined as at least two of three positive endoscopic tests from CLOtest®, histology, and/or culture. Patients were included in the analysis if they completed the study. Additionally, if patients dropped out of the study due to an adverse event related to the study drug, they were included in the analysis as failures of therapy. The impact of eradication on ulcer recurrence has not been assessed in patients with a past history of ulcer.
2. Patients were included in the analysis if they had documented *H. pylori* infection at baseline and had confirmed duodenal ulcer disease. All dropouts were included as failures of therapy.
3. (p < 0.05) versus clarithromycin plus amoxicillin.

Dual Therapy (omeprazole magnesium delayed-release capsules/clarithromycin)

Four randomized, double-blind, multi-center studies (4, 5, 6, and 7) evaluated omeprazole magnesium delayed-release capsules 40 mg once daily plus clarithromycin 500 mg three times daily for 14 days, followed by omeprazole magnesium delayed-release capsules 20 mg once daily, (Studies 4, 5, and 7) or by omeprazole magnesium delayed-release capsules 40 mg once daily (Study 6) for an additional 14 days in patients with active duodenal ulcer associated with *H. pylori*. Studies 4 and 5 were conducted in the U.S. and Canada and enrolled 242 and 256 patients, respectively. *H. pylori* infection and duodenal ulcer were confirmed in 219 patients in Study 4 and 228 patients in Study 5. These studies compared the combination regimen to omeprazole magnesium delayed-release capsules and clarithromycin monotherapies. Studies 6 and 7 were conducted in Europe and enrolled 154 and 215 patients, respectively. *H. pylori* infection and duodenal ulcer were confirmed in 148 patients in Study 6 and 208 patients in Study 7. These studies compared the combination regimen with omeprazole monotherapy. The results for the efficacy analyses for these studies are described below. *H. pylori* eradication was defined as no positive test (culture or histology) at 4 weeks following the end of treatment, and two negative tests were required to be considered eradicated of *H. pylori*. In the per-protocol analysis, the following patients were excluded: dropouts, patients with missing *H. pylori* tests post-treatment, and patients that were not assessed for *H. pylori* eradication because they were found to have an ulcer at the end of treatment.

The combination of omeprazole and clarithromycin was effective in eradicating *H. pylori*.

Table 10: *H. pylori* Eradication Rates (Per-Protocol Analysis at 4 to 6 Weeks) % of Patients Cured [95% Confidence Interval]

	Omeprazole magnesium delayed-release capsules + Clarithromycin	Omeprazole magnesium delayed-release capsules	Clarithromycin
US Studies			
Study 4	74 [60, 85] ^{1,2} (n = 53)	0 [0, 7] (n = 54)	31 [18, 47] (n = 42)
Study 5	64 [51, 76] ^{1,2} (n = 61)	0 [0, 6] (n = 59)	39 [24, 55] (n = 44)
Non US Studies			
Study 6	83 [71, 92] ² (n = 60)	1 [0, 7] (n = 74)	N/A
Study 7	74 [64, 83] ² (n = 86)	1 [0, 6] (n = 90)	N/A

1. Statistically significantly higher than clarithromycin monotherapy (p < 0.05).
2. Statistically significantly higher than omeprazole monotherapy (p < 0.05).

Ulcer healing was not significantly different when clarithromycin was added to omeprazole therapy compared with omeprazole therapy alone.

The combination of omeprazole and clarithromycin was effective in eradicating *H. pylori* and reduced duodenal ulcer recurrence.

Table 11: Duodenal Ulcer Recurrence Rates by *H. pylori* Eradication Status % of Patients with Ulcer Recurrence

	<i>H. pylori</i> eradicated ¹	<i>H. pylori</i> not eradicated ¹
US Studies²		
6 months post-treatment		
Study 4	35 ⁴ (n=49)	60 (n=88)
Study 5	8 ⁴ (n=53) ⁴	60 (n=106)
Non US Studies³		
6 months post-treatment		
Study 6	5 ⁴ (n=43)	46 (n=78)
Study 7	6 ⁴ (n=53) ⁴	43 (n=107)
12 months post-treatment		
Study 6	5 ⁴ (n=39)	68 (n=71)

1. *H. pylori* eradication status assessed at same time point as ulcer recurrence.
2. Combined results for omeprazole magnesium delayed-release capsules + clarithromycin, omeprazole magnesium delayed-release capsules, and clarithromycin treatment arms.
3. Combined results for omeprazole magnesium delayed-release capsules + clarithromycin and omeprazole magnesium delayed-release capsules treatment arms.
4. (p ≤ 0.01) versus proportion with duodenal ulcer recurrence who were not *H. pylori* eradicated.

14.3 Active Benign Gastric Ulcer

In a U.S. multicenter, double-blind, study of omeprazole 40 mg once daily, 20 mg once daily, and placebo in 520 patients with endoscopically diagnosed gastric ulcer, the following results were obtained.

Treatment of Gastric Ulcer % of Patients Healed (All Patients Treated)

	omeprazole magnesium delayed-release capsules 20 mg once daily (n = 202)	omeprazole magnesium delayed-release capsules 40 mg once daily (n = 214)	Placebo (n = 104)
Week 4	47.5 ¹	55.6 ¹	30.8
Week 8	74.8 ¹	82.7 ^{1,2}	48.1

- (p < 0.01) omeprazole magnesium delayed-release capsules 40 mg or 20 mg versus placebo.
- (p < 0.05) omeprazole magnesium delayed-release capsules 40 mg versus 20 mg.

For the stratified groups of patients with ulcer size less than or equal to 1 cm, no difference in healing rates between 40 mg and 20 mg was detected at either 4 or 8 weeks. For patients with ulcer size greater than 1 cm, 40 mg was significantly more effective than 20 mg at 8 weeks.

In a foreign, multinational, double-blind study of 602 patients with endoscopically diagnosed gastric ulcer, omeprazole 40 mg once daily, 20 mg once daily, and ranitidine 150 mg twice a day were evaluated.

Treatment of Gastric Ulcer % of Patients Healed (All Patients Treated)

	omeprazole magnesium delayed-release capsules 20 mg once daily (n = 200)	omeprazole magnesium delayed-release capsules 40 mg once daily (n = 187)	Ranitidine 150 mg twice daily (n = 199)
Week 4	63.5	78.1 ^{1,2}	56.3
Week 8	81.5	91.4 ^{1,2}	78.4

- (p < 0.01) omeprazole magnesium delayed-release capsules 40 mg versus ranitidine.
- (p < 0.01) omeprazole magnesium delayed-release capsules 40 mg versus 20 mg.

14.4 Symptomatic GERD

A placebo-controlled study was conducted in Scandinavia to compare the efficacy of omeprazole 20 mg or 10 mg once daily for up to 4 weeks in the treatment of heartburn and other symptoms in GERD patients without EE. Results are shown below.

% Successful Symptomatic Outcome¹

	omeprazole magnesium delayed-release capsules 20 mg a.m.	omeprazole magnesium delayed-release capsules 10 mg a.m.	Placebo a.m.
All patients	46 ^{2,3} (n = 205)	31 ³ (n = 199)	13 (n = 105)
Patients with confirmed GERD	56 ^{2,3} (n = 115)	36 ³ (n = 109)	14 (n = 59)

- Defined as complete resolution of heartburn.
- (p < 0.005) versus 10 mg.
- (p < 0.005) versus placebo.

14.5 EE due to Acid-Mediated GERD

In a US multicenter double-blind placebo controlled study of 20 mg or 40 mg of omeprazole magnesium delayed-release capsules in patients with symptoms of GERD and endoscopically diagnosed EE of grade 2 or above, the percentage healing rates (per protocol) were as follows:

	20 mg omeprazole magnesium delayed- release capsules (n = 83)	40 mg omeprazole magnesium delayed-release capsules (n = 87)	Placebo (n = 43)
Week 4	39 ¹	45 ¹	7
Week 8	74 ¹	75 ¹	14

1. (p < 0.01) omeprazole magnesium delayed-release capsules versus placebo.

In this study, the 40 mg dose was not superior to the 20 mg dose of omeprazole magnesium delayed-release capsules in the percentage healing rate. Other controlled clinical trials have also shown that omeprazole magnesium delayed-release capsules is effective in severe GERD. In comparisons with histamine H₂-receptor antagonists in patients with EE, grade 2 or above, omeprazole magnesium delayed-release capsules in a dose of 20 mg was significantly more effective than the active controls. Complete daytime and nighttime heartburn relief occurred significantly faster (p < 0.01) in patients treated with omeprazole magnesium delayed-release capsules than in those taking placebo or histamine H₂-receptor antagonists.

In this and five other controlled GERD studies, significantly more patients taking 20 mg omeprazole (84%) reported complete relief of GERD symptoms than patients receiving placebo (12%).

14.6 Maintenance of Healing of EE due to Acid-Mediated GERD

In a U.S. double-blind, randomized, multicenter, placebo controlled study, two dose regimens of omeprazole magnesium delayed-release capsules were studied in patients with endoscopically confirmed healed esophagitis. Results to determine maintenance of healing of EE are shown below.

Life Table Analysis

	omeprazole magnesium delayed-release capsules 20 mg once daily (n = 138)	omeprazole magnesium delayed- release capsules 20 mg 3 days per week (n = 137)	Placebo (n = 131)
Percent in endoscopic remission at 6 months	70 ¹	34	11

1. (p < 0.01) omeprazole magnesium delayed-release capsules 20 mg once daily versus omeprazole magnesium delayed-release capsules 20 mg 3 consecutive days per week or placebo.

In an international multicenter double-blind study, omeprazole magnesium delayed-release capsules 20 mg daily and 10 mg daily were compared with ranitidine 150 mg twice daily in patients with endoscopically confirmed healed esophagitis. The table below provides the results of this study for maintenance of healing of EE.

Life Table Analysis

	omeprazole magnesium delayed-release capsules 20 mg once daily (n = 131)	omeprazole magnesium delayed-release capsules 10 mg once daily (n = 133)	Ranitidine 150 mg twice daily (n = 128)
Percent in endoscopic remission at 12 months	77 ¹	58 ²	46

1. (p = 0.01) omeprazole magnesium delayed-release capsules 20 mg once daily versus omeprazole magnesium delayed-release capsules 10 mg once daily or Ranitidine.

2. (p = 0.03) omeprazole magnesium delayed-release capsules 10 mg once daily versus Ranitidine.

In patients who initially had grades 3 or 4 erosive esophagitis, for maintenance after healing 20 mg daily of omeprazole magnesium delayed-release capsules was effective, while 10 mg did not demonstrate effectiveness.

14.7 Pathological Hypersecretory Conditions

In open studies of 136 patients with pathological hypersecretory conditions, such as Zollinger-Ellison (ZE) syndrome with or without multiple endocrine adenomas, omeprazole magnesium delayed-release capsules significantly inhibited gastric acid secretion and controlled associated symptoms of diarrhea, anorexia, and pain. Doses ranging from 20 mg every other day to 360 mg per day maintained basal acid secretion below 10 mEq/hr in patients without prior gastric surgery, and below 5 mEq/hr in patients with prior gastric surgery.

Initial doses were titrated to the individual patient need, and adjustments were necessary with time in some patients [*see Dosage and Administration (2)*]. Omeprazole magnesium delayed-release capsules was well tolerated at these high dose levels for prolonged periods (> 5 years in some patients). In most ZE patients, serum gastrin levels were not modified by omeprazole magnesium delayed-release capsules. However, in some patients serum gastrin increased to levels greater than those present prior to initiation of omeprazole therapy. At least 11 patients with ZE syndrome on long-term treatment with omeprazole magnesium delayed-release capsules developed gastric carcinoids. These findings are believed to be a manifestation of the underlying condition, which is known to be associated with such tumors, rather than the result of the administration of omeprazole magnesium delayed-release capsules [*see Adverse Reactions (6)*].

14.8 Pediatric Studies for the Treatment of Symptomatic GERD, Treatment of EE due to Acid-Mediated GERD, and Maintenance of Healing of EE due to Acid-Mediated GERD

Treatment of Symptomatic GERD

The effectiveness of omeprazole magnesium delayed-release capsules for the treatment of symptomatic GERD in pediatric patients 1 to 16 years of age is based in part on data obtained from 125 pediatric patients in two uncontrolled clinical studies.

The first study enrolled 12 pediatric patients 1 to 2 years of age with a history of clinically diagnosed GERD. Patients were administered a single dose of omeprazole (0.5 mg/kg, 1 mg/kg, or 1.5 mg/kg) for 8 weeks as an open capsule in 8.4% sodium bicarbonate solution. Seventy-five percent (9/12) of the patients had vomiting/regurgitation episodes decreased from baseline by at least 50%.

The second study enrolled 113 pediatric patients 2 to 16 years of age with a history of symptoms suggestive of symptomatic GERD. Patients were administered a single dose of omeprazole (10 mg or 20 mg, based on body weight) for 4 weeks either as an intact capsule or as an open capsule in applesauce. Successful response was defined as no moderate or severe episodes of either pain-related symptoms or vomiting/regurgitation during the last 4 days of treatment. Results showed success rates of 60% (9/15; 10 mg omeprazole) and 59% (58/98; 20 mg omeprazole), respectively.

Treatment of EE due to Acid-Mediated GERD

In an uncontrolled, open-label dose-titration study, for the treatment of EE in pediatric patients 1 to 16 years of age, required doses that ranged from 0.7 to 3.5 mg/kg/day (80 mg/day). Doses were initiated at 0.7 mg/kg/day. Doses were increased in increments of 0.7 mg/kg/day (if intraesophageal pH showed a pH of < 4 for less than 6% of a 24-hour study). After titration, patients remained on treatment for 3 months. Forty-four percent of the patients were healed on a dose of 0.7 mg/kg body weight; most of the remaining patients were healed with 1.4 mg/kg after an additional 3 months' treatment. EE was healed in 51 of 57 (90%) children who completed the first course of treatment in the healing phase of the study. In addition, after 3 months of treatment, 33% of the children had no overall symptoms, 57% had mild reflux symptoms, and 40% had less frequent regurgitation/vomiting.

Maintenance of Healing of EE due to Acid-Mediated GERD

In an uncontrolled, open-label study of maintenance of healing of EE in 46 pediatric patients 1 to 16 years of age, 54% of patients required half the healing dose. The remaining patients increased the healing dose (0.7 to a maximum of 2.8 mg/kg/day) either for the entire maintenance period, or returned to half the dose before completion. Of the 46 patients who entered the maintenance phase, 19 (41%) had no relapse during follow-up (range 4 to 25 months). In addition, maintenance therapy in EE patients resulted in 63% of patients having no overall symptoms.

15 REFERENCES

1. Clinical and Laboratory Standards Institute (CLSI). *Methods for Dilution Antimicrobial Susceptibility Tests for Bacteria That Grow Aerobically; Approved Standard—Tenth Edition*. CLSI Document M07-A10, Clinical and Laboratory Standards Institute, 950 West Valley Road, Suite 2500, Wayne, Pennsylvania, 19087, USA 2015.

16 HOW SUPPLIED/STORAGE AND HANDLING

PRILOSEC (omeprazole magnesium) for delayed-release oral suspension, 2.5 mg or 10 mg omeprazole, is supplied as a unit dose packet containing a fine yellow powder, consisting of white to brownish omeprazole magnesium granules and pale yellow inactive granules. PRILOSEC unit dose packets are supplied as follows:

NDC 70515-625-01 unit dose packages of 30: 2.5 mg packets

NDC 70515-610-01 unit dose packages of 30: 10 mg packets

Storage

Store PRILOSEC for delayed-release oral suspension at 25°C (77°F); excursions permitted to 15 – 30°C (59 – 86°F). [See USP Controlled Room Temperature.]

17 PATIENT COUNSELING INFORMATION

Advise the patient to read the FDA-approved patient labeling (Medication Guide and Instructions for Use).

Acute Tubulointerstitial Nephritis

Advise the patient or caregiver to call the patient's healthcare provider immediately if they experience signs and/or symptoms associated with acute tubulointerstitial nephritis [see *Warnings and Precautions* (5.2)].

Clostridium difficile-Associated Diarrhea

Advise the patient or caregiver to immediately call the patient's healthcare provider if they experience diarrhea that does not improve [see *Warnings and Precautions* (5.3)].

Bone Fracture

Advise the patient or caregiver to report any fractures, especially of the hip, wrist or spine, to the patient's healthcare provider [see *Warnings and Precautions* (5.4)].

Severe Cutaneous Adverse Reactions

Advise the patient or caregiver to report any signs and symptoms of SCARs to their healthcare provider for further evaluation [see *Warnings and Precautions* (5.5)].

Cutaneous and Systemic Lupus Erythematosus

Advise the patient or caregiver to immediately call the patient's healthcare provider for any new or worsening of symptoms associated with cutaneous or systemic lupus erythematosus [see *Warnings and Precautions* (5.6)].

Cyanocobalamin (Vitamin B-12) Deficiency

Advise the patient or caregiver to report any clinical symptoms that may be associated with cyanocobalamin deficiency to the patient's healthcare provider if they have been receiving PRILOSEC for longer than 3 years [see *Warnings and Precautions* (5.8)].

Hypomagnesemia and Mineral Metabolism

Advise the patient or caregiver to report any clinical symptoms that may be associated with hypomagnesemia, hypocalcemia, hypokalemia, and hyponatremia to the patient's healthcare provider, if they have been receiving PRILOSEC for at least 3 months [see *Warnings and Precautions* (5.9)].

Drug Interactions

Advise patients to report to their healthcare provider if they start treatment with rilpivirine-containing products, clopidogrel, St. John's Wort or rifampin; or, if they take high-dose methotrexate [*see Contraindications (4), Warnings and Precautions (5.7, 5.10, 5.12)*].

Administration

- PRILOSEC is intended to be prepared in water and administered orally or via a nasogastric (NG) or gastric tube, as described in the Medication Guide.
- Take PRILOSEC before meals.
- Antacids may be used concomitantly with PRILOSEC.
- Missed doses: If a dose is missed, administer as soon as possible. However, if the next scheduled dose is due, do not take the missed dose, and take the next dose on time. Do not take two doses at one time to make up for a missed dose.

PRILOSEC is a trademark of the AstraZeneca group of companies. Manufactured for: Covis Pharma, Zug, 6300 Switzerland

©Covis Pharma 2023

MEDICATION GUIDE
PRILOSEC® (pry-lo-sec)
(omeprazole magnesium)
for delayed-release oral suspension

What is the most important information I should know about PRILOSEC?

PRILOSEC may help your acid-related symptoms, but you could still have serious stomach problems. Talk with your doctor.

PRILOSEC can cause serious side effects, including:

- **A type of kidney problem (acute tubulointerstitial nephritis).** Some people who take proton pump inhibitor (PPI) medicines, including PRILOSEC, may develop a kidney problem called acute tubulointerstitial nephritis that can happen at any time during treatment with PRILOSEC. Call your doctor right away if you have a decrease in the amount that you urinate or if you have blood in your urine.
- **Diarrhea caused by an infection (*Clostridium difficile*) in your intestines.** Call your doctor right away if you have watery stools or stomach pain that does not go away. You may or may not have a fever.
- **Bone fractures (hip, wrist, or spine).** Bone fractures in the hip, wrist, or spine may happen in people who take multiple daily doses of PPI medicines and for a long period of time (a year or longer). Tell your doctor if you have bone fracture, especially in the hip, wrist, or spine.
- **Certain types of lupus erythematosus.** Lupus erythematosus is an autoimmune disorder (the body's immune cells attack other cells or organs in the body). Some people who take PPI medicines, including PRILOSEC, may develop certain types of lupus erythematosus or have worsening of the lupus they already have. Call your doctor right away if you have new or worsening joint pain or a rash on your cheeks or arms that gets worse in the sun.

Talk to your doctor about your risk of these serious side effects.

PRILOSEC can have other serious side effects. See **“What are the possible side effects of PRILOSEC?”**

What is PRILOSEC?

A prescription medicine called a proton pump inhibitor (PPI) used to reduce the amount of acid in your stomach.

In adults, PRILOSEC is used for:

- up to 8 weeks for the healing of duodenal ulcers.
- 10 to 14 days with certain antibiotics to treat an infection caused by bacteria called *H. pylori*. If needed, your doctor may prescribe another 14 to 18 days of PRILOSEC after treatment with the antibiotics.
- up to 8 weeks for healing stomach ulcers.
- up to 4 weeks to treat heartburn and other symptoms that happen with gastroesophageal reflux disease (GERD).
- up to 8 weeks for the healing and symptom relief of acid-related damage to the lining of the esophagus (called erosive esophagitis or EE). Your doctor may prescribe another 4 weeks of PRILOSEC in patients whose EE does not heal.
- maintaining healing of EE and to help prevent the return of heartburn symptoms caused by GERD. It is not known if PRILOSEC is safe and effective when used for longer than 12 months for this purpose.
- the long-term treatment of conditions where your stomach makes too much acid. This includes a rare condition called Zollinger-Ellison Syndrome.

In children 1 to 16 years of age, PRILOSEC is used for:

- up to 4 weeks to treat heartburn and other symptoms that happen with GERD.
- up to 8 weeks to treat GERD with EE.
- maintaining healing of EE and to help prevent the return of heartburn symptoms caused by GERD. It is not known if PRILOSEC is safe and effective when used longer than 12 months for this purpose.

In children 1 month to less than 12 months of age, PRILOSEC is used for:

- up to 6 weeks to treat GERD with EE. It is not known if PRILOSEC is safe and effective for other uses in children 1 month to less than 12 months of age, or in children less than 1 month of age.

Do not take PRILOSEC if you are:

- allergic to omeprazole, any other PPI medicine, or any of the ingredients in PRILOSEC. See the end of this Medication Guide for a complete list of ingredients.
- taking a medicine that contains rilpivirine (EDURANT, COMPLERA, ODEFSEY) used to treat HIV-1 (Human Immunodeficiency Virus).

Before taking PRILOSEC, tell your doctor about all of your medical conditions, including if you:

- have low magnesium levels, low calcium levels and low potassium levels in your blood.
- are pregnant or plan to become pregnant. It is not known if PRILOSEC will harm your unborn baby.
- are breastfeeding or plan to breastfeed. PRILOSEC can pass into your breast milk. Talk to your doctor about the best way to feed your baby if you take PRILOSEC.
- **Tell your doctor about all of the medicines you take**, including prescription and over-the-counter medicines, vitamins and herbal supplements. **Especially tell your doctor if you take** a medicine that contains clarithromycin or amoxicillin, clopidogrel (Plavix), methotrexate (Otrxup, Rasuvo, Trexall, XATMEP), digoxin (LANOXIN), a water pill (diuretic), St. John's Wort (*Hypericum perforatum*), or rifampin (Rimactane, Rifater, Rifamate).

How should I take PRILOSEC?

- Take PRILOSEC exactly as prescribed by your doctor.
- Do not change your dose or stop PRILOSEC without talking to your doctor.
- PRILOSEC is usually taken 1 time each day.
- Take PRILOSEC before a meal.
- Antacids may be taken with PRILOSEC.
- PRILOSEC is mixed with water and can be taken by mouth, or given through a nasogastric (NG) tube or gastric tube.
- See the **"Instructions for Use"** at the end of this Medication Guide for instructions on how to mix and take PRILOSEC by mouth in water or how to mix and give PRILOSEC through an NG tube or gastric tube mixed in water.
- If you miss a dose of PRILOSEC, take it as soon as you remember. If it is almost time for your next dose, do not take the missed dose. Take the next dose at your regular time. Do not take 2 doses at the same time.
- If you take too much PRILOSEC, call your doctor or your poison control center at 1-800-222-1222 right away or go to the nearest emergency room.

What are the possible side effects of PRILOSEC?

PRILOSEC can cause serious side effects, including:

- See **"What is the most important information I should know about PRILOSEC?"**
- **Low Vitamin B-12 levels** in your body can happen in people who have taken PRILOSEC for a long time (more than 3 years). Tell your doctor if you have symptoms of low vitamin B-12 levels, including shortness of breath, lightheadedness, irregular heartbeat, muscle weakness, pale skin, feeling tired, mood changes, and tingling or numbness in the arms and legs.
- **Low magnesium levels and mineral metabolism in your body** can happen in people who have taken PRILOSEC for at least 3 months. Tell your doctor if you have symptoms of low magnesium levels, including seizures, dizziness, irregular heartbeat, jitteriness, muscle aches or weakness, and spasms of hands, feet or voice.
- **Stomach growths (fundic gland polyps)**. People who take PPI medicines for a long time have an increased risk of developing a certain type of stomach growths called fundic gland polyps, especially after taking PPI medicines for more than 1 year.
- **Severe skin reactions**. PRILOSEC can cause rare but severe skin reactions that may affect any part of your body. These serious skin reactions may need to be treated in a hospital and may be life threatening:
 - Skin rash which may have blistering, peeling or bleeding on any part of your skin (including your lips, eyes, mouth, nose, genitals, hands or feet).
 - You may also have fever, chills, body aches, shortness of breath, or enlarged lymph nodes.Stop taking PRILOSEC and call your doctor right away. These symptoms may be the first sign of a severe skin reaction.

The most common side effects of PRILOSEC in adults include: headache, stomach-area (abdominal) pain, nausea, diarrhea, vomiting, and gas.

The most common side effects of PRILOSEC in children 1 to 16 years of age include: upper respiratory infection, fever, headache, stomach-area (abdominal) pain, nausea, diarrhea, vomiting, and gas.

These are not all the possible side effects of PRILOSEC. Call your doctor for medical advice about side effects. You may report side effects to FDA at 1-800-FDA-1088.

How should I store PRILOSEC?

Store PRILOSEC at room temperature between 68°F to 77°F (20°C to 25°C).

Keep PRILOSEC and all medicines out of the reach of children.

General information about the safe and effective use of PRILOSEC.

Medicines are sometimes prescribed for purposes other than those listed in a Medication Guide. Do not use PRILOSEC for a condition for which it was not prescribed. Do not give PRILOSEC to other people, even if they have the same symptoms you have. It may harm them. You can ask your doctor or pharmacist for information about PRILOSEC that is written for healthcare professionals.

What are the ingredients in PRILOSEC?**Active ingredient:** omeprazole magnesium**Inactive ingredients:** glyceryl monostearate, hydroxypropyl cellulose, hypromellose, magnesium stearate, methacrylic acid copolymer C, polysorbate, sugar spheres, talc, and triethyl citrate, and also inactive granules. The inactive granules are composed of citric acid, crospovidone, dextrose, hydroxypropyl cellulose, iron oxide and xanthan gum.

Manufactured for: Covis Pharma, Zug, 6300 Switzerland

PRILOSEC is a trademark of the AstraZeneca group of companies. ©2020 Covis Pharma. All rights reserved.

This Medication Guide has been approved by the U.S. Food and Drug Administration

Revised: March 2022

INSTRUCTIONS FOR USE
PRILOSEC® (pry-lo-sec)
(omeprazole magnesium)
for delayed-release oral suspension

Taking PRILOSEC in water:

1. PRILOSEC comes in packets containing 2.5 mg and 10 mg of PRILOSEC.
2. Use an oral syringe to draw up the amount of water needed to mix your dose. Ask your pharmacist for an oral syringe.
3. If your dose of PRILOSEC is 2.5 mg, add 5 mL of water to a clean container. Empty the contents of the 2.5 mg packet into the container of water.
4. If your dose of PRILOSEC is 10 mg, add 15 mL of water to a clean container. Empty the contents of the 10 mg packet into the container of water.
5. If you or your child are instructed to use more than 1 packet for your dose of PRILOSEC, follow the mixing instructions provided by your pharmacist or doctor.
6. Stir.
7. Leave the mixture for 2 to 3 minutes to thicken.
8. Stir and drink the mixture within 30 minutes. If not used within 30 minutes, throw away this dose and mix a new dose.
9. If any medicine remains after drinking, add more water, stir, and drink right away.

Giving PRILOSEC with water through a nasogastric (NG) tube or gastric tube:For people who have an NG tube or gastric tube that is **size 6 or larger**, PRILOSEC may be given as follows:

1. PRILOSEC comes in packets containing 2.5 mg and 10 mg of PRILOSEC.
2. Use only a catheter tipped syringe to give PRILOSEC through an NG tube or gastric tube that is size 6 or larger.
3. If your dose of PRILOSEC is 2.5 mg, add 5 mL of water to a catheter tipped syringe. Add the contents of the 2.5 mg packet to the syringe.
4. If your dose of PRILOSEC is 10 mg, add 15 mL of water to a catheter tipped syringe. Add the contents of the 10 mg packet to the syringe.
5. Shake the syringe right away and then leave the mixture for 2 to 3 minutes to thicken.
6. Shake the syringe and inject through the NG tube or gastric tube into the stomach within 30 minutes.
7. Refill the syringe with the same amount of water you used to prepare your dose of PRILOSEC (5 mL or 15 mL of water depending on your dose).
8. Shake the syringe and flush any remaining medicine from the NG tube or gastric tube into the stomach.