

HIGHLIGHTS OF PRESCRIBING INFORMATION

These highlights do not include all the information needed to use ACTIVELLA safely and effectively. See full prescribing information for ACTIVELLA.

ACTIVELLA® (estradiol/norethindrone acetate) tablets, for oral use
Initial U.S. Approval: 1998

WARNING: CARDIOVASCULAR DISORDERS, PROBABLE DEMENTIA, BREAST CANCER, and ENDOMETRIAL CANCER *See full prescribing information for complete boxed warning*

Estrogen Plus Progestin Therapy

- The Women's Health Initiative (WHI) estrogen plus progestin substudy reported increased risks of deep vein thrombosis (DVT), pulmonary embolism (PE), stroke and myocardial infarction (MI) (5.1)
- The WHI estrogen plus progestin substudy reported increased risks of invasive breast cancer (5.2)
- The WHI Memory Study (WHIMS) estrogen plus progestin ancillary study of WHI reported an increased risk of probable dementia in postmenopausal women 65 years of age and older (5.3)
- Do not use estrogen plus progestogen therapy for the prevention of cardiovascular disease or dementia (5.1, 5.3)

Estrogen-Alone Therapy

- There is an increased risk of endometrial cancer in a woman with a uterus who use unopposed estrogens (5.2)
- The WHI estrogen-alone substudy reported increased risks of stroke and DVT (5.1)
- The WHIMS estrogen-alone ancillary study of WHI reported an increased risk of probable dementia in postmenopausal women 65 years of age and older (5.3)
- Do not use estrogen-alone therapy for the prevention of cardiovascular disease or dementia (5.2, 5.3)

RECENT MAJOR CHANGES

Warnings and Precautions, Malignant Neoplasms (5.2) 11/2023

INDICATIONS AND USAGE

Activella is an estrogen and progestin combination indicated in a woman with a uterus for:

- Treatment of Moderate to Severe Vasomotor Symptoms due to Menopause (1.1)
- Treatment of Moderate to Severe Symptoms of Vulvar and Vaginal Atrophy due to Menopause (1.2)

Limitations of Use:

When prescribing solely for the treatment of moderate to severe symptoms of vulvar and vaginal atrophy due to menopause, first consider the use of topical vaginal products.

- Prevention of Postmenopausal Osteoporosis (1.3)

Limitations of Use:

When prescribing solely for the prevention of postmenopausal osteoporosis, first consider the use of non-estrogen medications. Consider estrogen therapy only for women at significant risk of osteoporosis.

DOSAGE AND ADMINISTRATION

- Take a single Activella 1 mg/0.5 mg or 0.5 mg/0.1 mg tablet orally once daily for the Treatment of Moderate to severe Vasomotor Symptoms due to Menopause and for the Prevention of Postmenopausal Osteoporosis (2.1, 2.3)
- Activella 1 mg/0.5 mg tablets are taken orally once daily for the Treatment of Moderate to Severe Symptoms of Vulvar and Vaginal Atrophy due to Menopause (2.2)

DOSAGE FORMS AND STRENGTHS

- Activella (estradiol/norethindrone acetate) 1 mg/0.5 mg tablet (3)
- Activella (estradiol/norethindrone acetate) 0.5 mg/0.1 mg tablet (3)

CONTRAINDICATIONS

- Undiagnosed abnormal genital bleeding (4)
- Breast cancer or a history of breast cancer (4, 5.2)
- Estrogen-dependent neoplasia (4, 5.2)
- Active DVT, PE, or history of these conditions (4, 5.1)
- Active arterial thromboembolic disease (for example, stroke and MI), or a history of these conditions (4, 5.1)
- Known anaphylactic reaction, angioedema, or hypersensitivity to Activella (4)
- Hepatic impairment or disease (4, 5.10)
- Protein C, protein S, or antithrombin deficiency, or other known thrombophilic disorders (4)

WARNINGS AND PRECAUTIONS

- Estrogens increase the risk of gall bladder disease (5.4)
- Discontinue estrogen if severe hypercalcemia, loss of vision, severe hypertriglyceridemia or cholestatic jaundice occurs (5.5, 5.6, 5.9, 5.10)
- Monitor thyroid function in women on thyroid replacement therapy (5.11, 5.18)

ADVERSE REACTIONS

The most common adverse reactions (incidence \geq 5 percent) with Activella are: back pain, headache, pain in the extremity, nausea, diarrhea, gastroenteritis, insomnia, emotional lability, upper respiratory tract infection, sinusitis, nasopharyngitis, weight increase, breast pain, post-menopausal bleeding, uterine fibroid vaginal hemorrhage, ovarian cyst, endometrial thickening, viral infection, moniliasis genital, and accidental injury. (6.1)

To report SUSPECTED ADVERSE REACTIONS, contact Amneal Pharmaceuticals at 1-877-835-5472 or FDA at 1-800-FDA-1088 or www.fda.gov/medwatch.

DRUG INTERACTIONS

- Inducers and/or inhibitors of CYP3A4 may affect estrogen drug metabolism and decrease or increase the estrogen plasma concentration. (7)

See 17 for PATIENT COUNSELING INFORMATION and FDA-approved patient labeling.

Revised: 11/2023

FULL PRESCRIBING INFORMATION: CONTENTS*

WARNING: CARDIOVASCULAR DISORDERS, PROBABLE DEMENTIA, BREAST CANCER, and ENDOMETRIAL CANCER

1 INDICATIONS AND USAGE

- 1.1 Treatment of Moderate to Severe Vasomotor Symptoms due to Menopause
- 1.2 Treatment of Moderate to Severe Symptoms of Vulvar and Vaginal Atrophy due to Menopause
- 1.3 Prevention of Postmenopausal Osteoporosis

2 DOSAGE AND ADMINISTRATION

- 2.1 Treatment of Moderate to Severe Vasomotor Symptoms due to Menopause
- 2.2 Treatment of Moderate to Severe Symptoms of Vulvar and Vaginal Atrophy due to Menopause
- 2.3 Prevention of Postmenopausal Osteoporosis

3 DOSAGE FORMS AND STRENGTHS

4 CONTRAINDICATIONS

5 WARNINGS AND PRECAUTIONS

- 5.1 Cardiovascular Disorders
- 5.2 Malignant Neoplasms
- 5.3 Probable Dementia
- 5.4 Gallbladder Disease
- 5.5 Hypercalcemia
- 5.6 Vision Abnormalities
- 5.7 Addition of a Progestogen When a Woman Has Not Had a Hysterectomy
- 5.8 Elevated Blood Pressure
- 5.9 Exacerbation of Hypertriglyceridemia
- 5.10 Hepatic Impairment and/or Past History of Cholestatic Jaundice
- 5.11 Exacerbation of Hypothyroidism
- 5.12 Fluid Retention

- 5.13 Hypocalcemia
- 5.14 Exacerbation of Endometriosis
- 5.15 Hereditary Angioedema
- 5.16 Exacerbation of Other Conditions
- 5.17 Laboratory Tests
- 5.18 Drug - Laboratory Test Interactions
- 6 ADVERSE REACTIONS**
- 6.1 Clinical Trials Experience
- 6.2 Postmarketing Experience
- 7 DRUG INTERACTIONS**
- 8 USE IN SPECIFIC POPULATIONS**
- 8.1 Pregnancy
- 8.2 Lactation
- 8.4 Pediatric Use
- 8.5 Geriatric Use
- 10 OVERDOSAGE**
- 11 DESCRIPTION**
- 12 CLINICAL PHARMACOLOGY**
- 12.1 Mechanism of Action
- 12.2 Pharmacodynamics
- 12.3 Pharmacokinetics

- 13 NONCLINICAL TOXICOLOGY**
- 13.1 Carcinogenesis, Mutagenesis, Impairment of Fertility
- 14 CLINICAL STUDIES**
- 14.1 Effects on Vasomotor Symptoms in Postmenopausal Women
- 14.2 Effects on the Endometrium in Postmenopausal Women
- 14.3 Effects on Uterine Bleeding or Spotting in Postmenopausal Women
- 14.4 Effects on Bone Mineral Density in Postmenopausal Women
- 14.5 Women's Health Initiative Studies
- 14.6 Women's Health Initiative Memory Study
- 15 REFERENCES**
- 16 HOW SUPPLIED/STORAGE AND HANDLING**
- 16.1 How Supplied
- 16.2 Storage and Handling
- 17 PATIENT COUNSELING INFORMATION**

*Sections or subsections omitted from the full prescribing information are not listed.

FULL PRESCRIBING INFORMATION

WARNING: CARDIOVASCULAR DISORDERS, PROBABLE DEMENTIA, BREAST CANCER, and ENDOMETRIAL CANCER

Estrogen Plus Progestin Therapy

Cardiovascular Disorders and Probable Dementia

The Women's Health Initiative (WHI) estrogen plus progestin substudy reported increased risks of deep vein thrombosis (DVT), pulmonary embolism (PE), stroke and myocardial infarction (MI) in postmenopausal women (50 to 79 years of age) during 5.6 years of treatment with daily oral conjugated estrogen (CE) [0.625 mg] combined with medroxyprogesterone acetate (MPA) [2.5 mg], relative to placebo [*see Warnings and Precautions (5.1), and Clinical Studies (14.5)*].

The WHI Memory Study (WHIMS) estrogen plus progestin ancillary study of the WHI reported an increased risk of developing probable dementia in postmenopausal women 65 years of age and older during 4 years of treatment with daily CE (0.625 mg) combined with MPA (2.5 mg), relative to placebo. It is unknown whether this finding applies to younger postmenopausal women [*see Warnings and Precautions (5.3), Use in Specific Populations (8.5), and Clinical Studies (14.6)*].

Do not use estrogen plus progestogen therapy for the prevention of cardiovascular disease or dementia [*see Warnings and Precautions (5.1, 5.3), and Clinical Studies (14.5, 14.6)*].

Breast Cancer

The WHI estrogen plus progestin substudy also demonstrated an increased risk of invasive breast cancer [*see Warnings and Precautions (5.2), and Clinical Studies (14.5)*].

Only daily oral 0.625 mg CE and 2.5 mg MPA were studied in the estrogen plus progestin substudy of the WHI. Therefore, the relevance of the WHI findings regarding adverse cardiovascular events, dementia and breast cancer to lower CE plus other MPA doses, other routes of administration, or other estrogen plus progestogen products is not known. Without such data, it is not possible to definitively exclude these risks or determine the extent of these risks for other products. Discuss with your patient the benefits and risks of estrogen plus progestogen therapy, taking into account her individual risk profile.

Prescribe estrogens with or without progestogens at the lowest effective doses and for the shortest duration consistent with treatment goals and risks for the individual woman.

Estrogen-Alone Therapy

Endometrial Cancer

There is an increased risk of endometrial cancer in a woman with a uterus who uses unopposed estrogens.

Adding a progestogen to estrogen therapy has been shown to reduce the risk of endometrial hyperplasia, which may be a precursor to endometrial cancer. Adequate diagnostic measures, including directed or random endometrial sampling when indicated, should be undertaken to rule out malignancy in postmenopausal women with undiagnosed persistent or recurring abnormal genital bleeding [see *Warnings and Precautions (5.2)*].

Cardiovascular Disorders and Probable Dementia

The WHI estrogen-alone substudy reported increased risks of stroke and DVT in postmenopausal women (50 to 79 years of age) during 7.1 years of treatment with daily oral CE (0.625 mg)-alone, relative to placebo [see *Warnings and Precautions (5.1)*, and *Clinical Studies (14.5)*].

The WHIMS estrogen-alone ancillary study of the WHI reported an increased risk of developing probable dementia in postmenopausal women 65 years of age and older during 5.2 years of treatment with daily CE (0.625 mg)-alone, relative to placebo. It is unknown whether this finding applies to younger postmenopausal women [see *Warnings and Precautions (5.3)*, *Use in Specific Populations (8.5)*, and *Clinical Studies (14.6)*].

Do not use estrogen-alone therapy for the prevention of cardiovascular disease or dementia [see *Warnings and Precautions (5.1, 5.3)*, and *Clinical Studies (14.5, 14.6)*].

Only daily oral 0.625 mg CE was studied in the estrogen-alone substudy of the WHI. Therefore, the relevance of the WHI findings regarding adverse cardiovascular events and dementia to lower CE doses, other routes of administration, or other estrogen-alone products is not known. Without such data, it is not possible to definitively exclude these risks or determine the extent of these risks for other products. Discuss with your patient the benefits and risks of estrogen-alone therapy, taking into account her individual risk profile.

Prescribe estrogens with or without progestogens at the lowest effective doses and for the shortest duration consistent with treatment goals and risks for the individual woman.

1 INDICATIONS AND USAGE

Activella is indicated for:

1.1 Treatment of Moderate to Severe Vasomotor Symptoms due to Menopause

1.2 Treatment of Moderate to Severe Symptoms of Vulvar and Vaginal Atrophy due to Menopause

Limitation of Use

When prescribing solely for the treatment of moderate to severe symptoms of vulvar and vaginal atrophy due to menopause, first consider the use of topical vaginal products.

1.3 Prevention of Postmenopausal Osteoporosis

Limitation of Use

When prescribing solely for the prevention of postmenopausal osteoporosis, first consider the use of non-estrogen medications. Consider estrogen therapy only for women at significant risk of osteoporosis.

2 DOSAGE AND ADMINISTRATION

Use estrogen-alone, or in combination with a progestogen, at the lowest effective dose and the shortest duration consistent with treatment goals and risks for the individual woman. Reevaluate postmenopausal women periodically as clinically appropriate to determine whether treatment is still necessary.

2.1 Treatment of Moderate to Severe Vasomotor Symptoms due to Menopause

Take a single Activella tablet orally once daily for the treatment of moderate to severe vasomotor symptoms due to menopause.

- Activella 1 mg/0.5 mg
- Activella 0.5 mg/0.1 mg

2.2 Treatment of Moderate to Severe Symptoms of Vulvar and Vaginal Atrophy due to Menopause

Take a single Activella tablet orally once daily for the treatment of moderate to severe symptoms of vulvar and vaginal atrophy due to menopause.

- Activella 1 mg/0.5 mg

2.3 Prevention of Postmenopausal Osteoporosis

Take a single Activella tablet orally once daily for the prevention of postmenopausal osteoporosis.

- Activella 1 mg/0.5 mg
- Activella 0.5 mg/0.1 mg

3 DOSAGE FORMS AND STRENGTHS

Activella is available in two strengths:

- Activella 1 mg/ 0.5 mg contains 1 mg of estradiol and 0.5 mg of norethindrone acetate. The tablets are white, round, biconvex, film-coated tablets debossed with “ALH” on the one side and plain on the other side.
- Activella 0.5 mg/ 0.1 mg contains 0.5 mg of estradiol and 0.1 mg of norethindrone acetate. The tablets are white, round, biconvex, film-coated tablets debossed with “ALL” on the one side and plain on the other side.

4 CONTRAINDICATIONS

Activella is contraindicated in women with any of the following conditions:

- Undiagnosed abnormal genital bleeding [*see Warnings and Precautions (5.2)*]
- Breast cancer or history of breast cancer [*see Warnings and Precautions (5.2)*]
- Estrogen-dependent neoplasia [*see Warnings and Precautions (5.2)*]
- Active DVT, PE, or history of these conditions [*see Warnings and Precautions (5.1)*]
- Active arterial thromboembolic disease (for example, stroke and MI), or a history of these conditions [*see Warnings and Precautions (5.1)*]
- Known anaphylactic reaction, angioedema, or hypersensitivity to Activella
- Hepatic impairment or disease
- Protein C, protein S, or antithrombin deficiency, or other known thrombophilic disorders

5 WARNINGS AND PRECAUTIONS

5.1 Cardiovascular Disorders

Increased risks of PE, DVT, stroke and MI are reported with estrogen plus progestin therapy. Increased risks of stroke and DVT are reported with estrogen-alone therapy. Immediately discontinue estrogen with or without progestogen therapy if any of these occur or is suspected.

Manage appropriately any risk factors for arterial vascular disease (for example, hypertension, diabetes mellitus, tobacco use, hypercholesterolemia, and obesity) and/or venous thromboembolism (VTE) (for example, personal history or family history of VTE, obesity, and systemic lupus erythematosus).

Stroke

The WHI estrogen plus progestin substudy reported a statistically significant increased risk of stroke in women 50 to 79 years of age receiving daily CE (0.625 mg) plus MPA (2.5 mg) compared to women in the same age group receiving placebo (33 versus 25 strokes per 10,000 women-years) [see *Clinical Studies (14.5)*]. The increase in risk was demonstrated after the first year and persisted.¹ Immediately discontinue estrogen with or without progestogen therapy if a stroke occurs or is suspected.

The WHI estrogen-alone substudy reported a statistically significant increased risk of stroke in women 50 to 79 years of age receiving daily CE (0.625 mg)-alone compared to women in the same age group receiving placebo (45 versus 33 strokes per 10,000 women-years, respectively). The increase in risk was demonstrated in year 1 and persisted [see *Clinical Studies (14.5)*]. Immediately discontinue estrogen-alone therapy if a stroke occurs or is suspected.

Subgroup analyses of women 50 to 59 years of age suggest no increased risk of stroke for those women receiving CE (0.625 mg)-alone versus those receiving placebo (18 versus 21 per 10,000 women-years).¹

Coronary Heart Disease

The WHI estrogen plus progestin substudy reported an increased risk (not statistically significant) of coronary heart disease (CHD) events (defined as nonfatal MI, silent MI, or CHD death) in those women receiving daily CE (0.625 mg) plus MPA (2.5 mg) compared to women receiving placebo (41 versus 34 per 10,000 women-years).¹ An increase in relative risk was demonstrated in year 1, and a trend toward decreasing relative risk was reported in years 2 through 5 [see *Clinical Studies (14.5)*].

The WHI estrogen-alone substudy reported no overall effect on CHD events in women receiving estrogen-alone compared to placebo² [see *Clinical Studies (14.5)*].

Subgroup analyses of women 50 to 59 years of age, who were less than 10 years since menopause, suggest a reduction (not statistically significant) in CHD events in those women receiving daily CE (0.625 mg)-alone compared to placebo (8 versus 16 per 10,000 women-years).¹

In postmenopausal women with documented heart disease (n=2,763), average 66.7 years of age, in a controlled clinical trial of secondary prevention of cardiovascular disease (Heart and Estrogen/Progestin Replacement Study; HERS), treatment with daily CE (0.625 mg plus MPA (2.5 mg) demonstrated no cardiovascular benefit. During an average follow-up of 4.1 years, treatment with CE plus MPA did not reduce the overall rate of CHD events in postmenopausal women with established CHD. There were more CHD events in the CE plus MPA-treated group than in the placebo group in year 1, but not during the subsequent years. Two thousand three hundred twenty-one (2,321) women from the original HERS trial agreed to participate in an open label extension of HERS, HERS II. Average follow-up in HERS II was an additional 2.7 years, for a total of 6.8 years overall. Rates of CHD events were comparable among women in the CE plus MPA group and the placebo group in HERS, HERS II, and overall.

Venous Thromboembolism

The WHI estrogen plus progestin substudy reported a statistically significant 2-fold greater rate of VTE (DVT and PE) in women receiving daily CE (0.625 mg) plus MPA (2.5 mg) compared to women receiving placebo (35 versus 17 per 10,000 women-years). Statistically significant increases in risk for both DVT (26 versus 13

per 10,000 women-years) and PE (18 versus 8 per 10,000 women-years) were also demonstrated. The increase in VTE risk was demonstrated during the first year and persisted ³ [see *Clinical Studies (14.5)*]. Immediately discontinue estrogen plus progestogen therapy if a VTE occurs or is suspected.

In the WHI estrogen-alone substudy, the risk of VTE was increased for women receiving daily CE (0.625 mg)-alone compared to placebo (30 versus 22 per 10,000 women-years), although only the increased risk of DVT reached statistical significance (23 versus 15 per 10,000 women-years). The increase in VTE risk was demonstrated during the first 2 years ⁴ [see *Clinical Studies (14.5)*]. Immediately discontinue estrogen-alone therapy if a VTE occurs or is suspected.

If feasible, discontinue estrogens at least 4 to 6 weeks before surgery of the type associated with an increased risk of thromboembolism, or during periods of prolonged immobilization.

5.2 Malignant Neoplasms

Breast Cancer

After a mean follow-up of 5.6 years, the WHI substudy of daily CE (0.625 mg) plus MPA (2.5 mg) reported an increased risk of invasive breast cancer in women who took daily CE plus MPA compared to placebo.

In this substudy, prior use of estrogen-alone or estrogen plus progestin therapy was reported by 26 percent of the women. The relative risk of invasive breast cancer was 1.24, and the absolute risk was 41 versus 33 cases per 10,000 women-years, for CE plus MPA compared with placebo. Among women who reported prior use of hormone therapy, the relative risk of invasive breast cancer was 1.86, and the absolute risk was 46 versus 25 cases per 10,000 women-years, for CE plus MPA compared with placebo. Among women who reported no prior use of hormone therapy, the relative risk of invasive breast cancer was 1.09, and the absolute risk was 40 versus 36 cases per 10,000 women-years, for CE plus MPA compared with placebo. In the same substudy, invasive breast cancers were larger, were more likely to be node positive, and were diagnosed at a more advanced stage in the CE (0.625 mg) plus MPA (2.5 mg) group compared with the placebo group. Metastatic disease was rare, with no apparent difference between the two groups. Other prognostic factors, such as histologic subtype, grade and hormone receptor status did not differ between the groups ⁵ [see *Clinical Studies (14.5)*].

The WHI substudy of daily CE (0.625 mg)-alone provided information about breast cancer in estrogen-alone users. In the WHI estrogen-alone substudy, after an average follow-up of 7.1 years, daily CE-alone was not associated with an increased risk of invasive breast cancer [*relative risk (RR) 0.80*] compared to placebo ⁶ [see *Clinical Studies (14.5)*].

Consistent with the WHI clinical trials, observational studies have also reported an increased risk of breast cancer with estrogen plus progestin therapy, and a smaller increase in the risk for breast cancer with estrogen-alone therapy, after several years of use. One large meta-analysis of prospective cohort studies reported increased risks that were dependent upon duration of use and could last up to >10 years after discontinuation of estrogen plus progestin therapy and estrogen-alone therapy. Extension of the WHI Trials also demonstrated increased breast cancer risk associated with estrogen plus progestin therapy. Observational studies also suggest that the risk of breast cancer was greater, and became apparent earlier, with estrogen plus progestin therapy as compared to estrogen-alone therapy. These studies have not generally found significant variation in the risk of breast cancer among different estrogen plus progestin combinations, doses, or routes of administration.

The use of estrogen-alone and estrogen plus progestin therapy has been reported to result in an increase in abnormal mammograms requiring further evaluation.

In a one-year trial among 1,176 women who received either unopposed 1 mg estradiol or a combination of 1 mg estradiol plus one of three different doses of NETA (0.1, 0.25, 0.5 mg), seven new cases of breast cancer were diagnosed, two of which occurred among the group of 295 women treated with Activella 1 mg/0.5 mg and two of which occurred among the group of 294 women treated with 1 mg estradiol/0.1 mg NETA.

All women should receive yearly breast examinations by a healthcare provider and perform monthly breast self-examinations. In addition, mammography examinations should be scheduled based on patient age, risk factors, and prior mammogram results.

Endometrial Cancer

An increased risk of endometrial cancer has been reported with the use of unopposed estrogen therapy in a woman with a uterus. The reported endometrial cancer risk among unopposed estrogen users is about 2- to 12-fold greater than in nonusers, and appears dependent on duration of treatment and on estrogen dose. Most studies show no significant increased risk associated with use of estrogens for less than 1 year. The greatest risk appears to be associated with prolonged use, with increased risks of 15- to 24-fold for 5 to 10 years or more. This risk has been shown to persist for at least 8 to 15 years after estrogen therapy is discontinued.

Clinical surveillance of all women using estrogen-alone or estrogen plus progestogen therapy is important. Perform adequate diagnostic measures, including directed or random endometrial sampling when indicated, to rule out malignancy in postmenopausal women with undiagnosed persistent or recurring abnormal genital bleeding with unknown etiology.

There is no evidence that the use of natural estrogens results in a different endometrial risk profile than synthetic estrogens of equivalent estrogen dose. Adding a progestogen to estrogen therapy in postmenopausal women has been shown to reduce the risk of endometrial hyperplasia, which may be a precursor to endometrial cancer.

Endometrial hyperplasia occurred at a rate of approximately 1 percent or less with Activella in a clinical trial.

Ovarian Cancer

The CE plus MPA substudy of WHI reported that estrogen plus progestin increased the risk of ovarian cancer. After an average follow-up of 5.6 years, the relative risk for ovarian cancer for CE plus MPA versus placebo was 1.58 (95 percent confidence interval [CI], 0.77-3.24), but it was not statistically significant. The absolute risk for CE plus MPA versus placebo was 4 versus 3 cases per 10,000 women-years.⁷

A meta-analysis of 17 prospective and 35 retrospective epidemiology studies found that women who used hormonal therapy for menopausal symptoms had an increased risk for ovarian cancer. The primary analysis, using case-control comparisons, included 12,110 cancer cases from the 17 prospective studies. The relative risks associated with current use of hormonal therapy was 1.41 (95% CI 1.32 to 1.50); there was no difference in the risk estimates by duration of the exposure (less than 5 years [median of 3 years] vs. greater than 5 years [median of 10 years] of use before the cancer diagnosis). The relative risk associated with combined current and recent use (discontinued use within 5 years before cancer diagnosis) was 1.37 (95% CI 1.27-1.48), and the elevated risk was significant for both estrogen-alone and estrogen plus progestin products. The exact duration of hormone therapy use associated with an increased risk of ovarian cancer, however, is unknown.

5.3 Probable Dementia

In the WHI Memory Study (WHIMS) estrogen plus progestin ancillary study, a population of 4,532 postmenopausal women 65 to 79 years of age was randomized to daily CE (0.625 mg) plus MPA (2.5 mg) or placebo.

After an average follow-up of 4 years, 40 women in the CE plus MPA group and 21 women in the placebo group were diagnosed with probable dementia. The relative risk of probable dementia for the CE plus MPA versus placebo was 2.05 (95 percent CI, 1.21-3.48). The absolute risk of probable dementia for CE plus MPA versus placebo was 45 versus 22 cases per 10,000 women-years⁸ [see *Use in Specific Populations (8.5)*, and *Clinical Studies (14.6)*].

In the WHIMS estrogen-alone ancillary study, a population of 2,947 hysterectomized women 65 to 79 years of age was randomized to daily CE (0.625 mg)-alone or placebo. After an average follow-up of 5.2 years, 28 women in the estrogen-alone group and 19 women in the placebo group were diagnosed with probable dementia. The relative risk of probable dementia for CE-alone versus placebo was 1.49 (95 percent CI, 0.83-2.66). The absolute risk of probable dementia for CE-alone versus placebo was 37 versus 25 cases per 10,000 women-years⁸ [see *Use in Specific Populations (8.5)*, and *Clinical Studies (14.6)*].

When data from the two populations in the WHIMS estrogen-alone and estrogen plus progestin ancillary studies were pooled as planned in the WHIMS protocol, the reported overall relative risk of probable dementia was 1.76 (95 percent CI, 1.19-2.60). Since both ancillary studies were conducted in women 65 to 79 years of age, it is unknown whether these findings apply to younger postmenopausal women⁸ [see *Use in Specific Populations (8.5)*, and *Clinical Studies (14.6)*].

5.4 Gallbladder Disease

A 2- to 4-fold increase in the risk of gallbladder disease requiring surgery in postmenopausal women receiving estrogens has been reported.

5.5 Hypercalcemia

Estrogen administration may lead to severe hypercalcemia in women with breast cancer and bone metastases. Discontinue estrogens, including Activella if hypercalcemia occurs, and take appropriate measures to reduce the serum calcium level.

5.6 Vision Abnormalities

Retinal vascular thrombosis has been reported in women receiving estrogens. Discontinue Activella pending examination if there is a sudden partial or complete loss of vision, or a sudden onset of proptosis, diplopia, or migraine. Permanently discontinue estrogens, including Activella, if examination reveals papilledema or retinal vascular lesions.

5.7 Addition of a Progestogen When a Woman Has Not Had a Hysterectomy

Studies of the addition of a progestogen for 10 or more days of a cycle of estrogen administration, or daily with estrogen in a continuous regimen, have reported a lowered incidence of endometrial hyperplasia than would be induced by estrogen treatment alone. Endometrial hyperplasia may be a precursor to endometrial cancer. There are, however, possible risks that may be associated with the use of progestogens with estrogens compared to estrogen-alone regimens. These include an increased risk of breast cancer.

5.8 Elevated Blood Pressure

In a small number of case reports, substantial increases in blood pressure have been attributed to idiosyncratic reactions to estrogens. In a large, randomized, placebo-controlled clinical trial, a generalized effect of estrogen therapy on blood pressure was not seen.

5.9 Exacerbation of Hypertriglyceridemia

In women with pre-existing hypertriglyceridemia, estrogen therapy may be associated with elevations of plasma triglycerides leading to pancreatitis. Discontinue Activella if pancreatitis occurs.

5.10 Hepatic Impairment and/or Past History of Cholestatic Jaundice

Estrogens may be poorly metabolized in women with hepatic impairment. Exercise caution in any woman with a history of cholestatic jaundice associated with past estrogen use or with pregnancy. In the case of recurrence of cholestatic jaundice, discontinue Activella.

5.11 Exacerbation of Hypothyroidism

Estrogen administration leads to increased thyroid-binding globulin (TBG) levels. Women with normal thyroid function can compensate for the increased TBG by making more thyroid hormone, thus maintaining free T₄ and T₃ serum concentrations in the normal range. Women dependent on thyroid hormone replacement therapy who are also receiving estrogen may require increased doses of their thyroid replacement therapy. Monitor thyroid function in these women during treatment with Activella to maintain their free thyroid hormone levels in an acceptable range.

5.12 Fluid Retention

Estrogens plus progestogens may cause some degree of fluid retention. Monitor any woman with a condition(s) that might predispose her to fluid retention, such as a cardiac or renal impairment. Discontinue estrogen plus progestogen therapy, including Activella, with evidence of medically concerning fluid retention.

5.13 Hypocalcemia

Estrogen-induced hypocalcemia may occur in women with hypoparathyroidism. Consider whether the benefits of estrogen therapy, including Activella, outweigh the risks in such women.

5.14 Exacerbation of Endometriosis

A few cases of malignant transformation of residual endometrial implants have been reported in women treated post-hysterectomy with estrogen-alone therapy.

5.15 Hereditary Angioedema

Exogenous estrogens may exacerbate symptoms of angioedema in women with hereditary angioedema. Consider whether the benefits of estrogen therapy, including Activella, outweigh the risks in such women.

5.16 Exacerbation of Other Conditions

Estrogen therapy, including Activella, may cause an exacerbation of asthma, diabetes mellitus, epilepsy, migraine, porphyria, systemic lupus erythematosus, and hepatic hemangiomas. Consider whether the benefits of estrogen therapy outweigh the risks in such women.

5.17 Laboratory Tests

Serum follicle stimulating hormone (FSH) and estradiol levels have not been shown to be useful in the management of moderate to severe vasomotor symptoms and moderate to severe symptoms of vulvar and vaginal atrophy.

5.18 Drug-Laboratory Test Interactions

- Accelerated prothrombin time, partial thromboplastin time, and platelet aggregation time; increased platelet count; increased factors II, VII antigen, VIII coagulant activity, IX, X, XII, VII-X complex, and beta-thromboglobulin; decreased levels of anti-factor Xa and antithrombin III, decreased antithrombin III activity, increased levels of fibrinogen and fibrinogen activity; increased plasminogen antigen and activity.
- Increased thyroid-binding globulin (TBG) levels leading to increased circulating total thyroid hormone levels as measured by protein-bound iodine (PBI), T₄ levels (by column or by radioimmunoassay), or T₃ levels by radioimmunoassay. T₃ resin uptake is decreased, reflecting the elevated TBG. Free T₄ and free T₃ concentrations are unaltered. Women on thyroid replacement therapy may require higher doses of thyroid hormone.
- Other binding proteins may be elevated in serum, for example, corticosteroid binding globulin (CBG), sex hormone-binding globulin (SHBG), leading to increased total circulating corticosteroids and sex steroids, respectively. Free hormone concentrations, such as testosterone and estradiol, may be decreased. Other plasma proteins may be increased (angiotensinogen/rennin substrate, alpha-1 antitrypsin, ceruloplasmin).
- Increased plasma high-density lipoprotein (HDL) and HDL₂ cholesterol subfraction concentration, reduced low-density lipoprotein (LDL) cholesterol concentration, increased triglyceride levels.
- Impaired glucose tolerance.

6 ADVERSE REACTIONS

The following serious adverse reactions are discussed elsewhere in the labeling:

- Cardiovascular Disorders [see *Boxed Warning, Warnings and Precautions (5.1)*]
- Malignant Neoplasms [see *Boxed Warning, Warnings and Precautions (5.2)*]

6.1 Clinical Trials Experience

Because clinical trials are conducted under widely varying conditions, adverse reaction rates observed in the clinical trials of a drug cannot be directly compared to rates in the clinical trials of another drug and may not reflect the rates observed in practice.

Adverse reactions reported with Activella 1 mg/0.5 mg by investigators during clinical trials regardless of causality assessment are shown in Table 1.

TABLE 1
ALL TREATMENT-EMERGENT ADVERSE REACTIONS REGARDLESS OF RELATIONSHIP
REPORTED AT A FREQUENCY OF ≥ 5 PERCENT WITH ACTIVELLA 1 MG/0.5 MG

	Endometrial Hyperplasia Study (12-Months)		Vasomotor Symptoms Study (3-Months)		Osteoporosis Study (2-Years)	
	Activella 1 mg/0.5 mg (n=295)	1 mg E ₂ (n=296)	Activella 1 mg/0.5 mg (n=29)	Placebo (n=34)	Activella 1 mg/0.5 mg (n=47)	Placebo (n=48)
Body as a Whole						
Back Pain	6%	5%	3%	3%	6%	4%
Headache	16%	16%	17%	18%	11%	6%
Digestive System						
Nausea	3%	5%	10%	0%	11%	0%
Gastroenteritis	2%	2%	0%	0%	6%	4%
Nervous System						
Insomnia	6%	4%	3%	3%	0%	8%
Emotional Lability	1%	1%	0%	0%	6%	0%
Respiratory System						
Upper Respiratory Tract Infection	18%	15%	10%	6%	15%	19%
Sinusitis	7%	11%	7%	0%	15%	10%
Metabolic and Nutritional						
Weight Increase	0%	0%	0%	0%	9%	6%
Urogenital System						
Breast Pain	24%	10%	21%	0%	17%	8%
Post-Menopausal Bleeding	5%	15%	10%	3%	11%	0%
Uterine Fibroid	5%	4%	0%	0%	4%	8%
Ovarian Cyst	3%	2%	7%	0%	0%	8%
Resistance Mechanism						
Infection Viral	4%	6%	0%	3%	6%	6%
Moniliasis Genital	4%	7%	0%	0%	6%	0%
Secondary Terms						
Injury Accidental	4%	3%	3%	0%	17%*	4%*
Other Events	2%	3%	3%	0%	6%	4%

* including one upper extremity fracture in each group

Adverse reactions reported with Activella 0.5 mg/0.1 mg by investigators during clinical trials regardless of causality assessment are shown in Table 2.

TABLE 2
ALL TREATMENT-EMERGENT ADVERSE REACTIONS REGARDLESS OF RELATIONSHIP
REPORTED AT A FREQUENCY OF ≥ 5 PERCENT WITH ACTIVELLA 0.5 MG/0.1 MG

	Activella 0.5 mg/0.1 mg (n=194)	Placebo (n=200)
<i>Body as a Whole</i>		
Back Pain	10%	4%
Headache	22%	19%
Pain in extremity	5%	4%
<i>Digestive System</i>		
Nausea	5%	4%
Diarrhea	6%	6%
<i>Respiratory System</i>		
Nasopharyngitis	21%	18%
<i>Urogenital System</i>		
Endometrial thickening	10%	4%
Vaginal hemorrhage	26%	12%

6.2 Postmarketing Experience

The following adverse reactions have been identified during post-approval use of Activella. Because these reactions are reported voluntarily from a population of uncertain size, it is not always possible to reliably estimate their frequency or establish a causal relationship to drug exposure.

Genitourinary System

Changes in vaginal bleeding pattern and abnormal withdrawal bleeding or flow; breakthrough bleeding; spotting; dysmenorrhea, increase in size of uterine leiomyomata; vaginitis, including vaginal candidiasis; change in amount of cervical secretion; changes in cervical ectropion; pre-menstrual-like syndrome; cystitis-like syndrome; ovarian cancer; endometrial hyperplasia; endometrial cancer.

Breast

Tenderness, enlargement, pain, nipple discharge, galactorrhea; fibrocystic breast changes; breast cancer.

Cardiovascular

Deep and superficial venous thrombosis; pulmonary embolism; thrombophlebitis; myocardial infarction, stroke; increase in blood pressure.

Gastrointestinal

Nausea, vomiting; changes in appetite; cholestatic jaundice; abdominal pain/cramps, flatulence, bloating; increased incidence of gallbladder disease and pancreatitis.

Skin

Chloasma or melasma that may persist when drug is discontinued; erythema multiforme; erythema nodosum; hemorrhagic eruption; loss of scalp hair; seborrhea; hirsutism; itching; skin rash; pruritus.

Eyes

Retinal vascular thrombosis, intolerance to contact lenses.

Central Nervous System

Headache; migraine; dizziness; mental depression; chorea; insomnia; nervousness; mood disturbances; irritability; exacerbation of epilepsy; dementia.

Miscellaneous

Increase or decrease in weight; edema; leg cramps; changes in libido; fatigue; exacerbation of asthma; increased triglycerides; hypersensitivity; anaphylactoid/anaphylactic reactions.

7 DRUG INTERACTIONS

Co-administration of estradiol with norethindrone acetate did not elicit any apparent influence on the pharmacokinetics of norethindrone acetate. Similarly, no relevant interaction of norethindrone acetate on the pharmacokinetics of estradiol was found within the NETA dose range investigated in a single dose study.

Estradiol

In-vitro and *in-vivo* studies have shown that estrogens are metabolized partially by cytochrome P450 3A4 (CYP3A4). Therefore, inducers or inhibitors of CYP3A4 may affect estrogen drug metabolism. Inducers of CYP3A4 such as St. John's wort (*Hypericum perforatum*) preparations, phenobarbital, carbamazepine, and rifampin may reduce plasma concentrations of estrogens, possibly resulting in a decrease in therapeutic effects and/or changes in the uterine bleeding profile. Inhibitors of CYP3A4 such as erythromycin, clarithromycin, ketoconazole, itraconazole, ritonavir and grapefruit juice may increase plasma concentrations of estrogens and result in adverse reactions.

Norethindrone Acetate

Drugs or herbal products that induce or inhibit cytochrome P-450 enzymes, including CYP3A4, may decrease or increase the serum concentrations of norethindrone.

8 USE IN SPECIFIC POPULATIONS

8.1 Pregnancy

Risk Summary

Activella is not indicated for use in pregnancy. There are no data with the use of Activella in pregnant women; however, epidemiologic studies and meta-analyses have not found an increased risk of genital or nongenital birth defects (including cardiac anomalies and limb-reduction defects) following exposure to combined hormonal contraceptives (estrogen and progestins) before conception or during early pregnancy.

In the U.S. general population, the estimated background risk of major birth defects and miscarriage in clinically recognized pregnancies is 2% to 4% and 15% to 20%, respectively.

8.2 Lactation

Risk Summary

Estrogens plus progestogens are present in human milk and can reduce milk production in breast-feeding women. This reduction can occur at any time but is less likely to occur once breast-feeding is well established. The developmental and health benefits of breastfeeding should be considered along with the mother's clinical

need for Activella and any potential adverse effects on the breastfed child from Activella or from the underlying maternal condition.

8.4 Pediatric Use

Activella is not indicated for use in pediatric patients. Clinical studies have not been conducted in the pediatric population.

8.5 Geriatric Use

There have not been sufficient numbers of geriatric women involved in clinical studies utilizing Activella to determine whether those over 65 years of age differ from younger subjects in their response to Activella.

The Women's Health Initiative Studies

In the WHI estrogen plus progestin substudy (daily CE [0.625 mg] plus MPA [2.5 mg] versus placebo), there was a higher relative risk of nonfatal stroke and invasive breast cancer in women greater than 65 years of age [see *Clinical Studies (14.5)*].

In the WHI estrogen-alone substudy (daily CE [0.625 mg]-alone versus placebo), there was a higher relative risk of stroke in women greater than 65 years of age [see *Clinical Studies (14.5)*].

The Women's Health Initiative Memory Study

In the WHIMS ancillary studies of postmenopausal women 65 to 79 years of age, there was an increased risk of developing probable dementia in women receiving estrogen plus progestin or estrogen-alone when compared to placebo. It is unknown whether this finding applies to younger postmenopausal women [see *Warnings and Precautions (5.3)*, and *Clinical Studies (14.6)*].

Since both ancillary studies were conducted in women 65 to 79 years of age, it is unknown whether these findings apply to younger postmenopausal women⁸ [see *Warnings and Precautions (5.3)*, and *Clinical Studies (14.6)*].

10 OVERDOSAGE

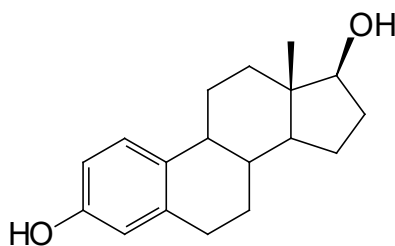
Overdosage of estrogen plus progestogen may cause nausea, vomiting, breast tenderness, abdominal pain, drowsiness and fatigue, and withdrawal bleeding may occur in women. Treatment of overdose consists of discontinuation of Activella therapy with institution of appropriate symptomatic care.

11 DESCRIPTION

Activella 1 mg/0.5 mg is a single tablet for oral administration containing 1 mg of estradiol and 0.5 mg of norethindrone acetate and the following excipients: lactose monohydrate, starch (corn), copovidone, talc, magnesium stearate, hypromellose and triacetin.

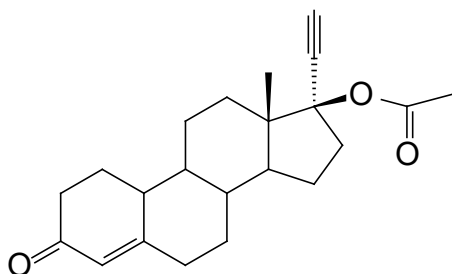
Activella 0.5 mg/0.1 mg is a single tablet for oral administration containing 0.5 mg of estradiol and 0.1 mg of norethindrone acetate and the following excipients: lactose monohydrate, starch (corn), hydroxypropylcellulose, talc, magnesium stearate, hypromellose and triacetin.

Estradiol is a white or almost white crystalline powder. Its chemical name is estra-1, 3, 5 (10)-triene-3, 17 β -diol hemihydrate with the empirical formula of C₁₈H₂₄O₂, ½ H₂O and a molecular weight of 281.4. The structural formula of E₂ is as follows:



Estradiol

Norethindrone acetate (NETA) is a white or yellowish-white crystalline powder. Its chemical name is 17 β - acetoxy-19-nor-17 α -pregn-4-en-20-yn-3-one with the empirical formula of C₂₂H₂₈O₃ and molecular weight of 340.5. The structural formula of NETA is as follows:



Norethindrone Acetate

12 CLINICAL PHARMACOLOGY

12.1 Mechanism of Action

Endogenous estrogens are largely responsible for the development and maintenance of the female reproductive system and secondary sexual characteristics. Although circulating estrogens exist in a dynamic equilibrium of metabolic interconversions, estradiol is the principal intracellular human estrogen and is substantially more potent than its metabolites, estrone and estriol, at the receptor level.

The primary source of estrogen in normally cycling adult women is the ovarian follicle, which secretes 70 to 500 mcg of estradiol daily, depending on the phase of the menstrual cycle. After menopause, most endogenous estrogen is produced by conversion of androstenedione, secreted by the adrenal cortex, to estrone in the peripheral tissues. Thus, estrone and the sulfate-conjugated form, estrone sulfate, are the most abundant circulating estrogens in postmenopausal women.

Estrogens act through binding to nuclear receptors in estrogen-responsive tissues. To date, two estrogen receptors have been identified. These vary in proportion from tissue to tissue.

Circulating estrogens modulate the pituitary secretion of the gonadotropins, luteinizing hormone (LH), and FSH through a negative feedback mechanism. Estrogens act to reduce the elevated levels of these hormones seen in postmenopausal women.

Progestin compounds enhance cellular differentiation and generally oppose the actions of estrogens by decreasing estrogen receptor levels, increasing local metabolism of estrogens to less active metabolites, or inducing gene products that blunt cellular responses to estrogen. Progestins exert their effects in target cells by

binding to specific progesterone receptors that interact with progesterone response elements in target genes. Progesterone receptors have been identified in the female reproductive tract, breast, pituitary, hypothalamus, and central nervous system.

12.2 Pharmacodynamics

Generally, a serum estrogen concentration does not predict an individual woman's therapeutic response to Activella nor her risk for adverse outcomes. Likewise, exposure comparisons across different estrogen products to infer efficacy or safety for the individual woman may not be valid.

12.3 Pharmacokinetics

Absorption

Estradiol

Estradiol is absorbed through the gastrointestinal tract. Following oral administration of Activella tablets, peak plasma estradiol concentrations are reached within 5 to 8 hours. The oral bioavailability of estradiol following administration of Activella 1 mg/0.5 mg when compared to a combination oral solution is 53%. Administration of Activella 1 mg/0.5 mg with food did not modify the bioavailability of estradiol.

Norethindrone Acetate

After oral administration, norethindrone acetate is absorbed and transformed to norethindrone. Norethindrone reaches a peak plasma concentration within 0.5 to 1.5 hours after the administration of Activella tablets. The oral bioavailability of norethindrone following administration of Activella 1 mg/0.5 mg when compared to a combination oral solution is 100%. Administration of Activella 1 mg/0.5 mg with food increases norethindrone AUC₀₋₇₂ by 19% and decreases C_{max} by 36%.

The pharmacokinetic parameters of estradiol (E₂), estrone (E₁), and norethindrone (NET) following oral administration of 1 Activella 1 mg/0.5 mg or 2 Activella 0.5 mg/0.1 mg tablet(s) to healthy postmenopausal women are summarized in Table 3.

TABLE 3
PHARMACOKINETIC PARAMETERS AFTER ADMINISTRATION OF
1 TABLET OF ACTIVELLA 1 MG/0.5 MG OR 2 TABLETS OF ACTIVELLA 0.5 MG/0.1 MG
TO HEALTHY POSTMENOPAUSAL WOMEN

	1 x Activella 1 mg/0.5 mg (n=24) Mean ^a (%CV) ^b	2 x Activella 0.5 mg/0.1 mg (n=24) Mean ^a (%CV) ^b
Estradiol^c (E₂)		
AUC _{0-t} (pg/mL*h)	766.5 (48)	697.3 (53)
C _{max} (pg/mL)	26.8 (36)	26.5 (37)
t _{max} (h): median (range)	6.0 (0.5-16.0)	6.5 (0.5-16.0)
t _{1/2} (h) ^d	14.0 ^e (29)	14.5 ^f (27)
Estrone^c (E₁)		
AUC _{0-t} (pg/mL*h)	4469.1 (48)	4506.4 (44)
C _{max} (pg/mL)	195.5 (37)	199.5 (30)
t _{max} (h): median (range)	6.0 (1.0-9.0)	6.0 (2.0-9.0)
t _{1/2} (h) ^d	10.7 (44) ^g	11.8 (25) ^g
Norethindrone (NET)		
AUC _{0-t} (pg/mL*h)	21043 (41)	8407.2 (43)
C _{max} (pg/mL)	5249.5 (47)	2375.4 (41)
t _{max} (h) : median (range)	0.7 (0.7-1.25)	0.8 (0.7-1.3)
t _{1/2} (h)	9.8 (32) ^h	11.4 (36) ⁱ

AUC = area under the curve, 0 – last quantifiable sample

C_{max} = maximum plasma concentration,

t_{max} = time at maximum plasma concentration,

t_{1/2} = half-life,

^a geometric mean; ^b geometric % coefficient of variation; ^c baseline unadjusted data; ^d baseline unadjusted data; ^e n=18; ^f n=16;

^g n=13; ^h n=22; ⁱ n=21

Following continuous dosing with once-daily administration of Activella 1 mg/0.5 mg, serum concentrations of estradiol, estrone, and norethindrone reached steady-state within two weeks with an accumulation of 33 to 47% above concentrations following single dose administration. Unadjusted circulating concentrations of E₂, E₁, and NET during Activella 1 mg/0.5 mg treatment at steady-state (dosing at time 0) are provided in Figures 1a and 1b.

Figure 1a: Mean Baseline-Uncorrected Estradiol and Estrone Serum Concentration-Time Profiles Following Multiple Doses of Activella 1 mg/0.5 mg (N=24)

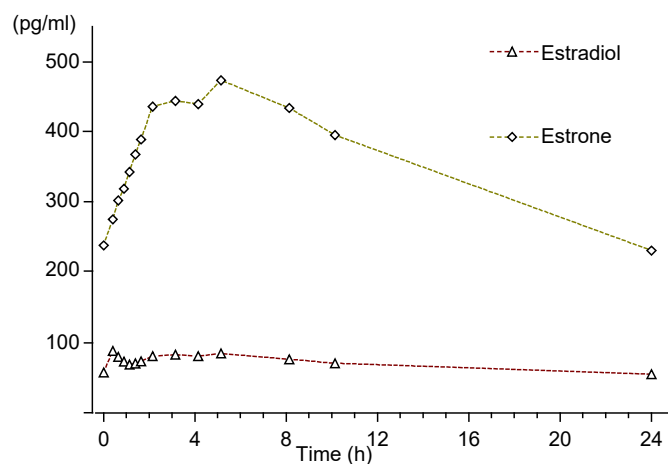
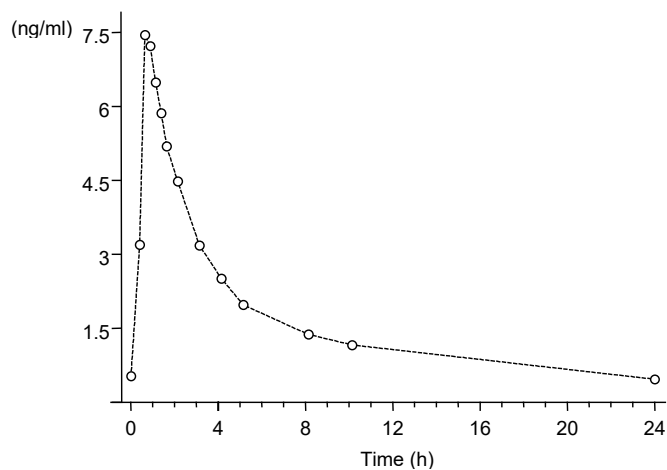


Figure 1b: Mean Baseline-Uncorrected Norethindrone Serum Concentration-Time Profile Following Multiple Doses of Activella 1 mg/0.5 mg (N=24)



Distribution

Estradiol

The distribution of exogenous estrogens is similar to that of endogenous estrogens. Estrogens are widely distributed in the body and are generally found in higher concentrations in the sex hormone target organs. Estradiol circulates in the blood bound to SHBG (37%) and to albumin (61%), while only approximately 1 to 2% is unbound.

Norethindrone Acetate

Norethindrone also binds to a similar extent to SHBG (36%) and to albumin (61%).

Metabolism

Estradiol

Exogenous estrogens are metabolized in the same manner as endogenous estrogens. Circulating estrogens exist in a dynamic equilibrium of metabolic interconversions. These transformations take place mainly in the liver. Estradiol is converted reversibly to estrone, and both can be converted to estriol, which is a major urinary metabolite. Estrogens also undergo enterohepatic recirculation via sulfate and glucuronide conjugation in the liver, biliary secretion of conjugates into the intestine, and hydrolysis in the intestine followed by reabsorption. In postmenopausal women, a significant proportion of the circulating estrogens exist as sulfate conjugates, especially estrone sulfate, which serves as a circulating reservoir for the formation of more active estrogens.

Norethindrone Acetate

The most important metabolites of norethindrone are isomers of 5 α -dihydro-norethindrone and tetrahydro-norethindrone, which are excreted mainly in the urine as sulfate or glucuronide conjugates.

Excretion

Estradiol

Estradiol, estrone, and estriol are excreted in the urine along with glucuronide and sulfate conjugates. The half-life of estradiol following single dose administration of Activella 1 mg/0.5 mg is 12 to 14 hours.

Norethindrone Acetate

The terminal half-life of norethindrone is about 8 to 11 hours.

13 NONCLINICAL TOXICOLOGY

13.1 Carcinogenesis, Mutagenesis, Impairment of Fertility

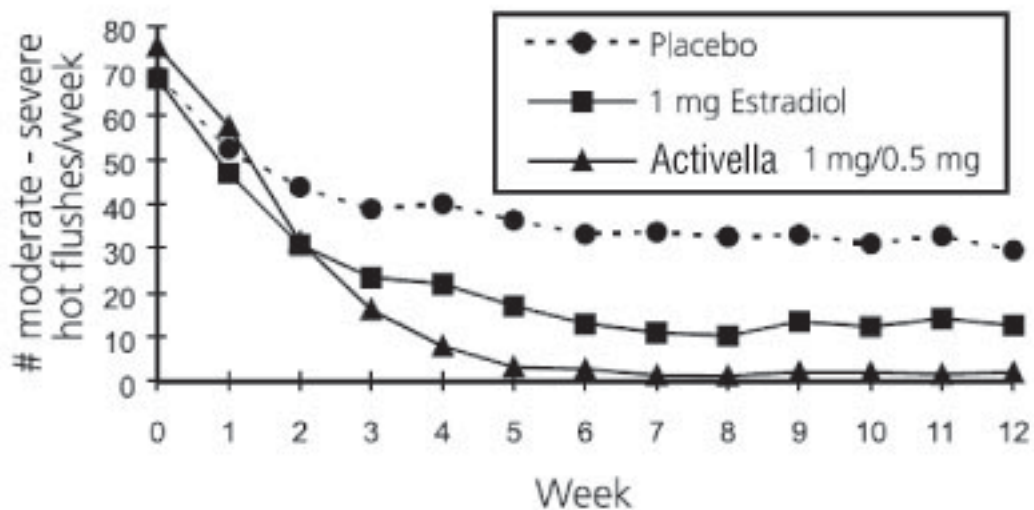
Long-term continuous administration of natural and synthetic estrogens in certain animal species increases the frequency of carcinomas of the breast, uterus, cervix, vagina, testis, and liver.

14 CLINICAL STUDIES

14.1 Effects on Vasomotor Symptoms in Postmenopausal Women

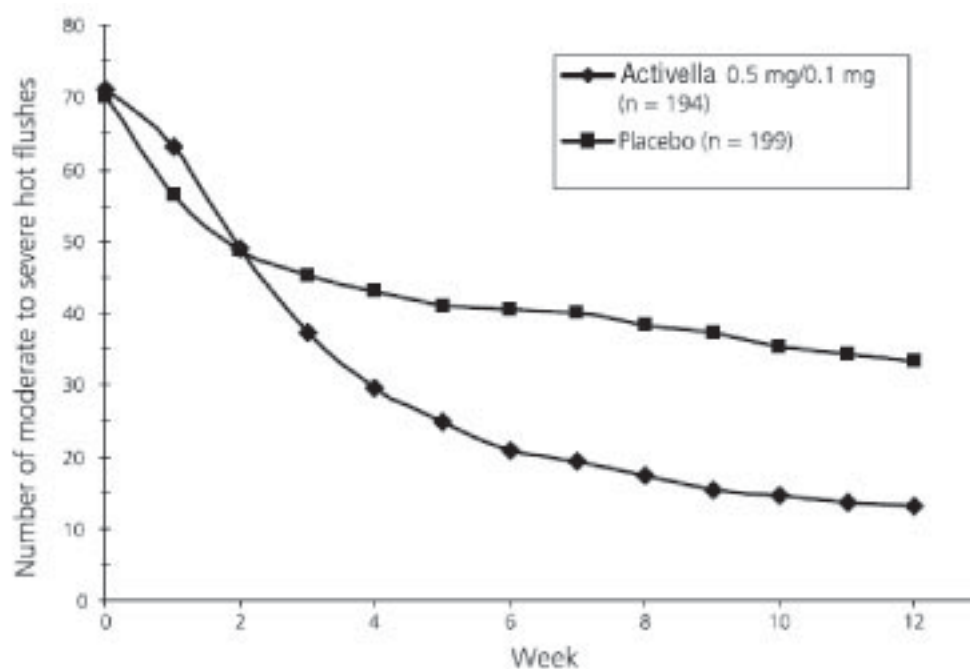
In a 12-week randomized clinical trial involving 92 subjects, Activella 1 mg/0.5 mg was compared to 1 mg of estradiol and to placebo. The mean number and intensity of hot flushes were significantly reduced from baseline to week 4 and 12 in both the Activella 1 mg/0.5 mg and the 1 mg estradiol group compared to placebo (see Figure 2).

Figure 2
Mean Weekly Number of Moderate and Severe Hot Flushes in a 12-Week Study



In a study conducted in Europe a total of 577 postmenopausal women were randomly assigned to either Activella 0.5 mg/0.1 mg, 0.5 mg E₂/0.25 mg NETA, or placebo for 24 weeks of treatment. The mean number and severity of hot flushes were significantly reduced at week 4 and week 12 in the Activella 0.5 mg/0.1 mg (see Figure 3) and 0.5 mg E₂/0.25 mg NETA groups compared to placebo.

Figure 3
Mean Number of Moderate to Severe Hot Flashes for Weeks 0 Through 12



14.2 Effects on the Endometrium in Postmenopausal Women

Activella 1 mg/0.5 mg reduced the incidence of estrogen-induced endometrial hyperplasia at 1 year in a randomized, controlled clinical trial. This trial enrolled 1,176 postmenopausal women who were randomized to one of 4 arms: 1 mg estradiol unopposed (n=296), 1 mg E₂ + 0.1 mg NETA (n=294), 1 mg E₂ + 0.25 mg NETA (n=291), and Activella 1 mg/0.5 mg (n=295). At the end of the study, endometrial biopsy results were available for 988 women. The results of the 1 mg estradiol unopposed arm compared to Activella 1 mg/0.5 mg are shown in Table 4.

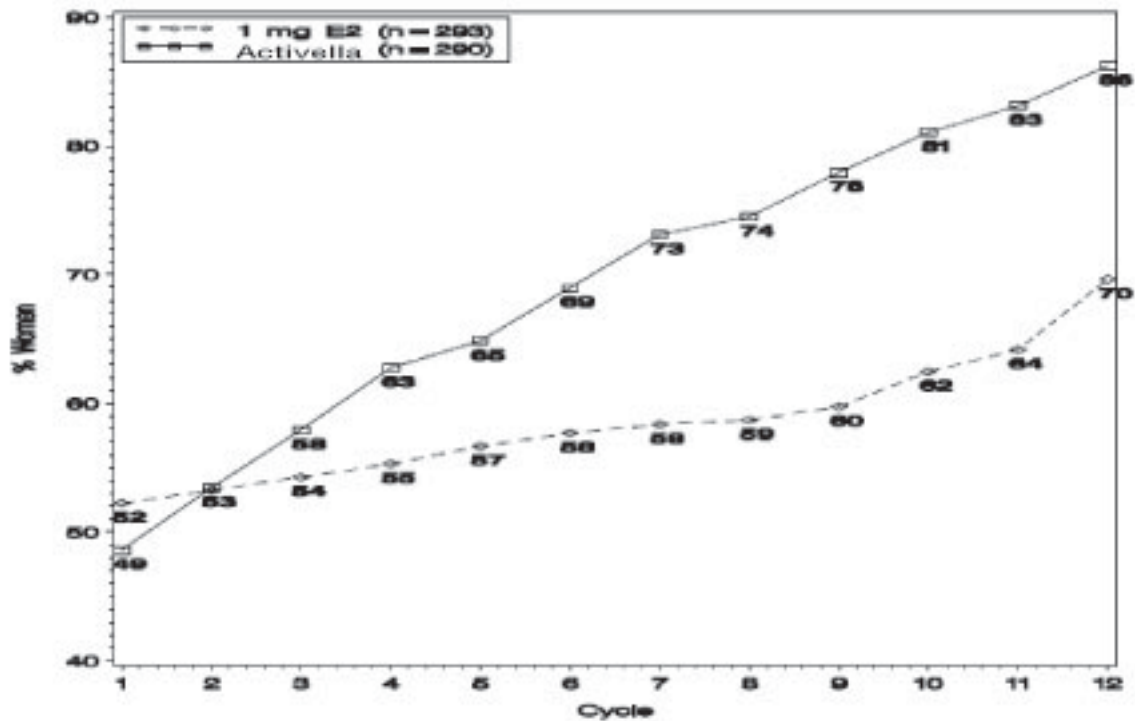
TABLE 4
INCIDENCE OF ENDOMETRIAL HYPERPLASIA WITH UNOPPOSED ESTRADIOL AND
ACTIVELLA 1 MG/0.5 MG IN A 12-MONTH STUDY

	Activella			
	1 mg E ₂ (n=296)	1 mg E ₂ /0.5 mg NETA (n=295)	1 mg E ₂ /0.25 mg NETA (n=291)	1 mg E ₂ /0.1 mg NETA (n=294)
No. of subjects with histological evaluation at the end of the study	247	241	251	249
No. (%) of subjects with endometrial hyperplasia at the end of the study	36 (14.6%)	1 (0.4%)	1 (0.4%)	2 (0.8%)

14.3 Effects on Uterine Bleeding or Spotting in Postmenopausal Women

During the initial months of therapy, irregular bleeding or spotting occurred with Activella 1 mg/0.5 mg treatment. However, bleeding tended to decrease over time, and after 12 months of treatment with Activella 1 mg/0.5 mg, about 86 percent of women were amenorrheic (see Figure 4).

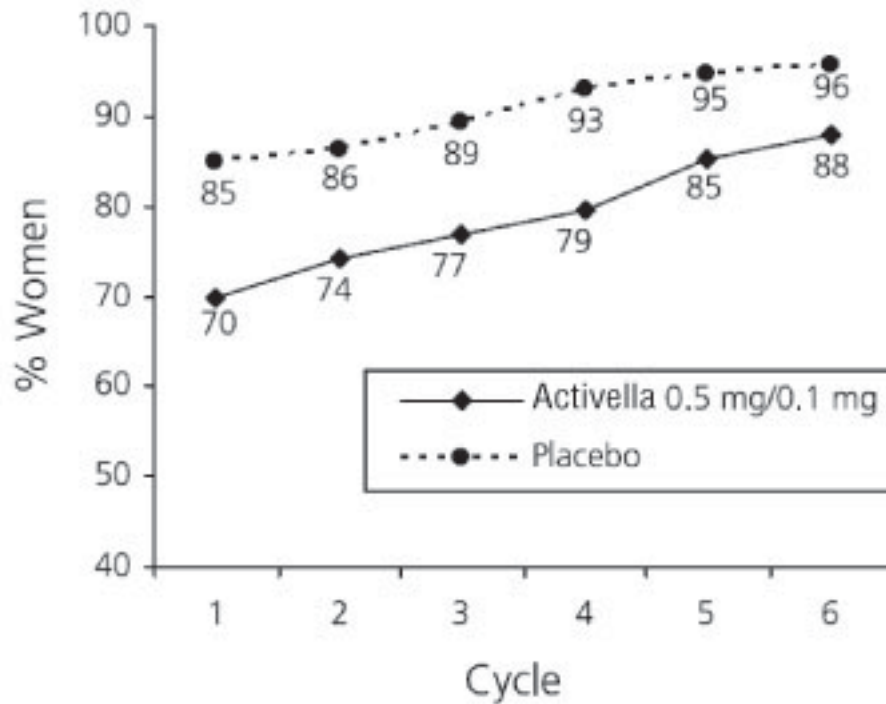
Figure 4
Patients Treated with Activella 1 mg/0.5 mg with Cumulative Amenorrhea over Time
Percentage of Women with no Bleeding or Spotting at any Cycle Through Cycle 13
Intent to Treat Population, LOCF



Note: the percentage of patients who were amenorrheic in a given cycle and through cycle 13 is shown. If data were missing, the bleeding value from the last reported day was carried forward (LOCF).

In the clinical trial with Activella 0.5 mg/0.1 mg, 88 percent of women were amenorrheic after 6 months of treatment (See Figure 5).

Figure 5
Patients Treated with Activella 0.5 mg/0.1 mg with
Cumulative Amenorrhea over Time
Percentage of Women with no Bleeding or Spotting at any
Cycle Through Cycle 6, Intent to Treat Population, LOCF



14.4 Effects on Bone Mineral Density in Postmenopausal Women

The results of two randomized, multicenter, calcium-supplemented (500 to 1,000 mg per day), placebo-controlled, 2 year clinical trials have shown that Activella 1 mg/0.5 mg and estradiol 0.5 mg are effective in preventing bone loss in postmenopausal women. A total of 462 postmenopausal women with intact uteri and baseline BMD values for lumbar spine within 2 standard deviations of the mean in healthy young women (T-score > -2.0) were enrolled. In a US trial, 327 postmenopausal women (mean time from menopause 2.5 to 3.1 years) with a mean age of 53 years were randomized to 7 groups (0.25 mg, 0.5 mg, and 1 mg of estradiol alone, 1 mg estradiol with 0.25 mg norethindrone acetate, 1 mg estradiol with 0.5 mg norethindrone acetate, and 2 mg estradiol with 1 mg norethindrone acetate, and placebo). In a European trial (EU trial), 135 postmenopausal women (mean time from menopause 8.4 to 9.3 years) with a mean age of 58 years were randomized to 1 mg estradiol with 0.25 mg norethindrone acetate, 1 mg estradiol with 0.5 mg norethindrone acetate, and placebo. Approximately 58 percent and 67 percent of the randomized subjects in the two clinical trials, respectively, completed the two clinical trials. BMD was measured using dual-energy x-ray absorptiometry (DXA).

A summary of the results comparing Activella 1 mg/0.5 mg and estradiol 0.5 mg to placebo from the two prevention trials is shown in Table 5.

TABLE 5
PERCENTAGE CHANGE (MEAN ± SD) IN BONE MINERAL DENSITY (BMD) FOR
ACTIVELLA 1 MG/0.5 MG AND 0.5 MG E₂[†]
(Intent to Treat Analysis, Last Observation Carried Forward)

	US Trial			EU Trial	
	Placebo (n=37)	0.5 mg E ₂ [†] (n=31)	Activella 1 mg/0.5 mg (n=37)	Placebo (n=40)	Activella 1 mg/0.5 mg (n=38)
Lumbar spine	-2.1 ± 2.9	2.3 ± 2.8 *	3.8 ± 3.0 *	-0.9 ± 4.0	5.4 ± 4.8 *
Femoral neck	-2.3 ± 3.4	0.3 ± 2.9 **	1.8 ± 4.1 *	-1.0 ± 4.6	0.7 ± 6.1
Femoral trochanter	-2.0 ± 4.3	1.7 ± 4.1***	3.7 ± 4.3 *	0.8 ± 6.9	6.3 ± 7.6 *

US= United States, EU = European

[†] While Activella 0.5 mg/0.1 mg was not directly studied in these trials, the US trial showed that addition of NETA to estradiol enhances the effect on BMD; therefore the BMD changes expected from treatment with Activella 0.5 mg/0.1 mg should be at least as great as observed with estradiol 0.5 mg.

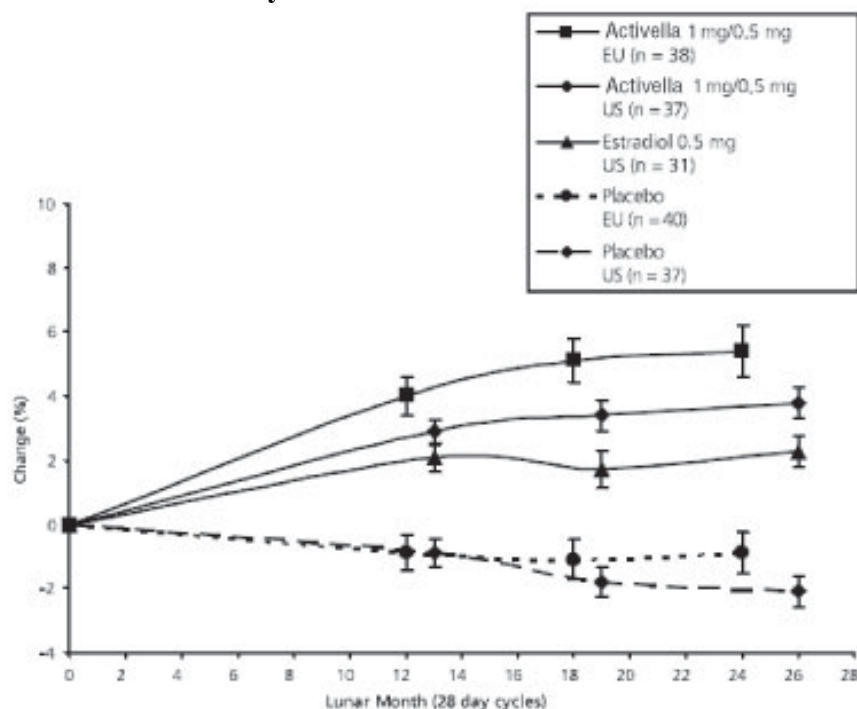
* Significantly (p<0.001) different from placebo

** Significantly (p<0.007) different from placebo

***Significantly (p<0.002) different from placebo

The overall difference in mean percentage change in BMD at the lumbar spine in the US trial (1000 mg per day calcium) between Activella 1 mg/0.5 mg and placebo was 5.9 percent and between estradiol 0.5 mg and placebo was 4.4 percent. In the European trial (500 mg per day calcium), the overall difference in mean percentage change in BMD at the lumbar spine was 6.3 percent. Activella 1 mg/0.5 mg and estradiol 0.5 mg also increased BMD at the femoral neck and femoral trochanter compared to placebo. The increase in lumbar spine BMD in the US and European clinical trials for Activella 1 mg/0.5 mg and estradiol 0.5 mg is displayed in Figure 6.

Figure 6
Percentage Change in Bone Mineral Density (BMD) ± SEM of the Lumbar Spine (L1-L4) for
Activella 1 mg/0.5 mg and Estradiol 0.5 mg
(Intent to Treat Analysis with Last Observation Carried Forward)



14.5 Women’s Health Initiative Studies

The WHI enrolled approximately 27,000 predominantly healthy postmenopausal women in two substudies to assess the risks and benefits of daily oral CE (0.625 mg)-alone or in combination with MPA (2.5 mg) compared to placebo in the prevention of certain chronic diseases. The primary endpoint was the incidence of CHD (defined as nonfatal MI, silent MI and CHD death), with invasive breast cancer as the primary adverse outcome. A “global index” included the earliest occurrence of CHD, invasive breast cancer, stroke, PE, endometrial cancer (only in the CE plus MPA substudy), colorectal cancer, hip fracture, or death due to other cause. These substudies did not evaluate the effects of CE plus MPA or CE-alone on menopausal symptoms.

WHI Estrogen Plus Progestin Substudy

The WHI estrogen plus progestin substudy was stopped early. According to the predefined stopping rule, after an average follow-up of 5.6 years of treatment, the increased risk of invasive breast cancer and cardiovascular events exceeded the specified benefits included in the “global index.” The absolute excess risk of events included in the “global index” was 19 per 10,000 women-years.

For those outcomes included in the WHI “global index,” that reached statistical significance after 5.6 years of follow-up, the absolute excess risks per 10,000 women-years in the group treated with CE plus MPA were 7 more CHD events, 8 more strokes, 10 more PEs, and 8 more invasive breast cancers, while the absolute risk reductions per 10,000 women-years were 6 fewer colorectal cancers and 5 fewer hip fractures.

Results of the CE plus MPA substudy, which included 16,608 women (average 63 years of age, range 50 to 79; 83.9 percent White, 6.8 percent Black, 5.4 percent Hispanic, 3.9 percent Other) are presented in Table 6. These results reflect centrally adjudicated data after an average follow-up of 5.6 years.

Table 6: Relative and Absolute Risk Seen in the Estrogen Plus Progestin Substudy of WHI at an Average of 5.6 Years^{a,b}

Event	Relative Risk CE/MPA versus Placebo (95% nCI ^c)	CE/MPA n = 8,506 Absolute Risk per 10,000 Women-Years	Placebo n = 8,102
CHD events	1.23 (0.99-1.53)	41	34
<i>Non-fatal MI</i>	<i>1.28 (1.00-1.63)</i>	<i>31</i>	<i>25</i>
<i>CHD death</i>	<i>1.10 (0.70-1.75)</i>	<i>8</i>	<i>8</i>
All strokes	1.31 (1.03–1.68)	33	25
<i>Ischemic stroke</i>	<i>1.44 (1.09–1.90)</i>	<i>26</i>	<i>18</i>
Deep vein thrombosis ^d	1.95 (1.43–2.67)	26	13
Pulmonary embolism	2.13 (1.45–3.11)	18	8
Invasive breast cancer ^e	1.24 (1.01–1.54)	41	33
Colorectal cancer	0.61 (0.42–0.87)	10	16
Endometrial cancer ^d	0.81 (0.48–1.36)	6	7
Cervical cancer ^d	1.44 (0.47–4.42)	2	1
Hip fracture	0.67 (0.47–0.96)	11	16
Vertebral fractures ^d	0.65 (0.46–0.92)	11	17
Lower arm/wrist fractures ^d	0.71 (0.59–0.85)	44	62
Total fractures ^d	0.76 (0.69–0.83)	152	199
Overall Mortality ^f	1.00 (0.83-1.19)	52	52
Global Index ^g	1.13 (1.02-1.25)	184	165

^a Adapted from numerous WHI publications. WHI publications can be viewed at www.nhlbi.nih.gov/whi.

^b Results are based on centrally adjudicated data.

^c Nominal confidence intervals unadjusted for multiple looks and multiple comparisons.

^d Not included in “global index”.

^e Includes metastatic and non-metastatic breast cancer, with the exception of *in situ* breast cancer.

Table 6: Relative and Absolute Risk Seen in the Estrogen Plus Progestin Substudy of WHI at an Average of 5.6 Years^{a,b}

Event	Relative Risk CE/MPA versus Placebo (95% nCI ^c)	CE/MPA n = 8,506	Placebo n = 8,102
		Absolute Risk per 10,000 Women-Years	

^f All deaths, except from breast or colorectal cancer, definite or probable CHD, PE or cerebrovascular disease.

^g A subset of the events was combined in a “global index” defined as the earliest occurrence of CHD events, invasive breast cancer, stroke, pulmonary embolism, colorectal cancer, hip fracture, or death due to other causes.

Timing of the initiation of estrogen plus progestin therapy relative to the start of menopause may affect the overall risk benefit profile. The WHI estrogen plus progestin substudy, stratified by age, showed in women 50 to 59 years of age a non-significant trend toward reduced risk for overall mortality [hazard ratio (HR) 0.69 (95 percent CI, 0.44-1.07)].

WHI Estrogen-Alone Substudy

The WHI estrogen-alone substudy was stopped early because an increased risk of stroke was observed, and it was deemed that no further information would be obtained regarding the risks and benefits of estrogen-alone in predetermined primary endpoints.

Results of the estrogen-alone substudy, which included 10,739 women (average 63 years of age, range 50 to 79; 75.3 percent White, 15.1 percent Black, 6.1 percent Hispanic, 3.6 percent Other), after an average follow-up of 7.1 years, are presented in Table 7.

Table 7: Relative and Absolute Risk Seen in the Estrogen-Alone Substudy of WHI^a

Event	Relative Risk CE versus Placebo (95% nCI ^b)	CE n = 5,310	Placebo n = 5,429
		Absolute Risk per 10,000 Women-Years	
CHD events ^c	0.95 (0.78–1.16)	54	57
<i>Non-fatal MI^c</i>	<i>0.91 (0.73–1.14)</i>	<i>40</i>	<i>43</i>
<i>CHD death^c</i>	<i>1.01(0.71–1.43)</i>	<i>16</i>	<i>16</i>
All strokes ^c	1.33 (1.05-1.68)	45	33
<i>Ischemic stroke^b</i>	<i>1.55 (1.19 – 2.01)</i>	<i>38</i>	<i>25</i>
Deep vein thrombosis ^{c,d}	1.47 (1.06–2.06)	23	15
Pulmonary embolism ^c	1.37 (0.90–2.07)	14	10
Invasive breast cancer ^c	0.80 (0.62–1.04)	28	34
Colorectal cancer ^c	1.08 (0.75–1.55)	17	16
Hip fracture ^c	0.65 (0.45–0.94)	12	19
Vertebral fractures ^{c,d}	0.64 (0.44-0.93)	11	18
Lower arm/wrist fractures ^{c,d}	0.58 (0.47-0.72)	35	59
Total fractures ^{c,d}	0.71 (0.64-0.80)	144	197
Death due to other causes ^{e,f}	1.08 (0.88–1.32)	53	50
Overall mortality ^{c,d}	1.04 (0.88–1.22)	79	75
Global Index ^g	1.02 (0.92–1.13)	206	201

^a Adapted from numerous WHI publications. WHI publications can be viewed at www.nhlbi.nih.gov/whi.

^b Nominal confidence intervals unadjusted for multiple looks and multiple comparisons.

^c Results are based on centrally adjudicated data for an average follow-up of 7.1 years.

^d Not included in “global index”.

^e Results are based on an average follow-up of 6.8 years.

^f All deaths, except from breast or colorectal cancer, definite or probable CHD, PE or cerebrovascular disease.

^g A subset of the events was combined in a “global index,” defined as the earliest occurrence of CHD events, invasive breast cancer, stroke, pulmonary embolism, colorectal cancer, hip fracture, or death due to other causes.

For those outcomes included in the WHI “global index” that reached statistical significance, the absolute excess risk per 10,000 women-years in the group treated with CE-alone was 12 more strokes, while the absolute risk reduction per 10,000 women-years was 7 fewer hip fractures.⁹ The absolute excess risk of events included in the “global index” was a non-significant 5 events per 10,000 women-years. There was no difference between the groups in terms of all-cause mortality.

No overall difference for primary CHD events (nonfatal MI, silent MI and CHD death) and invasive breast cancer incidence in women receiving CE-alone compared with placebo was reported in final centrally adjudicated results from the estrogen-alone substudy, after an average follow up of 7.1 years.

Centrally adjudicated results for stroke events from the estrogen-alone substudy, after an average follow-up of 7.1 years, reported no significant difference in distribution of stroke subtype or severity, including fatal strokes, in women receiving CE-alone compared to placebo. Estrogen-alone increased the risk for ischemic stroke, and this excess risk was present in all subgroups of women examined.¹⁰

Timing of the initiation of estrogen-alone therapy relative to the start of menopause may affect the overall risk benefit profile. The WHI estrogen-alone substudy, stratified by age, showed in women 50 to 59 years of age a non-significant trend toward reduced risk for CHD [*HR 0.63 (95 percent CI, 0.36-1.09)*] and overall mortality [*HR 0.71 (95 percent CI, 0.46-1.11)*].

14.6 Women’s Health Initiative Memory Study

The WHIMS estrogen plus progestin ancillary study of WHI enrolled 4,532 predominantly healthy postmenopausal women 65 years of age and older (47 percent were 65 to 69 years of age, 35 percent were 70 to 74 years of age, 18 percent were 75 years of age and older) to evaluate the effects of daily CE (0.625 mg) plus MPA (2.5 mg) on the incidence of probable dementia (primary outcome) compared to placebo.

After an average follow-up of 4 years, the relative risk of probable dementia for CE plus MPA versus placebo was 2.05 (95 percent CI, 1.21-3.48). The absolute risk of probable dementia for CE plus MPA versus placebo was 45 versus 22 cases per 10,000 women-years. Probable dementia as defined in this study included Alzheimer’s disease (AD), vascular dementia (VaD) and mixed types (having features of both AD and VaD). The most common classification of probable dementia in the treatment group and the placebo group was AD. Since the ancillary study was conducted in women 65 to 79 years of age, it is unknown whether these findings apply to younger postmenopausal women [*see Warnings and Precautions (5.3), and Use in Specific Populations (8.5)*].

The WHIMS estrogen-alone ancillary study of WHI study enrolled 2,947 predominantly healthy hysterectomized postmenopausal women 65 to 79 years of age (45 percent were 65 to 69 years of age, 36 percent were 70 to 74 years of age, 19 percent were 75 years of age and older) to evaluate the effects of daily CE (0.625 mg)-alone on the incidence of probable dementia (primary outcome) compared to placebo.

After an average follow-up of 5.2 years, the relative risk of probable dementia for CE-alone versus placebo was 1.49 (95 percent CI, 0.83-2.66). The absolute risk of probable dementia for CE-alone versus placebo was 37 versus 25 cases per 10,000 women-years. Probable dementia as defined in this study included AD, VaD and mixed types (having features of both AD and VaD). The most common classification of probable dementia in the treatment group and the placebo group was AD. Since the ancillary study was conducted in women 65 to 79 years of age, it is unknown whether these findings apply to younger postmenopausal women [*see Warnings and Precautions (5.3), and Use in Specific Populations (8.5)*].

When data from the two populations were pooled as planned in the WHIMS protocol, the reported overall relative risk for probable dementia was 1.76 (95 percent CI, 1.19-2.60). Differences between groups became

apparent in the first year of treatment. It is unknown whether these findings apply to younger postmenopausal women [see *Warnings and Precautions (5.3)*, and *Use in Specific Populations (8.5)*].

15 REFERENCES

1. Rossouw JE, et al. Postmenopausal Hormone Therapy and Risk of Cardiovascular Disease by Age and Years Since Menopause. *JAMA*. 2007;297:1465-1477.
2. Hsia J, et al. Conjugated Equine Estrogens and Coronary Heart Disease. *Arch Int Med*. 2006;166:357-365.
3. Cushman M, et al. Estrogen Plus Progestin and Risk of Venous Thrombosis. *JAMA*. 2004;292:1573-1580.
4. Curb JD, et al. Venous Thrombosis and Conjugated Equine Estrogen in Women Without a Uterus. *Arch Int Med*. 2006;166:772-780.
5. Chlebowski RT, et al. Influence of Estrogen Plus Progestin on Breast Cancer and Mammography in Healthy Postmenopausal Women. *JAMA*. 2003;289:3234-3253.
6. Stefanick ML, et al. Effects of Conjugated Equine Estrogens on Breast Cancer and Mammography Screening in Postmenopausal Women With Hysterectomy. *JAMA*. 2006;295:1647-1657.
7. Anderson GL, et al. Effects of Estrogen Plus Progestin on Gynecologic Cancers and Associated Diagnostic Procedures. *JAMA*. 2003;290:1739-1748.
8. Shumaker SA, et al. Conjugated Equine Estrogens and Incidence of Probable Dementia and Mild Cognitive Impairment in Postmenopausal Women. *JAMA*. 2004;291:2947-2958.
9. Jackson RD, et al. Effects of Conjugated Equine Estrogen on Risk of Fractures and BMD in Postmenopausal Women With Hysterectomy: Results From the Women's Health Initiative Randomized Trial. *J Bone Miner Res*. 2006;21:817-828.
10. Hendrix SL, et al. Effects of Conjugated Equine Estrogen on Stroke in the Women's Health Initiative. *Circulation*. 2006;113:2425-2434.

16 HOW SUPPLIED/STORAGE AND HANDLING

16.1 How Supplied

Activella (estradiol/norethindrone acetate) tablets, 1 mg/0.5 mg are available as white, round, biconvex, film-coated tablets, debossed with "ALH" on the one side and plain on the other side. (NDC 60846-232-01). It is supplied as 28 tablets in a blister pack, one blister pack per carton.

Activella (estradiol/norethindrone acetate) tablets, 0.5 mg/0.1 mg are available as white, round, biconvex, film-coated tablets, debossed with "ALL" on the one side and plain on the other side. (NDC 60846-231-01). It is supplied as 28 tablets in a blister pack, one blister pack per carton.

16.2 Storage and Handling

Store in a dry place protected from light. Store at 20° to 25°C (68° to 77°F), excursions permitted between 15° to 30°C (59° to 86°F) [see USP Controlled Room Temperature].

17 PATIENT COUNSELING INFORMATION

Advise women to read the FDA-approved patient labeling (Patient Information)

Vaginal Bleeding

Inform postmenopausal women to report any vaginal bleeding to their healthcare provider as soon as possible [see *Warnings and Precautions (5.2)*].

Possible Serious Adverse Reactions with Estrogen Plus Progestogen Therapy

Inform postmenopausal women of possible serious adverse reactions of estrogen plus progestogen therapy including Cardiovascular Disorders, Malignant Neoplasms, and Probable Dementia [see *Warnings and Precautions (5.1, 5.2, 5.3)*].

Possible Common Adverse Reactions with Estrogen Plus Progestogen Therapy

Inform postmenopausal women of possible less serious but common adverse reactions of estrogen plus progestogen therapy such as headache, breast pain and tenderness, nausea and vomiting.

Rx Only

Activella[®] is a registered trademark owned by Novo Nordisk Health Care AG.

Distributed by:

Amneal Specialty, a division of Amneal Pharmaceuticals LLC

Bridgewater, NJ 08807

Rev. 11-2023-04