

HIGHLIGHTS OF PRESCRIBING INFORMATION

These highlights do not include all the information needed to use TALTZ safely and effectively. See full prescribing information for TALTZ.

TALTZ (ixekizumab) injection, for subcutaneous use
Initial U.S. Approval: 2016

RECENT MAJOR CHANGES

Dosage and Administration (2.7, 2.8) 02/2024
Warnings and Precautions (5.1, 5.4) 08/2024

INDICATIONS AND USAGE

TALTZ® is a humanized interleukin-17A antagonist indicated for the treatment of:

- patients aged 6 years or older with moderate-to-severe plaque psoriasis who are candidates for systemic therapy or phototherapy. (1.1)
- adults with active psoriatic arthritis. (1.2)
- adults with active ankylosing spondylitis. (1.3)
- adults with active non-radiographic axial spondyloarthritis with objective signs of inflammation. (1.4)

DOSAGE AND ADMINISTRATION

Administer by subcutaneous injection.

Adult Plaque Psoriasis (2.2)

- Recommended dosage is 160 mg (two 80 mg injections) at Week 0, followed by 80 mg at Weeks 2, 4, 6, 8, 10, and 12, then 80 mg every 4 weeks.

Pediatric Plaque Psoriasis (2.3)

- For patients weighing greater than 50 kg, recommended dosage is 160 mg (two 80 mg injections) at Week 0, followed by 80 mg every 4 weeks.
- For patients weighing 25-50 kg, recommended dosage is 80 mg at Week 0, followed by 40 mg every 4 weeks.
- For patients weighing less than 25 kg, recommended dosage is 40 mg at Week 0, followed by 20 mg every 4 weeks.

Psoriatic Arthritis (2.4)

- Recommended dosage is 160 mg by subcutaneous injection (two 80 mg injections) at Week 0, followed by 80 mg every 4 weeks.
- For psoriatic arthritis patients with coexistent moderate-to-severe plaque psoriasis, use the dosing regimen for adult plaque psoriasis. (2.2)
- TALTZ may be administered alone or in combination with a conventional DMARD (e.g., methotrexate).

Ankylosing Spondylitis (2.5)

- Recommended dosage is 160 mg by subcutaneous injection (two 80 mg injections) at Week 0, followed by 80 mg every 4 weeks.

Non-radiographic Axial Spondyloarthritis (2.6)

- Recommended dosage is 80 mg by subcutaneous injection every 4 weeks.

DOSAGE FORMS AND STRENGTHS

Injection: (3)

- 80 mg/mL solution in a single-dose prefilled autoinjector
- 80 mg/mL solution in a single-dose prefilled syringe
- 40 mg/0.5 mL solution in a single-dose prefilled syringe
- 20 mg/0.25 mL solution in a single-dose prefilled syringe

CONTRAINDICATIONS

Serious hypersensitivity reaction to ixekizumab or to any of the excipients. (4)

WARNINGS AND PRECAUTIONS

- Infections:** Serious infections have occurred. Instruct patients to seek medical advice if signs or symptoms of clinically important chronic or acute infection occur. If a serious infection develops, discontinue TALTZ until the infection resolves. (5.1)
- Tuberculosis (TB):** Evaluate for TB prior to initiating treatment. (5.2)
- Hypersensitivity:** If a serious allergic reaction occurs, discontinue TALTZ immediately and initiate appropriate therapy. (5.3)
- Ecematous Eruptions:** In the postmarketing setting, cases of severe ecematous eruptions were reported in patients receiving TALTZ. Treatment may need to be discontinued to resolve the ecematous eruption. (5.4)
- Inflammatory Bowel Disease:** Crohn's disease and ulcerative colitis, including exacerbations, occurred during clinical trials. Monitor closely when prescribing TALTZ to patients with inflammatory bowel disease (IBD). Discontinue TALTZ and initiate appropriate medical management if IBD develops. (5.5)
- Immunizations:** Avoid use of live vaccines. (5.6)

ADVERSE REACTIONS

Most common (≥1%) adverse reactions associated with TALTZ treatment are injection site reactions, upper respiratory tract infections, nausea, and tinea infections. (6.1)

To report SUSPECTED ADVERSE REACTIONS, contact Eli Lilly and Company at 1-800-545-5979 (1-800-LillyRx) or FDA at 1-800-FDA-1088 or www.fda.gov/medwatch.

See 17 for PATIENT COUNSELING INFORMATION and FDA-approved Medication Guide.

Revised: 08/2024

FULL PRESCRIBING INFORMATION: CONTENTS***1 INDICATIONS AND USAGE**

- 1.1 Plaque Psoriasis
- 1.2 Psoriatic Arthritis
- 1.3 Ankylosing Spondylitis
- 1.4 Non-radiographic Axial Spondyloarthritis

2 DOSAGE AND ADMINISTRATION

- 2.1 Testing and Procedures Prior to Treatment Initiation
- 2.2 Recommended Dosage in Adult Plaque Psoriasis
- 2.3 Recommended Dosage in Pediatric Plaque Psoriasis
- 2.4 Recommended Dosage in Psoriatic Arthritis
- 2.5 Recommended Dosage in Ankylosing Spondylitis
- 2.6 Recommended Dosage in Non-radiographic Axial Spondyloarthritis
- 2.7 Preparation and Administration Instructions
- 2.8 Alternative Preparation Instructions of TALTZ Doses for Pediatric Patients with Plaque Psoriasis Weighing 50 kg or Less

3 DOSAGE FORMS AND STRENGTHS**4 CONTRAINDICATIONS****5 WARNINGS AND PRECAUTIONS**

- 5.1 Infections
- 5.2 Pre-treatment Evaluation for Tuberculosis

- 5.3 Hypersensitivity
- 5.4 Ecematous Eruptions
- 5.5 Inflammatory Bowel Disease
- 5.6 Immunizations

6 ADVERSE REACTIONS

- 6.1 Clinical Trials Experience
- 6.2 Immunogenicity
- 6.3 Postmarketing Experience

8 USE IN SPECIFIC POPULATIONS

- 8.1 Pregnancy
- 8.2 Lactation
- 8.4 Pediatric Use
- 8.5 Geriatric Use

11 DESCRIPTION**12 CLINICAL PHARMACOLOGY**

- 12.1 Mechanism of Action
- 12.2 Pharmacodynamics
- 12.3 Pharmacokinetics

13 NONCLINICAL TOXICOLOGY

- 13.1 Carcinogenesis, Mutagenesis, Impairment of Fertility

14 CLINICAL STUDIES

- 14.1 Adult Plaque Psoriasis

14.2 Pediatric Plaque Psoriasis

14.3 Psoriatic Arthritis

14.4 Ankylosing Spondylitis

14.5 Non-radiographic Axial Spondyloarthritis

16 HOW SUPPLIED/STORAGE AND HANDLING

17 PATIENT COUNSELING INFORMATION

*Sections or subsections omitted from the full prescribing information are not listed.

FULL PRESCRIBING INFORMATION

1 INDICATIONS AND USAGE

1.1 Plaque Psoriasis

TALTZ[®] is indicated for the treatment of patients 6 years of age and older with moderate-to-severe plaque psoriasis who are candidates for systemic therapy or phototherapy.

1.2 Psoriatic Arthritis

TALTZ is indicated for the treatment of adult patients with active psoriatic arthritis.

1.3 Ankylosing Spondylitis

TALTZ is indicated for the treatment of adult patients with active ankylosing spondylitis.

1.4 Non-radiographic Axial Spondyloarthritis

TALTZ is indicated for the treatment of adult patients with active non-radiographic axial spondyloarthritis (nr-axSpA) with objective signs of inflammation.

2 DOSAGE AND ADMINISTRATION

2.1 Testing and Procedures Prior to Treatment Initiation

Perform the following evaluations prior to TALTZ initiation:

- Evaluate patients for tuberculosis (TB) infection. TALTZ initiation is not recommended in patients with active TB infection. Initiate treatment of latent TB prior to initiation of TALTZ [see *Warnings and Precautions (5.2)*].
- Complete all age-appropriate vaccinations as recommended by current immunization guidelines prior to initiating treatment with TALTZ [see *Warnings and Precautions (5.6)*].

2.2 Recommended Dosage in Adult Plaque Psoriasis

TALTZ is administered by subcutaneous injection. The recommended dosage in adults with moderate-to-severe plaque psoriasis is 160 mg (two 80 mg injections) at Week 0, followed by 80 mg at Weeks 2, 4, 6, 8, 10, and 12, then 80 mg every 4 weeks.

2.3 Recommended Dosage in Pediatric Plaque Psoriasis

TALTZ is administered by subcutaneous injection every 4 weeks (Q4W). The recommended dosage in pediatric patients from 6 to less than 18 years of age with moderate-to-severe plaque psoriasis is based on the following weight categories.

Table 1: Recommended Dosage for Pediatric Patients 6 Years of Age and Older with Plaque Psoriasis

Pediatric Patient's Weight	Starting Dose (Week 0)	Dose every 4 weeks (Q4W) Thereafter
Greater than 50 kg	160 mg (two 80 mg injections)	80 mg
25 to 50 kg	80 mg	40 mg
Less than 25 kg	40 mg	20 mg

2.4 Recommended Dosage in Psoriatic Arthritis

The recommended dosage is 160 mg by subcutaneous injection (two 80 mg injections) at Week 0, followed by 80 mg every 4 weeks.

For psoriatic arthritis patients with coexistent moderate-to-severe plaque psoriasis, use the dosing regimen for adult plaque psoriasis [see *Dosage and Administration (2.2)*].

TALTZ may be administered alone or in combination with a conventional disease-modifying antirheumatic drug (cDMARD) (e.g., methotrexate).

2.5 Recommended Dosage in Ankylosing Spondylitis

The recommended dosage is 160 mg by subcutaneous injection (two 80 mg injections) at Week 0, followed by 80 mg every 4 weeks.

2.6 Recommended Dosage in Non-radiographic Axial Spondyloarthritis

The recommended dosage is 80 mg by subcutaneous injection every 4 weeks.

2.7 Preparation and Administration Instructions

TALTZ is intended for use under the guidance and supervision of a healthcare provider. Adult patients may self-inject or caregivers may give injections of TALTZ after training in subcutaneous injection technique using the autoinjector or prefilled syringe. Safety and effectiveness of pediatric self-administration has not been established. Therefore, TALTZ should be administered to pediatric patients by a healthcare provider or by a caregiver who has received training and demonstrated proper subcutaneous injection technique.

TALTZ 20 mg and 40 mg doses prepared from the TALTZ 80 mg/mL prefilled syringe should only be administered by a qualified healthcare professional [see *Dosage and Administration (2.8)*].

The TALTZ “Instructions for Use” contains more detailed instructions on the preparation and administration of TALTZ [see *Instructions for Use*].

Before injection, remove TALTZ autoinjector or TALTZ prefilled syringe from the refrigerator and allow TALTZ to reach room temperature (30 minutes) without removing the needle cap. Inspect TALTZ visually for particulate matter and discoloration prior to administration. TALTZ is a clear and colorless to slightly yellow solution. Do not use if the liquid contains visible particles, is discolored or cloudy (other than clear and colorless to slightly yellow).

Administer each injection at a different anatomic location (such as upper arms, thighs or any quadrant of abdomen) than the previous injection, and not into areas where the skin is tender, bruised, erythematous, indurated or affected by psoriasis. Administration of TALTZ in the upper, outer arm may be performed by a caregiver or healthcare provider [see *Instructions for Use*].

TALTZ does not contain preservatives, therefore discard any unused product.

If a dose is missed, administer the dose as soon as possible. Thereafter, resume dosing at the regular scheduled time.

2.8 Alternative Preparation Instructions of TALTZ Doses for Pediatric Patients with Plaque Psoriasis Weighing 50 kg or Less

If the 20 mg/0.25 mL or 40 mg/0.5 mL prefilled syringe is unavailable, TALTZ doses of 20 mg or 40 mg for pediatric patients with plaque psoriasis [see *Dosage and Administration (2.3)*] must be manually prepared according to the steps below using only the TALTZ 80 mg/mL prefilled syringe. The preparation and administration of the 20 mg and 40 mg doses should only be performed by a qualified healthcare professional. For additional preparation and administration instructions, [see *Dosage and Administration (2.7)*].

1. Gather the following necessary supplies for preparation:
 - 0.5 mL or 1 mL disposable syringe
 - Sterile needle for withdrawal
 - 27-gauge sterile needle for administration
 - Sterile, clear glass vial.
2. Expel the entire contents of the prefilled syringe into the sterile vial. DO NOT shake or swirl the vial. Do not add other medications to solutions containing TALTZ.
3. Using the 0.5 mL or 1 mL disposable syringe and sterile needle, withdraw the prescribed dose from the vial (0.25 mL for 20 mg; 0.5 mL for 40 mg).
4. Remove the needle from the syringe and replace it with a 27-gauge needle prior to administering TALTZ.

Storage of Prepared TALTZ

If necessary, TALTZ 20 mg or 40 mg doses prepared from an 80 mg/mL prefilled syringe may be stored at room temperature for up to 4 hours from first puncturing the sterile vial.

3 DOSAGE FORMS AND STRENGTHS

TALTZ is a clear and colorless to slightly yellow solution available as:

- Injection: 80 mg/mL solution of TALTZ in a single-dose prefilled autoinjector
- Injection: 80 mg/mL solution of TALTZ in a single-dose prefilled syringe
- Injection: 40 mg/0.5 mL solution of TALTZ in a single-dose prefilled syringe
- Injection: 20 mg/0.25 mL solution of TALTZ in a single-dose prefilled syringe

4 CONTRAINDICATIONS

TALTZ is contraindicated in patients with a previous serious hypersensitivity reaction, such as anaphylaxis, to ixekizumab or to any of the excipients [see *Warnings and Precautions (5.3)*].

5 WARNINGS AND PRECAUTIONS

5.1 Infections

TALTZ may increase the risk of infection. In clinical trials in adult patients with plaque psoriasis, the TALTZ group had a higher rate of infections than the placebo group (27% vs. 23% . Upper respiratory tract infections, oral candidiasis, conjunctivitis and tinea infections occurred more frequently in the TALTZ group than in the placebo group. A similar increase in risk of infection was seen in placebo-controlled trials in patients with pediatric psoriasis, psoriatic arthritis, ankylosing spondylitis, and non-radiographic axial spondyloarthritis [see *Adverse Reactions (6.1)*].

In the postmarketing setting, serious bacterial, viral, and fungal opportunistic infections have been reported in patients receiving IL-17 inhibitors including TALTZ. Instruct patients treated with TALTZ to seek medical advice if signs or

symptoms of clinically important chronic or acute infection occur. If a patient develops a serious infection or is not responding to standard therapy, monitor the patient closely and discontinue TALTZ until the infection resolves.

5.2 Pre-treatment Evaluation for Tuberculosis

Evaluate patients for tuberculosis (TB) infection prior to initiating treatment with TALTZ. Do not administer to patients with active TB infection. Initiate treatment of latent TB prior to administering TALTZ. Consider anti-TB therapy prior to initiating TALTZ in patients with a past history of latent or active TB in whom an adequate course of treatment cannot be confirmed. Patients receiving TALTZ should be monitored closely for signs and symptoms of active TB during and after treatment.

5.3 Hypersensitivity

Serious hypersensitivity reactions, including angioedema and urticaria (each $\leq 0.1\%$), occurred in the TALTZ group in clinical trials. Anaphylaxis, including cases leading to hospitalization, has been reported in post marketing use with TALTZ [see *Adverse Reactions* (6.1, 6.3)]. If a serious hypersensitivity reaction occurs, discontinue TALTZ immediately and initiate appropriate therapy.

5.4 Eczematous Eruptions

In the postmarketing setting, cases of severe eczematous eruptions, including atopic dermatitis-like eruptions, dyshidrotic eczema, and erythroderma were reported in patients receiving TALTZ; some cases resulted in hospitalization. The onset of eczematous eruptions was variable, ranging from days to months after the first dose of TALTZ. Treatment may need to be discontinued to resolve the eczematous eruption. Some patients with limited psoriasis treatment options were successfully treated for eczema while continuing TALTZ.

5.5 Inflammatory Bowel Disease

Patients treated with TALTZ may be at increased risk of inflammatory bowel disease. In clinical trials, Crohn's disease and ulcerative colitis, including exacerbations, occurred at a greater frequency in the TALTZ group than the placebo control group [see *Adverse Reactions* (6.1)]. During TALTZ treatment, monitor for onset or exacerbation of inflammatory bowel disease and if IBD occurs, discontinue TALTZ and initiate appropriate medical management.

5.6 Immunizations

Prior to initiating therapy with TALTZ, consider completion of all age-appropriate immunizations according to current immunization guidelines. Avoid use of live vaccines in patients treated with TALTZ. No data are available on the response to live vaccines.

6 ADVERSE REACTIONS

The following adverse drug reactions are discussed in greater detail in other sections of the label:

- Infections [see *Warnings and Precautions* (5.1)]
- Hypersensitivity Reactions [see *Contraindications* (4) and *Warnings and Precautions* (5.3)]
- Eczematous Eruptions [see *Warnings and Precautions* (5.4)]
- Inflammatory Bowel Disease [see *Warnings and Precautions* (5.5)]

6.1 Clinical Trials Experience

Because clinical trials are conducted under widely varying and controlled conditions, adverse reaction rates observed in the clinical trials of a drug cannot be directly compared to rates in the clinical trials of another drug and may not reflect the rates observed in practice.

Adult Plaque Psoriasis

Weeks 0 to 12:

Three placebo-controlled trials in subjects with plaque psoriasis were integrated to evaluate the safety of TALTZ compared to placebo for up to 12 weeks. A total of 1167 subjects (mean age 45 years; 66% men; 94% White) with plaque psoriasis received TALTZ (160 mg at Week 0, 80 mg every 2 weeks [Q2W] for 12 weeks) subcutaneously. In two of the trials, the safety of TALTZ (use up to 12 weeks) was also compared with an active comparator, U.S. approved etanercept [see *Clinical Studies* (14)].

In the 12-week, placebo-controlled period, adverse events occurred in 58% of the TALTZ Q2W group (2.5 per subject-year of follow-up) compared with 47% of the placebo group (2.1 per subject-year of follow-up). Serious adverse events occurred in 2% of the TALTZ group (0.07 per subject-year of follow-up), and in 2% of the placebo group (0.07 per subject-year of follow-up).

Table 2 summarizes the adverse reactions that occurred at a rate of at least 1% and at a higher rate in the TALTZ group than in the placebo group during the 12-week placebo-controlled period of the pooled clinical trials.

Table 2: Adverse Reactions Occurring in ≥1% of the TALTZ Group and More Frequently than in the Placebo Group in the Plaque Psoriasis Clinical Trials through Week 12

Adverse Reactions	TALTZ 80 mg Q2W (N=1167) n (%)	Etanercept ^b (N=287) n (%)	Placebo (N=791) n (%)
Injection site reactions	196 (17)	32 (11)	26 (3)
Upper respiratory tract infections ^a	163 (14)	23 (8)	101 (13)
Nausea	23 (2)	1 (<1)	5 (1)
Tinea infections	17 (2)	0	1 (<1)

a Upper respiratory tract infections cluster includes nasopharyngitis and rhinovirus infection.

b U.S. approved etanercept.

Adverse reactions that occurred at rates less than 1% in the TALTZ group and more frequently than in the placebo group during the 12-week induction period included rhinitis, oral candidiasis, urticaria, influenza, conjunctivitis, inflammatory bowel disease, and angioedema.

Weeks 13 to 60:

A total of 332 subjects received the recommended maintenance regimen of TALTZ 80 mg dosed every 4 weeks.

During the maintenance period (Weeks 13 to 60), adverse events occurred in 80% of subjects treated with TALTZ (1.0 per subject-year of follow-up) compared to 58% of subjects treated with placebo (1.1 per subject-year of follow-up). Serious adverse events were reported in 4% of subjects treated with TALTZ (0.05 per subject-year of follow-up) and none in the subjects treated with placebo.

Weeks 0 to 60:

Over the entire treatment period (Weeks 0 to 60), adverse events were reported in 67% of subjects treated with TALTZ (1.4 per subject-year of follow-up) compared to 48% of subjects treated with placebo (2.0 per subject-year of follow-up). Serious adverse events were reported in 3% of subjects treated with TALTZ (0.06 per subject-year of follow-up), and in 2% of subjects treated with placebo (0.06 per subject-year of follow-up).

Specific Adverse Drug Reactions

Injection Site Reactions

The most frequent injection site reactions were erythema and pain. Most injection site reactions were mild-to-moderate in severity and did not lead to discontinuation of TALTZ.

Infections

In the 12-week, placebo-controlled period of the clinical trials in plaque psoriasis, infections occurred in 27% of subjects treated with TALTZ (1.2 per subject-year of follow-up) compared to 23% of subjects treated with placebo (1.0 per subject-year of follow-up). Serious infections occurred in 0.4% of subjects treated with TALTZ (0.02 per subject-year of follow-up) and in 0.4% of subjects treated with placebo (0.02 per subject-year of follow-up) [see *Warnings and Precautions (5.1)*].

During the maintenance treatment period (Weeks 13 to 60), infections occurred in 57% of subjects treated with TALTZ (0.70 per subject-year of follow-up) compared to 32% of subjects treated with placebo (0.61 per subject-year of follow-up). Serious infections occurred in 0.9% of subjects treated with TALTZ (0.01 per subject-year of follow-up) and none in the subjects treated with placebo.

Over the entire treatment period (Weeks 0 to 60), infections were reported in 38% of subjects treated with TALTZ (0.83 per subject-year of follow-up) compared to 23% of subjects treated with placebo (1.0 per subject-year of follow-up). Serious infections occurred in 0.7% of subjects treated with TALTZ (0.02 per subject-year of follow-up), and in 0.4% of subject treated with placebo (0.02 per subject-year of follow-up).

Inflammatory Bowel Disease

In adult subjects with plaque psoriasis, Crohn's disease and ulcerative colitis, including exacerbations, occurred at a greater frequency in the TALTZ 80 mg Q2W group (Crohn's disease 0.1%, ulcerative colitis 0.2% than the placebo group (0%) during the 12-week, placebo-controlled period in clinical trials [see *Warnings and Precautions (5.5)*].

Laboratory Assessment of Cytopenia

Neutropenia

Over the entire treatment period (Weeks 0 to 60), neutropenia occurred in 11% of subjects treated with TALTZ (0.24 per subject-year of follow-up) compared to 3% of subjects treated with placebo (0.14 per subject-year of follow-up). In subjects treated with TALTZ, the incidence rate of neutropenia during Weeks 13 to 60 was lower than the incidence rate during Weeks 0 to 12.

In the 12-week, placebo-controlled period, neutropenia ≥ Grade 3 (<1,000 cells/mm³) occurred in 0.2% of the TALTZ group (0.007 per subject-year of follow-up) compared to 0.1% of the placebo group (0.006 per subject-year of follow-up). The majority of cases of neutropenia were either Grade 2 (2% for TALTZ 80 mg Q2W versus 0.3% for placebo; ≥1,000 to <1,500 cells/mm³ or Grade 1 (7% for TALTZ 80 mg Q2W versus 3% for placebo; ≥1,500 cells/mm³ to

<2,000 cells/mm³). Neutropenia in the TALTZ group was not associated with an increased rate of infection compared to the placebo group.

Thrombocytopenia

Ninety eight percent of cases of thrombocytopenia were Grade 1 (3% for TALTZ 80 mg Q2W versus 1% for placebo; $\geq 75,000$ cells/mm³ to $<150,000$ cells/mm³). Thrombocytopenia in subjects treated with TALTZ was not associated with an increased rate of bleeding compared to subjects treated with placebo.

Active Comparator Trials

In the two clinical trials that included an active comparator, the rate of serious adverse events during weeks zero to twelve was 0.7% for U.S. approved etanercept and 2% for TALTZ 80 mg Q2W, and the rate of discontinuation from adverse events was 0.7% for U.S. approved etanercept and 2% for TALTZ 80 mg Q2W. The incidence of infections was 18% for U.S. approved etanercept and 26% for TALTZ 80 mg Q2W. The rate of serious infections was 0.3% for both TALTZ 80 mg Q2W and U.S. approved etanercept.

Pediatric Plaque Psoriasis

TALTZ was evaluated in a placebo-controlled trial in pediatric subjects with moderate-to-severe psoriasis 6 to less than 18 years of age. A total of 171 subjects were studied (115 subjects on TALTZ and 56 subjects on placebo). Overall, the safety profile observed in pediatric subjects with plaque psoriasis treated with TALTZ every 4 weeks is consistent with the safety profile in adult subjects with plaque psoriasis with the exception of the frequencies of conjunctivitis (2.6%), influenza (1.7%), and urticaria (1.7%).

In this clinical trial, Crohn's disease occurred at a greater frequency in the TALTZ group (0.9%) than the placebo group (0%) during the 12-week, placebo-controlled period. Crohn's disease occurred in a total of 4 TALTZ treated subjects (2.0% in the clinical trial [see *Warnings and Precautions (5.5)*].

Psoriatic Arthritis

TALTZ was studied in two placebo-controlled trials in patients with psoriatic arthritis. A total of 678 patients were studied (454 patients on TALTZ and 224 on placebo). A total of 229 patients in these trials received TALTZ 160 mg at Week 0, followed by 80 mg every 4 weeks (Q4W). Overall, the safety profile observed in patients with psoriatic arthritis treated with TALTZ Q4W is consistent with the safety profile in adult patients with plaque psoriasis with the exception of the frequencies of influenza (1.3%) and conjunctivitis 1.3% .

Ankylosing Spondylitis

TALTZ was studied in two placebo-controlled trials in patients with ankylosing spondylitis. A total of 566 patients were studied (376 patients on TALTZ and 190 on placebo). A total of 195 patients in these trials received TALTZ 80 or 160 mg at Week 0, followed by 80 mg every 4 weeks (Q4W). Overall, the safety profile observed in patients with ankylosing spondylitis treated with TALTZ Q4W is consistent with the safety profile in adult patients with plaque psoriasis.

In adult patients with ankylosing spondylitis, Crohn's disease and ulcerative colitis, including exacerbations, occurred in 2 patients (1.0%) and 1 patient (0.5%), respectively, in the TALTZ 80 mg Q4W group and 1 patient (0.5%) and 0%, respectively, in the placebo group during the 16-week, placebo-controlled period in clinical trials. Of these patients, serious events occurred in 1 patient in the TALTZ 80 mg Q4W group and 1 patient in the placebo group [see *Warnings and Precautions (5.5)*].

Non-radiographic Axial Spondyloarthritis

TALTZ was studied in a placebo-controlled trial in patients with non-radiographic axial spondyloarthritis. A total of 303 patients were studied (198 patients on TALTZ and 105 on placebo). A total of 96 patients in this trial received TALTZ 80 or 160 mg at Week 0, followed by 80 mg every 4 weeks (Q4W). Overall, the safety profile observed in patients with non-radiographic axial spondyloarthritis treated with TALTZ 80 mg Q4W up to Week 16 is consistent with the previous experience of TALTZ in other indications.

6.2 Immunogenicity

As with all therapeutic proteins there is the potential for immunogenicity with TALTZ. The assay to test for neutralizing antibodies has limitations detecting neutralizing antibodies in the presence of ixekizumab; therefore, the incidence of neutralizing antibodies development could be underestimated.

Plaque Psoriasis Population

By Week 12, approximately 9% of adult subjects treated with TALTZ every 2 weeks developed antibodies to ixekizumab. Approximately 22% of subjects treated with TALTZ at the recommended dosing regimen developed antibodies to ixekizumab during the 60-week treatment period. The clinical effects of antibodies to ixekizumab are dependent on the antibody titer; higher antibody titers were associated with decreasing drug concentration and clinical response.

Of the adult subjects who developed antibodies to ixekizumab during the 60-week treatment period, approximately 10%, which equates to 2% of subjects treated with TALTZ at the recommended dosing regimen, had antibodies that were classified as neutralizing. Neutralizing antibodies were associated with reduced drug concentrations and loss of efficacy.

In pediatric psoriasis subjects treated with ixekizumab at the recommended dosing regimen up to 12 weeks, 21 subjects (18%) developed anti-drug antibodies, 5 subjects (4%) had confirmed neutralizing antibodies associated with low drug concentrations. No conclusive evidence could be obtained on the potential association of neutralizing antibodies and clinical response and/or adverse events due to small number of pediatric subjects in the study.

Psoriatic Arthritis Population

For subjects treated with TALTZ 80 mg every 4 weeks for up to 52 weeks (PsA1), 11% developed anti-drug antibodies, and 8% had confirmed neutralizing antibodies.

Ankylosing Spondylitis Population

For patients treated with TALTZ 80 mg every 4 weeks for up to 16 weeks (AS1, AS2), 5.2% developed anti-drug antibodies, and 1.5% had neutralizing antibodies.

Non-radiographic Axial Spondyloarthritis Population

Of patients treated with TALTZ 80 mg every 4 weeks for up to 52 weeks (nr-axSpA1), 8.9% developed anti-drug antibodies, all of which were low titer. No patient had neutralizing antibodies.

The detection of antibody formation is highly dependent on the sensitivity and specificity of the assay. Additionally, the observed incidence of antibody (including neutralizing antibody) positivity in an assay may be influenced by several factors including assay methodology, sample handling, timing of sample collection, concomitant medications, and underlying disease. For these reasons, comparison of incidence of antibodies to TALTZ across indications or with the incidences of antibodies to other products may be misleading.

6.3 Postmarketing Experience

The following adverse reactions have been identified during post-approval use of TALTZ. Because the reactions are reported voluntarily from a population of uncertain size, it is not always possible to reliably estimate their frequency or establish a causal relationship to TALTZ exposure.

Immune system disorders: anaphylaxis [see *Contraindications (4)*].

Infections: bacterial, viral, and fungal opportunistic infections, including cryptococcal meningoencephalitis, esophageal and disseminated mucocutaneous candidiasis, pulmonary tuberculosis, toxoplasmosis, varicella zoster virus reactivation, cytomegalovirus colitis, pulmonary aspergillosis.

Skin and subcutaneous tissue disorders: Eczematous eruptions (erythroderma, atopic dermatitis-like eruptions, and dyshidrotic eczema).

8 USE IN SPECIFIC POPULATIONS

8.1 Pregnancy

Pregnancy Exposure Registry

There is a pregnancy exposure registry that monitors pregnancy outcomes in women exposed to TALTZ during pregnancy. Pregnant women exposed to TALTZ are encouraged to enroll in the TALTZ Pregnancy Registry by calling 1-800-284-1695. Contact information for the registry is also available on <http://www.pregnancyregistry.lilly.com>.

Risk Summary

Available data from the published literature and the pharmacovigilance database with TALTZ use in pregnant women are insufficient to evaluate for a drug-associated risk of major birth defects, miscarriage or other adverse maternal or fetal outcomes.

Human IgG is known to cross the placental barrier; therefore, TALTZ may be transmitted from the mother to the developing fetus. An embryofetal development study conducted in pregnant monkeys during organogenesis at doses up to 19 times the maximum recommended human dose (MRHD) revealed no evidence of harm to the developing fetus. When dosing was continued until parturition, neonatal deaths were observed at 1.9 times the MRHD [see *Data*]. The clinical significance of these nonclinical findings is unknown.

The background risk of major birth defects and miscarriage for the indicated population is unknown. All pregnancies have a background risk of birth defect, loss, or other adverse outcomes. In the U.S. general population, the estimated background risk of major birth defects and miscarriage in clinically recognized pregnancies is 2 to 4% and 15 to 20%, respectively.

Data

Animal Data

An embryofetal development study was conducted in cynomolgus monkeys administered ixekizumab. No malformations or embryofetal toxicity were observed in fetuses from pregnant monkeys administered ixekizumab weekly

by subcutaneous injection during organogenesis to near parturition at doses up to 19 times the MRHD (on a mg/kg basis of 50 mg/kg/week). Ixekizumab crossed the placenta in monkeys.

In a pre- and post-natal development toxicity study, pregnant cynomolgus monkeys were administered weekly subcutaneous doses of ixekizumab up to 19 times the MRHD from the beginning of organogenesis to parturition. Neonatal deaths occurred in the offspring of two monkeys administered ixekizumab at 1.9 times the MRHD (on a mg/kg basis of 5 mg/kg/week) and two monkeys administered ixekizumab at 19 times the MRHD (on a mg/kg basis of 50 mg/kg/week). These neonatal deaths were attributed to early delivery, trauma, or congenital defect. The clinical significance of these findings is unknown. No ixekizumab-related effects on functional or immunological development were observed in the surviving infants from birth through 6 months of age.

8.2 Lactation

Risk Summary

There are no available data on the presence of ixekizumab in human milk, the effects on the breastfed infant, or the effects on milk production. Ixekizumab was detected in the milk of lactating cynomolgus monkeys. When a drug is present in animal milk, it is likely that the drug will be present in human milk. The developmental and health benefits of breastfeeding should be considered along with the mother's clinical need for TALTZ and any potential adverse effects on the breastfed infant from TALTZ or from the underlying maternal condition.

8.4 Pediatric Use

The safety and effectiveness of TALTZ have been established in pediatric subjects aged 6 years to less than 18 years with moderate-to-severe plaque psoriasis. The safety and effectiveness of TALTZ in other pediatric indications and for pediatric subjects less than 6 years of age have not been established.

8.5 Geriatric Use

Of the 4204 adult psoriasis subjects exposed to TALTZ, a total of 301 were 65 years or older, and 36 subjects were 75 years or older. Although no differences in safety or efficacy were observed between older and younger subjects, the number of subjects aged 65 and over is not sufficient to determine whether they respond differently from younger subjects [see *Clinical Pharmacology* (12.3)].

11 DESCRIPTION

Ixekizumab is a humanized immunoglobulin G subclass 4 (IgG4) monoclonal antibody (mAb) with neutralizing activity against IL-17A. Ixekizumab is produced by recombinant DNA technology in a recombinant mammalian cell line and purified using standard technology for bioprocessing. Ixekizumab is comprised of two identical light chain polypeptides of 219 amino acids each and two identical heavy chain polypeptides of 445 amino acids each and has a molecular weight of 146,158 Daltons for the protein backbone of the molecule.

TALTZ injection is a sterile, preservative free, clear and colorless to slightly yellow solution, for subcutaneous use available as 80 mg of ixekizumab in a 1 mL single-dose prefilled autoinjector or a single-dose prefilled syringe, 40 mg of ixekizumab in a 0.5 mL single-dose prefilled syringe, or 20 mg of ixekizumab in a 0.25 mL single-dose prefilled syringe. The prefilled autoinjector and prefilled syringe each contain a 1 mL glass syringe with a fixed 27 gauge ½ inch needle. The TALTZ 80 mg prefilled autoinjector and prefilled syringe are manufactured to deliver 80 mg of ixekizumab. The TALTZ 40 mg prefilled syringe is manufactured to deliver 40 mg of ixekizumab. The TALTZ 20 mg prefilled syringe is manufactured to deliver 20 mg of ixekizumab.

Each TALTZ 80 mg/mL single-dose autoinjector or TALTZ 80 mg/mL single-dose prefilled syringe is composed of ixekizumab (80 mg); Polysorbate 80, USP (0.3 mg); Sucrose, USP (80 mg); and Water for Injection, USP. Sodium Hydroxide, USP-NF, may have been added to adjust pH. The TALTZ solution has a pH of 5.2 – 6.2.

Each TALTZ 40 mg/0.5 mL single-dose prefilled syringe is composed of ixekizumab (40 mg); Polysorbate 80, USP (0.15 mg); Sucrose, USP (40 mg); and Water for Injection, USP. Sodium Hydroxide, USP-NF, may have been added to adjust pH. The TALTZ solution has a pH of 5.2 – 6.2.

Each TALTZ 20 mg/0.25 mL single-dose prefilled syringe is composed of ixekizumab (20 mg); Polysorbate 80, USP (0.08 mg); Sucrose, USP (20 mg); and Water for Injection, USP. Sodium Hydroxide, USP-NF, may have been added to adjust pH. The TALTZ solution has a pH of 5.2 – 6.2.

12 CLINICAL PHARMACOLOGY

12.1 Mechanism of Action

Ixekizumab is a humanized IgG4 monoclonal antibody that selectively binds with the interleukin 17A (IL-17A) cytokine and inhibits its interaction with the IL-17 receptor. IL-17A is a naturally occurring cytokine that is involved in normal inflammatory and immune responses. Ixekizumab inhibits the release of proinflammatory cytokines and chemokines.

12.2 Pharmacodynamics

No formal pharmacodynamic studies have been conducted with TALTZ.

12.3 Pharmacokinetics

The pharmacokinetic (PK) properties of ixekizumab were similar across the adult plaque psoriasis, psoriatic arthritis, ankylosing spondylitis, and non-radiographic axial spondyloarthritis indications.

Absorption

Following a single subcutaneous dose of 160 mg in subjects with plaque psoriasis, ixekizumab reached peak mean (\pm SD) serum concentrations (C_{max}) of 16.2 \pm 6.6 mcg/mL by approximately 4 days post dose.

Steady-state concentrations were achieved by Week 8 following the 160 mg starting dose and 80 mg every 2 weeks dosing regimen; the mean \pm SD steady-state trough concentration was 9.3 \pm 5.3 mcg/mL. Steady-state concentrations were achieved approximately 10 weeks after switching from the 80 mg every 2 weeks dosing regimen to the 80 mg every 4 weeks dosing regimen at Week 12. The mean \pm SD steady-state trough concentration was 3.5 \pm 2.5 mcg/mL.

In studies of subjects with plaque psoriasis, ixekizumab bioavailability ranged from 60% to 81% following subcutaneous injection. Administration of ixekizumab via injection in the thigh achieved a higher bioavailability relative to that achieved using other injection sites including the arm and abdomen.

Distribution

The mean (geometric CV%) volume of distribution at steady-state was 7.11 L 29% in subjects with plaque psoriasis.

Elimination

The metabolic pathway of ixekizumab has not been characterized. As a humanized IgG4 monoclonal antibody ixekizumab is expected to be degraded into small peptides and amino acids via catabolic pathways in the same manner as endogenous IgG.

The mean systemic clearance was 0.39 L/day (37%) and the mean (geometric CV%) half-life was 13 days (40% in subjects with plaque psoriasis).

Weight

Ixekizumab clearance and volume of distribution increase as body weight increases.

Dose Linearity

Ixekizumab exhibited dose-proportional pharmacokinetics in subjects with plaque psoriasis over a dose range from 5 mg (not the recommended dose) to 160 mg following subcutaneous administration.

Specific Populations

Age:

Geriatric Population

Population pharmacokinetic analysis indicated that age did not significantly influence the clearance of ixekizumab in adult subjects with plaque psoriasis. Subjects who are 65 years or older had a similar ixekizumab clearance as compared to subjects less than 65 years old.

Pediatric Population

Pediatric psoriasis subjects (6 to less than 18 years of age) were administered ixekizumab at the recommended pediatric dosing regimen for 12 weeks. Subjects weighing >50 kg and 25 to 50 kg had a mean \pm SD steady-state trough concentration of 3.8 \pm 2.2 mcg/mL and 3.9 \pm 2.4 mcg/mL at Week 12, respectively. There were limited PK data (n=2) in subjects weighing <25 kg at Week 12.

Drug Interaction Studies

Population PK data analyses indicated that the clearance of ixekizumab was not impacted by concomitant administration of methotrexate, or by prior exposure to methotrexate or adalimumab in patients with psoriatic arthritis.

Population PK data analyses indicated that the clearance of ixekizumab was not impacted by concomitant administration of oral corticosteroids, NSAIDs, or cDMARDs (sulfasalazine and methotrexate) in patients with ankylosing spondylitis and non-radiographic axial spondyloarthritis.

Cytochrome P450 Substrates

No clinically significant changes in exposure of caffeine (CYP1A2 substrate), warfarin (CYP2C9 substrate), omeprazole (CYP2C19 substrate) or midazolam (CYP3A substrate) were observed in subjects with plaque psoriasis when used concomitantly with a single 160 mg dose of ixekizumab, or multiple doses of 80 mg every 2 weeks. The potential effect of ixekizumab on the CYP2D6 activity cannot be ruled out due to high variability in exposure (approximately \pm 2-fold) of dextromethorphan and its CYP2D6 metabolite dextrorphan in psoriasis subjects.

13 NONCLINICAL TOXICOLOGY

13.1 Carcinogenesis, Mutagenesis, Impairment of Fertility

Animal studies have not been conducted to evaluate the carcinogenic or mutagenic potential of TALTZ. Moreover published literature is mixed on potential effects on malignancy risk due to the inhibition of IL-17A activity, the pharmacological action of TALTZ. Some published literature suggests that IL-17A directly promotes cancer cell invasion, suggesting a potential beneficial effect by TALTZ, whereas other reports indicate IL-17A promotes T-cell mediated tumor rejection, suggesting a potential adverse effect by TALTZ. However, neutralization of IL-17A with TALTZ has not been studied in these models. Depletion of IL-17A with a neutralizing antibody inhibited tumor development in mice, suggesting a potential beneficial effect by TALTZ. The relevance of experimental findings in mouse models for malignancy risk in humans is unknown.

No effects on fertility parameters such as reproductive organs, menstrual cycle length, or sperm analysis were observed in sexually mature cynomolgus monkeys that were administered ixekizumab for 13 weeks at a subcutaneous dose of 50 mg/kg/week (19 times the MRHD on a mg/kg basis). The monkeys were not mated to evaluate fertility.

14 CLINICAL STUDIES

14.1 Adult Plaque Psoriasis

Three multicenter, randomized, double-blind, placebo-controlled trials, Trials 1, 2, and 3 (NCT 01474512, NCT 01597245, NCT 01646177), enrolled a total of 3866 subjects 18 years of age and older with plaque psoriasis who had a minimum body surface area involvement of 10%, a static Physician Global Assessment (sPGA) score of ≥ 3 in the overall assessment (plaque thickness/induration, erythema, and scaling) of psoriasis on a severity scale of 0 to 5, a Psoriasis Area and Severity Index (PASI) score ≥ 12 , and who were candidates for phototherapy or systemic therapy.

In all three trials, subjects were randomized to either placebo or TALTZ (80 mg every 2 weeks [Q2W]) for 12 weeks, following a 160 mg starting dose. In the two active comparator trials (Trials 2 and 3), subjects were also randomized to receive U.S. approved etanercept 50 mg twice weekly for 12 weeks.

All three trials assessed the changes from baseline to Week 12 in the two co-primary endpoints: 1) PASI 75, the proportion of subjects who achieved at least a 75% reduction in the PASI composite score that takes into consideration both the percentage of body surface area affected and the nature and severity of psoriatic changes (induration, erythema and scaling) within the affected regions, and 2) sPGA of "0" (clear) or "1" (minimal), the proportion of subjects with an sPGA 0 or 1 and at least a 2-point improvement.

Other evaluated outcomes included the proportion of subjects with an sPGA score of 0 (clear), a reduction of at least 90% in PASI (PASI 90), a reduction of 100% in PASI (PASI 100), and an improvement of itch severity as measured by a reduction of at least 4 points on an 11-point itch Numeric Rating Scale.

Subjects in all treatment groups had a median baseline PASI score ranging from approximately 17 to 18. Baseline sPGA score was severe or very severe in 51% of subjects in Trial 1, 50% in Trial 2, and 48% in Trial 3.

Of all subjects, 44% had received prior phototherapy, 49% had received prior conventional systemic therapy, and 26% had received prior biologic therapy for the treatment of psoriasis. Of the subjects who had received prior biologic therapy, 15% had received at least one anti-TNF alpha agent, and 9% had received an anti-IL 12/IL23. A total of 23% of study subjects had a history of psoriatic arthritis.

Clinical Response at Week 12

The results of Trials 1, 2, and 3 are presented in Table 3.

Table 3: Efficacy Results at Week 12 in Adults with Plaque Psoriasis in Trials 1, 2, and 3; NRI^a

	Trial 1		Trial 2		Trial 3	
	TALTZ 80 mg ^b Q2W (N=433) n (%)	Placebo (N=431) n (%)	TALTZ 80 mg ^b Q2W (N=351) n (%)	Placebo (N=168) n (%)	TALTZ 80 mg ^b Q2W (N=385) n (%)	Placebo (N=193) n (%)
sPGA of "0" (clear) or "1" (minimal) ^c	354 (82)	14 (3)	292 (83)	4 (2)	310 (81)	13 (7)
sPGA of "0" (clear)	160 (37)	0	147 (42)	1 (1)	155 (40)	0
PASI 75 ^c	386 (89)	17 (4)	315 (90)	4 (2)	336 (87)	14 (7)
PASI 90	307 (71)	2 (1)	248 (71)	1 (1)	262 (68)	6 (3)
PASI 100	153 (35)	0	142 (40)	1 (1)	145 (38)	0
Itch NRS (≥ 4 point improvement) ^d	336 (86)	58 (16)	258 (85)	19 (14)	264 (83)	33 (21)

- ^a Abbreviations: N = number of patients in the intent-to-treat population; NRI = Non-Responder Imputation.
- ^b At Week 0, subjects received 160 mg of TALTZ.
- ^c Co-primary endpoints.
- ^d Itch NRS (≥ 4 improvement) in subjects with baseline Itch NRS ≥ 4 . The number of ITT subjects with baseline Itch NRS Score ≥ 4 are as follows: Trial 1, TALTZ n=391, PBO n=374; Trial 2, TALTZ n=303, PBO n=135; Trial 3, TALTZ n=320, PBO n=158.

Examination of age, gender, race, body weight, and previous treatment with a biologic did not identify differences in response to TALTZ among these subgroups at Week 12.

An integrated analysis of the U.S. sites in the two active comparator studies using U.S. approved etanercept, TALTZ demonstrated superiority to U.S. approved etanercept (50 mg twice weekly) on sPGA and PASI scores during the 12-week treatment period. The respective response rates for TALTZ 80 mg Q2W and U.S. approved etanercept 50 mg twice weekly were: sPGA of 0 or 1 (73% and 27%); PASI 75 (87% and 41%); sPGA of 0 (34% and 5%); PASI 90 (64% and 18%), and PASI 100 (34% and 4%).

Maintenance and Durability of Response

To evaluate the maintenance and durability of response, subjects originally randomized to TALTZ and who were responders at Week 12 (i.e., sPGA of 0 or 1) in Trial 1 and Trial 2 were re-randomized to an additional 48 weeks of either a maintenance dose of TALTZ 80 mg Q4W (every 4 weeks) or placebo. Non-responders (sPGA >1) at Week 12 and subjects who relapsed (sPGA ≥ 3) during the maintenance period were placed on TALTZ 80 mg Q4W.

For responders at Week 12, the percentage of subjects who maintained this response (sPGA 0 or 1) at Week 60 (48 weeks following re-randomization) in the integrated trials (Trial 1 and Trial 2) was higher for subjects treated with TALTZ 80 mg Q4W (75%) compared to those treated with placebo (7%).

For responders at Week 12 who were re-randomized to treatment withdrawal (i.e., placebo), the median time to relapse (sPGA ≥ 3) was 164 days in the integrated trials. Among these subjects, 66% regained a response of at least 0 or 1 on the sPGA within 12 weeks of restarting treatment with TALTZ 80 mg Q4W.

Psoriasis Involving the Genital Area

A randomized, double-blind, placebo-controlled trial (Trial 4) was conducted in 149 adult subjects with plaque psoriasis who had a minimum body surface area (BSA) involvement of 1%, a sPGA score of ≥ 3 (moderate psoriasis), a sPGA of Genitalia score of ≥ 3 (moderate psoriasis involving the genital area), who failed to respond to or were intolerant of at least one topical therapy used for treatment of psoriasis affecting the genital area, and who were candidates for phototherapy and/or systemic therapy.

Subjects had a median baseline PASI score of approximately 12. Baseline BSA involvement was at least 10% for approximately 60% of the enrolled subjects. Baseline sPGA of Genitalia score was severe or very severe in approximately 42% of the subjects; baseline sPGA score was severe or very severe in approximately 47% of the subjects.

Subjects randomized to TALTZ received an initial dose of 160 mg followed by 80 mg every 2 weeks for 12 weeks. The trial evaluated the primary endpoint of the proportion of subjects who achieved a "0" (clear) or "1" (minimal) response at Week 12 on sPGA of Genitalia. Other evaluated outcomes at Week 12 included the proportion of subjects who achieved a sPGA score of "0" (clear) or "1" (minimal), improvement of genital itch severity as measured by a reduction of at least 4 points in the 11-point Genital Psoriasis Symptoms Scale (GPSS) score Itch numeric rating scale (NRS), and the patient-perceived impact of psoriasis affecting the genital area on limiting frequency of sexual activity (intercourse or other activities) as measured by the Genital Psoriasis Sexual Frequency Questionnaire (GenPs-SFQ) Item 2 (In the past week how often did your genital psoriasis limit the frequency of your sexual activity?). SFQ Item 2 score ranges from 0 to 4 (0=never, 1=rarely, 2=sometimes, 3=often, 4=always); where higher scores indicate greater limitations on the frequency of sexual activity in the past week.

The results of Trial 4 are presented in Table 4.

Table 4: Efficacy Results at Week 12 in Adults with Genital Psoriasis in Trial 4; NRI^a

Endpoints	TALTZ 80 mg Q2W ^b n (%)	Placebo n (%)
Number of subjects randomized	N=75	N=74
sPGA of Genitalia "0" (clear) or "1" (minimal)	55 73%	6 8%
sPGA "0" (clear) or "1" (minimal)	55 73%	2 3%
Number of subjects with baseline GPSS^a Itch NRS Score ≥ 4	N=56	N=51
GPSS Genital Itch ≥ 4 point improvement	31 55%	3 6%
Number of subjects with baseline GenPs-SFQ^a Item 2 Score ≥ 2	N=37	N=42
GenPs-SFQ Item 2 score "0" (never) or "1" (rarely)	29 78%	9 21%

^a Abbreviations: NRI = Non-Responder Imputation; GPSS = Genital Psoriasis Symptoms Scale; GenPs-SFQ = Genital Psoriasis Sexual Frequency Questionnaire.

^b At Week 0, subjects received 160 mg of TALTZ, followed by 80 mg every 2 weeks for 12 weeks.

14.2 Pediatric Plaque Psoriasis

A randomized, double-blind, multicenter, placebo-controlled trial (IXORA-Peds, NCT03073200) enrolled 171 pediatric subjects 6 to less than 18 years of age, with moderate-to-severe plaque psoriasis (as defined by a sPGA score ≥ 3 , involving $\geq 10\%$ of the body surface area, and a PASI score ≥ 12) who were candidates for phototherapy or systemic therapy or were inadequately controlled on topical therapy.

Subjects were randomized to placebo or TALTZ with dosing stratified by weight.

- <25 kg: 40 mg at Week 0 followed by 20 mg Q4W
- 25 kg to 50 kg: 80 mg at Week 0 followed by 40 mg Q4W
- >50 kg: 160 mg at Week 0 followed by 80 mg Q4W

Response to treatment was assessed at 12 weeks of therapy and was defined by the proportion of subjects who achieved an sPGA score of “0” (clear) or “1” (almost clear) with at least a 2-point improvement from baseline and the proportion of subjects that achieved a reduction in PASI score of at least 75% (PASI 75) from baseline.

Other evaluated outcomes included the proportion of subjects who achieved PASI 90, PASI 100, sPGA of “0” and an improvement of itch severity as measured by a reduction of at least 4 points on an 11-point itch Numeric Rating Scale.

Subjects had a median baseline PASI score of 17 (range 12-49). Baseline sPGA score was severe or very severe in 49%. Of all subjects, 22% had received prior phototherapy and 32% had received prior conventional systemic therapy for the treatment of psoriasis.

Clinical Response

The efficacy results of IXORA-Peds are presented in Table 5.

Table 5: Efficacy Results in Pediatric Subjects with Plaque Psoriasis in IXORA-Peds, NRI^a

	TALTZ ^b (N=115) n (%)	Placebo (N=56) n (%)
Week 12		
sPGA “0” (clear) or “1” (minimal) ^c	93 81%	6 11%
sPGA “0” (clear)	60 52%	1 2%
PASI 75 ^c	102 89%	14 25%
PASI 90	90 78%	3 5%
PASI 100	57 50%	1 2%
Itch NRS ≥ 4 point improvement ^d	59 71%	8 20%
Week 4		
sPGA “0” (clear) or “1” (minimal)	55 48%	4 7%
PASI 75	62 54%	5 9%

^a Abbreviations: N = Number of subjects in the intent-to-treat population; NRI = Non-Responder Imputation.

^b At Week 0, subjects received 160 mg, 80 mg, or 40 mg of TALTZ, followed by 80 mg, 40 mg, or 20 mg every 4 weeks, depending on weight category, for 12 weeks.

^c Co-primary endpoints.

^d Itch NRS (≥ 4 improvement) in subjects with baseline Itch NRS ≥ 4 . The number of ITT subjects with baseline Itch NRS Score ≥ 4 are as follows: TALTZ, n = 83; PBO, n = 40.

14.3 Psoriatic Arthritis

The safety and efficacy of TALTZ were assessed in 679 patients, in 2 randomized, double-blind, placebo-controlled studies (PsA1 and PsA2) in adult patients, age 18 years and older with active psoriatic arthritis (at least 3 swollen and at least 3 tender joints) despite non-steroidal anti-inflammatory drug (NSAID), corticosteroid or disease modifying anti-rheumatic drug (DMARD) therapy. Patients in these studies had a diagnosis of PsA for at least 6 months across both studies. At baseline, 60% and 23% of the patients had enthesitis and dactylitis, respectively. In PsA2, all patients discontinued previous treatment with anti-TNF α agents due to either inadequate response or intolerance. In addition, approximately 47% of patients from both studies had concomitant methotrexate (MTX) use.

PsA1 Study (NCT 01695239) evaluated 417 biologic-naive patients, who were treated with either TALTZ 160 mg at Week 0 followed by 80 mg every 2 weeks (Q2W) or 4 weeks (Q4W), adalimumab 40 mg every 2 weeks, or placebo. PsA2 Study (NCT 02349295) evaluated 363 anti-TNF α experienced patients, who were treated with TALTZ 160 mg at Week 0 followed by 80 mg every 2 or 4 weeks, or placebo. Patients receiving placebo were re-randomized to receive

TALTZ (80 mg every 2 or 4 weeks) at Week 16 or Week 24 based on responder status. The primary endpoint was the percentage of patients achieving an ACR20 response at Week 24.

Clinical Response

In both studies, patients treated with TALTZ 80 mg Q4W demonstrated a greater clinical response including ACR20, ACR50, and ACR70 compared to placebo at Week 24 (Table 6). In PsA2, responses were seen regardless of prior anti-TNF α exposure.

Table 6: Responses^a at Week 12 and 24; NRI^b

	PsA1 – anti-TNF α naive			PsA2 – anti-TNF α – experienced		
	TALTZ 80 mg ^c Q4W (N=107)	Placebo (N=106)	Difference from placebo (95% CI)	TALTZ 80 mg ^c Q4W (N=122)	Placebo (N=118)	Difference from placebo (95% CI)
ACR20 response						
Week 12 %	57	31	26 (13, 39)	50	22	28 (16, 40)
Week 24 %	58	30	28 (15, 41)	53	20	34 (22, 45)
ACR50 response						
Week 12 %	34	5	29 (19, 39)	31	3	28 (19, 37)
Week 24 %	40	15	25 (14, 37)	35	5	30 (21, 40)
ACR70 response						
Week 12 %	15	0	15 (8, 22)	15	2	13 (6, 20)
Week 24 %	23	6	18 (9, 27)	22	0	22 (15, 30)

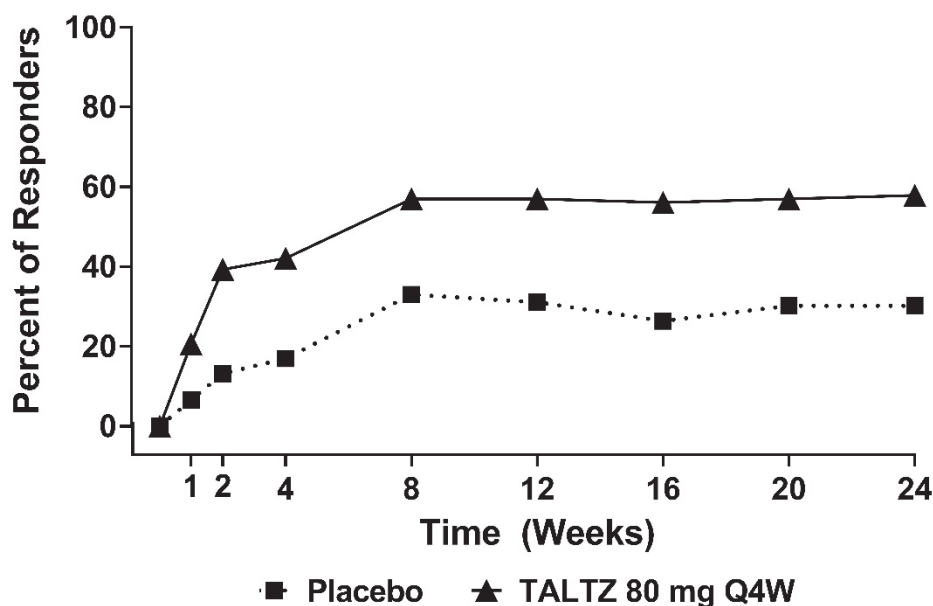
^a Patients who met escape criteria (less than 20% improvement in tender and swollen joint counts) at Week 16 or had missing data at Week 24 were considered non-responders at Week 24.

^b Abbreviations: N = number of patients in the intent-to-treat population; NRI = Non-Responder Imputation.

^c At Week 0, patients received 160 mg of TALTZ.

The percentage of patients achieving ACR20 response by visit is shown in Figure 1.

Figure 1: Percent of Patients Achieving ACR20 Response^a in PsA1 Through Week 24



^a Patients who met escape criteria (less than 20% improvement in tender and swollen joint counts) at Week 16 or had missing data at Week 24 were considered non-responders at Week 24.

The improvements in the components of the ACR response criteria are shown in Table 7.

Table 7: Efficacy results in ACR Components at Week 12 and 16

	PsA1		PsA2	
	TALTZ 80 mg ^a Q4W (N=107)	Placebo (N=106)	TALTZ 80 mg ^a Q4W (N=122)	Placebo (N=118)
No. of Swollen Joints				
Baseline	11.4	10.6	13.1	10.3
Mean Change at Week 12	-6.2	-3.2	-5.8	-2.6
Mean Change at Week 16	-6.2	-3.0	-7.4	-2.6
No. of Tender Joints				
Baseline	20.5	19.2	22.0	23.0
Mean Change at Week 12	-10.3	-3.5	-9.4	-5.4
Mean Change at Week 16	-9.7	-4.0	-10.1	-3.0
Patient's Assessment of Pain				
Baseline	60.1	58.5	63.9	63.9
Mean Change at Week 12	-26.6	-9.1	-29.8	-11.9
Mean Change at Week 16	-26.1	-10.6	-30.1	-12.3
Patient Global Assessment				
Baseline	62.7	61.1	66.4	64.1
Mean Change at Week 12	-29.7	-11.1	-34.5	-10.7
Mean Change at Week 16	-30.4	-13.2	-35.3	-15.7
Physician Global Assessment				
Baseline	57.6	55.9	60.3	58.9
Mean Change at Week 12	-34.0	-16.6	-34.4	-15.9
Mean Change at Week 16	-35.5	-16.5	-32.9	-9.7
Disability Index (HAQ-DI)^b				
Baseline	1.2	1.2	1.2	1.2
Mean Change at Week 12	-0.4	-0.1	-0.4	-0.1
Mean Change at Week 16	-0.4	-0.1	-0.5	-0.1
CRP (mg/L)				
Baseline	12.8	15.1	17.0	12.1
Mean Change at Week 12	-8.8	-3.2	-11.4	-4.3
Mean Change at Week 16	-9.3	-3.2	-11.2	-5.9

^a At Week 0, subjects received 160 mg of TALTZ.

^b Disability Index of the Health Assessment Questionnaire; 0 = best, 3 = worst, measures the patient's ability to perform the following: dress/groom, arise, eat, walk, reach, grip, maintain hygiene, and maintain daily activity.

Treatment with TALTZ resulted in improvement in dactylitis and enthesitis in patients with pre-existing dactylitis or enthesitis.

Treatment with TALTZ 80 mg Q4W resulted in an improvement in psoriatic skin lesions in patients with PsA.

Radiographic Response

Radiographic changes were assessed in PsA1. Inhibition of progression of structural damage was assessed radiographically and expressed as the change in modified total Sharp score (mTSS) at Week 16, compared to baseline. The total Sharp score was modified for psoriatic arthritis by addition of hand distal interphalangeal (DIP) joints.

TALTZ 80 mg Q4W inhibited the progression of structural joint damage (mTSS) compared to placebo at Week 16. The adjusted mean change from baseline in the mTSS was 0.13 for TALTZ 80 mg Q4W and 0.36 for placebo (difference in means TALTZ minus placebo: -0.23, 95% CI: (-0.42, -0.04)).

Physical Function

TALTZ treated patients showed improvement in physical function compared to patients treated with placebo as assessed by the Health Assessment Questionnaire-Disability Index (HAQ-DI) at Week 12 and 24. In both studies, the proportion of HAQ-DI responders (≥ 0.35 improvement in HAQ-DI score) was greater in the TALTZ 80 mg Q4W groups compared to placebo at week 12 and 24.

Other Health-Related Outcomes

General health status was assessed by the Short Form health survey (SF-36). At Week 12 in PsA1 and PsA2, patients treated with TALTZ showed greater improvement from baseline in the SF-36 physical component summary (PCS) score compared to patients treated with placebo but this improvement was not consistent in both studies for the SF-36 mental component summary (MCS) score. At Week 12, there was consistent evidence of effect in the physical-

functioning, role-physical, bodily-pain, and general health domains but not in the social-functioning, role-emotional, vitality, and mental health domains.

14.4 Ankylosing Spondylitis

The safety and efficacy of TALTZ were assessed in 567 patients, in 2 randomized, double-blind, placebo-controlled studies (AS1 and AS2) in adult patients, age 18 years and older with active ankylosing spondylitis. Patients had active disease as defined by the Bath Ankylosing Spondylitis Disease Activity Index (BASDAI) ≥ 4 despite non-steroidal anti-inflammatory drug (NSAID), corticosteroid, or disease modifying anti-rheumatic drug (DMARD) therapy. At baseline, patients had symptoms of AS for an average of 17 years across both studies. At baseline, approximately 32% of the patients were on a concomitant cDMARD. In AS2, all patients discontinued previous treatment with 1 or 2 TNF inhibitors due to either inadequate response or intolerance.

AS1 Study (NCT 02696785) evaluated 341 biologic-naive patients, who were treated with either TALTZ 80 mg or 160 mg at Week 0 followed by 80 mg every 2 weeks (Q2W) or 4 weeks (Q4W), adalimumab 40 mg every 2 weeks, or with placebo. Patients receiving placebo were re-randomized at Week 16 to receive TALTZ (160 mg starting dose, followed by 80 mg Q2W or Q4W). Patients receiving adalimumab were re-randomized at Week 16 to receive TALTZ (80 mg Q2W or Q4W). AS2 Study (NCT 02696798) evaluated 316 TNF-inhibitor experienced patients (90% were inadequate responders and 10% were intolerant to TNF inhibitors). All patients were treated with TALTZ 80 or 160 mg at Week 0 followed by 80 mg Q2W or Q4W, or with placebo. Patients receiving placebo were re-randomized at Week 16 to receive TALTZ (160 mg initial dose, followed by 80 mg Q2W or Q4W). The primary endpoint in both studies was the percentage of patients achieving an Assessment of Spondyloarthritis International Society 40 (ASAS40) response at Week 16.

Clinical Response

In both studies, patients treated with TALTZ 80 mg Q4W demonstrated greater improvements in ASAS40 and ASAS20 responses compared to placebo at Week 16 (Table 8). Responses were seen regardless of concomitant therapies. In AS2, responses were seen regardless of prior TNF-inhibitor exposure.

Table 8: ASAS20 and ASAS40 Responses at Week 16, NRI^{a,b}

	AS1 – biologic-naive			AS2 – TNF-inhibitor experienced		
	TALTZ 80 mg Q4W ^c (N=81)	Placebo (N=87)	Difference from placebo (95% CI)	TALTZ 80 mg Q4W ^c (N=114)	Placebo (N=104)	Difference from placebo (95% CI)
ASAS20 response ^d , %	64	40	24 (9, 39)	48	30	18 (6, 31)
ASAS40 response ^{d,e} , %	48	18	30 (16, 43)	25	13	13 (3, 23)

^a Abbreviations: N = number of patients in the intent-to-treat population; NRI = Non-responder Imputation.

^b Patients with missing data were counted as non-responders.

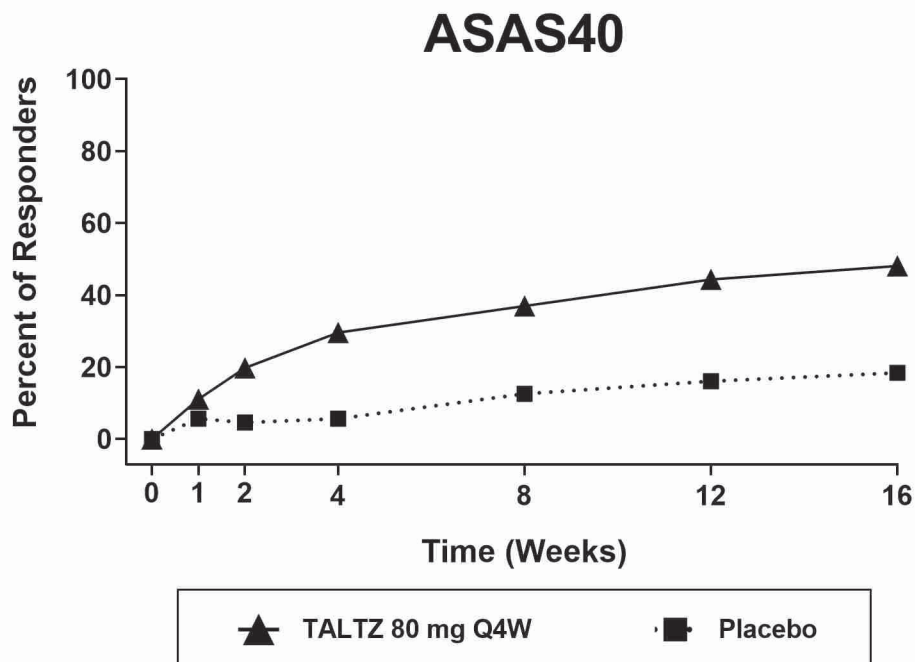
^c At Week 0, patients received 80 mg or 160 mg of TALTZ.

^d An ASAS20 response is defined as a $\geq 20\%$ improvement and an absolute improvement from baseline of ≥ 1 units (range 0 to 10) in ≥ 3 of 4 domains (Patient Global, Spinal Pain, Function, and Inflammation), and no worsening of $\geq 20\%$ and ≥ 1 unit (range 0 to 10) in the remaining domain. An ASAS40 response is defined as a $\geq 40\%$ improvement and an absolute improvement from baseline of ≥ 2 units in ≥ 3 of 4 domains without any worsening in the remaining domain.

^e Primary endpoint.

The percent of patients achieving ASAS40 response by visit in AS1 is shown in Figure 2.

Figure 2: ASAS40 Response through Week 16, NRI^a



^a Patients with missing data were counted as non-responders.

The improvement in the main components of the ASAS40 response criteria and other measures of disease activity are shown in Table 9.

Table 9: ASAS Components and Other Measures of Disease Activity at Week 16^{a,b}

	AS1 – biologic-naive		AS2 – TNF-inhibitor experienced	
	TALTZ 80 mg Q4W ^c (N=81)	Placebo (N=87)	TALTZ 80 mg Q4W ^c (N=114)	Placebo (N=104)
ASAS Components				
Patient Global Assessment (0-10)				
Baseline	6.9	7.1	8.0	7.8
Mean Change from Baseline	-2.5	-1.4	-2.4	-0.7
Total Spinal Pain (0-10)				
Baseline	7.2	7.4	7.9	7.8
Mean Change from Baseline	-3.2	-1.7	-2.4	-1.0
BASFI (0-10)				
Baseline	6.1	6.4	7.4	7.0
Mean Change from Baseline	-2.4	-1.2	-1.7	-0.6
Inflammation (0-10) ^d				
Baseline	6.5	6.8	7.2	7.2
Mean Change from Baseline	-3.2	-1.3	-2.4	-0.7
Other Measures of Disease Activity				
BASDAI Score				
Baseline	6.8	6.8	7.5	7.3
Mean Change from Baseline	-2.9	-1.4	-2.2	-0.9
BASMI				
Baseline	3.9	4.5	4.7	4.9
Mean Change from Baseline	-0.5	-0.1	-0.3	-0.0

hsCRP (mg/L)				
Baseline	12.2	16.0	20.2	16.0
Mean Change from Baseline	-5.2	1.4	-11.1	9.7

^a Abbreviations: ASDAS = Ankylosing Spondylitis Disease Activity Score; BASDAI = Bath Ankylosing Spondylitis Disease Activity Index; BASFI = Bath Ankylosing Spondylitis Functional Index; BASMI = Bath Ankylosing Spondylitis Metrology Index; hsCRP = High sensitivity C-reactive protein.

^b Mean changes are least-squares mean changes from baseline at Week 16.

^c At Week 0, patients received 80 or 160 mg of TALTZ.

^d Inflammation is the mean of patient-reported stiffness self-assessments (questions 5 and 6) in BASDAI.

Health-Related Outcomes

General health status and quality of life was assessed by the Short Form health survey (SF-36). At Week 16, in AS1 and AS2, compared to placebo, patients treated with TALTZ showed greater improvement from baseline in the SF-36 physical component summary (PCS) score and the physical functioning, role physical, bodily pain, vitality, and general health domains, with no consistent improvements in the mental component summary (MCS), social functioning, role emotional, and mental health domains.

14.5 Non-radiographic Axial Spondyloarthritis

The efficacy and safety of TALTZ were assessed in a randomized, double-blind, 52-week placebo-controlled study (nr-axSpA1) (NCT 02757352) in patients ≥ 18 years of age with active axial spondyloarthritis for at least 3 months. Patients must have had objective signs of inflammation indicated by elevated C-reactive protein (CRP) (defined as greater than 5 mg/L), and/or sacroiliitis on magnetic resonance imaging (MRI), and no definitive radiographic evidence of structural damage on sacroiliac joints. Patients had active disease as defined by the Bath Ankylosing Spondylitis Disease Activity Index (BASDAI) ≥ 4 , and spinal pain ≥ 4 on a 0 to 10 Numerical Rating Scale (NRS). Patients must have been intolerant to or had an inadequate response to at least two NSAIDs. Patients were treated with either placebo or TALTZ 80 mg or 160 mg at Week 0, followed by either 80 mg every 2 weeks (Q2W) or 80 mg every 4 weeks (Q4W). Initiation and/or dose adjustment of concomitant medications (NSAIDs, cDMARDs, corticosteroids, analgesics) were permitted starting at Week 16. Patients were allowed to transition to use of open-label TALTZ 80 mg Q2W starting at Week 16 up to Week 44 at the discretion of the investigator.

At baseline, patients had symptoms of nr-axSpA for an average of 11 years. Approximately 39% of the patients were on a concomitant cDMARD.

The primary endpoint was the percentage of patients achieving an Assessment of Spondyloarthritis International Society 40 (ASAS40) response at Week 52. The ASAS40 response was also evaluated at Week 16 as a major secondary endpoint.

Clinical Response

At both Weeks 16 and 52, a greater proportion of patients treated with TALTZ 80 mg Q4W had ASAS40 response compared to patients treated with placebo (Table 10). The components of ASAS response criteria and CRP are shown in Table 11.

Table 10: ASAS40 Responses at Week 16 and Week 52, NRI^{a,b}

	Week 16			Week 52		
	TALTZ 80 mg Q4W ^{c,d} (N=96)	Placebo (N=105)	Difference from placebo (95% CI)	TALTZ 80 mg Q4W ^{c,d} (N=96)	Placebo (N=105)	Difference from placebo (95% CI)
ASAS40 response^e, %	35.4	19.0	16.4 (4.2, 28.5)	30.2	13.3	16.9 (5.6, 28.1)

^a Abbreviations: N = number of patients in the intent-to-treat population; NRI = Non-responder Imputation.

^b Patients who initiated open-label TALTZ 80 mg Q2W, or discontinued initially randomized treatment and remained in the study, or were missing Week 16 or Week 52 data were counted as non-responders.

^c Starting at Week 16 and up to Week 44, patients who were determined as inadequate responders by investigators were given the option to make changes in their background therapy and/or transition to open label TALTZ 80 mg Q2W.

^d At Week 0, patients received 80 mg or 160 mg of TALTZ.

^e An ASAS40 response is defined as a $\geq 40\%$ improvement and an absolute improvement from baseline of ≥ 2 units in ≥ 3 of 4 domains without any worsening in the remaining domain.

The improvement in the main components of the ASAS40 response criteria and other measures of disease activity at Week 16 are shown in Table 11.

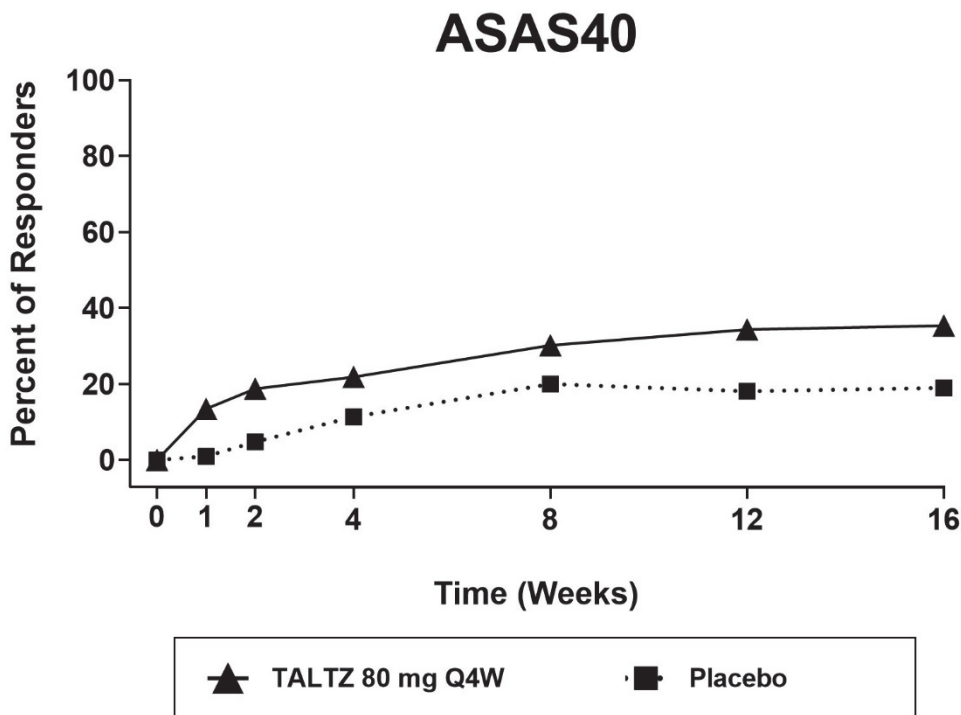
Table 11: ASAS Components and Other Measures of Disease Activity at Week 16^a

	TALTZ 80 mg Q4W ^b (N=96)	Placebo (N=105)
ASAS Components		
Patient Global Assessment (0-10)		
Baseline	7.1	7.4
Mean Change from Baseline ^c	-2.3	-1.3
Total Spinal Pain (0-10)		
Baseline	7.3	7.4
Mean Change from Baseline ^c	-2.4	-1.5
BASFI (0-10)		
Baseline	6.4	6.7
Mean Change from Baseline ^c	-2.0	-1.3
Inflammation (0-10) ^d		
Baseline	6.8	7.0
Mean Change from Baseline ^c	-2.5	-1.5
Other Measures of Disease Activity		
BASDAI Score (0-10)		
Baseline	7.0	7.2
Mean Change from Baseline ^c	-2.2	-1.5
BASMI (0-10)		
Baseline	3.2	3.2
Mean Change from Baseline ^c	-0.4	-0.2
hsCRP (mg/L)		
Baseline	12.4	14.3
Mean Change from Baseline ^c	-8.0	-3.0

- ^a Abbreviations: BASDAI = Bath Ankylosing Spondylitis Disease Activity Index; BASFI = Bath Ankylosing Spondylitis Functional Index; BASMI = Bath Ankylosing Spondylitis Metrology Index; hsCRP = High sensitivity C-reactive protein; NRI = Non-responder Imputation.
- ^b At Week 0, patients received 80 or 160 mg of TALTZ.
- ^c Mean changes are least-squares mean changes from baseline at Week 16 using a mixed model for repeated measures adjusting for treatment group, screening MRI/CRP classification, visit, continuous baseline, interaction of visit with treatment, interaction of continuous baseline with visit.
- ^d Inflammation is the mean of patient-reported stiffness self-assessments (questions 5 and 6) in BASDAI questionnaire.

The percent of patients achieving ASAS40 responses by visit is shown in Figure 3.

Figure 3: ASAS40 Responses through Week 16, NRI^a



^a Patients with missing data were counted as non-responders.

Health-Related Outcomes

General health status and quality of life was assessed by the Short Form health survey (SF-36). At Week 16, compared to placebo, nr-axSpA patients treated with TALTZ 80 mg Q4W showed greater improvement from baseline in the SF-36 physical component summary (PCS) score and physical functioning, bodily pain, vitality, and social functioning domains, with no consistent improvements in the mental component summary (MCS), role physical, general health, role emotional, and mental health domains.

16 HOW SUPPLIED/STORAGE AND HANDLING

How Supplied

TALTZ injection is a sterile, preservative free, clear and colorless to slightly yellow solution available in:

- a single-dose prefilled autoinjector or a single-dose prefilled syringe to deliver 80 mg ixekizumab.
- a single-dose prefilled syringe to deliver 40 mg ixekizumab.
- a single-dose prefilled syringe to deliver 20 mg ixekizumab.

TALTZ is supplied as:

	Pack Size	NDC Code
Autoinjector		
80 mg single-dose	Carton of 1	0002-1445-11
	Carton of 2	0002-1445-27
	Carton of 3	0002-1445-09
Prefilled syringe		
80 mg single-dose	Carton of 1	0002-7724-11
40 mg single-dose	Carton of 1	0002-8905-11
20 mg single-dose	Carton of 1	0002-8900-11

Storage and Handling

TALTZ is sterile and preservative-free. Discard any unused portion.

- TALTZ must be protected from light until use.

- Store refrigerated at 2°C to 8°C (36°F to 46°F).
 - If needed, patients/caregivers may store TALTZ at room temperature up to 30°C (86°F) for up to 5 days in the original carton to protect from light. Once TALTZ has been stored at room temperature, do not return to the refrigerator and discard, if unused, within 5 days.
 - Record the date when TALTZ is first removed from the refrigerator in the spaces provided on the carton.
 - For the 2 or 3 autoinjector pack, remove a single autoinjector at a time leaving the remaining autoinjector(s) in the original carton in the refrigerator. Ensure the unrefrigerated TALTZ is protected from light.
- Do not freeze. Do not use TALTZ if it has been frozen.
- Do not shake.
- Discard the TALTZ single-dose autoinjector or syringe after use in a puncture-resistant container.
- Not made with natural rubber latex.

17 PATIENT COUNSELING INFORMATION

Advise the patient and/or caregiver to read the FDA-approved patient labeling (*Medication Guide and Instructions for Use*) before the patient starts using TALTZ, and each time the prescription is renewed, as there may be new information they need to know.

Instructions on Self-Administration: Provide guidance to patients and caregivers on proper subcutaneous injection technique, including aseptic technique, and how to use the autoinjector or prefilled syringe correctly [*see Instructions for Use*].

Infection: Inform patients that TALTZ may lower the ability of their immune system to fight infections, and that serious infections, including opportunistic infections, may occur with the use of TALTZ. Instruct patients of the importance of communicating any history of infections to the healthcare provider, and contacting their healthcare provider if they develop any symptoms of infection [*see Warnings and Precautions (5.1)*].

Allergic Reactions: Advise patients to seek immediate medical attention if they experience any symptoms of serious hypersensitivity reactions [*see Warnings and Precautions (5.3)*].

Eczematous Eruptions: Inform patients that skin reactions resembling eczema may occur with the use of TALTZ. Instruct patients to seek medical advice if they develop signs or symptoms of eczema [*see Warnings and Precautions (5.4)*].

Pregnancy: Advise patients that there is a pregnancy exposure registry that monitors pregnancy outcomes in women exposed to TALTZ during pregnancy. Advise patients to contact the registry at 1-800-284-1695 to enroll [*see Use in Specific Populations (8.1)*].

**Eli Lilly and Company, Indianapolis, IN 46285, USA
US License Number 1891**

Copyright © 2016, 2024, Eli Lilly and Company. All rights reserved.

A3.0-TAL-0015-USPI-20240820

Medication Guide
TALTZ® (tolts)
(ixekizumab)
injection, for subcutaneous use

What is the most important information I should know about TALTZ?

TALTZ is a medicine that affects your immune system. TALTZ may lower the ability of your immune system to fight infections and may increase your risk of infections. Some people have had serious infections while taking TALTZ, including tuberculosis (TB), and infections caused by bacteria, fungi, or viruses that can spread throughout the body. Some people have been hospitalized from these infections.

- Your healthcare provider should check you for TB before you start treatment with TALTZ.
- Your healthcare provider may treat you with medicine for TB before you begin treatment with TALTZ if you have a past history of TB or have TB.
- Your healthcare provider should watch you closely for signs and symptoms of TB during and after treatment with TALTZ.

Before starting TALTZ, tell your healthcare provider if you:

- are being treated for an infection
- have an infection that does not go away or that keeps coming back
- have TB or have been in close contact with someone with TB
- think you have an infection or have symptoms of an infection such as:
 - fever, sweats, or chills
 - muscle aches
 - cough
 - shortness of breath
 - blood in your phlegm (mucus)
 - weight loss
 - warm, red, or painful skin or sores on your body
 - diarrhea or stomach pain
 - burning when you urinate or urinate more often than normal

After starting TALTZ, call your healthcare provider right away if you have any of the symptoms of infection listed above.

Do not use TALTZ if you have any symptoms of infection unless you are instructed to by your healthcare provider. See **“What are the possible side effects of TALTZ?”** for more information about side effects.

What is TALTZ?

TALTZ is a prescription medicine used to treat:

- people 6 years of age and older with moderate-to-severe plaque psoriasis who may benefit from taking injections or pills (systemic therapy) or phototherapy (treatment using ultraviolet or UV light).
- adults with active psoriatic arthritis. TALTZ can be used alone or with the medicine methotrexate.
- adults with active ankylosing spondylitis.
- adults with active non-radiographic axial spondyloarthritis with objective signs of inflammation.

It is not known if TALTZ is safe and effective in children for conditions other than plaque psoriasis or in children under 6 years of age.

Do not use TALTZ if you have had a severe allergic reaction to ixekizumab or any of the other ingredients in TALTZ. See the end of this Medication Guide for a complete list of ingredients in TALTZ.

Before using TALTZ, tell your healthcare provider about all of your medical conditions, including if you:

- have any of the conditions or symptoms listed in the section **“What is the most important information I should know about TALTZ?”**
- have Crohn’s disease or ulcerative colitis
- have recently received or are scheduled to receive an immunization (vaccine). You should avoid receiving live vaccines during treatment with TALTZ.
- are pregnant or plan to become pregnant. It is not known if TALTZ can harm your unborn baby.

Pregnancy Exposure Registry: There is a pregnancy registry to collect information about women who are exposed to TALTZ during pregnancy. The purpose of this registry is to collect information about the health of you and your baby. If you become pregnant while taking TALTZ, you are encouraged to enroll in the pregnancy registry by calling 1-800-284-1695 or by visiting online at www.pregnancyregistry.lilly.com.

- are breastfeeding or plan to breastfeed. It is not known if TALTZ passes into your breast milk.

Tell your healthcare provider about all the medicines you take, including prescription and over-the-counter medicines, vitamins, and herbal supplements.

How should I use TALTZ?

See the detailed “Instructions for Use” that comes with your TALTZ for information on how to prepare and inject a dose of TALTZ, and how to properly throw away (dispose of) used TALTZ autoinjectors and prefilled syringes.

- Use TALTZ exactly as prescribed by your or your child’s healthcare provider.
- For children 6 to 17 years of age:
 - Your child’s healthcare provider will decide which dose of TALTZ is right for your child and if you can give TALTZ to your child at home.
 - If your child’s healthcare provider decides that you may give TALTZ injections at home, you should receive training on the right way to prepare and inject TALTZ. Do not try to give TALTZ to your child until you have been shown how to inject TALTZ.
 - Children should not inject themselves with TALTZ. You or an adult caregiver should prepare and give TALTZ injections to your child.
 - Children will be given a TALTZ injection every 4 weeks.
- For adults, if your healthcare provider decides that you or a caregiver may give your TALTZ injections at home, you should receive training on the right way to prepare and inject TALTZ. Do not try to inject TALTZ yourself, until you or your caregiver have been shown how to inject TALTZ.
- TALTZ comes in a single-dose autoinjector and single-dose prefilled syringes that you or your caregiver may use at home to give injections. Your or your child’s healthcare provider will decide which type of TALTZ is best to use at home.
- TALTZ is given as an injection under the skin (subcutaneous injection), in the thighs or stomach area (abdomen) by you or a caregiver. A caregiver may also give the injection of TALTZ in the back of the arm.
- **Do not** give an injection in an area of the skin that is tender, bruised, red or hard, or in an area of skin that is affected by psoriasis.
- Each TALTZ injection should be given at a different site. **Do not** use the 1 inch area around your navel (belly button).

If you or your child forget to take a dose of TALTZ:

- Do not miss any doses of TALTZ unless your or your child’s healthcare provider says it is okay. If you forget to take or give the TALTZ dose, inject a dose as soon as you remember. Then, take or give the next dose at the regular scheduled time.
- If you inject more TALTZ than prescribed, call your or your child’s healthcare provider or go to the nearest emergency room right away.

What are the possible side effects of TALTZ?

TALTZ may cause serious side effects, including:

- See “What is the most important information I should know about TALTZ?”
- **Serious allergic reactions. If you have a severe allergic reaction, do not give another injection of TALTZ.** Get emergency medical help right away if you get any of the following symptoms of a serious allergic reaction:
 - feel faint
 - swelling of your face, eyelids, lips, mouth, tongue, or throat
 - trouble breathing or throat tightness
 - chest tightness
 - skin rash
- **Severe skin reactions that look like eczema** can happen during treatment with TALTZ from days to months after your first dose and can sometimes lead to hospitalization. Your healthcare provider may temporarily stop treatment with TALTZ if you develop severe skin reactions. Tell your healthcare provider if you have any of the following signs or symptoms:
 - redness or rash
 - itching
 - patches
 - your skin is dry or feels like leather
 - blisters or erosions that ooze or become crusty
 - small bumps or plaques with scale or crusting
- **Crohn’s disease or ulcerative colitis (inflammatory bowel disease) can happen during treatment with TALTZ, including worsening symptoms.** Tell your healthcare provider if you have new or worsening symptoms of inflammatory bowel disease during treatment with TALTZ, including:
 - stomach (abdomen) pain
 - diarrhea with or without blood
 - weight loss

The most common side effects of TALTZ in adults and children include:

- injection site reactions
- upper respiratory infections
- nausea
- fungal infections

These are not all of the possible side effects of TALTZ. Tell your healthcare provider about any side effect that bothers you or that does not go away. Call your doctor for medical advice about side effects. You may report side effects to FDA at 1-800-FDA-1088.

How should I store TALTZ?

- Protect TALTZ from light.
- Store TALTZ in the refrigerator between 36°F to 46°F (2°C to 8°C).
 - If needed, you or a caregiver may store TALTZ at room temperature up to 86°F (30°C) for up to 5 days in the original carton to protect from light. Once TALTZ has been stored at room temperature, do not return to the refrigerator. Throw away TALTZ if it is not used within 5 days at room temperature.
 - Record the date when TALTZ is first removed from the refrigerator in the spaces provided on the carton.
 - For the 2 or 3 autoinjector pack, remove a single autoinjector at a time leaving the remaining autoinjector(s) in the original carton in the refrigerator. Make sure the unrefrigerated TALTZ is protected from light.
- Do not freeze TALTZ. Do not use if TALTZ has been frozen.
- Do not shake TALTZ.

Keep TALTZ and all medicines out of the reach of children.

General information about the safe and effective use of TALTZ.

Medicines are sometimes prescribed for purposes other than those listed in a Medication Guide. Do not use TALTZ for a condition for which it was not prescribed. Do not give TALTZ to other people, even if they have the same symptoms you have. It may harm them. You can ask your healthcare provider or pharmacist for information about TALTZ that is written for health professionals.

What are the ingredients in TALTZ?

Active ingredient: ixekizumab

Inactive ingredients: Polysorbate 80, Sucrose, and Water for Injection. Sodium Hydroxide may have been added to adjust pH.

Not made with natural rubber latex.

For more information about TALTZ, call 1-800-545-5979 (1-800-LillyRx) or go to the following website: www.taltz.com.

TALTZ® (ixekizumab) injection is a registered trademark of Eli Lilly and Company.

Eli Lilly and Company Indianapolis, IN 46285, USA, US License Number 1891

Copyright © 2016, 2024, Eli Lilly and Company. All rights reserved.

A2.01-TAL-0010-MG-20240820