

HIGHLIGHTS OF PRESCRIBING INFORMATION

These highlights do not include all the information needed to use SYMPAZAN[®] safely and effectively. See full prescribing information for SYMPAZAN[®].

SYMPAZAN[®] (clobazam) oral film, CIV
Initial U.S. Approval: 2011

WARNING: RISKS FROM CONCOMITANT USE WITH OPIOIDS; ABUSE, MISUSE, AND ADDICTION; and DEPENDENCE AND WITHDRAWAL REACTIONS

See full prescribing information for complete boxed warning

- Concomitant use of benzodiazepines and opioids may result in profound sedation, respiratory depression, coma, and death. Reserve concomitant prescribing of these drugs in patients for whom alternative treatment options are inadequate. Limit dosages and durations to the minimum required. Follow patients for signs and symptoms of respiratory depression and sedation (5.1, 7.1).
- The use of benzodiazepines, including SYMPAZAN, exposes users to risks of abuse, misuse, and addiction, which can lead to overdose or death. Before prescribing SYMPAZAN and throughout treatment, assess each patient's risk for abuse, misuse, and addiction (5.2).
- Abrupt discontinuation or rapid dosage reduction of SYMPAZAN after continued use may precipitate acute withdrawal reactions, which can be life-threatening. To reduce the risk of withdrawal reactions, use a gradual taper to discontinue SYMPAZAN (2.2, 5.3).

RECENT MAJOR CHANGES

Warning and Precautions (5.7, 5.9)

3/2024

INDICATIONS AND USAGE

SYMPAZAN[®] is a benzodiazepine indicated for adjunctive treatment of seizures associated with Lennox-Gastaut Syndrome (LGS) in patients 2 years of age or older (1).

DOSAGE AND ADMINISTRATION

- For doses above 5 mg/day, administer in two divided doses (2.1)
- Patients weighing 30 kg or less: Initiate at 5 mg daily, and titrate as tolerated up to 20 mg daily (2.1)
- Patients weighing greater than 30 kg: Initiate at 10 mg daily, and titrate as tolerated up to 40 mg daily (2.1)
- Dosage adjustment is needed in following groups:
 - Geriatric patients (2.4, 8.5)
 - Known CYP2C19 poor metabolizers (2.5)
 - Mild or moderate hepatic impairment; no information for severe hepatic impairment (2.6, 8.8)
- Can be taken with or without food (2.3)
- Do not administer with liquids (2.3)

DOSAGE FORMS AND STRENGTHS

Oral Film: 5 mg, 10 mg and 20 mg (3)

CONTRAINDICATIONS

History of hypersensitivity to the drug or its ingredients (4)

WARNINGS AND PRECAUTIONS

- Somnolence or Sedation: Monitor for central nervous system (CNS) depression. Risk may be increased with concomitant use of other CNS depressants (5.4, 5.5)
- Serious Dermatological Reactions (including Stevens-Johnson Syndrome and toxic epidermal necrolysis): Discontinue SYMPAZAN[®] at first sign of rash unless the rash is clearly not drug-related (5.6)
- Drug Reaction with Eosinophilia and Systemic Symptoms (DRESS)/Multiorgan Hypersensitivity: Discontinue if no alternative etiology (5.7)
- Suicidal Behavior and Ideation: Monitor for suicidal thoughts or behaviors (5.8)
- Neonatal Sedation and Withdrawal Syndrome: SYMPAZAN use during pregnancy can result in neonatal sedation and/or neonatal withdrawal (5.9, 8.1)

ADVERSE REACTIONS

Adverse reactions that occurred at least 10% more frequently than placebo in any clobazam dose included constipation, somnolence or sedation, pyrexia, lethargy, and drooling (6.1)

To report SUSPECTED ADVERSE REACTIONS, contact Aquestive Therapeutics at 1-877-394-5045 or FDA at 1-800-FDA-1088 or www.fda.gov/medwatch.

DRUG INTERACTIONS

- Alcohol: Increases blood levels of clobazam by about 50% (7.2)
- Drugs metabolized by CYP2D6: Lower doses of these drugs may be required when used concomitantly with SYMPAZAN[®] (7.3)
- Strong or Moderate CYP2C19 Inhibitors: Dosage adjustment of SYMPAZAN[®] may be necessary (7.4)
- Cannabidiol: May increase risk of SYMPAZAN-related adverse reactions; consider dosage adjustment if this occurs (7.4)

USE IN SPECIFIC POPULATIONS

- Pregnancy: Based on animal data, may cause fetal harm (8.1)

See 17 for PATIENT COUNSELING INFORMATION and Medication Guide.

Revised: 3/2024

FULL PRESCRIBING INFORMATION: CONTENTS*

WARNING: RISKS FROM CONCOMITANT USE WITH OPIOIDS; ABUSE, MISUSE, AND ADDICTION; and DEPENDENCE AND WITHDRAWAL REACTIONS

1 INDICATIONS AND USAGE

2 DOSAGE AND ADMINISTRATION

- 2.1 Dosing Information
- 2.2 Discontinuation or Dosage Reduction of SYMPAZAN
- 2.3 Important Administration Instructions
- 2.4 Dosage Adjustments in Geriatric Patients
- 2.5 Dosage Adjustments in CYP2C19 Poor Metabolizers
- 2.6 Dosage Adjustments in Patients with Hepatic Impairment

3 DOSAGE FORMS AND STRENGTHS

4 CONTRAINDICATIONS

5 WARNINGS AND PRECAUTIONS

- 5.1 Risks from Concomitant Use with Opioids
- 5.2 Abuse, Misuse, and Addiction
- 5.3 Dependence and Withdrawal Reactions
- 5.4 Potentiation of Sedation from Concomitant Use with Central Nervous System Depressants
- 5.5 Somnolence or Sedation
- 5.6 Serious Dermatological Reactions
- 5.7 Drug Reaction with Eosinophilia and Systemic Symptoms (DRESS)/Multiorgan Hypersensitivity

5.8 Suicidal Behavior and Ideation

5.9 Neonatal Sedation and Withdrawal Syndrome

6 ADVERSE REACTIONS

6.1 Clinical Trials Experience

6.2 Postmarketing Experience

7 DRUG INTERACTIONS

7.1 Opioids

7.2 CNS Depressants and Alcohol

7.3 Effect of SYMPAZAN[®] on Other Drugs

7.4 Effect of Other Drugs on SYMPAZAN[®]

8 USE IN SPECIFIC POPULATIONS

8.1 Pregnancy

8.2 Lactation

8.3 Females and Males of Reproductive Potential

8.4 Pediatric Use

8.5 Geriatric Use

8.6 CYP2C19 Poor Metabolizers

8.7 Renal Impairment

8.8 Hepatic Impairment

9 DRUG ABUSE AND DEPENDENCE

9.1 Controlled Substance

9.2 Abuse

9.3 Dependence

10 OVERDOSAGE

11 DESCRIPTION

12 CLINICAL PHARMACOLOGY

12.1 Mechanism of Action

12.2 Pharmacodynamics

12.3 Pharmacokinetics

12.5 Pharmacogenomics

13 NONCLINICAL TOXICOLOGY

13.1 Carcinogenesis, Mutagenesis, Impairment of Fertility

14 CLINICAL STUDIES

14.1 Demonstration of Pharmacokinetic Equivalence Between

SYMPAZAN® and Clobazam Tablets

14.2 Adjunctive Treatment of Seizures Associated with Lennox-Gastaut Syndrome (LGS)

16 HOW SUPPLIED/STORAGE AND HANDLING

17 PATIENT COUNSELING INFORMATION

* Sections or subsections omitted from the full prescribing information are not listed

FULL PRESCRIBING INFORMATION

WARNING: RISKS FROM CONCOMITANT USE WITH OPIOIDS; ABUSE, MISUSE, AND ADDICTION; and DEPENDENCE AND WITHDRAWAL REACTIONS

- Concomitant use of benzodiazepines and opioids may result in profound sedation, respiratory depression, coma, and death. Reserve concomitant prescribing of these drugs in patients for whom alternative treatment options are inadequate. Limit dosages and durations to the minimum required. Follow patients for signs and symptoms of respiratory depression and sedation [see *Warnings and Precautions (5.1)*, and *Drug Interactions (7.1)*].
- The use of benzodiazepines, including SYMPAZAN, exposes users to risks of abuse, misuse, and addiction, which can lead to overdose or death. Abuse and misuse of benzodiazepines commonly involve concomitant use of other medications, alcohol, and/or illicit substances, which is associated with an increased frequency of serious adverse outcomes. Before prescribing SYMPAZAN and throughout treatment, assess each patient's risk for abuse, misuse, and addiction [see *Warnings and Precautions (5.2)*].
- The continued use of benzodiazepines, including SYMPAZAN, may lead to clinically significant physical dependence. The risks of dependence and withdrawal increase with longer treatment duration and higher daily dose. Abrupt discontinuation or rapid dosage reduction of SYMPAZAN after continued use may precipitate acute withdrawal reactions, which can be life-threatening. To reduce the risk of withdrawal reactions, use a gradual taper to discontinue SYMPAZAN or reduce the dosage [see *Dosage and Administration (2.2)* and *Warnings and Precautions (5.3)*].

1 INDICATIONS AND USAGE

SYMPAZAN® is indicated for the adjunctive treatment of seizures associated with Lennox-Gastaut Syndrome (LGS) in patients 2 years of age or older.

2 DOSAGE AND ADMINISTRATION

2.1 Dosing Information

A daily dose of SYMPAZAN® greater than 5 mg should be administered in divided doses twice daily; a 5 mg daily dose can be administered as a single dose. Dose patients according to body weight. Individualize dosing within each body weight group, based on clinical efficacy and tolerability. Each dose in Table 1 (e.g., 5 to 20 mg in 30 kg or less weight group) has been shown to be effective, although effectiveness increases with increasing dose [see *Clinical Studies (14)*]. Do not proceed with dose escalation more rapidly than weekly, because serum concentrations of clobazam and its active metabolite require 5 and 9 days, respectively, to reach steady-state.

Table 1: Recommended Total Daily Dosing by Weight Group		
	30 kg or Less Body Weight	Greater than 30 kg Body Weight
Starting Dose	5 mg	10 mg
Starting Day 7	10 mg	20 mg
Starting Day 14	20 mg	40 mg

2.2 Discontinuation or Dosage Reduction of SYMPAZAN

To reduce the risk of withdrawal reactions, increased seizure frequency, and status epilepticus, use a gradual taper to discontinue SYMPAZAN or reduce the dosage. Taper by decreasing the total daily dosage by 5-10 mg/day on a weekly basis until discontinued. If a patient develops withdrawal reactions, consider pausing the taper or increasing the dosage to the previous tapered dosage level. Subsequently decrease the dosage more slowly [see *Warnings and Precautions (5.3)* and *Drug Abuse and Dependence (9.3)*].

2.3 Important Administration Instructions

Instruct patients and/or caregivers to read the “Instructions for Use” carefully for complete directions on how to properly dose and administer SYMPAZAN[®] oral films.

Apply SYMPAZAN[®] on top of the tongue where it adheres and dissolves.

SYMPAZAN[®] oral film can be taken with or without food [see *Clinical Pharmacology (12.3)*]. Do not administer with liquids. As the film dissolves, saliva should be swallowed in a normal manner, but the patient should refrain from chewing, spitting or talking.

Only one oral film should be taken at a time; if a second film is needed to complete the dosage, it should not be taken until the first film has completely dissolved.

2.4 Dosage Adjustments in Geriatric Patients

Plasma concentrations at any given dose are generally higher in geriatric patients [see *Clinical Pharmacology (12.3)*]. Therefore, the starting dosage should generally be 5 mg/day for all geriatric patients. Then proceed slowly with dose escalation; titrate according to weight, but to half the dosage presented in Table 1, as tolerated. If necessary and based upon clinical response, an additional titration to the maximum dosage (20 mg/day or 40 mg/day, depending on weight) may be started on day 21 [see *Use in Specific Populations (8.5)*].

2.5 Dosage Adjustments in CYP2C19 Poor Metabolizers

In CYP2C19 poor metabolizers, levels of N-desmethylclobazam, clobazam's active metabolite, will be increased [see *Clinical Pharmacology (12.5)*]. Therefore, the starting dosage should be 5 mg/day in patients known to be CYP2C19 poor metabolizers. Then proceed slowly with dose escalation; titrate according to weight, but to half the dosage presented in Table 1, as tolerated. If necessary and based upon clinical response, an additional titration to the maximum dosage (20 mg/day or 40 mg/day, depending on weight) may be started on day 21 [see *Use in Specific Populations (8.6)*].

2.6 Dosage Adjustments in Patients with Hepatic Impairment

SYMPAZAN[®] is hepatically metabolized; however, there are limited data to characterize the effect of hepatic impairment on the pharmacokinetics of SYMPAZAN[®]. For patients with mild to moderate hepatic impairment (Child-Pugh score 5-9), the starting dosage should be 5 mg/day (regardless of weight). Then proceed slowly with dosing escalations; titrate patients according to weight, but to half the dosage presented in Table 1, as tolerated. If necessary and based upon clinical response, an additional titration to the maximum dosage (20 mg/day or 40 mg/day, depending on weight) may be started on day 21. There is inadequate information about metabolism of clobazam in patients with severe hepatic impairment. Therefore, no dosing recommendation can be given for those patients [see *Use in Specific Populations (8.8)*, *Clinical Pharmacology (12.3)*].

3 DOSAGE FORMS AND STRENGTHS

SYMPAZAN[®] Oral Film: Thin, white, rectangular, orally dissolving film strips:

- 5 mg imprinted with C5
- 10 mg imprinted with C10
- 20 mg imprinted with C20

4 CONTRAINDICATIONS

SYMPAZAN[®] is contraindicated in patients with a history of hypersensitivity to the drug or its ingredients. Hypersensitivity reactions have included serious dermatological reactions [see *Warnings and Precautions (5.6)*].

5 WARNINGS AND PRECAUTIONS

5.1 Risks from Concomitant Use with Opioids

Concomitant use of benzodiazepines, including SYMPAZAN[®], and opioids may result in profound sedation, respiratory depression, coma, and death. Because of these risks, reserve concomitant prescribing of benzodiazepines and opioids in patients for whom alternative treatment options are inadequate.

Observational studies have demonstrated that concomitant use of opioid analgesics and benzodiazepines increases the risk of drug-related mortality compared to use of opioids alone. If a decision is made to prescribe SYMPAZAN[®] concomitantly with opioids, prescribe the lowest effective dosages and minimum durations of concomitant use, and follow patients closely for signs and symptoms of respiratory depression and sedation. Advise both patients and caregivers about the risks of respiratory depression and sedation when SYMPAZAN[®] is used with opioids [see *Drug Interactions (7.1)*].

5.2 Abuse, Misuse, and Addiction

The use of benzodiazepines, including SYMPAZAN, exposes users to the risks of abuse, misuse, and addiction, which can lead to overdose or death. Abuse and misuse of benzodiazepines often (but not always) involve the use of doses greater than the maximum recommended dosage and commonly involve concomitant use of other medications, alcohol, and/or illicit substances, which is associated with an increased frequency of serious adverse outcomes, including respiratory depression, overdose, or death [see [Drug Abuse and Dependence \(9.2\)](#)].

Before prescribing SYMPAZAN and throughout treatment, assess each patient's risk for abuse, misuse, and addiction (e.g., using a standardized screening tool). Use of SYMPAZAN, particularly in patients at elevated risk, necessitates counseling about the risks and proper use of SYMPAZAN along with monitoring for signs and symptoms of abuse, misuse, and addiction. Prescribe the lowest effective dosage; avoid or minimize concomitant use of CNS depressants and other substances associated with abuse, misuse, and addiction (e.g., opioid analgesics, stimulants); and advise patients on the proper disposal of unused drug. If a substance use disorder is suspected, evaluate the patient and institute (or refer them for) early treatment, as appropriate.

5.3 Dependence and Withdrawal Reactions

To reduce the risk of withdrawal reactions, use a gradual taper to discontinue SYMPAZAN or reduce the dosage [see [Dosage and Administration \(2.2\)](#)].

Patients at an increased risk of withdrawal adverse reactions after benzodiazepine discontinuation or rapid dosage reduction include those who take higher dosages, and those who have had longer durations of use.

Acute Withdrawal Reactions

The continued use of benzodiazepines, including SYMPAZAN, may lead to clinically significant physical dependence. Abrupt discontinuation or rapid dosage reduction of SYMPAZAN after continued use, or administration of flumazenil (a benzodiazepine antagonist) may precipitate acute withdrawal reactions, which can be life-threatening (e.g., seizures) [see [Drug Abuse and Dependence \(9.3\)](#)].

Protracted Withdrawal Syndrome

In some cases, benzodiazepine users have developed a protracted withdrawal syndrome with withdrawal symptoms lasting weeks to more than 12 months [see [Drug Abuse and Dependence \(9.3\)](#)].

5.4 Potentiation of Sedation from Concomitant Use with Central Nervous System Depressants

Since SYMPAZAN[®] has a central nervous system (CNS) depressant effect, patients or their caregivers should be cautioned against simultaneous use with other CNS depressant drugs or alcohol, and cautioned that the effects of other CNS depressant drugs or alcohol may be potentiated [see [Drug Interactions \(7.2\)](#)].

5.5 Somnolence or Sedation

SYMPAZAN[®] causes somnolence and sedation. In clinical trials, somnolence or sedation was reported at all effective doses and was dose-related [see [Adverse Reactions \(6.1\)](#)].

In general, somnolence and sedation begin within the first month of treatment and may diminish with continued treatment. Prescribers should monitor patients for somnolence and sedation, particularly with concomitant use of other central nervous system depressants. Prescribers should caution patients against engaging in hazardous activities requiring mental alertness, such as operating dangerous machinery or motor vehicles, until the effect of SYMPAZAN[®] is known.

5.6 Serious Dermatological Reactions

Serious skin reactions, including Stevens-Johnson Syndrome (SJS) and toxic epidermal necrolysis (TEN), have been reported with clobazam in both children and adults during the post-marketing period. Patients should be closely monitored for signs or symptoms of SJS/TEN, especially during the first 8 weeks of treatment initiation or when re-introducing therapy.

SYMPAZAN[®] should be discontinued at the first sign of rash, unless the rash is clearly not drug-related. If signs or symptoms suggest SJS/TEN, use of this drug should not be resumed and alternative therapy should be considered [see [Contraindications \(4\)](#)].

5.7 Drug Reaction with Eosinophilia and Systemic Symptoms (DRESS)/Multiorgan Hypersensitivity

Drug Reaction with Eosinophilia and Systemic Symptoms (DRESS), also known as multiorgan hypersensitivity, has been reported in patients taking antiepileptic drugs, including clobazam. These events can be fatal or life-threatening, particularly if diagnosis and treatment do not occur as early as possible. DRESS typically, although not exclusively, presents with fever, rash, lymphadenopathy, and/or facial swelling, in association with other organ system involvement, such as hepatitis, nephritis, hematological abnormalities, myocarditis, or myositis, sometimes resembling an acute viral infection. Eosinophilia is often present. Because this disorder is variable in its expression, other organ systems not noted here may be involved. It is important to note that early manifestations of hypersensitivity, such as fever or lymphadenopathy, may be present even though rash is not evident. If such signs or symptoms are present, the patient should be evaluated immediately. SYMPAZAN should be discontinued if an alternative etiology for the signs or

| symptoms cannot be established [see [Contraindications \(4\)](#)].

5.8 Suicidal Behavior and Ideation

Antiepileptic drugs (AEDs), including SYMPAZAN[®], increase the risk of suicidal thoughts or behavior in patients taking these drugs for any indication. Patients treated with any AED for any indication should be monitored for the emergence or worsening of depression, suicidal thoughts or behavior, and/or any unusual changes in mood or behavior.

Pooled analyses of 199 placebo-controlled clinical trials (mono- and adjunctive therapy) of 11 different AEDs showed that patients randomized to one of the AEDs had approximately twice the risk (adjusted relative risk 1.8, 95% confidence interval [CI]: 1.2, 2.7) of suicidal thinking or behavior compared to patients randomized to placebo. In these trials, which had a median treatment duration of 12 weeks, the estimated incidence rate of suicidal behavior or ideation among 27,863 AED-treated patients was 0.43%, compared to 0.24% among 16,029 placebo-treated patients, representing an increase of approximately one case of suicidal thinking or behavior for every 530 patients treated. There were four suicides in drug-treated patients in the trials and none in placebo-treated patients, but the number is too small to allow any conclusion about drug effect on suicide.

The increased risk of suicidal thoughts or behavior with AEDs was observed as early as one week after starting drug treatment with AEDs and persisted for the duration of treatment assessed. Because most trials included in the analysis did not extend beyond 24 weeks, the risk of suicidal thoughts or behavior beyond 24 weeks could not be assessed.

The risk of suicidal thoughts or behavior was generally consistent among drugs in the data analyzed. The finding of increased risk with AEDs of varying mechanisms of action and across a range of indications suggests that the risk applies to all AEDs used for any indication. The risk did not vary substantially by age (5-100 years) in the clinical trials analyzed. [Table 2](#) shows absolute and relative risk by indication for all evaluated AEDs.

Table 2: Risk by Indication for Antiepileptic Drugs in the Pooled Analysis				
Indication	PlaceboPatients with Events per 1000 Patients	Drug Patients with Events per 1000 Patients	Relative Risk: Incidence of Drug Events in Drug Patients/Incidence in Placebo Patients	Risk Difference: Additional Drug Patients with Events per 1000 Patients
Epilepsy	1.0	3.4	3.5	2.4
Psychiatric	5.7	8.5	1.5	2.9
Other	1.0	1.8	1.9	0.9
Total	2.4	4.3	1.8	1.9

The relative risk for suicidal thoughts or behavior was higher in clinical trials for epilepsy than in clinical trials for psychiatric or other conditions, but the absolute risk differences were similar for the epilepsy and psychiatric indications.

Anyone considering prescribing SYMPAZAN[®] or any other AED must balance the risk of suicidal thoughts or behavior with the risk of untreated illness. Epilepsy and many other illnesses for which AEDs are prescribed are themselves associated with morbidity and mortality and an increased risk of suicidal thoughts and behavior. Should suicidal thoughts and behavior emerge during treatment, the prescriber needs to consider whether the emergence of these symptoms in any given patient may be related to the illness being treated.

5.9 Neonatal Sedation and Withdrawal Syndrome

Use of SYMPAZAN late in pregnancy can result in sedation (respiratory depression, lethargy, hypotonia) and/or withdrawal symptoms (hyperreflexia, irritability, restlessness, tremors, inconsolable crying, and feeding difficulties) in the neonate [see [Use in Specific Populations \(8.1\)](#)]. Monitor neonates exposed to SYMPAZAN during pregnancy or labor for signs of sedation and monitor neonates exposed to SYMPAZAN during pregnancy for signs of withdrawal; manage these neonates accordingly.

6 ADVERSE REACTIONS

Clinically significant adverse reactions that appear in other sections of the labeling include the following:

- Risks from Concomitant Use with Opioids [see [Warnings and Precautions \(5.1\)](#)]
- Abuse, Misuse, and Addiction [see [Warnings and Precautions \(5.2\)](#)]
- Dependence and Withdrawal Reactions [see [Warnings and Precautions \(5.3\)](#)]
- Potentiation of Sedation from Concomitant Use with Central Nervous System Depressants [see [Warnings and Precautions \(5.4\)](#)]
- Somnolence or Sedation [see [Warnings and Precautions \(5.5\)](#)]
- Serious Dermatological Reactions [see [Contraindications \(4\)](#), [Warnings and Precautions \(5.6\)](#)]
- Drug Reaction with Eosinophilia and Systemic Symptoms (DRESS)/Multiorgan Hypersensitivity [see [Warnings and Precautions \(5.7\)](#)]
- Suicidal Behavior and Ideation [see [Warnings and Precautions \(5.8\)](#)]

- Neonatal Sedation and Withdrawal Syndrome [see [Warnings and Precautions \(5.9\)](#)]

6.1 Clinical Trials Experience

Because clinical trials are conducted under widely varying conditions, adverse reaction rates observed in the clinical trials of a drug cannot be directly compared to rates in the clinical trials of another drug and may not reflect the rates observed in practice. The following adverse events have been reported in clinical trials of patients treated with clobazam, the active ingredient of SYMPAZAN®.

During its development for the adjunctive treatment of seizures associated with LGS, clobazam was administered to 333 healthy volunteers and 300 patients with a current or prior diagnosis of LGS, including 197 patients treated for 12 months or more. The conditions and duration of exposure varied greatly and included single- and multiple-dose clinical pharmacology studies in healthy volunteers and two double-blind studies in patients with LGS (Study 1 and 2) [see [Clinical Studies \(14\)](#)]. Only Study 1 included a placebo group, allowing comparison of adverse reaction rates on clobazam at several doses to placebo.

Adverse Reactions Leading to Discontinuation in an LGS Placebo Controlled Clinical Trial (Study 1)

The adverse reactions associated with clobazam treatment discontinuation in $\geq 1\%$ of patients in decreasing order of frequency included lethargy, somnolence, ataxia, aggression, fatigue, and insomnia.

Most Common Adverse Reactions in an LGS Placebo Controlled Clinical Trial (Study 1)

[Table 3](#) lists the adverse reactions that occurred in $\geq 5\%$ of clobazam-treated patients (at any dose), and at a rate greater than placebo-treated patients, in the randomized, double-blind, placebo-controlled, parallel group clinical study of adjunctive AED therapy for 15 weeks (Study 1).

Table 3: Adverse Reactions Reported for ≥5% of Patients and More Frequently than Placebo in Any Treatment Group					
	Placebo N=59 %	Clobazam Dose Level			All Clobazam N=179 %
		Low ^a N=58 %	Medium ^b N=62 %	High ^c N=59 %	
Gastrointestinal Disorders					
Vomiting	5	9	5	7	7
Constipation	0	2	2	10	5
Dysphagia	0	0	0	5	2
General Disorders and Administration Site Conditions					
Pyrexia	3	17	10	12	13
Irritability	5	3	11	5	7
Fatigue	2	5	5	3	5
Infections and Infestations					
Upper respiratory tract infection	10	10	13	14	12
Pneumonia	2	3	3	7	4
Urinary tract infection	0	2	5	5	4
Bronchitis	0	2	0	5	2
Metabolism and Nutrition Disorders					
Decreased appetite	3	3	0	7	3
Increased appetite	0	2	3	5	3
Nervous System Disorders					
Somnolence or Sedation	15	17	27	32	26
Somnolence	12	16	24	25	22
Sedation	3	2	3	9	5
Lethargy	5	10	5	15	10
Drooling	3	0	13	14	9
Ataxia	3	3	2	10	5
Psychomotor hyperactivity	3	3	3	5	4
Dysarthria	0	2	2	5	3
Psychiatric Disorders					
Aggression	5	3	8	14	8
Insomnia	2	2	5	7	5
Respiratory Disorders					
Cough	0	3	5	7	5

- ^a Maximum daily dose of 5 mg for ≤30 kg body weight; 10 mg for >30 kg body weight
^b Maximum daily dose of 10 mg for ≤30 kg body weight; 20 mg for >30 kg body weight
^c Maximum daily dose of 20 mg for ≤30 kg body weight; 40 mg for >30 kg body weight

6.2 Postmarketing Experience

The following adverse reactions have been identified during post-approval use of clobazam tablets. These reactions are reported voluntarily from a population of uncertain size; therefore, it is not possible to estimate their frequency or establish a causal relationship to drug exposure. Adverse reactions are categorized by system organ class.

Blood Disorders: Anemia, eosinophilia, leukopenia, thrombocytopenia

Eye Disorders: Diplopia, vision blurred

Gastrointestinal Disorders: Abdominal distention

General Disorders and Administration Site Conditions: Hypothermia

Investigations: Hepatic enzyme increased

Musculoskeletal: Muscle spasms

Psychiatric Disorders: Agitation, anxiety, apathy, confusional state, depression, delirium, delusion, hallucination

Renal and Urinary Disorders: Urinary retention

Respiratory Disorders: Aspiration, respiratory depression

Skin and Subcutaneous Tissue Disorders: Rash, urticaria, angioedema, and facial and lip edema

7 DRUG INTERACTIONS

7.1 Opioids

The concomitant use of benzodiazepines and opioids increases the risk of respiratory depression because of actions at different receptor sites in the CNS that control respiration. Benzodiazepines interact at GABAA sites, and opioids interact primarily at mu receptors. When benzodiazepines and opioids are combined, the potential for benzodiazepines to significantly worsen opioid-related respiratory depression exists. Limit dosage and duration of concomitant use of benzodiazepines and opioids, and follow patients closely for respiratory depression and sedation [see [Warnings and Precautions \(5.1\)](#)].

7.2 CNS Depressants and Alcohol

Concomitant use of SYMPAZAN[®] with other CNS depressants may increase the risk of sedation and somnolence [see [Warnings and Precautions \(5.4\)](#)].

Alcohol, as a CNS depressant, will interact with SYMPAZAN[®] in a similar way and also increases clobazam's maximum plasma exposure by approximately 50%. Therefore, caution patients or their caregivers against simultaneous use with other CNS depressant drugs or alcohol, and caution that the effects of other CNS depressant drugs or alcohol may be potentiated [see [Warnings and Precautions \(5.4\)](#)].

7.3 Effect of SYMPAZAN[®] on Other Drugs

Hormonal Contraceptives

SYMPAZAN[®] is a weak CYP3A4 inducer. As some hormonal contraceptives are metabolized by CYP3A4, their effectiveness may be diminished when given with SYMPAZAN[®]. Additional non-hormonal forms of contraception are recommended when using SYMPAZAN[®] [see [Clinical Pharmacology \(12.3\)](#), [Patient Counseling Information \(17\)](#)].

Drugs Metabolized by CYP2D6

SYMPAZAN[®] inhibits CYP2D6. Dose adjustment of drugs metabolized by CYP2D6 may be necessary [see [Clinical Pharmacology \(12.3\)](#)].

7.4 Effect of Other Drugs on SYMPAZAN[®]

Strong and Moderate Inhibitors of CYP2C19

Coadministration with strong or moderate inhibitors of CYP2C19 may result in increased exposure to N-desmethyclobazam, the active metabolite of clobazam. This may increase the risk of dose-related adverse reactions. Dosage adjustment of SYMPAZAN[®] may be necessary when co-administered with strong CYP2C19 inhibitors (e.g., fluconazole, fluvoxamine, ticlopidine) or moderate CYP2C19 inhibitors (e.g., omeprazole) [see [Clinical Pharmacology \(12.3\)](#)].

Effect of Cannabidiol on SYMPAZAN[®]

Coadministration of cannabidiol, a CYP3A4 and CYP2C19 substrate and a CYP2C19 inhibitor, with clobazam may increase the risk of clobazam-related adverse reactions [see [Warnings and Precautions \(5.4, 5.5\)](#), [Clinical Pharmacology \(12.3\)](#)]. Consider a reduction in dosage of cannabidiol or clobazam if adverse reactions known to occur with SYMPAZAN are

experienced.

8 USE IN SPECIFIC POPULATIONS

8.1 Pregnancy

Pregnancy Exposure Registry

There is a pregnancy exposure registry that monitors pregnancy outcomes in women exposed to AEDs, such as SYMPAZAN[®], during pregnancy. Healthcare providers are encouraged to recommend that pregnant women taking SYMPAZAN[®] enroll in the North American Antiepileptic Drug (NAAED) Pregnancy Registry by calling 1-888-233-2334 or online at <http://www.aedpregnancyregistry.org/>

Risk Summary

Neonates born to mothers using benzodiazepines late in pregnancy have been reported to experience symptoms of sedation and/or neonatal withdrawal [see [Warnings and Precautions \(5.9\)](#) and [Clinical Considerations](#)]. Available data from published observational studies of pregnant women exposed to benzodiazepines do not report a clear association with benzodiazepines and major birth defects (see [Data](#)).

Administration of clobazam to pregnant rats and rabbits during the period of organogenesis or to rats throughout pregnancy and lactation resulted in developmental toxicity, including increased incidences of fetal malformations and mortality, at plasma exposures for clobazam and its major active metabolite, N-desmethyclobazam, below those expected at therapeutic doses in patients [see [Animal Data](#)].

Data for other benzodiazepines suggest the possibility of long-term effects on neurobehavioral and immunological function in animals following prenatal exposure to benzodiazepines at clinically relevant doses.

The background risk of major birth defects and miscarriage for the indicated population is unknown. All pregnancies have a background risk of birth defect, loss, or other adverse outcomes. In the U.S. general population, the estimated background risk of major birth defects and miscarriage in clinically recognized pregnancies is 2%-4% and 15% -20%, respectively.

Clinical Considerations

Fetal/Neonatal Adverse Reactions

Benzodiazepines cross the placenta and may produce respiratory depression, hypotonia, and sedation in neonates. Monitor neonates exposed to SYMPAZAN during pregnancy or labor for signs of sedation, respiratory depression, hypotonia, and feeding problems. Monitor neonates exposed to SYMPAZAN during pregnancy for signs of withdrawal. Manage these neonates accordingly [see [Warnings and Precautions \(5.9\)](#)].

Data

Human Data

Published data from observational studies on the use of benzodiazepines during pregnancy do not report a clear association with benzodiazepines and major birth defects. Although early studies reported an increased risk of congenital malformations with diazepam and chlorthalidone, there was no consistent pattern noted. In addition, the majority of more recent case-control and cohort studies of benzodiazepine use during pregnancy, which were adjusted for confounding exposures to alcohol, tobacco and other medications, have not confirmed these findings.

Animal Data

In a study in which clobazam (0, 150, 450, or 750 mg/kg/day) was orally administered to pregnant rats throughout the period of organogenesis, embryofetal mortality and incidences of fetal skeletal variations were increased at all doses. The low-effect dose for embryofetal developmental toxicity in rats (150 mg/kg/day) was associated with plasma exposures (AUC) for clobazam and its major active metabolite, N-desmethyclobazam, lower than those in humans at the maximum recommended human dose (MRHD) of 40 mg/day.

Oral administration of clobazam (0, 10, 30, or 75 mg/kg/day) to pregnant rabbits throughout the period of organogenesis resulted in decreased fetal body weights, and increased incidences of fetal malformations (visceral and skeletal) at the mid and high doses, and an increase in embryofetal mortality at the high dose. Incidences of fetal variations were increased at all doses. The highest dose tested was associated with maternal toxicity (ataxia and decreased activity). The low effect dose for embryofetal developmental toxicity in rabbits (10 mg/kg/day) was associated with plasma exposures for clobazam and N-desmethyclobazam lower than those in humans at the MRHD.

Oral administration of clobazam (0, 50, 350, or 750 mg/kg/day) to rats throughout pregnancy and lactation resulted in increased

embryofetal mortality at the high dose, decreased pup survival at the mid and high doses and alterations in offspring behavior (locomotor activity) at all doses. The low-effect dose for adverse effects on preand postnatal development in rats (50 mg/kg/day) was associated with plasma exposures for clobazam and Ndesmethyloclobazam lower than those in humans at the MRHD.

8.2 Lactation

Risk Summary

SYMPAZAN[®] is excreted in human milk (see Data). There are reports of sedation, poor feeding and poor weight gain in infants exposed to benzodiazepines through breast milk. There are no data on the effects of clobazam on milk production.

The developmental and health benefits of breastfeeding should be considered along with the mother's clinical need for SYMPAZAN[®] and any potential adverse effects on the breastfed infant from SYMPAZAN[®] or from the underlying maternal condition.

Clinical Considerations

Adverse reactions such as somnolence and difficulty feeding have been reported in infants during breastfeeding in postmarketing experience with clobazam. Infants exposed to SYMPAZAN through breast milk should be monitored for sedation, poor feeding and poor weight gain.

Data

Scientific literature on clobazam use during lactation is limited. After short-term administration, clobazam and Ndesmethyloclobazam are transferred into breast milk.

8.3 Females and Males of Reproductive Potential

Administration of clobazam to rats prior to and during mating and early gestation resulted in adverse effects on fertility and early embryonic development at plasma exposures for clobazam and its major active metabolite, N-desmethyloclobazam, below those in humans at the MRHD [see *Nonclinical Toxicology (13.1)*].

8.4 Pediatric Use

Safety and effectiveness for the adjunctive treatment of seizures associated with Lennox-Gastaut syndrome in pediatric patients 2 years of age and older have been established in two adequate and well-controlled studies [see *Clinical Studies (14)*].

Safety and effectiveness in patients less than 2 years of age have not been established.

Juvenile Animal Data

In a study in which clobazam (0, 4, 36, or 120 mg/kg/day) was orally administered to rats during the juvenile period of development (postnatal days 14 to 48), adverse effects on growth (decreased bone density and bone length) and behavior (altered motor activity and auditory startle response; learning deficit) were observed at the high dose. The effect on bone density, but not on behavior, was reversible when drug was discontinued. The no-effect level for juvenile toxicity (36 mg/kg/day) was associated with plasma exposures (AUC) to clobazam and its major active metabolite, N-desmethyloclobazam, less than those expected at therapeutic doses in pediatric patients.

8.5 Geriatric Use

Clinical studies of clobazam did not include sufficient numbers of subjects aged 65 and over to determine whether they respond differently from younger subjects. However, elderly subjects appear to eliminate clobazam more slowly than younger subjects based on population pharmacokinetic analysis. For these reasons, dosage modification is recommended [see *Dosage and Administration (2.4)*, *Clinical Pharmacology (12.3)*].

8.6 CYP2C19 Poor Metabolizers

Concentrations of clobazam's active metabolite, N-desmethyloclobazam, are higher in CYP2C19 poor metabolizers than in extensive metabolizers. For this reason, dosage modification is recommended [see *Dosage and Administration (2.5)*, *Clinical Pharmacology (12.3)*].

8.7 Renal Impairment

The pharmacokinetics of clobazam were evaluated in patients with mild and moderate renal impairment. There were no significant differences in systemic exposure (AUC and C_{max}) between patients with mild or moderate renal impairment and healthy subjects. No dose adjustment is required for patients with mild and moderate renal impairment. There is essentially no experience with SYMPAZAN[®] in patients with severe renal impairment or ESRD. It is not known if clobazam or its active metabolite, N-desmethyl-clobazam, is dialyzable [see *Clinical Pharmacology (12.3)*].

8.8 Hepatic Impairment

SYMPAZAN[®] is hepatically metabolized; however, there are limited data to characterize the effect of hepatic impairment on the pharmacokinetics of clobazam. For this reason, dosage adjustment is recommended in patients with mild to moderate hepatic impairment (Child-Pugh score 5-9) [see [Dosage and Administration \(2.6\)](#)]. There is inadequate information about metabolism of SYMPAZAN[®] in patients with severe hepatic impairment [see [Clinical Pharmacology \(12.3\)](#)].

9 DRUG ABUSE AND DEPENDENCE

9.1 Controlled Substance

SYMPAZAN[®] contains clobazam, a Schedule IV controlled substance.

9.2 Abuse

SYMPAZAN is a benzodiazepine and a CNS depressant with a potential for abuse and addiction. Abuse is the intentional, non-therapeutic use of a drug, even once, for its desirable psychological or physiological effects. Misuse is the intentional use, for therapeutic purposes, of a drug by an individual in a way other than prescribed by a health care provider or for whom it was not prescribed. Drug addiction is a cluster of behavioral, cognitive, and physiological phenomena that may include a strong desire to take the drug, difficulties in controlling drug use (e.g., continuing drug use despite harmful consequences, giving a higher priority to drug use than other activities and obligations), and possible tolerance or physical dependence. Even taking benzodiazepines as prescribed may put patients at risk for abuse and misuse of their medication. Abuse and misuse of benzodiazepines may lead to addiction.

Abuse and misuse of benzodiazepines often (but not always) involve the use of doses greater than the maximum recommended dosage and commonly involve concomitant use of other medications, alcohol, and/or illicit substances, which is associated with an increased frequency of serious adverse outcomes, including respiratory depression, overdose, or death. Benzodiazepines are often sought by individuals who abuse drugs and other substances, and by individuals with addictive disorders [see [Warnings and Precautions \(5.2\)](#)].

The following adverse reactions have occurred with benzodiazepine abuse and/or misuse: abdominal pain, amnesia, anorexia, anxiety, aggression, ataxia, blurred vision, confusion, depression, disinhibition, disorientation, dizziness, euphoria, impaired concentration and memory, indigestion, irritability, muscle pain, slurred speech, tremors, and vertigo.

The following severe adverse reactions have occurred with benzodiazepine abuse and/or misuse: delirium, paranoia, suicidal ideation and behavior, seizures, coma, breathing difficulty, and death. Death is more often associated with polysubstance use (especially benzodiazepines with other CNS depressants such as opioids and alcohol). The World Health Organization epidemiology database contains reports of drug abuse, misuse, and overdoses associated with clobazam.

9.3 Dependence

Physical Dependence

SYMPAZAN may produce physical dependence from continued therapy. Physical dependence is a state that develops as a result of physiological adaptation in response to repeated drug use, manifested by withdrawal signs and symptoms after abrupt discontinuation or a significant dose reduction of a drug. Abrupt discontinuation or rapid dosage reduction of benzodiazepines or administration of flumazenil, a benzodiazepine antagonist, may precipitate acute withdrawal reactions, including seizures, which can be life-threatening. Patients at an increased risk of withdrawal adverse reactions after benzodiazepine discontinuation or rapid dosage reduction include those who take higher dosages (i.e., higher and/or more frequent doses) and those who have had longer durations of use [see [Warnings and Precautions \(5.3\)](#)].

To reduce the risk of withdrawal reactions, use a gradual taper to discontinue SYMPAZAN or reduce the dosage [see [Dosage and Administration \(2.2\)](#) and [Warnings and Precautions \(5.3\)](#)].

Acute Withdrawal Signs and Symptoms

Acute withdrawal signs and symptoms associated with benzodiazepines have included abnormal involuntary movements, anxiety, blurred vision, depersonalization, depression, derealization, dizziness, fatigue, gastrointestinal adverse reactions (e.g., nausea, vomiting, diarrhea, weight loss, decreased appetite), headache, hyperacusis, hypertension, irritability, insomnia, memory impairment, muscle pain and stiffness, panic attacks, photophobia, restlessness, tachycardia, and tremor. More severe acute withdrawal signs and symptoms, including life-threatening reactions, have included catatonia, convulsions, delirium tremens, depression, hallucinations, mania, psychosis, seizures, and suicidality.

Protracted Withdrawal Syndrome

Protracted withdrawal syndrome associated with benzodiazepines is characterized by anxiety, cognitive impairment, depression, insomnia, formication, motor symptoms (e.g., weakness, tremor, muscle twitches), paresthesia, and tinnitus that persists beyond 4 to 6 weeks after initial benzodiazepine withdrawal. Protracted withdrawal symptoms may last weeks to more than 12 months. As a result, there may be difficulty in differentiating withdrawal symptoms from potential re-emergence or

continuation of symptoms for which the benzodiazepine was being used.

Tolerance

Tolerance to SYMPAZAN may develop from continued therapy. Tolerance is a physiological state characterized by a reduced response to a drug after repeated administration (i.e., a higher dose of a drug is required to produce the same effect that was once obtained at a lower dose). Tolerance to the therapeutic effect of SYMPAZAN may develop; however, little tolerance develops to the amnestic reactions and other cognitive impairments caused by benzodiazepines.

10 OVERDOSAGE

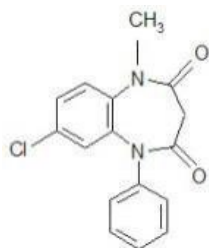
Overdosage of benzodiazepines is characterized by central nervous system depression ranging from drowsiness to coma. In mild to moderate cases, symptoms can include drowsiness, confusion, dysarthria, lethargy, hypnotic state, diminished reflexes, ataxia, and hypotonia. Rarely, paradoxical or disinhibitory reactions (including agitation, irritability, impulsivity, violent behavior, confusion, restlessness, excitement, and talkativeness) may occur. In severe overdosage cases, patients may develop respiratory depression and coma. Overdosage of benzodiazepines in combination with other CNS depressants (including alcohol and opioids) may be fatal [see [Warnings and Precautions \(5.2\)](#)]. Markedly abnormal (lowered or elevated) blood pressure, heart rate, or respiratory rate raise the concern that additional drugs and/or alcohol are involved in the overdosage.

In managing benzodiazepine overdosage, employ general supportive measures, including intravenous fluids and airway maintenance. Flumazenil, a specific benzodiazepine receptor antagonist indicated for the complete or partial reversal of the sedative effects of benzodiazepines in the management of benzodiazepine overdosage, can lead to withdrawal and adverse reactions, including seizures, particularly in the context of mixed overdosage with drugs that increase seizure risk (e.g., tricyclic and tetracyclic antidepressants) and in patients with long-term benzodiazepine use and physical dependency. The risk of withdrawal seizures with flumazenil use may be increased in patients with epilepsy. Flumazenil is contraindicated in patients who have received a benzodiazepine for control of a potentially life-threatening condition (e.g., status epilepticus). If the decision is made to use flumazenil, it should be used as an adjunct to, not as a substitute for, supportive management of benzodiazepine overdosage. See the flumazenil injection Prescribing Information.

Consider contacting the Poison Help line (1-800-222-1222) or a medical toxicologist for additional overdosage management recommendations.

11 DESCRIPTION

SYMPAZAN[®] contains clobazam, a benzodiazepine derivative, which is chemically known as 7-Chloro-1-methyl-5-phenyl-1H-1,5 benzodiazepine-2,4(3H,5H)-dione with a molecular formula of C₁₆H₁₃ClN₂O₂, molecular weight of 300.74, and it has the following structural formula:



Clobazam is a white or almost white, crystalline powder with a slightly bitter taste. It is slightly soluble in water and sparingly soluble in ethanol.

Each SYMPAZAN[®] Oral Film contains 5 mg, 10 mg or 20 mg of clobazam and the following inactive ingredients: artificial cooling flavor, citric acid, glycerol monooleate, hypromellose, maltitol, natural and artificial bitter masker, natural raspberry type flavor, polyethylene oxide, purified water, sodium phosphate dibasic, and sucralose.

12 CLINICAL PHARMACOLOGY

12.1 Mechanism of Action

The exact mechanism of action for clobazam, a 1,5-benzodiazepine, is not fully understood but is thought to involve potentiation of GABAergic neurotransmission resulting from binding at the benzodiazepine site of the GABA_A receptor.

12.2 Pharmacodynamics

Effects on Electrocardiogram

The effect of clobazam 20 mg and 80 mg administered twice daily on QTc interval was evaluated in a randomized, evaluator-blinded, placebo-, and active-controlled (moxifloxacin 400 mg) parallel thorough QT study in 280 healthy subjects. In a study with demonstrated ability to detect small effects, the upper bound of the one-sided 95% confidence interval for the largest

placebo adjusted, baseline-corrected QTc based on the Fridericia correction method was below 10 ms, the threshold for regulatory concern. Thus, at a dose two times the maximum recommended dose, clobazam did not prolong the QTc interval to any clinically relevant extent.

12.3 Pharmacokinetics

SYMPAZAN[®] Oral Films at single doses of 10 mg and 20 mg clobazam have been shown to be bioequivalent (C_{max} and AUC) to

clobazam tablets at equivalent doses. Following single-dose administration of SYMPAZAN[®], peak plasma levels (C_{max}) and the area under the curve (AUC) of clobazam are dose-proportional over the dose range of 10-20 mg. Based on a population pharmacokinetic analysis with

clobazam tablets, the pharmacokinetics of clobazam are linear from 5-160 mg/day. Clobazam is converted to N-desmethyclobazam which has about 1/5 the activity of clobazam. The estimated mean elimination half-lives (t_{1/2}) of clobazam and N-desmethyclobazam were 36-42 hours and 71-82 hours, respectively.

Absorption

The time to peak concentrations (T_{max}) of SYMPAZAN[®] clobazam oral film under fasted conditions ranged from 0.33 to 4.0 hours after single-dose administration. The administration of clobazam tablets with food does not affect absorption. Although not studied, the oral bioavailability of SYMPAZAN[®] oral film is unlikely to be affected under fed conditions.

Distribution

Clobazam is lipophilic and distributes rapidly throughout the body. The apparent volume of distribution at steady state was approximately 100 L. The *in vitro* plasma protein binding of clobazam and N-desmethyclobazam is approximately 80-90% and 70%, respectively.

Metabolism and Excretion

Clobazam is extensively metabolized in the liver, with approximately 2% of the dose recovered in urine and 1% in feces as unchanged drug. The major metabolic pathway of clobazam involves N-demethylation, primarily by CYP3A4 and to a lesser extent by CYP2C19 and CYP2B6. N-desmethyclobazam, an active metabolite, is the major circulating metabolite in humans, and at therapeutic doses, plasma concentrations are 3-5 times higher than those of the parent compound. Based on animal and *in vitro* receptor binding data, estimates of the relative potency of

N-desmethyclobazam compared to parent compound range from 1/5 to equal potency. N-desmethyl clobazam is extensively metabolized, mainly by CYP2C19. N-desmethyclobazam and its metabolites comprise ~94% of the total drug-related components in urine. Following a single oral dose of radiolabeled drug, approximately 11% of the dose was excreted in the feces and approximately 82% was excreted in the urine.

The polymorphic CYP2C19 is the major contributor to the metabolism of the pharmacologically active N-desmethyclobazam [see [Clinical Pharmacology \(12.5\)](#)]. In CYP2C19 poor metabolizers, levels of N-desmethyclobazam were 5-fold higher in plasma and 2- to 3-fold higher in the urine than in CYP2C19 extensive metabolizers.

Pharmacokinetics in Specific Populations

Age

Population pharmacokinetic analyses showed that the clearance of clobazam is lower in elderly subjects compared to other age groups (ages less than 64). Dosing should be adjusted in the elderly [see [Dosage and Administration \(2.4\)](#)].

Sex

Population pharmacokinetic analyses showed no difference in the clearance of clobazam between women and men.

Race

Population pharmacokinetic analyses including Caucasian (75%), African American (15%), and Asian (9%) subjects showed that there is no evidence of clinically significant effect of race on the clearance of clobazam.

Renal Impairment

The effect of renal impairment on the pharmacokinetics of clobazam was evaluated in patients with mild (creatinine clearance [CLCR] >50 to 80 mL/min; N=6) and moderate (CLCR=30 to 50 mL/min; N=6) renal dysfunction, with matching healthy controls (N=6), following administration of multiple doses of clobazam 20 mg/day. There were insignificant changes in C_{max} (3-24%) and AUC (≤13%) for clobazam or N-desmethyclobazam in patients with mild or moderate renal impairment compared to patients with normal renal function. Patients with severe renal impairment or ESRD were not included in this study.

Hepatic Impairment

There are limited data to characterize the effect of hepatic impairment on the pharmacokinetics of clobazam. In a small study, the pharmacokinetics of a 20 mg single oral dose of clobazam in 9 patients with liver impairment were compared to healthy controls (N=6). The C_{max} and the mean plasma clearance of clobazam, as well as the C_{max} of N-desmethyclobazam, showed no significant change compared to the healthy controls. The AUC values of N-desmethyclobazam in these patients were not available. Adjust dosage in patients with hepatic impairment [see [Dosage and Administration \(2.6\)](#)].

Drug Interaction Studies

In vitro studies:

Clobazam did not inhibit CYP1A2, CYP2C8, CYP2C9, CYP2C19, CYP2D6, CYP3A4, UGT1A1, UGT1A4, UGT1A6, or UGT2B4 *in vitro*. N-desmethyloclobazam showed weak inhibition of CYP2C9, UGT1A4, UGT1A6 and UGT2B4.

Clobazam and N-desmethyloclobazam did not significantly increase CYP1A2 or CYP2C19 activities, but did induce CYP3A4 activity in a concentration-dependent manner. Clobazam and N-desmethyloclobazam also increased UGT1A1 mRNA but at concentrations much higher than therapeutic levels. The potential for clobazam or N-desmethyloclobazam to induce CYP2B6 and CYP2C8 has not been evaluated.

Clobazam and N-desmethyloclobazam do not inhibit P-glycoprotein (P-gp), but are P-gp substrates.

In vivo studies:

Potential for Clobazam to Affect Other Drugs

The effect of repeated 40 mg once-daily doses of clobazam on the pharmacokinetic profiles of single-dose dextromethorphan (CYP2D6 substrate), midazolam (CYP3A4 substrate), caffeine (CYP1A2 substrate), and tolbutamide (CYP2C9 substrate), was studied when these probe substrates were given as a drug cocktail (N=18).

Clobazam increased AUC and C_{max} of dextromethorphan by 90% and 59%, respectively, reflecting its inhibition of CYP2D6 *in vivo*. Drugs metabolized by CYP2D6 may require dose adjustment when used with clobazam.

Clobazam decreased the AUC and C_{max} of midazolam by 27% and 24%, respectively, and increased the AUC and C_{max} of the metabolite 1-hydroxymidazolam by 4-fold and 2-fold, respectively. This level of induction does not call for dosage adjustment of drugs that are primarily metabolized by CYP3A4 when used concomitantly with clobazam. Some hormonal contraceptives are metabolized by CYP3A4 and their effectiveness may be diminished when given with SYMPAZAN[®] [see [Drug Interactions \(7.3\)](#)]. Repeated clobazam doses had no effect on caffeine and tolbutamide.

A population pharmacokinetic analysis indicated clobazam did not affect the exposure of valproic acid (a CYP2C9/2C19 substrate) or lamotrigine (a UGT substrate).

Potential for Other Drugs to Affect SYMPAZAN[®]

Co-administration of ketoconazole (a strong CYP3A4 inhibitor) 400 mg once-daily for 5 days increased clobazam AUC by 54%, with an insignificant effect on clobazam C_{max}. There was no significant change in AUC and C_{max} of N-desmethyloclobazam (N=18).

Strong (e.g., fluconazole, fluvoxamine, ticlopidine) and moderate (e.g., omeprazole) inhibitors of CYP2C19 may result in up to a 5-fold increase in exposure to N-desmethyloclobazam, the active metabolite of clobazam, based on extrapolation from pharmacogenomic data [see [Clinical Pharmacology \(12.5\)](#)]. Dosage adjustment of SYMPAZAN[®] may be necessary when co-administered with strong or moderate CYP2C19 inhibitors [see [Drug Interactions \(7.4\)](#)].

Coadministration of cannabidiol (a CYP3A4 and CYP2C19 substrate; an inhibitor of CYP2C19) produced a 3-fold increase in plasma concentrations of N-desmethyloclobazam, the active metabolite of clobazam (a substrate of CYP2C19). This may increase the risk of clobazam-related adverse reactions [see [Warnings and Precautions \(5.4, 5.5\)](#), [Drug Interactions \(7.4\)](#)].

The effects of concomitant antiepileptic drugs that are CYP3A4 inducers (phenobarbital, phenytoin, and carbamazepine), CYP2C19 inducers (valproic acid, phenobarbital, phenytoin, and carbamazepine), and CYP2C19 inhibitors (felbamate and oxcarbazepine) were evaluated using data from clinical trials. Results of population pharmacokinetic analysis show that these concomitant antiepileptic drugs did not significantly alter the pharmacokinetics of clobazam or N-desmethyloclobazam at steady-state.

Alcohol has been reported to increase the maximum plasma exposure of clobazam by approximately 50%. Alcohol may have additive CNS depressant effects when taken with SYMPAZAN[®] [see [Warnings and Precautions \(5.4\)](#), [Drug Interactions \(7.2\)](#)].

12.5 Pharmacogenomics

The polymorphic CYP2C19 is the main enzyme that metabolizes the pharmacologically active N-desmethyl-clobazam. Compared to CYP2C19 extensive metabolizers, N-desmethyloclobazam AUC and C_{max} are approximately 3-5 times higher in poor metabolizers (e.g., subjects with *2/*2 genotype) and 2 times higher in intermediate metabolizers (e.g., subjects with *1/*2 genotype). The prevalence of CYP2C19 poor metabolism differs depending on racial/ethnic background. Dosage in patients who are known CYP2C19 poor metabolizers may need to be adjusted [see [Dosage and Administration \(2.5\)](#)].

The systemic exposure of clobazam is similar for both CYP2C19 poor and extensive metabolizers.

13 NONCLINICAL TOXICOLOGY

13.1 Carcinogenesis, Mutagenesis, Impairment of Fertility

Carcinogenesis

In mice, oral administration of clobazam (0, 6, 12, or 24 mg/kg/day) for 2 years did not result in an increase in tumors. The highest dose tested was approximately 3 times the maximum recommended human dose (MRHD) of 40 mg/day, based on body

surface area (mg/m²).

In rats, oral administration of clobazam for 2 years resulted in increases in tumors of the thyroid gland (follicular cell adenoma and carcinoma) and liver (hepatocellular adenoma) at the mid and high doses. The low dose, not associated with an increase in tumors, was associated with plasma exposures (AUC) for clobazam and its major active metabolite, N-desmethyclobazam, less than that in humans at the MRHD.

Mutagenesis

Clobazam and the major active metabolite, N-desmethyclobazam, were negative for genotoxicity, based on data from a battery of *in vitro* (bacteria reverse mutation, mammalian clastogenicity) and *in vivo* (mouse micronucleus) assays.

Impairment of Fertility

In a fertility study in which clobazam (50, 350, or 750 mg/kg/day, corresponding to 12, 84, and 181 times the oral Maximum Recommended Human Dose, MRHD, of 40mg/day based on mg/m² body surface) was orally administered to male and female rats prior to and during mating and continuing in females to gestation day 6, increases in abnormal sperm and pre-implantation loss were observed at the highest dose tested. The no-effect level for fertility and early embryonic development in rats was associated with plasma exposures (AUC) for clobazam and its major active metabolite, N-desmethyclobazam, less than those in humans at the maximum recommended human dose of 40 mg/day.

14 CLINICAL STUDIES

14.1 Demonstration of Pharmacokinetic Equivalence Between SYMPAZAN® and Clobazam Tablets

The efficacy of SYMPAZAN® is based upon bioavailability studies comparing clobazam tablets to SYMPAZAN® [see [Clinical Pharmacology \(12.3\)](#)].

14.2 Adjunctive Treatment of Seizures Associated with Lennox-Gastaut Syndrome (LGS)

The effectiveness of clobazam for the adjunctive treatment of seizures associated with Lennox-Gastaut Syndrome was established in two multicenter controlled studies (Study 1 and Study 2). Both studies were similar in terms of disease characteristics and concomitant AED treatments. The most common concomitant AED treatments at baseline included: valproate, lamotrigine, levetiracetam, and topiramate.

Study 1

Study 1 (N=238) was a randomized, double-blind, placebo-controlled study consisting of a 4-week baseline period followed by a 3-week titration period and 12-week maintenance period. Patients age 2-54 years with a current or prior diagnosis of LGS were stratified into 2 weight groups (12.5 kg to ≤30 kg or >30 kg) and then randomized to placebo or one of three target maintenance doses of clobazam according to [Table 4](#).

Table 4: Study 1 Total Daily Dose		
	≤30 kg Body Weight	>30 kg Body Weight
Low Dose	5 mg daily	10 mg daily
Medium Dose	10 mg daily	20 mg daily
High Dose	20 mg daily	40 mg daily

Doses above 5 mg/day were administered in two divided doses.

The primary efficacy measure was the percent reduction in the weekly frequency of drop seizures (atonic, tonic, or myoclonic), also known as drop attacks, from the 4-week baseline period to 12-week maintenance period.

The pre-dosing baseline mean weekly drop seizure frequency was 98, 100, 61, and 105 for the placebo, low-, medium-, and high-dose groups, respectively. [Figure 1](#) presents the mean percent reduction in weekly drop seizures from this baseline. All dose groups of clobazam were statistically superior (p≤0.05) to the placebo group. This effect appeared to be dose dependent.

Figure 1: Mean Percent Reduction from Baseline in Weekly Drop Seizure Frequency (Study 1)

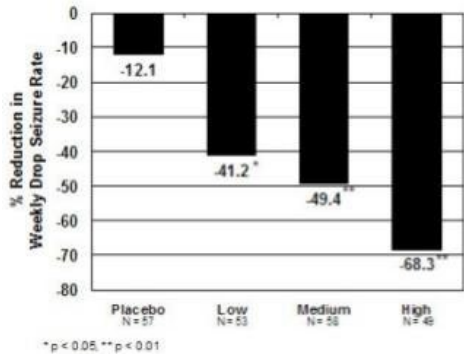
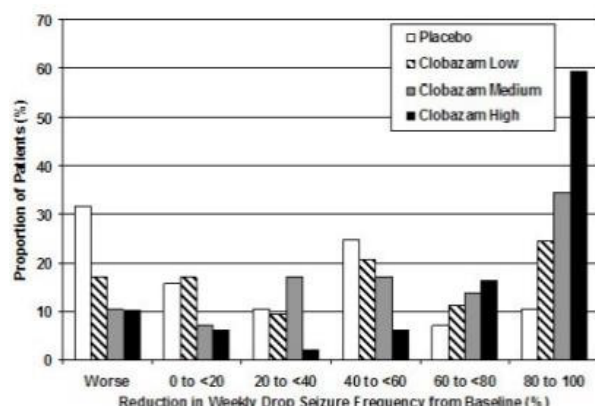


Figure 2 shows changes from baseline in weekly drop seizure frequency by category for patients treated with clobazam and placebo in Study 1. Patients in whom the seizure frequency increased are shown at left as "worse." Patients in whom the seizure frequency decreased are shown in five categories.

Figure 2: Drop Seizure Response by Category for Clobazam and Placebo (Study 1)



There was no evidence that tolerance to the therapeutic effect of clobazam developed during the 3-month maintenance period.

Study 2

Study 2 (N=68) was a randomized, double-blind comparison study of high- and low-dose clobazam, consisting of a 4-week baseline period followed by a 3-week titration period and 4-week maintenance period. Patients age 2-25 years with a current or prior diagnosis of LGS were stratified by weight, then randomized to either a low or high dose of clobazam, and then entered a 3-week titration period.

The primary efficacy measure was the percent reduction in the weekly frequency of drop seizures (atonic, tonic, or myoclonic), also known as drop attacks, from the 4-week baseline period to the 4-week maintenance period.

A statistically significantly greater reduction in seizure frequency was observed in the high-dose group compared to the low-dose group (median percent reduction of 93% vs 29%; $p < 0.05$).

16 HOW SUPPLIED/STORAGE AND HANDLING

Each SYMPAZAN[®] oral film is a white rectangular film that contains 5 mg, 10 mg or 20 mg of clobazam and printed in black ink either "C5," "C10" or "C20" on the strip according to their respective strengths and each film is packaged in a pouch (sachet).

NDC 10094-205-60: 5 mg oral film, Package of 60

NDC 10094-210-60: 10 mg oral film, Package of 60

NDC 10094-220-60: 20 mg oral film, Package of 60

Store SYMPAZAN[®] oral film pouches (sachets) at 20°C to 25°C (68°F to 77°F); Excursions permitted to 15°C to 30°C (59°F to 86°F) [See USP controlled room temperature].

17 PATIENT COUNSELING INFORMATION

Advise the patient to read the FDA-approved patient labeling ([Medication Guide](#) and [Instructions for Use](#)).

Risks from Concomitant Use with Opioids

Inform patients and caregivers that potentially fatal additive effects may occur if SYMPAZAN[®] is used with opioids and not to use such drugs concomitantly unless supervised by a healthcare provider [see [Warnings and Precautions \(5.1\)](#), [Drug Interactions \(7.1\)](#)].

Abuse, Misuse, and Addiction

Inform patients that the use of SYMPAZAN, even at recommended dosages, exposes users to risks of abuse, misuse, and addiction, which can lead to overdose and death, especially when used in combination with other medications (e.g., opioid analgesics), alcohol, and/or illicit substances. Inform patients about the signs and symptoms of benzodiazepine abuse, misuse, and addiction; to seek medical help if they develop these signs and/or symptoms; and on the proper disposal of unused drug [see [Warnings and Precautions \(5.2\)](#) and [Drug Abuse and Dependence \(9.2\)](#)].

Withdrawal Reactions

Advise patients or caregivers that abrupt withdrawal of AEDs may increase their risk of seizure. Inform patients that the

continued use of SYMPAZAN may lead to clinically significant physical dependence and that abrupt discontinuation or rapid dosage reduction of SYMPAZAN may precipitate acute withdrawal reactions, which can be life-threatening. Inform patients that in some cases, patients taking benzodiazepines have developed a protracted withdrawal syndrome with withdrawal symptoms lasting weeks to more than 12 months. Instruct patients that discontinuation or dosage reduction of SYMPAZAN may require a slow taper [see [Warnings and Precautions \(5.3\)](#) and [Drug Abuse and Dependence \(9.3\)](#)].

Somnolence or Sedation

Advise patients or caregivers to check with their healthcare provider before SYMPAZAN[®] is taken with other CNS depressants such as other benzodiazepines, opioids, tricyclic antidepressants, sedating antihistamines, or alcohol [see [Warnings and Precautions \(5.4, 5.5\)](#)].

If applicable, caution patients about operating hazardous machinery, including automobiles, until they are reasonably certain that SYMPAZAN[®] does not affect them adversely (e.g., impair judgment, thinking or motor skills).

Hypersensitivity

Inform patients or caregivers that SYMPAZAN[®] is contraindicated in patients with a history of hypersensitivity to the drug or its ingredients [see [Warnings and Precautions \(5.6\)](#)].

Interactions with Hormonal Contraceptives

Counsel women to also use non-hormonal methods of contraception when SYMPAZAN[®] is used with hormonal contraceptives and to continue these alternative methods for 28 days after discontinuing SYMPAZAN[®] to ensure contraceptive reliability [see [Drug Interactions \(7.3\)](#), [Clinical Pharmacology \(12.3\)](#)].

Serious Dermatological Reactions

Advise patients or caregivers that serious skin reactions have been reported in patients taking clobazam. Serious skin reactions, including SJS/TEN, may need to be treated in a hospital and may be life-threatening. If a skin reaction occurs while taking SYMPAZAN[®], patients or caregivers should consult with healthcare providers immediately [see [Warnings and Precautions \(5.6\)](#)].

DRESS/Multiorgan Hypersensitivity

Instruct patients and caregivers that a fever or rash associated with signs of other organ system involvement (e.g., lymphadenopathy, hepatic dysfunction) may be drug-related and should be reported to their healthcare provider immediately. SYMPAZAN should be discontinued immediately if a serious hypersensitivity reaction is suspected [see [Warnings and Precautions \(5.7\)](#)].

Suicidal Thinking and Behavior

Counsel patients, their caregivers, and their families that AEDs, including SYMPAZAN[®], may increase the risk of suicidal thoughts and behavior and advise them of the need to be alert for the emergence or worsening of symptoms of depression, any unusual changes in mood or behavior, or the emergence of suicidal thoughts, behavior, or thoughts of self-harm. Patients should report behaviors of concern immediately to healthcare providers [see [Warnings and Precautions \(5.8\)](#)].

Pregnancy

Advise pregnant females that the use of SYMPAZAN[®] late in pregnancy can result in in sedation (respiratory depression, lethargy, hypotonia) and/or withdrawal symptoms (hyperreflexia, irritability, restlessness, tremors, inconsolable crying, and feeding difficulties) in newborns [see [Warnings and Precautions \(5.9\)](#) and [Use in Specific Populations \(8.1\)](#)]. Instruct patients to notify their healthcare provider if they are pregnant.

Encourage patients to enroll in the North American Antiepileptic Drug (NAAED) Pregnancy Registry if they become pregnant while taking SYMPAZAN. The registry is collecting information about the safety of antiepileptic drugs during pregnancy [see [Use in Specific Populations \(8.1\)](#)].

Lactation

Counsel patients that clobazam, the active ingredient in SYMPAZAN[®], is excreted in breast milk. Instruct patients to notify their healthcare provider if they are breast feeding or intend to breastfeed. Instruct breastfeeding patients who take SYMPAZAN to monitor their infants for excessive sedation, poor feeding and poor weight gain, and to seek medical attention if they notice these signs [see [Use in Specific Populations \(8.2\)](#)].

Manufactured by: Aquestive Therapeutics

Warren, NJ 07059



MEDICATION GUIDE
SYMPAZAN® (SYM-pa-zan)
(clobazam)
oral film, CIV

What is the most important information I should know about SYMPAZAN?

- **SYMPAZAN is a benzodiazepine medicine. Taking benzodiazepines with opioid medicines, alcohol, or other central nervous system (CNS) depressants (including street drugs) can cause severe drowsiness, breathing problems (respiratory depression), coma, and death.**
Get emergency help right away if any of the following happens:
 - shallow or slowed breathing
 - breathing stops (which may lead to the heart stopping)
 - excessive sleepiness (sedation)Do not drive or operate heavy machinery until you know how taking SYMPAZAN with opioids affects you.
- **Risk of abuse, misuse, and addiction.** There is a risk for abuse, misuse, and addiction with benzodiazepines, including SYMPAZAN, which can lead to overdose and serious side effects including coma and death.
 - **Serious side effects including coma and death have happened in people who have abused or misused benzodiazepines, including SYMPAZAN.** These serious side effects may also include delirium, paranoia, suicidal thoughts or actions, seizures, and difficulty breathing. **Call your healthcare provider or go to the nearest hospital emergency room right away if you get any of these serious side effects.**
 - **You can develop an addiction even if you take SYMPAZAN as prescribed by your healthcare provider.**
 - **Take SYMPAZAN exactly as your healthcare provider prescribed.**
 - Do not share your SYMPAZAN with other people.
 - Keep SYMPAZAN in a safe place and away from children.
- **Physical dependence and withdrawal reactions.** SYMPAZAN can cause physical dependence and withdrawal reactions.
 - **Do not suddenly stop taking SYMPAZAN.** Stopping SYMPAZAN suddenly can cause serious and life-threatening side effects, including, unusual movements, responses, or expressions, seizures, sudden and severe mental or nervous system changes, depression, seeing or hearing things that others do not see or hear, an extreme increase in activity or talking, losing touch with reality, and suicidal thoughts or actions. **Call your healthcare provider or go to the nearest hospital emergency room right away if you get any of these symptoms.**
 - **Some people who suddenly stop benzodiazepines have symptoms that can last for several weeks to more than 12 months,** including, anxiety, trouble remembering, learning, or concentrating, depression, problems sleeping, feeling like insects are crawling under your skin, weakness, shaking, muscle twitching, burning, or prickling feeling in your hands, arms, legs or feet, and ringing in your ears.
 - Physical dependence is not the same as drug addiction. Your healthcare provider can tell you more about the differences between physical dependence and drug addiction.
 - Do not take more SYMPAZAN than prescribed or take SYMPAZAN for longer than prescribed.
- **SYMPAZAN can make you sleepy or dizzy and can slow your thinking and motor skills.**
 - Do not drive, operate heavy machinery, or do other dangerous activities until you know how SYMPAZAN affects you.
 - Do not drink alcohol or take other drugs that may make you sleepy or dizzy while taking SYMPAZAN without first talking to your healthcare provider. When taken with alcohol or drugs that cause sleepiness or dizziness, SYMPAZAN may make your sleepiness or dizziness much worse.
- **Serious skin reactions have been seen when SYMPAZAN is taken with other medicines and may require stopping its use.** Do not stop taking SYMPAZAN without first talking to your healthcare provider.
 - A serious skin reaction can happen at any time during your treatment with SYMPAZAN, but is more likely to happen within the first 8 weeks of treatment. These skin reactions may need to be treated right away.
 - Call your healthcare provider immediately if you have skin blisters, rash, sores in mouth, hives or any other allergic reaction.
- **A serious allergic reaction that may affect your skin or other parts of your body such as your liver, kidneys, heart, or blood cells.** This allergic reaction can be life-threatening and can cause death, particularly if it is not treated as early as possible. Call your healthcare provider right away if you have:
 - a skin rash
 - swelling of your face
 - dark urine
 - fever or swollen glands that do not go away
 - shortness of breath
 - yellowing of the skin or whites of the eyes
- **Like other antiepileptic medicines, SYMPAZAN may cause suicidal thoughts or actions in a very small number of people, about 1 in 500.**

Call your healthcare provider right away if you have any of these symptoms, especially if they are new, worse, or worry you:

- thoughts about suicide or dying
- new or worse depression
- feeling agitated or restless
- trouble sleeping (insomnia)
- acting aggressive, being angry or violent
- other unusual changes in behavior or mood
- attempts to commit suicide
- new or worse anxiety or irritability
- an extreme increase in activity and talking (mania)
- new or worse panic attacks
- acting on dangerous impulses

How can I watch for early symptoms of suicidal thoughts and actions?

- Pay attention to any changes, especially sudden changes, in mood, behaviors, thoughts, or feelings.
- Keep all follow-up visits with your healthcare provider as scheduled.

Call your healthcare provider between visits as needed, especially if you are worried about symptoms.

Stopping a seizure medicine suddenly in a patient who has epilepsy can cause seizures that will not stop (status epilepticus).

Suicidal thoughts or actions can be caused by things other than medicines. If you have suicidal thoughts or actions, your healthcare provider may check for other causes.

What is SYMPAZAN?

- SYMPAZAN is a prescription medicine used along with other medicines to treat seizures associated with Lennox-Gastaut Syndrome in people 2 years of age or older.
- **SYMPAZAN is a federally controlled substance (C-IV) because it contains clobazam that can be abused or lead to dependence.** Keep SYMPAZAN in a safe place to prevent misuse and abuse. Selling or giving away SYMPAZAN may harm others, and is against the law. Tell your healthcare provider if you have ever abused or been dependent on alcohol, prescription medicines or street drugs.

It is not known if SYMPAZAN is safe and effective in children less than 2 years old.

Do not take SYMPAZAN if you:

- are allergic to clobazam or any of the ingredients in SYMPAZAN. See the end of this Medication Guide for a complete list of ingredients in SYMPAZAN.

Before you take SYMPAZAN, tell your healthcare provider about all of your medical conditions, including if you:

- have liver or kidney problems
- have lung problems (respiratory disease)
- have or have had depression, mood problems, or suicidal thoughts or behavior
- use birth control medicine. SYMPAZAN may cause your birth control medicine to be less effective. Talk to your healthcare provider about the best birth control method to use.
- are pregnant or plan to become pregnant.
 - Taking SYMPAZAN late in pregnancy may cause your baby to have symptoms of sedation (breathing problems, sluggishness, low muscle tone) and/or withdrawal symptoms (jitteriness, irritability, restlessness, shaking, excessive crying, feeding problems).
 - Tell your healthcare provider right away if you become pregnant or think you are pregnant during treatment with SYMPAZAN.
 - If you become pregnant while taking SYMPAZAN, talk to your healthcare provider about registering with the North American Antiepileptic Drug Pregnancy Registry. You can register by calling 1-888- 233-2334. For more information about the registry go to <http://www.aedpregnancyregistry.org>. The purpose of this registry is to collect information about the safety of antiepileptic drugs during pregnancy.
- Are breastfeeding or plan to breastfeed. SYMPAZAN can pass into breast milk.
 - Breastfeeding during treatment with SYMPAZAN may cause your baby to have sleepiness, feeding problems, and decreased weight gain.
 - Talk to your healthcare provider about the best way to feed your baby if you take SYMPAZAN.

Tell your healthcare provider about all the medicines you take, including prescription and over-the counter medicines, vitamins, and herbal supplements. Taking SYMPAZAN with certain other medicines can cause side effects or affect how well SYMPAZAN or the other medicines work. Do not start or stop other medicines without talking to your healthcare provider.

How should I take SYMPAZAN?

- Take SYMPAZAN exactly as your healthcare provider tells you to take it.
- Your healthcare provider will tell you how much SYMPAZAN to take and when to take it.
- Place the entire SYMPAZAN oral film on top of the tongue.
- SYMPAZAN oral films can be taken with or without food.
- **Do not** take liquids with SYMPAZAN oral films.
- Take only 1 SYMPAZAN oral film at a time.
- Read the **Instructions for Use** at the end of this Medication Guide for information on the right way to take SYMPAZAN oral films.
- Your healthcare provider may change your dose if needed. **Do not** change your dose of SYMPAZAN without talking to your healthcare provider.
- **Do not** stop taking SYMPAZAN without first talking to your healthcare provider.
- Stopping SYMPAZAN suddenly can cause serious problems.
- If you take too much SYMPAZAN, call your healthcare provider or go to the nearest hospital emergency room right away.

What should I avoid while taking SYMPAZAN?

See “What is the most important information I should know about SYMPAZAN?”

What are the possible side effects of SYMPAZAN? SYMPAZAN may cause serious side effects, including:

- See “What is the most important information I should know about SYMPAZAN?”

The most common side effects of SYMPAZAN include:

- | | | | |
|-----------------------|-------------|--|-----------------------|
| • sleepiness | • drooling | • constipation | • cough |
| • pain with urination | • fever | • acting aggressive, being angry, or violent | • difficulty sleeping |
| • slurred speech | • tiredness | • problems with breathing | |

These are not all the possible side effects of SYMPAZAN. Call your doctor for medical advice about side effects. You may report side effects to FDA at 1-800-FDA-1088.

How should I store SYMPAZAN?

- Store SYMPAZAN oral film at room temperature between 68°F to 77°F (20°C to 25°C).

Keep SYMPAZAN and all medicines out of the reach of children.**General Information about the safe and effective use of SYMPAZAN.**

Medicines are sometimes prescribed for purposes other than those listed in a Medication Guide. Do not use SYMPAZAN for a condition for which it was not prescribed. Do not give SYMPAZAN to other people, even if they have the same symptoms that you have. It may harm them. You can ask your pharmacist or healthcare provider for information about SYMPAZAN that is written for health professionals.

What are the ingredients in SYMPAZAN? Active ingredient: clobazam

Inactive ingredients: artificial cooling flavor, citric acid, glycerol monooleate, hypromellose, maltitol, natural and artificial bitter masker, natural raspberry type flavor, polyethylene oxide, purified water, sodium phosphate dibasic, and sucralose.

Manufactured by:

Aquestive Therapeutics Warren, NJ 07059

SYMPAZAN[®] is a registered trademark of Aquestive Therapeutics

For more information, go to www.SYMPAZAN.com or call the Aquestive Therapeutics Rx Patient and Caregiver Support Line at 1-833- AQUESTV (1-833-278- 3788).

This Medication Guide has been approved by the U.S. Food and Drug Administration Revised: 3/2024

Instructions for Use SYMPAZAN® (SIM-pa-zan)

(clobazam) oral film, CIV

Read this Instructions for Use before you start using SYMPAZAN and each time you get a refill. There may be new information. The information does not take the place of talking with your healthcare provider about your medical condition or treatment.

Important Information for Patient and Caregiver:

- **Do not take SYMPAZAN until:**
 - you have read and understand these instructions.
 - you have reviewed the steps with your healthcare provider on how to take it.
 - you know the right time, how often, and the dose to take.
 - you feel comfortable with how to use SYMPAZAN.
- If you are not sure about giving treatment or when to give treatment, **call your healthcare provider** before using SYMPAZAN.

How should I store SYMPAZAN?

- Store SYMPAZAN at room temperature between 68°F to 77°F (20°C to 25°C).
- Keep SYMPAZAN in the foil pouch until you are ready to use. Use right away after opening foil pouch.
- **Keep SYMPAZAN and all medicines out of the reach of children.**

How to Use SYMPAZAN:

- Take only 1 SYMPAZAN film at a time unless instructed differently by your healthcare provider. If a second film is needed to get a full dose of SYMPAZAN, do not take the second film until the first film has completely dissolved.
- **Place the entire SYMPAZAN oral film on top of the tongue.** Check your prescription or contact your healthcare provider if you are not sure about the amount to take.
- Make sure your hands are clean and dry before handling the SYMPAZAN film.
- Check the expiration date printed on the foil pouch. **Do not** use SYMPAZAN if expired.

Step 1. Open Pouch

- Fold foil pouch along solid line.
- Note where the slit is and carefully tear it to open pouch.



Step 2. Remove Film

- Remove the SYMPAZAN from the foil pouch.



Step 3. Place on Tongue

- Place SYMPAZAN on top of the tongue. The film will stick to the tongue and begin to dissolve.



Step 4. Close Mouth and Swallow Saliva Normally

- Close mouth.
- Swallow saliva normally as SYMPAZAN dissolves.
- **Do not** take with liquids.
- **Do not** chew, spit, or talk while SYMPAZAN dissolves.



-
- **Wash your hands after taking SYMPAZAN.**
 - **Throw away the empty foil pouch in the regular trash.**

Manufactured by:
Aquestive Therapeutics
Warren, NJ 07059

For more information or support about SYMPAZAN: Call 1-833-AQUESTV (1-833-278-3788).

This Instructions for Use has been approved by the U.S. Food and Drug Administration. Revision Date: 11/2018

Revised: 1/2023

Aquestive Therapeutics