

HIGHLIGHTS OF PRESCRIBING INFORMATION

These highlights do not include all the information needed to use TERIPARATIDE INJECTION safely and effectively. See full prescribing information for TERIPARATIDE INJECTION.

TERIPARATIDE injection, for subcutaneous use

Initial U.S. Approval: 1987

INDICATIONS AND USAGE

Teriparatide Injection is a parathyroid hormone analog, (PTH 1-34), indicated for:

- Treatment of postmenopausal women with osteoporosis at high risk for fracture or patients who have failed or are intolerant to other available osteoporosis therapy (1)
- Increase of bone mass in men with primary or hypogonadal osteoporosis at high risk for fracture or patients who have failed or are intolerant to other available osteoporosis therapy (1)
- Treatment of men and women with osteoporosis associated with sustained systemic glucocorticoid therapy at high risk for fracture or patients who have failed or are intolerant to other available osteoporosis therapy (1)

DOSAGE AND ADMINISTRATION

- Recommended dosage is 20 mcg subcutaneously once daily (2.1)
- Consider supplemental calcium and Vitamin D based on individual patient needs (2.1)
- Administer as a subcutaneous injection into the thigh or abdominal region (2.2)
- Administer initially under circumstances in which the patient can sit or lie down if symptoms of orthostatic hypotension occur (2.2)
- Use of teriparatide for more than 2 years during a patient's lifetime should only be considered if a patient remains at or has returned to having a high risk for fracture (2.3)

DOSAGE FORMS AND STRENGTHS

Injection: 600 mcg/2.4 mL (250 mcg/mL) in a single-patient-use prefilled pen containing 28 daily doses of 20 mcg (3)

CONTRAINDICATIONS

- Patients with hypersensitivity to teriparatide or to any of its excipients (4)

WARNINGS AND PRECAUTIONS

- Osteosarcoma: Avoid use in patients with increased risk of osteosarcoma including patients with open epiphyses, metabolic bone diseases including Paget's disease, bone metastases or history of skeletal malignancies, prior external beam or implant radiation therapy involving the skeleton, and hereditary disorders predisposing to osteosarcoma. (5.1)
- Hypercalcemia and Cutaneous Calcification: Avoid in patients known to have an underlying hypercalcemic disorder. Discontinue in patients developing worsening of previously stable cutaneous calcification. (5.2)
- Risk of Urolithiasis: Consider the risk/benefit in patients with active or recent urolithiasis because of risk of exacerbation (5.3)
- Orthostatic Hypotension: Transient orthostatic hypotension may occur with initial doses of Teriparatide Injection (5.4)

ADVERSE REACTIONS

Most common adverse reactions (>10%) include: arthralgia, pain, and nausea (6.1)

To report SUSPECTED ADVERSE REACTIONS, contact Almaject, Inc., at 1-866-770-3024 or FDA at 1-800-FDA-1088 or www.fda.gov/medwatch.

DRUG INTERACTIONS

Digoxin: Transient hypercalcemia may predispose patients to digitalis toxicity (5.5, 7.1)

USE IN SPECIFIC POPULATIONS

- Pregnancy: Consider discontinuing when pregnancy is recognized (8.1)
- Lactation: Breastfeeding is not recommended (8.2)
- Pediatric Use: Safety and effectiveness not established. Avoid use due to increased baseline risk of osteosarcoma (5.1, 8.4)

See 17 for PATIENT COUNSELING INFORMATION and Medication Guide.

Revised: 06/2024

FULL PRESCRIBING INFORMATION: CONTENTS*

1 INDICATIONS AND USAGE

2 DOSAGE AND ADMINISTRATION

- 2.1 Recommended Dosage
- 2.2 Administration Instructions
- 2.3 Recommended Treatment Duration

3 DOSAGE FORMS AND STRENGTHS

4 CONTRAINDICATIONS

5 WARNINGS AND PRECAUTIONS

- 5.1 Osteosarcoma
- 5.2 Hypercalcemia and Cutaneous Calcification
- 5.3 Risk of Urolithiasis
- 5.4 Orthostatic Hypotension
- 5.5 Risk of Digoxin Toxicity

6 ADVERSE REACTIONS

- 6.1 Clinical Trials Experience
- 6.2 Postmarketing Experience

7 DRUG INTERACTIONS

- 7.1 Digoxin

8 USE IN SPECIFIC POPULATIONS

- 8.1 Pregnancy
- 8.2 Lactation
- 8.4 Pediatric Use
- 8.5 Geriatric Use

- 8.6 Hepatic Impairment

- 8.7 Renal Impairment

10 OVERDOSAGE

11 DESCRIPTION

12 CLINICAL PHARMACOLOGY

- 12.1 Mechanism of Action
- 12.2 Pharmacodynamics
- 12.3 Pharmacokinetics
- 12.6 Immunogenicity

13 NONCLINICAL TOXICOLOGY

- 13.1 Carcinogenesis, Mutagenesis, Impairment of Fertility
- 13.2 Animal Toxicology and/or Pharmacology

14 CLINICAL STUDIES

- 14.1 Treatment of Osteoporosis in Postmenopausal Women
- 14.2 Treatment to Increase Bone Mass in Men with Primary or Hypogonadal Osteoporosis
- 14.3 Treatment of Men and Women with Glucocorticoid-Induced Osteoporosis

16 HOW SUPPLIED/STORAGE AND HANDLING

- 16.1 How Supplied
- 16.2 Storage and Handling

17 PATIENT COUNSELING INFORMATION

* Sections or subsections omitted from the full prescribing information are not listed

FULL PRESCRIBING INFORMATION

1 INDICATIONS AND USAGE

Teriparatide Injection is indicated:

- For the treatment of postmenopausal women with osteoporosis at high risk for fracture (defined herein as having a history of osteoporotic fracture or multiple risk factors for fracture) or who have failed or are intolerant to other available osteoporosis therapy. In postmenopausal women with osteoporosis, Teriparatide Injection reduces the risk of vertebral and nonvertebral fractures.
- To increase bone mass in men with primary or hypogonadal osteoporosis at high risk for fracture or who have failed or are intolerant to other available osteoporosis therapy.
- For the treatment of men and women with osteoporosis associated with sustained systemic glucocorticoid therapy (daily dosage equivalent to 5 mg or greater of prednisone) at high risk for fracture or who have failed or are intolerant to other available osteoporosis therapy.

2 DOSAGE AND ADMINISTRATION

2.1 Recommended Dosage

The recommended dosage of Teriparatide Injection is 20 mcg given subcutaneously once daily. Instruct patients to take supplemental calcium and vitamin D if daily dietary intake is inadequate.

2.2 Administration Instructions

- Administer Teriparatide Injection as a subcutaneous injection into the thigh or abdominal region. Teriparatide Injection is not approved for intravenous or intramuscular use.
- Teriparatide Injection should be administered initially under circumstances in which the patient can sit or lie down if symptoms of orthostatic hypotension occur [*see Warnings and Precautions (5.4)*].
- Parenteral drug products should be inspected visually for particulate matter and discoloration prior to administration (Teriparatide Injection is a clear and colorless liquid). Do not use if solid particles appear or if the solution is cloudy or colored.
- Patients and/or caregivers who administer Teriparatide Injection should receive appropriate training and instruction on the proper use of the Teriparatide Injection delivery device from a qualified health professional.

2.3 Recommended Treatment Duration

Use of teriparatide for more than 2 years during a patient's lifetime should only be considered if a patient remains at or has returned to having a high risk for fracture [*see Warnings and Precautions (5.1)*].

3 DOSAGE FORMS AND STRENGTHS

Injection: 600 mcg/2.4 mL (250 mcg/mL) of teriparatide in a clear, colorless solution in a single-patient-use prefilled pen containing 28 daily doses of 20 mcg.

4 CONTRAINDICATIONS

Teriparatide Injection is contraindicated in patients with hypersensitivity to teriparatide or to any of its excipients. Hypersensitivity reactions have included angioedema and anaphylaxis [*see Adverse Reactions (6.2)*].

5 WARNINGS AND PRECAUTIONS

5.1 Osteosarcoma

An increase in the incidence of osteosarcoma (a malignant bone tumor) was observed in male and female rats treated with teriparatide. Osteosarcoma has been reported in patients treated with teriparatide in the post marketing setting; however, an increased risk of osteosarcoma has not been observed in observational studies in humans. There are limited data assessing the risk of osteosarcoma beyond 2 years of teriparatide use [*see Dosage and Administration (2.3), Adverse Reactions (6.2), Nonclinical Toxicology (13.1)*].

Avoid Teriparatide Injection use in patients with (these patients are at increased baseline risk of osteosarcoma):

- Open epiphyses (pediatric and young adult patients) (Teriparatide Injection is not approved in pediatric patients) [*see Use in Specific Populations (8.4)*].
- Metabolic bone diseases other than osteoporosis, including Paget's disease of the bone.
- Bone metastases or a history of skeletal malignancies.
- Prior external beam or implant radiation therapy involving the skeleton.
- Hereditary disorders predisposing to osteosarcoma.

5.2 Hypercalcemia and Cutaneous Calcification

Hypercalcemia

Teriparatide has not been studied in patients with pre-existing hypercalcemia. Teriparatide Injection may cause hypercalcemia and may exacerbate hypercalcemia in patients with pre-existing hypercalcemia [*see Adverse Reactions (6.1, 6.2)*]. Avoid Teriparatide Injection in patients known to have an underlying hypercalcemic disorder, such as primary hyperparathyroidism.

Risk of Cutaneous Calcification Including Calciphylaxis

Serious reports of calciphylaxis and worsening of previously stable cutaneous calcification have been reported in the post-marketing setting in patients taking teriparatide. Risk factors for development of calciphylaxis include underlying autoimmune disease, kidney failure, and concomitant warfarin or systemic corticosteroid use. Discontinue Teriparatide Injection in patients who develop calciphylaxis or worsening of previously stable cutaneous calcification.

5.3 Risk of Urolithiasis

In clinical trials, the frequency of urolithiasis was similar in patients treated with teriparatide and patients treated with placebo. However, teriparatide has not been studied in patients with active urolithiasis. If Teriparatide Injection-treated patients have pre-existing hypercalciuria or suspected/known active urolithiasis, consider measuring urinary calcium excretion. Consider the risks and benefits of use in patients with active or recent urolithiasis because of the potential to exacerbate this condition.

5.4 Orthostatic Hypotension

Teriparatide Injection should be administered initially under circumstances in which the patient can sit or lie down if symptoms of orthostatic hypotension occur. In short-term clinical pharmacology studies of teriparatide in healthy volunteers, transient episodes of symptomatic orthostatic hypotension were observed in 5% of volunteers. Typically, these events began within 4 hours of dosing and resolved (without treatment) within a few minutes to a few hours. When transient orthostatic hypotension occurred, it happened within the first several doses, it was relieved by placing the person in a reclining position, and it did not preclude continued treatment.

5.5 Risk of Digoxin Toxicity

Hypercalcemia may predispose patients to digitalis toxicity because teriparatide transiently increases serum calcium. Consider the potential onset of signs and symptoms of digitalis toxicity when Teriparatide Injection is used in patients receiving digoxin [see *Drug Interactions (7.1)*, *Clinical Pharmacology (12.3)*].

6 ADVERSE REACTIONS

6.1 Clinical Trials Experience

Because clinical studies are conducted under widely varying conditions, adverse reaction rates observed in the clinical studies of a drug cannot be directly compared to rates in the clinical studies of another drug and may not reflect the rates observed in practice.

Men with Primary or Hypogonadal Osteoporosis and Postmenopausal Women with Osteoporosis

The safety of teriparatide in the treatment of osteoporosis in men and postmenopausal women was assessed in two randomized, double-blind, placebo-controlled trials of 1382 patients (21% men, 79% women) aged 28 to 86 years (mean 67 years) [see *Clinical Studies (14.1, 14.2)*]. The median durations of the trials were 11 months for men and 19 months for women, with 691 patients exposed to teriparatide and 691 patients to placebo. All patients received 1000 mg of calcium plus at least 400 IU of vitamin D supplementation per day.

The incidence of all-cause mortality was 1% in the teriparatide group and 1% in the placebo group. The incidence of serious adverse events was 16% in the teriparatide group and 19% in the placebo group. Early discontinuation due to adverse events occurred in 7% in the teriparatide group and 6% in the placebo group.

Table 1 lists adverse events from these two trials that occurred in $\geq 2\%$ of teriparatide-treated and more frequently than placebo-treated patients.

Table 1. Percentage of Patients with Adverse Events Reported by at Least 2% of Teriparatide-Treated Patients and in More Teriparatide-Treated Patients than Placebo-Treated Patients from the Two Principal Osteoporosis Trials in Women and Men (Adverse Events are Shown Without Attribution of Causality)

	Teriparatide N=691 (%)	Placebo N=691 (%)
Event Classification		
Body as a Whole		
Pain	21.3	20.5
Headache	7.5	7.4
Asthenia	8.7	6.8
Neck pain	3.0	2.7

Cardiovascular		
Hypertension	7.1	6.8
Angina pectoris	2.5	1.6
Syncope	2.6	1.4
Digestive System		
Nausea	8.5	6.7
Constipation	5.4	4.5
Diarrhea	5.1	4.6
Dyspepsia	5.2	4.1
Vomiting	3.0	2.3
Gastrointestinal disorder	2.3	2.0
Tooth disorder	2.0	1.3
Musculoskeletal		
Arthralgia	10.1	8.4
Leg cramps	2.6	1.3
Nervous System		
Dizziness	8.0	5.4
Depression	4.1	2.7
Insomnia	4.3	3.6
Vertigo	3.8	2.7
Respiratory System		
Rhinitis	9.6	8.8
Cough increased	6.4	5.5
Pharyngitis	5.5	4.8
Dyspnea	3.6	2.6
Pneumonia	3.9	3.3
Skin and Appendages		
Rash	4.9	4.5
Sweating	2.2	1.7

Laboratory Findings

Serum Calcium — Teriparatide transiently increased serum calcium, with the maximal effect observed at approximately 4 to 6 hours post-dose. Serum calcium measured at least 16 hours post-dose was not different from pretreatment levels. In clinical trials, the frequency of at least 1 episode of transient hypercalcemia in the 4 to 6 hours after teriparatide administration was 11% of women and 6% of men treated with teriparatide compared to 2% of women and 0% of the men treated with placebo. The percentage of patients treated with teriparatide whose transient hypercalcemia was verified on consecutive measurements was 3% of women and 1% of men.

Urinary Calcium — Teriparatide increased urinary calcium excretion, but the frequency of hypercalciuria in clinical trials was similar for patients treated with teriparatide and placebo [see *Clinical Pharmacology* (12.2)].

Serum Uric Acid — Teriparatide increased serum uric acid concentrations. In clinical trials, 3% of teriparatide-treated patients had serum uric acid concentrations above the upper limit of normal compared with 1% of placebo-treated patients. However, the hyperuricemia did not result in an increase in gout, arthralgia, or urolithiasis.

Renal Function — No clinically important adverse renal effects were observed in clinical studies. Assessments included creatinine clearance; measurements of blood urea nitrogen (BUN), creatinine, and electrolytes in serum; urine specific gravity and pH; and examination of urine sediment.

Men and Women with Glucocorticoid-Induced Osteoporosis

The safety of teriparatide in the treatment of men and women with glucocorticoid-induced osteoporosis was assessed in a randomized, double-blind, active-controlled trial of 428 patients (19% men, 81% women) aged 22 to 89 years (mean 57 years) treated with ≥ 5 mg per day prednisone or equivalent for a minimum of 3 months [see *Clinical Studies (14.3)*]. The duration of the trial was 18 months with 214 patients exposed to teriparatide and 214 patients exposed to an oral daily bisphosphonate (active control). All patients received 1000 mg of calcium plus 800 IU of vitamin D supplementation per day.

There was no increase in mortality in the teriparatide group compared to the active control group. The incidence of serious adverse events was 21% in teriparatide patients and 18% in active control patients, and included pneumonia (3% teriparatide, 1% active control). Early discontinuation because of adverse events occurred in 15% of teriparatide patients and 12% of active control patients, and included dizziness (2% teriparatide, 0% active control).

Adverse events reported at a higher incidence in the teriparatide group and with at least a 2% difference in teriparatide-treated patients compared with active control-treated patients were: nausea (14%, 7%), gastritis (7%, 3%), pneumonia (6%, 3%), dyspnea (6%, 3%), insomnia (5%, 1%), anxiety (4%, 1%), and herpes zoster (3%, 1%), respectively.

6.2 Postmarketing Experience

Adverse Reactions from Postmarketing Spontaneous Reports

The following adverse reactions have been identified during post-approval use of teriparatide. Because these reactions are reported voluntarily from a population of uncertain size, it is not always possible to reliably estimate their frequency or establish a causal relationship to drug exposure.

- Cases of bone tumor and osteosarcoma have been reported rarely in the postmarketing period [see *Warnings and Precautions (5.1)*].
- Hypercalcemia greater than 13 mg/dL has been reported with teriparatide use.

Adverse events reported since market introduction that were temporally related to teriparatide therapy include the following:

- Allergic Reactions: Anaphylactic reactions, drug hypersensitivity, angioedema, urticaria
- Investigations: Hyperuricemia
- Respiratory System: Acute dyspnea, chest pain
- Musculoskeletal: Muscle spasms of the leg or back
- Other: Injection site reactions including injection site pain, swelling and bruising; oro-facial edema

Adverse Reactions from Observational Studies to Assess Incidence of Osteosarcoma

Two osteosarcoma surveillance safety studies (U.S. claims-based database studies) were designed to obtain data on the incidence rate of osteosarcoma among teriparatide-treated patients. In these two studies, three and zero osteosarcoma cases were identified among 379,283 and 153,316 teriparatide users, respectively. The study results suggest a similar risk for osteosarcoma between teriparatide users and their comparators. However, the interpretation of the study results calls for caution owing to the limitations of the data sources which do not allow for complete measurement and control for confounders.

7 DRUG INTERACTIONS

7.1 Digoxin

Sporadic case reports have suggested that hypercalcemia may predispose patients to digitalis toxicity. Teriparatide may transiently increase serum calcium. Consider the potential onset of signs and symptoms of digitalis toxicity when Teriparatide Injection is used in patients receiving digoxin [*see Warnings and Precautions (5.5), Clinical Pharmacology (12.3)*].

8 USE IN SPECIFIC POPULATIONS

8.1 Pregnancy

Risk Summary

There are no available data on Teriparatide Injection use in pregnant women to evaluate for drug-associated risk of major birth defects, miscarriage, or adverse maternal or fetal outcomes. Consider discontinuing Teriparatide Injection when pregnancy is recognized.

In animal reproduction studies, teriparatide increased skeletal deviations and variations in mouse offspring at subcutaneous doses equivalent to more than 60 times the recommended 20 mcg human daily dose (based on body surface area, mcg/m²), and produced mild growth retardation and reduced motor activity in rat offspring at subcutaneous doses equivalent to more than 120 times the human dose (*see Data*).

The background risk of major birth defects and miscarriage for the indicated population is unknown. The background risk in the US general population of major birth defects is 2% to 4% and of miscarriage is 15% to 20% of clinically recognized pregnancies.

Data

Animal Data

In animal reproduction studies, pregnant mice received teriparatide during organogenesis at subcutaneous doses equivalent to 8 to 267 times the human dose (based on body surface area, mcg/m²). At subcutaneous doses ≥ 60 times the human dose, the fetuses showed an increased incidence of skeletal deviations or variations (interrupted rib, extra vertebra or rib). When pregnant rats received teriparatide during organogenesis at subcutaneous doses 16 to 540 times the human dose, the fetuses showed no abnormal findings.

In a perinatal/postnatal study in pregnant rats dosed subcutaneously from organogenesis through lactation, mild growth retardation was observed in female offspring at doses ≥ 120 times the human dose. Mild growth retardation in male offspring and reduced motor activity in both male and female offspring were observed at maternal doses of 540 times the human dose. There were no developmental or reproductive effects in mice or rats at doses 8 or 16 times the human dose, respectively.

8.2 Lactation

Risk Summary

It is not known whether teriparatide is excreted in human milk, affects human milk production, or has effects on the breastfed infant. Avoid Teriparatide Injection use in women who are breastfeeding.

8.4 Pediatric Use

The safety and effectiveness of Teriparatide Injection have not been established in pediatric patients. Pediatric patients are at higher baseline risk of osteosarcoma because of open epiphyses [*see Warnings and Precautions (5.1)*].

8.5 Geriatric Use

Of the patients who received teriparatide in the osteoporosis trial of 1637 postmenopausal women, 75% were 65 years of age and older and 23% were 75 years of age and older. Of the patients who received teriparatide in the trial of 437 men with primary or hypogonadal osteoporosis, 39% were 65 years of age and over and 13% were 75 years of age and over. Of the 214 patients who received teriparatide in the glucocorticoid induced osteoporosis trial, 28% were 65 years of age and older and 9% were 75 years of age and older. No overall differences in safety or effectiveness of teriparatide have been observed between patients 65 years of age and older and younger adult patients.

8.6 Hepatic Impairment

No studies have been performed in patients with hepatic impairment [*see Clinical Pharmacology (12.3)*].

8.7 Renal Impairment

In 5 patients with severe renal impairment (CrCl <30 mL/minute), the AUC and T_{1/2} of teriparatide were increased by 73% and 77%, respectively. Maximum serum concentration of teriparatide was not increased. It is unknown whether teriparatide alters the underlying metabolic bone disease seen in chronic renal impairment [*see Clinical Pharmacology (12.3)*].

10 OVERDOSAGE

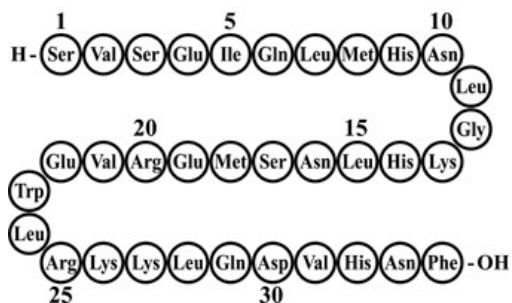
In postmarketing spontaneous reports, there have been cases of medication errors in which the entire contents (up to 800 mcg) (40 times the recommended dose) of the teriparatide prefilled delivery device (pen) have been administered as a single dose. Transient events reported have included nausea, weakness/lethargy and hypotension. No fatalities associated with overdose have been reported. Additional signs, symptoms, and complications of teriparatide overdose may include a delayed hypercalcemic effect, vomiting, dizziness, and headache.

Overdose Management — There is no specific antidote for a teriparatide overdose. Treatment of suspected overdose should include discontinuation of Teriparatide Injection, monitoring of serum calcium and phosphorus, and implementation of appropriate supportive measures, such as hydration.

11 DESCRIPTION

Teriparatide Injection is a recombinant human parathyroid hormone analog (PTH 1-34). It has an identical sequence to the 34 N-terminal amino acids (the biologically active region) of the 84-amino acid human parathyroid hormone.

The molecular formula of teriparatide is C₁₈₁H₂₉₁N₅₅O₅₁S₂ and the molecular weight is 4117.8 daltons. Its amino acid sequence is shown below:



Teriparatide is manufactured using a strain of *Pseudomonas fluorescens* modified by recombinant DNA technology. Teriparatide Injection is supplied as a sterile, colorless, clear, isotonic solution in a glass cartridge which is pre-assembled into a single-patient-use delivery device (pen) for subcutaneous injection. Each pen is filled to deliver 2.4 mL. Each mL contains 250 mcg teriparatide (as a free base), 0.41 mg glacial acetic acid, 0.10 mg sodium acetate (provided as 0.16 mg sodium acetate trihydrate), 45.4 mg mannitol, 3 mg metacresol, and water for injection. The drug product is a pH 4.0 solution.

Each prefilled pen delivers 20 mcg of teriparatide per dose for up to 28 days.

12 CLINICAL PHARMACOLOGY

12.1 Mechanism of Action

Endogenous 84-amino acid parathyroid hormone (PTH) is the primary regulator of calcium and phosphate metabolism in bone and kidney. Physiological actions of PTH include regulation of bone metabolism, renal tubular reabsorption of calcium and phosphate, and intestinal calcium absorption. The biological actions of PTH and teriparatide are mediated through binding to specific high-affinity cell-surface receptors. Teriparatide and the 34 N-terminal amino acids of PTH bind to these receptors with the same affinity and have the same physiological actions on bone and kidney. Teriparatide is not expected to accumulate in bone or other tissues.

The skeletal effects of teriparatide depend upon the pattern of systemic exposure. Once-daily administration of teriparatide stimulates new bone formation on trabecular and cortical (periosteal and/or endosteal) bone surfaces by preferential stimulation of osteoblastic activity over osteoclastic activity. In monkey studies, teriparatide improved trabecular microarchitecture and increased bone mass and strength by stimulating new bone formation in both cancellous and cortical bone. In humans, the anabolic effects of teriparatide manifest as an increase in skeletal mass, an increase in markers of bone formation and resorption, and an increase in bone strength. By contrast, continuous excess of endogenous PTH, as occurs in hyperparathyroidism, may be detrimental to the skeleton because bone resorption may be stimulated more than bone formation.

12.2 Pharmacodynamics

Pharmacodynamics in Men with Primary or Hypogonadal Osteoporosis and Postmenopausal Women with Osteoporosis

Effects on Mineral Metabolism — Teriparatide affects calcium and phosphorus metabolism in a pattern consistent with the known actions of endogenous PTH (e.g., increases serum calcium and decreases serum phosphorus).

Serum Calcium Concentrations — When teriparatide 20 mcg was administered once daily, the serum calcium concentration increased transiently, beginning approximately 2 hours after dosing and reaching a maximum concentration between 4 and 6 hours (median increase, 0.4 mg/dL). The serum calcium

concentration began to decline approximately 6 hours after dosing and returned to baseline by 16 to 24 hours after each dose.

In a clinical study of postmenopausal women with osteoporosis, the median peak serum calcium concentration measured 4 to 6 hours after dosing with teriparatide (20 mcg subcutaneous once daily) was 9.68 mg/dL at 12 months. The peak serum calcium remained below 11 mg/dL in >99% of women at each visit. Sustained hypercalcemia was not observed.

In this study, 11.1% of women treated with teriparatide had at least 1 serum calcium value above the upper limit of normal (ULN) (10.6 mg/dL) compared with 1.5% of women treated with placebo. The percentage of women treated with teriparatide whose serum calcium was above the ULN on consecutive 4- to 6-hour post-dose measurements was 3% compared with 0.2% of women treated with placebo. In these women, calcium supplements and/or teriparatide doses were reduced. The timing of these dose reductions was at the discretion of the investigator. Teriparatide dose adjustments were made at varying intervals after the first observation of increased serum calcium (median 21 weeks). During these intervals, there was no evidence of progressive increases in serum calcium.

In a clinical study of men with either primary or hypogonadal osteoporosis, the effects on serum calcium were similar to those observed in postmenopausal women. The median peak serum calcium concentration measured 4 to 6 hours after dosing with teriparatide was 9.44 mg/dL at 12 months. The peak serum calcium remained below 11 mg/dL in 98% of men at each visit. Sustained hypercalcemia was not observed.

In this study, 6% of men treated with teriparatide daily had at least 1 serum calcium value above the ULN (10.6 mg/dL) compared with none of the men treated with placebo. The percentage of men treated with teriparatide whose serum calcium was above the ULN on consecutive measurements was 1.3% (2 men) compared with none of the men treated with placebo. Calcium supplementation was reduced in these men [*see Warnings and Precautions (5.2), Adverse Reactions (6.1)*].

In a clinical study of women previously treated for 18 to 39 months with raloxifene (n=26) or alendronate (n=33), mean serum calcium >12 hours after teriparatide treatment was increased by 0.36 to 0.56 mg/dL, after 1 to 6 months of teriparatide treatment compared with baseline. Of the women pretreated with raloxifene, 3 (11.5%) had a serum calcium >11 mg/dL, and of those pretreated with alendronate, 3 (9.1%) had a serum calcium >11 mg/dL. The highest serum calcium reported was 12.5 mg/dL. None of the women had symptoms of hypercalcemia. There were no placebo controls in this study.

In the study of patients with glucocorticoid-induced osteoporosis, the effects of teriparatide on serum calcium were similar to those observed in postmenopausal women with osteoporosis not taking glucocorticoids.

Urinary Calcium Excretion — In a clinical study of postmenopausal women with osteoporosis who received 1000 mg of supplemental calcium and at least 400 IU of vitamin D, daily teriparatide increased urinary calcium excretion. The median urinary excretion of calcium was 190 mg/day at 6 months and 170 mg/day at 12 months. These levels were 30 mg/day and 12 mg/day higher, respectively, than in women treated with placebo. The incidence of hypercalciuria (>300 mg/day) was similar in the women treated with teriparatide or placebo.

In a clinical study of men with either primary or hypogonadal osteoporosis who received 1000 mg of supplemental calcium and at least 400 IU of vitamin D, daily teriparatide had inconsistent effects on urinary calcium excretion. The median urinary excretion of calcium was 220 mg/day at 1 month and 210 mg/day at 6 months. These levels were 20 mg/day higher and 8 mg/day lower, respectively, than in men treated with

placebo. The incidence of hypercalciuria (>300 mg/day) was similar in the men treated with teriparatide or placebo.

Phosphorus and Vitamin D — In single-dose studies, teriparatide produced transient phosphaturia and mild transient reductions in serum phosphorus concentration. However, hypophosphatemia (<2.4 mg/dL) was not observed in clinical trials with teriparatide.

In clinical trials of daily teriparatide, the median serum concentration of 1,25-dihydroxyvitamin D was increased at 12 months by 19% in women and 14% in men, compared with baseline. In the placebo group, this concentration decreased by 2% in women and increased by 5% in men. The median serum 25-hydroxyvitamin D concentration at 12 months was decreased by 19% in women and 10% in men compared with baseline. In the placebo group, this concentration was unchanged in women and increased by 1% in men.

In the study of patients with glucocorticoid-induced osteoporosis, the effects of teriparatide on serum phosphorus were similar to those observed in postmenopausal women with osteoporosis not taking glucocorticoids.

Effects on Markers of Bone Turnover — Daily administration of teriparatide to men and postmenopausal women with osteoporosis in clinical studies stimulated bone formation, as shown by increases in the formation markers serum bone-specific alkaline phosphatase (BSAP) and procollagen I carboxy-terminal propeptide (PICP). Data on biochemical markers of bone turnover were available for the first 12 months of treatment. Peak concentrations of PICP at 1 month of treatment were approximately 41% above baseline, followed by a decline to near-baseline values by 12 months. BSAP concentrations increased by 1 month of treatment and continued to rise more slowly from 6 through 12 months. The maximum increases of BSAP were 45% above baseline in women and 23% in men. After discontinuation of therapy, BSAP concentrations returned toward baseline. The increases in formation markers were accompanied by secondary increases in the markers of bone resorption: urinary N-telopeptide (NTX) and urinary deoxypyridinoline (DPD), consistent with the physiological coupling of bone formation and resorption in skeletal remodeling. Changes in BSAP, NTX, and DPD were lower in men than in women, possibly because of lower systemic exposure to teriparatide in men.

In the study of patients with glucocorticoid-induced osteoporosis, the effects of teriparatide on serum markers of bone turnover were similar to those observed in postmenopausal women with osteoporosis not taking glucocorticoids.

12.3 Pharmacokinetics

The pharmacokinetic parameters of teriparatide following single subcutaneous administration of Teriparatide Injection in patients with osteoporosis are shown in Table 2.

Table 2. Pharmacokinetic Parameters of Teriparatide Following Subcutaneous Administration of a Single Dose, 20 mcg, of Teriparatide Injection

	Mean ± S.D.	n
T _{max} (hour)*	0.25 (0.12, 1.08)	83
C _{max} (pg/mL)	109.5 ± 62.8	83
AUC _{0-t} (pg·hr/mL)	134.8 ± 79.7	83
AUC _{0-inf} (pg·hr/mL)	149.8 ± 68.1	72
t _{1/2} (hour)	0.79 ± 0.35	72

Arithmetic mean ± S.D.; *T_{max} = median (minimum, maximum)

Absorption — Teriparatide is absorbed after subcutaneous injection; the absolute bioavailability is approximately 95% based on pooled data from 20-, 40-, and 80-mcg doses (1-, 2-, and 4-times the recommended dosage, respectively). The peptide reaches peak serum concentrations about 30 minutes after subcutaneous injection of a 20-mcg dose and declines to non-quantifiable concentrations within 3 hours.

Distribution — Volume of distribution following intravenous injection is approximately 0.12 L/kg.

Elimination — Systemic clearance of teriparatide (approximately 62 L/hour in women and 94 L/hour in men) exceeds the rate of normal liver plasma flow, consistent with both hepatic and extra-hepatic clearance.

No metabolism or excretion studies have been performed with teriparatide. Peripheral metabolism of PTH is believed to occur by non-specific enzymatic mechanisms in the liver followed by excretion via the kidneys.

Specific Populations

Geriatric Patients — No age-related differences in teriparatide pharmacokinetics were detected (range 31 to 85 years).

Male and Female Patients — Although systemic exposure to teriparatide was approximately 20% to 30% lower in men than women, the recommended dosage for men and women is the same.

Racial Groups — The influence of race has not been determined.

Patients with Renal Impairment — No pharmacokinetic differences were identified in 11 patients with creatinine clearance (CrCl) 30 to 72 mL/minute administered a single dose of teriparatide. In 5 patients with severe renal impairment (CrCl <30 mL/minute), the AUC and T_{1/2} of teriparatide were increased by 73% and 77%, respectively. Maximum serum concentration of teriparatide was not increased. No studies have been performed in patients undergoing dialysis for chronic renal failure.

Patients with Hepatic Impairment — No studies have been performed in patients with hepatic impairment. Non-specific proteolytic enzymes in the liver (possibly Kupffer cells) cleave PTH(1-34) and PTH(1-84) into fragments that are cleared from the circulation mainly by the kidney.

Drug Interaction Studies

Digoxin — In a study of 15 healthy people administered digoxin daily to steady state, a single teriparatide dose did not alter the effect of digoxin on the systolic time interval (from electrocardiographic Q-wave onset to aortic valve closure, a measure of digoxin's calcium-mediated cardiac effect).

Hydrochlorothiazide — In a study of 20 healthy people, the coadministration of hydrochlorothiazide 25 mg with 40 mcg of teriparatide (2 times the recommended dose) did not affect the serum calcium response to teriparatide. The 24-hour urine excretion of calcium was reduced by a clinically unimportant amount (15%). The effect of coadministration of a higher dose of hydrochlorothiazide with teriparatide on serum calcium levels has not been studied.

Furosemide — In a study of 9 healthy people and 17 patients with CrCl 13 to 72 mL/minute, coadministration of intravenous furosemide (20 to 100 mg) with teriparatide 40 mcg (2 times the recommended dose) resulted in small increases in the serum calcium (2%) and 24-hour urine calcium (37%); however, these changes did not appear to be clinically important.

12.6 Immunogenicity

The observed incidence of anti-drug antibodies is highly dependent on the sensitivity and specificity of the assay. Differences in assay methods preclude meaningful comparisons of the incidence of anti-drug antibodies in the studies described below with the incidence of anti-drug antibodies in other studies, including those of teriparatide or of other teriparatide products.

The immunogenicity profile of Teriparatide Injection was evaluated in a 24-week randomized trial comparing the effects of Teriparatide Injection 20 mcg daily with another teriparatide product 20 mcg daily. In this trial, 2.2% (2/90) subjects who received Teriparatide Injection and 2.2% (2/91) subjects who received the other teriparatide product had detectable antibodies to teriparatide and one out of the two Teriparatide Injection treated patients developed neutralizing antibodies to teriparatide.

13 NONCLINICAL TOXICOLOGY

13.1 Carcinogenesis, Mutagenesis, Impairment of Fertility

Carcinogenesis

Two carcinogenicity bioassays were conducted in Fischer 344 rats. In the first study, male and female rats were given daily subcutaneous teriparatide injections of 5, 30, or 75 mcg/kg/day for 24 months from 2 months of age. These doses resulted in rat systemic exposures that were 3, 20, and 60 times higher than the systemic exposure observed in humans, respectively, following a subcutaneous dose of 20 mcg (based on AUC comparison). Teriparatide treatment resulted in a marked dose-related increase in the incidence of osteosarcoma, a rare malignant bone tumor, in both male and female rats. Osteosarcomas were observed at all doses and the incidence reached 40% to 50% in the high-dose groups. Teriparatide also caused a dose-related increase in osteoblastoma and osteoma in both sexes. No osteosarcomas, osteoblastomas or osteomas were observed in untreated control rats. The bone tumors in rats occurred in association with a large increase in bone mass and focal osteoblast hyperplasia.

The second 2-year study was carried out in order to determine the effect of treatment duration and animal age on the development of bone tumors. Female rats were treated for different periods between 2 and 26 months of age with subcutaneous teriparatide doses of 5 and 30 mcg/kg (equivalent to 3 and 20 times the human exposure at the 20-mcg dose, respectively, based on AUC comparison). The study showed that the occurrence of osteosarcoma, osteoblastoma and osteoma was dependent upon dose and duration of teriparatide exposure. Bone tumors were observed when immature 2-month old rats were treated with 30 mcg/kg/day of teriparatide for 24 months or with 5 or 30 mcg/kg/day of teriparatide for 6 months. Bone tumors were also observed when mature 6-month old rats were treated with 30 mcg/kg/day of teriparatide for 6 or 20 months. Tumors were not detected when mature 6-month old rats were treated with 5 mcg/kg/day of teriparatide for 6 or 20 months. The results did not demonstrate a difference in susceptibility to bone tumor formation, associated with teriparatide treatment, between mature and immature rats.

No bone tumors were detected in a long-term monkey study [*see Nonclinical Toxicology (13.2)*].

Mutagenesis

Teriparatide was not genotoxic in any of the following test systems: the Ames test for bacterial mutagenesis; the mouse lymphoma assay for mammalian cell mutation; the chromosomal aberration assay in Chinese hamster ovary cells, with and without metabolic activation; and the in vivo micronucleus test in mice.

Impairment of Fertility

No effects on fertility were observed in male and female rats given subcutaneous teriparatide doses of 30, 100, or 300 mcg/kg/day prior to mating and in females continuing through gestation Day 6 (16 to 160 times the human dose of 20 mcg based on surface area, mcg/m²).

13.2 Animal Toxicology and/or Pharmacology

In single-dose rodent studies using subcutaneous injection of teriparatide, no mortality was seen in rats given doses of 1000 mcg/kg (540 times the human dose based on surface area, mcg/m²) or in mice given 10,000 mcg/kg (2700 times the human dose based on surface area, mcg/m²).

In a long-term study, skeletally mature ovariectomized female monkeys (N=30 per treatment group) were given either daily subcutaneous teriparatide injections of 5 mcg/kg or vehicle. Following the 18-month treatment period, the monkeys were removed from teriparatide treatment and were observed for an additional 3 years. The 5 mcg/kg dose resulted in systemic exposures that were approximately 6 times higher than the systemic exposure observed in humans following a subcutaneous dose of 20 mcg (based on AUC comparison). Bone tumors were not detected by radiographic or histologic evaluation in any monkey in the study.

14 CLINICAL STUDIES

14.1 Treatment of Osteoporosis in Postmenopausal Women

The safety and efficacy of once-daily teriparatide, median exposure of 19 months, were examined in a double-blind, multicenter, placebo-controlled clinical study of 1637 postmenopausal women with osteoporosis. In this study 541 postmenopausal women were treated with 20 mcg teriparatide subcutaneously once daily.

All women received 1000 mg of calcium and at least 400 IU of vitamin D per day. Baseline and endpoint spinal radiographs were evaluated using the semiquantitative scoring. Ninety percent of the women in the study had 1 or more radiographically diagnosed vertebral fractures at baseline. The primary efficacy endpoint was the occurrence of new radiographically diagnosed vertebral fractures defined as changes in the height of previously undeformed vertebrae. Such fractures are not necessarily symptomatic.

Effect on Fracture Incidence

New Vertebral Fractures — Teriparatide, when taken with calcium and vitamin D and compared with calcium and vitamin D alone, reduced the risk of 1 or more new vertebral fractures from 14.3% of women in the placebo group to 5.0% in the teriparatide group (444 of the 541 patients treated with 20 mcg once daily of teriparatide were included in this analysis). This difference was statistically significant (p <0.001); the absolute reduction in risk was 9.3% and the relative reduction was 65%. Teriparatide was effective in reducing the risk for vertebral fractures regardless of age, baseline rate of bone turnover, or baseline BMD (see Table 3).

Table 3. Effect of Teriparatide on Risk of Vertebral Fractures in Postmenopausal Women with Osteoporosis

Percent of Women With Fracture				
	Teriparatide (N=444)	Placebo (N=448)	Absolute Risk Reduction (%, 95% CI)	Relative Risk Reduction (%, 95% CI)
New fracture (≥1)	5.0 ^a	14.3	9.3 (5.5-13.1)	65 (45-78)
1 fracture	3.8	9.4		
2 fractures	0.9	2.9		

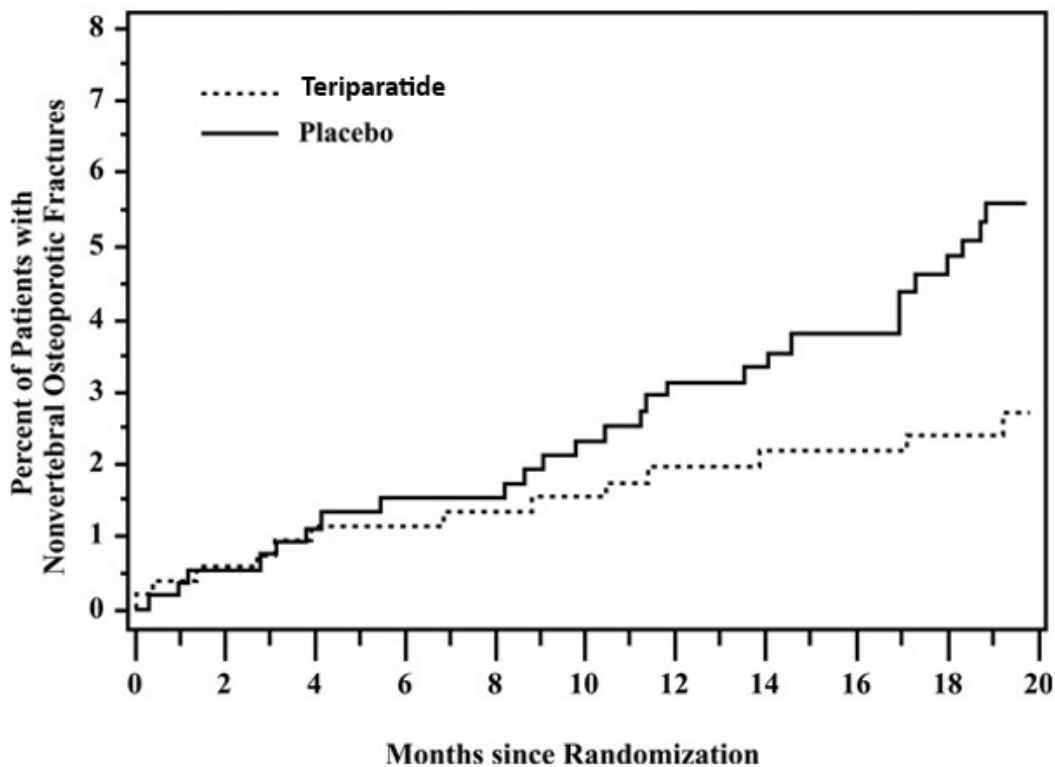
≥3 fractures	0.2	2.0
--------------	-----	-----

^a p ≤0.001 compared with placebo.

New Nonvertebral Osteoporotic Fractures — Teriparatide significantly reduced the risk of any nonvertebral fracture from 5.5% in the placebo group to 2.6% in the teriparatide group (p <0.05). The absolute reduction in risk was 2.9% and the relative reduction was 53%. The incidence of new nonvertebral fractures in the teriparatide group compared with the placebo group was ankle/foot (0.2%, 0.7%), hip (0.2%, 0.7%), humerus (0.4%, 0.4%), pelvis (0%, 0.6%), ribs (0.6%, 0.9%), wrist (0.4%, 1.3%), and other sites (1.1%, 1.5%), respectively.

The cumulative percentage of postmenopausal women with osteoporosis who sustained new nonvertebral fractures was lower in women treated with teriparatide than in women treated with placebo (see Figure 1).

Figure 1: Cumulative Percentage of Postmenopausal Women with Osteoporosis Sustaining New Nonvertebral Osteoporotic Fractures



Effect on Bone Mineral Density (BMD)

Teriparatide increased lumbar spine BMD in postmenopausal women with osteoporosis. Statistically significant increases were seen at 3 months and continued throughout the treatment period.

Postmenopausal women with osteoporosis who were treated with teriparatide had statistically significant increases in BMD from baseline to endpoint at the lumbar spine, femoral neck, total hip, and total body (see Table 4).

Table 4. Mean Percent Change in BMD from Baseline to Endpoint^a in Postmenopausal Women with Osteoporosis, Treated with Teriparatide or Placebo for a Median of 19 Months

	Teriparatide N=541	Placebo N=544
Lumbar spine BMD	9.7 ^b	1.1
Femoral neck BMD	2.8 ^c	-0.7
Total hip BMD	2.6 ^c	-1.0
Trochanter BMD	3.5 ^c	-0.2
Intertrochanter BMD	2.6 ^c	-1.3
Ward's triangle BMD	4.2 ^c	-0.8
Total body BMD	0.6 ^c	-0.5
Distal 1/3 radius BMD	-2.1	-1.3
Ultradistal radius BMD	-0.1	-1.6

^a Intent-to-treat analysis, last observation carried forward.

^b p <0.001 compared with placebo.

^c p <0.05 compared with placebo.

Teriparatide treatment increased lumbar spine BMD from baseline in 96% of postmenopausal women treated. Seventy-two percent of patients treated with teriparatide achieved at least a 5% increase in spine BMD, and 44% gained 10% or more.

Both treatment groups lost height during the trial. The mean decreases were 3.61 and 2.81 mm in the placebo and teriparatide groups, respectively.

Bone Histology

The effects of teriparatide on bone histology were evaluated in iliac crest biopsies of 35 postmenopausal women treated for 12 to 24 months with calcium and vitamin D and teriparatide. Normal mineralization was observed with no evidence of cellular toxicity. The new bone formed with teriparatide was of normal quality (as evidenced by the absence of woven bone and marrow fibrosis).

14.2 Treatment to Increase Bone Mass in Men with Primary or Hypogonadal Osteoporosis

The safety and efficacy of once-daily teriparatide, median exposure of 10 months, were examined in a double-blind, multicenter, placebo-controlled clinical study of 437 men with either primary (idiopathic) or hypogonadal osteoporosis. In this study, 151 men received 20 mcg of teriparatide given subcutaneously once daily. All men received 1000 mg of calcium and at least 400 IU of vitamin D per day. The primary efficacy endpoint was change in lumbar spine BMD.

Teriparatide increased lumbar spine BMD in men with primary or hypogonadal osteoporosis. Statistically significant increases were seen at 3 months and continued throughout the treatment period. Teriparatide was effective in increasing lumbar spine BMD regardless of age, baseline rate of bone turnover, and baseline BMD. The effects of teriparatide at additional skeletal sites are shown in Table 5.

Teriparatide treatment for a median of 10 months increased lumbar spine BMD from baseline in 94% of men treated. Fifty-three percent of patients treated with teriparatide achieved at least a 5% increase in spine BMD, and 14% gained 10% or more.

Table 5. Mean Percent Change in BMD from Baseline to Endpoint^a in Men with Primary or Hypogonadal Osteoporosis, Treated with Teriparatide or Placebo for a Median of 10 Months

	Teriparatide N=151	Placebo N=147
Lumbar spine BMD	5.9 ^b	0.5
Femoral neck BMD	1.5 ^c	0.3
Total hip BMD	1.2	0.5
Trochanter BMD	1.3	1.1
Intertrochanter BMD	1.2	0.6
Ward's triangle BMD	2.8	1.1
Total body BMD	0.4	-0.4
Distal 1/3 radius BMD	-0.5	-0.2
Ultradistal radius BMD	-0.5	-0.3

^a Intent-to-treat analysis, last observation carried forward.

^b p <0.001 compared with placebo.

^c p <0.05 compared with placebo.

14.3 Treatment of Men and Women with Glucocorticoid-Induced Osteoporosis

The efficacy of teriparatide for treating glucocorticoid-induced osteoporosis was assessed in a randomized, double-blind, active-controlled trial of 428 patients (19% men, 81% women) aged 22 to 89 years (mean 57 years) treated with ≥ 5 mg/day prednisone or equivalent for a minimum of 3 months. The duration of the trial was 18 months. In the trial 214 patients were treated with teriparatide 20 mcg given subcutaneously once daily. In the teriparatide group, the baseline median glucocorticoid dose was 7.5 mg/day and the baseline median duration of glucocorticoid use was 1.5 years. The mean (SD) baseline lumbar spine BMD was 0.85 ± 0.13 g/cm² and lumbar spine BMD T-score was -2.5 ± 1 (number of standard deviations below the mean BMD value for healthy adults). A total of 30% of patients had prevalent vertebral fracture(s) and 43% had prior non-vertebral fracture(s). The patients had chronic rheumatologic, respiratory or other diseases that required sustained glucocorticoid therapy. All patients received 1000 mg of calcium plus 800 IU of vitamin D supplementation per day.

Because of differences in mechanism of action (anabolic vs. anti-resorptive) and lack of clarity regarding differences in BMD as an adequate predictor of fracture efficacy, data on the active comparator are not presented.

Effect on Bone Mineral Density (BMD)

In patients with glucocorticoid-induced osteoporosis, teriparatide increased lumbar spine BMD compared with baseline at 3 months through 18 months of treatment. In patients treated with teriparatide, the mean percent change in BMD from baseline to endpoint was 7.2% at the lumbar spine, 3.6% at the total hip, and 3.7% at the femoral neck (p<0.001 all sites). The relative treatment effects of teriparatide were consistent in subgroups defined by gender, age, geographic region, body mass index, underlying disease, prevalent vertebral fracture, baseline glucocorticoid dose, prior bisphosphonate use, and glucocorticoid discontinuation during trial.

16 HOW SUPPLIED/STORAGE AND HANDLING

16.1 How Supplied

Teriparatide Injection is a clear, colorless solution, available as single-patient-use prefilled pens in the following package size:

- 600 mcg/2.4 mL (250 mcg/mL) [containing 28 daily doses of 20 mcg] NDC 72611-752-01.

16.2 Storage and Handling

- The Teriparatide Injection delivery device should be stored under refrigeration at 2°C to 8°C (36°F to 46°F) at all times.
- Recap the delivery device when not in use to protect the cartridge from physical damage and light.
- When using Teriparatide Injection, minimize the time out of the refrigerator; deliver the dose immediately following removal from the refrigerator.
- Do not freeze. Do not use Teriparatide Injection if it has been frozen.

17 PATIENT COUNSELING INFORMATION

Advise the patient to read the FDA-approved patient labeling (Medication Guide and the User Manual) before starting Teriparatide Injection and each time the prescription is renewed. Failure to follow the instructions may result in inaccurate dosing.

Osteosarcoma

Patients should be made aware that in rats, teriparatide caused an increase in the incidence of osteosarcoma (a malignant bone tumor). Although cases of osteosarcoma have been reported in patients using teriparatide, no increased risk of osteosarcoma was observed in adult humans treated with teriparatide [see *Warnings and Precautions (5.1)*].

Hypercalcemia

Instruct patients taking Teriparatide Injection to contact a health care provider if they develop persistent symptoms of hypercalcemia (e.g., nausea, vomiting, constipation, lethargy, muscle weakness) [see *Warnings and Precautions (5.2)*].

Orthostatic Hypotension

When initiating Teriparatide Injection treatment, instruct patients to be prepared to immediately sit or lie down during or after administration in case they feel lightheaded or have palpitations after the injection. Instruct patients to sit or lie down until the symptoms resolve. If symptoms persist or worsen, instruct patients to consult a healthcare provider before continuing treatment [see *Warnings and Precautions (5.4)*].

Other Osteoporosis Treatment Modalities

Patients should be informed regarding the roles of supplemental calcium and/or vitamin D.

Use of Delivery Device (Pen)

Instruct patients and caregivers who administer Teriparatide Injection on how to properly use the delivery device (*refer to User Manual*), to properly dispose of needles, and not to share their delivery device with

other patients. Instruct patients and caregivers who administer Teriparatide Injection that the contents of the delivery device should not be transferred to a syringe.

Inform patients that each Teriparatide Injection delivery device can be used for up to 28 days. After the 28-day use period, instruct patients to discard the Teriparatide Injection delivery device, even if it still contains some unused solution. Instruct patients not to use Teriparatide Injection after the expiration date printed on the delivery device and packaging.

Distributed by:
Almaject, Inc.
Morristown, NJ 07960 USA

PI752-XX

MEDICATION GUIDE
Teriparatide Injection (ter i par a tide)
for subcutaneous use

Read this Medication Guide before you start using Teriparatide Injection and each time you get a refill. There may be new information. Also, read the User Manual that comes with the Teriparatide Injection delivery device (pen) for information on how to use the device to inject your medicine the right way. This Medication Guide does not take the place of talking with your healthcare provider about your medical condition or your treatment.

What is the most important information I should know about Teriparatide Injection?

Possible bone cancer. During drug testing, the medicine in Teriparatide Injection caused some rats to develop a bone cancer called osteosarcoma. Studies in people have not shown that teriparatide increases your chance of getting osteosarcoma. There is little information about the chance of getting osteosarcoma in patients using teriparatide beyond 2 years.

What is Teriparatide Injection?

Teriparatide Injection is a prescription medicine used to:

- treat postmenopausal women who have osteoporosis who are at high risk for having broken bones (fractures) or who cannot use other osteoporosis treatments. Teriparatide Injection can lessen the chance of broken bones (fractures) in the spine and other bones in postmenopausal women with osteoporosis.
- increase the bone mass in men with primary or hypogonadal osteoporosis who are at high risk for having broken bones (fractures) or who cannot use other osteoporosis treatments.
- treat both men and women with osteoporosis due to use of glucocorticoid medicines, such as prednisone, for several months, who are at high risk for having broken bones (fractures) or who cannot use other osteoporosis treatments.

It is not known if Teriparatide Injection is safe and effective in children.

Teriparatide Injection should not be used in children and young adults whose bones are still growing.

Who should not use Teriparatide Injection?

Do not use Teriparatide Injection if you:

- are allergic to any of the ingredients in Teriparatide Injection. See the end of this Medication Guide for a complete list of the ingredients in Teriparatide Injection.

Symptoms of a serious allergic reaction of Teriparatide Injection may include swelling of the face, lips, tongue or throat that may cause difficulty in breathing or swallowing. Call your healthcare provider right away or get emergency medical help if you get any of these symptoms.

What should I tell my healthcare provider before using Teriparatide Injection?

Before you use Teriparatide Injection, tell your healthcare provider about all of your medical conditions, including if you:

- have a certain bone disease called Paget's disease or other bone disease.
- have bone cancer or have had a history of bone cancer.
- are a young adult whose bones are still growing.
- have had radiation therapy.
- are affected with a condition that runs in your family that can increase your chance of getting cancer in your bones.
- have or have had too much calcium in your blood (hypercalcemia).
- have or have had a skin condition with painful sores or wounds caused by too much calcium.
- have or have had kidney stones.
- take medicines that contain digoxin.
- are pregnant or plan to become pregnant. It is not known if Teriparatide Injection will harm your unborn baby.
- are breastfeeding or plan to breastfeed. It is not known if Teriparatide Injection passes into your breastmilk. You should not breastfeed while taking Teriparatide Injection.

Tell your healthcare provider about all the medicines you take including prescription and over-the-counter medicines, vitamins, and herbal supplements.

Know the medicines you take. Keep a list of them to show your healthcare provider and pharmacist when you get a new medicine.

How should I use Teriparatide Injection?

- Read the detailed Instructions for Use (User Manual) included with your Teriparatide Injection delivery device.
- Use Teriparatide Injection exactly as your healthcare provider tells you to. Your healthcare provider will tell you how much Teriparatide Injection to use and when to use it.
- Before you try to inject Teriparatide Injection yourself, a healthcare provider should teach you how to use the Teriparatide Injection delivery device to give your injection the right way.
- Inject Teriparatide Injection 1 time each day in your thigh or abdomen (lower stomach area). Do not inject into a vein or a muscle. Talk to a healthcare provider about how to rotate injection sites.
- The Teriparatide Injection delivery device has enough medicine for 28 days. It is set to give a 20-microgram dose of medicine each day. Do not inject all the medicine in the Teriparatide Injection delivery device at any one time.
- Do not transfer the medicine from the Teriparatide Injection delivery device to a syringe. This can result in taking the wrong dose of Teriparatide Injection. If you do not have pen needles to use with your Teriparatide Injection delivery device, talk with your healthcare provider.
- Teriparatide Injection should look clear and colorless. Do not use Teriparatide Injection if it has particles in it, or if it is cloudy or colored.
- Inject Teriparatide Injection right away after you take the delivery device out of the refrigerator.
- After each use, safely remove the needle, recap the delivery device, and put it back in the refrigerator right away.
- When you inject the first few doses of Teriparatide Injection, make sure you are in a place where you can sit or lie down right away in case you feel dizzy or have an abnormal heartbeat after the injection.
- Do not take more than 1 injection in the same day.
- Do not share your Teriparatide Injection delivery device with other people.
- If you take more Teriparatide Injection than prescribed, call your healthcare provider. If you take too much Teriparatide Injection, you may have nausea, vomiting, weakness, or dizziness.
- You should not use Teriparatide Injection for more than 2 years over your lifetime unless your healthcare provider finds that you need longer treatment because you have a high chance of breaking your bones.

If your healthcare provider recommends calcium and vitamin D supplements, you can take them at the same time you take Teriparatide Injection.

What are the possible side effects of Teriparatide Injection?

Teriparatide Injection may cause serious side effects including:

- See “**What is the most important information I should know about Teriparatide Injection?**”
- **Bone cancer (osteosarcoma):** Tell your healthcare provider right away if you have pain in your bones, pain in any areas of your body that does not go away, or any new or unusual lumps or swelling under your skin that is tender to touch.
- **Increased calcium in your blood.** Tell your healthcare provider if you have nausea, vomiting, constipation, low energy, or muscle weakness. These may be signs there is too much calcium in your blood.
- **Worsening of your kidney stones.** If you have or have had kidney stones your healthcare provider may check the calcium levels in your urine while you use Teriparatide Injection to see if there is worsening of this condition.
- **Decrease in blood pressure when you change positions.** Some people may feel dizzy, get a fast heartbeat, or feel light-headed right after the first few doses of Teriparatide Injection. This usually happens within 4 hours of taking Teriparatide Injection and goes away within a few hours. For the first few doses, give your injections of Teriparatide Injection in a place where you can sit or lie down right away if you get these symptoms. If your symptoms get worse or do not go away, contact your healthcare provider before you continue using Teriparatide Injection.

The most common side effects of Teriparatide Injection include:

- pain
- nausea
- joint aches

These are not all the possible side effects of Teriparatide Injection. For more information, ask your healthcare provider or pharmacist.

Call your doctor for medical advice about side effects. You may report side effects to FDA at 1-800-FDA-1088.

How should I store Teriparatide Injection?

- Store Teriparatide Injection in the refrigerator between 36°F to 46°F (2°C to 8°C) until ready to use. Use Teriparatide Injection right away after you remove it from the refrigerator.

- Do not freeze Teriparatide Injection. Do not use Teriparatide Injection if it has been frozen.
- Throw away the Teriparatide Injection delivery device after 28 days even if it has medicine in it (see the User Manual).
- Do not use Teriparatide Injection after the expiration date printed on the delivery device and packaging.
- Recap Teriparatide Injection when not in use to protect it from physical damage and light.

Keep Teriparatide Injection and all medicines out of the reach of children.

General information about the safe and effective use of Teriparatide Injection.

Medicines are sometimes prescribed for purposes other than those listed in a Medication Guide. Do not use Teriparatide Injection for a condition for which it was not prescribed. Do not give Teriparatide Injection to other people, even if they have the same symptoms that you have. It may harm them.

This Medication Guide summarizes the most important information about Teriparatide Injection. If you would like more information, talk with your healthcare provider. You can ask your pharmacist or healthcare provider for information about Teriparatide Injection that is written for healthcare professionals.

What are the ingredients in Teriparatide Injection?

Active ingredient: teriparatide

Inactive ingredients: glacial acetic acid, sodium acetate, mannitol, metacresol, and water for injection.

For more information, call Almaject, Inc. at 1-866-770-3024 or visit www.almaject.com.

Distributed by: Almaject, Inc.
Morristown, NJ 07960 USA

PL752-XX

This Medication Guide has been approved by the U.S. Food and Drug Administration

Approved: 06/2024

Teriparatide Injection User Manual

Storage Information

Always store the delivery device in the refrigerator with the white cap on.

Do not store the delivery device with a needle attached.

The delivery device can be stored in the refrigerator after first use for **28 days**.

Throw away (dispose of) delivery device after 28 days of use.



Important Information

Do not inject yourself or someone else until you have been shown how to inject using the delivery device. Your healthcare provider can show you or your caregiver how to prepare and inject a dose using the delivery device before you use it for the first time. Call your healthcare provider if you have any questions.

Do not inject Teriparatide until you have read the Medication Guide and this User Manual contained in your teriparatide injection delivery device carton thoroughly. Follow the instructions carefully whenever using the teriparatide injection delivery device.

Do not share your teriparatide injection delivery device or needles with anyone else. Infection or disease can be spread from one person to another.

Do not use the teriparatide injection delivery device for more than 28 days. The teriparatide injection delivery device contains 28 days of medicine. After 28 days of use throw away (dispose of) this delivery device even if it is not completely empty.

Do not inject more than 1 dose of teriparatide injection in the same day.

Do not attempt to transfer teriparatide injection from the delivery device provided to a syringe or any other device.

Teriparatide Injection Delivery Device and Parts

Needles not included. Becton, Dickinson and Company pen needles from 29 to 31 gauge are recommended for use with this device.

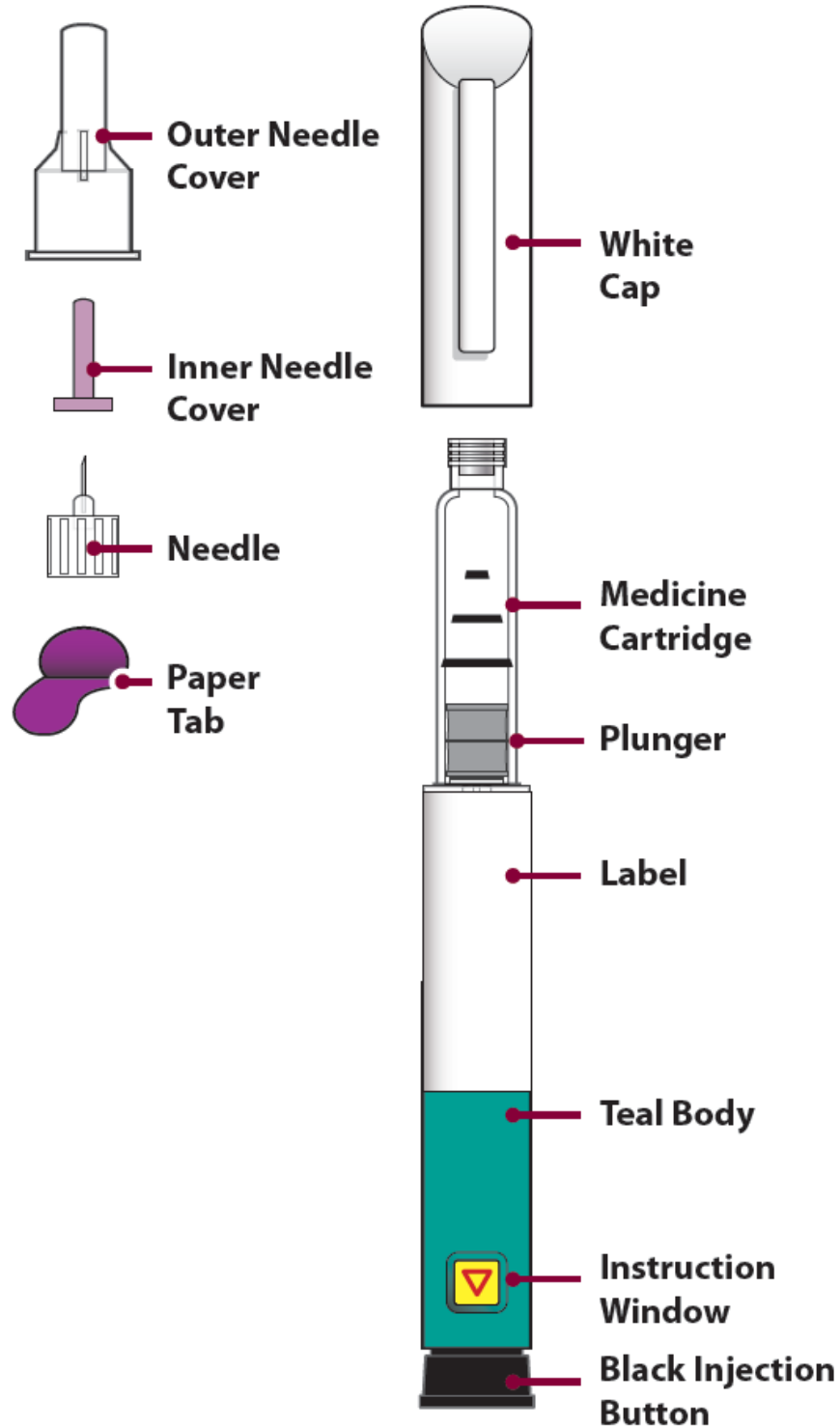


Figure A

Prepare for Injection

Step 1: Prepare Site and Remove the White Cap

- A) Wash hands prior to use.
- B) Prepare the injection site (thigh or abdomen) as recommended by your healthcare provider.
- C) Remove the white cap by pulling it straight off of the delivery device (Figure B).

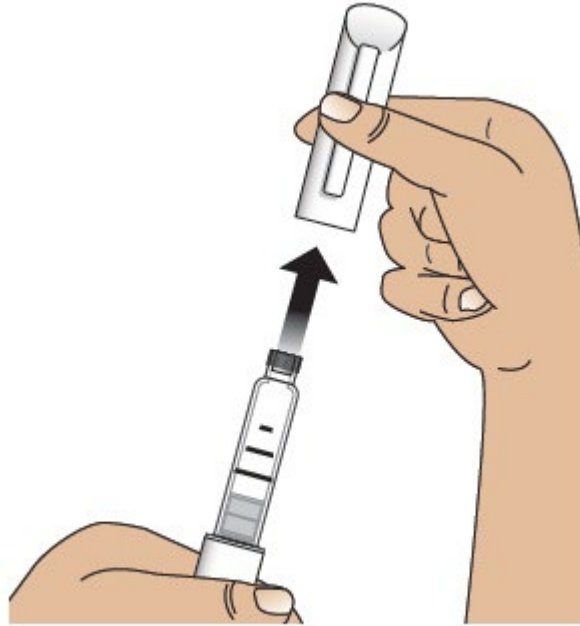


Figure B

Step 2: Check Device, Delivery Device Label and Medicine

- A) Check the delivery device.
Do not use the teriparatide injection delivery device if it is damaged.
- B) Check the label on the delivery device.
Do not use if the delivery device contains the incorrect medicine or if the medicine has expired (EXP) (Figure C).
- C) Check the medicine cartridge. The liquid medicine should be clear and colorless.
Do not use the medicine if it is cloudy, colored, or has floating particles. (Figure C).

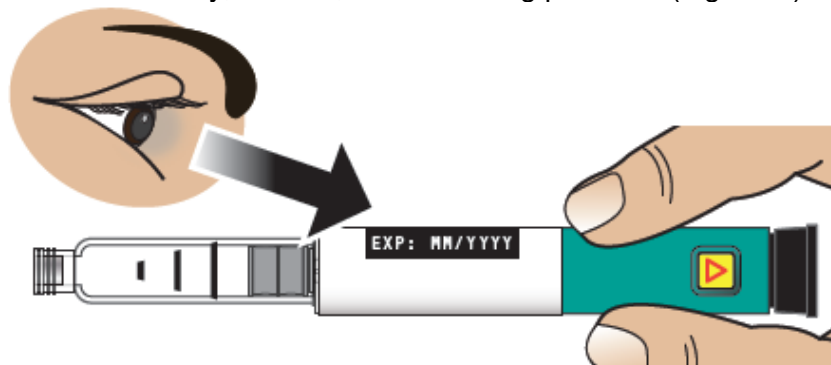
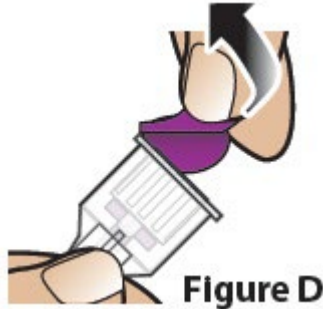


Figure C

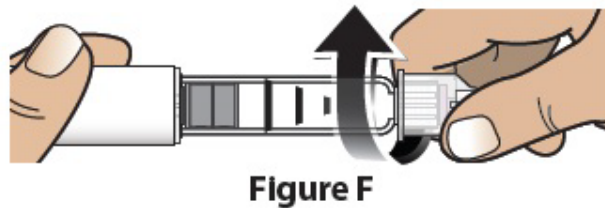
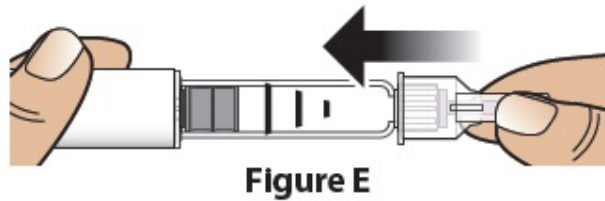
Step 3: Attach New Pen Needle to Injector

A) Peel off the paper tab (Figure D).



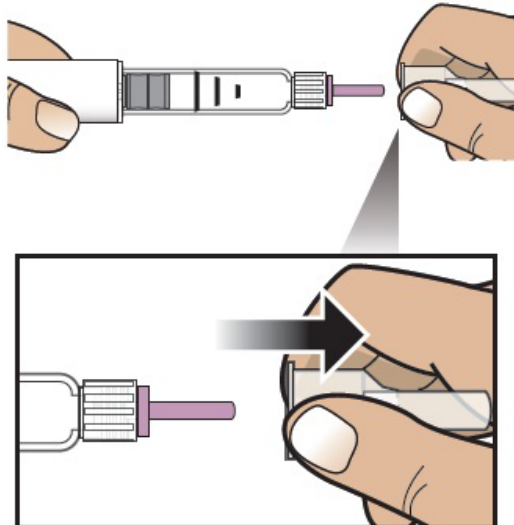
B) Push the pen needle **straight** onto medicine cartridge. Screw on pen needle to the right (clockwise) until firmly attached (Figure E and Figure F).

Do not over-tighten the pen needle.



Step 4: Remove Outer Needle Cover

Pull off the outer needle cover (Figure G) and **save it for later** (see Step 9).



Step 5: Set Dose

Pull out the black injection button **until it stops** (Figure H).

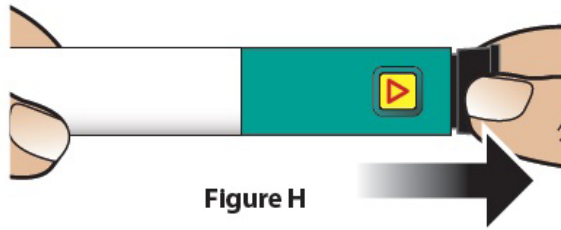


Figure H

Check to make sure red stripe shows. Additionally, the instruction window will show an arrow pointing towards the needle end of the delivery device (Figure I).

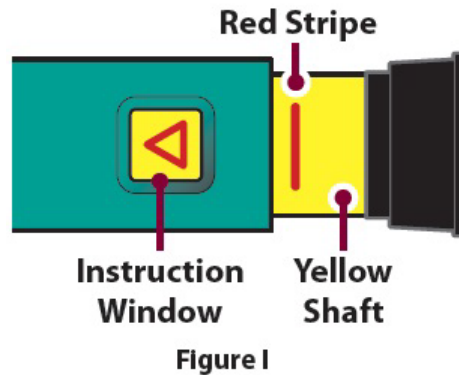


Figure I

Troubleshooting

If the delivery device does not set fully or if you cannot pull back on the black injection button refer to **Troubleshooting Problem E** on the back page.

Give (administer) Injection

Step 6: Remove Inner Needle Cover

A) Pull off the inner needle protector and throw it away (Figure J).

B) Caution: The needle will be exposed.

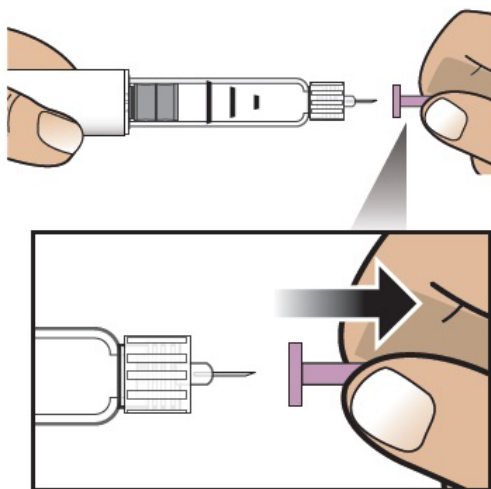


Figure J

Step 7: Inject Dose

A) Gently hold a fold of skin on your thigh or belly (abdomen) and insert the needle straight into the folded skin (Figure K).



Figure K

B) Press the black injection button down until it stops and hold (Figure L).

Press



Figure L

C) Hold it in and **count to 5 slowly**. You must wait until the count of 5 to make sure the full dose has been delivered (Figure M).

Hold

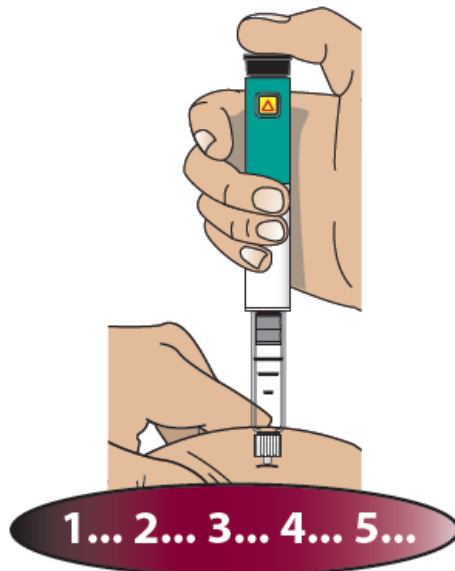


Figure M

D) Remove the needle from the skin (Figure N). When the needle is removed from skin, take your thumb off the black injection button.

Lift

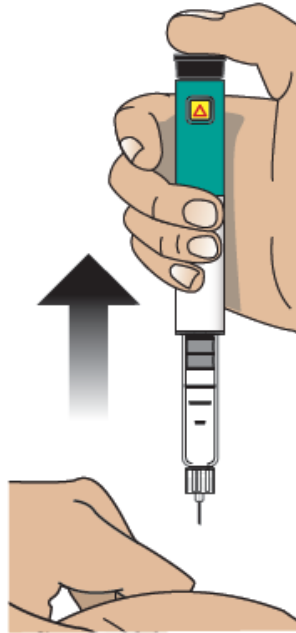


Figure N

Note: You may not see the plunger moving. To confirm that your dose has been delivered, see Step 8.

After Injection

Step 8: Confirm Dose

Check to make sure the black injection button is all the way down. The instruction window will show an arrow pointing towards the black button.

If the yellow shaft does not show, you have finished the injection steps the right way (Figure O).



Figure O

Important

You should **not** see any of the yellow shaft. If you do and have already injected the medicine, **do not** inject yourself a second time in the same day.

Instead, **you must reset the delivery device.**

Refer to **Troubleshooting Problem A** on the back page for more information.

Step 9: Remove Needle and Throw away (dispose)

A) Put the outer needle cover on the needle by scooping it up and pressing it on (Figure P and Figure Q). Do not try to put the needle cover back on with your hands.

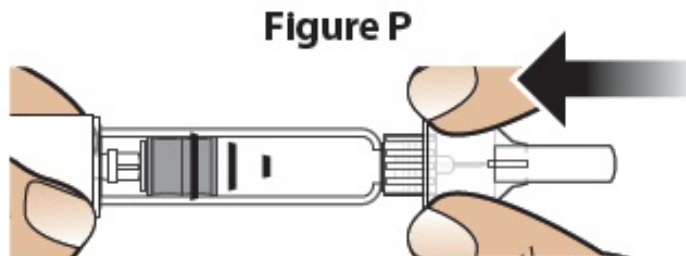
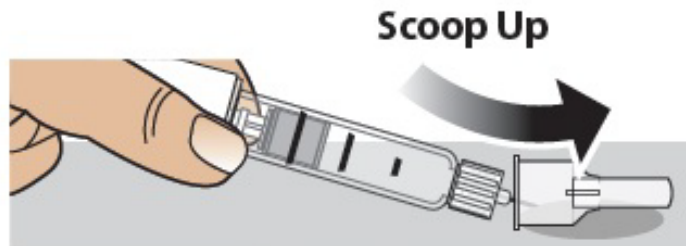


Figure P

Figure Q

B) Unscrew the covered needle all the way by giving the outer needle cover 3 to 5 left (counter-clockwise) turns (Figure R).



Figure R

Pull the needle straight off (Figure S).

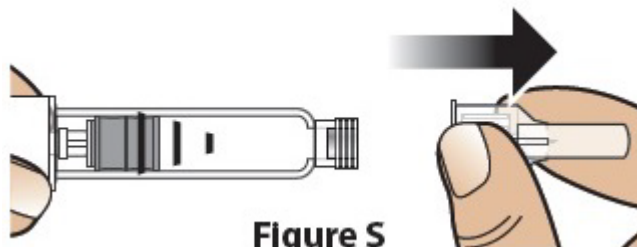


Figure S

C) Throw away (dispose of) the needle into a puncture resistant container according to local regulations (Figure T).

Do not reuse needle.

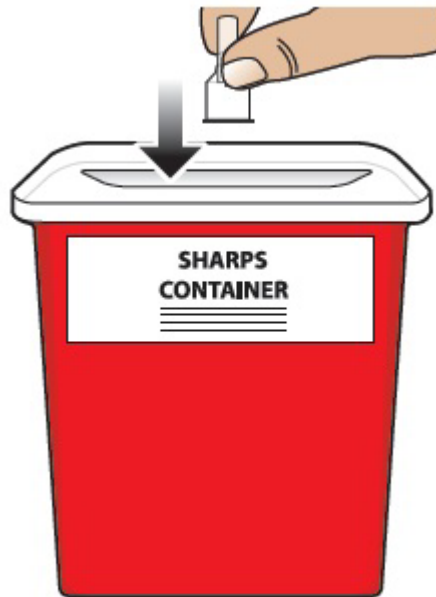


Figure T

Disposal Information

For more information about how to correctly throw away (dispose of) the needle refer to the Disposal Information section on the back page.

Step 10: Recap Delivery Device and Store

A) Push the white cap back on (Figure U).

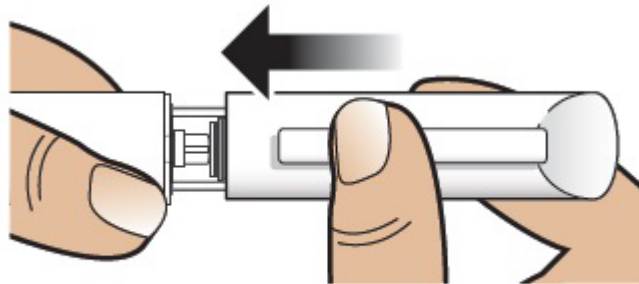


Figure U

B) Always store the delivery device in the refrigerator with the white cap on right after use (Figure V).

Do not store the delivery device with a needle attached.

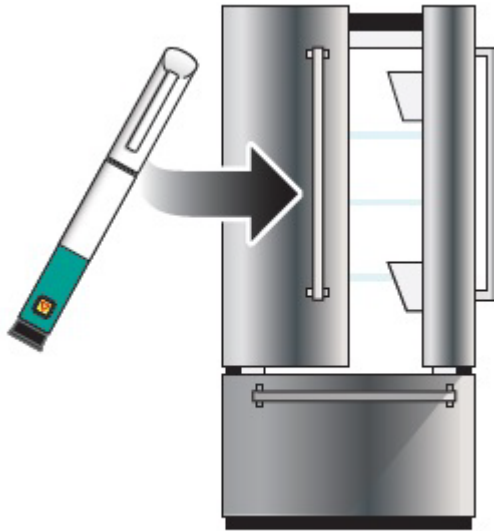



Figure V

Approved: 06/2024
Information

See Reverse Side for More

Troubleshooting

Problem	Solution
<p>A. The yellow shaft is still showing after I push in the black injection button. How do I reset my teriparatide injection delivery device?</p> 	<p>To reset the teriparatide injection delivery device, follow the steps below:</p> <ol style="list-style-type: none"> 1) If you have already injected, do not inject yourself a second time on the same day. 2) Remove the needle and throw away (dispose) in a sharps container according to local regulations. 3) Attach a new pen needle, pull off the outer needle cover and save it. 4) Pull off the inner needle cover and throw away. 5) Point the needle down into an empty container. Push in the black injection button until it stops. Hold it in and slowly count to five. You may see a small stream or drop of fluid. When you have finished, the black injection button should be all the way in. 6) If you still see the yellow shaft showing, contact Almaject, Inc. (see Contact Information below and to the right) or your healthcare provider. 7) Remove the needle and throw away (dispose) in a sharps container according to local regulations. Push the white cap back on and put your teriparatide injection delivery device in the refrigerator. <p>You can prevent this problem by always using a new pen needle for each injection, and by pushing the black injection button all the way in and slowly counting to five.</p>
<p>B. How can I tell if my teriparatide injection delivery device works?</p>	<p>The black injection button should be all the way in to show that the full dose of medicine has been injected from the teriparatide injection delivery device. Use a new pen needle every time you inject to be sure your teriparatide injection delivery device will work properly.</p>
<p>C. I see one air bubble in my teriparatide injection delivery device.</p>	<p>A small air bubble will not affect your dose and it will not harm you. You can continue to take your dose as usual.</p>
<p>D. I cannot get the needle off.</p>	<ol style="list-style-type: none"> 1) Put the outer needle cover on the needle. 2) Use the outer needle cover to unscrew the needle. 3) Unscrew the needle all the way by giving the outer needle cover 3 to 5 left (counter-clockwise) turns. 4) If you still cannot get the needle off, ask someone to help you.
<p>E. What should I do if I have difficulty pulling out the black injection button?</p>	<p>Change to a new teriparatide injection delivery device to take your dose as instructed by your healthcare provider.</p> <p>When the black injection button becomes hard to pull out, this means there is not enough medicine in your teriparatide injection delivery device for another dose. You may still see some medicine left in the cartridge.</p>

Disposal Information

Put your used needles in a FDA-cleared sharps disposal container right away after use.

Do not throw away (dispose of) loose needles in your household trash.

If you do not have a FDA-cleared sharps disposal container, you may use a container that is:

- made of a heavy-duty plastic,
- can be closed with a tight-fitting, puncture-resistant lid, without sharps being able to come out,
- upright and stable during use
- leak-resistant, and
- properly labeled to warn of hazardous waste inside the container

When your sharps disposal container is almost full, you will need to follow your community guidelines for the right way to dispose of your sharps disposal container. There may be state or local laws about how you should throw away used needles.

For more information about safe sharps disposal, and for specific information about sharps disposal in the state that you live in, go to the FDA's website at: <http://www.fda.gov/safesharpsdisposal>.

Do not throw away your used sharps disposal container in your household trash unless your community guidelines permit this.

Do not recycle your used sharps disposal container.

Always keep your used sharps disposal container out of the reach of children.

Cleaning and Storage

Cleaning Your Teriparatide Injection Delivery Device

- Wipe the outside of the teriparatide injection delivery device with a damp cloth.
- Do not place the teriparatide injection delivery device in water, or wash or clean it with any liquid.

Storing Your Teriparatide Injection Delivery Device

- After each use, refrigerate the teriparatide injection delivery device right away. Read and follow the instructions in the Medication Guide section "How should I store teriparatide injection?".
- **Do not** store the teriparatide injection delivery device with a needle attached. Doing this may cause air bubbles to form in the medicine cartridge.
- Store the teriparatide injection delivery device with the white cap on.
- **Do not** freeze teriparatide injection. If the teriparatide injection delivery device has been frozen, throw the device away and use a new teriparatide injection delivery device. If the teriparatide injection delivery device has been left out of the refrigerator, do not throw the delivery device away. Place the delivery device back in the refrigerator and call Almaject, Inc. (see Contact Information below).

Other Important Notes

- The teriparatide injection delivery device contains 28 days of medicine.
- **Do not** transfer teriparatide injection to a syringe. This may result in you taking the wrong dose of medicine.
- Read and follow the instructions in the User Manual so that you use your teriparatide injection delivery device the right way.
- Check the teriparatide injection delivery device label to make sure you have the right medicine and that it has not expired.
- **Do not** use the teriparatide injection delivery device if it looks damaged. Look at the teriparatide injection medicine in the cartridge. If the medicine is not clear and colorless, or if it has particles, do not use it. Call Almaject, Inc. if you notice any of these (see Contact Information below).
- Use a new needle for each injection.
- During injection, you may hear one or more clicks - this is normal.

- The teriparatide injection delivery device is not recommended for use by the blind or by those who have vision problems without help from a person trained in the proper use of the device.
- Keep your teriparatide injection delivery device and needles out of the reach of children.

Disposal of Pen Needles and Delivery Device

Disposal of Pen Needles and the Teriparatide Injection Delivery Device

- Before throwing away the teriparatide injection delivery device, be sure to remove the pen needle.
- Throw away your teriparatide injection delivery device and used needles as instructed by your healthcare provider, local or state laws, or institutional policies.

Dispose of the teriparatide injection delivery device 28 days after first use.

1st Use Date: _____ / _____ / _____

Throw Away After: _____ / _____ / _____

Contact Information

If you have questions, need help or for more information with your teriparatide injection delivery device, contact Almaject, Inc. at 1-866-770-3024 or your healthcare provider.

Distributed by: Almaject, Inc.
Morristown, NJ 07960 USA

Approved: 06/2024
IFU752-00