

## HIGHLIGHTS OF PRESCRIBING INFORMATION

These highlights do not include all the information needed to use KOSELUGO safely and effectively. See full prescribing information for KOSELUGO.

KOSELUGO® (selumetinib) capsules, for oral use

KOSELUGO® (selumetinib) oral granules

Initial U.S. Approval: 2020

### RECENT MAJOR CHANGES

Indications and Usage (1)	11/2025
Dosage and Administration (2.1)	11/2025
Warnings and Precautions (5.1, 5.2, 5.3, 5.4, 5.5, 5.7)	11/2025

### INDICATIONS AND USAGE

KOSELUGO is a kinase inhibitor indicated for the treatment of adult and pediatric patients 1 year of age and older with neurofibromatosis type 1 (NF1) who have symptomatic, inoperable plexiform neurofibromas (PN). (1)

### DOSAGE AND ADMINISTRATION

- KOSELUGO capsules:** The recommended dosage is 25 mg/m<sup>2</sup>, swallowed whole, taken orally twice daily with or without food (see Table 1). (2.1, 2.2)
- KOSELUGO oral granules:** The recommended dosage is equivalent to 25 mg/m<sup>2</sup>, sprinkled onto or mixed with soft food and taken orally twice daily (see Table 2). (2.1, 2.2)
- Moderate hepatic impairment (Child-Pugh B):** The recommended dosage is 20 mg/m<sup>2</sup> orally twice daily (see Tables 6 and 7). (2.2, 2.4)
- Severe hepatic impairment (Child-Pugh C):** The recommended dosage has not been established. (2.4, 8.6)
- Strong or Moderate CYP3A4 Inhibitors or Fluconazole:** If coadministration with strong or moderate CYP3A4 inhibitors or fluconazole cannot be avoided, reduce the dose of KOSELUGO (see Tables 8 and 9). (2.5)

### DOSAGE FORMS AND STRENGTHS

Capsules: 10 mg and 25 mg of selumetinib. (3)  
Oral Granules: 5 mg and 7.5 mg of selumetinib. (3)

### CONTRAINDICATIONS

None. (4)

### WARNINGS AND PRECAUTIONS

- Left Ventricular Dysfunction:** Assess ejection fraction prior to initiating treatment, every 3 months during the first year, then every 6 months thereafter and as clinically indicated. Withhold, reduce the dose, or permanently discontinue KOSELUGO based on severity of adverse reaction. (2.3, 5.1)
- Ocular Toxicity:** Conduct ophthalmic assessments prior to initiating KOSELUGO, at regular intervals during treatment and for new or worsening visual changes. Permanently discontinue KOSELUGO for retinal vein occlusion (RVO). Withhold KOSELUGO for retinal pigment

epithelial detachment (RPED), monitor with optical coherence tomography assessments until resolution, and resume at reduced dose. (2.3, 5.2)

- Gastrointestinal Toxicity:** Advise patients to start an anti-diarrheal agent immediately after the first episode of loose stool and to increase fluid intake. Withhold, reduce the dose, or permanently discontinue KOSELUGO based on severity of adverse reaction. (2.3, 5.3)
- Skin Toxicity:** Monitor for severe skin rashes. Withhold, reduce the dose, or permanently discontinue KOSELUGO based on severity of adverse reaction. (2.3, 5.4)
- Increased Creatine Phosphokinase (CPK):** Increased CPK and rhabdomyolysis can occur. Obtain serum CPK prior to initiating KOSELUGO, periodically during treatment, and as clinically indicated. If increased CPK occurs, evaluate for rhabdomyolysis or other causes. Withhold, reduce the dose, or permanently discontinue KOSELUGO based on severity of adverse reaction. (2.3, 5.5)
- Increased Vitamin E Levels and Increased Risk of Bleeding (KOSELUGO Capsules):** KOSELUGO capsules contain vitamin E and daily intake of vitamin E that exceeds the recommended or safe limits may increase the risk of bleeding. An increased risk of bleeding may occur in patients co-administered vitamin-K antagonists or anti-platelet agents. KOSELUGO oral granules do not contain vitamin E. (5.6)
- Embryo-Fetal Toxicity:** Can cause fetal harm. Advise patients of reproductive potential of the potential risk to a fetus and to use effective contraception (5.7, 8.1, 8.3).

### ADVERSE REACTIONS

Most common adverse reactions in pediatric patients (≥ 40%) are: vomiting, diarrhea, increased creatine phosphokinase, dry skin, paronychia, nausea, dermatitis acneiform, and pyrexia. (6.1)

Most common adverse reactions in adult patients (≥ 40%) are rash (all), dermatitis acneiform, and diarrhea. (6.1)

To report SUSPECTED ADVERSE REACTIONS, contact AstraZeneca 1-800-236-9933 or FDA at 1-800-FDA-1088 or [www.fda.gov/medwatch](http://www.fda.gov/medwatch).

### DRUG INTERACTIONS

- Strong or Moderate CYP3A4 Inhibitors or Fluconazole:** Avoid coadministration of strong or moderate CYP3A4 inhibitors or fluconazole with KOSELUGO. If coadministration cannot be avoided, reduce the dose of KOSELUGO. (2.5, 7.1)
- Strong or Moderate CYP3A4 Inducers:** Avoid concomitant use of strong and moderate CYP3A4 inducers. (7.1)

### USE IN SPECIFIC POPULATIONS

- Lactation:** Advise not to breastfeed. (8.2)

See 17 for PATIENT COUNSELING INFORMATION and FDA-approved patient labeling.

Revised: 11/2025

## FULL PRESCRIBING INFORMATION: CONTENTS\*

1	INDICATIONS AND USAGE	8	USE IN SPECIFIC POPULATIONS
2	DOSAGE AND ADMINISTRATION	8.1	Pregnancy
2.1	Recommended Dosage	8.2	Lactation
2.2	Administration	8.3	Females and Males of Reproductive Potential
2.3	Dosage Modifications for Adverse Reactions	8.4	Pediatric Use
2.4	Recommended Dosage in Patients with Hepatic Impairment	8.5	Geriatric Use
2.5	Dosage Modifications for Drug Interactions	8.6	Hepatic Impairment
3	DOSAGE FORMS AND STRENGTHS	10	OVERDOSAGE
4	CONTRAINDICATIONS	11	DESCRIPTION
5	WARNINGS AND PRECAUTIONS	12	CLINICAL PHARMACOLOGY
5.1	Left Ventricular Dysfunction	12.1	Mechanism of Action
5.2	Ocular Toxicity	12.2	Pharmacodynamics
5.3	Gastrointestinal Toxicity	12.3	Pharmacokinetics
5.4	Skin Toxicity	13	NONCLINICAL TOXICOLOGY
5.5	Increased Creatine Phosphokinase	13.1	Carcinogenesis, Mutagenesis, Impairment of Fertility
5.6	Increased Levels of Vitamin E and Increased Risk of Bleeding (KOSELUGO Capsules)	13.2	Animal Toxicology and/or Pharmacology
5.7	Embryo-Fetal Toxicity	14	CLINICAL STUDIES
6	ADVERSE REACTIONS	14.1	Neurofibromatosis Type 1 (NF1) with Inoperable Plexiform Neurofibromas (PN)
6.1	Clinical Trials Experience	16	HOW SUPPLIED/STORAGE AND HANDLING
7	DRUG INTERACTIONS	17	PATIENT COUNSELING INFORMATION
7.1	Effect of Other Drugs on KOSELUGO		

## FULL PRESCRIBING INFORMATION

### 1 INDICATIONS AND USAGE

KOSELUGO is indicated for the treatment of adult and pediatric patients 1 year of age and older with neurofibromatosis type 1 (NF1) who have symptomatic, inoperable plexiform neurofibromas (PN) [see [Dosage and Administration \(2\)](#)].

### 2 DOSAGE AND ADMINISTRATION

#### 2.1 Recommended Dosage

The recommended dosage of KOSELUGO capsules (see [Table 1](#)) and KOSELUGO oral granules (see [Table 2](#)) for adult and pediatric patients 1 year of age and older, based on body surface area, is 25 mg/m<sup>2</sup> orally twice daily, until disease progression or unacceptable toxicity [see [Dosage and Administration \(2.2\)](#)].

**Table 1 Recommended Dosage: KOSELUGO Capsules**

Body Surface Area*	KOSELUGO Capsules
0.55 – 0.69 m <sup>2</sup>	20 mg in the morning and 10 mg in the evening
0.70 – 0.89 m <sup>2</sup>	20 mg twice daily
0.90 – 1.09 m <sup>2</sup>	25 mg twice daily
1.10 – 1.29 m <sup>2</sup>	30 mg twice daily
1.30 – 1.49 m <sup>2</sup>	35 mg twice daily
1.50 – 1.69 m <sup>2</sup>	40 mg twice daily
1.70 – 1.89 m <sup>2</sup>	45 mg twice daily
≥ 1.90 m <sup>2</sup>	50 mg twice daily

\* The recommended dosage of KOSELUGO capsules for patients with a BSA less than 0.55 m<sup>2</sup> has not been established.

**Table 2 Recommended Dosage: KOSELUGO Oral Granules**

Body Surface Area*	KOSELUGO Oral Granules
0.40 – 0.59 m <sup>2</sup>	12.5 mg twice daily
0.60 – 0.69 m <sup>2</sup>	15 mg twice daily
0.70 – 0.89 m <sup>2</sup>	20 mg twice daily
0.90 – 1.09 m <sup>2</sup>	25 mg twice daily
1.10 – 1.29 m <sup>2</sup>	30 mg twice daily
1.30 – 1.49 m <sup>2</sup>	35 mg twice daily
1.50 – 1.69 m <sup>2</sup>	40 mg twice daily
1.70 – 1.89 m <sup>2</sup>	45 mg twice daily
≥ 1.90 m <sup>2</sup>	50 mg twice daily

\* The recommended dosage of KOSELUGO oral granules for patients with a BSA less than 0.40 m<sup>2</sup> has not been established.

#### 2.2 Administration

KOSELUGO is available in two dosage forms: KOSELUGO capsules and KOSELUGO oral granules. Prescribe KOSELUGO oral granules for patients who have difficulty swallowing whole capsules.

##### *KOSELUGO Capsules*

- Administer KOSELUGO capsules to patients who can swallow a whole capsule.
- Swallow KOSELUGO capsules whole. Do not open, chew or crush KOSELUGO capsules.
- KOSELUGO capsules may be administered with or without food.

## KOSELUGO Oral Granules

- Administer KOSELUGO oral granules to patients who have difficulty swallowing a whole capsule.
- Sprinkle KOSELUGO oral granules on or mix with a small amount (about 1 to 3 teaspoons) of smooth yogurt, or fruit puree containing the following fruits: apple, banana, pear, or strawberry and consume within 30 minutes of preparation. If not consumed within 30 minutes of preparation, discard and prepare a new dose. If a dose has been partially consumed within 30 minutes of preparation, discard the remainder of the dose and do not prepare a new dose, aim to complete dosing within 30 minutes next time.
- The KOSELUGO oral granules should be free-flowing. Do NOT use if the oral granules are clumped or stuck inside the capsule shell. Instruct the patient or caregiver to contact their pharmacy if this happens.
- Discard the empty capsule shells after use.
- Do NOT swallow, chew, or dissolve the capsule shells of KOSELUGO oral granules.
- Do NOT chew or crush the KOSELUGO oral granules. Do NOT add oral granules to liquids.
- Do NOT mix KOSELUGO oral granules in grapefruit or any juice, fruit puree or jam containing Seville orange.

### Missed Dose

If a dose of KOSELUGO capsules or KOSELUGO oral granules is missed, make up that dose unless the next dose is due within 6 hours.

### Vomiting

If vomiting occurs after taking a dose of KOSELUGO capsules or KOSELUGO oral granules, do not take an additional dose. Take the next dose at the regular scheduled time.

## 2.3 Dosage Modifications for Adverse Reactions

The recommended dose reductions for adverse reactions for KOSELUGO capsules and KOSELUGO oral granules are provided in Tables 3 and 4, respectively.

**Table 3 Recommended Dose Reductions for KOSELUGO Capsules for Adverse Reactions**

Body Surface Area	First Dose Reduction (mg/dose)		Second Dose Reduction (mg/dose)	
	Morning	Evening	Morning	Evening
0.55 – 0.69 m <sup>2</sup>	10	10	10 mg once daily	
0.70 – 0.89 m <sup>2</sup>	20	10	10	10
0.90 – 1.09 m <sup>2</sup>	25	10	10	10
1.10 – 1.29 m <sup>2</sup>	25	20	20	10
1.30 – 1.49 m <sup>2</sup>	25	25	25	10
1.50 – 1.69 m <sup>2</sup>	30	30	25	20
1.70 – 1.89 m <sup>2</sup>	35	30	25	20
≥ 1.90 m <sup>2</sup>	35	35	25	25

Permanently discontinue KOSELUGO capsules in patients unable to tolerate two dose reductions.

**Table 4 Recommended Dose Reductions for KOSELUGO Oral Granules for Adverse Reactions**

Body Surface Area	First Dose Reduction (mg/dose)		Second Dose Reduction (mg/dose)	
	Morning	Evening	Morning	Evening
0.40 – 0.59 m <sup>2</sup>	10	10	7.5	7.5
0.60 – 0.69 m <sup>2</sup>	12.5	12.5	10	10
0.70 – 0.89 m <sup>2</sup>	15	15	12.5	12.5
0.90 – 1.09 m <sup>2</sup>	20	20	15	15
1.10 – 1.29 m <sup>2</sup>	22.5	22.5	15	15
1.30 – 1.49 m <sup>2</sup>	25	25	25	10
1.50 – 1.69 m <sup>2</sup>	30	30	25	20
1.70 – 1.89 m <sup>2</sup>	35	30	25	20
≥ 1.90 m <sup>2</sup>	35	35	25	25

Permanently discontinue KOSELUGO oral granules in patients unable to tolerate two dose reductions.

The recommended dosage modifications of KOSELUGO capsules and KOSELUGO oral granules for adverse reactions are provided in Table 5.

**Table 5 Recommended Dosage Modifications for Adverse Reactions**

Severity of Adverse Reaction*	Recommended Dosage Modifications for KOSELUGO capsules and KOSELUGO oral granules
<i>Left Ventricular Dysfunction [see <a href="#">Warnings and Precautions (5.1)</a>]</i>	
<ul style="list-style-type: none"> <li>Asymptomatic decrease in left ventricular ejection fraction (LVEF) of 10% or greater from baseline and less than lower level of normal</li> </ul>	Withhold until resolution. Resume at reduced dose.
<ul style="list-style-type: none"> <li>Symptomatic decreased LVEF</li> <li>Grade 3 or 4 decreased LVEF</li> </ul>	Permanently discontinue.
<i>Ocular Toxicity [see <a href="#">Warnings and Precautions (5.2)</a>]</i>	
<ul style="list-style-type: none"> <li>Retinal Pigment Epithelial Detachment (RPED)</li> </ul>	Withhold until resolution. Resume at reduced dose.
<ul style="list-style-type: none"> <li>Retinal vein occlusion (RVO)</li> </ul>	Permanently discontinue.
<i>Gastrointestinal Toxicity [see <a href="#">Warnings and Precautions (5.3)</a>]</i>	
<ul style="list-style-type: none"> <li>Grade 3 Diarrhea</li> </ul>	Withhold until improved to Grade 0 or 1. Resume at same dose. Permanently discontinue if no improvement within 3 days.
<ul style="list-style-type: none"> <li>Grade 4 Diarrhea</li> </ul>	Permanently discontinue.
<ul style="list-style-type: none"> <li>Grade 3 or 4 Colitis</li> </ul>	Permanently discontinue.
<i>Skin Toxicity [see <a href="#">Warnings and Precautions (5.4)</a>]</i>	
<ul style="list-style-type: none"> <li>Grade 3 or 4</li> </ul>	Withhold until improvement. Resume at reduced dose.

Severity of Adverse Reaction*	Recommended Dosage Modifications for KOSELUGO capsules and KOSELUGO oral granules
<i>Increased Creatine Phosphokinase (CPK) [see <a href="#">Warnings and Precautions (5.5)</a>]</i>	
<ul style="list-style-type: none"> <li>• Grade 4 Increased CPK</li> <li>• Any Increased CPK and myalgia</li> </ul>	Withhold until improved to Grade 0 or 1. Resume at reduced dose. Permanently discontinue if no improvement within 3 weeks.
<ul style="list-style-type: none"> <li>• Rhabdomyolysis</li> </ul>	Permanently discontinue.
<i>Other Adverse Reactions [see <a href="#">Adverse Reactions (6.1)</a>]</i>	
<ul style="list-style-type: none"> <li>• Intolerable Grade 2</li> <li>• Grade 3</li> </ul>	Withhold KOSELUGO until improved to Grade 0 or 1. Resume at reduced dose.
<ul style="list-style-type: none"> <li>• Grade 4</li> </ul>	Withhold KOSELUGO until improved to Grade 0 or 1. Resume at reduced dose. Consider discontinuation.

\* Per National Cancer Institute Common Terminology Criteria for Adverse Events version 4.03.

## 2.4 Recommended Dosage in Patients with Hepatic Impairment

### *Severe Hepatic Impairment*

The recommended dosage of KOSELUGO for use in patients with severe hepatic impairment (Child-Pugh C) has not been established [see [Use in Specific Populations \(8.6\)](#)].

### *Moderate Hepatic Impairment*

The recommended dosage of KOSELUGO capsules (see [Table 6](#)) and KOSELUGO oral granules (see [Table 7](#)) for pediatric patients 1 year of age or older with moderate hepatic impairment (Child-Pugh B) is based on body surface area; 20 mg/m<sup>2</sup> orally twice daily, until disease progression or unacceptable toxicity [see [Dosage and Administration \(2.2\)](#)].

**Table 6 Recommended Dosage of KOSELUGO Capsules for Moderate Hepatic Impairment**

Body Surface Area	Moderate Hepatic Impairment (Child-Pugh B) (mg/dose)	
	Morning	Evening
0.55 – 0.69 m <sup>2</sup>	10	10
0.70 – 0.89 m <sup>2</sup>	20	10
0.90 – 1.09 m <sup>2</sup>	20	20
1.10 – 1.29 m <sup>2</sup>	25	25
1.30 – 1.49 m <sup>2</sup>	30	25
1.50 – 1.69 m <sup>2</sup>	35	30
1.70 – 1.89 m <sup>2</sup>	35	35
≥ 1.90 m <sup>2</sup>	40	40

**Table 7 Recommended Dosage of KOSELUGO Oral Granules for Moderate Hepatic Impairment**

Body Surface Area	Moderate Hepatic Impairment (Child-Pugh B) (mg/dose)	
	Morning	Evening
0.40 – 0.59 m <sup>2</sup>	10	10
0.60 – 0.69 m <sup>2</sup>	12.5	12.5
0.70 – 0.89 m <sup>2</sup>	15	15
0.90 – 1.09 m <sup>2</sup>	20	20
1.10 – 1.29 m <sup>2</sup>	25	25
1.30 – 1.49 m <sup>2</sup>	30	25
1.50 – 1.69 m <sup>2</sup>	35	30
1.70 – 1.89 m <sup>2</sup>	35	35
≥ 1.90 m <sup>2</sup>	40	40

## 2.5 Dosage Modifications for Drug Interactions

### Strong or Moderate CYP3A4 Inhibitors or Fluconazole

Avoid coadministration of strong or moderate CYP3A4 inhibitors or fluconazole with KOSELUGO. If coadministration with strong or moderate CYP3A4 inhibitors or fluconazole cannot be avoided, reduce the KOSELUGO dosage as recommended in Table 8 (KOSELUGO capsules) and Table 9 (KOSELUGO oral granules). After discontinuation of the strong or moderate CYP3A4 inhibitor or fluconazole for 3 elimination half-lives, resume the KOSELUGO dose that was taken prior to initiating the inhibitor or fluconazole [see [Drug Interactions \(7.1\)](#)].

**Table 8 Recommended Dosage of KOSELUGO Capsules for Coadministration with Strong or Moderate CYP3A4 Inhibitors or Fluconazole**

Body Surface Area	If the current dosage is 25 mg/m <sup>2</sup> twice daily, reduce to 20 mg/m <sup>2</sup> twice daily (mg/dose)		If the current dosage is 20 mg/m <sup>2</sup> twice daily, reduce to 15 mg/m <sup>2</sup> twice daily (mg/dose)	
	Morning	Evening	Morning	Evening
0.55 – 0.69 m <sup>2</sup>	10	10	10 mg once daily	
0.70 – 0.89 m <sup>2</sup>	20	10	10	10
0.90 – 1.09 m <sup>2</sup>	20	20	20	10
1.10 – 1.29 m <sup>2</sup>	25	25	25	10
1.30 – 1.49 m <sup>2</sup>	30	25	25	20
1.50 – 1.69 m <sup>2</sup>	35	30	25	25
1.70 – 1.89 m <sup>2</sup>	35	35	30	25
≥ 1.90 m <sup>2</sup>	40	40	30	30

**Table 9 Recommended Dosage of KOSELUGO Oral Granules for Coadministration with Strong or Moderate CYP3A4 Inhibitors or Fluconazole**

Body Surface Area	If the current dosage is 25 mg/m <sup>2</sup> twice daily, reduce to 20 mg/m <sup>2</sup> twice daily (mg/dose)		If the current dosage is 20 mg/m <sup>2</sup> twice daily, reduce to 15 mg/m <sup>2</sup> twice daily (mg/dose)	
	Morning	Evening	Morning	Evening
0.40 – 0.59 m <sup>2</sup>	10	10	7.5	7.5
0.60 – 0.69 m <sup>2</sup>	12.5	12.5	10	7.5
0.70 – 0.89 m <sup>2</sup>	15	15	10	10
0.90 – 1.09 m <sup>2</sup>	20	20	15	15
1.10 – 1.29 m <sup>2</sup>	25	25	25	10
1.30 – 1.49 m <sup>2</sup>	30	25	25	20
1.50 – 1.69 m <sup>2</sup>	35	30	25	25
1.70 – 1.89 m <sup>2</sup>	35	35	30	25
≥ 1.90 m <sup>2</sup>	40	40	30	30

### 3 DOSAGE FORMS AND STRENGTHS

Capsules:

- 10 mg selumetinib: white to off-white, opaque, hard capsule sealed with a clear band and marked with “SEL 10” in black ink.
- 25 mg selumetinib: blue, opaque, hard capsule sealed with a clear band and marked with “SEL 25” in black ink.

Oral Granules:

- 5 mg selumetinib: off-white to light-yellow free-flowing oral granules contained within capsules. The capsules have a yellow cap and white body. The cap is printed with “sel 5” in black ink, and body is printed with a sprinkle capsule image indicating opening.
- 7.5 mg selumetinib: off-white to light-yellow free-flowing oral granules contained within capsules. The capsules have a pink cap and white body. The cap is printed with “sel 7.5” in black ink, and body is printed with a sprinkle capsule image indicating opening.

### 4 CONTRAINDICATIONS

None.

### 5 WARNINGS AND PRECAUTIONS

#### 5.1 Left Ventricular Dysfunction

KOSELUGO can cause cardiomyopathy, defined as a decrease in left ventricular ejection fraction (LVEF)  $\geq$  10% below baseline. KOSELUGO has not been studied in patients with a history of clinically significant cardiac disease or LVEF less than 55% prior to treatment.

##### *Pediatric Patients*

In the NF1 PN pediatric safety pool (N = 134) [see [Adverse Reactions \(6.1\)](#)], Grade 2 LVEF decrease [Grade 2 LVEF decrease (40% to 50%; 10 to 19% drop from baseline)], based on reported adverse reactions, occurred in 17% of evaluable patients. Decreased LVEF of  $\geq$  20% occurred in 0.7% of patients and resulted in dose interruption and dose

reduction. Decreased LVEF resolved in 75% of these patients. The median time to first occurrence of LVEF decrease was approximately 12 months (median duration approximately 3 months).

#### *Adult Patients*

In the KOMET adult NF1 PN study (N = 71) [see [Adverse Reactions \(6.1\)](#)], Grade 2 LVEF decrease [Grade 2 LVEF decrease (40% to 50%; 10 to 19% drop from baseline)], based on echocardiogram results, occurred in 14% of evaluable patients. Decreased LVEF resulted in dose interruption in 1.4% of patients. The median time to first occurrence of LVEF decrease was approximately 4 months (median duration approximately 4 months).

Assess ejection fraction by echocardiogram prior to initiating treatment, every 3 months during the first year of treatment, every 6 months thereafter, and as clinically indicated. Withhold, reduce dose, or permanently discontinue KOSELUGO based on severity of adverse reaction [see [Dosage and Administration \(2.3\)](#)]. In patients who interrupt KOSELUGO for decreased LVEF, obtain an echocardiogram or a cardiac MRI every 3 to 6 weeks until resolution. Upon resolution of decreased LVEF to greater than or equal to the institutional LLN, obtain an echocardiogram or a cardiac MRI every 2 to 3 months or as directed by the cardiologist.

## **5.2 Ocular Toxicity**

KOSELUGO can cause ocular toxicity, including retinal vein occlusion (RVO), retinal pigment epithelial detachment (RPED), and blurred vision.

#### *Pediatric Patients*

In the NF1 PN pediatric safety pool (N = 134) [see [Adverse Reactions \(6.1\)](#)], blurred vision, photophobia, cataracts, ocular hypertension, and retinal tear occurred in 13% of pediatric patients receiving KOSELUGO. Blurred vision resulted in dose interruption in 1.5% of patients. Ocular toxicity resolved in 76% of these patients. RPED occurred in the pediatric population during treatment with single agent KOSELUGO and resulted in permanent discontinuation.

#### *Adult Patients*

In the KOMET adult NF1 PN study (N = 71) [see [Adverse Reactions \(6.1\)](#)], blurred vision and vitreous floaters occurred in 6% of patients receiving KOSELUGO. Serious ocular toxicities including RVO and RPED, occurred in an unapproved population of adult patients with multiple tumor types who received KOSELUGO as a single agent or in combination with other anti-cancer agents.

Conduct comprehensive ophthalmic assessments prior to initiating KOSELUGO, at regular intervals during treatment, and for new or worsening visual changes. Permanently discontinue KOSELUGO in patients with RVO. Withhold KOSELUGO in patients with RPED, follow up with optical coherence tomography assessments every 3 weeks until resolution, and resume KOSELUGO at a reduced dose. For other ocular toxicities, withhold, reduce dose, or permanently discontinue KOSELUGO based on severity of the adverse reaction [see [Dosage and Administration \(2.3\)](#)].

## **5.3 Gastrointestinal Toxicity**

KOSELUGO can cause gastrointestinal toxicities, including diarrhea and colitis.

#### *Pediatric Patients*

In the NF1 PN pediatric safety pool (N = 134) [see [Adverse Reactions \(6.1\)](#)], diarrhea occurred in 59% of patients who received KOSELUGO, including Grade 3 in 10% of patients. Diarrhea resulting in permanent discontinuation occurred in 0.7% of patients. Diarrhea resulting in dose interruption occurred in 10% of patients. The median time to first onset of diarrhea was approximately 2 months and the median duration was 5 days. Colitis occurred in an unapproved population of pediatric patients with multiple tumor types who received KOSELUGO as a single agent.

#### *Adult Patients*

In the KOMET adult NF1 PN study (N = 71) [see [Adverse Reactions \(6.1\)](#)], diarrhea occurred in 42% patients who received KOSELUGO. Diarrhea resulting in dose interruption occurred in 1.4% of patients. The median time to first onset of diarrhea was approximately 1 month and the median duration was 7 days. Serious gastrointestinal toxicities, including

perforation, colitis, ileus, and intestinal obstruction, occurred in an unapproved population of adult patients with multiple tumor types who received KOSELUGO as a single agent or in combination with other anti-cancer agents.

Advise patients to start an anti-diarrheal agent (e.g., loperamide) immediately after the first episode of unformed, loose stool and to increase fluid intake during diarrhea episodes. Withhold, reduce dose, or permanently discontinue KOSELUGO based on severity of adverse reaction [see [Dosage and Administration \(2.3\)](#)].

## 5.4 Skin Toxicity

KOSELUGO can cause severe rashes, including dermatitis acneiform.

### *Pediatric Patients*

In the NF1 PN pediatric safety pool (N = 134) [see [Adverse Reactions \(6.1\)](#)], rash occurred in 68% of patients who received KOSELUGO. The most frequent rashes included dermatitis acneiform (47%) and maculopapular rash (31%). Pruritus (30%), alopecia (26%), and eczema (24%) occurred in patients who received KOSELUGO. Grade 3 rash occurred in 5% of patients. Rash resulted in dose interruption in 8% of patients and dose reduction in 3.7% of patients.

### *Adult Patients*

In the KOMET adult NF1 PN study (N = 71) [see [Adverse Reactions \(6.1\)](#)], rash occurred in 85% of patients who received KOSELUGO. The most frequent rash included dermatitis acneiform (66%). Alopecia (18%) and pruritus (10%) occurred in patients who received KOSELUGO. Grade 3 rash occurred in 4.2% of patients. Rash resulted in dose interruption in 2.8% of patients, dose reduction in 2.8% of patients, and permanent discontinuation in 2.8% of patients. Other skin toxicities, including severe palmar-plantar erythrodysesthesia syndrome, occurred in an unapproved population of adult patients with multiple tumor types who received KOSELUGO as a single agent or in combination with other anti-cancer agents.

Monitor for severe skin rashes. Withhold, reduce dose, or permanently discontinue KOSELUGO based on severity of adverse reaction [see [Dosage and Administration \(2.3\)](#)].

## 5.5 Increased Creatine Phosphokinase

KOSELUGO can cause increased creatine phosphokinase (CPK), myalgia, and rhabdomyolysis.

### *Pediatric Patients*

In the NF1 PN pediatric safety pool (N = 134) [see [Adverse Reactions \(6.1\)](#)], increased creatine phosphokinase (CPK), based on laboratory data, occurred in 73% of patients who received KOSELUGO, including Grade 3 or 4 in 8% of patients. Increased CPK resulted in dose interruption and dose reduction in 4% of patients. Increased CPK concurrent with myalgia occurred in 5% of patients, including one patient who permanently discontinued KOSELUGO for myalgia.

### *Adults*

In the KOMET adult NF1 PN study (N = 71) [see [Adverse Reactions \(6.1\)](#)], increased creatine phosphokinase (CPK), based on laboratory data, occurred in 70% of patients who received KOSELUGO, including Grade 3 or 4 in 7% of patients. Increased CPK resulted in dose interruption and dose reduction in 4.2% and 2.8% of patients, respectively. Increased CPK concurrent with myalgia occurred in 1.4% of patients. Rhabdomyolysis occurred in an unapproved adult population who received KOSELUGO as a single agent.

Obtain serum CPK prior to initiating KOSELUGO, periodically during treatment, and as clinically indicated. If increased CPK occurs, evaluate patients for rhabdomyolysis or other causes. Withhold, reduce dose, or permanently discontinue KOSELUGO based on severity of adverse reaction [see [Dosage and Administration \(2.3\)](#)].

## 5.6 Increased Levels of Vitamin E and Increased Risk of Bleeding (KOSELUGO Capsules)

KOSELUGO capsules can cause increased levels of vitamin E and increased risk of bleeding.

KOSELUGO capsules contain vitamin E (10 mg capsules contain 32 mg vitamin E as the excipient, D-alpha-tocopheryl polyethylene glycol 1000 succinate (TPGS); while KOSELUGO 25 mg capsules contain 36 mg vitamin E as TPGS).

Vitamin E can inhibit platelet aggregation and antagonize vitamin K-dependent clotting factors. Daily vitamin E intake that exceeds the recommended or safe limits may increase the risk of bleeding. Supplemental vitamin E is not recommended if daily vitamin E intake (including the amount of vitamin E in KOSELUGO and supplement) will exceed the recommended or safe limits.

An increased risk of bleeding in patients may occur in patients who are co-administered vitamin K antagonists or anti-platelet antagonists with KOSELUGO capsules. Monitor for bleeding in these patients. Increase international normalized ratio (INR) monitoring, as appropriate, in patients taking a vitamin K antagonist. Perform anticoagulant assessments, including INR or prothrombin time, more frequently and adjust the dose of vitamin K antagonists or anti-platelet agents as appropriate.

KOSELUGO oral granules do not contain vitamin E [see [Drug Interactions \(7.1\)](#)].

## 5.7 Embryo-Fetal Toxicity

Based on findings from clinical trials, animal studies and its mechanism of action, KOSELUGO can cause fetal harm when administered to a pregnant woman. In KOMET, a first trimester spontaneous abortion was reported in a patient receiving KOSELUGO.

In animal reproduction studies, administration of selumetinib to mice during organogenesis caused reduced fetal weight, adverse structural defects, and effects on embryo-fetal survival at approximate exposures > 5-times the human exposure at the clinical dose of 25 mg/m<sup>2</sup> twice daily. Advise pregnant women of the potential risk to a fetus. Advise females of reproductive potential to use effective contraception during treatment with KOSELUGO and for 1 week after the last dose. Advise males with female partners of reproductive potential to use effective contraception during treatment with KOSELUGO and for 1 week after the last dose [see [Use in Specific Populations \(8.1, 8.3\)](#)].

## 6 ADVERSE REACTIONS

The following clinically significant adverse reactions are described elsewhere in the labeling:

- Left Ventricular Dysfunction [see [Warnings and Precautions \(5.1\)](#)]
- Ocular Toxicity [see [Warnings and Precautions \(5.2\)](#)]
- Gastrointestinal Toxicity [see [Warnings and Precautions \(5.3\)](#)]
- Skin Toxicity [see [Warnings and Precautions \(5.4\)](#)]
- Increased Creatine Phosphokinase [see [Warnings and Precautions \(5.5\)](#)]

### 6.1 Clinical Trials Experience

Because clinical trials are conducted under widely varying conditions, adverse reaction rates observed in the clinical trials of a drug cannot be directly compared to rates in the clinical trials of another drug and may not reflect the rates observed in practice.

The NF1 PN pediatric safety pool described in the WARNINGS AND PRECAUTIONS reflects exposure to KOSELUGO at the recommended dosage in 134 pediatric patients in SPRINKLE (N = 36) (NCT05309668), SPRINT Phase I (N = 24) (NCT01362803), SPRINT Phase II Stratum 1 (N = 50) [see [Clinical Studies \(14.1\)](#)], and Phase I Food Effect Study (N = 24) (NCT05101148). Among pediatric patients, the duration of KOSELUGO exposure was 12 months or longer (80%), more than 2 years (44%), or more than 3 years (37%). The most common adverse reactions in pediatric patients (≥ 40%) are vomiting, diarrhea, increased creatine phosphokinase, dry skin, paronychia, nausea, dermatitis acneiform, and pyrexia.

In the KOMET adult NF1 PN study, 71 adult patients received KOSELUGO at the recommended dosage [see [Clinical Studies \(14.1\)](#)]. Among adult patients, the duration of KOSELUGO exposure in the randomized period was 6 months or longer (92%), and 11 months or longer (66%). The most common adverse reactions in adult patients (≥ 40%) are rash (all), dermatitis acneiform, and diarrhea.

Neurofibromatosis Type 1 (NF1) with Inoperable Plexiform Neurofibromas (PN)

*Pediatrics 2-18 years of Age (SPRINT Phase II Stratum 1)*

The safety of KOSELUGO was evaluated in SPRINT Phase II Stratum 1 [see [Clinical Studies \(14.1\)](#)]. Eligible patients were 2-18 years of age with neurofibromatosis type 1 (NF1) who had inoperable plexiform neurofibromas (PN) that was causing significant morbidity. Patients were excluded for abnormal LVEF, uncontrolled hypertension (blood pressure  $\geq$  the 95<sup>th</sup> percentile for age, height, and sex), any current or past history of RVO or RPED, intraocular pressure  $>$  21 mmHg (or upper limit of normal adjusted by age), uncontrolled glaucoma, and inability to swallow whole capsules. Patients received KOSELUGO 25 mg/m<sup>2</sup> orally twice daily (N = 50). Among these patients, 88% were exposed for 12 months or longer and 66% were exposed for greater than 2 years.

Serious adverse reactions occurred in 24% of patients who received KOSELUGO. Serious adverse reactions that occurred in 2 or more patients were anemia, hypoxia and diarrhea.

Permanent discontinuation due to an adverse reaction occurred in 12% of patients who received KOSELUGO. Adverse reactions resulting in permanent discontinuation of KOSELUGO included increased blood creatinine, increased weight, diarrhea, paronychia, malignant peripheral nerve sheath tumor, acute kidney injury, and skin ulcer.

Dosage interruptions and dose reductions due to adverse reactions occurred in 80% and 24% of patients who received KOSELUGO, respectively. Adverse reactions requiring a dosage interruption or reduction in  $\geq$  5% of patients were vomiting, paronychia, diarrhea, nausea, abdominal pain, rash, skin infection, influenza-like illness, pyrexia and weight gain.

The most common adverse reactions ( $\geq$  40%) were vomiting, rash (all), abdominal pain, diarrhea, nausea, dry skin, fatigue, musculoskeletal pain, pyrexia, acneiform rash, stomatitis, headache, paronychia, and pruritus.

Table 10 presents the adverse reactions in SPRINT Phase II Stratum 1.

**Table 10 Adverse Reactions ( $\geq$  20%) in Patients Who Received KOSELUGO in SPRINT Phase II Stratum 1**

Adverse Reaction	KOSELUGO (N = 50)	
	All Grades (%)	Grade $\geq$ 3 (%) <sup>*</sup>
<b>Gastrointestinal</b>		
Vomiting	82	6
Abdominal pain <sup>1</sup>	76	0
Diarrhea	70	16
Nausea	66	2
Stomatitis <sup>2</sup>	50	0
Constipation	34	0
<b>Skin and Subcutaneous Tissue</b>		
Rash (all) <sup>3</sup>	80	6
Dry skin	60	0
Rash acneiform <sup>4</sup>	50	4
Paronychia <sup>5</sup>	48	6
Pruritus	46	0
Dermatitis <sup>6</sup>	36	4
Hair changes <sup>7</sup>	32	0
<b>Musculoskeletal and Connective Tissue</b>		
Musculoskeletal pain <sup>8</sup>	58	0
<b>General</b>		
Fatigue <sup>9</sup>	56	0
Pyrexia	56	8

Adverse Reaction	KOSELUGO (N = 50)	
	All Grades (%)	Grade ≥ 3 (%)*
Edema <sup>10</sup>	20	0
<b>Nervous System</b>		
Headache	48	2
<b>Respiratory, Thoracic and Mediastinal</b>		
Epistaxis	28	0
<b>Renal and Urinary System</b>		
Hematuria	22	2
Proteinuria	22	0
<b>Metabolism and Nutrition</b>		
Decreased appetite	22	0
<b>Cardiac System</b>		
Decreased ejection fraction	22	0
Sinus tachycardia	20	0
<b>Infections</b>		
Skin infection <sup>11</sup>	20	2

\* All events were Grade 3.

<sup>1</sup> Abdominal pain includes abdominal pain; abdominal pain upper.

<sup>2</sup> Stomatitis includes stomatitis; mouth ulceration.

<sup>3</sup> Rash (all) includes dermatitis acneiform; rash maculo-papular; erythema; rash pustular; rash; urticaria; exfoliative rash; rash pruritic; rash erythematous.

<sup>4</sup> Rash (acneiform) includes dermatitis acneiform.

<sup>5</sup> Paronychia includes paronychia; nail infection.

<sup>6</sup> Dermatitis includes dermatitis; dermatitis atopic; dermatitis diaper; eczema; seborrheic dermatitis; skin irritation.

<sup>7</sup> Hair changes include alopecia; hair color change.

<sup>8</sup> Musculoskeletal pain includes pain in extremity; back pain; neck pain; musculoskeletal pain.

<sup>9</sup> Fatigue includes fatigue; malaise.

<sup>10</sup> Edema includes peripheral swelling; edema; localized edema.

<sup>11</sup> Skin infection includes skin infection; abscess; cellulitis; impetigo; staphylococcal skin infection.

Clinically relevant adverse reactions that occurred < 20% of patients include:

- *Eye*: visual impairment.
- *Gastrointestinal Disorders*: dry mouth.
- *General Disorders*: facial edema, including periorbital edema and face edema.
- *Metabolism and Nutrition*: increased weight.
- *Renal and Urinary System*: acute kidney injury.
- *Respiratory, Thoracic & Mediastinal*: dyspnea, including exertional dyspnea and dyspnea at rest.
- *Vascular*: hypertension.

Table 11 presents the laboratory abnormalities in SPRINT Phase II Stratum 1.

**Table 11 Select Laboratory Abnormalities (≥ 15%) Worsening from Baseline in Patients Who Received KOSELUGO in SPRINT Phase II Stratum 1**

Laboratory Abnormality	KOSELUGO	
	All Grades (%)*	Grade ≥ 3 (%)
<b>Chemistry</b>		
Increased creatine phosphokinase (CPK)	79	7 <sup>§</sup>
Decreased albumin	51	0
Increased aspartate aminotransferase (AST)	41	2

Laboratory Abnormality	KOSELUGO	
	All Grades (%) <sup>*</sup>	Grade $\geq$ 3 (%)
Increased alanine aminotransferase (ALT)	35	4
Increased lipase	32	5
Increased potassium	27	4
Decreased potassium	18	2 <sup>§</sup>
Increased alkaline phosphatase	18	0
Increased amylase	18	0
Increased sodium	18	0
Decreased sodium	16	0
<b>Hematology</b>		
Decreased hemoglobin	41	4
Decreased neutrophils	33	4
Decreased lymphocytes	20	2

\* The denominator used to calculate the rate varied from 39 to 49 based on the number of patients with a baseline value and at least one post-treatment value.

§ Includes one Grade 4 increased CPK and one Grade 4 increased potassium.

#### *Adults $\geq$ 18 years of Age (KOMET)*

The safety of KOSELUGO was evaluated in KOMET [see [Clinical Studies \(14.1\)](#)]. Eligible patients were 18 years of age or older with NF1 who had symptomatic, inoperable PN. Patients were excluded for abnormal LVEF, uncontrolled hypertension, any current or past history of RVO or RPED/CSR, intraocular pressure  $>$  21 mmHg (or upper limit of normal adjusted by age), uncontrolled glaucoma, and inability to swallow whole capsules. Among the patients (N = 137) who have received KOSELUGO, the median duration of KOSELUGO treatment was 11 months with a range of 10 days to 31 months.

Serious adverse reactions occurred in 14% of patients who received KOSELUGO. Serious adverse reactions occurring in more than one patient included cellulitis (2.8%).

Permanent discontinuation due to an adverse reaction occurred in 13% of patients who received KOSELUGO. Adverse reactions resulting in permanent discontinuation of KOSELUGO included dermatitis acneiform, cellulitis, nausea, wound, neurofibrosarcoma, neurofibrosarcoma recurrent, psychiatric decompensation, ulcerative keratitis, and nail disorder.

Dosage interruptions and dose reductions due to adverse reactions occurred in 27% and 14% of patients who received KOSELUGO, respectively. Adverse reactions requiring a dosage reduction in 2 or more patients were paronychia, increased CPK, increased ALT, increased AST, rash, and alopecia. Adverse reactions requiring a dosage interruption in 2 or more patients were increased CPK, rash, headache, abdominal pain, nausea, and COVID-19.

The most common adverse reactions ( $\geq$  40%) were rash (all), rash (acneiform), and diarrhea.

Table 12 presents the adverse reactions in the KOMET study. The 12 cycle (48 weeks) randomization period for KOSELUGO versus placebo was followed by a single arm treatment period where all patients received KOSELUGO (placebo patients crossed over to KOSELUGO at end of the randomized period). No new adverse reactions were identified during the open-label period.

**Table 12 Adverse Reactions ( $\geq 20\%$ ) in Patients Who Received KOSELUGO Compared with Placebo in KOMET**

Adverse Reactions	Randomized to KOSELUGO* (N = 71)		Randomized to Placebo* (N = 74)	
	All Grades (%)	Grades $\geq 3$ (%)	All Grades (%)	Grades $\geq 3$ (%)
<b>Skin and Subcutaneous Tissue</b>				
Rash (all) <sup>1</sup>	85	4.2	23	0
Rash acneiform <sup>2</sup>	66	2.8	11	0
<b>Musculoskeletal and Connective Tissue</b>				
Musculoskeletal pain <sup>3</sup>	23	0	22	0
<b>Gastrointestinal</b>				
Diarrhea	42	0	12	0
Vomiting	25	0	8	0
Nausea	25	0	16	0
<b>General</b>				
Edema <sup>4</sup>	21	0	1.4	0
Fatigue <sup>5</sup>	24	0	14	0

\* ADRs of patients during the 12 Cycle (48 weeks) randomization period.

<sup>1</sup> Rash (all): acne, dermatitis, dermatitis acneiform, erythema, exfoliative rash, rash, rash erythematous, rash follicular, rash maculopapular, rash pruritic, rash pustular, urticaria, rash macular, and rash papular.

<sup>2</sup> Rash acneiform: acne and dermatitis acneiform.

<sup>3</sup> Musculoskeletal pain: arthralgia, back pain, musculoskeletal chest pain, musculoskeletal discomfort, musculoskeletal pain, musculoskeletal stiffness, myalgia, neck pain, non-cardiac chest pain, and pain in extremity.

<sup>4</sup> Edema: localized edema, edema, edema peripheral, and peripheral swelling.

<sup>5</sup> Fatigue: asthenia and fatigue.

Clinically relevant adverse reactions in  $< 20\%$  of patients who received KOSELUGO versus placebo based on reported adverse reactions included hair changes (18% vs 11%), paronychia (13% vs 4%), pyrexia (7% vs 4%), stomatitis (18% vs 5%), and skin infection (6% vs 1%), respectively. Decreased ejection fraction in patients who received KOSELUGO versus placebo based on reported echocardiogram results occurred in 14% and 11% of patients, respectively.

Table 13 presents the laboratory abnormalities in the KOMET study.

**Table 13 Select Laboratory Abnormalities ( $\geq 15\%$ ) That Worsened from Baseline in Patients Who Received KOSELUGO with a Difference Between Arms of  $> 10\%$  Compared to Placebo in KOMET**

Laboratory Abnormalities	Randomized to KOSELUGO* (N = 71)		Randomized to Placebo* (N = 74)	
	All Grades (%)	Grades $\geq 3$ (%)	All Grades (%)	Grades $\geq 3$ (%)
<b>Chemistry</b>				
Increase creatine phosphokinase	70	7	15	1.4
Increased aspartate aminotransferase (AST)	48	2.9	12	0
Increased alanine aminotransferase (ALT)	39	4.3	14	0

Decreased albumin	24	1.4	6	0
Increased alkaline phosphatase	17	1.4	7	0
Increased amylase	17	1.4	5	0
Decreased magnesium	16	0	5	0
<b>Hematology</b>				
Decreased hemoglobin	24	0	14	0

\* Lab abnormalities of patients during the 12 Cycle (48 weeks) randomization period.

### *Pediatrics > 1 year of Age on KOSELUGO Granules (SPRINKLE)*

The safety of KOSELUGO oral granules was evaluated in SPRINKLE (NCT05309668), a dose-finding and activity estimating, single-arm, multicenter study in 36 pediatric patients ages 1 year to less than 7 years with a clinical diagnosis of NF1-related symptomatic, inoperable PN. The study evaluated the pharmacokinetics (PK), safety, efficacy, and tolerability of KOSELUGO oral granules. Study patients were to receive KOSELUGO oral granules for 25 cycles at a dose equivalent to 25 mg/m<sup>2</sup> BSA twice daily until disease progression or unacceptable toxicity. The median age was approximately 4 years (range: 1 to 7 years), 61% were male, 61% were White, 14% were Asian and 3% were Black or African American.

In the SPRINKLE study, the median duration of KOSELUGO oral granules treatment in pediatric patients with neurofibromatosis type 1 (NF1) plexiform neurofibromas (PN) was 11 months (range: 3-25 months). Serious adverse reactions occurred in 6% of patients who received KOSELUGO oral granules. Serious adverse reactions occurred in 1 patient each and included pyrexia, gastroenteritis and upper respiratory infection. A total of 31% of patients had an adverse reaction leading to a dosage interruption. Adverse reactions requiring a dosage interruption in ≥ 5% of patients were pyrexia, vomiting, diarrhea, upper respiratory infection, gastroenteritis and eczema. The most common adverse reactions (≥ 40%) were pyrexia, dry skin, and paronychia.

The observed safety profile of KOSELUGO oral granules in the SPRINKLE study was consistent with the known safety profile of KOSELUGO capsules.

## **7 DRUG INTERACTIONS**

### **7.1 Effect of Other Drugs on KOSELUGO**

<b>Strong or Moderate CYP3A4 Inhibitors or Fluconazole</b>	
<i>Management</i>	<ul style="list-style-type: none"> <li>Avoid concomitant use of strong or moderate CYP3A4 inhibitors or fluconazole with KOSELUGO. If coadministration with strong or moderate CYP3A4 inhibitors or fluconazole cannot be avoided, reduce KOSELUGO dosage [see <a href="#">Dosage and Administration (2.4)</a>].</li> </ul>
<i>Clinical Impact</i>	<ul style="list-style-type: none"> <li>Concomitant use of KOSELUGO with a strong or moderate CYP3A4 inhibitor or fluconazole increased selumetinib plasma concentrations [see <a href="#">Clinical Pharmacology (12.3)</a>], which may increase the risk of adverse reactions.</li> </ul>
<b>Strong or Moderate CYP3A4 Inducers</b>	
<i>Management</i>	<ul style="list-style-type: none"> <li>Avoid concomitant use of strong or moderate CYP3A4 inducers with KOSELUGO.</li> </ul>
<i>Clinical Impact</i>	<ul style="list-style-type: none"> <li>Concomitant use of KOSELUGO with a strong or moderate CYP3A4 inducer decreased selumetinib plasma concentrations [see <a href="#">Clinical Pharmacology (12.3)</a>], which may reduce KOSELUGO efficacy.</li> </ul>
<b>Vitamin E</b>	
<i>Management</i>	<ul style="list-style-type: none"> <li>Supplemental vitamin E is not recommended if daily vitamin E intake (including the amount of vitamin E in KOSELUGO capsules and supplement) will exceed the recommended or safe limits.</li> </ul>

	<ul style="list-style-type: none"> <li>Monitor for bleeding in patients administered a vitamin-K antagonist or an anti-platelet agent with KOSELUGO capsules. Increase INR monitoring, as appropriate, in patients taking a vitamin-K antagonist [see <a href="#">Warnings and Precautions (5.3)</a>].</li> </ul>
<i>Clinical Impact</i>	<ul style="list-style-type: none"> <li>KOSELUGO capsules contain vitamin E and daily vitamin E intake that exceeds the recommended or safe limits may increase the risk of bleeding. An increased risk of bleeding may occur in patients taking a vitamin-K antagonist or an anti-platelet agent with KOSELUGO capsules.</li> </ul>

## 8 USE IN SPECIFIC POPULATIONS

### 8.1 Pregnancy

#### Risk Summary

Based on findings from animal studies and its mechanism of action [see [Clinical Pharmacology \(12.1\)](#)], KOSELUGO can cause fetal harm when administered to a pregnant woman. There are no available data on the use of KOSELUGO in pregnant women to evaluate drug-associated risk. In animal reproduction studies, administration of selumetinib to mice during organogenesis caused reduced fetal weight, adverse structural defects, and effects on embryofetal survival at exposures approximately > 5 times the human exposure at the clinical dose of 25 mg/m<sup>2</sup> twice daily (see *Data*). Advise pregnant women of the potential risk to the fetus.

In the U.S. general population, the estimated background risk of major birth defects and miscarriage in clinically recognized pregnancies is 2% to 4% and 15% to 20%, respectively.

#### Data

##### *Human Data*

In KOMET, a first trimester spontaneous abortion was reported in a patient receiving KOSELUGO.

##### *Animal Data*

In embryo-fetal development studies in mice at doses > 2.5 mg/kg twice daily (~5-times the human exposure based on area under the curve [AUC] at the clinical dose of 25 mg/m<sup>2</sup> twice daily), selumetinib caused increases in post-implantation loss, a reduction in mean fetal and litter weights, and an increased occurrence of open eye and cleft palate, but did not induce significant maternal toxicity.

Administration of selumetinib to pregnant mice from gestation Day 6 through lactation Day 20 resulted in reduced pup body weights and fewer pups met the pupil constriction criterion on day 21 post-partum. The incidence of malformations (e.g., prematurely open eye(s) and cleft palate) was increased even at the lowest dose of 0.5 mg/kg twice daily (maternal maximal concentration [C<sub>max</sub>] of ~0.6 times the human C<sub>max</sub> at the clinical dose of 25 mg/m<sup>2</sup> twice daily).

### 8.2 Lactation

#### Risk Summary

There are no data on the presence of selumetinib or its active metabolite in human milk or their effects on the breastfed child or milk production. Selumetinib and its active metabolite were present in the milk of lactating mice (see *Data*). Due to the potential for adverse reactions in a breastfed child, advise women not to breastfeed during treatment with KOSELUGO and for 1 week after the last dose.

#### Data

##### *Animal Data*

Selumetinib and its active metabolite were present in milk from mice dosed with selumetinib throughout gestation and lactation, with a mean plasma/milk ratio of 1.5 in lactating dams dosed at 5 mg/kg twice daily. Administration of selumetinib to dams during gestation and early lactation was associated with adverse events in pups, including reduced growth rates and incidence of malformations [see [Use in Specific Populations \(8.1\)](#)].

### 8.3 Females and Males of Reproductive Potential

KOSELUGO can cause fetal harm when administered to a pregnant woman [see [Use in Specific Populations \(8.1\)](#)].

#### Pregnancy Testing

Verify the pregnancy status of females of reproductive potential prior to initiating KOSELUGO [see [Use in Specific Populations \(8.1\)](#)].

#### Contraception

##### *Females*

Advise females of reproductive potential to use effective contraception during treatment and for 1 week after the last dose.

##### *Males*

Advise male patients with female partners of reproductive potential to use effective contraception during treatment with KOSELUGO and for 1 week after the last dose.

### 8.4 Pediatric Use

The safety and effectiveness have been established in pediatric patients 1 year of age and older with NF1 who have inoperable PN and the information on this use is discussed throughout the labeling. The safety and effectiveness of KOSELUGO have not been established in pediatric patients younger than 1 year of age.

#### Animal Toxicity Data

In 3-month general toxicology studies, male rats receiving selumetinib at doses  $\geq 10$  mg/kg daily (~60-times the human exposure based on AUC at the clinical dose of 25 mg/m<sup>2</sup> twice daily) showed growth plate dysplasia.

### 8.5 Geriatric Use

Clinical studies of KOSELUGO did not include a sufficient number of patients aged 65 and over to determine whether they respond differently from younger patients.

### 8.6 Hepatic Impairment

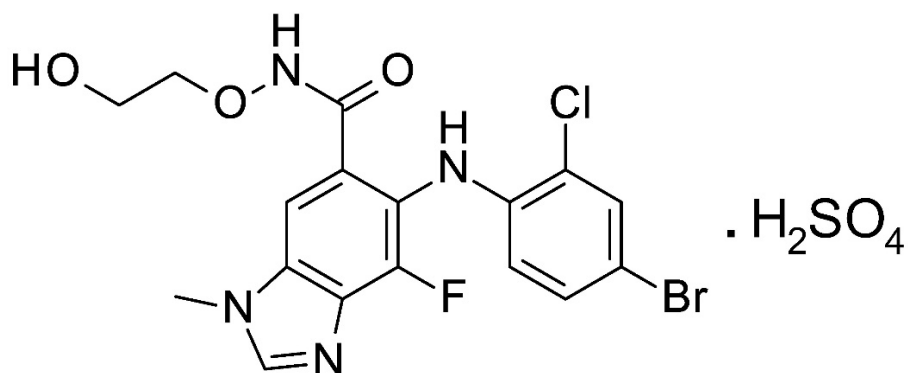
Selumetinib exposures increased in patients with moderate or severe hepatic impairment [see [Clinical Pharmacology \(12.3\)](#)]. Reduce the dose of KOSELUGO for patients with moderate hepatic impairment (Child-Pugh B). A recommended dosage of KOSELUGO for use in patients with severe hepatic impairment (Child-Pugh C) has not been established [see [Dosage and Administration \(2.4\)](#)].

## 10 OVERDOSAGE

Dialysis is not effective as KOSELUGO is highly protein bound and is extensively metabolized.

## 11 DESCRIPTION

KOSELUGO contains selumetinib sulfate, a kinase inhibitor. The chemical name is 5-[(4-bromo-2-chlorophenyl)amino]-4-fluoro-6-[(2-hydroxyethoxy)carbamoyl]-1-methyl-1*H*-benzimidazol-3-ium hydrogen sulfate. The molecular formula for selumetinib sulfate is C<sub>17</sub>H<sub>17</sub>BrClFN<sub>4</sub>O<sub>7</sub>S and the relative molecular mass is 555.76 g/mol. Selumetinib sulfate has the following structural formula:



Selumetinib sulfate is a white to yellow monomorphic crystalline powder that exhibits a pH dependent solubility. Selumetinib sulfate is freely soluble at pH < 1.5, sparingly soluble in the pH range at 1.5 to 3 and slightly soluble at pH > 3. Selumetinib sulfate has two ionizable functions with pKa values of 2.8 and 8.4.

KOSELUGO (selumetinib) 10 mg capsules for oral use, contain 10 mg selumetinib (equivalent to 12.1 mg selumetinib sulfate) and the excipient, vitamin E polyethylene glycol succinate. The capsule shell contains carnauba wax, carrageenan, hypromellose, potassium chloride, purified water, and titanium dioxide. The capsule is imprinted with black ink that contains ammonium hydroxide, iron oxide black, propylene glycol, and shellac.

KOSELUGO (selumetinib) 25 mg capsules for oral use, contain 25 mg selumetinib (equivalent to 30.25 mg selumetinib sulfate) and the excipient, vitamin E polyethylene glycol succinate. The capsule shell contains carnauba wax and/or cornstarch, carrageenan, FD&C blue 2, ferric oxide yellow, hypromellose, potassium chloride, purified water, and titanium dioxide. The capsule is imprinted with black ink that contains carnauba wax, FD&C Blue 2 aluminum lake, ferric oxide red, ferric oxide yellow, glyceryl monooleate, and shellac.

KOSELUGO (selumetinib) 5 mg oral granules contain 5 mg selumetinib (equivalent to 6.05 mg selumetinib sulfate). The uncoated cores contain selumetinib sulfate, glyceryl dibehenate, and stearyl polyoxyglycerides. The granule coating contains acetone, hypromellose acetate succinate, and stearic acid. The capsule shell contains ferric oxide yellow, hypromellose, and titanium dioxide. The capsule shell is imprinted with black ink that contains butyl alcohol, dehydrated alcohol, ferric oxide black, isopropyl alcohol, potassium hydroxide, propylene glycol, purified water, shellac, and strong ammonia solution.

KOSELUGO (selumetinib) 7.5 mg oral granules contain 7.5 mg selumetinib (equivalent to 9.08 mg selumetinib sulfate). The uncoated cores contain selumetinib sulfate, glyceryl dibehenate, and stearyl polyoxyglycerides. The granule coating contains acetone, hypromellose acetate succinate, and stearic acid. The capsule shell contains ferric oxide red, hypromellose, and titanium dioxide. The capsule shell is imprinted with black ink that contains butyl alcohol, dehydrated alcohol, ferric oxide black, isopropyl alcohol, potassium hydroxide, propylene glycol, purified water, shellac, and strong ammonia solution.

## 12 CLINICAL PHARMACOLOGY

### 12.1 Mechanism of Action

Selumetinib is an inhibitor of mitogen-activated protein kinase kinases 1 and 2 (MEK1/2). MEK1/2 proteins are upstream regulators of the extracellular signal-related kinase (ERK) pathway. Both MEK and ERK are critical components of the RAS-regulated RAF-MEK-ERK pathway, which is often activated in different types of cancers.

In genetically modified mouse models of NF1 that generate neurofibromas that recapitulate the genotype and phenotype of human NF1, oral dosing of selumetinib inhibited ERK phosphorylation, and reduced neurofibroma numbers, volume, and proliferation.

## 12.2 Pharmacodynamics

The exposure-response relationship and time course of pharmacodynamic response for the safety and effectiveness of KOSELUGO have not been fully characterized.

### Cardiac Electrophysiology

At a dose 1.5-times the maximum recommended dose, clinically significant QTc interval prolongation was not observed.

## 12.3 Pharmacokinetics

Selumetinib pharmacokinetics were observed at steady state in adult and pediatric patients with NF1 and are presented as mean (CV%) unless otherwise indicated.

The maximum plasma concentration ( $C_{max}$ ) is 792 (49) ng/mL and systemic exposure (AUC) is 2141 (55) ng•h/mL following KOSELUGO 25 mg/m<sup>2</sup> twice daily. Selumetinib AUC and  $C_{max}$  increases in a dose proportional manner over a dose range from 20 mg/m<sup>2</sup> to 30 mg/m<sup>2</sup> (0.8 to 1.2 times the recommended dose).

Selumetinib accumulation range is 1.2-1.5 fold following administration of KOSELUGO at 25 mg/m<sup>2</sup>.

At the recommended dosage of 25 mg/m<sup>2</sup> of KOSELUGO oral granules (sprinkled on smooth yogurt, smooth fruit sauce, smooth fruit puree, or smooth fruit jam) twice daily in pediatric patients (> 1 year old to < 7 years old), the AUC<sub>0-24h</sub> following the first dose of KOSELUGO oral granules was within the range of that in patients administered KOSELUGO capsules.

No clinically relevant differences in the pharmacokinetics of selumetinib were observed following administration of a single-dose of either the granule or capsule dosage forms of KOSELUGO at equivalent dosages, under fasted and fed conditions, in healthy adults.

### Absorption

Selumetinib absolute oral bioavailability is 62%. Selumetinib median (min, max) time to maximum plasma concentrations ( $T_{max}$ ) is 1.5 (0.22, 6.0) hours.

### *Effect of Food*

No clinically significant differences in selumetinib pharmacokinetics were observed following administration of low-fat (400-500 calories) or high-fat (800-1000 calories) meal.

### Distribution

Selumetinib apparent volume of distribution across a dose range of 20 mg/m<sup>2</sup> to 30 mg/m<sup>2</sup> (0.8 to 1.2 times the recommended dosage) ranges from 40 L-3710 L (66).

The plasma protein binding is 98.4% (primarily albumin).

### Elimination

Selumetinib elimination half-life is 9 (28) hours with an apparent (oral) clearance of 16 (44) L/hr/m<sup>2</sup>.

### *Metabolism*

Selumetinib is primarily metabolized by CYP3A4 and to a lesser extent by CYP2C19, CYP1A2, CYP2C9, CYP2E1, and CYP3A5. Selumetinib also undergoes glucuronidation by UGT1A1 and UGT1A3. It is estimated that 56% of the observed intrinsic clearance of selumetinib can be attributed to CYP metabolism and about 29% to direct glucuronidation by UGT enzymes.

The active metabolite, N-desmethyl selumetinib, is generated by CYP2C19 and CYP1A2 with additional contribution by CYP2C9 and CYP2A6, and it is metabolized through the same routes as selumetinib.

N-desmethyl selumetinib represents < 10% of selumetinib levels in human plasma, but is approximately 3- to 5-times more potent than the parent compound, contributing to about 21% to 35% of the overall pharmacologic activity.

#### *Excretion*

After a single oral dose of radiolabeled selumetinib 75 mg (1.5-times the recommended dose) to healthy adults, 59% of the dose was recovered in feces (19% as unchanged) and 33% in urine (< 1% as parent).

#### Specific Populations

No clinically significant differences in the pharmacokinetics of selumetinib or N-desmethyl selumetinib were observed based on age (1-79 years) race [White (56%), Asian (22%), Black (19%)].

#### *Pediatric Patients*

No clinically significant differences in the pharmacokinetics of selumetinib or N-desmethyl selumetinib were observed between the pediatric (aged 1 to < 17 years) and adult patients.

#### *Patients with Renal Impairment*

No clinically significant differences in selumetinib exposures were observed in patients with end stage renal disease (CLcr < 15 mL/min) who required dialysis. CLcr was estimated using the Cockcroft-Gault formula.

#### *Patients with Hepatic Impairment*

Dose normalized total AUC increased by 1.6-fold in patients with moderate hepatic impairment (Child-Pugh B) and in patients with severe hepatic impairment (Child-Pugh class C). Selumetinib unbound AUC increased by 1.4-fold in patients with moderate hepatic impairment (Child-Pugh B), and 3.2-fold in patients with severe hepatic impairment (Child-Pugh C).

#### Drug Interaction Studies

##### *Clinical Studies and Model-Informed Approaches*

*Strong or Moderate CYP3A4 Inhibitors:* Selumetinib AUC increased by 1.5-fold and C<sub>max</sub> by 1.2-fold following concomitant administration of itraconazole (strong CYP3A4 inhibitor). Concomitant use of erythromycin (moderate CYP3A4 inhibitor) is predicted to increase selumetinib AUC by 1.4-fold and C<sub>max</sub> by 1.2-fold.

*Fluconazole:* Selumetinib AUC increased by 1.5-fold and C<sub>max</sub> by 1.3-fold following concomitant administration of fluconazole (strong CYP2C19 inhibitor and moderate CYP3A4 inhibitor).

*Strong or Moderate CYP3A4 Inducers:* Selumetinib AUC decreased by 51% and C<sub>max</sub> by 26% following concomitant administration of rifampicin (strong CYP3A4 inducer). Concomitant use of efavirenz (moderate CYP3A4 inducer) is predicted to decrease selumetinib AUC by 38% and C<sub>max</sub> by 22%.

##### *In Vitro Studies*

*CYP Enzymes:* Selumetinib does not inhibit CYP1A2, CYP2A6, CYP2B6, CYP2C8, CYP2C9, CYP2C19, CYP2D6, CYP3A4, or CYP2E1. Selumetinib does not induce CYP3A4, CYP1A2, or CYP2B6.

*Transporter Systems:* Selumetinib does not inhibit BCRP, P-glycoprotein (P-gp), OATP1B1, OATP1B3, OCT2, OAT1, OAT3, MATE1, or MATE2K.

Selumetinib is a substrate of BCRP and P-gp.

## **13 NONCLINICAL TOXICOLOGY**

### **13.1 Carcinogenesis, Mutagenesis, Impairment of Fertility**

#### Carcinogenicity

Selumetinib was not carcinogenic in a 6-month study in rasH2 transgenic mice and in 2-year carcinogenicity study in rats at exposures  $\geq$  15-times the human exposure (AUC) at the clinical dose of 25 mg/m<sup>2</sup>.

### Mutagenicity

Selumetinib was not mutagenic or clastogenic *in vitro*. Selumetinib did result in an increase in micronucleated immature erythrocytes (chromosome aberrations) in mouse micronucleus studies, predominantly via an aneugenic mode of action, but at doses > 160 mg/kg (~38-times the human C<sub>max</sub> at the clinical dose of 25 mg/m<sup>2</sup>).

### Impairment of Fertility

In a 6-month mouse study, selumetinib did not affect male mating performance at any dose up to 20 mg/kg twice daily (approximately 33-times the human exposure based on AUC at the clinical dose of 25 mg/m<sup>2</sup> twice daily). In female mice exposed to selumetinib at 12.5 mg/kg twice daily, mating performance and fertility were not affected. The NOAEL for both maternal toxicity and effects on reproductive performance was 2.5 mg/kg twice daily (approximately 5-times the human exposure based on AUC at the clinical dose of 25 mg/m<sup>2</sup> twice daily).

## 13.2 Animal Toxicology and/or Pharmacology

In a 26-week repeat-dose toxicology study, selumetinib at a dose of 20 mg/kg (approximately 33-times the human exposure based on AUC at the clinical dose of 25 mg/m<sup>2</sup> twice daily) led to significant urinary tract obstruction as well as inflammation and luminal hemorrhage of the urethra leading to early death in male mice.

## 14 CLINICAL STUDIES

### 14.1 Neurofibromatosis Type 1 (NF1) with Inoperable Plexiform Neurofibromas (PN)

#### Pediatrics 2-18 years of Age (SPRINT Phase II Stratum 1)

The efficacy of KOSELUGO was evaluated in SPRINT Phase II Stratum 1, an open-label, multicenter, single arm trial (NCT01362803). Eligible patients were required to have NF1 with inoperable PN, defined as a PN that could not be completely removed without risk for substantial morbidity due to encasement of, or close proximity to, vital structures, invasiveness, or high vascularity of the PN. Patients were also required to have significant morbidity related to the target PN. Morbidities that were present in  $\geq$  20% of patients included disfigurement, motor dysfunction, pain, airway dysfunction, visual impairment, and bladder/bowel dysfunction. Patients received KOSELUGO 25 mg/m<sup>2</sup> orally twice daily until disease progression or unacceptable toxicity.

The major efficacy outcome measure was overall response rate (ORR), defined as the percentage of patients with complete response (defined as disappearance of the target PN) or confirmed partial response (defined as  $\geq$  20% reduction in PN volume confirmed at a subsequent tumor assessment within 3-6 months). The target PN, defined as the PN that caused relevant clinical symptoms or complications (PN-related morbidities), was evaluated for response rate using centrally read volumetric magnetic resonance imaging (MRI) analysis per Response Evaluation in Neurofibromatosis and Schwannomatosis (REINS) criteria. Tumor response was evaluated at baseline and while on treatment after every 4 cycles for 2 years, and then every 6 cycles. An additional efficacy outcome measure was duration of response (DoR).

A total of 50 pediatric patients received KOSELUGO. The median age was 10.2 years (range 3.5 to 17.4 years); 60% were male; and 84% were White, 8% were Black and 2% were Asian.

Efficacy results are provided in Table 14. The median time to onset of response was 7.2 months (range: 3.3 months to 1.6 years).

**Table 14 Efficacy Results from SPRINT Phase II Stratum 1**

Efficacy Parameter	SPRINT (N = 50)
Overall Response Rate <sup>§, *</sup>	

<b>Efficacy Parameter</b>	<b>SPRINT (N = 50)</b>
Overall Response Rate, n (%)	33 (66%)
95% CI	(51, 79)
Complete Response <sup>†</sup>	0
Confirmed Partial Response, n (%) <sup>†</sup>	33 (66%)
<b>Duration of Response<sup>‡</sup></b>	
Median (95% CI) months	NR (41.2 – NE)
DoR ≥ 24 months, n (%)	26 (79%)
DoR ≥ 36 months, n (%)	21 (64%)

CI – confidence interval, DoR – duration of response, NE – not evaluable, NR – not reached.

§ The ORR assessment (data cut-off date [DCO]: June 2018) was conducted by a single National Cancer Institute reviewer who was a SPRINT investigator and who evaluated all PN imaging from patients enrolled at all trial sites.

\* Responses required confirmation at least 3 months after the criteria for first response were met.

† Complete response: disappearance of the target lesion; Partial response: decrease in target PN volume by ≥ 20% compared to baseline.

‡ DCO: March 2021.

An independent centralized review of tumor response per REiNS criteria (data cut-off June 2018) resulted in an ORR of 44% (95% CI: 30, 59).

#### *Adults ≥ 18 years of Age (KOMET)*

The efficacy of KOSELUGO in adult patients was evaluated in KOMET, a randomized, multicenter, double-blind, placebo-controlled trial (NCT04924608). Eligible patients were required to be 18 years of age or older with neurofibromatosis type 1 (NF1) and symptomatic, inoperable plexiform neurofibroma (PN). Inoperable plexiform neurofibroma (PN) is defined as a PN that could not be completely removed without risk for substantial morbidity due to encasement of, or close proximity to, vital structures, invasiveness, or high vascularity of the PN.

A total of 145 patients were randomized (1:1) to KOSELUGO 25 mg/m<sup>2</sup> (BSA) or placebo twice daily for 12 cycles (28-day cycles). After the end of Cycle 12, or earlier if disease progression was confirmed by the Independent Central Review (ICR), patients initially randomized to placebo crossed over to receive KOSELUGO in the open-label treatment phase. Treatment was discontinued if a patient was no longer deriving clinical benefit, experienced unacceptable toxicity, patient decision, PN progression, or at the discretion of the investigator.

One target and when applicable one non-target PN was assessed by using volumetric MRI analysis and REiNS criteria.

The major efficacy outcome measure was overall response rate (ORR) by the end of Cycle 16, as determined by ICR per REiNS criteria. Duration of response was an additional efficacy outcome measure.

The study demographics were 52% male, 56% White, 31% Asian, 6% Black or African American, 10% Hispanic or Latino ethnicity, and the median age was 29 years (range: 18 to 60 years). PN-related morbidities that were present in > 20% of patients included pain, motor dysfunction, and disfigurement.

The trial demonstrated statistically significant ORR in patients randomized to KOSELUGO compared to placebo by the end of Cycle 16. The median time to response was 3.7 months (range: 3.6 months to 11.2 months).

Efficacy results are shown in Table 15.

**Table 15 Efficacy Results from KOMET**

<b>Efficacy Parameters</b>	<b>KOSELUGO (N = 71)</b>	<b>Placebo (N = 74)</b>
<b>Overall Response Rate by the end of Cycle 16 (ORR) *</b>		
ORR % (95% CI) †	20 (11, 31)	5 (2, 13)
p value ‡	0.011	
<b>Duration of Response §</b>		
Median (95% CI) months	NR (11.5, NE)	ND
≥ 6 months, n (%)	12 (86%)	ND

CI – confidence interval, ND – Not determined for placebo arm, NE – not estimable, NR - not reached.

\* Patients with confirmed complete response or partial response by independent central review (ICR) per REiNS criteria. Response confirmation was by a consecutive scan within 3 to 6 months after the first response as determined by ICR per REiNS criteria.

† All partial responders.

‡ 2-sided p-value calculated using Fisher's exact method.

§ Calculated using Kaplan-Meier method.

## 16 HOW SUPPLIED/STORAGE AND HANDLING

### How Supplied

#### *Selumetinib Capsules*

<b>Strength</b>	<b>Description</b>	<b>Capsules per Bottle</b>	<b>NDC Number</b>
10 mg	White to off-white, opaque, hard capsule sealed with a clear band and marked with “SEL 10” in black ink.	60	0310-0610-60
		28	0310-0610-28
25 mg	Blue, opaque, hard capsule sealed with a clear band and marked with “SEL 25” in black ink.	60	0310-0625-60
		28	0310-0625-28

#### *Selumetinib Oral Granules*

<b>Strength</b>	<b>Description</b>	<b>Capsules per Bottle</b>	<b>NDC Number</b>
5 mg	Off-white to light-yellow free-flowing oral granules contained within capsules. The capsules have a yellow cap and white body. The cap is printed with “sel 5” in black ink, and body is printed with a sprinkle capsule image indicating opening.	60	0310-0635-60
7.5 mg	Off-white to light-yellow free-flowing oral granules contained within capsules. The capsules have a pink cap and white body where the cap is printed with “sel 7.5” in black ink, and body is printed with a sprinkle capsule image indicating opening.	60	0310-0640-60

## Storage

### *KOSELUGO Capsules*

Store KOSELUGO capsules at 20°C to 25°C (68°F to 77°F) with excursions permitted to 15°C to 30°C (59°F to 86°F) [see USP Controlled Room Temperature]. Dispense and store in the original bottle to protect from light and moisture. Do not remove desiccant. Keep the bottle tightly closed after first opening.

### *KOSELUGO Oral Granules*

Store and transport KOSELUGO oral granules refrigerated at 2°C to 8°C (36°F to 46°F). After receipt, patients may store at room temperature 20°C to 25°C (68°F to 77°F). Do NOT exceed 30°C (86°F). KOSELUGO oral granules may clump together or stick to the capsule shell if exposed to high temperatures, which may lead to underdose. Dispense and store in the original bottle to protect from light and moisture. Do not remove desiccant. Keep the bottle tightly closed after first opening.

## **17 PATIENT COUNSELING INFORMATION**

Advise the patient to read the FDA-approved patient labeling (Patient Information and Instructions for Use).

### Left Ventricular Dysfunction

Advise patients and caregivers that KOSELUGO can cause a reduction in LVEF and to immediately report any signs or symptoms of cardiomyopathy to their healthcare provider [see [Warnings and Precautions \(5.1\)](#)].

### Ocular Toxicity

Advise patients and caregivers that KOSELUGO can cause ocular toxicity that can lead to blindness and to contact their healthcare provider if the patient experiences any changes in their vision [see [Warnings and Precautions \(5.2\)](#)].

### Gastrointestinal Toxicity

Advise patients and caregivers that KOSELUGO can cause diarrhea, nausea, vomiting, and stomatitis and to contact their healthcare provider at the first sign of gastrointestinal toxicity [see [Warnings and Precautions \(5.3\)](#)].

### Skin Toxicity

Advise patients and caregivers that KOSELUGO can cause serious skin toxicities and to contact their healthcare provider for severe skin changes [see [Warnings and Precautions \(5.4\)](#)].

### Increased Creatine Phosphokinase

Advise patients and caregivers that KOSELUGO can cause increased CPK and rhabdomyolysis to report any signs and symptoms of muscle pain or weakness to their healthcare provider [see [Warnings and Precautions \(5.5\)](#)].

### Increased Vitamin E Levels and Increased Risk of Bleeding (KOSELUGO Capsules)

Advise patients and caregivers to notify their healthcare provider if they are taking a supplement containing vitamin E, a vitamin-K antagonist or an anti-platelet agent [see [Warnings and Precautions \(5.6\)](#)].

### Embryo-Fetal Toxicity

- Advise pregnant women and females of reproductive potential of the potential risk to a fetus. Advise females of reproductive potential to inform their healthcare provider of a known or suspected pregnancy [see [Warnings and Precautions \(5.7\)](#), [Use in Specific Populations \(8.1\)](#)].
- Advise females of reproductive potential to use effective contraception during treatment with KOSELUGO and for 1 week after the last dose [see [Use in Specific Populations \(8.3\)](#)].

- Advise males with female partners of reproductive potential to use effective contraception during treatment with KOSELUGO and for 1 week after the last dose [see [Use in Specific Populations \(8.3\)](#), [Nonclinical Toxicology \(13.1\)](#)].

#### Lactation

Advise women not to breastfeed during treatment with KOSELUGO and for 1 week after the last dose [see [Use in Specific Populations \(8.2\)](#)].

#### Drug Interactions

Advise patients and caregivers to inform their healthcare provider of all concomitant medications, including prescription medicines, over-the-counter drugs, vitamins, and herbal products. Inform patients to avoid St. John's wort, grapefruit or grapefruit juice, and Seville orange while taking KOSELUGO [see [Drug Interactions \(7\)](#)].

#### Dosing and Administration

Inform patients and caregivers on how to take KOSELUGO and what to do for missed or vomited doses [see [Dosage and Administration \(2.1\)](#)].

Distributed by:

AstraZeneca Pharmaceuticals LP

Wilmington, DE 19850

© AstraZeneca 2025

<b>KOSELUGO® (ko-SEL-u-go) (selumetinib) capsules, for oral use</b>	<b>Patient Information</b>	<b>KOSELUGO® (ko-SEL-u-go) (selumetinib) oral granules</b>
<p><b>What is KOSELUGO?</b></p> <p>KOSELUGO is a prescription medicine that is used to treat adults and children 1 year of age and older with neurofibromatosis type 1 (NF1) who have plexiform neurofibromas that cause symptoms and cannot be completely removed by surgery.</p> <p>It is not known if KOSELUGO is safe and effective in children under 1 year of age.</p>		
<p><b>Before taking KOSELUGO, tell your healthcare provider about all of your medical conditions, including if you:</b></p> <ul style="list-style-type: none"> <li>• have heart problems.</li> <li>• have eye problems.</li> <li>• have liver problems.</li> <li>• are pregnant or plan to become pregnant. KOSELUGO can harm your unborn baby.</li> </ul> <p><b>Females who are able to become pregnant:</b></p> <ul style="list-style-type: none"> <li>○ Your healthcare provider should check to see if you are pregnant before you begin treatment with KOSELUGO.</li> <li>○ You should use effective birth control (contraception) during treatment with KOSELUGO and for 1 week after your last dose.</li> <li>○ Tell your healthcare provider right away if you become pregnant or think you may be pregnant during treatment with KOSELUGO.</li> </ul> <p><b>Males with female partners who are able to become pregnant:</b></p> <ul style="list-style-type: none"> <li>○ You should use effective birth control (contraception) during treatment with KOSELUGO and for 1 week after your last dose.</li> </ul> <ul style="list-style-type: none"> <li>• are breastfeeding or plan to breastfeed. It is not known if KOSELUGO passes into your breast milk. <ul style="list-style-type: none"> <li>○ <b>Do not</b> breastfeed during treatment with KOSELUGO and for 1 week after your last dose.</li> <li>○ Talk to your healthcare provider about the best way to feed your baby during this time.</li> </ul> </li> </ul> <p><b>Tell your healthcare provider about all the medicines you take</b>, including prescription and over-the-counter medicines, vitamins, or herbal supplements. Certain medicines may affect the way KOSELUGO works.</p> <p>Especially tell your healthcare provider if you are taking a supplement containing vitamin E, aspirin, blood thinners, or other medicines to treat blood clots. KOSELUGO capsules contain vitamin E, which may increase your risk of bleeding.</p>		
<p><b>How should I take KOSELUGO?</b></p> <ul style="list-style-type: none"> <li>• Take or give KOSELUGO exactly as your healthcare provider tells you to.</li> <li>• <b>Do not</b> change your dose or stop taking KOSELUGO unless your healthcare provider tells you to.</li> <li>• Your healthcare provider will decide on the right dose of KOSELUGO based on your or your child's weight or size (body surface area).</li> <li>• Take or give KOSELUGO 2 times a day.</li> <li>• If you or your child miss a dose of KOSELUGO capsules or KOSELUGO oral granules, take or give the dose as soon as you remember, unless the next dose is due within 6 hours. If your scheduled dose is due within 6 hours, skip the dose and take or give the next dose at the regular time.</li> <li>• If you or your child vomit after taking a dose of KOSELUGO capsules or KOSELUGO oral granules, <b>do not</b> take an additional dose. Take the next dose at the regular scheduled time.</li> </ul> <p><b>KOSELUGO comes in capsules and oral granules.</b></p> <ul style="list-style-type: none"> <li>• <b>If your healthcare provider prescribes KOSELUGO capsules:</b> <ul style="list-style-type: none"> <li>○ Take KOSELUGO capsules with or without food.</li> <li>○ Swallow KOSELUGO capsules whole. <b>Do not</b> open, chew, or crush the capsules.</li> <li>○ Tell your healthcare provider if you or your child has trouble swallowing capsules.</li> </ul> </li> <li>• <b>If your healthcare provider prescribes KOSELUGO oral granules:</b></li> </ul>		

- **See the Instructions for Use for the instructions on how to prepare and take or give KOSELUGO oral granules.**
- Prepare KOSELUGO oral granules by carefully opening the capsule and sprinkling all of the oral granules on a small amount (about 1 to 3 teaspoons) of smooth yogurt, or fruit puree containing the following fruits: apple, banana, pear, or strawberry.
- Take or give the KOSELUGO oral granules and food mixture within 30 minutes of preparing the dose.
- If the prepared dose of KOSELUGO oral granules and food mixture is not taken or given within 30 minutes, **do not** take or give the prepared dose. Throw away the mixture and prepare a new dose.
- If part of a dose is taken or given within 30 minutes of preparing, throw away the remainder of the mixture and **do not** prepare a new dose. Take or give the full dose within 30 minutes next time.
- The KOSELUGO oral granules should flow freely. **Do not** use if the oral granules are clumped or stuck inside the capsule shell. Contact your pharmacy if this happens.
- Throw away the empty capsule shells after use.
- **Do not** swallow, chew, or dissolve the capsule shells of KOSELUGO oral granules.
- **Do not** chew or crush the KOSELUGO oral granules. **Do not** add oral granules to liquids.
- **Do not** mix KOSELUGO oral granules in grapefruit or any juice, fruit puree or jam containing Seville orange.

#### **What should I avoid while taking KOSELUGO?**

Avoid St John's wort, grapefruit or grapefruit juice, and Seville orange during treatment with KOSELUGO.

#### **What are the possible side effects of KOSELUGO?**

##### **KOSELUGO can cause serious side effects, including:**

- **Heart problems.** KOSELUGO can lower the amount of blood pumped by your heart, which can be severe. Your healthcare provider will do tests before and during treatment with KOSELUGO to check how well your heart is working. Tell your healthcare provider right away if you get any of the following signs or symptoms:
  - persistent coughing or wheezing
  - shortness of breath
  - swelling of your ankles and feet
  - tiredness
  - increased heart rate
- **Eye problems.** KOSELUGO can cause eye problems that can lead to blindness. Your healthcare provider will check your vision before and during treatment with KOSELUGO. Tell your healthcare provider right away if you get new or worsening vision changes, including:
  - blurred vision
  - loss of vision
  - dark spots in your vision (floaters)
  - other changes to your vision
- **Stomach, intestine, and mouth (gastrointestinal) problems.** KOSELUGO can cause diarrhea, vomiting, nausea, and mouth sores. Diarrhea can be severe with KOSELUGO. Tell your healthcare provider right away the first time that you get diarrhea during treatment with KOSELUGO. Your healthcare provider may give you medicine to help control your diarrhea and may tell you to drink more fluids.
- **Skin problems.** Koselugo can cause severe skin rashes. Tell your healthcare provider if you get any of the following signs of skin problems:
  - rash that covers a large area of your body
  - flat skin rash
  - raised bumps on your skin
  - skin bumps that look like acne
  - blisters
  - peeling skin
  - itchy rash
  - hair thinning or hair loss (alopecia)
- **Increased level of an enzyme called creatine phosphokinase (CPK) in your blood and muscle problems.** Koselugo can cause severe muscle problems. Treatment with KOSELUGO may increase the level of enzyme in your blood called creatine phosphokinase (CPK), which may be a sign of muscle damage. Increased level of CPK in the blood are common during treatment with KOSELUGO and can also be severe. Your healthcare provider should do a blood test to check your blood levels of CPK before and during treatment with KOSELUGO. Tell your healthcare provider right away if you get any of the following signs or symptoms:
  - muscle aches or pain
  - dark, reddish urine

- muscle spasms and weakness

Your healthcare provider may change your dose, temporarily stop, or permanently stop treatment with KOSELUGO if you have any of these side effects.

**The most common side effects of KOSELUGO in children include:**

- vomiting
- diarrhea
- increased level of an enzyme called creatine phosphokinase (CPK) in your blood
- dry skin
- redness around the fingernails
- nausea
- skin bumps that look like acne
- fever

**The most common side effects of KOSELUGO in adults include:**

- rash
- diarrhea
- skin bumps that look like acne

These are not all of the possible side effects of KOSELUGO.

Call your doctor for medical advice about side effects. You may report side effects to FDA at 1-800-FDA-1088.

**How should I store KOSELUGO?**

- Store KOSELUGO capsules and KOSELUGO oral granules at room temperature between 68°F to 77°F (20°C to 25°C).
- **Do not** store KOSELUGO oral granules above 86°F (30°C). Store KOSELUGO oral granules in the refrigerator between 36°F to 46°F (2°C to 8°C) if the temperature is above 86°F (30°C). KOSELUGO oral granules may clump together or stick to the capsule shell if the medicine gets too hot, and you may not get your full dose.
- Keep KOSELUGO oral granules cold in a cooler bag with a cold pack if you need to take it anywhere.
- The bottle of KOSELUGO capsules and KOSELUGO oral granules contain a desiccant packet to reduce moisture. **Do not** throw away the desiccant packet.
- Keep KOSELUGO capsules and KOSELUGO oral granules in its original bottle to protect from light and moisture. Keep the bottle tightly closed.

**Keep KOSELUGO and all medicines out of the reach of children.**

**General information about the safe and effective use of KOSELUGO.**

Medicines are sometimes prescribed for purposes other than those listed in a Patient Information leaflet. **Do not** use KOSELUGO for a condition for which it was not prescribed. **Do not** give KOSELUGO to other people, even if they have the same symptoms you have. It may harm them. You can ask your pharmacist or healthcare provider for information about KOSELUGO that is written for a healthcare professional.

## What are the ingredients in KOSELUGO?

**Active ingredient:** selumetinib

### **KOSELUGO capsule inactive ingredients:**

- The 10 mg and 25 mg capsules contain: vitamin E polyethylene glycol succinate.
- The 10 mg capsule shell contains: carnauba wax, carrageenan, hypromellose, potassium chloride, purified water, and titanium dioxide.
- The 10 mg capsule printing ink contains: ammonium hydroxide, iron oxide black, propylene glycol, and shellac.
- The 25 mg capsule shell contains: carnauba wax and/or corn starch, carrageenan, FD&C blue 2, ferric oxide yellow, hypromellose, potassium chloride, purified water, and titanium dioxide.
- The 25 mg capsule printing ink contains: carnauba wax, FD&C Blue 2 aluminum lake, ferric oxide red, ferric oxide yellow, glyceryl monooleate, and shellac.

### **KOSELUGO oral granule inactive ingredients:**

- The 5 mg and 7.5 mg uncoated cores contain: glyceryl dibehenate and stearyl polyoxyglycerides.
- The 5 mg and 7.5 mg granule coatings contain: acetone, hypromellose acetate succinate, and stearic acid.
- The 5 mg shell contains: ferric oxide yellow, hypromellose, and titanium dioxide.
- The 5 mg printing ink contains: butyl alcohol, dehydrated alcohol, ferric oxide black, isopropyl alcohol, potassium hydroxide, propylene glycol, purified water, shellac, and strong ammonia solution.
- The 7.5 mg shell contains: ferric oxide red, hypromellose, and titanium dioxide.
- The 7.5 mg printing ink contains: butyl alcohol, dehydrated alcohol, ferric oxide black, isopropyl alcohol, potassium hydroxide, propylene glycol, purified water, shellac, and strong ammonia solution.

Distributed by: AstraZeneca Pharmaceuticals LP, Wilmington, DE 19850

©AstraZeneca 2025

For more information, go to website [www.KOSELUGO.com](http://www.KOSELUGO.com) or call 1-800-236-9933.

This Patient Information has been approved by the U.S. Food and Drug Administration.

Revised: 11/2025

**INSTRUCTIONS FOR USE**  
**KOSELUGO® (ko-SEL-u-go)**  
**(selumetinib)**  
**oral granules**

This Instructions for Use contains information on how to take or give KOSELUGO oral granules.

**Read this Instructions for Use before taking or giving KOSELUGO oral granules and each time you get a refill. There may be new information.** This information does not take the place of talking to your healthcare provider about your or your child's medical condition or treatment. Talk to your healthcare provider or pharmacist if you have any questions about how to take or give KOSELUGO oral granules.

**Important Information You Need to Know Before Taking or Giving KOSELUGO oral granules**

- KOSELUGO oral granules come in capsules that **must** be opened before use. **Do not** swallow, chew, or dissolve the capsule shells. **Do not** chew or crush the oral granules. **Do not** add oral granules to liquids.
- Take or give KOSELUGO oral granules exactly as your healthcare provider tells you to.
- **Do not** change your dose or stop taking KOSELUGO oral granules unless your healthcare provider tells you to.
- Your healthcare provider will decide on the right dose of KOSELUGO based on your or your child's weight or size (body surface area).
- KOSELUGO oral granules come in 2 different strengths: 5 mg and 7.5 mg. Each strength is a different color. Your healthcare provider may prescribe more than 1 strength of KOSELUGO oral granules for your or your child's dose. Make sure that you understand how many capsules of KOSELUGO oral granules you need and what strengths to take.
- Your healthcare provider may change the dose, temporarily stop, or permanently stop treatment with KOSELUGO oral granules if you or your child has side effects.
- Take or give KOSELUGO oral granules 2 times a day.
- If you or your child miss a dose of KOSELUGO oral granules, take or give the dose as soon as you remember, unless the next dose is due within 6 hours. If your scheduled dose is due within 6 hours, skip the dose and take or give the next dose at the regular time.
- If you or your child vomits after taking a dose of KOSELUGO oral granules, **do not** take an additional dose. Take the next dose at the regular scheduled time.
- For more information about KOSELUGO oral granules, see the Patient Information leaflet.

**Supplies needed to prepare a dose of KOSELUGO oral granules:**

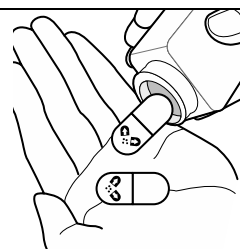
- The prescribed number of KOSELUGO oral granules.
- Smooth yogurt, or fruit puree containing the following fruits: apple, banana, pear, or strawberry.
- A spoon or a small cup.
- A paper towel or plate.

**Preparing KOSELUGO oral granules**

**Step 1:** Wash and dry your hands thoroughly.

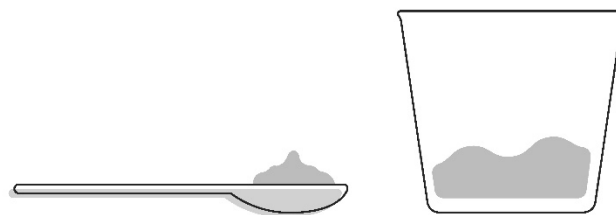


**Step 2:** Open the bottle(s) and take out the number of capsule(s) needed for your prescribed dose of KOSELUGO oral granules.



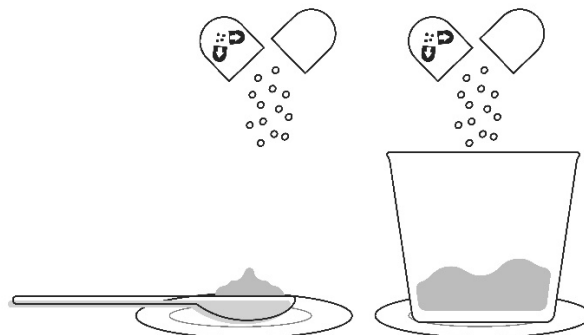
**Step 3:** Add a small amount (about 1 to 3 teaspoons) of smooth yogurt, or fruit puree containing apple, banana, pear, or strawberry onto the spoon or into a small cup.

- **Do not** mix KOSELUGO oral granules in grapefruit or any juice, fruit puree or jam containing Seville orange.



**Step 4:** Place the spoon or cup on the paper towel or plate. Carefully open the capsule(s) one at a time and sprinkle the entire contents of the capsule (oral granules) onto the food that is on the spoon or in the small cup.

- If you are using a spoon to prepare KOSELUGO oral granules, you may find it easier to prepare and take or give 1 capsule at a time. Repeat **Steps 3 to 6** for each capsule until the full dose is taken or given.
- **Do not** swallow, chew, or dissolve the capsule shells. **Do not** chew or crush the oral granules. **Do not** add oral granules to liquids.



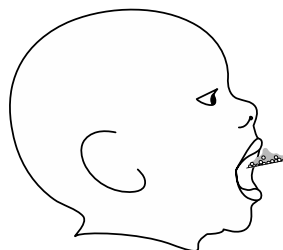
**Important:** The oral granules should flow freely inside the capsule. **Do not** use the capsule if the oral granules are clumped or stuck inside the capsule shell. Contact your pharmacy if this happens.

### Taking or giving KOSELUGO oral granules

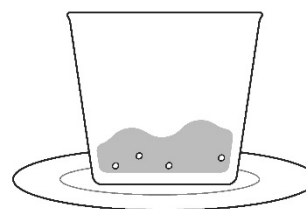
**Step 5:** Take or give the KOSELUGO oral granules and food mixture within 30 minutes of preparing the dose. Swallow the mixture without chewing while seated upright. **Do not** save for future use.

**Note:**

- If you **do not** take or give the KOSELUGO oral granules and food mixture within 30 minutes of preparing the dose, **do not** take or give the mixture. Throw away the mixture and prepare a new dose.
- If you take or give part of the mixture within 30 minutes of preparing the dose, throw away the remainder of the mixture and **do not** prepare a new dose. Take or give the full dose within 30 minutes next time.



**Step 6:** If you used a cup to prepare KOSELUGO oral granules, add more of the same food into the cup and take or give all of the mixture to make sure you get the full dose.



### Clean up

- Throw away empty capsule shells, used paper towel, and any spilled oral granules in your household trash.
- Wash your hands and all the supplies used to take or give KOSELUGO oral granules.

**Storing KOSELUGO oral granules**

- Store KOSELUGO oral granules at room temperature between 68°F to 77°F (20°C to 25°C).
- **Do not** store KOSELUGO oral granules above 86°F (30°C). Store KOSELUGO oral granules in the refrigerator between 36°F to 46°F (2°C to 8°C) if the temperature is above 86°F (30°C). KOSELUGO oral granules may clump together or stick to the capsule shell if the medicine gets too hot, and you may not get your full dose.
- Keep KOSELUGO oral granules cold in a cooler bag with a cold pack if you need to take it anywhere.
- The bottle of KOSELUGO oral granules contains a desiccant packet to reduce moisture. **Do not** throw away the desiccant packet.
- Keep KOSELUGO oral granules in its original bottle to protect from light and moisture. Keep the bottle tightly closed.

**Keep KOSELUGO and all medicines out of the reach of children.**

**Disposing of KOSELUGO oral granules**

- Ask your pharmacist how to throw away unused doses, expired medicines, or medicines you no longer use.

Distributed by: AstraZeneca Pharmaceuticals LP, Wilmington, DE 19850

©AstraZeneca 2025

For more information, go to website [www.KOSELUGO.com](http://www.KOSELUGO.com) or call 1-800-236-9933.

This Instructions for Use has been approved by the U.S. Food and Drug Administration.

Approved: Sep/2025