

## HIGHLIGHTS OF PRESCRIBING INFORMATION

These highlights do not include all the information needed to use FABHALTA safely and effectively. See full prescribing information for FABHALTA.

FABHALTA® (iptacopan) capsules, for oral use

Initial U.S. Approval: 2023

### WARNING: SERIOUS INFECTIONS CAUSED BY ENCAPSULATED BACTERIA

See full prescribing information for complete boxed warning.

FABHALTA increases the risk of serious and life-threatening infections caused by encapsulated bacteria, including *Streptococcus pneumoniae*, *Neisseria meningitidis*, and *Haemophilus influenzae* type b.

- Complete or update vaccination for encapsulated bacteria at least 2 weeks prior to the first dose of FABHALTA, unless the risks of delaying FABHALTA outweigh the risk of developing a serious infection. Comply with the most current Advisory Committee on Immunization Practices (ACIP) recommendations for vaccinations against encapsulated bacteria in patients receiving a complement inhibitor. (5.1)
- Patients receiving FABHALTA are at increased risk for invasive disease caused by encapsulated bacteria, even if they develop antibodies following vaccination. Monitor patients for early signs and symptoms of serious infections and evaluate immediately if infection is suspected. (5.1)

FABHALTA is available only through a restricted program under a Risk Evaluation and Mitigation Strategy (REMS) called FABHALTA REMS. (5.2)

### RECENT MAJOR CHANGES

Indications and Usage (1.2)	8/2024
Indications and Usage (1.3)	3/2025
Dosage and Administration (2.1)	3/2024

### INDICATIONS AND USAGE

FABHALTA is a complement factor B inhibitor, indicated for:

- the treatment of adults with paroxysmal nocturnal hemoglobinuria (PNH). (1.1)
- the reduction of proteinuria in adults with primary immunoglobulin A nephropathy (IgAN) at risk of rapid disease progression, generally a urine protein-to-creatinine ratio (UPCR)  $\geq 1.5$  g/g. (1.2)  
This indication is approved under accelerated approval based on reduction of proteinuria. It has not been established whether

FABHALTA slows kidney function decline in patients with IgAN. Continued approval for this indication may be contingent upon verification and description of clinical benefit in a confirmatory clinical trial.

- the treatment of adults with complement 3 glomerulopathy (C3G), to reduce proteinuria (1.3)

### DOSAGE AND ADMINISTRATION

200 mg orally twice daily with or without food. (2.2)

### DOSAGE FORMS AND STRENGTHS

Capsules: 200 mg (3)

### CONTRAINDICATIONS

- Serious hypersensitivity to iptacopan or any of the excipients. (4)
- Initiation in patients with unresolved serious infection caused by encapsulated bacteria. (4)

### WARNINGS AND PRECAUTIONS

- Monitoring of PNH Manifestations After FABHALTA Discontinuation: Monitor for signs of hemolysis after discontinuation. (5.3)
- Hyperlipidemia: Monitor serum lipid parameters periodically during treatment and initiate cholesterol-lowering medication, if indicated. (5.4)

### ADVERSE REACTIONS

- Most common adverse reactions in adults with PNH (incidence  $\geq 10\%$ ) were headache, nasopharyngitis, diarrhea, abdominal pain, bacterial infection, viral infection, nausea and rash. (6.1)
- Most common adverse reactions in adults with IgAN (incidence  $\geq 5\%$ ) were upper respiratory tract infection, lipid disorder, and abdominal pain. (6.1)
- Most common adverse reactions in adults with C3G (incidence  $\geq 10\%$ ) were nasopharyngitis and viral infections. (6.1)

To report SUSPECTED ADVERSE REACTIONS, contact Novartis Pharmaceuticals Corporation at 1-888-669-6682 or FDA at 1-800-FDA-1088 or [www.fda.gov/medwatch](http://www.fda.gov/medwatch).

### DRUG INTERACTIONS

- CYP2C8 inducers (e.g., rifampin): May decrease iptacopan exposure. Monitor for loss of efficacy. (7.1)
- Strong CYP2C8 inhibitors (e.g., gemfibrozil): May increase iptacopan exposure. Coadministration not recommended. (7.2)

### USE IN SPECIFIC POPULATIONS

- Severe hepatic impairment: Use not recommended. (8.7)

See 17 for PATIENT COUNSELING INFORMATION and Medication Guide.

Revised: 03/2025

## FULL PRESCRIBING INFORMATION: CONTENTS\*

### WARNING: SERIOUS INFECTIONS CAUSED BY ENCAPSULATED BACTERIA

#### 1 INDICATIONS AND USAGE

- 1.1 Paroxysmal Nocturnal Hemoglobinuria
- 1.2 Immunoglobulin A Nephropathy
- 1.3 Complement 3 Glomerulopathy

#### 2 DOSAGE AND ADMINISTRATION

- 2.1 Recommended Vaccination and Prophylaxis for Encapsulated Bacterial Infections
- 2.2 Recommended Dosage
- 2.3 PNH Patients Switching From Anti-C5 (eculizumab, ravulizumab) to FABHALTA

#### 3 DOSAGE FORMS AND STRENGTHS

#### 4 CONTRAINDICATIONS

#### 5 WARNINGS AND PRECAUTIONS

- 5.1 Serious Infections Caused by Encapsulated Bacteria
- 5.2 FABHALTA REMS
- 5.3 Monitoring of PNH Manifestations After FABHALTA Discontinuation
- 5.4 Hyperlipidemia

#### 6 ADVERSE REACTIONS

- 6.1 Clinical Trials Experience

#### 7 DRUG INTERACTIONS

- 7.1 CYP2C8 Inducers

- 7.2 Strong CYP2C8 Inhibitors

#### 8 USE IN SPECIFIC POPULATIONS

- 8.1 Pregnancy
- 8.2 Lactation
- 8.4 Pediatric Use
- 8.5 Geriatric Use
- 8.7 Hepatic Impairment

#### 11 DESCRIPTION

#### 12 CLINICAL PHARMACOLOGY

- 12.1 Mechanism of Action
- 12.2 Pharmacodynamics
- 12.3 Pharmacokinetics

#### 13 NONCLINICAL TOXICOLOGY

- 13.1 Carcinogenesis, Mutagenesis, Impairment of Fertility

#### 14 CLINICAL STUDIES

- 14.1 Paroxysmal Nocturnal Hemoglobinuria (PNH)
- 14.2 Immunoglobulin A Nephropathy (IgAN)
- 14.3 Complement 3 Glomerulopathy (C3G)

#### 16 HOW SUPPLIED/STORAGE AND HANDLING

#### 17 PATIENT COUNSELING INFORMATION

\*Sections or subsections omitted from the full prescribing information are not listed.

## FULL PRESCRIBING INFORMATION

### **WARNING: SERIOUS INFECTIONS CAUSED BY ENCAPSULATED BACTERIA**

**FABHALTA, a complement inhibitor, increases the risk of serious infections, especially those caused by encapsulated bacteria, such as *Streptococcus pneumoniae*, *Neisseria meningitidis*, and *Haemophilus influenzae* type b [see Warnings and Precautions (5.1)]. Life-threatening and fatal infections with encapsulated bacteria have occurred in patients treated with complement inhibitors. These infections may become rapidly life-threatening or fatal if not recognized and treated early.**

- **Complete or update vaccination for encapsulated bacteria at least 2 weeks prior to the first dose of FABHALTA, unless the risks of delaying therapy with FABHALTA outweigh the risk of developing a serious infection. Comply with the most current Advisory Committee on Immunization Practices (ACIP) recommendations for vaccinations against encapsulated bacteria in patients receiving a complement inhibitor. See *Warnings and Precautions (5.1)* for additional guidance on the management of the risk of serious infections caused by encapsulated bacteria.**
- **Patients receiving FABHALTA are at increased risk for invasive disease caused by encapsulated bacteria, even if they develop antibodies following vaccination. Monitor patients for early signs and symptoms of serious infections and evaluate immediately if infection is suspected.**

**Because of the risk of serious infections caused by encapsulated bacteria, FABHALTA is available only through a restricted program under a Risk Evaluation and Mitigation Strategy (REMS) called the FABHALTA REMS [see Warnings and Precautions (5.2)].**

## **1 INDICATIONS AND USAGE**

### **1.1 Paroxysmal Nocturnal Hemoglobinuria**

FABHALTA is indicated for the treatment of adults with paroxysmal nocturnal hemoglobinuria (PNH).

### **1.2 Immunoglobulin A Nephropathy**

FABHALTA is indicated to reduce proteinuria in adults with primary immunoglobulin A nephropathy (IgAN) at risk of rapid disease progression, generally a urine protein-to-creatinine ratio (UPCR)  $\geq 1.5$  g/g.

This indication is approved under accelerated approval based on reduction of proteinuria. It has not been established whether FABHALTA slows kidney function decline in patients with IgAN. Continued approval for this indication may be contingent upon verification and description of clinical benefit in a confirmatory clinical trial.

### **1.3 Complement 3 Glomerulopathy**

FABHALTA is indicated for the treatment of adults with complement 3 glomerulopathy (C3G), to reduce proteinuria.

## **2 DOSAGE AND ADMINISTRATION**

### **2.1 Recommended Vaccination and Prophylaxis for Encapsulated Bacterial Infections**

Vaccinate patients against encapsulated bacteria, including *Streptococcus pneumoniae* and *Neisseria meningitidis* (serogroups A, C, W, Y and B), according to current ACIP recommendations at least 2 weeks prior to initiation of FABHALTA [see Warnings and Precautions (5.1)].

If urgent FABHALTA therapy is indicated in a patient who is not up to date with vaccines for *Streptococcus pneumoniae* and *Neisseria meningitidis* according to ACIP recommendations, provide the patient with antibacterial drug prophylaxis and administer these vaccines as soon as possible [see Warnings and Precautions (5.1)].

Healthcare providers who prescribe FABHALTA must enroll in the FABHALTA REMS [see *Warnings and Precautions (5.2)*].

## 2.2 Recommended Dosage

The recommended dosage of FABHALTA is 200 mg orally twice daily without regard to food.

Swallow capsules whole. Do not open, break, or chew capsules.

If a dose or doses are missed, advise the patient to take one dose of FABHALTA as soon as possible (even if it is soon before the next scheduled dose) and then to resume the regular dosing schedule.

## 2.3 PNH Patients Switching From Anti-C5 (eculizumab, ravulizumab) to FABHALTA

To reduce the potential risk of hemolysis with abrupt discontinuation of other PNH therapies:

- For patients switching from eculizumab, initiate FABHALTA no later than 1 week after the last dose of eculizumab.
- For patients switching from ravulizumab, initiate FABHALTA no later than 6 weeks after the last dose of ravulizumab.

There is no available information regarding the timeframe for initiation of FABHALTA after other PNH therapies.

## 3 DOSAGE FORMS AND STRENGTHS

Capsules: 200 mg of iptacopan in pale yellow, opaque, hard gelatin capsules imprinted with “LNP200” on the body and “NVR” on the cap.

## 4 CONTRAINDICATIONS

FABHALTA is contraindicated:

- in patients with serious hypersensitivity to iptacopan or any of the excipients.
- for initiation in patients with unresolved serious infection caused by encapsulated bacteria, including *Streptococcus pneumoniae*, *Neisseria meningitidis*, or *Haemophilus influenzae* type b.

## 5 WARNINGS AND PRECAUTIONS

### 5.1 Serious Infections Caused by Encapsulated Bacteria

FABHALTA, a complement inhibitor, increases a patient’s susceptibility to serious, life-threatening, or fatal infections caused by encapsulated bacteria, including *Streptococcus pneumoniae*, *Neisseria meningitidis* (caused by any serogroup, including non-groupable strains), and *Haemophilus influenzae* type b. Life-threatening and fatal infections with encapsulated bacteria have occurred in both vaccinated and unvaccinated patients treated with complement inhibitors. The initiation of FABHALTA treatment is contraindicated in patients with unresolved serious infections caused by encapsulated bacteria.

Complete or update vaccination against encapsulated bacteria at least 2 weeks prior to administration of the first dose of FABHALTA, according to the current ACIP recommendations for patients receiving a complement inhibitor. Revaccinate patients in accordance with ACIP recommendations considering the duration of therapy with FABHALTA. Note that ACIP recommends an administration schedule in patients receiving complement inhibitors that differs from the administration schedule in the vaccine prescribing information. If urgent FABHALTA therapy is indicated in a patient who is not up to date with vaccines against encapsulated bacteria according to ACIP recommendations, provide the patient with antibacterial drug prophylaxis and administer these vaccines as soon as possible. Various durations and regimens of antibacterial drug prophylaxis have been considered, but the optimal durations and drug regimens for prophylaxis and their efficacy have not been studied in unvaccinated or vaccinated patients receiving complement inhibitors, including FABHALTA. The benefits and risks of treatment with FABHALTA, as well as the benefits and risks of antibacterial drug

prophylaxis in unvaccinated or vaccinated patients, must be considered against the known risks for serious infections caused by encapsulated bacteria.

Vaccination does not eliminate the risk of serious encapsulated bacterial infections, despite development of antibodies following vaccination. Closely monitor patients for early signs and symptoms of serious infection and evaluate patients immediately if an infection is suspected. Inform patients of these signs and symptoms and instruct patients to seek immediate medical care if these signs and symptoms occur. Promptly treat known infections. Serious infection may become rapidly life-threatening or fatal if not recognized and treated early. Consider interruption of FABHALTA in patients who are undergoing treatment for serious infections, depending on the risks of interrupting treatment in the disease being treated.

FABHALTA is available only through a restricted program under a REMS [see *Warnings and Precautions (5.2)*].

## **5.2 FABHALTA REMS**

FABHALTA is available only through a restricted program under a REMS called FABHALTA REMS, because of the risk of serious infections caused by encapsulated bacteria [see *Warnings and Precautions (5.1)*].

Notable requirements of the FABHALTA REMS include the following:

- Prescribers must enroll in the REMS.
- Prescribers must counsel patients about the risk of serious infections caused by encapsulated bacteria.
- Prescribers must provide patients with the REMS educational materials.
- Prescribers must assess patient vaccination status for vaccines against encapsulated bacteria and vaccinate if needed according to current ACIP recommendations two weeks prior to the first dose of FABHALTA.
- Prescribers must provide a prescription for antibacterial drug prophylaxis if treatment must be started urgently, and the patient is not up to date with vaccines against encapsulated bacteria according to current ACIP recommendations at least two weeks prior to the first dose of FABHALTA.
- Pharmacies that dispense FABHALTA must be certified in the FABHALTA REMS and must verify prescribers are certified.
- Patients must receive counseling from the prescriber about the need to receive vaccinations against encapsulated bacteria per ACIP recommendations, the need to take antibiotics as directed by the prescriber, and the early signs and symptoms of serious infections.
- Patients must be instructed to carry the Patient Safety Card with them at all times during treatment and for 2 weeks following the last dose of FABHALTA.

Further information is available by telephone: 1-833-99FABHA (1-833-993-2242) or online at [www.FABHALTA-REMS.com](http://www.FABHALTA-REMS.com).

## **5.3 Monitoring of PNH Manifestations After FABHALTA Discontinuation**

In PNH patients, after discontinuing treatment with FABHALTA, closely monitor patients for at least 2 weeks after the last dose for signs and symptoms of hemolysis. These signs include elevated lactate dehydrogenase (LDH) levels along with a sudden decrease in hemoglobin or PNH clone size, fatigue, hemoglobinuria, abdominal pain, dyspnea, major adverse vascular events (such as thrombosis, stroke and myocardial infarction), dysphagia, or erectile dysfunction. If discontinuation of FABHALTA is necessary, consider alternative therapy.

If hemolysis occurs after discontinuation of FABHALTA, consider restarting treatment with FABHALTA, if appropriate, or initiating another treatment for PNH.

## **5.4 Hyperlipidemia**

FABHALTA may increase total cholesterol, LDL-cholesterol, and serum triglycerides [see *Adverse Reactions (6.1)*].

Of the 54 FABHALTA-treated patients who had a normal total cholesterol level at baseline in APPLY-PNH, 43% developed Grade 1 hypercholesterolemia during the randomized treatment period. One FABHALTA-treated patient in APPLY-PNH experienced increased total cholesterol that worsened to Grade 2 from Grade 1 at baseline.

Of the 34 FABHALTA-treated patients who had a normal cholesterol level at baseline in APPOINT-PNH, 24% developed Grade 1 hypercholesterolemia during the core treatment period.

Of the 60 FABHALTA-treated patients who had LDL-cholesterol  $\leq$  130 mg/dL at baseline in APPLY-PNH, 17% developed LDL-cholesterol > 130-160 mg/dL, 8% developed LDL-cholesterol > 160-190 mg/dL, and 7% developed LDL-cholesterol > 190 mg/dL during the randomized treatment period. Of the 36 FABHALTA-treated patients who had LDL-cholesterol  $\leq$  130 mg/dL at baseline in APPOINT-PNH, 11% developed LDL-cholesterol > 130-160 mg/dL and 3% developed LDL-cholesterol > 160-190 mg/dL.

Of the 52 patients with normal triglyceride levels at baseline in APPLY-PNH, 23% developed Grade 1 elevated triglycerides during the randomized treatment period. Three FABHALTA-treated patients in APPLY-PNH experienced an increase in triglycerides from Grade 1 to Grade 2.

Of the 37 FABHALTA-treated patients who had a normal triglyceride level at baseline in APPOINT-PNH, 27% developed Grade 1 elevated triglycerides in the core treatment period.

Of the 102 FABHALTA-treated patients in APPLY-PNH and APPOINT-PNH, two patients required cholesterol-lowering medications.

Monitor serum lipid parameters periodically during treatment with FABHALTA and initiate cholesterol-lowering medication, if indicated.

## 6 ADVERSE REACTIONS

The following clinically significant adverse reactions are discussed in greater detail in other sections of the labeling:

- Serious Infections Caused by Encapsulated Bacteria [*see Warnings and Precautions (5.1)*].
- Hyperlipidemia [*see Warnings and Precautions (5.4)*].

### 6.1 Clinical Trials Experience

Because clinical trials are conducted under widely varying conditions, adverse reaction rates observed in the clinical trials of a drug cannot be directly compared to rates in the clinical trials of another drug and may not reflect the rates observed in practice.

#### Paroxysmal Nocturnal Hemoglobinuria (PNH)

The data described below reflects the exposure in adults with PNH who received FABHALTA (n = 62) or anti-C5 treatment (US-approved and non-US-approved eculizumab product or US-approved and non-US-approved ravulizumab product, n = 35) in APPLY-PNH [NCT04558918] and adults who received FABHALTA (n = 40) in APPOINT-PNH [NCT04820530] at the recommended dosing regimen for 24 weeks. In APPLY-PNH, serious adverse reactions were reported in 2 (3%) patients with PNH receiving FABHALTA. Serious adverse reactions included pyelonephritis, urinary tract infection and COVID-19. In APPOINT-PNH, serious adverse reactions were reported in 2 (5%) patients with PNH receiving FABHALTA. Serious adverse reactions included COVID-19 and bacterial pneumonia. The most common adverse reactions ( $\geq$  10%) with FABHALTA were headache, nasopharyngitis, diarrhea, abdominal pain, bacterial infection, viral infection, nausea, and rash.

Table 1 describes the adverse reactions that occurred in > 5% of patients treated with FABHALTA in the APPLY-PNH or APPOINT-PNH studies.

**Table 1: Adverse Reactions Reported in > 5% of Patients Treated with FABHALTA in APPLY-PNH or APPOINT-PNH Studies (24-Week Treatment Period)**

Adverse reactions	APPLY-PNH		APPOINT-PNH
	FABHALTA (N = 62) n (%)	Anti-C5 (Eculizumab or Ravulizumab) (N = 35) n (%)	FABHALTA (N = 40) n (%)
Headache <sup>a</sup>	12 (19)	1 (3)	11 (28)
Nasopharyngitis <sup>b</sup>	10 (16)	6 (17)	6 (15)
Diarrhea	9 (15)	2 (6)	3 (8)
Abdominal pain <sup>a</sup>	9 (15)	1 (3)	3 (8)
Bacterial infection <sup>c</sup>	7 (11)	4 (11)	2 (5)
Nausea	6 (10)	1 (3)	2 (5)
Viral infection <sup>d</sup>	6 (10)	11 (31)	7 (18)
Arthralgia	5 (8)	1 (3)	0
Thrombocytopenia <sup>a</sup>	4 (6)	0	0
Dizziness	4 (6)	0	1 (3)
Systemic hypertension <sup>a</sup>	4 (6)	0	0
Lipid disorder <sup>e</sup>	4 (6)	0	3 (8)
Rash <sup>f</sup>	2 (3)	0	4 (10)

<sup>a</sup>Includes similar terms.  
<sup>b</sup>Nasopharyngitis contains: rhinitis allergic, upper respiratory tract infection, pharyngitis, rhinitis.  
<sup>c</sup>Bacterial infection contains: pyelonephritis, urinary tract infection, bronchitis bacterial, bronchitis haemophilus, cholecystitis, folliculitis, cellulitis, arthritis bacterial, sepsis, klebsiella infection, staphylococcal infection, *Pseudomonas* infection, hordeolum, pneumonia bacterial.  
<sup>d</sup>Viral infection contains: COVID-19, herpes zoster, oral herpes, nasal herpes, influenza A virus test positive, influenza.  
<sup>e</sup>Lipid disorder contains: dyslipidemia, blood cholesterol increased, low density lipoprotein increased, hypercholesterolemia, blood triglycerides increased, hyperlipidemia.  
<sup>f</sup>Rash contains: dermatitis allergic, acne, erythema multiforme, rash maculo-papular, rash erythematous.

Clinically relevant adverse reactions reported in less than or equal to 5% of patients includes urticaria in one patient (3%) in APPOINT-PNH.

Description of Select Adverse Reactions (graded per NCI CTCAE Version 4.03 unless noted otherwise)

*Platelet Count Decreased*

Of the 37 FABHALTA-treated patients who had normal platelet counts at baseline in APPLY-PNH, 43% experienced any Grade thrombocytopenia during the randomized treatment period. Three FABHALTA-treated patients in APPLY-PNH experienced decreased platelets that worsened to Grade  $\geq 3$  from baseline (one patient with normal platelets that worsened to Grade 4, one patient with baseline Grade 1 that worsened to Grade 4, and one patient with baseline Grade 3 that worsened to Grade 4).

Immunoglobulin A Nephropathy (IgAN)

The safety of FABHALTA was evaluated in APPLAUSE-IgAN, a randomized placebo-controlled, double-blind clinical study in adults with IgAN (eGFR  $\geq 20$  mL /min/1.73 m<sup>2</sup> at baseline).

The data below reflect FABHALTA exposure in 235 patients with IgAN (eGFR  $\geq$  20 mL/min/1.73 m<sup>2</sup> at baseline) with a median duration of 43 weeks (up to 104 weeks) in APPLAUSE-IgAN. Table 2 describes the adverse reactions that occurred in  $\geq$  3 % of patients treated with FABHALTA and were  $\geq$  2% higher in frequency than placebo. All of these adverse reactions were mild or moderate in severity.

**Table 2: Adverse Reactions Reported in  $\geq$  3% of Adult Patients with IgAN (eGFR  $\geq$  20 mL /min/1.73 m<sup>2</sup>) Treated with FABHALTA and  $\geq$  2% Higher in Frequency Than Placebo in APPLAUSE-IgAN**

<b>Adverse reaction</b>	<b>FABHALTA (N = 235) n (%)</b>	<b>Placebo (N = 235) n (%)</b>
Upper respiratory tract infection	20 (9)	16 (7)
Lipid disorder <sup>1</sup>	15 (6)	10 (4)
Abdominal pain <sup>1</sup>	15 (6)	5 (2)
Nausea	8 (3)	2 (1)
Dizziness	7 (3)	2 (1)
<sup>1</sup> Includes similar terms.		

### Complement 3 Glomerulopathy (C3G)

The safety of FABHALTA was evaluated in APPEAR-C3G, a randomized, placebo-controlled, double-blind trial in adult patients with native kidney C3G. No new adverse reactions were identified during the 6-month placebo-controlled period of APPEAR-C3G, in which 38 patients were treated with FABHALTA and 36 patients were treated with placebo. The most common adverse reactions that occurred in  $\geq$  10% of patients treated with FABHALTA and were  $\geq$  5% higher in frequency than placebo were nasopharyngitis (11% in FABHALTA, 3% placebo) and viral infections (29% in FABHALTA, 22% placebo), mainly respiratory infections. One patient (3%) on FABHALTA and none on placebo had a serious adverse reaction of pneumonia and bacteremia secondary to an encapsulated organism (*S. pneumoniae*).

## **7 DRUG INTERACTIONS**

### **7.1 CYP2C8 Inducers**

Concomitant use of CYP2C8 inducers (e.g., rifampin) may decrease iptacopan exposure, which may result in loss of or reduced efficacy of FABHALTA. Monitor the clinical response and discontinue use of the CYP2C8 inducer if loss of efficacy of FABHALTA is evident.

### **7.2 Strong CYP2C8 Inhibitors**

Concomitant use of strong CYP2C8 inhibitors (e.g., gemfibrozil) may increase iptacopan exposure, which may result in an increased risk for adverse reactions with FABHALTA. Coadministration with a strong CYP2C8 inhibitor is not recommended.

## 8 USE IN SPECIFIC POPULATIONS

### 8.1 Pregnancy

#### Risk Summary

Available data from clinical trials with FABHALTA use in pregnant women are insufficient to identify a drug-associated risk of major birth defects, miscarriage, or other adverse maternal or fetal outcomes. There are risks to the mother and fetus associated with untreated PNH, IgAN, or C3G in pregnancy (*see Clinical Considerations*). The use of FABHALTA in pregnant women or women planning to become pregnant may be considered following an assessment of the risks and benefits.

In animal reproduction studies, oral administration of iptacopan to pregnant rats and rabbits during organogenesis at exposures 4- to 6-times the human exposure (based on AUC) at the maximum recommended human dose (MRHD) of 200 mg twice daily did not induce embryo or fetal toxicity (*see Data*).

The estimated background risk of major birth defects and miscarriage for the indicated populations is unknown. All pregnancies have a background risk of major birth defects, loss, or other adverse outcomes. In the U.S. general population, the estimated background risk of major birth defects and miscarriages in clinically recognized pregnancies is 2% to 4% and 15% to 20%, respectively.

#### Clinical Considerations

##### *Disease-Associated Maternal and/or Embryo/Fetal Risk*

PNH in pregnancy is associated with adverse maternal outcomes, including worsening cytopenias, thrombosis, infections, bleeding, miscarriages, increased maternal mortality, and adverse fetal outcomes, including fetal death and premature delivery.

IgAN in pregnancy is associated with adverse maternal outcomes, including increased rates of cesarean section, pregnancy-induced hypertension, pre-eclampsia and preterm delivery, and adverse fetal/neonatal outcomes, including stillbirth and low birth weight.

C3G in pregnancy may be associated with adverse maternal outcomes, in particular preeclampsia and miscarriage, as well as adverse fetal outcomes including prematurity and low birth weight.

#### Data

##### *Animal Data*

In an embryo-fetal development study in rats, oral administration of iptacopan during organogenesis did not cause embryo-fetal toxicity when given up to the highest dose of 1,000 mg/kg/day, which corresponds to 4-times the MRHD based on AUC.

In an embryo-fetal development study in rabbits, oral administration of iptacopan during organogenesis did not cause embryo-fetal toxicity when given up to the highest dose of 450 mg/kg/day, which corresponds to 6-times the MRHD based on AUC.

In a pre- and postnatal development study in rats, oral administration of iptacopan during gestation, parturition, and lactation did not cause adverse effects in offspring when given up to the highest dose of 1,000 mg/kg/day, which corresponds to 4-times the MRHD based on AUC.

### 8.2 Lactation

#### Risk Summary

There are no data on the presence of iptacopan or its metabolites in either human or animal milk, the effects on the breastfed child or on milk production. Since many medicinal products are secreted into human milk, and because of the potential for serious adverse reactions in a breastfed child, breastfeeding should be discontinued during treatment and for 5 days after the final dose.



## 8.4 Pediatric Use

Safety and effectiveness in pediatric patients with PNH, IgAN, or C3G have not been established.

## 8.5 Geriatric Use

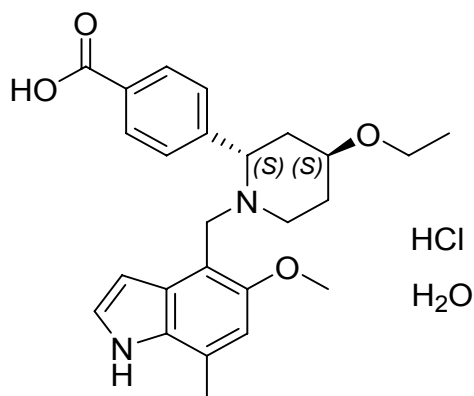
There were 29 PNH patients 65 years of age and older in APPLY-PNH and APPOINT-PNH [see *Clinical Studies (14)*]. Of the total number of FABHALTA-treated patients during the 24-week treatment period in these studies, 21 (20.6%) were 65 years of age and older, while 7 (6.9%) were 75 years of age and older. There were 8 IgAN patients 65 years of age and older in APPLAUSE-IgAN [see *Clinical Studies (14)*]. Of the total number of FABHALTA-treated patients, 3 (2.4%) were 65 years of age and older. Clinical studies of FABHALTA did not include sufficient numbers of patients 65 years of age and older to determine whether they respond differently from younger patients.

## 8.7 Hepatic Impairment

The use of FABHALTA is not recommended in patients with severe hepatic impairment (Child-Pugh class C). No dose adjustment is required for patients with mild (Child-Pugh class A) or moderate (Child-Pugh class B) hepatic impairment [see *Clinical Pharmacology (12.3)*].

## 11 DESCRIPTION

FABHALTA contains iptacopan, a complement Factor B inhibitor. The molecular weight of iptacopan hydrochloride monohydrate is approximately 477 g/mol. The chemical name is (2*S*,4*S*)-2-(4-Carboxyphenyl)-4-ethoxy-1-[(5-methoxy-7-methyl-1*H*-indol-4-yl)methyl]piperidin-1-ium chloride—water (1/1). The molecular formula is C<sub>25</sub>H<sub>30</sub>N<sub>2</sub>O<sub>4</sub>·HCl H<sub>2</sub>O. The structure is shown below.



Iptacopan hydrochloride monohydrate is a white or almost white to pale purplish-pink powder.

FABHALTA is supplied as hard gelatin capsules for oral administration. The capsules are packaged in high-density polyethylene (HDPE) bottles with induction seals and child resistant caps. Each FABHALTA capsule contains 200 mg iptacopan (provided as 225.8 mg iptacopan hydrochloride monohydrate) and the capsule shell contains the following inactive ingredients: gelatin, red ferric oxide, titanium dioxide, yellow ferric oxide. The black printing ink contains ferrous ferric oxide, potassium hydroxide, propylene glycol, shellac, and strong ammonia solution.

## 12 CLINICAL PHARMACOLOGY

### 12.1 Mechanism of Action

Iptacopan binds to Factor B of the alternative complement pathway and regulates the cleavage of C3, generation of downstream effectors, and the amplification of the terminal pathway.

In PNH, intravascular hemolysis (IVH) is mediated by the downstream membrane attack complex (MAC), while extravascular hemolysis (EVH) is facilitated by C3b opsonization. Iptacopan acts proximally in the

alternative pathway of the complement cascade to control both C3b-mediated EVH and terminal complement-mediated IVH.

In IgAN, the deposition of galactose deficient IgA1 (Gd-IgA1) containing immune complexes in the kidney locally activates the alternative complement pathway which is thought to contribute to the pathogenesis of IgAN. By binding to Factor B, iptacopan inhibits the alternative pathway.

In C3G, overactivation of the alternative complement pathway leads to C3 cleavage within the glomeruli resulting in C3 deposition and inflammation, which are thought to contribute to the pathogenesis of C3G. By binding to Factor B, iptacopan inhibits the alternative pathway.

## 12.2 Pharmacodynamics

Inhibition of the alternative complement pathway biomarkers, the *in vitro* alternative pathway assay and plasma Bb (fragment Bb of Factor B), started approximately 2 hours after a single iptacopan dose in healthy volunteers.

In PNH patients receiving concomitant anti-C5 treatment and FABHALTA 200 mg twice daily, the *in vitro* alternative pathway assay and plasma Bb decreased from baseline by 54.1% and 56.1%, respectively, on the first observation on Day 8. In treatment naïve PNH patients, these same biomarkers decreased from baseline by 78.4% and 58.9%, respectively, on the first observation after 4 weeks of treatment with FABHALTA 200 mg twice daily.

In PNH patients on concomitant anti-C5 treatment and FABHALTA 200 mg twice daily, the mean PNH red blood cell (RBC) clone size was 54.8% at baseline and increased to 89.2% after 13 weeks; the proportion of PNH Type II + III RBCs with C3 deposition was 12.4% at baseline and decreased to 0.2% after 13 weeks. In treatment naïve PNH patients, the mean PNH RBC clone size was 49.1% at baseline and increased to 91.1% after 12 weeks; there were negligible PNH Type II + III RBCs with C3 deposition in this population due to the predominance of IVH.

Iptacopan reduces serum LDH levels. In PNH patients previously treated with eculizumab, all patients treated with FABHALTA 200 mg twice daily achieved a reduction of LDH levels to < 1.5 times the upper limit of normal (ULN) at 13 weeks. In treatment naïve PNH patients, FABHALTA 200 mg twice daily reduced LDH by > 60% compared to baseline after 12 weeks and maintained the effect through the end of the study at 2 years.

In IgAN patients receiving 200 mg twice daily, the *in vitro* alternative pathway assay, plasma Bb, plasma soluble C5b-9 (also known as MAC), and urine soluble C5b-9 decreased from baseline by 85.2%, 17.5%, 19.5% and 96.5%, respectively, on the first observation at Month 9.

In C3G patients receiving 200 mg twice daily, the geometric mean serum C3 at baseline was 23 mg/dL and increased to 80 mg/dL at Day 14 of FABHALTA treatment. Over this same period, the placebo group geometric mean serum C3 level decreased from 25 mg/dL to 24 mg/dL. At 6 months the mean glomerular C3 deposition score (0-12) decreased by 0.8 (95% CI: -0.3, 1.8) from a baseline of 9.2 with FABHALTA and increased by 1.1 (95% CI: 0.1, 2.1) from a baseline of 9.6 with placebo. Plasma soluble C5b-9 (also known as MAC) and urine soluble C5b-9 decreased from baseline by 67% and 88%, respectively, at Day 180 of treatment with FABHALTA 200 mg twice daily compared to a 3% decrease in plasma soluble C5b-9 and a 36% decrease in urine soluble C5b-9 in the placebo group.

### Cardiac Electrophysiology

In a QTc clinical study in healthy volunteers, single supra-therapeutic iptacopan doses up to 1,200 mg (which provided greater than 4-fold peak concentration of the MRHD) showed no effect on cardiac repolarization or QT interval.

## 12.3 Pharmacokinetics

### Absorption

Following oral administration, iptacopan reached peak plasma concentrations approximately 2 hours post dose. At the recommended dosing regimen of 200 mg twice daily, steady state is achieved in approximately 5 days with minor accumulation (1.4-fold).

### *Effect of Food*

Based on a food-effect study in healthy volunteers, a high-fat meal did not affect the exposure of iptacopan to a clinically meaningful degree.

### Distribution

Iptacopan showed concentration-dependent plasma protein binding due to binding to the target Factor B in the systemic circulation. Iptacopan was 75% to 93% protein bound *in vitro* at the relevant clinical plasma concentrations. After administration of iptacopan 200 mg twice daily, the apparent volume of distribution at steady state was approximately 288 L.

### Elimination

The terminal half-life ( $t_{1/2}$ ) of iptacopan at steady state is approximately 25 hours after administration of FABHALTA 200 mg twice daily. The apparent clearance of iptacopan at steady state is 8 L/h after administration of FABHALTA 200 mg twice daily.

### *Metabolism*

Metabolism is a predominant elimination pathway for iptacopan with approximately 50% of the dose attributed to oxidative pathways. Metabolism of iptacopan includes N-dealkylation, O-deethylation, oxidation, and dehydrogenation, mostly driven by CYP2C8 (98%) with a small contribution from CYP2D6 (2%). Iptacopan undergoes Phase 2 metabolism through glucuronidation by UGT1A1, UGT1A3, and UGT1A8. In plasma, iptacopan was the major component, accounting for 83% of the drug-related species. Two acyl glucuronides were the only metabolites detected in plasma and were minor, accounting for 8% and 5% of the drug-related species. Iptacopan metabolites are not pharmacologically active.

### *Excretion*

In a human study, following a single 100 mg oral dose of [<sup>14</sup>C]-iptacopan, mean total excretion of radioactivity (iptacopan and metabolites) was 72% in the feces and 25% in the urine, for a total mean excretion of > 96% of the dose. Specifically, 18% of the dose was excreted as parent iptacopan in the urine, and 17% of the dose was excreted as parent iptacopan in feces.

### Linearity/Non-linearity

At doses between 25 mg and 200 mg twice daily, iptacopan was overall less than dose proportional. However, oral doses of 100 mg and 200 mg were approximately dose proportional.

### Specific Populations

A population pharmacokinetic (PK) analysis was conducted on iptacopan data from 234 patients. Age, body weight, race, and gender did not have a clinically significant effect on iptacopan PK.

### *Patients with Renal Impairment*

There were no clinically significant differences in the exposure of FABHALTA between patients with an eGFR in the range of 25 to <90 mL/min compared to those with normal eGFR. No data are currently available in patients on dialysis.

### *Patients with Hepatic Impairment*

In a study in subjects with normal hepatic function and patients with mild (Child-Pugh class A), moderate (Child-Pugh class B), or severe hepatic impairment (Child-Pugh class C), there was a negligible effect of hepatic impairment on the total (bound+unbound) exposure of iptacopan. However, unbound iptacopan AUC<sub>inf</sub> increased by 48%, 58% and 271% in patients with mild, moderate, and severe hepatic impairment, respectively, compared to subjects with normal hepatic function.

## Drug Interaction Studies

Based on a clinical drug interaction study in healthy volunteers, iptacopan exposure did not change to a clinically relevant degree when coadministered with clopidogrel (a moderate CYP2C8 inhibitor) or cyclosporine (a P-gp, BCRP, and OATP 1B1/1B3 inhibitor). The exposure of digoxin (a P-gp substrate) and rosuvastatin (an OATP substrate) did not change to a clinically relevant degree when coadministered with iptacopan.

## **13 NONCLINICAL TOXICOLOGY**

### **13.1 Carcinogenesis, Mutagenesis, Impairment of Fertility**

Iptacopan was not genotoxic or mutagenic in a battery of *in vitro* and *in vivo* assays.

Carcinogenicity studies conducted with oral administration of iptacopan in RasH2 transgenic mice with doses up to 1,000 mg/kg/day for 6 months and in rats with doses up to 750 mg/kg/day for 2 years did not identify any carcinogenic potential. The highest exposure to iptacopan in rats corresponds to approximately 9-times the MRHD based on AUC.

In a fertility study in male rats, iptacopan did not adversely impact fertility up to the highest tested dose of 750 mg/kg/day, which corresponds to 4-times the MRHD based on AUC. Reversible effects on the male reproductive system (testicular tubular degeneration and cellular debris in epididymis) were observed in repeat-dose toxicity studies with oral administration in dogs at doses  $\geq$  2-times the MRHD based on AUC, with no clear effects on sperm numbers, morphology, or motility. In a fertility and early embryonic developmental study in female rats, oral administration of iptacopan caused increased pre- and post-implantation losses when given at the highest dose of 1,000 mg/kg/day orally, which corresponds to approximately 11-times the MRHD based on AUC.

## **14 CLINICAL STUDIES**

### **14.1 Paroxysmal Nocturnal Hemoglobinuria (PNH)**

#### APPLY-PNH: Anti-C5 Treatment Experienced Patients With PNH

The efficacy of FABHALTA administered orally in adults with PNH was evaluated in a multi-center, open-label, 24-week, active comparator-controlled trial (APPLY-PNH; NCT04558918).

The study enrolled adults with PNH and residual anemia (hemoglobin < 10 g/dL) despite previous treatment with a stable regimen of anti-C5 treatment (either eculizumab or ravulizumab) for at least 6 months prior to randomization.

Ninety-seven patients were randomized in an 8:5 ratio to switch to FABHALTA 200 mg orally twice daily (n = 62) or to continue anti-C5 treatment (US-approved and non-US-approved eculizumab product n = 23 or US-approved and non-US-approved ravulizumab product n = 12) throughout the duration of the 24-week randomized controlled period. Randomization was stratified based on prior anti-C5 treatment and transfusion history within the last 6 months. Following completion of the 24-week randomized controlled period, all patients were eligible to enroll in a 24-week treatment extension period and receive FABHALTA monotherapy. Subsequently, patients were eligible to enter a separate long-term extension study.

Patients were required to be vaccinated against *Neisseria meningitidis* and recommended to be vaccinated against *Streptococcus pneumoniae* and *Haemophilus influenzae* type b. If the patient had not been previously vaccinated or if a booster was required, vaccination was administered at least 2 weeks prior to the first dose of study medication. If FABHALTA treatment was initiated earlier than 2 weeks after vaccination, antibacterial drug prophylaxis was administered.

Demographics and baseline disease characteristics were generally well balanced between treatment groups (see Table 3). The mean time on prior anti-C5 treatment was 3.8 and 4.2 years for the FABHALTA and anti-C5

groups, respectively. The baseline mean PNH RBC clone size (Type II + III) was 64.6% for the FABHALTA group and 57.4% for the anti-C5 group.

**Table 3: Patient Baseline Demographics and Characteristics in APPLY-PNH**

Parameters	Statistics	FABHALTA (n = 62)	Anti-C5 (Eculizumab or Ravulizumab) (n = 35)
Age (years)	Mean (SD) min, max	51.7 (16.9) 22, 84	49.8 (16.7) 20, 82
Sex Female	n (%)	43 (69.4)	24 (68.6)
Race White Asian Black or African American	n (%) n (%) n (%)	48 (77.4) 12 (19.4) 2 (3.2)	26 (74.3) 7 (20.0) 2 (5.7)
Ethnicity Not Hispanic or Latino Hispanic or Latino Not reported/unknown	n (%) n (%) n (%)	51 (82.3) 8 (12.9) 3 (4.8)	27 (77.1) 2 (5.7) 6 (17.1)
Hemoglobin level (g/dL)	Mean (SD)	8.9 (0.7)	8.9 (0.9)
LDH level (U/L)	Mean (SD)	269 (70)	273 (85)
Absolute reticulocyte count (ARC) (10 <sup>9</sup> /L)	Mean (SD)	193 (84)	191 (81)
At least one transfusion in 6 months prior to randomization	n (%)	35 (56.5)	21 (60.0)
History of MAVEs	n (%)	12 (19.4)	10 (28.6)
Disease duration (years)	Mean (SD)	11.9 (9.8)	13.5 (10.9)
Abbreviations: LDH, lactate dehydrogenase; MAVEs, major adverse vascular events (includes thrombosis, stroke and myocardial infarction); SD, standard deviation.			

Efficacy was established based on demonstration of superiority of switching to FABHALTA compared to continuing on anti-C5 therapy in achieving hematological response after 24 weeks of treatment, without a need for transfusion, by assessing the proportion of patients demonstrating: 1) sustained increase of  $\geq 2$  g/dL in hemoglobin levels from baseline (hemoglobin improvement) and 2) sustained hemoglobin levels  $\geq 12$  g/dL. Additional efficacy endpoints included transfusion avoidance, change from baseline in hemoglobin levels and change from baseline in absolute reticulocyte counts.

The efficacy results from the APPLY-PNH trial are provided in Table 4.

**Table 4: Efficacy Results for the 24-week Randomized Treatment Period for APPLY-PNH**

Endpoints	FABHALTA (N = 62)	Anti-C5 (Eculizumab or Ravulizumab) (N = 35)	Difference (95% CI) p-value
<b>Primary endpoints</b>			

Patients with sustained increase of hemoglobin levels $\geq 2$ g/dL <sup>a</sup> from baseline in the absence of transfusions	51/62	0/35	
Response rate (%) (95% CI)	82.3 (70.5, 90.8)	0 (0, 10.0)	81.5 <sup>b</sup> (71.6, 91.4) < 0.0001
Patients with sustained hemoglobin level $\geq 12$ g/dL <sup>a</sup> in the absence of transfusions	42/62	0/35	
Response rate (%) (95% CI)	67.7 (54.7, 79.1)	0 (0, 10.0)	66.6 <sup>b</sup> (54.6, 78.6) < 0.0001
<b>Secondary endpoints</b>			
Patients avoiding transfusion <sup>c,d</sup>	59/62	16/35	
Transfusion avoidance rate (%) (95% CI)	95.2 (86.5, 99.0)	45.7 (28.8, 63.4)	49.5 <sup>b</sup> (32.5, 66.6) < 0.0001
Hemoglobin change from baseline (g/dL) (adjusted mean <sup>e,f</sup> ) (95% CI)	3.6 (3.3, 3.9)	-0.1 (-0.5, 0.3)	3.7 (3.2, 4.1) < 0.0001
Absolute reticulocyte count change from baseline ( $10^9/L$ ) (adjusted mean <sup>e</sup> ) (95% CI)	-116 (-127, -105)	0 (-13, 14)	-116 (-132, -100) < 0.0001
Abbreviations: RR, rate ratio. <sup>a</sup> Assessed between Day 126 and 168. <sup>b</sup> Adjusted difference in proportion. <sup>c</sup> Assessed between Day 14 and 168. <sup>d</sup> Transfusion avoidance is defined as absence of administration of packed-red blood cell transfusions between Day 14 and 168. <sup>e</sup> Adjusted mean assessed between Day 126 and 168. <sup>f</sup> Excludes values within 30 days post-transfusion.			

### APPOINT-PNH: Complement Inhibitor Naïve Patients with PNH

Study APPOINT-PNH (NCT04820530) is a single arm study in adults with PNH who were not previously treated with a complement inhibitor. This study enrolled a total of 40 adults with PNH (RBC clone size  $\geq 10\%$ ), hemoglobin  $< 10$  g/dL, and LDH  $> 1.5$  times upper limit of normal (ULN). All 40 patients received FABHALTA 200 mg orally twice daily during the 24-week open-label core treatment period. Subsequently, patients were eligible to enroll in a 24-week treatment extension period and continue to receive FABHALTA, followed by a separate long-term extension study.

The mean age of the patients was 42.1 years and 42.5% were female. The mean disease duration was 4.7 years. The baseline mean PNH RBC clone size (Type II + III) was 42.7%, mean baseline hemoglobin was 8.2 g/dL, and approximately 70% of patients required a transfusion in the 6 months prior to treatment. The baseline mean LDH level was 1,699 U/L and the mean absolute reticulocyte count was  $154 \times 10^9/L$ . About 13% of patients had a history of MAVES. No patients discontinued from the core treatment period of the study.

In total, 77.5% (95% CI: 61.5%, 89.2%) of patients (31/40) achieved a sustained increase (between Day 126 and Day 168) in hemoglobin levels from baseline of  $\geq 2$  g/dL in the absence of RBC transfusions, based on central laboratory hemoglobin values. In a sensitivity analysis, 87.5% (95% CI: 73.2%, 95.8%) of patients (35/40) achieved a sustained increase (between Day 126 and Day 168) in hemoglobin levels from baseline of

≥ 2 g/dL in the absence of RBC transfusions, including local laboratory hemoglobin values when central laboratory hemoglobin values were not available.

## 14.2 Immunoglobulin A Nephropathy (IgAN)

The effect of FABHALTA was evaluated in a multicenter, randomized, placebo-controlled, double-blind study (APPLAUSE-IgAN, NCT04578834) in adults with biopsy-proven IgAN, eGFR ≥ 20 mL/min/1.73 m<sup>2</sup>, and urine protein-to-creatinine ratio (UPCR) ≥ 1 g/g on a stable dose of maximally-tolerated renin-angiotensin system (RAS) inhibitor therapy with or without a stable dose of an SGLT2 inhibitor. Patients with other glomerulopathies or those who had been recently treated with systemic immunosuppressants were excluded. Patients were included in either the Main Study Population (eGFR ≥ 30 mL/min/1.73 m<sup>2</sup>) or the Severe Renal Impairment population (eGFR ≥ 20 and < 30 mL/min/1.73 m<sup>2</sup>). Within each group, patients were randomized (1:1) to either FABHALTA 200 mg or placebo twice daily. Rescue immunosuppressive treatment could be initiated per investigator discretion during the trial.

Patients were required to be vaccinated against *Neisseria meningitidis* and *Streptococcus pneumoniae* and were recommended to be vaccinated against *Haemophilus influenzae* type b. If the patient had not been previously vaccinated or if a booster was required, vaccination was administered at least 2 weeks prior to first dosing. If FABHALTA treatment was initiated earlier than 2 weeks after vaccination, antibacterial drug prophylaxis was administered.

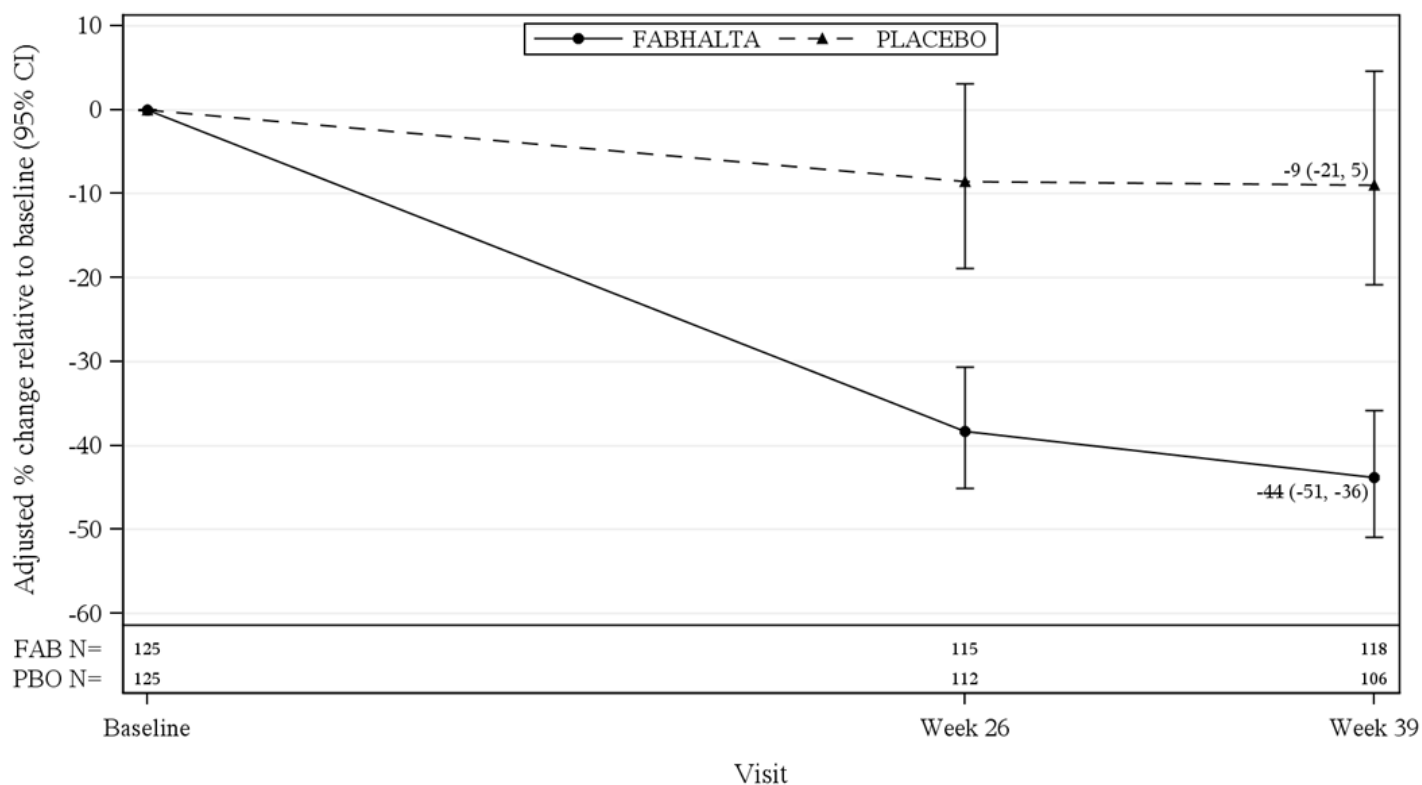
The efficacy analysis was based on the first 250 patients with an eGFR ≥ 30 mL/min/1.73 m<sup>2</sup> (Main Study Population), who had completed or discontinued the study prior to the Month 9 visit. At baseline, the mean age of these patients was 39 years (range 18 to 74 years); 52% were male, 44% White, 54% Asian, and < 1% Black or African American; the mean eGFR was 64 mL/min/1.73 m<sup>2</sup>; the geometric mean UPCR (sampled from a 24-hr urine collection) was 2.0 g/g, and 12% had a UPCR ≥ 3.5 g/g. At baseline, 99% of patients were treated with an ACEi or ARB and 13% were on an SGLT2i. Approximately 59% had a history of hypertension, 6% had a history of type 2 diabetes, and 75% had hematuria based on urine dipstick.

The primary endpoint was the percent reduction in UPCR (sampled from a 24-hr urine collection) at Month 9 relative to baseline (see Table 5). The mean percent change from baseline in UPCR over time is shown in Figure 1.

**Table 5: Percent Reduction in UPCR at Month 9 in APPLAUSE-IgAN**

	FABHALTA (N = 125)	Placebo (N = 125)
Geometric mean of UPCR, g/g		
Baseline	1.9 (n = 125)	2.0 (n = 125)
Month 9	1.0 (n = 119)	1.7 (n = 110)
% reduction in UPCR at Month 9 relative to baseline (95% CI) <sup>a</sup>	44% (36%, 51%)	9% (-5%, 21%)
FABHALTA versus placebo: % reduction in UPCR at Month 9 relative to baseline (95% CI) <sup>a</sup>		38% (26%, 49%)
p-value <sup>b</sup>		< 0.0001
<sup>a</sup> Percent reduction in UPCR was obtained from the adjusted geometric mean ratios where the log transformed ratio to baseline in UPCR (sampled from 24hr urine collection) was analyzed using an MMRM; Values after taking rescue immunosuppressive treatment for IgAN were imputed to reflect disease worsening. Rescue immunosuppressive treatment for IgAN was initiated in 0 and 7 (5.6%) patients in the FABHALTA and placebo group up to Month 9, respectively. <sup>b</sup> One-sided p-value statistically significant at the 0.005 level. Abbreviations: CI, confidence interval; IgAN, immunoglobulin A nephropathy; MMRM, mixed model of repeated measures; N, number of subjects in each group; n, number of subjects with available data at the time of analysis; UPCR, urine protein-to-creatinine ratio		

**Figure 1: Geometric Mean Percent Change from Baseline in UPCR by Visit in APPLAUSE-IgAN**



Adjusted % change relative to baseline in UPCR were obtained by analyzing the log transformed ratio to baseline in UPCR using an MMRM as described in Table 5. N represents the number of subjects with values non-missing/not imputed as per the intercurrent event handling strategy by visit and treatment group.

Abbreviations: CI, confidence interval; FAB, FABHALTA; MMRM, mixed model repeated measures; N, number of subjects in each group; PBO, placebo; UPCR, urine protein-to-creatinine ratio.

The treatment effect on UPCR at Month 9 was consistent across all subgroups including age, sex, race, baseline disease characteristics (such as baseline eGFR and proteinuria levels), and the use of SGLT2i.

### 14.3 Complement 3 Glomerulopathy (C3G)

The efficacy of FABHALTA in reducing proteinuria in adult patients with native kidney C3G was demonstrated in the APPEAR-C3G trial. Safety and effectiveness of FABHALTA in patients with recurrent C3G following kidney transplant have not been established.

APPEAR-C3G was a randomized, double-blind, placebo-controlled study in 74 adult patients with biopsy confirmed native kidney C3G who had a urine protein-to-creatinine ratio (UPCR)  $\geq 1$  g/g and eGFR  $\geq 30$  mL/min/1.73 m<sup>2</sup> (NCT04817618). Patients were randomized (1:1) to receive either FABHALTA 200 mg orally twice daily (N = 38) or placebo (N = 36) for 6 months, followed by a 6-month open-label treatment period in which all patients received FABHALTA 200 mg orally twice daily.

Patients were required to be on a maximally tolerated renin-angiotensin system (RAS) inhibitor and could be on a corticosteroid and/or mycophenolate mofetil/sodium (MMF/MPS) at baseline. All background therapies (i.e., RAS inhibitors, corticosteroids and MMF/MPS) were required to be at stable doses for 90 days prior to randomization and throughout the study. Randomization was stratified according to whether patients were receiving concomitant immunosuppressive therapy.

Patients were required to be vaccinated against *Neisseria meningitidis* and *Streptococcus pneumoniae* and were recommended to be vaccinated against *Haemophilus influenzae* type b. If the patient had not been previously vaccinated or if a booster was required, vaccination was administered at least 2 weeks prior to first dosing. If



FABHALTA treatment was initiated earlier than 2 weeks after vaccination, antibacterial drug prophylaxis was administered.

At baseline, the mean age of patients was 28 years (range 18 to 60 years), 64% were male, 69% were White, 24% were Asian, and 9% were Hispanic or Latino. The mean baseline eGFR (mL/min/1.73 m<sup>2</sup>) was 89 and 99 in the FABHALTA and placebo groups, respectively, and the geometric mean 24-hour UPCR (g/g) at baseline was 3.3 and 2.6 in the FABHALTA and placebo groups, respectively.

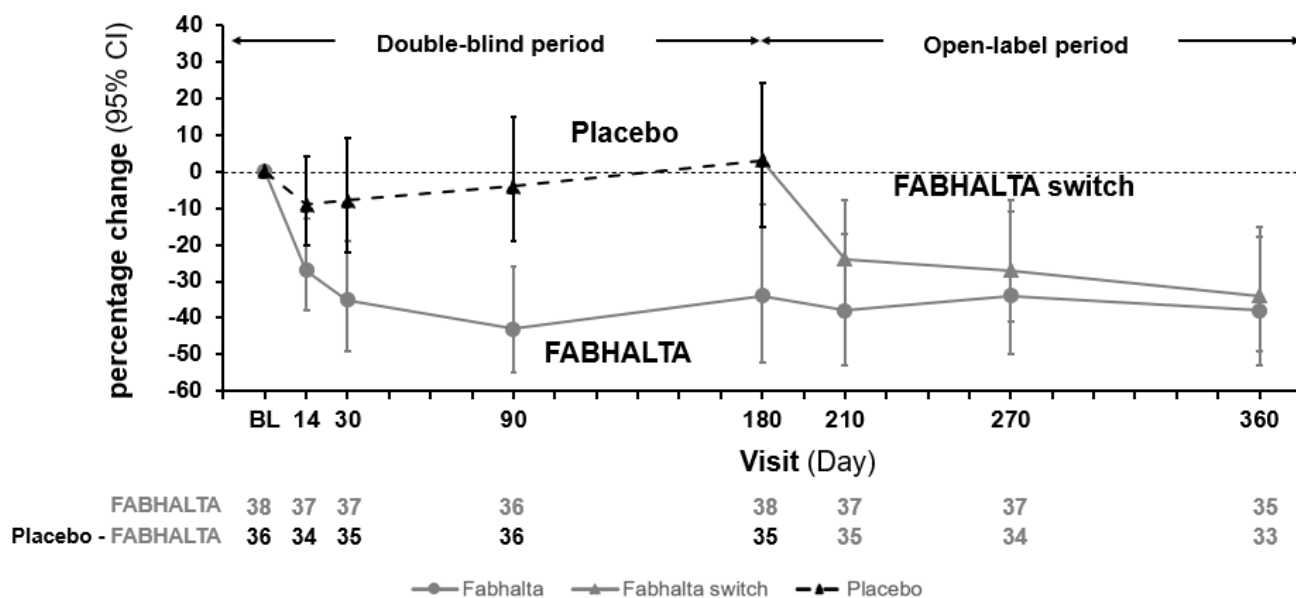
Twenty four percent of patients in the FABHALTA group and 3% in the placebo group had dense deposit disease. Baseline use of corticosteroids and/or MMF/MPS, and RAS inhibitor was balanced among the FABHALTA and placebo groups. Overall, 45% of patients were on corticosteroids and/or MMF/MPS, and 99% of patients were on a RAS inhibitor at baseline.

The primary efficacy endpoint was the log-transformed ratio to baseline in UPCR (sampled from a 24-hour urine collection) at 6 months. At 6 months, the geometric mean UPCR ratio relative to baseline was 0.70 (95% CI: 0.57, 0.85) and 1.08 (95% CI: 0.88, 1.31) in the FABHALTA and placebo groups, respectively, resulting in a 35% reduction in 24-hour UPCR from baseline in the FABHALTA group compared to placebo (p = 0.0028).

Following the initial 6-month treatment period, all patients were treated with FABHALTA for an additional 6 months. In patients initially randomized to FABHALTA, the reduction in 24-hour UPCR seen at 6 months was maintained at Month 12. In patients who switched from placebo to FABHALTA, the magnitude of the reduction in 24-hour UPCR from Month 6 to 12 was similar to the reduction seen in patients initially randomized to FABHALTA. The geometric mean percent change from baseline in UPCR (measured as first morning void [FMV]) over time is shown in Figure 2.

Compared to patients treated with placebo, patients treated with FABHALTA had a 7-fold higher odds (p = 0.0166) of achieving a composite renal endpoint defined as a ≥ 50% reduction in 24-hour UPCR compared to baseline and stable or improved eGFR compared to baseline [≤ 15% reduction in eGFR] at 6 months. Although a greater proportion of patients in the FABHALTA arm (30%) as compared to placebo (6%) achieved a ≥ 50% reduction in 24-hour UPCR compared to baseline, there was no difference between arms in the proportion of patients with stable or improved eGFR compared to baseline at 6 months (90% in FABHALTA vs 89% in placebo).

**Figure 2: Geometric Mean Percent Change from Baseline in UPCR FMV (g/g) up to Month 12 (APPEAR-C3G)**



The treatment effect of FABHALTA on UPCR at Month 6 was generally consistent across subgroups including age, sex, race, baseline disease characteristics (such as baseline proteinuria and eGFR levels) and use of immunosuppressive therapies.

## 16 HOW SUPPLIED/STORAGE AND HANDLING

200 mg capsules: pale yellow opaque hard capsules, imprinted with “LNP200” on one half and “NVR” on the other half, packaged in a high-density polyethylene (HDPE) bottle with induction seal and child-resistant cap. Each bottle contains 60 capsules (NDC 0078-1189-20).

Store at 20°C to 25°C (68°F to 77°F); excursions permitted between 15°C and 30°C (59°F and 86°F) [see USP Controlled Room Temperature].

## 17 PATIENT COUNSELING INFORMATION

Advise the patient to read the FDA-approved patient labeling (Medication Guide).

### Serious Infections Caused by Encapsulated Bacteria

Advise patients of the risk of serious infection. Inform patients of the need to complete or update their vaccinations against encapsulated bacteria at least 2 weeks prior to receiving the first dose of FABHALTA or to receive antibacterial drug prophylaxis if FABHALTA treatment must be initiated immediately and they have not been previously vaccinated. Inform patients of the requirement to be revaccinated according to current ACIP recommendations for encapsulated bacteria while on FABHALTA therapy [see *Warnings and Precautions (5.1)*].

Inform patients that vaccination may not prevent serious infection and to seek immediate medical attention if the following signs or symptoms occur [see *Warnings and Precautions (5.1)*]:

- fever with or without shivers or chills
- fever and a rash
- fever with chest pain and cough
- fever with breathlessness/fast breathing
- fever with high heart rate
- headache with nausea or vomiting
- headache and a fever
- headache with a stiff neck or stiff back
- confusion
- body aches with flu-like symptoms
- clammy skin
- eyes sensitive to light

Inform patients that they will be given a Patient Safety Card for FABHALTA that they should carry with them at all times during and for 2 weeks following treatment with FABHALTA. This card describes symptoms which, if experienced, should prompt the patient to seek immediate medical evaluation.

### FABHALTA REMS

FABHALTA is available only through a restricted program called FABHALTA REMS [see *Warnings and Precautions (5.2)*].

Inform the patient of the following notable requirements:

- Patients must receive counseling about the risk of serious infections caused by encapsulated bacteria.
- Patients must receive written educational materials about this risk.
- Patients must be instructed to carry the Patient Safety Card with them at all times during and for 2 weeks following treatment with FABHALTA.

- Patients must be instructed to complete or update vaccines against encapsulated bacteria per ACIP recommendations as directed by the prescriber prior to treatment with FABHALTA.
- Patients must receive antibiotics as directed by the prescriber if they are not up to date on vaccinations against encapsulated bacteria and have to start FABHALTA right away.

#### Importance of Adherence to Dosing Schedule

Inform patients with PNH of the importance of taking FABHALTA as prescribed in order to minimize the risk of hemolysis.

#### Discontinuation

Inform patients with PNH that they may develop serious hemolysis due to PNH if FABHALTA is discontinued and that they should be monitored by their healthcare providers for at least 2 weeks following discontinuation of FABHALTA.

Inform patients who discontinue FABHALTA to keep the Patient Safety Card with them for 2 weeks after the last dose of FABHALTA. The increased risk of serious infection may continue for a few weeks after the last dose of FABHALTA.

#### Hyperlipidemia

Inform patients that FABHALTA may increase their cholesterol and triglycerides and that monitoring of these parameters will be needed periodically during treatment.

Distributed by:

Novartis Pharmaceuticals Corporation  
East Hanover, New Jersey 07936

For more information, visit [www.FABHALTA.com](http://www.FABHALTA.com) or call 1-888-669-6682.

© Novartis

**MEDICATION GUIDE**  
**FABHALTA® (fab hal tah)**  
**(iptacopan)**  
**capsules, for oral use**

**What is the most important information I should know about FABHALTA?**

**FABHALTA is a medicine that affects part of your immune system. FABHALTA may lower the ability of your immune system to fight infections.**

- **FABHALTA increases your chance of getting serious infections caused by encapsulated bacteria**, including *Streptococcus pneumoniae*, *Neisseria meningitidis*, and *Haemophilus influenzae* type b. These serious infections may quickly become life-threatening or fatal if not recognized and treated early.
  - You must complete or update your vaccinations against *Streptococcus pneumoniae* and *Neisseria meningitidis* at least 2 weeks before your first dose of FABHALTA.
  - If you have not completed your vaccinations and FABHALTA must be started right away, you should receive the required vaccinations as soon as possible.
  - If you have not been vaccinated and FABHALTA must be started right away, you should also receive antibiotics to take for as long as your healthcare provider tells you.
  - If you have been vaccinated against these bacteria in the past, you might need additional vaccinations before starting FABHALTA. Your healthcare provider will decide if you need additional vaccinations.
  - Vaccines do not prevent all infections caused by encapsulated bacteria. **Call your healthcare provider or get emergency medical care right away if you have any of these signs and symptoms of a serious infection:**
    - fever with or without shivers or chills
    - fever with chest pain and cough
    - fever with high heart rate
    - headache and fever
    - confusion
    - clammy skin
    - fever and a rash
    - fever with breathlessness or fast breathing
    - headache with nausea or vomiting
    - headache with stiff neck or stiff back
    - body aches with flu-like symptoms
    - eyes sensitive to light

**Your healthcare provider will give you a Patient Safety Card about the risk of serious infections.** Carry it with you at all times during treatment and for 2 weeks after your last dose of FABHALTA. Your risk of serious infections may continue for a few weeks after your last dose of FABHALTA. It is important to show this card to any healthcare provider who treats you. This will help them diagnose and treat you quickly.

**FABHALTA is only available through a program called the FABHALTA Risk Evaluation and Mitigation Strategy (REMS). Before you can take FABHALTA, your healthcare provider must:**

- enroll in the FABHALTA REMS program
- counsel you about the risk of serious infections caused by certain bacteria
- give you information about the symptoms of serious infections
- make sure that you are vaccinated against serious infections caused by encapsulated bacteria and that you receive antibiotics if you need to start FABHALTA right away and you are not up to date on your vaccinations
- give you a **Patient Safety Card** about your risk of serious infections, as discussed above

For more information about side effects, see **“What are the possible side effects of FABHALTA?”**

**What is FABHALTA?**

FABHALTA is a prescription medicine used to:

- treat adults with a disease called paroxysmal nocturnal hemoglobinuria (PNH).
- reduce levels of protein in the urine (proteinuria) in adults with a kidney disease called primary immunoglobulin A nephropathy (IgAN), who are at risk of their disease progressing quickly.
- treat adults with a kidney disease called complement 3 glomerulopathy (C3G), to reduce levels of protein in the urine (proteinuria).

It is not known if FABHALTA is safe and effective in children with PNH, IgAN, or C3G.

**Who should not take FABHALTA?**

**Do not take FABHALTA if you:**

- are allergic to iptacopan or any of the ingredients in FABHALTA. See the end of this Medication Guide for a complete list of ingredients in FABHALTA.

- have a serious infection caused by encapsulated bacteria, including *Streptococcus pneumoniae*, *Neisseria meningitidis*, or *Haemophilus influenzae* type b when you are starting FABHALTA treatment.

**Before you take FABHALTA, tell your healthcare provider about all of your medical conditions, including if you:**

- have an infection or fever
- have liver problems
- are pregnant or plan to become pregnant. It is not known if FABHALTA will harm your unborn baby.
- are breastfeeding or plan to breastfeed. It is not known if FABHALTA passes into your breast milk. You should not breastfeed during treatment and for 5 days after your final dose of FABHALTA.

**Tell your healthcare provider about all the medicines you take**, including prescription and over-the-counter medicines, vitamins, and herbal supplements. Taking FABHALTA with certain other medicines may affect the way FABHALTA works and may cause side effects.

Know the medicines you take and the vaccines you receive. Keep a list of them to show your healthcare provider and pharmacist when you get a new medicine.

**How should I take FABHALTA?**

- Take FABHALTA exactly as your healthcare provider tells you. Do not change the dose or stop taking FABHALTA unless your healthcare provider tells you.
- Take 1 FABHALTA capsule 2 times each day, with or without food.
- Swallow the capsules whole. **Do not** open, break, or chew capsules.
- If you miss a dose or doses of FABHALTA, take 1 dose of FABHALTA as soon as you remember, even if it is almost time to take your next scheduled dose, and then take your next dose of FABHALTA at your regularly scheduled time.

**For people with PNH:**

- **If you are changing treatment from eculizumab to FABHALTA**, you should take your starting dose of FABHALTA no later than 1 week after your last dose of eculizumab.
- **If you are changing treatment from ravulizumab to FABHALTA**, you should take your starting dose of FABHALTA no later than 6 weeks after your last dose of ravulizumab.
- **If you stop taking FABHALTA**, your healthcare provider will need to monitor you closely for at least 2 weeks after stopping FABHALTA. **Stopping treatment with FABHALTA may cause a breakdown of red blood cells due to PNH.**

**Symptoms or problems that can happen due to breakdown of red blood cells include:**

- decreased hemoglobin level in your blood
- blood in your urine
- shortness of breath
- trouble swallowing
- tiredness
- pain in the stomach (abdomen)
- blood clots, stroke, and heart attack
- erectile dysfunction
- It is important you take FABHALTA exactly as your healthcare provider tells you to lower the possibility of breakdown of red blood cells due to PNH.

**What are the possible side effects of FABHALTA?**

**FABHALTA may cause serious side effects, including:**

- See “**What is the most important information I should know about FABHALTA?**”
- **Increased cholesterol and triglyceride (lipid) levels in your blood.** Your healthcare provider will do blood tests to check your cholesterol and triglycerides during treatment with FABHALTA. Your healthcare provider may start you on a medicine to lower your cholesterol if needed.

**The most common side effects of FABHALTA in adults include:**

- headache
- nasal congestion, runny nose, cough, sneezing, and sore throat (nasopharyngitis)
- diarrhea
- pain in the stomach (abdomen)
- infections (bacterial and viral)
- nausea
- rash

Tell your healthcare provider about any side effect that bothers you or that does not go away. These are not all of the possible side effects of FABHALTA.

Call your doctor for medical advice about side effects. You may report side effects to FDA at 1-800-FDA-1088.

**How should I store FABHALTA?**

- Store FABHALTA capsules at room temperature between 68°F to 77°F (20°C to 25°C).
- The FABHALTA container contains a child resistant cap.

**Keep FABHALTA and all medicines out of the reach of children.**

**General information about the safe and effective use of FABHALTA.**

Medicines are sometimes prescribed for purposes other than those listed in a Medication Guide. Do not use FABHALTA for a condition for which it was not prescribed. Do not give FABHALTA to other people, even if they have the same symptoms that you have. It may harm them. You can ask your pharmacist or healthcare provider for information about FABHALTA that is written for health professionals.

**What are the ingredients in FABHALTA?**

**Active ingredient:** iptacopan

**Inactive ingredients:** the capsule shell contains gelatin, red ferric oxide, titanium dioxide, yellow ferric oxide. The black printing ink contains ferrous ferric oxide, potassium hydroxide, propylene glycol, shellac, and strong ammonia solution.

Distributed by: Novartis Pharmaceuticals Corporation, East Hanover, New Jersey 07936

© Novartis

For more information, go to [www.FABHALTA.com](http://www.FABHALTA.com) or call 1-888-669-6682.

This Medication Guide has been approved by the U.S. Food and Drug Administration.

Revised: 03/2025