

80.3 [3.164]

19 [0.749]

100 [3.940]

8U14KFAXV1-T

<p>Dissolve Tabs Lansoprazole Delayed Release Orally Disintegrating Tablets 15 mg acid reducer</p> <p>Dexcel Pharma Technologies Ltd 10 Hakidma Street, Yokneam 2069200, Israel</p> <p>1. SEPARATE AT PERFORATION. 2. PEEL AT ARROW.</p>	<p>Exp YYYY/MM Batch No. 00000000</p> <p>START HERE</p> <p>Exp YYYY/MM Batch No. 00000000</p> <p>PEEL</p>	<p>Dissolve Tabs Lansoprazole Delayed Release Orally Disintegrating Tablets 15 mg acid reducer</p> <p>Dexcel Pharma Technologies Ltd 10 Hakidma Street, Yokneam 2069200, Israel</p> <p>1. SEPARATE AT PERFORATION. 2. PEEL AT ARROW.</p>
<p>Dissolve Tabs Lansoprazole Delayed Release Orally Disintegrating Tablets 15 mg acid reducer</p> <p>Dexcel Pharma Technologies Ltd 10 Hakidma Street, Yokneam 2069200, Israel</p> <p>1. SEPARATE AT PERFORATION. 2. PEEL AT ARROW.</p>	<p>Exp YYYY/MM Batch No. 00000000</p> <p>PEEL</p>	<p>Dissolve Tabs Lansoprazole Delayed Release Orally Disintegrating Tablets 15 mg acid reducer</p> <p>Dexcel Pharma Technologies Ltd 10 Hakidma Street, Yokneam 2069200, Israel</p> <p>1. SEPARATE AT PERFORATION. 2. PEEL AT ARROW.</p>
<p>Dissolve Tabs Lansoprazole Delayed Release Orally Disintegrating Tablets 15 mg acid reducer</p> <p>Dexcel Pharma Technologies Ltd 10 Hakidma Street, Yokneam 2069200, Israel</p> <p>1. SEPARATE AT PERFORATION. 2. PEEL AT ARROW.</p>	<p>Exp YYYY/MM Batch No. 00000000</p> <p>PEEL</p>	<p>Dissolve Tabs Lansoprazole Delayed Release Orally Disintegrating Tablets 15 mg acid reducer</p> <p>Dexcel Pharma Technologies Ltd 10 Hakidma Street, Yokneam 2069200, Israel</p> <p>1. SEPARATE AT PERFORATION. 2. PEEL AT ARROW.</p>
<p>Place tablet on tongue; tablet disintegrates, with or without water. Do not crush or chew tablets. One 14-day course of treatment. Take 1 tablet every day for 14 days. Do not take for more than 14 days or more often than every 4 months unless directed by a doctor.</p>		<p>Dissolve Tabs Lansoprazole Delayed Release Orally Disintegrating Tablets 15 mg acid reducer</p> <p>Dexcel Pharma Technologies Ltd 10 Hakidma Street, Yokneam 2069200, Israel</p> <p>1. SEPARATE AT PERFORATION. 2. PEEL AT ARROW.</p>

Exp YYYY/MM
Batch No. 00000000

PEEL

↔
Unsealed area

Batch No.
EXP
8U174 FA V1-T 060425

Drug Facts

Active ingredient (in each tablet).....Lansoprazole 15 mg, Acid Reducer

Purpose

Use ■ treats frequent heartburn (occurs 2 or more days a week) ■ not intended for immediate relief of heartburn; this drug may take 1 to 4 days for full effect

Warnings

Allergy alert:

- do not use if you are allergic to lansoprazole.
- lansoprazole may cause severe skin reactions. Symptoms may include:
 - rash
 - skin reddening
- an allergic reaction occurs, stop use and seek medical help right away.

Do not use if you have:

- trouble or pain swallowing food, vomiting with blood, or bloody or black stools
- heartburn with **lightheadedness, sweating or dizziness**
- chest pain or shoulder pain with shortness of breath, sweating, pain spreading to arms, neck or shoulders, or lightheadedness
- frequent chest pain

These may be signs of a serious condition. See your doctor.

Ask a doctor before use if you have ■ liver disease ■ had heartburn over 3 months. This may be a sign of a more serious condition.

- unexplained weight loss
- nausea or vomiting

Ask a doctor or pharmacist before use if you are taking a prescription drug.

- stomach pain

Stop use and ask a doctor if ■ your heartburn continues or worsens ■ you need to take this product for more than 14 days ■ you need to take more than 1 course of treatment every 4 months ■ you get diarrhea ■ you develop a rash or joint pain

If pregnant or breast-feeding, ask a health care professional before use. **Keep out of reach of children.** In case of overdose, get medical help or contact a Poison Control Center right away (1-800-222-1222).

Drug Facts (continued)

Directions ■ adults 18 years of age and older ■ this product is to be used once a day (every 24 hours), every day for 14 days ■ may take 1 to 4 days for full effect, although some people get complete relief of symptoms within 24 hours

14-Day Course of Treatment

- take 1 tablet before eating in the morning
- do not crush or chew tablets
- place the tablet on tongue; tablet disintegrates, with or without water. The tablets can also be swallowed whole with water.
- take every day for 14 days ■ do not take more than 1 tablet a day
- do not use for more than 14 days unless directed by your doctor
- do not take this medicine with alcohol

Repeated 14-Day Course (if needed)

- you may repeat a 14-day course every 4 months
- do not take for more than 14 days or more often than every 4 months unless directed by a doctor
- children under 18 years of age: ask a doctor before use. Heartburn in children may sometimes be caused by a serious condition.

Other information ■ read the directions and warnings before use ■ keep the carton, it contains important information. ■ store at 20-25°C (68-77°F) ■ keep product out of high heat and humidity ■ protect product from moisture ■ take the tablet immediately after opening individual blister. Do not store the tablet outside the blister pack for future use.

Inactive ingredients ascorbic acid, cetyl alcohol, colloidal silicon dioxide, copovidone, croscopoldone, havor, hypromellose, hypromellose phthalate, polyvinylpyrrolidone, polyethylene glycol, silicon dioxide, sodium stearoyl fumarate, sorbitol, sucralose, sugar spheres, talc, titanium dioxide, triethyl citrate

Questions or comments? 1-800-719-9260; weekdays 7:30 AM to 5:00 PM EST

NOT FOR RESALE

KEEP THE CARTON. IT CONTAINS IMPORTANT INFORMATION.

Safety Feature – Do not use if printed tablet blister unit is open or torn.

Location for lot number and expiration date

Compare to the active ingredient in Prevacid® 24 HR*

Treats Frequent Heartburn **24HR**

DISSOLVE TABS

Lansoprazole

Delayed Release Orally Disintegrating Tablets 15 mg Acid Reducer

Melts in your mouth
Dissolves without water

14 TABLETS

One 14-day course of treatment
May take 1 to 4 days for full effect

Tips for Managing Heartburn

- Avoid foods or drinks that are more likely to cause heartburn, such as rich, spicy, fatty and fried foods, chocolate, caffeine, alcohol and even some acidic fruits and vegetables.
- Eat slowly and do not eat big meals.
- Do not eat late at night or just before bedtime.

MELTech®
Melts In Your Mouth

Strawberry Flavor

15
Actual Size

Tips for Managing Heartburn

- Do not lie flat or bend over soon after eating.
- Raise the head of your bed.
- Wear loose-fitting clothing around your stomach.
- If you are overweight, lose weight. ■ If you smoke, quit smoking.

FORMAT: STANDARD	
TYPE SIZES:	
TITLE	9 pt Helvetica Neue LT Std 77 Bold Condensed Oblique
TITLE (continued)	8 pt Helvetica Neue LT Std 77 Bold Condensed Oblique
(continued)	8 pt Helvetica Neue LT Std 57 Condensed
HEADINGS	8 pt Helvetica Neue LT Std 77 Bold Condensed Oblique
SUBHEADINGS	6 pt Helvetica Neue LT Std 77 Bold Condensed
TEXT	6 pt Helvetica Neue LT Std 57 Condensed
LEADING	6.5 pt
BULLETS	5 pt ITC Zapf Dingbats Std Medium (square) with 2 ems (MM) spacing between statements
TELEPHONE #	6 pt Helvetica Neue LT Std 77 Bold Condensed
HEAVY LINES	1.5 pt
HAIRLINES	0.5 pt Extend to within 2 spaces of the "Drug Facts" box

Tips for Managing Heartburn

- Avoid foods or drinks that are more likely to cause heartburn, such as rich, spicy, fatty and fried foods, chocolate, caffeine, alcohol and even some acidic fruits and vegetables.
- Eat slowly and do not eat big meals.
- Do not eat late at night or just before bedtime.
- Do not lie flat or bend over soon after eating.
- Raise the head of your bed.
- Wear loose-fitting clothing around your stomach.
- If you are overweight, lose weight.
- If you smoke, quit smoking.

Questions or comments? 1-800-719-9260; weekdays 7:30 AM to 5:00 PM EST

Inactive ingredients ascorbic acid, cetyl alcohol, colloidal silicon dioxide, copovidone, copovidone, flavon, hypromellose, hypromellose phthalate, polyorbital glycol, polyorbital glycol, silicon dioxide, sodium stearoyl fumarate, sorbitol, sucralose, sugar spheres, talc, titanium dioxide, triethyl citrate

Other information ■ read the directions and warnings before use ■ keep the carton. It contains important information. ■ store at 20-25°C (68-77°F) ■ keep product out of high heat and humidity ■ protect product from moisture ■ take the tablet immediately after opening individual blister. Do not store the tablet outside the blister pack for future use.

4 months unless directed by a doctor ■ do not take for more than 14 days or more often than every 4 months unless directed by your doctor ■ you may repeat a 1-4 day course every 4 months ■ children under 18 years of age: ask a doctor before use. Heartburn in children may sometimes be caused by a serious condition.

Repeated 1-4 Day Course (if needed) ■ do not take this medicine with alcohol ■ do not use for more than 14 days unless directed by your doctor ■ take every day for 14 days ■ do not take more than 1 tablet a day ■ place the tablet on tongue; tablet disintegrates, with or without water. The tablets can also be swallowed whole with water. ■ do not crush or chew tablets ■ take 1 tablet before eating in the morning

1-4 Day Course of Treatment ■ take 1 tablet before eating in the morning ■ relief of symptoms within 24 hours ■ it may take 1 to 4 days for full effect, although some people get complete relief of symptoms within 24 hours ■ this product is to be used once a day (every 24 hours), every day for 14 days ■ **Directions** ■ adults 18 years of age and older

Drug Facts
Active ingredient (in each tablet) Lansoprazole 15 mg, Acid Reducer
Purpose ■ treats frequent heartburn (occurs 2 or more days a week) ■ not intended for immediate relief of heartburn; this drug may take 1 to 4 days for full effect
Warnings ■ do not use if you are allergic to lansoprazole ■ lansoprazole may cause severe skin reactions. Symptoms may include: ■ skin peeling ■ blisters ■ rash ■ heartburn with throat pain with shortness of breath, sweating, pain ■ chest pain or shoulder pain with shortness of breath, sweating, pain ■ spreading to arms, neck or shoulders; or lightheadedness ■ frequent chest pain ■ these may be signs of a serious condition. See your doctor.
Ask a doctor before use if you have ■ liver disease ■ had heartburn over 3 months. This may be a sign of a more serious condition. ■ frequent wheezing, particularly with heartburn ■ unexplained weight loss ■ nausea or vomiting ■ stomach pain
Ask a doctor or pharmacist before use if you are taking a prescription drug. Acid reducers may interact with certain prescription drugs.
Stop use and ask a doctor if ■ your heartburn continues or worsens ■ you need to take this product for more than 14 days ■ you need to take more than 1 course of treatment every 4 months ■ you get diarrhea ■ you develop a rash or joint pain
If pregnant or breast-feeding, ask a health care professional before use. **Keep out of reach of children.** In case of overdose, get medical help or contact a Poison Control Center right away (1-800-222-1222).

Do not use if you have: ■ an allergic reaction occurs; stop use and seek medical help right away. ■ trouble or pain swallowing food, vomiting with blood, or bloody or black stools ■ heartburn with lightheadedness, sweating or dizziness ■ chest pain or shoulder pain with shortness of breath, sweating, pain ■ spreading to arms, neck or shoulders; or lightheadedness ■ frequent chest pain ■ these may be signs of a serious condition. See your doctor.

Warnings ■ do not use if you are allergic to lansoprazole ■ lansoprazole may cause severe skin reactions. Symptoms may include: ■ skin peeling ■ blisters ■ rash ■ heartburn with throat pain with shortness of breath, sweating, pain ■ chest pain or shoulder pain with shortness of breath, sweating, pain ■ spreading to arms, neck or shoulders; or lightheadedness ■ frequent chest pain ■ these may be signs of a serious condition. See your doctor.

Do not use if you have: ■ an allergic reaction occurs; stop use and seek medical help right away. ■ trouble or pain swallowing food, vomiting with blood, or bloody or black stools ■ heartburn with lightheadedness, sweating or dizziness ■ chest pain or shoulder pain with shortness of breath, sweating, pain ■ spreading to arms, neck or shoulders; or lightheadedness ■ frequent chest pain ■ these may be signs of a serious condition. See your doctor.

Ask a doctor before use if you have ■ liver disease ■ had heartburn over 3 months. This may be a sign of a more serious condition. ■ frequent wheezing, particularly with heartburn ■ unexplained weight loss ■ nausea or vomiting ■ stomach pain
Ask a doctor or pharmacist before use if you are taking a prescription drug. Acid reducers may interact with certain prescription drugs.
Stop use and ask a doctor if ■ your heartburn continues or worsens ■ you need to take this product for more than 14 days ■ you need to take more than 1 course of treatment every 4 months ■ you get diarrhea ■ you develop a rash or joint pain
If pregnant or breast-feeding, ask a health care professional before use. **Keep out of reach of children.** In case of overdose, get medical help or contact a Poison Control Center right away (1-800-222-1222).

Location for lot number and expiration date

8U174 FA C8-T 060425



KEEP THE CARTON. IT CONTAINS IMPORTANT INFORMATION.

Safety Feature – Do not use if printed tablet blister unit is open or torn.

NDC XXXXX-XX-XX

Treats Frequent Heartburn



Compare to the active ingredient in Prevacid® 24 HR*

24 HR

DISSOLVE TABS

Lansoprazole

Delayed Release Orally Disintegrating Tablets 15 mg Acid Reducer

May take 1 to 4 days for full effect



14 TABLETS

ONE 14-DAY COURSE OF TREATMENT

Melts in your mouth Dissolves without water



FORMAT: STANDARD	
TYPE SIZES:	
TITLE	9 pt Helvetica Neue LT Std 77 Bold Condensed Oblique
TITLE (continued)	8 pt Helvetica Neue LT Std 77 Bold Condensed Oblique
(continued)	8 pt Helvetica Neue LT Std 57 Condensed
HEADINGS	8 pt Helvetica Neue LT Std 77 Bold Condensed Oblique
SUBHEADINGS	6 pt Helvetica Neue LT Std 77 Bold Condensed
TEXT	6 pt Helvetica Neue LT Std 57 Condensed
LEADING	6.5 pt
BULLETS	5 pt ITC Zapf Dingbats Std Medium (square) with 2 ems (MM) spacing between statements
TELEPHONE #	6 pt Helvetica Neue LT Std 77 Bold Condensed
HEAVY LINES	1.5 pt
HAIRLINES	0.5 pt Extend to within 2 spaces of the "Drug Facts" box

Tips for Managing Heartburn

- Avoid foods or drinks that are more likely to cause heartburn, such as rich, spicy, fatty and fried foods, chocolate, caffeine, alcohol and even some acidic fruits and vegetables.
- Eat slowly and do not eat big meals.
- Do not eat late at night or just before bedtime.
- Do not lie flat or bend over soon after eating.
- Raise the head of your bed.
- Wear loose-fitting clothing around your stomach.
- If you are overweight, lose weight.
- If you smoke, quit smoking.

Questions or comments? 1-800-719-9260; weekdays 7:30 AM to 5:00 PM EST
Inactive ingredients ascorbic acid, cetyl alcohol, colloidal silicon dioxide, copovidone, croscopollose, HPMC, hypromellose, hypromellose phthalate, polyvinylpyrrolidone, polyvinyl alcohol, silicon dioxide, sodium stearoyl fumarate, sorbitol, sucralose, sugar spheres, talc, titanium dioxide, triethyl citrate

Other information ■ read the directions and warnings before use ■ keep the carton. It contains important information. ■ store at 20-25°C (68-77°F) ■ keep product out of high heat and humidity ■ protect product from moisture ■ take the tablet immediately after opening individual blister. Do not store the tablet outside the blister pack for future use.

4 months unless directed by a doctor ■ do not take for more than 14 days or more often than every 4 months unless directed by your doctor ■ you may repeat a 14-day course every 4 months

Repeated 14-Day Course (if needed) ■ do not take this medicine with alcohol ■ do not use for more than 14 days unless directed by your doctor ■ take every day for 14 days ■ do not take more than 1 tablet a day ■ place the tablet on tongue; tablet disintegrates, with or without water. The tablets can also be swallowed whole with water.

14-Day Course of Treatment ■ take 1 tablet before eating in the morning ■ do not crush or chew tablets ■ heartburn with throat irritation, sweating or dizziness ■ trouble or pain swallowing food, vomiting with blood, or bloody or black stools ■ do not use if you are allergic to lansoprazole ■ lansoprazole may cause severe skin reactions. Symptoms may include: ■ skin peeling ■ blisters ■ rash ■ an allergic reaction occurs; stop use and seek medical help right away. If an allergic reaction occurs, see your doctor.

Warnings ■ do not use if you are allergic to lansoprazole ■ lansoprazole may cause severe skin reactions. Symptoms may include: ■ skin peeling ■ blisters ■ rash ■ an allergic reaction occurs; stop use and seek medical help right away. If an allergic reaction occurs, see your doctor.

Do not use if you have: ■ trouble or pain swallowing food, vomiting with blood, or bloody or black stools ■ heartburn with throat irritation, sweating or dizziness ■ chest pain or shoulder pain with shortness of breath, sweating, pain spreading to arms, neck or shoulders, or lightheadedness ■ frequent chest pain ■ acute reaction occurs; see your doctor. These may be signs of a serious condition.

Ask a doctor before use if you have: ■ liver disease ■ had heartburn over 3 months. This may be a sign of a more serious condition. ■ frequent heartburn, particularly with heartburn ■ unexplained weight loss ■ nausea or vomiting ■ stomach pain ■ Ask a doctor or pharmacist before use if you are taking a prescription drug. Acid reducers may interact with certain prescription drugs.

Stop use and ask a doctor if: ■ your heartburn continues or worsens ■ you need to take this product for more than 14 days ■ you need to take more than 1 course of treatment every 4 months ■ you get diarrhea ■ you develop a rash or joint pain ■ If pregnant or breast-feeding, ask a health care professional before use. Keep out of reach of children. In case of overdose, get medical help or contact a Poison Control Center right away (1-800-222-1222).

Drug Facts (continued)
Directions ■ adults 18 years of age and older ■ this product is to be used once a day (every 24 hours), every day for 14 days ■ relief of symptoms within 24 hours ■ it may take 1 to 4 days for full effect, although some people get complete relief of symptoms within 24 hours

Purpose Acid Reducer
Active ingredient (in each tablet) Lansoprazole 15 mg.
Use ■ treats frequent heartburn (occurs 2 or more days a week) ■ not intended for immediate relief of heartburn; this drug may take 1 to 4 days for full effect

Location for lot number and expiration date

8U174 FA C8-TV 061025



KEEP THE CARTON. IT CONTAINS IMPORTANT INFORMATION.

Safety Feature – Do not use if printed tablet blister unit is open or torn.

NDC XXXXX-XXX-XX

Treats Frequent Heartburn



Compare to the active ingredient in Prevacid® 24 HR*

24 HR

DISSOLVE TABS

Lansoprazole

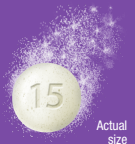
Delayed Release Orally Disintegrating Tablets 15 mg

Acid Reducer

May take 1 to 4 days for full effect



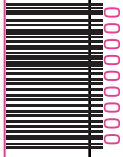
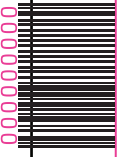
Orally Disintegrating Tablets



14 TABLETS

ONE 14-DAY COURSE OF TREATMENT

Melts in your mouth Dissolves without water



FORMAT: STANDARD	
TYPE SIZES:	
TITLE	9 pt Helvetica Neue LT Std 77 Bold Condensed Oblique
TITLE (continued)	8 pt Helvetica Neue LT Std 77 Bold Condensed Oblique
(continued)	8 pt Helvetica Neue LT Std 57 Condensed
HEADINGS	8 pt Helvetica Neue LT Std 77 Bold Condensed Oblique
SUBHEADINGS	6 pt Helvetica Neue LT Std 77 Bold Condensed
TEXT	6 pt Helvetica Neue LT Std 57 Condensed
LEADING	6.5 pt
BULLETS	5 pt ITC Zapf Dingbats Std Medium (square) with 2 ems (MM) spacing between statements
TELEPHONE #	6 pt Helvetica Neue LT Std 77 Bold Condensed
HEAVY LINES	1.5 pt
HAIRLINES	0.5 pt Extend to within 2 spaces of the "Drug Facts" box

Manufactured by:
Cexel Pharma Technologies Ltd
 10 Hakdima Street, Yokneam 2069200, Israel
 Made in Israel

*This product is not manufactured or distributed by Takeda Pharmaceuticals U.S.A., Inc.

Tips for Managing Heartburn

- Avoid foods or drinks that are more likely to cause heartburn, such as rich, spicy, fatty and fried foods, chocolate, caffeine, alcohol and even some acidic fruits and vegetables.
- Eat slowly and do not eat big meals.
- Do not eat late at night or just before bedtime.
- If you are overweight, lose weight.
- If you smoke, quit smoking.
- Wear loose-fitting clothing around your stomach.
- Raise the head of your bed.
- Do not lie flat or bend over soon after eating.

DISSOLVE TABS

Lansoprazole

Delayed Release Orally Disintegrating Tablets 15 mg

Drug Facts

Active ingredient (in each tablet)
 Lansoprazole 15 mg, Acid Reducer

Purpose
 Acid Reducer

Use
 ■ Treats frequent heartburn (occurs 2 or more days a week)
 ■ not intended for immediate relief of heartburn; this drug may take 1 to 4 days for full effect

Warnings
 ■ Do not use if you are allergic to lansoprazole.
 ■ lansoprazole may cause severe skin reactions. Symptoms may include:
 ■ rash
 ■ skin redness
 ■ blisters
 ■ If an allergic reaction occurs, stop use and seek medical help right away.

Do not use if you have:
 ■ trouble or pain swallowing food, vomiting with blood, or bloody or black stools
 ■ heartburn with lightheadedness, sweating or dizziness
 ■ chest pain or shoulder pain with shortness of breath, sweating, pain spreading to arms, neck or shoulders, or lightheadedness

Ask a doctor before use if you have ■ liver disease
 ■ had heartburn over 3 months. This may be a sign of a more serious condition.
 ■ frequent wheezing, particularly with heartburn
 ■ unexplained weight loss ■ nausea or vomiting ■ stomach pain

Ask a doctor or pharmacist before use if you are taking a prescription drug.
 Acid reducers may interact with certain prescription drugs.

Stop use and ask a doctor if ■ your heartburn continues or worsens
 ■ you need to take this product for more than 14 days
 ■ you need to take more than 1 course of treatment every 4 months
 ■ you get diarrhea ■ you develop a rash or joint pain

If pregnant or breast-feeding, ask a health care professional before use.
 ■ Keep out of reach of children. In case of overdose, get medical help or contact a Poison Control Center right away (1-800-222-1222).

Questions or comments? 1-800-719-9260, weekdays 7:30 AM to 5:00 PM EST

Other information
 ■ read the directions and warnings before use
 ■ keep the carton. It contains important information.
 ■ store at 20-25°C (68-77°F) ■ keep product out of high heat and humidity
 ■ protect product from moisture
 ■ take the tablet immediately after opening individual blister. Do not store the tablet outside the blister pack for future use.

Inactive ingredients
 ascorbic acid, cetyl alcohol, colloidal silicon dioxide, copovidone, croscopollose, havor, hypromellose, hypromellose phthalate, maize polyorbate 80, propylene glycol, silicon dioxide, sodium stearyl fumarate, sorbitol, sucralose, sugar spheres, talc, titanium dioxide, triethyl citrate

8U130 FA C8-T 060425

Location for lot number and expiration date

DISSOLVE TABS

Lansoprazole

Delayed Release Orally Disintegrating Tablets 15 mg

Safety Feature – Do not use if printed tablet blister unit is open or torn.

KEEP THE CARTON. IT CONTAINS IMPORTANT INFORMATION.

NDC XXXXX-XX-XX

Treats Frequent Heartburn

MELTech®
 Melts In Your Mouth

Compare to the active ingredient in Prevacid® 24 HR*

24 HR

DISSOLVE TABS

Lansoprazole

Delayed Release Orally Disintegrating Tablets 15 mg

Acid Reducer
 May take 1 to 4 days for full effect

28 TABLETS TWO 14-DAY COURSES OF TREATMENT

Melts in your mouth
 Dissolves without water

Strawberry Flavor

Actual size

EFB 1393

FORMAT: STANDARD	
TYPE SIZES:	
TITLE	9 pt Helvetica Neue LT Std 77 Bold Condensed Oblique
TITLE (continued)	8 pt Helvetica Neue LT Std 77 Bold Condensed Oblique
(continued)	8 pt Helvetica Neue LT Std 57 Condensed
HEADINGS	8 pt Helvetica Neue LT Std 77 Bold Condensed Oblique
SUBHEADINGS	6 pt Helvetica Neue LT Std 77 Bold Condensed
TEXT	6 pt Helvetica Neue LT Std 57 Condensed
LEADING	6.5 pt
BULLETS	5 pt ITC Zapf Dingbats Std Medium (square) with 2 ems (MM) spacing between statements
TELEPHONE #	6 pt Helvetica Neue LT Std 77 Bold Condensed
HEAVY LINES	1.5 pt
HAIRLINES	0.5 pt Extend to within 2 spaces of the "Drug Facts" box

Tips for Managing Heartburn

- Avoid foods or drinks that are more likely to cause heartburn, such as rich, spicy, fatty and fried foods, chocolate, caffeine, alcohol and even some acidic fruits and vegetables.
- Eat slowly and do not eat big meals.
- Do not eat late at night or just before bedtime.

■ Do not lie flat or bend over soon after eating.
 ■ Raise the head of your bed.
 ■ Wear loose-fitting clothing around your stomach.
 ■ If you are overweight, lose weight.
 ■ If you smoke, quit smoking.

Manufactured by:
Cexel Pharma Technologies Ltd
 10 Hakdima Street, Yokneam 2069200, Israel

This product is not manufactured or distributed by Takeda Pharmaceuticals U.S.A., Inc.
 owner of the registered trademark Prevacid®.

DISSOLVE TABS

Lansoprazole

Delayed Release Orally Disintegrating Tablets 15 mg

Drug Facts (continued)

Active ingredient (in each tablet)
 Lansoprazole 15 mg, Acid Reducer

Purpose
 Acid Reducer

Use
 ■ Treats frequent heartburn (occurs 2 or more days a week) not intended for immediate relief of heartburn; this drug may take 1 to 4 days for full effect.

Warnings
 ■ Do not use if you are allergic to lansoprazole.
 ■ lansoprazole may cause severe skin reactions. Symptoms may include: rash, blisters, skin redness.
 ■ If an allergic reaction occurs, stop use and seek medical help right away.

Do not use if you have:
 ■ trouble or pain swallowing food, vomiting with blood, or bloody or black stools
 ■ heartburn with lightheadedness, sweating or dizziness
 ■ chest pain or shoulder pain with shortness of breath, sweating, pain spreading to arms, neck or shoulders, or lightheadedness
 ■ frequent chest pain

These may be signs of a serious condition. See your doctor.
 ■ Ask a doctor before use if you have liver disease
 ■ had heartburn over 3 months. This may be a sign of a more serious condition.
 ■ frequent wheezing, particularly with heartburn
 ■ unexplained weight loss
 ■ nausea or vomiting
 ■ stomach pain

Ask a doctor or pharmacist before use if you are taking a prescription drug.
 Acid reducers may interact with certain prescription drugs.

Stop use and ask a doctor if ■ your heartburn continues or worsens
 ■ you need to take this product for more than 14 days
 ■ you need to take more than 1 course of treatment every 4 months
 ■ you get diarrhea
 ■ you develop a rash or joint pain

If pregnant or breast-feeding, ask a health care professional before use.
 ■ Keep out of reach of children. In case of overdose, get medical help or contact a Poison Control Center right away (1-800-222-1222).

Questions or comments? 1-800-719-9260, weekdays 7:30 AM to 5:00 PM EST

Other information
 ■ Read the directions and warnings before use.
 ■ Keep the carton. It contains important information.
 ■ Store at 20-25°C (68-77°F). ■ Keep product out of high heat and humidity.
 ■ protect product from moisture
 ■ take the tablet immediately after opening individual blister. Do not store the tablet outside the blister pack for future use.

Inactive ingredients
 ascorbic acid, cetyl alcohol, colloidal silicon dioxide, copovidone, croscopollose, havor, hypromellose, hypromellose phthalate, maize, methylcellulose, polyethylene glycol, silicon dioxide, sodium stearyl fumarate, sorbitol, sucralose, sugar spheres, talc, titanium dioxide, triethyl citrate

Location for lot number and expiration date

8U130 FA C8-TV 061125

DISSOLVE TABS

Lansoprazole

Delayed Release Orally Disintegrating Tablets 15 mg

Safety Feature – Do not use if printed tablet blister unit is open or torn.

KEEP THE CARTON. IT CONTAINS IMPORTANT INFORMATION.

NDC XXXXX-XX-XXX

Treats Frequent Heartburn

MELTech®
 Melts In Your Mouth

Compare to the active ingredient in Prevacid® 24 HR*

24 HR

DISSOLVE TABS

Lansoprazole

Delayed Release Orally Disintegrating Tablets 15 mg

Acid Reducer
 May take 1 to 4 days for full effect

28 TABLETS TWO 14-DAY COURSES OF TREATMENT

Melts in your mouth
 Dissolves without water

Orally Disintegrating Tablets

Strawberry Flavor

Actual size

EFB 1393

FORMAT: STANDARD	
TYPE SIZES:	
TITLE	9 pt Helvetica Neue LT Std 77 Bold Condensed Oblique
TITLE (continued)	8 pt Helvetica Neue LT Std 77 Bold Condensed Oblique
(continued)	8 pt Helvetica Neue LT Std 57 Condensed
HEADINGS	8 pt Helvetica Neue LT Std 77 Bold Condensed Oblique
SUBHEADINGS	6 pt Helvetica Neue LT Std 77 Bold Condensed
TEXT	6 pt Helvetica Neue LT Std 57 Condensed
LEADING	6.5 pt
BULLETS	5 pt ITC Zapf Dingbats Std Medium (square) with 2 ems (MM) spacing between statements
TELEPHONE #	6 pt Helvetica Neue LT Std 77 Bold Condensed
HEAVY LINES	1.5 pt
HAIRLINES	0.5 pt Extend to within 2 spaces of the "Drug Facts" box

Tips for Managing Heartburn

- Avoid foods or drinks that are more likely to cause heartburn, such as rich, spicy, fatty and fried foods, chocolate, caffeine, alcohol and even some acidic fruits and vegetables.
- Eat slowly and do not eat big meals.
- Do not eat late at night or just before bedtime.
- Do not lie flat or bend over soon after eating.
- Raise the head of your bed.
- Wear loose-fitting clothing around your stomach.
- If you are overweight, lose weight.
- If you smoke, quit smoking.

Manufactured by:
Cexel Pharma Technologies Ltd
 10 Hakdima Street, Yokneam 2069200, Israel
 Made in Israel

This product is not manufactured or distributed by Takeda Pharmaceuticals U.S.A., Inc., owner of the registered trademark Prevacid®.

DISSOLVE TABS
Lansoprazole
 Delayed Release Orally
 Disintegrating Tablets 15 mg

Drug Facts
Active ingredient (in each tablet)
 Lansoprazole 15 mg, Acid Reducer

Use
 ■ Treats frequent heartburn (occurs 2 or more days a week)
 ■ not intended for immediate relief of heartburn; this drug may take 1 to 4 days for full effect

Warnings
 ■ do not use if you are allergic to lansoprazole.
 ■ lansoprazole may cause severe skin reactions. Symptoms may include:
 ■ rash
 ■ blisters
 ■ skin peeling
 If an allergic reaction occurs, stop use and seek medical help right away.

Do not use if you have:
 ■ trouble or pain swallowing food, vomiting with blood, or bloody or black stools
 ■ heartburn with lightheadedness, sweating or dizziness
 ■ chest pain or shoulder pain with shortness of breath, sweating, pain spreading to arms, neck or shoulders, or lightheadedness
 ■ frequent chest pain
 These may be signs of a serious condition. See your doctor.

Ask a doctor before use if you have ■ liver disease
 ■ had heartburn over 3 months. This may be a sign of a more serious condition.
 ■ frequent wheezing, particularly with heartburn
 ■ unexplained weight loss ■ nausea or vomiting ■ stomach pain

Ask a doctor or pharmacist before use if you are taking a prescription drug.
 Acid reducers may interact with certain prescription drugs.

Stop use and ask a doctor if ■ your heartburn continues or worsens
 ■ you need to take this product for more than 14 days
 ■ you need to take more than 1 course of treatment every 4 months
 ■ you get diarrhea ■ you develop a rash or joint pain

If pregnant or breast-feeding, ask a health care professional before use.
 ■ Keep out of reach of children. In case of overdose, get medical help or contact a Poison Control Center right away (1-800-222-1222).

Questions or comments? 1-800-719-9260, weekdays 7:30 AM to 5:00 PM EST

Other information
 ■ read the directions and warnings before use
 ■ keep the carton. It contains important information.
 ■ store at 20-25°C (68-77°F) ■ keep product out of high heat and humidity
 ■ protect product from moisture
 ■ take the tablet immediately after opening individual blister. Do not store the tablet outside the blister pack for future use.

Inactive ingredients
 ascorbic acid, cetyl alcohol, colloidal silicon dioxide, copovidone, crospovidone, flavor, hypromellose, hypromellose phthalate, maize polyorbate 80, propylene glycol, silicon dioxide, sodium stearyl fumarate, sorbitol, sucralose, sugar spheres, talc, titanium dioxide, triethyl citrate

Location for lot number and expiration date

8U130 FA C8-TK 061125

DISSOLVE TABS
Lansoprazole
 Delayed Release Orally
 Disintegrating Tablets 15 mg

Safety Feature – Do not use if printed tablet blister unit is open or torn.

KEEP THE CARTON. IT CONTAINS IMPORTANT INFORMATION.

NDC XXXXX-XX-XX

MELTech®
 Melts In Your Mouth

Treats Frequent Heartburn

Compare to the active ingredient in Prevacid® 24 HR*

Buy One 14 Count, Get One 14 Count Free!

24 HR

DISSOLVE TABS

Lansoprazole
 Delayed Release Orally
 Disintegrating Tablets 15 mg
 Acid Reducer
 May take 1 to 4 days for full effect

28 TABLETS TWO 14-DAY COURSES OF TREATMENT

Melts in your mouth
 Dissolves without water

Strawberry Flavor

Actual size

EFB 1393

FORMAT: STANDARD	
TYPE SIZES:	
TITLE	9 pt Helvetica Neue LT Std 77 Bold Condensed Oblique
TITLE (continued)	8 pt Helvetica Neue LT Std 77 Bold Condensed Oblique
(continued)	8 pt Helvetica Neue LT Std 57 Condensed
HEADINGS	8 pt Helvetica Neue LT Std 77 Bold Condensed Oblique
SUBHEADINGS	6 pt Helvetica Neue LT Std 77 Bold Condensed
TEXT	6 pt Helvetica Neue LT Std 57 Condensed
LEADING	6.5 pt
BULLETS	5 pt ITC Zapf Dingbats Std Medium (square) with 2 ems (MM) spacing between statements
TELEPHONE #	6 pt Helvetica Neue LT Std 77 Bold Condensed
HEAVY LINES	1.5 pt
HAIRLINES	0.5 pt Extend to within 2 spaces of the "Drug Facts" box

Tips for Managing Heartburn

- Avoid foods or drinks that are more likely to cause heartburn, such as rich, spicy, fatty and fried foods, chocolate, caffeine, alcohol and even some acidic fruits and vegetables.
- Eat slowly and do not eat big meals.
- Do not eat late at night or just before bedtime.
- Do not lie flat or bend over soon after eating.
- Raise the head of your bed.
- Wear loose-fitting clothing around your stomach.
- If you are overweight, lose weight.
- If you smoke, quit smoking.

Manufactured by:
Cexel Pharma Technologies Ltd
 10 Hakdima Street, Yokneam 2069200, Israel
 Made in Israel

This product is not manufactured or distributed by Takeda Pharmaceuticals U.S.A., Inc., owner of the registered trademark Prevacid®.

DISSOLVE TABS

Lansoprazole

Delayed Release Orally Disintegrating Tablets 15 mg

Drug Facts (continued)

Active ingredient (in each tablet)
 Lansoprazole 15 mg, Acid Reducer

Use
 ■ Treats frequent heartburn (occurs 2 or more days a week) not intended for immediate relief of heartburn; this drug may take 1 to 4 days for full effect.

Warnings
 ■ Do not use if you are allergic to lansoprazole.
 ■ lansoprazole may cause severe skin reactions. Symptoms may include: rash, blisters, skin redness.
 ■ If an allergic reaction occurs, stop use and seek medical help right away.

Do not use if you have:
 ■ trouble or pain swallowing food, vomiting with blood, or bloody or black stools
 ■ heartburn with lightheadedness, sweating or dizziness
 ■ chest pain or shoulder pain with shortness of breath, sweating, pain spreading to arms, neck or shoulders, or lightheadedness
 ■ frequent chest pain

Ask a doctor before use if you have: ■ liver disease
 ■ had heartburn over 3 months. This may be a sign of a more serious condition.
 ■ frequent wheezing, particularly with heartburn
 ■ unexplained weight loss ■ nausea or vomiting ■ stomach pain

Ask a doctor or pharmacist before use if you are taking a prescription drug. Acid reducers may interact with certain prescription drugs.

Stop use and ask a doctor if: ■ your heartburn continues or worsens
 ■ you need to take this product for more than 14 days
 ■ you need to take more than 1 course of treatment every 4 months
 ■ you get diarrhea ■ you develop a rash or joint pain

If pregnant or breast-feeding, ask a health care professional before use. **Keep out of reach of children.** In case of overdose, get medical help or contact a Poison Control Center right away (1-800-222-1222).

Questions or comments? 1-800-719-9260, weekdays 7:30 AM to 5:00 PM EST

Other information
 ■ read the directions and warnings before use
 ■ keep the carton. It contains important information.
 ■ store at 20-25°C (68-77°F). ■ keep product out of high heat and humidity
 ■ protect product from moisture
 ■ take the tablet immediately after opening individual blister. Do not store the tablet outside the blister pack for future use.

Inactive ingredients ascorbic acid, cetyl alcohol, colloidal silicon dioxide, copovidone, crospovidone, flavor, hypromellose, hypromellose phthalate, maize polyorbate 80, propylene glycol, silicon dioxide, sodium stearyl fumarate, sorbitol, sucralose, sugar spheres, talc, titanium dioxide, triethyl citrate

Location for lot number and expiration date

8U130 FA C8-TN 061125

DISSOLVE TABS

Lansoprazole

Delayed Release Orally Disintegrating Tablets 15 mg

Safety Feature – Do not use if printed tablet blister unit is open or torn.

KEEP THE CARTON. IT CONTAINS IMPORTANT INFORMATION.

NDC XXXXX-XX-XX

MELTech®
 Melts In Your Mouth

Treats Frequent Heartburn

Compare to the active ingredient in Prevacid® 24 HR*

Bonus Size!
14 Tablets Free

24 HR

DISSOLVE TABS

Lansoprazole

Delayed Release Orally Disintegrating Tablets 15 mg

Acid Reducer
 May take 1 to 4 days for full effect

28 TABLETS TWO 14-DAY COURSES OF TREATMENT

Melts in your mouth
 Dissolves without water

Strawberry Flavor

Actual size

EFB 1393

FORMAT: STANDARD	
TYPE SIZES:	
TITLE	9 pt Helvetica Neue LT Std 77 Bold Condensed Oblique
TITLE (continued)	8 pt Helvetica Neue LT Std 77 Bold Condensed Oblique
(continued)	8 pt Helvetica Neue LT Std 57 Condensed
HEADINGS	8 pt Helvetica Neue LT Std 77 Bold Condensed Oblique
SUBHEADINGS	6 pt Helvetica Neue LT Std 77 Bold Condensed
TEXT	6 pt Helvetica Neue LT Std 57 Condensed
LEADING	6.5 pt
BULLETS	5 pt ITC Zapf Dingbats Std Medium (square) with 2 ems (MM) spacing between statements
TELEPHONE #	6 pt Helvetica Neue LT Std 77 Bold Condensed
HEAVY LINES	1.5 pt
HAIRLINES	0.5 pt Extend to within 2 spaces of the "Drug Facts" box

Made in Israel
 Manufactured by:
 Dexcel Pharma Technologies Ltd
 10 Hakdima Street, Yokneam 2069200, Israel

*This product is not manufactured or distributed by Takeda Pharmaceuticals U.S.A., Inc.

Tips for Managing Heartburn

- Avoid foods or drinks that are more likely to cause heartburn, such as rich, spicy, fatty and fried foods, chocolate, caffeine, alcohol and even some acidic fruits and vegetables.
- Eat slowly and do not eat big meals.
- Do not eat late at night or just before bedtime.
- If you are overweight, lose weight.
- If you smoke, quit smoking.
- Wear loose-fitting clothing around your stomach.
- Raise the head of your bed.
- Do not lie flat or bend over soon after eating.

DISSOLVE TABS

Lansoprazole

Delayed Release Orally Disintegrating Tablets 15 mg

Drug Facts

Active ingredient (in each tablet)
 Lansoprazole 15 mg, Acid Reducer

Purpose
 Acid Reducer

Use
 ■ Treats frequent heartburn (occurs 2 or more days a week)
 ■ not intended for immediate relief of heartburn; this drug may take 1 to 4 days for full effect

Warnings
 ■ do not use if you are allergic to lansoprazole.
 ■ lansoprazole may cause severe skin reactions. Symptoms may include:
 ■ rash
 ■ skin redness
 ■ blisters
 ■ if an allergic reaction occurs, stop use and seek medical help right away.

Do not use if you have:
 ■ trouble or pain swallowing food, vomiting with blood, or bloody or black stools
 ■ heartburn with lightheadedness, sweating or dizziness
 ■ chest pain or shoulder pain with shortness of breath, sweating, pain spreading to arms, neck or shoulders, or lightheadedness
 ■ frequent chest pain

Ask a doctor before use if you have ■ liver disease
 ■ had heartburn over 3 months. This may be a sign of a more serious condition.
 ■ frequent wheezing, particularly with heartburn
 ■ unexplained weight loss ■ nausea or vomiting ■ stomach pain

Ask a doctor or pharmacist before use if you are taking a prescription drug.
 Acid reducers may interact with certain prescription drugs.

Stop use and ask a doctor if ■ your heartburn continues or worsens
 ■ you need to take this product for more than 14 days
 ■ you need to take more than 1 course of treatment every 4 months
 ■ you get diarrhea ■ you develop a rash or joint pain

If pregnant or breast-feeding, ask a health care professional before use.
 ■ Keep out of reach of children. In case of overdose, get medical help or contact a Poison Control Center right away (1-800-222-1222).

Questions or comments? 1-800-719-9260, weekdays 7:30 AM to 5:00 PM EST

Other information
 ■ read the directions and warnings before use
 ■ keep the carton. It contains important information.
 ■ store at 20-25°C (68-77°F) ■ keep product out of high heat and humidity
 ■ protect product from moisture
 ■ take the tablet immediately after opening individual blister. Do not store the tablet outside the blister pack for future use.

Inactive ingredients
 ascorbic acid, cetyl alcohol, colloidal silicon dioxide, copovidone, croscopollose, havor, hypromellose, hypromellose phthalate, maize polyorbate 80, propylene glycol, silicon dioxide, sodium stearyl fumarate, sorbitol, sucralose, sugar spheres, talc, titanium dioxide, triethyl citrate

8U130 FA C8-TR 061125

Location for lot number and expiration date

DISSOLVE TABS

Lansoprazole

Delayed Release Orally Disintegrating Tablets 15 mg

Safety Feature – Do not use if printed tablet blister unit is open or torn.

KEEP THE CARTON. IT CONTAINS IMPORTANT INFORMATION.

NDC XXXXX-XX-XX

MELTech®
 Melts In Your Mouth

Compare to the active ingredient in Prevacid® 24 HR*

Bonus! + 14 Free

24 HR

DISSOLVE TABS

Lansoprazole

Delayed Release Orally Disintegrating Tablets 15 mg

Acid Reducer
 May take 1 to 4 days for full effect

28 TABLETS TWO 14-DAY COURSES OF TREATMENT

Melts in your mouth
 Dissolves without water

Strawberry Flavor

Actual size

EFB 1393

FORMAT: STANDARD	
TYPE SIZES:	
TITLE	9 pt Helvetica Neue LT Std 77 Bold Condensed Oblique
TITLE (continued)	8 pt Helvetica Neue LT Std 77 Bold Condensed Oblique
(continued)	8 pt Helvetica Neue LT Std 57 Condensed
HEADINGS	8 pt Helvetica Neue LT Std 77 Bold Condensed Oblique
SUBHEADINGS	6 pt Helvetica Neue LT Std 77 Bold Condensed
TEXT	6 pt Helvetica Neue LT Std 57 Condensed
LEADING	6.5 pt
BULLETS	5 pt ITC Zapf Dingbats Std Medium (square) with 2 ems (MM) spacing between statements
TELEPHONE #	6 pt Helvetica Neue LT Std 77 Bold Condensed
HEAVY LINES	1.5 pt
HAIRLINES	0.5 pt Extend to within 2 spaces of the "Drug Facts" box

Tips for Managing Heartburn

- Avoid foods or drinks that are more likely to cause heartburn, such as rich, spicy, fatty and fried foods, chocolate, caffeine, alcohol and even some acidic fruits and vegetables.
- Eat slowly and do not eat big meals.
- Do not eat late at night or just before bedtime.
- Do not lie flat or bend over soon after eating.
- Raise the head of your bed.
- Wear loose-fitting clothing around your stomach.
- If you are overweight, lose weight.
- If you smoke, quit smoking.

Manufactured by:
Cexel Pharma Technologies Ltd
 10 Hakdima Street, Yokneam 2069200, Israel

This product is not manufactured or distributed by Takeda Pharmaceuticals U.S.A., Inc., owner of the registered trademark Prevacid®.

Made in Israel

DISSOLVE TABS

Lansoprazole

Delayed Release Orally
 Disintegrating Tablets 15 mg

Drug Facts

Active ingredient (in each tablet)
 Lansoprazole 15 mg, Acid Reducer

Purpose
 Acid Reducer

Use
 ■ Treats frequent heartburn (occurs 2 or more days a week)
 ■ not intended for immediate relief of heartburn; this drug may take 1 to 4 days for full effect

Warnings
 ■ Do not use if you are allergic to lansoprazole.
 ■ lansoprazole may cause severe skin reactions. Symptoms may include:
 ■ rash
 ■ blisters
 ■ skin redness
 ■ If an allergic reaction occurs, stop use and seek medical help right away.

Do not use if you have:
 ■ trouble or pain swallowing food, vomiting with blood, or bloody or black stools
 ■ heartburn with lightheadedness, sweating or dizziness
 ■ chest pain or shoulder pain with shortness of breath, sweating, pain spreading to arms, neck or shoulders, or lightheadedness
 ■ frequent chest pain
 These may be signs of a serious condition. See your doctor.

Ask a doctor before use if you have ■ liver disease
 ■ had heartburn over 3 months. This may be a sign of a more serious condition.
 ■ frequent wheezing, particularly with heartburn
 ■ unexplained weight loss ■ nausea or vomiting ■ stomach pain

Ask a doctor or pharmacist before use if you are taking a prescription drug.
 Acid reducers may interact with certain prescription drugs.

Stop use and ask a doctor if ■ your heartburn continues or worsens
 ■ you need to take this product for more than 14 days
 ■ you need to take more than 1 course of treatment every 4 months
 ■ you get diarrhea ■ you develop a rash or joint pain

If pregnant or breast-feeding, ask a health care professional before use.
 ■ Keep out of reach of children. In case of overdose, get medical help or contact a Poison Control Center right away (1-800-222-1222).

5:00 PM EST
Questions or comments? 1-800-719-9260, weekdays 7:30 AM to

Other information
 ■ read the directions and warnings before use
 ■ keep the carton. It contains important information.
 ■ store at 20-25°C (68-77°F) ■ keep product out of high heat and humidity
 ■ protect product from moisture
 ■ take the tablet immediately after opening individual blister. Do not store the tablet outside the blister pack for future use.

Inactive ingredients
 ascorbic acid, cetyl alcohol, colloidal silicon dioxide, copovidone, croscopollose, hydroxypropylmethylcellulose, lactose, microcrystalline cellulose, polyethylene glycol, silicon dioxide, sodium stearyl fumarate, sorbitol, sucralose, sugar spheres, talc, titanium dioxide, triethyl citrate

Location for lot number and expiration date

8U130 FA C8-TS 061125

DISSOLVE TABS

Lansoprazole

Delayed Release Orally
 Disintegrating Tablets 15 mg

Safety Feature – Do not use if printed tablet blister unit is open or torn.

KEEP THE CARTON. IT CONTAINS IMPORTANT INFORMATION.

NDC XXXXX-XX-XX

MELTech®
 Melts In Your Mouth

Compare to the active ingredient in Prevacid® 24 HR*

Bonus! 14 Tablets FREE

24 HR

DISSOLVE TABS

Lansoprazole

Delayed Release Orally
 Disintegrating Tablets 15 mg

Acid Reducer
 May take 1 to 4 days for full effect

28 TABLETS TWO 14-DAY COURSES OF TREATMENT

Melts in your mouth
 Dissolves without water

Strawberry Flavor

Actual size

EFB 1393

FORMAT: STANDARD	
TYPE SIZES:	
TITLE	9 pt Helvetica Neue LT Std 77 Bold Condensed Oblique
TITLE (continued)	8 pt Helvetica Neue LT Std 77 Bold Condensed Oblique
(continued)	8 pt Helvetica Neue LT Std 57 Condensed
HEADINGS	8 pt Helvetica Neue LT Std 77 Bold Condensed Oblique
SUBHEADINGS	6 pt Helvetica Neue LT Std 77 Bold Condensed
TEXT	6 pt Helvetica Neue LT Std 57 Condensed
LEADING	6.5 pt
BULLETS	5 pt ITC Zapf Dingbats Std Medium (square) with 2 ems (MM) spacing between statements
TELEPHONE #	6 pt Helvetica Neue LT Std 77 Bold Condensed
HEAVY LINES	1.5 pt
HAIRLINES	0.5 pt Extend to within 2 spaces of the "Drug Facts" box

Tips for Managing Heartburn

- Avoid foods or drinks that are more likely to cause heartburn, such as rich, spicy, fatty and fried foods, chocolate, caffeine, alcohol and even some acidic fruits and vegetables.
- Eat slowly and do not eat big meals.
- Do not eat late at night or just before bedtime.
- Do not lie flat or bend over soon after eating.
- Raise the head of your bed.
- Wear loose-fitting clothing around your stomach.
- If you are overweight, lose weight.
- If you smoke, quit smoking.

Manufactured by:
Cexel Pharma Technologies Ltd
 10 Hakdima Street, Yokneam 2069200, Israel
 Made in Israel

*This product is not manufactured or distributed by Takeda Pharmaceuticals U.S.A., Inc., owner of the registered trademark Prevacid®.

DISSOLVE TABS

Lansoprazole

Delayed Release Orally Disintegrating Tablets 15 mg

Drug Facts (continued)

Active ingredient (in each tablet)
 Lansoprazole 15 mg, Acid Reducer

Use
 ■ Treats frequent heartburn (occurs 2 or more days a week)
 ■ not intended for immediate relief of heartburn; this drug may take 1 to 4 days for full effect

Warnings
 ■ do not use if you are allergic to lansoprazole.
 ■ lansoprazole may cause severe skin reactions. Symptoms may include:
 ■ rash
 ■ skin redness
 ■ blisters
 ■ if an allergic reaction occurs, stop use and seek medical help right away.

Do not use if you have:
 ■ trouble or pain swallowing food, vomiting with blood, or bloody or black stools
 ■ heartburn with lightheadedness, sweating or dizziness
 ■ chest pain or shoulder pain with shortness of breath, sweating, pain spreading to arms, neck or shoulders, or lightheadedness
 ■ frequent chest pain

Ask a doctor before use if you have ■ liver disease
 ■ had heartburn over 3 months. This may be a sign of a more serious condition.
 ■ frequent wheezing, particularly with heartburn
 ■ unexplained weight loss ■ nausea or vomiting ■ stomach pain

Ask a doctor or pharmacist before use if you are taking a prescription drug.
 Acid reducers may interact with certain prescription drugs.

Stop use and ask a doctor if ■ your heartburn continues or worsens
 ■ you need to take this product for more than 14 days
 ■ you need to take more than 1 course of treatment every 4 months
 ■ you get diarrhea ■ you develop a rash or joint pain

If pregnant or breast-feeding, ask a health care professional before use.
 ■ Keep out of reach of children. In case of overdose, get medical help or contact a Poison Control Center right away (1-800-222-1222).

Questions or comments? 1-800-719-9260, weekdays 7:30 AM to 5:00 PM EST

Other information
 ■ read the directions and warnings before use
 ■ keep the carton. It contains important information.
 ■ store at 20-25°C (68-77°F) ■ keep product out of high heat and humidity
 ■ protect product from moisture
 ■ take the tablet immediately after opening individual blister. Do not store the tablet outside the blister pack for future use.

Inactive ingredients
 ascorbic acid, cetyl alcohol, colloidal silicon dioxide, copovidone, croscopollose, flavor, hypromellose, hypromellose phthalate, maize polyorbate 80, propylene glycol, silicon dioxide, sodium stearyl fumarate, sorbitol, sucralose, sugar spheres, talc, titanium dioxide, triethyl citrate

Location for lot number and expiration date

8U130 FA C8-TA 061125

DISSOLVE TABS

Lansoprazole

Delayed Release Orally Disintegrating Tablets 15 mg

Safety Feature – Do not use if printed tablet blister unit is open or torn.

KEEP THE CARTON. IT CONTAINS IMPORTANT INFORMATION.

NDC XXXXX-XX-XX

MELTech®
 Melts In Your Mouth

Treats Frequent Heartburn

Compare to the active ingredient in Prevacid® 24 HR*

Value 2 Pack

24 HR

DISSOLVE TABS

Lansoprazole

Delayed Release Orally Disintegrating Tablets 15 mg

Acid Reducer

May take 1 to 4 days for full effect

28 TABLETS TWO 14-DAY COURSES OF TREATMENT

Melts in your mouth
 Dissolves without water

Strawberry Flavor

Actual size

EFB 1393

FORMAT: STANDARD	
TYPE SIZES:	
TITLE	9 pt Helvetica Neue LT Std 77 Bold Condensed Oblique
TITLE (continued)	8 pt Helvetica Neue LT Std 77 Bold Condensed Oblique
(continued)	8 pt Helvetica Neue LT Std 57 Condensed
HEADINGS	8 pt Helvetica Neue LT Std 77 Bold Condensed Oblique
SUBHEADINGS	6 pt Helvetica Neue LT Std 77 Bold Condensed
TEXT	6 pt Helvetica Neue LT Std 57 Condensed
LEADING	6.5 pt
BULLETS	5 pt ITC Zapf Dingbats Std Medium (square) with 2 ems (MM) spacing between statements
TELEPHONE #	6 pt Helvetica Neue LT Std 77 Bold Condensed
HEAVY LINES	1.5 pt
HAIRLINES	0.5 pt Extend to within 2 spaces of the "Drug Facts" box

Location for lot number and expiration date

8U155 FA C8-T 060425

Manufactured by:
Cexcel Pharma Technologies Ltd
 10 Hakdama Street, Yokneam 2069200, Israel

*This product is not manufactured or distributed by Takeda Pharmaceuticals U.S.A., Inc., owner of the registered trademark Prevacid®.

Tips for Managing Heartburn

- Avoid foods or drinks that are more likely to cause heartburn, such as rich, spicy, fatty and fried foods, chocolate, caffeine, alcohol and even some acidic fruits and vegetables.
- Do not eat late at night or just before bedtime.
- Eat slowly and do not eat big meals.
- Do not eat late at night or just before bedtime.
- Wear loose-fitting clothing around your stomach.
- Raise the head of your bed.
- Do not lie flat or bend over soon after eating.
- If you are overweight, lose weight.
- If you smoke, quit smoking.

Drug Facts

Active ingredient (in each tablet) Lansoprazole 15 mg.....Acid Reducer

Use

- treats frequent heartburn (occurs 2 or more days a week)
- not intended for immediate relief of heartburn; this drug may take 1 to 4 days for full effect

Warnings

Allergy alert: Do not use if you are allergic to lansoprazole. lansoprazole may cause severe skin reactions. Symptoms may include: skin redness ■ blisters ■ rash

If an allergic reaction occurs, stop use and seek medical help right away.

Do not use if you have:

- trouble or pain swallowing food, vomiting with blood, or bloody or black stools
- heartburn with lightheadedness, sweating or dizziness
- chest pain or shoulder pain with shortness of breath; sweating; pain spreading to arms, neck or shoulder; or lightheadedness
- frequent chest pain

These may be signs of a serious condition. See your doctor.

Ask a doctor before use if you have ■ liver disease

■ had heartburn over 3 months. This may be a sign of a more serious condition. ■ frequent wheezing, particularly with heartburn ■ unexplained weight loss ■ nausea or vomiting ■ stomach pain

Ask a doctor or pharmacist before use if you are taking a prescription drug. Acid reducers may interact with certain prescription drugs.

Stop use and ask a doctor if ■ your heartburn continues or worsens ■ you need to take this product for more than 14 days ■ you need to take more than 1 course of treatment every 4 months ■ you get diarrhea ■ you develop a rash or joint pain

Keep out of reach of children. In case of overdose, get medical help or contact a Poison Control Center right away (1-800-222-1222).

Questions or comments? 1-800-719-9260; weekdays 7:30 AM to 5:00 PM EST

Other information

- read the directions and warnings before use
- keep the carton. It contains important information.
- store at 20-25°C (68-77°F) ■ keep product out of high heat and humidity
- take the tablet immediately after opening individual blister. Do not store the tablet outside the blister pack for future use.

Inactive ingredients aspartic acid, cetyl alcohol, colloidal silicon dioxide, copovidone, croscopolone, flavor, hypromellose, hypromellose phthalate, maize polyborate 80, propylene glycol, silicon dioxide, sodium stearyl fumarate, sorbitol, sucralose, sugar spheres, talc, titanium dioxide, triethyl citrate

Directions ■ adults 18 years of age and older ■ take 1 tablet before eating in the morning ■ relief of symptoms within 24 hours ■ it may take 1 to 4 days for full effect, although some people get complete relief of symptoms within 24 hours

14-Day Course of Treatment

- take 1 tablet before eating in the morning
- do not crush or chew tablets
- place the tablet on tongue; tablet disintegrates, with or without water. The tablets can also be swallowed whole with water.
- take every day for 14 days ■ do not take more than 1 tablet a day
- do not use for more than 14 days unless directed by your doctor
- do not take this medicine with alcohol

Repeated 14-Day Course (if needed)

- you may repeat a 14-day course every 4 months
- do not take for more than 14 days or more often than every 4 months unless directed by a doctor

■ children under 18 years of age: ask a doctor before use. Heartburn in children may sometimes be caused by a serious condition.

DISSOLVE TABS

Lansoprazole

Delayed Release Orally Disintegrating Tablets 15 mg



DISSOLVE TABS

Lansoprazole

Delayed Release Orally Disintegrating Tablets 15 mg

Safety Feature – Do not use if printed tablet blister unit is open or torn.

KEEP THE CARTON. IT CONTAINS IMPORTANT INFORMATION.

NDC XXXXX-XXX-XX

Treats Frequent Heartburn



Compare to the active ingredient in Prevacid® 24 HR*

24 HR

DISSOLVE TABS

Lansoprazole

Delayed Release Orally Disintegrating Tablets 15 mg

Acid Reducer
 May take 1 to 4 days for full effect

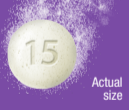


Strawberry Flavor

42 TABLETS

THREE 14-DAY COURSES OF TREATMENT

Melts in your mouth
 Dissolves without water



15

Actual size

EFB 1945

FORMAT: STANDARD	
TYPE SIZES:	
TITLE	9 pt Helvetica Neue LT Std 77 Bold Condensed Oblique
TITLE (continued)	8 pt Helvetica Neue LT Std 77 Bold Condensed Oblique
(continued)	8 pt Helvetica Neue LT Std 57 Condensed
HEADINGS	8 pt Helvetica Neue LT Std 77 Bold Condensed Oblique
SUBHEADINGS	6 pt Helvetica Neue LT Std 77 Bold Condensed
TEXT	6 pt Helvetica Neue LT Std 57 Condensed
LEADING	6.5 pt
BULLETS	5 pt ITC Zapf Dingbats Std Medium (square) with 2 ems (MM) spacing between statements
TELEPHONE #	6 pt Helvetica Neue LT Std 77 Bold Condensed
HEAVY LINES	1.5 pt
HAIRLINES	0.5 pt Extend to within 2 spaces of the "Drug Facts" box

Location for lot number and expiration date

8U155 FA C8-TJ 061125

Manufactured by:
Cexcel Pharma Technologies Ltd
 10 Hakdama Street, Yokneam 2069200, Israel

*This product is not manufactured or distributed by Takeda Pharmaceuticals U.S.A., Inc., owner of the registered trademark Prevacid®.

Tips for Managing Heartburn

- Avoid foods or drinks that are more likely to cause heartburn, such as rich, spicy, fatty and fried foods, chocolate, caffeine, alcohol and even some acidic fruits and vegetables.
- Do not lie flat or bend over soon after eating.
- Raise the head of your bed.
- Wear loose-fitting clothing around your stomach.
- If you are overweight, lose weight.
- If you smoke, quit smoking.

Do not eat late at night or just before bedtime.

Do not eat late at night or just before bedtime.

Drug Facts

Active ingredient (in each tablet) Lansoprazole 15 mg.....Acid Reducer

Use

- treats frequent heartburn (occurs 2 or more days a week)
- not intended for immediate relief of heartburn; this drug may take 1 to 4 days for full effect

Warnings

Allergy alert: ■ do not use if you are allergic to lansoprazole. ■ lansoprazole may cause severe skin reactions. Symptoms may include: ■ skin redness ■ blisters ■ rash

If an allergic reaction occurs, stop use and seek medical help right away.

Do not use if you have:

- trouble or pain swallowing food, vomiting with blood, or bloody or black stools
- heartburn with lightheadedness, sweating or dizziness
- chest pain or shoulder pain with shortness of breath; sweating; pain spreading to arms, neck or shoulders; or lightheadedness
- frequent chest pain

These may be signs of a serious condition. See your doctor.

Ask a doctor before use if you have ■ liver disease ■ had heartburn over 3 months. This may be a sign of a more serious condition.

■ frequent wheezing, particularly with heartburn ■ unexplained weight loss ■ nausea or vomiting ■ stomach pain

Ask a doctor or pharmacist before use if you are taking a prescription drug. Acid reducers may interact with certain prescription drugs.

Stop use and ask a doctor if ■ your heartburn continues or worsens ■ you need to take this product for more than 14 days ■ you need to take more than 1 course of treatment every 4 months ■ you get diarrhea ■ you develop a rash or joint pain

Keep out of reach of children. In case of overdose, get medical help or contact a Poison Control Center right away (1-800-222-1222).

Questions or comments? 1-800-719-9260; weekdays 7:30 AM to 5:00 PM EST

Other information

- read the directions and warnings before use
- keep the carton. It contains important information.
- store at 20-25°C (68-77°F) ■ keep product out of high heat and humidity
- take the tablet immediately after opening individual blister. Do not store the tablet outside the blister pack for future use.

Inactive ingredients aspartic acid, cetyl alcohol, colloidal silicon dioxide, copovidone, croscopolone, flavor, hypromellose, hypromellose phthalate, maize polyborate 80, propylene glycol, silicon dioxide, sodium stearyl fumarate, sorbitol, sucralose, sugar spheres, talc, titanium dioxide, triethyl citrate

Directions ■ adults 18 years of age and older ■ take 1 tablet before eating in the morning ■ relief of symptoms within 24 hours ■ it may take 1 to 4 days for full effect, although some people get complete relief of symptoms within 24 hours

14-Day Course of Treatment

- take 1 tablet before eating in the morning
- do not crush or chew tablets
- place the tablet on tongue; tablet disintegrates, with or without water. The tablets can also be swallowed whole with water.
- take every day for 14 days ■ do not take more than 1 tablet a day
- do not use for more than 14 days unless directed by your doctor
- do not take this medicine with alcohol

Repeated 14-Day Course (if needed)

- you may repeat a 14-day course every 4 months
- do not take for more than 14 days or more often than every 4 months unless directed by a doctor

■ children under 18 years of age: ask a doctor before use; heartburn in children may sometimes be caused by a serious condition.

DISSOLVE TABS

Lansoprazole

Delayed Release Orally Disintegrating Tablets 15 mg



DISSOLVE TABS

Lansoprazole

Delayed Release Orally Disintegrating Tablets 15 mg

Safety Feature – Do not use if printed tablet blister unit is open or torn.

KEEP THE CARTON. IT CONTAINS IMPORTANT INFORMATION.

NDC XXXXX-XXX-XX

Treats Frequent Heartburn



Compare to the active ingredient in Prevacid® 24 HR*

Child-resistant

24 HR

DISSOLVE TABS

Lansoprazole

Delayed Release Orally Disintegrating Tablets 15 mg

Acid Reducer
 May take 1 to 4 days for full effect

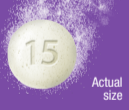


Strawberry Flavor

42 TABLETS

THREE 14-DAY COURSES OF TREATMENT

Melts in your mouth
 Dissolves without water



15

Actual size

EFB 1945

FORMAT: STANDARD	
TYPE SIZES:	
TITLE	9 pt Helvetica Neue LT Std 77 Bold Condensed Oblique
TITLE (continued)	8 pt Helvetica Neue LT Std 77 Bold Condensed Oblique
(continued)	8 pt Helvetica Neue LT Std 57 Condensed
HEADINGS	8 pt Helvetica Neue LT Std 77 Bold Condensed Oblique
SUBHEADINGS	6 pt Helvetica Neue LT Std 77 Bold Condensed
TEXT	6 pt Helvetica Neue LT Std 57 Condensed
LEADING	6.5 pt
BULLETS	5 pt ITC Zapf Dingbats Std Medium (square) with 2 ems (MM) spacing between statements
TELEPHONE #	6 pt Helvetica Neue LT Std 77 Bold Condensed
HEAVY LINES	1.5 pt
HAIRLINES	0.5 pt Extend to within 2 spaces of the "Drug Facts" box

Location for lot number and expiration date

8U155 FA C8-TV 061125

Manufactured by:
Cexcel Pharma Technologies Ltd
 10 Hakdama Street, Yokneam 2069200, Israel

*This product is not manufactured or distributed by Takeda Pharmaceuticals U.S.A., Inc., owner of the registered trademark Prevacid®.

Tips for Managing Heartburn

- Avoid foods or drinks that are more likely to cause heartburn, such as rich, spicy, fatty and fried foods, chocolate, caffeine, alcohol and even some acidic fruits and vegetables.
- Eat slowly and do not eat big meals.
- Do not eat late at night or just before bedtime.

■ Do not lie flat or bend over soon after eating.
- Raise the head of your bed.
- Wear loose-fitting clothing around your stomach.
- If you are overweight, lose weight.
- If you smoke, quit smoking.

Drug Facts

Active ingredient (in each tablet) Lansoprazole 15 mg.....Acid Reducer

Use

- treats frequent heartburn (occurs 2 or more days a week)
- not intended for immediate relief of heartburn; this drug may take 1 to 4 days for full effect

Warnings

Allergy alert: do not use if you are allergic to lansoprazole.

■ lansoprazole may cause severe skin reactions. Symptoms may include: ■ skin reddening ■ blisters ■ rash

If an allergic reaction occurs, stop use and seek medical help right away.

Do not use if you have:

- trouble or pain swallowing food, vomiting with blood, or bloody or black stools
- heartburn with lightheadedness, sweating or dizziness
- chest pain or shoulder pain with shortness of breath; sweating; pain spreading to arms, neck or shoulders; or lightheadedness
- frequent chest pain

These may be signs of a serious condition. See your doctor.

Ask a doctor before use if you have ■ liver disease

■ had heartburn over 3 months. This may be a sign of a more serious condition.
- frequent wheezing, particularly with heartburn
- unexplained weight loss ■ nausea or vomiting ■ stomach pain

Ask a doctor or pharmacist before use if you are taking a prescription drug. Acid reducers may interact with certain prescription drugs.

Stop use and ask a doctor if ■ your heartburn continues or worsens

- you need to take this product for more than 14 days
- you need to take more than 1 course of treatment every 4 months
- you get diarrhea ■ you develop a rash or joint pain

Keep out of reach of children. In case of overdose, get medical help or contact a Poison Control Center right away (1-800-222-1222).

Questions or comments? 1-800-719-9260; weekdays 7:30 AM to 5:00 PM EST

Drug Facts (continued)

Directions ■ adults 18 years of age and older

- take 1 to 4 days for full effect, although some people get complete relief of symptoms within 24 hours
- it may take 1 to 4 days for full effect, although some people get complete relief of symptoms within 24 hours

14-Day Course of Treatment

- take 1 tablet before eating in the morning
- do not crush or chew tablets
- place the tablet on tongue; tablet disintegrates, with or without water. The tablets can also be swallowed whole with water.
- take every day for 14 days ■ do not take more than 1 tablet a day
- do not use for more than 14 days unless directed by your doctor
- do not take this medicine with alcohol
- you may repeat a 14-day course every 4 months
- unless directed by a doctor
- children under 18 years of age: ask a doctor before use; heartburn in children may sometimes be caused by a serious condition.

Other information

- read the directions and warnings before use
- keep the carton. It contains important information.
- store at 20-25°C (68-77°F) ■ keep product out of high heat and humidity
- protect product from moisture
- take the tablet immediately after opening individual blister. Do not store the tablet outside the blister pack for future use.

Inactive ingredients aspartic acid, cetyl alcohol, colloidal silicon dioxide, copovidone, croscopolone, flavor, hypromellose, hypromellose phthalate, maize polyborate 80, propylene glycol, silicon dioxide, sodium stearyl fumarate, sorbitol, sucralose, sugar spheres, talc, titanium dioxide, triethyl citrate

DISSOLVE TABS

Lansoprazole

Delayed Release Orally Disintegrating Tablets 15 mg



DISSOLVE TABS

Lansoprazole

Delayed Release Orally Disintegrating Tablets 15 mg

Safety Feature – Do not use if printed tablet blister unit is open or torn.

KEEP THE CARTON. IT CONTAINS IMPORTANT INFORMATION.

NDC XXXXX-XXX-XX

Treats Frequent Heartburn



Compare to the active ingredient in Prevacid® 24 HR*

24 HR

DISSOLVE TABS

Lansoprazole

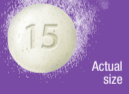
Delayed Release Orally Disintegrating Tablets 15 mg

Acid Reducer

May take 1 to 4 days for full effect



Orally Disintegrating Tablets



42 TABLETS

THREE 14-DAY COURSES OF TREATMENT

Melts in your mouth
Dissolves without water

Actual size

EFB 1945

FORMAT: STANDARD	
TYPE SIZES:	
TITLE	9 pt Helvetica Neue LT Std 77 Bold Condensed Oblique
TITLE (continued)	8 pt Helvetica Neue LT Std 77 Bold Condensed Oblique
(continued)	8 pt Helvetica Neue LT Std 57 Condensed
HEADINGS	8 pt Helvetica Neue LT Std 77 Bold Condensed Oblique
SUBHEADINGS	6 pt Helvetica Neue LT Std 77 Bold Condensed
TEXT	6 pt Helvetica Neue LT Std 57 Condensed
LEADING	6.5 pt
BULLETS	5 pt ITC Zapf Dingbats Std Medium (square) with 2 ems (MM) spacing between statements
TELEPHONE #	6 pt Helvetica Neue LT Std 77 Bold Condensed
HEAVY LINES	1.5 pt
HAIRLINES	0.5 pt Extend to within 2 spaces of the "Drug Facts" box

Location for lot number and expiration date

8U155 FA C8-TM 061125

Manufactured by:
Cexcel Pharma Technologies Ltd
 10 Hakdama Street, Yokneam 2069200, Israel

*This product is not manufactured or distributed by Takeda Pharmaceuticals U.S.A., Inc., owner of the registered trademark Prevacid®.

Tips for Managing Heartburn

- Avoid foods or drinks that are more likely to cause heartburn, such as rich, spicy, fatty and fried foods, chocolate, caffeine, alcohol and even some acidic fruits and vegetables.
- Eat slowly and do not eat big meals.
- Do not eat late at night or just before bedtime.

■ If you are overweight, lose weight. ■ If you smoke, quit smoking.

■ Wear loose-fitting clothing around your stomach.

■ Raise the head of your bed.

■ Do not lie flat or bend over soon after eating.

Drug Facts

Active ingredient (in each tablet) Lansoprazole 15 mg.....Acid Reducer

Use

- treats frequent heartburn (occurs 2 or more days a week)
- not intended for immediate relief of heartburn; this drug may take 1 to 4 days for full effect

Warnings

Allergy alert: ■ do not use if you are allergic to lansoprazole. ■ lansoprazole may cause severe skin reactions. Symptoms may include: ■ skin reddening ■ blisters ■ rash

If an allergic reaction occurs, stop use and seek medical help right away.

Do not use if you have:

- trouble or pain swallowing food, vomiting with blood, or bloody or black stools
- heartburn with lightheadedness, sweating or dizziness
- chest pain or shoulder pain with shortness of breath; sweating; pain spreading to arms, neck or shoulders; or lightheadedness
- frequent chest pain

These may be signs of a serious condition. See your doctor.

Ask a doctor before use if you have ■ liver disease ■ had heartburn over 3 months. This may be a sign of a more serious condition.

■ frequent wheezing, particularly with heartburn ■ unexplained weight loss ■ nausea or vomiting ■ stomach pain

Ask a doctor or pharmacist before use if you are taking a prescription drug. Acid reducers may interact with certain prescription drugs.

Stop use and ask a doctor if ■ your heartburn continues or worsens ■ you need to take this product for more than 14 days ■ you need to take more than 1 course of treatment every 4 months ■ you get diarrhea ■ you develop a rash or joint pain

Keep out of reach of children. In case of overdose, get medical help or contact a Poison Control Center right away (1-800-222-1222).

Questions or comments? 1-800-719-9260; weekdays 7:30 AM to 5:00 PM EST

Drug Facts (continued)

Directions ■ adults 18 years of age and older ■ this product is to be used once a day (every 24 hours), every day for 14 days ■ it may take 1 to 4 days for full effect, although some people get complete relief of symptoms within 24 hours

14-Day Course of Treatment

- take 1 tablet before eating in the morning
- do not crush or chew tablets
- place the tablet on tongue; tablet disintegrates, with or without water. The tablets can also be swallowed whole with water.
- take every day for 14 days ■ do not take more than 1 tablet a day
- do not use for more than 14 days unless directed by your doctor
- do not take this medicine with alcohol

Repeated 14-Day Course (if needed)

- you may repeat a 14-day course every 4 months
- do not take for more than 14 days or more often than every 4 months unless directed by a doctor

■ children under 18 years of age: ask a doctor before use; heartburn in children may sometimes be caused by a serious condition.

Other information

- read the directions and warnings before use
- keep the carton. It contains important information.
- store at 20-25°C (68-77°F) ■ keep product out of high heat and humidity
- protect product from moisture
- take the tablet immediately after opening individual blister. Do not store the tablet outside the blister pack for future use.

Inactive ingredients ascorbic acid, cetyl alcohol, colloidal silicon dioxide, copovidone, croscopolone, flavor, hypromellose, hypromellose phthalate, maize polyborate 80, propylene glycol, silicon dioxide, sodium stearyl fumarate, sorbitol, sucralose, sugar spheres, talc, titanium dioxide, triethyl citrate

DISSOLVE TABS

Lansoprazole

Delayed Release Orally Disintegrating Tablets 15 mg



DISSOLVE TABS

Lansoprazole

Delayed Release Orally Disintegrating Tablets 15 mg

Safety Feature – Do not use if printed tablet blister unit is open or torn.

KEEP THE CARTON. IT CONTAINS IMPORTANT INFORMATION.

NDC XXXXX-XXX-XX

Treats Frequent Heartburn



Compare to the active ingredient in Prevacid® 24 HR*

Bonus Pack: 28 + 14 Free

24 HR

DISSOLVE TABS

Lansoprazole

Delayed Release Orally Disintegrating Tablets 15 mg
 Acid Reducer
 May take 1 to 4 days for full effect



42 TABLETS

THREE 14-DAY COURSES OF TREATMENT

Melts in your mouth
 Dissolves without water



EFB 1945

FORMAT: STANDARD	
TYPE SIZES:	
TITLE	9 pt Helvetica Neue LT Std 77 Bold Condensed Oblique
TITLE (continued)	8 pt Helvetica Neue LT Std 77 Bold Condensed Oblique
(continued)	8 pt Helvetica Neue LT Std 57 Condensed
HEADINGS	8 pt Helvetica Neue LT Std 77 Bold Condensed Oblique
SUBHEADINGS	6 pt Helvetica Neue LT Std 77 Bold Condensed
TEXT	6 pt Helvetica Neue LT Std 57 Condensed
LEADING	6.5 pt
BULLETS	5 pt ITC Zapf Dingbats Std Medium (square) with 2 ems (MM) spacing between statements
TELEPHONE #	6 pt Helvetica Neue LT Std 77 Bold Condensed
HEAVY LINES	1.5 pt
HAIRLINES	0.5 pt Extend to within 2 spaces of the "Drug Facts" box

Location for lot number and expiration date

8U155 FA C8-TN 061125

Manufactured by:
Dexcel Pharma Technologies Ltd
10 Hakdama Street, Yokneam 2069200, Israel

*This product is not manufactured or distributed by Takeda Pharmaceuticals U.S.A., Inc., owner of the registered trademark Prevacid®.

Tips for Managing Heartburn

- Avoid foods or drinks that are more likely to cause heartburn, such as rich, spicy, fatty and fried foods, chocolate, caffeine, alcohol and even some acidic fruits and vegetables.
- Eat slowly and do not eat big meals.
- Do not eat late at night or just before bedtime.

■ Do not lie flat or bend over soon after eating.

■ Raise the head of your bed.

■ Wear loose-fitting clothing around your stomach.

■ If you are overweight, lose weight.

■ If you smoke, quit smoking.



Drug Facts

Active ingredient (in each tablet) Lansoprazole 15 mg.....Acid Reducer

Use

- treats frequent heartburn (occurs 2 or more days a week)
- not intended for immediate relief of heartburn; this drug may take 1 to 4 days for full effect

Warnings

Allergy alert: Do not use if you are allergic to lansoprazole.

■ lansoprazole may cause severe skin reactions. Symptoms may include: skin redness ■ blisters ■ rash

If an allergic reaction occurs, stop use and seek medical help right away.

Do not use if you have:

- trouble or pain swallowing food, vomiting with blood, or bloody or black stools
- heartburn with lightheadedness, sweating or dizziness
- chest pain or shoulder pain with shortness of breath; sweating; pain spreading to arms, neck or shoulders; or lightheadedness
- frequent chest pain

These may be signs of a serious condition. See your doctor.

Ask a doctor before use if you have ■ liver disease

■ had heartburn over 3 months. This may be a sign of a more serious condition.

■ frequent wheezing, particularly with heartburn

■ unexplained weight loss ■ nausea or vomiting ■ stomach pain

Ask a doctor or pharmacist before use if you are taking a prescription drug. Acid reducers may interact with certain prescription drugs.

Stop use and ask a doctor if ■ your heartburn continues or worsens

- you need to take this product for more than 14 days
- you need to take more than 1 course of treatment every 4 months
- you get diarrhea ■ you develop a rash or joint pain

Keep out of reach of children. In case of overdose, get medical help or contact a Poison Control Center right away (1-800-222-1222).

Questions or comments? 1-800-719-9260; weekdays 7:30 AM to 5:00 PM EST

Drug Facts (continued)

Directions ■ adults 18 years of age and older

- take 1 tablet for full effect, although some people get complete relief of symptoms within 24 hours
- it may take 1 to 4 days for full effect.

14-Day Course of Treatment

- take 1 tablet before eating in the morning
- do not crush or chew tablets
- place the tablet on tongue; tablet disintegrates, with or without water. The tablets can also be swallowed whole with water.
- take every day for 14 days ■ do not take more than 1 tablet a day
- do not use for more than 14 days unless directed by your doctor
- do not take this medicine with alcohol

Repeated 14-Day Course (if needed)

- you may repeat a 14-day course every 4 months
- do not take for more than 14 days or more often than every 4 months unless directed by a doctor

■ children under 18 years of age: ask a doctor before use; heartburn in children may sometimes be caused by a serious condition.

Other information

- read the directions and warnings before use
- keep the carton. It contains important information.
- store at 20-25°C (68-77°F) ■ keep product out of high heat and humidity
- protect product from moisture
- take the tablet immediately after opening individual blister. Do not store the tablet outside the blister pack for future use.

Inactive ingredients ascorbic acid, cetyl alcohol, colloidal silicon dioxide, copovidone, croscopolone, flavor, hypromellose, hypromellose phthalate, maize polyborate 80, propylene glycol, silicon dioxide, sodium stearyl fumarate, sorbitol, sucralose, sugar spheres, talc, titanium dioxide, triethyl citrate

DISSOLVE TABS

Lansoprazole

Delayed Release Orally Disintegrating Tablets 15 mg



DISSOLVE TABS

Lansoprazole

Delayed Release Orally Disintegrating Tablets 15 mg

Safety Feature – Do not use if printed tablet blister unit is open or torn.

KEEP THE CARTON. IT CONTAINS IMPORTANT INFORMATION.



NDC XXXXX-XXX-XX

Treats Frequent Heartburn



Compare to the active ingredient in Prevacid® 24 HR*

Bonus Size!
14 Tablets Free

24 HR

DISSOLVE TABS

Lansoprazole

Delayed Release Orally Disintegrating Tablets 15 mg
Acid Reducer
May take 1 to 4 days for full effect

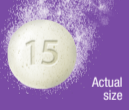


Strawberry Flavor

42 TABLETS

THREE 14-DAY COURSES OF TREATMENT

Melts in your mouth
Dissolves without water



15

Actual size

EFB 1945

FORMAT: STANDARD	
TYPE SIZES:	
TITLE	9 pt Helvetica Neue LT Std 77 Bold Condensed Oblique
TITLE (continued)	8 pt Helvetica Neue LT Std 77 Bold Condensed Oblique
(continued)	8 pt Helvetica Neue LT Std 57 Condensed
HEADINGS	8 pt Helvetica Neue LT Std 77 Bold Condensed Oblique
SUBHEADINGS	6 pt Helvetica Neue LT Std 77 Bold Condensed
TEXT	6 pt Helvetica Neue LT Std 57 Condensed
LEADING	6.5 pt
BULLETS	5 pt ITC Zapf Dingbats Std Medium (square) with 2 ems (MM) spacing between statements
TELEPHONE #	6 pt Helvetica Neue LT Std 77 Bold Condensed
HEAVY LINES	1.5 pt
HAIRLINES	0.5 pt Extend to within 2 spaces of the "Drug Facts" box

Location for lot number and expiration date

8U155 FA C8-TP 061125

Manufactured by:
Cexcel Pharma Technologies Ltd
 10 Hakdama Street, Yokneam 2069200, Israel

*This product is not manufactured or distributed by Takeda Pharmaceuticals U.S.A., Inc., owner of the registered trademark Prevacid®.

Tips for Managing Heartburn

- Avoid foods or drinks that are more likely to cause heartburn, such as rich, spicy, fatty and fried foods, chocolate, caffeine, alcohol and even some acidic fruits and vegetables.
- Eat slowly and do not eat big meals.
- Do not eat late at night or just before bedtime.

■ If you are overweight, lose weight. ■ If you smoke, quit smoking.

■ Wear loose-fitting clothing around your stomach.

■ Raise the head of your bed.

■ Do not lie flat or bend over soon after eating.



Drug Facts

Active ingredient (in each tablet) Lansoprazole 15 mg.....Acid Reducer

Use

- treats frequent heartburn (occurs 2 or more days a week)
- not intended for immediate relief of heartburn; this drug may take 1 to 4 days for full effect

Warnings

Allergy alert: ■ do not use if you are allergic to lansoprazole. ■ lansoprazole may cause severe skin reactions. Symptoms may include: ■ skin redness ■ blisters ■ rash

If an allergic reaction occurs, stop use and seek medical help right away.

Do not use if you have:

- trouble or pain swallowing food, vomiting with blood, or bloody or black stools
- heartburn with lightheadedness, sweating or dizziness
- chest pain or shoulder pain with shortness of breath; sweating; pain spreading to arms, neck or shoulders; or lightheadedness
- frequent chest pain

These may be signs of a serious condition. See your doctor.

Ask a doctor before use if you have ■ liver disease ■ had heartburn over 3 months. This may be a sign of a more serious condition. ■ frequent wheezing, particularly with heartburn ■ unexplained weight loss ■ nausea or vomiting ■ stomach pain

Ask a doctor or pharmacist before use if you are taking a prescription drug. Acid reducers may interact with certain prescription drugs.

Stop use and ask a doctor if ■ your heartburn continues or worsens ■ you need to take this product for more than 14 days ■ you need to take more than 1 course of treatment every 4 months ■ you get diarrhea ■ you develop a rash or joint pain

Keep out of reach of children. In case of overdose, get medical help or contact a Poison Control Center right away (1-800-222-1222).

Questions or comments? 1-800-719-9260; weekdays 7:30 AM to 5:00 PM EST

Drug Facts (continued)

Directions ■ adults 18 years of age and older ■ take 1 to 4 days for full effect, although some people get complete relief of symptoms within 24 hours

14-Day Course of Treatment

- take 1 tablet before eating in the morning
- do not crush or chew tablets
- place the tablet on tongue; tablet disintegrates, with or without water. The tablets can also be swallowed whole with water.
- take every day for 14 days ■ do not take more than 1 tablet a day
- do not use for more than 14 days unless directed by your doctor
- do not take this medicine with alcohol

Repeated 14-Day Course (if needed)

- you may repeat a 14-day course every 4 months
- do not take for more than 14 days or more often than every 4 months unless directed by a doctor

■ children under 18 years of age: ask a doctor before use; heartburn in children may sometimes be caused by a serious condition.

Other information

- read the directions and warnings before use
- keep the carton. It contains important information.
- store at 20-25°C (68-77°F) ■ keep product out of high heat and humidity
- protect product from moisture
- take the tablet immediately after opening individual blister. Do not store the tablet outside the blister pack for future use.

Inactive ingredients aspartic acid, cetyl alcohol, colloidal silicon dioxide, copovidone, croscopolone, flavor, hypromellose, hypromellose phthalate, maize polyorbital 80, propylene glycol, silicon dioxide, sodium stearyl fumarate, sorbitol, sucralose, sugar spheres, talc, titanium dioxide, triethyl citrate

DISSOLVE TABS

Lansoprazole

Delayed Release Orally Disintegrating Tablets 15 mg



DISSOLVE TABS

Lansoprazole

Delayed Release Orally Disintegrating Tablets 15 mg

Safety Feature – Do not use if printed tablet blister unit is open or torn.

KEEP THE CARTON. IT CONTAINS IMPORTANT INFORMATION.



NDC XXXXX-XXX-XX

Treats Frequent Heartburn



Compare to the active ingredient in Prevacid® 24 HR*

Bonus Size! 14 Free

24 HR

DISSOLVE TABS

Lansoprazole

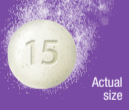
Delayed Release Orally Disintegrating Tablets 15 mg
 Acid Reducer
 May take 1 to 4 days for full effect



42 TABLETS

THREE 14-DAY COURSES OF TREATMENT

Melts in your mouth
 Dissolves without water



EFB 1945

FORMAT: STANDARD	
TYPE SIZES:	
TITLE	9 pt Helvetica Neue LT Std 77 Bold Condensed Oblique
TITLE (continued)	8 pt Helvetica Neue LT Std 77 Bold Condensed Oblique
(continued)	8 pt Helvetica Neue LT Std 57 Condensed
HEADINGS	8 pt Helvetica Neue LT Std 77 Bold Condensed Oblique
SUBHEADINGS	6 pt Helvetica Neue LT Std 77 Bold Condensed
TEXT	6 pt Helvetica Neue LT Std 57 Condensed
LEADING	6.5 pt
BULLETS	5 pt ITC Zapf Dingbats Std Medium (square) with 2 ems (MM) spacing between statements
TELEPHONE #	6 pt Helvetica Neue LT Std 77 Bold Condensed
HEAVY LINES	1.5 pt
HAIRLINES	0.5 pt Extend to within 2 spaces of the "Drug Facts" box

Location for lot number and expiration date

8U155 FA C8-TR 061125

Manufactured by:
Dexcel Pharma Technologies Ltd
10 Hakdama Street, Yokneam 2069200, Israel

*This product is not manufactured or distributed by Takeda Pharmaceuticals U.S.A., Inc., owner of the registered trademark Prevacid®.

Tips for Managing Heartburn

- Avoid foods or drinks that are more likely to cause heartburn, such as rich, spicy, fatty and fried foods, chocolate, caffeine, alcohol and even some acidic fruits and vegetables.
- Eat slowly and do not eat big meals.
- Do not eat late at night or just before bedtime.

■ If you are overweight, lose weight. ■ If you smoke, quit smoking.

■ Wear loose-fitting clothing around your stomach.

■ Raise the head of your bed.

■ Do not lie flat or bend over soon after eating.



Drug Facts

Active ingredient (in each tablet) Lansoprazole 15 mg.....Acid Reducer

Use

- treats frequent heartburn (occurs 2 or more days a week)
- not intended for immediate relief of heartburn; this drug may take 1 to 4 days for full effect

Warnings

Allergy alert: ■ do not use if you are allergic to lansoprazole. ■ lansoprazole may cause severe skin reactions. Symptoms may include: ■ skin redness ■ blisters ■ rash

If an allergic reaction occurs, stop use and seek medical help right away.

Do not use if you have:

- trouble or pain swallowing food, vomiting with blood, or bloody or black stools
- heartburn with lightheadedness, sweating or dizziness
- chest pain or shoulder pain with shortness of breath; sweating; pain spreading to arms, neck or shoulder; or lightheadedness
- frequent chest pain

These may be signs of a serious condition. See your doctor.

Ask a doctor before use if you have ■ liver disease ■ had heartburn over 3 months. This may be a sign of a more serious condition.

■ frequent wheezing, particularly with heartburn ■ unexplained weight loss ■ nausea or vomiting ■ stomach pain

Ask a doctor or pharmacist before use if you are taking a prescription drug. Acid reducers may interact with certain prescription drugs.

Stop use and ask a doctor if ■ your heartburn continues or worsens ■ you need to take this product for more than 14 days ■ you need to take more than 1 course of treatment every 4 months ■ you get diarrhea ■ you develop a rash or joint pain

Keep out of reach of children. In case of overdose, get medical help or contact a Poison Control Center right away (1-800-222-1222).

Questions or comments? 1-800-719-9260; weekdays 7:30 AM to 5:00 PM EST

Drug Facts (continued)

Directions ■ adults 18 years of age and older ■ take 1 tablet before eating in the morning ■ relief of symptoms within 24 hours

14-Day Course of Treatment

- take 1 tablet before eating in the morning
- do not crush or chew tablets
- place the tablet on tongue; tablet disintegrates, with or without water. The tablets can also be swallowed whole with water.
- take every day for 14 days. ■ do not take more than 1 tablet a day
- do not use for more than 14 days unless directed by your doctor
- do not take this medicine with alcohol

Repeated 14-Day Course (if needed)

- you may repeat a 14-day course every 4 months
- do not take for more than 14 days or more often than every 4 months unless directed by a doctor

■ children under 18 years of age: ask a doctor before use. Heartburn in children may sometimes be caused by a serious condition.

Other information

- read the directions and warnings before use
- keep the carton. It contains important information.
- store at 20-25°C (68-77°F). ■ keep product out of high heat and humidity
- protect product from moisture
- take the tablet immediately after opening individual blister. Do not store the tablet outside the blister pack for future use.

Inactive ingredients ascorbic acid, cetyl alcohol, colloidal silicon dioxide, copovidone, croscopolone, flavox, hypromellose, hypromellose phthalate, maize polyborate 80, propylene glycol, silicon dioxide, sodium stearyl fumarate, sorbitol, sucralose, sugar spheres, talc, titanium dioxide, triethyl citrate

DISSOLVE TABS

Lansoprazole

Delayed Release Orally Disintegrating Tablets 15 mg



DISSOLVE TABS

Lansoprazole

Delayed Release Orally Disintegrating Tablets 15 mg

Safety Feature – Do not use if printed tablet blister unit is open or torn.

KEEP THE CARTON. IT CONTAINS IMPORTANT INFORMATION.



NDC XXXXX-XXX-XX

Treats Frequent Heartburn



Compare to the active ingredient in Prevacid® 24 HR*

Bonus! + 14 Free

24 HR

DISSOLVE TABS

Lansoprazole

Delayed Release Orally Disintegrating Tablets 15 mg

Acid Reducer
May take 1 to 4 days for full effect

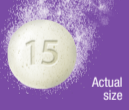


Strawberry Flavor

42 TABLETS

THREE 14-DAY COURSES OF TREATMENT

Melts in your mouth
Dissolves without water



15 Actual size

EFB 1945

FORMAT: STANDARD	
TYPE SIZES:	
TITLE	9 pt Helvetica Neue LT Std 77 Bold Condensed Oblique
TITLE (continued)	8 pt Helvetica Neue LT Std 77 Bold Condensed Oblique
(continued)	8 pt Helvetica Neue LT Std 57 Condensed
HEADINGS	8 pt Helvetica Neue LT Std 77 Bold Condensed Oblique
SUBHEADINGS	6 pt Helvetica Neue LT Std 77 Bold Condensed
TEXT	6 pt Helvetica Neue LT Std 57 Condensed
LEADING	6.5 pt
BULLETS	5 pt ITC Zapf Dingbats Std Medium (square) with 2 ems (MM) spacing between statements
TELEPHONE #	6 pt Helvetica Neue LT Std 77 Bold Condensed
HEAVY LINES	1.5 pt
HAIRLINES	0.5 pt Extend to within 2 spaces of the "Drug Facts" box

Location for lot number and expiration date

8U155 FA C8-TS 061125

Manufactured by:
Cexcel Pharma Technologies Ltd
 10 Hakdama Street, Yokneam 2069200, Israel

*This product is not manufactured or distributed by Takeda Pharmaceuticals U.S.A., Inc., owner of the registered trademark Prevacid®.

Tips for Managing Heartburn

- Avoid foods or drinks that are more likely to cause heartburn, such as rich, spicy, fatty and fried foods, chocolate, caffeine, alcohol and even some acidic fruits and vegetables.
- Do not lie flat or bend over soon after eating.
- Raise the head of your bed.
- Wear loose-fitting clothing around your stomach.
- If you are overweight, lose weight.
- If you smoke, quit smoking.

Do not eat late at night or just before bedtime.

Do not eat late at night or just before bedtime.

Drug Facts

Active ingredient (in each tablet) Lansoprazole 15 mg.....Acid Reducer

Use

- treats frequent heartburn (occurs 2 or more days a week)
- not intended for immediate relief of heartburn; this drug may take 1 to 4 days for full effect

Warnings

Allergy alert: Do not use if you are allergic to lansoprazole.

lansoprazole may cause severe skin reactions. Symptoms may include: ■ skin redness ■ blisters ■ rash

If an allergic reaction occurs, stop use and seek medical help right away.

Do not use if you have:

- trouble or pain swallowing food, vomiting with blood, or bloody or black stools
- heartburn with lightheadedness, sweating or dizziness
- chest pain or shoulder pain with shortness of breath; sweating; pain spreading to arms, neck or shoulder; or lightheadedness

Ask a doctor before use if you have: liver disease

had heartburn over 3 months. This may be a sign of a more serious condition.
- frequent wheezing, particularly with heartburn
- unexplained weight loss ■ nausea or vomiting ■ stomach pain

Ask a doctor or pharmacist before use if you are taking a prescription drug. Acid reducers may interact with certain prescription drugs.

Stop use and ask a doctor if ■ your heartburn continues or worsens

- you need to take this product for more than 14 days
- you need to take more than 1 course of treatment every 4 months
- you get diarrhea ■ you develop a rash or joint pain

Keep out of reach of children. In case of overdose, get medical help or contact a Poison Control Center right away (1-800-222-1222).

Questions or comments? 1-800-719-9260; weekdays 7:30 AM to 5:00 PM EST

Drug Facts (continued)

Directions ■ adults 18 years of age and older ■ this product is to be used once a day (every 24 hours), every day for 14 days ■ it may take 1 to 4 days for full effect, although some people get complete relief of symptoms within 24 hours

14-Day Course of Treatment

- take 1 tablet before eating in the morning
- do not crush or chew tablets
- place the tablet on tongue; tablet disintegrates, with or without water. The tablets can also be swallowed whole with water.
- take every day for 14 days ■ do not take more than 1 tablet a day
- do not use for more than 14 days unless directed by your doctor
- do not take this medicine with alcohol

Repeated 14-Day Course (if needed)

- you may repeat a 14-day course every 4 months
- do not take for more than 14 days or more often than every 4 months unless directed by a doctor

children under 18 years of age: ask a doctor before use; heartburn in children may sometimes be caused by a serious condition.

Other information

- read the directions and warnings before use
- keep the carton. It contains important information.
- store at 20-25°C (68-77°F) ■ keep product out of high heat and humidity
- protect product from moisture
- take the tablet immediately after opening individual blister. Do not store the tablet outside the blister pack for future use.

Inactive ingredients ascorbic acid, cetyl alcohol, colloidal silicon dioxide, copovidone, croscopollose, flavor, hypromellose, hypromellose phthalate, maize polyborate 80, propylene glycol, silicon dioxide, sodium stearyl fumarate, sorbitol, sucralose, sugar spheres, talc, titanium dioxide, triethyl citrate

DISSOLVE TABS

Lansoprazole

Delayed Release Orally Disintegrating Tablets 15 mg



DISSOLVE TABS

Lansoprazole

Delayed Release Orally Disintegrating Tablets 15 mg

Safety Feature – Do not use if printed tablet blister unit is open or torn.

KEEP THE CARTON. IT CONTAINS IMPORTANT INFORMATION.

NDC XXXXX-XXX-XX

Treats Frequent Heartburn



Compare to the active ingredient in Prevacid® 24 HR*

Bonus! 14 Tablets FREE

24 HR

DISSOLVE TABS

Lansoprazole

Delayed Release Orally Disintegrating Tablets 15 mg

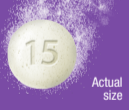
Acid Reducer
 May take 1 to 4 days for full effect



42 TABLETS

THREE 14-DAY COURSES OF TREATMENT

Melts in your mouth
 Dissolves without water



EFB 1945

FORMAT: STANDARD	
TYPE SIZES:	
TITLE	9 pt Helvetica Neue LT Std 77 Bold Condensed Oblique
TITLE (continued)	8 pt Helvetica Neue LT Std 77 Bold Condensed Oblique
(continued)	8 pt Helvetica Neue LT Std 57 Condensed
HEADINGS	8 pt Helvetica Neue LT Std 77 Bold Condensed Oblique
SUBHEADINGS	6 pt Helvetica Neue LT Std 77 Bold Condensed
TEXT	6 pt Helvetica Neue LT Std 57 Condensed
LEADING	6.5 pt
BULLETS	5 pt ITC Zapf Dingbats Std Medium (square) with 2 ems (MM) spacing between statements
TELEPHONE #	6 pt Helvetica Neue LT Std 77 Bold Condensed
HEAVY LINES	1.5 pt
HAIRLINES	0.5 pt Extend to within 2 spaces of the "Drug Facts" box

Location for lot number and expiration date

8U155 FA C8-TB 061125

Manufactured by:
Cexcel Pharma Technologies Ltd
 10 Hakdama Street, Yokneam 2069200, Israel

*This product is not manufactured or distributed by Takeda Pharmaceuticals U.S.A., Inc., owner of the registered trademark Prevacid®.

Tips for Managing Heartburn

- Avoid foods or drinks that are more likely to cause heartburn, such as rich, spicy, fatty and fried foods, chocolate, caffeine, alcohol and even some acidic fruits and vegetables.
- Eat slowly and do not eat big meals.
- Do not eat late at night or just before bedtime.

■ Do not lie flat or bend over soon after eating.

■ Raise the head of your bed.

■ Wear loose-fitting clothing around your stomach.

■ If you are overweight, lose weight.

■ If you smoke, quit smoking.

Drug Facts

Active ingredient (in each tablet) Lansoprazole 15 mg.....Acid Reducer

Use

- treats frequent heartburn (occurs 2 or more days a week)
- not intended for immediate relief of heartburn; this drug may take 1 to 4 days for full effect

Warnings

Allergy alert: do not use if you are allergic to lansoprazole.

■ lansoprazole may cause severe skin reactions. Symptoms may include: ■ skin redness ■ blisters ■ rash

If an allergic reaction occurs, stop use and seek medical help right away.

Do not use if you have:

- trouble or pain swallowing food, vomiting with blood, or bloody or black stools
- heartburn with lightheadedness, sweating or dizziness
- chest pain or shoulder pain with shortness of breath; sweating; pain spreading to arms, neck or shoulder; or lightheadedness

Ask a doctor before use if you have: liver disease

■ had heartburn over 3 months. This may be a sign of a more serious condition.

■ frequent wheezing, particularly with heartburn

■ unexplained weight loss ■ nausea or vomiting ■ stomach pain

Ask a doctor or pharmacist before use if you are taking a prescription drug. Acid reducers may interact with certain prescription drugs.

Stop use and ask a doctor if ■ your heartburn continues or worsens ■ you need to take this product for more than 14 days ■ you need to take more than 1 course of treatment every 4 months ■ you get diarrhea ■ you develop a rash or joint pain

Keep out of reach of children. In case of overdose, get medical help or contact a Poison Control Center right away (1-800-222-1222).

Questions or comments? 1-800-719-9260; weekdays 7:30 AM to 5:00 PM EST

Other information

- read the directions and warnings before use
- keep the carton. It contains important information.
- store at 20-25°C (68-77°F) ■ keep product out of high heat and humidity
- take the tablet immediately after opening individual blister. Do not store the tablet outside the blister pack for future use.

Inactive ingredients ascorbic acid, cetyl alcohol, colloidal silicon dioxide, copovidone, croscopolone, flavor, hypromellose, hypromellose phthalate, maize polyborate 80, propylene glycol, silicon dioxide, sodium stearyl fumarate, sorbitol, sucralose, sugar spheres, talc, titanium dioxide, triethyl citrate

Directions ■ adults 18 years of age and older ■ take 1 tablet before eating in the morning ■ relief of symptoms within 24 hours

14-Day Course of Treatment

- it may take 1 to 4 days for full effect, although some people get complete relief of symptoms within 24 hours

Repeated 14-Day Course (if needed)

- you may repeat a 14-day course every 4 months
- do not take for more than 14 days or more often than every 4 months unless directed by a doctor
- children under 18 years of age: ask a doctor before use. Heartburn in children may sometimes be caused by a serious condition.

Other information

- place the tablet on tongue; tablet disintegrates, with or without water.
- do not crush or chew tablets
- The tablets can also be swallowed whole with water.
- take every day for 14 days ■ do not take more than 1 tablet a day
- do not use for more than 14 days unless directed by your doctor
- do not take this medicine with alcohol

Drug Facts (continued)

DISSOLVE TABS

Lansoprazole
 Delayed Release Orally
 Disintegrating Tablets 15 mg



DISSOLVE TABS

Lansoprazole

Delayed Release Orally
 Disintegrating Tablets 15 mg

Safety Feature – Do not use if printed
 tablet blister unit is open or torn.

KEEP THE CARTON. IT CONTAINS IMPORTANT INFORMATION.

NDC XXXXX-XXX-XX

Treats Frequent Heartburn



Compare to the active ingredient
 in Prevacid® 24 HR*

Value 3 Pack

24 HR

DISSOLVE TABS

Lansoprazole

Delayed Release Orally
 Disintegrating Tablets 15 mg

Acid Reducer
 May take 1 to 4 days for full effect

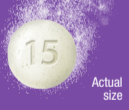


Strawberry
 Flavor

42 TABLETS

THREE 14-DAY COURSES
 OF TREATMENT

Melts in your mouth
 Dissolves without water



15
 Actual
 size

EFB 1945

FORMAT: STANDARD	
TYPE SIZES:	
TITLE	9 pt Helvetica Neue LT Std 77 Bold Condensed Oblique
TITLE (continued)	8 pt Helvetica Neue LT Std 77 Bold Condensed Oblique
(continued)	8 pt Helvetica Neue LT Std 57 Condensed
HEADINGS	8 pt Helvetica Neue LT Std 77 Bold Condensed Oblique
SUBHEADINGS	6 pt Helvetica Neue LT Std 77 Bold Condensed
TEXT	6 pt Helvetica Neue LT Std 57 Condensed
LEADING	6.5 pt
BULLETS	5 pt ITC Zapf Dingbats Std Medium (square) with 2 ems (MM) spacing between statements
TELEPHONE #	6 pt Helvetica Neue LT Std 77 Bold Condensed
HEAVY LINES	1.5 pt
HAIRLINES	0.5 pt Extend to within 2 spaces of the "Drug Facts" box

This is a representation of an electronic record that was signed electronically. Following this are manifestations of any and all electronic signatures for this electronic record.

/s/

NUSHIN F TODD
03/11/2026 11:13:27 AM