

HIGHLIGHTS OF PRESCRIBING INFORMATION

These highlights do not include all the information needed to use AUVELITY safely and effectively. See full prescribing information for AUVELITY.

AUVELITY® (dextromethorphan hydrobromide / bupropion hydrochloride) extended-release tablets, for oral use

Initial U.S. Approval: 2022

WARNING: SUICIDAL THOUGHTS AND BEHAVIORS
See full prescribing information for complete boxed warning.

Increased risk of suicidal thoughts and behavior in pediatric and young adult patients taking antidepressants. Closely monitor all antidepressant-treated patients for clinical worsening and emergence of suicidal thoughts and behaviors. AUVELITY is not approved for use in pediatric patients. (5.1, 8.4)

RECENT MAJOR CHANGES

Indications and Usage, Agitation Associated with Dementia Due to Alzheimer's Disease (1.2)-----4/2026

Dosage and Administration, Recommended Dosage for Treatment of Agitation Associated with Dementia Due to Alzheimer's Disease (2.3)-----4/2026

Warnings and Precautions, Hyponatremia (5.10)-----4/2026

INDICATIONS AND USAGE

AUVELITY is a combination of dextromethorphan, an uncompetitive *N*-methyl *D*-aspartate (NMDA) receptor antagonist and sigma-1 receptor agonist, and bupropion, an aminoketone and CYP450 2D6 inhibitor, indicated for:

- the treatment of major depressive disorder (MDD) in adults (1.1)
- the treatment of agitation associated with dementia due to Alzheimer's disease (1.2)

Limitations of Use: AUVELITY is not indicated as an as needed ("prn") treatment for agitation associated with dementia due to Alzheimer's disease (1.2).

DOSAGE AND ADMINISTRATION

- Prior to initiating treatment with AUVELITY: assess blood pressure; screen patients for history of bipolar disorder, mania, or hypomania; and determine if patients are receiving any other medications that contain bupropion or dextromethorphan. (2.1)
- For MDD, the starting dosage is AUVELITY 45 mg/105 mg once daily in the morning. On day 4, increase to the maximum recommended dosage of AUVELITY 45 mg/105 mg twice daily, separated by at least 8 hours. Do not exceed two doses within the same day. (2.2)
- For agitation associated with dementia due to Alzheimer's disease, the starting dosage is AUVELITY 30 mg/105 mg once daily in the morning. On day 8, increase to AUVELITY 30 mg/105 mg twice daily, separated by at least 8 hours, based on tolerability. On day 15, increase to the maximum recommended dosage of AUVELITY 45 mg/105 mg twice daily, separated by at least 8 hours, based on tolerability. Do not exceed two doses within the same day. (2.3)
- Swallow tablets whole, do not crush, divide, or chew. (2.2, 2.3)
- Moderate renal impairment: For patients with MDD or agitation associated with dementia due to Alzheimer's disease the maximum recommended dosage is one tablet of 45 mg/105 mg by mouth once daily in the morning. (2.4, 8.6)
- CYP2D6 poor metabolizers: For patients with MDD or agitation associated with dementia due to Alzheimer's disease, the maximum recommended dosage is one tablet of 45 mg/105 mg by mouth once daily in the morning. (2.6, 8.8, 12.3)

DOSAGE FORMS AND STRENGTHS

Extended-release tablets: dextromethorphan hydrobromide/bupropion hydrochloride 45 mg/105 mg, 30 mg/105 mg. (3)

CONTRAINDICATIONS

- Seizure disorder. (4)
- Current or prior diagnosis of bulimia or anorexia nervosa. (4)
- Abrupt discontinuation of alcohol, benzodiazepines, barbiturates, and antiepileptic drugs. (4)
- Use with an MAOI or within 14 days of stopping treatment with AUVELITY. Do not use AUVELITY within 14 days of discontinuing an MAOI. (4)
- Known hypersensitivity to bupropion, dextromethorphan, or other components of AUVELITY. (4)

WARNINGS AND PRECAUTIONS

- Seizure: Risk is dose-related. Discontinue if seizure occurs. (4, 5.2)
- Increased Blood Pressure and Hypertension: AUVELITY can increase blood pressure and cause hypertension. Assess blood pressure before initiating treatment and monitor periodically during treatment. (5.3)
- Activation of Mania or Hypomania: Screen patients for bipolar disorder. (5.4)
- Psychosis and Other Neuropsychiatric Reactions: Instruct patients to contact a healthcare provider if such reactions occur. (5.5)
- Angle-Closure Glaucoma: Angle-closure glaucoma has occurred in patients with untreated anatomically narrow angles treated with antidepressants. (5.6)
- Dizziness: AUVELITY may cause dizziness. Take precautions to reduce falls and use caution when operating machinery. (5.7)
- Serotonin Syndrome: Use of AUVELITY with selective serotonin reuptake inhibitors (SSRIs) or tricyclic antidepressants increases the risk. Discontinue if occurs. (5.8, 7.1)
- Embryo-fetal Toxicity: May cause fetal harm. Advise pregnant females of the potential risk to a fetus. Discontinue treatment in pregnant females and use alternative treatment for females who are planning to become pregnant. (5.9, 8.1, 8.3)
- Hyponatremia: Can occur in association with SIADH. (5.10)

ADVERSE REACTIONS

- MDD: Most common adverse reactions (≥5% and more than twice as frequently as placebo): dizziness, headache, diarrhea, somnolence, dry mouth, sexual dysfunction, and hyperhidrosis. (6.1)
- Agitation associated with dementia due to Alzheimer's disease: Most common adverse reactions (≥5% and more than twice as frequently as placebo): dizziness and dyspepsia. (6.1)

To report SUSPECTED ADVERSE REACTIONS, contact Axsome Therapeutics at 1-800-484-1672 or FDA at 1-800-FDA-1088 or www.fda.gov/medwatch.

DRUG INTERACTIONS

- Strong CYP2D6 inhibitors: For patients with MDD or agitation associated with dementia due to Alzheimer's disease maximum recommended dosage is one tablet of 45 mg dextromethorphan hydrobromide/105 mg bupropion hydrochloride by mouth once daily in the morning. (2.5, 7.1)
- Strong CYP2B6 inducers: Avoid use. (7.1)
- CYP2D6 Substrates: Increases the exposures of drugs that are substrates of CYP2D6. (7.1)
- Digoxin: May decrease plasma digoxin levels. Monitor digoxin levels. (7.1)
- Drugs that lower seizure threshold: Coadministration may increase risk of seizure. (7.1)
- Dopaminergic drugs: Central Nervous System (CNS) toxicity can occur with concomitant use. (7.1)
- Drug-laboratory test interactions: AUVELITY can cause false-positive urine test results for amphetamines. (7.2)

USE IN SPECIFIC POPULATIONS

- Lactation: Breastfeeding not recommended. (8.2)
- Severe Hepatic Impairment: Avoid use. (8.7)

See 17 for PATIENT COUNSELING INFORMATION and Medication Guide.

Revised: 4/2026

FULL PRESCRIBING INFORMATION: CONTENTS*

WARNING: SUICIDAL THOUGHTS AND BEHAVIORS

1 INDICATIONS AND USAGE

- 1.1 Major Depressive Disorder
- 1.2 Agitation Associated with Dementia Due to Alzheimer's Disease

2 DOSAGE AND ADMINISTRATION

- 2.1 Important Recommendations Prior to Initiating and During Treatment with AUVELITY
- 2.2 Recommended Dosage for the Treatment of Major Depressive Disorder
- 2.3 Recommended Dosage for Treatment of Agitation Associated with Dementia Due to Alzheimer's Disease
- 2.4 Dosage Recommendations in Patients with Renal Impairment
- 2.5 Dosage Recommendations for Concomitant Use with Strong CYP2D6 Inhibitors
- 2.6 Dosage Recommendations for Known CYP2D6 Poor Metabolizers (PMs)
- 2.7 Switching a Patient to or from a Monoamine Oxidase Inhibitor (MAOI) Antidepressant

3 DOSAGE FORMS AND STRENGTHS

4 CONTRAINDICATIONS

5 WARNINGS AND PRECAUTIONS

- 5.1 Suicidal Thoughts and Behaviors in Adolescents and Young Adults
- 5.2 Seizure
- 5.3 Increased Blood Pressure and Hypertension
- 5.4 Activation of Mania or Hypomania
- 5.5 Psychosis and Other Neuropsychiatric Reactions
- 5.6 Angle-Closure Glaucoma
- 5.7 Dizziness
- 5.8 Serotonin Syndrome
- 5.9 Embryo-fetal Toxicity
- 5.10 Hyponatremia

6 ADVERSE REACTIONS

- 6.1 Clinical Trials Experience
- 6.2 Postmarketing Experience

7 DRUG INTERACTIONS

- 7.1 Drugs Having Clinically Important Interactions with AUVELITY
- 7.2 Drug-Laboratory Test Interactions

8 USE IN SPECIFIC POPULATIONS

- 8.1 Pregnancy
- 8.2 Lactation
- 8.3 Females and Males of Reproductive Potential
- 8.4 Pediatric Use
- 8.5 Geriatric Use
- 8.6 Renal Impairment
- 8.7 Hepatic Impairment
- 8.8 CYP2D6 Poor Metabolizers

9 DRUG ABUSE AND DEPENDENCE

- 9.1 Controlled Substance
- 9.2 Abuse

10 OVERDOSAGE

11 DESCRIPTION

12 CLINICAL PHARMACOLOGY

- 12.1 Mechanism of Action
- 12.2 Pharmacodynamics
- 12.3 Pharmacokinetics

13 NONCLINICAL TOXICOLOGY

- 13.1 Carcinogenesis, Mutagenesis, Impairment of Fertility

14 CLINICAL STUDIES

- 14.1 Major Depressive Disorder
- 14.2 Agitation Associated with Dementia Due to Alzheimer's Disease

16 HOW SUPPLIED/STORAGE AND HANDLING

17 PATIENT COUNSELING INFORMATION

*Sections or subsections omitted from the full prescribing information are not listed.

FULL PRESCRIBING INFORMATION

WARNING: SUICIDAL THOUGHTS AND BEHAVIORS

Antidepressants increased the risk of suicidal thoughts and behaviors in pediatric and young adult patients in short-term studies. Closely monitor all antidepressant-treated patients for clinical worsening, and emergence of suicidal thoughts and behaviors [see *Warnings and Precautions (5.1)*]. AUVELITY is not approved for use in pediatric patients [see *Use in Specific Populations (8.4)*].

1 INDICATIONS AND USAGE

1.1 Major Depressive Disorder

AUVELITY is indicated for the treatment of major depressive disorder (MDD) in adults.

1.2 Agitation Associated with Dementia Due to Alzheimer's Disease

AUVELITY is indicated for the treatment of agitation associated with dementia due to Alzheimer's disease.

Limitations of Use:

AUVELITY is not indicated as an as needed ("prn") treatment for agitation associated with dementia due to Alzheimer's disease [see *Clinical Studies Section 14.2*].

2 DOSAGE AND ADMINISTRATION

2.1 Important Recommendations Prior to Initiating and During Treatment with AUVELITY

Prior to initiating and during treatment with AUVELITY:

- assess blood pressure and monitor periodically during treatment [see *Warnings and Precautions (5.3)*].
- screen patients for a personal or family history of bipolar disorder, mania, or hypomania [see *Warnings and Precautions (5.4)*].
- screen patients to determine if they are receiving any other medications that contain bupropion or dextromethorphan [see *Warnings and Precautions (5.2, 5.5, 5.8)*].

2.2 Recommended Dosage for Treatment of Major Depressive Disorder

The recommended starting dosage is AUVELITY 45 mg/105 mg once daily in the morning. On day 4, increase to the maximum recommended dosage of one tablet twice daily, given at least 8 hours apart. Do not exceed two doses within the same day.

Administer AUVELITY orally with or without food [see *Clinical Pharmacology (12.3)*]. Swallow tablets whole, do not crush, divide, or chew.

2.3 Recommended Dosage for Treatment of Agitation Associated with Dementia Due to Alzheimer's Disease

The recommended titration schedule is as follows:

- The recommended starting dose is AUVELITY 30 mg/105 mg once daily, in the morning. On day 8, increase to AUVELITY 30 mg/105 mg twice daily, given at least 8 hours apart, based on tolerability.
- On day 15, after starting AUVELITY, increase to the maximum recommended dosage of 45 mg/105 mg twice daily, given at least 8 hours apart, based on tolerability.

Do not exceed two doses within the same day.

Administer AUVELITY orally with or without food [see *Clinical Pharmacology (12.3)*]. Swallow tablets whole, do not crush, divide, or chew.

2.4 Dosage Recommendations in Patients with Renal Impairment

For patients with moderate renal impairment (eGFR 30 to 59 mL/minute/1.73 m²), the dosing recommendations for AUVELITY are as follows:

- For patients with MDD, the recommended starting and maximum dosage is 45 mg/105 mg once daily in the morning [see *Use in Specific Populations (8.6)*, *Clinical Pharmacology (12.3)*].
- For patients with Agitation Associated with Dementia due to Alzheimer’s Disease, the recommended starting dosage is 30 mg/105 mg once daily in the morning. On day 8, increase to the maximum recommended dosage of 45 mg/105 mg once daily in the morning, based on tolerability [see *Use in Specific Populations (8.6)*, *Clinical Pharmacology (12.3)*].

2.5 Dosage Recommendations for Concomitant Use with Strong CYP2D6 Inhibitors

When AUVELITY is co-administered with strong CYP2D6 inhibitors, the dosing recommendations for AUVELITY are as follows:

- For MDD, the recommended starting and maximum dosage is 45 mg/105 mg once daily in the morning [see *Drug Interactions (7.1)*, *Clinical Pharmacology (12.3)*].

For Agitation Associated with Dementia due to Alzheimer’s Disease, the recommended starting dosage is 30 mg/105 mg once daily in the morning. On day 8, increase to the maximum recommended dosage of 45 mg/105 mg once daily in the morning, based on tolerability [see *Drug Interactions (7.1)*, *Clinical Pharmacology (12.3)*].

2.6 Dosage Recommendations for Known CYP2D6 Poor Metabolizers (PMs)

For patients who are known CYP2D6 poor metabolizers, the dosing recommendations are as follows:

For MDD, the recommended starting and maximum dosage is 45 mg/105 mg once daily in the morning [see *Use in Specific Populations (8.6)*, *Clinical Pharmacology (12.3)*].

For Agitation Associated with Dementia due to Alzheimer’s Disease, the recommended starting dosage is 30 mg/105 mg once daily in the morning. On day 8, increase to the maximum recommended dosage of 45 mg/105 mg once daily in the morning, based on tolerability [see *Use in Specific Populations (8.6)*, *Clinical Pharmacology (12.3)*].

2.7 Switching a Patient to or from a Monoamine Oxidase Inhibitor (MAOI) Antidepressant

At least 14 days must elapse between discontinuation of an MAOI intended to treat depression and initiation of therapy with AUVELITY. Conversely, at least 14 days must be allowed after stopping AUVELITY before starting an MAOI antidepressant [see *Contraindications (4)*, *Drug Interactions (7.1)*].

3 DOSAGE FORMS AND STRENGTHS

AUVELITY extended-release tablets are available in two strengths:

- 30 mg dextromethorphan hydrobromide/105 mg bupropion hydrochloride. The tablets are white and round with “AXS” above “30” debossed on one side

- 45 mg dextromethorphan hydrobromide/105 mg bupropion hydrochloride. The tablets are beige and round with “45/105” debossed on one side

4 CONTRAINDICATIONS

AUVELITY is contraindicated in patients:

- with a seizure disorder [see *Warnings and Precautions (5.2)*].
- with a current or prior diagnosis of bulimia or anorexia nervosa as a higher incidence of seizures was observed in such patients treated with the immediate-release formulation of bupropion [see *Warnings and Precautions (5.2)*].
- undergoing abrupt discontinuation of alcohol, benzodiazepines, barbiturates, and antiepileptic drugs [see *Warnings and Precautions (5.2)*, *Drug Interactions (7.1)*].
- taking, or within 14 days of stopping, MAOIs due to the risk of serious and possibly fatal drug interactions, including hypertensive crisis and serotonin syndrome [see *Dosage and Administration (2.7)*, *Warnings and Precautions (5.8)*, *Drug Interactions (7.1)*]. Starting AUVELITY in a patient treated with reversible MAOIs such as linezolid or intravenous methylene blue is contraindicated.
- with known hypersensitivity to bupropion, dextromethorphan, or other components of AUVELITY. Anaphylactoid/anaphylactic reactions and Stevens-Johnson syndrome have been reported with bupropion. Arthralgia, myalgia, fever with rash, and other serum sickness-like symptoms suggestive of delayed hypersensitivity have also been reported with bupropion [see *Adverse Reactions (6.2)*].

5 WARNINGS AND PRECAUTIONS

5.1 Suicidal Thoughts and Behaviors in Adolescents and Young Adults

In pooled analyses of placebo-controlled trials of antidepressant drugs (SSRIs and other antidepressant classes) that included approximately 77,000 adult patients and 4,500 pediatric patients, the incidence of suicidal thoughts and behaviors in antidepressant-treated patients age 24 years and younger was greater than in placebo-treated patients. There was considerable variation in risk of suicidal thoughts and behaviors among drugs, but there was an increased risk identified in young patients for most drugs studied. There were differences in absolute risk of suicidal thoughts and behaviors across the different indications, with the highest incidence in patients with MDD. The drug-placebo differences in the number of cases of suicidal thoughts and behaviors per 1000 patients treated are provided in Table 1.

Table 1: Risk Differences of the Number of Patients of Suicidal Thoughts and Behavior in the Pooled Placebo-Controlled Trials of Antidepressants in Pediatric* and Adult Patients

Age Range	Drug-Placebo Difference in Number of Patients of Suicidal Thoughts or Behaviors per 1000 Patients Treated
	Increases Compared to Placebo
<18 years old	14 additional patients
18-24 years old	5 additional patients
	Decreases Compared to Placebo
25-64 years old	1 fewer patient
≥65 years old	6 fewer patients

*AUVELITY is not approved for use in pediatric patients.

It is unknown whether the risk of suicidal thoughts and behaviors in children, adolescents, and young adults extends to longer-term use, i.e., beyond four months. However, there is substantial evidence from placebo-controlled maintenance studies in adults with MDD that antidepressants delay the recurrence of depression and that depression itself is a risk factor for suicidal thoughts and behaviors.

Monitor all antidepressant-treated patients for any indication for clinical worsening and emergence of suicidal thoughts and behaviors, especially during the initial few months of drug therapy, and at times of dosage changes. Counsel family members or caregivers of patients to monitor for changes in behavior and to alert the healthcare provider. Consider changing the therapeutic regimen, including possibly discontinuing AUVELITY, in patients whose depression is persistently worse, or who are experiencing emergent suicidal thoughts or behaviors.

5.2 Seizure

Bupropion, a component of AUVELITY, can cause seizure. The risk of seizure with bupropion is dose-related.

When a bupropion hydrochloride (HCl) sustained-release tablet was dosed up to 300 mg per day (approximately 1.5 times the maximum recommended daily dosage of AUVELITY), the incidence of seizure was approximately 0.1% (1/1,000) and increased to approximately 0.4% (4/1,000) at the maximum recommended dosage for the sustained-release tablet of 400 mg per day (approximately 2 times the maximum recommended daily dosage of AUVELITY).

The risk of seizures is also related to patient factors, clinical situations, and concomitant medications that lower the seizure threshold. Consider these risks before initiating treatment with AUVELITY. AUVELITY is contraindicated in patients with a seizure disorder, current or prior diagnosis of anorexia nervosa or bulimia, or undergoing abrupt discontinuation of alcohol, benzodiazepines, barbiturates, and antiepileptic drugs [see *Contraindications (4)*, *Drug Interactions (7.1)*]. The following conditions can also increase the risk of seizure: severe head injury; arteriovenous malformation; CNS tumor or CNS infection; severe stroke; concomitant use of other medications that lower the seizure threshold (e.g., other bupropion products, antipsychotics, tricyclic antidepressants, theophylline, and systemic corticosteroids); metabolic disorders (e.g., hypoglycemia, hyponatremia, severe hepatic impairment, and hypoxia); use of illicit drugs (e.g., cocaine); or abuse or misuse of prescription drugs such as CNS stimulants. Additional predisposing conditions include diabetes mellitus

treated with oral hypoglycemic drugs or insulin; use of anorectic drugs; and excessive use of alcohol, benzodiazepines, sedative/hypnotics, or opiates.

Because the risk of seizure with bupropion is dose-related, screen patients for use of other bupropion-containing products prior to initiating AUVELITY [see *Dosage and Administration (2.1)*]. If concomitant use of AUVELITY with other bupropion-containing products is clinically warranted, inform patients of the risk. Discontinue AUVELITY and do not restart treatment if the patient experiences a seizure.

5.3 Increased Blood Pressure and Hypertension

AUVELITY contains bupropion, which can cause elevated blood pressure and hypertension. The risk of hypertension is increased if AUVELITY is used concomitantly with MAOIs or other drugs that increase dopaminergic or noradrenergic activity [see *Contraindications (4)*, *Drug Interactions (7.1)*].

Data from a comparative trial of a sustained-release tablet formulation of bupropion HCl, nicotine transdermal system (NTS), the combination of sustained-release bupropion plus NTS, and placebo as an aid to smoking cessation suggest a higher incidence of hypertension in patients treated with the combination of sustained-release bupropion and NTS. In this trial, 6.1% of subjects treated with the combination of sustained-release bupropion and NTS had hypertension compared with 2.5%, 1.6%, and 3.1% of subjects treated with sustained-release bupropion, NTS, and placebo, respectively. The majority of these subjects had evidence of pre-existing hypertension. Three subjects (1.2%) treated with the combination of sustained-release bupropion and NTS and 1 subject (0.4%) treated with NTS had study medication discontinued due to hypertension compared with none of the subjects treated with sustained-release bupropion or placebo. Monitor blood pressure in patients who receive the combination of bupropion and nicotine replacement.

In a clinical trial of an immediate-release bupropion tablet formulation in MDD subjects with stable congestive heart failure (N=36), bupropion was associated with an exacerbation of pre-existing hypertension in 2 subjects, leading to discontinuation of bupropion treatment. There are no controlled trials assessing the safety of bupropion in patients with a recent history of myocardial infarction or unstable cardiac disease.

Assess blood pressure prior to initiating treatment, and periodically monitor blood pressure during treatment with AUVELITY [see *Dosage and Administration (2.1)*].

5.4 Activation of Mania or Hypomania

Antidepressant treatment can precipitate a manic, mixed, or hypomanic manic episode. The risk appears to be increased in patients with bipolar disorder or who have risk factors for bipolar disorder. Prior to initiating AUVELITY, screen patients for a history of bipolar disorder and the presence of risk factors for bipolar disorder (e.g., family history of bipolar disorder, suicide, or depression) [see *Dosage and Administration (2.1)*]. AUVELITY is not approved for use in treating bipolar depression.

5.5 Psychosis and Other Neuropsychiatric Reactions

AUVELITY contains bupropion. Depressed patients treated with bupropion have had a variety of neuropsychiatric signs and symptoms, including delusions, hallucinations, psychosis, concentration disturbance, paranoia, and confusion. Some of these patients had a diagnosis of bipolar disorder. In some cases, these symptoms abated upon dose reduction and/or withdrawal of treatment.

AUVELITY contains dextromethorphan. Dextromethorphan overdose can cause toxic psychosis, stupor, coma, and hyperexcitability [see *Overdosage (10)*].

Because the risks of neuropsychiatric reactions are dose-related, screen patients for use of other bupropion- or dextromethorphan-containing products prior to initiating AUVELITY. If concomitant use of AUVELITY with other bupropion- or dextromethorphan-containing products is clinically warranted, monitor patients for neuropsychiatric reactions [see *Dosage and Administration (2.1)*] and instruct patients to contact a healthcare provider if such reactions occur.

5.6 Angle-Closure Glaucoma

The pupillary dilation that occurs following use of many antidepressant drugs including bupropion, a component of AUVELITY, may trigger an angle closure attack in a patient with anatomically narrow angles who does not have a patent iridectomy. Avoid use of antidepressants, including AUVELITY, in patients with untreated anatomically narrow angles.

5.7 Dizziness

AUVELITY may cause dizziness [see *Adverse Reactions (6.1)*]. In controlled studies of AUVELITY in depression, 14% of patients receiving AUVELITY and 6% of patients on placebo experienced dizziness. In a short-term controlled study of AUVELITY in agitation associated with dementia due to Alzheimer's disease, 9% of patients receiving AUVELITY and 3% of patients on placebo experienced dizziness. Take precautions to reduce the risk of falls, particularly for patients with motor impairment affecting gait or those with a history of falls. Caution patients about operating hazardous machinery, including motor vehicles, until they are reasonably certain that AUVELITY therapy does not affect them adversely.

5.8 Serotonin Syndrome

AUVELITY contains dextromethorphan. Concomitant use of AUVELITY with SSRIs or tricyclic antidepressants may cause serotonin syndrome, a potentially life-threatening condition with changes including altered mental status, hypertension, restlessness, myoclonus, hyperthermia, hyperreflexia, diaphoresis, shivering, and tremor [see *Drug Interactions (7.1)*, *Overdosage (10)*].

The concomitant use of AUVELITY with MAOIs is contraindicated. In addition, do not initiate AUVELITY in a patient being treated with MAOIs such as linezolid or intravenous methylene blue. If it is necessary to initiate treatment with an MAOI such as linezolid or intravenous methylene blue in a patient taking AUVELITY discontinue AUVELITY before initiating treatment with the MAOI [see *Contraindications (4)*, *Drug Interactions (7)*].

Prior to initiating AUVELITY, screen patients for use of other dextromethorphan-containing products [see *Dosage and Administration (2.1)*]. If concomitant use of AUVELITY with other serotonergic drugs is clinically warranted, inform patients of the increased risk for serotonin syndrome and monitor for symptoms. Discontinue AUVELITY and/or concomitant serotonergic drug immediately if the above symptoms occur, and initiate supportive symptomatic treatment.

5.9 Embryo-fetal Toxicity

Based on animal studies, AUVELITY may cause fetal harm when administered during pregnancy. In developmental toxicity studies in rats and rabbits, when a combination of dextromethorphan/quinidine was given to pregnant animals, fetal malformations (rabbits) and embryoletality were demonstrated in offspring. Neurotoxicity findings were observed in juvenile rats treated with a combination of dextromethorphan/quinidine on postnatal day (PND) 7, which corresponds to the third trimester of gestation through the first few months of life and may extend through the first three years of life in humans. The separate effect of dextromethorphan on developmental toxicity at the recommended clinical dose is unclear. Discontinue treatment in pregnant females and advise the patient about the potential risk to a fetus. Use alternative treatment for females who are planning to become pregnant [see *Use in Specific Populations* (8.1, 8.3)].

5.10 Hyponatremia

Hyponatremia has occurred as a result of treatment with AUVELITY. One case with serum sodium of 115 mmol/L was reported in a subject treated with AUVELITY in a premarketing clinical study. Geriatric patients may be at greater risk of developing hyponatremia. Hyponatremia may be the result of the syndrome of inappropriate antidiuretic hormone secretion (SIADH). Concomitant use of Auvelity with a serotonergic antidepressant may increase the risk of hyponatremia. Also, patients taking diuretics or who are otherwise volume-depleted can be at greater risk. Discontinue AUVELITY in patients with symptomatic hyponatremia and institute appropriate medical intervention. Signs and symptoms of hyponatremia include headache, difficulty concentrating, memory impairment, confusion, weakness, and unsteadiness, which can lead to falls. More severe and/or acute cases have included hallucination, syncope, seizure, coma, respiratory arrest, and death. [see *Use in Specific Populations* (Section 8.5)]

6 ADVERSE REACTIONS

The following adverse reactions are discussed in more detail in other sections of the labeling:

- Suicidal Thoughts and Behaviors in Adolescents and Young Adults [see *Warnings and Precautions* (5.1)]
- Seizure [see *Warnings and Precautions* (5.2)]
- Increased Blood Pressure and Hypertension [see *Warnings and Precautions* (5.3)]
- Activation of Mania or Hypomania [see *Warnings and Precautions* (5.4)]
- Psychosis and Other Neuropsychiatric Reactions [see *Warnings and Precautions* (5.5)]
- Angle-closure Glaucoma [see *Warnings and Precautions* (5.6)]
- Dizziness [see *Warnings and Precautions* (5.7)]
- Serotonin Syndrome [see *Warnings and Precautions* (5.8)]
- Embryo-fetal Toxicity [see *Warnings and Precautions* (5.9)]
- Hyponatremia [see *Warnings and Precautions* (5.10)]

6.1 Clinical Trials Experience

Because clinical trials are conducted under widely varying conditions, adverse reaction rates observed in the clinical trials of a drug cannot be directly compared to rates in the clinical trials of another drug and may not reflect the rates observed in clinical practice.

AUVELITY has been evaluated for safety in 2,550 adult patients who participated in multiple-dose clinical trials for major depressive disorder, agitation associated with dementia due to Alzheimer's disease, or another indication. Among them, 918 patients were treated with AUVELITY for at least 6 months, and 251 patients were treated with AUVELITY for at least 1 year.

Major Depressive Disorder

The data below are based on the 6-week, placebo-controlled study in which either AUVELITY (n=162) or placebo (n=164) was administered twice daily to patients with MDD (Study 1). Demographics of the patients who participated in this study are summarized in Clinical Studies [see *Clinical Studies (Section 14.1)*].

Adverse Reactions Leading to Discontinuation

In the 6-week placebo-controlled study, 4% of patients treated with AUVELITY and 0% of placebo-treated patients discontinued participation due to adverse reactions. The adverse reaction that led to study discontinuation in $\geq 1\%$ of patients treated with AUVELITY was anxiety (2%).

Most Common Adverse Reactions

In the 6-week placebo-controlled clinical study, the most common (incidence $\geq 5\%$ for AUVELITY and more than twice as frequently as placebo) adverse reactions were dizziness (16%), headache (8%), diarrhea (7%), somnolence (7%), dry mouth (6%), sexual dysfunction (6%), and hyperhidrosis (5%).

Table 2 shows the incidence of adverse reactions that occurred in $\geq 2\%$ of patients treated with AUVELITY and more frequently than in patients treated with placebo in Study 1.

Table 2: Adverse Reactions Occurring in $\geq 2\%$ of Adult Patients with MDD Treated with AUVELITY and More Frequently than in Patients Treated with Placebo in a 6-Week Placebo-Controlled Study (Study 1)

Adverse Reaction	AUVELITY (N=162) %	Placebo (N=164) %
Dizziness	16	6
Nausea	13	9
Headache	8	4
Diarrhea	7	3
Somnolence	7	3
Dry mouth	6	2
Sexual dysfunction ^a	6	0
Hyperhidrosis	5	0
Anxiety	4	1
Constipation	4	2
Decreased appetite	4	1
Insomnia	4	2
Arthralgia	3	0
Fatigue ^b	3	2
Paraesthesia ^c	3	0
Vision blurred	3	0

^aSexual dysfunction includes orgasm abnormal, erectile dysfunction, libido decreased, anorgasmia

^bFatigue includes fatigue, lethargy

^cParaesthesia includes paraesthesia, hypoaesthesia

Agitation Associated with Dementia Due to Alzheimer's Disease

The data below are based on the 5-week, placebo-controlled, parallel-group study in which either AUVELITY (n=159) or placebo (n=158) was administered twice daily to patients with agitation associated with dementia due to Alzheimer's disease. [see *Clinical Studies (Section 14.2)*]

Adverse Reactions Leading to Discontinuation

In the 5-week placebo-controlled study, 1.3% patients treated with AUVELITY and 1.3% of placebo-treated patients discontinued participation due to adverse reactions. No individual adverse reaction leading to discontinuation occurred in more than one subject.

Most Common Adverse Reactions

In the 5-week placebo-controlled clinical study, the most common (incidence $\geq 5\%$ for AUVELITY and more than twice as frequently as placebo) adverse reactions consisted of dizziness (9%) and dyspepsia (6%).

Table 3 shows the incidence of adverse reactions that occurred in $\geq 2\%$ of patients treated with AUVELITY and more frequently than in patients treated with placebo in a 5-week placebo-controlled study (Study 3).

Table 3: Adverse Reactions Occurring in $\geq 2\%$ of Adult Patients with Agitation Associated with Dementia Due to Alzheimer’s Disease Treated with AUVELITY and More Frequently than in Patients Treated with Placebo in a 5-Week Placebo-Controlled Study (Study 3)

Adverse Reaction	AUVELITY (N=159) %	Placebo (N=158) %
Dizziness ^a	9	3
Somnolence ^b	8	4
Dyspepsia ^c	6	1
Fatigue ^d	6	3
Nausea ^e	5	3
Dry Mouth	4	3
Headache	4	3
Constipation	3	0
Psychotic symptom ^f	3	0
Confusional state ^g	3	1
Cough	3	1
Bacterial infection ^h	3	1

^a Dizziness includes Vertigo, Dizziness postural, Balance disorder. ^b Somnolence includes Somnolence, Hypersomnia.

^c Dyspepsia includes Abdominal discomfort, Dyspepsia, Gastritis, Abdominal pain upper, Gastroesophageal reflux disease.

^d Fatigue includes Asthenia, Lethargy, Fatigue. ^e Nausea includes Nausea, Vomiting. ^f Psychotic symptom includes Catatonia, Delusion, Hallucination, Hallucination visual. ^g Confusional State includes Confusional state, Delirium, Disorientation.

^h Bacterial infection includes Abscess limb, Staphylococcal infection, Urinary tract infection.

6.2 Postmarketing Experience

The following adverse reactions have been identified with the use of AUVELITY and its individual components, dextromethorphan and bupropion, during postmarketing use. Because these reactions are reported voluntarily from a population of uncertain size, it is not always possible to reliably estimate their frequency or establish a causal relationship to drug exposure.

AUVELITY:

Feeling abnormal, tinnitus, and tremor.

Dextromethorphan

Drowsiness, dizziness, nervousness or restlessness, nausea, vomiting, and stomach pain.

Bupropion

Body (General): Arthralgia, myalgia, and fever with rash and other symptoms suggestive of delayed hypersensitivity. These symptoms may resemble serum sickness.

Cardiovascular: Complete atrioventricular block, extrasystoles, hypotension, hypertension (in some cases severe), phlebitis, pulmonary embolism, and Brugada pattern/syndrome.

Digestive: Colitis, esophagitis, gastrointestinal hemorrhage, gum hemorrhage, hepatitis, intestinal perforation, pancreatitis, and stomach ulcer.

Endocrine: Hyperglycemia, hypoglycemia, hyponatremia, and syndrome of inappropriate antidiuretic hormone secretion.

Hemic and Lymphatic: Anemia, leukocytosis, leukopenia, lymphadenopathy, pancytopenia, and thrombocytopenia. Altered PT and/or INR, infrequently associated with hemorrhagic or thrombotic complications, were observed when bupropion was coadministered with warfarin.

Metabolic and Nutritional: Glycosuria.

Musculoskeletal: Muscle rigidity/fever/rhabdomyolysis and muscle weakness.

Nervous System: Abnormal electroencephalogram (EEG), aggression, agitation, akinesia, aphasia, coma, completed suicide, delirium, delusions, depression, dysarthria, euphoria, extrapyramidal syndrome (dyskinesia, dystonia, hypokinesia, parkinsonism), hallucinations, homicidal ideation, hostility, increased libido, manic reaction, neuralgia, neuropathy, panic, paranoid ideation, psychosis, restlessness, suicide ideation, suicide attempt, unmasking tardive dyskinesia, aseptic meningitis, and tremor.

Respiratory: Pneumonia.

Skin and subcutaneous tissue disorders: Alopecia, angioedema, exfoliative dermatitis, hirsutism, Stevens-Johnson syndrome, acute generalized exanthematous pustulosis, and drug reaction with eosinophilia and systemic symptoms (DRESS).

Special Senses: Deafness, increased intraocular pressure, mydriasis, and tinnitus.

Urogenital: Abnormal ejaculation, cystitis, dyspareunia, dysuria, gynecomastia, menopause, painful erection, salpingitis, urinary incontinence, urinary retention, and vaginitis.

7 DRUG INTERACTIONS

7.1 Drugs Having Clinically Important Interactions with AUVELITY

Table 4: Clinically Important Drug Interactions with AUVELITY

Monoamine Oxidase Inhibitors (MAOIs)	
<i>Clinical Impact</i>	Concomitant use of AUVELITY with MAOIs increases the risk of hypertensive crisis and serotonin syndrome.
<i>Intervention</i>	AUVELITY is contraindicated in patients taking MAOIs (including MAOIs such as linezolid or intravenous methylene blue) or in patients who have taken MAOIs within the preceding 14 days. Allow at least 14 days after stopping AUVELITY before starting an MAOI [see <i>Dosage and Administration</i> (2.7), <i>Contraindications</i> (4), <i>Warnings and Precautions</i> (5.3, 5.8)]

Serotonergic Drugs	
<i>Clinical Impact</i>	Concomitant use of AUVELITY with other serotonergic drugs increases the risk of serotonin syndrome.
<i>Intervention</i>	Monitor for symptoms of serotonin syndrome when AUVELITY is used concomitantly with other drugs that may affect the serotonergic neurotransmitter systems. If serotonin syndrome occurs, consider discontinuation of AUVELITY and/or concomitant serotonergic drug [see <i>Dosage and Administration (2.1)</i> , <i>Warnings and Precautions (5.8)</i>].
Drugs that Lower Seizure Threshold	
<i>Clinical Impact</i>	AUVELITY contains bupropion which can cause seizure. Co-administration with other drugs that lower seizure threshold may increase risk of seizure.
<i>Intervention</i>	Use caution when administering AUVELITY concomitantly with drugs that lower the seizure threshold [see <i>Warnings and Precautions (5.2)</i>]. Discontinue AUVELITY and do not restart treatment if the patient experiences a seizure.
Strong Inhibitors of CYP2D6	
<i>Clinical Impact</i>	Concomitant use of AUVELITY with strong CYP2D6 inhibitors increases plasma concentrations of dextromethorphan.
<i>Intervention</i>	Dosage adjustment is necessary when AUVELITY is co-administered with strong inhibitors of CYP2D6 [see <i>Dosage and Administration (2.5)</i>]. Monitor patients for adverse reactions potentially attributable to dextromethorphan, such as somnolence and dizziness.
Strong Inducers of CYP2B6	
<i>Clinical Impact</i>	Concomitant use of AUVELITY with strong CYP2B6 inducers decreases plasma concentrations of dextromethorphan and bupropion and may decrease efficacy of AUVELITY [see <i>Clinical Pharmacology (12.3)</i>].
<i>Intervention</i>	Avoid co-administration of AUVELITY with strong inducers of CYP2B6. Consider alternatives to strong CYP2B6 inducers if needed.
Drugs Metabolized by CYP2D6	
<i>Clinical Impact</i>	<p><u>CYP2D6 Substrates</u></p> <p>Coadministration of AUVELITY with drugs that are metabolized by CYP2D6 can increase the exposures of drugs that are substrates of CYP2D6.</p> <p><u>Drugs that Require Metabolic Activation by CYP2D6</u></p> <p>Drugs that require metabolic activation by CYP2D6 to be effective could have reduced efficacy when administered concomitantly with AUVELITY.</p>

<i>Intervention</i>	<p><u>CYP2D6 Substrates</u></p> <p>When used concomitantly with AUVELITY, it may be necessary to decrease the dose of CYP2D6 substrates, particularly for drugs with a narrow therapeutic index.</p> <p><u>Drugs that Require Metabolic Activation by CYP2D6</u></p> <p>Patients treated concomitantly with AUVELITY may require increased doses of drugs that require activation by CYP2D6 to be effective.</p>
Digoxin	
<i>Clinical Impact</i>	Coadministration of AUVELITY with digoxin may decrease plasma digoxin levels.
<i>Intervention</i>	Monitor plasma digoxin levels in patients treated concomitantly with AUVELITY and digoxin [see <i>Clinical Pharmacology (12.3)</i>].
Dopaminergic Drugs	
<i>Clinical Impact</i>	CNS toxicity was reported when bupropion was co-administered with levodopa or amantadine. Adverse reactions include restlessness, agitation, tremor, ataxia, gait disturbance, vertigo, and dizziness.
<i>Intervention</i>	Use caution when administering AUVELITY concomitantly with dopaminergic drugs.
Alcohol	
<i>Clinical Impact</i>	AUVELITY contains bupropion which can increase adverse neuropsychiatric events or reduce alcohol tolerance.
<i>Intervention</i>	Consumption of alcohol should be minimized or avoided during treatment with AUVELITY.

7.2 Drug-Laboratory Test Interactions

False-positive urine immunoassay screening tests for amphetamines have been reported in patients taking bupropion. This is due to lack of specificity of some screening tests. False positive test results may result even following discontinuation of bupropion therapy. Confirmatory tests, such as gas chromatography/mass spectrometry, will distinguish bupropion from amphetamines.

8 USE IN SPECIFIC POPULATIONS

8.1 Pregnancy

Pregnancy Exposure Registry

There is a pregnancy exposure registry that monitors pregnancy outcomes in women exposed to antidepressants, including AUVELITY, during pregnancy. Healthcare providers are encouraged to register patients by contacting the National Pregnancy Registry for Antidepressants at 1-866-961-2388 or online at: <https://womensmentalhealth.org/research/pregnancyregistry/antidepressants/>.

Risk Summary

Based on animal studies, AUVELITY may cause fetal harm when administered during pregnancy. AUVELITY is not recommended during pregnancy. If a female becomes pregnant while being treated with AUVELITY, discontinue treatment and counsel the patient about the potential risk to a fetus [*see Warnings and Precautions (5.9)*].

In oral studies conducted in rats and rabbits, a combination of dextromethorphan/quinidine demonstrated developmental toxicity, including fetal malformations (rabbits) and embryoletality, when given to pregnant animals. When bupropion alone was administered to pregnant rats during organogenesis, there was no evidence of fetal malformations at doses up to approximately 21 times the maximum recommended human dose (MRHD) of 210 mg/day. When bupropion alone was given to pregnant rabbits during organogenesis, non-dose-related increases in incidence of fetal malformations, and skeletal variations were observed at doses approximately 2 to 5 times the MRHD and greater. Decreased fetal weights were seen at bupropion doses approximately 5 times the MRHD and greater. Neurotoxicity findings were observed in juvenile rats treated with a combination of dextromethorphan/quinidine on postnatal day (PND) 7, which corresponds to the third trimester of gestation through the first few months of life and may extend through the first three years of life in humans. Based on these findings, AUVELITY may cause fetal harm when administered to pregnant women (*see Data*).

The available clinical data on the use of AUVELITY during pregnancy is insufficient to evaluate for a drug-associated risk of major birth malformations, miscarriage, or other adverse maternal or fetal outcomes. However, there are available data on one of the individual components of AUVELITY, bupropion. Data from epidemiological studies of pregnant women exposed to bupropion in the first trimester have not identified an increased risk of congenital malformations overall (*see Data*). There are risks to the mother associated with untreated depression in pregnancy (*see Clinical Considerations*).

The estimated background risk of major birth defects and miscarriage for the indicated population is unknown. All pregnancies have a background risk of birth defect, loss, or other adverse outcomes. In the U.S. general population, the estimated background risk of major birth defects and miscarriage in clinically recognized pregnancies is 2% to 4% and 15% to 20%, respectively.

Clinical Considerations

Disease-Associated Maternal and/or Embryo/Fetal Risk

A prospective, longitudinal study followed 201 pregnant women with a history of major depressive disorder who were euthymic and taking antidepressants during pregnancy at the beginning of pregnancy. The women who discontinued antidepressants during pregnancy were more likely to experience a relapse of major depression than women who continued antidepressants. Consider the risks to the mother of untreated depression and potential effects on the fetus when discontinuing or changing treatment with antidepressant medications during pregnancy and postpartum.

Data

Human Data

Bupropion

Data from the international bupropion Pregnancy Registry (675 first trimester exposures) and a retrospective cohort study using the United Healthcare database (1,213 first trimester exposures) did not show an increased risk for malformations overall. The Registry was not designed or powered to evaluate specific defects but suggested a possible increase in cardiac malformations.

No increased risk for cardiovascular malformations overall has been observed after bupropion exposure during the first trimester. The prospectively observed rate of cardiovascular malformations in pregnancies with exposure to bupropion in the first trimester from the international bupropion Pregnancy Registry was 1.3% (9 cardiovascular malformations/675 first trimester maternal bupropion exposures), which is similar to the background rate of cardiovascular malformations (approximately 1%). Data from the United Healthcare database, which had a limited number of exposed cases with cardiovascular malformations, and a case-control study (11,700 infants with cardiovascular malformations and 20,093 infants with non-cardiovascular malformations) of self-reported antidepressant use, including bupropion (n=728), from the National Birth Defects Prevention Study (NBDPS) did not show an increased risk for cardiovascular malformations overall after bupropion exposure during the first trimester.

Study findings on bupropion exposure during the first trimester and risk for left ventricular outflow tract obstruction (LVOTO) or ventricular septal defect (VSD) are inconsistent and do not allow conclusions regarding a possible association. The United Healthcare database lacked sufficient power to evaluate the LVOTO association. NBDPS found slightly increased risk for LVOTO after partially accounting for underlying maternal conditions (n = 14; adjusted odds ratio [OR] = 1.18; 95% CI: 0.58, 2.43), and the Slone Epidemiology case control study did not find increased risk for LVOTO.

The Slone Epidemiology Study found an increased risk for VSD following first trimester maternal bupropion exposure (n = 17; adjusted OR = 2.5; 95% CI: 1.3, 5.0) but did not find increased risk for any other cardiovascular malformations studied (including LVOTO as above). The NBDPS and United Healthcare database study did not find an association between first trimester maternal bupropion exposure and VSD.

For the findings of LVOTO and VSD, the studies were limited by the small number of exposed cases, inconsistent findings among studies, and the potential for chance findings from multiple comparisons in case control studies.

Animal Data

In studies conducted in pregnant mice, dextromethorphan-bupropion was administered orally during the period of organogenesis at doses of 0-0, 26-57, 34-75, and 68-150 mg/kg/day, respectively. Administration of dextromethorphan-bupropion did not affect body weight, weight gain, food consumption, or pregnancy at any dose level and did not produce gross pathologic findings or placental or fetal findings at any dose level. The no-effect level for reproductive organ findings in mice was 68-150 mg/kg in both sexes, which is approximately 3.7/3.5 times the MRHD for AUVELITY on a mg/m² basis.

When dextromethorphan/quinidine was administered orally (0/0, 5/100, 15/100, and 50/100 mg/kg/day) to pregnant rats during the period of organogenesis, embryo-fetal deaths were observed at the highest dose tested and reduced skeletal ossification was observed at all doses. Oral administration to pregnant rabbits during organogenesis in two separate studies (0/0, 5/60, 15/60, and 30/60 mg/kg/day; 0/0, 5/100, 15/100, and 50/100 mg/kg/day) resulted in an increased incidence of fetal malformations at all but the lowest dose tested.

When dextromethorphan/quinidine was orally administered to female rats during pregnancy and lactation in two separate studies (0/0, 5/100, 15/100, and 30/100 mg/kg/day; 0/0, 5/100, 15/100, and 50/100 mg/kg/day), pup survival and pup weight were decreased at all doses, and developmental delay was observed in offspring at the mid and high doses. A no-effect dose for adverse developmental effects was not identified.

When dextromethorphan/quinidine was orally administered (0/0, 5/50, 15/50, 25/50 mg/kg) to male and female rats on postnatal day (PND) 7, the highest dose resulted in neuronal death in brain (thalamus and medulla oblongata). PND 7 in rat corresponds to the third trimester of gestation through the first several months of life but may extend to approximately three years of age in humans.

In studies conducted in pregnant rats and rabbits, bupropion alone was administered orally during the period of organogenesis at doses of up to 450 and 150 mg/kg/day, respectively (approximately 21 and 14 times the MRHD, respectively, on a mg/m² basis). There was no evidence of fetal malformations in rats. When given to pregnant rabbits during organogenesis, non-dose-related increases in incidence of fetal malformations and skeletal variations were observed at the lowest dose tested (25 mg/kg/day, approximately 2 times the MRHD on a mg/m² basis) and greater. Decreased fetal weights were observed at doses of 50 mg/kg/day (approximately 5 times the MRHD on a mg/m² basis) and greater. No maternal toxicity was evident at doses of 50 mg/kg/day or less. In a pre- and postnatal development study, bupropion administered orally to pregnant rats at doses of up to 150 mg/kg/day (approximately 7 times the MRHD on a mg/m² basis) from embryonic implantation through lactation had no effect on pup growth or development.

8.2 Lactation

Risk Summary

Data from published literature report the presence of bupropion and its metabolites in human milk (*see Data*). There are no data on the effects of bupropion or its metabolites on milk production. Limited data from postmarketing reports of bupropion use in lactating patients have not identified a clear association of adverse reactions in the breastfed infant.

Neurotoxicity findings were observed in juvenile rats treated with a combination of dextromethorphan/quinidine on postnatal day (PND) 7, which corresponds to the third trimester of gestation through the first few months of life and may extend through the first three years of life in humans [*see Use in Specific Populations (8.1)*]. It is not known whether dextromethorphan is present in human milk. There are no data on the effects of dextromethorphan on the breastfed infant or the effects on milk production. Because of the potential for neurotoxicity, advise patients that breastfeeding is not recommended during treatment with AUVELITY and for 5 days following final dose.

Data

In a lactation study of 10 women, levels of orally dosed bupropion and its active metabolites were measured in expressed milk. The average daily infant exposure (assuming 150 mL/kg daily consumption) to bupropion and its active metabolites was 2% of the maternal weight-adjusted dose. Postmarketing reports have described seizures in breastfed infants. The relationship of bupropion exposure and these seizures is unclear.

8.3 Females and Males of Reproductive Potential

Based on animal studies, AUVELITY may cause fetal harm when administered during pregnancy [see *Warnings and Precautions (5.9)*, *Use in Specific Populations (8.1)*]. However, the separate effect of dextromethorphan on developmental toxicity at the recommended clinical dose is unclear. Use alternative treatment for females who are planning to become pregnant.

8.4 Pediatric Use

The safety and effectiveness of AUVELITY have not been established in pediatric patients.

AUVELITY contains bupropion. Antidepressants, including bupropion, increase the risk of suicidal thoughts and behaviors in pediatric patients [see *Boxed Warning, Warning and Precautions (5.1)*].

8.5 Geriatric Use

There were 720 patients 65 years of age and older in the clinical studies of AUVELITY for agitation associated with dementia due to Alzheimer's disease [see *Clinical Studies (14.2)*]. Of the total number of AUVELITY-treated patients in these studies, 368 were 65 to less than 75 years of age, while 352 were 75 years of age and over. No overall differences in safety or effectiveness were observed between these subjects and younger subjects and other reported clinical experience has not identified differences in responses between geriatric and younger patients, but greater sensitivity of some older individuals cannot be ruled out.

AUVELITY has been associated with clinically significant hyponatremia in geriatric patients, who may be at greater risk for this adverse event [see *Warnings and Precautions (5.10)*].

8.6 Renal Impairment

Dosage adjustment of AUVELITY is recommended in patients with moderate renal impairment (eGFR 30 to 59 mL/minute/1.73 m²) [see *Dosage and Administration (2.4)*, *Clinical Pharmacology (12.3)*]. The pharmacokinetics of AUVELITY have not been evaluated in patients with severe renal impairment. AUVELITY is not recommended in patients with severe renal impairment (eGFR 15 to 29 mL/minute/1.73 m²).

8.7 Hepatic Impairment

No dose adjustment of AUVELITY is recommended in patients with mild (Child-Pugh A) or moderate hepatic impairment (Child-Pugh B) [see *Clinical Pharmacology (12.3)*]. The pharmacokinetics of AUVELITY have not been evaluated in patients with severe hepatic impairment (Child-Pugh C). AUVELITY is not recommended in patients with severe hepatic impairment.

8.8 CYP2D6 Poor Metabolizers

Dosage adjustment is recommended in patients known to be poor CYP2D6 metabolizers because these patients have higher dextromethorphan concentrations than extensive/intermediate CYP2D6 metabolizers [see *Dosage and Administration (2.6)*, *Clinical Pharmacology (12.3)*].

9 DRUG ABUSE AND DEPENDENCE

9.1 Controlled Substance

AUVELITY contains dextromethorphan and bupropion which are not controlled substances.

9.2 Abuse

Abuse is the intentional, non-therapeutic use of a drug, even once, for its desirable psychological or physiological effects.

AUVELITY has not been systematically studied in animals or humans for its potential for abuse, tolerance, or physical dependence. However, AUVELITY is a combination product containing dextromethorphan and bupropion, and cases of dextromethorphan abuse have been reported.

While clinical studies with AUVELITY did not reveal drug-seeking behavior, these observations were not systematic and it is not possible to predict on the basis of this experience the extent to which AUVELITY will be misused, diverted, and/or abused once marketed. Therefore, patients with a history of drug abuse should be observed closely for signs of AUVELITY misuse or abuse (e.g., development of tolerance, increases in dose, drug-seeking behavior).

AUVELITY is intended for oral use only. Seizures and/or cases of death have been reported when bupropion has been administered intranasally or by parenteral injection.

Dextromethorphan

Dextromethorphan has not been systematically studied in animals or humans for its potential for abuse, tolerance, or physical dependence. Cases of dextromethorphan abuse have been reported, predominantly in adolescents.

Bupropion

Controlled clinical trials conducted in normal volunteers, in subjects with a history of multiple drug abuse, and in depressed subjects showed some increase in motor activity and agitation/excitement, often typical of central stimulant activity.

In a population of individuals experienced with drugs of abuse, a single oral dose of 400 mg of bupropion (approximately 1.9 times the maximum recommended daily dosage of AUVELITY) produced mild amphetamine-like activity as compared with placebo on the Morphine-Benzedrine Subscale of the Addiction Research Center Inventories (ARCI) and a score intermediate between placebo and amphetamine on the Liking Scale of the ARCI. These scales measure general feelings of euphoria and drug liking which are often associated with abuse potential.

Findings in clinical trials, however, are not known to reliably predict the abuse potential of drugs. Nonetheless, evidence from single-dose studies does suggest that the recommended daily dosage of bupropion when administered in divided doses is not likely to be significantly reinforcing to people who abuse amphetamines or CNS stimulants. However, higher doses (which could not be tested because of the risk of seizure) might be modestly attractive to those who abuse CNS stimulant drugs.

10 OVERDOSAGE

Human Experience

There is limited clinical study experience regarding human overdose with AUVELITY. Overdose information is based on experience with the individual components, dextromethorphan and bupropion. Metabolism of the dextromethorphan component of AUVELITY is inhibited by the bupropion component, such that overdose due to AUVELITY might be more severe or more persistent compared to overdose of dextromethorphan alone.

Dextromethorphan

Symptoms of dextromethorphan overdose include nausea, vomiting, stupor, coma, respiratory depression, seizures, tachycardia, hyperexcitability, and toxic psychosis. Other adverse effects include ataxia, nystagmus, dystonia, blurred vision, and changes in muscle reflexes. Dextromethorphan may cause serotonin syndrome, and this risk is increased by overdose, particularly if taken with other serotonergic agents, SSRIs or tricyclic antidepressants.

Bupropion

Overdoses of up to 30 grams or more of bupropion (approximately 143 times the maximum recommended dose of AUVELITY) have been reported. Seizure was reported in approximately one-third of all cases. Other serious reactions reported with overdoses of bupropion alone included hallucinations, loss of consciousness, mental status changes, sinus tachycardia, ECG changes such as conduction disturbances (including QRS prolongation) or arrhythmias, clonus, myoclonus, and hyperreflexia. Fever, muscle rigidity, rhabdomyolysis, hypotension, stupor, coma, and respiratory failure have been reported mainly when bupropion was part of multiple drug overdoses.

Although most patients recovered without sequelae, deaths associated with overdoses of bupropion alone have been reported in patients ingesting large doses of the drug. Multiple uncontrolled seizures, bradycardia, cardiac failure, and cardiac arrest prior to death were reported in these patients.

Overdosage Management

Treatment of dextromethorphan overdose should be directed at symptomatic and supportive measures.

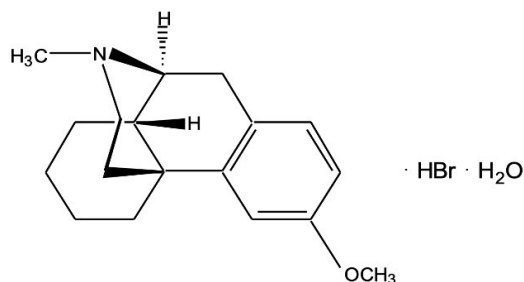
There are no known antidotes for bupropion. In case of an overdose, provide supportive care, including close medical supervision and monitoring. Consider the possibility of multiple drug overdose. Ensure an adequate airway, oxygenation, and ventilation. Monitor cardiac rhythm and vital signs. Induction of emesis is not recommended.

Consider contacting a Poison Help line (1-800-222-1222) or a medical toxicologist for overdose management recommendations for AUVELITY.

11 DESCRIPTION

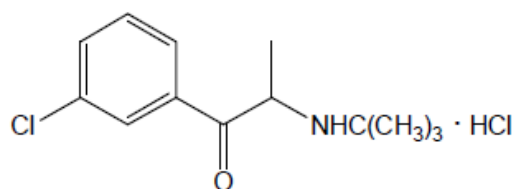
AUVELITY is a combination of dextromethorphan hydrobromide, an uncompetitive NMDA receptor antagonist and sigma-1 receptor agonist, and bupropion hydrochloride, an aminoketone and CYP450 2D6 inhibitor.

The chemical name of dextromethorphan hydrobromide is morphinan, 3- methoxy-17-methyl-, (9 α , 13 α , 14 α), hydrobromide monohydrate. Dextromethorphan hydrobromide has the empirical formula C₁₈H₂₅NO•HBr•H₂O and a molecular weight of 370.33 (271.4 dextromethorphan base). The structural formula is:



Dextromethorphan hydrobromide powder is white or almost white, crystalline, and sparingly soluble in water.

The chemical name of bupropion hydrochloride is:(±)-1-(3-chlorophenyl)-2-[(1,1-dimethylethyl)amino]-1-propanone hydrochloride. Bupropion hydrochloride has the empirical formula C₁₃H₁₈ClNO•HCl and a molecular weight of 276.2 (239.74 bupropion base). The structural formula is:



Bupropion hydrochloride powder is white and highly soluble in water.

AUVELITY is for oral administration and is available as round bilayer tablets. Each tablet contains either 30 mg or 45 mg dextromethorphan hydrobromide (equivalent to 21.99 and 32.98 mg, respectively, dextromethorphan base) in an immediate-release formulation and 105 mg bupropion hydrochloride (equivalent to 91.14 mg bupropion base) in an extended-release formulation. Each tablet contains the following inactive ingredients: carbomer homopolymer, colloidal silicon dioxide, crospovidone, glyceryl monocaprylocaprate, L-cysteine hydrochloride monohydrate, magnesium stearate, microcrystalline cellulose, polyvinyl alcohol, sodium lauryl sulfate, stearic acid, talc, and titanium dioxide. Beige tablets additionally contain red iron oxide and yellow iron oxide.

12 CLINICAL PHARMACOLOGY

12.1 Mechanism of Action

Dextromethorphan is an uncompetitive antagonist of the NMDA receptor (an ionotropic glutamate receptor) and a sigma-1 receptor agonist. The mechanism of dextromethorphan in the treatment of MDD and agitation associated with dementia due to Alzheimer's disease is unclear.

Bupropion increases plasma levels of dextromethorphan by competitively inhibiting cytochrome P450 2D6, which catalyzes a major biotransformation pathway for dextromethorphan. The mechanism of action of

bupropion in the treatment of MDD is unclear; however, it may be related to noradrenergic and/or dopaminergic mechanisms. Bupropion is a relatively weak inhibitor of the neuronal reuptake of norepinephrine and dopamine and does not inhibit monoamine oxidase or the reuptake of serotonin.

12.2 Pharmacodynamics

Cardiac Electrophysiology

At the maximum recommended dose, AUVELITY does not prolong the QT interval to any clinically relevant extent.

12.3 Pharmacokinetics

AUVELITY is a combination of dextromethorphan and bupropion. Bupropion inhibits the metabolism of dextromethorphan via CYP2D6. Dextromethorphan when co-administered with bupropion displays nonlinear pharmacokinetics at steady state, with greater than dose-proportional changes in AUC and C_{max} for varying doses of dextromethorphan [60 to 120 mg (0.67-1.33 times the maximum recommended dose of AUVELITY)] and less than dose-proportional changes for varying doses of bupropion [150 to 300 mg (0.71-1.43 times the maximum recommended dose of AUVELITY)].

Steady state plasma concentrations of dextromethorphan and bupropion when given as AUVELITY are achieved within 8 days. The accumulation ratios for dextromethorphan at steady state when given as AUVELITY are 20 and 32, respectively based on C_{max} and AUC_{0-12} , compared to 1.3 and 1.4, respectively, for dextromethorphan given without bupropion. The accumulation ratios for bupropion at steady state are 1.1 and 1.5, respectively based on C_{max} and AUC_{0-12} .

Absorption

The median T_{max} of dextromethorphan and bupropion when given as AUVELITY was 3 hours and 2 hours, respectively.

The C_{max} of the hydroxybupropion metabolite occurred approximately 3 hours post-dose and was approximately 14 times the peak level of bupropion and its AUC_{0-12} was about 19 times that of bupropion. The C_{max} of the erythrohydroxybupropion and threohydroxybupropion metabolites occurred approximately 4 hours post-dose and were approximately equal to and 5 times that of bupropion, respectively. The AUC_{0-12} values were 1.2 and 7 times that of bupropion, respectively.

Effect of Food

AUVELITY can be taken with or without food. Dextromethorphan C_{max} and AUC_{0-12} were unchanged and decreased by 14%, respectively, and bupropion C_{max} and AUC_{0-12} were increased by 3% and 6%, respectively, when AUVELITY was administered with food.

Distribution

The plasma protein binding of dextromethorphan is approximately 60-70% and bupropion is 84%. The extent of protein binding of the hydroxybupropion metabolite is similar to that for bupropion; whereas, the extent of protein binding of the threohydroxybupropion metabolite is about half that seen with bupropion.

Elimination

Following 8 days of administration of AUVELITY in extensive metabolizers, the mean elimination half-life of dextromethorphan was increased approximately 3-fold to 22 hours, as compared to dextromethorphan given without bupropion.

The mean elimination half-life of dextromethorphan and bupropion was 22 hours and 15 hours, respectively. The apparent elimination half-life of hydroxybupropion, erythrohydroxybupropion and threohydroxybupropion metabolites were approximately 35, 44 and 33 hours, respectively.

Metabolism

Dextromethorphan is primarily metabolized by CYP2D6 to dextrorphan. Bupropion is extensively metabolized with three active metabolites: hydroxybupropion, which is formed via hydroxylation of the tert-butyl group of bupropion, and the amino-alcohol isomers, threohydroxybupropion and erythrohydroxybupropion, which are formed via reduction of the carbonyl group. In vitro findings suggest that CYP2B6 is the principal isoenzyme involved in the formation of hydroxybupropion, while cytochrome P450 enzymes are not involved in the formation of threohydroxybupropion. Oxidation of the bupropion side chain results in the formation of a glycine conjugate of meta-chlorobenzoic acid, which is then excreted as the major urinary metabolite. The potency and toxicity of the metabolites relative to bupropion have not been fully characterized. However, it has been demonstrated in an antidepressant screening test in mice that hydroxybupropion is one-half as potent as bupropion, while threohydroxybupropion and erythrohydroxybupropion are 5-fold less potent than bupropion.

Excretion

In CYP2D6 extensive metabolizers, approximately 37-52% of the orally administered dose of dextromethorphan is recovered in the urine. Less than 2% of the administered dose is excreted as unchanged parent drug in the urine. In CYP2D6 poor metabolizers, approximately 45-83% of the administered dose is recovered in the urine. Approximately 26% of the administered dose is excreted as unchanged parent drug in the urine.

Following oral administration of 200 mg of ¹⁴C-bupropion in humans, 87% and 10% of the radioactive dose were recovered in the urine and feces, respectively. Only 0.5% of the oral dose was excreted as unchanged bupropion.

Specific Populations

Geriatric Patients

An open-label, multiple-dose study was conducted to evaluate the pharmacokinetics of AUVELITY at the maximum recommended dose at steady-state in 18 healthy geriatric (aged 65 to 85 years) and 10 healthy adult (aged 18 to 45 years) subjects. Following oral administration of AUVELITY, steady state was reached by Day 8 for dextromethorphan, bupropion, and all assessed metabolites, and their exposures, as measured by AUC and C_{max}, were generally comparable between the geriatric and young adult age groups on Day 1, and on Day 8.

The geometric mean ratios and 90% confidence intervals (CIs) of pharmacokinetic parameters (C_{max} and AUC) of dextromethorphan and bupropion following administration of AUVELITY in healthy geriatric (age 65 to 85) and healthy adult (aged 18 to 45) subjects are summarized in Figure 1.

Pediatric Patients

The pharmacokinetics of AUVELITY in pediatric patients have not been studied.

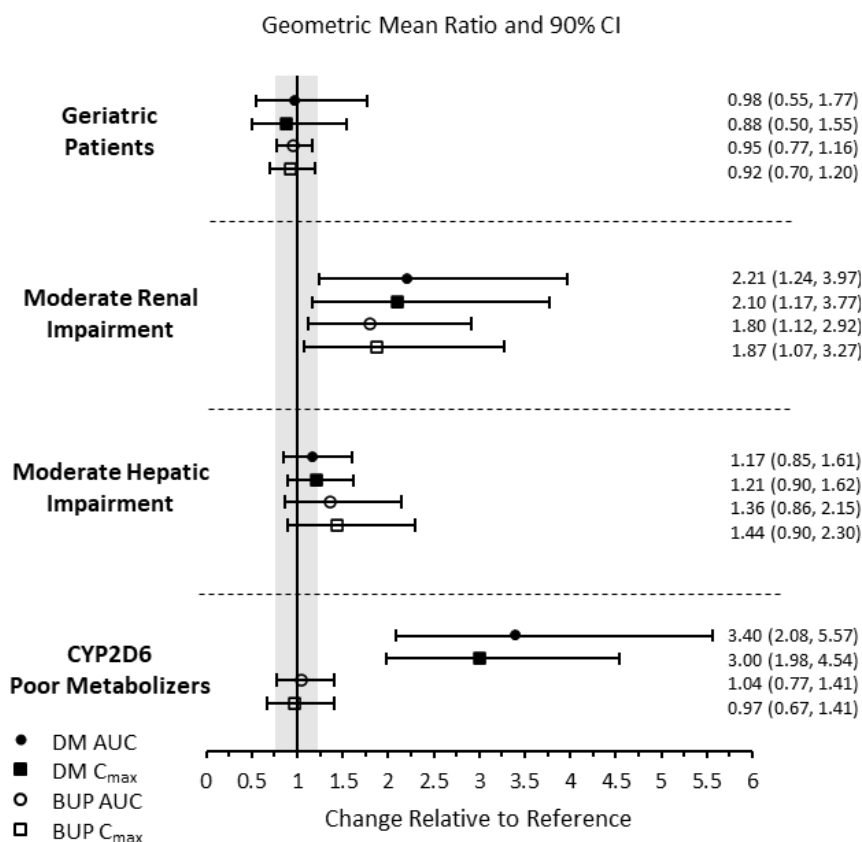
Male and Female/ Racial or Ethnic Groups

No significant pharmacokinetic differences based on sex and race have been observed for AUVELITY.

Patients with Renal Impairment, Patients with Hepatic Impairment, and CYP2D6 Poor Metabolizers

The effects of renal impairment, hepatic impairment, and CYP2D6 poor metabolizer status on the exposure to AUVELITY are summarized in Figure 1 [see Dosage and Administration (2.4, 2.6)].

Figure 1: Effects of Age, Renal Impairment, Hepatic Impairment, and CYP2D6 Poor Metabolizer Status on AUVELITY PK



Results are based on plasma concentrations of AUVELITY after 8 days of twice daily dosing. Reference = healthy adults 18-45 years of age for the geriatric study, matched healthy subjects for renal and hepatic impairment studies, and extensive or ultra-extensive CYP2D6 metabolizers. AUC = area under the plasma concentration-time curve from zero to 12 hours; BUP = bupropion; CI = confidence interval; C_{max} = maximum plasma concentration; DM = dextromethorphan; GMRs = geometric mean ratios; PK = pharmacokinetics.

Drug Interaction Studies

In Vitro Assessment of Drug Interactions

The potential for dextromethorphan and bupropion to inhibit or induce cytochrome P450 in vitro were evaluated in human liver microsomes.

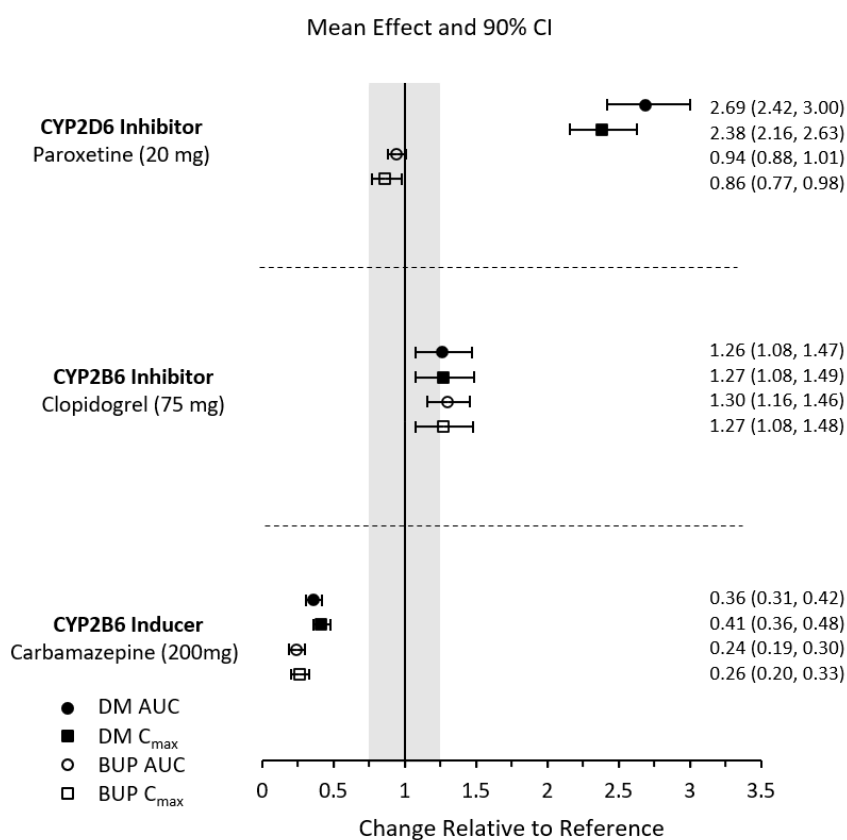
Bupropion and its metabolites (hydroxybupropion, erythrohydroxybupropion, threohydroxybupropion) are inhibitors of CYP2D6. At therapeutically relevant concentrations dextromethorphan does not inhibit CYP1A2, CYP2B6, CYP2C8, CYP2C9, CYP2C19, CYP2D6, or CYP3A4. Dextromethorphan does not cause induction of CYP1A2, CYP3A4, or CYP2B6.

Dextromethorphan is a substrate of the human P-gp transporter. Dextromethorphan does not inhibit transporters at therapeutically relevant concentrations.

In Vivo Assessment of Drug Interactions

The effects of other drugs on the exposure to AUVELITY are summarized in Figure 2 [see Dosage and Administration (2.5)].

Figure 2: Effects of Co-administered Compounds on AUVELITY PK



Results are based on steady state plasma concentrations of twice daily dosing of AUVELITY. Data are GMRs and 90% CIs. AUC = area under the plasma concentration-time curve from zero to 12 hours; BUP = bupropion; CI = confidence interval; C_{max} = maximum plasma concentration; DM = dextromethorphan; GMRs = geometric mean ratios; PK = pharmacokinetics.

Digoxin

Literature data showed that digoxin exposure was decreased when a single oral dose of 0.5-mg digoxin was administered 24 hours after a single oral dose of extended-release 150 mg bupropion in healthy volunteers.

13 NONCLINICAL TOXICOLOGY

13.1 Carcinogenesis, Mutagenesis, Impairment of Fertility

Carcinogenesis

In a 26-week carcinogenicity study in the Tg.rasH2 transgenic mouse, dextromethorphan at oral doses up to 100 mg/kg/day did not show any evidence of carcinogenic potential.

In a two-year carcinogenicity study in rats, dextromethorphan was administered at an oral dose of 50 mg/kg/day. No biologically significant tumor findings were observed. This dose is approximately 5.4 times the maximum recommended human dose (MRHD) of 90 mg/day on a mg/m² basis.

Lifetime carcinogenicity studies were performed in rats and mice at bupropion doses up to 300 and 150 mg/kg/day, respectively. These doses are approximately 13.9 and 3.5 times the MRHD, respectively, on a mg/m² basis. In the rat study there was an increase in nodular proliferative lesions of the liver at doses of 100 to 300 mg/kg/day (approximately 4.6 to 13.9 times the MRHD on a mg/m² basis); lower doses were not tested. The question of whether or not such lesions may be precursors of neoplasms of the liver is currently unresolved. Similar liver lesions were not seen in the mouse study, and no increase in malignant tumors of the liver and other organs was seen in either study.

Mutagenesis

Dextromethorphan was negative in *in vitro* (bacterial reverse mutation, chromosomal aberration in human lymphocytes) and *in vivo* (mouse micronucleus) assays.

Bupropion produced a positive response (2 to 3 times control mutation rate) in 2 of 5 strains in the Ames bacterial mutagenicity assay. Bupropion produced an increase in chromosomal aberrations in 1 of 3 *in vivo* rat bone marrow cytogenetic studies.

Impairment of fertility

When dextromethorphan was co-administered with quinidine orally (0/0, 5/100, 15/100, and 50/100 mg/kg/day) to male and female rats prior to and during mating, and continuing to Day 7 of gestation in females, no effect on fertility was observed up to the highest dose tested.

There were no effects on male and female fertility when rats were administered oral doses of bupropion up to 300 mg/kg/day (approximately 14 times the MRHD on a mg/m² basis) in females prior to mating and either through Day 13 of gestation or through lactation, and in males for 60 days prior to and through mating. However, doses of 200 mg/kg/day (approximately 9 times the MRHD on a mg/m² basis) or greater, caused transient ataxia or behavioral changes in adult female rats. There were also no adverse effects on fertility, reproduction, or growth and development of male or female offspring.

The effects on fertility of administering dextromethorphan and bupropion in combination are not known at this time.

14 CLINICAL STUDIES

14.1 Major Depressive Disorder

The efficacy of AUVELITY for the treatment of MDD in adults was demonstrated in a placebo-controlled clinical study (Study 1, NCT04019704) and confirmatory evidence which included a second study comparing AUVELITY to bupropion hydrochloride sustained-release tablets (Study 2, NCT03595579).

In Study 1, adult patients (18 to 65 years of age) who met the Diagnostic and Statistical Manual of Mental Disorders (DSM-5) criteria for MDD were randomized to receive AUVELITY (45 mg dextromethorphan hydrobromide / 105 mg bupropion hydrochloride) twice daily (N=156) or placebo twice daily (N=162) for 6 weeks. Patients in Study 1 had a median age of 41 years and were 67% female, 55% Caucasian, 35% Black, and 5% Asian.

The primary outcome measure was the change from baseline to Week 6 in the total score of the Montgomery-Asberg Depression Rating Scale (MADRS). The MADRS is a clinician-rated scale used to assess the severity of depressive symptoms. Patients are rated on 10 items to assess feelings of sadness, inner tension, reduced sleep or appetite, difficulty concentrating, lassitude, lack of interest, pessimism, and suicidality. Scores on the MADRS range from 0 to 60, with higher scores indicating more severe depression. AUVELITY was statistically significantly superior to placebo in improvement of depressive symptoms as measured by decrease in MADRS total score at Week 6 (see Table 5).

Table 5: Primary Efficacy Results for Change from Baseline in MADRS Total Score at Week 6 in Adult Patients with MDD (Study 1)

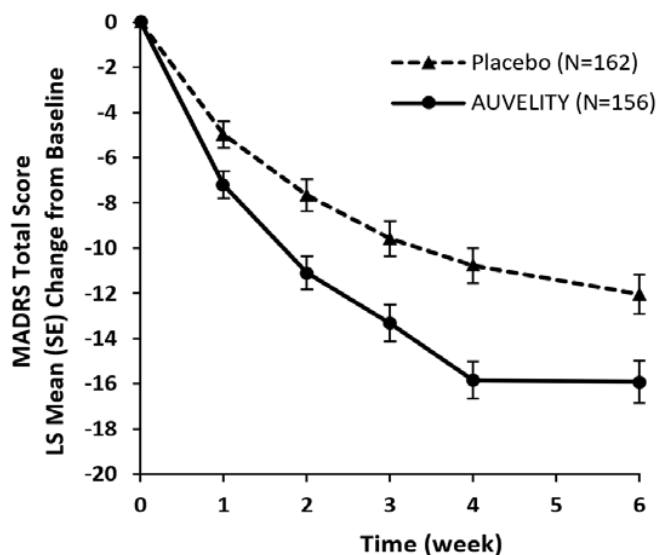
Study	Treatment Group	Mean Baseline Score (SD)	LS Mean Change from Baseline (SE)	LS Mean Difference ^a (95% CI)
Study 1	AUVELITY (N=156)	33.6 (4.4)	-15.9 (0.9)	-3.9 (-6.4, -1.4)
	Placebo (N=162)	33.2 (4.4)	-12.1 (0.9)	---

SD=standard deviation; SE=standard error; LS Mean=least-squares mean; CI=confidence interval.

^a drug – placebo

The change from baseline in MADRS total score by week in Study 1 is displayed in Figure 3. The change in MADRS total score from baseline to Week 1 and from baseline to Week 2 were pre-specified secondary efficacy endpoints. The difference between AUVELITY and placebo in change from baseline in MADRS total score was statistically significant at Week 1 and at Week 2.

Figure 3: Change from Baseline in MADRS Total Score by Week (Study 1)



Placebo (N)	161	162	159	159	157	150
AUVELITY (N)	156	155	142	132	128	124

SE = Standard Error

Examination of demographic subgroups by age, sex, and race did not suggest differences in response.

In Study 2, patients with MDD were randomized to receive AUVELITY or bupropion hydrochloride sustained-release tablets 105 mg twice daily for 6 weeks. The primary outcome measure was calculated by assessing the change from baseline in total MADRS score at each on-site visit from Week 1 to Week 6 and then taking the average of those scores. The results of the study demonstrated that dextromethorphan contributes to the antidepressant properties of AUVELITY.

14.2 Agitation Associated with Dementia Due to Alzheimer's Disease

The efficacy of AUVELITY for the treatment of agitation associated with dementia due to Alzheimer's disease was established in two randomized controlled studies. In these studies, patients were required to:

- Have a diagnosis of probable Alzheimer's disease based on the 2011 National Institute on Aging-Alzheimer Association criteria,
- Have a diagnosis of agitation based on the International Psychogeriatric Association provisional definition of agitation, exhibit moderate to severe symptoms, and require pharmacological intervention for their agitation, and
- Have a Mini-Mental State Examination score of ≥ 10 and ≤ 24 , and have a total score of ≥ 4 on the agitation/aggression item of the Neuropsychiatric Inventory.

Study 3 (NCT 03226522) was a 5-week, randomized, double-blind, placebo-controlled study. Patients were randomized to receive AUVELITY (titrated to 45 mg of dextromethorphan hydrobromide/105 mg of bupropion hydrochloride) twice daily (N=152), placebo twice daily (N=156), or 105 mg bupropion hydrochloride sustained-release (SR) twice daily (N=49; treatment arm terminated early for futility), for 5 weeks. The primary endpoint was the change from baseline to Week 5 in the total score of the Cohen-Mansfield Agitation Inventory (CMAI).

The CMAI is a clinician-rated questionnaire consisting of 29 items, which assess the frequency of manifestations of agitated behaviors in elderly patients, based on caregiver report. Behaviors on the CMAI scale may be further grouped into categories or subscales such as: physically aggressive behaviors, verbally aggressive behaviors, physically non-aggressive behaviors, and verbally non-aggressive behaviors. Each CMAI behavior was rated on a scale of 1 (never) to 7 (very frequent agitated behaviors). The total CMAI score ranges from 29 (absence of symptoms) to 203 (worst), with higher scores indicating more severe agitation-related and disruptive behaviors. A negative change indicates improvement.

AUVELITY was statistically significantly superior to placebo in improvement from baseline in CMAI total score at Week 5 (see Table 6). The change from baseline in CMAI total score by week in Study 3 is displayed in Figure 4. The modified Alzheimer’s Disease Cooperative Study-Clinical Global Impression of Change (mADCS-CGIC) is a 7-point clinician-rated scale ranging from “markedly improved” to “markedly worsened”. On the key secondary endpoint of response on the mADCS-CGIC, a statistically significantly greater proportion of patients treated with AUVELITY were rated as at least minimally improved compared to placebo. Patients in Study 3 had a median age of 75 years (range 65 to 90 years) and were 56% female, 86% Caucasian, 12% Black, and 1% Asian.

Table 6: Primary Efficacy Results for Change from Baseline in CMAI Total Score* at Week 5 in Adult Patients with Agitation Associated with Dementia Due to Alzheimer’s Disease (Study 3)

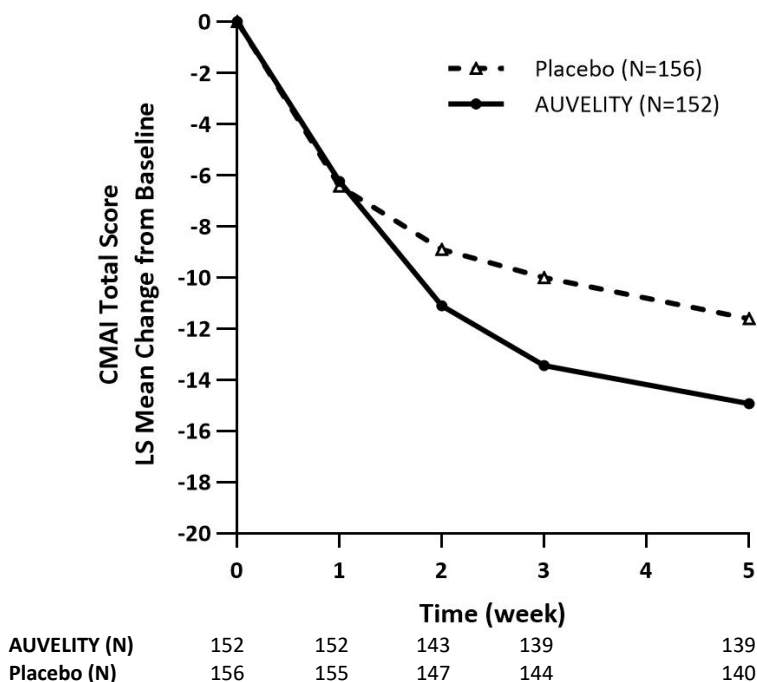
Treatment Group	Mean Baseline Score (SD)	LS Mean Change from Baseline (SE)	LS Mean Difference (95% CI)
AUVELITY (N=152)	60.8 (17.4)	-14.9 (0.9)	-3.3 ^a (-5.8, -0.8)
Placebo (N=156)	59.3 (15.5)	-11.6 (0.9)	---

SD=standard deviation; SE=standard error; LS Mean=least-squares mean; CI=confidence interval.

*In a supplementary analysis to examine the magnitude and direction of CMAI subscale response, Subscale 1 (physically aggressive behavior), Subscale 2 (physically non-aggressive behavior), Subscale 3 (verbally aggressive behavior), and Subscale 4 (verbally non-aggressive behavior) all scores trended in the same direction with no single factor overly influencing the CMAI total score.

^a AUVELITY - placebo

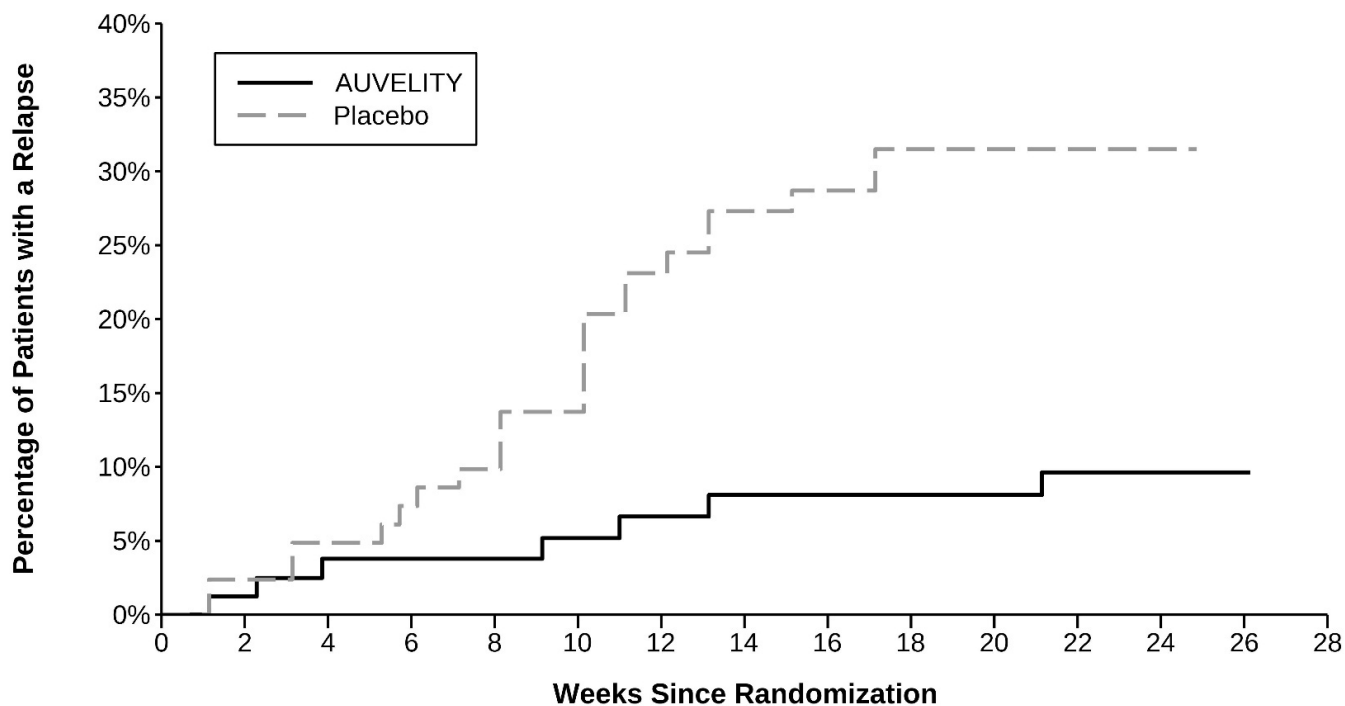
Figure 4: Change from Baseline in CMAI Total Score by Week (Study 3)



Study 4 (NCT 04947553) was a long-term, double-blind, randomized withdrawal study in patients who were known responders to AUVELITY. Patients were treated with AUVELITY, titrated to one 45 mg dextromethorphan/105 mg bupropion tablet twice daily, and upon reaching a sustained clinical response were randomized in a 1:1 ratio to either continue treatment with AUVELITY or switch to placebo, in a double-blind fashion. Sustained clinical response was defined as an improvement in the CMAI total score of ≥ 5 points, and improvement on the Patient Global Impression of Change, that was maintained for at least 4 weeks. The primary endpoint was time to relapse during the up to 6-month double-blind phase. Relapse was defined as a ≥ 10 -point worsening from randomization in the CMAI total score or a CMAI total score greater than that prior to any treatment with AUVELITY for 2 consecutive weeks, or hospitalization or other institutionalization due to agitation associated with dementia due to Alzheimer’s disease.

In Study 4, patients who continued treatment with AUVELITY experienced a statistically significantly longer time to relapse of agitation symptoms than did patients on placebo. The Kaplan-Meier curve of the time to relapse of agitation symptoms is presented in Figure 5. Patients in Study 4 had a median age of 73 years (range 65 to 89 years) and were 63% female, 92% Caucasian, and 7% Black.

Figure 5: Kaplan-Meier Plot of Time from Randomization to Relapse of Agitation Symptoms (Study 4)



Number at risk

AUVELITY	83	79	74	73	71	66	64	62	62	61	60	59	54	1	0
Placebo	84	82	77	74	71	65	56	52	51	47	45	43	39	0	0

Examination of demographic subgroups by age, sex, and race did not suggest differences in response.

16 HOW SUPPLIED/STORAGE AND HANDLING

AUVELITY (dextromethorphan hydrobromide / bupropion hydrochloride) extended-release tablets are film-coated, round, bilayer tablets with debossing on one side. AUVELITY is supplied in the following strengths and package configurations:

- Dextromethorphan hydrobromide 30 mg/bupropion hydrochloride 105 mg tablets are white with “AXS” above “30” debossed on one side:
Bottles of 21 tablets, NDC 81968-030-21
- Dextromethorphan hydrobromide 45mg/bupropion hydrochloride 105 mg tablets are beige with “45/105” debossed on one side:
Bottles of 30 tablets, NDC 81968-045-30
Bottles of 60 tablets, NDC 81968-045-60

Store AUVELITY in original bottle at 20°C to 25°C (68°F to 77°F), excursions permitted to 15°C to 30°C (59°F to 86°F) [see USP Controlled Room Temperature].

17 PATIENT COUNSELING INFORMATION

Advise the patient to read the FDA-approved patient labeling (Medication Guide).

Suicidal Thoughts and Behaviors

Advise patients and caregivers to look for the emergence of suicidal ideation and behavior, especially early during treatment and when the dose is adjusted up or down, and instruct them to report such symptoms to the healthcare provider [see *Boxed Warning, and Warnings and Precautions (5.1)*]

Hypersensitivity

Advise patients that both immediate and delayed hypersensitivity reactions to AUVELITY could occur. Instruct patients to seek medical attention immediately if they experience symptoms indicative of hypersensitivity, such as skin rash, pruritus, hives, chest pain, edema, shortness of breath, arthralgia, myalgia, or fever after taking AUVELITY [see *Contraindications (4)*].

Seizure

Advise patients that AUVELITY can cause seizure and that excessive use or abrupt discontinuation of alcohol, benzodiazepines, antiepileptic drugs, or sedatives/hypnotics can increase the risk. Advise patients to minimize or avoid use of alcohol. Instruct patients to use AUVELITY as directed and to discontinue, and not restart, AUVELITY if they experience a seizure while on treatment [see *Contraindications (4), Warnings and Precautions (5.2), Drug Interactions (7.1)*].

Increased Blood Pressure and Hypertension

Advise patients that AUVELITY can cause increased blood pressure and hypertension and that the risk is increased if used with some other medications such as MAOIs and drugs that increase dopaminergic or noradrenergic activity [see *Warnings and Precautions (5.3), Drug Interactions (7.1)*].

Activation of Mania or Hypomania

Advise patients to observe for signs of activation of mania/hypomania and instruct them to report such symptoms to the healthcare provider [see *Warnings and Precautions (5.4)*].

Psychosis and Other Neuropsychiatric Reactions

Inform patients that changes in mood including delusions, hallucinations, psychosis, concentration disturbances, paranoia, and confusion have occurred with use of bupropion, a component of AUVELITY. Instruct patients to notify a healthcare provider if they experience such symptoms [see *Warnings and Precautions (5.5), Adverse Reactions (6.2)*].

Angle-closure Glaucoma

Patients should be advised that taking AUVELITY can cause mild pupillary dilation, which in susceptible individuals, can lead to an episode of angle-closure glaucoma [see *Warnings and Precautions (5.6)*].

Dizziness

Advise patients that AUVELITY may cause dizziness. Inform patients to take precautions to reduce the risk of falls, particularly for patients with motor impairment affecting gait or a history of falls. Caution patients about

operating hazardous machinery, including motor vehicles, until they know how they will be affected by AUVELITY [see *Warnings and Precautions (5.7)*, *Adverse Reactions (6.1)*].

Serotonin Syndrome

Caution patients about the risk of serotonin syndrome, particularly with the concomitant use of AUVELITY with SSRIs or tricyclic antidepressants. Instruct patients to contact their health care provider or report to the emergency room if they experience signs or symptoms of serotonin syndrome [see *Warnings and Precautions (5.8)*, *Drug Interactions (7.1)*].

Embryo-fetal Toxicity

Advise pregnant females and females of reproductive potential of the potential risk to a fetus [see *Warning and Precautions (5.9)*]. Advise patients to notify their healthcare provider if they become pregnant or intend to become pregnant during therapy with AUVELITY. Advise patients that there is a pregnancy exposure registry that monitors pregnancy outcomes in women exposed to AUVELITY during pregnancy [see *Use in Specific Populations (8.1)*].

Hyponatremia

Advise patients that if they are treated with diuretics, or are otherwise volume depleted, or are elderly, they may be at greater risk of developing hyponatremia while taking AUVELITY [see *Warnings and Precautions (5.10)*].

Lactation

Advise patients not to breastfeed during treatment with AUVELITY and for 5 days after the final dose [see *Use in Specific Populations (8.2)*].

Administration Information

Advise patients not to take more than two tablets in the same day and to allow at least an 8-hour interval between doses [see *Dosage and Administration (2.2, 2.3)*].

Drug Interactions

Inform patients that AUVELITY increases the risk of drug interactions. Instruct patients to inform their healthcare provider about all the medications that they are taking before taking AUVELITY. Before taking any new medications, patients should tell their healthcare provider that they are taking AUVELITY.

Advise patients that AUVELITY can increase adverse neuropsychiatric reactions or reduce alcohol tolerance and to avoid or limit use of alcohol during treatment with AUVELITY [see *Drug Interactions (7.1)*].

Bupropion-Containing Products

Inform patients that AUVELITY contains bupropion which is an active ingredient in medications for other uses. Advise patients to inform their healthcare provider of all the medications that they are taking, including other bupropion-containing products [see *Dosage and Administration (2.1)*, *Warnings and Precautions (5.2, 5.3, 5.5)*, *Drug Interactions (7.1)*].

Dextromethorphan-Containing Products

Inform patients that AUVELITY contains dextromethorphan which is an active ingredient in medications for other uses. Advise patients to inform their healthcare provider of all the medications that they are taking, including other dextromethorphan-containing products [*see Dosage and Administration (2.1), Warnings and Precautions (5.5, 5.8), Drug Interactions (7.1)*].

Distributed by:

Axsome Therapeutics, Inc.

New York, NY 10007

AXSOME THERAPEUTICS and AUVELITY are trademarks or registered trademarks of Axsome Therapeutics, Inc. in the United States and other countries.

For patent information: www.axsome.com/IP

©2026 Axsome Therapeutics, Inc. All rights reserved.

AUV-USPI-00X.00X-20260430

MEDICATION GUIDE
AUVELITY® (aw - VEHL - ah- tee)
(dextromethorphan hydrobromide / bupropion hydrochloride)
extended-release tablets, for oral use

What is the most important information I should know about AUVELITY?

AUVELITY may cause serious side effects, including:

- **Increased risk of suicidal thoughts and actions.** AUVELITY and other antidepressant medicines may increase the risk of suicidal thoughts and actions in people 24 years of age and younger, **especially within the first few months of treatment or when the dose is changed. AUVELITY is not for use in children.**

- Depression or other mental illnesses are the most important causes of suicidal thoughts or actions.

How can I watch for and try to prevent suicidal thoughts and actions in myself or a family member?

- Pay close attention to any changes, especially sudden changes in mood, behavior, thoughts, or feelings or if you develop suicidal thoughts or actions. This is very important when an antidepressant medicine is started or when the dose is changed.
- Call your healthcare provider right away to report new or sudden changes in mood, behavior, thoughts, or feelings or if you develop suicidal thoughts or actions.
- Keep all follow-up visits with your healthcare provider as scheduled. Call your healthcare provider between visits as needed, especially if you have concerns about symptoms.

Call your healthcare provider or get emergency help right away if you have any of the following symptoms, especially if they are new, worse, or worry you:

- | | |
|---|---|
| ○ thoughts about suicide or dying | ○ suicide attempts |
| ○ new or worse depression | ○ new or worse anxiety |
| ○ feeling very agitated or restless | ○ panic attacks |
| ○ trouble sleeping (insomnia) | ○ new or worse irritability |
| ○ acting aggressive, being angry, or violent | ○ acting on dangerous impulses |
| ○ an extreme increase in activity and talking (mania) | ○ other unusual changes in behavior or mood |

See **“What are the possible side effects of AUVELITY?”** for more information about side effects.

What is AUVELITY?

AUVELITY is a prescription medicine used:

- to treat a certain type of depression called Major Depressive Disorder (MDD) in adults.
- to treat agitation that may happen with dementia due to Alzheimer’s disease.

AUVELITY should not be used as an “as needed” treatment for agitation that may happen with dementia due to Alzheimer’s disease.

It is not known if AUVELITY is safe and effective for use in children.

The ingredients in Auvelity, bupropion and dextromethorphan, are ingredients found in some other medicines approved for other uses. AUVELITY is not approved for other uses.

Do not take AUVELITY if you:

- have or had a seizure disorder.
- have or had an eating disorder such as anorexia nervosa or bulimia.
- have recently suddenly stopped drinking alcohol or use medicines called benzodiazepines, barbiturates, or anti-seizure medicines, and you have recently suddenly stopped taking them.
- take a monoamine oxidase inhibitor (MAOI)
- have stopped taking an MAOI in the last 14 days
- are being treated with the antibiotic linezolid or intravenous methylene blue
- are allergic to dextromethorphan, bupropion, or any of the ingredients in AUVELITY. See the end of this Medication Guide for a complete list of ingredients in AUVELITY.

Ask your healthcare provider or pharmacist if you are not sure if you take an MAOI or one of these medicines, including the antibiotic linezolid or intravenous methylene blue.

Do not start AUVELITY if you stopped taking an MAOI in the last 14 days.

Do not start taking an MAOI for at least 14 days after you stop treatment with AUVELITY.

Before taking AUVELITY, tell your healthcare provider about all your medical conditions, including if you:

- have or had seizures or convulsions
- have or had an eating disorder

- have or had a head injury
- have had a heart attack or have heart problems
- have a tumor in your nervous system (brain or spine)
- have had a stroke
- have low blood sugar
- have low sodium levels in your blood
- have liver problems
- have kidney problems
- drink a lot of alcohol
- abuse prescription medicines or street drugs
- have diabetes and take oral diabetes medicines or use insulin to control your blood sugar
- have high blood pressure
- have problems walking or a history of falls
- have or had bipolar disorder, or have a family history of bipolar disorder, suicide, or depression
- have high pressure in the eye (glaucoma)
- are pregnant or plan to become pregnant. AUVELITY may harm your unborn baby if you take AUVELITY during pregnancy. AUVELITY is not recommended during pregnancy.
 - Tell your healthcare provider right away if you become pregnant or think you are pregnant during treatment with AUVELITY. Your healthcare provider will prescribe another treatment for females who plan to become pregnant.
 - There is a pregnancy exposure registry for females who are exposed to AUVELITY during pregnancy. The purpose of the registry is to collect information about the health of females exposed to AUVELITY and their baby. If you become pregnant during treatment with AUVELITY, talk to your healthcare provider about registering with the National Pregnancy Registry for Antidepressants at 1-844-405-6185 or visit online at <https://womensmentalhealth.org/research/pregnancyregistry/antidepressants/>.
- are breastfeeding or plan to breastfeed. One of the ingredients in AUVELITY, bupropion, passes into your breast milk. Do not breastfeed during treatment with AUVELITY and for 5 days after the final dose.

Tell your healthcare provider about all the medicines you take, including prescription and over-the-counter medicines, vitamins, and herbal supplements.

AUVELITY and some other medicines may affect each other causing possible serious side effects. AUVELITY may affect the way other medicines work and other medicines may affect the way AUVELITY works.

Especially tell your healthcare provider if you take:

- other medicines containing bupropion or dextromethorphan
- medicines used to treat mood, anxiety, psychotic or thought disorders, including selective serotonin reuptake inhibitors (SSRIs), serotonin norepinephrine reuptake inhibitors (SNRIs), MAOIs, and tricyclic antidepressants
- medicines used to treat migraine headaches called triptans
- theophylline
- corticosteroids
- oral diabetes medicines or use insulin to control your blood sugar
- medicines to control appetite (anorectic)
- nicotine medicines to help you stop smoking
- street (illicit) drugs
- benzodiazepines, sedatives-hypnotics (sleep medicines), or opiates
- central nervous system (CNS) stimulants
- digoxin
- levodopa
- amantadine

Ask your healthcare provider if you are not sure if you are taking any of these medicines. Your healthcare provider can tell you if it is safe to take AUVELITY with your other medicines.

Do not start or stop any other medicines during treatment with AUVELITY without talking to your healthcare provider first. Stopping AUVELITY suddenly may cause you to have serious side effects. See, **“What are the possible side effects of AUVELITY?”**

Know the medicines you take. Keep a list of them to show to your healthcare provider and pharmacist when you get a new medicine.

How should I take AUVELITY?

- Take AUVELITY exactly as your healthcare provider tells you to take it.
- Your healthcare provider may increase your dose of AUVELITY during treatment. Follow the directions provided by your healthcare provider. Do not change your dose of AUVELITY without first talking to your healthcare provider.
- If you take AUVELITY 1 time a day, take your tablet in the morning.
- If your healthcare provider increases your dose to 2 times a day, take the AUVELITY tablets at least 8 hours apart.
- Do not take more than 2 AUVELITY tablets in 24 hours.
- Swallow AUVELITY tablets whole. Do not crush, chew, or divide AUVELITY tablets.
- AUVELITY may be taken with or without food.
- If you miss a dose, do not take an extra dose to make up for the dose you missed. Wait and take your next dose at the regular time. **Do not** take more than 1 dose of AUVELITY at a time.
- If you take too much AUVELITY, call your Poison Help line at 1-800-222-1222 or go to the nearest hospital emergency room right away.

What should I avoid while taking AUVELITY?

- Limit or avoid using alcohol during treatment with AUVELITY. If you usually drink a lot of alcohol, talk with your healthcare provider before suddenly stopping. If you suddenly stop drinking alcohol, you may increase your chance of having seizures.
- Do not drive a car or use heavy machinery until you know how AUVELITY affects you. AUVELITY can affect your ability to do these things safely.

What are possible side effects of AUVELITY?

AUVELITY may cause serious side effects, including:

- See “**What is the most important information I should know about AUVELITY?**”
- **Seizures.** There is a risk of seizures during treatment with AUVELITY. The risk is higher in people who:
 - take higher doses of AUVELITY
 - have certain medical problems
 - take AUVELITY with certain other medicines or alcohol

Do not take AUVELITY with other medicines unless your healthcare provider tells you to.

If you have a seizure during treatment with AUVELITY, stop taking AUVELITY and call your healthcare provider right away. **Do not** take AUVELITY again if you have a seizure.
- **Increases in blood pressure (hypertension).** Your healthcare provider should check your blood pressure before you start taking and during treatment with AUVELITY.
- **Manic episodes.** Manic episodes may happen in people with bipolar disorder who take AUVELITY. Symptoms may include:
 - greatly increased energy
 - racing thoughts
 - unusually grand ideas
 - talking more or faster than usual
 - severe trouble sleeping
 - reckless behavior
 - excessive happiness or irritability
- **Unusual thoughts or behaviors.** One of the ingredients in AUVELITY (bupropion), can cause unusual thoughts or behaviors, including delusions (believing you are someone else), hallucinations (seeing or hearing things that are not there), paranoia (feeling that people are against you), or feeling confused. If this happens to you, call your healthcare provider.
- **Eye problems (angle-closure glaucoma).** AUVELITY may cause a type of eye problem called angle-closure glaucoma in people with certain other eye conditions. You may want to undergo an eye examination to see if you are at risk and receive preventative treatment if you are. Call your healthcare provider if you have eye pain, changes in your vision, or swelling or redness in or around the eye.
- **Dizziness.** AUVELITY may cause dizziness which may increase your risk for falls.
- **Serotonin syndrome.** A potentially life-threatening problem called serotonin syndrome can happen when you take AUVELITY with certain other medicines. **Call your healthcare provider or go to the nearest hospital emergency room right away** if you develop any of the following signs and symptoms of serotonin syndrome:
 - agitation
 - sweating
 - seeing or hearing things that are not there (hallucinations)
 - flushing
 - confusion
 - high body temperature (hyperthermia)
 - coma
 - shaking (tremors), stiff muscles, or muscle twitching

- fast heartbeat
- changes in blood pressure
- dizziness
- loss of coordination
- seizures
- nausea, vomiting, diarrhea

• **Low levels of salt (sodium) in your blood.** Symptoms of this may include: headache, difficulty concentrating, memory changes, confusion, weakness and unsteadiness on your feet. Symptoms of severe or sudden cases of low salt levels in your blood may include: hallucinations (seeing or hearing things that are not real), fainting, seizures and coma. If not treated, severe low sodium levels can cause death. Elderly people and people who take diuretics or who become dehydrated may be at greater risk for this. Tell your healthcare provider if you develop signs and symptoms of low sodium levels.

The most common side effects of AUVELITY in MDD include:

- dizziness
- headache
- diarrhea
- feeling sleepy
- dry mouth
- sexual function problems
- excessive sweating

The most common side effects of AUVELITY in agitation that may happen with dementia due to Alzheimer's disease include:

- dizziness
- stomach upset or pain

AUVELITY may also cause allergic reactions. Allergic reactions can happen right after you start taking AUVELITY or develop later during AUVELITY treatment. Tell your healthcare provider right away if you develop any of the following signs and symptoms at any time during AUVELITY treatment:

- skin rash
- itching
- hives
- chest pain
- swelling
- shortness of breath
- muscle or joint pain
- fever

These are not all the possible side effects of AUVELITY.

Call your doctor for medical advice about side effects. You may report side effects to FDA at 1-800-FDA-1088.

How should I store AUVELITY?

- Store AUVELITY at room temperature between 68°F to 77°F (20°C to 25°C).
- Keep AUVELITY in the bottle that it comes in.
- **Keep AUVELITY and all medicines out of the reach of children.**

General information about the safe and effective use of AUVELITY.

Medicines are sometimes prescribed for purposes other than those listed in a Medication Guide. Do not use AUVELITY for a condition for which it was not prescribed. Do not give AUVELITY to other people, even if they have the same symptoms you have. It may harm them. You can ask your pharmacist or healthcare provider for information about AUVELITY that is written for health professionals.

If you take a urine drug screening test, AUVELITY may make the test result positive for amphetamines. If you tell the person giving you the drug screening test that you are taking AUVELITY, they can do a more specific drug screening test that should not have this problem.

What are the ingredients in AUVELITY?

Active ingredients: dextromethorphan hydrobromide / bupropion hydrochloride.

Inactive ingredients: carbomer homopolymer, colloidal silicon dioxide, crospovidone, glyceryl monocaprylocaprate, l-cysteine hydrochloride monohydrate, magnesium stearate, microcrystalline cellulose, polyvinyl alcohol, sodium lauryl sulfate, stearic acid, talc, and titanium dioxide. Beige tablets also contain red iron oxide and yellow iron oxide.

Distributed by: Axsome Therapeutics, Inc. New York, NY 10007

AXSOME Therapeutics and AUVELITY are trademarks owned by Axsome Therapeutics, Inc. in the United States and other countries.

For patent information: www.axsome.com/IP

©2026 AXSOME Therapeutics, Inc. All rights reserved.

For more information about AUVELITY, visit AUVELITY.com or call 1-866-496-AXSM (1-866-496-2976).

This Medication Guide has been approved by the U.S. Food and Drug Administration.
AUV-USMG-00X.00X-20260430

Revised: 04/2026

Figure 1: NDC 81968-030-21: 30 mg / 105 mg, 21-count Tablets: Carton Label

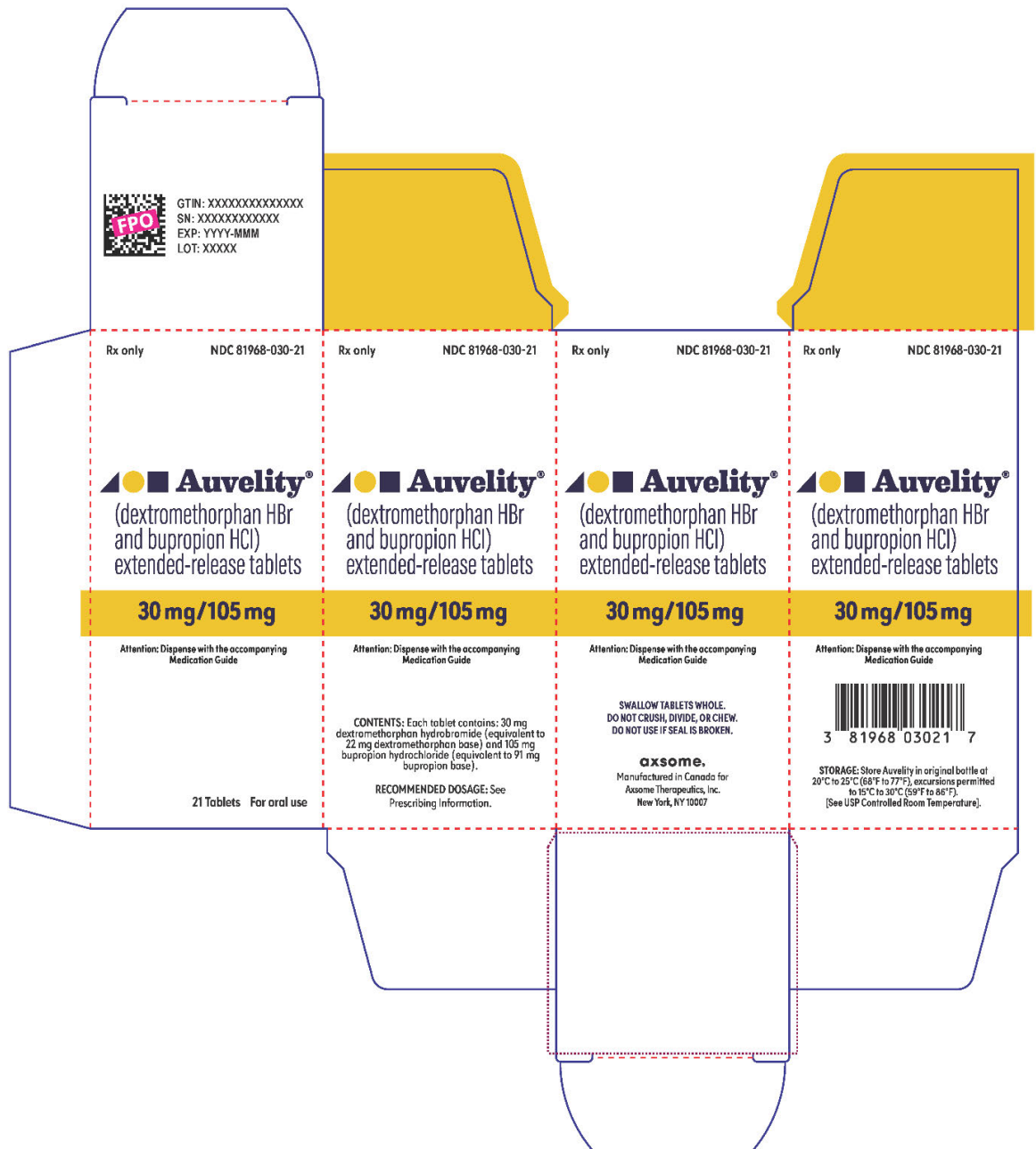


Figure 2: NDC 81968-030-21: 30 mg / 105 mg, 21-count Tablets: Bottle Label

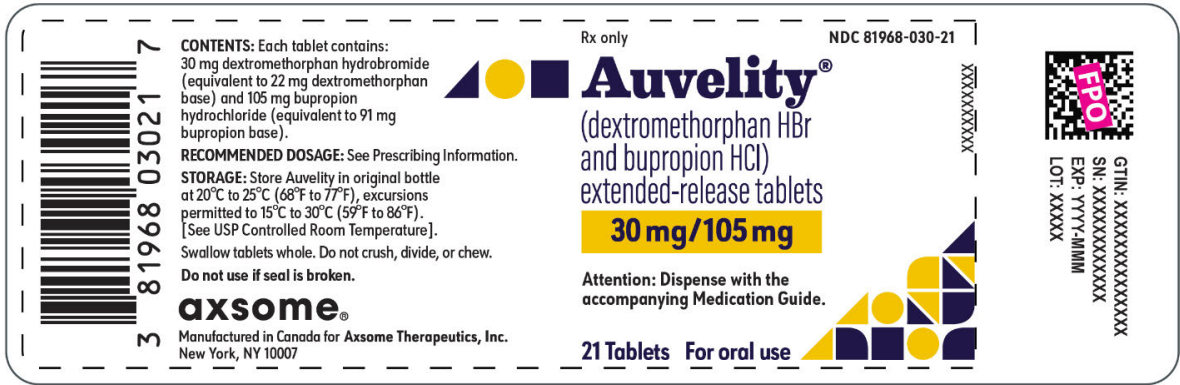
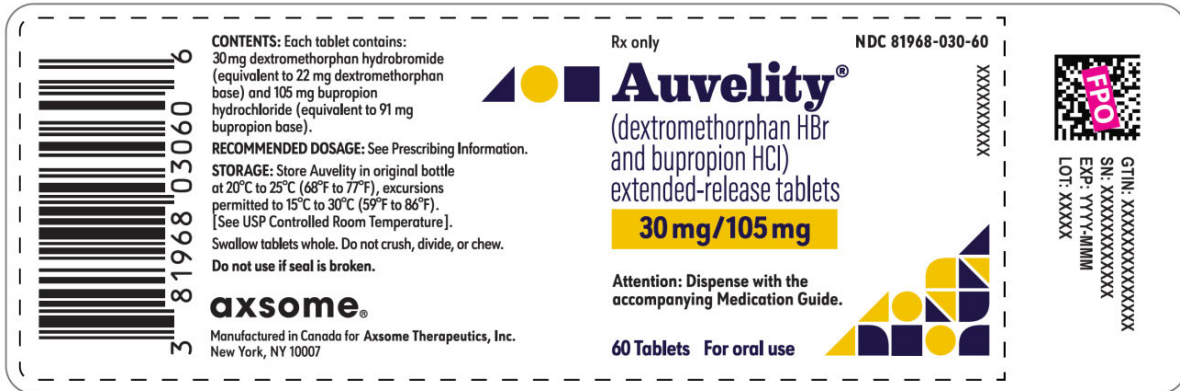


Figure 3: NDC 81968-030-60: 30 mg / 105 mg, 60-count Tablets: Bottle Label



This is a representation of an electronic record that was signed electronically. Following this are manifestations of any and all electronic signatures for this electronic record.

/s/

BERNARD A FISCHER on behalf of TIFFANY R FARCHIONE
05/05/2026 04:26:15 PM